

1 **Sphincterotomy for Biliary Sphincter of Oddi Disorder and idiopathic Acute Recurrent**  
2 **Pancreatitis: THE RESPOND LONGITUDINAL COHORT**  
3

4 **Authors:** Gregory A. Coté, MD, MS<sup>1</sup>, B. Joseph Elmunzer, MD, MSc<sup>2</sup>, Haley Nitchie, MHA<sup>2</sup>,  
5 Richard S. Kwon, MD<sup>3</sup>, Field F. Willingham, MD, MPH<sup>4</sup>, Sachin Wani, MD<sup>5</sup>, Vladimir Kushnir,  
6 MD<sup>6</sup>, Amitabh Chak, MD<sup>7</sup>, Vikesh Singh, MD, MSc<sup>8</sup>, Georgios Papachristou, MD<sup>9</sup>, Adam  
7 Slivka, MD, PhD<sup>10</sup>, Martin Freeman, MD<sup>11</sup>, Srinivas Gaddam, MD<sup>12</sup>, Priya Jamidar, MD<sup>13</sup>,  
8 Paul Tarnasky, MD<sup>14</sup>, Shyam Varadarajulu, MD<sup>15</sup>, Lydia D. Foster, MS<sup>16</sup>, and Peter B. Cotton,  
9 MD<sup>2</sup>

10  
11 **Author affiliation:**

12 <sup>1</sup> Department of Medicine, Division of Gastroenterology & Hepatology, Oregon Health &  
13 Science University

14 <sup>2</sup> Department of Medicine, Division of Gastroenterology & Hepatology, Medical University of  
15 South Carolina, Charleston, USA

16 <sup>3</sup> Department of Internal Medicine, Division of Gastroenterology & Hepatology, University of  
17 Michigan, Ann Arbor, MI

18 <sup>4</sup> Department of Medicine, Division of Digestive Diseases, School of Medicine, Emory  
19 University, Atlanta, GA

20 <sup>5</sup> Department of Medicine, Division of Gastroenterology and Hepatology, University of  
21 Colorado Anschutz Medical Campus, Aurora, Colorado, USA

22 <sup>6</sup> Department of Medicine, Division of Gastroenterology, Washington University in St. Louis  
23 School of Medicine, St. Louis, MO

24 <sup>7</sup> Digestive Health Institute, Department of Medicine, Case Western Reserve University,  
25 Cleveland, OH

26 <sup>8</sup> Division of Gastroenterology, Johns Hopkins Medical Institutions, Baltimore, MD

27 <sup>9</sup> Department of Medicine, Division of Gastroenterology & Hepatology, Ohio State University,  
28 Columbus, OH

29 <sup>10</sup> Department of Medicine, University of Pittsburgh, Pittsburgh, PA

30 <sup>11</sup> Department of Medicine, University of Minnesota, Minneapolis, MN

31 <sup>12</sup> Department of Medicine, Cedars Sinai School of Medicine

32 <sup>13</sup> Department of Medicine, Yale University School of Medicine, New Haven, CT

33 <sup>14</sup> Methodist Digestive Institute, Dallas, TX

34 <sup>15</sup> Digestive Health Institute, Orlando Health, Orlando, FL

35 <sup>16</sup> Department of Public Health Science, Medical University of South Carolina, Charleston,  
36 USA

37  
38  
39 **Authorship:**

40 Gregory A Cote, MD, MS (Conceptualization: Lead; Formal analysis: Supporting;  
41 Funding acquisition: Lead; Investigation: Lead; Methodology: Lead; Writing – original  
42 draft: Lead; Writing – review & editing: Equal)

43 B. Joseph Elmunzer (Investigation: Equal; Writing – review & editing: Equal)

44 Haley Nitchie (Project administration: Lead)

45 Richard S. Kwon (Investigation: Equal; Writing – review & editing: Equal)

46 Field F. Willingham (Investigation: Equal; Writing – review & editing: Equal)

47 Sachin Wani (Investigation: Equal; Writing – review & editing: Equal)

48 Vladimir Kushnir (Investigation: Equal; Writing – review & editing: Equal)

49 Amitabh Chak (Investigation: Equal; Writing – review & editing: Equal)

50 Vikesh Singh (Investigation: Equal; Writing – review & editing: Equal)

51 Georgios Papachristou (Investigation: Equal; Writing – review & editing: Equal)

52 Adam Slivka (Investigation: Equal; Writing – review & editing: Equal)  
53 Shyam Varadarajulu (Investigation: Equal; Writing – review & editing: Equal)  
54 Martin Freeman (Investigation: Equal; Writing – review & editing: Equal)  
55 Srinivas Gaddam (Writing – review & editing: Equal)  
56 Priya Jamidar (Writing – review & editing: Equal)  
57 Paul Tarnasky (Investigation: Equal; Writing – review & editing: Equal)  
58 Lydia D. Foster (Data curation: Lead; Formal analysis: Lead; Funding acquisition:  
59 Supporting; Writing – review & editing: Equal)  
60 Peter B. Cotton (Conceptualization: Supporting; Formal analysis: Supporting; Writing  
61 – review & editing: Equal)  
62

63 **Disclosure:** Research reported in this publication was supported by *the National Institute of*  
64 *Diabetes and Digestive and Kidney Diseases (NIDDK)* of the National Institutes of Health  
65 under award number R01DK115495 (Cote, Foster, Cotton). The content is solely the  
66 responsibility of the authors and does not necessarily represent the official views of the  
67 National Institutes of Health.  
68

69 **Conflict of interest disclosure:** No authors have a relevant conflict of interest.  
70

71 **Guarantor of the article:** **Gregory Cote** is accepting full responsibility for the conduct of the  
72 study and has had access to the data and control of the decision to publish.  
73

74 **Corresponding author contact information:**

75 Gregory Cote  
76 3181 SW Sam Jackson Park Rd  
77 Mail Code L461  
78 Portland, OR 97239-3098  
79 E: [coteg@ohsu.edu](mailto:coteg@ohsu.edu)  
80 F: 503-494-8776  
81

82 **Acronyms**

83

84 SOD Sphincter of Oddi disorders

85 DGBI Disorders of gut-brain interaction

86 CBD Common bile duct

87 iRAP Idiopathic recurrent acute pancreatitis

88 MASLD Metabolic dysfunction associated steatotic liver disease

89 RESPOnD Results of Ercp for SPHincter of Oddi Disorders

90 PROM Patient-reported outcome measures

91 SVI Stent vs. Indomethacin trial

92 IBS Irritable bowel syndrome

93 ULN Upper limit of normal

94 PGIC Patient Global Impression of Change

95 RAPID Recurrent Abdominal Pain Intensity and Disability

96 EPISOD Evaluating Predictors & Interventions in Sphincter of Oddi Dysfunction

97

98 **Abstract**

99 **Word count (limit 250): 249**

100 **Objective:** Sphincter of Oddi Disorders (SOD) are contentious conditions in patients whose  
101 abdominal pain, idiopathic acute pancreatitis (iAP) might arise from pressurization at the  
102 sphincter of Oddi. The present study aimed to measure the benefit of sphincterotomy for  
103 suspected SOD.

104  
105 **Design:** Prospective cohort conducted at 14 U.S. centers with 12 months follow-up. Patients  
106 undergoing first-time ERCP with sphincterotomy for suspected SOD were eligible:  
107 pancreatobiliary-type pain with or without iAP. The primary outcome was defined as the  
108 composite of improvement by Patient Global Impression of Change (PGIC), no new or  
109 increased opioids, and no repeat intervention. Missing data were addressed by hierarchal,  
110 multiple imputation scheme.

111  
112 **Results:** Of 316 screened, 213 were enrolled with 190 (89.2%) of these having a dilated bile  
113 duct, abnormal labs, iAP, or some combination. By imputation, an average of 122/213 (57.4%  
114 [95%CI 50.4-64.4]) improved; response rate was similar for those with complete follow-up  
115 (99/161, 61.5%, [54.0-69.0]); of these, 118 (73.3%) improved by PGIC alone. Duct size,  
116 elevated labs, and patient characteristics were not associated with response. AP occurred in  
117 37/213 (17.4%) at a median of 6 months post-ERCP and was more likely in those with a history  
118 of AP (30.9 vs. 2.9%,  $p < 0.0001$ ).

119  
120 **Conclusion:** Nearly 60% of patients undergoing ERCP for suspected SOD improve, although  
121 the contribution of a placebo response is unknown. Contrary to prevailing belief, duct size and  
122 labs are poor response predictors. AP recurrence was common and like observations from prior  
123 non-intervention cohorts, suggesting no benefit of sphincterotomy in mitigating future AP  
124 episodes.

125  
126 **Keywords:** Sphincter of Oddi Dysfunction; Cholangiopancreatography, Endoscopic  
127 Retrograde; abdominal pain; acute pancreatitis; Quality of Life; Sphincterotomy

<b>Key Messages</b>
<b>WHAT IS ALREADY KNOWN ON THIS TOPIC</b>
<ul style="list-style-type: none"><li>• It is not clear if the sphincter of Oddi can cause abdominal pain (Functional Biliary Sphincter of Oddi Disorder) and idiopathic acute pancreatitis (Functional Pancreatic Sphincter of Oddi Disorder), and whether ERCP with sphincterotomy can ameliorate abdominal pain or pancreatitis.</li></ul>
<b>WHAT THIS STUDY ADDS</b>
<ul style="list-style-type: none"><li>• Using multiple patient-reported outcome measures, most patients with suspected sphincter of Oddi disorder improve after ERCP with sphincterotomy.</li><li>• Duct size, elevated pancreatobiliary labs, and baseline patient characteristics are not independently associated with response.</li><li>• There is a high rate of recurrent acute pancreatitis within 12 months of sphincterotomy in those with a history of idiopathic acute pancreatitis.</li></ul>
<b>HOW THIS STUDY MIGHT AFFECT RESEARCH, PRACTICE, OR POLICY</b>
<ul style="list-style-type: none"><li>• Since a discrete population with a high (&gt; 80-90%) response rate to sphincterotomy for suspected pancreatobiliary pain could not be identified, there is a need for additional observational and interventional studies that include phenotyping of patients using novel imaging or biochemical biomarkers.</li><li>• There remains a pressing need for quantitative nociceptive biomarkers to distinguish pancreatobiliary pain from other causes of abdominal pain or central sensitization.</li><li>• Discovery of blood-, bile-, or imaging-based biomarkers for occult microlithiasis and pancreatitis may be helpful in predicting who is likely to benefit from sphincterotomy.</li></ul>

128

## 129 Introduction

130 Abdominal pain is common and often associated with overlapping disorders of gut-  
131 brain interaction (DGBI). Functional sphincter of Oddi disorders (SOD) are defined by  
132 episodic abdominal pain that bear a resemblance to discomfort originating from the biliary  
133 tree, pancreas, or both,<sup>1</sup> but equating pain unequivocally with SOD is not possible.<sup>2</sup> Few  
134 disorders incite more controversy than SOD since there is no diagnostic test to prove that the  
135 sphincter is the source of pain and prospective studies evaluating the benefit of endoscopic  
136 sphincterotomy have been inconsistent.<sup>3-6</sup>

137 Physician-defined characteristics of SOD include the presence of a dilated common  
138 bile duct (CBD), elevated liver or pancreas chemistries associated with pain,<sup>7</sup> and a more  
139 discrete subtype which are those idiopathic recurrent acute pancreatitis (iRAP). The latter  
140 represents a diagnostic spectrum ranging from radiographic changes definitive for acute  
141 pancreatitis to only pain with elevated pancreas biochemistries.<sup>8</sup> In fact, experts do not  
142 consider pain associated with a dilated duct and abnormal biochemistries as SOD: this has  
143 been renamed papillary stenosis and sphincterotomy is recommended based on historical  
144 studies.<sup>5</sup>

145 Physician-defined characteristics of SOD are not as objective as originally conceived.  
146 Duct dilation is an imperfect clinical biomarker given the prevalence of physiologic dilation  
147 that occurs with cholecystectomy, aging, and opioid use.<sup>9</sup> Similarly, the specificity of elevated  
148 liver chemistries as an SOD indicator is compromised by the high baseline rate of metabolic  
149 dysfunction associated steatotic liver disease (MASLD, estimated prevalence 10-35%)<sup>10</sup> as  
150 well as abnormal aminotransferase levels in the general population (estimated prevalence  
151 10-30%).<sup>11-13</sup> Finally, iRAP is a subjective diagnosis since physicians commonly diagnose  
152 acute pancreatitis in the absence of radiographic changes and deeming a case idiopathic  
153 varies across clinical practices and individual cases.

154 Given inconsistent outcomes and variability in current clinical practice, the Results of

155 ERCP for SPhincter of Oddi Disorders (RESPOnD) was a multicenter, prospective cohort  
156 study designed to measure the 12-month response to sphincterotomy, as defined by patient-  
157 reported outcome measures (PROMs), among patients undergoing ERCP for suspected  
158 SOD.  
159

160 **Methods**

161 *Study Design, Setting, and Participants*

162 RESPOND was a prospective cohort study conducted at 14 U.S. medical centers. Eligible  
163 patients included those age  $\geq 18$  years and offered ERCP with sphincterotomy for suspected  
164 SOD and no history of endoscopic sphincterotomy between January 2018 and March 2022.  
165 This included all SOD subtypes: 1) Biliary: pain with a dilated bile duct, elevated liver  
166 chemistries, or both, 2) Pancreatic: idiopathic acute pancreatitis, diagnosed radiographically  
167 or by elevated pancreas chemistries alone, and 3) Mixed type: characteristics of both Biliary  
168 and Pancreatic. For centers participating in the Stent vs. Indomethacin trial (SVI),<sup>14</sup> patients  
169 could be enrolled after their ERCP and then followed prospectively to the primary endpoint.  
170 Patients with chronic pancreatitis, pregnancy, or a psychiatric disorder that precluded  
171 obtaining informed consent were excluded (***study protocol is available in supplemental***  
172 ***materials***). A history of cholecystectomy was not required for participation if the treating  
173 physician recommended ERCP as the initial intervention. Similarly, sphincter of Oddi  
174 manometry was not required since most participating providers performed empiric  
175 sphincterotomies and manometry's poor reproducibility and clinical utility.<sup>15</sup> The study was  
176 reviewed and approved by the Human Subjects Protection Office at each participating center  
177 before commencement of enrollment.

178 After signing informed consent, patients completed a baseline assessment before the  
179 ERCP procedure during which they completed a series of validated questionnaires designed  
180 to characterize their pain, pain-related disability, relevant medical history, and factors such as  
181 underlying somatization, depression, anxiety, expectation of response, and recent opioid  
182 utilization (***supplementary table 1***). Bile duct diameter was recorded using magnetic  
183 resonance cholangiopancreatography, computed tomography, and ERCP, with dilation being  
184 defined as  $\geq 12$ mm on any.<sup>6</sup> A less stringent definition for bile duct dilation was considered  
185 but did not impact the results significantly (data not shown). Similarly, an abnormal



186 biochemistry was defined by a liver biochemistry (AST, ALT, or alkaline phosphatase) > 2x  
187 upper limit of normal (ULN) or > 3x ULN for pancreas chemistry (amylase or lipase).

188 During ERCP, the treating physician performed biliary, pancreatic, or dual  
189 sphincterotomies per their clinical judgement. Patients received periprocedural rectal  
190 indomethacin and a prophylactic pancreatic duct stent was placed per clinical judgement or  
191 per treatment allocation in the SVI trial if applicable.

192 Following ERCP, patients were followed quarterly in-person or by telephone for 12  
193 months. During these visits, patients completed a series of validated, patient-reported  
194 outcome measures, queried for recent opioid and other medication use for their abdominal  
195 symptoms, hospitalizations for abdominal symptoms, and whether additional interventions  
196 were performed for their symptoms.<sup>16</sup>

197

#### 198 *Primary and secondary outcomes*

199 The primary outcome definition of success was determined at 12 months and was a  
200 composite of the Patient Global Impression of Change (PGIC) rated as “much improved” or  
201 “very much improved”, without the need for a repeat ERCP or other abdominal intervention,  
202 and the same or less days of prescription opioid use during month 12 compared to the month  
203 preceding the index ERCP. Secondary outcomes included the change (from baseline) in  
204 pain-related disability measured by the Recurrent Abdominal Pain Intensity and Disability  
205 (RAPID) instrument,<sup>17</sup> physical and mental health summary scores as well as sub-scores  
206 derived from PROMIS-29.<sup>18</sup> Acute pancreatitis, defined by revised Atlanta criteria<sup>19</sup>, was  
207 deemed non-iatrogenic unless it occurred within 30 days of the index or a follow-up ERCP.

208

#### 209 *Statistical analysis*

210 The original sample size estimate was 360 subjects enrolled at sites participating in the SVI  
211 trial. This was based on SVI’s original sample size and rate of treatment naïve subjects

212 enrolled in SVI at the time of this study's inception (33%); RESPOnD enrollment began 28  
213 months after SVI. A sample size of 360 would have resulted in a confidence interval width on  
214 our estimated proportion of success to be approximately  $10\pm 5\%$ . Enrollment in RESPOnD  
215 was lower than anticipated because of a smaller proportion of eligible subjects in SVI (24%  
216 after commencement of RESPOnD) and the COVID-19 pandemic. Recruitment was  
217 terminated early due to funding expiration and analysis demonstrating a confidence interval  
218 width like our original estimate.

219 The prespecified primary analysis was an unadjusted primary outcome success  
220 proportion with a two-sided 95% confidence interval. Secondary outcomes were assessed for  
221 association with the primary outcome via a generalized linear model with log link and Poisson  
222 distribution, with the primary outcome as the dependent variable and the secondary outcome  
223 as the independent variable. Models were adjusted for the baseline value of the secondary  
224 outcome. The Poisson distribution was used due to convergence issues with the prespecified  
225 binomial distribution. For safety outcomes, the unadjusted proportion and two-sided 95%  
226 confidence interval was estimated.

227 For subjects missing primary outcome data, we followed a hierarchical imputation  
228 scheme, which included multiple imputation. Multiple imputation assumed data were missing  
229 at random and a sensitivity analysis was conducted to assess the impact of missing data;  
230 multiple imputation allows for the uncertainty of missing data by creating several different  
231 plausible imputed data sets and appropriately combining results obtained from each of  
232 them.<sup>20</sup>

233 Two multivariate logistic models associated with the imputed primary outcome were  
234 constructed. The first model considered physician-defined characteristics of SOD: elevated  
235 liver chemistry  $>2x$  ULN, bile duct diameter  $\geq 12\text{mm}$ , and history of idiopathic acute  
236 pancreatitis. The second model considered baseline patient characteristics suspected to  
237 have an association with the primary outcome by univariate testing ( $p \leq 0.10$ ).

## 238 Results

### 239 *Enrollment and follow-up*

240 During the study period, 316 patients were screened for eligibility and 216 were consented to  
241 participate. Three were excluded due to inability to complete ERCP (2) or missing informed  
242 consent documentation (1). Of the remaining 213 subjects, 179 (84.0%) were enrolled prior to  
243 their index ERCP and 34 (16.0%) after ERCP but prior to their assessment of the primary  
244 outcome (**figure 1**). The baseline demographics of these two subgroups were similar (data  
245 not shown). A total of 169 (79.3%) completed 12-month follow-up, 36 (16.9%) were lost to  
246 follow-up, 5 (2.3%) withdrew consent, and 3 (1.4%) died.

247

### 248 *Baseline characteristics*

249 The cohort was predominantly female sex (80.8%), non-Hispanic White (82.6%), and middle  
250 aged ( $50.6 \pm 14.9$  years, **table 1**). 110/213 (51.6%) had a history of at least one episode of  
251 acute pancreatitis in their lifetime, 99 (46.5%) within 12 months of their ERCP. The majority  
252 had previously undergone a cholecystectomy, were nonsmokers at the time of enrollment,  
253 and drank little to no alcohol. A substantial number of patients had concomitant comorbidities  
254 suspected to confound their clinical presentation with abdominal pain, abnormal liver  
255 chemistries, or both, including irritable bowel syndrome (41.8%), MASLD (19.7%),  
256 fibromyalgia (14.1%), and gastroparesis (8.0%). Most (190/213, 89.2%) subjects presented  
257 with one or more physician-defined characteristics of SOD (duct dilation, abnormal  
258 pancreatobiliary biochemistries, and/or acute pancreatitis history), leaving 23 (10.8%) with  
259 none of these features, suggestive of type III SOD using the Rome III definition.

260 The majority (143/169, 84.6%) had some degree of abdominal pain within 7 days of  
261 their index ERCP (**table 2**); the median number of pain days was 30 in the last 90, rated as a  
262 median of 7/10 and resulting in a median pain burden of 180 (interquartile range: 60, 495).  
263 Most patients characterized their pain as nociceptive (112/168, 66.7%). Approximately 1/3<sup>rd</sup>

264 of patients had low physical or mental health, whereas nearly half of participants had a high  
265 likelihood of somatization. Opioids were used within 30 days of ERCP in 62/171 (36.3%). The  
266 majority (90/166, 54.2%) expected their pain to be very much better or completely gone to  
267 consider the procedure as successful.

268

269 *Procedure characteristics*

270 During ERCP, only 2/212 (0.9%) of patients underwent sphincter of Oddi manometry.  
271 However, most patients underwent a biliary sphincterotomy (204/213, 95.8%), pancreatic  
272 sphincterotomy (26/213, 12.2%), or both (20, 9.4%); 2 (0.9%) underwent a precut  
273 sphincterotomy alone and 1 (0.5%) did not have any sphincterotomy performed. A serious  
274 adverse event developed within 30 days of the index ERCP in 68/213, (31.9%); 22/213  
275 (10.3%) developed post-ERCP pancreatitis and 1/213 (0.5%) perforation (**supplementary**  
276 **table 2**).

277

278 *Primary outcome: improvement following ERCP*

279 Among 213 patients who underwent ERCP, an average of 122 (57.4% [95%CI 50.4-64.4])  
280 met the imputed primary outcome for success at 12-month follow-up. The response rate  
281 changed minimally using the partial hierarchal imputation method: 103/179 (57.5% [50.3-  
282 64.8]). In a sensitivity analysis restricted to patients with complete follow-up data (n=161), the  
283 response rate was similar (99/161, 61.5%, [54.0-69.0]). Of those with complete follow-up  
284 data, 118 (73.3%) met the primary success by PGIC alone but 19 failed due to the need for  
285 additional procedures (n=15), new or increased need for opioids (n=3), or both (n=1).

286

287 *Secondary outcome: development of acute pancreatitis > 30 days after ERCP*

288 During 12-month follow-up, 37/213 (17.4%) developed at least one episode of non-iatrogenic  
289 acute pancreatitis at a median of 6 months after the index ERCP. Non-iatrogenic acute

290 pancreatitis was more likely if the patient had a history of acute pancreatitis prior to the index  
291 ERCP (30.9%,  $p < 0.0001$ , **figure 2**), but some events occurred in those with no prior history of  
292 acute pancreatitis (2.9%).

293

294 *Relationship between physician defined SOD, patient characteristics, and outcome*

295 There were no significant differences in success rates when patients were classified using  
296 the physician-defined criteria for SOD, with success rates in biliary type I (51.3%), type II  
297 (51.6%), type III (53.6%), pancreatic (56.1%), and mixed type (67.5%) being similar  
298 ( $p = 0.4152$ ) (**table 3**). Similarly, a history of acute pancreatitis (60.7 vs. 53.8%,  $p = 0.3560$ ), an  
299 elevated liver chemistry  $> 2x$  ULN (60.4 vs. 56.1%,  $p = 0.5627$ ), and bile duct dilation  $\geq 12$ mm  
300 (56.8 vs. 57.6%,  $p = 0.8062$ ) did not correspond with a higher likelihood of success. Multiple  
301 patient characteristics potentially associated with response to sphincterotomy were evaluated  
302 by univariate analysis, with key comparisons summarized in **table 4**. The most significant  
303 negative associations with the primary outcome were prescription opioid use in the last 30  
304 days (46.8 vs. 66.3%,  $p = 0.0236$ ), low baseline physical health (50.0 vs. 66.2%,  $p = 0.0512$ ),  
305 and high likelihood of somatization at the time of index ERCP (52.6 vs. 67.0%,  $p = 0.0750$ ).  
306 There was no association between response to ERCP and a past medical history of irritable  
307 bowel syndrome, MASLD, gastroparesis, smoking, and pain subtype (nociceptive or  
308 neuropathic).

309

310 *Multivariate analysis*

311 Physician-defined characteristics of SOD were not associated with a higher likelihood of  
312 response to ERCP with sphincterotomy (**table 5**). In a regression model which considered  
313 patient characteristics associated univariately ( $p \leq 0.10$ ) with response, none of these factors  
314 proved to be independently associated with improvement. Recent opioid use (multivariate  
315 odds ratio 0.53 [0.26 – 1.08],  $p = 0.0810$ ) appeared to be the most important patient factor but

316 did not remain statistically significant in the final model.

317

318 *Secondary outcomes*

319 Success defined using the prespecified primary outcome corresponded with change in pain-  
320 related disability (mean change in RAPID score from baseline, -41.2 vs. -28.6 for those who  
321 failed the primary outcome,  $p = 0.0127$ ). There was no association between change in RAPID  
322 score and bile duct diameter in the complete case population: consistent with the analysis of  
323 outcome according to Rome III SOD subtype, there was no correlation between increasing  
324 bile duct diameter and reduction in RAPID score ( $p=0.6303$ , *supplemental figure 1*).  
325 Summary physical (6.0 vs. 2.8,  $p = 0.0294$ ) and mental (7.6 vs. 3.2,  $p=0.0140$ ) health scores  
326 improved significantly among patients meeting the study's primary outcome for success. In  
327 the complete case population and except for anxiety, change in PROMIS-29 sub-scores was  
328 significantly associated with the study's primary outcome (*supplementary table 3*). At the  
329 12-month visit, the number of patients who required opioids for abdominal pain in the past 30  
330 days decreased from 62/171 (36.5%) to 24/169 (14.2%).

331

332

333

## 334 Discussion

### 335 *Sphincterotomy for suspected pancreatobiliary pain*

336 Is SOD a fabricated etiology for abdominal pain? Many clinicians do not believe SOD is real,  
337 and even fewer admit to performing ERCP to ameliorate it (at least by coding data).<sup>21, 22</sup> The  
338 RESPOnD cohort represents a population who share a common characteristic: their treating  
339 physician interpreted their abdominal pain and other signs as concerning for SOD and  
340 recommended an ERCP with sphincterotomy to address them. This is a common problem,  
341 especially in the U.S. where > 1 million cholecystectomies are performed annually and a  
342 growing proportion return for a first-time ERCP > 1 year postoperatively; these individuals  
343 have higher rates of morbidity following these delayed ERCPs, likely because many have  
344 SOD-like characteristics.<sup>23</sup> Clinicians have the daunting task of trying to determine the  
345 etiology of a patient's abdominal pain when it is clear that pain may manifest similarly yet  
346 originate from multiple organs and is often confounded by overlapping disorders of gut brain  
347 interaction.<sup>2, 24-26</sup> This issue of cross-sensitization imposes a substantial challenge in  
348 differentiating pain originating from the pancreas, biliary tree, or another organ. A reliable  
349 blood or imaging test to confirm that pain is originating in the gallbladder, sphincter of Oddi,  
350 or pancreas is lacking, and RESPOnD confirms that standard pancreatobiliary chemistries  
351 and duct size are inadequate prognosticators. Last, patients with abdominal pain severe or  
352 sustained enough to prompt referral to RESPOnD providers are at-risk for central  
353 sensitization;<sup>27</sup> this results in heightened pain signaling anywhere along the nervous system  
354 and probably influences response to local interventions such as sphincterotomy. Despite  
355 these challenges, most patients improved after 12 months of follow-up using RESPOnD's  
356 primary outcome definition and numerous secondary outcomes derived from PROMs.

357 The present study attempts to address the hypothesis that SOD is a cause of  
358 abdominal pain by showing that ERCP with sphincterotomy can ameliorate these symptoms.  
359 Is the observed response rate – 57% using the pre-defined primary outcome and as high as

360 73% when using the PGIC alone – too high for a placebo? The placebo response is greatest  
361 for patients suffering from the most severe pain and interventions (as opposed to drugs) have  
362 a greater placebo effect, especially when offered as pain treatments.<sup>28-31</sup> In the “Evaluating  
363 Predictors & Interventions in Sphincter of Oddi Dysfunction” (EPISOD) study which enrolled  
364 patients with pain suspicious to their clinician for SOD pain but normal ducts, no pancreatitis,  
365 and few with limited elevation in biochemistries, the placebo response was 37%; this might  
366 have been higher using the PGIC as part of EPISOD’s composite primary outcome.<sup>3</sup> The  
367 observed outcomes are similar to: 1) the placebo response in a randomized trial of a  
368 protease inhibitor for painful chronic pancreatitis, and 2) the response to endoscopic therapy  
369 in an open-label randomized trial compared to surgery.<sup>32, 33</sup> Other factors which may increase  
370 the placebo response include the patient’s expectation of how much the intervention will help  
371 and confidence with which the clinician explains the efficacy of their intervention.<sup>28, 29, 34, 35</sup> We  
372 did not measure the white coat effect, but more than half of patients expected complete or  
373 near complete resolution of their symptoms. The magnitude of the intervention (ERCP and its  
374 known risks) and the patient’s high expectation imply a substantial placebo response. An  
375 optimist could reasonably argue that a helpful placebo is still helpful... It is reassuring that  
376 despite the rate of serious adverse events within 30 days of ERCP, very few patients (< 6%)  
377 believed they were worse 12 months later. Another placebo-controlled randomized trial would  
378 be necessary to differentiate the sphincterotomy response from the placebo response.

379

### 380 *Physician-defined characteristics of SOD correlate poorly with response*

381 For decades, physicians have used duct dilation and biochemistries as objective markers for  
382 impaired drainage through the sphincter of Oddi. In contrast to historic trials of SOD,<sup>5, 6</sup> the  
383 present study demonstrates that physician-defined characteristics of SOD correlate poorly  
384 with response to sphincterotomy and is consistent with prior observations.<sup>36</sup> The reasons are  
385 undoubtedly multifactorial. First, the more widespread use of MRCP and endoscopic



386 ultrasound means RESPOND excluded patients with choledocholithiasis who might have  
387 been classified as SOD in older cohorts. Second, it is more common for gastroenterologists  
388 to consult on patients with abdominal pain who are already prescribed opioids for  
389 nonmalignant indications – abdominal pain or otherwise.<sup>37</sup> Opioids are a major confounder  
390 since they cause bile duct dilation, elevated liver chemistries, and even acute pancreatitis;  
391 44% of recent opioid users had a bile duct  $\geq 12$  mm, as compared to 31% for those without.  
392 Furthermore, recent opioids are more likely to associate with opioid-induced central  
393 sensitization, disruption to the gut microbiome, and their GI side effects overlap with the  
394 symptoms that mimic SOD; none of these are likely to help the chance of benefiting from  
395 sphincterotomy.

396

397 *The importance of pain characteristics in response*

398 Nearly half of RESPOND participants met criteria for underlying somatization at the time of  
399 enrollment. This likely represents a combination of individuals with a primary functional  
400 somatic syndrome and those who have developed central sensitization due to their chronic  
401 abdominal pain.<sup>27</sup> Differentiating these pain subtypes is beyond the scope of this study, but  
402 the finding that 72% of individuals without somatization improved is important because a  
403 placebo response is unlikely to explain this completely. Similarly, patients least impacted by  
404 their pain, defined by normal mental and physical health, and who did not require opioids to  
405 manage their pain experienced response rates  $> 70\%$ . These are populations who seem best  
406 to consider offering a high-risk intervention such as ERCP.

407

408 *Acute pancreatitis*

409 Approximately half of RESPOND participants presented with a history of acute pancreatitis  
410 prior to their index ERCP. While a natural history group is lacking in RESPOND, the high  
411 (31%) recurrence rate of pancreatitis at a median of 6 months after ERCP suggests

412 sphincterotomy is ineffective in reducing the rate of acute pancreatitis in this population. The  
413 observed recurrence rate is remarkably like an earlier randomized trial comparing biliary and  
414 pancreatic sphincterotomy for patients with iRAP<sup>4</sup> and worse than the reported recurrence  
415 rate (15.1%) from a meta-analysis of 17 studies and 4,754 individuals classified as idiopathic  
416 acute pancreatitis.<sup>38</sup> Having acute pancreatitis prior to the index ERCP was clearly associated  
417 with a higher likelihood of developing acute pancreatitis during follow-up and even  
418 comparable to patients whose pancreatitis is attributed to alcohol misuse and fail to quit.<sup>39-42</sup>  
419 RESPOnd's prospective study design with scheduled research follow-up assessments might  
420 have caused an inflation of the observed rate of AP when compared to studies whose  
421 approach to follow-up is more passive (e.g., a measurement bias). It is also noteworthy that  
422 3% of individuals with no prior history of acute pancreatitis developed an attack during the  
423 first 12 months of follow-up. All of this is in addition to a significant risk of post-ERCP  
424 pancreatitis (10.3%). For patients with iRAP, these data argue against a short-term benefit of  
425 ameliorating subsequent pancreatitis episodes.

426

#### 427 *Limitations*

428 The principal strengths of RESPOnd include its multicenter and prospective study design  
429 with use of validated questionnaires to define baseline patient characteristics and PROMs.  
430 Although some patients were lost to follow-up before reaching the 12-month primary  
431 outcome, the success rate was similar in a sensitivity analysis restricted to patients with  
432 complete follow-up data. Additionally, the success rate did not change substantially when  
433 considering alternatives to the PGIC, including a reduction in pain-related disability using the  
434 same definition from the EPISOD trial (RAPID score of < 6). These observations reassure  
435 that the imputation method did not introduce bias and that the study's primary outcome was  
436 reproducible using other PROMs. The use of neuromodulators and antispasmodics within 30  
437 days of enrollment was low (49% and 28%, respectively). While this is likely due to these

438 agents' lack of efficacy when used earlier in their clinical course (thus prompting consultation  
439 at an endoscopy referral center), the overall rate of pharmacotherapy failure at the time of  
440 enrollment was not queried due to concerns about recall bias. Another limitation is the  
441 heterogeneity of the patient cohort, including some patients who did not have a history of  
442 cholecystectomy and a mixture of patients with biliary, pancreatic, or both subtypes of SOD.  
443 Although SOD is classically defined as a post-cholecystectomy syndrome, the study team  
444 elected to include these cases to maximize the study's generalizability since the decision to  
445 perform ERCP was left to the discretion of the patient and treating physician based on the  
446 suspicion that their abdominal pain was originating in the biliary tree, pancreas, or both. Our  
447 subgroup analyses do not suggest that classically defined SOD subtypes perform differently.  
448 A history of cholecystectomy was not associated with a difference in success following the  
449 index ERCP (data not shown); 6 patients proceeded to cholecystectomy during follow-up,  
450 and all 4 who completed follow up at 12 months reported improvement. Similarly, patients  
451 with a history of acute pancreatitis as part of their SOD phenotype experienced similar  
452 response rates (by PROMs) to those with classically defined biliary SOD. Last, there is a real  
453 possibility of referral bias in this cohort. Patients referred to tertiary centers for suspected  
454 SOD may represent those with the most severe phenotype – and thus most susceptible to  
455 central sensitization and cross-sensitization. It is possible that there are unmeasured  
456 confounders which influenced the response rate. Despite its multicenter design and 4 years  
457 of recruitment, the final cohort was smaller than originally anticipated due to changes in  
458 practice patterns at participating centers and other unmeasured factors, raising the possibility  
459 of type II statistical error.

460

#### 461 *Conclusion*

462 RESPOnD demonstrates that nearly 60% patients who undergo ERCP for suspected SOD  
463 feel better after 12 months of follow-up, although the component attributable to a placebo

464 response is unclear. Physician-defined characteristics such as duct size, lab tests, and an  
465 objective history of acute pancreatitis correlate poorly with a person’s likelihood of benefiting  
466 from the procedure, meaning the traditional Rome III classification system is a poor guide to  
467 deciding who should be offered ERCP. Despite high technical success rates of ERCP with  
468 sphincterotomy, patients with antecedent acute pancreatitis are still likely to develop a  
469 recurrent attack. The most important prognostic factors for response to ERCP are determined  
470 by the patient, more nuanced, and many are difficult to precisely diagnose in the clinic: those  
471 without underlying somatization – a surrogate measure of disordered pain processing and/or  
472 central sensitization – no recent use of opioids, and least disabled by their symptoms stand  
473 the greatest odds of improvement. Those who are least desperate for intervention seem to  
474 stand the best chance of improvement. RESPOND highlights the importance of a careful  
475 history, the need for more objective pain biomarkers, and additional research into the placebo  
476 response of ERCP when performed for pain. In the meantime, clinicians should continue to  
477 tread cautiously and avoid the temptation to offer ERCP enthusiastically when “objective”  
478 features of SOD are present: they may open the door to a slippery slope.  
479

## 480 References

- 481 1. Cotton PB, Elta GH, Carter CR, et al. Rome IV. Gallbladder and Sphincter of Oddi  
482 Disorders. *Gastroenterology* 2016;150:1420-1429.
- 483 2. Hreinsson JP, Tornblom H, Tack J, et al. Factor Analysis of the Rome IV Criteria for  
484 Major Disorders of Gut-Brain Interaction (DGBI) Globally and Across Geographical, Sex,  
485 and Age Groups. *Gastroenterology* 2023;164:1211-1222.
- 486 3. Cotton PB, Durkalski V, Romagnuolo J, et al. Effect of endoscopic sphincterotomy for  
487 suspected sphincter of Oddi dysfunction on pain-related disability following  
488 cholecystectomy: the EPISOD randomized clinical trial. *JAMA* 2014;311:2101-9.
- 489 4. Cote GA, Imperiale TF, Schmidt SE, et al. Similar efficacies of biliary, with or without  
490 pancreatic, sphincterotomy in treatment of idiopathic recurrent acute pancreatitis.  
491 *Gastroenterology* 2012;143:1502-1509 e1.
- 492 5. Toouli J, Roberts-Thomson IC, Kellow J, et al. Manometry based randomised trial of  
493 endoscopic sphincterotomy for sphincter of Oddi dysfunction. *Gut* 2000;46:98-102.
- 494 6. Geenen JE, Hogan WJ, Dodds WJ, et al. The efficacy of endoscopic sphincterotomy  
495 after cholecystectomy in patients with sphincter-of-Oddi dysfunction. *N Engl J Med*  
496 1989;320:82-7.
- 497 7. Behar J, Corazziari E, Guelrud M, et al. Functional gallbladder and sphincter of oddi  
498 disorders. *Gastroenterology* 2006;130:1498-509.
- 499 8. Guda NM, Trikudanathan G, Freeman ML. Idiopathic recurrent acute pancreatitis.  
500 *Lancet Gastroenterol Hepatol* 2018;3:720-728.
- 501 9. Barakat MT, Banerjee S. Incidental biliary dilation in the era of the opiate epidemic: High  
502 prevalence of biliary dilation in opiate users evaluated in the Emergency Department.  
503 *World J Hepatol* 2020;12:1289-1298.
- 504 10. Powell EE, Wong VW, Rinella M. Non-alcoholic fatty liver disease. *Lancet*  
505 2021;397:2212-2224.
- 506 11. Ruhl CE, Everhart JE. Upper limits of normal for alanine aminotransferase activity in the  
507 United States population. *Hepatology* 2012;55:447-54.
- 508 12. Clark JM, Brancati FL, Diehl AM. The prevalence and etiology of elevated  
509 aminotransferase levels in the United States. *Am J Gastroenterol* 2003;98:960-7.
- 510 13. Ioannou GN, Boyko EJ, Lee SP. The prevalence and predictors of elevated serum  
511 aminotransferase activity in the United States in 1999-2002. *Am J Gastroenterol*  
512 2006;101:76-82.
- 513 14. Elmunzer BJ, Foster LD, Serrano J, et al. Indomethacin with or without prophylactic  
514 pancreatic stent placement to prevent pancreatitis after ERCP: a randomised non-  
515 inferiority trial. *Lancet* 2024;403:450-458.
- 516 15. Suarez AL, Pauls Q, Durkalski-Mauldin V, Cotton PB. Sphincter of Oddi Manometry:  
517 Reproducibility of Measurements and Effect of Sphincterotomy in the EPISOD Study. *J*  
518 *Neurogastroenterol Motil* 2016;22:477-82.
- 519 16. Cote GA, Nitchie H, Elmunzer BJ, et al. Characteristics of Patients Undergoing  
520 Endoscopic Retrograde Cholangiopancreatography for Sphincter of Oddi Disorders. *Clin*  
521 *Gastroenterol Hepatol* 2022;20:e627-e634.
- 522 17. Durkalski V, Stewart W, MacDougall P, et al. Measuring episodic abdominal pain and  
523 disability in suspected sphincter of Oddi dysfunction. *World J Gastroenterol*  
524 2010;16:4416-21.
- 525 18. Hays RD, Spritzer KL, Schalet BD, Cella D. PROMIS((R))-29 v2.0 profile physical and  
526 mental health summary scores. *Qual Life Res* 2018;27:1885-1891.
- 527 19. Banks PA, Bollen TL, Dervenis C, et al. Classification of acute pancreatitis--2012:  
528 revision of the Atlanta classification and definitions by international consensus. *Gut*  
529 2013;62:102-11.

- 530 20. Li P, Stuart EA, Allison DB. Multiple Imputation: A Flexible Tool for Handling Missing  
531 Data. *JAMA* 2015;314:1966-7.
- 532 21. Smith ZL, Shah R, Elmunzer BJ, Chak A. The Next EPISOD: Trends in Utilization of  
533 Endoscopic Sphincterotomy for Sphincter of Oddi Dysfunction from 2010-2019. *Clin*  
534 *Gastroenterol Hepatol* 2022;20:e600-e609.
- 535 22. Watson RR, Klapman J, Komanduri S, et al. Wide disparities in attitudes and practices  
536 regarding Type II sphincter of Oddi dysfunction: a survey of expert U.S. endoscopists.  
537 *Endosc Int Open* 2016;4:E941-6.
- 538 23. Thiruvengadam NR, Saumoy M, Schaubel DE, et al. Rise In First-Time ERCP For  
539 Benign Indications >1 Year After Cholecystectomy Is Associated With Worse Outcomes.  
540 *Clin Gastroenterol Hepatol* 2024.
- 541 24. Doran FS. The sites to which pain is referred from the common bile-duct in man and its  
542 implication for the theory of referred pain. *Br J Surg* 1967;54:599-606.
- 543 25. Kingham JG, Dawson AM. Origin of chronic right upper quadrant pain. *Gut* 1985;26:783-  
544 8.
- 545 26. Chapman WP, Herrera R, Jones CM. A comparison of pain produced experimentally in  
546 lower esophagus, common bile duct, and upper small intestine with pain experienced by  
547 patients with diseases of biliary tract and pancreas. *Surg Gynecol Obstet* 1949;89:573-  
548 82.
- 549 27. Bourke JH, Langford RM, White PD. The common link between functional somatic  
550 syndromes may be central sensitisation. *J Psychosom Res* 2015;78:228-36.
- 551 28. Dettori JR, Norvell DC, Chapman JR. The Art of Surgery: The Strange World of the  
552 Placebo Response. *Global Spine J* 2019;9:680-683.
- 553 29. Doherty M, Dieppe P. The "placebo" response in osteoarthritis and its implications for  
554 clinical practice. *Osteoarthritis Cartilage* 2009;17:1255-62.
- 555 30. Gu AP, Gu CN, Ahmed AT, et al. Sham surgical procedures for pain intervention result  
556 in significant improvements in pain: systematic review and meta-analysis. *J Clin*  
557 *Epidemiol* 2017;83:18-23.
- 558 31. Jonas WB, Crawford C, Colloca L, et al. To what extent are surgery and invasive  
559 procedures effective beyond a placebo response? A systematic review with meta-  
560 analysis of randomised, sham controlled trials. *BMJ Open* 2015;5:e009655.
- 561 32. Hart PA, Osypchuk Y, Hovbakh I, et al. A Randomized Controlled Phase 2 Dose-Finding  
562 Trial to Evaluate the Efficacy and Safety of Camostat in the Treatment of Painful Chronic  
563 Pancreatitis: The TACTIC Study. *Gastroenterology* 2023.
- 564 33. Issa Y, Kempeneers MA, Bruno MJ, et al. Effect of Early Surgery vs Endoscopy-First  
565 Approach on Pain in Patients With Chronic Pancreatitis: The ESCAPE Randomized  
566 Clinical Trial. *JAMA* 2020;323:237-247.
- 567 34. Rossettini G, Campaci F, Bialosky J, et al. The Biology of Placebo and Nocebo Effects  
568 on Experimental and Chronic Pain: State of the Art. *J Clin Med* 2023;12.
- 569 35. Jones MP, Guthrie-Lyons L, Sato YA, Talley NJ. Factors Associated With Placebo  
570 Treatment Response in Functional Dyspepsia Clinical Trials. *Am J Gastroenterol*  
571 2023;118:685-691.
- 572 36. Freeman ML, Gill M, Overby C, Cen YY. Predictors of outcomes after biliary and  
573 pancreatic sphincterotomy for sphincter of oddi dysfunction. *J Clin Gastroenterol*  
574 2007;41:94-102.
- 575 37. Keyes KM, Rutherford C, Hamilton A, et al. What is the prevalence of and trend in opioid  
576 use disorder in the United States from 2010 to 2019? Using multiplier approaches to  
577 estimate prevalence for an unknown population size. *Drug Alcohol Depend Rep* 2022;3.
- 578 38. Hajibandeh S, Jurdon R, Heaton E, et al. The risk of recurrent pancreatitis after first  
579 episode of acute pancreatitis in relation to etiology and severity of disease: A systematic

- 580 review, meta-analysis and meta-regression analysis. *J Gastroenterol Hepatol*  
581 2023;38:1718-1733.
- 582 39. Lankisch PG, Breuer N, Bruns A, et al. Natural history of acute pancreatitis: a long-term  
583 population-based study. *Am J Gastroenterol* 2009;104:2797-805; quiz 2806.
- 584 40. Yadav D, O'Connell M, Papachristou GI. Natural history following the first attack of acute  
585 pancreatitis. *Am J Gastroenterol* 2012;107:1096-103.
- 586 41. Ahmed Ali U, Issa Y, Hagensars JC, et al. Risk of Recurrent Pancreatitis and  
587 Progression to Chronic Pancreatitis After a First Episode of Acute Pancreatitis. *Clin*  
588 *Gastroenterol Hepatol* 2016;14:738-46.
- 589 42. Das R, Clarke B, Tang G, et al. Endoscopic sphincterotomy (ES) may not alter the  
590 natural history of idiopathic recurrent acute pancreatitis (IRAP). *Pancreatology*  
591 2016;16:770-7.  
592

## **Figure 1. Screening and enrollment**

Summary of enrollment and retention in RESPOND. Some patients (n=37) were enrolled after their ERCP but before the 12-month primary outcome assessment. In these cases, the baseline assessment did not include completion of validated instruments characterizing their pain or psychosocial comorbidity. These subjects completed all other baseline and follow-up assessments per protocol.



## **Figure 2. Development of acute pancreatitis following ERCP for suspected SOD**

Time to acute pancreatitis after the index ERCP with sphincterotomy. Episodes which occurred within 30 days of the index or follow-up ERCP are not represented.

**Table 1. Patient characteristics**

<b>Patient characteristic</b>	<b>Total N=213</b>
Age, Mean (SD)	50.6 (14.9)
Female sex, n (%)	172 (80.8)
Body mass index (kg/m <sup>2</sup> ), mean (SD)	27.8 (6.4)
Ethnicity, n (%)	
• Hispanic or Latino	10 (4.7)
• Not Hispanic or Latino	203 (95.3)
Race, n (%)	
• White	186 (87.3)
• Black/African American	18 (8.5)
• Other or Multiple	6 (3.8)
• American Indian/Alaska Native	1 (0.5)
• Asian	1 (0.5)
• Native Hawaiian/Other Pacific Islander	1 (0.5)
Smoking history, n (%)	
• Never	120 (56.3)
• Ever	61 (28.6)
• Current	32 (15.0)
Usual intake of alcohol during the past six months (drinks/week), n (%)	
• < 1 drink/week	177 (83.1)
• 2-6 drinks/week	35 (16.4)
• > 6 drinks/week	1 (0.5)
Prior Cholecystectomy, n (%)	169 (79.3)
<b>Relevant past medical history, n (%)</b>	
• Acute pancreatitis	110 (51.6)
• Irritable bowel syndrome <sup>α</sup>	71 (41.8)
• MASLD	42 (19.7)
• Fibromyalgia	30 (14.1)
• Gastroparesis	17 (8.0)
<b>Physician-defined characteristics of SOD, n (%)<sup>†</sup></b>	
• Bile duct diameter ≥ 12 mm	73/201 (36.3)
• Pancreatic duct diameter ≥ 4 mm	39/121 (32.2)
• Elevated liver chemistry ≥ 2x ULN	91/199 (45.7)
• Elevated pancreatic chemistry ≥ 3x ULN	49/165 (29.7)

IBS = irritable bowel syndrome; SD = standard deviation; MASLD = metabolic dysfunction associated liver disease; ULN = upper limit of normal

<sup>α</sup> 170/213 (79.8%) of subjects with data available (i.e., completed the Rome IBS questionnaire)

<sup>†</sup> Denominator for each biochemical and duct variable represents subjects with available data.

**Table 2. Pre-procedure pain characteristics, analgesic use, and psychiatric comorbidities**

Characteristic	Denominator	
<b>Pain characteristic</b>		
Response to cholecystectomy, n (%)		
• Complete response	161	67/161 (41.6)
• Partial response		36/161 (22.4)
• No response		58/161 (36.0)
Current pain like before cholecystectomy, n (%)		
• Days of pain episodes in past 90 days, median (IQR) ( <i>n</i> =169)	162	94/162 (58.0)
• Any abdominal pain in the last 7 days, n (%)	169	143 (84.6)
• Pain intensity (0-10) in past 90 days, median (IQR)	168	7 (6, 9)
• Pain burden (frequency x intensity product) in past 90 days, median (IQR)	168	180 (60, 495)
• Neuropathic pain, n (%)	167	32 (19.2)
• Nociceptive pain, n (%)	168	112 (66.7)
<b>Psychosocial characteristic</b>		
• High likelihood of depression <sup>*</sup> , n (%)	167	21 (12.6)
• High likelihood of anxiety <sup>ψ</sup> , n (%)	167	35 (21.0)
• High likelihood of somatization, n (%)	167	76 (45.5)
• Low physical health <sup>†</sup> , n (%)	165	60 (36.4)
• Low mental health <sup>‡</sup> , n (%)	165	52 (31.5)
<b>Medication use in the 30 days prior to ERCP</b>		
• Opioid, n (%)	171	62 (36.3)
• NSAIDs, n (%)	171	74 (43.3)
• Antispasmodics, n (%)	171	48 (28.1)
• Neuromodulators, n (%)	171	83 (48.5)

<sup>\*</sup> High likelihood of depression defined by a BSI-18 Depression T score  $\geq 65$

<sup>ψ</sup> High likelihood of anxiety defined by BSI-18 Anxiety T score  $\geq 65$

<sup>†</sup> Low physical health defined as a PROMIS-29 Physical Health Summary T score  $\leq 40$

<sup>‡</sup> Low mental health defined as a PROMIS-29 Mental Health Summary T score  $\leq 4$

**Table 3. Physician defined characteristics of SOD and response to ERCP treatment**

	Physician-defined characteristic		Denominator	Success, n (%) <sup>‡</sup>	p-value
<b>SOD Subtype</b>	<b>Biliary SOD alone</b> <ul style="list-style-type: none"> <li>• Elevated liver chemistry &gt; 2x ULN</li> <li>• Bile duct diameter ≥ 12 mm</li> </ul>	Both (type I)	19	9.8 (51.3)	0.4152
		Either (type II)	54	27.9 (51.6)	
		Neither (type III)	25	13.4 (53.6)	
	<b>Pancreatic SOD alone</b>		59	33.1 (56.1)	
	<b>Mixed type<sup>†</sup></b>		55	37.1 (67.5)	
<b>Any history of acute pancreatitis</b>	No	103	55.4 (53.8)	0.3560	
	Yes	110	66.8 (60.7)		
<b>Elevated liver chemistry &gt; 2x ULN</b>	No	108	60.6 (56.1)	0.5627	
	Yes	91	55.0 (60.4)		
<b>Bile duct diameter ≥ 12mm</b>	No	128	73.7 (57.6)	0.8062	
	Yes	73	41.5 (56.8)		
SOD = Sphincter of Oddi Disorder; ULN = upper limit of normal <sup>†</sup> Patients having characteristics of biliary type I or II and pancreatic SOD (acute pancreatitis history with or without elevated pancreas chemistry > 3x ULN) <sup>‡</sup> These data represent a composite of 20 imputed datasets, resulting in a reported “n” that is the average of the primary outcome.					

**Table 4. Relationship between patient characteristics and response to ERCP (odds ratio)**

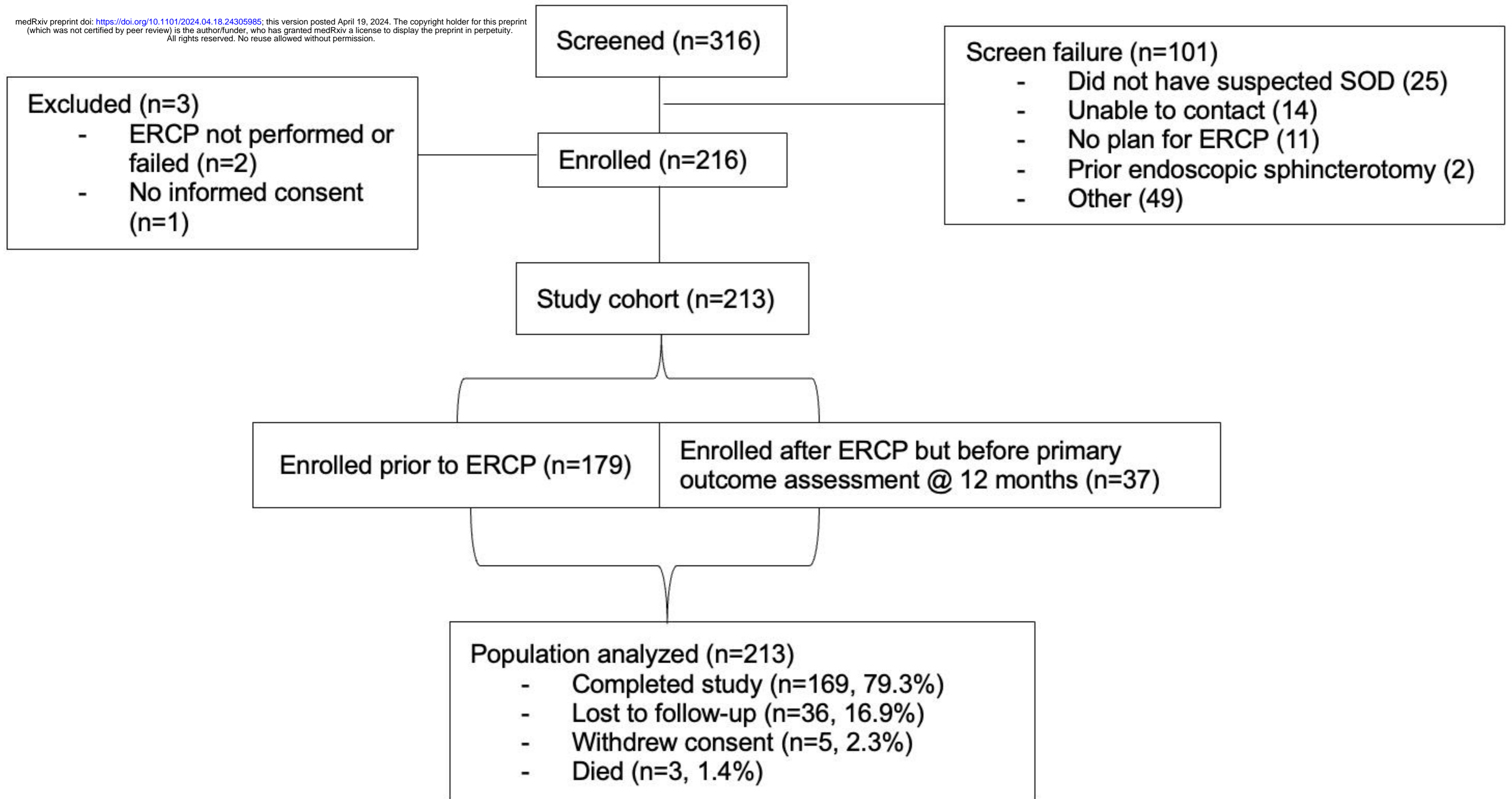
Patient Characteristic		Denominator	Primary Outcome Success, n (%)	p-value
Age, median (IQR)		213	48.9 (39.8 - 60)	0.6570
Sex at birth	Female	172	99.3 (57.7)	0.6735
	Male	41	22.9 (55.9)	
Smoking history	Current Smoker	32	14.6 (45.6)	0.3516
	Never Smoked	120	71.3 (59.4)	
	Past Smoker	61	36.4 (59.6)	
Prescription opioid use in last 30 days	No	109	72.8 (66.7)	<b>0.0276</b>
	Yes	62	30.2 (48.7)	
High likelihood of depression	No	146	91.7 (62.8)	0.1230
	Yes	21	9.3 (44.3)	
High likelihood of anxiety	No	132	82.1 (62.2)	0.4118
	Yes	35	18.9 (53.9)	
High likelihood of somatization	No	91	61 (67)	<b>0.0750</b>
	Yes	76	40 (52.6)	
Low physical health	No	105	69.6 (66.2)	<b>0.0512</b>
	Yes	60	30 (50)	
Low mental health	No	113	72.5 (64.1)	0.1565
	Yes	52	27.1 (52.1)	
Neuropathic pain	No	135	83.4 (61.8)	0.4980
	Yes	32	17.6 (54.8)	
Nociceptive pain	No	56	35.7 (63.8)	0.4984

Patient Characteristic		Denominator	Primary Outcome Success, n (%)	p-value
<b>Gastroparesis</b>	<b>Yes</b>	112	65.3 (58.3)	0.6814
	<b>No</b>	196	113.2 (57.8)	
<b>MASLD</b>	<b>Yes</b>	17	9 (52.9)	0.4359
	<b>No</b>	171	95.8 (56)	
<b>Irritable Bowel Syndrome</b>	<b>No</b>	99	64.9 (65.5)	0.1384
	<b>Yes</b>	71	38.1 (53.7)	

High likelihood of depression defined by BSI-18 Depression T score  $\geq 65$ ; High likelihood of anxiety defined by BSI-18 Anxiety T score  $\geq 65$ ; High likelihood of somatization defined by BSI-18 Somatization T score  $\geq 65$ ; Low physical and mental health defined by respective PROMIS-29 Summary T score  $\leq 40$ . Statistics were calculated for each of the multiple imputed datasets and combined using SAS PROC MIANALYZE to obtain the single statistic presented in these tables.

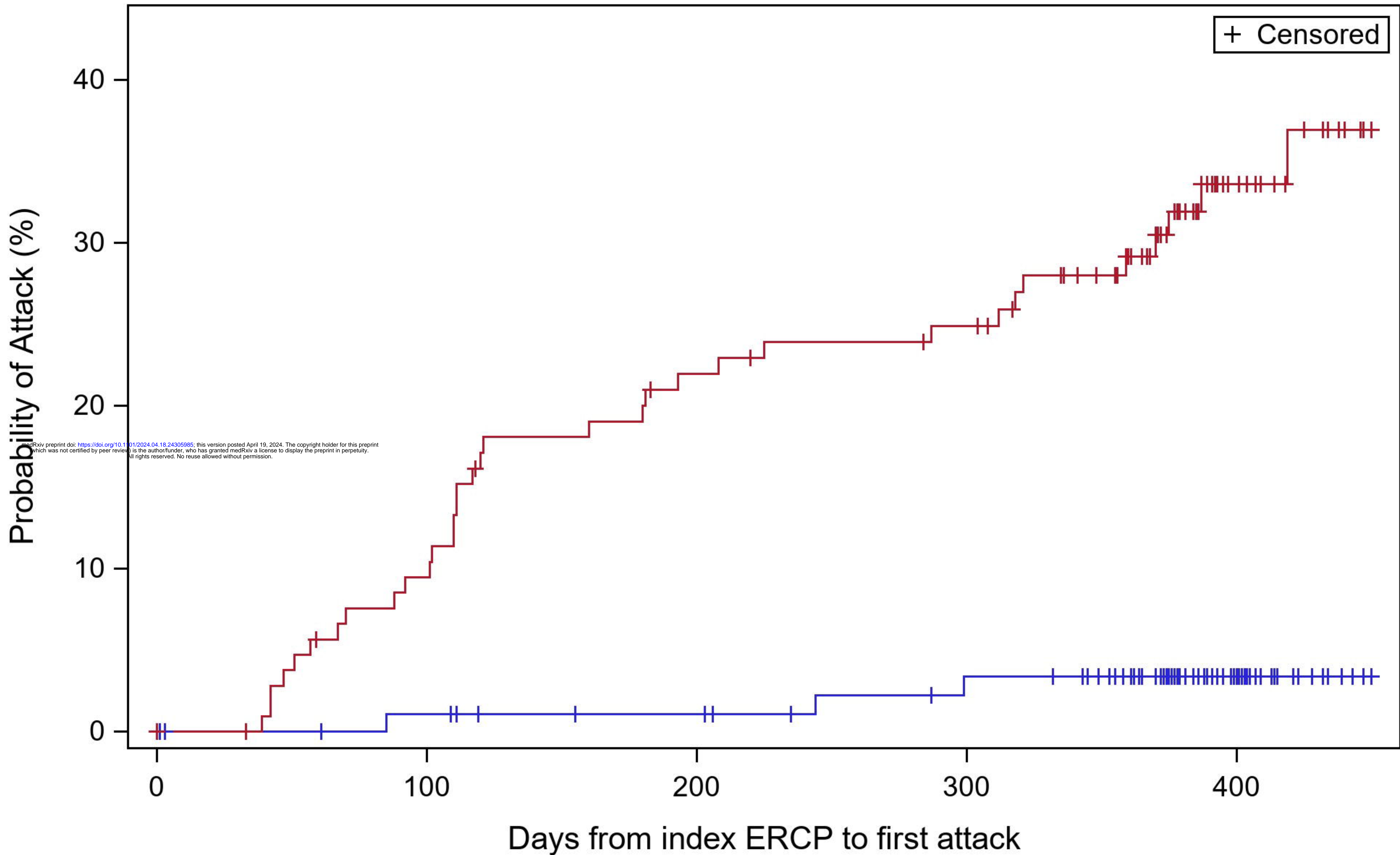
**Table 5. Factors associated with response to ERCP**

Parameter	Univariate odds ratio (95% CI)	Univariate p value	Multivariate odds ratio (95% CI)	Multivariate p value
<b>Physician-defined characteristics of SOD model</b>				
Dilated bile duct $\geq$ 12 mm	0.97 (0.53, 1.78)	0.9229	1.18 (0.60, 2.30)	0.6299
Elevated liver chemistry > 2x ULN	1.19 (0.65, 2.19)	0.5688	1.21 (0.64, 2.29)	0.5499
History of acute pancreatitis	1.33 (0.74, 2.4)	0.3459	1.38 (0.71, 2.69)	0.3428
<b>Baseline patient characteristics model</b>				
Prescription opioid use within 30 days of ERCP	0.47 (0.24, 0.93)	0.0304	0.53 (0.26, 1.08)	0.0810
High likelihood of somatization	0.54 (0.28, 1.07)	0.0787	0.70 (0.33, 1.47)	0.3432
Low physical health	0.51 (0.26, 1.01)	0.0549	0.64 (0.30, 1.37)	0.2500





# Acute Pancreatitis >30 days after an ERCP



History of Acute Pancreatitis — No — Yes

No	103	95	93	89	88	84	82	77	36	13
Yes	110	102	95	85	80	77	75	65	28	9