

1 **Full Title:** Autonomic Modulation with Mindfulness-Based Stress Reduction in Chronic  
2 Kidney Disease: A Randomized Controlled Trial

3 **Running Title:** MBSR on Sympathetic Activity in CKD

4  
5 **Authors:** Jinhee Jeong, PhD<sup>1,2</sup>, Yingtian Hu, PhD<sup>3</sup>, Matias Zanuzzi, MD<sup>1,2</sup>, Dana DaCosta,  
6 BS<sup>1,2</sup>, Sabrina Li<sup>1,2</sup> & Jeanie Park, MD<sup>1,2,4</sup>

7  
8 **Affiliations:** <sup>1</sup>Division of Renal Medicine, Department of Medicine, Emory University School  
9 of Medicine, Atlanta, Georgia; <sup>2</sup>Department of Veterans Affairs Health Care System, Decatur,  
10 Georgia; <sup>3</sup>Department of Biostatistics and Bioinformatics, Emory University Rollins School of  
11 Public Health, Atlanta, Georgia, <sup>4</sup>Center for Visual and Neurocognitive Rehabilitation,  
12 Department of Veterans Affairs Health Care System, Decatur, Georgia, USA

13  
14 **Institution Where Work Was Performed:** The Human Integrative Physiology Laboratory,  
15 Division of Renal Medicine, Emory University, Atlanta, Georgia, 30322, USA

16  
17 **Corresponding Author Information:** Jeanie Park, MD MS, Division of Renal Medicine,  
18 Emory University School of Medicine, 100 Woodruff Circle, Atlanta, Georgia, 30322, USA  
19 Email: [jeanie.park@emory.edu](mailto:jeanie.park@emory.edu)

20  
21 **Conflict-of-Interest:** The authors have declared that no conflict of interest exists.

22 **Total word counts: 7803 words**

23

24

25

26

27

28  
29  
30  
31  
32  
33  
34  
35  
36  
37  
38  
39  
40  
41  
42  
43  
44  
45  
46  
47  
48  
49  
50  
51  
52  
53  
54  
55  
56  
57  
58  
59

## Abstract

**Background:** Chronic kidney disease (CKD) is characterized by overactivation of the sympathetic nervous system (SNS) that leads to increased cardiovascular disease risk. Despite the deleterious consequences of SNS overactivity, there are very few therapeutic options available to combat sympathetic overactivity.

**Aim:** To evaluate the effects of Mindfulness-Based Stress Reduction (MBSR) on SNS activity in CKD patients.

**Method:** Participants with CKD stages III-IV were randomized to an 8-week MBSR program or Health Education Program (HEP; a structurally parallel, active control group). Primary outcomes were direct intraneural measures of SNS activity directed to muscle (MSNA) via microneurography at rest and during stress maneuvers.

**Results:** 28 participants ( $63 \pm 9$  years; 86% males) completed the intervention with 16 in MBSR and 12 in HEP. There was a significant Group (MBSR vs. HEP) by Time (baseline vs. post-intervention) interaction in the change in MSNA reactivity to mental stress ( $p=0.026$ ), with a significant reduction in the mean change in MSNA over 3 minutes of mental arithmetic at post-intervention ( $10.6 \pm 7.1$  to  $5.0 \pm 5.7$  bursts/min,  $p<0.001$ ), while no change was observed within the HEP group ( $p=0.773$ ).

**Conclusions:** In this randomized controlled trial, patients with CKD had an amelioration of sympathetic reactivity during mental stress following 8-weeks of MBSR but not after HEP. Our findings demonstrate that mindfulness training is feasible and may have clinically beneficial effects on autonomic function in CKD.

60

## Introduction

61           Chronic kidney disease (CKD) afflicts more than 35 million individuals in the United  
62 States and is associated with a significantly elevated risk of cardiovascular (CV) disease and  
63 mortality by up to 5-15 fold<sup>1,2</sup>. A primary contributor to heightened CV risk among these  
64 patients is the persistent elevation of sympathetic nervous system (SNS) activity<sup>3-5</sup>. Even modest  
65 declines in kidney function lead to substantial increases in both resting SNS activity as well as  
66 SNS reactivity that are independently associated with adverse CV events<sup>3,5</sup>. The use of  
67 sympatholytic medications in CKD is clinically limited<sup>6,7</sup> due to adverse side effects<sup>8-10</sup> and  
68 inferior efficacy in CV risk reduction compared to alternative antihypertensive agents<sup>8,11,12</sup>.  
69 Therefore, there is a critical need to develop novel therapeutic approaches to safely and  
70 effectively counter SNS overactivity to improve clinical outcomes in CKD and other high-risk  
71 patient populations characterized by SNS overactivation.

72           Mindfulness meditation may be one such novel nonpharmacologic strategy to lower SNS  
73 activity in individuals with CKD. In particular, mindfulness-based stress reduction (MBSR) is an  
74 8-week structured mindfulness meditation training program that has been extensively studied and  
75 has demonstrated beneficial effects on CV outcomes in patient populations<sup>13-15</sup>. Specifically,  
76 some, although not all, studies have shown that MBSR lowers clinic and ambulatory blood  
77 pressure (BP)<sup>16-20</sup>, and attenuates psychological<sup>21,22</sup> and physiological reactivity to stress<sup>23-26</sup>.  
78 Although the mechanisms underlying the cardioprotective mechanisms of MBSR remain  
79 unknown, indirect evidence suggests that MBSR may lower BP by modulating autonomic  
80 nervous system activity, particularly by lowering SNS activity<sup>27-29</sup>. Earlier investigations using  
81 indirect measures of SNS activity have shown that meditation increases low frequency and high  
82 frequency heart rate variability<sup>30-32</sup> and lowers plasma norepinephrine levels<sup>33</sup>. In addition, our  
83 group previously measured direct, intraneural recordings of muscle sympathetic nerve activity

84 (MSNA) via the gold-standard microneurographic technique to demonstrate the first direct  
85 evidence that a single session of mindfulness meditation acutely reduces BP and MSNA in  
86 patients with CKD<sup>34</sup>. However, there have been no prior studies testing the sustained effects of  
87 MBSR on SNS activity and reactivity using direct measures of SNS activity in humans.  
88 Therefore, we performed a randomized controlled trial to test the hypothesis that MBSR leads to  
89 sustained reductions in both resting MSNA and MSNA reactivity to stress in CKD.

90

91

92

93

94

95

96

97

98

99

100

101

102

103

## Methods

### 104 *Participants*

105           Individuals with CKD stages III and IV (estimated glomerular filtration rate (eGFR)  
106 between 15-59 mL/min/1.73 m<sup>2</sup>), as defined by the race-free CKD-EPI equation <sup>35</sup>, were  
107 recruited from Emory University clinics and the Atlanta Veterans Affairs (VA) Health Care  
108 System for participation in this study from September 2019 to Jun 2022. All participants had  
109 stable renal function (no greater than a decline of eGFR of 1cc/min/1.73m<sup>2</sup> per month over the  
110 prior 3 months). Exclusion criteria included uncontrolled hypertension (BP>160/90mmHg),  
111 vascular disease, use of clonidine, clinical evidence of heart failure or active heart disease  
112 determined by history, electrocardiogram (ECG) or echocardiogram, ongoing illicit drug use,  
113 alcohol use > 2 drinks/day within the past 12 months, diabetic neuropathy, severe anemia  
114 (hemoglobin <10mg/dL), and pregnancy or plans to become pregnant.

115

### 116 *Study Design and Randomization*

117           This was a single-site, parallel-group, randomized controlled clinical trial. Participants  
118 were allocated to MBSR group or a control Health-Enhancement Program (HEP) group in a 1:1  
119 ratio using a computer-generated sequence stratified by stage of CKD (Stage IIIA, IIIB, and IV).  
120 While the nature of the interventions did not allow for masking of the MBSR and HEP  
121 instructors and participants, all investigators and assessors were masked to study identifiers or  
122 group assignment during data analysis. After obtaining written informed consent, baseline  
123 measurements and basic metabolic panel were obtained. All measurements were obtained in a  
124 quiet, temperate (21°C) environment, after abstaining from food, caffeine, smoking, and alcohol  
125 for at least 12 h, and exercise for at least 24 h. After baseline assessments, participants were

126 randomly assigned to one of two interventions; MBSR and HEP. At the end of the trial, baseline  
127 measurements were repeated under identical conditions within 2 weeks following the completion  
128 of the final session. Participants were instructed not to change medication regimens, dietary  
129 habits, or physical activity levels for the duration of the study. This study was approved by the  
130 Emory University Institutional Review Board and the Atlanta VA Health Care System Research  
131 and Development Committee and registered with clinicaltrials.gov (NCT 04099992). All study  
132 procedures conformed to the standards set forth by the Declaration of Helsinki.

133

#### 134 *Study Interventions*

135 Both interventions followed detailed manuals and were administered to small groups (4-6  
136 participants) for 2.5 hours, once per week for eight consecutive weeks. Weekly group sessions as  
137 well as a half-day retreat were administered using Zoom© video conferencing. In addition to  
138 weekly attendance, participants were assigned 45-minutes of homework 6 days per week.

#### 139 **MBSR intervention**

140 The MBSR intervention was comprised of 8 weeks of 2.5 h sessions held once per week.  
141 An additional one-day “retreat” was also required for participants to attend between weeks 7 and  
142 8. A single, fully-certified teacher (M.D.) who had completed the University of Massachusetts  
143 MBSR professional training program with more than 15 years of mindfulness practice and  
144 teaching experience delivered the formalized program curriculum to participants.

145 The formal MBSR program focuses on mindfulness by increasing awareness of thoughts,  
146 feelings, and sensations from moment to moment, and to more skillfully respond (rather than  
147 automatically react) to stressors. Each of the eight weekly sessions includes psychoeducation

148 about mindfulness and stress (including a discussion of habitual behavioral and physiological  
149 reactions to stress, and learning to more purposely respond rather than react); experiential  
150 mindfulness practice, and a discussion of participants' experiences with mindfulness practice.  
151 Participants learn formal mindfulness practices (e.g., sitting meditation, yoga, body scan,  
152 walking meditation, body scan meditation) as well as more informal mindfulness activities such  
153 as awareness of breath, thoughts, or emotions, and mindfulness of daily life activities (e.g.,  
154 eating, breathing, washing dishes). They were encouraged to practice mindfulness in their daily  
155 lives. Participants received MP4 downloads on an electronic tablet with guided mindfulness  
156 meditation practices, a home practice manual, and weekly handouts with each week's formal and  
157 informal practice assignments. Participants were asked to perform daily home practice of 40-45  
158 minutes of recorded practice and keep a written record of their practice times. A makeup class on  
159 a different day was available if a participant missed a class. The half-day retreat session between  
160 weeks 7 and 8 sought to further integrate acquired skills and involved guided meditation practice  
161 and reflection.

## 162 **HEP Intervention**

163 An 8-week health enhancement program (HEP), a non-meditation intervention was  
164 administered as the gold-standard control intervention for MBSR<sup>36-38</sup>. HEP is designed to  
165 provide a structurally parallel, active control intervention to MBSR within the same group-based  
166 environment, matching for group support, facilitator attention, intervention duration, time spent  
167 on at-home practice while omitting any components of mindfulness. The original HEP manual  
168 had been developed for use in a non-clinical sample as a control condition for MBSR<sup>38</sup>.  
169 Specifically, HEP consists of music therapy, nutritional education, posture and balance  
170 movements, walking and stretching instructed by a health educator (a registered dietician) in a  
171 group setting for 8 weekly 2.5-hour sessions. Work with all practices with group discussion and

172 exercises during an all-day match the all-day retreat in MBSR. Participants received MP4  
173 downloads on an electronic tablet with recordings of health education topics, a home listening  
174 manual, and weekly handouts with each week's listening assignments, and were asked to listen  
175 to these MP4 recordings daily for 40-45 minutes and log their daily adherence. HEP was  
176 administered by a clinician with health education experience.

177

### 178 *Outcomes and Measurements*

179 The primary outcomes were sympathetic activity quantified as resting MSNA and MSNA  
180 reactivity to acute stressors. Secondary outcomes included resting BP and BP reactivity to acute  
181 stressors.

### 182 **Muscle Sympathetic Nerve Activity**

183 Multiunit postganglionic MSNA was recorded directly from the peroneal nerve by  
184 microneurography, as previously described<sup>39</sup>. Participants were placed in a supine position, and  
185 the leg was positioned for microneurography. A tungsten microelectrode (tip diameter 5–15 µm)  
186 (Bioengineering, University of Iowa) was inserted into the nerve, and a reference microelectrode  
187 was inserted subcutaneously 1–2 cm from the recording electrode. The signals were amplified  
188 (total gain: 50,000–100,000), filtered (700–2,000 Hz), rectified, and integrated (time constant 0.1  
189 s) to obtain a mean voltage display of sympathetic nerve activity (Nerve Traffic Analyzer, model  
190 662C-4, University of Iowa, Bioengineering) that was recorded by the LabChart 7 Program  
191 (PowerLab 16sp, ADInstruments). Continuous ECG was recorded simultaneously with the  
192 neurogram using a bioamp system. Beat-to-beat arterial BP was measured concomitantly using a  
193 noninvasive monitoring device that detects digital blood flow via finger cuffs and translates  
194 blood flow oscillations into continuous pulse pressure waveforms and beat-to-beat values of BP

195 (Finometer, Finapres Medical Systems, Amsterdam, The Netherlands)<sup>40</sup>. Absolute values of BP  
196 were internally calibrated using a concomitant upper arm BP reading and were calibrated at the  
197 start and every 15 min throughout the study. The tungsten microelectrode was manipulated to  
198 obtain a satisfactory nerve recording that met previously established criteria<sup>41</sup>. After 10 min of  
199 rest, BP, ECG, and MSNA were recorded continuously for 10 min. After 10 minutes of rest,  
200 MSNA, beat-to-beat BP and ECG were continuously measured throughout the stress protocols  
201 that include mental arithmetic (3 min), handgrip exercise (3 min) and cold pressor test (CPT,  
202 1min), separated by 15 min of rest and followed by 5 minutes of recovery. Detailed stress  
203 maneuver protocols are described below.

204 For MSNA data analysis, MSNA and ECG data were exported from the LabChart data  
205 acquisition system to WinCPRS (Absolute Aliens, Turku, Finland) for analysis. R-waves were  
206 detected and marked from the continuous ECG recording. MSNA bursts were automatically  
207 detected by the program using the following criteria: 3:1 burst-to-noise ratio within a 0.5-s  
208 search window, with an average latency in burst occurrence of 1.2–1.4 s from the previous R-  
209 wave. After automatic detection, the ECG and MSNA neurograms were visually inspected for  
210 accuracy of detection. MSNA was expressed as burst frequency (bursts/min) and burst incidence  
211 (bursts/100 heartbeats).

212

## 213 **Blood Pressure**

214 Baseline BP was measured after 5 min of rest in a seated position with the arm supported  
215 at heart level using an appropriately sized cuff per American College of Cardiology/American  
216 Heart Association (ACC/AHA) guidelines<sup>11</sup> using an automated device (Omron, HEM-907XL,

217 Omron Healthcare, Kyoto, Japan). Mean arterial blood pressures (MAP) were calculated as  $2/3$   
218 diastolic BP (DBP) +  $1/3$  systolic BP (SBP).

219

## 220 **Intervention Satisfaction**

221 Participants in both groups completed the 8-item Client Satisfaction Questionnaire (CSQ-8) to  
222 assess intervention satisfaction<sup>42</sup> at post-intervention.

223

## 224 **Stress Maneuvers**

225 *Mental Arithmetic*. Participants were asked to serially subtract a one- or two-digit number from  
226 a three- or four-digit number and were urged to do so as quickly and accurately as possible for 3  
227 minutes. An investigator used flash cards with a three- or four-digit number and were urged by  
228 two additional study team members in white coats to answer ‘faster’ and ‘get it right’. At the end  
229 of mental stress, participants were asked to rate their perceived stress during the mental math  
230 trial using a standard five-point scale, ranging from 0 (no stress) to 4 (severe stress). This test is  
231 shown to induce mental stress and increases MSNA<sup>43 44</sup>.

232 *Static Handgrip (SHG)*. Moderate intensity SHG was performed by squeezing the hand  
233 dynamometer at 30% maximal voluntary contraction in a sustained manner for 3 min. The  
234 participant was instructed to avoid inadvertent Valsalva and to maintain normal breathing  
235 patterns. Moderate SHG elicits an increase in MSNA<sup>45</sup> by activating muscle metaboreceptors  
236 and mechanoreceptors.

237 *Cold Pressor Test (CPT)*. The dominant hand was immersed up to the wrist in an ice water bath  
238 (4°C) for 1 min, which was followed by 3 min of recovery. Subjects were instructed to avoid  
239 breath holding and to stay as relaxed as possible. The participant was asked to rate the degree of

240 pain during the maneuver on a five-point pain scale, ranging from 0 (no pain) to 4 (severe pain).

241 CPT is a sympatho-excitatory maneuver that is known to evoke an increase in MSNA<sup>46</sup>.

242

## 243 **Statistics**

244 Based on our pilot data, the group difference in MSNA change after MBSR program (vs.  
245 a control program) was estimated to be  $-9.7 \pm 5.4$  bursts/min. 40 participants (20 per group)  
246 provided >90 % power at a significance level ( $\alpha$ ) of 0.05 for primary outcome (MSNA) after  
247 considering the expected 20% dropout rate.

248 Values are presented as mean  $\pm$  standard deviation (SD) unless otherwise noted.

249 Differences in participant characteristics between groups were determined using independent, 2-  
250 tailed, *t*-tests for continuous variables and chi-square tests for categorical variables. The primary  
251 analyses were based on the intention-to-treat approach. Repeated ANOVA tests with Group  
252 (MBSR vs. HEP) as a between factor and Time (baseline and post-intervention) as a within  
253 factor was used to analyze the change in MSNA reactivity during 3 minutes of mental arithmetic  
254 and SHG and 1 minute of CPT. When an ANOVA revealed a significant main effect or  
255 interaction, post hoc pairwise comparisons using the Sidak test were made. The within-group  
256 comparison from baseline to 8 weeks was done using 2-tailed, paired *t*-tests. In addition, a linear  
257 mixed model (LMM) analysis was conducted with Minutes, Group and Time as fixed factors and  
258 participants as a random factor to compare the group difference in slope-of-rise in the absolute  
259 MSNA change over 3 minutes of mental arithmetic and SHG. Adjustment with potential  
260 confounding factors, including the use of antihypertensive medications, was performed. An  $\alpha$   
261 <0.05 was considered statistically significant for all analyses. All analyses were performed using

262 SPSS version 26.0 (IBM Corporation, Somers, NY) and R (version 4.0.2, R Foundation for  
263 Statistical Computing, Vienna, Austria).

264

265

266

267

268

269

270

271

272

273

274

275

276

277

278

279

280

## Results

### 281 Participants and Intervention Adherence

282 A total of twenty-eight participants who completed the study intervention were included  
283 in this study (**Figure 1**). No significant differences in baseline demographics, comorbid  
284 conditions, medication use or clinical characteristics were observed between the MBSR and HEP  
285 groups. Intervention adherence measured by attendance of intervention group sessions, retreats  
286 and time spent on total home practice was high in both groups and comparable. CSQ-8 score  
287 indicated that participants in both groups were generally satisfied with the intervention (**Table**  
288 **1**).

### 289 Effect of MBSR on MSNA and Hemodynamics at Rest and During Stress

#### 290 *Resting Outcomes.*

291 Resting MSNA, BP and heart rate remained unchanged in both groups from pre-  
292 intervention baseline levels to post-intervention (**Table 2**).

293

#### 294 *Reactivity to Mental Arithmetic.*

295 There was a significant Group (MBSR vs. HEP) by Time (baseline vs. post-intervention)  
296 interaction in the change in MSNA reactivity to mental arithmetic stress. The MBSR group had a  
297 significant reduction in the mean change in MSNA over 3 minutes of mental arithmetic at post-  
298 intervention ( $10.6 \pm 7.1$  to  $5.0 \pm 5.7$  bursts/min;  $13.3 \pm 9.3$  to  $4.2 \pm 8.5$  bursts/100 heartbeats;  
299  $p < 0.001$  for both), while no change was observed within the HEP group ( $9.7 \pm 6.1$  to  $9.1 \pm 5.6$   
300 bursts/min;  $11.9 \pm 8.7$  to  $14.3 \pm 12.4$  bursts/100 heartbeats;  $p = 0.773$  and  $0.304$  respectively)  
301 (**Figure 2 A-B**). MSNA reactivity was lower at the 1<sup>st</sup>, 2<sup>nd</sup> and 3<sup>rd</sup> minute of mental arithmetic

302 within the MBSR group at post-intervention ( $p < 0.05$  for all), while no such change was observed  
303 within the HEP group ( $p > 0.05$  for all) (**Figure 3 A-D**). However, there was no significant  
304 change in the reactivity of BP and heart rate during mental arithmetic (**Figure 2 E-H**) In  
305 addition, LMM analyses revealed a significant decrease in the slope-of-rise of absolute MSNA  
306 changes during 3 minutes of mental arithmetic from baseline to post-intervention within the  
307 MBSR group, but not in the HEP group (effect sizes for the group difference (MBSR vs. HEP) in  
308 the slope change (baseline to post-intervention) of MSNA:  $-1.57$  bursts/min per min;  $p = 0.008$   
309 and  $-2.52$  bursts/100 heartbeats per min;  $p = 0.004$ , respectively). Results were similar when  
310 adjusted for antihypertensive medication usage. Perceived stress levels during mental arithmetic  
311 were comparable between baseline and post-intervention in both groups ( $2.2 \pm 1.2$  to  $2.2 \pm 0.9$  in  
312 the MBSR and  $2.5 \pm 1.0$  to  $2.4 \pm 1.3$  in the HEP group,  $p = 0.825$  for Time by Group interaction).  
313

#### 314 *Reactivity to Static Handgrip Exercise.*

315 The mean change in MSNA frequency, BP and HR over 3 minutes of SHG were not  
316 significantly changed from baseline to post-intervention in both MBSR and HEP groups ( $p > 0.05$   
317 for both), although the MSNA burst incidence reactivity to SHG decreased within the MBSR  
318 group ( $p < 0.05$ ), but not within the HEP group (**Table 2**). LMM analyses showed no significant  
319 group difference in the slope-of-rise of absolute MSNA changes during 3 minutes of SHG from  
320 baseline to post-intervention between the MBSR and HEP groups (effect sizes for the group  
321 difference for MSNA:  $-0.59$  bursts/min per min;  $p = 0.43$  and  $-1.58$  bursts/100 heartbeats per  
322 min;  $p = 0.14$ ).

323

#### 324 *Reactivity to Cold Pressor Test.*

325 MSNA, BP and heart rate reactivity to CPT remained unchanged in both groups from  
326 baseline to post-intervention in both MBSR and HEP groups (**Table 2**). Perceived pain levels  
327 during CPT were comparable between baseline and post-intervention in both groups ( $2.3 \pm 1.3$  to  
328  $2.0 \pm 1.4$  in the MBSR and  $3.5 \pm 0.7$  to  $2.9 \pm 1.0$  in the HEP group,  $p=0.416$  for Time by Group  
329 interaction).

330

### 331 **The Impact of Baseline MSNA Reactivity on MBSR-Induced Changes**

332 We further examined the linear association of baseline levels of MSNA reactivity during  
333 mental arithmetic with MBSR-induced changes in MSNA reactivity within the MBSR group.  
334 The magnitude of change in MSNA reactivity was inversely associated with baseline MSNA  
335 reactivity ( $p<0.001$ , **Figure 4A, C**) in the MBSR group, while no significant association was  
336 found within the HEP group ( $p>0.05$ ; **Figure 4B, D**).

337

338

339

340

341

342

343

344

345

346

## Discussion

347 We conducted a randomized controlled trial testing the efficacy of MBSR in lowering  
348 SNS overactivity in patients with CKD patients. By using direct intraneural recordings of SNS  
349 activity directed to the muscle via microneurography, we demonstrate a significant reduction in  
350 MSNA reactivity during acute mental stress in CKD patients who were randomized to 8 weeks  
351 of MBSR compared to the HEP control intervention. The MBSR intervention was well-accepted  
352 with high adherence rates to classes and practice homework, and our results suggest that MBSR  
353 may be a feasible adjunct intervention to improve CV risk by modulating autonomic balance in  
354 CKD.

355 MBSR is the most extensively studied meditation intervention in the US, with confirmed  
356 psychological and physiological health benefits including improved CV disease risk across  
357 different patient populations<sup>13-15, 19, 20</sup>. Mindfulness-based interventions are hypothesized to  
358 improve CV health by promoting effective self-emotion regulation through non-judgmental  
359 present-moment awareness and a shift in stress appraisal, ultimately reducing the stress-reactivity  
360 response<sup>27, 28, 47</sup>. These improvements in coping skills and psychological functioning may be  
361 coupled with the normalization of physiological functioning, such as the autonomic nervous  
362 system, potentially leading to improved CV outcomes<sup>29</sup>. Despite this concept that autonomic  
363 regulation during stress may underlie the CV health benefits of MBSR, limited research has  
364 investigated this area, with existing data primarily relying on indirect markers of autonomic  
365 function<sup>30-32</sup> such as heart rate variability and plasma norepinephrine<sup>33</sup>, and largely focusing on  
366 resting-state activity. We now provide the first evidence that MBSR may modulate SNS response  
367 to acute mental stress in CKD, a patient population at increased CV risk by virtue of chronic  
368 SNS overactivation. Our results align with previous evidence demonstrating that MBSR has  
369 favorable effects on stress responses on objectively measured stress biomarkers<sup>23-25</sup> as well as

370 self-reported stress scales<sup>21, 22</sup>. Prior work has shown that mindfulness-based interventions may  
371 attenuate increases in BP<sup>23, 24</sup>, neurohormonal (cortisol, adrenocorticotrophic hormone) and  
372 inflammatory (IL-6, TNF-a) reactivity<sup>25</sup>, perceived stress levels<sup>21, 22</sup> and functional magnetic  
373 resonance imaging-based neural reactivity<sup>26, 48</sup> during stressful stimuli. Given heightened  
374 physiological responses to stressors have been linked to an increased risk of CV diseases and  
375 mortality<sup>49-51</sup>, our results demonstrating MBSR-driven reductions in SNS stress reactivity has  
376 important clinical implication for CV risk management in CKD.

377         Our data also demonstrate that participants who initially displayed an augmented MSNA  
378 response to stress exhibited a more substantial reduction in MSNA reactivity following the  
379 MBSR intervention. This pattern of intervention response linked to the initial stress profile was  
380 specific to MBSR and not observed within the HEP group; thus, it is unlikely that these findings  
381 can be explained by regression towards the mean. These findings are in line with previous  
382 reports demonstrating a greater degree of BP reduction with MBSR in those with elevated levels  
383 of BP initially<sup>52, 53</sup>. Therefore, our findings suggest that the expected benefits of MBSR on  
384 autonomic stress reactivity may vary depending on an individual's initial stress response  
385 patterns, emphasizing the importance of tailored interventions to maximize the clinical utility of  
386 MBSR for optimal CV risk management in CKD.

387         Contrary to our hypothesis, decreased MSNA reactivity was not significantly associated  
388 with changes in BP reactivity, nor did resting BP and MSNA change significantly following the  
389 MBSR intervention in the present study. Many<sup>19, 20</sup>, but not all meta-analyses<sup>54</sup>, have  
390 demonstrated clinically significant reductions in BP as well as task-driven BP responses after  
391 participating in a MBSR intervention in individuals with CV disease. Our previous investigation  
392 showed BP and MSNA were acutely attenuated during a mindfulness meditation session that was  
393 sustained during the immediate recovery period in CKD patients<sup>34</sup>. However, in the present

394 study, the acute effects of mindfulness meditation on resting BP and MSNA were not maintained  
395 after completion of 8 weeks of MBSR, although the time-frames and the settings of  
396 measurements were not comparable (i.e., the acute responses to a 14 minutes of mindfulness  
397 meditation session vs. the changes over 8 weeks on resting MSNA and responses to a stressor). It  
398 is possible that more comprehensive or prolonged practice is needed for sustained improvements  
399 in resting MSNA, with downstream improvements in BP profiles in CKD. Alternatively, long-  
400 term change in BP stress reactivity may be more closely tied to peripheral vascular mechanisms  
401 (i.e., adrenergic receptor sensitivity) rather than changes in central SNS output, or due to other  
402 non-adrenergic mechanisms (i.e., inflammatory or renin-angiotensin aldosterone system (RAAS)  
403 pathways), which can be further investigated in future studies. It should also be noted that the  
404 majority of study participants were on anti-hypertensive medications including RAAS inhibitors  
405 (76%), calcium-channel blockers (57%) and beta-blockers (36%), which might have modulated  
406 the transduction of SNS activation on peripheral vasculature during an acute stressor to some  
407 extent.

408         While we observed reductions in MSNA reactivity after MBSR during specifically  
409 mental stress induced by mental arithmetic, we did not observe similar changes in MSNA  
410 reactivity during different stressors (physical stress by handgrip exercise and pain stress induced  
411 by cold pressor test). Although the mechanisms underlying these discrepant results are unclear,  
412 these differences in autonomic stress reactivity after MBSR may be attributed to the unique  
413 physiological mechanisms underlying each stressor. Mental stress increases SNS activity  
414 primarily through central neural pathways involving higher brain centers such as the prefrontal  
415 cortex, amygdala, and hippocampus<sup>55,56</sup>. Mindfulness practice aims to promote emotional self-  
416 regulation and reduce stress appraisal, potentially achieved through enhanced regulation of  
417 central neural signals. Previous evidence has demonstrated that mindfulness training can reduce

418 CV responses during mental stress tasks<sup>23,24</sup>, and induce positive changes in the brain regions  
419 responsible for processing stress neural signals<sup>57-60</sup>. Therefore, MBSR may have greater effects  
420 on SNS activation during mental stress as opposed to other types of stressors that involves a  
421 multifaceted interplay of peripheral and central mechanisms to activate SNS activity<sup>61-63</sup>.

422

### 423 **Limitations**

424 The majority of participants were Black males which may limit the generalizability of  
425 study results to females and other races. Antihypertensive medications such as angiotensin  
426 receptor blockers are known to impact sympathetic activity<sup>64</sup>, and therefore, may have  
427 confounded results, although no difference in medication usage was found between groups at  
428 baseline, and the primary results remained the same when adjusted for medication use.  
429 Furthermore, participants maintained a stable medication regimen throughout the study period.  
430 Therefore, MBSR-induced changes in MSNA stress reactivity are likely to represent true  
431 intervention effects, and the results of this study can be applicable to the general medicated CKD  
432 patients. The intervention sessions were administered virtually due to COVID-19 restrictions.  
433 However, besides the virtual platform, MBSR was administered per standard protocol by a  
434 certified MBSR trainer. The nature of the interventions did not allow for masking of the MBSR  
435 and HEP instructors and participants. However, analyses of all physiologic data were made in a  
436 masked fashion without the investigators' knowledge of group assignment. In addition, the active  
437 control intervention, HEP, was administered in parallel and matched for group setting, instructor  
438 attention, intervention duration, time spent on at-home practice while omitting any components  
439 of mindfulness.

440

441 **Conclusion**

442 In this randomized controlled trial, we evaluated the effects of MBSR on SNS activity  
443 and reactivity in CKD and demonstrated a beneficial effect of MBSR on sympathetic reactivity  
444 during mental stress. We also observed greater reductions in MSNA reactivity in participants  
445 with higher MSNA reactivity at baseline suggesting that MBSR may have greater beneficial  
446 effects in patients with higher sympathetic reactivity to stress. Our results highlight the  
447 therapeutic potential of MBSR in ameliorating mental stress-induced SNS overactivation in  
448 CKD.

449

450 **Acknowledgments**

451 **Author Contributions**

452 J.J. and J.P. conceived and designed research; J.J., M.Z., D.D. and J.P. performed experiments;  
453 J.J., Y.H., and J.P. analyzed data; J.J., Y.H., M.Z., D.D., S.L. and J.P. interpreted results of  
454 experiments; J.J., Y.H., and J.P. prepared figures; J.J., Y.H., M.Z. and J.P. drafted manuscript;  
455 J.J., Y.H., M.Z., D.D., S.L. and J.P. edited and revised manuscript; J.J., Y.H., M.Z., D.D., S.L.  
456 and J.P. approved final version of manuscript.

457 **Funding/Support:** This study was funded by NIH R01HL135183; NIH R61AT10457; NIH  
458 KL2TR002381; VA Merit I01CX001065.

459 **Role of the Funder/Sponsor:** The funder had no role in the design and conduct of the study;  
460 collection, management, analysis, and interpretation of the data; preparation, review, or approval  
461 of the manuscript; and decision to submit the manuscript for publication.

462 **Conflict of Interest Disclosures:** None reported.

## References

- 464 1. Go AS, Chertow GM, Fan D, McCulloch CE and Hsu CY. Chronic kidney disease and  
465 the risks of death, cardiovascular events, and hospitalization. *N Engl J Med*. 2004;351:1296-305.
- 466 2. Herzog CA, Asinger RW, Berger AK, Charytan DM, Diez J, Hart RG, Eckardt KU,  
467 Kasiske BL, McCullough PA, Passman RS, DeLoach SS, Pun PH and Ritz E. Cardiovascular  
468 disease in chronic kidney disease. A clinical update from Kidney Disease: Improving Global  
469 Outcomes (KDIGO). *Kidney Int*. 2011;80:572-86.
- 470 3. Grassi G, Quarti-Trevano F, Seravalle G, Arenare F, Volpe M, Furiani S, Dell'Oro R and  
471 Mancina G. Early sympathetic activation in the initial clinical stages of chronic renal failure.  
472 *Hypertension*. 2011;57:846-51.
- 473 4. Klein IH, Ligtenberg G, Neumann J, Oey PL, Koomans HA and Blankestijn PJ.  
474 Sympathetic nerve activity is inappropriately increased in chronic renal disease. *J Am Soc*  
475 *Nephrol*. 2003;14:3239-44.
- 476 5. Neumann J, Ligtenberg G, Klein, II, Koomans HA and Blankestijn PJ. Sympathetic  
477 hyperactivity in chronic kidney disease: pathogenesis, clinical relevance, and treatment. *Kidney*  
478 *Int*. 2004;65:1568-76.
- 479 6. Badve SV, Roberts MA, Hawley CM, Cass A, Garg AX, Krum H, Tonkin A and  
480 Perkovic V. Effects of beta-adrenergic antagonists in patients with chronic kidney disease: a  
481 systematic review and meta-analysis. *J Am Coll Cardiol*. 2011;58:1152-61.
- 482 7. Tomiyama H and Yamashina A. Beta-Blockers in the Management of Hypertension  
483 and/or Chronic Kidney Disease. *Int J Hypertens*. 2014;2014:919256.
- 484 8. Bakris GL, Fonseca V, Katholi RE, McGill JB, Messerli FH, Phillips RA, Raskin P,  
485 Wright JT, Jr., Oakes R, Lukas MA, Anderson KM, Bell DS and Investigators G. Metabolic  
486 effects of carvedilol vs metoprolol in patients with type 2 diabetes mellitus and hypertension: a  
487 randomized controlled trial. *JAMA*. 2004;292:2227-36.
- 488 9. Hundemer GL, Knoll GA, Petrcich W, Hiremath S, Ruzicka M, Burns KD, Edwards C,  
489 Bugeja A, Rhodes E and Sood MM. Kidney, Cardiac, and Safety Outcomes Associated With  
490 alpha-Blockers in Patients With CKD: A Population-Based Cohort Study. *Am J Kidney Dis*.  
491 2021;77:178-189 e1.
- 492 10. Vonend O, Marsalek P, Russ H, Wulkow R, Oberhauser V and Rump LC. Moxonidine  
493 treatment of hypertensive patients with advanced renal failure. *J Hypertens*. 2003;21:1709-17.
- 494 11. Whelton PK, Carey RM, Aronow WS, Casey DE, Jr., Collins KJ, Dennison Himmelfarb  
495 C, DePalma SM, Gidding S, Jamerson KA, Jones DW, MacLaughlin EJ, Muntner P, Ovbiagele  
496 B, Smith SC, Jr., Spencer CC, Stafford RS, Taler SJ, Thomas RJ, Williams KA, Sr., Williamson  
497 JD and Wright JT, Jr. 2017  
498 ACC/AHA/AAPA/ABC/ACPM/AGS/APhA/ASH/ASPC/NMA/PCNA Guideline for the  
499 Prevention, Detection, Evaluation, and Management of High Blood Pressure in Adults: A Report  
500 of the American College of Cardiology/American Heart Association Task Force on Clinical  
501 Practice Guidelines. *J Am Coll Cardiol*. 2018;71:e127-e248.
- 502 12. James PA, Oparil S, Carter BL, Cushman WC, Dennison-Himmelfarb C, Handler J,  
503 Lackland DT, LeFevre ML, MacKenzie TD, Ogedegbe O, Smith SC, Jr., Svetkey LP, Taler SJ,  
504 Townsend RR, Wright JT, Jr., Narva AS and Ortiz E. 2014 evidence-based guideline for the  
505 management of high blood pressure in adults: report from the panel members appointed to the  
506 Eighth Joint National Committee (JNC 8). *JAMA*. 2014;311:507-20.
- 507 13. Lakhan SE and Schofield KL. Mindfulness-based therapies in the treatment of  
508 somatization disorders: a systematic review and meta-analysis. *PLoS One*. 2013;8:e71834.

- 509 14. Lengacher CA, Kip KE, Barta M, Post-White J, Jacobsen PB, Groer M, Lehman B,  
510 Moscoso MS, Kadel R, Le N, Loftus L, Stevens CA, Malafa MP and Shelton MM. A pilot study  
511 evaluating the effect of mindfulness-based stress reduction on psychological status, physical  
512 status, salivary cortisol, and interleukin-6 among advanced-stage cancer patients and their  
513 caregivers. *J Holist Nurs.* 2012;30:170-85.
- 514 15. Lengacher CA, Shelton MM, Reich RR, Barta MK, Johnson-Mallard V, Moscoso MS,  
515 Paterson C, Ramesar S, Budhrani P, Carranza I, Lucas J, Jacobsen PB, Goodman MJ and Kip  
516 KE. Mindfulness based stress reduction (MBSR(BC)) in breast cancer: evaluating fear of  
517 recurrence (FOR) as a mediator of psychological and physical symptoms in a randomized control  
518 trial (RCT). *J Behav Med.* 2014;37:185-95.
- 519 16. Barnes VA, Pendergrast RA, Harshfield GA and Treiber FA. Impact of breathing  
520 awareness meditation on ambulatory blood pressure and sodium handling in prehypertensive  
521 African American adolescents. *Ethn Dis.* 2008;18:1-5.
- 522 17. Goldstein CM, Josephson R, Xie S and Hughes JW. Current perspectives on the use of  
523 meditation to reduce blood pressure. *Int J Hypertens.* 2012;2012:578397.
- 524 18. Manikonda JP, Stork S, Togel S, Lobmuller A, Grunberg I, Bedel S, Schardt F,  
525 Angermann CE, Jahns R and Voelker W. Contemplative meditation reduces ambulatory blood  
526 pressure and stress-induced hypertension: a randomized pilot trial. *J Hum Hypertens.*  
527 2008;22:138-40.
- 528 19. Younge JO, Gotink RA, Baena CP, Roos-Hesselink JW and Hunink MG. Mind-body  
529 practices for patients with cardiac disease: a systematic review and meta-analysis. *Eur J Prev*  
530 *Cardiol.* 2015;22:1385-98.
- 531 20. Scott-Sheldon LAJ, Gathright EC, Donahue ML, Balletto B, Feulner MM, DeCosta J,  
532 Cruess DG, Wing RR, Carey MP and Salmoirago-Blotcher E. Mindfulness-Based Interventions  
533 for Adults with Cardiovascular Disease: A Systematic Review and Meta-Analysis. *Ann Behav*  
534 *Med.* 2020;54:67-73.
- 535 21. Hoge EA, Bui E, Marques L, Metcalf CA, Morris LK, Robinaugh DJ, Worthington JJ,  
536 Pollack MH and Simon NM. Randomized controlled trial of mindfulness meditation for  
537 generalized anxiety disorder: effects on anxiety and stress reactivity. *J Clin Psychiatry.*  
538 2013;74:786-92.
- 539 22. Creswell JD, Pacilio LE, Lindsay EK and Brown KW. Brief mindfulness meditation  
540 training alters psychological and neuroendocrine responses to social evaluative stress.  
541 *Psychoneuroendocrinology.* 2014;44:1-12.
- 542 23. Lindsay EK, Young S, Smyth JM, Brown KW and Creswell JD. Acceptance lowers  
543 stress reactivity: Dismantling mindfulness training in a randomized controlled trial.  
544 *Psychoneuroendocrinology.* 2018;87:63-73.
- 545 24. Nyklicek I, Mommersteeg PM, Van Beugen S, Ramakers C and Van Boxtel GJ.  
546 Mindfulness-based stress reduction and physiological activity during acute stress: a randomized  
547 controlled trial. *Health Psychol.* 2013;32:1110-3.
- 548 25. Hoge EA, Bui E, Palitz SA, Schwarz NR, Owens ME, Johnston JM, Pollack MH and  
549 Simon NM. The effect of mindfulness meditation training on biological acute stress responses in  
550 generalized anxiety disorder. *Psychiatry Res.* 2018;262:328-332.
- 551 26. Dutcher JM, Boyle CC, Eisenberger NI, Cole SW and Bower JE. Neural responses to  
552 threat and reward and changes in inflammation following a mindfulness intervention.  
553 *Psychoneuroendocrinology.* 2021;125:105114.
- 554 27. Shapiro SL, Carlson LE, Astin JA and Freedman B. Mechanisms of mindfulness. *J Clin*  
555 *Psychol.* 2006;62:373-86.

- 556 28. Loucks EB, Schuman-Olivier Z, Britton WB, Fresco DM, Desbordes G, Brewer JA and  
557 Fulwiler C. Mindfulness and Cardiovascular Disease Risk: State of the Evidence, Plausible  
558 Mechanisms, and Theoretical Framework. *Curr Cardiol Rep*. 2015;17:112.
- 559 29. Creswell JD and Lindsay EK. How Does Mindfulness Training Affect Health? A  
560 Mindfulness Stress Buffering Account. *Current Directions in Psychological Science*.  
561 2014;23:401-407.
- 562 30. Ditto B, Eclache M and Goldman N. Short-term autonomic and cardiovascular effects of  
563 mindfulness body scan meditation. *Ann Behav Med*. 2006;32:227-34.
- 564 31. Nijjar PS, Puppala VK, Dickinson O, Duval S, Duprez D, Kreitzer MJ and Benditt DG.  
565 Modulation of the autonomic nervous system assessed through heart rate variability by a  
566 mindfulness based stress reduction program. *Int J Cardiol*. 2014;177:557-9.
- 567 32. Wang SJ, Chang YC, Hu WY, Chang YM and Lo C. The Comparative Effect of Reduced  
568 Mindfulness-Based Stress on Heart Rate Variability among Patients with Breast Cancer. *Int J*  
569 *Environ Res Public Health*. 2022;19.
- 570 33. Curiati JA, Bocchi E, Freire JO, Arantes AC, Braga M, Garcia Y, Guimaraes G and Fo  
571 WJ. Meditation reduces sympathetic activation and improves the quality of life in elderly  
572 patients with optimally treated heart failure: a prospective randomized study. *J Altern*  
573 *Complement Med*. 2005;11:465-72.
- 574 34. Park J, Lyles RH and Bauer-Wu S. Mindfulness meditation lowers muscle sympathetic  
575 nerve activity and blood pressure in African-American males with chronic kidney disease. *Am J*  
576 *Physiol Regul Integr Comp Physiol*. 2014;307:R93-R101.
- 577 35. Levey AS, Coresh J, Greene T, Stevens LA, Zhang YL, Hendriksen S, Kusek JW, Van  
578 Lente F and Chronic Kidney Disease Epidemiology C. Using standardized serum creatinine  
579 values in the modification of diet in renal disease study equation for estimating glomerular  
580 filtration rate. *Ann Intern Med*. 2006;145:247-54.
- 581 36. Eisendrath SJ, Gillung E, Delucchi KL, Segal ZV, Nelson JC, McInnes LA, Mathalon  
582 DH and Feldman MD. A Randomized Controlled Trial of Mindfulness-Based Cognitive Therapy  
583 for Treatment-Resistant Depression. *Psychother Psychosom*. 2016;85:99-110.
- 584 37. Eisendrath SJ, Gillung EP, Delucchi KL, Chartier M, Mathalon DH, Sullivan JC, Segal  
585 ZV and Feldman MD. Mindfulness-based cognitive therapy (MBCT) versus the health-  
586 enhancement program (HEP) for adults with treatment-resistant depression: a randomized  
587 control trial study protocol. *BMC Complement Altern Med*. 2014;14:95.
- 588 38. MacCoon DG, Imel ZE, Rosenkranz MA, Sheftel JG, Weng HY, Sullivan JC, Bonus KA,  
589 Stoney CM, Salomons TV, Davidson RJ and Lutz A. The validation of an active control  
590 intervention for Mindfulness Based Stress Reduction (MBSR). *Behav Res Ther*. 2012;50:3-12.
- 591 39. Wallin BG and Fagius J. Peripheral sympathetic neural activity in conscious humans.  
592 *Annu Rev Physiol*. 1988;50:565-76.
- 593 40. Jeleazcov C, Krajcinovic L, Munster T, Birkholz T, Fried R, Schuttler J and Fechner J.  
594 Precision and accuracy of a new device (CNAPTM) for continuous non-invasive arterial pressure  
595 monitoring: assessment during general anaesthesia. *Br J Anaesth*. 2010;105:264-72.
- 596 41. Mano T, Iwase S and Toma S. Microneurography as a tool in clinical neurophysiology to  
597 investigate peripheral neural traffic in humans. *Clin Neurophysiol*. 2006;117:2357-84.
- 598 42. Attkisson CC and Zwick R. The client satisfaction questionnaire. Psychometric properties  
599 and correlations with service utilization and psychotherapy outcome. *Eval Program Plann*.  
600 1982;5:233-7.
- 601 43. Fonkoue IT, Hu Y, Jones T, Vemulapalli M, Sprick JD, Rothbaum B and Park J. Eight  
602 weeks of device-guided slow breathing decreases sympathetic nervous reactivity to stress in  
603 posttraumatic stress disorder. *Am J Physiol Regul Integr Comp Physiol*. 2020;319:R466-R475.

- 604 44. Park J, Marvar PJ, Liao P, Kankam ML, Norrholm SD, Downey RM, McCullough SA,  
605 Le NA and Rothbaum BO. Baroreflex dysfunction and augmented sympathetic nerve responses  
606 during mental stress in veterans with post-traumatic stress disorder. *J Physiol*. 2017;595:4893-  
607 4908.
- 608 45. Mark AL, Victor RG, Nerhed C and Wallin BG. Microneurographic studies of the  
609 mechanisms of sympathetic nerve responses to static exercise in humans. *Circ Res*. 1985;57:461-  
610 9.
- 611 46. Victor RG, Leimbach WN, Jr., Seals DR, Wallin BG and Mark AL. Effects of the cold  
612 pressor test on muscle sympathetic nerve activity in humans. *Hypertension*. 1987;9:429-36.
- 613 47. Garland EL, Farb NA, Goldin P and Fredrickson BL. Mindfulness Broadens Awareness  
614 and Builds Eudaimonic Meaning: A Process Model of Mindful Positive Emotion Regulation.  
615 *Psychol Inq*. 2015;26:293-314.
- 616 48. Goldin PR and Gross JJ. Effects of mindfulness-based stress reduction (MBSR) on  
617 emotion regulation in social anxiety disorder. *Emotion*. 2010;10:83-91.
- 618 49. Schultz MG, Otahal P, Cleland VJ, Blizzard L, Marwick TH and Sharman JE. Exercise-  
619 induced hypertension, cardiovascular events, and mortality in patients undergoing exercise stress  
620 testing: a systematic review and meta-analysis. *Am J Hypertens*. 2013;26:357-66.
- 621 50. Weiss SA, Blumenthal RS, Sharrett AR, Redberg RF and Mora S. Exercise blood  
622 pressure and future cardiovascular death in asymptomatic individuals. *Circulation*.  
623 2010;121:2109-16.
- 624 51. Chida Y and Steptoe A. Greater cardiovascular responses to laboratory mental stress are  
625 associated with poor subsequent cardiovascular risk status: a meta-analysis of prospective  
626 evidence. *Hypertension*. 2010;55:1026-32.
- 627 52. Loucks EB, Nardi WR, Gutman R, Kronish IM, Saadeh FB, Li Y, Wentz AE, Webb J,  
628 Vago DR, Harrison A and Britton WB. Mindfulness-Based Blood Pressure Reduction (MB-BP):  
629 Stage 1 single-arm clinical trial. *PLoS One*. 2019;14:e0223095.
- 630 53. Lee EKP, Yeung NCY, Xu Z, Zhang D, Yu CP and Wong SYS. Effect and Acceptability  
631 of Mindfulness-Based Stress Reduction Program on Patients With Elevated Blood Pressure or  
632 Hypertension: A Meta-Analysis of Randomized Controlled Trials. *Hypertension*. 2020;76:1992-  
633 2001.
- 634 54. Abbott RA, Whear R, Rodgers LR, Bethel A, Thompson Coon J, Kuyken W, Stein K and  
635 Dickens C. Effectiveness of mindfulness-based stress reduction and mindfulness based cognitive  
636 therapy in vascular disease: A systematic review and meta-analysis of randomised controlled  
637 trials. *J Psychosom Res*. 2014;76:341-51.
- 638 55. Ulrich-Lai YM and Herman JP. Neural regulation of endocrine and autonomic stress  
639 responses. *Nat Rev Neurosci*. 2009;10:397-409.
- 640 56. Herman JP, Figueiredo H, Mueller NK, Ulrich-Lai Y, Ostrander MM, Choi DC and  
641 Cullinan WE. Central mechanisms of stress integration: hierarchical circuitry controlling  
642 hypothalamo-pituitary-adrenocortical responsiveness. *Front Neuroendocrinol*. 2003;24:151-80.
- 643 57. Creswell JD, Way BM, Eisenberger NI and Lieberman MD. Neural correlates of  
644 dispositional mindfulness during affect labeling. *Psychosom Med*. 2007;69:560-5.
- 645 58. Holzel BK, Hoge EA, Greve DN, Gard T, Creswell JD, Brown KW, Barrett LF,  
646 Schwartz C, Vaitl D and Lazar SW. Neural mechanisms of symptom improvements in  
647 generalized anxiety disorder following mindfulness training. *Neuroimage Clin*. 2013;2:448-58.
- 648 59. Modinos G, Ormel J and Aleman A. Individual differences in dispositional mindfulness  
649 and brain activity involved in reappraisal of emotion. *Soc Cogn Affect Neurosci*. 2010;5:369-77.
- 650 60. Taren AA, Gianaros PJ, Greco CM, Lindsay EK, Fairgrieve A, Brown KW, Rosen RK,  
651 Ferris JL, Julson E, Marsland AL, Bursley JK, Ramsburg J and Creswell JD. Mindfulness

652 meditation training alters stress-related amygdala resting state functional connectivity: a  
653 randomized controlled trial. *Soc Cogn Affect Neurosci*. 2015;10:1758-68.  
654 61. Gallagher KM, Fadel PJ, Smith SA, Stromstad M, Ide K, Secher NH and Raven PB. The  
655 interaction of central command and the exercise pressor reflex in mediating baroreflex resetting  
656 during exercise in humans. *Exp Physiol*. 2006;91:79-87.  
657 62. Burton AR, Fazalbhoy A and Macefield VG. Sympathetic Responses to Noxious  
658 Stimulation of Muscle and Skin. *Front Neurol*. 2016;7:109.  
659 63. Smith SA, Mitchell JH and Garry MG. The mammalian exercise pressor reflex in health  
660 and disease. *Exp Physiol*. 2006;91:89-102.  
661 64. Ohlstein EH, Brooks DP, Feuerstein GZ and Ruffolo RR, Jr. Inhibition of sympathetic  
662 outflow by the angiotensin II receptor antagonist, eprosartan, but not by losartan, valsartan or  
663 irbesartan: relationship to differences in prejunctional angiotensin II receptor blockade.  
664 *Pharmacology*. 1997;55:244-51.

665

666

667

668

669

670

671

672

673

674

675

676

677

678 **Table 1.** Participant Characteristics and Intervention Adherence

<b>Characteristics</b>	<b>MBSR (n=16)</b>	<b>HEP (n=12)</b>
<b>Age (yr)</b>	64.1 ± 8.4	63.3 ± 10.3
<b>Sex (male, %)</b>	14 (88%)	10 (83%)
<b>Race</b>		
Black	9 (56%)	10 (83%)
White	7 (44%)	2 (17%)
<b>Height (cm)</b>	175.5 ± 8.6	176.7 ± 10.7
<b>Weight (kg)</b>	101.4 ± 23.0	94.1 ± 16.9
<b>BMI (kg/m<sup>2</sup>)</b>	32.9 ± 6.4	30.1 ± 4.8
<b>Smokers (n,%)</b>	2 (13%)	1 (8%)
<b>Hypertension (n,%)</b>	13 (81%)	11 (92%)
<b>Diabetes (n,%)</b>	7 (44%)	7 (58%)
<b>Antihypertensive medications (n,%)</b>		
ACEI/ARB	13 (81%)	9 (75%)
CCB	9 (56%)	7 (58%)
Diuretics	8 (50%)	5 (42%)
β-blockers	3 (19%)	7 (58%)
α-blockers	4 (25%)	2 (17%)
Hydralazine	2 (13%)	0 (0%)
<b>Statin (n,%)</b>	10 (63%)	7 (58%)
<b>eGFR (ml·min<sup>-1</sup>·1.73 m<sup>-2</sup>)</b>	39.9 ± 12.3	46.0 ± 7.4
<b>Intervention Adherence and Satisfaction</b>		
Class Attendance (%)	95 ± 10	94 ± 11
Home Practice (%)	78 ± 23	85 ± 21
Home Practice (hour)	34 ± 21	43 ± 23
Retreat Attendance	14/16	8/12
Satisfaction	27 ± 4 (86 ± 13%)	30 ± 2 (95 ± 5 %)

679 Continuous values are expressed as means ± standard deviation.

680 **BMI:** Body Mass Index, **ACEI:** Angiotensin Converting Enzyme Inhibitors, **ARB:** Angiotensin  
 681 Receptor Blocker **CCB:** Calcium Channel Blocker, **eGFR:** Estimated Glomerular Filtration Rate.

682

683

684

685

686

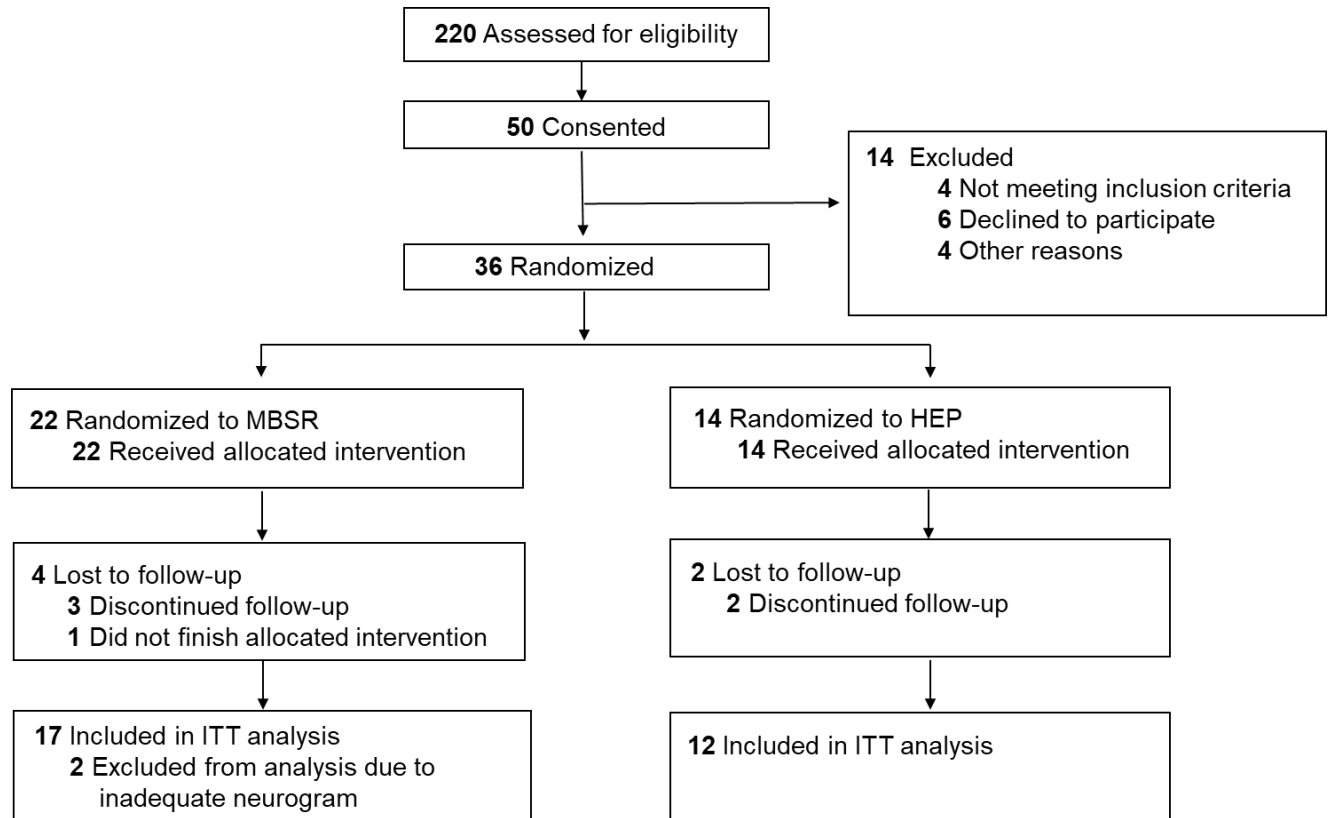
687

**Table 2.** Effects of MBSR vs. HEP Intervention on Resting and Reactivity to Static Handgrip and Cold Pressor Test of Cardiovascular and Sympathetic Parameters at in Patients with Chronic Kidney Disease.

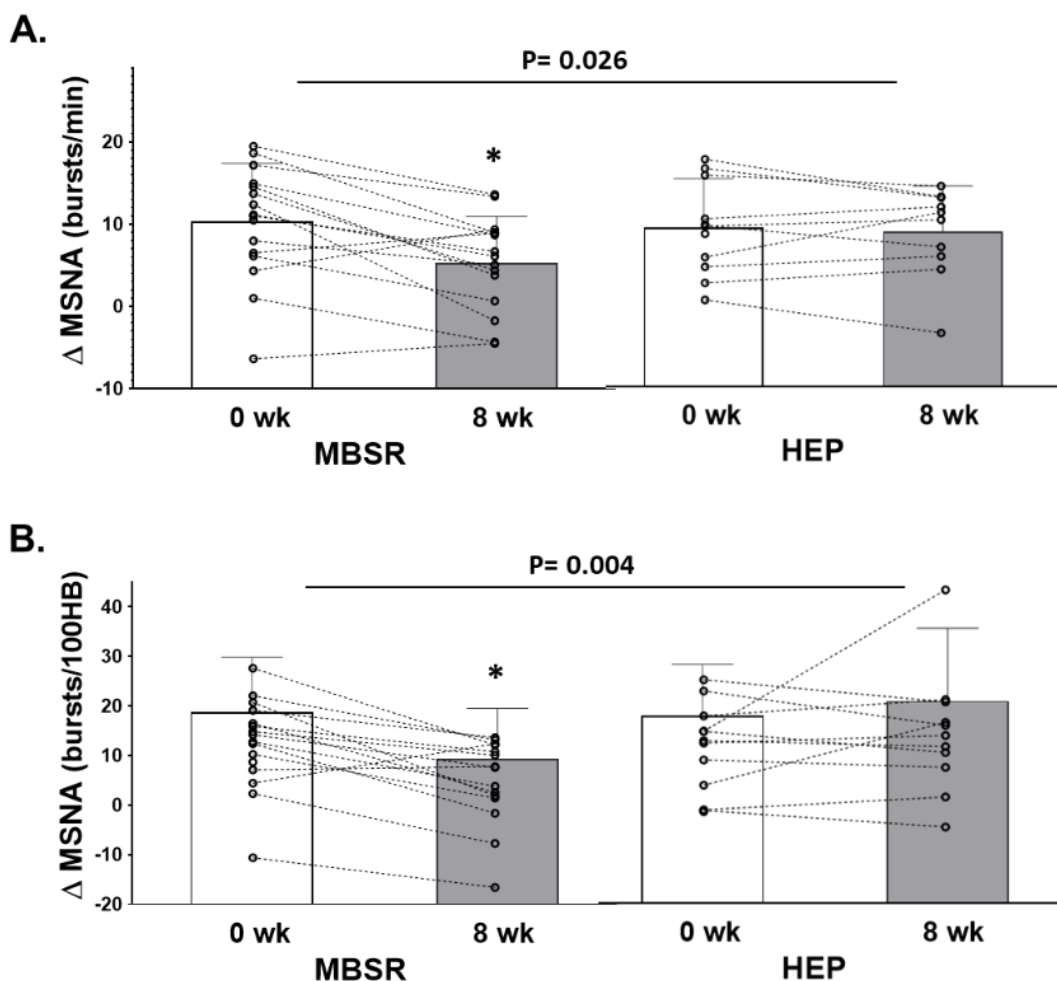
	MBSR (n=16)			HEP (n=12)			
	Baseline	8 weeks	Within-group P-value	Baseline	8 weeks	Within-group P-Value	Group x Time P-value
<b>Resting</b>							
SBP (mmHg)	122 ± 11	118 ±15	0.199	123 ± 12	121 ± 11	0.606	0.182
DBP (mmHg)	75 ± 8	70 ± 13	0.088	73 ± 12	72 ± 9	0.301	0.945
MAP (mmHg)	90 ± 8	86 ±13	0.099	89 ± 11	88 ± 8	0.318	0.390
HR (bpm)	72 ± 9	69 ±9	0.152	64 ± 7	66 ± 10	0.441	0.135
MSNA (bursts/min)	32.8 ± 7.6	33.8 ±8.9	0.448	38.9 ± 9.4	36.2 ± 8.9	0.117	0.096
MSNA (bursts/100HB)	53.7 ± 15.3	55.8 ± 17.9	0.501	61.3 ± 12.3	59.3 ± 12.6	0.547	0.372
<b>Reactivity to SHG</b>							
Δ SBP (mmHg)	10.5 ± 10.6	10.9 ± 13.2	0.922	10.8 ± 10.7	5.3 ± 8.3	0.205	0.286
Δ DBP (mmHg)	7 ± 7	9 ± 8	0.500	8 ± 6	6 ± 8	0.454	0.318
Δ MAP (mmHg)	10 ± 9	10 ± 10	0.976	10 ± 9	7 ± 6	0.318	0.416
Δ HR (bpm)	5 ± 4	6 ± 5	0.219	5 ± 6	5 ± 4	0.960	0.623
Δ MSNA (bursts/min)	14.3 ± 7.0	10.9 ± 6.4	0.139	9.3 ± 6.0	11.2 ± 9.1	0.484	0.142
Δ MSNA (bursts/100HR)	16.6 ± 11.4	9.9 ± 10.5	0.041	8.3 ± 7.9	11.8 ± 12.3	0.363	0.048
<b>Reactivity to CPT</b>							
Δ SBP (mmHg)	7 ± 8	1 ± 17	0.109	16 ± 15	10 ± 11	0.242	0.943
Δ DBP (mmHg)	8 ± 4	8 ± 10	0.812	14 ± 13	13 ± 12	0.596	0.783
Δ MAP (mmHg)	9 ± 6	6 ± 12	0.392	17 ± 16	11 ± 10	0.318	0.833
Δ HR (bpm)	7 ± 5	6 ± 4	0.219	9 ± 9	10 ± 7	0.496	0.200
Δ MSNA (bursts/min)	13.5 ± 15.9	12.1 ± 5.8	0.563	18.6 ± 16.4	22.1 ± 8.5	0.446	0.341
Δ MSNA (bursts/100HR)	15.1 ± 22.1	13.4 ± 12.5	0.713	17.6 ± 12.9	21.8 ± 6.2	0.503	0.450

Values are expressed as mean ± standard deviation.

**SBP:** Systolic Blood Pressure, **DBP:** Brachial Diastolic Blood Pressure, **MAP:** Mean Arterial Blood Pressure, **HR:** Heart Rate, **MSNA:** Muscle Sympathetic Nervous Activity, **HB:** Heart Beats, **SHG:** Static Handgrip, **CPT:** Cold Pressor Test. Within-group comparisons over 8 weeks were tested by paired *t*-tests and between-group comparisons on the changes over 8 weeks (Group by Time) were tested by repeated ANOVA tests.

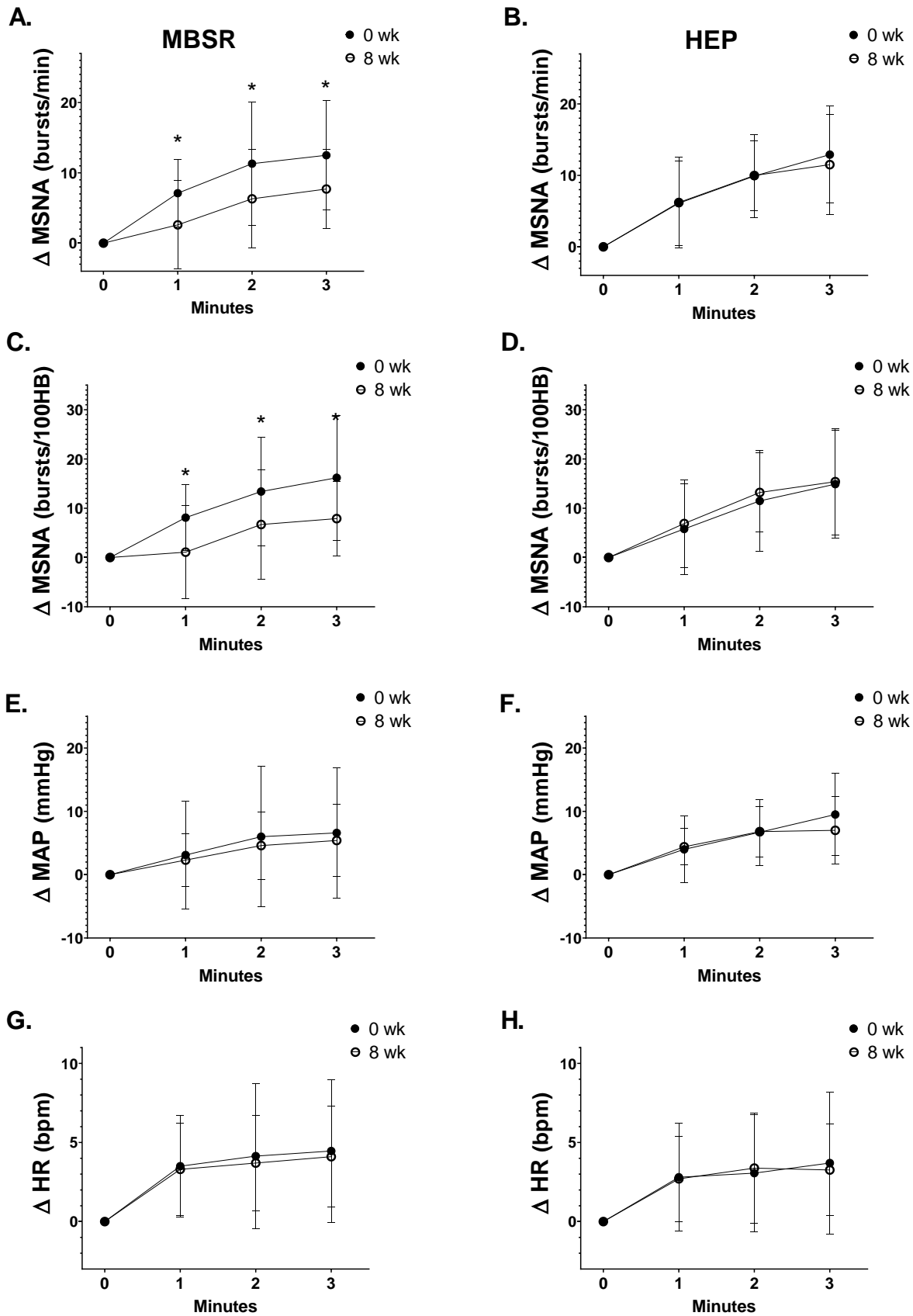


**Figure 1.** CONSORT diagram. The diagram depicts patient flow through the randomized clinical trial.



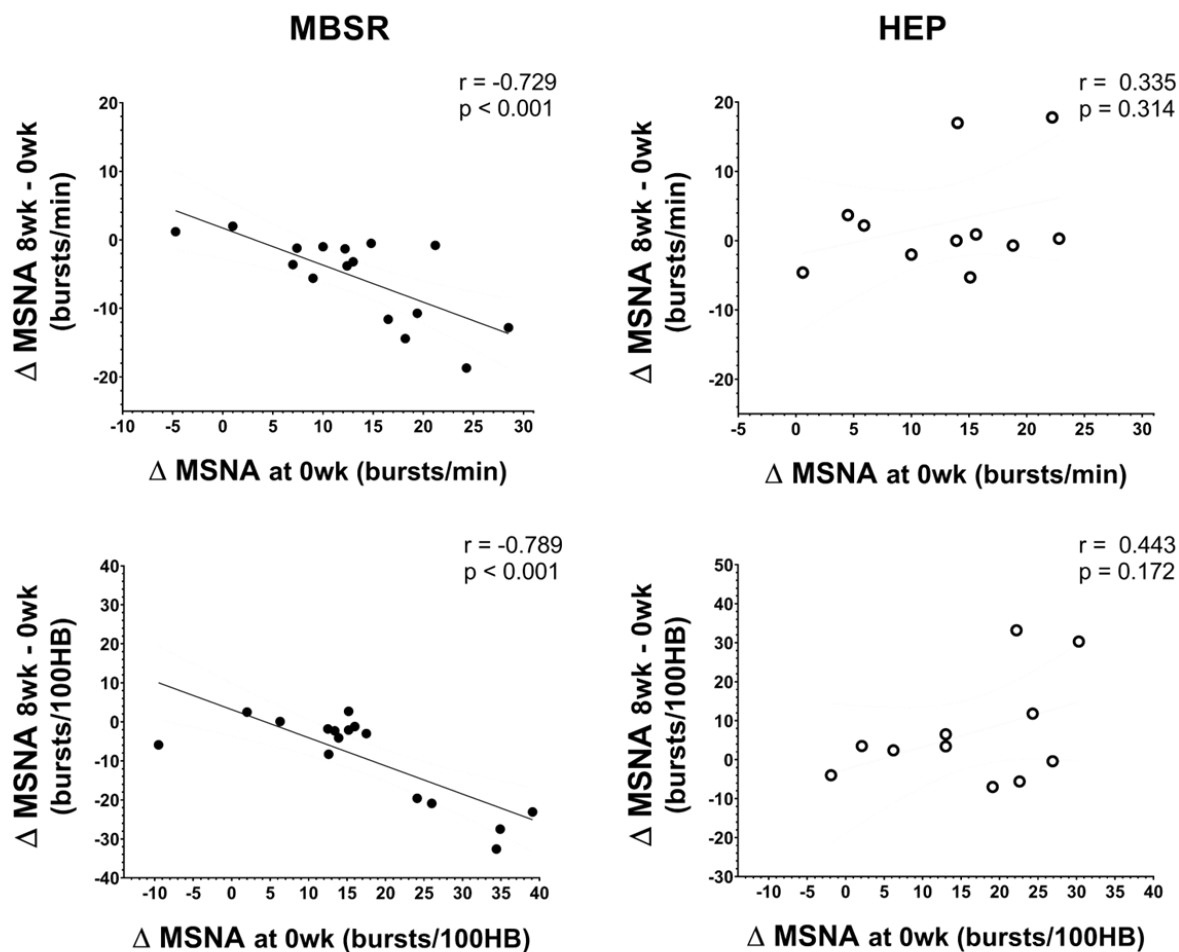
**Figure 2.** Reactivity of Muscle Sympathetic Nervous Activity (MSNA) Burst Frequency (**A**) and MSNA Burst Incidence (**B**) averaged over 3 minutes of Mental Arithmetic from baseline (**0 wk**) to post-intervention (**8 wk**) in patients with chronic kidney disease randomized to Mindfulness-Based Stress Reduction (MBSR; N=16) versus Health Education Program (HEP; N=12) groups.

Open circles (o) depict individual values for each study participant and bar graphs depict the mean and standard deviation values at baseline and post-intervention within each group. P-values denote statistically significant differences in the change from baseline to post-intervention between groups (Group x Time interaction) by repeated ANOVA tests. \* denotes statistically significant within-group difference from baseline to post-intervention by paired *t*-tests.



**Figure 3.** Reactivity in Muscle Sympathetic Nervous Activity (MSNA) Burst Frequency (**A, B**), MSNA Burst Incidence (**C, D**), Mean Arterial Blood Pressure (MAP) (**E, F**) and Heart Rate (HR) (**G, H**) during each minute of Mental Arithmetic from baseline (**0 wk**, closed circles) to post-intervention (**8 wk**, open circles) in patients with chronic kidney disease randomized to Mindfulness-Based Stress Reduction (MBSR; N=16) versus Health Education Program (HEP; N=12) groups.

\* denotes a statistically significant Time (baseline vs. post-intervention) by Minute (1<sup>st</sup>, 2<sup>nd</sup> or 3<sup>rd</sup> minute) interaction effect within the MBSR group by repeated ANOVA tests.



**Figure 4.** Association between Reactivity in Muscle Sympathetic Nervous activity (MSNA) Burst Frequency and MSNA Burst Incidence during mental arithmetic at Baseline (**0 wk**) and Change (post-intervention; **8 wk** – baseline; **0 wk**) in MBSR (**A, C** respectively, n=16) and in the HEP Group (**B, D** respectively, n=12) by Pearson correlation tests.

Closed circles (●) depict individual values for each study participant in the MBSR group while open circles (○) depict individual values for each study participant in the HEP group.