

# Meta-analysis of Genome wide Association Studies on Childhood ADHD Symptoms and Diagnosis Reveals 17 Novel Loci and 22 Potential Effector Genes

1  
2  
3  
4  
5  
6  
7 Van der Laan, Camiel M.<sup>1,2</sup>, Ip, Hill F.<sup>1</sup>, Schipper, Marijn<sup>3</sup>, Hottenga, Jouke-Jan<sup>1</sup>, Krapohl, Eva  
8 M. L.<sup>4</sup>, Brikell, Isabell<sup>5</sup>, Soler Artigas, María<sup>6,7,8</sup>, Cabana-Domínguez, Judith<sup>6,7,8</sup>, Llonga  
9 Natalia<sup>6,7,8</sup>, Nolte, Ilja M.<sup>9</sup>, St Pourcain, Beate<sup>10,11,12</sup>, Bolhuis, Koen<sup>13</sup>, Palviainen, Teemu<sup>14</sup>,  
10 Zafarmand, Hadi<sup>15,16</sup>, Gordon, Scott<sup>17</sup>, Zayats, Tetyana<sup>18,19,20</sup>, Aliev, Fazil<sup>21</sup>, Burt, Alexandra S.<sup>22</sup>,  
11 Wang, Carol A.<sup>23,24</sup>, Saunders, Gretchen<sup>25</sup>, Karhunen, Ville<sup>26,27</sup>, Adkins, Daniel E.<sup>28,29</sup>, Border,  
12 Richard<sup>30</sup>, Peterson, Roseann E.<sup>31,32</sup>, Prinz, Joseph A.<sup>33</sup>, Thiering, Elisabeth<sup>34,35</sup>, Vilor-Tejedor,  
13 Natàlia<sup>36-39</sup>, Ahluwalia, Tarunveer S.<sup>40,41</sup>, Allegrini, Andrea<sup>4</sup>, Rimfeld, Kaili<sup>4</sup>, Chen, Qi<sup>5</sup>, Lu, Yi<sup>5</sup>,  
14 Martin, Joanna<sup>5</sup>, Bosch, Rosa<sup>42,6</sup>, Ramos Quiroga, Josep Antoni<sup>6,43,7,8</sup>, Neumann, Alexander<sup>13</sup>,  
15 Ensink, Judith<sup>44,45,46,47</sup>, Grasby, Katrina<sup>17</sup>, Morosoli, José J.<sup>48,49,50</sup>, Tong, Xiaoran<sup>51</sup>, Marrington,  
16 Shelby<sup>52</sup>, Scott, James G.<sup>53,54,55</sup>, Shabalin, Andrey A.<sup>29</sup>, Corley, Robin<sup>56</sup>, Evans, Luke M.<sup>56,57</sup>,  
17 Sugden, Karen<sup>58,32</sup>, Alemany, Silvia<sup>6,7,8</sup>, Sass, Lærke<sup>39</sup>, Vinding, Rebecca<sup>39</sup>, Ehli, Erik A.<sup>59</sup>,  
18 Hagenbeek, Fiona A.<sup>1,14,45</sup>, Derks, Eske<sup>60</sup>, Larsson, Henrik<sup>5,61</sup>, Snieder, Harold<sup>9</sup>, Cecil,  
19 Charlotte<sup>13,62,63</sup>, Whipp, Alyce M.<sup>14</sup>, Korhonen, Tellervo<sup>14</sup>, Vuoksima, Eero<sup>14</sup>, Rose, Richard J.<sup>64</sup>,  
20 Uitterlinden, André G.<sup>63,65,66</sup>, Haavik, Jan<sup>18</sup>, Harris, Jennifer R.<sup>67</sup>, Helgeland, Øyvind<sup>68</sup>, Johansson,  
21 Stefan<sup>69</sup>, Knudsen, Gun Peggy S.<sup>67</sup>, Njolstad, Pal Rasmus<sup>69</sup>, Lu, Qing<sup>70</sup>, Rodriguez, Alina<sup>26</sup>,  
22 Henders, Anjali K.<sup>71</sup>, Mamun, Abdullah<sup>72</sup>, Najman, Jakob M.<sup>52</sup>, Brown, Sandy<sup>73</sup>, Hopfer,  
23 Christian<sup>74</sup>, Krauter, Kenneth<sup>75</sup>, Reynolds, Chandra<sup>76,57</sup>, Smolen, Andrew<sup>57</sup>, Stallings, Michael<sup>57,77</sup>,  
24 Wadsworth, Sally<sup>57</sup>, Wall, Tamara<sup>73</sup>, Eaves, Lindon<sup>78,32</sup>, Silberg, Judy L.<sup>78,32</sup>, Miller, Allison<sup>79</sup>,  
25 Havdahl, Alexandra<sup>80,81</sup>, Llop, Sabrina<sup>82,83</sup>, Lopez-Espinosa, Maria-Jose<sup>82,83,84</sup>, Bønnelykke,  
26 Klaus<sup>40</sup>, Sunyer, Jordi<sup>85,86,87</sup>, Arseneault, Louise<sup>88</sup>, Standl, Marie<sup>34</sup>, Heinrich, Joachim<sup>34,89,90</sup>,  
27 Boden, Joseph<sup>91</sup>, Pearson, John<sup>92</sup>, Horwood, John<sup>91</sup>, Kennedy, Martin<sup>93</sup>, Poulton, Richie<sup>94</sup>, Maes,  
28 Hermine H.<sup>78,32,95</sup>, Hewitt, John<sup>57,59</sup>, Copeland, William E.<sup>96</sup>, Middeldorp, Christel  
29 M.<sup>44,45,46,50,51,97,47</sup>, Williams, Gail M.<sup>52</sup>, Wray, Naomi<sup>71,98</sup>, Järvelin, Marjo-Riitta<sup>26,27,99</sup>, McGue,  
30 Matt<sup>25</sup>, Iacono, William<sup>25</sup>, Caspi, Avshalom<sup>59,100,88,101</sup>, Moffitt, Terrie E.<sup>59,100,88,101</sup>, Whitehouse,  
31 Andrew<sup>102</sup>, Pennell, Craig E.<sup>23,24</sup>, Klump, Kelly L.<sup>22</sup>, Jiang, Chang<sup>70</sup>, Dick, Danielle M.<sup>103,104,78,105</sup>,  
32 Reichborn-Kjennerud, Ted<sup>77,106</sup>, Martin, Nicholas G.<sup>17</sup>, Medland, Sarah E.<sup>17,50,107</sup>, Vrijkotte,  
33 Tanja<sup>108,46,109</sup>, Kaprio, Jaakko<sup>110,14</sup>, Tiemeier, Henning<sup>13,111</sup>, Davey Smith, George<sup>112,10</sup>, Hartman,  
34 Catharina A.<sup>113</sup>, Oldehinkel, Albertine J.<sup>114</sup>, Casas, Miquel<sup>142,43,114,115</sup>, Ribasés, Marta<sup>6,7,8</sup>,  
35 Lichtenstein, Paul<sup>5</sup>, Lundström, Sebastian<sup>116,117</sup>, Plomin, Robert<sup>4</sup>, Bartels, Meike<sup>1,46</sup>, Nivard,  
36 Michel G.<sup>1</sup>, Boomsma, Dorret I.<sup>1,46</sup>

## GWAMA OF ADHD SYMPTOMS AND DIAGNOSIS

- 37  
38 1 Department of Biological Psychology, Vrije Universiteit Amsterdam, Amsterdam, The  
39 Netherlands  
40 2 Netherlands Institute for the Study of Crime and Law Enforcement  
41 3 Department of Complex Trait Genetics, Center for Neurogenomics and Cognitive Research,  
42 Amsterdam Neuroscience, Vrije Universiteit Amsterdam, Amsterdam, The Netherlands  
43 4 Institute of Psychiatry, Psychology and Neuroscience, King's College London, United Kingdom  
44 5 Department of Medical Epidemiology and Biostatistics, Karolinska Institutet, Stockholm, Sweden  
45 6 Biomedical Network Research Centre on Mental Health (CIBERSAM), Instituto de Salud Carlos  
46 III, Barcelona, Spain  
47 7 Department of Mental Health, Hospital Universitari Vall d'Hebron, Barcelona, Spain.  
48 8 Psychiatric Genetics Unit, Group of Psychiatry, Mental Health and Addiction, Vall d'Hebron  
49 Research Institute (VHIR), Universitat Autònoma de Barcelona, Barcelona, Spain  
50 9 Department of Epidemiology, University of Groningen, University Medical Center Groningen,  
51 Groningen, The Netherlands  
52 10 MRC Integrative Epidemiology Unit, University of Bristol, Bristol, UK  
53 11 Max Planck Institute for Psycholinguistics, The Netherlands  
54 12 Donders Institute for Brain, Cognition and Behaviour, Radboud University, The Netherlands  
55 13 Department of Child and Adolescent Psychiatry/Psychology, Erasmus University Medical Center,  
56 Rotterdam, Netherlands  
57 14 Institute for Molecular Medicine FIMM, HiLife, University of Helsinki, Helsinki, Finland  
58 15 Department of Public Health, Amsterdam Public Health Research Institute, Amsterdam UMC,  
59 location Academic Medical Center, University of Amsterdam, Amsterdam, The Netherlands  
60 16 Department of Clinical Epidemiology, Biostatistics and Bioinformatics, Amsterdam Public Health  
61 Research Institute, Amsterdam UMC, location Academic Medical Center, University of  
62 Amsterdam, Amsterdam, The Netherlands  
63 17 QIMR Berghofer Medical Research Institute, Brisbane, Australia  
64 18 K.G. Jebsen Centre for Neuropsychiatric Disorders, Department of Biomedicine, University of  
65 Bergen, Norway  
66 19 Analytic and Translational Genetics Unit, Department of Medicine, Massachusetts General  
67 Hospital and Harvard Medical School, Boston, Massachusetts, USA  
68 20 Stanley Center for Psychiatric Research, Broad Institute of MIT and Harvard, Cambridge,  
69 Massachusetts, USA  
70 21 Department of Psychiatry, Robert Wood Johnson Medical School, Rutgers University, U.S.A  
71 22 Department of Psychology, Michigan State University, East Lansing, USA  
72 23 School of Medicine and Public Health. Faculty of Medicine and Health, The University of  
73 Newcastle, Newcastle, New South Wales, Australia  
74 24 Hunter Medical Research Institute, Newcastle, New South Wales, Australia  
75 25 Department of Psychology, University of Minnesota, USA  
76 26 MRC Centre for Environment and Health, Department of Epidemiology and Biostatistics, School  
77 of Public Health, Imperial College London, London, United Kingdom  
78 27 Faculty of Medicine, University of Oulu, PO Box 8000, FI-90014 Oulun yliopisto, Finland  
79 28 Department of Sociology, College of Social and Behavioral Science, University of Utah  
80 29 Department of Psychiatry, School of Medicine, University of Utah

## GWAMA OF ADHD SYMPTOMS AND DIAGNOSIS

- 81 30 Departments of Neurology and Computer Science, University of California Los Angeles,  
82 California, USA
- 83 31 Department of Psychiatry and Behavioral Sciences, State University of New York Downstate  
84 Health Sciences University, Brooklyn, NY, USA
- 85 32 Department of Psychiatry, Virginia Institute for Psychiatric and Behavioral Genetics, Virginia  
86 Commonwealth University, Richmond, VA, USA
- 87 33 Center for Genomic and Computational Biology, Duke University, Durham, NC, USA
- 88 34 Institute of Epidemiology, Helmholtz Zentrum München - German Research Center for  
89 Environmental Health, Neuherberg, Germany
- 90 35 Ludwig-Maximilians-University of Munich, Dr. von Hauner Children's Hospital, Division of  
91 Metabolic Diseases and Nutritional Medicine, Munich, Germany
- 92 36 BarcelonaBeta Brain Research Center, Pasqual Maragall Foundation (FPM), Barcelona, Spain
- 93 37 Centre for Genomic Regulation (CRG), The Barcelona Institute of Science and Technology,  
94 Barcelona, Spain
- 95 38 IMIM (Hospital del Mar Medical Research Institute), Barcelona, Spain
- 96 39 Department of Clinical Genetics. Erasmus University Medical Center. Rotterdam, Netherlands
- 97 40 COPSAC, Copenhagen Prospective Studies on Asthma in Childhood, Herlev and Gentofte  
98 Hospital, University of Copenhagen, Copenhagen, Denmark
- 99 41 Steno Diabetes Center Copenhagen, Herlev, Denmark
- 100 42 SJD MIND Schools Program, Hospital Sant Joan de Déu, Institut de Recerca Sant Joan de Déu,  
101 Esplugues de Llobregat, Spain
- 102 43 Department of Psychiatry and Legal Medicine, Universitat Autònoma de Barcelona, Barcelona,  
103 Spain
- 104 44 Department of child and adolescent psychiatry and psychology, Amsterdam UMC, Amsterdam
- 105 45 Reproduction and Development research Institute, Amsterdam, the Netherlands
- 106 46 Amsterdam Public Health Research Institute, Amsterdam, the Netherlands
- 107 47 Level, Academic center for Child and Adolescent Psychiatry, Amsterdam, The Netherlands
- 108 48 Department of Clinical, Educational, and Health Psychology, University College London,  
109 London, UK
- 110 49 Mental Health and Neuroscience Research Program, QIMR Berghofer Medical Research Institute,  
111 Brisbane, Australia
- 112 50 School of Psychology, University of Queensland, Brisbane, Australia
- 113 51 Center for Innovation in Public Health, University of Kentucky
- 114 52 School of Public Health, The University of Queensland, Herston, Qld, Australia
- 115 53 Child Health Research Centre, The University of Queensland, Brisbane, QLD, Australia
- 116 54 Child and Youth Mental Health Service, Children's Health Queensland Hospital and Health  
117 Service, Brisbane, QLD, Australia
- 118 55 Queensland Centre for Mental Health Research, QLD, Australia
- 119 56 Institute for Behavioral Genetics, University of Colorado Boulder, Colorado, USA
- 120 57 Department of Ecology and Evolutionary Biology, University of Colorado Boulder, Colorado,  
121 USA
- 122 58 Department of Psychology and Neuroscience, Duke University, Durham, N.C., U.S.A.
- 123 59 Avera Institute for Human Genetics, Sioux Falls, South Dakota, USA

## GWAMA OF ADHD SYMPTOMS AND DIAGNOSIS

- 124 60 Translational Neurogenomics Laboratory, QIMR Berghofer Medical Research Institute, Brisbane,  
125 Queensland, Australia
- 126 61 School of Medical Sciences, Orebro University, Orebro, Sweden
- 127 62 Department of Biomedical Data Sciences, Molecular Epidemiology, Leiden University Medical  
128 Center, Leiden, The Netherlands
- 129 63 Department of Epidemiology, Erasmus University Medical Center, Rotterdam, The Netherlands
- 130 64 Department of Psychological and Brain Sciences, Indiana University, Bloomington, IN, USA
- 131 65 Department of Internal Medicine, Erasmus University Medical Center, Rotterdam, The  
132 Netherlands
- 133 66 Netherlands Genomics Initiative (NGI)-sponsored Netherlands Consortium for Healthy Aging  
134 (NCHA), Leiden, The Netherlands
- 135 67 Centre for Fertility and Health, The Norwegian Institute of Public Health, Oslo, Norway
- 136 68 Department of Genetics and Bioinformatics, Division of Health Data and Digitalization,  
137 The Norwegian Institute of Public Health, Bergen, Norway
- 138 69 Department of Clinical Science, University of Bergen, Norway
- 139 70 Department of Biostatistics, University of Florida, Gainesville, USA
- 140 71 Institute for Molecular Bioscience, University of Queensland, QLD, Australia
- 141 72 Institute for Social Science Research, University of Queensland, QLD, Australia
- 142 73 Department of Psychiatry, University of California, San Diego
- 143 74 University of Colorado School of Medicine, Aurora, Colorado, USA
- 144 75 Department of Molecular, Cellular, and Developmental Biology, University of Colorado Boulder,  
145 USA
- 146 76 Department of Psychology, University of California Riverside, Riverside, CA, USA
- 147 77 Department of Psychology and Neuroscience, University of Colorado Boulder, Colorado, USA
- 148 78 Department of Human and Molecular Genetics, Virginia Commonwealth University, Richmond,  
149 VA, USA
- 150 79 Department of Pathology and Biomedical Science, and Carney Centre for Pharmacogenomics,  
151 University of Otago Christchurch, New Zealand
- 152 80 PsychGen Centre for Genetic Epidemiology and Mental Health, Norwegian Institute of Public  
153 Health, Oslo, Norway
- 154 81 Nic Waals Institute, Lovisenberg Diaconal Hospital, Oslo, Norway
- 155 82 Epidemiology and Environmental Health Joint Research Unit, FISABIO-Universitat Jaume I-  
156 Universitat de València, Valencia (Spain)
- 157 83 Spanish Consortium for Research on Epidemiology and Public Health (CIBERESP), Madrid  
158 (Spain)
- 159 84 Department of Nursing, Universitat de València, Valencia, Spain
- 160 85 ISGlobal, Barcelona Institute for Global Health, Barcelona, Spain
- 161 86 Universitat Pompeu Fabra (UPF), Barcelona, Spain
- 162 87 CIBER Epidemiología y Salud Pública (CIBERESP), Spain
- 163 88 Social, Genetic and Developmental Psychiatry Centre, Institute of Psychiatry, Psychology and  
164 Neuroscience, King's College London, U.K.
- 165 89 Institute and Outpatient Clinic for Occupational, Social and Environmental Medicine, University  
166 of Munich Medical Center, Ludwig-Maximilians-Universität München, Munich, Germany

## GWAMA OF ADHD SYMPTOMS AND DIAGNOSIS

- 167      <sup>90</sup> Allergy and Lung Health Unit, Melbourne School of Population and Global Health, University of  
168      Melbourne, Melbourne, Australia
- 169      <sup>91</sup> Christchurch Health and Development Study, Department of Psychological Medicine, University  
170      of Otago Christchurch, New Zealand
- 171      <sup>92</sup> Biostatistics and Computational Biology Unit, Department of Pathology and Biomedical Science,  
172      University of Otago Christchurch, New Zealand
- 173      <sup>93</sup> Department of Pathology and Biomedical Science, and Carney Centre for Pharmacogenomics,  
174      University of Otago Christchurch, New Zealand
- 175      <sup>94</sup> Dunedin Multidisciplinary Health and Development Research Unit, University of Otago,  
176      Dunedin, New Zealand
- 177      <sup>95</sup> Massey Cancer Center, Virginia Commonwealth University, Richmond, VA, USA
- 178      <sup>96</sup> Department of Psychiatry, College of Medicine, University of Vermont
- 179      <sup>97</sup> Arkin mental health care, Amsterdam, The Netherlands
- 180      <sup>98</sup> Queensland Brain Institute, Institute for Molecular Bioscience, University of Queensland, St  
181      Lucia 4072, Australia
- 182      <sup>99</sup> Department of Life Sciences, College of Health and Life Sciences, Brunel University London,  
183      London, United Kingdom
- 184      <sup>100</sup> Department of Psychiatry and Behavioral Sciences, Duke University School of Medicine,  
185      Durham, N.C., U.S.A.
- 186      <sup>101</sup> Center for Genomic and Computational Biology, Duke University, Durham, N.C., U.S.A.
- 187      <sup>102</sup> Telethon Kids Institute, University of Western Australia, Nedlands, Western Australia, Australia
- 188      <sup>103</sup> Department of Psychiatry, Robert Wood Johnson Medical School, Rutgers University, U.S.A.
- 189      <sup>104</sup> Department of Psychology, Virginia Commonwealth University, U.S.A.
- 190      <sup>105</sup> College Behavioral and Emotional Health Institute, Virginia Commonwealth University,  
191      Richmond, VA, USA
- 192      <sup>106</sup> Institute of Clinical Medicine, University of Oslo, Oslo, Norway
- 193      <sup>107</sup> School of Psychology and Counselling, Queensland University of Technology, Brisbane,  
194      Australia
- 195      <sup>108</sup> Department of Public and Occupational Health, Amsterdam University Medical Center,  
196      University of Amsterdam, Amsterdam
- 197      <sup>109</sup> Amsterdam Reproduction and Development Research Institute, Amsterdam, The Netherlands
- 198      <sup>110</sup> Department of Public Health, Medical Faculty, University of Helsinki, Helsinki, Finland
- 199      <sup>111</sup> Department of Social and Behavioral Science, Harvard TH Chan School of Public Health, Boston,  
200      USA
- 201      <sup>112</sup> Population Health Sciences, Bristol Medical School, University of Bristol, Bristol, UK
- 202      <sup>113</sup> Interdisciplinary Center Psychopathology and Emotion regulation (ICPE), Department of  
203      Psychiatry, University of Groningen, University Medical Center Groningen, Groningen, The  
204      Netherlands
- 205      <sup>114</sup> Fundació d'Investigació Sant Pau, Barcelona, Spain
- 206      <sup>115</sup> Instituto para el Desarrollo de Terapias Avanzadas en Neurociencias (IDETAN). Barcelona, Spain
- 207      <sup>116</sup> Gillberg Neuropsychiatry Centre, University of Gothenburg, Gothenburg, Sweden
- 208      <sup>117</sup> Centre for Ethics, Law and Mental Health, University of Gothenburg, Gothenburg, Sweden
- 209



## GWAMA OF ADHD SYMPTOMS AND DIAGNOSIS

### 210 **Abstract**

211 Attention-deficit/hyperactivity disorder (ADHD) is a heritable neurodevelopmental disorder for  
212 which genetic factors explain up to 75% of the variance. In this study, we performed a genome-  
213 wide association meta-analysis (GWAMA) of ADHD symptom measures, with an effective sample  
214 size of 120,092 (71,733 unique individuals from 28 population-based cohorts, with 288,887  
215 quantitative ADHD symptom measures). Next, we meta-analyzed the results with a genome-wide  
216 association study (GWAS) of ADHD diagnosis. The GWAMA of ADHD symptoms returned no  
217 genome-wide significant variants. However, we estimated strong genetic correlations between our  
218 study of quantitative ADHD symptoms and the earlier study of ADHD diagnosis ( $r_g = 1.00$ ,  $SE =$   
219  $0.06$ ). Moderate negative genetic correlations ( $r_g < -0.40$ ) were observed with several cognitive  
220 traits. Genetic correlations between ADHD and aggressive behavior and antisocial behavior were  
221 around 1. This provides further evidence of the wide pleiotropic effects of genetic variants and the  
222 role that genetic variants play in the co-occurrence with (mental) health traits. The GWAMAs of  
223 ADHD symptoms and diagnosis identified 2,039 genome-wide significant variants, representing  
224 39 independent loci, of which 17 were new. Using a novel fine-mapping and functional annotation  
225 method, we identified 22 potential effector genes which implicate several new potential biological  
226 processes and pathways that may play a role in ADHD. Our findings support the notion that clinical  
227 ADHD is at the extreme end of a continuous liability that is indexed by ADHD symptoms. We  
228 show that including ADHD symptom counts in large-scale GWAS can be useful to identify novel  
229 genes implicated in ADHD and related symptoms.

230

231 Keywords: ADHD, GWAS, symptoms, diagnosis, genetics, FLAMES

232

## GWAMA OF ADHD SYMPTOMS AND DIAGNOSIS

### 233 **Introduction**

234 Attention-deficit/hyperactivity disorder (ADHD) is, for many individuals, a persistent  
235 neurodevelopmental disorder (Faraone et al., 2006; Kan et al., 2013). ADHD is characterized by  
236 three core symptoms: hyperactivity, impulsivity, and inattention (American Psychiatric  
237 Association, 2013). It affects around 5% of children and adolescents and 2.5% of adults worldwide  
238 (Faraone et al., 2015). ADHD may be associated with serious consequences for affected  
239 individuals, their families, and society at large, with symptoms persisting across multiple settings,  
240 i.e. at home, at school, and elsewhere (Caci et al., 2014, 2015). The disorder has a predominantly  
241 genetic aetiology, involving both common and rare genetic variants (Faraone et al., 2024). The  
242 mean estimated heritability across 37 twin studies of ADHD was 74% (Faraone & Larsson, 2019;  
243 Kan et al., 2014; Merwood et al., 2013), with some differences in heritability across ages and raters  
244 (Kan et al., 2014; Merwood et al., 2013).

245 In 2019, a genome-wide association meta-analysis (GWAMA) of clinical ADHD, hereafter  
246 referred to as ADHD<sub>DIAG2019</sub>, including data from 20,183 cases and 35,191 controls, identified the  
247 first 12 genome-wide significant loci associated with ADHD (Demontis et al., 2019). The study  
248 reported that 22% of the variance in ADHD could be explained by all measured single nucleotide  
249 polymorphisms (SNPs). They also performed meta-analyses with deCode, 23andMe, and EAGLE  
250 (Middeldorp et al., 2016). Four independent loci reached the genome-wide significance threshold  
251 ( $p < 5 \times 10^{-8}$ ) in all three meta-analyses. Interestingly, most independent significant loci, 15, were  
252 found in the meta-analysis with a quantitative assessment of attention problems in EAGLE,  
253 suggesting that quantitative assessments of ADHD can boost the power to identify implicated  
254 genetic variants. Ten independent significant loci were found in meta-analyses with deCode and  
255 23andMe data. In 2023, Demontis and colleagues presented results from their updated GWAS

## GWAMA OF ADHD SYMPTOMS AND DIAGNOSIS

256 meta-analysis of ADHD (ADHD<sub>DIAG</sub>), combining newly extended data from iPSYCH, deCode,  
257 and the PGC, almost doubling the number of cases compared with ADHD<sub>DIAG2019</sub> (Demontis et al.,  
258 2023). The definition of cases was broader, for example by including individuals who used ADHD  
259 prescription medication. The study reported 27 independent significant loci and estimated that 14%  
260 of the variance in ADHD could be attributed to the included SNPs. The broader definition of  
261 ADHD diagnosis resulted in a larger sample and, therefore, more power to detect implicated  
262 genetic variants. However, this broader definition also increased the heterogeneity of the  
263 phenotype, which may explain the decrease in SNP-heritability (Wang et al., 2023).

264 There is increasing interest and recognition that ADHD symptom counts in non-clinical  
265 samples can tap into the same genetic construct as clinically diagnosed ADHD, supporting the  
266 notion that ‘clinical ADHD’ is at the extreme end of a continuous measure of ADHD symptoms  
267 (Larsson et al., 2012; Levy et al., 1997). This was initially suggested based on multivariate twin  
268 studies (Derks et al., 2008). Additionally, the genetic correlation ( $r_g$ ) between quantitative ADHD  
269 symptom counts (Middeldorp et al., 2016) and ADHD<sub>DIAG2019</sub> (Demontis et al., 2019) was  
270 estimated to be 0.97 (SE= 0.21,  $p= 2.66 \times 10^{-6}$ ), suggesting that combining these measures is a  
271 viable strategy to increase statistical power in ADHD GWASs. This was additionally supported by  
272 the increased number of genome-wide significant loci in the meta-analysis of ADHD<sub>DIAG2019</sub> and  
273 EAGLE, as compared to ADHD<sub>DIAG2019</sub> alone, and to meta-analyses of ADHD<sub>DIAG2019</sub>, deCode and  
274 23andMe.

275 In this study, we combine information from 28 population-based cohorts in a GWAMA of  
276 continuous ADHD symptom scores, leading to a total of 71,733 participants. The measures include  
277 repeated assessments (longitudinal data) by multiple raters (maternal, paternal, teachers, and self-  
278 assessments) and instruments across ages (range: 2-18 years), for a total of 288,887 measures. We



## GWAMA OF ADHD SYMPTOMS AND DIAGNOSIS

279 also include retrospective self-report data. We meta-analyze all available data into a cross-  
280 rater/cross-age/cross-instrument GWAMA of ADHD symptoms ( $ADHD_{SYMP}$ ), taking into  
281 consideration the dependency between multiple assessments within individuals (Ip et al., 2021).  
282 Using measures from multiple raters and ages may further increase the power of the analyses due  
283 to an increase in the validity of the ADHD symptom measures. Next, we estimate the genetic  
284 correlations ( $r_g$ ) between  $ADHD_{SYMP}$  and the meta-analysis of case-control samples (Demontis et  
285 al., 2023), and meta-analyze  $ADHD_{SYMP}$  with  $ADHD_{DIAG}$  ( $ADHD_{overall}$ ). Finally, we performed  
286 fine mapping and gene-based tests based on  $ADHD_{SYMP}$  and  $ADHD_{overall}$ , performed several  
287 follow-up enrichment and pathway analyses, and estimated genetic correlations between the  
288 GWAMA and a set of predefined outcomes from cognitive and externalizing behaviour domains.

289

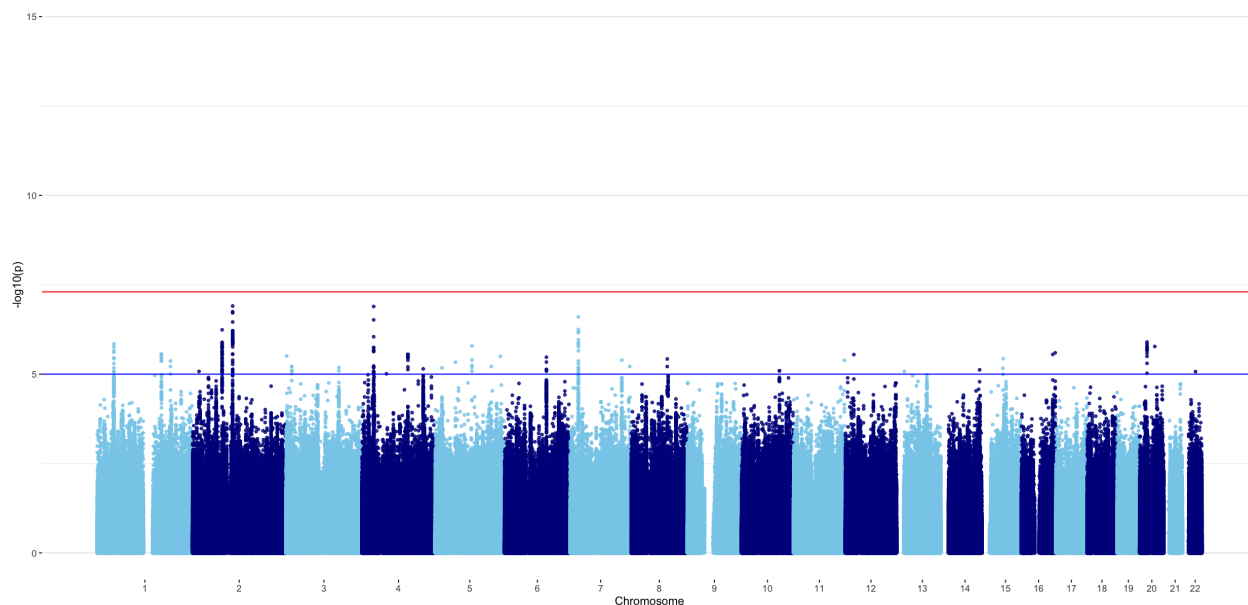
290

### 291 **Results**

#### 292 **$ADHD_{SYMP}$ GWAMA**

293 We first meta-analyzed the effect of each SNP across all available univariate GWAS of quantitative  
294 ADHD measures. Based on an effective sample size of 120,092, the estimated  $h^2_{SNP}$  of  $ADHD_{SYMP}$   
295 was 0.04 (SE= 0.01; Z= 8.12). The mean  $\chi^2$  statistic was 1.09 along with an LDSC-intercept of  
296 1.01 (SE= 0.01), indicating that there was no or very limited inflation in test statistics due to  
297 confounding biases such as population stratification. Rather, the GWAMA most likely captured  
298 the polygenic nature of childhood ADHD symptoms. The GWAMA of ADHD symptoms did not  
299 result in any genome-wide significant SNPs (Figure 1, Supplements Table 11).

## GWAMA OF ADHD SYMPTOMS AND DIAGNOSIS



300

301 Figure 1. Manhattan plot: GWAMA of ADHD symptoms.

302

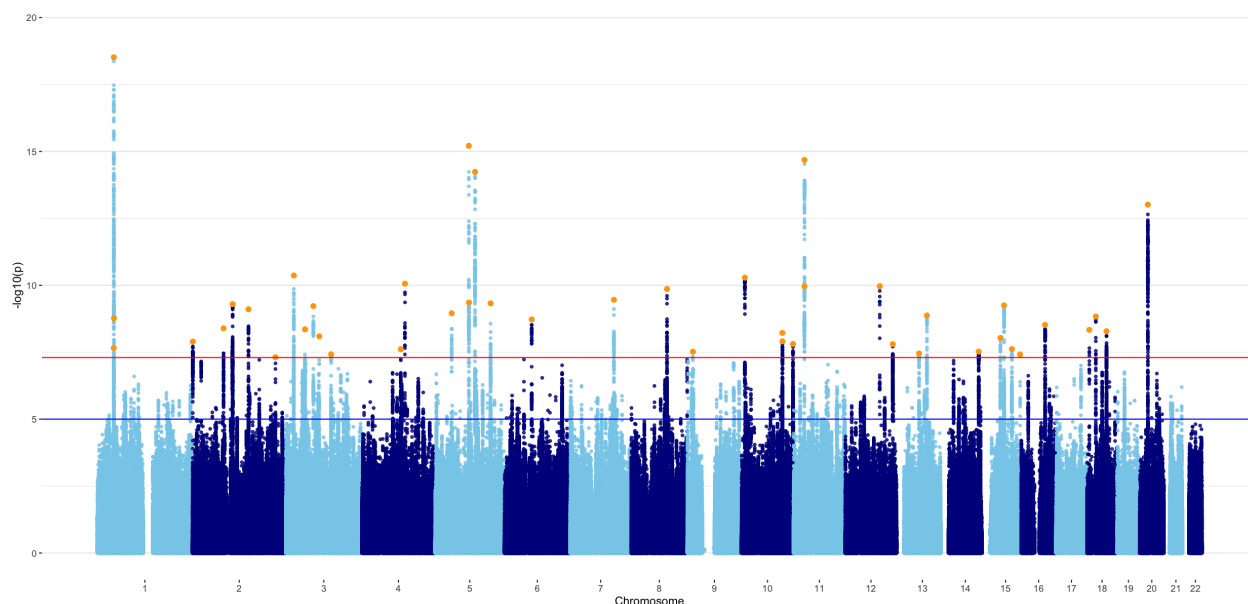
### 303 **Meta-analysis with ADHD diagnosis GWAS**

304 SNP-heritability estimated with genomicSEM was 0.13 (SE= 0.01) for ADHD<sub>DIAG</sub>. The estimated  
305 genetic correlation between ADHD<sub>SYMP</sub> and ADHD<sub>DIAG</sub> was 1.00 (SE= 0.06). The CTI was not  
306 significantly different from zero and were subsequently constrained to zero in the following meta-  
307 analysis.

308 Because the point estimate of the genetic correlation between ADHD<sub>SYMP</sub> and ADHD<sub>DIAG</sub>  
309 was not significantly different from 1, we constrained the genetic correlation at unity when pre-  
310 adjusting the weights and Z-scores for the meta-analysis of ADHD<sub>SYMP</sub> and ADHD<sub>DIAG</sub>. A total of  
311 6,571,852 SNPs were included in the meta-analysis. The SNP-heritability of ADHD<sub>overall</sub> was 0.11  
312 (SE= 0.01), with a mean  $\chi^2$  statistic of 1.52. The LDSC-intercept and ratio were 1.02 (SE= 0.01)  
313 and 0.03 (SE= 0.02), respectively, indicating that approximately 3% of the signal might be due to  
314 confounding factors. A Manhattan plot of ADHD<sub>overall</sub> is shown in Figure 2. 2,039 SNPs reached  
315 genome-wide significance ( $p < 5 \times 10^{-8}$ ), of which 644 were also reported in ADHD<sub>DIAG</sub> and 1,395

## GWAMA OF ADHD SYMPTOMS AND DIAGNOSIS

316 were new. The 2,039 SNPs corresponded to 43 independent lead SNPs in 39 independent  
317 significant loci, identified with FUMA. Of these 39 loci, 22 were also reported in ADHD<sub>DIAG</sub> and  
318 17 were new. See also Figure 2 and Supplements Tables 12 and 13.



319  
320 Figure 2. Manhattan plot: GWAMA of ADHD symptoms and ADHD diagnosis. *Note: orange dots*  
321 *reflect lead SNPs.*

322

323

### 324 **Follow-up analyses**

#### 325 *Fine mapping & gene-based tests*

326 Gene mapping in FUMA mapped the 43 lead SNPS in 39 independent genomic risk loci to 204  
327 associated genes (See Supplements Table 14), of which 45 were also reported by Demontis et al  
328 (2023). Second, gene-based tests were run in MAGMA (de Leeuw et al., 2015), identifying 64  
329 associated genes (see Supplements Table 15), of which 17 were previously reported by Demontis  
330 et al. (2023). Third, we ran FLAMES (Schipper et al., 2023), with the aim to get a better  
331 understanding of the genes that are causally involved in ADHD. A total of 22 genes had

## GWAMA OF ADHD SYMPTOMS AND DIAGNOSIS

332 FLAMES scores larger than 0.05, and were interpreted as potential effector genes (see  
333 Supplements Table 16). Fourteen of these effector genes were also tagged by the MAGMA gene-  
334 based test. Ten of these potential effector genes were previously reported by Demontis et al.  
335 (2023). Four genes were not reported by Demontis et al. (2023) but have previously been linked  
336 to ADHD, as listed by GWAS Catalog. Eight potential effector genes were not reported by  
337 Demontis et al. (2023) or by any ADHD specific studies listed on GWAS Catalog: *EMCN*,  
338 *STK32C*, *PCDH17*, *TCF12*, *PEAK1*, *IGF1R*, *CTNNA2*, and *ABCA12*.

339

### 340 *Enrichment & tissue specific expression*

341 Gene-set analysis in MAGMA revealed no significant enrichment in any MSigDB v2023  
342 gene-sets after correction for multiple testing. MAGMA expression analysis showed significant  
343 enrichment of the GWAMA signal in gene-sets differentially expressed in late infancy.  
344 Additionally, there was significant enrichment in several brain tissue types, as well as in the  
345 pituitary gland (See Supplements Figures 1 and 2).

346 Next, FUMA GENE2FUNC gene-set enrichment analyses of the 204 potential ADHD risk  
347 genes mapped by FUMA showed significant enrichment in genes identified in GWAS of ADHD,  
348 cognition-related phenotypes, and risk-taking behaviors. The genes were not significantly enriched  
349 in any tissue types, or in any of the Brainspan developmental stages of brain samples. Genes were  
350 enriched in 29 gene sets that code for transcription factor targets. Zero synapse cellular component  
351 terms or biological processes were significantly enriched at 1% FDR (testing terms with at least  
352 three matching input genes in SynGO). For a complete overview of all enrichment results and the  
353 included gene sets, see Supplemental Figures 3-5, and Supplemental Notes.

354 We repeated the same analyses for the 22 potential effector genes identified by FLAMES.  
355 Again, genes were highly enriched for genes identified in GWAS of cognition-related phenotypes,

## GWAMA OF ADHD SYMPTOMS AND DIAGNOSIS

356 and risk-taking behaviors. The 22 genes were significantly overrepresented in gene sets that are  
357 differentially expressed in the frontal cortex, but not in the “general tissue” type brain, or in any of  
358 the Brainspan developmental stages. Genes were also enriched in 52 gene sets that code for  
359 transcription factor targets, 13 microRNA targets, 4 gene ontology biological processes, 1  
360 canonical pathway, and 8 cell type signatures. Zero synapse cellular component terms or biological  
361 processes were significantly enriched at 1% FDR (testing terms with at least three matching input  
362 genes in SynGO). Nine genes were mapped to SynGO annotations, eight to cellular components  
363 and 9 to biological processes. Genes were enriched in integral components of the postsynaptic  
364 density membrane ( $q= 1.46 \times 10^{-3}$ ), postsynaptic density ( $q= 1.57 \times 10^{-3}$ ), postsynapse ( $q=$   
365  $5.67 \times 10^{-3}$ ), and synapse ( $q= 7.22 \times 10^{-3}$ ), as well as in postsynaptic modulation of chemical  
366 synaptic transmission ( $q= 3.28 \times 10^{-5}$ ), process in the synapse ( $q= 3.97 \times 10^{-4}$ ), and synapse  
367 organization ( $q= 1.62 \times 10^{-3}$ ). For a complete overview of all enrichment results and the included  
368 gene sets, see Supplemental Figures 6-12, Supplementary Tables 17 and 18, and Supplemental  
369 Notes.

370

### 371 *Genetic correlations*

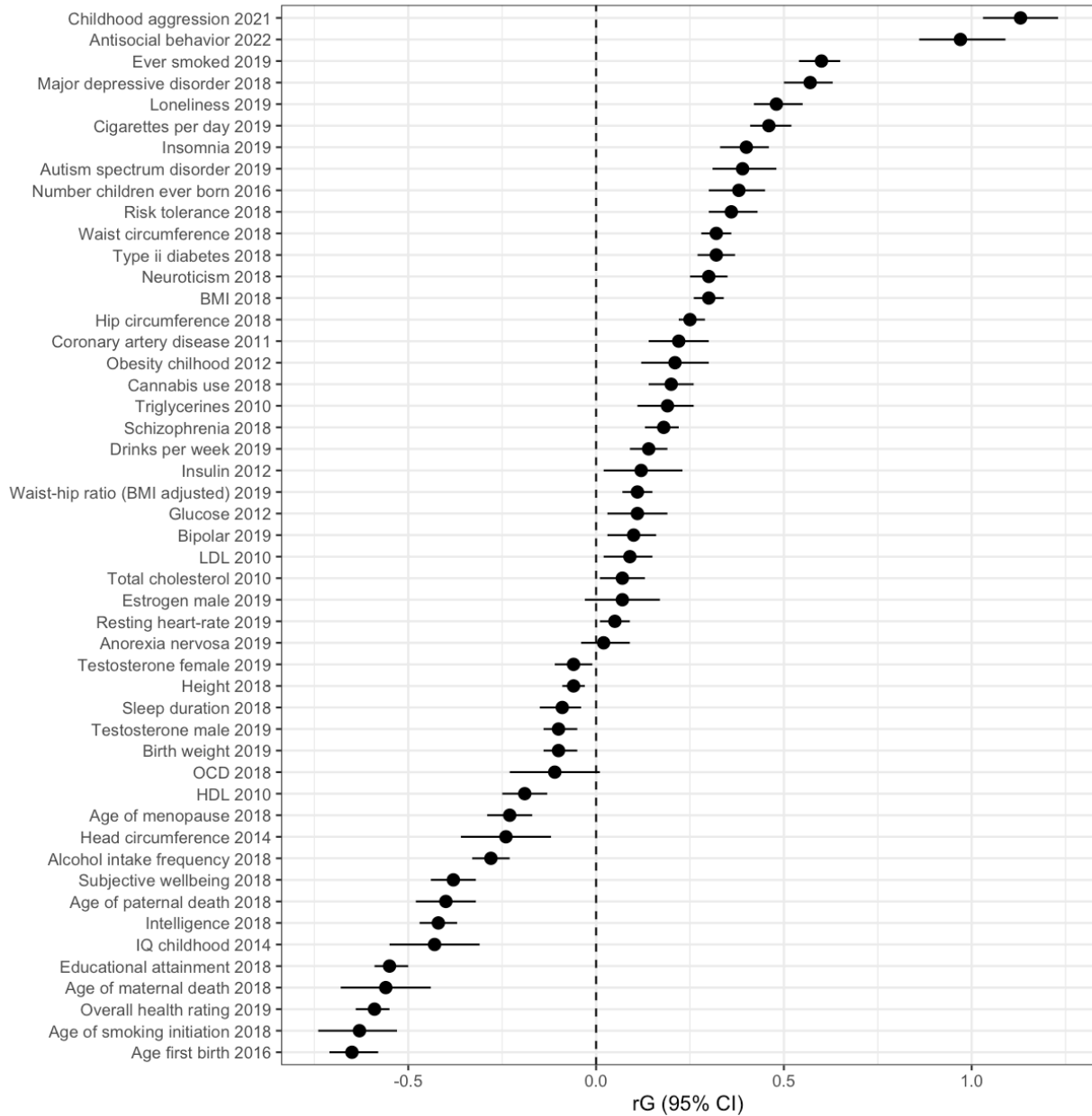
372 We estimated genetic correlations between  $ADHD_{overall}$  and 49 external phenotypes. Results are  
373 shown in Figure 4 and Supplementary Table 18. Strong positive genetic correlations were observed  
374 between  $ADHD_{overall}$  and childhood aggressive behavior ( $r_g= 1.13$ ,  $SE= 0.05$ ) and antisocial  
375 behavior ( $r_g= 0.97$ ,  $SE= 0.06$ ). The correlation of 1.13 with childhood aggressive behavior reflects  
376 a high genetic correlation that is likely greater than 1 due to sampling variation, correlations  
377 estimated by LD score regression in genomicSEM are not bounded between -1 and 1 (Childhood  
378 aggression  $h^2 Z= 9.03$ ). Measures of smoking habits ( $r_g= 0.46-0.6$ ,  $SE= 0.03$ ) and number of

## GWAMA OF ADHD SYMPTOMS AND DIAGNOSIS

379 children ( $r_g = 0.38$ , SE= 0.04) also showed moderate correlations, as did ratings of overall health  
380 ( $r_g = -0.59$ , SE= 0.03), educational attainment ( $r_g = -0.55$ , SE= 0.02), and childhood IQ ( $r_g = -0.43$ ,  
381 SE= 0.06). In general, ADHD<sub>overall</sub> showed weak to moderate genetic correlations with  
382 psychopathologies, including Major Depressive Disorder ( $r_g = 0.57$ , SE= 0.03) and Autism  
383 Spectrum Disorder ( $r_g = 0.39$ , SE= 0.04). Weak negative genetic correlations were found between  
384 ADHD<sub>overall</sub> and alcohol intake frequency ( $r_g = -0.28$ , SE= 0.03), but a weak positive correlation  
385 with drinks per week ( $r_g = 0.14$ , SE= 0.03) and a weak positive correlation with cannabis use ( $r_g =$   
386 0.2, SE= 0.03). Marees and colleagues (Marees et al., 2020) looked into similar genetic correlations  
387 for alcohol use, and found evidence to suggest that they are the result of SES influences.  
388 ADHD<sub>overall</sub> was weakly negatively genetically correlated with birth weight ( $r_g = -0.1$ , SE= 0.02),  
389 but showed a weak positive genetic correlation with childhood obesity ( $r_g = 0.21$ , SE=0.05) and a  
390 moderate positive genetic correlation with adult BMI ( $r_g = 0.3$ , SE= 0.02).



## GWAMA OF ADHD SYMPTOMS AND DIAGNOSIS



391  
 392 **Figure 4.** Genetic correlations with external phenotypes. Bars indicate 95% confidence intervals.

393

394

### 395 Discussion

396 We present a genome-wide association meta-analysis of childhood Attention-Deficit/Hyperactivity

397 Disorder symptoms (ADHD<sub>SYMP</sub>). A total of 28 cohorts with measures of ADHD symptom counts

## GWAMA OF ADHD SYMPTOMS AND DIAGNOSIS

398 took part; contributing data from multiple raters and instruments, across a wide range of ages. We  
399 meta-analyzed all continuous measures and combined these results with results from two  
400 GWAMAs of ADHD diagnosis ( $ADHD_{DIAG}$ ) by Demontis and colleagues (2019, 2023).

401 We did not identify any genome-wide significant hits for ADHD symptoms specifically.  
402 Genetic correlations with ADHD diagnosis was  $r_g = 1.00$ ,  $SE = 0.06$ . This supports the notion that  
403 clinical ADHD is at the extreme end of a continuous genetic liability that is indexed by ADHD  
404 symptoms (Larsson et al., 2012; Levy et al., 1997). This was previously suggested based on  
405 multivariate twin studies (Derks et al., 2008). The estimated  $h_{SNP}^2$  of  $ADHD_{SYMP}$  was 0.04 ( $SE =$   
406 0.01), which may be considered low compared to the estimated  $h_{SNP}^2$  in Demontis et al., 2019 and  
407 2023: 0.22 and 0.14 respectively. This is probably because we introduced heterogeneous  
408 measurement error and bias in our phenotyping by including symptom measures from different  
409 raters, and at different ages, which could subsequently suppress SNP-heritability.

410 By meta-analyzing GWASs of ADHD symptoms and ADHD diagnosis, we found 2,039  
411 genome-wide significant variants in 39 independent loci, of which 17 were new. Demontis et al.  
412 found 12 and 27 independent hits in 2019 and 2023, which included data from 23andMe. These  
413 23andMe data were excluded from the current meta-analyses. This shows that, because ADHD  
414 symptom measures have been widely collected, combining ADHD symptom counts and diagnosis  
415 can be effective in identifying implicated genetic variants for ADHD. The estimated  $h_{SNP}^2$  of  
416  $ADHD_{overall}$  was 0.11 ( $SE = 0.01$ ), compared to 0.13 ( $SE = 0.01$ ) in  $ADHD_{DIAG}$  when excluding  
417 23andMe data. This means that by including  $ADHD_{SYMP}$  in the  $ADHD_{DIAG}$  results,  $h_{SNP}^2$  slightly  
418 decreased. We believe this is due to heterogeneous measurement error and bias in the  $ADHD_{SYMP}$   
419 phenotyping (Wang et al., 2023). The same can be observed when looking at the differences in  
420  $h_{SNP}^2$  between  $ADHD_{DIAG}$  from 2019 ( $h_{SNP}^2 = 0.22$ , including 23andMe), which was strict in its

## GWAMA OF ADHD SYMPTOMS AND DIAGNOSIS

421 definition of ADHD cases, and  $ADHD_{DIAG}$  from 2023 ( $h^2_{SNP} = 0.14$ , including 23andMe), which  
422 was slightly more lenient in its definition of ADHD cases.

423 MAGMA analyses identified 64 potential ADHD risk genes. These genes were  
424 significantly enriched in genes previously identified in GWASs of cognitive phenotypes and risk-  
425 taking behaviors. The total GWAS signal was significantly differentially expressed in several brain  
426 specific tissue types, general brain tissue types and the pituitary gland, as well as in late infancy  
427 Brainspan brain samples. FUMA gene-mapping mapped significant loci to 204 genes. Again, genes  
428 were enriched in gene-sets reported by previous GWASs on cognitive behavior, risk-seeking  
429 behavior, and brain development. FUMA enrichment analyses further revealed 29 transcription  
430 factor targets that may be of interest for ADHD.

431 To get a better understanding of the causal pathways from SNPs to ADHD, we ran  
432 FLAMES (Schipper et al., 2023) to identify likely effector genes. FLAMES identified 22 potential  
433 effector genes, of which 14 overlapped with the MAGMA genes, 12 were previously reported by  
434 Demontis et al. (2023) and 8 were not previously linked to ADHD or not reported on GWAS  
435 Catalog. The 22 genes were significantly overrepresented in gene-sets differentially expressed in  
436 the frontal cortex, enriched in 4 GO biological processes related to neural and physical  
437 development, 52 transcription factor targets, 13 microRNA targets, 8 different cell type signatures,  
438 4 synapse cellular components, and 3 synaptic biological processes. In Demontis et al. (2023), the  
439 set of potential ADHD risk genes was significantly enriched among genes upregulated during early  
440 embryonic brain development, this result was not replicated in our study. A common theme is that  
441 implicated genes are enriched in processes that are involved in neural development and functioning.  
442 The results provide several new avenues to investigate, which could prove useful in gaining more  
443 insights into the etiology of ADHD. The results may provide more potentially useful information  
444 for the 22 potential effector genes compared to the 204 genes identified by FUMA positional

## GWAMA OF ADHD SYMPTOMS AND DIAGNOSIS

445 mapping, eQTL mapping, and chromatin interaction mapping. We think this difference results from  
446 the difference in strategies employed by both methods. FUMA maps every gene for which some  
447 functional link is known to exist, whereas FLAMES weighs all these measurements and only  
448 prioritizes genes if they are clearly more likely causal genes than the other genes in the locus. Our  
449 findings suggests that FLAMES can help identify functional pathways that may remain hidden  
450 with other approaches due to a reduction of noise from non-causal genes in the set of prioritized  
451 genes, which decreases the power to detect enrichment in functional gene-sets.

452         Next, we examined genetic correlations between  $ADHD_{overall}$  and various external  
453 phenotypes. Except for anorexia nervosa,  $ADHD_{overall}$  showed significant genetic correlations with  
454 all examined psychopathological traits. Most striking was the genetic correlation of 1.13 with  
455 childhood aggressive behavior, and 0.97 with antisocial behavior. Previous studies reported  
456 moderate-to-strong phenotypic correlations across sex-, rater-, age-, and instrument-specific  
457 assessment between aggressive behavior and attention problems and hyperactivity (Bartels et al.,  
458 2018). We found a negative genetic correlation between ADHD and alcohol intake frequency,  
459 and a positive correlation between ADHD and number of drinks per week. Marees et al. (2020)  
460 studied similar correlations between alcohol consumption and mental health traits, and found  
461 evidence that suggests the different genetic correlations are a result of SES effects. We found a  
462 moderate genetic correlation with smoking behaviors, but a small correlation with cannabis use  
463 and discrepant findings for alcohol consumption. This was surprising, given the phenotypic  
464 associations that have been reported in previous studies (Lee et al., 2011). We found negative  
465 correlations with several cognitive traits, such as (childhood) IQ, verbal-numerical reasoning, and  
466 educational attainment. Similar to a GWAS of childhood aggression (Ip et al., 2021), genetic  
467 correlations with several hormone levels were around zero. Finally, we found a small negative  
468 correlation with birthweight, but a weak positive correlation with childhood obesity, and adult

## GWAMA OF ADHD SYMPTOMS AND DIAGNOSIS

469 BMI. These genetic correlations suggest wide pleiotropic effects of variants involved with ADHD.  
470 This is illustrative of the polygenetic nature of most behavioral, cognitive, and (mental) health  
471 traits. It also indicates genetic factors play a role in the comorbidity of psychopathological  
472 disorders.

473 Combining data collected using different instruments and by different raters helps to  
474 increase the sample size, and with that the statistical power of our analyses. This is illustrated by  
475 the apparent increase in power to detect genetic variants associated with ADHD in the combination  
476 ADHD<sub>SYMP</sub> and ADHD<sub>DIAG</sub>, compared to the combination ADHD<sub>DIAG</sub> and EAGLE ADHD GWAS  
477 (Demontis et al., 2019; Middeldorp et al., 2016). However, this approach of including different  
478 raters and instruments also has some downsides. Correlations between raters and instruments are  
479 not always large, meaning that we introduce heterogeneous measurement error and bias in our  
480 phenotyping, which could suppress SNP-heritability. More homogeneous measurement may offer  
481 an avenue to higher powered GWAS. In light of increased collaborations between cohorts to  
482 expand sample sizes for GWAS, more efforts to standardize the assessment of traits could help  
483 further increase the power and specificity of GWAS results. Moreover, downstream analyses, for  
484 example using polygenic scores computed with the summary statistics of the current study, will  
485 favor cohorts using the same instruments and raters that dominated the discovery sample, in our  
486 case the Achenbach System of Empirically Based Assessment (Achenbach et al., 2017).

487 Assessments of ADHD in individuals from non-European ancestry were rare in each of the  
488 included cohorts. Because of the low number of assessments, we were forced to exclude non-  
489 European individuals from our analyses. We know that results from European ancestry GWASs  
490 often also significantly predict differences in non-European ethnic groups, but often effect sizes  
491 are diluted towards zero. Regrettably, this means that knowledge generated by these types of  
492 studies risks benefit individuals of European ancestry more than from diverse backgrounds. To

## GWAMA OF ADHD SYMPTOMS AND DIAGNOSIS

493 better understand the etiology of ADHD across individuals and backgrounds, it is important to  
494 continue ongoing efforts to increase the inclusivity of GWAS samples.

495 In conclusion, the current study adds novel insight into the genetic etiology of ADHD. By  
496 meta-analyzing GWAS results from symptom counts of ADHD in children with a diagnosis of  
497 ADHD, we identified novel genome-wide significant loci and genes. The number of genome-wide  
498 (significant) genetic variants that are implicated in ADHD provides further insight into the  
499 polygenic etiology of ADHD. The 22 potential effector genes that were identified by FLAMES  
500 gives insight in several biological processes that may play a causal role in the etiology of ADHD,  
501 and provides avenues for further research. The genetic correlations with other phenotypes further  
502 indicate the wide pleiotropic effects of genetic variants and the role that genetic variants play in  
503 the co-occurrence with (mental) health traits.

504

505

### 506 **Methods**

#### 507 **Sample & cohorts**

508 Childhood cohorts that collaborate within the ACTION (Aggression in Children: unraveling gene-  
509 environment interplay to inform Treatment and InterventiON strategies) consortium (Bartels et al.,  
510 2018; Boomsma, 2015; Ip et al., 2021) and EAGLE consortium (Middeldorp et al., 2019) took part  
511 in the meta-analysis of ADHD symptom counts (ADHD<sub>SYMP</sub>). Cohorts assessed ADHD Symptoms  
512 in children and adolescents aged 1.5 to 18 years and also included adult retrospective assessments.  
513 Each cohort received a standard operation protocol (see: [https://www.action-](https://www.action-europroject.eu/content/data-protocols)  
514 [europroject.eu/content/data-protocols](https://www.action-europroject.eu/content/data-protocols)). Cohorts could contribute one or several univariate genome-  
515 wide association studies (GWAS). A separate analysis was performed for every unique



## GWAMA OF ADHD SYMPTOMS AND DIAGNOSIS

516 combination of rater, instrument, and age, with a minimum of 450 observations per GWAS (so that  
517 each GWAS included a maximum of one measure for each individual). Extended information on  
518 the cohorts can be found in Supplementary Table 1 and the Supplementary Text. Assessments of  
519 individuals of non-European ancestry were limited, and analyses were restricted to individuals of  
520 European ancestry. In total, 28 cohorts contributed 154 GWASs, resulting in a total of 288,887  
521 observations from 72,483 unique individuals (Supplementary Table 2).

522

### 523 **Measurement of ADHD symptoms**

524 ADHD symptoms in children and adolescents were rated by parents, teachers, and the individuals  
525 themselves. Additionally, retrospective assessments of (pre-) adolescent ADHD symptoms from  
526 self-report or maternal report were included in the GWAMA. To maximize sample size, we  
527 included measurement of ADHD symptoms across multiple instruments. In total, 22 ADHD  
528 symptom assessment instruments were included in the meta-analysis (Supplementary Table 3). The  
529 most commonly employed instruments were the Achenbach System of Empirically Based  
530 Assessment (Achenbach et al., 2017) and the Strengths and Difficulties Questionnaire (Goodman,  
531 2001).

532

### 533 **Genotyping and quality control**

534 Genotyping was performed within each cohort using common genotyping arrays (see  
535 Supplementary Table 4), followed by cohort-specific quality control based on individual- and  
536 variant-based call rate, Hardy-Weinberg equilibrium, excessive heterozygosity rates, and minor  
537 allele frequency (see Supplementary Table 5). Cohorts removed samples with non-European  
538 ancestry. 78.6% of the cohorts imputed their genotypes to 1000 Genomes (1000G) phase 3 version  
539 5, while the remaining cohorts used 1000G phase 1 version 3 as the reference set for the imputation

## GWAMA OF ADHD SYMPTOMS AND DIAGNOSIS

540 (Supplementary Table 6). All genotypes were mapped to build 37 of the Human Genome Reference  
541 Consortium assembly (GRCh37).

542

### 543 **GWA model**

544 Each cohort performed a univariate GWAS where ADHD symptoms were regressed on the SNP  
545 genotype, with age, sex, and first five ancestry-based principal components as fixed effects, and, if  
546 necessary, cohort-specific covariates (Supplementary Table 7). To correct for dependency between  
547 observations within univariate analyses, cohorts with related individuals applied a mixed linear  
548 model (Tucker et al., 2015) or a sandwich correction of the standard errors (Minică et al., 2015).

549 GWASs were stratified by (1) rater, (2) instrument, and (3) age, so that observations within  
550 a univariate GWAS were independent, with a minimum stratum sample size of 450 observations.  
551 In total, summary statistics for 154 univariate GWAS were uploaded. Descriptive statistics for each  
552 uploaded GWAS are shown in Supplementary Table 8. Each cohort also supplied information on  
553 the degree of sample overlap and phenotypic correlation between their univariate analyses. These  
554 statistics allowed us to account for dependency between observations within cohorts.

555

### 556 **Pre-GWAMA QC**

557 Summary statistics from each GWAS went through quality control (QC) using the EasyQC  
558 software package (Winkler et al., 2014). SNPs with a genotyping rate below 95% were removed.  
559 We applied variable QC filters on MAF and HWE  $p$ -value tailored to the sample size in the specific  
560 GWAS. Respective cutoffs of  $\text{INFO} > 0.6$  and  $\text{INFO} > 0.7$  were applied to SNPs that were imputed  
561 using MACH and IMPUTE (Liu et al., 2015). Reported allele frequencies were compared to the  
562 allele frequency in an imputation-matched reference population and variants with an absolute

## GWAMA OF ADHD SYMPTOMS AND DIAGNOSIS

563 difference in allele frequency larger than 0.2 were removed. Supplementary Table 9 reports the  
564 number of SNPs before and after QC.

565

### 566 **Meta-analysis of ADHD symptoms**

567 The meta-analysis method is equal to the method described by Ip and colleagues (Ip et al., 2021).

568 Due to sample overlap between the univariate GWASs, covariance between GWAS test statistics

569 are a function of sample overlap and a truly shared genetic signal (Bulik-Sullivan, Loh, et al.,

570 2015). To correct for sample overlap during the meta-analysis, we applied a modified version of

571 the multivariate meta-analysis approach developed by Baselmans and colleagues (2019), where we

572 calculated the expected cross-trait-intercept (Bulik-Sullivan, Loh, et al., 2015) based on the

573 observed sample overlap and phenotypic covariance, as reported by the cohorts. Finally, because

574 the sum of the number of observations ( $N_{\text{obs}}$ ) was an overestimate of the effective sample size

575 ( $N_{\text{eff}}$ ), we approximated the effective sample size as proposed by Ip and colleagues (2021) ( $N_{\text{eff}} =$

576  $\frac{4}{\left(\frac{1}{N_{\text{cases}}} + \frac{1}{N_{\text{controls}}}\right)}$ ). SNPs with  $\text{MAF} < 0.01$ ,  $N_{\text{eff}} < 15,000$ , or were observed in only one cohort were

577 removed from further analyses. SNP-heritability ( $h^2_{\text{SNP}}$ ) was estimated by genomic Structural

578 Equation Modeling in R (Grotzinger et al., 2019).

579

### 580 **Meta-analysis with case-control ADHD GWAS**

581 In the next step, we meta-analyzed our  $\text{ADHD}_{\text{SYMP}}$  GWAMA with a GWAS of ADHD diagnosis

582 (Demontis et al., 2023). In  $\text{ADHD}_{\text{DIAG}}$ , cases are defined as clinically diagnosed with ADHD or

583 prescribed medication specific for ADHD.  $\text{ADHD}_{\text{DIAG}}$  included data from the Lundbeck

584 Foundation Initiative for Integrative Psychiatric Research (iPSYCH), the Psychiatric Genomics

## GWAMA OF ADHD SYMPTOMS AND DIAGNOSIS

585 Consortium (PGC), and deCode. Data were obtained for adults and children, resulting in a total of  
586 38,691 cases and 186,843 controls.

587 For the meta-analysis, we first adjusted the test statistics and sample sizes for ADHD<sub>SYMP</sub>  
588 and ADHD<sub>DIAG</sub> as proposed by (Demontis et al., 2019). The lifetime population prevalence of  
589 ADHD was assumed to be 5% (Faraone et al., 2015). SNP-heritability for ADHD<sub>SYMP</sub>, and  
590 ADHD<sub>DIAG</sub>, and  $r_g$  and cross-trait intercepts (CTI) between ADHD<sub>SYMP</sub> and ADHD<sub>DIAG</sub> were  
591 estimated by genomicSEM in R (Grotzinger et al., 2019). We meta-analyzed the results from  
592 ADHD<sub>SYMP</sub> and ADHD<sub>DIAG</sub> based on the approach outlined in Baselmans and colleagues  
593 (Baselmans et al., 2019). We specified the effective sample sizes for ADHD<sub>DIAG</sub> as suggested by  
594 Ip and colleagues (2021):  $N_{eff} = \frac{4}{\left(\frac{1}{N_{cases}} + \frac{1}{N_{controls}}\right)}$ . SNP-heritability was estimated using LDSC in  
595 genomicSEM (Grotzinger et al., 2019). We assumed no sample overlap between ADHD<sub>SYMP</sub> and  
596 ADHD<sub>DIAG</sub>.

597

### 598 **Follow-up analyses**

#### 599 *Fine mapping & gene-based tests*

600 We used FUMA (Watanabe et al., 2017) to identify independent genome-wide significant loci  
601 and associated genes. LD blocks of independent significant SNPs within 250kb were merged into  
602 a single genomic locus. Protein-coding genes were mapped if they were located within a  
603 maximum distance of 10 kb of an independent significant SNP, or if a credible variant was  
604 annotated to the gene based on eQTL data or chromatin interaction data from human brain (see  
605 Supplemental Text for the included datasets). These are the same settings used by Demontis et al.  
606 (Demontis et al., 2023). Gene-based tests were run in MAGMA (de Leeuw et al., 2015).  
607 MAGMA gene-based tests combine  $P$ -values from multiple SNPs inside a gene to obtain a test

## GWAMA OF ADHD SYMPTOMS AND DIAGNOSIS

608 statistic for each gene ( $Z_{\text{gene}}$ ), while accounting for incomplete linkage disequilibrium between  
609 SNPs. To this end, a list of 18,296 genes and their start- and end-positions, and pre-formatted  
610 genotypes, based on 1000G phase 3, were obtained from the MAGMA website (see  
611 Supplements). We applied a Bonferroni correction for multiple testing at  $\alpha = 0.05 / 18,296 =$   
612  $2.733 \times 10^{-6}$ .

613 It remains difficult to identify which genes are causally involved in ADHD. Fine-mapped  
614 Locus Assessment Model of Effector geneS (FLAMES) was recently developed with the goal of  
615 predicting the most likely effector genes from GWAS results. FLAMES is a novel framework that  
616 combines SNP-to-gene evidence and convergence-based evidence, outputting a single score per  
617 gene from fine-mapped GWAS loci. We performed statistical fine-mapping using FINEMAP  
618 version 1.4.1 (Benner et al., 2016), and an LD reference panel of 100,000 unrelated UK biobank  
619 participants of European descent. Given that the GWAMA contains cohorts that do not belong to  
620 the UK biobank we restricted the maximum number of causal variants in a locus modelled by  
621 FINEMAP to 1, to avoid overfitting. We ran FLAMES (version 1.0.0) by inputting pathway naïve  
622 PoPS scores (Weeks et al., 2023) for our GWAMA, the FUMA defined loci and corresponding  
623 fine-mapped credible sets, resulting in a single FLAMES score per gene. Genes with FLAMES  
624 scores above 0.05 were interpreted as potential effector genes, as suggested by the FLAMES  
625 authors. For more information on FLAMES, and the included functional annotations, see Schipper  
626 et al. (2023). Functional annotation and enrichment analysis was done for a set of genes with  
627 FLAMES scores above 0.05.

628

### 629 *Enrichment & pathway analyses*

630 We performed MAGMA gene-set analyses using the full  $\text{ADHD}_{\text{overall}}$  results. Gene property  
631 analysis was performed to test relationships between tissue specific gene expression profiles (See

## GWAMA OF ADHD SYMPTOMS AND DIAGNOSIS

632 Supplementary Notes for an overview) and ADHD-gene associations. Next, genes mapped by  
633 FUMA, and the set of potential effector genes identified with FLAMES were used in gene-set  
634 enrichment analyses. We ran hypergeometric tests using FUMA genes2func to assess if genes of  
635 interest are overrepresented in any of the pre-defined gene sets (See Supplemental Notes for all  
636 included gene-sets). We used SynGO (Koopmans et al., 2019) v1.2 (“20231201”) to test for  
637 enrichment in genes encoding for proteins involved in synaptic cellular components and biological  
638 pathways. The brain expressed background set was used, containing 18,035 unique genes.

639

### 640 *Genetic correlations*

641 We computed genetic correlations between  $ADHD_{\text{overall}}$  and 49 preselected traits, including  
642 cognition and externalizing behaviors, psychopathologies, anthropometric measures, metabolic,  
643 and health outcomes (see Supplementary Table 10). Phenotypes were selected based on established  
644 hypotheses or were at least nominally significantly ( $P < 0.05$ ) genetically correlated with  
645  $ADHD_{\text{DIAG2019}}$  (Demontis et al., 2019). Following Bulik-Sullivan et al. (Bulik-Sullivan, Finucane,  
646 et al., 2015) we restricted genetic correlations to external phenotypes for which the  $Z$ -scores of the  
647 LDSC-based  $h^2_{SNP}$  are  $\geq 4$ .

648

649

650

651

652

653

654

655



## GWAMA OF ADHD SYMPTOMS AND DIAGNOSIS

### 656 **Acknowledgements**

657 We very warmly thank all participants, their parents, and teachers for making this study possible.  
658 The project was supported by the *Aggression in Children: Unraveling gene-environment*  
659 *interplay to inform Treatment and InterventiON strategies* project (ACTION). ACTION received  
660 funding from the European Union Seventh Framework Program (FP7/2007-2013) under grant  
661 agreement no 602768. Cohort-specific acknowledgements and funding information are included  
662 in the Supplementary text.

663

### 664 **Ethics & Inclusion Statement**

665 This study is the result of a large collaborative effort among multiple clinical and population-  
666 based cohorts. Researchers and principal investigators (PIs) representing the individual cohorts  
667 were involved in the design and execution of the study. Cohort specific GWAS analyses were  
668 performed locally, by local researchers. Local researchers and PIs were included as co-authors in  
669 consultation with the PIs of each included cohort. Data collections for the cohorts were approved  
670 by local ethics committees. Study approval was obtained from the Central Ethics Committee on  
671 Research Involving Human Subjects of the VU University Medical Center, Amsterdam (NTR  
672 25th of May 2007 and ACTION 2013/41 and 2014.252), an Institutional Review Board certified  
673 by the U.S. Office of Human Research Protections (IRB number IRB00002991 under Federal-  
674 wide Assurance- FWA00017598; IRB/institute codes).

675

### 676 **Competing interests**

677 J.A.R.Q. was on the speakers' bureau and/or acted as consultant for Biogen, Idorsia, Casen-  
678 Recordati, Janssen-Cilag, Novartis, Takeda, Bial, Sincrolab, Neuraxpharm, Novartis, BMS,  
679 Medice, Rubió, Uriach, Technofarma and Raffo in the last 3 years. He also received travel

## GWAMA OF ADHD SYMPTOMS AND DIAGNOSIS

680 awards (air tickets + hotel) for taking part in psychiatric meetings from Idorsia, Janssen-Cilag,  
681 Rubió, Takeda, Bial and Medice. The Department of Psychiatry chaired by him received  
682 unrestricted educational and research support from the following companies in the last 3 years:  
683 Exeltis, Idorsia, Janssen- Cilag, Neuraxpharm, Oryzon, Roche, Probitas and Rubió. M.C. has  
684 received fees to give talks for TAKEDA and Laboratorios RUBIO. The authors have no other  
685 relevant affiliations or financial involvement with any organization or entity with a financial  
686 interest in or financial conflict with the subject matter or materials discussed in the manuscript  
687 apart from those disclosed.

688

### 689 **URLs**

690 GWAS Catalog: <https://www.ebi.ac.uk/gwas/>

691 FUMA: <https://fuma.ctglab.nl>

692 SynGO: <https://www.syngoportal.org>

693 Summary statistics: TBA

694

### 695 **Code & Summary Statistics**

696 Analysis plan: <https://www.action->

697 [euproject.eu/sites/default/files/Action%20AGG%20AP%20SOP.pdf](https://euproject.eu/sites/default/files/Action%20AGG%20AP%20SOP.pdf)

698 Code: -link to follow-

699 Summary Statistics: -link to follow-

700

701

702

## GWAMA OF ADHD SYMPTOMS AND DIAGNOSIS

703

704

### 705 **References**

706 Achenbach, T. M., Ivanova, M. Y., & Rescorla, L. A. (2017). Empirically based assessment and  
707 taxonomy of psychopathology for ages 1½–90+ years: Developmental, multi-informant, and  
708 multicultural findings. *Comprehensive Psychiatry*, *79*, 4–18.

709 <https://doi.org/10.1016/j.comppsy.2017.03.006>

710 American Psychiatric Association. (2013). *Diagnostic and Statistical Manual of Mental*  
711 *Disorders, Fifth Edition*.

712 Bartels, M., Hendriks, A., Mauri, M., Krapohl, E., Whipp, A., Bolhuis, K., Conde, L. C.,  
713 Luningham, J., Fung Ip, H., Hagenbeek, F., Roetman, P., Gatej, R., Lamers, A., Nivard, M.,  
714 van Dongen, J., Lu, Y., Middeldorp, C., van Beijsterveldt, T., Vermeiren, R., ... Boomsma,  
715 D. I. (2018). Childhood aggression and the co-occurrence of behavioural and emotional  
716 problems: results across ages 3–16 years from multiple raters in six cohorts in the EU-  
717 ACTION project. *European Child & Adolescent Psychiatry*, *27*(9), 1105–1121.

718 <https://doi.org/10.1007/s00787-018-1169-1>

719 Baselmans, B. M. L., Jansen, R., Ip, H. F., van Dongen, J., Abdellaoui, A., van de Weijer, M. P.,  
720 Bao, Y., Smart, M., Kumari, M., Willemsen, G., Hottenga, J.-J., Boomsma, D. I., de Geus,  
721 E. J. C., Nivard, M. G., & Bartels, M. (2019). Multivariate genome-wide analyses of the  
722 well-being spectrum. *Nature Genetics*, *51*(3), 445–451. [https://doi.org/10.1038/s41588-018-](https://doi.org/10.1038/s41588-018-0320-8)  
723 [0320-8](https://doi.org/10.1038/s41588-018-0320-8)

724 Benner, C., Spencer, C. C. A., Havulinna, A. S., Salomaa, V., Ripatti, S., & Pirinen, M. (2016).  
725 FINEMAP: efficient variable selection using summary data from genome-wide association  
726 studies. *Bioinformatics*, *32*(10), 1493–1501. <https://doi.org/10.1093/bioinformatics/btw018>

727 Boomsma, D. I. (2015). Aggression in children: unravelling the interplay of genes and  
728 environment through (epi)genetics and metabolomics. *Journal of Pediatric and Neonatal*  
729 *Individualized Medicine*, *4*(2), e040251. <https://doi.org/https://doi.org/10.7363/040251>

730 Bulik-Sullivan, B. K., Finucane, H. K., Anttila, V., Gusev, A., Day, F. R., Loh, P.-R., Duncan,  
731 L., Perry, J. R. B., Patterson, N., Robinson, E. B., Daly, M. J., Price, A. L., & Neale, B. M.  
732 (2015). An atlas of genetic correlations across human diseases and traits. *Nature Genetics*,  
733 *47*(11), 1236–1241. <https://doi.org/10.1038/ng.3406>

734 Bulik-Sullivan, B. K., Loh, P.-R., Finucane, H. K., Ripke, S., Yang, J., Patterson, N., Daly, M. J.,  
735 Price, A. L., & Neale, B. M. (2015). LD Score regression distinguishes confounding from  
736 polygenicity in genome-wide association studies. *Nature Genetics*, *47*(3), 291–295.  
737 <https://doi.org/10.1038/ng.3211>

738 Caci, H., Asherson, P., Donfrancesco, R., Faraone, S. V., Hervas, A., Fitzgerald, M., & Döpfner,  
739 M. (2015). Daily life impairments associated with childhood/adolescent attention-  
740 deficit/hyperactivity disorder as recalled by adults: results from the European Lifetime  
741 Impairment Survey. *CNS Spectrums*, *20*(2), 112–121.  
742 <https://doi.org/10.1017/S1092852914000078>

743 Caci, H., Doepfner, M., Asherson, P., Donfrancesco, R., Faraone, S. V., Hervas, A., & Fitzgerald,  
744 M. (2014). Daily life impairments associated with self-reported childhood/adolescent  
745 attention-deficit/hyperactivity disorder and experiences of diagnosis and treatment: Results

## GWAMA OF ADHD SYMPTOMS AND DIAGNOSIS

- 746 from the European Lifetime Impairment Survey. *European Psychiatry*, 29(5), 316–323.  
747 <https://doi.org/10.1016/j.eurpsy.2013.10.007>
- 748 de Leeuw, C. A., Mooij, J. M., Heskes, T., & Posthuma, D. (2015). MAGMA: Generalized Gene-  
749 Set Analysis of GWAS Data. *PLOS Computational Biology*, 11(4), e1004219.  
750 <https://doi.org/10.1371/journal.pcbi.1004219>
- 751 Demontis, D., Walters, G. B., Athanasiadis, G., Walters, R., Therrien, K., Nielsen, T. T.,  
752 Farajzadeh, L., Voloudakis, G., Bendl, J., Zeng, B., Zhang, W., Grove, J., Als, T. D., Duan,  
753 J., Satterstrom, F. K., Bybjerg-Grauholm, J., Bækved-Hansen, M., Gudmundsson, O. O.,  
754 Magnusson, S. H., ... Børglum, A. D. (2023). Genome-wide analyses of ADHD identify 27  
755 risk loci, refine the genetic architecture and implicate several cognitive domains. *Nature*  
756 *Genetics*, 55(2), 198–208. <https://doi.org/10.1038/s41588-022-01285-8>
- 757 Demontis, D., Walters, R. K., Martin, J., Mattheisen, M., Als, T. D., Agerbo, E., Baldursson, G.,  
758 Belliveau, R., Bybjerg-Grauholm, J., Bækvad-Hansen, M., Cerrato, F., Chambert, K.,  
759 Churchhouse, C., Dumont, A., Eriksson, N., Gandal, M., Goldstein, J. I., Grasby, K. L.,  
760 Grove, J., ... Neale, B. M. (2019). Discovery of the first genome-wide significant risk loci  
761 for attention deficit/hyperactivity disorder. *Nature Genetics*, 51(1), 63–75.  
762 <https://doi.org/10.1038/s41588-018-0269-7>
- 763 Derks, E. M., Hudziak, J. J., Dolan, C. V., van Beijsterveldt, T. C. E. M., Verhulst, F. C., &  
764 Boomsma, D. I. (2008). Genetic and Environmental Influences on the Relation Between  
765 Attention Problems and Attention Deficit Hyperactivity Disorder. *Behavior Genetics*, 38(1),  
766 11–23. <https://doi.org/10.1007/s10519-007-9178-8>
- 767 Faraone, S. V., Asherson, P., Banaschewski, T., Biederman, J., Buitelaar, J. K., Ramos-Quiroga,  
768 J. A., Rohde, L. A., Sonuga-Barke, E. J. S., Tannock, R., & Franke, B. (2015). Attention-  
769 deficit/hyperactivity disorder. *Nature Reviews Disease Primers*, 1(1), 15020.  
770 <https://doi.org/10.1038/nrdp.2015.20>
- 771 Faraone, S. V., Bellgrove, M. A., Brikell, I., Cortese, S., Hartman, C. A., Hollis, C., Newcorn, J.  
772 H., Philipsen, A., Polanczyk, G. V., Rubia, K., Sibley, M. H., & Buitelaar, J. K. (2024).  
773 Attention-deficit/hyperactivity disorder. *Nature Reviews Disease Primers*, 10(1), 11.  
774 <https://doi.org/10.1038/s41572-024-00495-0>
- 775 Faraone, S. V., Biederman, J., & Mick, E. (2006). The age-dependent decline of attention deficit  
776 hyperactivity disorder: a meta-analysis of follow-up studies. *Psychological Medicine*, 36(2),  
777 159–165. <https://doi.org/10.1017/S003329170500471X>
- 778 Faraone, S. V., & Larsson, H. (2019). Genetics of attention deficit hyperactivity disorder.  
779 *Molecular Psychiatry*, 24(4), 562–575. <https://doi.org/10.1038/s41380-018-0070-0>
- 780 Goodman, R. (2001). Psychometric Properties of the Strengths and Difficulties Questionnaire.  
781 *Journal of the American Academy of Child & Adolescent Psychiatry*, 40(11), 1337–1345.  
782 <https://doi.org/10.1097/00004583-200111000-00015>
- 783 Grotzinger, A. D., Rhemtulla, M., de Vlaming, R., Ritchie, S. J., Mallard, T. T., Hill, W. D., Ip,  
784 H. F., Marioni, R. E., McIntosh, A. M., Deary, I. J., Koellinger, P. D., Harden, K. P., Nivard,  
785 M. G., & Tucker-Drob, E. M. (2019). Genomic structural equation modelling provides  
786 insights into the multivariate genetic architecture of complex traits. *Nature Human*  
787 *Behaviour*, 3(5), 513–525. <https://doi.org/10.1038/s41562-019-0566-x>
- 788 Ip, H. F., van der Laan, C. M., Krapohl, E. M. L., Brikell, I., Sánchez-Mora, C., Nolte, I. M., St  
789 Pourcain, B., Bolhuis, K., Palviainen, T., Zafarmand, H., Colodro-Conde, L., Gordon, S.,  
790 Zayats, T., Aliev, F., Jiang, C., Wang, C. A., Saunders, G., Karhunen, V., Hammerschlag, A.  
791 R., ... Boomsma, D. I. (2021). Genetic association study of childhood aggression across

## GWAMA OF ADHD SYMPTOMS AND DIAGNOSIS

- 792 raters, instruments, and age. *Translational Psychiatry*, 11(1), 413.  
793 <https://doi.org/10.1038/s41398-021-01480-x>
- 794 Kan, K.-J., Dolan, C. V., Nivard, M. G., Middeldorp, C. M., van Beijsterveldt, C. E. M.,  
795 Willemsen, G., & Boomsma, D. I. (2013). Genetic and Environmental Stability in Attention  
796 Problems Across the Lifespan: Evidence From the Netherlands Twin Register. *Journal of*  
797 *the American Academy of Child & Adolescent Psychiatry*, 52(1), 12–25.  
798 <https://doi.org/10.1016/j.jaac.2012.10.009>
- 799 Kan, K.-J., van Beijsterveldt, C. E. M., Bartels, M., & Boomsma, D. I. (2014). Assessing Genetic  
800 Influences on Behavior: Informant and Context Dependency as Illustrated by the Analysis of  
801 Attention Problems. *Behavior Genetics*, 44(4), 326–336. [https://doi.org/10.1007/s10519-](https://doi.org/10.1007/s10519-014-9657-7)  
802 [014-9657-7](https://doi.org/10.1007/s10519-014-9657-7)
- 803 Koopmans, F., van Nierop, P., Andres-Alonso, M., Byrnes, A., Cijssouw, T., Coba, M. P.,  
804 Cornelisse, L. N., Farrell, R. J., Goldschmidt, H. L., Howrigan, D. P., Hussain, N. K., Imig,  
805 C., de Jong, A. P. H., Jung, H., Kohansalnodehi, M., Kramarz, B., Lipstein, N., Lovering, R.  
806 C., MacGillavry, H., ... Verhage, M. (2019). SynGO: An Evidence-Based, Expert-Curated  
807 Knowledge Base for the Synapse. *Neuron*, 103(2), 217–234.e4.  
808 <https://doi.org/10.1016/j.neuron.2019.05.002>
- 809 Larsson, H., Anckarsater, H., Råstam, M., Chang, Z., & Lichtenstein, P. (2012). Childhood  
810 attention-deficit hyperactivity disorder as an extreme of a continuous trait: a quantitative  
811 genetic study of 8,500 twin pairs. *Journal of Child Psychology and Psychiatry*, 53(1), 73–  
812 80. <https://doi.org/10.1111/j.1469-7610.2011.02467.x>
- 813 Lee, S. S., Humphreys, K. L., Flory, K., Liu, R., & Glass, K. (2011). Prospective association of  
814 childhood attention-deficit/hyperactivity disorder (ADHD) and substance use and  
815 abuse/dependence: A meta-analytic review. *Clinical Psychology Review*, 31(3), 328–341.  
816 <https://doi.org/10.1016/j.cpr.2011.01.006>
- 817 Levy, F., Hay, D. A., McStephen, M., Wood, C., & Waldman, I. (1997). Attention-Deficit  
818 Hyperactivity Disorder: A Category or a Continuum? Genetic Analysis of a Large-Scale  
819 Twin Study. *Journal of the American Academy of Child & Adolescent Psychiatry*, 36(6),  
820 737–744. <https://doi.org/10.1097/00004583-199706000-00009>
- 821 Liu, Q., Cirulli, E. T., Han, Y., Yao, S., Liu, S., & Zhu, Q. (2015). Systematic assessment of  
822 imputation performance using the 1000 Genomes reference panels. *Briefings in*  
823 *Bioinformatics*, 16(4), 549–562. <https://doi.org/10.1093/bib/bbu035>
- 824 Marees, A. T., Smit, D. J. A., Ong, J.-S., MacGregor, S., An, J., Denys, D., Vorspan, F., van den  
825 Brink, W., & Derks, E. M. (2020). Potential influence of socioeconomic status on genetic  
826 correlations between alcohol consumption measures and mental health. *Psychological*  
827 *Medicine*, 50(3), 484–498. <https://doi.org/10.1017/S0033291719000357>
- 828 Merwood, A., Greven, C. U., Price, T. S., Rijdsdijk, F., Kuntsi, J., McLoughlin, G., Larsson, H., &  
829 Asherson, P. J. (2013). Different heritabilities but shared etiological influences for parent,  
830 teacher and self-ratings of ADHD symptoms: an adolescent twin study. *Psychological*  
831 *Medicine*, 43(9), 1973–1984. <https://doi.org/10.1017/S0033291712002978>
- 832 Middeldorp, C. M., Felix, J. F., Mahajan, A., & McCarthy, M. I. (2019). The Early Growth  
833 Genetics (EGG) and EARly Genetics and Lifecourse Epidemiology (EAGLE) consortia:  
834 design, results and future prospects. *European Journal of Epidemiology*, 34(3), 279–300.  
835 <https://doi.org/10.1007/s10654-019-00502-9>
- 836 Middeldorp, C. M., Hammerschlag, A. R., Ouwens, K. G., Groen-Blokhuis, M. M., St. Pourcain,  
837 B., Greven, C. U., Pappa, I., Tiesler, C. M. T., Ang, W., Nolte, I. M., Vilor-Tejedor, N.,  
838 Bacelis, J., Ebejer, J. L., Zhao, H., Davies, G. E., Ehli, E. A., Evans, D. M., Fedko, I. O.,



## GWAMA OF ADHD SYMPTOMS AND DIAGNOSIS

- 839 Guxens, M., ... Boomsma, D. I. (2016). A Genome-Wide Association Meta-Analysis of  
840 Attention-Deficit/Hyperactivity Disorder Symptoms in Population-Based Pediatric Cohorts.  
841 *Journal of the American Academy of Child & Adolescent Psychiatry*, 55(10), 896-905.e6.  
842 <https://doi.org/10.1016/j.jaac.2016.05.025>
- 843 Minică, C. C., Dolan, C. V., Kampert, M. M. D., Boomsma, D. I., & Vink, J. M. (2015).  
844 Sandwich corrected standard errors in family-based genome-wide association studies.  
845 *European Journal of Human Genetics*, 23(3), 388–394. <https://doi.org/10.1038/ejhg.2014.94>
- 846 Schipper, M., de Leeuw, C. A., Maciel, B. A. P. C., Wightman, D. P., Hubers, N., Boomsma, D.  
847 I., O'Donovan, M. C., & Posthuma, D. (2023). A framework for accurate prediction of  
848 effector genes in genetic loci for complex traits. *MedRxiv*.
- 849 Tucker, G., Loh, P.-R., MacLeod, I. M., Hayes, B. J., Goddard, M. E., Berger, B., & Price, A. L.  
850 (2015). Two-Variance-Component Model Improves Genetic Prediction in Family Datasets.  
851 *The American Journal of Human Genetics*, 97(5), 677–690.  
852 <https://doi.org/10.1016/j.ajhg.2015.10.002>
- 853 Wang, X., Walker, A., Revez, J. A., Ni, G., Adams, M. J., McIntosh, A. M., Visscher, P. M.,  
854 Wray, N. R., Wray, N. R., Ripke, S., Mattheisen, M., Trzaskowski, M., Byrne, E. M.,  
855 Abdellaoui, A., Adams, M. J., Agerbo, E., Air, T. M., Andlauer, T. F. M., Bacanu, S.-A., ...  
856 Sullivan, P. F. (2023). Polygenic risk prediction: why and when out-of-sample prediction R<sup>2</sup>  
857 can exceed SNP-based heritability. *The American Journal of Human Genetics*, 110(7),  
858 1207–1215. <https://doi.org/10.1016/j.ajhg.2023.06.006>
- 859 Watanabe, K., Taskesen, E., van Bochoven, A., & Posthuma, D. (2017). Functional mapping and  
860 annotation of genetic associations with FUMA. *Nature Communications*, 8(1), 1826.  
861 <https://doi.org/10.1038/s41467-017-01261-5>
- 862 Weeks, E. M., Ulirsch, J. C., Cheng, N. Y., Trippe, B. L., Fine, R. S., Miao, J., Patwardhan, T.  
863 A., Kanai, M., Nasser, J., Fulco, C. P., Tashman, K. C., Aguet, F., Li, T., Ordovas-  
864 Montanes, J., Smillie, C. S., Biton, M., Shalek, A. K., Ananthakrishnan, A. N., Xavier, R. J.,  
865 ... Finucane, H. K. (2023). Leveraging polygenic enrichments of gene features to predict  
866 genes underlying complex traits and diseases. *Nature Genetics*, 55(8), 1267–1276.  
867 <https://doi.org/10.1038/s41588-023-01443-6>  
868