

Effect of Electroacupuncture on Delayed-Onset Muscle Soreness Induced by Eccentric Exercise in Young Untrained Men: Comparison of Contralateral and Ipsilateral Stimulation

1 Shoichi Komine^{1,2,3} ^{¶*}, Ikuru Miura^{4,5} [¶], Teng Hu⁶, Akihiro Ogata⁷, Shinsuke Tamai^{3,8}, Katsuyuki
2 Tokinoya⁹, Takehito Sugasawa³, Sechang Oh^{3,10}, Shota Wada¹¹, Kazuhiro Takekoshi³, Go Ito¹³,
3 Tomonori Isobe³, Takashi Matsui¹⁴, and Hajime Ohmori^{15,16}
4 [¶]These authors contributed equally to this work and share first authorship.

- 5 1. Department of Acupuncture and Moxibustion, Faculty of Health Care, Teikyo Heisei University,
6 Toshima-ku, Tokyo, Japan
7 2. Research Institute of Oriental Medicine, Teikyo Heisei University, Toshima-ku, Tokyo, Japan
8 3. Institute of Medicine, University of Tsukuba, Tsukuba, Ibaraki, Japan
9 4. Faculty of Sports and Health Science, Fukuoka University, Fukuoka, Japan
10 5. Institute for Physical Activity, Fukuoka University, Fukuoka, Japan
11 6. Graduate School of Human Health Sciences, Tokyo Metropolitan University, Hachioji, Tokyo,
12 Japan
13 7. Institute of Human Sciences, University of Tsukuba, Tsukuba, Ibaraki, Japan
14 8. Department of Sport Science and Research, Japan Institute of Sports Sciences, Kita-ku, Tokyo,
15 Japan
16 9. Embodied Wisdom Division, Center for Liberal Education and Learning, Sophia University,
17 Chiyoda-ku, Tokyo, Japan
18 10. Faculty of Rehabilitation, R Professional University of Rehabilitation, Tsuchiura, Japan
19 11. Graduate School of Comprehensive Human Sciences, University of Tsukuba, Tsukuba, Ibaraki,
20 Japan
21 12. Faculty of Rehabilitation, R Professional University of Rehabilitation, Tsuchiura, Japan
22 13. Oriental Medicine Research Center, Kitasato University, Minato-ku, Tokyo, Japan
23 14. Institute of Health and Sport Sciences, University of Tsukuba, Tsukuba, Ibaraki, Japan
24 15. Department of Sports and Health Management, Faculty of Business Information Sciences, Jobu
25 University, Isesaki, Gunma, Japan
26 16. University of Tsukuba, Tsukuba, Ibaraki, Japan

27 * Correspondence:

28 Shoichi Komine, Ph.D.

29 Address: Department of Acupuncture and Moxibustion, Faculty of Human Care, Teikyo Heisei
30 University

31 2-51-4 Higashi-Ikebukuro, Toshima-ku, Tokyo, 170-8445, JAPAN

32 Telephone/Fax: +81-3-5843-3111

33 E-mail: s.komine@thu.ac.jp (SK)

34 Author Contributions

35 Conceptualization: SK. Methodology: SK, IM, TH, AO, ST, KT, TS, KT, SW, GI, HO. Formal
36 analysis and investigation: SK, IM, TS, KT. Writing-original draft preparation: SK. Writing-review
37 and editing: SK, IM, SO, TI, TM. Funding acquisition: SK. Resources: SK. Supervision: SK.

38 **Abstract**

39 Background: Electroacupuncture stimulation is sometimes used to prevent and treat delayed onset
40 muscle soreness (DOMS) induced by exercise; however, the effect is unclear. Using a human biceps
41 brachii muscle pain induction model, we investigated the effect of contralateral electroacupuncture
42 (CEA) versus ipsilateral electroacupuncture (IEA) stimulation on DOMS and muscle injury markers.

43 Methods: Nineteen young men were randomly assigned to receive either CEA or IEA. All
44 participants performed eccentric exercise using the biceps brachii muscle of the nondominant arm to
45 induce muscle damage. Electroacupuncture stimulation (1.5 Hz, 15 minutes) was applied to the
46 dominant arm in the CEA group and the nondominant arm in the IEA group. Electroacupuncture
47 stimulation was applied in both groups from 7 days before exercise to 4 days after exercise. All
48 variables were analyzed at the following seven timepoints: baseline, immediately before exercise,
49 immediately after exercise, and on days 1–4 after exercise.

50 Results: Palpation pain was significantly lower in the IEA group than the CEA group at 72 and 96
51 hours after exercise. The decrease in the elbow range of motion after exercise was significantly
52 suppressed by electroacupuncture stimulation. The muscle injury markers (creatine kinase, lactate
53 dehydrogenase) increased following exercise, but these changes were not significantly influenced by
54 IEA stimulation. IEA suppressed exercise-induced oxidative stress at 72 hours after exercise.

55 Conclusion: This study suggests that the application of IEA before and after eccentric exercise
56 effectively reduces DOMS. Electroacupuncture might suppress increases in oxidative stress elicited
57 by eccentric exercise.

58

59 1 Introduction

60 Exercise is beneficial for overall health and is known to improve muscle strength, weight loss, mental
61 health, psychological and cognitive function, sleep disorders, type 2 diabetes, and cardiac diseases¹⁻⁵.
62 However, when performed by people who are unfamiliar with high-intensity exercise, exercise can
63 induce muscle soreness and damage. Muscle soreness that occurs several days after exercise is called
64 delayed onset muscle soreness (DOMS) and can be observed as pain during exercise or skeletal
65 muscle palpation⁶. DOMS can lead to a discrepancy between the perceived effort of muscle strength
66 exertion and the actual muscle strength⁷. Additionally, DOMS induces muscle weakness and altered
67 proprioception, increasing the risk of secondary impairments such as decreased exercise performance
68 and the potential for falls⁷⁻⁹. Therefore, the inhibition of DOMS is crucial.

69 DOMS and muscle damage are subjectively assessed using visual scales, and objectively evaluated
70 by measuring changes in the blood concentrations of enzymes such as creatine kinase and lactate
71 dehydrogenase¹⁰. In addition to conventional markers of muscle damage, blood cell-free DNA
72 (cfDNA) collected immediately after high-intensity exercise has recently been used to measure
73 exercise-induced changes and as a new biomarker of muscle damage¹¹. Furthermore, the post-
74 exercise-specific cfDNA (spcfDNA) efflux has been highlighted as a potentially useful marker of
75 muscle damage¹².

76 Acupuncture is a traditional Eastern therapeutic method that is often used to treat skeletal muscle
77 soreness. Several studies have examined the effects of acupuncture stimulation on DOMS. Itoh et al.
78 reported that DOMS is suppressed when acupuncture is applied to areas with tenderness induced by
79 eccentric exercise¹³, and a recent meta-analysis concluded that general acupuncture is effective in
80 alleviating DOMS¹⁴. However, the effectiveness of electroacupuncture for DOMS remains unclear.
81 Furthermore, there are cases in which it may not be possible to apply acupuncture on the injured side.
82 Such cases may require opposing acupuncture, also known as healthy-side acupuncture or
83 contralateral acupuncture, which is one of the nine acupuncture methods recorded in the classic
84 Chinese medicine textbook Huangdi Neijing (The Yellow Emperor's Canon of Internal Medicine).
85 Contralateral acupuncture is applied to the opposite side to the painful area¹⁵⁻¹⁸. However, the
86 literature on direct comparisons of the effect of different acupuncture methods on DOMS is limited.

87 To address this knowledge gap, we examined the effects of direct ipsilateral electroacupuncture
88 (IEA) versus contralateral electroacupuncture (CEA) on the occurrence of DOMS after eccentric
89 exercise. We also measured conventional muscle damage markers, oxidative stress markers, and
90 spcfDNA. We hypothesized that the application of IEA before and after eccentric exercise would
91 decrease the incidence of DOMS and reduce oxidative stress after eccentric exercise.

92

93 **2 Materials and Methods**

94 **2.1 Ethics Statement**

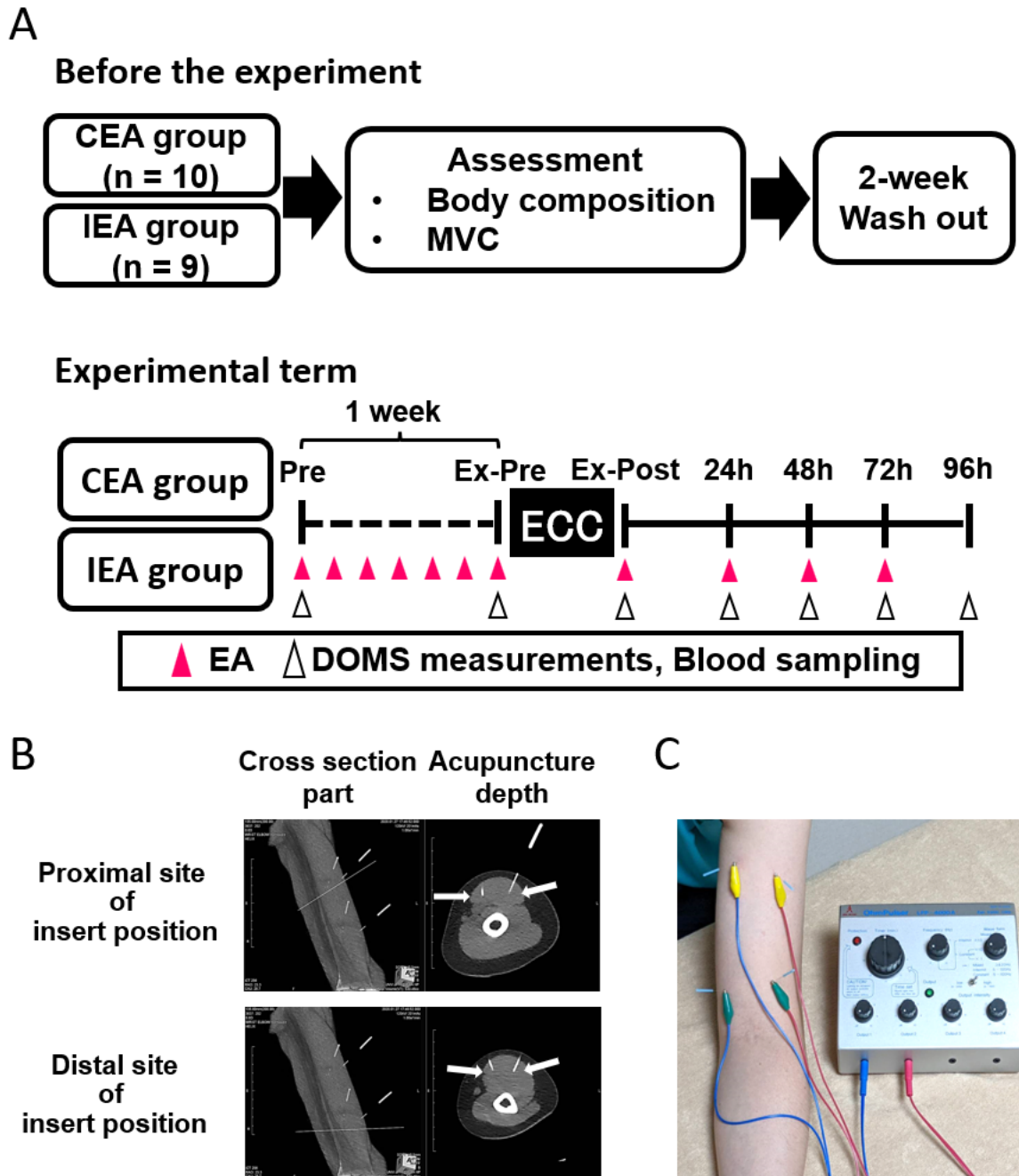
95 The study protocol was approved by the ethics committees of the University of Tsukuba, Japan
96 (approval number: Tai019-75) and Teikyo Heisei University (approval number: 2020-100) and
97 followed the ethics principles of the 7th revision (2013) of the Declaration of Helsinki. Participants
98 provided written informed consent and authorization for the disclosure of protected health
99 information before enrolling in the study.

100 **2.2 Experimental Design**

101 The study cohort comprised 19 healthy men with no knowledge of or experience with acupuncture
102 and no exercise habits, who had not smoked or used medication in the preceding 3 months.
103 Participants were instructed to refrain from (i) massaging their upper arm, (ii) strenuous exercise, (iii)
104 alcohol consumption, (iv) taking medication, (v) taking supplements, and (vi) receiving acupuncture
105 or electroacupuncture treatment during the experiment. Numbers were randomly generated by a
106 computer and aligned with each participant for randomization to divide the participants into the CEA
107 group and the IEA group. The experimental schedule is shown in Figure 1A. Before the experiment,
108 the height, body weight, body mass index, percentage fat, and muscle mass were measured using a 4-
109 Compartment Model Method body composition analyzer (RD-803L, Tanita, Tokyo, Japan). To
110 ensure that the degree of muscle soreness after exercise was approximately equivalent between
111 individuals, the maximal voluntary contraction (MVC) of the biceps of the nondominant arm was
112 measured using the Biodex System 4 (Sakai Med. Co., Tokyo, Japan). Briefly, the maximum torque
113 was analyzed while the participants performed isometric contractions in the sitting position with the
114 shoulder and elbow joints both at 90 degrees of flexion. The MVC was measured twice, and the
115 average MVC value was recorded. The average MVC was then corrected according to the length of
116 the participant's forearm. To exclude the influence of the MVC measurement, a 2-week washout
117 period was applied. After 2 weeks (i.e., at the Pre timepoint), all participants assembled in the
118 laboratory at 8:00 A.M. We measured the muscle soreness and the elbow joint angle and range, and
119 collected blood. Each participant then underwent electroacupuncture of the dominant arm in the CEA
120 group and the nondominant arm in the IEA group. On the exercise day (7 days after Pre), all
121 participants assembled in the laboratory at 8:00 A.M. Both groups underwent biceps brachii
122 evaluation and blood sample collection within 30 minutes before starting eccentric exercise (i.e., at
123 the Ex-Pre timepoint) and immediately after the exercise (i.e., at the Ex-Post timepoint). At 24, 48,
124 and 72 hours after the exercise session, the participants underwent measurements, blood sampling,
125 and electroacupuncture. At 96 hours after the exercise, only measurements were performed, and the
126 participants did not receive electroacupuncture. All measurements were performed by the same
127 evaluator, who was blinded to the group allocation.

128

Figure.1



129 **Fig. 1** Experimental flow and electroacupuncture stimulation

130 (A) Experimental flow. Pink arrowheads indicate electroacupuncture stimulation. White arrowheads
 131 indicate the timepoints at which DOMS evaluation and blood sample collection were performed.
 132 Electroacupuncture was performed after the measurement. (B) Electroacupuncture stimulation sites
 133 in the distal and proximal biceps brachii (magnetic resonance imaging). White lines indicate
 134 acupuncture needles. Arrows indicate the needle tips. (C) Position of the participant during
 135 electroacupuncture stimulation. CEA, contralateral electroacupuncture; DOMS, delayed onset muscle
 136 soreness; ECC, eccentric exercise; IEA, ipsilateral electroacupuncture; MVC, maximum voluntary
 137 contraction.

138 2.3 Dietary Analysis

139 Dietary assessment of the participants was conducted by qualified personnel using the 24-hour recall
140 method^{16, 17}. Subjects were asked to record their dietary intake, including three meals (breakfast,
141 lunch, and dinner), snacks, and beverages, for the first 3 days after exercise. Participants who
142 provided us with photographs of their daily diet were given a 15-min nutritional interview session,
143 during which the information was reviewed. Total amount, amino acids, total fat, total carbohydrate,
144 available carbohydrates, total fiber and energy intake of dietary contents were estimated using the
145 nutrition calculation software included in the Standard Tables of Food Composition in Japan 2019,
146 7th edition (Ishiyaku Publishers, Inc., Tokyo Japan). The calculations were performed by a nationally
147 certified dietitian.

148 2.4 Electroacupuncture

149 Electroacupuncture stimulation was performed 6 days before the exercise day, before and after
150 eccentric exercise on the same day, and 3 days after exercise (Fig. 1A). Before the experiment, we
151 explained to the participants that the IEA and CEA techniques were being compared to eliminate the
152 placebo effect. Electroacupuncture was applied to the dominant arm (the arm not experiencing
153 DOMS) in the CEA group and the nondominant arm (the arm experiencing DOMS) in the IEA
154 group. The acupuncture needles (0.2 mm diameter; SEIRIN Co., Ltd., Shizuoka, Japan) were inserted
155 to a depth of approximately 20 mm. Computed tomography images were obtained using a Brilliance
156 iCT scanner (Philips Electronics Ltd., Amsterdam, the Netherlands; Fig. 1B). Four needles were
157 placed at the distal and proximal ends of the long and short heads of the biceps brachii muscle.
158 Electric stimulation was applied to the biceps brachii muscle in the longitudinal direction at a
159 frequency of 1 Hz for 15 minutes using an Ohm Pulser LFP-4000A (Zen-Iryoki Co., Ltd., Fukuoka
160 Japan; Fig. 1C). Every pulse waveform was a 250- μ s asymmetric dipole pulse wave. This frequency
161 was determined by referring to stimuli used in previous studies¹⁹. Because the sensation of pain
162 varies between individuals, the intensity of electrical stimulation was set to a level at which the
163 participant felt comfortable (approximately 2–4 V), and the degree of contraction was set to a level
164 where minute contractions were observed at regular intervals. The stimulus intensity was adjusted to
165 a level that was confirmed as comfortable by the participant, with the intensity being decreased when
166 pain was felt. Acupuncture stimulation was performed by a Japanese national licensee who was
167 unaware of the group allocations.

168 2.5 Exercise Protocol

169 The exercise, blood sampling, and muscle assessments were performed on an empty stomach early in
170 the morning (06:00–08:30). Participants performed eccentric exercise of the brachial flexor muscle
171 group of the nondominant arm¹⁰. On the exercise day (Ex-Pre), we collected blood samples,
172 evaluated the range of motion, and measured muscle soreness. During the exercise, the participants
173 were seated with their lumbar spine flexed at 45 degrees and their chest supported. Starting with the
174 shoulder and elbow joints flexed at 90 degrees, they slowly extended the elbow joint to apply the
175 load. The exercise intensity was set to 70% MVC, and six sets of 5 seconds \times 5 repetitions were
176 performed. There was a 2-minute break between sets. The exercise timing relied on an electronic
177 metronome (60 beats/minute), and participants who were unable to maintain the rhythm by
178 themselves were assisted. After each 5-second eccentric contraction, it took 3 seconds to achieve the
179 correct arm position before starting the next 5-second eccentric contraction. All contractions started
180 at the same position while the participant was relaxed.

181 2.6 Muscle Soreness Assessment

182 Subjective biceps muscle soreness was evaluated using a visual analog scale, which consisted of a
183 100 mm straight line with “no pain” at the left end and “extreme pain” at the right end. Muscle
184 soreness was assessed before exercise, immediately after exercise, and during the next 4 days. Two
185 types of muscle soreness evaluation were performed: palpation and spontaneous maximal
186 extension¹⁰. Muscle soreness on palpation was evaluated by palpating the biceps muscle belly for 3 s.
187 The subjects extended their elbow joint to assess muscle soreness during spontaneous maximal
188 extension. The visual analog scale was calculated as the score after deducting the Ex-Pre score. The
189 same researcher evaluated all subjects to reduce assessment variability. The evaluation was
190 performed by a third party who was unaware of the grouping.

191 **2.7 Joint angle Evaluation**

192 The elbow joint range, which reflects muscle soreness and damage, was measured using a
193 goniometer (Takase Med, Tokyo, Japan). Starting from the lateral superior condyle of the humerus,
194 we aligned both axes of the goniometer with the acromion and radial styloid process and assessed the
195 resting angle as well as maximum extension and flexion within a pain-free range. Active motion by
196 the subject was used to measure the range of the elbow joint. The elbow joint range was calculated as
197 the difference between the maximum extension and flexion angles. The measured angles were
198 calculated as the angle after deducting the Pre angle. The range was measured twice by a third party
199 who was not aware of the grouping, and the average value was used.

200 **2.8 Blood Parameters**

201 Blood samples were collected from the antecubital veins from the opposite arm for
202 electroacupuncture stimulation and assessed by the Tsukuba i-Laboratory LLP for creatine kinase,
203 lactate dehydrogenase, aldolase, and aspartate aminotransferase^{17, 19-23}. The serum samples were
204 stored at -80 °C until further analysis.

205 **2.9 Oxidative Stress Assessment**

206 Next, we measured the levels of serum malondialdehyde (MDA), a lipid peroxidation product and an
207 indicator of eccentric exercise-induced oxidative stress. Measurements were performed using the 2-
208 thiobarbituric acid reactive substances (TBARS) assay kit (Cayman Chemical, Ann Arbor, MI USA)
209 following the manufacturer’s standard protocol. Briefly, the absorbance at 540 nm of the MDA-
210 thiobarbituric acid adduct, formed by the reaction of MDA and thiobarbituric acid under high
211 temperature (90–100 °C) and acidic conditions, was measured using a Varioskan microplate reader
212 (Thermo Fisher Scientific, Waltham, MA, USA).

213 **2.10 Blood spcfDNA measurement**

214 To analyze post-exercise-specific cfDNA (spcfDNA) flow out of the skeletal muscle, Serum cfDNA
215 was extracted using the Plasma/Serum Cell-Free Circulating DNA Purification Mini Kit (Norgen
216 Biotek Inc., Thorold, ON, Canada) following the manufacturer’s instructions. Then, the spcfDNA
217 sequence (spcfDNA-1) identified by Sugawara et al. and TaqMan qPCR primers and probes were
218 designed using the Primer-BLAST web tool (National Library of Medicine, Bethesda, MD, USA)¹².
219 The nucleotide sequences were as follows: spcfDNA-1 (forward: TCTTGTGGCCTTCGTTGGAA,
220 reverse: ATTGACCTCAAAGCGGCTGA, probe: 56-
221 FAM/ATTGACCTC/ZEN/AAAGCGGCTGA/3IABkFQ). The DNA extracted from human
222 fibroblasts (JCRB 1006.7, JCRB Cell Bank; original developers: Kouchi and Namba) was used to

223 create a calibration curve for absolute cfDNA quantification (calibration curve $R^2 > 0.99$). All
224 measurements were performed in duplicate.

225 **2.11 Statistical Analysis**

226 Statistical analysis was performed using IBM SPSS Statistics for Windows, Version 29.0 (IBM
227 Corp., Armonk, NY, USA). All data are expressed as mean \pm standard deviation. Within-group
228 comparisons between various sampling points were performed using a repeated measures two-way
229 analysis of variance (ANOVA) followed by Tukey's correction for multiple comparisons. Between-
230 group comparisons were performed using the Student's t-test. Statistical significance was set at $P <$
231 0.05.

232

233 **3 Results**

234 **3.1 Body Composition and Dietary Intake After Eccentric Exercise**

235 Body composition and maximal strength of the nondominant arm did not differ between the two
 236 groups (Table 1). The two groups also had similar total caloric, amino acid protein, fat, and
 237 carbohydrate intakes, as estimated from the meals consumed during the experiment (Table 2).

238 **Table 1.** Participant information

| Group | Age (Yr) | Hight (cm) | BW (kg) | Body fat (%) | BMR (kcal) | BMI (kg/m ²) | MVC (kg) |
|--------------|------------|-------------|-------------|--------------|----------------|--------------------------|------------|
| CEA (n = 10) | 21.4 ± 1.4 | 172.5 ± 6.3 | 67.7 ± 12.8 | 18.0 ± 6.7 | 1592.5 ± 233.6 | 22.7 ± 3.5 | 18.2 ± 1.8 |
| IEA (n = 9) | 21.0 ± 1.5 | 172.9 ± 4.3 | 65.6 ± 10.6 | 17.7 ± 4.8 | 1548.0 ± 185.0 | 21.9 ± 3.1 | 17.2 ± 3.6 |

239 BMI, body mass index; BMR, basal metabolic rate; BW, body weight; CEA, contralateral
 240 electroacupuncture group; IEA, ipsilateral electroacupuncture group; MVC, maximum voluntary
 241 contraction. Data are presented as mean ± standard deviation.

242 **Table 2.** Estimated daily dietary content during the experiment

| Group | Amount (g) | Calorie (kcal) | Protein (g) | Fat (g) | Carbohydrate (g) | Available Carbohydrates (g) | Total Fiber (g) |
|--------------|----------------|----------------|-------------|-------------|------------------|-----------------------------|-----------------|
| CEA (n = 10) | 1684.3 ± 459.9 | 2390.1 ± 531.3 | 90.8 ± 19.3 | 71.7 ± 22.1 | 302.7 ± 63.2 | 268.9 ± 68.8 | 16.1 ± 4.8 |
| IEA (n = 9) | 1416.3 ± 457.8 | 2222.6 ± 463.7 | 76.9 ± 26.6 | 69.4 ± 30.7 | 310.0 ± 53.3 | 284.3 ± 58.1 | 16.8 ± 3.7 |

243 The 24-hour recall method was used. CEA, contralateral electroacupuncture group; IEA, ipsilateral
 244 electroacupuncture group. Data are presented as mean ± standard deviation.

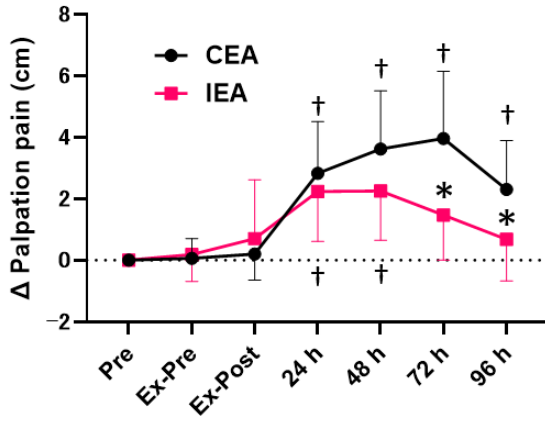
245 **3.2 Muscle Soreness Assessment**

246 In the CEA group, pain on palpation was significantly increased at 24 hours after exercise and
 247 remained elevated for 96 hours compared with the Pre levels (Fig. 2A); in contrast, the IEA group
 248 showed increased pain compared with the Pre levels only at 24 and 48 hours after exercise. Palpation
 249 pain at 72 and 96 hours after exercise was significantly lower in the IEA group than the CEA group.
 250 We found simple main effects of timepoint and group for pain felt during elbow extension after the
 251 exercise session. No interaction was observed (Fig. 2B). Figure 2C and 2D shows heat maps of the
 252 visual analog scale values for pain on palpation and extension compared with the Pre values for all
 253 participants.

254

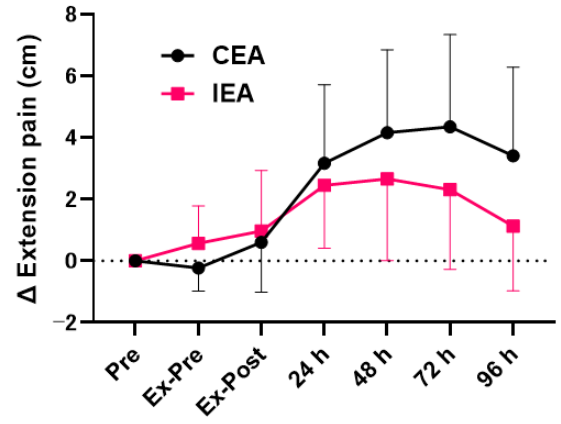
Figure. 2

A



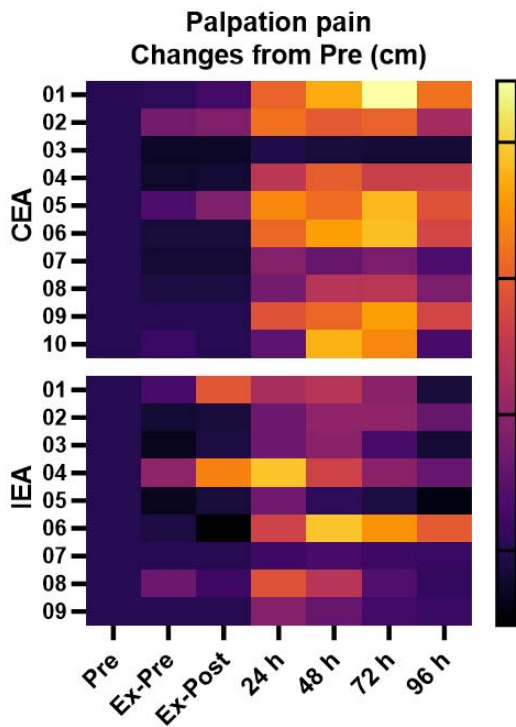
| Source of Variation | % of total variation | P value |
|---------------------|----------------------|---------|
| Interaction | 6.957 | 0.0109 |
| Time | 38.63 | <0.0001 |
| Group | 4.149 | 0.0016 |

B

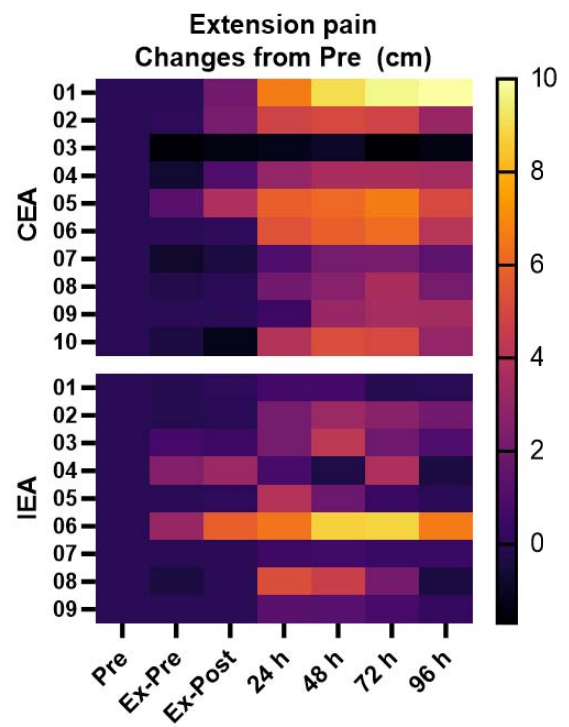


| Source of Variation | % of total variation | P value |
|---------------------|----------------------|---------|
| Interaction | 4.978 | 0.1364 |
| Time | 29.68 | <0.0001 |
| Group | 2.334 | 0.0326 |

C



D



255

256 **Fig. 2** Changes in subjective muscle soreness

257 Evaluated using the visual analog scale. Data are shown as changes from the Pre measurements.
258 Time course of pain on palpation (A) and during extension (B). Heat maps of pain on palpation (C)
259 and during extension (D). Each participant is identified by a number. Asterisks indicate significant
260 differences between the groups ($P < 0.05$). Daggers indicate significant differences within the group
261 compared with the Pre assessment ($P < 0.05$). Data are shown as mean \pm standard deviation and were
262 statistically compared using a two-way ANOVA followed by Tukey's post hoc test for multiple
263 group comparisons. In the table, the gray highlighted p-values indicate significant differences. CEA,
264 contralateral electroacupuncture group; IEA, ipsilateral electroacupuncture group; Pre, before the
265 experiment; Ex-Pre, before exercise; Ex-Post, immediately after exercise; 24, 48, 72, and 96 h: 24,
266 48, 72, and 96 hours after exercise, respectively. $n = 10$ in the CEA group, $n = 9$ in the IEA group.

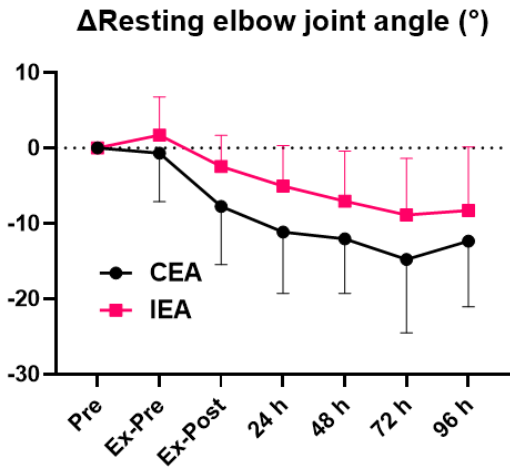
267 **3.3 Elbow Joint Angle Evaluation**

268 To analyze DOMS, we measured the elbow joint angle at which pain was induced. Specifically, we
269 calculated the resting elbow joint angle (Fig. 3A), flexion angle from rest to pain sensation (Fig. 3B),
270 extension angle from rest to pain sensation (Fig. 3C), and painless elbow joint range (Fig. 3D). We
271 found a simple main effect of timepoint and group for pain during elbow extension after the exercise
272 session. No interaction was observed.

273

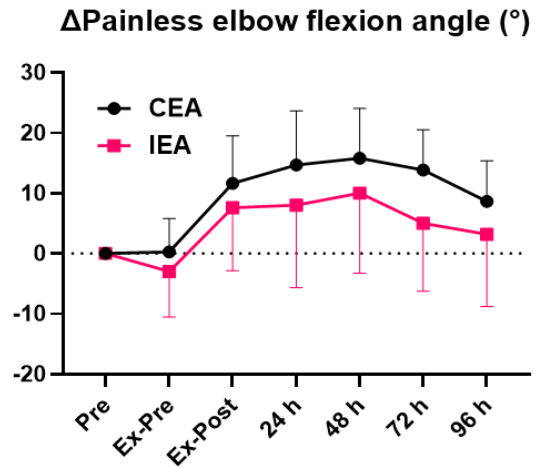
Figure.3

A



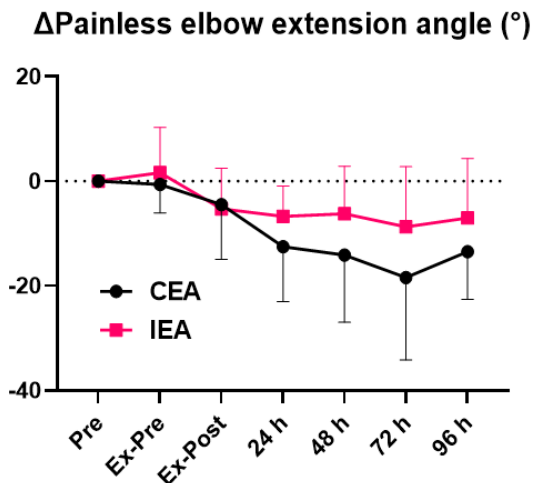
| Source of Variation | % of total variation | P value |
|---------------------|----------------------|---------|
| Interaction | 1.552 | 0.7791 |
| Time | 31.51 | <0.0001 |
| Group | 6.277 | 0.0004 |

B



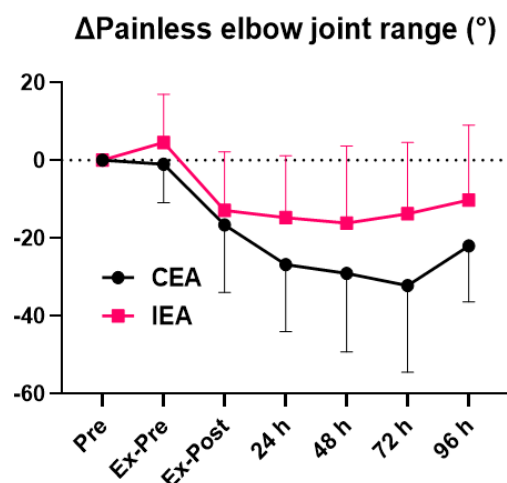
| Source of Variation | % of total variation | P value |
|---------------------|----------------------|---------|
| Interaction | 3.011 | 0.5296 |
| Time | 22.12 | <0.0001 |
| Group | 4.284 | 0.0079 |

C



| Source of Variation | % of total variation | P value |
|---------------------|----------------------|---------|
| Interaction | 1.606 | 0.8251 |
| Time | 25.28 | <0.0001 |
| Group | 5.627 | 0.0020 |

D



| Source of Variation | % of total variation | P value |
|---------------------|----------------------|---------|
| Interaction | 2.452 | 0.6062 |
| Time | 26.37 | <0.0001 |
| Group | 6.044 | 0.0011 |

274 **Fig. 3** Elbow joint angle and range

275 Resting elbow joint angle and painless elbow joint range. Data are shown as changes from the Pre
 276 measurements. Resting elbow joint angle (A). Painless elbow joint flexion (B) and extension (C)
 277 angles. Painless elbow joint range (D). Data are presented as mean ± standard deviation and were
 278 statistically compared using a two-way ANOVA. CEA, contralateral electroacupuncture group; IEA,

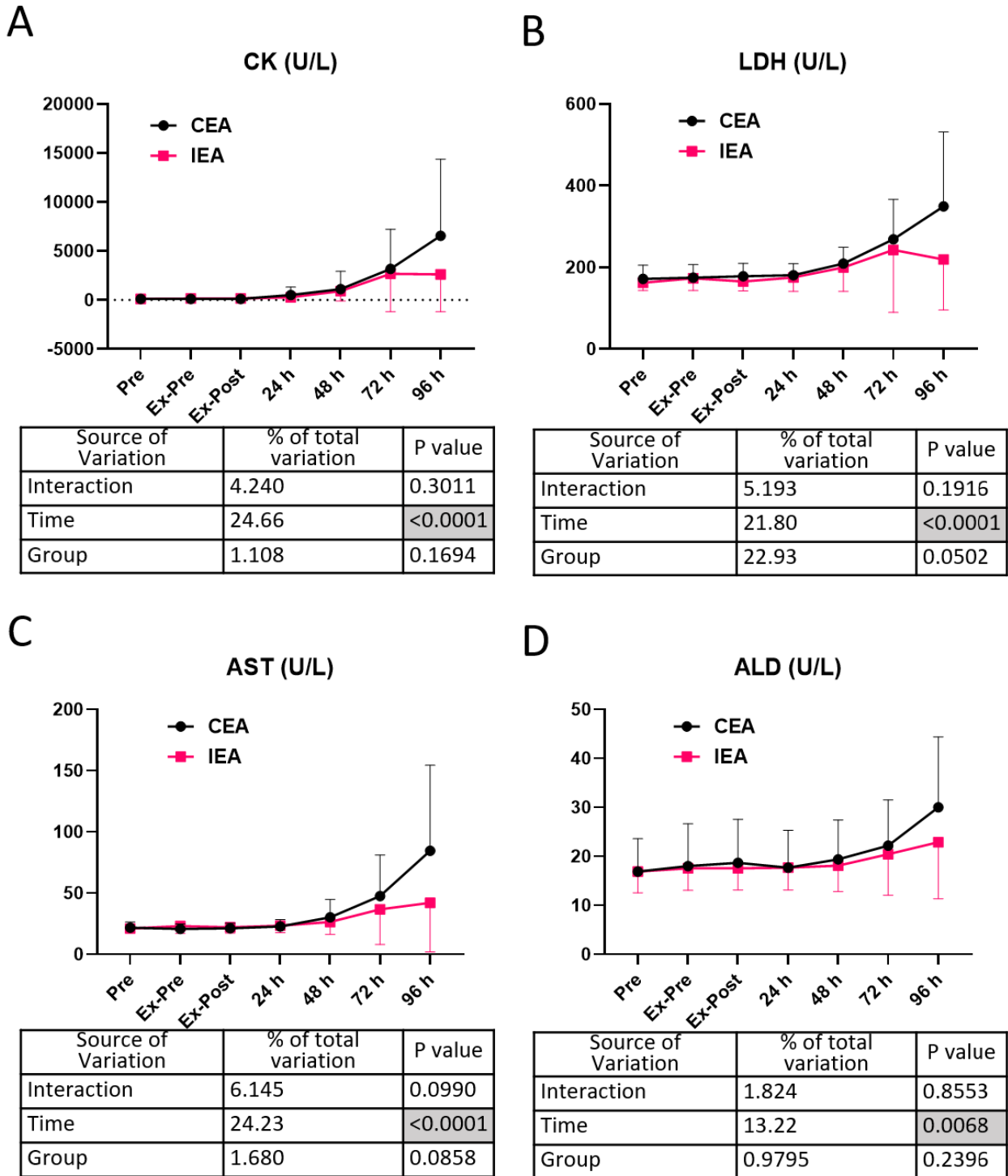
279 ipsilateral electroacupuncture group; Pre, before the experiment; Ex-Pre, before exercise; Ex-Post,
280 immediately after exercise; 24, 48, 72, and 96 h: 24, 48, 72, and 96 hours after exercise, respectively.
281 n = 10 in the CEA group, n = 9 in the IEA group.

282 **3.4 Skeletal Muscle Injury Markers**

283 Changes in the blood concentrations of skeletal muscle damage markers are shown in Figure 4A–D.
284 We found a simple main effect of timepoint for the concentrations of creatine kinase, aspartate
285 aminotransferase, and aldolase after the exercise session. No simple main effect of group was
286 observed, and we found no interaction.

287

Figure.4



288 **Fig. 4** Time course of muscle damage markers

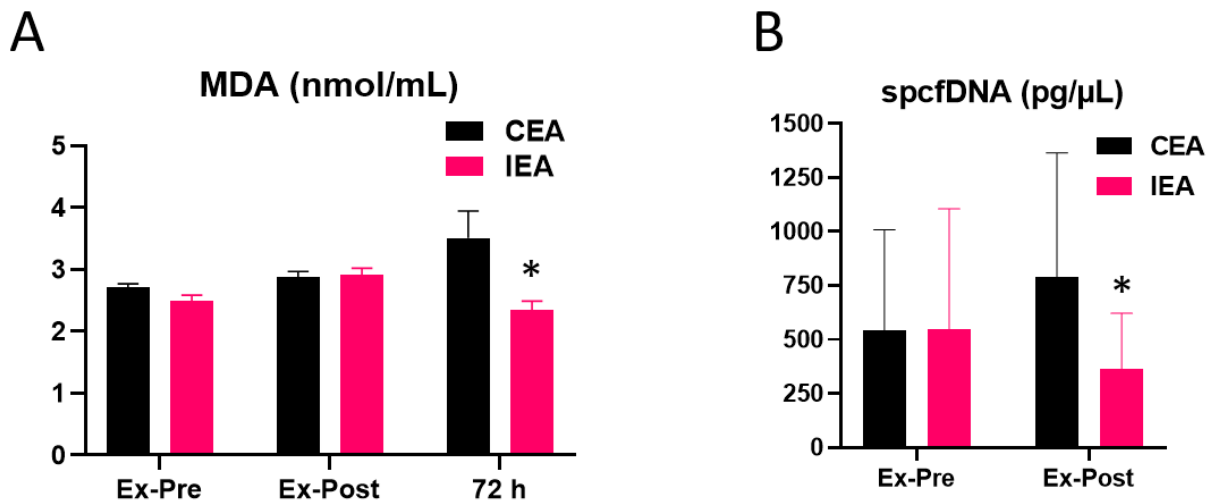
289 Changes in the serum concentrations of muscle injury markers. (A) CK, (B) LDH, (C) AST, and (D)
 290 ALD. Data are presented as mean \pm standard deviation and were statistically compared using a two-
 291 way ANOVA. CEA, contralateral electroacupuncture group; IEA, ipsilateral electroacupuncture
 292 group; CK, creatine kinase; LDH, lactate dehydrogenase; AST, aspartate aminotransferase; ALD,
 293 aldolase; Pre, before experiment; Ex-Pre, before exercise; Ex-Post, immediately after exercise; 24,

294 48, 72, and 96 h: 24, 48, 72, and 96 hours after exercise, respectively. n = 10 in the CEA group, n
 295 = 9 in the IEA group.

296 **3.5 Oxidative stress marker and post-exercise-specific cell-free DNA concentration**

297 To analyze markers involved in DOMS, we measured an oxidative stress marker (MDA) and
 298 spcfDNA (Fig. 5). The MDA concentration at 72 hours after exercise was significantly lower in the
 299 IEA group than the CEA group (Fig. 5A). The spcfDNA value immediately after exercise was
 300 significantly lower in the IEA group than the CEA group (Fig. 5B).

Figure. 5



301 **Fig. 5** Oxidative stress marker and spcf DNA concentration.

302 Changes in the serum concentrations of an oxidative stress marker and spcfDNA. (A) MDA
 303 concentration. (B) spcfDNA concentration. Asterisks indicate significant differences between groups
 304 ($P < 0.05$, Student's t-test). MDA, malondialdehyde; spcfDNA, post-exercise-specific cell-free DNA;
 305 Ex-Pre, before exercise; Ex-Post, immediately after exercise; 72 h, 72 hours after exercise. n = 10
 306 in the CEA group, n = 9 in the IEA group.

307 4 Discussion

308 This study is the first to show that direct electroacupuncture muscle stimulation before and after
309 exercise suppresses exercise-induced muscle soreness and damage. Additionally, the results revealed
310 that electroacupuncture stimulation suppressed the increase in post-exercise levels of oxidative stress
311 and spcfDNA concentration.

312 The IEA used in the present study suppressed DOMS after eccentric exercise. DOMS is known to
313 occur 24–48 hours after eccentric exercise²⁴. Additionally, several studies have reported the efficacy
314 of the contralateral acupuncture technique^{15, 25}. The present study found that IEA was more effective
315 in suppressing DOMS than CEA. Direct stimulation may be involved in the inhibition of DOMS;
316 however, this requires confirmation in further detailed analysis, including the use of a sham
317 acupuncture group.

318 We found that muscle damage markers, such as creatine kinase and lactate dehydrogenase, appeared
319 after the DOMS peak, as previously reported^{10, 26, 27}, suggesting that the eccentric exercise was
320 sufficient to induce damage. IEA suppressed DOMS after eccentric exercise but did not suppress the
321 expression of markers of muscle damage. There are many uncertainties regarding the dynamics of
322 muscle injury markers during muscle pain, and the concentrations of these markers may not align
323 with the dynamics of muscle pain²⁸. As electroacupuncture incorporates elements of electrical
324 stimulation, it is conceivable that electroacupuncture may produce muscle protective effects similar
325 to electrical stimulation²⁹. However, electroacupuncture did not affect the concentrations of muscle
326 injury markers. Electrical stimulation is considered to have the potential to influence neuropathic
327 pain inhibition³⁰; however, this concept requires further investigation.

328 Many studies have shown that the concentrations of lipid peroxidation products (MDA) are elevated
329 in skeletal muscles and serum after transient exercise^{31, 32}. An increased MDA concentration in the
330 blood after eccentric exercise was previously reported to increase oxidative stress after 48–72 hours^{27,}
331 ³². In the present study, electroacupuncture stimulation reduced the MDA concentration at 72 hours
332 after exercise. A previous study showed that electrical pulse stimulation of C2C12 cells results in
333 activation of the Nrf2 transcription factor, a master regulator of antioxidant enzymes¹⁹. Furthermore,
334 sulforaphane supplementation for 2 weeks suppresses DOMS after eccentric exercise²⁷. In the present
335 study, it is possible that IEA stimulation may have increased the antioxidant capacity in the muscle
336 and consequently suppressed the increase in the serum MDA concentration.

337 cfDNA fragments of various sizes leak into the blood as a result of cancer cell death, and analysis of
338 these fragments has been reported to be a useful marker of cancer cells^{33, 34}. Recently, cfDNA was
339 analyzed as a marker of muscle damage shortly after exercising³⁵. For example, the cfDNA
340 concentration is increased immediately after weightlifting and high-intensity exercise (leg press)^{11, 36},
341 while spcfDNA is reportedly a highly sensitive marker of extreme physical stress¹². In the present
342 study, IEA decreased the spcfDNA concentration immediately after exercise. Because electric
343 current-based stimulation protects muscle cell membranes²⁹, electroacupuncture stimulation may
344 have inhibited cfDNA efflux from muscle tissue. Therefore, spcfDNA is presumed to flow out from
345 the skeletal muscle, and this was prevented by electroacupuncture. Further research is required to
346 confirm these findings.

347

348 4.1 Limitations

349 Our results suggest that electroacupuncture stimulation suppressed muscle soreness and damage after
350 eccentric exercise. However, the present study did not include a sham electroacupuncture group.
351 Furthermore, it remains unclear whether the suppression of muscle soreness was caused by
352 electroacupuncture stimulation before (preventive effect) or after (therapeutic effect) the exercise.

353 **5 Conclusion**

354 IEA stimulation before and after eccentric exercise suppressed DOMS in young men and prevented
355 an increase in the concentrations of muscle damage markers and spcfDNA compared with CEA.
356 These results suggest the clinical effectiveness of electroacupuncture in preventing and treating
357 sports-related injuries, thus enhancing the motivation to exercise in untrained individuals and those
358 unfamiliar with exercise.

359 **6 Acknowledgments**

360 We thank Benjamin Knight, MSc, Sydney Koke, MFA, and Kelly Zammit, BVSc, from Edanz
361 (<https://jp.edanz.com/ac>) for editing a draft of this manuscript.

362 **7 Funding**

363 This study was supported by the JSPS KAKENHI (Grant Number: 22H03485) and Grant in Research
364 Aid for Anna-Massage-Acupressure, Acupuncture and Moxibustion from the Public Interest
365 Incorporated Foundation for Training and Examination in Anna-Massage-Acupressure, Acupuncture
366 and Moxibustion.

367 **8 Declaration of conflicting interests**

368 The authors declare no competing interests.

369

370 **9 References**

- 371 1. Basso JC, Oberlin DJ, Satyal MK, et al. Examining the Effect of Increased Aerobic Exercise
372 in Moderately Fit Adults on Psychological State and Cognitive Function. *Front Hum Neurosci* 2022;
373 16: 833149. 20220712. DOI: 10.3389/fnhum.2022.833149.
- 374 2. Brito LC, Marin TC, Azevêdo L, et al. Chronobiology of Exercise: Evaluating the Best Time
375 to Exercise for Greater Cardiovascular and Metabolic Benefits. *Compr Physiol* 2022; 12: 3621-3639.
376 20220629. DOI: 10.1002/cphy.c210036.
- 377 3. De Nys L, Anderson K, Ofosu EF, et al. The effects of physical activity on cortisol and sleep:
378 A systematic review and meta-analysis. *Psychoneuroendocrinology* 2022; 143: 105843. 20220624.
379 DOI: 10.1016/j.psyneuen.2022.105843.
- 380 4. Kagawa F, Yokoyama S, Takamura M, et al. Decreased physical activity with subjective
381 pleasure is associated with avoidance behaviors. *Sci Rep* 2022; 12: 2832. 20220218. DOI:
382 10.1038/s41598-022-06563-3.
- 383 5. Liu D, Zhang Y, Wu L, et al. Effects of Exercise Intervention on Type 2 Diabetes Patients
384 With Abdominal Obesity and Low Thigh Circumference (EXTEND): Study Protocol for a
385 Randomized Controlled Trial. *Front Endocrinol (Lausanne)* 2022; 13: 937264. 20220712. DOI:
386 10.3389/fendo.2022.937264.
- 387 6. Cheung K, Hume P and Maxwell L. Delayed onset muscle soreness : treatment strategies and
388 performance factors. *Sports Med* 2003; 33: 145-164. DOI: 10.2165/00007256-200333020-00005.
- 389 7. Proske U, Gregory JE, Morgan DL, et al. Force matching errors following eccentric exercise.
390 *Hum Mov Sci* 2004; 23: 365-378. DOI: 10.1016/j.humov.2004.08.012.
- 391 8. Saxton JM, Clarkson PM, James R, et al. Neuromuscular dysfunction following eccentric
392 exercise. *Med Sci Sports Exerc* 1995; 27: 1185-1193.
- 393 9. Weerakkody N, Percival P, Morgan DL, et al. Matching different levels of isometric torque in
394 elbow flexor muscles after eccentric exercise. *Exp Brain Res* 2003; 149: 141-150. 20030125. DOI:
395 10.1007/s00221-002-1341-0.
- 396 10. Ra SG, Miyazaki T, Ishikura K, et al. Combined effect of branched-chain amino acids and
397 taurine supplementation on delayed onset muscle soreness and muscle damage in high-intensity
398 eccentric exercise. *J Int Soc Sports Nutr* 2013; 10: 51. 20131106. DOI: 10.1186/1550-2783-10-51.
- 399 11. Andreatta MV, Curty VM, Coutinho JVS, et al. Cell-Free DNA as an Earlier Predictor of
400 Exercise-Induced Performance Decrement Related to Muscle Damage. *Int J Sports Physiol Perform*
401 2018; 13: 953-956. 20180728. DOI: 10.1123/ijsp.2017-0421.
- 402 12. Sugasawa T, Fujita SI, Kuji T, et al. Dynamics of Specific cfDNA Fragments in the Plasma of
403 Full Marathon Participants. *Genes (Basel)* 2021; 12 20210430. DOI: 10.3390/genes12050676.
- 404 13. Itoh K, Ochi H and Kitakoji H. Effects of tender point acupuncture on delayed onset muscle
405 soreness (DOMS)--a pragmatic trial. *Chin Med* 2008; 3: 14. 20081125. DOI: 10.1186/1749-8546-3-
406 14.
- 407 14. Huang C, Wang Z, Xu X, et al. Does Acupuncture Benefit Delayed-Onset Muscle Soreness
408 After Strenuous Exercise? A Systematic Review and Meta-Analysis. *Front Physiol* 2020; 11: 666.
409 20200717. DOI: 10.3389/fphys.2020.00666.

- 410 15. Guo Q, Di Z, Tian HF, et al. Contralateral Acupuncture for the Treatment of Phantom Limb
411 Pain and Phantom Limb Sensation in Oncologic Lower Limb Amputee: A Case Report. *Front*
412 *Neurosci* 2021; 15: 713548. 20211022. DOI: 10.3389/fnins.2021.713548.
- 413 16. Kim MK, Choi TY, Lee MS, et al. Contralateral acupuncture versus ipsilateral acupuncture in
414 the rehabilitation of post-stroke hemiplegic patients: a systematic review. *BMC Complement Altern*
415 *Med* 2010; 10: 41. 20100730. DOI: 10.1186/1472-6882-10-41.
- 416 17. Lu F. Clinical application of contralateral acupuncture technique. *J Tradit Chin Med* 1997;
417 17: 124-126.
- 418 18. Zhang S, Wang X, Yan CQ, et al. Different mechanisms of contralateral- or ipsilateral-
419 acupuncture to modulate the brain activity in patients with unilateral chronic shoulder pain: a pilot
420 fMRI study. *J Pain Res* 2018; 11: 505-514. 20180307. DOI: 10.2147/JPR.S152550.
- 421 19. Horie M, Warabi E, Komine S, et al. Cytoprotective Role of Nrf2 in Electrical Pulse
422 Stimulated C2C12 Myotube. *PLoS One* 2015; 10: e0144835. 20151214. DOI:
423 10.1371/journal.pone.0144835.
- 424 20. Bassit RA, Pinheiro CH, Vitzel KF, et al. Effect of short-term creatine supplementation on
425 markers of skeletal muscle damage after strenuous contractile activity. *Eur J Appl Physiol* 2010; 108:
426 945-955. 20091203. DOI: 10.1007/s00421-009-1305-1.
- 427 21. Clarkson PM, Nosaka K and Braun B. Muscle function after exercise-induced muscle damage
428 and rapid adaptation. *Med Sci Sports Exerc* 1992; 24: 512-520.
- 429 22. Cooke MB, Rybalka E, Williams AD, et al. Creatine supplementation enhances muscle force
430 recovery after eccentrically-induced muscle damage in healthy individuals. *J Int Soc Sports Nutr*
431 2009; 6: 13. 20090602. DOI: 10.1186/1550-2783-6-13.
- 432 23. Nosaka K and Newton M. Difference in the magnitude of muscle damage between maximal
433 and submaximal eccentric loading. *J Strength Cond Res* 2002; 16: 202-208.
- 434 24. Ra SG, Choi Y, Akazawa N, et al. Effects of Taurine Supplementation on Vascular
435 Endothelial Function at Rest and After Resistance Exercise. *Adv Exp Med Biol* 2019; 1155: 407-414.
436 DOI: 10.1007/978-981-13-8023-5_38.
- 437 25. Zhang H, Sun J, Wang C, et al. Randomised controlled trial of contralateral manual
438 acupuncture for the relief of chronic shoulder pain. *Acupunct Med* 2016; 34: 164-170. 20160121.
439 DOI: 10.1136/acupmed-2015-010947.
- 440 26. Ispirlidis I, Fatouros IG, Jamurtas AZ, et al. Time-course of changes in inflammatory and
441 performance responses following a soccer game. *Clin J Sport Med* 2008; 18: 423-431. DOI:
442 10.1097/JSM.0b013e3181818e0b.
- 443 27. Komine S, Miura I, Miyashita N, et al. Effect of a sulforaphane supplement on muscle
444 soreness and damage induced by eccentric exercise in young adults: A pilot study. *Physiol Rep* 2021;
445 9: e15130. DOI: 10.14814/phy2.15130.
- 446 28. Baird MF, Graham SM, Baker JS, et al. Creatine-kinase- and exercise-related muscle damage
447 implications for muscle performance and recovery. *J Nutr Metab* 2012; 2012: 960363. 20120111.
448 DOI: 10.1155/2012/960363.
- 449 29. Vanderthommen M, Chamayou R, Demoulin C, et al. Protection against muscle damage
450 induced by electrical stimulation: efficiency of a preconditioning programme. *Clin Physiol Funct*
451 *Imaging* 2015; 35: 267-274. 20140429. DOI: 10.1111/cpf.12160.

- 452 30. Varela-Rodriguez S, Sanchez-Gonzalez JL, Sanchez-Sanchez JL, et al. Effects of
453 Percutaneous Electrolysis on Endogenous Pain Modulation: A Randomized Controlled Trial Study
454 Protocol. *Brain Sci* 2021; 11 20210617. DOI: 10.3390/brainsci11060801.
- 455 31. Oh-ishi S, Kizaki T, Ookawara T, et al. Endurance training improves the resistance of rat
456 diaphragm to exercise-induced oxidative stress. *Am J Respir Crit Care Med* 1997; 156: 1579-1585.
457 DOI: 10.1164/ajrccm.156.5.96-11035.
- 458 32. Paschalis V, Nikolaidis MG, Fatouros IG, et al. Uniform and prolonged changes in blood
459 oxidative stress after muscle-damaging exercise. *In Vivo* 2007; 21: 877-883.
- 460 33. Hufnagl C, Leisch M, Weiss L, et al. Evaluation of circulating cell-free DNA as a molecular
461 monitoring tool in patients with metastatic cancer. *Oncol Lett* 2020; 19: 1551-1558. 20191209. DOI:
462 10.3892/ol.2019.11192.
- 463 34. Pantel K and Alix-Panabieres C. Liquid biopsy and minimal residual disease - latest advances
464 and implications for cure. *Nat Rev Clin Oncol* 2019; 16: 409-424. DOI: 10.1038/s41571-019-0187-3.
- 465 35. Vittori LN, Tarozzi A and Latessa PM. Circulating Cell-Free DNA in Physical Activities.
466 *Methods Mol Biol* 2019; 1909: 183-197. DOI: 10.1007/978-1-4939-8973-7_14.
- 467 36. Atamaniuk J, Vidotto C, Kinzlbauer M, et al. Cell-free plasma DNA and purine nucleotide
468 degradation markers following weightlifting exercise. *European Journal of Applied Physiology* 2010;
469 110: 695-701. DOI: 10.1007/s00421-010-1532-5.
- 470
- 471