

19 *E-mail: Hepeifeng2006@126.com, Shanxi Key Laboratory of Big Data for Clinical*
20 *Decision, Shanxi Medical University Medical Data Sciences, Shanxi Medical*
21 *University, Taiyuan 030012, China; 13934569928*

22 **Abstract**

23 **Background and Aims:** Observational studies on the association between physical
24 activity (PA) and inflammatory bowel diseases (IBDs), including Crohn's disease (CD)
25 and ulcerative colitis (UC), report inconsistent results. Moreover, the underlying
26 mediator between PA and IBDs remains unknown. We aimed to investigate the causal
27 effect of PA on IBD and the role of BMI as a mediator between PA and IBD.

28 **Methods:** Instrumental variables for the main exposures, i.e., moderate to vigorous
29 intense PA during leisure time (MVPA) and leisure screen time (LST), were extracted
30 from the meta-analysis on genome-wide association studies (GWASs). Summary
31 statistics of IBD, CD, and UC were retrieved from the GWASs on European populations.
32 Univariable Mendelian randomization (UVMR) analysis was performed to investigate
33 the net and individual effects of MVPA and LST on the risk of IBD. Multivariate MR
34 analysis was performed to investigate the effect of mediators on the risk of IBD.

35 **Results:** MR analysis revealed a protective relationship between MVPA and the risk of
36 IBD and CD. Higher genetically-predicted LST was associated with increased risk of
37 IBD and CD. The proportion of the effect of LST on IBD/CD mediated by BMI was
38 determined to be 0.8% and 3.7%. The proportion of the effect of MVPA on IBD/CD
39 mediated by BMI was determined to be 3.5% and 11.0%.

40 **Conclusion:** Our findings indicate a causal relationship between PA and IBD/CD and
41 elucidate the increased risk of IBD/CD due to reduced PA is partially mediated by
42 increased BMI.

43 **Keywords:** Mendelian Randomization; Physical Activity; Inflammatory Bowel Disease.

44

45 **Key messages**

46 **What is already known?**

47 Observational studies have shown that occupations involving more physical labor are
48 associated with a lower risk of IBD compared with sedentary occupations.

49 **What is new here?**

50 The causal effect of PA on IBD and the role of BMI as a mediator between PA and IBD
51 were investigated.

52 **How can this study help patient care?**

53 The incidence of CD can be reduced by promoting lifestyle management, such as
54 reducing recreational sedentary activities and encouraging proper exercise. In addition,
55 individuals who are not physically active should monitor their BMI to prevent the
56 development of CD.

57 **1. Introduction**

58 Inflammatory bowel disease (IBD), including Crohn's disease (CD) and ulcerative
59 colitis (UC), are chronic and life-threatening inflammatory diseases¹. CD manifests as
60 transmural inflammation and longitudinal ulceration and affects the entire
61 gastrointestinal tract, in particular the terminal ileum and adjacent colon, whereas UC
62 manifests as mucosal inflammation and is restricted to the colon^{2 3}. In recent years,
63 breakthroughs in our knowledge of the pathogenesis of these diseases have resulted in
64 the availability of a wider range of therapeutic options for IBD; however, owing to the
65 complex pathogenesis and lack of knowledge regarding the exact cause of the
66 diseases, there exists a therapeutic ceiling⁴. Currently, CD and UC are incurable, and
67 patients often require lifelong treatment with drugs⁵. To improve the quality of life of
68 patients with IBD, determining potential modifiable risk factors and treatments to
69 slow down the progression or even prevent the onset of these diseases is important.

70 Recently, physical activity (PA) has attracted extensive attention as one of the most
71 prevalent modifiable risk factors for diseases worldwide. PA is defined as any
72 mechanical movement produced by skeletal muscular action that results in energy
73 expenditure above basal levels⁶. Early studies have shown that occupations involving
74 more physical labor are associated with a lower risk of IBD compared with sedentary
75 occupations^{7 8}. In two large prospective cohorts of American women, higher levels of
76 PA were associated with a reduced risk of CD compared to lower levels of PA, but no
77 association was found between UC and PA⁹. A meta-analysis also came to the same

78 conclusion¹⁰; however, a study by Chan et al. reported a different result, i.e.¹¹, PA did
79 not show any association with UC or CD. These contradictions in the observational
80 studies indicate that additional studies are required to estimate the actual causal
81 relationships. Furthermore, many observational studies have reported that physical
82 inactivity and increased sedentary time are associated with an increased risk of
83 obesity^{12 13}. Meanwhile, a substantial and consistent body of epidemiological data
84 suggests that obesity is one of the high-risk factors for developing IBD^{14 15}. These
85 findings indicate that the increased risk of CD observed in individuals who engage in
86 lower levels of PA may be partially mediated by weight gain. However, to date, no
87 study has validated this hypothesis.

88 Traditional observational studies form the backbone of our current understanding of
89 the mediating pathways; however, these studies might have been influenced by
90 potential confounding, measurement error, and reverse causality. Thus, the extent to
91 which the association observed between exposure and outcome and its intermediates
92 is influenced by bias, such as confounding, measurement error, and reverse causality,
93 remains unclear. These limitations can be overcome by applying Mendelian
94 randomization (MR), which is an accepted method of investigating causal
95 relationships in observational data. MR uses single-nucleotide polymorphisms (SNPs)
96 elucidated by genome-wide association studies (GWASs) to be strongly associated
97 with an exposure as instrumental variables (IVs) to determine whether a causal
98 relationship exists between an exposure and outcome. Since genetic variants are

99 randomly allocated at conception prior to disease onset, MR analysis efficiently
100 avoids potential confounding factors and reverse causality¹⁶. As a recent development
101 in the MR, multivariate MR (MVMR) method is used to investigate mediation.

102 In this study, we aimed to determine potential causal relationships between self-
103 reported moderate to vigorous intense PA during leisure time (MVPA)/leisure screen
104 time (LST) and the risk of IBD, including that of its two subtypes, i.e., CD and UC,
105 by analyzing the most recent GWAS data using the univariable two-sample MR
106 (UVMR) method. Furthermore, using the MVMR method, we aimed to determine
107 whether BMI mediates the effects of MVPA/LST on IBD, including CD and UC, and
108 the proportion of the effect that is mediated by BMI.

109

110 **2. Methods**

111 **2.1 Data Sources**

112 **2.1.1 Summary-level data of MVPA and LST**

113 Summary statistics of the main exposures analyzed in this study, i.e., MVPA
114 (Moderate to vigorous intense physical activity during leisure time) and LST (leisure
115 screen time), were extracted from the latest published meta-analysis of GWASs on
116 self-reported MVPA and LST. The meta-analysis analyzed 51 GWASs and included a
117 total of 703,901 European individuals (MVPA: $n = 608,595$; LST: $n = 526,725$)¹⁷
118 (summarized in Table 1). Activities such as swimming and jogging were regarded as
119 MVPA, and activities such as watching TV, playing video games, and sitting at the

120 computer were regarded as LST. The results of the GWASs were adjusted for
121 principal covariates, including assessment center, genotyping array, age, and season.

122 **2.1.2 Summary-level data of IBD**

123 Summary statistics of IBD were extracted from a meta-analysis of GWASs of IBD
124 that included a total of 25,042 clinically diagnosed cases of IBD (with 34,915
125 controls), 12,194 clinically diagnosed cases of CD (with 28,072 controls), and 12,366
126 clinically diagnosed cases of UC (with 33,609 controls) (summarized in Table 1). The
127 first 10 principal components for each cohort were adjusted¹⁸.

128 **2.1.3 Summary-level data of BMI**

129 Genome-wide significant ($P < 5 \times 10^{-8}$) genetic variants associated with BMI were
130 extracted from a meta-analysis of GWASs, which included a total of 681,275
131 individuals of European ancestry, published by the Genetic Investigation of
132 Anthropometric Traits consortium (summarized in Table 1). Age, age squared, and
133 study-specific covariates, including principal components for adjusting for population
134 stratification, were adjusted¹⁹.

135 **2.2 Selection of IVs**

136 For MR analysis, we included IVs that met the following three assumptions (Fig 1): (a)
137 the IV must be robustly associated with the exposure; (b) the IV must be unrelated to
138 any known confounders; and (c) the IV must be associated with the risk of outcome
139 only via its effects on the exposure. First, SNPs associated with PA were extracted,
140 with the genome-wide significance threshold as $P < 5 \times 10^{-8}$ for MVPA and LST.

141 Second, SNPs that satisfied the relevance assumption ($r^2 = 0.01$, clumping distance =
142 10,000 kb) were regarded as being correlated with the MVPA and LST and to exhibit
143 genome-wide significance. Additionally, they were validated to be independent and
144 not in linkage disequilibrium. Moreover, only data pertaining to individuals of
145 European ancestry were analyzed in this study, and population stratification did not
146 violate the independence assumption at any instance.

147 **2.3 Statistical analysis**

148 **2.3.1 Total, direct, and indirect effects**

149 First, UVMR analysis was performed to determine the net effect of MVPA and LST
150 on IBD (including CD and UC), which was regarded as the total effect. Next, UVMR
151 analysis was performed again to estimate the effect of MVPA and LST on BMI.
152 Subsequently, MVMR analysis was performed to determine the effect of mediators on
153 IBD (including CD and UC) after adjusting for MVPA and LST.

154 The total effect of an exposure on an outcome can be broken down into direct and
155 indirect effects. Direct effect is defined as the effect of exposures on an outcome that
156 is not mediated through a causal intermediate, whereas indirect effect is defined as the
157 effect of an exposure on an outcome through a candidate mediator (Fig 2). Herein, the
158 indirect effect was calculated using the product of the coefficients method, wherein,
159 after adjusting for MVPA and LST, the MR estimate of the effect of MVPA and LST
160 on BMI was multiplied with the MR estimate of the impact of BMI on IBD (including
161 CD and UC). Furthermore, the proportion of the effect mediated by BMI was

162 calculated by dividing the indirect effect by the total effect. The confidence intervals
163 (CIs) and standard errors for the proportion of the effect mediated by BMI were
164 estimated using the delta method.

165 **2.3.2 UVMR and MVMR analysis**

166 To evaluate the effect of MVPA and LST on the risk of IBD (including that of CD and
167 UC), we used the fixed-effects inverse variance-weighted (IVW) method as the main
168 UVMR and MVMR method. The IVW method is used to estimate the odds ratio (OR)
169 for genetic variants and is the most widely used method in MR studies. Herein, for
170 IVW analysis, we used the Wald estimator method to estimate the causal effect of
171 each SNP and determined the overall effect by meta-analyzing all the estimates.

172 **2.3.3 MR sensitivity analyses**

173 Sensitivity analyses were performed to validate the robustness of the IVW results and
174 determine pleiotropy and the potential genetic outliers. A weighted median estimator
175 method, which is a modification of the standard weighted median MR, was employed
176 to examine the median effects of all the SNPs and resulting in unbiased estimates of
177 effects under the assumption that >50% of the information contributing to the analysis
178 comes from valid IVs. MR-Egger method was used to test directional pleiotropy and
179 causal effects that on average differed from zero and to estimate the causal effects
180 under the InSIDE (Instrument Strength Independent of Direct Effect) assumption. In
181 MR-Egger regression, the slope is used to estimate the causal effect of the exposure
182 on the outcome when it is consistent with the strength of the instrument independent

183 of the direct effects assumption; in addition, deviation of the intercept of MR–Egger
184 regression from zero indicates the presence of pleiotropy. Despite the statistically
185 lower efficiency (i.e., a wider range of CIs), the MR–Egger method provides a causal
186 estimate (i.e., regression slope) corrected for directional horizontal pleiotropy. The
187 MR pleiotropy residual sum and outlier method (MR PRESSO) was employed to
188 detect significant outliers, and outliers were removed to correct horizontal pleiotropic
189 effects. The global test was used to assess whether horizontal pleiotropy existed
190 among the instruments. Furthermore, Cochran Q test was used to evaluate the
191 heterogeneity among the causal effects of each variant. $P < 0.10$ was regarded to
192 indicate statistically significant heterogeneity. We also performed “leave-one-out”
193 analysis to determine and assess the potential impact of specific variants on the
194 estimates by excluding one SNP each turn and performing IVW analysis on the other
195 SNPs.

196 The results of the MR analyses are represented as ORs, and 95% CIs were determined
197 for the risk of outcomes for the corresponding unit changes in exposure. The OR of
198 the outcome risk per log OR change in exposure was interpreted as the final effect
199 estimates, given that all exposure variables in the current analysis were binary. MR
200 analyses were performed using the “TwoSampleMR” package in the R software
201 (version 4.1.2).

202

203 **3. Results**

204 **3.1 Total and direct effects of MVPA and LST on IBD, CD, and UC**

205 In UVMR, IVW analysis suggested a protective causal relationship between MVPA
206 and IBD as well as MVPA and CD (Table 2, Fig 3 A-B). For each S.D. increase in
207 MVPA, the relative odds of IBD decreased by 33.5% (OR = 0.665, 95% CI = 0.465–
208 0.952, P = 0.026) and the relative odds of CD decreased by 46.7% (OR = 0.533, 95%
209 CI = 0.302–0.942, P = 0.030). IVW analysis showed that a higher genetically-
210 predicted LST was associated with increased risk of IBD and CD (Table3,
211 Supplementary Fig 1 A-B). For each S.D. increase in LST, the relative odds of IBD
212 (OR = 1.213, 95% CI = 1.063–1.384, P = 0.004) increased by 21.3% and the relative
213 odds of CD (OR = 1.245, 95% CI = 1.070–1.449, P = 0.005) increased by 24.5%. On
214 the contrary, MVPA did not show a statistically significant association with a reduced
215 risk of developing UC (OR = 0.761, 95% CI = 0.489–1.183, P = 0.225) (Table 2, Fig
216 3 C). Furthermore, no statistically significant evidence of a relationship was observed
217 between LST and UC (OR = 1.122, 95% CI = 0.950–1.325, P = 0.176) (Table 3,
218 Supplementary Fig 1 C). Similar causal estimates were observed for IBD (including
219 CD and UC) using the other MR methods, including the weighted median and MR–
220 Egger methods.

221 In the MVMR analyses, a causal relationship between MVPA and IBD was observed
222 after adjusting for BMI. For each S.D. increase in MVPA, the relative odds of IBD
223 decreased by 32.3% (OR = 0.677, 95% CI = 0.464–0.986, P = 0.042) and the relative
224 odds of CD decreased by 42.2% (OR = 0.578, 95% CI = 0.356–0.936, P = 0.026)

225 (Table 4). On the contrary, the causal relationship between LST and IBD (OR =1.074,
226 95% CI = 0.831–1.388, P = 0.586) or LST and CD (OR = 1.107, 95% CI = 0.797–
227 1.537, P = 0.543) did not show statistical significance after adjusting for BMI (Table
228 4).

229 **3.2 Effect of MVPA and LST on BMI**

230 To explore the effect of MVPA and LST on IBD (including CD and UC) mediated
231 through BMI, we performed UVMR analysis to estimate the effect of MVPA and LST
232 on BMI. The results showed that higher levels of MVPA were associated with lower
233 BMI and that higher levels of LST were associated with higher BMI. For each SD
234 increase in MVPA, the BMI was observed to decrease by 0.154 SD units (OR = 0.846,
235 95% CI = 0.739–0.969, P = 0.016), and for each SD increase in LST, the BMI was
236 observed to increase by 0.148 SD units (OR = 1.148, 95% CI = 1.094–1.204, P = 1.48
237 $\times 10^{-8}$).

238 **3.3 Effect of BMI on IBD, CD, and UC after adjusting for MVPA and LST**

239 In the MVMR analyses of MVPA–BMI–IBD and MVPA–BMI–CD, the conditional
240 F-statistics for MVPA and BMI were both >10. After accounting for MVPA, the direct
241 effect of BMI on IBD was determined to be OR 1.020 (95% CI = 0.894–1.163, P =
242 0.769), and the proportion mediated by BMI was determined to be 0.8%. Likewise,
243 after accounting for MVPA, the direct effect of BMI on CD was determined to e OR
244 1.150 (95% CI = 0.971–1.361, P = 0.104), and the proportion mediated by BMI was
245 determined to be 3.7%.

246 In the MVMR analyses of LST–BMI–IBD and LST–BMI–CD, the conditional F-
247 statistics for LST and BMI were both >10 . After accounting for LST, the direct effect
248 of BMI on IBD was determined to be OR 1.051 (95% CI = 0.901–1.226, $P = 0.528$),
249 and the proportion mediated by BMI was determined to be 3.5%. After accounting for
250 LST, the direct effect of BMI on CD was determined to be OR 1.192 (95% CI =
251 0.979–1.452, $P = 0.081$), and the proportion mediated by BMI was determined to be
252 11.0% of the total effect (Table 4).

253 **3.4 Sensitivity analyses**

254 We performed a series of sensitivity analyses, including the MR–Egger intercept test,
255 Cochran Q test, and MR–PRESSO global test, to assess the robustness of our results.
256 In the MR–Egger intercept tests, P values > 0.05 were not likely to exhibit horizontal
257 pleiotropy. Even though heterogeneity was observed in the Cochran Q test, the MR
258 estimates did not invalidate random-effect IVW. Furthermore, the pooled
259 heterogeneity was balanced. Altogether, our results were less likely to be confused by
260 horizontal pleiotropy, heterogeneity (Fig 3 D-F, Supplementary Fig 1 D-F), or
261 individual SNP effects, as demonstrated by the leave-one-out analyses (Fig 3 G-I,
262 Supplementary Fig 2 A-C).

263

264 **4. Discussion**

265 In this study, we used the UVMR and MVMR methods to analyze data from large-
266 scale GWASs. First, our results suggest an effect of genetically-predicted reduced

267 MVPA, increased LST, and increased BMI on the risk of IBD and CD. However, our
268 results suggest no association between PA/ LST and risk of UC. Second, our study
269 provides robust evidence that the effect of MVPA/LST on IBD and CD is partially
270 mediated by BMI. Altogether, our study reveals the complex association between
271 MVPA/LST, BMI, and IBD, including its subtypes; moreover, our findings address
272 the gap in knowledge on this topic in the general population.

273 Several observational studies have investigated the association between PA and the
274 risk of IBD. The Nurses' Health Study I and II reported that women aged between 25
275 to 55 years who engaged in at least 27 metabolic equivalent tasks (MET) hours of PA
276 per week exhibited an HR of 0.56 (0.37; 0.84) for the risk of developing CD
277 compared with women who were inactive; however, these studies reported no
278 association between PA and the risk of UC⁹. These findings are consistent with those
279 of our study. However, a study on the European Prospective Investigation into Cancer
280 and Nutrition cohort did not report an association between PA and the risk of CD and
281 UC¹¹. These conflicting results may be because the cohort included only 75 CD cases
282 and 177 UC cases and because the study was unable to account for long-term changes
283 in PA. Moreover, this contradictory result may be attributed to the analysis method
284 itself. Observational studies may be influenced by unavoidable clinical confounders,
285 which influence the exposures and outcomes, thereby making it difficult to accurately
286 determine causal relationships.

287 Despite long-standing clinical observations^{11 20}, the causal genetic association between

288 BMI and CD was not discovered until recently²¹. However, no previous study has
289 investigated whether increased BMI mediates the effect of MVPA/LST on the risk of
290 CD. The results of our study suggest an indirect effect of MVPA/LST on the risk of
291 CD that is mediated by BMI. Furthermore, in the context of MR, this effect is highly
292 unlikely to have been confounded by other factors. Our MR analysis indicates that
293 approximately 4% of the effect of reduced MVPA on increased CD risk is mediated
294 by BMI and that approximately 11% of the effect of increased LST on increased CD
295 risk is mediated by BMI. The difference in the mediated proportion may be attributed
296 to the fact that compared to reduced MVPA, increased LST results in lower energy
297 expenditure and higher energy intake (particularly snacking), thereby resulting in a
298 greater shift in energy balance to excess energy and a more significant increase in
299 BMI^{22 23}.

300 Our in-depth analyses of the mediating effect of BMI elicited potential explanations
301 for this causal association between MVPA/LST and IBD/CD. Inflammatory T cells
302 are known to direct innate cells to maintain a constant hypersensitivity to microbial
303 antigens, tissue injury, and chronic intestinal inflammation. Therefore, the
304 accumulation of inflammatory T cells in the intestine is considered to be one of the
305 main pathogenic mechanisms of IBD²⁴. A substantial body of research suggests that
306 obesity may contribute to IBD and CD by altering innate and intrinsic immune
307 responses. In obese individuals, adipocytes can synthesize and secrete several
308 biologically active substances called adipokines, such as lipocalin adiponectin (APN),

309 IL-1, IL-6, IL-8, IFN γ , TNF- α , and leptin^{25 26}. Among these, leptin and lipocalin
310 adiponectin are of particular interest. The balance between leptin and adiponectin, i.e.,
311 the leptin–adiponectin ratio, is important for the maintenance of intestinal immune
312 homeostasis²⁶. Leptin exerts a notable pro-inflammatory effect on the immune system
313 and can be released when stimulated by inflammation²⁷. In contrast, lipocalin has an
314 inhibitory effect on the expression of adhesion molecules and pro-inflammatory
315 mediators²⁶. At the onset of obesity, the leptin–adiponectin ratio is altered, wherein the
316 level of leptin is elevated. Increased leptin secretion induces the proliferation of
317 inflammatory CD4 T cells and results in an increase of type 1 T helper (Th1) cells and
318 the suppression of Th2 cytokines²⁸. In addition, TNF- α , IL-1 β , and IL-6 have been
319 demonstrated to recruit CD4 T cells and enhance Th1/17 immunity; moreover, IFN- γ
320 has been shown to induce Th17 cell development²⁹⁻³¹.

321 IBD may be caused by inflammatory T cells influencing the function of innate cells,
322 such as epithelial cells, fibroblasts, and phagocytes, which results in constant
323 hyperresponsiveness to microbial antigens being activated, thereby causing intestinal
324 tissue injury and chronic intestinal inflammation^{24 32 33}. Under these conditions,
325 intestinal permeability increases, and microbial components cross the barrier,
326 inducing activation of DCs and macrophages, which in turn induce the infiltration of
327 more inflammatory CD4 T-cells into the intestinal tissues^{24 34}. Meanwhile,
328 lipopolysaccharide present on the surface of microbes activates the NF- κ B pathway,
329 which results in the elevation of TLR-4 expression in adipocytes and preadipocytes,

330 leading to increased production of adipokines, and creating a positive inflammatory
331 feedback loop that further exacerbates the development of IBD^{26 35}. Th1 and Th17-
332 dominant immune cells have been shown to play a central role in the pathogenesis of
333 CD, whereas Th2-type immune cells were shown to play an important role in UC³⁶.
334 This may explain why the occurrence of obesity leads mainly to IBD and CD rather
335 than UC.

336 Taken together, our findings validated that increasing moderate to vigorous intense PA
337 and reducing LST prevent CD and that this effect is partially mediated by BMI.
338 Therefore, the incidence of CD can be reduced by promoting lifestyle management,
339 such as reducing recreational sedentary activities and encouraging proper exercise. In
340 addition, individuals who are not physically active should monitor their BMI to
341 prevent the development of CD. This practice can reduce the risk of CD development
342 as well as the burden on healthcare and general public health returns in terms of
343 human productivity³⁷.

344 This study has several strengths. First, this study is based on the largest and most up-
345 to-date GWAS database on PA and is the first to use MR to analyze whether BMI
346 mediates the effects of MVPA/LST on the risk of IBD. Second, we assessed the causal
347 effects of MVPA and LST on the risk of IBD as a whole, as well as the two main
348 subtypes of IBD, i.e., UC and CD, using an MR approach, which reduces unobserved
349 confounding and is less susceptible to reverse causation and exposures that are non-
350 differentially measured with error. Nevertheless, our study also has several limitations.

351 First, the genetic instruments and GWASs used in this study were based on
352 individuals of European ancestry; therefore, our results cannot be generalized to other
353 ethnic groups. Second, our MR analysis only yielded genetic evidence. In the future,
354 animal studies or population-based observational studies should be conducted to
355 validate the causality, explore potential mechanisms of this possible causal association,
356 and further explore related mechanisms. Third, the self-reported PA data may be
357 affected by the participants' memorizing and cognitive abilities, such as awareness of
358 the beneficial effects of PA, which could have resulted in misclassification and
359 outcome bias.

360 In conclusion, by leveraging large-scale genetic summary-level data, we found that
361 elevated BMI partially mediates the effect of MVPA/LST on the risk of IBD and CD.
362 Our study findings may provide a strategy for preventing IBD and CD. Further studies
363 are warranted to decipher other potential mechanisms linking MVPA/LST to IBD and
364 CD.

365 **Declarations**

366 **Ethics approval and consent to participate**

367 Since the analysis used published studies or publicly available GWAS summary data,
368 containing no personal identifications, no ethical committee approval was required. The
369 informed consent from participants, and approval by ethical committees involved in the
370 original studies.

371 **Consent for publication**

372 Not applicable.

373 **Availability of data and materials**

374 LST and MVPA data underlying this article are available in the NHGRI-EBI GWAS
375 Catalog, and can be accessed with IDs GCST90104339 and GCST90104341,
376 respectively. IBD, CD, UC and BMI data are available in the IEU OpenGWAS, and
377 can be accessed with IDs ebi-a-GCST004131, ebi-a-GCST004132, ebi-a-
378 GCST004133, ebi-b-40, respectively.

379 **Competing interests**

380 The authors declare that they have no competing interests.

381 **Funding**

382 This work was supported by the National Social Science Fund of China (21BTQ050).

383 **Authors' contributions**

384 Minjing Chang, Yuhui Zhao and Jun Qiao designed the study. Minjing Chang, Yuhui
385 Zhao, Jun Qiao wrote the manuscript. Minjing Chang, Yuhui Zhao, Jun Qiao acquired

386 the data, assessed quality, analyzed and interpreted the data. All authors were involved
387 in drafting of the manuscript and critical revision of the manuscript, including the
388 authorship list. All authors approved the final draft of the manuscript. Prof. He had
389 full access to all of the data in the study and takes responsibility for the integrity and
390 the accuracy of the data analysis.

391 **Acknowledgments**

392 We are indebted to the staff and participants of the Genetic Investigation of
393 Anthropometric Traits consortium, IEU OpenGWAS, the NHGRI-EBI GWAS Catalog
394 and the genome-wide association study consortia for their important contributions,
395 without whom this effort would not have been possible.

396 **Abbreviations**

397 Inflammatory bowel disease (IBD); Crohn's disease (CD); ulcerative colitis (UC);
398 physical activity (PA); Mendelian randomization (MR); single-nucleotide
399 polymorphisms (SNPs); genome-wide association studies (GWASs); instrumental
400 variables (IVs); multivariate MR (MVMR); moderate to vigorous intense PA during
401 leisure time (MVPA); leisure screen time (LST); univariable MR (UVMR);
402 confidence intervals (CIs); inverse variance-weighted (IVW); odds ratio (OR);
403 InSIDE (Instrument Strength Independent of Direct Effect); MR pleiotropy residual
404 sum and outlier method (MR PRESSO); metabolic equivalent tasks (MET); type 1 T
405 helper (Th1)

406 **Writing Assistance**

407 Not applicable

408 **Synopsis**

409 The main point of this article is that there is a causal relationship between PA and

410 IBD/CD and that the portion of the increased risk of IBD/CD due to decreased PA is

411 mediated by increased BMI.

412 **References**

- 413 1. Guan Q. A Comprehensive Review and Update on the Pathogenesis of
414 Inflammatory Bowel Disease. *Journal of immunology research*.
415 2019;2019:7247238.
- 416 2. Seyedian SS, Nokhostin F, Malamir MD. A review of the diagnosis, prevention,
417 and treatment methods of inflammatory bowel disease. *Journal of medicine and*
418 *life*. 2019;12:113-22.
- 419 3. Baumgart DC, Sandborn WJ. Inflammatory bowel disease: clinical aspects and
420 established and evolving therapies. *Lancet (London, England)*. 2007;369:1641-57.
- 421 4. Na SY, Moon W. Perspectives on Current and Novel Treatments for Inflammatory
422 Bowel Disease. *Gut and liver*. 2019;13:604-16.
- 423 5. Cai Z, Wang S, Li J. Treatment of Inflammatory Bowel Disease: A Comprehensive
424 Review. *Frontiers in medicine*. 2021;8:765474.
- 425 6. Sharif K, Watad A, Bragazzi NL, et al. Physical activity and autoimmune diseases:
426 Get moving and manage the disease. *Autoimmunity reviews*. 2018;17:53-72.
- 427 7. Bøggild H, Tüchsen F, Orhede E. Occupation, employment status and chronic
428 inflammatory bowel disease in Denmark. *International journal of epidemiology*.
429 1996;25:630-7.
- 430 8. Sonnenberg A. Occupational distribution of inflammatory bowel disease among
431 German employees. *Gut*. 1990;31:1037-40.
- 432 9. Khalili H, Ananthakrishnan AN, Konijeti GG, et al. Physical activity and risk of

- 433 inflammatory bowel disease: prospective study from the Nurses' Health Study
434 cohorts. *BMJ (Clinical research ed)*. 2013;347:f6633.
- 435 10. Wang Q, Xu KQ, Qin XR, et al. Association between physical activity and
436 inflammatory bowel disease risk: A meta-analysis. *Digestive and liver disease :
437 official journal of the Italian Society of Gastroenterology and the Italian
438 Association for the Study of the Liver*. 2016;48:1425-31.
- 439 11. Chan SS, Luben R, Olsen A, et al. Body mass index and the risk for Crohn's
440 disease and ulcerative colitis: data from a European Prospective Cohort Study
441 (The IBD in EPIC Study). *The American journal of gastroenterology*.
442 2013;108:575-82.
- 443 12. Silva B, Silva I, Ekelund U, et al. Associations of physical activity and sedentary
444 time with body composition in Brazilian young adults. *Scientific reports*.
445 2019;9:5444.
- 446 13. Myers A, Gibbons C, Finlayson G, et al. Associations among sedentary and active
447 behaviours, body fat and appetite dysregulation: investigating the myth of
448 physical inactivity and obesity. *British journal of sports medicine*. 2017;51:1540-
449 44.
- 450 14. Harpsøe MC, Basit S, Andersson M, et al. Body mass index and risk of
451 autoimmune diseases: a study within the Danish National Birth Cohort.
452 *International journal of epidemiology*. 2014;43:843-55.
- 453 15. Khalili H, Ananthakrishnan AN, Konijeti GG, et al. Measures of obesity and risk

- 454 of Crohn's disease and ulcerative colitis. *Inflammatory bowel diseases*.
455 2015;21:361-8.
- 456 16. Davey Smith G, Hemani G. Mendelian randomization: genetic anchors for causal
457 inference in epidemiological studies. *Human molecular genetics*. 2014;23:R89-98.
- 458 17. Wang Z, Emmerich A, Pillon NJ, et al. Genome-wide association analyses of
459 physical activity and sedentary behavior provide insights into underlying
460 mechanisms and roles in disease prevention. *Nature genetics*. 2022;54:1332-44.
- 461 18. de Lange KM, Moutsianas L, Lee JC, et al. Genome-wide association study
462 implicates immune activation of multiple integrin genes in inflammatory bowel
463 disease. *Nature genetics*. 2017;49:256-61.
- 464 19. Yengo L, Sidorenko J, Kemper KE, et al. Meta-analysis of genome-wide
465 association studies for height and body mass index in ~700000 individuals of
466 European ancestry. *Human molecular genetics*. 2018;27:3641-49.
- 467 20. Singh S, Dulai PS, Zarrinpar A, et al. Obesity in IBD: epidemiology, pathogenesis,
468 disease course and treatment outcomes. *Nature reviews Gastroenterology &*
469 *hepatology*. 2017;14:110-21.
- 470 21. Carreras-Torres R, Ibáñez-Sanz G, Obón-Santacana M, et al. Identifying
471 environmental risk factors for inflammatory bowel diseases: a Mendelian
472 randomization study. *Scientific reports*. 2020;10:19273.
- 473 22. Otten JJ, Jones KE, Littenberg B, et al. Effects of television viewing reduction on
474 energy intake and expenditure in overweight and obese adults: a randomized

- 475 controlled trial. Archives of internal medicine. 2009;169:2109-15.
- 476 23. Frydenlund G, Jørgensen T, Toft U, et al. Sedentary leisure time behavior,
477 snacking habits and cardiovascular biomarkers: the Inter99 Study. European
478 journal of preventive cardiology. 2012;19:1111-9.
- 479 24. Saez A, Gomez-Bris R, Herrero-Fernandez B, et al. Innate Lymphoid Cells in
480 Intestinal Homeostasis and Inflammatory Bowel Disease. International journal of
481 molecular sciences. 2021;22.
- 482 25. Dandona P, Aljada A, Chaudhuri A, et al. Metabolic syndrome: a comprehensive
483 perspective based on interactions between obesity, diabetes, and inflammation.
484 Circulation. 2005;111:1448-54.
- 485 26. Bilski J, Mazur-Bialy A, Wojcik D, et al. Role of Obesity, Mesenteric Adipose
486 Tissue, and Adipokines in Inflammatory Bowel Diseases. Biomolecules. 2019;9.
- 487 27. Genser L, Aguanno D, Soula HA, et al. Increased jejunal permeability in human
488 obesity is revealed by a lipid challenge and is linked to inflammation and type 2
489 diabetes. The Journal of pathology. 2018;246:217-30.
- 490 28. Weidinger C, Ziegler JF, Letizia M, et al. Adipokines and Their Role in Intestinal
491 Inflammation. Frontiers in immunology. 2018;9:1974.
- 492 29. Pesce B, Ribeiro CH, Larrondo M, et al. TNF- α Affects Signature Cytokines of
493 Th1 and Th17 T Cell Subsets through Differential Actions on TNFR1 and TNFR2.
494 International journal of molecular sciences. 2022;23.
- 495 30. Geginat J, Paroni M, Kastirr I, et al. Reverse plasticity: TGF- β and IL-6 induce

- 496 Th1-to-Th17-cell transdifferentiation in the gut. *European journal of immunology*.
497 2016;46:2306-10.
- 498 31. Griffiths JS, Camilli G, Kotowicz NK, et al. Role for IL-1 Family Cytokines in
499 Fungal Infections. *Frontiers in microbiology*. 2021;12:633047.
- 500 32. Tindemans I, Joosse ME, Samsom JN. Dissecting the Heterogeneity in T-Cell
501 Mediated Inflammation in IBD. *Cells*. 2020;9.
- 502 33. Duchmann R, Kaiser I, Hermann E, et al. Tolerance exists towards resident
503 intestinal flora but is broken in active inflammatory bowel disease (IBD). *Clinical
504 and experimental immunology*. 1995;102:448-55.
- 505 34. Preza GC, Yang OO, Elliott J, et al. T lymphocyte density and distribution in
506 human colorectal mucosa, and inefficiency of current cell isolation protocols. *PloS
507 one*. 2015;10:e0122723.
- 508 35. Kruis T, Batra A, Siegmund B. Bacterial translocation - impact on the adipocyte
509 compartment. *Frontiers in immunology*. 2014;4:510.
- 510 36. Schirmer M, Garner A, Vlamakis H, et al. Microbial genes and pathways
511 in inflammatory bowel disease. *Nature reviews Microbiology*. 2019;17:497-511.
- 512 37. Shafer LA, Shaffer S, Witt J, et al. IBD Disability Index Is Associated With Both
513 Direct and Indirect Costs of Inflammatory Bowel Disease. *Inflammatory bowel
514 diseases*. 2022;28:1189-97.

515 **Table 1: Characteristics of GWAS included in MR analyses.**

Trait/phenotype	GWAS consortium	Ethnicity	Sample size (total or case/control subjects)	PMID
MVPA	MTAG	European	608,595	36071172
LST	MTAG	European	526,725	36071172
IBD	IBD meta-GWAS	European	25,042/34,915	28067908
CD	CD meta-GWAS	European	12,194/28,072	28067908
UC	UC meta-GWAS	European	12,366/33,609	28067908
BMI	GIANT	European	681,275	30124842

516

517 GWAS data sets included in MR analyses. PMID, PubMed identifier. Abbreviations: MVPA, moderate to vigorous intense physical activity
518 during leisure time. LST, leisure screen time. IBD, inflammatory bowel disease. CD, Crohn's disease. UC, ulcerative colitis. BMI, Body Mass
519 Index.

520 **Table 2. The causal effect of MVPA on IBD, CD, and UC.**

exposure	outcome	SNPs	MR methods	OR	95%CI	Pval	Q_pval	Intercept_pval
			IVW	0.665	0.465,0.952	0.026	0.315	
	IBD	9	MR-Egger	0.364	0.056,2.353	0.324	0.267	0.538
			WM	0.671	0.424,1.062	0.088		
			IVW	0.533	0.302,0.942	0.030	0.079	
MVPA	CD	9	MR-Egger	1.076	0.054,21.636	0.963	0.057	0.654
			WM	0.588	0.320,1.083	0.089		
			IVW	0.761	0.489,1.183	0.225	0.368	
	UC	9	MR-Egger	0.096	0.011,0.809	0.068	0.668	0.093
			WM	0.704	0.396,1.254	0.234		

521

522 The Q_pval was executed by the MR-Egger and IVW methods to detect heterogeneity. The intercept p-value was derived from the pleiotropy

523 test of MR-Egger regression. Abbreviations: MVPA, moderate to vigorous intense physical activity during leisure time. IBD, inflammatory

524 bowel disease. CD, Crohn's disease. UC, ulcerative colitis.

525

526 **Table 3. The causal effect of LST on IBD, CD, and UC.**

exposure	outcome	SNPs	MR methods	OR	95%CI	Pval	Q_pval	Intercept_pval
LST	IBD	85	IVW	1.213	1.063,1.384	0.004	0.027	0.698
			MR-Egger	1.079	0.591,1.973	0.804	0.024	
			WM	1.163	0.978,1.382	0.088		
	CD	86	IVW	1.245	1.070,1.449	0.005	0.351	0.313
			MR-Egger	1.765	0.884,3.526	0.111	0.353	
			WM	1.213	0.973,1.513	0.086		
			IVW	1.122	0.950,1.325	0.176	0.026	
	UC	87	MR-Egger	0.800	0.376,1.702	0.564	0.026	0.371
			WM	1.107	0.897,1.367	0.342		

527

528 The Q_pval was executed by the MR-Egger and IVW methods to detect heterogeneity. The intercept p-value was derived from the pleiotropy

529 test of MR-Egger regression. Abbreviations: LST, leisure screen time. IBD, inflammatory bowel disease. CD, Crohn's disease. UC, ulcerative

530 colitis.

531

532 **Table 4: Mediation analysis in our research.**

Exposure	Mediator	Outcome	a	se_a	b	se_b	c'	se_c'	a*b	se_a*b	c	Proportion mediated
MVPA	BMI	IBD	-0.167	0.069	0.020	0.067	-0.390	0.192	-0.003	0.011	-0.407	0.008
MVPA	BMI	CD	-0.167	0.069	0.140	0.086	-0.549	0.246	-0.023	0.017	-0.628	0.037
LST	BMI	IBD	0.138	0.024	0.050	0.079	0.071	0.131	0.007	0.011	0.193	0.035
LST	BMI	CD	0.138	0.024	0.176	0.101	0.102	0.167	0.024	0.014	0.219	0.110

533

534 **a** represents an estimate of the association between exposure and mediator in a linear regression model535 **b** represents an estimate of the association between mediator and outcome, conditional on exposure in a logistic regression model536 **c'** represents an estimate of the direct effect between exposure and outcome, conditional on the mediator in a logistic regression model537 **a*b** represents an estimate of the indirect effect of the mediator on outcome538 **c** represents an estimate of the association between exposure and outcome in the results of two samples539 **proportion mediated** is calculated by $a*b / c$

540 standard errors (se) were calculated using the delta method.

541 Abbreviations: MVPA, moderate to vigorous intense physical activity during leisure time. LST, leisure screen time. IBD, inflammatory bowel
542 disease. CD, Crohn's disease. UC, ulcerative colitis. BMI, Body Mass Index.

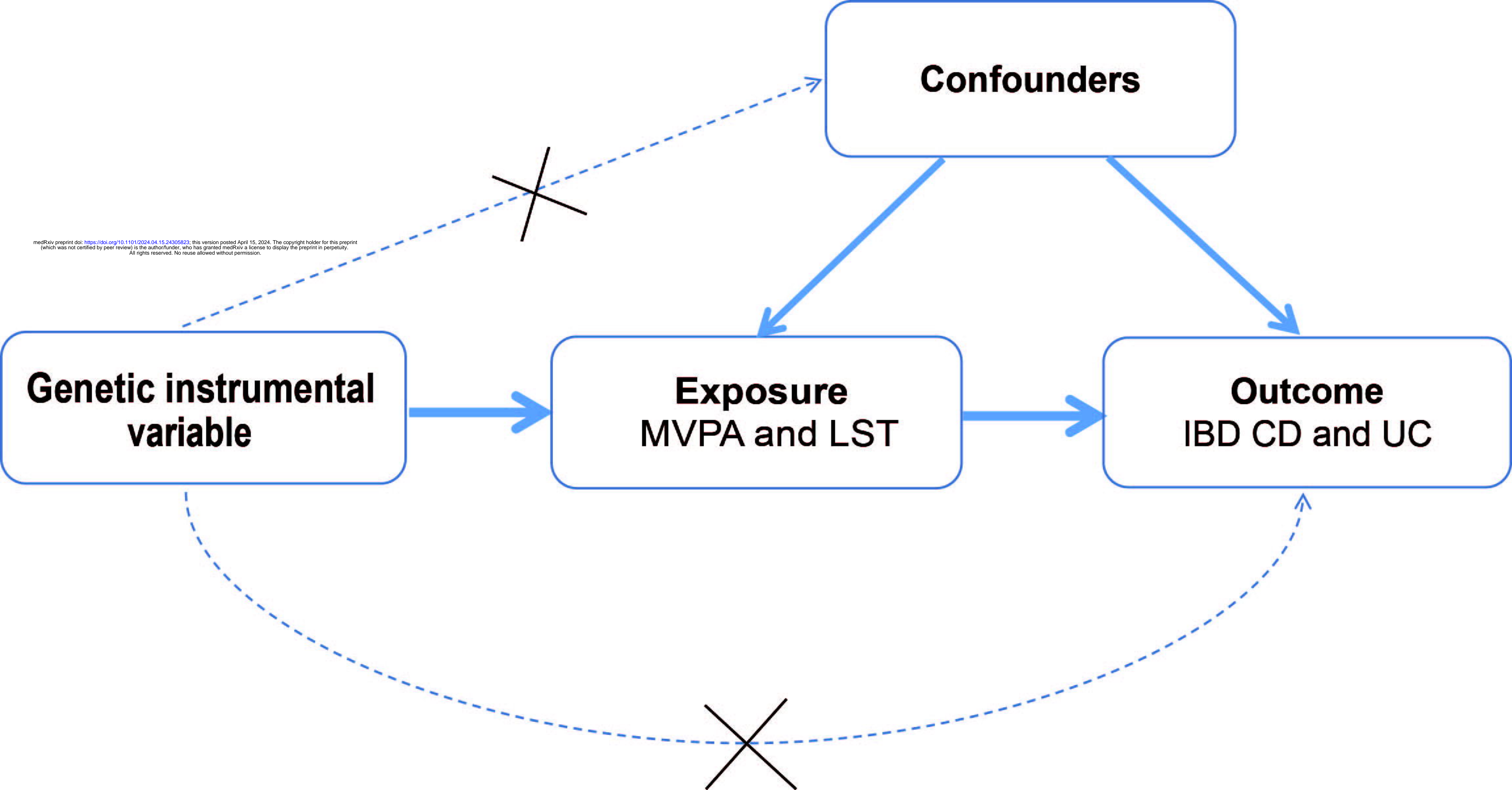
543 **Fig 1: Mendelian randomization model of exposure and outcome.** The design is under the assumption that the genetic instrumental variables
544 are associated with exposure, but not with confounders, and the genetic instrumental variable influence outcome only through exposure. Genetic
545 instrumental variable indicates single nucleotide polymorphism.

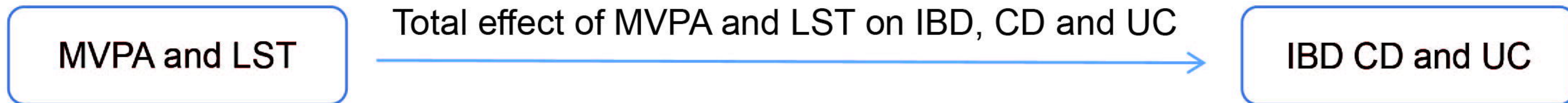
546 **Fig 2: Direct acyclic graph to illustrate total, direct, and indirect effects of MVPA and LST on IBD, CD, and UC.** Directed acyclic graphs
547 demonstrating the hypothesized direction for the total effect of MVPA and LST on IBD, CD and UC (A) and the hypothesized direction for the
548 effect of MVPA and LST on BMI (B), which may partially mediate the effect of MVPA and LST on IBD, CD and UC.

549 **Fig 3: Scatter plots, funnel plots and leave-one-out analysis for the association of MVPA on IBD, CD and UC.** (A-C) Scatter plots for IVW,
550 MR-Egger and WM analysis methods demonstrating the effect of MVPA on IBD (A), CD (B) and UC (C). (D-F) Funnel plot of MVPA on IBD
551 (D), CD (E) and UC (F) to suggest no evidence of substantial heterogeneity. (G-I) Leave-one-out analysis to explore whether the causal link of
552 MVPA on IBD (G), CD (H) and UC (I) was driven by single specific SNP.

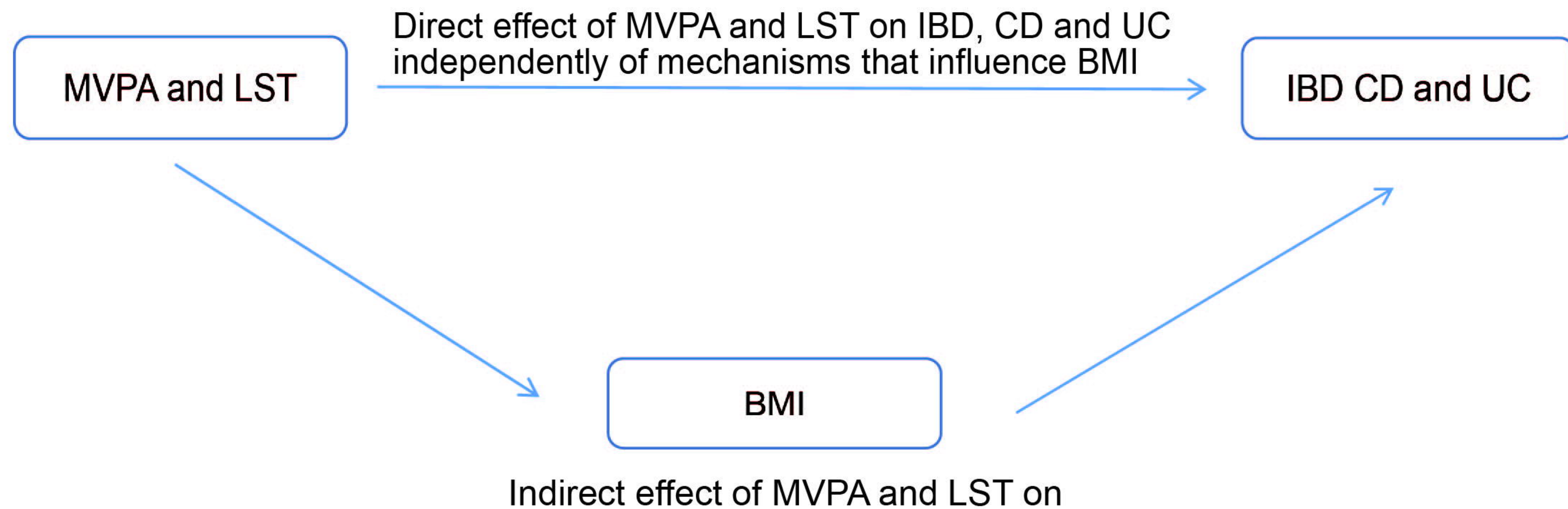
553 **Supplementary Fig 1: Scatter plots and funnel plots for the association of LST on IBD, CD and UC.** (A-C) Scatter plots for IVW, MR-
554 Egger and WM analysis methods demonstrating the effect of LST on IBD (A), CD (B) and UC (C). (D-F) Funnel plot of LST on IBD (D), CD
555 (E) and UC (F) to suggest no evidence of substantial heterogeneity.

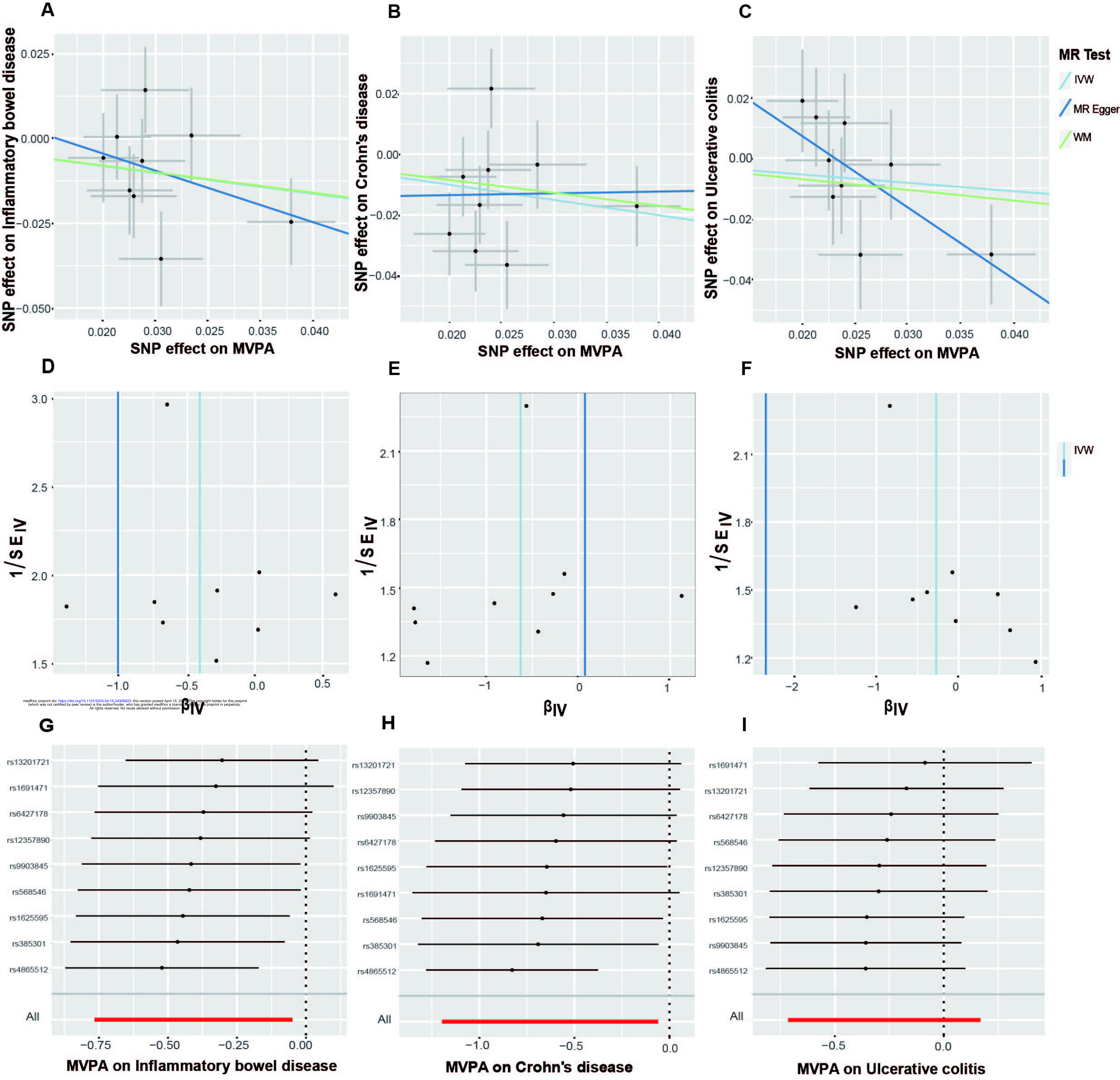
556 **Supplementary Fig 2: leave-one-out analysis for the association of LST on IBD, CD, and UC.** (A-C) Leave-one-out analysis to explore
557 whether the causal link of LST on IBD (A), CD (B), and UC (C) were driven by a single specific SNP.



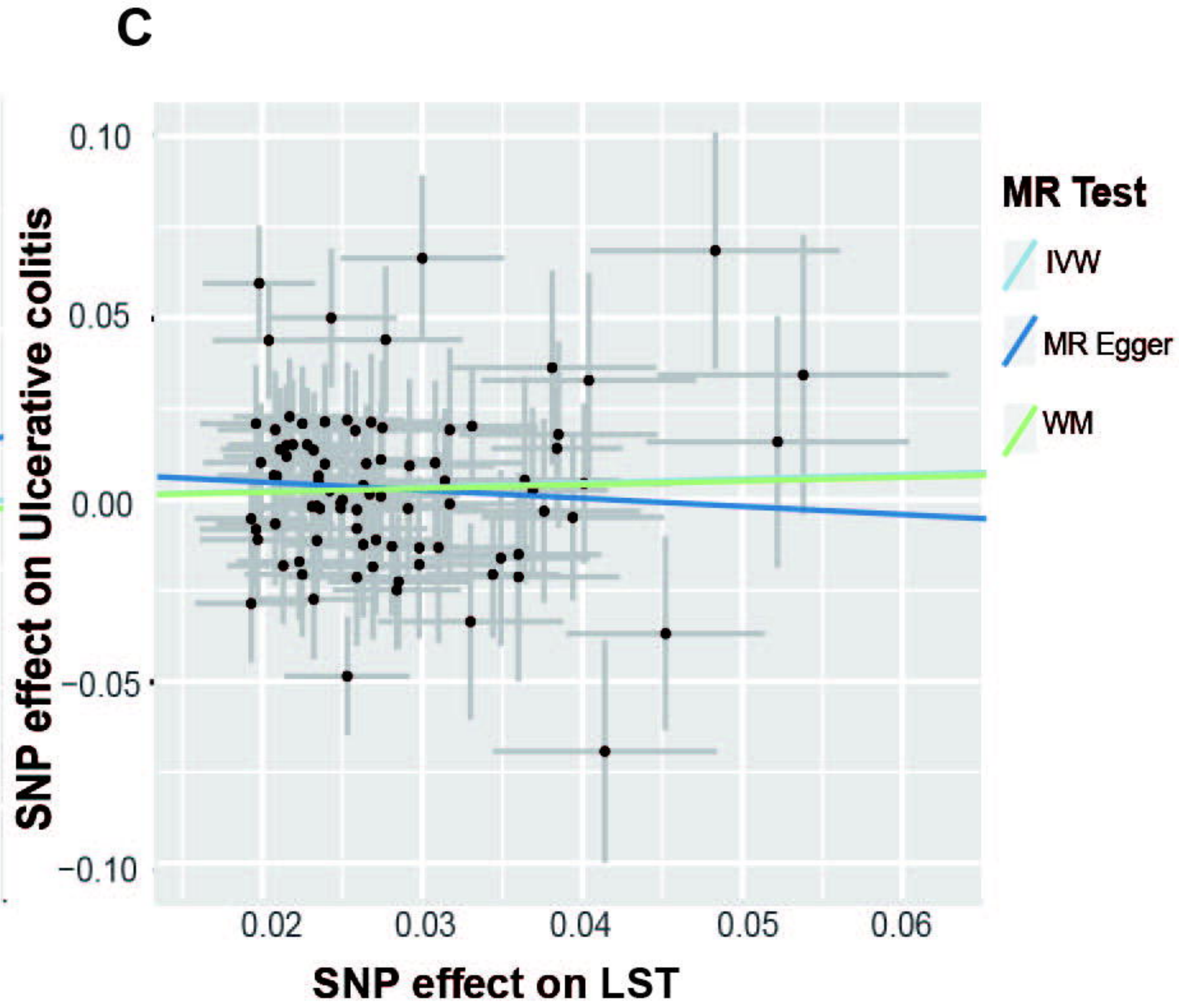
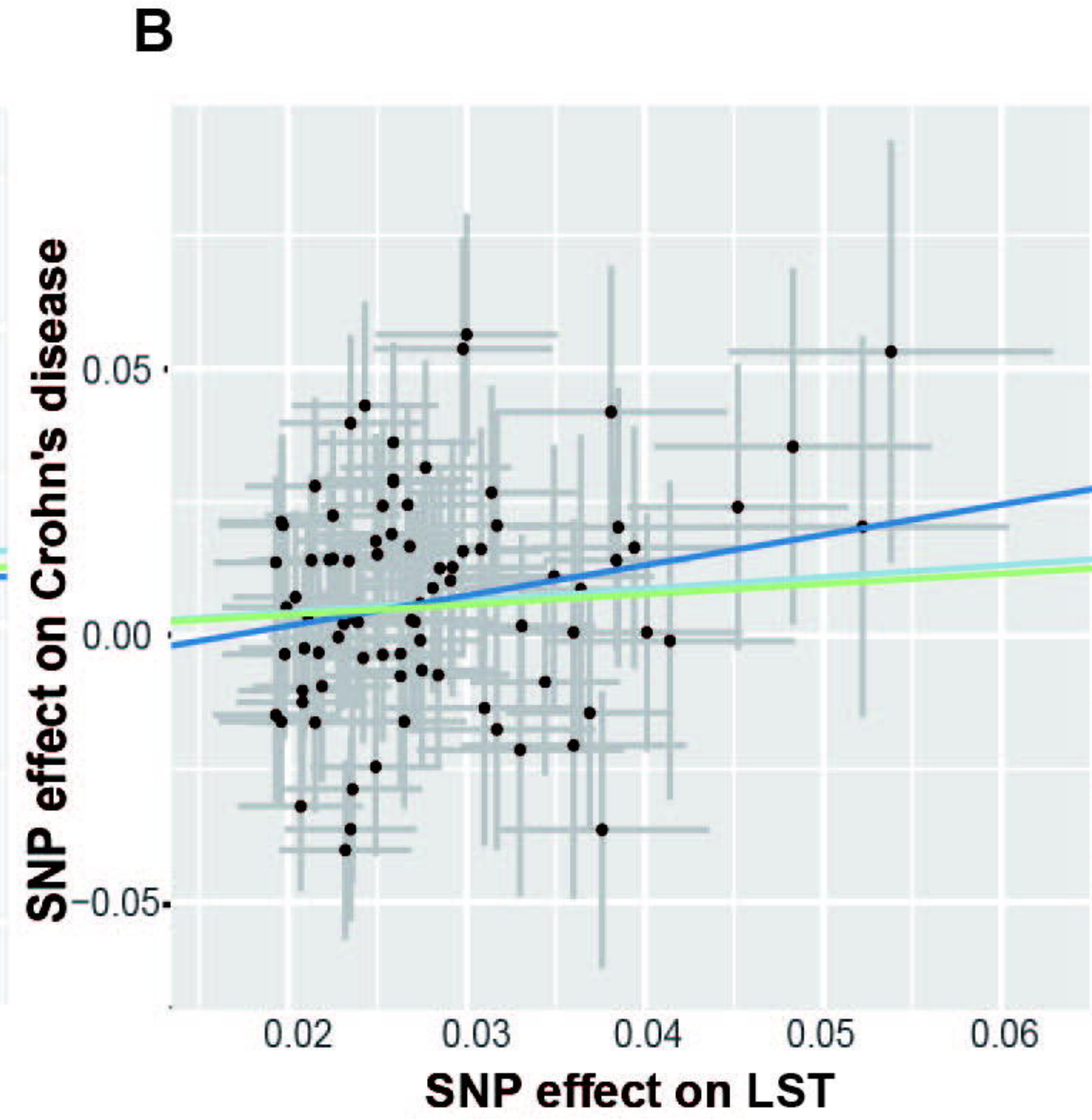
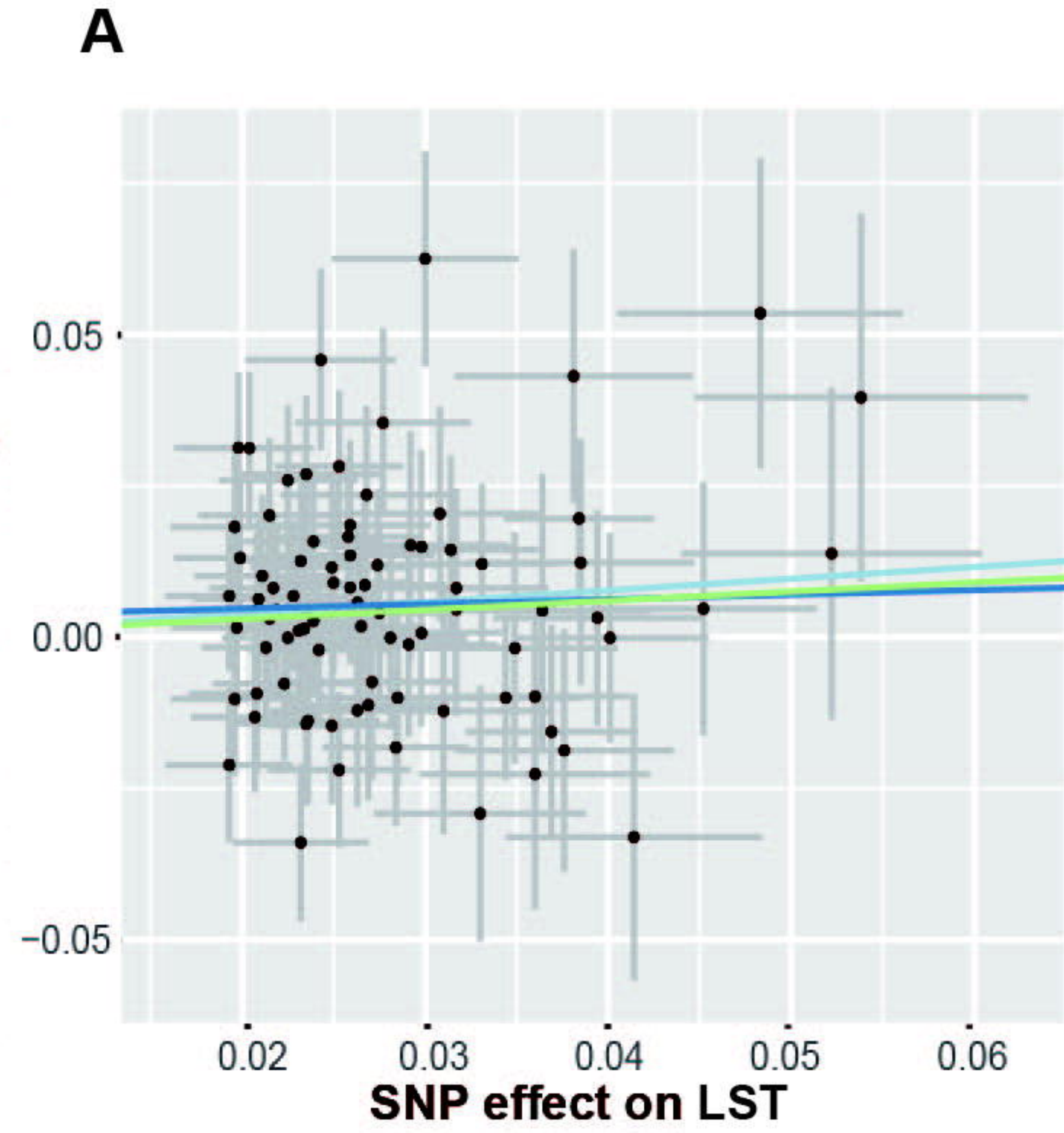
A

medRxiv preprint doi: <https://doi.org/10.1101/2024.04.15.24305823>; this version posted April 15, 2024. The copyright holder for this preprint (which was not certified by peer review) is the author/funder, who has granted medRxiv a license to display the preprint in perpetuity. All rights reserved. No reuse allowed without permission.

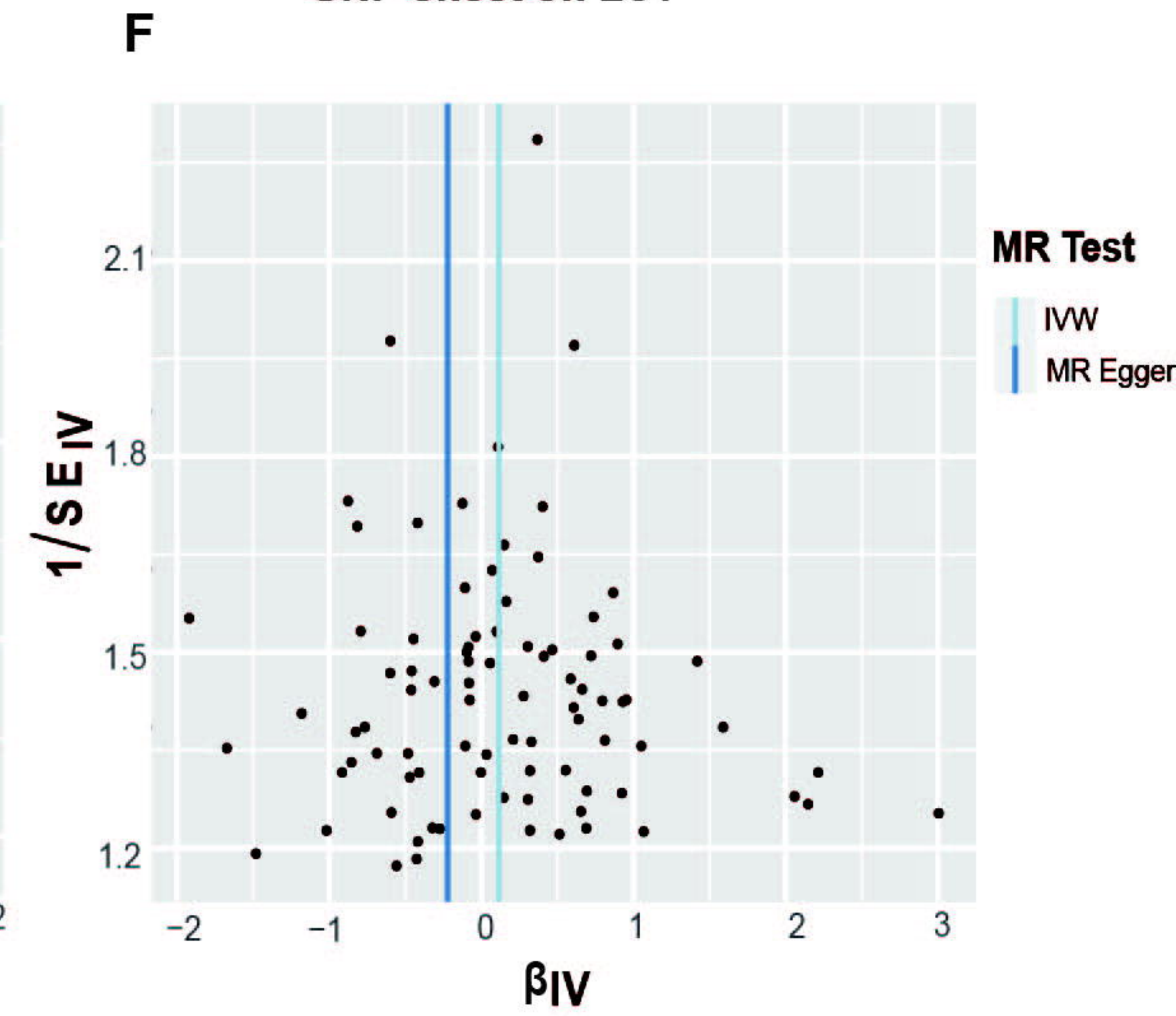
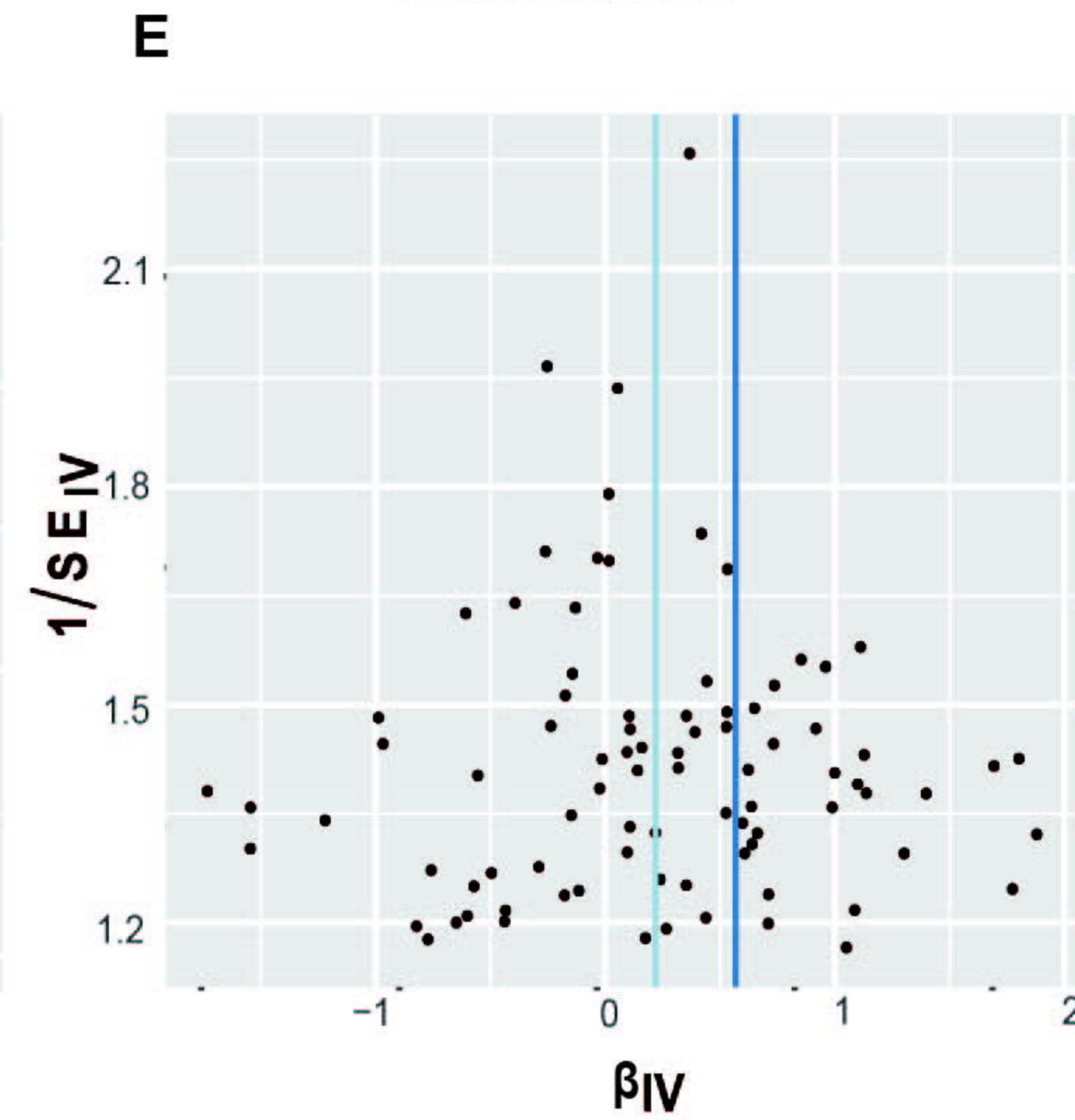
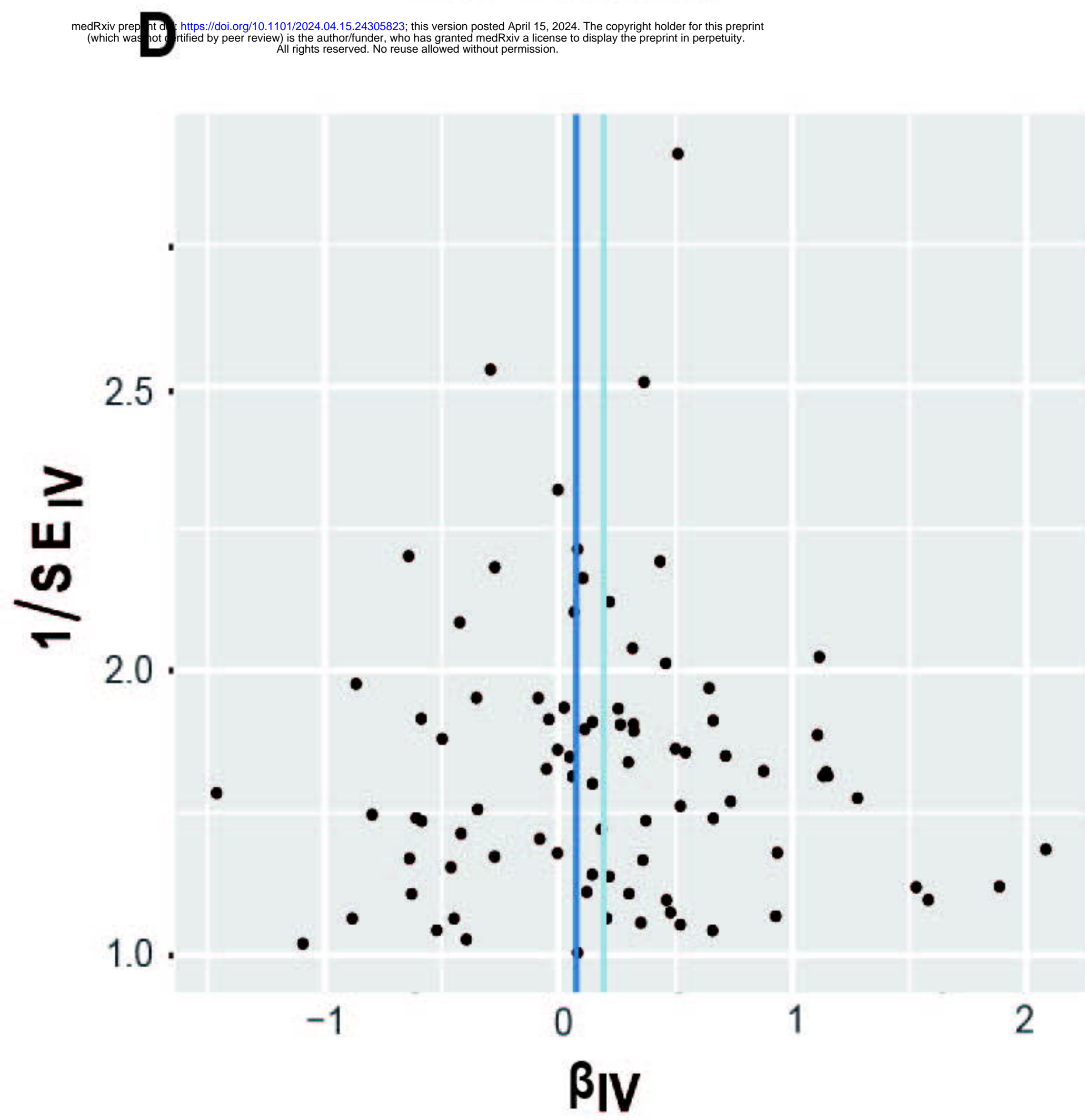
B



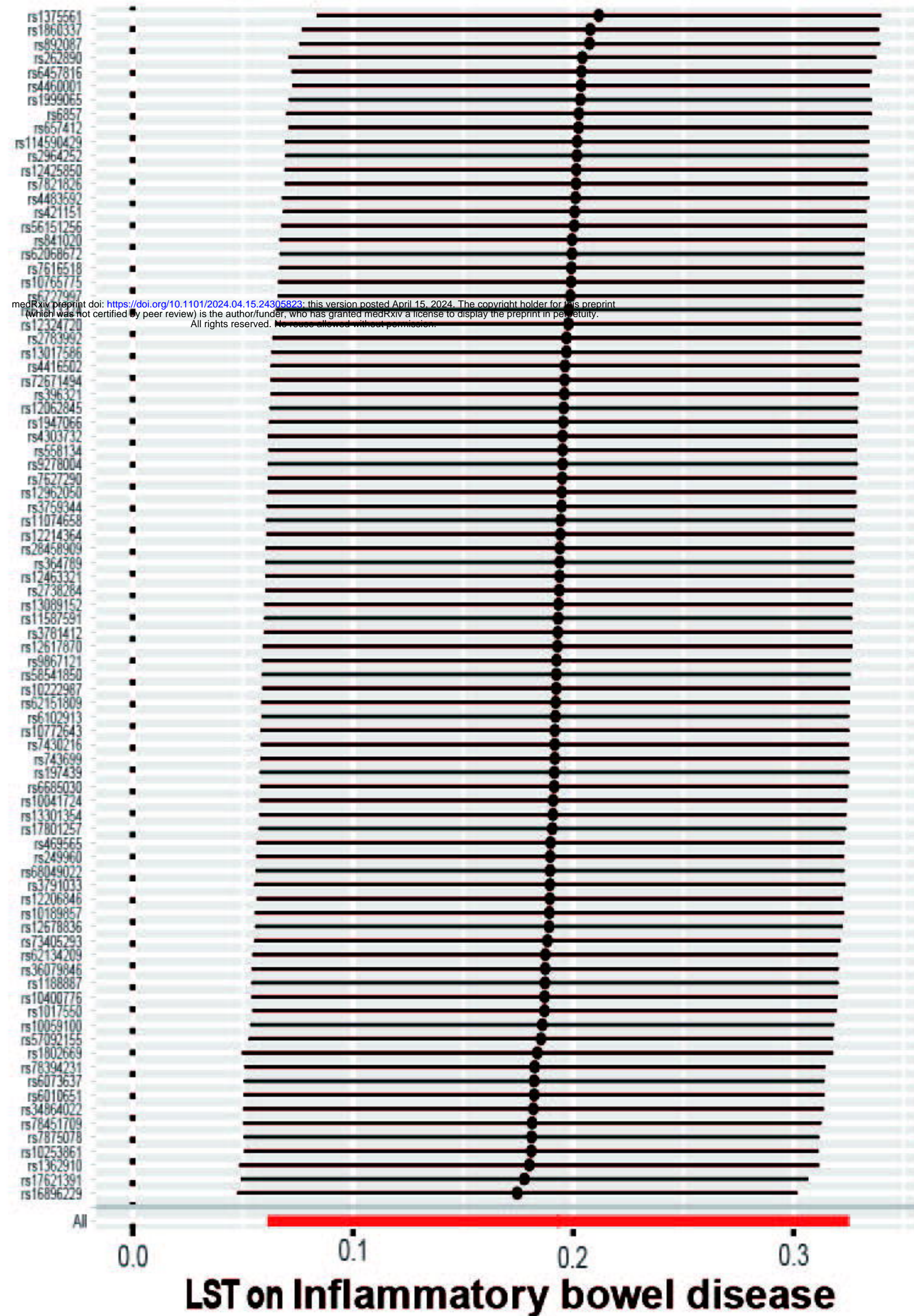
SNP effect on Inflammatory bowel disease



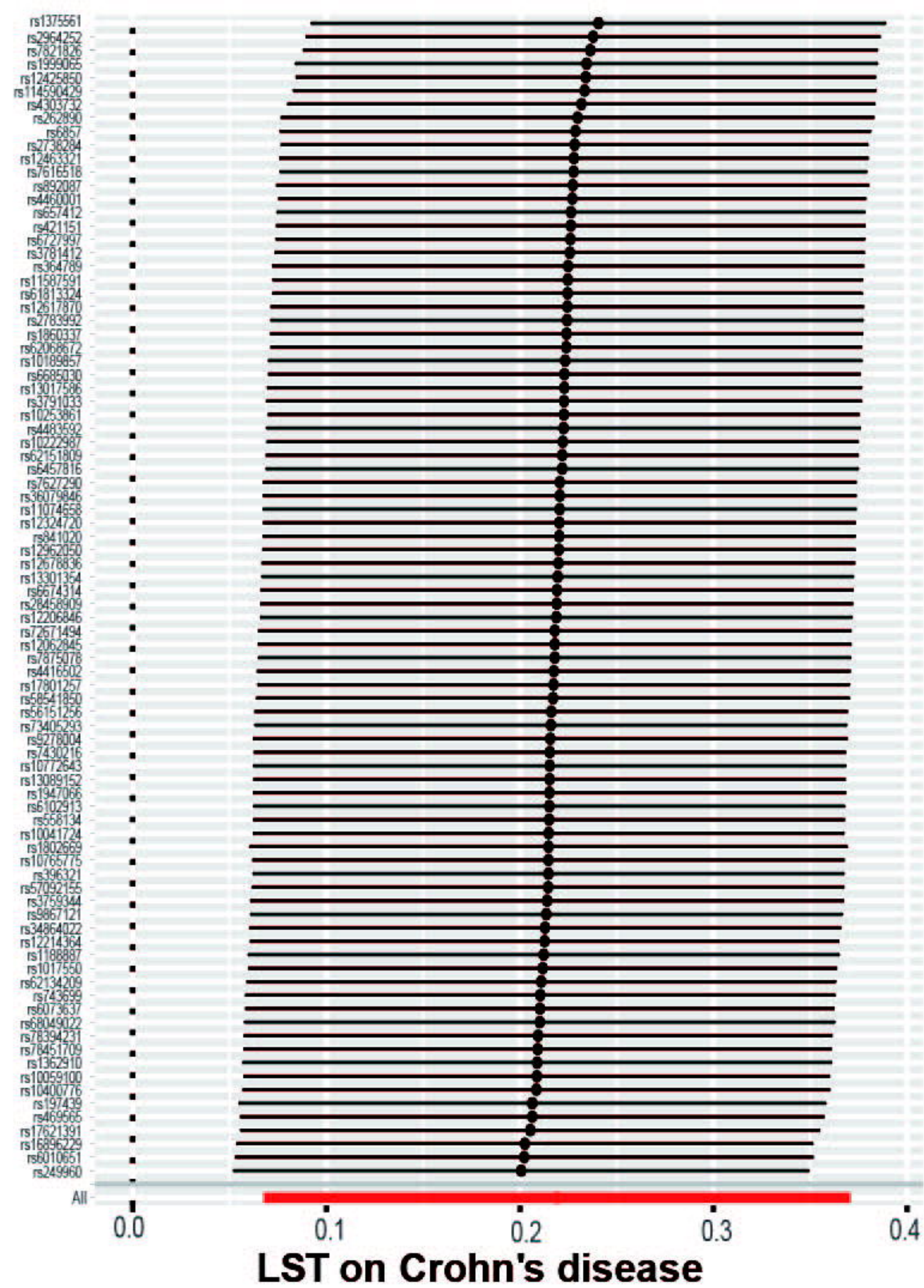
medRxiv preprint doi: <https://doi.org/10.1101/2024.04.15.24305823>; this version posted April 15, 2024. The copyright holder for this preprint (which was not certified by peer review) is the author/funder, who has granted medRxiv a license to display the preprint in perpetuity. All rights reserved. No reuse allowed without permission.



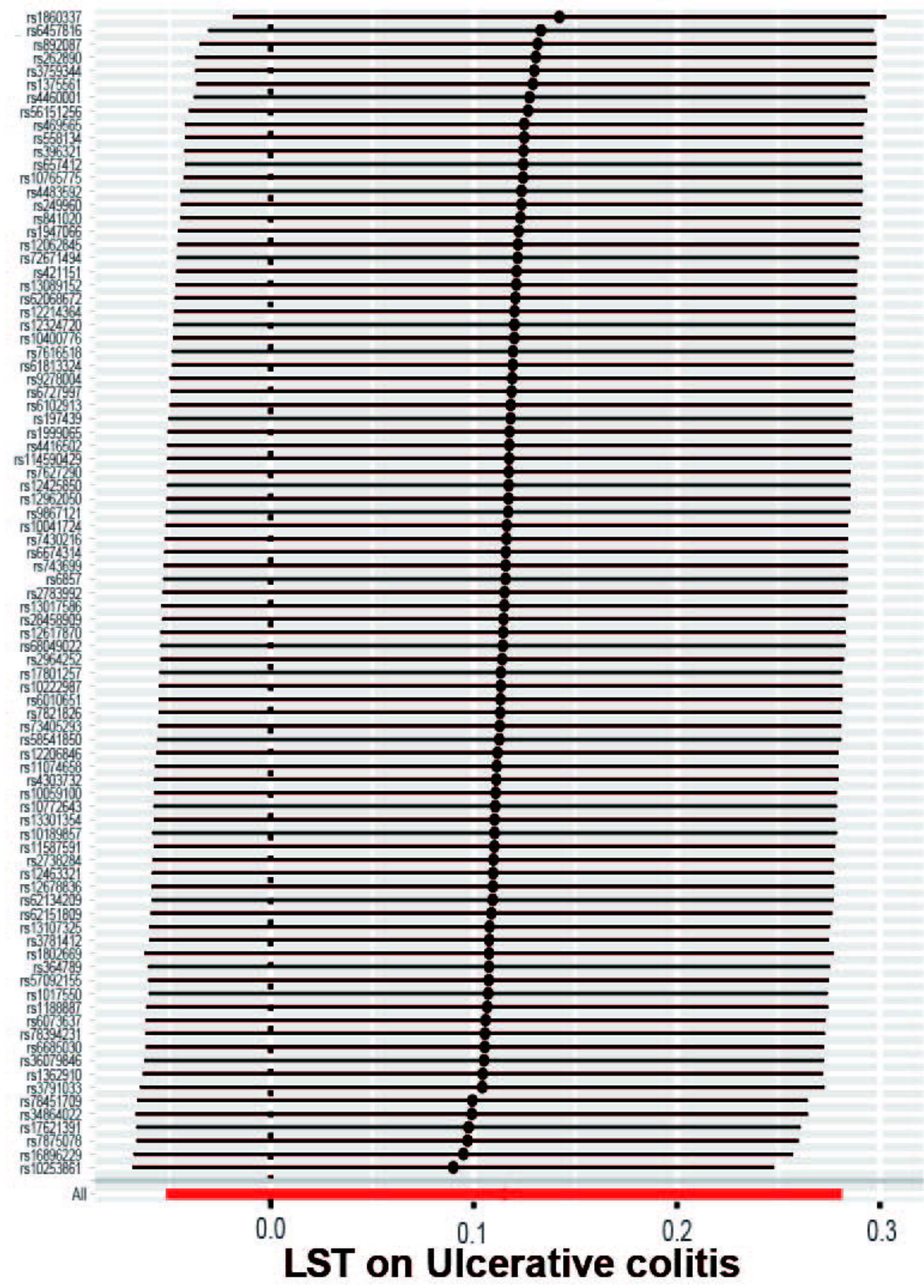
A



B



C



medRxiv preprint doi: <https://doi.org/10.1101/2024.04.15.24305823>; this version posted April 15, 2024. The copyright holder for this preprint (which was not certified by peer review) is the author/funder, who has granted medRxiv a license to display the preprint in perpetuity. All rights reserved. No reuse allowed without permission.