

1 **Physical determinants of daily physical activity in older men and** 2 **women**

3 Laura Karavirta¹, Timo Aittokoski¹, Katja Pynnönen¹, Timo Rantalainen¹, Kate Westgate²,
4 Tomas Gonzales², Lotta Palmberg¹, Joonas Neuvonen¹, Jukka A. Lipponen^{3,4}, Katri
5 Turunen^{1,5}, Riku Nikander^{1,6}, Erja Portegijs^{1,7}, Taina Rantanen¹, Søren Brage²

6 ¹Faculty of Sport and Health Sciences and Gerontology Research Center, University of
7 Jyväskylä, Finland

8 ²MRC Epidemiology Unit, University of Cambridge, Cambridge, United Kingdom

9 ³Department of Applied Physics, Faculty of Science and Forestry, University of Eastern
10 Finland, Finland

11 ⁴Department of Emergency Care, Kuopio University Hospital, Finland

12 ⁵Seinäjäki University of Applied Sciences, Finland

13 ⁶Wellbeing region of Central Finland/Wellbeing services county of Central Finland, Finland

14 ⁷University of Groningen, University Medical Center Groningen, Center for Human
15 Movement Sciences, Groningen, the Netherlands

16 **Running title:** Physical determinants of daily activity

17 Address for correspondence: Laura Karavirta

18 Faculty of Sport and Health Sciences

19 PO Box 35, 40014 University of Jyväskylä, Finland

20 Phone: +358 40 8055041

21 E-mail: laura.i.karavirta@jyu.fi

22 **Keywords:** energy expenditure, intensity, accelerometry, heart rate, ageing

23 Abstract

24 **Introduction** The ability to perform bodily movement varies in ageing men and women. We
25 investigated whether physical fitness may explain sex differences in daily physical activity
26 energy expenditure (PAEE) among older people.

27 **Methods** A population-based cohort of 75, 80, and 85-year-old men and women (n=409, 62
28 % women) underwent laboratory-based assessment of walking speed, maximal knee
29 extension strength, and body fat percentage. Free-living physical activity was assessed as
30 total PAEE, and light (LPA) and moderate-to-vigorous physical activity (MVPA) using
31 individually calibrated combined accelerometry and heart rate sensing. Path modelling was
32 used to examine indirect associations between sex, physical fitness, and physical activity.

33 **Results** Men had a more favourable physical fitness profile and higher overall PAEE (mean
34 34.0 (SD 10.8) kJ/kg/day) than women (28.3 (8.4) kJ/kg/day, $p<0.001$). The path model for
35 PAEE explained 33 % of the variance. The direct association of sex on PAEE was non-
36 significant, whereas the association between sex and PAEE through body fat ($\beta=0.20$,
37 $p<0.001$) and walking speed ($\beta=0.05$, $p=0.001$) were statistically significant. Similarly, the
38 associations between sex and MVPA through body fat ($\beta=0.11$, $p=0.002$) and walking speed
39 ($\beta=0.05$, $p=0.001$) were significant, as were the associations between sex and LPA through
40 body fat ($\beta=0.24$, $p<0.001$) and walking speed ($\beta=0.03$, $p=0.019$).

41 **Conclusion** Differences in physical activity between men and women may reflect underlying
42 differences in cardiorespiratory fitness and adiposity. These results highlight the importance
43 of maintaining physical fitness to support active living in older adults.

44

45 **Introduction**

46 Low physical activity is of concern, especially in older adults, who are at risk for functional
47 limitations and loss of independence (Westerterp, 2000). The overall volume of physical
48 activity is typically expressed as daily physical activity energy expenditure (PAEE), which is
49 accumulated through the engagement of behaviours of different intensities. Wearable sensors,
50 such as accelerometers and heart rate (HR) sensors, can be used to objectively assess physical
51 activity and estimate PAEE (Brage et al., 2015; Ceesay et al., 1989). To convert data from
52 wearables into intensity estimates, often grouped into light, moderate, and vigorous physical
53 activity, methodological studies with suitable criterion measures and population groups have
54 been conducted, validating both intensity and volume estimates of activity (Brage et al.,
55 2004; Westgate et al., 2024). The implementation of wearables and the use of an inferential
56 framework for PAEE estimation allows the evaluation of the joint health associations for
57 activity volume and intensity as recently demonstrated for mortality in the UK Biobank
58 (Strain et al., 2020). These prospective studies provide evidence of the health consequences
59 of different activity behaviour profiles but say little about the determinants of physical
60 activity, including individual physical characteristics, which decline at an accelerated rate in
61 older people (Fleg et al., 2005).

62 Physical fitness is a group of physical characteristics that are defined as the “physiologic
63 attribute determining a person’s ability to perform muscle-powered work”, whereas physical
64 activity is bodily movement produced by skeletal muscles that results in energy expenditure
65 (2018 Physical Activity Guidelines Advisory Committee, 2018). Therefore, instantaneous
66 PAEE, or intensity, is dependent on the individual capacity to perform muscle-powered work
67 at any given moment. Physical fitness is a multicomponent characteristic including body
68 composition, cardiorespiratory fitness, and muscle strength, which are all independently
69 associated with health (Blair et al., 1996; Jayanama et al., 2022; Li et al., 2018). It is well
70 known that men have a more favourable body composition, and higher muscle strength and
71 cardiorespiratory fitness compared to women. The mean difference in cardiorespiratory
72 fitness between men and women is approximately 1 to 2 METs in older age (Fleg et al., 2005;
73 Ogawa et al., 1992), which could translate to higher physical activity intensity and volume in
74 men compared to women. Thus, the previously observed tendency of men to favour vigorous
75 intensity activities more than women, and women to engage in lower intensity activities more

76 often compared to men (Lindsay et al., 2019; Sattelmair et al., 2011) may be by constraint
77 rather than choice.

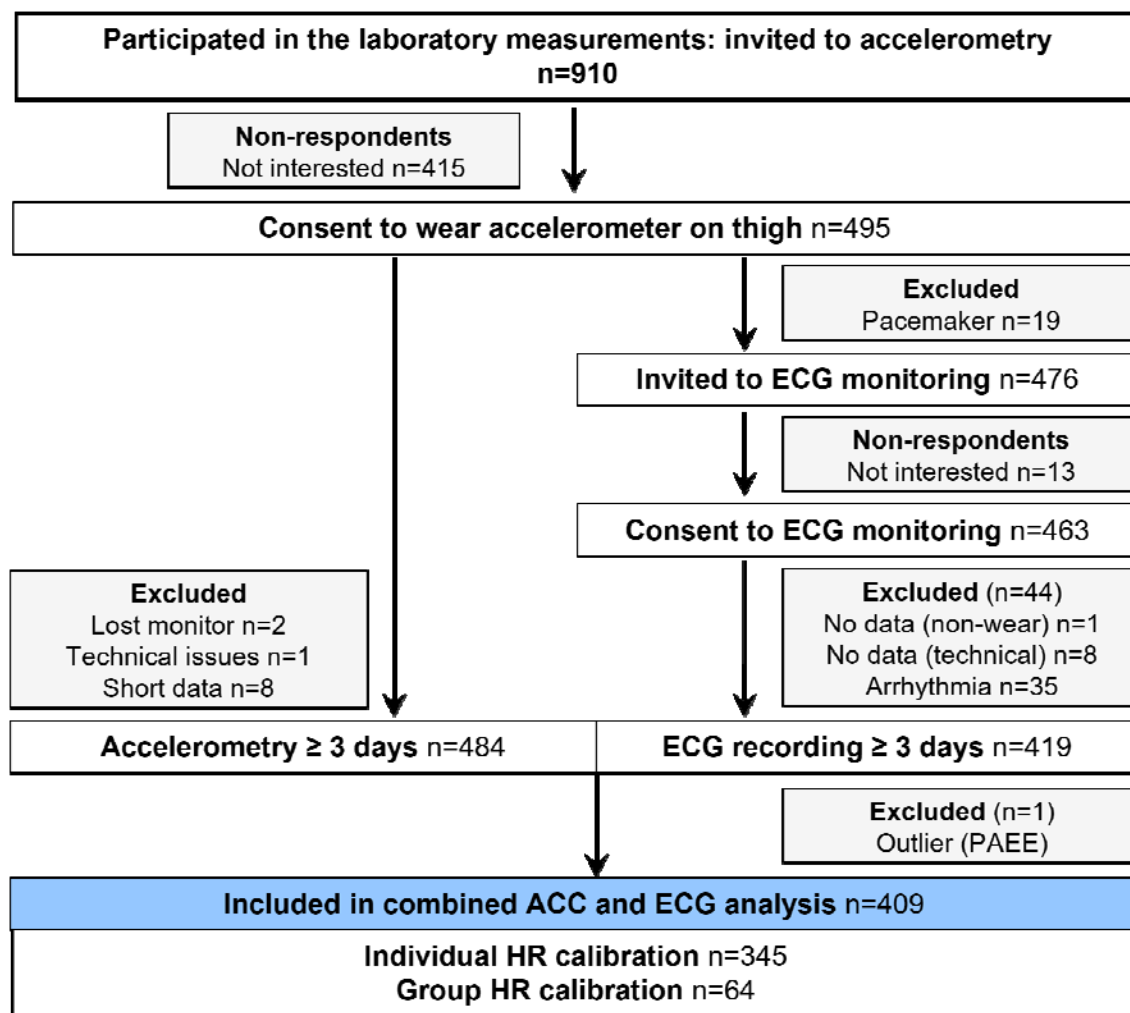
78 The aim of the study was to explore the direct and indirect associations between physical
79 characteristics and physical activity volume and intensity among older people. More
80 specifically, we examined how the components of physical fitness (body fat percentage,
81 walking speed, and muscle strength) may mediate the relationships between sex and physical
82 activity. We hypothesized that some of the variance in physical activity is explained by
83 physical fitness rather than sex.

84 **Methods**

85 **Participants**

86 The data for the present analyses are from a population-based observational study including
87 three age cohorts: 75, 80, and 85 years and we have published the study protocol previously
88 (Rantanen et al., 2018). The personal details such as sex and date of birth, were available in
89 the sample specifics drawn from the Digital and Population Services Agency
90 (<https://dvv.fi/en>). We targeted everyone living independently near the city centre of
91 Jyväskylä, in Central Finland, who were born during the years specified. The ethical
92 committee of the Central Finland Health Care District provided a statement on the AGNES
93 study protocol on the 23rd of August, 2017. Participants were required to provide a written
94 informed consent.

95 Of the 2791 people approached, the overall participation rate was 36.6 (Portegijs et al., 2019).
96 From this sample of 1021 participants (57.3 % women), 910 individuals agreed to participate
97 in the laboratory assessments and were thus also invited to take part in the device-based
98 physical activity monitoring in free living (Fig. 1). To those who agreed to wear a thigh-
99 mounted accelerometer (n=495), we additionally offered an electrocardiogram (ECG)
100 recorder unless the participant had an active implantable medical device such as a heart
101 pacemaker (n=19). We excluded participants with less than 3 days of wearables data and
102 were able to obtain combined accelerometry and HR data for 409 participants (61.9 %
103 women).



104

105 **Fig. 1.** Participant flow chart. Combined wearable sensor data from the AGNES study at
106 baseline. ACC, accelerometry; ECG, electrocardiogram; PAEE, physical activity energy
107 expenditure; HR, heart rate.

108 **Physical fitness measurements**

109 **Six-minute walk test (6MWT)**

110 We used the 6-minute walk test to assess cardiorespiratory fitness and to individually
111 calibrate HR to PAEE. The walking test was performed at the research centre on an indoor
112 20-meter corridor at a self-selected usual pace (Karavirta et al., 2020). Walking speed (in
113 km/h) was calculated from the total distance walked in six minutes. The participants wore the
114 same sensors as during the free-living monitoring: a triaxial accelerometer (sampling
115 continuously at 100 Hz, 13-bit, ± 16 g, UKK RM42; UKK Terveyspalvelut Oy, Tampere,
116 Finland) and an ECG recorder (14-bit, ± 16 g, 250 Hz, eMotion Faros 180, Bittium

117 Corporation, Oulu, Finland). HR was derived from the ECG recordings using a built-in QRS
118 detection of Kubios HRV Premium 3.2.0 software (Kubios Oy, Kuopio, Finland) that is
119 based on the Pan-Tompkins algorithm (Pan & Tompkins, 1985). Any artifacts were corrected
120 using automatic noise detection with manual editing, when necessary. Walking HR was
121 calculated by averaging the resulting RR intervals (the time interval between two successive
122 R waves on the ECG) over the last minute of the test and converting to HR in beats per
123 minute (bpm). Recovery HR after the test was analysed from the RR intervals over 90
124 seconds, subjected to quadratic regression against recovery time, and solved for 45 seconds,
125 similar to previous work (Brage et al., 2007; Westgate et al., 2024). For the PAEE estimation,
126 HR values were expressed above sleeping HR (HRaS) but are reported as absolute values in
127 the results for readability.

128 **Maximal knee extension strength**

129 Knee extension strength was measured at an angle of 60 degrees from the fully extended leg
130 towards flexion. Following a practice trial, the test was performed at least three times
131 allowing one minute rest between trials until no further improvement occurred (Rantanen et
132 al., 2018). The highest value in newtons normalized to body mass to account for the strength
133 requirements of transferring the body (Davies & Dalsky, 1997) was recorded as the test
134 result. The test-retest reliability of the test is excellent; for measurements in 80-year-olds
135 performed 1–2 weeks apart, the Pearson correlation coefficient was 0.965 (Rantanen et al.,
136 1997).

137 **Adiposity**

138 Multi-frequency bioelectrical impedance measurement (InBody 720, Biospace, Seoul, Korea)
139 was used to assess adiposity as body fat percentage. Measurements were performed with
140 participants wearing light clothing standing barefoot on the device platform and holding the
141 handles in both hands. Physical assessments in the laboratory also included standard
142 objective anthropometric measurements of height and body mass.

143 **Physical activity monitoring during free-living**

144 Physical activity monitoring took place between a home interview and a laboratory visit, at
145 which the wearable sensors were attached and removed, respectively. The thigh-worn triaxial
146 accelerometer was taped on by a research assistant to the anterior aspect of the mid-thigh of
147 the dominant leg, and the ECG recorder was attached with an adhesive strip that included two
148 electrodes 12 centimetres apart. The strip was attached either on the sternum or diagonally on

149 the left side of the chest under the breast to ensure comfortable wear depending on the
150 anatomy of the participant. Both monitors were covered with a self-adhesive film for
151 waterproofing to enable constant wear including during showering. However, swimming or
152 bathing was discouraged during the monitoring period. The electrode and adhesives were
153 replaced once in the middle of the monitoring period by a research assistant.

154 **Accelerometry and ECG signal processing**

155 Raw acceleration data were calibrated to local gravity, based on the principle described
156 elsewhere (van Hees et al., 2014). However, we deviated slightly from this procedure by
157 including only gain and offset in the optimization procedure and utilizing the Levenberg-
158 Marquardt algorithm in the iterative minimization of the error function (Karavirta et al.,
159 2020). From resulting gravity-calibrated acceleration values, mean amplitude deviation
160 ($MAD = 1/n \sum |r_k - r|$) was calculated from the vector magnitude (Euclidian norm) of the
161 resultant acceleration ($\sqrt{X^2+Y^2+Z^2}$) in nonoverlapping 5-second epochs (Vähä-Ypyä et al.,
162 2015). This activity-related acceleration metric is robust to residual calibration error through
163 the subtraction operation. MAD was then resampled to 10-second epochs to match the 10-
164 second averaging of the HR time series. The data were visually checked day-by-day to ensure
165 that only days with complete 24-hour data without non-wear were included in the subsequent
166 analysis. Data of 11 participants owing to either loss of monitor ($n=2$), technical error
167 ($n=1$), or data availability for less than three full days ($n=8$) were excluded (Fig.1).

168 Free-living ECG recordings were analysed with commercial medically certified Awario
169 arrhythmia analysis algorithms (Awario, Heart2Save, Kuopio, Finland) (Santala et al., 2022).
170 The algorithm detects and removes noisy segments of the ECG, detects the QRS complexes,
171 and estimates the average HR in a 10-second sliding time window from the analysable parts
172 of the ECG. Participants with persistent atrial fibrillation throughout the recording were
173 excluded from further analyses ($n=35$, Fig. 1). Additionally, one outlier was excluded due to
174 unreliable HR resulting in a PAEE estimate more than 3 SD above the sample mean.

175 **Estimation of physical activity energy expenditure**

176 PAEE was estimated from the 10-second epoch time series of MAD and HR separately, and
177 then combined in a branched equation model (Brage et al., 2004). A linear regression
178 equation for estimating instantaneous PAEE (intensity) from MAD was established using
179 treadmill walking in a separate dataset of 12 older participants (methods described in
180 Supplement 1):

181
$$\text{PAEE (J/kg/min)} = 295.3 * \text{MAD} + 90.8 \quad (1)$$

182 The linear equation was used for all accelerometry epochs where MAD was above a flex
183 movement point (Brage et al., 2007). Flex acceleration was defined as the group mean
184 acceleration during the slowest speed of the treadmill walking (1.5 km/h) which is almost
185 equal to the previously used flex point defined as 50 % of the acceleration measured during
186 walking at 3.2 km/h (Brage et al., 2007). Between the flex point and zero acceleration (the
187 lowest recorded MAD during free living), PAEE was extrapolated linearly between PAEE at
188 the flex point and the origin of 0 g, 0 J/kg/min (Supplement 1, Fig.S1.1).

189 From the HR time-series data, PAEE was estimated using an individual calibration equation.
190 Individual variation in the relationship between HR and energy expenditure was captured
191 using a novel calibration method based on a self-paced walking test (Westgate et al., 2024).
192 The method can be used to individually determine the linear relationship between HR and
193 PAEE, which can then be used to compute PAEE at any HR level as follows:

194
$$\text{PAEE}_{ij} = \beta_i * \text{HRaS}_{ij} + \alpha_i, \quad (2)$$

195 where PAEE_{ij} and HRaS_{ij} are physical activity energy expenditure (J/kg/min) and heart rate
196 (bpm above sleeping heart rate) for participant i for epoch j . β_i and α_i are the slope and
197 intercept of the linear regression equation for participant i .

198 For calculating the individual slope and intercept of the linear equation, we computed one
199 more parameter from the 6-minute walk test in addition to walking and recovery HR: energy
200 pulse, which was defined as the average HR above sleep divided by the energy cost of
201 walking using a previously validated equation (Ludlow & Weyand, 2016):

202
$$\text{PAEE walk (J/kg/min)} = 20.35 * (3.85 + 5.97 * \text{walk speed}^2 / \text{height}), \quad (3)$$

203 where 20.35 is the caloric equivalent of oxygen in J/ml O₂ (Consolazio et al., 1963), walk
204 speed is in m/s, and height is in m. Energy pulse was further transformed using a natural
205 logarithm (ln EP). We used the combination of the simple and complex equations by
206 Westgate and colleagues (Westgate et al., 2024) with an average weighting (factor 0.5) to
207 account for beta-blocker use and sex but to avoid parameter overfitting:

208
$$\beta_i = 0.5 * (5.67 + 5.82) + 0.5 * (0.767 + 0.513) * \ln \text{EP} + 0.5 * (0 + 0.572) * \text{sex} \quad (4)$$

$$\begin{aligned} 209 \quad \alpha_i &= -0.5*(305 + 311) + 155*\lnEP - 0.5*(1.45+1.50)*HRaSrec - 0.5*(0 + 0.4)*sex \\ 210 \quad &+ 0.5*(0 + 164)*beta-blocker - 0.5*(0 + 69)*\lnEP *beta-blocker, \end{aligned}$$

211 where i indicates participant i , sex was coded 0=woman and 1=man, and beta-blocker use
212 0=no and 1=yes. HRaSrec is recovery heart rate 45 seconds after the walking test above
213 sleeping HR.

214 The individual slope β_i and intercept α_i were used to estimate PAEE when HR was at least 5
215 bpm above flex HR. Flex HR is a theoretical deflection point above which HR is linearly
216 associated with PAEE and is classically defined as “the mean of the highest HR during rest
217 and the lowest HR during the lightest imposed exercise” (Ceesay et al., 1989). Below this
218 point, PAEE was interpolated to 0 J/kg/min at resting HR, since at low HR levels, HR can
219 fluctuate due to other factors than physical activity (Brage et al., 2007; Westgate et al., 2024).
220 Flex HR was individually estimated from the midpoint between the HR corresponding to
221 PAEE at the slowest walking speed of our treadmill protocol (108 J/kg/min at 1.5 km/h,
222 Supplement 1) and resting HR determined as 10 bpm above sleeping HR. For participants in
223 whom we were unable to extract valid HR from the walking test ($n=64$, Fig.1), we used a
224 group calibration equation based on all participants in the study with valid calibration whilst
225 accounting for age, sex, beta blockage, and sleeping HR:

$$\begin{aligned} 226 \quad PAEE_j &= (7.23 - 0.00878*age + 0.359*sex - 0.000175*HRsleep + 0.0671*beta- \\ 227 \quad &blocker)*HRaS_j - 2.10*age + 18.0*sex - 0.0903*HRsleep + 59.9*beta-blocker - \\ 228 \quad &4.27, \end{aligned} \tag{5}$$

229 where $HRaS_j$ is HR in epoch j expressed as above sleeping HR. In the group-calibrated
230 subsample, flex HR (above sleep) was predicted from sleeping HR: $0.37 * \text{sleeping HR} - 2.5$
231 $+ 5$ (Brage et al., 2007). Sleeping HR was defined as the median of the 10th lowest HR
232 observed during sleep across multiple 24-hour periods (Brage et al., 2004).

233 Accelerometry and HR-based PAEE time series were combined using a branched equation
234 modelling (Brage et al., 2004). In essence, the model gives a larger weight for accelerometry-
235 based PAEE estimation when acceleration and HR are low (due to the known fluctuation in
236 HR at low levels regardless of physical activity), and a larger weight for HR when it is above
237 the flex point and accompanied by physical movement, implemented as described elsewhere

238 (Brage et al., 2015). In addition, whenever HR was not available due to noise or transient
239 arrhythmia in the ECG signal, acceleration-PAEE was used. HR availability is reported as a
240 percentage of the accelerometer wear time.

241 In addition to overall PAEE, we calculated PAEE at moderate-to-vigorous (MVPA, 2–5 net
242 METs) and light intensity (LPA, 0.5–2 net METs) as minutes and proportions of the overall
243 PAEE. MVPA was also expressed in MET-minutes. The distribution of PAEE was
244 additionally calculated in fine-grained intensity bins of 0.5 to 1.0 METs each. One MET was
245 defined according to the standard of 3.5 ml/kg/min (Ainsworth et al., 2011) and converted to
246 J/kg/min using 20.35 J/ml (Consolazio et al., 1963), resulting in a value of 71 J/min/kg.

247 **Covariates**

248 Age, duration of education, chronic conditions, beta-blocker use, smoking, accelerometer
249 wear time, and HR availability as a percentage of the accelerometer wear time were tested as
250 potential covariates. The duration of education (years) and the total number of self-reported
251 physician-diagnosed chronic conditions were self-reported during the home interview
252 (Rantanen et al., 2018). Participants reported their current medication in a postal
253 questionnaire, and beta-blocker medication was identified (yes/no) based on the ATC
254 (Anatomical Therapeutic Chemical) code. Smoking was self-reported as never, past, or
255 current, and dichotomously reclassified as never or past/present.

256 **Statistical analyses**

257 Group values are means followed by standard deviations (SD). The differences in participant
258 characteristics and physical activity between the sexes were tested using an independent-
259 samples t-test and Cohen's d for effect sizes. Cross-tabulation and chi-squared tests were
260 used for categorical variables. Bivariate associations among components of physical fitness
261 and physical activity, stratified by sex, were analysed using Pearson's correlation. Path
262 modelling was conducted to examine whether the components of physical fitness (body fat,
263 walking speed, and muscle strength) mediate the relationships between sex and physical
264 activity. The model is structured considering the previously observed heterogeneity of
265 physical fitness within sexes which suggests that stratification by sex alone may not account
266 for the individual variance in physical activity. Maximum likelihood robust (MLR) estimator
267 was used to obtain parameter estimates supposing missing values to be missing at random
268 (MAR). The covariance coverage was 0.968 at minimum. In separate models, a component of
269 physical activity (i.e., overall PAEE, MVPA, or LPA) was an outcome and sex was an

270 explanatory variable. All three physical fitness components were added simultaneously to the
 271 models to test the potential mediator effect, and they were allowed to correlate with each
 272 other. Each component of physical fitness and physical activity was adjusted for age, duration
 273 of education, and number of chronic conditions. Additionally (or based on modification
 274 indexes), age was allowed to correlate with the number of chronic conditions and the duration
 275 of education. In the final models, only statistically significant associations were included.
 276 Chi-square (χ^2), root mean squared error of approximation (RMSEA, <0.06), comparative fit
 277 index (CFI, >0.95), Tucker-Lewis Index (TLI, >0.95), standardized root mean square residual
 278 (SRMR <0.08) are reported as indices of model fit.

279 As a sensitivity analysis and to enhance the applicability of the present results to studies that
 280 use an accelerometer only, path modelling was also performed for accelerometry-based
 281 PAEE without HR sensing. Statistical significance was set at $p < 0.05$. Analysis was conducted
 282 using IBM SPSS Statistics 28.0.1.1 and Mplus version 8.6 (Muthén & Muthén, 2017).

283 Results

284 Men and women in the present sample did not significantly differ in terms of age, the number
 285 of chronic conditions, duration of education, or beta-blocker use (table 1). As expected, men
 286 had larger body size with lower body fat percentage compared to women. Muscle strength
 287 and walking speed were higher in men. Women had higher HR during sleep, self-paced
 288 walking, and recovery after the walk compared to men.

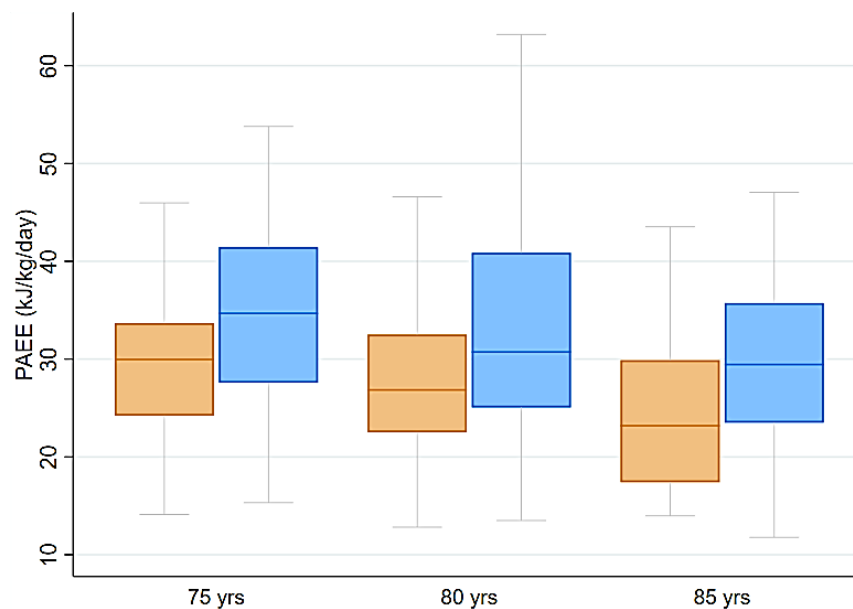
289 **Table 1.** AGNES study participant characteristics.

	Women (n=253)		Men (n=156)		Total (n=409)		p (sex)
	Mean	SD	Mean	SD	Mean	SD	
Age	78.2	3.4	78.2	3.2	78.2	3.3	0.985
Body height (m)	1.58	0.05	1.72	0.06	1.64	0.09	<0.001
Body mass (kg)	70.1	11.8	79.1	11.3	73.5	12.4	<0.001
Fat Free Mass (kg)	42.1	4.5	57.2	6.9	47.9	9.2	<0.001
Body Fat (%)	39.0	7.1	27.0	6.7	34.5	9.1	<0.001
Chronic conditions (count)	3.0	1.8	2.7	1.8	2.9	1.8	0.17
Education (years)	11.6	4.0	12.1	4.4	11.8	4.2	0.31
Muscle strength (N/kg)	4.23	1.23	5.70	1.45	4.78	1.50	<0.001

Walk Speed (km/h)	4.13	0.79	4.45	0.76	4.25	0.79	<0.001
Walk EE estim. (net stdMET)	2.57	0.52	2.65	0.50	2.60	0.51	0.10
HR walk (bpm)	104.9	15.3	98.6	16.0	102.5	15.8	<0.001
HR rec (bpm)	88.8	15.0	84.4	14.6	87.1	15.0	0.007
HR sleep (bpm)	52.5	6.7	48.9	6.5	51.2	6.8	<0.001
	n	(%)	n	(%)	n	(%)	
Past or present smoking (yes)	35	13.8	67	43.2	102	25.0	<0.001
Betablocker use (yes)	91	36.0	45	28.8	136	33.3	0.138

290 EE estim., estimated energy expenditure; HR, heart rate; rec; recovery

291 Figure 2 presents overall PAEE stratified by age and sex, showing inverse associations for
 292 age in both sexes. The allocation of PAEE to LPA and MVPA as energy expenditure,
 293 proportion, and minutes per day are presented in Table 2. Approximately half of the daily
 294 PAEE was spent in light-intensity activities in both men and women ($p=0.44$), while the
 295 contribution of activities of at least moderate intensity was 28% in men and 23% in women
 296 ($p<0.001$). All the other indicators of daily physical activity were also higher in men
 297 compared to women ($p<0.001$). The effect size of sex on PAEE varied across the intensity
 298 spectrum ranging from 0.25 to 0.56, being largest at 1.5-2.0 METs (Fig.3). PAEE, MVPA,
 299 and LPA were significantly associated with body fat percentage, walking speed, and
 300 muscular strength in both men and women (Table 3).



301

302 **Fig 2.** A boxplot of the median (\pm first and third quartile with lower and upper adjacent
 303 values) of daily physical activity energy expenditure stratified by age group and sex (women
 304 in orange, men in blue).

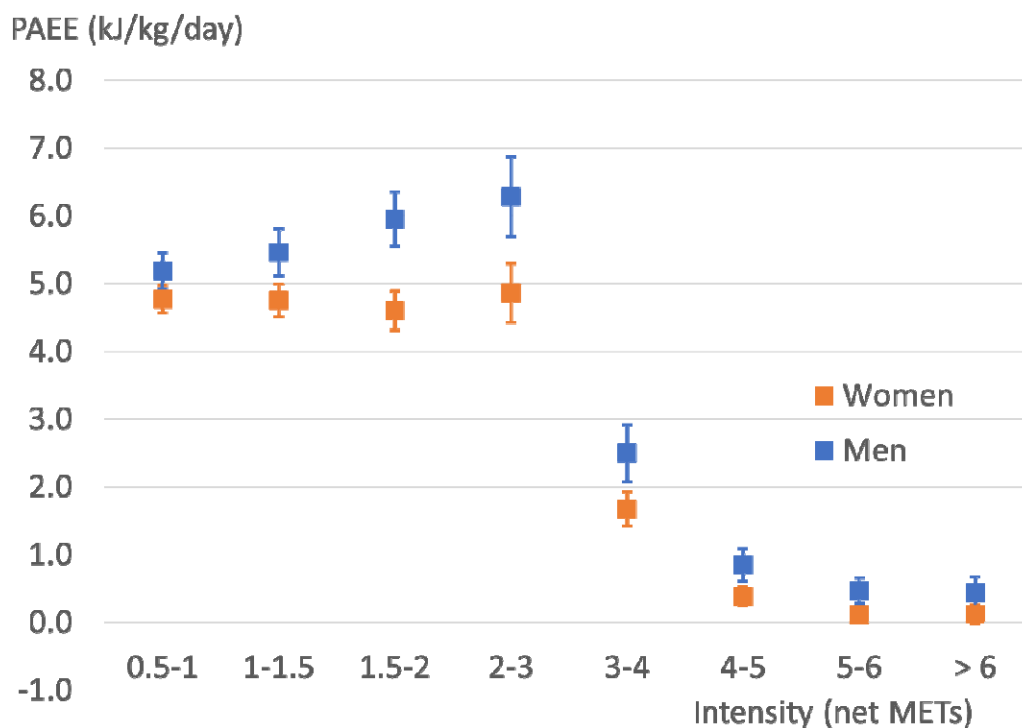
305

306 **Table 2.** Physical activity metrics stratified by sex.

	Women		Men		Total		p (sex)
	Mean	SD	Mean	SD	Mean	SD	
PAEE (kJ/kg/day)	28.3	8.4	34.0	10.8	30.5	9.8	<0.001
PAEE from MVPA (kJ/kg/day)	7.1	5.7	10.5	7.5	8.4	6.6	<0.001
PAEE from MVPA (%)	22.7	12.5	28.0	13.1	24.7	13.0	<0.001
PAEE from LPA (kJ/kg/day)	14.1	4.8	16.6	5.4	15.1	5.2	<0.001
PAEE from LPA (%)	50.0	8.7	49.3	8.5	49.7	8.6	0.44
LPA (min/day)	184	59	211	66	194	63	<0.001
MVPA (min/day)	37	27	52	32	43	30	<0.001
MVPA (min/week)	260	187	364	227	299	209	<0.001
MVPA (net stdMET mins/week)	703	556	1035	741	829	652	<0.001
Wear time (days)	7.2	1.1	7.1	1.2	7.1	1.1	0.56
HR availability (%)	74.8	24.4	74.1	23.8	74.5	24.1	0.78

307 PAEE, physical activity energy expenditure; MVPA, moderate-to-vigorous physical activity;

308 LPA, light physical activity; stdMET, standard metabolic equivalent (3.5 ml/kg/min)



309

310 **Fig.3.** Daily accumulation of physical activity energy expenditure (PAEE, mean \pm 95 % CI)
 311 in men and women at different intensity levels expressed as standard metabolic equivalents
 312 above the resting level (net METs). Note, bin size differences below and above 2 net MET.

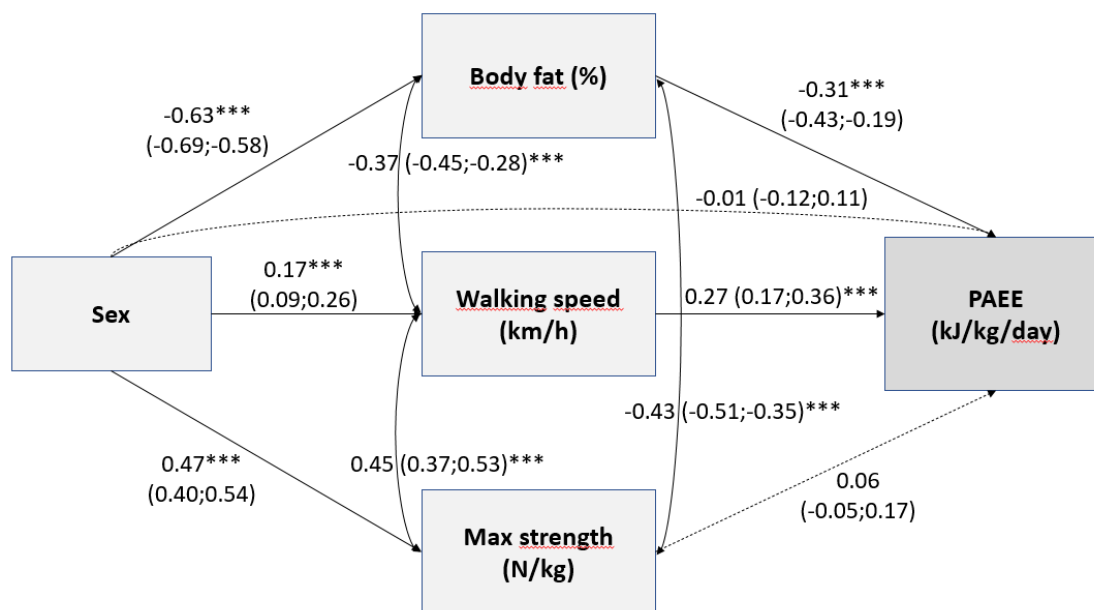
313 **Table 3.** Pearson's correlation coefficients between physical fitness and activity stratified by
 314 sex.

		PAEE (kJ/kg/day)	PAEE from MVPA (kJ/kg/day)	PAEE from LPA (kJ/kg/day)
<i>Women</i>				
Body Fat (%)	r	-0.429	-0.323	-0.381
	p	<0.001	<0.001	<0.001
Walk speed (km/h)	r	0.445	0.425	0.282
	p	<0.001	<0.001	<0.001
Muscle strength (N/kg)	r	0.401	0.401	0.224
	p	<0.001	<0.001	<0.001
<i>Men</i>				
Body Fat (%)	r	-0.414	-0.341	-0.371
	p	<0.001	<0.001	<0.001
Walk speed (km/h)	r	0.454	0.440	0.302
	p	<0.001	<0.001	<0.001
Muscle strength (N/kg)	r	0.275	0.253	0.187
	p	0.001	0.002	0.021

315 Sex had a bivariate association with overall PAEE ($\beta=0.28$; 95% CI 0.19-0.37; $p<0.001$),
316 LPA (0.23; 0.14-0.33; $p<0.001$), and MVPA (0.25; 0.15-0.34; $p<0.001$). Results of the path
317 model further indicated that men had a lower percentage of body fat than women but faster
318 walking speed and higher maximal strength (Fig.4). All associations of the path model are
319 presented in Supplementary file 2, Table S2.1. Of the physical fitness components, higher
320 body fat percentage was negatively and higher walking speed positively associated with
321 PAEE and MVPA while the associations of maximal strength with PAEE at different
322 intensities were not significant. The direct effect of sex on PAEE at different intensities
323 attenuated to non-significant.

324 The indirect effects from sex to PAEE through body fat ($\beta=0.20$, $p<0.001$) and walking speed
325 ($\beta=0.05$, $p=0.001$) were statistically significant. The model explained 33.3 % of the variance
326 in PAEE, and the model fit was good ($\chi^2(9)=17.147$, $p=0.047$, RMSEA 0.047, CFI 0.989,
327 TLI 0.974, SRMR 0.047). Similarly, the indirect effects from sex to MVPA (Supplementary
328 file 3 Fig.S3.1; Table S2.1) and from sex to LPA (Fig.S3.2; Table S2.1) through body fat and
329 walking speed were statistically significant, and the models explained 27.2 % of the variance
330 in MVPA and 21.1 % of the variance in LPA. Considering covariates, the number of chronic
331 conditions was negatively related to all physical activity variables, walking speed, and muscle
332 strength but positively associated with body fat. Duration of education was positively
333 associated with walking speed and negatively with age, and the number of chronic conditions
334 was positively associated with age.

335 In the sensitivity analysis where only accelerometry was used (Table S2.2; Fig.S3.3), all
336 indirect effects from sex to accelerometry-based PAEE through the physical fitness
337 components were significant including muscle strength: body fat ($\beta=0.16$, $p<0.001$), walking
338 speed ($\beta=0.05$, $p=0.002$), and muscle strength ($\beta=0.05$, $p=0.042$) explaining 30.6 % of the
339 variance in accelerometry-based PAEE ($\chi^2(9)=16.075$, $p=.065$, RMSEA 0.044, CFI 0.990,
340 TLI 0.976, SRMR 0.045).



341

342 **Fig.4.** Standardized beta coefficients (with 95% confidence intervals) from path model
 343 testing factors describing physical fitness (body fat percentage, walking speed, and muscle
 344 strength) as mediators in the relationships between sex and physical activity energy
 345 expenditure (PAEE, * $p \leq 0.05$, ** $p \leq 0.01$, *** $p \leq 0.001$).

346 Discussion

347 In this study, we investigated the physical determinants of PAEE in older Finnish men and
 348 women using combined accelerometry and heart rate sensing. The PAEE component from
 349 accelerometry was based on incremental walking data of a similar age group, and the PAEE
 350 component from heart rate was individually calibrated using a novel method based on self-
 351 paced submaximal walking. This is the first time the self-paced walking calibration was
 352 applied to older people, for whom it is a feasible method due to their heterogeneous
 353 functional ability. We observed approximately 20 % higher PAEE among older men
 354 compared to women, and our path analysis suggests this difference is largely explained by
 355 men's lower body fat percentage and higher walking speed. Body fat percentage was an
 356 important contributor to LPA, whereas walking speed was the most important fitness
 357 component of MVPA. The results illustrate the intertwined association between physical
 358 fitness and physical activity in the context of ageing.

359 Previous studies have reported similar differences between younger men and women. In the
 360 Fenland study including the age range of 29 – 64 years, higher overall PAEE was observed in

361 men (59 (SD 23) kJ/kg/day) compared to women (50 (20) kJ/kg/day) (Lindsay et al., 2019).
362 Schrack et al. quantified physical activity both in absolute and relative terms and concluded,
363 that based on the absolute activity counts women appeared less active, whereas in relative
364 terms (percentage of HR reserve) women were less sedentary and engaged in more light and
365 moderate activity compared to men (Schrack et al., 2018). They also observed that walking
366 speed over 400 m was lower in the tertile with the lowest agreement between absolute and
367 relative physical activity, which indirectly suggests that slow walking speed may be a
368 determinant of the lower absolute volume of activity of a person who engages in activities at
369 their own comfortable pace. Thus, the chosen methodology affects the observed difference
370 between the sexes, even though the contribution of the distinct methodology for relative and
371 absolute intensity quantification may also play a role (Schrack et al., 2018).

372 The majority of physical activity of older people is composed of walking, either incidental or
373 planned. Therefore, the intensity at which people walk in their daily lives may have a major
374 impact on the accumulation of MVPA. It can be inferred from the present and previous
375 studies, that the preferred intensity of walking may be at either side of the common MVPA
376 cut point of 3 METs (i.e. 2 net METs) (Rejeski et al., 2016; Schrack et al., 2012). In the
377 present sample of older adults, the average walking intensity in the laboratory test was 2.6
378 (SD 0.5) net METs varying from 1.2 to 4.2 METs. Comparable walking intensity has also
379 been reported previously when oxygen uptake was measured at “usual comfortable pace” in a
380 diverse age group of 30–100 years. They walked on average at 13.0 (SD 2.8) ml/kg/min,
381 which equals 2.7 standard net METs (Schrack et al., 2012). Even though the preferred speed
382 may be higher in the laboratory than in a free-living environment (Takayanagi et al., 2019),
383 those with lower walking speed in the laboratory are probably less likely to exceed the
384 moderate intensity cut point while walking in free-living. For LPA, an even more important
385 contributor was body fat percentage. This may be explained by the differential metabolic
386 contributions of muscle and fat tissue on energy expenditure during physical activity. PAEE
387 is generally expressed relative to total body mass, as was the case also in this study, which
388 means that individuals with higher body fat percentage have less muscle mass for generating
389 bodily movement, and more fat mass to carry during weight-bearing activities. The
390 contribution of LPA was large, approximately half of the total PAEE, which may explain the
391 importance of body composition for LPA.

392 We used combined sensing of accelerometry and HR for PAEE assessment to take advantage
393 of both methods: 1) the well-established linear relationship between HR and energy

394 expenditure across activity modes at moderate-to-vigorous intensities (Ceesay et al., 1989),
395 and 2) the capability of thigh-mounted accelerometry to separate movement from non-
396 movement at low intensities (Vähä-Ypyä et al., 2015), where the correlation between HR and
397 PAEE is low (Ceesay et al., 1989). It has previously been shown that locomotion-based
398 accelerometry models of PAEE may underestimate PAEE in free-living whereas individually
399 calibrated HR models agree with doubly-labelled water measures of PAEE on average with
400 high individual variance, and combined estimates being unbiased and with lower error
401 variation (Brage et al., 2015). That said, correlations between combined sensing estimates
402 and accelerometry-only estimates are relatively high, and our sensitivity analysis showed that
403 the present findings are also applicable to accelerometry methodology. Therefore, the
404 potential role of physical fitness as a determinant of PAEE is a relevant consideration to all
405 studies that use PAEE estimation for quantifying volume or the intensity distribution of
406 physical activity. Therefore, we encourage the inclusion of both fitness and physical activity
407 assessments in epidemiological studies.

408 The strengths of the current study include the population-based sample of older men and
409 women, which was reasonably balanced in terms of the sex of the participants including 61.9
410 % of women, which is comparable to the national proportion of women in this age group
411 (61.3 %) in 2017 (Statistics Finland, 2023). The subsample was somewhat more physically
412 active based on self-report than those who did not volunteer for the device-based monitoring.
413 The subsample also had a faster walking speed (Portegijs et al., 2019). Therefore, we cannot
414 generalise our findings to represent the whole population of older people, which is an
415 important but not unusual limitation when examining this age group.

416 To conclude, we observed higher volume and intensity of physical activity in a population-
417 based sample of older men compared to women, a difference which was largely determined
418 by sex differences in adiposity and cardiorespiratory fitness. The mediation effect of muscle
419 strength was weaker and significant only when PAEE was assessed using accelerometry only.
420 Our findings stress the importance of keeping fit and maintaining a healthy weight in order to
421 support active living in older adults.

422 **Funding**

423 This work was supported by the European Research Council (grant number 693045 to TaR),
424 Yrjö Jahnsson Foundation (to LK), and the Academy of Finland (grant numbers 339391 and

425 346462 to LK, and 321336, 328818, and 352653 to TiR). KW, TG, and SB were funded by
426 the UK Medical Research Council (MC_UU_00006/4) and the NIHR Cambridge Biomedical
427 Research Centre (NIHR203312 and IS-BRC-1215-20014). The content of this publication
428 does not reflect the official opinion of the funders. Responsibility for the information and
429 views expressed in the publication lies entirely with the authors.

430 **Author contributions**

431 Laura Karavirta: Conceptualization, Data Curation, Formal Analysis, Funding Acquisition,
432 Investigation, Methodology, Project Administration, Software, Supervision, Visualization,
433 Writing – Original Draft, Writing – Review & Editing

434 Timo Aittokoski: Data Curation, Formal Analysis, Writing – Review & Editing

435 Katja Pynnönen: Formal Analysis, Methodology, Writing – Review & Editing

436 Timo Rantalainen: Formal Analysis, Writing – Review & Editing

437 Kate Westgate: Software, Writing – Review & Editing

438 Tomas Gonzales: Software, Writing – Review & Editing

439 Joonas Neuvonen: Data Curation, Writing – Review & Editing

440 Lotta Palmberg: Data Curation, Writing – Review & Editing

441 Jukka A. Lipponen: Formal Analysis, Writing – Review & Editing

442 Katri Turunen: Data Curation, Writing – Review & Editing

443 Riku Nikander: Data Curation, Writing – Review & Editing

444 Erja Portegijs: Data Curation, Writing – Review & Editing

445 Taina Rantanen: Funding Acquisition, Supervision, Writing – Review & Editing

446 Søren Brage: Methodology, Software, Supervision, Writing – Review & Editing

447

448 **References**

449

- 450 2018 Physical Activity Guidelines Advisory Committee. (2018). *2018 Physical Activity*
451 *Guidelines Advisory Committee Scientific Report*.
452 https://health.gov/sites/default/files/2019-09/PAG_Advisory_Committee_Report.pdf
- 453 Ainsworth, B. E., Haskell, W. L., Herrmann, S. D., Meckes, N., Bassett, D. R., Tudor-Locke,
454 C., Greer, J. L., Vezina, J., Whitt-Glover, M. C., Leon, A. S., Ainsworth, B. E., Haskell,
455 W. L., Herrmann, S. D., Meckes, N., Bassett, D. R., Tudor-Locke, C., Greer, J. L.,
456 Vezina, J., Whitt-Glover, M. C., & Leon, A. S. (2011). 2011 Compendium of Physical
457 Activities: A Second Update of Codes and MET Values. *Medicine & Science in Sports*
458 *& Exercise*, *43*(8), 1575–1581. <https://doi.org/10.1249/MSS.0b013e31821ece12>
- 459 Blair, S. N., Kampert, J. B., Kohl, H. W., Barlow, C. E., Macera, C. A., Paffenbarger, R. S.,
460 & Gibbons, L. W. (1996). Influences of Cardiorespiratory Fitness and Other Precursors
461 on Cardiovascular Disease and All-Cause Mortality in Men and Women. *JAMA*, *276*(3),
462 205–210. <https://doi.org/10.1001/JAMA.1996.03540030039029>
- 463 Brage, S., Brage, N., Franks, P. W., Ekelund, U., Wong, M.-Y., Andersen, L. B., Froberg, K.,
464 & Wareham, N. J. (2004). Branched equation modeling of simultaneous accelerometry
465 and heart rate monitoring improves estimate of directly measured physical activity
466 energy expenditure. *Journal of Applied Physiology*, *96*(1), 343–351.
467 <https://doi.org/10.1152/jappphysiol.00703.2003>
- 468 Brage, S., Ekelund, U., Brage, N., Hennings, M. A., Froberg, K., Franks, P. W., & Wareham,
469 N. J. (2007). Hierarchy of individual calibration levels for heart rate and accelerometry
470 to measure physical activity. *Journal of Applied Physiology*, *103*(2), 682–692.
471 <https://doi.org/10.1152/jappphysiol.00092.2006>
- 472 Brage, S., Westgate, K., Franks, P. W., Stegle, O., Wright, A., Ekelund, U., & Wareham, N.
473 J. (2015). Estimation of Free-Living Energy Expenditure by Heart Rate and Movement
474 Sensing: A Doubly-Labelled Water Study. *PLOS ONE*, *10*(9), e0137206.
475 <https://doi.org/10.1371/journal.pone.0137206>
- 476 Ceesay, S. M., Prentice, A. M., Day, K. C., Murgatroyd, P. R., Goldberg, G. R., Scott, W., &
477 Spurr, G. B. (1989). The use of heart rate monitoring in the estimation of energy
478 expenditure: a validation study using indirect whole-body calorimetry. *British Journal of*
479 *Nutrition*, *61*(2), 175–186. [https://doi.org/DOI: 10.1079/BJN19890107](https://doi.org/DOI:10.1079/BJN19890107)
- 480 Consolazio, C., Johnson, R., & Pecora, L. (1963). *Physiological measurements of metabolic*
481 *functions in man*. McGraw-Hill.
- 482 Davies, M. J., & Dalsky, G. P. (1997). Normalizing strength for body size differences in
483 older adults. *Medicine & Science in Sports & Exercise*, *29*(5), 713–717.
484 <https://doi.org/10.1097/00005768-199705000-00020>
- 485 Fleg, J. L., Morrell, C. H., Bos, A. G., Brant, L. J., Talbot, L. A., Wright, J. G., & Lakatta, E.
486 G. (2005). Accelerated Longitudinal Decline of Aerobic Capacity in Healthy Older
487 Adults. *Circulation*, *112*(5), 674–682.
488 <https://doi.org/10.1161/CIRCULATIONAHA.105.545459>

- 489 Jayanama, K., Theou, O., Godin, J., Mayo, A., Cahill, L., & Rockwood, K. (2022).
490 Relationship of body mass index with frailty and all-cause mortality among middle-aged
491 and older adults. *BMC Medicine*, 20(1). <https://doi.org/10.1186/S12916-022-02596-7>
- 492 Karavirta, L., Rantalainen, T., Skantz, H., Lisko, I., Portegijs, E., & Rantanen, T. (2020).
493 Individual Scaling of Accelerometry to Preferred Walking Speed in the Assessment of
494 Physical Activity in Older Adults. *The Journals of Gerontology: Series A Biological
495 Sciences and Medical Sciences*, 75(9), e111–e118.
496 <https://doi.org/10.1093/gerona/glaa142>
- 497 Li, R., Xia, J., Zhang, X., Gathirua-Mwangi, W. G., Guo, J., Li, Y., McKenzie, S., & Song,
498 Y. (2018). Associations of Muscle Mass and Strength with All-Cause Mortality among
499 US Older Adults. *Medicine & Science in Sports & Exercise*, 50(3), 458.
500 <https://doi.org/10.1249/MSS.0000000000001448>
- 501 Lindsay, T., Westgate, K., Wijndaele, K., Hollidge, S., Kerrison, N., Frouhi, N., Griffin, S.,
502 Wareham, N., & Brage, S. (2019). Descriptive epidemiology of physical activity energy
503 expenditure in UK adults (The Fenland study). *International Journal of Behavioral
504 Nutrition and Physical Activity*, 16(1), 126. <https://doi.org/10.1186/s12966-019-0882-6>
- 505 Ludlow, L. W., & Weyand, P. G. (2016). Energy expenditure during level human walking:
506 seeking a simple and accurate predictive solution. *Journal of Applied Physiology*,
507 120(5), 481–494. <https://doi.org/10.1152/jappphysiol.00864.2015>
- 508 Muthén, L. K., & Muthén, B. O. (2017). *Mplus User's Guide* (8th ed.). Muthén & Muthén.
- 509 Ogawa, T., Spina, R. J., Martin, W. H., Kohrt, W. M., Schechtman, K. B., Holloszy, J. O., &
510 Ehsani, A. A. (1992). Effects of aging, sex, and physical training on cardiovascular
511 responses to exercise. *Circulation*, 86(2), 494–503.
512 <https://www.ncbi.nlm.nih.gov/pubmed/1638717>
- 513 Pan, J., & Tompkins, W. J. (1985). A Real-Time QRS Detection Algorithm. *IEEE
514 Transactions on Biomedical Engineering*, BME-32(3), 230–236.
515 <https://doi.org/10.1109/TBME.1985.325532>
- 516 Portegijs, E., Karavirta, L., Saajanaho, M., Rantalainen, T., & Rantanen, T. (2019). Assessing
517 physical performance and physical activity in large population-based aging studies:
518 Home-based assessments or visits to the research center? *BMC Public Health*, 19(1).
519 <https://doi.org/10.1186/s12889-019-7869-8>
- 520 Rantanen, T., Era, P., & Heikkinen, E. (1997). Physical Activity and the Changes in Maximal
521 Isometric Strength in Men and Women from the Age of 75 to 80 Years. *Journal of the
522 American Geriatrics Society*, 45(12), 1439–1445. <https://doi.org/10.1111/j.1532-5415.1997.tb03193.x>
- 524 Rantanen, T., Saajanaho, M., Karavirta, L., Siltanen, S., Rantakokko, M., Viljanen, A.,
525 Rantalainen, T., Pynnönen, K., Karvonen, A., Lisko, I., Palmberg, L., Eronen, J.,
526 Palonen, E.-M., Hinrichs, T., Kauppinen, M., Kokko, K., & Portegijs, E. (2018). Active
527 aging - Resilience and external support as modifiers of the disablement outcome:
528 AGNES cohort study protocol. *BMC Public Health*, 18(1), 565.
529 <https://doi.org/10.1186/s12889-018-5487-5>

- 530 Rejeski, W. J., Marsh, A. P., Brubaker, P. H., Buman, M., Fielding, R. A., Hire, D., Manini,
531 T., Rego, A., Miller, M. E., & LIFE Study Investigators, for the L. S. (2016). Analysis
532 and Interpretation of Accelerometry Data in Older Adults: The LIFE Study. *The*
533 *Journals of Gerontology. Series A, Biological Sciences and Medical Sciences*, 71(4),
534 521–528. <https://doi.org/10.1093/gerona/glv204>
- 535 Santala, O. E., Lipponen, J. A., Jäntti, H., Rissanen, T. T., Tarvainen, M. P., Laitinen, T. P.,
536 Laitinen, T. M., Castrén, M., Väliäho, E.-S., Rantula, O. A., Naukkarinen, N. S.,
537 Hartikainen, J. E. K., Halonen, J., & Martikainen, T. J. (2022). Continuous mHealth
538 Patch Monitoring for the Algorithm-Based Detection of Atrial Fibrillation: Feasibility
539 and Diagnostic Accuracy Study. *JMIR Cardio*, 6(1), e31230.
540 <https://doi.org/10.2196/31230>
- 541 Sattelmair, J., Pertman, J., Ding, E. L., Kohl, H. W., Haskell, W., & Lee, I.-M. (2011). Dose
542 Response Between Physical Activity and Risk of Coronary Heart Disease. *Circulation*,
543 124(7), 789–795. <https://doi.org/10.1161/CIRCULATIONAHA.110.010710>
- 544 Schrack, J. A., Leroux, A., Fleg, J. L., Zipunnikov, V., Simonsick, E. M., Studenski, S. A.,
545 Crainiceanu, C., & Ferrucci, L. (2018). Using Heart Rate and Accelerometry to Define
546 Quantity and Intensity of Physical Activity in Older Adults. *Journals of Gerontology -*
547 *Series A Biological Sciences and Medical Sciences*, 73(5), 668–675.
548 <https://doi.org/10.1093/gerona/gly029>
- 549 Schrack, J. A., Simonsick, E. M., Chaves, P. H. M., & Ferrucci, L. (2012). The Role of
550 Energetic Cost in the Age-Related Slowing of Gait Speed. *Journal of the American*
551 *Geriatrics Society*, 60(10), 1811–1816. [https://doi.org/10.1111/j.1532-](https://doi.org/10.1111/j.1532-5415.2012.04153.x)
552 [5415.2012.04153.x](https://doi.org/10.1111/j.1532-5415.2012.04153.x)
- 553 Statistics Finland. (2023, November 6). *Population according to age (5-year) and sex, 2017*.
554 StatFin Population Structure.
- 555 Strain, T., Wijndaele, K., Dempsey, P. C., Sharp, S. J., Pearce, M., Jeon, J., Lindsay, T.,
556 Wareham, N., & Brage, S. (2020). Wearable-device-measured physical activity and
557 future health risk. *Nature Medicine*, 26(9), 1385–1391. [https://doi.org/10.1038/s41591-](https://doi.org/10.1038/s41591-020-1012-3)
558 [020-1012-3](https://doi.org/10.1038/s41591-020-1012-3)
- 559 Takayanagi, N., Sudo, M., Yamashiro, Y., Lee, S., Kobayashi, Y., Niki, Y., & Shimada, H.
560 (2019). Relationship between Daily and In-laboratory Gait Speed among Healthy
561 Community-dwelling Older Adults. *Scientific Reports 2019 9:1*, 9(1), 1–6.
562 <https://doi.org/10.1038/s41598-019-39695-0>
- 563 Vähä-Ypyä, H., Vasankari, T., Husu, P., Suni, J., & Sievänen, H. (2015). A universal,
564 accurate intensity-based classification of different physical activities using raw data of
565 accelerometer. *Clinical Physiology and Functional Imaging*, 35(1), 64–70.
566 <https://doi.org/10.1111/cpf.12127>
- 567 van Hees, V. T., Fang, Z., Langford, J., Assah, F., Mohammad, A., da Silva, I. C. M., Trenell,
568 M. I., White, T., Wareham, N. J., & Brage, S. (2014). Autocalibration of accelerometer
569 data for free-living physical activity assessment using local gravity and temperature: an
570 evaluation on four continents. *Journal of Applied Physiology*, 117(7), 738–744.
571 <https://doi.org/10.1152/jappphysiol.00421.2014>

- 572 Westerterp, K. R. (2000). Daily physical activity and ageing. *Current Opinion in Clinical*
573 *Nutrition and Metabolic Care*, 3(6), 485–488. [https://doi.org/10.1097/00075197-](https://doi.org/10.1097/00075197-200011000-00011)
574 [200011000-00011](https://doi.org/10.1097/00075197-200011000-00011)
- 575 Westgate, K., Gonzales, T. I., Hollidge, S., Lindsay, T., Wareham, N., & Brage, S. (2024). A
576 Self-Paced Walk Test for Individual Calibration of Heart Rate to Energy Expenditure.
577 *Journal for the Measurement of Physical Behaviour*, 7(1).
578 <https://doi.org/10.1123/JMPB.2023-0042>
- 579

580 **Supporting information**

- 581 Supplementary file 1 (accelerometry method)
- 582 Supplementary file 2 (Tables S2.1 and S2.2)
- 583 Supplementary file 3 (Figures S3.1, S3.2, and S3.3)