

1 **Efficacy of a physical activity regimen on visual outcomes among persons newly**  
2 **diagnosed with abnormal glucose tolerance: Study protocol for a pilot randomized**  
3 **controlled trial.**

4  
5 Ebenezer Oduro Antiri<sup>1,2¶\*</sup>, Thomas Hormenu<sup>1,2¶</sup>, Edward Wilson Ansah<sup>1¶</sup>, Stephen Ocansey<sup>3¶</sup>,  
6 Rudolf Aaron Arthur<sup>2,4¶</sup>, Eric Awlme-Ableh<sup>1,2¶</sup>, Iddrisu Salifu<sup>2¶</sup>, Benjamin Nyane<sup>2,4¶</sup>, Augustine  
7 Mac-Hubert Gabla<sup>1,2¶</sup>, Juliet Elikem Paku<sup>1,2¶</sup>

8 <sup>1</sup>Department of Health, Physical Education and Recreation, University of Cape Coast, Cape Coast,  
9 Ghana

10 <sup>2</sup>Cardiometabolic Epidemiology Research Laboratory, Department of Health, Physical Education  
11 and Recreation, University of Cape Coast, Cape Coast, Ghana

12 <sup>3</sup>Department of Optometry and Vision Science, School of Allied Health Sciences, University of Cape  
13 Coast, Cape Coast, Ghana

14 <sup>4</sup>Directorate of University Health Services, University of Cape Coast, Cape Coast, Ghana

15  
16  
17  
18  
19 \* Corresponding author

20 Email: [oduro.antiri@gmail.com](mailto:oduro.antiri@gmail.com) (EOA)

21  
22  
23 ¶These authors contributed equally to this work.

24  
25 **Funding Statement**

26 This study is expected to be carried out without external funding  
27  
28  
29  
30  
31

32 **Abstract**

33 Background: Abnormal Glucose Tolerance (AGT), which encompasses diabetes and  
34 prediabetes, is a growing health problem globally. It is affecting millions and predisposing  
35 such patients to several complications, including ocular complications. Physical activity has  
36 been found to improve glycemic levels, but the specific effect on visual outcomes in a newly  
37 diagnosed African population with AGT is yet to be explored fully. This pilot randomized  
38 controlled trial seeks to evaluate the efficacy of a physical activity intervention among newly  
39 diagnosed persons with AGT in Cape Coast, Ghana.

40 Methods: An ostensibly healthy population will be screened for AGT. Persons newly  
41 diagnosed with AGT will be recruited into the randomized controlled trial. About 50 newly  
42 diagnosed participants with AGT will undergo a 12-week moderate-to-vigorous physical  
43 activity (MVPA) intervention, specifically exercises that burn more than 3.0 metabolic  
44 equivalents (METs), to ascertain its effect on their visual acuity, contrast sensitivity, central  
45 visual field and diabetic retinopathy status. The participants will be randomized into a  
46 physical activity intervention group and a control group. Assessments will be done at  
47 baseline, and treatment outcomes will be done on the last day of the intervention for each  
48 participant.

49 Discussion: Physical activity is a proven lifestyle intervention that reduces glycemic levels in  
50 people with AGT. Unfortunately, many persons are unaware of their high level of glucose  
51 tolerance, which is associated with the deterioration of vision. This study intends to  
52 investigate and present findings on the advantages of physical activity interventions on  
53 visual outcomes among people with AGT. The study holds promise in informing evidence-  
54 based interventions for persons with AGT in poor economies.

55 **Clinical trial registration**

56 This trial has been registered with the Pan African Clinical Trails Registry with the identifier:  
57 PACTR202401462338744.

58

59 **Key words: Abnormal Glucose Tolerance, Physical Activity Intervention, Visual**  
60 **Outcomes, Randomized Controlled Trial, Ghana**

61

62

63

## 64 **Background**

65 Abnormal Glucose Tolerance (AGT), with all its negative health implication, is gradually  
66 becoming a regularized phenomenon with which society must contend. Instances of  
67 Impaired Glucose Tolerance (IGT), Impaired Fasting Glucose (IFG), and/or diabetes mellitus  
68 all identify as situations of AGT. The number of adults who suffer from only diabetes mellitus  
69 is estimated to experience a surge from 537 million adults to 783 million by 2045 (1).  
70 Additionally, there are also an estimated 541 million adults who have Impaired Glucose  
71 Tolerance (IGT) or prediabetes, making them highly susceptible to developing diabetes and  
72 its complications (1–3). Even without consideration of all other instances of Abnormal  
73 Glucose Tolerance (AGT), the estimated rate of growth of adults with diabetes mellitus is  
74 quite alarming.

75 In Ghana, the estimated prevalence of diabetes mellitus has been pegged at a high rate of  
76 6.5% (4). As typical on the global scene, Type 2 Diabetes Mellitus (T2DM) is the most  
77 common in Ghana. It is important to acknowledge that instances of Abnormal Glucose  
78 Tolerance (AGT) such as overt diabetes have extensive precarious effects on an individual's  
79 health system, such as one's ocular health (5). Diabetic Retinopathy (DR), which is the one of  
80 most common microvascular complications of T2DM (6), has the tendency to cause total  
81 blindness if not managed properly (7). According to the literature (7), almost 60% of T2DM  
82 patients are found to have some form of diabetic retinopathy. Unfortunately, diabetic  
83 retinopathy has been a leading cause of adult-onset blindness in the past decade (8).

84 Type 2 Diabetes Mellitus (T2DM) is heavily influenced by both modifiable and partially  
85 adjustable risk factors, making it the most modifiable kind of diabetes (1,9). For example,

86 previous studies have demonstrated that lifestyle changes, including a healthier diet and  
87 more physical activity significantly lower the risk of developing complications from T2DM  
88 (10–12). They also show that the vice versa is also possible where there can be complex  
89 complications from T2DM. It has been observed that there are numerous health advantages  
90 of physical activity such as improving glucose control, lipid profiling, and cardiovascular  
91 health, which help manage instances of AGT (13). Such demonstrations and observations  
92 suggest that in the instance of Diabetic Retinopathy (DR), for example, physical activity  
93 would have a direct impact on its management.

94 In fact, there have been studies that have investigated the associations between  
95 hyperglycemia (as associated with AGT) and visual functions, with these studies showing an  
96 observable reduction in visual functions due to hyperglycemia (14–20). Thus, these studies  
97 recommended lifestyle interventions like dietary changes and increased physical activity to  
98 improve visual outcomes. Further clinical trials also reported some positive change in visual  
99 functioning as a result of physical activity participation (21,22). However, many of the  
100 studies, as with the clinical trials, did not include an African population and persons with the  
101 prediabetes condition (5,21–23). Many of those studies rather focused on people diagnosed  
102 with diabetes who are likely to be on other prescribed interventions (5,21–23). Additionally,  
103 they assessed physical activity levels subjectively, by relying on patients' self-reported data  
104 (21,22).

105 There is, therefore, the need for additional investigations into the related effects of physical  
106 activity and AGT, established through an objectively self-monitored physical activity  
107 regimen on visual outcomes in newly diagnosed persons with AGT from Africa.

108 Understanding the direct impact of physical activity on AGT-related visual outcomes will  
109 enable the development of a more concise, evidence-based interventions for patients with  
110 AGT related ocular health issues. In that regard, the present study seeks interventions that  
111 are cost effective, person-specific, and target-driven. It has been suggested that cost-effective  
112 interventions are sustainable and can easily lead to actual lifestyle modification because they  
113 can be done without significant financial burden (24,25). Studies also show that such  
114 interventions need to be person-specific to be successful (26). For instance, persons with  
115 AGT may have varying characteristics, and tailoring physical activity interventions to their  
116 unique characteristics and needs is crucial for enhancing its adherence and effectiveness  
117 (27,28). Providing specific targets for a physical activity intervention is also another  
118 important factor, as it motivates participants and helps track their progress in adhering to  
119 the intervention (29).

120 In 2024, the International Diabetes Federation (IDF) and the International Agency for the  
121 Prevention of Blindness (IAPB) published a policy brief to help the development and  
122 implementation of measures to reduce diabetic eye disease worldwide (30). This trial  
123 protocol describes how the recommendations of developing contextually appropriate  
124 screening and treatment interventions, as well as building capacity in monitoring and  
125 evaluating progress of people with diabetic retinopathy can be implemented in an African  
126 population. Thus, the present study explores the effect of a cost-effective, person-specific,  
127 and target-driven physical activity regimen on visual outcomes among persons newly  
128 diagnosed with AGT in Cape Coast, Ghana.

## 129 **Objectives**

130 The main objective of this study is to evaluate the feasibility of carrying out a double-blind  
131 Randomized Controlled Trial (RCT) and to investigate the effects of a moderate-to-vigorous  
132 physical activity (MVPA) regimen on visual outcomes among persons newly diagnosed with  
133 AGT in Cape Coast. The secondary objective is to investigate whether a physical activity  
134 regimen will influence the ability of the experimental group to cope with their daily visual  
135 demands, in comparison to the control group.

## 136 **Methods**

### 137 **Study design**

138 This study is a 12-week pilot and feasibility study with a double-blind, randomized control  
139 trial. The design will focus on the preliminary efficacy of physical activity to impact visual  
140 outcomes among newly diagnosed persons with AGT. The trial is designed based on the  
141 Standard Protocol Items: Recommendations for Interventional Trials (SPIRIT)(31) and will  
142 compare an experimental group (physical activity regimen) and an active placebo group  
143 (lifestyle change education), randomized into their respective groups in a 1:1 ratio. The trial  
144 design is further illustrated in Figures 1 and 2. The study protocol has been approved by the  
145 University of Cape Coast Institutional Review Board (UCCIRB) (UCCIRB/EXT/2022/27). The  
146 protocol is registered with the Pan African Clinical Trails Registry  
147 (PACTR202401462338744).

148 **Fig 1. SPIRIT schedule of enrolment, interventions, and assessments**

149 **Fig 2. Flow chart of the RCT process for the participants in the study**

150 **Settings and population**

151 The study will be conducted at the Cardiometabolic Epidemiology Research Laboratory  
152 (CERL), University of Cape Coast. Recruitment will be carried out in communities in Cape  
153 Coast, Ghana. Moreover, the participants will be persons who have been newly diagnosed  
154 with AGT.

155 **Eligibility criteria**

156 All prospective participants in this trial will be well informed about the study. The  
157 participants will provide written or oral consent to participate in the trial. The inclusion  
158 criteria for the trial comprise: a) Newly diagnosed persons with AGT; and b) people between  
159 the ages of 25 and 70. The exclusion criteria for the trial comprise: a) Pregnant women and  
160 breastfeeding mothers; b) individuals with pre-existing diabetes (either type 1 or type 2); c)  
161 individuals with a BMI below 18.5 kg/m<sup>2</sup>; d) individuals with anemia; e) individuals with  
162 cardiac comorbidities or signs of cardiovascular instability; and f) individuals with any other  
163 contraindicated condition for moderate-intensity physical activity.

164 **Allocation and blinding**

165 The participants in this study will be randomized into experimental or control groups, using  
166 the software [www.randomizer.org](http://www.randomizer.org). This process will be done by an independent researcher  
167 who will not take part in the intervention and evaluation stages of this trial. The  
168 randomization process will be done at a 1:1 ratio, with each participant given a special  
169 number.

170 Since the trial is double-blinded, both researchers and participants will be masked to the  
171 entire randomization process. As required, the researcher conducting the intervention will

172 not take part in the evaluations while the evaluator will not know the allocations of the  
173 participants.

## 174 **Procedure**

175 There will be a preliminary screening of the population to diagnose and identify individuals  
176 with AGT suffering from visual problems in the in the communities. This screening of the  
177 population in Coast to identify people eligible for the trial began in the first quarter of 2023  
178 and ended in the final quarter of 2023. Individuals will be included in the clinical trial if they  
179 are diagnosed with AGT, being either prediabetes or diabetes for any of the Fasting Blood  
180 Glucose (FBG), Glycated Hemoglobin (HbA1c) and Oral Glucose Tolerance Test (OGTT)  
181 diagnostic tests. In addition, these individuals must have visual functioning deficits,  
182 including visual acuity, contrast sensitivity, and central visual field. Such individuals will  
183 then be informed of the purpose of the trial and their voluntary participation in the study  
184 will be solicited. Also, the Visual Disability Index of each participant will be measured using  
185 the Visual Disability Questionnaire (32). Those who will agree to take part in the study will  
186 then be given an informed consent form to sign (to take part in the baseline and pre-  
187 intervention assessments).

188 When the baseline and pre-intervention assessments have been conducted, an independent  
189 researcher will then assign the participants into either the experimental or control groups  
190 based on the 1:1 randomization using the randomization software. A researcher will be  
191 responsible for explaining the physical activity regimen to the experimental group, as well  
192 as setting up the fitness applications on their smartphones that will be used for estimating  
193 daily physical activity levels. Another researcher will also provide the necessary information  
194 to the control group for this trial.



195 The physical activity will be a macrocycle of 12 weeks, with three mesocycles consisting of  
196 four weeks each. Participants in the experimental group will be contacted every four weeks  
197 to enquire of the possible occurrences. This feedback will inform the next decision of  
198 whether the participants should move from one mesocycle to another, based on their  
199 adherence levels and willingness to continue. After the conclusion of the last week of the  
200 intervention phase, participants will be assessed at CERL on all parameters assessed at the  
201 baseline and pre-intervention stages.

## 202 **Assessments**

203 The assessments for this trial will be conducted at CERL. All measures are expected to last  
204 around 120 minutes for each participant. The measures for this trial include:

205 *Fasting Blood Glucose (FBG)*: FBG will be measured after at least 8 hours of fasting using a  
206 glucometer. Blood samples will be taken from the participants and analyzed for blood  
207 glucose concentration, at mmol/L.

208 *Glycated Hemoglobin (HbA1c)*: HbA1c will be measured from a blood sample that will be  
209 taken from participants using the HbA1c analyzer.

210 *Oral Glucose Tolerance Test (OGTT)*: The glucose tolerance of the participants will be  
211 examined through the OGTT. Each participant will drink a 75g glucose solution after fasting  
212 overnight. Baseline glucose level will be measured, after which blood samples are taken at 1  
213 hour and 2 hours after ingesting the glucose solution. The glucose levels then will be  
214 measured and analyzed. The glucose level recorded at exactly 2 hours after ingestion will  
215 determine whether the participant can be considered normal (less than 140 mg/dL),  
216 prediabetic (140 to 199 mg/dL), or diabetic (200 mg/dL or higher) (33).

217 *Body Mass Index:* Height and weight will be measured as means to gauge participants' BMI.  
218 The participants will then be classified as severely underweight (less than 16.5kg/m<sup>2</sup>),  
219 underweight (under 18.5 kg/m<sup>2</sup>), normal weight (from 18.5 to 24.9 kg/m<sup>2</sup>), overweight (25  
220 to 29.9 kg/m<sup>2</sup>), obesity (greater than or equal to 30 kg/m<sup>2</sup>), with sub-classifications of  
221 obesity class I (30 to 34.9 kg/m<sup>2</sup>), obesity class II (35 to 39.9 kg/m<sup>2</sup>) and obesity class III  
222 (greater than or equal to 40 kg/m<sup>2</sup>) (34).

223 *Visual Acuity (VA):* VA will be measured using the Early Treatment Diabetic Retinopathy  
224 Study (ETDRS) Chart for high contrast acuity. This chart reports VA on a log of the minimum  
225 angle of resolution (logMAR).

226 *Contrast Sensitivity (CS):* CS will be measured using a Pelli-Robson chart under standardized  
227 light conditions. This test measures the ability of the participants to discern letters at  
228 decreasing contrast levels.

229 *Central Visual Field (CVF):* CVF will be examined using the Amsler Chart. CVF is within 10  
230 degrees radius from fixation and provides information on central vision function of the  
231 participants.

232 *Visual Disability Index (VDI):* Using the Visual Disability Questionnaire (VDQ), the VDI of the  
233 participants will be assessed to quantify the effects of visual impairment on an individual's  
234 capacity to execute daily activities.

235 *Adherence:* Based on a similar clinical trial (35), adherence to the physical activity  
236 intervention will be defined and assessed as having done MVPA with the physical activity  
237 tracker on for more than 75% of the intervention period and having read more than 50% of  
238 program content.

239 *Incidents:* Incidents will be defined as any adverse, uncomfortable, or unexpected events that  
240 will jeopardize the ability and willingness of the participant to continue the clinical trial. This  
241 assessment will be case dependent, ranging from telephonic evaluation to clinical evaluation  
242 at CERL.

## 243 **Intervention**

244 According to the key guidelines, adults with chronic conditions or disabilities, who are able,  
245 should do at least 150 minutes (2 hours and 30 minutes) to 300 minutes (5 hours) a week of  
246 moderate-intensity physical activity, or 75 minutes (1 hour and 15 minutes) to 150 minutes  
247 (2 hours and 30 minutes) a week of vigorous-intensity aerobic physical activity, or an  
248 equivalent combination of moderate- and vigorous-intensity aerobic activity (36,37). The  
249 comparison is that 1 minute of vigorous-intensity activity is equivalent to 2 minutes of  
250 moderate-intensity activity. That is, the lower limit of vigorous-intensity physical activity  
251 (6.0 METs) is twice the lower limit of moderate-intensity activity (3.0 METs). Therefore, 75  
252 minutes of vigorous-intensity activity a week is roughly equivalent to 150 minutes of  
253 moderate-intensity activity a week.

254 This is the basis for the development of the tailored physical activity regimen for each of the  
255 participants. The main moderate-intensity physical activity adopted for this study is brisk  
256 walking while that of vigorous-intensity physical activity is running. The design and  
257 implementation mirrored a similar physical activity study that assessed the impact of  
258 physical activity on abnormal glucose tolerance and visual outcomes (22). The intervention  
259 period (macrocycle) was divided into three mesocycles (four weeks each), with fixed  
260 increments with each subsequent mesocycle. For participants with T2DM, physical activity

261 should not be performed after taking oral hypoglycemic medication when they have not  
262 eaten.

### 263 **Intervention group**

264 The participants in the experimental group will undergo moderate-intensity physical  
265 activity (150 minutes and above) or vigorous-intensity physical activity (75 minutes and  
266 above), or combine the two in an equivalent way. This will depend on the age, gender, and  
267 daily activity of the participants. Subsequently, the amount of time for physical activity will  
268 be increased by 75 minutes for moderate-intensity physical activity and 37.5 minutes for  
269 vigorous-intensity physical activity for every four weeks during the intervention phase. The  
270 physical activity will be structured, planned, individualized, and tracked during the period.  
271 The activity can be performed at home, work, or at fitness facilities. There will be no more  
272 than two consecutive days without undertaking the exercise.

273 The amount of time of physical activity will be self-tracked using the accelerometer and GPS  
274 sensors of the participants' smartphones. Mobile phone fitness and health applications will  
275 be used to document the patient's physical activity history. The Apple Health App will be  
276 used by participants who use IOS run mobile phones while the Google Fit App will be used  
277 by android phones users (in the cases where the brands of the android mobile phone does  
278 not have in-built fitness and health applications).

### 279 **Control group**

280 Participants in the control group will receive health education, including materials focusing  
281 on the importance of regular physical activity for overall health and well-being. The  
282 education will cover general recommendations for physical activity, potential benefits, and  
283 strategies for incorporating movement into daily life. Unlike the intervention group, there

284 will be no prescribed duration, intensity, or frequency of engaging in physical activity. The  
285 goal is to promote a general understanding of the benefits of physical activity without  
286 providing a specific, planned activity regimen. As opposed to the robust tracking system set  
287 up for the physical activities of the experimental group, the control group participants will  
288 be asked to keep a simple log or diary of their physical activities.

## 289 **Outcome Measures**

### 290 **Primary outcome: Visual outcomes**

291 Adherence to a physical activity intervention would significantly improve visual outcomes  
292 in an African population with AGT. This outcome presupposes a difference in visual  
293 outcomes before and after the physical activity regimen has been completed by the  
294 participants. The visual outcomes being assessed in this trial will be visual acuity, contrast  
295 sensitivity, and central visual field of the participants, before and after the introduction of  
296 the physical activity intervention. Visual acuity will be assessed using the Early Treatment  
297 Diabetic Retinopathy Study (ETDRS) chart, contrast sensitivity will be assessed using the  
298 Pelli-Robson contrast sensitivity chart, and the central visual field (CVF) will be assessed  
299 using the Amsler Chart.

### 300 **Secondary outcomes: Glycemic level, Visual Disability Index, Feasibility**

301 *Glycemic level:* Adherence to a physical activity intervention significantly reduces glycemic  
302 levels in an African population with AGT. This outcome presupposes a difference in glycemic  
303 levels before and after the physical activity regimen has been completed by the participants.  
304 Glycemic levels in this trial will be assessed in three ways: Oral Glucose Tolerance Test  
305 (OGTT), Glycated Hemoglobin (HbA1c), and Fasting Blood Glucose (FBG).

306 *Visual Disability Index (VDI)*: The visual disability index involves a quantification of the  
307 effects of visual impairment on an individual's capacity to execute daily activities. It offers a  
308 comprehensive evaluation of the effects of ocular conditions on the general functioning of a  
309 person. Visual Disability Index (VDI) will be assessed using the Visual Disability  
310 Questionnaire (VDQ) adapted from Shrestha and Kaiti (2014) who used the inventory to  
311 study diabetic patients.

## 312 **Feasibility**

313 Feasibility will be assessed by the number of people who are recruited for the trial and how  
314 well they adhere to the requirements of the trial. In addition, occurrences (positive or  
315 negative) will be assessed as well (38,39). This will be documented along with the clinical  
316 outcomes.

317 The clinical outcomes (FPG, HbA1c, OGTT, VA, CS, CVF) will be assessed at pre-intervention,  
318 after each mesocycle and post intervention. VDI will be measured only at pre-intervention  
319 and post-intervention. Concerning the feasibility outcome measures, data on incidence and  
320 adherence will be collected weekly, with recruitment already assessed at the pre-  
321 intervention stage.

## 322 **Sample size**

323 A total of 50 participants are expected to be recruited for this study. There will be 20  
324 participants in each group. An additional 10 will be recruited to cater for attrition or  
325 participant dropout as recommended for RCT pilot studies (40,41).

## 326 **Data management**

327 A comprehensive database will be created and used to monitor the progress of each  
328 participant, including all assessments. All collected data will be strictly recorded and stored  
329 on a password-protected computer, accessible only to the research team, but kept with the  
330 principal investigator. An independent researcher will oversee the data collection process  
331 and ensures its safety. The analysis of the data will begin when the complete data for each  
332 assessment has been collected at all stages of the trial.

## 333 **Statistical analysis**

334 SPSS software version 27.0 (SPSS Inc, Chicago, IL) will be used to manage and analyse the  
335 data. The normality of the data will be tested using the Shapiro-Wilk test. The significance  
336 level for all the statistical tests will be 0.05. Descriptive statistics will be done to provide an  
337 overview of the data. This would include frequencies for categorical variables, measures of  
338 central tendency and spread for continuous variables.

339 The difference in the primary outcome (visual outcomes improving after the physical activity  
340 regimen) will be analyzed using the mixed-design Analysis of Variance (ANOVA), with a  
341 within-subjects factor (pretest and posttest) and a between- subject factor (experimental  
342 and control) at  $p < 0.05$ . This is similar to a previous experimental study carried out among  
343 patients with diabetic retinopathy (22).

344 The secondary outcome or difference in glycemc levels after the physical activity  
345 intervention will be analyzed using a paired t-test to compare the changes in the visual  
346 disability index within each group from baseline to post-intervention. An independent-  
347 samples t-test will be used to assess the difference in glycemc levels between the

348 intervention and control groups at post-intervention. This is similar to a study which  
349 investigated the effect of a physical activity promotion program on the adherence to physical  
350 activity among people living with type 2 diabetes (42).

351 The other secondary outcome of visual disability index, reducing after the physical activity  
352 intervention, will be assessed with within-group comparisons using a paired t-test to  
353 compare the changes in the visual disability index within each group, from baseline to post-  
354 intervention. Also, between-group comparisons will be made using independent-samples t-  
355 test to assess the changes in VDI between the experimental group and control group at post-  
356 intervention, with p-value less than 0.05 considered significant.

## 357 **Ethics**

358 This study will adhere to the tenets of the Declaration of Helsinki on research involving  
359 human subjects (43). The protocol has also been approved by the UCCIRB  
360 (UCCIRB/EXT/2022/27). In addition, this research is registered with the Pan African Clinical  
361 Trails Registry - PACTR202401462338744.

362 Furthermore, the dataset from this study will only be accessible to the researcher  
363 responsible for analyzing the data. To maintain confidentiality and privacy of the  
364 participants, the data will be ciphered by assigning codes to conceal any details that might  
365 identify a participant.

## 366 **Discussion**

367 Evidence suggests that before visible fundus changes appear in patients with abnormal  
368 glucose tolerance, there is some substantial inner retinal dysfunction caused by the elevated  
369 glycemic levels (17). This is characterized by morphological changes in the Retinal Ganglion



370 Cell (RGC) and inner retinal layers of the patients (44). Accordingly, the condition could be  
371 caused by chronic exposure to high glucose levels that induces oxidative stress and activates  
372 inflammatory pathways in the retina, which in turn affects perception of vision and proper  
373 visual functioning (17,45,46).

374 There is a strong scientific evidence to suggest that non-pharmacological lifestyle changes,  
375 like regular physical activity, can reduce the risk of cardiovascular diseases (CVD), type 2  
376 diabetes, metabolic syndrome, obesity, and certain types of cancer (36). Regular physical  
377 activity includes structured exercise in a variety of forms and it offers a net benefit for most  
378 individuals living with T2DM (7,11,35,47). For instance, regular physical activity enhances  
379 insulin sensitivity, increases cardiorespiratory fitness, improves glycemic control, reduces  
380 the risk of cardiovascular mortality, and enhances psychosocial well-being (13). The term  
381 "trained eye", akin to the phrase "trained heart" used in cardiology, highlights the positive  
382 effects of physical activity on not only the health of the eye, but also on the eye and the visual  
383 system (48).

384 Many studies have investigated the effect of non-pharmacological interventions on selected  
385 visual functions, and recorded some positive change in visual functioning (21,22). An  
386 interventional study assessed the effect of a multicomponent nutritional formula on visual  
387 functions among people with both short and long-term diabetes and found that the  
388 intervention offered some overall protection of visual function associated with the onset and  
389 progression of DR in both groups (21). However, this study was conducted at a single center  
390 and did not discover any significant intergroup difference. To improve on the previous  
391 results, another study (22) designed an individual-specific tailored physical activity  
392 intervention to improve compliance and elicit uniform results, regardless of the varying

393 glycemic levels among the participants. The study recorded decreased glycemic levels and a  
394 resulting improvement in visual functioning, especially visual acuity. However, they did not  
395 include people with prediabetes as the focus was on diabetic patients who are likely to be on  
396 other interventions (22). Thus, it is important to also assess the efficacy of these  
397 interventions on both diabetic and prediabetic persons. Also, adherence in these studies was  
398 self-reported by the patients, making such measurements very subjective. Therefore, it is  
399 important to assess the efficacy of a physical activity regimen on visual outcomes among  
400 newly diagnosed patients with AGT, and that adherence to the regimen is measured  
401 objectively.

402 This trial has the element of objective tracking of the physical activity regimen. Subjective  
403 tracking where patients record how much physical activity they have done poses a challenge  
404 because of the case of self-desirability bias it presents (49). There is a growing emphasis on  
405 self-monitoring applications that allow patients to measure and track their own physical  
406 health parameters (weight, physical activity, blood pressure, blood glucose level, lung  
407 function), and where patients' willingness to self-monitor might be associated with disease  
408 controllability (50). In fact, among patients with diabetes mellitus, asthma, hypertension,  
409 rheumatism and migraine, those with diabetes mellitus have been found to be more willing  
410 to self-monitor their health parameters (50).

411 At the conclusion of this trial, we expect to identify changes in visual outcomes, especially  
412 visual acuity, as was found in a recent study that tested for similar outcomes (22). Also, it is  
413 expected that there will be changes in the VDI of the participants as has been observed in a  
414 previous study (32). Generally, this trial seeks to confirm the associations that have been  
415 comprehensively described by a recent systematic review on the topic area (23).

416 **Strengths and Weaknesses**

417 While there will be efforts to ensure blinding, there remains a possibility of bias because the  
418 experimental group will be motivated more than the control group to be more physically  
419 active. The other limitation is that the study is based on participants following the prescribed  
420 exercise regimen to the latter. This may vary due to personal preferences, lifestyle, or  
421 challenges to exercise.

422 Despite these limitations, the study's strengths lie in its rigorous design, detailed outcome  
423 measures, objectives, and accurate adherence monitoring. While adhering to the ethical  
424 guidelines, this research intends to give a comprehensive analysis of the feasibility and  
425 preliminary efficacy of physical activity interventions for improving visual outcomes among  
426 people with AGT.

427 **Data availability**

428 Not applicable .

429

430

431

432

433

434

435

436

437

## 438 **References**

- 439 1. International Diabetes Federation. IDF Diabetes Atlas. 10th editi. Brussels; 2021.
- 440 2. Bartnik M, Malmberg K, Hamsten A, Efendic S, Norhammar A, Silveira A, et al.  
441 Abnormal glucose tolerance--a common risk factor in patients with acute myocardial  
442 infarction in comparison with population-based controls. *J Intern Med.* 2004  
443 Oct;256(4):288–97.
- 444 3. Palmert MR, Gordon CM, Kartashov AI, Legro RS, Emans SJ, Dunaif A. Screening for  
445 Abnormal Glucose Tolerance in Adolescents with Polycystic Ovary Syndrome. *J Clin*  
446 *Endocrinol Metab* [Internet]. 2002 Mar 1;87(3):1017–23. Available from:  
447 <https://doi.org/10.1210/jcem.87.3.8305>
- 448 4. Asamoah-Boaheng M, Sarfo-Kantanka O, Tuffour A, Eghan B, Mbanaya J. Prevalence  
449 and risk factors for diabetes mellitus among adults in Ghana: a systematic review and  
450 meta-analysis. *Int Health.* 2019;11(2):83–92.
- 451 5. Faiq MA, Sengupta T, Nath M, Velpandian T, Saluja D, Dada R, et al. Ocular  
452 manifestations of central insulin resistance. *Neural Regen Res.* 2023  
453 May;18(5):1139–46.
- 454 6. Mansour A, Mousa M, Abdelmannan D, Tay G, Hassoun A, Alsafar H. Microvascular  
455 and macrovascular complications of type 2 diabetes mellitus: Exome wide  
456 association analyses. *Front Endocrinol (Lausanne)* [Internet]. 2023;14:1143067.  
457 Available from: <https://www.frontiersin.org/articles/10.3389/fendo.2023.1143067>
- 458 7. Bukht M, Ahmed K, Hossain S, Masud P, Sultana S, Khanam R. Association between  
459 physical activity and diabetic complications among Bangladeshi type 2 diabetic  
460 patients. *Diabetol Metab Syndr.* 2019;13(1):806–9.

- 461 8. Bourne RRA, Stevens GA, White RA, Smith JL, Flaxman SR, Price H, et al. Causes of  
462 vision loss worldwide, 1990-2010: A systematic analysis. *Lancet Glob Heal*. 2013  
463 Dec;1(6):e339-49.
- 464 9. Issaka A, Paradies Y, Stevenson C. Modifiable and emerging risk factors for type 2  
465 diabetes in Africa: a systematic review and meta-analysis protocol. *Syst Rev*.  
466 2018;7:139.
- 467 10. Davies MJ, Aroda VR, Collins BS, Gabbay RA, Green J, Maruthur NM, et al.  
468 Management of hyperglycaemia in type 2 diabetes, 2022. A consensus report by the  
469 American Diabetes Association (ADA) and the European Association for the Study of  
470 Diabetes (EASD). *Diabetologia*. 2022;65(12):1925–66.
- 471 11. Denche-Zamorano Á, Mendoza-Muñoz DM, Barrios-Fernandez S, Perez-Corraliza C,  
472 Franco-García JM, Carlos-Vivas J, et al. Physical activity reduces the risk of developing  
473 diabetes and diabetes medication use. *Healthcare*. 2022 Dec;10(12):2479.
- 474 12. Tuomilehto J, Lindström J, Eriksson JG, Valle TT, Hämäläinen H, Ilanne-Parikka P, et  
475 al. Prevention of type 2 diabetes mellitus by changes in lifestyle among subjects with  
476 impaired glucose tolerance. *N Engl J Med*. 2001 May;344(18):1343–50.
- 477 13. Carbone S, Del Buono MG, Ozemek C, Lavie CJ. Obesity, risk of diabetes and role of  
478 physical activity, exercise training and cardiorespiratory fitness. *Prog Cardiovasc*  
479 *Dis*. 2019;62(4):327–33.
- 480 14. Bao YK, Yan Y, Gordon M, McGill JB, Kass M, Rajagopal R. Visual field loss in patients  
481 with diabetes in the absence of clinically-detectable vascular retinopathy in a  
482 nationally representative survey. *Invest Ophthalmol Vis Sci*. 2019 Nov;60(14):4711–  
483 6.

- 484 15. Gualtieri M, Bandeira M, Hamer RD, Damico FM, Moura ALA, Ventura DF. Contrast  
485 sensitivity mediated by inferred magno- and parvocellular pathways in type 2  
486 diabetics with and without nonproliferative retinopathy. *Invest Ophthalmol Vis Sci*.  
487 2011 Feb;52(2):1151–5.
- 488 16. Mirković J, Risimić D. Contrast sensitivity in patients with diabetes mellitus. *Med*  
489 *Podml*. 2018;69(4):35–9.
- 490 17. Nagai N, Mushiga Y, Ozawa Y. Evaluating fine changes in visual function of diabetic  
491 eyes using spatial-sweep steady-state pattern electroretinography. *Sci Rep*  
492 [Internet]. 2023;13(1):13686. Available from: [https://doi.org/10.1038/s41598-023-](https://doi.org/10.1038/s41598-023-40686-5)  
493 [40686-5](https://doi.org/10.1038/s41598-023-40686-5)
- 494 18. Pinilla I, Ferreras A, Idoipe M, Sanchez-Cano AI, Perez-Garcia D, Herrera LX, et al.  
495 Changes in frequency-doubling perimetry in patients with type I diabetes prior to  
496 retinopathy. *Biomed Res Int*. 2013;2013:341269.
- 497 19. Siersma V, Køster-Rasmussen R, Bruun C, Olivarius N de F, Brunes A. Visual  
498 impairment and mortality in patients with type 2 diabetes. *BMJ open diabetes Res*  
499 *care*. 2019;7(1):e000638.
- 500 20. Stavrou EP, Wood JM. Letter contrast sensitivity changes in early diabetic  
501 retinopathy. *Clin Exp Optom*. 2003 May;86(3):152–6.
- 502 21. Chous AP, Richer SP, Gerson JD, Kowluru RA. The Diabetes Visual Function  
503 Supplement Study (DiVFuSS). *Br J Ophthalmol* [Internet]. 2016 Feb 1;100(2):227–34.  
504 Available from: <http://bjo.bmj.com/content/100/2/227.abstract>
- 505 22. Pardhan S, Upadhyaya T, Smith L, Sharma T, Tuladhar S, Adhikari B, et al. Individual  
506 patient-centered target-driven intervention to improve clinical outcomes of diabetes,

- 507 health literacy, and self-care practices in Nepal: A randomized controlled trial. *Front*  
508 *Endocrinol (Lausanne)*. 2023;14:1076253.
- 509 23. AlQabandi Y, Nandula SA, Boddepalli CS, Gutlapalli SD, Lavu VK, Abdelwahab  
510 Mohamed Abdelwahab R, et al. Physical activity status and diabetic retinopathy: A  
511 review. *Cureus*. 2022 Aug;14(8):e28238.
- 512 24. Sathish T, Oldenburg B, Thankappan KR, Absetz P, Shaw JE, Tapp RJ, et al. Cost-  
513 effectiveness of a lifestyle intervention in high-risk individuals for diabetes in a low-  
514 and middle-income setting: Trial-based analysis of the Kerala Diabetes Prevention  
515 Program. *BMC Med*. 2020 Sep;18(1):251.
- 516 25. Singh K, Chandrasekaran AM, Bhaumik S, Chattopadhyay K, Gamage AU, Silva P De, et  
517 al. Cost-effectiveness of interventions to control cardiovascular diseases and diabetes  
518 mellitus in South Asia: A systematic review. *BMJ Open*. 2018;8(4):e017809.
- 519 26. Edlind M, Mitra N, Grande D, Barg FK, Carter T, Turr L, et al. Why effective  
520 interventions do not work for all patients: exploring variation in response to a  
521 chronic disease management intervention. *Med Care*. 2018 Aug;56(8):719–26.
- 522 27. Skoglund G, Nilsson BB, Olsen CF, Bergland A, Hilde G. Facilitators and barriers for  
523 lifestyle change in people with prediabetes: a meta-synthesis of qualitative studies.  
524 *BMC Public Health [Internet]*. 2022;22(1):553. Available from:  
525 <https://doi.org/10.1186/s12889-022-12885-8>
- 526 28. Ma JK, Floegel TA, Li LC, Leese J, De Vera MA, Beauchamp MR, et al. Tailored physical  
527 activity behavior change interventions: challenges and opportunities. *Transl Behav*  
528 *Med*. 2021 Dec;11(12):2174–81.
- 529 29. Collado-Mateo D, Lavín-Pérez AM, Peñacoba C, Del Coso J, Leyton-Román M, Luque-

- 530 Casado A, et al. Key factors associated with adherence to physical exercise in patients  
531 with chronic diseases and older adults: An umbrella review. *Int J Environ Res Public*  
532 *Health*. 2021 Feb;18(4).
- 533 30. IAPB, IDF. Diabetic Retinopathy: A Call for Global Action. 2024.
- 534 31. Chan AW, Tetzlaff JM, Altman DG, Laupacis A, Gøtzsche PC, Krleža-Jerić K, et al.  
535 SPIRIT 2013 statement: defining standard protocol items for clinical trials. *Ann*  
536 *Intern Med*. 2013 Feb;158(3):200–7.
- 537 32. Shrestha GS, Kaiti R. Visual functions and disability in diabetic retinopathy patients. *J*  
538 *Optom* [Internet]. 2014;7(1):37–43. Available from:  
539 <https://www.sciencedirect.com/science/article/pii/S188842961300023X>
- 540 33. ElSayed NA, Aleppo G, Aroda VR, Bannuru RR, Brown FM, Bruemmer D, et al.  
541 Classification and diagnosis of diabetes: Standards of care in diabetes—2023.  
542 *Diabetes Care* [Internet]. 2022 Dec 12;46(Supplement\_1):S19–40. Available from:  
543 <https://doi.org/10.2337/dc23-S002>
- 544 34. Weir CB, Jan A. BMI Classification Percentile And Cut Off Points. In *Treasure Island*  
545 *(FL)*; 2024.
- 546 35. Kooiman TJM, de Groot M, Hoogenberg K, Krijnen WP, van der Schans CP, Kooy A.  
547 Self-tracking of physical activity in people with type 2 diabetes: A randomized  
548 controlled trial. *Comput Inform Nurs*. 2018 Jul;36(7):340–9.
- 549 36. Piercy KL, Troiano RP, Ballard RM, Carlson SA, Fulton JE, Galuska DA, et al. The  
550 physical activity guidelines for Americans. *JAMA*. 2018 Nov;320(19):2020–8.
- 551 37. DiPietro L, Buchner DM, Marquez DX, Pate RR, Pescatello LS, Whitt-Glover MC. New  
552 scientific basis for the 2018 U.S. Physical Activity Guidelines. *J Sport Heal Sci*. 2019



- 553 May;8(3):197–200.
- 554 38. Morris NS, Rosenbloom DA. CE: Defining and understanding pilot and other  
555 feasibility studies. *Am J Nurs*. 2017 Mar;117(3):38–45.
- 556 39. Resnick B. The definition, purpose and value of pilot research. *Geriatr Nurs*.  
557 2015;36(2):S1–2.
- 558 40. Kieser M, Wassmer G. On the use of the upper confidence limit for the variance from  
559 a pilot sample for sample size determination. *Biometrical J* [Internet]. 1996 Jan  
560 1;38(8):941–9. Available from: <https://doi.org/10.1002/bimj.4710380806>
- 561 41. Whitehead AL, Julious SA, Cooper CL, Campbell MJ. Estimating the sample size for a  
562 pilot randomised trial to minimise the overall trial sample size for the external pilot  
563 and main trial for a continuous outcome variable. *Stat Methods Med Res*. 2016  
564 Jun;25(3):1057–73.
- 565 42. Eshete A, Mohammed S, Shine S, Eshetie Y, Assefa Y, Tadesse N. Effect of physical  
566 activity promotion program on adherence to physical exercise among patients with  
567 type II diabetes in North Shoa Zone Amhara region: a quasi-experimental study. *BMC*  
568 *Public Health* [Internet]. 2023;23(1):709. Available from:  
569 <https://doi.org/10.1186/s12889-023-15642-7>
- 570 43. World Medical Association. World Medical Association Declaration of Helsinki:  
571 Ethical principles for medical research involving human subjects. *JAMA*. 2013  
572 Nov;310(20):2191–4.
- 573 44. Amato R, Catalani E, Dal Monte M, Cammalleri M, Cervia D, Casini G. Morpho-  
574 functional analysis of the early changes induced in retinal ganglion cells by the onset  
575 of diabetic retinopathy: The effects of a neuroprotective strategy. *Pharmacol Res*

576 [Internet]. 2022;185:106516. Available from:  
577 <https://www.sciencedirect.com/science/article/pii/S1043661822004625>

578 45. Park HYL, Kim IT, Park CK. Early diabetic changes in the nerve fibre layer at the  
579 macula detected by spectral domain optical coherence tomography. *Br J Ophthalmol.*  
580 2011 Sep;95(9):1223–8.

581 46. Spaide RF. Measurable aspects of the retinal neurovascular unit in diabetes,  
582 glaucoma, and controls. *Am J Ophthalmol.* 2019 Nov;207:395–409.

583 47. Amin M, Kerr D, Atiase Y, Yakub Y, Driscoll A. Understanding physical activity  
584 behavior in Ghanaian adults with type 2 diabetes: A qualitative descriptive study. *J*  
585 *Funct Morphol Kinesiol.* 2023;8(3):127.

586 48. Szalai I, Pályá F, Csorba A, Tóth M, Somfai G. The effect of physical exercise on the  
587 retina and choroid. *Klin Monbl Augenheilkd.* 2020;237(4):446–9.

588 49. Howitt C, Brage S, Hambleton IR, Westgate K, Samuels TA, Rose AMC, et al. A cross-  
589 sectional study of physical activity and sedentary behaviours in a Caribbean  
590 population: combining objective and questionnaire data to guide future  
591 interventions. *BMC Public Health [Internet].* 2016;16(1):1036. Available from:  
592 <https://doi.org/10.1186/s12889-016-3689-2>

593 50. Huygens MWJ, Swinkels ICS, de Jong JD. Self-monitoring of health data by patients  
594 with a chronic disease: does disease controllability matter? *BMC Fam Pract.*  
595 2017;18:40.

596

597

598 **Supporting Information**

599 Supporting Information file S1.

600 Supporting Information file S2.

601

Timepoint	Enrollment	Allocation	Baseline	Intervention Macrocycle (12 weeks)			Post-Intervention	Close-Out
	0	0	0	W1-W4 (Mesocycle I)	W5-W8 (Mesocycle II)	W9-W12 (Mesocycle III)		
<b>Enrollment:</b>	X							
Eligibility screen	X							
Informed consent	X							
Allocation		X						
<b>Interventions:</b>								
Intervention A (Physical Activity Intervention)				X	X	X		
Intervention B (Control)				X	X	X		
Assessments:							X	
Age			X					
Sex			X					
Body mass index			X				X	
Physical Activity (Yes/No)			X	X	X	X	X	
Physical Activity (minutes/week)			X	X	X	X	X	
Fasting Plasma Glucose (FPG)			X				X	
Glycated Hemoglobin (HbA1c)			X				X	
Oral Glucose Tolerance Test (OGTT)			X				X	
Visual Acuity			X				X	
Visual Field			X				X	
Contrast Sensitivity			X				X	
Visual Disability Index			X				X	
Adherence			X	X	X	X	X	
Incidents			X	X	X	X	X	
Statistical Analysis								X

Fig 1. SPIRIT schedule of enrolment, interventions, and assessments

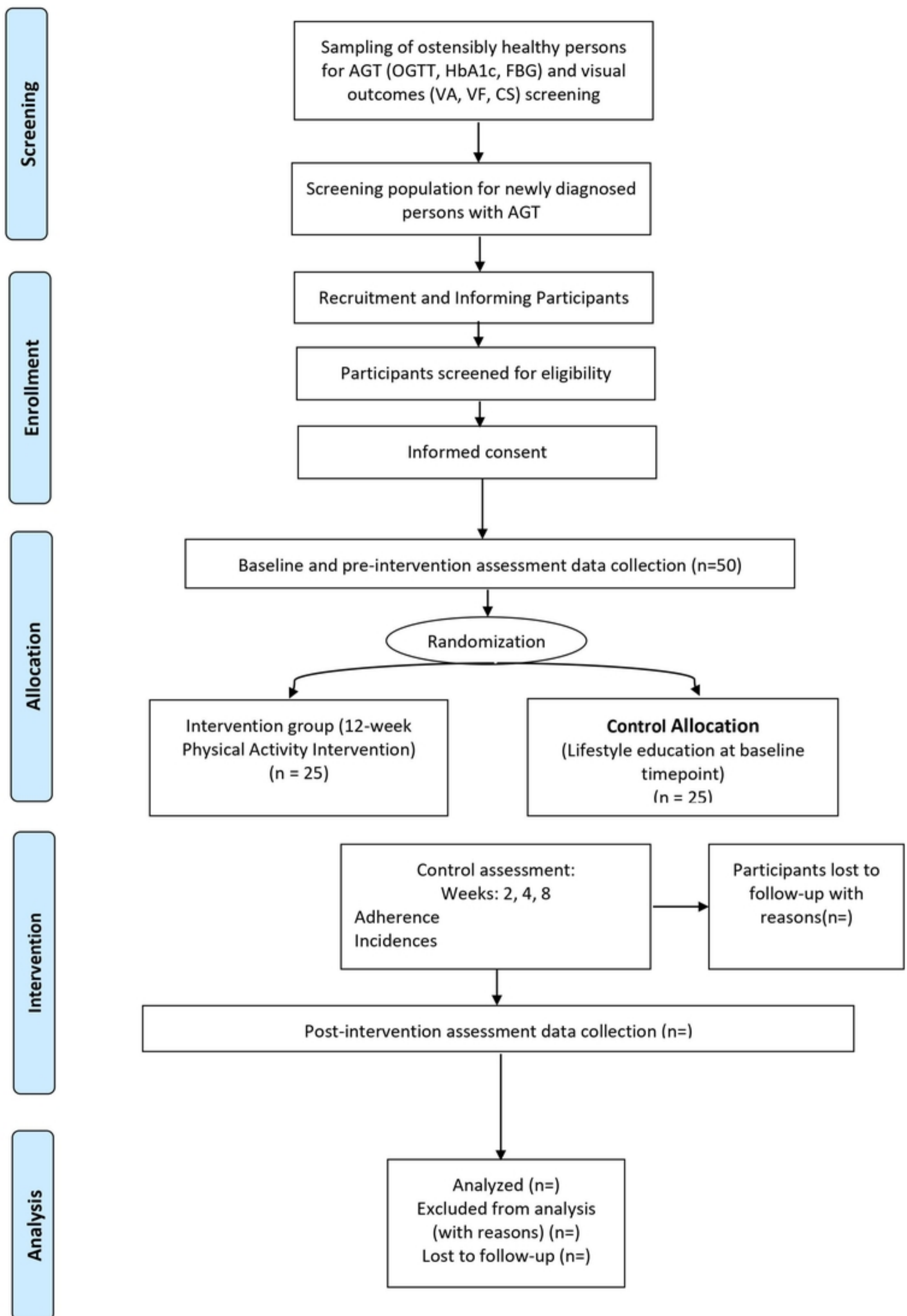


Fig 2. Flow chart of the RCT process for the participants in the study