

# 1 **ASCVD risk refinement with NT-proBNP for statin allocation**

## 2 **among low- and intermediate risk individuals**

3 Jelena Pavlović, MD, MSc<sup>1</sup>; Maryam Kavousi, MD, PhD<sup>1</sup>; M. Kamran Ikram, MD, PhD<sup>1,2</sup>;  
4 Daniel Bos, MD, PhD<sup>1,3,4,5</sup>; M. Arfan Ikram, MD, PhD<sup>1</sup>; Maarten J.G. Leening, MD, PhD<sup>1,3,6</sup>

5

6 <sup>1</sup> Department of Epidemiology, Erasmus MC - University Medical Center Rotterdam, Rotterdam, the Netherlands

7 <sup>2</sup> Department of Neurology, Erasmus MC - University Medical Center Rotterdam, Rotterdam, the Netherlands

8 <sup>3</sup> Department of Radiology, Erasmus MC - University Medical Center Rotterdam, Rotterdam, the Netherlands

9 <sup>4</sup> Department of Cardiovascular Sciences, KU Leuven, Leuven, Belgium

10 <sup>5</sup> Department of Clinical Epidemiology, Harvard T.H. Chan School of Public Health, Boston, MA, US

11 <sup>6</sup> Department of Cardiology, Erasmus MC - University Medical Center Rotterdam, Rotterdam, the Netherlands

12

13 Short title: Risk-refining with NT-proBNP for ASCVD prevention

14

### 15 **Corresponding Author**

16 Maarten J.G. Leening, MD, PhD

17 Departments of Epidemiology and Cardiology

18 Erasmus MC – University Medical Center Rotterdam

19 P.O. Box 2040, 3000 CA Rotterdam

20 Tel: +31 10 70 44229

Fax: +31 10 70 44657

Email: [m.leening@erasmusmc.nl](mailto:m.leening@erasmusmc.nl)

21

22 **Abstract word count: 283**

23 **Manuscript text** (without title page, abstract, references, tables, and figure legends): **3121**

24 **Total document word count: 6026**

25

26 **ABSTRACT**

27 **Background:** Statin trials targeting low- to intermediate risk individuals, namely MEGA,  
28 JUPITER, and HOPE-3, have demonstrated benefit of statin use for primary prevention of  
29 atherosclerotic cardiovascular disease (ASCVD), but are poorly reflected in guideline  
30 recommendations for primary prevention of ASCVD. N-terminal pro-B-type natriuretic peptide  
31 (NT-proBNP) may refine ASCVD risk in low-to intermediate risk individuals eligible for HOPE-  
32 3, JUPITER and MEGA, and aid statin initiation in low- to intermediate risk populations.

33 **Methods:** 5434 participants, aged 45 years and above from the prospective population-based  
34 Rotterdam Study, free of ASCVD, heart failure, and diabetes, were included between 1997 and  
35 2008. Eligibility criteria for MEGA, JUPITER, and HOPE-3 trials were checked for each  
36 participant. ASCVD event rates, hazard ratios (HR), 5-year numbers needed to treat (NNT<sub>5y</sub>),  
37 and screen (NNS<sub>5y</sub>) per trial eligible population and NT-proBNP category ( $\leq 50$ , 50-100, and  
38  $>100$  pg/mL) were calculated.

39 **Results:** Median age was 61.6 years, 58.9% were women, median NT-proBNP was 60 pg/mL.  
40 The proportions of participants eligible for MEGA, JUPITER and HOPE-3 were 34.9%, 10.4%  
41 and 23.7%. Incidence rates per 1000 person-years for ASCVD were 10.4 (95%CI: 60.1-67.9) for  
42 MEGA, 16.8 (95%CI: 13.6-20.6) for JUPITER, and 12.1 (95%CI: 10.3-14) for HOPE-3.  
43 Adjusted HR in trial eligible individuals for NT-proBNP  $>100$  pg/mL compared to  $\leq 50$  pg/mL  
44 level were 1.73 (95%CI: 1.21-2.47), 1.46 (95%CI: 0.80-2.66) and 1.50 (95%CI: 0.99-2.26),  
45 respectively. Estimated NNT<sub>5y</sub> among trial eligible individuals with NT-proBNP levels  $>100$   
46 pg/mL based on high-intensity statin treatment, varied from 23 to 34 to prevent one ASCVD  
47 event, while NNS<sub>5y</sub> ranged between 56 and 134.

48 **Conclusions:** NT-proBNP level >100 pg/mL identifies individuals at the highest ASCVD risk  
49 among low- to intermediate risk populations who are likely to benefit from statin treatment at  
50 acceptable  $NNT_{5y}$  and  $NNS_{5y}$ .

51

52 **Key words:** Atherosclerotic cardiovascular disease, primary prevention, N-terminal pro-B-type  
53 natriuretic peptide, statin, randomized clinical trial, epidemiology, population-based.

54 **Clinical Perspective**

55 **1. What is New?**

- 56 • NT-proBNP level >100 pg/mL can identify individuals at the highest ASCVD risk  
57 among low- to intermediate risk populations who are likely to benefit from statin  
58 treatment at acceptable numbers needed to treat and screen.
- 59 • Among apparently healthy individuals without prior ASCVD and diabetes mellitus, 60%  
60 was deemed to be at low- to intermediate risk by qualifying for at least one of three RCT  
61 based on the trial eligibility criteria, and one out four individuals had NT-proBNP level  
62 >100 pg/mL.

63 **2. What are the Clinical Implications?**

- 64 • NT-proBNP level can be used for risk refining in low- to intermediate risk individuals  
65 who are most likely to benefit from statin initiation for ASCVD primary prevention.

66

67

68

69

70

71

72

73

74

75 **Non-standard Abbreviations and Acronyms**

76	ASCVD	atherosclerotic cardiovascular disease
77	CHD	coronary heart disease
78	HOPE-3	Heart Outcomes Prevention Evaluation-3 Trial
79	JUPITER	Justification for the Use of Statins in Prevention: Intervention Trial Evaluating
80		Rosuvastatin
81	MEGA	The Management of Elevated Cholesterol in the Primary Prevention Group of
82		Adult Japanese Trial
83	NNS	number needed to screen
84	NNT	number needed to treat
85	NT-proBNP	N-terminal pro-B-type natriuretic peptide
86	RCT	randomized controlled trial

87 **INTRODUCTION**

88 Management of blood cholesterol is one of the cornerstones of primary prevention of  
89 atherosclerotic cardiovascular disease (ASCVD).<sup>1,2</sup> A variety of randomized clinical trials (RCT)  
90 have demonstrated the efficacy of statin treatment among individuals free of ASCVD.<sup>3,4</sup> Three  
91 major RCT, namely the Management of Elevated Cholesterol in the Primary Prevention Group  
92 of Adult Japanese (MEGA)<sup>5</sup>, Justification for the Use of Statins in Prevention: Intervention Trial  
93 Evaluating Rosuvastatin (JUPITER)<sup>6</sup>, and Heart Outcomes Prevention Evaluation-3 (HOPE-  
94 3)<sup>7,8</sup>, have established the benefit of statin treatment in low- to intermediate risk individuals free  
95 of ASCVD.

96 We previously demonstrated that the findings of these three trials were poorly reflected in  
97 the US and European cholesterol treatment guideline recommendations.<sup>9</sup> In addition, extending  
98 statin treatment recommendations to healthy individuals at low ASCVD risk raised concerns of  
99 statin overprescription.<sup>10-12</sup> Hence, the latest US and European guidelines suggest using  
100 additional non-traditional risk factors, referred to as either risk enhancers or risk modifiers, to  
101 refine, and thus improve risk assessment in individuals at low- or intermediate ASCVD risk.<sup>1,2</sup>

102 In this regard, N-terminal pro-B-type natriuretic peptide (NT-proBNP) is a promising  
103 biomarker with potential to improve ASCVD risk assessment in low- to intermediate risk  
104 populations. NT-proBNP has been consistently associated with ASCVD risk,<sup>13,14</sup> and is widely  
105 available and affordable,<sup>15</sup> which makes it an appealing tool for ASCVD risk refinement in  
106 clinical practice. The value of NT-proBNP as a biomarker for risk refinement and statin  
107 allocation in primary prevention of ASCVD requires further evaluation.

108           In this study, we evaluate the application of NT-proBNP as a risk refining and decision-  
109   making tool in community-dwelling individuals meeting the eligibility criteria for three low- to  
110   intermediate risk statin RCT for primary prevention of ASCVD.

111

## 112   **METHODS**

### 113   *Setting and Study Population*

114   We used data from the Rotterdam Study, a prospective population-based cohort study drawn  
115   from the unselected population of a suburb in Rotterdam, designed to investigate etiology,  
116   preclinical phase, prognosis, and potential intervention targets for chronic diseases in mid- and  
117   late-life. The Rotterdam Study rationale and design have been described in detail previously.<sup>16</sup>

118           The Rotterdam Study recruited individuals in four subcohorts. Extensive examinations at  
119   baseline and follow-up visits were carried out every three to four years. NT-proBNP was  
120   measured in three subcohorts from 1997 to 2008. In total, 10,522 participants underwent  
121   examinations in these three visits combined, of which 9,326 participants had valid NT-proBNP  
122   measurement, informed consent, and follow-up (Figure S1).

123           All participants provided written informed consent to participate in the study and to have  
124   their information obtained from treating physicians. The Rotterdam Study has been approved by  
125   the Medical Ethics Committee of the Erasmus MC (registration number MEC 02.1015) and by  
126   the Dutch Ministry of Health, Welfare and Sport (Population Screening Act WBO, license  
127   number 1071272-159521-PG). The Rotterdam Study has been entered into the Netherlands  
128   National Trial Register (NTR; [www.trialregister.nl](http://www.trialregister.nl)) and into the WHO International Clinical  
129   Trials Registry Platform (ICTRP; [www.who.int/ictrp/network/primary/en/](http://www.who.int/ictrp/network/primary/en/)) under shared  
130   catalogue number NTR6831.

131 *NT-proBNP Measurement*

132 NT-proBNP was measured from blood samples stored at -80°C, collected in glass tubes with clot  
133 activator and serum separation gel. NT-proBNP was measured using an  
134 electrochemiluminescence immunoassay (Elecsys proBNP; Hoffman-La Roche Ltd., Basel,  
135 Switzerland) and Elecsys 2100 analyzer, as described previously.<sup>17,18</sup>

136

137 *Assessment of ASCVD*

138 The main outcome was incident ASCVD, composed of myocardial infarction, coronary  
139 revascularization, non-hemorrhagic stroke, and ASCVD mortality.<sup>19,20</sup> Events were adjudicated  
140 until January 1<sup>st</sup>, 2015. Follow-up and adjudication of outcome events was based on the general  
141 practitioners' and medical specialists' reports and verified by the study physicians, in detail  
142 described previously.<sup>19,20</sup>

143

144 *Assessment of Covariables*

145 Information on medication use, smoking behavior, postmenopausal status, and medical history  
146 was collected by trained interviewers using a structured home interview. Anthropometric  
147 measures and laboratory testing were obtained during a visit to the research center.<sup>13</sup> A detailed  
148 description of ASCVD risk factors assessment and used definitions for blood pressure,  
149 triglycerides, total, high-density and low-density cholesterol, glucose, c-reactive protein, thyroid-  
150 stimulating hormone, serum creatinine, estimated glomerular filtration rate, alanine  
151 aminotransferase, presence of diabetes mellitus and family history of premature coronary heart  
152 disease are provided in the Supplemental Methods.

153



154 *Statin Trial Eligibility*

155 We followed eligibility criteria for three double blind placebo-controlled RCT on statin use in  
156 primary prevention targeted at low- to intermediate risk individuals with hard ASCVD end  
157 points: MEGA,<sup>5,21</sup> JUPITER,<sup>6</sup> and HOPE-3<sup>7</sup> (Table 1, Table S1).

158 Inclusion criteria among the RCT varied due to differences in design and hypothesis.

159 Major RCT inclusion criteria included: age, sex, lipid levels, C-reactive protein levels, history of  
160 diabetes mellitus, blood pressure, and postmenopausal status for women (Table 1, Table S1).

161 Data on a few minor exclusion criteria were not available in the Rotterdam Study, such as  
162 creatine phosphokinase levels, illicit drug abuse, and rare medical conditions (Table S1).

163

164 Finally, to select apparently healthy individuals and emulate eligibility criteria for three  
165 RCT (Figure S1), in the present analysis we included a total of 5434 participants over 45 years of  
166 age, without a history of diabetes mellitus, ASCVD, and heart failure, with low-density  
167 lipoprotein (LDL) cholesterol levels below 190 mg/dL (4.9 mmol/L), not using a statin, and  
168 without uncontrolled risk factors. The uncontrolled risk factors in essence reflected minor  
169 exclusion criteria defined by three RCT, such as uncontrolled hypertension, hypothyroidism,  
170 history of chronic liver disease, use of systemic corticosteroids or cyclosporin, and high levels of  
171 serum creatinine and triglycerides, as defined in the Supplemental Methods. History of ASCVD  
172 was defined as any of the following: myocardial infarction, coronary or other arterial  
173 revascularization procedure, stroke, transient ischemic attack, or repeated prescription of nitrates  
174 (as a proxy for angina pectoris).<sup>19,20,22,23</sup> We excluded individuals with age-specific levels of NT-  
175 proBNP indicative of underlying heart failure (if age <50 years and NT-proBNP >450 pg/mL, or  
176 age 50-75 years and NT-proBNP >900 pg/mL, or age >75y and NT-proBNP >1800 pg/mL).<sup>24</sup>

177 *Statistical Analysis*

178 First, we determined the cardiovascular risk factor profiles for each trial, and proportions of the  
179 study population meeting eligibility criteria for MEGA, JUPITER, and HOPE-3. In addition, we  
180 divided the trial eligible populations using three NT-proBNP thresholds ( $\leq 50$  pg/mL, 50-100  
181 pg/mL, and  $>100$  pg/mL).<sup>25</sup>

182 Next, we calculated incidence rates for ASCVD events per 1000 person-years in the  
183 entire study population, trial eligible subgroups, and by NT-proBNP categories.

184 To evaluate the risk refining properties of the three NT-proBNP categories, we applied  
185 Cox regression models. Specifically, we analyzed associations of continuous natural-log-  
186 transformed NT-proBNP, and NT-proBNP categories in relation to the incidence of ASCVD  
187 events in the total population as well as in trial eligible subgroups. The reference for comparison  
188 was the lowest NT-proBNP category ( $\leq 50$  pg/mL). We report adjusted hazard ratios (HR) for  
189 two models: model 1, adjusted for age and sex, and model 2, additionally adjusted for traditional  
190 risk factors: current smoking, systolic blood pressure, total and high-density lipoprotein  
191 cholesterol.

192 To explore the potential yield of NT-proBNP as a risk refining and statin allocation tool  
193 in the context of ASCVD primary prevention, we calculated 5-year numbers needed to treat  
194 (NNT<sub>5y</sub>) and numbers needed to screen (NNS<sub>5y</sub>) for each NT-proBNP category.

195 Based on the observed ASCVD event rates and the anticipated risk reduction with statin  
196 therapy, we calculated NNT<sub>5y</sub>. We calculated NNT<sub>5y</sub> for 30% and 50% LDL cholesterol  
197 reduction, corresponding to treatment with moderate- and high-intensity statins, respectively.<sup>26</sup>  
198 For primary prevention, expected relative risk reduction of 25% in major ASCVD events was  
199 used for each 38.7 mg/dL (1.0 mmol/L) of LDL cholesterol lowering.<sup>3</sup> We calculated NNT<sub>5y</sub>

200 using the following formula:  $NNT_{5y} = 1 / (5 * [\text{observed ASCVD incidence rate}] * [\text{observed}$   
201  $\text{median LDL in mmol/L}] * [\text{anticipated proportional LDL reduction}] * [\text{anticipated ASCVD}$   
202  $\text{relative risk reduction}]$ ).

203  $NNS_{5y}$  to prevent one ASCVD event were calculated based on the  $NNT_{5y}$  and NT-  
204 proBNP level distributions for trial eligible subgroups.  $NNS_{5y}$  were calculated by multiplying  
205  $NNT_{5y}$  with inverse probability of the prevalence of the NT-proBNP threshold, in total  
206 population and trial eligible subgroups.

207 Sensitivity analyses restricted to a composite coronary heart disease (CHD) outcome  
208 were performed and presented the corresponding results in the Supplemental Material. The CHD  
209 outcome was defined as a composite of myocardial infarction, coronary revascularization, and  
210 CHD mortality.<sup>19</sup> For CHD, the relative risk reduction of 29% in CHD events was used for each  
211 38.7 mg/dL (1.0 mmol/L) of LDL cholesterol lowering to calculate respective  $NNT_{5y}$  and  
212  $NNS_{5y}$ .<sup>3</sup>

213 We had complete data for 95.7% of traditional cardiovascular risk factors. Missing values  
214 were handled by single imputation using an expectation-maximization algorithm, separately for  
215 each sex, using age and all other traditional risk factors.<sup>27</sup> We used IBM SPSS Statistics version  
216 25.0 (IBM Corp, Armonk, NY, USA) and R version 4.0.4 (R Foundation for Statistical  
217 Computing, Vienna, Austria) for all analyses.

218

## 219 **RESULTS**

220 Median age in the total population was 61.6 years and 58.9% were women. The median NT-  
221 proBNP was 60 pg/mL (Table 2). MEGA eligible individuals were younger and had lower

222 median NT-proBNP levels compared to JUPITER and HOPE-3 eligible individuals. The HOPE-  
223 3 eligible population had the most unfavorable lipid profile.

224 Overall, 1896 (34.9%, 95%CI: 33.6-36.2), 567 (10.4%, 95%CI: 9.6-11.3), and 1287  
225 (23.7%, 95%CI: 22.6-24.8) individuals of the total study population fitted the eligibility criteria  
226 for MEGA, JUPITER, and HOPE-3, respectively (Figure 1). JUPITER had the highest  
227 proportion of eligible individuals with NT-proBNP levels >100 pg/mL (41.1%), as compared to  
228 MEGA (21.7%) and HOPE-3 (30.6%) eligible individuals (Table 2).

229 In total population, during a mean (SD) follow-up of 9.9 (4.2) years, 681 first ASCVD  
230 events in total were observed, corresponding to an ASCVD event rate of 12.6 (95%CI: 11.7-  
231 13.6) per 1000 person-years. Among trial eligible individuals with NT-proBNP levels >100  
232 pg/mL, JUPITER had the highest ASCVD incidence rate (24.0 per 1000 person-years), and  
233 MEGA the lowest (15.0 per 1000 person-years) (Table S2).

234 NT-proBNP >100 pg/mL was significantly associated with ASCVD incidence after  
235 adjusting for traditional risk factors (model 2) in the total study population and among  
236 individuals eligible for MEGA (Figures 2). Multivariable adjusted HR for ASCVD events  
237 comparing NT-proBNP levels of >100 pg/mL and  $\leq$ 50 pg/mL were 1.56 (95%CI: 1.27-1.91;  
238  $P<0.001$ ) in the total population, 1.72 (95%CI: 1.20-2.45;  $P=0.003$ ) among MEGA eligible, 1.46  
239 (95%CI: 0.80-2.67;  $P=0.213$ ) among JUPITER eligible, and 1.50 (95%CI: 1.00-2.27;  $P=0.052$ )  
240 among HOPE-3 eligible individuals (Figure 2). Adjustment for traditional risk factors only  
241 marginally affected the HR (Table S3). The ASCVD free survival was lowest across all trial  
242 eligible individuals when NT-proBNP levels were >100 pg/mL (Figure 3).

243 Estimated  $NNT_{5y}$  to avoid one ASCVD event were lowest for JUPITER eligible  
244 individuals, except for those with NT-proBNP levels  $\leq$ 50 pg/mL (Figure 4, Table S4). Among

245 MEGA, JUPITER and HOPE-3 eligible with NT-proBNP levels >100 pg/mL, 48, 39 and 56  
246 individuals would need to be treated with moderate-intensity statins for 5 years to prevent one  
247 ASCVD event. With high-intensity statins, NNT<sub>5y</sub> were 29 for MEGA, 23 for JUPITER, and 34  
248 for HOPE-3.

249 Among individuals with NT-proBNP levels >100 pg/mL for MEGA, JUPITER, and  
250 HOPE-3 eligible, NNS<sub>5y</sub> based on the NNT<sub>5y</sub> with high-intensity statins were 134, 56 and 111,  
251 respectively (Figure 4). Estimated NNT<sub>5y</sub> and NNS<sub>5y</sub> were lower for high-intensity statin  
252 treatment compared to moderate-intensity statin treatment (Table S4).

253 Results for CHD outcomes followed a similar pattern to those for ASCVD (Tables S5  
254 and S6, Figures S2 and S3). Estimated NNT<sub>5y</sub> and NNS<sub>5y</sub> to prevent an ASCVD event were  
255 lower than those needed to prevent a CHD event (Table S4).

256

## 257 **DISCUSSION**

258 NT-proBNP levels >100 pg/mL identify individuals at an increased risk of ASCVD among  
259 individuals at low- to intermediate risk who are eligible for statin RCT for primary prevention of  
260 ASCVD.<sup>5-7</sup> We found comparable numbers needed to treat to those reported by the three original  
261 trials. Our results imply that NT-proBNP could be considered as a risk refining tool among  
262 individuals at low- to intermediate risk for primary prevention of ASCVD.

263 The percentages of eligibility for three statin primary prevention trials were 34.9% for  
264 MEGA, 10.4% for JUPITER and 23.7% for HOPE-3, with minimal overlap between trials,  
265 meaning that these trials differentially selected low- to intermediate risk profiles in the general  
266 population free of ASCVD. Overall, 57.2% of the general population sample free of ASCVD and  
267 diabetes, was eligible for at least one of these three RCT, meaning that for these individuals, the

268 evidence of the statin efficacy to prevent ASCVD is established. This finding emphasizes the  
269 broad evidence base for statin use in primary prevention of ASCVD, which is in stark contrast  
270 with the small number of selected very high-risk individuals that is currently strongly  
271 recommended statin therapy in the most recent European prevention guidelines.<sup>28</sup> Although NT-  
272 proBNP >100 pg/mL was significantly associated with ASCVD incidence in the total study  
273 population and MEGA eligible individuals (Figures 2), but not among JUPITER and HOPE-3  
274 eligible, the association was comparable across trial eligible populations. The lack of significant  
275 association might be explained with limited number of events during follow-up, given that  
276 substantially fewer individuals qualified for JUPITER and HOPE-3 compared to MEGA (Table  
277 S3).

278 In this study we used NT-proBNP as a tool to refine ASCVD risk to identify low- to  
279 intermediate risk individuals for whom evidence supports preventive statin treatment. To  
280 examine the yield of statin treatment in the trial eligible population we calculated  $NNT_{5y}$  and  
281  $NNS_{5y}$ . NNT is commonly used in clinical trials to assess the acceptability of the investigated  
282 intervention.<sup>29,30</sup> Generally, the lower the NNT, the more acceptable the intervention is. NNT  
283 over approximately five years of statin treatment reported by the three evaluated statin trials  
284 ranged from 25 to 119 (Table 1).<sup>5-8</sup> In the present study, we report comparable  $NNT_{5y}$  varying  
285 from 23 to 34 for ASCVD for high-intensity statins to prevent one event among trial eligible  
286 individuals with NT-proBNP levels >100 pg/mL. In addition, NNS provides an estimate of the  
287 number of individuals that need to undergo NT-proBNP testing to identify individuals at NT-  
288 proBNP levels >100 pg/mL, and subsequently prevent one ASCVD event in the coming five  
289 years. In our study, among trial eligible individuals,  $NNS_{5y}$  ranged between 56 to 134 with high-  
290 intensity statins. Our results indicate that NT-proBNP level >100 pg/mL can identify individuals

291 at the highest ASCVD risk among low- to intermediate risk populations who are likely to benefit  
292 from statin treatment at acceptable NNT<sub>5y</sub> and NNS<sub>5y</sub>. Ultimately, whether these estimated  
293 NNT<sub>5y</sub> and NNS<sub>5y</sub> are acceptable for clinical practice is highly dependent on the healthcare  
294 system. Although NNT has its limitations,<sup>30</sup> it can inform a shared decision-making between  
295 patient and healthcare provider regarding the pros and cons of statin use in primary prevention of  
296 ASCVD.

297

### 298 *Implications*

299 As apparently healthy individuals at low- to intermediate ASCVD risk are more likely to  
300 have ASCVD risk around the decision thresholds, in this population NT-proBNP can further  
301 inform decision regarding the allocation of statin treatment. We demonstrated that statin  
302 initiation in this population based on NT-proBNP level of >100 pg/mL could be acceptable in  
303 terms of how many individuals would need to be screened and treated with statins to avoid one  
304 ASCVD event. Current US and European ASCVD prevention guidelines do not yet recommend  
305 the use of NT-proBNP as a risk enhancer or modifier for risk stratification.<sup>1,2</sup> In contrast, NT-  
306 proBNP has been endorsed in the latest iteration of the ESC guidelines for peri-operative cardiac  
307 care to identify apparently healthy individuals at increased risk for peri-operative cardiac  
308 events.<sup>31</sup> Furthermore, compared to imaging methods endorsed by the US and European ASCVD  
309 prevention guidelines, the price of a single NT-proBNP measurement is considerably lower. In  
310 addition, NT-proBNP testing could be easily integrated into routine clinical practice. Our results  
311 suggest that the application of NT-proBNP as a risk refining tool for primary prevention warrants  
312 further evaluation, including defining optimal age- and sex-specific thresholds for clinical  
313 decision-making in ASCVD risk refinement. For example, NT-proBNP levels are higher in

314 women,<sup>32</sup> NT-proBNP increases with age,<sup>24</sup> and co-morbidities further affect levels of NT-  
315 proBNP.<sup>33</sup>

316

### 317 ***Limitations***

318 Specific limitations of our study need to be addressed. As most of the Rotterdam Study  
319 population is of European descent (95.7% white), our findings require validation in other  
320 ethnicities. Although large differences across ethnicities are not expected, it is relevant to  
321 establish generalizability in different populations. Due to the healthy volunteer effect observed in  
322 the Rotterdam Study cohort, the prevalence of cardiovascular risk factors and ASCVD incidence  
323 rates during follow-up are likely somewhat lower than in real-world data setting.<sup>34</sup> Therefore, our  
324 results need to be interpreted with caution when extrapolating findings to the broader population  
325 accessing healthcare services.

326

### 327 ***Conclusions***

328 NT-proBNP levels >100 pg/mL identify individuals at the highest ASCVD risk among low- to  
329 intermediate risk populations who are likely to benefit from statin treatment at acceptable NNT<sub>5y</sub>  
330 and NNS<sub>5y</sub>. Almost 60% of the general population free of ASCVD and diabetes was eligible for  
331 at least one of three statin RCT, and one out four had NT-proBNP levels >100 pg/mL.



332 **Acknowledgments**

333 The dedication, commitment, and contribution of inhabitants, general practitioners, and  
334 pharmacists to the Rotterdam Study are gratefully acknowledged.

335

336 **Sources of Funding**

337 The Rotterdam Study is supported by the Erasmus MC and Erasmus University Rotterdam; the  
338 Netherlands Organization for Scientific Research (NWO); the Netherlands Organization for  
339 Health Research and Development (ZonMw); the Research Institute for Diseases in the Elderly;  
340 the Netherlands Genomics Initiative; the Ministry of Education, Culture, and Science; the  
341 Ministry of Health, Welfare, and Sports; the European Commission (DG XII); and the  
342 Municipality of Rotterdam. Dr Pavlović was supported by Erasmus Mundus Western Balkans, a  
343 project funded by the European Commission. The funders had no role in the design and conduct  
344 of the study; collection, management, analysis, and interpretation of the data; preparation,  
345 review, or approval of the manuscript; and decision to submit the manuscript for publication.

346

347 **Disclosures**

348 All authors have completed and submitted the ICMJE Form for Disclosure of Potential Conflicts  
349 of Interest. Dr Leening reports receiving speaker fees from Sanofi; Daiichi Sankyo; and  
350 Novartis; and served on an advisory board for Boehringer Ingelheim. No other disclosures were  
351 reported.

352

353

354 **Supplemental Material**

355 Supplemental Methods

356 Tables S1-S6

357 Figures S1-S3

358 References 35-36

359 **References**

- 360 1. Grundy SM, Stone NJ, Bailey AL, Beam C, Birtcher KK, Blumenthal RS, Braun LT, de  
361 Ferranti S, Faiella-Tommasino J, Forman DE. 2018  
362 AHA/ACC/AACVPR/AAPA/ABC/ACPM/ADA/AGS/APhA/ASPC/NLA/PCNA  
363 guideline on the management of blood cholesterol: a report of the American College of  
364 Cardiology/American Heart Association Task Force on Clinical Practice Guidelines. *J*  
365 *Am Coll Cardiol*. 2019;73:e285-e350.
- 366 2. Visseren FLJ, Mach F, Smulders YM, Carballo D, Koskinas KC, Bäck M, Benetos A,  
367 Biffi A, Boavida J-M, Capodanno D, et al. 2021 ESC Guidelines on cardiovascular  
368 disease prevention in clinical practice: Developed by the Task Force for cardiovascular  
369 disease prevention in clinical practice with representatives of the European Society of  
370 Cardiology and 12 medical societies With the special contribution of the European  
371 Association of Preventive Cardiology (EAPC). *Eur Heart J*. 2021;42:3227-3337. doi:  
372 10.1093/eurheartj/ehab484
- 373 3. Cholesterol Treatment Trialists' (CTT) Collaborators. The Effects of Lowering LDL  
374 Cholesterol with Statin Therapy in People at Low Risk of Vascular Disease: Meta-  
375 analysis of Individual Data from 27 Randomised Trials. *Lancet*. 2012;380:581-590. doi:  
376 10.1016/S0140-6736(12)60367-5
- 377 4. Taylor F, Huffman MD, Macedo AF, Moore TH, Burke M, Davey Smith G, Ward K,  
378 Ebrahim S. Statins for the primary prevention of cardiovascular disease. *Cochrane*  
379 *Database Syst Rev*. 2013;1:CD004816.
- 380 5. Nakamura H, Arakawa K, Itakura H, Kitabatake A, Goto Y, Toyota T, Nakaya N,  
381 Nishimoto S, Muranaka M, Yamamoto A, et al. Primary prevention of cardiovascular

- 382 disease with pravastatin in Japan (MEGA Study): a prospective randomised controlled  
383 trial. *Lancet*. 2006;368:1155-1163. doi: 10.1016/s0140-6736(06)69472-5
- 384 6. Ridker PM, Danielson E, Fonseca FA, Genest J, Gotto Jr. AM, Kastelein JJ, Koenig W,  
385 Libby P, Lorenzatti AJ, MacFadyen JG, et al. Rosuvastatin to prevent vascular events in  
386 men and women with elevated C-reactive protein. *N Engl J Med*. 2008;359:2195-2207.
- 387 7. Yusuf S, Bosch J, Dagenais G, Zhu J, Xavier D, Liu L, Pais P, Lopez-Jaramillo P, Leiter  
388 LA, Dans A, et al. Cholesterol Lowering in Intermediate-Risk Persons without  
389 Cardiovascular Disease. *N Engl J Med*. 2016;374:2021-2031. doi:  
390 10.1056/NEJMoa1600176
- 391 8. Bosch J, Lonn EM, Jung H, Zhu J, Liu L, Lopez-Jaramillo P, Pais P, Xavier D, Diaz R,  
392 Dagenais G, et al. Lowering cholesterol, blood pressure, or both to prevent cardiovascular  
393 events: results of 8.7 years of follow-up of Heart Outcomes Evaluation Prevention  
394 (HOPE)-3 study participants. *Eur Heart J*. 2021;42:2995-3007. doi:  
395 10.1093/eurheartj/ehab225
- 396 9. Pavlović J, Greenland P, Deckers JW, Kavousi M, Hofman A, Ikram MA, Franco OH,  
397 Leening MJ. Assessing gaps in cholesterol treatment guidelines for primary prevention of  
398 cardiovascular disease based on available randomised clinical trial evidence: The  
399 Rotterdam Study. *Eur J Prev Cardiol*. 2018;25:420-431. doi:  
400 10.1177/2047487317743352
- 401 10. Ioannidis JP. More than a billion people taking statins? Potential implications of the new  
402 cardiovascular guidelines. *JAMA*. 2014;311:463-464.
- 403 11. Abramson JD, Redberg RF. The opinion pages: Don't give more patients statins. In: *The*  
404 *New York Times*. 2013:A33.

- 405 12. Navar AM. Questioning the Benefit of Statins for Low-Risk Populations—Medical  
406 Misinformation or Scientific Evidence?—Reply. *JAMA Cardiology*. 2019. doi:  
407 10.1001/jamacardio.2019.5123
- 408 13. Kavousi M, Elias-Smale S, Rutten JHW, Leening MJG, Vliegenthart R, Verwoert GC,  
409 Krestin GP, Oudkerk M, de Maat MPM, Leebeek FWG. Evaluation of Newer Risk  
410 Markers for Coronary Heart Disease Risk Classification: A Cohort Study. *Ann Intern*  
411 *Med*. 2012;156:438-444. doi: 10.7326/0003-4819-156-6-201203200-00006
- 412 14. Lemos JAd, Ayers CR, Levine BD, deFilippi CR, Wang TJ, Hundley WG, Berry JD,  
413 Seliger SL, McGuire DK, Ouyang P, et al. Multimodality Strategy for Cardiovascular  
414 Risk Assessment. *Circulation*. 2017;135:2119-2132. doi:  
415 doi:10.1161/CIRCULATIONAHA.117.027272
- 416 15. Ledwidge MT, O'Connell E, Gallagher J, Tilson L, James S, Voon V, Bermingham M,  
417 Tallon E, Watson C, O'Hanlon R. Cost-effectiveness of natriuretic peptide-based  
418 screening and collaborative care: a report from the STOP-HF (St Vincent's Screening TO  
419 Prevent Heart Failure) study. *Eur J Heart Failure*. 2015;17:672-679.
- 420 16. Ikram MA, Kieboom BCT, Brouwer WP, Brusselle G, Chaker L, Ghanbari M,  
421 Goedegebure A, Ikram MK, Kavousi M, de Knegt RJ, et al. The Rotterdam Study.  
422 Design update and major findings between 2020 and 2024. *Eur J Epidemiol*. 2024.
- 423 17. Rutten JHW, Mattace-Raso FUS, Steyerberg EW, Lindemans J, Hofman A, Wieberdink  
424 RG, Breteler MMB, Wittteman JCM, Meiracker AHvd. Amino-Terminal Pro-B-Type  
425 Natriuretic Peptide Improves Cardiovascular and Cerebrovascular Risk Prediction in the  
426 Population. *Hypertension*. 2010;55:785-791. doi:  
427 doi:10.1161/HYPERTENSIONAHA.109.143313

- 428 18. Yeo KT, Wu AH, Apple FS, Kroll MH, Christenson RH, Lewandrowski KB, Sedor FA,  
429 Butch AW. Multicenter evaluation of the Roche NT-proBNP assay and comparison to the  
430 Biosite Triage BNP assay. *Clin Chim Acta*. 2003;338:107-115. doi:  
431 10.1016/j.cccn.2003.08.016
- 432 19. Leening MJG, Kavousi M, Heeringa J, van Rooij FJ, Verkroost-van Heemst J, Deckers  
433 JW, Mattace-Raso FU, Ziere G, Hofman A, Stricker BH, et al. Methods of Data  
434 Collection and Definitions of Cardiac Outcomes in the Rotterdam Study. *Eur J*  
435 *Epidemiol*. 2012;27:173-185.
- 436 20. Berghout BP, Bos D, Koudstaal PJ, Ikram MA, Ikram MK. Risk of recurrent stroke in  
437 Rotterdam between 1990 and 2020: a population-based cohort study. *Lancet Reg Health*  
438 *Eur*. 2023;30:100651.
- 439 21. Nakamura H. Design and baseline characteristics of a study of primary prevention of  
440 coronary events with pravastatin among Japanese with mildly elevated cholesterol levels.  
441 *Circ J*. 2004;68:860-867.
- 442 22. Bos MJ, van Rijn MJ, Wittteman JC, Hofman A, Koudstaal PJ, Breteler MM. Incidence  
443 and Prognosis of Transient Neurological Attacks. *JAMA*. 2007;298:2877-2885. doi:  
444 10.1001/jama.298.24.2877
- 445 23. Maitland-van der Zee AH, Klungel OH, Stricker BHC, van der Kuip DA, Wittteman JC,  
446 Hofman A, Leufkens HG, de Boer A. Repeated Nitrate Prescriptions as a Potential  
447 Marker for Angina Pectoris. A Comparison with Medical Information from the  
448 Rotterdam Study. *Pharm World Sci*. 2003;25:70-72. doi: 10.1023/a:1023292830670
- 449 24. Januzzi JL, van Kimmenade R, Lainchbury J, Bayes-Genis A, Ordonez-Llanos J,  
450 Santalo-Bel M, Pinto YM, Richards M. NT-proBNP testing for diagnosis and short-term

- 451 prognosis in acute destabilized heart failure: an international pooled analysis of 1256  
452 patients: the International Collaborative of NT-proBNP Study. *Eur Heart J.* 2006;27:330-  
453 337. doi: 10.1093/eurheartj/ehi631
- 454 25. Ndumele CE, Matsushita K, Sang Y, Lazo M, Agarwal SK, Nambi V, Deswal A,  
455 Blumenthal RS, Ballantyne CM, Coresh J, et al. N-Terminal Pro-Brain Natriuretic  
456 Peptide and Heart Failure Risk Among Individuals With and Without Obesity: The  
457 Atherosclerosis Risk in Communities (ARIC) Study. *Circulation.* 2016;133:631-638.
- 458 26. Collins R, Reith C, Emberson J, Armitage J, Baigent C, Blackwell L, Blumenthal R,  
459 Danesh J, Smith GD, DeMets D, et al. Interpretation of the Evidence for the Efficacy and  
460 Safety of Statin Therapy. *Lancet.* 2016;388:2532-2561. doi: 10.1016/S0140-  
461 6736(16)31357-5
- 462 27. Dempster AP, Laird NM, Rubin DB. Maximum Likelihood From Incomplete Data via  
463 the EM Algorithm. *Journal of the Royal Statistical Society Series B (Methodological).*  
464 1977;39:1-38. doi: 10.1111/j.2517-6161.1977.tb01600.x
- 465 28. Mortensen MB, Tybjærg-Hansen A, Nordestgaard BG. Statin Eligibility for Primary  
466 Prevention of Cardiovascular Disease According to 2021 European Prevention  
467 Guidelines Compared With Other International Guidelines. *JAMA Cardiol.* 2022;7:836-  
468 843.
- 469 29. Elliott MH, Skydel JJ, Dhruva SS, Ross JS, Wallach JD. Characteristics and Reporting of  
470 Number Needed to Treat, Number Needed to Harm, and Absolute Risk Reduction in  
471 Controlled Clinical Trials, 2001-2019. *JAMA Intern Med.* 2021;181:282-284.
- 472 30. Saver JL, Lewis RJ. Number Needed to Treat: Conveying the Likelihood of a  
473 Therapeutic Effect. *JAMA.* 2019;321:798-799. doi: 10.1001/jama.2018.21971

- 474 31. Halvorsen S, Mehilli J, Cassese S, Hall TS, Abdelhamid M, Barbato E, De Hert S, de  
475 Laval I, Geisler T, Hinterbuchner L, et al. 2022 ESC Guidelines on cardiovascular  
476 assessment and management of patients undergoing non-cardiac surgery: Developed by  
477 the task force for cardiovascular assessment and management of patients undergoing non-  
478 cardiac surgery of the European Society of Cardiology (ESC) Endorsed by the European  
479 Society of Anaesthesiology and Intensive Care (ESAIC). *Eur Heart J*. 2022;43:3826-  
480 3924. doi: 10.1093/eurheartj/ehac270
- 481 32. Redfield MM, Rodeheffer RJ, Jacobsen SJ, Mahoney DW, Bailey KR, Burnett JC.  
482 Plasma brain natriuretic peptide concentration: impact of age and gender. *J Am Coll*  
483 *Cardiol*. 2002;40:976-982.
- 484 33. Bernstein LH, Zions MY, Alam ME, Haq SA, Heitner JF, Zarich S, Seamonds B, Berger  
485 S. What is the best approximation of reference normal for NT-proBNP? Clinical levels  
486 for enhanced assessment of NT-proBNP (CLEAN). *Journal of Medical Laboratory and*  
487 *Diagnosis*. 2011;2:16-21.
- 488 34. Leening MJG, Heeringa J, Deckers JW, Franco OH, Hofman A, Wittteman JC, Stricker  
489 BH. Healthy Volunteer Effect and Cardiovascular Risk. *Epidemiology*. 2014;25:470-471.  
490 doi: 10.1097/EDE.0000000000000091
- 491 35. Friedewald Levy R. I. FDS, William T. Estimation of the concentration of low-density  
492 lipoprotein cholesterol in plasma, without use of the preparative ultracentrifuge. *Clin*  
493 *Chem*. 1972;18:499-502.
- 494 36. Expert Panel. Executive Summary of The Third Report of The National Cholesterol  
495 Education Program (NCEP) Expert Panel on Detection, Evaluation, And Treatment of  
496 High Blood Cholesterol In Adults (Adult Treatment Panel III). Expert Panel on



497           Detection, Evaluation and Trea. *JAMA*. 2001;285:2486-2497. doi:  
498           10.1001/jama.285.19.2486  
499   37.   Graham I, Atar D, Borch-Johnsen K, Boysen G, Burell G, Cifkova R, Dallongeville J, De  
500   Backer G, Ebrahim S, Gjelsvik B, et al. European guidelines on cardiovascular disease  
501   prevention in clinical practice: executive summary: Fourth Joint Task Force of the  
502   European Society of Cardiology and Other Societies on Cardiovascular Disease  
503   Prevention in Clinical Practice (Constituted by r. *Eur Heart J*. 2007;28:2375-2414.  
504  
505  
506

507 **Table 1. Overview of the clinical trial characteristics**

<b>RCT characteristics</b>	<b>MEGA, 2006</b>	<b>JUPITER, 2008</b>	<b>HOPE-3, 2016</b>
Statin	Pravastatin 10-20 mg	Rosuvastatin 20 mg	Rosuvastatin 10 mg
Sample size	7,832	17,802	12,705
Mean follow-up, y	5.3	1.9*	5.6*
Age, y	40-70	50-97	≥55
<b>Major entry criteria†</b>			
Cholesterol (mg/dL)	Total 200-270	LDL <130	None
Other major criteria	Postmenopausal women	Men ≥50 y, women ≥60 y; C-reactive protein ≥2 mg/L	Men ≥55 y, women ≥65 y; ≥1 additional risk factor
<b>Outcomes</b>			
Definition	- Composite of major CHD, sudden cardiac death, angina, and revascularization;  - Composite of all CHD, stroke, and CVD death.	- Composite of non-fatal MI, non-fatal stroke, revascularization, hospital admission for angina, and confirmed CVD death.	- Composite of CVD death, non-fatal MI, and non-fatal stroke;  - Composite of CVD death, resuscitated cardiac arrest, non-fatal MI, non-fatal stroke, heart failure, and revascularizations.
Control events (event rate per 1000 pys)	101/3966 (5.0); 172/3966 (8.5)	251/8901 (13.6)	304/6344 (9.8 <sup>‡</sup> ); 363/6344 (11.5 <sup>‡</sup> )
Treatment events (event rate per 1000 pys)	66/3866 (3.3); 125/3866 (6.4)	142/8901 (7.7)	235/6361 (7.7 <sup>‡</sup> ); 277/6361 (9.0 <sup>‡</sup> )
Treatment effect, HR	0.67 (95%CI: 0.49-0.91; P=0.01); 0.74 (95%CI: 0.59-0.94; P=0.01)	0.56 (95%CI: 0.46-0.69; P<0.001)	0.76 (95%CI: 0.64-0.91; P=0.002); 0.75 (95%CI: 0.64-0.88; P<0.001)
<b>NNT</b>			
Per outcome definition	119; 91	25 <sup>§</sup>	91; 73

508 \* Median.

509 † Major criteria presented in the table were simplified for didactic purposes. Detailed inclusion and exclusion criteria per RCT, and  
510 data availability are presented in Table S1.

511 ‡ Event rates for treatment and control group were only provided for the follow-up period of 8.7 years (i.e., including 3.1 years of post  
512 RCT follow-up).<sup>5</sup>

513 § As JUPITER trial ended earlier, the trial authors calculated NNT over an average period of 5 years to be 25.<sup>6</sup>

514

515 Abbreviations: CHD, coronary heart disease; CVD, cardiovascular disease; HOPE-3, Heart Outcomes Prevention Evaluation-3; HR,  
516 hazard ratio; JUPITER, Justification for the Use of Statins in Prevention: Intervention Trial Evaluating Rosuvastatin; LDL, low-  
517 density lipoprotein; MEGA, The Management of Elevated Cholesterol in the Primary Prevention Group of Adult Japanese; MI,  
518 myocardial infarction; NNT, number needed to treat; RCT, randomized controlled trial.

519 **Table 2. Population characteristics**

	<b>Total population (n=5434)</b>	<b>MEGA eligible (n=1896)</b>	<b>JUPITER eligible (n=567)</b>	<b>HOPE-3 eligible (n=1287)</b>
Age, y	61.6 (56.7-69.1)	60.8 (57.2-64.5)	67.0 (61.8-75.1)	65.6 (61.2-72.4)
Women	3199 (58.9)	1128 (59.5)	281 (49.6)	620 (48.2)
Total cholesterol, mg/dL	220 (197-242)	205 (181-230)	191 (174-204)	239 (229-251)
HDL cholesterol, mg/dL	54 (45-66)	51 (44-62)	51 (42-64)	55 (46-67)
LDL cholesterol, mg/dL	140 (119-159)	126 (108-149)	113 (102-123)	157 (146-169)
Triglycerides, mg/dL	109 (83-149)	106 (83-144)	104 (81-146)	120 (91-160)
Systolic blood pressure, mmHg	134 (122-147)	133 (122-146)	138 (126-150)	132 (122-143)
Diastolic blood pressure, mmHg	78 (71-85)	79 (72-86)	77 (70-85)	76 (69-83)
Current smoking	1208 (22.2)	468 (24.7)	149 (26.3)	210 (16.3)
Body mass index, kg/m <sup>2</sup>	26.3 (24.0-29.0)	26.5 (24.2-29.0)	27.1 (24.5-30.5)	26.6 (24.3-29.3)
Waist-hip-ratio, ratio	0.88 (0.82-0.95)	0.88 (0.82-0.94)	0.92 (0.86-0.98)	0.93 (0.88-0.97)
Glucose, mg/dL	97 (92-104)	99 (92-106)	99 (94-106)	97 (92-104)
CRP, mg/L	1.4 (0.6-3.2)	1.2 (0.5-2.6)	4.1 (2.8-6.9)	1.6 (0.6-3.6)
eGFR, mL/min/1.73m <sup>2</sup>	83 (72-94)	84 (75-94)	77 (67-87)	78 (68-89)
Blood pressure lowering medication use	201 (3.7)	49 (2.6)	34 (6.0)	56 (4.4)
NT-proBNP, pg/mL	60 (33-110)	50 (29-89)	79 (42-152)	64 (35-116)
NT-proBNP ≤50 pg/mL	2296 (42.3)	946 (49.9)	183 (32.3)	519 (40.3)
NT-proBNP 50-100 pg/mL	1589 (29.2)	539 (28.4)	151 (26.6)	375 (29.1)
NT-proBNP >100 pg/mL	1549 (28.5)	411 (21.7)	233 (41.1)	393 (30.6)

520

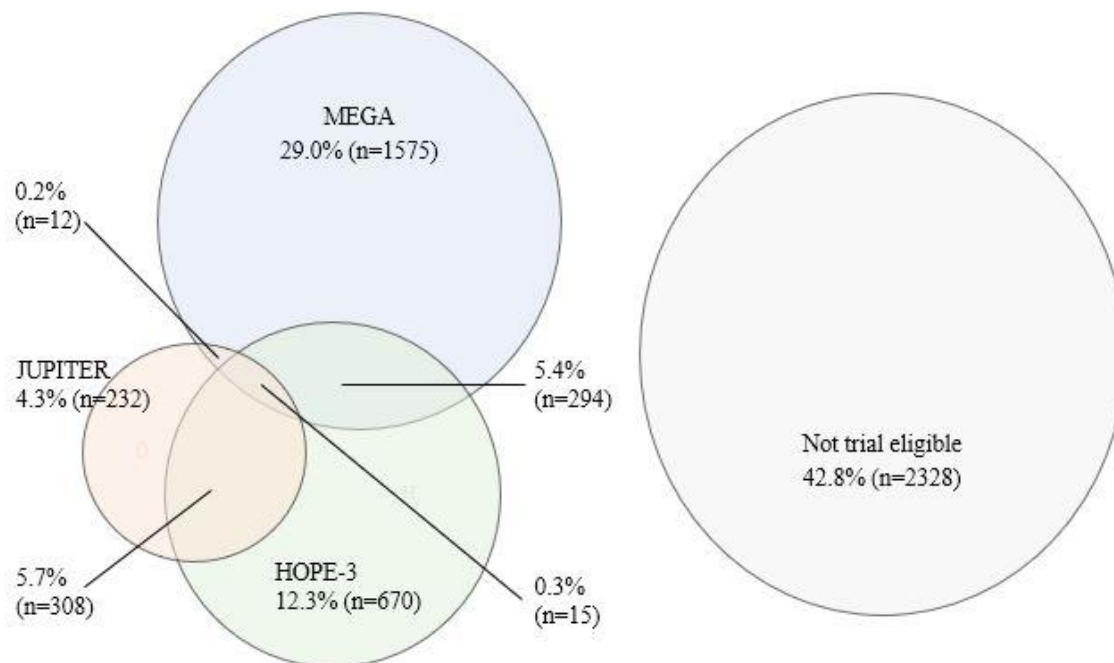
521 Values are medians (IQR) or counts (%).

522 To convert total, LDL, and HDL cholesterol from mg/dL to SI (mmol/L) divide by 38.7, and for triglycerides by 88.6; glucose from  
523 mg/dL to SI (mmol/L) divide by 18; CRP from mg/L to SI (nmol/L) multiply by 9.5; NT-proBNP from pg/mL to SI (pmol/L) multiply  
524 by 0.12.

525

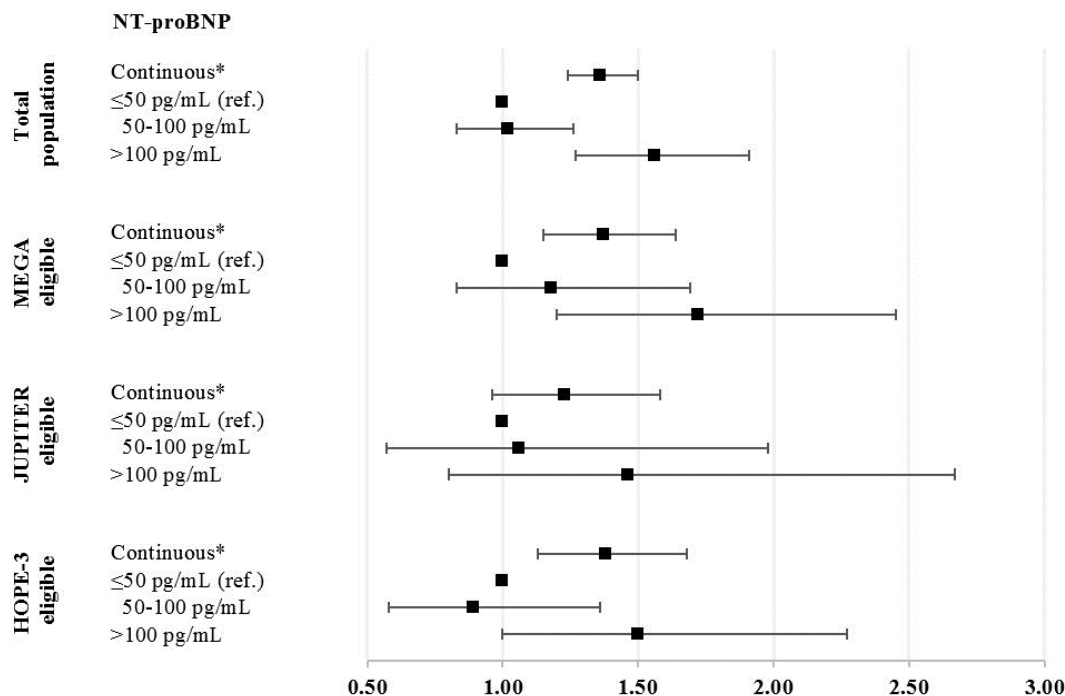
526 Abbreviations: CRP, C-reactive protein; eGFR, estimated glomerular filtration rate; HDL, high-density lipoprotein; HOPE-3, Heart  
527 Outcomes Prevention Evaluation-3; JUPITER, Justification for the Use of Statins in Prevention: Intervention Trial Evaluating  
528 Rosuvastatin; LDL, low-density lipoprotein; MEGA, The Management of Elevated Cholesterol in the Primary Prevention Group of  
529 Adult Japanese; NT-proBNP, N-terminal pro-B-type natriuretic peptide.

530 **Figure 1. General population eligibility for statin trials in primary prevention of ASCVD**  
531 **targeting low- and intermediate risk individuals**



532  
533 Abbreviations: ASCVD, atherosclerotic cardiovascular disease; HOPE-3, Heart Outcomes  
534 Prevention Evaluation-3; JUPITER, Justification for the Use of Statins in Prevention:  
535 Intervention Trial Evaluating Rosuvastatin; MEGA, The Management of Elevated Cholesterol in  
536 the Primary Prevention Group of Adult Japanese.

537 **Figure 2. Adjusted hazard ratios for incident ASCVD**



538

539 \* Natural-log-transformed NT-proBNP values.

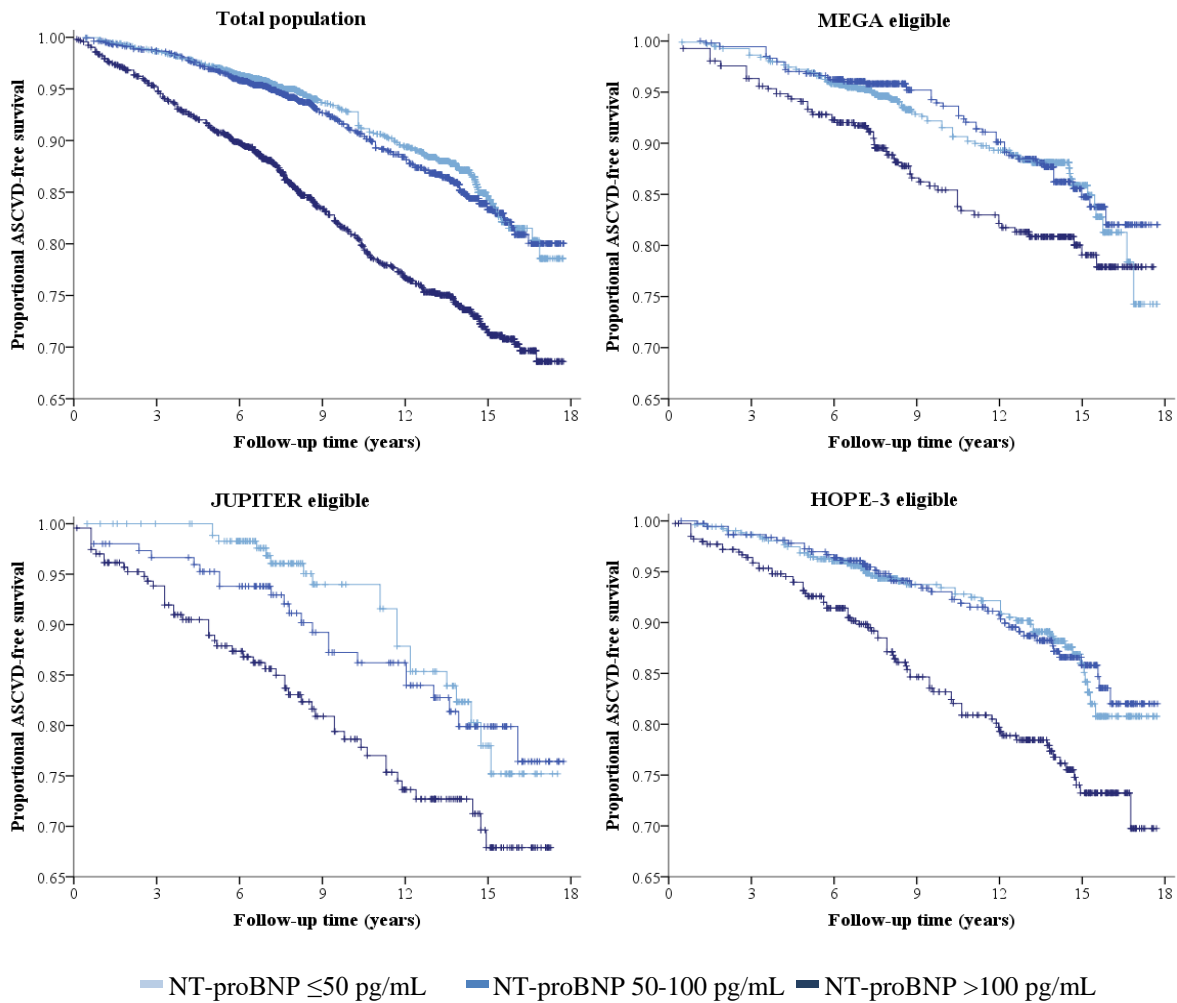
540

541 Adjusted hazard ratios (model 2) for ASCVD with 95% confidence intervals per natural-log-  
542 transformed NT-proBNP values, comparing two NT-proBNP categories with NT-proBNP ≤50  
543 pg/mL (reference group) in total population and per trial eligible subpopulations.

544

545 Abbreviations: ASCVD, atherosclerotic cardiovascular disease; HDL, high-density lipoprotein;  
546 HOPE-3, Heart Outcomes Prevention Evaluation-3; JUPITER, Justification for the Use of  
547 Statins in Prevention: Intervention Trial Evaluating Rosuvastatin; MEGA, The Management of  
548 Elevated Cholesterol in the Primary Prevention Group of Adult Japanese; NT-proBNP, N-  
549 terminal pro-B-type natriuretic peptide.

550 **Figure 3. ASCVD free survival curves by NT-proBNP level and trial eligibility**



551

552

553 Abbreviations: ASCVD, atherosclerotic cardiovascular disease; HOPE-3, Heart Outcomes

554 Prevention Evaluation-3; JUPITER, Justification for the Use of Statins in Prevention:

555 Intervention Trial Evaluating Rosuvastatin; MEGA, The Management of Elevated Cholesterol in

556 the Primary Prevention Group of Adult Japanese; NT-proBNP, N-terminal pro-B-type natriuretic

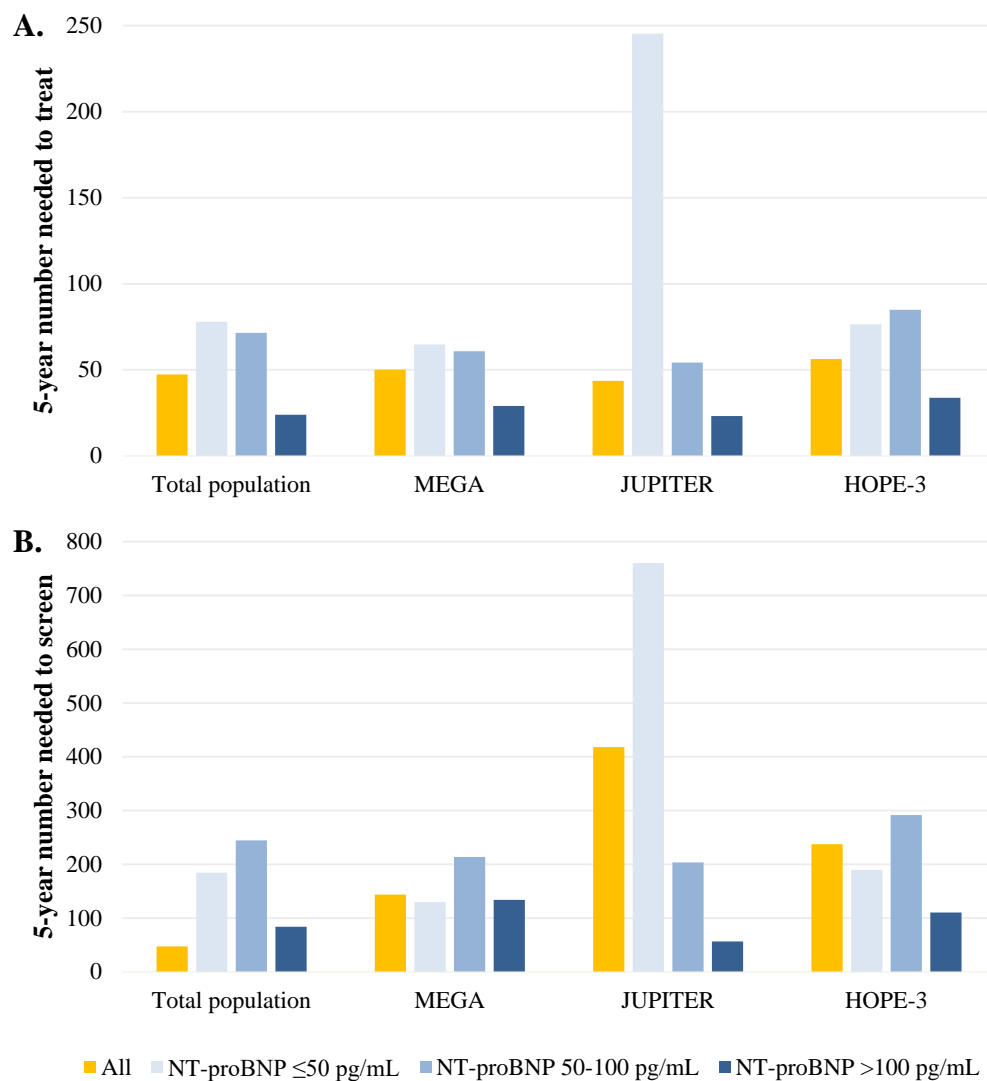
557 peptide.

558





560 **Figure 4. Numbers needed to treat and screen for five years to avoid a single ASCVD event**  
561 **with high-intensity statins**



562  
563 Panel A, Numbers needed to treat for five years to avoid a single ASCVD event with high-  
564 intensity statins, by NT-proBNP level. Panel B, Numbers needed to screen for five years to avoid  
565 a single ASCVD event with high-intensity statins, by NT-proBNP level.  
566  
567 Abbreviations: ASCVD, atherosclerotic cardiovascular disease; HOPE-3, Heart Outcomes  
568 Prevention Evaluation-3; JUPITER, Justification for the Use of Statins in Prevention:

569 Intervention Trial Evaluating Rosuvastatin; MEGA, The Management of Elevated Cholesterol in  
570 the Primary Prevention Group of Adult Japanese; NT-proBNP, N-terminal pro-B-type natriuretic  
571 peptide.  
572