

Evidence of aberrant anti-Epstein-Barr virus antibody response, though no viral reactivation, in people with post-stroke fatigue

Isobel C. Mouat¹, Judy Zhu², Alperen Aslan², Barry W. McColl³, Stuart M. Allan^{4,5,6}, Craig J. Smith^{4,6,7,8}, Marion S. Buckwalter^{2,9,10} and Laura McCulloch¹

1. Centre for Inflammation Research, Institute for Regeneration and Repair South, University of Edinburgh, UK
2. Department of Neurology and Neurological Sciences, Stanford University School of Medicine, Stanford, CA, USA.
3. UK Dementia Research Institute, Centre for Discovery Brain Sciences, The University of Edinburgh, Edinburgh, UK
4. Geoffrey Jefferson Brain Research Centre, School of Biological Sciences, Faculty of Biology, Medicine and Health, The University of Manchester, UK
5. Division of Neuroscience, The University of Manchester, Manchester, UK
6. Lydia Becker Institute of Immunology and Inflammation, Faculty of Biology, Medicine and Health, Manchester Academic Health Science Centre, The University of Manchester, Manchester, UK
7. Division of Cardiovascular Sciences, The University of Manchester, Manchester, Manchester, UK
8. Geoffrey Jefferson Brain Research Centre, Manchester Academic Health Science Centre, Northern Care Alliance NHS Foundation Trust, University of Manchester, Manchester, UK
9. Wu Tsai Neurosciences Institute, Stanford University, Stanford, CA, USA
10. Department of Neurosurgery, Stanford University School of Medicine, Stanford, CA, USA

KEYWORDS: Ischaemic Stroke, fatigue, Epstein-Barr Virus

WORD COUNT: 3374

FIGURES AND TABLES

Table 1. Clinical cohort

Figure 1. Fatigue and mood of cohort

Figure 2. Similar frequencies of EBV viraemia in people with and without post-stroke fatigue

Figure 3. Anti-EBV seroresponse in people with post-stroke fatigue

Figure 4. IgM anti-VCA titre correlates with fatigue but not selected clinical characteristics

Figure 5. Total circulating antibodies unchanged between low and high post-stroke fatigue groups

Supplementary Figure 1. Anti-EBV antibodies do not associate with stroke severity.

Supplementary Figure 2. IgM anti-VCA titre does not associate with various cognitive domains

NOTE: This preprint reports new research that has not been certified by peer review and should not be used to guide clinical practice.

45 Abstract

46 BACKGROUND

47 Fatigue is a common complication of stroke that has a significant impact on quality of life. The biological mechanisms
48 that underly post-stroke fatigue are currently unclear, however, reactivation of latent viruses and their impact on
49 systemic immune function have been increasingly reported in other conditions where fatigue is a predominant
50 symptom. Epstein-Barr virus (EBV) in particular has been associated with fatigue, including in long-COVID and myalgic
51 encephalomyelitis/chronic fatigue syndrome, but has not yet been explored within the context of stroke.

52 AIMS

53 We performed an exploratory analysis to determine if there is evidence of a relationship between EBV reactivation
54 and post-stroke fatigue.

55 METHODS

56 In a chronic ischemic stroke cohort (>6 months post-stroke), we assayed circulating EBV by qPCR and measured the
57 titres of anti-EBV antibodies by ELISA in patients with high fatigue (FACIT-F <40) and low fatigue (FACIT-F >41).
58 Statistical analysis between two-groups were performed by t-test when normally distributed according to the Shapiro-
59 Wilk test, by Mann-Whitney test when the data was not normally distributed, and by Fisher's exact test for categorical
60 data.

61 RESULTS

62 We observed a similar incidence of viral reactivation between people with low versus high levels of post-stroke fatigue
63 (5 of 22 participants (24%) versus 6 of 22 participants (27%)). Although the amount of circulating EBV was similar
64 between the groups, we observed an altered antibody response against EBV antigens in participants with high fatigue,
65 with reduced IgM against the Viral Capsid Antigen (VCA; 2.244 ± 0.926 vs 3.334 ± 2.68 ; $P = 0.031$). Total IgM levels were
66 not different between groups indicating this effect was specific to EBV ($3.23 \times 10^5 \pm 4.44 \times 10^4$ high fatigue versus 4.60
67 $\times 10^5 \pm 9.28 \times 10^4$ low fatigue; $P = 0.288$).

68 CONCLUSIONS

69 These findings indicate that EBV is not more prone to reactivation during chronic stroke recovery in those with post-
70 stroke fatigue. However, the dysregulated antibody response to EBV may be suggestive of viral reactivation at an
71 earlier stage after stroke and warrants further investigation.

84 Introduction

85 Post-stroke fatigue is a major clinical concern that is experienced by around half of stroke survivors (1). Fatigue has a
86 major impact on quality of life and has been identified by stroke survivors, carers and health care professionals as a
87 high priority for future research (2). There are varying estimates of the duration of post-stroke fatigue, though it is
88 clear that for many it is a persistent symptom that continues for years (3). Multiple factors are hypothesised to
89 contribute to risk of post-stroke fatigue, including biological sex, white matter abnormalities, stroke severity, and
90 depression (4). Despite its clinical importance, there are currently no effective treatments, and identifying biological
91 mechanisms driving post-stroke fatigue has been recommended as a research priority, with dysregulation of the
92 immune system and inflammation highlighted as the top area for further investigation (5).

93 With the recent worldwide impact of long-COVID, there has been an upsurge of interest in understanding common
94 factors that drive fatigue in different clinical conditions. Reactivation of Epstein-Barr virus (EBV) and its association
95 with a dysregulated immune system has been increasingly associated with fatigue, including in long-COVID (6) and
96 myalgic encephalomyelitis/chronic fatigue syndrome (ME/CFS) (7). EBV is a ubiquitous gamma-herpesvirus virus that
97 infects >90% of all people (8). EBV lies dormant for the majority of life, and constant host immune surveillance largely
98 maintains the virus in a latent state. There can be however periodic reactivation, particularly during periods of
99 immunosuppression (9). EBV reactivation has been observed in an array of conditions where the immune system is
100 compromised, including haematopoietic and solid organ transplantation (10, 11), HIV infection (12, 13), and stress
101 (14). While it is still unknown how EBV is linked to the development of fatigue, it is thought that genetic susceptibility
102 (15) and viral-induced chronic inflammation (16) may both have a role.

103 Suppression of some aspects of systemic immune function is a common feature of stroke and is associated with
104 infection vulnerability and worse outcomes (17-20). While alterations to peripheral immunity are most apparent in
105 the acute phase of stroke recovery, there is evidence of persistent immune changes during chronic recovery (21).
106 Therefore, post-stroke immune suppression has potential to create an immune environment permissible to
107 reactivation of EBV. There is some evidence of herpesvirus reactivation following stroke: in the five years following
108 stroke, there is an increased risk of herpes zoster reactivation in people (22). Animal models indicate risk of both HIV
109 and herpes simplex virus 1 (HSV-1) reactivation following stroke (23, 24). We focused on EBV due to its high
110 seroprevalence. EBV also has the ability to modulate immune function, including suppression of IFN γ and CD8 T cell
111 responses, and the prevention of B cell apoptosis, resulting in increased risk of cancer and autoimmune disease (25-
112 28), suggesting reactivation of EBV after stroke could contribute to further dysregulation of the immune environment
113 and development of secondary complications.

114 In this study we aimed to investigate the frequency of circulating EBV and the immunoglobulin response to EBV in
115 people recovering from stroke with high versus low levels of reported fatigue.

116 Methods

117 *Study design and participants*

118 The StrokeCog study is a longitudinal cohort study aiming to investigate the post-stroke immune response and
119 cognitive functioning over the course of stroke recovery (29). Participants included in the parent study had ischemic
120 strokes that were confirmed by MRI or CT scan, were over the age of 25, were able to return for annual follow-up
121 visits, and had fluency in English. Exclusion criteria included preceding cognitive impairment or dysphasia that
122 precluded ability to complete the neurological assessments, life expectancy of under one year, or pre-existing
123 conditions that would impact the assessment of neurological or cognitive outcomes. The parent study was approved
124 by the Stanford University Institutional Review Board. We designed this as a nested case-control (fatigue vs. no fatigue)
125 cohort within the StrokeCog cohort. Cohort characteristics are further discussed in the results section.

126 *Clinical data*

127 A neurological evaluation was performed on each participant comprised of various neuropsychological assessments
128 (29). For the purpose of this study, we are particularly interested in fatigue, mood, and cognition. Fatigue was
129 measured in participants using the Functional Assessment of Chronic Illness Therapy – Fatigue Scale (FACIT-F) (30), a
130 questionnaire tool that assesses patient-reported fatigue and impact on daily living. The measure is made up of 13

131 questions, each requiring an answer on a 5-point Likert-type scale, with the summation of responses producing a single
132 value. Additionally, the Stroke Impact Scale (SIS) version 3 was administered, a well-established patient-based, self-
133 report questionnaire (31). Various domains are measured, and for the purpose of this study we examined the SIS3
134 domain, which is a measure of mood/emotion. Finally, to measure cognition, the Montreal Cognitive Assessment
135 (MoCA) was utilized (32).

136 *Sample collection and processing*

137 Blood was collected the same time as neurological assessment. For the isolation of plasma and peripheral blood
138 mononuclear cells (PBMCs), blood was collected into sterile BD Vacutainer tubes containing 15% K3
139 ethylenediaminetetraacetic acid (EDTA) solution (Thermo Fisher Scientific), placed on ice, and centrifuged at 2,000g
140 for 10 minutes at 4°C. Plasma supernatant was isolated, aliquoted, and stored at -80°C prior to use. The remaining
141 sample was further processed with a 15mL Ficoll density gradient in a SepMate Tube-50, cells were washed with PBS
142 with 2% fetal bovine serum (FBS), counted on a haemocytometer, and frozen in a Mr. Frosty (Thermo Fisher) at -80°C
143 for 24 hours before being transferred to liquid nitrogen for storage. Genomic DNA was extracted from 2×10^6 PBMCs
144 with the Qiagen QIAamp DNA Blood Mini Kit (cat no 51104).

145 *Detection of antibodies*

147 Enzyme-linked immunosorbent assay (ELISA) was used to measure antibody titres in plasma including those against
148 EBV antigens and C-reactive protein (CRP) and total IgM and IgG. Commercial ELISA kits were used to measure anti-
149 viral capsid antigen (VCA) IgM (Abcam, ab108732), anti-VCA IgG (Abcam, ab108730), anti-Epstein-Barr nuclear antigen
150 1 (EBNA1) IgG (Abcam, ab108731), IgM (Abcam, ab214568), IgG (Abcam, ab195215), and anti-CRP (Abcam, ab260058),
151 and completed according to manufacturer's instructions. Plasma samples were diluted to 1:100 concentration for the
152 anti-VCA IgM and anti-EBNA1 IgG, 1:2000 for the anti-VCA IgG and anti-CRP and 1:100,000 for the IgM and total IgG.
153 Samples were run in duplicate and each plate was run with positive, negative, and cut-off controls (anti-VCA and anti-
154 EBNA1), or a standard. Absorbance was measured at 450 nm using a SpectraMax 340PC384 (Molecular Devices).
155 Interpretation of results was done in accordance with manufacturer's instructions. For anti-EBV titres, samples were
156 considered to give a positive result if more than 10% above the cut-off control.

157 *EBV viraemia*

158 Circulating EBV was measured by qPCR with gDNA isolated from peripheral leukocytes. The Norgen EBV TaqMan PCR
159 kit (TM41050) was used and duplicate samples were run on a BioRad CFX96 Real-Time PCR Detection System (BioRad).
160 The assay was completed and results were analysed in accordance with manufacturer's instructions. All samples
161 displayed amplification of the internal PCR validation control.

162 *Statistical analyses*

163 Analysis and presentation of data was performed with GraphPad Prism software version 9.5.1 (GraphPad Software
164 Inc.). Statistical analysis between two-groups were performed by t-test when normally distributed according to the
165 Shapiro-Wilk test, by Mann-Whitney test when the data was not normally distributed, and by Fisher's exact test for
166 categorical data. Correlation analyses were performed by simple linear regression on log-transformed data, with best-
167 fit line and 95% confidence bands plotted. $P < 0.05$ was considered statistically significant.

168 **Results**

169 *Cohort selection*

170 A total of 44 participants from the StrokeCog cohort were included in this exploratory study based on their experience
171 of fatigue. Patients completed a fatigue questionnaire alongside a battery of neurological tests at a minimum of five
172 months post stroke onset and a concurrent blood sample was taken. To identify participants for this study we selected
173 the 30 individuals with the highest FACIT-F scores and 30 participants with the lowest FACIT-F scores, and of those
174 identified 22 participants in each group that matched with regards to age, biological sex, infarct volume, initial stroke
175 severity (National Institutes of Health Stroke Scale, NIHSS), and time from stroke to sample collection (Table 2). The
176 resulting cohort comprised of a high fatigue (FACIT-F <40) and low fatigue (FACIT-F >41) group (Figure 1A), with the
177 dichotomisation aligning with previously published values for levels of post-stroke fatigue (33). The higher fatigue
178 group had lower Stroke Impact Scale domain 3 (SIS3) scores, indicating worse mood, and there was association

179 between fatigue (FACIT-F) and mood (SIS3) (Figure 1B, C). The cohort was comprised of individuals with relatively low
 180 severity strokes, with a median NIHSS of 4 and 5 for the low and high fatigue groups, respectively, and a median infarct
 181 volume of 7.2mL (low fatigue) and 5.5mL (high fatigue, Table 1). The low and high fatigue groups had similar prevalence
 182 of risk factors, including hypertension and previous stroke, as well as medication usage. However, there was a small,
 183 but not significant, increase in duration from index stroke in the high fatigue group (Table 1).

184

185 **Table 2. Clinical cohort**

186 Median and interquartile range (IQR), analysed by Mann-Whitney test for nonparametric data and Fisher's exact test for
 187 categorical data. NIHSS, National Institutes of Health Stroke Scale; IV, intravenous; IA, intra-arterial; ACE, Angiotensin Converting
 188 Enzyme.

	High fatigue	Low fatigue
Age at Baseline, median (IQR)	65 (56-71)	66 (58-71)
Sex		
Male, n (%)	14 (64)	14 (64)
Female, n (%)	8 (36)	8 (36)
Presentation		
Right hemisphere, n (%)	13 (59%)	10 (45%)
Left hemisphere, n (%)	9 (41%)	10 (45%)
Bilateral, n (%)	0 (0%)	2 (9%)
NIHSS, median (IQR)	5 (2-11)	4 (2-13)
Infarct volume (mL), median (IQR)	5.5 (0.46-39.08)	7.2 (1.98-42.33)
Days from Stroke to Baseline, median (IQR)	316 (235-1062)	256 (206-1236)
IV thrombolysis, n (%)	4 (20%)	8 (38%)
IA thrombectomy, n (%)	4 (20%)	6 (29%)
Risk Factors		
Hypertension, n (%)	15 (75%)	9 (43%)
Previous stroke, n (%)	4 (24%)	2 (12%)
Atrial fibrillation, n (%)	3 (17%)	5 (24%)
Hyperlipidaemia, n (%)	9 (53%)	6 (29%)
Other cardiovascular diseases, n (%)	2 (12%)	3 (17%)
Heart valve repair/replacement, n (%)	1 (5%)	2 (9%)
Angina, n (%)	0 (0%)	0 (%)
Congestive heart failure, n (%)	1 (5%)	1 (5%)
Pacemaker and/or defibrillator, n (%)	0 (0%)	2 (9%)
Coronary angioplasty, n (%)	3 (15%)	4 (18%)
Medications		
Antiplatelets, n (%)	6 (27%)	5 (23%)
Anticoagulants, n (%)	1 (5%)	2 (9%)
Statin, n (%)	18 (82%)	16 (73%)
Beta-blocker, n (%)	6 (27%)	6 (27%)
ACE-inhibitor, n (%)	4 (18%)	4 (18%)
Angiotensin II receptor blocker, n (%)	6 (27%)	4 (18%)

189

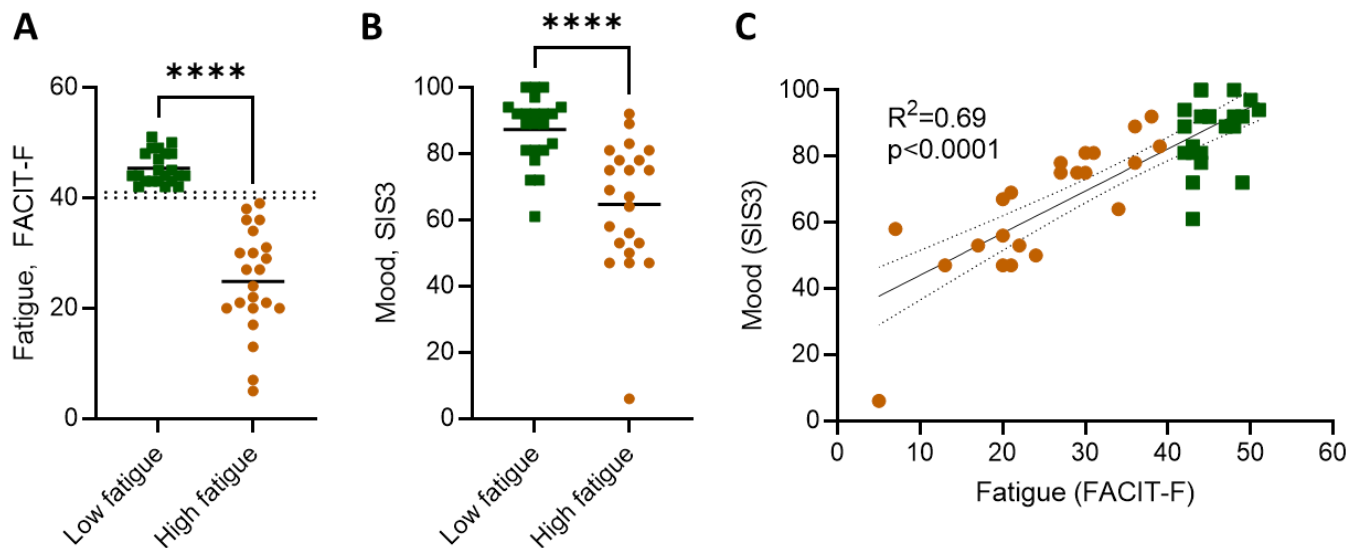


Figure 1. Fatigue and mood of cohort.

(A) Fatigue, measured by the Functional Assessment of Chronic Illness Therapy – Fatigue (FACIT-F) tool, with threshold for high versus low fatigue demarcated by dotted lines (B) mood, as measured by the Stroke Impact Scale (SIS), and correlation between fatigue (FACIT-F) and mood (SIS3). Each data point represents an individual participant, mean plotted. Data show individual participants plus mean; analysed by (A, B) Mann-Whitney test and (C) linear regression, with best-fit line and 95% confidence band plotted; ****P < 0.0001.

Frequency of circulating virus is not different between participants with high and low post-stroke fatigue

EBV is expected to be detectable in circulation during primary infection and reactivation events, though not during latency when the virus lays dormant in lymphoid tissues. EBV DNA was detected in the circulation of 5 of 22 participants (24%) with low fatigue and 6 of 22 participants (27%) with high fatigue (Figure A). Of the individuals positive for EBV, no difference was observed in the viral load between those with low and high fatigue (Figure B). As immune suppression after stroke is associated with increased stroke severity, we would expect that EBV reactivation would be more prevalent in participants with a higher stroke severity. Between participants with and without detectable circulating EBV, there was no difference in the initial stroke severity, measured by NIHSS (Figure 2C).

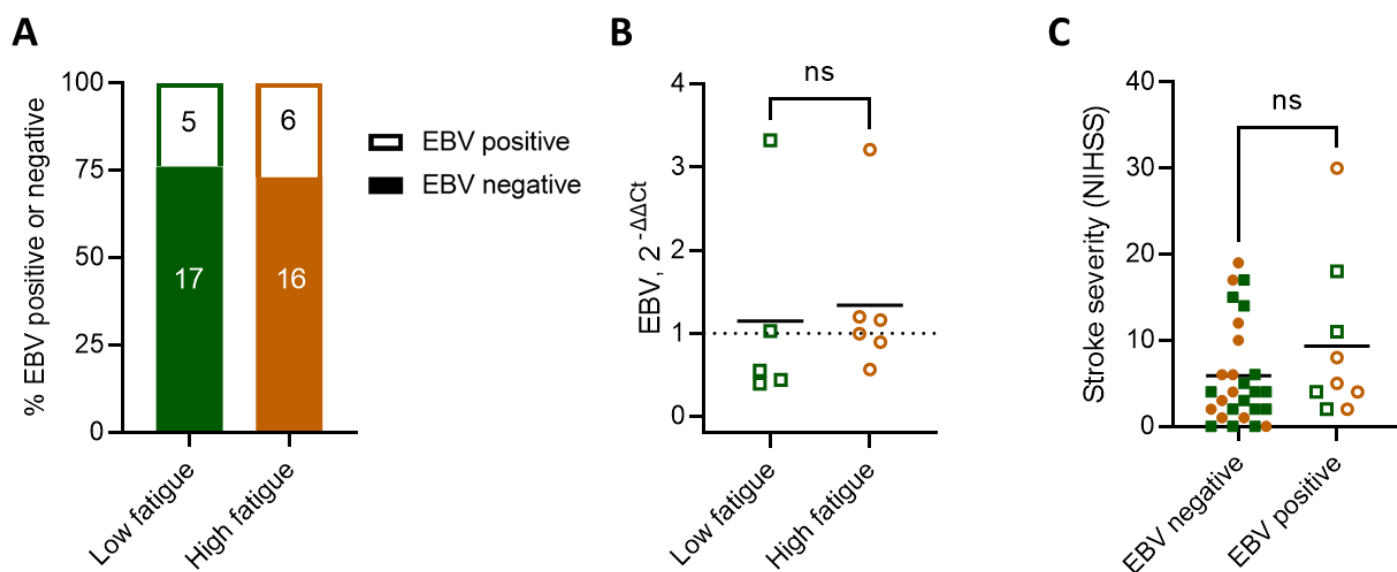


Figure 2. Similar frequencies of EBV viraemia in people with and without post-stroke fatigue

(A) Circulating EBV was measured by qPCR. (B) Circulating EBV load was assessed in the subset of participants positive for EBV. EBV was quantified with the delta-delta Ct method, using the housekeeping gene provided by the Norgen EBV PCR kit. (C) Stroke

210 severity, measured by NIHSS, between participants with and without detectable circulating EBV by qPCR. Low fatigue participants
211 are plotted as green squares and high fatigue as orange circles. Open shapes indicate participants with EBV viremia, as measured
212 by qPCR. Data show individual participants plus mean; (B) unpaired t-test; (C) Mann-Whitney test.

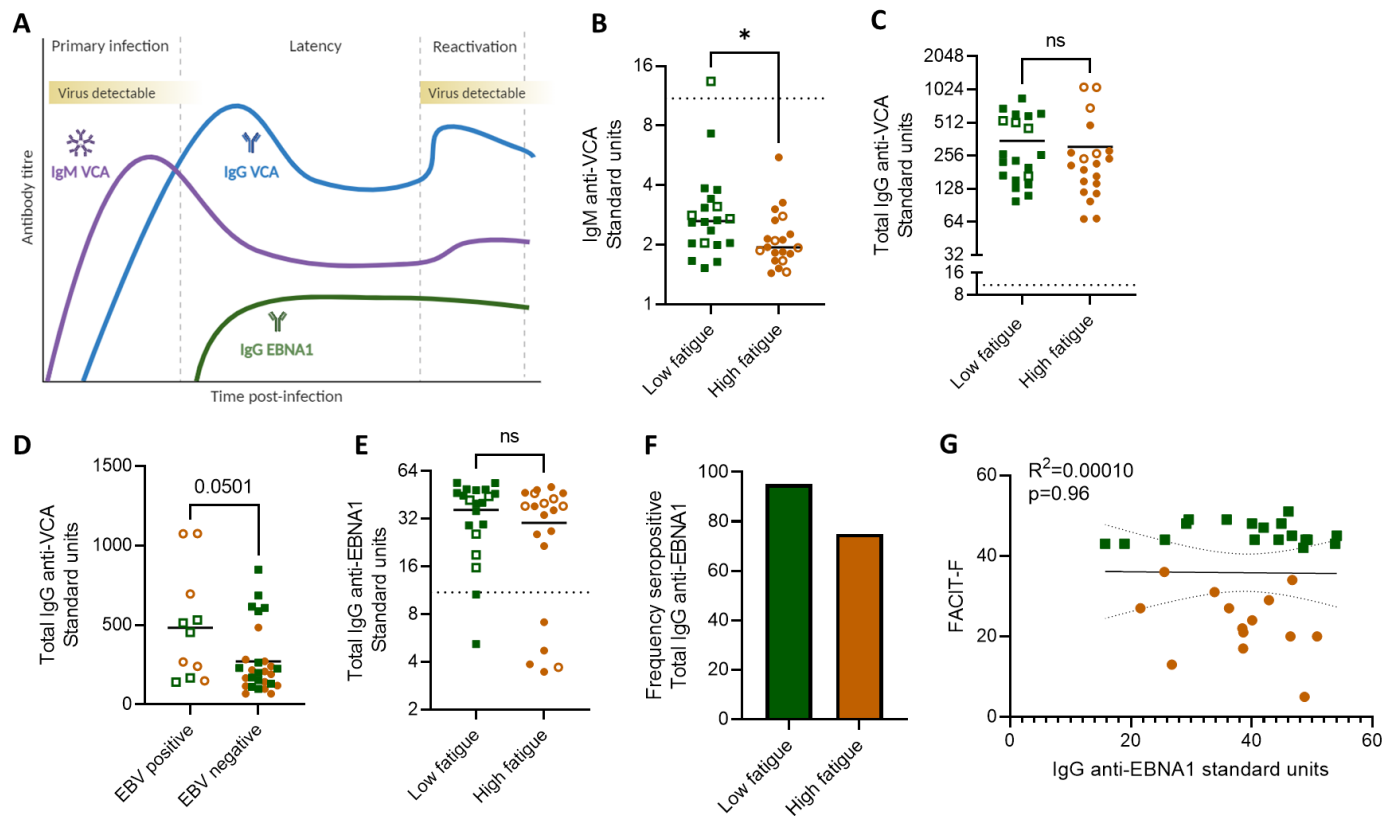
213

214 *EBV seroresponse in people with post-stroke fatigue*

215 To investigate the antibody response to EBV, we measured circulating antibodies against the EBV lytic antigen VCA
216 and latency antigen EBNA1. We observed that all participants were seropositive for EBV, as measured by the presence
217 of at least one IgG antibody class against EBNA1, IgG against VCA, or IgM against VCA. No recent primary infections
218 were detected, defined as a positive IgM anti-VCA and negative IgG anti-EBNA1 (data not shown). This means that all
219 patients showing positive viremia by qPCR were experiencing reactivation of previously latent infection.

220 We first measured IgM against VCA, which would be expected to be highest during primary infection and remain
221 persistently detectable in seropositive individuals (Figure 3A). While nearly all samples were below the cut-off control,
222 indicating a lack of recent primary infection, all samples were in the detectable range of the assay. We observed a
223 lower IgM titre against VCA in the high fatigue group, compared to the low fatigue group (Figure 3B). Next, we
224 measured the titre of IgG against VCA, which would be expected to increase in response to viral reactivation (Figure
225 3A). We did not observe a difference in anti-VCA IgG titre between groups (Figure 3C). This result aligns with the qPCR
226 results where patients with viremia were evenly distributed between low and high fatigue groups, and reinforce that
227 people with higher levels of post-stroke fatigue did not show increased incidence of EBV reactivation following stroke.
228 Individuals with viremia detected by qPCR had higher titres of anti-VCA IgG (Figure 3D), as expected in response to an
229 ongoing infection (Figure 3A).

230 We next measured the titres of IgG against latency antigen EBNA1, indicative of memory to primary infection and/or
231 an adaptive antibody response to reactivation, and did not observe a difference between low and high post-stroke
232 fatigue groups (Figure 3E). The ELISA cut off control was used to determine seropositivity, i.e. the presence of antibody
233 responses to antigen. Seropositivity was then used to stratify participants into seropositive versus seronegative for
234 IgG against EBNA1. We observed that of the low fatigue participants, 18/20 (90%) displayed seropositivity for anti-
235 EBNA1 IgG, compared to 15/20 (75%) of the high fatigue participants (Figure 3F). Of the individuals seropositive for
236 anti-EBNA1 IgG, we did not observe a relationship between IgG anti-EBNA1 titres and fatigue (Figure 3G). Taken
237 together with our previous finding that individuals with high fatigue have lower IgM titres against the lytic VCA antigen
238 (Figure 3B), this could indicate a potentially aberrant antibody response to EBV in people with post-stroke fatigue.
239 Titres of anti-EBV antibodies did not associate with initial stroke severity (Supplementary Figure 1).



240

241 **Figure 3. Anti-EBV seroresponse in people with post-stroke fatigue**

242 (A) Schematic of expected circulating anti-EBV antibody titres following primary infection, and during latency, and reactivation. Created with BioRender. (B-G) Plasma antibodies to EBV were measured by ELISA. Low fatigue participants are plotted as green squares and high fatigue as orange circles. Open shapes indicate participants with EBV viremia, as measured by qPCR, and the dotted line (B, E, G) indicates the ELISA cut off control value. (B) Titre of anti-Epstein-Barr nuclear antigen 1 (EBNA1) IgG between participants with low versus high post-stroke fatigue. (C) Percent of participants within each group that are positive seropositive for anti-EBNA1 IgG. Seropositivity is considered any value >10% over the cut-off control value. (D) Association between self-reported fatigue (FACT-F) and IgG anti-EBNA1 titre. (E) Titre of IgG anti-viral capsid antigen (VCA) between low and high fatigue groups. (F) Titre of IgG anti-VCA between participants with and without EBV viremia, measured by qPCR. (G) Titre of IgM anti-viral capsid antigen (VCA) between low and high fatigue groups. Data show individual data points plus mean; *p < 0.05; (E) unpaired t-test (B, F, G) Mann-Whitney test; (D) linear regression, with best-fit line and 95% confidence band plotted.

252

253 We then examined anti-VCA IgM titres in relation to various clinical characteristics. As expected from our previous results (Figure 3), we observed a correlation between fatigue and anti-VCA IgM titre (Figure 4A). No association was observed between IgM against VCA and age, biological sex, days from stroke to baseline, mood, or infarct volume (Figure 4B-F). Finally, anti-VCA IgM was not associated with cognitive domains, including working memory, processing speed, memory, visual spatial, or language (Supplementary figure 2).

258 Together, these results indicate that there is not a difference in EBV reactivation between groups, but suggest possible alterations to the EBV antibody response, particularly the anti-VCA IgM response, in people with post-stroke fatigue. The dampened IgM against VCA observed in participants with post-stroke fatigue does not associate with other clinical or neurological parameters, suggesting a link to fatigue in particular.

261

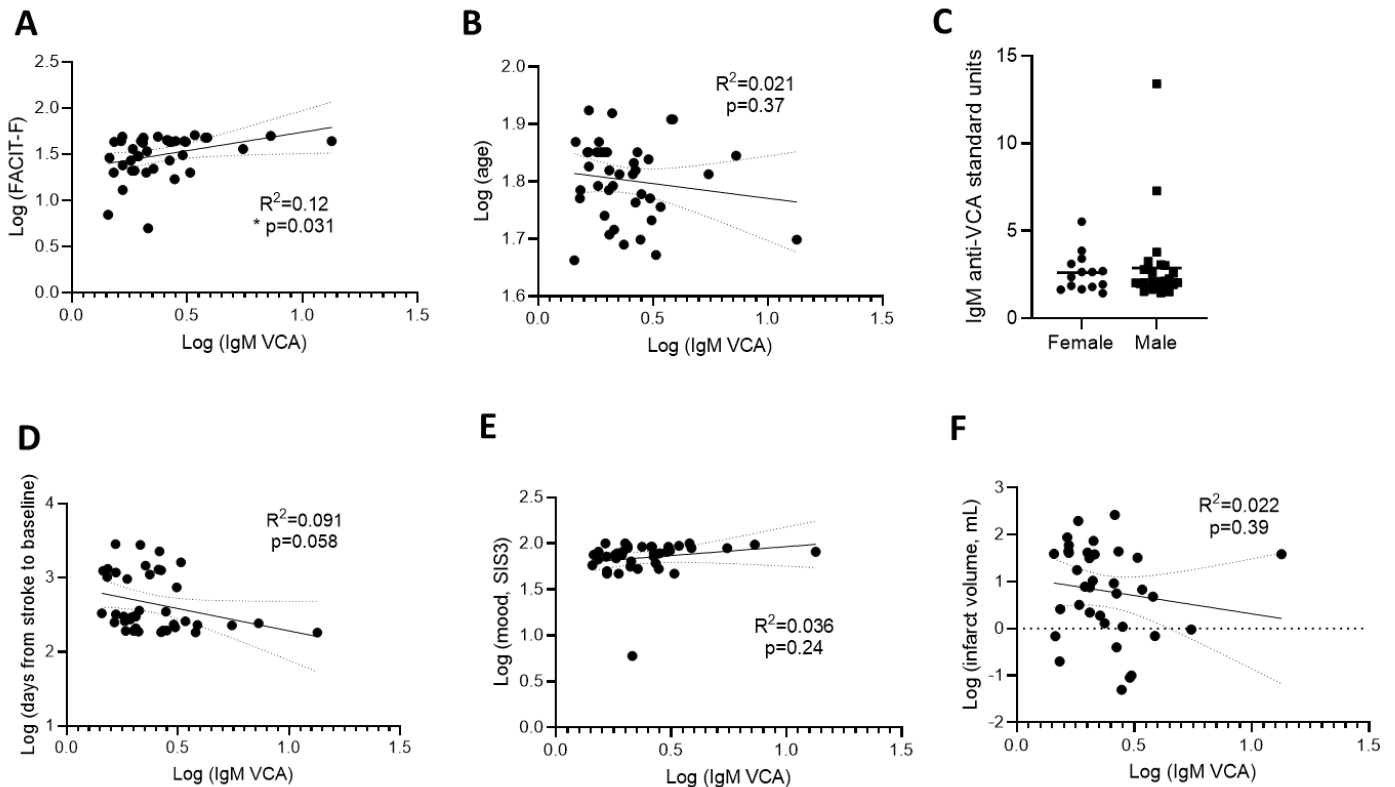


Figure 4. IgM anti-VCA titre correlates with fatigue but not selected clinical characteristics

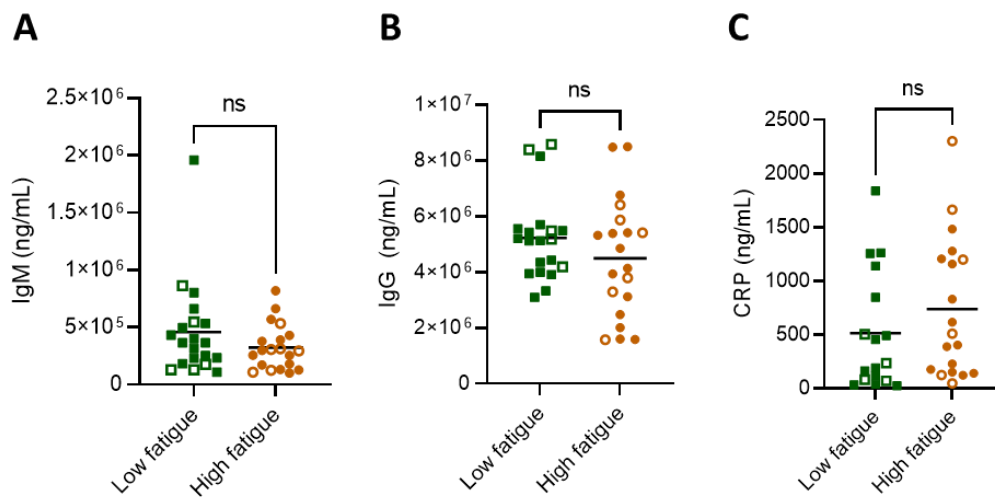
Titre of IgM against VCA were plotted against various characteristics, including (A) FACIT-F score, (B) age, (C) biological sex, (D) days from stroke to baseline, (E) mood as measured by SIS3, and (G) infarct volume. Each data point represents an individual participant. Analysed by linear regression with best-fit line and 95% confidence band plotted (A-B, D-F).

Total antibody titres unchanged between low and high post-stroke fatigue groups

To investigate if changes to total circulating antibody levels were responsible for the observed changes in anti-EBV antibodies, we measured circulating IgM and total IgG. We did not observe differences in the levels of IgM nor total IgG between the low and high fatigue groups (Figure 5A, B), indicating that the observed differences in anti-VCA IgM were not driven by a loss of total circulating IgM.

Additionally, we measured the inflammatory protein C-reactive protein (CRP) that has been previously associated with poor outcome after stroke – and is indicative of stroke-induced systemic immune alterations (34). We did not observe a difference in the level of circulating CRP between those with low and high post-stroke fatigue, suggesting that fatigue is not associated with general systemic immune alterations post-stroke (Figure 5C).

No differences in antibody or CRP levels were observed in the participants with EBV viremia (open shapes) compared to those without detectable circulating virus (filled shapes, Figure 5A-C).



280

281 **Figure 5. Total circulating antibodies unchanged between low and high post-stroke fatigue groups.**

282 Amount of circulating IgM and total IgG antibodies, as well as C-reactive protein (CRP). Data show individual participants plus
283 mean; analysed by Mann-Whitney test.

284

285 Discussion

286 In this study, we aimed to explore if EBV reactivation associates with post-stroke fatigue. To our knowledge, this is the
287 first study to examine EBV, and its relationship with fatigue, during stroke recovery. Here, we report a lack of evidence
288 for EBV reactivation in people with post-stroke fatigue during chronic stroke recovery. However, we did see alterations
289 in the antibody response to EBV in patients with high fatigue. There were no differences in total IgM or IgG antibody
290 concentrations between high and low fatigue groups, suggesting this is specifically associated with the immune
291 response to EBV.

292 Estimates of EBV reactivation in the general population vary but have been reported between 30 and 50% (35-37),
293 and reactivation is known to increase with age (38). In this study, we detected EBV in 25% of participants, indicating
294 that people with a history of stroke may not have elevated EBV reactivation, although a direct comparison with healthy
295 participants would be necessary to confirm. Severe COVID-19 is known to drive similar immunological changes seen
296 after stroke, including lymphopenia (39). In chronic recovery from COVID-19, increased IgG titres against EBV lytic
297 antigen were shown to be a common feature in patients who experienced long-COVID, associated with high fatigue,
298 versus those who experienced a healthy recovery (6). A smaller study confirmed reactivation of EBV in 50% of patients
299 with long-COVID versus 20% with healthy recovery (40). However, a study of patients admitted to the intensive care
300 unit with ongoing severe COVID-19 measured EBV reactivation in 82% of patients, which may suggest peak viral
301 reactivation occurs during acute illness (41). This is supported by a study looking at the sequelae of long-COVID
302 development showing that viral reactivation occurs during acute infection and is a predictor of long-COVID (42).
303 Together, these studies suggest that time post infection is an important consideration when investigating EBV
304 reactivation, but the immunological effects of this may persist beyond EBV reactivation itself.

305 We examined EBV reactivation by measuring circulating virus and anti-EBV antibody titres and by both measures there
306 was no evidence of EBV reactivation. Surprisingly, even in the absence of reactivation, there were indications of an
307 aberrant anti-EBV immune response in participants with post-stroke fatigue. The IgM titre against lytic EBV antigen,
308 VCA, was decreased in participants with higher post-stroke fatigue and was also negatively correlated with post-stroke
309 fatigue. Additionally, the IgG titre against latency antigen EBNA1 was seropositive in a lower proportion of high fatigue
310 participants, however we did not observe a correlation with fatigue. The mechanism and clinical relevance of this
311 unexpected finding is not clear from current data. Stroke induces a systemic suppression of immune response, the
312 extent of which is associated with the initial stroke severity (43). We have previously shown that B cell numbers, and
313 antibody responses, are reduced after stroke (19, 44). Therefore, it could be hypothesised that the altered antibody
314 response to EBV in patients with high fatigue is due to higher initial stroke severities and more extensive alterations
315 to systemic immune function. However, we saw no association between titres of anti-VCA IgM and infarct volume or

stroke severity. Furthermore, there were no differences in total IgM or in CRP concentrations between low and high fatigue groups. This suggests that the altered antibody titres to EBV antigens is not simply a result of more extensive systemic immune alterations in the high fatigue patient group. We chose to examine patients at least five months (and up to eight years) post-stroke as fatigue is a chronic condition and we aimed to examine if active EBV infection may drive fatigue. However, we know that immune alterations that occur acutely after stroke are associated with increased infection risk. Therefore, it is possible that EBV reactivation could occur more acutely after stroke. The reduced antibody titres to EBV antigen in chronic recovery in high fatigue patients may be an indication of an aberrant immune response to earlier viral reactivation.

In addition to sampling time point, there are further limitations to consider in this study. The sample size is relatively small. Additionally, fatigue is a subjective measure, reliant on patient reporting. In this study fatigue was examined by the FACIT-F tool, however various tools exist to measure fatigue and there can be discrepancies in the extent of fatigue recorded depending on which test is used (45). Here we examined only EBV, though there is evidence that other viruses reactivate following stroke, such as herpes zoster virus (22). Reactivation of multiple viruses, including cytomegalovirus and human herpesvirus (HHV) 6, HHV-7, HHV-8 have been associated with chronic fatigue and could play a role in fatigue after stroke (46).

Although we have not found an association with EBV reactivation during chronic stroke recovery and incidence of fatigue, the alterations to circulating EBV antibody titres suggest we should not fully dismiss a potential role for reactivation of EBV and/or other latent viruses in the pathophysiology of post-stroke fatigue. Further, larger studies using acute recovery timepoints and alternative latent viruses will be required to fully examine the role of viral reactivation in post-stroke fatigue.

Funding acknowledgements

This research was funded by the Leducq Stroke-IMPACT Transatlantic Network of Excellence (19CVD01; MSB/ICM/BM/SA/CS), an American Heart Institute / Allen Frontiers Group Brain Health Award (19PABHI34580007; MSB), the Wu Tsai Neurosciences Institute (MSB), and a Wellcome Sir Henry Dale Fellowship (220755/Z/20/Z; LM).

Author contributions

ICM, BM, SA, CS, MSB, and LM contributed to the concept and design of the work. ICM, JZ, and AA performed data acquisition. ICM completed data analysis and drafted the article. ICM, MSB, and LM contributed to interpretation of data. BM, SA, CS, MSB, and LM provided critical revision.

Declaration of Conflicting Interests

The Authors declare that there is no conflict of interest

Open Access

For the purpose of open access, the author has applied a CC BY public copyright licence to any Author Accepted Manuscript version arising from this submission.

Data availability

The raw and anonymized data used in this study can be made available to other researchers on request. Written proposals can be addressed to the corresponding author and will be assessed by the StrokeCog investigators for appropriateness of use, and a data sharing agreement will be put in place before data are shared.

360 References

- 361 1. Zhan J, Zhang P, Wen H, Wang Y, Yan X, Zhan L, et al. Global prevalence estimates of poststroke fatigue: A
362 systematic review and meta-analysis. *Int J Stroke*. 2023;18(9):1040-50.
- 363 2. Hill G, Regan S, Francis R. Research priorities to improve stroke outcomes. *Lancet Neurol*. 2022;21(4):312-3.
- 364 3. Paciaroni M, Acciarresi M. Poststroke Fatigue. *Stroke*. 2019;50(7):1927-33.
- 365 4. Zhang S, Cheng S, Zhang Z, Wang C, Wang A, Zhu W. Related risk factors associated with post-stroke fatigue:
366 a systematic review and meta-analysis. *Neurological Sciences*. 2021;42(4):1463-71.
- 367 5. English C, Simpson DB, Billinger SA, Churilov L, Coupland KG, Drummond A, et al. A roadmap for research in
368 post-stroke fatigue: Consensus-based core recommendations from the third Stroke Recovery and Rehabilitation
369 Roundtable. *Int J Stroke*. 2023:17474930231189135.
- 370 6. Klein J, Wood J, Jaycox JR, Dhodapkar RM, Lu P, Gehlhausen JR, et al. Distinguishing features of long COVID
371 identified through immune profiling. *Nature*. 2023;623(7985):139-48.
- 372 7. Shikova E, Reshkova V, Kumanova A, Raleva S, Alexandrova D, Capo N, et al. Cytomegalovirus, Epstein-Barr
373 virus, and human herpesvirus-6 infections in patients with myalgic encephalomyelitis/chronic fatigue syndrome. *J*
374 *Med Virol*. 2020;92(12):3682-8.
- 375 8. Cohen JL. Epstein-Barr virus infection. *N Engl J Med*. 2000;343(7):481-92.
- 376 9. Kerr JR. Epstein-Barr virus (EBV) reactivation and therapeutic inhibitors. *J Clin Pathol*. 2019;72(10):651-8.
- 377 10. Ru Y, Zhang X, Song T, Ding Y, Zhu Z, Fan Y, et al. Epstein-Barr virus reactivation after allogeneic
378 hematopoietic stem cell transplantation: multifactorial impact on transplant outcomes. *Bone Marrow Transplant*.
379 2020;55(9):1754-62.
- 380 11. San-Juan R, Comoli P, Caillard S, Moulin B, Hirsch HH, Meylan P. Epstein-Barr virus-related post-transplant
381 lymphoproliferative disorder in solid organ transplant recipients. *Clin Microbiol Infect*. 2014;20 Suppl 7:109-18.
- 382 12. Ferbas J, Rahman MA, Kingsley LA, Armstrong JA, Ho M, Zhou SY, et al. Frequent oropharyngeal shedding of
383 Epstein-Barr virus in homosexual men during early HIV infection. *Aids*. 1992;6(11):1273-8.
- 384 13. Stevens SJ, Blank BS, Smits PH, Meenhorst PL, Middeldorp JM. High Epstein-Barr virus (EBV) DNA loads in
385 HIV-infected patients: correlation with antiretroviral therapy and quantitative EBV serology. *Aids*. 2002;16(7):993-
386 1001.
- 387 14. Glaser R, Pearson GR, Jones JF, Hillhouse J, Kennedy S, Mao HY, et al. Stress-related activation of Epstein-
388 Barr virus. *Brain Behav Immun*. 1991;5(2):219-32.
- 389 15. Ruiz-Pablos M. CD4+ Cytotoxic T Cells Involved in the Development of EBV-Associated Diseases. *Pathogens*.
390 2022;11(8).
- 391 16. Fevang B, Wyller VBB, Mollnes TE, Pedersen M, Asprusten TT, Michelsen A, et al. Lasting Immunological
392 Imprint of Primary Epstein-Barr Virus Infection With Associations to Chronic Low-Grade Inflammation and Fatigue.
393 *Front Immunol*. 2021;12:715102.
- 394 17. Hoffmann S, Harms H, Ulm L, Nabavi DG, Mackert B-M, Schmehl I, et al. Stroke-induced immunodepression
395 and dysphagia independently predict stroke-associated pneumonia – The PREDICT study. *Journal of Cerebral Blood*
396 *Flow & Metabolism*. 2016.
- 397 18. Prass K, Meisel C, Hoflich C, Braun J, Halle E, Wolf T, et al. Stroke-induced immunodeficiency promotes
398 spontaneous bacterial infections and is mediated by sympathetic activation reversal by poststroke T helper cell type
399 1-like immunostimulation. *J Exp Med*. 2003;198.
- 400 19. McCulloch L, Smith CJ, McColl BW. Adrenergic-mediated loss of splenic marginal zone B cells contributes to
401 infection susceptibility after stroke. *Nature Communications*. 2017;8:15051.
- 402 20. Elkind MSV, Boehme AK, Smith CJ, Meisel A, Buckwalter MS. Infection as a Stroke Risk Factor and
403 Determinant of Outcome After Stroke. *Stroke*. 2020;51(10):3156-68.
- 404 21. Stanne TM, Angerfors A, Andersson B, Brännmark C, Holmegaard L, Jern C. Longitudinal Study Reveals Long-
405 Term Proinflammatory Proteomic Signature After Ischemic Stroke Across Subtypes. *Stroke*. 2022;53(9):2847-58.
- 406 22. Tung YC, Tu HP, Wu MK, Kuo KL, Su YF, Lu YY, et al. Higher risk of herpes zoster in stroke patients. *PLoS One*.
407 2020;15(2):e0228409.
- 408 23. Bertrand L, Méroth F, Tournebize M, Leda AR, Sun E, Toborek M. Targeting the HIV-infected brain to improve
409 ischemic stroke outcome. *Nat Commun*. 2019;10(1):2009.
- 410 24. Gumenyuk A, Motorna N, Rybalko S, Savosko S, Sokurenko L, Starosyla D, et al. Development of herpetic
411 infection associated with stroke and its correction with acyclovir. *Current Issues in Pharmacy and Medical Sciences*.
412 2017;30(1):20-3.

- 413 25. Kanegane H, Wakiguchi H, Kanegane C, Kurashige T, Tosato G. Viral interleukin-10 in chronic active Epstein-
414 Barr virus infection. *J Infect Dis.* 1997;176(1):254-7.
- 415 26. Henderson S, Huen D, Rowe M, Dawson C, Johnson G, Rickinson A. Epstein-Barr virus-coded BHRF1 protein,
416 a viral homologue of Bcl-2, protects human B cells from programmed cell death. *Proceedings of the National*
417 *Academy of Sciences.* 1993;90(18):8479-83.
- 418 27. Draborg AH, Duus K, Houen G. Epstein-Barr virus in systemic autoimmune diseases. *Clin Dev Immunol.*
419 2013;2013:535738.
- 420 28. Ford M, Orlando E, Amengual JE. EBV Reactivation and Lymphomagenesis: More Questions than Answers.
421 *Curr Hematol Malig Rep.* 2023;18(6):226-33.
- 422 29. Drag LL, Mlynash M, Nassar H, Osborn E, Kim DE, Angst MS, et al. A longitudinal study of the post-stroke
423 immune response and cognitive functioning: the StrokeCog study protocol. *BMC Neurol.* 2020;20(1):313.
- 424 30. Yellen SB, Cella DF, Webster K, Blendowski C, Kaplan E. Measuring fatigue and other anemia-related
425 symptoms with the Functional Assessment of Cancer Therapy (FACT) measurement system. *J Pain Symptom Manage.*
426 1997;13(2):63-74.
- 427 31. Duncan PW, Bode RK, Min Lai S, Perera S. Rasch analysis of a new stroke-specific outcome scale: the Stroke
428 Impact Scale. *Arch Phys Med Rehabil.* 2003;84(7):950-63.
- 429 32. Nasreddine ZS, Phillips NA, Bédirian V, Charbonneau S, Whitehead V, Collin I, et al. The Montreal Cognitive
430 Assessment, MoCA: a brief screening tool for mild cognitive impairment. *J Am Geriatr Soc.* 2005;53(4):695-9.
- 431 33. Butt Z, Lai JS, Rao D, Heinemann AW, Bill A, Cella D. Measurement of fatigue in cancer, stroke, and HIV using
432 the Functional Assessment of Chronic Illness Therapy - Fatigue (FACIT-F) scale. *J Psychosom Res.* 2013;74(1):64-8.
- 433 34. Smith CJ, Emsley HCA, Gavin CM, Georgiou RF, Vail A, Barberan EM, et al. Peak plasma interleukin-6 and
434 other peripheral markers of inflammation in the first week of ischaemic stroke correlate with brain infarct volume,
435 stroke severity and long-term outcome. *BMC Neurology.* 2004;4(1):2.
- 436 35. Brengel-Pesce K, Morand P, Schmuck A, Bourgeat MJ, Buisson M, Barguès G, et al. Routine use of real-time
437 quantitative PCR for laboratory diagnosis of Epstein-Barr virus infections. *J Med Virol.* 2002;66(3):360-9.
- 438 36. Gopal MR, Thomson BJ, Fox J, Tedder RS, Honess RW. Detection by PCR of HHV-6 and EBV DNA in blood and
439 oropharynx of healthy adults and HIV-seropositives. *Lancet.* 1990;335(8705):1598-9.
- 440 37. Haque T, Crawford DH. PCR amplification is more sensitive than tissue culture methods for Epstein-Barr virus
441 detection in clinical material. *J Gen Virol.* 1997;78 (Pt 12):3357-60.
- 442 38. Stowe RP, Kozlova EV, Yetman DL, Walling DM, Goodwin JS, Glaser R. Chronic herpesvirus reactivation occurs
443 in aging. *Exp Gerontol.* 2007;42(6):563-70.
- 444 39. McCulloch L, Mouat IC, South K, McColl BW, Allan SM, Smith CJ. Stroke-induced changes to immune function
445 and their relevance to increased risk of severe COVID-19 disease. *Discovery Immunology.* 2022;1(1).
- 446 40. Rohrhofer J, Graninger M, Lettenmaier L, Schweighardt J, Gentile SA, Koidl L, et al. Association between
447 Epstein-Barr-Virus reactivation and development of Long-COVID fatigue. *Allergy.* 2023;78(1):297-9.
- 448 41. Simonnet A, Engelmann I, Moreau AS, Garcia B, Six S, El Kalioubie A, et al. High incidence of Epstein-Barr
449 virus, cytomegalovirus, and human-herpes virus-6 reactivations in critically ill patients with COVID-19. *Infect Dis*
450 *Now.* 2021;51(3):296-9.
- 451 42. Su Y, Yuan D, Chen DG, Ng RH, Wang K, Choi J, et al. Multiple early factors anticipate post-acute COVID-19
452 sequelae. *Cell.* 2022;185(5):881-95.e20.
- 453 43. Westendorp WF, Vermeij JD, Hilkens NA, Brouwer MC, Algra A, van der Worp HB, et al. Development and
454 internal validation of a prediction rule for post-stroke infection and post-stroke pneumonia in acute stroke patients.
455 *Eur Stroke J.* 2018;3(2):136-44.
- 456 44. McCulloch L, Allan SM, Smith CJ, McColl BW. Interleukin-1 receptor antagonist treatment in acute ischaemic
457 stroke does not alter systemic markers of anti-microbial defence. *bioRxiv.* 2019:587881.
- 458 45. Nordin Å, Taft C, Lundgren-Nilsson Å, Dencker A. Minimal important differences for fatigue patient reported
459 outcome measures—a systematic review. *BMC Medical Research Methodology.* 2016;16(1):62.
- 460 46. Rasa S, Nora-Krukke Z, Henning N, Eliassen E, Shikova E, Harrer T, et al. Chronic viral infections in myalgic
461 encephalomyelitis/chronic fatigue syndrome (ME/CFS). *J Transl Med.* 2018;16(1):268.

462

463

464