

## **Applications of Large Language Models in Psychiatry: A Systematic Review.**

Mahmud Omar<sup>1</sup>, Shelly Soffer<sup>2</sup>, Alexander W Charney<sup>3</sup>, Isotta Landi<sup>3</sup>, Girish N Nadkarni<sup>4</sup>, Eyal Klang.

- 1- Tel-Aviv university, Faculty of Medicine.
- 2- Internal Medicine B, Assuta Medical Center, Ashdod, Israel, and Ben-Gurion University of the Negev, Be'er Sheva, Israel.
- 3- Icahn School of Medicine at Mount Sinai, New York, New York.
- 4- Hasso Plattner Institute for Digital Health at Mount Sinai, Icahn School of Medicine at Mount Sinai, New York, New York.

**Funding:** No external funding was received for the research, authorship, and/or publication of this article.

**Conflict of Interest Statement:** The authors declare that they have no competing interests that might be perceived to influence the results and/or discussion reported in this paper.

**Acknowledgements:** The authors wish to thank the research and administrative staff at their respective institutions for their support and contributions to this study.

### **Author Contributions**

- Mahmud Omar (MO): Conceptualization, Methodology, Screening and Data Extraction, Writing - Original Draft Preparation.
- Shelly Soffer: Data Collection, Writing - Review & Editing.
- Alexander W Charney: Supervision, Validation, Writing - Review & Editing.
- Isotta Landi: Data Interpretation, Writing - Review & Editing.

- Girish N Nadkarni: Project Administration, Resources, Writing - Review & Editing.
- Eyal Klang (EK): Data Curation, Screening and Data Extraction, Writing - Review & Editing.

**Ethical Approval:** Not applicable for this systematic review.

**Consent for Publication:** All authors have read and agreed to the published version of the manuscript.

## **Abstract**

**Background:** With their unmatched ability to interpret and engage with human language and context, large language models (LLMs) hint at the potential to bridge AI and human cognitive processes. This review explores the current application of LLMs, such as ChatGPT, in the field of psychiatry.

**Methods:** We followed PRISMA guidelines and searched through PubMed, Embase, Web of Science, and Scopus, up until March 2024.

**Results:** From 771 retrieved articles, we included 16 that directly examine LLMs' use in psychiatry. LLMs, particularly ChatGPT and GPT-4, showed diverse applications in clinical reasoning, social media, and education within psychiatry. They can assist in diagnosing mental health issues, managing depression, evaluating suicide risk, and supporting education in the field. However, our review also points out their limitations, such as difficulties with complex cases and potential underestimation of suicide risks.

**Conclusion:** Early research in psychiatry reveals LLMs' versatile applications, from diagnostic support to educational roles. Given the rapid pace of advancement, future investigations are poised to explore the extent to which these models might redefine traditional roles in mental health care.

## **Introduction**

The integration of artificial intelligence (AI) into various healthcare sectors has brought transformative changes (1–3). Currently, Large Language Models (LLMs) like Chat Generative Pre-trained Transformer (ChatGPT) are at the forefront (2,4,5).

Advanced LLMs, such as GPT-4 and Claude Opus, possess an uncanny ability to understand and generate human-like text. This capacity indicates their potential to act as intermediaries between AI functionalities and the complexities of human cognition.

Unlike their broader application in healthcare, LLMs in psychiatry address unique challenges such as the need for personalized mental health interventions and the management of complex mental disorders (4,6). Their capacity for human-like language generation and interaction is not just a technological advancement; it's a critical tool in bridging the treatment gap in mental health, especially in under-resourced areas (4,6–8).

In psychiatry, LLMs like ChatGPT can provide accessible mental health services, breaking down geographical, financial, or temporal barriers, which are particularly pronounced in mental health care (4,9). For instance, ChatGPT can support therapists by offering tailored assistance during various treatment phases, from initial assessment to post-treatment recovery (10–12). This includes aiding in symptom management and encouraging healthy lifestyle changes pertinent to psychiatric care (10–14).

ChatGPT's ability to provide preliminary mental health assessments and psychotherapeutic support is a notable advancement (15,16). It can engage in meaningful conversations, offering companionship and empathetic responses, tailored

to individual mental health needs (6,10,11,13), a component that is essential in psychiatric therapy (17).

Despite these capabilities, currently, LLMs do not replace human therapists (18–20). Rather, the technology supplements existing care, enhancing the overall treatment process while acknowledging the value of human clinical judgment and therapeutic relationships (4,8,13).

As LLM technology advances rapidly, it holds the potential to alter traditional mental health care paradigms. This review aims to assess their current role within psychiatry research.

## **Methods**

### Search Strategy

The review was registered with the International Prospective Register of Systematic Reviews - PROSPERO (Registration code: CRD42024524035) We adhered to the Preferred Reporting Items for Systematic Reviews and Meta-Analyses (PRISMA) guidelines (21,22).

A systematic search was conducted across key databases: PubMed, Embase, Web of Science, and Scopus, from December 2022 up until March 2024. We chose December 2022, as it was the date of introduction of chatGPT. We complemented the search via reference screening for any additional papers. We chose PubMed, Embase, Web of Science, and Scopus for their comprehensive coverage of medical and psychiatric literature.

Our search strategy combined specific keywords related to LLM, including 'ChatGPT,' 'Artificial Intelligence,' 'Natural Language Processing,' and 'Large Language Models,' with psychiatric terminology such as 'Psychiatry' and 'Mental Health.' Additionally, to refine our search, we incorporated keywords for the most relevant psychiatric diseases. These included terms like 'Depression,' 'Anxiety Disorders,' 'Bipolar Disorder,' 'Schizophrenia,' and others pertinent to our study's scope.

Specific search strings for each database are detailed in the supplementary materials.

### Study Selection

The selection of studies was rigorously conducted by two independent reviewers, MO and EK. Inclusion criteria were set to original research articles that specifically examined the application of LLMs in psychiatric settings.

Eligible studies were required to present measurable outcomes related to psychiatric care, such as patient engagement, diagnostic accuracy, treatment adherence, or clinician efficiency.

We excluded review articles, case reports, conference abstracts without full texts, editorials, preprints, and studies not written in English.

MO and EK systematically evaluated each article against these criteria. In cases of disagreement or uncertainty regarding the eligibility of a particular study, the matter was resolved through discussion and, if necessary, consultation with additional researchers in our team to reach a consensus.

#### Data Extraction

Data extraction was performed by two independent reviewers, MO and EK, using a structured template. Key information extracted included the study's title, authors, publication year, study design, psychiatric condition or setting, the role of the LLM model, sample size, findings related to the effectiveness and impact of the model, and any noted conclusions and implications. In cases of discrepancy during the extraction process, issues were resolved through discussion and consultation with other researchers involved in the study.

#### Risk of Bias

In our systematic review, we opted for a detailed approach instead of a standard risk of bias assessment, given the unique and diverse nature of the studies included. Each study is presented in a table highlighting its design and essential variables (**Table 1**).

A second table catalogs the inherent limitations of each study, providing a transparent overview of potential biases and impacts on the results (**Table 2**).

Additionally, a figure illustrates the quartiles and SCImago Journal Rank scores of the journals where these studies were published, offering insight into their academic significance (**Figure 1**). This method ensures a clear, concise evaluation of the varied included papers.



## Results

### *Search Results and Study Selection*

Our systematic search across PubMed, Embase, Web of Science, and Scopus yielded a total of 771 papers. The breakdown of the initial results was as follows: PubMed (186), Scopus (290), Embase (133), and Web of Science (162). After applying automated filters to exclude review articles, case reports, and other non-relevant document types, 454 articles remained. The removal of duplicates further reduced the pool to 288 articles.

Subsequent screening based on titles and abstracts led to the exclusion of 255 papers, primarily due to their irrelevance or lack of discussion on LLMs, leaving 33 articles for full-text evaluation. Upon detailed examination, 16 studies were found to meet our inclusion criteria and were thus selected for the final review (23–38). The process of study selection and the results at each stage are comprehensively illustrated in **Figure 2**, the PRISMA flowchart.

### *Overview of the Included Studies*

Most of the studies in our review were published in Q1 journals, indicating a high level of influence in the field (**Figure 1**). The studies varied in their approach, using data ranging from real patient interactions on online platforms to simulated scenarios, and in scale, from individual case studies to large datasets.

Most research focused on various versions of ChatGPT, including ChatGPT-3.5 and ChatGPT-4, with some comparing its performance to traditional methods or other LLMs. The applications of LLMs in these studies were diverse, covering aspects like mental health screening augmentation on social media, generating psychodynamic formulations, and assessing risks in psychiatric conditions.

In highlighting key studies, Liyanage et al. found that ChatGPT was effective in enhancing Reddit post analysis for wellness classification (36). Levkovich et al. observed ChatGPT's unbiased approach in depression diagnosis, contrasting with biases noted in primary care physicians' methods, especially due to gender and socioeconomic status (31). Additionally, Li et al. demonstrated GPT-4's proficiency in psychiatric diagnostics, uniquely passing the Taiwanese Psychiatric Licensing Examination and paralleling experienced psychiatrists' diagnostic abilities (23).

### *LLMs' applications and limitations in mental health*

We categorized the applications of LLM in the included studies into three main themes to provide a synthesized and comprehensive overview:

#### Applications (Table 1, Figure 3)

##### 1. **Clinical Reasoning:**

- **Hwang et al.** demonstrated ChatGPT's ability in generating psychodynamic formulations, indicating potential in clinical psychiatry with statistical significance (Kendall's  $W = 0.728$ ,  $p = 0.012$ ) (37).
- **Levkovich et al. (2023)** compared ChatGPT's recommendations for depression treatment against primary care physicians, finding ChatGPT more aligned with accepted guidelines, particularly for mild depression (31).
- **Levkovich et al. and Elyoseph et al. (2023)** assessed ChatGPT's performance in assessing suicide risk. The study by Levkovich et al. highlighted that ChatGPT tended to underestimate risks when compared to mental health professionals, particularly in scenarios with

high perceived burdensomeness and feeling of thwarted belongingness (28). The study by Elyoseph, found that while GPT-4's evaluations were similar to mental health professionals, ChatGPT-3.5 often underestimated suicide risk (29).

- **D'Souza et al.** evaluated ChatGPT's response to psychiatric case vignettes, where it received high ratings, especially in generating management strategies for conditions like anxiety and depression (33).
- **Li et al.** demonstrated ChatGPT GPT-4's capabilities in the Taiwanese Psychiatric Licensing Examination and psychiatric diagnostics, closely approximating the performance of experienced psychiatrists (23). ChatGPT outperformed the two LLMs, Bard and Llama-2.
- **Heston T.F. et al.** Evaluated ChatGPT-3.5's responses in depression simulations. AI typically recommended human support at moderate depression levels (PHQ-9 score of 12) and insisted on human intervention at severe levels (score of 25) (34).
- **Dergaa et al.** critically assessed ChatGPT's effectiveness in mental health assessments, particularly highlighting its inadequacy in dealing with complex situations, such as nuanced cases of postpartum depression requiring detailed clinical judgment, suggesting limitations in its current readiness for broader clinical use (27).
- **Elyoseph et al. (2024)** provided a comparative analysis of depression prognosis from the perspectives of AI models, mental health professionals, and the general public. The study revealed notable differences in long-term outcome predictions. AI models, including

ChatGPT, showed variability in prognostic outlooks, with ChatGPT-3.5 often presenting a more pessimistic view compared to other AI models and human evaluation (24).

- **Elyoseph et al. (2023)** investigated ChatGPT's emotional awareness using the Levels of Emotional Awareness Scale (LEAS). ChatGPT scored significantly higher than the general population, indicating a high level of emotional understanding (30).

## 2. Social Media applications:

- **Liyanage et al.** used ChatGPT models to augment data from Reddit posts, enhancing classifier performance in identifying Wellness Dimensions. This resulted in improvements in the F-score of up to 13.11% (36).
- **Mazumdar et al.** applied GPT-3 in classifying mental health disorders from Reddit data, achieving an accuracy of around 87% and demonstrating its effectiveness in explanation generation (32). GPT-3 demonstrated superior performance in classifying mental health disorders and generating explanations, outperforming traditional models like LIME and SHAP.

**Figure 4** presents the different types of data inputs for GPT in the current applications for the field of psychiatry.

## 3. Educational Therapeutic Interventions:

- **Spallek et al.** examined ChatGPT's application in mental health and substance use education, finding its outputs to be substandard

compared to expert materials. However, when prompts were carefully engineered, the outputs were better aligned with communication guidelines (26).

- **Hadar-Shoval D et al.**, explored ChatGPT's ability to understand mental state in personality disorders (25), and **Sezgin et al.** (38), assessed responses to postpartum depression questions. Both studies reflect ChatGPT's utility both as an educational resource and for offering preliminary therapeutic advice. **Sezgin et al.** (38) showed that GPT-4 demonstrated generally higher quality, more clinically accurate responses compared to Bard and Google Search.
- **Parker et al.** ChatGPT-3.5 was used to respond to clinically relevant questions about bipolar disorder and to generate songs related to bipolar disorder, testing both its factual knowledge and creativity. The study highlighted its utility in providing basic information, but also its limitations in citing current, accurate references (35).

Additional data in the supplementary material includes demographics, journals of the included papers, SCImago Journal Rank (SJR) 2022 data for these publications, and specific performance metrics for the models across various applications, detailed in **S1-S2 tables** in the supplementary material.

### Safety and Limitations

Concerns regarding safety and limitations in LLMs clinical applications emerge as critical themes. For instance, Heston T.F. et al. observed that ChatGPT-3.5 recommended human support at moderate depression levels but only insisted on

human intervention at severe levels, underscoring the need for cautious application in high-risk scenarios (34).

Elyoseph et al. highlighted that ChatGPT consistently underestimated suicide risks compared to mental health professionals, especially in scenarios with high perceived burdensomeness and thwarted belongingness (29).

Dergaa et al. concluded that ChatGPT, as of July 2023, was not ready for mental health assessment and intervention roles, showing limitations in complex case management (27). This suggests that while ChatGPT shows promise, it is not without significant risks and limitations, particularly in handling complex and sensitive mental health scenarios (**Table 2, Figure 5**).

## Discussion

Our findings demonstrate LLMs, especially ChatGPT and GPT-4, potential as a valuable tool in psychiatry, offering diverse applications from clinical support to educational roles. Studies like Liyanage et al. and Mazumdar et al. showcased its efficacy in data augmentation and mental health disorder classification (32,36).

Others, such as Hwang et al. and Levkovich et al. (2023), highlighted its capabilities in clinical settings, including diagnosis and risk assessment (31,37). Overall, GPT emerged as the most used and studied LLM in the field of psychiatry.

However, concerns about its limitations and safety in clinical scenarios were evident, as seen in studies by Elyoseph et al. (2023) and Dergaa et al., indicating that while ChatGPT holds promise, its integration into clinical psychiatry must be approached with caution (27,29).

The potential and efficacy of AI, particularly LLMs, in psychiatry are highlighted by our review, showing its capability to streamline care, lower barriers, and reduce costs in mental health services (39). Studies like Liyanage et al. and Hwang et al. illustrate ChatGPT's diverse applications, from clinical data analysis to formulating psychodynamic profiles, which contribute to a more efficient, accessible, and versatile approach in mental healthcare (19,20,36,37). Moreover, in light of the COVID-19 pandemic's impact on mental health and the growing demand for digital interventions, Mitsea et al.'s research highlights the significant role of AI in enhancing digitally assisted mindfulness training for self-regulation and mental well-being, further enriching the scope of AI applications in mental healthcare (40).

When compared with humans and other LLMs, ChatGPT consistently adheres to clinical guidelines, as shown in Levkovich et al.'s study (31). Furthermore, ChatGPT

often surpasses other models in tasks like psychiatric diagnostics, as demonstrated by Li et al (23).

These studies collectively underscore the utility of current LLMs, particularly ChatGPT and GPT-4, in psychiatry, demonstrating promise across various domains. While serving as a complementary tool to human expertise, especially in complex psychiatric scenarios (4,6,11,20), LLMs are poised for deeper integration into mental health care. This evolution is propelled by rapid technological advancements and significant financial investments since the watershed moment of ChatGPT introduction, late 2022. Future research should closely monitor this integration, exploring how LLMs not only supplement but also augment human expertise in psychiatry.

Our review has limitations. The absence of a formal risk of bias assessment, due to the unique nature of the included studies, is a notable drawback. Additionally, the reliance on studies that did not use real patient data as well as the heterogeneity in study designs could affect the generalizability of our findings. Moreover, the diversity of methods and tasks in the included studies prohibited us from performing a meta-analysis. It should also be mentioned that all studies were retrospective in nature. Future directions should include prospective, real-world evidence studies, that could cement the utility of LLM in the psychiatry field.

In conclusion,

Early research in psychiatry reveals LLMs' versatile applications, from diagnostic support to educational roles. Given the rapid pace of advancement, future investigations are poised to explore the extent to which these models might redefine traditional roles in mental health care.



## References

1. Singh O. Artificial intelligence in the era of ChatGPT - Opportunities and challenges in mental health care. *Indian J Psychiatry*. 2023;65(3):297.
2. Dave T, Athaluri SA, Singh S. ChatGPT in medicine: an overview of its applications, advantages, limitations, future prospects, and ethical considerations. *Front Artif Intell*. 2023 May 4;6.
3. Terra M, Baklola M, Ali S, El-Bastawisy K. Opportunities, applications, challenges and ethical implications of artificial intelligence in psychiatry: a narrative review. *Egypt J Neurol Psychiatr Neurosurg*. 2023 Jun 20;59(1):80.
4. He Y, Liang K, Han B, Chi X. A digital ally: The potential roles of ChatGPT in mental health services. *Asian J Psychiatr*. 2023 Oct;88:103726.
5. Beam AL, Drazen JM, Kohane IS, Leong TY, Manrai AK, Rubin EJ. Artificial Intelligence in Medicine. *New England Journal of Medicine*. 2023 Mar 30;388(13):1220–1.
6. Caliyurt O. AI and Psychiatry: The ChatGPT Perspective. *ALPHA PSYCHIATRY*. 2023 Mar 30;24(2):1–42.
7. Cheng S, Chang C, Chang W, Wang H, Liang C, Kishimoto T, et al. The now and future of <sc>ChatGPT</sc> and <sc>GPT</sc> in psychiatry. *Psychiatry Clin Neurosci*. 2023 Nov 11;77(11):592–6.
8. King DR, Nanda G, Stoddard J, Dempsey A, Hergert S, Shore JH, et al. An Introduction to Generative Artificial Intelligence in Mental Health Care: Considerations and Guidance. *Curr Psychiatry Rep*. 2023 Dec 30;25(12):839–46.
9. Yang K, Ji S, Zhang T, Xie Q, Kuang Z, Ananiadou S. Towards Interpretable Mental Health Analysis with Large Language Models. In: *Proceedings of the 2023 Conference on Empirical Methods in Natural Language Processing*. Stroudsburg, PA, USA: Association for Computational Linguistics; 2023. p. 6056–77.
10. Khawaja Z, Bélisle-Pipon JC. Your robot therapist is not your therapist: understanding the role of AI-powered mental health chatbots. *Front Digit Health*. 2023 Nov 8;5.
11. Boucher EM, Harake NR, Ward HE, Stoeckl SE, Vargas J, Minkel J, et al. Artificially intelligent chatbots in digital mental health interventions: a review. *Expert Rev Med Devices*. 2021 Dec 3;18(sup1):37–49.
12. Sarkar S, Gaur M, Chen LK, Garg M, Srivastava B. A review of the explainability and safety of conversational agents for mental health to identify avenues for improvement. *Front Artif Intell*. 2023 Oct 12;6.

13. Ettman CK, Galea S. The Potential Influence of AI on Population Mental Health. *JMIR Ment Health*. 2023 Nov 16;10:e49936.
14. Haman M, Školník M, Šubrt T. Leveraging ChatGPT for Human Behavior Assessment: Potential Implications for Mental Health Care. *Ann Biomed Eng*. 2023 Nov 8;51(11):2362–4.
15. Fiske A, Henningsen P, Buyx A. Your Robot Therapist Will See You Now: Ethical Implications of Embodied Artificial Intelligence in Psychiatry, Psychology, and Psychotherapy. *J Med Internet Res*. 2019 May 9;21(5):e13216.
16. Cuesta MJ. Psychopathology for the twenty-first century: Towards a ChatGPT psychopathology? *European Neuropsychopharmacology*. 2023 Aug;73:21–3.
17. Ross J, Watling C. Use of empathy in psychiatric practice: Constructivist grounded theory study. *BJPsych Open*. 2017 Jan 2;3(1):26–33.
18. Blease C, Torous J. ChatGPT and mental healthcare: balancing benefits with risks of harms. *BMJ Mental Health*. 2023 Nov 10;26(1):e300884.
19. King DR, Nanda G, Stoddard J, Dempsey A, Hergert S, Shore JH, et al. An Introduction to Generative Artificial Intelligence in Mental Health Care: Considerations and Guidance. *Curr Psychiatry Rep*. 2023 Dec 30;25(12):839–46.
20. Avula VCR, Amalakanti S. Artificial intelligence in psychiatry, present trends, and challenges: An updated review. *Archives of Mental Health*. 2023 Oct 17;
21. Page MJ, McKenzie JE, Bossuyt PM, Boutron I, Hoffmann TC, Mulrow CD, et al. The PRISMA 2020 statement: an updated guideline for reporting systematic reviews. *BMJ*. 2021 Mar 29;n71.
22. Schiavo JH. PROSPERO: An International Register of Systematic Review Protocols. *Med Ref Serv Q*. 2019 Apr 3;38(2):171–80.
23. Li D, Kao Y, Tsai S, Bai Y, Yeh T, Chu C, et al. Comparing the performance of ChatGPT GPT-4, Bard, and Llama-2 in the Taiwan Psychiatric Licensing Examination and in differential diagnosis with multi-center psychiatrists. *Psychiatry Clin Neurosci*. 2024 Feb 26;
24. Elyoseph Z, Levkovich I, Shinan-Altman S. Assessing prognosis in depression: comparing perspectives of AI models, mental health professionals and the general public. *Fam Med Community Health*. 2024 Jan 9;12(Suppl 1):e002583.
25. Hadar-Shoval D, Elyoseph Z, Lvovsky M. The plasticity of ChatGPT's mentalizing abilities: personalization for personality structures. *Front Psychiatry*. 2023 Sep 1;14.

26. Spallek S, Birrell L, Kershaw S, Devine EK, Thornton L. Can we use ChatGPT for Mental Health and Substance Use Education? Examining Its Quality and Potential Harms. *JMIR Med Educ*. 2023 Nov 30;9:e51243.
27. Dergaa I, Fekih-Romdhane F, Hallit S, Loch AA, Glenn JM, Fessi MS, et al. ChatGPT is not ready yet for use in providing mental health assessment and interventions. *Front Psychiatry*. 2024 Jan 4;14.
28. Levkovich I, Elyoseph Z. Suicide Risk Assessments Through the Eyes of ChatGPT-3.5 Versus ChatGPT-4: Vignette Study. *JMIR Ment Health*. 2023 Sep 20;10:e51232.
29. Elyoseph Z, Levkovich I. Beyond human expertise: the promise and limitations of ChatGPT in suicide risk assessment. *Front Psychiatry*. 2023 Aug 1;14.
30. Elyoseph Z, Hadar-Shoval D, Asraf K, Lvovsky M. ChatGPT outperforms humans in emotional awareness evaluations. *Front Psychol*. 2023 May 26;14.
31. Levkovich I, Elyoseph Z. Identifying depression and its determinants upon initiating treatment: ChatGPT versus primary care physicians. *Fam Med Community Health*. 2023 Sep 16;11(4):e002391.
32. Mazumdar H, Chakraborty C, Sathvik M, Mukhopadhyay sabyasachi, Panigrahi PK. GPTFX: A Novel GPT-3 Based Framework for Mental Health Detection and Explanations. *IEEE J Biomed Health Inform*. 2024;1–8.
33. Franco D'Souza R, Amanullah S, Mathew M, Surapaneni KM. Appraising the performance of ChatGPT in psychiatry using 100 clinical case vignettes. *Asian J Psychiatr*. 2023 Nov;89:103770.
34. Heston TF. Safety of Large Language Models in Addressing Depression. *Cureus*. 2023 Dec 18;
35. Parker G, Spoelma MJ. A chat about bipolar disorder. *Bipolar Disord*. 2023 Sep 28;
36. Liyanage C, Garg M, Mago V, Sohn S. Augmenting Reddit Posts to Determine Wellness Dimensions impacting Mental Health. In: *The 22nd Workshop on Biomedical Natural Language Processing and BioNLP Shared Tasks*. Stroudsburg, PA, USA: Association for Computational Linguistics; 2023. p. 306–12.
37. Hwang G, Lee DY, Seol S, Jung J, Choi Y, Her ES, et al. Assessing the potential of ChatGPT for psychodynamic formulations in psychiatry: An exploratory study. *Psychiatry Res*. 2024 Jan;331:115655.
38. Sezgin E, Chekeni F, Lee J, Keim S. Clinical Accuracy of Large Language Models and Google Search Responses to Postpartum Depression Questions: Cross-Sectional Study. *J Med Internet Res*. 2023 Sep 11;25:e49240.

39. Li H, Zhang R, Lee YC, Kraut RE, Mohr DC. Systematic review and meta-analysis of AI-based conversational agents for promoting mental health and well-being. *NPJ Digit Med*. 2023 Dec 19;6(1):236.
40. Mitsea E, Drigas A, Skianis C. Digitally Assisted Mindfulness in Training Self-Regulation Skills for Sustainable Mental Health: A Systematic Review. *Behavioral Sciences*. 2023 Dec 10;13(12):1008.

## Tables and figures

**Table 1:** Summary of the included papers.

Author	Year	Model	Application	Main Results
Liyanage et al.(36)	2023	GPT-3.5	Data augmentation for wellness dimension classification	ChatGPT models effectively augmented Reddit post data, significantly improving classification performance for wellness dimensions.
Hwang et al.(37)	2024	GPT-4	Psychodynamic formulations in psychiatry	GPT-4 successfully created relevant and accurate psychodynamic formulations based on patient history.
Parker et al.(35)	2023	GPT-3	Information on bipolar disorder	GPT-3 provided basic material on bipolar disorders and creative song generation, but lacked depth for scientific review.
Heston T.F. et al.(34)	2023	GPT-3.5	Simulating depression scenarios	ChatGPT-3.5 conversational agents recommended human support at critical points, highlighting the need for AI

				safety in mental health.
D'Souza et al.(33)	2023	GPT-3.5	Responding to psychiatric case vignettes	ChatGPT 3.5 showed high competence in handling psychiatric case vignettes, with strong diagnostic and management strategy generation.
Levkovich et al.(31)	2023	GPT-3.5, GPT-4	Depression diagnosis and treatment	ChatGPT aligned with guidelines for depression management, contrasting with primary care physicians and showing no gender or socioeconomic biases.
Mazumdar et al.(32)	2023	GPT-3, BERT-large, MentalBERT, ClinicBERT, and PsychBERT	Mental health disorder classification and explanation	GPT-3 outperformed other models in classifying mental health disorders and generating explanations, showing promise for AI-IoMT deployment.
Sezgin et al.(38)	2023	GPT-4, LaMDA (using Bard)	Responding to postpartum depression questions	GPT-4 provided more clinically accurate responses to postpartum depression questions, surpassing other models

				and Google Search.
Elyoseph et al.(30)	2023	GPT-3.5	Emotional awareness evaluations	ChatGPT showed higher emotional awareness compared to the general population and improved over time.
Elyoseph et al.(29)	2023	GPT-3.5	Suicide risk assessment	ChatGPT underestimated suicide risks compared to mental health professionals, indicating the need for human judgment in complex assessments.
Levkovich et al.(28)	2023	GPT-3.5, GPT-4	Suicide risk assessment vignettes	GPT-4's evaluations of suicide risk were similar to mental health professionals, though with some overestimations and underestimations.
Dergaa et al.(27)	2024	GPT-3.5	Mental health assessment and interventions	ChatGPT showed limitations in complex medical scenarios, underlining its unpreparedness for standalone use in mental health practice.

Spallek et al.(26)	2023	GPT-4	Mental health and substance use education	GPT-4's outputs were substandard compared to expert materials in terms of depth and adherence to communication guidelines.
Hadar-Shoval D et al.(25)	2023	GPT-3.5	Responses for BPD and SPD scenarios	ChatGPT effectively differentiated emotional responses in BPD and SPD scenarios, showing tailored mentalizing abilities.
Elyoseph et al.(24)	2024	GPT-3.5, GPT-4	Prognosis in depression	ChatGPT-3.5 showed a more pessimistic prognosis in depression compared to other LLMs and mental health professionals.
Li et al.(23)	2024	GPT-4, Bard and Llama-2	Psychiatric licensing examination and diagnostics	GPT-4 outperformed other models in psychiatric diagnostics, closely matching the capabilities of human psychiatrists.

Abbreviations: BPD: Borderline Personality Disorder | SPD: Schizoid Personality Disorder | GPT: Generative Pre-trained Transformer | AI: Artificial Intelligence | NLP: Natural Language Processing | EDA: Easy Data Augmentation | BT: Back Translation | PHQ-9: Patient Health Questionnaire-9 | LEAS: Levels of Emotional Awareness Scale | AI-IoMT: Artificial Intelligence-Internet of Medical Things | GRADE: Grading of Recommendations, Assessment, Development, and Evaluations.

**Table 2:** Summary of the studies designs and limitations.

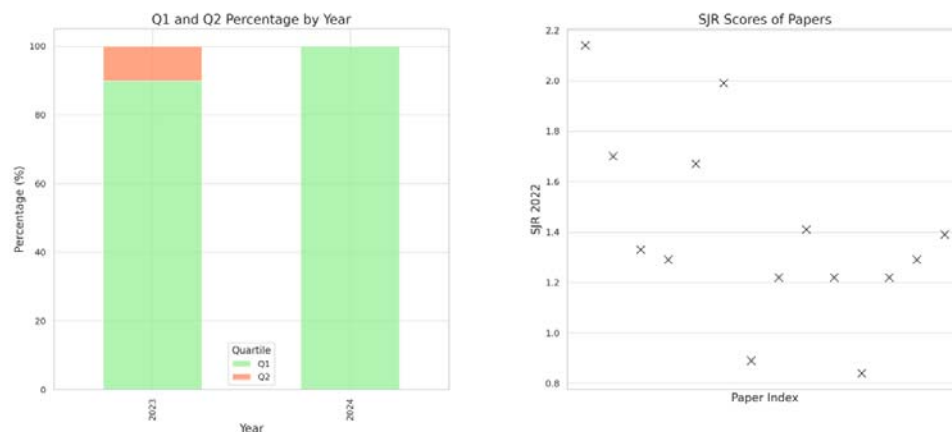


Author	Year	Study Design	Sample Size	Study Limitations
Liyanage et al.(36)	2023	Exploratory and Experimental Study	4,376 records	Limited generalizability due to the use of specific Reddit data and potential online discourse biases.
Hwang et al.(37)	2024	Exploratory and Experimental Study	1 detailed case	Reliance on fictional data from literature; lacks a comparator group for performance context.
Liyanage et al.(36)	2023	Exploratory and Experimental Study - Evaluative Research	NA	Clinical relevance limited by use of AI-generated responses and lack of real patient data.
Hwang et al.(37)	2023	Observational Cross-Sectional Study	25 agents	Potential non-representativeness of simulations and small sample size of ChatGPT-3.5 agents.
Liyanage et al.(36)	2023	Experimental Study	100 vignettes	Fictional vignettes may not fully represent real-world psychiatric complexities; no comparator group.
Hwang et al.(37)	2023	Cross-Sectional Analysis	Vignette-based	Hypothetical vignettes may lack real clinical scenario applicability; absence of patient demographics.
Liyanage et al.(36)	2023	Retrospective and Prospective Analysis	NR	Absence of demographic data and potential biases in retrospective data selection.
Hwang et al.(37)	2023	Cross-Sectional Study	14 questions	Lack of traditional participants; may not reflect clinical consultation complexity.
Liyanage et al.(36)	2023	Comparative Prospective Study	750 participants	Fictional scenarios may not replicate real-world emotional challenges; comparison to general norms.
Hwang et al.(37)	2023	Comparative Retrospective Analysis	379 professionals	Use of fictional vignettes; limited by specificity and generalizability.
Liyanage et al.(36)	2023	Prospective Vignette Study	379 professionals	Hypothetical vignettes; focus on specific scenarios, not covering the full spectrum of risk factors.
Hwang et al.(37)	2024	Prospective Simulated Interactions	3 scenarios	Fictional scenarios; lacks complex real-patient interaction dynamics.
Liyanage et al.(36)	2023	View Point and Case Study	10 queries	Small number of real-world queries; comparison to potentially biased expert materials.
Hwang et al.(37)	2023	Cross-Sectional Quantitative Analysis	AI-generated data	Fictional data limits real-world applicability; no comparator group.
Liyanage et al.(36)	2024	Retrospective Comparative	2,460 participants	Use of fictional vignettes; focus on AI perspectives may have

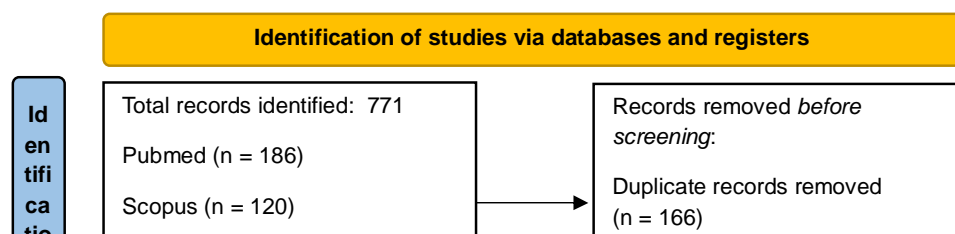
		Analysis		inherent biases.
Hwang et al.(37)	2024	Retrospective Analysis	24 psychiatrists	Fictional data for examination; limited comparison group size.

Abbreviations: AI: Artificial Intelligence | NA: Not Available | NR: Not Reported

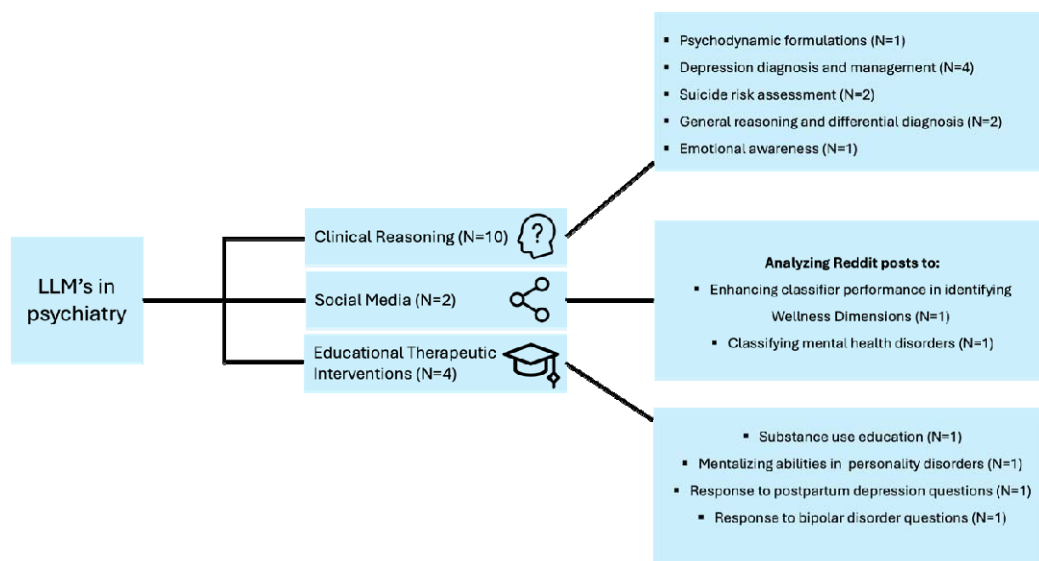
**Figure 1:** SJR scores and journal quartiles of the included studies.



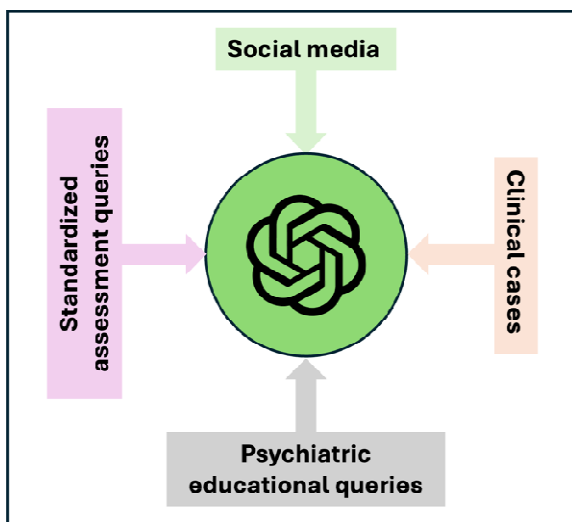
**Figure 2:** PRISMA flowchart.



**Figure 3:** Applications and Evaluations of LLMs in Diverse Domains of Psychiatry.



**Figure 4:** Data Input Spectrum for GPT in Psychiatric Applications.



**Figure 5:** Strengths and limitations of GPT's current applications in psychiatry practice.

