

1 **Centhaquine Increases Stroke Volume and Cardiac Output in Patients**
2 **with Hypovolemic Shock**

3 **Aman Khanna¹, Krish Vaidya², Dharmesh Shah³, Amaresh K. Ranjan^{4*} and Anil Gulati^{4,5,6*}**

4 ¹ Aman Hospital and Research Centre Organization, Vadodara, Gujarat, INDIA

5 ² I cure Heart care, Vadodara, Gujarat, INDIA

6 ³ Pharmazz India Pvt. Ltd., Greater Noida, UP, INDIA.

7 ⁴ Pharmazz Inc. Research and Development, Willowbrook, IL, USA.

8 ⁵ Department of Bioengineering, The University of Illinois at Chicago, Chicago, IL, USA.

9 ⁶ Midwestern University, Downers Grove, IL, USA.

10 ***Correspondence:**

11 anil.gulati@pharmazz.com & amaresh.ranjan@pharmazz.com

12 **Keywords: Centhaquine, Cardiac Output, Venous Return, Blood Pressure, Shock,**
13 **Hypovolemia, Resuscitation, Critical Care.**

14

15

16

17

18

19

20

21

22

23

24

25

26

27

28

29

30 **Abstract**

31 Background: Centhaquine is a resuscitative agent that acts on α 2B adrenergic receptors to enhance
32 venous return in hypovolemic shock. The effect of centhaquine on cardiac output in patients with
33 hypovolemic shock has not been reported.

34 Methods: Trans-thoracic echocardiography was utilized to measure stroke volume (SV), cardiac output
35 (CO), left ventricular outflow tract-velocity time integral (LVOT-VTI), left ventricular outflow tract
36 diameter (LVOTd), heart rate (HR), left ventricular ejection fraction (LVEF), left ventricular fractional
37 shortening (FS) and inferior vena cava (IVC) diameter before (0 min) and after centhaquine (0.01
38 mg/kg, iv infusion over 60 min) treatment (60 min, 120 min, and 300 min) in 12 randomly selected
39 patients with hypovolemic shock enrolled in a prospective, multicenter, open-label phase IV clinical
40 study (NCT05956418) of centhaquine in patients with hypovolemic shock.

41 Results: A significant increase in SV (mL) was observed after 60, 120, and 300 minutes of centhaquine
42 treatment. CO (mL/min) increased significantly at 120 and 300 min despite a decrease in HR at these
43 times. A significant increase in IVC diameter and LVOT-VTI (mL) at these time points was observed,
44 which indicated increased venous return. The LVEF and FS did not change, while the mean arterial
45 pressure (MAP, mmHg) increased in patients after 120 and 300 minutes of centhaquine treatment.
46 Positive correlations between IVC diameter and SV ($R^2 = 0.9556$) and between IVC diameter and MAP
47 ($R^2 = 0.8928$) were observed, which indicated the effect of centhaquine mediated increase in venous
48 return on SV, CO, and MAP.

49 Conclusions: Centhaquine mediated increase in venous return appears to play a critical role in
50 enhancing SV, CO, and MAP in patients with hypovolemic shock; these changes could be pivotal for
51 reducing shock-mediated circulatory failure, promoting tissue perfusion, and improving patient
52 outcomes.

53 Trial registration: The phase IV trial reported in this study has Clinical Trials Registry, India;
54 ctri.icmr.org.in, CTRI/2021/01/030263; clinicaltrials.gov, NCT05956418.

55

56

57

58

59

60

61

62

63

64

65

66 **1 Introduction**

67 Hypovolemic shock decreases circulating blood volume and reduces stroke volume (SV), cardiac
68 output (CO)[1], and tissue blood perfusion, leading to the possibility of organ failure and death.
69 Managing hypovolemic shock is critical and involves prompt and targeted interventions to restore the
70 circulating blood volume and increase organ perfusion using various fluids and vasopressors[1; 2].
71 Although the commonly used fluids (crystalloids or colloids) help compensate for the volume loss,
72 patients often require vasopressors to achieve perfusion endpoints (e.g., CO and MAP)[3].
73 Vasopressors induce constriction of the blood vessels and aid the sympathetic system to increase blood
74 pressure and CO, in an attempt to increase tissue perfusion[4]. However, the use of vasopressors (e.g.,
75 epinephrine, norepinephrine, dopamine, vasopressin, and angiotensin) remains debatable due to
76 associated risks, including cardiac arrhythmias, decreased tissue perfusion, fluid extravasation, and
77 organ failure [5].

78 At the normal physiological state, a significant amount of blood is pooled on the venous side (having
79 high vascular capacitance) of the circulation; however, in hypovolemic shock, blood accumulation in
80 the veins is further increased, and that a significant amount of blood does not participate in tissue
81 perfusion[6]. It is of interest to divert the pooled venous blood towards the arterial side so that the
82 circulating blood volume can be increased, which will help increase stroke volume (SV), cardiac output
83 (CO), and mean arterial pressure (MAP), as well as increase tissue perfusion.

84 Centhaquine (2-[2-[4-(3-Methylphenyl)-1-piperazinyl]ethyl] quinoline citrate) is being developed to
85 treat hypovolemic shock. It showed good tolerability and safety in healthy subjects with minimal
86 adverse effects observed at almost ten times the therapeutic dose (NCT02408731). Clinical studies in
87 hypovolemic shock patients (NCT04056065 and NCT04045327) found that centhaquine significantly
88 increased HR and MAP, reduced lactate levels, and increased survival[7; 8]. The proposed mechanism
89 of action of centhaquine is by acting on venous α 2B-adrenergic receptors; it augments the blood return
90 to the heart and increases SV[9]. In swine and rat models of hypovolemic shock, centhaquine
91 significantly increased the SV, leading to increased CO and MAP [10; 11] and improved survival. The
92 current study investigates centhaquine's role in increasing cardiovascular variables (SV, CO, and MAP)
93 by enhancing venous blood return in human patients with hypovolemic shock.

94 **2 Materials and methods**

95 **2.1 Study Design**

96 This pilot study was conducted on 12 randomly selected patients enrolled in a prospective, multicenter,
97 open-label phase IV clinical study (NCT05956418) of centhaquine in patients with hypovolemic
98 shock. At the baseline, demographic data, chest X-ray, electrocardiogram (ECG), and vital signs were
99 recorded along with blood counts and chemistry. Patients received 0.01 mg/kg centhaquine by
100 intravenous infusion over 60 min in 100 mL normal saline. Systolic and diastolic blood pressure (SBP
101 and DBP) were recorded using a sphygmomanometer at baseline, hourly for the initial 48 hrs, and in
102 between if needed. The mean arterial pressure [$DBP + 1/3 (SBP - DBP)$] and pulse pressure (SBP-
103 DBP) were calculated.

104 The ongoing phase IV study is an open label study aimed at assessing the post-marketing efficacy of
105 centhaquine. All patients in this study received centhaquine along with standard of care for
106 hypovolemic shock. Data from the baseline value in this study was compared. Historical data on fluid

107 resuscitation was also used to understand the superiority of resuscitation with centhaquine. The study
108 duration for an individual patient was seven days or earlier (patient discharge).

109 2.1.2 Echocardiographic measurements

110 Transthoracic echocardiography was utilized to assess SV, CO, HR, left ventricular ejection fraction
111 (LVEF), and left ventricular fractional shortening (LVFS) before (0 min) and after centhaquine
112 treatment (60 min, 120 min and 300 min). An expert technician conducted the echocardiography, and
113 the detailed methodology is as follows -

114 2.1.2.1 LVOT diameter: A parasternal long-axis view was obtained to visualize the left ventricular
115 outflow tract (LVOT) and the aortic valve. The view of the aortic valve opening and closing was
116 ensured. The best view of the aortic valve at mid-systole (when the valves are wide open) was ensured,
117 images were captured, and the distance near the aortic annulus at the base of the leaflets was measured
118 using the tool. This measured distance was the diameter of the LVOT.

119 2.1.2.2 LVOT VTI (LVOT velocity time integral): The pulse-wave Doppler gate was aligned parallel
120 to the LVOT in the Apical 5 Chamber view to obtain the best VTI tracing. Once the Doppler gate was
121 positioned well, the pulse wave Doppler was activated. The automated LVOT VTI was calculated
122 after tracing the outline of one of the systolic waveforms. The values for the LVOT VTI are denoted
123 as the distance in centimeters (cm) and represent the distance that blood travels in one heartbeat.

124 2.1.2.3 Heart rate (HR): The specific points on the screen corresponding to individual heartbeats were
125 marked, and the heart rate was automatically calculated by the echocardiography machine based on
126 this input.

127 2.1.2.4 SV and CO: SV was calculated as the product of the LVOT diameter and the LVOT VTI. CO
128 was calculated as the product of SV and HR.

129 2.1.2.5 LVEF and LVFS: LVEF was calculated via visual estimation by reviewing different
130 echocardiography windows, as was done in an emergency setting. LVFS was calculated using the
131 formula ($\%LVFS = [(LVDD-LVDS)/LVDD] \times 100$, where LVDD is the left ventricle diameter at
132 diastole, and LVDS is the left ventricle diameter at systole, measured through echocardiography.

133 2.2 Patient population, consent, and regulatory oversight

134 The phase IV study's detailed inclusion/exclusion criteria (NCT05956418) are provided at
135 <https://clinicaltrials.gov/study/NCT05956418>. Adult hypovolemic shock patients aged ≥ 18 years with
136 an SBP ≤ 90 mmHg upon presentation to the emergency room or ICU, receiving standard shock
137 treatment, and having a blood lactate level >2.0 mmol/L were included in the study.

138 Informed consent from all enrolled patients or their legally authorized representative (LAR) was
139 obtained verbally and in writing after communicating the study details.

140 The study adhered to the Harmonization of Technical Requirements for Registration of
141 Pharmaceuticals for Human Use Guideline for Good Clinical Practice (ICH-GCP), the Helsinki
142 Declaration, and local regulatory requirements.

143 2.3 Safety evaluation

144 Safety was evaluated by the study investigators based on adverse events (AEs), physical examination
145 results, vital signs (including HR, SBP, DBP, body temperature, and respiratory rate), ECG, and
146 clinical variables. Any AEs that occurred or worsened during or after centhaquine treatment were
147 systematically recorded and coded by system organ class and preferred term using the latest version of
148 the International Conference on Harmonization Medical Dictionary for Regulatory Activities.

149 2.4 Multivariate Imputation by Chained Equations (MICE)

150 Data not available (6.4%) were assessed as "missing values," and they were imputed using "MICE,"
151 which is a package that implements a method to address missing data by creating multiple imputations
152 (replacement values) for multivariate missing data[12]. In this study, five patients had multiple
153 imputations for missing echocardiography data. A scalar of 20, given the number of iterations and
154 predictive mean matching "pmm," was used.

155 2.5 Statistical analysis

156 The results are presented as the mean \pm standard error of the mean (SEM). The statistical analysis was
157 performed using GraphPad Prism 10.1.2 (GraphPad, San Diego, CA, USA). Parametric analysis was
158 carried out using a one-way analysis of variance without assuming equal variances with a normal
159 probability distribution. The post hoc Tukey's multiple comparisons test was performed to estimate
160 the significance of differences. p values < 0.05 were considered to indicate statistical significance at
161 the 95% confidence level.

162 3 Results

163 3.1 Patient demographics, baseline characteristics, and volume of fluid administration during 164 the first 5 hours of resuscitation.

165 The demographics and baseline characteristics are shown in Table 1.

166 3.2 Centhaquine Increases Stroke Volume, Cardiac Output, and Mean Arterial Pressure

167 At baseline (0 min), the mean SV (mL) was 63.36 ± 4.06 . At 60 min, 120 min, and 300 min, the mean
168 SV (mL) was 78.07 ± 4.98 ($\Delta 23.2\%$, $p=0.0084$), 83.51 ± 3.78 ($\Delta 31.8\%$, $p=0.0002$), and 89.18 ± 3.71
169 ($\Delta 40.74\%$, $p<0.0001$), respectively (Fig. 1A).

170 The mean CO (mL/min) at baseline was 5728.58 ± 263.4 . At 60 min, 120 min, and 300 min, the mean
171 SV (mL) was 6273.91 ± 318.33 ($\Delta 9.52\%$, $p=0.3097$), 7212.74 ± 291.2 ($\Delta 25.9\%$, $p=0.0002$), and
172 7004.28 ± 255.36 ($\Delta 22.23\%$, $p=0.0013$), respectively (Fig. 1B).

173 At baseline, the mean HR (bpm) was 92.08 ± 3.55 . At 60 min, 120 min, and 300 min, the mean HR
174 (bpm) was 81.33 ± 2.23 ($\Delta 11.69\%$, $p=0.0006$), 82.1 ± 0.96 ($\Delta 10.97\%$, $p=0.0015$) and 79.42 ± 1.80
175 ($\Delta 13.41\%$, $p<0.0001$), respectively (Fig. 1C).

176 MAP (mmHg) at baseline or 0 min was 58.89 ± 1.03 . At 60 min, 120 min, and 300 min, the MAP
177 values were 62.22 ± 1.44 ($\Delta 5.66\%$, $p=.4601$), 68.33 ± 1.86 ($\Delta 16.04\%$, $p=0.0015$), and 69.27 ± 2.4
178 ($\Delta 17.64\%$, $p=0.0005$), respectively (Fig. 1D).

179 3.3 Centhaquine Increases the Venous Return (increase in IVC Diameter)

180 The mean IVC diameter (cm) at baseline was 0.92 ± 0.04 . A change in IVC diameter was observed
181 after centhaquine treatment at 60, 120, and 300 min; the mean IVC diameter (cm) was 1.07 ± 0.03
182 ($\Delta 15.94\%$, $p=0.0091$), 1.14 ± 0.02 ($\Delta 25.00\%$, $p<0.0001$) and 1.14 ± 0.03 ($\Delta 23.19\%$, $p<0.0001$),
183 respectively (Fig. 2A).

184 The relationships between "IVC diameter and SV" and "IVC diameter and MAP" were evaluated. A
185 direct correlation ($R^2 = 0.9556$; $p=0.02245$) between IVC diameter and SV (Fig. 2B) and between IVC
186 diameter and MAP was observed ($R^2 = 0.8928$; $p=0.05514$) (Fig. 2C).

187 3.4 Centhaquine Increases LVOT-VTI (Blood Flow towards Aortic Annulus/Valve)

188 LVOT-VTI (cm) indicates the blood flow from the left ventricle of the heart towards the aorta. LVOT-
189 VTI was 18.54 ± 1.11 at the baseline, while it was 21.97 ± 1.05 ($\Delta 18.52\%$, $p=0.0159$) 24.14 ± 0.76
190 ($\Delta 30.2\%$, $p<0.0001$), and 24.9 ± 0.8 ($\Delta 34.15\%$, $p<0.0001$) at 60 min, 120 min, and 300 min,
191 respectively (Fig. 3A). A direct correlation ($R^2 = 0.9796$; $p=0.01024$) between LVOT-VTI and IVC
192 diameter was observed (Fig. 3B). LVOT diameter and area remain unchanged (Fig. 3C and D) at these
193 time points.

194 4 Discussions

195 The current study was conducted on 12 hypovolemic shock patients from a single cohort phase IV
196 (NCT05956418) study; centhaquine increased SV and decreased HR (Fig. 1A and C) with ~40%
197 increase in SV, which is much higher compared to other studies relying on fluid infusion alone (~10-
198 25%) [13; 14]. Kumar et al. demonstrated a 15-25% increase in SV in healthy humans after infusion
199 of 3 liters of normal saline at the rate of 1 liter per hour and observed cardiac inotropic effect of fluids
200 with a ~14% increase in LVEF. On the other hand, in our current study, only 746.12 ± 87.42 ml of
201 fluid was required for 5 hours (~150 ml per hour) of resuscitation (Table 2), and no change in LVEF
202 and LVFS (suppl fig. 1A and B) was seen, indicating no effect on cardiac inotropy. Thus, centhaquine
203 increases SV independent of the volume of fluids during resuscitation and does not affect cardiac
204 inotropy. Hence, risks of fluid extravasation and cardiac arrhythmia are mitigated [15], which are
205 associated with a higher volume of fluids and using vasopressors to treat shock[16; 17].

206 CO and MAP were increased (Fig. 1B, D, and Suppl Table 1) after centhaquine treatment despite
207 reduced HR and unchanged total peripheral resistance (Suppl Fig. 2), indicating an impact of increased
208 SV on arterial circulation and tissue perfusion. IVC diameter was also significantly increased (Fig.
209 2A), reflecting increased venous return and cardiac preload [18; 19; 20] after centhaquine treatment.
210 A direct correlation between IVC diameter and SV ($R^2 = 0.9556$) (Fig. 2B), and IVC diameter and
211 MAP ($R^2 = 0.8928$) (Fig. 2C) was observed, which indicated an effect of increased venous return on
212 SV, CO, and MAP.

213 Furthermore, LVOT-VTI was significantly upregulated after centhaquine treatment, which indicated
214 increased blood flow in the left ventricular outflow tract during systole, leading to enhanced SV[21;
215 22]. The increased blood flow towards LVOT could be attributed to increased chronotropy, cardiac
216 inotropy, or venous return. After centhaquine treatment, however, patients were observed with
217 decreased cardiac chronotropy and no change in inotropy (Suppl Fig. 1A and B); hence, increased
218 venous return would be the main reason for the increased LVOT-VTI. The observed direct correlation
219 between IVC diameter and LVOT-VTI ($R^2 = 0.9796$; $p=0.01024$) (Fig. 3B) has further supported the
220 role of centhaquine mediated enhanced venous return in improving blood flow towards LVOT and
221 enhancing SV.

222 Increased venous return and flow in LVOT would increase the blood volume in the arterial system,
223 leading to increased MAP. Besides blood volume, vascular resistance is also vital for regulating blood
224 pressure. Nonetheless, centhaquine treatment demonstrated no significant change in total peripheral
225 resistance (Suppl Fig. 2), further supporting the role of centhaquine mediated increased venous return
226 on arterial blood volume, causing an increase in MAP in patients with hypovolemic shock.

227 All patients treated with centhaquine in the study showed improved HR, respiratory rate, and body
228 temperature. A reduction in serum lactate, base deficit, and an increase in PO₂/FiO₂ was observed in
229 hypovolemic shock patients treated with centhaquine (Table 3). Improved patient outcomes were
230 observed with decreased MODS (0.17 ± 0.11 at the time of discharge vs 2.5 ± 0.38 at the baseline),
231 and stabilized hematological, biochemical, and serum electrolyte levels (Suppl Table 1). All 12
232 centhaquine treated patients recovered and were discharged at 3.1 ± 0.074 days. Thus, the efficacy and
233 safety of centhaquine in hypovolemic shock patients is promising.

234 These findings align with studies in animal models of hypovolemic shock[10; 11; 23; 24; 25],
235 leading to increased venous return, CO, MAP, and tissue perfusion and underscore the significance of
236 venous return in managing shock[26], with centhaquine targeting this through $\alpha 2B$ -AR agonism. Thus,
237 the current study and other studies[22; 23; 24] highlight the importance of venous return for treating
238 shock. The venous return is modulated through the venous tone, which is primarily regulated by the
239 sympatho-adrenergic system, and thus, adrenergic signaling appears to be an important target in
240 treating various types of shock[27; 28; 29; 30]. Interestingly, ARs are distributed distinctly in the
241 arterial and venous systems and play a key role in coordinating the arterial and venous circulation.
242 Most arteries and large veins (e.g., vena cava) are mainly regulated by $\alpha 1/\alpha 2$ -ARs, while peripheral
243 veins are regulated by $\alpha 2B$ -ARs[25; 31; 32; 33]. The high abundance of $\alpha 2B$ -ARs in the peripheral
244 veins highlights their involvement in the constriction of these peripheral veins. The peripheral veins
245 have relatively higher capacitance than central veins (58.95% vs 11.05%) and hence are vital players
246 for regulating venous return and cardiac preload, which proportionately affects SV. Therefore, findings
247 of the study demonstrating increased SV with increased IVC diameter indicate that centhaquine would
248 be acting on the $\alpha 2B$ -ARs present in the peripheral veins and inducing venoconstriction, which would
249 mobilize the unstressed blood present in these veins towards the vena cava and leading to increased
250 blood volume in IVC causing increase in its diameter (Fig. 2A).

251 However, further studies are required to elucidate which specific venous systems are affected after
252 centhaquine treatment. Studies have shown that cutaneous and splanchnic veins, which together
253 constitute the major blood reservoir in the body, respond to various factors, e.g., temperature, stress,
254 arterial blood parameters, and blood pressure[27], elucidating the effect of centhaquine on the
255 individual venous system would help explore its potential further for treatment of different types of
256 shock involving circulatory failure in different regions. Moreover, further randomized controlled trials
257 with larger cohorts are necessary to fully understand centhaquine's effects on venous systems and its
258 potential in treating different types of shock associated with circulatory failure.

259 **5 Conclusions**

260 The increased venous return induced by centhaquine plays a pivotal role in elevating SV, CO, and
261 MAP mediated through increased LVOT-VTI and IVC diameter in patients experiencing hypovolemic
262 shock. An increase in SV, CO, and MAP occurs concurrently with a decrease in heart rate without
263 influencing the inotropic function of the heart. This unique combination of outcomes suggests that
264 centhaquine has remarkable potential to mitigate circulatory failure associated with hypovolemic
265 shock, thereby promoting blood flow and tissue perfusion and improving overall patient outcomes.

266 Understanding centhaquine's distinctive mechanism of action raises the possibility of its development
267 as a novel resuscitative agent not only for hypovolemic shock but also for other shock types (e.g., septic
268 shock and vasodilatory shock) that share pathophysiological characteristics involving circulatory
269 failure and hypotension. While further research and clinical studies are needed to fully elucidate
270 centhaquine's effectiveness and safety profile across diverse shock conditions, its ability to enhance
271 venous return and cardiac performance without undesirable effects on heart rate or inotropy could be
272 pivotal for the development of a highly effective and safer resuscitative agent for the treatment of
273 shock.

274 **6 References**

- 275 [1] E.M. Snyder, Jr., Management of refractory shock. *Calif Med* 80 (1954) 13-5.
- 276 [2] K.J. Kalkwarf, and B.A. Cotton, Resuscitation for Hypovolemic Shock. *Surg Clin North Am* 97 (2017)
277 1307-1321.
- 278 [3] S.M. Hollenberg, Vasoactive drugs in circulatory shock. *American journal of respiratory and*
279 *critical care medicine* 183 (2011) 847-55.
- 280 [4] P.P. Manolopoulos, I. Boutsikos, P. Boutsikos, N. Iacovidou, and K. Ekmektzoglou, Current use and
281 advances in vasopressors and inotropes support in shock. *Journal of Emergency and Critical Care*
282 *Medicine* 4 (2020).
- 283 [5] N. Fage, P. Asfar, P. Radermacher, and J. Demiselle, Norepinephrine and Vasopressin in
284 Hemorrhagic Shock: A Focus on Renal Hemodynamics. *Int J Mol Sci* 24 (2023).
- 285 [6] R.S. Alexander, Venomotor tone in hemorrhage and shock. *Circ Res* 3 (1955) 181-90.
- 286 [7] A. Gulati, R. Choudhuri, A. Gupta, S. Singh, S.K.N. Ali, G.K. Sidhu, P.D. Haque, P. Rahate, A.R. Bothra,
287 G.P. Singh, S. Maheshwari, D. Jeswani, S. Haveri, A. Agarwal, and N.R. Agrawal, A Multicentric,
288 Randomized, Controlled Phase III Study of Centhaquine (Lyfaquin((R))) as a Resuscitative Agent
289 in Hypovolemic Shock Patients. *Drugs* 81 (2021) 1079-1100.
- 290 [8] A. Gulati, D. Jain, N.R. Agrawal, P. Rahate, R. Choudhuri, S. Das, D.P. Dhibar, M. Prabhu, S. Haveri,
291 R. Agarwal, and M.S. Lavhale, Resuscitative Effect of Centhaquine (Lyfaquin((R))) in Hypovolemic
292 Shock Patients: A Randomized, Multicentric, Controlled Trial. *Adv Ther* 38 (2021) 3223-3265.
- 293 [9] A. Chalkias, Shear Stress and Endothelial Mechanotransduction in Trauma Patients with
294 Hemorrhagic Shock: Hidden Coagulopathy Pathways and Novel Therapeutic Strategies. *Int J Mol*
295 *Sci* 24 (2023).
- 296 [10] Z. Kontouli, C. Staikou, N. Iacovidou, I. Mamais, E. Kouskouni, A. Papalois, P. Papapanagiotou, A.
297 Gulati, A. Chalkias, and T. Xanthos, Resuscitation with centhaquin and 6% hydroxyethyl starch
298 130/0.4 improves survival in a swine model of hemorrhagic shock: a randomized experimental
299 study. *Eur J Trauma Emerg Surg* 45 (2019) 1077-1085.
- 300 [11] A. Gulati, M.S. Lavhale, D.J. Garcia, and S. Havalad, Centhaquin improves resuscitative effect of
301 hypertonic saline in hemorrhaged rats. *J Surg Res* 178 (2012) 415-23.
- 302 [12] M.J. Azur, E.A. Stuart, C. Frangakis, and P.J. Leaf, Multiple imputation by chained equations: what
303 is it and how does it work? *Int J Methods Psychiatr Res* 20 (2011) 40-9.
- 304 [13] A. Kumar, R. Anel, E. Bunnell, S. Zanotti, K. Habet, C. Haery, S. Marshall, M. Cheang, A. Neumann,
305 A. Ali, C. Kavinsky, and J.E. Parrillo, Preload-independent mechanisms contribute to increased
306 stroke volume following large volume saline infusion in normal volunteers: a prospective
307 interventional study. *Crit Care* 8 (2004) R128-36.
- 308 [14] A. Carsetti, M. Cecconi, and A. Rhodes, Fluid bolus therapy: monitoring and predicting fluid
309 responsiveness. *Curr Opin Crit Care* 21 (2015) 388-94.

- 310 [15] M. Mandal, Ideal resuscitation fluid in hypovolemia: The quest is on and miles to go! *Int J Crit*
311 *Illn Inj Sci* 6 (2016) 54-5.
- 312 [16] J.A. Russell, Vasopressor therapy in critically ill patients with shock. *Intensive Care Med* 45
313 (2019) 1503-1517.
- 314 [17] D. De Backer, P. Biston, J. Devriendt, C. Madl, D. Chochrad, C. Aldecoa, A. Brasseur, P. Defrance,
315 P. Gottignies, J.L. Vincent, and S.I. Investigators, Comparison of dopamine and norepinephrine in
316 the treatment of shock. *N Engl J Med* 362 (2010) 779-89.
- 317 [18] M. Lyon, M. Blaivas, and L. Brannam, Sonographic measurement of the inferior vena cava as a
318 marker of blood loss. *Am J Emerg Med* 23 (2005) 45-50.
- 319 [19] S. Sefidbakht, R. Assadsangabi, H.R. Abbasi, and A. Nabavizadeh, Sonographic measurement of
320 the inferior vena cava as a predictor of shock in trauma patients. *Emerg Radiol* 14 (2007) 181-5.
- 321 [20] M. Massalha, R. Faranish, S. Romano, and R. Salim, Decreased inferior vena cava diameter as an
322 early marker in postpartum hemorrhage. *Ultrasound Obstet Gynecol* 59 (2022) 234-240.
- 323 [21] J. Wang, D. Zhou, Y. Gao, Z. Wu, X. Wang, and C. Lv, Effect of VTILVOT variation rate on the
324 assessment of fluid responsiveness in septic shock patients. *Medicine (Baltimore)* 99 (2020)
325 e22702.
- 326 [22] A. Perez-Manjarrez, E. Garcia-Cruz, R. Gopar-Nieto, G.M. Jimenez-Rodriguez, E. Lazcano-Diaz, G.
327 Rojas-Velasco, and D. Manzur-Sandoval, Usefulness of the velocity-time integral of the left
328 ventricular outflow tract variability index to predict fluid responsiveness in patients undergoing
329 cardiac surgery. *Echo Res Pract* 10 (2023) 9.
- 330 [23] M.S. Lavhale, S. Havalad, and A. Gulati, Resuscitative effect of centhaquin after hemorrhagic
331 shock in rats. *J Surg Res* 179 (2013) 115-24.
- 332 [24] P. Papapanagiotou, T. Xanthos, A. Gulati, A. Chalkias, A. Papalois, Z. Kontouli, A. Alegakis, and N.
333 Iacovidou, Centhaquin improves survival in a swine model of hemorrhagic shock. *J Surg Res* 200
334 (2016) 227-35.
- 335 [25] M. Geevarghese, 3rd, K. Patel, A. Gulati, and A.K. Ranjan, Role of adrenergic receptors in shock.
336 *Front Physiol* 14 (2023) 1094591.
- 337 [26] A. Chalkias, E. Laou, N. Papagiannakis, V. Spyropoulos, E. Kouskouni, K. Theodoraki, and T.
338 Xanthos, Assessment of Dynamic Changes in Stressed Volume and Venous Return during
339 Hyperdynamic Septic Shock. *J Pers Med* 12 (2022).
- 340 [27] P.M. Vanhoutte, The Role of the Systemic Veins: An Update. *Phlebology* 2 (1987) 61-73.
- 341 [28] T. Shen, and K. Baker, Venous return and clinical hemodynamics: how the body works during
342 acute hemorrhage. *Adv Physiol Educ* 39 (2015) 267-71.
- 343 [29] D.J. Funk, E. Jacobsohn, and A. Kumar, Role of the venous return in critical illness and shock: part
344 II-shock and mechanical ventilation. *Crit Care Med* 41 (2013) 573-9.
- 345 [30] R. Spiegel, Stressed vs. unstressed volume and its relevance to critical care practitioners. *Clin*
346 *Exp Emerg Med* 3 (2016) 52-54.
- 347 [31] J.A. Giovannitti, Jr., S.M. Thoms, and J.J. Crawford, Alpha-2 adrenergic receptor agonists: a review
348 of current clinical applications. *Anesth Prog* 62 (2015) 31-9.
- 349 [32] X.L. Rudner, D.E. Berkowitz, J.V. Booth, B.L. Funk, K.L. Cozart, E.B. D'Amico, H. El-Moalem, S.O.
350 Page, C.D. Richardson, B. Winters, L. Marucci, and D.A. Schwinn, Subtype specific regulation of
351 human vascular alpha(1)-adrenergic receptors by vessel bed and age. *Circulation* 100 (1999)
352 2336-43.
- 353 [33] L. Hering, M. Rahman, S.A. Potthoff, L.C. Rump, and J. Stegbauer, Role of alpha2-Adrenoceptors
354 in Hypertension: Focus on Renal Sympathetic Neurotransmitter Release, Inflammation, and
355 Sodium Homeostasis. *Front Physiol* 11 (2020) 566871.

356

357 **7 List of abbreviations**

358	AR	Adrenergic Receptors
359	SV	Stroke Volume
360	CO	Cardiac Output
361	LVEF	Left Ventricular Ejection Fraction
362	FS	Fractional Shortening (Left Ventricular)
363	IVC	Inferior Vena Cava
364	LVOT	Left Ventricular Outflow Tract
365	VTI	Velocity Time Integral
366	LVDD	Left Ventricle Diameter at Diastole
367	LVDS	Left Ventricle Diameter at Systole
368	DBP	Diastolic Blood Pressure
369	HR	Heart Rate
370	MAP	Mean Arterial Pressure
371	SV	Stroke Volume
372	SVR	Systemic Vascular Resistance
373	SBP	Systolic Blood Pressure
374	SOC	Standard of Care
375	MICE	Multivariate Imputation by Chained Equations
376	MODS	Multiple Organ Dysfunction Syndrome
377	ARDS	Acute Respiratory Distress Syndrome

378 **8 Declaration**

379 Ethics Approval and Consent to Participate: The study was conducted in compliance with the
380 Harmonisation of Technical Requirements for Registration of Pharmaceuticals for Human Use
381 Guideline for Good Clinical Practice (ICH-GCP), the Helsinki Declaration, and local regulatory
382 requirements. The study protocol (PMZ-2010/CT-4.1/2019), version 1.0/ dated October 16, 2019, was
383 approved by the Drugs Controller General of India (DCGI), Directorate General of Health Services,
384 Ministry of Health & Family Welfare, Government of India (DCGI CT NOC. No.: CT/ND/110/2020).
385 Besides, each institutional ethics committee reviewed and approved the study protocol before initiating
386 patient enrolment. The trial was registered at the Clinical Trials Registry, India
387 (CTRI/2021/01/030263), and the United States National Library of Medicine, ClinicalTrials.gov
388 (NCT05956418). Each site's ethics committee was informed of any protocol deviation, amendment,
389 subject exclusion or withdrawal, and serious adverse events (SAE). (Details of the participating site
390 for this study are in Suppl Table 2)

391 Consent: The patients included in this study were in a state of life-threatening shock; therefore, for
392 patients who were not fit to give consent themselves at the time of treatment initiation, informed
393 consent was obtained from their legally authorized representative (LAR). The investigator verbally,
394 as well as in writing, informed the patient or LAR of the details of the study relevant to a decision
395 about whether to participate in the study.

396 No patient identifiable data is present in this article.

397 **9 Conflict of Interest**

398 D.S. is an employee of Pharmazz India Pvt. Ltd., INDIA, and A.K.R. is an employee of Pharmazz,
399 Inc., Willowbrook, IL, USA. A.G. is an employee of Pharmazz, Inc., Willowbrook, IL, USA, and
400 has issued and pending patents related to this study. All the other authors declare no competing
401 interests.

402 **10 Author Contributions**

403 Conceptualization: A.G., and D.S.; Data curation: A.G., A.K.R. and D.S.; Formal analysis: A.K.R.,
404 A.G. and D.S.; Investigation: A.K., K.V.; Methodology: A.G., D.S. and A.K.; Project administration:
405 A.K. and D.S.; Visualization: A.G. and A.K.R.; Writing—original draft: A.K.R.; Writing—review &
406 editing: A.K.R., A.G. and D.S. All authors read and approved the final manuscript.

407 **11 Funding**

408 Pharmazz India Pvt Ltd. supported the study.

409 **12 Acknowledgments**

410 We acknowledge Sunil Gulati, Pharmazz Inc., USA, for imputing missing data using a package
411 "Multivariate Imputation by Chained Equations (MICE)," which implements a method to address
412 missing data by creating multiple imputations (replacement values) for multivariate missing data.

413

414

415 **13 Data Availability Statement**

416 The anonymized patient datasets generated and/or analyzed during the study are available from the
417 corresponding author on a reasonable request from a bona fide researcher/research group.

418 **Figure legends:**

419 **Figure 1. Effects of centhaquine on cardiovascular variables (SV, CO, HR, and MAP).**

420 * P<0.05, ** P<0.01, *** P<0.001, and **** P<0.0001 compared to 0 min. n= 12.

421 **Figure 2. Effect of centhaquine on venous return (IVC diameter) and its correlation with SV**
422 **and MAP.** * P<0.05, ** P<0.01, *** P<0.001, and **** P<0.0001 compared to 0 min (A). n= 12.

423 **Figure 3. Effect of centhaquine on blood flow (LVOT-VTI) in LVOT to the aorta and its**
424 **correlation with IVC diameter.** * P<0.05, ** P<0.01, *** P<0.001, and **** P<0.0001 compared
425 to 0 min (A). n= 12.

426

427

428

429

430

431

432

433

434

435

436

437

438

439

440

441

442

443

444 **Figure 1**

445

446

447

448

449

450

451

452

453

454

455

456

457

458

459

460

461

462

463

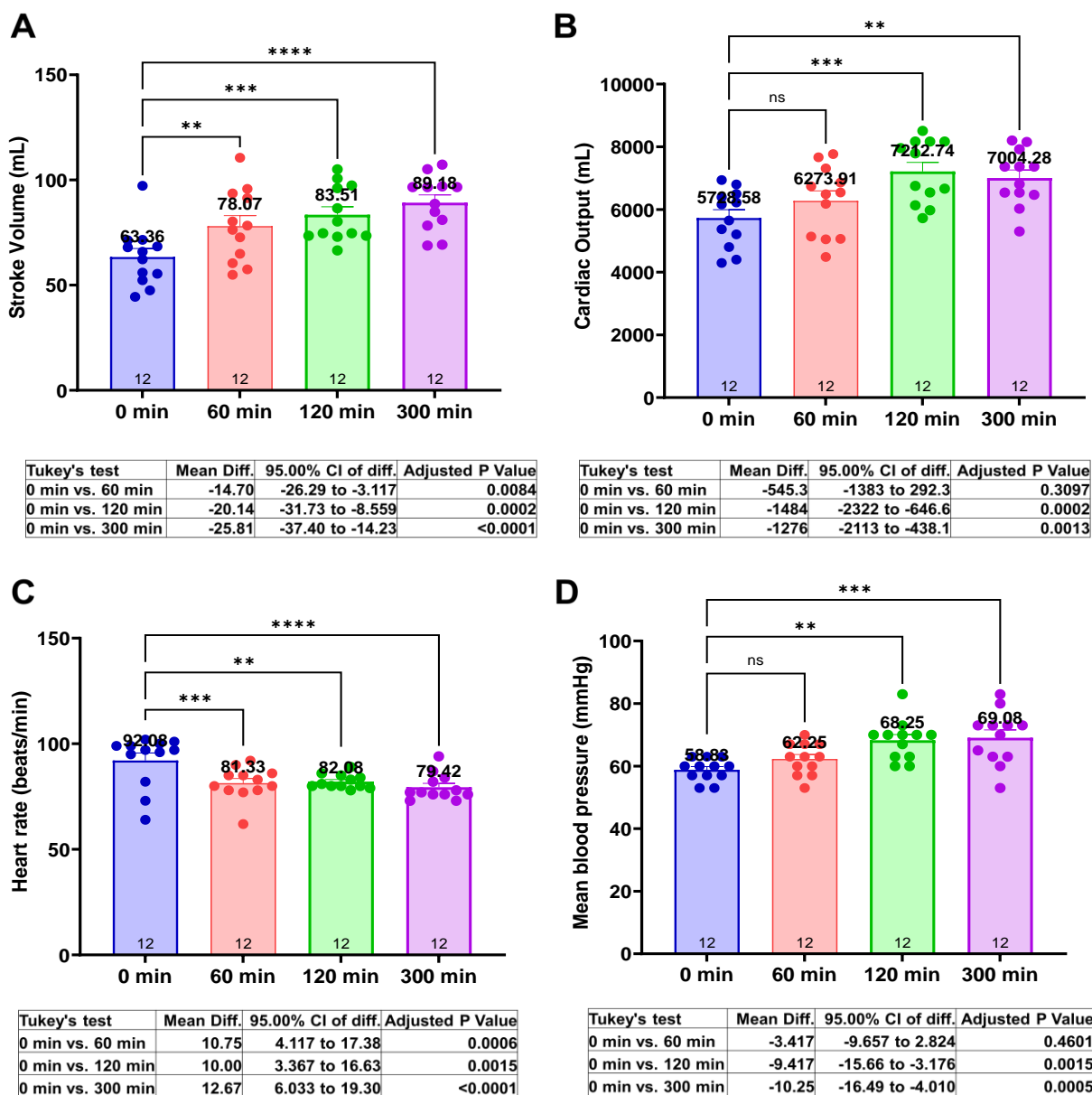
464

465

466

467

468

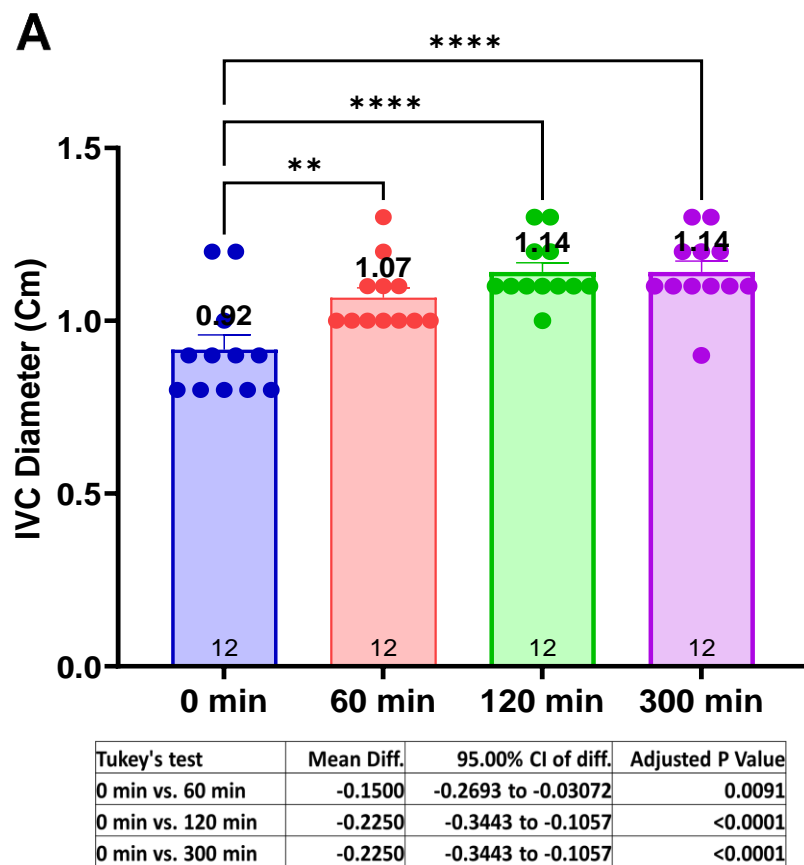


469 **Figure 2**

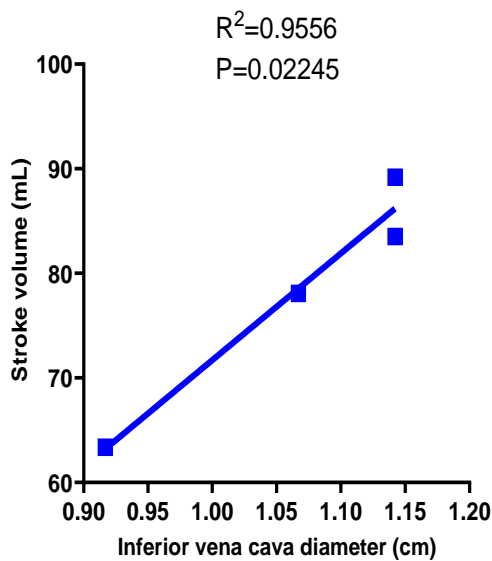
470

471

472

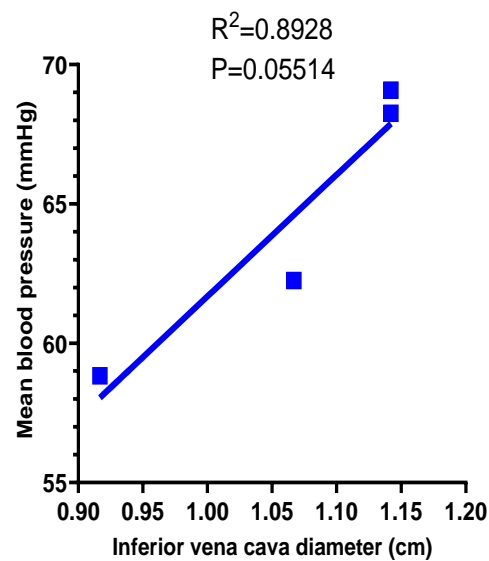


B



R (Mean; 95.00% CI)	0.9775; 0.2721 to 0.9995
R squared (P (two-tailed))	0.9556 (0.0225)

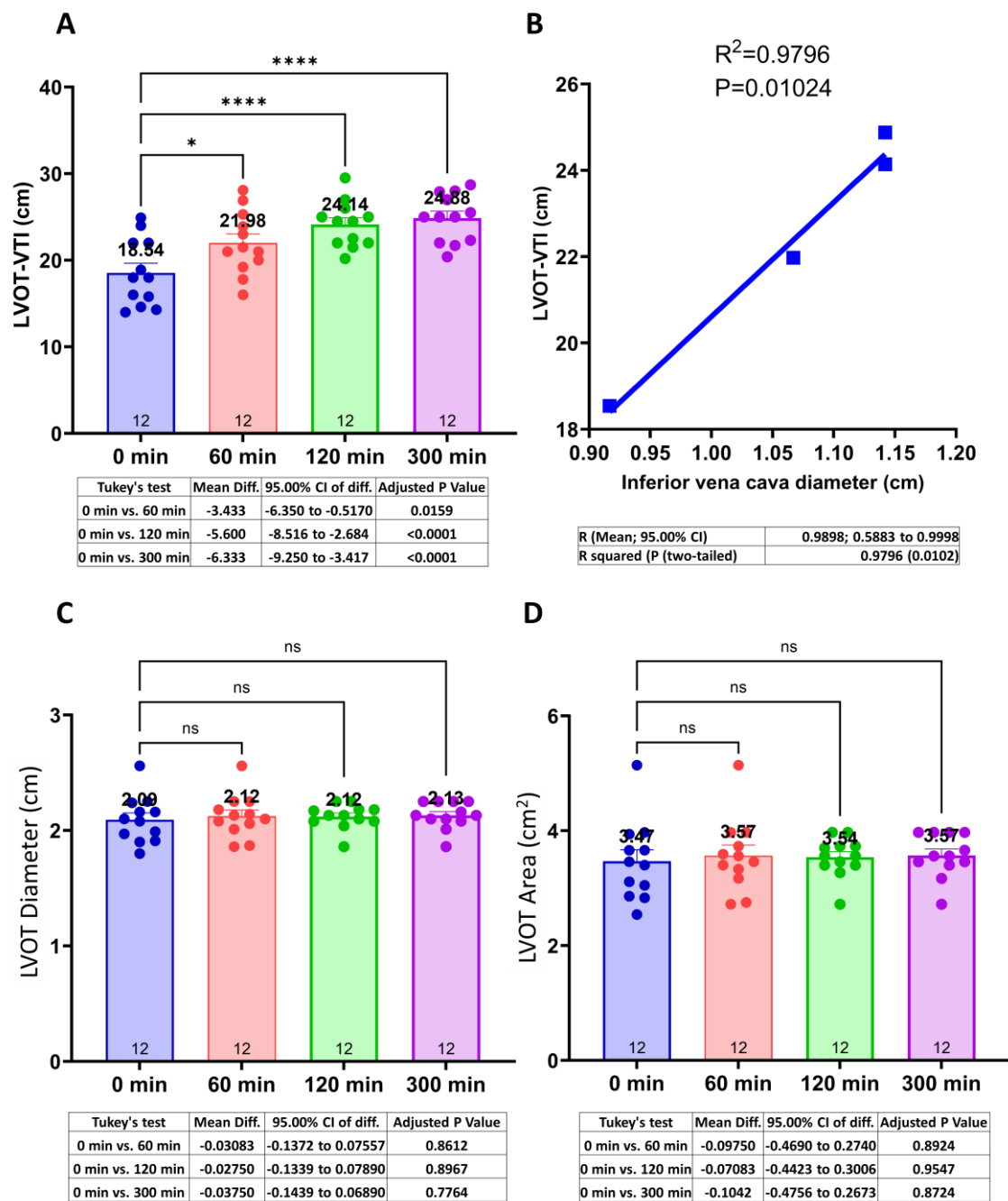
C



R (Mean; 95.00% CI)	0.9449; -0.1766 to 0.9989
R squared (P (two-tailed))	0.8928 (0.0551)

473

474 **Figure 3**



475

476

477

478

479

Table 1. Baseline characteristics of patients

Age (years)	37.42 ± 3.68
Body weight (kg)	58.83 ± 1.57
Height (cm)	157.67± 1.2
Body mass index (kg/m ²)	23.64 ± 0.22
Sex	
Men	9 (75%)
Women	3 (25%)
Medical history	
Hypertension	0
Diabetes	0
Renal disorders	0
Respiratory disease	1 (8.33%)
Ischemic heart disease	0
Liver fibrosis	0
Hepatitis (Altered SGPT)	6 (50%)
Preeclampsia	0
Reason for hypovolemic shock	
Gastroenteritis (vomiting, abdominal pain and or diarrhea)	8(66.67%)
Enteric fever	4(33.33%)
Dengue fever	2 (16.67%)
Falciparum malaria	1 (8.33%)
Acute appendicitis	1 (8.33%)
Clinical factors	
Systolic blood pressure (mmHg)	73.87 ± 2.9

Table 1. Baseline characteristics of patients

Diastolic blood pressure (mmHg)	45.33 ± 1.64
Heart rate (beats/min)	108 ± 4.4
ECG	Normal
Random blood glucose (mg/dL)	104.24 ± 4.75
Shock index	1.51 ± 0.12
MODS	2.5 ± 0.38
ARDS	0.08 ± 0.083
Respiratory rate (breaths/min)	23.5 ± 0.23
Body temperature (°F)	102.3 ± 0.36
Blood lactate (mmol/L)	2.5 ± 0.06
Base deficit (mmol/L)	-1.49 ± 0.06
Hemoglobin (g/dL)	12.16 ± 0.45
Hematocrit (%)	37.24 ± 1.26
Creatinine (mg/dL)	1.13 ± 0.15
Glomerular filtration rate (mL/min/1.73 m ²)	83.43 ± 7.84
pH	7.21 ± 0.01
pCO ₂ (mmHg)	33.17 ± 0.90
PO ₂ /FiO ₂	376.75 ± 6.32

481 The data are presented as the mean ± SEM.

482

483

484

485

486

487

488

489 **Table 2. Volume of fluids administered to patients before randomization and during the first 5**
490 **hours of resuscitation.**

Normal saline (mL)	Normal saline with dextrose (mL)	Total volume (mL)
345.7 ± 67.2	400.42 ± 32.42	746.12 ± 87.42

491 The data are presented as the mean ± SEM.

492

493

494

495

496

497

498

499

500

501

502

503

504

505

506 **Table 3. Patient vital signs were recorded from day 1 (baseline) through days 3/4.**

Vitals	Baseline	After administration of centhaquine		
	Day 1	Day 2	Day 3	Day 4
SBP (mmHg)	73.83 ± 2.88	102.17 ± 1.17	110.00 ± 1.74	120.00 ± 1.67
DBP (mmHg)	45.33 ± 1.64	63.17 ± 2.47	69.17 ± 1.49	77.78 ± 1.47
Heart rate (beats/min)	108 ± 4.38	95.5 ± 3.27	92.42 ± 2.30	85.56 ± 1.45
Respiratory rate (breaths/min)	23.5 ± 0.23	21.83 ± 0.65	21.25 ± 0.64	20.11 ± 0.59
Body temperature (°F)	102.28 ± 0.36	99.51 ± 0.64	98.21 ± 0.30	97.57 ± 0.20
Lactate (mM/L)	2.5 ± 0.06	2.02 ± 0.03	1.67 ± 0.04	1.17 ± 0.05
Base deficit (mM/L)	-149 ± 0.06	-0.52 ± 0.09	0.38 ± 0.18	0.43 ± 0.04
PO ₂ /FiO ₂	376.75 ± 6.32	405.5 ± 1.74	419.45 ± 1.98	427.51 ± 3.05

507 The data are presented as the mean ± SEM. *DBP* diastolic blood pressure, *SBP* systolic blood
 508 pressure.

509

510