

1 **Using electronic health records to evaluate the adherence to cervical cancer**
2 **prevention guidelines: a cross-sectional study**

3 Kerli Mooses*¹, Aleksandra Šavrova², Maarja Pajusalu¹, Marek Oja¹, Sirli Tamm¹, Markus
4 Haug¹, Lee Padrik³, Made Laanpere^{3,4}, Anneli Uusküla⁵, Raivo Kolde¹

5

6 ¹ Institute of Computer Science, University of Tartu, Tartu, Estonia

7 ² North Estonia Medical Center, Tallinn, Estonia

8 ³ Tartu University Hospital Women's Clinic, Tartu, Estonia

9 ⁴ Institute of Clinical Medicine, University of Tartu, Tartu, Estonia

10 ⁵ Institute of Family Medicine and Public Health, University of Tartu, Tartu, Estonia

11

12 **Corresponding author:**

13 Kerli Mooses,

14 Address: Narva mnt 18, Tartu, Tartumaa, 51009, Estonia

15 Phone: +372 5526542

16 E-mail: Kerli.mooses@ut.ee

17

18 **ABSTRACT**

19 **Objective:** The fight against cervical cancer requires effective screening together with optimal
20 and on-time treatment along the care continuum. We aimed to examine the impact of cervical
21 cancer screening and treatment guidelines on screening, and follow-up adherence to guidelines.

22 **Methods:** Data from electronic health records and healthcare provision claims for 50 702
23 women was used. The annual rates of PAP tests, HPV tests and colposcopies during two
24 guideline periods (2nd version 2012–2014 vs 3rd version 2016–2019) were compared. To
25 assess the adherence to guidelines, the subjects were classified as adherent, over- or undertested
26 based on the timing of the appropriate follow-up test.

27 **Results:** The number of PAP tests decreased and HPV tests increased during the 3rd guideline
28 period ($p < 0.01$). During the 3rd guideline period, among 21–29-year-old women, the
29 adherence to guidelines ranged from 38.7% (44.4...50.1) for ASC-US to 73.4% (62.6...84.3)
30 for HSIL, and among 30–59-year-old from 49.0% (45.9...52.2) for ASC-US to 65.7%
31 (58.8...72.7) for ASC-H. The highest rate of undertested women was for ASC-US (21–29y:
32 25.7%; 30–59y: 21.9%). The rates of over-tested women remained below 12% for all cervical
33 pathologies observed. There were 55.2% (95% CI 49.7...60.8) of 21–24-year-old and 57.1%
34 (95% CI 53.6...60.6) of 25–29-year-old women who received an HPV test not adherent to the
35 guidelines.

36 **Conclusions:** Our findings highlighted some shortcomings in the adherence to guidelines,
37 especially among women under 30. The insights gained from this study helps to improve the
38 quality of care and thus, reduce cervical cancer incidence and mortality.

39

40 **Keywords:** cervical cancer, guideline adherence, undertesting, over-testing, optimal care, early
41 detection of cancer, electronic health records, healthcare claims

42 **Word count:** Abstract: 250 words ; Manuscript: 3104 words

43 INTRODUCTION

44 Cervical cancer, one of the most common malignant neoplasms among women [1], is
45 preventable with the timely discovery of pre-cancerous lesions and appropriate treatment [2].
46 Moreover, World Health Organisation has set a target to eliminate cervical cancer as a public
47 health problem [2]. To fulfil this goal, countries have developed their own national guidelines
48 for screening and management of cervical abnormalities, while others adhere to only
49 international ones [8,9]. These guidelines have changed over time together with the evolution
50 of scientific knowledge [3] and try to offer the best protection against cervical cancer while
51 balancing the benefits and harms of the testing and ensuring the effective use of healthcare
52 resources. Therefore, it is crucial that these guidelines are followed and effectively
53 implemented in the practice. Despite this, both underscreening and over-screening has been
54 reported [4–8]. For example, underscreening has remained a challenge in several countries as
55 the adherence to screening guidelines in developed countries is on average 63% [4], ranging
56 from 37% to 82% in Europe [5]. At the same time, a considerable amount of women are tested
57 more often than recommended [6,7,9]. Too frequent testing is not only a financial burden to
58 the healthcare system but can lead to overtreatment and have a negative impact on the
59 reproductive health [10]. While several studies have found difficulties in adopting new
60 guidelines in the US and thus, causing the increase in over-testing [6,7,9], there is a lack of
61 similar studies in Europe.

62 To assure screening benefits, it is crucial to involve and maintain women from screening to
63 treatment and to follow-up along a care continuum. It has been estimated that 12% of invasive
64 cervical cancer cases are attributable to poor follow-up after abnormal PAP test [11]. To date,
65 the data about treatment and follow-up patterns is limited and the need for additional studies
66 has been stressed [12,13]. There are some studies describing the follow-up of abnormal
67 screening results, however, in most cases, the focus is on the timing of the follow-up test

68 [12,14–16], while less attention has been paid to the additional tests [13]. More detailed
69 information about the treatment pathways help to provide better treatment and care for women
70 and reduce the incidence of cervical cancer.

71 Previously, it has been highlighted that there is a considerable amount of research that fails to
72 improve practice as it does not address questions that are important to practitioners, it is not
73 applicable to real-life, patient-centred or available to policy makers [17–20]. To increase the
74 practicability of current study and to ensure that the results are disseminated and implemented
75 into the practice, it has been conducted in close co-operation with Estonian Gynaecologists
76 Society and several practitioners. Moreover, to get better overview of the real situation we
77 incorporated diverse types of real-world data. Thus, in the current study, we utilized nationwide
78 and population-based electronic health record (EHR) and healthcare provision claims data with
79 the aim to investigate the influence of cervical cancer screening guidelines on testing practices,
80 and the adherence to guidelines in the case of follow-up tests.

81

82 **MATERIAL AND METHODS**

83 **Setting**

84 In Estonia, the evidence-based guideline for diagnosing, monitoring, and treatment of
85 precancerous cervical, vaginal, and vulvar conditions is developed and disseminated by the
86 Estonian Gynaecologists Society. In the current cross-sectional study, we focus on the 2nd
87 (2007–2014) and 3rd (2014–2021) versions of the guidelines. During the 2nd version the primary
88 screening test was the PAP test with a one-year interval between the first two tests, which in
89 case of no abnormalities, was followed by a two-year testing interval. The 3rd version of the
90 guideline recommended a three-year testing interval with a PAP test or a five-year interval
91 when HPV or co-testing was applied.

92

93 **Data**

94 In this cross-sectional study we combined data from two health databases with national
95 coverage – EHR and healthcare service provision claims from 01.01.2012 to 31.12.2019. The
96 databases were linked using a unique personal code given to all persons living in Estonia. The
97 data was transferred to Observational Medical Outcomes Partnership (OMOP) common data
98 model (CDM) version 5.3 [22] described in more detail by Oja et al [23]. The study sample
99 consisted of randomly selected 10% of the Estonian female population aged 16–65 years (N =
100 50 702) and followed the age distribution of the whole female population [23]. The study was
101 approved by the Research Ethics Committee of the University of Tartu (300/T-23) and the
102 Estonian Committee on Bioethics and Human Research (1.1-12/653) and the requirement for
103 informed consent was waived.

104 The episodes of cervical cytology together with diagnoses, HPV tests and colposcopies were
105 identified from EHR and claims databases. When one PAP test had multiple diagnoses (eg
106 NILM and LSIL), the most severe pathology was used. Cervical cytology results were
107 categorised according to the Bethesda system criteria:[24] negative for intraepithelial lesion or
108 malignancy (NILM); atypical squamous cells of undetermined significance (ASC-US); low-
109 grade squamous intraepithelial lesions (LSIL); atypical squamous cells cannot exclude high-
110 grade squamous intraepithelial lesions (ASC-H); high-grade squamous intraepithelial lesions
111 (HSIL). The corresponding Standard Nomenclature of Medicine (SNOMED) codes are
112 presented in Table S1.

113

114 **Assessing the effect of guidelines on the testing practices**

115 The data about all PAP tests, HPV tests and colposcopies during 2012–2014 (2nd version) were
116 compared with data from 2016–2019 (3rd version). The year 2015 was considered a transition
117 period and was left out from the comparison. In this analysis, we present the annual testing

118 rates for the target group of the guidelines (21–65-year-old women) and the younger age group
119 (16–20-year-old) who should not receive any testing.

120

121 **Assessing the adherence to cervical cancer prevention and care continuum**

122 *Follow-up of PAP tests*

123 We described the follow-up during the 3rd guideline version (2015–2019) when the PAP result
124 was NILM, ASC-US, LSIL, ASC-H, or HSIL. For each PAP test result under observation a
125 separate cohort was created with similar inclusion criteria: 1) the first corresponding PAP test
126 result was recorded after 01.01.2015 (index event), 2) there was no occurrence of more serious
127 cervical pathology 30 days before and after the index date, 3) no previous diagnosis of the same
128 cervical pathology within three years before the index event was present (not applicable to
129 NILM), 4) a follow-up period after the index date was at least 15 months for cervical
130 pathologies and 3.5 years for NILM. Women with a history of HIV, cervical cancer or
131 hysterectomy were excluded from the analysis. When describing the follow-up of NILM we
132 also excluded women whose PAP test was accompanied by an HPV test, as in the case of co-
133 testing, the recommended testing interval was longer (five years). In this analysis we focused
134 on two age groups: 21–29 and 30–59-year-olds.

135 In Table 1 we present the follow-up tests after NILM and cervical pathologies according to the
136 guidelines together with the adherence and undertested criteria deployed in the analysis. The
137 adherence to guidelines was assessed in terms of timing and appropriate follow-up test. When
138 the appropriate follow-up test was performed in a time interval specified in the guidelines and
139 no additional test was present, the woman was considered as adherent. To provide some
140 flexibility and account for possible shifts caused by appointment scheduling, we allowed a time
141 lag when classifying the test as adherent. For example, according to the guidelines in the case
142 of NILM the follow-up PAP test should be done after three years, however, when the next PAP

143 test was done two years and seven months or three years and four months after the index date,
 144 it was considered adherent. Those women who had a follow-up test according to the guidelines
 145 but in addition had some PAP or HPV test(s) between the index test and an adherent follow-up
 146 test, were classified as over-tested, while women who did not receive any test after the PAP
 147 test, were classified as undertested. Women who did not belong to adherent, over- or
 148 undertested group were left out from current analysis (n = 2997, 32.5%).

149

150 **Table 1.** The follow-up tests of NILM and cervical abnormalities according to the guidelines
 151 and the adherence definition in the analysis.

	Age	Guidelines	Adherent in the analysis*	Undertested in the analysis
NILM	21–59	New PAP test after 3 years	New PAP test between 2.5 to 3.5 years	No test within 3.5 years
ASC-US	21–59	New PAP test after 12 months OR Immediate HPV test	New PAP test between 9–15 months OR HPV test in 3 months	No test within 15 months
LSIL	21–24	New PAP test after 12 months	New PAP test between 9–15 months	No test within 15 months
	25–59	New PAP test after 12 months OR Immediate colposcopy	Co-test between 9–15 months OR Colposcopy in 3 months	
ASC-H	21–59	Colposcopy	Colposcopy in 3 months	No test within 12 months
HSIL	21–59	Colposcopy	Colposcopy in 3 months	No test within 12 months

152 * no additional test between index and follow-up test

153

154 *HPV testing among women aged 21–29 years*

155 The HPV test was not recommended as a screening test in this age group. However, in the case
 156 of cervical pathology ASC-US among 21–24-year-old women and ASC-US or LSIL among
 157 25–29-year-old women, HPV test was allowed. Thus, these age groups were analysed
 158 separately. The index date was the first HPV test between 01.01.2016–31.12.2019. Next, the
 159 preceding PAP test together with its result was identified. The period for the preceding PAP
 160 test was set 12 months before or 30 days after the index date.

161

162 **Data analysis**

163 To describe the overall sample, we calculated the annual rates of PAP tests, HPV tests and
 164 colposcopies per 100 000 women together with 95% confidence intervals (95% CI) using the
 165 midyear population counts for the denominator. Repeated testing within 30 days was
 166 considered duplicates and only the first record was included in the analysis. The threshold of
 167 30 days was chosen to account for different testing and laboratory analysis pathways. The
 168 differences in the number of tests between the two guideline periods were described using
 169 absolute and relative change of rates. The p-values were calculated using a z-test of
 170 proportions, and the statistical significance level was set at $p < 0.05$. When describing the
 171 adherence, under- and over-testing during the 3rd guideline period, ratios together with 95% CI
 172 are presented. The analysis was performed using R v4.1.2.

173

174 **RESULTS**

175 **The study cohort**

176 During the study period, 72.6% of 21–65-year-old and 23.7% of 16–20-year-old women had
 177 received at least one PAP test (Table 2).

178 **Table 2.** PAP tests, HPV tests, and colposcopies in 2012–2019 for 21–65-year-old (n = 47 570)
 179 and 16–20-year-old (n = 7 404) women, in Estonia. The number of tests, women who received
 180 at least one test and their proportion.

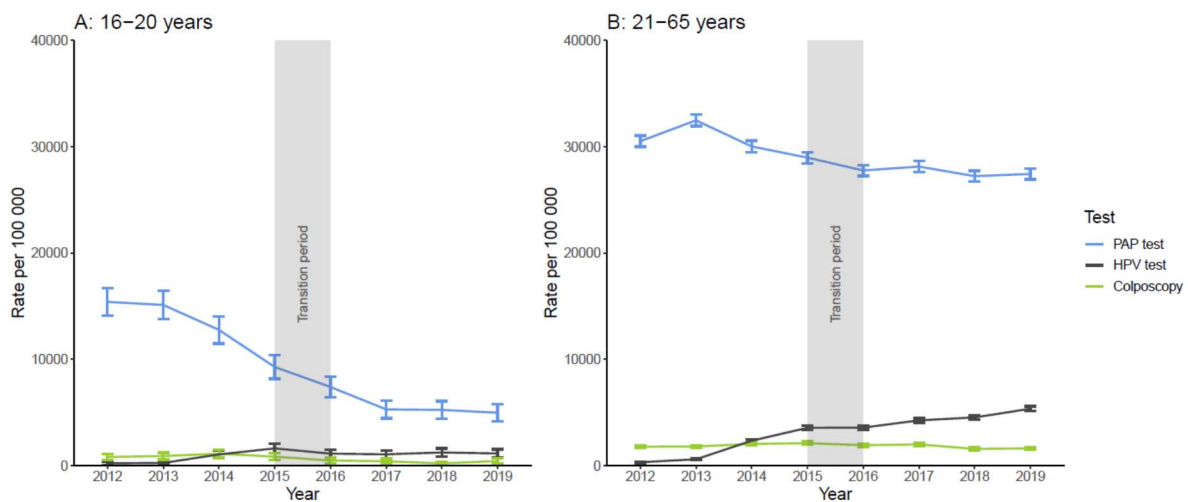
Age:	Procedures (n)		Women received at least one procedure (n (%))	
	16–20y	21–65y	16–20y	21–65y
PAP test	2 567	103 213	1 755 (23.7%)	34 530 (72.6%)
HPV test	236	10 177	206 (2.8%)	7 060 (14.8%)
Colposcopy	178	6 830	135 (1.8%)	3 972 (8.3%)

181

182

183 **The effect of guidelines on the testing practices**

184 During the 3rd guideline period (2016–2019) there was a statistically significant decline in the
185 number of PAP tests and an increase in HPV tests in both age groups compared with the 2nd
186 guideline version ($P < 0.001$) (Table S2). The decline in colposcopies during the 3rd period was
187 present only among 16–20 years-old women ($P < 0.01$) (Table S2). The annual PAP testing,
188 HPV testing and colposcopy rates per 100 000 women is presented in Figure 1.



189

190 **Figure 1.** The rate of women per 100 000 who received PAP tests, HPV tests or colposcopies
191 during 2nd and 3rd guideline versions (2012–2014 vs 2016–2019) in the age groups 16–20 years
192 (A) and 21–65 years (B).

193

194 **Adherence to cervical cancer prevention and care continuum in 2015–2019**

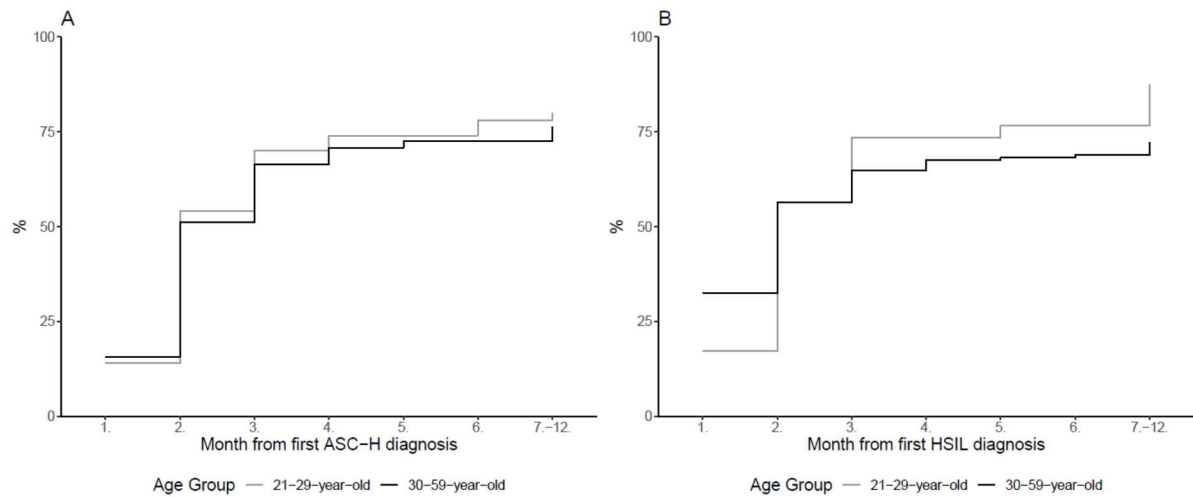
195 The adherence to guidelines after NILM was 22.7% (95% CI 20.4 - 24.8) among 21–29-year-
196 old and 20.5% (95% CI 19.4 - 21.5) among 30–59-year-old women (Table 3).

197

198 **Table 3.** The proportion of adherent, under- and over-tested women based on the PAP test
 199 outcome among age groups 21–29 and 30–59 years.

	N	Adherent % (95% CI)	Undertested % (95% CI)	Over-tested % (95% CI)
21–29 years				
NILM	1373	22.7 (20.4...24.8)	25.1 (22.8...27.4)	17.6 (15.5...19.6)
ASC-US	295	38.7 (44.4...50.1)	25.7 (20.8...30.8)	11.9 (8.2...15.6)
LSIL	142	39.4 (31.4...47.8)	19.0 (12.6...25.5)	12.0 (6.6...17.3)
ASC-H	50	68.0 (55.1...80.1)	8.0 (0.5...15.5)	2.0 (-1.9...5.9)
HSIL	64	73.4 (62.6...84.3)	4.7 (-0.5...9.9)	-
30–59 years				
NILM	5768	20.5 (19.4...21.5)	27.0 (25.8...28.1)	17.1 (16.1...18.1)
ASC-US	975	49.0 (45.9...52.2)	21.9 (19.4...24.5)	9.5 (7.7...11.4)
LSIL	214	51.9 (45.2...58.6)	13.1 (8.6...17.6)	5.6 (2.5...8.7)
ASC-H	178	65.7 (58.8...72.7)	6.7 (3.1...10.4)	0.6 (-0.5...1.7)
HSIL	176	64.2 (57.1...71.3)	11.9 (7.1...16.7)	0.6 (-0.5...1.7)

200
 201 Among 21–29-year-old women, 68.0% (95% CI 55.1 - 80.1) of women with ASC-H and 73.4%
 202 (95% CI 62.6 - 84.3) with HSIL were adherent with the guidelines (Table 3). When looking at
 203 a one-year period, the proportion of 30–59-year-old women receiving colposcopy was 80.0%
 204 (95% CI 68.9 - 91.1) for ASC-H and 87.5% (95% CI 79.4 - 95.6) for HSIL (Figure 2). The
 205 proportion of women with no follow-up activity after ASC-H and HSIL was below 10% (Table
 206 3). In the case of milder pathologies (ASC-US, LSIL) less than half of 21–29-year-old women
 207 were adherent with the guidelines, while 25.7% (95% CI 20.8 - 30.8) of women with ASC-US
 208 and 19.0% (95% CI 12.6 - 25.5) of women with LSIL did not receive any tests within 15 months
 209 after the first corresponding pathology.



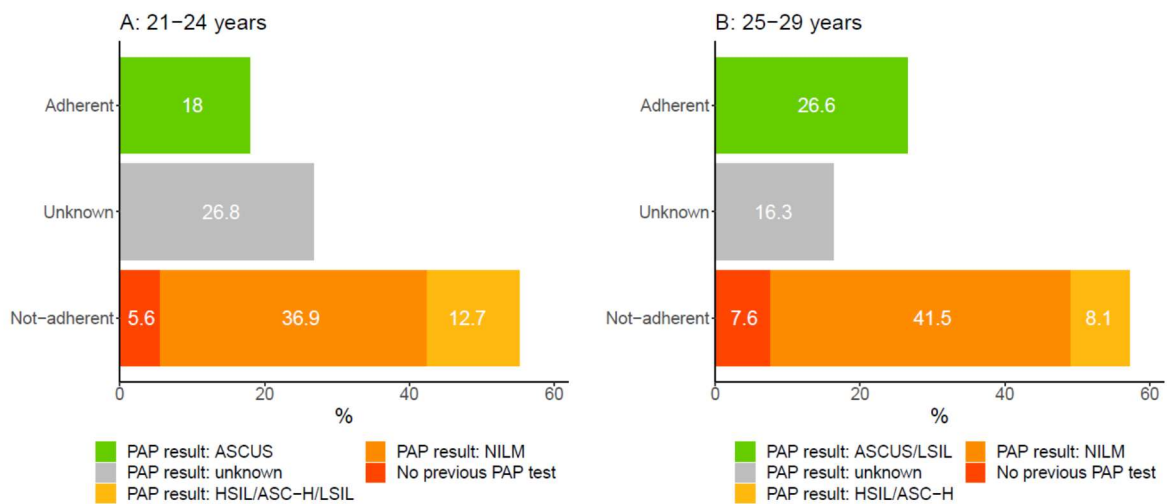
210

211 **Figure 2.** The time of colposcopy after ASC-H (A) and HSIL (B) by age group.

212

213 As for 30–59-year-old women, in the case of cervical pathology the adherence to guidelines
 214 ranged from 49.0% (95% CI 45.9 - 52.2) for ASC-US to 65.7% (95% CI 58.8 - 72.7) for ASC-
 215 H (Table 3). The highest rate of undertested women with a cervical pathology was observed
 216 for ASC-US (21.9%, 95% CI 19.4 - 24.5) and lowest for ASC-H (6.7%, 95% CI 3.1 - 10.4).
 217 When looking at a one-year period, 76.4% (95% CI 70.2 - 82.6) of women with ASC-H and
 218 72.2% (95% CI 65.5 - 78.8) with HSIL received a colposcopy (Figure 2).

219 As for the HPV testing among women aged 21–29 years there were 55.2% (95% CI 49.7 -
 220 60.8) of 21–24-year-old and 57.1% (95% CI 53.6 - 60.6) 25–29-year-old women who received
 221 an HPV test without a preceding PAP test or the result of the preceding PAP test did not require
 222 additional HPV test (Figure 3). The proportion of women whose HPV test was performed
 223 according to the guidelines was 18.0% (95 CI 13.7 - 22.3) among 21–24-year-old and 26.6%
 224 (95% CI 23.5 - 29.7) among 25–29-year-old women.



225

226 **Figure 3.** The distribution of 21–24 (A) and 25–29 (B) year-old women who had their first
 227 HPV test between 2016–2019 based on the preceding PAP test.

228

229 **DISCUSSION**

230 The study extends the current literature on the adherence to cervical cancer screening
 231 guidelines. Our findings indicate that the guidelines have an influence on the practice, and that
 232 overall, the new guideline has been adopted by the practitioners. Still, there are some
 233 shortcomings that need to be addressed. For example, the adherence rates of follow-up ranged
 234 from 40–73% depending on the cervical pathology and age, while better follow-up care was
 235 provided for women with high-grade pathology. A considerable proportion of women were
 236 undertested and thus, did not receive an optimal protection against cervical cancer, while
 237 overtesting was more prevalent among young women under 30. Our results give a good insight
 238 into the quality of care and highlight aspects that need to be addressed to reduce the incidence
 239 and mortality of cervical cancer.

240 After implementing the 3rd version of the cervical cancer screening guidelines, the number of
 241 PAP tests reduced and HPV tests increased. These trends in PAP tests in both age groups and
 242 HPV tests among 21–65-year-old women are consistent with previous studies [8,24,25].
 243 Although some studies have suggested that increasing the testing interval can be a barrier to

244 implementing the guidelines [6,9], this seems not to be the case in our study. It could be
245 hypothesised that the relatively successful adoption of the new guideline can, at least partly, be
246 attributable to the fact that the national gynaecologists society led the whole guideline
247 development and dissemination process.

248 However, our study documented considerable over-testing. First, there was a significant
249 increase in HPV testing among 16–20-year-old women during the 3rd guideline version
250 compared to the previous guideline. As HPV test is not recommended in this age group, this
251 trend can be classified as over-testing. This increase contradicts earlier studies conducted in
252 the US where the number of HPV tests remained steady [25] or had a slight decline [25].
253 Secondly, we observed a substantial over-testing among 21–29-year-old women where more
254 than half of HPV tests did not have a preceding PAP test result as recommended by the
255 guidelines. Thirdly, 12% of young women with ASC-US and LSIL and a fifth with NILM
256 received additional tests before the follow-up test recommended by the guidelines. Therefore,
257 the over-testing tends to be more prevalent among women under 30. Such surplus tests are not
258 only an inefficient use of healthcare resources, but they can cause stress and anxiety for women
259 [27] and negatively impact the reproductive health [10]. Moreover, as the low-grade cytologic
260 findings of young women tend to experience regression without any intervention [10,28],
261 caution is recommended in treating them [29]. It could be hypothesised that the increase in
262 HPV testing among young women is due to the guideline change as HPV test became the
263 primary screening test in the 3rd guideline and the recommended age range was just unnoticed
264 by the practitioners. Our findings suggests that more effort should be made to raise the
265 awareness of clinicians about the recommended testing and treatment pathways among young
266 women.

267 In accordance with the previous findings [12], our study indicates that women with high-grade
268 cervical pathology had better follow-up care than low-grade pathology. This is reflected both

269 in the adherence rates as well as in the proportion of undertested women. The adherence rates
270 for high-grade cervical pathologies (ASC-H and HSIL) ranged in our study from 64% among
271 30–59-year-old with HSIL to 73% among 21–29-year-old with HSIL, which were lower than
272 previously reported in Canada [16] and higher than in the USA [29]. Whereas the adherence
273 rates for low-grade cervical pathologies in our study remained around 39% to 52%. However,
274 it should be highlighted, that despite having a better follow-up care in the case of high-grade
275 cervical pathology, almost a fifth of women with ASC-H and HSIL did not receive a
276 colposcopy within one year. When looking at the proportion of undertested women, the rates
277 of women without any follow-up test were a higher for women with low-grade cervical
278 pathology. Somewhat surprisingly, the lowest proportion of adherent women was in the case
279 of NILM, where only a fifth of women received their next PAP test as recommended in the
280 guidelines, while a quarter of women did not receive any additional testing within three and
281 half years. The proportion of adherent women with NILM in the current study is significantly
282 lower, and the proportion of undertested women higher compared to previously reported
283 [31,32]. Although irregular testing is better than no testing [33,34], the best protection against
284 cervical cancer is provided with regular testing and appropriate follow-up of cervical
285 pathologies [35,36]. Previously it has been shown that the main reason for under-screening is
286 the lack of knowledge of the guidelines among women [37]. Our results highlight the need to
287 improve the overall knowledge about cervical cancer and also an overall health literacy of
288 women. It has been pointed out that difficulty in understanding health information, lower
289 knowledge and worry about cervical cancer contribute to nonadherence to cervical cancer
290 screening [37,38]. In contrast, according to a meta-analysis, better health literacy is associated
291 with higher cervical cancer screening participation [40]. In addition, there are several
292 organizational factors that can support the participation in screening, such as receiving personal
293 reminders via different channels [41,42], or making the participation as convenient as possible.

294 It has been shown that long waiting lists, inappropriate appointment times, and distance from
295 the clinic are some reasons for nonadherence [43]. Therefore, a multidisciplinary approach is
296 needed where both the individual as well as healthcare system are addressed.

297 When interpreting our study results some limitations should be considered. First, there are some
298 completeness issues as 45% of the PAP test had no result reported in the EHR which hinders
299 the long-term analysis of testing patterns. Therefore, our study focused only on the first follow-
300 up test rather than the whole treatment pathway. Second, the short timespan under observation
301 set some restrictions on evaluating the over- and undertesting, which could give a better
302 understanding of implementing the guidelines. Third, the study is also limited by the lack of
303 information on socio-demographic variables. At the same time, the strength of current study is
304 the close co-operation with Estonian Gynaecologists Society and clinical practitioners which
305 helped to identify several knowledge gaps in the implementation of cervical cancer prevention
306 guidelines. We addressed these gaps using real-world data by combining EHR and claims
307 database which store healthcare data for almost all Estonians, both insured and uninsured [23].
308 The results of the study will be used to improve the implementation of the guidelines, plan
309 targeted interventions and nudge the policy makers and other stakeholders to support the
310 effective implementation of the guidelines to provide optimal treatment and care for the women
311 which in long-term should also result in the reduced incidence and mortality of cervical cancer.

312

313 **CONCLUSION**

314 The study gave an important insight of the actual clinical practice and helped to identify several
315 shortcomings in the implementation of cervical cancer prevention guidelines that need to be
316 addressed. The practical input of the study will be used to provide better optimal treatment and
317 better care for the women on national level. For some pathologies and age groups the
318 adherence, overtesting or undertesting patterns seem to be similar internationally, indicating

319 universal trends to be present. However, there is a lack of studies monitoring the guideline
320 adherence for follow-up testing. Thus, more research is needed to reveal both unnecessary and
321 insufficient testing practices and take action against them.

322

323 **Abbreviations**

324 AIS – adenocarcinoma in situ of the cervix

325 ASC-H – atypical squamous cells cannot exclude HSIL

326 ASC-US – atypical squamous cells of undetermined significance

327 EHR – electronic health record

328 HSIL – high-grade squamous intraepithelial lesions

329 LSIL – atypical squamous cells of undetermined significance

330 NILM – negative for intraepithelial lesion or malignancy

331 OMOP – Observational Medical Outcomes Partnership

332

333 **DECLARATIONS**

334 **Ethics approval and consent to participate**

335 The study was approved by the Research Ethics Committee of the University of Tartu (300/T-
336 23) and the Estonian Committee on Bioethics and Human Research (1.1-12/653) and the
337 requirement for informed consent was waived.

338

339 **Consent for publication**

340 Not applicable.

341

342 **Availability of data and materials**

343 There are legal restrictions on sharing de-identified data. According to legislative regulation
344 and data protection law in Estonia, the authors cannot publicly release the data received from
345 the health data registries in Estonia.

346

347 **Competing interests**

348 The authors declare that they have no competing interests.

349

350 **Funding**

351 The research was carried out with the financial support of the Estonian Research Council grant
352 (PRG1844), the European Social Fund via the IT Academy programme, the European Regional
353 Development Fund through EXCITE Centre of Excellence (TK148) and OPTIMA project
354 (grant agreement No. 101034347) through IMI2 Joint Undertaking supported by European
355 Union's Horizon 2020 research and innovation programme and the European Federation of
356 Pharmaceutical Industries and Associations (EFPIA).

357

358 **Authors' contribution**

359 All authors participated in the conceptualisation, planning, revision and editing process and
360 have approved the submitted version. In addition, data, the methodology was developed by
361 KM, MO, ST, AU, RK. The data cleaning, data analysis and visualisations were carried out by
362 MO, ST, MH, KM, MP. The initial draft was written by KM.

363

364 **Acknowledgements**

365 Not applicable.

366 **References**

- 367 1. International Agency of Research on Cancer, WHO. Cancer today [Internet]. 2022 [cited
368 2022 Feb 23]. Available from: <https://gco.iarc.fr/today/>
- 369 2. Global strategy to accelerate the elimination of cervical cancer as a public health problem.
370 Geneva: World Health Organization; 2020.
- 371 3. Bouvard V, Wentzensen N, Mackie A, Berkhof J, Brotherton J, Giorgi-Rossi P, et al. The
372 IARC Perspective on Cervical Cancer Screening. *N Engl J Med*. 2021;385:1908–18.
- 373 4. Gakidou E, Nordhagen S, Obermeyer Z. Coverage of Cervical Cancer Screening in 57
374 Countries: Low Average Levels and Large Inequalities. *PLoS Med*. 2008;5:e132.
- 375 5. Zhang W, Gao K, Fowkes FJI, Adeloje D, Rudan I, Song P, et al. Associated factors and
376 global adherence of cervical cancer screening in 2019: a systematic analysis and modelling
377 study. *Glob Health*. 2022;18:101.
- 378 6. Parekh N, Donohue JM, Men A, Corbelli J, Jarlenski M. Cervical Cancer Screening
379 Guideline Adherence Before and After Guideline Changes in Pennsylvania Medicaid. *Obstet
380 Gynecol*. 2017;129:66–75.
- 381 7. Franklin M, Webel A, Kaelber D, Evans J, Kelley C. Prevalence of Cervical Cancer
382 Overscreening: Review of a Wellness Registry. *CIN Comput Inform Nurs*. 2020;38:459–65.
- 383 8. Qin J, Shahangian S, Saraiya M, Holt H, Gagnon M, Sawaya GF. Trends in the use of
384 cervical cancer screening tests in a large medical claims database, United States, 2013–2019.
385 *Gynecol Oncol*. 2021;163:378–84.
- 386 9. Perkins RB, Anderson BL, Sheinfeld Gorin S, Schulkin JA. Challenges in Cervical Cancer
387 Prevention. *Am J Prev Med*. 2013;45:175–81.
- 388 10. Campaner AB, Fernandes GL. Cervical Cancer Screening of Adolescents and Young
389 Women: Further Evidence Shows a Lack of Clinical Value. *J Pediatr Adolesc Gynecol*.
390 2021;34:6–11.
- 391 11. Spence AR, Goggin P, Franco EL. Process of care failures in invasive cervical cancer:
392 Systematic review and meta-analysis. *Prev Med*. 2007;45:93–106.
- 393 12. Singhal R, Rubenstein LV, Wang M, Lee ML, Raza A, Holschneider CH. Variations in
394 Practice Guideline Adherence for Abnormal Cervical Cytology in a County Healthcare System.
395 *J Gen Intern Med*. 2008;23:575–80.
- 396 13. Jørgensen SF, Andersen B, Rebolj M, Njor SH. Gaps between recommendations and their
397 implementation: A register-based study of follow-up after abnormalities in cervical cancer
398 screening. *Prev Med*. 2021;146:106468.
- 399 14. Kupets R, Lu Y, Vicus D, Paszat L. Are There Flaws in the Follow-Up of Women With
400 Low-Grade Cervical Dysplasia in Ontario? *J Obstet Gynaecol Can*. 2014;36:892–9.

- 401 15. Elit L, Krzyzanowska M, Saskin R, Barbera L, Razzaq A, Lofters A, et al.
402 Sociodemographic factors associated with cervical cancer screening and follow-up of abnormal
403 results. *Can Fam Physician*. 2012;58:e22.
- 404 16. Elit L, Saskin R, Raut R, Elliott L, Murphy J, Marrett L. Sociodemographic factors
405 associated with cervical cancer screening coverage and follow-up of high grade abnormal
406 results in a population-based cohort. *Gynecol Oncol*. 2013;128:95–100.
- 407 17. Ioannidis JPA. Why Most Clinical Research Is Not Useful. *PLOS Med*. 2016;13:e1002049.
- 408 18. Chalmers I, Glasziou P. Avoidable waste in the production and reporting of research
409 evidence. *The Lancet*. 2009;374:86–9.
- 410 19. Gleadhill C, Williams CM, Kamper SJ, Bolsewicz K, Delbridge A, Mahon B, et al.
411 Meaningful coproduction with clinicians: establishing a practice-based research network with
412 physiotherapists in regional Australia. *Health Res Policy Syst*. 2023;21:38.
- 413 20. Graham ID, McCutcheon C, Kothari A. Exploring the frontiers of research co-production:
414 the Integrated Knowledge Translation Research Network concept papers. *Health Res Policy
415 Syst*. 2019;17:88, s12961-019-0501–7.
- 416 21. OMOP Common Data Model, v5.3 [Internet]. 2023. Available from:
417 <https://ohdsi.github.io/CommonDataModel/cdm53.html>
- 418 22. Oja M, Tamm S, Mooses K, Pajusalu M, Talvik H-A, Ott A, et al. Transforming Estonian
419 health data to the Observational Medical Outcomes Partnership (OMOP) Common Data
420 Model: lessons learned. *medRxiv*. 2023;2023.02.16.23285697.
- 421 23. Nayar R, Wilbur D. *The Bethesda System for Reporting Cervical Cytology. Definitions,
422 Criteria, and Explanatory Notes*. Third edition. Springer Cham; 2015.
- 423 24. Hirth JM, Tan A, Wilkinson GS, Berenson AB. Compliance with cervical cancer screening
424 and human papillomavirus testing guidelines among insured young women. *Am J Obstet
425 Gynecol*. 2013;209:200.e1-200.e7.
- 426 25. MacLaughlin KL, Jacobson RM, Radecki Breitkopf C, Wilson PM, Jacobson DJ, Fan C,
427 et al. Trends Over Time in Pap and Pap-HPV Cotesting for Cervical Cancer Screening. *J
428 Womens Health* 2002. 2019/01/07 ed. 2019;28:244–9.
- 429 26. McCaffery K, Waller J, Forrest S, Cadman L, Szarewski A, Wardle J. Testing positive for
430 human papillomavirus in routine cervical screening: examination of psychosocial impact.
431 *BJOG Int J Obstet Gynaecol*. 2004;111:1437–43.
- 432 27. Moore K, Cofer A, Elliot L, Lanneau G, Walker J, Gold MA. Adolescent cervical dysplasia:
433 histologic evaluation, treatment, and outcomes. *Am J Obstet Gynecol*. 2007;197:141.e1-
434 141.e6.
- 435 28. Kyrgiou M, Koliopoulos G, Martin-Hirsch P, Arbyn M, Prendiville W, Paraskeva E.
436 Obstetric outcomes after conservative treatment for intraepithelial or early invasive cervical
437 lesions: systematic review and meta-analysis. *The Lancet*. 2006;367:489–98.

- 438 29. Tosteson ANA, Beaber EF, Tiro J, Kim J, McCarthy AM, Quinn VP, et al. Variation in
439 Screening Abnormality Rates and Follow-Up of Breast, Cervical and Colorectal Cancer
440 Screening within the PROSPR Consortium. *J Gen Intern Med.* 2016;31:372–9.
- 441 30. de la Motte Rouge T, Touboul C, Lhomel C, Rouprêt M, Morère J-F. Factors associated
442 with compliance to cervical cancer screening in France: The EDIFICE 6 survey. *Gynecol
443 Oncol.* 2021;160:112–7.
- 444 31. Rendle KA, Schiffman M, Cheung LC, Kinney WK, Fetterman B, Poitras NE, et al.
445 Adherence patterns to extended cervical screening intervals in women undergoing human
446 papillomavirus (HPV) and cytology cotesting. *Prev Med.* 2018;109:44–50.
- 447 32. Pedersen K, Burger EA, Campbell S, Nygård M, Aas E, Lönnberg S. Advancing the
448 evaluation of cervical cancer screening: development and application of a longitudinal
449 adherence metric. *Eur J Public Health.* 2017;27:1089–94.
- 450 33. Dugué P-A, Lynge E, Rebolj M. Mortality of non-participants in cervical screening:
451 Register-based cohort study: Mortality of non-participants in cervical screening. *Int J Cancer.*
452 2014;134:2674–82.
- 453 34. Arbyn M, Anttila A, Jordan J, Ronco G, Schenck U, Segnan N, et al. European Guidelines
454 for Quality Assurance in Cervical Cancer Screening. Second Edition—Summary Document.
455 *Ann Oncol.* 2010;21:448–58.
- 456 35. Landy R, Pesola F, Castañón A, Sasieni P. Impact of cervical screening on cervical cancer
457 mortality: estimation using stage-specific results from a nested case–control study. *Br J Cancer.*
458 2016;115:1140–6.
- 459 36. Suk R, Hong Y-R, Rajan SS, Xie Z, Zhu Y, Spencer JC. Assessment of US Preventive
460 Services Task Force Guideline–Concordant Cervical Cancer Screening Rates and Reasons for
461 Underscreening by Age, Race and Ethnicity, Sexual Orientation, Rurality, and Insurance, 2005
462 to 2019. *JAMA Netw Open.* 2022;5:e2143582.
- 463 37. Galvin AM, Garg A, Matthes S, Thompson EL. Utilizing a Multidimensional Health
464 Literacy Framework to Assess Cervical Cancer Screening Nonadherence. *Health Educ Behav.*
465 2021;48:710–8.
- 466 38. Grigore M, Popovici R, Pristavu A, Grigore AM, Matei M, Gafitanu D. Perception and use
467 of Pap smear screening among rural and urban women in Romania. *Eur J Public Health.*
468 2017;27:1084–8.
- 469 39. Baccolini V, Isonne C, Salerno C, Giffi M, Migliara G, Mazzalai E, et al. The association
470 between adherence to cancer screening programs and health literacy: A systematic review and
471 meta-analysis. *Prev Med.* 2022;155:106927.
- 472 40. Ruco A, Dossa F, Tinmouth J, Llovet D, Jacobson J, Kishibe T, et al. Social Media and
473 mHealth Technology for Cancer Screening: Systematic Review and Meta-analysis. *J Med
474 Internet Res.* 2021;23:e26759.
- 475 41. Schliemann D, Tan MM, Hoe WMK, Mohan D, Taib NA, Donnelly M, et al. mHealth
476 Interventions to Improve Cancer Screening and Early Detection: Scoping Review of Reviews.
477 *J Med Internet Res.* 2022;24:e36316.

478 42. Kivistik A, Lang K, Baili P, Anttila A, Veerus P. Women's knowledge about cervical
479 cancer risk factors, screening, and reasons for non-participation in cervical cancer screening
480 programme in Estonia. *BMC Womens Health*. 2011;11:43–43.

481