

# 1 **Overview of prognostic factors in adult glioma; a 10-year** 2 **experience at a single institution**

3  
4 Amir Barzegar Behrooz<sup>1,2,3</sup>, Hadi Darzi Ramandi<sup>4,5</sup>, Hamid Latifi-Navid<sup>2,6,7</sup>, Payam  
5 Peymani<sup>8</sup>, Rahil Tarharoudi<sup>3,9</sup>, Nasrin Momeni<sup>3,9</sup>, Mohammad Mehdi Sabaghpour Azarian<sup>10</sup>,  
6 Sherif Eltonsy<sup>8</sup>, Ahmad Pour-Rashidi<sup>3,11\*</sup>, Saeid Ghavami<sup>1,12,13, 14\*</sup>

7  
8 <sup>1</sup>Department of Human Anatomy and Cell Science, University of Manitoba College of  
9 Medicine, Winnipeg, Manitoba, Canada

10 <sup>2</sup>Electrophysiology Research Center, Neuroscience Institute, Tehran University of Medical Sciences,  
11 Tehran, Iran

12 <sup>3</sup>Brain Cancer Research Group, Department of Cancer, Asu vanda Gene Industrial Research Company,  
13 Tehran 1533666398, Iran

14 <sup>4</sup>Department of Biostatistics, Asu vanda Gene Industrial Research Company, Tehran1533666398, Iran

15 <sup>5</sup>Department of Biotechnology, Bu-Ali Sina University, Hamedan, Iran

16 <sup>6</sup>Department of Molecular Medicine, National Institute of Genetic Engineering and Biotechnology,  
17 14965/161, Tehran, Iran

18 <sup>7</sup>School of Biological Sciences, Institute for Research in Fundamental Sciences (IPM), Tehran, Iran

19 <sup>8</sup>College of Pharmacy, Rady Faculty of Health Sciences, University of Manitoba

20 <sup>9</sup>Department of Molecular and Cellular Sciences, Faculty of Advanced Science and Technology,  
21 Tehran Medical Sciences, Islamic Azad University, Tehran, Iran

22 <sup>10</sup>Department of Biotechnology, Asu vanda Gene Industrial Research Company, Tehran 1533666398,  
23 Iran

24 <sup>11</sup>Department of Neurosurgery, Sina Hospital, Tehran University of Medical Sciences, Tehran, Iran

25 <sup>12</sup>Academy of Silesia, Faculty of Medicine, Katowice, Poland.

26 <sup>13</sup>Biology of Breathing Theme, Children Hospital Research Institute of Manitoba, University of  
27 Manitoba, Winnipeg, Manitoba, Canada

28 <sup>14</sup>Research Institute of Oncology and Hematology, Cancer Care Manitoba-University of Manitoba,  
29 Winnipeg, Manitoba, Canada

30 \* These authors have co-senior authorship.

31 \*Correspondence Dr. Ahmad Pour-Rashidi, Department of Neurosurgery, Sina Hospital, Tehran  
32 University of Medical Sciences, Tehran, Iran.

33  
34  
35  
36  
37

## 38 Abstract

39 **Objective:** The most prevalent central nervous system (CNS) neoplasm arising from glial  
40 cells is glioma, which diffusely invades brain tissue. Among gliomas, Glioblastoma (GBM) is  
41 a glioma of the highest grade and associated with a grim prognosis, with a median overall  
42 survival of 15 months with and 3-4 months without therapy. We examined how clinical  
43 variables and molecular profiles may have affected overall survival (OS) at Sina Hospital in  
44 Tehran over the past ten years.

45 **Methods:** A retrospective study was conducted at Sina Hospital in Tehran, Iran, and  
46 examined patients  $\geq 11$  years with confirmed glioma diagnoses between 2012 and 2020. We  
47 evaluated the correlation between OS in GBM patients and sociodemographic as well as  
48 clinical factors, including age, gender, extent of tumor resection, tumor location,  
49 chemo/radiotherapy, and molecular profiling based on IDH1, MGMT, TERT, and EGFR  
50 status. Kaplan-Meier and multivariate Cox regression models were used to assess patient  
51 survival.

52 **Results:** Following a comprehensive evaluation of medical records, 186 patients were  
53 enrolled in the study. The median OS was 20 months, with a 2-year survival rate of 62.5%.  
54 Among the 132 patients with available IDH measurements, 105 (79.5%) exhibited IDH1  
55 wild-type tumors. Of the 132 patients with assessed MGMT methylation, 94 (71.2%) had  
56 MGMT methylated tumors. TERT promoter methylation was detected in 112 out of 132 cases  
57 (84.8%), while no methylation was observed in 20 cases (15.2%). Analyses using  
58 multivariable models revealed that age at histological grade ( $P < 0.0001$ ), adjuvant  
59 radiotherapy ( $P < 0.014$ ), IDH1 status ( $P < 0.026$ ), and TERT promoter status ( $P < 0.030$ )  
60 were independently associated with OS.

61 **Conclusion:** The findings of this study demonstrate that patients with higher tumor  
62 histological grades who had received adjuvant radiotherapy, exhibited IDH1 mutations, or  
63 presented with TERT promoter mutations, experienced improved OS. The median survival  
64 time was 20 months, with 15.6% and 46.9% of patients surviving at 12 and 24 months,  
65 respectively.

66 **Keywords:** Glioma; Glioblastoma; Overall survival; Genomic profiling; Tumor heterogeneity

67

## 68 Introduction

69 Gliomas are primary brain lesions involving cerebral structures without well-defined  
70 boundaries and constitute the most prevalent central nervous system (CNS) neoplasms.  
71 Glioblastoma (GBM) is a glioma of the highest grade with, has a very dismal prognosis.  
72 Gliomas can develop at any age, but are most common in older adults<sup>1,2</sup>. Patients with GBM  
73 under 70 years of age showed a median lifespan of around 14.6 months, even with the best  
74 current standard of treatment, which includes adjuvant chemotherapy with temozolomide  
75 (TMZ) and chemoradiotherapy after tumor excision. Population-based research indicates that  
76 chances of survival decline with age<sup>3,4</sup>.

77        Considering most GBM patients pass away from the illness in under a year and almost  
78 none survive long-term, GBM tumors have attracted a lot of interest in the research  
79 community<sup>5</sup>. Even after extensive surgery, concomitant radiation, adjuvant TMZ, and  
80 rigorous treatment, the median survival period for adult patients is still only around ten  
81 months, which may get up to 14 months with combination treatment and radiation; just 3-5%  
82 of patients live longer than three to five years after diagnosis<sup>6-8</sup>. In addition to patient  
83 characteristics like age and gender, biological variables such as O<sup>6</sup>-methylguanine-DNA  
84 methyltransferase (MGMT) promoter methylation status, 1p/19q deletion, and  $\alpha$  isocitrate  
85 dehydrogenase 1 (IDH1) gene mutation status may impact disease susceptibility and  
86 progression<sup>9</sup>, which makes predicting GBM survival a challenging task.

87        Age at diagnosis, surgical resection, tumor grade, chemo/radiotherapy, and genetic  
88 profiling affect glioma survival. This study evaluated the characteristics of glioma patients  
89 treated at Sina Hospital in Tehran over the past decade. We highlighted and discussed critical  
90 issues such as the importance of molecular profiling in predicting OS, the association of  
91 glioma survival with prognostically favorable clinical factors, and future research priorities  
92 for this patient population.

93

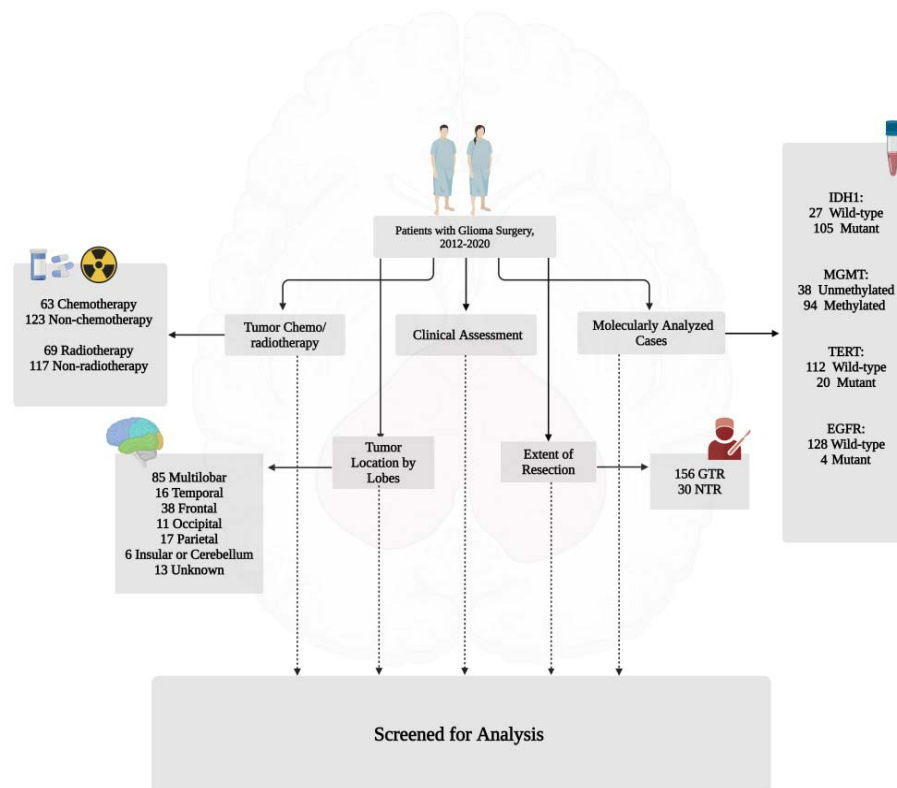
## 94 **Materials and methods**

### 95 **Population characteristics and study design**

96

97 This retrospective study involved patients aged 11 years and older hospitalized at Sina  
98 Hospital in Tehran, Iran, from March 2012 to September 2020. The Ethics and Research  
99 Committee of Tehran University of Medical Science, Neurosurgical Department of Sina  
100 Hospital (IR.TUMS.SINAHOSPITAL.REC.1399.111) approved this project. Included  
101 patients had a confirmed diagnosis of glioma based on histological examination. Various data  
102 points were collected, including age, gender, extent of tumor resection, tumor location,  
103 chemo/radiotherapy details, and genomic profiling information such as IDH1 status, MGMT  
104 methylation, telomerase reverse transcriptase (TERT) promoter mutation, and epidermal  
105 growth factor receptor (EGFR) amplification. Data were obtained by examining patient  
106 hospital records and the use of a data collection form. The classification of all tumors was  
107 performed according to the WHO classification system. The male-to-female ratio and average  
108 age at diagnosis were calculated for each histological subtype. To maintain ethical standards,  
109 patient information was extracted from archived records using pseudonyms to ensure the  
110 confidentiality of participants. This study does not include any patient-specific information.  
111 Patients who underwent emergency operations and those with a Karnofsky Performance  
112 Status (KPS) score below 70 and/or a history of psychiatric diseases were excluded (please  
113 see **Figure 1** for further details).

114



115

116 **Figure 1** Study design and flow chart of patient selection (Created with BioRender.com).

117

## 118 Genetic profile

119 A Qiagen ffpe (formalin-fixed paraffin-embedded) kit was used for sample extraction, Master  
 120 ABI for PCR, and Qiagen q24 qangen Stanford University for pyrosequencing.

121

## 122 Statistical analysis

123 The primary focus of our study was to assess the impact of specific clinical variables and  
 124 molecular profiles on overall survival (OS), defined as the duration from the day of tumor  
 125 diagnosis to the date of death from any cause. To gain insights into the characteristics of the  
 126 patients, we conducted a thorough descriptive analysis. Descriptive statistics were employed  
 127 to summarize continuous measures, including the number of observed values, median,  
 128 standard deviation, median, and range. To examine the differences between subgroups,  
 129 categorized data were compared using the Chi-square ( $\chi^2$ ) test. Furthermore, we employed the  
 130 two-tailed Student's t-test to analyze the age distribution comparison. The reverse Kaplan-  
 131 Meier method was utilized to estimate the median survival time. Survival curves were  
 132 generated using Kaplan-Meier estimates, and differences between the curves were analyzed  
 133 using the log-rank test. A two-tailed  $p$ -value  $< 0.05$  was considered statistically significant.  
 134 We used Cox proportional hazards regression analysis to evaluate the impact of measured  
 135 variables on patient survival in multivariate adjusted models, using a stepwise Wald backward  
 136 selection procedure. All statistical analyses were performed using *R* software version 4.1.0.

137

## 138 **Results**

139 A complete flow diagram of patient selection is provided in **Figure 1**. This study investigated  
140 the association between OS and various factors, including gender, age, distinct tumor grades,  
141 the extent of resection, multiple surgeries, radio- and chemotherapy received, mutational  
142 profiles in IDH1 and TERT, EGFR alterations, and methylation of the MGMT promoter.  
143 Among the cohort of 186 patients meeting the inclusion criteria, a combined treatment  
144 approach incorporating both radiation therapy and chemotherapy was administered to 58  
145 patients. Additionally, 11 patients received radiation therapy as a standalone treatment, while  
146 5 patients exclusively underwent chemotherapy.

147

### 148 **Association between glioma grades and parameters studied**

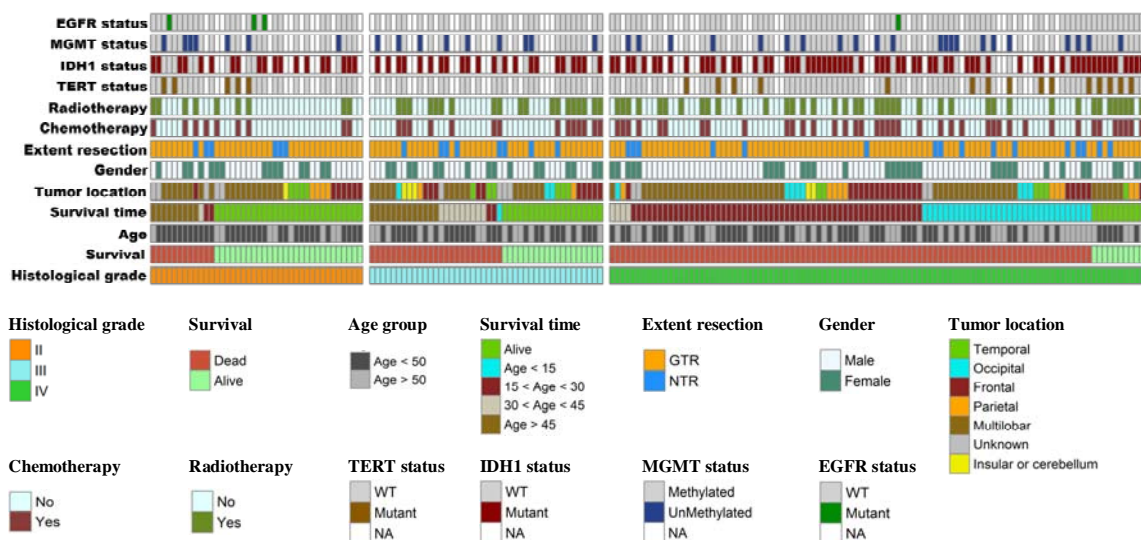
149 **Figure 2** provides an overview of the prevalence of genetic and epigenetic alterations  
150 identified in the 186 glioma patients with available follow-up. A detailed description of the  
151 clinical characteristics and molecular profiling observed in the patients can be found in **Table**  
152 **1**. Patients were grouped based on the degree of glioma. The median age of patients with  
153 grade II, III, and IV tumors was 40.0, 44.5, and 45.5 years, respectively. This patient cohort  
154 with newly diagnosed glioma was comprised of 121 (65.1%) males and 65 (34.9%) females,  
155 as shown in **Figure 3**. The  $\chi^2$  value was estimated to compare the expected ratios with the  
156 observed ratios separately for sex groups, age groups, tumor grade, radiotherapy, and  
157 chemotherapy across different tumor grades. Both men and women demonstrated an increase  
158 in mortality with an increasing degree of glioma (grade IV) (**Figure 4A**). An analysis of  
159 patient age and mortality rates revealed that in both age groups (age < 50 and age  $\geq$  50) the  
160 mortality rate significantly higher in patients with grade IV glioma compared to the other  
161 groups (**Figure 4B**). Mortality rate of patients with grade IV tumors in both the unilobar and  
162 multilobar groups was significantly higher than in patients with grade II and III glioma  
163 (**Figure 4C**). Only patients with grade IV tumors that underwent chemotherapy showed  
164 significantly lower mortality rates and higher survival than patients who did not (**Figure 4D**).  
165 Similarly, patients with grade IV tumors subjected to radiotherapy showed a higher survival  
166 rate compared to those not treated (**Figure 4E**); both chemo- and radiotherapy appeared to  
167 improve survival in grade III patients as well, although these effects did not reach statistical  
168 significance (**Figures 4D, E**).

169

170

171

172



173 **Figure 2** The distribution of molecular and clinical characteristics among the included glioma patient  
 174 population. Molecular classification was arranged by the three histological types of gliomas (grades II,  
 175 III, and IV)

176

177

178

179

180

181

182

183

184

185

186

187

188

189

190

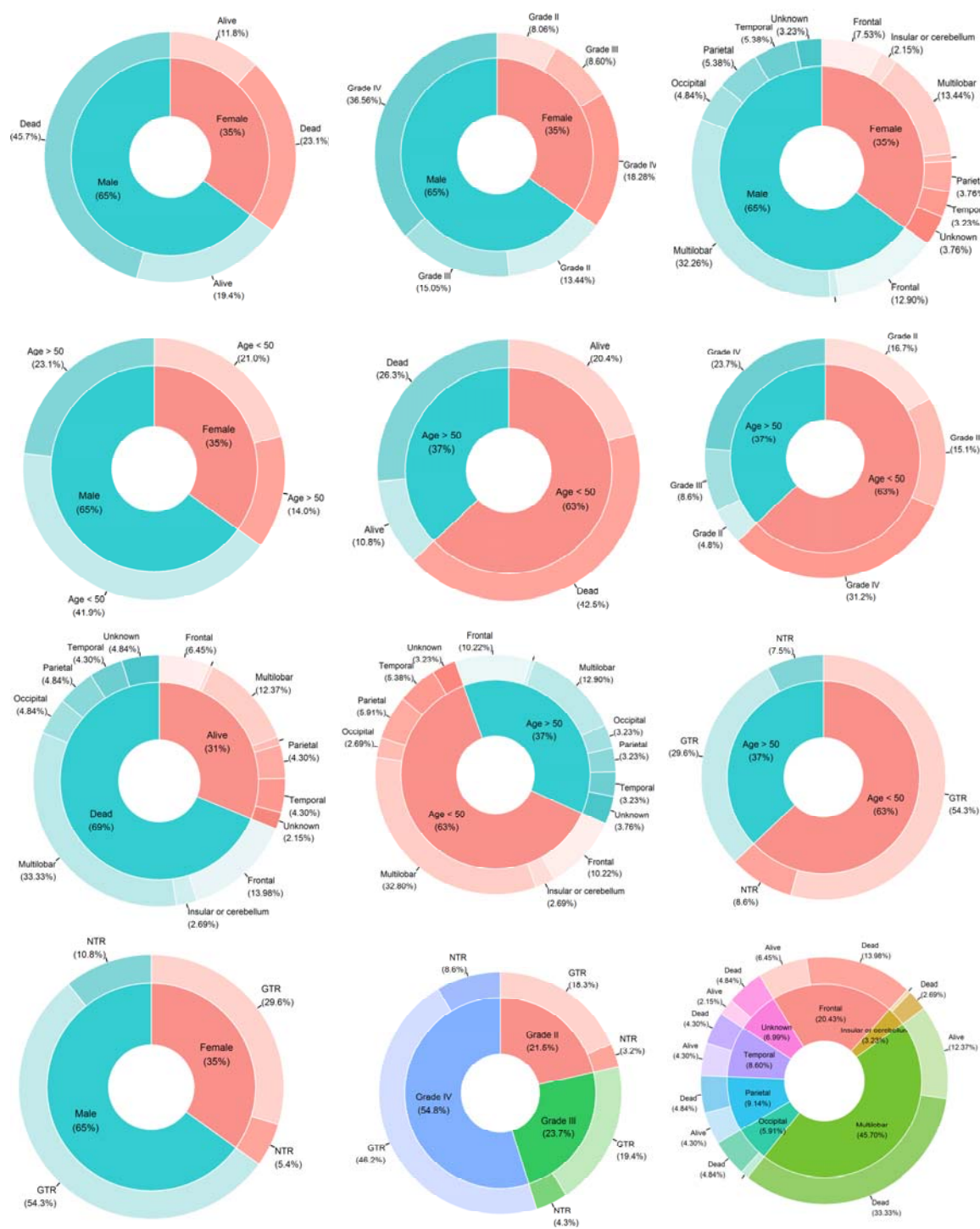
191

192  
193

**Table 1** Characteristics of the 186 patients with glioma in this study

Characteristics	Cases	%
<b>Age group</b>		
< 20 years	8	4.3
20-50 years	109	58.6
> 50 years	69	37.1
Median age (range); years	44.5 (11 – 81)	
<b>Gender</b>		
Male	121	65.1
Female	65	34.9
<b>Distinct tumor grades</b>		
Grade II	40	21.5
Grade III	44	23.7
Grade IV	102	54.8
<b>Extent of resection (EOR)</b>		
Gross-total resection (GTR)	156	83.9
Near-total resection (NTR)	30	16.1
<b>Tumor location by lobe</b>		
Multilobar	85	45.7
Temporal	16	8.6
Frontal	38	20.4
Occipital	11	5.9
Parietal	17	9.1
Insular or cerebellum	6	3.2
Unknown	13	7.0
<b>Survival</b>		
Dead	128	68.8
Alive	58	31.2
Survival $\leq$ 12	20	15.6
12 < Survival $\leq$ 24	60	46.9
24 < Survival $\leq$ 36	18	14.1
Survival $\geq$ 36	30	23.4
<b>Multiple surgeries</b>		
Yes	62	33.3
No	124	66.7
<b>Anesthesia</b>		
Awake	22	12.6
General	152	87.4
<b>Chemotherapy</b>		
Yes	63	33.9
No	123	66.1
<b>Adjuvant radiotherapy</b>		
Yes	69	37.1
No	117	62.9
<b>Radio/chemo therapy</b>		
Yes	58	31.2
No	128	68.8
<b>Type 2 diabetes mellitus</b>		
Yes	14	7.5
No	172	92.5





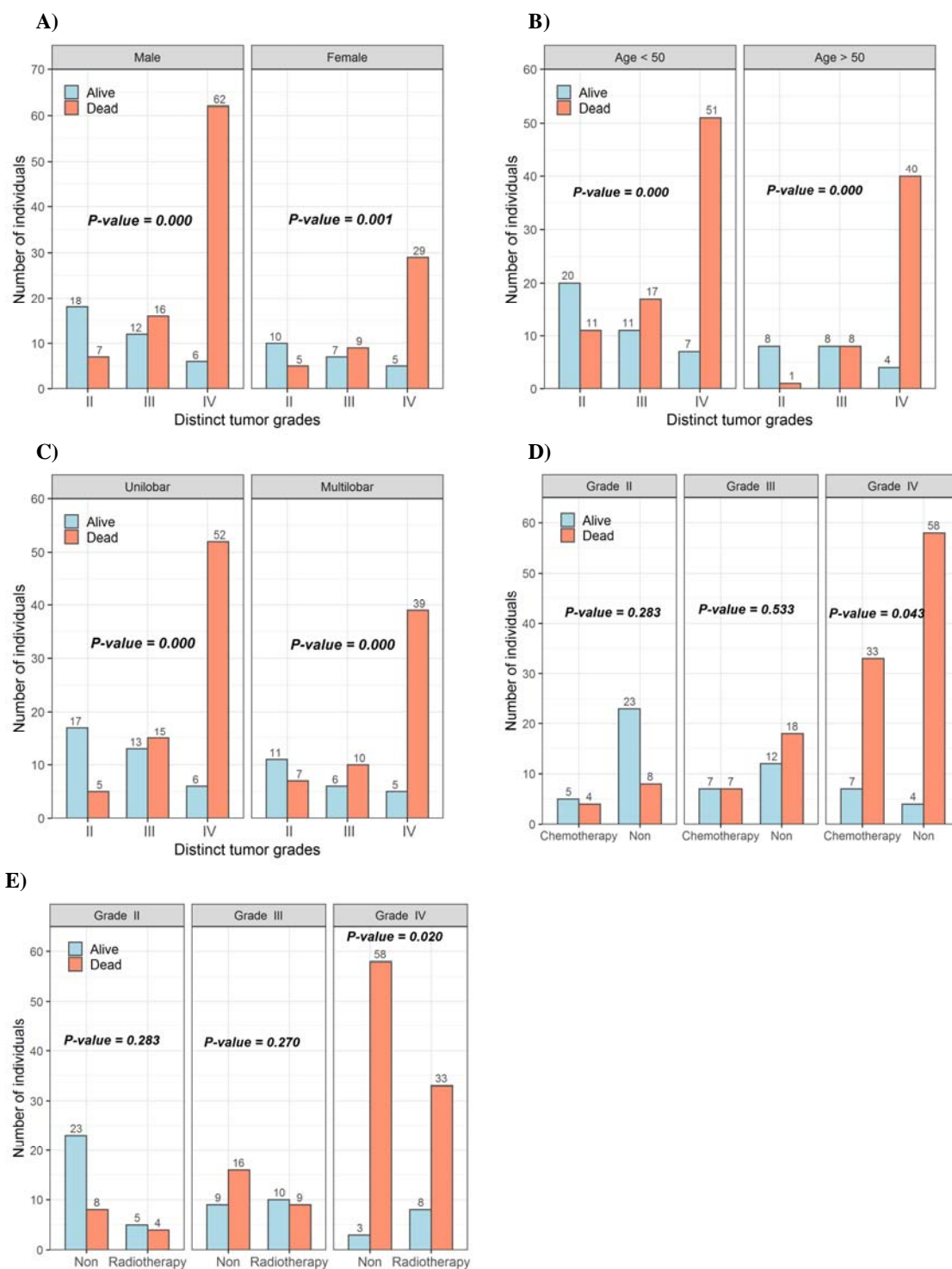
195 **Figure 3** Pie charts showing the frequency of specific characteristics among the 186 patients of the  
 196 studied glioma cohort. The area of each segment is proportional to the number of patients

197

198

199





200 **Figure 4** The ratios of different grades of glioma in the examined groups are shown in (A) gender vs.  
 201 survival, (B) age groups vs. survival, (C) glioma vs. survival, (D) chemotherapy vs. survival, and (E)  
 202 adjuvant radiotherapy vs. survival. The Chi-square test was used to compare the groups

203

204

205

## 206 **IDH1 and EGFR mutation allele frequencies**

207 In this study, the IDH1 and EGFR status was evaluated in tissue samples from each  
 208 patient (**Figure 2**), and the frequencies of IDH1 and EGFR mutations were determined  
 209 (**Tables 2**). It should be noted that genetic profile information was available for 132 out of the  
 210 total 186 patients included in the study. Among the grade II gliomas (n=28), 19 cases (67.8%)  
 211 exhibited IDH1 mutations, while 3 patients (10.7%) had EGFR mutations. In grade III  
 212 gliomas (n=26), 22 cases (84.6%) showed IDH1 mutations, and no EGFR mutations were  
 213 observed. In grade IV gliomas (n=78), 64 patients (82.0%) had IDH1 mutations, and 1 patient  
 214 (1.2%) had an EGFR mutation. Among the 26 grade III glioma samples, 4 cases (15.3%) had  
 215 wild-type IDH1, and 26 cases (100%) had wild-type EGFR. On the other hand, in the 78  
 216 grade IV glioma cases, 14 cases (17.9%) had wild-type IDH1, and 77 cases (98.7%) had wild-  
 217 type EGFR. It is worth noting that the frequency of IDH1 mutations was higher compared to  
 218 EGFR mutations in grade II, III, and IV gliomas. Specifically, we observed only 3, 0, and 1  
 219 mutation(s) in the EGFR gene among grade II, III, and IV gliomas, respectively.  
 220

221 **Table 2** The distribution of IDH1, MGMT, TERT, and EGFR mutations among different histological  
 222 grades of glioma in 132 patients with available genetic profiling

Molecular assay	Different grades of glioma tumor			Total
	Grade II (28)	Grade III (26)	Grade IV (78)	
<b>IDH1 status</b>				
Wild type	9	4	14	27
Mutant	19	22	64	105
<b>MGMT methylation status</b>				
Methylated	21	17	56	94
Non-methylated	7	9	22	38
<b>TERT promoter status</b>				
Wild type	23	26	63	112
Mutant	5	0	15	20
<b>EGFR amplification status</b>				
Wild type	25	26	77	128
Mutant	3	0	1	4

223

## 224 **Allele frequencies of TERT and MGMT genes and clinical response in patients**

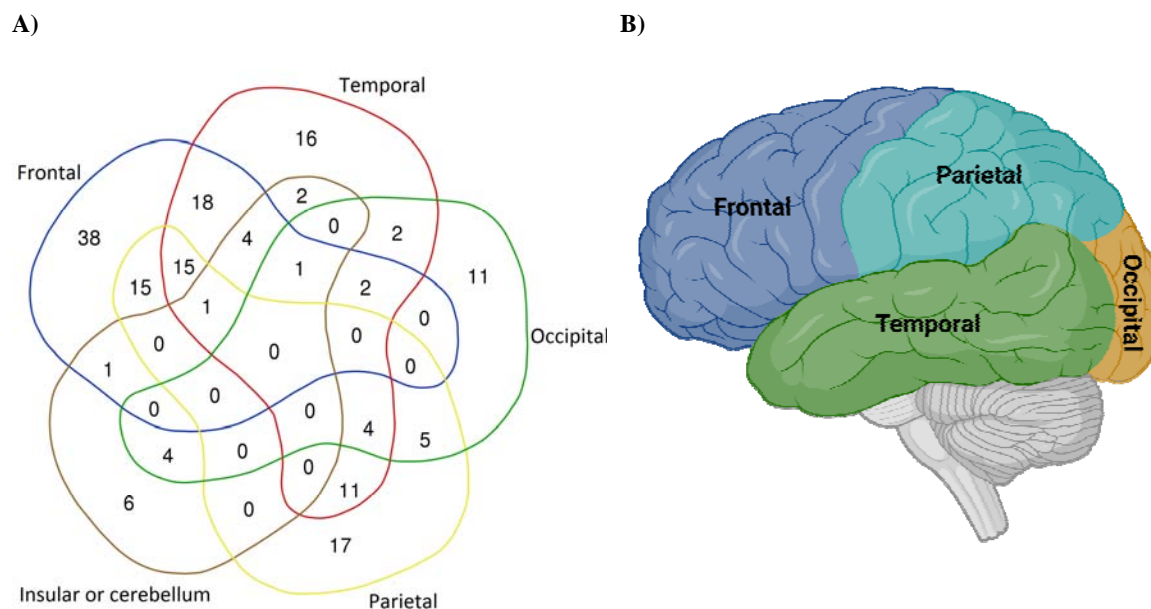
225 In the study cohort of 132 cases, the IDH1, MGMT, TERT, and EGFR status were evaluated  
 226 successfully. Among these cases, 105 (79.5%) exhibited IDH1 mutations, 20 (15.1%) had  
 227 TERT mutations, 94 (71.2%) were classified as MGMT-methylated tumors, and four (3%)  
 228 showed EGFR mutations. MGMT methylation rates were lower (6 patients) in patients with  
 229 IDH1 wild-type tumors and higher (88 patients) in patients with IDH1 mutant tumors. Of the  
 230 186 patients with treatment recorded, 63 (33.9%) and 69 (37.1%) received TMZ and  
 231 radiotherapy, respectively. As of the time of final data collection, 58 patients (31.2%) were  
 232 still alive or lost to follow-up.

233 In this study of 173 patients, tumors in the frontal lobe were the most prevalent (95  
 234 patients), followed by tumors in the temporal lobe (76 patients), parietal lobe (68 patients),  
 235 occipital lobe (29 patients), and insular cortex or cerebellum (19 patients). The most common

236 tumor combinations were observed in the frontal + temporal (18 patients), parietal + frontal  
237 (15 patients) and parietal + frontal + temporal (15 patients) lobes (**Figure 5A**). None of the  
238 patients had tumors in all four brain lobes simultaneously. Occipital lobe tumors tended to  
239 manifest as isolated cases in glioma patients, with 11 out of 29 cases showing no signs of  
240 tumors in other brain lobes (**Figure 3 and 5A**). Anatomically, the location of tumors was  
241 primarily multilobar (85 of 173 patients), with a subset of patients demonstrating frontal  
242 (21.9%, n = 38) and temporal (9.2%, n = 16) gliomas. Other tumor locations included the  
243 parietal lobe (9.8%, n = 17), insular cortex or cerebellum (3.5%, n = 6), and occipital lobe  
244 (6.4%, n = 11) (**Figure 5A**). The tumor location was unknown in 13 patients due to  
245 unavailable clinical follow-up and imaging data.

246 The alluvial plot (**Figure 6**) shows the distribution and relationships between survival  
247 rate, tumor grade, TERT genetic profile, and adjuvant radiotherapy. A considerable number of  
248 patients with tumor grade IV (n = 102) had a high mortality rate (90%). Furthermore, the  
249 chart illustrates that patients who received adjuvant radiotherapy had a significantly lower  
250 mortality rate. The association between the TERT genetic profile and survival rate further  
251 underscores the relevance of genetic characteristics in prognostic evaluations.

252



253 **Figure 5 (A)** Venn diagram illustrating the distribution of 173 patients with tumors in the  
254 “Temporal,” “Frontal,” “Occipital,” “Parietal” and “Insular or cerebellum” lobes of the brain. **(B)** The  
255 lobes of brain (Created with BioRender.com).

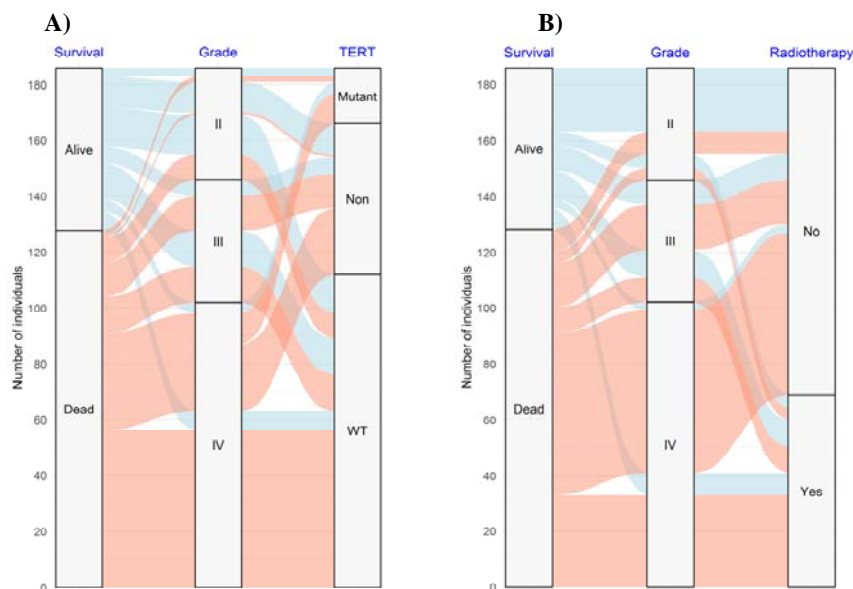
256

257

258

259

260



261 **Figure 6** The alluvial plot showing the distribution of patients, survival subgroup, and histological  
 262 grade in relation to (A) TERT alleles and (B) adjuvant radiotherapy  
 263

264 **Survival analysis**

265 Results of multivariate Cox regression analyses for clinical characteristics and molecular  
 266 profiles, including IDH1, TERT, and MGMT, are presented in **Table 3**. In multivariate  
 267 models, the histological grade of the tumor (HR, 5.70; 95% CI, 3.54-9.18;  $P < 0.0001$ ),  
 268 adjuvant radiotherapy (HR, 0.41; 95% CI, 0.19-0.83;  $P < 0.014$ ), IDH status (HR for IDH1  
 269 mutant status, 2.05; 95%CI, 1.07-4.32;  $P < 0.026$ ), TERT status (HR for unmethylated status,  
 270 2.15; 95% CI, 1.08-3.88;  $P < 0.030$ ) were significantly associated with OS (**Table 3**).  
 271

272 **Table 3** Prognostic univariate and multivariate Cox regression analyses in glioma patients

Characteristic	Patients number	Univariate	Multivariate			
		<i>p</i> -value	<i>p</i> -value	HR	95% CI for HR	
					Lower	Upper
Age, per year (<50 vs >50)	128	0.022*	0.0534	1.0128	0.9998	1.026
Gender (Male vs Female)	128	0.26	0.4336	1.1675	0.7923	1.7204
Histological grade (grades II, III, and IV)	128	$2.9 \times 10^{-13}$ *	$7.67 \times 10^{-13}$ *	<b>5.7041</b>	<b>3.5431</b>	<b>9.1829</b>
Extent of resection (GTR vs NTR)	128	0.55	0.6865	1.1092	0.6705	1.835
Glioma (unilobar vs multilobar)	128	0.84	0.7637	0.9381	0.6185	1.4228
Chemotherapy (Yes vs No)	128	0.76	0.2542	1.4972	0.7481	2.9963
Adjuvant radiotherapy (Yes vs No)	128	0.0047*	0.0142*	<b>0.4017</b>	<b>0.1938</b>	<b>0.8326</b>
IDH1 status (WT vs Mutant)	91	0.83	0.0262*	<b>2.0562</b>	<b>1.0749</b>	<b>4.317</b>
TERT mutation (WT vs Mutant)	91	$2.6 \times 10^{-5}$ *	0.0305*	<b>2.1542</b>	<b>1.0891</b>	<b>3.882</b>
MGMT methylation (WT vs Mutant)	91	0.49	0.4238	0.7986	0.4604	1.385

273 \*  $P < 0.05$ .

274

## 275 **Factors associated with overall survival**

276 The median survival of patients was 20 months (600 days; **Figure 7A**), with 15.6% and  
277 46.9% of patients alive at 12 and 24 months, respectively. Nineteen patients (14.8%) survived  
278 for longer than 48 months (4 years) and were considered long-term survivors. Interestingly,  
279 the four patients who were still alive when the dataset was finalized (OS > 50, 53, 65, and 71  
280 months) exhibited mutated IDH1 and methylated MGMT. Initially, we assessed whether any  
281 genetic alterations were associated with survival through univariate and multivariate analyses  
282 (**Table 3**). A more stringent multivariate analysis, which only incorporates parameters with  $P$   
283 > 0.05 in the univariate analyses, revealed the same parameters were independent prognostic  
284 factors. Glioma patients with IDH1 mutations had a median OS of 21 months compared to  
285 17.5 months for those without an IDH1 mutation (**Figure 7G**). Methylation of MGMT was  
286 associated with a median OS of 20.5 months compared to 19 months in non-methylated cases  
287 (**Figure 7I**). Patients with a TERT promoter mutation exhibited a median OS of 16 months,  
288 whereas patients with a non-mutated TERT promoter had a median OS of 21 months (**Figure**  
289 **7H**). Notably, patients with solely an IDH1 mutation exhibited the most favorable survival,  
290 with a median survival of 21 months. Subsequently, patients with both an IDH1 mutation and  
291 MGMT methylation experienced a slightly lower median survival of 20 months. In contrast,  
292 patients lacking either an IDH1 mutation or MGMT methylation had the shortest median  
293 survival of 16 months. It is worth noting that the molecular profile analysis, specifically  
294 regarding wild-type IDH1 and MGMT methylation, encompassed a limited sample size of  
295 only three patients who exhibited survival durations of 18, 50, and 62 months, respectively.  
296 Furthermore, we conducted an assessment of the prognostic significance of histological grade  
297 and clinical characteristics. Among the histological subgroups, Grades II and III demonstrated  
298 a more favorable prognosis, with median OS durations of 51 and 46 months, respectively.  
299 Conversely, Grade IV was associated with an extremely poor outcome, with an OS of 18  
300 months (**Figure 7B**). Additionally, patients under the age of 50 displayed a more favorable  
301 prognosis, with a median OS of 23 months, compared to the subgroup aged 50 years and  
302 above, which exhibited a median OS of 19 months (**Figure 7D**).

303

304

305

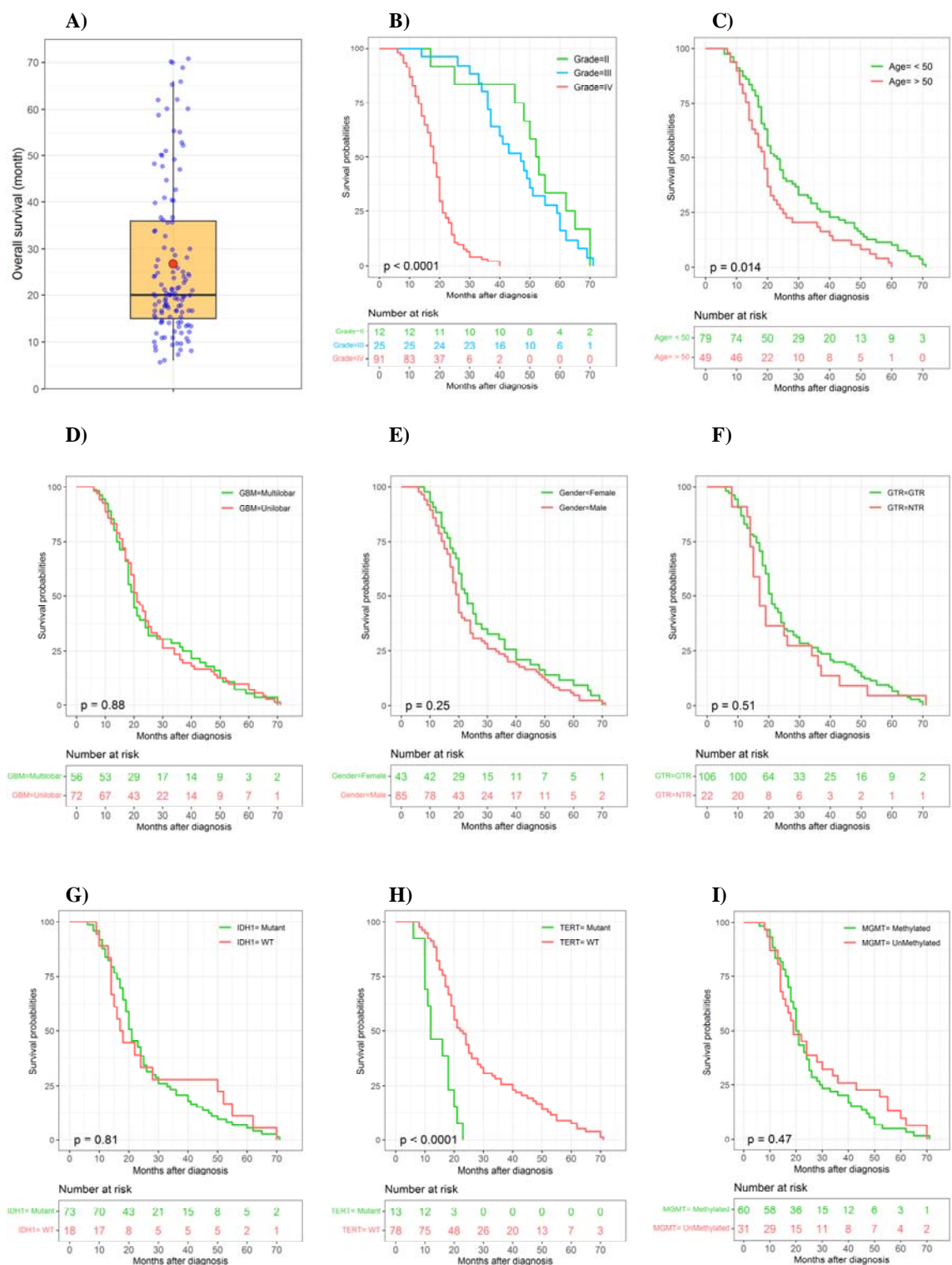
306

307

308

309

310



311 **Figure 7** The distribution of glioma patient survival and Kaplan-Meier curves for overall survival are  
 312 shown for 8 risk groups. (A) The box plot illustrates the overall survival (months) of glioma patients.  
 313 Kaplan-Meier curves show survival probabilities in relation to (B) the histological grade, (C) age  
 314 age groups, (D) uni- and multilobar glioma, (E) gender, (F) extent of resection, (G) IDH1 status, (H)  
 315 TERT status, and (I) MGMT status.



## 316 Discussion

317 Our results showed a difference of 40, 44.5, and 45.5 years in the median age of patients with  
318 grade II, III, and IV tumors, respectively. Gliomas were more common in males than in  
319 females, and the death rate increased with glioma grade, with the highest mortality in grade  
320 IV patients. GBM is the most prevalent malignant brain tumor in adults, accounting for 54%  
321 of all cases. The incidence of GBM increases with age, and the development of illnesses,  
322 especially those affecting the CNS, is more likely among older people. Wild-type IDH GBM  
323 is the most common aggressive primary brain tumor in adults, with an average diagnostic age  
324 of 68–70 years, and progresses rapidly. Elderly (65 and older) GBM patients may have a  
325 worse post-treatment survival rate due to age-related changes, such as diminished immune  
326 system function and persistent neuroinflammation<sup>10,11</sup>. A negative correlation exists between  
327 the age at which GBM is identified and prognosis. The 10-year relative survival rate declines  
328 from 15.2% to 5.7% between 20-44 and 45-54 years of age, respectively<sup>12,13</sup>.

329 The results of the current study show that glioma patients with IDH1 mutations (IDH1mt)  
330 had a median OS of 21 months versus 17.5 months for those without an IDH1 mutation. In  
331 addition, methylation of the MGMT (MGMTmet) was associated with a median OS of 20.5  
332 months versus 19 months in patients with a non-methylated. The combination of IDH1  
333 mutations and MGMT methylation status is a more accurate predictor of survival in  
334 glioblastoma compared to either IDH1 or MGMT alone. Glioblastoma patients were  
335 categorized into 3 distinct genotypes based on the genetic and epigenetic characteristics of  
336 IDH1 and MGMT: GBM patients with IDH1mt/MGMTmet had the longest survival,  
337 followed by patients with IDH1mt/MGMTunmet or IDH1wt/MGMTmet, and patients with  
338 IDH1wt/MGMTunmet had the shortest survival<sup>14</sup>. Improved prognosis has been linked to  
339 tumor molecular characteristics such as MGMT promoter methylation and IDH1 mutation<sup>15-</sup>  
340<sup>17</sup>. Thus, MGMT methylation positively impacts survival and responsiveness to TMZ therapy  
341<sup>15</sup>. In addition, IDH and MGMT co-methylation is linked to a better prognosis and predicts  
342 the response to chemotherapy and surgical resection<sup>16</sup>.

343 Surgical resection, radiation, and TMZ chemotherapy constitute the standard treatment for  
344 GBM. Despite the intensive nature of this therapy, the tumor reoccurs within 7 to 10 months  
345 following surgery in 75-90% of GBM patients<sup>18-20</sup>. A study utilizing molecular testing  
346 revealed distinct genetic profiles among GBM survivors. Notably, mutations in the IDH genes  
347 (IDH1 and IDH2) and methylation of the MGMT promoter were identified as two significant  
348 factors associated with a more favorable response to standard clinical care<sup>21</sup>. Patients with  
349 mutant IDH1/2 GBM exhibited superior outcomes to those with wild-type IDH tumors, with a  
350 survival of 14 and 42 months, respectively<sup>22</sup>. Literature suggests a strong correlation between  
351 TERT gene polymorphisms and an increased risk of glioma in patients<sup>23</sup>. TERT mutations  
352 are also linked to biomarkers such as IDH1, 1p19q, TP53, and EGFR<sup>24</sup>.

353 Gliomas are more prevalent in men than in women. The tumors of glioblastoma patients  
354 showed huge genetic sex differences linked to survival. According to a study on differentially  
355 expressed genes in the tumor clusters, survival in men was impacted the most by genes that  
356 govern cell division. Regarding survival in females, integrin gene expression was the most  
357 critical mechanism for tumor dissemination [23]. Other work indicated that male patients had

358 the lowest cancer-specific survival (CSS) rates throughout localized cancer stages and various  
359 age groupings, which was confirmed by stratified analysis <sup>25, 26</sup>.

360 One study reported that women with IDH1-mutant tumors were concentrated in the group  
361 with the most favorable prognosis, while in males; the mutations were spread out across all  
362 groups. Considering IDH1 mutations have been linked to higher survival in glioblastoma  
363 patients, the longest-surviving female cluster is consistent with this theory. However, this was  
364 not the case for men <sup>25</sup>. Our present study indicates that patients with a mutation in TERT had  
365 a median OS of 16 months compared to 21 months in those without a TERT mutation. In  
366 addition, MGMT methylation status was shown to affect the prognostic value of a TERT  
367 promoter mutation. Only TERT-mutated GBM with MGMT methylation may respond to  
368 TMZ; therefore, TMZ may not benefit all patients with MGMT-methylated GBM <sup>27</sup>. Long-  
369 term follow-up of patients with TERT promoter mutant GBMs showed a high correlation  
370 between the prognosis and the presence of multifocal/distant lesions. There was a associated  
371 between EGFR amp/gain, CDKN2A deletion, and PTEN loss, as well as a negative  
372 correlation between CDK4 and TP53 deletion for the TERTp mutation <sup>28</sup>. EGFR mutations  
373 have been demonstrated to be effective prognostic indicators of OS in IDH-wildtype GBM  
374 patients. Moreover, there is data to suggest that EGFR amplification is evident in high-grade  
375 gliomas (25%). EGFR amplification was also observed to be limited to IDH wild-type (26%)  
376 and TERT mutant (27%) gliomas, occurring irrespective of MGMT promoter methylation  
377 status and being mutually exclusive with 1p/19q co-deletion (LOH) <sup>29</sup>. The functional  
378 connection between EGFR and p53 in GBM is intriguing. Thus, EGFR has been shown to  
379 reduce the activity of wild-type p53 by increasing the interaction between DNA-PKcs and  
380 p53. Either EGFR or DNA-PKc knockdown enhanced the transcriptional activity of wild-type  
381 p53 due to a reduced interaction between p53 and DNA-PKcs. These results revealed a unique  
382 non-canonical regulatory axis between EGFR and wild-type p53 in GBM, with unexpected  
383 biological functions <sup>30</sup>.

384 We observed an apparent difference (although not statistically significant) in the OS of  
385 gross (GTR) versus near total resection (NTR) glioma patients, which is consistent with  
386 findings by Abdelfath et al. <sup>31</sup>. GTR appears to be more beneficial than subtotal resection  
387 (STR) in extending the life of elderly individuals with high-grade glioma <sup>32</sup>. Aggressive  
388 surgical resection should be considered for older GBM patients, especially those with  
389 relatively low KPS. Intraoperative magnetic resonance imaging (ioMRI) does not seem to  
390 provide any significant advantage over intraoperative ultrasonography (ioUS) in experienced  
391 hands in this population. Still, it may significantly prolong the duration of surgery, which is a  
392 modifiable prognostic factor that affects care <sup>33</sup>. Other work showed a correlation between  
393 maximal tumor excision and OS in all categories of glioblastoma patients. Additionally,  
394 maximal resection of non-contrast-enhanced (NCE) tumors was associated with longer OS in  
395 younger patients, independent of IDH status, and in patients with IDH-wild-type  
396 glioblastoma, regardless of the methylation status of the promoter region of the DNA repair  
397 enzyme O<sup>6</sup>-methylguanine-DNA methyltransferase <sup>34</sup>.

398 Within our cohort, the anatomical tumor location was generally confined to a multi-lobe,  
399 primarily multilobar disease (45.6%), with some patients demonstrating tumor growth in the  
400 frontal (20.4%) and temporal (8.6%) lobes. Other tumor locations included the parietal lobe

401 (9.1%), insular cortex or cerebellum (3.2%), and occipital lobe (5.9%). Most glioblastomas  
402 develop in the periventricular white matter areas close to the subventricular zone. MGMT  
403 promoter methylation tumors are more prevalent in the left temporal lobe, particularly in  
404 patients with GBM, an IDH1 mutant tumor, tumors with the proneural gene expression  
405 subtype, or frontal lobe tumors missing PTEN deletion. IDH1 mutation-associated MGMT-  
406 methylated tumors tended to manifest in the left frontal lobe, whereas EGFR-amplified and  
407 EGFR variant 3-expressing tumors occurred most frequently in the left temporal lobe. A  
408 comparable area in the left temporal lobe was associated with excellent radiochemotherapy  
409 response and improved survival<sup>35</sup>. In another study, tumors in the right occipitotemporal  
410 periventricular white matter were substantially related to poor survival in both training and  
411 test cohorts and had a greater tumor volume than tumors in other regions. Right parietal  
412 tumors were associated with hypoxia pathway enrichment and platelet-derived growth factor  
413 receptor (PDGFRA) amplification, deeming these processes appropriate subgroup-specific  
414 treatment targets. Additionally, central tumor placement was associated with a worse  
415 prognosis. In elderly individuals, the distance from the center of the third ventricle to the  
416 contrast-enhancing tumor border may be a practical prognostic indicator<sup>35-37</sup>.

417 Our study recognizes certain limitations, including the utilization of data from a single  
418 center and an underpowered analysis for detecting differences among patient subgroups. The  
419 scarcity of data on comorbidities such as lung infections, renal disorders, seizures, high blood  
420 pressure, and paresthesia emphasizes the necessity for more extensive and standardized data  
421 collection. Moreover, we did not adjust for multiple comparisons. However, the study's  
422 strength lies in its meticulous examination of factors associated with glioma prognosis and  
423 treatment response, presenting valuable insights for clinical decision-making. Additionally,  
424 we highlighted the synergistic impact of specific genetic profiles and radiotherapy, identifying  
425 potential targets for personalized treatment strategies. Despite the acknowledged limitations,  
426 this study offers a comprehensive analysis of crucial factors influencing glioma prognosis and  
427 treatment response.

428

## 429 **Conclusion**

430 The present study aimed to investigate the impact of clinical and molecular factors on the  
431 overall survival of glioblastoma patients. Multivariate Cox regression analysis revealed that  
432 histological tumor grade, adjuvant radiotherapy, IDH status, and TERT promoter status were  
433 significantly associated with overall survival. Notably, patients with IDH1 mutations and  
434 TERT promoter mutations exhibited longer survival. Factors such as extensive tumor  
435 removal, smaller tumor size, and prompt initiation of radiation therapy after surgery were  
436 associated with favorable prognoses. Patients with higher tumor grades had poorer outcomes,  
437 while those who received adjuvant radiotherapy showed improved survival. In conclusion,  
438 this study highlights the importance of molecular and clinical characteristics in predicting  
439 overall survival in glioblastoma patients and provides valuable insights for personalized  
440 treatment strategies.

441

442 **Funding**

443 The Asu Vanda Gene Industrial Research Company, Tehran (1533666398), Iran, provided  
444 funding support for this study.

445 **Ethic**

446 The Ethics and Research Committee of Tehran University of Medical Science, Neurosurgical  
447 Department of Sina Hospital (IR.TUMS.SINAHOSPITAL.REC.1399.111) approved this  
448 study.

449 **Acknowledgement**

450 We appreciate Sina Hospital for providing the required testing facilities and equipment for the  
451 study.

452 **Author contribution**

453 **Amir Barzegar Behrooz:** drafting & editing of the manuscript with input from all authors.  
454 **Hadi Darzi Ramandi:** contributed to data analysis and interpretation, and drafting & editing  
455 of the manuscript. **Hamid Latifi-Navid:** reviewing & editing of the manuscript. **Payam**  
456 **Peymani:** reviewing & editing of the manuscript. **Rahil Tarharoudi, Nasrin Momeni and**  
457 **Mohammad Mehdi Sabaghpour Azarian:** assisted in data curation. **Sherif Eltonsy:**  
458 Reviewing & editing of the manuscript. **Ahmad Pour-Rashidi:** supervised the project and  
459 contributed to the writing, reviewing, and editing. **Saeid Ghavami:** supervision of the project,  
460 resources, and final draft. All authors approved the final document as submitted.

461 **Competing interests**

462 The authors affirm that no conflicts of interest exist.

463 **Data availability statement**

464 The authors confirm that the data supporting the findings of this study are available within the  
465 article.

466

467

468 **References:**

- 469 (1) Dunn, G. P.; Rinne, M. L.; Wykosky, J.; Genovese, G.; Quayle, S. N.; Dunn, I. F.; Agarwalla, P.  
470 K.; Chheda, M. G.; Campos, B.; Wang, A.; et al. Emerging insights into the molecular and cellular  
471 basis of glioblastoma. *Genes Dev* **2012**, *26* (8), 756-784. DOI: 10.1101/gad.187922.112 From NLM.
- 472 (2) Nahid Dadashzadeh Asl1a, T. S. a., Meisam Haghmoradi 3, Ahmad Pour-Rashidi 4, ; Mohammad  
473 Mehdi Sabaghpour Azarian 5, H. H., \*, Vahid Hosseinpour 7, Amir ; Barzegar Behrooz 8. Prevalence  
474 of Central Nervous System Tumors in Iran: A Systematic and Meta-analysis. *Latin American Journal*  
475 *of Pharmacy* **2023**, *42* (10), 8-17.
- 476 (3) Minniti, G.; Lombardi, G.; Paolini, S. Glioblastoma in Elderly Patients: Current Management and  
477 Future Perspectives. *Cancers (Basel)* **2019**, *11* (3). DOI: 10.3390/cancers11030336 From NLM.
- 478 (4) Weller, M.; Wick, W.; Aldape, K.; Brada, M.; Berger, M.; Pfister, S. M.; Nishikawa, R.;  
479 Rosenthal, M.; Wen, P. Y.; Stupp, R.; et al. Glioma. *Nature Reviews Disease Primers* **2015**, *1* (1),  
480 15017. DOI: 10.1038/nrdp.2015.17.
- 481 (5) Zhang, Y. H.; Li, Z.; Zeng, T.; Pan, X.; Chen, L.; Liu, D.; Li, H.; Huang, T.; Cai, Y. D.  
482 Distinguishing Glioblastoma Subtypes by Methylation Signatures. *Front Genet* **2020**, *11*, 604336.  
483 DOI: 10.3389/fgene.2020.604336 From NLM.
- 484 (6) Dubrow, R.; Darefsky, A. S. Demographic variation in incidence of adult glioma by subtype,  
485 United States, 1992-2007. *BMC Cancer* **2011**, *11*, 325. DOI: 10.1186/1471-2407-11-325 From NLM.
- 486 (7) van den Bent, M. J.; Geurts, M.; French, P. J.; Smits, M.; Capper, D.; Bromberg, J. E. C.; Chang,  
487 S. M. Primary brain tumours in adults. *Lancet* **2023**, *402* (10412), 1564-1579. DOI: 10.1016/s0140-  
488 6736(23)01054-1 From NLM.
- 489 (8) Mohammed, S.; Dinesan, M.; Ajayakumar, T. Survival and quality of life analysis in glioblastoma  
490 multiforme with adjuvant chemoradiotherapy: a retrospective study. *Rep Pract Oncol Radiother* **2022**,  
491 *27* (6), 1026-1036. DOI: 10.5603/RPOR.a2022.0113 From NLM.
- 492 (9) Baid, U.; Rane, S. U.; Talbar, S.; Gupta, S.; Thakur, M. H.; Moiyadi, A.; Mahajan, A. Overall  
493 Survival Prediction in Glioblastoma With Radiomic Features Using Machine Learning. *Front Comput*  
494 *Neurosci* **2020**, *14*, 61. DOI: 10.3389/fncom.2020.00061 From NLM.
- 495 (10) Miller, K. D.; Ostrom, Q. T.; Kruchko, C.; Patil, N.; Tihan, T.; Cioffi, G.; Fuchs, H. E.; Waite, K.  
496 A.; Jemal, A.; Siegel, R. L.; et al. Brain and other central nervous system tumor statistics, 2021. *CA*  
497 *Cancer J Clin* **2021**, *71* (5), 381-406. DOI: 10.3322/caac.21693 From NLM.
- 498 (11) Kim, M.; Ladomersky, E.; Mozny, A.; Kocherginsky, M.; O'Shea, K.; Reinstein, Z. Z.; Zhai, L.;  
499 Bell, A.; Lauing, K. L.; Bollu, L.; et al. Glioblastoma as an age-related neurological disorder in adults.  
500 *Neurooncol Adv* **2021**, *3* (1), vdab125. DOI: 10.1093/noonadv/vdab125 From NLM.
- 501 (12) Rabab'h, O.; Al-Ramadan, A.; Shah, J.; Lopez-Negrete, H.; Gharaibeh, A. Twenty Years After  
502 Glioblastoma Multiforme Diagnosis: A Case of Long-Term Survival. *Cureus* **2021**, *13* (6), e16061.  
503 DOI: 10.7759/cureus.16061 From NLM.
- 504 (13) Ostrom, Q. T.; Gittleman, H.; Truitt, G.; Boscia, A.; Kruchko, C.; Barnholtz-Sloan, J. S.  
505 CBTRUS Statistical Report: Primary Brain and Other Central Nervous System Tumors Diagnosed in  
506 the United States in 2011-2015. *Neuro Oncol* **2018**, *20* (suppl\_4), iv1-iv86. DOI:  
507 10.1093/neuonc/noy131 From NLM.
- 508 (14) Molenaar, R. J.; Verbaan, D.; Lamba, S.; Zanon, C.; Jeuken, J. W. M.; Boots-Sprenger, S. H. E.;  
509 Wesseling, P.; Hulsebos, T. J. M.; Troost, D.; van Tilborg, A. A.; et al. The combination of IDH1  
510 mutations and MGMT methylation status predicts survival in glioblastoma better than either IDH1 or  
511 MGMT alone. *Neuro-Oncology* **2014**, *16* (9), 1263-1273. DOI: 10.1093/neuonc/nou005 (accessed  
512 3/4/2024).
- 513 (15) Louis, D. N.; Perry, A.; Reifenberger, G.; von Deimling, A.; Figarella-Branger, D.; Cavenee, W.  
514 K.; Ohgaki, H.; Wiestler, O. D.; Kleihues, P.; Ellison, D. W. The 2016 World Health Organization  
515 Classification of Tumors of the Central Nervous System: a summary. *Acta Neuropathol* **2016**, *131* (6),  
516 803-820. DOI: 10.1007/s00401-016-1545-1 From NLM.
- 517 (16) Molenaar, R. J.; Verbaan, D.; Lamba, S.; Zanon, C.; Jeuken, J. W.; Boots-Sprenger, S. H.;  
518 Wesseling, P.; Hulsebos, T. J.; Troost, D.; van Tilborg, A. A.; et al. The combination of IDH1



- 519 mutations and MGMT methylation status predicts survival in glioblastoma better than either IDH1 or  
520 MGMT alone. *Neuro Oncol* **2014**, *16* (9), 1263-1273. DOI: 10.1093/neuonc/nou005 From NLM.
- 521 (17) Hegi, M. E.; Diserens, A. C.; Gorlia, T.; Hamou, M. F.; de Tribolet, N.; Weller, M.; Kros, J. M.;  
522 Hainfellner, J. A.; Mason, W.; Mariani, L.; et al. MGMT gene silencing and benefit from  
523 temozolomide in glioblastoma. *N Engl J Med* **2005**, *352* (10), 997-1003. DOI:  
524 10.1056/NEJMoa043331 From NLM.
- 525 (18) Ho, V. K.; Reijneveld, J. C.; Enting, R. H.; Bienfait, H. P.; Robe, P.; Baumert, B. G.; Visser, O.  
526 Changing incidence and improved survival of gliomas. *Eur J Cancer* **2014**, *50* (13), 2309-2318. DOI:  
527 10.1016/j.ejca.2014.05.019 From NLM.
- 528 (19) Aldape, K.; Zadeh, G.; Mansouri, S.; Reifenberger, G.; von Deimling, A. Glioblastoma:  
529 pathology, molecular mechanisms and markers. *Acta Neuropathol* **2015**, *129* (6), 829-848. DOI:  
530 10.1007/s00401-015-1432-1 From NLM.
- 531 (20) Omuro, A.; DeAngelis, L. M. Glioblastoma and other malignant gliomas: a clinical review. *Jama*  
532 **2013**, *310* (17), 1842-1850. DOI: 10.1001/jama.2013.280319 From NLM.
- 533 (21) Jovčevska, I. Genetic secrets of long-term glioblastoma survivors. *Bosn J Basic Med Sci* **2019**, *19*  
534 (2), 116-124. DOI: 10.17305/bjms.2018.3717 From NLM.
- 535 (22) Molinaro, A. M.; Taylor, J. W.; Wiencke, J. K.; Wrensch, M. R. Genetic and molecular  
536 epidemiology of adult diffuse glioma. *Nat Rev Neurol* **2019**, *15* (7), 405-417. DOI: 10.1038/s41582-  
537 019-0220-2 From NLM.
- 538 (23) Yuan, Y.; Qi, C.; Maling, G.; Xiang, W.; Yanhui, L.; Ruofei, L.; Yunhe, M.; Jiewen, L.; Qing, M.  
539 TERT mutation in glioma: Frequency, prognosis and risk. *J Clin Neurosci* **2016**, *26*, 57-62. DOI:  
540 10.1016/j.jocn.2015.05.066 From NLM.
- 541 (24) Powter, B.; Jeffreys, S. A.; Sareen, H.; Cooper, A.; Brungs, D.; Po, J.; Roberts, T.; Koh, E. S.;  
542 Scott, K. F.; Sajinovic, M.; et al. Human TERT promoter mutations as a prognostic biomarker in  
543 glioma. *J Cancer Res Clin Oncol* **2021**, *147* (4), 1007-1017. DOI: 10.1007/s00432-021-03536-3 From  
544 NLM.
- 545 (25) Yang, W.; Warrington, N. M.; Taylor, S. J.; Whitmire, P.; Carrasco, E.; Singleton, K. W.; Wu,  
546 N.; Lathia, J. D.; Berens, M. E.; Kim, A. H.; et al. Sex differences in GBM revealed by analysis of  
547 patient imaging, transcriptome, and survival data. *Sci Transl Med* **2019**, *11* (473). DOI:  
548 10.1126/scitranslmed.aao5253 From NLM.
- 549 (26) Tian, M.; Ma, W.; Chen, Y.; Yu, Y.; Zhu, D.; Shi, J.; Zhang, Y. Impact of gender on the survival  
550 of patients with glioblastoma. *Biosci Rep* **2018**, *38* (6). DOI: 10.1042/bsr20180752 From NLM.
- 551 (27) Vuong, H. G.; Nguyen, T. Q.; Ngo, T. N. M.; Nguyen, H. C.; Fung, K. M.; Dunn, I. F. The  
552 interaction between TERT promoter mutation and MGMT promoter methylation on overall survival of  
553 glioma patients: a meta-analysis. *BMC Cancer* **2020**, *20* (1), 897. DOI: 10.1186/s12885-020-07364-5  
554 From NLM.
- 555 (28) Kikuchi, Z.; Shibahara, I.; Yamaki, T.; Yoshioka, E.; Shofuda, T.; Ohe, R.; Matsuda, K. I.; Saito,  
556 R.; Kanamori, M.; Kanemura, Y.; et al. TERT promoter mutation associated with multifocal  
557 phenotype and poor prognosis in patients with IDH wild-type glioblastoma. *Neurooncol Adv* **2020**, *2*  
558 (1), vdaa114. DOI: 10.1093/oaajnl/vdaa114 From NLM.
- 559 (29) Hölzl, D.; Hutarew, G.; Zellinger, B.; Alinger-Scharinger, B.; Schlicker, H. U.; Schwartz, C.;  
560 Sotlar, K.; Kraus, T. F. J. EGFR Amplification Is a Phenomenon of IDH Wildtype and TERT Mutated  
561 High-Grade Glioma: An Integrated Analysis Using Fluorescence In Situ Hybridization and DNA  
562 Methylome Profiling. *Biomedicines* **2022**, *10* (4). DOI: 10.3390/biomedicines10040794 From NLM.
- 563 (30) Ding, J.; Li, X.; Khan, S.; Zhang, C.; Gao, F.; Sen, S.; Wasylshen, A. R.; Zhao, Y.; Lozano, G.;  
564 Koul, D.; et al. EGFR suppresses p53 function by promoting p53 binding to DNA-PKcs: a  
565 noncanonical regulatory axis between EGFR and wild-type p53 in glioblastoma. *Neuro Oncol* **2022**,  
566 *24* (10), 1712-1725. DOI: 10.1093/neuonc/noac105 From NLM.
- 567 (31) AbdelFatah, M. A. R.; Kotb, A.; Said, M. A.; Abouelmaaty, E. M. H. Impact of extent of  
568 resection of newly diagnosed glioblastomas on survival: a meta-analysis. *Egyptian Journal of*  
569 *Neurosurgery* **2022**, *37* (1), 3. DOI: 10.1186/s41984-022-00145-1.
- 570 (32) Han, Q.; Liang, H.; Cheng, P.; Yang, H.; Zhao, P. Gross Total vs. Subtotal Resection on Survival  
571 Outcomes in Elderly Patients With High-Grade Glioma: A Systematic Review and Meta-Analysis.  
572 *Front Oncol* **2020**, *10*, 151. DOI: 10.3389/fonc.2020.00151 From NLM.



- 573 (33) Barak, T.; Vetsa, S.; Nadar, A.; Jin, L.; Gupte, T. P.; Fomchenko, E. I.; Miyagishima, D. F.;  
574 Yalcin, K.; Vasandani, S.; Gorelick, E.; et al. Surgical strategies for older patients with glioblastoma. *J*  
575 *Neurooncol* **2021**, *155* (3), 255-264. DOI: 10.1007/s11060-021-03862-z From NLM.
- 576 (34) Molinaro, A. M.; Hervey-Jumper, S.; Morshed, R. A.; Young, J.; Han, S. J.; Chunduru, P.; Zhang,  
577 Y.; Phillips, J. J.; Shai, A.; Lafontaine, M.; et al. Association of Maximal Extent of Resection of  
578 Contrast-Enhanced and Non-Contrast-Enhanced Tumor With Survival Within Molecular Subgroups of  
579 Patients With Newly Diagnosed Glioblastoma. *JAMA Oncol* **2020**, *6* (4), 495-503. DOI:  
580 10.1001/jamaoncol.2019.6143 From NLM.
- 581 (35) Ellingson, B. M.; Lai, A.; Harris, R. J.; Selfridge, J. M.; Yong, W. H.; Das, K.; Pope, W. B.;  
582 Nghiemphu, P. L.; Vinters, H. V.; Liau, L. M.; et al. Probabilistic radiographic atlas of glioblastoma  
583 phenotypes. *AJNR Am J Neuroradiol* **2013**, *34* (3), 533-540. DOI: 10.3174/ajnr.A3253 From NLM.
- 584 (36) Fyllingen, E. H.; Bø, L. E.; Reinertsen, I.; Jakola, A. S.; Sagberg, L. M.; Berntsen, E. M.;  
585 Salvesen, Ø.; Solheim, O. Survival of glioblastoma in relation to tumor location: a statistical tumor  
586 atlas of a population-based cohort. *Acta Neurochir (Wien)* **2021**, *163* (7), 1895-1905. DOI:  
587 10.1007/s00701-021-04802-6 From NLM.
- 588 (37) Liu, T. T.; Achrol, A. S.; Mitchell, L. A.; Du, W. A.; Loya, J. J.; Rodriguez, S. A.; Feroze, A.;  
589 Westbroek, E. M.; Yeom, K. W.; Stuart, J. M.; et al. Computational Identification of Tumor Anatomic  
590 Location Associated with Survival in 2 Large Cohorts of Human Primary Glioblastomas. *AJNR Am J*  
591 *Neuroradiol* **2016**, *37* (4), 621-628. DOI: 10.3174/ajnr.A4631 From NLM.

592