

1 **TITLE PAGE**

2 **Title- A Phase 1 Study of Novel Antiplatelet Agent to Overcome Pharmacogenomic**

3 **Limitations of Clopidogrel**

4 Dr. Anil Pareek-MD<sup>1\*</sup>, Mr. Nitin Chandurkar-M.Pharm<sup>2</sup>, Mr. Vivek Raut-M.Pharm<sup>3</sup>, Mr. Kumar  
5 Naidu-M.Sc.<sup>4</sup>

6 **Affiliations**

7 <sup>1\*</sup>President, Medical Affairs and Clinical Research, Ipca Laboratories Limited, Mumbai,  
8 Maharashtra, India;

9 <sup>2</sup>Senior Vice President, Clinical Research & Development, Ipca Laboratories Limited, Mumbai,  
10 Maharashtra, India;

11 <sup>3</sup>Deputy General Manager, Clinical Research & Development, Ipca Laboratories Limited,  
12 Mumbai, Maharashtra, India;

13 <sup>4</sup>Assistant General Manager, Clinical Data Management and Statistical Analysis, Ipca  
14 Laboratories Limited, Mumbai, Maharashtra, India.

15 **Short Title-** Antiplatelet Drug Overcoming Clopidogrel's Limitations

16 **Total Word Count:** 4911

17

18

19

20 **Address for correspondence**

21 **Name: Dr. Anil Pareek**

22 **Email:** anil.pareek@ipca.com

23 **Address:** President–Medical Affairs and Clinical Research, Ipca Laboratories Limited, 142 AB,  
24 Kandivali Industrial Estate, Kandivali West, Mumbai – 400067

25 **Contact:** +91-22-66474641

26 **Fax:** +91-22-28686954

27 **ORCID ID:** 0000-0002-5048-1629

28

29

30

31

32

33 **A PHASE 1 STUDY OF NOVEL ANTIPLATELET AGENT TO OVERCOME**  
34 **PHARMACOGENOMIC LIMITATIONS OF CLOPIDOGREL**

35 **Abstract**

36 **Background:** Clopidogrel is the most commonly prescribed thienopyridine as part of dual  
37 antiplatelet therapy for the treatment of cardiovascular diseases. However, Clopidogrel  
38 responsiveness shows variability based on CYP2C19 polymorphism. Therefore, we planned a  
39 study with an objective of evaluating safety, tolerability, pharmacodynamics and  
40 pharmacokinetics of a novel thienopyridine antiplatelet agent AT-10 in healthy Indian subjects in  
41 comparison with standard dosage regimen of Clopidogrel based on their CYP2C19 genotyping.

42 **Methods:** Two CYP2C19 genotype based groups were identified i.e., Poor Metabolizer and  
43 Extensive Metabolizers with 20 subjects in each group (N=40) for participating in a randomized,  
44 two period, cross-over study. Each study period lasted 6 days including administration of loading  
45 and maintenance doses of AT-10 (40mg/10mg) or Clopidogrel (300mg/75mg). The  
46 pharmacokinetics and pharmacodynamics were assessed on day 1 and day 6 at several time  
47 intervals.

48 **Results:** Overall result of pharmacodynamic parameters showed that, mean % Inhibition of  
49 Platelet Aggregation between AT-10 and Clopidogrel in all subjects at Post-dose 6hr (loading  
50 dose) (AT-10: Clopidogrel; 73.30% vs. 18.53%) and Post-dose 6 hr on Day 6 (maintenance  
51 dose) (AT-10: Clopidogrel; 83.41% vs. 51.19 %) obtained from the AT-10 group was  
52 significantly higher than the Clopidogrel group. Further, %inhibition of platelet aggregation  
53 from AT-10 treatment in poor metabolizer group was significantly higher than the Clopidogrel  
54 treatments in extensive metabolizer group.

55 Overall pharmacokinetic comparison in all subjects indicates that AT-10 gives greater exposure  
56 to active Metabolite MP-H4 than Clopidogrel.

57 Conclusion: AT-10 may emerge as a promising anti-platelet drug and can be further developed in  
58 clinical studies for the unmet medical needs of cardiovascular diseases.

59 CTRI Registration: CTRI/2021/03/032206

## 60 Clinical Perspectives

- 61 • AT-10 (2-oxo-Clopidogrel) is a novel thienopyridine P2Y<sub>12</sub> inhibitor under clinical  
62 development in India.
- 63 • It is a Clopidogrel derivative that is metabolically converted to produce the active thiol  
64 metabolite similar to Clopidogrel.
- 65 • The response to AT-10 was found unaffected by genetic CYP2C19 polymorphisms to the  
66 extent of its influence in Clopidogrel, thus eliminating the need for characterization of  
67 Clopidogrel responsiveness and thereby maintaining effectiveness in all patients,  
68 including those patients who are identified as CYP2C19 poor and intermediate  
69 metabolizers.
- 70 • Further studies are required to investigate the influence of CYP2C19 functional  
71 polymorphisms on the response to AT-10 dose in diverse clinical settings, and especially  
72 on the risk of recurrent thrombotic events during AT-10 treatment as compared to  
73 Clopidogrel therapy.

74 **Keywords:** Antiplatelet agent, AT-10, Clopidogrel, CYP2C19 genotype, Pharmacodynamics,  
75 Pharmacokinetics

76 **Abbreviations**

77 ACS- Acute Coronary Syndrome

78 ADP- Adenosine Diphosphate

79 AUC- Area under the curve

80 BMI- Body Mass Index

81 CAD- Coronary Artery Disease

82 CDSCO- Central Drug Standard Control Organization

83 CES-1- Carboxylesterase-1

84 CVD- Cardiovascular Disease

85 CYP- Cytochrome P

86 DES- Drug Eluting Stent

87 EM-Extensive Metabolizers

88 IM- Intermediate Metabolizers

89 LCMS/MS- Liquid Chromatography-Mass Spectrometry

90 LOF- Loss of Function

91 LSMs- Least-squares means

92 PCI- Percutaneous Coronary Intervention

- 93 PD- Pharmacodynamic
- 94 PK- Pharmacokinetic
- 95 PM- Poor Metabolizers
- 96 TEAE- Treatment Emergent Adverse Events
- 97 USFDA- United States Drug and Food Administration
- 98
- 99
- 100
- 101
- 102

## 103 INTRODUCTION

104 Cardiovascular diseases remain the leading cause of mortality worldwide. Estimated 20.5 million  
105 deaths were reported globally due to cardiac conditions in 2021 which showed a marked increase  
106 from 12.1 million CVD deaths recorded in 1990<sup>1</sup>. Of these deaths, more than 50% are secondary  
107 to coronary artery disease, with acute coronary syndrome (ACS) accounting for approximately  
108 10% of all admissions presenting to emergency care physicians<sup>2</sup>. Platelets play a key role in the  
109 development of ACS, as plaque rupture is followed by platelet adhesion, activation, and  
110 aggregation, leading to thrombosis formation<sup>3</sup>. Antiplatelet drugs serve as a first-line  
111 antithrombotic therapy for the management of acute ischemic events and the prevention of  
112 secondary complications in vascular diseases. Numerous antiplatelet therapies have been  
113 developed; however, currently available agents are still associated with inadequate efficacy, risk  
114 of bleeding, and variability in individual response<sup>4</sup>. Dual Antiplatelet therapy with Aspirin and  
115 P2Y12 inhibitors, drugs from thienopyridine class (Ticlopidine, Clopidogrel, and Prasugrel) is  
116 therefore the cornerstone of medical management in patients with ACS, those undergoing  
117 percutaneous coronary Intervention (PCI), prevention of stent thrombosis and is necessary in  
118 both the acute phase and long-term maintenance therapy<sup>5-7</sup>. Despite these benefits, many patients  
119 continue to have recurrent atherothrombotic events while receiving standard dual antiplatelet  
120 therapy<sup>8</sup>. Amongst all P2Y12 inhibitors, Clopidogrel is the most commonly prescribed  
121 thienopyridine with acceptable safety profile. However, the pharmacodynamic response to  
122 Clopidogrel varies widely from subject to subject, and about 25% of patients treated with  
123 standard Clopidogrel doses display low *ex vivo* inhibition of ADP-induced platelet aggregation<sup>9</sup>.  
124 While the use of Clopidogrel has undoubtedly been a beneficial advance in the treatment of ACS

125 with regard to both short and long term morbidity and mortality<sup>10, 11</sup>, it remains a treatment with  
126 several shortcomings.

127 Clopidogrel is a prodrug and its clinical efficacy appears to be a function of the amount of  
128 enzymatically derived active thiol metabolite formed. Clopidogrel is first metabolized to the  
129 intermediate metabolite, 2-oxo-Clopidogrel, followed by metabolism to an active thiol  
130 metabolite *in vivo*. Notably, both metabolic steps leading to thiol formation have been shown to  
131 be predominantly dependent on CYP2C19 and, to a lesser extent, CYP3A4. As a prodrug,  
132 around 85% of Clopidogrel *in vivo* is inactivated by carboxylesterase-1 (CES-1) and the  
133 remaining 15% is converted to the active metabolite H4 via a two-step process in liver, which is  
134 predominantly influenced by cytochrome CYP2C19 polymorphisms. Various CYP enzymes are  
135 involved for converting Clopidogrel to its active metabolite (H4). First metabolic step is  
136 predominantly dependent on CYP2C19 (45%) and second step on CYP3A4 enzyme (40%).  
137 However, involvement of CYP2C19 during second step is only 21%. Since CYP2C19 is  
138 involved in both metabolic steps, any changes in its activity will have significant impacts on the  
139 formation of the active thiol metabolite and hence, on the response to treatment<sup>12,13</sup>. The  
140 metabolism of Clopidogrel to its active metabolite can be impaired by genetic variations in  
141 CYP2C19 or by drugs that inhibit CYP2C19, such as Omeprazole or Esomeprazole.

142 It has been established that not all of the patients receiving Clopidogrel benefit to the same  
143 extent, and it has been shown that patients with a Poor Metabolizers (PM) genotype status for  
144 CYP2C19 are at increased risk of ischemic events after percutaneous coronary intervention<sup>5,14</sup>  
145 suggesting that CYP2C19 polymorphism is a clinically relevant determinant of response to  
146 Clopidogrel. In 2010, the USFDA had imposed a box warning on Clopidogrel bisulfate tablets  
147 (Plavix) stating that “Effectiveness of Clopidogrel bisulfate depends on conversion to an active



148 metabolite by the cytochrome P450 (CYP) system, principally CYP2C19 enzyme. Consider use  
149 of another platelet P2Y12 inhibitor in patients identified as CYP2C19 poor metabolizers”<sup>15</sup>. It  
150 means there is a well-established relationship exists between CYP2C19 deficient  
151 pharmacogenomic populations and Clopidogrel drug response that result in diminished  
152 effectiveness in PMs because of impaired metabolism of Clopidogrel.

153  
154 Patients with carriers of reduced-function CYP2C19 alleles (poor and intermediate metabolizers)  
155 will produce lower levels of Clopidogrel's active thiol metabolite. Due to which such patients  
156 shows diminished platelet inhibition, and are at higher risk of major adverse cardiovascular  
157 events, including a threefold greater risk of stent thrombosis<sup>16,17,18</sup> hence newer antiplatelet are  
158 preferred in such patients. Although, the newer agents like Prasugrel and Ticagrelor are devoid  
159 of such problems (genetic polymorphism) the CV benefits comes with cost of increased bleeding  
160 risk that includes fatal intracranial hemorrhage<sup>19</sup>.

161  
162 There is a considerable heterogeneity observed in the activity of CYP450 enzymes in humans  
163 and it has become apparent that individuals have polymorphisms in CYP2C19 resulting in low or  
164 non responsiveness to Clopidogrel known as ‘Clopidogrel resistance’<sup>16,20</sup>. The frequency of  
165 CYP2C19\*2 allele associated with PM type reported to be 47.23% in Coronary Artery Disease  
166 (CAD) patients in general population in India<sup>21</sup>. Studies conducted by Adithan et. al<sup>22</sup> have  
167 reported incidence of CYP2C19 polymorphism of around 37.9% in south Indian general  
168 population and 35.5% by Kavita et al<sup>23</sup> in western Indian general population.

169

170 In the recently published real-world data composing East Asians who had undergone Drug  
171 Eluting Stent (DES) implantation and received Clopidogrel based antiplatelet therapy indicated  
172 that, Intermediate Metabolizers (IM) or PMs (PM) which was close to 62.1% of the total  
173 population evaluated had a higher risk of cardiac death, myocardial infarction, and stent  
174 thrombosis at 5-year follow-up compared with normal metabolizers<sup>24</sup>. Further, authors have also  
175 reported that the risk of cardiac death, myocardial infarction and stent thrombosis in IMs and  
176 PMs was much higher within 1 year after DES implantation. The most common CYP2C19 loss  
177 of function allele is \*2 with allele frequencies of ~15% in Caucasians and Africans, and 29–35%  
178 in Asians. These data indicates that the prevalence of IM and PM is more in Asian population  
179 than that of the western population<sup>18,24</sup>. This high prevalence of CYP2C19 polymorphism  
180 renders Clopidogrel ineffective or adds variability in effectiveness in poor and intermediate  
181 metabolizers respectively.

182

183 Hence, to overcome the shortcomings of Clopidogrel associated mainly with CYP2C19  
184 metabolism, we have developed a novel antiplatelet agent AT-10 (2-oxo-clopidogrel) , which is a  
185 Clopidogrel derivative that is metabolically converted in one CYP-dependent step, to produce  
186 the active metabolite similar to the approved listed drug Plavix (Clopidogrel bisulfate tablet). A  
187 major advantage of the prodrug AT-10 is its more efficient metabolism through one CYP-  
188 dependent step, as compared to the two-step process for Clopidogrel involving several CYP450  
189 isoenzymes. The metabolic pathway of Clopidogrel and AT-10 (2-oxo-clopidogrel) is depicted in

190 **Figure 1.**

191 The response to AT-10 may not be influenced by genetic CYP2C19 polymorphisms to the extent  
192 of its influence in Clopidogrel, thus eliminating the need for characterization of Clopidogrel

193 responsiveness and thereby maintaining effectiveness in all patients, including those patients  
194 who are identified as CYP2C19 poor and intermediate metabolizers. Prior to this Indian Phase 1  
195 study, one proof of concept clinical study was performed with an objective of evaluating and  
196 establishing the dose-response relationship of single and multiple doses of AT-10 ranging from  
197 7.5 to 40 mg in healthy human subjects. In that proof of concept study, AT-10, 40-mg dose was  
198 found to be comparable to the Clopidogrel 300 mg dose with regard to %IPA at 6 hr following  
199 the single loading dose. Hence, AT-10 40 mg was selected as the loading dose. Since the  
200 maintenance dose of Clopidogrel (75 mg) is 1/4th of the loading dose of Clopidogrel (300 mg),  
201 AT-10 10-mg (1/4th of the loading dose of AT-10 40-mg) was selected as the maintenance dose to  
202 administer in this Phase 1 Indian study. AT-10 was found to be safe and well tolerated in humans  
203 at all doses tested in that proof of concept study. So, in light of promising data obtained from  
204 nonclinical and earlier conducted proof of concept clinical study, we first time evaluated safety,  
205 tolerability, pharmacodynamics and pharmacokinetics of AT-10 in healthy Indian subjects in  
206 comparison with standard dosage regimen of Clopidogrel. It is important to note that AT-10 is an  
207 intermediate metabolite in the metabolic pathway of Clopidogrel to the active metabolite.  
208 Therefore, this study does not represent the first exposure of AT-10 in humans. It does, however,  
209 represent the direct administration of AT-10 to humans.

## 210 **METHODS**

### 211 **Study Design**

212 This was an open label, unicentric, randomized, two-period, two-sequence, crossover,  
213 comparative, single and multiple-dose, Pharmacokinetic (PK) and Pharmacodynamic (PD) study  
214 conducted in healthy human subjects. Two CYP2C19 genotype based groups were identified i.e.,  
215 PM (PM) and EMs (EM) with 20 subjects in each group (N=40). Each metabolizer group was

216 further randomized in 1:1 ratio to receive either Clopidogrel (Plavix, Sanofi Aventis, USA) or  
217 AT-10 (Ipca Laboratories Limited, India) in 2 sequences. Sequence 1 includes administration of  
218 AT-10 on 1<sup>st</sup> period and Clopidogrel on 2<sup>nd</sup> period while sequence 2 was the reversal of sequence  
219 1. All subjects underwent a 2 period treatment regimen; each period treatment lasted for 6 days.  
220 A study period included administration of loading dose (LD) of Clopidogrel 300 mg or AT-10,  
221 40 mg on Day 1 followed by once daily maintenance dose (MD) of either Clopidogrel 75 mg or  
222 AT-10, 10 mg from day 2 to day 6. Then the subjects were crossed over to receive the alternate  
223 therapy for the 2<sup>nd</sup> period. A wash out period of at least 14 days was maintained between the  
224 study periods.

225 On day 1, all subjects fasted for at least 10 hours prior dosing and at least 4 hours post dose in  
226 each period. Water was restricted prior to 1 hour of study drug administration and 1 hour post  
227 dosing in each period. All subjects were housed in the clinical facility from at least 11 hours  
228 prior dosing until at least 24 hours post dosing after administration of last MD in each period.

### 229 **Study Population**

230 Healthy Indian adult male and female subjects of age between 18 to 45 years with body mass  
231 index (BMI) of 18.50 to 29.90 kg/m<sup>2</sup> were enrolled in the study. Prior enrollment, we conducted  
232 CYP2C19 genotyping for categorizing the subjects as EMs (EM; genotype \*1/\*1) or PMs (PM;  
233 genotype \*2/\*2). In order to confirm and cross verify the detected genotypes, the blood samples  
234 of all screened subjects were assessed independently at two different laboratories. Subjects with  
235 matching alleles only at both the testing laboratories were considered for enrollment in the study  
236 provided that such subjects meet the study enrollment criteria. Polymerase Chain Reaction  
237 (PCR) followed by DNA sequence analysis technology was used for genotyping test. Subjects

238 with no evidence of underlying disease, medical history, clinical examination and laboratory  
239 investigations performed during the pre-study screening within 28 days prior to commencement  
240 of the study were included.

241 Subjects with known allergy to Clopidogrel, AT-10 or any component of the formulation and to  
242 any other related class of drug; history or presence of significant cardiovascular, respiratory,  
243 hepatic, renal, hematological, gastrointestinal, endocrine, immunologic, dermatologic,  
244 musculoskeletal, neurological or psychiatric disease; history or presence of significant alcohol  
245 dependence (abuse) or drug abuse within the past 1 year; history of chronic smoking or chronic  
246 consumption of tobacco products; history of difficulty in donating blood and subjects with  
247 known increased risks of bleeding were excluded from the study. Also, Subjects who had  
248 donated blood or loss of blood 50 ml to 100 ml within 30 days or 101 ml to 200 ml within 60  
249 days or > 200 ml within 90 days prior to first dose of study medication were excluded. Subjects  
250 who had consumed any medication known to alter hepatic metabolic enzyme activity within 28  
251 days prior to the initial dose of study medication (e.g. strong CYP3A inhibitors or inducers,  
252 Omeprazole or other proton pump inhibitors) were excluded. Also, Pregnant or lactating women  
253 were not included in the study.

#### 254 **Ethics**

255 The study was done in accordance with the ethical principles of Declaration of Helsinki and  
256 requirements of Good Clinical Practice. It was approved by Sangini Hospital Ethics Committee  
257 and Indian Regulatory Authority [Central Drug Standard Control Organization (CDSCO)]. It was  
258 registered on Clinical Trials Registry India with registration number CTRI/2021/03/032206  
259 [Registered on: 23/03/2021]. Written informed consent was obtained from all the participants'

260 prior participation in the study. No study related procedure was undertaken prior to obtaining  
261 written informed consent from subject.

## 262 **Safety Assessment**

263 Safety assessments were performed by the investigator at screening and continued throughout the  
264 course of the study. Safety evaluations involved assessment of adverse events, coagulation  
265 parameters (PT and PTT), pre-dose and post-dose vital signs, ECGs, clinical laboratory testing  
266 (hematology, blood chemistry, and urinalysis), and general physical and clinical examinations.  
267 Coagulation parameters were also assessed at screening, at housing during each period, at 8 hrs  
268 post-dose on each dosing day and at exit or early termination.

## 269 **Pharmacodynamic Assessment**

270 Pharmacodynamic (PD) assessment i.e. inhibition of platelet aggregation was performed by  
271 using ADP-induced platelet aggregation from whole blood treated with sodium citrate (3.2%) as  
272 an anti-coagulant. The whole blood impedance aggregometry (CHRONO-LOG<sup>®</sup> 592,  
273 Pennsylvania, United States) was used for assessing ADP-induced platelet aggregation. It uses  
274 electrical impedance to measure platelet aggregates in response to agonist addition in whole  
275 blood. As a result, electrical resistance between the wires increase and this change in impedance  
276 is recorded continuously in AGGRO/LINK<sup>®</sup>-WBA software. This change in electrical  
277 impedance is directly proportional to the extent of platelet aggregation and is indicated on the  
278 digital display in ohms (unit) after six minutes. The inhibition of platelet aggregation was further  
279 calculated by using the formula: Platelet Inhibition (%IPA) =  $(1 - \text{Residual Impedance}$   
280  $(\text{amplitude in ohm}) / \text{Baseline Impedance (amplitude in ohm)}) \times 100$ . The PD samples were  
281 analyzed at the clinical site only. Aggregometry was carried-out after stimulation of collected

282 blood sample with 20  $\mu\text{M}$  of ADP. As compared to conventional Light Transmission  
283 Aggregometry (LTA), the impedance aggregometry assesses platelet function under more  
284 physiological conditions as it is performed in whole blood, thus enabling other blood elements to  
285 influence platelet aggregation. Also, it takes place on a solid surface resembling the  
286 physiological process of platelet adhesion and aggregation. The principle of impedance method  
287 is similar to that of LTA except that it is done in whole blood, thus obviating the need for  
288 preparation of a platelet rich and poor plasma which may add variability to the test results.

289 For pharmacodynamic assessment, blood samples were collected into pre-labeled Citrate Tubes  
290 (3.2%). A total of 4 blood samples (2.7 mL each) were collected, prior administration of drug  
291 and at 30 minutes, 2 and 6 hours after the study drug administration on each dosing day.  
292 Additionally, one more blood sample was collected on day 7 after 24 hours of last MD  
293 administration in each period.

#### 294 **Pharmacokinetic Assessment**

295 In each period, blood samples (5 mL each) were collected in pre-labelled Na-Citrate vacutainers  
296 at pre-dose and at 0.25, 0.5, 0.75, 1, 1.5, 2, 3, 4, 6, 8, 12 and 24 h after study drug administration  
297 on Days 1 and 6 for assessment of PK parameters. In between on Day 3, 4 and 5 of each period,  
298 pre-dose sample was also collected.

299 Plasma concentrations of derivatized active metabolite H4 (measured as MP-H4) were  
300 determined using a validated Liquid Chromatography-Mass Spectrometry (LCMS/MS) method.  
301 The PK analysis was performed using a model independent software program (WinNonlin  
302 Professional version 8.3). Maximum concentration ( $C_{\text{max}}$ ), and the time to reach  $C_{\text{max}}$  i.e.,  $T_{\text{max}}$   
303 were obtained from plasma concentration time curves. Then elimination rate constant ( $k$ ),

304 elimination half life ( $t^{1/2}$ ), Clearance (Cl), Volume of distribution ( $V_d$ ) and Area under the curve  
305 (AUC) were calculated following non-compartmental analysis of plasma time course data for  
306 active metabolite MP-H4.

### 307 **Statistical Analysis**

308 For PD analyses, %IPA generated by Aggregometry at different time points among the groups  
309 were assessed. Maximum %IPA for each group was compared using Analyses of variance  
310 (ANOVA) with sequence, treatment, period and subject (sequence) as fixed effects. For the  
311 comparison between types of metabolizers, the ANOVA model with types of metabolizers as  
312 fixed effect was used. Least-squares means (LSMs) with 95% CI was calculated by ANOVA for  
313 each comparison.

314 To estimate the PK parameters, statistical comparison of the overall PK (Day 1 and Day 6),  
315 single-dose and multiple-dose PK parameters of peak ( $C_{max}$ ) and total ( $AUC_t$ ,  $AUC_{inf}$ )  
316 exposure of MP-H4 were made between the AT-10 and Clopidogrel dose groups; between and  
317 within metabolizer groups. Geometric means were calculated for  $C_{max}$ ,  $AUC_t$  and  $AUC_{inf}$ .  
318 ANOVA was performed on the ln-transformed PK parameters  $C_{max}$ ,  $AUC_t$  and  $AUC_{inf}$ .  
319 Geometric means and its 90% CI were given for all parameters in each phenotype.

320 Data were presented using descriptive statistics i.e. n (%) for categorical variables and mean, SD,  
321 minimum and maximum for continuous variables. according to the regulatory guidelines.  
322 Significance was calculated using P values;  $p < 0.05$  was considered statistically significant. All  
323 the statistical analyses were performed using SAS version 9.4.

324



## 325 **RESULTS**

### 326 **Subject enrollment and Demographics characteristics**

327 A total of 40 subjects were enrolled in the study. Two CYP2C19 genotype based groups were  
328 identified i.e., PM and EMs with 20 subjects in each group. Out of 40 enrolled subjects, 37  
329 subjects had completed the study. Remaining 3 subjects were discontinued from the study due to  
330 adverse event (n=2) and consent withdrawal (n=1). The two treatment groups were well balanced  
331 with regards to all baseline characteristics. Demographic characteristics of these subjects are  
332 given in **Table 1**.

### 333 **Pharmacodynamic Results**

334 The ADP induced platelet aggregation was assessed for change from baseline in each treatment  
335 group at each time point assessed on each dosing day for PD analysis. The inhibition of ADP-  
336 induced platelet aggregation occurred rapidly, reaches peak at around 6 hr and inhibition was  
337 sustained until 24hr post dose. The mean %IPA over 6 days of drug administration (loading and  
338 maintenance dose) is shown in **Figure 2** for both AT-10 and Clopidogrel.

339 The mean %IPA between PMs and EMs in AT-10 group showed that, %IPA at Post-dose 6 hr on  
340 day 6 (MD) obtained from the AT-10 in EMs group appeared to be higher than the AT-10  
341 treatments in PMs group. However, the difference between the AT-10 treatments in EMs versus  
342 AT-10 treatments in PMs was found to be statistically insignificant at post dose 6 hr LD and post  
343 dose 24 hr after day 6 (MD). The mean %IPA was found to be comparable in poor and EMs in  
344 AT-10 group. It means AT-10 produces equivalent PD effect in both extensive and PMs and the  
345 antiplatelet effect of AT-10 is not affected by the genotyping metabolizing status of the  
346 volunteers. Although %IPA post 6 hr on day 6 was significant, it was more than 70% in PMs.

347 That should be enough to be efficient. This indicates that the PD response to AT-10 may not be  
348 influenced by CYP2C19 polymorphisms in PMs (**Table 2**).

349 On the contrary, following loading and maintenance dose post 6 hr on Day 6 in Clopidogrel  
350 treatment group the mean %IPA was found to be significantly higher for EMs as compared to  
351 PMs. In PMs, %IPA observed was half of that observed in EM. This indicates that the PD  
352 response to Clopidogrel following loading and maintenance dose is influenced by CYP2C19  
353 polymorphisms resulting in less PD effect in PMs than that in EMs which is consistence with  
354 data reported for Clopidogrel in various studies<sup>25,26</sup>. (**Table 2**)

355 Further, when we compared the mean %IPA between AT-10 PMs and Clopidogrel EMs, the  
356 %IPA at Post-dose 6hr (LD) obtained from the AT -10 treatment in PM group was statistically  
357 significant with that of Clopidogrel treatments in EMs group. However, %IPA at Post-dose 6 hr  
358 on Day 6 (MD) and Post-dose 24 hr after Day 6 obtained from the AT-10 treatment in PM group  
359 appears to be statistically insignificant than the Clopidogrel treatments in EMs group. This  
360 indicates that the response to AT-10 is not influenced by CYP2C19 polymorphisms, hence  
361 patients including those who are CYP2C19 Poor Metabolizers, may receive clinical benefits  
362 from AT-10 treatment (**Table 3**).

363 Moreover, the overall result of PD parameters showed that, mean %IPA between AT-10 and  
364 Clopidogrel in all subjects at Post-dose 6hr (LD), Post-dose 6 hr on Day 6 and Post-dose 24 hr  
365 after Day 6 obtained from the AT-10 group was significantly higher than the Clopidogrel group.  
366 Similarly, following loading and maintenance dose, the mean %IPA for AT-10 treatment group  
367 was significantly higher than that observed with Clopidogrel treatment group in both poor and  
368 EMs (**Figure 2**).

## 369 **Pharmacokinetic Results**

370 AT-10 is a Clopidogrel derivative that is metabolically converted to produce the active  
371 metabolite (MP-H4) of the approved listed drug Plavix (Clopidogrel bisulfate). The PK  
372 parameters for MP-H4 for all subjects have been presented in **Table 4** after administration of  
373 AT-10 and Clopidogrel.

374 Analysis of MP-H4 between AT-10 and Clopidogrel in all subjects at Day 6 showed that, C<sub>max</sub>  
375 (AT-10: Clopidogrel; 2.68 ng/mL Vs 1.07 ng/mL p = 0.0001) and AUC<sub>t</sub> (AT-10 : Clopidogrel;  
376 3.27 hr\*ng/mL Vs 1.09 hr\*ng/mL p = 0.0000) of pharmacologically active metabolite MP-H4  
377 are significantly higher in AT-10 treatment than Clopidogrel indicates that AT-10 at 10mg gives  
378 greater exposure of MP-H4 metabolite than Clopidogrel 75mg. MP-H4 metabolite is responsible  
379 for pharmacological and therapeutic action; hence pharmacodynamic effect (anti-platelet effect)  
380 expected at steady state with AT-10 treatment can be greater than Clopidogrel treatment  
381 regardless of genotyping status. The mean plasma concentration curve after administration of  
382 loading and maintenance dose of AT-10 and Clopidogrel is shown in **Figure 3**.

383 Overall, there is a statistically significant difference observed between AT-10 and Clopidogrel  
384 treatment for assessed pharmacokinetic parameters. This indicates that 40mg LD and 10mg MD  
385 of AT-10 gives greater exposure of H4 (measured as MP-H4) metabolite than Clopidogrel 300  
386 mg loading and 75mg maintenance dose.

## 387 **Safety assessment**

388 All enrolled subjects were eligible for safety analysis. Treatment emergent adverse events  
389 (TEAE) occurred during the study are summarized in **Table 5**. A total of 11 TEAEs were  
390 observed in 7 participants where 5 AEs were mild, 1 AE was moderate and 5 AEs were severe.

391 Nine of these events were possibly related and 2 were unlikely related to the study drug. No  
392 serious adverse events were reported during the course of study. Hence, both the treatments were  
393 found to be safe and well tolerated in all study population despite the differences in their  
394 genotyping status.

## 395 **DISCUSSION**

396 Despite of newer antiplatelet agents (P2Y12 inhibitors), Clopidogrel is the most widely  
397 prescribed thienopyridine with acceptable safety profile; however has major shortcoming  
398 associated with CYP2C19 genetic polymorphism. After more than a decade following the  
399 introduction of dual antiplatelet therapy as the standard of care in the setting of ACS and PCI<sup>11,27</sup>  
400 significant concerns with the effectiveness of Clopidogrel were raised, mainly non-  
401 responsiveness to therapeutic effects resulting from CYP polymorphisms<sup>28,29</sup>.

402 To overcome the limitations of Clopidogrel associated with CYP2C19 metabolism, Ipca has  
403 developed a novel antiplatelet drug AT-10, that is metabolically converted to produce the active  
404 metabolite of the approved listed drug Plavix (Clopidogrel bisulfate). A major advantage of the  
405 AT-10 is its more efficient metabolism as compared to the two-step process for Clopidogrel  
406 involving several CYP450 isoenzymes. This study is the first to evaluate the PD, PK, safety and  
407 tolerability of AT-10 in Indian subjects. We have also emphasized the effect of a person's CYP  
408 genotype on pharmacological profiles of AT-10 (test drug) and Clopidogrel (reference drug) as  
409 previously published studies have shown impact of CYP2C19 polymorphism on Clopidogrel  
410 responsiveness up to a major extent<sup>16,25,30,31</sup>.

411 This study met its primary objective and showed that AT-10 is safe and well-tolerated when  
412 administered as LD of 40mg followed by 10mg MD for 5 consecutive days. Safety findings from

413 all enrolled subjects did not show any clinically significant trends or abnormalities in liver  
414 function tests, clinical chemistry, hematology, and coagulation. Most of the AEs were relatively  
415 minor in nature and were considered possibly and unlikely related to study drug treatment.  
416 Results from vital signs and ECGs were unremarkable. The overall number of subjects with  
417 TEAEs was similar in two treatment groups. No bleeding or other signs of bleeding were  
418 reported in the subjects for both the treatments.

419 Following loading and maintenance dose, the mean %IPA for AT-10 treatment group was  
420 significantly higher than that observed with Clopidogrel treatment group in overall study  
421 population, poor and EMs. It means AT-10 produces higher platelet inhibition than the  
422 Clopidogrel following loading and maintenance doses not only in EMs but also in PMs. Hence  
423 AT-10 is likely to benefit all patients irrespective of their genotyping status.

424 The single and multiple dose pharmacokinetics of active metabolite (H4) have been assessed.  
425 From the PK data it was observed that, in overall population for MP-H4 the concentration and  
426 extent of exposure (C<sub>max</sub> and AUC) following loading and maintenance dose are significantly  
427 higher in AT-10 treatment group than Clopidogrel treatment. Similarly, in both extensive and  
428 PMs the concentration and extent of exposure (C<sub>max</sub> and AUC) following loading and  
429 maintenance dose are significantly higher in AT-10 treatment group than Clopidogrel treatment  
430 for MP-H4. It means the pharmacokinetics of Clopidogrel is influenced by genetic CYP2C19  
431 polymorphisms to a greater extent than its influence in AT-10 treatment group. As per the  
432 published literature<sup>32</sup> a strong correlation between H4 plasma exposure and platelet inhibition  
433 exists, demonstrating that individuals with highest exposure to H4 active metabolite have the  
434 greatest antiplatelet response. Since H4 metabolite of Clopidogrel is responsible for

435 pharmacological and therapeutic action the pharmacodynamics effect expected with AT-10  
436 treatment may be greater than Clopidogrel treatment in both CYP2C19 EMs and PMs.

437 The HOST-EXAM (Harmonizing Optimal Strategy for Treatment of Coronary Artery Stenosis-  
438 Extended Antiplatelet Monotherapy) Extended study had compared the outcomes of Aspirin  
439 monotherapy with those of Clopidogrel monotherapy after PCI<sup>33</sup>. Total of 5438 patients who  
440 were maintained on DAPT without clinical events for 12±6 months after percutaneous coronary  
441 intervention with drug-eluting stents were enrolled. During an extended follow-up of more than 5  
442 years after randomization, Clopidogrel monotherapy (75mg) compared with Aspirin  
443 monotherapy (100mg) was associated with lower rates of the composite net clinical outcome  
444 (death, nonfatal myocardial infarction, stroke, readmission attributable to acute coronary  
445 syndrome, and bleeding) in patients without clinical events for 12±6 months after percutaneous  
446 coronary intervention with drug-eluting stents. 12.8 Vs 16.9% (hazard ratio, 0.74 [95% CI, 0.63-  
447 0.86]; P<0.001).

448 As per the recently published Guideline for the Management of Patients With Chronic Coronary  
449 Disease by American Heart Association/American College of Cardiology Joint Committee, in  
450 patients with Chronic Coronary Disease (CCD) treated with PCI, DAPT consisting of Aspirin  
451 and Clopidogrel for 6 months post PCI followed by single antiplatelet therapy is indicated to  
452 reduce MACE and bleeding events<sup>34</sup>.

453 These findings and clinical practice guidelines again supports the use of Clopidogrel as the  
454 preferred antiplatelet agent over Aspirin for the secondary prevention of coronary artery disease.  
455 It means Clopidogrel has a place in therapy so as AT-10 as it overcomes the shortcomings of  
456 Clopidogrel associated mainly with CYP2C19 polymorphism.

457 As concluded by Jean-Sébastien Hulot et al<sup>26</sup> in their pharmacogenetic study, this study results  
458 also shows that the CYP2C19\*2 mutant allele is a major genetic determinant of the  
459 pharmacodynamic response to standard-dose Clopidogrel (75 mg/day) in healthy human  
460 subjects. As per Drug Label Information of Plavix<sup>15</sup>, Clopidogrel 75mg per day has shown  
461 average platelet inhibition of 40% to 60% at steady state but several clinical trials have shown  
462 variability in response to inhibition of platelets and are generally around 30% which was also  
463 observed in our study.

464 It is of due importance that CYP2C19 remains the predictor of variability in response of  
465 Clopidogrel and has been clearly evident in previous clinical evaluations<sup>25,26</sup>. Similar  
466 observations were also seen in our study as EMs have shown IPA in range of 37% to 71% while  
467 participants with CYP2C19 LOF alleles representing PMs have shown very poor inhibition of  
468 platelets maximum up to 36% only but for AT-10, the platelet inhibition was consistent despite  
469 the disparities in phenotypes of the participants. There was no detrimental impact of CYP2C19  
470 polymorphism on %IPA of AT-10. This indicates that AT-10 can be used in all patients without  
471 concerning about the type of metabolizer as compared to selective use of Clopidogrel due to  
472 ‘Clopidogrel resistance’. Being a Clopidogrel derivative, AT-10 can provide all benefits of  
473 Clopidogrel and at the same time will overcome the shortcomings of Clopidogrel. It can be a  
474 safer alternative to newer agents being similar to Clopidogrel. Further it may replace Clopidogrel  
475 in the management of cerebrovascular diseases (transient ischemic attack and Stroke) and  
476 peripheral vascular diseases.

477 Since the concentration and extent of exposure ( $C_{max}$  and AUC) of active metabolite (H4) and the  
478 observed mean %IPA following loading and maintenance dose are significantly higher in AT-10  
479 treatment group than Clopidogrel treatment in both EMs and PMs, there is a need to optimize the

480 dose of AT-10 in target population. Further studies can be planned to assess and find out the PD  
481 equivalent dose of AT-10 when administered as a loading and maintenance dose.

### 482 **Limitations of Investigation**

483 This was a healthy volunteer study with limited sample size. The interventions in the study were  
484 evaluated in poor and extensive metabolizers. Effects of AT-10 need further evaluation in  
485 intermediate, rapid and ultra rapid metabolizers whose prevalence is significant in general patient  
486 population.

487 Although inhibition of platelet aggregation is recognized as surrogate marker for incidence of  
488 MACE (i.e. higher % inhibition correlates to lesser CV events.), it is still unknown what level of  
489 %IPA translates in preventing CV events.

490 Hence, further larger studies are required to investigate the influence of CYP2C19 functional  
491 polymorphisms on the response to AT-10 dose in the clinical setting, and especially on the risk  
492 of recurrent thrombotic events during AT-10 treatment including bleeding risk as compared to  
493 Clopidogrel therapy.

### 494 **CONCLUSION**

495 Based on the results of our study, it could be concluded that AT-10 may emerge as a promising  
496 anti-platelet drug and can be further developed in clinical studies for the unmet medical needs of  
497 cardiovascular diseases. This might be studied alone or as a part of dual antiplatelet therapy for  
498 implementation into future treatment strategies.

499

500



501 **Funding:** This study was funded by Ipca Laboratories Limited.

502 **Disclosures:**

503 **Dr. Anil Pareek** is the President of Medical Affairs and Clinical Research Department in the  
504 pharmaceutical Industry, Ipca Laboratories Limited.

505 **Mr. Nitin Chandurkar** is the Senior Vice President of Clinical Research and Development in  
506 the pharmaceutical Industry, Ipca Laboratories Limited.

507 **Mr. Vivek Raut** is currently the Deputy General Manager in Clinical Research and  
508 Development department at Ipca Laboratories Limited.

509 **Mr. Kumar Naidu** is Assistant General Manager in Clinical Data Management and Statistical  
510 Analysis at Ipca Laboratories Limited.

511 All authors are employees of Ipca Laboratories Ltd and involved in conceptualization,  
512 coordination and execution of the study.

513 **Acknowledgements:**

514 Authors acknowledge CBCC Global Research LLP, Neuberg Supratech Laboratory & Research  
515 Institute Pvt. Ltd., geneOmbio Technologies Pvt. Ltd. and Cliantha Research for their extended  
516 support in conducting laboratory assessments. Authors appreciate the help of Dr. Baishakhee  
517 Bishoyi, employee of Ipca Laboratories for drafting this manuscript; Mangesh Manchekar and  
518 Tushar Jadhao, employees of Ipca Laboratories Limited, for their help in labelling and packaging  
519 of clinical trial supplies.

520

521 **REFERENCES**

522 1. Lindstrom M, DeCleene N, Dorsey H, Fuster V, Johnson CO, LeGrand KE, et al.  
523 Global burden of cardiovascular diseases and risks collaboration, 1990-2021. *J Am*  
524 *Coll Cardiol.* 2022;80(25):2372–425.

525  
526 2. Kontos MC, Diercks DB, Kirk JD. Emergency department and office-based  
527 evaluation of patients with chest pain. *Mayo Clin Proc.* 2010;85(3):284–99.

528  
529 3. Libby P. Current concepts of the pathogenesis of the acute coronary syndromes.  
530 *Circulation.* 2001;104(3):365–72.

531  
532 4. Xiang Q, Pang X, Liu Z, Yang G, Tao W, Pei Q, et al. Progress in the development of  
533 antiplatelet agents: Focus on the targeted molecular pathway from bench to clinic.  
534 *Pharmacol Ther.* 2019;203(107393):107393.

535  
536 5. Menozzi A, Lina D, Conte G, Mantovani F, Ardissino D. Antiplatelet therapy in acute  
537 coronary syndromes. *Expert Opin Pharmacother.* 2012;13(1):27–42.

538

- 539 6. Byrne RA, Rossello X, Coughlan JJ, Barbato E, Berry C, Chieffo A, et al. 2023 ESC  
540 Guidelines for the management of acute coronary syndromes. *Eur Heart J Acute*  
541 *Cardiovasc Care*. 2023;44(38):3720–826.
- 542
- 543 7. Steinhubl SR, Berger PB, Mann JT III, Fry ETA, DeLago A, Wilmer C, et al. Early  
544 and sustained dual oral antiplatelet therapy following percutaneous coronary  
545 intervention: A randomized controlled trial. *JAMA*. 2002;288(19):2411.
- 546
- 547 8. Effects of Clopidogrel in addition to aspirin in patients with acute coronary  
548 syndromes without ST-segment elevation. *N Engl J Med*. 2001;345(7):494–502.
- 549
- 550 9. Gurbel PA, Bliden KP, Hiatt BL, O'Connor CM. Clopidogrel for coronary stenting:  
551 Response variability, drug resistance, and the effect of pretreatment platelet  
552 reactivity. *Circulation*. 2003;107(23):2908–13.
- 553
- 554 10. Sabatine MS, Cannon CP, Gibson CM. Addition of Clopidogrel to aspirin and  
555 fibrinolytic therapy for myocardial infarction with ST-segment elevation. *ACC Curr J*  
556 *Rev*. 2005;14(6):1.
- 557

- 558 11. Yusuf S, Zhao F, Mehta SR, Chrolavicius S, Tognoni G, Fox KK, et al. Effects of  
559 Clopidogrel in addition to aspirin in patients with acute coronary syndromes without  
560 ST-segment elevation. *N Engl J Med*. 2001;345(7):494–502.
- 561
- 562 12. Kazui M, Nishiya Y, Ishizuka T, Hagihara K, Farid NA, Okazaki O, et al.  
563 Identification of the human cytochrome P450 enzymes involved in the two oxidative  
564 steps in the bioactivation of Clopidogrel to its pharmacologically active metabolite.  
565 *Drug Metab Dispos*. 2010;38(1):92–9.
- 566
- 567 13. Sangkuhl K, Klein TE, Altman RB. Clopidogrel pathway. *Pharmacogenet Genomics*.  
568 2010;20(7):463–5.
- 569
- 570 14. Matetzky S, Shenkman B, Guetta V, Shechter M, Beinart R, Goldenberg I, et al.  
571 Clopidogrel resistance is associated with increased risk of recurrent atherothrombotic  
572 events in patients with acute myocardial infarction. *Circulation*. 2004;109(25):3171–  
573 5.
- 574
- 575 15. [Accessdata.fda.gov](https://www.accessdata.fda.gov) [Internet]. 1997. PLAVIX® (Clopidogrel bisulfate) tablets, for  
576 oral use. Available from:  
577 [https://www.accessdata.fda.gov/drugsatfda\\_docs/label/2021/009768s053lbl.pdf](https://www.accessdata.fda.gov/drugsatfda_docs/label/2021/009768s053lbl.pdf)

578

579 16. Mega JL, Close SL, Wiviott SD, Shen L, Hockett RD, Brandt JT, et al. Cytochrome  
580 P-450 polymorphisms and response to Clopidogrel. *N Engl J Med.* 2009;360(4):354–  
581 62.

582

583

584

585 17. Simon T, Verstuyft C, Mary-Krause M, Quteineh L, Drouet E, Méneveau N, et al.  
586 Genetic determinants of response to Clopidogrel and cardiovascular events. *N Engl J*  
587 *Med.* 2009;360(4):363–75.

588

589 18. Scott SA, Sangkuhl K, Stein CM, et al. Clinical Pharmacogenetics Implementation  
590 Consortium. Clinical Pharmacogenetics Implementation Consortium guidelines for  
591 CYP2C19 genotype and clopidogrel therapy: 2013 update. *Clin Pharmacol Ther.*  
592 2013;94(3):317-23.

593

594 19. Wallentin L, Becker RC, Budaj A, Cannon CP, Emanuelsson H, Held C, et al.  
595 Ticagrelor versus Clopidogrel in patients with acute coronary syndromes. *N Engl J*  
596 *Med.* 2009;361(11):1045–57.

597

- 598 20. Gong IY, Crown N, Suen CM, Schwarz UI, Dresser GK, Knauer MJ, et al. Clarifying  
599 the importance of CYP2C19 and PON1 in the mechanism of Clopidogrel  
600 bioactivation and in vivo antiplatelet response. *Eur Heart J*. 2012;33(22):2856–2464a.  
601
- 602 21. Shetkar SS, Ramakrishnan S, Seth S, Chandna P, Verma SK, Bhargava B, et al. CYP  
603 450 2C19 polymorphisms in Indian patients with coronary artery disease. *Indian*  
604 *Heart J*. 2014;66(1):16–24.  
605
- 606 22. Adithan C, Gerard N, Vasu S, Rosemary J, Shashindran CH, Krishnamoorthy R.  
607 Allele and genotype frequency of CYP2C19 in a Tamilian population. *Br J Clin*  
608 *Pharmacol*. 2003;56(3):331–3.  
609
- 610 23. Shalia KK, Shah VK, Pawar P, Divekar SS, Payannavar S. Polymorphisms of MDR1,  
611 CYP2C19 and P2Y12 genes in Indian population: Effects on Clopidogrel response.  
612 *Indian Heart J*. 2013;65(2):158–67.  
613
- 614 24. Lee SH, Jeong YH, Hong D, Choi KH, Lee JM, Park TK, et al. Clinical impact of  
615 CYP2C19 genotype on Clopidogrel-based antiplatelet therapy after percutaneous  
616 coronary intervention. *JACC Cardiovasc Interv*. 2023;16(7):829–43.  
617

- 618 25. Shuldiner AR, O'Connell JR, Bliden KP, Gandhi A, Ryan K, Horenstein RB, et al.  
619 Association of cytochrome P450 2C19 genotype with the antiplatelet effect and  
620 clinical efficacy of Clopidogrel therapy. *JAMA*. 2009;302(8):849–57.  
621
- 622 26. Hulot JS. Cytochrome P450 2C19 loss-of-function polymorphism is a major  
623 determinant of Clopidogrel responsiveness in healthy subjects. *Blood*.  
624 2006;108(7):2244–7.  
625
- 626 27. Mehta SR, Yusuf S, Peters RJG, Bertrand ME, Lewis BS, Natarajan MK, et al.  
627 Effects of pretreatment with Clopidogrel and aspirin followed by long-term therapy in  
628 patients undergoing percutaneous coronary intervention: the PCI-CURE study.  
629 *Lancet*. 2001;358(9281):527–33.  
630
- 631 28. Amin AM, Sheau Chin L, Mohamed Noor DA, Mostafa H, Abdul Kader MASK, Kah  
632 Hay Y, et al. The effect of CYP2C19 genetic polymorphism and non-genetic factors  
633 on Clopidogrel platelets inhibition in East Asian coronary artery disease patients.  
634 *Thromb Res*. 2017;158:22–4.  
635
- 636 29. Brandt JT, Close SL, Iturria SJ, Payne CD, Farid NA, Ernest CS II, et al. Common  
637 polymorphisms of CYP2C19 and CYP2C9 affect the pharmacokinetic and

638 pharmacodynamic response to Clopidogrel but not prasugrel. *J Thromb Haemost.*  
639 2007;5(12):2429–36.

640

641 30. Collet JP, Hulot JS, Pena A, Villard E, Esteve JB, Silvain J, et al. Cytochrome P450  
642 2C19 polymorphism in young patients treated with Clopidogrel after myocardial  
643 infarction: a cohort study. *Lancet.* 2009;373(9660):309–17.

644

645 31. Gurbel PA, Bliden KP, Hiatt BL, O'Connor CM. Clopidogrel for coronary stenting:  
646 response variability, drug resistance, and the effect of pretreatment platelet reactivity:  
647 Response variability, drug resistance, and the effect of pretreatment platelet  
648 reactivity. *Circulation.* 2003;107(23):2908–13.

649

650 32. Karaźniewicz-Łada M, Danielak D, Burchardt P, Kruszyna Ł, Komosa A, Lesiak M,  
651 et al. Clinical pharmacokinetics of Clopidogrel and its metabolites in patients with  
652 cardiovascular diseases. *Clin Pharmacokinet.* 2014;53(2):155–64.

653

654 33. Kang J, Park KW, Lee H, Hwang D, Yang HM, Rha SW, et al. Aspirin versus  
655 Clopidogrel for long-term maintenance monotherapy after percutaneous coronary  
656 intervention: The HOST-EXAM extended study. *Circulation.* 2023;147(2):108–17.

657



658 34. Virani, Salim S., et al. "2023 AHA/ACC/ACCP/ASPC/NLA/PCNA guideline for the  
659 management of patients with chronic coronary disease: a report of the American  
660 Heart Association/American College of Cardiology Joint Committee on Clinical  
661 Practice Guidelines." *Circulation* 148.9 (2023): e9-e119.

662

663 **Table 1: Demographic and baseline characteristics of the enrolled subjects**

| Characteristic                                                                                                                                                                                                                                                                                                                                                                                                                                                                                                                                                     | Treatment Sequence |                    | Overall (N=40) | P- Value |
|--------------------------------------------------------------------------------------------------------------------------------------------------------------------------------------------------------------------------------------------------------------------------------------------------------------------------------------------------------------------------------------------------------------------------------------------------------------------------------------------------------------------------------------------------------------------|--------------------|--------------------|----------------|----------|
|                                                                                                                                                                                                                                                                                                                                                                                                                                                                                                                                                                    | Sequence AB (N=20) | Sequence BA (N=20) |                |          |
| Gender, n (%)                                                                                                                                                                                                                                                                                                                                                                                                                                                                                                                                                      |                    |                    |                | 0.9999   |
| Female                                                                                                                                                                                                                                                                                                                                                                                                                                                                                                                                                             | 6 (30.0)           | 6 (30.0)           | 12 (30.0)      |          |
| Male                                                                                                                                                                                                                                                                                                                                                                                                                                                                                                                                                               | 14 (70.0)          | 14 (70.0)          | 28 (70.0)      |          |
| Age (years), Mean ± SD                                                                                                                                                                                                                                                                                                                                                                                                                                                                                                                                             | 32.6 ± 6.36        | 34.9 ± 5.21        | 33.7 ± 5.85    | 0.2185   |
| BMI (Kg/m <sup>2</sup> ), Mean ± SD                                                                                                                                                                                                                                                                                                                                                                                                                                                                                                                                | 23.41 ± 3.47       | 24.51 ± 2.67       | 23.96 ± 3.11   | 0.2691   |
| Height (cm), Mean ± SD                                                                                                                                                                                                                                                                                                                                                                                                                                                                                                                                             | 166.2 ± 10.20      | 162.0 ± 7.23       | 164.1 ± 8.99   | 0.1413   |
| Weight (Kg), Mean ± SD                                                                                                                                                                                                                                                                                                                                                                                                                                                                                                                                             | 64.91 ± 12.67      | 64.08 ± 9.07       | 64.50 ± 10.89  | 0.8119   |
| Race, n (%)                                                                                                                                                                                                                                                                                                                                                                                                                                                                                                                                                        |                    |                    |                |          |
| Asian                                                                                                                                                                                                                                                                                                                                                                                                                                                                                                                                                              | 20 (100)           | 20 (100)           | 40 (100)       | 0.9999   |
| Menopause Status, n (%)                                                                                                                                                                                                                                                                                                                                                                                                                                                                                                                                            |                    |                    |                |          |
| Not Menopausal                                                                                                                                                                                                                                                                                                                                                                                                                                                                                                                                                     | 6 (30.0)           | 6 (30.0)           | 12 (30.0)      | 0.9999   |
| Menstrual Cycle, n (%)                                                                                                                                                                                                                                                                                                                                                                                                                                                                                                                                             |                    |                    |                |          |
| Regular and Clinically Normal                                                                                                                                                                                                                                                                                                                                                                                                                                                                                                                                      | 6 (30.0)           | 6 (30.0)           | 12 (30.0)      | 0.9999   |
| <p>N: The number of subjects in the safety population for each sequence or the safety population for the overall; n: The number of subjects in the specific category. %: calculated using the number of subjects in the safety population for each sequence, or the safety population for the overall, as denominator (n/N*100)</p> <p>Age, Height, weight and BMI at Pre-Screening visit are considered.</p> <p>Treatment A : AT-10 (2-oxo-Clopidogrel bisulfate) Tablets 40 mg/10mg</p> <p>Treatment B : Plavix® (Clopidogrel bisulfate) Tablets 300 mg/75mg</p> |                    |                    |                |          |

664

665

666

667

668

669

670

671 **Table 2: Mean %IPA between Poor and Extensive Metabolizers in AT10 and Clopidogrel**

| Time point                                                        | Extensive Metabolizers | Poor Metabolizers | 95% CI of LS mean difference | P value |
|-------------------------------------------------------------------|------------------------|-------------------|------------------------------|---------|
| <b>AT-10</b>                                                      |                        |                   |                              |         |
| Post-dose 6hr (LD)                                                | 80.694 ± 27.5592       | 65.905 ± 30.2122  | 14.79 (-3.72 - 33.30)        | 0.1141  |
| Post-dose 6hr on Day 6 (MD)                                       | 94.269 ± 12.9226       | 72.558 ± 40.9339  | 21.71 (1.74 - 41.68)         | 0.0340  |
| Post-dose 24hr after Day 6 (MD)                                   | 88.995 ± 21.1644       | 79.032 ± 34.8512  | 9.96 (-9.16 - 29.09)         | 0.2975  |
| <b>Clopidogrel</b>                                                |                        |                   |                              |         |
| Post-dose 6hr (LD)                                                | 37.140 ± 50.8991       | -1.168 ± 46.1272  | 38.31 (4.84 - 71.78)         | 0.0262  |
| Post-dose 6hr on Day 6 (MD)                                       | 71.551 ± 29.9885       | 30.833 ± 42.7628  | 40.72 (15.70 - 65.74)        | 0.0022  |
| Post-dose 24hr after Day 6 (MD)                                   | 65.306 ± 58.5336       | 36.644 ± 46.0291  | 28.66 (-5.98 - 63.31)        | 0.1020  |
| Data Presented as Mean± SD; LD- Loading Dose; MD-Maintenance Dose |                        |                   |                              |         |

672

673 **Table 3: Statistical Analysis of Mean %IPA between AT-10 Poor Metabolizers and**  
 674 **Clopidogrel Extensive Metabolizers**

| Time point                                                        | AT - 10          | Clopidogrel      | 95% CI of LS mean difference | P value |
|-------------------------------------------------------------------|------------------|------------------|------------------------------|---------|
| Post-dose 6hr (LD)                                                | 65.905 ± 30.2122 | 37.140 ± 50.8991 | 28.765 (6.11 - 51.42)        | 0.0389  |
| Post-dose 6hr on Day 6 (MD)                                       | 72.558± 40.9339  | 71.551 ± 29.9885 | 1.007 (-19.02% -21.03%)      | 0.9328  |
| Post-dose 24hr after Day 6 (MD)                                   | 79.032 ± 34.8512 | 65.306 ± 58.5336 | 13.72643 (-13.23% - 40.68%)  | 0.3954  |
| Data Presented as Mean± SD; LD- Loading Dose; MD-Maintenance Dose |                  |                  |                              |         |

675

676

677

678

679

680 **Table 4: Pharmacokinetic Parameters of MP-H4 on Day 1 and Day 6 (All subjects)**

| Parameters                               | Day1 (N=37)                             |                                          | Day6 (N=37)                            |                                          |
|------------------------------------------|-----------------------------------------|------------------------------------------|----------------------------------------|------------------------------------------|
|                                          | AT-10                                   | Clopidogrel                              | AT-10                                  | Clopidogrel                              |
| C <sub>max</sub> (ng/mL)                 | 9.56 ± 7.01<br>(73.33%)                 | 4.31 ± 4.06<br>(94.30%)                  | 3.01 ± 1.58<br>(52.35%)                | 1.22 ± 0.64<br>(52.51%)                  |
| #T <sub>max</sub> (hr)                   | 0.50<br>(0.25 - 2.00)                   | 0.75<br>(0.25 - 2.00)                    | 0.50<br>(0.00 - 4.00)                  | 0.50<br>(0.50 - 1.00)                    |
| AUC <sub>t</sub><br>(hr* ng/mL)          | 14.23 ± 4.82<br>(33.84%)                | 4.80 ± 2.43<br>(50.57%)                  | 3.42 ± 1.03<br>(30.26%)                | 1.23 ± 0.62<br>(50.52%)                  |
| AUC <sub>inf</sub><br>( hr*ng/mL )       | 15.36 ± 4.41<br>(28.68%)                | 5.34 ± 2.36<br>(44.12%)                  | 3.81 ± 1.12<br>(29.41%)                | 1.44 ± 0.63<br>(43.75%)                  |
| T <sub>½</sub> ( hr )                    | 3.33 ± 1.85<br>(55.50%)                 | 0.91 ± 0.43<br>(47.30%)                  | 1.76 ± 2.29<br>(130.15%)               | 0.71 ± 0.55<br>(77.74%)                  |
| Kel ( 1/hr )                             | 0.27 ± 0.13<br>(49.06%)                 | 0.87 ± 0.27<br>(31.08%)                  | 0.69 ± 0.40<br>(57.85%)                | 1.27 ± 0.50<br>(39.56%)                  |
| Kel <sub>lower</sub>                     | 3.16 ± 1.77<br>(56.00%)                 | 1.54 ± 0.67<br>(43.42%)                  | 1.84 ± 1.03<br>(56.24%)                | 0.98 ± 0.23<br>(23.01%)                  |
| Kel <sub>upper</sub>                     | 11.03 ± 4.51<br>(40.92%)                | 4.21 ± 1.14<br>(27.04%)                  | 4.57 ± 1.58<br>(34.50%)                | 2.25 ± 0.62<br>(27.49%)                  |
| Vd/F (mL)                                | 2796782.26 ±<br>720716.15<br>(25.77%)   | 68069565.39 ±<br>31035114.97<br>(45.59%) | 2914055.03 ±<br>1169552.58<br>(40.13%) | 61932416.51 ±<br>26502532.12<br>(42.79%) |
| Cl/F (mL/hr)                             | 13282418.32 ±<br>7752256.80<br>(58.36%) | 84001569.64 ±<br>42699043.41<br>(50.83%) | 6254732.88 ±<br>6181797.33<br>(98.83%) | 63098668.98 ±<br>57845349.30<br>(91.67%) |
| Data Presented as Mean ± SD (CV %)       |                                         |                                          |                                        |                                          |
| #For T <sub>max</sub> median (min – max) |                                         |                                          |                                        |                                          |

681

682

683 **Table 5: Summary of Treatment Emergent Adverse Events**

| System Organ Class<br>Preferred Term                                                                                                                                                                                                          | Treatment A<br>(N = 40) | Treatment B<br>(N = 39) | Overall<br>(N = 40) |
|-----------------------------------------------------------------------------------------------------------------------------------------------------------------------------------------------------------------------------------------------|-------------------------|-------------------------|---------------------|
| Gastrointestinal Disorders                                                                                                                                                                                                                    | 2 (0.9) 2               | 3 (1.3) 3               | 5 (12.5) 5          |
| Nausea                                                                                                                                                                                                                                        | 2 (0.9) 2               | 3 (1.3) 3               | 5 (12.5) 5          |
| General Disorders And Administration Site<br>Conditions                                                                                                                                                                                       | 00.0 (00.0)             | 1 (0.4) 3               | 1 (2.5) 3           |
| Pain                                                                                                                                                                                                                                          | 00.0 (00.0)             | 1 (0.4) 1               | 1 (2.5) 1           |
| Pyrexia                                                                                                                                                                                                                                       | 00.0 (00.0)             | 1 (0.4) 1               | 1 (2.5) 1           |
| Swelling                                                                                                                                                                                                                                      | 00.0 (00.0)             | 1 (0.4) 1               | 1 (2.5) 1           |
| Psychiatric Disorders                                                                                                                                                                                                                         | 1 (0.4) 1               | 00.0 (00.0)             | 1 (2.5) 1           |
| Anxiety                                                                                                                                                                                                                                       | 1 (0.4) 1               | 00.0 (00.0)             | 1 (2.5) 1           |
| Respiratory, Thoracic And Mediastinal Disorders                                                                                                                                                                                               | 1 (0.4) 1               | 00.0 (00.0)             | 1 (2.5) 1           |
| Cough                                                                                                                                                                                                                                         | 1 (0.4) 1               | 00.0 (00.0)             | 1 (2.5) 1           |
| Skin And Subcutaneous Tissue Disorders                                                                                                                                                                                                        | 00.0 (00.0)             | 1 (0.4) 1               | 1 (2.5) 1           |
| Erythema                                                                                                                                                                                                                                      | 00.0 (00.0)             | 1 (0.4) 1               | 1 (2.5) 1           |
| MedDRA version 24.1.                                                                                                                                                                                                                          |                         |                         |                     |
| Data presented as n (%) E                                                                                                                                                                                                                     |                         |                         |                     |
| E: Number of events; N: Number of subjects dosed with each treatment; n: Number of subjects with adverse event with particular category; %: Calculated using the number of subjects treated with each treatment as the denominator (n/N*100). |                         |                         |                     |
| Treatment A: AT-10 (2-oxo-Clopidogrel bisulfate) Tablets 40 mg/10mg                                                                                                                                                                           |                         |                         |                     |
| Treatment B: Plavix® (Clopidogrel bisulfate) Tablets 300 mg/75mg                                                                                                                                                                              |                         |                         |                     |

684

685

686

687

688

689

690

691

692 **Fig.1: Metabolic Pathway of Clopidogrel and AT-10 (2-Oxo-Clopidogrel)**

693

694

695

696

697

698

699

700

701

702

703

704 **Fig.2: Overall %IPA of AT-10 vs. Clopidogrel**

705

706

707

708

709

710

711

712

713

714 **Fig 3: MP-H4 of AT-10 and Clopidogrel on Day 1 and Day 6 (Overall subjects)**

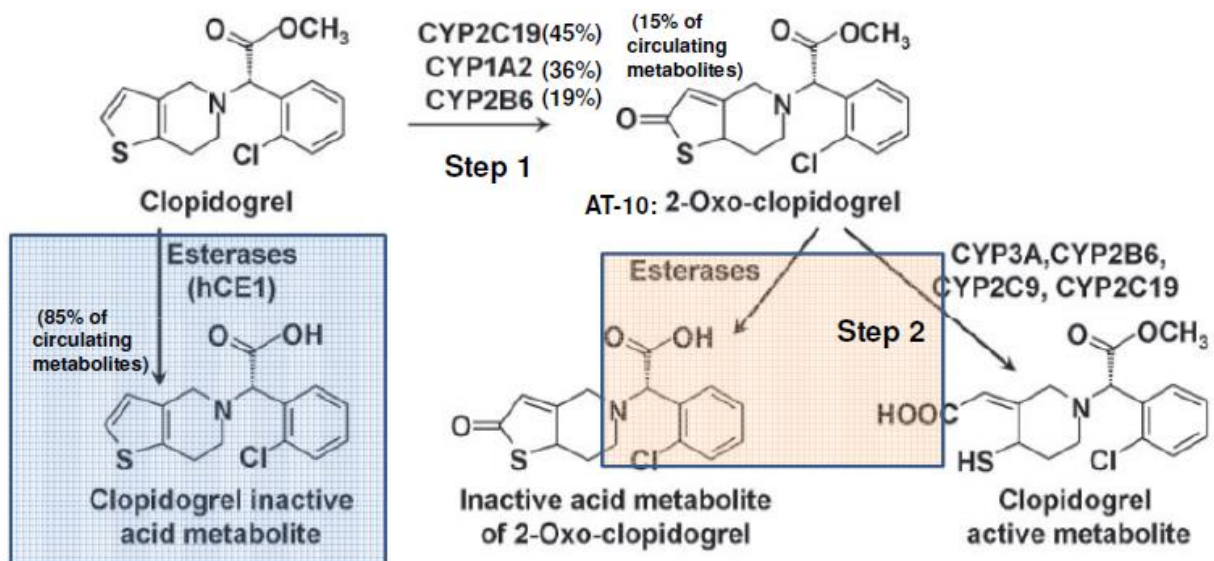
715

716

717



1 **Fig.1: Metabolic Pathway of Clopidogrel and AT-10 (2-Oxo-Clopidogrel)**



2

3

4

5

6

7

8

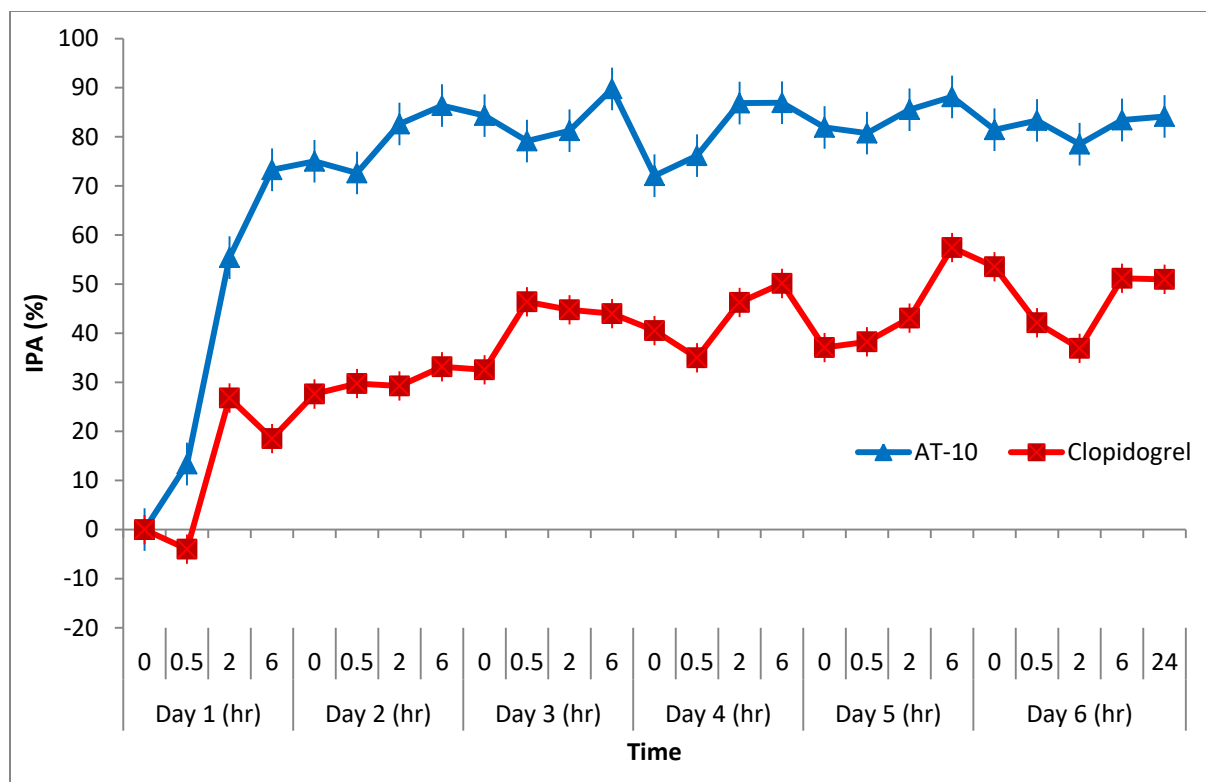
9

10

11

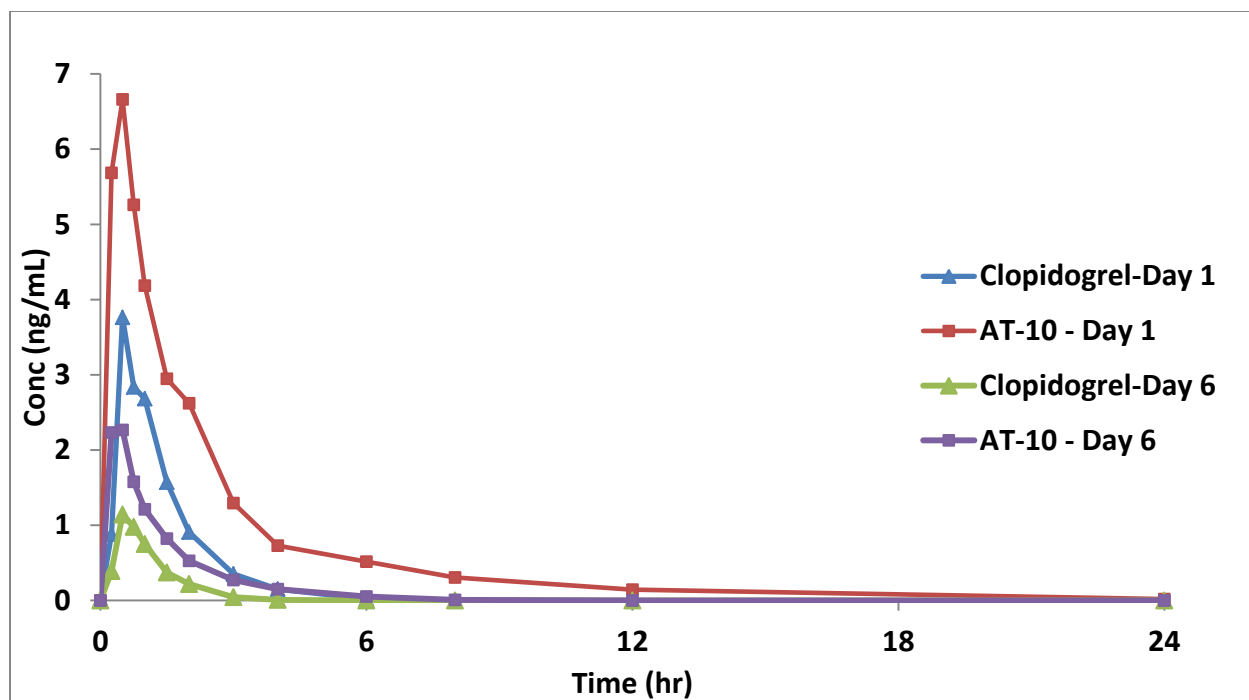
12

13 **Fig.2: Overall %IPA of AT-10 vs. Clopidogrel**



14  
15  
16  
17  
18  
19  
20  
21  
22  
23

**Fig 3: MP-H4 of AT-10 and Clopidogrel on Day 1 and Day 6 (Overall subjects)**



24  
25  
26  
27