

1 Cell type profile variation in menstrual effluent by sample collection method identified  
2 using methylation cytometry

3

4 Authors: Irma M. Vlasac<sup>1</sup>, Hannah G. Stolrow<sup>1</sup>, Zaneta M. Thayer<sup>2</sup>, Brock C.  
5 Christensen<sup>1,3</sup>, Luisa Rivera<sup>2</sup>

6

7 <sup>1</sup> Department of Epidemiology, Geisel School of Medicine at Dartmouth, Lebanon, NH  
8 03756, USA

9 <sup>2</sup> Department of Anthropology, Dartmouth College, Hanover, NH 03755, USA

10 <sup>3</sup> Department of Molecular and Systems Biology, Geisel School of Medicine at  
11 Dartmouth, Lebanon, NH 03756, USA

12

### 13 **Abstract**

14 Menstrual effluent cell profiles have potential as noninvasive biomarkers of female  
15 reproductive and gynecological health and disease. We used DNA methylation-based  
16 cell type deconvolution (methylation cytometry) to identify cell type profiles in self-  
17 collected menstrual effluent. During the second day of their menstrual cycle healthy  
18 participants collected menstrual effluent using a vaginal swab, menstrual cup, and pad.  
19 Immune cell proportions were highest in menstrual cup samples, and epithelial cells  
20 were highest in swab samples. Our work demonstrates the feasibility and utility of  
21 menstrual effluent cell profiling in population-level research using remotely collected  
22 samples and DNA methylation.

23

## 24 **Introduction**

25 Human females with access to birth control menstruate approximately 400 times during  
26 their reproductive lifespan<sup>1</sup>, from menarche in early adolescence around 12 years of  
27 age, continuing until menopause at approximately 40-50 years of age. Menstruation is a  
28 result of a complex and highly specific system regulated hormonally through the  
29 hypothalamus, pituitary, and ovarian endocrine axis, and disruption to the menstrual  
30 cycle can be indicative of underlying health issues. As an example, irregular and long  
31 menstrual cycles are associated with a range of adverse conditions, including ovarian  
32 cancer<sup>2</sup> and greater risk of premature mortality<sup>3</sup>. Menstrual effluent is comprised of the  
33 shed uterine lining developed during the secretory phase of the menstrual cycle as well as cells  
34 from the cervix and vagina. As such, menstrual effluent may be a powerful proxy tissue for the  
35 endometrium, with recent work finding considerable overlap between menstrual and  
36 endometrial cytokine levels, cellular composition, and gene expression profiles<sup>4,5</sup>. Research  
37 on menstrual effluent has begun to investigate its potential as an informative  
38 biospecimen in women's health research. Studies to date have focused on elucidating  
39 inflammatory profiles and identifying perinatal biomarkers of fertility and  
40 endometriosis<sup>5-7</sup>, and as a determinant of adverse pregnancy outcomes. In addition,  
41 despite significant disease burden there are no current non-invasive screening tools for  
42 ovarian cancer, endometrial cancer, or endometriosis.

43  
44 Methylation cytometry methods can determine the cell-type admixture of biospecimens  
45 with cell reference profiles of DNA methylation and statistical deconvolution. Methylation  
46 cytometry methods exist for multiple biospecimen types but have not been applied to

47 menstrual effluent. The hierarchical tumor immune microenvironment epigenetic  
48 deconvolution (HiTIMED) algorithm quantifies up to 17 cell types and can be used to  
49 estimate cell types in both tumor and non-tumor normal tissues<sup>8</sup>. HiTIMED developed  
50 20 tissue-specific cell reference deconvolution libraries, including endometrial tissue,  
51 from which menstrual effluent is shed directly from the endometrium of the uterus. We  
52 demonstrate the utility and feasibility of DNA-based cell type profiling in menstrual  
53 effluent in healthy females across three collection methods: menstrual cup, menstrual  
54 pad, and vaginal swab.

55

## 56 **Materials and Methods**

57

### 58 **Study Participants and Samples**

59 Healthy study participants (n=12) were recruited through campus flyers, online  
60 communities, and in-person recruitment as part of an IRB-approved study at Dartmouth  
61 College. Written consent was obtained, and study participants were screened based on  
62 the following eligibility criteria: 18 years of age and older, regular menstrual cycles, no  
63 current use of hormonal birth control, no history of reproductive disorders (PCOS,  
64 endometriosis, adenomyosis, gynecologic cancers), and no immunomodulatory therapy.  
65 Participants completed two questionnaires: health history, and menstrual questionnaire  
66 completed at the time of sample collection. Study kits were mailed to participants and  
67 contained supplies for menstrual pad, vaginal swab, and menstrual cup self-collection  
68 along with instructions to minimize variability among collection methods. Participants

69 were instructed to collect samples on the second day of their period, defined as the  
70 second day following the onset of bleeding.

71

72 For swab collection, participants were instructed to insert the swab (*Puritan HydraFlock*,  
73 #25-3406-H) into their vagina and hold for 15 seconds or until completely saturated. The  
74 swab was placed in a 4 mL self-standing centrifuge tube containing 2 mL of DNA/RNA  
75 shield (*Zymo*, #R1100-250). This process was repeated twice for the collection of two  
76 swabs. To collect the pad sample, participants were provided with an organic cotton  
77 liner (*natracare*, #3145), with a cut 2 x 2-inch square liner secured on top. Participants  
78 were instructed to wear the liner until the square was completely saturated, which was  
79 estimated to take approximately 5 minutes but may have varied amongst participants.  
80 Once the square was saturated, using the provided tweezers, participants removed the  
81 saturated square and placed it in a 4 mL self-standing centrifuge tube containing 2 mL  
82 of DNA/RNA shield (*Zymo*, # R1100-250). The menstrual cup (*NeoProMedical*,  
83 #B092DTN2XS) was worn for sample collection after which a disposable pipette was  
84 used to aliquot 2 mL of menstrual effluent into a 4 mL self-standing centrifuge tube  
85 containing 2 mL of DNA/RNA shield (*Zymo*, #R1100-250). Participants were instructed  
86 to wear nitrile gloves for all collection modes and place samples in a biohazard  
87 collection bag before packaging them in the return box.

88

### 89 **DNA Extraction and Methylation Analysis**

90 DNA was extracted from menstrual cup samples using Qiagen DNeasy Blood and  
91 Tissue kit protocol, following manufacturers protocol for extraction from blood samples.

92 DNA was extracted from menstrual pads by cutting a 1x1 centimeter piece of the  
93 saturated menstrual pad sample, then using it as the base material for extraction using  
94 the Qiagen DNA Investigator's Kit. DNA was extracted from vaginal swab samples by  
95 removing the swab from the plastic swab base, then using the swab material as the  
96 base material for extraction using the Qiagen DNA Investigator's Kit. DNA was extracted  
97 from a total of 36 samples, three samples per participant with 12 participants assessed  
98 in total. Extracted DNA samples were bisulfite modified using the EZ DNAm Kit (Zymo  
99 Research) following the manufacturers optimized protocol for Illumina Methylation  
100 arrays<sup>9</sup>. Bisulfite converted DNA was arrayed on the Infinium MethylationEPIC  
101 BeadChip V2 array at the Dartmouth Cancer Center Genomics and Molecular Biology  
102 Shared Resource.

103

#### 104 **Data Processing and Quality Control**

105 MethylationEPICv2 Intensity data (IDATs) were preprocessed for normal exponential  
106 out-of-band (Noob) correction using Minfi<sup>10</sup>. Quality control was performed using a  
107 detection P, CpG, and sample threshold of 5%, with zero samples demonstrating a  
108 percentage of low quality CpG values greater than 5%. Beta value technical replicates  
109 were collapsed by averaging probes with common probe ID prefixes using SeSAmE<sup>11</sup>.  
110 Single nucleotide polymorphisms (SNPs), probes were used as a quality control metric  
111 to assess concordance amongst sample type and participant. Non-CpG cytosine  
112 methylation, cancer somatic mutation probes, and probes located on sex chromosomes  
113 were filtered. Beta values were normalized using beta mixture quantile normalization  
114 (BMIQ). For quality control, sample matching was confirmed using SNP probes.

115

## 116 **Statistical Analysis**

117 Cell proportions were estimated using Hierarchical Immune Tumor Deconvolution  
118 (HiTIMED)<sup>8</sup>, designated at deconvolution level four, set to non-tumor normal tissue with  
119 the uterine carcinoma deconvolution library. Cell proportions from each sample type  
120 (menstrual pad, menstrual cup, vaginal swab) were assessed for significant differences  
121 between the three collection sample types using a Kruskal-Wallis test. Unsupervised  
122 hierarchical clustering was performed using the top 20,000 most variable CpGs. A  
123 Recursively Partitioned Mixture Model (RPMM)<sup>12</sup> was fit using the 20,000 most variably  
124 methylated CpGs to identify subgroups within the methylation data. Association of  
125 RPMM cluster membership with sample collection method was tested with a Fisher's  
126 exact test.

127

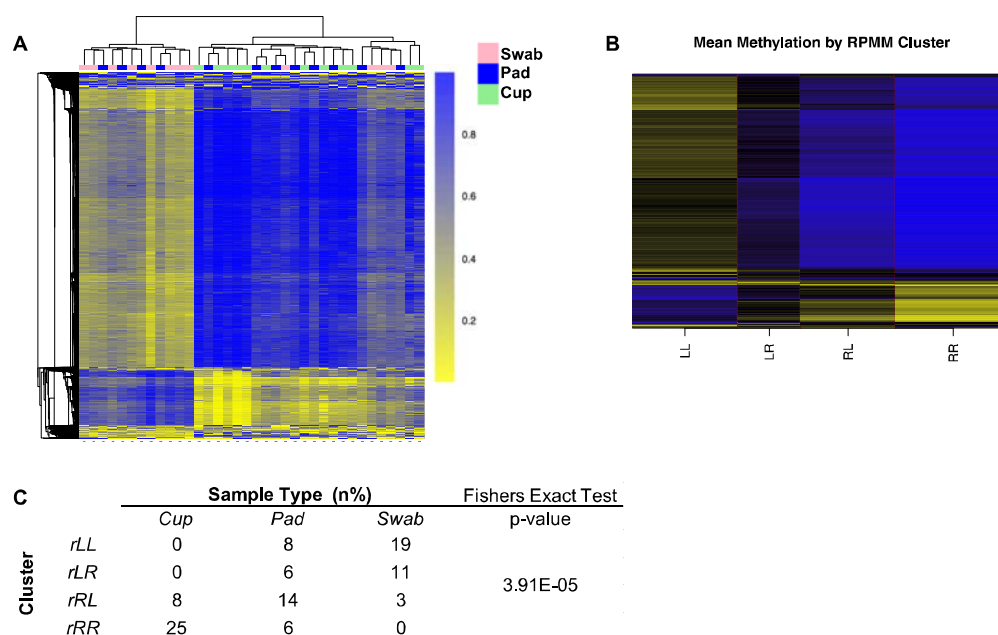
## 128 **Results**

129 DNA methylation data from each collection method matched to a total of twelve study  
130 participants (**Supplementary Table 1**) was visualized with unsupervised hierarchical  
131 clustering of the 20,000 most variably methylated CpGs (**Figure 1A**). To test  
132 associations of methylation with sample collection method, a recursively partitioned  
133 mixture model was fit to the 20,000 most variably methylated CpGs (**Figure 1B**),  
134 resulting in four clusters. The majority of cup samples (75%) were in cluster rRR, and  
135 sample collection method was significantly associated with methylation cluster  
136 membership (Fisher's Exact  $P=3.9E-05$ , **Figure 1C**).

137

138

139



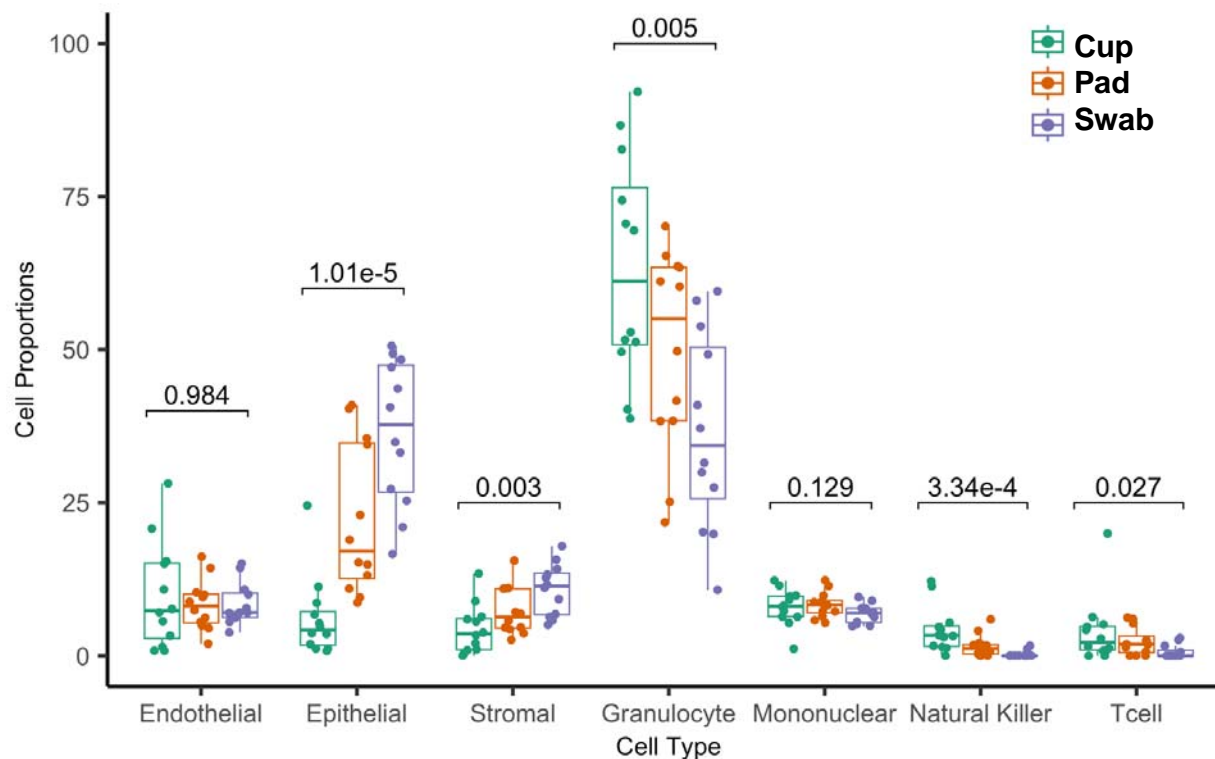
140

141 **Figure 1.** A) Unsupervised hierarchical clustering based on top 20,000 most variable  
 142 CpGs. B) Recursively Partitioned Mixture Model (RPMM) with mean methylation  
 143 displayed in each of the four clusters. C) table of RPMM cluster membership by sample  
 144 type.

145

146 Menstrual effluent cell type proportions were estimated using HiTIMED in all samples  
 147 and compared among collection methods. Epithelial and stromal cell proportions were  
 148 significantly higher in swab samples compared to pad samples, with cup samples  
 149 demonstrating the lowest epithelial and stromal cell proportions; cup samples had  
 150 significantly higher granulocyte, natural killer, and T cell proportions compared to swab  
 151 samples ( $P < 0.05$ , Kruskal-Wallis test, **Figure 2**).

152



153  
154 **Figure 2.** Menstrual effluent cell type proportions differ among menstrual cup, menstrual  
155 pad, and vaginal swab collection methods as determined by methylation cytometry.

156  
157 **Discussion**

158 Our work demonstrates the utility of cell type profiling in menstrual effluent with  
159 methylation cytometry for research applications in female reproductive and  
160 gynecological health and disease. Methylation cytometry cell deconvolution analysis  
161 identified cell type proportion differences by sample collection method. Menstruation is a  
162 process of tissue inflammation and is marked by an increase in myeloid immune cells  
163 and leukocytes recruited in response to inflammation from necrotizing and shedding  
164 tissue<sup>13,14</sup>. Menstrual cup samples had the highest immune cell proportions, specifically  
165 granulocyte, natural killer, and T cell proportions in comparison to menstrual pad and



166 vaginal swab samples. Considering diseases marked by abnormally high inflammation,  
167 such as endometriosis, future studies utilizing menstrual effluent should consider  
168 collection method as it relates with the study goals and hypotheses. Studies aimed at  
169 elucidating immune cell profiles with gynecologic health and disease may be better  
170 powered to discern effects with menstrual cup and pad collection methods. Similarly,  
171 studies which may be more focused on assessing conditions that affect epithelial and  
172 stromal cells of the cervix or vagina, may favor menstrual pads or vaginal swabs for  
173 sample collection. In any case, application of methylation cytometry methods enables  
174 investigation of cell-type-dependent and cell-type-independent associations with health  
175 and disease.

176

177 We expected cell type proportion differences based on collection method similarly to  
178 how we observed them. The vaginal swab collection method had higher epithelial cell  
179 proportions, which is likely related to the method of sample collection considering the  
180 participant collected the sample shallowly within the vaginal canal as opposed to closer  
181 to the cervix. Similarly, the menstrual pad collection likely demonstrates higher epithelial  
182 cell proportions considering the shed menstrual effluent travels through the vaginal  
183 canal and vulva before being absorbed on the menstrual pad. While menstrual cup  
184 sample collections demonstrate the highest immune cell proportions compared to other  
185 sample collection methods, menstrual effluent collected by menstrual pad holds great  
186 promise for future research studies given it captures cell types from the immune,  
187 epithelial, and stromal cell compartments. Considering menstrual pad collection is the  
188 only method of collection that doesn't require insertion, it allows for a truly non-invasive,

189 non-penetrative sample collection, allowing for sample collection from adolescents and  
190 individuals that may not want to use an insertional collection method. As menstrual pads  
191 can easily and inexpensively be shipped in the mail and are widely available, they may  
192 provide greater potential in the scope of population level studies and studies conducted  
193 in resource limited populations. Use of DNA-based cell typing in menstrual effluent  
194 samples combined with remote, noninvasive sampling methods potentiate both  
195 research and future clinical applications of menstrual effluent specimens that benefit  
196 women's health.

197

### 198 **Supplementary Table 1**

<b>Characteristic</b>	<b>Participants (N = 12)</b>
<b>Age (%)</b>	
18 - 25	7 (58.3)
26 - 35	2 (16.7)
> 35	3 (25.0)
<i>Average Age</i>	27
<b>Parity (%)</b>	
Nulliparous	8 (66.7)
Multiparous	4 (33.3)
<b>Menstrual Pain (%)</b>	
Not painful	1 (8.3)
A little painful	4 (33.3)
Somewhat painful	6 (50.0)
Very painful	1 (8.3)
<b>Recent Illness (%)</b>	
No	11 (91.7)
Yes	1 (8.3)
<b>Pain Medication (%)</b>	
None	9 (75.0)
Ibuprofen	3 (25.0)

199

200

201

### 202 **Declarations**

203

204 Ethics approval and consent to participate

205

206 Availability of data and materials

207

208 Funding

209

210

211 Author's contributions

212 LR and ZMT designed the study. IMV and HGS processed samples. IMV performed the  
213 analysis and drafted the manuscript. All authors contributed to and approved the final  
214 manuscript. Thank you to Claire Pingitore and Sovi Mya-Wellons for their assistance in  
215 assembling and sending study kits.

216

217

218 **References**

219 1. Jabbour, H. N., Kelly, R. W., Fraser, H. M. & Critchley, H. O. D. Endocrine Regulation  
220 of Menstruation. *Endocrine Reviews* **27**, 17–46 (2006).

221 2. Cirillo, P. M., Wang, E. T., Cedars, M. I., Chen, L. & Cohn, B. A. Irregular menses  
222 predicts ovarian cancer: Prospective evidence from the Child Health and  
223 Development Studies. *International Journal of Cancer* **139**, 1009–1017 (2016).

224 3. Wang, Y.-X. *et al.* Menstrual cycle regularity and length across the reproductive  
225 lifespan and risk of premature mortality: prospective cohort study. *BMJ* **371**, m3464  
226 (2020).

- 227 4. Tortorella, C. *et al.* Interleukin-6, interleukin-1 $\beta$ , and tumor necrosis factor  $\alpha$  in  
228 menstrual effluents as biomarkers of chronic endometritis. *Fertility and Sterility* **101**,  
229 242–247 (2014).
- 230 5. Warren, L. A. *et al.* Analysis of menstrual effluent: diagnostic potential for  
231 endometriosis. *Molecular Medicine* **24**, 1 (2018).
- 232 6. Naseri, S., Rosenberg-Hasson, Y., Maecker, H. T., Avrutsky, M. I. & Blumenthal, P. D.  
233 A cross-sectional study comparing the inflammatory profile of menstrual effluent vs.  
234 peripheral blood. *Health Science Reports* **6**, e1038 (2023).
- 235 7. Nayyar, A. *et al.* Menstrual Effluent Provides a Novel Diagnostic Window on the  
236 Pathogenesis of Endometriosis. *Frontiers in Reproductive Health* **2**, (2020).
- 237 8. Zhang, Z. *et al.* HiTIMED: hierarchical tumor immune microenvironment epigenetic  
238 deconvolution for accurate cell type resolution in the tumor microenvironment using  
239 tumor-type-specific DNA methylation data. *Journal of Translational Medicine* **20**, 516  
240 (2022).
- 241 9. Campan, M., Weisenberger, D. J., Trinh, B. & Laird, P. W. MethyLight. *Methods Mol*  
242 *Biol* **507**, 325–337 (2009).
- 243 10. Aryee, M. J. *et al.* Minfi: a flexible and comprehensive Bioconductor package for  
244 the analysis of Infinium DNA methylation microarrays. *Bioinformatics* **30**, 1363–1369  
245 (2014).
- 246 11. Zhou, W., Triche, T. J., Jr, Laird, P. W. & Shen, H. SeSAME: reducing artifactual  
247 detection of DNA methylation by Infinium BeadChips in genomic deletions. *Nucleic*  
248 *Acids Research* **46**, e123 (2018).

- 249 12. Koestler, D. C., Marsit, C. J., Christensen, B. C., Kelsey, K. T. & Houseman, E. A.  
250 A recursively partitioned mixture model for clustering time-course gene expression  
251 data. *Translational cancer research* **3**, 217 (2014).
- 252 13. Salamonsen, L. A. Tissue injury and repair in the female human reproductive  
253 tract. *Reproduction* **125**, 301–311 (2003).
- 254 14. Finn, C. A. Implantation, Menstruation and Inflammation. *Biological Reviews* **61**,  
255 313–328 (1986).
- 256
- 257
- 258