

A method for measuring mitochondrial DNA copy number in pediatric populations.

1 **Simran Maggo¹, Liam Y. North², Aime Ozuna², Dejerianne Ostrow¹, Grajeda I Yander¹,**
2 **Hakimjavadi Hesmedin¹, Jennifer A. Cotter^{1,3}, Alexander R. Judkins^{1,3}, Pat Levitt^{2,3}, *Xiaowu**
3 **Gai^{1,3}**

4 1. Department of Pathology and Laboratory Medicine, Children's Hospital Los Angeles, Los
5 Angeles, CA

6 2. The Saban Research Institute, Children's Hospital Los Angeles, Los Angeles, CA

7 3. Keck School of Medicine, University of Southern California, Los Angeles, CA

8 *** Correspondence:**

9 Xiaowu Gai

10 xgai@chla.usc.edu

11 **Keywords: Mitochondria DNA Copy Number, Adversity, lpWGS (Min.5-Max. 8)**

12 **Abstract**

13 The mitochondrion is a multifunctional organelle that modulates multiple systems critical for
14 homeostasis during pathophysiological stress. Variation in mitochondrial DNA (mtDNA) copy
15 number (mtDNACn), a key mitochondrial change associated with chronic stress, is an emerging
16 biomarker for disease pathology and progression. mtDNACn can be quantified from whole blood
17 samples using qPCR to determine the ratio of nuclear DNA to mtDNA. However, the collection of
18 blood samples in pediatric populations, particularly in infants and young children, can be technically
19 challenging, yield much smaller volume samples, and can be distressing for the patients and their
20 caregivers. Therefore, we have validated a mtDNACn assay utilizing DNA from simple buccal swabs
21 (Isohelix SK-2S) and report here it's performance in specimens from infants (age = <12 months).
22 Utilizing qPCR to amplify ~200bp regions from two mitochondrial (*ND1*, *ND6*) and two nuclear
23 (*BECN1*, *NEB*) genes, we demonstrated absolute (100%) concordance with results from low-pass
24 whole genome sequencing (lpWGS). We believe that this method overcomes key obstacles to

25 measuring mtDNAcn in pediatric populations and creates the possibility for development of clinical
26 assays to measure mitochondrial change during pathophysiological stress.

27

28 **1 Introduction**

29 The mitochondrion is an essential organelle producing cellular energy through oxidative metabolism.
30 In addition to being the “powerhouse” of the cell, mitochondria are increasingly recognized for their
31 roles in a broad range of cellular processes. Damage-associated molecular patterns (DAMPs) are
32 pathophysiological changes that occur on the cellular level that can be mediated by the release of
33 mitochondrial DNA and mitochondrial double stranded RNA into the cytoplasm during mitophagy
34 (1, 2). This may lead to increased oxidative stress and changes in nuclear gene expression, triggering
35 inflammation-related signaling pathways and systemic inflammatory responses (3-5).

36 One of the most well-studied associations between mtDNAcn and pathology is in cancer (6).
37 Increased mtDNAcn has been observed in various cancer types, including breast, lung, and colorectal
38 cancer. Known as mitochondrial biogenesis, this is thought to support the high energy demands of
39 rapidly dividing cancer cells, but may also contribute to chemoresistance, making it a potential
40 therapeutic target (7-9). Diseases may also be characterized by a reduced mtDNAcn. Mitochondrial
41 diseases often involve mutations in nuclear or mitochondrial genes that disrupt mtDNA maintenance
42 affecting energy production and causing a wide range of symptoms, such as muscle weakness,
43 neurological deficits, and organ dysfunction (1, 10, 11). Other diseases associated with changes in
44 mtDNAcn include neurodegenerative and cardiovascular diseases, and metabolic disorders including
45 type 2 diabetes and obesity (12-14).

46 Chronic stress, a persistent state of emotional and psychological strain, has been closely linked with
47 changes in mtDNAcn and altered mitochondrial functioning in pre-clinical models of early adversity
48 and in human adults (15-17). Disordered mitochondrial function may be an important contributor to
49 the molecular mechanisms of human disease, including several mental and physical health
50 conditions. In chronic stress, dysregulation of the hypothalamic-pituitary-adrenal (HPA) axis and
51 increased cortisol can affect mitochondrial function and mtDNAcn (18, 19). These changes highlight
52 the need for a reliable means of assessing mtDNAcn.

53 A variety of methods have been described to quantify mtDNAcn, beginning with use of a
54 combination of restriction enzymes and southern blotting to evaluate the intensity of nuclear to
55 mitochondrial DNA probes (20). Molecular methods including PCR, qPCR, digital PCR and
56 genomic methods including whole exome sequencing (WES) and whole genome sequencing (WGS)
57 have all been used to establish a relative mtDNAcn value by comparing nuclear to mitochondrial

58 intensity, CT values, copies, number of reads, respectively (3, 21, 22). PCR based approaches are
59 broadly cost effective for implementation of routine clinical testing. While WES/WGS are becoming
60 more cost-effective and are used in some specialized settings, they remain impractical for routine
61 clinical testing of mtDNAcn. However, given the small size of the mitochondrial genome, low pass
62 whole genome sequencing (lpWGS) at a read depth of 0.5 – 3x provides ~50X mitochondrial genome
63 coverage. This is sufficient for quantifying mtDNAcn and is significantly less expensive than
64 standard WES/WGS in settings with the capacity for clinical genomic testing (23).

65 To obtain sufficient volume and quality of DNA for mtDNAcn testing, conventional methods utilize
66 venipuncture, from which up to 10mLs of whole blood is collected (24). However, this exceeds the
67 recommended volume limits for infants and children (25), and venipuncture can be technically
68 challenging and can generate anxiety and discomfort in pediatric populations (26-28). Therefore, we
69 utilized buccal swabs (Isohelix SK-2S buccal swab kit and BuccalFix buffer BFX25 to stabilize DNA
70 and RNA) for specimen collection as it was minimally invasive, simple to administer and cost
71 effective. Using DNA extracted from these swabs, we developed a mtDNAcn qPCR assay and
72 evaluated its performance in comparison to a commercially available mtDNAcn qPCR kit
73 (NovaQUANT Human Mitochondrial to Nuclear DNA ratio kit, Millipore Sigma, USA) and lpWGS.

74

75 2 Materials and Methods

76 2.1 Participants and study design

77 Buccal swab samples collected through Children’s Hospital Los Angeles as part of the California
78 Initiative to Advance Precision Medicine (CIAPM) - Adverse Childhood Experiences (ACEs)
79 program (Scalable Measurement and Clinical Deployment of Mitochondrial Biomarkers of Toxic
80 Stress – IRB# CHLA-21-00174) and the Your Baby: Healthy Development and Resiliency (IRB#
81 CHLA-18-00547) studies were used for assay development. Participants' or their legal
82 representatives provided written consent to take part in the aforementioned studies. The ACEs study
83 samples used in this study were from 164 mothers and their infants recruited to participate at the 6-
84 month timepoint of this ongoing study that also includes a 12-month infant visit. The Your Baby
85 study samples used in this study were from 19 mothers and 21 infants. A total of six samples
86 collected as part of the CIAPM study were used to validate the commercial (samples a1-a3) and our
87 own (samples b1-b3) qPCR based mtDNAcn assay. The commercial assay and lpWGS were
88 performed on 40 samples (Your Baby study, 19 mothers and their 21 infants) to assess the
89 concordance of these two techniques. However, further use of the commercial qPCR mtDNAcn
90 assay was precluded by supply chain issues which limited the availability of kits (at the time of
91 manuscript submission, the NovaQUANT assay is currently described as “limited availability” from
92 Millipore Sigma). Therefore, we established the concordance of our assay (developed with CIAPM
93 samples b1-b3) using three samples from the Your Baby study that were previously used for the
94 commercial assay and lpWGS. We then performed our mtDNAcn qPCR assay on 164 mother and
95 164 infant ACEs study samples and, finally assessed concordance using lpWGS on a subset of 36
96 samples (18 mothers and their 18 infants) from the ACEs study. The workflows and study samples
97 are summarized in **Figure 1**.

98 2.2 Specimen collection, DNA isolation and extraction

99 The IsoHelix SK-2S kit in combination with the BFX-25 stabilizing buffer can be used for the
100 isolation of both DNA and RNA from a single buccal swab. Caregivers were instructed not to give
101 infants food or milk for 60 minutes prior to specimen collection. Mothers utilized a gentle ‘bear hug
102 technique’ to hold the infant while a member of the research staff swabbed the buccal mucosa of each
103 cheek for 30 seconds (total of 60 seconds, timed), and then placed the swab into the collection tube.
104 Maternal buccal swabs were self-collected during the same visit following an identical procedure.

105 While some infants tolerated a shorter period of time (30-45 seconds), we found that moderate
106 pressure applied during swabbing for any time between 30-60 seconds is the most important element
107 for sufficient sample collection. No mother-infant pairs were excluded from the study due to
108 inadequate swab times. Collection tubes received a 500 μ L aliquot of BuccalFix buffer (BFX-25)
109 and were inverted 10 times before being barcoded and stored at -80°C in the CHLA Pediatric
110 Research Biorepository. DNA and RNA were extracted using the Maxwell RSC Blood DNA kit
111 &RSC miRNA from Tissue and Plasma Kit (Promega) and stored at 4°C and -80°C , respectively,
112 until required. DNA/RNA quality (nanodrop) and quantity (Qubit) was assessed prior to use.

113 **2.3 mtDNAcn assays and lpWGS**

114 NovaQUANT (Millipore Sigma, USA) is a qPCR assay that assesses relative mtDNAcn by
115 comparing the ratio of mitochondrial to nuclear DNA using the Ct (ΔCt) levels of two mitochondrial
116 genes (ND1 and ND6) and two nuclear genes (BECN1 and NEB). Real-time PCR of 4 targets (2
117 mitochondrial, 2 nuclear) was performed following the manufacturer's protocol. All samples were
118 run in triplicate (DNA – 2ng/replicate), including nuclease-free water as a no template control
119 (NTC). For analysis, we used the manufacturer's recommended method in which relative mtDNAcn
120 was calculated by assessing the ratio of mtDNA/nDNA for the MT-ND1 and MT-ND4, by the
121 geometric mean of BECN1 and NEB1.

122 Due to supply chain issues that limited availability of the commercial assay, we designed a
123 mtDNAcn qPCR assay utilizing prior published primers and mitochondrial gene target normalization
124 against nuclear genes (29) (Table1). The Ct (ΔCt) levels of two mitochondrial genes (ND1 and ND6)
125 and two nuclear genes (BECN1 and NEB) were assessed for each DNA sample. A reference DNA-
126 sample (NA12878) which has been broadly used in validating many genomic assays was included in
127 all runs. Real-time PCR of the four target genes was performed on DNA obtained from the buccal
128 swab specimens using the following cycling parameters: 95°C for 10 minutes; 40 cycles of 95°C for
129 15 seconds, 60°C for 60 seconds on the StepOnePlus™ Real-Time PCR System (Applied
130 Biosystems, USA) and using RT² SYBR Green ROX FAST Master mix (Qiagen, USA) consisting of
131 HotStart DNA taq polymerase, nucleotides, ROX as the reference dye, and SYBR Green dye. All
132 samples were run in triplicate (DNA – 2ng/replicate), including nuclease-free water as a no template
133 control (NTC). Once normalized, the mitochondrial gene target Ct value was analyzed using the 2-
134 Delta-Delta method (30) to convert the Ct value to a linear form for analysis of gene expression and
135 calculate the relative change in mitochondrial copy number. Briefly, Cts from the ND1 gene are

136 subtracted from that of the BECN1 gene to obtain $\Delta Ct1$ ($\Delta Ct1 = Ct^{Nuc1} - Ct^{Mito1}$), while ND6 Ct is
137 subtracted from NEB Ct to obtain $\Delta Ct2$ ($\Delta Ct2 = Ct^{Nuc2} - Ct^{Mito2}$), then copy numbers are calculated
138 based on the ΔCt of the matched mitochondrial to nuclear DNA Cts ($N = 2^{\Delta Ct}$). The average of the
139 two copy number results provides the final relative mtDNAcn per sample.

140 We performed lpWGS to evaluate the performance of both the commercial and our own mtDNAcn
141 assay (**Figure 1**). DNA (5ng) obtained from a subset of the same buccal swab specimens was used to
142 prepare NGS libraries using xGen™ cfDNA & FFPE DNA Library Prep (Integrated DNA
143 Technologies Coralville, IA). NGS libraries were barcoded, pooled and sequenced on Illumina
144 NextSeq 500 at 2x100bp to an average read-depth ranging from 0.5 – 1X. Relative mtDNAcn was
145 then calculated using the formula $mtDNAcn = (\text{Average mitochondrial genome coverage} / \text{Average}$
146 $\text{autosomal chromosome coverage}) * 2$, as previously described (31).

147 *Figure 1 here.*

148 We assessed the performance of our mtDNAcn assay by three-way comparison to the commercial
149 assay and lpWGS results obtained from three samples using DNA (2ng/replicate) obtained from a
150 subset of the same buccal swab specimens from the Your Baby study. We were only able to perform
151 this 3-way comparison on this subset of samples due to (1) limited amounts of DNA remaining and
152 (2) limited quantities of the commercial assay.

153 *Table 1 here.*

154 **2.4 Data analysis**

155 Correlation analysis and graphing were done using GraphPad Prism (version 9.5.1) and R (version
156 4.3.1) running in RStudio. Data are presented as means with error bars depicting standard deviation
157 (SD) unless otherwise specified.

158 3 Results

159 3.1 Commercial assay validation and assessment

160 We initially assessed buccal swab specimens from the Your Baby study comprised of 19 mothers and
161 21 infants. As shown in **Figure 2**, the IsoHelix SK-2S kit in combination with the BFX-25 stabilizing
162 buffer produced high-quality DNA and RNA as assessed by 260/280 and 260/230 ratios. The
163 collection method yielded a range of 20-2000ng DNA across infant samples, and 200-4000ng DNA
164 across maternal samples (**Figure 2C**). We were able to elute an average of 600ng of DNA and RNA
165 in a 25uL volume, providing sufficient nucleic acid concentrations for multiple assays on each
166 sample (new **Figures 2C and 2D**). Prior to assessing mtDNAcn in the Your Baby study samples, we
167 conducted an inter and intra-day assay validation of the commercial NovaQUANT mtDNA qPCR
168 assay utilizing DNA obtained from three specimens (a1, a2 and a3). Inter-day variability was
169 determined by running a1, a2 and a3 in triplicate on consecutive days; intra-day variability was
170 determined by running the same samples in triplicate a second time on the same plate.
171 (**Supplementary Figures s1 – s3**).

172

173 *Figure 2 here.*

174

175 We then used the commercial assay to determine mtDNAcn for Your Baby study samples utilizing
176 DNA available for 19 mothers and 21 infants. Our results shown in **Figure 3A** illustrate the mean
177 mtDNAcn level was higher in infants (229.2 ± 66.4 S.D) than maternal samples (136.7 ± 41.8 S.D)
178 (**Figure 3A**). The Your Baby samples showed a 97% concordance (**Figure 3B**) between the
179 commercial mtDNAcn qPCR assay and lpWGS results.

180

181 *Figure 3 here.*

182 3.2 Validation and performance characterization of our qPCR assay.

183 We developed our own custom mtDNAcn qPCR assay combining methods from the commercial
184 assay and published primers as previously described. We performed inter- and intra-day validation
185 for our assay as described previously (**Supplementary Figures s4 -s6**). Using three samples from

186 the Your Baby Study, we performed a three-way comparison of our assay, the commercial assay and
187 lpWGS assay, and showed a 100% concordance (Pearson r of 1) for all three assays (**Figure 4**).

188 *Figure 4 here.*

189
190 Our own assay then was utilized to evaluate DNA from 164 mothers and 164 six-month old infant
191 samples collected for the ACEs study. **Figure 5** shows DNA quality, quantity and mtDNAcn from
192 this cohort. In addition, we showed a high concordance between our assay and lpWGS on a subset of
193 36 ACEs samples (Pearson $r = 0.94$).

194 *Figure 5 here.*

195 **3.3 Mitochondrial haplogroup assessment**

196 Mitochondrial haplogroups are defined by a set of variants in the mitochondrial genome that form
197 specific branches of the mitochondrial phylogenetic tree (32, 33). These may be useful as markers of
198 genetic ancestry, population migrations and environmental adaptation, and certain haplogroups have
199 been associated with susceptibility or resistance to specific diseases (34, 35). We used the Phy-mer
200 tool that we previously developed (33) to evaluate the mitochondrial haplogroups and determine
201 haplogroup regions for 18 mothers for which we had lpWGS data (**Figure 6**). The majority of
202 maternal haplogroups were from the “Americas” region (North and South America).

203 *Figure 6 here.*

204

205 4 Discussion

206 We report the development and validation of mtDNA copy number assays that provide highly
207 reliable and reproducible results from an oral biospecimen. Using the IsoHelix SK-2S buccal swab
208 kit we were able to isolate DNA and RNA of sufficient quality and quantity from infants and adults
209 to perform qPCR based mtDNAcn and lpWGS assays from a single sample. This makes these assays
210 particularly useful for infants and young children for whom specimen collection and sample
211 limitations may effectively preclude existing methods. Our own qPCR assay required as little as 2ng
212 of DNA per qPCR replicate and our lpWGS required 5ng for library preparation. We demonstrated
213 high concordance of results from our qPCR mtDNAcn assay, a commercial qPCR mtDNAcn assay,
214 and lpWGS.

215 Different methods of measuring mtDNAcn have been evaluated previously (21). One study used data
216 from two adult cohorts, the Atherosclerosis Risk in Communities (ARIC) study and the Multi-Ethnic
217 Study of Atherosclerosis (MESA), and evaluated mtDNAcn calculated from qPCR, two microarray
218 platforms, whole genome sequencing (WGS), and whole exome sequencing (WES) (21). The results
219 showed that mtDNAcn calculated from WGS data had the strongest associations with known
220 mtDNAcn correlates, such as age, sex, white blood cell count, and incident cardiovascular disease.
221 mtDNAcn calculated from WGS also was more significantly associated with these traits compared to
222 all other methods, including qPCR. While the current study only evaluated one DNA extraction
223 method, the ARIC study also examined the impact of DNA extraction methods on mtDNAcn
224 estimation and found that measuring mtDNAcn from cell lysate resulted in less variability compared
225 to traditional methods using phenol-chloroform-isoamyl alcohol and silica-based column selection
226 (21).

227 There is growing evidence that mitochondrial adaptation as part of the cell danger response (36, 37)
228 may play a central role in various pathophysiological states, including cancer, cardiovascular disease,
229 metabolic disorders and chronic stress (16, 19, 38-43). Mitochondrial DNA copy number is a critical
230 determinant of mitochondrial function, influencing cellular energy production and metabolism (3).
231 Developing mtDNAcn assays that can be used in infants and young children provides the opportunity
232 to study whether atypical mtDNAcn may be an indicator of early pathophysiological changes that are
233 currently challenging to identify using other measures. Use of buccal swabs for sample collection and
234 a qPCR based method make our assay potentially cost effective and scalable, two key features for
235 any clinical test. While this test has broad potential application, we are particularly interested in its

236 utility for measuring mtDNAcn changes in infants and young children to better understand whether
237 and how mtDNAcn may reflect developmental disruption due to early adversity. This requires study
238 of larger populations which hopefully can be more readily accomplished using this assay.

239

240 5 References

- 241 1. Grochowska J, Czerwinska J, Borowski LS, Szczesny RJ. Mitochondrial RNA, a new trigger of the innate
242 immune system. *Wiley Interdiscip Rev RNA*. 2022;13(3):e1690.
- 243 2. Qiu Y, Huang Y, Chen M, Yang Y, Li X, Zhang W. Mitochondrial DNA in NLRP3 inflammasome
244 activation. *Int Immunopharmacol*. 2022;108:108719.
- 245 3. Filograna R, Mennuni M, Alsina D, Larsson NG. Mitochondrial DNA copy number in human disease:
246 the more the better? *FEBS Lett*. 2021;595(8):976-1002.
- 247 4. Picard M, Wallace DC, Burelle Y. The rise of mitochondria in medicine. *Mitochondrion*. 2016;30:105-
248 16.
- 249 5. Wallace DC. Mitochondria as chi. *Genetics*. 2008;179(2):727-35.
- 250 6. Wallace DC. Mitochondria and cancer: Warburg addressed. *Cold Spring Harb Symp Quant Biol*.
251 2005;70:363-74.
- 252 7. Audano M, Pedretti S, Ligorio S, Crestani M, Caruso D, De Fabiani E, et al. "The Loss of Golden
253 Touch": Mitochondria-Organelle Interactions, Metabolism, and Cancer. *Cells*. 2020;9(11).
- 254 8. Kaneva K, Merkurjev D, Ostrow D, Ryutov A, Triska P, Stachelek K, et al. Detection of mitochondrial
255 DNA variants at low level heteroplasmy in pediatric CNS and extra-CNS solid tumors with three different
256 enrichment methods. 2021:14.
- 257 9. Kopinski PK, Singh LN, Zhang S, Lott MT, Wallace DC. Mitochondrial DNA variation and cancer. *Nat*
258 *Rev Cancer*. 2021;21(7):431-45.
- 259 10. Breda CNS, Davanzo GG, Basso PJ, Saraiva Câmara NO, Moraes-Vieira PMM. Mitochondria as central
260 hub of the immune system. *Redox Biol*. 2019;26:101255.
- 261 11. Petruzzella V, Sardanelli AM, Scacco S, Panelli D, Papa F, Trentadue R, et al. Dysfunction of
262 mitochondrial respiratory chain complex I in neurological disorders: genetics and pathogenetic mechanisms.
263 *Adv Exp Med Biol*. 2012;942:371-84.
- 264 12. Kong C, Song W, Fu T. Systemic inflammatory response syndrome is triggered by mitochondrial
265 damage (Review). *Mol Med Rep*. 2022;25(4).
- 266 13. Norat P, Soldozy S, Sokolowski JD, Gorick CM, Kumar JS, Chae Y, et al. Mitochondrial dysfunction in
267 neurological disorders: Exploring mitochondrial transplantation. *NPJ Regen Med*. 2020;5(1):22.
- 268 14. Pyle A, Anugraha H, Kurzawa-Akanbi M, Yarnall A, Burn D, Hudson G. Reduced mitochondrial DNA
269 copy number is a biomarker of Parkinson's disease. *Neurobiol Aging*. 2016;38:216.e7-.e10.
- 270 15. Eagleson KL, Villaneuva M, Southern RM, Levitt P. Proteomic and mitochondrial adaptations to early-
271 life stress are distinct in juveniles and adults. *Neurobiol Stress*. 2020;13:100251.
- 272 16. Picard M, McEwen BS. Psychological Stress and Mitochondria: A Conceptual Framework. *Psychosom*
273 *Med*. 2018;80(2):126-40.
- 274 17. Tyrka AR, Parade SH, Price LH, Kao HT, Porton B, Philip NS, et al. Alterations of Mitochondrial DNA
275 Copy Number and Telomere Length With Early Adversity and Psychopathology. *Biol Psychiatry*.
276 2016;79(2):78-86.
- 277 18. Lapp HE, Ahmed S, Moore CL, Hunter RG. Toxic stress history and hypothalamic-pituitary-adrenal axis
278 function in a social stress task: Genetic and epigenetic factors. *Neurotoxicol Teratol*. 2019;71:41-9.
- 279 19. Zitkovsky EK, Daniels TE, Tyrka AR. Mitochondria and early-life adversity. *Mitochondrion*.
280 2021;57:213-21.
- 281 20. Memon AA, Zoller B, Hedelius A, Wang X, Stenman E, Sundquist J, et al. Quantification of
282 mitochondrial DNA copy number in suspected cancer patients by a well optimized ddPCR method. *Biomol*
283 *Detect Quantif*. 2017;13:32-9.
- 284 21. Longchamps RJ, Castellani CA, Yang SY, Newcomb CE, Sumpter JA, Lane J, et al. Evaluation of
285 mitochondrial DNA copy number estimation techniques. *PLoS One*. 2020;15(1):e0228166.
- 286 22. Picard M. Blood mitochondrial DNA copy number: What are we counting? 2021:11.
- 287 23. Dong Z, Zhang J, Hu P, Chen H, Xu J, Tian Q, et al. Low-pass whole-genome sequencing in clinical
288 cytogenetics: a validated approach. *Genet Med*. 2016;18(9):940-8.

- 289 24. Gillio-Meina C, Cepinskas G, Cecchini EL, Fraser DD. Translational research in pediatrics II: blood
290 collection, processing, shipping, and storage. *Pediatrics*. 2013;131(4):754-66.
- 291 25. Howie SR. Blood sample volumes in child health research: review of safe limits. *Bull World Health*
292 *Organ*. 2011;89(1):46-53.
- 293 26. Cohen LL. Behavioral approaches to anxiety and pain management for pediatric venous access.
294 *Pediatrics*. 2008;122 Suppl 3:S134-9.
- 295 27. Kennedy RM, Luhmann J, Zempsky WT. Clinical implications of unmanaged needle-insertion pain and
296 distress in children. *Pediatrics*. 2008;122 Suppl 3:S130-3.
- 297 28. Meyer A, Paroni F, Gunther K, Dharmadhikari G, Ahrens W, Kelm S, et al. Evaluation of Existing
298 Methods for Human Blood mRNA Isolation and Analysis for Large Studies. *PLoS One*. 2016;11(8):e0161778.
- 299 29. Finlin BS, Memetimin H, Confides AL, Kasza I, Zhu B, Vekaria HJ, et al. Human adipose beiging in
300 response to cold and mirabegron. *JCI Insight*. 2018;3(15).
- 301 30. Livak KJ, Schmittgen TD. Analysis of relative gene expression data using real-time quantitative PCR
302 and the 2(-Delta Delta C(T)) Method. *Methods*. 2001;25(4):402-8.
- 303 31. Qian Y, Butler TJ, Opsahl-Ong K, Giroux NS, Sidore C, Nagaraja R, et al. fastMitoCalc: an ultra-fast
304 program to estimate mitochondrial DNA copy number from whole-genome sequences. *Bioinformatics*.
305 2017;33(9):1399-401.
- 306 32. Kaneva K, Schurr TG, Tatarinova TV, Buckley J, Merkurjev D, Triska P, et al. Mitochondrial DNA
307 haplogroup, genetic ancestry, and susceptibility to Ewing sarcoma. *Mitochondrion*. 2022;67:6-14.
- 308 33. Navarro-Gomez D, Leipzig J, Shen L, Lott M, Stassen AP, Wallace DC, et al. Phy-Mer: a novel
309 alignment-free and reference-independent mitochondrial haplogroup classifier. *Bioinformatics*.
310 2015;31(8):1310-2.
- 311 34. Alwehaidah MS, Bakhiet M, AlFadhli S. Mitochondrial Haplogroup Reveals the Genetic Basis of
312 Diabetes Mellitus Type 2 Comorbidity in Psoriasis. *Med Princ Pract*. 2021;30(1):62-8.
- 313 35. Canter JA, Haas DW, Kallianpur AR, Ritchie MD, Robbins GK, Shafer RW, et al. The mitochondrial
314 pharmacogenomics of haplogroup T: MTND2*LHON4917G and antiretroviral therapy-associated peripheral
315 neuropathy. *Pharmacogenomics J*. 2008;8(1):71-7.
- 316 36. Naviaux RK. Metabolic features and regulation of the healing cycle-A new model for chronic disease
317 pathogenesis and treatment. *Mitochondrion*. 2019;46:278-97.
- 318 37. Naviaux RK. Metabolic features of the cell danger response. *Mitochondrion*. 2014;16:7-17.
- 319 38. Trumpff C, Michelson J, Lagranha CJ, Taleon V, Karan KR, Sturm G, et al. Stress and circulating cell-
320 free mitochondrial DNA: A systematic review of human studies, physiological considerations, and technical
321 recommendations. *Mitochondrion*. 2021;59:225-45.
- 322 39. Trumpff C, Marsland AL, Basualto-Alarcon C, Martin JL, Carroll JE, Sturm G, et al. Acute psychological
323 stress increases serum circulating cell-free mitochondrial DNA. *Psychoneuroendocrinology*. 2019;106:268-76.
- 324 40. Sharma P, Sampath H. Mitochondrial DNA Integrity: Role in Health and Disease. *Cells*. 2019;8(2):21.
- 325 41. Daniels TE, Olsen EM, Tyrka AR. Stress and Psychiatric Disorders: The Role of Mitochondria. *Annu Rev*
326 *Clin Psychol*. 2020;16:165-86.
- 327 42. Chaudhari PR, Singla A, Vaidya VA. Early Adversity and Accelerated Brain Aging: A Mini-Review. *Front*
328 *Mol Neurosci*. 2022;15:822917.
- 329 43. Hoffmann A, Spengler D. The Mitochondrion as Potential Interface in Early-Life Stress Brain
330 Programming. *Front Behav Neurosci*. 2018;12:306.

331

332

333 **5.1 Tables**

334 **Table 1 Primers utilized.**

Primer Name	Forward	Tm	Primer Name	Reverse	Tm
NEB-Fin-F1	GGCACCTCTTGATATGCTCC	58.11	NEB-Fin-R1	TATGCCTTCTTGGCAAGGTCC	60.34
BECN1-Fin-F1	GAAGTTTTCCGGCGGCTAC	62	BECN1-Fin-R1	CCGTCACCCAAGTCCGGT	64.4
ND1-Fin-F1	CCAACCTCCTACTCCTCATTGT	59.21	ND1-Fin-R1	AGGGTTGTAGTAGCCCGTAG	59.21
ND6-Fin-F1	ACTACAGCGATGGCTATTGAGG	60.7	ND6-Fin-R1	ATACTCTTTCACCCACAGCACC	60.4

335

336 **6 Conflict of Interest**

337 *The authors declare that the research was conducted in the absence of any commercial or financial*
338 *relationships that could be construed as a potential conflict of interest.*

339 **7 Author Contributions**

340 Simran Maggo and Dejerianne Ostrow led the development of the qPCR assays. Simran Maggo
341 drafted the original manuscript including data analysis and production of tables and figures. Liam
342 North and Aime Ozuna led the recruitment of study participants for the ACEs study. Yander Grajeda
343 conducted all laboratory procedures to generate all data in this manuscript. Hesmedin Hakimjavadi
344 assisted with IpWGS analysis. Jennifer Cotter, Alexander Judkins, Pat Levitt and Xiaowu Gai
345 developed the ACEs study. Pat Levitt developed the Your Baby study. All authors contributed to
346 editing and final proof-reading of this manuscript.

347 **8 Funding**

348 This research project was supported by the California Initiative to Advance Precision Medicine –
349 ACES Program (OPR20139) and The JPB Research Network on Toxic Stress: A project of the
350 Center on the Developing Child at Harvard University.

351 **9 Acknowledgments**

352 This research project was supported by the California Initiative to Advance Precision Medicine –
353 ACES Program (OPR20139), The Saban Research Institute Developmental Neuroscience and
354 Neurogenetics Program, the Simms/Mann Family Foundation and the CHLA Center for Personalized
355 Medicine. We are grateful to Drs. Alma Gharib and Sahana Nagabhushan Kalburgi for guidance in
356 establishing the full research protocol and to Suchi Patel for assisting with initial data generation for
357 the NovaQUANT assay.

358

359

360 **Data Availability Statement**

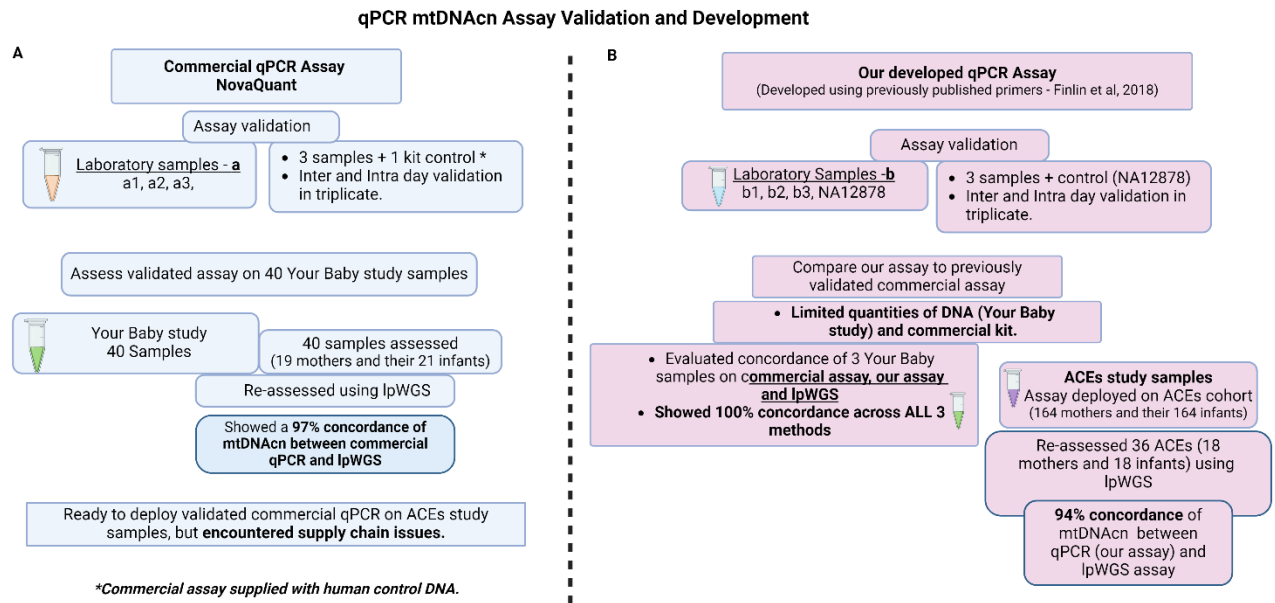
361 The original contributions presented in the study are included in the article/supplementary material,
362 further inquiries can be directed to the corresponding author.

363

364 10 Figures

365

366

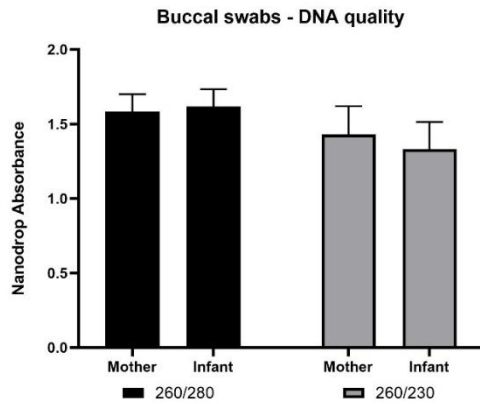


367

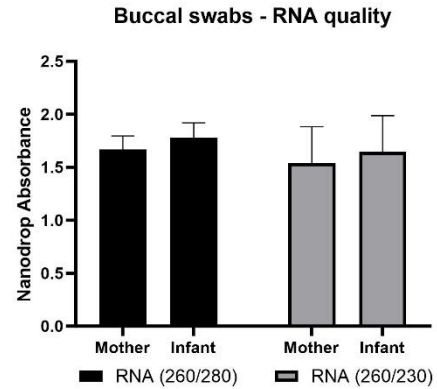
368 **Figure 1 Study Design for qPCR mtDNA assay validation and development.** (A) Commercial,
369 NovaQUANT (Millipore Sigma, USA) mtDNAcn qPCR assay validation and study samples utilized;
370 (B) our mtDNAcn qPCR assay development, validation and study samples utilized.

371

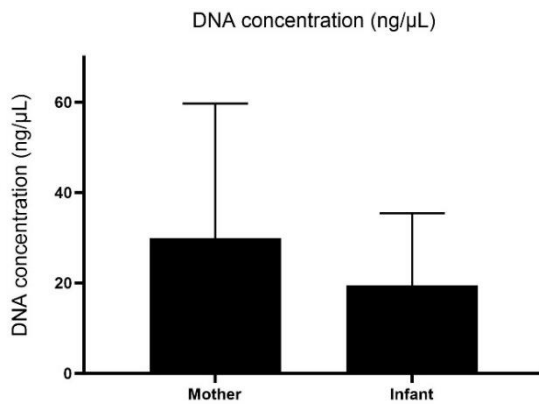
A



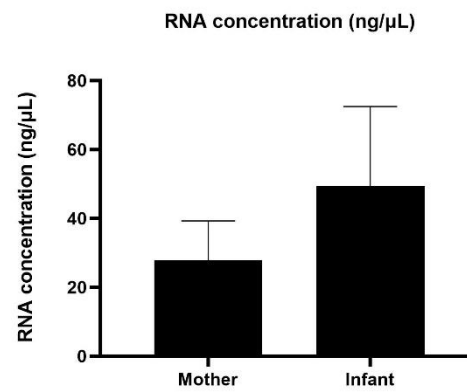
B



C



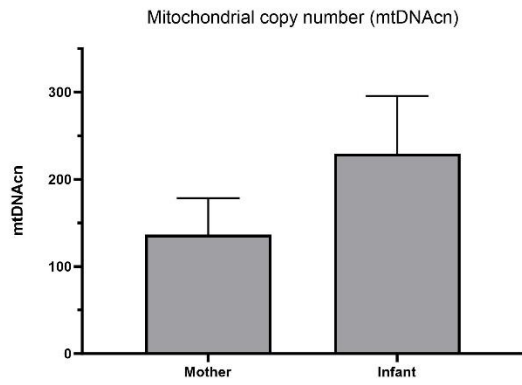
D



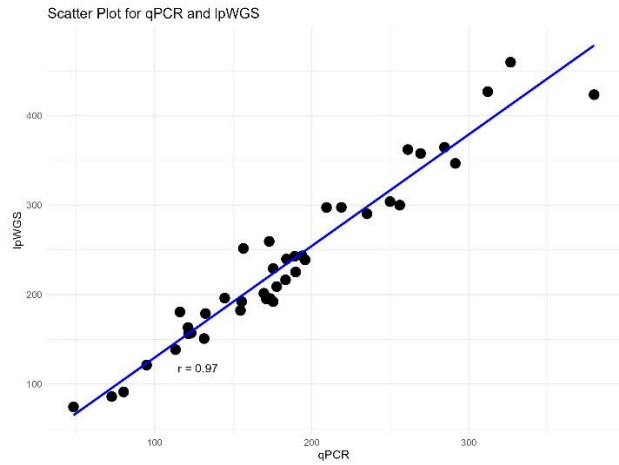
373 **Figure 2 Nucleic acid collection results.** Assessment of DNA and RNA quality (panels A and B)
 374 (panels C and D) of the IsoHelix SK-2S kit in combination with the BFX-25 stabilizing buffer on 19 mother and
 375 21 infant samples from the Your Baby study.

376

A

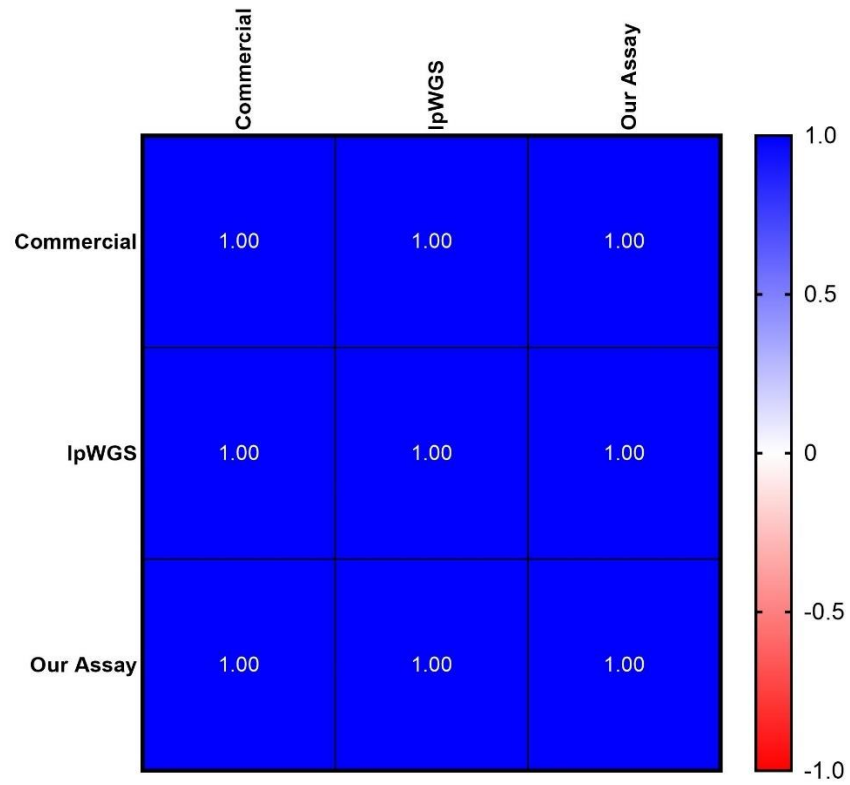


B



377 **Figure 3 mtDNAcn results for commercial assay and concordance with lpWGS.** *Mother and*
378 *infant mtDNAcn assessment using the commercial assay (panel A). Strong (Pearson $r = 0.97$)*
379 *concordance of the commercial qPCR assay and lpWGS for mtDNAcn assessment (panel B).*

380

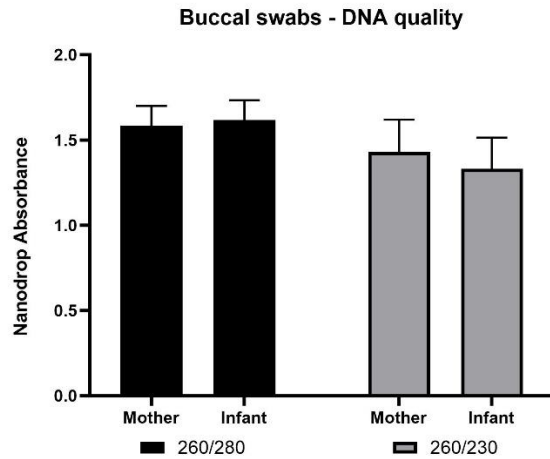


381

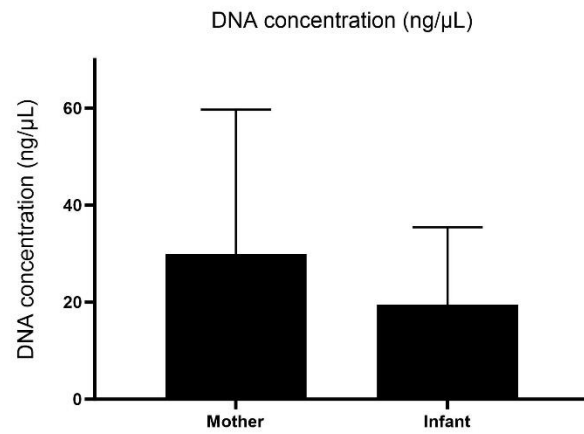
382 **Figure 4. Concordance of mtDNAcn between commercial, lpWGS and our own assays. High**
 383 *(100%) concordance, depicted as Pearson's r values, of all three methodologies used to assess*
 384 *mtDNAcn.*

385

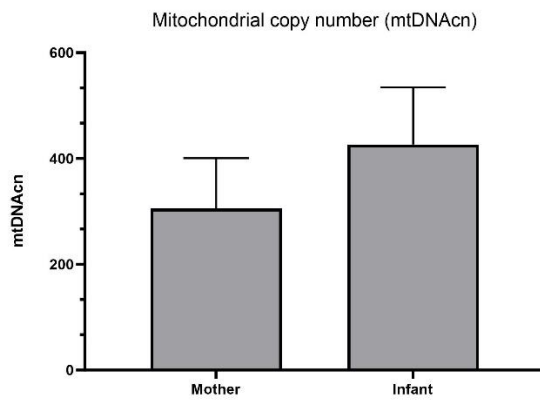
A



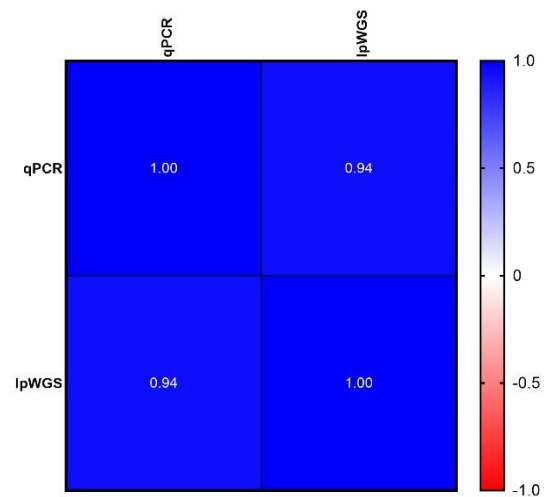
B



C

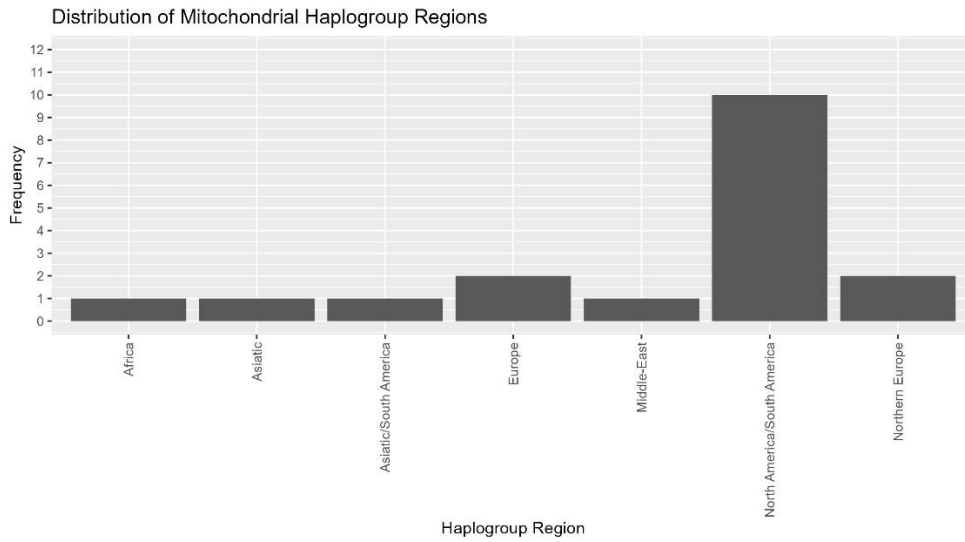


D



386 **Figure 5. ACEs study: Nucleic acid collection results and mtDNAcn results from our qPCR and lpWGS assays.**
 387 DNA quality (Panel A), DNA quantity (Panel B), average mtDNAcn in mothers (164) and infants (164) assessed
 388 using our qPCR assay (panel C), and concordance of 36 samples re-assessed for mtDNAcn using lpWGS (panel
 389 D), depicted as Pearson's r values. RNA quality and quantity was also assessed and is shown in
 390 **Supplementary Figure s7.**

391



392

393 **Figure 6. Mitochondrial haplogroups determination.** *Evaluation of mitochondrial haplogroups for 18*
 394 *maternal samples that underwent lpWGS showed most falling into North America/South America, with small*
 395 *numbers from other haplogroup regions.*

396

397

398 **11 Supplementary Material**

399 **11.1 Inter and intra-day validation of the commercial NovaQUANT mtDNA qPCR assay**

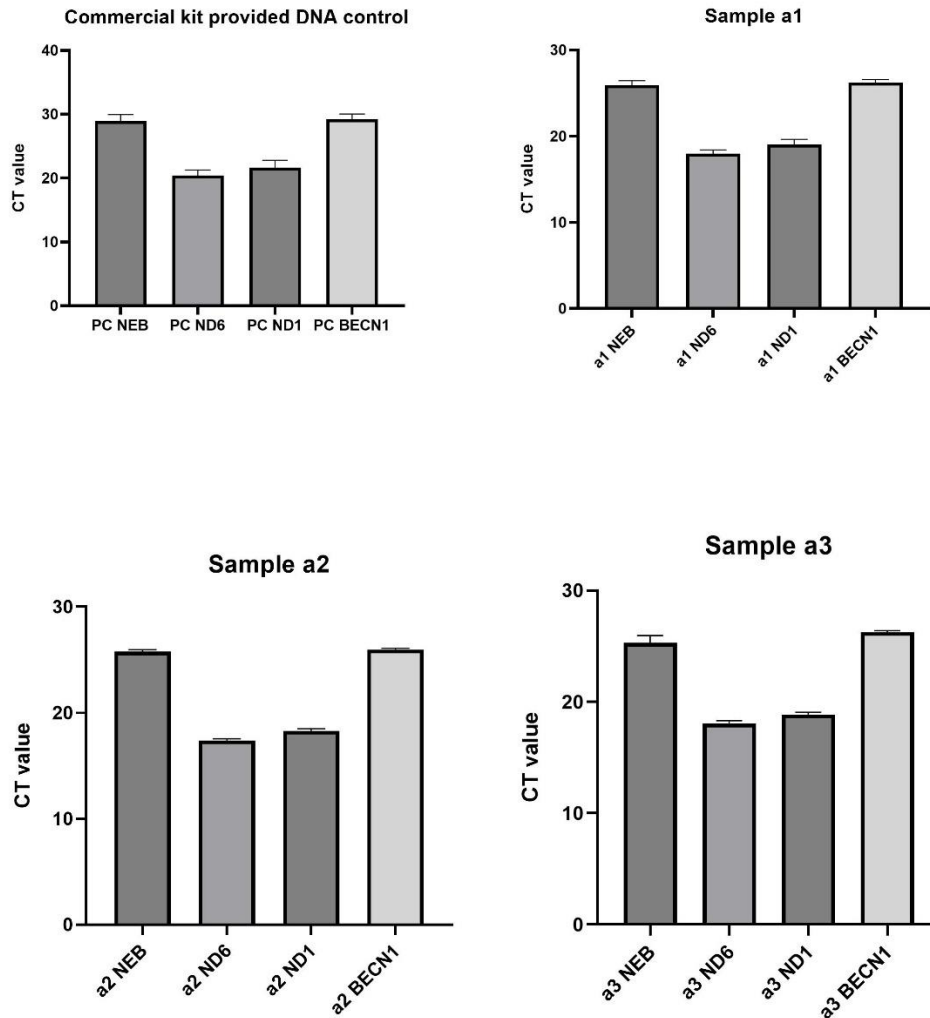
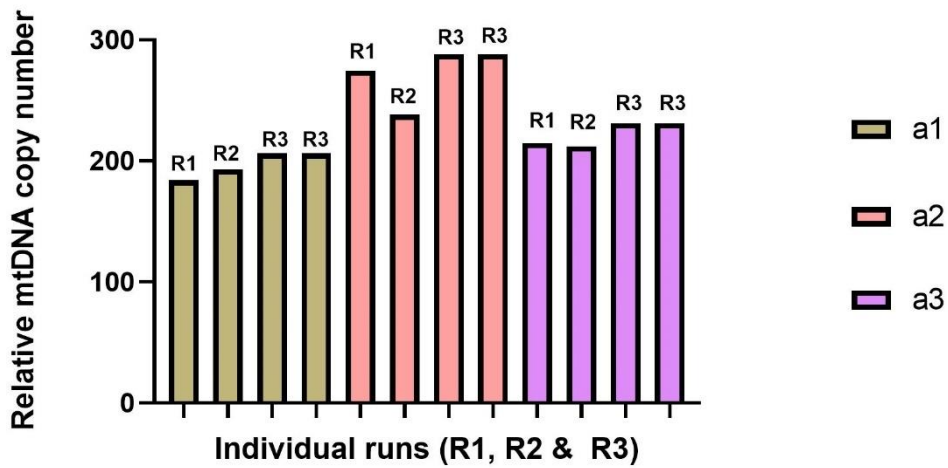


Figure s1. Mitochondrial DNA copy number assay validation. The qPCR assay utilizes two nuclear (NEB, BECN1) and two mitochondrial genes (ND1, ND6). The graphs above show the average CT values \pm SD from three separate validation runs. In each run the individual DNA sample was run in triplicate. Positive control (PC) is a DNA sample provided by the kit manufacturer.

400

Validation of Mitochondrial DNA copy number assay.

A



B

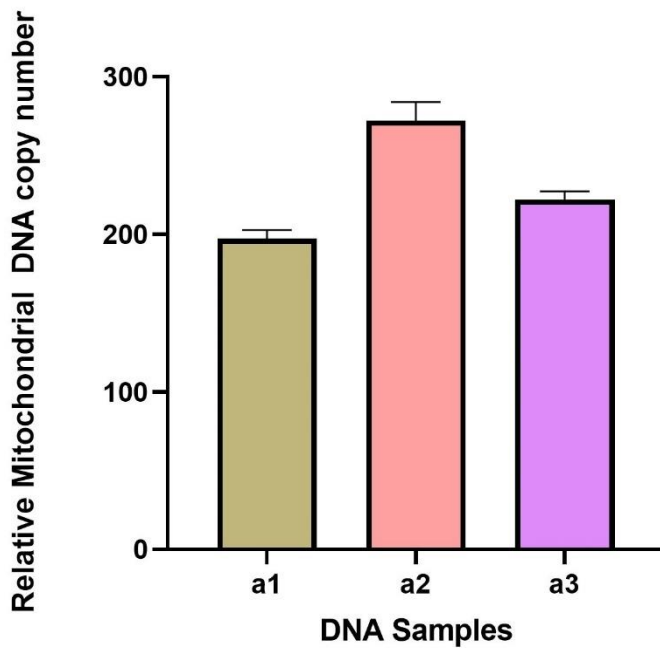


Figure s2. Panel A - DNA samples were assayed in 3 separate validation runs (R1, R2, R3). R1 and R2 are inter-day validation runs. R3 is the intra-day validation run. In the third validation run (R3, intra-day), each sample was run twice (in triplicate). Panel B - Average of all runs. The graphs above show the average mitochondrial DNA copy number \pm SD.

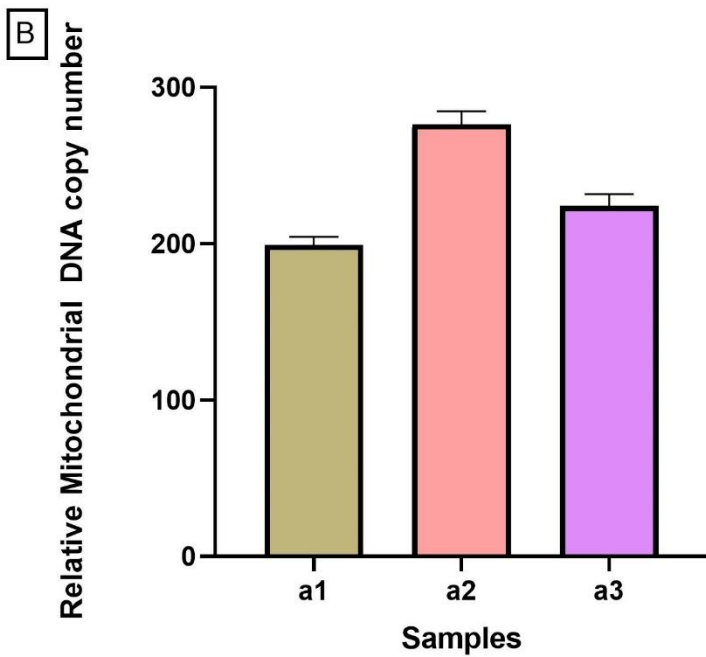
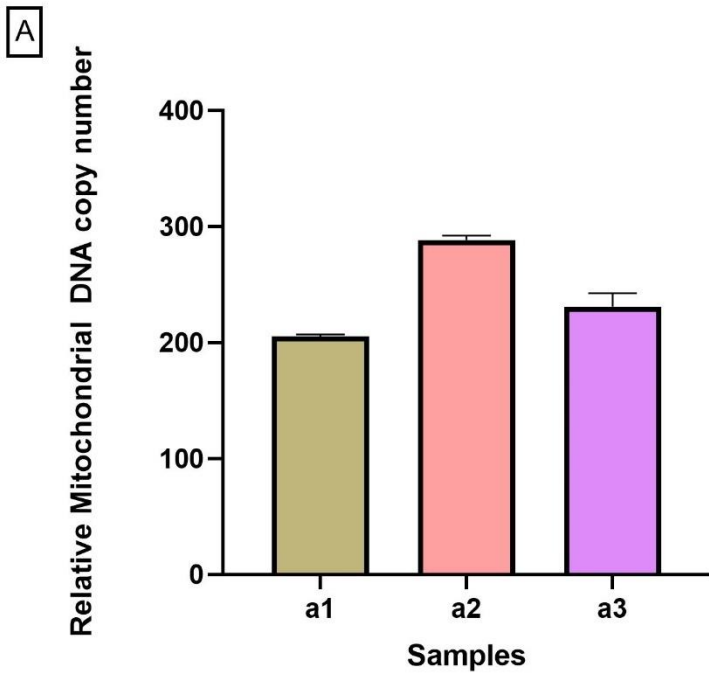


Figure s3. The graphs above show validation results from intra (A) and inter (B) runs. Inter-day results show relative mitochondrial DNA copy number \pm SD from samples run consecutively on two separate days on different plates in triplicate. Intra-day results show relative mitochondrial DNA copy number \pm SD from samples run TWICE on the same plate in triplicate.

402

403

404 **11.2 Inter- and intra-day validation of our qPCR mtDNAcn assay**

Intra-Day Validation (in-house qPCR mtDNAcn assay)

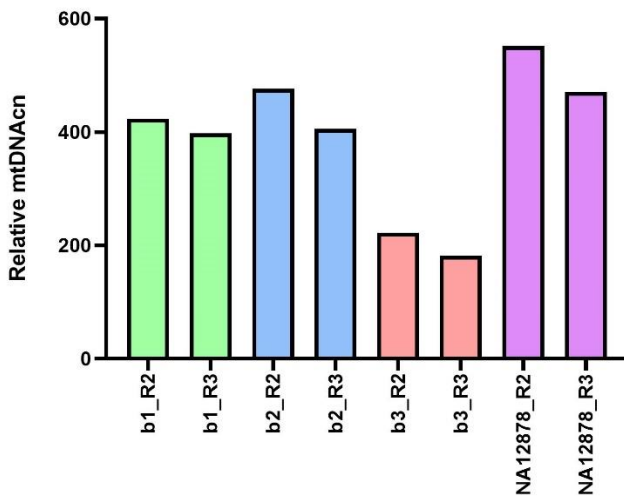


Figure s4 shows results of INTRA-day validation of in-house qPCR mtDNAcn assay. Run2 (R2) was carried out in the morning, and RUN3 (R3) was carried out in the afternoon of the same day. The different colored bars represent samples b1, b2, b3 and internal standard DNA sample - NA12878 respectively.

405

406

Inter-Day validation (In-house qPCR mtDNAcn assay).

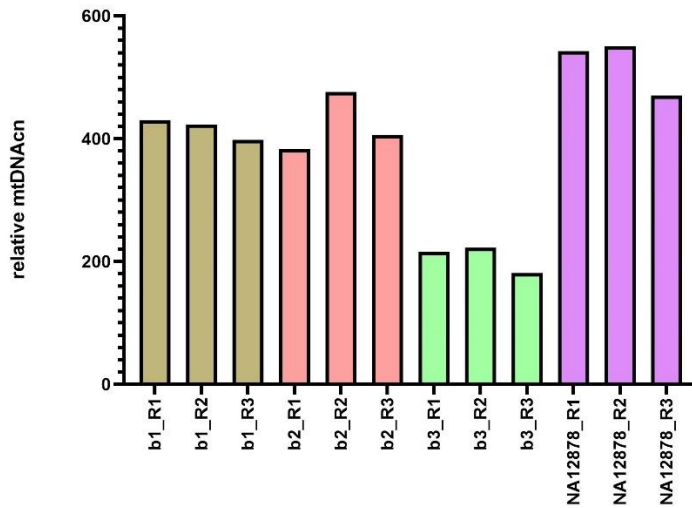


Figure s5 shows INTER-DAY validation of in-house qPCRmtDNA assay. Run1 (R1) and Run2 (R2) were carried out on consecutive days. Run 2 and Run3 (R3) were carried out on the same day. The different colored bars represent samples b1, b2, b3 and internal standard DNA sample - NA12878 respectively.

407

408

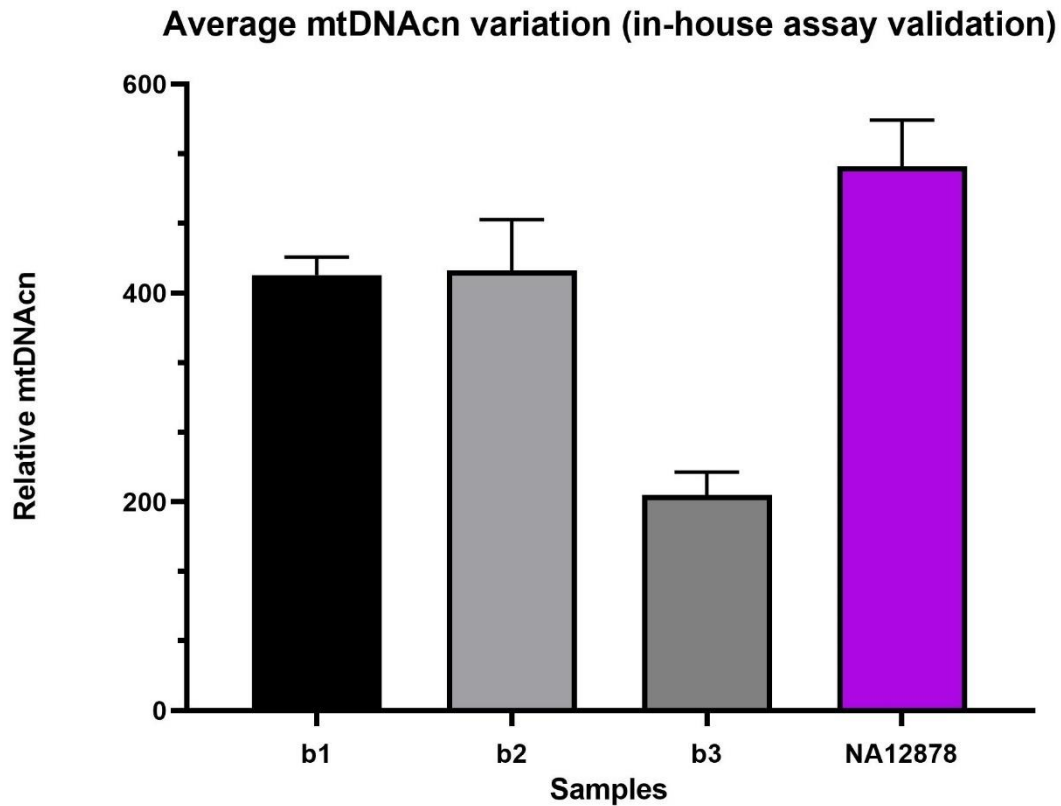
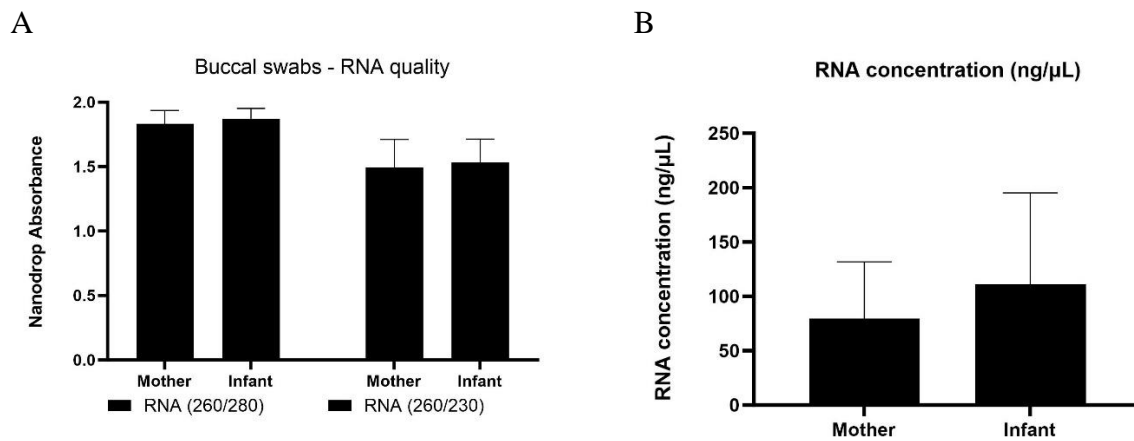


Figure s6 shows the average mtDNAcn and standard deviations from three separate runs.

409

410 **11.3 RNA quality and quantity of extracted RNA from ACEs study**



411 **Figure s7** RNA quality (panels A) and quantity (Panel B) of 164 mother and 164 infant samples from
 412 the ACEs cohort.

413

414