

1 **Effect of a male-targeted digital decision support application aimed at increasing linkage to HIV**  
2 **care among men: Findings from the HITS cluster randomized clinical trial in rural South Africa**

3 Hae-Young Kim<sup>1,2</sup>, Maxime Inghels<sup>3,4</sup>, Thulile Mathenjwa<sup>2</sup>, Maryam Shahmanesh<sup>2,5</sup>, Janet Seeley<sup>2,6</sup>,  
4 Philippa Matthews<sup>2</sup>, Sally Wyke<sup>7</sup>, Nuala McGrath<sup>2,8, 18</sup>, Oluwafemi Adeagbo<sup>9,10</sup>, Dickman Gareta,<sup>2</sup>  
5 H. Manisha Yapa<sup>11,12</sup>, Thembelihle Zuma<sup>2</sup>, Adrian Dobra<sup>13</sup>, Ann Blandford<sup>14</sup>, Till Bärnighausen<sup>15</sup>,  
6 Frank Tanser<sup>2,16,17,18</sup>

7  
8 <sup>1</sup> New York University Grossman School of Medicine, New York, USA

9 <sup>2</sup> Africa Health Research Institute, KwaZulu-Natal, South Africa

10 <sup>3</sup> Lincoln International Institute for Rural Health, University of Lincoln, Lincoln, United Kingdom

11 <sup>4</sup> Centre Population et Développement (UMR 196 Paris Descartes – IRD), SageSud (ERL INSERM  
12 1244), Institut de Recherche pour le Développement, Paris, France

13 <sup>5</sup> Institute for Global Health, University College London, London, United Kingdom

14 <sup>6</sup> London School of Hygiene and Tropical Medicine, London, United Kingdom

15 <sup>7</sup> University of Glasgow, Glasgow, United Kingdom

16 <sup>8</sup> University of Southampton, Southampton, United Kingdom

17 <sup>9</sup> University of Johannesburg, Johannesburg, South Africa

18 <sup>10</sup> College of Public Health, University of Iowa, USA

19 <sup>11</sup> The Kirby Institute, University of New South Wales Sydney, Sydney, Australia

20 <sup>12</sup> Sydney Infectious Diseases Institute, University of Sydney, Sydney, Australia

21 <sup>13</sup> University of Washington, Washington, USA

22 <sup>14</sup> University College London Interaction Centre, University College London, London, United  
23 Kingdom

24 <sup>15</sup> Heidelberg Institute of Global Health, University of Heidelberg, Heidelberg, Germany

25 <sup>16</sup> Centre for Epidemic Response and Innovation, School for Data Science and  
26 Computational Thinking, Stellenbosch University, Stellenbosch, South Africa

27 **NOTE: This preprint reports new research that has not been certified by peer review and should not be used to guide clinical practice.**

28 <sup>17</sup> South African DSI-NRF Centre of Excellence in Epidemiological Modelling and Analysis  
29 (SACEMA), Stellenbosch University, Stellenbosch, South Africa

30  
31  
32  
33  
34  
35  
36  
37  
38  
39  
40  
41  
42  
43  
44  
45  
46  
47  
48  
49  
50  
51  
52  
53  
54  
55  
56

<sup>18</sup> School of Nursing and Public Health, University of KwaZulu-Natal, Durban, South Africa

Corresponding Author: Hae-Young Kim, PhD, 227 East 30<sup>th</sup> Street, New York, NY, USA; e-mail address: hae-young.kim@nyulangone.org

Keywords: Linkage to HIV care, informed decision-making, digital counseling application, human-centered intervention design, randomized controlled trial, South Africa

Word count:

Abstract: 348/350

Main text: 3,379/3500

**Competing interests**

The authors declare no conflicts of interest.

**Authors' contributions**

**Oluwafemi Adeagbo:** Conceptualization, Methodology, Software, Writing – Review & Editing. **Till Bärnighausen:** Conceptualization, Funding acquisition, Investigation, Methodology, Software, Supervision, Writing – Review & Editing. **Ann Blandford:** Conceptualization, Investigation, Methodology, Software, Writing – Review & Editing. **Adrian Dobra:** Conceptualization, Formal analysis, Methodology, Writing – Review & Editing. **Dickman Gareta:** Data curation, Software, Writing – Review & Editing. **Maxime Inghels:** Conceptualization, Data curation, Formal analysis, Methodology, Validation, Writing – Review & Editing. **Hae-Young Kim:** Conceptualization, Data curation, Formal analysis, Methodology, Writing – Original Draft Preparation. **Thulile Mathenjwa:** Conceptualization, Investigation, Methodology, Project Administration, Software, Writing – Review & Editing. **Phillippa Matthews:** Conceptualization, Funding acquisition, Methodology, Software, Writing – Review & Editing. **Nuala McGrath:** Conceptualization, Funding acquisition, Methodology, Software, Writing – Review & Editing. **Jane Seeley:** Conceptualization, Funding acquisition, Methodology, Software, Writing – Review & Editing. **Maryam Shahmanesh:** Conceptualization, Funding acquisition, Methodology, Software, Writing – Review & Editing. **Frank Tanser:** Conceptualization, Funding acquisition, Investigation, Methodology, Software, Supervision,

57 Writing – Review & Editing. **Sally Wyke:** Conceptualization, Funding acquisition, Methodology, Software,  
58 Writing – Review & Editing. **H Manisha Yapa:** Conceptualization, Methodology, Writing – Review &  
59 Editing. **Thembelihle Zuma:** Conceptualization, Methodology, Writing – Review & Editing.

60

## 61 **Acknowledgement**

62 We thank community members for their continued support and participation in the Africa Health  
63 Research Institute’s Health and Demographic Surveillance System (HDSS), and the AHRI population,  
64 clinical, laboratory and data management teams.

65

66 **Funding:** The research is funded by the National Institute of Allergy and Infectious Diseases (NIAID)  
67 of the National Institutes of Health (NIH) under Award Number R01AI124389 (PIs: FT and TB).  
68 EPIC-HIV development was supported by the Engineering and Physical Sciences Research Council  
69 (EPSRC) Interdisciplinary Research Collaboration (IRC) Early-warning Sensing Systems for  
70 Infectious Diseases (i-sense) EP/K031953/1 and MRC MR/P024378/1. FT and TB are supported by  
71 the Eunice Kennedy Shriver National Institute of Child Health and Human Development (NICHD)  
72 (Award # R01-HD084233), and FT is additionally supported by the National Institute of Mental Health  
73 (NIMH) (Award # R01MH131480). NM is a recipient of an NIHR Research Professorship award (RP-  
74 2017-08-ST2-008). The Africa Health Research Institute’s HDSS is funded by the Wellcome Trust  
75 (201433/A/16/A), and the South Africa Population Research Infrastructure Network (funded by the  
76 South African Department of Science and Technology and hosted by the South African Medical  
77 Research Council). The content is solely the responsibility of the authors and does not necessarily  
78 represent the official views of the funding bodies.

79

## 80 **Role of the funding source**

81 The funders of the study had no role in study design, data collection, data analysis, data interpretation,  
82 or writing of the article.

83 **Data and materials availability:** The de-identified datasets are available upon reasonable request  
84 through the Africa Health Research Institute (AHRI) data repository at  
85 <https://data.ahri.org/index.php/home>

86

87 **Abstract**

88 **Introduction:** Linkage to HIV care remains suboptimal among men. We investigated the effectiveness  
89 of a male-targeted HIV-specific decision support app, Empowering People through Informed Choices  
90 for HIV (EPIC-HIV), on increasing linkage to HIV care among men in rural South Africa.

91 **Methods:** Home-Based Intervention to Test and Start (HITS) was a multi-component cluster-  
92 randomized controlled trial among 45 communities in uMkhanyakude, KwaZulu-Natal. The  
93 development of EPIC-HIV was guided by self-determination theory and human-centered intervention  
94 design to increase intrinsic motivation to seek HIV testing and care among men. EPIC-HIV was offered  
95 in two stages: EPIC-HIV 1 at the time of home-based HIV counseling and testing (HBHCT), and  
96 EPIC-HIV 2 at 1 month after positive HIV diagnosis. Sixteen communities were randomly assigned  
97 to the arms to receive EPIC-HIV, and 29 communities to the arms without EPIC-HIV. Among all  
98 eligible men, we compared linkage to care (initiation or resumption of antiretroviral therapy after >3  
99 months of care interruption) at local clinics within 1 year of a home visit, which was ascertained from  
100 individual clinical records. Intention-to-treat analysis was performed using modified Poisson  
101 regression with adjustment for receiving another intervention (i.e., financial incentives) and clustering  
102 at the community level. We also conducted a satisfaction survey for EPIC-HIV 2.

103 **Results:** Among all 13,894 eligible men (i.e.,  $\geq 15$  years and resident in the 45 communities), 20.7%  
104 received HBHCT, resulting in 122 HIV-positive tests. Among these, 54 men linked to care within 1  
105 year after HBHCT. Additionally, of the 13,765 eligible participants who did not receive HBHCT or  
106 received HIV-negative results, 301 men linked to care within 1 year. Overall, only 13 men received  
107 EPIC-HIV 2. The proportion of linkage to care did not differ in the arms assigned to EPIC-HIV  
108 compared to those without EPIC-HIV (adjusted risk ratio=1.05; 95% CI:0.86-1.29). All 13 men who  
109 used EPIC-HIV 2 reported the app was acceptable, user-friendly, and useful for getting information  
110 on HIV testing and treatment.

111 **Conclusion:** Reach was low although acceptability and usability of the app was very high among  
112 those who engaged with it. Enhanced digital support applications could form part of interventions to  
113 increase knowledge of HIV treatment for men.

114

115 Clinical Trial Number: ClinicalTrials.gov # NCT03757104

116

## 117 INTRODUCTION

118 Despite significant progress in HIV prevention and antiretroviral therapy (ART),<sup>1-8</sup> timely linkage to  
119 care remains a challenge, especially among men in sub-Saharan Africa.<sup>9</sup> In South Africa, of 8 million  
120 people living with HIV (PLWH), 94% of PLWH knew their HIV status, but only 74% of them linked  
121 to care and received ART in 2021.<sup>10</sup> Gaps are particularly significant among men, with only 68%  
122 successfully linking to care and receiving ART, whereas nearly 80% of women did so.<sup>10</sup> Home-based  
123 HIV counseling and testing (HBHCT) has been demonstrated as a highly acceptable and effective  
124 way to increase HIV testing and diagnosis in sub-Saharan Africa (SSA).<sup>11-18</sup> However, studies have  
125 reported that linkage to HIV care at clinics after HBHCT has been suboptimal, ranging from as low  
126 as 14% to 75%<sup>16,19-22</sup> In particular, men encounter various barriers such as social stigma, gender  
127 norms, or perceptions about the treatment, resulting in delays in seeking treatment until they feel  
128 severely ill.<sup>21,23</sup> Also, men often report the need to prioritize going to work over visiting a clinic for  
129 financial reasons.<sup>24</sup>

130  
131 Linking to and remaining in care for life-long treatment require consistent and internal motivation.  
132 Motivational interviewing (MI) is widely used as a person-centered counseling intervention to enhance  
133 intrinsic motivation for behavior change.<sup>25</sup> Studies have demonstrated its effectiveness in increasing  
134 adherence to ART<sup>26</sup> or reducing sexual risky behavior among both HIV-positive and HIV-negative  
135 individuals.<sup>27</sup> It is conceptually based on self-determination theory (SDT), which postulates that  
136 meeting three essential psychological needs – autonomy (i.e., having a sense of choice and being the  
137 initiator of actions), competence (i.e., feeling capable of achieving desired outcomes), and relatedness  
138 (i.e., need to feel connected to others) – enhances individuals' motivation for behavioral changes and  
139 facilitate achieving desired health outcomes over time.<sup>28-31</sup> However, implementing and delivering MI  
140 can be resource-intensive. Counselors need to receive comprehensive and specialized training,<sup>32</sup> and  
141 MI sessions typically lasts about 30-40 minutes per session and multiple sessions might be required to  
142 achieve effective behavior change.<sup>33</sup>

143

144 Digital technology interventions are increasingly utilized as one of the approaches to address this  
145 challenge and support engagement in the HIV care continuum.<sup>34</sup> While these interventions require  
146 infrastructure such as access to phones and data connectivity, they have the potential to be more cost-  
147 effective, less labor-intensive, and more equitable to overcome geographical barriers. Several studies  
148 have examined the effect of digital technologies to provide counseling and support on improving  
149 linkage to care in SSA. In rural Uganda and Kenya, when individuals who tested positive via  
150 community-wide HIV testing were offered facilitated linkage to care such as provision of a telephone  
151 hotline for enquiries, up to 73% linked to care within 1 year.<sup>35</sup> On the other hand, less than one-third  
152 of individuals newly diagnosed via HBHCT linked to care within 6 months in rural South Africa,  
153 despite SMS reminders and nurse-led telephone support for linkage to care.<sup>9</sup> To our knowledge, no  
154 study has explicitly developed a tablet-based male-targeted HIV decision support app to provide  
155 tailored counseling based on SDT and examined its impact on linkage to HIV care in SSA.

156

157 Home-Based Intervention to Test and Start (HITS) was a multi-component cluster-randomized  
158 controlled trial among 45 communities in uMkhanyakude district of KwaZulu-Natal. We previously  
159 reported that the probability of uptake of HIV testing increased by more than 50% in the financial  
160 incentive arms but did not differ in the arms which received a male-targeted HIV-specific decision  
161 support app, Empowering People through Informed Choices for HIV (EPIC-HIV).<sup>36</sup> In this study, we  
162 investigated the impact of EPIC-HIV on increasing HIV-positive diagnosis and linkage to HIV care  
163 within 1 year among men in rural South Africa.

164

## 165 **METHODS**

### 166 **Setting**

167 The trial was nested within AHRI's Health and Demographic Surveillance System (HDSS) and  
168 facilitated linkage to care in the uMkhanyakude district of northern KwaZulu Natal.<sup>37</sup> Adult (age 15+  
169 years) HIV prevalence in the study area was estimated as 19% in men and 40% in women in 2018.<sup>1</sup>  
170 Since 2003, AHRI has conducted ongoing population-based HIV surveillance within AHRI's HDSS.



171 The HIV surveillance is annually conducted among all residents aged  $\geq 15$  years to collect data on  
172 sexual behavior and general health as well as dried blood spots samples for anonymized HIV testing  
173 after obtaining informed consent.<sup>38,39</sup>

174

## 175 **Trial Design**

176 The trial was registered at the National Institute of Health (ClinicalTrials.gov # NCT03757104), and  
177 the full trial protocol was published elsewhere.<sup>40</sup> In brief, between February and December 2018, we  
178 implemented a 2x2 factorial cluster-randomized trial among a population of 37,028 residents aged  
179  $\geq 15$  years across 45 clusters within AHRI's ongoing population-based annual HIV testing platform  
180 (Figure 1).<sup>40-42</sup> Two interventions were conditional financial incentives and a male-targeted app-  
181 based system for informed decision making, called EPIC-HIV. Over the entire study duration, 8  
182 communities received only financial incentives, 8 communities received only EPIC-HIV, 8  
183 communities received both intervention, and 21 communities received standard of care. Both males  
184 and females were eligible to receive financial incentives but only males were eligible to receive  
185 EPIC-HIV. Implementation and acceptance of the HITS intervention were evaluated using a process  
186 evaluation through post-intervention satisfaction surveys<sup>43,44</sup> as well as focus group discussion and  
187 in-depth interviews among study participants, fieldworkers, and health professionals. The results of  
188 the process evaluation are published elsewhere.<sup>45</sup> Randomization was conducted to ensure balance  
189 across the arms using stratified sampling at the community-level based on the HIV incidence among  
190 young females aged 15-30 years.

191

## 192 **Standard of care for HBHCT and linkage to care**

193 Since 2017, a rapid point-of-care HIV test with immediate result has been offered by field workers as  
194 part of the AHRI population-based annual HIV surveillance. All field workers are trained in HIV  
195 counselling and testing in accordance with the South African national guidelines. If individuals are not  
196 available at the initial attempt of contact, field workers revisit them two more times in the same week  
197 during normal working hours. If they are still not available, a tracking team makes a home visit for

198 three more times in the evenings or weekends before considering them as not being able to contact.  
199 Participants testing HIV-positive via HBHCT are encouraged to link to care within 7-10 days of the  
200 HIV test date, and are offered a referral slip for an appointment to receive HIV care at one of the 10  
201 local clinics. AHRI has set up an electronic data collection system, called ARHILink, which records  
202 clinical information and reasons for visits for all consenting individuals presenting at these clinics  
203 including ART initiation and ART follow-up visits. Also, the AHRI surveillance database was linked  
204 with TIER.Net, a three-tiered electronic patient management system used in public clinics in South  
205 Africa for monitoring and evaluating HIV care and treatment for all patients on ART using personal  
206 identifiers and algorithms developed at AHRI. Both AHRILink and TIER.Net were used to confirm  
207 the date of ART initiation or resumption of ART care after the study visit among all eligible  
208 participants in the trial. Individuals who opt in and consent for facilitated linkage and have not linked  
209 to care within two weeks of the HIV test date receive a single Short Message Service (SMS) message  
210 as a reminder. If these individuals do not link to care within a further two weeks, a trained nurse  
211 contacts them by telephone to discuss any concerns and encourages them to link to care.<sup>9</sup>

212

## 213 **Intervention**

214 The male-targeted HIV-specific decision support application (EPIC-HIV) was developed in two  
215 versions (EPIC-HIV 1 and EPIC-HIV 2) and implemented and offered via a tablet. The application  
216 development is described in detail elsewhere.<sup>40,44</sup> In brief, the development was guided by a  
217 combination of self-determination theory and human-centered intervention design using a mixture of  
218 audio, text, video, photos, and graphics. The conceptual design was first developed in three phases:  
219 1) literature review on barriers and facilitators for HIV care among men; 2) prototype development  
220 and iteration drawing on review and self-determination theory, with a specific focus on autonomy  
221 and competence, with some aspects of relatedness; and 3) evaluation with target users. Then the  
222 prototype of the app was electronically developed and refined for design and usability with potential  
223 users. EPIC-HIV 1 has seven characters designed to appeal to different clients. These characters  
224 explain how and why they overcame barriers to HIV testing and treatment to provide vicarious

225 experience to clients and to encourage their decision to take a rapid HIV test and link to care if tested  
226 HIV-positive. EPIC-HIV 2 has three main modules, which are designed to demonstrate how barriers  
227 to seeking HIV treatment can be overcome, focusing on the effectiveness of ART to suppress viral  
228 load and transmission to sexual partners. All modules were designed to demonstrate that essential  
229 features of masculinity would not be challenged by HIV testing and treatment. They were designed  
230 in an interactive narrative form, and participants could freely explore different modules using a  
231 private earphone. The interventions were delivered in a two-stage scheme for HIV testing and  
232 linkage to care. EPIC-HIV 1 was delivered to men prior to the HIV test offer. If participants did not  
233 link to HIV care within a month of a positive HIV test, a study tracker re-visited and offered them  
234 EPIC-HIV 2.

235

236 In the arms receiving financial incentives, participants were offered a R50 (US ~\$3) food voucher for  
237 a local supermarket conditional on their participation in rapid HIV testing. Participants who tested  
238 HIV-positive were offered another R50 food voucher if they visited any of the 10 primary health clinics  
239 in the AHRI HIV surveillance area to seek HIV treatment within 6 weeks of the positive HIV test date.

240

## 241 **Outcomes**

242 In this study, we report the probability of linkage to care at local clinics within 1 year after home-based  
243 visit in the arms which received EPIC-HIV and those which did not receive EPIC-HIV. Linkage to  
244 care was defined as ART initiation or resumption and captured using two sources of data collection,  
245 TIER.Net and AHRILink. ART initiation was defined as being newly initiated on ART without any  
246 prior record of ART initiation. ART resumption was defined as re-initiating ART after >90 days of  
247 care interruption as ascertained through AHRILink and/or TIER.Net. We also assessed the  
248 acceptability of and satisfaction with EPIC-HIV 2 among males who completed EPIC-HIV 2 using the  
249 adapted Client Satisfaction Questionnaire (CSQ-8) with eight questions.<sup>46</sup> In addition, two questions  
250 were added to assess the relevance of the app in the setting and user friendliness. All ten items were  
251 asked using a 4-point Likert scale of 1 to 4 per item, where the higher points were associated with

252 agreement or satisfaction (e.g., 3 for mostly satisfied and 4 for very satisfied) and the lower points with  
253 disagreement or dissatisfaction (e.g., 1 for mostly dissatisfied and 2 for quite dissatisfied). More details  
254 of the satisfaction survey completed for EPIC-HIV 1<sup>47</sup> and EPIC-HIV 2<sup>44</sup> have been reported  
255 elsewhere.

256

## 257 **Statistical methods**

258 The primary analysis was conducted using the intent-to-treat (ITT) analysis for all men randomized at  
259 the community level by the arms with and without EPIC-HIV. We examined the outcome as a binary  
260 variable using modified Poisson regression with adjustment for financial incentives and clustering of  
261 standard errors at the community level. The time to linkage to care by intervention arms by 1 year was  
262 estimated using Kaplan-Meier survival curves. The log rank test was used to compare the difference in  
263 the linkage to care. For the satisfaction survey items, the proportions who reported satisfaction or  
264 positive agreement (i.e., point 3 or 4 in the 4-point Likert item) were calculated. Analyses were  
265 conducted in STATA 15.1 (StataCorp) and R 4.0.3.

266

## 267 **Ethics statement**

268 The study protocols for the AHRI's population-based HIV testing platform and HITS intervention  
269 were approved by the Biomedical Research Ethics Committee of the University of KwaZulu-Natal  
270 (BE290/16 and BFC398/16).<sup>40</sup> Permission for the trial was obtained from the KwaZulu-Natal  
271 Department of Health, South Africa. Participation in the HIV surveillance and HITS trial is completely  
272 voluntary. Individuals may choose not to answer and/or participate in any component of the HIV  
273 surveillance and to withdraw at any time. Written informed consent was sought from individuals aged  
274  $\geq 18$  years, and parental or guardian consent with child assent for individuals of 15-17 years old were  
275 obtained.

276

## 277 **RESULTS**

### 278 **Participants and recruitment flow**

279 All 15,485 men living in the 45 clusters in the study area were initially considered eligible for the trial.  
280 Study participants were enrolled from February 2018 to December 2018 and followed up over 1 year.  
281 Of these, 1,591 died or out-migrated. Of the 13,894 remaining eligible men, 4,244 (30.6%) were never  
282 contacted (mainly due to absence at the time of HIV testing despite several attempts to follow up),  
283 4,773 (34.4%) chose not to participate in the annual population-based HIV testing in 2018, and 453  
284 (3.3%) reported being on ART, thus resulting in 4,424 (31.8% of the resident population) who  
285 participated in the population-based HIV testing (Figure 1). Randomization successfully achieved  
286 balance regarding HIV prevalence and sociodemographic variables in EPIC-HIV vs. no EPIC-HIV  
287 arms except for the area of residency (Table 1).

288

### 289 **HIV positive diagnosis by intervention arms among men**

290 Among all 13,894 men  $\geq 15$  years resident in the 45 communities in 2018, the overall uptake of home-  
291 based HIV testing was 21.4% (996/4654) in the EPIC-HIV arms, and 18.3% (1871/10240) in the arms  
292 without EPIC-HIV. Of 20.6% men (n=2,867) who received HBHCT, 122 were tested HIV-positive.  
293 In ITT analysis, 1.0% (47/4654) in the EPIC-HIV arms and 0.8% (75/9240) in the arms without EPIC-  
294 HIV were tested HIV-positive using the rapid HIV tests. The probability of positive HIV diagnosis via  
295 HBHCT did not differ in the EPIC-HIV arms, compared to the arms without EPIC-HIV, after adjusting  
296 for financial incentives and clustering at community-level (adjusted Risk Ratio [aRR]=1.07, 95% CI:  
297 0.69-1.68, p=0.76).

298

### 299 **Linkage to care at 1 year by intervention arms among men**

300 From individual clinical records ascertained from 17 clinics within the surveillance area, we confirmed  
301 that a total of 355 men in the trial initiated ART or resumed care within 1 year of the home visit. First,  
302 of a total of 129 who tested HIV-positive (n=122) or discordant or invalid (n=7) via HBHCT, 18 were  
303 confirmed to be on ART, 58 had interrupted ART care, and 53 never initiated on ART at the time of  
304 HBHCT. Among the 111 men who had interrupted ART care or not on ART, 54 (48.6%) linked to  
305 care by 1 year (26/40 [65.0%] in the EPIC-HIV arms and 28/71 [39.4%] in the arms without EPIC-

306 HIV). Second, of 13,765 who did not receive HBHCT or received HIV-negative results via HBHCT,  
307 1625 were confirmed to be on ART, 484 had interrupted care at the time of study visit, 11,656 never  
308 initiated on ART at the time of HBHCT. By 1 year after the study visit, 10 people newly initiated ART  
309 and 291 resumed care (98/4037 [2.4%] in the EPIC-HIV arms and 203/8103 [2.5%] in the arms without  
310 EPIC-HIV). Overall, in the ITT analysis, there was no increase in linkage to care within 1 year among  
311 men in the EPIC-HIV arms (2.7%, 124/4654 compared to the arms without EPIC-HIV (2.5%,  
312 231/9240), after adjusting for financial incentives and clustering at community-level (aRR=1.05, 95%  
313 CI: 0.86-1.29).

314

### 315 **EPIC-HIV 2 and linkage to care**

316 Among the 47 men tested positive in the EPIC-HIV arms, 32 had not been linked to care by 1 month  
317 after home-based study visit, 9 men could not be reached, and 23 were offered EPIC-HIV 2. Of these,  
318 13 men consented and completed EPIC-HIV 2. Of the 10 men who did not consent for EPIC-HIV 2,  
319 the main reasons were being busy or at work (40%, n=4), understanding the purpose of the app without  
320 the need to engage with the app (30%, n=3), and feeling fine (20%, n=2), or other (10%, n=1). Of  
321 those who completed EPIC-HIV 2, everyone (n=13) reported that they were mostly or very satisfied  
322 with the app as well as the amount of HIV management information they received through the app,  
323 and felt motivated to seek HIV care. Also, everyone assessed the user-friendliness of the app as  
324 excellent.

325 Of those who completed EPIC-HIV 2, 8 men (61.5%) successfully linked to care by 1 year, while 4  
326 men (40%) who did not consent for EPIC-HIV 2 did so.

327

### 328 **DISCUSSION**

329 In this study, we found that the provision of a digital counseling app based on self-determination theory  
330 and human-centered intervention design did not significantly improve linkage to care by 1 year in men,  
331 despite the fact that the participants found that both EPIC-HIV1 (offered at the time of HIV testing)<sup>47</sup>  
332 and EPIC-HIV 2 (offered at 1 month follow-up after positive HIV diagnosis) were highly acceptable,

333 user-friendly, and useful for getting information on HIV testing and treatment. Also, nearly half of  
334 them who completed EPIC-HIV2 did not link to care by 1 year after home-based testing and positive  
335 HIV diagnosis.

336

337 Several factors may have contributed to the null effect of the intervention. First, the implementation  
338 and delivery of the EPIC-HIV app proved to be complex and encountered various challenges. EPIC-  
339 HIV was specifically designed to accommodate different learning styles and offer tailored information  
340 based on SDT principles, allowing end-users to independently navigate the app without requiring  
341 direct support or interaction with a counselor.<sup>44</sup> However, some participants did not use the earphones  
342 or needed assistance from the study staff to navigate the app.<sup>45</sup> Additionally, due to time constraints  
343 for both study staff and participants during household visits, some reported that they did not have  
344 sufficient time to explore the app or rushed through navigating the app.<sup>45</sup> Lastly, the number of new  
345 HIV diagnoses, and consequently those who were successfully reached and provided with EPIC-HIV  
346 2 was low in this single round of intervention, which would have reduced the power to detect an  
347 intervention effect. Building upon the high acceptability of the app, strategies to increase the reach and  
348 dose, such as offering the app through mobile phones or targeting a larger audience, could be  
349 considered in future.

350

351 Men tend to face higher barriers to accessing care at clinics, including perceptions about the treatment,  
352 social stigma or gender norms, as well as other structural barriers.<sup>21,23</sup> A study in KwaZulu-Natal also  
353 reported insufficient time or the need to prioritize going to work as barriers for linking to care among  
354 men.<sup>24</sup> In this study, of those who were not linked to care in 1 month, >60% could not be reached or  
355 did not consent for EPIC-HIV 2. The primary reasons included being busy at work or feeling fine,  
356 which were similar to the barriers to linkage to care found in other studies.<sup>21,23,24</sup> We also found that  
357 small once-off financial incentives increased the uptake of HIV testing but did not improve linkage to  
358 care.<sup>36</sup> Collectively, these suggest that the once-off counselling app or financial incentives might not  
359 be sufficient to overcome these socioeconomic and structural barriers for linkage to care. Future studies

360 could investigate the effect of providing additional support to overcome such structural barriers. For  
361 example, in Zimbabwe, when patients diagnosed with HIV at home were escorted to visit a clinic and  
362 link to care, more than 85% successfully linked to care within 30 days of HIV diagnosis.<sup>48</sup> In another  
363 study in Uganda, when patients were followed up and offered counseling at home 1 and 2 months after  
364 HBHCT, it helped to overcome barriers to HIV care such as stigma and fear of treatment side effects,  
365 resulting in successful link to care.<sup>49</sup> Such interventions could be resource-intensive and may need to  
366 be adapted to a specific local setting and context.

367

368 Despite the study being conducted as a cluster-randomized clinical trial over 13,000 male participants  
369 within the ongoing population-based HIV surveillance, the overall number of individuals who were  
370 successfully reached and received EPIC-HIV 1 and EPIC-HIV 2 was low. It is also possible that  
371 individuals may have linked to care at other clinics within or outside the subdistrict, or linked to care  
372 after our pre-specified time frame. We defined linkage to care as ART initiation or resumption, but it  
373 is possible that study participants linked to care without initiating ART and were missed in our analysis.

374

## 375 **CONCLUSION**

376 In the multi-component cluster-randomized clinical trial, we found that the provision of a digital  
377 counseling app based on self-determination theory and human-centered intervention design did not  
378 significantly increase linkage to care by 1 year among men. The high levels of engagement with the  
379 digital decision-support application suggests that enhanced digital support applications might form  
380 part of a suite of interventions to increase knowledge of HIV treatment and prevention options for men.

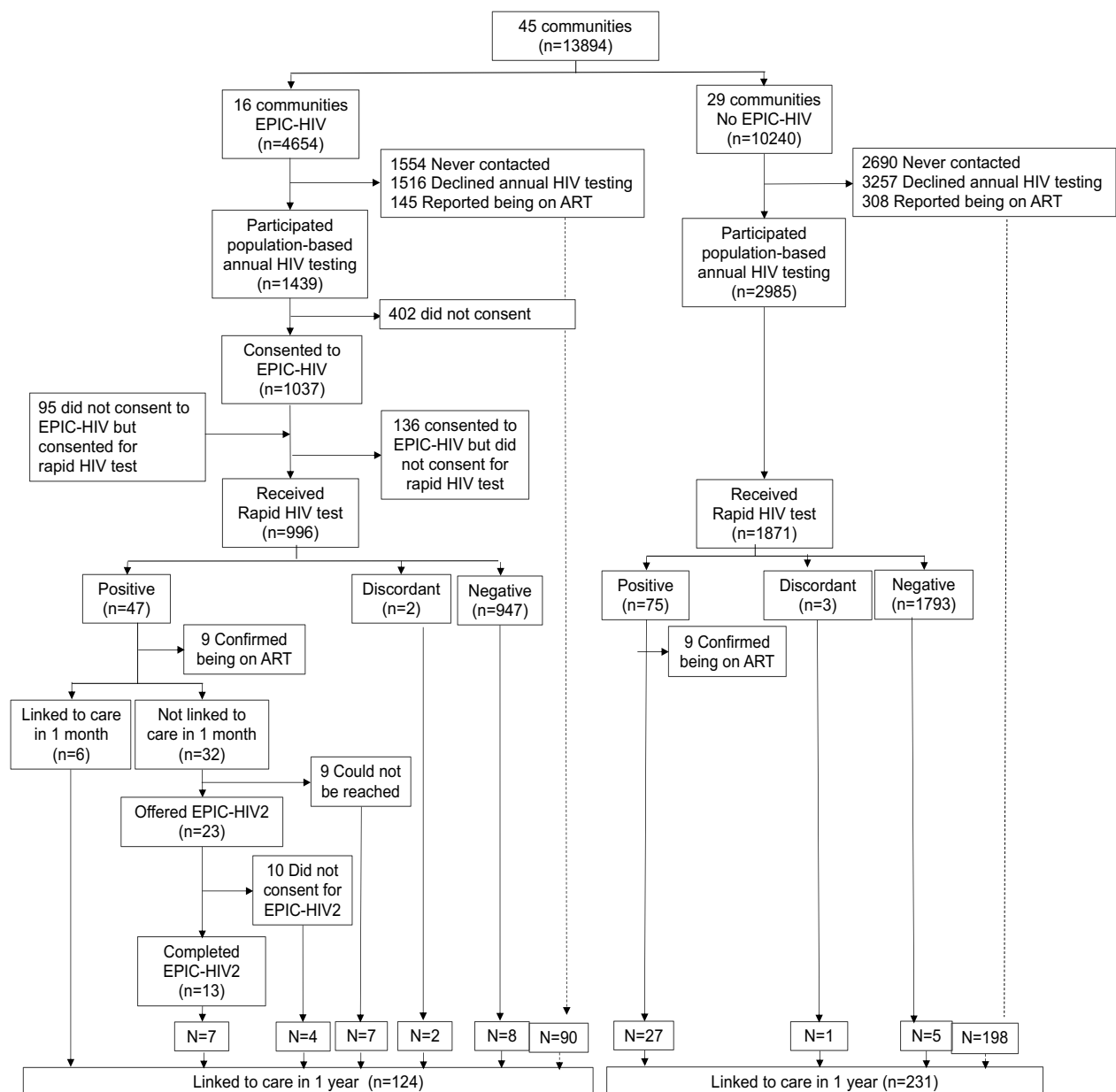


## 381 REFERENCES

- 382 1. Joint United Nations Programme on HIV/AIDS (UNAIDS). Understanding fast-track:  
383 accelerating action to end the AIDS epidemic by 2030. Geneva, Switzerland: UNAIDS; 2015.
- 384 2. Cohen MS, Chen YQ, McCauley M, Gamble T, Hosseinipour MC, Kumarasamy N, et al.  
385 Prevention of HIV-1 infection with early antiretroviral therapy. *N Engl J Med*. 2011 Aug  
386 11;365(6):493–505.
- 387 3. Cohen MS, Chen YQ, McCauley M, Gamble T, Hosseinipour MC, Kumarasamy N, et al.  
388 Antiretroviral Therapy for the Prevention of HIV-1 Transmission. *New England Journal of*  
389 *Medicine*. 2016 Sep 1;375(9):830–9.
- 390 4. Rodger AJ, Cambiano V, Bruun T, Vernazza P, Collins S, van Lunzen J, et al. Sexual  
391 Activity Without Condoms and Risk of HIV Transmission in Serodifferent Couples When the HIV-  
392 Positive Partner Is Using Suppressive Antiretroviral Therapy. *JAMA*. 2016 Jul 12;316(2):171–81.
- 393 5. Tanser F, Barnighausen T, Grapsa E, Zaidi J, Newell ML. High coverage of ART associated  
394 with decline in risk of HIV acquisition in rural KwaZulu-Natal, South Africa. *Science*. 2013 Feb  
395 22;339(6122):966–71.
- 396 6. Vandormael A, Akullian A, Siedner M, Bärnighausen T, de Oliveira T, Tanser F. Declines in  
397 HIV incidence among men and women in a South African population-based cohort. *Nature*  
398 *Communications*. 2019;10(1):5482.
- 399 7. Tanser F, Kim HY, Vandormael A, Iwuji C, Bärnighausen T. Opportunities and challenges in  
400 HIV treatment as prevention research: results from the ANRS 12249 cluster-randomized trial and  
401 associated population cohort. *Current HIV/AIDS Reports*. 2020;1–12.
- 402 8. Akullian A, Vandormael A, Miller JC, Bershteyn A, Wenger E, Cuadros D, et al. Large age  
403 shifts in HIV-1 incidence patterns in KwaZulu-Natal, South Africa. *PNAS [Internet]*. 2021 Jul 13  
404 [cited 2021 Aug 5];118(28). Available from: <https://www.pnas.org/content/118/28/e2013164118>
- 405 9. Baisley KJ, Seeley J, Siedner MJM, Koole K, Matthews P, Tanser F, et al. Findings from  
406 home-based HIV testing and facilitated linkage after scale-up of test and treat in rural South Africa:  
407 young people still missing. *HIV Medicine*. 2019 Nov;20(10):704–8.
- 408 10. Joint United Nations Programme on HIV/AIDS (UNAIDS). *UNAIDS Data 2022*. 2023.
- 409 11. Sabapathy K, Van den Bergh R, Fidler S, Hayes R, Ford N. Uptake of Home-Based  
410 Voluntary HIV Testing in Sub-Saharan Africa: A Systematic Review and Meta-Analysis. Sansom  
411 SL, editor. *PLoS Medicine*. 2012 Dec;9(12):e1001351–e1001351.
- 412 12. Sekandi JN, Sempeera H, List J, Mugerwa MA, Asiimwe S, Yin X, et al. High acceptance of  
413 home-based HIV counseling and testing in an urban community setting in Uganda. *BMC Public*  
414 *Health*. 2011 Sep 26;11(1):730.
- 415 13. Parker LA, Jobanputra K, Rusike L, Mazibuko S, Okello V, Kerschberger B, et al. Feasibility  
416 and effectiveness of two community-based HIV testing models in rural Swaziland. *Trop Med Int*  
417 *Health*. 2015 Jul;20(7):893–902.
- 418 14. Labhardt ND, Motlomelo M, Cerutti B, Pfeiffer K, Kamele M, Hobbins MA, et al. Home-  
419 based versus mobile clinic HIV testing and counseling in rural Lesotho: a cluster-randomized trial.  
420 *PLoS Med*. 2014 Dec;11(12):e1001768.
- 421 15. Maman D, Ben-Farhat J, Chilima B, Masiku C, Salumu L, Ford N, et al. Factors associated  
422 with HIV status awareness and Linkage to Care following home based testing in rural Malawi. *Trop*  
423 *Med Int Health*. 2016 Nov;21(11):1442–51.
- 424 16. Iwuji CC, Orne-Gliemann J, Larmarange J, Okesola N, Tanser F, Thiebaut R, et al. Uptake of  
425 Home-Based HIV Testing, Linkage to Care, and Community Attitudes about ART in Rural  
426 KwaZulu-Natal, South Africa: Descriptive Results from the First Phase of the ANRS 12249 TasP  
427 Cluster-Randomised Trial. *PLoS Med*. 2016 Aug;13(8):e1002107.
- 428 17. Dalal W, Feikin DR, Amolloh M, Ransom R, Burke H, Lugalia F, et al. Home-Based HIV  
429 Testing and Counseling in Rural and Urban Kenyan Communities. *JAIDS Journal of Acquired*  
430 *Immune Deficiency Syndromes*. 2013 Feb 1;62(2):e47.
- 431 18. van Rooyen H, Barnabas RV, Baeten JM, Phakathi Z, Joseph P, Krows M, et al. High HIV  
432 testing uptake and linkage to care in a novel program of home\_based HIV counseling and testing

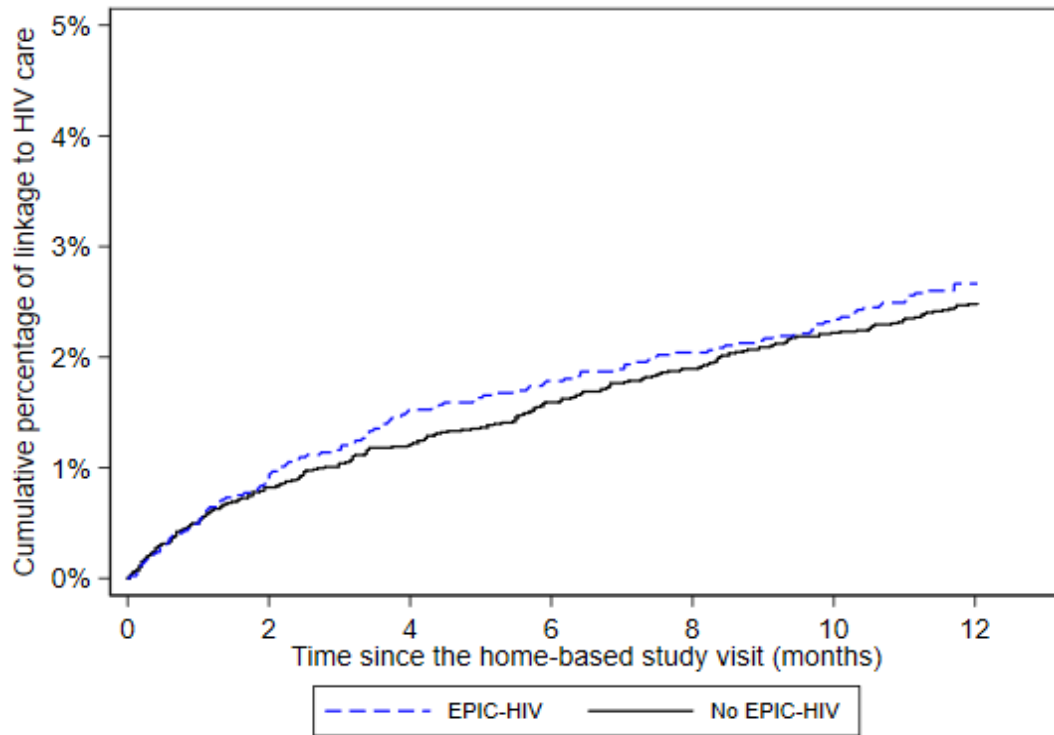
- 433 with facilitated referral in KwaZulu-Natal, South Africa. *J Acquir Immune Defic Syndr*. 2013 Sep  
434 1;64(1):e1–8.
- 435 19. Hatcher AM, Turan JM, Leslie HH, Kanya LW, Kwena Z, Johnson MO, et al. Predictors of  
436 linkage to care following community-based HIV counseling and testing in rural Kenya. *AIDS Behav*.  
437 2012 Jul;16(5):1295–307.
- 438 20. Bigogo G, Amolloh M, Laserson KF, Audi A, Aura B, Dalal W, et al. The impact of home-  
439 based HIV counseling and testing on care-seeking and incidence of common infectious disease  
440 syndromes in rural western Kenya. *BMC Infect Dis*. 2014 Jul 8;14:376.
- 441 21. Maughan-Brown B, Beckett S, Kharsany ABM, Cawood C, Khanyile D, Lewis L, et al. Poor  
442 rates of linkage to HIV care and uptake of treatment after home-based HIV testing among newly  
443 diagnosed 15-to-49 year-old men and women in a high HIV prevalence setting in South Africa.  
444 *AIDS Care*. 2021 Jan;33(1):70–9.
- 445 22. Seeley J, Bond V, Yang B, Floyd S, MacLeod D, Viljoen L, et al. Understanding the Time  
446 Needed to Link to Care and Start ART in Seven HPTN 071 (PopART) Study Communities in  
447 Zambia and South Africa. *AIDS and Behavior*. 2019 Apr;23(4):929–46.
- 448 23. Maughan-Brown B, Harrison A, Galárraga O, Kuo C, Smith P, Bekker LG, et al. Factors  
449 affecting linkage to HIV care and ART initiation following referral for ART by a mobile health  
450 clinic in South Africa: evidence from a multimethod study. *J Behav Med*. 2019 Oct;42(5):883–97.
- 451 24. Hlongwa M, Jama NA, Mehlomakulu V, Pass D, Basera W, Nicol E. Barriers and Facilitating  
452 Factors to HIV Treatment Among Men in a High-HIV-Burdened District in KwaZulu-Natal, South  
453 Africa: A Qualitative Study. *Am J Mens Health*. 2022 Sep 6;16(5):15579883221120987.
- 454 25. Markland D, Ryan RM, Tobin VJ, Rollnick S. Motivational Interviewing and Self-  
455 Determination Theory. *Journal of Social and Clinical Psychology*. 2005 Sep;24(6):811–31.
- 456 26. Hill S, Kavookjian J. Motivational interviewing as a behavioral intervention to increase  
457 HAART adherence in patients who are HIV-positive: A systematic review of the literature. *AIDS*  
458 *Care*. 2012 May 1;24(5):583–92.
- 459 27. Naar-King S, Parsons JT, Johnson AM. Motivational interviewing targeting risk reduction for  
460 people with HIV: a systematic review. *Curr HIV/AIDS Rep*. 2012 Dec;9(4):335–43.
- 461 28. Ntoumanis N, Ng JYY, Prestwich A, Quested E, Hancox JE, Thøgersen-Ntoumani C, et al. A  
462 meta-analysis of self-determination theory-informed intervention studies in the health domain:  
463 effects on motivation, health behavior, physical, and psychological health. *Health Psychology*  
464 *Review*. 2021 Apr 3;15(2):214–44.
- 465 29. Patrick H, Williams GC. Self-determination theory: its application to health behavior and  
466 complementarity with motivational interviewing. *Int J Behav Nutr Phys Act*. 2012 Mar 2;9:18.
- 467 30. Johnson VD. Promoting Behavior Change: Making Healthy Choices in Wellness and Healing  
468 Choices in Illness—Use of Self-Determination Theory in Nursing Practice. *Nursing Clinics of North*  
469 *America*. 2007 Jun 1;42(2):229–41.
- 470 31. Ryan RM, Deci EL. Self-determination theory and the facilitation of intrinsic motivation,  
471 social development, and well-being. *The American psychologist*. 2000 Jan;55(1):68–78.
- 472 32. Miller WR, Rollnick S. *Motivational Interviewing: Helping People Change*. Guilford Press;  
473 2012. 497 p.
- 474 33. Chariyeva Z, Golin CE, Earp JA, Suchindran C. Does motivational interviewing counseling  
475 time influence HIV-positive persons' self-efficacy to practice safer sex? *Patient Education and*  
476 *Counseling*. 2012 Apr 1;87(1):101–7.
- 477 34. Jongbloed K, Parmar S, van der Kop M, Spittal PM, Lester RT. Recent Evidence for  
478 Emerging Digital Technologies to Support Global HIV Engagement in Care. *Curr HIV/AIDS Rep*.  
479 2015 Dec;12(4):451–61.
- 480 35. Ayieko J, Petersen ML, Charlebois ED, Brown LB, Clark TD, Kwarisiima D, et al. A Patient-  
481 Centered Multicomponent Strategy for Accelerated Linkage to Care Following Community-Wide  
482 HIV Testing in Rural Uganda and Kenya. *J Acquir Immune Defic Syndr*. 2019 Apr 1;80(4):414–22.
- 483 36. Tanser FC, Kim HY, Mathenjwa T, Shahmanesh M, Seeley J, Matthews P, et al. Home-  
484 Based Intervention to Test and Start (HITS): a community-randomized controlled trial to increase  
485 HIV testing uptake among men in rural South Africa. *Journal of the International AIDS Society*.

- 486 2021 Feb;24(2):e25665.
- 487 37. Gareta D, Baisley K, Mngomezulu T, Smit T, Khoza T, Nxumalo S, et al. Cohort Profile  
488 Update: Africa Centre Demographic Information System (ACDIS) and population-based HIV  
489 survey. *International Journal of Epidemiology*. 2021 Feb 1;50(1):33–4.
- 490 38. Tanser F, Hosegood V, Barnighausen T, Herbst K, Nyirenda M, Muhwava W, et al. Cohort  
491 Profile: Africa Centre Demographic Information System (ACDIS) and population-based HIV survey.  
492 *International journal of epidemiology*. 2008 Oct;37(5):956–62.
- 493 39. Muhwava W, Nyirenda M, Mutevedzi T, Herbst A, Hosegood V. Operational and  
494 Methodological Procedures of the Africa Centre Demographic Information System. 2007.
- 495 40. Mathenjwa T, Kim HY, Zuma T, Shahmanesh M, Seeley J, Matthews P, et al. Home-based  
496 intervention to test and start (HITS) protocol: a cluster-randomized controlled trial to reduce HIV-  
497 related mortality in men and HIV incidence in women through increased coverage of HIV treatment.  
498 *BMC Public Health*. 2019 Dec 19;19(1):969.
- 499 41. Tanser F, Barnighausen T. Home-based Intervention to Test and Start (HITS) [Data set]  
500 [Internet]. Africa Health Research Institute (AHRI); Available from:  
501 <https://doi.org/10.23664/AHRI.HITS.2019>
- 502 42. Herbst K, Haring G, Siedner M, Hanekom W. AHRI.Surveillance Episodes HIV Dataset  
503 2022 (Version 4) [Data set] [Internet]. Africa Health Research Institute (AHRI); Available from:  
504 <https://doi.org/10.23664/AHRI.SEH2022>
- 505 43. Adeagbo O, Tanser F, Gumede V, Mathenjwa T, Matthews P, Wyke S, et al. A Process  
506 Evaluation of an Incentivised Home-based Intervention to Test and Start (HITS) in an HIV  
507 Hyperendemic setting in rural KwaZulu-Natal, South Africa. *Sexually Transmitted Infections*.  
508 2019;95(Suppl 1).
- 509 44. Mathenjwa T, Adeagbo O, Zuma T, Dikgale K, Zeitlin A, Matthews P, et al. Development  
510 and Acceptability of a Tablet-Based App to Support Men to Link to HIV Care: Mixed Methods  
511 Approach. *JMIR mHealth and uHealth*. 2020 Nov 24;8(11):e17549.
- 512 45. Mathenjwa T, Bain LE, Adeagbo O, Kim HY, Inghels M, Zuma T, et al. Increasing HIV  
513 testing and linkage to care among men in rural South Africa using conditional financial incentives  
514 and a decision support app: a process evaluation. Submitted.
- 515 46. Brooke J. SUS -- a quick and dirty usability scale. In 1996. p. 189–94.
- 516 47. Adeagbo O, Kim HY, Tanser F, Xulu S, Dlamini N, Gumede V, et al. Acceptability of a  
517 tablet-based application to support early HIV testing among men in rural KwaZulu-Natal, South  
518 Africa: a mixed method study. *AIDS care*. 2021;33(4):494–501.
- 519 48. Tafuma TA, Mahachi N, Dziwa C, Marowa P, Moga T, Chimbizikai T, et al. Time taken to  
520 link newly identified HIV positive clients to care following a home-base index case HIV testing:  
521 Experience from two provinces in Zimbabwe. *PLoS ONE* [Internet]. 2018 Aug;13(8). Available  
522 from: [/pmc/articles/PMC6104920/](https://pubmed.ncbi.nlm.nih.gov/316104920/)
- 523 49. Bukenya D, Seeley J, Tumwekwase G, Kabunga E, Ruzagira E. How Follow-Up Counselling  
524 Increases Linkage to Care Among HIV-Positive Persons Identified Through Home-Based HIV  
525 Counselling and Testing: A Qualitative Study in Uganda. *SAGE Open*. 2020 Jan  
526 1;10(1):2158244019900166.
- 527 a



**Figure 1.** Flow diagram for the HITS cluster-randomized controlled trial and linkage to care within 1 year of a home visit among men. Flow diagram shows individual flow through each stage of the HITS trial in the arms with and without EPIC-HIV. The dashed line indicates linkage to care within 1 year among those who were never contacted, declined annual HIV testing, or did not consent to EPIC-HIV.

**Figure 2. Kaplan Meir curves for linkage to HIV care at clinics for one year after the home-based study visit among men.** The solid black lines represent the arms without EPIC-HIV, and the dashed blue lines the arms with EPIC-HIV.



**Table 1. Baseline characteristics of communities and individuals among men in the EPIC-HIV vs. no EPIC-HIV arms**

| Characteristic   | EPIC-HIV         | No EPIC-HIV      |
|--|------------------|------------------|
| <b><i>Community-level factor</i></b>                                 | <b>n=16</b>      | <b>n=29</b>      |
| HIV prevalence in 2018, % (95% CI)*                                  | 18.5 (15.9-21.3) | 15.0 (12.4-17.9) |
| <b><i>Individual-level factors</i></b>                               | <b>n=4654</b>    | <b>n=9240</b>    |
| Time since last HIV test in the surveillance (years), median (IQR)** | 2.5 (0.6, 6.0)   | 2.3 (1.0, 5.3)   |
| <b>Age (years), n (%)</b>  |                  |                  |
| 15-25  | 1703 (36.6)      | 3406 (36.9)      |
| 25-35  | 1058 (22.8)      | 2145 (23.3)      |
| 35-45  | 694 (14.9)       | 1474 (16.0)      |
| 45-55  | 471 (10.1)       | 899 (9.7)        |
| ≥55  | 721 (15.5)       | 1298 (14.1)      |
| <b>Marital Status, n (%)</b>   |                  |                  |
| Never married  | 1209 (26.0)      | 2463 (26.7)      |
| Married  | 706 (15.2)       | 1314 (14.2)      |
| Informal Union   | 1774 (38.1)      | 3610 (39.1)      |
| Separated/Divorced/Widowed   | 93 (2.0)         | 159 (1.7)        |
| Don't know/Missing   | 872 (18.7)       | 1694 (18.3)      |
| <b>Education, n (%)</b>  |                  |                  |
| No formal education  | 1046 (22.5)      | 1977 (21.4)      |
| Primary (grade 1-7)  | 254 (5.5)        | 499 (5.4)        |
| Secondary+ (≥ grade 8)   | 2700 (58)        | 5401 (58.5)      |
| Don't know/Missing   | 654 (14.1)       | 1363 (14.8)      |
| <b>Area of residency, n (%)</b>                                      |                  |                  |
| Rural  | 2644 (56.8)      | 5397 (58.4)      |
| Peri-urban   | 1677 (36.0)      | 3129 (33.9)      |
| Urban  | 333 (7.2)        | 714 (7.7)        |

\*95% confidence intervals were calculated using the cumulative probabilities of the binomial distribution.

\*\*Data indicates the time since last HIV test among those who ever participated in the annual HIV surveillance, including 2,051 (44.4%) in the EPIC-HIV arms and 4,052 (43.7%) in the arms without EPIC-HIV among men. Abbreviation: IQR, Interquartile Range