

1 **Circulating SFRP5 levels are elevated in colorectal cancer and correlate with overall survival in stage II-**
2 **III disease**

3

4 Runhao Li ^{1,2}, Saifei Liu ^{1,2}, Kenny Yeo ^{2,3}, Suzanne Edwards ⁶, Man Ying Li ^{2,3}, Ryan Santos ^{2,5}, Sima Kianpour
5 Rad ^{1,2}, Fangmeino Wu ^{1,2}, Guy Maddern ^{2,3}, Joanne Young ^{1,2,4}, Yoko Tomita ^{1,2,4}, Amanda Townsend ^{1,2,4},
6 Kevin Fenix ^{2,3}, Ehud Hauben ³, Timothy Price ^{1,2,4}, Eric Smith ^{1,2,3,4}

7

- 8 1. Solid Tumour Group, Basil Hetzel Institute for Translational Health Research, The Queen Elizabeth Hospital,
9 Woodville South, South Australia, 5011, Australia
- 10 2. Adelaide Medical School, The University of Adelaide, Adelaide, South Australia, 5005, Australia
- 11 3. Discipline of Surgery, The University of Adelaide, Basil Hetzel Institute for Translational Health Research,
12 The Queen Elizabeth Hospital, Woodville South, South Australia, 5011, Australia
- 13 4. Medical Oncology, The Queen Elizabeth Hospital, South Australia, 5011, Australia
- 14 5. Viral Immunology Group, The University of Adelaide and Basil Hetzel Institute for Translational Health
15 Research, South Australia, 5011, Australia
- 16 6. School of Public Health, The University of Adelaide, Adelaide, South Australia, 5005, Australia

17

18 Corresponding author: eric.smith@adelaide.edu.au.

19 ORCID identifier: <https://orcid.org/0000-0003-2958-3492>

20

21 Contributing author: runhao.li@adelaide.edu.au.

22 ORCID identifier: <https://orcid.org/0000-0001-5577-049X>

23

24 **Keywords:**

25 SFRP5; plasma biomarker; colorectal cancer; diagnosis; prognosis

26

27 **Abbreviations**

28 area under the receiver operating characteristic (AUROC)

29 circulating SFRP5 (cSFRP5)

30 colorectal cancer (CRC)

NOTE: This preprint reports new research that has not been certified by peer review and should not be used to guide clinical practice.

- 31 cysteine-rich domain (CRD)
- 32 enzyme-linked immunosorbent assay (ELISA)
- 33 mismatch repair deficiency (dMMR)
- 34 mismatch repair proficient (pMMR)
- 35 netrin-like domain (NTR)
- 36 secreted frizzled-related protein 5 (SFRP5)

37

38 **Novelty and Impact**

39 Our study unveils the clinical significance of circulating Secreted Frizzled-Related Protein 5 (cSFRP5) as a
40 potential diagnostic and prognostic marker in colorectal cancer (CRC). Analysing plasma from 731 participants,
41 we provide novel insights into cSFRP5, observing elevated levels in CRC compared to healthy controls, with the
42 highest concentrations in stage II. Importantly, elevated cSFRP5 levels correlate with prolonged survival in stage
43 II-III patients, suggesting a promising avenue for improving outcomes and reducing recurrence.

44 **ABSTRACT**

45 Secreted Frizzled-Related Protein 5 (SFRP5) modulates Wnt signalling pathways, affecting diverse biological
46 processes. We assessed the diagnostic and prognostic value of circulating SFRP5 (cSFRP5) in colorectal cancer
47 (CRC). Plasma cSFRP5 concentrations were measured using ELISA in healthy donors (n=133), individuals
48 diagnosed with CRC (n=449), colorectal polyps (n=85), and medical conditions in other organs including cancer,
49 inflammation, and benign states (n=64). Patients with CRC, polyps, and other conditions showed higher cSFRP5
50 levels than healthy individuals ($p<0.0001$). Receiver operating characteristic curves comparing healthy donors
51 with medical conditions, polyps, and CRC were 0.814 ($p<0.0001$), 0.763 ($p<0.0001$), and 0.762 ($p<0.0001$),
52 respectively. In CRC, cSFRP5 correlated with patient age ($p<0.0001$), tumour stage ($p<0.0001$), and histological
53 differentiation ($p=0.0273$). Levels peaked in stage II versus I ($p<0.0001$), III ($p=0.0007$), or IV ($p<0.0001$), and
54 were higher in stage III versus I ($p=0.0007$) and IV ($p=0.0054$), with no difference between I and IV. Elevated
55 cSFRP5 levels predicted longer overall survival in stage II-III CRC (univariate: HR 1.82, 95% CI 1.02-3.26,
56 $p=0.024$; multivariable: HR 2.34, 95% CI 1.12-4.88, $p=0.015$). This study confirms elevated cSFRP5 levels in
57 CRC and reveals a correlation between elevated cSFRP5 and overall survival in stage II-III disease.

58 INTRODUCTION

59 Colorectal cancer (CRC) represents a significant global healthcare challenge, ranking as the third most diagnosed
60 cancer and a leading cause of cancer-related mortality¹. With over 1.8 million reported cases and more than 0.9
61 million deaths in 2020 alone, there is urgency for the development of early detection strategies and to significantly
62 improve treatment efficacy and survival rates. Enhancing screening methodologies, advocating regular screenings
63 among high-risk populations, and developing precise, non-invasive screening technologies are imperative^{2,3}.

64
65 Secreted frizzled-related protein 5 (SFRP5) belongs to the SFRP family, an evolutionarily conserved group of
66 extracellular glycoproteins crucial for modulating Wnt signalling pathways⁴. These pathways play pivotal roles
67 in various cellular processes, including embryonic development⁵, tissue homeostasis, and the modulation of
68 tumour initiation, growth, and metastasis^{6,7}. Structurally, SFRPs contain an amino-terminal signal peptide, a
69 cysteine-rich domain (CRD), and a carboxy-terminal netrin-like domain (NTR)⁸. The CRD is similar to the Wnt
70 ligand binding site found in Frizzled family of cell surface receptor proteins⁹. The NTR domain is involved in
71 protein-protein interactions and is thought to contribute to the function of SFRPs¹⁰. This structure enables SFRPs
72 to act as soluble antagonists of Wnt signalling by interacting with Wnt ligands and inhibiting activation of the
73 Frizzled receptors (reviewed in¹¹).

74
75 SFRP5, specifically, has been shown inhibit multiple Wnt ligands such as Wnt5A and Wnt11, thereby regulating
76 both canonical and non-canonical Wnt pathways^{12,13}. Experimental evidence from murine disease models and
77 studies on SFRP5 knockout mice suggests that secretion of SFRP5 by adipocytes prevents hepatic steatosis and
78 metabolic dysfunction associated with liver fibrosis by modulating inflammatory cells within adipose tissue^{12,14}.
79 In humans, downregulation of SFRP5 contributes to proinflammatory conditions in visceral adipose tissue,
80 potentially exacerbating obesity-related comorbidities¹⁵.

81
82 Indeed, circulating SFRP5 (cSFRP5) has emerged as a potential biomarker in various diseases, participating in
83 diverse pathological processes¹⁶⁻¹⁸. Typically, individuals with metabolic disorders like obesity, insulin resistance,
84 and diabetes exhibit reduced levels of cSFRP5 compared to healthy controls¹⁶⁻¹⁹. Meanwhile, interventions
85 leading to significant weight loss in overweight individuals are associated with increased cSFRP5 levels, further
86 highlighting its role in metabolic regulation²⁰⁻²². These findings collectively suggest that higher cSFRP5 levels
87 are associated with reduced risk of metabolic disorders in humans. Interestingly, metabolic syndrome has been

88 shown to be associated with increased risk of liver metastasis in CRC patients ²³. Additionally, cSFRP5 has
89 implications in cardiovascular diseases, with lower concentrations observed in individuals with arterial stiffness
90 ²⁴, atherosclerosis ²⁵, coronary artery disease ^{26,27}, and hypertension ^{21,28}.

91

92 In contrast, the role of cSFRP5 in cancer remains understudied. Our previous study indicated that cSFRP5 was
93 elevated in CRC compared to non-CRC controls, and elevated cSFRP5 levels were associated with extended
94 disease-free survival among patients in stages I-III ²⁹. Yet, limitations, such as small sample size and insufficient
95 control groups, hindered the comprehensive understanding of its potential. In this study, we measured cSFRP5
96 concentrations in an independent, retrospective, multi-centre cohort encompassing 133 healthy controls without
97 documented pathology, 449 patients with different stages of CRC, 85 individuals with colorectal polyps, and 64
98 individuals with other notable medical conditions in other organs including cancer, inflammation, and benign
99 states. Our primary objectives were to validate cSFRP5's diagnostic and prognostic potential and explore its
100 correlation with CRC progression-related clinical-pathological parameters and overall survival. Our secondary
101 objectives were to determine if cSFRP5 was altered in patients diagnosed with colorectal polyps and other medical
102 conditions in other organs including cancer, inflammation, and benign states.

103

104 **MATERIALS AND METHODS**

105 **Patient plasma samples**

106 All plasma samples were obtained from Victorian Cancer Biobank (Table 1) and were sourced from multiple
107 centres (Supplementary Table 1). The CRC samples were collected over a period from 1999 until 2021. All
108 individuals had fasted from the previous night until after blood collection.

109

110 **SFRP5 enzyme-linked immunosorbent assay**

111 The plasma cSFRP5 concentration was determined using a commercially sourced, commonly used enzyme-linked
112 immunosorbent assay (ELISA) according to the manufacturer's instructions (Cloud Clone Corp., TX, USA) ²⁹.

113 All ELISA kits used in this study were sourced from a single lot number (Lot# L210917454), with a detection
114 range of 1.56-100 ng/mL. Plasma samples were diluted 1 in 2 in phosphate buffered saline (pH 7.0-7.2) and
115 analysed in duplicate. The optical density at 450 nm was measured using iMark Microplate Absorbance Reader
116 (Bio-Rad Laboratories, Inc., CA, USA), and the calculated cSFRP5 concentration was derived from the standard
117 curve.

118

119 **Statistical analysis**

120 Statistical analyses were conducted using either Prism 10 for MacOS (GraphPad Software, Inc., CA, USA), SAS
121 On Demand for Academics (SAS Institute Inc., NC, USA), or the R package, survival v3.5. To assess differences
122 in cSFRP5 concentration between patient groups, we utilised Kruskal-Wallis with Dunn's multiple comparisons
123 test. Correlations between cSFRP5 concentration and various prognostic clinical-pathological parameters were
124 examined using the Mann-Whitney test. A linear regression model was employed to evaluate the relationship
125 between cSFRP5 concentration and patient group, tumour invasion stage, TNM group, as well as other prognostic
126 clinical-pathological parameters. This model was adjusted for potential confounding variables, including age and
127 sex. Assumptions crucial to the linear models, such as normality of residuals and homoscedasticity, were found
128 to be upheld through careful inspection of residual histograms and scatterplots of residuals against predicted
129 values. Univariate and multivariable Cox proportional hazard models were performed using R package, survival
130 v3.5, to assess relationship between overall survival, cSFRP5 concentration, TNM stage, age, sex, vascular or
131 perineural invasion, histological differentiation, and tumour site. A $p \leq 0.05$ was deemed statistically significant.

132

133 **RESULTS**

134 **Patient cohorts**

135 The study included 731 participants (Table 1), comprising 133 healthy donors without documented pathology
136 (Supplementary Table 2), 449 individuals diagnosed with CRC, 85 individuals with colorectal polyps
137 (Supplementary Table 3), and 64 individuals with other notable medical conditions in other organs
138 (Supplementary Table 4). The polyps group comprised the following subtypes: villous/tubulovillous (n=48),
139 adenoma/adenomatous (n=31), sessile serrated (n=2), hyperplastic (n=2), inflammatory (n=1), and Peutz Jegher
140 syndrome (n=1). The other notable medical conditions included patients diagnosed with cancer (n=4), chronic
141 inflammation (n=49), and benign diseases (n=11). The healthy participants consisted of more females ($p < 0.0001$)
142 and were significantly younger ($p < 0.0001$) (Supplementary fig. 1).

143

144 **Circulating SFRP5 was elevated in colorectal cancer**

145 The cSFRP5 concentration was significantly higher in CRC (mean 17.67 ng/mL, 95% confidence interval (95%
146 CI): 16.63-18.72 ng/mL) compared to healthy donors (9.26 ng/mL, 95% CI: 8.08-10.45 ng/mL; $p < 0.0001$; Figure
147 1A). The area under the receiver operating characteristic (AUROC) curve for discriminating between CRC and

148 healthy donors was 0.762 (95% CI: 0.717 to 0.807; $p < 0.0001$; Figure 1B). With regards to TNM stage, the cSFRP5
149 was significantly higher in all stages of CRC compared to healthy donors (Figure 1C). Notably, the cSFRP5 levels
150 were highest in stage II compared to either stage I ($p < 0.0001$), III ($p = 0.0003$), or IV ($p < 0.0001$). The cSFRP5 was
151 significantly elevated in stage III compared to stage I ($p = 0.0007$) and IV ($p = 0.0054$). There was no significant
152 difference between stage I and IV. Recognising the notable variations in both age and sex among our patient
153 cohorts and considering prior studies indicating the potential impact of these factors on cSFRP5 levels^{30,31}, we
154 utilised a linear regression model to account for age and sex differences (Supplementary Table 5). Our analysis
155 revealed a correlation between age and increased cSFRP5 concentration, but no discernible disparity was observed
156 between males and females. Adjusting for age and sex did not alter the pattern of significant differences.

157

158 **Circulating SFRP5 was elevated in colorectal polyps**

159 Elevation of cSFRP5 was also observed in colorectal polyps, with a mean concentration of 17.34 ng/mL (95% CI:
160 15.00-19.69 ng/mL) compared to healthy donors (Supplementary fig. 2A; $p < 0.0001$). The AUROC curve for
161 discriminating polyps from healthy donors was 0.763 (95% CI: 0.699 to 0.828; $p < 0.0001$; Supplementary fig. 2B).
162 Furthermore, individuals with villous/tubulovillous ($p < 0.0001$) and adenoma/adenomatous ($p < 0.01$) polyps,
163 categorized as having high cancer progression risk, displayed significantly elevated cSFRP5 levels compared to
164 healthy controls (Supplementary fig. 2C).

165

166 **Circulating SFRP5 was elevated in other disease states**

167 Comparing individuals with various medical conditions to healthy donors revealed elevated cSFRP5 levels among
168 those with notable medical conditions, with a mean concentration of 21.23 ng/mL (95% CI: 17.84-24.62 ng/mL),
169 significantly higher than healthy donors ($p < 0.0001$; Supplementary fig. 3A). The AUROC curve for
170 distinguishing between individuals with notable medical conditions and healthy donors yielded a value of 0.814
171 (95% CI: 0.746 to 0.882; $p < 0.0001$; Supplementary fig. 3B). Moreover, cSFRP5 levels exhibited significant
172 increases in individuals with other cancers ($p < 0.0001$), inflammation ($p < 0.0001$), and miscellaneous benign
173 conditions ($p < 0.01$) in other organs compared to healthy controls (Supplementary fig. 3C). However, it is
174 important to acknowledge that the sample size of these subgroups was limited, necessitating further validation
175 with larger cohorts.

176

177 **Elevated circulating SFRP5 levels were not exclusive to colorectal cancer**

178 We employed a linear regression model to adjust for age and sex differences when comparing patient groups
179 (Supplementary Table 6). The adjusted cSFRP5 concentration was notably higher in patients with significant
180 medical conditions ($p<0.0001$), colorectal polyps ($p=0.0020$), and CRC ($p<0.0001$). Particularly, cSFRP5 levels
181 were significantly elevated in patients with notable medical conditions compared to those with either colorectal
182 polyps ($p=0.0130$) or CRC ($p=0.0027$). However, no significant difference was observed between the polyps and
183 CRC groups. The AUROC curve for distinguishing between notable medical conditions and either CRC or polyps
184 was 0.596 (95% CI: 0.518 to 0.674; $p=0.0127$) and 0.613 (95% CI: 0.519 to 0.706; $p=0.0188$), respectively
185 (Supplementary Fig. 4). In summary, these findings suggest elevated cSFRP5 levels across various disease states,
186 including colorectal polyps and CRC.

187

188 **Elevated circulating SFRP5 in colorectal cancer was associated with patient age, tumour stage and** 189 **histological differentiation**

190 In the patients with CRC, we investigated the correlations between the cSFRP5 concentration and different
191 clinical-pathological parameters (Table 2 and Supplementary fig. 5). We observed a significant increase in
192 cSFRP5 concentration with patient age ($p<0.0001$), TNM stage ($p<0.0001$), advanced depth of invasion
193 ($p<0.0001$), in the absence of distant metastasis ($p=0.0049$), and with poorly differentiated tumours ($p=0.0273$).
194 The cSFRP5 concentration was significantly higher in CRC patients with more invasive T3 and T4 primary
195 tumours compared to the less invasive T1 and T2 (Supplementary fig. 5A). Although there was an increase in
196 cSFRP5 concentration in CRC with mismatch repair deficiency (dMMR; Supplementary fig. 5I; $p=0.0655$), it did
197 not reach statistical significance. We did not detect variations in relation to sex, lymph node metastasis, vascular
198 or perineural invasion, diabetes, or hypertension in the patients with CRC.

199

200 **Circulating SFRP5 correlates with overall survival in stage II-III colorectal cancer**

201 We examined the relationship between cSFRP5 and overall survival of all CRC patients using Cox proportional
202 hazard models (Supplementary Table 7). The median follow-up period was 4.3 years (range 0.08-20.7 years).
203 Patients were stratified into low and high groups according to the median cSFRP5 concentration of 16.34 ng/mL
204 observed among all CRC patients included in this study. When considering the entire CRC population
205 encompassing stages I-IV, no significant association emerged between cSFRP5 concentration and overall survival,
206 as revealed by both univariate ($p=0.4866$) and multivariable ($p=0.9721$) models (Supplementary Fig. 6 and
207 Supplementary Table 7).

208

209 Ultimately, we examined the relationship between cSFRP5 and overall survival among stage II-III CRC patients,
210 who are at an elevated risk of disease recurrence. High cSFRP5 levels were associated with extended overall
211 survival (Figure 2 and Table 3; HR 1.82; 95% CI 1.02-3.26; p=0.0442). This correlation persisted in multivariable
212 analysis, accounting for confounding factors (HR 2.34; 95% CI 1.12-4.88; p=0.0229). These findings underscore
213 the prognostic relevance of cSFRP5 in CRC, particularly in the context of stage II-III disease.

214

215 **DISCUSSION**

216 This study investigated the levels of cSFRP5 across a diverse cohort, including healthy individuals, as well as
217 those with CRC, colorectal polyps, and various other medical conditions. Elevated concentrations of cSFRP5
218 were identified in patients with CRC, polyps, and other significant illnesses, compared to the healthy controls.
219 Notably, among CRC patients, cSFRP5 levels were highest in TNM stage II, followed by stage III, and were
220 lowest in both stage I and IV. Furthermore, cSFRP5 levels exhibited an increase with patient age and were higher
221 in the poorly differentiated tumours. Moreover, high cSFRP5 levels were associated with longer overall survival
222 in the stage II-III CRC patients.

223

224 In our previous study, we highlighted the potential of cSFRP5 concentration as a diagnostic marker, effectively
225 distinguishing CRC patients from those without CRC (AUROC 0.828, 95% CI 0.761-0.898)²⁹. In the current
226 study we reported that the cSFRP5 level comparing patients with CRC to healthy donors had a AUROC of 0.762
227 (95% CI: 0.717 to 0.807; p<0.0001). However, it is important to emphasise that we did not find a significant
228 difference between patients with colorectal polyps and those with CRC. Noteworthy is the fact that most of these
229 individuals with polyps have a high risk of developing into cancer. This suggests that cSFRP5 may hold value in
230 identifying individuals with high-risk polyps. However, our latest research revealed that individuals with other
231 notable medical conditions also exhibited elevated cSFRP5 levels. These findings raise concerns about the
232 exclusive use of cSFRP5 as a diagnostic biomarker for CRC population screening. However, it is important to
233 note that the notable medical conditions group consisted of patients admitted to hospitals for treatment of various
234 diseases, including cancer, inflammation, and benign states in organs other than the colorectum, and do not
235 necessarily represent the general population.

236

237 Regarding CRC prognosis, our findings indicate that cSFRP5 levels are most elevated in patients with TNM stage
238 II tumours, followed by stage III, and are at their lowest in both stage I and IV. This was similar to our previous
239 findings in an independent CRC cohort, except that cSFRP5 levels were elevated in stage I, II and III compared
240 to stage IV²⁹. It is important to note that the previous study was constrained by a smaller sample size. Additionally,
241 we previously reported an association between elevated cSFRP5 and longer disease-free survival (HR 2.385; 95%
242 CI 1.181–4.816; $p=0.015$)²⁹. Unfortunately, the current study lacked data on disease recurrence for a
243 comprehensive analysis of disease-free survival. However, the current observation that elevated cSFRP5 in CRC
244 patients is linked to improved overall survival is consistent with the previous findings for disease-free survival.
245 Taken together, these findings suggest a favourable association between elevated cSFRP5 in CRC and survival
246 outcomes, particularly in those with stage II-III disease.

247
248 The explanation for the increased cSFRP5 observed in patients with CRC, polyps, and in the other disease states
249 remains largely unclear. In CRC, it is well established that SFRP5 transcript expression decreases due to promoter
250 DNA hypermethylation^{29,32}, suggesting that the cancer cells are unlikely to be the origin of the heightened cSFRP5.
251 However, to date there have been no studies that have reported SFRP5 protein levels in colorectal tissues. Research
252 indicates that pancreatic cells express some of the highest levels of SFRP5^{29,33,34}. Elevated glucose and insulin
253 levels have been shown to decrease SFRP5 expression in pancreatic cells³⁵, and insulin infusion leads to a
254 decrease in serum cSFRP5³⁶. Conversely, free fatty acids counteract the insulin-induced decrease in cSFRP5³⁶.
255 Furthermore, serum cSFRP5 is positively correlated with HDL-cholesterol and negatively correlated with
256 triglycerides and adiponectin³⁶. Additionally, cSFRP5 is inversely associated with circulating levels of pro-
257 inflammatory cytokines, including IL-6 and TNF α ³⁷. These collective observations suggest that systemic
258 disruptions in metabolism and inflammation drive changes in cSFRP5 levels, and potentially account for the
259 elevated concentrations observed in the study.

260
261 It is well accepted that SFRP5 binds Wnt ligands to antagonise Wnt signalling pathways⁴. The Wnt signalling
262 pathway is intricate and contingent on context. This pathway is indispensable for normal cellular processes,
263 including cell proliferation, differentiation, and tissue homeostasis. However, dysregulation of the Wnt pathway
264 is a pivotal factor in the development and progression of CRC. The non-canonical Wnt ligand, Wnt5a, is
265 overexpressed in CRC and promotes cancer cell epithelial-mesenchymal transition, facilitating metastasis^{38,39}.
266 The primary sources of Wnt5a in CRC are fibroblasts and macrophages. Hirashima et al. demonstrated that Wnt5a

267 was expressed by cancer associated fibroblasts ⁴⁰. The Wnt5a+ cancer associated fibroblasts were significantly
268 associated with TNM stage, and recurrence. Subsequent *in vitro* analyses using human recombinant Wnt5a protein
269 revealed that cancer cell proliferation and migration were significantly increased by stimulation with Wnt5a. Liu
270 et al. identified that Wnt5a+ tumour-associated macrophages were associated with disease progression and poor
271 prognosis ⁴¹. Moreover, Wnt5a+ macrophages promoted CRC cell proliferation, invasion, and migration, and the
272 knockdown of Wnt5a significantly impaired the pro-tumour functions of tumour-associated macrophages. We
273 propose that the observed elevated levels of cSFRP5 inhibit Wnt5a-mediated disease progression. However, we
274 acknowledge that further studies are required.

275
276 We noticed higher cSFRP5 levels in mismatch repair deficient CRC compared to proficient ones, but it didn't
277 reach statistical significance. Unfortunately, only 244 out of 449 (54.3%) patients had their mismatch repair status
278 reported, as it was not routinely tested at these institutions. Mismatch repair deficient CRC tends to have more
279 mutations, generating neoantigens that attract immune cells to the tumour microenvironment. Meanwhile, SFRP5
280 by virtue of antagonising Wnt signalling pathways, has various effects on immune cells, influencing their
281 behaviour and differentiation ⁴². It can shift macrophages toward an anti-inflammatory type ¹² and affect the
282 balance between effector and regulatory T cells, contributing to immune stability ⁴³. Overall, SFRP5 appears to
283 play a role in modulating immune cell differentiation, affecting the balance between pro-inflammatory and anti-
284 inflammatory responses. More research is needed to determine the specific role of cSFRP5 in shaping the tumour
285 immune cell microenvironment in CRC.

286
287 SFRP5 has garnered attention as a promising therapeutic target for various conditions, including metabolic
288 diseases ¹⁶. Notably, SFRP5 administration reversed hyperglycaemia and hepatic steatosis in multiple mouse
289 models of metabolic dysfunction ¹². Lifestyle modifications leading to substantial weight loss in overweight
290 individuals have been reported to increase cSFRP5 levels ²⁰⁻²². Exercise training induced calorie expenditure in
291 individuals with type 2 diabetes mellitus raised cSFRP5 levels ⁴⁴. Additionally, clinically prescribed drugs such
292 as the glucagon-like peptide-1 receptor agonist liraglutide have demonstrated the ability to elevate cSFRP5 levels
293 ³¹. Considering the observed association of elevated cSFRP5 with improved disease-free survival ²⁹ and overall
294 survival, interventions that elevate cSFRP5 and target Wnt signalling pathways could emerge as attractive options
295 for personalized medicine, particularly as an adjuvant therapy in individuals with stage II-III CRC with a
296 heightened risk of disease recurrence.

297

298 A significant limitation of this study is its retrospective design, which precludes adjustments to clinical practices.

299 Additionally, the absence of complete data for potentially important confounders, such as hypertension, obesity,

300 insulin resistance, and diabetes represent a noteworthy drawback. The unavailability of anthropometric

301 measurements, such as body weight, height, and waist circumference, further constrains the comprehensiveness

302 of our analysis. Moreover, the lack of information on therapeutic drug usage, such as chemotherapeutics and anti-

303 inflammatories, limits our ability to adequately assess these factors. Moving forward, the validation of our findings

304 through prospective studies involving comprehensive CRC patient cohorts is crucial for advancing our

305 understanding of the diagnostic and prognostic potential of cSFRP5.

306

307 In conclusion, this study validated previous findings that cSFRP5 levels are elevated in CRC patients and revealed

308 that the highest cSFRP5 concentrations were detected in TNM stage II, followed by stage III, and the lowest in

309 stages I and IV. Importantly, we report the novel finding that elevated cSFRP5 levels correlated with extended

310 overall survival among stage II-III CRC patients, emphasizing its potential clinical significance as a prognostic

311 biomarker. Our findings suggest that augmenting cSFRP5 levels could potentially enhance survival outcomes for

312 stage II-III CRC patients, who are most vulnerable to disease recurrence.

313

314 **ADDITIONAL INFORMATION**

315 **Acknowledgements**

316 The authors wish to thank the study participants, nurses and clinicians from Victorian Cancer Biobank in

317 Melbourne, Victoria, Australia.

318

319 **Author Contributions**

320 Conceptualization: Runhao Li, Timothy Price, Ehud Hauben and Eric Smith; Methodology: Runhao Li, Saifei

321 Liu, Sima Kianpour Rad, Ryan Santos, Man Ying Li, Fangmeino Wu; Formal analysis and investigation: Runhao

322 Li, Kenny Yeo, Suzanne Edwards, Eric Smith; Writing - original draft preparation: Runhao Li; Writing - review

323 and editing: Runhao Li, Kenny Yeo, Suzanne Edwards, Ryan Santos, Amanda Townsend, Yoko Tomita, Guy

324 Maddern, Joanne Young, Kevin Fenix, Ehud Hauben, Timothy Price, and Eric Smith; Funding acquisition:

325 Timothy Price, Ehud Hauben, and Eric Smith; Resources: Timothy Price, Ehud Hauben, and Eric Smith;

326 Supervision: Kevin Fenix, Timothy Price, and Eric Smith.

327

328 **Ethics approval and consent to participate**

329 This study was performed in line with the principles of the Declaration of Helsinki, and in accordance with the
330 Australian Code for the Responsible Conduct of Research and the National Statement on Ethical Conduct in
331 Human Research. Approval was granted by the Central Adelaide Local Health Network Human Research Ethics
332 Committee (Date 21-Sep-2021/No. HREC/14/TQEHLMH/164). Informed consent was obtained from all
333 individual participants included in the study.

334

335 **Data availability**

336 The data that support the findings of this study are available from the corresponding author upon reasonable
337 request.

338

339 **Competing Interests**

340 The authors have no relevant financial or non-financial interests to disclose.

341

342 **Funding information**

343 This work was supported by AusHealth (Grant number RES-SFRP-01). Author Runhao Li has received an
344 International PhD scholarship from The University of Adelaide.

345

346 **REFERENCES**

- 347 1. Sung H, Ferlay J, Siegel RL, et al. Global Cancer Statistics 2020: GLOBOCAN Estimates of Incidence
348 and Mortality Worldwide for 36 Cancers in 185 Countries. *CA Cancer J Clin*. May 2021;71(3):209-249.
349 doi:10.3322/caac.21660
- 350 2. Kastrinos F, Kupfer SS, Gupta S. Colorectal Cancer Risk Assessment and Precision Approaches to
351 Screening: Brave New World or Worlds Apart? *Gastroenterology*. Apr 2023;164(5):812-827.
352 doi:10.1053/j.gastro.2023.02.021
- 353 3. Mikaeel RR, Symonds EL, Kimber J, et al. Young-onset colorectal cancer is associated with a personal
354 history of type 2 diabetes. *Asia Pac J Clin Oncol*. Feb 2021;17(1):131-138. doi:10.1111/ajco.13428

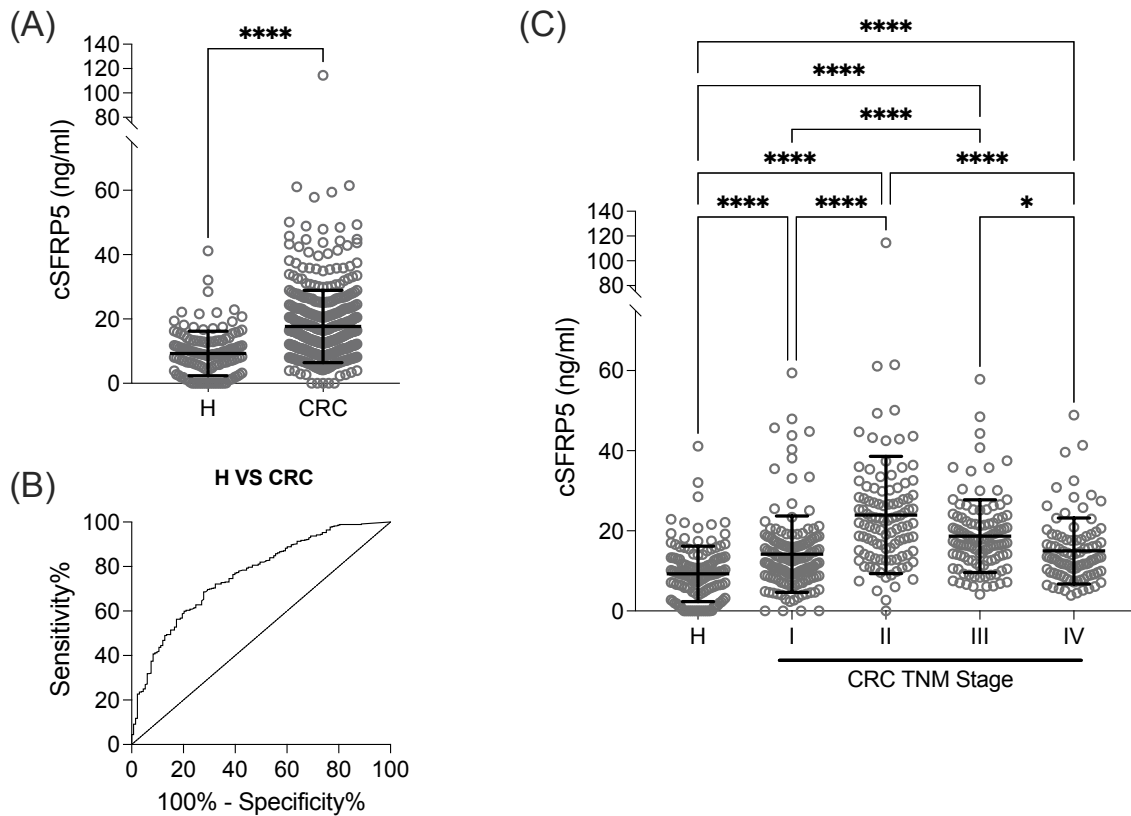
- 355 4. Bovolenta P, Esteve P, Ruiz JM, Cisneros E, Lopez-Rios J. Beyond Wnt inhibition: new functions of
356 secreted Frizzled-related proteins in development and disease. *J Cell Sci.* Mar 15 2008;121(Pt 6):737-46.
357 doi:10.1242/jcs.026096
- 358 5. Komiya Y, Habas R. Wnt signal transduction pathways. *Organogenesis.* Apr 2008;4(2):68-75.
359 doi:10.4161/org.4.2.5851
- 360 6. Klaus A, Birchmeier W. Wnt signalling and its impact on development and cancer. *Nat Rev Cancer.* May
361 2008;8(5):387-98. doi:10.1038/nrc2389
- 362 7. Anastas JN, Moon RT. WNT signalling pathways as therapeutic targets in cancer. *Nat Rev Cancer.* Jan
363 2013;13(1):11-26. doi:10.1038/nrc3419
- 364 8. Jones SE, Jomary C. Secreted Frizzled-related proteins: searching for relationships and patterns.
365 *Bioessays.* Sep 2002;24(9):811-20. doi:10.1002/bies.10136
- 366 9. Bhat RA, Stauffer B, Komm BS, Bodine PV. Structure-function analysis of secreted frizzled-related
367 protein-1 for its Wnt antagonist function. *J Cell Biochem.* Dec 15 2007;102(6):1519-28. doi:10.1002/jcb.21372
- 368 10. Bányai L, Patthy L. The NTR module: domains of netrins, secreted frizzled related proteins, and type I
369 procollagen C-proteinase enhancer protein are homologous with tissue inhibitors of metalloproteases. *Protein Sci.*
370 Aug 1999;8(8):1636-42. doi:10.1110/ps.8.8.1636
- 371 11. Schulte G. International Union of Basic and Clinical Pharmacology. LXXX. The class Frizzled receptors.
372 *Pharmacol Rev.* Dec 2010;62(4):632-67. doi:10.1124/pr.110.002931
- 373 12. Ouchi N, Higuchi A, Ohashi K, et al. Sfrp5 is an anti-inflammatory adipokine that modulates metabolic
374 dysfunction in obesity. *Science.* Jul 23 2010;329(5990):454-7. doi:10.1126/science.1188280
- 375 13. Li Y, Rankin SA, Sinner D, Kenny AP, Krieg PA, Zorn AM. Sfrp5 coordinates foregut specification and
376 morphogenesis by antagonizing both canonical and noncanonical Wnt11 signaling. *Genes Dev.* Nov 1
377 2008;22(21):3050-63. doi:10.1101/gad.1687308
- 378 14. Chatani N, Kamada Y, Kizu T, et al. Secreted frizzled-related protein 5 (Sfrp5) decreases hepatic stellate
379 cell activation and liver fibrosis. *Liver Int.* Aug 2015;35(8):2017-26. doi:10.1111/liv.12757
- 380 15. Catalán V, Gómez-Ambrosi J, Rodríguez A, et al. Activation of noncanonical Wnt signaling through
381 WNT5A in visceral adipose tissue of obese subjects is related to inflammation. *J Clin Endocrinol Metab.* Aug
382 2014;99(8):E1407-17. doi:10.1210/jc.2014-1191

- 383 16. Song Y, Ma Y, Zhang K, et al. Secreted frizzled-related protein 5: A promising therapeutic target for
384 metabolic diseases via regulation of Wnt signaling. *Biochem Biophys Res Commun*. Oct 15 2023;677:70-76.
385 doi:10.1016/j.bbrc.2023.08.008
- 386 17. Wang D, Zhang Y, Shen C. Research update on the association between SFRP5, an anti-inflammatory
387 adipokine, with obesity, type 2 diabetes mellitus and coronary heart disease. *J Cell Mol Med*. Mar
388 2020;24(5):2730-2735. doi:10.1111/jcmm.15023
- 389 18. Tong S, Ji Q, Du Y, Zhu X, Zhu C, Zhou Y. Sfrp5/Wnt Pathway: A Protective Regulatory System in
390 Atherosclerotic Cardiovascular Disease. *J Interferon Cytokine Res*. Aug 2019;39(8):472-482.
391 doi:10.1089/jir.2018.0154
- 392 19. Nakamura K, Fuster JJ, Walsh K. Adipokines: a link between obesity and cardiovascular disease. *J*
393 *Cardiol*. Apr 2014;63(4):250-9. doi:10.1016/j.jjcc.2013.11.006
- 394 20. Tan X, Wang X, Chu H, Liu H, Yi X, Xiao Y. SFRP5 correlates with obesity and metabolic syndrome
395 and increases after weight loss in children. *Clin Endocrinol (Oxf)*. Sep 2014;81(3):363-9. doi:10.1111/cen.12361
- 396 21. Yin C, Chu H, Li H, Xiao Y. Plasma Sfrp5 and adiponectin levels in relation to blood pressure among
397 obese children. *J Hum Hypertens*. Apr 2017;31(4):284-291. doi:10.1038/jhh.2016.76
- 398 22. Schulte DM, Müller N, Neumann K, et al. Pro-inflammatory wnt5a and anti-inflammatory sFRP5 are
399 differentially regulated by nutritional factors in obese human subjects. *PLoS One*. 2012;7(2):e32437.
400 doi:10.1371/journal.pone.0032437
- 401 23. Bhome R, Peppas N, Karar S, McDonnell D, Mirnezami A, Hamady Z. Metabolic syndrome is a predictor
402 of all site and liver-specific recurrence following primary resection of colorectal cancer: Prospective cohort study
403 of 1006 patients. *Eur J Surg Oncol*. Jul 2021;47(7):1623-1628. doi:10.1016/j.ejso.2020.12.016
- 404 24. Cho YK, Kang YM, Lee SE, et al. Effect of SFRP5 (Secreted Frizzled-Related Protein 5) on the WNT5A
405 (Wingless-Type Family Member 5A)-Induced Endothelial Dysfunction and Its Relevance With Arterial Stiffness
406 in Human Subjects. *Arterioscler Thromb Vasc Biol*. Jun 2018;38(6):1358-1367. doi:10.1161/atvbaha.117.310649
- 407 25. Wang B, Pan Y, Yang G, et al. Sfrp5/Wnt5a and leptin/adiponectin levels in the serum and the periarterial
408 adipose tissue of patients with peripheral arterial occlusive disease. *Clin Biochem*. Jan 2021;87:46-51.
409 doi:10.1016/j.clinbiochem.2020.11.002
- 410 26. Miyoshi T, Doi M, Usui S, et al. Low serum level of secreted frizzled-related protein 5, an anti-
411 inflammatory adipokine, is associated with coronary artery disease. *Atherosclerosis*. Apr 2014;233(2):454-459.
412 doi:10.1016/j.atherosclerosis.2014.01.019

- 413 27. Tong S, Du Y, Ji Q, et al. Expression of Sfrp5/Wnt5a in human epicardial adipose tissue and their
414 relationship with coronary artery disease. *Life Sci.* Mar 15 2020;245:117338. doi:10.1016/j.lfs.2020.117338
- 415 28. Li B, Yao Q, Guo S, et al. Type 2 diabetes with hypertensive patients results in changes to features of
416 adipocytokines: Leptin, Irisin, LGR4, and Sfrp5. *Clin Exp Hypertens.* 2019;41(7):645-650.
417 doi:10.1080/10641963.2018.1529779
- 418 29. Kirana C, Smith E, Ngo DT, et al. High preoperative levels of circulating SFRP5 predict better prognosis
419 in colorectal cancer patients. *Future Oncol.* Nov 2020;16(31):2499-2509. doi:10.2217/fon-2020-0356
- 420 30. Yadav SS, Hussain S, Dwivedi P, Khattri S, Sawlani KK, Usman K. Assesement of serum Sfrp5/Wnt-
421 5a level and its utility in the risk stratification of treatment naïve patients with metabolic syndrome. *J*
422 *Immunoassay Immunochem.* Jan 2 2023;44(1):1-12. doi:10.1080/15321819.2022.2104125
- 423 31. Hu W, Li L, Yang M, et al. Circulating Sfrp5 is a signature of obesity-related metabolic disorders and is
424 regulated by glucose and liraglutide in humans. *J Clin Endocrinol Metab.* Jan 2013;98(1):290-8.
425 doi:10.1210/jc.2012-2466
- 426 32. Qi J, Zhu YQ, Luo J, Tao WH. Hypermethylation and expression regulation of secreted frizzled-related
427 protein genes in colorectal tumor. *World J Gastroenterol.* Nov 28 2006;12(44):7113-7.
428 doi:10.3748/wjg.v12.i44.7113
- 429 33. Single-cell transcriptomics of 20 mouse organs creates a Tabula Muris. *Nature.* Oct 2018;562(7727):367-
430 372. doi:10.1038/s41586-018-0590-4
- 431 34. Jones RC, Karkanas J, Krasnow MA, et al. The Tabula Sapiens: A multiple-organ, single-cell
432 transcriptomic atlas of humans. *Science.* May 13 2022;376(6594):eabl4896. doi:10.1126/science.abl4896
- 433 35. Guan B, Li W, Li F, et al. Sfrp5 mediates glucose-induced proliferation in rat pancreatic β -cells. *J*
434 *Endocrinol.* May 2016;229(2):73-83. doi:10.1530/joe-15-0535
- 435 36. Rydzewska M, Nikolajuk A, Matulewicz N, Stefanowicz M, Karczewska-Kupczewska M. Serum
436 secreted frizzled-related protein 5 in relation to insulin sensitivity and its regulation by insulin and free fatty acids.
437 *Endocrine.* Nov 2021;74(2):300-307. doi:10.1007/s12020-021-02793-z
- 438 37. Zhang Y, Ran Y, Kong L, et al. Decreased SFRP5 correlated with excessive metabolic inflammation in
439 polycystic ovary syndrome could be reversed by metformin: implication of its role in dysregulated metabolism. *J*
440 *Ovarian Res.* Jul 20 2021;14(1):97. doi:10.1186/s13048-021-00847-4

- 441 38. Gujral TS, Chan M, Peshkin L, Sorger PK, Kirschner MW, MacBeath G. A noncanonical Frizzled2
442 pathway regulates epithelial-mesenchymal transition and metastasis. *Cell*. Nov 6 2014;159(4):844-56.
443 doi:10.1016/j.cell.2014.10.032
- 444 39. Fuertes G, Del Valle-Pérez B, Pastor J, et al. Noncanonical Wnt signaling promotes colon tumor growth,
445 chemoresistance and tumor fibroblast activation. *EMBO Rep*. Apr 5 2023;24(4):e54895.
446 doi:10.15252/embr.202254895
- 447 40. Hirashima T, Karasawa H, Aizawa T, et al. Wnt5a in cancer-associated fibroblasts promotes colorectal
448 cancer progression. *Biochem Biophys Res Commun*. Sep 3 2021;568:37-42. doi:10.1016/j.bbrc.2021.06.062
- 449 41. Liu Q, Yang C, Wang S, et al. Wnt5a-induced M2 polarization of tumor-associated macrophages via IL-
450 10 promotes colorectal cancer progression. *Cell Commun Signal*. Mar 30 2020;18(1):51. doi:10.1186/s12964-
451 020-00557-2
- 452 42. Haseeb M, Pirzada RH, Ain QU, Choi S. Wnt Signaling in the Regulation of Immune Cell and Cancer
453 Therapeutics. *Cells*. Nov 3 2019;8(11)doi:10.3390/cells8111380
- 454 43. Pundkar C, Antony F, Kang X, et al. Targeting Wnt/ β -catenin signaling using XAV939 nanoparticles in
455 tumor microenvironment-conditioned macrophages promote immunogenicity. *Heliyon*. Jun 2023;9(6):e16688.
456 doi:10.1016/j.heliyon.2023.e16688
- 457 44. Zadeh MAM, Afrasyabi S, Mohamadi ZA. The effects of exercise training induced calories expenditure
458 on type 2 diabetes related cardio metabolic physiological parameters and adipocytokines. *J Diabetes Metab*
459 *Disord*. Dec 2022;21(2):1219-1231. doi:10.1007/s40200-021-00808-0
- 460

461 FIGURES



462

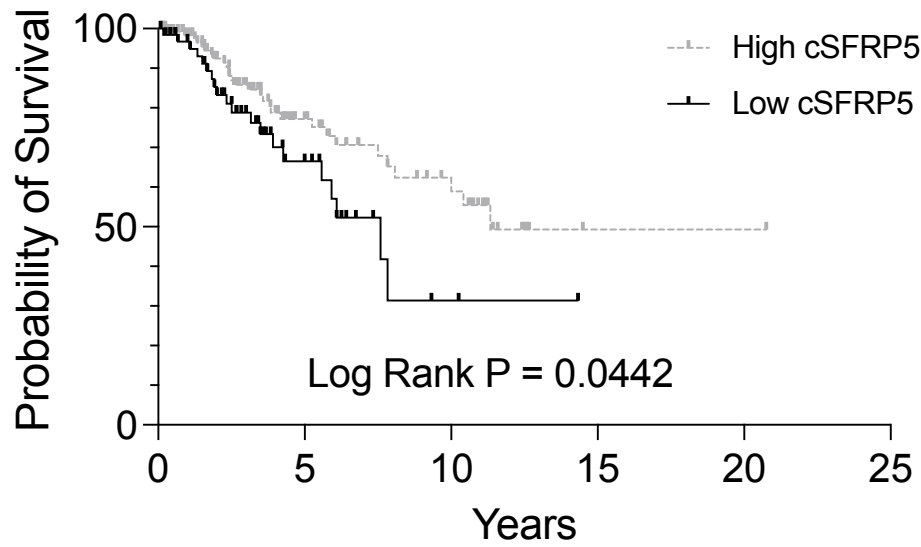
463 **Figure 1:** (A) Concentration of cSFRP5 in healthy donors (H) (n=133) and patients with colorectal cancer (CRC)

464 (n=449). (B) AUROC curve for cSFRP5 concentration comparing H to CRC. (C) Concentration of cSFRP5 in

465 healthy donors (H) (n=133) and CRC patients by TNM stage I (n=147), stage II (n=103), stage III (n=109), and

466 stage IV (n=90). The data are the mean \pm SD. Kruskal-Wallis with Dunn's multiple comparisons were used,

467 ****p<0.0001, *p<0.05.



Number at risk

Years	0	5	10	15	20
High cSFRP5	138	39	18	1	1
Low cSFRP5	74	16	2	0	0

468

469 **Figure 2:** Kaplan-Meier survival curve for overall survival in patients with stage II-III colorectal CRC (n=212)

470 dichotomized into low (≤ 16.34 ng/mL), or high (> 16.34 ng/mL) cSFRP5 concentration.

471 **TABLES**

472 **Table 1** Summary of participants in this study

Group	n	Female (%)	Median age, years (range)
Healthy (H)	133	86 (64.7%)	42 (16-80)
Notable medical conditions (D)	64	15 (23.4%)	60 (25-88)
Colorectal polyps (P)	85	40 (47.1%)	66 (22-88)
Colorectal Cancer (CRC)			
Stage I	147	60 (40.8%)	68 (34-91)
Stage II	103	40 (38.8%)	68 (32-95)
Stage III	109	36 (33.0%)	68 (28-89)
Stage IV	90	36 (40.0%)	57.5 (25-82)
<i>CRC Total</i>	<i>449</i>	<i>172 (38.3%)</i>	<i>66 (25-95)</i>
Total	731	313 (42.8%)	63 (16-95)

473

474 **Table 2** cSFRP5 concentration in CRC with various prognostic clinical-pathological parameters

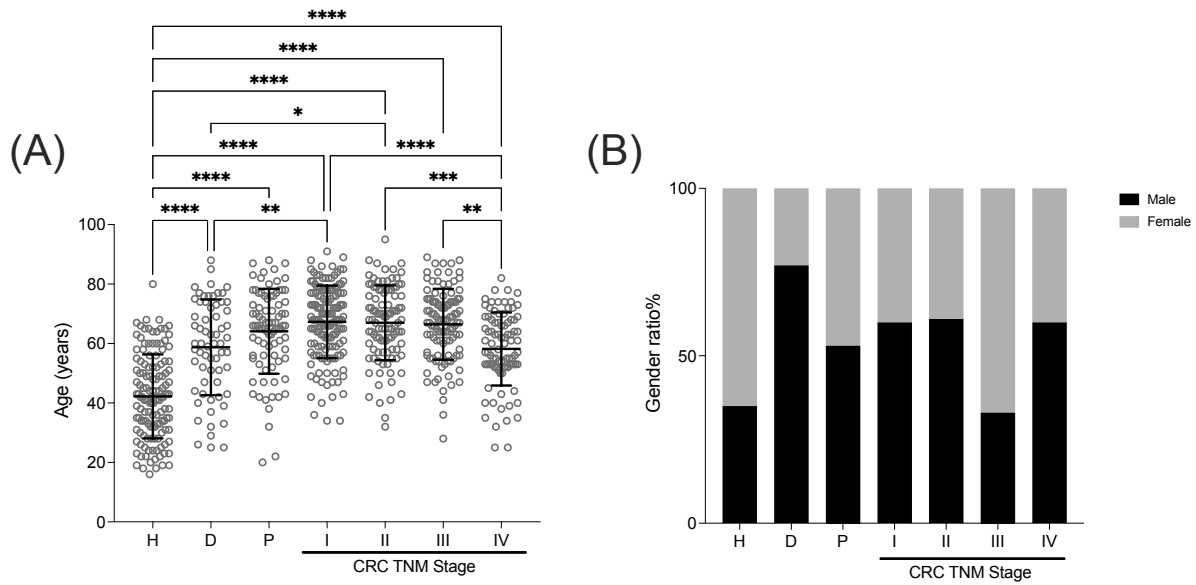
Clinical parameters	n	Mean cSFRP5 (95% CI)	p value
Age*	449		<0.0001
Sex			
Female	172	17.65 (15.97-19.33)	0.3927
Male	277	17.69 (16.35-19.03)	
TNM stage			
I	147	14.18 (12.63-15.74)	
II	103	23.94 (21.08-26.80)	<0.0001
III	109	28.68 (16.96-20.41)	
IV	90	14.98 (13.26-16.70)	
Tumour invasion (T-stage)			
T1	54	15.19 (12.11-18.27)	
T2	103	13.72 (12.10-15.34)	<0.0001
T3	175	21.15 (19.26-23.03)	
T4	58	19.15 (16.34-21.95)	
Lymph node metastasis (N-stage)			
N0	260	18.06 (16.50-19.62)	0.2122
N1/N2	137	17.99 (16.49-19.49)	
NR	52		
Distant metastasis (M-stage)			
M0	359	18.35 (17.13-19.57)	0.0049
M1	90	14.98 (13.26-16.70)	
Vascular or perineural invasion			
Negative	381	17.43 (16.28-18.57)	0.0980
Positive	68	19.07 (16.56-21.58)	
Histological differentiation			
Low (Grade 1-2)	374	17.06 (16.03-18.09)	0.0273
High (Grade 3-4)	75	20.74 (17.22-24.27)	
Tumour site			
Colon	311	18.07 (16.72-19.42)	0.7549
Rectum	138	16.78 (15.25-18.31)	
Mismatch repair status			
pMMR	220	18.21 (16.79-19.63)	0.0655
dMMR	24	25.20 (15.80-34.60)	
NR	205		
Diabetes			
Negative	130	17.66 (15.40-19.91)	0.2007
Positive	94	18.47 (16.43-20.50)	
NR	225		

	Clinical parameters	n	Mean cSFRP5 (95% CI)	p value
	Hypertension			
	Negative	26	16.20 (13.93-18.46)	0.8196
	Positive	198	18.23 (16.50-19.96)	
	NR	225		
475	<i>*Analysed as a continuous variable.</i>			
476	<i>Mismatch repair deficiency (dMMR)</i>			
477	<i>Mismatch repair proficient (pMMR)</i>			
478	<i>Not recorded (NR)</i>			
479	<i>95% confidence interval (95% CI)</i>			

480 **Table 3** Univariate and multivariable analysis of overall survival in stage II-III CRC

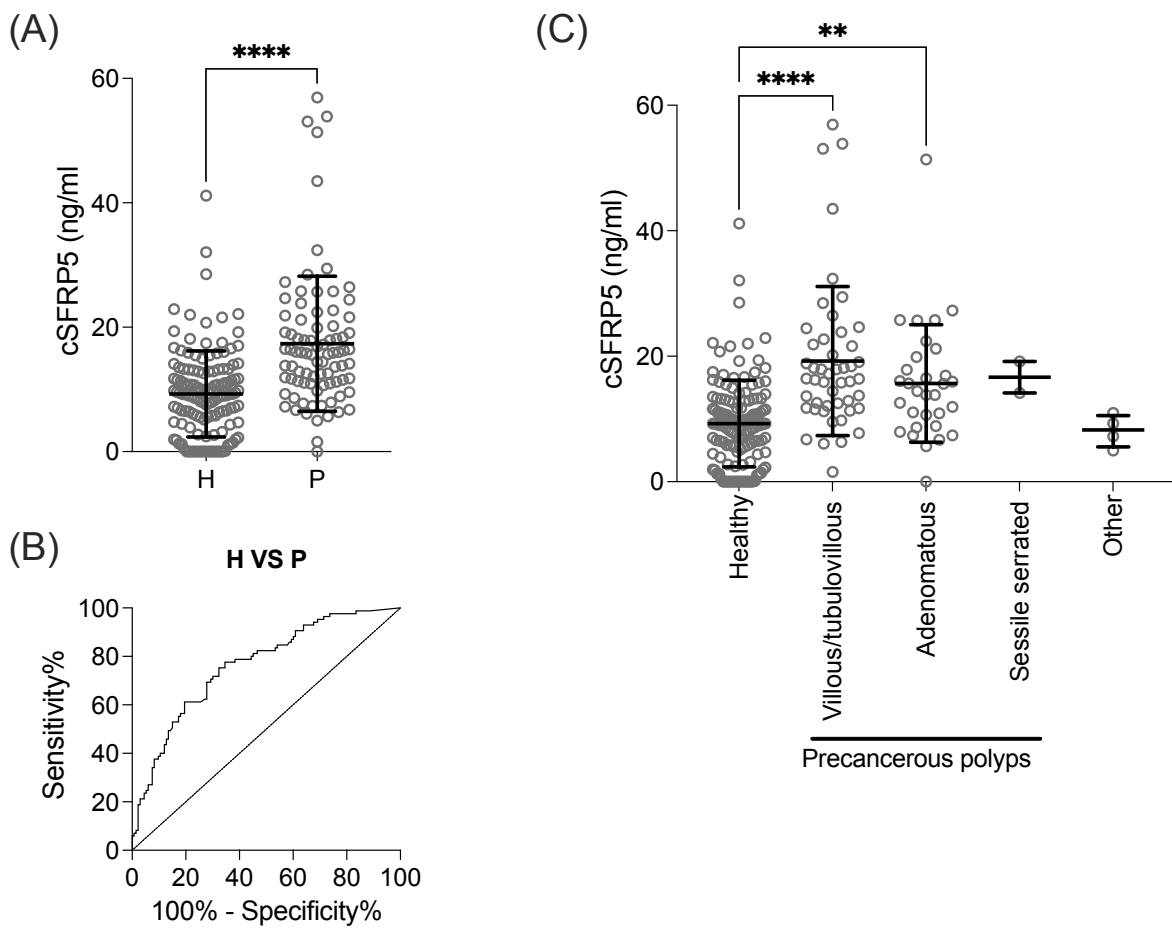
Predictor	Univariate		Multivariable	
	Hazard ratio (95% CI)	p value	Hazard ratio (95% CI)	p value
cSFRP5				
High (>16.34 ng/mL)	1		1	
Low (≤16.34 ng/mL)	1.82 (1.02-3.26)	0.0442	2.34 (1.12-4.88)	0.0229
Age*	1.06 (1.03-1.09)	<0.001	1.07 (1.03-1.10)	<0.001
Sex				
Male	1		1	
Female	0.80 (0.44-1.45)	0.4609	0.81 (0.43-1.53)	0.5210
TNM stage				
II	1		1	
III	1.41 (0.80-2.47)	0.2366	1.18 (0.61-2.27)	0.6151
Differentiation				
Low (Grade 1-2)	1		1	
High (Grade 3-4)	1.17 (0.63-2.16)	0.6203	1.03 (0.53-1.92)	0.9920
Vascular or perineural invasion				
Negative	1		1	
Positive	1.67 (0.89-3.11)	0.1065	1.78 (0.89-3.55)	0.1003
Tumour site				
Colon	1		1	
Rectum	0.79 (0.43-1.43)	0.4344	0.95 (0.51-1.77)	0.8839

481 *Analysed as a continuous variable.



482

483 **Supplementary fig. 1:** Age and gender of individuals in different groups. (A) Comparison of age in healthy
484 donors without documented pathology (H) (n=133), patients with other notable medical conditions (D) (n=64),
485 colorectal polyps (P) (n=85), or colorectal cancer (CRC) patients (n=449): stage I (n=147), stage II (n=103), stage
486 III (n=109), and stage IV (n=90). Data as mean \pm SD. Kruskal-Wallis with Dunn's multiple comparisons were
487 used, ****p<0.0001, ***p<0.001, **p<0.01, *p<0.05. (B) Comparison of gender ratio between different groups.



488

489 **Supplementary fig. 2:** Concentration of cSFRP5 from healthy donors (H) and patients with colorectal polyps (P)

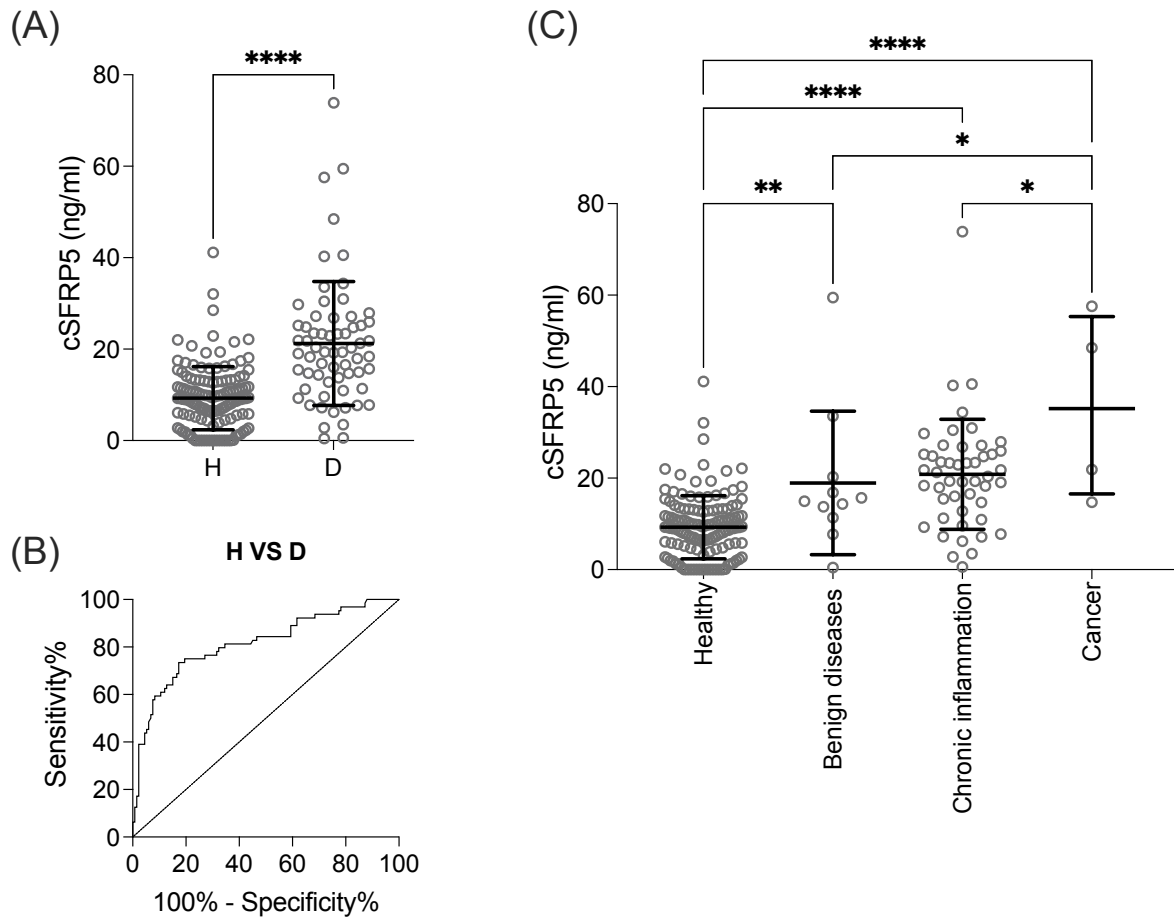
490 (A) Comparison of cSFRP5 concentration in H (n=133) and P (n=85). (B) AUROC curve for cSFRP5

491 concentration comparing H to P. (C) Concentration of cSFRP5 in healthy donors (H) and patients with

492 villous/tubulovillous (n=48), adenoma/adenomatous (n=31), sessile serrated (n=2), and other (n=4) types of

493 colorectal polyps. The data are the mean ± SD. Kruskal-Wallis with Dunn's multiple comparisons were used,

494 ****p < 0.0001, **p < 0.01.



495

496 **Supplementary fig. 3:** Concentration of SFRP5 from healthy donors (H) and other notable medical conditions

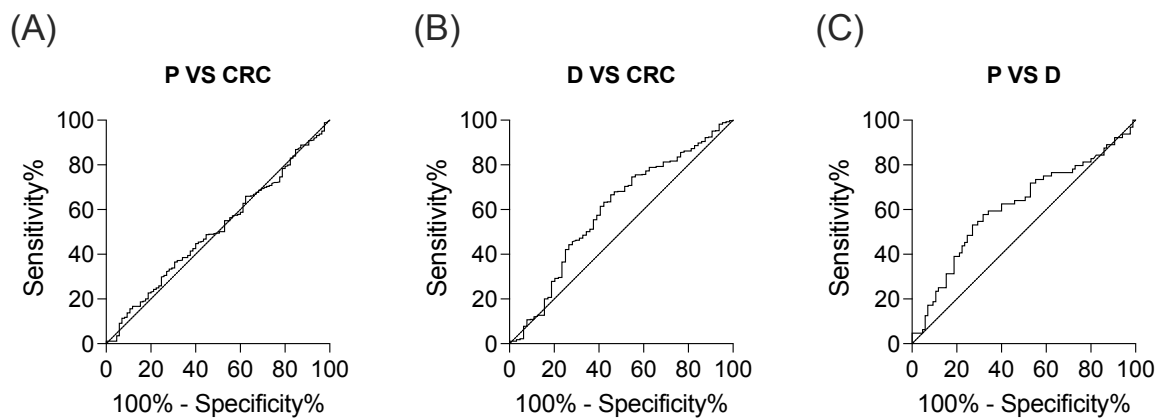
497 (D). (A) Comparison of cSFRP5 concentration in H (n=133) and D (n=64). (B) AUROC curve for cSFRP5

498 concentration comparing H to D. (C) Concentration of cSFRP5 in healthy donors (H) (n=133) and patients with

499 different types of notable medical conditions or significant disease by benign diseases (n=11), chronic

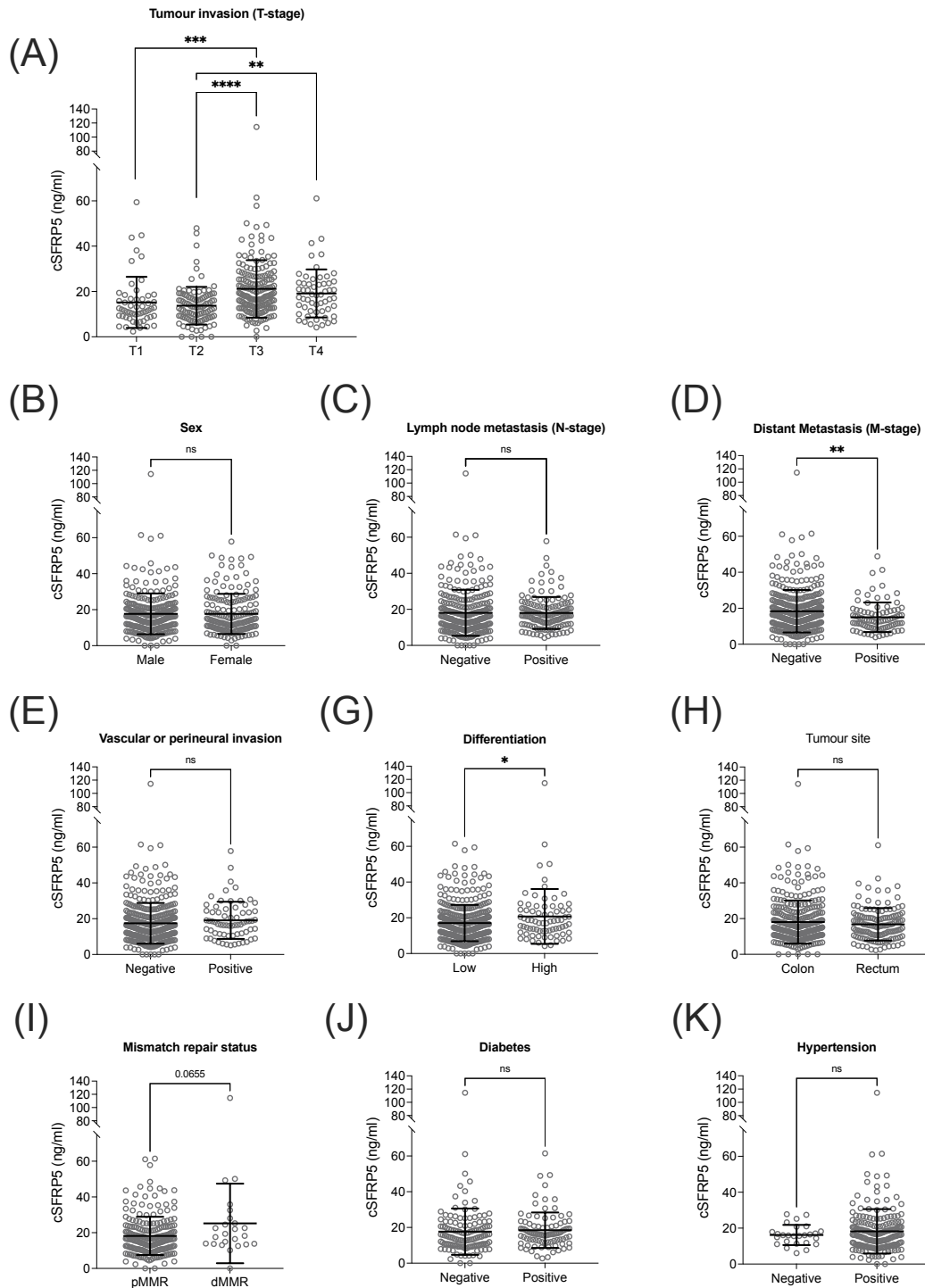
500 inflammation (n=49), and cancer (n=4). The data are the mean \pm SD. Kruskal-Wallis with Dunn's multiple

501 comparisons were used, ****p<0.0001, ***p<0.001, **p<0.01, *p<0.05.



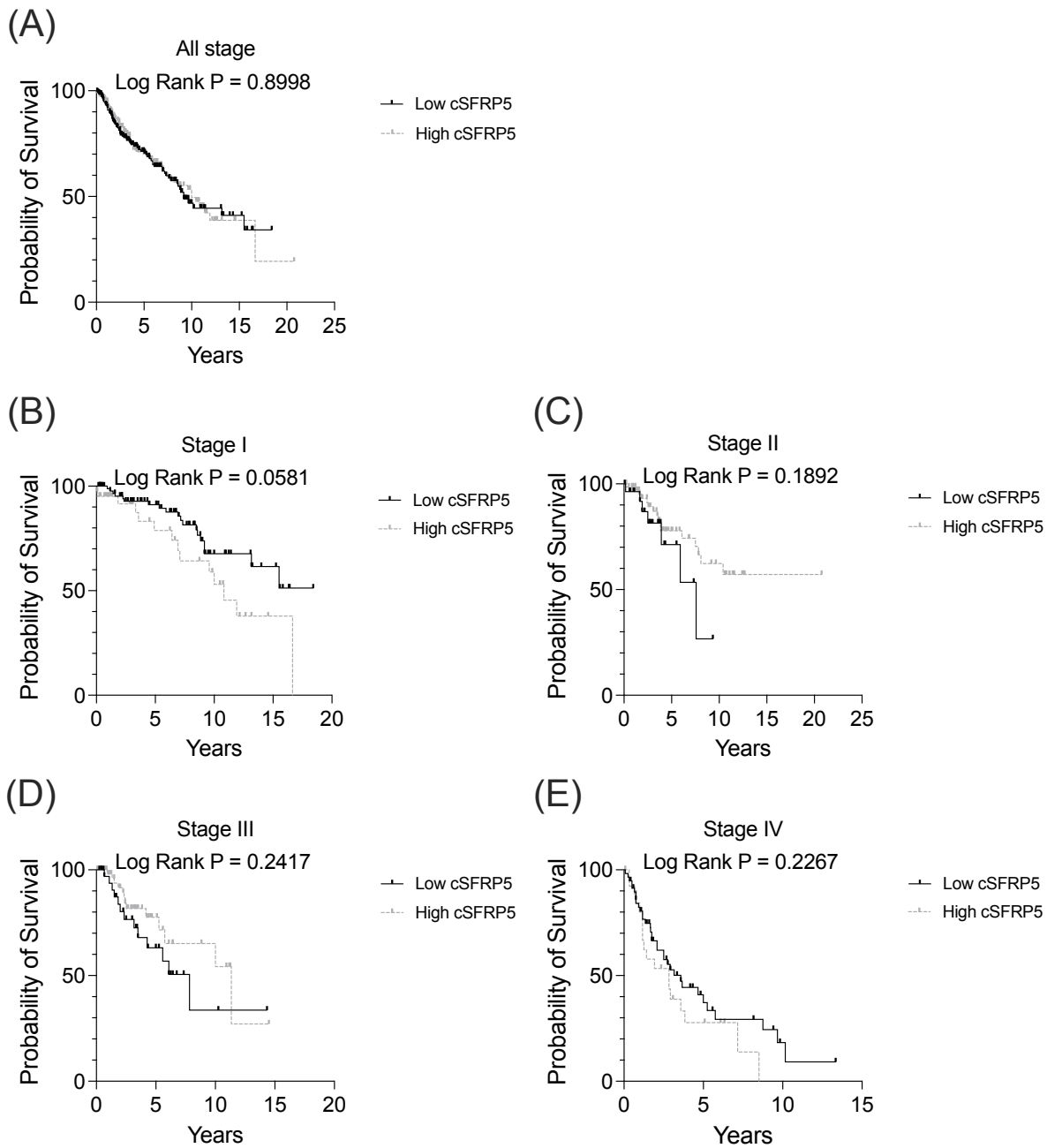
502

503 **Supplementary fig. 4:** cSFRP5 AUROC curves for (A) colorectal cancer polyps (P) (n=85) versus colorectal
504 cancer (CRC) (n=449), (B) other notable medical conditions (D) (n=64) versus CRC (n=449), and (C) P (n=85)
505 versus D (n=64).



506

507 **Supplementary fig. 5:** Concentration of cSFRP5 by various prognostic clinical-pathological parameters. (A)
 508 primary tumour invasion (T) stage. T1: tumour invades submucosa (n=54), T2: tumour invades muscularis propria
 509 (n=103), T3: tumour invades through the muscularis propria into peri-colorectal tissues (n=175), and T4: tumour
 510 directly invades or is adherent to other organs or structures (n=58). (B-K) cSFRP5 concentration comparison of
 511 sex, lymph node metastasis, distant metastasis, vascular or perineural invasion (VPNI), differentiation, tumour
 512 site, mismatch repair status, diabetes, and hypertension respectively. The data are the mean \pm SD. A linear
 513 regression model was used for multiple comparisons, ****p<0.0001, ***p<0.001, **p<0.01, *p<0.05.



514

515 **Supplementary fig. 6:** The Kaplan-Meier survival curves for overall survival in patients with colorectal cancer
516 based on low and high cSFRP5 expression levels. (A) All patients (n=449), (B) Stage I (n=147), (C) Stage II
517 (n=103), (D) Stage III (n=109), (E) Stage IV (n=90). Patients are dichotomized into low (≤ 16.34 ng/mL), or high
518 (> 16.34 ng/mL) cSFRP5 concentration, and survival curve were compared using Kaplan-Meier plots.

519 **Supplementary Table 1** Summary of all samples from different institutions

Hospital / Institution	Healthy (H)	Notable medical conditions (D)	Colorectal polyps (P)	Colorectal Cancer (CRC)	Total (n)
Austin Hospital (AH)	21	26	8	85	140
Barwon Health (BH)	-	-	3	1	4
Eastern Health (EH)	6	11	20	184	221
Monash Health (MH)	-	-	4	5	9
North Health (NH)	2	6	5	3	16
Peter MacCallum Cancer Centre (PM)	104	21	15	86	226
Royal Melbourne Hospital (RMH)	-	-	13	20	33
Western Health (WH)	-	-	17	65	82
Total	133	64	85	449	731

520

521 **Supplementary Table 2** Summary of healthy donors without significant documented pathology

Group	n	Female (%)	Median age, years (range)
Healthy	75	28 (37.3%)	41 (16-80)
Prophylactic mastectomy	37	37 (100%)	41 (22-60)
Breast reduction	19	19 (100%)	43 (18-64)
Uterus endocervical polyp	1	1 (100%)	63
Lipoma	1	1 (100%)	68
Total	133	86 (50.0%)	42 (16-80)

522

523 **Supplementary Table 3** Summary of patients with colorectal polyps

Polyp type	n
Villous/tubulovillous adenoma	48
Adenoma/adenomatous	31
Sessile serrated	2
Hyperplastic	2
Inflammatory	1
Peutz Jegher syndrome	1
Total	85

524

525 **Supplementary Table 4** Summary of patients with notable medical conditions

Classification	Notable medical conditions	n	Total
Cancer	Lobectomy for lung cancer	1	4
	Osteosarcoma; abscess	1	
	Renal oncocytoma	1	
	Transitional cell carcinoma	1	
Chronic inflammation	Active chronic colitis/proctitis	1	49
	Bladder wall lesions	1	
	Bronchiolitis & pneumonia	11	
	Cholangitis and pancreatitis	1	
	Cholecystitis and cholelithiasis	8	
	Cirrhotic appearance	1	
	Crohn's disease	2	
	Diverticulosis	4	
	Duodenal oedema and mild inflammation	1	
	Hashimoto's (autoimmune) thyroiditis	3	
	Interstitial cystitis	1	
	Lung cavitating lesion	1	
	Necrotizing granulomatous lymphadenitis	1	
	Non-necrotising granulomatous inflammation	1	
	Peritoneal abscess	1	
	Pleural bloodstained fluid	1	
	Prostatitis	5	
	Reactive lymphoid hyperplasia	1	
	Resection of ileoanal pouch	1	
	Right hemicolectomy: ulceration	1	
Sinus histiocytosis	1		
Splenectomy, autoimmune hemolytic anaemia	1		
Benign disease	Meckel's diverticulum	1	11
	Peri-rectal bleeding	1	
	Haematuria, likely benign prostatic hyperplasia	1	
	Benign multinodular goitre	2	
	Multiple simple bilateral renal cysts	1	
	Nodular and prostatic hyperplasia	2	
	Anthraxosis	1	
	Haematoma	1	
	Hydronephrosis	1	

526

527 **Supplementary Table 5** Linear regression model of cSFRP5 (continuous) versus TNM stage

Predictor	Comparison	Unadjusted		Adjusted by age and sex	
		Mean difference (95% CI)	p value	Mean difference (95% CI)	p value
TNM stage	I vs II	-9.76 (-12.42, -7.10)	< 0.0001	-9.81 (-12.43, -7.20)	< 0.0001
	I vs III	-4.50 (-7.12, -1.89)	0.0007	-4.65 (-7.23, -2.07)	0.0004
	I vs IV	-0.80 (-3.57, 1.97)	0.5725	-2.21 (-5.03, 0.60)	0.1234
	II vs III	5.26 (2.41, 8.10)	0.0003	5.16 (2.36, 7.96)	0.0003
	II vs IV	8.96 (5.98, 11.95)	< 0.0001	7.60 (4.58, 10.61)	< 0.0001
	III vs IV	5.10 (1.69, 8.55)	0.0054	3.70 (0.76, 6.65)	0.0138
Age	Continuous			1.69 (0.83, 2.56)	< 0.0001
Sex	Female vs Male			0.08 (-2.16, 2.32)	0.9444

528

529 **Supplementary Table 6** Linear regression model of cSFRP5 (continuous) versus patient groups

Predictor	Comparison	Unadjusted		Adjusted by age and sex	
		Mean difference (95% CI)	p value	Mean difference (95% CI)	p value
Patient group	H vs D	-11.97 (-15.17, -8.76)	<0.0001	-9.36 (-12.72, -6.00)	<0.0001
	H vs P	-8.08 (-11.00, -5.15)	<0.0001	-4.97 (-8.12, -1.81)	0.0020
	H vs CRC	-8.41 (-10.49, -6.33)	<0.0001	-5.07 (-7.54, -2.60)	<0.0001
	D vs P	3.89 (0.40, 7.37)	0.0288	4.39 (0.93, 7.86)	0.0130
	D vs CRC	3.56 (0.74, 6.37)	0.0132	4.29 (1.48, 7.10)	0.0027
	P vs CRC	-0.33 (-2.82, 2.16)	0.7949	-0.10 (-2.56, 2.36)	0.9342
Age	Continuous			1.35 (0.78, 1.92)	<0.0001
Sex	Female vs Male			-0.94 (-2.53, 0.66)	0.2498

530

531 **Supplementary Table 7** Univariate and multivariable analysis of overall survival for all CRC patients

Predictor	Univariate		Multivariable	
	Hazard ratio (95% CI)	p value	Hazard ratio (95% CI)	p value
cSFRP5*	1.01 (0.99-1.02)	0.4866	0.99 (0.98-1.02)	0.9721
Age*	1.03 (1.02-1.05)	<0.001	1.06 (1.04-1.08)	<0.001
Sex				
Male	1		1	
Female	0.86 (0.61-1.22)	0.4066	1.06 (0.74-1.53)	0.7331
TNM stage				
I	1		1	
II	1.33 (0.78-2.27)	0.2894	1.24 (0.70-2.19)	0.4526
III	1.91 (1.13-3.21)	0.0151	1.69 (0.94-3.05)	0.0943
IV	5.56 (3.55-8.72)	<0.001	8.58 (5.16-14.25)	<0.001
Differentiation				
Low (Grade 1-2)	1		1	
High (Grade 3-4)	1.23 (0.81-1.86)	0.3286	1.15 (0.74-1.79)	0.5442
Vascular or perineural invasion				
Negative	1		1	
Positive	2.27 (1.51-3.42)	<0.001	1.59 (1.02-2.49)	0.0402
Tumour site				
Colon	1		1	
Rectum	0.72 (0.49-1.07)	0.1049	1.25 (0.81-1.91)	0.3084

532 *Analysed as a continuous variable.