

# 1 Perennial Disaster Patterns in Central Europe since 2000:

## 2 Implications for Hospital Preparedness Planning

### 3 – A cross sectional Analysis

4 von der Forst M<sup>\*1</sup>, Dietrich M<sup>1</sup>, Schmitt FCF<sup>1</sup>, Popp E<sup>1</sup>, Ries M<sup>2</sup>

5  
6 1 Heidelberg University, Medical Faculty Heidelberg, Department of Anesthesiology, Im  
7 Neuenheimer Feld 420, 69120 Heidelberg

8 2 Heidelberg University, Medical Faculty Heidelberg, Pediatric Neurology and Metabolic  
9 Medicine, Center for Pediatrics and Adolescent Medicine, Im Neuenheimer Feld 430, 69120  
10 Heidelberg

11  
12  
13  
14  
15  
16  
17  
18  
19  
20  
21  
22  
23  
24  
25 **Corresponding Author:**

26 Dr. med. Maik von der Forst

27 Im Neuenheimer Feld 420

28 69120 Heidelberg

29 [Maik.forst@med.uni-heidelberg.de](mailto:Maik.forst@med.uni-heidelberg.de)

30  
31 **Keywords:** Disaster Management, Mass Casualty Incident, Hospital Emergency

NOTE: This preprint reports new research that has not been certified by peer review and should not be used to guide clinical practice.

32 Preparedness, Natural Hazard, Hospital Disaster Planning

33 **Abstract**

34 **Introduction:** Hospitals are vital components of a country's critical infrastructure, essential for  
35 maintaining resilient public services. Emergency planning for hospitals is crucial to ensure their  
36 functionality under special circumstances. The impact of climate change and seasonal  
37 variations in the utilization of hospital services further complicate emergency planning.  
38 Therefore, the knowledge of perennial disaster patterns could help strengthening the resilience  
39 of health care facilities.

40 **Methods:** We conducted a cross-sectional analysis of the Emergency Events Database EM-  
41 DAT for disasters in Central Europe between January 2000 and December 2023 (defined as  
42 Germany and bordering countries). Primary endpoint was the average month of occurrence of  
43 disasters across the overall study period.

44 **Results:** Out of 474 events, 83% were associated with a natural cause and only 80 events  
45 (=17%) were technological. More than 50 % of the technological disasters were categorized in  
46 the transport accident subgroup. Technological disasters were spread equally over the whole  
47 year. The vast majority of natural disasters (N=394) were due to storm (n=178, 45%), flood  
48 (n=101, 26%) and extreme temperatures (n=93, 24%) with peaks occurring during summer  
49 and winter months, while less disasters were registered during autumn and especially spring  
50 seasons.

51 **Discussion:** Looking at the three most common disaster types, extreme temperatures, floods,  
52 and storms are clearly dominating and cause over 90% of the natural disasters in central  
53 Europe. An overlap of hospital admissions due to seasonal effects and catastrophic events,  
54 mainly triggered by natural disasters in the vulnerable periods may lead to a partial collapse of  
55 the health care system. To deal with such a variety of different and potentially simultaneous  
56 hazards using an “all hazards” approach could be promising and often has been seen as the  
57 most effective strategy for hospital emergency planning.

58

## 59 Introduction

60 Hospitals are one of the main institutions of the health care system. As a part of the so-called  
61 critical infrastructure of a country they are essential for the maintenance of public services (1).  
62 Hospital emergency planning is crucial to ensure that their functionality can be maintained also  
63 under special circumstances. Strengthening the resilience of the critical infrastructure and  
64 among them health facilities is one of the goals of the Sendai Framework for disaster risk  
65 reduction until 2030 (2) In different countries hospitals are obligated to prepare plans for  
66 different potential emergency situations e.g. mass casualty events, fire, or blackout. There are  
67 existing national and international guidelines and reviews which define the most important  
68 scenarios to prepare for (3–7). Most of the mentioned threats handle local problems and  
69 assume an intact infrastructure as well as the possibility of regional assistance through external  
70 authorities. As such, a survey of 96 German hospitals showed that only about 25% of the  
71 hospitals have plans for floods or extreme weather events (8). But in the last years in Europe  
72 there were a number of events at a larger scale, like the “Ahrtal Flood”, different wildfires or  
73 heatwaves which compromised more than a single region at the same time and led at least  
74 partially to a destroyed or compromised infrastructure. Similar phenomena were also seen  
75 after the earthquake in Algeria 2003 and the Indian Ocean tsunami of 2004 which led to a  
76 significant reduction of health facilities (9).

77 In addition to these catastrophic events partially due to climate change, the utilization of  
78 hospital services underlies seasonal differences. On the one hand the summer months could  
79 be associated with a higher number of heat-associated illness e.g. cardiovascular and renal  
80 diseases on the other hand during the winter season respiratory virus infections are common  
81 (10–12). It is therefore essential to have an overview about the origin and the perennial pattern  
82 of disasters to prepare hospitals for these future challenges and help hospital administrators  
83 and emergency managers to prioritize resources. While there are many case reports and  
84 analysis for smaller events affecting hospitals (fire, traffic incidents, terroristic attacks,  
85 cybercrime), for Europe at our knowledge at the moment there is no analysis which kind of  
86 events at the disaster level may predominantly affect hospitals (13–17).

87 We asked the following research question:

88 Across the study period 2000-2023, were there particular months or seasons where disasters  
89 had particularly peaked, in the overall average, and which disasters were these?

90 With the present cross-sectional study of the EM-DAT database we aim to analyse and  
91 characterize disaster types in central Europe since 2000 with a particular focus on perennial  
92 disaster patterns and outline the potential impact of these findings for future hospital  
93 emergency planning and better preparedness.

94

## 95 **Methods**

96 We conducted a cross-sectional analysis on disaster events the Emergency Events Database  
97 EM-DAT (18). EM-DAT is a free open access disaster database, considering disasters from all  
98 over the world (19). We included listed events between January 2000 and December 2023 in  
99 Central Europe, which was defined as Germany and bordering countries (Denmark, The  
100 Netherlands, Belgium, Luxembourg, Switzerland, Austria, Czech Republic, and Poland).  
101 Events before 2000 were not taken into consideration because “*Pre-2000 data is particularly*  
102 *subject to reporting biases*”, further we considered this time period of 23 years as the most  
103 current and best representative sample for the research question (18). The Covid-19 pandemic  
104 as an exceptional and still ongoing event affecting people worldwide was excluded from the  
105 analysis, because it has special emergency implications due to its magnitude and is considered  
106 different from the usual underlying disaster pattern. The selection of countries was based on  
107 two particular assumptions: 1) there should be a geographical proximity to make climate  
108 variables and exposure to the same kind of events comparable, 2) the socio-economic status  
109 of a country and technological development should be similar due to their similar implications  
110 on necessary hospital preparedness.

111 All listed disaster events were defined as situations which: “*overwhelm local capacity,*  
112 *necessitating a request to the national or international level for external assistance; an*

113 *unforeseen and often sudden event that causes great damage, destruction, and human*  
114 *suffering.*" (18). To be listed an event has to further met at least one of the following EM-DAT  
115 Inclusion Criteria: at least ten deaths (including dead and missing), or at least 100 affected  
116 (people affected, injured, or homeless) or a call for international assistance or an emergency  
117 declaration (18). Primary data sources for EM-DAT include "UN agencies, non-governmental  
118 organizations, reinsurance companies, research institutes, and press agencies" (18).

119 Disasters are listed with four levels of depth, so events are divided into groups, subgroups,  
120 types, and subtypes. The three EM-DAT disaster groups are 'Natural', 'Technological', and  
121 'Complex'. The Peril Classification and Hazard Glossary is currently the primary reference for  
122 classifying natural hazards and divides them into six main subgroups: Geophysical,  
123 Hydrological, Meteorological, Climatological, Biological, and Extra-terrestrial (20).

124 Data were downloaded from the EM-DAT website on 12<sup>th</sup> December 2023 and considered  
125 events including November 2023, and then exported into an electronic database system  
126 (Microsoft Excel®, Microsoft Deutschland GmbH, Unterschleißheim, Germany). Variables for  
127 analysis included: [Disaster Group, Disaster Subgroup, Disaster Type, Country, Start Year,  
128 Start Month, Start Day, End Year, End Month, End Day, Total Deaths]. The statistical analysis  
129 and figures were performed with SPSS (Statistical Product and Services Solutions, Version  
130 25, SPSS Inc., Chicago, IL, USA) and Graphpad Prism (Version V, GraphPad Software, La  
131 Jolla, USA). Standard methods of descriptive statistics were applied in the analysis of the  
132 complete dataset.

133 Primary endpoint was month of occurrence across the overall study period. We compared the  
134 disaster groups natural and technological. The perennial pattern of disasters was elaborated  
135 by attributing all disasters across the overall analysis period into their individual month of  
136 occurrence, irrespective of the year. Further the disasters were divided into types following the  
137 EM-DAT nomenclature, the perennial pattern of types was analysed in the same matter. Every  
138 disaster event was listed by the country which was affected and then compared to the ground  
139 area and the number of inhabitants of every country.

140 The analysed years were further divided into two equal time periods to compare the frequency  
141 of disaster during a longer period. Also, the duration in months of every event was analysed.

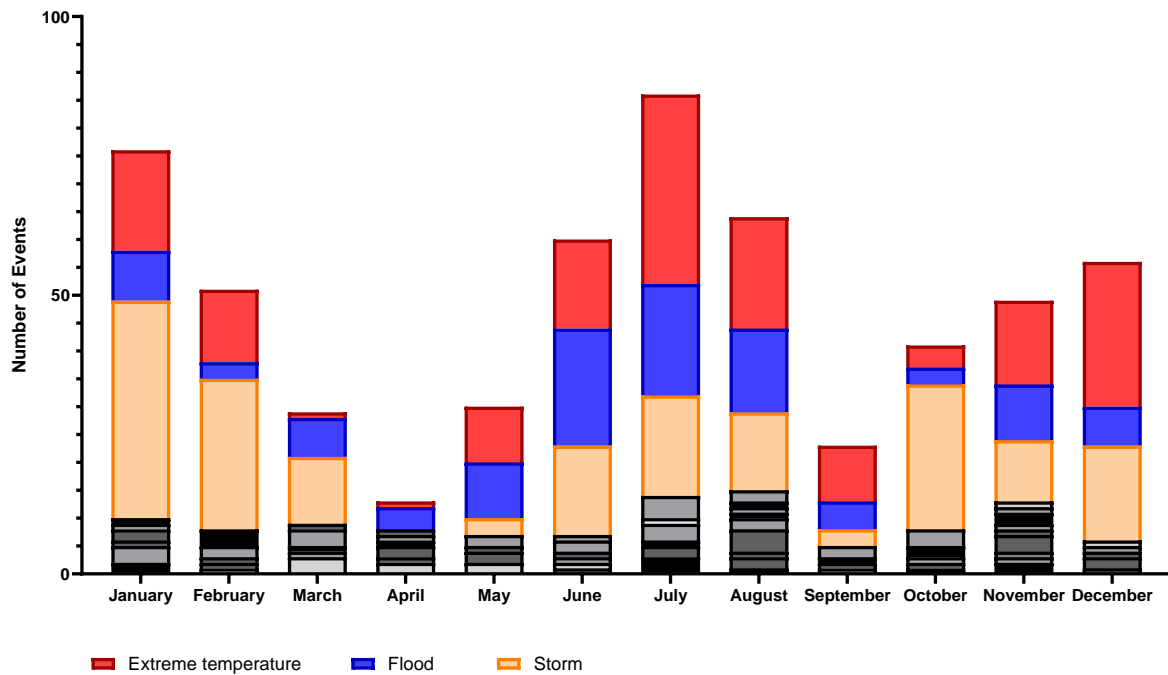
142 For a comparison of disaster number and the total Inhabitants of the different countries the  
143 German Website Statista.de was used (21) The study fulfills the requirements of the STROBE  
144 statement (22).

145 Ethics: As a descriptive analysis based on pre-existing data without direct human or animal  
146 research involvement, the present study did not require Institutional Review Board Ethics  
147 Committee review.

148

## 149 **Results**

150 Since 1<sup>st</sup> January 2000, 474 events were registered in EM-DAT. Fifty-four percent of all  
151 disasters occurred during the first half of the mentioned time period. Overall, the number of  
152 disasters in central Europe, as defined for the underlying study, was slightly decreasing over  
153 time.



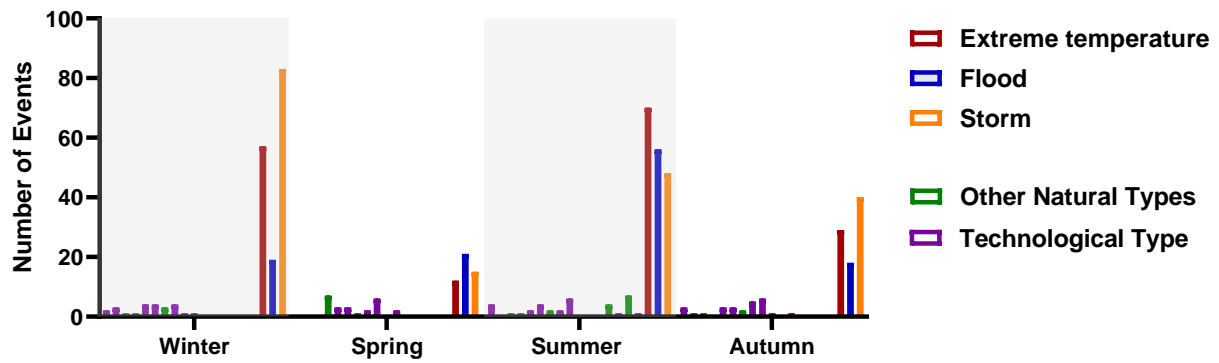
154

155 **Figure 1:** Perennial pattern of disasters in Central Europe by month of occurrence between  
156 January 2000 and November 2023 (in black all other disaster types).

157

158 The number of events categorized by month of occurrence across the overall analysis period  
159 shows that the disaster peaks are situated during summer and winter months, while less  
160 disasters are registered during autumn and especially spring seasons. Compared to  
161 technological events the frequency of disasters related to natural phenomena was much  
162 higher, since 2000 there were registered 394 events in EM-DAT. As a characteristic property  
163 of disasters due to natural hazards that were included in this analysis, a varying frequency  
164 during the course of the year with a particular pattern could be detected (Fig. 1). Going more  
165 into detail reveals that these periodical fluctuations can be associated predominantly to the  
166 three main types of natural disasters, i.e., extreme temperatures, flood, and storms (Fig. 1).

167 While there were some minor causes like drought (n=2), earthquake (n=3), epidemic (n=4), mass  
168 movement (n=8) and wildfire (n=5), which taken together represent only 5.6% of all listed  
169 natural disasters, the vast majority of disasters were due to storm (n=178, 45%), flood (n=101,  
170 26%) and extreme temperatures (n=93, 24%).

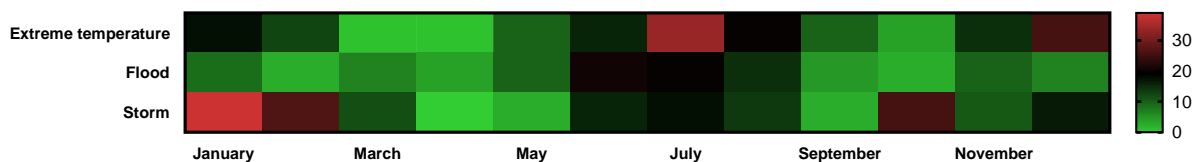


171

172 **Figure 2:** Overall number of disasters by type in Central Europe between 2000 to 2023,  
 173 categorized by season of the year (in black all other disaster types).

174

175 It appears that while storms are most frequent in the winter season, more floods are registered  
 176 during summer months (Fig. 2). For extreme temperatures there are two peaks one for extreme  
 177 heat and one for extreme cold, corresponding to summer and winter months (Fig. 2).  
 178 Importantly, while the absolute number of cold events is higher ( $n= 52$  vs.  $41$ ) than extreme  
 179 heat, the impact regarding death is nearly completely associated to heat events (97% of all  
 180 extreme temperature deaths). Considering all events there were 60 which had a duration  $> 1$   
 181 month from start to end, 55 of these belong to the three dominating disaster types storm, flood  
 182 and extreme temperature. The maximum duration of a disaster was 5 months (extreme  
 183 temperature). In general, extreme temperature disasters lasted longer than floods and storms.



184

185 **Figure 3:** Heat map showing perennial frequency distributions for extreme temperatures, flood,  
 186 and storm in Central Europe between 2000 and 2023.

187

188 A better visualisation of the three most common hazards during the course of the year and the  
 189 analysis of potential coincidences is given by a heat map which is a graphical representation

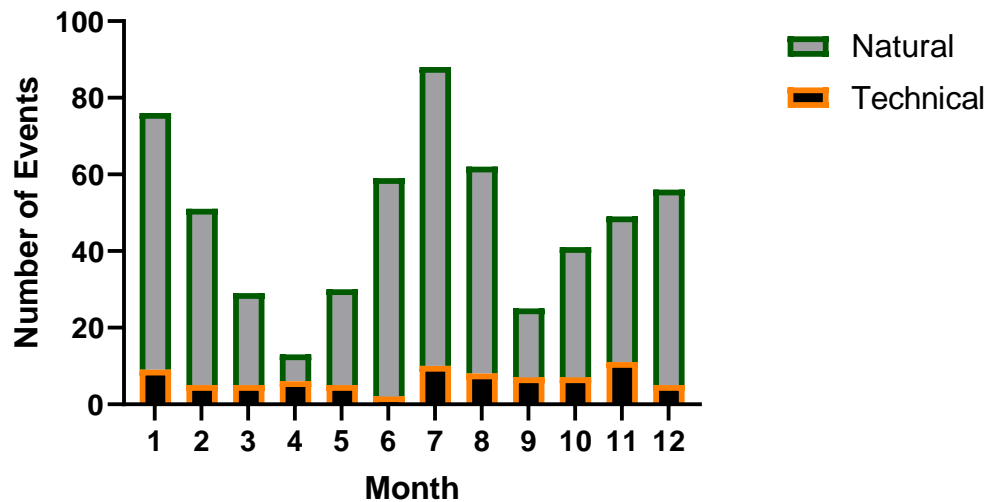


190 of data where values in a matrix are represented as colors (Fig. 3). The numerical magnitude  
 191 of events is represented by colours whereas light green means zero events and red means  
 192 maximum number of events (in our dataset forty). The Months March, April and May show  
 193 the lowest incidence of the main disaster types in central Europe, further also September,  
 194 October and November from 2000-2023 were less affected by disasters than Winter or  
 195 Summer Months (Fig. 3). Some major characteristics of the three main disaster types are  
 196 shown in Table 1.

197 **Table 1:** Main season and deaths associated with disasters due to extreme temperature, flood,  
 198 and storm in Central Europe between 2000 and 2023

	Extreme Temperature	Flood	Storm
<b>N=</b>	93 (41x Heat / 52x Cold)	101	178
<b>Main Season</b> <b>(% of total Events)</b>	Winter 37% Summer 33%	Summer 50%	Winter 47%
<b>Death (n)</b>	64.456 (Heat 97%)	573	470

199

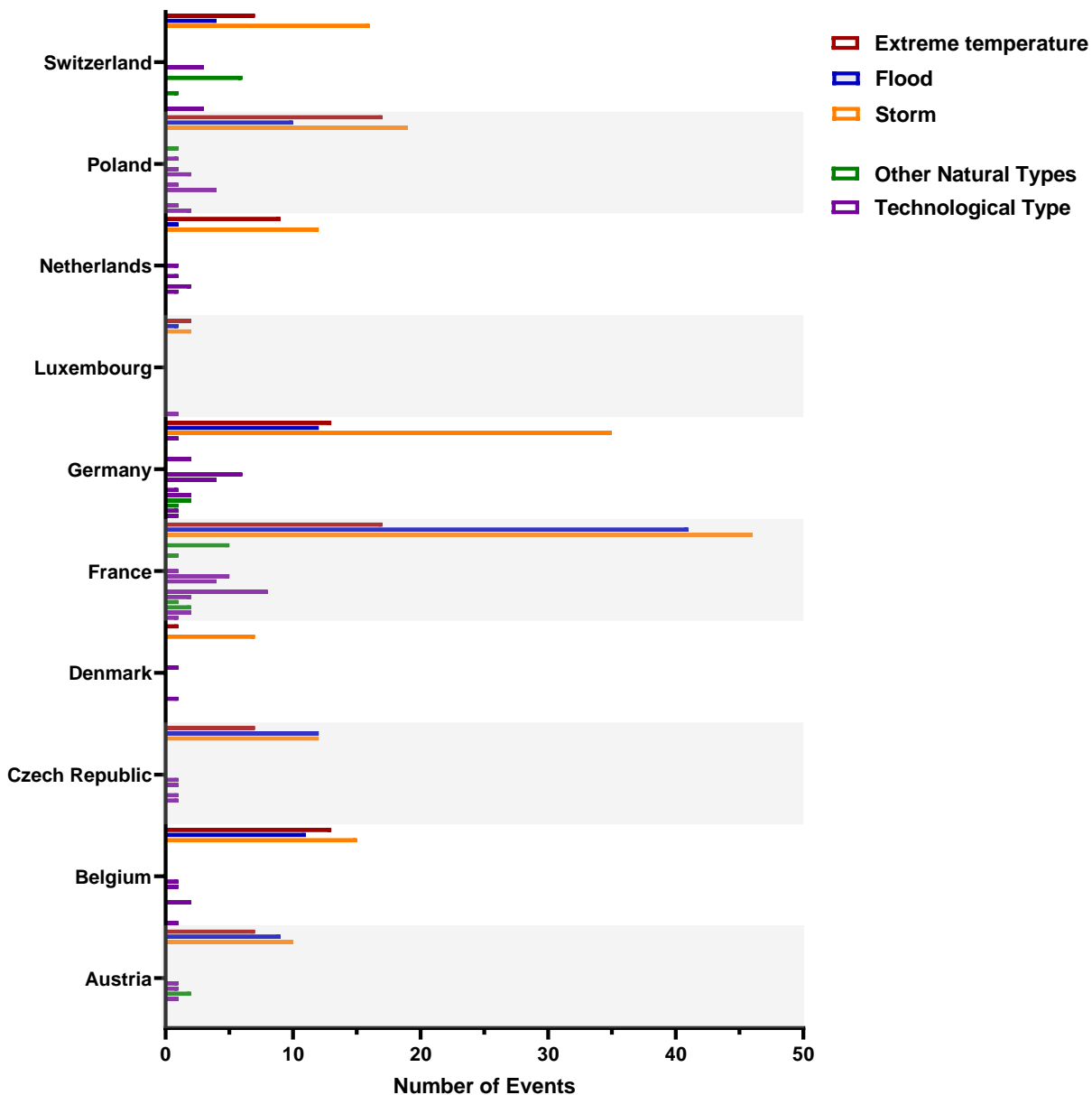


200

201 **Figure 4:** Number of disasters in Central Europe between 2000 and 2023 attributed to month  
202 of the year across the overall study period, stratified by natural or technical types.

203

204 In total most of the analysed disasters were associated to a natural cause and only 80 events  
205 (=17%) were technological. More than 50% of the technological disasters were categorized in  
206 the transport accident subgroup (aircraft n=9, rail n=13, road n=19, water n=2). The remaining  
207 events (n=37) were all of the subgroup industrial and miscellaneous accidents. In detail there  
208 were mostly fires (n=14) or explosions (n=13) or collapses (n=4). There were no substantial  
209 differences between the analyzed countries, whereas, of interest, the bigger industrialized  
210 ones in total had more technological events (e.g. France n=23, Germany n=19). Looking at the  
211 different months, there was a slight fluctuation for technological disasters over the whole year.  
212 The months January, July and November have more events in total, but these could not be  
213 attributed to specific causes and seems coincidental (Fig. 4). Dividing the analyzed period into  
214 equal parts (2000-2011 & 2012-2023) it appears that technological events are becoming less  
215 frequent and 70% (n=56) of the registered disasters happened between 2000 and 2011.



216

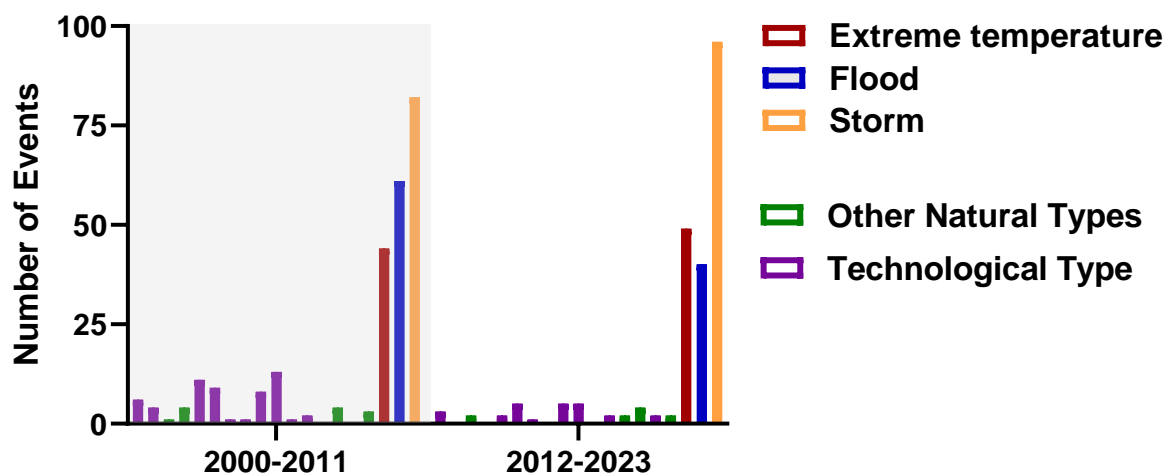
217 **Figure 5:** Absolute number of disasters between 2020 and 2023 categorized by country and  
 218 disaster type (in black all other disaster types).

219

220 As expected, the number of disasters was different between the selected countries. France  
 221 (n=137) and Germany (n=83) showed the highest total number of disasters. Comparing these  
 222 data with the area and the population size of the countries it results that both France (2.1  
 223 Events/Mio. inhabitants) and Germany (0.96 Events/Mio. inhabitants) are together with

224 Denmark (1,7 Events/Mio. Inhabitants) the three countries with a relatively smaller number of  
225 disasters, while e.g. in Luxembourg there were 9,2 Events/Mio. inhabitants (21).

226 The three main disaster types correspond to the most common in almost all analyzed  
227 countries. There are only a few exceptions regarding flood events. Denmark (0% of all events),  
228 the Netherlands (4% of all events) and Switzerland (10% of all events) had relatively few flood  
229 disasters registered in the database (Fig. 5).



230

231 **Figure 6:** Overall number of disasters 2000 – 2023 in Central Europe categorized by semester  
232 of observation period and disaster type (in black all other disaster types).

233

234 Comparing the first and the second half of the analyzed time period shows that the number of  
235 storms and extreme temperature events is rising, while the number of registered floods is  
236 numerically decreasing as well as the sum of technological incidents (Fig. 6).

237

## 238 Discussion

239 The present analysis points out the perennial pattern of disasters across central Europe  
240 between 2000 and 2023 and highlights critical peak seasons necessitating hospital  
241 preparedness. Notably, our examination reveals that the summer and winter months emerge

242 as the most vulnerable periods, characterized by a prevalence of extreme temperatures,  
243 floods, and storms. Particularly alarming is the disproportionate loss of life attributed to  
244 heatwaves during the summer months. While other regions of the globe have grappled with  
245 the impact of natural hazards such as floods, hurricanes, and droughts on healthcare  
246 infrastructure for decades, Central Europe has, fortunately, been largely spared by such events  
247 in recent years (23–27). Preparation and precaution are nevertheless essential to diminish the  
248 number of deaths in these potentially upcoming disasters (28). An essential factor is that public  
249 healthcare could be affected much longer than the event itself (29). Different events of the last  
250 few years e.g. the “Ahrtal Flood” confirmed this perception, some hospitals that were hit by the  
251 flood and in part had to be evacuated, were not able to get back to their usual business for  
252 several months (30–32). Unfortunately, the level of hospital preparedness is varying and  
253 probably due to the lack in legislation or financial issues it is often insufficient (33). Especially  
254 in industrialized countries compared to developing countries the focus of disaster planning lies  
255 less on natural hazards (34).

256 The analysis of registered catastrophes in central Europe during the last 23 years showed that  
257 the main group are natural hazards (Fig. 1) which affect the different countries in a similar  
258 manner (Fig. 3). The results of the ongoing analysis further indicate that especially during  
259 summer and winter months (Fig. 2), the incidence of catastrophic events is higher than in  
260 spring and autumn. Both are seasons where the demand of health services usually is already  
261 high and hospitals are often working at their limits e.g. due to heat or the annual epidemics of  
262 different respiratory viral diseases (10). Looking at the three most common disaster types  
263 extreme temperatures, floods and storms are clearly dominating and cause over 90% of the  
264 disasters related to natural hazards in central Europe (Fig. 2). In the hospital disaster planning  
265 literature, a publication from Munasinghe et al. which analyzed 53 publications, less than 10%  
266 and in a systematic review by Hasan et al. only two of thirteen articles were dealing exclusively  
267 with these three hazards (34,35).

268 Taken together extreme temperatures appear during the summer and the winter season,  
269 whereas especially heat periods are a major health problem and cause a significant number

270 of deaths (36–38). This is mostly due to heat-related illness including e.g. cardiovascular and  
271 respiratory complications as well as renal failure and negative impact on fetal health (11,39).  
272 The results of the distribution further show that floods have a peak during summer season  
273 while, vice versa, storms appear predominantly during late autumn and winter months. This  
274 further means a probability of a coincidence of two disaster types at the same time (e.g. heat  
275 wave and flood) (Fig. 6). Further especially these leading hazards in the future will probably  
276 become more frequent and affect more people in different regions due to climate change (25).  
277 An overlap of hospital admissions due to seasonal effects and catastrophic events may lead  
278 to a partial collapse of the health care system.

279 Looking at the results of the present study and the findings of the literature it should be of high  
280 interest and priority to prepare hospitals for potentially overlapping disasters. Financial issues  
281 should not be an obstacle as in the U.S. weather and climate disasters since 1980 caused a  
282 total damage that exceeds \$2.655 trillion (40). In total compared to other topics there is still  
283 only few scientific literature regarding catastrophic events and hospital emergency planning,  
284 also if there is a rising number of scientific articles coming up especially after larger disaster  
285 events (41). An analysis from Melnychuk et. al found 363 peer-reviewed publications including  
286 the grey literature. Sorted by type it shows that there are 13 different kinds of threats and over  
287 >45% of the peer reviewed literature belong to the category “Others” (42). Other reviews further  
288 indicate that in the majority of hospitals some crucial aspects of emergency planning are  
289 missing, these include especially dead body handling, waste management, transport and  
290 access routes, which are relevant mostly in disaster situations with a destroyed infrastructure  
291 (34). A systematic review by Hasan et al. had similar findings, screening over 2500 publications  
292 led to 13 peer reviewed articles focusing on hospital surge capacity preparedness. Overall  
293 missing stuff and staff, the lack of standardized assessment tools and system related barriers  
294 were identified as the limiting factors to preparedness for surge capacity (35).

295 Taken together because of the complexity of this topic hospitals should engage experts which  
296 develop a hospital disaster plan/ business continuity plan (often used synonymously) (4,43).  
297 To deal with such a variety of different and potentially simultaneous hazards using an “all

298 hazards” approach could be promising and often has been seen as the most effective strategy  
299 for hospital emergency planning (44,45). The findings of two different reviews demonstrate that  
300 the all-hazard approach is an established strategy and was chosen in more than half of the  
301 articles (34,35). Preparing for “all-hazards” means that the processes of emergency planning  
302 are organized without knowledge of the specific event. On the one hand this model has some  
303 advantages especially in case of disasters that previously were not considered in the plans of  
304 a single hospital on the other hand it could also have potential negative effects regarding the  
305 preparation of hazard specific tasks (46). A mixture of both strategies e.g. by creating toolbox  
306 including hazard specific protocols but using an “all-hazard” approach as a backbone for  
307 command and control, communication and alert issues could strengthen the resilience of  
308 health care facilities. The main task to fulfill the goals of the Sendai Framework should be the  
309 development of constructive, infrastructural, and administrative resilience (2). To  
310 operationalize disaster preparedness Verheul et. al developed nonagon with crucial  
311 components (47). It could be helpful to consider the 2015 updated Hospital Safety Index tool,  
312 developed by the World Health Organization and the Pan American Health Organization, which  
313 is the mostly used tool for hospital emergency preparedness assessment (48).

314 This analysis relies on the accuracy of the data collection in EM-DAT. The database driven  
315 design of pre-existing data with unchangeable elements is a limitation regarding the possibility  
316 of a more specific analysis. It cannot be excluded that recording of disaster events may be  
317 incomplete (49). Nevertheless, during the analysis period covered in this report, data  
318 acquisition into EM-DAT was performed prospectively. Further in some of the listed events  
319 there are missing data, especially regarding the impact (costs, death, affected people), but this  
320 was not the main focus of the actual analysis. In general, EM-DAT is considered an  
321 authoritative data source in the field. Another relevant limitation is that some disasters which  
322 affected more than one country at the same time were listed as a single entry in EM-DAT for  
323 every country and the given data did not offer the possibility to group these events reliably.  
324 Therefore, the same catastrophe appears once for every single affected country, which may

325 lead to an overestimation. On the other hand, the advantage of this method is that events  
326 hitting larger geographical areas appear with a higher impact by their higher single number.

327

## 328 **Conclusion**

329 The awareness of perennial disaster patterns in central Europe with particular vulnerability  
330 phases in the summer and winter months may allow hospital managers and emergency  
331 planners better preparation, response, and recovery from predominant disaster events, mainly  
332 extreme temperatures, flood, and storm. In other parts of the world the high frequency of  
333 climate associated disaster events and the analysis of their potential damages as well as  
334 community disruptions already led to the development of toolkits to prepare the health care  
335 system for changing climate(50,51). Taken together potential upcoming of more than one  
336 scenario at the same time should be considered, therefore a mixed approach of event specific  
337 protocols and an “all hazard” strategy for core areas could strengthen the adaptive resilience  
338 of health care facilities.

339



## 340 References

- 341 1. Good Governance for Critical Infrastructure Resilience [Internet]. OECD; 2019. (OECD Reviews  
342 of Risk Management Policies). Available from: [https://www.oecd-](https://www.oecd-ilibrary.org/governance/good-governance-for-critical-infrastructure-resilience_02f0e5a0-en)  
343 [ilibrary.org/governance/good-governance-for-critical-infrastructure-resilience\\_02f0e5a0-en](https://www.oecd-ilibrary.org/governance/good-governance-for-critical-infrastructure-resilience_02f0e5a0-en)
- 344 2. Sendai framework for disaster risk reduction 2015–2030. In: UN world conference on disaster  
345 risk reduction, 2015 March 14–18, Sendai, Japan. [Internet]. [cited 2024 Feb 9]. Available from:  
346 <https://www.undrr.org/publication/sendai-framework-disaster-risk-reduction-2015-2030>
- 347 3. World Health Organization. Hospital Safety Index [Internet]. 2015 [cited 2024 Feb 9]. Available  
348 from: <https://www.who.int/publications/i/item/9789241548984>
- 349 4. Handbuch Krankenhausalarm- und –einsatzplanung. Bundesamt für Bevölkerungsschutz und  
350 Katastrophenhilfe (BBK); 2020.
- 351 5. ASIAN DISASTER PREPAREDNESS CENTER. Planning Guideline for Hospital Emergency Response  
352 Plan (HERP) [Internet]. 2022 [cited 2024 Feb 9]. Available from:  
353 <https://app.adpc.net/resources/hospital-emergency-response-plan-herp-guideline/>
- 354 6. GOI-UNDP DRM Programme (2002-2008). Guidelines For Hospital Emergency Preparedness  
355 Planning [Internet]. [cited 2024 Feb 9]. Available from:  
356 [https://www.asdma.gov.in/pdf/publication/undp/guidelines\\_hospital\\_emergency.pdf](https://www.asdma.gov.in/pdf/publication/undp/guidelines_hospital_emergency.pdf)
- 357 7. World Health Organization. Hospital emergency response checklist [Internet]. 2011 [cited 2024  
358 Feb 9]. Available from: [https://www.who.int/publications/i/item/hospital-emergency-](https://www.who.int/publications/i/item/hospital-emergency-response-checklist)  
359 [response-checklist](https://www.who.int/publications/i/item/hospital-emergency-response-checklist)
- 360 8. von der Forst M, Popp E, Weigand MA, Neuhaus C. Sonderlagen und Gefahrenabwehr in  
361 deutschen Krankenhäusern – eine Umfrage zum Ist-Zustand. *Die Anaesthesiologie*. 2023 Nov  
362 19;72(11):784–90.
- 363 9. The Lancet. Keeping hospitals safe from all types of disaster. *The Lancet*. 2008  
364 Feb;371(9611):448.
- 365 10. Moriyama M, Hugentobler WJ, Iwasaki A. Annual review of virology seasonality of respiratory  
366 viral infections. *Annu Rev Virol*. 2020;7:83–101.
- 367 11. Gronlund CJ, Zanobetti A, Wellenius GA, Schwartz JD, O’Neill MS. Vulnerability to renal, heat  
368 and respiratory hospitalizations during extreme heat among U.S. elderly. *Clim Change*. 2016 Jun  
369 1;136(3–4):631–45.
- 370 12. Bishop-Williams KE, Berke O, Pearl DL, Kelton DF. A spatial analysis of heat stress related  
371 emergency room visits in rural Southern Ontario during heat waves. *BMC Emerg Med*. 2015  
372 Aug 6;15(1).
- 373 13. Söderin L, Agri J, Hammarberg E, Lennquist-Montán K, Montán C. Hospital preparedness for  
374 major incidents in Sweden: a national survey with focus on mass casualty incidents. *European*  
375 *Journal of Trauma and Emergency Surgery*. 2023 Apr 1;49(2):635–51.

- 376 14. Campanale ER, Maragno M, Annese G, Cafarelli A, Coretti R, Argemì J, et al. Hospital  
377 preparedness for mass gathering events and mass casualty incidents in Matera, Italy, European  
378 Capital of Culture 2019. *European Journal of Trauma and Emergency Surgery*. 2022 Oct  
379 1;48(5):3831–6.
- 380 15. Ulmer N, Barten DG, De Cauwer H, Gaakeer MI, Klokman VW, Van Der Lugt M, et al. Terrorist  
381 Attacks against Hospitals: World-Wide Trends and Attack Types. *Prehosp Disaster Med*. 2022  
382 Feb 18;37(1):25–32.
- 383 16. Sullivan N, Tully J, Dameff C, Opara C, Snead M, Selzer J. A National Survey of Hospital Cyber  
384 Attack Emergency Operation Preparedness. *Disaster Med Public Health Prep*. 2023 Mar  
385 22;17(3).
- 386 17. Paganini M, Borrelli F, Cattani J, Ragazzoni L, Djalali A, Carengo L, et al. Assessment of disaster  
387 preparedness among emergency departments in Italian hospitals: a cautious warning for  
388 disaster risk reduction and management capacity. 2016.
- 389 18. EM-DAT, CRED / UCLouvain, Brussels, Belgium [Internet]. [cited 2024 Feb 9]. Available from:  
390 [www.emdat.be](http://www.emdat.be)
- 391 19. Mazhin S, Farrokhi M, Noroozi M, Roudini J, Hosseini S, Motlagh M, et al. Worldwide disaster  
392 loss and damage databases: A systematic review. *J Educ Health Promot*. 2021;10(1):329.
- 393 20. Integrated Research on Disaster Risk. Peril Classification and Hazard Glossary (IRDR DATA  
394 Publication No. 1) [Internet]. Beijing: Integrated Research on Disaster Risk; 2014 [cited 2024  
395 Feb 9]. Available from: [https://council.science/wp-content/uploads/2019/12/Peril-  
396 Classification-and-Hazard-Glossary-1.pdf](https://council.science/wp-content/uploads/2019/12/Peril-Classification-and-Hazard-Glossary-1.pdf)
- 397 21. Statista 2023. Statista 2023. [cited 2024 Feb 10]. Anzahl der Einwohner in den Ländern Europas  
398 im Jahr 2023 . Available from:  
399 [https://de.statista.com/statistik/daten/studie/1187610/umfrage/bevoelkerung-der-laender-  
400 europas/](https://de.statista.com/statistik/daten/studie/1187610/umfrage/bevoelkerung-der-laender-europas/)
- 401 22. von Elm E, Altman DG, Egger M, Pocock SJ, Gøtzsche PC, Vandenbroucke JP. The Strengthening  
402 the Reporting of Observational Studies in Epidemiology (STROBE) statement: guidelines for  
403 reporting observational studies. *J Clin Epidemiol* [Internet]. 2008 Apr;61(4):344–9. Available  
404 from: <https://linkinghub.elsevier.com/retrieve/pii/S0895435607004362>
- 405 23. Uppal A, Evans L, Chitkara N, Patrawalla P, Ann Mooney M, Addrizzo-Harris D, et al. In search  
406 of the silver lining: The impact of superstorm sandy on Bellevue Hospital. *Ann Am Thorac Soc*.  
407 2013 Apr;10(2):135–42.
- 408 24. King MA, Dorfman M V., Einav S, Niven AS, Kisson N, Grissom CK. Evacuation of Intensive Care  
409 Units during Disaster: Learning from the Hurricane Sandy Experience. Vol. 10, *Disaster Medicine  
410 and Public Health Preparedness*. Cambridge University Press; 2016. p. 20–7.
- 411 25. Crimmins A, Balbus J, Gamble JL, Beard CB, Bell JE, Dodgen D, et al. The Impacts of Climate  
412 Change on Human Health in the United States: A Scientific Assessment [Internet]. Washington,  
413 DC; 2016. Available from: <https://health2016.globalchange.gov/downloads>

- 414 26. Rattanakanlaya K, Sukonthasarn A, Wangsrikhun S, Chanprasit C. Improving flood disaster  
415 preparedness of hospitals in Central Thailand: Hospital personnel perspectives. *J Clin Nurs*. 2022  
416 Apr 1;31(7–8):1073–81.
- 417 27. Hines E, Reid CE. Hurricane Harvey Hospital Flood Impacts: Accuracy of Federal Emergency  
418 Management Agency Flood Hazard Areas in Harris County, Texas. *Public Health [Internet]*.  
419 2020; 110:574–9. Available from: <http://www.ajph.org>
- 420 28. Toner E. Healthcare Preparedness: Saving Lives. *Health Secur*. 2017 Jan 1;15(1):8–11.
- 421 29. Bell JE, Herring SC, Jantarasami L, Adrianopoli C, Benedict K, Conlon K, et al. Ch. 4: Impacts of  
422 Extreme Events on Human Health. *The Impacts of Climate Change on Human Health in the*  
423 *United States: A Scientific Assessment*. Washington, DC; 2016.
- 424 30. Dpa/afp/aerzteblatt.de. Kurzschluss durch Hochwasser: Klinik in Leverkusen evakuiert.  
425 *Deutsches Ärzteblatt Online [Internet]*. 2021; Available from:  
426 [https://www.aerzteblatt.de/nachrichten/125600/Kurzschluss-durch-Hochwasser-Klinik-in-](https://www.aerzteblatt.de/nachrichten/125600/Kurzschluss-durch-Hochwasser-Klinik-in-Leverkusen-evakuiert)  
427 [Leverkusen-evakuiert](https://www.aerzteblatt.de/nachrichten/125600/Kurzschluss-durch-Hochwasser-Klinik-in-Leverkusen-evakuiert)
- 428 31. Kna/aerzteblatt.de. Katholische Krankenhäuser kämpfen mit Folgen des Hochwassers.  
429 *Deutsches Ärzteblatt Online [Internet]*. 2021; Available from:  
430 [https://www.aerzteblatt.de/nachrichten/125736/Katholische-Krankenhaeuser-kaempfen-mit-](https://www.aerzteblatt.de/nachrichten/125736/Katholische-Krankenhaeuser-kaempfen-mit-Folgen-des-Hochwassers)  
431 [Folgen-des-Hochwassers](https://www.aerzteblatt.de/nachrichten/125736/Katholische-Krankenhaeuser-kaempfen-mit-Folgen-des-Hochwassers)
- 432 32. Fos/aerzteblatt.de. Das Hochwasser stand zwei Meter im Untergeschoss. *Deutsches Ärzteblatt*  
433 *Online [Internet]*. 2021; Available from: [https://www.aerzteblatt.de/nachrichten/125716/Das-](https://www.aerzteblatt.de/nachrichten/125716/Das-Hochwasser-stand-zwei-Meter-im-Untergeschoss)  
434 [Hochwasser-stand-zwei-Meter-im-Untergeschoss](https://www.aerzteblatt.de/nachrichten/125716/Das-Hochwasser-stand-zwei-Meter-im-Untergeschoss)
- 435 33. Dami F, Yersin B, Hirzel AH, Hugli O. Hospital disaster preparedness in Switzerland. *Swiss Med*  
436 *Wkly*. 2014;144(October):1–6.
- 437 34. Munasinghe NL, O'Reilly G, Cameron P. Establishing the Domains of a Hospital Disaster  
438 Preparedness Evaluation Tool: A Systematic Review. Vol. 37, *Prehospital and Disaster Medicine*.  
439 Cambridge University Press; 2022. p. 674–86.
- 440 35. Hasan MK, Nasrullah SM, Quattrocchi A, Arcos González P, Castro-Delgado R. Hospital surge  
441 capacity preparedness in disasters and emergencies: a systematic review. Vol. 225, *Public*  
442 *Health*. Elsevier B.V.; 2023. p. 12–21.
- 443 36. Robine JM, Cheung SLK, Le Roy S, Van Oyen H, Griffiths C, Michel JP, et al. Death toll exceeded  
444 70,000 in Europe during the summer of 2003. *C R Biol*. 2008 Feb;331(2):171–8.
- 445 37. an der Heiden M, Muthers S, Niemann H, Buchholz U, Grabenhenrich L, Matzarakis A.  
446 Estimation of heat-related deaths in Germany between 2001 and 2015. *Bundesgesundheitsblatt - Gesundheitsforschung - Gesundheitsschutz*. Springer Verlag; 2019.  
447
- 448 38. Ballester J, Quijal-Zamorano M, Méndez Turrubiates RF, Pegenaute F, Herrmann FR, Robine JM,  
449 et al. Heat-related mortality in Europe during the summer of 2022. *Nat Med*. 2023 Jul  
450 1;29(7):1857–66.

- 451 39. Bobb JF, Obermeyer Z, Wang Y, Dominici F. Cause-specific risk of hospital admission related to  
452 extreme heat in older adults. *JAMA - Journal of the American Medical Association*. 2014 Dec  
453 24;312(24):2659–67.
- 454 40. Smith AB. U.S. Billion-dollar Weather and Climate Disasters, 1980 - present (NCEI Accession  
455 0209268). NOAA National Centers for Environmental Information. Dataset. . 2020.
- 456 41. Sasaki H, Maruya H, Abe Y, Fujita M, Furukawa H, Fuda M, et al. Scoping review of hospital  
457 business continuity plans to validate the improvement after the 2011 great east Japan  
458 Earthquake and Tsunami. *Tohoku Journal of Experimental Medicine*. 2020;251(3):147–59.
- 459 42. Melnychuk E, Sallade TD, Kraus CK. Hospitals as disaster victims: Lessons not learned? Vol. 3,  
460 *JACEP Open*. John Wiley and Sons Inc; 2022.
- 461 43. Hart A, Hertelendy A, Ciottone GR. Why Every US Hospital Needs a Disaster Medicine Physician  
462 Now. Vol. 16, *Disaster Medicine and Public Health Preparedness*. Cambridge University Press;  
463 2022. p. 1–2.
- 464 44. Herstein JJ, Schwedhelm MM, Vasa A, Biddinger PD, Hewlett AL. Emergency preparedness:  
465 What is the future? Vol. 1, *Antimicrobial Stewardship and Healthcare Epidemiology*. Cambridge  
466 University Press; 2021.
- 467 45. Gregory PA. *Inquiries Journal/Student Pulse*. 2015. Reassessing the Effectiveness of All-Hazards  
468 Planning in Emergency Management. Available from:  
469 <http://www.inquiriesjournal.com/a?id=1050>
- 470 46. Wax RS. Preparing the Intensive Care Unit for Disaster. Vol. 35, *Critical Care Clinics*. W.B.  
471 Saunders; 2019. p. 551–62.
- 472 47. Verheul MLMI, Dückers MLA. Defining and Operationalizing Disaster Preparedness in Hospitals:  
473 A Systematic Literature Review. *Prehosp Disaster Med*. 2020;35(1):61–8.
- 474 48. Lamine H, Lamberti-Castronuovo A, Singh P, Chebili N, Zedini C, Achour N, et al. A Qualitative  
475 Study on the Use of the Hospital Safety Index and the Formulation of Recommendations for  
476 Future Adaptations. *Int J Environ Res Public Health*. 2023 Mar 1;20(6).
- 477 49. Jones RL, Kharb A, Tubeuf S. The untold story of missing data in disaster research: a systematic  
478 review of the empirical literature utilising the Emergency Events Database (EM-DAT).  
479 *Environmental Research Letters*. 2023 Oct 1;18(10):103006.
- 480 50. Seltnerich N. Safe from the storm: Creating climate-resilient health care facilities. Vol. 126,  
481 *Environmental Health Perspectives*. Public Health Services, US Dept of Health and Human  
482 Services; 2018.
- 483 51. Guenther R, Balbus J. Primary Protection: Enhancing Health Care Resilience for a Changing  
484 Climate. Washington, DC:U.S. Department of Health and Human Services. [Internet]. 2014  
485 [cited 2024 Feb 14]. Available from:  
486 [https://toolkit.climate.gov/sites/default/files/SCRHCFI%20Best%20Practices%20Report%20fin  
487 al2%202014%20Web.pdf](https://toolkit.climate.gov/sites/default/files/SCRHCFI%20Best%20Practices%20Report%20final%202014%20Web.pdf)