

1 **Title: Glial activation mediates phenotypic effects of *APOE* ϵ 4 and sex in Alzheimer's disease**

2

3 **Authors and Affiliations:**

4 Roger M. Lane, MD^a; Dan Li, PhD^a; Taher Darreh-Shori^b

5 ^aIonis Pharmaceuticals Inc., Carlsbad, CA, USA

6 ^bKarolinska Institutet, Department of Neurobiology, Care Sciences and Society; Division
7 of Clinical Geriatrics, Stockholm, Sweden

8

9 **Corresponding Author:** Roger M. Lane, MD, MPH,

10 Address: Ionis Pharmaceuticals, 2855 Gazelle Court, Carlsbad, CA 92010, USA

11 Email: rlane@ionisph.com

12 Tel. Number:

13 **Declaration of Interest:**

14 RML and DL are Employees of, and holders of stock/stock options in, Ionis Pharmaceuticals Inc.

15 TDS has no conflicts of interest.

16

17

18 **Word Count**

19 Abstract: 150/150

20 Introduction: 596/650

21 Discussion: 1420/1500

22

1 ABSTRACT

2 INTRODUCTION: This study examined the impact of *apolipoprotein ε4 (APOEε4)* allele
3 frequency and sex on the phenotype of Alzheimer’s disease (AD).

4
5 METHODS: The baseline characteristics, CSF, and neuroimaging biomarkers, and cognition
6 scores collected from 45 patients aged 50-74 years with confirmed early AD from clinical trial
7 NCT03186989 were evaluated in a post-hoc study.

8
9 RESULTS: A phenotypic spectrum was observed from a predominant amyloid and limbic-
10 amnesic phenotype in male *APOEε4* homozygotes to a predominantly tau, limbic-sparing, and
11 multidomain cognitive impairment phenotype in female *APOEε4* noncarriers. Amyloid
12 pathology inversely correlated with tau pathophysiology, glial activation, and synaptic injury,
13 with the strongest correlations observed in male *APOEε4* carriers. Tau pathophysiology was
14 correlated with glial activation, synaptic injury, and neuroaxonal damage, with the strongest
15 correlation observed in female *APOEε4* noncarriers.

16
17 DISCUSSION: Glial activation is influenced by apoE isoform and sex, which explains much of
18 the phenotypic heterogeneity in early AD below age 75 years.

19
20
21 KEYWORDS: Apolipoprotein E, sex, glial activation, amyloid, tau, synaptic injury

22

1 HIGHLIGHTS

- 2 • *APOEε4* homozygotes displayed a predominantly amyloid and limbic-amnestic
3 phenotype.
- 4 • Female *APOEε4* noncarriers displayed a predominantly tau, limbic-sparing, and
5 multidomain cognitive impairment phenotype.
- 6 • In male *APOEε4* carriers, amyloid pathology was inversely correlated with tau
7 pathophysiology, synaptic injury, and glial activation
- 8 • Females displayed a non-*APOEε4* allele frequency-dependent increase in glial activation
9 and synaptic injury
- 10 • In female *APOEε4* noncarriers, tau pathophysiology was strongly correlated with glial
11 activation, synaptic injury, and neuroaxonal damage

12

13

1 RESEARCH IN CONTEXT

2

3 **Systematic review:** The impact of *APOEε4* alleles and sex on phenotypic features was examined
4 in 45 patients, aged 50-74 years, with early AD.

5

6 **Interpretation:** Findings were consistent with prior reports and suggest that glial activation,
7 influenced by apoE isoform and sex, explains much of the phenotypic heterogeneity in early AD
8 below age 75 years. Lower glial activation in *APOEε4* homozygotes associated with the highest
9 levels of amyloid and the lowest levels of tau pathology, and a limbic-amnestic phenotype,
10 suggesting degeneration of basal forebrain cholinergic neurons. Higher glial activation in female
11 *APOEε4* noncarriers was associated with the highest tau pathology and synaptic injury, the
12 lowest amyloid pathology, greater ventricular expansion, and multi-domain cognitive deficits.

13

14 **Future directions:** This work defined a combined sex, genotype, and age framework that
15 delineates multiple pathways to end-stage AD. Confirmation is required, followed by
16 optimization of therapeutic approaches to amyloid, tau, and glial activation pathologies along the
17 disease stage continuum.

1 1. BACKGROUND

2 The *APOEε4* polymorphism is the major genetic risk factor for sporadic AD, mainly
3 exerting its pathogenic effects via altered glial activation and amyloid pathology accumulation
4 (1, 2). Functional levels of glial activation may balance the cellular needs to stimulate amyloid-
5 beta ($A\beta$) clearance and limit both synaptic engulfment and the spread of tau pathology (3-6).
6 Glial activation is associated with the spread of tau and synaptic pathology (5, 7, 8). In *APOEε4*
7 noncarriers, females have higher levels of CSF tau pathology in both prodromal disease and mild
8 AD compared to males (9). Female noncarriers are also more likely to develop overactivated
9 microglia with age (10). In females with AD, glial activation is generally higher (11) and cortical
10 microglial activation is more important for AD progression (12). In contrast, glial responses in
11 *APOEε4* carriers are deficient and favor the accumulation of amyloid pathology (13). This
12 deficiency implicates altered lipid dynamics, altered cholinergic and checkpoint signaling, and
13 may also be a consequence of $A\beta$ accumulation.

14 Poor lipidation of apoE4 impairs its ability to opsonize extracellular debris such as
15 fibrillar $A\beta_{42}$ and myelin breakdown products, which impairs microglial recognition and
16 clearance responses (14, 15). Rather than clear debris effectively, *APOEε4* microglia show
17 phagocytic and endolysosomal dysfunction, become senescent, upregulate pro-inflammatory
18 response genes, and downregulate genes responsible for migration and phagocytosis (16, 17).
19 Like overactive glia, these functionally underactive glia produce proinflammatory cytokines
20 (18), and therefore, it is critical that biomarkers of glial activation represent functional activation
21 of glia and not inflammation (19).

22 ApoE4 is associated with decreased intracellular exchange of fatty acids and cholesterol
23 between neurons and astrocytes with reduced fatty acid β -oxidation, lipid droplet accumulation,

1 increased neuronal cholesterol synthesis, and impaired abilities to maintain myelin and cell
2 membranes (20). Fatty-acid fueled bioenergetics improve microglial migration, phagocytic
3 ability, and lysosomal degradation (21, 22), whereas the loss of these functions is associated with
4 lipid droplet formation that is markedly exacerbated in *APOEε4* carriers and by proximity to Aβ
5 plaques (23). Altered lipid composition and fluidity of the cell membrane alters the stability and
6 function of membrane receptors, including alpha 7 nicotinic acetylcholine (ACh) receptors ($\alpha7$ -
7 nAChRs)(24, 25).

8 The cholinergic system acts to control glial reactivity and function via rapid focal
9 synaptic signaling and slow diffuse extracellular signaling through $\alpha7$ -nAChRs (26). In a
10 concentration and aggregation-dependent manner, Aβ signals through $\alpha7$ -nAChRs and also
11 influences the extracellular fluid equilibrium between the breakdown and synthesis of ACh via
12 effects on ACh-hydrolyzing capacity of cholinesterases (27) and choline acetyltransferase
13 (ChAT) activity (28). ApoE forms soluble and highly stable complexes with cholinesterase
14 enzymes and Aβ, that can oscillate between slow and ultrafast ACh hydrolysis, depending on Aβ
15 availability (29). Reduced cholinesterase activity and lowering of glial activation markers are
16 seen in *APOEε4* carriers, particularly in individuals with polymorphic variants of genes encoding
17 cholinesterase enzymes with lower activity (29, 30). These individuals accumulate Aβ earlier
18 with a younger age-of-onset of AD (31). Amnesic symptoms parallel the progressive
19 denervation of basal forebrain corticolimbic cholinergic neuronal projections that remove the
20 cholinergic ‘brake’ on glial activation in the medial temporal lobe (MTL) and other cortical
21 regions, permitting the spread of tau and neurodegenerative pathology, and transitioning these
22 individuals into AD (31, 32).

1 This study sought to examine the early AD phenotypic spectrum with respect to *APOEε4*
2 genotype. The study analyzed cross-sectional demographic, CSF biomarker, neuroimaging and
3 cognitive domain assessments from patients below 75 years of age who were diagnosed with
4 early AD. The younger age of participants limited the likelihood of other age-related pathologies,
5 which likely allowed for a clearer examination of the influence of genotype on early AD.

6

7 2. METHODS

8 2.1 Clinical Trial

9 Baseline samples obtained from Clinical Trial NCT03186989 were assessed for
10 biomarkers in a retrospective study. The trial was conducted at 12 centers in Canada, Finland,
11 Germany, the Netherlands, Sweden, and the UK between August 2017 and February 2020. The
12 trial was conducted in accordance with Good Clinical Practice Guidelines of the International
13 Council for Harmonisation, and according to the ethical principles outlined in the Declaration of
14 Helsinki. The complete study (33) was approved by relevant ethics committees (**Table S1**).
15 Written informed consent was provided by the participants.

16

17 2.2 Study Eligibility

18 Eligible study participants were between the ages of 50 and 74; had probable early AD
19 (amnesic or non-amnesic), defined by a Mini-Mental State Examination score (MMSE) (34) of
20 20-27, inclusive, and either a Clinical Dementia Rating (35) Overall Global Score of 1, or a
21 Global Score of 0.5 with a Memory Score of 1; a CSF pattern of low $A\beta_{1-42}$ (≤ 1200 pg/ml),
22 elevated total-tau (> 200 pg/ml) and p-tau (> 18 pg/ml), and a total-tau to $A\beta_{1-42}$ ratio > 0.28 ; and

1 a diagnosis of probable AD based on National Institute of Aging-Alzheimer’s Association (NIA-
2 AA) criteria (36).

3 2.3 Data Collection and Processing

4 CSF collected from participants at the baseline of an interventional study was analyzed
5 for markers of amyloid accumulation (inversely indexed by $A\beta_{42}$), tau pathophysiology (p-
6 tau₁₈₁), neuroaxonal degeneration (NfL), synaptic injury (Ng), glial activation (YKL-40) (**Table**
7 **S2**). Patients were characterized for common variants of *APOE* (ie, *APOEε4*, *APOEε3*, and
8 *APOEε2*), and butyrylcholinesterase (*BCHE*) (ie, *BCHE-K*).

9 The study required 3-dimensional T1-weighted structural magnetic resonance imaging
10 (MRI) scans of the head with volumetric analyses calculated using VivoQuant™, which includes
11 preprocessing and multi-atlas segmentation modules, followed by visual inspection and manual
12 editing if needed (37). The mean baseline ventricular volume and hippocampal volume were
13 expressed as a percentage of the total intracranial volume (% ICV). Baseline Mini-Mental State
14 Examination (MMSE) and Repeatable Battery for the Assessment of Neurological Status
15 (RBANS) scores were also reported.

16

17 2.4 Statistical analysis

18 Quantitative assessments were summarized using descriptive statistics, including number
19 of patients, mean, and standard deviation. Qualitative assessments were summarized using
20 frequency counts and percentages. The exact test was used to examine the Hardy-Weinberg
21 equilibrium (HWE) in the distribution of *APOEε4* alleles in the study population. All exact tests
22 were performed using the R package “Hardy Weinberg” (38).

1 Analysis of variance (ANOVA) and analysis of covariance (ANCOVA) were used to test
2 whether the burden of amyloid pathology differed across *APOEε4* homozygotes, heterozygotes,
3 and noncarriers. When the ANCOVA model was applied, the model included *BCHE-K* carrier
4 status and sex as factors and the baseline MMSE total score as a covariate. Prior to performing
5 ANOVA and ANCOVA, the normality assumption of residuals was tested using the
6 Kolmogorov-Smirnov test. If significant departures from normality were observed, the Wilcoxon
7 Rank Sum test was applied. Both ANOVA and ANCOVA were applied to test baseline CSF
8 markers across two or more genotype groups. When ANCOVA was applied, age-at-baseline was
9 included as an additional covariate in the model. If the normality assumption was not satisfied,
10 both ANOVA and ANCOVA models were fitted to the log-transformed data. Box plots were
11 used to visualize data by group.

12 Relationships between CSF Aβ₄₂, CSF p-tau₁₈₁, and other CSF biomarkers, and brain
13 volumes were explored in the overall population and in each genotype group in a simple linear
14 correlation analysis with a Pearson correlation coefficient. The squared Pearson correlation
15 coefficient (R^2) and P value were provided in the correlation analysis. Correlation coefficients
16 were defined as: $0.81 \leq R^2 < 1$ as strong; $0.49 \leq R^2 < 0.81$ as moderately strong; $0.25 \leq R^2 < 0.49$
17 as moderate; $0.09 \leq R^2 < 0.25$ as weak; and $R^2 < 0.09$ as negligible. Scatterplots with a simple
18 linear regression line were produced to depict the relationships between two quantitative
19 variables.

20 Multiple regression analysis was also utilized to assess the functional relationships
21 between biomarkers of interest. This model was applied with CSF Aβ₄₂ or CSF p-tau₁₈₁ as the
22 response variable, and *APOEε4*, sex, and the biomarker of interest (ie, CSF p-tau₁₈₁ or Aβ₄₂,
23 NfL, Ng, YKL-40; hippocampal volume, ventricular volume) as independent variables. This

1 determined the strength of association of CSF A β ₄₂ or CSF p-tau with parameters of interest, in
2 conjunction with the other independent variables included in the model.

3 3. RESULTS

4 3.1 Patient cohort

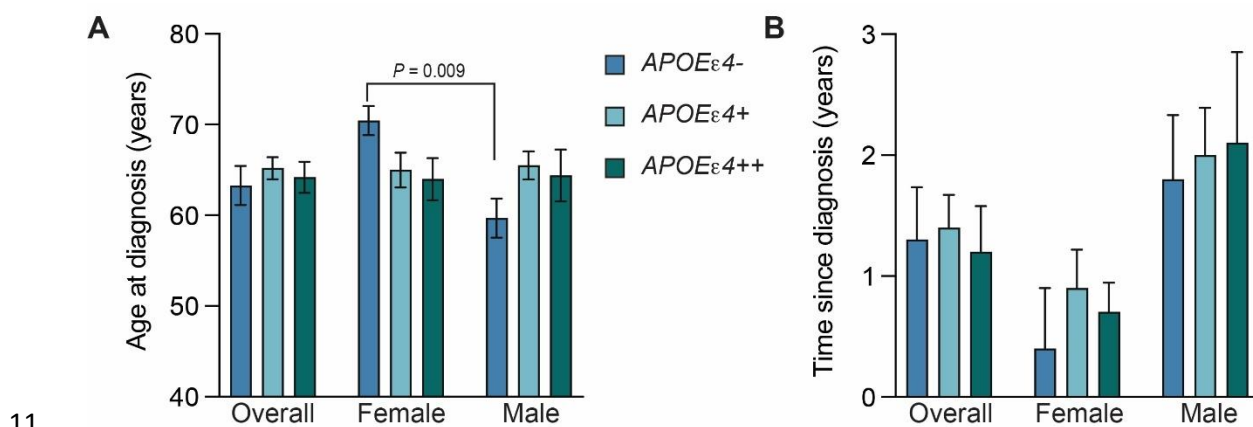
5 A total of 102 participants were assessed for eligibility, 56 were excluded, and one
6 enrolled participant did not provide genetic test results. The study sample comprised 45
7 participants with a mean age of 65.8 years and a mean baseline MMSE total score of 23.6 (**Table**
8 **S3**). The *APOE* ϵ 4 allele was carried by 33 (73%) participants; 10 (22%) were homozygotes and
9 23 (51%) were heterozygotes (**Table S3**). All *APOE* ϵ 4 noncarriers were homozygous for
10 *APOE* ϵ 3, except for one that was *APOE* ϵ 2/ ϵ 3. The distribution of *APOE* genotypes (HWE exact
11 *P* value = 1) was consistent with Hardy-Weinberg equilibrium. Participant baseline
12 characteristics were summarized according to *APOE* ϵ 4 genotype and sex (**Tables S3-4**) and have
13 also been described previously (33). The impact of *BCHE-K* allelic status on the phenotype of
14 early AD in *APOE* ϵ 4 carriers was also assessed and reported (31).

15

16 3.1 Age at diagnosis and *APOE* ϵ 4 allele status

17 *APOE* ϵ 4 allele frequency-dependent effects on the risk-of-onset of AD are highest in the
18 seventh decade, wane over 70 years of age, and are particularly reduced after 80 years of age
19 (39-41). Therefore, in this sample of early AD patients aged less than 75 years, the effects of
20 *APOE* ϵ 4 on the AD phenotype may be maximal. In the overall population, the mean age-at-
21 diagnosis of AD was 63.3 years in males and 65.7 years in females. This contrasted with female
22 *APOE* ϵ 4 noncarriers whose mean age-at-diagnosis was 10.7 years later than male *APOE* ϵ 4
23 noncarriers (**Figure 1A**; 70.4 years in females vs 59.7 years in males, *P* = .009, ANOVA) and

1 nearly 5-fold less time from age-at-diagnosis of AD to study baseline (**Figure 1B**; 4.8 months in
2 females vs 21.6 months in males). The restricted age range for study entry may have been at least
3 partly responsible for the lack of any significant *APOEε4* allele frequency-dependent reductions
4 of age-at-diagnosis of AD or age-at-baseline in the overall population, although a trend was
5 observed in females between increasing allele frequency and decreased age (**Figure 1A**).
6 Additionally, female *APOEε4* carriers spent a mean of 0.8 years between AD diagnosis and
7 study baseline, whereas male carriers spent 2.0 years (**Figure 1B**), which is consistent with prior
8 studies showing that female *APOEε4* carriers less than 75 years of age have a greater risk for AD
9 and a more rapid transition from MCI to AD, especially in heterozygotes (42-44). In *APOEε4*
10 homozygotes less than 75 years, the risk for AD may be similar between males and females (45).

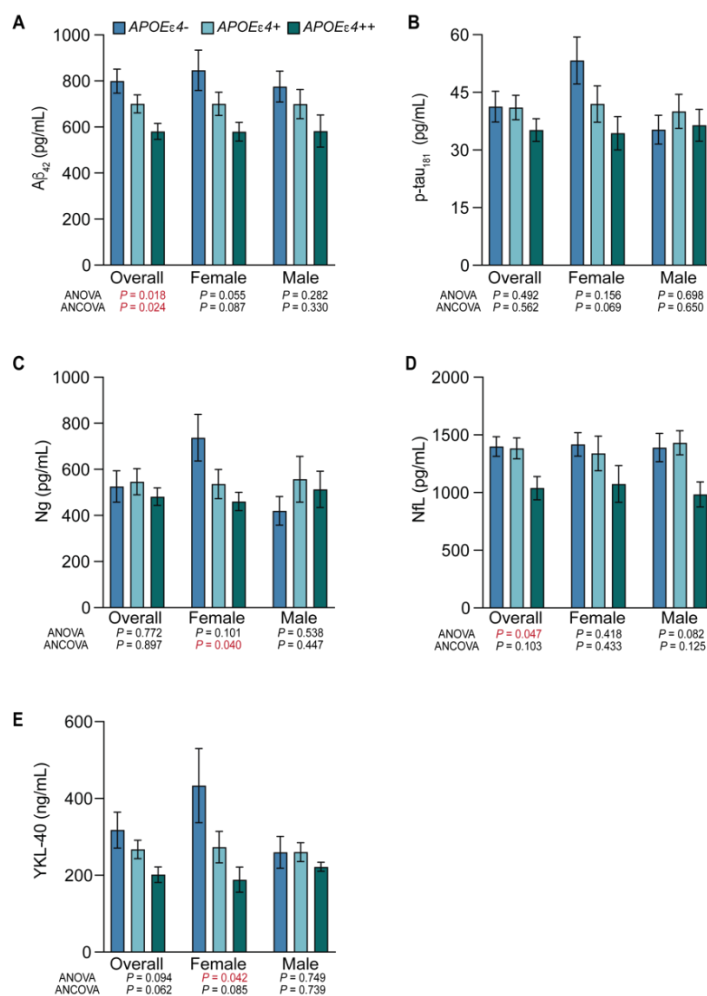


11
12 **Figure 1: Age at diagnosis and time since diagnosis by *APOEε4* status and sex.**
13 The mean (\pm SEM) was calculated for the age-at-diagnosis (A) and time since diagnosis (B) for all
14 subgroups. Subgroups included the overall population, females, and males, subdivided according to
15 *APOEε4* genotype (blue, *APOEε4* noncarriers; light blue, *APOEε4* heterozygotes; green, *APOEε4*
16 homozygotes). Subgroups and their labels are consistent throughout all figures. Female participants of all
17 genotypes displayed a shorter time since diagnosis than males. See Tables S3 and S4 for more details.
18

19 3.2 *APOEε4* allele frequency-dependent changes on CSF markers

20 *APOEε4* allele frequency-dependent increases in amyloid pathology were observed,
21 indexed inversely by CSF $A\beta_{42}$ (**Figure 2A**). The level of amyloid pathology was significantly

1 different across *APOEε4* noncarriers, heterozygotes, and homozygotes (**Figure 2A**; CSF Aβ₄₂ of
 2 799.2 pg/mL vs 700.2 pg/mL vs 580.7 pg/mL, respectively; *P* = .018 ANOVA, *P* = .024
 3 ANCOVA). The *APOEε4* allele frequency-dependent increase in amyloid pathology followed
 4 the same trend in males and females but did not reach significance. Male and female *APOEε4*
 5 homozygotes showed similar levels of amyloid pathology (CSF Aβ₄₂ 582.1 vs 579.7 pg/mL,
 6 respectively). Higher levels of amyloid pathology are compatible with accumulation beginning at
 7 an earlier age in association with *APOEε4* allele frequency, with higher levels of amyloid
 8 accumulation required in *APOEε4/ε4* > *APOEε3/ε4* > *APOEε3/ε3* to induce symptoms (46).



9

1 Figure 2. Levels of amyloid pathology, tau pathophysiology, glial activation, and synaptic injury by
2 *APOEε4* allele frequency and sex. The mean and standard error of the mean for CSF Aβ₄₂ (A) CSF
3 p-tau₁₈₁ (B) CSF Ng (C) CSF NfL (D) and CSF YKL-40 (E). Females showed significant *APOEε4*
4 allele frequency-dependent relationships for synaptic injury (CSF Ng) and glial activation (CSF YKL-
5 40), and CSF Aβ₄₂ and CSF p-tau₁₈₁ showed a trend towards significance. See Tables S3 and S4 for
6 more details.
7

1 No significant differences were observed between groups for p-tau₁₈₁. However, *APOEε4*
2 homozygotes showed the lowest levels of tau pathology, and in female *APOEε4* homozygotes
3 this was most pronounced when compared to female *APOEε4* noncarriers (**Figure 2B**; CSF p-
4 tau₁₈₁ of 34.4 pg/mL vs 53.3 pg/mL). Synaptic injury was lowest in *APOEε4* homozygotes, and
5 significantly different across female noncarriers, heterozygotes, and homozygotes (**Figure 2C**;
6 CSF Ng of 737.3 pg/mL vs 536.3 pg/mL vs 460.5 pg/mL, respectively; $P = .101$ ANOVA, $P =$
7 $.040$ ANCOVA). Males showed the opposite trend, where noncarriers exhibited the lowest levels
8 of synaptic injury. Neuroaxonal injury was also significantly different across noncarriers,
9 heterozygotes, and homozygotes (**Figure 2D**; CSF NfL of 1398.9 pg/mL vs 1383.1 pg/mL vs
10 1038.5 pg/mL, respectively; $P = .047$ ANOVA, $P = .103$ ANCOVA) and followed the same
11 trend in males and females.

12 Glial activation was highest in noncarriers and lowest in *APOEε4* homozygotes (**Figure**
13 **2E**). This was especially pronounced in females that showed significant differences across
14 noncarriers, heterozygotes, and homozygotes (CSF YKL-40 of 433.2 ng/mL vs 273.3 ng/mL vs
15 187.9 ng/mL, respectively; $P = .042$ ANOVA, $P = .085$ ANCOVA).

16 Overall, *APOEε4* homozygotes had the highest levels of amyloid pathology and the
17 lowest levels of tau pathophysiology, neuroaxonal damage, postsynaptic injury, and glial
18 activation (**Figure 2**). This finding was most pronounced in female *APOEε4* homozygotes.

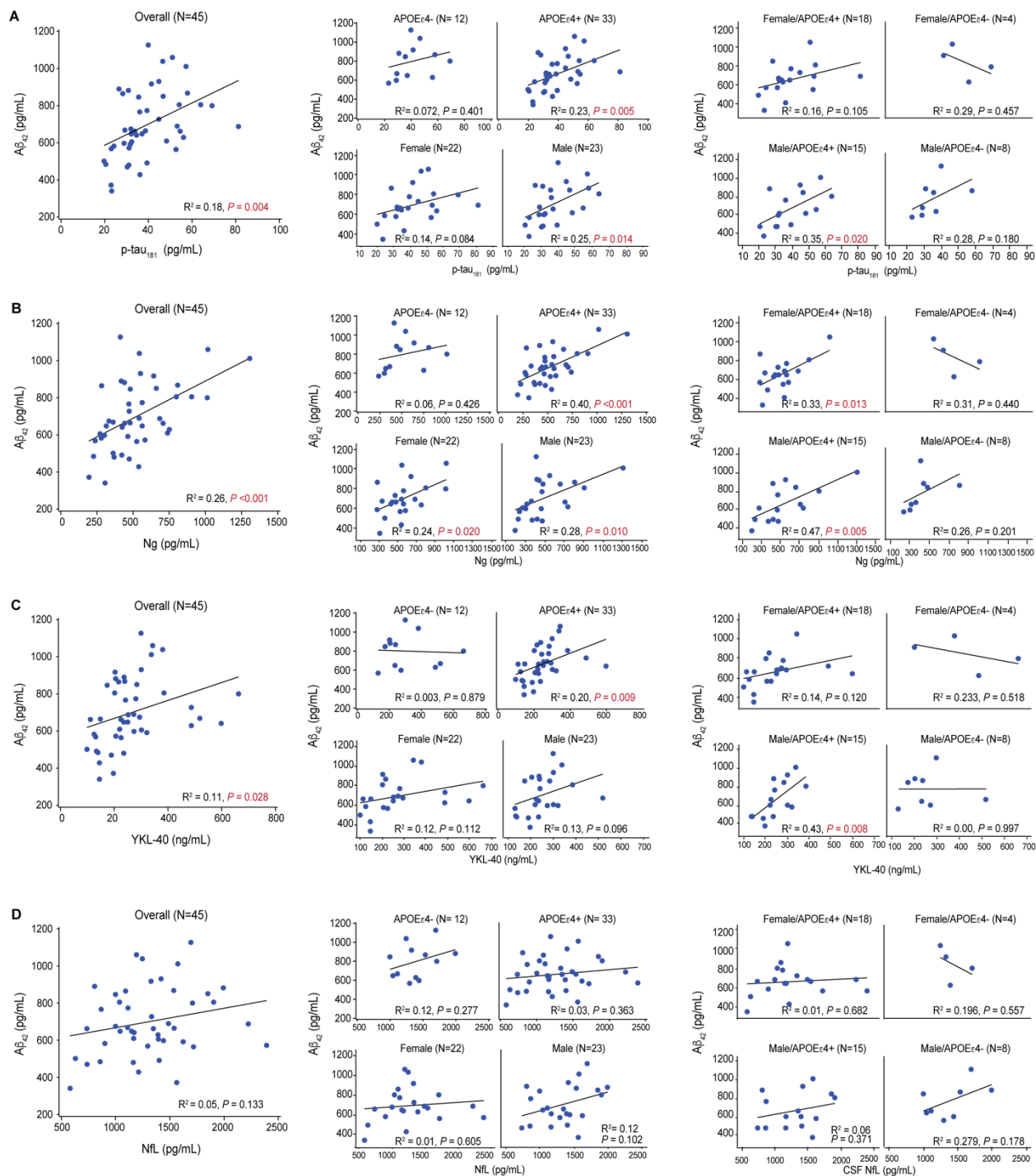
19
20 3.3 Amyloid accumulation, hypofunctional glia mediated clearance, and neurodegenerative
21 pathology

22 Multiple regression analyses of the overall population identified that amyloid
23 accumulation (inversely indexed by CSF Aβ₄₂) was associated with *APOEε4* carrier status ($P <$

1 .029), a larger total brain ventricle volume ($P < .021$), less synaptic injury (CSF Ng, $P < .001$),
2 and less tau pathophysiology (CSF p-tau₁₈₁, $P = .005$). There was also a trend towards less glial
3 activation (CSF YKL-40, $P = .097$). In simple linear correlation analyses in the overall
4 population, amyloid pathology showed weak to moderate inverse correlations with tau
5 pathophysiology ($R^2 = 0.18$, $P = .004$), synaptic injury ($R^2 = 0.26$, $P < .001$), and glial activation
6 ($R^2 = 0.11$, $P = .028$) (**Figure 3A-C**). These inverse correlations were absent in *APOEε4*
7 noncarriers, but were strengthened in *APOEε4* carriers and in males, and in male *APOEε4*
8 carriers they were moderate (**Figure 3A-C**). Synaptic injury and amyloid pathology also had a
9 weak inverse correlation in females ($R^2 = 0.24$, $P = .020$), which strengthened to a moderate
10 inverse correlation with in female *APOEε4* carriers ($R^2 = 0.33$, $P = .013$) (**Figure 3B**). Amyloid
11 pathology and neuroaxonal damage were not significantly correlated in any subgrouping (**Figure**
12 **3D**).

13

14



1
 2 **Figure 3. Linear relationships between levels of CSF Aβ₄₂ and other CSF markers.**
 3 Multiple regression identified an association between CSF Aβ₄₂ and CSF levels of p-tau₁₈₁, CSF
 4 NfL, and CSF YKL-40. These associations were fit to simple linear regressions to obtain *R*-squared and *P*
 5 values. (A) CSF Aβ₄₂ (lower levels indicate more amyloid pathology) showed a positive correlation with
 6 CSF p-tau₁₈₁ (higher levels indicate more tau pathophysiology) in the overall population, especially in
 7 *APOEε4* carriers. When stratified by sex, male *APOEε4* carriers showed the strongest correlation
 8 indicating that higher levels of amyloid pathology were associated with less tau pathology. (B) CSF Aβ₄₂

1 showed a positive correlation with Ng (higher levels indicate more synaptic injury) in the overall
2 population, especially in *APOEε4* carriers. When stratified by sex, both male and female *APOEε4* carriers
3 exhibited a strong correlation. (C) CSF Aβ₄₂ showed a positive correlation with YKL-40 (higher levels
4 indicate more glial activation) in the overall population, especially in *APOEε4* carriers. When further
5 stratified by sex, male *APOEε4* carriers exhibited the strongest correlation indicating that lower levels of
6 glial activation were associated with more amyloid pathology. (D) CSF Aβ₄₂ showed no correlations with
7 NfL (higher levels indicate more axonal injury).

9 3.4 Tau pathophysiology, neurodegenerative pathology, and glial activation

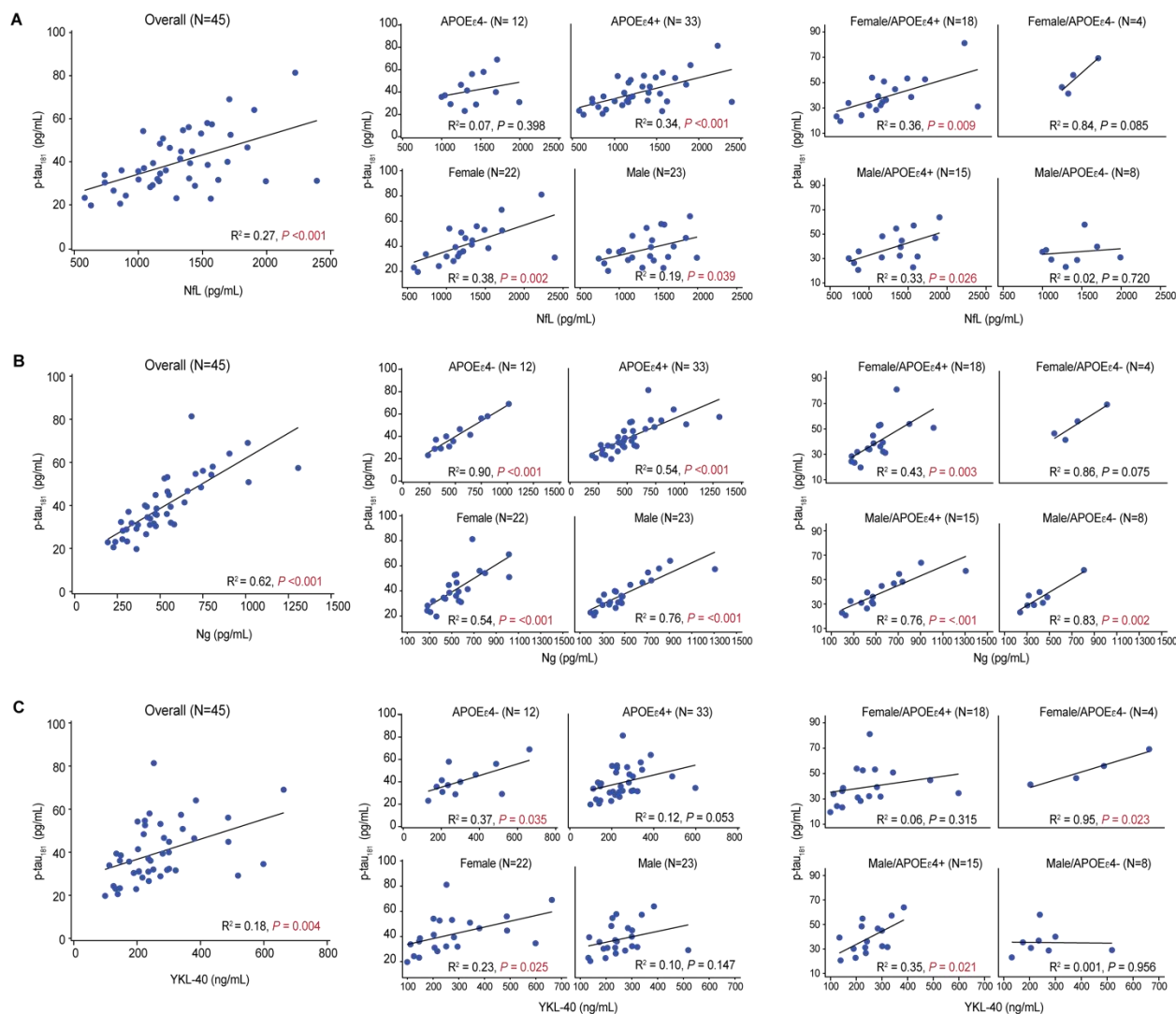
10 In multiple regression analysis, tau pathophysiology was associated with greater
11 neuroaxonal damage (CSF NfL, $P = .002$), more synaptic injury (CSF Ng, $P < .001$), and higher
12 levels of glial activation (CSF YKL-40, $P = .01$). In simple linear regressions, tau
13 pathophysiology was moderately correlated with neuroaxonal damage in the overall population
14 ($R^2 = 0.27$, $P < .001$) and in *APOEε4* carriers ($R^2 = 0.34$, $P < .001$) (**Figure 4A**). In nearly all
15 subgroups, tau pathophysiology showed moderately strong and strong correlations with synaptic
16 injury (**Figure 4B**). Tau pathophysiology was weakly correlated with glial activation in the
17 overall population ($R^2 = 0.18$, $P = .004$) and moderately correlated in *APOEε4* noncarriers ($R^2 =$
18 0.37 , $P = .035$) (**Figure 4C**).

19 Tau pathophysiology and neuroaxonal damage showed a weak correlation in males ($R^2 =$
20 0.19 , $P = .039$) and a moderate correlation in females ($R^2 = 0.38$, $P = .002$) (**Figure 4A**). Tau
21 pathophysiology showed a moderately strong correlation with synaptic injury in both males ($R^2 =$
22 0.76 , $P = .001$) and females ($R^2 = 0.54$, $P < .001$) (**Figure 4B**) and a weak correlation with glial
23 activation in females ($R^2 = 0.23$, $P = .025$) (**Figure 4C**). Notably, correlation of neuroaxonal
24 damage with synaptic injury was significant, but weak in the overall population ($R^2 = 0.13$, $P =$
25 $.016$), as well as in *APOEε4* carriers ($R^2 = 0.14$, $P = .033$) (**Data not shown**). In female *APOEε4*
26 noncarriers, correlations between tau and glial activation were significant and strong ($R^2 = 0.95$,
27 $P = .023$), and correlations between tau and neuroaxonal damage or synaptic injury were strong,

1 but did not achieve significance. Whereas, in male *APOEε4* noncarriers, correlations of tau with
2 glial activation and neuroaxonal damage were absent (**Figure 4A,C**), and synaptic injury was
3 strong but lacked statistical significance (**Figure 4B**). In female *APOEε4* carriers, correlations
4 with tau pathophysiology were absent for glial activation (**Figure 4C**), and moderate for
5 neuroaxonal damage ($R^2 = 0.36$, $P = .009$) and synaptic injury ($R^2 = 0.43$, $P = .003$) (**Figure**
6 **4A,B**). In male *APOEε4* carriers, tau pathophysiology was moderately correlated with glial
7 activation ($R^2 = 0.35$, $P = .021$) and neuroaxonal damage ($R^2 = 0.33$, $P = .026$) (**Figure 4A,C**),
8 and showed moderately strong correlations with synaptic injury ($R^2 = 0.76$, $P < .001$) (**Figure**
9 **4B**).

10 The most compelling associations of tau pathophysiology with glial activation and
11 neurodegenerative pathology were in female *APOEε4* noncarriers and male *APOEε4* carriers.
12 Higher CSF p-tau₁₈₁ levels are typically seen in female *APOEε4* carriers with preclinical and
13 prodromal AD but not in mild or later dementia stages (9). In *APOEε4* heterozygotes, females
14 may be able to leverage a non-*APOEε4* allele to achieve higher levels of glial activation and
15 increased tau pathology. Whereas increasing levels of tau pathophysiology in male *APOEε4*
16 carriers with early AD may reflect more advanced degeneration of the basal forebrain
17 corticolimbic cholinergic neurons, which is indexed by greater limbic-amnestic features and is
18 associated with removal of the cholinergic ‘brake’ on glial function in the MTL followed by
19 wider spread of cortical tau and synaptic pathology. In early AD, spreading cholinergic
20 denervation-induced cortical glial activation-mediated tau and neurodegenerative pathology may
21 be most evident in male *APOEε4* homozygotes (32).

22



1

2 **Figure 4. Linear relationships between levels of CSF p-tau₁₈₁ and other CSF markers.**

3 Multiple regression identified an association between CSF p-tau₁₈₁ and CSF levels of neurofilament light

4 chain (NfL), Ng, and YKL-40. These associations were fit to simple linear regressions to obtain *R*-squared

5 and *P* values. (A) CSF p-tau₁₈₁ showed a positive correlation with CSF NfL (higher levels indicate more

6 neuroaxonal injury) in the overall population, which was driven by *APOEε4* carriers. When stratified by

7 sex, both male and female *APOEε4* carriers showed a positive correlation. (B) CSF p-tau₁₈₁ showed a

8 positive correlation with Ng (higher levels indicate more synaptic injury) that was moderately strong in the

9 overall population and in *APOEε4* noncarriers and strong in *APOEε4* carriers. This relationship was

10 evident in both males and females, independent of *APOEε4* status. (C) CSF p-tau₁₈₁ showed a positive

11 correlation with YKL-40 (higher levels indicate more glial activation) in the overall population that was

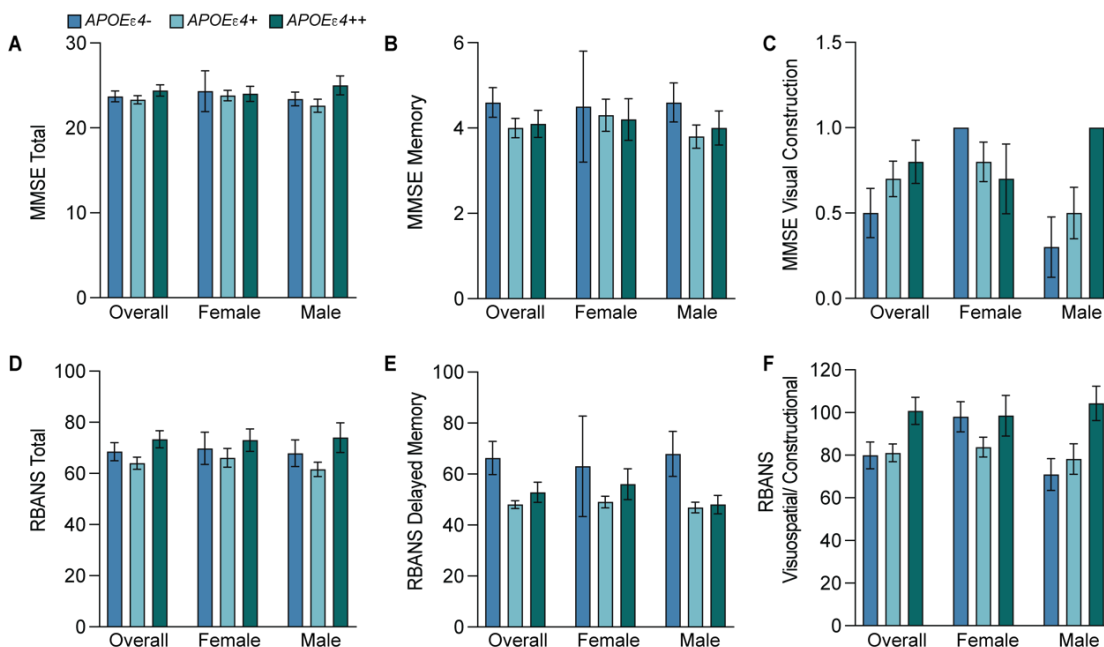
12 stronger in *APOEε4* noncarriers than carriers. When stratified by sex, a positive correlation was present in

13 male *APOEε4* carriers and in female *APOEε4* noncarriers.

14

1 3.5 Sex and *APOEε4* allele influences on cognition

2 Overall, *APOEε4* carriers had a more temporo-limbic (hippocampal atrophy > ventricular
3 expansion) and amnesic (memory > visuospatial impairment) phenotype relative to *APOEε4*
4 noncarriers (**Figures 5 and 6**), as described previously (47, 48). In *APOEε4* homozygotes, male
5 participants exhibited more of a limbic-amnesic phenotype than females, as evidenced by
6 slightly greater amnesic deficits (**Figure 5B, E**; MMSE memory 4.0 vs 4.2; RBANS delayed
7 memory 48 vs 56; for males vs females) and hippocampal atrophy (**Figure 6A**; 0.22 vs 0.26
8 %ICV; for males vs females). In *APOEε4* heterozygotes, numerically greater amnesic deficits
9 were also observed in male participants (**Figure 5B,E**; MMSE memory 3.8 vs 4.3; RBANS
10 delayed memory 46.9 vs 49.0). These apparent sex differences in *APOEε4* heterozygotes were
11 not reflected in amyloid accumulation (**Figure 2A**), tau pathophysiology (**Figure 2B**),
12 hippocampal volumes (**Figure 6A**), or in the mean age-at-diagnosis of AD (65.5 years vs 65.0
13 years, respectively) (**Figure 1A**).



14

1 Figure 5: Baseline cognition test scores by *APOEε4* status and sex.
2 The mean and standard error of the mean for baseline cognition tests and two of their individual
3 components: For the MMSE Total (A), Memory (B), and Visual Construction (C); For the RBANS Total
4 (D), Delayed memory (E), and Visuospatial/Constructional (F). Both tests followed the same trends
5 between genotypes with the least overall cognitive and visuospatial deficits in *APOEε4* homozygotes and
6 the greatest amnesic deficits in *APOEε4* carriers. See Tables S3 and S4 for more details.
7

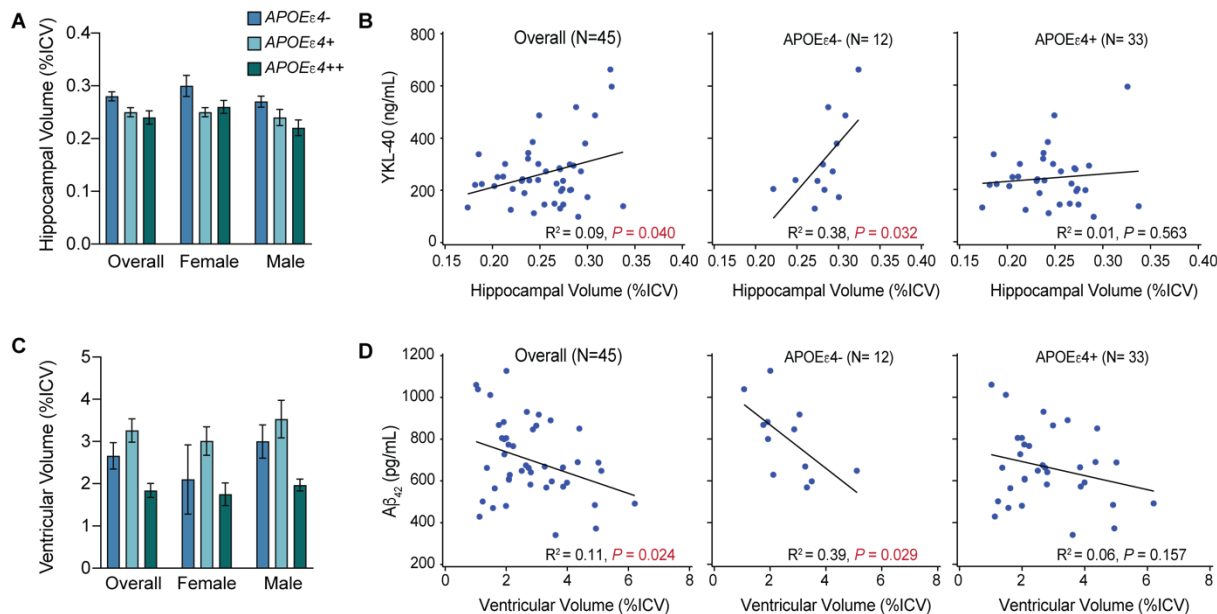
8 Overall, the limbic-amnesic phenotype was more prominent in male *APOEε4* carriers
9 (**Figures 5,6**), suggesting greater and earlier degeneration of the basal forebrain corticolimbic
10 cholinergic projection system in males. Thus, in early-stage AD, male *APOEε4* homozygotes
11 may have developed slightly higher levels of glial activation and tau pathophysiology than
12 females because of greater removal of the corticolimbic cholinergic “brake” on glial activation in
13 the MTL and other cortical areas. In male *APOEε4* carriers, tau pathophysiology correlated
14 moderately with glial activation ($R^2 = 0.35, P = .021$), but this correlation was absent in females
15 (**Figure 4C**). This could indicate that in male *APOEε4* carriers with early AD below the age of
16 75 years, increases in tau pathology are more dependent on limbic and cortical glial activation
17 due to corticolimbic cholinergic denervation. Thus, in early AD, *APOEε4* homozygotes may still
18 have the lowest levels of tau pathophysiology, and males and females may be on slightly
19 different journeys to end stage disease where *APOEε4* homozygotes will rapidly evolve the
20 greatest burden of tau pathology as they progress through the dementia disease stage continuum
21 (49).

22 3.6 Brain volumes in *APOEε4* noncarriers

23 Neither amyloid nor tau were associated with hippocampal volume. However, total
24 hippocampal volume showed a weak association with glial activation in simple linear correlation
25 analysis (**Figure 6B**): lower glial activation correlated with more hippocampal atrophy. This
26 association was moderate in *APOEε4* noncarriers ($R^2 = 0.38, P = .032$) and was absent in
27 *APOEε4* carriers (**Figure 6B**). This finding aligns with the putative role of glial activation in

1 *APOEε4* noncarriers in limiting the accumulation of amyloid pathology and more intact basal
 2 forebrain corticolimbic cholinergic projections. Thus, in early AD aged less than 75 years, the
 3 absence of apoE4 results in less tau and neurodegenerative pathology in the MTL (48).

4 Total brain ventricle size showed a weak positive association with amyloid burden in
 5 both multiple and simple linear ($R^2 = 0.11$, $P = .024$) correlation analyses (**Figure 6D**). This
 6 aligns with weak or equivocal associations between amyloid burden and ventricular expansion or
 7 whole brain atrophy in previous studies(50). The association between ventricle size and amyloid
 8 burden was moderate in *APOEε4* noncarriers ($R^2 = 0.39$, $P = .029$) and was absent in *APOEε4*
 9 carriers. This suggests that tau and neurodegenerative pathology may be more dependent on
 10 levels of amyloid pathology in *APOEε4* noncarriers than in carriers. Tau pathophysiology was
 11 not correlated with ventricular size.



12
 13 **Figure 6. Observations for hippocampal and ventricular volume by *APOEε4* status.**
 14 The mean and standard error of the mean for hippocampal volume (A) or ventricular volume (C) (as a
 15 percentage of total intracranial volume [%ICV]). R^2 and P values were obtained by fitting simple linear
 16 regressions (B,D). CSF YKL-40 correlated with hippocampal volume in the overall population and
 17 *APOEε4* noncarriers (B). CSF Aβ₄₂ correlated with ventricular volume in the overall population and in
 18 *APOEε4* noncarriers (D). See Tables S3 and S4 for more details

19

1 3.7 *APOEε4* heterozygotes exhibit influences of both alleles

2 Relative to homozygotes, *APOEε4* heterozygotes had a less extreme limbic-amnestic
3 phenotype, less amyloid, more tau and neurodegenerative pathology, more widespread brain
4 atrophy changes, and higher levels of glial activation (**Figures 2-6**). Relative to noncarriers,
5 heterozygotes also had more amyloid, similar levels of tau and neurodegenerative pathology, and
6 less glial activation. Thus, *APOEε4* heterozygotes demonstrate clear influences of both the
7 *APOEε4* allele on amyloid accumulation and the non-*APOEε4* allele on a more permissive
8 environment for tau spreading. With respect to the limbic-amnestic phenotype, male
9 heterozygotes appear slightly closer to that of all *APOEε4* homozygotes, whereas the phenotype
10 of female heterozygotes is slightly closer to all *APOEε4* noncarriers.

11

12 3.8 Hyperfunctional glia in female *APOEε4* noncarriers

13 Post-hoc analysis of *APOEε4* noncarriers requires cautious interpretation because of the
14 small number of participants and the preponderance of male (n = 8) relative to female (n = 4)
15 participants. Confirmation is required in prospective analyses of larger populations; however, the
16 subsequent results align well with those of a prodromal AD cohort (32, 44).

17 Despite the highest burdens of glial activation, tau pathophysiology and synaptic injury
18 (**Figure 2**), female relative to male *APOEε4* noncarriers exhibited a later mean age-at-diagnosis
19 of AD of 10.7 years (**Figure 1**) and 5-fold less time from age-at-diagnosis of AD to study
20 baseline. Male *APOEε4* noncarriers had slightly greater amyloid accumulation at baseline but
21 their levels of glial activation, tau pathophysiology, and synaptic injury were markedly lower
22 than in female noncarriers and do not explain their younger age-at-diagnosis of AD.

23 Interestingly, in a 3-4 year study of individuals with prodromal AD, male *APOEε4* noncarriers

1 exhibited the slowest decline in brain volumes and the lowest rate of transition to dementia (44).
2 Overall, cognitive impairment in *APOEε4* noncarriers was similar in male and female
3 participants, and both had relatively low amnesic deficits. However, males had more
4 dysexecutive clinical features than females, demonstrated by greater deficits in
5 visuospatial/constructional (**Figure 5C,F**; MMSE Visual Construction, 0.3 vs 1.0; RBANS
6 Visuospatial/Constructional, 70.9 vs 98.0) and attentional (MMSE Attention/Calculation, 2.8 and
7 3.8; RBANS Attention, 71.4 and 81.0, respectively) assessments. Thus, both sexes had relatively
8 non-amnesic cognitive deficits, but female participants exhibited less visuospatial/constructional
9 and attentional impairment, had delayed AD onset (a decade later), and spent less time in the
10 mild AD stage since diagnosis.

11 In the current study, levels of glial activation and synaptic injury were inversely related to
12 *APOEε4* allele frequency in female participants, but this relationship was not seen in male
13 participants (**Figure 2C,E**). The highest levels of glial activation, tau pathophysiology, and
14 synaptic injury were seen in female *APOEε4* noncarriers (**Figure 2B,C,E**). Furthermore,
15 correlations of glial activation with tau pathophysiology were weak in the overall population (R^2
16 = 0.18, $P = .004$) and strong in female *APOEε4* noncarriers ($R^2 = 0.95$, $P = .023$) (**Figure 4C**).
17 Correlations of synaptic injury with tau pathophysiology were moderately strong in the overall
18 population ($R^2 = 0.62$, $P < .001$) and strong in female *APOEε4* noncarriers ($R^2 = 0.86$, $P = .075$)
19 (**Figure 4B**). Correlations of neuroaxonal injury with tau pathophysiology were moderately
20 strong in the overall population ($R^2 = 0.27$, $P < .001$) and strong in female *APOEε4* noncarriers
21 ($R^2 = 0.84$, $P = .085$) (**Figure 4A**).

22 Progression to AD in female *APOEε4* noncarriers may only occur after amyloid
23 accumulation eventually reaches the minimum “threshold” to engage the secondary effector

1 tauopathy mechanism when the replication and spread of tau pathology is readily facilitated(51).
2 The substantially greater burden of p-tau₁₈₁ in female *APOEε4* noncarriers likely reflects a more
3 diffuse distribution of neocortical tau pathology facilitated by an interaction between sufficient
4 accumulated toxic species of Aβ and a permissive state of glial activation (**Figure 2-4**)(7, 8). In
5 summary, the rapid spread/replication of tau in the cerebral cortex of female *APOEε4* noncarriers
6 is strongly associated with higher levels of glial activation, synaptic and neuroaxonal
7 degeneration, and an early AD phenotype of multidomain cognitive impairment with relative
8 preservation of corticolimbic cholinergic innervation, hippocampal volume, and memory
9 function. Female *APOEε4* noncarriers in the current study align with a subtype found in 30% of
10 AD patients in a large-scale CSF mass spectrometry proteomic analysis that was characterized
11 by overactive glia (52). This subtype was characterized by increased CSF t-tau and p-tau₁₈₁;
12 relatively widespread cortical atrophy; and increased specific microglial proteins involved in
13 detecting and engulfing amyloid plaque and in innate immune activation, including ApoE and
14 complement complex proteins such as complement component C1q.

15 Although AD may affect females with more intensity, more rapid brain atrophy, and
16 faster cognitive decline than in males, it does not appear to do so earlier (53, 54). The higher
17 prevalence of AD in females is mostly driven by a divergence of prevalence rates in males and
18 females with increasing age (55, 56). There is an inflection point near 75 years of age where it is
19 difficult to detect significant differences by sex below 75 years, and incidence rates get more
20 divergent above 75 years (57). Most AD below the age of 75 years may be in *APOEε4* carriers,
21 with a moderately increased risk in female *APOEε4* heterozygotes (45). Interestingly, in *APOE4*
22 carriers, the risk for AD below the age of 75 years is greater in females, but over the age of 75
23 years the risk for AD is greater in males (39). However, in *APOEε4* noncarriers over the age of

1 75 years, the overall prevalence rates for AD may be substantially higher in females than in
2 males (44). Cortical microglial activation may be higher with age and disproportionately more
3 important for AD progression in females (12). For example, a prior study using
4 neuropathological indicators in human tissue identified that microglial activation in females was
5 associated with both amyloid-mediated increases in tau pathology (~50%) and direct induction of
6 tau pathology (~50%), whereas in males, microglial activation was predominantly associated
7 with direct induction of tau pathology (~74%)(12). In *APOE4* noncarriers, greater CSF tau
8 pathology emerges in females relative to males in prodromal disease and this difference is also
9 present in mild AD (9). In the current study in patients with early AD, tau pathophysiology was
10 substantially greater in female *APOE4* noncarriers (**Figure 2B**).

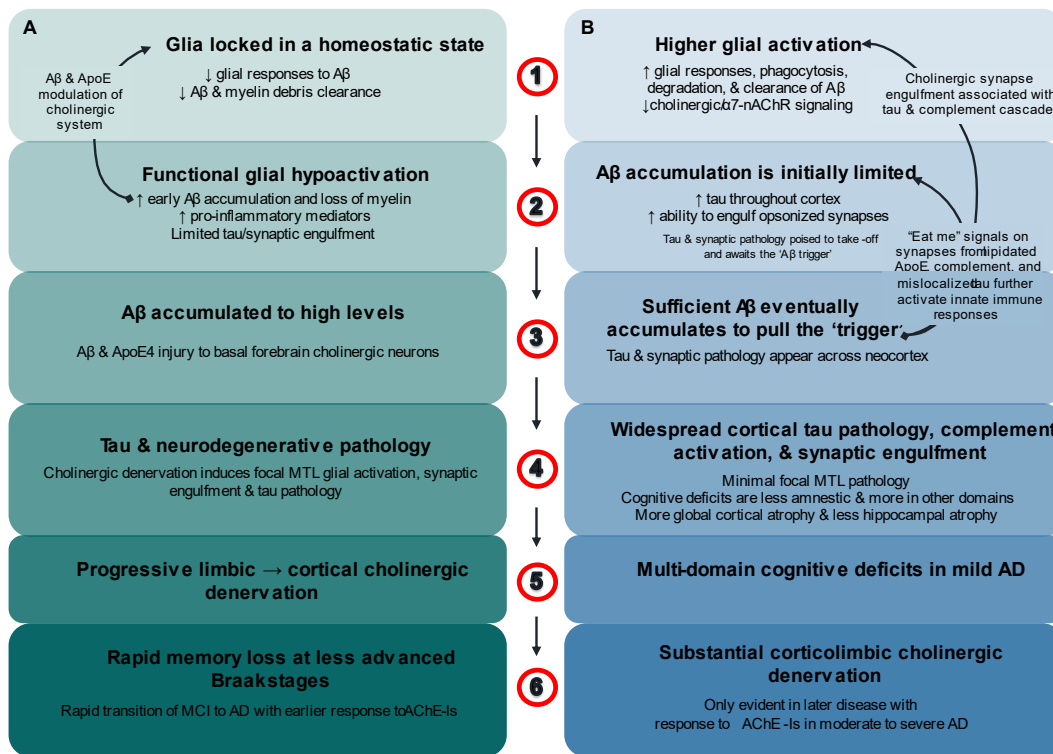
11

1 4. DISCUSSION

2 Genetic variation has a clear influence on the phenotype of early AD in people below the
3 age of 75 years, which was likely made apparent by a decreased likelihood of other age-related
4 pathologies. Amyloid or tau pathology on their own may not pose a substantial risk for
5 neurodegenerative brain pathology, but their co-occurrence may index major risk (58, 59). In
6 *APOEε4* homozygotes, deficient glial clearance mechanisms result in early amyloid pathology,
7 however, substantial neurodegeneration and symptoms only begin when tau pathology spreads.
8 In contrast, in female *APOEε4* noncarriers, functionally active glia initially limit amyloid
9 pathology, but amyloid accumulation eventually reaches a minimum threshold to trigger tau
10 pathology, resulting in accelerated replication and spread of tau and synaptic pathology. When
11 viewed together, end-stage AD pathology looks similar and may not reflect the divergent
12 pathways taken to get there (49). Through the examination of a younger age group, this study
13 demonstrates that genotype and sex can differentiate phenotypic extremes in early AD.

14 The amyloid cascade hypothesis of AD implies that parenchymal amyloid positivity at an
15 earlier age should drive secondary effector tau and synaptic pathology, and present with an
16 earlier age-at-onset of AD (51). Although synaptic loss may be necessary to produce clinical
17 impairments, in *APOEε4* carriers in the current study, and particularly in males, amyloid
18 pathology was inversely correlated with tau pathophysiology, glial activation and synaptic injury
19 (**Figure 3**). *APOEε4* allele frequency-dependent reductions of glial activation were associated
20 with lower Aβ clearance and accumulations of amyloid pathology, but also limited tau
21 pathophysiology and synaptic engulfment (**Figure 7A**). *APOEε4* homozygotes had the highest
22 amyloid and the lowest tau and neurodegenerative pathology (**Figure 2**). Tau and
23 neurodegenerative pathology localized in the MTL transition *APOEε4* homozygotes from

- 1 preclinical to clinical AD at an earlier age with less global brain tau and neurodegenerative
- 2 pathology (**Figure 2**) (48, 60). In younger *APOEε4* carriers with global amyloid pathology, tau-
- 3 PET imaging indicates that tau pathology is more severe with a focal MTL distribution (48, 61).
- 4 This is associated with more hippocampal atrophy and less global cerebral atrophy.



- 5
- 6 **Figure 7. Glial activation differentiates *APOEε4* homozygotes from *APOEε4* noncarriers in early**
- 7 **AD.** (A) in *APOEε4* homozygotes aged < 75 years, ApoE4 locks glia in a homeostatic state with
- 8 decreased responsiveness to, and phagocytosis of, extracellular debris including Aβ fibrils (1).
- 9 “Functionally underactive” glia mean earlier and greater amyloid accumulation, but limited synaptic
- 10 engulfment and loss (2), Aβ accumulates to high levels and along with ApoE4 induces degeneration of
- 11 basal forebrain corticolimbic cholinergic neurons (3). In prodromal AD, limbic cholinergic denervation
- 12 removes the cholinergic “brake” on glia to increase glial activation, tau and neurodegenerative pathology
- 13 in the MTL. This is followed by spread of tau and neurodegenerative pathology beyond the MTL as
- 14 cholinergic denervation and glial activation progresses to other cortical regions (4) and paralleled by the
- 15 emergence of a rapidly progressing limbic-amnesic phenotype (5). As corticolimbic cholinergic
- 16 denervation, glial activation, tau pathology and neurodegeneration spread there is rapid progression from
- 17 prodromal to dementia stages of AD with an uncharacteristically good response to AChE-Is in mild AD
- 18 (6). (B) In contrast, female *APOE4* noncarriers usually aged > 75 years have higher levels of glial
- 19 activation, with induction of microglia response genes that include *APOE* (1). This results in chronically
- 20 “functionally over-active” glia with increased phagocytic and degradative functions that limit Aβ pathology
- 21 (2). Higher levels of glial activation result in lower levels of amyloid accumulation, but once sufficient Aβ
- 22 fibrils are present, tau pathology and synaptic engulfment accelerate, and these pathologies spread

1 across the neocortex (3). Generalized cortical tau pathology and synaptic injury index glia tilting through
2 balanced-functionality thresholds to initiate excessive inflammatory and complement system cascades.
3 The lack of focal MTL tau and neurodegenerative pathology means relative sparing of amnesic deficits
4 and hippocampal atrophy, and cortical atrophy changes are more global (4). Multidomain cognitive
5 deficits rapidly transition patients from prodromal to mild stage AD (5). Corticolimbic cholinergic
6 denervation only becomes apparent in the moderate and severe stages of AD where robust AChE-I
7 treatment effects are also observed (6).

8
9 Parenchymal amyloid pathology may accumulate to high levels in *APOE ϵ 4* homozygotes
10 less than 75 years of age before the combined effects of apoE4 and A β induce sufficient
11 degeneration of basal forebrain corticolimbic cholinergic neurons to release the ‘brake’ on glial
12 activation. Glial activation, tau, and neurodegenerative pathology first appear in the MTL and
13 then spread to involve other cortical areas as cholinergic denervation becomes more widespread
14 (**Figure 7A**). Across the aging and AD spectrum, *APOE ϵ 4* carriers present increased microglial
15 activation in early Braak stage regions within the MTL compared to noncarriers, which mediates
16 A β -independent effects of *APOE ϵ 4* on tau accumulation (62). The rapidly progressing limbic-
17 amnesic phenotype indexes the spreading of pathology that is responsible for ushering *APOE ϵ 4*
18 carriers through prodromal stages of disease and over the dementia threshold, with a response to
19 acetylcholinesterase-inhibitors (AChE-Is) that is apparent in the mild stage of AD (63).
20 Requirements for corticolimbic cholinergic denervation may include apoE4 and low levels of
21 glial activation that induce high levels of accumulated A β . However, in most *APOE ϵ 4* carriers
22 and across the spectrum of AD, an accumulated high amyloid burden inducing cholinergic
23 denervation may not be necessary to induce glial activation if levels of glial activation are
24 already higher for other reasons, such as in *APOE ϵ 4* heterozygotes and noncarriers, in females,
25 and in patients over the age of about 75 years.

26 Preclinical *APOE ϵ 4* carriers exhibit the greatest loss of basal forebrain volume (64).

27 Degeneration of basal forebrain cholinergic neurons that project to the MTL and other cortical

1 structures, precedes and predicts longitudinal MTL degeneration (65). The ascending neuronal
2 projections of the basal forebrain cholinergic system may be particularly vulnerable to the
3 combination of apoE4-mediated glial hypofunction and deficient lipid delivery with high levels
4 of A β and tau pathology (66-68). Corticolimbic cholinergic denervation may be evident at early
5 stages of AD (69), and failure of this circuitry is inextricably linked with amnesic deficits (70).
6 A β and apoE4 also influence synaptic and extracellular ACh levels (30, 71).

7 Further lowering of glial activation in *APOE ϵ 4* carriers, such as in the presence of K
8 variant *BCHE* alleles, induces amyloid accumulation at even younger ages, lowers the age-of-
9 onset of AD, and hastens progression from prodromal to dementia AD, especially in those below
10 the age of 75 years (31, 32, 72, 73). Therefore, factors that increase glial activation, such as
11 aging, may explain why *APOE ϵ 4* effects on risk for AD may be maximal below the age of 70
12 years and largely absent above the age of 85 years (39-41). *APOE ϵ 4* carriers with early AD and a
13 mean age of 70 years show *APOE ϵ 4* allele frequency-dependent accelerated progression of
14 hippocampal atrophy and decreased global cerebral atrophy, but in individuals more advanced in
15 age or disease progression, brain volume atrophy does not differ by genotype (74-76). In younger
16 *APOE ϵ 4* homozygotes disseminated neocortical tau pathology and widespread synaptic injury
17 may be initially limited (**Figure 7A**), but as corticolimbic denervation progresses from MTL
18 structures to involve other cortical regions, the spread of tau pathology and synaptic degeneration
19 is facilitated and may be more rapid than in *APOE ϵ 4* noncarriers. In the current study, tau
20 pathophysiology in *APOE ϵ 4* carriers had a moderately strong correlation with synaptic injury
21 and moderate correlation with neuroaxonal injury, suggesting that once tau pathology is
22 triggered, it is associated with neurodegeneration (**Figure 4**). In male *APOE ϵ 4* carriers, moderate
23 to moderately strong correlations of tau pathophysiology with glial activation, synaptic injury,

1 and neuroaxonal damage suggest that increases in glial activation are particularly associated with
2 tau and neurodegenerative pathology in male *APOEε4* carriers (**Figure 4**).

3 In contrast, female *APOEε4* noncarriers have high levels of functional glial activation
4 (**Figure 2E**). More effective clearance of Aβ limits amyloid pathology and avoids the substantial
5 accumulation of amyloid at younger ages, however, noncarriers are at increasing risk of
6 developing dementia as they age(32). However, noncarriers are vulnerable because even
7 relatively low levels of amyloid pathology can trigger tau and synaptic pathology to spread
8 rapidly (**Figure 7B**). In the current study, *APOEε4* noncarriers with early AD exhibited multi-
9 domain cognitive impairment and global brain atrophy but lacked marked amnesic deficits or
10 hippocampal atrophy. In *APOEε4* noncarriers, a significant response to AChE-Is is generally
11 only seen in moderate and severe stages of AD (**Figure 7B**)(32, 63).

12 *APOEε4* allele frequency-dependent reduction of functional glial activation is most
13 evident below the age of 75 years, which contrasts with over-activation of glia in female
14 noncarriers that is most evident greater than 75 years(32). In *APOEε4* noncarriers from the
15 current study, tau pathophysiology was strongly correlated with synaptic pathology in both males
16 and females, but correlations with glial activation and neuroaxonal damage were only strong in
17 females and absent in males (**Figure 4A-C**). In addition, females, but not males, showed an
18 inverse *APOEε4* allele frequency-dependent relationships with glial activation, tau
19 pathophysiology and synaptic injury (**Figure 2**). The highest levels of glial activation, tau and
20 synaptic pathology, and the lowest levels of amyloid pathology were evidenced in female
21 *APOEε4* noncarriers (**Figure 2**). In *APOEε4* noncarriers, sex had a major effect on age-of-
22 diagnosis of AD, with a significantly earlier mean age in male relative to female participants of
23 10.7 years. Thus, while female *APOEε4* noncarriers may be relatively resilient at younger ages,

1 their risk for AD may increase with age becoming particularly divergent from males over the age
2 of 75 years (57). This is supported by the literature, where 40% of female *APOEε4* noncarriers
3 aged 75 years or more with prodromal AD, transitioned to dementia during a four-year study
4 compared to only 21% of male noncarriers (44).

5 Limitations of this current study include its retrospective nature, its small size, and that
6 participants were largely of European ancestry. In addition, discerning clinical phenotypes on a
7 variable background of AChE-I therapy (**Tables S3, 4**) may be problematic because *APOEε4*
8 carriers are more responsive to AChE-I treatment in the mild stage of AD, therefore attention,
9 processing speed, and amnesic deficits may have been partly obscured (63).

10 In early AD below 75 years of age, increased *APOEε4* allele frequency is associated with
11 decreased functional activation of glia; this was evident in females, but not in males. Male and
12 female *APOEε4* homozygotes had the lowest levels of glial activation, while female *APOEε4*
13 noncarriers, and to a lesser extent female *APOEε4* heterozygotes, had increased levels of glial
14 activation. These age, genotype, and sex influences on levels of glial activation are important
15 determinants in the mix and timing of amyloid and tau pathology, neurodegeneration,
16 denervation of the corticolimbic cholinergic system, and clinical features of early AD. They may
17 explain much of the phenotypic heterogeneity in early AD populations aged below 75 years.
18 These findings should be confirmed in larger, prospective, and longitudinal studies.

19

1 Acknowledgements

2 We thank the participants and their companions who participated in the study; the sites, and
3 study team from Ionis for executing the study; and Gwendolyn Kaeser who created the figures,
4 and edited and styled the manuscript per journal requirements.

5 Author contributions

6 RML was responsible for study design, statistical analysis plan design, and data interpretation,
7 and wrote the manuscript. DL advised on statistical analysis plan, performed data analysis, data
8 interpretation, and performed critical review of the manuscript. TDS advised on structure of the
9 manuscript, data interpretation, and performed critical review of the manuscript.

10 Funding

11 The clinical trial from which these baseline results were obtained was funded by Biogen. The
12 preparation of this manuscript was funded by Ionis Pharmaceuticals.

13 Availability of data and materials

14 The baseline data that support the findings of this investigation are available in the
15 supplementary materials (Tables S3–S4) and additional data and materials are available upon
16 request.

17

18 Declarations

19 Ethics approval and consent to participate

20 Patients provided written, informed consent at the time of recruitment. The study was approved
21 by the institutional review board or independent ethics committee at each investigational site.

22

- 1 [Declarations of interest](#)
- 2 RML and DL are Employees of, and holders of stock/stock options in, Ionis Pharmaceuticals Inc.
- 3 TDS has no conflicts of interest.
- 4

1 References

- 2 1. Yamazaki Y, Zhao N, Caulfield TR, Liu C-C, Bu G. Apolipoprotein E and Alzheimer disease:
3 pathobiology and targeting strategies. *Nature Reviews Neurology*. 2019;15(9):501-18.
- 4 2. Koutsodendris N, Nelson MR, Rao A, Huang Y. Apolipoprotein E and Alzheimer's Disease:
5 Findings, Hypotheses, and Potential Mechanisms. *Annu Rev Pathol*. 2022;17:73-99.
- 6 3. Guillot-Sestier MV, Doty KR, Gate D, Rodriguez J, Jr., Leung BP, Rezai-Zadeh K, Town T. I110
7 deficiency rebalances innate immunity to mitigate Alzheimer-like pathology. *Neuron*. 2015;85(3):534-48.
- 8 4. Suarez-Calvet M, Morenas-Rodriguez E, Kleinberger G, Schlepckow K, Araque Caballero MA,
9 Franzmeier N, et al. Early increase of CSF sTREM2 in Alzheimer's disease is associated with tau related-
10 neurodegeneration but not with amyloid-beta pathology. *Mol Neurodegener*. 2019;14(1):1.
- 11 5. Jain N, Lewis CA, Ulrich JD, Holtzman DM. Chronic TREM2 activation exacerbates A β -
12 associated tau seeding and spreading. *J Exp Med*. 2023;220(1).
- 13 6. Gratuze M, Leyns CE, Sauerbeck AD, St-Pierre MK, Xiong M, Kim N, et al. Impact of TREM2R47H
14 variant on tau pathology-induced gliosis and neurodegeneration. *J Clin Invest*. 2020;130(9):4954-68.
- 15 7. Pascoal TA, Benedet AL, Ashton NJ, Kang MS, Therriault J, Chamoun M, et al. Microglial
16 activation and tau propagate jointly across Braak stages. *Nature medicine*. 2021;27(9):1592-9.
- 17 8. Bellaver B, Povala G, Ferreira PCL, Ferrari-Souza JP, Leffa DT, Lussier FZ, et al. Astrocyte reactivity
18 influences amyloid- β effects on tau pathology in preclinical Alzheimer's disease. *Nature medicine*. 2023.
- 19 9. Mofrad RB, Tijms BM, Scheltens P, Barkhof F, van der Flier WM, Sikkes SA, Teunissen CEJN. Sex
20 differences in CSF biomarkers vary by Alzheimer disease stage and APOE ϵ 4 genotype.
21 2020;95(17):e2378-e88.
- 22 10. Sala Frigerio C, Wolfs L, Fattorelli N, Thrupp N, Voytyuk I, Schmidt I, et al. The Major Risk Factors
23 for Alzheimer's Disease: Age, Sex, and Genes Modulate the Microglia Response to A β Plaques. *Cell Rep*.
24 2019;27(4):1293-306.e6.
- 25 11. Berchtold NC, Cribbs DH, Coleman PD, Rogers J, Head E, Kim R, et al. Gene expression changes in
26 the course of normal brain aging are sexually dimorphic. *Proc Natl Acad Sci U S A*. 2008;105(40):15605-
27 10.
- 28 12. Casaletto KB, Nichols E, Aslanyan V, Simone SM, Rabin JS, La Joie R, et al. Sex-specific effects of
29 microglial activation on Alzheimer's disease proteinopathy in older adults. *Brain*. 2022;145(10):3536-45.
- 30 13. Yin Z, Rosenzweig N, Kleemann KL, Zhang X, Brandão W, Margeta MA, et al. APOE4 impairs the
31 microglial response in Alzheimer's disease by inducing TGF β -mediated checkpoints. *Nat Immunol*.
32 2023;24(11):1839-53.
- 33 14. Machlovi SI, Neuner SM, Hemmer BM, Khan R, Liu Y, Huang M, et al. APOE4 confers
34 transcriptomic and functional alterations to primary mouse microglia. *Neurobiology of disease*.
35 2022;164:105615.
- 36 15. Podleśny-Drabiniok A, Marcora E, Goate AM. Microglial Phagocytosis: A Disease-Associated
37 Process Emerging from Alzheimer's Disease Genetics. *Trends Neurosci*. 2020;43(12):965-79.
- 38 16. Safaiyan S, Kannaiyan N, Snaidero N, Brioschi S, Biber K, Yona S, et al. Age-related myelin
39 degradation burdens the clearance function of microglia during aging. *Nat Neurosci*. 2016;19(8):995-8.
- 40 17. Lin YT, Seo J, Gao F, Feldman HM, Wen HL, Penney J, et al. APOE4 Causes Widespread Molecular
41 and Cellular Alterations Associated with Alzheimer's Disease Phenotypes in Human iPSC-Derived Brain
42 Cell Types. *Neuron*. 2018;98(6):1141-54.e7.
- 43 18. Hu Y, Fryatt GL, Ghorbani M, Obst J, Menassa DA, Martin-Estebane M, et al. Replicative
44 senescence dictates the emergence of disease-associated microglia and contributes to A β pathology.
45 *Cell Rep*. 2021;35(10):109228.

- 1 19. Connolly K, Lehoux M, O'Rourke R, Assetta B, Erdemir GA, Elias JA, et al. Potential role of
2 chitinase-3-like protein 1 (CHI3L1/YKL-40) in neurodegeneration and Alzheimer's disease. *Alzheimers*
3 *Dement*. 2022.
- 4 20. Yin F. Lipid metabolism and Alzheimer's disease: clinical evidence, mechanistic link and
5 therapeutic promise. *Febs j*. 2023;290(6):1420-53.
- 6 21. Leng L, Yuan Z, Pan R, Su X, Wang H, Xue J, et al. Microglial hexokinase 2 deficiency increases
7 ATP generation through lipid metabolism leading to β -amyloid clearance. *Nature metabolism*.
8 2022;4(10):1287-305.
- 9 22. Choi H, Mook-Jung I. Lipid fuel for hungry-angry microglia. *Nature metabolism*. 2022;4(10):1223-
10 4.
- 11 23. Prakash P, Manchanda P, Paouri E, Bisht K, Sharma K, Wijewardhane PR, et al. Amyloid β Induces
12 Lipid Droplet-Mediated Microglial Dysfunction in Alzheimer's Disease. *bioRxiv*. 2023:2023.06.04.543525.
- 13 24. Baenziger JE, Morris ML, Darsaut TE, Ryan SE. Effect of membrane lipid composition on the
14 conformational equilibria of the nicotinic acetylcholine receptor. *J Biol Chem*. 2000;275(2):777-84.
- 15 25. Barrantes FJ. Cholesterol effects on nicotinic acetylcholine receptor: cellular aspects. *Subcell*
16 *Biochem*. 2010;51:467-87.
- 17 26. Benfante R, Di Lascio S, Cardani S, Fornasari D. Acetylcholinesterase inhibitors targeting the
18 cholinergic anti-inflammatory pathway: a new therapeutic perspective in aging-related disorders. *Aging*
19 *Clin Exp Res*. 2021;33(4):823-34.
- 20 27. Kumar R, Nordberg A, Darreh-Shori T. Amyloid- β peptides act as allosteric modulators of
21 cholinergic signalling through formation of soluble BA β ACs. *Brain*. 2016;139(Pt 1):174-92.
- 22 28. Baidya AT, Kumar A, Kumar R, Darreh-Shori T. Allosteric Binding Sites of A β Peptides on the
23 Acetylcholine Synthesizing Enzyme ChAT as Deduced by In Silico Molecular Modeling. *Int J Mol Sci*.
24 2022;23(11).
- 25 29. Darreh-Shori T, Siawesh M, Mousavi M, Andreasen N, Nordberg A. Apolipoprotein epsilon4
26 modulates phenotype of butyrylcholinesterase in CSF of patients with Alzheimer's disease. *Journal of*
27 *Alzheimer's disease : JAD*. 2012;28(2):443-58.
- 28 30. Darreh-Shori T, Vijayaraghavan S, Aeinehband S, Piehl F, Lindblom RP, Nilsson B, et al. Functional
29 variability in butyrylcholinesterase activity regulates intrathecal cytokine and astroglial biomarker
30 profiles in patients with Alzheimer's disease. *Neurobiology of aging*. 2013;34(11):2465-81.
- 31 31. Lane RM, Darreh-Shori T, Junge C, Li D, Yang QM, Edwards A, et al. Onset of Alzheimer disease in
32 apolipoprotein ϵ 4 carriers is earlier in butyrylcholinesterase K variant carriers. *medRxiv*. 2024.
- 33 32. Lane RM, Darreh-Shori T. Understanding the beneficial and detrimental effects of donepezil and
34 rivastigmine to improve their therapeutic value. *Journal of Alzheimer's disease : JAD*. 2015;44(4):1039-
35 62.
- 36 33. Mummery CJ, Borjesson-Hanson A, Blackburn DJ, Vijverberg EGB, De Deyn PP, Ducharme S, et al.
37 Tau-targeting antisense oligonucleotide MAPT(Rx) in mild Alzheimer's disease: a phase 1b, randomized,
38 placebo-controlled trial. *Nature medicine*. 2023.
- 39 34. Folstein MF, Folstein SE, McHugh PR. "Mini-mental state". A practical method for grading the
40 cognitive state of patients for the clinician. *J Psychiatr Res*. 1975;12(3):189-98.
- 41 35. Morris JC, Ernesto C, Schafer K, Coats M, Leon S, Sano M, et al. Clinical dementia rating training
42 and reliability in multicenter studies: the Alzheimer's Disease Cooperative Study experience. *Neurology*.
43 1997;48(6):1508-10.
- 44 36. Albert MS, DeKosky ST, Dickson D, Dubois B, Feldman HH, Fox NC, et al. The diagnosis of mild
45 cognitive impairment due to Alzheimer's disease: recommendations from the National Institute on
46 Aging-Alzheimer's Association workgroups on diagnostic guidelines for Alzheimer's disease. *Alzheimers*
47 *Dement*. 2011;7(3):270-9.

- 1 37. Wang X, Ghayoor A, Novicki A, Holmes S, Seibyl J, Hesterman J. [P4–266]: APPLICATION OF A
2 MULTI-ATLAS SEGMENTATION TOOL TO HIPPOCAMPUS, VENTRICLE AND WHOLE BRAIN
3 SEGMENTATION. *Alzheimer's & Dementia*. 2017;13(7S_Part_28):P1385-P6.
- 4 38. Graffelman J. Exploring diallelic genetic markers: the HardyWeinberg package. *Journal of*
5 *Statistical Software*. 2015;64:1-23.
- 6 39. Huang LC, Lee MY, Chien CF, Chang YP, Li KY, Yang YH. Age and sex differences in the association
7 between APOE genotype and Alzheimer's disease in a Taiwan Chinese population. *Frontiers in aging*
8 *neuroscience*. 2023;15:1246592.
- 9 40. Bellou E, Baker E, Leonenko G, Bracher-Smith M, Daunt P, Menzies G, et al. Age-dependent
10 effect of APOE and polygenic component on Alzheimer's disease. *Neurobiology of aging*. 2020;93:69-77.
- 11 41. Whitwell JL, Tosakulwong N, Weigand SD, Graff-Radford J, Ertekin-Taner N, Machulda MM, et al.
12 Relationship of APOE, age at onset, amyloid and clinical phenotype in Alzheimer disease. 2021;108:90-8.
- 13 42. Wang X, Zhou W, Ye T, Lin X, Zhang J. Sex Difference in the Association of APOE4 with Memory
14 Decline in Mild Cognitive Impairment. *Journal of Alzheimer's disease : JAD*. 2019;69(4):1161-9.
- 15 43. Neu SC, Pa J, Kukull W, Beekly D, Kuzma A, Gangadharan P, et al. Apolipoprotein E Genotype and
16 Sex Risk Factors for Alzheimer Disease: A Meta-analysis. *JAMA neurology*. 2017;74(10):1178-89.
- 17 44. Lane RM, He Y. Butyrylcholinesterase genotype and gender influence Alzheimer's disease
18 phenotype. *Alzheimers Dement*. 2013;9(2):e1-73.
- 19 45. Farrer LA, Cupples LA, Haines JL, Hyman B, Kukull WA, Mayeux R, et al. Effects of Age, Sex, and
20 Ethnicity on the Association Between Apolipoprotein E Genotype and Alzheimer Disease: A Meta-
21 analysis. *JAMA*. 1997;278(16):1349-56.
- 22 46. Fleisher AS, Chen K, Liu X, Ayutyanont N, Roontiva A, Thiyyagura P, et al. Apolipoprotein E ϵ 4
23 and age effects on florbetapir positron emission tomography in healthy aging and Alzheimer disease.
24 *Neurobiology of aging*. 2013;34(1):1-12.
- 25 47. Groot C, Grothe MJ, Mukherjee S, Jelistratova I, Jansen I, van Loenhoud AC, et al. Differential
26 patterns of gray matter volumes and associated gene expression profiles in cognitively-defined
27 Alzheimer's disease subgroups. *NeuroImage Clinical*. 2021;30:102660.
- 28 48. Mattsson N, Ossenkoppele R, Smith R, Strandberg O, Ohlsson T, Jögi J, et al. Greater tau load
29 and reduced cortical thickness in APOE ϵ 4-negative Alzheimer's disease: a cohort study. *Alzheimers Res*
30 *Ther*. 2018;10(1):77.
- 31 49. Reiman EM, Arboleda-Velasquez JF, Quiroz YT, Huentelman MJ, Beach TG, Caselli RJ, et al.
32 Exceptionally low likelihood of Alzheimer's dementia in APOE2 homozygotes from a 5,000-person
33 neuropathological study. *Nat Commun*. 2020;11(1):667.
- 34 50. Josephs KA, Whitwell JL, Ahmed Z, Shiung MM, Weigand SD, Knopman DS, et al. Beta-amyloid
35 burden is not associated with rates of brain atrophy. *Ann Neurol*. 2008;63(2):204-12.
- 36 51. Hardy JA, Higgins GA. Alzheimer's disease: the amyloid cascade hypothesis. *Science*.
37 1992;256(5054):184-5.
- 38 52. Tijms BM, Vromen EM, Mjaavatten O, Holstege H, Reus LM, Lee Svd, et al. Large-scale
39 cerebrospinal fluid proteomic analysis in Alzheimer's disease patients reveals five molecular subtypes
40 with distinct genetic risk profiles. *medRxiv*. 2023:2023.05.10.23289793.
- 41 53. Sauty B, Durrleman S. Impact of sex and APOE- ϵ 4 genotype on patterns of regional brain
42 atrophy in Alzheimer's disease and healthy aging. *Front Neurol*. 2023;14:1161527.
- 43 54. Laws KR, Irvine K, Gale TM. Sex differences in cognitive impairment in Alzheimer's disease.
44 *World J Psychiatry*. 2016;6(1):54-65.
- 45 55. Ferretti MT, Iulita MF, Cavedo E, Chiesa PA, Schumacher Dimech A, Santucciono Chadha A, et al.
46 Sex differences in Alzheimer disease - the gateway to precision medicine. *Nat Rev Neurol*.
47 2018;14(8):457-69.

- 1 56. Dubal DB. Sex difference in Alzheimer's disease: An updated, balanced and emerging
2 perspective on differing vulnerabilities. *Handb Clin Neurol.* 2020;175:261-73.
- 3 57. Beam CR, Kaneshiro C, Jang JY, Reynolds CA, Pedersen NL, Gatz M. Differences Between Women
4 and Men in Incidence Rates of Dementia and Alzheimer's Disease. *Journal of Alzheimer's disease : JAD.*
5 2018;64(4):1077-83.
- 6 58. Rhein V, Song X, Wiesner A, Ittner LM, Baysang G, Meier F, et al. Amyloid-beta and tau
7 synergistically impair the oxidative phosphorylation system in triple transgenic Alzheimer's disease mice.
8 *Proc Natl Acad Sci U S A.* 2009;106(47):20057-62.
- 9 59. Puzzo D, Argyrousi EK, Staniszewski A, Zhang H, Calcagno E, Zuccarello E, et al. Tau is not
10 necessary for amyloid- β -induced synaptic and memory impairments. *The Journal of Clinical*
11 *Investigation.* 2020;130(9):4831-44.
- 12 60. Ossenkopppele R, Binette AP, Groot C, Smith R, Strandberg O, Palmqvist S, et al. Amyloid and Tau
13 PET positive cognitively unimpaired individuals: Destined to decline? 2022:2022.05.23.22275241.
- 14 61. Susanto TA, Pua EP, Zhou J. Cognition, brain atrophy, and cerebrospinal fluid biomarkers
15 changes from preclinical to dementia stage of Alzheimer's disease and the influence of apolipoprotein e.
16 *Journal of Alzheimer's disease : JAD.* 2015;45(1):253-68.
- 17 62. Ferrari-Souza JP, Lussier FZ, Leffa DT, Therriault J, Tissot C, Bellaver B, et al. APOE ϵ 4 associates
18 with microglial activation independently of A β plaques and tau tangles. *Sci Adv.* 2023;9(14):eade1474.
- 19 63. Lane RM, He Y. Emerging hypotheses regarding the influences of butyrylcholinesterase-K
20 variant, APOE epsilon 4, and hyperhomocysteinemia in neurodegenerative dementias. *Medical*
21 *hypotheses.* 2009;73(2):230-50.
- 22 64. Schmitz TW, Soreq H, Poirier J, Spreng RN. Longitudinal Basal Forebrain Degeneration Interacts
23 with TREM2/C3 Biomarkers of Inflammation in Presymptomatic Alzheimer's Disease. *J Neurosci.*
24 2020;40(9):1931-42.
- 25 65. Schmitz TW, Nathan Spreng R. Basal forebrain degeneration precedes and predicts the cortical
26 spread of Alzheimer's pathology. *Nat Commun.* 2016;7:13249.
- 27 66. Yu MC, Chuang YF, Wu SC, Ho CF, Liu YC, Chou CJ. White matter hyperintensities in cholinergic
28 pathways are associated with dementia severity in e4 carriers but not in non-carriers. *Front Neurol.*
29 2023;14:1100322.
- 30 67. Hu L, Wong TP, Cote SL, Bell KF, Cuello AC. The impact of Abeta-plaques on cortical cholinergic
31 and non-cholinergic presynaptic boutons in alzheimer's disease-like transgenic mice. *Neuroscience.*
32 2003;121(2):421-32.
- 33 68. Bell KF, Claudio Cuello A. Altered synaptic function in Alzheimer's disease. *European journal of*
34 *pharmacology.* 2006;545(1):11-21.
- 35 69. Mesulam M, Shaw P, Mash D, Weintraub S. Cholinergic nucleus basalis tauopathy emerges early
36 in the aging-MCI-AD continuum. *Ann Neurol.* 2004;55(6):815-28.
- 37 70. Ballinger EC, Ananth M, Talmage DA, Role LW. Basal Forebrain Cholinergic Circuits and Signaling
38 in Cognition and Cognitive Decline. *Neuron.* 2016;91(6):1199-218.
- 39 71. Fontana IC, Kumar A, Nordberg A. The role of astrocytic alpha7 nicotinic acetylcholine receptors
40 in Alzheimer disease. *Nat Rev Neurol.* 2023;19(5):278-88.
- 41 72. Chuang YF, Varma V, An Y, Tanaka T, Davatzikos C, Resnick SM, Thambisetty M. Interaction
42 between Apolipoprotein E and Butyrylcholinesterase Genes on Risk of Alzheimer's Disease in a
43 Prospective Cohort Study. *Journal of Alzheimer's disease : JAD.* 2020;75(2):417-27.
- 44 73. Lane R, Feldman HH, Meyer J, He Y, Ferris SH, Nordberg A, et al. Synergistic effect of
45 apolipoprotein E epsilon4 and butyrylcholinesterase K-variant on progression from mild cognitive
46 impairment to Alzheimer's disease. *Pharmacogenetics and genomics.* 2008;18(4):289-98.
- 47 74. Bigler ED, Lowry CM, Anderson CV, Johnson SC, Terry J, Steed MJAJoN. Dementia, quantitative
48 neuroimaging, and apolipoprotein E genotype. 2000;21(10):1857-68.

1 75. Yasuda M, Mori E, Kitagaki H, Yamashita H, Hirono N, Shimada K, et al. Apolipoprotein E ϵ 4 allele
2 and whole brain atrophy in late-onset Alzheimer's disease. 1998;155(6):779-84.

3 76. Jack Jr CR, Petersen RC, Xu YC, O'Brien PC, Waring SC, Tangalos EG, et al. Hippocampal atrophy
4 and apolipoprotein E genotype are independently associated with Alzheimer's disease. 1998;43(3):303-
5 10.

6