

# Inflammatory bowel disease and risk of more than 1500 comorbidities: A disease-wide pre- and post-diagnostic phenomic association study

Anthony Ebert<sup>1\*</sup>, Rahma Elmahdi<sup>1,2\*</sup>, Gry Poulsen<sup>1</sup>, Martin Bøgsted<sup>1</sup>, Bram Verstockt<sup>3,4</sup>, Charlie W Lees<sup>5\*\*</sup>, and Tine Jess<sup>1,2\*\*</sup>

<sup>1</sup>Center for Molecular Prediction of Inflammatory Bowel Disease (PREDICT), Department of Clinical Medicine, Aalborg University, Copenhagen, Denmark

<sup>2</sup>Department of Gastroenterology and Hepatology, Aalborg University Hospital, Aalborg, Denmark

<sup>3</sup>Department of Gastroenterology and Hepatology, University Hospitals Leuven, KU Leuven, Leuven, Belgium

<sup>4</sup>Department of Chronic Diseases and Metabolism, KU Leuven, Leuven, Belgium

<sup>5</sup>Centre for Genomic and Experimental Medicine, Institute of Genetics and Cancer, University of Edinburgh, UK

\* Co-first author

\*\* Co-last author

## Correspondence

Tine Jess

Center for Molecular Prediction of Inflammatory Bowel Disease (PREDICT)

Department of Clinical Medicine, Aalborg University

A.C. Meyers Vænge 15, Copenhagen SV, 2450, Denmark

email: jess@dcm.aau.dk

## Abstract

**Background & Aims:** Inflammatory bowel disease (IBD), including Crohn's disease (CD) and ulcerative colitis (UC), is associated with various extra-intestinal manifestations. Identifying comorbidities in IBD and the timing of their development provides valuable insight into mechanisms underlying IBD.

**Methods:** We conducted a population- and disease-wide phenomic association study in IBD, using >6 million ICD-10 coded healthcare contacts from 10 years before and up-to 17 years after IBD diagnosis to investigate associations with 1583 comorbidities. To explore diseases with potential aetiological significance, we compared strength of association with co-morbidities in the pre-diagnostic with the post-diagnostic period. To correct for multiple testing, we adjust the significance threshold with the Bonferroni correction ( $p\text{-value} < 7.90 \times 10^{-6}$ ).

**Results:** We identified 312 statistically significant associations with 125 of these appearing before diagnosis. Risk of immune-mediated diseases and extra-intestinal manifestations is increased up to 10 years prior to IBD diagnosis (e.g., enteropathic arthropathies:  $RR_{CD}$ : 3.57, 95% CI: 2.65-4.78;  $RR_{UC}$ : 1.8, 95% CI: 1.38-2.32). As with hepatic and pancreatic disorders (e.g., acute pancreatitis:  $RR_{CD}$ : 1.83, 95% CI: 1.30- 2.53;  $RR_{UC}$ : 2.27, 95% CI: 1.84-2.79). Risk of cardiometabolic diseases and neuropsychological disorders was increased both pre- and post-diagnostically. Potential sequelae of treatment, such as osteoporosis ( $HR_{CD}$ : 2.56, 95% CI: 2.30-2.86;  $HR_{UC}$ : 1.92, 95% CI: 1.79-2.07) were primarily seen post-diagnostically. Infectious mononucleosis ( $RR$ : 1.87, 95% CI: 1.37-2.52) was significantly associated with the pre- compared to the post-diagnostic period for CD.

**Conclusion:** Findings demonstrate that IBD is a multisystemic disease, particularly manifesting with metabolic, immune, and neuropsychological disorders, up-to 10 years prior to diagnosis. Diseases of aetiological interest identified warrant further investigation.

# 1 Introduction

The inflammatory bowel diseases (IBD), Crohn's disease (CD) and ulcerative colitis (UC), are chronic intestinal conditions with a multifactorial aetiology. Identified genetic risk loci<sup>1;2</sup> may—in combination with environmental factors, such as diet, smoking, exercise, and exposure to infectious agents—be implicated in disease development<sup>3</sup> through multiple mechanisms, including epigenetic modifications, alterations in the gut microbiota, and immune dysregulation<sup>4</sup>. To complicate the aetiological understanding of IBD further, between 6-50% of patients develop extra-intestinal manifestations (EIMs), including erythema nodosum, uveitis, primary sclerosing cholangitis, and autoimmune hepatitis<sup>5</sup>, or immune-mediated inflammatory diseases (IMIDs), including psoriasis and ankylosing spondylitis, which may share common inflammatory pathways, genetic associations<sup>6</sup>, and response to anti-inflammatory therapies including those targeting TNF, IL12/23 and JAK inhibition. Emerging evidence also suggests that neuropsychiatric diseases<sup>7</sup> and cardiovascular diseases occur with increased frequency in IBD<sup>8</sup>, and additional diseases may occur either due to chronic inflammation, altered immunity and/or treatment with corticosteroids and immunosuppression<sup>9</sup>.

Hence, our understanding of IBD as a single-organ disease is challenged, while evidence of the involvement of other organs is still fragmented. This creates limitations for our aetiological understanding of IBD and the ability to optimize disease phenotyping and tailor treatment.<sup>10</sup> In other IMIDs, such as rheumatoid arthritis and psoriasis, there is increasing systematic investigation into associated comorbidities, primarily those manifesting following IMID diagnosis. This has not only enhanced the understanding of disease aetiology of diseases such as rheumatoid arthritis and psoriasis but has also revealed that co-morbidities lead to increased cost of care, poorer medical outcomes<sup>11;12</sup> and reduced emotional functioning<sup>13</sup>. With a compounding prevalence of IBD worldwide and an increasing average age of IBD patients<sup>14</sup>, the co-morbid burden is only expected to increase further, and a greater understanding of the interrelationship of IBD and comorbid diseases is urgently needed.

Using Danish nationwide healthcare data on all disease categories, as defined by the World Health Organization's 10th revision of the International Classification of Diseases (ICD-10), we aimed to undertake the first population- and disease-wide association study in IBD exploring all pre-diagnostic comorbidities from 10 to 1 year prior to IBD, as well as all post-diagnostic comorbidities observed from date of IBD diagnosis and up to 17 years after.

## 2 Methods

### 2.1 Data and study population

The Danish National Patient Register (LPR) covers the entire population of Denmark with comprehensive data from 1977<sup>15</sup>. These data record hospital contacts with associated diagnostic codes including outpatient contacts from 1995 and contacts from private hospitals from 2002. IBD and all other diseases are defined with reference to the World Health Organization's 10th revision of the International Classification of Diseases (ICD-10)<sup>16</sup>. The LPR data are linked to the Danish Civil Registration System (CPR)<sup>17</sup> by a unique personal identification number to verify and obtain data on age, sex, vital statistics, and residence.

The study cohort comprises all Danish residents with a new IBD diagnosis in the period from 1 January 2005 to 31 December 2021. IBD cases are identified with reference to the LPR with the following criteria, as established in a previous study<sup>18</sup>, at least two in- or outpatient contacts within a two-year period, with associated (primary or secondary) IBD diagnostic codes (CD: ICD-8 563.01, 563.02, 563.08, 563.09 and ICD-10: K50; UC: ICD-8 563.19, 569.04 and ICD-10 codes K51). Patients with an earlier in- or out-patient contact with an IBD diagnostic code were excluded. A case is defined as either UC or CD based on the most recent diagnostic code and the date of first recorded diagnosis is termed the index-date. To allow adequate time to identify pre-diagnostic comorbidities and to improve identification of only newly diagnosed IBD cases, the IBD patients included must be continuously resident in Denmark for at least 10 years prior to their index-date to be included as a case in the study. Demographic and residency data for cases and controls were retrieved from the CPR.

At the index date, each case is matched to six controls from the general Danish population by sex, date of birth and municipality of residence. Each control must also have been continuously resident in Denmark for at least 10 years prior to the index-date. Additionally, the controls must be resident in Denmark until the second in- or outpatient contact of their case, to avoid immortality bias. Finally, the control must be free of IBD diagnoses prior to the index-date. The study population was followed for a censoring event including emigration, death, 31 December 2021 (end of study), or any diagnosis of IBD (for matched controls).

### 2.2 Statistical analysis

We analyse the association between IBD and the 1583 diseases at the three-character level in Chapters (I-XIX) of ICD-10 (e.g., M72 *Fibroblastic disorders*). The analysis is split into two diagnostic windows (pre-diagnosis and post-diagnosis) for each three-character disease category. First, we calculate the cumulative incidence spanning from 10 years prior up to 10 years after the IBD diagnosis date for the first appearance of any diagnosis by disease category within each chapter. We

then calculate pre- and post-diagnosis risk of ICD-10 disease category diagnosis and finally, calculate risk of pre-diagnosis association compared with post-diagnosis association of statistically significant disease categories with large effect size.

The IBD pre-diagnostic period is defined as the nine-year period from ten years prior to one year before the index-date. We exclude the most recent year prior to diagnosis from the pre-diagnostic period to avoid capturing sequelae of IBD management following diagnosis in the pre-diagnostic period. For each disease category, we record the number of individuals with a diagnosis in the pre-diagnostic period, perform Fisher's exact test to compute the p-value and calculate an odds ratio estimate with a confidence interval. The relative risk (RR) with 95% confidence interval is then calculated from the odds ratio using Zhang and Yu's approximation<sup>19</sup>.

The post-diagnostic period is defined as the period immediately after diagnosis and ends at the point of censoring or ICD-10 disease category diagnosis. For each disease category, the study population comprises all IBD cases and controls without a prior diagnosis of the disease category in question. Therefore, all diagnoses within a disease category are the first for the case or the match. We perform Cox proportional regression analysis for ICD-10 disease category diagnosis to compute a hazard ratio (HR), 95% confidence interval and p-value.

To correct for multiple testing, we adjust our significance threshold (from  $p < 0.05$ ) with the Bonferroni correction<sup>20</sup>. We therefore test 6332 disease associations (1583 disease categories for both CD and UC, in the pre- and post-diagnostic window) resulting in a Bonferroni adjusted p-value of  $7.90 \times 10^{-6}$ , which we refer to as the threshold for disease-wide statistical significance.

In the interest of identifying potential novel disease associations, comorbidities with disease-wide statistical significance (in either the pre- or post-diagnostic period) are further screened for prevalence threshold of at least 0.2% for assessment. We exclude categories with vague or catch-all terms such as "M89 *Other disorders of bone*". Certain estimates could not be reported due to anonymity requirements and low case numbers, in these cases the intervals are left blank in the figures.

Finally, we identify comorbidities with strong pre-diagnostic effects, relative to their post-diagnostic effects. This analysis includes only highly significant pre-diagnostic ( $p < 0.001$ ) disease categories, where the ratio of pre- to post-diagnostic effect is greater than 1.2-fold. All analyses were conducted in R (v4.2.3).

### 3 Results

We identified 11,298 CD patients and 23,067 UC patients diagnosed with IBD in Denmark in the period from 1 January 2005 to 31 December 2021. Each patient was matched to six individuals from the general Danish population by sex, date of birth and municipality ( $n = 206,190$ ) using the date of diagnosis as index date (Figure S1: Flow diagram of study population inclusion). Among IBD patients, 56.4% of CD patients and 51.7% of UC patients were women, 50.9% of CD patients and 40.3% of UC patients were diagnosed before age 40 (Table 1).

#### 3.1 Cumulative incidence of comorbidities pre- and post-IBD

We observed an overall pattern of multimorbidity across organ systems, beginning up to 10 years prior to diagnosis and being increasingly pronounced over time. We particularly observe a significantly increased risk of cardiometabolic, neuropsychological, and skin and musculoskeletal disorders present up to a decade before IBD diagnosis (Figure 1). For most organ systems, the excess occurrence of diseases both pre- and post-diagnostically was more pronounced in CD than in UC (Figure 1; Figure S2: Proportion of significant associations for CD and UC by ICD-10 Chapter).

Figures 2 and 3 illustrate the pre- and post-diagnostic risk of comorbidities for CD patients for ICD-10 chapter I to XI and XII to XIX, respectively. Whereas figures 4 and 5 illustrate the pre- and post-diagnostic risk of comorbidities for UC patients for ICD-10 chapter I to XI and XII to XIX, respectively.

#### 3.2 Pre- and post-diagnostic EIMs and IMIDs

We confirmed the occurrence of a series of EIMs after IBD diagnosis and were able to show that the majority of these EIMs already occurred in excess up to 10 years prior to IBD diagnosis, including diseases of the joints, eyes, skin, and respiratory tract. Joint and musculoskeletal disorders, such as enteropathic arthropathies, were seen at increased rates in both CD (RR: 3.57, 95% CI: 2.65-4.78) and UC (RR: 1.80, 95% CI: 1.38-2.32) prior to IBD diagnosis, and even more pronounced after IBD diagnosis. Pyoderma gangrenosum was only increased prior to diagnosis in UC (RR<sub>UC</sub>: 4.80, 95% CI: 1.65-13.50), despite a markedly excess risk in CD after diagnosis (HR<sub>CD</sub>: 29.40, 95% CI: 11.20-77.10).

We confirmed an increased risk of multiple IMIDs in IBD patients versus the matched control population, and further showed that the increased risk was present up to 10 years prior to IBD diagnosis, as illustrated by estimates for psoriasis (RR<sub>CD</sub>: 2.57, 95% CI: 2-3.29; RR<sub>UC</sub>: 1.54, 95% CI: 1.25-1.87) and ankylosing spondylitis (RR<sub>CD</sub>: 10.7, 95% CI: 7.70-14.90; RR<sub>UC</sub>: 2.56, 95% CI: 1.85-3.50).

### 3.3 Pre-diagnostic gastrointestinal and liver diseases

Several gastrointestinal and liver disorders, which were expected post-diagnostically, were already observed in excess in the pre-diagnostic period for both CD and UC. Diagnoses of chronic gastrointestinal diseases associated with IBD, including gastro-oesophageal reflux disease (RR<sub>CD</sub>: 2.26, 95% CI: 1.96-2.59; RR<sub>UC</sub>: 1.64, 95% CI: 1.47-1.82), gastric (RR<sub>CD</sub>: 2.56 95% CI: 2.03-3.22; RR<sub>UC</sub>: 1.68, 95% CI: 1.41-1.98) and duodenal ulcers (RR<sub>CD</sub>: 3.38, 95% CI: 2.47-4.61; RR<sub>UC</sub>: 0.984, 95% CI: 0.758-1.26) showed stronger pre-diagnostic association with CD than UC. As expected, acute appendicitis prior to IBD diagnosis was associated with increased risk of CD (RR<sub>CD</sub>: 1.58, 95% CI: 1.36-1.84) and decreased risk of UC (RR<sub>UC</sub>: 0.77, 95% CI: 0.664-0.899).

Pancreatic and hepatobiliary disorders were seen in excess both in CD and UC in the pre-diagnostic period, including gall stones (RR<sub>CD</sub>: 1.82, 95% CI: 1.62-2.04; RR<sub>UC</sub>: 1.26, 95% CI: 1.15-1.37), liver cirrhosis (RR<sub>CD</sub>: 2.60 95% CI: 1.25-5.13; RR<sub>UC</sub>: 2.35, 95% CI: 1.55-3.49), and acute pancreatitis (RR<sub>CD</sub>: 1.83, 95% CI: 1.3-2.53; RR<sub>UC</sub>: 2.27, 95% CI: 1.84-2.79).

### 3.4 Pre- and post-diagnostic cardiometabolic disorders

We observed an increased risk of cardiovascular diseases in the pre-diagnostic period, including hypertension (RR<sub>CD</sub>: 1.43, 95% CI: 1.33-1.54; RR<sub>UC</sub>: 1.22, 95% CI: 1.16-1.28) and ischemic heart disease (RR<sub>CD</sub>: 1.29, 95% CI: 1.11-1.48; RR<sub>UC</sub>: 1.30, 95% CI: 1.19-1.41) for both CD and UC, and arterial embolism and thrombosis (RR<sub>CD</sub>: 2.16, 95% CI: 1.19-3.76) in CD, which increased over time in the post-diagnostic period. We furthermore observed an increased risk of type 2 diabetes mellitus both prior to (RR<sub>CD</sub>: 1.33, 95% CI: 1.16-1.52; RR<sub>UC</sub>: 1.13, 95% CI: 1.04-1.24) and after IBD diagnosis, as well as an increased risk of obesity, particularly in the post-diagnostic period (HR<sub>CD</sub>: 1.46, 95% CI: 1.34-1.6; HR<sub>UC</sub>: 1.23 95% CI: 1.15-1.32).

### 3.5 Pre- and post-diagnostic neuropsychological disorders including substance use

Excess risk of several mental and behavioural disorders, including depression, anxiety, and substance use disorders was observed in the pre- and post-diagnostic period for CD patients in particular, who had a markedly increased risk of alcohol (HR: 1.54, 95% CI: 1.30-1.81), tobacco use disorders (HR: 4.04, 95% CI: 3.51-4.65), and stress and adjustment disorders (HR: 1.62, 95% CI: 1.40-1.87) post-diagnostically.

All effect sizes calculated for comorbidities associated with CD and UC in the pre- and post-diagnostic period are presented in Table S1: Interactive Table of pre- and post- diagnostic risk of comorbidities in CD and UC.

### 3.6 Disease risk in pre-diagnostic relative to post-diagnostic phase

Finally, we assessed which diseases were more prominent in the pre-diagnostic relative to the post-diagnostic period (Figure 6). Overall, there were twice as many diseases occurring predominantly pre-diagnostically, compared to the post-diagnostically in patients with CD (24 diseases) than in patients with UC (12 diseases), confirming the more pronounced systemic prodromal development of CD and include expected diagnoses, such as haemorrhoids (RR: 2.54, 95% CI: 2.24-2.87; HR: 1.81, 95% CI: 1.60-2.04), as well as unexpected diagnoses, such as lipidaemias (RR: 1.36, 95% CI: 1.20-1.54; HR: 1.15, 95% CI: 1.01-1.30), hypertension (RR: 1.43, 95% CI: 1.33-1.54; HR: 1.17, 95% CI: 1.08-1.27), and conditions with potential aetiological explanations, such as infectious mononucleosis (RR: 1.87, 95% CI: 1.37-2.52; HR: 1.10, 95% CI: 0.541-2.24).

Patients with CD were at higher relative risk of receiving a diagnosis of personality disorder before compared with after CD diagnosis (RR: 2.57, 95% CI: 1.72-3.78; HR: 1.81, 95% CI: 1.45-2.27) and UC patients were at higher relative risk of being diagnosed with stress before compared with after UC diagnosis (RR: 1.41, 95% CI: 1.16-1.70; HR: 1.08, 95% CI: 0.951-1.22), potentially reflecting delayed diagnosis of IBD reflected by increased symptoms of deterioration.

## 4 Discussion

This comprehensive population-based disease-wide association study examining >1500 diseases among >35,000 patients with IBD and >200,000 controls revealed that a diagnosis of IBD was associated with 312 other diseases, of which 125 diseases were present up to 10 years before diagnosis. Based on these observations, we created an interactive resource to explore IBD comorbidities across organ systems (Table S1: Interactive Table of pre- and post- diagnostic risk of comorbidities in CD and UC). In addition to identifying expected diseases associated with IBD, including known EIMs and IMIDs, we identified multisystem comorbidities up to a decade prior to the incident IBD diagnosis, including cardiometabolic, neuropsychological, and immune and infectious diseases associated with both CD and UC. Most of the pre-diagnostic comorbidities appeared with larger effect sizes and earlier in CD than UC patients.

Identification of diseases occurring with higher frequency prior to compared with after IBD diagnosis may have aetiological implications. Interestingly, infectious mononucleosis was the only infectious disease identified as more strongly associated with IBD in the pre-diagnostic period than in the post-diagnostic period, a finding confined to CD. A recent

prospective cohort study from Germany found infectious mononucleosis to be significantly associated with CD development but not UC<sup>21</sup>, supporting the hypothesis of a potential pathophysiological involvement of Epstein–Barr virus (EBV) in the development of CD. Strong evidence for EBV’s causal role in multiple sclerosis, has recently been reported in a US military cohort of >10 million service members<sup>22</sup>. Potential explanations for an association between infectious mononucleosis and IBD could be related to the mechanism of EBV-infection of auto-reactive B-cells in genetically susceptible individuals, or, according to a recent transcriptomics study, significant overlap between IBD risk loci and loci occupied by the EBV EBNA2 protein, signifying gene–environment interaction at the loci for IBD development<sup>23</sup>.

We confirm an increased risk of cardiometabolic disorders following IBD diagnosis in accordance with former observational studies<sup>24;25</sup>. We further show that these diseases may be present years up to a decade prior to IBD diagnosis, which may have both aetiological and treatment implications. The pre-IBD presence of cardiometabolic diseases indicates that not only chronic systemic inflammation, but also shared underlying mechanisms for development of cardiometabolic disease and IBD may exist, potentially reflecting shared environmental factors such as smoking and diet, which may act through microbiome dysfunction<sup>3</sup>. The increased risk of cardiometabolic disease in the pre-diagnostic period may also have clinical implications. The risk of ischaemic heart disease is increased markedly prior to IBD diagnosis and warrants clinical awareness following an IBD diagnosis. As JAK inhibitors – a class of small oral molecules to treat chronic inflammatory diseases - have recently been linked with increased MACE (major adverse cardiovascular events) risk–in rheumatoid arthritis populations<sup>26</sup>, additional caution might also be warranted in selected IBD patients in light of our observed pre-diagnostic cardiovascular comorbidity.

For associations with EIMs and IMIDs, we provide important additional evidence to the existing literature. Not only do we confirm the occurrence of several EIMs, including erythema nodosum, asthma, pyoderma gangrenosum, and iridocyclitis, and IMIDs, such as psoriasis, ankylosing spondylitis and coeliac disease in patients diagnosed with IBD, but we also show that these disorders are present at significantly increased frequency several years before diagnosis, pointing towards a long prodromal phase of IBD with multiorgan involvement. In line with our observations, Bernstein et al. found that EIMs and IMIDs had among the strongest increased risks of all IBD comorbidities following assessment of the Charlson Morbidity Index of diseases associated with IBD<sup>27</sup>. We observe that the risk of EIMs and IMIDs in the post-diagnostic period is larger in CD than in UC, again highlighting CD particularly as a multisystem disease. Our findings may have implications for screening and therapeutic considerations and raises the question, whether EIM and IMID diagnoses should prompt practitioner investigation for IBD in the context of gastrointestinal symptoms.

For several diseases observed in excess following an IBD diagnosis, it remains to be understood if these are consequences of severe disease or the treatment thereof. We observed a significantly increased risk in the post-diagnostic period of osteopenia and osteoporosis with pathological fracture, which is a well-documented adverse effect of long-term steroid exposure<sup>28</sup>. Advances in IBD therapies over the last decades with more steroid sparing management in severe IBD management may change this picture over time. Immunosuppression may explain the viral enteric, pulmonary, and opportunistic infections seen at higher rates in the post- compared with pre-diagnostic period. Balancing the adverse impact of therapies is an ongoing clinical challenge, and there is also a need for development of tools to differentiate between severity of disease and consequences of treatment thereof when assessing long-term outcomes with observational data.

Regarding the psychiatric disorders, we confirm significant bidirectional association between IBD in relation to depression and anxiety<sup>29</sup>. The proposed mechanisms underlying this association<sup>7</sup> are complex but may involve direct biochemical pathways through “the gut–brain axis” via the vagus nerve<sup>30</sup>, or more indirect mechanisms, such as the, possibly preclinical, symptoms of IBD inducing psychological stress<sup>31</sup>.

The strengths of the present study are the population-wide and disease-wide assessment of all potential known and unknown comorbidities of IBD, which to our knowledge is the first phenomic study of this nature for any chronic illness. Further strengths are the size of the case population, assuring power; the drawing of matched controls from the general population rather than non-IBD hospital records, improving the generalizability of our findings; the length of follow-up beginning from 10 years prior to diagnosis until up to 17 years post-diagnosis, allowing us to investigate long-term associations in either direction of diagnosis; and the termination of the pre-diagnostic window 1 year prior to the incident diagnosis of IBD, thereby reducing surveillance bias. Lastly, both our application of a prevalence threshold 0.2% for disease assessment and our choice of the Bonferroni correction, leading to a disease-wide significance threshold of  $7.90 \times 10^{-6}$ , reduces the potential for false positive findings.

Potential limitations that should be acknowledged include that registry data is subject to surveillance bias or capture of systemic biases such as common incorrect diagnoses by clinical practitioners, and this may have impacted our identification of several disorders diagnosed via e.g., endoscopy, including benign intestinal tumours or diverticular disease. Although we capture most EIMs and IMIDs associated with IBD and, as a novel finding, show that they appear many years prior to disease diagnosis, not all known IMIDs related to IBD will be captured, if not captured through outpatient or inpatient contacts. The study also contains risk of ascertainment bias, but this is diminished by use of population-representative, nationwide diagnostic data, where cases are additionally matched to controls within municipality of residence. This is particularly the case for our findings in analyses from the pre-diagnostic period, where IBD patients would not be subject to the same level of clinical follow-up as following diagnosis.

In this population-based disease-wide study of almost 35,000 IBD patients followed for >300,000 pre-diagnostic and >250,000 post-diagnostic person-years, we observe an overall pattern of multimorbidity beginning from 10 years prior to diagnosis, with a more pronounced effect in CD relative to UC. Pre-diagnostic associations are seen across

organ systems for both CD and UC, including the endocrine, circulatory, respiratory, musculoskeletal, and genitourinary systems. Additionally, for CD, we observe significant associations with haematological, neurological, and ocular diseases in the pre-diagnostic period, along with infectious mononucleosis, which supports a potential role for EBV in disease pathogenesis as recently elucidated in multiple sclerosis. Findings indicate the presence of multisystem pathology up to 10 years before IBD diagnosis, which is increasing in frequency throughout the disease course. This underscores the need for multidisciplinary care, including cardiometabolic measurements and neuropsychological support, and increased attention to the management of a broad range of co-occurring disorders already present at the time of IBD diagnosis.

## References

- [1] Byong Duk Ye and Dermot PB McGovern. Genetic variation in IBD: progress, clues to pathogenesis and possible clinical utility. *Expert review of clinical immunology*, 12(10):1091–1107, 2016.
- [2] Isabelle Cleynen, Gabrielle Boucher, Luke Jostins, L Philip Schumm, Sebastian Zeissig, Tariq Ahmad, Vibeke Andersen, Jane M Andrews, Vito Annese, Stephan Brand, et al. Inherited determinants of Crohn’s disease and ulcerative colitis phenotypes: a genetic association study. *The Lancet*, 387(10014):156–167, 2016.
- [3] Robert Carreras-Torres, Gemma Ibáñez-Sanz, Mireia Obón-Santacana, Eric J Duell, and Victor Moreno. Identifying environmental risk factors for inflammatory bowel diseases: a Mendelian randomization study. *Scientific reports*, 10(1):19273, 2020.
- [4] Daniel B Graham and Ramnik J Xavier. Pathway paradigms revealed from the genetics of inflammatory bowel disease. *Nature*, 578(7796):527–539, 2020.
- [5] Hannah Gordon, Johan Burisch, Pierre Ellul, Konstantinos Karmiris, Konstantinos Katsanos, Mariangela Allocca, Giorgos Bamias, Manuel Barreiro-de Acosta, Tasanee Braithwaite, Thomas Greuter, et al. ECCO guidelines on extraintestinal manifestations in inflammatory bowel disease. *Journal of Crohn’s and Colitis*, 18(1):1–37, 2024.
- [6] Charlie W Lees, JC Barrett, M Parkes, and J Satsangi. New IBD genetics: common pathways with other diseases. *Gut*, pages gut–2009, 2011.
- [7] Tania H Bisgaard, Kristine H Allin, Laurie Keefer, Ashwin N Ananthakrishnan, and Tine Jess. Depression and anxiety in inflammatory bowel disease: epidemiology, mechanisms and treatment. *Nature Reviews Gastroenterology & Hepatology*, 19(11):717–726, 2022.
- [8] Julie Aarestrup, Tine Jess, Camilla J Kobylecki, Børge G Nordestgaard, and Kristine H Allin. Cardiovascular risk profile among patients with inflammatory bowel disease: a population-based study of more than 100 000 individuals. *Journal of Crohn’s and Colitis*, 13(3):319–323, 2019.
- [9] Rahma Elmahdi, Louise T Thomsen, Aske T Iversen, Kristine H Allin, Susanne K Kjær, and Tine Jess. Increased risk of genital warts in inflammatory bowel disease: A Danish registry-based cohort study (1996–2018). *United European Gastroenterology Journal*, 10(3):287–295, 2022.
- [10] Marjorie Argollo, Daniela Gilardi, Carina Peyrin-Biroulet, Jean-Francois Chabot, Laurent Peyrin-Biroulet, and Silvio Danese. Comorbidities in inflammatory bowel disease: a call for action. *The Lancet Gastroenterology & Hepatology*, 4(8):643–654, 2019.
- [11] Premarani Sinnathurai, Rachelle Buchbinder, Catherine Hill, Marissa Lassere, and Lyn March. Comorbidity in psoriatic arthritis and rheumatoid arthritis. *Internal Medicine Journal*, 48(11):1360–1368, 2018.
- [12] Jin Bu, Ruilian Ding, Liangjia Zhou, Xiangming Chen, and Erxia Shen. Epidemiology of psoriasis and comorbid diseases: a narrative review. *Frontiers in immunology*, page 2484, 2022.
- [13] Joëlle Van Den Hoek, Leo D Roorda, Hendriek C Boshuizen, Gerard J Tijhuis, Geertrudis A Van Den Bos, and Joost Dekker. Physical and mental functioning in patients with established rheumatoid arthritis over an 11-year followup period: the role of specific comorbidities. *The Journal of Rheumatology*, 43(2):307–314, 2016.
- [14] Stephanie Coward, Fiona Clement, Eric I Benchimol, Charles N Bernstein, J Antonio Avina-Zubieta, Alain Bitton, Mathew W Carroll, Glen Hazlewood, Kevan Jacobson, Susan Jelinski, et al. Past and future burden of inflammatory bowel diseases based on modeling of population-based data. *Gastroenterology*, 156(5):1345–1353, 2019.
- [15] Morten Schmidt, Sigrun Alba Johannesdottir Schmidt, Jakob Lyng Sandegaard, Vera Ehrenstein, Lars Pedersen, and Henrik Toft Sørensen. The Danish National Patient Registry: a review of content, data quality, and research potential. *Clinical epidemiology*, pages 449–490, 2015.

- [16] World Health Organization. *ICD-10 : international statistical classification of diseases and related health problems*, volume 2. World Health Organization Geneva, 10th revision, 5th ed. edition, 2004. ISBN 9241546492 9241546530 9241546549. URL <https://apps.who.int/iris/handle/10665/246208>.
- [17] Morten Schmidt, Lars Pedersen, and Henrik Toft Sørensen. The Danish Civil Registration System as a tool in epidemiology. *European journal of epidemiology*, 29:541–549, 2014.
- [18] Manasi Agrawal, Heidi S Christensen, Martin Bøgsted, Jean-Frederic Colombel, Tine Jess, and Kristine H Allin. The rising burden of inflammatory bowel disease in Denmark over two decades: a nationwide cohort study. *Gastroenterology*, 163(6):1547–1554, 2022.
- [19] Jun Zhang and F Yu Kai. What’s the relative risk?: A method of correcting the odds ratio in cohort studies of common outcomes. *Jama*, 280(19):1690–1691, 1998.
- [20] Tyler J VanderWeele and Maya B Mathur. Some desirable properties of the Bonferroni correction: is the Bonferroni correction really so bad? *American journal of epidemiology*, 188(3):617–618, 2019.
- [21] Sven H Loosen, Karel Kostev, David Schöler, Hans-Martin Orth, Noemi F Freise, Björn-Erik Ole Jensen, Petra May, Johannes G Bode, Christoph Roderburg, and Tom Luedde. Infectious mononucleosis is associated with an increased incidence of Crohn’s disease: results from a cohort study of 31 862 outpatients in Germany. *European Journal of Gastroenterology & Hepatology*, 35(3):255–260, 2023.
- [22] Kjetil Bjornevik, Marianna Cortese, Brian C Healy, Jens Kuhle, Michael J Mina, Yumei Leng, Stephen J Elledge, David W Niebuhr, Ann I Scher, Kassandra L Munger, et al. Longitudinal analysis reveals high prevalence of Epstein-Barr virus associated with multiple sclerosis. *Science*, 375(6578):296–301, 2022.
- [23] John B Harley, Xiaoting Chen, Mario Pujato, Daniel Miller, Avery Maddox, Carmy Forney, Albert F Magnusen, Arthur Lynch, Kashish Chetal, Masashi Yukawa, et al. Transcription factors operate across disease loci, with EBNA2 implicated in autoimmunity. *Nature genetics*, 50(5):699–707, 2018.
- [24] Mark Hudson, A Chitolie, RA Hutton, MS Smith, RE Pounder, and AJ Wakefield. Thrombotic vascular risk factors in inflammatory bowel disease. *Gut*, 38(5):733, 1996.
- [25] Tine Jess, Britt W Jensen, Mikael Andersson, Marie Villumsen, and Kristine H Allin. Inflammatory bowel diseases increase risk of type 2 diabetes in a nationwide cohort study. *Clinical Gastroenterology and Hepatology*, 18(4):881–888, 2020.
- [26] Steven R Ytterberg, Deepak L Bhatt, Ted R Mikuls, Gary G Koch, Roy Fleischmann, Jose L Rivas, Rebecca Germino, Sujatha Menon, Yanhui Sun, Cunshan Wang, et al. Cardiovascular and cancer risk with tofacitinib in rheumatoid arthritis. *New England Journal of Medicine*, 386(4):316–326, 2022.
- [27] Charles N Bernstein, Zoann Nugent, Seth Shaffer, Harminder Singh, and Ruth Ann Marrie. Comorbidity before and after a diagnosis of inflammatory bowel disease. *Alimentary Pharmacology & Therapeutics*, 54(5):637–651, 2021.
- [28] Kristen L Farraj, James R Pellegrini, Rezwan F Munshi, Jose Russe-Russe, Aboud Kaliounji, Muhammad S Tiwana, Pranay Srivastava, and Krishnayer Subramani. Chronic steroid use: An overlooked impact on patients with inflammatory bowel disease. *JGH Open*, 6(12):910–914, 2022.
- [29] Tania H Bisgaard, Kristine H Allin, Rahma Elmahdi, and Tine Jess. The bidirectional risk of inflammatory bowel disease and anxiety or depression: A systematic review and meta-analysis. *General Hospital Psychiatry*, 2023.
- [30] Yohei Mikami, Junya Tsunoda, Hiroki Kiyohara, Nobuhito Taniki, Toshiaki Teratani, and Takanori Kanai. Vagus nerve-mediated intestinal immune regulation: therapeutic implications of inflammatory bowel diseases. *International immunology*, 34(2):97–106, 2022.
- [31] Eva M Szigethy, John I Allen, Marci Reiss, Wendy Cohen, Lilani P Perera, Lili Brillstein, Raymond K Cross, David A Schwartz, Lawrence R Kosinski, Joshua B Colton, et al. White paper AGA: the impact of mental and psychosocial factors on the care of patients with inflammatory bowel disease. *Clinical Gastroenterology and Hepatology*, 15(7):986–997, 2017.

## **Funding**

AE, GP, MB, RE, and TJ are supported by the Danish National Research Foundation (DNRF148). RE is supported by the Novo Nordisk Foundation (NNF21OC0068631). CWL is funded by a UKRI (UK research and Innovation) Future Leaders Fellowship “Predicting outcomes in IBD” (MR/S034919/1). BV is supported by the Clinical Research Fund (KOOR) at the University Hospitals Leuven and the Research Council at the KU Leuven.

## **Keywords**

inflammatory bowel disease; Crohn’s disease, ulcerative colitis, pre-diagnosis, multisystem, comorbid

## **Conflicts of interest**

AE, GP, MB and RE report no competing interests. BV reports research support from AbbVie, Biora Therapeutics, Landos, Pfizer, Sosei Heptares and Takeda; speaker fees from Abbvie, Biogen, Bristol Myers Squibb, Celltrion, Chiesi, Falk, Ferring, Galapagos, Janssen, MSD, Pfizer, R-Biopharm, Takeda, Truvion and Viartis; consultancy fees from Abbvie, Alimentiv, Applied Strategic, Atheneum, Biora Therapeutics, Bristol Myers Squibb, Galapagos, Guidepoint, Landos, Mylan, Inotrem, Ipsos, Janssen, Pfizer, Progenity, Sandoz, Sosei Heptares, Takeda, Tillots Pharma and Viartis. CWL has acted as a consultant to Abbvie, Janssen, Takeda, Pfizer, Galapagos, Bristol Myers Squibb, B.I., Sandoz, Novartis, GSK, Gilead, ViforPharma, Dr Falk, Trellus Health and Iterative Scopes; he has received speaking fees and travel support from Pfizer, Janssen, Abbvie, Galapagos, MSD, Takeda, Shire, Ferring, Hospira and Dr Falk. TJ reports consultancy fee from Ferring Pharmaceuticals.

## **Author contributions**

ACE, GP, MB, and TJ conceptualised the paper and RE contributed key analysis concepts. All authors were involved in the developing the methodology, and validation of findings. ACE and GP developed the code for and undertook the analysis. ACE, GP, and MB provided the formal statistical methodology input. The original draft was written by RE, ACE, MB, CWL, and TJ. All authors contributed to review and editing of the manuscript. ACE, RE, MB, BV, CWL and TJ contributed to the visualisation of findings.

## **Acknowledgements**

We wish to thank Carsten Eriksen for his assistance with improving the readability of the forest plots.

## **Data sharing**

The study was based on data from the Danish National Health registers (<https://sundhedsdatastyrelsen.dk>). The register data are protected by the Danish Act on Processing of Personal Data and are accessed through application to and approval from the Danish Data Protection Agency and the Danish Health Data Authority.



## 5 Tables and figures

Table 1: Demographic baseline characteristics (age (years), year of diagnosis, sex at birth) of inflammatory bowel disease patients (Crohn's disease and ulcerative colitis) and sex- and age- match controls.

|  | Crohn's disease |                      | Ulcerative colitis |                       |
|--|-----------------|----------------------|--------------------|-----------------------|
|  | N = 11,298      | controls, N = 67,788 | N = 23,067         | controls, N = 138,402 |
| <b>Age of IBD onset (index date), y</b>            |                 |                      |                    |                       |
| 17-39  | 5,749 (50.9%)   | 34,458 (50.8%)       | 9,306 (40.3%)      | 55,817 (40.3%)        |
| 40-59  | 3,144 (27.8%)   | 18,934 (27.9%)       | 7,401 (32.1%)      | 44,375 (32.1%)        |
| 60+  | 2,405 (21.3%)   | 14,396 (21.2%)       | 6,360 (27.6%)      | 38,210 (27.6%)        |
| <b>Calendar year of birth</b>                      |                 |                      |                    |                       |
| 1905-1939  | 740 (6.5%)      | 4,440 (6.5%)         | 2,501 (10.8%)      | 15,006 (10.8%)        |
| 1940-1959  | 2,508 (22.2%)   | 15,048 (22.2%)       | 6,230 (27.0%)      | 37,380 (27.0%)        |
| 1960-1979  | 3,506 (31.0%)   | 21,036 (31.0%)       | 7,740 (33.6%)      | 46,440 (33.6%)        |
| 1980-2003  | 4,544 (40.2%)   | 27,264 (40.2%)       | 6,596 (28.6%)      | 39,576 (28.6%)        |
| <b>Calendar year of IBD diagnosis (index date)</b> |                 |                      |                    |                       |
| 2005-2009  | 2,724 (24.1%)   | 16,344 (24.1%)       | 6,977 (30.2%)      | 41,862 (30.2%)        |
| 2010-2014  | 3,261 (28.9%)   | 19,566 (28.9%)       | 7,265 (31.5%)      | 43,590 (31.5%)        |
| 2015-2018  | 3,134 (27.7%)   | 18,804 (27.7%)       | 5,494 (23.8%)      | 32,964 (23.8%)        |
| 2019-2021  | 2,179 (19.3%)   | 13,074 (19.3%)       | 3,331 (14.4%)      | 19,986 (14.4%)        |
| <b>Sex</b>   |                 |                      |                    |                       |
| Female   | 6,368 (56.4%)   | 38,208 (56.4%)       | 11,916 (51.7%)     | 71,496 (51.7%)        |
| Male   | 4,930 (43.6%)   | 29,580 (43.6%)       | 11,151 (48.3%)     | 66,906 (48.3%)        |

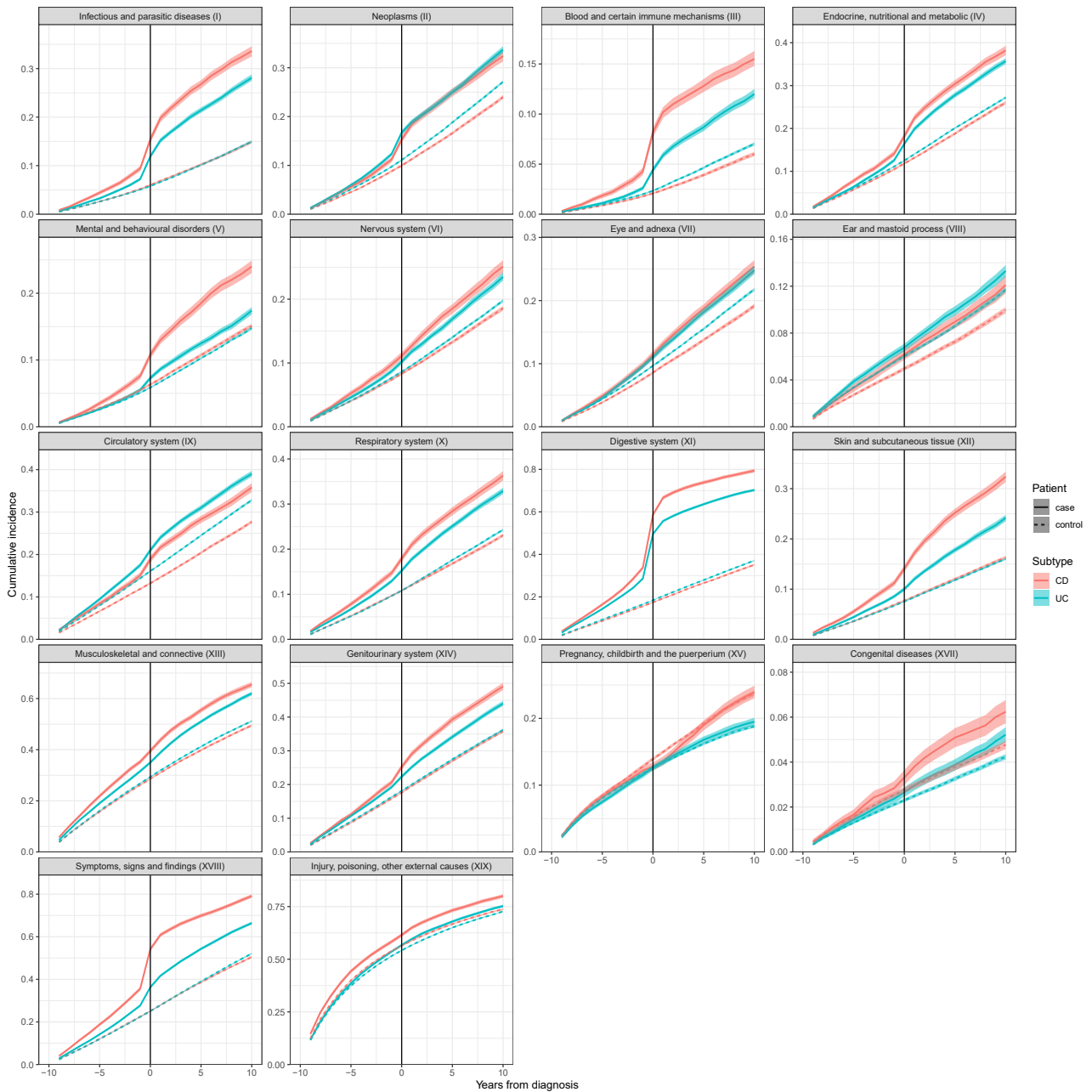


Figure 1: Cumulative incidence of three-character level diagnosis presented by ICD-10 chapter (Including: *Certain infectious and parasitic diseases (I)*, *Neoplasms (II)*, *Diseases of the blood and blood-forming organs and certain disorders involving the immune mechanism (III)*, *Endocrine, nutritional and metabolic diseases (IV)*, *Mental, Behavioural and Neurodevelopmental disorders (V)*, *Diseases of the nervous system (VI)*, *Diseases of the eye and adnexa (VII)*, *Diseases of the ear and mastoid process (VIII)*, *Diseases of the circulatory system (IX)*, *Diseases of the respiratory system (X)*, *Diseases of the digestive system (XI)*, *Diseases of the skin and subcutaneous tissue (XII)*, *Diseases of the musculoskeletal system and connective tissue (XIII)*, *Diseases of the genitourinary system (XIV)*, *Pregnancy, childbirth and the puerperium (XV)*, *Congenital malformations, deformations and chromosomal abnormalities (XVII)*, *Symptoms, signs and abnormal clinical and laboratory findings, not elsewhere classified (XVIII)*, *Injury, poisoning and certain other consequences of external causes (XIX)*) for CD, Crohn's disease and UC, ulcerative colitis and age-, sex-, and municipality-matched controls from -10 years to 10 years from IBD, inflammatory bowel disease diagnosis.

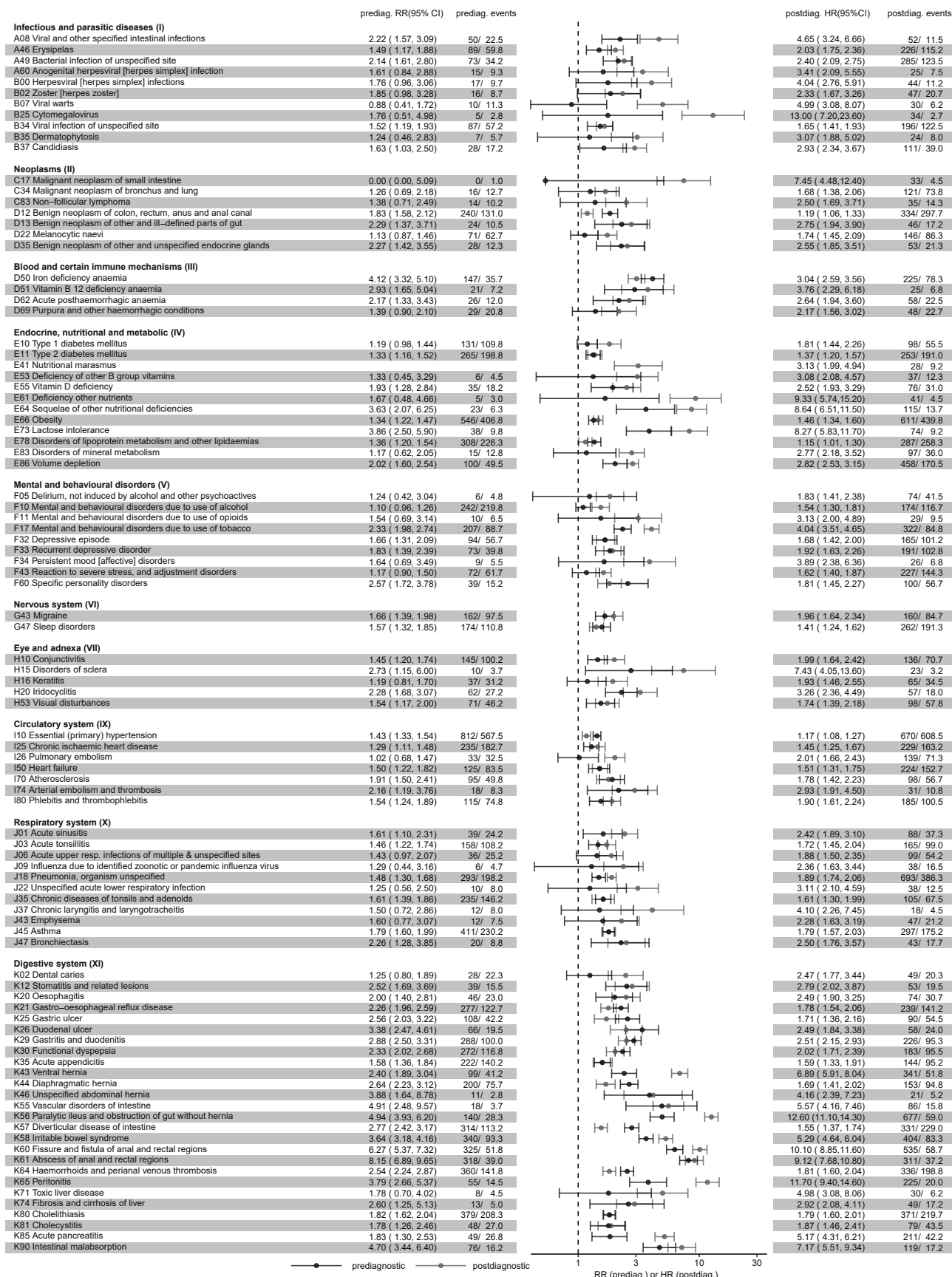


Figure 2: Crohn's disease associated diagnoses at the ICD-10 three-character level (Including: *Certain infectious and parasitic diseases (I), Neoplasms (II), Diseases of the blood and blood-forming organs and certain disorders involving the immune mechanism (III), Endocrine, nutritional and metabolic diseases (IV), Mental, Behavioural and Neurodevelopmental disorders (V), Diseases of the nervous system (VI), Diseases of the eye and adnexa (VII), Diseases of the ear and mastoid process (VIII), Diseases of the circulatory system (IX), Diseases of the respiratory system (X), Diseases of the digestive system (XI)*). Pre-diagnostic RR, relative risk and 95% CI, confidence intervals and post-diagnostic HR, hazard ratio and 95% CI estimates compared with age-, sex- and municipality-matched controls. Diagnoses meeting the prevalence threshold ( $\geq 0.2\%$ ) with disease-wide significance (Bonferroni correction:  $p < 7.90 \times 10^{-6}$ ) are included.

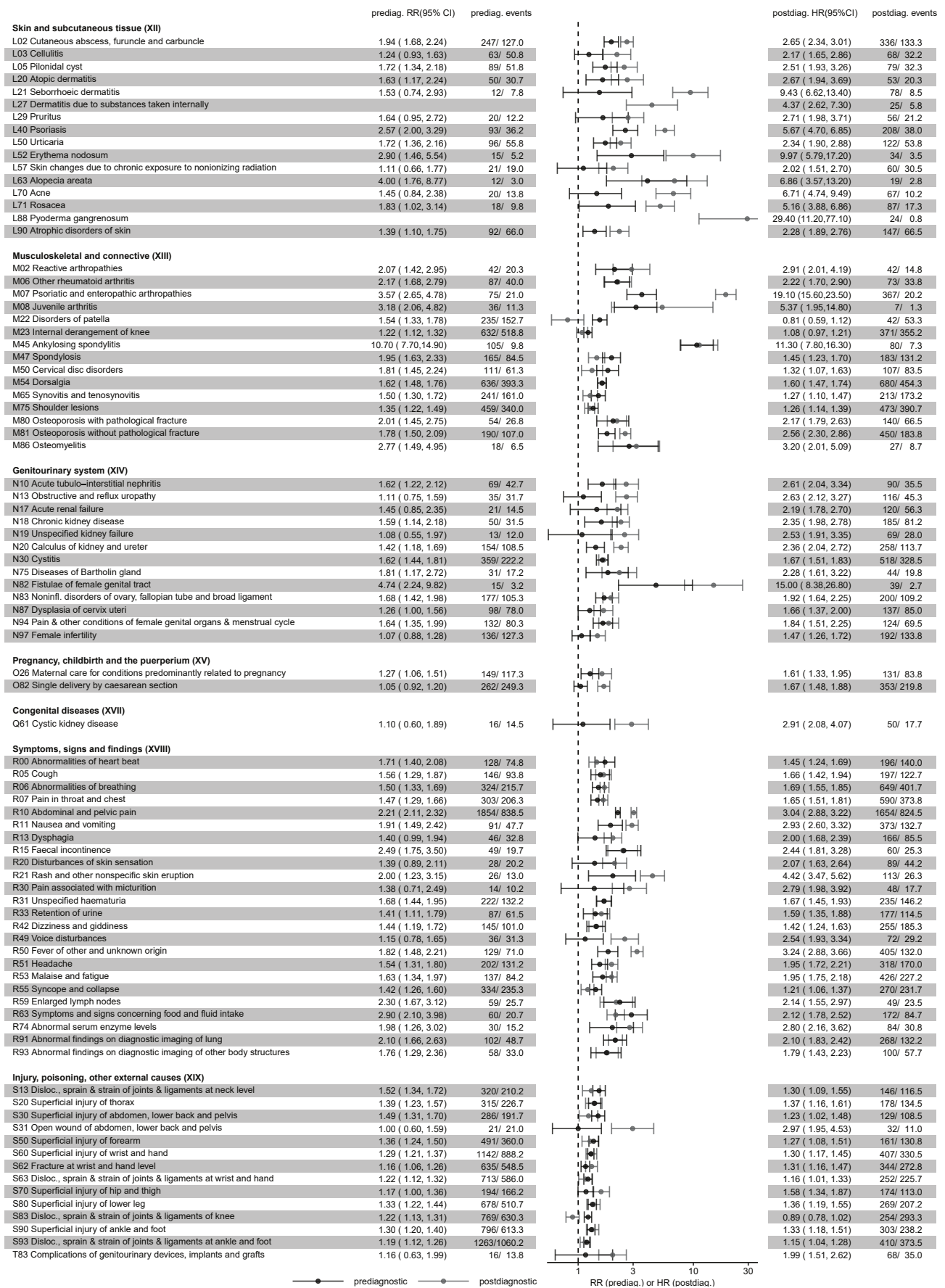


Figure 3: Crohn's disease associated diagnoses at the three-character ICD-10 level (Including: *Diseases of the skin and subcutaneous tissue (XII)*, *Diseases of the musculoskeletal system and connective tissue (XIII)*, *Diseases of the genitourinary system (XIV)*, *Pregnancy, childbirth and the puerperium (XV)*, *Congenital malformations, deformations and chromosomal abnormalities (XVII)*, *Symptoms, signs and abnormal clinical and laboratory findings, not elsewhere classified (XVIII)*, *Injury, poisoning and certain other consequences of external causes (XIX)*). Pre-diagnostic RR, relative risk and 95% CI, confidence intervals and post-diagnostic HR, hazard ratio and 95% CI estimates compared with age-, sex- and municipality-matched controls. Diagnoses meeting the prevalence threshold ( $\geq 0.2\%$ ) with disease-wide significance (Bonferroni correction:  $p < 7.90 \times 10^{-6}$ ) are included.

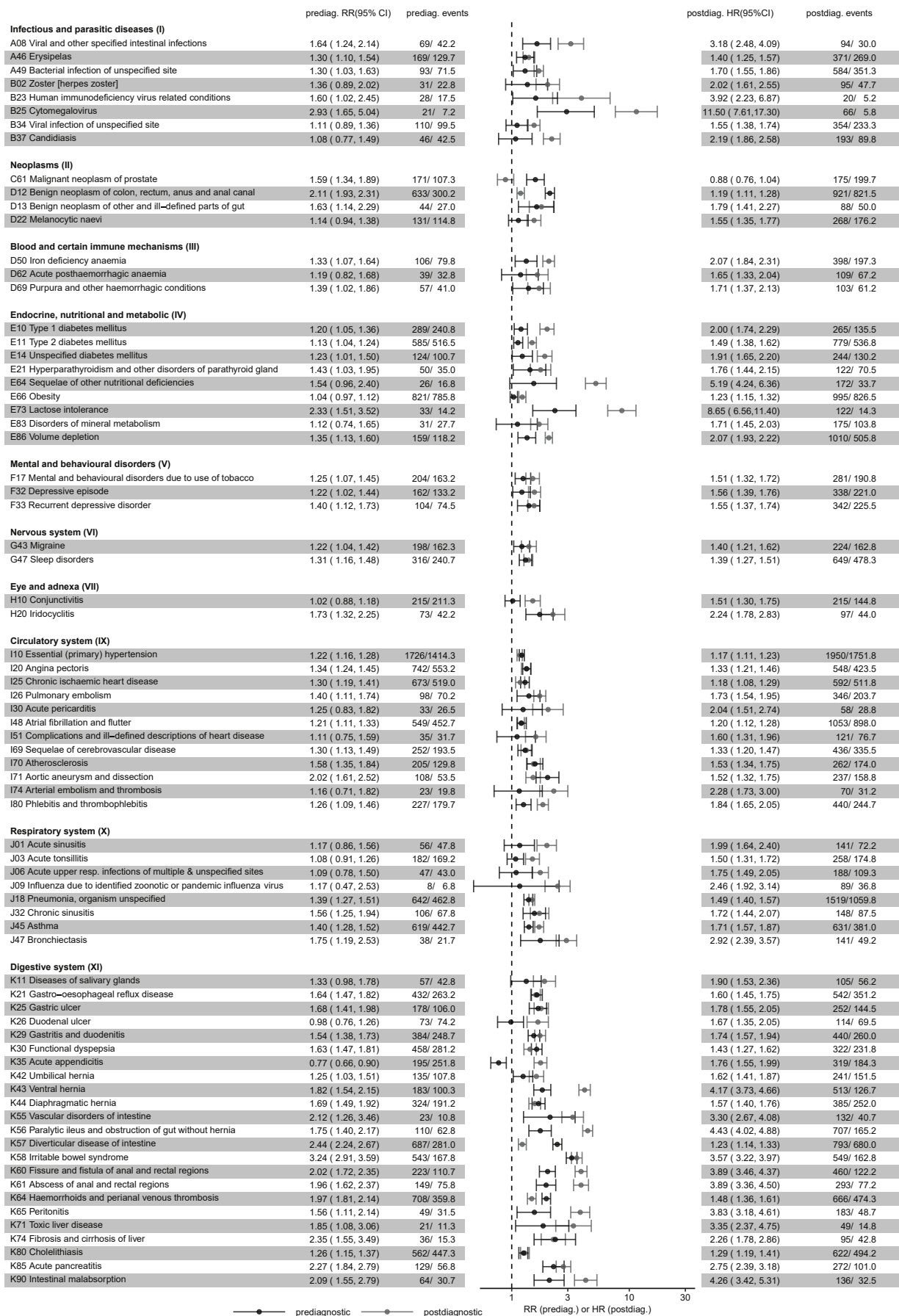


Figure 4: Ulcerative colitis associated diagnoses at the ICD-10 three-character level (Including: *Certain infectious and parasitic diseases (I), Neoplasms (II), Diseases of the blood and blood-forming organs and certain disorders involving the immune mechanism (III), Endocrine, nutritional and metabolic diseases (IV), Mental, Behavioural and Neurodevelopmental disorders (V), Diseases of the nervous system (VI), Diseases of the eye and adnexa (VII), Diseases of the ear and mastoid process (VIII), Diseases of the circulatory system (IX), Diseases of the respiratory system (X), Diseases of the digestive system (XI)*). Pre-diagnostic RR, relative risk and 95% CI, confidence intervals and post-diagnostic HR, hazard ratio and 95% CI estimates compared with age-, sex- and municipality-matched controls. Diagnoses meeting the prevalence threshold ( $\geq 0.2\%$ ) with disease-wide significance (Bonferroni correction:  $p < 7.90 \times 10^{-6}$ ) are included.

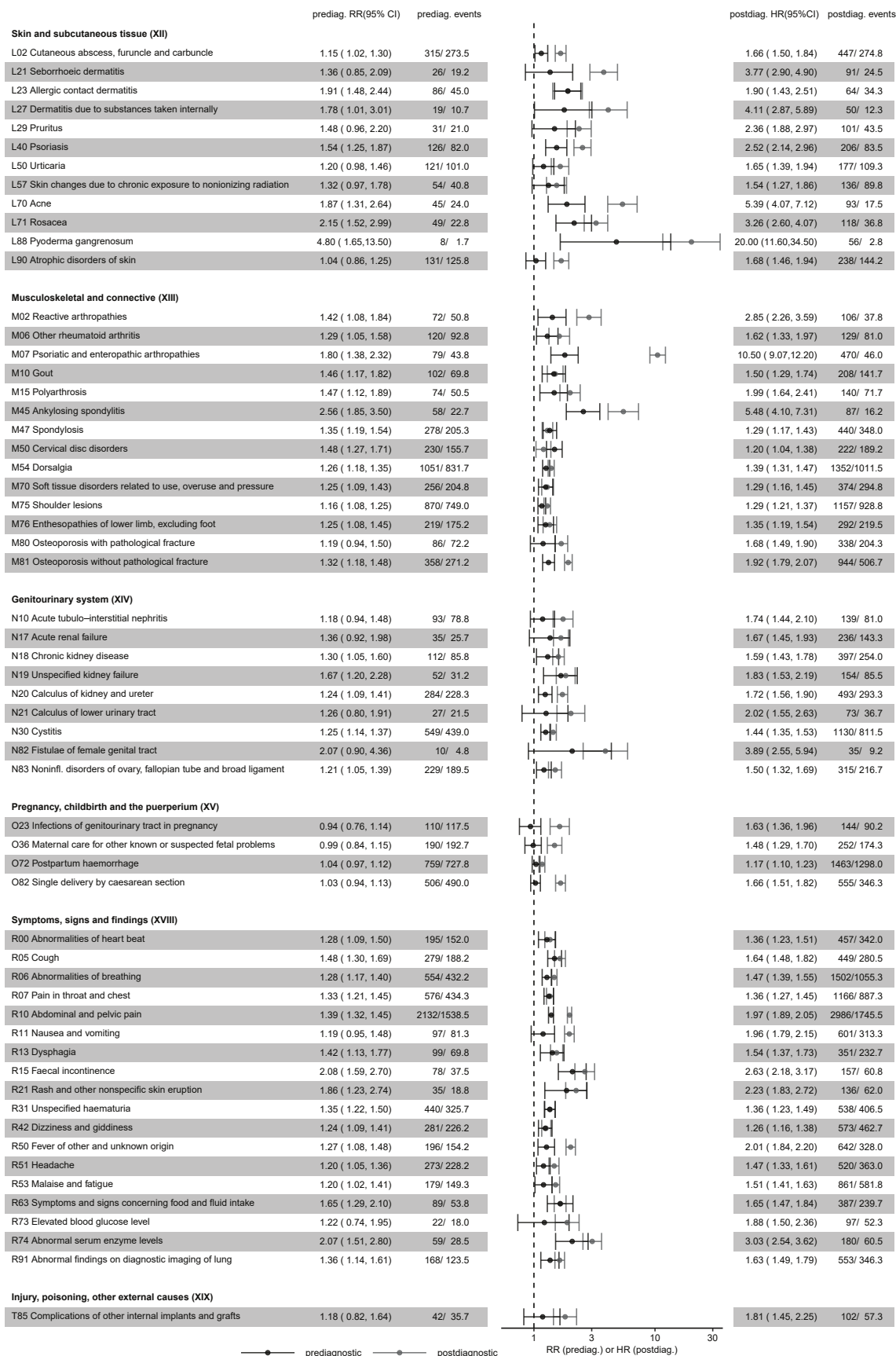


Figure 5: Ulcerative colitis associated diagnoses at the three-character ICD-10 level (Including: *Diseases of the skin and subcutaneous tissue (XII)*, *Diseases of the musculoskeletal system and connective tissue (XIII)*, *Diseases of the genitourinary system (XIV)*, *Pregnancy, childbirth and the puerperium (XV)*, *Congenital malformations, deformations and chromosomal abnormalities (XVII)*, *Symptoms, signs and abnormal clinical and laboratory findings, not elsewhere classified (XVIII)*, *Injury, poisoning and certain other consequences of external causes (XIX)*). Pre-diagnostic RR, relative risk and 95% CI, confidence intervals and post-diagnostic HR, hazard ratio and 95% CI estimates compared with age-, sex- and municipality-matched controls. Diagnoses meeting the prevalence threshold ( $\geq 0.2\%$ ) with disease-wide significance (Bonferroni correction:  $p < 7.90 \times 10^{-6}$ ) are included.

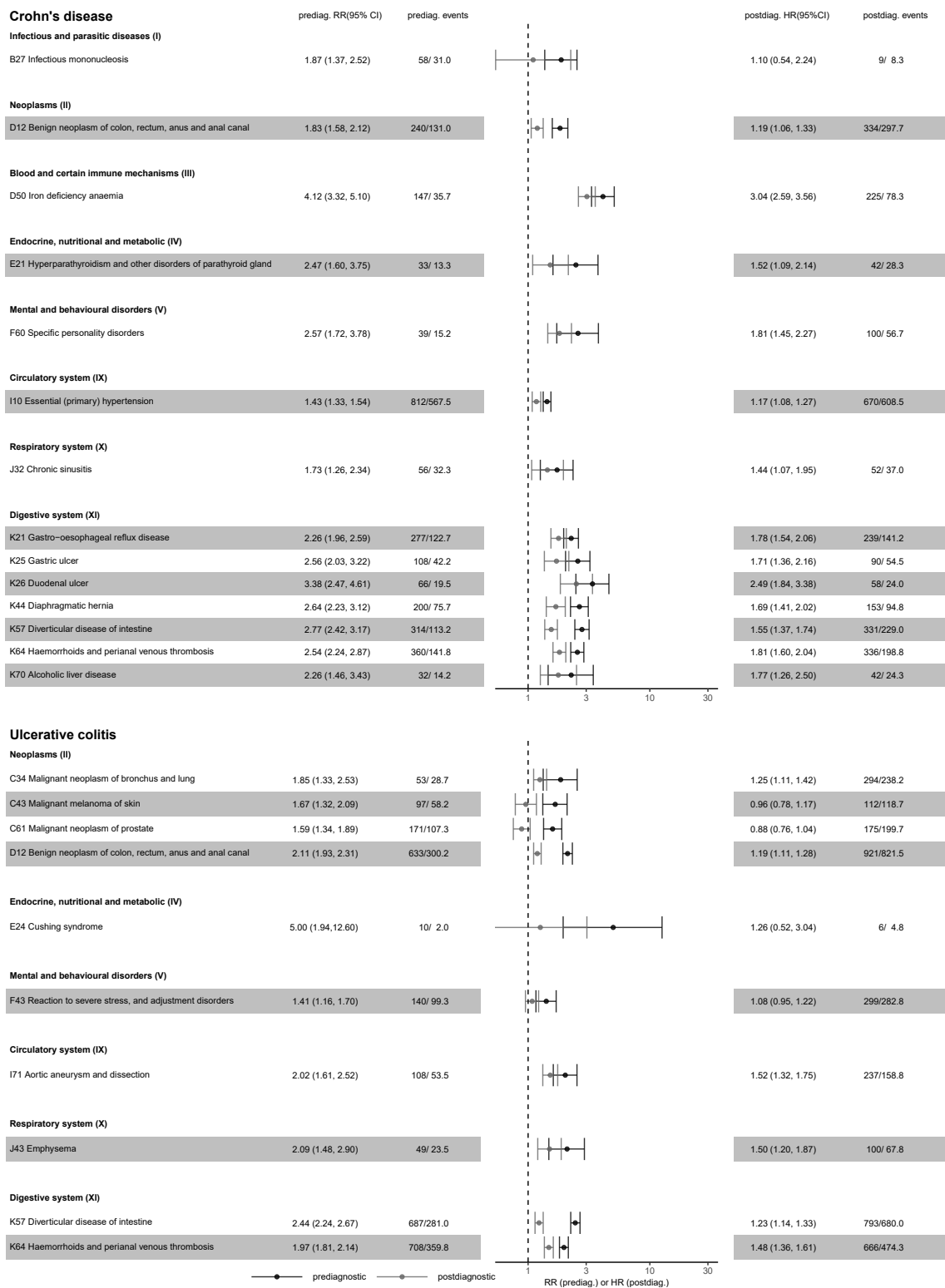


Figure 6: Diagnoses associated with CD, Crohn's disease and UC, ulcerative colitis before IBD, inflammatory bowel disease diagnosis. Pre-diagnostic RR, relative risk compared with post-diagnostic HR, hazard ratio of diagnoses of disease-wide significance for Crohn's disease and Ulcerative colitis. Highly statistically significant diagnoses ( $p < 0.001$ ), with pre-diagnostic effect estimates (RR) at least 1.2 of the post-diagnostic effect estimates (HR) are included.

## Supplementary materials



Table S1: Interactive table of effect sizes. See online supplementary materials.

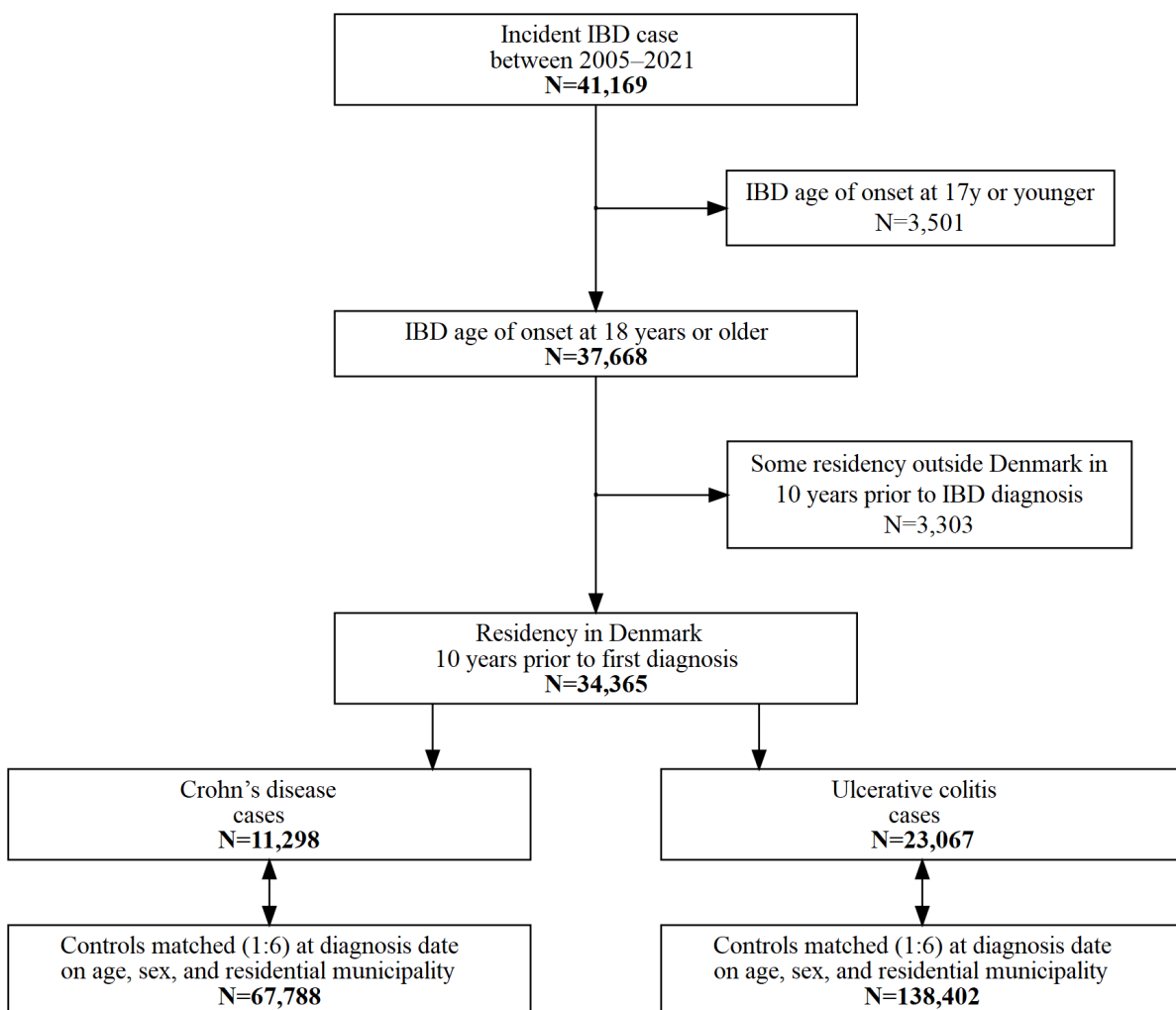


Figure S1: Flow diagram of study population.



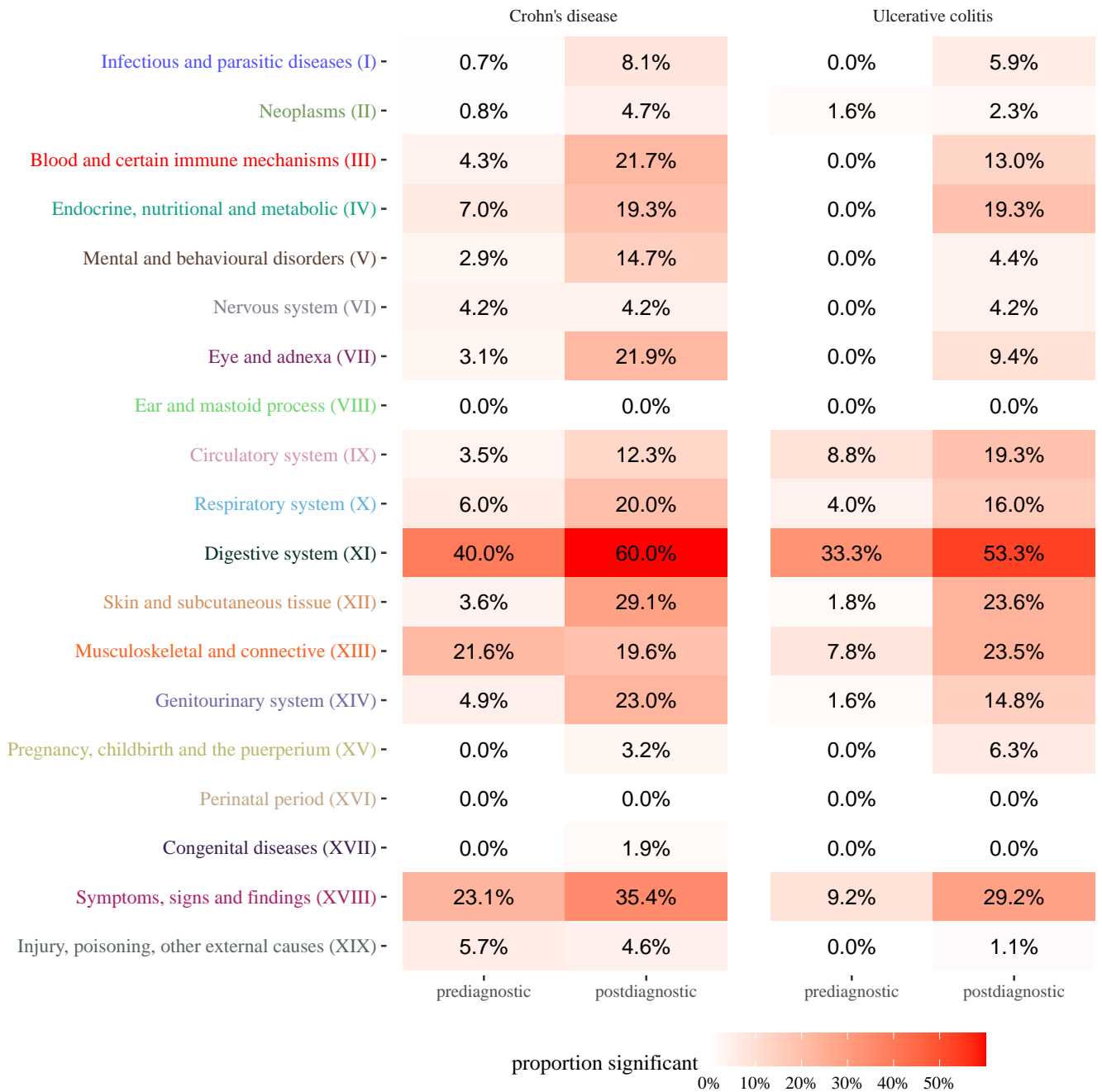


Figure S2: Proportion of significant associations in each ICD-10 Chapter. Significance threshold corrected for multiple testing.