

1 **Title:** GX-I7(rhIL-7-hyFc, efineptakin alfa), a long-acting IL-7, safely and effectively increased
2 peripheral CD8⁺ and CD4⁺ T cells and TILs in patients with solid tumors

3
4 **Authors and affiliations:** Gun Min Kim^{1,*}, Sojeong Kim^{2,3,*}, Myung Ah Lee⁴, Mi-Sun Byun⁵,
5 Donghoon Choi⁶, Se Hwan Yang⁶, Jung Won Woo⁵, Young Chul Sung⁵, Eui-Cheol Shin², Su-Hyung
6 Park^{2,#}, Tae Won Kim^{7,#} and Joohyuk Sohn^{1,#}

7
8 ¹Division of Medical Oncology, Department of Internal Medicine, Yonsei Cancer Center, Yonsei
9 University College of Medicine, Seoul, Korea

10 ²Graduate School of Medical Science and Engineering, Korea Advanced Institute of Science and
11 Technology, Daejeon, Korea

12 ³Division of Hematology, Department of Internal Medicine, Yonsei University College of Medicine,
13 Seoul, Republic of Korea.

14 ⁴Division of Medical Oncology, Seoul St. Mary's Hospital, The catholic University of Korea., Seoul,
15 Korea

16 ⁵Genexine, Inc., Seoul, Korea

17 ⁶NeoImmuneTech, Inc., Rockville, MD, USA

18 ⁷Department of Oncology, University of Ulsan College of Medicine, Asan Medical Center, Seoul,
19 Korea

20
21 * These authors contributed equally to this work.

22
23 **Running title:** Safety and tolerability of GX-I7 in solid tumor patients

24
25 **Keywords:** GX-I7, IL-7, hybrid Fc, lymphopenia, efineptakin alfa

26
27 **#Corresponding author:** Joohyuk Sohn, Tae Won Kim, and Su-Hyung Park contributed equally to
28 this work.

29
30 Joohyuk Sohn, MD

31 Department of Internal Medicine, Yonsei Cancer Center,

32 Yonsei University College of Medicine, Seoul, Korea

33 Phone: (82) 2228-8131

34 Fax number: (82) 2228-8131

35 Email address: ONCOSOHN@yuhs.ac

36 **NOTE:** This preprint reports new research that has not been certified by peer review and should not be used to guide clinical practice.

37 Tae Won Kim, MD
38 Department of Oncology, Asan Medical Center, University of Ulsan College of Medicine,
39 Seoul, Korea
40 Phone: (82)23010-3910 Fax number: (82) 24749027
41 Email address: twkimmd@amc.seoul.kr

42
43 Su-Hyung Park, PhD
44 Graduate School of Medical Science and Engineering,
45 Korea Advanced Institute of Science and Technology, Daejeon, Korea
46 Phone: (82) 42-350-4248
47 Fax number: (82) 42-350-4240;
48 Email address: park3@kaist.ac.kr

49
50 The authors declare no potential conflicts of interest.

51
52 **Translational Relevance Statement:**

53 In animal studies, GX-I7 showed promising results by increasing peripheral lymphocyte counts, tumor
54 infiltrating lymphocytes (TILs), and anti-tumor efficacy when administered either alone or in
55 combination with cyclophosphamide or immune checkpoint inhibitors, such as anti-PD-(L)1 or anti-
56 CTLA-4 antibodies. Based on the positive results from previous in vivo and phase 1 studies, the
57 current study was designed to evaluate the safety, tolerability, pharmacokinetics (PK), and
58 pharmacodynamics (PD) of GX-I7 in patients with locally advanced or metastatic solid tumors. These
59 findings support the use of GX-I7 as a safe and effective T cell-amplifying agent to correct T cell
60 deficiencies and improve the clinical outcomes of other anti-cancer agents. GX-I7 has the potential to
61 be a promising therapeutic option for cancer patients as it can create a favorable environment for
62 immune checkpoint inhibitors and other anti-cancer treatments to fight against cancer.

63
64
65
66
67
68
69
70
71
72

73 **ABSTRACT**

74 **Purpose:** GX-I7 (rhIL-7-hyFc, efineptakin alfa) is a hybrid Fc-fused long-acting recombinant human
75 interleukin-7 (IL-7) developed by Genexine, Inc. with the aim of correcting T-cell deficiency, thereby
76 strengthening the immune response to fight against cancer. This Phase 1b trial (NCT03478995) was
77 designed to assess the safety, tolerability, pharmacokinetics (PK), and pharmacodynamics (PD) of GX-
78 I7 in patients with locally advanced or metastatic solid tumors.

79 **Methods:** This study consisted of two phases: dose-escalation and expansion. Eight dose groups were
80 administered GX-I7 intramuscularly at doses ranging from 60 to 1700 µg/kg every three or six weeks.

81 **Results:** All regimens were safe and well tolerated, with the most frequently reported adverse drug
82 reactions being injection site reactions, which were manageable with or without pharmacological
83 intervention. GX-I7 demonstrated dose-dependent increases in the maximum serum concentration
84 (C_{max}) and area under the curve up to the last measurable concentration (AUC_{last}). In addition, a dose-
85 dependent increase in circulating CD8⁺/CD4⁺ T cells was observed. In five patients who consented for
86 biopsy, a statistically significant increase in tumor-infiltrating CD8⁺/CD4⁺ T cell lymphocytes after
87 GX-I7 treatment was observed.

88 **Conclusion:** These findings support the use of GX-I7 as a safe and effective T cell-amplifying agent
89 capable of correcting T cell deficiencies. GX-I7 is expected to result in better clinical outcomes when
90 used in combination with other anti-cancer agents by creating a better environment for immune
91 checkpoint inhibitors and anti-cancer treatments to fight cancer.

92

93 **INTRODUCTION**

94 Surgery and chemotherapy have long been the two major modalities for cancer treatment, while
95 chemotherapy is the sole option for patients with non-resectable advanced or metastatic solid tumors.
96 However, with the emergence of immune therapies, such as immune checkpoint inhibitors (ICI), T cells
97 have become a central focus in engaging the immune system in battle against cancer(1). Previous
98 studies have revealed that lymphopenia (2), including anti-cancer treatment-induced lymphopenia, is
99 associated with inferior survival outcomes (3-5). Furthermore, a low response to ICI therapy has been
100 observed in patients with low lymphocyte count (6). As T cells play a central role in the immune
101 response to cancer, correcting lymphopenia and increasing tumor infiltrating lymphocytes (TILs) are
102 crucial in enhancing the immune response to cancer, thereby improving treatment outcomes (7, 8).

103 GX-I7 (rhIL-7-hyFc, efineptakin alfa) is a hybrid Fc-fused long-acting recombinant human interleukin-
104 7 (IL-7) developed by Genexine, Inc., with the aim of correcting T cell deficiency, thereby
105 strengthening the immune response to fight cancer and creating a favorable environment for anti-cancer
106 treatment or ICIs. IL-7 is a homeostatic cytokine that plays an important role in the development,
107 maintenance, proliferation, and regeneration of T-cells (9, 10). Despite the clinical benefits of IL-7 in
108 various therapeutic areas, including cancer, the development of IL-7 as a commercial drug is limited

109 by its short half-life (11-19).
110 GX-I7 effectively lengthens the IL-7 half-life by six times compared to that of rhIL-7 via neonatal Fc
111 receptor (FcRn)-mediated recycling (20, 21). In vivo, GX-I7 led to an increase in peripheral
112 lymphocyte counts and TILs when administered either in monotherapy or combination therapy with
113 cyclophosphamide (CPA) or ICI (e.g., anti-PD-(L)1 or anti-CTLA-4 antibody), and showed anti-tumor
114 efficacy in murine syngeneic tumor models (22).
115 With in vivo and clinical Phase 1 study results supporting further development of GX-I7 to correct T
116 cell deficiencies, this study was designed to assess safety, tolerability, pharmacokinetics (PK) and
117 pharmacodynamics (PD) of GX-I7 in patients with locally advanced or metastatic solid tumors.

118 119 **RESEARCH DESIGN AND METHODS**

120 *Ethics statement*

121 This study was approved by the institutional review board of each research site (Yonsei University
122 Health System Severance Hospital, Seoul Asan Medical Center and Catholic Medical Center) and
123 conducted in full accordance with the Declaration of Helsinki and Korean Good Clinical Practice
124 (www.clinicaltrials.gov registration number: NCT03478995). Written informed consent was obtained
125 from all patients prior to conducting any study-related procedures.

126 *Study design*

127 This was a Phase 1b, open-label, dose-escalation study to evaluate the safety, tolerability, PK, and PD
128 of GX-I7 in patients with locally advanced or metastatic solid tumors. The primary objectives were to
129 determine the recommended phase 2 dose (RP2D) and maximum tolerated dose (MTD) and to
130 characterize dose-limiting toxicities (DLTs). Classic 3+3 design was adopted for sequential dose
131 escalation, and the DLT evaluation period was 3 weeks.

132 *Patients*

133 Eligible patients were aged ≥ 19 years and had an Eastern Cooperative Oncology Group (ECOG)
134 performance status of 0 or 1, an estimated life expectancy of > 12 weeks, and appropriate hematologic,
135 hepatic, and end-organ function values. Patients had histological documentation of locally advanced,
136 recurrent, or metastatic incurable solid tumors that had failed to know or available therapy, or for whom
137 standard therapy was considered inappropriate. Exclusion criteria included any anti-tumor therapy
138 within three weeks and previous use of an ICI or immunomodulatory monoclonal antibody (mAb)-
139 derived drug within 12 weeks prior to the initiation of study treatment.

140 *Treatment*

141 Patients were enrolled to receive GX-I7 intramuscularly at three- or six-week intervals. The dose was
142 escalated, and a total of eight dose levels were tested, each with at least three patients, at doses of 60,
143 120, 240, 480, 720, 960, 1200, and 1700 $\mu\text{g}/\text{kg}$ at three-week intervals. Out of the eight tested dose
144 levels, two (720 and 1200 $\mu\text{g}/\text{kg}$) were selected as potential RP2D for expansion, and up to six

145 additional patients were enrolled at these doses for the expansion phase. At a dose expansion of 1200
146 $\mu\text{g}/\text{kg}$, the efficacy of GX-I7 was evaluated at both three- and six-week intervals. For biopsy-consented
147 patients, tumor tissue was collected both pre and three–five weeks after post-GX-I7 administration to
148 test changes in TILs.

149 ***Safety, tolerability, and immunogenicity assessments***

150 The safety and tolerability of GX-I7 were assessed throughout the study by adverse event (AE)
151 monitoring using the NCI Common Terminology Criteria for Adverse Events (CTCAE) (version 4.03).
152 Undesirable symptoms, clinically significant abnormalities in clinical laboratory tests, vital signs,
153 physical examination, or DLT, as well as the emergence of antibodies (anti-drug antibody [ADA] and
154 neutralizing antibody [nAb]) were included. Treatment-emergent adverse events (TEAEs) were
155 analyzed. The presence of antibodies against GX-I7 was determined using a validated enzyme-linked
156 immunosorbent assay (ELISA), as described in the GX-I7 Phase 1 First-in-human (FIH) study (22).
157 All patients who tested positive for ADA were analyzed for its neutralizing property (nAb).

158 ***Efficacy***

159 Solid tumor assessments were performed by CT scan or MRI every 2 cycles up to cycle 8, and every
160 four cycles or as clinically indicated thereafter. Tumor response and progression were evaluated
161 according to the Response Evaluation Criteria in Solid Tumors (RECIST) (version 1.1).

162 ***PK analysis***

163 Blood samples for PK analysis were collected during Cycle 1 while the patients were hospitalized at
164 various time points, including pre-dose and 0.5, 6, 12, 24, 48, and 72hours post-dose. Additional blood
165 collections were performed on Cycle 1 Day 8 (C1D8), C1D15, and C2D1 for patients administered
166 GX-I7 every 3 weeks and C1D8, C1D15, C1D22, and C2D1 for patients administered GX-I7 every 6
167 weeks. Serum IL-7 concentrations were measured using the Quantikine HS ELISA Human IL-7
168 immunoassay kit (R&D Systems, Minneapolis, MN), and the detailed analysis method was based on a
169 previously reported phase 1 study (22). The PK parameters were derived by a non-compartmental
170 method using Phoenix WinNonlin software (version 7.0, Certara, St. Louis, MO, USA). In addition,
171 the correlation between the administered dose and AUC_{last} and C_{max} was analyzed.

172 ***PD analysis***

173 The PD variables were changes in absolute lymphocyte counts (ALC) and subsets of immune cells (T,
174 B, and NK cells) in the blood assessed on a weekly basis at pre-dose, C1D1, and C2D1. Thereafter, it
175 was performed on day 1 (pre-dose) of every cycle and at the treatment discontinuation (DC) visit.
176 Absolute T, B, and NK cell counts were calculated using ALCs multiplied by the proportions of CD3^+ ,
177 CD19^+ and CD56^+ cells against total lymphocytes, and absolute CD4^+ and CD8^+ T cells were calculated
178 using ALCs multiplied by the proportions of CD4^+ and CD8^+ T cells against total CD3^+ T cells,
179 respectively. Ki67^+ and CD127^+ T cell counts were calculated by multiplying the proportion of Ki67^+ -
180 or CD127^+ -expressing cells by total CD4^+ and CD8^+ T cells, respectively. All analyses were performed

181 using multicolor flow cytometry. The following anti-human fluorochrome-conjugated antibodies were
182 used: anti-CD3- Alexa Fluor 700 (UCHT1), anti-IL-7R α -BV421 (A019D5), anti-CD4-PE-Cy5
183 (OKT4), anti-CD45RA-APC-Cy7 (HI100), anti-CCR7-BV785 (G043H7), anti-CD25-BV650 (BD96;
184 BioLegend), anti-CD19-BV711 (SJ25C1), anti-CD14-BV711 (M ϕ P9), anti-CD8-Alexa Fluor 700
185 (RPA-T8; all from BD Biosciences), and anti-CD56-APC (CMSSB; Thermo Fisher). Simultaneously,
186 dead cells were stained using a Live/Dead Fixable Red Dead Cell Stain Kit (Thermo Fisher Scientific).
187 The cells were fixed and permeabilized using a Foxp3 Staining Buffer Set (Thermo Fisher), and
188 intracellular molecules were stained (4 °C, 20 min) using anti-Ki-67-PE-Cy7 (20Raj1) and anti-Foxp3-
189 PE (236A/E7; Thermo Fisher) (Supplementary material). To calculate the maximum ALC and the area
190 under the ALC-time curve until the last sampling time, the Phoenix WinNonlin software was used after
191 correcting the baseline values. The change in TILs at pre and post GX-I7 administration was evaluated
192 in patients who consented to biopsy using Multiplex IHC analysis (Supplementary Material).

193 ***Statistical analysis***

194 All demographic characteristics and PK and PD parameters were summarized using descriptive
195 statistics. Continuous variables were summarized using the number of observations, mean, standard
196 deviation, coefficient of variation, median, and range as appropriate. Categorical values were
197 summarized using the number of observations and percentages as appropriate. Data were summarized
198 for the dose cohort, expansion cohort, and total patient population. All assessments before the first
199 dose of the study drug were considered as baseline. If multiple baseline assessments were performed,
200 the most recent assessment was used for statistical analysis. A parametric or nonparametric method
201 was used based on the results of the normality test. All analyses were 2-sided, with a significance
202 level of 5%, and a 95% confidence interval (CI) was calculated. All statistical analyses were
203 performed using SAS® Version 9.4 (SAS Institute, Cary, NC, USA).

204

205 **RESULTS**

206 ***Patients disposition and baseline characteristics***

207 Out of 42 patients screened across three hospitals, 35 patients were enrolled in the study and received
208 at least one dose of GX-I7, with seven patients being excluded because they either did not satisfy the
209 eligibility criteria (five patients) or withdrew their consent (two patients). In the dose escalation phase,
210 according to the classical 3 + 3 design, 3 patients were assigned to each group. In the 1700 μ g/kg group,
211 only two patients were enrolled because of the occurrence of one DLT. The group receiving 720 μ g/kg,
212 which showed the highest increase in ALC fold change, and 1200 μ g/kg as the maximum tolerated
213 dose (MTD) was selected as the potential recommended phase 2 dose (RP2D). Three patients receiving
214 720 μ g/kg group every 3 weeks (q3w), three patients receiving 1200 μ g/kg q3w, and six patients
215 receiving 1200 μ g/kg q6w were enrolled in the dose expansion (Figure 1). A dose expansion group
216 receiving GX-I7 q6w was included after determining that since the ALC remained elevated at the time

217 of the q3w repeated dosing, it was not expected that frequent administration of GX-I7 would bring
218 additional benefits. The median age (range) was 58 (40-75) years; 54% were male, and all were Asian.
219 Baseline ECOG performance status was 0 in 49% of patients, and the most common site of the primary
220 tumor was colon/rectal in 66% of patients, followed by the breast in 11%, and the ovary in 9% of
221 patients. At the time of study enrollment, metastatic lesions were commonly found in the lungs (32
222 patients), followed by the liver (24 patients), and lymph nodes (14 patients). All subjects enrolled in
223 the study were at stage IV with a third or more lines of treatment. In previous therapies, the majority
224 of subjects had been treated with antimetabolite, targeted, and platinum-based agents. The subjects
225 discontinued their previous treatment primarily because of disease progression (PD). The demographic
226 and baseline characteristics are summarized in Table 1.

227 ***Safety***

228 The safety analysis set included patients who received at least one dose of GX-I7 during the clinical
229 trial. Safety data from all 35 enrolled patients were used to assess the safety profiles. GX-I7
230 intramuscular administration was safe and well tolerated across doses ranging from 60 to 1200 µg/kg,
231 except for the 1700 µg/kg dose. A total of 225 TEAEs occurred in all the 35 patients (100%). Among
232 these, 116 adverse drug reactions (ADRs) occurred in 28 of 35 patients (80.0%), with the majority rated
233 as Grade 1 and 2 (68 and 43 cases, respectively). The most frequently reported ADR was injection site
234 reaction (61 cases in 25 patients (71.4%)), followed by pyrexia with 21 cases in 12 patients (34.3%),
235 then rash with 8 cases in 7 patients (20.0%). All 61 reported injection site reactions were classified as
236 grade 1 or 2, and most were spontaneously resolved, with 32 cases being resolved with medications.
237 No cases of grade 3 or 4 injection site reactions were observed.

238 In the 720, 1200, and 1700 µg/kg groups, grade 3 or higher ADRs were reported: fatigue (720 and 1200
239 µg/kg), hypersensitivity, and anaphylactic reactions (1700 µg/kg). Due to grade 3 fatigue and
240 anaphylactic reaction, two patients discontinued GX-I7 permanently. No GX-I7 related death have been
241 reported.

242 The dose-limiting toxicity of GX-I7 was assessed in 35 patients for all dose groups, and at 1700 µg/kg,
243 one out of two patients experienced DLT, which was a case of Grade 3 or higher hypersensitivity.
244 Therefore, the MTD was determined to be 1200 µg/kg, and this dose administered every 6 weeks was
245 selected as RP2D. Regardless of the administration interval, the incidence of ADA increased on day
246 21, and no ADA-related AE were observed. A summary of the safety profile is presented in Table 2.

247 ***Tumor response***

248 Of the 35 patients with solid tumors who underwent dose escalation and expansion, 6 patients (18.75%)
249 showed disease control as stable disease (SD). Among these six patients, the doses received were 60,
250 120, 240, 720, and 1200 µg/kg, as shown in Supplementary Table S1. The median PFS was 5.69 weeks
251 (95% CI; 5.13, 5.98).

252 ***Pharmacokinetics (PK)***

253 This study conducted a PK analysis of 35 patients from all cohorts. As shown in Figure 2A, serum
254 concentration was measured at various time points after intramuscular administration of GX-I7,
255 ranging from 60 to 1700 $\mu\text{g}/\text{kg}$. The PK profile of GX-I7 showed a dose-dependent response. The peak
256 serum concentration (C_{max}) was reached at 11–47.5 hours post dosing, with peak serum concentration
257 ranging from 2.11 to 76.5 ng/mL, and a half-life lasting from 60.8 to 139.7 hours (Supplementary Table
258 S2). AUC_{last} and C_{max} increased linearly with dose ($R^2 = 0.9174$ and 0.9657 , respectively; Figure 2B
259 and 2C).

260 **Pharmacodynamics (PD)**

261 PD analyses were performed for changes in the absolute lymphocyte count (ALC) and lymphocyte
262 subsets. The ALC, CD4^+ and CD8^+ T cell counts showed a statistically significant increase at C1D21
263 compared to the baseline at all dose levels: 60-120, 240-480, 720-960 and 1200-1700 $\mu\text{g}/\text{kg}$ groups
264 ($*p < 0.05$, $**p < 0.01$, $***p < 0.001$, Figure 3A) in a dose-dependent manner. In contrast, GX-I7
265 administration did not cause significant changes in B or NK cells (Figure 3B). These results are
266 consistent with previously reported findings (23). Increases in ALC were observed in both lymphopenic
267 and non-lymphopenic patients ($*p < 0.05$, $****p < 0.0001$, respectively; Figure 3C).

268 To evaluate the potential mechanism by which GX-I7 increases lymphocyte counts, $\text{Ki67}^+\text{CD4}^+$ T cells
269 and $\text{Ki67}^+\text{CD8}^+$ T cells were measured. Their percentage peaked on day 7 after treatment and showed
270 a dose-dependent and statistically significant increase in all the groups (Figure 3D). IL-7 binds to IL-7
271 receptor α (CD127) expressed on the surface of T cells, and CD127 is downregulated or internalized
272 when T cells are over-activated by IL-7 (transcytosis). Indeed, there was a significant but transient
273 decrease in $\text{CD127}^+\text{CD4}^+$ and $\text{CD127}^+\text{CD8}^+$ T cells on day 7 compared with day 0 in each group.
274 However, these decreases were restored at three weeks post dose (Figure 3E). Previous clinical studies
275 of rhIL-7 in HIV-infected or refractory cancer patients revealed that the relative frequency of regulatory
276 T cells (T_{reg}) expressing low-level CD127 was reduced due to IL-7-induced expansion of conventional
277 T-cells (24, 25). Consistent with previous studies, the ratio of CD4^+ and CD8^+ T cells to regulatory T
278 cells on day 21 after GX-I7 administration compared to baseline showed an increasing trend, and the
279 increase was statistically significant in the 240-480 and 1200-1700 $\mu\text{g}/\text{kg}$ groups (Figure 3F). Figure
280 3G shows the average fold-change of CD4^+ and CD8^+ T cell subtypes at day 21 after GX-I7
281 administration compared to the baseline. While all CD4^+ and CD8^+ T cell subsets, including naïve,
282 central memory (CM), and effector memory (EM) T cells, showed significantly increased numbers
283 after GX-I7 administration, notable increases in the number were observed for naïve CD8^+ and CD4^+
284 T cells.

285 Pre and post-treatment tumor biopsies were collected from five patients who consented to the
286 intervention to evaluate changes in the number of tumor-infiltrating lymphocytes (TILs). Multiplex
287 IHC was used in this study, and all biopsies were collected in the third week after the first injection or
288 the second week after the second injection of GX-I7. A statistically significant increase in $\text{CD8}^+/\text{CD4}^+$

289 TILs was observed after GX-I7 treatment (720 $\mu\text{g}/\text{kg}$ group, 1 patient; 1200 $\mu\text{g}/\text{kg}$ group; four patients)
290 (Figure 4A). Figure 4B shows a representative image of tumor tissue from a patient treated at 1200
291 $\mu\text{g}/\text{kg}$, demonstrating increased CD4⁺ and CD8⁺ T cell infiltration at week 3 compared to baseline.

292

293 **DISCUSSION**

294 This is the first phase 1 study to evaluate the safety, tolerability, pharmacokinetics (PK), and
295 pharmacodynamics (PD) of GX-I7 in patients with locally advanced or metastatic incurable solid
296 tumors. GX-I7 was shown to be safe and well tolerated in a wide range of doses, ranging from 60 to
297 1200 $\mu\text{g}/\text{kg}$, at 3- or 6-week intervals. Tolerability and safety were confirmed in GX-I7 single
298 subcutaneous and intramuscular dose-escalation tests in healthy subjects (23). This clinical trial was
299 conducted to confirm the safety and tolerability of GX-I7 in patients with locally advanced, recurrent,
300 or metastatic incurable solid tumors. The most common adverse event and adverse drug reactions in
301 all dose groups were injection site reactions, which were also observed following the administration of
302 other cytokine products (26). There were no adverse events, such as a serious injection site reaction,
303 which would result in permanent discontinuation of GX-I7 treatment. MTD and RP2D were confirmed
304 to be 1200 $\mu\text{g}/\text{kg}$ based on the dose-limiting toxicity in each GX-I7 dose group. The DLT that occurred
305 was one subject with grade 3 or higher hypersensitivity in the 1700 $\mu\text{g}/\text{kg}$ group. Since the safety and
306 tolerability of GX-I7 up to 1200 $\mu\text{g}/\text{kg}$ have been established in patients with chemorefractory solid
307 tumors, it is expected that it can be safely administered in combination with other anticancer drugs. For
308 efficacy analysis, anti-tumor activity was assessed in 32 patients who received at least one dose of GX-
309 I7 and completed one cycle of treatment with measurable disease. Six patients (18.75%) showed stable
310 disease (SD), and the median progression-free survival (mPFS) was 5.69 weeks (95% CI:5.13 - 5.98
311 weeks), with similar mPFS between groups. GX-I7 is a safe and effective T-cell amplifier. Although
312 the primary objective of the study was safety and the number of patients enrolled was low, GX-I7
313 monotherapy showed a modest clinical benefit, with six patients having stable disease, indicating the
314 need for further studies, in monotherapy or in combination with other immunotherapies, to establish its
315 clinical efficacy in larger trials.

316 The PK profile provided evidence that GX-I7 is a long-acting IL-7 with a dose-dependent increase in
317 systemic exposure, as indicated by C_{max} and AUC_{last} . PD analyses demonstrated that GX-I7 is capable
318 of increasing the absolute lymphocyte counts (ALC), CD4⁺ and CD8⁺ T cells in a dose-dependent
319 manner but does not affect B cell counts. The increase in ALC, as assessed by ΔE_{max} and ΔAUEC , was
320 positively correlated with systemic exposure to GX-I7, as indicated by C_{max} and AUC_{last}
321 (Supplementary Figure S1). In five available paired biopsies, GX-I7 also showed the ability to increase
322 the number of tumor-infiltrating lymphocytes (TILs) of the CD4 and CD8 subtypes. ADA emergence
323 was observed regardless of the dose and dosing interval, but it did not have an impact on the safety of
324 GX-I7. The final RP2D was determined to be 1200 $\mu\text{g}/\text{kg}$ based on the maximum observed change in

325 ALC, used as a pharmacodynamic marker, within a dose range that demonstrated safety and tolerability.
326 The increase in Ki67 expression and downregulation of CD127 provided evidence that the increase in
327 ALC and T cells is due to the direct mechanism of action of GX-I7. Administration of GX-I7 resulted
328 in an improvement in the CD4⁺ T cell/T_{reg} and CD8⁺ T cell/T_{reg} ratios, generating a favorable
329 environment for enhanced immune activity.

330 In this study, most patients received at least two or more doses of GX-I7 at 3-week intervals. However,
331 starting from the second repeated dosing, there was no observed increase in proliferation markers such
332 as Ki67 in T cells and ALC (Supplementary Figure S2A). Based on these results, GX-I7 was
333 administered at 6-week intervals at a dose of 1200 µg/kg in the expansion phase. As shown in
334 Supplementary Figure S2B, the levels of Ki67⁺CD4⁺ and Ki67⁺CD8⁺ T cells, as well as the ALC level
335 (although data from only one patient was available), increased in the blood following repeated dosing
336 of GX-I7 at 6-week intervals. It was not possible to obtain long-term follow-up results of repeated
337 dosing, as most of the patients participating in this clinical trial had late-stage cancer with very short
338 life expectancies. For this reason, an animal study was conducted as a supportive measure in normal
339 cynomolgus monkeys, and it showed that when the monkeys were repeatedly administered GX-I7 at a
340 dose of 3 mg/kg with intervals of 6, 9, and 12-weeks, the proliferation markers and ALC showed a
341 tendency to increase when administered at intervals of 6-week or longer (Supplementary figure S3).
342 Therefore, the dosing interval can be considered an important factor that may affect the PD profile of
343 GX-I7. Subsequent studies with GX-I7 administered GX-I7 with dosing intervals of 6 weeks or longer.
344 ADA occurs in more than 90% of patients after receiving a dose of GX-I7, which is consistent with
345 previous findings in healthy adults. In Phase 1 clinical trials in healthy volunteers, ADA was observed
346 in most patients (75-100%) approximately 10 days after GX-I7 administration, but most of these
347 antibodies disappeared within 330 days of follow-up.

348 In the present study, repeated administration of GX-I7 at 6-week intervals demonstrated an increase in
349 proliferation markers, despite the presence of ADA. Similarly, in the monkey study, repeated
350 administration of GX-I7 for 6-week or longer resulted in increased expression of proliferation markers,
351 even in the presence of ADA (Supplementary Figure S3, Supplementary Table S3). These results
352 indicate that ADA production does not affect the ability of GX-I7 to increase ALC; however, further
353 studies involving a larger number of patients with longer treatment durations are warranted to confirm
354 these findings. The main pharmacodynamic response of GX-I7 in biological systems is an increase in
355 ALC. However, it is still under investigation whether this GX-I7-related boost in ALC directly leads to
356 increased TIL and mediates clinical efficacy. In the present study, as part of this investigation, multiplex
357 IHC analysis was performed on a small number of patients whose tumors were biopsied, and an
358 increase in CD4⁺ and CD8⁺ T cells was observed within the tumor tissues at 3 or 5 weeks after GX-I7
359 administration. Thus, GX-I7 as a T-cell amplifier provides a unique opportunity for immuno-oncology
360 combination strategies by reconstituting persistent T-cells.

361 These findings support the use of GX-I7 as a safe and effective T cell-amplifying agent for correcting
362 T cell deficiency. Studies are ongoing to evaluate the clinical efficacy of GX-I7 when used in
363 combination with other anti-cancer agents. Novel combinations with GX-I7 have the potential to
364 improve the tumor microenvironment and enhance the efficacy of ICI and other anti-cancer treatments
365 to fight cancer.

367 **ACKNOWLEDGMENTS**

368 This work was supported by Bio-Teller, who provided scientific advice for this clinical research.

370 **REFERENCE**

- 371 1. Waldman AD, Fritz JM, Lenardo MJ. A guide to cancer immunotherapy: from T cell basic
372 science to clinical practice. *Nat Rev Immunol*. Nature Publishing Group; 2020;20:651–68.
- 373 2. Ménétrier-Caux C, Ray-Coquard I, Blay J-Y, Caux C. Lymphopenia in Cancer Patients and its
374 Effects on Response to Immunotherapy: an opportunity for combination with Cytokines?
375 *Journal for ImmunoTherapy of Cancer*. 2019;7:85.
- 376 3. Venkatesulu BP, Mallick S, Lin SH, Krishnan S. A systematic review of the influence of
377 radiation-induced lymphopenia on survival outcomes in solid tumors. *Crit Rev Oncol Hematol*.
378 2018;123:42–51.
- 379 4. Grossman SA, Ellsworth S, Campian J, Wild AT, Herman JM, Laheru D, et al. Survival in
380 Patients With Severe Lymphopenia Following Treatment With Radiation and Chemotherapy for
381 Newly Diagnosed Solid Tumors. *J Natl Compr Canc Netw*. 2015;13:1225–31.
- 382 5. Kim CG, Kim MH, Kim JH, Kim S-G, Kim GM, Kim TY, et al. On-treatment derived
383 neutrophil-to-lymphocyte ratio and survival with palbociclib and endocrine treatment: analysis
384 of a multicenter retrospective cohort and the PALOMA-2/3 study with immune correlates.
385 *Breast Cancer Res*. 2023;25:4.
- 386 6. Diehl A, Yarchoan M, Hopkins A, Jaffee E, Grossman SA. Relationships between lymphocyte
387 counts and treatment-related toxicities and clinical responses in patients with solid tumors
388 treated with PD-1 checkpoint inhibitors. *Oncotarget*. 2017;8:114268–80.
- 389 7. Lohr J, Ratliff T, Huppertz A, Ge Y, Dictus C, Ahmadi R, et al. Effector T-cell infiltration
390 positively impacts survival of glioblastoma patients and is impaired by tumor-derived TGF- β .
391 *Clin Cancer Res*. 2011;17:4296–308.
- 392 8. Martens A, Wistuba-Hamprecht K, Yuan J, Postow MA, Wong P, Capone M, et al. Increases in
393 Absolute Lymphocytes and Circulating CD4⁺ and CD8⁺ T Cells Are Associated with Positive
394 Clinical Outcome of Melanoma Patients Treated with Ipilimumab. *Clin Cancer Res*.
395 2016;22:4848–58.
- 396 9. Fry TJ, Mackall CL. The many faces of IL-7: from lymphopoiesis to peripheral T cell

- 397 maintenance. *J Immunol.* 2005;174:6571–6.
- 398 10. Surh CD, Sprent J. Homeostasis of naive and memory T cells. *Immunity.* 2008;29:848–62.
- 399 11. Sereti I, Estes JD, Thompson WL, Morcock DR, Fischl MA, Croughs T, et al. Decreases in
400 colonic and systemic inflammation in chronic HIV infection after IL-7 administration. *PLoS*
401 *Pathog.* 2014;10:e1003890.
- 402 12. Trédan O, Ménétrier-Caux C, Ray-Coquard I, Garin G, Cropet C, Verronèse E, et al. ELYPSE-
403 7: a randomized placebo-controlled phase IIa trial with CYT107 exploring the restoration of
404 CD4⁺ lymphocyte count in lymphopenic metastatic breast cancer patients. *Ann Oncol.*
405 2015;26:1353–62.
- 406 13. Sheikh V, Porter BO, DerSimonian R, Kovacs SB, Thompson WL, Perez-Diez A, et al.
407 Administration of interleukin-7 increases CD4 T cells in idiopathic CD4 lymphocytopenia.
408 *Blood.* 2016;127:977–88.
- 409 14. Mazzucchelli R, Durum SK. Interleukin-7 receptor expression: intelligent design. *Nat Rev*
410 *Immunol.* Nature Publishing Group; 2007;7:144–54.
- 411 15. Thiébaud R, Jarne A, Routy J-P, Sereti I, Fischl M, Ive P, et al. Repeated Cycles of Recombinant
412 Human Interleukin 7 in HIV-Infected Patients With Low CD4 T-Cell Reconstitution on
413 Antiretroviral Therapy: Results of 2 Phase II Multicenter Studies. *Clin Infect Dis.*
414 2016;62:1178–85.
- 415 16. Levy Y, Lacabaratz C, Weiss L, Viard J-P, Goujard C, Lelièvre J-D, et al. Enhanced T cell
416 recovery in HIV-1-infected adults through IL-7 treatment. *J Clin Invest.* 2009;119:997–1007.
- 417 17. Alstadhaug KB, Croughs T, Henriksen S, Leboeuf C, Sereti I, Hirsch HH, et al. Treatment of
418 progressive multifocal leukoencephalopathy with interleukin 7. *JAMA Neurol.* 2014;71:1030–
419 5.
- 420 18. Zhong H, Xibing G, Yaping D, Zheng W, Decai F, Xiaoye G, et al. Interleukin-7 in Patients
421 With Chronic Hepatitis B May Have Effect on T Follicular Helper Cells and Specific Cellular
422 Immunity. *Hepat Mon.* 2016;16:e36068.
- 423 19. Hou H, Kang Y, Zeng Y, Li Y, Shang J. Interleukin-7 augments CD8⁺ T cells function and
424 promotes viral clearance in chronic hepatitis C virus infection. *Cytokine.* 2018;102:26–33.
- 425 20. Levin D, Golding B, Strome SE, Sauna ZE. Fc fusion as a platform technology: potential for
426 modulating immunogenicity. *Trends Biotechnol.* 2015;33:27–34.
- 427 21. Abdiche YN, Yeung YA, Chaparro-Riggers J, Barman I, Strop P, Chin SM, et al. The neonatal
428 Fc receptor (FcRn) binds independently to both sites of the IgG homodimer with identical
429 affinity. *MAbs.* 2015;7:331–43.
- 430 22. Kim J-H, Kim Y-M, Choi D, Jo S-B, Park HW, Hong S-W, et al. Hybrid Fc-fused interleukin-7
431 induces an inflamed tumor microenvironment and improves the efficacy of cancer
432 immunotherapy. *Clin Transl Immunology.* 2020;9:e1168.

- 433 23. Lee SW, Choi D, Heo M, Shin E-C, Park S-H, Kim SJ, et al. hIL-7-hyFc, A Long-Acting IL-7,
434 Increased Absolute Lymphocyte Count in Healthy Subjects. *Clin Transl Sci.* 2020;13:1161–9.
- 435 24. Rosenberg SA, Sportès C, Ahmadzadeh M, Fry TJ, Ngo LT, Schwarz SL, et al. IL-7
436 Administration to Humans Leads to Expansion of CD8⁺ and CD4⁺ Cells but a Relative Decrease
437 of CD4⁺ T-Regulatory Cells. *J Immunother.* 2006;29:313–9.
- 438 25. Sereti I, Dunham RM, Spritzler J, Aga E, Proschan MA, Medvik K, et al. IL-7 administration
439 drives T cell–cycle entry and expansion in HIV-1 infection. *Blood.* 2009;113:6304–14.
- 440 26. Francois B, Jeannet R, Daix T, Walton AH, Shotwell MS, Unsinger J, et al. Interleukin-7
441 restores lymphocytes in septic shock: the IRIS-7 randomized clinical trial. *JCI Insight.*
442 2018;3:e98960, 98960.

443
444
445
446
447
448
449
450
451
452
453
454
455
456
457
458
459
460
461
462
463
464
465
466
467
468

470 Table 1. Baseline characteristics.

Group	GX-17 60 µg/kg (n=3)	GX-17 120 µg/kg (n=3)	GX-17 240 µg/kg (n=3)	GX-17 480 µg/kg (n=3)	GX-17 720 µg/kg (n=6)	GX-17 960 µg/kg (n=3)	GX-17 1200 µg/kg (n=12)	GX-17 1700 µg/kg (n=2)	Total (n=35)
Age (years)									
Median (Min, Max)	58 (52, 64)	58 (55, 58)	59 (52, 75)	44 (44, 48)	57 (45, 71)	58 (45, 65)	62 (43, 75)	54 (48, 60)	58 (40, 75)
Gender, N (%)									
Male	2 (67)	0	3 (100)	2 (67)	4 (67)	1 (33)	6 (50)	1 (50)	19 (54)
Race, N (%)									
Asian	3 (100)	3 (100)	3 (100)	3 (100)	6 (100)	3 (100)	12 (100)	2 (100)	35 (100)
ECOG performance status, N (%)									
0	1 (33)	1 (33)	1 (33)	0	5 (83)	2 (67)	5 (42)	2 (100)	17 (49)
1	2 (67)	2 (67)	2 (67)	3 (100)	1 (17)	1 (33)	7 (58)	0	18 (51)
Site of Primary Tumor, N (%)									
Breast	1 (33)	0	0	1 (33)	0	0	2 (17)	0	4 (11)
Colon/Rectal	1 (33)	2 (67)	2 (67)	2 (67)	4 (67)	3 (100)	7 (58)	2 (100)	23 (66)
Ovary	0	1 (33)	0	0	0	0	2 (17)	0	3 (9)
Other	1 (33)	0	1 (33)	0	2 (33)	0	1 (8)	0	5 (14)
Location of Metastatic, N									
Abdominal Wall	0	1	0	0	1	1	1	0	4
Adrenal Gland	1	0	1	0	0	0	1	0	3
Bone	1	0	0	1	1	0	1	0	4
Brain	0	0	0	1	0	0	1	0	2
Liver	2	2	2	2	1	3	10	2	24

Lung	3	2	3	3	5	3	11	2	32
Lymph Node	2	2	1	2	3	2	2	0	14
Pleura	1	0	0	0	0	0	1	0	2
Other	2	0	2	1	2	2	4	0	13

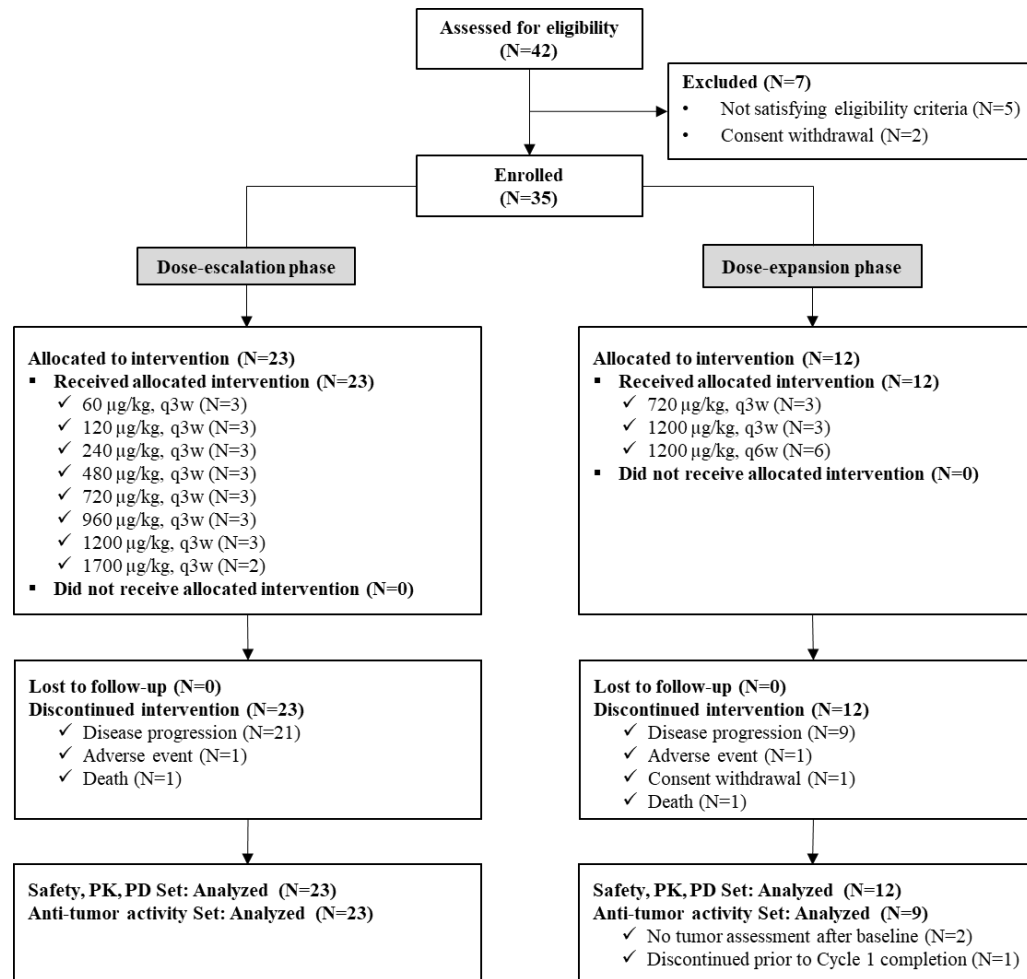
471
472
473
474
475
476
477
478
479
480
481
482
483
484
485
486
487
488
489
490
491
492
493
494
495
496
497
498

499 Table 2. Summary of safety profiles

Group	GX-I7 60 µg/kg (n=3)	GX-I7 120 µg/kg (n=3)	GX-I7 240 µg/kg (n=3)	GX-I7 480 µg/kg (n=3)	GX-I7 720 µg/kg (n=6)	GX-I7 960 µg/kg (n=3)	GX-I7 1200 µg/kg (n=12)	GX-I7 1700 µg/kg (n=2)	Total (n=35)
Subjects with Treatment-Emergent Adverse Events, n (%) [Events]									
	3 (100.0) [14]	3 (100.0) [30]	3 (100.0) [15]	3 (100.0) [21]	6 (100.0) [35]	3 (100.0) [6]	12 (100.0) [88]	2 (100.0) [16]	35 (100.0) [225]
Subject with Adverse Drug Reactions, n (%) [Events]									
	3 (100.0) [6]	2 (66.7) [9]	3 (100) [6]	2 (66.7) [8]	4 (66.7) [18]	2 (66.7) [4]	10 (83.3) [49]	2 (100.0) [16]	28 (80.0) [116]
General disorders and administration site conditions									
Injection site reaction	3 (100.0) [6]	5 (66.7) [5]	3 (100.0) [3]	2 (66.7) [6]	3 (50.0) [9]	1 (33.3) [3]	9 (75.0) [24]	2 (100.0) [5]	25 (71.4) [61]
Pyrexia	0	1 (33.3) [1]	1 (33.3) [1]	1 (33.3) [2]	1 (16.7) [2]	1 (33.3) [1]	5 (41.7) [11]	2 (100.0) [3]	12 (34.3) [21]
Fatigue	0	0	0	0	1 (16.7) [1]	0	3 (25.0) [3]	0	4 (11.4) [4]
Skin and subcutaneous tissue disorders									
Rash	0	0	0	0	3 (50.0) [4]	0	2 (16.7) [2]	2 (100.0) [2]	7 (20.0) [8]
Rash popular	0	1 (33.3) [1]	0	0	0	0	0	0	1 (2.9) [1]
Immune system disorders									
Anaphylactic reaction	0	0	0	0	0	0	0	1 (50.0) [1]	1 (2.9) [1]
Hypersensitivity	0	0	0	0	0	0	0	1 (50.0) [1]	1 (2.9) [1]
Gastrointestinal disorders									

Nausea	0	0	0	0	0	0	1 (8.3) [1]	0	1 (2.9) [1]
Investigations									
Platelet count decreased	0	0	0	0	0	0	0	1 (50.0) [1]	1 (2.9) [1]

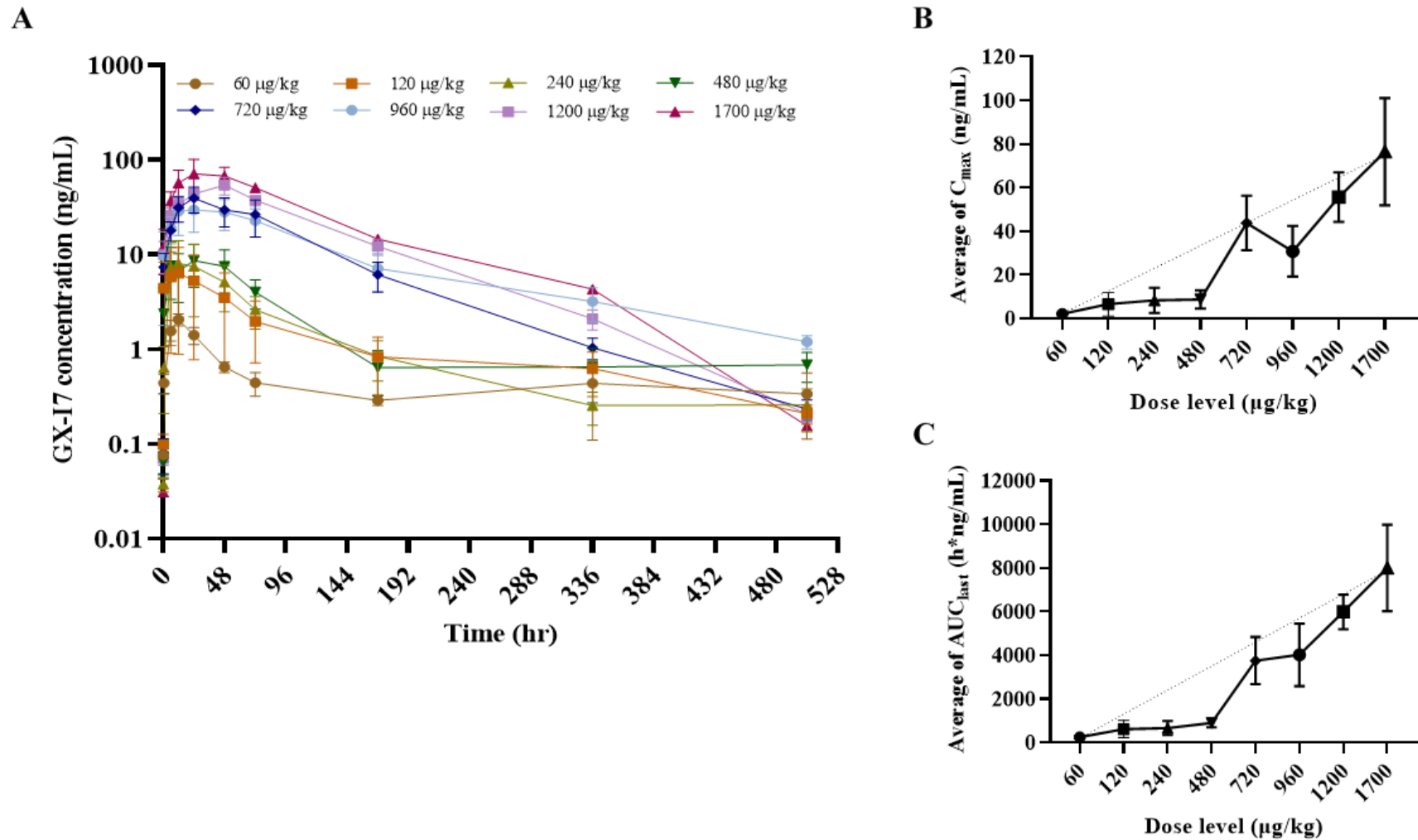
500
501
502
503
504
505
506
507
508
509
510
511
512
513
514
515
516
517
518
519



520

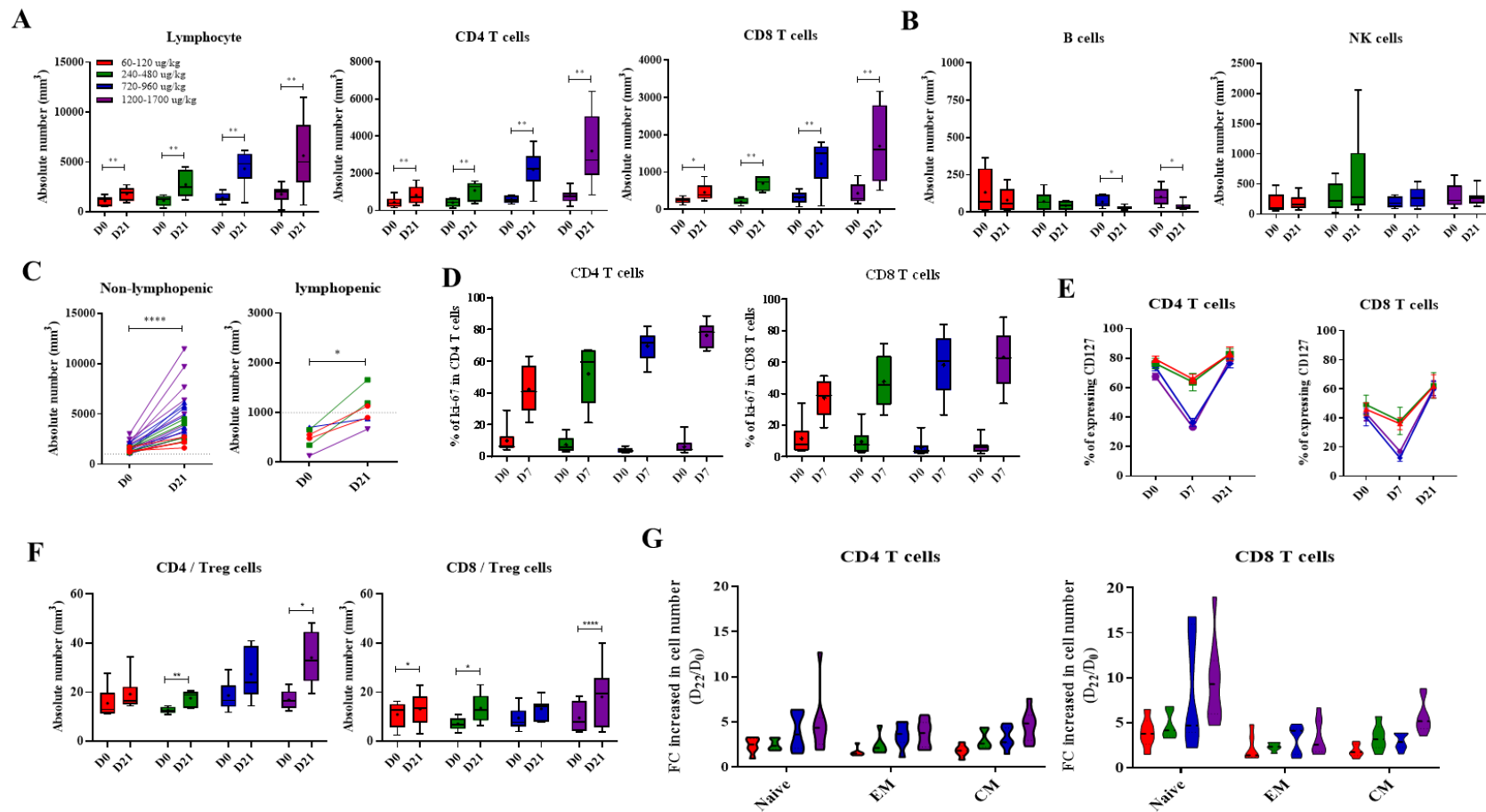
521

522 Figure 1. Patient disposition. Patients in the dose-escalation stage were treated with 60, 120, 240, 480, 720, 960, 1200 and 1700 µg/kg of GX-I7
 523 intramuscularly every 3 weeks (Q3W). In the dose-expansion stage, patients received a 720 and 1200 µg/kg dose of GX-I7 intramuscularly every 3 weeks
 524 (Q3W) or every 6 weeks (Q6W), which were selected in the dose-escalation stage.



525

526 Figure 2. Pharmacokinetics profiles following the first intramuscular administration of GX-I7 ranging from 60 to 1700 $\mu\text{g/kg}$. (A) The mean serum
 527 concentration-time profiles of GX-I7, (B) the maximum concentration (C_{max}) versus dose of GX-I7, and (C) the area under the serum concentration-time
 528 curve from time zero to the last measurable time-point (AUC_{last}) versus dose of GX-I7. the results are presented as mean \pm standard deviation (SD).

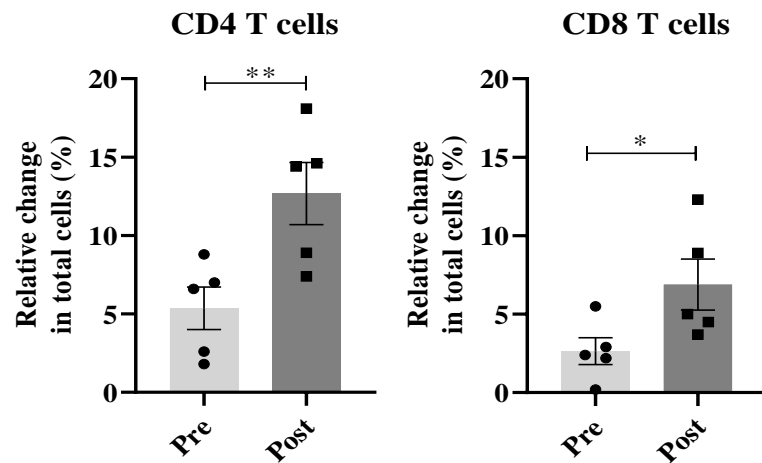


529

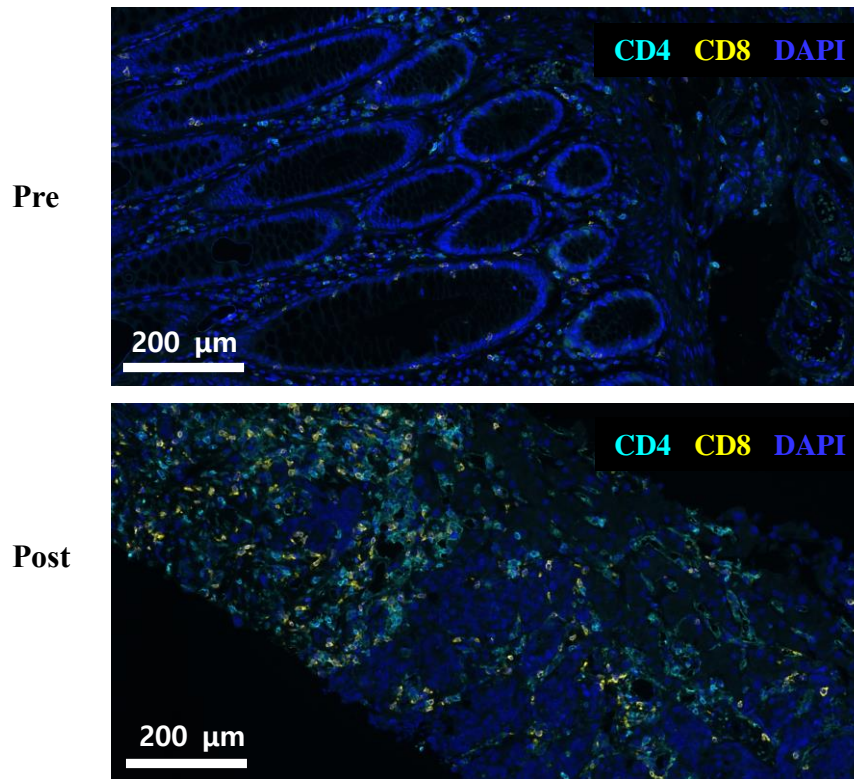
530 Figure 3. Pharmacodynamic profiles following the first intramuscular administration of GX-I7 across four groups with difference doses. Changes in (A)
 531 ALC, CD4⁺, CD8⁺ T cells, (B) other immune cells (C) ALC in non-lymphopenic (ALC>1,000 cells/mm³) patients and lymphopenic (ALC<1,000 cells/mm³)
 532 patients, (D) percentage (%) of Ki67⁺CD4⁺ and Ki67⁺CD8⁺ T cells, (E) percentage (%) of CD127⁺CD4⁺ and CD127⁺CD8⁺ T cells, (F) CD4⁺T/Treg and
 533 CD8⁺T/Treg cells ratios and (G) sub-sets of CD4⁺ and CD8⁺ T cells. *p<0.05, **p<0.01, ***p<0.001 versus baseline (Day 0) group by Wilcoxon matched-
 534 pairs signed rank test. FC; fold change.

535
536
537
538
539
540
541
542
543
544
545
546
547
548
549
550
551
552

A



B



553 Figure 4. T cell subsets evaluation by Multiplex-IHC for tumor microenvironments at baseline (pre) and GX-I7 treatment (post) from solid tumor patients.
554 All tissue samples were biopsied at the metastasized site, except for one pre-dose sample from one subject. (A) The percentages of infiltrating CD4⁺ and
555 CD8⁺ T cells in the whole tumor samples were higher in post specimens. (B) Representative Multiplex-IHC image of pre-treatment (upper) and post-
556 treatment (lower) in biopsied specimens. Scale bars: 200 μm for IHC and DAPI (blue) was used for nuclear staining. *p<0.05, **p<0.01 versus baseline
557 (Day 0) group by Paired t-test.