

1 **Trajectory of Cognitive Function After Incident Heart Failure**

2 Supriya Shore, MD MSCS¹, Hanyu Li, MS¹, Min Zhang, PhD¹, Rachael Whitney, PhD¹, Alden L.
3 Gross, PhD MHS², Ankeet S. Bhatt, MD MBA SM³, Brahmajee K. Nallamothu, MD MPH¹, Bruno
4 Giordani, PhD¹, Emily M. Briceño, PhD¹, Jeremy B. Sussman, MD MS¹, Jose Gutierrez, MD
5 MPH⁵, Kristine Yaffe, MD⁶, Michael Griswold, PhD², Michelle C. Johansen, MD PhD², Oscar L.
6 Lopez, MD⁷, Rebecca F. Gottesman, MD PhD⁸, Stephen Sidney, MD MPH³, Susan R.
7 Heckbert, MD PhD⁴, Tatjana Rundek, MD PhD⁹, Timothy M. Hughes, PhD¹⁰, William T.
8 Longstreth Jr, MD MPH⁴, Deborah A. Levine, MD MPH¹

9 1 University of Michigan, Ann Arbor, MI, USA

10 2 Johns Hopkins Bloomberg School of Public Health, Baltimore, MD, USA

11 3 Kaiser Permanente San Francisco Medical Center and Division of Research, San Francisco,
12 CA, USA

13 4 University of Washington, Seattle, WA, USA

14 5 Columbia University, New York, NY, USA

15 6 University of California, San Francisco, CA, USA

16 7 University of Pittsburgh, Pittsburgh, PA, USA

17 8 National Institute of Neurological Disorders and Stroke (NINDS), Bethesda, MD, USA

18 9 University of Miami – Miller School of Medicine, Evelyn F. McKnight Brain Institute, FL, USA

19 10 Wake Forest School of Medicine, Winston-Salem, NC, USA

20

21 Corresponding Author:

22 Supriya Shore MD MSCS

23 NCRC 14-G237

24 2800 Plymouth Rd

25 Ann Arbor, MI 48109

26 Email: shores@umich.edu

27 Phone: 734-764-3036

28 Fax: 734-232-4480

29 Short title: Cognitive changes after incident HF

30 Total word count: 8343

31 Abstract word count: 346

32 Manuscript word count: 4271

33

34 **Abstract**

35 **Background:** The size/magnitude of cognitive changes after incident heart failure (HF) are
36 unclear. We assessed whether incident HF is associated with changes in cognitive function after
37 accounting for pre-HF cognitive trajectories and known determinants of cognition.

38 **Methods:** This pooled cohort study included adults without HF, stroke, or dementia from six US
39 population-based cohort studies from 1971-2019: Atherosclerosis Risk in Communities Study,
40 Coronary Artery Risk Development in Young Adults Study, Cardiovascular Health Study,
41 Framingham Offspring Study, Multi-Ethnic Study of Atherosclerosis, and Northern Manhattan
42 Study. Linear mixed-effects models estimated changes in cognition at the time of HF (change in
43 the intercept) and the rate of cognitive change over the years after HF (change in the slope),
44 controlling for pre-HF cognitive trajectories and participant factors. Change in global cognition
45 was the primary outcome. Change in executive function and memory were secondary
46 outcomes. Cognitive outcomes were standardized to a *t*-score metric (mean [SD], 50 [10]); a 1-
47 point difference represented a 0.1-SD difference in cognition.

48 **Results:** The study included 29,614 adults (mean [SD] age was 61.1 [10.5] years, 55% female,
49 70.3% White, 22.2% Black 7.5% Hispanic). During a median follow-up of 6.6 (Q1-Q3: 5-19.8)
50 years, 1,407 (4.7%) adults developed incident HF. Incident HF was associated with an acute
51 decrease in global cognition (-1.08 points; 95% CI -1.36, -0.80) and executive function (-0.65
52 points; 95% CI -0.96, -0.34) but not memory (-0.51 points; 95% CI -1.37, 0.35) at the time of the
53 event. Greater acute decreases in global cognition after HF were seen in those with older age,
54 female sex and White race. Individuals with incident HF, compared to HF-free individuals,
55 demonstrated faster declines in global cognition (-0.15 points per year; 95% CI, -0.21, -0.09)
56 and executive function (-0.16 points per year; 95% CI -0.23, -0.09) but not memory (-0.11
57 points per year; 95% CI -0.26, 0.04) compared with pre-HF slopes.

58 **Conclusions:** In this pooled cohort study, incident HF was associated with an acute decrease
59 in global cognition and executive function at the time of the event and faster declines in global
60 cognition and executive function over the following years.

61

62 **Clinical Perspective**

63

64 **What is new?**

- 65 • Incident heart failure (HF) is associated with an acute decrease in global
66 cognition and executive function at the time of the event and also faster declines
67 in global cognition and executive function during the years after the event,
68 controlling for pre-HF cognitive trajectories.

69

70 **What are the clinical implications?**

- 71 • Preventing HF might be an effective strategy for maintaining brain health.
72 • Cognition should be assessed after HF diagnosis.
73 • HF management should be tailored to cognitive abilities.

74

75 **Non-standard Abbreviations and Acronyms**

76 AF: Atrial fibrillation

77 ARIC: Atherosclerosis Risk in Communities Study

78 CARDIA: Coronary Artery Risk Development in Young Adults Study

79 CHS: Cardiovascular Health Study

80 EF: Executive Function

81 FOS: Framingham Offspring Study

82 GC: Global Cognition

83 HF: Heart Failure

84 MI: Myocardial infarction

85 MESA: Multi-Ethnic Study of Atherosclerosis

86 NOMAS: Northern Manhattan Study

87 SD: Standard deviation

88 INTRODUCTION

89 Understanding and reducing the vascular contributions to cognitive decline and dementia is
90 critical because dementia is common, costly, and morbid. Heart failure (HF) affects 6.2 million
91 people worldwide and imposes a high burden of disabling symptoms on afflicted individuals,
92 associated caregivers, healthcare systems, and society.^{1, 2} Management of HF is complex,
93 relying heavily on a patient's cognitive ability due to the need for significant care coordination,
94 lifestyle changes, medication compliance, and to process multi-faceted information about
95 available therapies.³⁻⁵ While cognitive dysfunction has been linked to several cardiovascular
96 disorders like hypertension, coronary artery disease, and stroke,⁶⁻⁹ how cognition changes after
97 incident HF remains poorly understood.

98 Prior studies note a high prevalence of cognitive impairment in HF patients.¹⁰⁻¹² However, the
99 size of acute changes in cognition at the time of incident HF is unclear. It is also unclear
100 whether HF survivors have a faster rate of cognitive decline (slope change) over the years
101 following HF onset compared with their pre-HF rate of cognitive decline after accounting for the
102 acute cognitive decrease at the time of the event (intercept change). Studies describing
103 changes in cognition after HF have been unable to measure actual changes in cognition
104 associated with HF because they lacked repeated measures of cognition before and after HF
105 onset.¹³⁻¹⁵ Additionally, studies have not measured both the acute decrease in cognition at the
106 time of HF onset and the change in the rate of cognitive decline over the years after HF
107 simultaneously. As the number of people with HF is expected to increase,¹⁶ identifying how
108 cognition changes during the disease course has significant implications for clinical practice and
109 healthcare policy.¹⁷

110 We conducted a pooled study using six population-based cohorts with repeated cognitive
111 testing, data on incident HF, and longitudinal follow-up to determine the changes in cognition
112 after incident HF. We hypothesized that incident HF is associated with an acute decrease in

113 cognition and a faster rate of cognitive decline, after accounting for pre-HF cognitive trajectories.

114 If an association was found, we also aimed to assess if the association between HF and

115 cognitive change varied by age, sex and race.

116

117 **METHODS**

118 **Data Source and Study Design**

119 This cohort study included individual participant data from 6 well-characterized, US
120 prospective cohorts and study years between 1971 and 2019: Atherosclerosis Risk in
121 Communities Study (ARIC), Coronary Artery Risk Development in Young Adults Study
122 (CARDIA), Cardiovascular Health Study (CHS), Framingham Offspring Study (FOS), Multi-
123 Ethnic Study of Atherosclerosis (MESA) and Northern Manhattan Study (NOMAS). These
124 cohorts were chosen because they have physician-adjudicated HF cases, repeated measures
125 of cognition and blood pressure (BP), and geographic, age, racial or ethnic diversity.¹⁸⁻²²

126

127 **Ethics**

128 The institutional review board at the University of Michigan approved this study. Participating
129 institutions approved the cohort studies. All participants gave written informed consent. Data will
130 be shared according to the procedures of the cohort studies. All analyses were pre-registered
131 and approved by each cohort's leadership teams prior to initiation.

132

133 **Study Population**

134 We included all individuals with at least one cognitive assessment during cohort follow-up
135 and without a preceding history of HF, stroke, or dementia (Figure 1). We excluded individuals
136 with HF, stroke, or dementia at or before the first cognitive assessment and those lacking
137 complete data on covariates of interest. Follow-up was censored after an incident stroke if it
138 occurred during follow-up, as stroke is associated with cognitive decline.⁶

139

140 **Exposure variable**

141 HF was captured prospectively during cohort follow-up. HF diagnoses were adjudicated by
142 expert physicians in CARDIA, CHS, FOS, MESA, and for participants enrolled in ARIC after
143 2005 using standardized protocols with medical record review (see Supplementary Table 1 for
144 details).²³⁻²⁷ For ARIC participants enrolled prior to 2005, HF diagnosis was classified as a
145 hospitalization with an International Classification of Disease diagnosis code indicating HF in
146 any position. For NOMAS, HF diagnosis was based on participant self-report,²⁸ which also has
147 high specificity.²⁹ Measures of left ventricular ejection fraction are not available in all cohorts and
148 were not used in our study.

149

150 **Outcome**

151 The primary outcome of interest was global cognition (GC). Secondary outcomes were
152 executive function (EF) and memory. Validated cognitive tests, consistent with the Vascular
153 Cognitive Impairment Harmonization Standards,³⁰ were administered in the six cohorts by
154 trained staff either in person or over telephone.³¹

155 To make inferences about cognitive domains instead of individual cognitive test items and to
156 account for different cognitive tests administered across cohorts, we cocalibrated available

157 cognitive test items into factors representing GC (a composite of EF, memory, general mental
158 status, language, motor and visuospatial ability), EF, and memory using all available cognitive
159 information.³² These harmonized measures for cognitive function facilitate assessment of
160 cognitive domains rather than individual tests.⁷⁻⁹ In a pre-statistical harmonization phase,
161 neuropsychologists identified 153 test items from 34 cognitive instruments across the cohorts
162 and determined shared and unique items across cohorts. Neuropsychologists assigned all
163 available cognitive test items into domains. Individual tests in each domain are listed in
164 Supplementary Table 2. Using item response theory methods, each test item was weighted
165 based on its correlation with other items and empirically assigned a relative location along the
166 latent cognitive trait corresponding to its estimated difficulty.^{33, 34} We computed factor scores for
167 each domain, which were set to a *t*-score metric (mean [SD], 50[10]) at a participant's first
168 cognitive assessment; a 1-point difference thus represented a 0.1-SD difference in the
169 distribution of cognition across the 6 cohorts. Higher cognitive scores indicate better cognitive
170 function.

171

172 **Covariates**

173 We included covariates that could confound the association between HF and cognition and
174 were available in all cohorts before the first cognitive assessment.^{7,25} We used covariate values
175 measured either immediately before or on the same day as the first cognitive assessment. All
176 included covariates were harmonized by choosing common response categories for categorical
177 variables and converting measurements to standard units for continuous variables as done
178 previously.⁷⁻⁹

179 Demographics included age, race/ethnicity, sex, education, and study cohort. Race/ethnicity
180 was self-reported and categorized as Black, White, and Hispanic (any race) by the cohorts.³² All

181 other reported races were excluded as they formed a small minority in the context of this larger
182 study (n=953; 2.4%). Clinical variables included alcohol drinks weekly, active cigarette smoking,
183 any physical activity, body mass index, waist circumference, history of myocardial infarction
184 (MI), history of atrial fibrillation (AF), fasting glucose, low density cholesterol, glomerular filtration
185 rate, use of antihypertensive medications and cumulative mean systolic blood pressure and
186 baseline cognitive slope. Expert physicians defined the presence of MI and AF at any point from
187 cohort enrollment until the first cognitive assessment based on published guidelines, medical
188 record review, and standardized protocols. Current antihypertensive medication use was
189 assessed based on medication bottles and self-report. Cumulative mean systolic blood pressure
190 was defined as a mean of all systolic blood pressures checked at in-person visits using standard
191 protocols and equipment.⁸ All continuous variables were centered at the median.

192

193 **Statistical Analysis**

194 We compared baseline characteristics between patients with and without incident HF during
195 follow-up using 2-sample *t*-tests for continuous variables and χ^2 tests for categorical variables.
196 Each outcome measuring cognition was assessed as a continuous variable. Incident HF was
197 treated as a time-dependent variable.

198 A linear mixed-effects model was used to estimate the association between HF and cognitive
199 change, both around the time of incident HF diagnosis and in the following years, adjusted for
200 the covariates and baseline (pre-HF) cognitive slope. It included random effects for intercept
201 and slope to accommodate the correlation of cognitive measures within participants over time
202 and to allow participant-specific rates of cognitive change. We included interaction terms
203 between time and age, sex, and race/ethnicity based on prior research.^{7, 8} The first cognitive
204 assessment is considered as time 0 for this study.

205 To estimate the association between incident HF and cognition, the model included a time-
206 varying incident HF variable (changed from 0 to 1 on the date of the first incident HF diagnosis).
207 In addition, a spline term for years after HF was added to determine if incident HF was
208 associated with a faster rate of cognitive decline in the years following the diagnosis. For
209 individuals with HF, this variable was 0 before their first HF diagnosis. The coefficient for this
210 variable represents the association of incident HF and the rate of post-HF decline in cognitive
211 function. This study considers the first cognitive assessment after incident HF the initial change
212 with incident HF diagnosis. We found no evidence of non-linear effects of cognition on time and
213 the effect of HF on time.

214 Statistical significance for all analyses was set as $P < 0.05$ (2-sided). All analyses were
215 performed using SAS version 9.4 (SAS Institute, Cary, NC) and R (version 4.2.1).

216

217 **Sensitivity and Secondary Analyses**

218 In sensitivity analyses, to account for attrition bias, we repeated analyses with individuals
219 who had ≥ 2 cognitive assessments. We also repeated analyses within cohorts to assess for
220 heterogeneity in associations between HF and cognitive decline.

221 In secondary analyses, to explore whether the association of incident HF with cognitive
222 decline differed based on age of HF onset, we added the following interaction terms of incident
223 HF with age as fixed effects: incident HF*age at HF onset and time elapsed since incident HF
224 diagnosis*age at HF onset. Similar analyses were performed to assess for effect modification by
225 sex and race.

226 We performed additional sensitivity analyses using myocardial infarction (MI) and atrial
227 fibrillation (AF) as time-varying covariates to assess the impact of incident MI and AF instead of
228 treating them as fixed covariates. These additional analyses were proposed to account for any

229 additional changes in exposure to these variables after the first cognitive assessment, as they
230 have been previously associated with a cognitive decline and are on the causal pathway with
231 HF and cognitive decline.^{9, 35}

232

233 **Results**

234 Our study cohort included 29,614 participants with a mean age of 61.1±10.5 years at first
235 cognitive assessment, 54.5% were female, 70.3% were White, 22.2% were Black, and 7.5%
236 were Hispanic. Overall, 1,407 (4.8%) had incident HF over a median follow-up duration of 6.6
237 (Q1-Q3: 5-19.8) years. All participants had GC assessed. However, EF and memory
238 assessments were introduced later and performed on 26,417 (89.2%) and 19,176 (64.8%)
239 participants respectively. Median (Q1-Q3) number of assessments were 3(2-5) for GC, 2(2-4)
240 for EF and 2(2-3) for memory.

241

242 ***Baseline Characteristics***

243 Table 1 presents the baseline characteristics of study participants by incident HF status.
244 Participants who developed HF were older (68 vs. 61 years) at first cognitive assessment, less
245 likely to have Black race (18% vs. 22%) and had lower levels of education. Participants who
246 developed HF had a higher incidence of MI (11% vs. 4%) and AF (5% vs. 2%). Compared with
247 participants who did not develop HF, participants with HF had a lower glomerular filtration rate,
248 mean (SD) [68 (1) vs. 75 (19) mL/min/1.73m²] and a higher cumulative mean systolic blood
249 pressure [148 (21) vs. 137 (19) mmHg] despite higher rates of antihypertensive medication use
250 (49% vs. 31%). Participants with incident HF, compared with participants who did not develop
251 HF, had a greater median (Q1-Q3) number of assessments for GC [8 (4-11) vs. 3 (2-5)], EF [6
252 (4-9) vs. 2 (2-3)] and memory [4(3-4) vs. 2(2-3)]. Participants who developed HF had lower

253 scores for GC (-1.56 points; 95% CI -0.68 to -2.44) and EF (-2.35 points; 95% CI -1.7 to -2.96)
254 but similar scores for memory (+0.04 points; 95% CI -1.53 to +1.61) at the study visit
255 immediately prior to incident HF compared to those who did not develop HF.

256

257 ***Change in cognition with incident HF diagnosis***

258 The median time (Q1-Q3) between the last pre-HF cognitive assessment and incident
259 diagnosis of HF was 2.6 (1.0-6.2) years for GC, 2.2 (1.0-6.6) years for EF, and 6.1 (5.1-15.1)
260 years for memory. After incident HF diagnosis, the median (Q1-Q3) number of assessments for
261 GC, EF, and memory were 4 (2-8), 3 (2-6), and 2 (1-3) respectively. The median time (Q1-Q3)
262 between incident HF diagnosis, and first post-HF cognitive assessment was 1.0 (0.9-2.2) years
263 for GC, 1.0 (0.9-2.1) years for EF, and 5.0 (4.3-5.4) years for memory.

264 Incident HF was associated with an acute decrease in GC (-1.08 points; 95% CI -1.36 to -
265 0.80) and EF (-0.65 points; 95% CI -0.96 to -0.34) but not memory (-0.51 points; 95% CI -1.37
266 to 0.35) after adjusting for pre-HF slope and covariates (Table 2). Incident HF was also
267 associated with faster decline in GC (-0.15 points per year; 95% CI -0.21 to -0.09) and EF (-0.16
268 points per year; 95% CI -0.23 to -0.09) but not for memory (-0.11 points per year; 95% CI -0.26
269 to 0.04) after controlling for pre-HF slope and the acute decrease in cognition at the time of the
270 HF diagnosis. After selecting the final, parsimonious model, we calculated participant-specific
271 (conditional) the predicted values for cognitive scores for a 70-year-old White male with average
272 values of covariates at baseline (with college degree or higher education, non-smoker, no
273 alcohol use, no history of AF, no history of MI, some physical activity, no anti-hypertensive
274 medication use, body mass index of 27.06 kg/m², waist circumference of 95.25 cm, fasting
275 blood glucose of 97.26 mg/dL, low density lipoprotein cholesterol of 123.8 mg/dL, glomerular
276 filtration rate 72.72 ml/min/m², and cumulative mean systolic blood pressure of 136 mmHg.)

277 conditional on his experiencing or not experiencing incident HF during the follow-up period (at
278 year 9;Figure 2).

279

280 ***Associations between Age of Onset, Sex, and Race-Ethnicity, Incident HF and Cognitive*** 281 ***Change***

282 Table 3 shows the results of our interaction analyses for change in cognitive function with
283 incident HF diagnosis by age of HF onset, sex, and race. Older age at HF onset was associated
284 with a larger acute decrease in GC with incident HF diagnosis (-1.52 points per 10-year older
285 age of HF onset; 95% CI -1.99 to -1.04). However, there was no difference in change in GC
286 slope after incident HF diagnosis (0.02 points per year; 95% CI -0.05 to +0.10). While older age
287 at HF onset did not modify change in EF acutely (-0.34 points per 10-year older age of HF
288 onset; 95% CI -1.18, 0.50), the change in EF slope after incident HF diagnosis was slower with
289 increasing age of HF onset (0.37 points per year per 10-year older age of HF onset; 95% CI
290 0.18-0.55). We found no evidence that age modified the association between incident HF and
291 memory at either incident HF diagnosis or after.

292 We observed racial/ethnic differences in cognitive trajectory after HF diagnosis when holding
293 sex constant. Compared with White participants, Black participants had a smaller acute
294 decrease in GC and EF around the time of incident HF diagnosis (0.84 points; 95% CI 0.05-1.62
295 & 1.59 points; 95% CI 0.74, 2.44 respectively) but not memory (0.58 points; 95% CI -1.37, 2.52).
296 However, long-term cognitive declines after incident HF did not differ between Black and White
297 participants for any cognitive outcome. We found no difference in the cognitive changes
298 associated with incident HF between Hispanic (any race) and White participants.

299 Females experienced a larger acute decrease in GC after incident HF diagnosis (-0.74
300 points; 95% CI -1.31 to -0.18), but the GC slope did not differ by sex after incident HF (0.03

301 points per year; 95% CI -0.10 to 0.15). The EF and memory changes after incident HF did not
302 differ by sex.

303

304 ***Sensitivity Analyses***

305 Results were similar in analyses including participants with ≥ 2 cognitive assessments
306 (n=24,090 for GC, n=20,533 for EF, and n=14,649 for memory; Supplementary Table 3). There
307 was little heterogeneity in the associations between HF and GC across cohorts (Supplementary
308 Table 4). Results were similar in sensitivity analysis including history of MI and AF as time-
309 varying covariates (Supplementary Table 5). Incident MI and AF were associated with larger
310 acute cognitive decline in HF patients compared to those without.

311

312 **Discussion**

313 In a pooled analysis of 6 large, US prospective cohort studies that performed serial cognitive
314 assessments on 29,614 participants, we observed that incident HF was associated with an
315 acute decrease in GC and EF at the time of the event as well as faster declines in GC and EC
316 over the years after the event adjusting for pre-HF cognitive trajectories and known
317 determinants of cognitive function. We did not find significant changes in memory associated
318 with incident HF. Results persisted after further adjustment for MI and AF. In clinical terms, our
319 findings suggest that individuals diagnosed with incident HF, experience global cognitive aging
320 equivalent to 10 years within 7 years after HF diagnosis, compared to those without HF. We
321 also observed a larger acute decrease in GC at the time of incident HF diagnosis associate with
322 older age, female sex and self-identified White race.

323 Incident HF could be associated with cognitive decline through several mechanisms. We
324 tested the best-established mechanisms, which are vascular risk factors, and comorbidities
325 such as hypertension, MI, and AF, and they failed to explain our findings. Other hypotheses
326 include HF causing systemic inflammation and endothelial dysfunction, which have been
327 implicated in the causal pathway for cognitive impairment.³⁶⁻³⁸ In addition, HF may cause
328 cognitive decline due to a decrease in cerebral perfusion.³⁹ We likely did not see a difference in
329 memory as we were underpowered. Additional studies need to evaluate mechanisms behind the
330 cognitive decline associated with HF to identify modifiable targets.

331 Our findings suggest a larger decrease in cognition with incident HF diagnosis in older,
332 White, and female adults. The larger acute decrease in cognition with older age likely reflects
333 the loss of cognitive reserve and identifies subgroups at higher risk for cognitive impairment who
334 might need closer monitoring and more support in managing HF. The larger acute decreases in
335 GC and EF after HF seen in White participants likely reflects the higher pre-HF cognitive
336 performance of this subpopulation⁴⁰ with a greater room to decrease. However, sex differences
337 in cognitive functioning are complex. Females likely have a faster cognitive decline with HF due
338 to differences in sex hormones, greater microvascular disease, and inflammation compared to
339 males.^{7, 41, 42}

340 Experts have classified clinically meaningful cognitive decline as a decrease in cognitive
341 function of ≥ 0.5 standard deviations from baseline cognitive scores.⁴³ If the observed HF-
342 related changes in cognitive function in our study are confirmed and causal, adults with HF
343 would reach the threshold of meaningful cognitive decline 5.9 years sooner for GC and 4.7
344 years sooner for EF than HF-free adults. Findings from our study have several implications both
345 for clinical management and healthcare policy. Reducing HF-associated burden is a priority.⁵
346 Successfully achieving this goal relies heavily on a patient's cognitive ability with the need to
347 follow specific diet, monitor symptoms, adhere to medications – with an average HF patient

348 taking at least 10 different medications – and coordinate care across multiple sub-specialties.⁴⁴
349 In addition, progressive cognitive decline is associated with depression,⁴⁵ dementia,⁴⁶ and
350 functional decline,⁴⁷ causing greater caregiver burden and institutionalization risk. Cognitive
351 monitoring for older adults with HF could help identify individuals at risk for these adverse
352 events. Such screening may also facilitate interventions such as avoiding medications
353 contributing to cognitive dysfunction and using non-pharmacological measures such as exercise
354 training and cognitive rehabilitation that may halt or slow cognitive decline.^{48, 49} HF treatment for
355 older adults may need to be individualized to consider associated cognitive decline. This would
356 involve home care programs to closely monitor these patients to prevent hospitalizations,
357 interventions to help with medication adherence and modifying decision aids for HF treatments
358 for patients with cognitive impairment.

359 Our study has several strengths. First, we used harmonized measures of cognition
360 performed serially in participants, allowing us to control for pre-HF cognitive trajectory and
361 describe the entire trajectory of cognitive function for HF patients. Pooling cohort studies
362 enabled us to capture diverse populations with well-described socio-demographic
363 characteristics and to generalize more broadly than earlier studies that were more limited in
364 scope. Finally, HF diagnosis in our study used clinical methods and did not rely on
365 administrative or claims measures.

366 Our findings should be interpreted in the context of several limitations. HF typically has an
367 insidious onset, and diagnosis may be delayed until the progression of symptoms or a severe
368 stage. Enrolled participants are likely to have delayed their cohort visit until they felt better
369 following a diagnosis of HF that may have delayed capturing early acute changes in cognition.
370 Assuming that participants' postmortem cognitive data are missing at random might lead to
371 immortal cohort bias. However, these factors would likely bias our findings toward
372 underestimating cognitive decline. In addition, we used linear mixed effects models that are

373 robust to sparse data, using all available cognitive measurements prior to HF diagnosis with
374 additional sensitivity analyses that demonstrated consistent results. We were unable to control
375 for possible confounders such as depression that are associated with both HF⁵⁰ and cognitive
376 decline⁴⁶ or markers of HF severity such as NYHA class. Third, NOMAS relied on patient self-
377 report to identify HF, though self-reported HF has high accuracy.²⁹ Since participant reported HF
378 is highly specific but not as sensitive as clinically validated HF diagnosis, data from NOMAS
379 could bias our findings towards the null. Assuming that participants' postmortem cognitive data
380 are missing at random might lead to immortal cohort bias and underestimate cognitive declines.

381 In conclusion, in a pooled analysis of individual participant data from 6 large, prospective
382 cohort studies, participants with incident HF, compared with participants without HF, had an
383 acute decrease in GC and EF and faster declines in GC and EF accounting for pre-HF cognitive
384 trajectories and comorbidities like stroke. A larger acute decrease in cognition after incident HF
385 diagnosis was noted in older adults, White, and female participants. Future studies should
386 assess the mechanisms of cognitive decline after incident HF, if specific therapies mitigate risk
387 for cognitive decline associated with HF, and whether assessment of cognitive function should
388 be considered as part of HF management.

389

390 **Disclosures**

391 **Funding/Support:** This research project is supported by a grant R01 NS102715 from the
392 National Institute of Neurological Disorders and Stroke (NINDS), National Institutes of Health,
393 Department of Health and Human Service. The NINDS was not involved in the design and
394 conduct of the study; collection, management, analysis, and interpretation of the data;
395 preparation, review, or approval of the manuscript; and decision to submit the manuscript for
396 publication except one representative (author RFG) of the funding agency reviewed the

397 manuscript. The content is solely the responsibility of the authors and does not necessarily
398 represent the official views of the National Institute of Neurological Disorders and Stroke or the
399 National Institutes of Health. Additional funding was provided to:

400 Supriya Shore, MD MSCS: AHA grant ID 855105

401 Michelle Johanssen, MD PhD: NINDS grant K23 NS112459

402 Deborah A Levine, MD MPH: National Institute of Aging (NIA) grant R01 AG051827 and RF1

403 AG068410

404 Alden Gross, PhD: NIA grant K01 AG050699

405 Bruno Giordani, PhD: NIA Michigan Alzheimer's Disease Research Center grant P30

406 AG053760

407 Emily Briceño, PhD: NIA P30 AG024824

408 **Cohort Funding/Support:**

409 The Atherosclerosis Risk in Communities Study is carried out as a collaborative study supported
410 by National Heart, Lung, and Blood Institute contracts (75N92022D00001, 75N92022D00002,
411 75N92022D00003, 75N92022D00004, 75N92022D00005). The ARIC Neurocognitive Study is
412 supported by U01HL096812, U01HL096814, U01HL096899, U01HL096902, and U01HL096917
413 from the NIH (NHLBI, NINDS, NIA and NIDCD). The authors thank the staff and participants of
414 the ARIC study for their important contributions.

415 The Coronary Artery Risk Development in Young Adults Study (CARDIA) is conducted and
416 supported by the National Heart, Lung, and Blood Institute (NHLBI) in collaboration with the
417 University of Alabama at Birmingham (HHSN268201800005I & HHSN268201800007I),
418 Northwestern University (HHSN268201800003I), University of Minnesota
419 (HHSN268201800006I), and Kaiser Foundation Research Institute (HHSN268201800004I).

420 This manuscript has been reviewed by CARDIA for scientific content.

421 The Cardiovascular Health Study (CHS) was supported by contracts HHSN268201200036C,
422 HHSN268200800007C, HHSN268201800001C, N01HC55222, 379 N01HC85079,

423 N01HC85080, N01HC85081, N01HC85082, N01HC85083, N01HC85086, 75N92021D00006,
424 and grants U01HL080295 and U01HL130114 from the National Heart, Lung, and Blood Institute
425 (NHLBI), with additional contribution from the National Institute of Neurological Disorders and
426 Stroke (NINDS). Additional support was provided by R01AG023629, R01AG15928, and
427 R01AG20098 from the National Institute on Aging (NIA). A full list of principal CHS investigators
428 and institutions can be found at CHS-NHLBI.org. The content is solely the responsibility of the
429 authors and does not necessarily represent the official views of the National Institutes of Health.
430 The Framingham Heart Study (FHS) is a project of the National Heart Lung and Blood Institute
431 of the National Institutes of Health and Boston University School of Medicine. This project has
432 been funded in whole or in part with Federal funds from the National Heart, Lung, and Blood
433 Institute, National Institutes of Health, Department of Health and Human Services, under
434 contract No. HHSN268201500001I.
435 The Northern Manhattan Stroke (NOMAS) study has been funded at least in part with federal
436 funds from the National Institutes of Health, National Institute of Neurological Disorders and
437 Stroke by R01 NS29993.
438 The Multi-Ethnic Study of Atherosclerosis (MESA) was supported by contracts
439 75N92020D00001, HHSN268201500003I, N01-HC-95159, 75N92020D00005, N01-HC-95160,
440 75N92020D00002, N01-HC-95161, 75N92020D00003, N01-HC-95162, 75N92020D00006,
441 N01-HC-95163, 75N92020D00004, N01-HC-95164, 75N92020D00007, N01-HC-95165, N01-
442 HC-95166, N01-HC-95167, N01-HC-95168 and N01-HC-95169 from the National Heart, Lung,
443 and Blood Institute, and by grants UL1-TR-000040, UL1-TR-001079, and UL1-TR-001420 from
444 the National Center for Advancing Translational Sciences (NCATS). Cognitive testing at Exam 6
445 in MESA has been funded by grants R01HL127659 from the National Heart, Lung, and Blood
446 Institute (NHLBI), and R01AG054069 from the National Institutes on Aging. The authors thank
447 the other investigators, the staff, and the individuals of the MESA study for their valuable

448 contributions. A full list of participating MESA investigators and institutions can be found at

449 <http://www.mesa-nhlbi.org>.

450 **Disclosures:** The authors have no relevant conflicts of interest.

451

452 **References**

- 453 1. Roger VL, Sidney S, Fairchild AL, Howard VJ, Labarthe DR, Shay CM, Tiner AC,
454 Whitsel LP, Rosamond WD and American Heart Association Advocacy Coordinating C.
455 Recommendations for Cardiovascular Health and Disease Surveillance for 2030 and Beyond: A
456 Policy Statement From the American Heart Association. *Circulation*. 2020;141:e104-e119.
- 457 2. Joo H, Fang J, Losby JL and Wang G. Cost of informal caregiving for patients with heart
458 failure. *Am Heart J*. 2015;169:142-48 e2.
- 459 3. Bhatt AS, Abraham WT, Lindenfeld J, Bristow M, Carson PE, Felker GM, Fonarow GC,
460 Greene SJ, Psotka MA, Solomon SD, Stockbridge N, Teerlink JR, Vaduganathan M, Wittes J,
461 Fiuzat M, O'Connor CM and Butler J. Treatment of HF in an Era of Multiple Therapies:
462 Statement From the HF Collaboratory. *JACC Heart Fail*. 2021;9:1-12.
- 463 4. Allen LA, Stevenson LW, Grady KL, Goldstein NE, Matlock DD, Arnold RM, Cook NR,
464 Felker GM, Francis GS, Hauptman PJ, Havranek EP, Krumholz HM, Mancini D, Riegel B,
465 Spertus JA, American Heart A, Council on Quality of C, Outcomes R, Council on Cardiovascular
466 N, Council on Clinical C, Council on Cardiovascular R, Intervention, Council on Cardiovascular
467 S and Anesthesia. Decision making in advanced heart failure: a scientific statement from the
468 American Heart Association. *Circulation*. 2012;125:1928-52.
- 469 5. Heidenreich PA, Bozkurt B, Aguilar D, Allen LA, Byun JJ, Colvin MM, Deswal A, Drazner
470 MH, Dunlay SM, Evers LR, Fang JC, Fedson SE, Fonarow GC, Hayek SS, Hernandez AF,
471 Khazanie P, Kittleson MM, Lee CS, Link MS, Milano CA, Nnacheta LC, Sandhu AT, Stevenson
472 LW, Vardeny O, Vest AR and Yancy CW. 2022 AHA/ACC/HFSA Guideline for the Management
473 of Heart Failure: Executive Summary: A Report of the American College of Cardiology/American
474 Heart Association Joint Committee on Clinical Practice Guidelines. *J Am Coll Cardiol*.
475 2022;79:1757-1780.
- 476 6. Levine DA, Galecki AT, Langa KM, Unverzagt FW, Kabeto MU, Giordani B and Wadley
477 VG. Trajectory of Cognitive Decline After Incident Stroke. *JAMA*. 2015;314:41-51.

- 478 7. Levine DA, Gross AL, Briceno EM, Tilton N, Giordani BJ, Sussman JB, Hayward RA,
479 Burke JF, Hingtgen S, Elkind MSV, Manly JJ, Gottesman RF, Gaskin DJ, Sidney S, Sacco RL,
480 Tom SE, Wright CB, Yaffe K and Galecki AT. Sex Differences in Cognitive Decline Among US
481 Adults. *JAMA Netw Open*. 2021;4:e210169.
- 482 8. Levine DA, Gross AL, Briceno EM, Tilton N, Kabeto MU, Hingtgen SM, Giordani BJ,
483 Sussman JB, Hayward RA, Burke JF, Elkind MSV, Manly JJ, Moran AE, Kulick ER, Gottesman
484 RF, Walker KA, Yano Y, Gaskin DJ, Sidney S, Yaffe K, Sacco RL, Wright CB, Roger VL, Allen
485 NB and Galecki AT. Association Between Blood Pressure and Later-Life Cognition Among
486 Black and White Individuals. *JAMA Neurol*. 2020;77:810-819.
- 487 9. Johansen MC, Ye W, Gross A, Gottesman RF, Han D, Whitney R, Briceno EM, Giordani
488 BJ, Shore S, Elkind MSV, Manly JJ, Sacco RL, Fohner A, Griswold M, Psaty BM, Sidney S,
489 Sussman J, Yaffe K, Moran AE, Heckbert S, Hughes TM, Galecki A and Levine DA. Association
490 Between Acute Myocardial Infarction and Cognition. *JAMA Neurol*. 2023;80:723-731.
- 491 10. Gure TR, Blaum CS, Giordani B, Koelling TM, Galecki A, Pressler SJ, Hummel SL and
492 Langa KM. Prevalence of cognitive impairment in older adults with heart failure. *J Am Geriatr*
493 *Soc*. 2012;60:1724-9.
- 494 11. Dodson JA, Truong TT, Towle VR, Kerins G and Chaudhry SI. Cognitive impairment in
495 older adults with heart failure: prevalence, documentation, and impact on outcomes. *Am J Med*.
496 2013;126:120-6.
- 497 12. Sterling MR, Jannat-Khah D, Bryan J, Banerjee S, McClure LA, Wadley VG, Unverzagt
498 FW, Levitan EB, Goyal P, Peterson JC, Manly JJ, Levine DA and Safford MM. The Prevalence
499 of Cognitive Impairment Among Adults With Incident Heart Failure: The "Reasons for
500 Geographic and Racial Differences in Stroke" (REGARDS) Study. *J Card Fail*. 2019;25:130-
501 136.

- 502 13. Qiu C, Winblad B, Marengoni A, Klarin I, Fastbom J and Fratiglioni L. Heart failure and
503 risk of dementia and Alzheimer disease: a population-based cohort study. *Arch Intern Med*.
504 2006;166:1003-8.
- 505 14. Tilvis RS, Kahonen-Vare MH, Jolkkonen J, Valvanne J, Pitkala KH and Strandberg TE.
506 Predictors of cognitive decline and mortality of aged people over a 10-year period. *J Gerontol A*
507 *Biol Sci Med Sci*. 2004;59:268-74.
- 508 15. Hammond CA, Blades NJ, Chaudhry SI, Dodson JA, Longstreth WT, Jr., Heckbert SR,
509 Psaty BM, Arnold AM, Dublin S, Sitlani CM, Gardin JM, Thielke SM, Nanna MG, Gottesman RF,
510 Newman AB and Thacker EL. Long-Term Cognitive Decline After Newly Diagnosed Heart
511 Failure: Longitudinal Analysis in the CHS (Cardiovascular Health Study). *Circ Heart Fail*.
512 2018;11:e004476.
- 513 16. Mohebi R, Chen C, Ibrahim NE, McCarthy CP, Gaggin HK, Singer DE, Hyle EP, Wasfy
514 JH and Januzzi JL, Jr. Cardiovascular Disease Projections in the United States Based on the
515 2020 Census Estimates. *J Am Coll Cardiol*. 2022;80:565-578.
- 516 17. Virani SS, Alonso A, Benjamin EJ, Bittencourt MS, Callaway CW, Carson AP,
517 Chamberlain AM, Chang AR, Cheng S, Delling FN, Djousse L, Elkind MSV, Ferguson JF,
518 Fornage M, Khan SS, Kissela BM, Knutson KL, Kwan TW, Lackland DT, Lewis TT, Lichtman
519 JH, Longenecker CT, Loop MS, Lutsey PL, Martin SS, Matsushita K, Moran AE, Mussolino ME,
520 Perak AM, Rosamond WD, Roth GA, Sampson UKA, Satou GM, Schroeder EB, Shah SH, Shay
521 CM, Spartano NL, Stokes A, Tirschwell DL, VanWagner LB, Tsao CW, American Heart
522 Association Council on E, Prevention Statistics C and Stroke Statistics S. Heart Disease and
523 Stroke Statistics-2020 Update: A Report From the American Heart Association. *Circulation*.
524 2020;141:e139-e596.
- 525 18. Wright JD, Folsom AR, Coresh J, Sharrett AR, Couper D, Wagenknecht LE, Mosley TH,
526 Jr., Ballantyne CM, Boerwinkle EA, Rosamond WD and Heiss G. The ARIC (Atherosclerosis
527 Risk In Communities) Study: JACC Focus Seminar 3/8. *J Am Coll Cardiol*. 2021;77:2939-2959.

- 528 19. Friedman GD, Cutter GR, Donahue RP, Hughes GH, Hulley SB, Jacobs DR, Jr., Liu K
529 and Savage PJ. CARDIA: study design, recruitment, and some characteristics of the examined
530 subjects. *J Clin Epidemiol.* 1988;41:1105-16.
- 531 20. Fried LP, Borhani NO, Enright P, Furberg CD, Gardin JM, Kronmal RA, Kuller LH,
532 Manolio TA, Mittelmark MB, Newman A and et al. The Cardiovascular Health Study: design and
533 rationale. *Ann Epidemiol.* 1991;1:263-76.
- 534 21. Feinleib M, Kannel WB, Garrison RJ, McNamara PM and Castelli WP. The Framingham
535 Offspring Study. Design and preliminary data. *Prev Med.* 1975;4:518-25.
- 536 22. Sacco RL, Boden-Albala B, Gan R, Chen X, Kargman DE, Shea S, Paik MC and Hauser
537 WA. Stroke incidence among white, black, and Hispanic residents of an urban community: the
538 Northern Manhattan Stroke Study. *Am J Epidemiol.* 1998;147:259-68.
- 539 23. The Framingham Study Criteria For Events (Sequence of Events File "SOE").
540 [https://biolincc.nhlbi.nih.gov/media/studies/framoffspring/Protocols/Criteria%20for%20Events%20-%20Sequence%20of%20Events%20File%20SOE.pdf?link_time=2022-11-](https://biolincc.nhlbi.nih.gov/media/studies/framoffspring/Protocols/Criteria%20for%20Events%20-%20Sequence%20of%20Events%20File%20SOE.pdf?link_time=2022-11-14_23:11:26.747440)
541 [14_23:11:26.747440](https://biolincc.nhlbi.nih.gov/media/studies/framoffspring/Protocols/Criteria%20for%20Events%20-%20Sequence%20of%20Events%20File%20SOE.pdf?link_time=2022-11-14_23:11:26.747440).
- 542 14_23:11:26.747440.
- 543 24. Bahrami H, Bluemke DA, Kronmal R, Bertoni AG, Lloyd-Jones DM, Shahar E, Szklo M
544 and Lima JA. Novel metabolic risk factors for incident heart failure and their relationship with
545 obesity: the MESA (Multi-Ethnic Study of Atherosclerosis) study. *J Am Coll Cardiol.*
546 2008;51:1775-83.
- 547 25. Bibbins-Domingo K, Pletcher MJ, Lin F, Vittinghoff E, Gardin JM, Arynchyn A, Lewis CE,
548 Williams OD and Hulley SB. Racial differences in incident heart failure among young adults. *N*
549 *Engl J Med.* 2009;360:1179-90.
- 550 26. Rosamond WD, Chang PP, Baggett C, Johnson A, Bertoni AG, Shahar E, Deswal A,
551 Heiss G and Chambless LE. Classification of heart failure in the atherosclerosis risk in
552 communities (ARIC) study: a comparison of diagnostic criteria. *Circ Heart Fail.* 2012;5:152-9.
- 553 27. CHS: Event Data Collection Overview. <https://chs-nhlbi.org/EventsData>.

- 554 28. Rincon F, Dhamoon M, Moon Y, Paik MC, Boden-Albala B, Homma S, Di Tullio MR,
555 Sacco RL and Elkind MS. Stroke location and association with fatal cardiac outcomes: Northern
556 Manhattan Study (NOMAS). *Stroke*. 2008;39:2425-31.
- 557 29. Camplain R, Kucharska-Newton A, Loehr L, Keyserling TC, Layton JB, Wruck L, Folsom
558 AR, Bertoni AG and Heiss G. Accuracy of Self-Reported Heart Failure. The Atherosclerosis Risk
559 in Communities (ARIC) Study. *J Card Fail*. 2017;23:802-808.
- 560 30. Hachinski V, Iadecola C, Petersen RC, Breteler MM, Nyenhuis DL, Black SE, Powers
561 WJ, DeCarli C, Merino JG, Kalaria RN, Vinters HV, Holtzman DM, Rosenberg GA, Wallin A,
562 Dichgans M, Marler JR and Leblanc GG. National Institute of Neurological Disorders and
563 Stroke-Canadian Stroke Network vascular cognitive impairment harmonization standards.
564 *Stroke*. 2006;37:2220-41.
- 565 31. Manly JJ, Schupf N, Stern Y, Brickman AM, Tang MX and Mayeux R. Telephone-based
566 identification of mild cognitive impairment and dementia in a multicultural cohort. *Arch Neurol*.
567 2011;68:607-14.
- 568 32. Briceno EM, Gross AL, Giordani BJ, Manly JJ, Gottesman RF, Elkind MSV, Sidney S,
569 Hingtgen S, Sacco RL, Wright CB, Fitzpatrick A, Fohner AE, Mosley TH, Yaffe K and Levine
570 DA. Pre-Statistical Considerations for Harmonization of Cognitive Instruments: Harmonization of
571 ARIC, CARDIA, CHS, FHS, MESA, and NOMAS. *J Alzheimers Dis*. 2021;83:1803-1813.
- 572 33. Muthen LK and Muthen BO. *Mplus user's guide: Eighth Edition*. Los Angeles, CA.
- 573 34. Asparouhov T and Muthén B. Plausible values for latent variables using Mplus.
574 Technical Report. <http://www.statmodel.com/download/Plausible.pdf>. 2010;2022.
- 575 35. Chen LY, Norby FL, Gottesman RF, Mosley TH, Soliman EZ, Agarwal SK, Loehr LR,
576 Folsom AR, Coresh J and Alonso A. Association of Atrial Fibrillation With Cognitive Decline and
577 Dementia Over 20 Years: The ARIC-NCS (Atherosclerosis Risk in Communities Neurocognitive
578 Study). *J Am Heart Assoc*. 2018;7.

- 579 36. Mann DL. Innate immunity and the failing heart: the cytokine hypothesis revisited. *Circ*
580 *Res.* 2015;116:1254-68.
- 581 37. Iadecola C and Gorelick PB. Converging pathogenic mechanisms in vascular and
582 neurodegenerative dementia. *Stroke.* 2003;34:335-7.
- 583 38. Doyle KP, Quach LN, Sole M, Axtell RC, Nguyen TV, Soler-Llavina GJ, Jurado S, Han J,
584 Steinman L, Longo FM, Schneider JA, Malenka RC and Buckwalter MS. B-lymphocyte-
585 mediated delayed cognitive impairment following stroke. *J Neurosci.* 2015;35:2133-45.
- 586 39. Villringer A and Laufs U. Heart failure, cognition, and brain damage. *Eur Heart J.*
587 2021;42:1579-1581.
- 588 40. Glymour MM and Manly JJ. Lifecourse social conditions and racial and ethnic patterns of
589 cognitive aging. *Neuropsychol Rev.* 2008;18:223-54.
- 590 41. Lam CSP, Arnott C, Beale AL, Chandramouli C, Hilfiker-Kleiner D, Kaye DM, Ky B,
591 Santema BT, Sliwa K and Voors AA. Sex differences in heart failure. *Eur Heart J.*
592 2019;40:3859-3868c.
- 593 42. Mielke MM, Vemuri P and Rocca WA. Clinical epidemiology of Alzheimer's disease:
594 assessing sex and gender differences. *Clin Epidemiol.* 2014;6:37-48.
- 595 43. Wolinsky FD, Unverzagt FW, Smith DM, Jones R, Stoddard A and Tennstedt SL. The
596 ACTIVE cognitive training trial and health-related quality of life: protection that lasts for 5 years.
597 *J Gerontol A Biol Sci Med Sci.* 2006;61:1324-9.
- 598 44. Riegel B, Moser DK, Anker SD, Appel LJ, Dunbar SB, Grady KL, Gurvitz MZ, Havranek
599 EP, Lee CS, Lindenfeld J, Peterson PN, Pressler SJ, Schocken DD, Whellan DJ, American
600 Heart Association Council on Cardiovascular N, American Heart Association Council on
601 Cardiovascular N, American Heart Association Council on Clinical C, American Heart
602 Association Council on Nutrition PA, Metabolism, American Heart Association Interdisciplinary
603 Council on Quality of C and Outcomes R. State of the science: promoting self-care in persons

- 604 with heart failure: a scientific statement from the American Heart Association. *Circulation*.
605 2009;120:1141-63.
- 606 45. Unutzer J, Katon W, Callahan CM, Williams JW, Jr., Hunkeler E, Harpole L, Hoffing M,
607 Della Penna RD, Noel PH, Lin EH, Tang L and Oishi S. Depression treatment in a sample of
608 1,801 depressed older adults in primary care. *J Am Geriatr Soc*. 2003;51:505-14.
- 609 46. Clark LJ, Gatz M, Zheng L, Chen YL, McCleary C and Mack WJ. Longitudinal verbal
610 fluency in normal aging, preclinical, and prevalent Alzheimer's disease. *Am J Alzheimers Dis*
611 *Other Demen*. 2009;24:461-8.
- 612 47. Bennett HP, Corbett AJ, Gaden S, Grayson DA, Kril JJ and Broe GA. Subcortical
613 vascular disease and functional decline: a 6-year predictor study. *J Am Geriatr Soc*.
614 2002;50:1969-77.
- 615 48. Petersen RC, Lopez O, Armstrong MJ, Getchius TSD, Ganguli M, Gloss D, Gronseth
616 GS, Marson D, Pringsheim T, Day GS, Sager M, Stevens J and Rae-Grant A. Practice guideline
617 update summary: Mild cognitive impairment: Report of the Guideline Development,
618 Dissemination, and Implementation Subcommittee of the American Academy of Neurology.
619 *Neurology*. 2018;90:126-135.
- 620 49. Verhaeghen P, Marcoen A and Goossens L. Improving memory performance in the
621 aged through mnemonic training: a meta-analytic study. *Psychol Aging*. 1992;7:242-51.
- 622 50. Sbolli M, Fiuzat M, Cani D and O'Connor CM. Depression and heart failure: the lonely
623 comorbidity. *Eur J Heart Fail*. 2020;22:2007-2017.

624

625

Table 1: Baseline characteristics between participants who did and did not have an incident heart failure diagnosis during follow-up

Characteristic	Participants without incident heart failure (N= 28,207)	Participants with incident heart failure (N=1,407)	P value
Age at cohort enrollment, mean \pm SD, years	52.8 \pm 16.6	65.3 \pm 12.7	<0.001
Age at first cognitive assessment, mean \pm SD, years	60.7 \pm 10.5	67.8 \pm 9.4	<0.001
Female sex	15,375 (54.5%)	768 (54.6%)	0.98
Race/Ethnicity			<0.001
White	19,812 (70.2%)	1,020 (72.5%)	
Black	6,305 (22.3%)	256 (18.2%)	
Hispanic (any race)	2,090 (7.4%)	131 (9.3%)	
Education:			<0.001
Eighth grade or less	2,785 (9.9%)	236 (16.8%)	
Grades 9-11/some high school	2,894 (10.2%)	183 (13.0%)	
Completed high school	7,863 (27.9%)	398 (28.3%)	
Some college but no degrees	5,067 (18.0%)	264 (18.8%)	
College degree or higher	9,598 (34.0%)	326 (23.2%)	
Study Cohort			<0.001
ARIC	11,267 (39.9%)	267 (19.0%)	
CARDIA	3,643 (12.9%)	9 (0.6%)	
CHS	4,366 (15.5%)	781 (55.5%)	
FOS	3,347 (11.9%)	126 (9.0%)	
MESA	3,055 (10.8%)	5 (0.4%)	
NOMAS	2,529 (9.0%)	219 (15.6%)	
Active smoker	5,100 (18.1%)	207 (14.7%)	0.001
Number of alcoholic drinks per week			0.004

None	14,486 (51.4%)	744(52.9%)	
1-6	8540 (30.3%)	442 (31.4%)	
7-13	2,877 (10.2%)	101 (7.2%)	
14+	2,304 (8.2%)	120 (8.5%)	
Any physical activity	22,509 (79.8%)	1,124 (79.9%)	0.96
Body mass index, mean \pm SD, kg/m ²	27.9 \pm 5.6	28.4 \pm 5.5	<0.001
Waist circumference, mean \pm SD, cm	96 \pm 14	98 \pm 14	<0.001
History of myocardial infarction	1,056 (3.7%)	157 (11.2%)	<0.001
History of atrial fibrillation	478 (1.7%)	68 (4.8%)	<0.001
Fasting glucose, mean \pm SD, mg/dL	104.5 \pm 33.9	112.8 \pm 45.2	<0.001
Low density cholesterol, mean \pm SD, mg/dL	125.6 \pm 36.5	130.1 \pm 35.1	<0.001
Glomerular filtration rate, mean \pm SD, ml/min/1.73m ²	74.9 \pm 19.0	67.6 \pm 17.2	<0.001
Use of antihypertensive medications	8,710 (30.9%)	685 (48.7%)	<0.001
Cumulative mean systolic blood pressure, mean \pm SD, mmHg	137.4 \pm 19.0	148.4 \pm 20.8	<0.001
Cognitive scores at first assessment (mean \pm SD)			
Global cognition,	51.6 \pm 8.1	50.1 \pm 7.6	<0.001
Executive function,	51.7 \pm 8.2	49.4 \pm 7.9	<0.001
Memory	50.9 \pm 6.5	50.9 \pm 5.7	0.34

All categorical variables are N (%).

Legend: ARIC: Atherosclerosis Risk in Communities; CARDIA: Coronary Artery Risk Development in Young Adults Study; CHS: Cardiovascular Health Study; FOS: Framingham Offspring Study; MESA: Multi-Ethnic Study of Atherosclerosis; NOMAS: Northern Manhattan Study; SD: standard deviation

All cognitive measures are set to a *t* score metric (mean [SD], 50 [10]) at a participant's first cognitive assessment; a 1-point

difference represents a 0.1-SD difference in the distribution of cognition across the 6 cohorts. Higher cognitive scores indicate better performance.

Table 2: Adjusted changes in cognitive function after incident heart failure diagnosis

Measure	Global Cognition N= 29,614	Executive Function N= 26,417	Memory N= 19,176
	Coefficient (95% CI)	Coefficient (95% CI)	Coefficient (95% CI)
Baseline cognitive score	45.17 (44.87, 45.46)	44.27 (43.94, 44.59)	49.59 (49.21, 49.97)
Baseline cognitive slope without incident HF, per year	-0.25 (-0.26, -0.24)	-0.30 (-0.31, -0.29)	-0.28 (-0.3, -0.27)
Difference in baseline cognitive score, per 10-year older age	-2.08 (-2.18, -1.97)	-2.94 (-3.06, -2.82)	-1.54 (-1.68, -1.39)
Acute change in cognitive score after incident HF diagnosis	-1.08 (-1.36, -0.80)	-0.65 (-0.96, -0.34)	-0.51 (-1.37, 0.35)
Change in cognitive slope after incident HF, per year	-0.15 (-0.21, -0.09)	-0.16 (-0.23, -0.09)	-0.11 (-0.26, 0.04)

All cognitive measures are set to a *t* score metric (mean [SD], 50 [10]) at a participant's first cognitive assessment; a 1-point difference represents a 0.1-SD difference in the distribution of cognition across the 6 cohorts. Higher cognitive scores indicate better performance.

A linear mixed-effects model was used with a time-varying incident HF covariate to estimate the association between incident HF diagnosis and initial decline in cognitive function (intercept) at the time of event and a time since HF diagnosis variable to estimate the association between incident HF and the decline in cognitive function (slope) over time. Other covariates include time since first cognitive assessment, race/ethnicity, sex, education, study cohort, alcoholic drinks per week, current cigarette smoking, any physical activity, body mass index, waist circumference, history of myocardial infarction, history of atrial fibrillation, fasting glucose, low density cholesterol, glomerular filtration rate, use of antihypertensive medications, cumulative mean systolic blood pressure (treated as time-independent variable), age*follow-up duration, race-ethnicity*follow-up duration, sex*follow-up duration. All covariates were measured either prior to or on the day of first cognitive assessment. All the continuous variables, including age, body mass index, waist circumference, low density cholesterol, glomerular filtration rate, and cumulative mean systolic blood pressure were centered at the median.

Abbreviation: HF: heart failure

Table 3: Modification of the adjusted changes in cognitive function after incident heart failure diagnosis by age of heart failure onset, race-ethnicity, and sex

Measure	Global Cognition N= 29,614	Executive Function N= 26,417	Memory N=19,176
	Coefficient (95% CI)	Coefficient (95% CI)	Coefficient (95% CI)
Baseline cognitive score	45.17 (44.88, 45.47)	44.26 (43.94, 44.59)	49.59 (49.20, 49.97)
Baseline cognitive slope without incident HF, per year	-0.25 (-0.26, -0.24)	-0.30 (-0.31, -0.29)	-0.3 (-0.31, -0.29)
Difference in baseline cognitive score, per 10-year older age	-2.08 (-2.18, -1.97)	-2.94 (-3.06, -2.82)	-1.54 (-1.68, -1.39)
Change in baseline cognitive slope per year without HF, per 10-year older age	-0.15 (-0.16, -0.15)	-0.12 (-0.12, -0.11)	-0.18 (-0.20, -0.17)
Difference in the acute change in cognitive score after incident HF, per 10-year older age of HF onset	-1.52 (-1.99, -1.04)	-0.34 (-1.18, 0.50)	-1.9 (-3.91, 0.10)
Difference in the change of cognitive slope per year after incident HF, per 10-year older age of HF onset	0.02 (-0.05, 0.10)	0.37 (0.18, 0.55)	0.25 (-0.21, 0.72)
Difference in baseline cognitive score in Black vs. white individuals	-5.96 (-6.15, -5.77)	-5.73 (-5.93, -5.53)	-3.41 (-3.63, -3.18)
Difference in baseline cognitive slope per year without HF, in Black vs. white individuals	-0.01 (-0.03, 0.01)	0.01 (-0.01, 0.02)	-0.07 (-0.09, -0.04)
Difference in the acute change in cognitive score after incident HF, in Black vs. white individuals	0.84 (0.05, 1.62)	1.59 (0.74, 2.44)	0.58 (-1.37, 2.52)
Difference in the change of cognitive slope per year, after incident HF in Black vs. white individuals	0.11 (-0.06, 0.28)	-0.01 (-0.20, 0.18)	0.06 (-0.28, 0.40)

Difference in baseline cognitive score in Hispanic vs. non-Hispanic individuals	-5.32 (-5.68, -4.96)	-5.67 (-6.11, -5.22)	-0.59 (-1.37, 0.18)
Difference in baseline cognitive slope per year without HF, in Hispanic vs. non-Hispanic individuals	0.11 (0.09, 0.14)	0.04 (-0.02, 0.10)	0.28 (0.18, 0.37)
Difference in the initial change in cognitive score after incident HF between Hispanic vs. non-Hispanic individuals	0.58 (-0.37, 1.53)	0.48 (-3.83, 4.80)	2.92 (-2.85, 8.68)
Difference in the change of cognitive slope per year, after incident HF in Hispanic vs. White individuals	0.1 (-0.09, 0.30)	0.01 (-2.34, 2.36)	-1.67 (-4.49, 1.15)
Difference in baseline cognitive score for females vs. males	1.92 (1.78, 2.07)	1.81 (1.66, 1.97)	1.97 (1.79, 2.15)
Difference in baseline cognitive slope per year without HF, in females vs. males	-0.06 (-0.07, -0.05)	-0.07 (-0.08, -0.06)	-0.01 (-0.03, 0.01)
Difference in the acute change in cognitive score after incident HF, in females vs. males	-0.74 (-1.31, -0.18)	0.4 (-0.22, 1.02)	-0.43 (-2.16, 1.31)
Difference in the change in cognitive slope per year, after incident HF in females vs. males	0.03 (-0.10, 0.15)	-0.02 (-0.17, 0.13)	0.06 (-0.25, 0.36)

All cognitive measures are set to a *t* score metric (mean [SD], 50 [10]) at a participant's first cognitive assessment; a 1-point difference represents a 0.1-SD difference in the distribution of cognition across the 6 cohorts. Higher cognitive scores indicate better performance.

Model used is a linear, mixed-effects model with following covariates: time since first cognitive assessment, time-varying incident HF, time after incident HF, age, sex, race/ethnicity, study cohort, education level, number of alcoholic drinks per week, active smoking, body mass index, waist circumference, any physical activity, cumulative mean systolic blood pressure (time independent variable), antihypertensive medication use, history of myocardial infarction, history of atrial fibrillation, fasting glucose, low density cholesterol, glomerular filtration rate, age*follow-up duration, race-ethnicity*follow-up duration, sex*follow-up duration, time after HF, race-ethnicity*time-varying incident HF, race-ethnicity*time after HF, sex*time-varying incident HF, sex*time after HF, age of HF onset*time-varying incident HF, age of HF onset*time after HF. All covariates were measured either prior to or on the day of first cognitive assessment.

All continuous variables were centered at the median. Abbreviation: HF: heart failure

Figure 1: Cohort creation

Legend: ARIC : Atherosclerosis Risk in Communities Study; CARDIA: Coronary Artery Risk Development in Young Adults Study; CHS: Cardiovascular Health Study; FOS: Framingham Offspring Study; HF: Heart Failure; MESA: Multi-Ethnic Study of Atherosclerosis; NOMAS: Northern Manhattan Study

Figure 2: Predicted trajectory of change in cognitive function before and after heart failure diagnosis

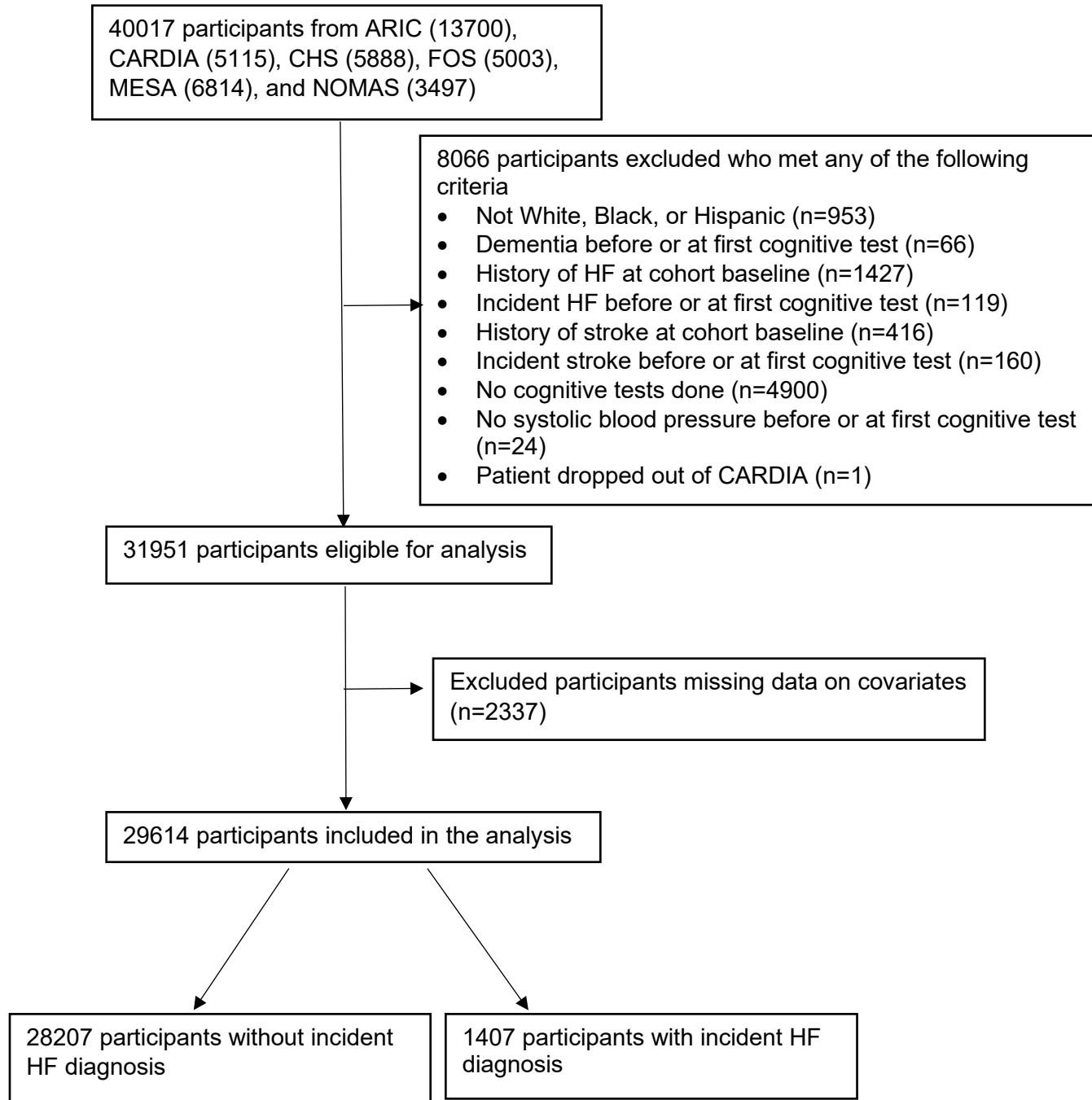
Legend: Global cognition measures global cognitive performance. All cognitive measures are set to a T-score metric (mean 50, SD 10) at a participant's first cognitive assessment; a 1-point difference represents a 0.1 SD difference in the distribution of the specified cognitive domain across the six cohorts. Higher cognitive scores indicate better performance. Cognitive observations were censored after stroke. Graphs represent a 70-year-old White male with college degree or higher education, non-smoker, no alcohol use, no history of atrial fibrillation, no history of myocardial infarction, some physical activity, no anti-hypertensive medication use, body mass index of 27.06 kg/m², waist circumference of 95.25 cm, fasting blood glucose of 97.26 mg/dL, low density lipoprotein cholesterol of 123.8 mg/dL, glomerular filtration rate 72.72 ml/min/m², and cumulative mean systolic blood pressure of 136 mmHg. All values for continuous variables have been centered to the cohort median.

(A): Mean Change in Global Cognition

(B): Mean Change in Executive Function

(C): Mean Change in Memory

Figure 1: Cohort Creation

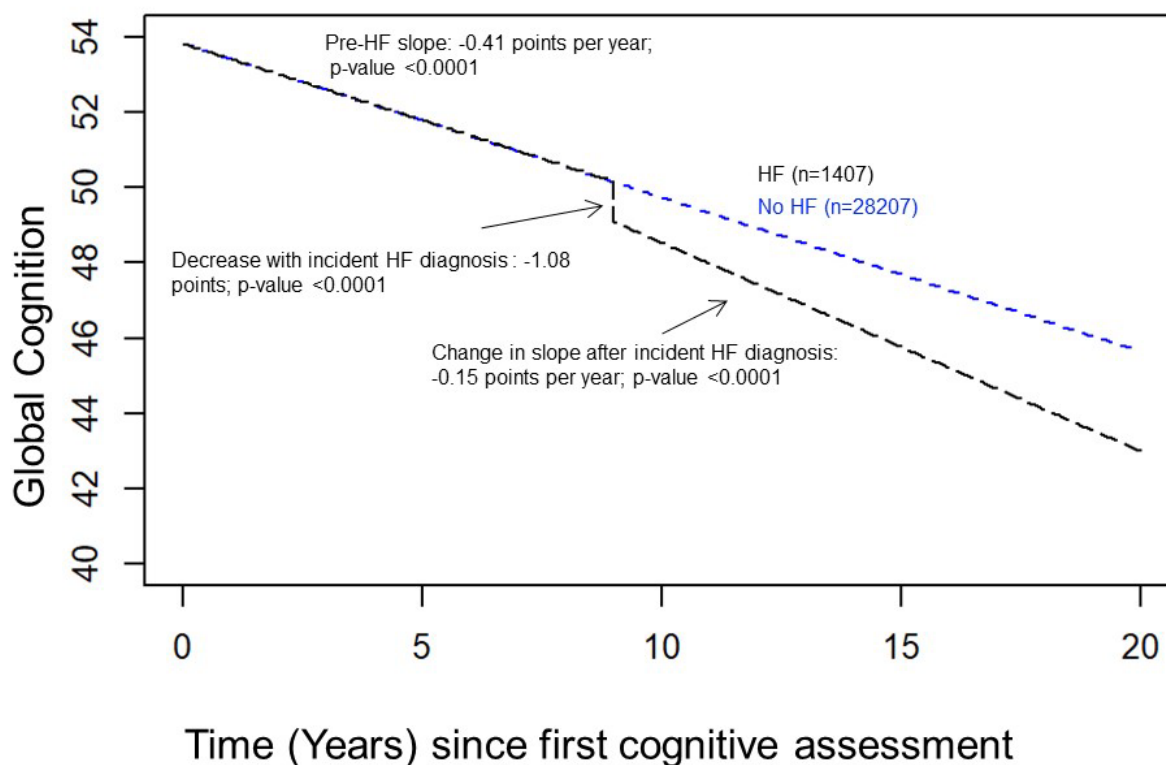


Legend: ARIC: Atherosclerosis Risk in Communities Study; CARDIA: Coronary Artery Risk Development in Young Adults Study; CHS: Cardiovascular Health Study; FOS: Framingham Offspring Study; HF: Heart Failure; MESA: Multi-Ethnic Study of Atherosclerosis; NOMAS: Northern Manhattan Study

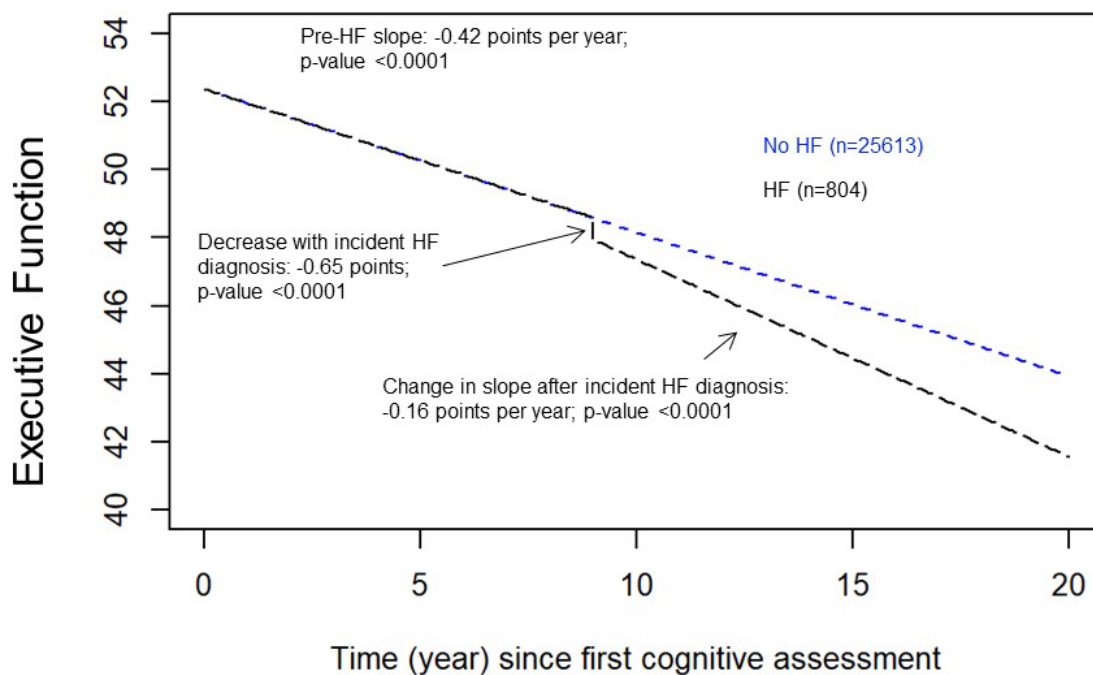
Figure 2: Predicted mean changes in cognitive function scores before and after heart failure diagnosis

Legend: Global cognition measures global cognitive performance. All cognitive measures are set to a T-score metric (mean 50, SD 10) at a participant's first cognitive assessment; a 1-point difference represents a 0.1 SD difference in the distribution of the specified cognitive domain across the six cohorts. Higher cognitive scores indicate better performance. Cognitive observations were censored after stroke. Graphs represent a 70-year-old White male with college degree or higher education, non-smoker, no alcohol use, no history of atrial fibrillation, no history of myocardial infarction, some physical activity, no anti-hypertensive medication use, body mass index of 27.06 kg/m², waist circumference of 95.25 cm, fasting blood glucose of 97.26 mg/dL, low density lipoprotein cholesterol of 123.8 mg/dL, glomerular filtration rate 72.72 ml/min/m², and cumulative mean systolic blood pressure of 136 mmHg. All values for continuous variables have been centered to the cohort median.

(A): Incident HF and Mean Changes in Global Cognition



(B): Incident HF and Mean Changes in Executive Function



(C): Incident HF and Mean Changes in Memory

