



Abstract

**Background:** Heart Rate Score (HRSc), the percent of atrial beats in the largest paced/sensed 10-bpm histogram bin recorded in cardiac devices, is a metric of chronotropic incompetence.

It remains uncertain if HRSc independently predicts atrial high-rate episodes (AHREs) in patients with sinus node dysfunction (SND) undergoing pacemaker (PM) implantation.

**Objective:** To determine the relationship between initial HRSc post-PM implant and new-onset AHREs in patients with SND.

**Methods:** The cohort included patients with Boston Scientific PMs implanted for SND from 2012-2021 at Cleveland Clinic, University of Occupational and Environmental Health, Japan, Kyushu Rosai Hospital, and JCHO Kyushu Hospital. Patients were excluded if they had atrial fibrillation before PM implant or AHREs in the initial 3-months post-implant. Subsequent AHREs post-implant (>1% of atrial beats>170 bpm) were evaluated.

**Results:** Over 48.9 (IQR 25.8-50.4) months, 136 consecutive PM patients (age  $75 \pm 10$  years, 42% male) were followed. The median initial HRSc was 73(55-86)%. AHREs developed in 28/136 (21%). Although %RA pacing and HRSc correlated, rate-responsive pacing was associated with a HRSc only in the patients with high %RA pacing. Patients with  $HRSc \geq 80\%$  had higher occurrence of AHREs than those with  $HRSc < 80\%$  ( $p=0.01$ , log-rank test). After adjusting for age, race, comorbidities, left ventricular ejection fraction, left atrial diameter, %RA/RV pacing, and rate-response programming, HRSc (HR:2.84, 95% CI:1.17-6.92;  $P=0.02$ ) and male sex (HR:2.55, 95% CI:1.15-6.19;  $P=0.04$ ) were independent predictors of AHREs.

**Conclusion:**  $HRSc \geq 80\%$  independently predicted new-onset, device-determined AHREs for patients undergoing PM implant for SND. HRSc may have prognostic and therapeutic implications.

## 1 **Introduction**

2 Heart Rate Score (HRSc) is a novel parameter of chronotropic incompetence using  
3 long-term heart rate variation for patients with cardiac implantable electronic devices  
4 (CIEDs).<sup>1</sup> It is defined as the percent of atrial beats in the largest paced/sensed  
5 10-beat/minutes histogram bin of a pacemaker (PM) or implantable cardioverter-defibrillator  
6 (ICD) (Figure 1). HRSc  $\geq 70\%$  predicts mortality in patients without atrial fibrillation (AF)  
7 who have ICDs<sup>2</sup> or cardiac resynchronization therapy defibrillators (CRT-Ds).<sup>3,4</sup>

8 Atrial high-rate episodes (AHREs) have attracted much attention in anticoagulant  
9 therapy decisions for the risk of stroke in CIED patients.<sup>5,6</sup> Unfortunately, no established data  
10 from electrocardiograms or device interrogation can yet predict development of AHREs. We  
11 recently showed that HRSc, early post-implantation, can predict new-onset AHREs in PM  
12 patients in a large database.<sup>7</sup> In this prior study, the incidence of AHREs, defined as  $>1\%$  of  
13 atrial beats  $\geq 170$  bpm (primary endpoint), correlated with the incidence of mode switch  
14 episodes  $\geq 24$  hours. However, that study could not collect clinical information, including PM  
15 indication, as it used a retrospective, de-identified, database. Therefore, it remains uncertain  
16 whether HRSc predicts AHREs in PM patients with sinus node dysfunction (SND)  
17 independent of clinical parameters.

18 The goal of this study was to evaluate the baseline HRSc post-PM implant in lieu  
19 of clinical characteristics and determine if an independent relationship exists between the  
20 initial HRSc and subsequent development of AHREs in patients with SND who underwent  
21 dual-chamber PM implant. We focused on the incidence of AHREs developing after implant  
22 for those with no AHREs during an initial 3-month observation.

## 23 **Methods**

### 24 **Study Cohort**

25 The cohort included consecutive patients with Boston Scientific PMs implanted for  
26 SND from 2012-2021 at 4 hospitals (Cleveland Clinic in the United States, University of  
27 Occupational and Environmental Health, Japan, Kyushu Rosai Hospital, and JCHO Kyushu  
28 Hospital in Japan). Patients were excluded if they had single chamber or biventricular PMs,  
29 atrial fibrillation (AF) before PM implantation or detected device-determined AHREs  
30 detection during the first 3 months after implantation.

31 Data were analyzed retrospectively. The study was approved by the Institutional  
32 Review Board of the Cleveland Clinic, University of Occupational and Environmental Health,

1 Japan, Kyushu Rosai Hospital, and JCHO Kyushu Hospital.

2 Heart Rate Score (HRSc) and Baseline Period

3 HRSc was defined, as previously described, as the percent of all paced and sensed atrial  
4 events in the most populated 10-bpm rate histogram bin of the CIED, shown in Figure 1.<sup>4</sup>

5 HRSc, used in all analyses, was determined from remote interrogation data from the  
6 dual-chamber PM during the baseline period (the first 3 months after PM implantation). The  
7 HRSc, calculated at the last transmission during the baseline period, was designated the  
8 initial HRSc.

9 Outcome

10 The endpoint was device-determined AHREs after the baseline period. The endpoint for  
11 AHREs was considered >1% of atrial beats  $\geq 170$  beats/min recorded by the PM.

12 Follow-up Data Analysis

13 The occurrence of AHREs was examined using stored remote monitoring data and  
14 tracked during follow-up periods. The relationship between the initial HRSc and occurrence  
15 of device-determined AHREs was assessed.

16 Statistical Analysis

17 Continuous variables were expressed as mean $\pm$ standard deviation (SD), median  
18 (interquartile range, IQR: 25<sup>th</sup>-75<sup>th</sup>), or range, depending on the distribution of data, whereas  
19 categorical variables were expressed as counts and percentages. The optimal HRSc for  
20 predicting device-determined AHREs was chosen to be 80% for AHREs based on J-statistics  
21 (Figure 2). Kaplan-Meier analyses evaluated freedom from AHREs after the baseline period  
22 for the two initial HRSc groups. Log-rank tests were performed to compare group classified  
23 by initial HRSc. Variables with P values <0.05 after single variable analysis were entered  
24 into a multiple variable regression analysis to assess if there is an independent predictor of  
25 AHREs. P<0.05 was considered statistically significant. All statistical analysis were  
26 performed using JMP version 15.2.0 (SAS Institute Inc., Cary, NC).

27 Results

28 *Subjects Demographics*

29 A total of 310 consecutive patients were enrolled. Patients who had atrial  
30 fibrillation before PM implantation or device-determined AHREs in the first three months  
31 (n=174) were excluded. The remaining 136 were followed for a median of 48.9 (IQR,

1 25.8-50.4) months.

2 Patient characteristics are listed in Table 1. The mean patient age was 75±10 years;  
3 57 (41.9%) were male. Almost 50% of patients were Asian and 40% were European  
4 American. No patients were prescribed anti-arrhythmic drugs. The mean left ventricular  
5 ejection fraction (LVEF) and left atrial diameter (LAD) by echocardiogram were 62±7 % and  
6 41±7 mm, respectively. The atrial lead was placed in the right atrium appendage in almost all  
7 patients. The ventricular lead was implanted in right ventricular septum in approximately  
8 two-thirds.

#### 9 *Pacemaker Programming and Interrogation Data*

10 Pacemaker programming at the time of implantation is shown in Table 2.  
11 Rate-responsive pacing was programmed in 70% of patients. Atrial sensitivity was  
12 programmed to a mean of 0.4±0.1 mV and the lower rate limit (LRL) was programmed to 60  
13 bpm in 124/136 (91.2%) patients. The cumulative percent of RA and RV pacing (%RA  
14 pacing and %RV pacing) during the baseline period were a mean of 57±32 %, and 13±27 %,   
15 respectively.

#### 16 *Heart Rate Score*

17 The initial HRSc was calculated at a median of 51 days (IQR, 7-84) after  
18 pacemaker implantation. The median value of the HRSc was 73% (IQR, 55-86%).

#### 19 *Outcome*

20 Over a median of 48.9 months (IQR, 25.8-50.4 months), 28/136 (21%) subjects  
21 experienced the endpoint of >1% AHREs. Subjects with an initial HRSc ≥80% had a higher  
22 incidence of AHREs (Kaplan-Meier rate of 40%) versus those with an initial HRSc <80%  
23 (Kaplan-Meier rate of 24%) through the 90.0 months during post-baseline follow-up.  
24 (log-rank P =0.01) (Figure 3).

#### 25 *Association of Heart Rate Score and Percent of Right Atrial Pacing*

26 Figure 4 shows a positive correlation between %RA pacing during the baseline  
27 period and initial HRSc ( $R^2=0.725$ ,  $P<0.0001$ ) for all patients. Patients were analyzed  
28 additionally by the %RA pacing and rate-response (ON or OFF). HRSc was plotted against  
29 RA pacing (Figures 5 and 6). In all 7 patients with high %RA pacing (pacing ≥70%) and no  
30 rate response (OFF), HRSc was high (≥80%). For those with rate response ON, with RA  
31 pacing ≥70%, 14 /54 patients had HRSc <80% (Figure 5). In patients with mid and low %RA  
32 pacing (<70%), the distribution of HRSc did not differ between those with rate response ON

1 and OFF (Figure 6).

## 2 *Predictors for Incidence of Atrial High-Rate Episode*

3 By multivariable analysis, the initial HRSc (HR: 2.84, 95% CI: 1.17-6.92; P=0.02)  
4 and male sex (HR: 2.55, 95% CI: 1.15-6.19; P=0.04) were the only independent predictors of  
5 AHREs incidence (Table 3).

## 6 **Discussion**

7 We found that the initial HRSc  $\geq 80\%$ , calculated within 3 months after  
8 dual-chamber PM implantation for SND, independently predicted new-onset, device defined,  
9 AHREs in subsequent follow-up. This report is the first to demonstrate a relationship  
10 between HRSc and device-detected AHREs in this population. Subjects with an initial HRSc  
11  $\geq 80\%$  had an increased risk of AHREs. This analysis held true over the 48.9-month  
12 follow-up, after adjustment for risk factors for AHREs including: age, race, histories of  
13 hypertension, diabetes mellitus, coronary artery disease, cardiomyopathy, LVEF,  
14 LAD, %RA/RV pacing, and rate-responsive pacing. Despite a positive correlation  
15 between %RA pacing and HRSc for patients dependent on RA pacing, more than one-quarter  
16 with rate-responsive pacing had HRSc  $< 80\%$ ; those without rate-responsive pacing all had  
17 HRSc  $\geq 80\%$ .

18 Our study indicates that a high initial HRSc ( $\geq 80\%$ ) predicts AHREs recorded after  
19 PM implantation for SND independently. Currently no established indicator from  
20 electrocardiograms or device interrogation has been shown to predict subsequent  
21 development of AHREs. Although our prior report<sup>7</sup> indicated that the HRSc predicts  
22 subsequent AHREs in PM patients in a large de-identified database, clinical parameters  
23 including PM indication could not be determined. Therefore, we investigated the relationship  
24 between initial HRSc and subsequent AHREs focusing on PM patients implanted for SND in  
25 the current study.

26 Our results demonstrate that HRSc predicts pacemaker detected AHREs. It is not  
27 clear that this correlates directly to clinical AF. However, in our prior report<sup>7</sup>, the incidence  
28 of AHREs defined by  $> 1\%$  of atrial beats  $\geq 170$  bpm correlated with the incidence of mode  
29 switch episodes  $\geq 24$  hours which is likely to represent substantial paroxysmal or persistent  
30 AF.

31 Age, gender, hypertension, diabetes mellitus, ischemic heart disease,  
32 pharmacologic therapy, left atrial dilatation, and LVEF, are well known risk factors for

1 AF.<sup>8-11</sup> In our study, HRSc predicted AHREs independent of other risk factors.  
2 Interestingly, however, male gender also predicted AHREs. This result is consistent with  
3 community-based ARIC (Atherosclerosis Risk In Communities) study that showed higher  
4 incidence of AF in males than females.<sup>12</sup> In pacemaker patients with SND, high %RV pacing  
5 is found to be associated with an increased AF.<sup>13-15</sup> In addition, the association between %RA  
6 pacing and AF has been also identified.<sup>16,17</sup>

7 In the current study, the median HRSc of 73% in PM patients with SND was higher  
8 than prior reports.<sup>2,7</sup> This result indicates that our study patients have severe chronotropic  
9 incompetence. Patients with little or no spontaneous heart rate change above the LRL have a  
10 high HRSc<sup>1</sup>. In addition, the optimal HRSc cut-point to predict device-determined AHREs  
11 was found to be  $\geq 80\%$ . Notably, this optimal cut-point is different from HRSc  $\geq 70\%$  for  
12 predicting mortality in patients with ICDs or CRT-Ds.<sup>3,4</sup>

13 Rate-responsive pacing can decrease HRSc in patients with sinus node dysfunction  
14 who pace predominantly at the LRL and have a high HRSc (Figure 5). On the other hand, for  
15 patients with SND who have less chronotropic incompetence, rate-responsive RA pacing may  
16 be less likely affect HRSc (Figure 6). Rate responsive pacing may be excessive or even  
17 harmful for those who have chronotropic competence.<sup>3</sup> Rate-responsive pacing may be best  
18 reserved for those with high baseline HRSc. However, LRL programming affects %RA  
19 pacing and HRSc. A high LRL can override the resting intrinsic rate resulting in an increase  
20 in %RA pacing and subsequently increase in HRSc. Conversely, programming a lower LRL  
21 may decrease %RA pacing and lower HRSc. Most subjects in this study were programmed to  
22 an LRL of 60 but prior data showed that lower LRL programming improved survival in a  
23 large database of CRT-D subjects.<sup>18</sup> Further research is needed to assess the relationships of  
24 LRL, AHREs, %RA pacing and HRSc.

### 25 Study Limitations

26 This was a retrospective analysis and therefore, may be affected by unknown  
27 confounders. We were unable to assess the impact of rate responsive pacing on AHREs. The  
28 present study also does not answer whether lowering HRSc with pacemaker programming  
29 affects AHREs. The population was not large enough to determine relationships of HRSc to a  
30 higher percentage of AHREs or episodes that could become persistent AF.

### 31 Conclusion

32 In patients undergoing PM implant for SND, HRSc $\geq 80\%$  independently predicted  
33 device-determined AHREs in long-term follow-up. As initial HRSc predicts AHREs in this

1 population, this parameter may have prognostic and therapeutic implications.

2 Acknowledgements:

3 Bruce L. Wilkoff, MD passed away before submitting this manuscript and authors express  
4 our sincerest condolence to him and sincerely appreciate his incredible leadership, he gave to  
5 see this project completed. And the authors sincerely appreciate Hiroyuki Takatsu, MD, of  
6 Kyushu Rosai Hospital, and Kan Kikuchi, MD, of JCHO Kyushu Hospital for obtaining  
7 patient's demographic and HRSc data.

8

9 Sources of Funding: None

10

11 Disclosures:

12 KH and RK: have nothing to declare.

13 HA: Research Grant: Boston Scientific, Medtronic, Abbott

14 BO: Member of a DSMB sponsored by AstraZeneca

15 ADS: Consultant: VivaQuant, CardioSignal

16 PWJ, NW, and DP are salaried employees of Boston Scientific.

17 BLW: Consultant and Speaker: Boston Scientific, Medtronic, Abbott, Biotronik

18 GYHL: Consultant and speaker: BMS/Pfizer, Boehringer Ingelheim, Daiichi-Sankyo, Anthos.

19 He is a National Institute for Health and Care Research (NIHR) Senior Investigator and  
20 co-principal investigator of the AFFIRMO project on multimorbidity in AF, which has  
21 received funding from the European Union's Horizon 2020 research and innovation  
22 programme under grant agreement No 899871.

23

24 Data Availability: The data underlying this article will be shared on reasonable request to the  
25 corresponding authors.

26

27



1 References

- 2 1. Sharma A, Richards M, Olshansky B, Wold N, Jones P, Perschbacher D, Wilkoff BL.  
3 Heart rate score, a measure related to chronotropic incompetence in pacemaker patients.  
4 Heart Rhythm O2. 2021;2:124-131.
- 5 2. Gopinathannair R, Sharma A, Jones P, English C, Furmanek S, Olshansky B. Heart rate  
6 score and outcomes in ICD patients: insights from the prospective randomized INTRINSIC  
7 RV trial. J Interv Card Electrophysiol. 2022;64:87-93.
- 8 3. Olshansky B, Richards M, Sharma A, Wold N, Jones P, Perschbacher D, Wilkoff BL.  
9 Survival after rate-responsive programming in patients with cardiac resynchronization  
10 therapy-defibrillator implants is associate with a novel parameter: The Heart rate score. Circ  
11 Arrhythm Electrophysiol. 2016;9:e003806.
- 12 4. Wilkoff BL, Richards M, Sharma A, Wold N, Jones P, Perschbacher D, Olshansky B. A  
13 device histogram-based simple predictor of mortality risk in ICD and CRT-D patients: the  
14 heart rate score. Pacing Clin Electrophysiol. 2017;40:333-343.
- 15 5. Kirchof P, Toennis T, Goette A, Camm AJ, Diener HC, Becher N, Becher N, Bertaglia E,  
16 Blomstrom Lundqvist C, Borlich M, et al: NOAH-AFNET 6. Anticoagulation with edoxaban  
17 in patients with atrial high-rate episodes. N Engl J Med. 2023;389:1167-1179.
- 18 6. Healey JS, Lopes RD, Granger CB, Alings M, Rivard L, McIntyre WF, Atar D, Birnie  
19 DH, Boriani G, Camm AJ, et al: ARTESIA investigators. Apixaban for stroke prevention in  
20 subclinical atrial fibrillation. N Engl J Med. 2023 Nov 12. doi: 10.1056/NEJMoa2310234.
- 21 7. Hayashi K, Abe H, Olshansky B, Sharma AD, Jones PW, Wold N, Perschbacher D,  
22 Kohno R, Richards M, Wilkoff BL. Initial heart rate score predicts new-onset atrial  
23 tachyarrhythmias in pacemaker patients. Europace. 2023. Aug 2;25:euad242. doi:  
24 10.1093/europace/euad242.
- 25 8. Himmelreich JCL, Lucassen WAM, Harskamp RE, Aussems C, van Weert HCPM,  
26 Nielsen MMJ. CHARGE-AF in a national routine primary care electronic health records  
27 database in the Netherlands: validation for 5-year risk of atrial fibrillation and implications  
28 for patient selection in atrial fibrillation screening. Open Heart. 2021;8:e001459
- 29 9. Magnussen C, Niiranen TJ, Ojeda FM, Gianfagna F, Blankenberg S, Njølstad I,  
30 Vartiainen E, Sans S, Pasterkamp G, Hughes M, et al; BiomarcCaRE Consortium. Sex  
31 difference and similarities in atrial fibrillation epidemiology, risk factors, and mortality in  
32 community cohorts: Results from BiomarcCaRE Consortium (Biomarker for cardiovascular  
33 risk assessment in Europe). Circulation 2017;136:1588-1597.
- 34 10. Dittrich HC, Pearce LA, Asinger RW, McBride R, Zabalgaitia M, Pennock GD, Safford  
35 RE, Rothbart RM, Halperin JL, Hart RG; Left atrial diameter in nonvalvular atrial

- 1 fibrillation: An echocardiographic study. Stroke prevention in atrial fibrillation investigators.  
2 Am Heart J. 1999;137:494-499.
- 3 11. Chioncel O, Lainscak M, Seferovic PM, Anker SD, Crespo-Leiro MG, Harjola VP,  
4 Parissis J, Laroche C, Piepoli MF, Fonseca C, et al. Epidemiology and one-year outcomes in  
5 patients with chronic heart failure and preserved, mid-range and reduced ejection fraction: an  
6 analysis of the ESC Heart Failure long-term registry. Eur J Heart Fail. 2017;19:1574-1585.
- 7 12. Aronis KN, Zhao D, Hoogeveen RC, Alonso A, Ballantyne CM, Guallar E, Jones SR,  
8 Martin SS, Nazarian S, Steffen BT, et al. Association of lipoprotein(a) levels with incident  
9 atrial fibrillation and ischemic stroke: The ARIC (Atherosclerosis risk in communities) study.  
10 J Am Heart Assoc. 2017;6:e007372. doi: 10.1161/JAHA.117.007372.
- 11 13. Sweeney MO, Hellkamp AS, Ellenbogen KA, Greenspon AJ, Freedman RA, Lee KL,  
12 Lamas GA: Mode Selection Trial investigators. Adverse effect of ventricular pacing on heart  
13 failure and atrial fibrillation among patients with normal baseline QRS duration in a clinical  
14 trial of pacemaker therapy for sinus node dysfunction. Circulation. 2003;107:2932-2937.
- 15 14. Nielsen JC, Kristensen L, Anderson HR, Mortensen PT, Pedersen OL, Pedersen AK. A  
16 randomized comparison of atrial and dual-chamber pacing in 177 consecutive patients with  
17 sick sinus syndrome: echocardiographic and clinical outcome. J Am Coll Cardiol.  
18 2003;42:614-623.
- 19 15. Hayashi K, Kohno R, Fujino Y, Takahashi M, Oginosawa Y, Ohe H, Miyamoto T,  
20 Fukuda S, Araki M, Sonoda S, et al. Pacing from right ventricular septum and development  
21 of new atrial fibrillation in paced patients with atrioventricular block and preserved left  
22 ventricular function. Circ J. 2016;80:2302-2309.
- 23 16. Elkayam LU, Koehler JL, Sheldon TJ, Glotzer TV, Rosenthal LS, Lamas GA. The  
24 influence of atrial and ventricular pacing on the incidence of atrial fibrillation: a  
25 meta-analysis. Pacing Clin Electrophysiol. 2011;34:1593-1599.
- 26 17. Hjøtshøj S, Riahi S, Nielsen JC, Skjøth F, Lundbye-Christensen S, Anderson HR;  
27 DANPACE Investigators. Does atrial pacing lead to atrial fibrillation in patients with sick  
28 sinus syndrome? Insight from DANPACE trial. Europace. 2014;16:241-245.
- 29 18. Sharma AD, Wilkoff BL, Richards M, Wold N, Jones P, Perschbacher D, Olshansky B.  
30 Lower rate limit for pacing by cardiac resynchronization defibrillators: Should lower rate  
31 programming be reconsidered? Heart Rhythm. 2021;18:2087-2093.

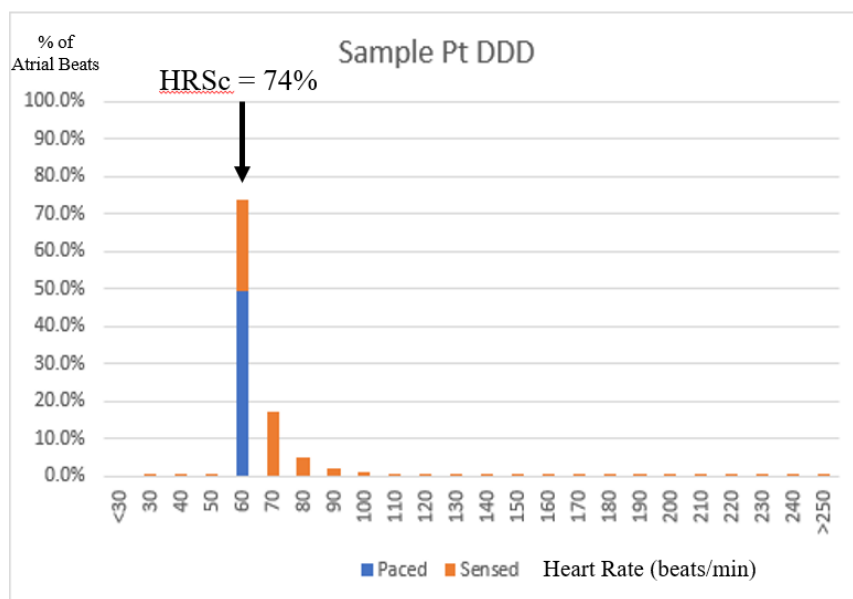
32

33

**Figure and Table Legends**

1

2 Figure 1. Example of HRSc



3

4 The HRSc was defined as the percent of all paced and sensed atrial event in single most  
5 populated 10-bpm rate histogram bin. This figure shows an example of HRSc of the patients  
6 in DDD mode. Here, HRSc is calculated as 74%.

7 HRSc indicates heart rate score.

8

9

10

11

12

13

14

15

16

17

18

19

20

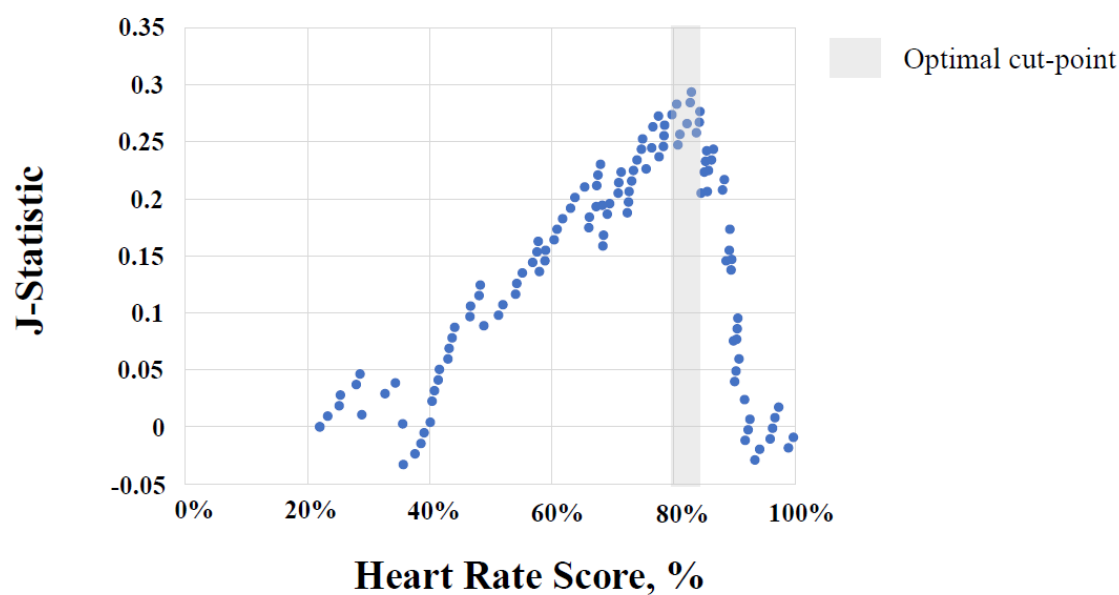
21

22

23

24

1 Figure 2. Optimal HRSc for predicting AHREs

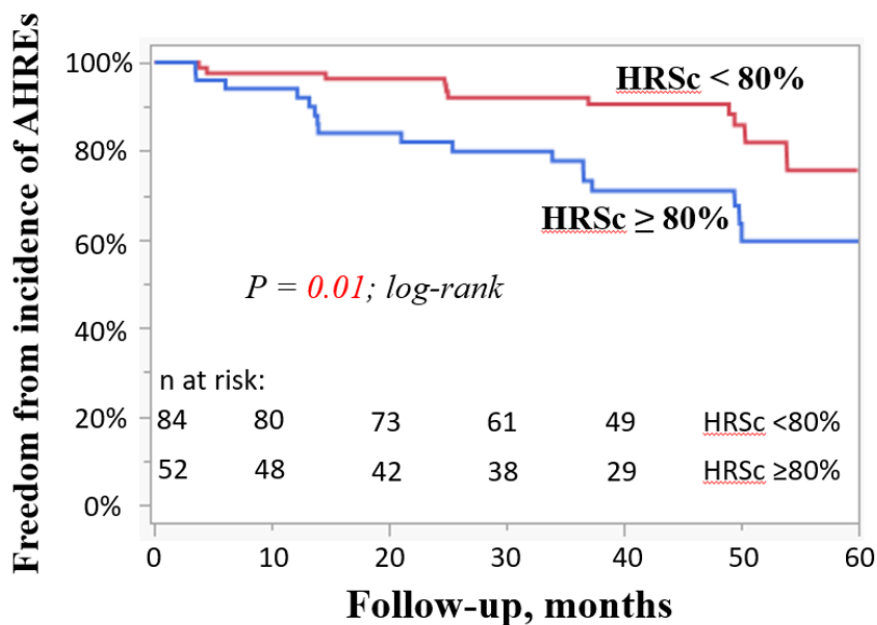


2  
3

4 J-statistic analysis shows 80% as the optimal HRSc for predicting device-determined AHREs.  
5 AHREs, atrial high-rate episodes; HRSc, heart rate score.

6  
7  
8  
9  
10  
11  
12  
13  
14  
15  
16  
17  
18  
19  
20  
21  
22  
23  
24

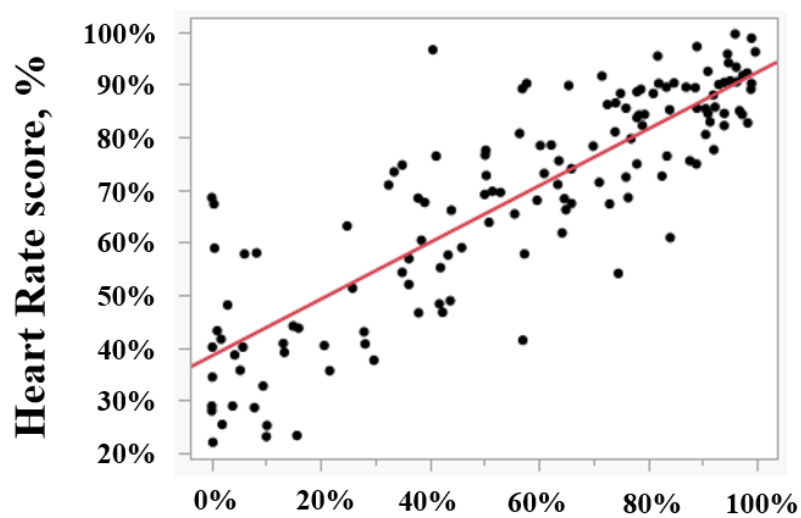
1 Figure 3. Survival free from AHREs by HRSc



2  
3 Survival free from AHREs by HRSc Grouping is shown in this Kaplan-Meier analysis.  
4 Kaplan-Meier analysis shows that subjects with an initial HRSc  $\geq 80\%$  had a higher incidence  
5 of AHREs versus those with an initial HRSc  $< 80\%$ , the primary end point.  
6 HRSc indicates heart rate score; AHREs, atrial high-rate episodes.

7  
8  
9  
10  
11  
12  
13  
14  
15  
16  
17  
18  
19  
20  
21  
22  
23

1 Figure 4. Heart Rate Score and % RA pacing (Correlation by continuous measures)



**Baseline %RA pacing**

$$\text{HR score \%} = 38.4 + 0.5\% \text{ RA pacing}$$

$$R^2 = 0.725, \quad P < 0.0001$$

2

3 The %RA pacing and initial HRSc were strongly correlated.

4

5

6

7

8

9

10

11

12

13

14

15

16

17

18

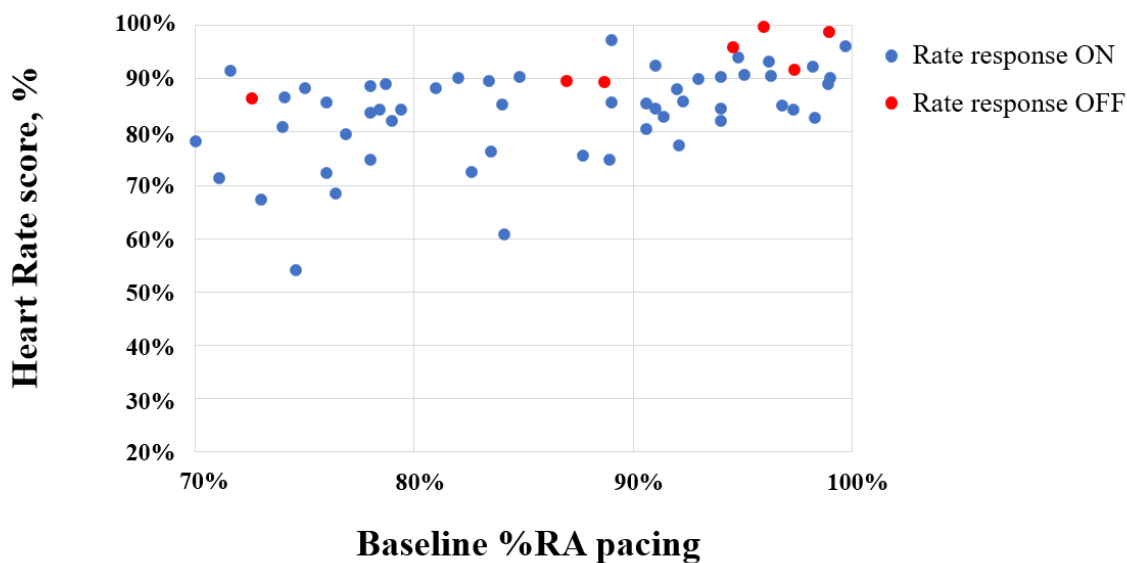
19

20

21

22

1 Figure 5. Heart rate score and %RA pacing (%RA pacing  $\geq 70\%$ , N=61)



2

3 In the patients with %RA pacing  $\geq 70\%$ , when the rate response was OFF (red point, N=7), all  
4 HRSc was  $\geq 80\%$ . On the other hand, when the rate response was ON (blue point, N=54), 14  
5 /54 patients had HRSc  $< 80\%$

6

7

8

9

10

11

12

13

14

15

16

17

18

19

20

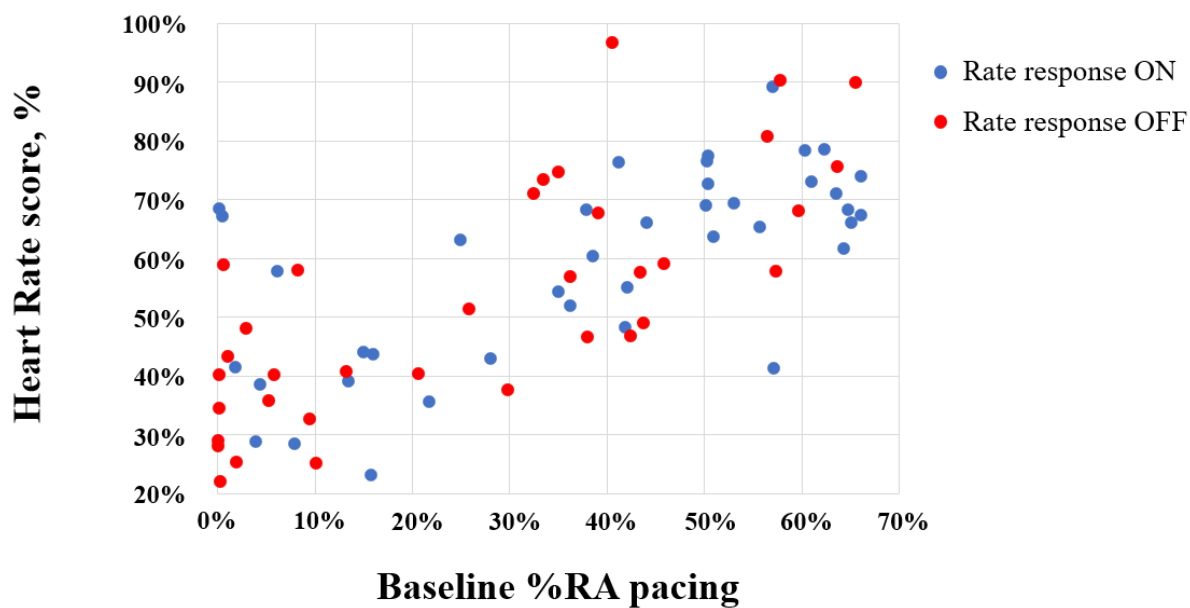
21

22

23

24

1 Figure 6. Heart rate score and %RA pacing (%RA pacing <70%, N=75)



2  
3 In the patients with RA pacing <70%, the distribution of HRSc did not differ between the  
4 cases with rate response ON (blue point, N=40) and OFF (red point, N=35).  
5 HRSc indicates heart rate score; RA, right atrium.

6



1 Table 1. Patient characteristics

---

Demographics	
Age (years)	75 ± 10
Gender: Male, n (%)	57 (41.9)
Race, n (%)	
Asian	73 (53.7)
European American	56 (41.2)
African American	6 (4.4)
Multi-racial	1 (0.7)
Medical history, n (%)	
Hypertension	76 (55.9)
Diabetes mellitus	24 (17.6)
Ischemic heart disease	14 (10.3)
Cardiomyopathy	10 (7.3)
Medication regimen, n (%)	
Angiotensin converting enzyme inhibitor	6 (4.4)
Angiotensin receptor blocker	26 (19.1)
β-blocker	19 (14.0)
Anti-arrhythmic drugs	0 (0)
Anticoagulant	6 (4.4)
Echocardiographic measurements	
Left ventricular ejection fraction, %	62 ± 7
Left atrial diameter, mm	41 ± 7
Pacing site, n (%)	
Right atrium	
Appendage	131 (96.3)
Low septum	5 (3.7)
Right ventricle	
Apex	47 (34.6)
Septum	89 (65.4)

---

2 Continuous variables were expressed as mean ± standard deviation (SD); Categorical data are  
3 presented as number (percentage).

4

1 **Table 2. Pacemaker programming and interrogation data**

---

Pacing mode	
DDD	42 (30.9)
DDDR	93 (68.4)
DDIR	1 (0.7)
Rate responsive pacing programming ON	94 (69.1)
Dual sensors (Accelerometer and Minute ventilation)	63
Single sensors	31
Accelerometer	11
Minute ventilation	20
Atrial sensitivity	0.4 ± 0.1
Pacing rate, ppm	
Lower rate limit	59 ± 4
Max tracking rate limit	124 ± 11
Atrioventricular interval, ms	
Sensed	219 ± 74
Paced	238 ± 62
Cumulative% of	
Atrial paced	57 ± 32
Ventricular paced	13 ± 27

---

- 2 HR indicates heart rate; RV, right ventricle; DDD, non-rate responsive pacing; DDDR, DDIR,  
3 rate responsive pacing.

1 **Table 3. Predictors for AHREs**

	Univariate analysis		Multivariable analysis	
	OR (95% CI)	P value	OR (95% CI)	P value
Age, per year	0.99 (0.96-1.04)	0.97		
Gender, male	2.63 (1.12-6.17)	0.03	2.55 (1.05-6.19)	0.04
Hypertension	1.28 (0.55-3.00)	0.56		
Diabetes mellitus	0.50 (0.14-1.80)	0.29		
Coronary artery disease	1.06 (0.27-4.08)	0.94		
Cardiomyopathy	0.96 (0.19-4.80)	0.96		
β-blocker	1.03 (0.31-3.34)	0.96		
Angiotensin receptor blocker	0.44 (0.12-1.60)	0.21		
European American (Race) vs. Japanese	2.03 (0.85-4.86)	0.11		
LV ejection fraction, per 1%	0.96 (0.90-1.02)	0.23		
Left atrium diameter, mm	1.02 (0.95-1.10)	0.56		
Rate response On	3.26 (1.05-10.08)	0.04	2.77 (0.86-8.91)	0.09
Lower rate limit, ppm	1.05 (0.93-1.19)	0.43		
%RA pacing	3.91 (0.94-16.27)	0.06		
%RV pacing	1.86 (0.45-7.68)	0.39		
Initial heart rate score ≥ 80%	3.22 (1.37-7.61)	0.007	2.84 (1.17-6.92)	0.02

2 AHREs = Atrial high-rate episodes; RA = Right atrium; RV = Right ventricle; OR = Odds Ratio; CI = Confidence interval.