

1 **Severe Acute Respiratory Syndrome Coronavirus 2 (SARS-CoV-2) Household**  
2 **Transmission during the Omicron Era in Massachusetts: A Prospective, Case-Ascertained**  
3 **Study using Genomic Epidemiology**

4  
5 Jaspreet Banga<sup>1\*</sup>, Taylor Brock-Fisher<sup>2,3\*</sup>, Brittany A. Petros<sup>2,4\*</sup>, Eric Y. Dai<sup>5</sup>, Ariana T.  
6 Leonelli<sup>5</sup>, Sabrina T. Dobbins<sup>2</sup>, Katelyn S. Messer<sup>2</sup>, Audrey B. Nathanson<sup>5</sup>, Amelia Capone<sup>6</sup>,  
7 Nancy Littlehale<sup>6</sup>, Viola Appiah-Danquah<sup>5</sup>, Siang Dim<sup>5</sup>, Gage K. Moreno<sup>2</sup>, Maura Crowther<sup>5</sup>,  
8 Kannon A. Lee<sup>5</sup>, Katherine C. DeRuff<sup>2</sup>, Bronwyn L. MacInnis<sup>2</sup>, Michael Springer<sup>7</sup>, Pardis C.  
9 Sabeti<sup>2,3,8,9</sup>, Kathryn E. Stephenson<sup>1,5,10,11,#</sup>

10

11 \*These authors contributed equally.

12

13 <sup>1</sup>Division of Infectious Diseases, Beth Israel Deaconess Medical Center, Boston, MA, USA

14 <sup>2</sup>The Broad Institute of MIT and Harvard, Cambridge, MA, USA

15 <sup>3</sup>Department of Organismic and Evolutionary Biology, Faculty of Arts and Sciences, Harvard  
16 University, Cambridge, MA, USA

17 <sup>4</sup>Harvard/MIT MD-PhD Program, Boston, MA, USA

18 <sup>5</sup>Center for Virology and Vaccine Research, Beth Israel Deaconess Medical Center, Boston, MA,  
19 USA

20 <sup>6</sup>Beth Israel Lahey Health Primary Care, Chelsea, MA, USA

21 <sup>7</sup>Department of Systems Biology, Harvard Medical School, Boston, MA, USA

22 <sup>8</sup>Harvard T.H. Chan School of Public Health, Boston, MA, USA

23 <sup>9</sup>Howard Hughes Medical Institute, Chevy Chase, MD, USA

24 <sup>10</sup>Harvard Medical School, Boston, MA, USA

25 <sup>11</sup>Ragon Institute of Massachusetts General Hospital (MGH), Massachusetts Institute of

26 Technology (MIT) and Harvard, Cambridge, MA, USA

27

28 #Corresponding Author: Kathryn E. Stephenson, MD, MPH, Center for Virology and Vaccine

29 Research, Beth Israel Deaconess Medical Center, E/CLS-1037, 300 Brookline Ave, Boston, MA

30 02215. Email: kstephen@bidmc.harvard.edu.

31

32 **Key Points:** When community transmission of SARS-CoV-2 is high, distinguishing household

33 transmissions from independent introductions is difficult with either epidemiologic or genomic

34 data alone. Here, we conducted daily nasal sampling with genomic sequencing to understand the

35 dynamics of viral transmission within households.

36

37

38 **Abstract:**

39

40 Background:

41 Households are a major setting for SARS-CoV-2 infections, but there remains a lack of  
42 knowledge regarding the dynamics of viral transmission, particularly in the setting of widespread  
43 pre-existing SARS-CoV-2 immunity and evolving variants.

44

45 Methods:

46 We conducted a prospective, case-ascertained household transmission study in the greater  
47 Boston area in March-July 2022. Anterior nasal swabs, along with clinical and demographic  
48 data, were collected for 14 days. Nasal swabs were tested for SARS-CoV-2 by PCR. Whole  
49 genome sequencing was performed on high-titer samples.

50

51 Results:

52 We enrolled 33 households in a primary analysis set, with a median age of participants of 25  
53 years old (range 2-66); 98% of whom had received at least 2 doses of a COVID-19 vaccine.  
54 58% of households had a secondary case during follow up and the secondary attack rate (SAR)  
55 for contacts infected was 39%. We further examined a strict analysis set of 21 households that  
56 had only 1 PCR+ case at baseline, finding an SAR of 22.5%. Genomic epidemiology further  
57 determined that there were multiple sources of infection for household contacts, including the  
58 index case and outside introductions. When limiting estimates to only highly probable  
59 transmissions given epidemiologic and genomic data, the SAR was 18.4%.

60

61 Conclusions:

62 Household contacts of a person newly diagnosed with COVID-19 are at high risk for SARS-  
63 CoV-2 infection in the following 2 weeks. This is, however, not only due to infection from the  
64 household index case, but also because the presence of an infected household member implies  
65 increased SARS-CoV-2 community transmission. Further studies to understand and mitigate  
66 household transmission are needed.

67

68

69 **INTRODUCTION**

70

71 In March 2022, the SARS-CoV-2 Omicron variant BA.2 and its descendants caused multiple  
72 outbreaks across the greater Boston area of Massachusetts<sup>1</sup>. More than 95% of the population of  
73 Massachusetts at that time had received at least one dose of a COVID-19 vaccine, and a large  
74 number of individuals had been infected with the Omicron BA.1 variant only a few months  
75 prior<sup>1</sup>. Despite this presence of partial population immunity, there were over 200,000 new  
76 COVID-19 cases reported in Massachusetts between March and July 2022, coincident with the  
77 dropping of mask requirements and a reduction in social distancing policies.

78

79 Throughout the COVID-19 pandemic, households have been a major setting for SARS-CoV-2  
80 transmission<sup>2</sup>. A meta-analysis of 135 studies published in 2022 found that the secondary attack  
81 rate (SAR) – the risk of transmission from index case to household contact – of exposed  
82 household contacts was 30-36% during the Alpha and Delta SARS-CoV-2 waves and 43%  
83 during the early (BA.1) Omicron period<sup>2</sup>. Factors associated with transmission risk were the  
84 vaccine status of the exposed contact, household density (i.e., the number of people sleeping in  
85 the same room), and immunological factors such as the magnitude of cross-reactive memory T  
86 cells to SARS-CoV-2 antigens<sup>3-5</sup>. In general, the SARs reported in households, and other  
87 residential settings<sup>6</sup>, have been far higher than reported in other settings such as schools, where a  
88 SAR of 2.8% was reported for exposed students in 10 Massachusetts schools during the Delta  
89 wave<sup>7</sup>.

90

91 Despite the large number and range of household studies performed to date, there remains a lack  
92 of precision and detail regarding the dynamics of SARS-CoV-2 household transmission. These  
93 studies are each individually small in size, and most lack careful characterization on the genomic  
94 level. This uncertainty is particularly important in the increasingly common scenario where there  
95 is (1) widespread pre-existing SARS-CoV-2 immunity, either from vaccination or infection, (2)  
96 emergence of new SARS-CoV-2 strains that are partially immune evasive, and (3) few infection  
97 control precautions in home and community environments. Knowing the risk of household  
98 transmission in this scenario, as well as identifying factors that can predict lower SARs, would  
99 enhance our ability to counsel patients appropriately and meaningfully reduce SARS-CoV-2  
100 infections in households.

101

102 To address this research gap, we conducted a household SARS-CoV-2 transmission study in the  
103 greater Boston area in March-July 2022 in which we used clinical, demographic, viral kinetic,  
104 and genomic data for high-resolution analyses of SARS-CoV-2 transmission dynamics.

105

## 106 **METHODS:**

107

108 We conducted a prospective, observational, case-ascertained transmission study of household  
109 contacts of index SARS-CoV-2 cases identified in the greater Boston and Chelsea areas of  
110 Massachusetts in the United States. The primary recruitment pathway was via ambulatory  
111 COVID-19 testing sites associated with Beth Israel Deaconess Medical Center (BIDMC).

112

113

114 **Ethics**

115 The BIDMC Committee on Clinical Investigation, its Institutional Review Board (IRB),  
116 approved the study protocol (#2022P000021). Consent procedures were completed via  
117 phone/video conferencing or in-person. All enrolled participants provided verbal informed  
118 consent. Participants who met applicable IRB guidelines for provision of assent underwent an  
119 age-appropriate assent process; informed consent for study participation was obtained from each  
120 participant's parent or legal guardian before any study-specific procedures were performed.  
121 Sequencing of SARS-CoV-2-positive specimens was covered under protocol #1612793224,  
122 reviewed and approved by the Massachusetts Institute of Technology (MIT) IRB.

123

124 **Study Population**

125 An index case was eligible for inclusion if the participant (1) had a positive SARS-CoV-2 test  
126 either by rapid diagnostic assay or RT-PCR no more than 5 days prior to enrollment and had no  
127 more than 5 days of acute respiratory illness symptoms prior to testing, and (2) lived, and had  
128 plans to live in his/her household for the follow-up period of 14 days, and (3) was not  
129 hospitalized and had not been hospitalized since the date of illness onset, and (4) was at least 2  
130 years old. An index case was excluded from the study if the participant did not live in a  
131 household (e.g., lived alone or in a congregate setting), or if they reported that any other person  
132 in the household had an acute respiratory illness or tested positive for SARS-CoV-2 in the 7 days  
133 before the test date or illness onset date of the index case.

134

135 A household contact was eligible for inclusion if the participant (1) routinely slept (at least half  
136 of the nights in the last month) in the same household as the index case, and (2) slept in the

137 household at least once between 1 day prior to the earliest of the index case’s illness onset or  
138 positive test date and (3) had plans to live in the household for the follow-up period, and (4) was  
139 at least 2 years old.

140

### 141 **Respiratory Specimen Collection**

142 Each enrolled index case and household member self-collected an anterior nasal swab  
143 (Rhinostics dry swab in a sterile tube; <https://rhinostics.com/>) on each day of the 14-day follow-  
144 up period. The swab was self-collected regardless of whether the individual had acute respiratory  
145 illness signs or symptoms. Samples were dropped off by the participants at the BIDMC Clinical  
146 Research Center or the Chelsea clinic. A subset of participants who were treated with  
147 nirmatrelvir-ritonavir were asked to extend the follow-up period and continue self-swabbing for  
148 an additional 7 days in order to monitor for potential virologic rebound<sup>8</sup>.

149

### 150 **Questionnaires**

151 At enrollment, each consenting household member and index case, or his/her parent/guardian,  
152 was asked to provide information on participant demographics, recent exposures to COVID-19,  
153 presence of high-risk conditions, prior and current symptoms of COVID-19, COVID-19  
154 vaccination status, household characteristics, interactions with other enrolled and non-enrolled  
155 household members and people outside the home, and other social or medical history, including  
156 other vaccination history, as deemed appropriate. An optional follow-up questionnaire was  
157 administered to participants on days 7 and 14.

158

159



160 **SARS-CoV-2 Viral Load Quantification**

161 Viral loads were measured with the Quaris SARS-CoV-2 Assay, a real-time reverse  
162 transcription polymerase chain reaction (rRT-PCR) test, using the Luna Probe One-Step RT-  
163 qPCR Kit (No ROX) [NEB E3007]<sup>9</sup>. The SARS-CoV-2 primer and probe set detects RNA from  
164 the SARS-CoV-2 N1 and RdRP genes, and uses the human RNase P gene as a positive control.  
165 When received by the laboratory, samples were rehydrated with 300 µl phosphate buffered saline  
166 (PBS), inactivated at 65°C, and subsequently used directly as input for the Quaris assay without  
167 extraction. rRT-PCR was performed on an Applied Biosystem QuantStudio 7 instrument  
168 (software version 1.7). Liquid handling was automated using either the Tecan Fluent 1080, the  
169 Hamilton Star, or the Multidrop combi dispenser. N1 gene cycle threshold (Ct) values are  
170 reported. Viral rebound was defined as at least 2 negative (Ct $\geq$ 35) PCR results followed by at least  
171 2 positive (Ct $<$ 35) results.

172

173 **SARS-CoV-2 Whole Genome Sequencing**

174 Anterior nasal swabs that were positive for SARS-CoV-2 with Ct values of maximally 32 via the  
175 Quaris assay were sequenced as previously described<sup>10</sup>. Briefly, following inactivation with  
176 Buffer AVL, RNA was extracted from the samples using the MagMAX mirVana Total RNA  
177 Isolation Kit for the Kingfisher Flex (Thermo Fisher #A27828) according to the manufacturer's  
178 instructions. The ARTIC v4.1 primer set was used to amplify SARS-CoV-2 genetic material,  
179 from which Illumina DNA Prep sequencing libraries were prepared and sequenced on the  
180 NextSeq 550<sup>11</sup>.

181

182

### 183 **SARS-CoV-2 Genomic Data Analysis**

184 Sequencing reads were demultiplexed, filtered to remove adapter and contaminant sequences,  
185 depleted of reads mapping to the human genome, and assembled by alignment to the reference  
186 sequence NC045512.2 via the viral-ngs v2.1.33 pipeline<sup>12</sup>. The following optional inputs were  
187 used with the assemble\_refbased workflow to accommodate amplicon-based sequencing:  
188 major\_cutoff = 0.5, min\_coverage = 20, skip\_mark\_dupes = TRUE, and trim\_coords\_bed =  
189 "gs://pathogen-public-dbs/v1/amplicon\_primers-ARTICv4.1\_NC\_045512.2.bed".

190

191 Lineages were assigned to viral genomes using Pango v4.1.3 pango-data v1.17<sup>13</sup>. Consensus  
192 single nucleotide variants (SNVs) were determined after removing ambiguous sites and sites  
193 prone to amplicon sequencing error<sup>14</sup>. Intrahost single nucleotide variants (iSNVs) were called  
194 using LoFreq and were filtered as follows: (i) masking of known problematic sites in SARS-  
195 CoV-2 genome, (ii) site read depth of minimally 100; (iii) allele frequency of minimally 3%; and  
196 (iv) no evidence of strand bias (via Fisher's exact test with  $p > 0.05$ )<sup>11,15</sup>.

197

### 198 **Transmission Analysis**

199 To infer the relatedness of cases within a household, the most complete genome (i.e., the genome  
200 with the highest percentage of unambiguous sites) was used for each person with a minimum  
201 unambiguous genome length of 15,000 bp. The genetic (SNV) distance between pairs of cases was  
202 used alongside the serial interval, viral kinetics, iSNV information, and test status of other  
203 individuals at baseline to classify households into transmission categories. All pairs of cases within  
204 each household were assessed, excluding those inconsistent with the longitudinal testing data.

205

206 Transmissions were categorized as highly probable, possible, or unlikely. Pairs with a genetic  
207 distance of less than 2 SNVs and an iSNV in a putative donor that reached consensus in the putative  
208 recipient (i.e., transmission of a minor variant through a tight transmission bottleneck) were  
209 considered highly probable<sup>16,17</sup>. An index-contact pair in the strict analysis set (i.e., from a  
210 household with a single infected participant and documented PCR- contacts at baseline) with a  
211 genetic distance of less than 3 SNVs and a serial interval of less than 7 days were also considered  
212 highly probable transmissions. Pairs with a genetic distance of less than 3 SNVs and a serial  
213 interval of less than 7 days, but without iSNV support, were categorized as a possible transmission,  
214 though we cannot rule out a non-household recent common ancestor (i.e., a shared exposure)<sup>18,19</sup>.  
215 Pairs with a genetic distance of 3 or more SNVs or a serial interval of minimally 7 days were  
216 considered unlikely. Highly probable and possible transmission links were plotted.<sup>20,21</sup>

217

## 218 **Phylogenetic Analysis**

219 Contextual genomes (10 BA.1 sequences each from Massachusetts and the United States, and 50  
220 BA.2 sequences each from Massachusetts and the United States, isolated between 2022-02-01 and  
221 2022-08-01) were downloaded from NCBI GenBank. These sequences, along with the most  
222 complete genome assembled per study participant (of minimally 15,000 bp), were aligned to the  
223 reference sequence (NC\_045512.2) using Nextclade v.2.14.1<sup>22</sup>. A phylogenetic tree was estimated  
224 using IQ-TREE v.2.2.2.6<sup>23</sup> and was visualized and annotated using ggtree v.3.8.2<sup>24</sup> in R v.4.3.1.

225

226

227 **RESULTS**

228

229 **Screening, Enrollment, and Follow-up**

230 Enrollment began on March 3, 2022 and continued until July 9, 2022, after local SARS-CoV-2  
231 case counts had declined<sup>1</sup>. We enrolled 38 households containing 38 index cases and 77  
232 household contacts; Figure 1. One household was subsequently found to be ineligible and 4  
233 households did not complete 14 days of follow up. The remaining 33 households (33 index cases  
234 and 66 household contacts) constituted our primary analysis set; 85% of these households  
235 (28/33) had all household members participate. Of the 33 households in the primary analysis set,  
236 3 households had an index case that was PCR- at the time of first research swab, and 9  
237 households had at least one household contact that were PCR+ at the time of first research swab.  
238 The remaining 21 households (21 index cases and 40 PCR- household contacts) constituted our  
239 strict analysis set. The median number of persons per household in the primary analysis set was  
240 3.5 (range, 2-5; Supplementary Table 2). The median house size was 1400 square feet (range,  
241 740-3300; Supplementary Table 2).

242

243 **Study Population**

244 Demographic and clinical characteristics of index cases and household contacts in the primary  
245 analysis set are shown in Table 1 and Supplemental Table 1. The median age was 25 years  
246 (range, 5-64) for index cases and 39 years (range, 2-66) for household contacts. 23% of  
247 participants were children in elementary or middle school. Participants were predominantly  
248 White and Non-Hispanic. 81% of participants reported having no medical conditions. The most  
249 common reported medical conditions were asthma (12%), autoimmune or immune system

250 disease (8%), and high blood pressure (4%). 10% of participants reported having COVID-19 at  
251 some point prior to the study (though symptom- and testing-based ascertainment bias is likely).  
252 98% of participants received at least 2 vaccine doses. The median duration between most recent  
253 vaccination or most recent infection was 160 days (range 0-307).

254

### 255 **SARS-CoV-2 Infections**

256 Of the 33 households in the primary analysis set, 19 (58%) had a household contact who tested  
257 positive by PCR during follow up (Figure 2A and Table 2). Of the 66 household contacts in the  
258 primary analysis set, 26 tested positive, indicating a putative SAR of 39%; 11 of these cases were  
259 detected on day 1 of swabbing. If limiting analysis to the 21 households in the strict analysis set,  
260 9 (43%) households had a new incident infection during follow up, corresponding to 9 infections  
261 out of 40 household contacts, or a putative SAR of 22.5%.

262

263 In the primary analysis set of 33 households, the median minimal Ct - corresponding to peak  
264 viral load - was 25.65 for index cases and 23 for infected household contacts (Supplemental  
265 Table 3). Median duration of viral shedding was 6.5 days and 8 days for index cases and  
266 contacts, respectively, and the median time to positive SARS-CoV-2 test from index diagnosis  
267 date was 3 days. The lower viral load and decreased duration of shedding for index cases is most  
268 likely due to the fact that cases were detected partway through infection. Eleven participants  
269 reported taking nirmatrelvir-ritonavir; 3 participants had viral rebound (Supplemental Figure 1A:  
270 MPO-02, BQE-01 and BQE-02)<sup>8</sup>.

271

272

## 273 **SARS-CoV-2 Sequencing**

274 For the primary analysis set, approximately 1300 total anterior nasal swab samples were  
275 collected and analyzed via the rRT-PCR Quaris assay. 181 of these samples, from 48 unique  
276 individuals across 26 unique households, had a diagnostic Ct under 32 (mean = 30.1) and were  
277 thus subject to genomic sequencing. 178/181 (98.3%) samples had a nonzero unambiguous  
278 assembly length with a median length of 29,321bp. 143 samples, which came from 44 unique  
279 individuals among 24 unique households, produced partial genomes of at least 15,000 bp in  
280 length (Supplemental Table 4). 15 households yielded partial genomes from multiple individuals  
281 within the household. The vast majority of the sequences were BA.2 descendants, consistent with  
282 national trends (Figure 2B), though a BA.1 sequence was collected early in enrollment.

283

284 Focusing first on analyzable households in the strict analysis set (N=6), we found that four  
285 households had viral sequences that were either identical between index and secondary cases or  
286 differed by only 1-2 SNVs (Figure 3A, Supplemental Table 5). In these cases, transmission from  
287 index to secondary case was considered highly probable. In two households, we identified  
288 significant viral variation between sequences isolated from the index and secondary contacts,  
289 strongly suggesting that the secondary cases were independent introductions (Figure 3B). In  
290 household XOA, the index case was infected with a BA.2.13 variant, while the contact was  
291 infected with BA.2.12.1; there was a 13 SNV difference between sequences. In household  
292 WMD, the index case was infected with BA.2.12.1, and the contact was infected with BA.2;  
293 there was a 20 SNV difference between sequences. (Of the 3 remaining households with  
294 secondary cases in the strict analysis set (AXB, JDU and NKF), sequences were not available or  
295 couldn't be analyzed; viral kinetic curves for these households are in Figure 3C). When

296 excluding the 2 household contacts that were infected outside of the household, the SAR among  
297 individual household contacts in the strict analysis set was 18.4% (Table 2).

298  
299 Analyzing transmission networks among all the households in the primary analysis set revealed  
300 several interesting patterns. In 5 households, there were clusters of infections (2-3 per household)  
301 that were all genetically linked to the index case (Figure 4A (a representative example), and  
302 Supplemental Figure 1A). In these households, there were 0 SNVs different between index and  
303 contact sequences, but the close overlap in diagnosis dates suggests that either a shared common  
304 exposure or intra-household transmission was possible. In 3 households, there were two distinct  
305 clusters of infections detected (Figure 4B (a representative example), and Supplemental Figure  
306 1B). In these households, the index case was infected with a virus that was 3-4 SNVs different  
307 than the viruses that circulated in the rest of the household. In 1 household (Figure 4C), there  
308 was evidence that the index case was co-infected with 2 contemporaneously circulating strains  
309 (BA.2.1.12 and BA.2.10) while the contact was infected with solely BA.2.1.12; given the close  
310 diagnosis dates, this could be explained by either a shared social network or transmission with a  
311 bottleneck.

312

### 313 **Potential Predictors of Transmission**

314 To explore potential predictors of transmission between an index case and household contact, we  
315 examined the 7 household contacts where transmission from the index was highly likely  
316 compared to the 28 participating contacts that remained uninfected. Using Wilcoxon rank sum  
317 and Fisher's exact tests (Table 3), we found that there was no association between infection  
318 status and the contact's prior COVID-19 vaccination, number of prior vaccines received, history

319 of prior infection, days since vaccination and/or infection, age or sex assigned at birth. There was  
320 also no association between infection status and the associated index case's prior COVID-19  
321 vaccine status, minimum Ct value, or duration of SARS-CoV-2 shedding, and no association  
322 between infection status and the number of persons in the household or and square footage. The  
323 small sample size and homogeneity of many of these variables (e.g., vaccine history) limited the  
324 power of our analysis to detect predictors of transmission risk.

325

## 326 **DISCUSSION**

327

328 Here we studied the transmission dynamics of SARS-CoV-2 within households using  
329 prospective daily PCR surveillance, clinical and demographic data, and genomic epidemiology.  
330 Our study is well-positioned to reflect the transmission dynamics of households consisting of  
331 relatively young, healthy individuals with pre-existing immunity to SARS-CoV-2. It was  
332 conducted during a wave of Omicron BA.2 and its sub-lineages. Our study population consisted  
333 primarily of families with 2-5 members; 23% of our participants were children in elementary or  
334 middle school. Participants were highly vaccinated, having received a median of 3 COVID-19  
335 vaccines. Only 10% had a known prior COVID-19 diagnosis and the population was overall very  
336 healthy.

337

338 Our study found that the risk of SARS-CoV-2 in exposed households is very high, consistent  
339 with previous reports. In our primary analysis set, we found that 58% of enrolled households  
340 went on to have a second SARS-CoV-2 case in the household over the next 2 weeks. Nearly a  
341 third of households had a positive secondary case identified on the very first day of testing. At



342 the individual level, we found that 39% of household contacts tested positive for SARS-CoV-2  
343 during follow up. Following the infection of a household contact, putatively negative household  
344 members must make decisions around travel and attending school or work. Here, we provide  
345 data that could inform this value-based decision.

346

347 We further aimed to more rigorously estimate the risk of SARS-CoV-2 transmission directly  
348 from an index case, performing a strict analysis including only households that had one  
349 confirmed PCR+ index case and only PCR- household contacts at the beginning of surveillance.  
350 In this analysis, we identified 9 cases among 40 household contacts, or a SAR of 22.5%. Using  
351 genomic epidemiology, we then excluded 2 cases as these were likely acquired outside of the  
352 household. We thus determined that SAR was 18.4%. Our study was conducted when multiple  
353 BA.2 descendants were circulating, and this genetic diversity improved our ability to rule out  
354 putative transmission events.

355

356 Using genomic epidemiology across all the households, we found that the infectious source of  
357 secondary cases was varied. The most common source of infection was the index case, but other  
358 sources included an imported case (outside the household), shared exposures with the index, or  
359 other infected contacts within the home. Our findings, particularly evidence of shared exposures  
360 and imported cases, highlight that infection within a household serves as a proxy for broader risk  
361 for community transmission, emphasizing the importance of maintaining vigilant public health  
362 measures both inside and outside of the home. More public health attention should be focused on  
363 mitigating this risk via vaccination and therapeutic advances, enhanced and early case detection  
364 and isolation, and non-pharmaceutical interventions such as masking and ventilation.

365  
366 SAR estimates have varied considerably across multiple studies, due to varying study designs,  
367 populations, and circulating SARS-CoV-2 variants. During the Alpha and Delta waves, the SAR  
368 for exposed household contacts was reported between 30-36%, rising to 43% during the early  
369 (BA.1) Omicron period<sup>2</sup>. Here we report that during a BA.2 wave (and its descendants), the SAR  
370 was 39% using a larger primary set of households, 22.5% with a strict set of households, and  
371 18.4% when further incorporating genomic data. This lower estimate using genomic data is  
372 likely a more accurate reflection of the true risk of household exposure.

373  
374 Our small sample size substantially limited our power to assess predictors of transmission,  
375 especially because prior COVID-19 vaccination was near universal in our study cohort. Given  
376 the complexity of estimating the magnitude of pre-existing SARS-CoV-2 immunity by history  
377 alone, particularly in the context of both infection and prior vaccines, future household  
378 transmission studies would benefit from larger cohorts and baseline immunologic assessments of  
379 humoral, cellular and mucosal immune responses.

380  
381 In summary, we determined that the risk of household transmission of SARS-CoV-2 is very  
382 high, even when using genomic epidemiology to exclude imported cases. Further interventions to  
383 block household transmission should be studied, especially in the now-common scenario when  
384 population immunity and vaccine coverage are high but viral variants are increasingly immune  
385 evasive.

386  
387

388 **Acknowledgements**

389 We thank the participants and staff at the Center for Virology and Vaccine Research Clinical  
390 Trials Unit, the Harvard Catalyst Clinical Research Center, and the Beth Israel Deaconess  
391 Primary Care—Chelsea Clinic. We also thank Daniel J. Park for providing important feedback  
392 on the manuscript, and Janet Morgan for administrative support.

393

394 **Funding Sources**

395 This study was supported by the Massachusetts Consortium for Pathogen Readiness (K.E.S.),  
396 Beth Israel Deaconess Medical Center (K.E.S.), National Institutes of Health (R01-GM120122 to  
397 M.S.), Harvard Catalyst, the National Institute of General Medical Sciences (T32GM007753 and  
398 T32GM144273 to B.A.P.), the Centers for Disease Control and Prevention (CDC) COVID-19  
399 baseline genomic surveillance contract to the Clinical Research Sequencing Platform  
400 (75D30121C10501 to B.L.M.), a CDC Broad Agency Announcement (75D30120C09605 to  
401 B.L.M.), the CDC Pathogen Genomic Centers of Excellence (NU50CK000629 to B.L.M and  
402 P.C.S), the National Institute of Allergy and Infectious Diseases (U19AI110818 and  
403 U01AI151812 to P.C.S.), and Howard Hughes Medical Institute (P.C.S.).

404

405 **Conflicts of Interest**

406 P.C.S. is a co-founder of, shareholder in, and scientific advisor to Sherlock Biosciences, Inc and  
407 Delve Bio; she is also a Board member of and shareholder in Danaher Corporation. P.C.S. has  
408 filed IP related to genome sequencing and analysis. The authors declare no other conflicts of  
409 interests.

410

411 **FIGURE LEGENDS**

412

413 **Figure 1. Trial profile.**

414

415 **Figure 2. Household diagram.** (A) Individual households are labeled with a 3-letter identifier  
416 and represented with grey boxes. Households in both the primary and strict analysis sets are  
417 shown. Each member of the household is shown within the grey box, with their outcome color-  
418 coded as described in the legend. (B) Phylogenetic map of positive samples.

419

420 **Figure 3. Viral load curves and transmission plots by household in the strict analysis set.**

421 (A) Households where transmission was determined to be highly probable are shown. (B)  
422 Households where transmission was determined to be unlikely are shown. (C) Households that  
423 did not yield sufficient sequencing data are shown.

424

425 **Figure 4. Representative viral load curves and transmission plots from primary analysis**

426 **set.** (A) A representative household is shown where either a shared exposure (i.e., social  
427 network) exists or within-household transmission has occurred, as all cases are genetically linked  
428 to the index case. (B) A representative household is shown where two separate infection clusters  
429 were identified. (C) A household is shown where a putative co-infection was identified in the  
430 index case.

431

432 **Supplemental Figure 1. Additional viral load curves and transmission plots by household in**  
433 **the primary analysis set.** Households are shown where either a shared exposure exists or

434 possible transmission has occurred, as all cases are genetically linked to the index case.

435 Households are shown where two separate infection clusters were identified.

436

437

438 **References:**

- 439 1. Massachusetts Department of Public Health COVID-19 Dashboard, [www.mass.gov](http://www.mass.gov).
- 440 2. Madewell ZJ, Yang Y, Longini IM, Jr., Halloran ME, Dean NE. Household Secondary  
441 Attack Rates of SARS-CoV-2 by Variant and Vaccination Status: An Updated Systematic  
442 Review and Meta-analysis. *JAMA Netw Open*. Apr 1 2022;5(4):e229317.  
443 doi:10.1001/jamanetworkopen.2022.9317
- 444 3. Singanayagam A, Hakki S, Dunning J, et al. Community transmission and viral load  
445 kinetics of the SARS-CoV-2 delta (B.1.617.2) variant in vaccinated and unvaccinated individuals  
446 in the UK: a prospective, longitudinal, cohort study. *Lancet Infect Dis*. Feb 2022;22(2):183-195.  
447 doi:10.1016/S1473-3099(21)00648-4
- 448 4. Kleynhans J, Walaza S, Martinson NA, et al. Household Transmission of Severe Acute  
449 Respiratory Syndrome Coronavirus 2 From Adult Index Cases With and Without Human  
450 Immunodeficiency Virus in South Africa, 2020-2021: A Case-Ascertained, Prospective,  
451 Observational Household Transmission Study. *Clin Infect Dis*. Feb 8 2023;76(3):e71-e81.  
452 doi:10.1093/cid/ciac640
- 453 5. Kundu R, Narean JS, Wang L, et al. Cross-reactive memory T cells associate with  
454 protection against SARS-CoV-2 infection in COVID-19 contacts. *Nat Commun*. Jan 10  
455 2022;13(1):80. doi:10.1038/s41467-021-27674-x
- 456 6. Petros BA, Turcinovic J, Welch NL, et al. Early Introduction and Rise of the Omicron  
457 Severe Acute Respiratory Syndrome Coronavirus 2 (SARS-CoV-2) Variant in Highly  
458 Vaccinated University Populations. *Clin Infect Dis*. Feb 8 2023;76(3):e400-e408.  
459 doi:10.1093/cid/ciac413
- 460 7. Nelson SB, Dugdale CM, Brenner IR, et al. Prevalence and Risk Factors for School-  
461 Associated Transmission of SARS-CoV-2. *JAMA Health Forum*. Aug 4 2023;4(8):e232310.  
462 doi:10.1001/jamahealthforum.2023.2310
- 463 8. Dai EY LK, Nathanson AB, Leonelli AT, Petros BA, Brock-Fisher T, Dobbins ST,  
464 MacInnis BL, Capone A, Littlehale N, Boucau J, Marino C, Barczak AK, Sabeti PC, Springer M,  
465 Stephenson KE. Viral Kinetics of Severe Acute Respiratory Syndrome Coronavirus 2 (SARS-  
466 CoV-2) Omicron Infection in mRNA-Vaccinated Individuals Treated and Not Treated with  
467 Nirmatrelvir-Ritonavir. medRxiv [Preprint]. *medRxiv 2022011322269257*. 2022;
- 468 9. Emergency Use Authorization (EUA) Summary Quaris SARS-CoV-2 Assay. Available  
469 at: <https://wwwfdagov/media/149445/download>. 2021;
- 470 10. Petros BA, Paull JS, Tomkins-Tinch CH, et al. Multimodal surveillance of SARS-CoV-2  
471 at a university enables development of a robust outbreak response framework. *Med*. Dec 9  
472 2022;3(12):883-900 e13. doi:10.1016/j.medj.2022.09.003
- 473 11. [https://github.com/artic-network/artic-ncov2019/tree/master/primer\\_schemes/nCoV-](https://github.com/artic-network/artic-ncov2019/tree/master/primer_schemes/nCoV-2019/V4.1)  
474 [2019/V4.1](https://github.com/artic-network/artic-ncov2019/tree/master/primer_schemes/nCoV-2019/V4.1).
- 475 12. Park, D et al., <https://github.com/broadinstitute/viral-ngs/tree/v1.25.0>.
- 476 13. O'Toole A, Scher E, Underwood A, et al. Assignment of epidemiological lineages in an  
477 emerging pandemic using the pangolin tool. *Virus Evol*. 2021;7(2):veab064.  
478 doi:10.1093/ve/veab064
- 479 14. [https://github.com/W-L/ProblematicSites\\_SARS-](https://github.com/W-L/ProblematicSites_SARS-CoV2/blob/master/problematic_sites_sarsCov2.vcf)  
480 [CoV2/blob/master/problematic\\_sites\\_sarsCov2.vcf](https://github.com/W-L/ProblematicSites_SARS-CoV2/blob/master/problematic_sites_sarsCov2.vcf).

- 481 15. Wilm A, Aw PP, Bertrand D, et al. LoFreq: a sequence-quality aware, ultra-sensitive  
482 variant caller for uncovering cell-population heterogeneity from high-throughput sequencing  
483 datasets. *Nucleic Acids Res.* Dec 2012;40(22):11189-201. doi:10.1093/nar/gks918
- 484 16. Braun KM, Moreno GK, Wagner C, et al. Acute SARS-CoV-2 infections harbor limited  
485 within-host diversity and transmit via tight transmission bottlenecks. *PLoS Pathog.* Aug  
486 2021;17(8):e1009849. doi:10.1371/journal.ppat.1009849
- 487 17. Song JS, Lee J, Kim M, et al. Serial Intervals and Household Transmission of SARS-  
488 CoV-2 Omicron Variant, South Korea, 2021. *Emerg Infect Dis.* Mar 2022;28(3):756-759.  
489 doi:10.3201/eid2803.212607
- 490 18. Bendall EE, Callear AP, Getz A, et al. Rapid transmission and tight bottlenecks constrain  
491 the evolution of highly transmissible SARS-CoV-2 variants. *Nat Commun.* Jan 17  
492 2023;14(1):272. doi:10.1038/s41467-023-36001-5
- 493 19. Lythgoe KA, Hall M, Ferretti L, et al. SARS-CoV-2 within-host diversity and  
494 transmission. *Science.* Apr 16 2021;372(6539)doi:10.1126/science.abg0821
- 495 20. Campbell F, Cori A, Ferguson N, Jombart T. Bayesian inference of transmission chains  
496 using timing of symptoms, pathogen genomes and contact data. *PLoS Comput Biol.* Mar  
497 2019;15(3):e1006930. doi:10.1371/journal.pcbi.1006930
- 498 21. Jombart T, Cori A, Didelot X, Cauchemez S, Fraser C, Ferguson N. Bayesian  
499 reconstruction of disease outbreaks by combining epidemiologic and genomic data. *PLoS*  
500 *Comput Biol.* Jan 2014;10(1):e1003457. doi:10.1371/journal.pcbi.1003457
- 501 22. Aksamentov I, Roemer C, Hodcroft EB, Neher RA. Nextclade: clade assignment,  
502 mutation calling and quality control for viral genomes. *The Journal of Open Source Software.*  
503 2021;6(67)
- 504 23. Nguyen LT, Schmidt HA, von Haeseler A, Minh BQ. IQ-TREE: a fast and effective  
505 stochastic algorithm for estimating maximum-likelihood phylogenies. *Mol Biol Evol.* Jan  
506 2015;32(1):268-74. doi:10.1093/molbev/msu300
- 507 24. Yu G, Smith DK, Zhu H, Guan Y, Tsan-Yuk Lam T. ggtree : an r package for  
508 visualization and annotation of phylogenetic trees with their covariates and other associated data.  
509 *Methods in Ecology and Evolution.* 2016;  
510

**TABLES****Table 1. Baseline Characteristics of Study Population**

<b>Characteristic</b>	<b>All Participants (N=99)</b>	<b>Index Cases (N=33)</b>	<b>Contacts (N=66)</b>
<b>Age</b> (Median, Min-Max)	27 (2-66)	25 (5-64)	39 (2-66)
<b>Sex assigned at birth</b> (N, %) –			
Male	44 (48.4)	14 (43.8)	30 (50.9)
Female	47 (51.7)	18 (56.3)	29 (49.2)
Missing	8	1	7
<b>Race</b> (N, %) –			
American Indian or Alaskan Native	10 (11.0)	3 (9.4)	7 (11.9)
Asian	2 (2.2)	1 (3.1)	1 (1.7)
Black or African American	0	0	0
Native Hawaiian or Other Pacific Islander	0	0	0
White	79 (86.8)	28 (87.5)	51 (86.4)
Multiple	0	0	0
Prefer Not to Report	0	0	0
Other	0	0	0
Missing	8	1	7
<b>Ethnicity</b> (N, %) –			
Hispanic or Latino / Latinx	3 (3.3)	1 (3.1)	2 (3.4)



Not Hispanic or Latino / Latinx	88 (96.7)	31 (96.9)	57 (96.6)
Missing	8	1	7
<b>Body Mass Index</b> (Median, Min/Max)	22.9 (14.1-7.2)	23.0 (16.1-37.1)	22.7 (14.1-47.2)
Missing	19	9	10
<b>Medical Conditions</b> (N, %)			
None	69 (81.2)	21 (72.4)	48 (85.7)
Cancer	0	0	0
Diabetes	1 (1.2)	1 (3.5)	0
Asthma or wheezing	10 (11.8)	5 (17.2)	5 (8.9)
COPD/Emphysema	0	0	0
High blood pressure	3 (3.5)	1 (3.5)	2 (3.6)
Coronary artery disease	0	0	0
Congestive heart failure	0	0	0
Peripheral artery disease	0	0	0
Other*	2 (2.4)	1 (3.5)	1 (1.8)
Missing	14	4	10
<b>Autoimmune or Immune System Diseases, Any**</b> (N, %)	7 (8.2)	1 (3.7)	6 (10.3)
Missing	14	6	8
<b>Prior Diagnosis of COVID-19</b> (N, %)	9 (9.5)	1 (3.2)	8 (12.5)
Missing	4	2	2

Days between most recent diagnosis and enrollment (Median, Min-Max)	59 (18-780)	780	57 (18-462)
Hospitalized for COVID-19 (N, %) – <i>missing 1</i>	0	0	0
<b>Prior Receipt of a COVID-19 Vaccine (N, %) – <i>missing 2</i></b>	95 (97.9)	32 (100)	63 (96.9)
Number of doses (Median, Min-Max)	3 (2-4)	3 (2-4)	3 (2-4)
Days between most recent COVID-19 vaccination and enrollment (Median, Min-Max) – <i>missing 4</i>	165 (1-308)	165 (48-308)	165 (1-307)
Days between most recent diagnosis OR most recent COVID-19 vaccination (whichever is more recent) and enrollment (Median, Min-Max)	160 (0-308)	164.5 (0-308)	160 (1-307)
Missing	2	1	1

\*Reported by participant: “heart aneurysm” (1); history of stroke (2)

\*\*Reported by participant: “irritable bowel syndrome, eczema and allergies” (1); “vitiligo” (1); “diverticulosis” (1); “Reynaud’s disease” (1)

**Table 2. SARS-CoV-2 Secondary Attack Rates**

	<b># Events</b>	<b>Total Households</b>	<b>Total Contacts</b>	<b>SAR (%)</b>
<b>Primary Analysis Set</b>				
Households with 2 <sup>o</sup> cases	19	33	-	57.6
Individual 2 <sup>o</sup> cases	26	-	66	39.4
<b>Strict Analysis Set</b>				
Households with 2 <sup>o</sup> cases	9	21	-	42.9
Households with 2 <sup>o</sup> cases, excluding households with outside infection	7	19	-	36.8
Individual 2 <sup>o</sup> cases	9	-	40	22.5
Individual 2 <sup>o</sup> cases, excluding individuals with outside infection	7	-	38	18.4

**Table 3. Household Contact Characteristics by Infection Status (Strict Analysis Set), Excluding 2<sup>0</sup> Cases with Outside Infections**

	<b>Infected Contact (N=7)</b>	<b>Not Infected Contact (N=28)</b>	<b>p-value</b>
<b>Characteristic of Household Contact</b>			
Age (Median, Min-Max)	46 (13-50)	28.5 (10-64)	0.76 <sup>a</sup>
Male sex assigned at birth (N, %)	2 (33.3)	13 (59.1%)	0.37 <sup>b</sup>
Missing	1	6	
Number of COVID-19 vaccines received (Median, Min-Max)	3 (2-3)	3 (2-4)	1.00 <sup>b</sup>
Missing	0	1	
Days from last infection/vaccination (Median, Min-Max)	146 (119-193)	138 (-1-197)	0.45 <sup>a</sup>
Missing	0	6	
<b>Characteristic of Associated Index Case</b>			
Lowest Ct value (Median, Min-Max)	27.8 (18.2-35)	25 (15.9-33.9)	0.19 <sup>a</sup>
Duration of shedding in days (Median, Min-Max)	7 (3-9)	8 (1-15)	0.41 <sup>a</sup>
Missing	0	0	
<b>Characteristic of Associated Household</b>			
Number of persons in household (Median, Min-Max)	4 (2-4)	4 (2-4)	0.10 <sup>b</sup>
Missing	0	1	
Square footage (Median, Min-Max)	1140 (740-3300)	1000 (740-3300)	0.59 <sup>a</sup>
Missing	2	15	
a. Wilcoxon rank sum test			
b. Fisher's Exact			

## SUPPLEMENTAL TABLES

**Supplemental Table 1. Additional Baseline Data**

<b>Characteristic</b>	<b>All Participants (N=99)</b>	<b>Index Cases (N=33)</b>	<b>Contacts (N=66)</b>
<b>Currently Working / Employment (N, %) – <i>missing 13</i></b>			
Yes	57 (66.3)	18 (69.2)	39 (65.0)
No	29 (33.7)	8 (30.8)	21 (35.0)
Missing	13	7	6
<b>Student (N, %) – <i>missing 9</i></b>			
Yes	32 (35.6)	13 (43.3)	19 (31.7)
No	58 (64.4)	17 (56.7)	41 (68.3)
Missing	9	3	6
<b>If yes (N=32), level (N, %)</b>			
Elementary	11 (34.4)	5 (38.5)	6 (31.6)
Middle School	12 (37.5)	5 (38.5)	7 (36.8)
High School	5 (15.6)	2 (15.4)	3 (15.8)
Community College	0	0	0
College or University	4 (12.5)	1 (7.7)	3 (15.8)
<b>Currently Uses eCigarettes/Vape (N, %) – <i>missing 9</i></b>	1 (1.1)	0	1 (1.6)
<b>Currently Smokes Cigarettes (N, %) – <i>missing 9</i></b>	1 (1.1)	0	1 (1.6)

<b>History of Smoking Cigarettes (N, %) – missing 10</b>	11 (12.4)	3 (10.3)	8 (13.3)
If yes, packs per day (N, %)			
0.5	7 (63.6)	1 (33.3)	6 (75.0)
1.0	4 (36.4)	2 (66.7)	2 (25.0)
1.5	0	0	0
2.0	0	0	0
2.5	0	0	0
3 or more	0	0	0
If yes, how many years (N, %)			
1-5	8 (72.7)	2 (66.7)	6 (75.0)
5-10	0	0	0
10-15	1 (9.1)	0	1 (12.5)
15-20	0	0	0
20 or more	2 (18.2)	1 (33.3)	1 (12.5)
<b>Concurrent Use of Steroids or Immune Suppressing Medications (N, %) – missing 12</b>	6 (6.9)	1 (3.6)	5 (8.5)
<b>Concurrent use of NSAIDs – missing 13</b>	38 (44.2)	10 (37.0)	28 (47.5)

**Supplemental Table 2. Baseline Characteristics of Study Households in Primary Analysis Set**

<b>Characteristic</b>	<b>Total Households (N=33)</b>
Number of persons in household (Median, Min-Max)	3.5 (2-5)
House size (in square feet) as reported by index (Median, Min-Max)	1400 (740-3300)
Missing or unknown data from 11 households	

**Supplemental Table 3. SARS-CoV-2 Viral Kinetics in Primary Analysis Set, Excluding 2 Cases of Outside Introduction**

<b>Outcome</b>	<b>Index Cases (N=30)<sup>a</sup></b>	<b>Infected Contacts (N=26)</b>
Lowest Ct (median, min-max)	25.65 (15.9-35)	23 (8.1-36.2)
Duration of viral shedding <sup>b</sup> (median, min-max)	6.5 days (1-19)	8 days (1-20)
Time to first positive SARS-CoV-2 from index diagnosis date	N/A	3 days (0-10)

a. Excluding 3 index cases who were PCR negative at baseline.

b. From first positive SARS-CoV-2 test.



**Supplemental Table 4. Sequencing Performance**

<b>Household</b>	<b>Participant</b>	<b>Samples</b>	<b>Samples Producing Genome with Minimum Unambiguous Genome Length of 15 kbp</b>
AXB	1	1	0
	2	6	5
JRP	1	5	5
	2	6	6
ODK	1	1	1
EGI	1	6	6
	4	5	4
CWA	1	4	3
	2	4	3
VBL	1	1	1
TSE	1	1	1
	2	6	5
KQX	1	1	1
DUC	1	2	1
	2	8	7
MPO	2	5	4
	3	9	7
	4	4	3
HXJ	1	4	1
	3	5	5
BQE	1	7	5
	2	5	5
SVW	1	1	1

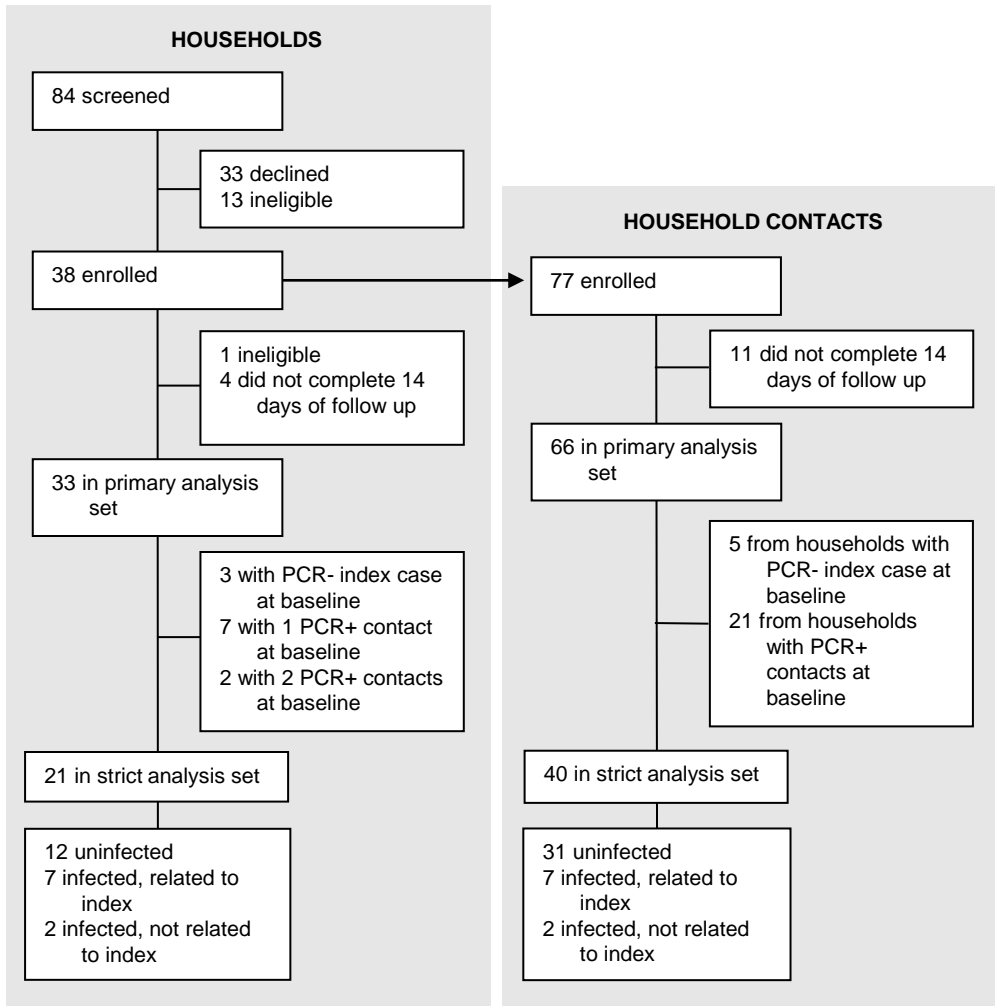
IRG	1	2	2
	2	6	6
	3	4	3
	4	8	5
LCT	1	7	5
	4	11	9
	5	9	9
PFK	1	1	1
	4	2	1
JDU	1	1	1
XOA	1	6	1
	2	4	4
REZ	1	1	0
WMD	1	2	1
	3	4	3
HSA	1	1	1
	2	5	3
YVB	1	1	0
NKF	1	1	1
	2	1	0
QEC	1	1	1
OXS	1	2	2
	2	1	1
	4	2	2
LME	1	1	1

**Supplemental Table 5. Household Transmission Analysis**

Household	Transmission Direction	SNV Distance	Difference in Dates of Diagnosis (Days)	iSNV Information	Transmission Pair Categorization	Household Transmission Categorization
JRP	1>2	1	4		Highly probable	Highly probable
EGI	1>4	1	4		Highly probable	Highly probable
CWA	1>2	0	2	C21721T; T22917A; C23673T present at mixed sites in 1 (possible BA.2.12.1 & BA.2.10 co-infection) and fixed in 2	Possible	Possible
	2>1	0	-2		Possible	
TSE	1>2	3	5		Unlikely	Unlikely
	2>1	3	-5		Unlikely	
DUC	1>2	0	2		Possible	Possible
	2>1	0	-2		Possible	
MPO	4>2	0	3		Possible	Possible
	4>3	0	6		Possible	
	2>4	0	-3		Possible	
	2>3	0	3		Possible	
HXJ	1>3	0	1	share C23393T at < 10% frequency	Possible	Possible
	3>1	0	-1		Possible	
BQE	2>1	0	2		Possible	Possible
	1>2	0	-2		Possible	
IRG	1>4	3	2		Unlikely	Mixed household
	4>1	3	-2		Unlikely	
	4>2	0	3		Possible	
	4>3	0	5		Possible	
	2>3	0	2		Possible	
LCT	4>1	4	1		Unlikely	Mixed household

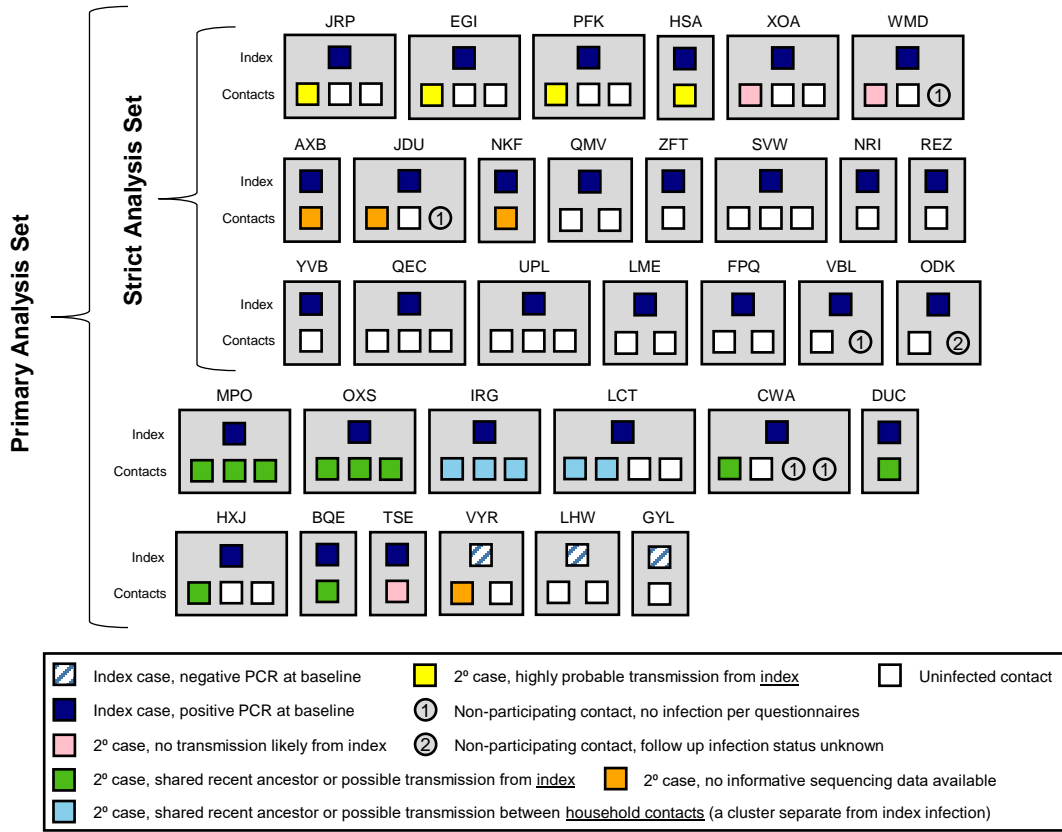
	1>4	4	-1		Unlikely	
	4>5	0	5		Possible	
PFK	1>4	0	6		Highly probable	Possible
XOA	1>2	13	9	share C3832T at < 10% frequency	Unlikely	Unlikely
WMD	1>3	20	12		Unlikely	Unlikely
HSA	1>2	2	5		Highly probable	Possible
OXS	1>2	0	2		Possible	Possible
	1>4	0	2		Possible	
	2>1	0	-2		Possible	
	2>4	0	0		Possible	
	4>1	0	-2		Possible	
	4>2	0	0		Possible	

**FIGURE 1**

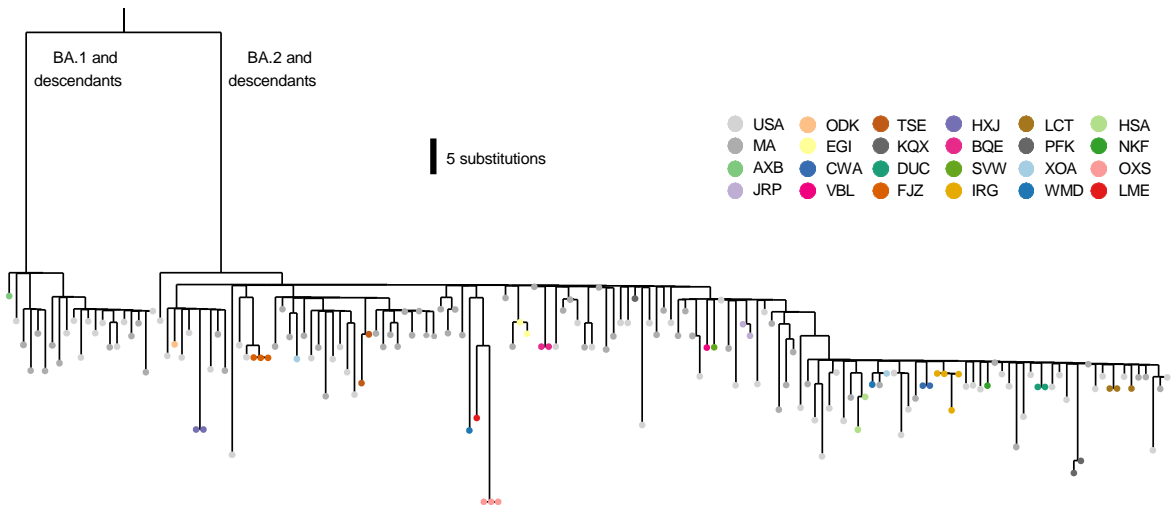


**FIGURE 2**

**A**

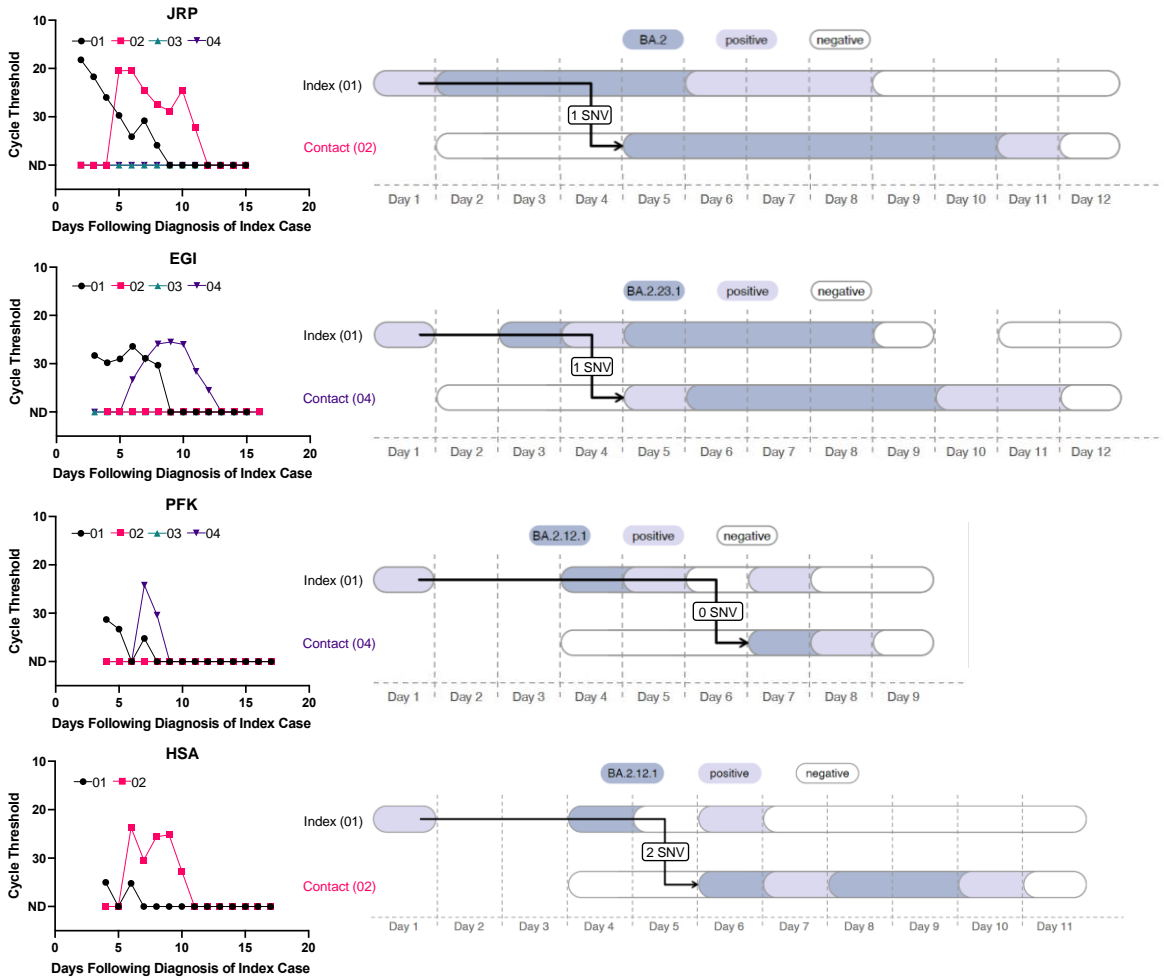


**B**

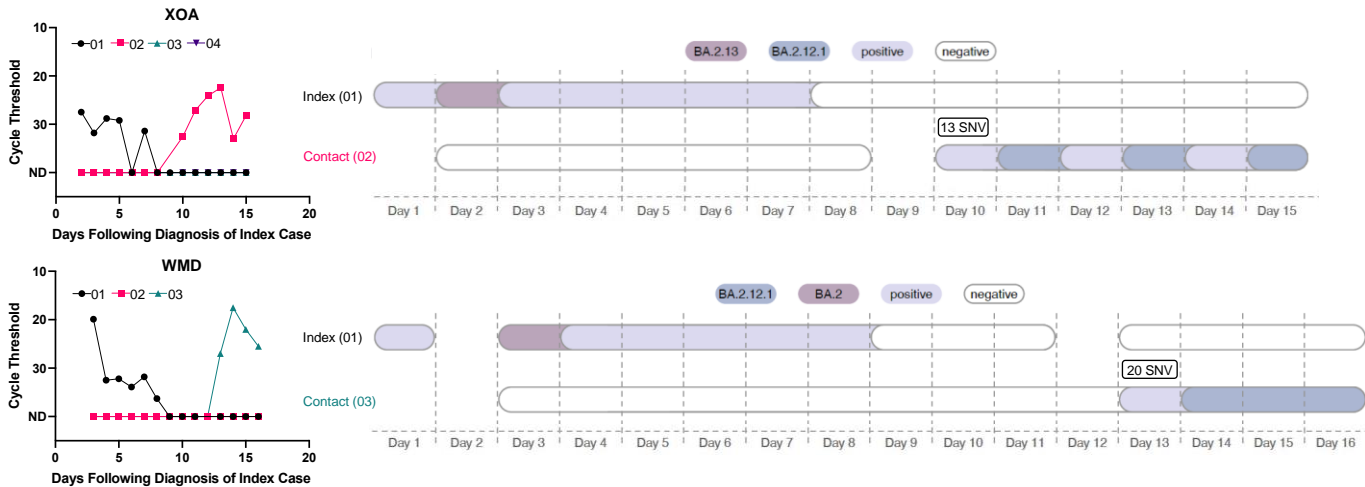


# FIGURE 3

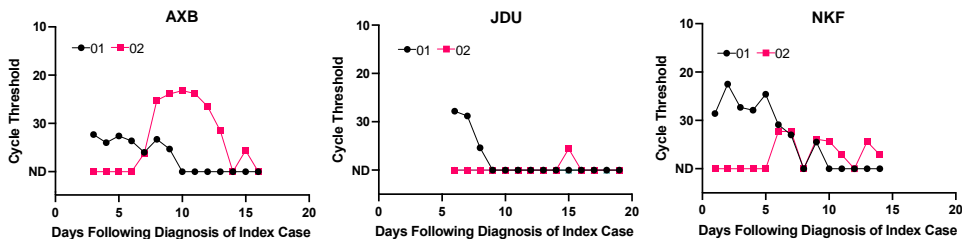
**A**



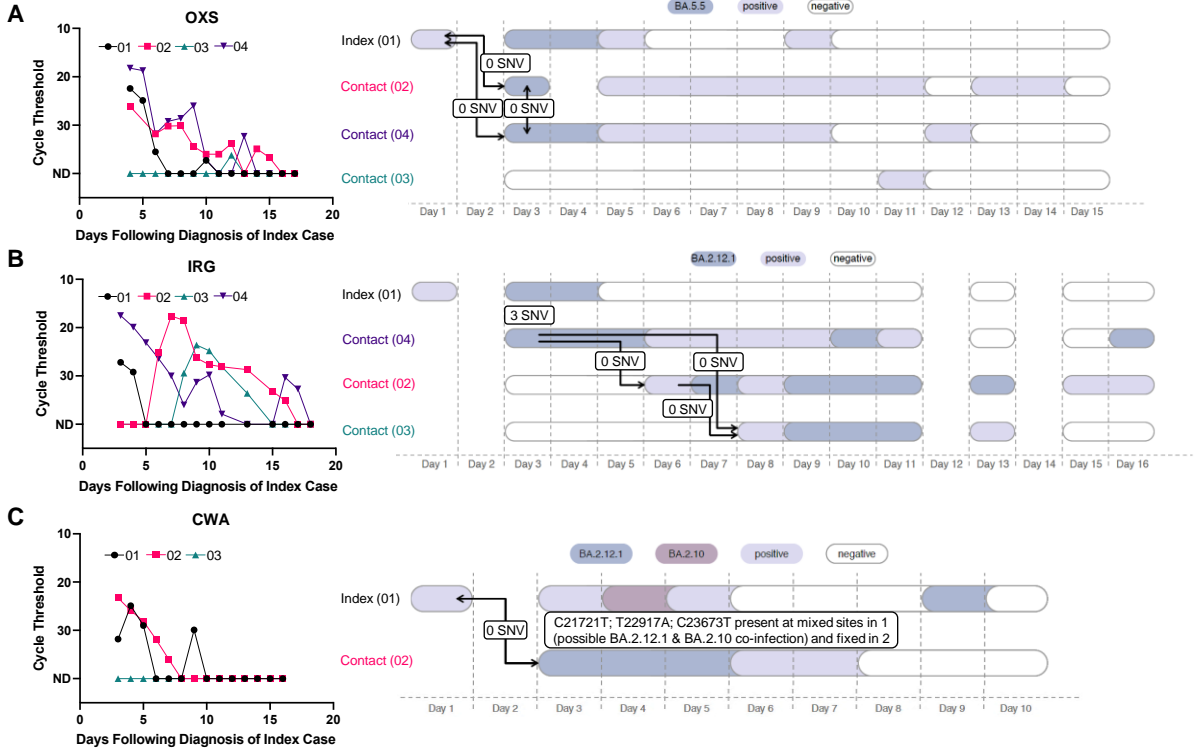
**B**



**C**



# FIGURE 4





# SUPPLEMENTAL FIGURE 1

