

Is SARS-CoV-2 elimination or mitigation best? Regional and disease characteristics determine the recommended strategy

Maria M. Martignoni ^{*1,4}, Julien Arino ³, and Amy Hurford ^{†1,2}

¹Department of Mathematics and Statistics, Memorial University of Newfoundland, Canada

²Biology Department and Department of Mathematics and Statistics, Memorial University of Newfoundland, Canada

³Department of Mathematics, University of Manitoba, Winnipeg, Manitoba, Canada

⁴Department of Ecology, Evolution and Behavior, A. Silberman Institute of Life Sciences, Faculty of Sciences, Hebrew University of Jerusalem, Jerusalem, Israel

February 2, 2024

Abstract

Public health responses to the COVID-19 pandemic varied across the world. Some countries (e.g., mainland China, New Zealand, and Taiwan) implemented elimination strategies involving strict travel measures and periods of rigorous non-pharmaceutical interventions (NPIs) in the community, aiming to achieve periods with no disease spread; while others (e.g., many European countries and the United States of America) implemented mitigation strategies involving less strict NPIs for prolonged periods, aiming to limit community spread. Travel measures and community NPIs have high economic and social costs, and there is a need for guidelines that evaluate the appropriateness of an elimination or mitigation strategy in regional contexts. To guide decisions, we identify key criteria and provide indicators and visualizations to help answer each question. Considerations include determining whether disease elimination is: (1) necessary to ensure health care provision; (2) feasible from an epidemiological point of view; and (3) cost effective when considering, in particular, the economic costs of travel measures and treating infections. We discuss our recommendations by considering the regional and economic variability of Canadian provinces and territories, and the epidemiological characteristics of different SARS-CoV-2 variants.

Keywords : Elimination, mitigation, suppression, policies, public health, epidemiology, mathematical modelling, infectious disease modeling, importations, COVID-19, SARS-CoV-2, optimization, economy, Canada, epidemiology.

*Corresponding author: mmartignoni@mun.ca, maria.martignonimseya@mail.huji.ac.il

†Corresponding author: ahurford@mun.ca

1 Introduction

2 Non-pharmaceutical Interventions (NPIs) have greatly reduced the spread of SARS-CoV-2
3 [42, 15], the virus that causes COVID-19, and include: travel measures, such as self-isolation,
4 quarantine, and testing requirements applying to individuals arriving from other jurisdictions;
5 and community measures, such as physical distancing, gathering size restrictions, and business
6 and school closures, that apply to residents. However, these restrictions substantially reduced
7 economic activity, increased unemployment rates, and undermined social wellbeing [40, 81, 78].
8 As NPIs have substantial economic and societal costs, it is important to establish criteria to
9 adjust restrictions to control infection spread with minimal cost.

10 Canada is the second largest country in the world by area, extending from the Pacific
11 to the Atlantic to the Arctic Oceans with ten provinces and three territories widely differing
12 in their geography, population, and economies. Canada is also a federal state, with respon-
13 sibility for health care divided between the federal government, responsible for: regulation
14 of entry into the national territory; approval of medications and vaccines; the health of First
15 Nations living on reserves, the military, and inmates in the federal prison system, and with the
16 provinces and territories responsible for most of the remaining health care issues, including
17 the implementation of health policies, and entry to, and movement within, their borders. Ge-
18 ographic, economic and jurisdictional differences, as well as differences in health care capacity,
19 have driven broad inter-provincial variation in the type and timing of NPIs implemented to
20 limit viral spread [71, 18, 124], which has in turn led to different COVID-19 epidemics in
21 different Canadian jurisdictions.

22 Prior to the establishment of the Omicron variant in December 2021, the Atlantic provinces
23 (New Brunswick, Nova Scotia, Prince Edward Island, and Newfoundland and Labrador) and
24 Northern Canada (Nunavut, Yukon, and Northwest Territories) generally implemented a con-
25 tainment strategy [92] that resulted in periods of elimination of community infections [47]
26 consistent with an ‘elimination’ or ‘zero-COVID strategy’ [19, 10, 45] (see Fig. 1a). These
27 provinces and territories have relatively small population sizes [102], and in Newfoundland
28 and Labrador, for example, elimination was achieved through strict border control of few
29 ports of entry (through which travellers from the rest of Canada and abroad could enter the
30 province), contact tracing, testing, and rigorous restrictions to end community transmission
31 when community outbreaks occurred [92]. In contrast, provinces with large urban centers,
32 such as Ontario and Quebec, may have implemented ‘mitigation’ or ‘suppression’ strategies,
33 aiming to flatten the epidemic curve and keep the number of cases below the critical care
34 capacity, with some community transmission [10, 32, 20] (see Fig. 1b). At times during 2020
35 and 2021, these provinces reported high case counts [50], nearly reaching the critical care
36 capacity in December 2020 and March 2021 [22, 21, 34].

37 Whether an elimination or mitigation strategy is the preferable response to pandemic
38 threats has been matter of debate (e.g., [2, 109, 37, 61, 72, 83]). Early in the COVID-19
39 pandemic, countries implementing an elimination strategy were praised for obtaining better
40 public health outcomes, economic growth, civil liberties, and general population well-being [82,
41 10, 9, 43]. However, by late 2021, and especially with more people becoming vaccinated and the
42 spread of the more transmissible Omicron (B.1.1.529) variant of concern, most countries had
43 abandoned the elimination strategy [8, 26, 46], and the societal costs of strict restrictions were
44 increasingly highlighted [13, 75, 118]. These observations indicate that neither elimination,
45 nor mitigation is the indisputable optimal strategy, and that the preferred strategy may vary
46 regionally and change over time.

Box 1: Common errors and misconceptions that bias against recommending an elimination strategy

- Multiple studies have shown that travel measures do not have a substantial role when community outbreaks are occurring [7, 117, 112, 16, 24], which may lead to the misconception that travel measures are unimportant. However, in regions with no community cases, travel measures become critical to ensure that mild community restrictions can remain in place for a reasonable period of time.
- Recommendations have considered whether travel measures should be implemented [119, 24], but may have overlooked coordinated implementation of multiple components of a public health response. An elimination strategy might involve travel measures when there are no community cases, an aggressive containment response to community cases when they occur, and a plan to continue the elimination strategy only until the conditions for the implementation of the elimination strategy are no longer met, for example, when the population becomes highly vaccinated [82].
- International guidelines considered as best-practise in several countries [119, 120] are not necessarily applicable to small jurisdictions or remote communities with self-determination of health care (e.g., economically smaller Canadian provinces or Indigenous communities), which may bias against elimination strategy recommendations. While elimination may be unsustainable and economically damaging at the country level, in smaller regions an elimination strategy may provide benefits, for example, helping to protect health system capacity.
- Differential equations are frequently used to model infectious diseases (e.g. the Susceptible-Infectious-Recovered (SIR) compartmental models [59]) and treat infectious individuals as a continuous quantity. Such models can predict a wave of infection caused by a fractional number of individuals after community NPIs are relaxed [41], which is an artifact of the model choice. This limitation can be overcome by modelling the expected number of outbreaks, and then modelling each community outbreak individually (e.g. [47, 101, 38]).
- Results of stochastic simulations are often reported as means of an ensemble of simulations with community outbreaks starting on different days. The ensemble mean may show no elimination of infection, although elimination does occur for individual simulations. Therefore, the results of stochastic models (including agent-based models) should be carefully reported (e.g. [54]).

47

48 Infection severity, health care capacity, the efficiency of case detection, the vaccination
49 status of a population, and the economic and societal costs of NPIs have a fundamental role
50 in determining if an elimination or a mitigation strategy should be preferred. Many such
51 indicators are highlighted in *Guidance for a strategic approach to lifting restrictive public*
52 *health measures* [91] and other guidance documents by Canadian provincial public health
53 [93], the Public Health Agency of Canada [90], and the World Health Organization [120]. Yet,
54 lacking are quantitative descriptions that specify the relative importance and inter-relatedness
55 of indicators, and how these quantities combine to determine epidemiological quantities that
56 guide decisions.

57 A further issue that has not previously been highlighted, is that the most relevant epi-
58 demiological quantities for regions implementing an elimination strategy are different than for

59 those implementing mitigation or suppression. When a mitigation strategy is implemented,
60 travel-related cases make only a negligible contribution to epidemic dynamics [7, 117, 112],
61 and the infection dynamics are mainly determined by the pathogen spread rate within a com-
62 munity (e.g., by indicators such as the basic or control reproduction numbers of the infection
63 [30, 36, 57]). On the other hand, travel measures, including testing and post-arrival quarantine
64 or self-isolation, may be a more critical component of the combined public health response in
65 regions implementing an elimination strategy. In this case, other forms of assessment such as
66 the evaluation of the efficiency of travel measures, including testing and quarantine policies
67 [128, 107, 89, 106, 6, 101], and the probability of elimination under specific community NPIs
68 (i.e., capacity limits or school and business closures) for hypothetical community outbreak
69 scenarios [88, 14, 44, 38], are key to inform public health responses.

70 Due to these fundamental differences in the key quantities and modelling approaches
71 used to forecast the epidemiological dynamics of mitigation and elimination, it has been
72 challenging to develop methods that allow a quantitative comparison of the two strategies
73 for decision-making purposes (see also Box 1, in which we highlight some common errors
74 and misconceptions when deciding whether an elimination strategy should be implemented).
75 Here, we identify key epidemiological and regional characteristics to evaluate whether disease
76 elimination or mitigation is desirable, and we outline criteria to guide this decision. We
77 highlight three main questions that should be answered to determine the circumstances when
78 elimination is a recommended approach (see Fig. 2). Namely, is elimination:

- 79 ① necessary to ensure health care provision?
- 80 ② epidemiologically feasible?
- 81 ③ cost effective?

82 We discuss each of these questions separately, and consider which role different criteria may
83 play during an unfolding pandemic. Although our discussion will mainly focus on the approach
84 to SARS-CoV-2 of different Canadian provinces and territories, our conclusions have broad
85 implications that apply widely outside the Canadian context.

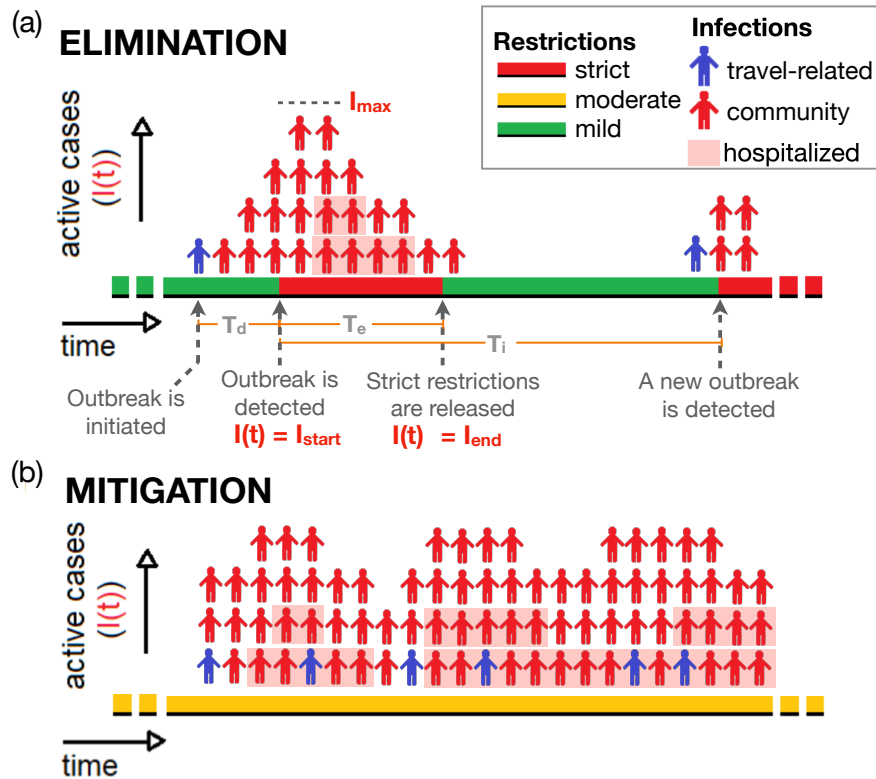


Fig. 1: Visual representation of (a) an elimination, and (b) a mitigation strategy. When an elimination strategy is implemented, a community outbreak initiated by an infected traveler is detected after a time interval T_d . Following outbreak detection, strict restrictions to reduce the number of cases are implemented during the time interval T_e (red regions). Strict restrictions are released when the number of cases drops from I_{max} to below a minimum I_{end} (green region). The time interval between the time of detection for two consecutive outbreaks is T_i . When a mitigation strategy is implemented, prolonged periods of moderate restrictions are enacted (yellow regions). While epidemiological indicators governing the community infection dynamics, such as the control or basic reproduction numbers, are helpful to characterize disease spread when mitigation is implemented, other indicators that explicitly consider the number, frequency, and severity of outbreaks (e.g., T_e , T_i , I_{max} , I_{start} and I_{end}) are needed to characterise the epidemiological dynamics when an elimination strategy is implemented (see also Fig. 2). Red persons correspond to community cases. Blue persons correspond to travel-related cases that infect individuals in the community (i.e., ‘spillover’). For simplicity, travel-related cases that do not cause community cases are not shown in the figure. Shaded cases correspond to hospitalized cases. The width of a person corresponds to the average duration of an active case and the relationship between incidence, prevalence, and hospital occupancy is investigated in the supplementary information, section A. [Adapted from [68]]

86 1 Is elimination necessary to ensure health care provision?

87 During the pandemic, in many countries a main purpose of NPI implementation was to ensure
 88 that the number of severe cases did not rise above hospital or Intense Care Unit (ICU) capacity.
 89 High pathogen transmissibility, high rates of asymptomatic cases, and low testing efficiency,
 90 are all factors that could cause a community outbreak to go undetected for several days. In
 91 regions with low resource capacity (e.g., jurisdictions with low hospital, contact tracing or
 92 testing capacities), the number of cases when the outbreak is initially detected may already
 93 have the potential to approach, or exceed, available resources for control and health care
 94 capacity [12, 113, 48]. This is particularly true of hospital and ICU occupancy limits, because
 95 due to the delay between exposure and hospitalization, and because hospital stays are often

106 many days, peak hospital occupancy usually occurs weeks after the implementation of strict
107 community NPIs and can be substantially higher than hospital occupancy at the time of strict
108 NPI implementation (see supplementary information, section A). Thus, in these regions the
109 implementation of strict community measures as soon as the outbreak is detected may be
110 necessary to prevent hospital and ICU burden, spurring the implementation of an elimination
111 approach. This choice is accompanied by implementation of travel measures after the outbreak
112 is eliminated, meaning that the costs and disruptions of strict border control are outweighed
113 by the benefits associated with protecting the capacity of the health care system.

114 On the other hand, regions with higher resource capacity may be able to detect a new
115 outbreak before the number of hospitalizations reaches the potential to near the regional
116 capacity. In these cases, a disease mitigation approach consisting of moderate community NPIs
117 may be sufficient to ensure hospital capacity limits are not exceeded, and strict travel measures
118 may lead to unnecessary costs and disruptions, that could negatively affect the compliance
119 with other public health measures [127, 33]. Even when health care capacity is high, concerns
120 regarding pathogen variants that are highly transmissible or virulent, and uncertainty in
121 how cases will respond to interventions may justify the precautionary implementation of an
122 elimination approach (or a ‘wait-and-see approach’ [88]) rather than a mitigation approach,
123 in order to delay pathogen spread until more information is available, vaccines or therapy is
124 developed, or response preparedness is enhanced [49, 35, 1, 6].

125 Disease severity will also determine whether elimination or mitigation is preferable. The
126 occurrence of severe disease depends on characteristics of a population including the pro-
127 portion with different ages, co-morbidities, vaccination and immunity statuses, associations
128 between these variables, and where these factors may be heterogeneous within a population
129 [97, 111]. For instance, it maybe be reasonable to recommend a SARS-CoV-2 elimination
130 approach for regions whose populations have a high prevalence of co-morbidities, or a low
131 proportion of individuals vaccinated [5, 60]. On the other hand, a lower proportion of cases
132 requiring hospitalization arising from high vaccination rates, or the spread of a less severe vari-
133 ant, may reduce the need of an elimination strategy. For instance, the SARS-CoV-2 variant
134 of concern Omicron (B.1.1.529) established and spread in Canada when a large proportion of
135 the population had already received at least two doses of vaccine, reducing the rates of severe
136 disease with respect to other variants (see vertical axis, Fig. 3).

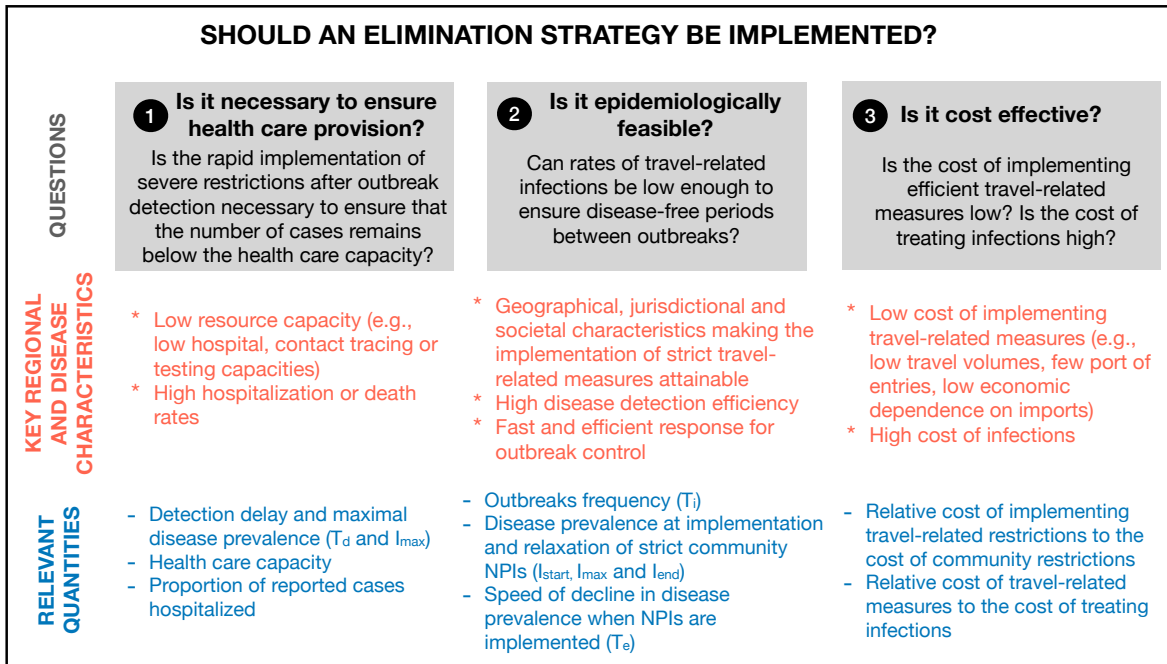


Fig. 2: The figure summarizes the three possible criteria presented in this manuscript that can be used to determine whether elimination or mitigation strategy is preferable, and key regional and disease characteristics and relevant quantities that should be considered to answer each of the questions. The meaning of the different parameters is shown in Fig. 1.

127 **2 Is elimination epidemiologically feasible?**

128 For elimination to be feasible, the duration of the strict restrictions needs to be balanced with
 129 a reasonable period when restrictions are relaxed to release the population for the adverse im-
 130 pacts of strict public health measures (i.e., the proportion of green zones to red zones in Fig. 1a
 131 needs to be high). This requires both that many weeks elapse between community outbreaks
 132 initiated by infected travellers, and that once the outbreak is detected strict community NPIs
 133 are sufficient to rapidly decrease infection prevalence.

134 The probability that a travel-related case initiates a community outbreak depends on
 135 travel measures, infection prevalence in neighboring regions, pathogen characteristics, such
 136 as its transmissibility, airborne transmission, incubation time or testing efficiency [66, 96,
 137 123], community NPIs and vaccination levels [47]. The time before an outbreak can be
 138 considered under control (i.e., when the probability that further community infections may
 139 occur is very low) depends on peak incidence and on the effectiveness of the strict NPIs
 140 in reducing community transmission. Peak incidence (as discussed in 1) determines the
 141 approximate maximum from which new daily cases must decline, and the effectiveness of
 142 strict community NPIs determines the speed of the decline. The speed of the decline depends
 143 on pathogen transmissibility, and on the efficiency of contact tracing, testing, and isolation [42,
 144 100]. Thus, local socio-geographic characteristics, pathogen characteristics, and characteristics
 145 of the local population can make an elimination strategy more or less feasible from a purely
 146 epidemiological point of view, and this feasibility should be continuously reassessed given
 147 evolving pathogenic traits and compliance with public health measures.

148 When a disease is highly transmissible, outbreaks occur often, as prevalence may be higher
 149 in other connected regions, and as the virus spreads easily even when restrictions are in place
 150 [47], allowing only short or no periods of mild restrictions. For example, it may not have been
 151 epidemiologically feasible to eliminate the SARS-CoV-2 Delta variant in Melbourne, Victoria,

152 Australia, even with strict NPIs. On October 21, 2021, Melbourne residents exited an 11 week
153 lockdown because vaccination targets had been met, but at this time daily reported cases in
154 Victoria were 2,232: the second highest that had been reported for any Australian state [53].

155 In Newfoundland and Labrador there were 10 months between the last reported case asso-
156 ciated with the initial community outbreak (original SARS-CoV-2 virus) in March 2020, and
157 the next community outbreak (Alpha variant) that began in February 2021 [92]. The more
158 transmissible and virulent Delta variant was introduced into Newfoundland and Labrador in
159 April 2021, and over the next 8 months several community outbreaks were reported in smaller
160 regions across the province, with much shorter periods between community outbreaks than
161 previously observed [92]. Nonetheless, elimination was achieved (and therefore feasible) in
162 Newfoundland and Labrador for the original, Alpha, and Delta variants, but not for the more
163 transmissible and less virulent Omicron variant. In Fig. 3 (horizontal axis), we provide esti-
164 mates of the expected average percent of days with mild restrictions between two consecutive
165 outbreaks if an elimination strategy is implemented (i.e., the percentage of days when mild
166 (green) restrictions are implemented during the period T_i , see Fig. 1a), based on the travel
167 measures applied in Newfoundland and Labrador and for different SARS-CoV-2 variants of
168 concern (see supplementary information, section B, for methodology). The effectiveness of
169 the same public health measures varies depending on the pathogen or variant considered,
170 making different strategies preferable at different points in time. Additionally, as discussed
171 in ①, different COVID-19 variants can be characterised by different rates of severe illness,
172 and their variant emergence will coincide with different vaccination rates in the population.
173 These considerations affect the risk of exceeding hospital capacity (Fig. 3, vertical axis).

174 Lastly, for an elimination strategy to be feasible it is not only important to achieve fast
175 outbreak detection and implementation of strict community restrictions, but it is also nec-
176 essary that strict measures are relaxed when they are no longer needed, because during an
177 ongoing pandemic there remains a risk of disease re-introduction, and the population may be
178 asked to comply with strict public health measures once again. The World Health Organi-
179 zation defines an outbreak as over when two incubation periods have passed with no further
180 cases reported (i.e., 28 days for COVID-19 [86]), however, a more precise approach could be
181 to relax measures when there is a high probability that the number of cases in the community
182 is zero [86]), and to consider how quickly the reported cases were isolated. Contact tracing
183 efficiency and population compliance will affect when community NPI relaxation can feasibly
184 occur [70, 17]. Thus, faster reopening may occur in regions characterised by social cohesive-
185 ness, such as rural areas where ‘everyone knows everyone’, and where infected people and their
186 contacts are easier to identify and reach [121, 64]. On the other hand, contact tracing might
187 be impractical in larger and more densely populated areas making an elimination strategy
188 more challenging to implement.

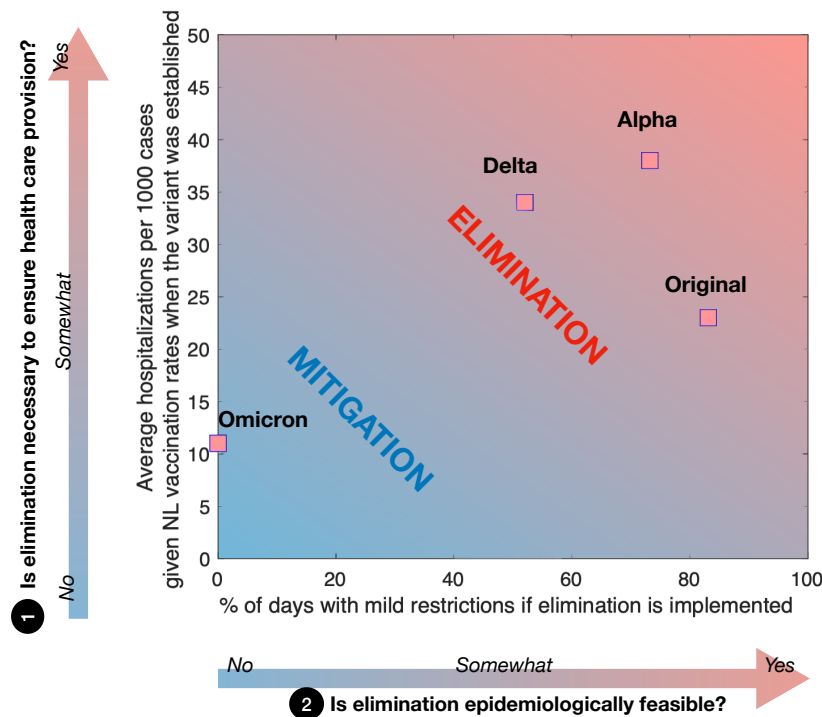


Fig. 3: Estimated average hospitalization per 1000 cases considering vaccination rates at the time each SARS-CoV-2 variant was established in the Canadian province of Newfoundland and Labrador (vertical axis) and estimated percent of days with mild NPIs between two consecutive community outbreaks if an elimination strategy is implemented (i.e., ratio of T_e/T_i on the horizontal axis, see Fig. 1). When high transmissibility does not allow for periods with no community cases between outbreaks, and when the risk of severe disease is relatively low, elimination is no longer feasible, and mitigation is preferred. Estimates used for producing the figure and their derivation are provided in the supplementary information, section B. [Adapted from [68]].

3 Is it cost effective?

189

190 Discussing costs when it comes to fighting a pandemic threat is challenging, and there are
 191 trade-offs to be considered. Minimal public health restrictions may lead to many infections,
 192 hospitalizations, and deaths, while strict public health restrictions may lead to economic,
 193 social and psychological damages [81, 85]. Considering such costs involves finding a complex
 194 balance between medical needs, and social and economic freedom. This said, certain costs,
 195 whether social, economic, or medical, are unequivocally larger in some regions relative to
 196 others. When deciding if elimination or mitigation is preferable, an important consideration
 197 is the trade-off between the economic cost of implementing travel measures, which tend to be
 198 higher for a disease elimination strategy; and the costs of treating infections, which tend to
 199 be higher for a disease mitigation strategy due to higher number of infections [10, 122].

200

201 Travel measures, such as travel declaration forms and testing requirements that are verified
 202 at arrival are less costly, and can feasibly be enforced, in regions with few ports of entry. The
 203 costs of requiring arriving travellers to quarantine or self-isolate are less in regions with low
 204 travel volumes, while the cost of reducing travel-related infections in Canada's economically
 205 larger provinces, i.e., Ontario and Quebec, are substantial due to the large volume of trade
 206 occurring across the inter-provincial and international borders [103, 104]. Travel measures
 207 may be less costly and more feasible in Atlantic Canada, where there are few ports of entry
 208 into most of the four provinces. Furthermore, during the pandemic, international arrivals
 to Canada occurred mostly first into provinces outside of Atlantic Canada [94], with with

209 federal travel measures applying to these travellers before onward travel, which may have
210 substantially reduced the risk of disease importation to Atlantic Canada. The implementation
211 of travel measures in regions whose economies strongly depend on tourism can also be very
212 costly for the country, especially if not well timed [98, 39].

213 The cost of treating a fixed number of infections is proportionally higher in smaller eco-
214 nomic regions, compared to larger economic regions, because of large differences in the size of
215 the economies (see horizontal axis of Figure 4) and relatively similar costs of treating infec-
216 tions. The costs of strict community NPIs, such as complete business closures, might also be
217 higher in economically larger regions relatively to economically smaller regions. In Fig. 4 the
218 pre-pandemic number of international travelers arriving to Canadian provinces and territories
219 is shown versus their yearly Gross Domestic Product (GDP) in 2019. Areas characterised
220 by low GDP and low travel volumes, such as Northern or Atlantic Canada, might opt for
221 disease elimination to reduce pandemic costs by implementing travel measures to reduce the
222 risk of community infections initiated from travel-related cases. Additionally, due to the
223 lower travel volumes in these regions, elimination may also be more epidemiologically feasible
224 (see point 2). Economically larger provinces (e.g., Ontario, Quebec, British Columbia, and
225 Alberta), might consider mitigation to be an economically preferable strategy.

226 In addition to economic costs, social and mental health costs need to be considered when
227 discussing NPI implementation [2]. Elimination may provide more freedoms during periods of
228 mild restrictions, however, social interactions are substantially limited during periods of strict
229 restrictions, which may cause high occurrence of mental health issues, such as depression and
230 anxiety, or domestic violence [23, 25, 95]. Mitigation requires prolonged periods of moderate
231 restrictions that can be exhausting and negatively impact the population [40, 81, 78]. Social
232 and mental health costs of these two strategies are experienced unequally across population
233 groups. Different social and psychological stress levels can arise depending on personal living
234 situations, employment sector, gender, ethnicity, and social determinants of health [81], and
235 it is misleading to report only whether elimination or mitigation guarantees lower social costs
236 at a population level without also stratifying these costs for population groups. In many cases
237 social costs of NPIs are to be paid in the future, and it is only recently that researchers have
238 developed methods to determine the direct and indirect impact of NPIs implementation on
239 a population’s health and social functioning [126, 116, 62, 31, 76]. For these reasons, it is
240 premature to discuss which of elimination or mitigation may be preferred in terms of social
241 cost.

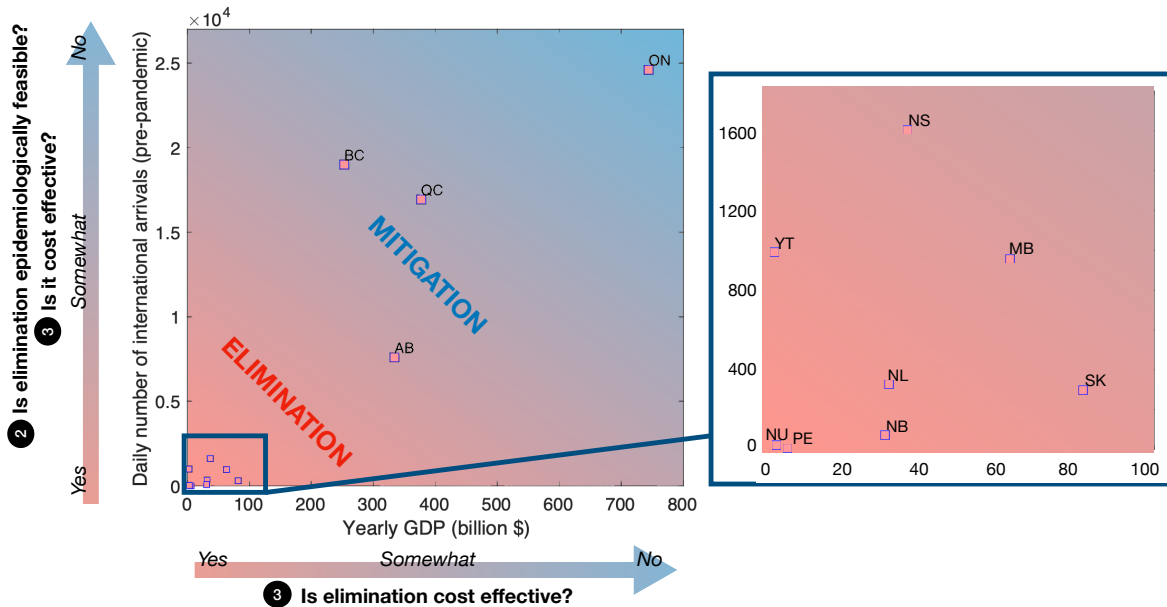


Fig. 4: Daily number of international travelers (averaged over April 2018 to March 2019, [103]) and 2018 yearly GDP [105] obtained for different provinces and territories in Canada. Mitigation may be recommended in regions with high travel volumes, as in these regions travel measures might be less feasible and more costly. The two letter abbreviations denote Alberta (AB), British Columbia (BC), Manitoba (MB), New Brunswick (NB), Newfoundland and Labrador (NL), Northwest Territories (NT), Nova Scotia (NS), Nunavut (NU), Ontario (ON), Prince Edward Island (PE), Quebec (QC), Saskatchewan (SK), Yukon (YT). Data for the Northwest territories (NT) for the same time period are not available.

Discussion

242

243 During the pandemic, the World Health Organization recommended a risk-assessment ap-
 244 proach that considers local epidemiology, public health measures and capacity, and contextual
 245 factors to determine if restrictions on international travel should be implemented [119]. Yet,
 246 quantitative criteria to evaluate whether an elimination or a mitigation strategy is preferable,
 247 and guidelines applicable to subnational jurisdictions, are lacking. We propose a concep-
 248 tual framework to guide the decision to implement an elimination or a mitigation strategy
 249 in response to a pandemic threat. We hope that our framework will inspire new modelling
 250 approaches to support and regularly reassess this decision.

251

252 So far, the focus of many epidemiological optimization models has been to determine the
 253 optimal level of social distancing needed to minimize infections and the socio-economic costs
 254 of interventions [11, 99, 55, 41, 3, 63, 125, 4, 77, 52]. However, as noted in [41] and [54],
 255 common modelling formulations can produce highly erroneous results when applied to situa-
 256 tions where infection prevalence can be zero in reality (see also considerations listened in Box
 257 1). Therefore, new mathematical tools are urgently needed to quantitatively optimize the
 258 trade-off between elimination and mitigation. We also emphasize that for proper quantitative
 259 comparison of response strategies, future modelling should explicitly consider a distinction
 260 between community cases and travel-related cases, and include statistics that are relevant for
 261 the characterisation of community outbreaks occurring when an elimination strategy is imple-
 262 mented, such as the efficiency of border testing and quarantine policies and the probability of
 263 a traveller initiating a community outbreak [128, 47, 101, 107, 106], the expected size of such
 an outbreak [88, 38, 44], the probability that a community outbreak has been eliminated, such

264 that strict NPIs might be relaxed [86, 14, 79], vaccination strategies [69, 89] and elimination
265 exit strategies [47, 70, 115] for regions with low infection prevalence.

266 Our analysis supports the application of local, rather than global, public health measures
267 and responses [73, 71, 74, 56]. Indeed, in large regions urban and rural areas might be char-
268 acterised by different geographical features, health care services, economies, and therefore
269 disease dynamics [73, 71, 74]. We provide arguments to support the implementation of local
270 travel measures, even if these occur within a country, as these measures can be considered
271 a cost effective strategy to maintain a healthier economy and less restrictive social distanc-
272 ing in such regions. Considering the relative importance of the criteria presented here, and
273 their inter-relatedness in determining whether elimination or mitigation may be best, is an
274 important future research area.

275 Finally, although we discussed the dichotomy between implementing elimination and mit-
276 igation, alternative approaches to these two strategies can also be considered [84]. One of
277 such example is the regulated planning of intermittent intense measures of short duration,
278 that occur after periods when measures are relaxed, called ‘precautionary breaks’ or ‘circuit
279 breakers’ [58, 29]. This strategy was first adopted by Singapore [51], and then implemented
280 in other countries such as the United Kingdom and Canada [67, 110].

281 Acknowledgement

282 MM is grateful to the Azrieli fundation for the award of the Azrieli fellowship. MM, JA, and
283 AH were funded by the Natural Sciences and Engineering Research Council of Canada-Public
284 Health Agency of Canada Emerging Infectious Disease Modelling Consortium. MM and AH
285 received funding from the Department of Health and Community Services, Newfoundland and
286 Labrador, Canada.

287 References

- 288 [1] Adeshina Adekunle, Michael Meehan, Diana Rojas-Alvarez, James Trauer, and Emma
289 McBryde. Delaying the COVID-19 epidemic in Australia: evaluating the effectiveness
290 of international travel bans. *Australian and New Zealand Journal of Public Health*,
291 44(4):257–259, 2020.
- 292 [2] Lara B Akin, Bernardo Andretti, Rafael Goldszmidt, John F Helliwell, Anna Pether-
293 ick, Jan-Emmanuel De Neve, Elizabeth W Dunn, Daisy Fancourt, Elkhonon Goldberg,
294 Sarah P Jones, et al. Policy stringency and mental health during the covid-19 pan-
295 demic: a longitudinal analysis of data from 15 countries. *The Lancet Public Health*,
296 7(5):e417–e426, 2022.
- 297 [3] Fernando E Alvarez, David Argente, and Francesco Lippi. A simple planning problem
298 for COVID-19 lockdown. Technical report, National Bureau of Economic Research,
299 2020. No. w26981.
- 300 [4] Marco Tulio Angulo, Fernando Castaños, Rodrigo Moreno-Morton, Jorge X Velasco-
301 Hernández, and Jaime A Moreno. A simple criterion to design optimal non-
302 pharmaceutical interventions for mitigating epidemic outbreaks. *Journal of the Royal*
303 *Society Interface*, 18(178):20200803, 2021.
- 304 [5] Elisha B Are, Yexuan Song, Jessica E Stockdale, Paul Tupper, and Caroline Colijn.
305 COVID-19 endgame: From pandemic to endemic? Vaccination, reopening and evolution

- 306 in low-and high-vaccinated populations. *Journal of Theoretical Biology*, 559:111368,
307 2023.
- 308 [6] Julien Arino, Nicolas Bajoux, Stephanie Portet, and James Watmough. Quarantine and
309 the risk of COVID-19 importation. *Epidemiology & Infection*, 148, 2020.
- 310 [7] Julien Arino, Pierre-Yves Boelle, Evan M Milliken, and Stephanie Portet. Risk of
311 COVID-19 variant importation - How useful are travel control measures? *Infectious
312 Disease Modelling*, 6:875–897, 2021.
- 313 [8] Australian Cabinet. National plan to transition Australia’s national COVID Response.
314 [https://web.archive.org/web/20220607095448/https://www.pmc.gov.au/national-
315 plan-transition-australias-national-covid-response](https://web.archive.org/web/20220607095448/https://www.pmc.gov.au/national-plan-transition-australias-national-covid-response), 2021.
- 316 [9] Michael G Baker, Amanda Kvalsvig, Ayesha J Verrall, and Newtown Wellington. New
317 Zealand’s COVID-19 elimination strategy. *Med J Aust*, 213(5):198–200, 2020.
- 318 [10] Michael G Baker, Nick Wilson, and Tony Blakely. Elimination could be the optimal
319 response strategy for COVID-19 and other emerging pandemic diseases. *BMJ*, 371,
320 2020.
- 321 [11] MT Barlow, ND Marshall, and RC Tyson. Optimal shutdown strategies for covid-19
322 with economic and mortality costs: British columbia as a case study. *Royal Society
323 Open Science*, 8(9):202255, 2021.
- 324 [12] Rachelle N Binny, Michael G Baker, Shaun C Hendy, Alex James, Audrey Lustig,
325 Michael J Plank, Kannan M Ridings, and Nicholas Steyn. Early intervention is the key
326 to success in COVID-19 control. *Royal Society Open Science*, 8(11):210488, 2021.
- 327 [13] Alicia Blair, Mattia de Pasquale, Valentin Gabeff, Mélanie Rufi, and Antoine Flahault.
328 The end of the elimination strategy: decisive factors towards sustainable management
329 of COVID-19 in New Zealand. *Epidemiologia*, 3(1):135–147, 2022.
- 330 [14] Tony Blakely, Jason Thompson, Natalie Carvalho, Laxman Bablani, Nick Wilson, and
331 Mark Stevenson. The probability of the 6-week lockdown in Victoria (commencing 9
332 July 2020) achieving elimination of community transmission of SARS-CoV-2. *Medical
333 Journal of Australia*, 213(8):349–351, 2020.
- 334 [15] Jan M Brauner, Sören Mindermann, Mrinank Sharma, David Johnston, John Salvatier,
335 Tomáš Gavenčiak, Anna B Stephenson, Gavin Leech, George Altman, Vladimir Mikulik,
336 et al. Inferring the effectiveness of government interventions against COVID-19. *Science*,
337 371(6531), 2021.
- 338 [16] Jacob Burns, Ani Movsisyan, Jan M Stratil, Michaela Coenen, Karl MF Emmert-Fees,
339 Karin Geffert, Sabine Hoffmann, Olaf Horstick, Michael Laxy, Lisa M Pfadenhauer,
340 et al. Travel-related control measures to contain the COVID-19 pandemic: A rapid
341 review. *Cochrane Database of Systematic Reviews*, (9), 2020.
- 342 [17] Timothy Callaghan, Jennifer A Lueck, Kristin Lunz Trujillo, and Alva O Ferdinand.
343 Rural and urban differences in COVID-19 prevention behaviors. *The Journal of Rural
344 Health*, 37(2):287–295, 2021.

- 345 [18] Emily Cameron-Blake, Charles Breton, Paisley Sim, Helen Tatlow, Thomas Hale, An-
346 drew Wood, Jonathan Smith, Julia Sawatsky, Zachary Parsons, and Katherine Tyson.
347 Variation in the Canadian Provincial and Territorial responses to COVID-19. *Blavatnik*
348 *School of Government Working Paper*, 2021. Available: www.bsg.ox.ac.uk/covidtra.
- 349 [19] CAN-shield. Covid Strategic Choice. ‘Is it time to build the Canadian Shield?’ Website.
350 <https://covidstrategicchoices.ca/>. Accessed: 2021-11-18.
- 351 [20] Canadian Broadcasting Corporation (CBC), Montreal. COVID-19 News.
352 [https://www.cbc.ca/news/canada/montreal/montreal-quebec-covid-third-wave-](https://www.cbc.ca/news/canada/montreal/montreal-quebec-covid-third-wave-vaccination-1.6006078)
353 [vaccination-1.6006078](https://www.cbc.ca/news/canada/montreal/montreal-quebec-covid-third-wave-vaccination-1.6006078). Accessed: 2021-05-05.
- 354 [21] Canadian Broadcasting Corporation (CBC), Montreal.
355 [https://www.cbc.ca/news/canada/montreal/quebec-health-minister-covid-](https://www.cbc.ca/news/canada/montreal/quebec-health-minister-covid-hospitalizations-1.5847543)
356 [hospitalizations-1.5847543](https://www.cbc.ca/news/canada/montreal/quebec-health-minister-covid-hospitalizations-1.5847543), Accessed: 2020-12-30.
- 357 [22] Canadian Broadcasting Corporation (CBC), Toronto.
358 [https://www.cbc.ca/news/canada/toronto/doses-moderna-covid-19-vaccine-expected-](https://www.cbc.ca/news/canada/toronto/doses-moderna-covid-19-vaccine-expected-arrive-ontario-today-1.5857207)
359 [arrive-ontario-today-1.5857207](https://www.cbc.ca/news/canada/toronto/doses-moderna-covid-19-vaccine-expected-arrive-ontario-today-1.5857207). Accessed: 2020-12-30.
- 360 [23] Joht Singh Chandan, Julie Taylor, Caroline Bradbury-Jones, Krishnarajah Niran-
361 tharakumar, Eddie Kane, and Siddhartha Bandyopadhyay. COVID-19: a public health
362 approach to manage domestic violence is needed. *The Lancet Public Health*, 5(6):e309,
363 2020.
- 364 [24] Matteo Chinazzi, Jessica T Davis, Marco Ajelli, Corrado Gioannini, Maria Litvinova,
365 Stefano Merler, Ana Pastore y Piontti, Kumpeng Mu, Luca Rossi, Kaiyuan Sun, et al.
366 The effect of travel restrictions on the spread of the 2019 novel coronavirus (COVID-19)
367 outbreak. *Science*, 368(6489):395–400, 2020.
- 368 [25] Jade Connor, Sarina Madhavan, Mugdha Mokashi, Hanna Amanuel, Natasha R John-
369 son, Lydia E Pace, and Deborah Bartz. Health risks and outcomes that dispropor-
370 tionately affect women during the COVID-19 pandemic: A review. *Social Science &*
371 *Medicine*, page 113364, 2020.
- 372 [26] Eva Corlett. New Zealand Covid elimination strategy to be phased out, Ardern
373 says. [https://www.theguardian.com/world/2021/oct/04/new-zealand-covid-strategy-](https://www.theguardian.com/world/2021/oct/04/new-zealand-covid-strategy-in-transition-ardern-says-as-auckland-awaits-lockdown-decision)
374 [in-transition-ardern-says-as-auckland-awaits-lockdown-decision](https://www.theguardian.com/world/2021/oct/04/new-zealand-covid-strategy-in-transition-ardern-says-as-auckland-awaits-lockdown-decision), 2021.
- 375 [27] COVID-19 daily epidemiology update. [https://health-infobase.canada.ca/covid-](https://health-infobase.canada.ca/covid-19/epidemiological-summary-covid-19-cases.html)
376 [19/epidemiological-summary-covid-19-cases.html](https://health-infobase.canada.ca/covid-19/epidemiological-summary-covid-19-cases.html), accessed March 7, 2022.
- 377 [28] COVID-19 Vaccination in Canada. [https://health-infobase.canada.ca/covid-](https://health-infobase.canada.ca/covid-19/vaccination-coverage/)
378 [19/vaccination-coverage/](https://health-infobase.canada.ca/covid-19/vaccination-coverage/), accessed March 7, 2022.
- 379 [29] M. Cuoto Zuber. Covid-19 lockdown, shutdown, circuit brea- kers: How do these terms
380 differ? Global News. [https://globalnews.ca/news/7735633/covid-lockdown-emergency-](https://globalnews.ca/news/7735633/covid-lockdown-emergency-break-shutdown/)
381 [break-shutdown/](https://globalnews.ca/news/7735633/covid-lockdown-emergency-break-shutdown/). Accessed 8 Jan 2024.
- 382 [30] Jonathan Dushoff and Sang Woo Park. Speed and strength of an epidemic intervention.
383 *Proceedings of the Royal Society B*, 288(1947):20201556, 2021.

- 384 [31] Harry Ferguson, Sarah Pink, and Laura Kelly. The unheld child: social work, social
385 distancing and the possibilities and limits to child protection during the COVID-19
386 pandemic. *The British Journal of Social Work*, 52(4):2403–2421, 2022.
- 387 [32] Neil M Ferguson, Daniel Laydon, Gemma Nedjati-Gilani, Natsuko Imai, Kylie Ainslie,
388 Marc Baguelin, Sangeeta Bhatia, Adhiratha Boonyasiri, Zulma Cucunubá, Gina Cuomo-
389 Dannenburg, et al. Impact of non-pharmaceutical interventions (NPIs) to reduce
390 COVID-19 mortality and healthcare demand. *Imperial College COVID-19 Response*
391 *Team*, page 20, 2020.
- 392 [33] Axel Franzen and Fabienne Wöhner. Coronavirus risk perception and compliance with
393 social distancing measures in a sample of young adults: Evidence from Switzerland.
394 *PloS one*, 16(2):e0247447, 2021.
- 395 [34] Global-News. [https://globalnews.ca/news/7721656/ontario-icu-capacity-hospital-](https://globalnews.ca/news/7721656/ontario-icu-capacity-hospital-critical-level-covid-19/)
396 [critical-level-covid-19/](https://globalnews.ca/news/7721656/ontario-icu-capacity-hospital-critical-level-covid-19/). Accessed: 2021-04-06.
- 397 [35] Arnaud Godin, Yiqing Xia, David L Buckeridge, Sharmistha Mishra, Dirk Douwes-
398 Schultz, Yannan Shen, Maxime Lavigne, Mélanie Drolet, Alexandra M Schmidt, Marc
399 Brisson, et al. The role of case importation in explaining differences in early SARS-CoV-
400 2 transmission dynamics in Canada—A mathematical modeling study of surveillance
401 data. *International Journal of Infectious Diseases*, 102:254–259, 2020.
- 402 [36] Julia R Gog and T Déirdre Hollingsworth. Epidemic interventions: insights from classic
403 results. *Philosophical Transactions of the Royal Society B*, 376(1829):20200263, 2021.
- 404 [37] Christian Gold. Unclear conclusions on sars-cov-2 elimination versus mitigation. *Lancet*
405 (*London, England*), 398(10311):1566, 2021.
- 406 [38] Nick Golding, David J Price, Gerard Ryan, Jodie McVernon, James M McCaw, and
407 Freya M Shearer. A modelling approach to estimate the transmissibility of sars-cov-2
408 during periods of high, low, and zero case incidence. *Elife*, 12:e78089, 2023.
- 409 [39] Stefan Gössling, Daniel Scott, and C Michael Hall. Pandemics, tourism and global
410 change: a rapid assessment of COVID-19. *Journal of sustainable tourism*, 29(1):1–20,
411 2020.
- 412 [40] Emeline Han, Melisa Mei Jin Tan, Eva Turk, Devi Sridhar, Gabriel M Leung, Kenji
413 Shibuya, Nima Asgari, Juhwan Oh, Alberto L García-Basteiro, Johanna Hanefeld, et al.
414 Lessons learnt from easing COVID-19 restrictions: An analysis of countries and regions
415 in Asia Pacific and Europe. *The Lancet*, 396:1525–1534, 2020. Issue 10261.
- 416 [41] Elsa Hansen and Troy Day. Optimal control of epidemics with limited resources. *Journal*
417 *of Mathematical Biology*, 62:423–451, 2011.
- 418 [42] Nina Haug, Lukas Geyrhofer, Alessandro Londei, Elma Dervic, Amélie Desvars-Larrive,
419 Vittorio Loreto, Beate Pinior, Stefan Thurner, and Peter Klimek. Ranking the effec-
420 tiveness of worldwide COVID-19 government interventions. *Nature human behaviour*,
421 4(12):1303–1312, 2020.
- 422 [43] John F Helliwell, Max B Norton, Shun Wang, Lara B Aknin, and Haifang Huang. Well-
423 being analysis favours a virus-elimination strategy for COVID-19. Technical report,
424 National Bureau of Economic Research, 2021.

- 425 [44] Shaun Hendy, Nicholas Steyn, Alex James, Michael J Plank, Kate Hannah, Rachelle N
426 Binny, and Audrey Lustig. Mathematical modelling to inform New Zealand’s COVID-19
427 response. *Journal of the Royal Society of New Zealand*, 51(sup1):S86–S106, 2021.
- 428 [45] Anita E Heywood and C Raina Macintyre. Elimination of COVID-19: what would it
429 look like and is it possible? *The Lancet Infectious Diseases*, 20(9):1005–1007, 2020.
- 430 [46] G. Ho. Zero-Covid strategy no longer feasible due to highly infectious delta variant:
431 PM Lee. [https://www.straitstimes.com/singapore/politics/spore-must-press-on-with-](https://www.straitstimes.com/singapore/politics/spore-must-press-on-with-strategy-of-living-with-covid-19-and-not-be-paralysed-by)
432 [strategy-of-living-with-covid-19-and-not-be-paralysed-by](https://www.straitstimes.com/singapore/politics/spore-must-press-on-with-strategy-of-living-with-covid-19-and-not-be-paralysed-by), 2021.
- 433 [47] Amy Hurford, Maria M Martignoni, J Concepción Loredó-Osti, Francis Anokye, Julien
434 Arino, Bilal Saleh Husain, Brian Gaas, and James Watmough. Pandemic modelling
435 for regions implementing an elimination strategy. *Journal of Theoretical Biology*,
436 561:111378, 2023.
- 437 [48] Amy Hurford, Maria M Martignoni, Paul Tupper, Caroline Colijn, Sarah P Otto,
438 Christopher McCabe, and David JD Earn. Travel restrictions and the Omicron variant.
439 2021.
- 440 [49] Amy Hurford, Proton Rahman, and J Concepción Loredó-Osti. Modelling the impact
441 of travel restrictions on COVID-19 cases in Newfoundland and Labrador. *Royal Society*
442 *Open Science*, 8(6):202266, 2021.
- 443 [50] Canada Health Infobase. Canada Health Infobase, Coronavirus disease 2019
444 (COVID-19). [https://health-infobase.canada.ca/covid-19/epidemiological-summary-](https://health-infobase.canada.ca/covid-19/epidemiological-summary-covid-19-cases.html)
445 [covid-19-cases.html](https://health-infobase.canada.ca/covid-19/epidemiological-summary-covid-19-cases.html). Epidemiology update, Accessed: 2021-11-18.
- 446 [51] I Jacinta, Pei Chen, Jason Chin-Huat Yap, Li Yang Hsu, and Yik Ying Teo. COVID-19
447 and Singapore: from early response to circuit breaker. *Ann Acad Med Singap*, 49(8):561,
448 2020.
- 449 [52] Vito Janko, Nina Reščič, Aljoša Vodopija, David Susič, Carlo De Masi, Tea Tušar, Anton
450 Gradišek, Sophie Vandepitte, Delphine De Smedt, Jana Javornik, et al. Optimizing non-
451 pharmaceutical intervention strategies against COVID-19 using artificial intelligence.
452 *Frontiers in public health*, 11:1073581, 2023.
- 453 [53] R. Jose. Melbourne readies to exit world’s longest COVID-19 lockdown.
454 [https://www.reuters.com/world/asia-pacific/melbourne-readies-exit-worlds-longest-](https://www.reuters.com/world/asia-pacific/melbourne-readies-exit-worlds-longest-covid-19-lockdowns-2021-10-20/)
455 [covid-19-lockdowns-2021-10-20/](https://www.reuters.com/world/asia-pacific/melbourne-readies-exit-worlds-longest-covid-19-lockdowns-2021-10-20/), 2021.
- 456 [54] Jonas L Juul, Kaare Græsbøll, Lasse Engbo Christiansen, and Sune Lehmann. Fixed-
457 time descriptive statistics underestimate extremes of epidemic curve ensembles. *Nature*
458 *physics*, 17(1):5–8, 2021.
- 459 [55] Markus Kantner and Thomas Koprucki. Beyond just “flattening the curve”: Optimal
460 control of epidemics with purely non-pharmaceutical interventions. *Journal of Mathe-*
461 *matics in Industry*, 10(1):1–23, 2020.
- 462 [56] Vadim A Karatayev, Madhur Anand, and Chris T Bauch. Local lockdowns outperform
463 global lockdown on the far side of the COVID-19 epidemic curve. *Proceedings of the*
464 *National Academy of Sciences*, 117(39):24575–24580, 2020.

- 465 [57] Matt J Keeling, Louise Dyson, Glen Guyver-Fletcher, Alex Holmes, Malcolm G Sem-
466 ple, ISARIC4C Investigators, Michael J Tildesley, and Edward M Hill. Fitting to the
467 UK COVID-19 outbreak, short-term forecasts and estimating the reproductive number.
468 *Statistical Methods in Medical Research*, 31(9):1716–1737, 2022.
- 469 [58] Matt J Keeling, Glen Guyver-Fletcher, Alex Holmes, Louise Dyson, Michael J Tildesley,
470 Edward M Hill, and Graham F Medley. Precautionary breaks: planned, limited duration
471 circuit breaks to control the prevalence of covid-19. *Limited Duration Circuit Breaks to*
472 *Control the Prevalence of COVID-19*, 2020.
- 473 [59] Matt J. Keeling and Pejman Rohani. *Infectious Disease Modelling*. Princeton University
474 Press, Princeton, NJ, 2011.
- 475 [60] Jackson A Killian, Marie Charpignon, Bryan Wilder, Andrew Perrault, Milind Tambe,
476 and Maimuna S Majumder. Evaluating COVID-19 lockdown and business-sector-specific
477 reopening policies for three US states. *Available at SSRN 3598744*, 2020.
- 478 [61] Michael König and Adalbert Winkler. The impact of government responses to
479 the COVID-19 pandemic on GDP growth: Does strategy matter? *PloS one*,
480 16(11):e0259362, 2021.
- 481 [62] Anastasia Kourti, Androniki Stavridou, Eleni Panagouli, Theodora Psaltopoulou, Chara
482 Spiliopoulou, Maria Tsolia, Theodoros N Sergentanis, and Artemis Tsitsika. Domestic
483 violence during the COVID-19 pandemic: a systematic review. *Trauma, violence, &*
484 *abuse*, 24(2):719–745, 2023.
- 485 [63] Thomas Kruse and Philipp Strack. Optimal control of an epidemic through social
486 distancing. 2020. Cowles Foundation Discussion Paper No. 2229, Available at SSRN:
487 <https://ssrn.com/abstract=3583186> or <http://dx.doi.org/10.2139/ssrn.3583186>.
- 488 [64] R Ryan Lash, Patrick K Moonan, Brittany L Byers, Robert A Bonacci, Kimberly E
489 Bonner, Matthew Donahue, Catherine V Donovan, Heather N Grome, Julia M Janssen,
490 Reed Magleby, et al. COVID-19 case investigation and contact tracing in the US, 2020.
491 *JAMA Network Open*, 4(6):e2115850–e2115850, 2021.
- 492 [65] Kathy Leung, Marcus HH Shum, Gabriel M Leung, Tommy TY Lam, and Joseph T
493 Wu. Early transmissibility assessment of the N501Y mutant strains of SARS-CoV-2
494 in the United Kingdom, October to November 2020. *Eurosurveillance*, 26(1):2002106,
495 2021.
- 496 [66] Dyani Lewis. Why many countries failed at COVID contact-tracing—but some got it
497 right. *Nature*, 588(7838):384–388, 2020.
- 498 [67] Maya Lowe, Shawn HE Harmon, Ksenia Kholina, Rachel Parker, and Janice E Graham.
499 Public health communication in Canada during the COVID-19 pandemic. *Canadian*
500 *Journal of Public Health*, 113(Suppl 1):34–45, 2022.
- 501 [68] A. Hurford M. M. Martignoni. It’s not realistic to eliminate covid-19 in newfoundland
502 and labrador. here’s why’. Canada Broadcast Corporation (CBC) opinion, Posted: Mar
503 18, 2022, [https://www.cbc.ca/news/canada/newfoundland-labrador/covid-19-here-to-](https://www.cbc.ca/news/canada/newfoundland-labrador/covid-19-here-to-stay-1.6384033)
504 [stay-1.6384033](https://www.cbc.ca/news/canada/newfoundland-labrador/covid-19-here-to-stay-1.6384033).

- 505 [69] Maria M. Martignoni, Proton Rahman, and Amy Hurford. Rotational worker vaccina-
506 tion provides indirect protection to vulnerable groups in regions with low COVID-19
507 prevalence. *AIMS Mathematics*, 7(3):3988–4003, 2022.
- 508 [70] Maria M Martignoni, Josh Renault, Joseph Baafi, and Amy Hurford. Downsizing of
509 COVID-19 contact tracing in highly immune populations. *Plos one*, 17(6):e0268586,
510 2022.
- 511 [71] Liam G McCoy, Jonathan Smith, Kavya Anchuri, Isha Berry, Joanna Pineda, Vinyas
512 Harish, Andrew T Lam, Seung Eun Yi, Sophie Hu, Laura Rosella, et al. Characterizing
513 early Canadian federal, provincial, territorial and municipal nonpharmaceutical inter-
514 ventions in response to COVID-19: A descriptive analysis. *CMAJ Open*, 8(3):E545,
515 2020.
- 516 [72] C Jessica E Metcalf, Soa Fy Andriamandimby, Rachel E Baker, Emma E Glennon, Katie
517 Hampson, T Deirdre Hollingsworth, Petra Klepac, and Amy Wesolowski. Challenges
518 in evaluating risks and policy options around endemic establishment or elimination of
519 novel pathogens. *Epidemics*, 37:100507, 2021.
- 520 [73] Sharmistha Mishra, Jeffrey C Kwong, Adrienne K Chan, and Stefan D Baral. Under-
521 standing heterogeneity to inform the public health response to COVID-19 in Canada.
522 *CMAJ*, 192(25):E684–E685, 2020.
- 523 [74] Sharmistha Mishra, Jennifer D Walker, Linda Wilhelm, Vincent Larivière, Tania
524 Bubela, and Sharon E Straus. Use and misuse of research: Canada’s response to Covid-
525 19 and its health inequalities. *bmj*, 382, 2023.
- 526 [75] Madhavi Misra, Harsha Joshi, Rakesh Sarwal, and Krishna D Rao. Exit strategies from
527 lockdowns due to COVID-19: a scoping review. *BMC public health*, 22(1):488, 2022.
- 528 [76] Carmen Moreno, Til Wykes, Silvana Galderisi, Merete Nordentoft, Nicolas Crossley,
529 Nev Jones, Mary Cannon, Christoph U Correll, Louise Byrne, Sarah Carr, et al. How
530 mental health care should change as a consequence of the COVID-19 pandemic. *The
531 lancet psychiatry*, 7(9):813–824, 2020.
- 532 [77] Alex LK Morgan, Mark EJ Woolhouse, Graham F Medley, and Bram AD Van Bun-
533 nik. Optimizing time-limited non-pharmaceutical interventions for COVID-19 outbreak
534 control. *Philosophical Transactions of the Royal Society B*, 376(1829):20200282, 2021.
- 535 [78] Krishnadas Nanath, Sreejith Balasubramanian, Vinaya Shukla, Nazrul Islam, and
536 Supriya Kaitheri. Developing a mental health index using a machine learning approach:
537 Assessing the impact of mobility and lockdown during the COVID-19 pandemic. *Tech-
538 nological forecasting and social change*, 178:121560, 2022.
- 539 [79] Trung Nguyen, Mehnaz Adnan, Binh P Nguyen, Joep de Lig, Jemma L Geoghegan,
540 Richard Dean, Sarah Jefferies, Michael G Baker, Winston Kg Seah, Andrew A Sporle,
541 et al. COVID-19 vaccine strategies for Aotearoa New Zealand: a mathematical mod-
542 elling study. *The Lancet Regional Health–Western Pacific*, 15, 2021.
- 543 [80] Hiroshi Nishiura, Kimihito Ito, Asami Anzai, Tetsuro Kobayashi, Chayada Piantham,
544 and Alfonso J Rodríguez-Morales. Relative reproduction number of SARS-CoV-2 Omi-
545 cron (B. 1.1. 529) compared with Delta variant in South Africa, 2021.

- 546 [81] Coilín ÓhAiseadha, Gerry A Quinn, Ronan Connolly, Awwad Wilson, Michael Con-
547 nolly, Willie Soon, and Paul Hynds. Unintended Consequences of COVID-19 Non-
548 Pharmaceutical Interventions (NPIs) for Population Health and Health Inequalities.
549 *International Journal of Environmental Research and Public Health*, 20(7):5223, 2023.
- 550 [82] Miquel Oliu-Barton, Bary SR Pradelski, Philippe Aghion, Patrick Artus, Ilona Kick-
551 busch, Jeffrey V Lazarus, Devi Sridhar, and Samantha Vanderslott. SARS-CoV-2 elimi-
552 nation, not mitigation, creates best outcomes for health, the economy, and civil liberties.
553 *The Lancet*, 397(10291):2234–2236, 2021.
- 554 [83] Miquel Oliu-Barton, Bary SR Pradelski, Philippe Aghion, Patrick Artus, Ilona Kick-
555 busch, Jeffrey V Lazarus, and Samantha Vanderslott. Unclear conclusions on SARS-
556 CoV-2 elimination versus mitigation—Authors’ reply. *The Lancet*, 398(10311):1566–1567,
557 2021.
- 558 [84] Miquel Oliu-Barton, Bary SR Pradelski, Yann Algan, Michael G Baker, Agnes Binag-
559 waho, Gregory J Dore, Ayman El-Mohandes, Arnaud Fontanet, Andreas Peichl, Viola
560 Priesemann, et al. Elimination versus mitigation of SARS-CoV-2 in the presence of
561 effective vaccines. *The Lancet global health*, 10(1):e142–e147, 2022.
- 562 [85] Marco Pangallo, Alberto Aleta, R Maria del Rio-Chanona, Anton Pichler, David Martín-
563 Corral, Matteo Chinazzi, François Lafond, Marco Ajelli, Esteban Moro, Yamir Moreno,
564 et al. The unequal effects of the health–economy trade-off during the COVID-19 pan-
565 demic. *Nature Human Behaviour*, pages 1–12, 2023.
- 566 [86] Kris V Parag, Benjamin J Cowling, and Christl A Donnelly. Deciphering early-warning
567 signals of SARS-CoV-2 elimination and resurgence from limited data at multiple scales.
568 *Journal of the Royal Society Interface*, 18(185):20210569, 2021.
- 569 [87] Miguel I Paredes, Stephanie M Lunn, Michael Famulare, Lauren A Frisbie, Ian Painter,
570 Roy Burstein, Pavitra Roychoudhury, Hong Xie, Shah A Mohamed Bakhsh, Ricardo
571 Perez, et al. Associations between severe acute respiratory syndrome coronavirus 2
572 (SARS-CoV-2) variants and risk of coronavirus disease 2019 (COVID-19) hospitalization
573 among confirmed cases in Washington State: a retrospective cohort study. *Clinical*
574 *Infectious Diseases*, 75(1):e536–e544, 2022.
- 575 [88] Michael J Plank. Minimising the use of costly control measures in an epidemic elimi-
576 nation strategy: A simple mathematical model. *Mathematical Biosciences*, 351:108885,
577 2022.
- 578 [89] Michael J Plank, Rachelle N Binny, Shaun C Hendy, Audrey Lustig, and Kannan Rid-
579 ings. Vaccination and testing of the border workforce for COVID-19 and risk of com-
580 munity outbreaks: a modelling study. *Royal Society Open Science*, 8(9):210686, 2021.
- 581 [90] Public Health Agency of Canada. Federal, Provincial, Territorial Pub-
582 lic Health Response Plan for Ongoing Management of COVID-19.
583 [https://www.canada.ca/en/public-health/services/diseases/2019-novel-coronavirus-](https://www.canada.ca/en/public-health/services/diseases/2019-novel-coronavirus-infection/guidance-documents/federal-provincial-territorial-public-health-response-plan-ongoing-management-covid-19.html)
584 [infection/guidance-documents/federal-provincial-territorial-public-health-response-](https://www.canada.ca/en/public-health/services/diseases/2019-novel-coronavirus-infection/guidance-documents/federal-provincial-territorial-public-health-response-plan-ongoing-management-covid-19.html)
585 [plan-ongoing-management-covid-19.html](https://www.canada.ca/en/public-health/services/diseases/2019-novel-coronavirus-infection/guidance-documents/federal-provincial-territorial-public-health-response-plan-ongoing-management-covid-19.html), 2022.
- 586 [91] Public Health Agency of Canada. Guidance for a strategic approach to lift-
587 ing restrictive public health measures. [https://www.canada.ca/en/public-](https://www.canada.ca/en/public-health/services/diseases/2019-novel-coronavirus-infection/guidance-documents/lifting-public-health-measures.html)
588 [health/services/diseases/2019-novel-coronavirus-infection/guidance-documents/lifting-](https://www.canada.ca/en/public-health/services/diseases/2019-novel-coronavirus-infection/guidance-documents/lifting-public-health-measures.html)
589 [public-health-measures.html](https://www.canada.ca/en/public-health/services/diseases/2019-novel-coronavirus-infection/guidance-documents/lifting-public-health-measures.html), 2022.

- 590 [92] Public Health, Newfoundland and Labrador. Report to the
591 House of Assembly on the COVID-19 Public Health Emergency.
592 [https://www.assembly.nl.ca/business/electronicdocuments/ReporttoHOACOVID-](https://www.assembly.nl.ca/business/electronicdocuments/ReporttoHOACOVID-19PublicHealthEmergency2022.pdf)
593 [19PublicHealthEmergency2022.pdf](https://www.assembly.nl.ca/business/electronicdocuments/ReporttoHOACOVID-19PublicHealthEmergency2022.pdf), 2022.
- 594 [93] Public Health Ontario. Jurisdictional Scan of Frameworks and Epidemiologic
595 Indicators to Inform Public Health Measures during COVID-19.
596 [https://www.publichealthontario.ca/-/media/documents/ncov/he/2020/12/covid-](https://www.publichealthontario.ca/-/media/documents/ncov/he/2020/12/covid-19-jurisdictional-scan-epi-indicators-public-health.pdf?la=en)
597 [19-jurisdictional-scan-epi-indicators-public-health.pdf?la=en](https://www.publichealthontario.ca/-/media/documents/ncov/he/2020/12/covid-19-jurisdictional-scan-epi-indicators-public-health.pdf?la=en), 2020.
- 598 [94] Public Safety Canada. Timeline – CBSA Border Measures.
599 [https://www.publicsafety.gc.ca/cnt/trnsprnc/brfng-mtrls/prlmntry-](https://www.publicsafety.gc.ca/cnt/trnsprnc/brfng-mtrls/prlmntry-bndrs/20210907/05-en.aspx)
600 [bndrs/20210907/05-en.aspx](https://www.publicsafety.gc.ca/cnt/trnsprnc/brfng-mtrls/prlmntry-bndrs/20210907/05-en.aspx). Date: April 23, 2021.
- 601 [95] Oliver Robinson. COVID-19 lockdown policies: An interdisciplinary review. *Available*
602 *at SSRN 3782395*, 2021.
- 603 [96] Bertrand R Rowe, André Canosa, Amina Meslem, and Frantz Rowe. Increased airborne
604 transmission of COVID-19 with new variants, implications for health policies. *Building*
605 *and environment*, 219:109132, 2022.
- 606 [97] Clark D Russell, Nazir I Lone, and J Kenneth Baillie. Comorbidities, multimorbidity
607 and COVID-19. *Nature medicine*, 29(2):334–343, 2023.
- 608 [98] Siamak Seyfi, C Michael Hall, and Bardia Shabani. COVID-19 and international travel
609 restrictions: the geopolitics of health and tourism. *Tourism Geographies*, 25(1):357–373,
610 2023.
- 611 [99] Oluwaseun Sharomi and Tufail Malik. Optimal control in epidemiology. *Annals of*
612 *Operations Research*, 251:55–71, 2017.
- 613 [100] Kristian Soltesz, Fredrik Gustafsson, Toomas Timpka, Joakim Jaldén, Carl Jidling,
614 Albin Heimerson, Thomas B Schön, Armin Spreco, Joakim Ekberg, Örjan Dahlström,
615 et al. The effect of interventions on COVID-19. *Nature*, 588(7839):E26–E28, 2020.
- 616 [101] Emma Southall, Z Ogi-Gittins, AR Kaye, WS Hart, FA Lovell-Read, and RN Thompson.
617 A practical guide to mathematical methods for estimating infectious disease outbreak
618 risks. *Journal of Theoretical Biology*, page 111417, 2023.
- 619 [102] Statistics Canada. 2016 Census. Statistics Canada Catalogue no. 98-316-
620 X2016001. Ottawa. Released November 29, 2017. [https://www12.statcan.gc.ca/census-](https://www12.statcan.gc.ca/census-recensement/2016/dp-pd/prof/index.cfm?Lang=E)
621 [recensement/2016/dp-pd/prof/index.cfm?Lang=E](https://www12.statcan.gc.ca/census-recensement/2016/dp-pd/prof/index.cfm?Lang=E). Accessed November 15, 2021.
- 622 [103] Statistics Canada. Table 24-10-0041-01 International travellers entering or returning to
623 Canada, by type of transport DOI: <https://doi.org/10.25318/2410004101-eng>.
- 624 [104] Statistics Canada. Table 12-10-0088-01 Interprovincial and international trade flows,
625 basic prices, summary level (x 1,000,000), DOI: [https://doi.org/10.25318/1210008801-](https://doi.org/10.25318/1210008801-eng)
626 [eng](https://doi.org/10.25318/1210008801-eng).
- 627 [105] Statistics Canada. Table 36-10-0402-02 Gross domestic product (GDP) at basic prices,
628 by industry, provinces and territories, growth rates (x 1,000,000).

- 629 [106] Nicholas Steyn, Audrey Lustig, Shaun C Hendy, Rachelle N Binny, and Michael J
630 Plank. Effect of vaccination, border testing, and quarantine requirements on the risk of
631 COVID-19 in New Zealand: A modelling study. *Infectious Disease Modelling*, 7(1):184–
632 198, 2022.
- 633 [107] Nicholas Steyn, Michael J Plank, Alex James, Rachelle N Binny, Shaun C Hendy, and
634 Audrey Lustig. Managing the risk of a COVID-19 outbreak from border arrivals. *Journal
635 of the Royal Society Interface*, 18(177):20210063, 2021.
- 636 [108] Anika Stobart and Stephen Duckett. Australia’s Response to COVID-19. *Health Eco-
637 nomics, Policy and Law*, 17(1):95–106, 2022.
- 638 [109] Zhaohui Su, Ali Cheshmehzangi, Dean McDonnell, Junaid Ahmad, Sabina Šegalo, Yu-
639 Tao Xiang, and Claudimar Pereira da Veiga. The advantages of the zero-COVID-19
640 strategy. *International journal of environmental research and public health*, 19(14):8767,
641 2022.
- 642 [110] Helen Tatlow, Emily Cameron-Blake, Sagar Grewal, Thomas Hale, Toby Phillips, and
643 Andrew Wood. Variation in the response to COVID-19 across the four nations of the
644 United Kingdom. *Blavatnik Sch Gov Work Paper*, 2021.
- 645 [111] Bhaskar Thakur, Pallavi Dubey, Joseph Benitez, Joshua P Torres, Sireesha Reddy,
646 Navkiran Shokar, Koko Aung, Debabrata Mukherjee, and Alok Kumar Dwivedi. A
647 systematic review and meta-analysis of geographic differences in comorbidities and as-
648 sociated severity and mortality among individuals with COVID-19. *Scientific reports*,
649 11(1):8562, 2021.
- 650 [112] Gianpaolo Scalia Tomba and Jacco Wallinga. A simple explanation for the low impact of
651 border control as a countermeasure to the spread of an infectious disease. *Mathematical
652 biosciences*, 214(1-2):70–72, 2008.
- 653 [113] Paul Tupper, Sarah P Otto, and Caroline Colijn. Fundamental limitations of contact
654 tracing for COVID-19. *Facets*, 6(1):1993–2001, 2021.
- 655 [114] Updates on COVID-19 Variants of Concern (VOC). [https://nccid.ca/covid-19-
656 variants/](https://nccid.ca/covid-19-variants/), accessed March 7, 2022.
- 657 [115] Giorgia Vattiato, Audrey Lustig, Oliver Maclaren, Rachelle N Binny, Shaun C Hendy,
658 Emily Harvey, Dion O’Neale, and Michael J Plank. Modelling Aotearoa New Zealand’s
659 COVID-19 protection framework and the transition away from the elimination strategy.
660 *Royal Society Open Science*, 10(2):220766, 2023.
- 661 [116] Jianghao Wang, Yichun Fan, Juan Palacios, Yuchen Chai, Nicolas Guetta-Jeanrenaud,
662 Nick Obradovich, Chenghu Zhou, and Siqi Zheng. Global evidence of expressed senti-
663 ment alterations during the COVID-19 pandemic. *Nature Human Behaviour*, 6(3):349–
664 358, 2022.
- 665 [117] Chad R Wells, Pratha Sah, Seyed M Moghadas, Abhishek Pandey, Affan Shoukat,
666 Yaning Wang, Zheng Wang, Lauren A Meyers, Burton H Singer, and Alison P Galvani.
667 Impact of international travel and border control measures on the global spread of the
668 novel 2019 coronavirus outbreak. *Proceedings of the National Academy of Sciences*,
669 117(13):7504–7509, 2020.

- 670 [118] Shuk-Ching Wong, Albert Ka-Wing Au, Hong Chen, Lithia Lai-Ha Yuen, Xin Li,
671 David Christopher Lung, Allen Wing-Ho Chu, Jonathan Daniel Ip, Wan-Mui Chan,
672 Hoi-Wah Tsoi, et al. Transmission of Omicron (B. 1.1. 529)-SARS-CoV-2 Variant of
673 Concern in a designated quarantine hotel for travelers: a challenge of elimination strat-
674 egy of COVID-19. *The Lancet Regional Health–Western Pacific*, 18, 2022.
- 675 [119] World Health Organization. Public health considerations while resuming
676 international travel, [https://www.who.int/news-room/articles-detail/public-health-](https://www.who.int/news-room/articles-detail/public-health-considerations-while-resuming-international-travel)
677 [considerations-while-resuming-international-travel](https://www.who.int/news-room/articles-detail/public-health-considerations-while-resuming-international-travel), 30 Jul 2020.
- 678 [120] World Health Organization. Chapter 4 National pandemic influenza risk as-
679 sessment in Pandemic influenza risk management: a WHO guide to inform
680 and harmonize national and international pandemic preparedness and response.
681 <https://iris.who.int/handle/10665/259893>. License: CC BY-NC-SA 3.0 IGO, 2017.
- 682 [121] World Health Organization and others. Operational guide for engaging communities in
683 contact tracing, 28 may 2021. Technical report, World Health Organization, 2021.
- 684 [122] Shishi Wu, Rachel Neill, Chuan De Foo, Alvin Qijia Chua, Anne-Sophie Jung, Victoria
685 Haldane, Salma M Abdalla, Wei-jie Guan, Sudhvir Singh, Anders Nordström, et al.
686 Aggressive containment, suppression, and mitigation of covid-19: lessons learnt from
687 eight countries. *bmj*, 375, 2021.
- 688 [123] Yu Wu, Liangyu Kang, Zirui Guo, Jue Liu, Min Liu, and Wannian Liang. Incubation
689 period of COVID-19 caused by unique SARS-CoV-2 strains: a systematic review and
690 meta-analysis. *JAMA network open*, 5(8):e2228008–e2228008, 2022.
- 691 [124] Yiqing Xia, Jorge Luis Flores Anato, Caroline Colijin, Naveed Janjua, Michael Ot-
692 terstatter, Mike Irvine, Tyler Williamson, Marie B Varughese, Michael Li, Nathaniel
693 Osgood, et al. Canada’s Provincial Covid-19 Pandemic Modelling Efforts: A Review of
694 Mathematical Models and Their Impacts on the Responses. 2023.
- 695 [125] Haoxiang Yang, Özge Sürer, Daniel Duque, David P Morton, Bismark Singh, Spencer J
696 Fox, Remy Pasco, Kelly Pierce, Paul Rathouz, Victoria Valencia, et al. Design of
697 COVID-19 staged alert systems to ensure healthcare capacity with minimal closures.
698 *Nature Communications*, 12(1):1–7, 2021.
- 699 [126] Kai Yuan, Yi-Miao Gong, Lin Liu, Yan-Kun Sun, Shan-Shan Tian, Yi-Jie Wang,
700 Yi Zhong, An-Yi Zhang, Si-Zhen Su, Xiao-Xing Liu, et al. Prevalence of posttraumatic
701 stress disorder after infectious disease pandemics in the twenty-first century, including
702 COVID-19: a meta-analysis and systematic review. *Molecular psychiatry*, 26(9):4982–
703 4998, 2021.
- 704 [127] Ricci P H Yue, Bobo HP Lau, Cecilia LW Chan, and Siu-Man Ng. Risk perception
705 as a double-edged sword in policy compliance in COVID-19 pandemic? A two-phase
706 evaluation from Hong Kong. *Journal of Risk Research*, 25(9):1131–1145, 2022.
- 707 [128] Cameron Zachreson, Freya M Shearer, David J Price, Michael J Lydeamore, Jodie
708 McVernon, James McCaw, and Nicholas Geard. COVID-19 in low-tolerance border
709 quarantine systems: Impact of the Delta variant of SARS-CoV-2. *Science Advances*,
710 8(14):eabm3624, 2022.

711 [129] Jiří Zahradník, Shir Marciano, Maya Shemesh, Eyal Zoler, Daniel Harari, Jeanne Chiar-
712 avalli, Björn Meyer, Yinon Rudich, Chunlin Li, Ira Marton, et al. SARS-CoV-2 variant
713 prediction and antiviral drug design are enabled by RBD in vitro evolution. *Nature*
714 *microbiology*, 6(9):1188–1198, 2021.