

Physical Activity, Sedentary Behavior and Microbiome: A Systematic Review and Meta-analysis

Inmaculada Pérez-Prieto^{1,2}, Abel Plaza-Florido^{3,4}, Esther Ubago-Guisado^{2,3}, Francisco B. Ortega^{3,5,6}, Signe Altmäe^{1,2,7}

¹ Department of Biochemistry and Molecular Biology, Faculty of Sciences, University of Granada, Granada, Spain.

² Instituto de Investigación Biosanitaria ibs.GRANADA, Granada, Spain.

³ Department of Physical Education and Sports, Faculty of Sport Sciences, Sport and Health University Research Institute (iMUDS). University of Granada, Granada, Spain.

⁴ Pediatric Exercise and Genomics Research Center, UC Irvine School of Medicine, Irvine, CA, United States.

⁵ Department of Biosciences and Nutrition, Karolinska Institutet, Huddinge, Sweden.

⁶ Faculty of Sport and Health Sciences, University of Jyväskylä, Jyväskylä, Finland.

⁷ Division of Obstetrics and Gynecology, CLINTEC, Karolinska Institutet, Stockholm, Sweden.

ABSTRACT

Background. The effects of physical activity and sedentary behavior on human health are well known, however, the molecular mechanisms are poorly understood. Growing evidence points to physical activity as an important modulator of the microbial composition, while evidence of sedentary behavior is scarce. We aimed to synthesize and meta-analyze the current evidence about the effects of physical activity and sedentary behavior on microbiome across different body sites and in different populations.

Methods. A systematic search in PubMed, Web of Science, Scopus and Cochrane databases was conducted until September 2022. Random-effects meta-analyses including cross-sectional studies (active *vs.* inactive / athletes *vs.* non-athletes) or trials reporting the chronic effect of physical activity interventions on gut microbiome alpha-diversity in healthy individuals were performed.

Results. Ninety-one studies were included in this systematic review. Our meta-analyses of 2632 participants indicated no consistent effect of physical activity on microbial alpha-diversity, although there seems to be a trend toward a higher microbial richness in athletes compared to non-athletes. We observed an increase in short-chain fatty acids-producing bacteria such as *Akkermansia*, *Faecalibacterium*, *Veillonella* or *Roseburia* in active individuals and after physical activity interventions.

Conclusions. Physical activity levels were positively associated with the relative abundance of short-chain fatty acids-producing bacteria. Athletes seem to have a richer microbiome compared to non-athletes. However, high heterogeneity between studies avoids to obtain conclusive information on the role of physical activity in microbial composition. Future multi-omics studies would enhance our understanding of the molecular effects of physical activity and sedentary behavior on the microbiome.

Keywords: exercise, microbial diversity, microbiota, omics, 16S rRNA gene sequencing.

1. Introduction

It is well-known that physical activity (PA) (i.e., any movement produced by skeletal muscles which demands a higher energy expenditure than in resting conditions) can improve different health-related outcomes such as insulin resistance, adiposity, and fitness, among others ^{1,2}. A related yet different construct is sedentary behavior (SB) (i.e., a behavior characterized by an energy expenditure of 1.5 or fewer metabolic equivalents [METs]), and is associated with a higher risk of different diseases ^{3,4}. Thus, increasing PA and reducing SB have been considered to prevent and treat multiple chronic diseases ⁵. However, the molecular mechanisms underlying the health benefits of PA (acute or chronic effects) and the adverse effects of SB on health are poorly understood ⁶.

In the last decades, a new sight of the human being as a set of microbial and human cells has emerged ⁷. The collection of microorganisms encompasses bacteria, viruses, fungi and archaea that inhabits our body is defined as the microbiota and is at least as abundant as the number of human cells ⁸. The genomes of the abovementioned microorganisms (i.e., microbiota) are called the microbiome, which is considered “our second genome” and “our last organ” due to its important role in human physiology ^{9,10}. Metagenomics studies (e.g., marker gene sequencing and whole metagenome sequencing) led characterization of microbiome composition using three common analyses: (1) alpha-diversity, that characterizes the microbial diversity within a sample considering richness and evenness (i.e., the number and the relative abundance of microbes); (2) beta-diversity, which measures the diversity between samples assigning a numerical value for every pair of samples to determine microbial community-level dissimilarities; (3) differential

abundance analysis, that identifies those microorganisms that differ in abundance when compared different samples.

There is evidence indicating that environmental and lifestyle factors such as pollutants, antibiotics, diet, lack of PA and increased SB, among others, may have a negative impact on microbiome composition and function leading to the disruption of the microbial homeostasis (i.e., dysbiosis) ¹¹⁻¹³. In fact, microbial dysbiosis has been associated with the development of multiple diseases such as obesity ^{14,15}, type 2 diabetes ¹⁶, and cancer ^{17,18}, among others. Thus, there is a growing interest to determine the composition of the “healthy core” microbiome and the factors that could shape the microbial communities, such as PA and SB, in order to design new therapeutic interventions ^{19,20}.

Particularly, PA has been described as one of the most important modulators of the microbiome, while little is known about the effect of SB on microbial communities due to the limited number of studies ^{21,22}. Recent advances in meta-omics-based studies (i.e., marker gene sequencing, metagenomics, meta-transcriptomics, meta-proteomics, and meta-metabolomics) allow the identification of the molecular pathways regulated by PA ²³. Thus, the effect of PA on the microbiome, especially on the gut microbial communities, is a research topic of increasing interest ^{24,25}. In the last years, several systematic reviews reported the effects of PA on the gut microbiome of healthy adults ²⁶⁻²⁹, older adults ³⁰ and adults with obesity and type 2 diabetes ^{31,32}. In addition, a systematic review on the effect of aerobic athletic performance has been recently published ³³. However, the aforementioned systematic reviews showed inconsistent findings from observational and intervention studies ²⁶⁻³². Therefore, there is a need to synthesize the whole body of knowledge about the effect of PA and SB on the microbiome including healthy (e.g. non-athletes and professional athletes), unhealthy populations (e.g. obesity, diabetes, cancer), different stages of life (i.e., children, young and older adults), and different body niches (e.g. gut, saliva, vaginal, etc.) through metagenomics approaches.

The current study aimed: 1) to summarize all the studies available about the relationship of PA and SB (observational and intervention studies) with microbiome performing metagenomics in humans and 2) meta-analyse the available data.

2. Material and methods

This systematic review and meta-analysis was conducted following the Preferred Reporting Items for Systematic Reviews and Meta-Analyses guidelines (PRISMA) ³⁴. The review protocol was registered in the International Prospective Register of Systematic Reviews (PROSPERO; <http://www.crd.york.ac.uk/PROSPERO>) with the reference number: CRD42022298526.

2.1 Search strategy

A systematic search was conducted in PubMed, Web of Science, SCOPUS, and Cochrane electronic databases from inception to September 29, 2022. Search terms were included based on the sports science and microbiome terms of interest. **Table 1** includes a list with the main terms and their definitions related to microbiome field used in this systematic search. **Electronic Supplementary Table S1** illustrates the search terms and strategy for each database.

2.2 Study selection criteria

The inclusion criteria were as follow: (1) all observational studies (longitudinal or cross-sectional) that report the association of PA and/or SB with microbiome; (2) all original studies that included the effect of PA (acute and/or chronic effects) on microbiome. The exclusion criteria were: (1) studies addressing the effect of PA (acute or chronic effects) on microbiome containing diet modifications, probiotics and prebiotics supplements or caloric restriction, in which it was not possible to isolate the independent effect of PA, (2) non-eligible publication types, such as editorials, study protocols, letters to the editors, meeting abstracts, or review articles, (3) studies written in any language other than English or Spanish.

The selection process of the studies resulting from the literature search was performed using the software “Covidence” (<https://www.covidence.org/>), which detected duplicates. After removing the duplicates, the articles were first independently filtered by title/abstract screening by two researchers (I.P.P and A.P.F). Those articles that met the inclusion criteria were selected for the full-text review. Conflictive articles were solved through common consensus by the same researchers (I.P.P and A.P.F). Any article that did not meet the eligibility criteria was excluded. The quality assessment of the included studies was independently conducted by I.P.P and A.P.F (see **Electronic Supplementary Material Appendix S1**).

2.3 Data extraction

For each study, one researcher (I.P.P) conducted the data extraction including the following information: (1) author's name and date of publication, (2) study design, (3) characteristics of the population (number of participants, sex, age and ethnicity), (4) characteristics of the exposure (i.e., PA or SB), (5) sample origin, (6) dependent outcome (i.e., DNA extraction method, detection method of the microbiome and sequencing platform), (7) dietary record, (8) main findings and (9) raw data availability. A second researcher (A.P.F) performed a double-check for data correction.

2.4 Data synthesis and meta-analysis

We conducted three meta-analyses including cross-sectional studies (active *vs.* inactive / athletes *vs.* non-athletes) or trials reporting the chronic effect of PA interventions on gut microbiome diversity (specifically alpha-diversity, expressed by the Shannon diversity and Chao1 indexes) in healthy individuals (see **Electronic Supplementary Material Appendix S1** for detailed explanation).

Statistical analyses were performed using the Comprehensive Meta-Analysis software (version 3; Biostat Inc.,1385, NJ, USA). The effect size was calculated using Cohen's *d* and 95% confidence intervals (CIs) for standardized mean difference (SMD). Pooled SMD was estimated using a random-effects model. Heterogeneity between studies was assessed using the I^2 statistics, which represents the percentage of total variation across studies, considering I^2 values of 25%, 50%, and 75% as low, moderate and high heterogeneity, respectively ³⁵. A *p* value of less than 0.05 was considered statistically significant.

3. Results

3.1 General overview

PRISMA checklist 2020 reflects the appropriateness of the methods performed in this systematic review and meta-analysis (**Electronic Supplementary Tables S2, S3**). **Figure 1** illustrates the PRISMA flow diagram of the search process. A total of 12503 articles were detected across the four databases, and after removing the duplicates and non-eligible articles, 91 studies were included in this systematic review: 50 observational studies (all cross-sectional) ³⁶⁻⁸⁵, 9 studies reported the acute effects of PA (e.g., following

a marathon, rowing, etc.) on microbiome ^{23,86–93}, and 32 studies reported the chronic effects of PA on microbiome (17 non-RCT, 13 RCT and 2 randomized controlled cross-over trials) ^{94–125}. Of the 50 cross-sectional studies, 8 were eligible (based on availability of microbiome diversity data and healthy participants) for the first meta-analysis comparing groups of high and low PA levels in non-athletes ^{44,66,69,70,78,81,83,85}, and 11 were included in the second meta-analysis comparing athletes vs. non-athletes ^{47,49,104,51,56,60,74,76,78,79,81}. Of the 32 intervention studies, 7 were selected for the third meta-analysis, to evaluate the chronic effects of PA on microbiome alpha-diversity ^{96,97,99,109,112,119,124}.

Seventeen studies reported significant associations between PA ^{38,41,72,83–85,43,44,59,63,65–68} or SB ^{48,64,70} and microbial diversity (i.e., alpha- and/or beta-diversity), and 19 studies found significant differences in the relative abundance of specific bacteria in active vs. inactive participants ^{36,38,63,66,68–71,78,84,85,39,41,42,44–46,48,59} (**Table 2**). Sixteen studies found significant differences in microbial diversity ^{47,49,62,74–76,79,80,51,52,54–58,61} and 13 in the abundance of specific microbial taxa ^{47,52,78,79,104,53,55–58,74–76} between athletes vs. non-athletes, professional vs. amateur or athletes from different sports. Three studies detected significant differences in alpha-diversity ^{89,90,92}, while 8 studies described significant changes in the relative abundance of certain bacteria after acute PA interventions ^{23,86,87,89–93}. Seventeen studies detected significant differences in alpha- and/or beta-diversity ^{94,95,115,117–120,123,125,98,101,102,104,108,111,112,114}, and 24 studies described significant changes in the relative abundance of certain bacteria after chronic PA interventions ^{94,95,109,111–117,119,121,97,122–125,98,99,101,102,105,107,108}.

The sample sizes ranged from 1 ⁹⁰ to 2183 ⁶⁵ (**Table 2**). Fifty-three studies involved both male and female participants ^{23,36,55–57,59,63–68,38,69–73,77–81,39,83,85–87,92,94,96,98,100,103,41,104–108,114,115,117,119,120,42,121,123,125,45,46,50,54}, while 12 were exclusively conducted on women ^{37,43,110,118,48,51,58,74,82,88,95,99} and 25 on men ^{40,44,76,84,89–91,93,97,101,102,109,47,112,113,116,122,124,49,52,53,60–62,75}. One study did not report the gender of the participants ¹¹¹. Regarding age, 5 studies recruited children (i.e., 7-12 years) and/or adolescents (i.e., 13-17 years) ^{59,64,68,73,123}, 67 included young and middle-aged adults (i.e., 18-64 years) ^{23,36,49–55,60–62,40,65,66,70,71,74,76–80,42,82,85–93,43,94–96,98,100–105,44,106–113,115,116,45,117,118,120–122,124,125,46–48}, 12 older adults (i.e., ≥65 years) ^{37,38,99,114,39,41,57,63,69,72,84,97}, 3 studies combined adolescents and adults ^{56,58,119} and 4 adults of different age ^{67,75,81,83}. Fifty-nine studies were performed on healthy individuals

23,36,49,50,52–59,37,60–62,64–66,68,70,71,74,40,75,76,78–81,83,85,87,89,42,90–93,96–100,103,43,104,105,109–113,116,119,44,45,47,48, while 32 studies included participants with different diseases such as obesity or breast cancer, among others^{38,39,77,82,84,86,88,94,95,101,102,106,41,107,108,114,115,117,118,120–123,46,124,125,51,63,67,69,72,73}.

Regarding the exposure, 26 cross-sectional studies recorded PA using self-reported questionnaires^{36,37,46,48,59,65–68,70–72,38,73,78,81,83–85,39–45}, whereas 8 studies included PA data registered by accelerometry^{42,48,63,66,69,82,84,85} (**Table 2**). Additionally, four studies reported SB data expressed as time per sedentary breaks/bouts or screen time^{48,64,70,73}. Twenty-two cross-sectional studies recruited athletes from different sports such as rugby, athletics or football, among others^{47,49,58,60–62,74–79,50,80,104,51–57}. Six studies analyzed the effects of a marathon, footrace or rowing race on microbiome^{23,87,89,90,92,93}, three reported the effect of a single bout of PA (i.e., no sport competition) on microbiome^{86,88,91} and 32 conducted a long-term PA intervention ranged from two weeks¹²¹ to thirty-four weeks¹¹⁵, mostly consisting of aerobic training^{94,95,113,115,119–121,97,98,103,105,107,109,111,112} or a combination of aerobic and resistance training^{96,99,116–118,122–125,100–102,104,106,108,110,114}.

Most of the studies analyzed the gut microbiome, with the exception of ten which collected saliva, oral, oropharyngeal, muscle, blood or vaginal samples^{36,43,52,64,80,86,88,102,113,116} (**Table 2**). Concerning the detection method, 78 studies conducted the 16S rRNA gene sequencing approach to characterize the microbiome^{23,36,45–48,51–53,55,56,58,37,59–64,66–69,38,70–79,39,80–87,90,91,40,92–95,97–100,102,103,41,104,105,107–113,115,42,116,118–121,123–125,43,44}, 16 performed metagenomics analyses^{23,49,101,106,114,115,117,122,50,54,57,60,65,89,95,96} and two studies focused on meta-transcriptomics (i.e., microbial RNA-sequencing)^{50,88}. Twenty-one studies did not report dietary data for all the participants^{36,39,102,104,106,111,113,115–117,119,121,74,123,76,79,80,86,88,98,99}. One study performed a control of diet (each participants received the same kind of food) during the PA intervention⁸⁷.

Figure 2 shows a graphical summary of the main findings. Specific outcomes of microbial composition identified in the articles are discussed and interpreted in the context of the current knowledge in the Discussion section. For further details, see **Electronic Supplementary Appendix S2**.

3.2 Quality assessment

Among the 50 cross-sectional studies, 26 were categorized as high quality (quality score $\geq 75\%$), whereas 24 as low quality (quality score $< 75\%$) (**Electronic Supplementary Table S4**). Regarding the 9 studies about the acute effects of PA, 8 studies were considered to have a high quality and 1 showed a low quality (**Electronic Supplementary Table S5**). Concerning the 32 studies (15 RCTs and 17 non-RCTs) that reported the chronic effects of PA interventions, one RCT presented a high quality and 14 a low quality (**Electronic Supplementary Table S6**), while 12 non-RCTs were categorized as high quality and 5 as low quality studies (**Electronic Supplementary Table S7**).

3.3 Meta-analysis

3.3.1 First meta-analysis (cross-sectional studies): high vs. low PA levels

This meta-analysis united 1814 participants from 8 studies, where 1157 belonged to the high PA and 657 participants to the low PA groups. No significant differences were reported between the groups of high and low PA levels on alpha-diversity represented by the Shannon diversity index (SMD= -0.101, 95% CI -0.386-0.184, $p=0.488$, $I^2= 33.581$) and Chao1 index (SMD= -0.127, 95% CI -0.563-0.309, $p=0.568$, $I^2= 13.774$) (**Fig. 3A**).

3.3.2 Second meta-analysis (cross-sectional studies): athletes vs. non-athletes

This meta-analysis comprised 651 participants from 11 studies, including 329 athletes and 322 non-athletes. No significant differences were reported between the groups of athletes and non-athletes on alpha-diversity using the Shannon diversity index (SMD= -0.113, 95% CI -0.441-0.215, $p= 0.501$, $I^2= 0.000$). However, athletes tended to present a higher alpha-diversity compared to non-athletes' when Chao1 index was used as an indicator of microbial alpha-diversity (SMD= 0.482, 95% CI -0.026-0.991, $p=0.063$, $I^2= 0.000$) (**Fig. 3B**).

3.3.3 Third meta-analysis (intervention studies): chronic effects of PA

The third meta-analysis united 167 participants from 7 studies, where 118 were allocated to a PA group and 49 to a control group. No significant differences were found between the PA and control groups on alpha-diversity using the Shannon diversity index (PA group: SMD=0.132, 95% CI -0.124-0.388, $p= 0.312$, $I^2= 0.000$; control group: SMD= 0.110, 95% CI -0.288-0.508, $p= 0.587$; $I^2= 0.000$) or Chao1 index (PA group: SMD= -0.080, 95% CI -0.454-0.295, $p= 0.677$, $I^2= 0.000$; control group: SMD= 0.001, 95% CI -0.454-0.457, $p= 0.995$; $I^2= 0.000$) (**Fig. 3C**).

4. Discussion

The main findings of this systematic review and meta-analysis were: 1) there was no consistent effect of PA on modifying microbial alpha-diversity, although most of studies support that PA (observational and intervention studies) induces changes in microbiome composition with the increase of short-chain fatty acids (SCFAs)-producing bacteria such as *Akkermansia*, *Roseburia* or *Veillonella*, among others; 2) there is very limited evidence of the effect of SB on microbiome; 3) few studies assessed PA data by objective methods (i.e., accelerometry); 4) there are few studies about the acute effect of PA on microbiome; 5) available studies are hardly comparable due to heterogeneity of the participants (i.e., age, sex, health status), wide use of different self-reported questionnaires to record PA, lack of standardized criteria to stratify participants in active/sedentary groups in cross-sectional studies and different characteristics of PA interventions (e.g., type, intensity, duration); 6) most of studies did not include diet as a confounder in their statistical analyses; 7) well-designed multi-omics studies (i.e., metagenomics, meta-transcriptomics, meta-proteomics and meta-metabolomics) are warranted to clarify the effect of PA and SB on microbiome.

4.1 Cross-sectional studies: physical activity and sedentary behavior (non-athletes)

Microbiome diversity is considered a direct measure of gut health, and a loss of diversity has been linked to a higher risk of obesity, type 2 diabetes, and cancer, among others¹²⁶. In this systematic review, four studies found that the gut microbiome of children and adults with higher PA levels showed higher alpha-diversity, compared to those who rarely or never exercised^{59,65,66,85}. Similarly, two studies reported a positive association between PA level and gut alpha-diversity in participants with different diseases^{38,67}. A positive correlation between average PA intensity and vaginal microbiome alpha-diversity was also found in healthy college-aged women⁴³. However, other studies in individuals with different age and health conditions reported negative or no associations^{36,39,78,81–84,41,44,48,63,68–71}, as is also detected in our meta-analysis of 1814 participants (**Fig. 3A**). Heterogeneity in study population (i.e., health status, sex, age), methodological aspects (i.e., use of diverse self-reported questionnaires, different pipelines to analyze the microbiome, etc.), varying criteria to stratify participants based on PA level and lack of control of relevant covariates (e.g. diet) in statistical analyses

may contribute to the discrepant findings across studies. In fact, Langsetmo *et al.* demonstrated different results depending on the method for measuring PA, where self-reported PA was positively associated with beta-diversity⁸⁴, while objectively measured PA recorded by accelerometry (expressed as step counts) showed no associations⁸⁴.

Regarding SB, Bressa *et al.* reported that less time in sedentary bouts was positively associated with alpha-diversity (Shannon and Chao1 indexes) in premenopausal women⁴⁸. In contrast, there were no significant differences in alpha-diversity when compared the gut microbiome of physically active women (those who perform at least 3 hours of PA per week) and sedentary women (i.e., those who perform <3 hours)⁴⁸. Whisner *et al.* did not find any significant differences in alpha-diversity parameters across quartiles of SB in a cohort of college students⁷⁰. However, a later study detected an increased alpha-diversity in the saliva of children who reported less screen time⁶⁴. Interestingly, recent evidence indicates a positive association between SB and *Streptococcus*, detected in feces and saliva^{63,64}. *Streptococcus* has been described as a key bacteria in disease such as old-onset colorectal cancer¹²⁷. The existence of an oral-gut microbiome crosstalk has been proposed, highlighting a possible association between oral dysbiosis, oral-gut microbiome axis and the pathogenesis of different diseases such as gastrointestinal disease or colorectal cancer¹²⁸. Thus, more future research is needed to unravel the role of SB as a potential modulator of microbial communities.

There are more consistent findings about the associations between PA and the gut microbiome, mostly at lower taxonomic categories. At phylum level, Firmicutes seems to be more abundant in the gut of those individuals with higher PA levels^{41,59}, although several studies found the inverse association⁴⁴⁻⁴⁶. Since Firmicutes has been associated with fiber¹²⁹, different dietary habits may be partially explaining variability between the studies. Interestingly, growing evidence supports that PA increases the abundance of a Firmicutes-belonging group of commensal bacteria able to produce SCFAs from non-digestible carbohydrates ingested through diet, such as butyrate, propionate and acetate¹³⁰. Most of the included studies reported higher abundances of SCFAs-producing bacteria from *Lachnospiraceae* and *Erysipelotrichaceae* families^{42,59,63,66,70}, and *Roseburia*, *Coprococcus*, *Lachnospira*, *Blautia* and *Faecalibacterium* genera, among others, in more active individuals compared to those with lower PA levels^{42,59,70,71,84,85}. Particularly, Bressa *et al.* quantified the relative abundance of *Akkermansia muciniphila*, *Faecalibacterium prausnitzii* and *Roseburia hominis* by real-time PCR (qPCR) and

detected higher abundances in physically active compared to inactive women⁴⁸. SCFAs have been linked to good health due to their role on metabolic function, being substrates for energy metabolism as well as important signaling molecules implicated in the gut-microbiota axis and in the regulation of the immune response^{131,132}. Since the availability of SCFAs are influenced by both, the ingestion of nutritional components and their digestion directed by the gut microbes¹³⁰, the previous results could indicate SCFAs as the key molecular link between PA, diet and microbiome.

4.2 Cross-sectional studies: athletes vs. non-athletes

Available evidence generally agrees on a trend towards the increase of the gut microbial diversity in athletes of different sports disciplines compared to non-athletes (see our meta-analysis of 651 participants; **Fig. 3B**). Further, a recent meta-analysis evaluated microbial alpha-diversity of shotgun metagenomics data of the gut microbiomes of 207 athletes of different sports and 107 non-athletes and found a significantly higher species richness in athletes compared to non-athletes¹³³. However, it is also well known that specific dietary requirements are usually implemented based on the duration and intensity of PA training¹³⁴, which makes difficult to determine the isolated effect of athletic performance on the microbial communities. In 2014, Clarke *et al.* reported, for the first time, a positive association between athletic performance and alpha-diversity parameters, when compared the gut microbiome by 16S rRNA sequencing of a group of professional rugby players and sedentary participants with low and high BMI (i.e., BMI \leq 25 or $>$ 28, respectively)⁴⁷. However, the athletes' enhanced diversity was also associated with high protein consumption in this group. Barton *et al.*⁴⁹ re-analyzed the participants from Clarke *et al.* to evaluate the microbiome diversity with the whole metagenome shotgun sequencing, confirming the previous results⁴⁷. More recently, Penney *et al.* analyzed the combined effects of diet and athletic performance in the gut microbiome of those participants, and found a significant association with alpha-diversity when combined the effect of both athletic performance and dietary habits⁶⁰. Later studies described an enriched microbial diversity in athletes with special diets, compared to sedentary participants^{61,62}, and others did not find any significant differences between athletes and non-athletes with similar dietary patterns^{52,53,57}. In contrast, 2 studies reported a higher alpha-diversity in athletes compared to sedentary participants with similar dietary habits^{51,56}. Large variety of sports disciplines included in the abovementioned studies (marathon runners, bodybuilders, cross-country skiers, rugby players, etc.) can be also contributing

to inconsistency of the results. So far, the isolated effect of athletic performance, independently of diet, is still unclear.

Since diet is one of the most important modulators of the microbiome, differences in nutritional habits may also affect the relative abundance of specific microorganisms¹³⁵. In fact, high-digestible carbohydrate diets have been related to the growth of SCFAs-producing bacteria. Clarke *et al.* reported a higher abundance of Firmicutes phylum and a decreased abundance of Bacteroidetes in rugby players compared to sedentary individuals with high BMI⁴⁷. Both groups presented a distinct nutritional profile, with an increased consumption of protein, fiber, carbohydrate and monounsaturated and polyunsaturated fat in the athletes group. A later study also described a higher abundance of Firmicutes and lower levels of Bacteroidetes in rugby players compared to non-athletes⁷⁶. Accordingly to these findings, animal and human studies have positively associated Firmicutes to fiber intake but negatively to fat consumption, while Bacteroidetes showed the opposite association¹²⁹. Additionally, later metabolic pathway analyses revealed that rugby players had an enriched profile of SCFAs⁴⁹. Other SCFAs-producer, *F. prausnitzii*, was also found to be more abundant in senior athletes compared to older sedentary participants after adjusting for different covariates, including diet⁵⁷. Morishima *et al.* found an increase of *Faecalibacterium* in female runners compared to non-athletes, and a higher abundance of succinate, a SCFA that can be produced by *Faecalibacterium*⁷⁴.

Liang *et al.* reported that professional martial arts athletes had an enriched microbiome compared to amateurs, and identified changes in the abundance of several bacteria after adjusting for different confounders including diet⁵⁵. Furthermore, one study found higher diversity and Firmicutes/Bacteroidetes ratio in female elite compared to non-elite athletes⁵⁸. However, metagenomics and meta-transcriptomics analyses conducted by Petersen *et al.* only detected differences at transcriptomic (RNA) level, highlighting the need for more microbiome studies at functional level⁵⁰.

Few studies have identified significant microbial shifts in relation with the type of sport^{53,54,56}. Interestingly, O'Donovan *et al.* compared athletes from 16 different sports and found specific bacterial taxa such as *Anaerostipes hadrus*, *F. prausnitzii* and *Bacteroides caccae*, differently abundant between sports with a moderate-dynamic component (e.g. fencing), high-dynamic and low-static components (e.g. field hockey), and high-dynamic and static components (e.g. rowing)⁵⁴.

4.3 Acute effects of PA

Most of the studies aimed to analyze potential changes in the gut microbial composition following a marathon ^{23,87,90}. In this sense, two studies detected an increase in Firmicutes/Bacteroidetes ratio of the gut microbiome in long-distance runners post-race ^{90,92}. Significantly, Grosicki *et al.* also detected a higher abundance of *Veillonella*, accordingly to the results obtained by Scheiman *et al.* ^{23,90}. The last study proposed a microbiome-encoded enzymatic mechanism that could partially explain how microbiome and its metabolites (i.e., SCFAs) may contribute to enhance athletic performance ²³. After detecting a higher abundance of *Veillonella* in runners after the race, they observed that administration of *Veillonella atypica* in a mouse model improved run time and demonstrated its capability of metabolically converting the exercise-induced lactate into propionate in the colon to subsequently re-enter the systemic circulation. In search of confirming these findings, Moitinho-Silva *et al.* quantified the relative abundance of *V. atypica* by qPCR and sequencing in a subset of elite athletes (mainly cyclists and triathletes) and sedentary participants, but failed to find any significant differences between the groups ¹⁰⁴. These contrasting results could be partially explained by several limitations of the last study such as the lack of dietary data for the athletes group. Other studies have detected an increase in several SCFA-producing bacteria, including *Coprococcus_2*, *Dorea* or *Roseburia* after a marathon or a transoceanic rowing race ^{87,89}. Although the number of human studies is still limited, these findings support emerging evidence of the existence of a crosstalk between the gut microbiota and skeletal muscle through lactate (generated during exercise) and its conversion to SCFAs by the gut microbes which, consequently, could improve athletic performance ²⁵. In fact, SCFAs have been recently defined as “biotics” (substances able to modulate the microbiome by increasing the abundance of beneficial microbes) that could be used as an exogenous microbiome modulation approach for improving health and athletic performance ¹³⁶. Interestingly, a recent study discovered a gut–brain connection in mice that enhances athletic performance by increasing dopamine signaling during PA ¹³⁷. These results indicate that motivation for PA is influenced by the gut microbes derived-metabolites, suggesting a microbiome-dependent mechanism for explaining inter-individual variability in PA motivation and performance.

On the other hand, the acute effect of a bout of PA on the microbiome continues to be a scarcely investigated topic. Tabone *et al.* followed this approach analyzing fecal

samples from athletes who underwent a moderate-intensity treadmill session until volitional exhaustion and detected changes in six bacteria (*Romboutsia*, *Escherichia coli* TOP498, *Ruminococcaceae* UCG-005, *Blautia*, *Ruminiclostridium* 9 and *Clostridium phoceensis*)⁹¹. Overall, acute interventions collect serum samples where potential changes can be detected earlier compared to fecal ones. In this context, one study collected blood and fecal samples of myalgic encephalomyelitis / chronic fatigue syndrome participants and detected changes at major bacterial phyla such as Actinobacteria, Bacteroidetes, Firmicutes and Proteobacteria, in both samples after a cycle ergometer maximal exercise test⁸⁶. A later study exclusively analyzed viral reads (i.e., virome) from blood samples by RNA-seq and did not detect any differences after acute PA⁸⁸. Thus, more research directed to analyze blood microbiome is needed to accurately assess the short-term effect of PA, specially, meta-transcriptomics and meta-metabolomics could be a novel and useful approach to study the active microbiome in the context of acute effects of PA.

4.4 Chronic effects of PA

To further deepen the overall knowledge of the chronic effects of PA on human microbiome and, generally, the host health, several clinical trials have been published in the last years^{94,95,104–113,96,114–123,97,124,125,98–103}. Our meta-analysis of 167 participants is the first analysis that quantifies those trials in healthy participants, indicating that controversial results for alpha-diversity are consistently found (**Fig. 3C**). Two studies performed in healthy adults that underwent a 12-week aerobic PA intervention (3 sessions of 30 min per week) or 7-week high-intensity interval training (consisting of swimming lengths) reported an increase in microbial alpha-diversity^{111,119}. Conversely, Moitinho-Silva *et al.* detected a slight decrease in alpha-diversity after an aerobic PA intervention (6 weeks; 3 sessions of 30 min per week) in healthy adults [63], although no differences were observed in another group subjected to a strength training [63]. Another study recruited healthy adults to undergo a PA intervention (aerobic and resistance training; 8 weeks; 3 sessions of 90 min per week), but no significant changes in alpha-diversity were detected after the intervention⁹⁶. Most of the studies in unhealthy individuals did not report any significant changes in alpha-diversity after a PA intervention^{94,95,122,124,125,102,106–108,114,115,118,121}. However, the chronic effect of PA on microbiome composition becomes clearer in the beta-diversity analysis, where more studies agree on a significant dissimilarity in the microbial communities of the individuals after long-term

PA^{94,95,118–120,123,125,98,101,102,108,111,112,114,115}. Interestingly, Allen *et al.* observed how differences in the beta-diversity detected at baseline between the participants with normal-weight and obesity disappeared after an aerobic PA intervention (6 weeks; 3 of 30-60 min sessions per week)⁹⁴. Different study designs (17 non-RCT, 13 RCT and 2 randomized controlled cross-over trials), health status of participants (15 studies with healthy and 17 with unhealthy populations), characteristics of PA interventions (type, duration, and intensity), and methodological differences in microbiome analysis, diet, among other factors, might partially influence the varying results obtained.

In accordance with observational studies^{38,48,59,63,66,69,71,74,85}, an increase in SCFAs-producing bacteria such as *Lachnospiraceae*, *Verrucomicrobiaceae*, *Lachnospira*, *Akkermansia*, *Veillonella*, *Faecalibacterium*, *Bifidobacterium* and *Roseburia* was also reported in participants with different age and health conditions (including obesity, prediabetes and insulin resistance, among others) after PA interventions ranging from 2 to 34 weeks^{94,95,122–124,101,102,107,108,112,114,115,121}. More specifically, Liu *et al.* described an increase in *A. muciniphila* and an improvement in insulin sensitivity after a 12 weeks-concurrent PA intervention in men with prediabetes that were classified as responders compared to non-responders¹²². Later studies have also reported an increase in *A. muciniphila* in participants with overweight/obesity or type 2 diabetes after long-term PA^{101,114}. *A. muciniphila* has been related to prevention of multiple metabolic diseases such as obesity, metabolic syndrome and type 2 diabetes¹³⁸. In a recent publication, a multi-omics approach (transcriptomics, proteomics, metabolomics and lipidomics) investigated the underlying molecular mechanism of *A. muciniphila* in obesity. It concluded that *A. muciniphila* reduced lipid accumulation and downregulated the expression of genes related to adipogenesis and lipogenesis in adipocytes¹³⁹. These studies point to *A. muciniphila* as a promising microbial target (potentially modulated by PA) with therapeutic effects in obesity and other metabolic diseases. At genus level, *Akkermansia* has also been widely found to be positively associated with PA in cross-sectional studies^{47,48} and increased after PA interventions^{95,122}.

4.5 Future Directions

Our understanding about the effect of PA (little research is conducted on SB) on microbial communities is still in its infancy, vastly limited to the amplicon sequencing approach (i.e., 16S rRNA sequencing) and is highly variable between the studies. This

heterogeneity highlights the need to perform well-designed studies focusing on specific detailed populations and establishing reference pipelines to ensure the accuracy and comparability of the results. To ensure the reproducibility and comparability of the future studies in the field, we recommend the researchers to follow the recent good practice guidelines ^{140,141} when microbiome analyses are performed.

Most of cross-sectional studies in this systematic review recorded PA measures by self-reported questionnaires. Accelerometry has been widely demonstrated to be a more valid and comparable method for objectively collecting participants' PA and SB levels ¹⁴². Therefore, more accelerometry-based studies will allow researchers to apply standardized criteria to classify participants based on the use of cut-points for PA and SB which will reduce the inconsistency between study findings and reveal the accurate association of PA and SB with microbiome. In intervention studies that assess the chronic effects of PA on microbiome, we detected a low quality in the RCTs. These results could be partially explained by the use of a checklist ¹⁴³ with a stricter scale for the quality assessment.

Since most of the studies analyzed DNA sequences regardless of microbial variability or functionality (only two studies performed a meta-transcriptomic analysis), we are not close to determine the functional microbes susceptible to PA. Moreover, future multi-omics analyses (i.e., combining metagenomics, meta-transcriptomics, meta-proteomics and meta-metabolomics) would further unravel the complex host-microbial molecular pathways implicated in the molecular response to PA. In this regard, the Molecular Transducers of Physical Activity Consortium (MoTrPAC) ⁶ will provide a powerful source of information to advance our understanding of PA's effects on the microbiome in humans and animal models performing multi-omics analyses.

4.6 Limitations and strengths

Due to the lack of available information, an important limitation of our meta-analysis was the use and transformation of directly reported data from the articles instead of re-analyzing raw data to reduce potential bias introduced by applying different methodologies and pipelines across studies. Besides, limited information prevented us from additionally analyzing other microbiome outcomes of interest, such as the differential abundance of key bacteria. Future studies should make publicly available raw sequences generated from sequencing platforms to allow future meta-analyses to cover

these gaps in the literature. Nevertheless, our meta-analysis has been performed including specifically those studies in healthy population and conducting sub-groups analysis according to study design to gain homogeneity. Moreover, we followed a rigorous and reliable methodology previously validated^{144,145} to obtain numerical data when they were unavailable. Additional strengths of our systematic review are the elaboration according to PRISMA guidelines, use of four different search databases (PubMed, Web of Science, SCOPUS and Cochrane), and performance of quality assessment with validated tools specific for each study design, which ensure the scientific rigor.

5. Perspective

Our systematic review summarizes the available knowledge about the relationship between PA and SB and the microbiome from multiple body sites and across different human populations. So far, growing evidence points to higher abundances of SCFAs-producing bacteria in more active individuals or after a PA intervention. Our meta-analysis uniting 2632 participants indicated no consistent effect of PA on microbial alpha-diversity, although there seems to be a trend toward a higher richness in athletes compared to non-athletes. Thus, accelerometry-based observational studies and RCTs are needed to face this inconsistency. Additionally, there are scarce information about the effect of SB on microbiome. In conclusion, precisely-designed, well-controlled and multi-omics studies are needed to reduce heterogeneity, obtain comparable results and, therefore, gain reliable knowledge about the effect of PA and SB on the human microbiome.

Acknowledgments

Projects SAF2017-87526-R, PID2021-127280OB-I00 and PID2020-120249RB-100 funded by MCIN/AEI/10.13039/501100011033/FEDER “Una manera de hacer Europa”; Project A-CTS-614-UGR20 funded by FEDER/Junta de Andalucía-Consejería de Economía y Conocimiento; Projects P20_00158 and P20_00124 funded by Junta de Andalucía; Unidad de excelencia SOMM17/6107/UGR funded by Plan Propio de Investigación/Universidad de Granada; S.A, I.P.P are supported by grants RYC-2016-21199, FPU19/05561, funded by MCIN/AEI/10.13039/501100011033 and FSE “El FSE invierte en tu futuro”. A.P.F contribution was funded in part by NIH grant #: U01

TR002004 (REACH project). E.U.G is supported by the María Zambrano fellowship by the Ministerio de Universidades and the Unión Europea–NextGenerationEU. This work is part of a Ph.D. thesis conducted in the Biomedicine Doctoral Studies of the University of Granada, Spain.

Conflict of interest

The authors declare that the research was conducted in the absence of any commercial or financial relationships that could be construed as a potential conflict of interest.

Author contributions

I.P.P conceptualized, designed, and wrote the manuscript. A.P.F participated in all systematic review phases (except for writing) and reviewed the manuscript draft for important intellectual content. E.U.G participated in elaborating the meta-analysis and reviewed the initial manuscript draft for important intellectual content. F.B.O and S.A conceptualized and designed the review, supervised all the article processes and reviewed the manuscript for important intellectual content.

References

1. Bull FC, Al-Ansari SS, Biddle S, et al. World Health Organization 2020 guidelines on physical activity and sedentary behaviour. *Br J Sports Med.* 2020;54(24):1451-1462. doi:10.1136/bjsports-2020-102955
2. Ekelund U, Tarp J, Steene-Johannessen J, et al. Dose-response associations between accelerometry measured physical activity and sedentary time and all cause mortality: systematic review and harmonised meta-analysis. *BMJ.* 2019;366:14570. doi:10.1136/bmj.14570

3. Patterson R, McNamara E, Tainio M, et al. Sedentary behaviour and risk of all-cause, cardiovascular and cancer mortality, and incident type 2 diabetes: a systematic review and dose response meta-analysis. *Eur J Epidemiol*. 2018;33(9):811-829. doi:10.1007/s10654-018-0380-1
4. Katzmarzyk PT, Powell KE, Jakicic JM, et al. Sedentary Behavior and Health: Update from the 2018 Physical Activity Guidelines Advisory Committee. *Med Sci Sports Exerc*. 2019;51(6):1227-1241. doi:10.1249/MSS.0000000000001935
5. Pedersen BK, Saltin B. Exercise as medicine - evidence for prescribing exercise as therapy in 26 different chronic diseases. *Scand J Med Sci Sports*. 2015;25 Suppl 3:1-72. doi:10.1111/sms.12581
6. Sanford JA, Nogiec CD, Lindholm ME, et al. Molecular Transducers of Physical Activity Consortium (MoTrPAC): Mapping the Dynamic Responses to Exercise. *Cell*. 2020;181(7):1464-1474. doi:10.1016/j.cell.2020.06.004
7. Turnbaugh PJ, Ley RE, Hamady M, Fraser-Liggett CM, Knight R, Gordon JI. The human microbiome project. *Nature*. 2007;449(7164):804-810. doi:10.1038/nature06244
8. Sender R, Fuchs S, Milo R. Revised Estimates for the Number of Human and Bacteria Cells in the Body. *PLoS Biol*. 2016;14(8):e1002533. doi:10.1371/journal.pbio.1002533
9. Lynch S V., Pedersen O. The Human Intestinal Microbiome in Health and Disease. *N Engl J Med*. 2016;375(24):2369-2379. doi:10.1056/NEJMr1600266
10. Baquero F, Nombela C. The microbiome as a human organ. *Clin Microbiol Infect*. 2012;18 Suppl 4:2-4. doi:10.1111/j.1469-0691.2012.03916.x
11. Redondo-Useros N, Nova E, González-Zancada N, Díaz LE, Gómez-Martínez S, Marcos A. Microbiota and Lifestyle: A Special Focus on Diet. *Nutrients*. 2020;12(6):1-54. doi:10.3390/nu12061776
12. Levy M, Kolodziejczyk AA, Thaïss CA, Elinav E. Dysbiosis and the immune system. *Nat Rev Immunol*. 2017;17(4):219-232. doi:10.1038/nri.2017.7
13. Gilbert JA, Blaser MJ, Caporaso JG, Jansson JK, Lynch S V., Knight R. Current understanding of the human microbiome. *Nat Med*. 2018;24(4):392-400.

doi:10.1038/nm.4517

14. Angelakis E, Armougom F, Carrière F, et al. A Metagenomic Investigation of the Duodenal Microbiota Reveals Links with Obesity. *PLoS One*. 2015;10(9):e0137784. doi:10.1371/journal.pone.0137784
15. Liu R, Hong J, Xu X, et al. Gut microbiome and serum metabolome alterations in obesity and after weight-loss intervention. *Nat Med*. 2017;23(7):859-868. doi:10.1038/nm.4358
16. Deshpande AD, Harris-Hayes M, Schootman M. Epidemiology of diabetes and diabetes-related complications. *Phys Ther*. 2008;88(11):1254-1264. doi:10.2522/ptj.20080020
17. Koliarakis I, Messaritakis I, Nikolouzakis TK, Hamilos G, Souglakos J, Tsiaoussis J. Oral Bacteria and Intestinal Dysbiosis in Colorectal Cancer. *Int J Mol Sci*. 2019;20(17). doi:10.3390/ijms20174146
18. Parida S, Sharma D. The power of small changes: Comprehensive analyses of microbial dysbiosis in breast cancer. *Biochim Biophys Acta Rev cancer*. 2019;1871(2):392-405. doi:10.1016/j.bbcan.2019.04.001
19. Young VB. Therapeutic manipulation of the microbiota: past, present, and considerations for the future. *Clin Microbiol Infect*. 2016;22(11):905-909. doi:10.1016/j.cmi.2016.09.001
20. Zhang X, Li L, Butcher J, Stintzi A, Figeys D. Advancing functional and translational microbiome research using meta-omics approaches. *Microbiome*. 2019;7(1):154. doi:10.1186/s40168-019-0767-6
21. Donati Zeppa S, Agostini D, Gervasi M, et al. Mutual Interactions among Exercise, Sport Supplements and Microbiota. *Nutrients*. 2019;12(1). doi:10.3390/nu12010017
22. Wegierska AE, Charitos IA, Topi S, Potenza MA, Montagnani M, Santacroce L. The Connection Between Physical Exercise and Gut Microbiota: Implications for Competitive Sports Athletes. *Sports Med*. 2022;52(10):2355-2369. doi:10.1007/s40279-022-01696-x
23. Scheiman J, Lubner JM, Chavkin TA, et al. Meta-omics analysis of elite athletes

- identifies a performance-enhancing microbe that functions via lactate metabolism. *Nat Med*. 2019;25(7):1104-1109. doi:10.1038/s41591-019-0485-4
24. Mailing LJ, Allen JM, Buford TW, Fields CJ, Woods JA. Exercise and the Gut Microbiome: A Review of the Evidence, Potential Mechanisms, and Implications for Human Health. *Exerc Sport Sci Rev*. 2019;47(2):75-85. doi:10.1249/JES.000000000000183
 25. Hawley JA. Microbiota and muscle highway - two way traffic. *Nat Rev Endocrinol*. 2020;16(2):71-72. doi:10.1038/s41574-019-0291-6
 26. Ortiz-Alvarez L, Xu H, Martinez-Tellez B. Influence of Exercise on the Human Gut Microbiota of Healthy Adults: A Systematic Review. *Clin Transl Gastroenterol*. 2020;11(2):e00126. doi:10.14309/ctg.000000000000126
 27. Aya V, Flórez A, Perez L, Ramírez JD. Association between physical activity and changes in intestinal microbiota composition: A systematic review. *PLoS One*. 2021;16(2):e0247039. doi:10.1371/journal.pone.0247039
 28. Dorelli B, Gallè F, De Vito C, et al. Can Physical Activity Influence Human Gut Microbiota Composition Independently of Diet? A Systematic Review. *Nutrients*. 2021;13(6):1-14. doi:10.3390/nu13061890
 29. Dziewiecka H, Buttar HS, Kasperska A, et al. Physical activity induced alterations of gut microbiota in humans: a systematic review. *BMC Sport Sci Med Rehabil*. 2022;14(1):122. doi:10.1186/s13102-022-00513-2
 30. Ramos C, Gibson GR, Walton GE, Magistro D, Kinnear W, Hunter K. Systematic Review of the Effects of Exercise and Physical Activity on the Gut Microbiome of Older Adults. *Nutrients*. 2022;14(3). doi:10.3390/nu14030674
 31. Silva JSC, Seguro CS, Naves MM V. Gut microbiota and physical exercise in obesity and diabetes - A systematic review. *Nutr Metab Cardiovasc Dis*. Published online January 29, 2022. doi:10.1016/j.numecd.2022.01.023
 32. Zheng C, Chen X-K, Tian XY, Ma AC-H, Wong SH-S. Does the gut microbiota contribute to the antiobesity effect of exercise? A systematic review and meta-analysis. *Obesity (Silver Spring)*. 2022;30(2):407-423. doi:10.1002/oby.23345
 33. Bonomini-Gnutzmann R, Plaza-Díaz J, Jorquera-Aguilera C, Rodríguez-

- Rodríguez A, Rodríguez-Rodríguez F. Effect of Intensity and Duration of Exercise on Gut Microbiota in Humans: A Systematic Review. *Int J Environ Res Public Health*. 2022;19(15). doi:10.3390/ijerph19159518
34. Page MJ, McKenzie JE, Bossuyt PM, et al. The PRISMA 2020 statement: an updated guideline for reporting systematic reviews. *BMJ*. 2021;372:n71. doi:10.1136/bmj.n71
 35. Higgins JPT, Thompson SG, Deeks JJ, Altman DG. Measuring inconsistency in meta-analyses. *BMJ*. 2003;327(7414):557-560. doi:10.1136/bmj.327.7414.557
 36. Lim MY, Yoon HS, Rho M, et al. Analysis of the association between host genetics, smoking, and sputum microbiota in healthy humans. *Sci Rep*. 2016;6:23745. doi:10.1038/srep23745
 37. Shin J-H, Sim M, Lee J-Y, Shin D-M. Lifestyle and geographic insights into the distinct gut microbiota in elderly women from two different geographic locations. *J Physiol Anthropol*. 2016;35(1):31. doi:10.1186/s40101-016-0121-7
 38. Lin T-Y, Wu P-H, Lin Y-T, Hung S-C. Characterization of Gut Microbiota Composition in Hemodialysis Patients With Normal Weight Obesity. *J Clin Endocrinol Metab*. 2020;105(6):2006-2014. doi:10.1210/clinem/dgaa166
 39. Zhu Q, Jiang S, Du G. Effects of exercise frequency on the gut microbiota in elderly individuals. *Microbiologyopen*. 2020;9(8):e1053. doi:10.1002/mbo3.1053
 40. Yoon H, Lee DH, Lee JH, et al. Characteristics of the Gut Microbiome of Healthy Young Male Soldiers in South Korea: The Effects of Smoking. *Gut Liver*. 2021;15(2):243-252. doi:10.5009/gnl19354
 41. Heinzl S, Aho VTE, Suenkel U, et al. Gut Microbiome Signatures of Risk and Prodromal Markers of Parkinson Disease. *Ann Neurol*. 2020;88(2):320-331. doi:10.1002/ana.25788
 42. Castellanos N, Diez GG, Antúnez-Almagro C, et al. Key Bacteria in the Gut Microbiota Network for the Transition between Sedentary and Active Lifestyle. *Microorganisms*. 2020;8(5). doi:10.3390/microorganisms8050785
 43. Song SD, Acharya KD, Zhu JE, et al. Daily Vaginal Microbiota Fluctuations Associated with Natural Hormonal Cycle, Contraceptives, Diet, and Exercise.

mSphere. 2020;5(4):1-14. doi:10.1128/mSphere.00593-20

44. Gallè F, Valeriani F, Cattaruzza MS, et al. Mediterranean Diet, Physical Activity and Gut Microbiome Composition: A Cross-Sectional Study among Healthy Young Italian Adults. *Nutrients*. 2020;12(7). doi:10.3390/nu12072164
45. Valeriani F, Gallè F, Cattaruzza MS, et al. Are nutrition and physical activity associated with gut microbiota? A pilot study on a sample of healthy young adults. *Ann Ig*. 2020;32(5):521-527. doi:10.7416/ai.2020.2372
46. Palmas V, Pisanu S, Madau V, et al. Gut microbiota markers associated with obesity and overweight in Italian adults. *Sci Rep*. 2021;11(1):5532. doi:10.1038/s41598-021-84928-w
47. Clarke SF, Murphy EF, O'Sullivan O, et al. Exercise and associated dietary extremes impact on gut microbial diversity. *Gut*. 2014;63(12):1913-1920. doi:10.1136/gutjnl-2013-306541
48. Bressa C, Bailén-Andrino M, Pérez-Santiago J, et al. Differences in gut microbiota profile between women with active lifestyle and sedentary women. *PLoS One*. 2017;12(2):e0171352. doi:10.1371/journal.pone.0171352
49. Barton W, Penney NC, Cronin O, et al. The microbiome of professional athletes differs from that of more sedentary subjects in composition and particularly at the functional metabolic level. *Gut*. 2018;67(4):625-633. doi:10.1136/gutjnl-2016-313627
50. Petersen LM, Bautista EJ, Nguyen H, et al. Community characteristics of the gut microbiomes of competitive cyclists. *Microbiome*. 2017;5(1):98. doi:10.1186/s40168-017-0320-4
51. Mörkl S, Lackner S, Müller W, et al. Gut microbiota and body composition in anorexia nervosa inpatients in comparison to athletes, overweight, obese, and normal weight controls. *Int J Eat Disord*. 2017;50(12):1421-1431. doi:10.1002/eat.22801
52. Minty M, Canceill T, Lê S, et al. Oral health and microbiota status in professional rugby players: A case-control study. *J Dent*. 2018;79:53-60. doi:10.1016/j.jdent.2018.10.001

53. Jang L-G, Choi G, Kim S-W, Kim B-Y, Lee S, Park H. The combination of sport and sport-specific diet is associated with characteristics of gut microbiota: an observational study. *J Int Soc Sports Nutr.* 2019;16(1):21. doi:10.1186/s12970-019-0290-y
54. O'Donovan CM, Madigan SM, Garcia-Perez I, Rankin A, O' Sullivan O, Cotter PD. Distinct microbiome composition and metabolome exists across subgroups of elite Irish athletes. *J Sci Med Sport.* 2020;23(1):63-68. doi:10.1016/j.jsams.2019.08.290
55. Liang R, Zhang S, Peng X, et al. Characteristics of the gut microbiota in professional martial arts athletes: A comparison between different competition levels. *PLoS One.* 2019;14(12):e0226240. doi:10.1371/journal.pone.0226240
56. Kulecka M, Fraczek B, Mikula M, et al. The composition and richness of the gut microbiota differentiate the top Polish endurance athletes from sedentary controls. *Gut Microbes.* 2020;11(5):1374-1384. doi:10.1080/19490976.2020.1758009
57. Fart F, Rajan SK, Wall R, et al. Differences in Gut Microbiome Composition between Senior Orienteering Athletes and Community-Dwelling Older Adults. *Nutrients.* 2020;12(9). doi:10.3390/nu12092610
58. Han M, Yang K, Yang P, et al. Stratification of athletes' gut microbiota: the multifaceted hubs associated with dietary factors, physical characteristics and performance. *Gut Microbes.* 2020;12(1):1-18. doi:10.1080/19490976.2020.1842991
59. Bai J, Hu Y, Bruner DW. Composition of gut microbiota and its association with body mass index and lifestyle factors in a cohort of 7-18 years old children from the American Gut Project. *Pediatr Obes.* 2019;14(4):e12480. doi:10.1111/ijpo.12480
60. Penney N, Barton W, Pasma JM, et al. Investigating the Role of Diet and Exercise in Gut Microbe-Host Cometalabolism. *mSystems.* 2020;5(6). doi:10.1128/mSystems.00677-20
61. Genç A. Does exercise and nutrition style affect intestinal microbiota diversity? *Prog Nutr.* 2020;22(4). doi:10.23751/pn.v22i4.9062

62. Özkan A, Demirhan B, Genç A, et al. Effect of different intensity exercise on intestinal microbiota. *Prog Nutr*. 2020;22(4):1-8. doi:10.23751/pn.v22i4.10192
63. Zhong X, Powell C, Phillips CM, et al. The Influence of Different Physical Activity Behaviours on the Gut Microbiota of Older Irish Adults. *J Nutr Health Aging*. 2021;25(7):854-861. doi:10.1007/s12603-021-1630-6
64. Engberg E, Raju SC, Figueiredo RAO, Weiderpass E, Rounge TB, Viljakainen H. Saliva microbiota differs between children with low and high sedentary screen times. *Hum Microbiome J*. 2021;20:100080. doi:10.1016/j.humic.2021.100080
65. Jie Z, Liang S, Ding Q, et al. Dairy consumption and physical fitness tests associated with fecal microbiome in a Chinese cohort. *Med Microecol*. 2021;9(June):100038. doi:10.1016/j.medmic.2021.100038
66. Houttu V, Boulund U, Nicolaou M, et al. Physical Activity and Dietary Composition Relate to Differences in Gut Microbial Patterns in a Multi-Ethnic Cohort-The HELIUS Study. *Metabolites*. 2021;11(12). doi:10.3390/metabo11120858
67. Walker RL, Vlamakis H, Lee JWJ, et al. Population study of the gut microbiome: associations with diet, lifestyle, and cardiometabolic disease. *Genome Med*. 2021;13(1):188. doi:10.1186/s13073-021-01007-5
68. Santarossa S, Sitarik AR, Johnson CC, et al. Associations of physical activity with gut microbiota in pre-adolescent children. *Phys Act Nutr*. 2021;25(4):24-37. doi:10.20463/pan.2021.0023
69. Magzal F, Shochat T, Haimov I, et al. Increased physical activity improves gut microbiota composition and reduces short-chain fatty acid concentrations in older adults with insomnia. *Sci Rep*. 2022;12(1):2265. doi:10.1038/s41598-022-05099-w
70. Whisner CM, Maldonado J, Dente B, Krajmalnik-Brown R, Bruening M. Diet, physical activity and screen time but not body mass index are associated with the gut microbiome of a diverse cohort of college students living in university housing: a cross-sectional study. *BMC Microbiol*. 2018;18(1):210. doi:10.1186/s12866-018-1362-x

71. Shivani S, Kao C-Y, Chattopadhyay A, et al. Uremic Toxin-Producing Bacteroides Species Preval in the Gut Microbiota of Taiwanese CKD Patients: An Analysis Using the New Taiwan Microbiome Baseline. *Front Cell Infect Microbiol.* 2022;12:726256. doi:10.3389/fcimb.2022.726256
72. Lubomski M, Xu X, Holmes AJ, et al. Nutritional Intake and Gut Microbiome Composition Predict Parkinson's Disease. *Front Aging Neurosci.* 2022;14:881872. doi:10.3389/fnagi.2022.881872
73. Visuthranukul C, Sriswasdi S, Tepasamorndech S, et al. Association of Human Intestinal Microbiota with Lifestyle Activity, Adiposity, and Metabolic Profiles in Thai Children with Obesity. *J Nutr Metab.* 2022;2022:3029582. doi:10.1155/2022/3029582
74. Morishima S, Aoi W, Kawamura A, et al. Intensive, prolonged exercise seemingly causes gut dysbiosis in female endurance runners. *J Clin Biochem Nutr.* 2021;68(3):253-258. doi:10.3164/jcbtn.20-131
75. Šoltys K, Lendvorský L, Hric I, et al. Strenuous Physical Training, Physical Fitness, Body Composition and Bacteroides to Prevotella Ratio in the Gut of Elderly Athletes. *Front Physiol.* 2021;12:670989. doi:10.3389/fphys.2021.670989
76. Morishima S, Oda N, Ikeda H, et al. Altered Fecal Microbiotas and Organic Acid Concentrations Indicate Possible Gut Dysbiosis in University Rugby Players: An Observational Study. *Microorganisms.* 2021;9(8). doi:10.3390/microorganisms9081687
77. Babszky G, Torma F, Aczel D, et al. COVID-19 Infection Alters the Microbiome: Elite Athletes and Sedentary Patients Have Similar Bacterial Flora. *Genes (Basel).* 2021;12(10). doi:10.3390/genes12101577
78. Xu Y, Zhong F, Zheng X, Lai H-Y, Wu C, Huang C. Disparity of Gut Microbiota Composition Among Elite Athletes and Young Adults With Different Physical Activity Independent of Dietary Status: A Matching Study. *Front Nutr.* 2022;9:843076. doi:10.3389/fnut.2022.843076
79. Hintikka JE, Munukka E, Valtonen M, et al. Gut Microbiota and Serum Metabolome in Elite Cross-Country Skiers: A Controlled Study. *Metabolites.*

- 2022;12(4). doi:10.3390/metabo12040335
80. Cuthbertson L, Turner SEG, Jackson A, et al. Evidence of immunometabolic dysregulation and airway dysbiosis in athletes susceptible to respiratory illness. *EBioMedicine*. 2022;79:104024. doi:10.1016/j.ebiom.2022.104024
 81. Mahnic A, Rupnik M. Different host factors are associated with patterns in bacterial and fungal gut microbiota in Slovenian healthy cohort. *PLoS One*. 2018;13(12):e0209209. doi:10.1371/journal.pone.0209209
 82. Carter SJ, Hunter GR, Blackston JW, et al. Gut microbiota diversity is associated with cardiorespiratory fitness in post-primary treatment breast cancer survivors. *Exp Physiol*. 2019;104(4):529-539. doi:10.1113/EP087404
 83. Zhang W, Li J, Lu S, et al. Gut microbiota community characteristics and disease-related microorganism pattern in a population of healthy Chinese people. *Sci Rep*. 2019;9(1):1594. doi:10.1038/s41598-018-36318-y
 84. Langsetmo L, Johnson A, Demmer RT, et al. The Association between Objectively Measured Physical Activity and the Gut Microbiome among Older Community Dwelling Men. *J Nutr Health Aging*. 2019;23(6):538-546. doi:10.1007/s12603-019-1194-x
 85. Castellanos N, Diez GG, Antúnez-Almagro C, et al. A Critical Mutualism - Competition Interplay Underlies the Loss of Microbial Diversity in Sedentary Lifestyle. *Front Microbiol*. 2019;10:3142. doi:10.3389/fmicb.2019.03142
 86. Shukla SK, Cook D, Meyer J, et al. Changes in Gut and Plasma Microbiome following Exercise Challenge in Myalgic Encephalomyelitis/Chronic Fatigue Syndrome (ME/CFS). *PLoS One*. 2015;10(12):e0145453. doi:10.1371/journal.pone.0145453
 87. Zhao X, Zhang Z, Hu B, Huang W, Yuan C, Zou L. Response of Gut Microbiota to Metabolite Changes Induced by Endurance Exercise. *Front Microbiol*. 2018;9:765. doi:10.3389/fmicb.2018.00765
 88. Bouquet J, Li T, Gardy JL, et al. Whole blood human transcriptome and virome analysis of ME/CFS patients experiencing post-exertional malaise following cardiopulmonary exercise testing. *PLoS One*. 2019;14(3):e0212193.

doi:10.1371/journal.pone.0212193

89. Keohane DM, Woods T, O'Connor P, et al. Four men in a boat: Ultra-endurance exercise alters the gut microbiome. *J Sci Med Sport*. 2019;22(9):1059-1064. doi:10.1016/j.jsams.2019.04.004
90. Grosicki GJ, Durk RP, Bagley JR. Rapid gut microbiome changes in a world-class ultramarathon runner. *Physiol Rep*. 2019;7(24):e14313. doi:10.14814/phy2.14313
91. Tabone M, Bressa C, García-Merino JA, et al. The effect of acute moderate-intensity exercise on the serum and fecal metabolomes and the gut microbiota of cross-country endurance athletes. *Sci Rep*. 2021;11(1):3558. doi:10.1038/s41598-021-82947-1
92. Fukuchi M, Sugita M, Banjo M, Yonekura K, Sasuga Y. The impact of a competitive event and the efficacy of a lactic acid bacteria-fermented soymilk extract on the gut microbiota and urinary metabolites of endurance athletes: An open-label pilot study. *PLoS One*. 2022;17(1):e0262906. doi:10.1371/journal.pone.0262906
93. Sato M, Suzuki Y. Alterations in intestinal microbiota in ultramarathon runners. *Sci Rep*. 2022;12(1):6984. doi:10.1038/s41598-022-10791-y
94. Allen JM, Mailing LJ, Niemi GM, et al. Exercise Alters Gut Microbiota Composition and Function in Lean and Obese Humans. *Med Sci Sports Exerc*. 2018;50(4):747-757. doi:10.1249/MSS.0000000000001495
95. Munukka E, Ahtiainen JP, Puigbó P, et al. Six-Week Endurance Exercise Alters Gut Metagenome That Is not Reflected in Systemic Metabolism in Over-weight Women. *Front Microbiol*. 2018;9:2323. doi:10.3389/fmicb.2018.02323
96. Cronin O, Barton W, Skuse P, et al. A Prospective Metagenomic and Metabolomic Analysis of the Impact of Exercise and/or Whey Protein Supplementation on the Gut Microbiome of Sedentary Adults. *mSystems*. 2018;3(3):1-17. doi:10.1128/mSystems.00044-18
97. Taniguchi H, Tanisawa K, Sun X, et al. Effects of short-term endurance exercise on gut microbiota in elderly men. *Physiol Rep*. 2018;6(23):e13935.

doi:10.14814/phy2.13935

98. Hampton-Marcell JT, Eshoo TW, Cook MD, Gilbert JA, Horswill CA, Poretzky R. Comparative Analysis of Gut Microbiota Following Changes in Training Volume Among Swimmers. *Int J Sports Med.* 2020;41(5):292-299. doi:10.1055/a-1079-5450
99. Zhong F, Wen X, Yang M, et al. Effect of an 8-week Exercise Training on Gut Microbiota in Physically Inactive Older Women. *Int J Sports Med.* 2021;42(7):610-623. doi:10.1055/a-1301-7011
100. Bycura D, Santos AC, Shiffer A, et al. Impact of Different Exercise Modalities on the Human Gut Microbiome. *Sport (Basel, Switzerland).* 2021;9(2). doi:10.3390/sports9020014
101. Barton W, Cronin O, Garcia-Perez I, et al. The effects of sustained fitness improvement on the gut microbiome: A longitudinal, repeated measures case-study approach. *Transl Sport Med.* 2021;4(2):174-192. doi:10.1002/tsm2.215
102. Uchida F, Oh S, Shida T, et al. Effects of Exercise on the Oral Microbiota and Saliva of Patients with Non-Alcoholic Fatty Liver Disease. *Int J Environ Res Public Health.* 2021;18(7). doi:10.3390/ijerph18073470
103. Feng T, Hilal MG, Wang Y, et al. Differences in Gut Microbiome Composition and Antibiotic Resistance Gene Distribution between Chinese and Pakistani University Students from a Common Peer Group. *Microorganisms.* 2021;9(6). doi:10.3390/microorganisms9061152
104. Moitinho-Silva L, Wegener M, May S, et al. Short-term physical exercise impacts on the human holobiont obtained by a randomised intervention study. *BMC Microbiol.* 2021;21(1):162. doi:10.1186/s12866-021-02214-1
105. Craven J, Cox AJ, Bellinger P, et al. The influence of exercise training volume alterations on the gut microbiome in highly-trained middle-distance runners. *Eur J Sport Sci.* 2022;22(8):1222-1230. doi:10.1080/17461391.2021.1933199
106. Cronin O, Barton W, Moran C, et al. Moderate-intensity aerobic and resistance exercise is safe and favorably influences body composition in patients with quiescent Inflammatory Bowel Disease: a randomized controlled cross-over trial.

- BMC Gastroenterol.* 2019;19(1):29. doi:10.1186/s12876-019-0952-x
107. Verheggen RJHM, Konstanti P, Smidt H, Hermus ARMM, Thijssen DHJ, Hopman MTE. Eight-week exercise training in humans with obesity: Marked improvements in insulin sensitivity and modest changes in gut microbiome. *Obesity (Silver Spring)*. 2021;29(10):1615-1624. doi:10.1002/oby.23252
 108. Erlandson KM, Liu J, Johnson R, et al. An exercise intervention alters stool microbiota and metabolites among older, sedentary adults. *Ther Adv Infect Dis.* 2021;8:20499361211027068. doi:10.1177/20499361211027067
 109. Resende AS, Leite GSF, Lancha Junior AH. Changes in the Gut Bacteria Composition of Healthy Men with the Same Nutritional Profile Undergoing 10-Week Aerobic Exercise Training: A Randomized Controlled Trial. *Nutrients*. 2021;13(8). doi:10.3390/nu13082839
 110. Oliveira CB, Marques C, Abreu R, et al. Gut microbiota of elite female football players is not altered during an official international tournament. *Scand J Med Sci Sports*. 2022;32 Suppl 1:62-72. doi:10.1111/sms.14096
 111. Lkhagva E, Chung H-J, Ahn J-S, Hong S-T. Host Factors Affect the Gut Microbiome More Significantly than Diet Shift. *Microorganisms*. 2021;9(12). doi:10.3390/microorganisms9122520
 112. Donati Zeppa S, Amatori S, Sisti D, et al. Nine weeks of high-intensity indoor cycling training induced changes in the microbiota composition in non-athlete healthy male college students. *J Int Soc Sports Nutr.* 2021;18(1):74. doi:10.1186/s12970-021-00471-z
 113. Villarroel J, Donkin I, Champion C, Burcelin R, Barrès R. Endurance Training in Humans Modulates the Bacterial DNA Signature of Skeletal Muscle. *Biomedicines*. 2021;10(1). doi:10.3390/biomedicines10010064
 114. Torquati L, Gajanand T, Cox ER, et al. Effects of exercise intensity on gut microbiome composition and function in people with type 2 diabetes. *Eur J Sport Sci*. Published online March 23, 2022:1-12. doi:10.1080/17461391.2022.2035436
 115. Cheng R, Wang L, Le S, et al. A randomized controlled trial for response of microbiome network to exercise and diet intervention in patients with

- nonalcoholic fatty liver disease. *Nat Commun.* 2022;13(1):2555.
doi:10.1038/s41467-022-29968-0
116. Soriano S, Curry K, Sadrameli SS, et al. Alterations to the gut microbiome after sport-related concussion in a collegiate football players cohort: A pilot study. *Brain, Behav Immun - Heal.* 2022;21(October 2021):100438.
doi:10.1016/j.bbih.2022.100438
 117. Huber Y, Pfirrmann D, Gebhardt I, et al. Improvement of non-invasive markers of NAFLD from an individualised, web-based exercise program. *Aliment Pharmacol Ther.* 2019;50(8):930-939. doi:10.1111/apt.15427
 118. Dupuit M, Rance M, Morel C, et al. Effect of Concurrent Training on Body Composition and Gut Microbiota in Postmenopausal Women with Overweight or Obesity. *Med Sci Sports Exerc.* 2022;54(3):517-529.
doi:10.1249/MSS.0000000000002809
 119. Bielik V, Hric I, Ugrayová S, et al. Effect of High-intensity Training and Probiotics on Gut Microbiota Diversity in Competitive Swimmers: Randomized Controlled Trial. *Sport Med - open.* 2022;8(1):64. doi:10.1186/s40798-022-00453-8
 120. Kern T, Blond MB, Hansen TH, et al. Structured exercise alters the gut microbiota in humans with overweight and obesity-A randomized controlled trial. *Int J Obes (Lond).* 2020;44(1):125-135. doi:10.1038/s41366-019-0440-y
 121. Motiani KK, Collado MC, Eskelinen J-J, et al. Exercise Training Modulates Gut Microbiota Profile and Improves Endotoxemia. *Med Sci Sports Exerc.* 2020;52(1):94-104. doi:10.1249/MSS.0000000000002112
 122. Liu Y, Wang Y, Ni Y, et al. Gut Microbiome Fermentation Determines the Efficacy of Exercise for Diabetes Prevention. *Cell Metab.* 2020;31(1):77-91.e5.
doi:10.1016/j.cmet.2019.11.001
 123. Quiroga R, Nistal E, Estébanez B, et al. Exercise training modulates the gut microbiota profile and impairs inflammatory signaling pathways in obese children. *Exp Mol Med.* 2020;52(7):1048-1061. doi:10.1038/s12276-020-0459-0
 124. Rettedal EA, Cree JME, Adams SE, et al. Short-term high-intensity interval

- training exercise does not affect gut bacterial community diversity or composition of lean and overweight men. *Exp Physiol*. 2020;105(8):1268-1279. doi:10.1113/EP088744
125. Warbeck C, Dowd AJ, Kronlund L, et al. Feasibility and effects on the gut microbiota of a 12-week high-intensity interval training plus lifestyle education intervention on inactive adults with celiac disease. *Appl Physiol Nutr Metab*. 2021;46(4):325-336. doi:10.1139/apnm-2020-0459
 126. Fan Y, Pedersen O. Gut microbiota in human metabolic health and disease. *Nat Rev Microbiol*. 2021;19(1):55-71. doi:10.1038/s41579-020-0433-9
 127. Yang Y, Du L, Shi D, et al. Dysbiosis of human gut microbiome in young-onset colorectal cancer. *Nat Commun*. 2021;12(1):6757. doi:10.1038/s41467-021-27112-y
 128. Park S-Y, Hwang B-O, Lim M, et al. Oral-Gut Microbiome Axis in Gastrointestinal Disease and Cancer. *Cancers (Basel)*. 2021;13(9):2124. doi:10.3390/cancers13092124
 129. Wu GD, Chen J, Hoffmann C, et al. Linking long-term dietary patterns with gut microbial enterotypes. *Science*. 2011;334(6052):105-108. doi:10.1126/science.1208344
 130. Flint HJ, Duncan SH, Scott KP, Louis P. Links between diet, gut microbiota composition and gut metabolism. *Proc Nutr Soc*. 2015;74(1):13-22. doi:10.1017/S0029665114001463
 131. Morrison DJ, Preston T. Formation of short chain fatty acids by the gut microbiota and their impact on human metabolism. *Gut Microbes*. 2016;7(3):189-200. doi:10.1080/19490976.2015.1134082
 132. Daisley BA, Koenig D, Engelbrecht K, et al. Emerging connections between gut microbiome bioenergetics and chronic metabolic diseases. *Cell Rep*. 2021;37(10):110087. doi:10.1016/j.celrep.2021.110087
 133. Tarracchini C, Fontana F, Lugli GA, et al. Investigation of the Ecological Link between Recurrent Microbial Human Gut Communities and Physical Activity. *Microbiol Spectr*. 2022;10(2):e0042022. doi:10.1128/spectrum.00420-22

134. Mancin L, Rollo I, Mota JF, et al. Optimizing Microbiota Profiles for Athletes. *Exerc Sport Sci Rev.* 2021;49(1):42-49. doi:10.1249/JES.0000000000000236
135. Marttinen M, Ala-Jaakkola R, Laitila A, Lehtinen MJ. Gut Microbiota, Probiotics and Physical Performance in Athletes and Physically Active Individuals. *Nutrients.* 2020;12(10):2936. doi:10.3390/nu12102936
136. Sales KM, Reimer RA. Unlocking a novel determinant of athletic performance: The role of the gut microbiota, short-chain fatty acids, and “biotics” in exercise. *J Sport Heal Sci.* Published online September 9, 2022. doi:10.1016/j.jshs.2022.09.002
137. Dohnalová L, Lundgren P, Carty JRE, et al. A microbiome-dependent gut-brain pathway regulates motivation for exercise. *Nature.* Published online December 14, 2022. doi:10.1038/s41586-022-05525-z
138. Everard A, Belzer C, Geurts L, et al. Cross-talk between Akkermansia muciniphila and intestinal epithelium controls diet-induced obesity. *Proc Natl Acad Sci U S A.* 2013;110(22):9066-9071. doi:10.1073/pnas.1219451110
139. Lee J-S, Song W-S, Lim JW, et al. An integrative multiomics approach to characterize anti-adipogenic and anti-lipogenic effects of Akkermansia muciniphila in adipocytes. *Biotechnol J.* 2022;17(2):e2100397. doi:10.1002/biot.202100397
140. Molina NM, Sola-Leyva A, Haahr T, et al. Analysing endometrial microbiome: methodological considerations and recommendations for good practice. *Hum Reprod.* 2021;36(4):859-879. doi:10.1093/humrep/deab009
141. Mirzayi C, Renson A, Genomic Standards Consortium, et al. Reporting guidelines for human microbiome research: the STORMS checklist. *Nat Med.* 2021;27(11):1885-1892. doi:10.1038/s41591-021-01552-x
142. Migueles JH, Cadenas-Sanchez C, Ekelund U, et al. Accelerometer Data Collection and Processing Criteria to Assess Physical Activity and Other Outcomes: A Systematic Review and Practical Considerations. *Sports Med.* 2017;47(9):1821-1845. doi:10.1007/s40279-017-0716-0
143. Moola S, Munn Z, Tufanaru C, et al. Chapter 7: Systematic reviews of etiology

and risk. In: *Systematic Reviews of Etiology and Risk. JBI Manual for Evidence Synthesis*. 667 JBI, Edited by E A, Z M. ; 2020.

144. Drevon D, Fursa SR, Malcolm AL. Intercoder Reliability and Validity of WebPlotDigitizer in Extracting Graphed Data. *Behav Modif*. 2017;41(2):323-339. doi:10.1177/0145445516673998
145. Dhakal B, Szabo A, Chhabra S, et al. Autologous Transplantation for Newly Diagnosed Multiple Myeloma in the Era of Novel Agent Induction: A Systematic Review and Meta-analysis. *JAMA Oncol*. 2018;4(3):343-350. doi:10.1001/jamaoncol.2017.4600
146. Martínez-González MA, Fernández-Jarne E, Serrano-Martínez M, Wright M, Gomez-Gracia E. Development of a short dietary intake questionnaire for the quantitative estimation of adherence to a cardioprotective Mediterranean diet. *Eur J Clin Nutr*. 2004;58(11):1550-1552. doi:10.1038/sj.ejcn.1602004

Table 1. Definition of main microbiome-related terms used in this systematic review.

Term	Definition
Microbiota	Collection of microorganisms, including bacteria, archaea, viruses and fungal communities, that collectively inhabit a particular environment (eg., gut, blood, vagina, etc.)
Microbiome	Collection of genomes of the microorganisms inhabiting a particular environment
Healthy core microbiota	Set of microbial taxa universally present in healthy individuals who lack overt disease phenotypes
Alpha-diversity	Diversity within a sample taking into account both the number of microorganisms in a sample (richness) and their distribution (evenness)
Shannon Diversity Index	Alpha-diversity estimator of microbial richness and evenness within a sample or niche
Chao1 Index	Alpha-diversity abundance-based estimator of microbial richness within a sample or niche
Beta-diversity	Diversity between samples taking into account a distance matrix that reflects how compositionally different the samples are from one another (i.e., dissimilarity between samples)
Meta-omics	Refers to those techniques, including marker gene sequencing, metagenomics, meta-transcriptomics, meta-proteomics, and meta-metabolomics, which directly examine the phylogenetic markers, genes, transcripts, proteins, or metabolites from a microbial community
Marker gene sequencing (e.g. 16S rRNA gene sequencing)	DNA sequencing method to identify the microbes present in a given microbial community through the analysis of a sequence variation (i.e., hypervariable region) of a single ubiquitous gene (e.g. 16S ribosomal RNA gene)
Metagenomics (or shotgun metagenomics)	DNA sequencing method to assess the entire functional gene content of a given microbial community. It provides a much greater specific identification of the microbes compared to marker gene analysis (e.g. 16S rRNA gene), in which classification is normally limited to the genus level as multiple species may have the same sequence within the studied hypervariable region
Meta-transcriptomics	RNA sequencing method to assess the transcriptionally active microbes of a given microbial community, providing knowledge of the functional activity of these microorganisms

Meta-proteomics

Shotgun method to characterize the entire microbial protein complement of a sample

Meta-metabolomics

Shotgun method to identify the microbial metabolites present in a sample

Table 2. Summary of the main characteristics of the studies included in this systematic review.

Observational studies (cross-sectional)

Ref.	Type of study	Population size (N); Sex (% Females); Age (y); Ethnicity/Race (%)	Characteristics of the exposure (PA, SB), acute or chronic effects of PA	Sample origin	Dependent outcome; DNA extraction method; detection method; sequencing platform	Dietary record	Main findings	Raw data availability
Clarke et al. 2014	Cross-sectional	Group 1: Professional rugby players (N=40); M; 28.8±3.8y Group 2: Sedentary participants with low BMI (BMI ≤25), (N=23); M; 28.1±5.1y Group 3: Sedentary participants with high BMI (BMI >28), (N=23); M; 30.8±5.6y Irish (98.8%); Indian (1.2%)	Athletic performance (rugby)	Fecal samples	Gut microbiome; QIAamp DNA Stool Mini Kit; 16S rRNA gene sequencing (V4); 454 Genome Sequencer FLX	FFQ	Athletes presented a higher alpha-diversity compared to sedentary individuals (i.e., both BMI groups). Firmicutes, <i>Akkermansiaceae</i> and <i>Akkermansia</i> were increased while Bacteroidetes and <i>Bacteroides</i> decreased in athletes compared to high-BMI group. In comparison with those with low BMI, athletes had a higher abundance of <i>Prevotella</i> and <i>Prevotellaceae</i> and lower abundance of <i>Lactobacillus</i> , <i>Lactobacillaceae</i> and <i>Bacteroides</i>	SRA repository (Accession number: PRJEB4609)
Lim et al. 2016	Cross-sectional	Twin-family cohort (N=257); M+F (57.98%); 46.15±12.70y; Korean	PA level across 7 days (Korean version of IPAQ)	Saliva samples	Sputum microbiome; PowerSoil DNA Isolation Kit; 16S rRNA gene sequencing (V4); Illumina MiSeq	NR	PA level (MET-min/week) was not correlated with alpha-diversity, while it was negatively associated with <i>Lachnospiraceae</i>	ENA (Accession number: ERP010734)
Shin et al. 2016¹	Cross-sectional	Healthy participants (N=19); F; >65y; Korean	PA level across 7 days (Korean version of IPAQ)	Fecal samples	Gut microbiome; QIAamp fast DNA Stool Mini Kit; 16S rRNA gene sequencing (V1-V2); Ion S5 XL	3-day food record	PA level (MET-min/week) was not associated with the relative abundance of <i>Catenibacterium</i> and <i>Butyricimonas</i>	SRA repository (Accession number: PRJNA326143)

Bressa et al. 2017	Cross-sectional	<p>Group 1: Active participants (N=19); F; 30.7±5.9y; Caucasian</p> <p>Group 2: Sedentary participants (N=21); F; 32.2±8.7y; Caucasian</p>	<p>PA level according to WHO recommendations for PA (i.e., sedentary subjects were those who did not perform 3 days of PA per week for 30 min at a moderate intensity; and active subjects were those who performed at least 3 hours of PA per week)</p> <p>Light PA, MVPA and SB (accelerometer on the right wrist)</p>	Fecal samples	Gut microbiome; Power Soil DNA Kit; 16S rRNA gene sequencing (V3-V4); Illumina MiSeq	FFQ	<p>There were no significant differences in alpha- or beta-diversity between active and sedentary women. Active women presented a higher abundance of health-promoting bacterial species (<i>Bifidobacterium</i> spp., <i>Roseburia hominis</i>, <i>Akkermansia muciniphila</i> and <i>Fecalibacterium prausnitzii</i>) compared to sedentary women</p> <p>SB recorded by accelerometry correlated with alpha-diversity metrics, <i>Desulfovibrionaceae</i> and <i>Paraprevotella</i></p>	NCBI BioSample (Accession number: PRJNA350839)
Barton et al. 2017	Cross-sectional	<p>Group 1: Professional rugby players (N=40); M; 28.8±3.8y</p> <p>Group 2: Sedentary participants with BMI ≤25 (N=23); M; 28.1±5.1y</p> <p>Group 3: Healthy sedentary control with BMI >28 (N=23); M; 30.8±5.6y</p> <p>Irish (98.8%), Indian (1.2%)</p>	Athletic performance (rugby)	Fecal samples	Gut microbiome; QIAmp DNA Stool Mini Kit; WMGS; Illumina HiSeq 2500	FFQ	Athletes presented a higher alpha-diversity compared to sedentary individuals (i.e., both BMI groups). Beta-diversity analysis indicated a significant dissimilarity between samples from all groups	ENA (Accession number: PRJEB15388)

Petersen et al. 2017	Cross-sectional	Cyclists (N=33); M+F (33.33%); 33y (19-49); NR	Competition level PA time across a week (self-reported questionnaire)	Fecal samples	Gut microbiome; PowerSoil DNA Isolation Kit or PowerMicrobiome RNA Isolation Kit; WMGS and RNA-Seq; Illumina HiSeq and NextSeq	Self-reported questionnaire	3 taxonomic clusters, characterized by either high <i>Prevotella</i> , high <i>Bacteroides</i> or a mix of genera, were identified, although no significant correlations between clusters and competition level (i.e., being professional or amateur cyclist). PA time during a week was positively associated with <i>Prevotella</i>	NCBI BioProject (Accession number: PRJNA305507)
Mörkl et al. 2017	Cross-sectional	Group 1: Participants with anorexia nervosa (N=18); F; 22.44±3.20y; NR Group 2: Participants with normal-weight (N=26); F; 24.93±3.75y; NR Group 3: Participants with overweight (N=22); F; 25.35±3.98y; NR Group 4: Participants with obesity (N=20); F; 26.9±6.09y; NR Group 5: Athletes (N=20); F; 22.15±3.86y; NR	Athletic performance (type of sport NR)	Fecal samples	Gut microbiome; PowerLyzer PowerSoil DNA Isolation Kit; 16S rRNA gene sequencing (V1-V2); Ion Torrent PGM	2-day food record	Athletes showed the highest alpha-diversity compared to other groups. Beta-diversity analysis indicated differences between samples from all groups	NR
Bai et al. 2018	Cross-sectional	Healthy children, data derived from the AGP (N=267); M+F (33.3%); 11.5±3.8y; Caucasian (85.8%); other (14.2%)	PA frequency (self-reported questionnaire)	Fecal samples	Gut microbiome; NR; 16S rRNA gene sequencing (V4); Illumina MiSeq	Self-reported questionnaire about type of diet (i.e., omnivore or vegetarian)	Children who engaged in daily PA showed a higher alpha-diversity than those who occasionally, rarely or never did PA. Beta-diversity analysis showed dissimilarity between samples from children who reported different PA frequency	NR

Minty et al. 2018	Cross-sectional	Group 1: Professional rugby players (N=24); M; 27.29±4.66y; NR Group 2: Sedentary participants (N=22); M; 26.59±3.87y; NR	Athletic performance (rugby)	Saliva samples	Oral microbiome; Qiamp Cador Pathogen Mini Kit; 16S rRNA gene sequencing (V2-V4); Illumina MiSeq	Self-reported questionnaire about quantity and the frequency of food intake	Professional rugby players had a lower alpha-diversity and an increase in <i>Streptococcus</i> compared to sedentary individuals	NR
Whisner et al. 2018	Cross-sectional	Healthy college students (N=82); M+F (57.3%); 18.4±0.6y; Hispanic (31.7%); Caucasian (39.0%); other (29.3%)	PA level across 7 days (Godin-Shephard Leisure-Time Physical Activity Questionnaire) and SB level (self-reported questionnaire)	Fecal samples	Gut microbiome; PowerSoil DNA Isolation Kit; 16S rRNA gene sequencing (V4); Illumina MiSeq	ASA24 24-hour dietary recall (2 weekdays and 1 weekend day)	There were no significant differences in alpha-diversity or F/B ratio between individuals with different PA level (MVPA-min/day) or SB (screen time-min/day). Beta-diversity analysis revealed dissimilarity between samples from individuals with different SB level. <i>Paraprevotellaceae</i> , <i>Lachnospiraceae</i> and <i>Lachnospira</i> were increased in those who reported more MVPA-min/day, while <i>Enterobacteriaceae</i> and <i>Enterobacteriales</i> were higher in those who reported less MVPA-min/day	SRA repository (Project ID: PRJNA473006 with accession numbers: SAMN0925819 7- SAMN0925827 8)
Mahnic et al. 2018	Cross-sectional	Healthy participants (N=186); M+F (62.9%); 45.2y (18-85); Slovenian	PA frequency across 7 days (self-reported questionnaire)	Fecal samples	Gut microbiome; QIAamp Fast Stool DNA Mini Kit; 16S rRNA gene sequencing (V3-V4); Illumina MiSeq	Self-reported questionnaire about type of diet (i.e., regular, vegetarian, vegan, gluten free, lactose free or raw food diet)	PA frequency (reported as occasionally or once per week) was not significantly associated with bacterial alpha-diversity, but was correlated with higher fungal alpha-diversity and lower abundance of <i>Saccharomyces cerevisiae</i>	Metagenomics RAST database (Accession number: mgp85661)
Zhang et al. 2019	Cross-sectional	Healthy participants (N=131); M+F (38.93%); 35.8±12.0y; Chinese	PA frequency in the last month (self-reported questionnaire)	Fecal samples	Gut microbiome; QIAamp Fast DNA Stool Mini Kit; 16S rRNA gene sequencing (V3-V4); Illumina MiSeq	Self-reported questionnaire	Individuals who reported a higher frequency of PA exhibited a lower alpha-diversity compared to those of less PA frequency (frequency	Microbial Genome database (ID=

							reported as never, occasionally, 1 or 2 times/week or >1 hour/week)	ICDC-20180224-143509), and SRA repository (Accession numbers: SAMN09531358-SAMN09531488)
Carter et al. 2019	Cross-sectional	Post-primary treatment breast cancer survivors with history of ductal carcinoma in situ or stage I–IIIA breast cancer (N=37); F; 55±9y; African-American (43%), European-American (51%), other (6%)	PA level across 10 days (hip-worn accelerometer)	Fecal samples	Gut microbiome; DNA Miniprep Kit; 16S rRNA gene sequencing (V4); Illumina MiSeq	3-day food record (2 weekdays and 1 weekend day)	PA (MVPA-min/week) and free-living energy expenditure (kcal/day), were not associated with alpha- and beta-diversity. Otherwise, cardiorespiratory fitness (VO ₂ peak) was correlated with alpha- and beta-diversity	NR
Langsetmo et al. 2019	Cross-sectional	Community-dwelling older participants (N=373); M; 84.0±3.9y; non-Hispanic white (87.9%), other (12.1%)	PA level across 7 days (accelerometer on the right wrist) Self-reported PA level across 7 days (PASE)	Fecal samples	Gut microbiome; MO BIO PowerSoil DNA Isolation Kit; 16S rRNA gene sequencing (V4); Illumina MiSeq	FFQ	Self-reported PA (expressed as PASE score [ranging from 0 to 400], with higher scores indicating greater PA) or objective PA (step counts) were not associated with alpha-diversity, but PASE score was consistently correlated with beta-diversity differences. Participants with higher step counts had higher relative abundance of <i>Cetobacterium</i> and lower of <i>Coprobacillus</i> , <i>Adlercreutzia</i> and <i>Erysipelotrichaceae</i> CC-115	NR

Jang et al. 2019	Cross-sectional	Group 1: Bodybuilders (N=15); M; 24.9±2.7y; Korean Group 2: Elite distance runners (N=15); M; 19.8±0.8y; Korean Group 3: Sedentary participants (N=15); M; 26.3±2.0y; Korean	Athletic performance (body building, athletics)	Fecal samples	Gut microbiome; Fast DNA SPIN extraction kit; 16S rRNA gene sequencing (V3-V4); Illumina MiSeq	3-day food record (2 weekdays and 1 weekend day)	Type of sport did not make a significant difference in alpha- and beta-diversity, but affected the relative abundance of certain bacteria, such as <i>Bifidobacterium</i> and <i>Sutterella</i>	NR
O'Donovan et al. 2019	Cross-sectional	Athletes across 16 different sports (N=37); M+F (37.84%); 27.0±5.0y; Irish	Sports classification groups based on the dynamic and static components (i.e., moderate-dynamic component [e.g. fencing], high-dynamic and low-static components [e.g. hockey], and high-dynamic and static components [e.g. rowing])	Fecal samples	Gut microbiome; Repeated bead beating plus column method; WMGS; Illumina NextSeq	FFQ	There were no significant differences in alpha-diversity, although beta-diversity analysis revealed dissimilarities between samples from different sport groups. <i>Streptococcus suis</i> , <i>Clostridium bolteae</i> , <i>Lactobacillus phage LfeInf</i> and <i>Anaerostipes hadrus</i> were associated with the moderate-dynamic component group; <i>Bifidobacterium animalis</i> , <i>Lactobacillus acidophilus</i> , <i>Prevotella intermedia</i> and <i>Fecalibacterium prausnitzii</i> with groups with high dynamic and low static components, and <i>Bacteroides caccae</i> with the high-dynamic and static components group	ENA (Accession number: PRJEB32794)
Liang et al. 2019	Cross-sectional	Group 1: Higher-level professional martial arts athletes (N=12); M+F (58.33%); 20.08±1.83y; Chinese Group 2: Lower-level professional martial arts	Competition level according to General Administration of Sport of China	Fecal samples	Gut microbiome; QIAamp DNA Stool Mini Kit; 16S rRNA gene sequencing (V3-V4); Illumina HiSeq 2500	Faeces Pre-collection Questionnaire	Higher-level athletes had a higher alpha-diversity compared to lower-level athletes. <i>Porphyromonadaceae</i> , <i>Parabacteroides</i> , <i>Phascolarctobacterium</i> , <i>Oscillibacter</i> and <i>Bilophila</i> were enriched in higher-level athletes, while <i>Veillonellaceae</i> and <i>Megasphaera</i>	NCBI BioProject (Accession number: PRJNA529323)

athletes (N=16); M+F (50%); 20.19±1.22y; Chinese

were more abundant in the lower-level athletes

Castellanos et al. 2020	Cross-sectional	Group 1: Active participants (N=64); M+F (42.19%); 32.17±7.40y; Caucasian Group 2: Sedentary participants (N=45); M+F (37.78%); 33.69±7.96y; Caucasian	PA level according to WHO recommendations for PA (i.e., sedentary subjects were those who did not perform 3 days of PA per week for 30 min at a moderate intensity; and active subjects were those who performed at least 3 hours of PA per week) PA and SB (accelerometer on the right wrist)	Fecal samples	Gut microbiome; EZNA Stool DNA Kit; 16S rRNA gene sequencing (V3-V4); Illumina MiSeq	FFQ	Active participants exhibited a higher alpha-diversity and network complexity of the gut microbiome compared to sedentary individuals. Beta-diversity analysis showed dissimilarity between samples from both groups. <i>Coprococcus</i> , <i>Blautia</i> and <i>Eubacterium</i> were more abundant in active participants, whereas <i>Bacteroides</i> and <i>Parabacteroides</i> were higher in the sedentary participants	NCBI Biosample (Accession number: PRJNA564612)
Lin et al. 2020	Cross-sectional	Hemodialysis patients (N=96); M+F (46.88%); 68.1±1.0y; Taiwanese	PA level across 7 days (PASE)	Fecal samples	Gut microbiome; Qiagen DNA Mini Kit; 16S rRNA gene sequencing (V3-V4); Illumina MiSeq 2000	FFQ	PA level (expressed as PASE score) was positively correlated with alpha-diversity and the abundance of <i>Coprococcus</i>	NR
Zhu et al. 2020²	Cross-sectional	Participants from the AGP (N=2486); M+F (NR); >18y; NR	PA frequency (self-reported questionnaire)	Fecal samples	Gut microbiome; NR; 16S rRNA gene sequencing (V4); Illumina MiSeq	NR	There were no significant differences in alpha-diversity between PA frequency groups of elderly individuals (frequency reported as never, rare, occasionally, regular or daily). However, Actinobacteria phylum gradually increased and	ENA (Accession number: PRJEB 11419)

							Cyanobacteria decreased with PA frequency. At family and genus level, gut microbiome of daily exercising elderly individuals approached that of middle-age adults	
Yoon et al. 2020	Cross-sectional	Healthy soldiers (N=100); M; 21.0y (20–22); Korean	PA level across 7 days (Korean version of IPAQ). Among the three levels of PA designated by IPAQ, “inactive” individuals were considered as “insufficiently active,” whereas those who were “minimally active” or undertook “health-enhancing PA” were classified as “sufficiently active”	Fecal samples	Gut microbiome; PowerSoil DNA Isolation Kit; 16S rRNA gene sequencing (V3-V4); Illumina MiSeq	FFQ	Beta-diversity analysis did not indicate a significant dissimilarity between samples from participants who undertook insufficient and sufficient PA	NR
Kulecka et al. 2020	Cross-sectional	Group 1: Marathon runners (N=14); M+F (NR); 14-72y; Polish Group 2: Cross-country skiers (N=11); M+F (NR); 14-72y; Polish Group 3: Sedentary participants (N=46); M+F (NR); 14-72y; Polish	Athletic performance (marathon, cross-country skiing)	Fecal samples	Gut microbiome; QIAamp DNA Stool Kit; 16S rRNA gene sequencing (NR); Ion Torrent PGM	24-hour diet recall	Cross-country skiers had a higher alpha-diversity and F/B ratio compared to sedentary individuals. 25 taxa differed between athletes and sedentary individuals, particularly, athletes from both sports presented a lower abundance of Bacteroidetes and higher of <i>Prevotella</i> compared to non-athletes. 3 taxa (2 belonged to <i>Lachnospiraceae</i> family) differed between athletes’ groups	NR

Heinzel et al. 2020	Cross-sectional	Elderly participants with Parkinson Disease (N=666); M+F (47.3%); 68.4±6.3y; NR	PA level (self-reported questionnaire)	Fecal samples	Gut microbiome; PSP Spin Stool DNA Plus Kit; 16S rRNA gene sequencing (V3-V4); Illumina MiSeq	Self-reported questionnaire	PA level (hours of sport/week) was inversely associated with alpha-diversity, and explained most of the variance in terms of beta-diversity, together with constipation and BMI. <i>Bacteroides</i> -enriched enterotype was more frequent in active individuals, while Firmicutes-enriched enterotype was more observed in those less active	ENA (Accession number: PRJEB32920)
Castellanos et al. 2020	Cross-sectional	Group 1: Active participants (N=64); M+F (42.19%); 32.17±7.40y; Caucasian Group 2: Sedentary participants (N=45); M+F (37.78%); 33.69±7.96y; Caucasian	PA level according to WHO recommendations for PA (i.e., sedentary subjects were those who did not perform 3 days of PA per week for 30 min at a moderate intensity; and active subjects were those who performed at least 3 hours of PA per week)	Fecal samples	Gut microbiome; EZNA Stool DNA Kit; 16S rRNA gene sequencing (V3-V4); Illumina MiSeq	FFQ	<i>Roseburia faecis</i> , an unclassified taxon from <i>Roseburia</i> genus, <i>Rikenellaceae</i> and <i>Erysipelotrichaceae</i> families were the most relevant keystone bacteria (i.e., those with higher influence on other bacteria) in the reorganization that occurs when transitioning from an active to a sedentary condition, while the keystone bacteria from a sedentary to an active condition belonged to <i>Sutterella</i> , <i>Bacteroides</i> , <i>Streptococcus</i> , <i>Odoribacter</i> , <i>Clostridium</i> and <i>Christensenellaceae</i>	NCBI Biosample (Accession number: PRJNA564612)
Song et al. 2020	Cross-sectional	Female students (N=26); F; 18-22y; NR	Type, time and intensity of PA (self-reported questionnaire)	Vaginal swab samples	Vaginal microbiome; DNeasy PowerSoil Kit; 16S rRNA gene sequencing (V3-V5); Illumina MiSeq	Dietary data reported by the dining hall food provider	PA time was positively associated with alpha-diversity in participants that reported an average intensity > 1.5 (intensity ranging from 1 [low] to 3 [high])	SRA repository (Accession number: PRJNA637322)
Gallè et al. 2020	Cross-sectional	University students (N=140); M; 22.5±2.9y; Italian	PA level across 7 days (IPAQ)	Fecal samples	Gut microbiome; DNA extraction protocol using nylon-tipped flocced swabs; 16S rRNA gene sequencing (NR); Illumina MiSeq	Questionnaire developed by Martínez-González et al. ¹⁴⁶	There were no significant differences in alpha-diversity, but beta-diversity analysis indicated dissimilarity between samples from individuals with different PA level. <i>Megasphaera</i> , <i>Lachnobacterium</i> ,	SRA repository (Accession number: PRJNA630035)

Dialister and *Paraprevotella* were more abundant in individuals with low PA levels (level ranging from 1 [low active] to 3 [highly active])

Fart et al. 2020	Cross-sectional	Group 1: Physically active senior orienteering athletes (N=28); M+F (43%); 68.5y (67–72); NR Group 2: Community-dwelling older adults (N=70); M+F (47%); 72y (69–76); NR	Athletic performance (type of sport NR)	Fecal samples	Gut microbiome; QIAmp DNA Stool Mini Kit; WMGS; Illumina HiSeq 2500	FFQ	There were no significant differences in alpha-diversity, but beta-diversity analyses indicated differences between samples from both groups. Senior orienteering athletes had a more homogeneous microbiome and a higher abundance of <i>Fecalibacterium prausnitzii</i> compared to the community-dwelling older adults	NR
Valeriani et al. 2020	Cross-sectional	Healthy participants (N=59); M+F (50.9%); 23.1±3.14y; Caucasian	PA level across 7 days (IPAQ)	Fecal samples	Gut microbiome; DNA extraction protocol using nylon-tipped flocced swabs; 16S rRNA gene sequencing (NR); Illumina MiSeq	Questionnaire developed by Martínez-González et al. ¹⁴⁶	PA level (METs/week) was negatively correlated with Firmicutes phylum	NR
Han et al. 2020	Cross-sectional	Group 1: Youth non-elite rowing athletes (N=6); F; 12-16y; Chinese Group 2: Youth elite rowing athletes (N=6); F; 12-17y; Chinese Group 3: Adult elite rowing athletes (N=7); F; 19-26y; Chinese	Competition level according to General Administration of Sport of China	Fecal samples	Gut microbiome; PowerSoil DNA Isolation Kit; 16S rRNA gene sequencing (V3-V4); Illumina MiSeq	Self-reported questionnaire	Both elite groups presented a higher alpha-diversity compared to the non-elite group. The relative abundance of Firmicutes and Proteobacteria was higher in elite athletes, while Bacteroidetes was lower compared to non-elite athletes	SRA repository (Accession number: PRJNA513393)
Penney et al. 2020³	Cross-sectional	Group 1: Professional rugby players (N=40); M; 28.8±3.8y	Athletic performance (rugby)	Fecal samples	Gut microbiome; QIAmp DNA Stool Mini Kit; 16S rRNA gene sequencing (V4) and	FFQ	There were no significant differences in alpha-diversity between professional rugby players and sedentary individuals	SRA repository (Accession number: PRJEB4609)

		Group 2: Sedentary participants (N=46); M; 28.1±5.1y			WMGS; 454 Genome Sequencer FLX and Illumina HiSeq 2500			and ENA (Accession number: PRJEB15388)
		Irish (98.8%); Indian (1.2%)						
Genç et al. 2020	Cross-sectional	Group 1: Professional footballers (N=5); M; 18.0±0.0y; NR Group 2: Amateur footballers (N=5); M; 18.8±1.3y; NR Group 3: Sedentary participants (N=5); M; 21.8±1.3y; NR	Athletic performance (football) and competition level (Professionals trained for 4 days/week, 2 hours/day, while the amateurs trained for 2 days/week, 2 hours/day)	Fecal samples	Gut microbiome; DNA extraction in silica column; 16S rRNA gene sequencing (NR); Illumina MiSeq	Nutrient Consumption questionnaire	Professional athletes exhibited the highest alpha-diversity metrics of richness, while the lowest was found in the sedentary group	NR
Özkan et al. 2020	Cross-sectional	Group 1: Professional footballers (N=5); M; 18.0±0.0y; NR Group 2: Amateur footballers (N=5); M; 18.8±1.3y; NR Group 3: Sedentary participants (N=5); M; 21.8±1.3y; NR	Athletic performance (football) and competition level (Professionals trained for 4 days/week, 2 hours/day, while the amateurs trained for 2 days/week, 2 hours/day)	Fecal samples	Gut microbiome; DNA extraction in silica column; 16S rRNA gene sequencing (NR); Illumina MiSeq	Nutrient Consumption questionnaire	Amateur athletes exhibited the highest alpha diversity metric of evenness, while the lowest was found in the sedentary group	NR
Palmas et al. 2021	Cross-sectional	Group 1: Participants with overweight/obesity (N=46); M+F (86.96%); 50±12y; Italian Group 2: Healthy normal-weight controls (N=46);	PA level across 7 days (IPAQ)	Fecal samples	Gut microbiome; QIAamp DNA Stool Mini Kit; 16S rRNA gene sequencing (V3-V4); Illumina MiSeq	3-day food record (2 weekdays and 1 weekend day)	PA level (METs/week) was negatively correlated with Firmicutes phylum, in particular, <i>Megamonas</i> , <i>M. funiformis</i> , <i>Megasphaera</i> , <i>M. hominis</i> and <i>Eubacterium bifforme</i> , which were also more abundant in participants with overweight/obesity	ENA (Accession number: PRJEB39037)

M+F (89.13%); 49±11y;
Italian

Zhong et al. 2021	Cross-sectional	Older participants (N=100); M+F (44%); 69±3y; Irish	PA level across 7 days (accelerometer on the thigh)	Fecal samples	Gut microbiome; Repeated bead beating plus column method; 16S rRNA gene sequencing (V3-V4); Illumina MiSeq	FFQ	No PA behavior was significantly associated with alpha-diversity. MVPA was significantly associated with beta-diversity. <i>Ruminococcus</i> and an unclassified genus of <i>Ruminococcaceae</i> were negatively associated with SB, while <i>Streptococcus</i> was positively associated. <i>Ruminococcaceae</i> , <i>Clostridium_XI</i> , <i>Ruminococcus</i> , <i>Turicibacter</i> and <i>Bifidobacterium</i> were positively associated with standing, while <i>Anaerostipes</i> , an unclassified genus of <i>Lachnospiraceae</i> , <i>Alistipes</i> and <i>Bacteroides</i> were negatively associated with standing and positively with MVPA. <i>Ruminococcus</i> was negatively associated with MVPA. <i>Alistipes</i> was negatively associated with light PA	NR
Engberg et al. 2021	Cross-sectional	Group 1: Participants with low screen time (N=193); M+F (56.5%); 11.7±0.4y; Finnish Group 2: Participants with high screen time (N=183); M+F (41%); 11.8±0.4y; Finnish	WHO Health Behavior in School-Aged Children (HBSC) study questionnaire (i.e., low screen time = TV viewing ≤ 1 hour/day on weekend days;	Saliva samples	Saliva microbiome; Beads-based method; 16S rRNA gene sequencing (V3-V4); Illumina HiSeq 1500	16-item FFQ	Low screen time group presented a higher alpha-diversity. Beta-diversity analysis showed significant differences between groups. 10 differentially abundant microbes were detected, particularly, <i>Veillonella</i> , <i>Prevotella</i> and <i>Streptococcus</i> were enriched in the high screen time group	EGA (Accession number: EGAS00001003039)

high screen time =
TV viewing \geq 4
hours/day on
weekend days)

Morishima et al. 2021	Cross-sectional	Group 1: Elite endurance runners (N=15); F; 20.5 \pm 1.2y; Japanese Group 2: Healthy non-athletes (N=14); F; 20.9 \pm 0.3y; Japanese	Athletic performance (athletics)	Fecal samples	Gut microbiome; NR; 16S rRNA gene sequencing (NR); Illumina MiSeq	NR	There were no significant differences in alpha-diversity. Beta-diversity showed a significant dissimilarity between groups. 11 bacterial genera were significantly different between groups, importantly, <i>Faecalibacterium</i> was enriched in the athletes compared to non-athletes	NR
Šoltys et al. 2021	Cross-sectional	Group 1: Elderly endurance athletes (N=13); M; 63.5y (61.4–65.7); Caucasian Group 2: Elderly non-athletes (N=9); M; 64.9y (62.1–67.7); Caucasian	Athletic performance (type of sport NR)	Fecal samples	Gut microbiome; ZymoBIOMICS DNA/RNA Kit; 16S rRNA gene sequencing (NR); Illumina MiSeq	5-day 24-hour food record	There were no significant differences in alpha-diversity between endurance athletes and non-athletes. Beta-diversity analysis showed significant dissimilarities between groups. <i>Bacteroides</i> was less abundant in the athletes, while <i>Prevotella</i> , <i>Intestinimonas</i> and <i>Subdoligranulum</i> were enriched compared to non-athletes	GenBank repository (Accession number: PRJNA731908)
Jie et al. 2021	Cross-sectional	Young participants (N=2183); M+F (50.2%); 29.6 \pm 5.5y; Chinese	PA level (self-reported questionnaire)	Fecal samples	Gut microbiome; Guanidine thiocyanate silica beads-based method; WMGS; BGISEQ-500	Dietary questionnaire	PA intensity, sports habits and average time per exercise were positively associated with alpha-diversity	CNGB (Accession number: CNP0000426-CNP0000289)
Morishima et al. 2021	Cross-sectional	Group 1: University rugby players (N=88); M; 20.7 \pm 1.3y; Japanese Group 2: Healthy university participants (N=20); M; 20.1 \pm 1.8y; Japanese	Athletic performance (rugby)	Fecal samples	Gut microbiome; QuickGene DNA Tissue Kit SII; 16S rRNA gene sequencing (V3-V4); Illumina MiSeq	NR	Rugby players showed a lower alpha-diversity (in Chao1 index) compared to non-athletes. Beta-diversity showed significant dissimilarities between groups. 5 phyla and 13 genera were differentially abundant between groups, e.g. Firmicutes, <i>Collinsella</i> , <i>Megamonas</i> ,	DDBJ (Accession number: DRA012258)

Haemophilus and *Enterobacter* were enriched while Bacteroidetes, *Bacteroides* and *Akkermansia* were less abundant in the athletes group

Babszky et al. 2021	Cross-sectional	Group 1: Competition athletes who has been diagnosed for COVID19 (N=20); M+F (20%); 24.2±4.8y; NR Group 2: Sedentary participants who have been diagnosed for COVID19 (N=20); M+F (25%); 27.8±7.5y; NR	Athletic performance (athletes belonged to national first and second leagues)	Fecal samples	Gut microbiome; QIAmp Fast DNA Stool Mini Kit; 16S rRNA gene sequencing (NR); Ion Torrent PGM	Nutritional habits provided	There were no significant differences in alpha- and beta-diversity, and microbiome composition between groups during or after COVID19 (inter-groups comparison)	NR
Houttu et al. 2021	Cross-sectional	Group 1: Subjective active participants (N=868); M+F (50.9%); 53.4±10.5y; African Surinamese (10.5%), South-Asian Surinamese (5.3%), Moroccan (27%), Turkish (19.8%), Dutch (37.4%) Group 2: Objective active participants (N=62); M+F (53.2%); 50.0±8.5y; African Surinamese (11.3%), South-Asian Surinamese (9.7%), Moroccan (24.2%), Turkish (6.2%), Dutch (38.7%)	Subjective PA level according to Dutch PA guidelines (Short Questionnaire to Assess Health-enhancing physical Activity [SQUASH]: sedentary subjects were those who did not perform 150 min of PA per week; and active subjects were those who performed at least 150 min of PA per week)	Fecal samples	Gut microbiome; Bead-based method; 16S rRNA gene sequencing (V4); Illumina MiSeq	FFQ	Subjective active participants presented a higher alpha-diversity (in Simpson index) compared to sedentary participants. Beta-diversity analysis showed significant dissimilarities between these groups. <i>Lachnospiraceae</i> and <i>Veillonella</i> were significantly more abundant in the subjective active group, whereas <i>Enterobacteriales</i> , <i>Enterobacteriaceae</i> , <i>Escherichia/Shigella</i> , <i>Klebsiella</i> , <i>Prevotella_2</i> , <i>Roseburia hominis</i> , <i>Erysipelatoclostridium</i> and <i>Lachnoclostridium</i> were enriched in the sedentary group	NR

Group 3: Subjective sedentary participants (N=441); M+F (54%); 49±10.5y; African Surinamese (17%), South-Asian Surinamese (10.4%), Moroccan (24.9%), Turkish (24.7%), Dutch (22.9%)

Objective PA level (accelerometer on the chest [ActiHeart] across 4 days: sedentary when PA level is ≤ 1.69 and active when ≥ 1.70)

Group 4: Objective sedentary participants (N=100); M+F (53%); 51.8±6.5y; African Surinamese (6%), South-Asian Surinamese (5%), Moroccan (28%), Turkish (22%), Dutch (39%)

Walker et al. 2021	Cross-sectional	Sub-cohort from Generation 3 (N=1267), New Offspring (N=31) and OMNI 2 cohorts (N=137); M+F (55.7%); 55y (32–89); White (89.9%), other (10.1%)	PA level across 1 month (self-reported questionnaire)	Fecal samples	Gut microbiome; QIAamp 96 PowerFecal Qiacube HT Kit; 16S rRNA gene sequencing (V4); Illumina MiSeq	7-day dietary questionnaire	Leisure-time PA was positively associated with alpha-diversity	SRA repository (Accession number: PRJNA758252)
Santarossa et al. 2021	Cross-sectional	Group 1: Children who met PA guidelines of ≥ 60 min (N=189); M+F (42.9%); 10y; White (23.3%), African-American (61.4%), other/mixed (15.3%) Group 2: Children who did not meet PA guidelines of ≥ 60 min (N=132); M+F	PA level across 1 year (The Block Physical Activity Screener)	Fecal samples	Gut microbiome; Modified cetyltrimethylammonium bromide (CTAB) method; 16S rRNA gene sequencing (V4); Illumina Nextseq	Dietary pattern reported	There were no significant differences in alpha-diversity between groups, although min of daily moderate PA were associated with increased alpha-diversity in females. Beta-diversity analysis showed significant differences between groups. 186 OTUs were differently abundant between groups, specifically, members of <i>Christensenellaceae</i> R-7 group and <i>Subdoligranulum</i> were	NR

(50%); 10y; White (22.7%), African-American (65.2%); other/mixed (12.1%)

increased, while *Blautia*, *Faecalibacterium*, *Roseburia* and *Ruminococcaceae* UCG-014 were decreased in those children who met the PA recommendations compared to the other group

Magzal et al. 2022	Cross-sectional	Group 1: More active participants with insomnia (N=31); M+F (80.64%); 72.22±5.08y; Israeli Group 2: Less active participants with insomnia (N=18); M+F (77.77%); 73.66±6.65y; Israeli	PA level across 2 weeks (accelerometer on the right ankle: active participants were those with median daily step counts ≥ 6500, while less active group had step counts < 6500)	Fecal samples	Gut microbiome; DNeasy PowerSoil Kit; 16S rRNA gene sequencing (V4); Illumina MiSeq	Food questionnaire	There were no significant differences in alpha- and beta-diversity between more and less active participants. <i>Bifidobacterium</i> , <i>Clostridium sensu stricto</i> 1, <i>UCG-002</i> , <i>Catenibacterium</i> , <i>Peptococcus</i> , <i>Holdemanella</i> and <i>Butyricicoccus</i> were enriched, while <i>Barnesiella</i> , <i>Blautia</i> , <i>Lachnospirillum</i> , <i>Christensenellaceae</i> R-7 group and <i>UCG-005</i> were decreased in more active compared to less active group	SRA repository (Accession number: PRJNA730721)
Xu et al. 2022	Cross-sectional	Group 1: Elite athletes (N=22); M+F (45.5%); 21.55±2.42y; Chinese Group 2: Physically active participants (N=22); M+F (45.5%); 21.27±2.47y; Chinese Group 3: Physically inactive participants (N=22); M+F (45.5%); 21.27±2.51y; Chinese	Athletic performance (athletes from 400m, 1,500m, high jump, long jump, discus, javelin and pole vault, that had ≥ 8 years of experience and participated in official events held by the Chinese Athletics Association or International Association of Athletics Federation)	Fecal samples	Gut microbiome; MagPure Stool DNA KF Kit B; 16S rRNA gene sequencing (V3-V4); Illumina MiSeq	FFQ	There were no significant differences in alpha- and beta-diversity between groups. Elite athletes had a significantly higher abundance of <i>Clostridiaceae</i> and <i>Megamonas rupellensis</i> compared to the non-athletes. <i>Bilophila</i> and <i>Faecalicoccus</i> were more abundant in physically inactive participants compared to the other groups	NR

PA level according to the American College of Sports guidelines (i.e., active subjects were those who perform ≥ 150 min of PA per week; and inactive subjects were those who did not engage in any moderate or vigorous PA per day)

Hintikka et al. 2022	Cross-sectional	Group 1: Cross-country skiers (N=27); M+F (48%); 27.1 \pm 5.1y; Finnish Group 2: Physically active participants (N=27); M+F (48%); 27.4 \pm 5.6y; Finnish	Athletic performance (Finnish Nordic Ski Championships)	Fecal samples	Gut microbiome; GXT Stool Extraction Kit VER 2.0; 16S rRNA gene sequencing (V4); Illumina MiSeq	NR	Athletes presented a higher alpha-diversity compared to physically active participants. Beta-diversity did not indicate significant dissimilarities between groups. Athletes had a higher relative abundance of <i>Eubacterium eligens</i> group and lower of <i>Phascolarctobacterium</i> , <i>Lachnospiraceae</i> UCG-001, <i>Bacteroides</i> , <i>Lachnoclostridium</i> , <i>Akkermansia</i> , among others, compared to non-athletes The amount of weekly PA in the non-athletes group was positively associated with <i>Pasteurellaceae</i> and inversely with <i>Acidamidococcaceae</i> . The training load of the athletes was negatively associated with <i>Enterobacteriaceae</i> , <i>Bacteroidaceae</i> and <i>Veillonellaceae</i>	NR
-----------------------------	-----------------	--	---	---------------	---	----	--	----

Shivani et al. 2022	Cross-sectional	Healthy participants (N=119); M+F (68.1%); 47.1±15y; Taiwanese	PA level (self-reported questionnaire)	Fecal samples	Gut microbiome; QIAamp Fast DNA Stool Mini Kit; 16S rRNA gene sequencing (V3-V4); Illumina MiSeq	Type of diet recorded	There were no significant differences in alpha- and beta-diversity between participants with different PA level (reported as high, moderate, light or sedentary). Individuals with high to moderate PA level per week showed a significantly higher abundance of <i>Faecalibacterium</i> and <i>F. prausnitzii</i> , compared to less active subjects	NR
Cuthbertson et al. 2022	Cross-sectional	Group 1: Elite athletes (N=117); M+F (44.6%); 24.40±3.89y; NR Group 2: Healthy non-athletes (PA < 4 hours/week) (N=10); NR; 19y; NR	Athletic performance (athletes belonged to UK Sport-funded Olympic World Class Programmes)	Oropharyngeal throat swab samples	Oropharynx resident mucosal microbiome; modified CTAB method; 16S rRNA gene sequencing (V4); Illumina MiSeq	NR	Athletes had a lower alpha-diversity compared to non-athletes	ENA (Accession number: PRJEB45648)
Lubomski et al. 2022	Cross-sectional	Group 1: Participants with Parkinson disease (N=103); M+F (43.7%); 67.1±12.2y; Caucasian (78.6), Asian (3.9%), Middle Eastern (6.8%), other (10.7%) Group 2: Healthy participants (N=81); M+F (67.9%); 62.4±15.6y; Caucasian (79.0%), Asian (6.2%), Middle Eastern (2.5%), other (12.3%)	PA level across 7 days (IPAQ)	Fecal samples	Gut microbiome; MP Biomedicals FastDNA SPIN Kit for Feces; 16S rRNA gene sequencing (V3-V4); Illumina MiSeq	FFQ	PA level was associated with changes in beta-diversity	NCBI (Accession number: PRJNA808166)
Visuthranukul et al. 2022	Cross-sectional	Obese children (N=164); M+F (41%); 10.4±2.2y; Thai	PA and SB (self-reported questionnaires)	Fecal samples	Gut microbiome; QIAamp fast DNA Stool Mini Kit; 16S rRNA gene sequencing (V3-V4); Illumina MiSeq	24-hour dietary recall	Actinobacteria and <i>Bifidobacterium</i> were negatively associated with weekday screen time	NR

Intervention studies (Acute and/or chronic effects of PA)

Shukla et al. 2015	Within-subjects experiment	Group 1: Patients with myalgic encephalomyelitis/chronic fatigue syndrome (N=10); M+F (80%); 48.6±10.5y; NR Group 2: Healthy controls (N=10); M+F (80%); 46.5±13.0y; NR	Cycle ergometer exercise test until volitional exhaustion (3-min warm-up with increments of 15 W per min)	Fecal and blood samples	Gut and blood microbiome; QIAamp DNA Blood Mini Kit and QIAamp DNA Stool Mini Kit; 16S rRNA gene sequencing (NR); 454 GS FLX	NR	There were significant changes in the abundance of major gut phyla in patients not observed in healthy controls at 72 hours post-exercise. In blood samples, bacteria belonged to <i>Clostridium</i> clusters XIVa and IV increased in the patients at 15 min post-exercise	SRA repository (Accession number: PRJNA302040)
Allen et al. 2018	Non-RCT	Group 1: Sedentary participants with obesity (N=14); M+F (78.57%); 31.14±8.57y; NR Group 2: Sedentary lean participants (N=18); M+F (50%); 25.10±6.52y; NR	AE; 6 weeks; 3 sessions/week; 30 to 60 min/session at 60%–75% of HRR	Fecal samples	Gut microbiome; PowerLyzer PowerSoil DNA Isolation Kit; 16S rRNA gene sequencing (V4); Illumina MiSeq	7-day food record used to design a 3-day food menu that participants were asked to follow before each fecal collection	There was no significant effect of PA intervention on alpha-diversity. Beta-diversity analysis revealed that dissimilarity between BMI groups at baseline disappeared after training. <i>Clostridiales</i> , <i>Lachnospira</i> , <i>Roseburia</i> , <i>Fecalibacterium</i> and an unclassified taxon from <i>Lachnospiraceae</i> family increased after PA irrespective of BMI	NR
Zhao et al. 2018	Within-subjects experiment	Amateur runners (N=20); M+F (20%); 31.3±6.1y; Chinese	2016 Chongqing International Half Marathon	Fecal samples	Gut microbiome; CTAB/SDS method; 16S rRNA gene sequencing (V3-V4); Illumina HiSeq	Control of diet (i.e., each participant received the same kind of food)	There was no significant effect of the half-marathon on alpha-diversity. <i>Coriobacteriaceae</i> , <i>Succinivibrionaceae</i> , <i>Coprococcus_2</i> , <i>Actinobacillus</i> and <i>Ruminococcus bicirculans</i> increased after the half-marathon	SRA repository (Accession number: SRP108097)
Cronin et al. 2018	RCT	Group 1: PA only group: Healthy sedentary participants (N=25); M+F (56%); 35y (28, 38); Caucasian	ARE; 8 weeks; 3 sessions/week; 90 min/session; AE at moderate intensity + 8 resistance exercises (3 sets of 8 repetitions,	Fecal samples	Gut microbiome; QIAamp DNA Stool Mini Kit; WMGS; Illumina Hiseq 2500	FFQ	There was no significant effect of PA intervention on alpha- and beta-diversity (intra-group comparison [group 1])	ENA (Accession number: PRJEB20054)

Group 2: PA + Protein group: Healthy sedentary participants (N=22); M+F (55%); 32y (28, 35); Caucasian

increasing resistance weight by 15% to 20%)

Group 3: Protein only (control) group: Healthy sedentary participants (N=27); M+F (41%); 34y (28, 36); Caucasian

Munukka et al. 2018	Non-RCT	Sedentary participants with overweight (N=17); F; 36.8±3.9y; Finnish	AE; 6 weeks; 3 sessions/week; 40, 50 or 60 min/session for weeks 1-2, 3-4 or 5-6, at low intensity (below the aerobic threshold). Every other session, weeks 3-4/5-6 included 3/4 intervals of 10 min at moderate intensity (between the aerobic and anaerobic threshold)	Fecal samples	Gut microbiome; GTX stool kit; 16S rRNA gene sequencing (V4) and WMGS; Illumina MiSeq	3-day food record (2 weekdays and 1 weekend day)	There was no significant effect of PA intervention on alpha-diversity, but beta-diversity analysis revealed differences between samples before and after training. There was a decrease in Proteobacteria and an increase in Verrucomicrobia, <i>Verrucomicrobiaceae</i> and <i>Akkermansia</i> in response to PA intervention	ENA (Accession numbers: PRJEB27978 [16S], PRJEB27914 [WMGS])
Taniguchi et al. 2018	Randomized controlled cross-over trial	Healthy participants (N=31); M; 62-76y; Japanese	AE; 5 weeks; 30 min for weeks 1-2, and 45 min for weeks 3-5; intensity was gradually increased such at a power output	Fecal samples	Gut microbiome; MagDEA DNA 200 Kit; 16S rRNA gene sequencing (V3-V4); Illumina MiSeq	FFQ	There was no significant effect of PA intervention on alpha- and beta-diversity. <i>Oscillospira</i> increased while <i>Clostridium difficile</i> decreased after PA intervention period, while both did not change in the control period	DDBJ database (Accession Number: DRA005883)

designed to elicit 60% of VO₂peak during week 1, 70% during weeks 2-3, and 75% during weeks 4-5

Cronin et al. 2019	Randomized controlled cross-over trial	Group 1: PA group: Patients in clinical remission of Inflammatory Bowel Disease and physically inactive (N=13); M+F (30.8%); 33y (31, 36); NR Group 2: Control group: Patients in clinical remission of Inflammatory Bowel Disease and physically inactive (N=7); M+F (14.3%); 31y (31, 36); NR	ARE; 8 weeks; 3 sessions/week at moderate and progressive intensity, based on the couch to 5 km training programs	Fecal samples	Gut microbiome; QIAmp DNA Stool Mini Kit; WMGS; Illumina NextSeq 500	NR	There was no significant effect of PA intervention on alpha- and beta-diversity (inter-group comparisons)	ENA (Accession number: PRJEB27623)
Bouquet et al. 2019	Within-subjects experiment	Group 1: Patients with myalgic encephalomyelitis/chronic fatigue syndrome (N=14); F; 49y (38.0, 58.3); NR Group 2: Healthy controls (N=11); F; 50y (45.5, 58.5); NR	2 cycle ergometer exercise tests until volitional exhaustion (3-min warm-up with increments of 15 W per min)	Blood samples	Blood microbiome; PAXgene Blood RNA Kit; RNA-seq; Illumina HiSeq 2500	NR	There was no significant effect of acute PA on viral abundance	NCBI GEO repository (Accession number: Bioproject ID: PRJNA526259, GEO ID: GSE128078)
Keohane et al. 2019	Within-subjects experiment	Healthy well-trained athletes (N=4); M; 26.5±1.3y; NR	33-day, 5000-km transoceanic rowing race	Fecal samples	Gut microbiome; DNA Genotek OMNIgene Gut Stool Microbiome Kit; WMGS; Illumina NextSeq 550	FFQ to assess diet pre-race, and food consumption record during the race	Alpha-diversity increased during the race. <i>Dorea longicatena</i> , <i>Roseburia hominis</i> and unclassified members of the genus <i>Subdoligranulum</i> increased, while <i>Bacteroides</i>	NR

finegoldii decreased during the rowing race

Scheiman et al. 2019	Within-subjects experiment	Group 1: Marathon runners (N=15); M+F (65%); 27.4y; Caucasian (85%), Asian (11.5%), mixed (4%) Group 2: Sedentary controls (N=11); M+F (50%); 29.5y; Caucasian (50%), Asian (33%), Black (8%) Group 3: Ultra-marathon runners and rowers (N=87); M+F (48.28%); 28.5±2.8y; Caucasian (100%)	Group 1 and 2: 2015 Boston Marathon Group 3: NR	Fecal samples	Gut microbiome; Mo Bio PowerSoil high-throughput DNA extraction Kit; 16S rRNA gene sequencing (V4) and WMGS; Illumina MiSeq and HiSeq 2500	Daily annotation sheet to collect dietary data adapted from the AGP	The relative abundance of <i>Veillonella</i> increased in runners post-marathon compared to controls, and in ultra-marathoners and rowers after a PA intervention	NCBI BioProject (Accession numbers: PRJNA472785 [16S], PRJNA472768 [WMGS])
Huber et al. 2019⁴	Non-RCT	Patients with non-alcoholic fatty liver disease (N=41); M+F (34.1%); 41y (24, 61); NR	ARE individualised training program; 8 weeks; 3-5 sessions/week at moderate intensity	Fecal samples	Gut microbiome; PureLink Microbiome DNA Purification Kit; WMGS; Nanopore MinION	NR	Alpha-diversity increased after training. At phylum level, Bacteroidetes and Euryarchaeota increased, whereas Actinobacteria decreased after ARE training. At genus level, 9 genera significantly increased, whereas <i>Bifidobacterium</i> decreased	NR
Kern et al. 2019	RCT	Group 1: Active commuting group: Participants with overweight/obesity (N=19); M+F (58%); 35y (28, 43); NR	Active commuting by bike (group 1); moderate PA (50% of VO ₂ peak-reserve for group 2) or vigorous (70% of VO ₂ peak-reserve for group 3)	Fecal samples	Gut microbiome; NucleoSpin Soil Kit; 16S rRNA gene sequencing (V4); Illumina HiSeq 2500	4-day food record (3 weekdays and 1 weekend day)	Alpha-diversity increased in the vigorous-intensity PA group after 3 months of training, compared to the control group. Beta-diversity analysis indicated dissimilarity between samples from PA and control groups, in particular, the vigorous-intensity PA group showed a decreased	NR

Group 2: Moderate-intensity PA group: Participants with overweight/obesity (N=31); M+F (45%); 33y (27, 38); NR

intensity; 6 months; 5 sessions/week

heterogeneity. No genera significantly changed after PA intervention

Group 3: Vigorous-intensity PA group: Participants with overweight/obesity (N=24); M+F (50%); 39y (33, 42); NR

Group 4: Control group: Participants with overweight/obesity (N=14); M+F (43%); 38y (30, 42); NR

Liu et al. 2019 RCT

Group 1: PA group: Sedentary participants with overweight/obesity and prediabetes (N=50); M; 42.80±2.55y; Chinese

ARE; 12 weeks; 3 sessions/week; 70 min/session; 3 x 10-min stations of high-intensity treadmill intervals +

Fecal samples

Gut microbiome; Guanidine thiocyanate silica beads-based method; WMGS; Illumina HiSeq 4000

FFQ

Group 2: Control group: Sedentary participants with overweight/obesity and prediabetes (N=19); M; 44.94±2.43y; Chinese

high-intensity resistance and calisthenics exercises intervals + high intensity stationary bike intervals, with 3-4 min recovery between stations

There was no significant effect of PA intervention on alpha- and beta-diversity even after separating the PA group into responders and non-responders. However, the microbial profiles of non-responders after PA training shared more similarity with those of the control group. The abundance of *Bacteroides xylanisolvens*, *Alistipes putredinis*, *Alistipes shahii* decreased, and *Streptococcus mitis* group and *Lanchospiraceae bacterium* increased in responders compared to non-responders

Grosicki et al. 2019	Within-subjects experiment	World-class ultramarathon runner (N=1); M; 32y; NR	163-km mountain footrace Western States Endurance Run	Fecal samples	Gut microbiome; Guanidine thiocyanate silica column-based method; 16S rRNA gene sequencing (V4); Illumina NextSeq 500	The participant was asked for reporting purposeful changes in diet	Alpha-diversity, F/B ratio, and the relative abundances of <i>Veillonella</i> and <i>Streptococcus concomitant</i> increased, while <i>Alloprevotella</i> and <i>Subdoligranulum</i> decreased after the mountain footrace	NR
Motiani et al. 2020	Non-RCT	Group 1: Sprint interval training (SIT) group: Sedentary participants with prediabetes/type-2 diabetes (N=10); M+F (30%); 49±4y; NR Group 2: Moderate-intensity continuous training (MICT) group: Sedentary participants with prediabetes/type-2 diabetes (N=8); M+F (25%); 49±4y; NR	SIT or MICT; 2 weeks; 3 sessions/week; each SIT session involved 4-6 x 30-s bouts of all out cycling efforts with 4 min of recovery between the cycling bouts. The MICT sessions involved 40 to 60 min of moderate-intensity (60% of VO ₂ peak) cycling	Fecal samples	Gut microbiome; MasterPure Complete DNA & RNA Purification Kit; 16S rRNA gene sequencing (V3-V4); Illumina MiSeq	NR	There was no significant effect of SIT and MICT on alpha-diversity (i.e., group x time interaction). Both training modes increased the relative abundance of Bacteroidetes and decreased <i>Clostridium spp</i> (i.e., group x time interaction). There was an increase in <i>Lachnospira</i> after SIT and <i>Veillonella</i> and <i>Fecalibacterium</i> after MICT compared to baseline (intra-group comparisons)	NR
Hampton-Marcell et al. 2020	Non-RCT	Collegiate swimmers (N=13); M+F (61.54%); 18-24y; NR	Swimming training season: Phase 1: peak training (2 weeks); phase 2: start of taper (2 weeks); phase 3: end of taper (2 weeks)	Fecal samples	Gut microbiome; MoBio PowerSoil DNA Isolation Kit; 16S rRNA gene sequencing (V4); Illumina MiSeq	NR	Coinciding with the reduction in training volume, there was a significant decrease in alpha-diversity, community similarity and the abundance of <i>Fecalibacterium</i> and <i>Coproccoccus</i>	Figshare (10.6084/m9.figshare.9117125)
Rettedal et al. 2020	Non-RCT	Group 1: Participants with overweight (N=15); M; 31.0±2.0y; NR	HIIT; 3 weeks; 3 sessions/week; 8-12 x 60-s bouts at $\dot{V}O_2$ peak power output interspersed	Fecal samples	Gut microbiome; Quick-DNA Fecal/Soil Microbe Microprep Kit; 16S rRNA gene sequencing	FFQ	There was no significant effect of HIIT on alpha-, beta-diversity, F/B ratio and specific bacteria (i.e., intra- and inter-group comparisons)	SRA repository (Accession number: PRJNA630282)

		Group 2: Lean participants (N=14); M; 29.0±2.0y; NR	by 75-s rest time		(V3-V4); Illumina MiSeq			
Quiroga et al. 2020	RCT	Group 1: PA group: Participants with obesity (N=20); M+F (48%); 11.0±0.4y; NR Group 2: Control group: Participants with obesity (N=9); M+F (50%); 10.5±0.5y; NR Group 3: Control group: Healthy participants (N=14); M+F (50%); 9.5±0.4y; NR	ARE; 12 weeks; 2 sessions/week; 45 min/session; 30-s sprint (at a maximum cadence at 3'30", 4'30", 5'30", and 6'30", increasing the load level after each sprint) + resistance exercises (3 sets of 12 repetitions with a load of 30% 1RM, increasing until 3 sets of 8 repetitions with a load of 70% 1RM, with breaks of 20-60s between series)	Fecal samples	Gut microbiome; QIAamp DNA Stool Mini Kit with some modifications; 16S rRNA gene sequencing (V3-V4); Illumina MiSeq	Participants received nutritional advice for a healthy and balanced diet	Beta-diversity analysis did not indicate a significant dissimilarity between samples from obese and healthy groups after training. The relative abundances of Proteobacteria and Gammaproteobacteria decreased, while <i>Blautia</i> , <i>Dialister</i> and <i>Roseburia</i> increased after PA intervention, tending to be similar to the healthy group	NR
Warbeck et al. 2020	RCT	Group 1: PA group: Sedentary participants with celiac disease (N=20); M+F (80%); 42.0±12.3y; NR Group 2: Control group: Sedentary participants with celiac disease (N=21); M+F (90.48%); 46.2±10.2y; NR	HIIT; 12 weeks; 2 sessions/week; 60 min/session; 6 x 30-s HIIT intervals increasing up to 14 intervals, with 2 min of recovery (90% of HRmax for the HIIT intervals and 50% of HRmax for the active rest intervals)	Fecal samples	Gut microbiome; FastDNA Spin Kit for Feces; 16S rRNA gene sequencing (V3-V4); Illumina MiSeq	3-day food record (2 weekdays and 1 weekend day)	There was no significant effect of HIIT on alpha-diversity. Beta-diversity analysis indicated dissimilarities between groups. Following the intervention, the PA group showed a higher relative abundance of <i>Parabacteroides</i> and <i>Defluviitaleaceae</i> UCG-011	NR

Zhong et al. 2021	RCT	<p>Group 1: Exercise group: Healthy sedentary participants (N=6); F; 69.83±4.50y; Chinese</p> <p>Group 2: Control group: Healthy sedentary participants (N=6); F; 67.50±4.28y; Chinese</p>	<p>ARE; 8 weeks; 4 sessions/week; 60 min/session; 5 x 4-min aerobic exercises with 20-s rest time between 2 exercises + 6 resistance exercises with 2 sets of 8-10 repetitions that progressively increased to 3 sets of 12-15 repetitions</p>	Fecal samples	Gut microbiome; NucleoSpin Soil Kit; 16S rRNA gene sequencing (V4); Illumina HiSeq 2500	NR	There was no significant effect of PA intervention in alpha-diversity (i.e., group x time interaction). The relative abundances of <i>Actinobacteria</i> , <i>Eubacteriaceae</i> and <i>Eubacterium</i> significantly increased in the exercise group compared to the control group (i.e., group x time interaction)	NR
Bycura et al. 2021	Non-RCT	<p>Group 1: Cardiorespiratory PA group: Healthy participants (N=28); M+F (75%); 20.54±1.93y; NR</p> <p>Group 2: Resistance PA group: Healthy participants (N=28); M+F (60.71%); 21.28±3.85y; NR</p>	<p>Group 1: Cardiorespiratory PA training; 8 weeks; 3 sessions/week; 60 min/session at 60–90% HRmax</p> <p>Group 2: RE; 8 weeks; 3 sessions/week; 60 min/session at 70–85% 1RM over 3–6 sets of 6–12 repetitions</p>	Fecal samples	Gut microbiome; DNeasy PowerSoil Kit (Intervention 1) and MoBIO 96-well PowerSoil kit (Intervention 2); 16S rRNA gene sequencing (V4); Illumina MiSeq	Participants were formally instructed to maintain their dietary habits and asked to report any major deviations in the per-sample questionnaire	Cardiorespiratory PA initially induced dissimilarities between samples (i.e., beta-diversity) which were not maintained after the intervention, while RE resulted in no significant changes	SRA repository (Accession number: PRJNA693579)
Tabone et al. 2021	Within-subjects experiment	Endurance cross-country runners (N=40); M; 35.79±8.01y; NR	Treadmill exercise test until volitional exhaustion (with a slope of 1% at 10 km/h, with increments of 0.3 km/h every 30 s)	Fecal samples	Gut microbiome; E.Z.N.A. Kit; 16S rRNA gene sequencing (V3-V4); Illumina MiSeq	FFQ and 3-day food record (2 weekdays and 1 weekend day)	There was no significant effect of a single bout of PA in alpha- and beta-diversity. The relative abundances of <i>Romboutsia</i> , <i>Ruminococcaceae</i> UCG-005, <i>E. coli</i> TOP498 and <i>Blautia</i> increased, while	NCBI Biosample (https://submit.ncbi.nlm.nih.gov/subs/sra/SUB7780980/overview)

Ruminiclostridium 9 and *Clostridium phoceensis* decreased after acute PA

Barton et al. 2021	Non-RCT	Unfit participants (N=2); M; 30 and 33y; NR	6-month training that culminated in a marathon or an Olympic-distance triathlon; training for the marathon consisted of regular AE complimented with 2 sessions/week of RE, while training for the triathlon included AE	Fecal samples	Gut microbiome; QIAmp DNA Stool Mini Kit; WMGS; Illumina NextSeq 500	Daily food records via the MyFitnessPal app and monthly FFQ	Alpha-diversity increased over the training period and peaked for the marathoner near the marathon and for the triathlete in the intensity peak of his training. Beta-diversity showed dissimilarities between participants throughout the study period. For the marathoner, <i>Veillonella parvula</i> increased, while <i>Agathobacter rectalis</i> decreased after 6-month training. For the triathlete, <i>Akkermansia muciniphila</i> and <i>Methanobrevibacter smithii</i> increased while <i>Bifidobacterium animalis</i> decreased after the training period	ENA (Accession number: PRJEB27624)
Uchida et al. 2021	Non-RCT	Group 1: PA group: Patients with non-alcoholic fatty liver disease (N=49); M; 49.2±8.3y; Japanese Group 2: Dietary restriction group: Patients with non-alcoholic fatty liver disease (N=21); M; 53.0±9.9y; Japanese	ARE; 12 weeks; 3 sessions/week; 90 min/session; AE consisted of fast walking and/or light jogging for 20–40 min at 60–85% VO ₂ max + resistance exercises (leg presses, leg curls, chest presses, etc.)	Saliva samples	Oral microbiome; DNeasy Blood & Tissue Kit; 16S rRNA gene sequencing (V3-V4); Illumina MiSeq	Food diary record (NR for PA group)	There was no significant effect of ARE intervention on alpha-diversity. Beta-diversity analysis revealed dissimilarities after intervention. <i>Campylobacter</i> , <i>Corynebacterium</i> , <i>Actinomyces</i> and <i>Lautropia</i> increased while <i>Prevotella</i> decreased after PA intervention (intra-group comparison [group 1])	NR
Feng et al. 2021	Non-RCT	Healthy college students (N=12); M+F (41,7%); 25.3±3.8y; Chinese (50%), Pakistani (50%)	AE; 4 weeks; 25-35 min/day of jogging	Fecal samples	Gut microbiome; Ezup genomic DNA extraction kit; 16S rRNA gene	Dietary interviews	There was no significant effect of PA intervention on alpha- and beta-diversity, and gut microbiome	ENA (Accession number: PRJEB38835)

					sequencing (V4-V5); Illumina MiSeq		composition at any time-point (7 th , 14 th , 21 th and 28 th days)	
Moithino-Silva et al. 2021⁵	RCT and cross-sectional	Group 1: Aerobic PA group: Physically inactive participants (N=13); M+F (77%); 31.4±8.3y; German Group 2: Resistance PA group: Physically inactive participants (N=12); M+F (50%); 29.9±7.9y; German Group 3: Control group: Physically inactive participants (N=11); M+F (64%); 33.4±7.9y; German Group 4: Extreme PA group: Elite athletes (N=13); M+F (62%); 30±9.9y; German	Group 1: AE; 6 weeks; 3 sessions/week; 30 min/session; running at an intensity regulated by the RPE Group 2: RE; 6 weeks; 3 sessions/week; 30 min/session; 8 repetitions x 6 strength exercises	Fecal samples	Gut microbiome; QIAamp DNA Fast stool Mini Kit; 16S rRNA gene sequencing (V1-V2); Illumina MiSeq	Self-reported dietary questionnaire (NR for elite athletes)	There was no significant effect of AE and RE on alpha- and beta-diversity, and the abundance of specific bacteria There were no significant differences in alpha- and beta-diversity between elite athletes and physically inactive participants, although athletes had a higher abundance of <i>Bacteroides</i>	ENA (Accession number: PRJEB38835)
Craven et al. 2021	Non-RCT	Highly-trained middle-distance runners (N=14); M+F (42.9%); 20.7±3.2y (men), 22.0±3.4y (women); NR	Normal training (NormTr): 3 weeks High-volume training (HVolTr): 3 weeks; 10, 20 and 30% increase in training volume during each successive week from NormTr	Fecal samples	Gut microbiome; Repeated bead beating plus column method; 16S rRNA gene sequencing (V3-V4); Illumina MiSeq	3-day food record	HVolTr or TaperTr did not induce significant changes in alpha-diversity compared to NormTr. <i>Pasterellaceae</i> , <i>Lachnospirillum</i> , <i>Haemophilus</i> , <i>Streptococcus parasagunis</i> , and <i>H. parainfluenzae</i> decreased, while <i>Ruminococcus callidus</i> increased following HVolTr	NR

Taper training (TaperTr); 1 week; 55% exponential reduction in training volume from HVolTr week 3

Verheggen et al. 2021	Non-RCT	Participants with obesity (N=14); M+F (50%); 51.0±1.0y; NR	AE; 8 weeks; 2-4 sessions/week; 5-min warm-up, followed by 50 min of cycling on an ergometer at 65% to 85% of the HRR, and 5-min cooldown	Fecal samples	Gut microbiome; Maxwell 16 Total RNA system; 16S rRNA gene sequencing (V5-V6); NR	24-hour food records before and in the last week of intervention	There was no significant effect of the PA intervention on alpha- and beta-diversity. <i>Ruminococcus gauvreauii</i> , <i>Lachnospiraceae</i> FCS020 group and <i>Anaerostipes</i> significantly increased after PA intervention	NR
Erlandson et al. 2021	Non-RCT	Sedentary participants (N=22); M+F (5%); 58.0y (55.0, 63.8); Caucasian (77%), Hispanic (14%), other (18%)	ARE; 24 weeks; 3 sessions/week; 20–30 min of treadmill walking at 30–40% of VO ₂ max increasing up to 40–50% VO ₂ max and time 5 min each week + 3x8 repetitions of RE (e.g. bench press, leg press, lateral pulldown, and a rotating fourth exercise) at 40–50% 1RM increasing up to 60–70% 1RM	Fecal samples	Gut microbiome; QIAamp PowerFecal Pro DNA Isolation Kit; 16S rRNA gene sequencing (V3-V4); Illumina MiSeq	3-day food record	There was no significant effect of PA intervention on alpha-diversity. Beta-diversity analysis showed dissimilarities at phylum level after PA intervention. <i>Bifidobacterium</i> , an unidentified genus of <i>Bifidobacteriaceae</i> , <i>Oscillospira</i> and <i>Anaerostipes</i> increased, while <i>Prevotella</i> and <i>Oribacterium</i> decreased after ARE	SRA repository (Accession number: PRJNA657420)

Resende et al. 2021	RCT	Group 1: PA group: Sedentary participants (N=12); M; 25.58±5.07y; Brazilian Group 2: Control group: Sedentary participants (N=12); M; 25.5±4.66y; Brazilian	AE; 10 weeks; 3 sessions/week; 50 min/session; 5-min warm-up followed by 40 min of steady-state cycling at 60–65% relative intensity of VO ₂ peak and 5-min cool-down	Fecal samples	Gut microbiome; QIAamp Fast DNA Stool Mini Kit; 16S rRNA gene sequencing (V4); Illumina MiSeq	FFQ and 3-day food record in week 5 (2 weekdays and 1 weekend day)	There was no significant effect of AE intervention on alpha- and beta-diversity. <i>Streptococcus</i> increased while an unclassified genus of <i>Clostridiales</i> order decreased after intervention (group x time interaction)	NCBI Biosample (Accession number: PRJNA592775)
Oliveira et al. 2021	Non-RCT	Football players (N=17); F; 24.1±3.4y; Portuguese	Official international football tournament (10 days including 7 training sessions and 3 official matches separated by 48–72 hours)	Fecal samples	Gut microbiome; NZY Tissue gDNA Isolation Kit; 16S rRNA gene sequencing (V3-V4); Ion Torrent PGM	24-hour food records	There was no significant effect of the tournament on alpha- and beta-diversity, and gut microbiome composition	NR
Lkhagva et al. 2021	RCT	Group 1: PA group: Healthy participants (N=13); NR; 30-50y; Korean Group 2: Dietary group: Healthy participants (N=14); NR; 30-50y; Korean Group 3: Control group: Healthy participants (N=14); NR; 30-50y; Korean	AE; 12 weeks; 3 sessions/week; 30 min/session	Fecal samples	Gut microbiome; Mobio PowerLyzer PowerSoil DNA Isolation Kit; 16S rRNA gene sequencing (V1-V3); 454 Genome Sequencer FLX	NR	AE intervention increased alpha-diversity. Beta-diversity showed a significant dissimilarity between PA and control groups. Firmicutes, Tenericutes, Verrucomicrobia and <i>Dialister succinatiphilus</i> increased, while Proteobacteria, <i>Lentishaerae</i> , <i>Bacteroides fragilis</i> , <i>Phascolarctobacterium faecium</i> and <i>Megasphaera elsdenii</i> decreased after AE (inter-group comparisons [group 1 and 3])	Figshare (10.6084/m9.figshare.16620349.v1)
Donati Zeppa et al. 2021	Non-RCT	Healthy sedentary college students (N=18); M; 22±2y; Italian	AE; 9 weeks; 3, 4 or 5 sessions/week; 55, 60 or 70 min/session; warm-	Fecal samples	Gut microbiome; QIAamp PowerFecal DNA Kit; 16S rRNA	Daily call interviews from 2 weeks before PA	There was no significant effect of AE on alpha-diversity. Beta-diversity analysis revealed a significant dissimilarity after intervention.	NR

			up followed by a high-intensity interval cycling training and a cool-down		gene sequencing (V3-V4); Illumina MiSeq	intervention to the end of the study	Actinobacteria, <i>Bifidobacterium</i> , <i>Dorea</i> and a member of <i>Ruminococcaceae</i> family increased while Cyanobacteria, Proteobacteria, <i>Parabacteroides</i> , <i>Prevotella</i> , <i>Lachnospira</i> and <i>Phascolarctobacterium</i> decreased after AE	
Villarroel et al. 2021	Non-RCT	Healthy participants (N=8); M; 24±4y; NR	AE; 6 weeks; 5 sessions/week; 60 min of cycling at 70% of VO ₂ max	Skeletal muscle and blood samples	Muscle and blood microbiome; NucleoSpin blood kit; 16S rRNA gene sequencing (V3-V4); Illumina MiSeq	NR	There was no significant effect of AE on alpha-diversity in muscle and blood samples. <i>Pseudomonas</i> decreased while <i>Staphylococcus</i> and <i>Acinetobacter</i> increased in muscle after AE	NR
Fukuchi et al. 2022⁶	Within-subjects experiment	College long-distance runners (N=13); M+F (30.8%); 19-21y; Japanese	4-week period of training season with an official race in week 4	Fecal samples	Gut microbiome; ISOFEAL for Beads Beating; 16S rRNA gene sequencing (V3-V4); Illumina MiSeq	Food records	The race induced an increase in alpha-diversity. Beta-diversity analysis showed a significant microbial dissimilarity before and after the race. Firmicutes increased while Bacteroidetes decreased after the race (pre- and post-comparisons before dietary supplementation)	DDBJ database (Accession number: DRA011638, BioProject ID: PRJDB11304 and BioSample IDs: SAMD00283406-SAMD00283454)
Torquati et al. 2022	RCT	Group 1: Moderate-intensity continuous training (C- MIT) group: Participants with type-2 diabetes (N=7); M+F (85.7%); 62.5±5.5y; NR Group 2: High-intensity interval training (C-HIIT) group: Participants with	C-MIT: ARE, 8 weeks; 4 sessions/week; 52.5 min/session; 2 sessions of combining ARE (22 min of AE at 55-69% of HRpeak followed by 30 min of RE at 11-13	Fecal samples	Gut microbiome; Qiagen DNeasy Powersoil Kit; WMGS; Illumina NextSeq500	24-hour food records before and in the last week of intervention	There was no significant effect of C-MIT and C-HIIT on alpha-diversity. Beta-diversity analysis showed differences between groups after interventions. <i>Bifidobacterium</i> , <i>A. muciniphila</i> , <i>Lachnospira eligens</i> , <i>Enterococcus</i> spp., and <i>Clostridium Cluster IV</i> were higher after C-MIT, while bacteria from	NR

type-2 diabetes (N=5); M+F (20%); 64.4±8.2y; NR

RPE) and 2 sessions of only AE (52.5 min at 55-69% of HRmax)

C-HIIT: ARE, 8 weeks; 3 sessions/week; 26 min/session; 3-min warm-up at 50-60% of HRpeak, followed by 4 min of AE at 85-95% of HRpeak and 1-min rest + 8x1-min intervals of RE at 17-18 RPE with each interval separated by 1-min rest, and a 3-min cool-down at 50-60% of HRpeak

Erysipelothrichales, *Oscillospirales* and *Methanobrevibacter smithii* increased after C-HIIT

Cheng et al. 2022	RCT	<p>Group 1: AE group: Patients with non-alcoholic fatty liver disease and prediabetes (N=22); M+F (77.3%); 59.3y (57.3, 61.3); Chinese</p> <p>Group 2: AE + Diet group: Patients with non-alcoholic fatty liver disease and Prediabetes (N=22); M+F (69.6%); 59.4y (57.8, 61.1); Chinese</p>	<p>AE; 8.6 months; 2-3 sessions/week; 5-min warm-up followed by 30-60 min of AE at 60-75% of the VO₂max, and 5-min cool-down</p>	Fecal samples	<p>Gut microbiome; InviMag Stool DNA Kit; 16S rRNA gene sequencing (V3-V4) and WMGS; Illumina MiSeq and HiSeq X Ten</p>	NR	<p>There was no significant effect of PA intervention on alpha-diversity (group x time interaction). Beta-diversity analysis revealed dissimilarities between groups. 13 microbes (belonged to <i>Bacteroides</i>, <i>Ruminococcus</i> and <i>Lachnospiraceae</i>) increased after AE intervention</p>	<p>NCBI BioProject (Accession number: PRJNA757939)</p>
--------------------------	-----	--	---	---------------	---	----	--	--

Group 4: Diet group;
Patients with non-alcoholic
fatty liver disease and
prediabetes (N=23); M+F
(63.6%); 59.7y (57.7,
61.7); Chinese

Group 3: Control group;
Patients with non-alcoholic
fatty liver disease and
prediabetes (N=18); M+F
(77.8%); 60.6y (59.0,
62.2); Chinese

Soriano et al. 2022⁷	Non-RCT	Collegiate football players (N=33); M; 19.3±1.4y; non-Hispanic white (54.5%); non-Hispanic black (39.4%), Hispanic (18.2%), mixed (6.1%)	Football season at 3 time-points: mid-season, post-season and off-season	Fecal and saliva samples	Gut and oral microbiome; QIAamp PowerFecal Pro DNA Kit and Norgen Saliva DNA Isolation Reagent Kit; 16S rRNA gene sequencing (V1-V9); Nanopore MinION	NR	There was no significant effect of football season on alpha-diversity in gut and saliva samples. 8 gut bacteria differed in abundance between the post- and off-season, such as <i>Anthrobacter</i> sp. YN and <i>Desulfirispirillum indicum</i> which decreased during the off-season	SRA repository (Accession number: PRJNA699316)
Dupuit et al. 2022	RCT	Group 1: HIIT+RE group; Postmenopausal women with overweight/obesity (N=8); F; 58.8±5.3y; NR Group 2: Control group; Postmenopausal women; (N=9); F; 60.9±4.8y; NR	HIIT + RE; 12 weeks; 3 sessions/week; 45 min/session; HIIT consisted of sprinting/speeding for 8 s followed by slow pedaling (30–40 rpm) for 12 s at ~85% HRmax + 10 resistance exercises at 8–12RM with 60-90-s rest between exercises	Fecal samples	Gut microbiome; Maxwell RSC PureFood GMO and Authentication Kit; 16S rRNA gene sequencing (V4); Illumina MiSeq	5-day food record (3 weekdays and 2 weekend days)	There was no significant effect of HIIT+RE on alpha-diversity or microbiome composition (group x time interaction). Beta-diversity analysis showed dissimilarities at pre- and post-intervention in the HIIT + RT group, while it remained stable in the control group	NR

Sato et al. 2022	Within-subjects experiments	Ultramarathon runners (N=9); M; 46.9±5.8y; Japanese	Marathon (8 participants ran 96.102 km and one ran 99.12 km)	Fecal samples	Gut microbiome; phenol:chloroform:isoamyl alcohol (25:24:1); 16S rRNA gene sequencing (V1-V2); Illumina MiSeq	Food record	There was no significant effect of the marathon on alpha- and beta-diversity. <i>Collinsella aerofaciens</i> , <i>Catenibacillus scindens</i> , <i>Clostridium</i> sp E2 and <i>Alistipes putredinis</i> , among others, increased, while <i>Blautia luti</i> , <i>Eubacterium rectale</i> , <i>Faecalibacterium prausnitzii</i> and Butyrate-producing bacterium SS3/4 decreased after the marathon	NR
Bielik et al. 2022	RCT	Group 1: HIIT group: Competitive swimmers (N=12); M+F; 16–25y; NR Group 2: HIIT+HIITB (HIIT and probiotic cheese) group: Competitive swimmers (N=12); M+F; 16–25y; NR	HIIT; 7 weeks; swimming lengths of 12.5 m (2-4 sets of 12 repetitions), 25 m (2 x 16), 50 m (1 x 4-8), and 100 m (1 x 2-8) at > 90% of maximum speed. Last week ended with the Slovak Swimming National Championship over a long course (50 m)	Fecal samples	Gut microbiome; ZymoBiotics DNA/RNA mini kit; 16S rRNA gene sequencing (V1-V3); Illumina MiSeq	NR	There was an increase in alpha-diversity after HIIT intervention. 14 bacterial taxa (Gammaproteobacteria, <i>Burkholderiales</i> , <i>Barnesiellaceae</i> , <i>Sutterellaceae</i> , <i>Butyricimonas</i> , <i>Alistipes</i> , <i>Lactococcus</i> , <i>Parasutterella</i> , among others) were differentially abundant after HIIT	GenBank repository (Accession number: SAMN23561538-SAMN23561590, PRJNA785427)

¹ Only a subsample of 8 subjects were selected for the sequencing analysis.

² The effect of PA on the gut microbiome was only studied in elderly participants (N=897).

³ To analyse the effect of PA, independently of diet, a subsample of 35 athletes with a healthy diet was compared to a group of 11 controls with a healthy diet.

⁴ Microbiome analyses were only performed from a subset of 9 patients.

⁵ In addition to the RCT, a cross-sectional study was performed to assess potential microbiome differences between elite athletes and physically inactive participants.

⁶ The first four-week pre-observation period measured changes in the gut microbiome due to a race exclusively. During the second four-week period, participants ingested a multi-strain lactic acid bacteria-fermented soymilk extract, therefore, this analysis was excluded from this systematic review.

⁷ In this study, they excluded any samples from athletes that suffered a concussion and subsequently grouped all remaining samples according to the three collection time-points (for fecal samples, mid-season: N=29; post-season: N=22, and off-season: N=21; for saliva samples: mid-season: N=11; post-season: N=8; and off-season: N=5).

Abbreviations: Aerobic exercise training (AE); American Gut Project (AGP); Better Exercise Adherence after Treatment (BEAT); Breast cancer survivor (BCS); Combined aerobic and resistance exercise training (ARE); China National GeneBank DataBase (CBGD); DNA Data Bank of Japan (DDBJ); European Genome-phenome Archive (EGA); European Nucleotide Archive (ENA); Female (F); Firmicutes/Bacteroidetes (F/B); Food Frequency Questionnaire (FFQ); Gene Expression Omnibus (GEO); Heart rate reserve (HRR); High-intensity interval training (HIIT); International Physical Activity Questionnaire (IPAQ); Kilocalories (kcal); Male (M); Maximal heart rate (HRmax); Maximal oxygen consumption (VO₂max); Metabolic equivalent of task (MET); Minutes (min); Moderate-intensity continuous training (MICT); Moderate-to-vigorous physical activity (MVPA); National Center for Biotechnology Information (NCBI); Non-randomized controlled trial (Non-RCT); Non-randomized comparative trial (Non-RCMT); Not reported (NR); One-repetition maximum (1RM); Peak oxygen consumption (VO₂peak); Physical Activity Scale for the Elderly (PASE); Randomized controlled trial (RCT); Rate of perceived exertion (RPE); Resistance exercise training (RE); RNA

sequencing (RNA-seq); Seconds (s); Sequence Read Archive (SRA); Sprint interval training (SIT); Terminal restriction fragment length polymorphism (T-RFLP); Trunk muscle training (TM); Whole Metagenome Sequencing (WMGS); World Health Organization (WHO); Years (y)

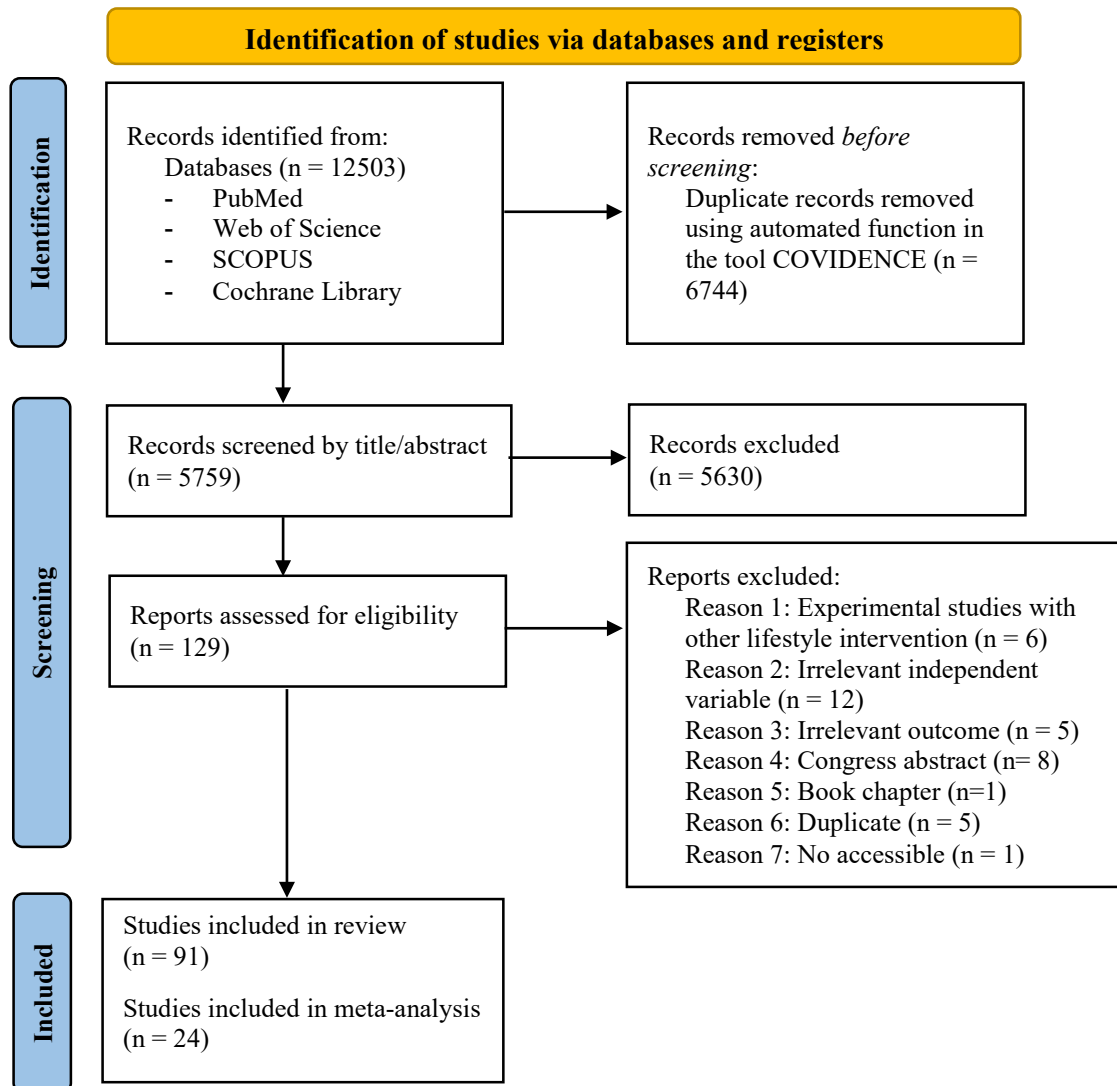
FIGURE LEGENDS

Fig. 1 Search process according to the Preferred Reporting Items for Systematic Reviews and Meta-Analyses (PRISMA) 2020 flow diagram

Fig. 2 Summary of the main characteristics and findings of the studies included in this systematic review. A) Exposure: in cross-sectional studies, the effect of physical activity (PA), sedentary behavior (SB) or athletic performance on microbiome was analyzed. In intervention studies, the acute or chronic effects of PA on microbiome were evaluated. B) Microbiome outcomes: samples from different body sites (gut, saliva, blood, muscle and vagina, among others) were analyzed by distinct detection methods (16S rRNA sequencing and whole metagenome sequencing [WMGS] for DNA-based microbiome analysis; meta-transcriptomic [RNA sequencing] for RNA-based microbiome analysis). C: Main findings: relevant results concerning alpha- and beta-diversity and differential abundance analysis are shown. D) Metabolic effects of PA-microbiome interaction. Growing evidence indicates that PA increases the abundance of members of the Firmicutes phylum, bacteria able to produce short-chain fatty acids (SCFAs). SCFAs produced by the gut microbiome by processing nutrients from diet may have positive effects in the intestine, improving barrier function and inflammation state. A crosstalk between the gut microbiome and skeletal muscle through lactate (generated during PA) and its conversion to SCFAs may improve athletic performance. SCFAs have been also linked to promoting neurogenesis (through brain-derived neurotrophic factor [BDNF]), improving hypothalamic–pituitary–adrenal (HPA) axis control, reducing inflammation and the risk of psychological diseases (e.g. depression, anxiety). A microbiome-dependent gut-brain connection mediated by microbial metabolites (i.e., fatty acid amides [FAAs], such as N-oleoylethanolamide [OEA]) has been discovered in mice, which enhances exercise performing and motivation by increasing dopamine signaling during PA. Recent studies suggest that dysbiosis may lead to the growth of proteolytic microbes able to produce trimethylamine-N-oxide (TMAO), an important metabolite that in elevated concentration has been linked to adverse cardiac events and chronic kidney diseases (CKD). This figure was created with BioRender.com

Fig. 3 Panel A) shows the meta-analysis of the high-PA *vs.* low-PA level's effects on Shannon diversity and Chao1 indexes (i.e., alpha-diversity metrics). Eight studies were finally included (Shannon diversity index^{44,66,69,78,81,83,85}; Chao1 index^{44,70,78,81,85}). Panel B) indicates the meta-analysis of the athletes *vs.* non-athletes' effects on both alpha-

diversity metrics, i.e., Shannon diversity (8 studies ^{47,49,51,60,76,78,79,81}) and Chao1 indexes (9 studies ^{47,51,56,74,76,78,79,81,104}). Panel C) shows the meta-analysis of the PA intervention (up) vs. control's effects (down) on the Shannon diversity (7 studies ^{96,97,99,109,112,119,124}) and Chao1 index (3 studies ^{97,99,112}). Due to the lack of studies, we included both RCTs ^{96,97,99,109,119} and non-RCTs ^{112,124} in the same meta-analysis. The bottom meta-analyses reflect the effect of time in the absence of PA intervention since only includes the control groups that were available from the RCTs. We did not use the control groups of Cronin *et al.* 2018 and Bielik *et al.* 2022, as they consumed a protein or probiotic supplement ^{96,119}



A) EXPOSURE

Cross-sectional

PA & SB

Level assessed by:
- Questionnaire
- Accelerometry



Athletic performance

Athletes vs non-athletes
Competition level
Type of sport



Intervention

Acute effects

Marathon
Rowing
Bout of PA



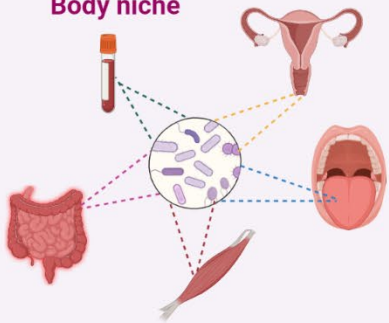
Chronic effects

Endurance
Resistance



B) MICROBIOME OUTCOMES

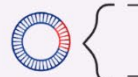
Body niche



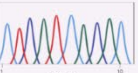
Detection method

DNA sequencing

16S rRNA



WMGS



RNA sequencing



C) MAIN FINDINGS



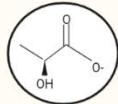
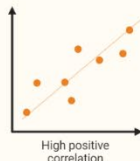
Diversity

- Discrepancies in **α-diversity**
- Most of studies reported dissimilarity between samples (**β-diversity**)



Specific taxa changes

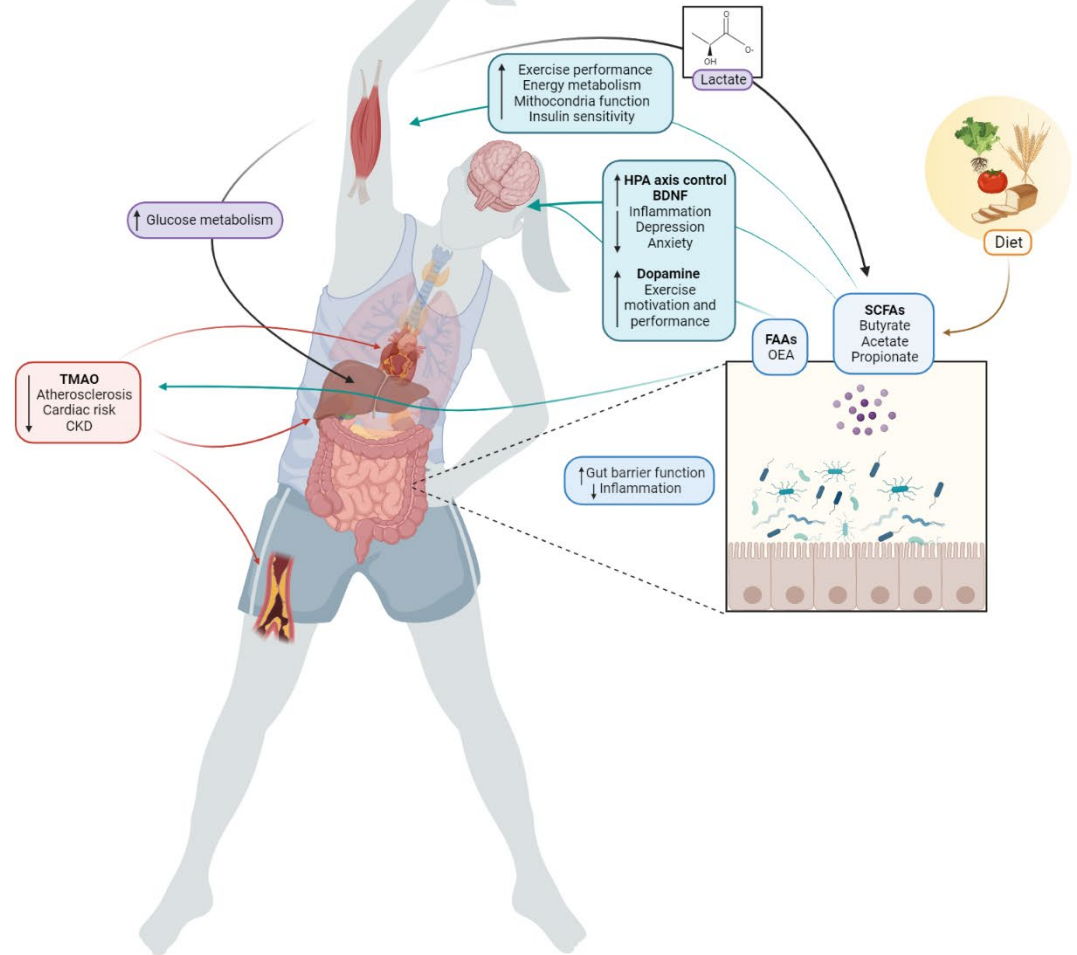
↑ *Akkermansia*
Veillonella
Roseburia
Faecalibacterium



Functional changes

↑ SCFAs-producing and anti-inflammatory bacterial taxa

D) METABOLIC EFFECTS OF PA-MICROBIOME INTERACTION



A)

Study name	Statistics for each study					Std diff in means and 95% CI
	Std diff in means	Standard error	Lower limit	Upper limit	p-Value	
Shannon index						
Mahnic et al. 2018	0,131	0,175	-0,212	0,474	0,454	
Zhang et al. 2019	-1,033	0,297	-1,616	-0,451	0,001	
Castellanos et al. 2020	0,444	0,197	0,058	0,829	0,024	
Gallè et al. 2020	-0,544	0,295	-1,122	0,034	0,065	
Houttu et al. 2021	0,057	0,058	-0,057	0,172	0,326	
Magzal et al. 2022	0,070	0,296	-0,511	0,651	0,813	
Xu et al. 2022	-0,276	0,303	-0,869	0,318	0,363	
Random	-0,101	0,145	-0,386	0,184	0,488	
Chao1 index						
Whisner et al. 2018	0,042	0,299	-0,544	0,628	0,888	
Mahnic et al. 2018	0,164	0,175	-0,179	0,507	0,349	
Castellanos et al. 2020	0,317	0,196	-0,067	0,700	0,106	
Gallè et al. 2020	-1,055	0,305	-1,652	-0,458	0,001	
Xu et al. 2022	-0,300	0,303	-0,894	0,295	0,323	
Random	-0,127	0,222	-0,563	0,309	0,568	

C)

Study name	Statistics for each study					Std diff in means and 95% CI
	Std diff in means	Standard error	Lower limit	Upper limit	p-Value	
Shannon index Intervention groups						
Cronin et al. 2018	0,201	0,284	-0,355	0,757	0,478	
Taniguchi et al. 2018	0,000	0,254	-0,498	0,498	1,000	
Rettedal et al. 2020	-0,133	0,378	-0,875	0,608	0,725	
Zhong et al. 2021	-0,084	0,578	-1,216	1,049	0,885	
Resende et al. 2021	0,094	0,408	-0,707	0,895	0,818	
Donati Zeppa et al. 2021	0,231	0,334	-0,424	0,887	0,489	
Bielik et al. 2022	0,667	0,419	-0,155	1,489	0,112	
Random	0,132	0,131	-0,124	0,388	0,312	
Control groups						
Taniguchi et al. 2018	-0,050	0,254	-0,547	0,448	0,845	
Zhong et al. 2021	0,137	0,578	-0,996	1,270	0,813	
Resende et al. 2021	0,523	0,415	-0,291	1,337	0,208	
Random	0,110	0,203	-0,288	0,508	0,587	

B)

Study name	Statistics for each study					Std diff in means and 95% CI
	Std diff in means	Standard error	Lower limit	Upper limit	p-Value	
Shannon index						
Clarke et al. 2014	0,473	0,265	-0,046	0,993	0,074	
Barton et al. 2017	0,151	0,266	-0,370	0,672	0,570	
Mörkd et al. 2017	-0,189	0,298	-0,773	0,395	0,526	
Mahnic et al. 2018	0,390	0,514	-0,617	1,398	0,448	
Penney et al. 2020	0,287	0,347	-0,393	0,967	0,408	
Morishima et al. 2021	-0,419	0,249	-0,907	0,070	0,093	
Xu et al. 2022	-0,798	0,313	-1,412	-0,184	0,011	
Hintikka et al. 2022	-0,562	0,277	-1,105	-0,018	0,043	
Random	-0,113	0,167	-0,441	0,215	0,501	
Chao1 index						
Clarke et al. 2014	0,587	0,267	0,064	1,110	0,028	
Mörkd et al. 2017	0,587	0,304	-0,008	1,182	0,053	
Mahnic et al. 2018	0,019	0,513	-0,986	1,025	0,970	
Kulecka et al. 2020	1,233	0,325	0,595	1,870	0,000	
Kulecka' et al. 2020	1,478	0,363	0,766	2,189	0,000	
Moitinho-Silva et al. 2021	0,392	0,326	-0,247	1,031	0,229	
Morishima et al. 2021	1,806	0,441	0,942	2,670	0,000	
Morishima' et al. 2021	-0,794	0,254	-1,291	-0,297	0,002	
Xu et al. 2022	0,180	0,302	-0,412	0,772	0,552	
Hintikka et al. 2022	-0,433	0,275	-0,973	0,107	0,116	
Random	0,482	0,259	-0,026	0,991	0,063	

Study name	Statistics for each study					Std diff in means and 95% CI
	Std diff in means	Standard error	Lower limit	Upper limit	p-Value	
Chao1 index Intervention groups						
Taniguchi et al. 2018	0,020	0,254	-0,478	0,518	0,938	
Zhong et al. 2021	-0,020	0,577	-1,151	1,112	0,973	
Donati Zeppa et al. 2021	-0,273	0,335	-0,929	0,384	0,416	
Random	-0,080	0,191	-0,454	0,295	0,677	
Control groups						
Taniguchi et al. 2018	0,005	0,254	-0,493	0,503	0,984	
Zhong et al. 2021	-0,018	0,577	-1,150	1,114	0,975	
Random	0,001	0,232	-0,454	0,457	0,995	