

Title: Possible roles of phytochemicals with bioactive properties in the prevention of and recovery from COVID-19

Authors Sachiko Koyama^{1*}, Vonnie D.C. Shields^{2§}, Thomas Heinbockel^{3§}, Paule V. Joseph^{4§}, Poonam Adhikari, Rishemjit Kaur⁵, Ritesh Kumar⁵, Rafieh Alizadeh, Surabhi Bhutani, Orietta Calcinoni, Carla Mucignat-Caretta, Jingguo Chen, Keiland W. Cooper, Subha R. Das, Paloma Rohlfs Domínguez, Maria Dolors Guàrdia, Maria A. Klyuchnikova, Tatiana K. Laktionova, Eri Mori, Zeinab Namjoo, Ha Nguyen, Mehmet Hakan Özdener, Shima Parsa, Elif Özdener Poyraz, Daniel Jan Strub, Farzad Taghizadeh-Hesary, Rumi Ueha, Vera V. Voznessenskaya

* Corresponding author

§ These authors contributed equally to the paper

Affiliations

Sachiko Koyama, Indiana University, School of Medicine, Indianapolis, IN, 46202, U.S.A. sakoyama@iu.edu, ORCID: 0000-0002-6886-1961

Vonnie D.C. Shields, Biological Sciences Department, Fisher College of Science and Mathematics, Towson University, Towson, MD, 21252, U.S.A. E-mail: vshields@towson.edu 0000-0001-9836-4416

Thomas Heinbockel, Department of Anatomy, Howard University College of Medicine, Washington, DC, 20059, U.S.A. Email: theinbockel@howard.edu, ORCID: 0000-0003-4347-2131

Paule V. Joseph, National Institute of Alcohol Abuse and Alcoholism, Section of Sensory Science and Metabolism and National Institute of Nursing Research, Bethesda, MD. E-mail: paule.joseph@nih.gov ORCID: 0000-0002-1198-9622

Poonam Adhikari, Indian Institute of Technology Ropar, India. Email: adhikari.poonam96@gmail.com

Rishemjit Kaur, CSIR-Central Scientific Instruments Organisation, Sector-30C, Chandigarh, India. E-mail: rishemjit.kaur@csio.res.in ORCID: 0000-0002-9424-0907

Ritesh Kumar, CSIR-Central Scientific Instruments Organisation, Sector-30C, Chandigarh, India. E-mail: riteshkr@csio.res.in ORCID: 0000-0003-4284-5311

Rafieh Alizadeh, ENT and Head and Neck Research Center and Department, The Five Senses Health Institute, School of Medicine, Iran University of Medical Sciences, Tehran, Iran. E-mail: nafiseh.alizadeh@gmail.com ORCID: 0000-0002-3132-9904

Surabhi Bhutani, School of Exercise and Nutritional Sciences, San Diego State University, San Diego, CA 92182, United States. E-mail: sbhutani@sdsu.edu

Orietta Calcinoni, VMPCT private practice, Milan, Italy. orietta.calcinoni@gmail.com, ORCID 0000-0003-4665-3106

Carla Mucignat-Caretta, Department of Molecular Medicine, University of Padova, 35131 Padova, Italy. E-mail: carla.mucignat@unipd.it, ORCID: 0000-0001-5307-0414

Jingguo Chen, Department of Otolaryngology-Head and Neck Surgery, The Second Affiliated Hospital of Xi'an Jiaotong University, Xi'an 710004, China. Email: jing-guo.chen@outlook.com, Jing-guo.chen@xjtu.edu.cn ORCID: 0000-0002-7051-4037

Keiland W. Cooper, Department of Neurobiology and Behavior, University of California, Irvine, CA 92697, U.S.A. Email: kwcooper@uci.edu ORCID: 0000-0002-0358-9645

Subha R. Das, Department of Chemistry and The Center for Nucleic Acids Science & Technology, Carnegie Mellon University, Pittsburgh, PA 15213, U.S.A. E-mail: srdas@andrew.cmu.edu, ORCID: 0000-0002-5353-0422

Paloma Rohlfs Domínguez, Department of Evolutionary Psychology and Educational Psychology. Universidad del País Vasco-Euskal Herriko Unibertsitatea, Barrio de Sarriena s/n 48940 Leioa (Bizkaia, Spain). E-mail: paloma.rohlf@ehu.eus ORCID: 0000-0002-5242-9947

Maria Dolors Guàrdia, Food Research Institute (IRTA), Finca Camps i Armet s/n, 17121 Monells (Spain). E-mail: mariadolors.guardia@irta.cat ORCID: 0000-0001-7358-9467

Maria A. Klyuchnikova, Severtsov Institute of Ecology & Evolution, Russian Academy of Sciences, Moscow, Russia. E-mail: klyuchnikova@gmail.com, ORCID: 0000-0001-9254-8927

Tatiana K. Laktionova, Severtsov Institute of Ecology & Evolution, Russian Academy of Sciences, Moscow, Russia. E-mail: tatita.laktionova@gmail.com, ORCID: 0000-0002-9753-023X

Eri Mori, Department of Otorhinolaryngology, Jikei University school of medicine, Tokyo, Japan. Email: morieri@jikei.ac.jp ORCID: 0000-0003-3273-3789

Zeinab Namjoo, Department of Anatomical Sciences, School of Medicine, Ardabil University of Medical Sciences, Ardabil, Iran. E-mail: znamjoo1392@gmail.com; ORCID: 0000-0001-8541-1359

Ha Nguyen, Monell Chemical Senses Center, Philadelphia, Pennsylvania, U.S.A. hanguyen@monell.org; ORCID: 0000-0001-6128-8667

Mehmet Hakan Özdener, Monell Chemical Senses Center, Philadelphia, Pennsylvania, U.S.A. E-mail: hodzener@monell.org ORCID: 0000-0001-9259-4683

Shima Parsa, Transplant Research Center, Shiraz University of Medical Sciences, Shiraz, Iran. E-mail: shimaparsa.md@gmail.com ORCID: 0000-0001-9734-9097

Elif Özdener Poyraz, School of Pharmacy & Health Sciences, Fairleigh Dickinson University, NJ, U.S.A. eozdener@fdu.edu ORCID: 0000-0002-0797-193X

Daniel Jan Strub, Department of Chemical Biology and Bioimaging, Wrocław University of Science and Technology, Wyb. Wyspiańskiego 27, 50-370, Wrocław, Poland. E-mail: daniel.strub@pwr.edu.pl ORCID: 0000-0003-0858-463X

Farzad Taghizadeh-Hesary, ENT and Head and Neck Research Center and Department, The Five Senses Health Institute, School of Medicine, Iran University of Medical Sciences, Tehran, Iran. E-mail: farzadth89@gmail.com ORCID: 0000-0002-6195-2203

Rumi Ueha, Swallowing Center, the University of Tokyo Hospital, Tokyo, Japan. Email: ruu1025@yahoo.co.jp; UEHAR-OTO@h.u-tokyo.ac.jp ORCID: 0000-0002-0608-7237

Vera V. Voznessenskaya, Severtsov Institute of Ecology & Evolution, Russian Academy of Sciences, Moscow, Russia.
E-mail: veravoznessenskaya@gmail.com ORCID: 0000-0002-6138-2060

1 **Abstract**

2 **Purpose** There have been large geographical differences in the infection and death rates of COVID-19. Foods and
3 beverages containing high amounts of phytochemicals with bioactive properties were suggested to prevent
4 contracting, to limit the severity of, and to facilitate recovery from COVID-19. The goal of our study was to
5 determine the correlation of the type of foods/beverages people consumed and the risk reduction of contracting
6 COVID-19 and the recovery from COVID-19.

7 **Methods** We developed an online survey that asked the participants whether they contracted COVID-19, their
8 symptoms, time to recover, and their frequency of eating various types of foods/beverages. The survey was first
9 developed in English and then translated into 10 different languages.

10 **Results** The participants who did not contract COVID-19 consumed vegetables, herbs/spices, and fermented
11 foods/beverages significantly more than the participants who contracted COVID-19 and those who were not tested
12 but became sick most likely from COVID-19. The geographic location of participants corresponded with the
13 language of the survey, except for the English version, thus, nine out of the 10 language versions represented a
14 country. Among the six countries (India, Iran, Italy, Japan, Russia, Spain) with over one hundred participants, we
15 found that in India and Japan the people who contracted COVID-19 showed significantly shorter recovery time, and
16 greater daily intake of vegetables, herbs/spices, and fermented foods/beverages was associated with faster recovery.
17 **Conclusion** Our results suggest that phytochemical compounds included in the vegetables may have contributed in
18 not only preventing contraction of COVID-19, but also accelerating their recovery.

19 (249 words; EJM limit is 250 words)

20

21 **Keywords:** COVID-19, phytochemicals, foods, beverages, consumption habits, prevention, recovery

22

23

24

25 Introduction

26

27 The outbreak of the coronavirus disease 2019 (COVID-19) became a long pandemic that lasted over three years,
28 and, although the federal COVID-19 public health emergency declaration ended in 5/11/2023, there are still new
29 variants of the SARS-CoV-2 prevailing and weekly over 30,000 new patients in the U.S were hospitalized in January
30 2024 (<https://covid.cdc.gov/covid-data-tracker/#datatracker-home>). As of January 7th, 2024, the cumulative cases of
31 patients who contracted the virus surpassed 774 million with over 7 million deaths worldwide
32 (<https://data.who.int/dashboards/covid19/cases?n=c>). Throughout the pandemic, there have been various reports
33 investigating the factors that may influence infection, the severity of symptoms, and the recovery process including
34 genetic factors, pre-existing conditions, and age. We now know that the polymorphism of ACE2, the genes that
35 regulate ACE2 expression and affinity to SARS-CoV-2, and that sex affect the susceptibility to COVID-19 (for
36 example, [1–5]). Pre-existing conditions such as obesity and type 2 diabetes [5, 6] as well as age [5] have also been
37 found to affect vulnerability. Another key point that also emerged from previous studies was the geographical
38 difference in the number of cases around the world. Many speculated that it may have been the result of government
39 strategies, such as herd immunity, and/or genetic differences [7, 8]. There were also discussions around the possibility
40 of differences in the food materials used by different countries and the effects of phytochemical compounds included
41 in them contributing to prevent contracting the virus and/or improving the recovery process [9].

42 Since the outbreak of COVID-19, there have been multiple studies examining the effects of phytochemicals and
43 plant-based diets and beverages on COVID-19 (e.g., [10, 11] on tea; [12, 13] on plant-based diet; [14] on the effects
44 of eating carnation and citrus fruits). *In silico* and review studies have shown that there are phytochemicals which may
45 bind to the SARS-CoV-2 responsible for COVID-19 (e.g., [15, 16]). Such binding may contribute to suppress the
46 infection if the phytochemicals bind to the spike protein of the virus [9, 17], and to suppress the replication if they
47 bind to the enzymes involved in the replication of the virus [9]. Foods that contain large amounts of phytochemical
48 compounds with bioactive properties may resemble the effects of drugs used for treatment of COVID-19 [18]. These
49 studies suggest that daily consumption of foods and beverages that contain these phytochemicals may prevent/suppress
50 the contraction of COVID-19 or facilitate faster recovery from it [18–22]. Some examples of these foods and
51 beverages are green vegetables, such as broccoli/cabbage, citrus fruits, such as lemon and orange and red fruits, such

52 as blueberries, coffee, and black tea. Considering the studies indicating that some of the patients with severe symptoms
53 for long term after the acute phase of COVID-19 (post-acute sequelae of COVID-19 (PASC), or Long-COVID)
54 possess virus persisting in their tissue as a reservoir [23], consuming foods/beverages with such effects in their daily
55 may have a possibility to be some help in their recovery by binding to the S-protein or the enzymes related to
56 replication of virus.

57 Other than the effects of phytochemicals on binding to SARS-CoV-2 and limiting infection, there are
58 phytochemicals with anti-inflammatory effects [15, 24]. As inflammation is one of the key symptoms of COVID-19
59 and PASC, phytochemicals with anti-inflammatory effects may have beneficial influences on the recovery from
60 COVID-19 and PASC [25, 26].

61 There are countries where cuisines and beverages widely use various herbs and spices. Many of the
62 phytochemicals included in these cuisines possess anti-inflammatory and antioxidant effects (for example zingerone
63 of ginger [27, 28] and curcumin of turmeric [28, 29]), and some may bind to the SARS-CoV-2 that causes COVID-
64 19 as well (for example carvacrol in oregano and thyme [17, 30], cinnamaldehyde in cinnamon [30], geraniol in
65 lemongrass, lavender, rose and others [30], curcumin in turmeric [30–32] and others [33]). It is possible that depending
66 on the traditional cuisines in each country, there are differences in the type and amount of these phytochemicals
67 consumed, and that may have produced the differences in the infection, severity, and recovery from COVID-19. These
68 phytochemicals are also included in beverages, such as teas from tea plants [10, 21] and herbal teas. A recent study
69 conducted with healthy identical twins has shown that those who were assigned to consume vegan diet had
70 significantly improved cholesterol concentration, fasting insulin level, and body weight loss compared to those who
71 were assigned to eat omnivorous food, indicating the effects of phytochemicals on several health conditions even
72 among genetically identical twins [34]. The health benefits of fermented foods has also been shown [35–37], which
73 not only affect gut microbiota by the probiotic lactic acid bacteria, but also can improve the health status of the person
74 directly by their anti-inflammatory, antioxidant, and other bioactive properties. Herbal medicines [38], supplements
75 [39], and essential oils [40] may also function to prevent and improve the recovery from COVID-19 due to the
76 phytochemicals with bioactive properties included in them.

77 The goal of the present study was to determine if there were associations between the contraction of COVID-19
78 and/or recovery from it and the self-reported consumption of phytochemicals. To do so, we developed a global survey
79 to understand the possible correlation between the types and frequencies of the foods, beverages, herbal medicine,

80 supplements, and essential oils people consumes or used, and COVID-19 infection rates and recovery. The results of
81 our survey suggested that the participants of the survey who did not get COVID-19 ate leaf vegetables, root vegetables,
82 other vegetables, and fermented foods/beverages, and used herbs and spices daily at a high percentage. In addition,
83 the participants who contracted COVID-19 who answered that they ate vegetables, fermented foods/beverages, and
84 used herbs and spices daily showed shorter days to recover from COVID-19.

85

86 **Materials and Methods**

87

88 **Participants**

89 Data was collected from participants who consented to participate and were older than 18 years in age. Participation
90 in this survey was voluntary and was not remunerated. As it was an online survey, the participants had to access it
91 via the internet. The protocol was approved as an exempt study by Indiana University Human Research Protection
92 Program (HRPP) in the U.S.A. (protocol #14915) as well as by the Office of Regulatory Research Compliance of
93 Howard University (IRB-2022-0380), by the Jikei University School of Medicine Ethics Committee in Japan (#34-
94 003), the Bioethics Committee at the A.N. Severtsov Institute of Ecology & Evolution of Russian Academy of
95 Sciences (no.2022-63-NC), and by the Second Affiliated Hospital of Xi'an Jiaotong University, Medical Ethics
96 Committee in China (#2022023). The link and the QR codes to the survey were distributed using social media (for
97 example, Twitter, Facebook, etc.), virtual communication platforms, flyers, and word of mouth. This study was
98 conducted as an Internal Study of the Global Consortium for Chemosensory Research (GCCR)
99 (<https://gchemosensr.org/>), Project ID #NDS005, and invitation to participate in the survey was also sent to
100 participants of previous survey by GCCR, Project ID #GCCR001 [41].

101

102 **Survey development**

103

104 In the survey, we gathered information on demographic data, dietary habits, and information on COVID-19
105 infection experiences. The questions asked included: 1) age, 2) ethnicity, 3) location of residency, 4) experience of
106 COVID-19 contraction, 5) symptoms experienced and severity, 6) eating and drinking habit and frequency of intake
107 (daily, weekly, monthly, and never), 7) use of herbal medicine and frequency, 8) use of supplements and frequency,

108 and 9) use of essential oils for prevention and recovery from COVID-19. The questions on foods and beverages
109 were conducted in categorical questions and free text questions so that participants could write the name of the foods
110 and beverages that were not in the list of foods and beverage examples shown in the survey. Considering the goals
111 of the survey, we also asked whether a specific culture or a country influenced the answers to the questions on eating
112 and drinking habits. Smoking habits and pre-existing conditions were also asked. Details on the survey development
113 can be found in Supplementary Information.

114

115 **Processing and analyses of the results**

116

117 All the data from each language version were combined in one file in order to obtain the “Overall results” (see
118 the Results section). The results displayed the amount of time that it took individuals to complete the survey. Data
119 were excluded if the time to complete the survey was short from the concern that the participant may have not taken
120 the time needed to answer each survey question thoughtfully and accurately. We arbitrarily selected 100 seconds as
121 the minimum time to finish the surveys. The participants who claimed to be younger than 18 years old were
122 excluded. The participants who did not answer the question about whether they got COVID-19 were also excluded.
123 Following this step, the distribution of selections of the frequency of eating and drinking (daily, weekly, monthly,
124 never) and free text answers, depending on health condition (“Not tested”, “Tested positive”, and “Did not get
125 COVID”), were analyzed.

126 Secondly, the data of each language version were analyzed separately. The answers concerning ethnicity and
127 current location were analyzed to determine if each language version reflected any specific country and whether
128 there was a specific country or culture affected. Subsequently, the distribution of selections of the frequency of
129 eating and drinking (daily, weekly, monthly, never) and free text answers, depending on the health condition (“Not
130 tested”, “Tested positive”, and “Did not get COVID”), were analyzed.

131

132 **Statistical analyses**

133

134 We used Chi-square tests for comparisons of the food and beverage consumption, as well as the severity of
135 symptoms. We used the Kruskal Wallis and Mann-Whitney U-tests to compare the days to recover from COVID-
136 19. Systat 13.2 (Inpixon HQ, Palo Alto CA, USA) was used for the statistical analysis.

137

138 **Results**

139

140 **Overall results (all countries together)**

141

142 **i) Number of participants used for data analyses**

143 The survey was conducted online. Overall, there were 1777 participants. The time taken by participants to
144 complete an online survey was interpreted to be a representation of their level of comprehension and accuracy
145 in responding to the questions. To ensure the reliability of the collected data, we conducted an analysis of the
146 survey completion times and found that about 10% of the participants (n=187) completed the survey within a
147 significantly short period, *i.e.*, within 100 sec, which suggest a lack of comprehension. We decided to exclude
148 the participants who finished the survey within 100 seconds. Participants who were younger than 18 as well as
149 the participants who did not answer the question on whether they contracted COVID-19 were also excluded.
150 This made the amount of data from 1583 participants eligible to be used for further analysis.

151

152 **ii) Gender and age of participants**

153 The gender and age of the participants whose data were used in the analyses were male (average age
154 40.27 ± 14.60 ; n=237 (26.87%)), female (average age 42.43 ± 14.07 ; n=624 (70.75%)), non-binary/third gender
155 (average age 37.50 ± 13.96 ; n=4 (0.454%)), and prefer not to answer (average age 41.82 ± 12.70 , n=17 (1.51%)).

156

157 **iii) COVID-19 status of the participants**

158 The participants were asked about their COVID-19 status and to select from three categories, *i.e.* "Not tested
159 but suspected", "Tested positive", and "Did not get COVID". Of the 1583 participants, 312 participants (19.7 %) reported to not have been tested but suspected that they contracted COVID-19, 835 participants (52.7 %) reported

160

161 that they had tested positive for the virus, and 436 participants (27.5%) reported to have not contracted COVID-
162 19 or contracted it unknowingly.

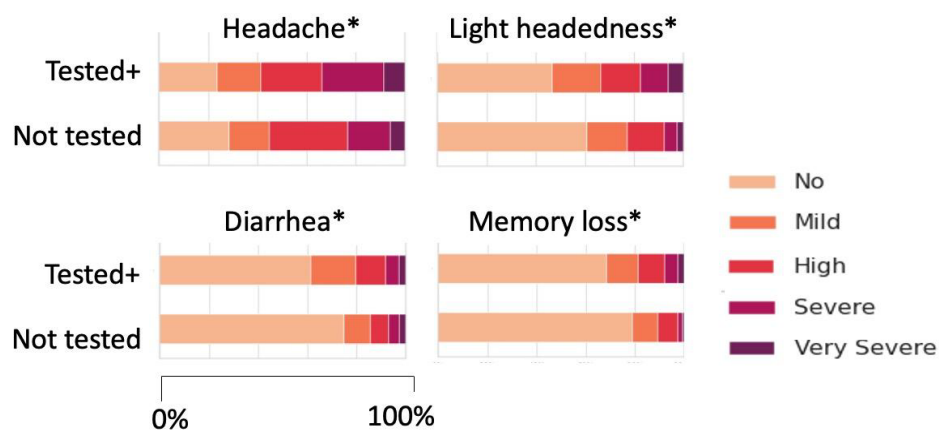
163

164 **iv) Symptoms**

165 Overall, the participants of the “Tested positive” group reported more severe symptoms than the “Not tested”
166 group. The symptoms of “Headache”, “Lightheadedness”, “Diarrhea”, “Memory loss” were significantly more
167 reported by the “Tested positive” group (Chi-square test, Headache, $\chi^2=20.244$, $df=4$, $P<0.001$; Lightheadedness,
168 $\chi^2=19.026$, $df=4$, $P<0.001$; Memory loss, $\chi^2=20.993$, $df=4$, $P<0.001$; Diarrhea, $\chi^2=12.372$, $df=4$, $P<0.05$)
169 (Figure 1, Supplementary Table 2). There were no significant differences in other symptoms asked in the survey,
170 such as fever, chills, body aches, and so on between the “Not tested” and “Tested positive” groups
171 (Supplementary Figure 1, Supplementary Table 2).

172 Considering that the impact on chemical senses is known to be one of the major symptoms of COVID-19,
173 we compared the self-reported dysfunction in the chemical senses. The senses of smell and taste were reported
174 more frequently compared to chemesthesis, and there were no significant differences between the “Not tested”
175 and “Tested positive” groups (Chi-square test, smell, $\chi^2=2.122$, $df=2$, N.S.; taste, $\chi^2=4.013$, $df=2$, N.S. Figure
176 2). Dysfunction in chemesthesis was less reported compared to the senses of smell and taste, and there were no
177 differences between the “Not tested” and “Tested positive” group (Chi-square test, $\chi^2=2.532$, $df=2$, N.S.; Figure
178 2, Supplementary Table 2). When “Not tested” and “Tested positive” were combined to compare among the
179 three types of chemical senses, we found that the occurrences of chemosensory dysfunction of smell and taste
180 were not largely different from each other, and dysfunction in chemesthesis was reported significantly less than
181 expected values. The differences in the occurrences of chemosensory dysfunction were statistically significant
182 (Chi-square test, $\chi^2=390.616$, $df=4$, $P<0.001$). Thus, the sense of smell and taste are more vulnerable to COVID-
183 19 compared to chemesthesis.

184



185

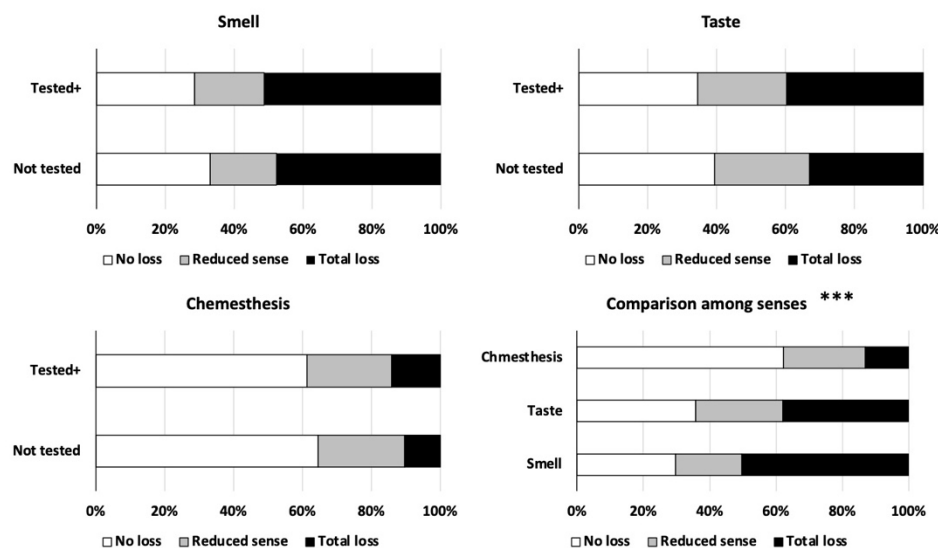
186

Fig. 1 Symptoms that showed significant differences between the “Not tested” and “Tested positive” groups. *: Chi-

187

square test, $P < 0.05$

188



189

190

Fig. 2 Self-reported senses of smell, taste, and chemesthesis by the “Not tested” and “Tested positive” groups and

191

comparison of the occurrences of chemosensory dysfunction in the sense of smell, taste, and chemesthesis. ***: Chi-square

192

test, $P < 0.001$

193

194 v) Intake of foods and beverages

195

Based on the goal of this survey to determine whether there are differences in the consumption of each type

196

of beverages and food materials, we focused on the differences between the “Tested positive” group and others,

197 especially with “Did not get COVID” but also with “Not tested” group since the symptoms were lighter in this
198 group compared to the “Tested positive” group.

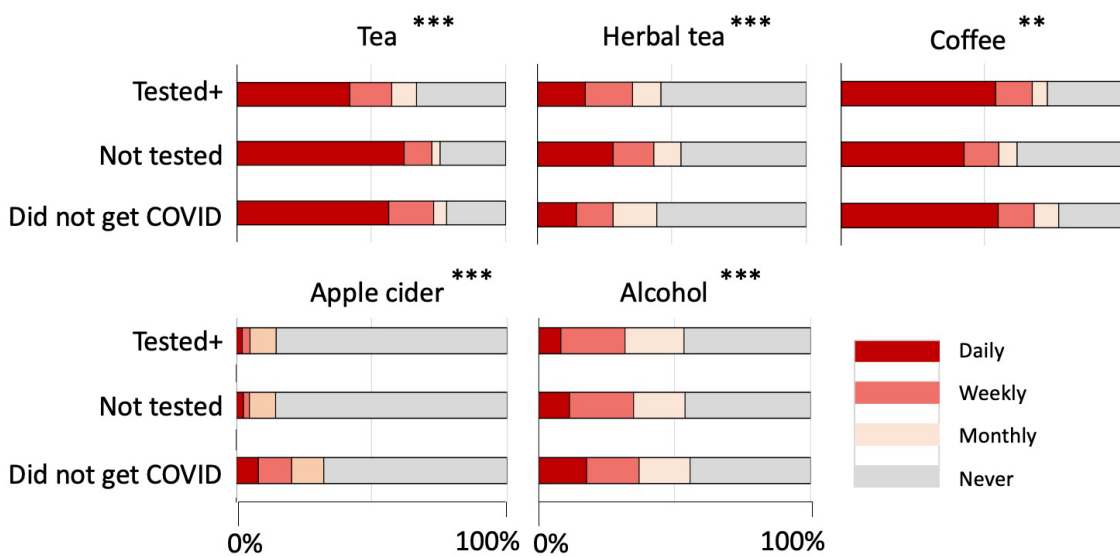
199

200 a) Beverages

201 Figure 3 shows the results on beverage consumption. Other than hot chocolate, we found significant
202 differences among the 3 groups of participants (Chi-square tests, tea, $\chi^2=54.528$, $df=6$, $P<0.001$; herbal tea,
203 $\chi^2=31.060$, $df=6$, $P<0.001$; coffee, $\chi^2=22.207$, $df=6$, $P=0.001$; cider/apple cider, $\chi^2=79.553$, $df=6$, $P<0.001$,
204 alcohol, $\chi^2=29.920$, $df=6$, $P<0.001$; hot chocolate, $\chi^2=9.771$, $df=6$, N.S.) (Supplementary Table 3). “Tea” and
205 “coffee” are, in general, consumed daily more than other types of beverages.

206 Table 1 shows the Chi-square scores of each cell in the Chi-square tests and the color markers show whether
207 the observed values were higher or lower than the expected values, contributing to the statistical significance in
208 the Chi-square tests. The darkness of the color was arbitrarily classified in three levels where higher Chi-square
209 scores were assigned darker color to show larger discrepancy from the expected values. “Tea” was significantly
210 more daily consumed by participants who “Did not get COVID” and “Not tested” (Figure 3 and Table 1).
211 Although herbal tea is often discussed with its beneficial effects on health, herbal tea was significantly less
212 consumed by the “Did not get COVID” group (Figure 3 and Table 1). Although the overall consumption was
213 much less than other beverages, apple cider was found to be significantly more consumed by “Did not get
214 COVID” group participants. Coffee did not show specific tendencies among groups. Daily consumption of
215 alcohol reported was higher in the “Did not get COVID” group. Hot chocolate was not consumed so frequently
216 by any of the groups.

217



218

219

Fig. 3 Intake of tea, herbal tea, coffee, apple cider, alcohol, and hot chocolate. **: P<0.01, ***: P<0.001

220

221

222

223

224

225

Table 1 Results on Beverages. Discrepancy of observed values from expected values in the chi-square test. The colors indicate that the observed values were higher than the expected values (smaller to larger discrepancy indicated by pink to red color) and the observed values lower than expected values (smaller to larger discrepancy indicated by light to dark blue). Grey color indicates there were no or negligible discrepancies.

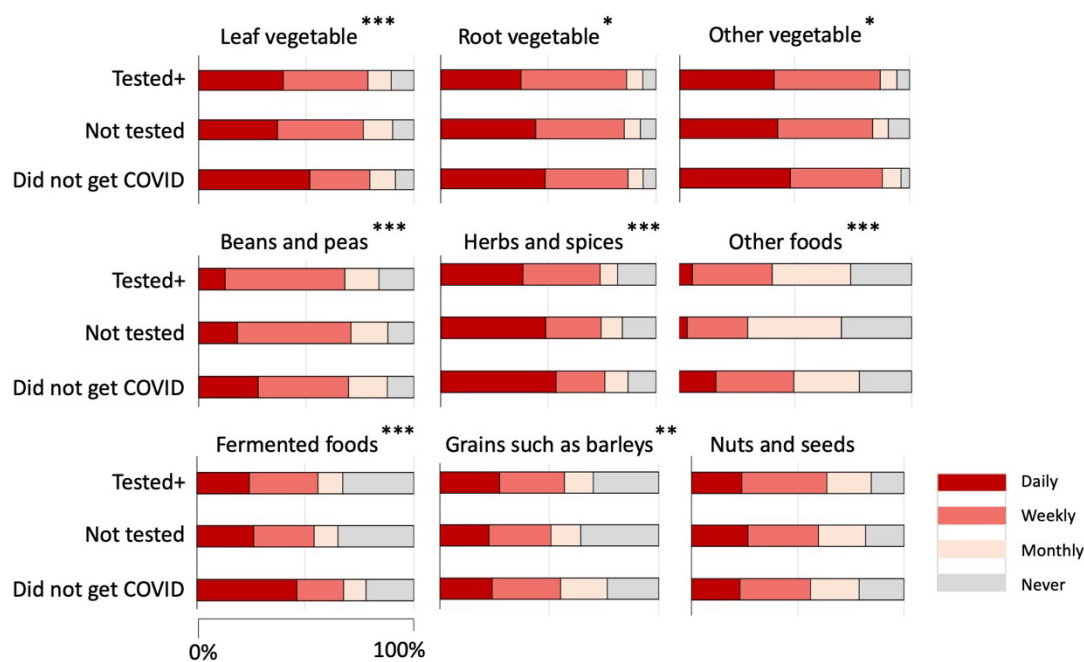
Tea	Daily	Weekly	Monthly	Never			
Tested+							
Not tested							
Did not get COVID							
Herbal tea	Daily	Weekly	Monthly	Never			
Tested+							
Not tested							
Did not get COVID							
Coffee	Daily	Weekly	Monthly	Never			
Tested+							
Not tested							
Did not get COVID							
Apple cider	Daily	Weekly	Monthly	Never			
Not tested							
Tested+							
Did not get COVID							
Alcohol	Daily	Weekly	Monthly	Never			
Tested+							
Not tested							
Did not get COVID							
Observed < Expected value	Expected < Observed value						
						$0 < \chi^2 \leq 2$	
						$2 < \chi^2 \leq 5$	
						$5 < \chi^2 \leq 10$	
						$10 < \chi^2$	

226

227

228 b) Foods

229 There was an overall tendency that the “Did not get COVID” group daily consumed leaf, root, other
 230 vegetables, beans and peas, nuts and seeds, spices and herbs, other foods, such as mushrooms, and fermented
 231 food significantly more than the expected values compared to other two groups (Chi-square test, leaf vegetable,
 232 $\chi^2=23.957$, $df=6$, $P<0.001$; root vegetable, $\chi^2=15.828$, $df=6$, $P=0.015$; other vegetable, $\chi^2=13.848$, $df=6$, $P<0.05$;
 233 beans and peas, $\chi^2=47.242$, $df=6$, $P<0.001$; nuts and seeds, $\chi^2=10.160$, $df=6$, N.S.; herbs and spices, $\chi^2=36.757$,
 234 $df=6$, $P<0.001$; cereals and grains including barley, $\chi^2=21.060$, $df=6$, $P=0.0018$; other foods, $\chi^2=51.960$, $df=6$,
 235 $P<0.001$; fermented foods, $\chi^2=62.945$, $df=6$, $P<0.001$) (Figure 4 and Supplementary Table 2). Differences from
 236 the expected values showing that the “Did not get COVID” group daily consumed more compared to other two
 237 groups were especially large in leaf vegetables, beans and peas, herbs and spices, other foods, and fermented
 238 foods (Table 2).



239
240 **Fig. 4** Frequency of consuming various types of foods by the three groups. *: P<0.05, **: P<0.01, ***: P<0.001

241
242 **Table 2** Results on Foods. Discrepancy from expected values. The colors indicate that the observed values were higher
243 than the expected values (smaller to larger discrepancy indicated by pink to red color) and the observed values lower than
244 the expected values (smaller to larger discrepancy indicated by light to dark blue). Grey color indicates there were no or
245 negligible discrepancies.

Leaf vegetables	Daily	Weekly	Monthly	Never
Tested+				
Not tested				
Did not get COVID				

Other foods	Daily	Weekly	Monthly	Never
Tested+				
Not tested				
Did not get COVID				

Root vegetables	Daily	Weekly	Monthly	Never
Tested+				
Not tested				
Did not get COVID				

Fermented foods	Daily	Weekly	Monthly	Never
Tested+				
Not tested				
Did not get COVID				

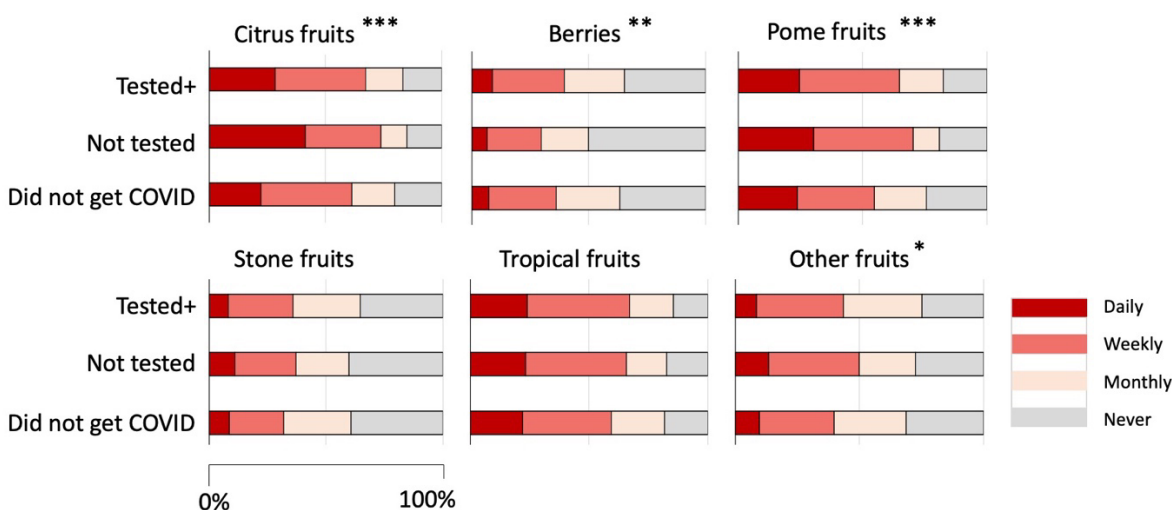
Other vegetables	Daily	Weekly	Monthly	Never
Tested+				
Not tested				
Did not get COVID				

Beans and peas	Daily	Weekly	Monthly	Never
Tested+				
Not tested				
Did not get COVID				

Herbs and spices	Daily	Weekly	Monthly	Never
Tested+				
Not tested				
Did not get COVID				

Observed < Expected value	Expected < Observed value	
		$0 < \chi^2 \leq 2$
		$2 < \chi^2 \leq 5$
		$5 < \chi^2 \leq 10$
		$10 < \chi^2$

248 In fruits, the consumption of citrus fruits, berries, pome fruits, stone fruits, and other fruits showed
 249 statistically significant differences in the frequency of eating among the health conditions of the participants
 250 (Chi-square test, Citrus fruits, $\chi^2=31.541$, $df=6$, $P<0.001$; berries, $\chi^2=21.167$, $df=6$, $P=0.0017$; pome fruits,
 251 $\chi^2=25.777$, $df=6$, $P<0.001$; stone fruits, $\chi^2=8.617$, $df=6$, N.S., tropical fruits, $\chi^2=8.001$, $df=6$, N.S.; other fruits,
 252 $\chi^2=16.516$, $df=6$, $P<0.05$) (Figure 5, Supplementary Table 3). Comparison of the observed values and the
 253 expected values (chi-square scores), however, did not indicate that the “Did not get COVID” group daily ate
 254 fruits more than other groups (Table 3). Other than the stone fruits, the “Did not get COVID” group ate fruits
 255 rather less than other two groups (Table 3).



256

257

Fig. 5 Frequency of consuming fruits by the three groups. *: $P<0.05$, **: $P<0.01$, ***: $P<0.001$

258

259

Table 3 Results on Fruits. Discrepancy from expected values. The colors indicate that the observed values were higher
 260 than the expected values (smaller to larger discrepancy indicated by pink to red color) and the observed values were lower
 261 than the expected values (smaller to larger discrepancy indicated by light to dark blue). Grey color indicates there were no
 262 or negligible discrepancies.

Citrus fruits	Daily	Weekly	Monthly	Never
Tested+				
Not tested				
Did not get COVID				

Berries	Daily	Weekly	Monthly	Never
Tested+				
Not tested				
Did not get COVID				

Pome fruits	Daily	Weekly	Monthly	Never
Tested+				
Not tested				
Did not get COVID				

Stone fruits	Daily	Weekly	Monthly	Never
Tested+				
Not tested				
Did not get COVID				

Other fruits	Daily	Weekly	Monthly	Never
Tested+				
Not tested				
Did not get COVID				

Observed < Expected value	Expected < Observed value	
		$0 < \chi^2 \leq 2$
		$2 < \chi^2 \leq 5$
		$5 < \chi^2 \leq 10$
		$10 < \chi^2$

263

264 **c) Herbal medicines, supplements, and essential oils**

265 There were significant differences in the way that herbal medicines and supplements were taken, and
 266 essential oils were used by the three groups (Chi-square test, herbal medicine, $\chi^2=18.872$, $df=6$, $P=0.004$;
 267 supplements, $\chi^2=38.246$, $df=6$, $P<0.001$; essential oils for prevention, $\chi^2=10.904$, $df=6$, N.S.; essential oils for
 268 recovery, $\chi^2=4.807$, $df=3$, N.S.) (Supplementary Figure 2 and 3, Supplementary Table 3). Comparison of the
 269 Chi-square scores revealed that the “Did not get COVID” group took herbal medicines and supplements or used
 270 essential oils significantly less than the expected values (Supplementary Table 4).

271

272 **Comparison of countries**

273

274 Next, we conducted analyses of the results for all the versions of languages separately. This was based on our
 275 interest in the cultural differences in the eating and drinking habits and their possible relationship with the infection
 276 rate in various countries, which became often discussed on social media at the beginning of the pandemic. The
 277 nationality of the participants of each language version of the survey did not necessarily mean that they were
 278 ethnically affiliated to a certain country (for example, Spanish is spoken in many countries). We determined the

279 ethnicity of the participants in each language version of the survey using the answers to the questions on ethnicity
280 and residing location. We found that, other than the English version, over 90% of the participants of each language
281 version of the survey were ethnically affiliated to one country (Supplementary Table 5). Although Spanish is spoken
282 in many countries, the participants in this survey were over 90% affiliated to Spain. The participants of the Persian
283 version were also over 90% affiliated to Iran. This suggests that it is possible to expect that the results of each
284 language version, other than the English version, may be able to represent geographical and cultural differences in
285 the eating and drinking habits. The participants of the English version reported their ethnicity as Greek, Asian,
286 Indian, Vietnamese, Israeli, Irish/German, Bosnian, and Montenegrin (Supplementary Table 5).

287 As the number of participants for some of the language versions of the survey was too few to analyze the data,
288 we focused on the results of the language version that had more than 100 participants and excluding the English
289 version because of the mixed ethnicity nature. Thus, the comparison of countries was conducted using the data of
290 the Indian English, Italian, Japanese, Persian, Russian, and Spanish versions of the survey to represent the six
291 countries of India, Italy, Japan, Iran, Russia, and Spain.

292

293 a) Beverages

294 We focused on the percentage of participants who reported that they have been drinking the type of beverage
295 daily. We could see a large difference among the countries in the results. Figure 6 shows the results of tea and
296 coffee. In Japan, the percentage of participants who reported to drink tea or coffee daily was similarly high. India,
297 Russia and Iran showed a high percentage of drinking tea daily but much less percentage of drinking coffee daily.
298 Contrarily, in Italy and Spain, the percentage of drinking coffee daily was much higher than that of tea. Although the
299 cultural differences were clear and suggested there might be differences in the tendencies of consumption if we take
300 these differences into consideration, the percentages of daily consumption of tea and coffee among the health
301 conditions did not show specific tendencies that suggest the benefits of tea or coffee to prevent contracting COVID-
302 19.

303

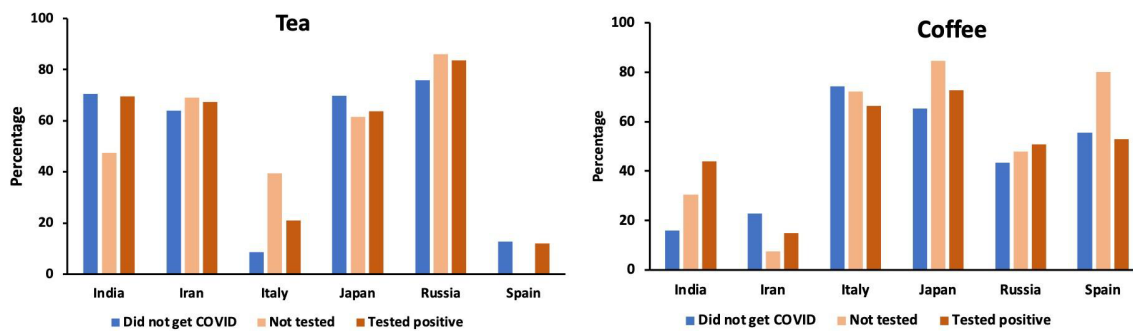


Fig. 6 Percentage of participants in each group who have been drinking tea or coffee daily.

Table 4 shows the magnification of the discrepancy between the expected values and observed values (Chi-square scores) of the “Did not get COVID” group of the six countries. Japan and Russia showed higher than expected values in the answers of “Daily” in tea, whereas Italy and Japan showed higher than expected values in the answers of “Daily” in coffee. The observed value of “Daily” in coffee by participants in Spain was not higher than the expected values but the observed value of “Daily” in tea was much lower than the expected value in Spain, suggesting that tea is not favored in Spain. These results also indicate the drinking habits of both tea and coffee in Japan, drinking coffee in Italy, and drinking tea in Russia.

Table 4 Results on Tea and coffee. Discrepancy from expected values - comparison among the “Did not get COVID” group of each country. The colors indicate where the observed values were higher than the expected values (smaller to larger discrepancy indicated by pink to red color) and where the observed values were lower than the expected values (smaller to larger discrepancy indicated by light to dark blue). Grey color indicates there were no or negligible discrepancies.

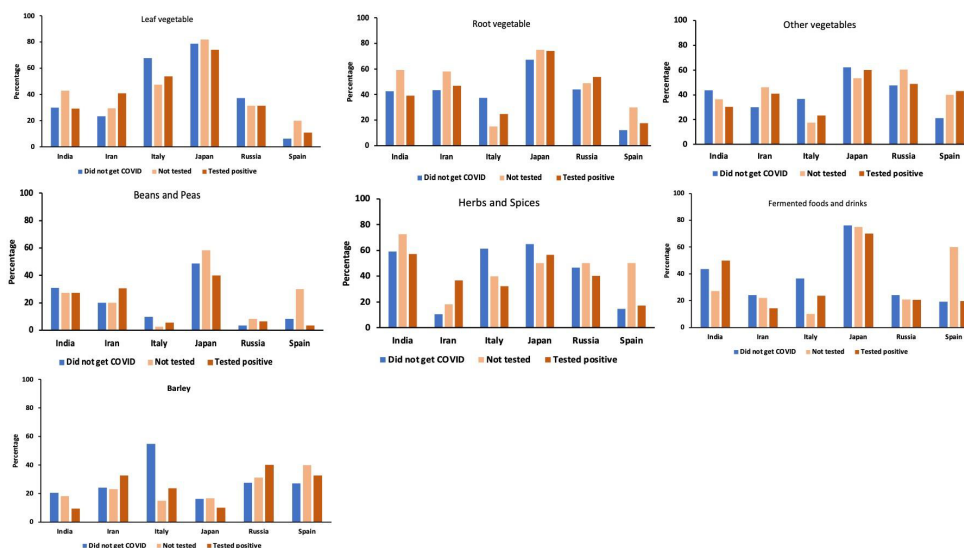
Tea					Coffee				
	Daily	weekly	monthly	never		Daily	weekly	monthly	never
India					India				
Iran					Iran				
Italy					Italy				
Japan					Japan				
Russia					Russia				
Spain					Spain				

$0 < \chi^2 < 2.0$	More than expected	Less than expected
$2.0 < \chi^2 < 5.0$		
$5.0 < \chi^2 < 10.0$		
$10.0 < \chi^2$		

b) Foods

321 In the overall section, the results of leaf vegetables, root vegetables, fermented foods, beans and peas, cereals
322 and grains including barley, and herbs and spices showed higher percentages of daily consumption by the “Did not
323 get COVID” group. When the results were split among countries, we found large differences in the tendencies
324 among them (Chi-square test, leaf vegetables, $\chi^2=138.382$, $df=15$, $P<0.001$; root vegetables, $\chi^2=74.398$, $df=15$,
325 $P<0.001$; fermented foods, $\chi^2=129.664$, $df=15$, $P<0.001$; beans and peas, $\chi^2=121.634$, $df=15$, $P<0.001$; herbs and
326 spices, $\chi^2=110.345$, $df=15$, $P<0.001$; cereals and grains including barley, $\chi^2=73.772$, $df=15$, $P<0.001$; other
327 vegetables, $\chi^2=51.673$, $df=15$, $P<0.001$). Overall, Japan showed higher intake of all the categories of foods other
328 than cereals and grains including barley, compared with other countries but there were no statistically significant
329 differences among the health conditions other than the results on herbs and spices (Figure 7 and Supplementary
330 Figure 3 for the rest of the categories). The results by the “Did not get COVID” group of Italy showed clearly higher
331 percentages of daily consumption in the 7 categories of foods although the overall percentages were smaller than the
332 results in Japan (Figure 7).

333 Table 5 shows the discrepancy between the expected values and observed values in the answers by the “Did not
334 get COVID” group of the 6 countries. The “Did not get COVID” group of Japan showed higher daily consumption
335 of leafy vegetables, root vegetables, other vegetables, beans and peas, herbs and spices, and fermented foods, and
336 Italy showed a higher consumption of cereals and grains including barley (Table 5). The “Did not get COVID”
337 group of Spain showed a lower daily consumption of leaf vegetables, root vegetables, other vegetables, beans and
338 peas, herbs and spices, and fermented foods, showing a clear contrast to the results of the “Did not get COVID”
339 group of Japan.



340
 341 **Fig. 7** Percentage of participants who were daily eating leaf vegetables, root vegetables, fermented foods, herbs and spices, beans
 342 and peas, and other foods such as mushrooms and olives.

343
 344 **Table 5** Results on Foods. Discrepancy from expected values - comparison among the “Did not get COVID” group of the
 345 six countries. The colors indicate where the observed values were higher than the expected values (smaller to larger discrepancy
 346 indicated by pink to red color) and where the observed values were lower than the expected values (smaller to larger discrepancy
 347 indicated by light to dark blue). Grey color indicates there were no or only negligible discrepancies.

Leaf vegetables	Daily	weekly	monthly	never
India				
Iran				
Italy				
Japan				
Russia				
Spain				

Herbs and Spices	Daily	weekly	monthly	never
India				
Iran				
Italy				
Japan				
Russia				
Spain				

Root vegetables	Daily	weekly	monthly	never
India				
Iran				
Italy				
Japan				
Russia				
Spain				

Cereals including barley	Daily	weekly	monthly	never
India				
Iran				
Italy				
Japan				
Russia				
Spain				

Other vegetables	Daily	weekly	monthly	never
India				
Iran				
Italy				
Japan				
Russia				
Spain				

Fermented foods and drinks	Daily	weekly	monthly	never
India				
Iran				
Italy				
Japan				
Russia				
Spain				

Beans and peas	Daily	weekly	monthly	never
India				
Iran				
Italy				
Japan				
Russia				
Spain				

0 < χ^2 < 2.0		
	More than expected	Less than expected
2.0 < χ^2 < 5.0		
5.0 < χ^2 < 10.0		
10.0 < χ^2		

348
 349

350 Such differences among countries also suggest the possibility that, in the results where we did not see clear
351 differences among health conditions in the overall analysis section above, the differences depending on the country
352 might have compensated each other, and produced that lack of tendencies. Indeed, there were large differences in
353 the percentages of participants who ate the food types daily that did not show specific tendencies in the overall
354 section depending on countries and health conditions (Supplementary Figure 3). Interestingly, the results of the
355 survey in Japanese showed low percentages of daily consumption of all the types of fruits regardless of the health
356 condition type, compared to other countries (Supplementary Figure 3). Considering the high percentage of daily
357 consumption in all types of vegetables in the Japanese version, “daily consumption of vegetables and less frequent
358 consumption of fruits” seemed to be the characteristics of food consumption in Japan. The results of the Italian
359 version of the survey showed higher daily consumption of tropical fruits, barleys, other fruits, and other vegetables
360 by the “Did not get COVID” group than other two groups (Supplementary Figure 3). These results suggested
361 striking differences in the eating habits of the “Did not get COVID” groups in Italy and Japan.

362

363 **c) Herbal medicines, supplements, and essential oils**

364 Herbal medicines have been used for centuries in countries all over the world. In the questions about the usage
365 of herbal medicines, we found that the daily usage is rather high in India and Iran (Supplementary Figure 4). “Not
366 tested” group participants in Iran also showed high daily usage of herbal medicine. Daily usage of supplements had
367 the tendency to be higher in the “Not tested” and “Tested positive” groups than the “Did not get COVID” group, and
368 low in the Spanish version (Supplementary Figure 4). Daily usage of essential oil for prevention and recovery was
369 low overall with the tendency to be higher in the “Tested positive” group (Supplementary Figure 4).

370

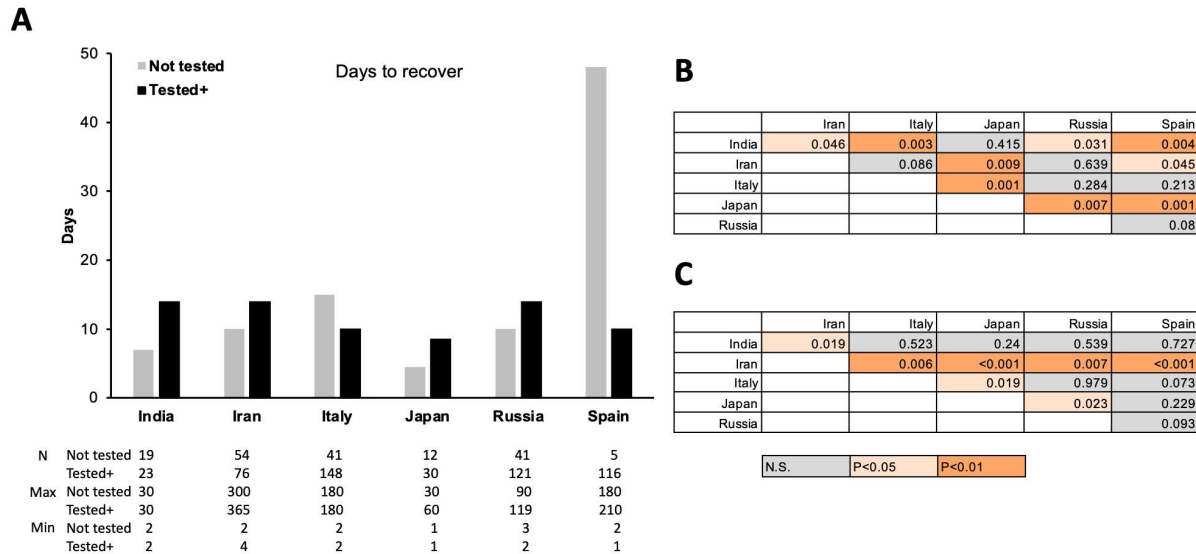
371 **Comparison with recovery**

372

373 There were significant differences in the self-reported days for recovery among the countries (Kruskal Wallis
374 test, “Not tested”, $H=20.397$, $df=5$, $P=0.001$; “Tested positive”, $H=21.808$, $df=5$, $P=0.001$; results of pairwise
375 comparison as well as medians of the days to recover are shown in Figure 8). This time in days for recovery was not
376 necessarily the time until the PCR tests turned negative, but it was the self-reported time length until recovery. The
377 recovery time reported by participants of both “Not tested” and “Tested positive” groups in Japan was statistically

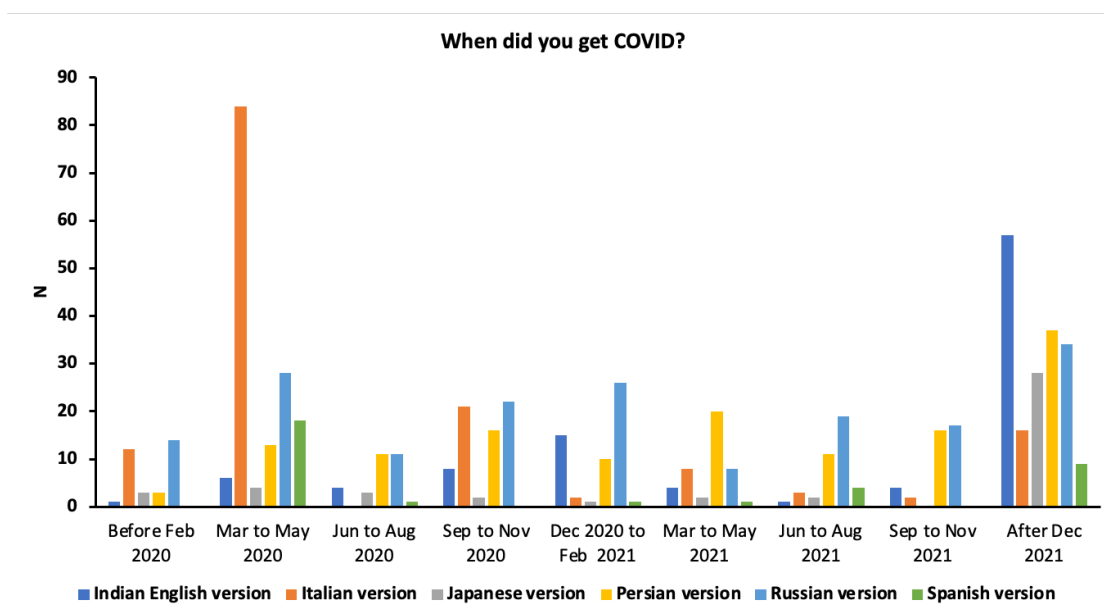
378 significantly shorter than in countries other than India (Figure 8). The recovery time of the “Not tested” group of
 379 India was statistically shorter than all other countries except Japan, and the recovery time of the “Tested positive”
 380 group of Iran was significantly longer than other countries although the median was not different (Figure 8). The
 381 median recovery time of the “Not tested” group of Spain was long, but it was not statistically significantly different
 382 from the recovery time of the “Not tested” group of Italy and Russia (Figure 8).

383 Other than the results of Spain, the median of the number of days until recovery in the “Tested positive” group
 384 ranged from 8.5 days (Japan) to 14 days (India, Iran, Russia), and those in the “Not tested” group ranged from 4.5
 385 days (Japan) to 15 days (Italy). The minimum of the reported days ranged from 1 to 4 and the maximum of the
 386 reported days ranged from 60 days to 365 (one year), excluding the participants who reported they are still not
 387 recovered, most likely with Long-COVID. The days until recovery between the “Not tested” and “Tested positive”
 388 groups were significantly longer in the “Tested positive” group than the “Not tested” group in India (Mann-Whitney
 389 U-test, $P=0.014$) and Iran (Mann-Whitney U-test, $P<0.001$), and not significantly different in other countries.
 390 Overall, these results indicate the significant differences among countries and significantly short time to recover in
 391 Japan and India, and longer time to recover by the “Tested positive” group in India and Iran.



392
 393 **Fig. 8** Median of the self-reported time (days) until recovery of “Not tested” and “Tested positive” group participants (a) and
 394 tables showing statistical differences of pairwise comparisons of the “Not tested” (b) and “Tested positive” (c) groups.
 395

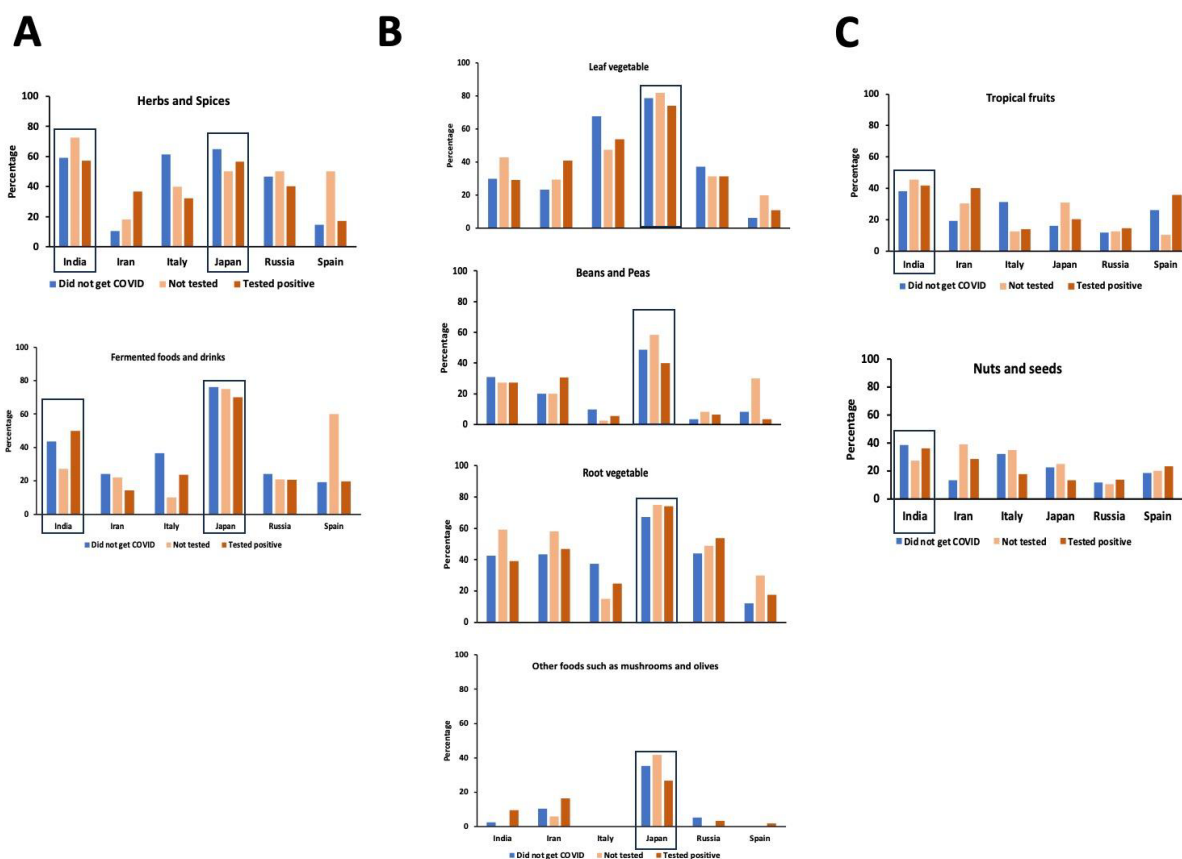
396 These differences in the time to recover among countries could be due to the type of the virus (original and
397 variants that emerged later) they contracted and the availability of the medicines especially at the early stage of the
398 pandemic. Figure 9 shows the numbers of answers to the question asking when the participants (“Not tested” and
399 “Tested positive” group combined, and English version excluded as the location of the participants is not clear)
400 contracted COVID-19 (Figure 9). Large number of participants in Italy contracted COVID-19 early in 2020 whereas
401 the participants from India, Iran, and Japan show a high peak in ‘after December’ 2021. Spain also showed a high
402 peak in spring 2020 and a smaller peak in ‘after December 2021’. The number of the participants from Russia shows
403 multiple peaks with slightly higher numbers in spring 2020 and after December 2021.
404



405
406 **Fig. 9** Reports on the dates the participants contracted COVID-19 (“Not tested” and “Tested positive” group combined).
407

408 Although the timing of contracting COVID-19 can affect the time that it may take to recover, there is also a
409 possibility that daily consumption of certain types of foods and beverages can have effects on facilitating recovery
410 from COVID-19. And, if so, there is a possibility that the more people take these foods, the time to recover may
411 become shorter. This could be especially important in case of the “Not tested” group as they were most likely not
412 prescribed medicines, because they were not tested. The food and drink categories that are more frequently
413 consumed in Japan and/or India could suggest the types of foods and beverages that may have such possibly
414 facilitating effects. Figure 10 shows the food that were taken daily and had higher percentages of daily consumption

415 in India and Japan. Beverages did not show specifically higher percentages in Japan and in India than other
 416 countries. Hence, they are not shown in Figure 10. Herbs and spices and fermented food/beverages were consumed
 417 daily at higher percentages in India and in Japan compared to other countries (Figure 10a). Figure 10b shows the
 418 categories of foods that were especially high in Japan and Figure 10c shows the categories of foods that were higher
 419 in India than other countries, although the percentages were not extremely high, compared to other food categories.
 420 These categories of foods may have had the effects on preventing as well as facilitating recovery from COVID-19
 421 and that these could be the candidate foods for further tests in future.



422
 423 **Fig. 10** Daily consumption of foods in each country. (a) Food categories that showed high percentages of daily consumption
 424 in India and Japan. (b) Food categories that showed high percentages of daily consumption in Japan than other countries. (c)
 425 Food categories that showed higher percentages of daily consumption in India than other countries. India and Japan are
 426 highlighted by squares.
 427

428 Dysfunction in the chemical senses is now well-known as one of the major symptoms of COVID-19. Large
429 number of the participants from Italy replied to have experienced chemosensory dysfunction, and participants from
430 Russia and Spain also replied with a high number of chemosensory dysfunctions. These are the countries where
431 many of the participants reported they contracted COVID-19 early in 2020, when the pandemic was more virulent
432 and the influences of contracting the virus were strongest, and this could be the reason for the higher incidences of
433 chemosensory dysfunction (Supplementary Figure 5).

434

435 **Discussion**

436

437 The key findings from our survey were as follows: 1) higher percentage of people who did not get COVID-19
438 daily ate various types of vegetables and fermented foods/beverages, 2) in India and Japan, the people who did not
439 get tested and who tested positive showed significantly shorter time to recover from COVID-19, 3) the people who
440 tested positive or did not get tested and recovered rather quickly were eating/drinking these vegetables and
441 fermented foods/beverages significantly more daily, 4) fruits are known to have beneficial effects on health, but they
442 were not specifically consumed more by those who did not get COVID-19, 5) teas are also known to have beneficial
443 effects on health and on COVID-19, and people who did not get tested and who did not get COVID-19 were found
444 to have a higher daily intake of tea, 6) people who tested positive reported more severe symptoms compared to
445 people who did not get tested, and 7) there were significant differences in the number of days to recover among
446 countries in both the group that did not get tested group and the group that tested positive.

447 Tea and coffee were found to be the most preferred beverages to drink daily, although there were some country-
448 dependent differences about which is more preferred. In our survey, we found that tea was significantly more
449 consumed daily by the people who did not get COVID-19 and those who were not tested than by the participants
450 who tested positive to COVID-19. Although it is difficult to conclude from survey data whether it had some effects
451 or not, there were significant differences in the severity of the symptoms between people who tested positive and
452 those who did not get tested. Previous studies have shown that (-) epigallocatechin gallate (EGCG), theasinensin A
453 (TSA), and galloylated theaflavins such as theaflavin 3,3'-di-*O*-gallate (TFDG) included in teas have anti-SARS-
454 CoV-2 activities [10, 11, 21, 42, 43]. The differences in the processing methods generate large differences in the
455 concentration of chemical composition in green tea, yellow tea, white tea, oolong tea, and black tea [44]. TSA and

456 TFDG are catechin derivatives that increase by enzymatic oxidation during the processing of the tea leaves, and thus
457 EGCG is decreased in black tea [44, 45]. The studies showing that EGCG, TSA, and TFDG have anti-SARS-CoV-2
458 effects indicate that these changes in the amount included by differences in the processing methods do not affect the
459 potential positive effects of tea. Importantly, it should be noted that there are studies showing that milk casein blocks
460 the anti-SARS-CoV-2 effects of tea because of the binding of them to casein [46]. These studies suggest the possible
461 effects of teas on preventing and suppressing severity of COVID-19, but also indicate that depending on how the tea
462 is prepared (for example, milk tea and chai tea, which adds milk), the effects can be blocked.

463 Although in our survey the results on coffee did not show its effects on facilitating recovery from COVID-19
464 or suppressing infection, a study using a large amount of data ($n > 37K$) in the UK Biobank on dietary habits and
465 COVID-19 infection rate has shown a significant negative correlation between the drinking habit of coffee and the
466 infection rate, *i.e.*, people drinking coffee were less infected to COVID19 [47]. An *in vitro* study has also shown that
467 coffee, caffeine, or diluted human serum samples collected from healthy adults who drank coffee suppressed
468 infection of SARS-CoV-2 [22]. It could be that the lack of tendency in our project is due to the smaller data size,
469 and it is also possible that the differences are due to the international nature of our study, or possible interactions
470 with other beverages or foods or the way of preparation like in case of teas.

471 An important result in this study is that the people who did not get COVID-19 showed general trend to consume
472 leaf, root and other vegetables, mushrooms, fermented foods/beverages, beans and peas, and herbs and spices daily
473 and that the people who tested positive and those who did not get tested and consumed them daily recovered faster.
474 This tendency of inverse relationship between intake of vegetables and COVID-19 was also found in previous
475 COVID-19 literature. Tadbir Vajargah et al (2022) [48] found that the severity of COVID-19 symptoms of 250
476 hospitalized patients negatively correlated with the amount of consumption of vegetables as well as fruits and
477 dietary fiber. They also recovered faster, leading to shorter hospitalization and convalescence periods. A meta-
478 analysis study, which was conducted before the COVID-19-pandemic, has also shown that higher intakes of fruits
479 and vegetables reduce proinflammatory cytokines, and improved the immune system profiles [49]. In a survey-based
480 study focusing on six European countries, researchers found that people who were on plant-based diet or pescatarian
481 diet (plant-based diet with fish) had milder symptoms of COVID-19 [12]. The results of our study are in line with
482 these studies and suggest the importance of vegetable intake and also highlight the importance of studies on the key
483 phytochemicals or combinations of phytochemicals that contributed to these differences.

484 In case of fermented foods and beverages, there are additional factors that are necessary to take into
485 consideration, *i.e.*, the roles of bacteria. There are also animal-based fermented foods/beverages, which may have
486 different effects compared to those that are plant-based. Muhialdin et al. (2021) [35] summarized the antiviral
487 activities of probiotic bacteria in fermented foods. They suggested that the antiviral effects of fermented foods could
488 be exerted directly through the viral neutralization by the bioactive compounds and indirectly through improving the
489 innate immune system [35]. It should be noted that the fermented foods/beverages category was one of the two most
490 commonly reported categories in India and Japan; the two countries that showed significantly faster recovery from
491 COVID-19. This suggests the importance of further studies on fermented foods/beverages.

492 Considering the well-known beneficial effects of fruits on health, we hypothesized that we would find higher
493 daily consumption of fruits, but, interestingly, with the exception of stone fruits, daily fruit consumption was rather
494 low compared to vegetables and fermented foods. In fact, there are studies that found the negative association of
495 fruits consumption and COVID-19 [48]. In the study that identified foods that contain chemical compounds with
496 bioactive properties that resemble clinically approved drugs for COVID-19, they identified 52 phytochemical
497 compounds with anti-SARS-CoV-2 effects [18]. They reported that flavonoids, coumarins, stilbenes, indoles, and
498 phenolic acids are the major groups of phytochemicals with anti-COVID-19 effects. Examples they listed are
499 quercetin, kaempferol, myricetin of flavonols, luteolin and apigenin of flavones, procyanidin B2 of flavanols,
500 naringin of flavanones, daidzein, genistein, legumelin of isoflavonoids, trans-resveratrol of stilbenes, 3-indole-
501 carbinol of indoles, and gallic acid of phenolic acids. Many of these phytochemicals with bioactive properties
502 against SARS-CoV-2 are included in fruits (berries, citrus fruits, pome fruits, stone fruits, and tropical fruits). It
503 could be that, similarly to coffee, there may be some differences in the images of fruits among countries (for
504 example, fruits are called ‘mizu-gashi’ in old Japanese language, which means ‘watery sweets/desserts’). Japanese
505 participants reported very high daily intake of all types of vegetables and fermented foods/drinks in comparison to
506 other countries, but daily consumption of fruits was rather low. Daily consumption of citrus fruits and tropical fruits
507 was high in India and Iran, and Iran showed higher daily consumption of pome fruits than other countries. These
508 differences could be an example of cultural differences in eating habits among countries.

509 We were unable to control individual differences in the amount of each serving size of food and beverages.
510 There are also differences in the amount of chemical ingredients even within the same plant, depending on its
511 location and seasonal influences, and in the way the food/beverage is prepared. Another issue to take into

512 consideration is the possibility that the results of this survey could be telling the people who consume various
513 vegetables daily are more cautious of their overall health and may modify other activities of daily living other than
514 their eating habits, such as self-distancing, wearing masks, and sanitizing their hands and other things. As such,
515 there are also limits in the study using surveys.

516 In conclusion, our results suggest that daily consumption of phytochemical compounds included in the
517 vegetables may have contributed to preventing contraction of COVID-19 as well as to accelerating the recover from
518 COVID-19. The food and beverage categories that were found to be eaten daily more by the people who did not get
519 COVID-19 are the candidates to conduct studies in detail with more controlled experimental conditions, studies
520 using animal model systems, and at the level of phytochemical compounds to determine mechanisms of action in
521 future.

522

523

524

525 **Acknowledgements**

526 We are grateful to the participants in our survey and Pierre Johane Joseph for trying the survey prior to launch.

527 Kang Zhu, Yanni Zhang, and Chao Yu helped Jingguo Chen in translating the survey into Chinese and spreading the survey. We would like to
528 express our gratitude to Angela Bassoli, Michael Farruggia, Antonella Di Pizio, and Shannon Olsson for their comments to our study.

529

530 **Author contributions** SK, PVJ, VDCS, and TH served as the leadership team of the project to make decisions at each time points. All authors
531 participated in developing the English version of the survey. The English version of the survey was translated into Chinese, Indian English,

532 Italian, Japanese, Persian, Polish, Russian, Spanish, and Turkish, and the followings were in participated in the translation of each language: JC

533 for Chinese, RisK and RitK for Indian English, CM-C and OC for Italian, RU and EM for Japanese, SP, RA, ZN, and FT-H for Persian, DJS for

534 Polish, TKL, MAK, and VVV for Russian, MDG and PRD for Spanish, and EÖP and MHÖ for Turkish. All authors participated in advertising

535 the survey. RisK, RitK, PA, HN, KWC, and SK analyzed the data. SK wrote the first draft of the paper and all authors participated in editing the

536 draft. All authors read and approved the final manuscript.

537

538 **Funding**

539 KWC is funded by NSF DGE-1839285

540 **Availability of data and materials**

541

542 **Declarations**

543 **Conflict of interest** The authors have no conflicts of interest to declare

544 **Ethics approval and consent to participate** The survey contained a question that asked consent to participate and we obtained consent from the
545 participants. Ethical approval was obtained as an exempt study from Indiana University Human Research Protection Program (HRPP) in the
546 U.S.A. (protocol #14915), the Office of Regulatory Research Compliance of Howard University (IRB-2022-0380), the Jikei University School of
547 Medicine Ethics Committee in Japan (#34-003), the Bioethics Committee at the A.N. Severtsov Institute of Ecology & Evolution of Russian
548 Academy of Sciences (no.2022-63-NC), and by the Second Affiliated Hospital of Xi'an Jiaotong University, Medical Ethics Committee in China
549 (#2022023).

550 **References**

- 551 1. Chaudhary S, Sreenivasulu K, Mltra P, et al (2021) Role of Genetic Variants and Gene
552 Expression in the Susceptibility and Severity of COVID-19. *Annals of laboratory medicine*
553 41:. <https://doi.org/10.3343/alm.2021.41.2.129>
- 554 2. Devaux CA, Camoin-Jau L (2022) An update on angiotensin-converting enzyme 2
555 structure/functions, polymorphism, and duplicitous nature in the pathophysiology of
556 coronavirus disease 2019: Implications for vascular and coagulation disease associated
557 with severe acute respiratory syndrome coronavirus infection. *Front Microbiol*
558 13:1042200. <https://doi.org/10.3389/fmicb.2022.1042200>
- 559 3. Vadgama N, Kreymerman A, Campbell J, et al (2022) SARS-CoV-2 Susceptibility and ACE2
560 Gene Variations Within Diverse Ethnic Backgrounds. *Front Genet* 13:888025.
561 <https://doi.org/10.3389/fgene.2022.888025>
- 562 4. Korayem OH, Ahmed AE, Meabed MH, et al (2023) Genetic clues to COVID-19 severity:
563 exploring the stromal cell-derived factor-1/CXCL12 rs2839693 polymorphism in adult
564 Egyptians. *BMC Infect Dis* 23:702. <https://doi.org/10.1186/s12879-023-08691-1>
- 565 5. Sidhwani SK, Mirza T, Khatoon A, et al (2023) Angiotensin-converting enzyme 2 (ACE2)
566 polymorphisms and susceptibility of severe SARS-CoV-2 in a subset of Pakistani
567 population. *Viol J* 20:120. <https://doi.org/10.1186/s12985-023-02091-2>
- 568 6. Al-Sayyar A, Hulme KD, Thibaut R, et al (2022) Respiratory Tract Infections in Diabetes -
569 Lessons From Tuberculosis and Influenza to Guide Understanding of COVID-19 Severity.
570 *Front Endocrinol (Lausanne)* 13:919223. <https://doi.org/10.3389/fendo.2022.919223>
- 571 7. Ishak A, Mehendale M, AlRawashdeh MM, et al (2022) The association of COVID-19
572 severity and susceptibility and genetic risk factors: A systematic review of the literature.
573 *Gene* 836:146674. <https://doi.org/10.1016/j.gene.2022.146674>
- 574 8. Cappadona C, Rimoldi V, Paraboschi EM, Asselta R (2023) Genetic susceptibility to severe
575 COVID-19. *Infect Genet Evol* 110:105426. <https://doi.org/10.1016/j.meegid.2023.105426>
- 576 9. Merarchi M, Dudha N, Das BC, Garg M (2021) Natural products and phytochemicals as
577 potential ANTI-SARS-CoV -2 drugs. *Phytotherapy Research* 35:5384–5396.
578 <https://doi.org/10.1002/ptr.7151>
- 579 10. Ohgitani E, Shin-Ya M, Ichitani M, et al (2021) Significant Inactivation of SARS-CoV-2 In
580 Vitro by a Green Tea Catechin, a Catechin-Derivative, and Black Tea Galloylated
581 Theaflavins. *Molecules* 26:3572. <https://doi.org/10.3390/molecules26123572>

- 582 11. Chourasia M, Koppula P, Battu A, et al (2021) EGCG, a Green Tea Catechin, as a Potential
583 Therapeutic Agent for Symptomatic and Asymptomatic SARS-CoV-2 Infection. *Molecules*
584 26:1200. <https://doi.org/10.3390/molecules26051200>
- 585 12. Kim H, Rebholz CM, Hegde S, et al (2021) Plant-based diets, pescatarian diets and COVID-
586 19 severity: a population-based case–control study in six countries. *BMJNPH* 4:257–266.
587 <https://doi.org/10.1136/bmjnph-2021-000272>
- 588 13. Acosta-Navarro JC, Dias LF, De Gouveia LAG, et al (2024) Vegetarian and plant-based diets
589 associated with lower incidence of COVID-19. *BMJNPH* e000629.
590 <https://doi.org/10.1136/bmjnph-2023-000629>
- 591 14. Nimer RM, Khabour OF, Swedan SF, Kofahi HM (2022) Effect of natural products use prior
592 to infection with COVID-19 on disease severity and hospitalization: A self-reported cross-
593 sectional survey study. *F1000Res* 11:639.
594 <https://doi.org/10.12688/f1000research.121933.2>
- 595 15. Koyama S, Kondo K, Ueha R, et al (2021) Possible Use of Phytochemicals for Recovery from
596 COVID-19-Induced Anosmia and Ageusia. *IJMS* 22:8912.
597 <https://doi.org/10.3390/ijms22168912>
- 598 16. Haddad M, Gaudreault R, Sasseville G, et al (2022) Molecular Interactions of Tannic Acid
599 with Proteins Associated with SARS-CoV-2 Infectivity. *IJMS* 23:2643.
600 <https://doi.org/10.3390/ijms23052643>
- 601 17. Kumar S, Kashyap P, Chowdhury S, et al (2021) Identification of phytochemicals as
602 potential therapeutic agents that binds to Nsp15 protein target of coronavirus (SARS-CoV-
603 2) that are capable of inhibiting virus replication. *Phytomedicine* 85:153317.
604 <https://doi.org/10.1016/j.phymed.2020.153317>
- 605 18. Laponogov I, Gonzalez G, Shepherd M, et al (2021) Network machine learning maps
606 phytochemically rich “Hyperfoods” to fight COVID-19. *Hum Genomics* 15:1.
607 <https://doi.org/10.1186/s40246-020-00297-x>
- 608 19. Jena AB, Kanungo N, Nayak V, et al (2021) Catechin and curcumin interact with S protein of
609 SARS-CoV2 and ACE2 of human cell membrane: insights from computational studies. *Sci*
610 *Rep* 11:2043. <https://doi.org/10.1038/s41598-021-81462-7>
- 611 20. Bahun M, Jukić M, Oblak D, et al (2022) Inhibition of the SARS-CoV-2 3CLpro main
612 protease by plant polyphenols. *Food Chem* 373:131594.
613 <https://doi.org/10.1016/j.foodchem.2021.131594>
- 614 21. Shin-Ya M, Nakashio M, Ohgitani E, et al (2023) Effects of tea, catechins and catechin
615 derivatives on Omicron subvariants of SARS-CoV-2. *Sci Rep* 13:16577.
616 <https://doi.org/10.1038/s41598-023-43563-3>

- 617 22. Wu C-S, Li Y-C, Peng S-L, et al (2023) Coffee as a dietary strategy to prevent SARS-CoV-2
618 infection. *Cell Biosci* 13:210. <https://doi.org/10.1186/s13578-023-01154-9>
- 619 23. Proal AD, VanElzakker MB, Aleman S, et al (2023) SARS-CoV-2 reservoir in post-acute
620 sequelae of COVID-19 (PASC). *Nat Immunol* 24:1616–1627.
621 <https://doi.org/10.1038/s41590-023-01601-2>
- 622 24. Koyama S, Purk A, Kaur M, et al (2019) Beta-caryophyllene enhances wound healing
623 through multiple routes. *PLoS ONE* 14:e0216104.
624 <https://doi.org/10.1371/journal.pone.0216104>
- 625 25. Frere JJ, Serafini RA, Pryce KD, et al (2022) SARS-CoV-2 infection in hamsters and humans
626 results in lasting and unique systemic perturbations after recovery. *Sci Transl Med*
627 14:eabq3059. <https://doi.org/10.1126/scitranslmed.abq3059>
- 628 26. Wong RSY (2021) Inflammation in COVID-19: from pathogenesis to treatment. *Int J Clin*
629 *Exp Pathol* 14:831–844
- 630 27. Shamsabadi S, Nazer Y, Ghasemi J, et al (2023) Promising influences of zingerone against
631 natural and chemical toxins: A comprehensive and mechanistic review. *Toxicon*
632 233:107247. <https://doi.org/10.1016/j.toxicon.2023.107247>
- 633 28. Ballester P, Cerdá B, Arcusa R, et al (2023) Antioxidant Activity in Extracts from
634 Zingiberaceae Family: Cardamom, Turmeric, and Ginger. *Molecules* 28:4024.
635 <https://doi.org/10.3390/molecules28104024>
- 636 29. Shamsnia HS, Roustaei M, Ahmadvand D, et al (2023) Impact of curcumin on p38 MAPK:
637 therapeutic implications. *Inflammopharmacology* 31:2201–2212.
638 <https://doi.org/10.1007/s10787-023-01265-2>
- 639 30. Kulkarni SA, Nagarajan SK, Ramesh V, et al (2020) Computational evaluation of major
640 components from plant essential oils as potent inhibitors of SARS-CoV-2 spike protein.
641 *Journal of Molecular Structure* 1221:128823.
642 <https://doi.org/10.1016/j.molstruc.2020.128823>
- 643 31. Teli DM, Shah MB, Chhabria MT (2021) In silico Screening of Natural Compounds as
644 Potential Inhibitors of SARS-CoV-2 Main Protease and Spike RBD: Targets for COVID-19.
645 *Front Mol Biosci* 7:599079. <https://doi.org/10.3389/fmolb.2020.599079>
- 646 32. Gupta S, Singh V, Varadwaj PK, et al (2020) Secondary metabolites from spice and herbs as
647 potential multitarget inhibitors of SARS-CoV-2 proteins. *Journal of Biomolecular Structure*
648 *and Dynamics* 1–20. <https://doi.org/10.1080/07391102.2020.1837679>
- 649 33. Mokhtari T, Azizi M, Sheikhabaei F, et al (2023) Plant-Derived Antioxidants for
650 Management of COVID-19: A Comprehensive Review of Molecular Mechanisms. *Tanaffos*
651 22:27–39

- 652 34. Landry MJ, Ward CP, Cunanan KM, et al (2023) Cardiometabolic Effects of Omnivorous vs
653 Vegan Diets in Identical Twins: A Randomized Clinical Trial. *JAMA Netw Open* 6:e2344457.
654 <https://doi.org/10.1001/jamanetworkopen.2023.44457>
- 655 35. Muhialdin BJ, Zawawi N, Abdull Razis AF, et al (2021) Antiviral activity of fermented foods
656 and their probiotics bacteria towards respiratory and alimentary tracts viruses. *Food*
657 *Control* 127:108140. <https://doi.org/10.1016/j.foodcont.2021.108140>
- 658 36. Bousquet J, Anto JM, Czarlewski W, et al (2021) Cabbage and fermented vegetables: From
659 death rate heterogeneity in countries to candidates for mitigation strategies of severe
660 COVID-19. *Allergy* 76:735–750. <https://doi.org/10.1111/all.14549>
- 661 37. Bousquet J, Czarlewski W, Zuberbier T, et al (2021) Spices to Control COVID-19 Symptoms:
662 Yes, but Not Only.... *Int Arch Allergy Immunol* 182:489–495.
663 <https://doi.org/10.1159/000513538>
- 664 38. You L-Z, Dai Q-Q, Zhong X-Y, et al (2023) Clinical evidence of three traditional Chinese
665 medicine drugs and three herbal formulas for COVID-19: A systematic review and meta-
666 analysis of the Chinese population. *J Integr Med* 21:441–454.
667 <https://doi.org/10.1016/j.joim.2023.08.001>
- 668 39. Balasubramanian R, Maideen NMP, Muthusamy S, et al (2023) Role of Supplements in the
669 Management of COVID-19 - A Comprehensive Review. *Infect Disord Drug Targets*
670 23:e100323214544. <https://doi.org/10.2174/1871526523666230310094646>
- 671 40. Ginting B, Chiari W, Duta TF, et al (2023) COVID-19 pandemic sheds a new research
672 spotlight on antiviral potential of essential oils - A bibliometric study. *Heliyon* 9:e17703.
673 <https://doi.org/10.1016/j.heliyon.2023.e17703>
- 674 41. Parma V, Ohla K, Veldhuizen MG, et al (2020) More Than Smell-COVID-19 Is Associated
675 With Severe Impairment of Smell, Taste, and Chemesthesis. *Chem Senses* 45:609–622.
676 <https://doi.org/10.1093/chemse/bjaa041>
- 677 42. Jang M, Park Y-I, Cha Y-E, et al (2020) Tea Polyphenols EGCG and Theaflavin Inhibit the
678 Activity of SARS-CoV-2 3CL-Protease *In Vitro*. *Evidence-Based Complementary and*
679 *Alternative Medicine* 2020:1–7. <https://doi.org/10.1155/2020/5630838>
- 680 43. Steinmann J, Buer J, Pietschmann T, Steinmann E (2013) Anti-infective properties of
681 epigallocatechin-3-gallate (EGCG), a component of green tea: Anti-infective effects of
682 EGCG. *Br J Pharmacol* 168:1059–1073. <https://doi.org/10.1111/bph.12009>
- 683 44. Wang Y, Kan Z, Thompson HJ, et al (2019) Impact of Six Typical Processing Methods on the
684 Chemical Composition of Tea Leaves Using a Single *Camellia sinensis* Cultivar, Longjing 43.
685 *J Agric Food Chem* 67:5423–5436. <https://doi.org/10.1021/acs.jafc.8b05140>

- 686 45. Shi J, Yang G, You Q, et al (2023) Updates on the chemistry, processing characteristics, and
687 utilization of tea flavonoids in last two decades (2001-2021). *Critical Reviews in Food*
688 *Science and Nutrition* 63:4757–4784. <https://doi.org/10.1080/10408398.2021.2007353>
- 689 46. Nakashio M, Ohgitani E, Shin-Ya M, et al (2023) Milk Casein Inhibits Effect of Black Tea
690 Galloylated Theaflavins to Inactivate SARS-CoV-2 In Vitro. *Bioengineering (Basel)* 10:1068.
691 <https://doi.org/10.3390/bioengineering10091068>
- 692 47. Vu T-HT, Rydland KJ, Achenbach CJ, et al (2021) Dietary Behaviors and Incident COVID-19
693 in the UK Biobank. *Nutrients* 13:2114. <https://doi.org/10.3390/nu13062114>
- 694 48. Tadbir Vajargah K, Zargarzadeh N, Ebrahimzadeh A, et al (2022) Association of fruits,
695 vegetables, and fiber intake with COVID-19 severity and symptoms in hospitalized
696 patients: A cross-sectional study. *Front Nutr* 9:934568.
697 <https://doi.org/10.3389/fnut.2022.934568>
- 698 49. Hosseini B, Berthon BS, Saedisomeolia A, et al (2018) Effects of fruit and vegetable
699 consumption on inflammatory biomarkers and immune cell populations: a systematic
700 literature review and meta-analysis. *Am J Clin Nutr* 108:136–155.
701 <https://doi.org/10.1093/ajcn/nqy082>
- 702 50. Subar AF, Thompson FE, Kipnis V, et al (2001) Comparative Validation of the Block, Willett,
703 and National Cancer Institute Food Frequency Questionnaires. *American Journal of*
704 *Epidemiology* 154:1089–1099. <https://doi.org/10.1093/aje/154.12.1089>
- 705

706 **Supplementary Information**

707

708 **Supplementary Methods**

709

710 **Development of Survey**

711

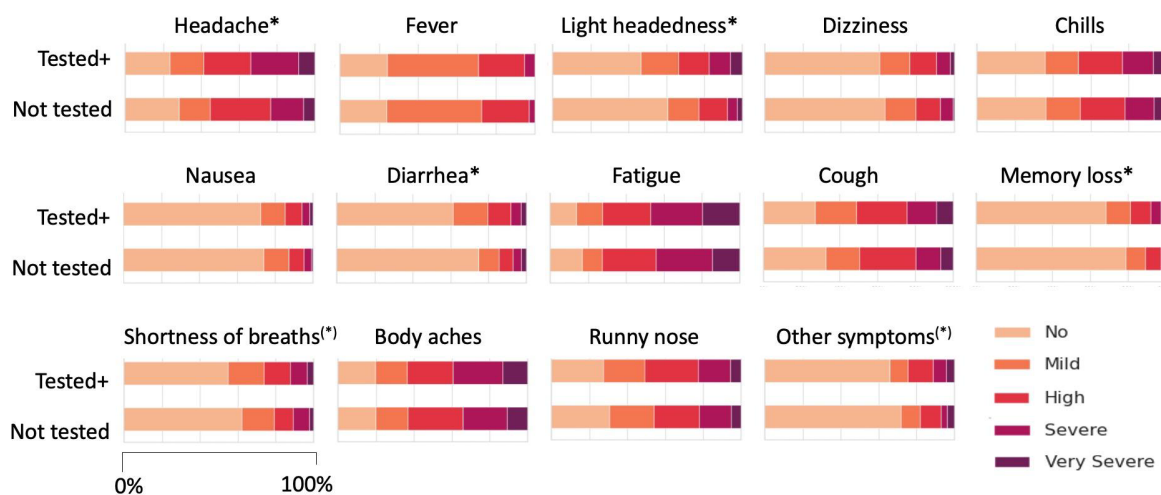
712 Questions about eating habits were constructed by asking how frequently the participants ate each category of
713 foods, and the category was based on the food classification by the Ministry of Health Labour and Welfare of Japan
714 (<https://www.mhlw.go.jp/english/topics/foodsafety/positivelist060228/dl/r04.pdf>). The food categories that we used
715 were: citrus fruits, berries, pome fruits, stone fruits, tropical fruits, other fruits, leaf vegetables, root vegetables, other
716 vegetables, beans and peas, nuts and seeds, herbs and spices, cereals and grains containing buckwheat and barleys,
717 other foods such as mushrooms, and fermented foods. Buckwheat and barleys were specifically selected as
718 representatives of cereals and grains and based on a paper showing that the phytochemicals included in them were
719 effective on COVID-19 [15]. In order to enhance the understanding of the types of foods and the ease of answering
720 survey questions, we listed some examples of foods in the questions pertaining to food categories. For example, in
721 asking the frequency of eating root vegetables, we asked “Root vegetables, such as carrot, turnip, garlic, beetroots,
722 parsnip roots, parsley root, radish, onion, sacred lotus, taro, yam, sweet potato, potato?” (English version). As the
723 participants took the survey from around the world, it was necessary to adjust the examples depending on the
724 language version because of the differences in the availability and familiarity of certain food items. In addition, we
725 did not want the availability of the examples to affect the answers. There were also some food items that were
726 named differently, depending on their location. Thus, the Indian English version was prepared separately. Questions
727 on drinking habits were constructed by asking how frequently the participants drank four types of beverages: 1) Tea,
728 based on the studies showing the chemical ingredients found within, had effects on coronavirus [8, 18], 2) other tea
729 and herbal teas, not made from tea plants, 3) coffee, 4) cider, 5) hot chocolate, and 4) alcohol. Similar to the
730 questions pertaining to foods, we showed some examples to enhance the ease of understanding. In addition, we
731 made some adjustments to the examples shown in each language version of the survey (for example, the Russian and
732 Turkish versions had examples of vodka and raki, respectively, instead of brandy, which other language versions
733 may have contained). The Persian version did not have questions on cider and alcohol. The lists of these examples
734 are shown in Supplementary Table 1.

735 Regarding COVID-19, we asked to choose from the choices of “Did not get COVID”, “Not get tested but think
736 yes”, and “Tested positive”. We also asked if they got COVID-19, when they got sick and how long it took to
737 recover (not necessarily based on PCR results as there was the “Not tested” group). We asked what symptoms they
738 experienced as well as their severity. The symptoms that were asked included if people experienced a headache,
739 cough, shortness of breath, runny nose or congestion, muscle/body aches/soreness, chills, lightheadedness or brain
740 fog, dizziness, nausea, fatigue, memory loss or concussion or hallucination, diarrhea or gastrointestinal symptoms,
741 hair loss, smell loss or reduction, taste loss or reduction, chemesthesis loss or reduction, other symptoms. Separately,
742 we asked if they have persisting symptoms (PASC, or Long-COVID).

743 The English version of the questionnaire was developed first using Qualtrics software (Qualtrics, Provo, UT,
744 USA, <https://www.qualtrics.com>). Subsequently, the survey was translated into nine other languages, thus getting a
745 total of 10 language versions, namely Chinese, English, Indian English, Italian, Japanese, Persian, Polish, Russian,
746 Spanish, and Turkish. The survey has been online since February 2022. Data used for the analysis were obtained
747 between February 2022 and May 2023. The frequency of eating and drinking was asked following the style of the
748 Diet History Questionnaire (DHQ) by the National Cancer Institute (NCI) [50] as a validated questionnaire for
749 surveys on nutrition and modified the choices of answers of DHQ to “Never”, “Daily”, “Weekly”, “Monthly”. We
750 also asked the people surveyed which type of food items and beverages they consumed using a multiple selection
751 question. As the examples do not cover all the types of foods in each category, we also added a question where
752 survey participants could include what food or beverage item they ate or drank.

753

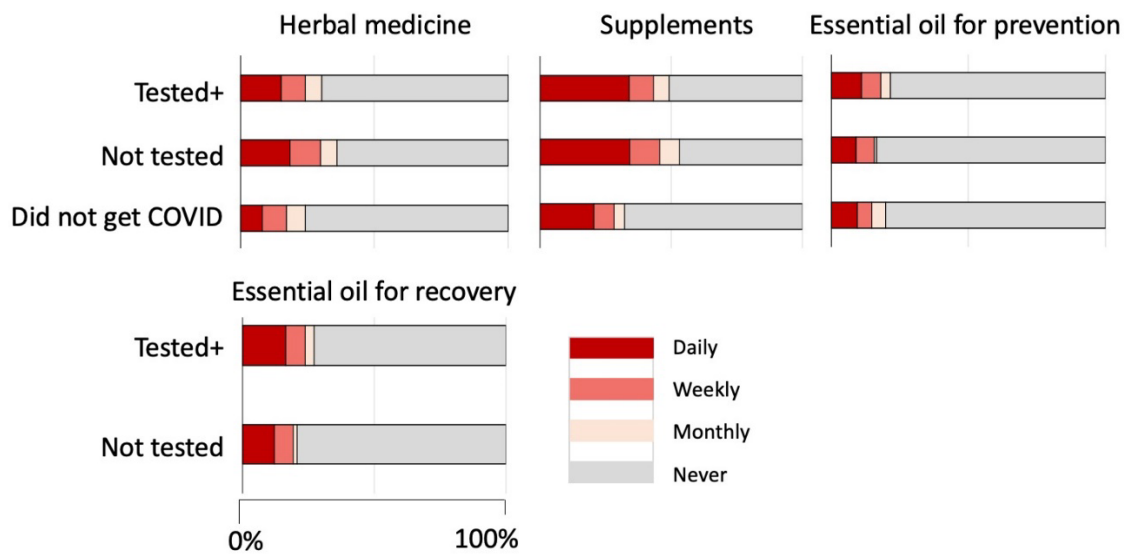
754 **Supplementary Figure 1.** Symptoms of COVID-19 reported by the “Tested Positive” group and “Not Tested”
755 group. *: $P < 0.05$, (*): $0.05 < P < 0.10$
756



757
758
759

760

Supplementary Figure 2. Intake of herbal medicines, supplements, and usage of essential oils



761

762

763

764

765

766

767

768

769

770

771

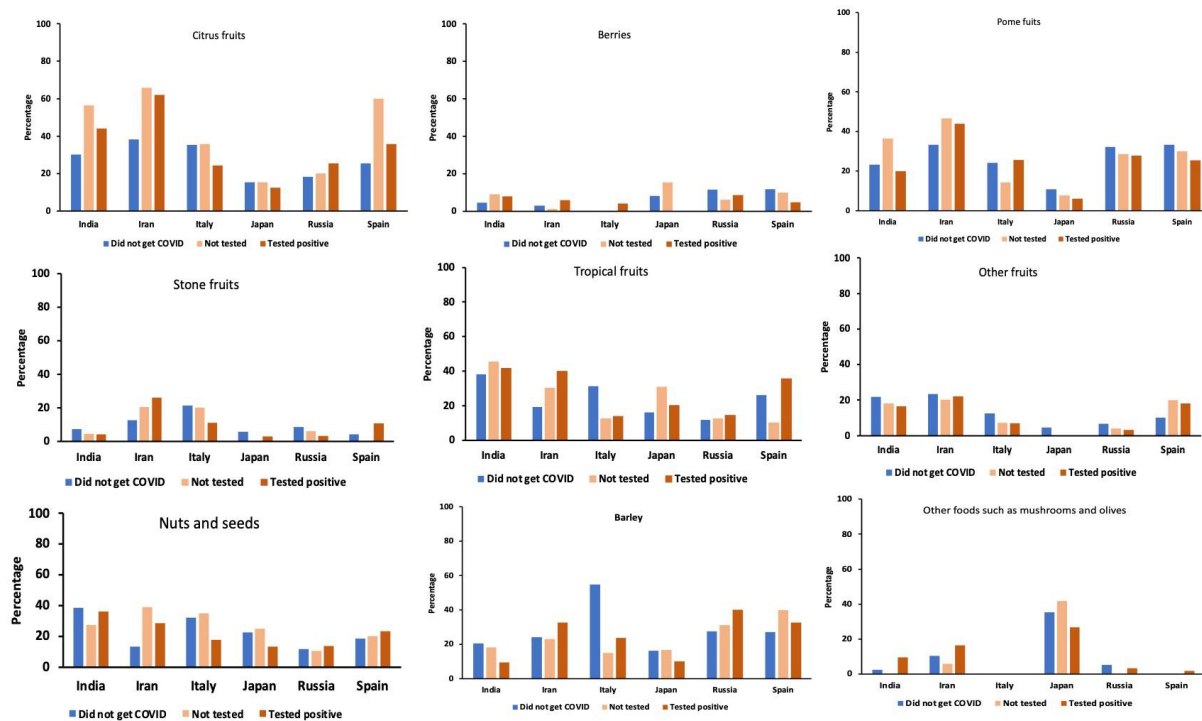
772

773

774

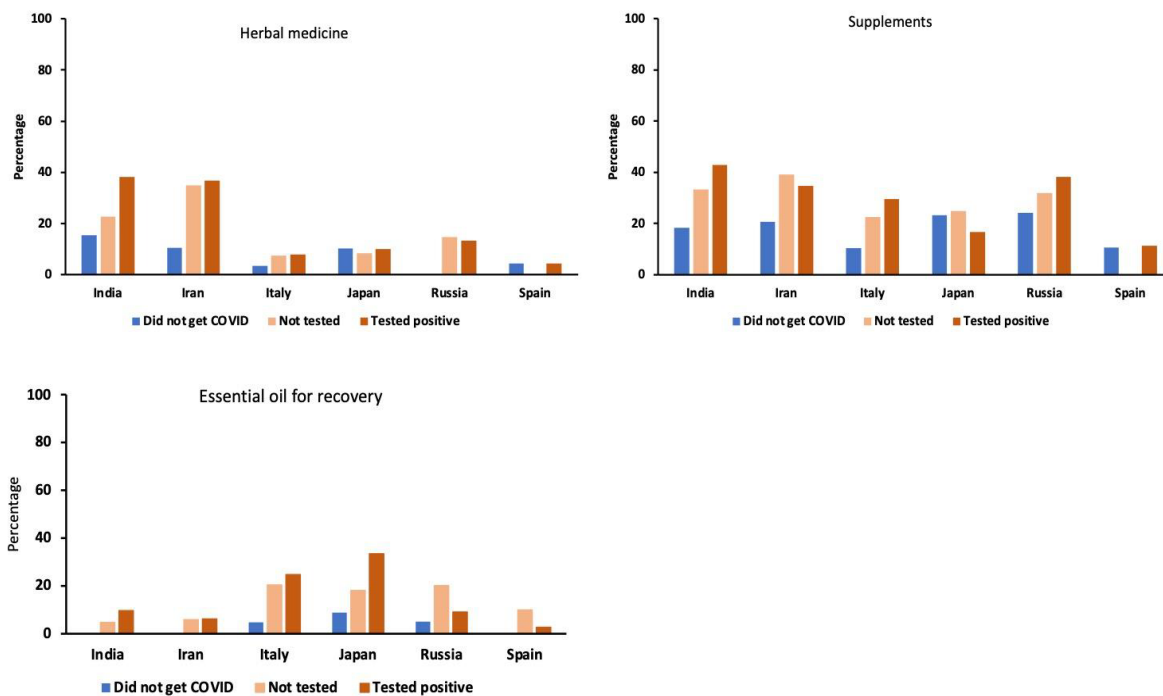
775

776 **Supplementary Figure 3.** Daily intake of foods of categories other than those shown in the main text, split by
 777 countries. Blue bars: “Did not get COVID-19” group, light orange bars: “Not tested” group, Dark orange bars:
 778 “Tested positive” group



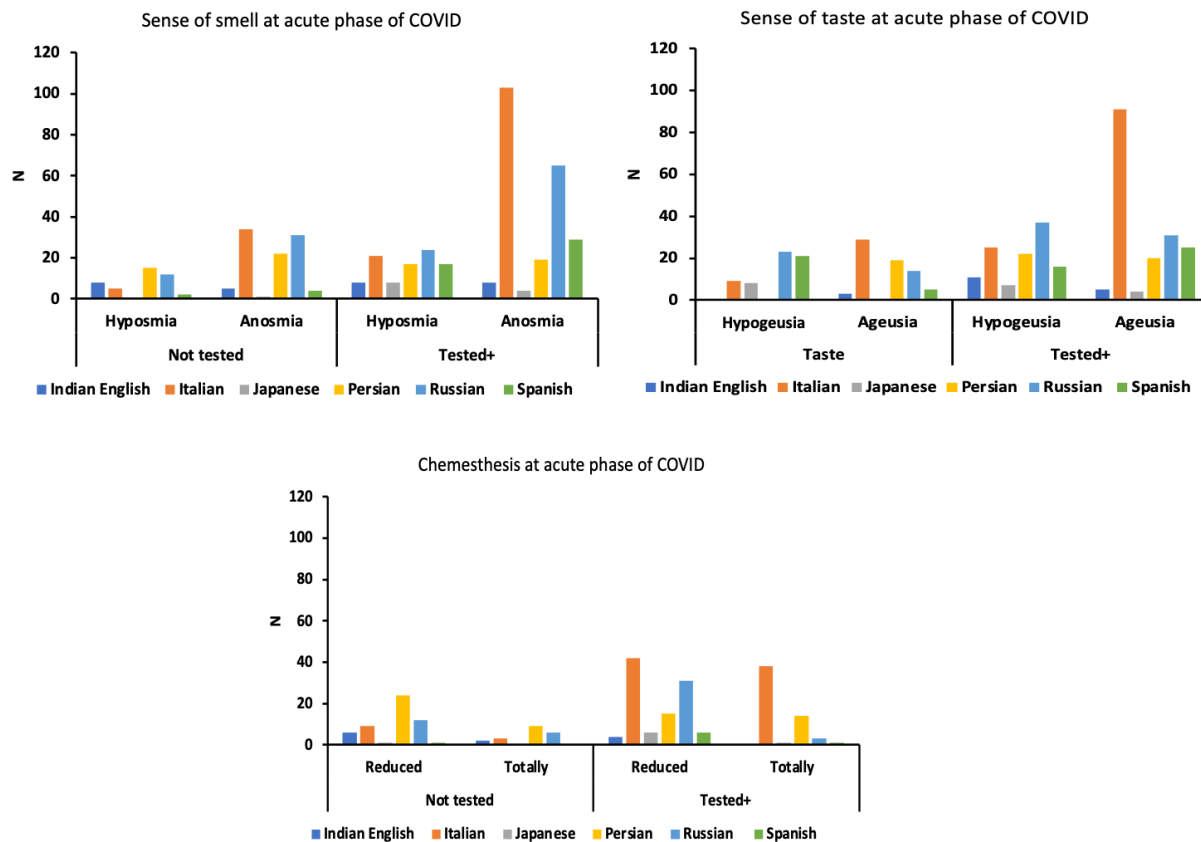
779
 780
 781
 782

783 **Supplementary Figure 4.** Daily intake of herbal medicine and supplements, and daily use of essential oils, split by
784 countries.



785
786
787
788

789 **Supplementary Figure 5.** Number of participants reporting experiences of chemosensory dysfunction due to
 790 COVID-19.



791
 792
 793

Supplementary table 1. Examples of food items used in each language version of the survey (Part 1: Chinese, English, Indian English, and Japanese)

Supplementary table 1. Examples of food items used in each language version of the survey (Part 2. Persian, Polish, Russian, Spanish, and Turkish)

Supplementary Table 1 is removed from MedRxiv as it contains other languages, MedRxiv has a policy that “any information presented in a language other than English should be removed or completely replaced with the English translation”. Please contact corresponding author for access to this information.

Supplementary Table 2. Comparison of the severity of symptoms reported by “Not tested” and “Tested positive” groups.

Symptoms			
Fever	$\chi^2=0.088$	df=2	P=0.957
Headache	$\chi^2=20.244$	df=4	P=0.0004
Chills	$\chi^2=1.334$	df=4	P=0.856
Lightheadedness	$\chi^2=19.026$	df=4	P=0.0007
dizziness	$\chi^2=0.876$	df=4	P=0.928
body aches	$\chi^2=3.214$	df=4	P=0.523
Memory loss	$\chi^2=20.993$	df=4	P=0.0003
fatigue	$\chi^2=5.737$	df=4	P=0.220
coughs	$\chi^2=7.210$	df=4	P=0.1251
shortness of breaths	$\chi^2=4.460$	df=4	P=0.347
runny nose/nose congestion	$\chi^2=3.487$	df=4	P=0.480
Diarrhea	$\chi^2=12.372$	df=4	P=0.015
nausea	$\chi^2=0.722$	df=4	P=0.949
hair loss	$\chi^2=0.463$	df=1	P=0.496
Smell dysfunction	$\chi^2=2.122$	df=2	P=0.713
Taste dysfunction	$\chi^2=4.012$	df=2	P=0.134
Chemesthesis dysfunction	$\chi^2=2.532$	df=2	P=0.639
other symptoms	$\chi^2=2.679$	df=4	P=0.613

Supplementary Table 3. Comparison of the food and beverage consumption reported by “Not tested”, “Tested positive”, and “Did not get COVID” groups.

Foods and beverage types	N	Chi-square value (df=6)	n (%)				P	Cramer’s V (Effect size) df=2 *: small association (0.07 < 0.21) **: moderate association (0.21 < 0.35)
			χ^2	Daily	Weekly	Monthly		
<u>Tea</u> Tested+ Not tested Did not get COVID	1461	$\chi^2=54.528$	319 (41.97) 168 (62.22) 243 (56.38)	119 (15.66) 28 (10.37) 72 (16.71)	69 (9.08) 8 (2.96) 21 (4.87)	253 (33.29) 66 (24.44) 95 (22.04)	P<0.001	0.14*
<u>Herbal tea</u> Tested+ Not tested Did not get COVID	1461	$\chi^2=31.060$	136 (18.87) 76 (28.15) 62 (14.42)	133 (17.48) 41 (15.19) 59 (13.72)	81 (10.64) 27 (10.00) 70 (16.28)	411 (54.10) 126 (47.67) 239 (55.58)	P<0.001	0.10*
<u>Coffee</u> Tested+ Not tested Did not get COVID	1459	$\chi^2=22.207$	415 (53.90) 115 (42.75) 230 (54.76)	98 (12.73) 33 (12.27) 52 (12.38)	41 (5.32) 17 (6.32) 36 (8.57)	216 (28.05) 104 (38.66) 102 (24.29)	P=0.0011	0.087*
<u>Apple cider</u> Tested+ Not tested Did not get COVID	1277	$\chi^2=79.553$	15 (2.14) 5 (2.69) 32 (8.21)	20 (2.85) 4 (2.15) 48 (12.31)	69 (9.84) 18 (9.68) 46 (11.79)	597 (85.16) 159 (85.48) 264 (67.69)	P<0.001	0.18*

<u>Hot chocolate</u> Tested+ Not tested Did not get COVID	1446	$\chi^2=9.771$	43 (5.70) 6 (2.26) 18 (4.24)	72 (9.54) 22 (8.27) 44 (10.35)	129 (17.09) 41 (15.41) 57 (13.41)	511 (67.68) 197 (74.06) 306 (72.00)	P=0.135	0.057
<u>Alcohol</u> Tested+ Not tested Did not get COVID	1277	$\chi^2=23.920$	57 (8.13) 21 (11.29) 69 (17.69)	165 (23.54) 44 (23.66) 75 (19.23)	153 (21.83) 35 (18.82) 73 (18.72)	326 (46.50) 86 (46.24) 173 (44.36)	P<0.001	0.097*
<u>Citrus fruits</u> Tested+ Not tested Did not get COVID	1424	$\chi^2=31.541$	211 (28.36) 108 (41.38) 93 (22.20)	290 (38.98) 85 (32.57) 164 (39.14)	119 (15.99) 29 (11.11) 77 (18.38)	124 (16.67) 39 (14.94) 85 (20.29)	P<0.001	0.105*
<u>Berries</u> Tested+ Not tested Did not get COVID	1418	$\chi^2=21.167$	65 (8.75) 17 (6.56) 30 (7.21)	229 (30.82) 60 (23.17) 120 (28.85)	191 (25.71) 52 (20.08) 113 (27.16)	258 (34.72) 130 (50.19) 153 (36.78)	P=0.0017	0.086*
<u>Pome fruits</u> Tested+ Not tested Did not get COVID	1412	$\chi^2=25.777$	183 (24.66) 78 (30.35) 98 (23.73)	298 (40.16) 103 (40.08) 128 (30.99)	130 (17.52) 27 (10.51) 86 (20.82)	131 (17.65) 49 (19.07) 101 (24.46)	P<0.001	0.096*
<u>Stone fruits</u> Tested+ Not tested Did not get COVID	1403	$\chi^2=8.617$	60 (8.13) 28 (11.07) 35 (8.50)	204 (27.64) 66 (26.09) 96 (23.30)	213 (28.86) 57 (22.53) 119 (28.88)	261 (35.37) 102 (40.32) 162 (39.32)	N.S.	0.055

<u>Tropical fruits</u> Tested+ Not tested Did not get COVID	1397	$\chi^2=8.001$	176 (23.95) 59 (23.32) 90 (22.00)	316 (42.99) 107 (42.29) 153 (37.41)	137 (18.64) 43 (17.00) 91 (22.25)	106 (14.42) 44 (17.39) 75 (18.34)	P=0.24	0.054
<u>Other fruits</u> Tested+ Not tested Did not get COVID	1390	$\chi^2=16.516$	63 (8.61) 34 (13.39) 39 (9.65)	255 (34.84) 93 (36.61) 122 (30.20)	233 (31.83) 57 (22.44) 117 (28.96)	181 (24.73) 70 (27.56) 126 (31.19)	P<0.05	0.077*
<u>Leaf vegetables</u> Tested+ Not tested Did not get COVID	1379	$\chi^2=23.957$	287 (39.42) 92 (36.80) 207 (51.62)	285 (39.15) 99 (39.60) 112 (27.93)	79 (10.85) 34 (13.60) 48 (11.97)	77 (10.58) 25 (10.00) 34 (8.48)	P<0.001	0.093*
<u>Root vegetables</u> Tested+ Not tested Did not get COVID	1371	$\chi^2=15.828$	270 (37.45) 111 (44.22) 194 (48.62)	353 (48.96) 103 (41.04) 153 (38.35)	54 (7.49) 19 (7.57) 28 (7.02)	44 (6.10) 18 (7.17) 24 (6.02)	P<0.05	0.076*
<u>Other vegetables</u> Tested+ Not tested Did not get COVID	1358	$\chi^2=13.848$	294 (41.06) 106 (42.57) 189 (48.09)	330 (46.09) 103 (41.37) 157 (39.95)	53 (7.40) 17 (6.83) 32 (8.14)	39 (5.45) 23 (9.24) 15 (3.82)	P<0.05	0.071*
<u>Beans and peas</u> Tested+ Not tested Did not get COVID	1354	$\chi^2=47.242$	88 (12.34) 45 (18.00) 108 (27.62)	396 (55.54) 132 (52.80) 164 (41.94)	113 (15.85) 43 (17.20) 71 (18.16)	116 (16.27) 30 (12.00) 48 (12.28)	P<0.001	0.132*

<u>Nuts and seeds</u> Tested+ Not tested Did not get COVID	1351	$\chi^2=10.160$	168 (23.66) 66 (26.51) 90 (22.96)	284 (40.00) 83 (33.33) 130 (33.16)	148 (20.85) 55 (22.09) 89 (22.70)	110 (15.49) 45 (18.07) 83 (21.17)	N.S.	0.061
<u>Spices and herbs</u> Tested+ Not tested Did not get COVID	1340	$\chi^2=35.757$	271 (38.28) 119 (48.77) 208 (53.61)	254 (35.88) 63 (25.82) 88 (22.68)	57 (8.05) 24 (9.84) 42 (10.82)	126 (17.80) 38 (15.58) 50 (12.89)	P<0.001	0.117*
<u>Cereals and grains including barley</u> Tested+ Not tested Did not get COVID	1318	$\chi^2=21.060$	190 (27.34) 54 (22.31) 91 (23.88)	206 (29.64) 69 (28.51) 119 (31.23)	92 (13.24) 33 (13.64) 81 (21.26)	207 (29.78) 86 (35.54) 90 (23.62)	P=0.0018	0.089*
<u>Other foods such as mushrooms</u> Tested+ Not tested Did not get COVID	1327	$\chi^2=51.960$	41 (5.87) 9 (3.72) 62 (16.02)	239 (34.24) 63 (26.03) 129 (33.33)	236 (33.81) 97 (40.08) 109 (28.17)	182 (26.07) 73 (30.17) 87 (22.48)	P<0.001	0.140*
<u>Fermented foods</u> Tested+ Not tested Did not get COVID	1331	$\chi^2=62.945$	169 (24.07) 64 (26.23) 178 (46.23)	223 (31.77) 68 (27.87) 83 (21.56)	80 (11.40) 27 (11.07) 39 (10.13)	230 (32.76) 85 (34.84) 85 (22.08)	P<0.001	0.154*
<u>Herbal medicines</u> Tested+ Not tested Did not get COVID	1331	$\chi^2=18.872$	107 (15.24) 45 (18.44) 31 (8.05)	63 (8.97) 28 (11.48) 35 (9.09)	43 (6.13) 15 (6.15) 27 (7.01)	489 (69.66) 156 (63.93) 292 (75.84)	P=0.0044	0.0842*

<u>Supplements</u> Tested+ Not tested Did not get COVID	1314	$\chi^2=38.246$	235 (33.96) 83 (34.16) 78 (20.58)	64 (9.25) 28 (11.53) 29 (7.65)	41 (5.92) 18 (7.41) 15 (3.96)	352 (50.87) 114 (46.91) 257 (67.81)	P<0.001	0.121*
<u>Essential oils for prevention</u> Tested+ Not tested Did not get COVID	1315	$\chi^2=10.904$	76 (11.01) 22 (9.09) 36 (9.40)	48 (6.96) 16 (6.61) 20 (5.22)	24 (3.48) 2 (0.83) 20 (5.22)	542 (78.55) 202 (83.47) 307 (80.16)	N.S.	0.064
<u>Essential oils for recovery</u> Tested+ Not tested	926	$\chi^2=4.807$ df=3	112 (16.33) 29 (12.08)	51 (7.43) 17 (7.08)	23 (3.35) 4 (1.67)	500 (72.89) 190 (79.17)	N.S.	0.072* df=1

Supplementary Table 4. Discrepancy from expected values. The colors indicate where the observed values were higher than the expected values (smaller to larger discrepancy indicated by pink to red color), and the observed values were lower than the expected values (smaller to larger discrepancy indicated by light to dark blue). Grey color indicates there were no or negligible discrepancies: Results on herbal medicines, supplements, essential oils.

Herbal medicine	Daily	Weekly	Monthly	Never
Tested+				
Not tested				
Did not get COVID				

Supplements	Daily	Weekly	Monthly	Never
Tested+				
Not tested				
Did not get COVID				

Oil for prevention	Daily	Weekly	Monthly	Never
Tested+				
Not tested				
Did not get COVID				

Oil for prevention	Daily	Weekly	Monthly	Never
Tested+				
Not tested				
Did not get COVID				

Observed < Expected value	Expected < Observed value	
		$0 < \chi^2 \leq 2$
		$2 < \chi^2 \leq 5$
		$5 < \chi^2 \leq 10$
		$10 < \chi^2$

Supplementary Table 5. Ethnicity of the participants who answered each language version of the survey

Language of the survey	Ethnicity of the participants
Chinese	Not clear (none wrote answers)
English	Greek, Asian, Indian, Vietnam, Israeli, Irish/German, Bosnian, Montenegrin, not clear
Indian English	100% Indian
Italian	97.3% Italian, 2.7% not clear
Japanese	98.3% Japanese, 1.1% Chinese, 0.6% American
Persian	100% Iranian
Polish	Not clear (15 wrote answers, of which 9 were in Polish, others unclear)
Russian	91.3% Russian, 8.7% not clear
Spanish	94.2% Spanish, 5.8% not clear
Turkish	Not clear (only 2 wrote answers)

Supplementary Material

English version of the survey

GCCR - Phytochemicals - English1

Q82 I am at least 18 years old, and I wish to voluntarily participate in this study.

- Yes (1)
- No (2)

Skip To: End of Survey If I am at least 18 years old, and I wish to voluntarily participate in this study. = No

End of Block: Block 1

Start of Block: Block 2

During the pandemic, many people have tried various methods to help accelerate their recovery from symptoms of COVID-19. Among the most popular approaches are at home remedies and herbal medicines. It is still unclear whether some foods, drinks, essential oils, and their ingredients may be helpful in recovering from COVID-19.

In this survey, we would like to hear if you tried any specific foods, drinks, home remedies, or herbal medicines that you have heard or think work in suppressing COVID-19 symptoms and/or in facilitating recovery. If you did, please let us know – we would like to hear their effects.

Thank you so much for your voluntary participation. The data will be de-identified, saved and protected in our system.

– Global Consortium for Chemosensory Research Team

Please let us know if you have any questions regarding the study.

General contact: Dr. Sachiko Koyama, Indiana University, [REDACTED] sakoyama@iu.edu

One of the lead researchers has a company that does research and development of products using phytochemicals. This company is not funding or sponsoring this research study. We are giving you this information so you can decide if this affects your willingness to participate in this study.

Q2 Did you get COVID-19?

- Not tested, but I suspect that I got it (1)

- o Yes – tested positive via PCR or antibody test (2)
- o No or not aware (3)

Display This Question:

If Did you get COVID-19? = Not tested, but I suspect that I got it

Or Did you get COVID-19? = Yes – tested positive via PCR or antibody test

Q3 If yes, what symptoms did/do you have (overall and when at worst)?

	No Fever (1)	Mild Fever (2)	High Fever (3)
Fever (measured or estimated): (1)	o	o	o

Display This Question:

If Did you get COVID-19? = Not tested, but I suspect that I got it

Or Did you get COVID-19? = Yes – tested positive via PCR or antibody test

Q4 (Continued)

	No (1)	Mild (2)	Moderate (3)	Severe (4)	Very Severe (5)
Headache (1)	o	o	o	o	o
Cough (2)	o	o	o	o	o

Shortness of breath (3)	<input type="radio"/>	<input type="radio"/>	<input type="radio"/>	<input type="radio"/>	<input type="radio"/>
Runny nose or congestion (4)	<input type="radio"/>	<input type="radio"/>	<input type="radio"/>	<input type="radio"/>	<input type="radio"/>
Muscle/body aches/soreness (5)	<input type="radio"/>	<input type="radio"/>	<input type="radio"/>	<input type="radio"/>	<input type="radio"/>
Chills (6)	<input type="radio"/>	<input type="radio"/>	<input type="radio"/>	<input type="radio"/>	<input type="radio"/>
Light headedness or brain fog (7)	<input type="radio"/>	<input type="radio"/>	<input type="radio"/>	<input type="radio"/>	<input type="radio"/>
Dizziness (8)	<input type="radio"/>	<input type="radio"/>	<input type="radio"/>	<input type="radio"/>	<input type="radio"/>
Nausea (9)	<input type="radio"/>	<input type="radio"/>	<input type="radio"/>	<input type="radio"/>	<input type="radio"/>
Fatigue (10)	<input type="radio"/>	<input type="radio"/>	<input type="radio"/>	<input type="radio"/>	<input type="radio"/>
Memory loss, confusion, hallucination (11)	<input type="radio"/>	<input type="radio"/>	<input type="radio"/>	<input type="radio"/>	<input type="radio"/>
Diarrhea, gastrointestinal symptoms (12)	<input type="radio"/>	<input type="radio"/>	<input type="radio"/>	<input type="radio"/>	<input type="radio"/>
Other symptoms (13)	<input type="radio"/>	<input type="radio"/>	<input type="radio"/>	<input type="radio"/>	<input type="radio"/>

Display This Question:

If Did you get COVID-19? = Not tested, but I suspect that I got it

Or Did you get COVID-19? = Yes – tested positive via PCR or antibody test

Q5 (Continued)

	Yes (1)	No (2)
Hair loss (1)	○	○

Display This Question:

If Did you get COVID-19? = Not tested, but I suspect that I got it

Or Did you get COVID-19? = Yes – tested positive via PCR or antibody test

Q6 (Continued)

	No loss (1)	Reduced sensation (2)	Total loss of sensation (3)
Loss of smell or reduced smell (1)	○	○	○
Loss of taste or reduced taste (2)	○	○	○

Loss of chemesthesis or reduced chemesthesis (includes the burning, stinging, pricking sense associated with the spiciness of chili or the freshness/coolness of menthol): (3)

Display This Question:

If (Continued) = Loss of taste or reduced taste [Reduced sensation]

Or (Continued) = Loss of taste or reduced taste [Total loss of sensation]

Q7 If you experienced reduced ability to taste or total loss of taste, which sensation?

- Sweet (1)
- Sour (2)
- Salty (3)
- Bitter (4)
- Umami (savory) (5)

Display This Question:

If Did you get COVID-19? = Yes – tested positive via PCR or antibody test

Or Did you get COVID-19? = Not tested, but I suspect that I got it

Q8 When did you have COVID for the first time (in case you got it multiple times)?

- Before February 2020 (1)
- Between March to May, 2020 (2)
- Between June to August, 2020 (3)
- Between September to November, 2020 (4)

- Between December 2020 to February 2021 (5)
- Between March to May, 2021 (6)
- June to August, 2021 (7)
- September to November, 2021 (8)
- After December 2021 (9)

Display This Question:

If Did you get COVID-19? = Yes – tested positive via PCR or antibody test

Or Did you get COVID-19? = Not tested, but I suspect that I got it

Q9 Approximately how many days did it take to have a negative COVID test, or how many days did it take to recover from the worst phase (if you did not get tested)?

Display This Question:

If Did you get COVID-19? = Yes – tested positive via PCR or antibody test

Or Did you get COVID-19? = Not tested, but I suspect that I got it

Q10 Do (did) you have persisting symptoms of COVID-19?

- Yes (1)
- No (2)

Display This Question:

If Do (did) you have persisting symptoms of COVID-19? = Yes

Q12 Which persisting symptoms do you have? Choose all that apply

- Fever (1)
- Headache (2)
- Cough (3)

- Shortness of breath (4)
- Runny nose or congestion (5)
- Muscle/body aches/soreness (6)
- Chills (7)
- Light headedness or brain fog (8)
- Dizziness (9)
- Nausea (10)
- Fatigue (11)
- Hair loss (12)
- Memory loss (13)
- Confusion (14)
- Hallucination (15)
- Loss or reduced smell (16)
- Loss or reduced taste (17)
- Loss or reduced chemesthesis (18)
- Diarrhea (19)
- Gastrointestinal Symptoms (20)
- Others (21)

Q13 Please answer to the following questions about your fluids/beverage consumption during the pandemic (since December 2019).

Q14 During the pandemic, how often did you drink tea such as black tea, green tea, white tea, yellow tea, oolong tea, red tea, others? (Note: This excludes Kombucha. Please check one answer that best describes the frequency of your use of the food category)

- Never (1)

- Daily (2)
- Weekly (3)
- Monthly (4)

Q15 During the pandemic, how often did you drink herbal tea such as ginger, lemongrass, licorice, others?

- Never (1)
- Daily (2)
- Weekly (3)
- Monthly (4)

Display This Question:

If During the pandemic, how often did you drink herbal tea such as ginger, lemongrass, licorice, oth... = Daily

Or During the pandemic, how often did you drink herbal tea such as ginger, lemongrass, licorice, oth... = Weekly

Or During the pandemic, how often did you drink herbal tea such as ginger, lemongrass, licorice, oth... = Monthly

Q16 What type of herbal tea do/did you drink?

- Ginger (11)
- Lemongrass (14)
- Others (15) _____

Q17 During the pandemic, how often did you drink coffee?

- Never (1)
- Daily (2)
- Weekly (3)
- Monthly (4)

Display This Question:

If During the pandemic, how often did you drink coffee? = Daily

Or During the pandemic, how often did you drink coffee? = Weekly

Or During the pandemic, how often did you drink coffee? = Monthly

Q18 What type of coffee do/did you drink?

Q19 During the pandemic, how often did you drink cocoa?

- Never (1)
- Daily (2)
- Weekly (3)
- Monthly (4)

Q20 During the pandemic, how often did you drink cider?

- Never (1)
- Daily (2)
- Weekly (3)
- Monthly (4)

Q21 During the pandemic, how often did you drink alcohol such as wine, beer, whiskey, brandy, others?

- Never (1)
- Daily (2)
- Weekly (3)
- Monthly (4)

Display This Question:

If During the pandemic, how often did you drink alcohol such as wine, beer, whiskey, brandy, others? = Daily

Or During the pandemic, how often did you drink alcohol such as wine, beer, whiskey, brandy, others? = Weekly

Or During the pandemic, how often did you drink alcohol such as wine, beer, whiskey, brandy, others? = Monthly

Q22 What type of alcoholic beverage do/did you drink? You may write more than one.

- beer (4)
- brandy (5)
- whiskey (6)
- wine (7)
- Others (8) _____

Q77 Did you change your fluid/beverage habits after the pandemic started?

- Yes (1)
- No (2)

Display This Question:

If Did you change your fluid/beverage habits after the pandemic started? = Yes

Q80 Why did you change your fluid/beverage habits?

- To prevent contracting the virus, I started to drink medicinal/herbal tea more often. (1)
- Regular liquids did not taste good anymore. (2)
- No specific reason (3)
- Other reason (4)

Display This Question:

If Did you change your fluid/beverage habits after the pandemic started? = Yes

Q78 Name of the drink

Q23 Please tell us if there are specific foods that you used during this pandemic. Fruits (check one answer that best describes the frequency of your use of the food category)

Q24 Citrus fruits such as mandarin orange, clementine, tangerine, lemon, lime, pummelo, kumquat, sweet orange?

- Never (1)
- Daily (2)
- Weekly (3)
- Monthly (4)

Display This Question:

If Citrus fruits such as mandarin orange, clementine, tangerine, lemon, lime, pummelo, kumquat, swee... =
Daily

Or Citrus fruits such as mandarin orange, clementine, tangerine, lemon, lime, pummelo, kumquat, swee... =
Weekly

Or Citrus fruits such as mandarin orange, clementine, tangerine, lemon, lime, pummelo, kumquat, swee... =
Monthly

Q25 What citrus fruit do/did you eat?

- clementine (4)
- kumquat (5)
- lemon (6)
- lime (7)
- mandarin orange (8)
- pummelo (9)
- sweet orange (10)
- tangerine (11)
- others (12) _____

Q26 Berries such as cranberry, blueberry, huckleberry, strawberry, blackberry, raspberry, black elderberry, gooseberry, black mulberry, pitanga, black currants (cassis)?

- Never (1)
- Daily (2)
- Weekly (3)
- Monthly (4)

Display This Question:

If Berries such as cranberry, blueberry, huckleberry, strawberry, blackberry, raspberry, black elder... = Daily

Or Berries such as cranberry, blueberry, huckleberry, strawberry, blackberry, raspberry, black elder... = Weekly

Or Berries such as cranberry, blueberry, huckleberry, strawberry, blackberry, raspberry, black elder... = Monthly

Q27 What berries do you eat?

- blackberry (4)
- black currants (cassis) (5)
- black elderberry (6)
- black mulberry (7)
- blueberry (8)
- cranberry (9)
- gooseberry (10)
- huckleberry (11)
- pitanga (12)
- raspberry (13)
- strawberry (14)
- others (15) _____

Q84 Pome fruits such as apple, pear, quince?

- Never (1)
- Daily (2)
- Weekly (3)
- Monthly (4)

Display This Question:

If Pome fruits such as apple, pear, quince? = Daily

Or Pome fruits such as apple, pear, quince? = Weekly

Or Pome fruits such as apple, pear, quince? = Monthly

Q85 What pome fruits did you eat?

- apple (4)
- pear (5)
- quince (6)
- others (7) _____

Q86 Stone fruits such as plum, cherry, apricot, peach?

- Never (1)
- Daily (2)
- Weekly (3)
- Monthly (4)

Display This Question:

If Stone fruits such as plum, cherry, apricot, peach? = Daily

Or Stone fruits such as plum, cherry, apricot, peach? = Weekly

Or Stone fruits such as plum, cherry, apricot, peach? = Monthly

Q87 What stone fruits did you eat?

- apricot (4)

- cherry (5)
- peach (6)
- plum (7)
- others (8) _____

Q28 Tropical fruits such as banana, mango, papaya, kiwi, pineapple, date, avocado, soursop?

- Never (1)
- Daily (2)
- Weekly (3)
- Monthly (4)

Display This Question:

If Tropical fruits such as banana, mango, papaya, kiwi, pineapple, date, avocado, soursop? = Daily

Or Tropical fruits such as banana, mango, papaya, kiwi, pineapple, date, avocado, soursop? = Weekly

Or Tropical fruits such as banana, mango, papaya, kiwi, pineapple, date, avocado, soursop? = Monthly

Q29 What tropical fruit do/did you eat? ()

- avocado (4)
- banana (5)
- date (6)
- kiwi (7)
- mango (8)
- papaya (9)
- pineapple (10)
- soursop (11)
- others (12) _____

Q30 Other fruits such as fig, muskmelon, watermelon, and grapes?

- Never (1)
- Daily (2)
- Weekly (3)
- Monthly (4)

Display This Question:

If Other fruits such as fig, muskmelon, watermelon, and grapes? = Daily

Or Other fruits such as fig, muskmelon, watermelon, and grapes? = Weekly

Or Other fruits such as fig, muskmelon, watermelon, and grapes? = Monthly

Q31 What other fruits do/did you eat?

- fig (4)
- grapes (5)
- muskmelon (6)
- watermelon (7)
- others (8) _____

Q32 Leaf vegetables such as lettuce, chicory, endive, turnip leaves, spinach, celery, purslane, cabbage, broccoli, brussel sprouts, cauliflower, beet leaves, fennel, arugula, green parts (leaves) of onions, and artichokes?

- Never (1)
- Daily (2)
- Weekly (3)
- Monthly (4)

Display This Question:

If Leaf vegetables such as lettuce, chicory, endive, turnip leaves, spinach, celery, purslane, cabba... = Daily

Or Leaf vegetables such as lettuce, chicory, endive, turnip leaves, spinach, celery, purslane, cabba... = Weekly

Or Leaf vegetables such as lettuce, chicory, endive, turnip leaves, spinach, celery, purslane, cabba... = Monthly

Q33 What leaf vegetables do/did you eat?

- arugula (4)
- beet leaves (5)
- broccoli (6)
- brussel sprouts (7)
- cabbage (8)
- cauliflower (9)
- celery (10)
- chicory (11)
- endive (12)
- fennel (13)
- green onions (14)
- lettuce (15)
- purslane (16)
- spinach (17)
- turnip leaves (18)
- artichokes (19)
- others (20) _____

Q34 Root vegetables such as carrot, turnip, garlic, beetroots, parsnip roots, parsley root, radish, onion, sacred lotus, taro, yam, sweet potato, potato?

- Never (1)
- Daily (2)
- Weekly (3)
- Monthly (4)

Display This Question:

If Root vegetables such as carrot, turnip, garlic, beetroots, parsnip roots, parsley root, radish, o... = Daily

Or Root vegetables such as carrot, turnip, garlic, beetroots, parsnip roots, parsley root, radish, o... = Weekly

Or Root vegetables such as carrot, turnip, garlic, beetroots, parsnip roots, parsley root, radish, o... = Monthly

Q35 What root vegetables do/did you eat?

- beetroots (5)
- carrot (6)
- garlic (7)
- onion (9)
- parsley roots (10)
- parsnip roots (11)
- potato (12)
- radish (13)
- sacred lotus (14)
- sweet potato (15)
- taro (16)
- turnip (18)
- yam (19)
- others (20) _____

Q88 Other vegetables such as cucumber, gourd, asparagus, leek, cherry tomato, garden tomatoes, green bell pepper, Italian sweet red pepper, orange bell pepper, yellow bell pepper, eggplant, okra?

- Never (1)
- Daily (2)
- Weekly (3)
- Monthly (4)

Display This Question:

If Other vegetables such as cucumber, gourd, asparagus, leek, cherry tomato, garden tomatoes, green... = Daily

Or Other vegetables such as cucumber, gourd, asparagus, leek, cherry tomato, garden tomatoes, green... = Weekly

Or Other vegetables such as cucumber, gourd, asparagus, leek, cherry tomato, garden tomatoes, green... = Monthly

Q89 What other vegetables do/did you eat?

- asparagus (4)
- cherry tomatoes (5)
- cucumber (6)
- gourd (7)
- eggplant (8)
- garden tomatoes (9)
- green bell pepper (10)
- Italian sweet red pepper (11)
- leek (12)
- okra (13)
- orange bell pepper (14)
- yellow bell pepper (15)
- others (16) _____

Q36 Beans and peas such as green beans, yellow wax bean, common bean, broad bean, Mung bean, black-eyed pea (cowpea), yardlong bean, scarlet bean, lima bean, common pea, chickpeas, carob beans, soybean?

- Never (1)
- Daily (2)
- Weekly (3)
- Monthly (4)

Display This Question:

If Beans and peas such as green beans, yellow wax bean, common bean, broad bean, Mung bean, black-ey... =
Daily

Or Beans and peas such as green beans, yellow wax bean, common bean, broad bean, Mung bean, black-ey... =
Weekly

Or Beans and peas such as green beans, yellow wax bean, common bean, broad bean, Mung bean, black-ey... =
Monthly

Q37 What beans and peas do/did you eat?

- black-eyed pea (cowpea) (4)
- broad bean (5)
- carob beans (6)
- chickpeas (7)
- common beans (8)
- common peas (9)
- green beans (10)
- lima bean (11)
- Mung bean (12)
- scarlet beans (13)
- soybeans (14)
- yellow wax beans (15)
- yardlong bean (16)
- others (17) _____

Q38 Nuts and seeds such as almond, pecan nut, Colorado pinyon (pine nuts), Brazil nuts, Macadamia nuts, pistachio, hazel nuts, walnut?

- Never (1)
- Daily (2)

- Weekly (3)
- Monthly (4)

Display This Question:

If Nuts and seeds such as almond, pecan nut, Colorado pinyon (pine nuts), Brazil nuts, Macadamia nut... =
Daily

Or Nuts and seeds such as almond, pecan nut, Colorado pinyon (pine nuts), Brazil nuts, Macadamia nut... =
Weekly

Or Nuts and seeds such as almond, pecan nut, Colorado pinyon (pine nuts), Brazil nuts, Macadamia nut... =
Monthly

Q39 What nuts and seeds do/did you eat

- almond (4)
- Brazil nuts (5)
- Colorado pinyon (pine nuts) (6)
- hazel nuts (7)
- Macadamia nuts (8)
- pecan nut (9)
- pistachio (10)
- walnuts (11)
- others (12) _____

Q40 Spices and herbs such as rosemary, thyme, coriander, ginger, sweet basil, dill, parsley, sage, rhubarb, saffron, chives, Chinese mustard, sweet marjoram, garden cress, sweet bay, turmeric, alfalfa, peppermint (including their extracted essential oils used as food additives and flavoring)?

- Never (1)
- Daily (2)
- Weekly (3)
- Monthly (4)

Display This Question:

If Spices and herbs such as rosemary, thyme, coriander, ginger, sweet basil, dill, parsley, sage, rh... = Daily

Or Spices and herbs such as rosemary, thyme, coriander, ginger, sweet basil, dill, parsley, sage, rh... = Weekly

Or Spices and herbs such as rosemary, thyme, coriander, ginger, sweet basil, dill, parsley, sage, rh... = Monthly

Q41 What spices and herbs do/did you eat?

- alfalfa (4)
- Chinese mustard (5)
- chives (6)
- coriander (7)
- dill (8)
- garden cress (9)
- ginger (29)
- parsley (10)
- peppermint (11)
- rhubarb (12)
- rosemary (13)
- saffron (14)
- sage (15)
- sweet basil (16)
- sweet bay (17)
- sweet marjoram (18)
- thyme (19)
- turmeric (20)
- others (21) _____

Q42 Cereals/grains such as or using buckwheat, barley?

- Never (1)
- Daily (2)
- Weekly (3)
- Monthly (4)

Display This Question:

If Cereals/grains such as or using buckwheat, barley? = Daily

Or Cereals/grains such as or using buckwheat, barley? = Weekly

Or Cereals/grains such as or using buckwheat, barley? = Monthly

Q43 What buckwheat and barley food do/did you eat? ()

Q44 Other foods such as mushroom?

- Never (1)
- Daily (2)
- Weekly (3)
- Monthly (4)

Display This Question:

If Other foods such as mushroom? = Daily

Or Other foods such as mushroom? = Weekly

Or Other foods such as mushroom? = Monthly

Q45 What other foods do/did you eat?

- mushroom (4)
- Others (6) _____

Q46 Please tell us how frequently you ate/drank fermented foods during this pandemic to prevent catching COVID-19 or to facilitate recovery from COVID-19, such as sauerkraut, pickles, kefir, tempeh, natto, kombucha, miso, kimchi, yogurt? (check one answer that best describes the frequency of your use of the food category)

- Never (1)
- Daily (2)
- Weekly (3)
- Monthly (4)

Display This Question:

If Please tell us how frequently you ate/drank fermented foods during this pandemic to prevent catch... = Daily

Or Please tell us how frequently you ate/drank fermented foods during this pandemic to prevent catch... = Weekly

Or Please tell us how frequently you ate/drank fermented foods during this pandemic to prevent catch... = Monthly

Q47 What fermented foods/drinks do you eat/drink?

- kefir (4)
- kimchi (5)
- kombucha (6)
- miso (7)
- natto (8)
- pickles (9)
- sauerkraut (10)
- tempeh (11)
- yogurt (12)
- others (13) _____

Display This Question:

If Please tell us how frequently you ate/drank fermented foods during this pandemic to prevent catch... = Daily

And Please tell us how frequently you ate/drank fermented foods during this pandemic to prevent catch... = Weekly

And Please tell us how frequently you ate/drank fermented foods during this pandemic to prevent catch... = Monthly

Q48 What food materials/ingredients are they made from?

Q49 Please tell us how frequently you took **herbal medicines** during this pandemic **to prevent catching COVID-19 or facilitate recovery from COVID-19.** (check one answer that best describes the frequency of your use of the food category)

- Never (1)
- Daily (2)
- Weekly (3)
- Monthly (4)

Display This Question:

If Please tell us how frequently you took herbal medicines during this pandemic to prevent catching... = Daily

Or Please tell us how frequently you took herbal medicines during this pandemic to prevent catching... = kly

Or Please tell us how frequently you took herbal medicines during this pandemic to prevent catching... = Monthly

Q50 Which herbal medicine(s) did you take?

Q51 Please tell us how frequently you took any **supplements** like vitamins, CBD pills, turmeric pills, propolis that you used during this pandemic **to prevent catching COVID-19 or facilitate recovery from COVID-19.** (check one answer that best describes the frequency of your use of the food category)

- Never (1)
- Daily (2)

- Weekly (3)
- Monthly (4)

Display This Question:

If Please tell us how frequently you took any supplements like vitamins, CBD pills, turmeric pills,... = Daily

Or Please tell us how frequently you took any supplements like vitamins, CBD pills, turmeric pills,... = Weekly

Or Please tell us how frequently you took any supplements like vitamins, CBD pills, turmeric pills,... = Monthly

Q52 Which supplement(s) did you take?

Q53 Please tell us how frequently you used some **essential oils** (include different delivery methods such as containers, diffusers, candles, massage, or other aromatherapeutic delivery methods) **to prevent catching COVID-19**. (check one answer that best describes the frequency of your use of the food category)

- Never (1)
- Daily (2)
- Weekly (3)
- Monthly (4)

Display This Question:

If Please tell us how frequently you used some essential oils (include different delivery methods su... = Daily

Or Please tell us how frequently you used some essential oils (include different delivery methods su... = Weekly

Or Please tell us how frequently you used some essential oils (include different delivery methods su... = Monthly

Q54 What type of smells/odorants?

Display This Question:

If Please tell us how frequently you used some essential oils (include different delivery methods su... = Daily

And Please tell us how frequently you used some essential oils (include different delivery methods such as containers, diffusers, candles, massage, or other aromatherapeutic delivery methods) to facilitate recovery from COVID-19. = Weekly

And Please tell us how frequently you used some essential oils (include different delivery methods such as containers, diffusers, candles, massage, or other aromatherapeutic delivery methods) to facilitate recovery from COVID-19. = Monthly

Q55 What delivery method(s) do you use?

- containers (4)
- diffuser (5)
- candles (6)
- massage (7)
- others (8) _____

Q56 Please tell how frequently you used some **essential oils** (include different delivery methods such as containers, diffusers, candles, massage, or other aromatherapeutic delivery methods) **to facilitate recovery from COVID-19.** (check one answer that best describes the frequency of your use of the food category)

- Never (1)
- Daily (2)
- Weekly (3)
- Monthly (4)
- Did not get sick by COVID-19 (5)

Display This Question:

If Please tell how frequently you used some essential oils (include different delivery methods such as containers, diffusers, candles, massage, or other aromatherapeutic delivery methods) to facilitate recovery from COVID-19. = Daily

Or Please tell how frequently you used some essential oils (include different delivery methods such as containers, diffusers, candles, massage, or other aromatherapeutic delivery methods) to facilitate recovery from COVID-19. = Weekly

Or Please tell how frequently you used some essential oils (include different delivery methods such as containers, diffusers, candles, massage, or other aromatherapeutic delivery methods) to facilitate recovery from COVID-19. = Monthly

Q57 What type of smells/odorants?

Display This Question:

If Please tell how frequently you used some essential oils (include different delivery methods such... = Daily

Or Please tell how frequently you used some essential oils (include different delivery methods such... = Weekly

Or Please tell how frequently you used some essential oils (include different delivery methods such... = Monthly

Q58 What delivery method(s) do you use?

- container (4)
- diffuser (5)
- candle (6)
- massage (7)
- others (8) _____

Q59 Please tell us if there are **anything else** (for example, air freshener, perfume) that you use daily during this pandemic **to prevent catching COVID-19 or facilitate recovery from COVID-19.**

Display This Question:

If If Please tell us if there are anything else (for example, air freshener, perfume) that you use dail... Text Response Is Not Empty

Q60 How often did you use it/them?

- Never (1)
- Daily (2)
- Weekly (3)
- Monthly (4)

Q61 Overall, are there some prescribed medicines, generic medicines, herbal medicines, home remedies, supplements, food ingredients, fluids, essential oils, or others that you think are effective in treating sickness and recovering from COVID-19 symptoms?

- Yes (1)
- No (2)
- Did not get COVID-19 (3)
- Did not try anything (4)

Display This Question:

If Overall, are there some prescribed medicines, generic medicines, herbal medicines, home remedies,... = Yes

Q62 If yes, please describe up to the top three:

- 1. What was it? (1) _____
- 1. For what symptom? (2) _____
- 2. What was it? (3) _____
- 2. For what symptom? (4) _____
- 3. What was it? (5) _____
- 3. For what symptom? (6) _____

Display This Question:

If Overall, are there some prescribed medicines, generic medicines, herbal medicines, home remedies,... = No

Q63 If No, is there anything that you heard that helps and you tried, but did it not work? Please describe up to three:

- 1. What was it? (1) _____
- 1. For what symptom? (2) _____
- 2. What was it? (3) _____
- 2. For what symptom? (4) _____
- 3. What was it? (5) _____
- 3. For what symptom? (6) _____

Q64 What year were you born?

Q65 What is your gender?

- Male (1)
- Female (2)
- Non-binary / third gender (3)
- Prefer not to say (4)

Q66 What is your ethnicity?

Q67 Your current location.

- City (1) _____
- Country (2) _____

Q68 Do you consider the answers you provided here to be strongly influenced by a specific (or several specific) country/culture(s)?

- Yes (1)
- No (2)

Display This Question:

If Do you consider the answers you provided here to be strongly influenced by a specific (or several... = Yes

Q69 If yes, which country or culture?

Q70 Do you smoke?

- Yes (1)
- No (2)

Q71 Do you vape?

- Yes (1)
- No (2)

Display This Question:

If Do you vape? = Yes

Q72 If yes, which flavor(s) do you add?

Q73 Did you have pre-existing health conditions pre-pandemic?

- Yes (1)
- No (2)

Display This Question:

If Did you have pre-existing health conditions pre-pandemic? = Yes

Q74 Which health conditions?

Q75 Is there anything else that you would like to share about how best to treat Covid-19 symptoms?

- Yes (4) _____
- No (5)

Q76 Lastly, did your eating/drinking habits change from pre-pandemic? If yes, explain. Did you stop eating certain items? Did you start eating certain items more?

- Yes, started to eat/drink more XX: Please tell me what you started to eat/drink more (4)

- Yes, started not to eat/drink YY: Please tell us what you started not to eat/drink or eat/drink less (5)

- No (6)

End of Block: Block 2