

1 **The effect of proactive, interactive, two-way texting on 12-**  
2 **month retention in antiretroviral therapy: findings from a**  
3 **quasi-experimental study in Lilongwe, Malawi**

4  
5 Caryl Feldacker <sup>1,2§</sup>, Robin E. Klabbers <sup>1,3</sup>, Jacqueline Huwa<sup>4</sup>, Christine Kiruthu-Kamamia <sup>2,4</sup>,  
6 Agness Thawani<sup>4</sup>, Petros Tembo<sup>4</sup>, Joseph Chintedza<sup>4</sup>, Geldert Chiwaya<sup>4</sup>, Aubrey Kudzala<sup>4</sup>,  
7 Pachawo Bisani<sup>4</sup>, Dumisani Ndhlovu<sup>4</sup>, Johnnie Seyani<sup>4</sup>, and Hannock Tweya<sup>1,2</sup>

8  
9 Affiliations:

10 1 Department of Global Health, University of Washington, Seattle, WA, USA.

11 2 International Training and Education Center for Health (I-TECH), Seattle, WA, USA.

12 3 Department of Emergency Medicine, University of Washington, Seattle, WA, USA.

13 4 Lighthouse Trust, Lilongwe, Malawi

14  
15 § Corresponding author: Caryl Feldacker

16 Street Name: 325 9th Avenue

17 City: Seattle

18 Postal Code: WA 98104

19 Country: USA

20 Email: [cfeld@uw.edu](mailto:cfeld@uw.edu)

21  
22 E-mail addresses of authors:

23 CF: [cfeld@uw.edu](mailto:cfeld@uw.edu)

NOTE: This preprint reports new research that has not been certified by peer review and should not be used to guide clinical practice.

24 REK: [reklabb@uw.edu](mailto:reklabb@uw.edu)

25 JH: [jhuwa@lighthouse.org.mw](mailto:jhuwa@lighthouse.org.mw)

26 CKK: [ckamamia@lighthouse.org.mw](mailto:ckamamia@lighthouse.org.mw)

27 AT: [athawani@lighthouse.org.mw](mailto:athawani@lighthouse.org.mw)

28 JC: [jchintedza@lighthouse.org.mw](mailto:jchintedza@lighthouse.org.mw)

29 PT: [ptembo@lighthouse.org.mw](mailto:ptembo@lighthouse.org.mw)

30 GC: [gchiwaya@lighthouse.org.mw](mailto:gchiwaya@lighthouse.org.mw)

31 AK: [akudzala@lighthouse.org.mw](mailto:akudzala@lighthouse.org.mw)

32 PB: [pbisani@lighthouse.org.mw](mailto:pbisani@lighthouse.org.mw)

33 DN: [dumi\\_ndhlovu@lighthouse.org.mw](mailto:dumi_ndhlovu@lighthouse.org.mw)

34 JS: [jseyani@lighthouse.org.mw](mailto:jseyani@lighthouse.org.mw)

35 HT: [htweya@itech-malawi.org](mailto:htweya@itech-malawi.org)

36

37 Short title: Two-way texting to improve 12-month retention in antiretroviral therapy in Malawi

38

39 Keywords: mobile health; digital health innovation; interactive messaging; short message

40 service; implementation science, early retention in antiretroviral therapy; routine settings,

41 Malawi

42

43 Word count:

44 Abstract: 302

45 Main text: 4000

46

47

48

49

50

51

## 52 **Abstract**

53 **Background:** Retaining clients on antiretroviral therapy (ART) is challenging especially  
54 during the first year on ART. Mobile health (mHealth) interventions show promise to close  
55 retention gaps. We aimed to assess reach (who received the intervention?) and effectiveness  
56 (did it work?) of a hybrid two-way texting (2wT) intervention to improve ART retention at a  
57 large public clinic in Lilongwe, Malawi.

58 **Methods:** Between August 2021 - June 2023, a quasi-experimental study compared outcomes  
59 between two cohorts of new ART clients: 1) those opting into 2wT with combined automated,  
60 weekly motivation short messaging service (SMS) messages and response-requested  
61 appointment reminders; and 2) a matched historical cohort receiving standard of care (SoC).  
62 *Reach* was defined as “the proportion clients  $\leq 6$  months of ART initiation eligible for 2wT”.  
63 *2wT effectiveness* was assessed in time-to-event analysis comparing Kaplan-Meier plots of 6-  
64 and 12-month retention between 2wT and SoC using a log-rank test. The effect of 2wT on  
65 ART drop out was estimated using multivariable Cox proportional hazard models, adjusting  
66 for sex, age and WHO stage at ART initiation.

67 **Results:** Of the 1,146 clients screened, 645 were ineligible (56%) largely due to lack of phone  
68 access (393/645; 61%) and illiteracy (149/645; 23%): a reach of 44%. Among 468 2wT  
69 participants, the 12-month probability of ART retention was 91% (95%CI: 88% - 93%)  
70 compared to 75% (95%CI: 71% - 79%) among 468 SoC participants ( $p < 0.0001$ ). Compared to  
71 SoC participants, 2wT participants had a 62% lower hazard of dropping out of ART care at all  
72 time points (hazard ratio 0.38, 95% CI: 0.26-0.54;  $p < 0.001$ ).

73 **Conclusions:** Not all clients were reached with 2wT. For those who opted-in, 2wT reduced  
74 drop out throughout the first year on ART and significantly increased 12-month retention. The  
75 proactive 2wT approach should be expanded as a complement to other interventions in routine,  
76 low-resource settings to improve ART retention.

77

## 78 **Introduction**

79 In sub-Saharan Africa (SSA), persistent gaps in retention on antiretroviral therapy (ART)  
80 among specific groups and geographies of people living with HIV (PLHIV) threaten decades  
81 of impressive progress [1]. Loss to follow up (LTFU) is highest among those newly on ART  
82 through 6 months in care [2, 3]. Gaps in retention are a problem: even short treatment  
83 interruptions can lead to increased client morbidity, mortality, drug resistance, and HIV  
84 transmission risk [4]. Most efforts to address LTFU are reactive, waiting for clients to miss  
85 visits before intervening, resulting in tracing delays that reduce the likelihood of finding,  
86 returning, and retaining clients in care [5, 6]. Addressing retention gaps is costly, often relying  
87 on healthcare workers (HCWs) to call or trace clients identified as LTFU in-person [7]. Recent  
88 reductions in global funding, chronic shortages of HCWs, and increasing client volumes  
89 exacerbate retention challenges. Proactive, lower-intensity, effective retention interventions,  
90 especially for ART clients in their first year in care, are needed in routine, low-resource SSA  
91 settings.

92 Numerous mobile health (mHealth) interventions show promise to significantly increase  
93 ART retention (alive in care, adherence to ART, visit compliance) among adults [8-14].  
94 Effectiveness, however, is not guaranteed; not all mHealth interventions are associated with  
95 improved ART retention [15-19]. Previous mHealth intervention research suggests that several  
96 mHealth intervention characteristics raise the likelihood of ART retention impact. First, lower  
97 technology approaches that rely on short-message service (SMS) which requires only feature

98 phones appear better suited to low- or middle-income country (LMIC) settings [20, 21]. SMS-  
99 focused interventions show high acceptability [11, 22-24] and reduce digital health equity  
100 concerns associated with apps that require smartphones [25]. Second, interactive interventions  
101 that enhance communication between clients and HCWs are more effective than one-way blast  
102 communication to engage clients in care [13, 26]. Interaction potentially diminishes message  
103 fatigue and facilitates more personalized, intensive support when needed [27]. Third,  
104 engagement of diverse stakeholders throughout the design, testing, and evaluation process  
105 creates ownership and buy-in [28], helping tailor the right interventions to the local context  
106 [29]. Lastly, iterative monitoring and evaluation (M&E) of mHealth in accordance with digital  
107 health best practices suggested by the World Health Organization (WHO) helps to ensure these  
108 interventions complement, as opposed to conflict with, ongoing health system strengthening  
109 [30, 31].

110 Malawi is an ideal location to assess mHealth to improve client retention. Malawi is a low-  
111 resource country with an adult HIV prevalence of ~7% [32]. Although progress towards 95-95-  
112 95 appears on track [32], LTFU is high, especially during in the first year on ART [33]. Five  
113 years after ART initiation, only 54% of PLHIV are retained in ART care [34]. Given pervasive  
114 HCW shortages [35], alternatives to human resource-intensive solutions are needed. In Malawi,  
115 the Ministry of Health (MoH) has tested several ART-related innovations at Lighthouse Trust  
116 (LT), one of the largest ART providers and a WHO-recognized ART Centre of Excellence in  
117 Lilongwe, the capital [36]. LT provides integrated HIV care to 38,000 ART clients in its two  
118 flagship clinics in urban Lilongwe: 25,000 at Martin Preuss Centre (MPC) and 13,000 at  
119 Lighthouse clinic (LH). At LT, retention at twelve months post-ART initiation is estimated at  
120 73%, falling to 63% by 24 months. In 2006, LT established an intensive client retention  
121 program, “Back-To-Care” (B2C), in which up to three calls or home visits are attempted to  
122 encourage clients who miss their scheduled appointment to return to care; B2C currently aims

123 to trace all clients who miss visits by  $\geq 14$  days. B2C has been well-recognized for its success  
124 returning clients to care [37-41]. However, B2C, like other reactive tracing efforts, is highly  
125 resource intensive [38]. At MPC clinic from July-September, 2023, there were 18,842  
126 scheduled ART visits; 1,798 clients (10%) missed visits by  $\geq 14$  days and were referred to  
127 B2C. With five, full-time B2C tracers, only 40% (719/1798) of potential LTFU clients during  
128 that period were successfully found. B2C efforts are stretched, leading to delayed or missed  
129 tracing. LT needs proactive, effective, retention innovations that reflect the reality of routine,  
130 low-resource, public settings.

131 In 2021, LT and partners at the University of Washington's International Training and  
132 Education Center for Health (I-TECH) and Medic developed a two-way texting (2wT) system  
133 to improve early retention at MPC clinic. 2wT is an hybrid (automated and interactive)  
134 intervention combining weekly non-HIV-related motivational messaging and response  
135 requested scheduled ART visit reminders, aiming to provide proactive retention support to  
136 prevent care gaps before they happen. Early 2wT usability assessment among new ART  
137 initiates (within 6 months of initiation) demonstrated high client acceptability and support for  
138 the 2wT approach [42].

139 We aimed to assess the impact of the 2wT intervention on 12-month retention among new  
140 ART initiates at MPC using a quasi-experimental design. We employed an implementation  
141 science (IS) approach to enhance the quality, speed, and impact of translating 2wT research  
142 findings into routine practice [43]. We applied the RE-AIM framework (reach, effectiveness,  
143 adoption, implementation, maintenance) to guide our evaluation[44] and further understanding  
144 for whom, where, why and how 2wT works [45]. In this paper, we assess 2wT *reach* by  
145 describing the participant flow from 2wT screening, eligibility, and enrollment and examine  
146 2wT *effectiveness* by comparing ART retention at 12 months between 1) new ART clients who  
147 opted into 2wT (intervention) versus 2) a historical cohort of routine MPC new initiates who

148 received standard of care (SoC) (comparison). We hypothesized that 2wT would improve 12-  
149 month retention by  $\geq 10\%$ , from 73% to 83%.

150

## 151 **Methods**

### 152 **Setting**

153 The study was conducted at MPC, LT's largest urban clinic in Lilongwe, Malawi. LT operates  
154 as part of MoH ART service delivery and employs the MoH electronic medical record system  
155 (EMRS) at MPC [46]. On average, MPC initiates 450 PLHIV on ART per quarter following  
156 the test and treat strategy. At ART registration, clients' demographics, phone number(s) and  
157 WHO stage are captured in the EMRS [47]. During the first three to six months after ART  
158 initiation, clients are seen monthly, after which, if clients are stable and adherent to ART, visit  
159 frequency is typically decreased to once every three- or six-months.

160

### 161 **Study design, cohort creation and sample size**

162 A quasi-experimental design was used to assess the effect of 2wT on 12-month ART retention  
163 by comparing retention among a cohort of 2wT participants to that among a matched historical  
164 comparison cohort receiving SoC at MCP one year prior to 2wT implementation. The  
165 intervention cohort was matched 1:1 on age (bands of 5 years), sex, and WHO stage at initiation  
166 via random selection from an MPC dataset of 1,455 ART clients who had a phone number.  
167 With a baseline 12-month retention at MPC of 73% in March 2021, 438 participants would be  
168 required in each arm to provide 90% power to detect a 10% retention difference between 2wT  
169 and SoC. We recruited 501 2wT participants to account for transfer-out, withdraws and deaths.  
170 2wT participants-initiated ART between May 2021 – April 2022 and were followed through

171 12 months post-ART initiation. The historical, matched, comparison SoC cohort initiated ART  
172 at MPC between November 2019 - November 2020, before 2wT launch.

173

## 174 **2wT behavior change theory**

175 2wT design was informed by the theory that prompts can spur action to change [48]. By using  
176 SMS to target key individual-level constructs proven effective in previous HIV-related  
177 behavior change programs [49-52] it is expected that the 2wT intervention will improve early  
178 retention on ART (**Fig 1**). To increase *behavioral control* over timely attendance at scheduled  
179 ART visits, participants are reminded by SMS in advance to provide time to arrange transport  
180 or free their schedules. 2wT helps improve participant *motivation* to make decisions for their  
181 own wellness, including adhering to ART, via weekly non-HIV (neutral) messages or  
182 educational content that support participant engagement in their health. Initial 2wT participant  
183 education and subsequent interaction with 2wT officers encourages *self-efficacy* by providing  
184 participants with an opportunity to request visit date changes, report transfers, or communicate  
185 about any issues related to their visits.

186

## 187 **Fig 1: Program theory of change for 2wT**

188

189

190

## 191 **Retention interventions**

### 192 **Standard of care (SoC)**

193 The historical comparison cohort received SoC at MPC. As of mid-2019, as part of SoC, all  
194 new ART initiates at MPC were assigned an *ART Buddy*, a PLHIV on ART at LT who would



195 serve as a “buddy” for their first 12 months on ART. Buddies are considered Expert Clients, a  
196 cadre of paid, trained, peer-supporters who guide clients through early ART care by providing  
197 health education, disclosure support, and adherence counseling. Each ART Buddy is paid a  
198 nominal fee to support ~15 new ART initiates.

199

200 The 2wT and historical comparison cohort received different retention support (**Table 1**).

201

202

203 Table 1: Retention support received by 2wT and SoC participants

Activity	First 12 months on ART	
	Standard of Care (SoC)	Two-way texting (2wT)
<b>At ART Initiation</b>		
ART education and counselling at ART initiation	Yes	Yes
Completion of locator form for B2C purposes	Yes	Yes
Assigned an ART Buddy	Yes	No
<b>Proactive retention activities</b>		
Weekly motivational messages (general encouragement and information about healthy habits)	No	Yes
Before a visit	Phone calls by an ART Buddy 3 days and, if necessary, 2 days and 1 day before a scheduled visit	Automated SMS visit reminders 3 days and 1 day before a scheduled visit
<b>Reactive retention activities</b>		
1-13 days after a missed visit (reactive) unless a client returns to care	Up to 3 phone call attempts by ART Buddy after a missed visit	Automated SMS missed appointment reminders on days 2, 5, and 11 after scheduled visit
Back to care (B2C) referral for tracing $\geq 14$ days	Weekly manual generation of tracing list	Daily automated generation of tracing list

204

## 205 **2wT intervention**

206 The 2wT approach was developed in accordance with the Principles for Digital Development  
 207 [53] and based on the open-source Community Health Toolkit (CHT) [54]. 2wT’s easy-to-use  
 208 CHT-based design resulted from an iterative human-centered design (HCD) process that  
 209 incorporated feedback from LT clients, HCWs, and retention officers, described previously  
 210 [55]. In brief, 2wT is a free, proactive, mHealth intervention that combines automated  
 211 motivation messages with interactive individualized visit reminders (**Fig 2**) [42]. 2wT does not  
 212 use an app, nor does it require participants to download anything. ART clients who opt into  
 213 2wT are sent weekly one-way, “blast” motivation messages containing non-HIV-related

214 content such as generic messages of encouragement (e.g., “You can do it”, “You are making  
215 great choices every day”) and general health advice (e.g., “Drink boiled and clean water”,  
216 “Seek help when you do not feel well”). Additionally, 2wT participants receive response-  
217 requested individualized visit reminders day 3 and 1 before their scheduled clinic visit.  
218 Participants who confirm visit reminders with a “yes” end the dialogue. A "no" triggers  
219 interactive SMS with a HCW in which participants may change their appointment dates, report  
220 transfers, or chat about other visit-related issues. Participants who miss a scheduled clinic visit  
221 are sent follow-up reminders 2, 5, and 11 days after the appointment (unless they return to  
222 care). Messages are stopped upon participant request, transfer or death.

223

## 224 **Fig 2: 2wT intervention message flow**

225

226

227

## 228 **2wT recruitment: screening and enrollment**

229 During the 2wT enrollment period (August 2021 - April 2022), all new ART clients at MPC  
230 were screened for study eligibility, including: 1) initiated ART <6 months prior; 2)  $\geq 18$  years;  
231 3) possessed phone at enrolment; 4) had basic literacy; 5) completed informed consent; and 6)  
232 received their 2wT enrollment text. Eligible participants enrolled to receive messages in either  
233 Chichewa or English, based on their preference, but could send SMS in any language.  
234 Participants received instructions on how to respond to 2wT messages.

235

## 236 **Data collection**

237 For both the 2wT and SoC cohort, data on routine MoH ART outcomes were extracted from  
238 the EMRS for participants' first twelve months post-ART initiation (May 2021 – June 2023  
239 for 2wT and November 2019 – January 2022 for SoC). These outcomes could be either 1) *alive*  
240 *and on ART* (alive and retained in ART care on the date of record review); 2) *stopped ART*  
241 *treatment* (alive but informed the clinic they stopped ART); 3) *transferred* (documented move  
242 to another facility); 4) *dead* (all cause mortality); and 5) *LTFU* (no return to clinic within 60  
243 days of a scheduled visit) [46]. To ensure correct ART outcome ascertainment, intervention  
244 and comparison group outcomes were updated for 60 days beyond the 12-month period.  
245 Participants who requested to stop visit reminder messages were considered to have withdrawn  
246 from the study and were classified as *withdrew*. SMS data was obtained from the 2wT database  
247 and the SMS aggregator, Africa's Talking.

248

## 249 **Study Outcomes**

250 *Reach* was measured using screening data and was defined as the proportion of screened  
251 PLHIV eligible and willing to participate in 2wT. *Effectiveness* was measured as the effect of  
252 2wT on 12-month retention on ART, defined as “alive on ART” according to the Malawi MoH  
253 ART outcome, as opposed to “drop out”, a study-specific grouping that included both “stopped  
254 ART treatment” and “LTFU”. We examined message response rates and 6-month retention on  
255 ART care as secondary analyses.

256

## 257 **Statistical analysis**

258 2wT participants were considered exposed to the intervention if at least one visit reminder SMS  
259 was successfully delivered to their phone within the 12-month follow-up period; exposed  
260 participants were included in analysis. Descriptive statistics present matching success between

261 the 2wT and SoC cohort, MoH ART outcomes at 6- and 12- month follow-up for 2wT vs. SoC  
262 clients, and describe 2wT reach. Counts and frequencies report the number of messages sent  
263 by the 2wT platform and by participants as well as message response rates. Chi-square tests  
264 were performed to compare the proportion of participants in each MoH ART outcome category  
265 for the 2wT and SoC cohort. 2wT participants who withdrew from the study were excluded  
266 from the denominator. Effectiveness was primarily assessed in time-to-event analysis.  
267 Transfer, death and withdrew were censoring events; LTFU and stopping ART treatment were  
268 failure events. Participants were censored twelve months after ART initiation. Individuals in  
269 the intervention arm who enrolled in the study after ART initiation were considered to come  
270 under observation at the time of enrolment but entered analysis taking account of the  
271 accumulated time on ART. Kaplan-Meier plots of retention on ART and probabilities of being  
272 retained on ART six and twelve months post-ART initiation are presented, comparing 2wT and  
273 SoC retention curves using a log-rank test. The effect of the intervention on ART drop out was  
274 estimated using Cox proportional hazard models. Multivariable Cox proportional hazard  
275 models were used to model the association between retention intervention (2wT or SoC) and  
276 ART drop out, adjusting for sex, age and WHO stage at ART initiation. We assessed the  
277 proportional hazards assumption using Schoenfeld residuals and assessed interaction between  
278 the intervention and relevant covariates. The unadjusted hazard ratio (HR) and adjusted HR  
279 were reported with 95% confidence interval.

280

## 281 **Ethics**

282 The study protocol was approved by the Malawi National Health Sciences Research Committee  
283 (#20/06/2565) and the University of Washington, Seattle, USA ethics review board  
284 (STUDY000101060). At enrolment, 2wT participants provided written informed consent in

285 either Chichewa or English, according to their preference. SoC clients did not consent as only  
286 de-identified, routine monitoring and evaluation data was collected from EMRS.

287

## 288 **Results**

### 289 **2wT Reach**

290 The study team screened 1,146 new ART clients at MPC to yield a cohort of 501 2wT  
291 participants, an intervention reach of 44% (**Fig 3**). The most common reasons for ineligibility  
292 were lack of phone access (393, 61%), illiteracy (149, 23%), and age under 18 years (48, 7%).  
293 The majority of 2wT participants were female (56%), had an average age of 33 years, and  
294 WHO clinical stages 1 or 2. Among 2wT participants exposed and included in analysis, 373  
295 (80%) were enrolled at the ART initiation visit while the remaining 95 (20%) were enrolled  
296 during a subsequent visit, on average 99 days (standard deviation (SD): 53 days) after ART  
297 initiation. The matching process successfully created similarity in matched demographic and  
298 clinical characteristics between 2wT and SoC groups (**Table 2**).

299

300 **Fig 3: 2wT enrollment flow: Screening, eligibility, and enrollment participation**

301

302

303

304 Table 2. Participant characteristics

	2wT arm (N=468)	Standard of care (N=468)
Sex		
Female	261 (55.8%)	261 (55.8%)
Male	207 (44.2%)	207 (44.2%)
Age (years)		
Median [interquartile range (IQR)]	33 [27 - 40]	33 [27 - 40]
Age group (years)		
<20	4 (0.9%)	4 (0.9%)
20-24	64 (13.7%)	64 (13.7%)
25-29	102 (21.8%)	102 (21.8%)
30-34	88 (18.8%)	88 (18.8%)
35-39	90 (19.2%)	90 (19.2%)
40-44	56 (12.0%)	57 (12.2%)
45-49	42 (9.0%)	41 (8.8%)
50-54	11 (2.4%)	11 (2.4%)
55-59	7 (1.5%)	7 (1.5%)
60-64	2 (0.4%)	2 (0.4%)
65-70	1 (0.2%)	2 (0.4%)
75+	1 (0.2%)	0 (0%)
WHO stage		
Stage 1 or 2	364 (77.8%)	364 (77.8%)
Stage 3	71 (15.2%)	71 (15.2%)
Stage 4	30 (6.4%)	30 (6.4%)
Unknown	3 (0.6%)	3 (0.6%)
Time on ART before enrollment		
Median [Min, Max]	0 [0, 182]	0 [0, 29.0]

305

306

### 307 **2wT platform engagement**

308 During the study period, the 2wT platform recorded a total of 31,861 messages. The 2wT  
 309 system sent 27,859 SMS (87%): 18,093 motivational messages (65%); 4,561 visit reminders

310 (16%); 1,468 missed visit reminders (5%); and 3,737 other messages (13%) (**Fig 4**). The  
311 delivery success rate was 76% for motivation messages; 79% for visit reminders; and 75% for  
312 missed appointment reminders. Of all 31,862 messages, 4,002 messages (13%) were sent by  
313 participants. Participants responded to 39% of successfully delivered pre-visit reminders  
314 (proactive) and 32% of successfully delivered post-missed visit reminders (reactive). Of 16  
315 (3%) participants who requested to stop 2wT messaging, 5 lost interest (31%), 5 noted  
316 confidentiality concerns (31%), and 3 noted no longer needing texts to remember their  
317 appointments (19%) as reasons to stop.

318

319

320 **Fig 4: Interactive SMS flow between the 2wT system and the participants**

321

## 322 **2wT effectiveness**

### 323 **ART outcomes at 6 and 12 months**

324 Six months post-ART initiation, 88% were alive and in care in the 2wT arm as compared to  
325 76% in the SoC arm ( $p<0.001$ ). The 2wT arm had lower LTFU (5% vs. 11%) than SoC  
326 ( $p<0.001$ ) and lower stopped treatment (1% vs. 5%) ( $p<0.001$ ) than SoC arm (Table 3). At 12  
327 months post-ART initiation, 81% of 2wT were alive and in care as compared to 66% of SoC  
328 ( $<0.001$ ). The 2wT arm had lower LTFU (7% vs 18%) ( $p<0.001$ ) and stopped treatment (2%  
329 vs 6%) ( $p=0.004$ ) compared to SoC. Equal percentages of both 2wT and SoC transferred out  
330 (9% vs 9%) and died (2% vs 2%) at twelve months.

331

332



333 **Table 3: 6- and 12-month MoH ART outcomes of 2wT vs. SoC participants**

334

	<b>2wT arm</b> <b>N = 468</b>	<b>Routine</b> <b>N = 468</b>	
	N (%)	N (%)	P-value
6-months post-ART initiation	454*	468	
Alive	401 (88)	354 (76)	<0.001
LTFU	21 (5)	52 (11)	<0.001
Stopped treatment	6 (1)	25 (5)	<0.001
Transfer out	21 (5)	30 (6)	0.2
Dead	5 (1)	7 (2)	0.6
12-months post ART-initiation	452*	468	
Alive	365 (81)	309 (66)	<0.001
LTFU	31 (7)	84 (18)	<0.001
Stopped treatment	10 (2)	28 (6)	0.004
Transfer out	39 (9)	40 (9)	1
Dead	7 (2)	7 (2)	0.9

335 \*By 6-months, 14 participants, and by 12-months, 16 participants had withdrawn from the study

336

337

338 **Retention in care at 6 and 12 months**

339 Kaplan-Meier curves revealed differences in retention on ART over time between the 2wT and  
340 the SoC arm ( $p < 0.0001$ ) (**Fig 5**). Six months post-ART initiation, the probability of being  
341 retained on ART in the 2wT group was 93% (95% CI: 91% - 95%) compared to 79% (95%CI:  
342 75% - 82%) in the SoC group. At twelve months, the probability of retention on ART was 91%  
343 among 2wT participants (95% CI: 88% - 93%) and 75% among SoC participants (95% CI:  
344 71% - 79%).

345 **Fig 5: Kaplan-Meier curve of retention on ART among 2wT and SoC clients over time,**  
346 **displaying 95% confidence intervals and log-rank test p-value**

347

## 348 **Drop out during the first year on ART**

349 In unadjusted analysis, being in 2wT arm was associated with a 62% lower hazard of drop out  
350 during follow-up (HR 0.38, 95%CI: 0.27 – 0.55) as compared to SoC. A similar effect on drop  
351 out was found controlling for sex, age and WHO stage (HR 0.38, 95% CI: 0.26-0.54). In the  
352 first year on ART, men were more likely to drop out of care: in the multivariate analysis, being  
353 male was associated with a 49% higher hazard of dropout from ART care as compared to  
354 females (HR 1.49, 95% CI 1.07-2.09). Each additional year of age was associated with a 5%  
355 reduction in hazard of dropout (HR 0.95% CI:0.93-0.97). Compared to individuals with WHO  
356 stage 1 or 2, those with WHO stage 3 at ART initiation had a 5% lower hazard of dropout (HR,  
357 0.95% CI 0.59-1.52) while those with WHO stage 4 had a 31% higher hazard (HR 1.31, 95%  
358 CI 1.07-2.09).

359

## 360 **Discussion**

361 As a result of the combined motivation messages and automated visit reminders of the 2wT  
362 intervention, retention in ART care at 12 months was 16% higher among 2wT participants as  
363 compared to SoC clients. At any point over the first year on ART, those with 2wT support were  
364 62% less likely to drop out as compared to their SoC peers. For both 2wT and SoC, men were  
365 more likely to drop out than females, and older clients were more likely to be retained.  
366 Improved retention among 2wT participants is most striking in the first months immediately  
367 after ART initiation, a high risk period when care gaps are most likely [56]. Still, 2wT  
368 effectiveness should not eclipse limitations in 2wT reach: over 50% of those invited to  
369 participate were ineligible, largely due to lack of phone access or illiteracy. This evidence  
370 informs discussion of the strengths and weaknesses of the 2wT approach and provides guidance  
371 for transitioning the optimization of 2wT from research to routine practice.

372

373 Several aspects of 2wT design likely contributed to success. First, we used a human-centered,  
374 co-design process with clients, HCWs, and stakeholders, informing iterative improvements that  
375 likely raised the likelihood of matching the right 2wT design to the expressed local need [57].  
376 For participants, the 2wT approach was perceived as user-friendly, responses were easy, and  
377 both motivational and visit reminders were appreciated [42]. For HCWs, 2wT was highly  
378 usable and was perceived to improve their connection with participants, reflecting their needs  
379 [55]. Lighthouse HCWs currently maintain the day-to-day operations and management of the  
380 2wT system independently, factors that enhance the likelihood of sustaining the intervention  
381 [58]. The open-source 2wT technology, itself, appears to be the right fit for the low-resource  
382 setting. 2wT requires only basic phones with SMS capability from participants (no  
383 smartphones, no need to download apps, no data plan) and a web-based interface for HCWs  
384 that runs on commonly available PC computers and Android tablets. The workload also meets  
385 the low resource setting. Currently, one 2wT officer handles all client interaction for over 400  
386 participants as compared to SoC where each ART Buddy is assigned up to 15 new ART clients.  
387 The hybrid automated and manual design relies heavily on 2wT automated reminders, both  
388 before visits and after missed appointments, requiring realistic effort while the intensity of  
389 direct participant-to-HCW interaction appears manageable.

390 The intervention messages and their scheduling also likely improved outcomes. First, 2wT  
391 messages were informed by health behavior theory, adapting the messages alongside software  
392 optimization to increase the strength of both [59]. Over two decades of research demonstrates  
393 the importance of having a strong theoretical model to provide rationale for how interventions  
394 may influence behaviors [60]. We suggest that 2wT content helped improve participant  
395 motivation, behavioral control, and self-efficacy, hoping to create positive habits of ART  
396 adherence from initiation onward. Second, the cadence of 2wT messaging intensity appears to

397 suit participants. Although other mHealth with weekly response-requested messaging found no  
398 effect on 12-month retention [61], 2wT included weekly motivational or education messages  
399 without requesting a response and only required participants to interact with the system or  
400 HCWs with a single “1=yes” or 0=no” to confirm visits a few days before appointments, with  
401 option to interact more if needed or desired. The 2wT nudge and minimal participant effort  
402 likely lessened the potential fatigue that more messages could cause [13]. Furthermore, a  
403 previous mHealth qualitative study noted that fears of unintended disclosure from HIV-related  
404 message content could reduce SMS intervention participation or uptake [11]. Using  
405 suggestions from current 2wT users, 2wT may have found the right type of mixed educational  
406 and motivational content, without HIV-related messaging.

407 Despite effectiveness, effort will be needed to expand 2wT reach as only 44% of those screened  
408 for participation met the 2wT eligibility criteria. Current access in Malawi to mobile phones in  
409 2022 was estimated at 60% [62] with access among females likely lower [63]. However,  
410 growth in mobile phone ownership is expected to rise, potentially reducing these concerns in  
411 future. Likewise, as more than 25% of adults in Malawi are unable to read or write [64], future  
412 voice functionality in 2wT or improved “flash” features (calling a number to trigger a voice  
413 call back) could expand reach in response to low literacy client needs [13]. As 2wT participants  
414 noted a preference for SMS over calls, given that messages are discrete and do not require a  
415 participant to pick up or attend to them at a specific time [42], voice should not replace SMS,  
416 but augment existing options. Additive retention models, where clients can have more than one  
417 retention support may also lead to gains [12], improving reach and impact as 2wT moves from  
418 research to routine practice. Expanding enrolment into 2wT for any client on ART, and  
419 including clients ages 15 and older (the age of consent in Malawi) combined with efforts to  
420 improve 2wT awareness among LT clients who come on evenings and weekends (when study  
421 team were not available) could improve 2wT uptake of 2wT retention support.

## 422 **Limitations**

423 Our findings should be considered in light of limitations. First, it is possible that 2wT effect  
424 could diminish over time [65], and future studies of 2wT reach adaptation, flexibility, or  
425 optimization should explore how to maintain the early retention gains. Second, despite  
426 successful matching, using a historical comparison group may pose a threat to internal validity,  
427 especially given the different temporal influences of COVID-19 on participants. Third, the  
428 extent to which the two study cohorts received the intended retention support, i.e., whether  
429 2wT participants actually received 2wT (were SMS read?) or whether PLHIV buddies actually  
430 called SoC participants (did ART Buddies provide intended support?) is unknown, calling for  
431 future fidelity investigation of both 2wT and SoC interventions in practice. Moreover, 2wT  
432 was opt-in, allowing those who were eligible and interested to volunteer for the retention  
433 support. Participants who choose an intervention are likely more open and responsive to the  
434 support. Lastly, we did not include the outcomes of those who transferred out as we lacked  
435 resources to track clients to other clinics. Despite these limitations, the strengths of this quasi-  
436 experimental design in the routine Malawi ART setting suggests that this specific 2wT  
437 approach may be beneficial to improve early retention among the sizeable population who wish  
438 to opt-in.

## 439 **Conclusions**

440 At a high-volume, routine ART clinic in Malawi, the proactive, low-intensity 2wT approach  
441 improved 12-month retention among new ART initiates who enrolled. 2wT should be scaled  
442 as a part of, and not a replacement for, complementary retention efforts in routine ART settings  
443 in Malawi. Even with sub-optimal reach, adoption the 2wT approach as a component of routine  
444 retention efforts could benefit the ART client population as a whole by freeing existing HCWs  
445 to trace more clients presumed LTFU, returning more clients to care. More retention choices  
446 could also help cater to the diverse preferences and practicalities of retaining clients on ART

447 over time. Given the large client volume of LT clinics, Lighthouse’s leadership, and continued  
448 MoH collaboration, expansion of the 2wT retention approach for both new and existing ART  
449 clients could positively impact overall ART program success at scale.

450

451

## 452 **Acknowledgements**

453 We would like to acknowledge the study participants, the study team (Kondwani Masiye,  
454 Harrison Chirwa, Blessings Wandira, Daniel Mwakanema, Madalitso Chawanje, William  
455 Maziya, Isaac Nyirenda), colleagues from Medic (Maryanne Mureithi, Femi Oni, Beatrice  
456 Wasunna, Edwin Kagereki, Adinan Alhassan, Kawere Wagaba, Evelyn Waweru, and Mourice  
457 Barasa), the MPC clinic, M&E teams, B2C team, and MoH staff at Bwaila for their invaluable  
458 contribution to the study.

459

## 460 **Funding**

461 Research reported in this publication was supported by the Fogarty International Center of the  
462 National Institutes of Health under Award Number R21TW011658/R33TW011658. The  
463 content is solely the responsibility of the authors and does not necessarily represent the official  
464 views of the National Institutes of Health.

465

## 466 **Data Availability statement**

467 The data that support the findings of this study are included in supplemental materials.

468

469

## 470 **References**

- 471 1. UNAIDS. GLOBAL AIDS STRATEGY 2021–2026 END INEQUALITIES. END AIDS.2021. Available  
472 from: <https://www.unaids.org/en/resources/documents/2021/2021-2026-global-AIDS-strategy>.
- 473 2. Chammartin F, Zurcher K, Keiser O, Weigel R, Chu K, Kiragga AN, et al. Outcomes of Patients  
474 Lost to Follow-up in African Antiretroviral Therapy Programs: Individual Patient Data Meta-analysis.

- 475 Clin Infect Dis. 2018;67(11):1643-52. Epub 2018/06/12. doi: 10.1093/cid/ciy347. PubMed PMID:  
476 29889240; PubMed Central PMCID: PMC6233676.
- 477 3. Muhula S, Gachohi J, Kombe Y, Karanja S. Interventions to improve early retention of patients  
478 in antiretroviral therapy programmes in sub-Saharan Africa: A systematic review. PloS one.  
479 2022;17(2):e0263663. Epub 2022/02/10. doi: 10.1371/journal.pone.0263663. PubMed PMID:  
480 35139118; PubMed Central PMCID: PMC6233676.
- 481 4. UNAIDS. IN DANGER: UNAIDS Global AIDS Update 20222022. Available from:  
482 [https://www.unaids.org/sites/default/files/media\\_asset/2022-global-aids-update\\_en.pdf](https://www.unaids.org/sites/default/files/media_asset/2022-global-aids-update_en.pdf).
- 483 5. Beres LK, Mody A, Sikombe K, Nicholas LH, Schwartz S, Eshun-Wilson I, et al. The effect of  
484 tracer contact on return to care among adult, “lost to follow-up” patients living with HIV in Zambia:  
485 an instrumental variable analysis. Journal of the International AIDS Society. 2021;24(12):e25853. doi:  
486 <https://doi.org/10.1002/jia2.25853>.
- 487 6. Mirzazadeh A, Eshun-Wilson I, Thompson RR, Bonyani A, Kahn JG, Baral SD, et al. Interventions  
488 to reengage people living with HIV who are lost to follow-up from HIV treatment programs: A  
489 systematic review and meta-analysis. PLOS Medicine. 2022;19(3):e1003940. doi:  
490 10.1371/journal.pmed.1003940.
- 491 7. Bershteyn A, Jamieson L, Kim HY, Platais I, Milali MP, Mudimu E, et al. Transmission reduction,  
492 health benefits, and upper-bound costs of interventions to improve retention on antiretroviral  
493 therapy: a combined analysis of three mathematical models. Lancet Glob Health. 2022;10(9):e1298-  
494 e306. Epub 2022/08/13. doi: 10.1016/S2214-109X(22)00310-2. PubMed PMID: 35961353; PubMed  
495 Central PMCID: PMC9380252 employees of the institutions to which they are affiliated in the  
496 header. AB declares grants from the Bill & Melinda Gates Foundation (BMGF) and the US National  
497 Institutes of Health (NIH). LJ declares grants from the United States Agency for International  
498 Development (USAID) and BMGF. ANP declares grants from NIH, UK Research and Innovation (UKRI),  
499 Wellcome Trust, and BMGF and payment for serving on the HIV Glasgow Congress steering  
500 committee. VC declares grants from UKRI, Unitaid, National Institute for Health Research, USAID, UK



- 501 Research and Innovation Medical Research Council, and BMGF and consulting fees from WHO. GM-R  
502 declares grants from BMGF, USAID South Africa, USAID, and Foundation for Innovative New  
503 Diagnostics and serving in leadership or fiduciary roles at the WHO, South African Department of  
504 Health, and South African National AIDS Council. All other authors declare no competing interests.
- 505 8. World Health Organization. WHO guideline: recommendations on digital interventions for  
506 health system strengthening: web supplement 2: summary of findings and GRADE tables. World  
507 Health Organization, 2019.
- 508 9. Mayer JE, Fontelo P. Meta-analysis on the effect of text message reminders for HIV-related  
509 compliance. *AIDS care*. 2017;29(4):409-17. Epub 2016/08/02. doi: 10.1080/09540121.2016.1214674.  
510 PubMed PMID: 27477580; PubMed Central PMCID: PMC5480218.
- 511 10. Kruse C, Betancourt J, Ortiz S, Valdes Luna SM, Bamrah IK, Segovia N. Barriers to the Use of  
512 Mobile Health in Improving Health Outcomes in Developing Countries: Systematic Review. *J Med*  
513 *Internet Res*. 2019;21(10):e13263. Epub 2019/10/09. doi: 10.2196/13263. PubMed PMID: 31593543;  
514 PubMed Central PMCID: PMC6811771.
- 515 11. Ronen K, Unger JA, Drake AL, Perrier T, Akinyi P, Osborn L, et al. SMS messaging to improve  
516 ART adherence: perspectives of pregnant HIV-infected women in Kenya on HIV-related message  
517 content. *AIDS care*. 2018;30(4):500-5. Epub 2017/12/20. doi: 10.1080/09540121.2017.1417971.  
518 PubMed PMID: 29254362; PubMed Central PMCID: PMC5839109.
- 519 12. Kanters S, Park JJ, Chan K, Socias ME, Ford N, Forrest JJ, et al. Interventions to improve  
520 adherence to antiretroviral therapy: a systematic review and network meta-analysis. *The lancet HIV*.  
521 2017;4(1):e31-e40. Epub 2016/11/20. doi: 10.1016/S2352-3018(16)30206-5. PubMed PMID:  
522 27863996.
- 523 13. Amankwaa I, Boateng D, Quansah DY, Akuoko CP, Evans C. Effectiveness of short message  
524 services and voice call interventions for antiretroviral therapy adherence and other outcomes: A  
525 systematic review and meta-analysis. *PloS one*. 2018;13(9):e0204091. Epub 2018/09/22. doi:

- 526 10.1371/journal.pone.0204091. PubMed PMID: 30240417; PubMed Central PMCID:  
527 PMCPMC6150661.
- 528 14. Demena BA, Artavia-Mora L, Ouedraogo D, Thiombiano BA, Wagner N. A Systematic Review  
529 of Mobile Phone Interventions (SMS/IVR/Calls) to Improve Adherence and Retention to Antiretroviral  
530 Treatment in Low-and Middle-Income Countries. *AIDS Patient Care STDS*. 2020;34(2):59-71. Epub  
531 2020/02/13. doi: 10.1089/apc.2019.0181. PubMed PMID: 32049555.
- 532 15. Linnemayr S, Huang H, Luoto J, Kambugu A, Thirumurthy H, Haberer JE, et al. Text messaging  
533 for improving antiretroviral therapy adherence: no effects after 1 year in a randomized controlled trial  
534 among adolescents and young adults. *American journal of public health*. 2017;107(12):1944-50.
- 535 16. Mehra N, Tunje A, Hallström IK, Jerene D. Effectiveness of mobile phone text message  
536 reminder interventions to improve adherence to antiretroviral therapy among adolescents living with  
537 HIV: A systematic review and meta-analysis. *PloS one*. 2021;16(7):e0254890.
- 538 17. Gross R, Ritz J, Hughes MD, Salata R, Mugenyi P, Hogg E, et al. Two-way mobile phone  
539 intervention compared with standard-of-care adherence support after second-line antiretroviral  
540 therapy failure: a multinational, randomised controlled trial. *Lancet Digit Health*. 2019;1(1):e26-e34.  
541 Epub 2019/09/19. doi: 10.1016/S2589-7500(19)30006-8. PubMed PMID: 31528850; PubMed Central  
542 PMCID: PMCPMC6746315.
- 543 18. Kemp CG, Velloza J. Implementation of eHealth Interventions Across the HIV Care Cascade: a  
544 Review of Recent Research. *Curr HIV/AIDS Rep*. 2018;15(6):403-13. Epub 2018/09/02. doi:  
545 10.1007/s11904-018-0415-y. PubMed PMID: 30171519; PubMed Central PMCID: PMCPMC6289676.
- 546 19. Kinuthia J, Ronen K, Unger JA, Jiang W, Matemo D, Perrier T, et al. SMS messaging to improve  
547 retention and viral suppression in prevention of mother-to-child HIV transmission (PMTCT) programs  
548 in Kenya: A 3-arm randomized clinical trial. *PLoS Med*. 2021;18(5):e1003650. Epub 2021/05/25. doi:  
549 10.1371/journal.pmed.1003650. PubMed PMID: 34029338; PubMed Central PMCID:  
550 PMCPMC8186790 following competing interests: BR has been on a DSMB and mock FDA advisory

- 551 panel for Gilead; and GJS reports financial support from NIH. All other authors declare no competing  
552 interests.
- 553 20. Wang Z, Zhu Y, Cui L, Qu B. Electronic health interventions to improve adherence to  
554 antiretroviral therapy in people living with HIV: Systematic review and meta-analysis. *JMIR mHealth*  
555 and *uHealth*. 2019;7(10):e14404.
- 556 21. Linde DS, Korsholm M, Katanga J, Rasch V, Lundh A, Andersen MS. One-way SMS and  
557 healthcare outcomes in Africa: Systematic review of randomised trials with meta-analysis. *PloS one*.  
558 2019;14(6):e0217485. Epub 2019/06/07. doi: 10.1371/journal.pone.0217485. PubMed PMID:  
559 31170176; PubMed Central PMCID: PMCPMC6553734 one-way SMS on attendance to cervical cancer  
560 screening follow-up appointment attendance. This does not alter our adherence to PLOS ONE policies  
561 on data sharing and materials. AL, MK and JK have no conflicts of interest.
- 562 22. Georgette N, Siedner MJ, Zanoni B, Sibaya T, Petty CR, Carpenter S, et al. The Acceptability  
563 and Perceived Usefulness of a Weekly Clinical SMS Program to Promote HIV Antiretroviral Medication  
564 Adherence in KwaZulu-Natal, South Africa. *AIDS and behavior*. 2016;20(11):2629-38. Epub  
565 2016/10/21. doi: 10.1007/s10461-016-1287-z. PubMed PMID: 26781866; PubMed Central PMCID:  
566 PMCPMC4949151.
- 567 23. Pienaar J, Day S, Setswe G, Wasunna B, Ncube V, Ndebele F, et al. 'I understood the texting  
568 process well'. Participant perspectives on usability and acceptability of SMS-based telehealth follow-  
569 up after voluntary medical male circumcision in South Africa. *DIGITAL HEALTH*.  
570 2023;9:20552076231194924. Epub 2023/09/01. doi: 10.1177/20552076231194924. PubMed PMID:  
571 37654716; PubMed Central PMCID: PMCPMC10467206.
- 572 24. Feldacker C, Holeman I, Murenje V, Xaba S, Korir M, Wambua B, et al. Usability and  
573 acceptability of a two-way texting intervention for post-operative follow-up for voluntary medical  
574 male circumcision in Zimbabwe. *PloS one*. 2020;15(6):e0233234. Epub 2020/06/17. doi:  
575 10.1371/journal.pone.0233234. PubMed PMID: 32544161; PubMed Central PMCID:  
576 PMCPMC7297350.

- 577 25. Holeman I, Kane D. Human-centered design for global health equity. *Information Technology*  
578 *for Development*. 2020;26(3):477-505.
- 579 26. Odegard ES, Langbraten LS, Lundh A, Linde DS. Two-way text message interventions and  
580 healthcare outcomes in Africa: Systematic review of randomized trials with meta-analyses on  
581 appointment attendance and medicine adherence. *PloS one*. 2022;17(4):e0266717. Epub 2022/04/15.  
582 doi: 10.1371/journal.pone.0266717. PubMed PMID: 35421134; PubMed Central PMCID:  
583 PMCPMC9009629.
- 584 27. Wald DS, Butt S, Bestwick JP. One-way versus two-way text messaging on improving  
585 medication adherence: meta-analysis of randomized trials. *Am J Med*. 2015;128(10):1139 e1-5. Epub  
586 2015/06/19. doi: 10.1016/j.amjmed.2015.05.035. PubMed PMID: 26087045.
- 587 28. Huang F, Blaschke S, Lucas H. Beyond pilotitis: taking digital health interventions to the  
588 national level in China and Uganda. *Global Health*. 2017;13(1):49. Epub 2017/08/02. doi:  
589 10.1186/s12992-017-0275-z. PubMed PMID: 28756767; PubMed Central PMCID: PMCPMC5535287.
- 590 29. Shah R, Watson J, Free C. A systematic review and meta-analysis in the effectiveness of mobile  
591 phone interventions used to improve adherence to antiretroviral therapy in HIV infection. *BMC public*  
592 *health*. 2019;19(1):915. doi: 10.1186/s12889-019-6899-6.
- 593 30. World Health Organization. *Monitoring and Evaluating Digital Health Interventions: A practical*  
594 *guide to conducting research and assessment*2016 [cited 2021. Available from:  
595 <https://apps.who.int/iris/bitstream/handle/10665/252183/9789241511766-eng.pdf>.
- 596 31. World Health Organization. *Recommendations on digital interventions for health system*  
597 *strengthening*. Geneva: WHO; 2019 [cited 2023 September 29]. Available from:  
598 <https://www.who.int/publications/i/item/9789241550505>.
- 599 32. UNAIDS. *Country Overview: Malawi* Geneva: UNAIDS; 2022 [cited 2023 August 6]. Available  
600 from: <https://www.unaids.org/en/regionscountries/countries/malawi>.

- 601 33. Mugglin C, Haas AD, van Oosterhout JJ, Msukwa M, Tenthani L, Estill J, et al. Long-term  
602 retention on antiretroviral therapy among infants, children, adolescents and adults in Malawi: A  
603 cohort study. *PloS one*. 2019;14(11):e0224837.
- 604 34. Fox MP, Rosen S. Retention of Adult Patients on Antiretroviral Therapy in Low- and Middle-  
605 Income Countries: Systematic Review and Meta-analysis 2008-2013. *J Acquir Immune Defic Syndr*.  
606 2015;69(1):98-108. Epub 2015/05/06. doi: 10.1097/QAI.0000000000000553. PubMed PMID:  
607 25942461; PubMed Central PMCID: PMC4422218.
- 608 35. Muula AS. The paradox of Malawi's health workforce shortage: pragmatic and unpopular  
609 decision are needed. *Malawi Medical Journal*. 2023;35(1):1-2.
- 610 36. Phiri S, Neuhann F, Glaser N, Gass T, Chaweza T, Tweya H, et al. The path from a volunteer  
611 initiative to an established institution: evaluating 15 years of the development and contribution of the  
612 Lighthouse trust to the Malawian HIV response. *BMC health services research*. 2017;17(1):548. Epub  
613 2017/08/11. doi: 10.1186/s12913-017-2466-y. PubMed PMID: 28793895; PubMed Central PMCID:  
614 PMCPMC5551033.
- 615 37. Weigel R, Hochgesang M, Brinkhof MW, Hosseinipour MC, Boxshall M, Mhango E, et al.  
616 Outcomes and associated risk factors of patients traced after being lost to follow-up from  
617 antiretroviral treatment in Lilongwe, Malawi. *BMC infectious diseases*. 2011;11(1):31.
- 618 38. Tweya H, Oboho IK, Gugsu ST, Phiri S, Rambiki E, Banda R, et al. Loss to follow-up before and  
619 after initiation of antiretroviral therapy in HIV facilities in Lilongwe, Malawi. *PloS one*.  
620 2018;13(1):e0188488.
- 621 39. Weigel R, Hosseinipour MC, Feldacker C, Gareta D, Tweya H, Chiwoko J, et al. Ensuring HIV-  
622 infected pregnant women start antiretroviral treatment: an operational cohort study from Lilongwe,  
623 Malawi. *Trop Med Int Health*. 2012;17(6):751-9. Epub 2012/04/11. doi: 10.1111/j.1365-  
624 3156.2012.02980.x. PubMed PMID: 22487553.

- 625 40. Tweya H, Feldacker C, Estill J, Jahn A, Ng'ambi W, Ben-Smith A, et al. Are they really lost? “True”  
626 status and reasons for treatment discontinuation among HIV infected patients on antiretroviral  
627 therapy considered lost to follow up in urban Malawi. *PloS one*. 2013;8(9):e75761.
- 628 41. Tweya H, Gareta D, Chagwera F, Ben-Smith A, Mwenyemasi J, Chiputula F, et al. Early active  
629 follow-up of patients on antiretroviral therapy (ART) who are lost to follow-up: the  
630 ‘Back-to-Care’ project in Lilongwe, Malawi. *Tropical Medicine & International Health*. 2010;15:82-9.
- 631 42. Huwa J, Tweya H, Mureithi M, Kiruthu-Kamamia C, Oni F, Chintedza J, et al. “It reminds me  
632 and motivates me”: Human-centered design and implementation of an interactive, SMS-based digital  
633 intervention to improve early retention on antiretroviral therapy: Usability and acceptability among  
634 new initiates in a high-volume, public clinic in Malawi. *PloS one*. 2023;18(7):e0278806. Epub  
635 2023/07/20. doi: 10.1371/journal.pone.0278806. PubMed PMID: 37471383; PubMed Central PMCID:  
636 PMCPMC10358959.
- 637 43. Holtrop JS, Estabrooks PA, Gaglio B, Harden SM, Kessler RS, King DK, et al. Understanding and  
638 applying the RE-AIM framework: Clarifications and resources. *J Clin Transl Sci*. 2021;5(1):e126. Epub  
639 2021/08/10. doi: 10.1017/cts.2021.789. PubMed PMID: 34367671; PubMed Central PMCID:  
640 PMCPMC8327549.
- 641 44. Glasgow RE, Harden SM, Gaglio B, Rabin B, Smith ML, Porter GC, et al. RE-AIM Planning and  
642 Evaluation Framework: Adapting to New Science and Practice With a 20-Year Review. *Front Public*  
643 *Health*. 2019;7(64):64. Epub 2019/04/16. doi: 10.3389/fpubh.2019.00064. PubMed PMID: 30984733;  
644 PubMed Central PMCID: PMCPMC6450067.
- 645 45. Feldstein AC, Glasgow RE. A practical, robust implementation and sustainability model  
646 (PRISM) for integrating research findings into practice. *The joint commission journal on quality and*  
647 *patient safety*. 2008;34(4):228-43.
- 648 46. Malawi Ministry of Health. Clinical management of HIV in children and adults. Malawi  
649 Integrated Guidelines and Standard Operating Procedures for Providing HIV Services. Lilongwe:  
650 Ministry of Health, Malawi 2022.

- 651 47. Douglas GP, Gadabu OJ, Joukes S, Mumba S, McKay MV, Ben-Smith A, et al. Using touchscreen  
652 electronic medical record systems to support and monitor national scale-up of antiretroviral therapy  
653 in Malawi. PLoS Med. 2010;7(8):e1000319. Epub 2010/08/17. doi: 10.1371/journal.pmed.1000319.  
654 PubMed PMID: 20711476; PubMed Central PMCID: PMCPMC2919419.
- 655 48. Fogg BJ, editor A behavior model for persuasive design. Proceedings of the 4th international  
656 Conference on Persuasive Technology; 2009.
- 657 49. Bandura A. Health promotion from the perspective of social cognitive theory. Psychology and  
658 health. 1998;13(4):623-49.
- 659 50. Fishbein M, Ajzen I. Predicting and changing behavior: The reasoned action approach: Taylor  
660 & Francis; 2011.
- 661 51. Glanz K, Rimer BK, Viswanath K. Health behavior and health education: theory, research, and  
662 practice: John Wiley & Sons; 2008.
- 663 52. Godin G, Kok G. The theory of planned behavior: a review of its applications to health-related  
664 behaviors. Am J Health Promot. 1996;11(2):87-98. Epub 1996/10/04. doi: 10.4278/0890-1171-  
665 11.2.87. PubMed PMID: 10163601.
- 666 53. Principles for Digital Development. Principles for Digital Development 2022 [cited 2022 August  
667 2022]. Available from: <https://digitalprinciples.org/>.
- 668 54. CHT Core Framework. Community Health Toolkit,. 4.5.0 ed: Medic; 2023.
- 669 55. Mureithi M, Ng'aari L, Wasunna B, Kiruthu-Kamamia C, Sande O, Chiwaya GD, et al. Centering  
670 healthcare workers in developing digital health interventions: usability and acceptability of a two-way  
671 texting retention intervention in a public HIV clinic in Lilongwe, Malawi. medRxiv.  
672 2023:2023.01.09.23284326. Epub 2023/01/31. doi: 10.1101/2023.01.09.23284326. PubMed PMID:  
673 36711633; PubMed Central PMCID: PMCPMC9882492.
- 674 56. Weigel R, Estill J, Egger M, Harries AD, Makombe S, Tweya H, et al. Mortality and loss to follow-  
675 up in the first year of ART: Malawi national ART programme. AIDS. 2012;26(3):365-73. doi:  
676 10.1097/QAD.0b013e32834ed814. PubMed PMID: 00002030-201201280-00012.

- 677 57. Johnston W, Keogh A, Dickson J, Leslie SJ, Megyesi P, Connolly R, et al. Human-Centered  
678 Design of a Digital Health Tool to Promote Effective Self-care in Patients With Heart Failure: Mixed  
679 Methods Study. *JMIR Form Res.* 2022;6(5):e34257. Epub 2022/05/11. doi: 10.2196/34257. PubMed  
680 PMID: 35536632; PubMed Central PMCID: PMC9131139.
- 681 58. Mamuye A, Nigatu AM, Chanyalew MA, Amor LB, Loukil S, Moyo C, et al. Facilitators and  
682 Barriers to the Sustainability of eHealth Solutions in Low-and Middle-Income Countries: Descriptive  
683 Exploratory Study. *JMIR Formative Research.* 2023;7:e41487.
- 684 59. Moller AC, Merchant G, Conroy DE, West R, Hekler E, Kugler KC, et al. Applying and advancing  
685 behavior change theories and techniques in the context of a digital health revolution: proposals for  
686 more effectively realizing untapped potential. *J Behav Med.* 2017;40(1):85-98. Epub 2017/01/07. doi:  
687 10.1007/s10865-016-9818-7. PubMed PMID: 28058516; PubMed Central PMCID: PMC9131139.
- 688 60. Fishbein M. The role of theory in HIV prevention. *AIDS care.* 2000;12(3):273-8. Epub  
689 2000/08/06. doi: 10.1080/09540120050042918. PubMed PMID: 10928203.
- 690 61. van der Kop ML, Muhula S, Nagide PI, Thabane L, Gelmon L, Awiti PO, et al. Effect of an  
691 interactive text-messaging service on patient retention during the first year of HIV care in Kenya  
692 (WeTel Retain): an open-label, randomised parallel-group study. *Lancet Public Health.*  
693 2018;3(3):e143-e52. Epub 2018/01/24. doi: 10.1016/S2468-2667(17)30239-6. PubMed PMID:  
694 29361433; PubMed Central PMCID: PMC9131139.
- 695 62. Statista. Number of mobile cellular subscriptions per 100 inhabitants in Malawi from 2000 to  
696 2022 2023 [updated July 2023 January 10, 2024]. Available from:  
697 [https://www.statista.com/statistics/509554/mobile-cellular-subscriptions-per-100-inhabitants-in-](https://www.statista.com/statistics/509554/mobile-cellular-subscriptions-per-100-inhabitants-in-malawi/)  
698 [malawi/](https://www.statista.com/statistics/509554/mobile-cellular-subscriptions-per-100-inhabitants-in-malawi/).
- 699 63. Anto-Ocrah M, Latulipe RJ, Mark TE, Adler D, Zaihra T, Lanning JW. Exploring association of  
700 mobile phone access with positive health outcomes and behaviors amongst post-partum mothers in  
701 rural Malawi. *BMC Pregnancy Childbirth.* 2022;22(1):485. Epub 2022/06/14. doi: 10.1186/s12884-022-  
702 04782-0. PubMed PMID: 35698066; PubMed Central PMCID: PMC9131139.



703 64. UNICEF. Malawi Education Fact Sheet Geneva: UNICEF; 2022 [cited 2023 March 17]. Available  
704 from: [https://data.unicef.org/wp-content/uploads/2022/12/2022Malawi\\_Factsheet\\_InDesign-](https://data.unicef.org/wp-content/uploads/2022/12/2022Malawi_Factsheet_InDesign-FINAL-2.pdf)  
705 [FINAL-2.pdf](https://data.unicef.org/wp-content/uploads/2022/12/2022Malawi_Factsheet_InDesign-FINAL-2.pdf).

706 65. Nordberg B, Kaguir E, Chamorro de Angeles KJ, Gabriel EE, van der Kop ML, Mwangi W, et al.  
707 The use, adherence, and evaluation of interactive text-messaging among women admitted to  
708 prevention of mother-to-child transmission of HIV care in Kenya (WeTel PMTCT). BMC Pregnancy and  
709 Childbirth. 2024;24(1):25. doi: 10.1186/s12884-023-06194-0.

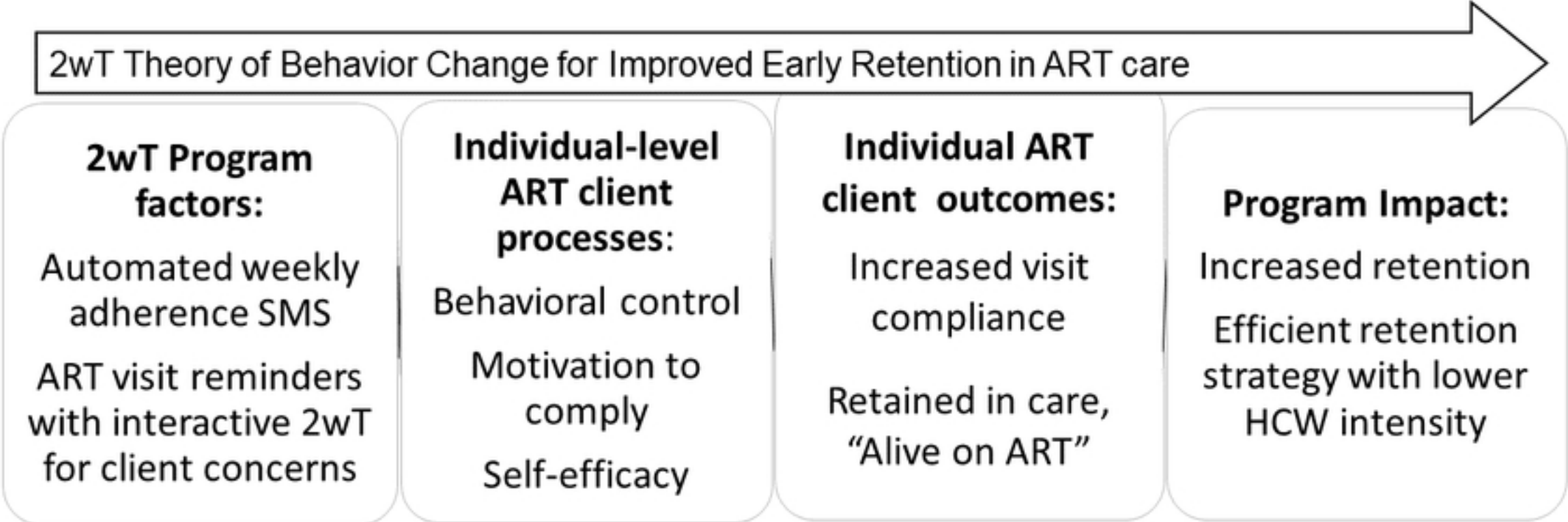
710

## 711 **Supplemental information**

712 **S1 File. Dataset.** Retention outcomes dataset in CSV format.

713

2wT Theory of Behavior Change for Improved Early Retention in ART care



**2wT Program factors:**

Automated weekly adherence SMS

ART visit reminders with interactive 2wT for client concerns

**Individual-level ART client processes:**

Behavioral control

Motivation to comply

Self-efficacy

**Individual ART client outcomes:**

Increased visit compliance

Retained in care, "Alive on ART"

**Program Impact:**

Increased retention

Efficient retention strategy with lower HCW intensity

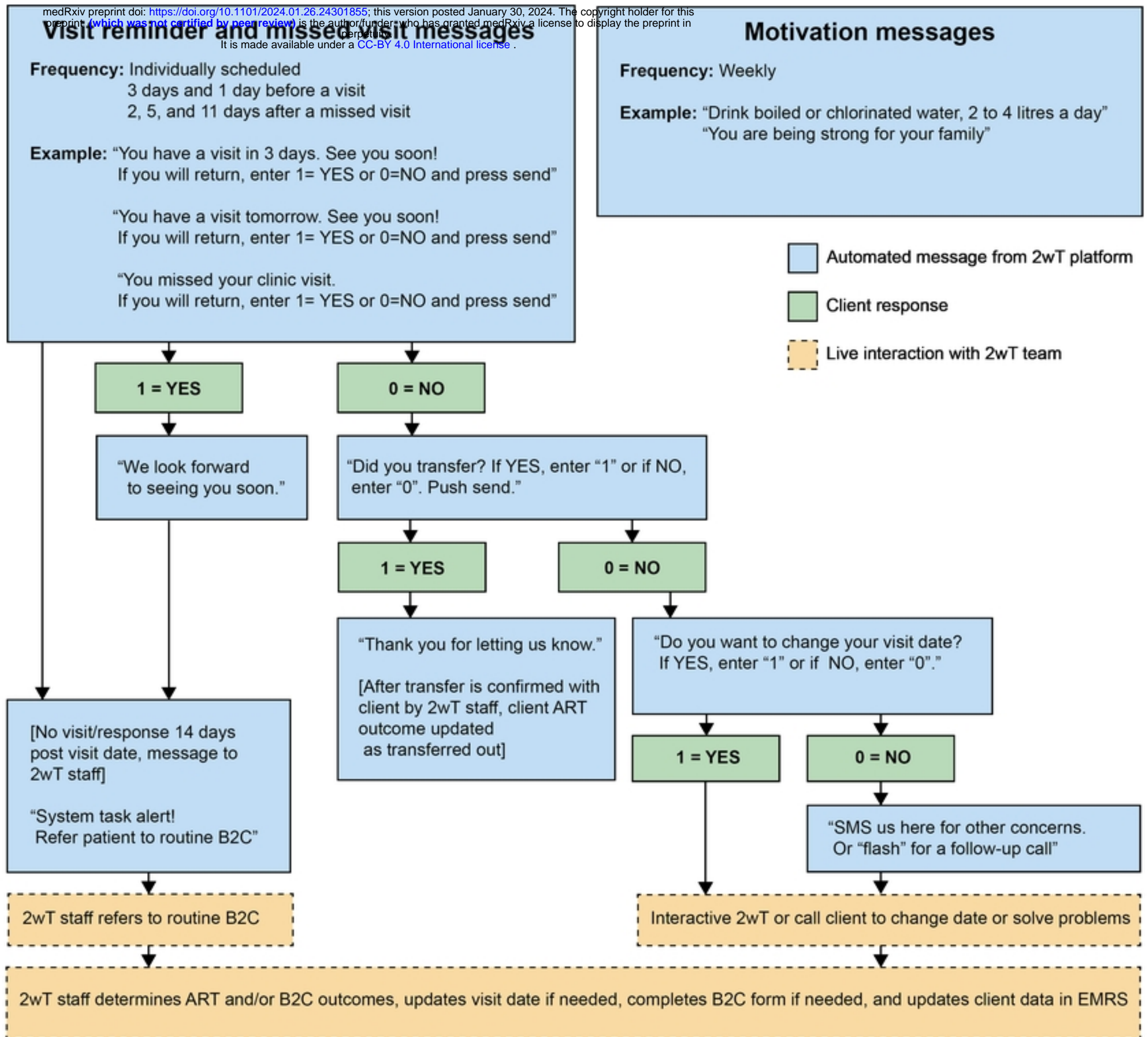


Fig 2

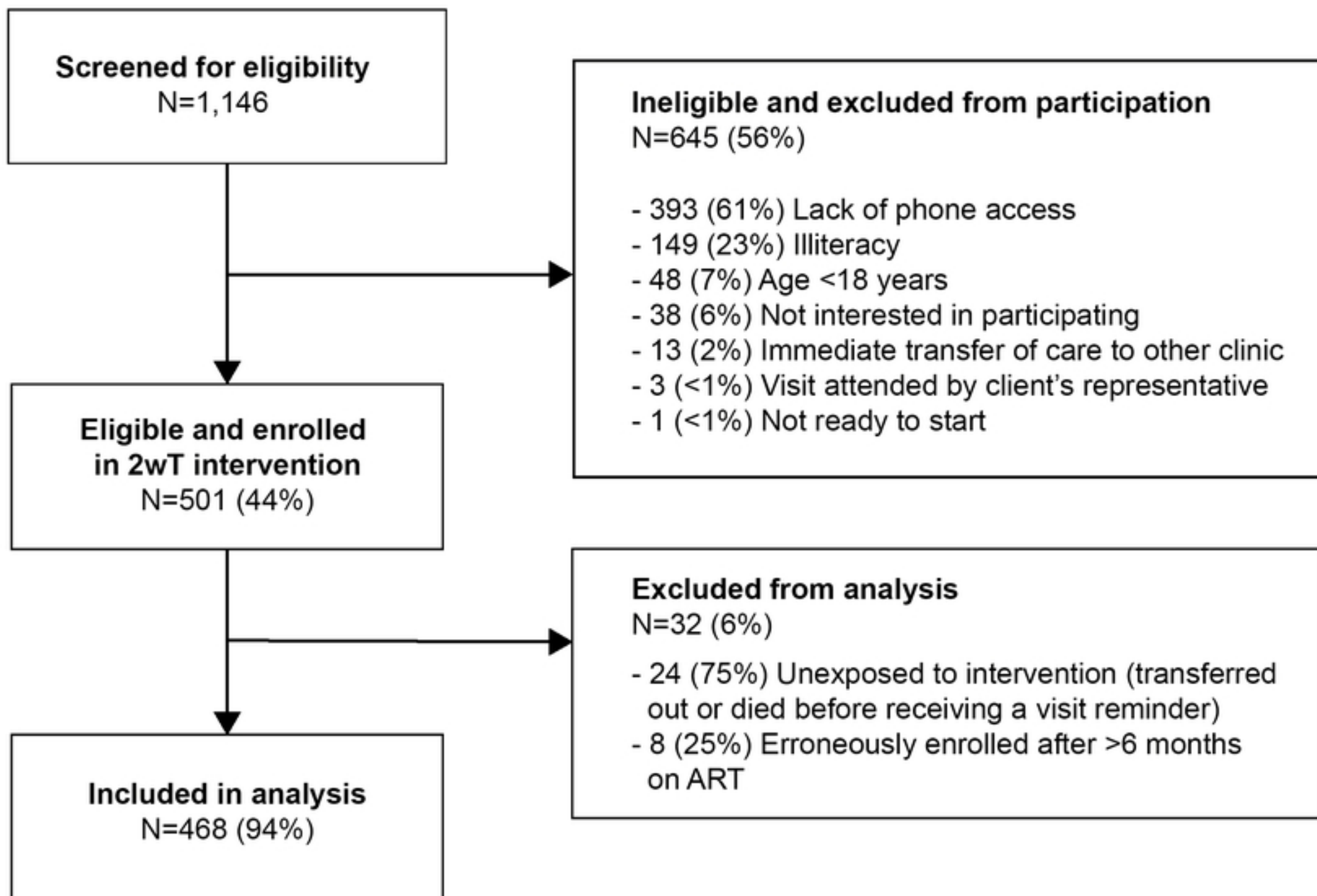


Fig3

Percent of participants retained on ART

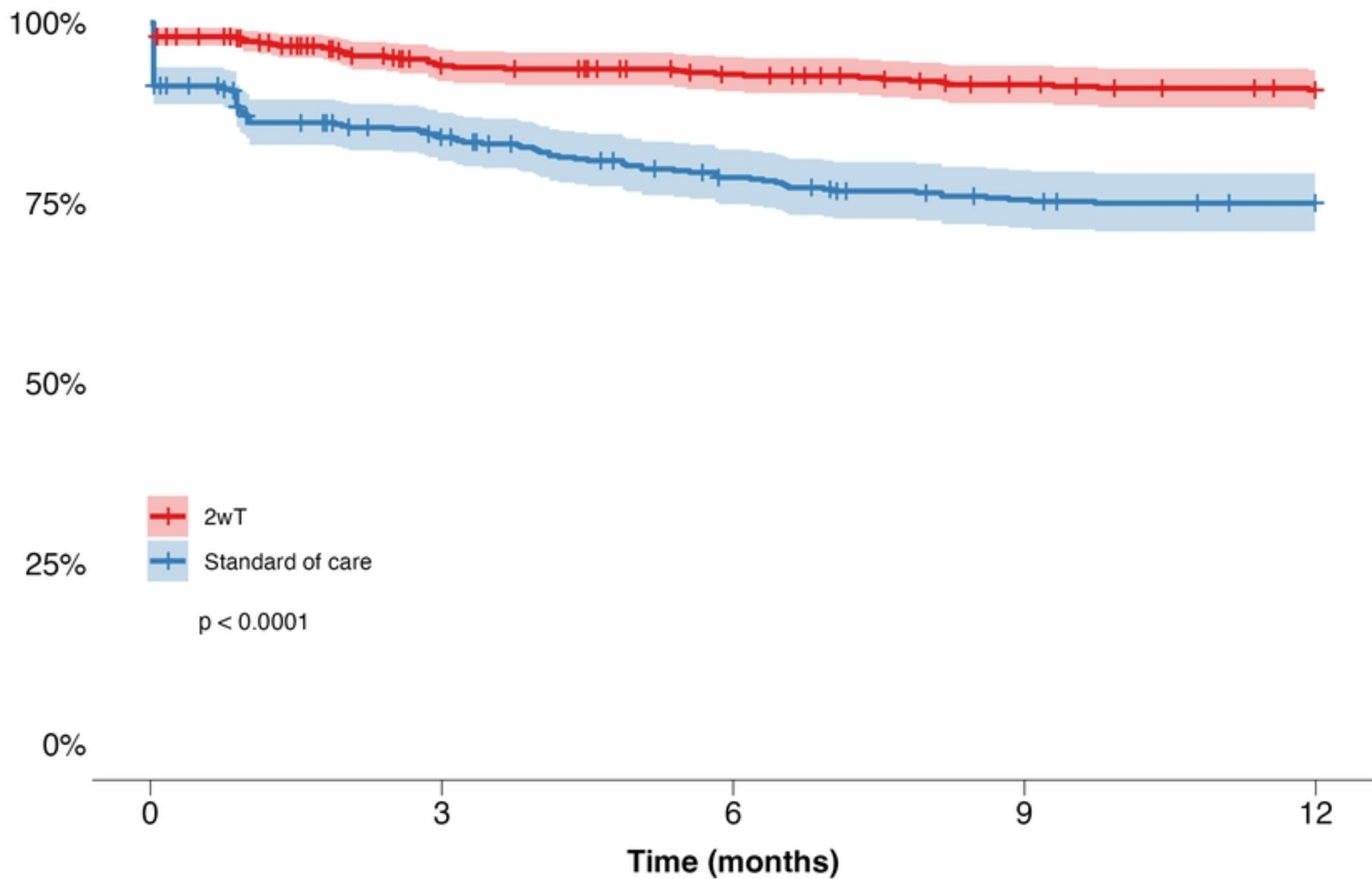


Fig5

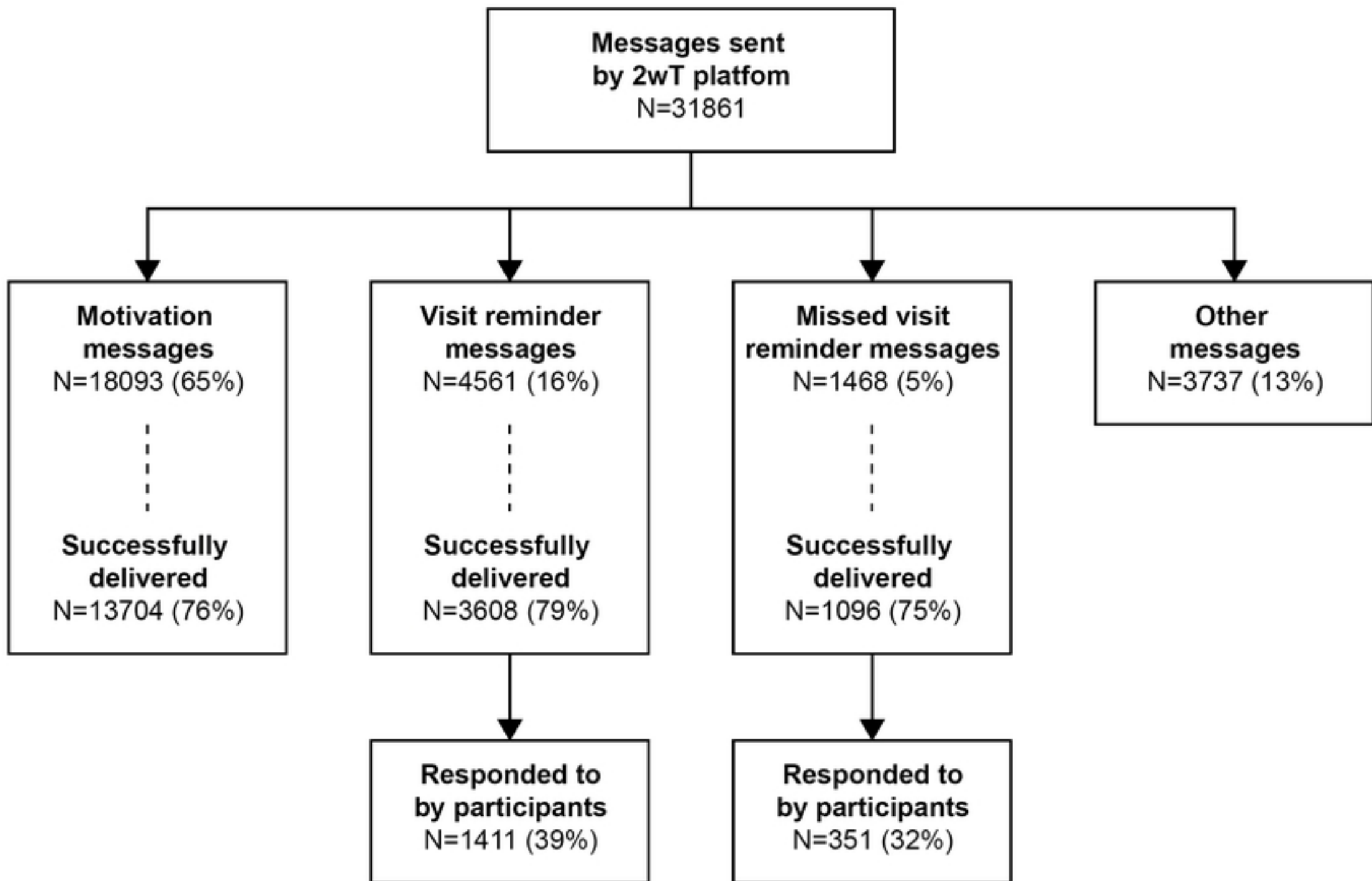


Fig4