

1 **Manuscript Title:**

2 Safety Monitoring of Bivalent COVID-19 mRNA Vaccines Among Recipients 6 months and Older in the United States

4 **Authors:**

5 Patricia C. Lloyd, PhD, ScM,<sup>1</sup> Elizabeth R. Smith, BS,<sup>2</sup> Joann F. Gruber, PhD, MSPH,<sup>1</sup> Michelle Ondari, MSPH,<sup>2</sup> Hui Lee Wong,  
6 PhD,<sup>1</sup> Mao Hu, BS,<sup>2</sup> Tainya C. Clarke, PhD, MPH, MSc,<sup>1</sup> Rowan McEvoy, BS,<sup>2</sup> Kandace L. Amend, PhD, MPH,<sup>3</sup> Daniel C.  
7 Beachler, PhD, MHS,<sup>4</sup> Cheryl N McMahill-Walraven, PhD, MSW,<sup>6</sup> John D. Seeger, DrPH, PharmD,<sup>3</sup> Alex Secora, PhD,<sup>5</sup> Djeneba  
8 Audrey Djibo, PhD,<sup>6</sup> Jennifer Song, MA, MURP,<sup>3</sup> Nandini Selvam, PhD, MPH,<sup>5</sup> Jonathan P. DeShazo, PhD, MPH,<sup>6</sup> Robin Clifford,  
9 MS,<sup>3</sup> Eugenio Abente, PhD,<sup>6</sup> Yoganand Chillarige, MPA,<sup>2</sup> Richard A. Forshee, PhD,<sup>1</sup> Steven A. Anderson, PhD, MPP,<sup>1</sup> Azadeh  
10 Shoaibi, PhD, MHS.<sup>7</sup>

12 **Affiliations:**

13 <sup>1</sup> US Food and Drug Administration, Silver Spring, MD, USA

14 <sup>2</sup> Acumen LLC, Burlingame, CA, USA

15 <sup>3</sup> Optum Epidemiology, Boston, MA, USA

16 <sup>4</sup> Carelon, Wilmington, DE, USA

17 <sup>5</sup> IQVIA, Falls Church, VA, USA

18 <sup>6</sup> CVS Health Clinical Trial Services, Blue Bell, PA, USA

19 <sup>7</sup> Affiliated with the US Food and Drug Administration, Silver Spring, MD, USA during the conduct of this work

20

21 **Author Email Addresses:**

22 Patricia C. Lloyd (patricia.lloyd@fda.hhs.gov), Elizabeth R. Smith (esmith@acumenllc.com), Joann F. Gruber

23 (joann.gruber@fda.hhs.gov), Michelle Ondari (mondari@acumenllc.com), Hui Lee Wong (huilee.wong@fda.hhs.gov), Mao Hu

24 (mhu@acumenllc.com), Tainya C. Clarke (tainya.clarke@fda.hhs.gov), Rowan McEvoy (rmcevoy@acumenllc.com), Kandace L.

25 Amend (kandace.amend@optum.com), Daniel C. Beachler (daniel.beachler@carelon.com), Cheryl N McMahill-Walraven

26 (cheryl.walraven@cvshealth.com), John D. Seeger (john.seeger@optum.com), Alex Secora (alex.secora@iqvia.com), Djeneba

27 Audrey Djibo (audrey.djibo@cvshealth.com), Jennifer Song (jennifer.song@optum.com), Nandini Selvam

28 (nandini.selvam@iqvia.com), Jonathan P. DeShazo (jonathan.deshazo@cvshealth.com), Robin Clifford (robin.clifford@optum.com),

29 Eugenio Abente (abentee@aetna.com), Yoganand Chillarige (ychillarige@acumenllc.com), Richard A. Forshee

30 (richard.forshee@fda.hhs.gov), Steven A. Anderson (steven.anderson@fda.hhs.gov), Azadeh Shoaibi (azadeh.shoaibi@nih.gov).

31

32 **Corresponding Author:**

33 Patricia C. Lloyd, PhD, ScM

34 Health Statistician

35 Office of Biostatistics and Pharmacovigilance  
36 Center for Biologics Evaluation and Research  
37 U.S. Food & Drug Administration  
38 10903 New Hampshire Ave., Building 71  
39 Silver Spring, MD 20993  
40 Email: [patricia.loyd@fda.hhs.gov](mailto:patricia.loyd@fda.hhs.gov)  
41 **Word Count: 2,957**  
42

43 **Keywords**

44 COVID-19 vaccine, vaccine safety, SARS-CoV-2, bivalent COVID-19 vaccine, mRNA vaccines

45 **Abstract (Word Count: 299/300)**

46 **Importance**

47 Active monitoring of health outcomes after COVID-19 vaccination provides early detection of rare outcomes post-licensure.

48 **Objective**

49 To evaluate health outcomes following bivalent COVID-19 Pfizer-BioNTech (BNT162b2) and Moderna (mRNA-1273.222)  
50 vaccination among individuals 6 months and older in the United States.

51 **Design**

52 Monthly monitoring of health outcomes from August 2022 to July 2023 in four administrative claims databases. Descriptive analyses  
53 monitored vaccine uptake, outcome counts and coadministration of bivalent COVID-19 and influenza vaccines. Sequential analyses  
54 tested for elevated risk of each outcome in a prespecified post-vaccination risk interval, or a period of hypothesized elevation based on  
55 clinical guidance, compared to a historical baseline.

56 **Participants and Exposures**

57 Persons 6 months and older who received a bivalent COVID-19 BNT162b2 or mRNA-1273.222 vaccine during the study period, with  
58 continuous enrollment in a medical insurance plan from the start of an outcome-specific clean interval to the COVID-19 vaccination  
59 date. Vaccines were identified using product-specific codes from medical coding systems.

60 **Health Outcomes**

61 Twenty outcomes were monitored in BNT162b2 vaccine recipients 6 months-4 years, and mRNA-1273.222 vaccine recipients 6  
62 months-5 years. Twenty-one outcomes were monitored in BNT162b2 vaccine recipients 5-17 years and mRNA-1273.222 vaccine  
63 recipients 6-17 years. Eighteen outcomes were monitored in persons 18 years and older for both mRNA vaccines.

#### 64 **Results**

65 Overall, 13.9 million individuals 6 months and older received a single bivalent COVID-19 mRNA vaccine. The statistical threshold  
66 for a signal was met for two outcomes in one database: anaphylaxis following bivalent BNT162b2 and mRNA-1273.222 vaccines in  
67 persons 18-64 years and myocarditis/pericarditis following bivalent BNT162b2 vaccines in individuals 18-35 years. There were no  
68 signals identified in young children.

#### 69 **Conclusions**

70 Results were consistent with prior observations from published studies on COVID-19 vaccine safety. This study supports the safety  
71 profile of bivalent COVID-19 mRNA vaccines and the conclusion that the benefits of vaccination outweigh the risks.

72 **1. Background**

73 The U.S. Food & Drug Administration (FDA) first authorized bivalent formulations of COVID-19 mRNA vaccines in August  
74 2022.<sup>1</sup> These updated vaccines included both the SARS-CoV-2 ancestral strain and omicron BA.4 and BA.5 subvariants and offered  
75 added protection against more recently circulating strains of the virus.<sup>1</sup> Vaccines were first authorized in persons 12 years and older  
76 for the bivalent COVID-19 Pfizer-BioNTech (BNT162b2) vaccine, and 18 years and older for the bivalent COVID-19 Moderna  
77 (mRNA-1273.222) vaccine.<sup>2,3</sup> The authorization for both vaccine brands was expanded in October 2022 to include persons 5 years  
78 and older for the bivalent BNT162b2 vaccine and 6 years and older for the mRNA-1273.222 vaccine.<sup>2,3</sup> In December 2022, the  
79 authorization for both vaccine brands was further expanded to include populations 6 months and older.<sup>2,3</sup>

80 There have been approximately 56 million bivalent COVID-19 vaccine doses administered in the U.S. as of May 2023.<sup>4</sup> Of these,  
81 42.0% have been administered to persons 65 years and older, 51.9% to persons aged 18-64 years, 5.9% to persons aged 5-17 years,  
82 and <1% to the population aged 6 months- 4 years.<sup>4</sup> Overall, bivalent COVID-19 mRNA vaccines have been administered to about  
83 17.0% of the U.S. population.<sup>4</sup>

84 FDA has been performing near real-time surveillance to monitor the real-world safety of bivalent COVID-19 vaccines available in  
85 the U.S. Near real-time surveillance is a screening method designed to rapidly identify potential safety signals as vaccines are  
86 administered. However, results do not establish a causal association due to methodologic limitations. More robust epidemiological  
87 studies may be used to evaluate potential safety signals identified from screening methods.

88 This study presents results from FDA’s near real-time safety monitoring of bivalent COVID-19 vaccines using data from three  
89 commercial databases representing vaccine recipients aged 6 months to 64 years, and the Centers for Medicare & Medicaid Services  
90 (CMS) Medicare database representing vaccine recipients aged 65 years and older.

91 **2. Methods**

92 **2.1 Data Sources**

93 This study used administrative commercial health claims data from Carelon Research, CVS Health, and Optum to capture health  
94 care data on the population aged 6 months – 64 years old. Medicare Fee-For-Service (FFS) data from the CMS Shared Systems  
95 Database was used to capture data on the population aged 65 years and older. These databases contain longitudinal medical and  
96 pharmacy claims data that captures patient’s demographic information, clinical diagnoses, and vaccine administration information  
97 among other health care utilization information. The CMS Medicare enrollment database was used to capture enrollment information  
98 for the Medicare population. Where available, local and state-based Immunization Information Systems (IIS) data was linked to  
99 commercial claims databases to supplement the capture of patient’s COVID-19 vaccination history. Once validated, data from select  
100 IIS jurisdictions was included in the analysis. Supplementary Table E1 summarizes individual database-related characteristics  
101 including enrollment size and claims delay.

102

103



104 **2.2 Study Population and Period**

105 Health plan members aged 6 months and older were included in surveillance if they received a bivalent COVID-19 mRNA vaccine  
106 during the vaccine brand- and age-specific authorization periods and were continuously enrolled in their respective health plan for the  
107 complete duration of the outcome-specific clean interval. The surveillance period extended from the U.S. authorization date for the  
108 bivalent COVID-19 mRNA vaccines (i.e., August 2022 for ages 12 years and older; October 2022 for 5-11 years of age; December  
109 2022 for 6 months to 4 years of age) through mid-2023. Exact surveillance start dates varied by vaccine brand and age group based on  
110 vaccine authorization dates (Supplementary Table E2).

111 **2.3 Exposures and Follow-Up**

112 The exposure was defined as the receipt of the bivalent BNT162b2 or mRNA-1273.222 COVID-19 vaccines in any setting during  
113 the vaccine brand and age-specific authorization periods. Bivalent COVID-19 mRNA vaccines were identified in claims and IIS data  
114 using product and dose-specific codes from the Current Procedural Terminology (CPT)/ Health Care Common Procedure Coding  
115 System (HCPCS), National Drug Codes (NDCs), and CVX (vaccine administered) codes.<sup>5</sup> Only individuals' first bivalent vaccine  
116 administration was included in surveillance because bivalent COVID-19 vaccines were authorized as a single dose at the start of  
117 surveillance.

118 Follow-up time included all person-time accrued during the prespecified post-vaccination risk intervals. Risk intervals were  
119 defined as a period of hypothesized elevated risk due to vaccination and were established based on guidance from clinicians and  
120 literature review. Risk intervals were censored at disenrollment, subsequent COVID-19 vaccination, surveillance end date, or death.

## 121 **2.4 Health Outcomes**

122 Health outcomes were selected based on literature review, consultation with clinicians, and prior COVID-19 vaccine surveillance  
123 activities. Outcomes were monitored separately: an individual with multiple different outcomes was included in surveillance for each  
124 outcome, but only the first eligible occurrence of an outcome was included in the analysis. Eligible outcomes were defined as those  
125 occurring in the risk interval with no prior occurrence of the respective outcome during the outcome-specific clean interval. The clean  
126 interval was a period defined relative to vaccination date used to identify incident outcomes, in which an individual enters the  
127 outcome-specific study cohort only if the outcome did not occur during this interval. Table 1 presents the outcomes with clinical care  
128 settings, risk intervals, and clean intervals used to identify incident outcomes. It also indicates outcomes that were included in  
129 descriptive monitoring and sequential testing, by age group.

130 While most outcomes underwent sequential testing, outcomes were only descriptively monitored if there were limited historical  
131 case counts to estimate background rates, which were required for testing. Among children aged 6 months – 4 years and 6 months – 5  
132 years receiving BNT162b2 and mRNA-1273.222 vaccines respectively, 12 outcomes underwent descriptive monitoring and sequential  
133 testing, while eight were only descriptively monitored. For persons 5-17 years and 6-17 years receiving BNT162b2 and mRNA-

134 1273.222 vaccines respectively, 13 outcomes were both descriptively monitored and sequentially tested, and eight outcomes were only  
135 descriptively monitored. Seventeen outcomes were included in descriptive monitoring and sequential testing for adults 18 years and  
136 older, while a single outcome was only descriptively monitored (Table 4).

## 137 **2.5 Statistical Analyses**

### 138 *Descriptive Monitoring*

139 Vaccine uptake and health outcome counts were monitored monthly along with the demographic characteristics of vaccine  
140 recipients. The frequency of concomitant bivalent COVID-19 and seasonal influenza vaccination was also monitored. Prevalence of  
141 concomitant influenza vaccination was measured on the same-day and within 42 days prior to or following the bivalent COVID-19  
142 mRNA vaccination date. Concomitant influenza vaccination was only descriptively monitored and was not included in inferential  
143 testing nor adjusted for in any analyses.

### 144 *Sequential Testing*

145 The Poisson Maximized Sequential Probability Ratio Test (PMaxSPRT) was used to evaluate the rate of outcomes in specific age  
146 groups following vaccination compared to a historical baseline rate.<sup>6</sup> Monthly sequential testing was performed to generate incidence  
147 rate ratios (IRRs) of observed outcome rates compared with database-specific historical (expected) rates. Historical rates were  
148 adjusted to account for claims processing delay, and where case counts permitted, standardized by age and sex for the population  
149 younger than 65 years old, and by age, sex, race, and nursing home residency for the population 65 years and older.<sup>7</sup> We estimated

150 annual historical rates for a pre-COVID-19 period (2017-2019) and a COVID-19 period between April and December 2020. Selection  
151 of the comparator rate was based on the overlap between the 95% confidence intervals for the periods. If rates in the historical period  
152 (individual years between 2017 and 2020) did not have overlapping 95% confidence intervals indicating a substantive difference in the  
153 rates, we selected the lower or more stable rate as the most conservative approach. This was performed to enhance the sensitivity of  
154 the test by increasing the likelihood that potential signals were not missed. Otherwise, the median annual rate was selected. Pre-  
155 COVID-19 rates from 2019 were selected for most outcomes; however, rates from the 2020 COVID-19 period were selected if the  
156 COVID-19 period rates did not return to pre-COVID-19 levels.

157 For each outcome, monthly sequential testing was conducted in each database and began when a minimum of three outcomes after  
158 bivalent COVID-19 vaccination was observed. Testing was conducted until the earlier of one of the following events occurred: an  
159 observed signal, surveillance end, or when the outcome-specific prespecified surveillance length was met, which was defined as the  
160 expected number of outcomes within a 6-month period.<sup>5</sup> We used a one-tailed test with a null hypothesis that the observed outcome  
161 rate was no greater than the historical comparator beyond a prespecified test margin with an overall alpha of 1%. A strict alpha level  
162 was selected to minimize false signals based on the large number of tests performed. Testing margins were determined for each  
163 outcome based on input from clinicians to avoid detection of minimal increases in risk that were unlikely to be clinically relevant. A  
164 statistical signal occurred if the log likelihood ratio exceeded the critical value, which was a threshold set to determine if the observed  
165 result was due to chance.<sup>5</sup> SAS © version 9.4, R version 4.1.2, and R Sequential Package Version 3.3.1 were used for the analysis.

166 This surveillance activity was performed under the FDA Biologics Effectiveness and Safety (BEST) Initiative and is covered  
167 under the scope of the FDA public health surveillance mandate.

### 168 **3. Results**

#### 169 *Descriptive Monitoring*

170 A total of 13.9 million bivalent COVID-19 mRNA vaccine doses were observed, including 5.5 million vaccinations across  
171 commercial databases including Carelon Research, CVS Health, and Optum databases, and 8.4 million vaccinations in the Medicare  
172 FFS database (Table 2). Figure 1 shows weekly vaccine uptake by vaccine brand and database. Among commercial databases, Carelon  
173 had the highest weekly vaccine uptake compared to CVS Health and Optum databases. Figure 2 shows weekly vaccine uptake in  
174 commercial and Medicare databases by vaccine brand and age group. For adults 18 years and older, peak vaccination uptake occurred  
175 between September and December 2022, with the highest weekly vaccination uptake observed for persons 65 years and older. For  
176 children 5-17 years, BNT162b2 vaccine recipients had the highest weekly vaccine uptake between September and December 2022.  
177 Minimal weekly vaccine uptake was observed for BNT162b2 and mRNA-1273.222 vaccine users 6 months-4 years and 6 months-5  
178 years respectively, and mRNA-1273.222 vaccine users 6-17 years.

179 Among vaccine recipients 6 months-64 years in commercial insurance databases, 12% were 6 months-17 years, 24% were 18-35  
180 years, 39% were 36-55 years, and 25% were 56-64 years (Table 2). There was a slightly higher proportion of female recipients (54%)  
181 than males, which was consistent for BNT162b2 and mRNA-1273.222 vaccine brands. The majority of vaccine users resided in urban

182 areas (95%). The prevalence of same-day concomitant bivalent COVID-19 and seasonal influenza vaccination was 40%, increasing to  
183 62% in the 42 days prior to or after the COVID-19 vaccination date. There was a slightly higher proportion of same-day concomitant  
184 vaccination among BNT162b2 recipients (41%) than mRNA-1273.222 recipients (39%), increasing to 62% for both vaccine brands in  
185 the 42 days before or after bivalent COVID-19 vaccination (Table 2).

186 In the Medicare FFS population 65 years and older, 88% of vaccine recipients were aged 65-84 years with a higher proportion of  
187 females (57%) than males. This was relatively consistent across BNT162b2 and mRNA-1273.222 vaccine users (Table 2). The  
188 majority of COVID-19 vaccine users resided in urban areas (82%), with a slightly higher proportion of BNT162b2 vaccine users  
189 residing in urban areas (85%) compared to mRNA-1273.222 users (79%). Only a small portion of vaccine users resided in the nursing  
190 home (2%). The prevalence of same-day concomitant bivalent COVID-19 and seasonal influenza vaccination was 33%, increasing to  
191 72% in the 42 days before or after bivalent COVID-19 vaccination. There was a higher rate of same-day concomitant vaccination with  
192 influenza vaccines among BNT162b2 vaccine users (35%) compared to mRNA-1273.222 users (30%), increasing to 73% and 70%  
193 respectively in the 42 days prior to or following COVID-19 vaccination.

#### 194 ***Sequential Testing***

195 Sequential testing was performed for outcomes with estimable background rates. Of 17 outcomes monitored with sequential  
196 testing in adults aged 18-64 years, anaphylaxis and myocarditis/pericarditis met the statistical threshold for a signal in one of three  
197 databases (Table 3). An anaphylaxis signal was detected following bivalent BNT162b2 and mRNA-1273.222 vaccination among

198 participants aged 18-64 years in the Carelon Research database, based on <11 events<sup>1</sup> for each vaccine brand. Similarly, a  
199 myocarditis/pericarditis signal was observed among bivalent BNT162b2 vaccine recipients aged 18-35 years in the Carelon Research  
200 database, based on <11 events<sup>1</sup>. No statistical signals were observed in CVS Health, Optum, or Medicare FFS databases.

201 The incidence rate of anaphylaxis following bivalent BNT162b2 and mRNA-1273.222 vaccination was 74.5 and 109.4 cases per  
202 100,000 person-years respectively, among those 18-64 years in the Carelon database. The incidence rate of myocarditis/pericarditis  
203 following bivalent BNT162b2 vaccination was 131.4 cases per 100,000 person-years for persons 18-35 years in the Carelon database.

204 Among the population aged 6 months-4 years and 6 months-5 years receiving the bivalent COVID-19 BNT162b2 and mRNA-  
205 1273.222 vaccines, respectively, sequential testing was not initiated for any of the 12 outcomes for which testing was planned, as the  
206 minimum number of cases needed to start testing (i.e., 3 cases) was not observed. Similarly, for the population aged 5-17 years, of 13  
207 outcomes included in testing, testing was only initiated for appendicitis, seizures/convulsions, and Bell's Palsy following BNT162b2  
208 vaccination across commercial databases due to limited case counts for the other outcomes. Testing was not initiated for any outcomes  
209 among mRNA-1273.222 vaccine recipients aged 5-17 years due to limited case counts. The majority of outcomes did not initiate  
210 testing in persons 6 months-17 years due to limited case counts. Of outcomes that initiated testing in this age group, no statistical  
211 signals were detected for either vaccine brand (Table 3).

212 In the Medicare population aged 65 years and older, sequential testing was initiated for all 17 outcomes for both BNT162b2 and  
213 mRNA-1273.222 vaccinations, and no statistical signals were detected (Table 3).

---

<sup>1</sup> Cell counts < 11 have been suppressed in the manuscript text and tables.

#### 214 4. Discussion

215 This study monitored the safety of bivalent COVID-19 mRNA vaccines administered to 13.9 million persons 6 months and older  
216 in the U.S. by evaluating the risk of several outcomes following vaccination. Two outcomes met the statistical threshold for a signal in  
217 one of three commercial databases: anaphylaxis following bivalent BNT162b2 and mRNA-1273.222 vaccination in recipients aged  
218 18-64 years and myocarditis/pericarditis following BNT162b2 vaccination in recipients aged 18-35 years.

219 These findings are largely consistent with existing safety assessments of COVID-19 mRNA vaccines. An elevated risk of  
220 myocarditis/pericarditis and anaphylaxis was identified following monovalent mRNA vaccines.<sup>8-12</sup> Risk of myocarditis/pericarditis  
221 was specifically identified in males aged 12-39 years of age in other studies.<sup>8,10,12</sup> While an increased anaphylaxis risk has been  
222 reported,<sup>9,11,13</sup> more recent studies have suggested a comparable risk to that of other vaccines.<sup>14</sup> Surveillance for the bivalent COVID-  
223 19 mRNA vaccines by the Vaccine Adverse Event Reporting System (VAERS) has similarly shown cases of myocarditis/pericarditis  
224 and allergic/anaphylactic events among the population aged 12 years and older.<sup>15</sup> A prior near-real time surveillance study identified a  
225 statistical signal for seizures/convulsions following monovalent BNT162b2 and mRNA-1273 vaccination in children 2-4/5 years.<sup>16</sup>  
226 Our study identified zero cases of seizures/convulsions in this age group following bivalent vaccination, and no outcomes met the  
227 statistical threshold for signal in the young age group.

228 Our study population had a high prevalence of same-day concomitant administration of bivalent COVID-19 mRNA and influenza  
229 vaccines. Clinical trials that have assessed the safety and reactogenicity of concomitant administration of these vaccines have not  
230 found any safety concerns or reduced immune response related to the concomitant use of these vaccines.<sup>17-19</sup> While we had a high



231 prevalence of concomitant vaccination, our study did not perform testing stratified by concomitant influenza vaccination status; thus,  
232 we are unable to draw any conclusions about the safety of concomitant vaccination.

233 This study had several strengths. The study included a large sample size of geographically diverse participants from all age groups  
234 authorized to receive bivalent BNT162b2 or mRNA-1273.222 vaccines from both commercially and publicly insured populations  
235 across the U.S. The study also evaluated several outcomes as vaccines were administered. The near-real time surveillance method  
236 allowed for vaccine safety to be monitored shortly after bivalent COVID-19 mRNA vaccine authorizations. Outcomes were similarly  
237 able to be monitored for an extensive period varying from three to eleven months depending on database, vaccine brand and age  
238 group.

239 The near-real time surveillance method applied in this study is a crude signal detection method used for rapid safety screening.  
240 This method uses a comparator (i.e., aggregate historical rates) with limited adjustment for confounding factors. This method,  
241 similarly, requires the specification of multiple parameters that, if misspecified, could affect the presence or absence of detected  
242 signals such as risk interval timing and length, and the testing margin used to identify meaningful elevations in risk. Additionally, we  
243 did not adjust for multiple testing of outcomes which may have increased the likelihood of observing a false positive safety signal  
244 when risk is not truly elevated. Therefore, this method does not establish a causal association between the vaccines and outcomes.  
245 Furthermore, although we observed substantial uptake of bivalent COVID-19 mRNA vaccines, this was reduced relative to  
246 administration of monovalent COVID-19 mRNA vaccine doses. This could have decreased our power to detect statistical signals,  
247 particularly for rare outcomes, and may explain some differences in signals detected or not detected across databases. Our study was

248 also limited by the use of administrative claims data, collected for billing purposes, but used for safety surveillance activities. Our  
249 medical record review has shown that certain outcomes are detected in claims data more accurately than others.<sup>20,21</sup> Since we did not  
250 conduct medical record review nor adjust for outcome misclassification for outcomes evaluated in this study, the presence and extent  
251 of outcome misclassification is unknown and could apply to at least some of the outcomes included in surveillance. This can bias  
252 signal detection in either direction.

253 The surveillance of bivalent COVID-19 mRNA vaccines supports the safety of these vaccines and is consistent with findings from  
254 surveillance results of monovalent COVID-19 mRNA vaccines. This study contributes to regulatory decision-making for COVID-19  
255 vaccines and public health and supports the conclusion that the benefits of vaccination outweigh the risks.

256

257 All authors attest they meet the ICMJE criteria for authorship.

258

### 259 **Conflicts of Interest Statement**

260 Co-authors from U.S. Food and Drug Administration and Acumen LLC declared no conflicts of interests. The following authors

261 reported a conflict of interest: Kandace L. Amend,<sup>1</sup> John D. Seeger,<sup>1</sup> Jennifer Song,<sup>1</sup> Robin Clifford,<sup>1</sup> Cheryl N. McMahill-

262 Walraven,<sup>2</sup> Djeneba Audrey Djibo,<sup>2</sup> Jonathan P. DeShazo,<sup>2</sup> Eugenio Abente,<sup>2</sup> Daniel C. Bleacher,<sup>3</sup> Alex Secora,<sup>4</sup> Nandini Selvam.<sup>4</sup>

263 <sup>1</sup>Employee of Optum, with reported stock or stock options in UnitedHealth Group.

264 <sup>2</sup>Employee of CVS Health.

265 <sup>3</sup>Employee of Elevance Health Incorporated.

266 <sup>4</sup>Employee of IQVIA.

267

### 268 **Acknowledgements**

269 We would like to thank Bowen Chen, Yue Wu, Vincent Varvaro, Kamran Kazemi, Olivia Zhang, Nimesh Shah, Samikshya Siwakoti,

270 Anchi Lo, Jing Wang, Bing Lyu from Acumen LLC; Grace Yang, Sarah Sargen, Alexandra Stone, Wafa Tarazi, Megan Ketchell,

271 Kathryn Federici, Amaka Ume, Emily Myers, Eli Wolter, Jackson Slaney, Bobby Smith, Lauren Peetluk, and Elizabeth Bell from

272 Optum; Anne Marie Kline, Nancy B. Shaik, Ana M. Martinez-Baquero, Smita Bhatia, Vaibhav Sharma from CVS; Shiva Vojjala,

273 Ramya Avula, Shiva Chaudhary, Shanthi P Sagare, Ramin Riahi, Brian Greenwald, and Grace Stockbower, Michael Goodman,  
274 Michael Bruhn, and Ruth Weed from Carelon/IQVIA.

275

276 **Funding**

277 This work was supported by the U.S. Food and Drug Administration, whom were an integral part of the study design, implementation  
278 and interpretation of the analysis, writing of the report, along with the decision to submit the manuscript for publication.

279

280 **References**

- 281 1. Administration FaD. Coronavirus (COVID-19) Update: FDA Authorizes Moderna, Pfizer-BioNTech Bivalent COVID-19  
282 Vaccines for Use as a Booster Dose. 2022; [https://www.fda.gov/news-events/press-announcements/coronavirus-covid-19-](https://www.fda.gov/news-events/press-announcements/coronavirus-covid-19-update-fda-authorizes-moderna-pfizer-biontech-bivalent-covid-19-vaccines-use)  
283 [update-fda-authorizes-moderna-pfizer-biontech-bivalent-covid-19-vaccines-use](https://www.fda.gov/news-events/press-announcements/coronavirus-covid-19-update-fda-authorizes-moderna-pfizer-biontech-bivalent-covid-19-vaccines-use), 2023.
- 284 2. U.S. Food and Drug Administration. Moderna COVID-19 Vaccine (2023-2024) Letter of Authorization. In:2023.
- 285 3. U.S. Food and Drug Administration. Letter of Authorization (Reissued). In:2023.
- 286 4. Centers for Disease Control and Prevention. COVID-19 Vaccination in the United States. 2023; [https://covid.cdc.gov/covid-](https://covid.cdc.gov/covid-data-tracker/#vaccinations_vacc-people-booster-percent-pop5)  
287 [data-tracker/#vaccinations\\_vacc-people-booster-percent-pop5](https://covid.cdc.gov/covid-data-tracker/#vaccinations_vacc-people-booster-percent-pop5), 2023.
- 288 5. Center for Biologics Evaluation and Research BI. COVID-19 Vaccine Safety Surveillance: Bivalent Dose Vaccine Active  
289 Monitoring Protocol Addendum 2023; [https://bestinitiative.org/wp-content/uploads/2023/01/C19-Bivalent-Booster-Active-](https://bestinitiative.org/wp-content/uploads/2023/01/C19-Bivalent-Booster-Active-Monitoring-Protocol-Addendum-2022.pdf)  
290 [Monitoring-Protocol-Addendum-2022.pdf](https://bestinitiative.org/wp-content/uploads/2023/01/C19-Bivalent-Booster-Active-Monitoring-Protocol-Addendum-2022.pdf). Accessed 2023.
- 291 6. Kulldorff M, Davis RL, Kolczak† M, Lewis E, Lieu T, Platt R. A Maximized Sequential Probability Ratio Test for Drug and  
292 Vaccine Safety Surveillance. *Sequential Analysis*. 2011;30(1):58-78.
- 293 7. Center for Biologics Evaluation and Research BI. Background Rates of Adverse Events of Special Interest for COVID-19  
294 Vaccine Safety Monitoring. 2021; [https://bestinitiative.org/wp-content/uploads/2022/01/C19-Vax-Safety-AESI-Bkgd-Rate-](https://bestinitiative.org/wp-content/uploads/2022/01/C19-Vax-Safety-AESI-Bkgd-Rate-Protocol-FINAL-2020.pdf)  
295 [Protocol-FINAL-2020.pdf](https://bestinitiative.org/wp-content/uploads/2022/01/C19-Vax-Safety-AESI-Bkgd-Rate-Protocol-FINAL-2020.pdf), 2023.
- 296 8. Fatima M, Ahmad Cheema H, Ahmed Khan MH, et al. Development of myocarditis and pericarditis after COVID-19  
297 vaccination in adult population: A systematic review. *Annals of medicine and surgery (2012)*. 2022;76:103486.
- 298 9. McNeil MM, Weintraub ES, Duffy J, et al. Risk of anaphylaxis after vaccination in children and adults. *The Journal of allergy*  
299 *and clinical immunology*. 2016;137(3):868-878.
- 300 10. Oster ME, Shay DK, Su JR, et al. Myocarditis Cases Reported After mRNA-Based COVID-19 Vaccination in the US From  
301 December 2020 to August 2021. *JAMA*. 2022;327(4):331-340.
- 302 11. Shimabukuro TT, Cole M, Su JR. Reports of Anaphylaxis After Receipt of mRNA COVID-19 Vaccines in the US—December  
303 14, 2020-January 18, 2021. *JAMA*. 2021;325(11):1101-1102.
- 304 12. Goddard K, Lewis N, Fireman B, et al. Risk of myocarditis and pericarditis following BNT162b2 and mRNA-1273 COVID-19  
305 vaccination. *Vaccine*. 2022;40(35):5153-5159.
- 306 13. Judd A, Samarakoon U, Blumenthal K. Self-Reported Reactions After COVID-19 Vaccination. *Journal of Allergy and*  
307 *Clinical Immunology*. 2022;149(2):AB56.
- 308 14. Jagers J, Wolfson AR. mRNA COVID-19 Vaccine Anaphylaxis: Epidemiology, Risk Factors, and Evaluation. *Current*  
309 *allergy and asthma reports*. 2023;23(3):195-200.
- 310 15. Hause AM, Marquez P, Zhang B, et al. Safety Monitoring of Bivalent COVID-19 mRNA Vaccine Booster Doses Among  
311 Persons Aged  $\geq 12$  Years - United States, August 31-October 23, 2022. *MMWR Morbidity and mortality weekly report*.  
312 2022;71(44):1401-1406.

- 313 16. Hu M, Shoaibi A, Feng Y, et al. Safety of Monovalent BNT162b2 (Pfizer-BioNTech), mRNA-1273 (Moderna), and NVX-  
314 CoV2373 (Novavax) COVID-19 Vaccines in US Children Aged 6 months to 17 years. 2023:2023.2010.2013.23296903.
- 315 17. Hause AM, Zhang B, Yue X, et al. Reactogenicity of Simultaneous COVID-19 mRNA Booster and Influenza Vaccination in  
316 the US. *JAMA network open*. 2022;5(7):e2222241.
- 317 18. Izikson R, Brune D, Bolduc J-S, et al. Safety and immunogenicity of a high-dose quadrivalent influenza vaccine administered  
318 concomitantly with a third dose of the mRNA-1273 SARS-CoV-2 vaccine in adults aged  $\geq 65$  years: a phase 2, randomised,  
319 open-label study. *The Lancet Respiratory Medicine*. 2022;10(4):392-402.
- 320 19. Lazarus R, Baos S, Cappel-Porter H, et al. Safety and immunogenicity of concomitant administration of COVID-19 vaccines  
321 (ChAdOx1 or BNT162b2) with seasonal influenza vaccines in adults in the UK (ComFluCOV): a multicentre, randomised,  
322 controlled, phase 4 trial. *Lancet (London, England)*. 2021;398(10318):2277-2287.
- 323 20. Arya DP, Said MA, Izurieta HS, et al. Surveillance for Guillain-Barré syndrome after 2015-2016 and 2016-2017 influenza  
324 vaccination of Medicare beneficiaries. *Vaccine*. 2019;37(43):6543-6549.
- 325 21. Goud R, Thompson D, Welsh K, et al. ICD-10 anaphylaxis algorithm and the estimate of vaccine-attributable anaphylaxis  
326 incidence in Medicare. *Vaccine*. 2021;39(38):5368-5375.
- 327 22. Al Qudah Z, Abukwaik W, Souayah N. Stroke after Vaccination in United States. A Report from the CDC/FDA Vaccine  
328 Adverse Event Reporting System. [1990–2010]. *Neurology*. 2012;78.
- 329 23. Smeeth L, Thomas SL, Hall AJ, Hubbard R, Farrington P, Vallance P. Risk of Myocardial Infarction and Stroke after Acute  
330 Infection or Vaccination. *The New England Journal of Medicine*. 2004;351:2611-2618.
- 331 24. Rüggeberg JU, Gold MS, Bayas J-M, et al. Anaphylaxis: case definition and guidelines for data collection, analysis, and  
332 presentation of immunization safety data. *Vaccine*. 2007;25(31):5675-5684.
- 333 25. Su JR, Moro PL, Ng CS, Lewis PW, Said MA, Cano MV. Anaphylaxis after vaccination reported to the Vaccine Adverse  
334 Event Reporting System, 1990-2016. *Journal of Allergy and Clinical Immunology*. 2019;143(4):1465-1473.
- 335 26. Donahue JG, Kieke BA, Lewis EM, et al. Near Real-Time Surveillance to Assess the Safety of the 9-Valent Human  
336 Papillomavirus Vaccine. *Pediatrics*. 2019;144(6).
- 337 27. Gee J, Naleway A, Shui I, et al. Monitoring the safety of quadrivalent human papillomavirus vaccine: findings from the  
338 Vaccine Safety Datalink. *Vaccine*. 2011;29(46).
- 339 28. Renoud L, Khouri C, Revol B, et al. Association of Facial Paralysis With mRNA COVID-19 Vaccines: A Disproportionality  
340 Analysis Using the World Health Organization Pharmacovigilance Database. *JAMA Internal Medicine*. 2021;181(9):1243-  
341 1245.
- 342 29. Wijnans L, Dodd CN, Weibel D, Sutrenboom M. Bell's palsy and influenza(H1N1)pdm09 containing vaccines: A self-  
343 controlled case series. *PLoS One*. 2017;12(5).
- 344 30. Pishko AM, Bussel JB, Cines DB. COVID-19 vaccination and immune thrombocytopenia. *Nature Medicine*. 2021;27(7):1145-  
345 1146.

- 346 31. Kearon C. Natural history of venous thromboembolism. *Circulation*. 2003;107:I-22-I-30.
- 347 32. Kearon C, Akl EA. Duration of anticoagulant therapy for deep vein thrombosis and pulmonary embolism. *Blood*.  
348 2014;123(12):1794-1801.
- 349 33. Vickers ER, McClure DL, Naleway A, et al. Risk of venous thromboembolism following influenza vaccination in adults aged  
350 50 years and older in the Vaccine Safety Datalink. *Vaccine*. 2017;35(43):5872-5877.
- 351 34. Tang N, Li D, Wang X, Sun Z. Abnormal coagulation parameters are associated with poor prognosis in patients with novel  
352 coronavirus pneumonia. *Journal of Thrombosis and Haemostasis*. 2020;18(4):844-847.
- 353 35. Pellegrino P, Carnovale C, Perrone V, et al. Acute disseminated encephalomyelitis onset: evaluation based on vaccine adverse  
354 events reporting systems. *PLoS One*. 2013;8(10).
- 355 36. Duffy J, Weintraub E, Hambidge SJ, et al. Febrile seizure risk after vaccination in children 6 to 23 months. *Pediatrics*.  
356 2016;138(1).
- 357 37. Dodd CN, Romio SA, Black S, et al. International collaboration to assess the risk of Guillain Barré Syndrome following  
358 Influenza A (H1N1) 2009 monovalent vaccines. *Vaccine*. 2013;31(40):4448-4458.
- 359 38. Schonberger LB, Bregman DJ, Sullivan-Bolyai JZ, et al. Guillain-Barré syndrome following vaccination in the national  
360 influenza immunization program, United States, 1976–1977. *American Journal of Epidemiology*. 1979;110(2):105-123.
- 361 39. Black C, Kaye JA, Jick H. MMR vaccine and idiopathic thrombocytopenic purpura. *British Journal of Clinical  
362 Pharmacology*. 2003;55(1):107-111.
- 363 40. D'alò G, Zorzoli E, Capanna A, et al. Frequently asked questions on seven rare adverse events following immunization.  
364 *Journal of Preventive Medicine and Hygiene*. 2017;58(1):E13-E26.
- 365 41. Baker MA, Baer B, Kulldorff M, et al. Kawasaki disease and 13-valent pneumococcal conjugate vaccination among young  
366 children: A self-controlled risk interval and cohort study with null results. *PloS Medicine*. 2019;16(7).
- 367 42. Yung CF, Ma X, Cheung YB, Oh BK, Soh S, Thoon KC. Kawasaki Disease following administration of 13-valent  
368 pneumococcal conjugate vaccine in young children. *Scientific Reports*. 2019;9(1).
- 369 43. Hennon TR, Penque MD, Abdul-Aziz R, et al. COVID-19 associated Multisystem Inflammatory Syndrome in Children (MIS-  
370 C) guidelines; a Western New York approach. *Progress in Pediatric Cardiology* 2020.
- 371 44. Kuntz J, Crane B, Weinmann S, Naleway AL, Team VSDI. Myocarditis and pericarditis are rare following live viral  
372 vaccinations in adults. *Vaccine*. 2018;36(12):1524-1527.
- 373 45. Klein NP. Myocarditis analyses in the Vaccine Safety Datalink : rapid cycle analyses and “head-to-head” product comparisons.  
374 2021; <https://stacks.cdc.gov/view/cdc/110921>.
- 375 46. Duffy J, Weintraub E, Vellozzi C, DeStefano F. Narcolepsy and influenza A (H1N1) pandemic 2009 vaccination in the United  
376 States. *Neurology*. 2019;83(20):1823-1830.
- 377 47. Montplaisir J, Petit D, Quinn M, et al. Risk of narcolepsy associated with inactivated adjuvanted (AS03) A/H1N1 (2009)  
378 pandemic influenza vaccine in Quebec. *PLoS One*. 2014;9(9).

- 379 48. Sarkanen TO, Alakuijala APE, Dauvilliers YA, Partinen MM. Incidence of narcolepsy after H1N1 influenza and vaccinations:  
380 Systematic review and meta-analysis. *Sleep Medicine Reviews*. 2017;38:177-186.
- 381 49. Agmon-Levin N, Kivity S, Szyper-Kravitz M, Shoenfeld Y. Transverse myelitis and vaccines: a multi-analysis. *Lupus*.  
382 2009;18(13):1198-1204.
- 383 50. Whitworth H, Sartain SE, Kumar R, et al. Rate of thrombosis in children and adolescents hospitalized with COVID-19 or MIS-  
384 C. *Blood*. 2021;138(2):190-198.

385



386 **Table 1. Health outcome definitions (settings, clean intervals, risk intervals), and analysis types**

Outcome	Age Group (years)	Care Setting	Clean Interval (days)*	Risk Interval (days)	Descriptive Analysis	Sequential Testing
Acute myocardial infarction	6 mos.-4/6 mos.-5	IP	365	1-28 <sup>22,23</sup>	Yes	No
	5-17/6-17				Yes	No
	18-64				Yes	Yes
	65+				Yes	Yes
Anaphylaxis	6 mos.-4/6 mos.-5.	IP, OP-ED	30	0-1 <sup>24,25</sup>	Yes	Yes
	5-17/6-17.				Yes	Yes
	18-64				Yes	Yes
	65+				Yes	Yes
Appendicitis	6 mos.-4/6 mos.-5	IP, OP-ED	365	1-42 <sup>26,27</sup>	Yes	Yes
	5-17/6-17				Yes	Yes
	18-64				Yes	Yes
	65+				Yes	Yes
Bell's palsy	6 mos.-4 /6 mos.-5	IP, OP/PB	183	1-42 <sup>28,29</sup>	Yes	Yes
	5-17/6-17				Yes	Yes
	18-64				Yes	Yes
	65+				Yes	Yes
Common site thrombosis with thrombocytopenia	6 mos.-4/6 mos.-5	[Definition below]**	365	1-28 <sup>30</sup>	Yes	Yes
	5-17/6-17				Yes	Yes
	18-64				Yes	Yes
	65+				Yes	Yes
Deep vein thrombosis	6 mos.-4/6 mos.-5	IP, OP/PB	365	1-28 <sup>31-33</sup>	Yes	Yes
	5-17/6-17				Yes	Yes
	18-64				Yes	Yes
	65+.				Yes	Yes
Disseminated intravascular coagulation	6 mos.-4/6 mos.-5	IP, OP-ED	365	1-28 <sup>34</sup>	Yes	Yes
	5-17/6-17				Yes	Yes
	18-64				Yes	Yes
	65+				Yes	Yes

Encephalitis/ encephalomyelitis	6 mos.-4/6 mos.-5	IP	183	1-42 <sup>35</sup>	Yes	Yes
	5-17/6-17				Yes	Yes
	18-64				Yes	Yes
	65+				Yes	Yes
Febrile seizures	6 mos.-4/6 mos.-5	IP, OP-ED	42	0-7 <sup>36</sup>	Yes	No
	5-17/6-17				Yes	No
Guillain-Barré syndrome	6 mos.-4/6 mos.-5	IP- primary position only	365	1-42 <sup>37,38</sup>	Yes	Yes
	5-17/6-17				Yes	No
	18-64				Yes	Yes
	65+				Yes	Yes
Hemorrhagic stroke	6 mos.-4/6 mos.-5	IP	365	1-28 <sup>22,23</sup>	Yes	Yes
	5-17/6-17				Yes	No
	18-64				Yes	Yes
	65+				Yes	Yes
Immune thrombocytopenia	6 mos.-4/6 mos.-5	IP (primary diagnosis only)	365	1-42 <sup>39,40</sup>	Yes	Yes
	5-17/6-17				Yes	Yes
	18-64				Yes	Yes
	65+				Yes	Yes
Kawasaki disease	6 mos.-4/6 mos.-5	IP, OP/PB	365	1-28 <sup>41,42</sup>	Yes	No
	5-17/6-17				Yes	No
Multisystem inflammatory syndrome	6 mos.-4/6 mos.-5	IP, OP-ED	365	1-42 <sup>43</sup>	Yes	No
	5-17/6-17				Yes	No
	18-64				Yes	No
	65+.				Yes	No
Myocarditis/ pericarditis	6 mos.-4/6 mos.-5.	IP, OP/PB IP, OP-ED	365	1-7 <sup>10,44</sup> 1-21 <sup>45</sup>	Yes	Yes
	5-17/6-17				Yes	Yes
	18-35				Yes	Yes
	18-64				Yes	Yes
	36-64				Yes	Yes
65+	Yes	Yes				
Narcolepsy	6 mos.-4/6 mos.-5	IP, OP/PB	365	1-42 <sup>46-48</sup>	Yes	No

	5-17/6-17				Yes	Yes
	18-64				Yes	Yes
	65+				Yes	Yes
Non-hemorrhagic stroke	6 mos.-4/6 mos.-5	IP	365	1-28 <sup>22,23</sup>	Yes	Yes
	5-17/6-17				Yes	Yes
	18-64				Yes	Yes
	65+				Yes	Yes
Pulmonary embolism	6 mos.-4/6 mos.-5	IP	365	1-28 <sup>31-33</sup>	Yes	Yes
	5-17/6-17				Yes	Yes
	18-64				Yes	Yes
	65+				Yes	Yes
Seizures/ convulsions	6 mos.-1	IP, OP-ED	42	0-7 <sup>36</sup>	Yes	Yes
	2-4 /2-5				Yes	Yes
	5-17/6-17				Yes	Yes
Transverse myelitis	6 mos.-4/6 mos.-5	IP, OP-ED	365	1-42 <sup>49</sup>	Yes	No
	5-17/6-17				Yes	No
	18-64				Yes	Yes
	65+				Yes	Yes
Unusual site thrombosis with thrombocytopenia	6 mos.-4/6 mos.-5	[Definition below]**	365	1-28 <sup>50</sup>	Yes	No
	5-17/6-17				Yes	No
	18-64				Yes	Yes
	65+				Yes	Yes

387 Definitions: Clean interval is defined as an interval used to define incident outcomes where an individual enters the study cohort only if the outcome did not occur during that  
 388 interval. Risk interval is defined as an interval during which occurrence of the outcome will be included in the analysis.

389 Acronyms: IP – inpatient; OP-ED - outpatient emergency department; OP/PB outpatient & professional

390 \* References for the clean interval could not be located in the literature and are based on clinician input

391 \*\* Common site thrombosis with thrombocytopenia and unusual site thrombosis with thrombocytopenia are combined outcomes consisting of a thrombotic event (made up of  
 392 other events such as acute myocardial infarction, deep vein thrombosis etc.,) and a thrombocytopenia event (defined in the IP, OP/PB setting). The overall setting definition for  
 393 each outcome depends on individual setting definitions for each of these components

387  
 388  
 389  
 390  
 391  
 392  
 393  
 394  
 395

396 **Table 2. Characteristics of the population vaccinated with bivalent COVID-19 mRNA vaccines aged 6 months-64 years in CVS Health, Carelon**  
 397 **Research, and Optum Databases; aged ≥ 65+ years in Medicare Database**  
 398

Patient Characteristics	Any Bivalent COVID-19 mRNA Vaccine				BNT162b2 Bivalent				mRNA-1273.222			
	Commercial Databases		Medicare		Commercial Databases		Medicare		Commercial Databases		Medicare	
	N	%	N	%	N	%	N	%	N	%	N	%
<b>Total</b>	<b>5,498,556</b>	<b>100</b>	<b>8,380,283</b>	<b>100</b>	<b>3,769,301</b>	<b>100</b>	<b>4,869,360</b>	<b>100</b>	<b>1,729,255</b>	<b>100</b>	<b>3,510,923</b>	<b>100</b>
<b>Age at Vaccine Administration (years)</b>												
6 mos.-4	33,051	0.6	--	--	33,051	0.9	--	--	--	--	--	--
5-11	234,201	4.3	--	--	234,201	6.2	--	--	--	--	--	--
6 mos.-5	23,864	0.4	--	--	--	--	--	--	23,864	1.4	--	--
6-11	21,719	0.4	--	--	--	--	--	--	21,719	1.3	--	--
12-17	329,297	6.0	--	--	301,069	8.0	--	--	28,228	1.6	--	--
18-25	454,374	8.3	--	--	319,187	8.5	--	--	135,187	7.8	--	--
26-35	872,613	15.9	--	--	579,921	15.4	--	--	292,692	16.9	--	--
36-45	1,026,398	18.7	--	--	684,872	18.2	--	--	341,526	19.7	--	--
46-55	1,128,330	20.5	--	--	748,022	19.8	--	--	380,308	22.0	--	--
56-64	1,374,709	25.0	--	--	868,978	23.1	--	--	505,731	29.2	--	--
65-74	--	--	4,414,887	52.7	--	--	2,544,098	52.2	--	--	1,870,789	53.3
75-84	--	--	2,937,151	35.0	--	--	1,699,813	34.9	--	--	1,237,338	35.2
85+	--	--	1,028,245	12.3	--	--	625,449	12.8	--	--	402,796	11.5
Missing/ Unknown	0	0.0	0	0.00	0	0.0	0	0.0	0	0.0	0	0.0
<b>Sex</b>												
Female	2,973,454	54.1	4,760,468	56.8	2,039,091	54.1	2,784,173	57.2	934,363	54.0	1,976,295	56.3
Male	2,522,429	45.9	3,619,815	43.2	1,728,476	45.9	2,085,187	42.8	793,953	45.9	1,534,628	43.7
Missing/ Unknown	2,673	0.0	0	0.0	1,734	0.0	0	0.0	939	0.1	0	0.0
<b>Urban/Rural</b>												

Rural	270,566	4.9	1,437,843	17.2	155,304	4.1	706,057	14.5	115,262	6.7	731,786	20.8
Urban	5,224,680	95.0	6,906,602	82.4	3,611,592	95.8	4,143,587	85.1	1,613,088	93.3	2,763,015	78.7
Missing/ Unknown	3,310	0.1	35,838	0.4	2,405	0.1	19,716	0.4	905	0.1	16,122	0.5
<b>Nursing Home Residency</b>												
Nursing Home	--	--	162,676	1.9	--	--	114,823	2.4	--	--	47,853	1.4
Non-Nursing Home	--	--	8,217,607	98.1	--	--	4,754,537	97.6	--	--	3,463,070	98.6
<b>HHS Region**</b>												
Region 1	415,184	7.6	636,543	7.6	260,059	6.9	375,493	7.7	155,125	9.0	261,050	7.4
Region 2	717,615	13.1	772,359	9.2	497,768	13.2	445,935	9.2	219,847	12.7	326,424	9.3
Region 3	663,777	12.1	1,041,119	12.4	456,144	12.1	605,595	12.4	207,633	12.0	435,524	12.4
Region 4	700,716	12.7	1,436,145	17.1	484,902	12.9	780,141	16.0	215,814	12.5	656,004	18.7
Region 5	840,248	15.3	1,510,948	18.0	594,476	15.8	933,502	19.2	245,772	14.2	577,446	16.4
Region 6	335,791	6.1	712,875	8.5	222,060	5.9	376,103	7.7	113,731	6.6	336,772	9.6
Region 7	196,416	3.6	486,163	5.8	143,920	3.8	309,893	6.4	52,496	3.0	176,270	5.0
Region 8	243,198	4.4	308,916	3.7	178,681	4.7	209,853	4.3	64,517	3.7	99,063	2.8
Region 9	1,162,526	21.1	1,076,085	12.8	763,870	20.3	586,787	12.1	398,656	23.1	489,298	13.9
Region 10	220,579	4.0	391,565	4.7	165,541	4.4	241,908	5.0	55,038	3.2	149,657	4.3
Missing/ Unknown	2,506	0.0	7,565	0.1	1,880	0.0	4,150	0.1	626	0.0	3,415	0.1
<b>Concomitant Vaccination Status</b>												
Influenza (Same Day)	2,223,077	40.4	2,764,112	33.0	1,545,503	41.0	1,720,039	35.3	677,574	39.2	1,044,073	29.7
Influenza (+/- 42 days)*	3,391,431	61.7	6,005,972	71.7	2,325,523	61.7	3,539,611	72.7	1,065,908	61.6	2,466,361	70.2

\*Relative to bivalent COVID-19 mRNA vaccination date to align with broadest adverse event-specific risk interval

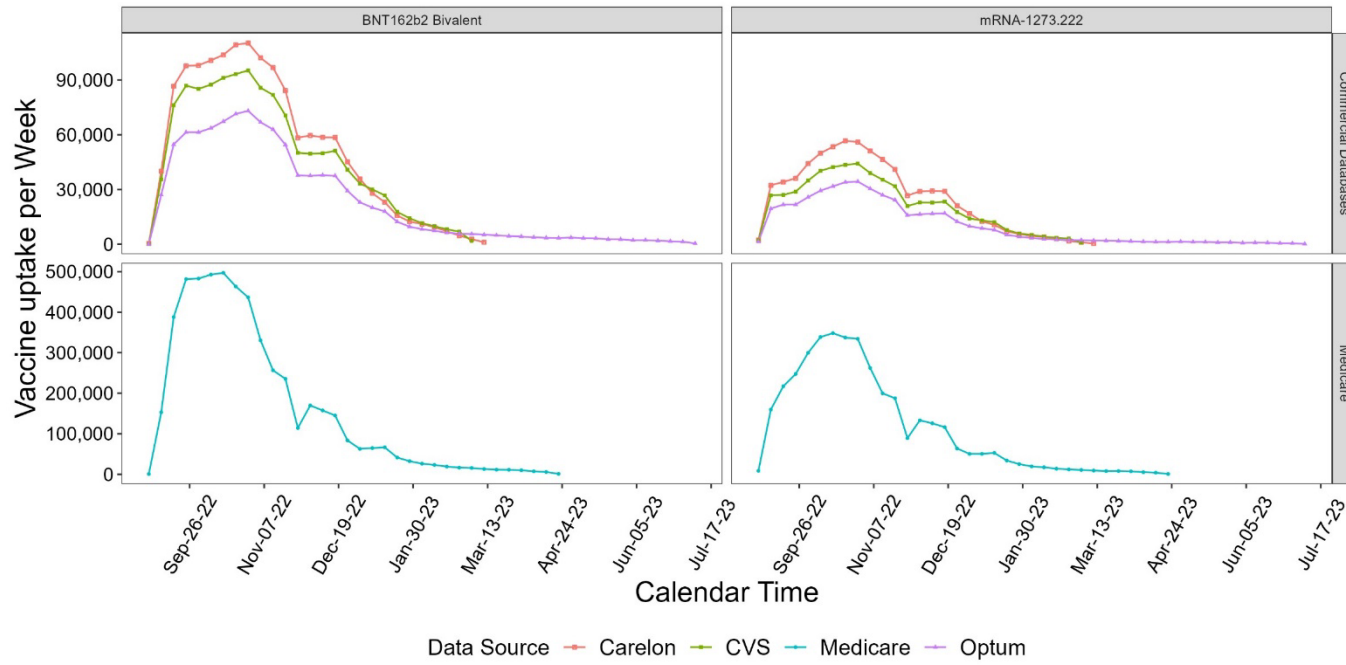
\*\*Health and Human Services (HHS) regions are designated by the U.S. HHS Department to serve state and local organizations. Information on individual U.S. states and territories included in each region is linked.

Data cuts: CVS Health (2/28), Caredon (3/4), Optum (7/8), Medicare (4/22)

399  
400  
401  
402  
  
403

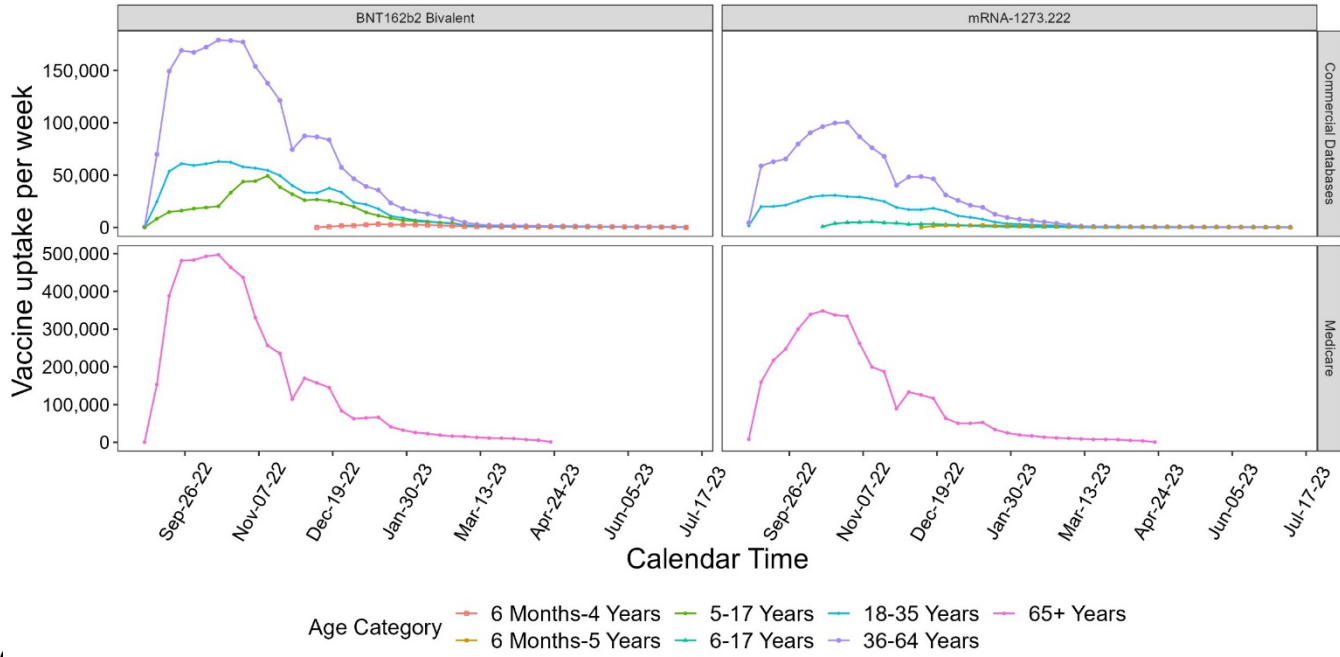
404  
405

**Figure 1. Pattern of vaccination trends in vaccine administrations of bivalent COVID-19 mRNA vaccines, August 2022 - April 2023 by vaccine brand and database**



406  
407  
408

409 **Figure 2. Pattern of bivalent COVID-19 mRNA vaccines uptake August 2022- July 2023 by age group and database**



410

411

412

413

**Table 3. Sequential testing results in population vaccinated with bivalent COVID-19 mRNA vaccines**

Outcome	Age Group of Interest (years)	BNT162b2 Bivalent						mRNA 1273.222					
		Commercial Databases			Medicare			Commercial Databases			Medicare		
		No. Cases	Person-Years	Signal <sup>†</sup>	No. Cases	Person-Years	Signal <sup>†</sup>	No. Cases	Person-Years	Signal <sup>†</sup>	No. Cases	Person-Years	Signal <sup>†</sup>
Acute myocardial infarction	18-64	173	183,346	No	--	--	--	111	95,413	No	--	--	--
	65+	--	--	--	1,391	185,695	No	--	--	--	847	124,521	No
Anaphylaxis	6 mos.-4 /6 mos.-5	0	169	NA	--	--	--	0	123	NA	--	--	--
	5-17/6-17	0	2,879	NA	--	--	--	0	269	NA	--	--	--
	18-64	<11	17,190	Yes*	--	--	--	<11	8,895	Yes*	--	--	--
	65+	--	--	--	<11	26,573	No	--	--	--	<11	19,167	No
Appendicitis	6 mos.-4 /6 mos.-5	0	1,650	NA	--	--	--	<11	1,432	NA	--	--	--
	5-17/6-17	57	46,901	No	--	--	--	<11	4,350	NA	--	--	--
	18-64	270	271,731	No	--	--	--	153	141,412	No	--	--	--
	65+	--	--	--	378	520,510	No	--	--	--	286	377,255	No
Bell's palsy	6 mos.-4 /6 mos.-5	0	2,591	NA	--	--	--	<11	1,964	NA	--	--	--
	5-17/6-17	19	54,336	No	--	--	--	<11	5,041	NA	--	--	--
	18-64	313	319,957	No	--	--	--	147	166,052	No	--	--	--
	65+	--	--	--	853	434,115	No	--	--	--	793	389,836	No
Common site thrombosis with thrombocytopenia	6 mos.-4 /6 mos.-5 **	0	603	NA	--	--	--	0	568	NA	--	--	--
	5-17/6-17	<11	32,218	NA	--	--	--	0	3,000	NA	--	--	--
	18-64	38	185,056	No	--	--	--	17	96,260	No	--	--	--
	65+	--	--	--	680	281,427	No	--	--	--	597	248,391	No



Deep vein thrombosis	6 mos.-4 /6 mos.-5	0	1,308	NA	--	--	--	0	1,113	NA	--	--	--
	5-17/6-17	<11	32,229	NA	--	--	--	0	2,998	NA	--	--	--
	18-64	403	184,442	No	--	--	--	203	95,926	No	--	--	--
	65+	--	--	--	1,641	207,772	No	--	--	--	1,055	141,714	No
Disseminated intravascular coagulation	6 mos.-4 /6 mos.-5	0	1,112	NA	--	--	--	0	966	NA	--	--	--
	5-17/6-17	<11	31,587	NA	--	--	--	0	2,934	NA	--	--	--
	18-64	<11	182,927	No	--	--	--	<11	95,193	No	--	--	--
	65+	--	--	--	72	348,559	No	--	--	--	47	252,617	No
Encephalitis/encephalomyelitis	6 mos.-4 /6 mos.-5	0	1,984	NA	--	--	--	0	1,535	NA	--	--	--
	5-17/6-17	0	52,101	NA	--	--	--	0	4,806	NA	--	--	--
	18-64	<11	311,472	NA	--	--	--	<11	161,738	NA	--	--	--
	65+	--	--	--	52	537,826	No	--	--	--	37	388,869	No
Guillain-Barré syndrome	6 mos.-4 /6 mos.-5	0	1,579	NA	--	--	--	0	1,377	NA	--	--	--
	18-64	<11	270,776	No	--	--	--	<11	140,894	NA	--	--	--
	65+	--	--	--	21	518,627	No	--	--	--	11	375,854	No
Hemorrhagic stroke	6 mos.-4 /6 mos.-5	<11	1,222	NA	--	--	--	0	1,049	NA	--	--	--
	18-64	30	184,170	No	--	--	--	15	95,832	No	--	--	--
	65+	--	--	--	555	348,265	No	--	--	--	356	252,438	No
Immune thrombocytopenia	6 mos.-4 /6 mos.-5 ***	0	320	NA	--	--	--	0	323	NA	--	--	--
	5-17/6-17	0	47,461	NA	--	--	--	0	4,411	NA	--	--	--
	18-64	<11	273,946	No	--	--	--	<11	142,520	No	--	--	--

	65+	--	--	--	42	521,851	No	--	--	--	23	378,240	No
Myocarditis/P ericarditis (1- 7 day risk window, all settings)	6 mos.-4 /6 mos.-5	0	381	NA	--	--	--	0	319	NA	--	--	--
	5-17/6-17	<11	8,295	NA	--	--	--	0	773	NA	--	--	--
	18-35	<11	11,832	Yes	--	--	--	<11	5,618	NA	--	--	--
	18-64	26	47,204	No	--	--	--	13	24,550	No	--	--	--
	36-64	17	35,371	No	--	--	--	<11	18,932	No	--	--	--
	65+	--	--	--	72	87,542	No	--	--	--	51	63,449	No
Myocarditis/P ericarditis (1- 21 day risk window, all settings)	6 mos.-4 /6 mos.-5	0	1,077	NA	--	--	--	0	905	NA	--	--	--
	5-17/6-17	<11	24,533	NA	--	--	--	0	2,283	NA	--	--	--
	18-35	19	35,061	No	--	--	--	<11	16,641	No	--	--	--
	18-64	61	140,157	No	--	--	--	30	72,891	No	--	--	--
	36-64	42	105,096	No	--	--	--	23	56,250	No	--	--	--
	65+	--	--	--	253	261,992	No	--	--	--	149	189,899	No
Myocarditis/P ericarditis (1- 7 day risk window, IP/OP-ED)	6 mos.-4 /6 mos.-5	0	357	NA	--	--	--	0	300	NA	--	--	--
	5-17/6-17	<11	8,220	NA	--	--	--	0	767	NA	--	--	--
	18-35	<11	11,773	NA	--	--	--	<11	5,591	NA	--	--	--
	18-64	<11	47,003	No	--	--	--	<11	24,450	NA	--	--	--
	36-64	<11	35,230	NA	--	--	--	<11	18,859	NA	--	--	--
	65+	--	--	--	27	87,613	No	--	--	--	16	63,497	No
Myocarditis/P ericarditis (1- 21 day risk window,	6 mos.-4 /6 mos.-5	0	993	NA	--	--	--	0	841	NA	--	--	--
	5-17/6-17	<11	24,277	NA	--	--	--	0	2,258	NA	--	--	--

IP(OP-ED)	18-35	<11	34,823	No	--	--	--	<11	16,538	NA	--	--	--
	18-64	13	139,362	No	--	--	--	<11	72,503	No	--	--	--
	36-64	<11	104,539	No	--	--	--	<11	55,964	No	--	--	--
	65+	--	--	--	75	262,202	No	--	--	--	42	190,042	No
Narcolepsy	5-17/6-17	<11	47,933	NA	--	--	--	<11	4,454	NA	--	--	--
	18-64	140	275,418	No	--	--	--	67	143,284	No	--	--	--
	65+	--	--	--	181	521,422	No	--	--	--	149	377,965	No
Non-hemorrhagic stroke	6 mos.-4 /6 mos.-5	0	1,177	NA	--	--	--	0	1,012	NA	--	--	--
	5-17/6-17	<11	31,792	NA	--	--	--	0	2,953	NA	--	--	--
	18-64	70	183,450	No	--	--	--	37	95,472	No	--	--	--
	65+	--	--	--	871	186,210	No	--	--	--	900	198,968	No
Pulmonary embolism	5-17/6-17	0	32,099	NA	--	--	--	0	2,987	NA	--	--	--
	18-64	57	184,601	No	--	--	--	29	96,041	No	--	--	--
	65+	--	--	--	767	290,496	No	--	--	--	630	249,022	No
Seizures/Convulsions	6 mos.-1	<11	274	NA	--	--	--	<11	160	NA	--	--	--
	2-4/2-5	0	373	NA	--	--	--	0	311	NA	--	--	--
	5-17/6-17	17	11,374	No	--	--	--	<11	1,061	NA	--	--	--
Transverse myelitis	18-64	<11	272,051	No	--	--	--	0	141,575	NA	--	--	--
	65+	--	--	--	11	519,838	No	--	--	--	<11	376,755	No
Unusual site thrombosis with thrombocytopenia	18-64	<11	183,537	NA	--	--	--	<11	95,512	NA	--	--	--
	65+	--	--	--	42	347,927	No	--	--	--	13	252,150	No

Counts less than 11 have been masked/suppressed

NA indicates that for the outcome and age group no testing was initiated due to case counts < 3.

“--” indicates that the outcome and age group combination did not apply to a given database(s).

Acronyms: IP - inpatient, OP-ED - outpatient emergency department, OP/PB outpatient & professional

† Indicates whether or not a statistical signal was observed in the database(s) for the outcome and age group.

\*Signal observed in Carelon database, only

\*\*Sequential testing not conducted in Optum database

\*\*\*Sequential testing conducted in Carelon database, only

415 **Table 4. Frequency of vaccine doses and outcomes among outcomes only descriptively monitored**

Outcome	Age Group of Interest (years)	BNT162b2 Bivalent				mRNA 1273.222			
		Commercial Databases		Medicare		Commercial Databases		Medicare	
		No. Cases	No. Doses	No. Cases	No. Doses	No. Cases	No. Doses	No. Cases	No. Doses
Acute myocardial infarction	6 mos.-4 / 6 mos.-5	0	20,857	--	--	0	17,361	--	--
	5-17/6-17	0	436,784	--	--	0	40,746	--	--
Common site thrombosis with thrombocytopenia	6 mos.-4 / 6 mos.-5 *	0	9,764	--	--	0	7,551	--	--
Febrile seizures	6 mos.-4 / 6 mos.-5	<11	31,571	--	--	<11	22,990	--	--
	5-17/6-17	<11	525,424	--	--	<11	49,056	--	--
Guillain-Barré syndrome	5-17/6-17	0	436,785	--	--	0	40,746	--	--
Hemorrhagic stroke	5-17/6-17	<11	436,775	--	--	0	40,746	--	--
Immune thrombocytopenia	6 mos.-4 / 6 mos.-5 **	0	15,111	--	--	0	12,432	--	--
Kawasaki disease	6 mos.-4 / 6 mos.-5	0	20,837	--	--	0	17,348	--	--
	5-17/6-17	<11	436,688	--	--	<11	40,736	--	--
Multisystem inflammatory syndrome	6 mos.-4 / 6 mos.-5	0	20,856	--	--	0	17,359	--	--
	5-17/6-17	0	436,772	--	--	0	40,745	--	--
	18-64	0	2,478,389	--	--	0	1,288,891	--	--
	65+	--	--	<11	4,574,507	--	--	0	3,315,135
Narcolepsy	6 mos.-4 / 6 mos.-5	0	20,856	--	--	0	17,361	--	--
Pulmonary embolism	6 mos.-4 / 6 mos.-5	0	20,857	--	--	0	17,361	--	--
Transverse myelitis	6 mos.-4 / 6 mos.-5	0	20,856	--	--	0	17,361	--	--
	5-17/6-17	<11	436,784	--	--	0	40,746	--	--
Unusual site thrombosis with thrombocytopenia	6 mos.-4 / 6 mos.-5	0	20,857	--	--	0	17,361	--	--
	5-17/6-17	0	436,784	--	--	0	40,746	--	--

416 Counts less than 11 have been masked/suppressed.

417 "--" indicates that the outcome and age group combination did not apply to a given database(s).

418 \*Contain counts from Optum, only

419 \*\*Contain counts from CVS Health and Optum, only

420 Data cuts: CVS Health (2/28), Carelon (3/4), Optum (7/8), Medicare (4/22)