

Monitoring Report: GLP-1 RA Prescribing Trends - December 2023 Data

Samuel Gratzl, PhD*

Patricia J Rodriguez, PhD, MPH*

Brianna M Goodwin Cartwright, MS

Charlotte Baker, DrPH, MPH, CPH

Nicholas L Stucky, MD, PhD

* Denotes co-first author

Affiliations: All authors are affiliated with Truveta, Inc.

Corresponding author:

Dr Nicholas Stucky

Truveta, Inc

1745 114th Ave SE, Bellevue, WA 98004

Email: nicholass@truveta.com

Abstract

Background: Limited recent data exist on prescribing patterns and patient characteristics for glucagon-like peptide 1 receptor agonists (GLP-1 RAs), an important drug class used as anti-diabetic medication (ADM) for patients with type 2 diabetes mellitus (T2D) and/or anti-obesity medication (AOM) in patients with overweight or obesity.

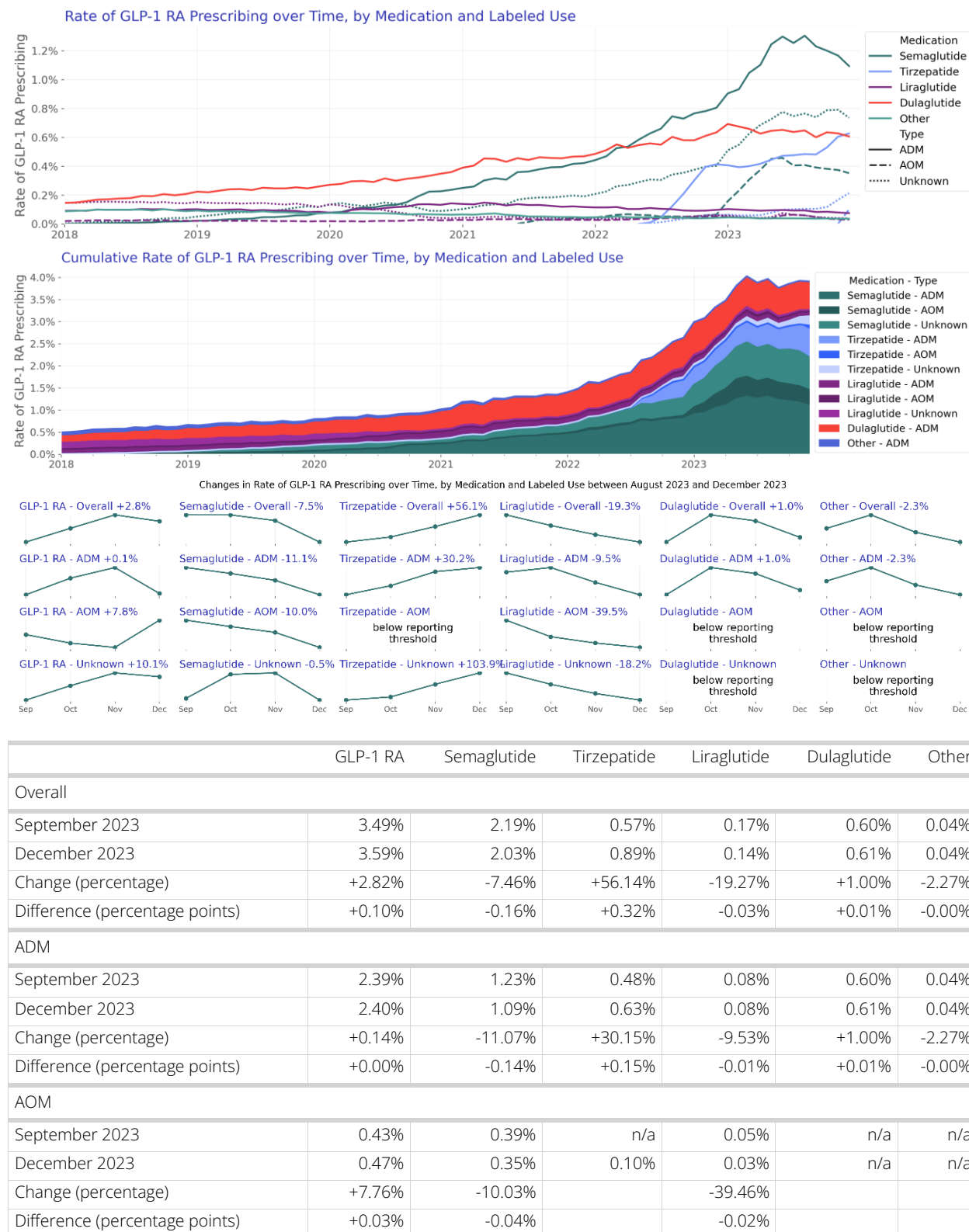
For brevity, we use the term GLP-1 RA to refer to both GLP-1 RA and dual GLP-1 RA/GIP medications.

Objective: To describe recent trends in prescribing and dispensing of GLP-1-based medications in the US

Methods: Using a subset of real-world electronic health record (EHR) data from Truveta, a growing collective of health systems that provide more than 18% of all daily clinical care in the US, we identified people who were prescribed a GLP-1-based medication between January 01, 2018 and December 31, 2023. We describe prescribing volumes and patient characteristics over time, by medication, and by FDA-labeled use. Among the subset of patients for whom post-prescription dispensing data is available, we describe the proportion and characteristics of patients who were and were not dispensed a GLP-1 RA following their prescription.

Results: 1,063,200 patients were prescribed a GLP-1 RA between January 2018 and December 2023, with 4,213,888 total prescriptions during this period. Among first-time prescriptions for which use could be established, ADMs accounted for 86.6% and AOMs accounted for 13.4%. The most common first-time medication was semaglutide (n = 559,880). Among those with available data, 71.5% of first-time ADM prescriptions overall and 74.9% in September 2023 had a fill within 60 days. By comparison, 45.6% of first-time AOM prescriptions overall and 32.1% in September 2023 had a fill within 60 days.

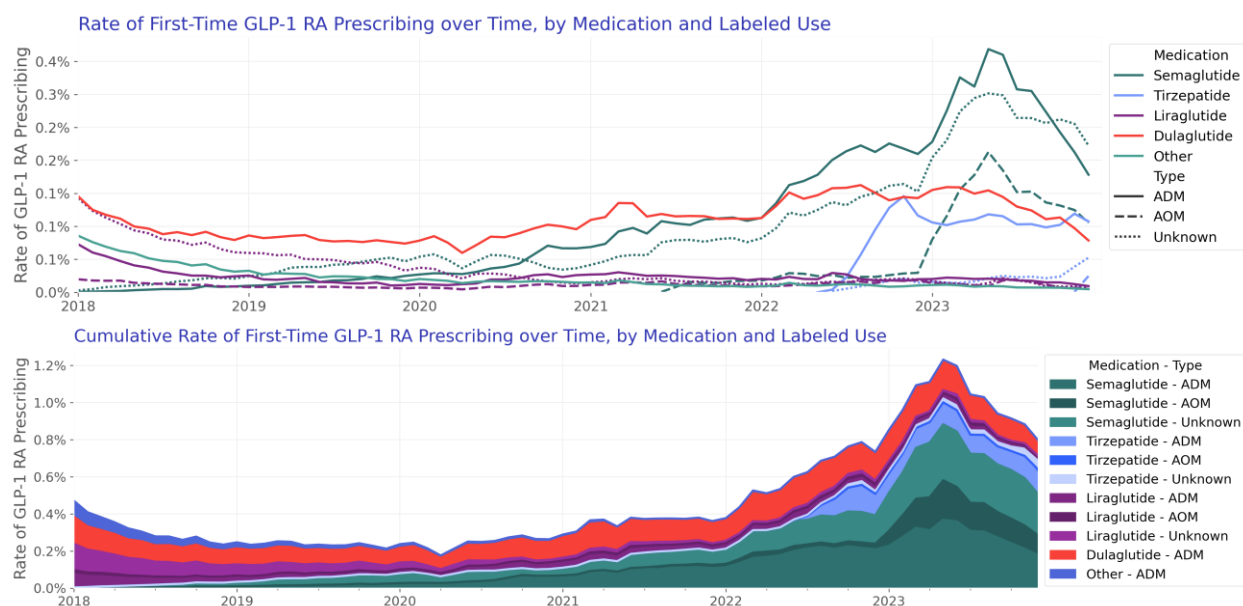
Trends in Prescribing

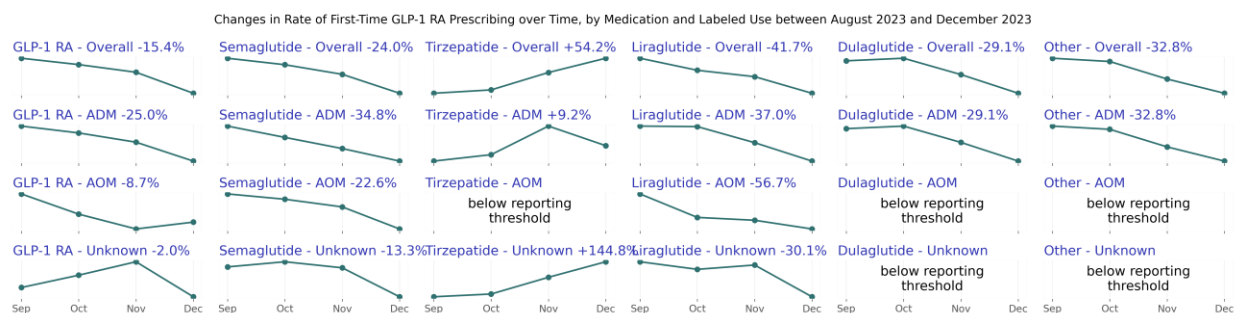


Unknown						
September 2023	0.88%	0.74%	0.10%	0.05%	n/a	n/a
December 2023	0.97%	0.74%	0.21%	0.04%	n/a	n/a
Change (percentage)	+10.11%	-0.47%	+103.86%	-18.15%		
Difference (percentage points)	+0.09%	-0.00%	+0.11%	-0.01%		

- Overall prescribing rates (GLP-1 RA prescriptions per total prescriptions) in December 2023 remained approximately the same as rates in November 2023 and October 2023.
- The number of patients prescribed an ADM in December 2023 remained approximately the same as the number in both November 2023 and October 2023.
- Among ADMs, semaglutide was the most prescribed medication. In late 2023, tirzepatide surpassed dulaglutide as the second most commonly prescribed ADM.
- The number of patients prescribed an AOM in December 2023 was 1.2 times November 2023 and 1.1 times October 2023.
- Semaglutide was the most commonly prescribed AOM, followed by AOM liraglutide. Prescribing of AOM tirzepatide was observed in the first month of availability in pharmacies, December 2023.

Trends in First-Time Prescribing



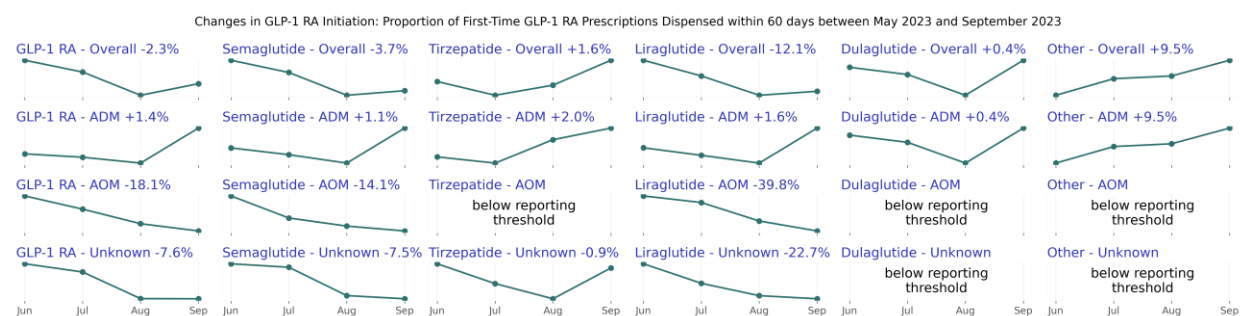
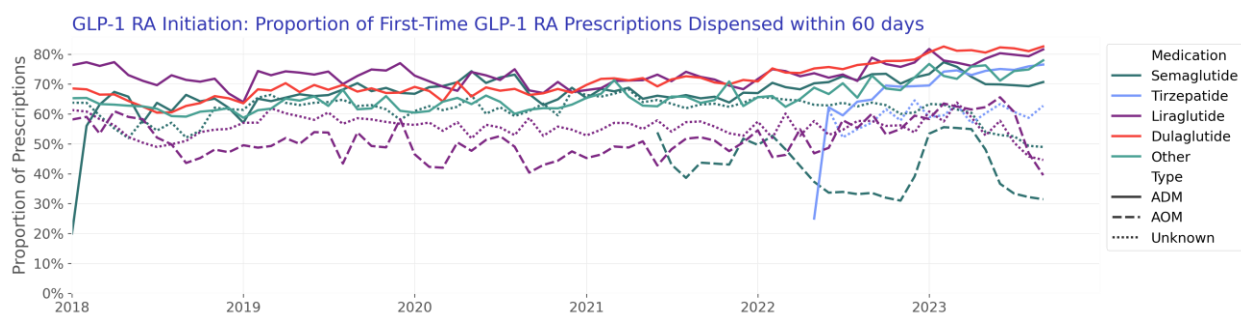


	GLP-1 RA	Semaglutide	Tirzepatide	Liraglutide	Dulaglutide	Other
Overall						
September 2023	0.94%	0.67%	0.12%	0.04%	0.11%	0.01%
December 2023	0.80%	0.51%	0.18%	0.02%	0.08%	0.00%
Change (percentage)	-15.40%	-24.02%	+54.17%	-41.65%	-29.08%	-32.83%
Difference (percentage points)	-0.14%	-0.16%	+0.06%	-0.02%	-0.03%	-0.00%
ADM						
September 2023	0.51%	0.27%	0.10%	0.02%	0.11%	0.01%
December 2023	0.38%	0.18%	0.11%	0.01%	0.08%	0.00%
Change (percentage)	-24.98%	-34.77%	+9.23%	-37.02%	-29.08%	-32.83%
Difference (percentage points)	-0.13%	-0.10%	+0.01%	-0.01%	-0.03%	-0.00%
AOM						
September 2023	0.15%	0.14%	n/a	0.01%	n/a	n/a
December 2023	0.14%	0.11%	0.02%	0.01%	n/a	n/a
Change (percentage)	-8.66%	-22.65%		-56.69%		
Difference (percentage points)	-0.01%	-0.03%		-0.01%		
Unknown						
September 2023	0.29%	0.26%	0.02%	0.01%	n/a	n/a
December 2023	0.28%	0.22%	0.05%	0.01%	n/a	n/a
Change (percentage)	-2.01%	-13.28%	+144.82%	-30.10%		
Difference (percentage points)	-0.01%	-0.03%	+0.03%	-0.00%		

- First-time prescribing rates (first-time GLP-1 RA prescriptions per total prescriptions) in December 2023 were slightly lower than rates in November 2023 and October 2023.
- First-time prescribing of ADMs was lower in the most recent month, with first-time prescribing rates in December 2023 being 0.8 times that of November 2023.
- Similar to overall prescribing, semaglutide was the most commonly first-prescribed GLP-1 RA overall and in the most recent period.
- First-time prescribing of AOMs was similar in the most recent month, with first-time prescribing rates in December 2023 being 1.0 times that of November 2023.

- While overall prescribing of semaglutide increased throughout 2023, first-time prescribing of semaglutide slowed after the first quarter of 2023 from 0.9% of prescriptions in May 2023 to 0.5% in December 2023. Similar declines were observed for ADM, AOM, and unknown semaglutide. In contrast, new prescribing of tirzepatide increased throughout 2023.

Trends in Dispensing



	GLP-1 RA	Semaglutide	Tirzepatide	Liraglutide	Dulaglutide	Other
Overall						
June 2023	62.28%	56.63%	72.98%	67.59%	82.28%	71.15%
September 2023	60.86%	54.56%	74.14%	59.40%	82.60%	77.93%
Change (percentage)	-2.28%	-3.66%	+1.60%	-12.10%	+0.39%	+9.53%
Difference (percentage points)	-1.42%	-2.07%	+1.17%	-8.18%	+0.32%	+6.78%
ADM						
June 2023	73.88%	69.89%	75.06%	80.32%	82.28%	71.15%
September 2023	74.89%	70.68%	76.53%	81.60%	82.60%	77.93%
Change (percentage)	+1.37%	+1.14%	+1.97%	+1.59%	+0.39%	+9.53%
Difference (percentage points)	+1.01%	+0.80%	+1.48%	+1.28%	+0.32%	+6.78%
AOM						
June 2023	39.20%	36.64%	n/a	65.59%	n/a	n/a
September 2023	32.09%	31.46%	n/a	39.51%	n/a	n/a
Change (percentage)	-18.13%	-14.14%		-39.76%		
Difference (percentage points)	-7.11%	-5.18%		-26.08%		

Unknown						
June 2023	53.98%	52.93%	63.28%	57.74%	n/a	n/a
September 2023	49.88%	48.97%	62.73%	44.62%	n/a	n/a
Change (percentage)	-7.60%	-7.49%	-0.87%	-22.72%		
Difference (percentage points)	-4.11%	-3.97%	-0.55%	-13.12%		

- During the full time period, 74.2% of GLP-1 RA prescriptions had a dispense within 60 days of their prescription.
- 60-day initiation rates were higher for ADMs compared to AOMs. 71.5% of patients first prescribed an ADM overall and 74.9% in September 2023 filled a GLP-1 RA within 60 days, compared to 45.6% of patients first prescribed an AOM overall and 32.1% in the September 2023.
- 60-day AOM initiation rates for the 65+ population (23.6% in September 2023) are lower than AOM initiation rates for the population aged 18-64 (32.9% in September 2023).

About this report

This report provides recent trends in the prescribing and dispensing of glucagon-like peptide-1 receptor agonist (GLP-1 RAs)-based medications, including dual GLP-1 RA/gastric inhibitory polypeptide (GIP) over time, by medication, and by FDA-labeled use. We used near real-time, aggregated electronic health record (EHR) data from a collective of US healthcare systems to describe prescribing and dispensing of GLP-1 RA medications from January 2018 to December 2023.

Introduction

Obesity and type 2 diabetes mellitus (T2D) are interconnected epidemics with a high prevalence and individual and combined negative impacts on health (CDC, 2020, Hales, 2020). Glucagon-like peptide-1 receptor agonist (GLP-1 RAs) -based medications, including dual GLP-1 RA/gastric inhibitory polypeptide (GIP), have been shown to improve glycemic control in patients with T2D and reduce weight in patients with and without T2D (Davies, 2015, Davies, 2021, Garvey, 2023, Jastreboff, 2022, Wilding, 2023, Yeh, 2023). GLP-1 RA have also demonstrated cardiovascular benefit in patients with and without T2D (Lincoff, 2023, Ussher, 2023).

Interest in these medications has recently accelerated, largely for their weight-loss effects; however, limited empiric data exist on prescribing, dispensing, and patient

characteristics. Access to and use of GLP-1 RA may be impacted by high cost, limited insurance coverage for patients without T2D and medication shortages.

Methods

Data

We evaluated prescribing and dispensing of GLP-1 RAs between January 2018 and December 2023 using a subset of Truveta Data. Truveta provides access to continuously updated, linked, and de-identified electronic health record (EHR) from a collective of US health care systems that provide 18% of all daily clinical care in the US, including structured information on demographics, encounters, diagnoses, vital signs (e.g., weight, BMI, blood pressure), medication requests (prescriptions), medication administration, laboratory and diagnostic tests and results (e.g., HbA1c tests and values), and procedures. Updated EHR data are provided daily to Truveta by member health care systems. In addition to EHR data for care delivered within Truveta member health care systems, medication dispensing and social drivers of health (SDOH) information are made available through linked third-party data. Medication dispense (via e-prescribing data) includes fills for prescriptions written both within and outside Truveta member health care systems, providing greater observability into patients' medication history. Medication dispense histories are updated at the time of the encounter, and include fill dates, NDC or RxNorm codes, quantity dispensed, and days of medication supplied. SDOH data include individual-level factors, including income and education.

Population

We identified GLP-1 RA prescriptions (medication requests) and dispenses among adults using RxNorm and NDC codes for dulaglutide, exenatide, liraglutide, lixisenatide, semaglutide, and tirzepatide. Exenatide and lixisenatide were grouped as 'other' given small relative sizes. Brands were identified when possible using RxNorm and NDC codes. Brands labeled for treatment of T2D were classified as ADMs and brands labeled for treatment of overweight and obesity were classified as AOMs. When brand could not be established, the labeled use was classified as unknown.

Prescribing Analysis

Characteristics of adult patients ever prescribed a GLP-1 RA were summarized, including demographics, social drivers of health (SDOH), and presence of T2D and/or

overweight or obesity. Characteristics are provided by medication and by year of first prescription.

Overall and first-time prescribing rates of GLP-1 RA were summarized over time by medication and labeled use. The prescribing rate was calculated monthly as the number of patients with a GLP-1 RA prescription divided by the number of patients with any prescription in the month. Absolute differences and percentage changes in the rate of GLP-1 RA prescribing over the most recent 3-month period were summarized overall and by medication and labeled use.

Dispensing Analysis

We describe the proportion of GLP-1 RA prescriptions (overall and first-time) with a dispense occurring within 60 days. Dispensing analyses were restricted to prescriptions for which complete 60-day dispensing outcomes could be observed. Dispensing outcomes were considered observable if (1) a dispense was recorded in the 60 days following the prescription, and/or (2) an encounter took place after the 60-day period ended (at which time any dispenses would be observed). To allow sufficient follow-up, we report dispensing with a 90-day delay. Given shortages and expected substitutions at the pharmacy, we considered the dispense of any GLP-1 RA, which could differ from the prescribed GLP-1 RA.

We plot the proportion of prescriptions (overall and first-time) dispensed within 60 days over time, by medication and use. Differences in dispensing were expected between ADMs and AOMs given ADMs are typically covered by insurance, whereas insurance coverage for AOMs is limited. As such, we provide dispensing rates stratified by FDA labeled use. Further, we stratify dispensing by age 65+ vs. 18-64 as a proxy for Medicare coverage. Medicare never provides coverage for AOMs, whereas commercial insurers may.

Results

Overall population

The demographics of patients by first-prescribed medication are as follows:

Table 1: Patient Characteristics by First-Prescribed GLP-1 RA Medication.

	Semaglutide	Tirzepatide	Liraglutide	Dulaglutide	Other	Overall
N	559,880 (100.00%)	81,347 (100.00%)	139,750 (100.00%)	241,651 (100.00%)	40,572 (100.00%)	1,063,200 (100.00%)
Age Group						
18-44	142,598 (25.47%)	25,734 (31.63%)	34,357 (24.58%)	33,945 (14.05%)	4,801 (11.83%)	241,435 (22.71%)
45-64	281,977 (50.36%)	43,291 (53.22%)	70,441 (50.41%)	124,321 (51.45%)	20,559 (50.67%)	540,589 (50.85%)
65+	135,305 (24.17%)	12,322 (15.15%)	34,952 (25.01%)	83,385 (34.51%)	15,212 (37.49%)	281,176 (26.45%)
Sex						
Female	362,007 (64.66%)	56,276 (69.18%)	92,218 (65.99%)	129,894 (53.75%)	21,463 (52.90%)	661,858 (62.25%)
Male	197,850 (35.34%)	25,069 (30.82%)	47,530 (34.01%)	111,752 (46.25%)	19,106 (47.09%)	401,307 (37.75%)
Other	23 (0.00%)	2 (0.00%)	2 (0.00%)	5 (0.00%)	3 (0.01%)	35 (0.00%)
Race						
White	403,241 (72.02%)	60,471 (74.34%)	102,995 (73.70%)	166,560 (68.93%)	30,205 (74.45%)	763,472 (71.81%)
Black or African American	75,289 (13.45%)	9,365 (11.51%)	18,152 (12.99%)	34,854 (14.42%)	4,894 (12.06%)	142,554 (13.41%)
Asian	14,127 (2.52%)	1,554 (1.91%)	2,476 (1.77%)	6,407 (2.65%)	906 (2.23%)	25,470 (2.40%)
Unknown	31,089 (5.55%)	4,731 (5.82%)	7,946 (5.69%)	16,881 (6.99%)	2,193 (5.41%)	62,840 (5.91%)
Native Hawaiian or Other Pacific Islander	2,169 (0.39%)	203 (0.25%)	591 (0.42%)	1,008 (0.42%)	167 (0.41%)	4,138 (0.39%)
American Indian or Alaska Native	3,941 (0.70%)	467 (0.57%)	1,325 (0.95%)	1,715 (0.71%)	386 (0.95%)	7,834 (0.74%)
Other Race	23,862 (4.26%)	3,671 (4.51%)	5,220 (3.74%)	11,839 (4.90%)	1,487 (3.67%)	46,079 (4.33%)
Declined to answer	6,162 (1.10%)	885 (1.09%)	1,045 (0.75%)	2,387 (0.99%)	334 (0.82%)	10,813 (1.02%)
Ethnicity						
Hispanic or Latino	66,027 (11.79%)	10,123 (12.44%)	14,375 (10.29%)	31,374 (12.98%)	4,397 (10.84%)	126,296 (11.88%)
Not Hispanic or Latino	454,126 (81.11%)	65,101 (80.03%)	115,932 (82.96%)	191,376 (79.20%)	33,038 (81.43%)	859,573 (80.85%)
Unknown	32,732 (5.85%)	5,105 (6.28%)	8,096 (5.79%)	16,157 (6.69%)	2,756 (6.79%)	64,846 (6.10%)
Declined to answer	6,995 (1.25%)	1,018 (1.25%)	1,347 (0.96%)	2,744 (1.14%)	381 (0.94%)	12,485 (1.17%)
Characteristics						
Type 2 Diabetes	277,893 (49.63%)	35,541 (43.69%)	75,534 (54.05%)	177,041 (73.26%)	31,469 (77.56%)	597,478 (56.20%)
Overweight or Obesity	381,780 (68.19%)	55,844 (68.65%)	83,954 (60.07%)	123,567 (51.13%)	20,110 (49.57%)	665,255 (62.57%)

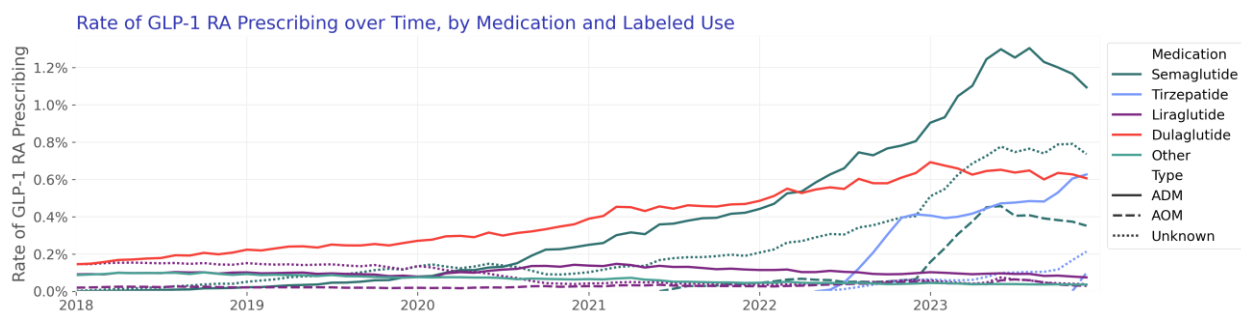
Labeled Use						
ADM	258,995 (46.26%)	67,161 (82.56%)	47,620 (34.08%)	241,651 (100.00%)	40,572 (100.00%)	655,999 (61.70%)
AOM	76,066 (13.59%)	837 (1.03%)	24,743 (17.71%)	n/a	n/a	101,646 (9.56%)
Unknown	224,819 (40.15%)	13,349 (16.41%)	67,387 (48.22%)	n/a	n/a	305,555 (28.74%)
Year						
2018	5,023 (0.90%)	n/a	39,408 (28.20%)	27,714 (11.47%)	14,691 (36.21%)	86,836 (8.17%)
2019	18,353 (3.28%)	n/a	23,587 (16.88%)	25,739 (10.65%)	7,905 (19.48%)	75,584 (7.11%)
2020	29,641 (5.29%)	n/a	16,884 (12.08%)	27,949 (11.57%)	5,457 (13.45%)	79,931 (7.52%)
2021	63,704 (11.38%)	n/a	19,721 (14.11%)	42,882 (17.75%)	4,402 (10.85%)	130,709 (12.29%)
2022	143,475 (25.63%)	23,286 (28.63%)	21,364 (15.29%)	59,918 (24.80%)	4,447 (10.96%)	252,490 (23.75%)
2023	299,684 (53.53%)	58,061 (71.37%)	18,786 (13.44%)	57,449 (23.77%)	3,670 (9.05%)	437,650 (41.16%)
Comorbidity						
Asthma	77,602 (13.86%)	11,080 (13.62%)	20,360 (14.57%)	28,310 (11.72%)	4,769 (11.75%)	142,121 (13.37%)
CKD	53,881 (9.62%)	5,458 (6.71%)	14,672 (10.50%)	33,005 (13.66%)	5,375 (13.25%)	112,391 (10.57%)
COPD	27,169 (4.85%)	2,920 (3.59%)	8,805 (6.30%)	16,939 (7.01%)	3,081 (7.59%)	58,914 (5.54%)
Hyperlipidemia	303,820 (54.27%)	39,712 (48.82%)	71,102 (50.88%)	139,305 (57.65%)	24,829 (61.20%)	578,768 (54.44%)
Hypertension	310,378 (55.44%)	40,609 (49.92%)	77,591 (55.52%)	146,819 (60.76%)	26,147 (64.45%)	601,544 (56.58%)
Major Depression	79,283 (14.16%)	10,615 (13.05%)	21,089 (15.09%)	26,994 (11.17%)	4,669 (11.51%)	142,650 (13.42%)
Education: History of College Attendance						
Attended but not currently	237,108 (42.35%)	40,164 (49.37%)	54,016 (38.65%)	70,328 (29.10%)	10,434 (25.72%)	412,050 (38.76%)
Currently attending	7,918 (1.41%)	1,516 (1.86%)	1,579 (1.13%)	1,505 (0.62%)	220 (0.54%)	12,738 (1.20%)
No college on record	254,098 (45.38%)	27,914 (34.31%)	72,555 (51.92%)	142,669 (59.04%)	25,456 (62.74%)	522,692 (49.16%)
Unknown	60,756 (10.85%)	11,753 (14.45%)	11,600 (8.30%)	27,149 (11.23%)	4,462 (11.00%)	115,720 (10.88%)
Estimated Individual Income						
0 - 25,000	14,723 (2.63%)	1,821 (2.24%)	5,225 (3.74%)	8,393 (3.47%)	1,255 (3.09%)	31,417 (2.95%)
25,001 - 30,000	23,474 (4.19%)	2,760 (3.39%)	7,429 (5.32%)	12,439 (5.15%)	1,925 (4.74%)	48,027 (4.52%)
30,001 - 35,000	36,167 (6.46%)	4,166 (5.12%)	11,648 (8.33%)	19,640 (8.13%)	3,333 (8.22%)	74,954 (7.05%)
35,001 - 40,000	49,303 (8.81%)	5,918 (7.28%)	15,299 (10.95%)	25,474 (10.54%)	4,495 (11.08%)	100,489 (9.45%)
40,001 - 50,000	109,297 (19.52%)	14,397 (17.70%)	30,493 (21.82%)	50,299 (20.81%)	8,721 (21.50%)	213,207 (20.05%)

50,001 - 60,000	89,409 (15.97%)	12,750 (15.67%)	21,945 (15.70%)	36,900 (15.27%)	6,446 (15.89%)	167,450 (15.75%)
60,001 - 80,000	100,019 (17.86%)	15,133 (18.60%)	22,200 (15.89%)	37,646 (15.58%)	6,302 (15.53%)	181,300 (17.05%)
80,001 - 100,000	42,756 (7.64%)	6,834 (8.40%)	8,160 (5.84%)	14,438 (5.97%)	2,237 (5.51%)	74,425 (7.00%)
100,001 - 120,000	19,901 (3.55%)	3,207 (3.94%)	3,571 (2.56%)	5,827 (2.41%)	934 (2.30%)	33,440 (3.15%)
120,001 - 150,000	11,435 (2.04%)	2,061 (2.53%)	1,811 (1.30%)	2,881 (1.19%)	387 (0.95%)	18,575 (1.75%)
More than 150K	2,649 (0.47%)	547 (0.67%)	371 (0.27%)	569 (0.24%)	76 (0.19%)	4,212 (0.40%)
Unknown	60,747 (10.85%)	11,753 (14.45%)	11,598 (8.30%)	27,145 (11.23%)	4,461 (11.00%)	115,704 (10.88%)

Prescribing over time

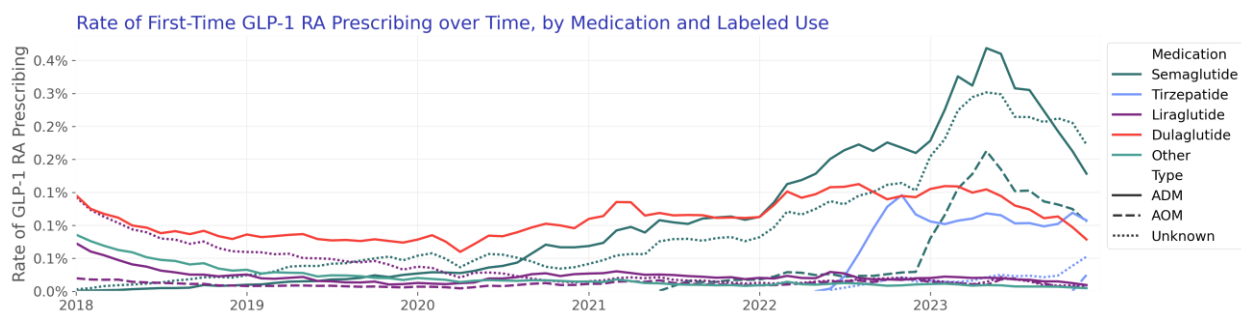
Overall

We describe the monthly rate of prescriptions by medication and FDA labeled use over time:



First-time

We describe the monthly rate of first-time prescriptions by medication and FDA labeled use over time.



Characteristics of patients by year of first GLP-1 RA use are as follows:

Table 2: Patient Characteristics by Year of First GLP-1 RA Prescription.

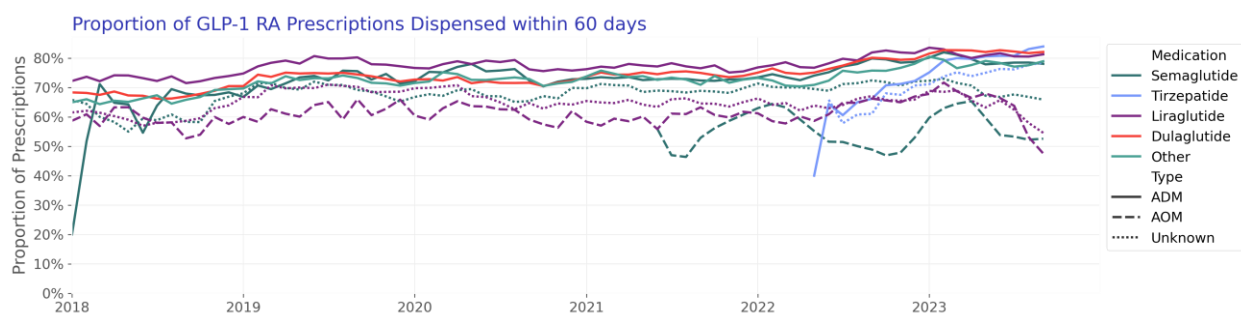
	2018	2019	2020	2021	2022	2023
N	86,836 (100.00%)	75,584 (100.00%)	79,931 (100.00%)	130,709 (100.00%)	252,490 (100.00%)	437,650 (100.00%)
Age Group						
18-44	12,718 (14.65%)	12,237 (16.19%)	13,644 (17.07%)	25,315 (19.37%)	61,044 (24.18%)	116,477 (26.61%)
45-64	48,969 (56.39%)	40,498 (53.58%)	41,894 (52.41%)	66,536 (50.90%)	126,087 (49.94%)	216,605 (49.49%)
65+	25,149 (28.96%)	22,849 (30.23%)	24,393 (30.52%)	38,858 (29.73%)	65,359 (25.89%)	104,568 (23.89%)
Sex						
Female	48,438 (55.78%)	42,008 (55.58%)	44,222 (55.33%)	76,748 (58.72%)	160,638 (63.62%)	289,804 (66.22%)
Male	38,396 (44.22%)	33,574 (44.42%)	35,707 (44.67%)	53,958 (41.28%)	91,846 (36.38%)	147,826 (33.78%)
Other	2 (0.00%)	2 (0.00%)	2 (0.00%)	3 (0.00%)	6 (0.00%)	20 (0.00%)
Race						
White	66,506 (76.59%)	56,067 (74.18%)	57,938 (72.49%)	94,210 (72.08%)	180,806 (71.61%)	307,945 (70.36%)
Black or African American	10,562 (12.16%)	9,261 (12.25%)	10,134 (12.68%)	16,958 (12.97%)	33,602 (13.31%)	62,037 (14.18%)
Asian	1,638 (1.89%)	1,778 (2.35%)	2,080 (2.60%)	3,782 (2.89%)	6,238 (2.47%)	9,954 (2.27%)
Unknown	4,541 (5.23%)	4,485 (5.93%)	4,903 (6.13%)	7,033 (5.38%)	14,033 (5.56%)	27,845 (6.36%)
Native Hawaiian or Other Pacific Islander	295 (0.34%)	301 (0.40%)	355 (0.44%)	607 (0.46%)	1,035 (0.41%)	1,545 (0.35%)
American Indian or Alaska Native	628 (0.72%)	611 (0.81%)	592 (0.74%)	1,158 (0.89%)	1,982 (0.78%)	2,863 (0.65%)
Other Race	2,147 (2.47%)	2,555 (3.38%)	3,268 (4.09%)	5,696 (4.36%)	12,036 (4.77%)	20,377 (4.66%)
Declined to answer	519 (0.60%)	526 (0.70%)	661 (0.83%)	1,265 (0.97%)	2,758 (1.09%)	5,084 (1.16%)
Ethnicity						
Hispanic or Latino	7,457 (8.59%)	7,680 (10.16%)	9,159 (11.46%)	16,462 (12.59%)	32,898 (13.03%)	52,640 (12.03%)
Not Hispanic or Latino	73,773 (84.96%)	62,546 (82.75%)	65,498 (81.94%)	106,045 (81.13%)	200,987 (79.60%)	350,724 (80.14%)
Unknown	4,936 (5.68%)	4,650 (6.15%)	4,535 (5.67%)	6,842 (5.23%)	15,675 (6.21%)	28,208 (6.45%)
Declined to answer	670 (0.77%)	708 (0.94%)	739 (0.92%)	1,360 (1.04%)	2,930 (1.16%)	6,078 (1.39%)
Characteristics						
Type 2 Diabetes	69,517 (80.06%)	57,655 (76.28%)	58,456 (73.13%)	84,980 (65.01%)	130,044 (51.50%)	196,826 (44.97%)
Overweight or Obesity	53,090 (61.14%)	43,247 (57.22%)	44,278 (55.40%)	76,467 (58.50%)	154,465 (61.18%)	293,708 (67.11%)

Medication						
Semaglutide	5,023 (5.78%)	18,353 (24.28%)	29,641 (37.08%)	63,704 (48.74%)	143,475 (56.82%)	299,684 (68.48%)
Tirzepatide	n/a	n/a	n/a	n/a	23,286 (9.22%)	58,061 (13.27%)
Liraglutide	39,408 (45.38%)	23,587 (31.21%)	16,884 (21.12%)	19,721 (15.09%)	21,364 (8.46%)	18,786 (4.29%)
Dulaglutide	27,714 (31.92%)	25,739 (34.05%)	27,949 (34.97%)	42,882 (32.81%)	59,918 (23.73%)	57,449 (13.13%)
Other	14,691 (16.92%)	7,905 (10.46%)	5,457 (6.83%)	4,402 (3.37%)	4,447 (1.76%)	3,670 (0.84%)
Labeled Use						
ADM	54,384 (62.63%)	44,568 (58.96%)	53,950 (67.50%)	92,360 (70.66%)	171,655 (67.98%)	239,082 (54.63%)
AOM	3,789 (4.36%)	2,503 (3.31%)	2,769 (3.46%)	7,341 (5.62%)	16,296 (6.45%)	68,948 (15.75%)
Unknown	28,663 (33.01%)	28,513 (37.72%)	23,212 (29.04%)	31,008 (23.72%)	64,539 (25.56%)	129,620 (29.62%)
Comorbidity						
Asthma	11,327 (13.04%)	9,574 (12.67%)	10,041 (12.56%)	17,055 (13.05%)	32,661 (12.94%)	61,463 (14.04%)
CKD	11,128 (12.81%)	9,670 (12.79%)	10,630 (13.30%)	16,536 (12.65%)	25,478 (10.09%)	38,949 (8.90%)
COPD	6,204 (7.14%)	5,284 (6.99%)	5,541 (6.93%)	8,024 (6.14%)	12,627 (5.00%)	21,234 (4.85%)
Hyperlipidemia	58,793 (67.71%)	47,212 (62.46%)	47,800 (59.80%)	73,515 (56.24%)	128,392 (50.85%)	223,056 (50.97%)
Hypertension	59,694 (68.74%)	49,685 (65.73%)	49,974 (62.52%)	77,154 (59.03%)	134,052 (53.09%)	230,985 (52.78%)
Major Depression	12,148 (13.99%)	9,992 (13.22%)	10,372 (12.98%)	18,248 (13.96%)	33,608 (13.31%)	58,282 (13.32%)
Education: History of College Attendance						
Attended but not currently	26,398 (30.40%)	24,401 (32.28%)	27,012 (33.79%)	48,449 (37.07%)	101,830 (40.33%)	183,960 (42.03%)
Currently attending	700 (0.81%)	583 (0.77%)	748 (0.94%)	1,363 (1.04%)	3,280 (1.30%)	6,064 (1.39%)
No college on record	52,998 (61.03%)	45,295 (59.93%)	47,262 (59.13%)	73,284 (56.07%)	119,246 (47.23%)	184,607 (42.18%)
Unknown	6,740 (7.76%)	5,305 (7.02%)	4,909 (6.14%)	7,613 (5.82%)	28,134 (11.14%)	63,019 (14.40%)
Estimated Individual Income						
0 – 25,000	1,937 (2.23%)	2,033 (2.69%)	2,363 (2.96%)	4,190 (3.21%)	7,643 (3.03%)	13,251 (3.03%)
25,001 – 30,000	3,453 (3.98%)	3,442 (4.55%)	3,825 (4.79%)	6,498 (4.97%)	11,485 (4.55%)	19,324 (4.42%)
30,001 – 35,000	6,577 (7.57%)	6,050 (8.00%)	6,453 (8.07%)	10,215 (7.82%)	17,735 (7.02%)	27,924 (6.38%)
35,001 – 40,000	9,035 (10.40%)	8,411 (11.13%)	8,735 (10.93%)	13,880 (10.62%)	23,452 (9.29%)	36,976 (8.45%)
40,001 – 50,000	19,336 (22.27%)	17,296 (22.88%)	18,072 (22.61%)	28,718 (21.97%)	49,926 (19.77%)	79,859 (18.25%)
50,001 – 60,000	15,114 (17.41%)	12,661 (16.75%)	13,465 (16.85%)	21,684 (16.59%)	39,135 (15.50%)	65,391 (14.94%)

60,001 – 80,000	15,579 (17.94%)	12,708 (16.81%)	13,438 (16.81%)	22,370 (17.11%)	42,910 (16.99%)	74,295 (16.98%)
80,001 – 100,000	5,566 (6.41%)	4,619 (6.11%)	5,105 (6.39%)	8,988 (6.88%)	18,110 (7.17%)	32,037 (7.32%)
100,001 – 120,000	2,235 (2.57%)	1,916 (2.53%)	2,191 (2.74%)	3,907 (2.99%)	8,280 (3.28%)	14,911 (3.41%)
120,001 – 150,000	1,065 (1.23%)	953 (1.26%)	1,139 (1.42%)	2,149 (1.64%)	4,651 (1.84%)	8,618 (1.97%)
More than 150K	199 (0.23%)	192 (0.25%)	236 (0.30%)	498 (0.38%)	1,030 (0.41%)	2,057 (0.47%)
Unknown	6,740 (7.76%)	5,303 (7.02%)	4,909 (6.14%)	7,612 (5.82%)	28,133 (11.14%)	63,007 (14.40%)

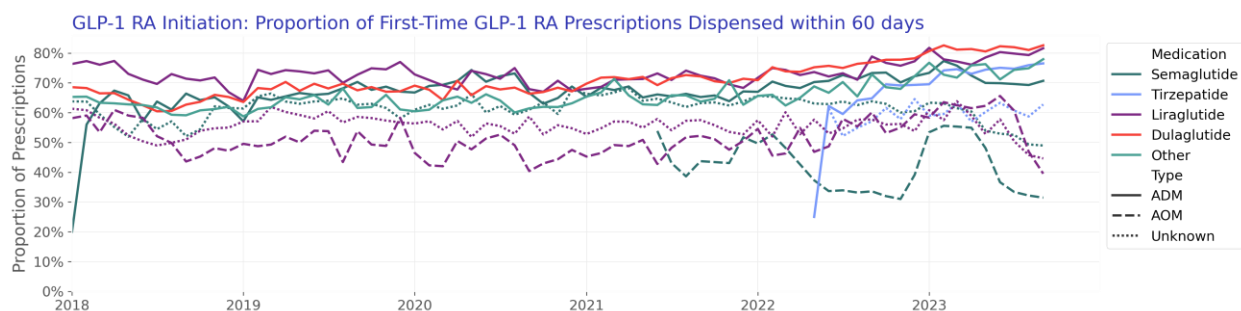
60-day dispensing over time

We describe the proportion of patients with any GLP-1 RA prescriptions (first-time and repeat) in a given month who filled any GLP-1 RA in the 60 days following their prescription.



60-day initiation over time

We describe the proportion of patients first-prescribed a GLP-1 RA who filled any GLP-1 RA in the subsequent 60 days over time.



Patient characteristics are given in Table 3:

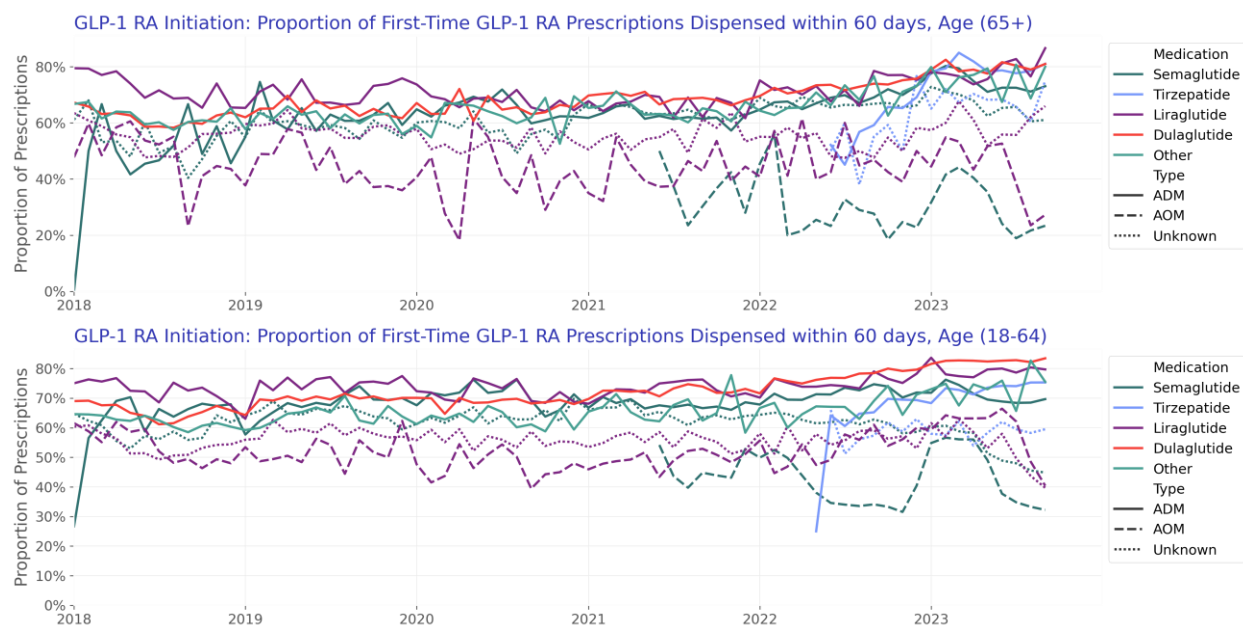
Table 3: Patient Characteristics by Dispense Status. Dispense status refers to presence of any GLP-1 RA dispense within 60 days of first GLP-1 RA prescription. Table contains the subset of patients with observable 60-day dispense outcomes.

	Dispensed in 60 Days	Not Dispensed in 60 Days	Overall
N	649,259 (100.00%)	341,702 (100.00%)	990,961 (100.00%)
Age Group			
18-44	133,158 (20.51%)	88,196 (25.81%)	221,354 (22.34%)
45-64	338,980 (52.21%)	167,435 (49.00%)	506,415 (51.10%)
65+	177,121 (27.28%)	86,071 (25.19%)	263,192 (26.56%)
Sex			
Female	395,709 (60.95%)	220,260 (64.46%)	615,969 (62.16%)
Male	253,530 (39.05%)	121,432 (35.54%)	374,962 (37.84%)
Other	20 (0.00%)	10 (0.00%)	30 (0.00%)
Race			
White	463,151 (71.34%)	249,773 (73.10%)	712,924 (71.94%)
Black or African American	85,937 (13.24%)	46,482 (13.60%)	132,419 (13.36%)
Asian	16,526 (2.55%)	7,557 (2.21%)	24,083 (2.43%)
Unknown	40,207 (6.19%)	17,164 (5.02%)	57,371 (5.79%)
Native Hawaiian or Other Pacific Islander	2,607 (0.40%)	1,305 (0.38%)	3,912 (0.39%)
American Indian or Alaska Native	4,831 (0.74%)	2,532 (0.74%)	7,363 (0.74%)
Other Race	29,219 (4.50%)	13,650 (3.99%)	42,869 (4.33%)
Declined to answer	6,781 (1.04%)	3,239 (0.95%)	10,020 (1.01%)
Ethnicity			
Hispanic or Latino	76,665 (11.81%)	41,807 (12.23%)	118,472 (11.96%)
Not Hispanic or Latino	524,497 (80.78%)	278,187 (81.41%)	802,684 (81.00%)
Unknown	40,212 (6.19%)	18,007 (5.27%)	58,219 (5.88%)
Declined to answer	7,885 (1.21%)	3,701 (1.08%)	11,586 (1.17%)
Characteristics			
Type 2 Diabetes	401,561 (61.85%)	167,198 (48.93%)	568,759 (57.39%)
Overweight or Obesity	394,815 (60.81%)	232,353 (68.00%)	627,168 (63.29%)
Medication			
Semaglutide	322,270 (49.64%)	192,843 (56.44%)	515,113 (51.98%)
Tirzepatide	51,543 (7.94%)	21,414 (6.27%)	72,957 (7.36%)
Liraglutide	82,270 (12.67%)	51,855 (15.18%)	134,125 (13.53%)
Dulaglutide	167,914 (25.86%)	61,746 (18.07%)	229,660 (23.18%)
Other	25,262 (3.89%)	13,844 (4.05%)	39,106 (3.95%)
Labeled Use			
ADM	441,407 (67.99%)	175,969 (51.50%)	617,376 (62.30%)
AOM	41,008 (6.32%)	48,877 (14.30%)	89,885 (9.07%)
Unknown	166,844 (25.70%)	116,856 (34.20%)	283,700 (28.63%)

Year			
2018	53,193 (8.19%)	32,659 (9.56%)	85,852 (8.66%)
2019	47,663 (7.34%)	26,474 (7.75%)	74,137 (7.48%)
2020	50,472 (7.77%)	27,717 (8.11%)	78,189 (7.89%)
2021	84,527 (13.02%)	43,256 (12.66%)	127,783 (12.89%)
2022	165,321 (25.46%)	78,576 (23.00%)	243,897 (24.61%)
2023	248,083 (38.21%)	133,020 (38.93%)	381,103 (38.46%)
Comorbidity			
Asthma	86,643 (13.34%)	47,770 (13.98%)	134,413 (13.56%)
CKD	72,389 (11.15%)	35,047 (10.26%)	107,436 (10.84%)
COPD	37,516 (5.78%)	18,481 (5.41%)	55,997 (5.65%)
Hyperlipidemia	361,820 (55.73%)	186,776 (54.66%)	548,596 (55.36%)
Hypertension	370,769 (57.11%)	196,059 (57.38%)	566,828 (57.20%)
Major Depression	85,594 (13.18%)	51,153 (14.97%)	136,747 (13.80%)
Education: History of College Attendance			
Attended but not currently	240,382 (37.02%)	142,029 (41.57%)	382,411 (38.59%)
Currently attending	6,661 (1.03%)	5,026 (1.47%)	11,687 (1.18%)
No college on record	330,161 (50.85%)	162,460 (47.54%)	492,621 (49.71%)
Unknown	72,055 (11.10%)	32,187 (9.42%)	104,242 (10.52%)
Estimated Individual Income			
0 - 25,000	18,653 (2.87%)	10,476 (3.07%)	29,129 (2.94%)
25,001 - 30,000	28,870 (4.45%)	16,016 (4.69%)	44,886 (4.53%)
30,001 - 35,000	46,082 (7.10%)	24,287 (7.11%)	70,369 (7.10%)
35,001 - 40,000	61,669 (9.50%)	32,767 (9.59%)	94,436 (9.53%)
40,001 - 50,000	131,685 (20.28%)	68,759 (20.12%)	200,444 (20.23%)
50,001 - 60,000	101,913 (15.70%)	55,002 (16.10%)	156,915 (15.83%)
60,001 - 80,000	109,972 (16.94%)	59,363 (17.37%)	169,335 (17.09%)
80,001 - 100,000	45,018 (6.93%)	24,217 (7.09%)	69,235 (6.99%)
100,001 - 120,000	19,915 (3.07%)	11,056 (3.24%)	30,971 (3.13%)
120,001 - 150,000	10,998 (1.69%)	6,157 (1.80%)	17,155 (1.73%)
More than 150K	2,439 (0.38%)	1,418 (0.41%)	3,857 (0.39%)
Unknown	72,045 (11.10%)	32,184 (9.42%)	104,229 (10.52%)

By Age

As a proxy for Medicare insurance, we segment initiation rate by populations 65+ versus 18-64.



Patient characteristics for patients aged 65+ are given in Table 4:

Table 4: Patient Characteristics by Dispense Status, Age 65+. Dispense status refers to presence of any GLP-1 RA dispense within 60 days of first GLP-1 RA prescription. Table contains the subset of patients with observable 60-day dispense outcomes.

	Dispensed in 60 Days	Not Dispensed in 60 Days	Overall
N	177,121 (100.00%)	86,071 (100.00%)	263,192 (100.00%)
Age Group			
65+	177,121 (100.00%)	86,071 (100.00%)	263,192 (100.00%)
Sex			
Female	96,758 (54.63%)	45,893 (53.32%)	142,651 (54.20%)
Male	80,363 (45.37%)	40,178 (46.68%)	120,541 (45.80%)
Race			
White	136,795 (77.23%)	68,637 (79.74%)	205,432 (78.05%)
Black or African American	16,444 (9.28%)	7,900 (9.18%)	24,344 (9.25%)
Asian	4,141 (2.34%)	1,705 (1.98%)	5,846 (2.22%)
Unknown	10,722 (6.05%)	4,299 (4.99%)	15,021 (5.71%)
Native Hawaiian or Other Pacific Islander	402 (0.23%)	162 (0.19%)	564 (0.21%)
American Indian or Alaska Native	1,028 (0.58%)	445 (0.52%)	1,473 (0.56%)
Other Race	6,018 (3.40%)	2,299 (2.67%)	8,317 (3.16%)
Declined to answer	1,571 (0.89%)	624 (0.72%)	2,195 (0.83%)

Ethnicity			
Hispanic or Latino	13,597 (7.68%)	6,253 (7.26%)	19,850 (7.54%)
Not Hispanic or Latino	149,458 (84.38%)	73,679 (85.60%)	223,137 (84.78%)
Unknown	11,788 (6.66%)	5,142 (5.97%)	16,930 (6.43%)
Declined to answer	2,278 (1.29%)	997 (1.16%)	3,275 (1.24%)
Characteristics			
Type 2 Diabetes	128,120 (72.33%)	59,884 (69.58%)	188,004 (71.43%)
Overweight or Obesity	100,696 (56.85%)	49,953 (58.04%)	150,649 (57.24%)
Medication			
Semaglutide	82,988 (46.85%)	42,928 (49.88%)	125,916 (47.84%)
Tirzepatide	8,332 (4.70%)	2,785 (3.24%)	11,117 (4.22%)
Liraglutide	20,610 (11.64%)	12,525 (14.55%)	33,135 (12.59%)
Dulaglutide	55,742 (31.47%)	22,772 (26.46%)	78,514 (29.83%)
Other	9,449 (5.33%)	5,061 (5.88%)	14,510 (5.51%)
Labeled Use			
ADM	128,976 (72.82%)	54,008 (62.75%)	182,984 (69.52%)
AOM	2,763 (1.56%)	5,050 (5.87%)	7,813 (2.97%)
Unknown	45,382 (25.62%)	27,013 (31.38%)	72,395 (27.51%)
Year			
2018	15,186 (8.57%)	9,603 (11.16%)	24,789 (9.42%)
2019	13,830 (7.81%)	8,458 (9.83%)	22,288 (8.47%)
2020	14,828 (8.37%)	8,871 (10.31%)	23,699 (9.00%)
2021	24,535 (13.85%)	13,211 (15.35%)	37,746 (14.34%)
2022	42,801 (24.16%)	19,495 (22.65%)	62,296 (23.67%)
2023	65,941 (37.23%)	26,433 (30.71%)	92,374 (35.10%)
Comorbidity			
Asthma	20,693 (11.68%)	9,819 (11.41%)	30,512 (11.59%)
CKD	40,626 (22.94%)	20,074 (23.32%)	60,700 (23.06%)
COPD	17,989 (10.16%)	9,274 (10.77%)	27,263 (10.36%)
Hyperlipidemia	120,429 (67.99%)	61,448 (71.39%)	181,877 (69.10%)
Hypertension	125,548 (70.88%)	65,132 (75.67%)	190,680 (72.45%)
Major Depression	22,158 (12.51%)	10,680 (12.41%)	32,838 (12.48%)
Education: History of College Attendance			
Attended but not currently	11,831 (6.68%)	6,216 (7.22%)	18,047 (6.86%)
Currently attending	505 (0.29%)	278 (0.32%)	783 (0.30%)
No college on record	142,866 (80.66%)	70,566 (81.99%)	213,432 (81.09%)
Unknown	21,919 (12.38%)	9,011 (10.47%)	30,930 (11.75%)
Estimated Individual Income			
0 - 25,000	3,844 (2.17%)	1,500 (1.74%)	5,344 (2.03%)
25,001 - 30,000	7,935 (4.48%)	3,652 (4.24%)	11,587 (4.40%)
30,001 - 35,000	16,279 (9.19%)	7,804 (9.07%)	24,083 (9.15%)
35,001 - 40,000	17,664 (9.97%)	9,050 (10.51%)	26,714 (10.15%)
40,001 - 50,000	33,446 (18.88%)	16,974 (19.72%)	50,420 (19.16%)

50,001 - 60,000	26,579 (15.01%)	13,674 (15.89%)	40,253 (15.29%)
60,001 - 80,000	27,888 (15.75%)	14,161 (16.45%)	42,049 (15.98%)
80,001 - 100,000	12,348 (6.97%)	5,859 (6.81%)	18,207 (6.92%)
100,001 - 120,000	5,702 (3.22%)	2,754 (3.20%)	8,456 (3.21%)
120,001 - 150,000	2,995 (1.69%)	1,388 (1.61%)	4,383 (1.67%)
More than 150K	522 (0.29%)	246 (0.29%)	768 (0.29%)
Unknown	21,919 (12.38%)	9,009 (10.47%)	30,928 (11.75%)

Patient characteristics for patients aged 18-65 are given in Table 5:

Table 5: Patient Characteristics by Dispense Status, Age 18-64. Dispense status refers to presence of any GLP-1 RA dispense within 60 days of first GLP-1 RA prescription. Table contains the subset of patients with observable 60-day dispense outcomes.

	Dispensed in 60 Days	Not Dispensed in 60 Days	Overall
N	472,138 (100.00%)	255,631 (100.00%)	727,769 (100.00%)
Age Group			
18-44	133,158 (28.20%)	88,196 (34.50%)	221,354 (30.42%)
45-64	338,980 (71.80%)	167,435 (65.50%)	506,415 (69.58%)
Sex			
Female	298,951 (63.32%)	174,367 (68.21%)	473,318 (65.04%)
Male	173,167 (36.68%)	81,254 (31.79%)	254,421 (34.96%)
Other	20 (0.00%)	10 (0.00%)	30 (0.00%)
Race			
White	326,356 (69.12%)	181,136 (70.86%)	507,492 (69.73%)
Black or African American	69,493 (14.72%)	38,582 (15.09%)	108,075 (14.85%)
Asian	12,385 (2.62%)	5,852 (2.29%)	18,237 (2.51%)
Unknown	29,485 (6.24%)	12,865 (5.03%)	42,350 (5.82%)
Native Hawaiian or Other Pacific Islander	2,205 (0.47%)	1,143 (0.45%)	3,348 (0.46%)
American Indian or Alaska Native	3,803 (0.81%)	2,087 (0.82%)	5,890 (0.81%)
Other Race	23,201 (4.91%)	11,351 (4.44%)	34,552 (4.75%)
Declined to answer	5,210 (1.10%)	2,615 (1.02%)	7,825 (1.08%)
Ethnicity			
Hispanic or Latino	63,068 (13.36%)	35,554 (13.91%)	98,622 (13.55%)
Not Hispanic or Latino	375,039 (79.43%)	204,508 (80.00%)	579,547 (79.63%)
Unknown	28,424 (6.02%)	12,865 (5.03%)	41,289 (5.67%)
Declined to answer	5,607 (1.19%)	2,704 (1.06%)	8,311 (1.14%)
Characteristics			
Type 2 Diabetes	273,441 (57.92%)	107,314 (41.98%)	380,755 (52.32%)
Overweight or Obesity	294,119 (62.30%)	182,400 (71.35%)	476,519 (65.48%)

Medication			
Semaglutide	239,282 (50.68%)	149,915 (58.65%)	389,197 (53.48%)
Tirzepatide	43,211 (9.15%)	18,629 (7.29%)	61,840 (8.50%)
Liraglutide	61,660 (13.06%)	39,330 (15.39%)	100,990 (13.88%)
Dulaglutide	112,172 (23.76%)	38,974 (15.25%)	151,146 (20.77%)
Other	15,813 (3.35%)	8,783 (3.44%)	24,596 (3.38%)
Labeled Use			
ADM	312,431 (66.17%)	121,961 (47.71%)	434,392 (59.69%)
AOM	38,245 (8.10%)	43,827 (17.14%)	82,072 (11.28%)
Unknown	121,462 (25.73%)	89,843 (35.15%)	211,305 (29.03%)
Year			
2018	38,007 (8.05%)	23,056 (9.02%)	61,063 (8.39%)
2019	33,833 (7.17%)	18,016 (7.05%)	51,849 (7.12%)
2020	35,644 (7.55%)	18,846 (7.37%)	54,490 (7.49%)
2021	59,992 (12.71%)	30,045 (11.75%)	90,037 (12.37%)
2022	122,520 (25.95%)	59,081 (23.11%)	181,601 (24.95%)
2023	182,142 (38.58%)	106,587 (41.70%)	288,729 (39.67%)
Comorbidity			
Asthma	65,950 (13.97%)	37,951 (14.85%)	103,901 (14.28%)
CKD	31,763 (6.73%)	14,973 (5.86%)	46,736 (6.42%)
COPD	19,527 (4.14%)	9,207 (3.60%)	28,734 (3.95%)
Hyperlipidemia	241,391 (51.13%)	125,328 (49.03%)	366,719 (50.39%)
Hypertension	245,221 (51.94%)	130,927 (51.22%)	376,148 (51.69%)
Major Depression	63,436 (13.44%)	40,473 (15.83%)	103,909 (14.28%)
Education: History of College Attendance			
Attended but not currently	228,551 (48.41%)	135,813 (53.13%)	364,364 (50.07%)
Currently attending	6,156 (1.30%)	4,748 (1.86%)	10,904 (1.50%)
No college on record	187,295 (39.67%)	91,894 (35.95%)	279,189 (38.36%)
Unknown	50,136 (10.62%)	23,176 (9.07%)	73,312 (10.07%)
Estimated Individual Income			
0 - 25,000	14,809 (3.14%)	8,976 (3.51%)	23,785 (3.27%)
25,001 - 30,000	20,935 (4.43%)	12,364 (4.84%)	33,299 (4.58%)
30,001 - 35,000	29,803 (6.31%)	16,483 (6.45%)	46,286 (6.36%)
35,001 - 40,000	44,005 (9.32%)	23,717 (9.28%)	67,722 (9.31%)
40,001 - 50,000	98,239 (20.81%)	51,785 (20.26%)	150,024 (20.61%)
50,001 - 60,000	75,334 (15.96%)	41,328 (16.17%)	116,662 (16.03%)
60,001 - 80,000	82,084 (17.39%)	45,202 (17.68%)	127,286 (17.49%)
80,001 - 100,000	32,670 (6.92%)	18,358 (7.18%)	51,028 (7.01%)
100,001 - 120,000	14,213 (3.01%)	8,302 (3.25%)	22,515 (3.09%)
120,001 - 150,000	8,003 (1.70%)	4,769 (1.87%)	12,772 (1.75%)
More than 150K	1,917 (0.41%)	1,172 (0.46%)	3,089 (0.42%)
Unknown	50,126 (10.62%)	23,175 (9.07%)	73,301 (10.07%)

Discussion and Conclusion

This analysis summarized GLP-1 RA prescribing trends and patient characteristics from January 2018 to December 2023. During this period, 1,063,200 patients were prescribed a total of 4,213,888 total prescriptions. ADMs accounted for 90.4% of prescriptions, and AOMs accounted for 9.6%, among prescriptions where use was known. A larger proportion of ADMs, compared to AOMs, were dispensed within 60 days: 71.5% of first-time ADM prescriptions and 45.6% of first-time AOM prescriptions had a fill within 60 days.

Several limitations of our analysis should be noted. All data are preliminary and may change as additional data are obtained. These findings are consistent with data accessed January 15, 2024. Data presented in this analysis represent raw counts and/or rates, and post-stratification methods have not been conducted. In addition, cohorts with small counts may be suppressed during the de-identification process leading to the appearance of zero patients for a given time period. Given relatively large numbers of patients prescribed and dispensed GLP-1 RA, we do not expect substantial suppression in the most recent periods. The unknowns in this report either indicate the value was not included in the individual's electronic health record or that it was excluded from the data to protect an individual's identity as a part of Truveta's commitment to privacy (Truveta, 2024). Finally, this report is a description of prescribing trends and patient characteristics only. Results should not be interpreted as causal.

References

Truveta. (2024). Truveta's Approach to Patient Privacy. <https://resources.truveta.com/patient-privacy>

Centers for disease control and prevention. "National diabetes statistics report". 2020. <https://www.cdc.gov/diabetes/data/statistics-report/index.html>.

Davies, Melanie J., et al. "Efficacy of liraglutide for weight loss among patients with type 2 diabetes: the SCALE diabetes randomized clinical trial." *JAMA* 314.7 (2015): 687-699.

Davies, Melanie, et al. "Semaglutide 2· 4 mg once a week in adults with overweight or obesity, and type 2 diabetes (STEP 2): a randomised, double-blind, double-dummy, placebo-controlled, phase 3 trial." *The Lancet* 397.10278 (2021): 971-984.

Hales, Craig M., et al. "Prevalence of obesity and severe obesity among adults: United States, 2017–2018. NCHS Data Brief, no 360." National Center for Health Statistics 360 (2020): 1-7.

Han, Sabrina H., et al. "Public interest in the off-label use of glucagon-like peptide 1 agonists (Ozempic) for cosmetic weight loss: a google trends analysis." *Aesthetic Surgery Journal* 44.1 (2024): 60-67.

Garvey, W. Timothy, et al. "Tirzepatide once weekly for the treatment of obesity in people with type 2 diabetes (SURMOUNT-2): a double-blind, randomised, multicentre, placebo-controlled, phase 3 trial." *The Lancet* (2023).

Jastreboff, Ania M., et al. "Tirzepatide once weekly for the treatment of obesity." *New England Journal of Medicine* 387.3 (2022): 205-216.

Lincoff, A. Michael, et al. "Semaglutide and cardiovascular outcomes in obesity without diabetes." *New England Journal of Medicine* 389.24 (2023): 2221-2232.

Ussher, John R., and Daniel J. Drucker. "Glucagon-like peptide 1 receptor agonists: cardiovascular benefits and mechanisms of action." *Nature Reviews Cardiology* 20.7 (2023): 463-474.

Wilding, John PH, et al. "Once-weekly semaglutide in adults with overweight or obesity." *New England Journal of Medicine* 384.11 (2021): 989-1002.

Whitley, Heather P., Jennifer M. Trujillo, and Joshua J. Neumiller. "Potential Strategies for Addressing GLP-1 and Dual GLP-1/GIP Receptor Agonist Shortages." *Clinical Diabetes* (2023): cd230023.

Yeh, Tzu-Lin, et al. "Effect of glucagon-like peptide-1 receptor agonists on glycemic control, and weight reduction in adults: A multivariate meta-analysis." *PLOS One* 18.1 (2023): e0278685.

Acknowledgements

The authors thank Dr. Ty Gluckman for his contributions and feedback on describing GLP-1 RA prescribing trends.