

1                   **Evaluation of Clonal Hematopoiesis and Mosaic Loss of Y Chromosome in**  
2                   **Cardiovascular Risk: an analysis in prospective studies**

3  
4 Fawaz S<sup>1\*</sup>, MD; Marti S<sup>2\*</sup>, PharmD; Dufossée M<sup>3\*</sup> MSc; Pucheu Y<sup>1</sup>, MD; Gaufroy A<sup>1</sup>, MD;  
5 Broitman J<sup>1</sup>, MD; Bidet A<sup>2</sup>, PharmD, Soumaré A<sup>4</sup> PhD, Munsch G<sup>4</sup> PhD, Tzourio C<sup>4</sup> MD PhD,  
6 Debette S<sup>4</sup> MD PhD, Trégouët DA<sup>4</sup> PhD, James C<sup>2,3</sup>, MD PhD; Mansier O<sup>2,3§</sup>, PharmD PhD ;  
7 Couffinhal T<sup>1,3§</sup> MD PhD

8  
9 <sup>1</sup> CHU de Bordeaux, Service des Maladies Coronaires et Vasculaires, F-33600 Pessac,  
10 France

11 <sup>2</sup> CHU de Bordeaux, Laboratoire d'Hématologie, F-33600 Pessac, France

12 <sup>3</sup> Univ. Bordeaux, INSERM, Biologie des maladies cardiovasculaires, U1034, F-33600  
13 Pessac, France

14 <sup>4</sup> Univ. Bordeaux, Bordeaux Population Health Research Center, INSERM, UMR\_S 1219, F-  
15 33076, Bordeaux, France

16 \* These authors contributed equally to this work

17 § These authors contributed equally to this work

18  
19 ***Short title: CHIP do not highly increase the risk of MI even when associated with***  
20 ***mLOY***

21  
22 ***Corresponding authors***

23 Pr Thierry Couffinhal.

24 [thierry.couffinhal@inserm.fr](mailto:thierry.couffinhal@inserm.fr)

25 Dr Olivier Mansier.

26 [olivier.mansier@inserm.fr](mailto:olivier.mansier@inserm.fr)

27 Inserm U1034 -1, avenue de Magellan, Hôpital Haut Lévêque - 33604 Pessac - France

28 ***Total word count: 5035***



30 **Abstract**

31 **Background:** Clonal hematopoiesis of indeterminate potential (CHIP) was initially linked to a  
32 twofold increase in atherothrombotic events. However, recent investigations have revealed a  
33 more nuanced picture, suggesting that CHIP may confer only a modest rise in Myocardial  
34 Infarction (MI) risk. This observed lower risk might be influenced by yet unidentified factors  
35 that modulate the pathological effects of CHIP. Mosaic loss of Y chromosome (mLOY), a  
36 common marker of clonal hematopoiesis in men, has emerged as a potential candidate for  
37 modulating cardiovascular risk associated with CHIP. In this study, we aimed to ascertain the  
38 risk linked to each somatic mutation or mLOY and explore whether mLOY could exert an  
39 influence on the cardiovascular risk associated with CHIP.

40 **Methods:** We conducted an examination for the presence of CHIP and mLOY using targeted  
41 high-throughput sequencing and digital PCR in a cohort of 446 individuals. Among them, 149  
42 patients from the CHAth study had experienced a first myocardial infarction (MI) at the time  
43 of inclusion (MI(+) subjects), while 297 individuals from the Three-City cohort had no history  
44 of cardiovascular events (CVE) at the time of inclusion (MI(-) subjects). All subjects  
45 underwent thorough cardiovascular phenotyping, including a direct assessment of  
46 atherosclerotic burden. Our investigation aimed to determine whether mLOY could modulate  
47 inflammation, atherosclerosis burden, and atherothrombotic risk associated with CHIP.

48 **Results:** CHIP and mLOY were detected with a substantial prevalence (45.1% and 37.7%,  
49 respectively), and their occurrence was similar between MI(+) and MI(-) subjects. Notably,  
50 nearly 40% of CHIP(+) male subjects also exhibited mLOY. Interestingly, neither CHIP nor  
51 mLOY independently resulted in significant increases in plasma hsCRP levels,  
52 atherosclerotic burden, or MI incidence. Moreover, mLOY did not amplify or diminish  
53 inflammation, atherosclerosis, or MI incidence among CHIP(+) male subjects. Conversely, in  
54 MI(-) male subjects, CHIP heightened the risk of MI over a five-year period, particularly in  
55 those lacking mLOY.

56 **Conclusion:** Our study highlights the high prevalence of CHIP and mLOY in elderly  
57 individuals. Importantly, our results demonstrate that neither CHIP nor mLOY in isolation  
58 substantially contribute to inflammation, atherosclerosis, or MI incidence. Furthermore, we  
59 find that mLOY does not exert a significant influence on the modulation of inflammation,  
60 atherosclerosis burden, or atherothrombotic risk associated with CHIP. However, CHIP may  
61 accelerate the occurrence of MI, especially when unaccompanied by mLOY. These findings  
62 underscore the complexity of the interplay between CHIP, mLOY, and cardiovascular risk,  
63 suggesting that large-scale studies with thousands more patients may be necessary to  
64 elucidate subtle correlations.

65

66 **Keywords:** Clonal hematopoiesis of indeterminate potential (CHIP); Mosaic loss of Y  
67 chromosome; myocardial infarction; inflammation; atheromatous burden.

68

#### 69 ***Author approval***

70 All authors have seen and approved the manuscript.

#### 71 ***Disclosures***

72 The authors report no conflict of interest.

#### 73 ***Sources of Funding***

74 This study was supported by the Fondation Cœur & Recherche (the Société Française  
75 de Cardiologie), the Fédération Française de Cardiologie, ERA-CVD (« CHEMICAL »  
76 consortium, JTC 2019) and the Fondation Université de Bordeaux. The laboratory of  
77 Hematology of the University Hospital of Bordeaux benefitted of a convention with the  
78 Nouvelle Aquitaine Region (2018-1R30113-8473520) for the acquisition of the Nextseq  
79 550Dx sequencer used in this study.

80 **Registration:** URL: <https://clinicaltrials.gov>; Unique identifier: NCT04581057.

81

## 82 **Introduction**

83 Atherothrombosis is the main cause of death worldwide. Traditional cardiovascular risk  
84 factors (CVRF), such as diabetes, smoking, dyslipidemia, hypertension, explain 70 to 75% of  
85 cardiovascular events suffered by patients. However, a significant part of these events  
86 remains unexplained given that 25 to 30% of people without any evident cause can present  
87 an atherosclerotic cardiovascular event (CVE), whereas not all high-risk subjects (according  
88 to traditional CVFR) experience such an event (Berry et al., 2012).

89 Recently, clonal hematopoiesis of indeterminate potential (CHIP) has emerged as a potential  
90 new risk factor of cardiovascular diseases (Jaiswal et al., 2014). This condition results from  
91 the acquisition by a hematopoietic stem cell of somatic mutations in leukemia-driver genes,  
92 leading to clonal expansion of a population of hematopoietic cells without any clinical or  
93 biological sign of hematological malignancy. The definition of CHIP proposed to date,  
94 requires the detection of the mutation at a variant allele frequency (VAF) of more than 2%,  
95 representing a proportion of mutated cells of more than 4% (Steensma et al., 2015). The  
96 most commonly mutated genes in CHIP are *DNA Methyltransferase 3A (DNMT3A)* and *Ten*  
97 *Eleven Translocation 2 (TET2)*. In 2014, Jaiswal *et al* showed that CHIP was associated with  
98 a decreased survival mainly because of an increased atherothrombotic mortality. In  
99 particular, they observed a 2.0 fold-increased risk of myocardial infarction (MI) and a 2.6-fold  
100 increased risk of ischemic stroke (Jaiswal et al., 2014). In 2017, these data were confirmed,  
101 showing a 1.9-fold increased risk of coronary heart disease in the presence of CHIP,  
102 independently of traditional CVRF (Jaiswal et al., 2017). At the same time, a causative role of  
103 CHIP in inducing atherosclerosis has been demonstrated in animal models through the  
104 induction of a proinflammatory state (Fuster et al., 2017; Jaiswal et al., 2017). More recently,  
105 Kessler *et al* showed in 454 803 subjects from the UK Biobank that the association of CHIP  
106 with atherothrombotic events was restricted to high VAF clones (*ie*  $\geq 10\%$ ) with a much lower  
107 risk than initially demonstrated (HR=1.11, Kessler et al., 2022). But even with these criteria,  
108 no association between CHIP and atherothrombotic events was found in a validation cohort  
109 of 173 585 subjects (Kessler et al., 2022), which has also been suggested in another work

110 studying several hundred thousand subjects (Kar et al., 2022). Thus, the impact of CHIP on  
111 atherothrombosis in humans is not totally evident, possibly because of the existence of yet  
112 unidentified modulating factors that could potentiate or counteract the effect of CHIP. For  
113 example, the p.Asp358Ala variant of the IL6 receptor gene has been shown to decrease the  
114 atherothrombotic risk associated with CHIP (Bick et al., 2020; Vlasschaert et al., 2023a).  
115 However, the impact of other genetic variants on the cardiovascular risk associated with  
116 CHIP remains unknown.

117 Gain or loss of chromosomes in hematopoietic cells appears to be as frequent as the  
118 acquisition of somatic mutations during aging (Saiki et al., 2021). In particular, mosaic loss of  
119 chromosome Y (mLOY) has been shown to be frequent in male subjects without evidence of  
120 hematological malignancy (Wright et al., 2017; Zhou et al., 2016). mLOY was associated with  
121 cardiovascular diseases (Lofffield et al., 2018; Sano et al., 2022), and can be detected in a  
122 rather high proportion of subjects with CHIP (Ljungström et al., 2022; Zink et al., 2017).  
123 Finally, while *TET2* mutations promote inflammation and atherosclerosis in mouse models  
124 (Jaiswal et al., 2017), mLOY was shown to switch macrophages from a pro-inflammatory to a  
125 pro-fibrotic phenotype (Sano et al., 2022). Thus, because of their opposite effect on  
126 macrophages phenotype, mLOY could balance the effect of CHIP regarding the induction of  
127 inflammation and thus decrease the development of atherosclerosis and the resulting  
128 atherothrombotic risk. We thus hypothesized that mLOY could modulate the effect of CHIP in  
129 inducing inflammation, atherosclerosis and triggering atherothrombotic events.

130 In this study, we used sensitive technics to determine the prevalence of both CHIP and  
131 mLOY in 2 cohorts of subjects. We sought to determine whether CHIP and mLOY  
132 significantly increase the cardiovascular risk separately. We also searched to determine in  
133 humans whether mLOY could impact the effect of CHIP on inflammation, atherosclerosis  
134 burden or atherothrombotic risk.

135

136 **Methods**

137 **Patients**

138 For this study, we recruited 446 patients: 149 with a first MI and 297 without a MI or other  
139 CVE at inclusion. The 149 subjects with a MI were enrolled in the CHAth study between  
140 March 2019 and October 2021 (MI(+) subjects). The main eligibility criterion was suffering  
141 from a first MI of atherosclerosis origin after 75 years of age without evidence of  
142 hematological malignancy (Supplementary Figure S1). They were included 4+/-2 months  
143 after the acute event, in order to assess their basal inflammatory state. In the presence of  
144 any clinical sign or factor associated with inflammation, the appointment was reported in  
145 order not to skew biological and genetic data. Additionally, we ensured that the subjects had  
146 not been vaccinated against SARS-Cov2 within 15 days of enrollment. The study was  
147 approved by the institutional review board (IRDCB 2019-A02902-05), and registered  
148 (<https://www.clinicaltrials.gov>: NCT04581057). All participants gave written informed consent  
149 before inclusion in the study. Eligibility and exclusion criteria are more detailed in the  
150 Supplementary Methods.

151 As a control cohort, we selected subjects without any history of CVE at inclusion in the  
152 Three-City (3C) study cohort (MI(-) subjects, Supplementary Figure S1) (3C Study Group,  
153 2003). The 3C study is a prospective study that enrolled 9294 subjects of 65 years or more  
154 who were selected upon electoral lists. These subjects were followed for several years (up to  
155 12 years) to detect the development of dementia from a vascular origin. As such, they  
156 benefitted from a stringent cardiovascular follow-up, with adjudication of all cardiovascular  
157 events (in particular occurrence of MI). Among these subjects, we selected the 297 subjects  
158 who did not present any CVE before inclusion. Seventy-nine of them presented a MI during  
159 follow-up. The remaining 218 subjects had no atherothrombotic event during follow up, and  
160 were matched on age, sex and CVRF with those who had a MI during follow up  
161 (Supplementary Figure S1).

162

163 **Clinical and biological parameters measured at inclusion**

164 In MI(+) subjects, a routine cardiovascular evaluation was performed at inclusion (between 2  
165 and 7 month after MI occurrence). Subjects were asked about presence of dyspnea or  
166 angina, evaluated with NYHA and CCS scales. Information was obtained from medical  
167 records about a potential recurrence of a cardiovascular event since the index event (new  
168 MI, coronary revascularization, stroke, hospitalization for acute heart failure). Traditional  
169 cardiovascular risk factors were noted. Routine biological analyses comprising blood count,  
170 high-sensitive CRP (hsCRP), lipid profile, HbA1c were performed in the laboratory of the  
171 university hospital of Bordeaux on fresh samples.

172 For MI(-) subjects, data available at inclusion included hsCRP level, lipid profile and  
173 traditional CVRF. No blood count was available but none of the subjects developed cancer  
174 (including hematological malignancy) during follow-up suggesting that detectable somatic  
175 mutations were indicative of CHIP and not hematological malignancy.

176

#### 177 **Measurement of atherosclerosis burden**

178 For MI(+) subjects, a transthoracic echocardiography was performed at inclusion by trained  
179 cardiologists and ejection fraction calculated. Supra-aortic trunks ultrasonography with 3D-  
180 measurement of carotid atheroma volume was performed by trained physicians of the  
181 hospital University of Bordeaux, using a Philips iU22 probe equipped with a linear-3D volume  
182 convertor VL13-5 (Philips). Images were analyzed using the Vascular Plaque Quantification  
183 software on the QLAB 10.2 system (Philips). Carotid stenosis quantification was done with  
184 NASCET criteria. Functional ischemic testing was performed at the clinicians' discretion. For  
185 MI(-) subjects, atherosclerosis burden was assessed at the inclusion by ultrasound  
186 echography recording detection of atherosclerotic plaques, atherosclerotic plaque numbers  
187 and intima-media thickness.

188

#### 189 **Follow up of subjects**

190 For MI(+) subjects, the follow-up was conducted with a standardized questionnaire  
191 previously validated in clinical trials (Lafitte et al., 2013). Recurrence of MI as well as any



192 significant cardiovascular event (cardiovascular death, acute coronary syndrome, stroke or  
193 transient ischemic attack, congestive heart failure, secondary coronary revascularization, or  
194 peripheral vascular surgery) occurring between the initial event and the year after inclusion in  
195 the study were recorded. All medical records of participants who died, or who reported on the  
196 questionnaire that they had experienced cardiovascular symptoms between baseline and  
197 follow-up evaluations, were reviewed by one of the investigators, and the patient practitioners  
198 were contacted. For MI(-) subjects, a follow up was performed for up to 12 years. All  
199 cardiovascular events were recorded (including MI) with adjudication upon medical records  
200 by an expert committee (Supplementary Figure 1).

201

#### 202 **Search for somatic mutations and mosaic loss of chromosome Y**

203 For both MI(+) and MI(-) subjects, DNA was extracted from total leukocytes obtained at  
204 inclusion. The search for somatic mutations was carried out by the Laboratory of Hematology  
205 of the University Hospital of Bordeaux using the Next Generation Sequencing (NGS) panel  
206 designed for the diagnosis and follow-up of myeloid hematological malignancies. The genes  
207 tested are detailed in Supplementary Table S1.

208

209 Briefly, target sequences were captured using the SureSelect technology (Agilent).  
210 Sequencing was performed on a NextSeq 550Dx Instrument (Illumina technology) and  
211 analyzed using an in-house bioinformatics pipeline (see Supplementary Methods for more  
212 details). Variants interpretation was performed independently by two biologists according to  
213 criteria previously described (Luque Paz et al., 2021) and reported in Supplementary Table  
214 S2. According to the definition of CHIP, only mutations with a VAF  $\geq$  2% were retained.  
215 Although we did not used error-corrected sequencing, the high depth (2111X in median)  
216 coupled with bioinformatic tools and manual curing allowed us to reliably detect variants with  
217 a VAF $\geq$ 1%.

218

219 The search of mLOY was performed thanks to an in-house droplet digital PCR technic using  
220 the following primers and probes:

- 221 - Primer-amel-Fwd : 5'- CCCCTGGGCACTGTAAAGAAT
- 222 - Primer-amel-Rev: 5'- CCAAGCATCAGAGCTTAAACTG
- 223 - Probe-amelX : 5'- HEX-CCAAATAAAGTGGTTTCTCAAGT-BHQ
- 224 - Probe-amelY: 5'- FAM-CTTGAGAAACATCTGGGATAAAG-BHQ.

225 Briefly, 75 ng of DNA was mixed with ddPCR supermix for Probes (no dUTP, Biorad),  
226 primers (0.9µM each) and probes (0.25µM each). The emulsion was prepared with the QX-  
227 100 (Biorad). The amplification program was as follows: 10-minutes denaturation at 95°C,  
228 followed by 40 cycles of 30 seconds at 94°C, 1 minute at 55°C, and inactivation of 10  
229 minutes at 98°C. The number of droplets positive for amelX and amelY was determined on  
230 the QX-200 droplet reader (Biorad) using the QuantaSoft software version 1.5 (Biorad). At  
231 least 10,000 droplets were analyzed in each well. We determined the background noise of  
232 our technique by analyzing the DNA of control subjects (men under 40 years old with a  
233 normal karyotype, as assessed by conventional cytogenetic studies). We observed that only  
234 a signal corresponding to 9% of cells with mLOY could be considered different from  
235 background noise. By analyzing a dilution series of control DNA, we demonstrated the  
236 reliability of our ddPCR assay in estimating the proportion of cells with mLOY and its ability to  
237 detect as low as 10% of cells with mLOY. Considering the background noise, we established  
238 our threshold for confirming the presence of mLOY at 9% of cells with mLOY.

239

#### 240 **Statistical analyses**

241 Univariate association analyses were conducted using Fisher exact or Chi-square test  
242 statistics for categorical variables. Analysis of variance was used for quantitative variables.  
243 Multivariate association analyses were performed using logistic or linear regression models  
244 as appropriate. Analyses were adjusted for age and sex (CHIP) or for age only (mLOY). We  
245 used raw values for all quantitative variables as they presented a normal distribution, except  
246 for CRP levels for which we analyzed log(CRP). Log-rank test and Cox statistical models

247 were employed to assess the association of clinical/biological variables with the incidence of  
248 future cardiovascular events.

249 All analyses were conducted using either the RStudio software (Posit team (2023). RStudio:  
250 Integrated Development Environment for R. Posit Software, PBC, Boston, MA. URL  
251 <http://www.posit.co/>.) or the PRISM software (GraphPad Prism version 9.5.1).

252

## 253 **Results**

### 254 **Patient's characteristics**

255 In this study, we aimed to decipher whether mLOY could alter the effect of CHIP in  
256 inducing a chronic inflammation that would favor the development of atherosclerosis and the  
257 incidence of atherothrombotic events. To answer this question, we analyzed 446 subjects  
258 from 2 prospective studies, 149 who presented a MI at inclusion and 297 who did not present  
259 any CVE before inclusion. The general characteristics of the 446 combined subjects are  
260 detailed in Table 1. Briefly, the median age was 76.4 years and 257 (57.6%) were males.  
261 Forty percent of them presented more than 2 CVRF. MI(+) subjects were older (due to the  
262 inclusion criteria), more frequently men, and presented a lower cardiovascular risk than MI(-)  
263 subjects (due to the initiation of treatment between the initial event and the inclusion).

264

### 265 **CHIP and mLOY are detected as frequently in MI(+) and MI(-) subjects**

266 Among the 446 subjects, at least one mutation with a VAF $\geq$ 2% was detected in 201  
267 persons (45.1%), defining CHIP(+) subjects (Table 1, Figure 1A). As previously described,  
268 *DNMT3A* and *TET2* were the 2 most frequently mutated genes. The other mutated genes  
269 were those previously described in CHIP (Figure 1B, Jaiswal et al., 2017, 2014; Zink et al.,  
270 2017) and the median VAF was 2% (Figure 1C). The mutational profile of CHIP(+) subjects  
271 is available in the Supplementary Tables S3 and S4 while the characteristics of CHIP(+)  
272 compared with CHIP(-) subjects are detailed in the Supplementary Tables S5 and S6. In this  
273 study, we considered subjects without any detectable mutation(-) or with only mutations with a  
274 VAF below 2% as non-CHIP carriers (CHIP(-) subjects).

275 A mLOY was present in 83 (37.7%) male subjects (mLOY(+) subjects, Table 1,  
276 Figure 1A). The clinico-biological characteristics of mLOY(+) subjects compared with mLOY(-  
277 ) subjects are detailed in the Supplementary Tables S5 and S6. The median proportion of  
278 cells with mLOY was 18% [12%;32%]. There was no significant association between CHIP  
279 and mLOY since 39 CHIP(+) subjects (39.8%) also carried a mLOY compared with 44  
280 CHIP(-) subjects (36.1%, p=0.579). Finally, as previously demonstrated, CHIP(+) subjects

281 were significantly older than CHIP(-) subjects (Supplementary Tables S5 and S6). We also  
282 observed a significant association between age and CHIP prevalence ( $p < 0.001$ ). Similarly,  
283 the prevalence of mLOY increased with age ( $p < 0.001$ , Figure 1D).

284 We observed a similar frequency of CHIP and mLOY in MI(+) and MI(-) subjects  
285 (Figure 1A, Table 1). Besides, the association of CHIP with mLOY was as frequent in MI(+)  
286 and MI(-) subjects (22.7% and 13.8%,  $p = 0.797$ ). Of note, MI(+) and MI(-) subjects presented  
287 similar proportions of mutated genes (Figure 1B) and VAF (Supplementary Figure 2). Similar  
288 results were also observed when considering CHIP associated with important clones (*i.e.*  
289  $VAF \geq 5\%$ , Table 1), when analyzing only *DNMT3A* and *TET2* mutations (data not shown), or  
290 when making further adjustment on CVRF.

291 Altogether, these results suggest that CHIP and mLOY are very frequent but not  
292 associated with the existence of a history of MI, even when mLOY is associated with CHIP.

293

#### 294 **Neither CHIP, mLOY, nor their combination highly increase basal inflammation or** 295 **atherosclerotic burden**

296 It was demonstrated that *TET2* mutations were associated with the induction of a pro-  
297 inflammatory phenotype of macrophages (Fuster et al., 2017). On the contrary, mLOY was  
298 shown to decrease the inflammatory phenotype of macrophages (Sano et al., 2022).  
299 Therefore, we searched to determine whether mLOY could counter the inflammatory state  
300 that would be associated with CHIP. In the total cohort, CHIP(+) and CHIP(-) subjects  
301 presented similar levels of hsCRP, as did mLOY(+) and mLOY(-) subjects (Table 2).  
302 Similarly, hsCRP levels were not different in CHIP(-)/mLOY(-), CHIP(+)/mLOY(-), CHIP(-  
303 )/mLOY(+) and CHIP(+)/mLOY(+) subjects. The impact of CHIP and mLOY on hsCRP levels,  
304 either alone or in combination, was comparable in MI(+) or MI(-) subjects (Table 2). This was  
305 also true when restricting the analysis to *DNMT3A* and *TET2* mutated CHIP(+) subjects  
306 (Supplementary Table S7), or when adjusting further on CVRF. Finally, subjects with  
307 important CHIP or mLOY clones did not present higher levels of hsCRP (Supplementary  
308 Table S8).

309           Very few data are available about atheroma burden associated with CHIP and/or  
310 mLOY in humans. Moreover, the modulation of the atherogenic effect of CHIP by mLOY  
311 remains unexplored. We thus asked whether CHIP alone or in association with mLOY was  
312 associated with an increased atherosclerotic burden. In MI(+) subjects we observed a similar  
313 proportion of multitruncular coronary lesions and carotid stenosis >50% in CHIP(+) and  
314 CHIP(-) subjects (Table 3). The global atheroma volume was explored by 3D ultrasound in  
315 34 MI(+) patients, without difference between CHIP(+) and CHIP(-) subjects. Similar results  
316 were obtained when analyzing only CHIP(+) subjects carrying *TET2* and/or *DNMT3A*  
317 mutations (Supplementary Table S7), when comparing mLOY(+) and mLOY(-) subjects  
318 (Table 3), or when analyzing the association of CHIP with mLOY (Supplementary Table S9).  
319 Concordantly, in MI(-) subjects, all available atherosclerosis markers were similar between  
320 CHIP(+) and CHIP(-), as well as between mLOY(+) and mLOY(-) subjects (Table 3). This  
321 was also true when analyzing the effect of the different combinations of CHIP and mLOY  
322 (Supplementary Table S9). Once again, all these results were confirmed in subjects with a  
323 VAF  $\geq 5\%$  for CHIP or a mLOY  $\geq 50\%$  (Supplementary Table S8), or when adjusting further on  
324 CVRF.

325           Altogether, our results suggest that in both the context of a recent MI and in healthy  
326 individuals, CHIP is not associated with a systemic inflammation or an increased  
327 atherosclerotic burden. Additionally, mLOY does not modulate inflammatory parameters or  
328 atherosclerosis, even in the presence of CHIP.

329

### 330 **Neither CHIP, mLOY, nor their combination highly impact the incidence of MI.**

331           To decipher whether mLOY could impact the atherothrombotic risk associated with  
332 CHIP, we analyzed the incidence of MI during the follow-up of MI(-) subjects. Seventy-nine  
333 subjects developed a MI after inclusion in the study with a median delay of 5.00 years.  
334 Subjects with MI during follow-up did not differ significantly from those without MI in terms of  
335 demography or cardiovascular risk (Supplementary Table S10). Contrary to other studies, we  
336 did not observe an association between CHIP and an increased incidence of MI (HR 1.033

337 [0.657;1.625] after adjustment on age, sex and CVRF). In comparison, hypercholesterolemia  
338 and smoking tended to associate with stronger risk of incident MI (HR = 1.474 [0.758;2.866]  
339 and 1.866 [0.943;3.690], respectively). Similarly, neither mLOY nor the association between  
340 CHIP and mLOY were associated with an increased incidence of MI (Figure 2A-B,  
341 Supplementary Table S11). Concordantly, we did not observe any difference in the  
342 prevalence of CHIP, mLOY or their association between MI(-) subjects who suffered from a  
343 MI during follow up and those who did not (Supplementary Table S10). This was also the  
344 case when restricting the analysis to CHIP with a VAF  $\geq 5\%$ , to subjects with a proportion of  
345 cells with mLOY  $\geq 50\%$ , to CHIP associated with *DNMT3A* or *TET2* mutations  
346 (Supplementary Figure S3A-S3B, Supplementary Table S10), or when making further  
347 adjustment on CVRF. These results suggest that the atherothrombotic risk associated with  
348 CHIP is moderate, and is not modulated by its association with mLOY. Moreover, neither  
349 CHIP, mLOY nor their combination were significantly associated with atherothrombotic  
350 recurrence (Supplementary Table S11).

351

### 352 **CHIP in the absence of mLOY may accelerate the occurrence of MI**

353 In order to search for a combined effect of CHIP with mLOY on the risk of incidence  
354 of MI, we finally focused our analysis on MI(-) male subjects. In this population, we observed  
355 that MI occurred earlier in CHIP(+) subjects, with a significant increased 5-year incidence of  
356 MI (log-rank test,  $p=0.014$ , Figure 2C). Such an effect was not observed in MI(-) female  
357 subjects (log-rank test,  $p=0.9402$ , Supplementary Figure S3C). Interestingly, this effect was  
358 more pronounced in CHIP(+)/mLOY(-) subjects who presented a significantly higher 5-year  
359 incidence of MI (log-rank test,  $p=0.010$ , Figure 2D) and a significantly lower median time to  
360 MI compared with other subjects (Kruskall-Wallis test,  $p=0.007$ ). CHIP(+)/mLOY(-) subjects  
361 also presented a higher 5-year incidence of MI using Cox models after adjustment on age  
362 and CVRF (HR 7.81,  $p=0.0388$ ). Altogether, our results suggest that CHIP do not increase  
363 the risk of MI, but may accelerate its incidence, particularly in the absence of mLOY.

364

## 365 **Discussion**

366 Clonal hematopoiesis of indeterminate potential (CHIP) has previously been implicated in  
367 decreased overall survival, primarily due to its association with an increased incidence of  
368 cardiovascular diseases such as coronary artery disease (CAD) and stroke (Jaiswal et al.,  
369 2017, 2014). Experimental models have suggested that this association may arise from the  
370 pro-inflammatory phenotype of mutated monocytes/macrophages, contributing to the  
371 development of atherosclerotic plaques (Fuster et al., 2017; Jaiswal et al., 2017). However,  
372 recent findings in the literature have presented a complex and sometimes contradictory  
373 picture. Studies have reported varying results regarding the relationship between CHIP,  
374 inflammation markers, and atherothrombotic events, challenging the initial notion of a high  
375 atherothrombotic risk associated with CHIP (Bick et al., 2020; Busque et al., 2020; Kar et al.,  
376 2022; Kessler et al., 2022; Vlasschaert et al., 2023a). Moreover, there has been a scarcity of  
377 evidence linking CHIP to an increased burden of atherosclerosis in human subjects (Heimlich  
378 et al., 2024; Jaiswal et al., 2017; Wang et al., 2022; Zekavat et al., 2023). Additionally, limited  
379 data are available on the potential impact of chromosomal abnormalities, particularly mosaic  
380 loss of the Y chromosome (mLOY), on atherothrombosis in individuals with CHIP. In this  
381 study, we sought to investigate whether mLOY could modulate the effects of CHIP  
382 concerning systemic inflammation, atherosclerotic burden, and the risk of atherothrombotic  
383 events. To achieve this, we employed sensitive techniques, including targeted high-  
384 throughput sequencing and digital PCR, to analyze samples from two cohorts of meticulously  
385 phenotyped subjects.

386 In contrast to many previous studies, we conducted an analysis involving two distinct  
387 cohorts. The "cases" were individuals recruited from the CHAth study within 2 to 7 months  
388 following their first myocardial infarction (MI) after the age of 75. We also established a  
389 "control cohort" comprising 297 subjects from the 3C cohort, none of whom had experienced  
390 CVE before inclusion. This allowed us to assess the effects of CHIP and mLOY on



391 inflammation and atherosclerosis independently of pre-existing cardiovascular disease. Our  
392 analysis revealed a remarkably high frequency of CHIP, with an estimated prevalence of  
393 45% among our 446 subjects, with a median age of 76.4 years. This prevalence exceeded  
394 initial reports of 15-20% determined by whole exome sequencing (WES) in individuals aged  
395 70-80,(Genovese et al., 2014; Jaiswal et al., 2014) likely attributable to the enhanced  
396 sensitivity of our sequencing technique. Importantly, our estimated prevalence aligns with  
397 studies employing similarly sensitive high-throughput sequencing techniques.(Guermouche  
398 et al., 2020; Mas-Peiro et al., 2020; Pascual-Figal et al., 2021; van Zeventer et al., 2021)  
399 Furthermore, our approach allowed us to reliably detect mutations with a variant allele  
400 frequency (VAF) as low as 1%. We chose to define subjects with detectable mutations at a  
401 VAF of 1% as CHIP(-), aligning with the WHO definition of CHIP.(Khoury et al., 2022)  
402 Notably, all our analyses also yielded identical results when comparing CHIP(+) patients to  
403 subjects without any detectable mutations or when comparing all patients with somatic  
404 mutations with a  $VAF \geq 1\%$  to those without.

405 A recent study by Mas-Peiro et al. demonstrated an association between mLOY and  
406 increased post-transcatheter aortic valve replacement (TAVR) mortality (Mas-Peiro et al.,  
407 2023). In their investigation, a mLOY ratio threshold of 17% was deemed the most relevant  
408 for discriminating patients' mortality risk. In our study, we employed a mLOY threshold of 9%  
409 to identify mLOY, a value determined to allow a reliable mLOY detection and to distinguish it  
410 from the background noise signal. Using this threshold, we frequently detected mLOY in  
411 male subjects within our cohort, with an estimated prevalence of 37.7% among 220 subjects.  
412 This prevalence surpasses that reported by Forsberg et al (Forsberg et al., 2014) but aligns  
413 with recent findings from studies employing sensitive techniques.(Zink et al., 2017)

414 Surprisingly, our cohort did not reveal any significant association between the presence of  
415 CHIP and the detection of mLOY. This contrasts with the results of two recent  
416 studies,(Ljungström et al., 2022; Zink et al., 2017) possibly explained by the heightened

417 sensitivity of our methodology in reliably detecting both somatic mutations and mLOY, which  
418 may exist in very small proportions of blood cells.

419 Mouse models of CHIP have recently suggested that somatic mutations are linked to a pro-  
420 inflammatory phenotype of mutated monocytes/macrophages, an observation supported by  
421 human samples using single-cell RNA sequencing (Abplanalp et al., 2021). However,  
422 contradictory results have emerged when examining plasma markers of inflammation.  
423 Studies, including ours, have not consistently identified a significant increase in plasma  
424 hsCRP or proinflammatory cytokines in CHIP carriers (Cook et al., 2019; Pascual-Figal et al.,  
425 2021), whereas others have reported such associations (Bick et al., 2020; Busque et al.,  
426 2020). Importantly, our study did not show any significant association between the detection  
427 of CHIP(+/-)mLOY and plasma levels of IL1 $\beta$  and IL6 in MI(+) subjects, suggesting that  
428 CHIP's association with increased systemic inflammation may depend on specific stimulating  
429 factors. Notably, recent studies have reported elevated levels of plasma inflammatory  
430 markers in CHIP carriers during atherothrombotic events, such as MI or stroke (Arends et al.,  
431 2023; Böhme et al., 2022; Wang et al., 2022), indicating that CHIP may amplify systemic  
432 inflammation under specific conditions, but not necessarily in a basal state, as in our study.

433 To date, only a limited number of studies have successfully linked the presence of CHIP to  
434 an increased atherosclerotic burden. While Jaiswal *et al.* reported a higher calcic score in  
435 subjects with CHIP (Jaiswal et al., 2017), and Zekavat *et al.* suggested an increased  
436 atherosclerosis (Zekavat et al., 2023), these evaluations relied on self-reported atheroma  
437 and indirect parameters. In the context of coronary artery disease, only 2 studies addressed  
438 this question with conflicting results. Heimlich *et al.* observed an increased prevalence of  
439 stenosis and obstructive stenosis in CHIP(+) subjects, particularly of the left main artery,  
440 while Wang *et al.* did not notice any association between CHIP and the extent of coronary  
441 artery disease. (Heimlich et al., 2024; Wang et al., 2022) Our study stands as one of the first  
442 to utilize direct markers of atherosclerosis, including global atheroma volume, in CHIP(+)

443 subjects within the context of coronary artery disease. Strikingly, we did not detect a clear  
444 increase in atherosclerosis among CHIP or mLOY carriers, either individually or in  
445 combination. Conversely, increased atherosclerotic burden associated with CHIP has been  
446 observed in patients with stroke.(Mayerhofer et al., 2023)

447 Our study bears some limitations, the first of them being a relatively modest sample size of  
448 449 subjects, which did not allow us to establish a direct association between CHIP, either  
449 alone or in conjunction with mLOY, and coronary heart disease. These results are in  
450 contradiction with previous studies based on cohorts composed of a high number of subjects  
451 (Jaiswal et al., 2014, 2017; Vlasschaert et al., 2023a). At the time of our study's initiation, the  
452 literature suggested a CHIP prevalence of 20% after 75 years and an increased MI risk  
453 associated with CHIP, with a hazard ratio of 1.7. Based on this data, a cohort of 112 cases  
454 would have been sufficient to demonstrate a more frequent presence of CHIP in MI(+)  
455 patients compared to MI(-) subjects with a power of 0.90 (more details are available in the  
456 Supplementary Methods). Although our study was not designed to demonstrate an  
457 association between CHIP and incident MI, we were able to confirm that the increased risk of  
458 MI associated with the presence of CHIP, if any, is lower 1.7, which is in accordance with  
459 more recent studies (Vlasschaert et al., 2023a; Zekavat et al., 2023; Zhao et al., 2024).

460 Different parameters could have also contributed to the discrepancy of our results with those  
461 of previous studies. First, the age of our subjects ( $\geq 75$  years in the CHAth study,  $\geq 65$  years in  
462 the 3C study) is higher than the one of other cohorts. Jaiswal et al., 2017; Vlasschaert et al.,  
463 2023a; Zhao et al., 2024). Then our strategy to search for somatic variants was also  
464 different. In particular, we did not use the criteria defined by Vasschaert *et al* (Vlasschaert et  
465 al., 2023b) to cure variants that were called. This had a limited effect since 86.8% of the  
466 variants detected in our cohort were concordant with the criteria of Vlasschaert *et al*  
467 (Vlasschaert et al., 2023b), impacting the conclusion on the existence of a CHIP in only 15  
468 patients. We also searched for a specific effect of *TET2* mutations on inflammation,

469 atherosclerosis or risk of MI, as the literature suggests that they could be considered as  
470 “positive controls”. However, we did not find any significant effect of *TET2* mutations. Finally,  
471 we were not able to reliably detect variants with a VAF<1% and could have missed the effect  
472 of low-VAF variants, as recently shown by Zhao *et al* (Zhao et al., 2024).

473 However, our results align with previous studies that reported either no difference in CHIP  
474 prevalence between individuals with MI and those without (Busque et al., 2020), or no  
475 significant association between CHIP and incident *de novo* or recurrent atherothrombotic  
476 events (Arends et al., 2023; David et al., 2022; Kar et al., 2022). Recently, Kessler et al.  
477 proposed that the increased risk of atherothrombotic events might be limited to CHIP with a  
478 VAF of 10% or higher (Kessler et al., 2022). However, even when considering this criterion,  
479 the association was not validated in a cohort of 173,585 subjects. Moreover, in our cohort the  
480 observed effect of CHIP on the risk of MI (HR = 1.033) was substantially lower than the ones  
481 observed for other established cardiovascular risk factors such as hypercholesterolemia (HR  
482 = 1.475) or smoking (HR = 1.865). This underscores the formidable challenges of identifying  
483 associations with low effect sizes, necessitating cohorts comprising hundreds of thousands  
484 of subjects to achieve statistical significance. Collectively, these findings suggest that any  
485 atherothrombotic risk associated with CHIP is limited in scope and cannot be used in clinical  
486 practice for the management of patients with a history of cardiovascular disease or a risk of  
487 atherothrombosis.

488 However, we believe that our study has also some strength. Notably, we employed highly  
489 sensitive techniques for the reliable detection of both CHIP and mLOY, surpassing the  
490 capabilities of large cohort studies relying on whole exome sequencing and SNP arrays.  
491 Furthermore, we meticulously assessed atherosclerotic burden using sensitive parameters  
492 and evaluated two cohorts—one comprising MI(+) subjects and the other MI(-) subjects—  
493 with precise cardiovascular phenotyping at inclusion and rigorous follow-up, including direct  
494 evaluation and adjudication of all CVE.

495

496 In summary, our findings provide a nuanced perspective on the relationship between CHIP,  
497 mLOY, and cardiovascular outcomes, highlighting the need for larger, more comprehensive  
498 studies to elucidate potential associations further. Our findings that CHIP might expedite the  
499 onset of MI, particularly in the absence of mLOY warrant further investigation in larger  
500 subject cohorts.

501

502 ***Acknowledgements***

503 The authors would like to thank the University Hospital of Bordeaux CRB-K for processing  
504 the samples and Coralie Foucault and the Agilent Society for their partnership in supplying  
505 NGS reactive. We also thank Marina Migeon, Joël Decombe and Candice Falourd for their  
506 technical help, as well as Christel Duprat and Matthieu Meilhan for operational organization  
507 of the project.

508

509 ***Authorship***

510 TC, OM and CJ designed the study. SF, YP, TC, AG and JB enrolled the subjects in the  
511 CHAth study and performed all cardiovascular evaluation. AS, CT and SD set up the 3 City  
512 Study Cohort. AB, SM, OM analyzed the NGS data. MD, GM and DAT realized the statistical  
513 analysis. SF, SM, MD, DAT, CJ, OM and TC wrote the paper. All authors read and agreed to  
514 the final version of the manuscript.

515

516 **References**

- 517 3C Study Group. 2003. Vascular factors and risk of dementia: design of the Three-City Study  
518 and baseline characteristics of the study population. *Neuroepidemiology* **22**:316–325.  
519 doi:10.1159/000072920
- 520 Abplanalp WT, Cremer S, John D, Hoffmann J, Schuhmacher B, Merten M, Rieger MA,  
521 Vasa-Nicotera M, Zeiher AM, Dimmeler S. 2021. Clonal Hematopoiesis-Driver DNMT3A  
522 Mutations Alter Immune Cells in Heart Failure. *Circ Res* **128**:216–228.  
523 doi:10.1161/CIRCRESAHA.120.317104
- 524 Arends CM, Liman TG, Strzelecka PM, Kufner A, Löwe P, Huo S, Stein CM, Piper SK,  
525 Tilgner M, Sperber PS, Dimitriou S, Heuschmann PU, Hablesreiter R, Harms C, Bullinger L,  
526 Weber JE, Endres M, Damm F. 2023. Associations of clonal hematopoiesis with recurrent  
527 vascular events and death in patients with incident ischemic stroke. *Blood* **141**:787–799.  
528 doi:10.1182/blood.2022017661
- 529 Berry JD, Dyer A, Cai X, Garside DB, Ning H, Thomas A, Greenland P, Van Horn L, Tracy  
530 RP, Lloyd-Jones DM. 2012. Lifetime risks of cardiovascular disease. *N Engl J Med* **366**:321–  
531 329. doi:10.1056/NEJMoa1012848
- 532 Bick AG, Weinstock JS, Nandakumar SK, Fulco CP, Bao EL, Zekavat SM, Szeto MD, Liao X,  
533 Leventhal MJ, Nasser J, Chang K, Laurie C, Burugula BB, Gibson CJ, Lin AE, Taub MA,  
534 Aguet F, Ardlie K, Mitchell BD, Barnes KC, Moscati A, Fornage M, Redline S, Psaty BM,  
535 Silverman EK, Weiss ST, Palmer ND, Vasan RS, Burchard EG, Kardia SLR, He J, Kaplan  
536 RC, Smith NL, Arnett DK, Schwartz DA, Correa A, de Andrade M, Guo X, Konkole BA, Custer  
537 B, Peralta JM, Gui H, Meyers DA, McGarvey ST, Chen IY-D, Shoemaker MB, Peyser PA,  
538 Broome JG, Gogarten SM, Wang FF, Wong Q, Montasser ME, Daya M, Kenny EE, North  
539 KE, Launer LJ, Cade BE, Bis JC, Cho MH, Lasky-Su J, Bowden DW, Cupples LA, Mak ACY,  
540 Becker LC, Smith JA, Kelly TN, Aslibekyan S, Heckbert SR, Tiwari HK, Yang IV, Heit JA,  
541 Lubitz SA, Johnsen JM, Curran JE, Wenzel SE, Weeks DE, Rao DC, Darbar D, Moon J-Y,  
542 Tracy RP, Buth EJ, Rafaels N, Loos RJF, Durda P, Liu Y, Hou L, Lee J, Kachroo P,  
543 Freedman BI, Levy D, Bielak LF, Hixson JE, Floyd JS, Whitsel EA, Ellinor PT, Irvin MR,

544 Fingerlin TE, Raffield LM, Armasu SM, Wheeler MM, Sabino EC, Blangero J, Williams LK,  
545 Levy BD, Sheu WH-H, Roden DM, Boerwinkle E, Manson JE, Mathias RA, Desai P, Taylor  
546 KD, Johnson AD, NHLBI Trans-Omics for Precision Medicine Consortium, Auer PL,  
547 Kooperberg C, Laurie CC, Blackwell TW, Smith AV, Zhao H, Lange E, Lange L, Rich SS,  
548 Rotter JI, Wilson JG, Scheet P, Kitzman JO, Lander ES, Engreitz JM, Ebert BL, Reiner AP,  
549 Jaiswal S, Abecasis G, Sankaran VG, Kathiresan S, Natarajan P. 2020. Inherited causes of  
550 clonal haematopoiesis in 97,691 whole genomes. *Nature* **586**:763–768. doi:10.1038/s41586-  
551 020-2819-2

552 Böhme M, Desch S, Rosolowski M, Scholz M, Krohn K, Büttner P, Cross M, Kirchberg J,  
553 Rommel K-P, Pöss J, Freund A, Baber R, Isermann B, Ceglarek U, Metzeler KH, Platzbecker  
554 U, Thiele H. 2022. Impact of Clonal Hematopoiesis in Patients With Cardiogenic Shock  
555 Complicating Acute Myocardial Infarction. *J Am Coll Cardiol* **80**:1545–1556.  
556 doi:10.1016/j.jacc.2022.08.740

557 Busque L, Sun M, Buscarlet M, Ayachi S, Feroz Zada Y, Provost S, Bourgoïn V, Mollica L,  
558 Meisel M, Hinterleitner R, Jabri B, Dubé M-P, Tardif J-C. 2020. High-sensitivity C-reactive  
559 protein is associated with clonal hematopoiesis of indeterminate potential. *Blood Adv*  
560 **4**:2430–2438. doi:10.1182/bloodadvances.2019000770

561 Cook EK, Izukawa T, Young S, Rosen G, Jamali M, Zhang L, Johnson D, Bain E, Hilland J,  
562 Ferrone CK, Buckstein J, Francis J, Momtaz B, McNaughton AJM, Liu X, Snetsinger B,  
563 Buckstein R, Rauh MJ. 2019. Comorbid and inflammatory characteristics of genetic subtypes  
564 of clonal hematopoiesis. *Blood Adv* **3**:2482–2486. doi:10.1182/bloodadvances.2018024729

565 David C, Duployez N, Eloy P, Belhadi D, Chezeli J, Guern VL, Laouénan C, Fenwarth L,  
566 Rouzaud D, Mathian A, de Almeida Chaves S, Duhaut P, Fain O, Galicier L, Ghillani-Dalbin  
567 P, Kahn JE, Morel N, Perard L, Pha M, Sarrot-Reynaud F, Aumaitre O, Chasset F, Limal N,  
568 Desmurs-Clavel H, Ackermann F, Amoura Z, Papo T, Preudhomme C, Costedoat-  
569 Chalumeau N, Sacre K. 2022. Clonal haematopoiesis of indeterminate potential and  
570 cardiovascular events in systemic lupus erythematosus (HEMATOPLUS study). *Rheumatol*  
571 *Oxf Engl* **61**:4355–4363. doi:10.1093/rheumatology/keac108



572 Forsberg LA, Rasi C, Malmqvist N, Davies H, Pasupulati S, Pakalapati G, Sandgren J, Diaz  
573 de Ståhl T, Zaghlool A, Giedraitis V, Lannfelt L, Score J, Cross NCP, Absher D, Janson ET,  
574 Lindgren CM, Morris AP, Ingelsson E, Lind L, Dumanski JP. 2014. Mosaic loss of  
575 chromosome Y in peripheral blood is associated with shorter survival and higher risk of  
576 cancer. *Nat Genet* **46**:624–628. doi:10.1038/ng.2966

577 Fuster JJ, MacLauchlan S, Zuriaga MA, Polackal MN, Ostriker AC, Chakraborty R, Wu C-L,  
578 Sano S, Muralidharan S, Rius C, Vuong J, Jacob S, Muralidhar V, Robertson AAB, Cooper  
579 MA, Andrés V, Hirschi KK, Martin KA, Walsh K. 2017. Clonal hematopoiesis associated with  
580 TET2 deficiency accelerates atherosclerosis development in mice. *Science* **355**:842–847.  
581 doi:10.1126/science.aag1381

582 Genovese G, Kähler AK, Handsaker RE, Lindberg J, Rose SA, Bakhoum SF, Chambert K,  
583 Mick E, Neale BM, Fromer M, Purcell SM, Svantesson O, Landén M, Höglund M, Lehmann  
584 S, Gabriel SB, Moran JL, Lander ES, Sullivan PF, Sklar P, Grönberg H, Hultman CM,  
585 McCarroll SA. 2014. Clonal Hematopoiesis and Blood-Cancer Risk Inferred from Blood DNA  
586 Sequence. *N Engl J Med* **371**:2477–2487. doi:10.1056/NEJMoa1409405

587 Guermouche H, Ravalet N, Gallay N, Deswarte C, Foucault A, Beaud J, Rault E, Saindoy E,  
588 Lachot S, Martignoles J-A, Gissot V, Suner L, Gyan E, Delhommeau F, Herault O, Hirsch P.  
589 2020. High prevalence of clonal hematopoiesis in the blood and bone marrow of healthy  
590 volunteers. *Blood Adv* **4**:3550–3557. doi:10.1182/bloodadvances.2020001582

591 Heimlich JB, Raddatz MA, Wells J, Vlasschaert C, Olson S, Threadcraft M, Foster K,  
592 Boateng E, Umbarger K, Su YR, Roden DM, Barker CM, Bick AG. 2024. Invasive  
593 Assessment of Coronary Artery Disease in Clonal Hematopoiesis of Indeterminate Potential.  
594 *Circ Genomic Precis Med* e004415. doi:10.1161/CIRCGEN.123.004415

595 Jaiswal S, Fontanillas P, Flannick J, Manning A, Grauman PV, Mar BG, Lindsley RC, Mermel  
596 CH, Burt N, Chavez A, Higgins JM, Moltchanov V, Kuo FC, Kluk MJ, Henderson B,  
597 Kinnunen L, Koistinen HA, Ladenvall C, Getz G, Correa A, Banahan BF, Gabriel S,  
598 Kathiresan S, Stringham HM, McCarthy MI, Boehnke M, Tuomilehto J, Haiman C, Groop L,  
599 Atzmon G, Wilson JG, Neuberg D, Altshuler D, Ebert BL. 2014. Age-Related Clonal

600 Hematopoiesis Associated with Adverse Outcomes. *N Engl J Med* **371**:2488–2498.  
601 doi:10.1056/NEJMoa1408617

602 Jaiswal S, Natarajan P, Silver AJ, Gibson CJ, Bick AG, Shvartz E, McConkey M, Gupta N,  
603 Gabriel S, Ardissino D, Baber U, Mehran R, Fuster V, Danesh J, Frossard P, Saleheen D,  
604 Melander O, Sukhova GK, Neuberg D, Libby P, Kathiresan S, Ebert BL. 2017. Clonal  
605 Hematopoiesis and Risk of Atherosclerotic Cardiovascular Disease. *N Engl J Med* **377**:111–  
606 121. doi:10.1056/NEJMoa1701719

607 Kar SP, Quiros PM, Gu M, Jiang T, Mitchell J, Langdon R, Iyer V, Barcena C, Vijayabaskar  
608 MS, Fabre MA, Carter P, Petrovski S, Burgess S, Vassiliou GS. 2022. Genome-wide  
609 analyses of 200,453 individuals yield new insights into the causes and consequences of  
610 clonal hematopoiesis. *Nat Genet* **54**:1155–1166. doi:10.1038/s41588-022-01121-z

611 Kessler MD, Damask A, O’Keeffe S, Banerjee N, Li D, Watanabe K, Marketta A, Van Meter  
612 M, Semrau S, Horowitz J, Tang J, Kosmicki JA, Rajagopal VM, Zou Y, Houvras Y, Ghosh A,  
613 Gillies C, Mbatchou J, White RR, Verweij N, Bovijn J, Parikshak NN, LeBlanc MG, Jones M,  
614 Regeneron Genetics Center, GHS-RGC DiscovEHR Collaboration, Glass DJ, Lotta LA,  
615 Cantor MN, Atwal GS, Locke AE, Ferreira MAR, Deering R, Paulding C, Shuldiner AR,  
616 Thurston G, Ferrando AA, Salerno W, Reid JG, Overton JD, Marchini J, Kang HM, Baras A,  
617 Abecasis GR, Jorgenson E. 2022. Common and rare variant associations with clonal  
618 haematopoiesis phenotypes. *Nature* **612**:301–309. doi:10.1038/s41586-022-05448-9

619 Khoury JD, Solary E, Abla O, Akkari Y, Alaggio R, Apperley JF, Bejar R, Berti E, Busque L,  
620 Chan JKC, Chen W, Chen X, Chng W-J, Choi JK, Colmenero I, Coupland SE, Cross NCP,  
621 De Jong D, Elghetany MT, Takahashi E, Emile J-F, Ferry J, Fogelstrand L, Fontenay M,  
622 Germing U, Gujral S, Haferlach T, Harrison C, Hodge JC, Hu S, Jansen JH, Kanagal-  
623 Shamanna R, Kantarjian HM, Kratz CP, Li X-Q, Lim MS, Loeb K, Loghavi S, Marcogliese A,  
624 Meshinchi S, Michaels P, Naresh KN, Natkunam Y, Nejati R, Ott G, Padron E, Patel KP,  
625 Patkar N, Picarsic J, Platzbecker U, Roberts I, Schuh A, Sewell W, Siebert R, Tembhare P,  
626 Tyner J, Verstovsek S, Wang W, Wood B, Xiao W, Yeung C, Hochhaus A. 2022. The 5th  
627 edition of the World Health Organization Classification of Haematolymphoid Tumours:

- 628 Myeloid and Histiocytic/Dendritic Neoplasms. *Leukemia* **36**:1703–1719. doi:10.1038/s41375-  
629 022-01613-1
- 630 Lafitte M, Pucheu Y, Latry K, Dijos M, Casassus E, Couffinhal T. 2013. Predictors of  
631 cardiovascular prognosis in patients receiving optimized secondary prevention measures  
632 after acute coronary syndrome. *Eur J Prev Cardiol* **20**:283–290.  
633 doi:10.1177/2047487311434107
- 634 Ljungström V, Mattisson J, Halvardson J, Pandzic T, Davies H, Rychlicka-Buniowska E,  
635 Danielsson M, Lacaze P, Cavelier L, Dumanski JP, Baliakas P, Forsberg LA. 2022. Loss of Y  
636 and clonal hematopoiesis in blood—two sides of the same coin? *Leukemia* **36**:889–891.  
637 doi:10.1038/s41375-021-01456-2
- 638 Loffield E, Zhou W, Graubard BI, Yeager M, Chanock SJ, Freedman ND, Machiela MJ.  
639 2018. Predictors of mosaic chromosome Y loss and associations with mortality in the UK  
640 Biobank. *Sci Rep* **8**:12316. doi:10.1038/s41598-018-30759-1
- 641 Luque Paz D, Riou J, Verger E, Cassinat B, Chauveau A, Ianotto J-C, Dupriez B, Boyer F,  
642 Renard M, Mansier O, Murati A, Rey J, Etienne G, Mansat-De Mas V, Tavitian S, Nibourel O,  
643 Girault S, Le Bris Y, Girodon F, Ranta D, Chomel J-C, Cony-Makhoul P, Sujobert P, Robles  
644 M, Ben Abdelali R, Kosmider O, Cottin L, Roy L, Sloma I, Vacheret F, Wemeau M, Mossuz  
645 P, Slama B, Cussac V, Denis G, Walter-Petrich A, Burrioni B, Jézéquel N, Giraudier S,  
646 Lippert E, Socié G, Kiladjian J-J, Ugo V. 2021. Genomic analysis of primary and secondary  
647 myelofibrosis redefines the prognostic impact of ASXL1 mutations: a FIM study. *Blood Adv*  
648 **5**:1442–1451. doi:10.1182/bloodadvances.2020003444
- 649 Mas-Peiro S, Abplanalp WT, Rasper T, Berkowitsch A, Leistner DM, Dimmeler S, Zeiher AM.  
650 2023. Mosaic loss of Y chromosome in monocytes is associated with lower survival after  
651 transcatheter aortic valve replacement. *Eur Heart J* **44**:1943–1952.  
652 doi:10.1093/eurheartj/ehad093
- 653 Mas-Peiro S, Hoffmann J, Fichtlscherer S, Dorsheimer L, Rieger MA, Dimmeler S, Vasa-  
654 Nicotera M, Zeiher AM. 2020. Clonal haematopoiesis in patients with degenerative aortic

655 valve stenosis undergoing transcatheter aortic valve implantation. *Eur Heart J* **41**:933–939.  
656 doi:10.1093/eurheartj/ehz591

657 Mayerhofer E, Strecker C, Becker H, Georgakis MK, Uddin MM, Hoffmann MM, Nadarajah N,  
658 Meggendorfer M, Haferlach T, Rosand J, Natarajan P, Anderson CD, Harloff A, Hoermann  
659 G. 2023. Prevalence and Therapeutic Implications of Clonal Hematopoiesis of Indeterminate  
660 Potential in Young Patients With Stroke. *Stroke* **54**:938–946.  
661 doi:10.1161/STROKEAHA.122.041416

662 Pascual-Figal DA, Bayes-Genis A, Díez-Díez M, Hernández-Vicente Á, Vázquez-Andrés D,  
663 de la Barrera J, Vazquez E, Quintas A, Zuriaga MA, Asensio-López MC, Dopazo A,  
664 Sánchez-Cabo F, Fuster JJ. 2021. Clonal Hematopoiesis and Risk of Progression of  
665 Heart Failure With Reduced Left Ventricular Ejection Fraction. *J Am Coll Cardiol* **77**:1747–  
666 1759. doi:10.1016/j.jacc.2021.02.028

667 Saiki R, Momozawa Y, Nannya Y, Nakagawa MM, Ochi Y, Yoshizato T, Terao C, Kuroda Y,  
668 Shiraishi Y, Chiba K, Tanaka H, Niida A, Imoto S, Matsuda K, Morisaki T, Murakami Y,  
669 Kamatani Y, Matsuda S, Kubo M, Miyano S, Makishima H, Ogawa S. 2021. Combined  
670 landscape of single-nucleotide variants and copy number alterations in clonal hematopoiesis.  
671 *Nat Med* **27**:1239–1249. doi:10.1038/s41591-021-01411-9

672 Sano S, Horitani K, Ogawa H, Halvardson J, Chavkin NW, Wang Y, Sano M, Mattisson J,  
673 Hata A, Danielsson M, Miura-Yura E, Zaghlool A, Evans MA, Fall T, De Hoyos HN,  
674 Sundström J, Yura Y, Kour A, Arai Yohei, Theil MC, Arai Yuka, Mychaleckyj JC, Hirschi KK,  
675 Forsberg LA, Walsh K. 2022. Hematopoietic loss of Y chromosome leads to cardiac fibrosis  
676 and heart failure mortality. *Science* **377**:292–297. doi:10.1126/science.abn3100

677 Steensma DP, Bejar R, Jaiswal S, Lindsley RC, Sekeres MA, Hasserjian RP, Ebert BL. 2015.  
678 Clonal hematopoiesis of indeterminate potential and its distinction from myelodysplastic  
679 syndromes. *Blood* **126**:9–16. doi:10.1182/blood-2015-03-631747

680 van Zeventer IA, Salzbrunn JB, de Graaf AO, van der Reijden BA, Boezen HM, Vonk JM,  
681 van der Harst P, Schuringa JJ, Jansen JH, Huls G. 2021. Prevalence, predictors, and

682 outcomes of clonal hematopoiesis in individuals aged  $\geq 80$  years. *Blood Adv* **5**:2115–2122.  
683 doi:10.1182/bloodadvances.2020004062

684 Vlasschaert C, Heimlich JB, Rauh MJ, Natarajan P, Bick AG. 2023a. Interleukin-6 Receptor  
685 Polymorphism Attenuates Clonal Hematopoiesis-Mediated Coronary Artery Disease Risk  
686 Among 451 180 Individuals in the UK Biobank. *Circulation* **147**:358–360.  
687 doi:10.1161/CIRCULATIONAHA.122.062126

688 Vlasschaert C, Mack T, Heimlich JB, Niroula A, Uddin MM, Weinstock J, Sharber B, Silver  
689 AJ, Xu Y, Savona M, Gibson C, Lanktree MB, Rauh MJ, Ebert BL, Natarajan P, Jaiswal S,  
690 Bick AG. 2023b. A practical approach to curate clonal hematopoiesis of indeterminate  
691 potential in human genetic data sets. *Blood* **141**:2214–2223. doi:10.1182/blood.2022018825

692 Wang S, Hu S, Luo X, Bao X, Li J, Liu M, Lv Y, Zhao C, Zeng M, Chen X, Unsworth A, Jones  
693 S, Johnson TW, White SJ, Jia H, Yu B. 2022. Prevalence and prognostic significance of  
694 DNMT3A- and TET2- clonal haematopoiesis-driver mutations in patients presenting with ST-  
695 segment elevation myocardial infarction. *eBioMedicine* **78**:103964.  
696 doi:10.1016/j.ebiom.2022.103964

697 Wright DJ, Day FR, Kerrison ND, Zink F, Cardona A, Sulem P, Thompson DJ, Sigurjonsdottir  
698 S, Gudbjartsson DF, Helgason A, Chapman JR, Jackson SP, Langenberg C, Wareham NJ,  
699 Scott RA, Thorsteindottir U, Ong KK, Stefansson K, Perry JRB. 2017. Genetic variants  
700 associated with mosaic Y chromosome loss highlight cell cycle genes and overlap with  
701 cancer susceptibility. *Nat Genet* **49**:674–679. doi:10.1038/ng.3821

702 Zekavat SM, Viana-Huete V, Matesanz N, Jorshery SD, Zuriaga MA, Uddin MM, Trinder M,  
703 Paruchuri K, Zorita V, Ferrer-Pérez A, Amorós-Pérez M, Kunderfranco P, Carriero R, Greco  
704 CM, Aroca-Crevillen A, Hidalgo A, Damrauer SM, Ballantyne CM, Niroula A, Gibson CJ,  
705 Pirruccello J, Griffin G, Ebert BL, Libby P, Fuster V, Zhao H, Ghassemi M, Natarajan P, Bick  
706 AG, Fuster JJ, Klarin D. 2023. TP53-mediated clonal hematopoiesis confers increased risk  
707 for incident atherosclerotic disease. *Nat Cardiovasc Res* 1–15. doi:10.1038/s44161-022-  
708 00206-6

709 Zhao K, Shen X, Liu H, Lin Z, Li J, Chen S, Liu F, Huang K, Cao J, Liu X, Shen C, Yu L,  
710 Zhao Y, Zhao L, Li Y, Hu D, Huang J, Lu X, Gu D. 2024. Somatic and Germline Variants and  
711 Coronary Heart Disease in a Chinese Population. *JAMA Cardiol* **9**:233–242.  
712 doi:10.1001/jamacardio.2023.5095

713 Zhou W, Machiela MJ, Freedman ND, Rothman N, Malats N, Dagnall C, Caporaso N, Teras  
714 LT, Gaudet MM, Gapstur SM, Stevens VL, Jacobs KB, Sampson J, Albanes D, Weinstein S,  
715 Virtamo J, Berndt S, Hoover RN, Black A, Silverman D, Figueroa J, Garcia-Closas M, Real  
716 FX, Earl J, Marenne G, Rodriguez-Santiago B, Karagas M, Johnson A, Schwenn M, Wu X,  
717 Gu J, Ye Y, Hutchinson A, Tucker M, Perez-Jurado LA, Dean M, Yeager M, Chanock SJ.  
718 2016. Mosaic loss of chromosome Y is associated with common variation near TCL1A. *Nat*  
719 *Genet* **48**:563–568. doi:10.1038/ng.3545

720 Zink F, Stacey SN, Norddahl GL, Frigge ML, Magnusson OT, Jonsdottir I, Thorgeirsson TE,  
721 Sigurdsson A, Gudjonsson SA, Gudmundsson J, Jonasson JG, Tryggvadottir L, Jonsson T,  
722 Helgason A, Gylfason A, Sulem P, Rafnar T, Thorsteinsdottir U, Gudbjartsson DF, Masson  
723 G, Kong A, Stefansson K. 2017. Clonal hematopoiesis, with and without candidate driver  
724 mutations, is common in the elderly. *Blood* **130**:742–752. doi:10.1182/blood-2017-02-769869  
725

726 **Figure legends**

727

728 **Figure 1: CHIP, mLOY and their combination are as frequent in MI(+) and MI(-) subjects**

729 A: Prevalence of CHIP, mLOY and their combination in the total cohort of 449 subjects, in MI(+) as  
730 well as in MI(-) subjects. B: Mutational spectrum of CHIP expressed as the proportion of mutations  
731 detected in the indicated genes. C: VAF measured for the different mutations detected in the 449  
732 subjects detected in the indicated genes. D: Prevalence of CHIP and mLOY depending on age in the  
733 total cohort (for CHIP) and in male subjects (for mLOY).

734

735 **Figure 2: CHIP and mLOY do not increase significantly the risk of incident MI, but**  
736 **could accelerate it in male subjects.**

737 Incidence of MI during follow up according to the presence of CHIP (A) or mLOY (B) in MI(-)  
738 subjects. Incidence of MI during follow up according to the presence of CHIP (C) or the  
739 combination of CHIP and mLOY (D) in male MI(-) subjects. Survival was compared between  
740 the different groups with log-rank tests.

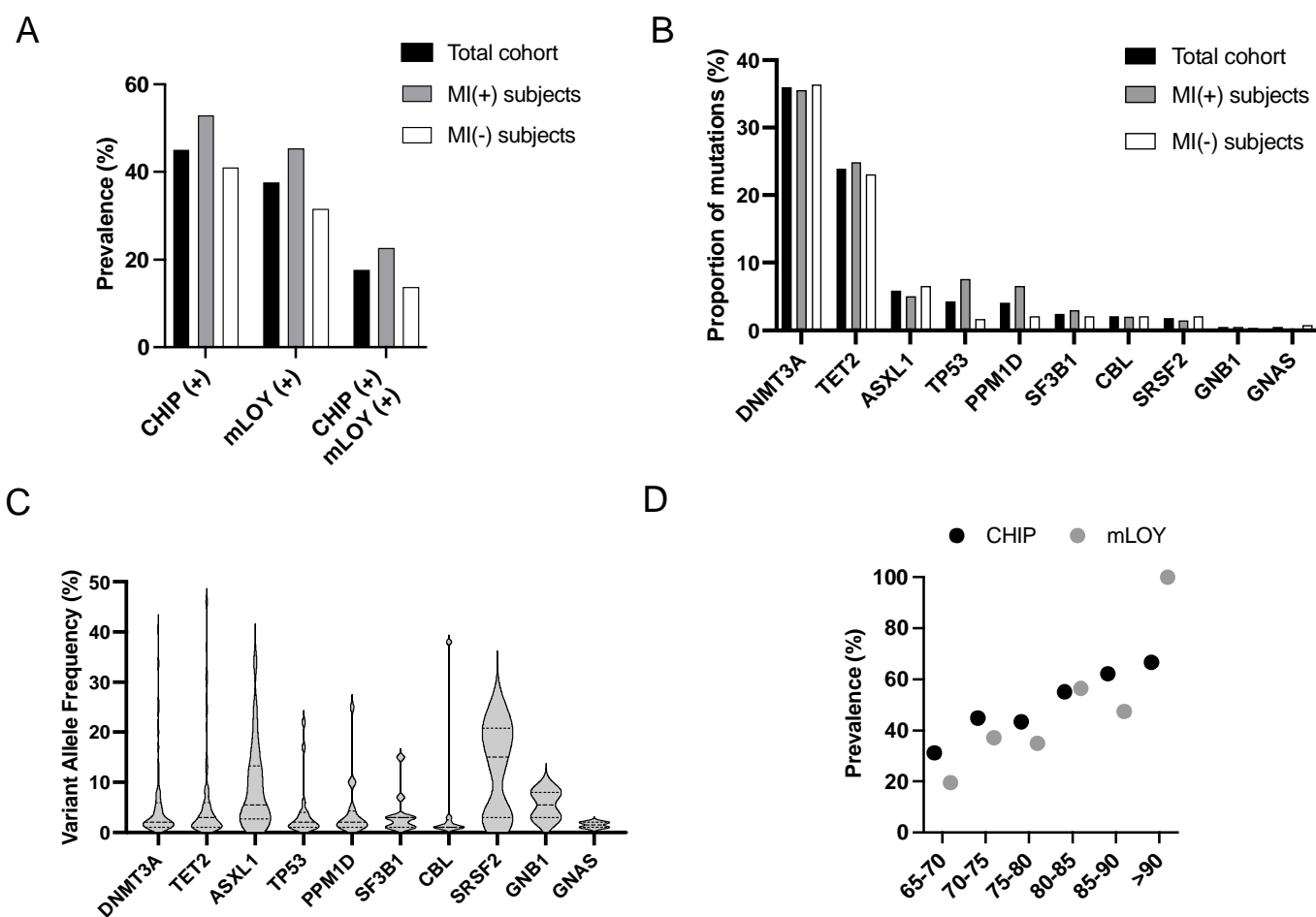


Figure 1



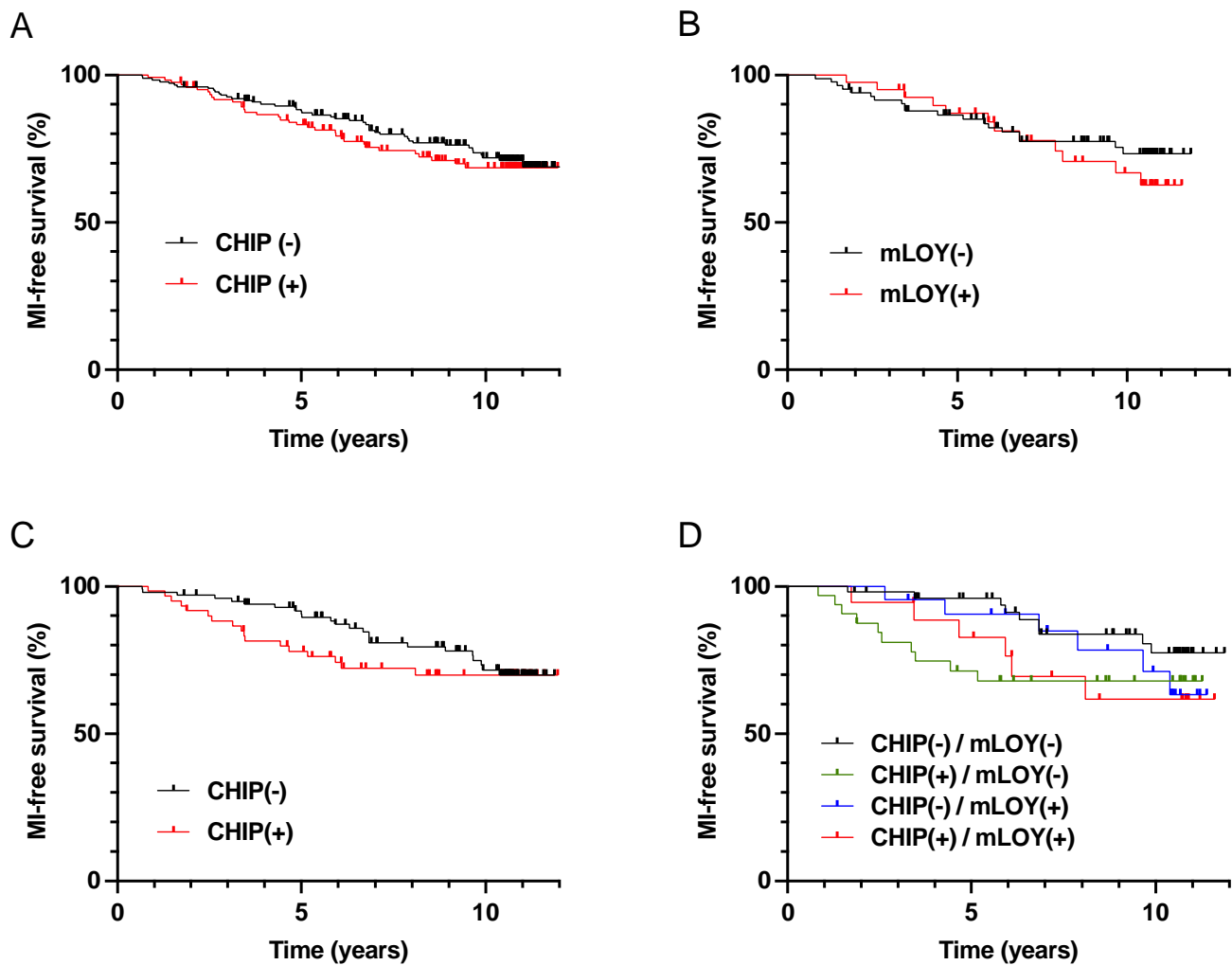


Figure 2

**Table 1: Characteristics of the population at the time of inclusion**

	All subjects n = 446	MI(+) subjects n=149	MI(-) subjects n=297	p-value
Male, n (%)	<b>257 (57.6)</b>	<b>98 (66)</b>	<b>159 (54)</b>	<b>0.015</b>
Median age, years (Q1;Q3)	<b>76.4 (71.9;80.9)</b>	<b>82.0 (78.0;86.0)</b>	<b>73.6 (70.6;77.8)</b>	<b>P &lt; 10<sup>-4</sup></b>
<b>Cardiovascular risk factors</b>				
BMI, kg/m <sup>2</sup> (Q1;Q3)	25.5 (23.6;28.3)	25.5 (23.6;28.5)	25.5 (23.6;28.1)	0.14
Diabetes, n (%)	<b>94 (21.2)</b>	<b>47 (32%)</b>	<b>47 (16%)</b>	<b>p &lt; 10<sup>-4</sup></b>
Hypertension, n (%)	<b>362 (82.8)</b>	<b>107 (76.4)</b>	<b>255 (85.9)</b>	<b>0.020</b>
Total cholesterol, g/L (Q1;Q3)	<b>2.08 (1.72;2.38)</b>	<b>1.45 (1.25;1.72)</b>	<b>2.23 (2.00;2.47)</b>	<b>p &lt; 10<sup>-4</sup></b>
LDL-c, g/L (Q1;Q3)	<b>1.25 (0.94;1.52)</b>	<b>0.77 (0.61;1.03)</b>	<b>1.39 (1.19;1.60)</b>	<b>p &lt; 10<sup>-4</sup></b>
HDL-c, g/L (Q1;Q3)	<b>0.56 (0.46;0.66)</b>	<b>0.47 (0.39;0.57)</b>	<b>0.59 (0.50;0.68)</b>	<b>p &lt; 10<sup>-4</sup></b>
Smoking, n (%)	32 (7.2)	6 (4.4)	26 (8.7)	0.117
<b>Prevalence of CHIP and mLOY</b>				
CHIP prevalence, n (%)	201 (45.1)	79 (53%)	122 (41%)	0.923
Prevalence of CHIP with VAF ≥5%	88 (19.7)	30 (20.1)	58 (19.5)	0.069
Subjects tested for mLOY, n	220	97	123	-
mLOY prevalence, n (%)	83 (37.7)	44 (45.4)	39 (31.7)	0.783
CHIP(+) / mLOY(+) prevalence, n (%)	39 (17.7)	22 (22.7)	17 (13.8)	0.797

Data are expressed as numbers and frequency or median, first and third quartiles. For quantitative values, comparisons were made by linear regression of log values adjusted for age and sex. For qualitative parameters, comparisons were made by the fisher test. For each variable, results are expressed among patients with available value.

**Table 2: CHIP and mLOY are not associated with increased hsCRP level**

	hsCRP level All subjects	p value	hsCRP level MI(+) subjects	p value	hsCRP level MI(-) subjects	p value
CHIP(-)	1.64 (1.00;3.69)	0.652	1.40 (1.00;4.00)	0.600	1.71 (0.97;3.22)	0.141
CHIP(+)	2.00 (1.00;3.90)		2.20 (1.10;5.00)		1.63 (0.91;2.54)	
mLOY(-)	1.45 (0.99;2.75)	0.156	1.8 (1.0;4.8)	0.149	1.41 (0.74;2.16)	0.358
mLOY(+)	1.73 (1.01;4.00)		2.4 (1.03;4.5)		1.2 (0.99;2.99)	
CHIP (-) mLOY (-)	1.11 (0.76;2.19)	0.410	1.00 (0.77;2.72)	0.430	1.35 (0.79;2.14)	0.570
CHIP (+) mLOY (-)	1.87 (1.00;3.03)		2.30 (1.35;7.35)		1.43 (0.72;2.37)	
CHIP (-) mLOY (+)	2.20 (1.02;4.00)		2.50 (1.30;4.00)		1.37 (0.95;3.75)	
CHIP (+) mLOY (+)	1.23 (1.01;3.80)		2.00 (1.02;4.75)		1.17 (1.03;1.73)	

hsCRP Data are expressed as median, first and third quartiles. Comparisons were performed by linear regression of log values adjusted for age and sex. hsCRP levels are expressed in mg/L For each variable, results are expressed among patients with available value.

**Table 3: CHIP and mLOY are not associated with an increased atherosclerotic burden**

Atherosclerosis burden evaluation in MI(+) subjects							
	All patients (n = 149)	CHIP (-) (n = 70)	CHIP (+) (n = 79)	p-value	mLOY (-) (n = 53)	mLOY (+) (n = 44)	p-value
Multitroncular lesions, n (%)	68 (45.6)	29 (41.4)	39 (49.4)	0.484	25 (47.2)	20 (45.4)	0.717
Carotid stenosis ≥ 50%, n (%)	7 (4.7)	2 (2.8)	5 (6.3)	0.317	2 (3.8)	3 (6.8)	0.451
Global atheroma volume (mm <sup>3</sup> ), median (Q1;Q3)	499.5 (408.0;604.5)	455.0 (374.0;555.0)	520.0 (411.5;611.5)	0.333	601.0 (412.0;718.0)	492.0 (344.5;600.5)	0.707
Atherosclerosis burden evaluation in MI(-) subjects							
	All patients (n = 297)	CHIP (-) (n = 175)	CHIP (+) (n = 122)	p-value	mLOY (-) (n = 84)	mLOY (+) (n = 39)	p-value
Patients with atherosclerotic plaque, n (%)	135 (45.4)	81 (46.3)	54 (44.3)	0.997	34 (40.5)	19 (48.7)	0.537
Number of plaque, median (Q1;Q3)	1 (1;2)	2 (1;2)	1 (1;2)	0.258	2 (1;2)	2 (1;2)	0.863
Intima Media Thickness (mm), median (Q1;Q3)	0.68 (0.60;0.76)	0.67 (0.60;0.76)	0.68 (0.59;0.74)	0.897	0.67 (0.62;0.76)	0.72 (0.57;0.83)	0.706

Data are expressed as numbers and frequency or median, first and third quartiles. For quantitative values, comparisons were made by linear regression of log values adjusted for age and sex. For qualitative parameters, comparisons were made by the fisher test and logistic regression. For each variable, results are expressed among patients with available value.