

1 **Comprehensive Evaluation of Clonal Hematopoiesis and Mosaic Loss of Y**
2 **Chromosome in Cardiovascular Risk: A Thorough Analysis in prospective studies**

3
4 Fawaz S^{1*}, MD; Marti S^{2*}, PharmD; Dufossée M^{3*} MSc; Pucheu Y¹, MD; Gaufroy A¹, MD;
5 Broitman J¹, MD ; Bidet A², PharmD, Soumaré A⁴ PhD, Munsch G⁴ PhD, Tzourio C⁴ MD PhD,
6 Debette S⁴ MD PhD, Trégouët DA⁴ PhD, James C^{2,3}, MD PhD; Mansier O^{2,3§}, PharmD PhD ;
7 Couffinhal T^{1,3§} MD PhD

8
9 ¹ CHU de Bordeaux, Service des Maladies Coronaires et Vasculaires, F-33600 Pessac,
10 France

11 ² CHU de Bordeaux, Laboratoire d'Hématologie, F-33600 Pessac, France

12 ³ Univ. Bordeaux, INSERM, Biologie des maladies cardiovasculaires, U1034, F-33600
13 Pessac, France

14 ⁴ Univ. Bordeaux, Bordeaux Population Health Research Center, INSERM, UMR_S 1219, F-
15 33076, Bordeaux, France

16 * These authors contributed equally to this work

17 § These authors contributed equally to this work

18

19 ***Short title: CHIP do not highly increase the risk of MI even when associated with***
20 ***mLOY***

21

22 ***Corresponding authors***

23 Pr Thierry Couffinhal.

24 thierry.couffinhal@inserm.fr

25 Dr Olivier Mansier.

26 olivier.mansier@inserm.fr

27 Inserm U1034 -1, avenue de Magellan, Hôpital Haut Lévêque - 33604 Pessac - France

28 ***Total word count: 4192***

30 **Abstract**

31 **Background:** Clonal hematopoiesis of indeterminate potential (CHIP) was initially linked to a
32 twofold increase in atherothrombotic events. However, recent investigations have revealed a
33 more nuanced picture, suggesting that CHIP may confer only a modest rise in Myocardial
34 Infarction (MI) risk. This observed lower risk might be influenced by yet unidentified factors
35 that modulate the pathological effects of CHIP. Mosaic loss of Y chromosome (mLOY), a
36 common marker of clonal hematopoiesis in men, has emerged as a potential candidate for
37 modulating cardiovascular risk associated with CHIP. In this comprehensive study, we aimed
38 to ascertain the precise risk linked to each somatic mutation or mLOY and explore whether
39 mLOY could exert an influence on the cardiovascular risk associated with CHIP.

40 **Methods:** We conducted a meticulous examination for the presence of CHIP and mLOY
41 using targeted high-throughput sequencing and digital PCR in a cohort of 446 individuals.
42 Among them, 149 patients from the CHAth study had experienced a first myocardial
43 infarction (MI) at the time of inclusion (MI(+) subjects), while 297 individuals from the 3-city
44 cohort had no history of cardiovascular events (CVE) at the time of inclusion (MI(-) subjects).
45 All subjects underwent thorough cardiovascular phenotyping, including a direct assessment
46 of atherosclerotic burden. Our investigation aimed to determine whether mLOY could
47 modulate inflammation, atherosclerosis burden, and atherothrombotic risk associated with
48 CHIP.

49 **Results:** CHIP and mLOY were detected with a substantial prevalence (45.1% and 37.7%,
50 respectively), and their occurrence was similar between MI(+) and MI(-) subjects. Notably,
51 nearly 40% of CHIP(+) male subjects also exhibited mLOY. Interestingly, neither CHIP nor
52 mLOY independently resulted in significant increases in plasma hsCRP levels,
53 atherosclerotic burden, or MI incidence. Moreover, mLOY did not amplify or diminish
54 inflammation, atherosclerosis, or MI incidence among CHIP(+) male subjects. Conversely, in

55 MI(-) male subjects, CHIP heightened the risk of MI over a five-year period, particularly in
56 those lacking mLOY.

57 **Conclusion:** Our study highlights the high prevalence of CHIP and mLOY in elderly
58 individuals. Importantly, our results demonstrate that neither CHIP nor mLOY in isolation
59 substantially contribute to inflammation, atherosclerosis, or MI incidence. Furthermore, we
60 find that mLOY does not exert a significant influence on the modulation of inflammation,
61 atherosclerosis burden, or atherothrombotic risk associated with CHIP. However, CHIP may
62 accelerate the occurrence of MI, especially when unaccompanied by mLOY. These findings
63 underscore the complexity of the interplay between CHIP, mLOY, and cardiovascular risk,
64 suggesting that large-scale studies with thousands more patients may be necessary to
65 elucidate subtle correlations.

66
67 **Keywords:** Clonal hematopoiesis of indeterminate potential (CHIP); Mosaic loss of Y
68 chromosome; myocardial infarction; inflammation; atheromatous burden.

69
70 ***Author approval***

71 All authors have seen and approved the manuscript.

72 ***Disclosures***

73 The authors report no conflict of interest.

74 ***Sources of Funding***

75 This study was supported by the Fondation Cœur & Recherche (the Société Française
76 de Cardiologie), the Fédération Française de Cardiologie, ERA-CVD (« CHEMICAL »
77 consortium, JTC 2019) and the Fondation Université de Bordeaux. The laboratory of
78 Hematology of the University Hospital of Bordeaux benefitted of a convention with the
79 Nouvelle Aquitaine Region (2018-1R30113-8473520) for the acquisition of the Nextseq
80 550Dx sequencer used in this study.

81 **Registration:** URL: <https://clinicaltrials.gov>; Unique identifier: NCT04581057.

83 **Introduction**

84 Atherothrombosis is the main cause of death worldwide. Traditional cardiovascular risk
85 factors (CVRF), such as diabetes, smoking, dyslipidemia, hypertension, explain 70 to 75% of
86 cardiovascular events suffered by patients. However, a significant part of these events
87 remains unexplained given that 25 to 30% of people without any evident cause can present
88 an atherosclerotic cardiovascular event (CVE), whereas not all high-risk subjects (according
89 to traditional CVFR) experience such an event.¹

90 Recently, clonal hematopoiesis of indeterminate potential (CHIP) has emerged as a potential
91 new risk factor of cardiovascular diseases.² This condition results from the acquisition by a
92 hematopoietic stem cell of somatic mutations in leukemia-driver genes, leading to clonal
93 expansion of a population of hematopoietic cells without any clinical or biological sign of
94 hematological malignancy. The definition of CHIP proposed to date, requires the detection of
95 the mutation at a variant allele frequency (VAF) of more than 2%, representing a proportion
96 of mutated cells of more than 4%.³ The most commonly mutated genes in CHIP are *DNA*
97 *Methyltransferase 3A (DNMT3A)* and *Ten Eleven Translocation 2 (TET2)*. In 2014, Jaiswal *et*
98 *al* showed that CHIP was associated with a decreased survival mainly because of an
99 increased atherothrombotic mortality. In particular, they observed a 2.0 fold-increased risk of
100 myocardial infarction (MI) and a 2.6-fold increased risk of ischemic stroke.² In 2017, these
101 data were confirmed, showing a 1.9-fold increased risk of coronary heart disease in the
102 presence of CHIP, independently of traditional CVRF.⁴ At the same time, a causative role of
103 CHIP in inducing atherosclerosis has been demonstrated in animal models through the
104 induction of a proinflammatory state.^{4,5} More recently, Kessler *et al* showed in 454 803
105 subjects from the UK Biobank that the association of CHIP with atherothrombotic events was
106 restricted to high VAF clones (*ie* $\geq 10\%$) with a much lower risk than initially demonstrated
107 (HR=1.11).⁶ But even with these criteria, no association between CHIP and atherothrombotic
108 events was found in a validation cohort of 173 585 subjects,⁶ which has also been suggested
109 in another work studying several hundred thousand subjects.⁷ Thus, the impact of CHIP on
110 atherothrombosis in humans is not totally evident, possibly because of the existence of yet

111 unidentified modulating factors that could potentiate or counteract the effect of CHIP. For
112 example, the p.Asp358Ala variant of the IL6 receptor gene has been shown to decrease the
113 atherothrombotic risk associated with CHIP.^{8,9} However, the impact other genetic variants on
114 the cardiovascular risk associated with CHIP remains unknown.

115 Gain or loss of chromosomes in hematopoietic cells appears to be as frequent as the
116 acquisition of somatic mutations during aging.¹⁰ In particular, mosaic loss of chromosome Y
117 (mLOY) has been shown to be frequent in male subjects without evidence of hematological
118 malignancy.^{11,12} mLOY was associated with cardiovascular diseases,^{13,14} and can be
119 detected in a rather high proportion of subjects with CHIP.^{15,16} Finally, while *TET2* mutations
120 promote inflammation and atherosclerosis in mouse models,⁴ mLOY was shown to switch
121 macrophages from a pro-inflammatory to a pro-fibrotic phenotype.¹⁴ Thus, because of their
122 opposite effect on macrophages phenotype, mLOY could balance the effect of CHIP
123 regarding the induction of inflammation and thus decrease the development of
124 atherosclerosis and the resulting atherothrombotic risk. We thus hypothesized that mLOY
125 could modulate the effect of CHIP in inducing inflammation, atherosclerosis and triggering
126 atherothrombotic events.

127 In this study, we used sensitive technics to determine the prevalence of both CHIP and
128 mLOY in 2 cohorts of subjects. We sought to determine whether CHIP and mLOY
129 significantly increase the cardiovascular risk separately. We also searched to determine in
130 humans whether mLOY could impact the effect of CHIP on inflammation, atherosclerosis
131 burden or atherothrombotic risk.

132

133 **Methods**

134 **Patients**

135 For this study, we recruited 446 patients: 149 with a first MI and 297 without a MI or other
136 CVE at inclusion. The 149 subjects with a MI were enrolled in the CHAth study between
137 March 2019 and October 2021 (MI(+) subjects). The main eligibility criterion was suffering
138 from a first MI of atherosclerosis origin after 75 years of age without evidence of
139 hematological malignancy (Supplementary Figure S1). They were included between 4+/-2
140 months after the acute event, in order to assess their basal inflammatory state. In the
141 presence of any clinical sign or factor associated with inflammation, the appointment was
142 reported in order not to skew biological and genetic data. Additionally, we ensured that the
143 subjects had not been vaccinated against SARS-Cov2 within 15 days of enrollment. The
144 study was approved by the institutional review board (IRDCB 2019-A02902-05), and
145 registered (<https://www.clinicaltrials.gov>: NCT04581057). All participants gave written
146 informed consent before inclusion in the study. Eligibility and exclusion criteria are more
147 detailed in the Supplementary Methods.

148 As a control cohort, we selected subjects without any history of CVE at inclusion in the 3-city
149 (3C) study cohort (MI(-) subjects, Supplementary Figure S1).¹⁷ The 3C study is a prospective
150 study that enrolled 9294 subjects of 65 years or more who were selected upon electoral lists.
151 These subjects were followed for several years (up to 12 years) to detect the development of
152 dementia from a vascular origin. As such, they benefitted from a stringent cardiovascular
153 follow-up, with adjudication of all cardiovascular events (in particular occurrence of MI).
154 Among these subjects, we selected the 297 subjects who did not present any CVE before
155 inclusion. Seventy-nine of them presented a MI during follow-up. The remaining 218 subjects
156 had no atherothrombotic event during follow up, and were matched on age, sex and CVRF
157 with those who had a MI during follow up (Supplementary Figure S1).

158

159 **Clinical and biological parameters measured at inclusion**

160 In MI(+) subjects, a routine cardiovascular evaluation was performed at inclusion (between 2
161 and 7 month after MI occurrence). Subjects were asked about presence of dyspnea or
162 angina, evaluated with NYHA and CCS scales. Information was obtained from medical
163 records about a potential recurrence of a cardiovascular event since the index event (new
164 MI, coronary revascularization, stroke, hospitalization for acute heart failure). Traditional
165 cardiovascular risk factors were noted. Routine biological analyses comprising blood count,
166 high-sensitive CRP (hsCRP), lipid profile, HbA1c were performed in the laboratory of the
167 university hospital of Bordeaux on fresh samples.

168 For MI(-) subjects, data available at inclusion included hsCRP level, lipid profile and
169 traditional CVRF. No blood count was available but none of the subjects developed cancer
170 (including hematological malignancy) during follow-up suggesting that detectable somatic
171 mutations were indicative of CHIP and not hematological malignancy.

172

173 **Measurement of atherosclerosis burden**

174 For MI(+) subjects, a transthoracic echocardiography was performed at inclusion by trained
175 cardiologists and ejection fraction calculated. Supra-aortic trunks ultrasonography with 3D-
176 measurement of atherosclerotic volume was performed by trained physicians, using a
177 Philips iU22 probe equipped with a linear-3D volume convertor VL13-5 (Philips). Images
178 were analyzed using the Vascular Plaque Quantification software on the QLAB 10.2 system
179 (Philips). Carotid stenosis quantification was done with NASCET criteria. Functional ischemic
180 testing was performed at the clinicians' discretion. For MI(-) subjects, atherosclerosis burden
181 was assessed at the inclusion by ultrasound echography recording detection of
182 atherosclerotic plaques, atherosclerotic plaque numbers and intima-media thickness.

183

184 **Follow up of subjects**

185 For MI(+) subjects, the follow-up was conducted with a standardized questionnaire
186 previously validated in clinical trials.¹⁸ Recurrence of MI as well as any significant
187 cardiovascular event (cardiovascular death, acute coronary syndrome, stroke or transient

188 ischemic attack, congestive heart failure, secondary coronary revascularization, or peripheral
189 vascular surgery) occurring between the initial event and the year after inclusion in the study
190 were recorded. All medical records of participants who died, or who reported on the
191 questionnaire that they had experienced cardiovascular symptoms between baseline and
192 follow-up evaluations, were reviewed by one of the investigators, and the patient practitioners
193 were contacted. For MI(-) subjects, a follow up was performed for up to 12 years. All
194 cardiovascular events were recorded (including MI) with adjudication upon medical records
195 by an expert committee (Figure 1).

196

197 **Search for somatic mutations and mosaic loss of chromosome Y**

198 For both MI(+) and MI(-) subjects, DNA was extracted from total leukocytes obtained at
199 inclusion. The search for somatic mutations was carried out by the Laboratory of Hematology
200 of the University Hospital of Bordeaux using the Next Generation Sequencing (NGS) panel
201 designed for the diagnosis and follow-up of myeloid hematological malignancies. The genes
202 tested are detailed in Supplementary Table S1.

203

204 Briefly, target sequences were captured using the SureSelect technology (Agilent).
205 Sequencing was performed on a NextSeq 550Dx Instrument (Illumina technology) and
206 analyzed using an in-house bioinformatics pipeline (see Supplementary Methods for more
207 details). Variants interpretation was performed independently by two biologists according to
208 criteria previously described¹⁹ and reported in Supplementary Table S2. According to the
209 definition of CHIP, only mutations with a VAF \geq 2% were retained.

210

211 The search of mLOY was performed thanks to an in-house droplet digital PCR technic using
212 the following primers and probes:

- 213 - Primer-amel-Fwd : 5'- CCCCTGGGCACTGTAAAGAAT
- 214 - Primer-amel-Rev: 5'- CCAAGCATCAGAGCTTAAACTG
- 215 - Probe-amelX : 5'- HEX-CCAAATAAAGTGGTTTCTCAAGT-BHQ

216 - Probe-ameLY: 5'- FAM-CTTGAGAAACATCTGGGATAAAG-BHQ.

217 Briefly, 75 ng of DNA was mixed with ddPCR supermix for Probes (no dUTP, Biorad),
218 primers (0.9µM each) and probes (0.25µM each). The emulsion was prepared with the QX-
219 100 (Biorad). The amplification program was as follows: 10-minutes denaturation at 95°C,
220 followed by 40 cycles of 30 seconds at 94°C, 1 minute at 55°C, and inactivation of 10
221 minutes at 98°C. The number of droplets positive for amelX and amelY was determined on
222 the QX-200 droplet reader (Biorad) using the QuantaSoft software version 1.5 (Biorad). At
223 least 10,000 droplets were analyzed in each well. A cut off of 9% of cells with mLOY defined
224 the detection of a mLOY based on the study of 30 men of less than 40 years who had a
225 normal karyotype as assessed by conventional cytogenetic study.

226

227 **Statistical analyses**

228 Univariate association analyses were conducted using Fisher exact or Chi-square test
229 statistics for categorical variables. Analysis of variance was used for quantitative variables.
230 Multivariate association analyses were performed using logistic or linear regression models
231 as appropriate. Analyses were adjusted for age and sex (CHIP) or for age only (mLOY). We
232 used raw values for all quantitative variables as they presented a normal distribution, except
233 for CRP levels for which we analyzed log(CRP). Log-rank test statistics were employed to
234 assess the association of clinical/biological variables with the incidence of future
235 cardiovascular events.

236 All analyses were conducted using either the RStudio software (Posit team (2023). RStudio:
237 Integrated Development Environment for R. Posit Software, PBC, Boston, MA. URL
238 <http://www.posit.co/>.) or the PRISM software (GraphPad Prism version 9.5.1).

239

240 **Results**

241 **Patient's characteristics**

242 In this study, we aimed to decipher whether mLOY could alter the effect of CHIP in
243 inducing a chronic inflammation that would favor the development of atherosclerosis and the
244 incidence of atherothrombotic events. To answer this question, we analyzed 446 subjects
245 from 2 prospective studies, 149 who presented a MI at inclusion and 297 who did not present
246 any CVE before inclusion. The general characteristics of the 446 combined subjects are
247 detailed in Table 1. Briefly, the median age was 76.4 years and 257 (57.6%) were males.
248 Forty percent of them presented more than 2 CVRF. MI(+) subjects were older (due to the
249 inclusion criteria), more frequently men, and presented a lower cardiovascular risk than MI(-)
250 subjects (due to the initiation of treatment between the initial event and the inclusion).

251

252 **CHIP and mLOY are detected as frequently in MI(+) and MI(-) subjects**

253 Among the 446 subjects, at least one mutation with a VAF \geq 2% was detected in 201
254 persons (45.1%), defining CHIP(+) subjects (Table 1, Figure 1A). As previously described,
255 *DNMT3A* and *TET2* were the 2 most frequently mutated genes. The other mutated genes
256 were those previously described in CHIP (Figure 1B)^{2,4,16} and the median VAF was 2%
257 (Figure 1C). The mutational profile of CHIP(+) subjects is available in the Supplementary
258 Tables S3 and S4 while the characteristics of CHIP(+) compared with CHIP(-) subjects are
259 detailed in the Supplementary Tables S5 and S6. In this study, we considered subjects
260 without any detectable mutation or with only mutations with a VAF below 2% as non-CHIP
261 carriers (CHIP(-) subjects).

262 A mLOY was present in 83 (37.7%) male subjects (mLOY(+) subjects, Table 1,
263 Figure 1A). The clinico-biological characteristics of mLOY(+) subjects compared with mLOY(-
264) subjects are detailed in the Supplementary Tables S5 and S6. The median proportion of
265 cells with mLOY was 18% [12%;32%]. There was no significant association between CHIP
266 and mLOY since 39 CHIP(+) subjects (39.8%) also carried a mLOY compared with 44
267 CHIP(-) subjects (36.1%, p=0.579). Finally, as previously demonstrated, CHIP(+) subjects

268 were significantly older than CHIP(-) subjects (Supplementary Tables S5 and S6). We also
269 observed an increasing prevalence of both CHIP and mLOY with age (Figure 1D).

270 We observed a similar frequency of CHIP and mLOY in MI(+) and MI(-) subjects
271 (Figure 1A, Table 1). Besides, the association of CHIP with mLOY was as frequent in MI(+)
272 and MI(-) subjects (22.7% and 13.8%, $p=0.797$). Of note, MI(+) and MI(-) subjects presented
273 similar proportions of mutated genes (Figure 1B) and VAF (Supplementary Figure 2). Similar
274 results were also observed when considering CHIP associated with important clones (*i.e.*
275 $VAF \geq 5\%$, Table 1). or when analyzing only *DNMT3A* and *TET2* mutations (data not shown).

276 Altogether, these results suggest that CHIP and mLOY are very frequent but not
277 associated with the existence of a history of MI, even when mLOY is associated with CHIP.

278

279 **Neither CHIP, mLOY, nor their combination highly increase basal inflammation or**
280 **atherosclerotic burden**

281 It was demonstrated that *TET2* mutations were associated with the induction of a pro-
282 inflammatory phenotype of macrophages.⁵ On the contrary, mLOY was shown to decrease
283 the inflammatory phenotype of macrophages.¹⁴ Therefore, we searched to determine
284 whether mLOY could counter the inflammatory state that would be associated with CHIP. In
285 the total cohort, CHIP(+) and CHIP(-) subjects presented similar levels of hsCRP, as did
286 mLOY(+) and mLOY(-) subjects (Table 2). Similarly, hsCRP levels were not different in
287 CHIP(-)/mLOY(-), CHIP(+)/mLOY(-), CHIP(-)/mLOY(+) and CHIP(+)/mLOY(+) subjects. The
288 impact of CHIP and mLOY on hsCRP levels, either alone or in combination, was comparable
289 in MI(+) or MI(-) subjects (Table 2).—This was also true when restricting the analysis to
290 *DNMT3A* and *TET2* mutated CHIP(+) subjects (Supplementary Table S7). Finally, subjects
291 with important CHIP or mLOY clones did not present higher levels of hsCRP (Supplementary
292 Table S8).

293 Very few data are available about atheroma burden associated with CHIP and/or
294 mLOY in humans. Moreover, the modulation of the atherogenic effect of CHIP by mLOY
295 remains unexplored. We thus asked whether CHIP alone or in association with mLOY was

296 associated with an increased atherosclerotic burden. In MI(+) subjects we observed a similar
297 proportion of multitruncular coronary lesions and carotid stenosis >50% in CHIP(+) and
298 CHIP(-) subjects (Table 3). The global atheroma volume was explored by 3D ultrasound in
299 34 MI(+) patients, without difference between CHIP(+) and CHIP(-) subjects. Similar results
300 were obtained when analyzing only CHIP(+) subjects carrying *TET2* and/or *DNMT3A*
301 mutations (Supplementary Table S7), when comparing mLOY(+) and mLOY(-) subjects
302 (Table 3), or when analyzing the association of CHIP with mLOY (Supplementary Table S9).
303 Concordantly, in MI(-) subjects, all available atherosclerosis markers were similar between
304 CHIP(+) and CHIP(-), as well as between mLOY(+) and mLOY(-) subjects (Table 3). This
305 was also true when analyzing the effect of the different combinations of CHIP and mLOY
306 (Supplementary Table S9). Once again, all these results were confirmed in subjects with a
307 VAF $\geq 5\%$ for CHIP or a mLOY $\geq 50\%$ (Supplementary Table S8).

308 Altogether, our results suggest that both in the context of a recent MI and in healthy
309 individuals, CHIP were not associated with a systemic inflammation or an increased
310 atherosclerotic burden. mLOY do not modulate inflammatory parameters or atherosclerosis,
311 even in the presence of CHIP.

312

313 **Neither CHIP, mLOY, nor their combination highly impact the incidence of MI.**

314 To decipher whether mLOY could impact the atherothrombotic risk associated with
315 CHIP, we analyzed the incidence of MI during the follow-up of MI(-) subjects. Seventy-nine
316 subjects developed a MI after inclusion in the study with a median delay of 5.00 years.
317 Subjects with MI during follow-up did not differ significantly from those without MI in terms of
318 demography or cardiovascular risk (Supplementary Table S10). CHIP, mLOY and their
319 association were not significantly associated with an increased incidence of MI (Figure 2A-B,
320 Supplementary Table S11). Concordantly, we did not observe any difference in the
321 prevalence of CHIP, mLOY or their association between MI(-) subjects who suffered from a
322 MI during follow up and those who did not (Supplementary Table S10). This was also the
323 case when restricting the analysis to CHIP with a VAF $\geq 5\%$, a proportion of cells with mLOY

324 $\geq 50\%$ or to CHIP associated with *DNMT3A* or *TET2* mutations (Supplementary Figure S3A-
325 S3B, Supplementary Table S10). These results suggest that the atherothrombotic risk
326 associated with CHIP is moderate, and is not modulated by its association with mLOY.
327 Moreover, neither CHIP, mLOY nor their combination were significantly associated with
328 atherothrombotic recurrence (Supplementary Table S11).

329

330 **CHIP in the absence of mLOY may accelerate the occurrence of MI**

331 In order to search for a combined effect of CHIP with mLOY on the risk of incidence
332 of MI, we finally focused our analysis on MI(-) male subjects. In this population, we observed
333 that MI occurred earlier in CHIP(+) subjects, with a significant increased 5-year incidence of
334 MI (log-rank test, $p=0.0142$, Figure 2C). Such an effect was not observed in MI(-) female
335 subjects (log-rank test, $p=0.9402$, Supplementary Figure S3C). Interestingly, this effect was
336 more pronounced in CHIP(+)/mLOY(-) subjects who presented a significantly higher 5-year
337 incidence of MI (log-rank test, $p=0.0104$, Figure 2D) and a significantly lower median time to
338 MI compared with other subjects (Kruskall-Wallis test, $p=0.007$). Altogether, our results
339 suggest that CHIP do not increase the risk of MI, but may accelerate its incidence,
340 particularly in the absence of mLOY.

341

342 **Discussion**

343 Clonal hematopoiesis of indeterminate potential (CHIP) has previously been implicated in
344 decreased overall survival, primarily due to its association with an increased incidence of
345 cardiovascular diseases such as coronary artery disease (CAD) and stroke.^{2,4} Experimental
346 models have suggested that this association may arise from the pro-inflammatory phenotype
347 of mutated monocytes/macrophages, contributing to the development of atherosclerotic
348 plaques.^{4,5} However, recent findings in the literature have presented a complex and
349 sometimes contradictory picture. Studies have reported varying results regarding the
350 relationship between CHIP, inflammation markers, and atherothrombotic events, challenging
351 the initial notion of a high atherothrombotic risk associated with CHIP.^{6,7,9,20,21} Moreover,
352 there has been a scarcity of evidence linking CHIP to an increased burden of atherosclerosis
353 in human subjects.^{4,22} Additionally, limited data are available on the potential impact of
354 chromosomal abnormalities, particularly mosaic loss of the Y chromosome (mLOY), on
355 atherothrombosis in individuals with CHIP. In this study, we sought to investigate whether
356 mLOY could modulate the effects of CHIP concerning systemic inflammation, atherosclerotic
357 burden, and the risk of atherothrombotic events. To achieve this, we employed sensitive
358 techniques, including targeted high-throughput sequencing and digital PCR, to analyze
359 samples from two cohorts of meticulously phenotyped subjects.

360 In contrast to many previous studies, we conducted a comprehensive analysis involving two
361 distinct cohorts. The "cases" were individuals recruited from the CHAth study within 2 to 7
362 months following their first myocardial infarction (MI) after the age of 75. We also established
363 a "control cohort" comprising 297 subjects from the 3-city cohort, none of whom had
364 experienced CVE before inclusion. This allowed us to assess the effects of CHIP and mLOY
365 on inflammation and atherosclerosis independently of pre-existing cardiovascular disease.

366 Our analysis revealed a remarkably high frequency of CHIP, with an estimated prevalence of
367 45% among our 446 subjects, with a median age of 76.4 years. This prevalence exceeded

368 initial reports of 15-20% determined by whole exome sequencing (WES) in individuals aged
369 70-80,^{2,23} likely attributable to the enhanced sensitivity of our sequencing technique.
370 Importantly, our estimated prevalence aligns with studies employing similarly sensitive high-
371 throughput sequencing techniques.²⁴⁻²⁷ Furthermore, our approach allowed us to reliably
372 detect mutations with a variant allele frequency (VAF) as low as 1%. We chose to define
373 subjects with detectable mutations at a VAF of 1% as CHIP(-), aligning with the WHO
374 definition of CHIP.²⁸ Notably, all our analyses also yielded identical results when comparing
375 CHIP(+) patients to subjects without detectable mutations.

376 A recent study by Mas-Peiro et al. demonstrated an association between mLOY and
377 increased post-transcatheter aortic valve replacement (TAVR) mortality.²⁹ In their
378 investigation, a mLOY ratio threshold of 17% was deemed the most relevant for
379 discriminating patients' mortality risk. In our study, we employed a mLOY threshold of 9% to
380 identify mLOY, a value determined through DNA samples from patients for whom the
381 absence of mLOY had been definitively established through conventional cytogenetic
382 analysis and an age below 40 years. Using this threshold, we frequently detected mLOY in
383 male subjects within our cohort, with an estimated prevalence of 37.7% among 220 subjects.
384 This prevalence surpasses that reported by Forsberg et al.³⁰ but aligns with recent findings
385 from studies employing sensitive techniques.¹⁶

386 Surprisingly, our cohort did not reveal any significant association between the presence of
387 CHIP and the detection of mLOY. This contrasts with the results of two recent studies,^{15,16}
388 possibly explained by the heightened sensitivity of our methodology in reliably detecting both
389 somatic mutations and mLOY, which may exist in very small proportions of blood cells.

390 Mouse models of CHIP have recently suggested that somatic mutations are linked to a pro-
391 inflammatory phenotype of mutated monocytes/macrophages, an observation supported by
392 human samples using single-cell RNA sequencing.³¹ However, contradictory results have
393 emerged when examining plasmatic markers of inflammation. Studies, including ours, have

394 not consistently identified a significant increase in plasma hsCRP or proinflammatory
395 cytokines in CHIP carriers,^{25,32} whereas others have reported such associations.^{20,21}
396 Importantly, our study did not observe any significant association between the detection of
397 CHIP(+/-)mLOY and plasma levels of IL1 β and IL6 in MI(+) subjects, suggesting that CHIP's
398 association with increased systemic inflammation may depend on specific stimulating factors.
399 Notably, recent studies have reported elevated levels of plasma inflammatory markers in
400 CHIP carriers during atherothrombotic events, such as MI or stroke,³³⁻³⁵ indicating that CHIP
401 may amplify systemic inflammation under specific conditions, but not necessarily in a basal
402 state, as in our study.

403 To date, only a limited number of studies have successfully linked the presence of CHIP to
404 an increased atherosclerotic burden. While Jaiswal *et al.* reported a higher calcic score in
405 subjects with CHIP⁴, and Zekavat *et al.* suggested an increased atherosclerosis,²² these
406 evaluations relied on self-reported atheroma and indirect parameters. Our study stands as
407 the first to utilize direct markers of atherosclerosis, including global atheroma volume, in
408 CHIP(+) subjects within the context of coronary artery disease. Strikingly, we did not detect a
409 clear increase in atherosclerosis among CHIP or mLOY carriers, either individually or in
410 combination. Conversely, increased atherosclerotic burden associated with CHIP has been
411 observed in patients with stroke.³⁶

412 Our cohort comprising 449 subjects was unable to establish a direct association between
413 CHIP, either alone or in conjunction with mLOY, and coronary heart disease. These results
414 align with previous studies that reported either no difference in CHIP prevalence between
415 individuals with MI and those without,²¹ or no significant association between CHIP and
416 incident de novo or recurrent atherothrombotic events.^{7,34,37} Recently, Kessler *et al.* proposed
417 that the increased risk of atherothrombotic events might be limited to CHIP with a VAF of
418 10% or higher.⁶ However, even when considering this criterion, the association was not
419 validated in a cohort of 173,585 subjects. Notably, at the time of our study's initiation, the

420 literature suggested an increased MI risk associated with CHIP, with a hazard ratio of 1.9-
421 2.0. Based on this data, a cohort of 112 cases would have been sufficient to demonstrate a
422 more frequent detection of CHIP in MI(+) patients compared to MI(-) subjects with a power of
423 0.90. This underscores the formidable challenges of identifying associations with low effect
424 sizes, necessitating cohorts comprising hundreds of thousands of subjects to achieve
425 statistical significance. Regarding specific mutations in *DNMT3A*, *TET2* or other genes, our
426 study did not reveal differing effects on inflammation, atherosclerosis, or MI incidence.
427 Collectively, these findings suggest that any atherothrombotic risk associated with CHIP is
428 limited in scope.

429 In conclusion, our study does not provide substantive evidence supporting a significant
430 association between CHIP and substantial systemic inflammation, a pronounced increase in
431 atherosclerotic burden, or a markedly elevated atherothrombotic risk. Additionally, mLOY did
432 not appear to significantly modulate inflammation or atherosclerosis in the presence of CHIP.
433 However, our data suggests that CHIP might expedite the onset of MI, particularly in the
434 absence of mLOY. These findings warrant further investigation in larger subject cohorts.

435 While our study bears some limitations, including a relatively modest sample size of 449
436 subjects and recruitment of subjects within 2 to 7 months post-MI, it possesses strengths.
437 Notably, we employed highly sensitive techniques for the reliable detection of both CHIP and
438 mLOY, surpassing the capabilities of large cohort studies relying on whole exome
439 sequencing and SNP arrays. Furthermore, we meticulously assessed atherosclerotic burden
440 using sensitive parameters and conducted a thorough evaluation of two cohorts—one
441 comprising MI(+) subjects and the other MI(-) subjects—with precise cardiovascular
442 phenotyping at inclusion and rigorous follow-up, including direct evaluation and adjudication
443 of all CVE.

444 In summary, our findings provide a nuanced perspective on the relationship between CHIP,
445 mLOY, and cardiovascular outcomes, highlighting the need for larger, more comprehensive
446 studies to elucidate potential associations further.

447

448 **Acknowledgements**

449 The authors would like to thank the CRB-K of the University Hospital of Bordeaux for
450 processing of the samples and Coralie Foucault and the Agilent Society for their partnership
451 in supplying NGS reactive. We also thank Marina Migeon, Joël Decombe and Candice
452 Falourd for their technical help, as well as Christel Duprat and Matthieu Meilhan for
453 operational organization of the project.

454

455 **Authorship**

456 TC, OM and CJ designed the study. SF, YP, TC, AG and JB enrolled the subjects in the
457 CHAth study and performed all cardiovascular evaluation. AS, CT and SD set up the 3 City
458 Study Cohort. AB, SM, OM analyzed the NGS data. MD and DAT realized the statistical
459 analysis. SF, SM, MD, DAT, CJ, OM and TC wrote the paper. All authors read and agreed to
460 the final version of the manuscript.

461

462 **References**

- 463 1. Berry JD, Ning H, Horn LV, Lloyd-Jones DM. Lifetime Risks of Cardiovascular
464 Disease. *N Engl J Med* 2012;9.
- 465 2. Jaiswal S, Fontanillas P, Flannick J, Manning A, Grauman PV, Mar BG, Lindsley RC,
466 Mermel CH, Burt N, Chavez A, Higgins JM, Moltchanov V, Kuo FC, Kluk MJ, Henderson B,
467 Kinnunen L, Koistinen HA, Ladenvall C, Getz G, Correa A, Banahan BF, Gabriel S,
468 Kathiresan S, Stringham HM, McCarthy MI, Boehnke M, Tuomilehto J, Haiman C, Groop L,
469 Atzmon G, Wilson JG, Neuberg D, Altshuler D, Ebert BL. Age-Related Clonal Hematopoiesis
470 Associated with Adverse Outcomes. *N Engl J Med* 2014;**371**:2488–2498.
- 471 3. Steensma DP, Bejar R, Jaiswal S, Lindsley RC, Sekeres MA, Hasserjian RP, Ebert
472 BL. Clonal hematopoiesis of indeterminate potential and its distinction from myelodysplastic
473 syndromes. *Blood* 2015;**126**:9–16.
- 474 4. Jaiswal S, Natarajan P, Silver AJ, Gibson CJ, Bick AG, Shvartz E, McConkey M,
475 Gupta N, Gabriel S, Ardissino D, Baber U, Mehran R, Fuster V, Danesh J, Frossard P,
476 Saleheen D, Melander O, Sukhova GK, Neuberg D, Libby P, Kathiresan S, Ebert BL. Clonal
477 Hematopoiesis and Risk of Atherosclerotic Cardiovascular Disease. *N Engl J Med*
478 2017;**377**:111–121.
- 479 5. Fuster JJ, MacLauchlan S, Zuriaga MA, Polackal MN, Ostriker AC, Chakraborty R,
480 Wu C-L, Sano S, Muralidharan S, Rius C, Vuong J, Jacob S, Muralidhar V, Robertson AAB,
481 Cooper MA, Andrés V, Hirschi KK, Martin KA, Walsh K. Clonal hematopoiesis associated
482 with TET2 deficiency accelerates atherosclerosis development in mice. *Science*
483 2017;**355**:842–847.
- 484 6. Kessler MD, Damask A, O’Keeffe S, Van Meter M, Banerjee N, Semrau S, Li D,
485 Watanabe K, Horowitz J, Houvras Y, Gillies C, Mbatchou J, White RR, Kosmicki JA, LeBlanc
486 MG, Jones M, Regeneron Genetics Center, GHS-RGC DiscovEHR Collaboration, Glass DJ,
487 Lotta LA, Cantor MN, Atwal GS, Locke AE, Ferreira MAR, Deering R, Paulding C, Shuldiner
488 AR, Thurston G, Salerno W, Reid JG, Overton JD, Marchini J, Kang HM, Baras A, Abecasis
489 GR, Jorgenson E. Exome sequencing of 628,388 individuals identifies common and rare

490 variant associations with clonal hematopoiesis phenotypes

491 7. Kar SP, Quiros PM, Gu M, Jiang T, Langdon R, Iyer V, Barcena C, Vijayabaskar MS,
492 Fabre MA, Carter P, Burgess S, Vassiliou GS. Genome-wide analyses of 200,453 individuals
493 yields new insights into the causes and consequences of clonal hematopoiesis

494 8. Bick AG, Pirruccello JP, Griffin GK, Gupta N, Gabriel S, Saleheen D, Libby P,
495 Kathiresan S, Natarajan P. Genetic Interleukin 6 Signaling Deficiency Attenuates
496 Cardiovascular Risk in Clonal Hematopoiesis. *Circulation* 2020;**141**:124–131.

497 9. Vlasschaert C, Heimlich JB, Rauh MJ, Natarajan P, Bick AG. Interleukin-6 Receptor
498 Polymorphism Attenuates Clonal Hematopoiesis-Mediated Coronary Artery Disease Risk
499 Among 451 180 Individuals in the UK Biobank. *Circulation* 2023;**147**:358–360.

500 10. Saiki R, Momozawa Y, Nannya Y, Nakagawa MM, Ochi Y, Yoshizato T, Terao C,
501 Kuroda Y, Shiraishi Y, Chiba K, Tanaka H, Niida A, Imoto S, Matsuda K, Morisaki T,
502 Murakami Y, Kamatani Y, Matsuda S, Kubo M, Miyano S, Makishima H, Ogawa S.
503 Combined landscape of single-nucleotide variants and copy number alterations in clonal
504 hematopoiesis. *Nat Med* 2021;**27**:1239–1249.

505 11. Wright DJ, Day FR, Kerrison ND, Zink F, Cardona A, Sulem P, Thompson DJ,
506 Sigurjonsdottir S, Gudbjartsson DF, Helgason A, Chapman JR, Jackson SP, Langenberg C,
507 Wareham NJ, Scott RA, Thorsteindottir U, Ong KK, Stefansson K, Perry JRB. Genetic
508 variants associated with mosaic Y chromosome loss highlight cell cycle genes and overlap
509 with cancer susceptibility. *Nat Genet* 2017;**49**:674–679.

510 12. Zhou W, Machiela MJ, Freedman ND, Rothman N, Malats N, Dagnall C, Caporaso N,
511 Teras LT, Gaudet MM, Gapstur SM, Stevens VL, Jacobs KB, Sampson J, Albanes D,
512 Weinstein S, Virtamo J, Berndt S, Hoover RN, Black A, Silverman D, Figueroa J, Garcia-
513 Closas M, Real FX, Earl J, Marenne G, Rodriguez-Santiago B, Karagas M, Johnson A,
514 Schwenn M, Wu X, Gu J, Ye Y, Hutchinson A, Tucker M, Perez-Jurado LA, Dean M, Yeager
515 M, Chanock SJ. Mosaic loss of chromosome Y is associated with common variation near
516 *TCL1A*. *Nat Genet* 2016;**48**:563–568.

517 13. Lofffield E, Zhou W, Graubard BI, Yeager M, Chanock SJ, Freedman ND, Machiela

- 518 MJ. Predictors of mosaic chromosome Y loss and associations with mortality in the UK
519 Biobank. *Sci Rep* 2018;**8**:12316.
- 520 14. Sano S, Horitani K, Ogawa H, Halvardson J, Chavkin NW, Wang Y, Sano M,
521 Mattisson J, Hata A, Danielsson M, Miura-Yura E, Zaghlool A, Evans MA, Fall T, De Hoyos
522 HN, Sundström J, Yura Y, Kour A, Arai Y, Thel MC, Arai Y, Mychaleckyj JC, Hirschi KK,
523 Forsberg LA, Walsh K. Hematopoietic loss of Y chromosome leads to cardiac fibrosis and
524 heart failure mortality. *Science* 2022;**377**:292–297.
- 525 15. Ljungström V, Mattisson J, Halvardson J, Pandzic T, Davies H, Rychlicka-Buniowska
526 E, Danielsson M, Lacaze P, Cavelier L, Dumanski JP, Baliakas P, Forsberg LA. Loss of Y
527 and clonal hematopoiesis in blood—two sides of the same coin? *Leukemia* 2022;**36**:889–891.
- 528 16. Zink F, Stacey SN, Norrdahl GL, Frigge ML, Magnusson OT, Jonsdottir I,
529 Thorgeirsson TE, Sigurdsson A, Gudjonsson SA, Gudmundsson J, Jonasson JG,
530 Tryggvadottir L, Jonsson T, Helgason A, Gylfason A, Sulem P, Rafnar T, Thorsteinsdottir U,
531 Gudbjartsson DF, Masson G, Kong A, Stefansson K. Clonal hematopoiesis, with and without
532 candidate driver mutations, is common in the elderly. *Blood* 2017;**130**:742–752.
- 533 17. 3C Study Group. Vascular factors and risk of dementia: design of the Three-City
534 Study and baseline characteristics of the study population. *Neuroepidemiology* 2003;**22**:316–
535 325.
- 536 18. Lafitte M, Pucheu Y, Latry K, Dijos M, Casassus E, Couffignal T. Predictors of
537 cardiovascular prognosis in patients receiving optimized secondary prevention measures
538 after acute coronary syndrome. *Eur J Prev Cardiol* 2013;**20**:283–290.
- 539 19. Luque Paz D, Riou J, Verger E, Cassinat B, Chauveau A, Ianotto J-C, Dupriez B,
540 Boyer F, Renard M, Mansier O, Murati A, Rey J, Etienne G, Mansat-De Mas V, Tavitian S,
541 Nibourel O, Girault S, Le Bris Y, Girodon F, Ranta D, Chomel J-C, Cony-Makhoul P, Sujobert
542 P, Robles M, Ben Abdelali R, Kosmider O, Cottin L, Roy L, Sloma I, Vacheret F, Wemeau M,
543 Mossuz P, Slama B, Cussac V, Denis G, Walter-Petrich A, Burrioni B, Jézéquel N, Giraudier
544 S, Lippert E, Socié G, Kiladjian J-J, Ugo V. Genomic analysis of primary and secondary
545 myelofibrosis redefines the prognostic impact of ASXL1 mutations: a FIM study. *Blood Adv*

- 546 2021;**5**:1442–1451.
- 547 20. Bick AG, Weinstock JS, Nandakumar SK, Fulco CP, Leventhal MJ, Bao EL, Nasser J,
548 Zekavat SM, Szeto MD, Laurie C, Taub MA, Mitchell BD, Barnes KC, Moscati A, Fornage M,
549 Redline S, Psaty BM, Silverman EK, Weiss ST, Palmer ND, Vasani RS, Burchard EG, Kardia
550 SL, He J, Kaplan RC, Smith NL, Arnett DK, Schwartz DA, Correa A, Andrade M de, Guo X,
551 Konkole BA, Custer B, Peralta JM, Gui H, Meyers DA, McGarvey ST, Chen IY-D, Shoemaker
552 MB, Peyser PA, Broome JG, Gogarten SM, Wang FF, Wong Q, Montasser ME, Daya M,
553 Kenny EE, North K, Launer LJ, Cade BE, Bis JC, Cho MH, Lasky-Su J, Bowden DW,
554 Cupples LA, Mak AC, Becker LC, Smith JA, Kelly TN, Aslibekyan S, Heckbert SR, Tiwari HK,
555 Yang IV, Heit JA, Lubitz SA, Rich SS, Johnsen JM, Curran JE, Wenzel S, Weeks DE, Rao
556 DC, Darbar D, Moon J-Y, Tracy RP, Buth EJ, Rafaels N, Loos RJ, Hou L, Lee J, Kachroo P,
557 Freedman BI, Levy D, Bielak LF, Hixson JE, Floyd JS, Whitsel EA, Ellinor P, Irvin MR,
558 Fingerlin TE, Raffield LM, Armasu SM, Rotter JI, Wheeler MM, Sabino EC, Blangero J,
559 Williams LK, Levy BD, Sheu WH-H, Roden DM, Boerwinkle E, Manson JE, Mathias RA,
560 Desai P, Taylor KD, Johnson A, Auer PL, Kooperberg C, Laurie CC, Blackwell TW, Smith
561 AV, Zhao H, Lange E, Lange L, Wilson JG, Lander ES, Engreitz JM, Ebert BL, Reiner AP,
562 Sankaran VG, Jaiswal S, Abecasis G, Natarajan P, Kathiresan S, on behalf of the NHLBI
563 Trans-Omics for Precision Medicine (TOPMed) Consortium. Inherited Causes of Clonal
564 Hematopoiesis of Indeterminate Potential in TOPMed Whole Genomes
- 565 21. Busque L, Sun M, Buscarlet M, Ayachi S, Feroz Zada Y, Provost S, Bourgoin V,
566 Mollica L, Meisel M, Hinterleitner R, Jabri B, Dubé M-P, Tardif J-C. High-sensitivity C-
567 reactive protein is associated with clonal hematopoiesis of indeterminate potential. *Blood Adv*
568 2020;**4**:2430–2438.
- 569 22. Zekavat SM, Viana-Huete V, Matesanz N, Jorshery SD, Zuriaga MA, Uddin MM,
570 Trinder M, Paruchuri K, Zorita V, Ferrer-Pérez A, Amorós-Pérez M, Kunderfranco P, Carriero
571 R, Greco CM, Aroca-Crevillen A, Hidalgo A, Damrauer SM, Ballantyne CM, Niroula A,
572 Gibson CJ, Pirruccello J, Griffin G, Ebert BL, Libby P, Fuster V, Zhao H, Ghassemi M,
573 Natarajan P, Bick AG, Fuster JJ, Klarin D. TP53-mediated clonal hematopoiesis confers

- 574 increased risk for incident atherosclerotic disease. *Nat Cardiovasc Res* 2023;1–15.
- 575 23. Genovese G, Kähler AK, Handsaker RE, Lindberg J, Rose SA, Bakhoun SF,
576 Chambert K, Mick E, Neale BM, Fromer M, Purcell SM, Svantesson O, Landén M, Höglund
577 M, Lehmann S, Gabriel SB, Moran JL, Lander ES, Sullivan PF, Sklar P, Grönberg H,
578 Hultman CM, McCarroll SA. Clonal Hematopoiesis and Blood-Cancer Risk Inferred from
579 Blood DNA Sequence. *N Engl J Med* 2014;**371**:2477–2487.
- 580 24. Guermouche H, Ravalet N, Gallay N, Deswarte C, Foucault A, Beaud J, Rault E,
581 Saindoy E, Lachot S, Martignoles J-A, Gissot V, Suner L, Gyan E, Delhommeau F, Herault
582 O, Hirsch P. High prevalence of clonal hematopoiesis in the blood and bone marrow of
583 healthy volunteers. *Blood Adv* 2020;**4**:3550–3557.
- 584 25. Pascual-Figal DA, Bayes-Genis A, Díez-Díez M, Hernández-Vicente Á, Vázquez-
585 Andrés D, Barrera J de la, Vazquez E, Quintas A, Zuriaga MA, Asensio-López MC, Dopazo
586 A, Sánchez-Cabo F, Fuster JJ. Clonal Hematopoiesis and Risk of Progression of
587 Heart Failure With Reduced Left Ventricular Ejection Fraction. *J Am Coll Cardiol*
588 2021;**77**:1747–1759.
- 589 26. Mas-Peiro S, Hoffmann J, Fichtlscherer S, Dorsheimer L, Rieger MA, Dimmeler S,
590 Vasa-Nicotera M, Zeiher AM. Clonal haematopoiesis in patients with degenerative aortic
591 valve stenosis undergoing transcatheter aortic valve implantation. *Eur Heart J* 2020;**41**:933–
592 939.
- 593 27. Zeventer IA van, Salzbrunn JB, Graaf AO de, Reijden BA van der, Boezen HM, Vonk
594 JM, Harst P van der, Schuringa JJ, Jansen JH, Huls G. Prevalence, predictors, and
595 outcomes of clonal hematopoiesis in individuals aged ≥ 80 years. *Blood Adv* 2021;**5**:2115–
596 2122.
- 597 28. Khoury JD, Solary E, Abala O, Akkari Y, Alaggio R, Apperley JF, Bejar R, Berti E,
598 Busque L, Chan JKC, Chen W, Chen X, Chng W-J, Choi JK, Colmenero I, Coupland SE,
599 Cross NCP, De Jong D, Elghetany MT, Takahashi E, Emile J-F, Ferry J, Fogelstrand L,
600 Fontenay M, Germing U, Gujral S, Haferlach T, Harrison C, Hodge JC, Hu S, Jansen JH,
601 Kanagal-Shamanna R, Kantarjian HM, Kratz CP, Li X-Q, Lim MS, Loeb K, Loghavi S,

- 602 Marcogliese A, Meshinchi S, Michaels P, Naresh KN, Natkunam Y, Nejati R, Ott G, Padron
603 E, Patel KP, Patkar N, Picarsic J, Platzbecker U, Roberts I, Schuh A, Sewell W, Siebert R,
604 Tembhare P, Tyner J, Verstovsek S, Wang W, Wood B, Xiao W, Yeung C, Hochhaus A. The
605 5th edition of the World Health Organization Classification of Haematolymphoid Tumours:
606 Myeloid and Histiocytic/Dendritic Neoplasms. *Leukemia* 2022;**36**:1703–1719.
- 607 29. Mas-Peiro S, Abplanalp WT, Rasper T, Berkowitsch A, Leistner DM, Dimmeler S,
608 Zeiher AM. Mosaic loss of Y chromosome in monocytes is associated with lower survival
609 after transcatheter aortic valve replacement. *Eur Heart J* 2023;**44**:1943–1952.
- 610 30. Forsberg LA, Rasi C, Malmqvist N, Davies H, Pasupulati S, Pakalapati G, Sandgren
611 J, Diaz de Ståhl T, Zaghlool A, Giedraitis V, Lannfelt L, Score J, Cross NCP, Absher D,
612 Janson ET, Lindgren CM, Morris AP, Ingelsson E, Lind L, Dumanski JP. Mosaic loss of
613 chromosome Y in peripheral blood is associated with shorter survival and higher risk of
614 cancer. *Nat Genet* 2014;**46**:624–628.
- 615 31. Abplanalp WT, Cremer S, John D, Hoffmann J, Schuhmacher B, Merten M, Rieger
616 MA, Vasa-Nicotera M, Zeiher AM, Dimmeler S. Clonal Hematopoiesis-Driver DNMT3A
617 Mutations Alter Immune Cells in Heart Failure. *Circ Res* 2021;**128**:216–228.
- 618 32. Cook EK, Izukawa T, Young S, Rosen G, Jamali M, Zhang L, Johnson D, Bain E,
619 Hilland J, Ferrone CK, Buckstein J, Francis J, Momtaz B, McNaughton AJM, Liu X,
620 Snetsinger B, Buckstein R, Rauh MJ. Comorbid and inflammatory characteristics of genetic
621 subtypes of clonal hematopoiesis. *Blood Adv* 2019;**3**:2482–2486.
- 622 33. Wang S, Hu S, Luo X, Bao X, Li J, Liu M, Lv Y, Zhao C, Zeng M, Chen X, Unsworth
623 A, Jones S, Johnson TW, White SJ, Jia H, Yu B. Prevalence and prognostic significance of
624 DNMT3A- and TET2- clonal haematopoiesis-driver mutations in patients presenting with ST-
625 segment elevation myocardial infarction. *eBioMedicine* 2022;**78**:103964.
- 626 34. Arends CM, Liman TG, Strzelecka PM, Kufner A, Löwe P, Huo S, Stein CM, Piper
627 SK, Tilgner M, Sperber PS, Dimitriou S, Heuschmann P, Hablesreiter R, Harms C, Bullinger
628 L, Weber JE, Endres M, Damm F. Associations of clonal haematopoiesis with recurrent
629 vascular events and death in patients with incident ischemic stroke. *Blood*

630 2022:blood.2022017661.

631 35. Böhme M, Desch S, Rosolowski M, Scholz M, Krohn K, Büttner P, Cross M,
632 Kirchberg J, Rommel K-P, Pöss J, Freund A, Baber R, Isermann B, Ceglarek U, Metzeler
633 KH, Platzbecker U, Thiele H. Impact of Clonal Hematopoiesis in Patients With Cardiogenic
634 Shock Complicating Acute Myocardial Infarction. *J Am Coll Cardiol* 2022;**80**:1545–1556.

635 36. Mayerhofer E, Strecker C, Becker H, Georgakis MK, Uddin MM, Hoffmann MM,
636 Nadarajah N, Meggendorfer M, Haferlach T, Rosand J, Natarajan P, Anderson CD, Harloff A,
637 Hoermann G. Prevalence and Therapeutic Implications of Clonal Hematopoiesis of
638 Indeterminate Potential in Young Patients With Stroke. *Stroke* 2023.

639 37. David C, Duployez N, Eloy P, Belhadi D, Chezeli J, Guern VL, Laouénan C, Fenwarth
640 L, Rouzaud D, Mathian A, Almeida Chaves S de, Duhaut P, Fain O, Galicier L, Ghillani-
641 Dalbin P, Kahn JE, Morel N, Perard L, Pha M, Sarrot-Reynauld F, Aumaitre O, Chasset F,
642 Limal N, Desmurs-Clavel H, Ackermann F, Amoura Z, Papo T, Preudhomme C, Costedoat-
643 Chalumeau N, Sacre K. Clonal haematopoiesis of indeterminate potential and cardiovascular
644 events in systemic lupus erythematosus (HEMATOPLUS study). *Rheumatol Oxf Engl*
645 2022;**61**:4355–4363.

646

647 **Figure legends**

648

649 **Figure 1: CHIP, mLOY and their combination are as frequent in MI(+) and MI(-) subjects**

650 A: Prevalence of CHIP, mLOY and their combination in the total cohort of 449 subjects, in MI(+) as
651 well as in MI(-) subjects. B: Mutational spectrum of CHIP expressed as the proportion of mutations
652 detected in the indicated genes. C: VAF measured for the different mutations detected in the 449
653 subjects detected in the indicated genes. D: Prevalence of CHIP and mLOY depending on age in the
654 total cohort (for CHIP) and in male subjects (for mLOY).

655

656 **Figure 2: CHIP and mLOY do not increase significantly the risk of incident MI, but**
657 **could accelerate it in male subjects.**

658 Incidence of MI during follow up according to the presence of CHIP (A) or mLOY (B) in MI(-)
659 subjects. Incidence of MI during follow up according to the presence of CHIP (C) or the
660 combination of CHIP and mLOY (D) in male MI(-) subjects. Survival was compared between
661 the different groups with log-rank tests.

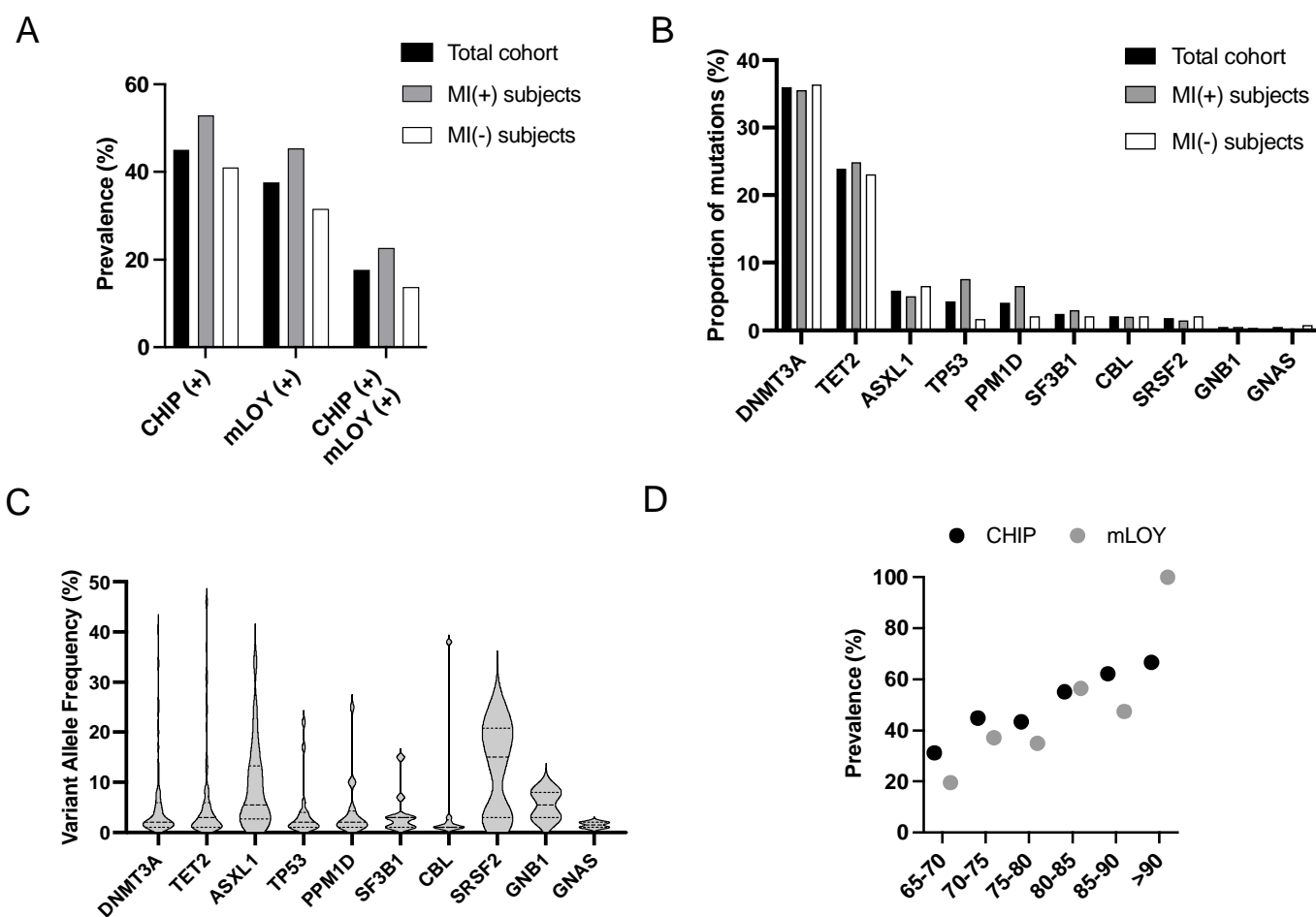


Figure 1

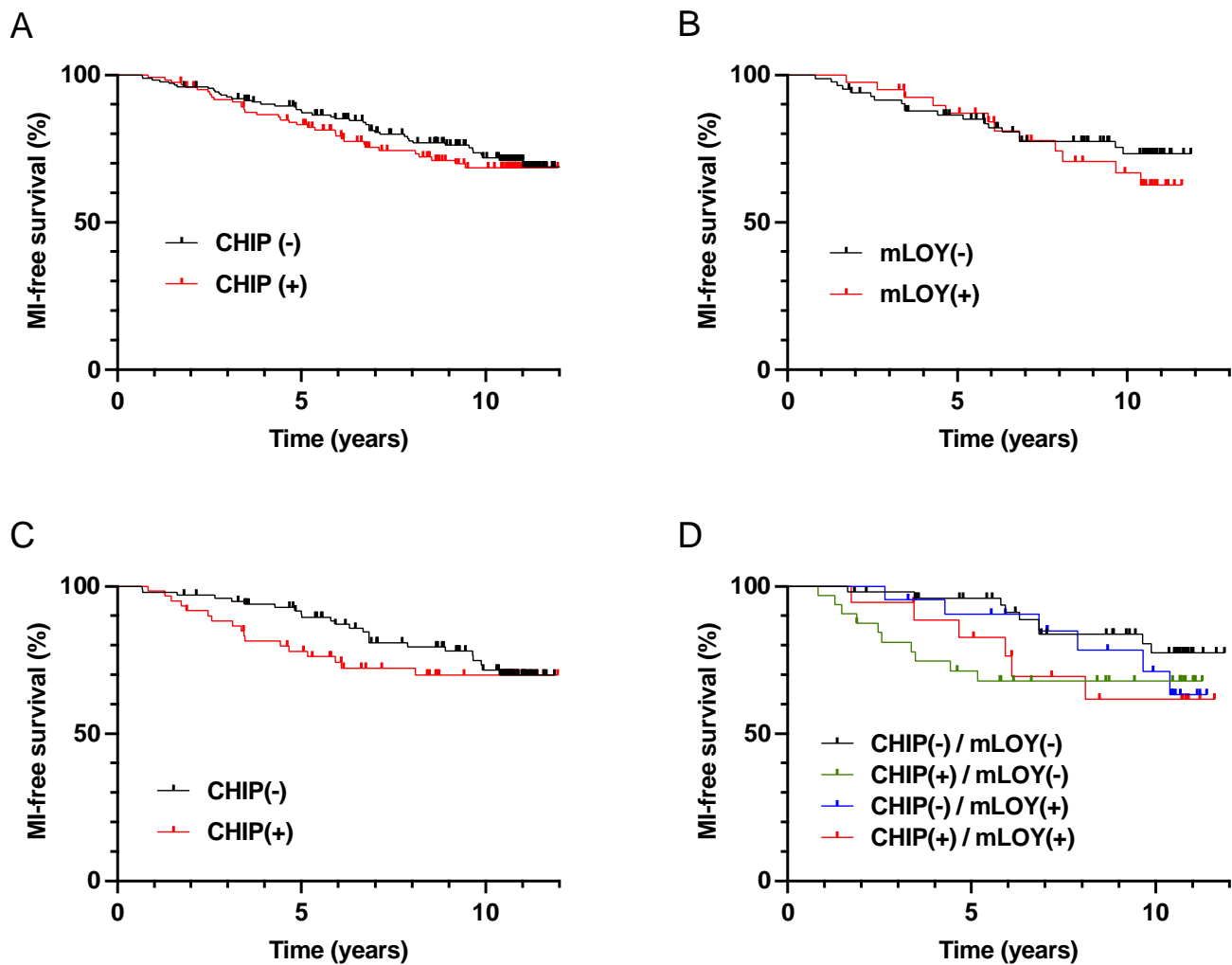


Figure 2

Table 1: Characteristics of the population at the time of inclusion

	All subjects n = 446	MI(+) subjects n=149	MI(-) subjects n=297	p-value
Male, n (%)	257 (57.6)	98 (66)	159 (54)	0.015
Median age, years (Q1;Q3)	76.4 (71.9;80.9)	82.0 (78.0;86.0)	73.6 (70.6;77.8)	P < 10⁻⁴
Cardiovascular risk factors				
BMI, kg/m ² (Q1;Q3)	25.5 (23.6;28.3)	25.5 (23.6;28.5)	25.5 (23.6;28.1)	0.14
Diabetes, n (%)	94 (21.2)	47 (32%)	47 (16%)	p < 10⁻⁴
Hypertension, n (%)	362 (82.8)	107 (76.4)	255 (85.9)	0.020
Total cholesterol, g/L (Q1;Q3)	2.08 (1.72;2.38)	1.45 (1.25;1.72)	2.23 (2.00;2.47)	p < 10⁻⁴
LDL-c, g/L (Q1;Q3)	1.25 (0.94;1.52)	0.77 (0.61;1.03)	1.39 (1.19;1.60)	p < 10⁻⁴
HDL-c, g/L (Q1;Q3)	0.56 (0.46;0.66)	0.47 (0.39;0.57)	0.59 (0.50;0.68)	p < 10⁻⁴
Smoking, n (%)	32 (7.2)	6 (4.4)	26 (8.7)	0.117
Prevalence of CHIP and mLOY				
CHIP prevalence, n (%)	201 (45.1)	79 (53%)	122 (41%)	0.923
Prevalence of CHIP with VAF ≥5%	88 (19.7)	30 (20.1)	58 (19.5)	0.069
Subjects tested for mLOY, n	220	97	123	-
mLOY prevalence, n (%)	83 (37.7)	44 (45.4)	39 (31.7)	0.783
CHIP(+) / mLOY(+) prevalence, n (%)	39 (17.7)	22 (22.7)	17 (13.8)	0.797

Data are expressed as numbers and frequency or median, first and third quartiles. For quantitative values, comparisons were made by linear regression of log values adjusted for age and sex. For qualitative parameters, comparisons were made by the fisher test. For each variable, results are expressed among patients with available value.

Table 2: CHIP and mLOY are not associated with increased hsCRP level

	hsCRP level All subjects	p value	hsCRP level MI(+) subjects	p value	hsCRP level MI(-) subjects	p value
CHIP(-)	1.64 (1.00;3.69)	0.652	1.40 (1.00;4.00)	0.600	1.71 (0.97;3.22)	0.141
CHIP(+)	2.00 (1.00;3.90)		2.20 (1.10;5.00)		1.63 (0.91;2.54)	
mLOY(-)	1.45 (0.99;2.75)	0.156	1.8 (1.0;4.8)	0.149	1.41 (0.74;2.16)	0.358
mLOY(+)	1.73 (1.01;4.00)		2.4 (1.03;4.5)		1.2 (0.99;2.99)	
CHIP (-) mLOY (-)	1.11 (0.76;2.19)	0.410	1.00 (0.77;2.72)	0.430	1.35 (0.79;2.14)	0.570
CHIP (+) mLOY (-)	1.87 (1.00;3.03)		2.30 (1.35;7.35)		1.43 (0.72;2.37)	
CHIP (-) mLOY (+)	2.20 (1.02;4.00)		2.50 (1.30;4.00)		1.37 (0.95;3.75)	
CHIP (+) mLOY (+)	1.23 (1.01;3.80)		2.00 (1.02;4.75)		1.17 (1.03;1.73)	

hsCRP Data are expressed as median, first and third quartiles. Comparisons were performed by linear regression of log values adjusted for age and sex. hsCRP levels are expressed in mg/L For each variable, results are expressed among patients with available value.

Table 3: CHIP and mLOY are not associated with an increased atherosclerotic burden

Atherosclerosis burden evaluation in MI(+) subjects							
	All patients (n = 149)	CHIP (-) (n = 70)	CHIP (+) (n = 79)	p-value	mLOY (-) (n = 53)	mLOY (+) (n = 44)	p-value
Multitroncular lesions, n (%)	68 (45.6)	29 (41.4)	39 (49.4)	0.484	25 (47.2)	20 (45.4)	0.717
Carotid stenosis ≥ 50%, n (%)	7 (4.7)	2 (2.8)	5 (6.3)	0.317	2 (3.8)	3 (6.8)	0.451
Global atheroma volume (mm ³), median (Q1;Q3)	499.5 (408.0;604.5)	455.0 (374.0;555.0)	520.0 (411.5;611.5)	0.333	601.0 (412.0;718.0)	492.0 (344.5;600.5)	0.707
Atherosclerosis burden evaluation in MI(-) subjects							
	All patients (n = 297)	CHIP (-) (n = 175)	CHIP (+) (n = 122)	p-value	mLOY (-) (n = 84)	mLOY (+) (n = 39)	p-value
Patients with atherosclerotic plaque, n (%)	135 (45.4)	81 (46.3)	54 (44.3)	0.997	34 (40.5)	19 (48.7)	0.537
Number of plaque, median (Q1;Q3)	1 (1;2)	2 (1;2)	1 (1;2)	0.258	2 (1;2)	2 (1;2)	0.863
Intima Media Thickness (mm), median (Q1;Q3)	0.68 (0.60;0.76)	0.67 (0.60;0.76)	0.68 (0.59;0.74)	0.897	0.67 (0.62;0.76)	0.72 (0.57;0.83)	0.706

Data are expressed as numbers and frequency or median, first and third quartiles. For quantitative values, comparisons were made by linear regression of log values adjusted for age and sex. For qualitative parameters, comparisons were made by the fisher test and logistic regression. For each variable, results are expressed among patients with available value.