

Predictors of Developing Renal Dysfunction Following Diagnosis of Transthyretin Cardiac Amyloidosis

Running Title: Renal Dysfunction in ATTR Cardiac Amyloidosis

Malcolm L McDonald MD¹, Yosef Manla MD², Alice Sonnino MD¹, Mileydis Alonso DO¹, Radhika K Neicheril MD³, Alejandro Sanchez MD¹, Gabrielle Lafave MD², Yelenis Seijo De Armas MD¹, Antonio Lewis Camargo MD¹, Dipan Uppal MD¹, Armaan Handa, MS¹, David Wolinsky MD¹, Nina Thakkar Rivera DO PhD¹, Mauricio Velez MD¹, David Baran MD¹, Jerry D. Estep MD¹, David Snipelisky MD¹

1: Department of Cardiovascular Disease, Heart, Vascular, and Thoracic Institute, Cleveland Clinic Florida, Weston, FL, USA

2: Department of Cardiology, Heart, Vascular, and Thoracic Institute, Cleveland Clinic Abu Dhabi, Abu Dhabi, United Arab Emirates

3: Department of Medicine, Internal Medicine, Cleveland Clinic Florida, Weston, FL, USA

Author/Financial Disclosures: none

Funding: none

Conflict of Interest: none

Corresponding Author:

David Snipelisky, MD

Robert and Suzanne Tomsich Department of Cardiology

Section of Heart Failure & Cardiac Transplant Medicine

Cleveland Clinic, 2950 Cleveland Clinic Boulevard

Weston, FL 33331, USA

E-mail address: snipeld@ccf.org

Words: 3308

Abstract

Background: In patients with transthyretin cardiac amyloidosis (ATTR-CA), renal dysfunction is a poor prognostic indicator. Limited data are available on variables that portend worsening renal function (wRF) among ATTR-CA patients.

Objectives: This study assesses which characteristics place patients at higher risk for the development of wRF (defined as a drop of $\geq 10\%$ in GFR) within the first year following diagnosis of ATTR-CA.

Methods: We included patients with ATTR-CA (n=134) evaluated between 2/2016 and 12/2022 and followed for up to one-year at our amyloid clinic. Patients were stratified into two groups: a group with maintained renal function (mRF) and a group with wRF and compared using appropriate testing. Significant variables in the univariate analysis were included in the multivariable logistic regression model to determine characteristics associated with wRF.

Results: Within a follow-up period of 326 ± 118 days, the median GFR% change measured -6% [-18% , $+8\%$]. About 41.8% (n=56) had wRF, while the remainder had mRF. In addition, in patients with no prior history of CKD, 25.5% developed de-novo CKD. On multivariable logistic regression, only NYHA class $\geq III$ (OR: 3.9, 95% CI [1.6-9.3]), history of IHD (OR:0.3, 95% CI [0.1-0.7]), and receiving SGLT-2i (OR: 0.1, 95% CI [0.02-0.5]) were significant predictors of wRF.

Conclusion: Our study demonstrated that the development of new or worsening renal dysfunction is common following the diagnosis of ATTR-CA. Additionally, we identified worse NYHA class and no prior history of IHD as significant predictors associated with developing wRF, while receiving SGLT2i therapy appeared to be protective in this population.

KEY WORDS:

Cardiac amyloidosis, SGLT-2 inhibitor, Renal outcomes, ATTR

Abbreviations:

ATTR-CA: transthyretin cardiac amyloidosis

CKD: Chronic Kidney Disease

IHD: ischemic heart disease

mRF: maintained renal function.

NT-proBNP: N-terminal prohormone of Brain Natriuretic Peptide

NYHA: New York Heart Association

SGLT-2i: sodium-glucose cotransporter-2 inhibitors

wRF: worsening renal function.

Introduction:

Transthyretin cardiac amyloidosis (ATTR-CA) is a rare, progressive, and ultimately fatal disease that results from the misfolding and aggregation of amyloidogenic transthyretin (TTR) proteins in the myocardial extracellular space (1,2). ATTR-CA can result from an idiopathic subtype, also known as wild-type (wtATTR-CA), or a hereditary subtype (hATTR-CA) resulting from a pathogenic genetic mutation (1–3). Irrespective of the subtype, deposition of protein in patients with ATTR-CA not uncommonly extends beyond myocardial tissue to other organ systems. The kidney, nervous system, and gastrointestinal tract, among others, can suffer from protein deposition, leading to a wide array of phenotypic manifestations of the disease with an equally broad array of morbidity and disability burdens (1,3).

Direct renal involvement is primarily described in hATTR-CA, occurring to a much lesser extent in wtATTR-CA(1,3–5). Tissue deposition of misfolded ATTR in the glomeruli, renal vasculature, and interstitium is well-documented as a potential mechanism for worsening renal function (wRF) (3–5). However, the renal impacts of this systemic disease extend beyond local tissue effects. Through several complex physiological cascades, including neurohormonal activation, vascular non-compliance, poor tissue perfusion, and worsening autonomic dysfunction, the interplay between the failing heart and the kidney often results in further disease progression and end-organ decline (1).

Although renal dysfunction is a poor prognostic indicator among patients with ATTR-CA, most studies focus only on the hATTR-CA subset and assess characteristics associated with already established renal disease (4,6). Considering the morbidity and mortality risks associated with renal disease in this population, the aim of this study is to assess which clinical characteristics

place patients at risk for development of wRF or progression of known disease following the diagnosis of ATTR-CA.

Methods:

Study Population and Design

Consecutive patients evaluated in our amyloid clinic with a confirmed diagnosis of ATTR-CA between 2/2016 and 11/2022 were assessed. Patients included were diagnosed with either wtATTR or hATTR. Patients with light chain (AL) amyloidosis were excluded. Data on patient demographics, comorbidities, medical history, imaging and laboratory findings, and clinical presentation were collected retrospectively by review of the electronic medical record. Patients with incomplete data were excluded. This study was approved by the Cleveland Clinic Foundation Institutional Review Board.

Study Variables and Definitions

ATTR-CA diagnosis was confirmed through verification of endomyocardial biopsy tissue samples or ⁹⁹Tc-pyrophosphate scanning combined with single photon emission computed tomography (SPECT) imaging. The presence of AL amyloidosis was ruled out by laboratory testing and, if indicated, either bone marrow or endomyocardial biopsy. History of CKD was defined as having an estimated glomerular filtration rate of less than 60 ml/min/1.73m² based on the Chronic Kidney Disease Epidemiology Collaboration (CKD-EPI) equation. Glomerular filtration rate (GFR) was recorded at the time of diagnosis and the last follow-up encounter (closest to one year). Given the considerable instability of the GFR value on measurement and variations in follow-up periods in studies evaluating renal outcomes, there is no concrete

definition of rapid decline in renal function (4,6,7). We defined wRF as a decline of $\geq 10\%$ in GFR over time, a cut-off that has been previously defined and validated to predict cardiovascular and renal endpoints in other clinical studies (8). Accordingly, patients were stratified into two groups: patients with maintained renal function (mRF), which included patients with either an increase or decrease in GFR of up to 10% over the study period, and a group with wRF, defined as a drop of $\geq 10\%$ in GFR over time. A new incidence of CKD was defined as having a measurement of eGFR of <60 ml/min/1.73m² within the study period despite the patient having an eGFR ≥ 60 ml/min/1.73m² at baseline.

Statistical Analysis

Categorical variables were presented as frequencies and percentages and compared using a chi-square test. Normally distributed continuous variables were presented as mean and standard deviation and compared using t-tests or paired t-test, as appropriate. Non-normally distributed continuous variables were presented as medians and quartiles and compared using Wilcoxon rank-sum tests. The wRF and mRF groups were compared, and statistically significant ($P<0.05$) variables in the univariate analysis were included in the multivariable logistic regression model to determine characteristics associated with wRF. A significance level of 0.05 was assumed for all tests. Analysis was performed using JMP® Data Analysis (Software Version 16, SAS Institute Inc., Cary, NC, USA).

Results

A total of 134 patients with a confirmed diagnosis of ATTR-CA were included in this study. Within a follow-up period of 326 ± 118 days, there was an overall decrease in GFR at follow-up

compared to baseline (58.4 vs. 53.7, $P < 0.001$), and the median GFR% change over time measured -6% [-18%, +8]. When stratifying patients according to GFR change over time, 58.2% ($n=78$) had mRF, while the rest had wRF (41.8%, $n=56$) with a change over time in absolute GFR of -12.5 [-22.5, -8] and a median GFR% change over time of -22% [-33%, -15%]).

When comparing the mRF and the wRF groups, there were no differences in age (78 ± 7.7 vs. 78.8 ± 8.7 , $P=0.6$) or rates of male gender (92.3% vs. 89.3%, $P=0.5$), however patients with wRF were more likely African American (AA) (26.8% vs. 10.3%, OR:3.2, 95% CI [1.2-8.2] $P=0.01$). Additionally, no difference in history of hypertension ($P=0.9$), diabetes mellitus ($P=0.6$), atrial fibrillation ($P=0.7$), or peripheral vascular disease ($P=0.3$) were noted. Patients in the wRF group were less likely to have a history of ischemic heart disease (IHD) (48.2% vs. 71.8%, OR: 0.4 95% CI [0.2-0.8], $P=0.01$) or prior diagnosis of chronic kidney disease (CKD) (55.4% vs. 71.8%, OR:0.5. 95%CI [0.2-1] $P=0.04$). At the time of ATTR-CA diagnosis, there were no group differences in ejection fraction ($P=0.8$) or NT-proBNP levels ($P=0.2$) (**Table.1**). Nonetheless, patients in the wRF group tended to present with NYHA class \geq III (66.1% vs. 47.4%, OR:2.1, 95% CI [1.1-4.4], $P=0.03$).

Use of tafamidis at the time of diagnosis was high in both groups (91% vs. 87.5%, $P=0.5$), and patients who developed wRF were less likely to be on SGLT-2i (3.6% vs. 20.8%, OR:0.14, 95% CI [0.03-0.65], $P=0.002$). No differences were noticed in rates of prescription of other guideline-directed medical therapies between groups. Further, in a sub-analysis of patients with mRF, there was a trend towards a 45% slower decline in GFR% over time (median decline: 3.9% vs. 7.1%, $P=0.08$) among SGLT-2i receivers as compared to non-receivers. Among this subset of patients, no other statistical differences were identified between any of the remaining characteristics

analyzed, including age, race, comorbidities, functional class, ATTR-CA type, and concomitant use of other pharmacologic agents.

On a multivariable logistic regression including AA race, history of CKD, history of IHD, NYHA class \geq III at presentation, and receiving SGLT-2i, only NYHA class \geq III (OR: 3.9, 95% CI[1.6-9.3]), history of IHD (OR: 0.3, 95% CI [0.1-0.7]), and SGLT-2i prescription (OR: 0.1, 95% CI [0.02-0.5]) were significant predictors of wRF (**Figure 1**).

In a sub-analysis of patients with no prior history of CKD (n=47), 25.5% (n=12) developed de novo CKD over the study period. Compared to those who maintained an eGFR \geq 60 during the study period, a higher proportion of patients with NYHA class \geq III (75% vs. 40%, P=0.04), higher levels of NT-proBNP (3495 [1905-11431] vs. 972 [542.2-2512], P=0.001), higher serum Cr levels (1.1 \pm 0.15 vs. 0.9 \pm 0.14, P=0.001), lower LVEF (45 \pm 13 vs. 52 \pm 8.3, P=0.04), and higher rates of diuretic use (91.7% vs. 57.1%, P=0.03) were noted among those who developed CKD (**Table 2**).

Discussion:

Our study found that worsening renal function following the diagnosis of ATTR-CA was quite common, with over 40% of patients developing new-onset or worsening of known renal disease within the first year following diagnosis of ATTR-CA and also demonstrated a 1-year incidence of de-novo CKD estimated at greater than 25%. A higher proportion of African American patients developed wRF. Among those who developed wRF lower burden of prior CKD or IHD, worse NYHA class, and lower rates of SGLT-2i prescription were recorded.

Compared to contemporary data, the development of renal dysfunction in our study is consistent with prior analyses. In a French study of 103 vATTR-CA patients, almost one-third developed CKD within a follow-up of almost 8 years (4). In another study from Italy of patients with

hATTR with a median follow-up time of 56 months, kidney dysfunction was present in 15% of the patients, with a similar Portuguese study of 403 symptomatic patients with the V30M mutation estimating CKD prevalence at 36% (6,7). Recent post-hoc analysis of the ATTR-ACT study, which included both the wtATTR and hATTR, demonstrated deteriorating renal function over a 30-month period (9). In comparison, our study investigated short-term decline in renal function during the first year following diagnosis of ATTR-CA and found relatively high rates of renal dysfunction. While most available data have been derived from the hATTR population and renal dysfunction has been primarily associated with the hATTR phenotype (4–7,10), our study encompassed both wild-type and hereditary ATTR-CA phenotypes and found no significant differences in rates of developing de-novo CKD between these two groups.

Racial variability was noted, with a higher proportion of African American patients developing wRF over time in our cohort. This might be attributed to less access to care and follow-up among African American patients, resulting in later disease diagnosis (11). Published data on ATTR-CA revealed that African Americans were more likely to present with impaired systolic function at the time of diagnosis (12). In addition, African Americans are susceptible to a higher prevalence and earlier onset of chronic diseases than other racial groups (13). They also have a higher prevalence of other comorbidities, such as hypertension, which tend to present at younger ages and are 2-fold more likely to develop diabetes. Such comorbidities are well-known to significantly impact renal outcomes among patients with heart failure (14). The current study lends insight into ongoing efforts to further address disparate heart failure outcomes in minority populations, and further dedicated long-term studies should be considered to investigate renal outcomes among minorities with ATTR-CA.

Another key finding of this study is that a lack of SGLT-2i therapy is a significant predictor of

wRF in this patient population. With the use of other common heart failure therapies limited by detrimental effects such as symptomatic hypotension with the use of ACEi and ARB, negative inotropic and chronotropic effects with beta-blockers, and the potential for irreversible binding to amyloid fibrils potentiating drug toxicities with calcium channel blockers and digoxin, expanding the spectrum of available systemic pharmacologic agents in improving renal outcomes is vital (15). Numerous recent studies have shown the benefit of SGLT-2i therapy in patients with HFpEF physiology as well as those with CKD through a variety of mechanisms that remain incompletely understood (15–20). To our knowledge, our study represents the first demonstration of a renal-protective effect of SGLT-2i in a mixed population of ATTR-CA patients of hATTR and wtATTR subtypes alike. Further studies are needed to validate this association and help assess whether SGLT2-i use among patients with ATTR-CA should become standard of care, particularly considering the lack of other evidence-based therapies among this difficult-to-manage population.

This study also found that wRF in our cohort was more evident among those without ischemic heart disease. This could be attributed to other ongoing systemic pathophysiologies that may contribute to a faster decline in renal function. Additionally, patients with no history of CKD were more likely to develop wRF than those with a prior history of CKD, and the direct and indirect impact of ATTR-CA on renal function in this cohort seemed to be more pronounced among these patients. Therefore, we investigated the burden of renal dysfunction among those with no prior history of CKD and estimated that a quarter of the patients had a new incidence of CKD during the study period. These patients were more likely to have a worse NYHA class at presentation and higher NT-proBNP, consistent with prior published studies in the overall population of HF patients and likely reflecting a state of chronic congestion, further promoting

renal dysfunction (21,22). One study demonstrated that the risk for wRF, defined as an increase in serum creatinine ≥ 0.3 mg/dL, increased by 4.0 (95% CI 2.1-7.5) for each standard deviation of log NT-proBNP (21). In addition, these patients who developed CKD had lower LVEF at baseline, highlighting the burden of cardio-renal interactions on the development of renal dysfunction among those with impaired ventricular function who were diagnosed with ATTR-CA in the late course of the disease progression. Also, those who developed CKD were more likely to be on loop diuretics at the time of diagnosis. These findings were consistent with a sub-analysis of the Effect of N-3 Polyunsaturated Fatty Acids in Patients with Chronic Heart Failure (GISSI-HF) trial, demonstrating an earlier and steeper decline in eGFR among HF patients who were prescribed loop diuretics (23). This suggests that a multi-disciplinary approach is warranted when addressing patients with ATTR-CA and volume overload and requires balancing diuresis while also monitoring for hemodynamic alterations that might reduce renal perfusion (1).

Finally, the influence of concurrent tafamidis therapy on renal outcomes in our cohort was considered. While the impact of tafamidis on renal outcomes in patients with ATTR-CA has not been widely investigated, a post-hoc analysis of the ATTR-ACT revealed a slower decline and improvement in CKD staging in those who were prescribed this drug representing a potential source for confounding (9). Our population featured a high rate of tafamidis prescription, though rates of prescription were comparable across the wRF and mRF cohorts with no evident discrepancy between the two groups.

Limitations:

Our study has several limitations. This was a retrospective study with non-standardized follow-up dates, limiting standardization capability across our presented population. Further, serum creatinine was used to evaluate kidney function which may lend toward an overestimation of

GFR, given general muscle wasting is expected in patients with amyloidosis. In addition, other indicators of wRF, such as proteinuria/microalbuminuria, cystatin c, and free light chain measurements, which may represent more sensitive indicators of the early stages of renal dysfunction, were not included in this study (1,3). Regardless of these limitations, the study included a relatively large overall population size with longitudinal follow-up.

Conclusion:

Our study demonstrated that the development of new or worsening renal dysfunction is common following the diagnosis of ATTR-CA. Patients with both wtATTR and hATTR were at similar risk. The wRF group had higher rates of African American race, and lower burden of prior CKD or IHD. Additionally, we identified worse NYHA class and no prior history of IHD as significant predictors associated with developing wRF, while receiving SGLT2i therapy appeared to be protective in this population (Figure 2).

Acknowledgments: None

Funding: None

Conflict of Interest: None

References:

1. Committee W., Kittleson MM., Ruberg FL., et al. 2023 ACC expert consensus decision pathway on comprehensive multidisciplinary care for the patient with cardiac amyloidosis: a report of the American College of Cardiology Solution Set Oversight Committee. *J Am Coll Cardiol* 2023;81(11):1076–126.
2. Griffin JM., Rosenthal JL., Grodin JL., Maurer MS., Grogan M., Cheng RK. ATTR amyloidosis: current and emerging management strategies: JACC: CardioOncology state-of-the-art review. *Cardio Oncology* 2021;3(4):488–505.
3. Feitosa VA., Neves P., Jorge LB., Noronha IL., Onuchic LF. Renal amyloidosis: a new time for a complete diagnosis. *Brazilian Journal of Medical and Biological Research* 2022;55.
4. Solignac J., Delmont E., Fortanier E., et al. Kidney involvement in hereditary transthyretin amyloidosis: a cohort study of 103 patients. *Clin Kidney J* 2022;15(9):1747–54.
5. Fenoglio R., Baldovino S., Barreca A., et al. Renal involvement in transthyretin amyloidosis: the double presentation of transthyretin amyloidosis deposition disease. *Nephron* 2022;146(5):481–8.
6. Ferraro PM., D'Ambrosio V., Di Paolantonio A., et al. Renal involvement in hereditary transthyretin amyloidosis: an Italian single-centre experience. *Brain Sci* 2021;11(8):980.
7. Lobato LMCL. A Nefropatia na Polineuropatia Amiloidótica Familiar de Tipo Português (TTR V30M) 2012.
8. Meguro S., Inaishi J., Sato Y., Komuro I., Itoh H. One-year estimated glomerular filtration rate decline as a risk factor of cardiovascular and renal end-points in high-risk Japanese patients. *J Diabetes Investig* 2021;12(7):1212–9.
9. Sperry BW., Sultan MB., Gundapaneni B., Tai SS., Witteles R. EFFECT OF TAFAMIDIS ON RENAL FUNCTION IN PATIENTS WITH TRANSTHYRETIN AMYLOID CARDIOMYOPATHY IN ATTR-ACT. *J Am Coll Cardiol* 2023;81(8_Supplement):336.
10. GERTZ MA., KYLE RA., THIBODEAU SN. Familial amyloidosis: a study of 52 North American-born patients examined during a 30-year period. *Mayo Clinic Proceedings*, vol. 67. Elsevier; 1992. p. 428–40.
11. Dickman SL., Gaffney A., McGregor A., et al. Trends in health care use among Black and White persons in the US, 1963–2019. *JAMA Netw Open* 2022;5(6):e2217383–e2217383.
12. Martyn T., Saef J., Dey AR., et al. Racial and genetic differences in presentation of transthyretin amyloid cardiomyopathy with impaired left ventricular function. *Heart Fail* 2022;10(9):689–91.
13. Simons RL., Lei M-K., Klopach E., Zhang Y., Gibbons FX., Beach SRH. Racial discrimination, inflammation, and chronic illness among African American women at midlife: support for the weathering perspective. *J Racial Ethn Health Disparities* 2021;8:339–49.
14. Lim E., Gandhi K., Davis J., Chen JJ. Prevalence of chronic conditions and multimorbidities in a geographically defined geriatric population with diverse races and ethnicities. *J Aging Health* 2018;30(3):421–44.
15. Butler J., Usman MS., Filippatos G., et al. Safety and Efficacy of Empagliflozin and Diuretic Use in Patients with Heart Failure and Preserved Ejection Fraction: A Post Hoc Analysis of the EMPEROR-Preserved Trial. *JAMA Cardiol* 2023.
16. Anker SD., Butler J., Filippatos G., et al. Empagliflozin in heart failure with a preserved ejection fraction. *New England Journal of Medicine* 2021;385(16):1451–61.

17. Packer M., Anker SD., Butler J., et al. Cardiovascular and renal outcomes with empagliflozin in heart failure. *New England Journal of Medicine* 2020;383(15):1413–24.
18. Packer M. Autophagy stimulation and intracellular sodium reduction as mediators of the cardioprotective effect of sodium–glucose cotransporter 2 inhibitors. *Eur J Heart Fail* 2020;22(4):618–28.
19. Pandey AK., Bhatt DL., Pandey A., et al. Mechanisms of benefits of sodium-glucose cotransporter 2 inhibitors in heart failure with preserved ejection fraction. *Eur Heart J* 2023;44(37):3640–51.
20. Pandey AK., Dhingra NK., Hibino M., Gupta V., Verma S. Sodium-glucose cotransporter 2 inhibitors in heart failure with reduced or preserved ejection fraction: a meta-analysis. *ESC Heart Fail* 2022;9(2):942–6.
21. Pfister R., Müller-Ehmsen J., Hagemeister J., Hellmich M., Erdmann E., Schneider CA. NT-pro-BNP predicts worsening renal function in patients with chronic systolic heart failure. *Intern Med J* 2011;41(6):467–72.
22. Bosselmann H., Gislason G., Gustafsson F., et al. Incidence and predictors of end-stage renal disease in outpatients with systolic heart failure. *Circ Heart Fail* 2013;6(6):1124–31.
23. Damman K., Masson S., Lucci D., et al. Progression of renal impairment and chronic kidney disease in chronic heart failure: an analysis from GISSI-HF. *J Card Fail* 2017;23(1):2–9.

	mRF group (n=78)	wRF group (n=56)	P- Value
Demographics and Comorbidities			
Age (Years, mean ± SD)	78 ± 7.7	78.8 ± 8.7	0.6
Male Gender (%)	72 (92.3%)	50 (89.3%)	0.5
African American (%)	8 (10.3%)	15 (26.8%)	0.01
Hypertension (%)	67(85.9%)	48 (85.7%)	0.9
Diabetes Mellitus (%)	18 (23.1%)	11 (19.6)	0.6
Atrial Fibrillation (%)	59 (75.6%)	44 (78.6%)	0.7
Ischemic Heart Disease (%)	56 (71.8%)	27 (48.2%)	0.006
Peripheral Artery Disease	24 (30.8)	13 (23.2%)	0.3
Chronic Kidney Disease (%)	56 (71.8%)	31 (55.4%)	0.049
Neuropathy	50 (64.1%)	34 (60.7%)	0.7
vATTR (%)	12 (15.4%)	13 (23.2%)	0.3
Clinical Findings			
NYHA Class			
Class I	5 (6.4%)	2 (3.6%)	0.04
Class II	36 (46.1%)	16 (29.1%)	
Class III	36 (46.1%)	32 (58.2%)	
Class IV	1 (1.3%)	5 (9.1%)	
NYHA Class ≥ III	37 (47.4%)	37 (66.1%)	0.003
Systolic blood pressure (mmHg, mean ± SD)	126.6 ± 17	124.4 ± 17	0.5
Heart rate (bpm, mean ± SD)	73.8 ± 13	73.6 ± 14	0.5
Echocardiographic Findings			
LVEF% (mean ± SD)	50±9.8	49.4 ± 11.2	0.8
LVIDd (cm, mean ± SD)	4.4±0.7	4.3±0.6	0.7
Baseline Laboratory Findings			
Serum Creatinine (mg/dl, mean ± SD)	1.4 ± 0.6	1.4 ± 0.6	0.9
eGFR (ml/min/1.73 m ² , mean ± SD)	54 ± 19.3	61 ± 23	0.1
NT-proBNP (pg/mL, median [IQR])	1885 [784.5- 3779]	2354 [909- 6467]	0.2
Baseline Medications (%)			
Loop Diuretics	59 (75.6%)	47 (83.9%)	0.2
Beta-blockers	31 (39.7%)	22 (39.3%)	0.9
ACEI/ARB/ARNI	28 (35.9%)	19 (33.9%)	0.8
MRA	27 (34.6%)	18 (32.1)	0.8
SGLT-2 inhibitors	16 (20.8%)	2 (3.6%)	0.002
Tafamidis	71 (91%)	49 (87.5%)	0.5

Table 1. A Comparison of Baseline Clinical Characteristics of Patients Diagnosed with ATTR Cardiac Amyloidosis According to Their Renal Outcomes within One-year Follow-up

*ACEI: Angiotensin-converting Enzyme Inhibitor. ARB: Angiotensin Receptor Blocker. ARNI: Angiotensin Receptor Neprilysin Inhibitor. eGFR: estimated glomerular filtration rate. HF: heart failure. HFrEF: heart failure with reduced ejection fraction. HFmrEF: heart failure with mildly reduced ejection fraction. HFpEF: heart failure with preserved ejection fraction. IQR: interquartile range. LVIDd: Left ventricular internal diameter end diastole. MRA: Mineralocorticoid receptor antagonist. mRF: maintained renal function. NT-proBNP: N-terminal prohormone of Brain Natriuretic Peptide. NYHA: New York Heart Association. SGLT-2: sodium-glucose cotransporter-2. wRF: worsening renal function.

	Developed CKD (n=12)	Maintained eGFR \geq 60 (n=35)	P-Value
Demographics and Comorbidities			
Age (Years, mean \pm SD)	78.3 \pm 8.5	77.4 \pm 7	0.7
Male Gender (%)	12 (100%)	31 (88.6%)	0.6
African American (%)	4 (33.3%)	6 (17.2%)	0.2
Hypertension (%)	11 (91.7%)	29 (82.9%)	0.7
Diabetes Mellitus (%)	1 (8.3%)	8 (22.9)	0.4
Atrial Fibrillation (%)	10 (83.3%)	21 (60%)	0.2
Ischemic Heart Disease (%)	6 (50%)	23 (65.7%)	0.5
Peripheral Artery Disease	2 (16.7)	13 (37.1%)	0.3
Chronic Kidney Disease (%)	0 (0%)	0 (0%)	1
Neuropathy	9 (75%)	27 (77.2%)	0.9
vATTR (%)	3 (25%)	7 (20%)	0.7
Clinical Findings			
NYHA Class \geq III	9 (75%)	14 (40%)	0.04
Systolic blood pressure (mmHg, mean \pm SD)	126.9 \pm 16	123.7 \pm 20	0.5
Heart rate (bpm, mean \pm SD)	71.4 \pm 4.4	74.5 \pm 14.3	0.5
Echocardiographic Findings			
LVEF% (mean \pm SD)	45 \pm 13	52 \pm 8.3	0.04
LVIDd (cm, mean \pm SD)	4.5 \pm 0.4	4.1 \pm 0.55	0.07
Baseline Laboratory Findings			
Serum Creatinine (mg/dl, mean \pm SD)	1.1 \pm 0.15	0.9 \pm 0.14	0.001
eGFR (ml/min/1.73 m ² , mean \pm SD)	85 \pm 9.9	80.4 \pm 10.2	0.2
NT-proBNP (pg/mL, median [IQR])	3495 [1905-11431]	972 [542.2-2512]	0.001
Baseline Medications (%)			
Loop Diuretics	11 (91.7%)	20 (57.1%)	0.03
Beta-blockers	4 (33.3%)	10 (28.6%)	0.7
ACEI/ARB/ARNI	5 (41.7%)	11 (31.4%)	0.4
MRA	4 (33.3%)	10 (28.6)	0.7
SGLT-2 inhibitors	1 (9.1%)	3 (8.6%)	0.8
Tafamidis	10 (83.3%)	32 (91.4%)	0.6

Table 2. A Comparison of Baseline Clinical Characteristics of Patients Who Developed CKD During the vs. Those Who Maintained an eGFR \geq 60 ml/min/1.7 m² Within One-year Follow-up.

*ACEI: Angiotensin-converting Enzyme Inhibitor. ARB: Angiotensin Receptor Blocker. ARNI: Angiotensin Receptor Neprilysin Inhibitor. eGFR: estimated glomerular filtration rate. HF: heart failure. HF_rEF: heart failure with reduced ejection fraction. HF_{mr}EF: heart failure with mildly reduced ejection fraction. HF_pEF: heart failure with preserved ejection fraction. IQR: interquartile range. LVIDd: Left ventricular internal diameter end diastole. MRA: Mineralocorticoid receptor antagonist. mRF: maintained renal function. NT-proBNP: N-terminal prohormone of Brain Natriuretic Peptide. NYHA: New York Heart Association. SGLT-2: sodium-glucose cotransporter-2. wRF: worsening renal function.

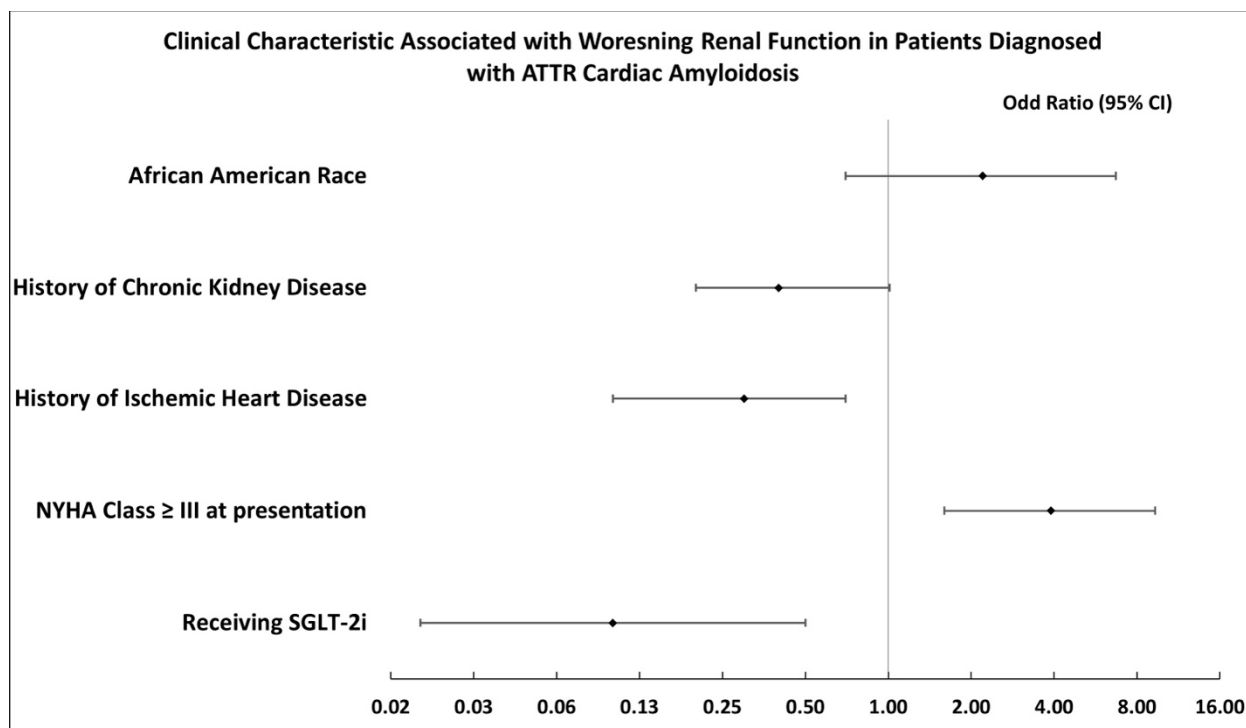


Figure 1. Clinical characteristics associated with worsening renal function in patients diagnosed with ATTR cardiac amyloidosis.

*AA: African American, ATTR-CA: transthyretin cardiac amyloidosis, CKD: Chronic Kidney Disease, IHD: ischemic Heart Disease, NT-proBNP: N-terminal prohormone of Brain Natriuretic Peptide, NYHA: New York Heart Association, SGLT-2i: sodium-glucose cotransporter-2 inhibitors. wRF: worsening renal function.

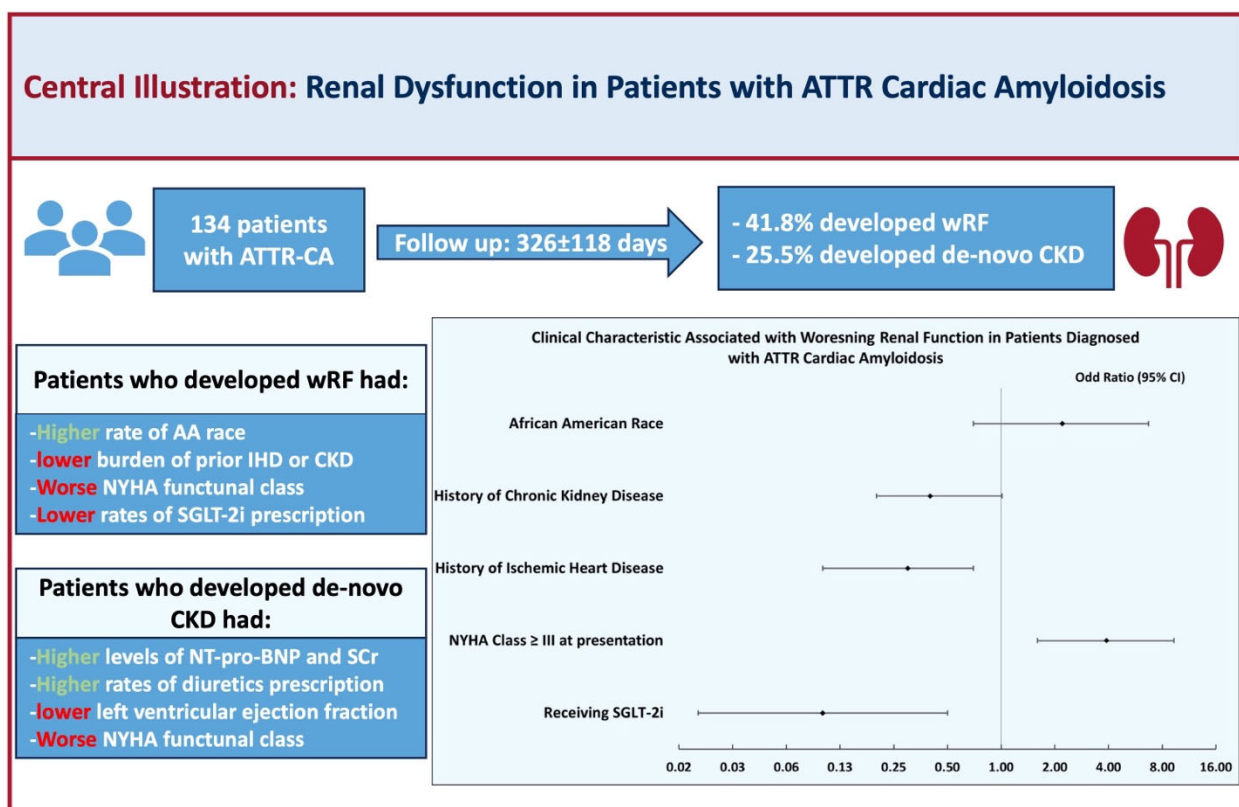


Figure 2. Central Illustration: Renal Dysfunction in Patients with ATTR Cardiac Amyloidosis.
*AA: African American, ATTR-CA: transthyretin cardiac amyloidosis, CKD: Chronic Kidney Disease, IHD: ischemic Heart Disease, NT-proBNP: N-terminal prohormone of Brain Natriuretic Peptide, NYHA: New York Heart Association, SCr; Serum Creatinine, SGLT-2i: sodium-glucose cotransporter-2 inhibitors. wRF: worsening renal function.