

1 **Title: Protection afforded by post-infection SARS-CoV-2 vaccine doses: a cohort**  
2 **study in Shanghai**

3

4 Bo Zheng<sup>1†</sup>, Bronner Gonçalves<sup>2†</sup>, Pengfei Deng<sup>3†</sup>, Weibing Wang<sup>1,4</sup>, Jie Tian<sup>1</sup>,  
5 Xueyao Liang<sup>1</sup>, Ye Yao<sup>5\*</sup>, Caoyi Xue<sup>3\*</sup>

6

7

8 1 Department of Epidemiology, School of Public Health, Fudan University, Shanghai  
9 200032, China

10 2 Department of Comparative Biomedical Sciences, School of Veterinary Medicine,  
11 University of Surrey, Guildford, UK

12 3 Shanghai Pudong New Area Center for Disease Control and Prevention, Shanghai,  
13 200120, China

14 4 Key Laboratory of Public Health Safety of Ministry of Education, Fudan University,  
15 Shanghai 200032, China

16 5 School of Public Health, Shanghai Institute of Infectious Disease and Biosecurity,  
17 Fudan University, Shanghai 200032, China

18

19

20 † These authors contributed equally to this work.

21 \* Corresponding authors:

22 Dr. Ye Yao

23 School of Public Health, Fudan University, 138 Yi Xue Yuan Road, Shanghai 200032,  
24 China (e-mail: [yyao@fudan.edu.cn](mailto:yyao@fudan.edu.cn)).

25 Dr. Caoyi Xue

26 Shanghai Pudong New Area Center for Disease Control and Prevention, 3039  
27 Zhangyang Road, Shanghai, 200120, China (e-mail: [xuecaoyi83@163.com](mailto:xuecaoyi83@163.com))

28

29

30

31

32

33 NOTE: This preprint reports new research that has not been certified by peer review and should not be used to guide clinical practice.

34 **ABSTRACT**

35 **Background:** In many settings, a large fraction of the population has both been  
36 vaccinated against and infected by SARS-CoV-2. Hence, quantifying the protection  
37 provided by post-infection vaccination has become critical for policy. We aimed to  
38 estimate the protective effect against SARS-CoV-2 reinfection of an additional  
39 vaccine dose after an initial Omicron variant infection.

40 **Methods:** We report a retrospective, population-based cohort study performed in  
41 Shanghai, China, using electronic databases with information on SARS-CoV-2  
42 infections and vaccination history. We compared reinfection incidence by post-  
43 infection vaccination status in individuals initially infected during the April-May 2022  
44 Omicron variant surge in Shanghai and who had been vaccinated before that period.  
45 Cox models were fit to estimate adjusted hazard ratios (aHR).

46 **Results:** 275,896 individuals were diagnosed with RT-PCR-confirmed SARS-CoV-2  
47 infection in April-May 2022; 199,312/275,896 were included in analyses on the effect  
48 of a post-infection vaccine dose. Post-infection vaccination provided protection  
49 against reinfection (aHR 0.82; 95% CI 0.79-0.85). For patients who had received one,  
50 two or three vaccine doses before their first infection, hazard ratios for the post-  
51 infection vaccination effect were 0.84 (0.76-0.93), 0.87 (0.83-0.90) and 0.96 (0.74-  
52 1.23), respectively. Vaccination within 30 and 90 days before the second Omicron  
53 wave provided different degrees of protection (in aHR): 0.51 (0.44-0.58), and 0.67  
54 (0.61-0.74), respectively. Moreover, for all vaccine types, but to different extents, a  
55 post-infection dose given to individuals who were fully vaccinated before first  
56 infection was protective.

57 **Conclusions:** In previously vaccinated and infected individuals, an additional vaccine  
58 dose provided protection against Omicron variant reinfection. These observations will  
59 inform future policy decisions on COVID-19 vaccination in China and other countries.

60

61 **Keywords:** COVID-19, vaccine effectiveness, hybrid immunity, reinfection, Omicron  
62 variant.

63

64

65

66

## 67 **1 Introduction**

68 Four years after the first reports of severe acute respiratory syndrome  
69 coronavirus 2 (SARS-CoV-2) infection, the Coronavirus disease (COVID-19)  
70 pandemic continues to be a global concern, especially due to the risk of emergence of  
71 new variants[1, 2]. In most countries, the variant that is currently epidemiologically  
72 dominant is the Omicron[3, 4], which, due to its increased transmissibility and high  
73 number of mutations, led to significant increases in the number of infections in  
74 2022[5]. Omicron variant infections were first observed in China in December  
75 2021[3], and in Shanghai, the spread of the Omicron BA.2 sublineage led to a  
76 substantial increase in COVID-19 incidence between February 26 and June 30,  
77 2022[6].

78 In December 2022[7], an important change in the COVID-19 policy in China,  
79 namely the end of most social distancing measures and of mass screening activities,  
80 was associated with a second surge in SARS-CoV-2 infections in Shanghai. The  
81 current circulation of the virus in the Shanghainese population and reports of vaccine  
82 fatigue mean that it is important to estimate the protective effect of vaccination  
83 against reinfection in this population. In this study, we aimed to quantify the effect of  
84 vaccine doses given after a first infection on the risk of subsequent infection. For that,  
85 we used data collected during the first Omicron variant wave, when hundreds of  
86 thousands of individuals tested real-time polymerase chain reaction (RT-PCR)-  
87 positive for SARS-CoV-2 infection[8] in Shanghai, of which 275,896 individuals in  
88 Pudong. The fact that the population in Shanghai was mostly SARS-CoV-2 infection  
89 naïve before the spread of the Omicron variant provides a unique opportunity to  
90 estimate the real-world benefit of post-infection vaccine doses in a population that  
91 was first exposed to infection during a relatively short and well-defined time window.  
92 We further investigated whether the number of pre-infection vaccination doses  
93 modified the protective effect of the post-infection dose against Omicron BA.5  
94 sublineage.

## 95 **2 Results**

### 96 *2.1 Demographic characteristics of the study population*

97 Of the 275,896 individuals with RT-PCR-confirmed SARS-CoV-2 infection  
98 during the first Omicron variant wave (from April 1 to May 31, 2022) in Pudong,  
99 Shanghai, 1,227 individuals died from reasons unrelated to COVID-19 between the

100 first infection and November 2022 and were excluded from our analysis. Most first  
101 infections (243,906, 88.8%) occurred in April; for 306 (0.1%) individuals,  
102 information on the date of first infection was not available. In April 2022, more than  
103 half of the study population (68.6%) had completed full vaccination and one third  
104 (34.4%) had received booster vaccination.

105 To assess the effect of an additional vaccine dose given after infection, the  
106 analytic sample consisted of 199,312 individuals (**Figure 1**). 85,804 were women  
107 (43.1%); 836 (0.4%) had gender information missing. 38.1% of the study participants  
108 were aged 20 to 39 years and only 0.9% were aged 0 to 6 years.

## 109 **2.2 Vaccination after first Omicron variant infection**

110 **Figure 2** (Panel A) shows vaccination coverage in the analytic population over  
111 time. In April 2022, a series of emergency epidemic prevention measures, including  
112 mass screening with Nucleic Acid Amplification Tests (NAATs), city-wide lockdown,  
113 home quarantine of residents, were implemented in Shanghai, leading to the  
114 temporary suspension of vaccination in April and May 2022. By the end of the study  
115 period, January 2023, 69.5% (**Table S1**) of the study participants had completed full  
116 vaccination, and 38.4% booster vaccination (**Figure S1**). Vaccination coverages for  
117 the first, second, third, and fourth vaccine doses were 72.7%, 67.6%, 37.4% and 0.3%,  
118 respectively.

119 As mentioned above, only participants who had received vaccination before the  
120 first infection were included in this analysis. After infection, 10,241 (5.1%), 5,096  
121 (2.6%), and 810 (0.4%) individuals received another vaccine dose in August, and  
122 during the periods from September to November 2022 and from December 2022 to  
123 January 2023, respectively. Between their first infection, in April-May 2022, and  
124 January 2023, 17.4% (2,466/14,131) of the study participants who had one pre-  
125 infection dose received a second dose of COVID-19 vaccine, and 13.8%  
126 (12,886/93,087) of those who had received two pre-infection doses received a third  
127 vaccine dose. Only 1.0% (142/14,131) of the study participants who had one pre-  
128 infection dose received two doses of COVID-19 vaccine after infection, and 0.2%  
129 (144/93,087) of those who had received two pre-infection doses received two vaccine  
130 doses after infection (**Table S5**). All individuals with three pre-infection vaccine  
131 doses who received a fourth dose (795/92,094, 0.9%) received the post-infection dose  
132 in December 2022; for 793 of these participants, the vaccine dose received in

133 December was their second booster vaccination (for the other 2, their fourth dose was  
134 the first booster vaccination; see *Supplementary Appendix* for more information about  
135 vaccine policy in Shanghai).

### 136 **2.3 SARS-CoV-2 reinfections**

137 Among the study participants, 48,651/199,312 (24.4%) had SARS-CoV-2  
138 reinfection. The median age of individuals with no evidence of reinfection was 41.7  
139 years (IQR: 31.0, 55.7 years), and of individuals with confirmed SARS-CoV-2  
140 reinfection, 45.8 years (IQR: 34.0, 55.9 years) (**Table S1**). The median time interval  
141 between the first infection and reinfection was 244.7 days (IQR: 237.4, 250.0), which  
142 implies that the risk of misclassifying a long infection as a reinfection was low.

143 **Figure 2** (Panels B and C) shows the cumulative incidence of SARS-CoV-2  
144 reinfection by vaccination status. Overall, individuals who were not vaccinated after  
145 their first infection were more often reinfected compared to those vaccinated after  
146 infection. The percentage of female individuals who became reinfected was lower  
147 than that of male individuals (22.4% vs. 26.1%; **Table 1**); and reinfection was more  
148 common in participants aged 40 to 59 years compared to those aged 20 to 39 (29.4%  
149 vs. 22.4%). Individuals originally from other provinces had a slightly higher risk of  
150 reinfection compared to individuals from Shanghai (20.9% vs. 18.9%). The risks for  
151 retired individuals, for those of working age who were not working, and for those  
152 working were 22.5, 21.0, and 20.8%, respectively.

### 153 **2.4 Vaccine effectiveness**

154 For individuals who had received at least one vaccine dose before infection  
155 during the first Omicron variant wave, post-infection vaccination was protective  
156 against reinfection (adjusted hazard ratio [aHR] 0.82, 95% CI 0.79, 0.85). As shown  
157 in **Figure 3**, this protective effect was observed in subgroups defined by the number  
158 of pre-infection vaccine doses: aHR of 0.84 (95% CI, 0.76, 0.93) and 0.87 (95% CI,  
159 0.83, 0.90) for one and two pre-infection doses respectively; and for patients with  
160 three vaccine doses prior to infection, the association was not statistically significant  
161 (aHR: 0.96 [0.74, 1.23]). When analyses are stratified by partial and full vaccination  
162 status before the first infection, an additional vaccine dose was protective (aHR 0.76  
163 [0.68, 0.84], and 0.93 [0.89, 0.97], respectively); and among individuals who had  
164 received booster vaccination before the spread of the first Omicron variant wave in  
165 Shanghai, the hazard ratio estimate was consistent with a more limited effect (aHR:

166 0.95 [0.75, 1.22]).

167 In analyses stratified by demographic characteristics (**Figure 4**), post-infection  
168 vaccine doses were protective in both female (aHR 0.81 [0.76, 0.86]) and male  
169 individuals (aHR 0.83 [0.79, 0.87]). Vaccine dose after the first Omicron variant wave  
170 was more protective for participants aged 60 years or older (aHR 0.73 [0.69, 0.78]  
171 compared to other age groups. The estimated aHR for individuals who were  
172 asymptomatic during their first infection was 0.80 (0.74, 0.87), and for those who  
173 were symptomatic during the first infection was 1.01 (0.78, 1.29).

174 As a secondary analysis, we estimated vaccine effects by calendar time of  
175 vaccination. Additional vaccine doses given within 30 and 90 days of the second  
176 Omicron variant wave were associated with lower hazard of reinfection (aHRs 0.51  
177 [0.44, 0.58], 0.67 [0.61, 0.74], respectively). Note that in this secondary analysis,  
178 exposed and unexposed individuals were matched using propensity scores. We also  
179 performed a secondary analysis by vaccine type: for example, we compared patients  
180 who completed full vaccination before first infection and received a post-infection  
181 Ad5-nCOV vaccine dose, with those who completed full vaccination before first  
182 infection and received no vaccination post-infection; this approach was repeated for  
183 inactivated vaccines and recombinant protein vaccines (**Table S6**). Note that in this  
184 analysis, the types of vaccines administered before infection often align between the  
185 post-infection vaccination group and the post-infection non-vaccination group (see  
186 **Table S6**). Post-infection Ad5-nCoV vaccine dose given to those had received full  
187 vaccination before the first infection was associated with lower hazard of reinfection  
188 (0.67, 95% CI: 0.56, 0.80); a protective effect was also observed for other vaccine  
189 types: inactivated vaccines (0.92, 95% CI: 0.87, 0.98) or recombinant protein vaccines  
190 (0.77, 95% CI: 0.64, 0.92). We performed an additional ad-hoc sensitivity analysis  
191 using a Cox model that was not adjusted for the severity of the first infection. As  
192 shown in **Figure S2**, our findings were not affected by the non-inclusion of disease  
193 severity in the survival analysis model.

### 194 **3 Discussion**

195 We aimed to estimate the added value of a vaccine dose given after SARS-CoV-  
196 2 infection in individuals who had received COVID-19 vaccination before the  
197 emergence of the Omicron variant. Although quantification of the protective effect of  
198 additional vaccine doses in individuals who have been both exposed to infection and



199 previously vaccinated is a public health policy priority, as in many settings this group  
200 represents a large fraction of the population, studies on this question are often  
201 complicated by the variable timing of infection, vaccination and reinfection. Here, we  
202 leveraged the epidemiological history of COVID-19 in Shanghai municipality, where  
203 exposure to first and second SARS-CoV-2 infections occurred during well-defined  
204 periods of time, and large electronic databases allowed analyses of vaccination and  
205 infection history. Our study showed that vaccine doses given after the first Omicron  
206 variant infection reduced the risk of reinfection with this variant during a second,  
207 large surge of infections in the city. We also assessed the impact of the timing of  
208 vaccination relative to the second Omicron variant wave, and presented secondary and  
209 sensitivity analyses. This study will be used to guide COVID-19 vaccination policy in  
210 the municipality of Shanghai, and have implications for the rest of the country.

211 In Shanghai, COVID-19 vaccination started in February 2021 for individuals  
212 aged between 18 and 59 years, and over the following months, both older residents  
213 and children were included in the vaccination programme[9]. By the time of the first  
214 surge of Omicron variant infections, less than 70% of Shanghai residents aged 60 to  
215 79 years had completed a primary vaccination series, and 40% had received a booster  
216 dose[8]. This was the context in which the population in this municipality was  
217 exposed to a first large epidemic of SARS-CoV-2 infections. The change in policy in  
218 December 2022 that was associated with a significant increase in the number of  
219 infections was our primary motivation to study the additional protection afforded by  
220 vaccine doses after infection. Indeed, although epidemiological studies have been  
221 reported on the effect of vaccination against reinfection, primarily in Europe[10],  
222 North America[11] and Middle East[12], there is limited evidence from settings  
223 similar to that in Shanghai, where both the infection and vaccination histories, in  
224 terms of vaccine types, differ considerably from those in most Western countries. As  
225 individuals increasingly question the benefit of getting vaccinated after COVID-19  
226 recovery, evidence generated locally is necessary.

227 Previous studies have shown that infection alone can result in immune responses  
228 that protect against Omicron variant reinfection. For example, a study in Qatar, with a  
229 test-negative design, found that an earlier Omicron variant infection provided  
230 protection against symptomatic BA.4 or BA.5 reinfection[13]. There are also different  
231 types of evidence that support vaccination post-infection. In Israel, post-infection

232 vaccination protected against reinfection in individuals with no history of pre-  
233 infection vaccine doses[14], and prior SARS-CoV-2 infection was associated with  
234 lower risk for breakthrough infection among individuals receiving the BNT162b2 or  
235 mRNA-1273 vaccines in Qatar[15]. Further, a recent cohort study, performed in the  
236 US, of previously infected individuals who were unvaccinated at the time of first  
237 infection suggest that vaccination after recovery from COVID-19 decreased risk of  
238 reinfection by approximately half[16], which was consistent with a case-control study  
239 also conducted in the US[17]. Although our research question was different from  
240 those in these studies, data from Shanghai suggest that a vaccine dose after infection  
241 in individuals who had received at least one dose of SARS-CoV-2 vaccine before  
242 infection provides protection against reinfection. We note that whilst an additional  
243 vaccine dose was protective for individuals who had received one or two vaccine  
244 doses before the first Omicron variant wave, for those individuals who had received  
245 three vaccine doses, the evidence for a protective effect was limited. A possible  
246 explanation relates to the timing of the additional vaccine dose: for all individuals  
247 with three pre-infection vaccine doses, the post-infection dose was given in December  
248 2022 and, as a few weeks are required for immunologic boosting, the relatively short  
249 follow-up might have been insufficient to detect an effect. Similarly, evidence that an  
250 additional vaccine dose was protective for individuals who had received booster  
251 vaccination before the spread of the first Omicron variant wave in Shanghai was  
252 limited; the majority (793/810) of these individuals had 3 doses before first Omicron  
253 variant infection.

254 In a secondary analysis that assessed the impact of the timing of the additional  
255 vaccine dose on the estimated effect, we observe that vaccination within 30 and 90  
256 days before the second surge of Omicron variant provided different degrees of  
257 protection, consistent with waning of immunity even in individuals with multiple  
258 vaccine doses and history of infection[18]. As the length of follow-up in our study  
259 was relatively short, we were not able to analyze immunity duration over longer  
260 periods of time after the start of the second Omicron variant wave. This observation  
261 has implications for COVID-19 vaccination programmes: for example, under  
262 perfectly functioning logistics, it is possible that timing of vaccination campaigns,  
263 including for individuals who have been both previously infected and vaccinated,



264 might be optimal if launched immediately after increase in incidence (e.g. linked to a  
265 new variant), rather than immediately after the end of a wave of infections.

266 In our analyses stratified by demographic characteristics, the protective effect of  
267 an additional vaccine dose was higher among patients who were 60 years of age or  
268 older than among younger individuals. As older individuals are more likely to suffer  
269 severe disease, including in settings similar to Shanghai[6], this finding suggests that  
270 vaccination of individuals in this age group, even after previous infection and  
271 vaccination, is beneficial. Similar to the findings of Ghorbani et al[19], we also found  
272 that the rate of reinfection in females was lower than in males; however, the  
273 protective effect of post-infection vaccine doses was similar in the two groups.

274 We also observed greater protection after an Ad5-nCoV vaccine dose in  
275 individuals who were fully vaccinated before their first SARS-CoV-2 infection  
276 compared to post-infection doses with other vaccine types. Note however that not all  
277 post-infection doses were of the same type of pre-infection vaccine doses. Another  
278 stratified analysis revealed that the protective effect of additional doses was different  
279 in individuals who had asymptomatic presentations of the first infection versus those  
280 who had symptomatic disease (aHR 0.80 [0.74, 0.87] and 1.01 [0.78, 1.29]). This  
281 could be related to different immune responses after infections with different  
282 severities. Indeed, reduced antibody response after the initial SARS-CoV-2 infection  
283 has been associated with incidence of reinfections. For example, in the study by  
284 Islamoglu and colleagues[20], it was observed that antibody responses against SARS-  
285 CoV-2 were protective against COVID-19 reinfection. Consistently, in the Republic  
286 of Korea, CD4<sup>+</sup> T-cell responses tended to be greater in patients who had severe  
287 disease[21]. In agreement with these studies, that had different designs, our analysis  
288 suggests that individuals who had severe or critical COVID-19 had a lower risk of  
289 reinfection compared to those who were asymptomatic (see **Table 1**). Note that  
290 individuals who were asymptomatic and those with mild symptoms during the first  
291 infection had comparable rates of reinfection. However, individuals with unknown  
292 disease severity during the first infection had a higher reinfection rate compared to  
293 those with documented clinical severity. This is possibly due to the fact that  
294 asymptomatic individuals were more likely to experience home isolation or delayed  
295 transfer, leading to more frequent missing clinical severity data for this group.

296 Strengths of our study include: the well-defined timing of first infections and  
297 reinfections in Shanghai, linked to the two Omicron variant waves; detailed  
298 information on vaccination based on a citywide system; mass screening for SARS-  
299 CoV-2 infections during the first Omicron variant surge; free testing during the  
300 second Omicron wave. Further, to prevent immortal time bias, a common problem in  
301 epidemiological studies where treatment/exposure assignment is not aligned with the  
302 start of follow-up, we performed survival analysis that used a time varying exposure  
303 variable. The insights from our study are also likely generalizable to similar urban  
304 settings facing distinct waves of SARS-CoV-2 infections and that adopted the same  
305 vaccine types. However, our study also has limitations. Firstly, information on key  
306 variables, such as occupation, household registration, clinical severity during the first  
307 infection, were missing for a non-negligible fraction of the study population.  
308 Although in the primary analysis we performed adjustment for likely confounders,  
309 and in the secondary analysis we used propensity score matching, as in other  
310 observational studies, we cannot rule out the possibility of residual confounding,  
311 which in this context could be related to comorbidities that might affect both the  
312 decision to vaccinate after infection and risk of reinfection. Differences in healthcare-  
313 seeking behavior could also bias case ascertainment between post-infection  
314 vaccinated and unvaccinated individuals[22], although, as we restricted the study  
315 population to individuals who had received at least one pre-infection dose, this  
316 potential bias might be more limited than in other vaccine studies.

## 317 **Conclusions**

318 Although SARS-CoV-2 vaccination, including booster doses, is recommended  
319 by the public health authorities in Shanghai to reduce the local disease burden caused  
320 by COVID-19, there is increasing unwillingness in the population to receive  
321 additional vaccine doses, and vaccine fatigue has been frequently reported. Our study  
322 provides evidence that there is additional value for individuals who have been  
323 vaccinated in receiving vaccine doses after infections. It also suggests that vaccination  
324 programmes need to be linked to efficient surveillance for new infections so that  
325 public health authorities can maximize impact of additional doses, including in this  
326 group of patients.

## 327 **4 Materials and methods**

### 328 ***4.1 Study setting and participants***

329 During the first Omicron variant wave, the entire city of Shanghai entered a  
330 lockdown phase on April 1, 2022; and on June 1, 2022, the local government declared  
331 the end of the city-wide lockdown[6]. Residents (citizens, including immigrants from  
332 other provinces, and foreigners) in Shanghai, a provincial-level municipality in China  
333 with a population of more than 25 million people, underwent several rounds of SARS-  
334 CoV-2 RT-PCR testing between April 1 and May 31, 2022. This study included  
335 individuals diagnosed with their first SARS-CoV-2 infection between April 1 and  
336 May 31, 2022 in the Pudong District, Shanghai; both individuals who were diagnosed  
337 by mass screening and those with symptoms who were seen by healthcare  
338 professionals were included. Information on infection history as well as data on  
339 demographic variables (sex, age) were provided by Center for Disease Control and  
340 Prevention in Shanghai, China.

341 Additional information (e.g. on occupation, residence, clinical severity and  
342 symptoms of first infection) was available for patients with hospital records and those  
343 who were transferred to a hospital. The recorded clinical severity was categorized as  
344 asymptomatic, mild, moderate, severe, or critically ill[23, 24]. During the first  
345 Omicron variant wave in Shanghai, many Fangcang shelter hospitals were rapidly  
346 converted into facilities to treat COVID-19 patients and made important contributions  
347 in providing adequate healthcare to patients with mild to moderate symptoms, and  
348 preventing further viral transmission in the community[25]. The efficient referral and  
349 transfer mechanisms in the local communities meant that the majority of patients were  
350 admitted to Fangcang shelter hospitals one or two days after testing positive for  
351 SARS-CoV-2[26]. However, many patients were either admitted to hospital without  
352 complete clinical information or not transferred to other hospitals; for these study  
353 participants, information on clinical severity was often missing.

#### 354 ***4.2 Study design and eligibility criteria***

355 There was a second surge of Omicron variant cases from December 2022; and  
356 from January 2023, free nucleic acid testing services were no longer offered in  
357 Shanghai, and mandatory PCR testing on all personnel ceased. After this change, the  
358 cost of an individual test was 16 yuan (US\$2.33)[27]. For this reason, the outcome  
359 variable in our analysis was based on reinfection data collected prior to January 2023.  
360 Reinfection-related death was defined as death within 30 days of a SARS-CoV-2  
361 reinfection[10]; individuals who died from reasons unrelated to COVID-19 between

362 the two Omicron variant waves were excluded. Individuals were also excluded if the  
363 date of first infection was missing. As the reasons why some individuals refused to  
364 receive vaccination varied and were often unknown[28], our analysis focused on  
365 individuals who had received at least one vaccine dose before the first SARS-CoV-2  
366 infection.

### 367 ***4.3 Vaccination and reinfection data***

368 The Shanghai Group Immunization System captures all vaccine administrations  
369 in the municipality and is updated daily. This system is linked to the National  
370 Immunization Program Information System, which also includes national  
371 identification-matched COVID-19 vaccinations received outside of Shanghai[8].  
372 Vaccination status was categorized in accordance with national technical  
373 recommendations for COVID-19 vaccination[8]: unvaccinated, partially vaccinated,  
374 fully vaccinated and fully vaccinated with booster dose (here, also referred to as  
375 booster vaccination). Below, inactivated vaccines refer to Sinovac-CoronaVac,  
376 Sinopharm/BIBP COVID-19 vaccine, and Sinopharm/WIBP COVID-19 vaccine;  
377 Ad5-vectored vaccine refers to Cansino Ad5-nCoV-S COVID-19 vaccine; and  
378 recombinant protein vaccine refers to recombinant COVID-19 vaccine (CHO cell),  
379 Anhui Zhifei Longcom Biopharmaceutical Institute of Microbiology.

380 As in other epidemiological studies[19, 29], we defined reinfection as a positive  
381 SARS-CoV-2 RT-PCR or rapid antigen test at least 90 days after the first positive test.  
382 Phylogenetic analysis coupled with contact tracing data revealed community  
383 transmission of Omicron BA.5.2 sublineage in Shanghai[9]; the subvariant was  
384 estimated to have caused ~90% of infections during the second Omicron variant wave.

### 385 ***4.4 Statistical analysis***

386 Continuous variables are summarized as medians and interquartile ranges (IQR),  
387 and categorical variables, as counts and proportions. Cumulative incidence of  
388 reinfections was calculated and expressed as the number of reinfected individuals per  
389 100 participants. Cox proportional hazards models with a time varying exposure  
390 variable corresponding to post-infection vaccination were used to estimate adjusted  
391 hazard ratios (aHR). In this analysis, time to reinfection was the outcome, and post-  
392 infection vaccination, the exposure of interest; models were adjusted for sex, age,  
393 residence, occupation and clinical severity of the first SARS-CoV-2 infection. As, due  
394 to social distancing measures, the number of SARS-CoV-2 infections diagnosed

395 between May and November 2022 in Shanghai was low (N = 89 individuals), the start  
396 of the follow-up in the survival analysis was on December 1, and for each participant,  
397 the follow-up continued until January 3, 2023 or confirmed SARS-CoV-2 reinfection,  
398 whichever occurred earlier. We note that by using this approach, both the start of the  
399 follow-up and the eligibility (which required confirmed SARS-CoV-2 infection  
400 during the initial Omicron variant wave, and being at risk of infection when the  
401 second Omicron variant wave occurred in December) are temporally aligned. On the  
402 other hand, for some participants, the time of exposure (post-infection vaccination)  
403 occurred after time zero, which could potentially lead to immortal time bias[30]; for  
404 this reason, the exposure variable was as time-varying. We also assessed whether this  
405 effect was modified by demographic characteristics.

406 We conducted a secondary analysis to estimate the protection afforded by  
407 vaccination before the second Omicron variant wave (that is, only vaccine doses  
408 received before December 2022 were used in defining the exposure variable); this  
409 analysis was stratified by time intervals between post-infection vaccination and the  
410 second Omicron variant wave, and by post-infection vaccine type (for individuals  
411 who had the same vaccination status or the same number of doses before first  
412 infection). For this secondary analysis, propensity score matching was used to  
413 improve comparability between the exposed and unexposed groups; the propensity  
414 score was calculated using a logistic regression model with all available baseline  
415 characteristics, and a one-to-one matching was performed using the nearest neighbor  
416 matching method with a caliper width of 0.20[31]. We assessed the balance of  
417 covariates after matching using standardized mean differences (SMD), and considered  
418 a value of less than 0.1 to be indicative of adequate matching (**Table S2-4**). All  
419 statistical analyses were performed using R.4.1.1 software (Foundation for Statistical  
420 Computing, Vienna, Austria; <https://www.r-project.org>). We followed the  
421 Strengthening the reporting of observational studies in epidemiology (STROBE)  
422 recommendations, and the STROBE checklist is provided in the *Supplementary*  
423 *Appendix (Table S7)*

#### 424 **Acknowledgments**

425 We gratefully acknowledge all participants in this study.

426

427

428  
429  
430  
431  
432  
433  
434  
435  
436

437 **Additional information**

438 **Funding**

Funder	Grant reference number	Author
Key Discipline Program of Pudong New Area Health System	PWZxk2022-25	Caoyi Xue
Development and Application of Intelligent Epidemic Surveillance and Artificial Intelligence Analysis System	21002411400	Weibing Wang
Shanghai Three-year Action Plan to Strengthen the Construction of Public Health System	GWVI-11.2-XD08	Caoyi Xue

The funders had no role in study design, data collection and interpretation, or the decision to submit the work for publication.

439 **Author contributions**

440 BZ, BG, WW and YY designed the study. CX, PD and BZ extracted the data and  
441 constructed the database. BZ, JT and XL analyzed the data. BZ and WW drafted the  
442 manuscript—original draft. BG, XC, YY and WW conducted critical revisions of the  
443 manuscript—review and editing. All authors read and approved the final manuscript.

444 **Ethics**

445 The study was approved by the Ethical Review Committee in the Shanghai Pudong  
446 New Area Center for Disease Control and Prevention (approval number: PDCDCLL-  
447 20220801-001).

448 **Consent for publication**

449 Not applicable.

450 **Competing interests**



451 The authors declare that they have no known competing financial interest or personal  
452 relationship that could influence the work reported in this paper.

453

454

455 **Additional files**

456 **Supplementary files**

457 Table S1. Descriptive overview of the study population.

458 Table S2. Baseline demographic characteristics of unvaccinated and vaccinated  
459 groups after first infection stratified by dose received before first infection.

460 Table S3. Baseline demographic characteristics of unvaccinated and vaccinated  
461 groups after first infection stratified by intervals before the policy change.

462 Table S4. Baseline demographic characteristics of unvaccinated and vaccinated  
463 groups after first infection stratified by vaccination status prior infection.

464 Table S5. Characteristics of vaccination distribution among study population.

465 Table S6. Effect of vaccination after first infection against SARS-CoV-2 reinfection  
466 stratified by sequence of vaccination dose and vaccination status before first infection.

467 Table S7. STROBE Statement.

468 Figure S1. Vaccination status coverage in the study population.

469 Figure S2. Effect of vaccine dose on SARS-CoV-2 reinfection stratified by pre-  
470 infection vaccination and not adjusted for the severity of the first infection.

471 **Data availability**

472 The individual-level data used in this study are sensitive and cannot be publicly  
473 shared. Requests for data should be made to the Shanghai Pudong New Area Center  
474 for Disease Control and Prevention.

## 475 **References**

- 476 1. Pan Y, Wang L, Feng Z, Xu H, Li F, Shen Y, Zhang D, Liu WJ, Gao GF, Wang Q:  
477 **Characterisation of SARS-CoV-2 variants in Beijing during 2022: an epidemiological**  
478 **and phylogenetic analysis.** *Lancet* 2023, **401**(10377):664-672.
- 479 2. Zhu N, Zhang D, Wang W, Li X, Yang B, Song J, Zhao X, Huang B, Shi W, Lu R *et al.*  
480 **A Novel Coronavirus from Patients with Pneumonia in China, 2019.** *N Engl J Med*  
481 2020, **382**(8):727-733.
- 482 3. Viana R, Moyo S, Amoako DG, Tegally H, Scheepers C, Althaus CL, Anyaneji UJ,  
483 Bester PA, Boni MF, Chand M *et al.* **Rapid epidemic expansion of the SARS-CoV-2**  
484 **Omicron variant in southern Africa.** *Nature* 2022, **603**(7902):679-686.
- 485 4. Zhou Y, Zhi H, Teng Y: **The outbreak of SARS-CoV-2 Omicron lineages, immune**  
486 **escape, and vaccine effectivity.** *J Med Virol* 2023, **95**(1):e28138.
- 487 5. Li J, Lai S, Gao GF, Shi W: **The emergence, genomic diversity and global spread of**  
488 **SARS-CoV-2.** *Nature* 2021, **600**(7889):408-418.
- 489 6. Chen X, Yan X, Sun K, Zheng N, Sun R, Zhou J, Deng X, Zhuang T, Cai J, Zhang J  
490 *et al.* **Estimation of disease burden and clinical severity of COVID-19 caused by**  
491 **Omicron BA.2 in Shanghai, February-June 2022.** *Emerg Microbes Infect* 2022,  
492 **11**(1):2800-2807.
- 493 7. Zheng L, Liu S, Lu F: **Impact of National Omicron Outbreak at the end of 2022 on the**  
494 **future outlook of COVID-19 in China.** *Emerg Microbes Infect* 2023, **12**(1):2191738.
- 495 8. Huang Z, Xu S, Liu J, Wu L, Qiu J, Wang N, Ren J, Li Z, Guo X, Tao F *et al.*  
496 **Effectiveness of inactivated COVID-19 vaccines among older adults in Shanghai:**  
497 **retrospective cohort study.** *Nat Commun* 2023, **14**(1):2009.
- 498 9. Huang Z, Xu S, Liu J, Wu L, Qiu J, Wang N, Ren J, Li Z, Guo X, Tao F *et al.*  
499 **Effectiveness of inactivated and Ad5-nCoV COVID-19 vaccines against SARS-CoV-2**  
500 **Omicron BA. 2 variant infection, severe illness, and death.** *BMC Med* 2022, **20**(1):400.
- 501 10. Nielsen KF, Moustsen-Helms IR, Schelde AB, Gram MA, Emborg HD, Nielsen J,  
502 Hansen CH, Andersen MA, Meaidi M, Wohlfahrt J *et al.* **Vaccine effectiveness against**  
503 **SARS-CoV-2 reinfection during periods of Alpha, Delta, or Omicron dominance: A**  
504 **Danish nationwide study.** *PLoS Med* 2022, **19**(11):e1004037.
- 505 11. Bobrovitz N, Ware H, Ma X, Li Z, Hosseini R, Cao C, Selemon A, Whelan M, Premji Z,  
506 Issa H *et al.* **Protective effectiveness of previous SARS-CoV-2 infection and hybrid**  
507 **immunity against the omicron variant and severe disease: a systematic review and**  
508 **meta-regression.** *Lancet Infect Dis* 2023, **23**(5):556-567.
- 509 12. Gazit S, Saciuk Y, Perez G, Peretz A, Ben-Tov A, Stuart EA, Patalon T: **Hybrid**  
510 **immunity against reinfection with SARS-CoV-2 following a previous SARS-CoV-2**  
511 **infection and single dose of the BNT162b2 vaccine in children and adolescents: a**  
512 **target trial emulation.** *Lancet Microbe* 2023, **4**(7):e495-e505.
- 513 13. Altarawneh HN, Chemaitelly H, Ayoub HH, Hasan MR, Coyle P, Yassine HM, Al-

- 514 Khatib HA, Smatti MK, Al-Kanaani Z, Al-Kuwari E *et al*: **Protective Effect of Previous**  
515 **SARS-CoV-2 Infection against Omicron BA.4 and BA.5 Subvariants.** *N Engl J Med*  
516 2022, **387**(17):1620-1622.
- 517 14. Hammerman A, Sergienko R, Friger M, Beckenstein T, Peretz A, Netzer D, Yaron S,  
518 Arbel R: **Effectiveness of the BNT162b2 Vaccine after Recovery from Covid-19.** *N*  
519 *Engl J Med* 2022, **386**(13):1221-1229.
- 520 15. Abu-Raddad LJ, Chemaitelly H, Ayoub HH, Yassine HM, Benslimane FM, Al Khatib  
521 HA, Tang P, Hasan MR, Coyle P, Al Kanaani Z *et al*: **Association of Prior SARS-CoV-**  
522 **2 Infection With Risk of Breakthrough Infection Following mRNA Vaccination in Qatar.**  
523 *Jama* 2021, **326**(19):1930-1939.
- 524 16. Lewis N, Chambers LC, Chu HT, Fortnam T, De Vito R, Gargano LM, Chan PA,  
525 McDonald J, Hogan JW: **Effectiveness Associated With Vaccination After COVID-19**  
526 **Recovery in Preventing Reinfection.** *JAMA Netw Open* 2022, **5**(7):e2223917.
- 527 17. Cavanaugh AM, Spicer KB, Thoroughman D, Glick C, Winter K: **Reduced Risk of**  
528 **Reinfection with SARS-CoV-2 After COVID-19 Vaccination - Kentucky, May-June**  
529 **2021.** *MMWR Morb Mortal Wkly Rep* 2021, **70**(32):1081-1083.
- 530 18. Ferdinands JM, Rao S, Dixon BE, Mitchell PK, DeSilva MB, Irving SA, Lewis N,  
531 Natarajan K, Stenehjem E, Grannis SJ *et al*: **Waning of vaccine effectiveness against**  
532 **moderate and severe covid-19 among adults in the US from the VISION network: test**  
533 **negative, case-control study.** *Bmj* 2022, **379**:e072141.
- 534 19. Sotoodeh Ghorbani S, Taherpour N, Bayat S, Ghajari H, Mohseni P, Hashemi Nazari  
535 SS: **Epidemiologic characteristics of cases with reinfection, recurrence, and hospital**  
536 **readmission due to COVID-19: A systematic review and meta-analysis.** *J Med Virol*  
537 2022, **94**(1):44-53.
- 538 20. Islamoglu MS, Cengiz M, Uysal BB, Ikitimur H, Ozdemir Z, Karamehmetoglu A,  
539 Akbulut AE, Bakdur AN, Ozdemir A, Kayıkcıoğlu H *et al*: **Relationship between**  
540 **Antibody Levels and SARS-Cov-2 Reinfection.** *Ann Clin Lab Sci* 2021, **51**(6):750-755.
- 541 21. Kang CK, Kim M, Lee S, Kim G, Choe PG, Park WB, Kim NJ, Lee CH, Kim IS, Jung  
542 K *et al*: **Longitudinal Analysis of Human Memory T-Cell Response According to the**  
543 **Severity of Illness up to 8 Months After Severe Acute Respiratory Syndrome**  
544 **Coronavirus 2 Infection.** *J Infect Dis* 2021, **224**(1):39-48.
- 545 22. Yung CF, Pang D, Kam KQ, Lye DC, Ong B, Chong CY, Tan KB: **BNT162b2 vaccine**  
546 **protection against omicron and effect of previous infection variant and vaccination**  
547 **sequence among children and adolescents in Singapore: a population-based cohort**  
548 **study.** *Lancet Child Adolesc Health* 2023.
- 549 23. Chen Z, Deng X, Fang L, Sun K, Wu Y, Che T, Zou J, Cai J, Liu H, Wang Y *et al*:  
550 **Epidemiological characteristics and transmission dynamics of the outbreak caused by**  
551 **the SARS-CoV-2 Omicron variant in Shanghai, China: A descriptive study.** *Lancet*  
552 *Reg Health West Pac* 2022, **29**:100592.

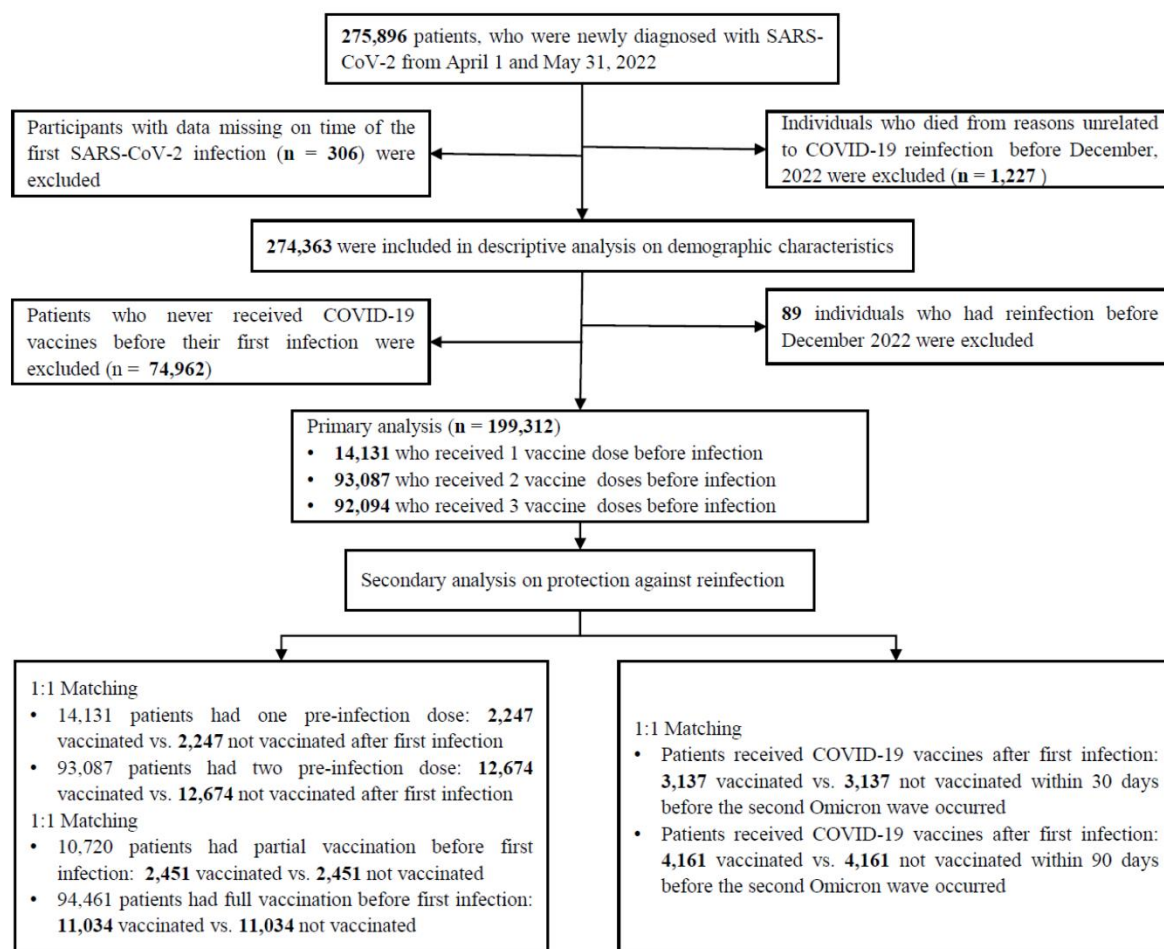
- 553 24. Ge Y, Martinez L, Sun S, Chen Z, Zhang F, Li F, Sun W, Chen E, Pan J, Li C *et al.*  
554 **COVID-19 Transmission Dynamics Among Close Contacts of Index Patients With**  
555 **COVID-19: A Population-Based Cohort Study in Zhejiang Province, China.** *JAMA*  
556 *Intern Med* 2021, **181**(10):1343-1350.
- 557 25. Zhang X, Zhang W, Chen S: **Shanghai's life-saving efforts against the current**  
558 **omicron wave of the COVID-19 pandemic.** *Lancet* 2022, **399**(10340):2011-2012.
- 559 26. Ye L, Li WF, Shao J, Xu Z, Ju J, Xu H: **Fighting Omicron epidemic in China: Real-**  
560 **world big data from Fangcang shelter hospital during the outbreak in Shanghai 2022.**  
561 *J Infect* 2022, **85**(4):436-480.
- 562 27. **No more free PCR tests in Shanghai from Sunday**  
563 [<https://www.shine.cn/covid19/2301064857/>]
- 564 28. Wu J, Li Q, Silver Tarimo C, Wang M, Gu J, Wei W, Ma M, Zhao L, Mu Z, Miao Y:  
565 **COVID-19 Vaccine Hesitancy Among Chinese Population: A Large-Scale National**  
566 **Study.** *Front Immunol* 2021, **12**:781161.
- 567 29. **Investigative criteria for suspected cases of SARS-CoV-2 reinfection (ICR)**  
568 [<https://stacks.cdc.gov/view/cdc/96072>]
- 569 30. Hernán MA, Sauer BC, Hernández-Díaz S, Platt R, Shrier I: **Specifying a target trial**  
570 **prevents immortal time bias and other self-inflicted injuries in observational analyses.**  
571 *J Clin Epidemiol* 2016, **79**:70-75.
- 572 31. Ueno M, Komeda K, Kosaka H, Nakai T, Nomi T, Iida H, Tanaka S, Ikoma H,  
573 Matsuda K, Hirokawa F *et al.* **Prognostic impact of neoadjuvant chemotherapy in**  
574 **patients with synchronous colorectal liver metastasis: A propensity score matching**  
575 **comparative study.** *Int J Surg* 2021, **94**:106106.  
576

577 **Table 1. Characteristics of the study population and reinfection rate by post-infection vaccination status.** Here, reinfection rate refers to  
578 the percentage of the relevant study subpopulation with evidence of reinfection between December 1, 2022 and January 3, 2023. Note that for  
579 the variables on region, occupation, and clinical severity, data are missing for large fractions of the study population.

580

Characteristics		All		No post-infection vaccination		Post-infection vaccination	
		N (%)	Reinfection rate, % (95% CI).	N (%)	Reinfection rate, % (95% CI).	N (%)	Reinfection rate, % (95% CI).
<b>Overall</b>		199,312	24.4 (24.2, 24.6)	183,165	24.7 (24.5, 24.9)	16,147	21.5 (20.8, 22.2)
<b>Sex</b>	Male	112,672 (56.5)	26.1 (25.8, 26.4)	104,002 (56.8)	26.4 (26.1, 26.7)	8,670 (53.7)	22.3 (21.3, 23.3)
	Female	85,804 (43.1)	22.4 (22.1, 22.7)	78,403 (42.8)	22.9 (22.6, 23.2)	7,401 (45.8)	17.4 (16.4, 18.3)
<b>Age, years</b>	0-6	1,736 (0.9)	7.0 (5.8, 8.3)	1,569 (0.9)	6.6 (5.4, 8.0)	167 (1.0)	10.2 (6.2, 15.9)
	7-19	10,762 (5.4)	13.0 (12.3, 13.7)	10,347 (5.6)	12.9 (12.3, 13.6)	415 (2.6)	14.7 (11.4, 18.8)
	20-39	75,955 (38.1)	22.4 (22.1, 22.8)	71,005 (38.8)	22.7 (22.3, 23.0)	4,950 (30.7)	19.1 (17.9, 20.3)
	40-59	74,680 (37.5)	29.4 (29.0, 29.8)	70,569 (38.5)	29.6 (29.2, 30.0)	4,111 (25.5)	25.8 (24.2, 27.4)
	60+	35,903 (18.0)	22.6 (22.1, 23.1)	29,446 (16.1)	23.7 (23.1, 24.2)	6,457 (40.0)	17.6 (16.6, 18.6)
<b>Regions</b>	Shanghai	44,259 (22.2)	18.9 (18.5, 19.3)	41,250 (22.5)	19.4 (19.0, 19.9)	3,009 (18.6)	11.9 (10.7, 13.1)
	Other provinces	44,959 (22.6)	20.9 (20.5, 21.3)	43,045 (23.5)	21.0 (20.6, 21.5)	1,914 (11.9)	18.2 (16.4, 20.2)
<b>Occupations</b>	Preschoolers and students	12,232 (6.1)	12.1 (11.5, 12.7)	11,677 (6.4)	12.0 (11.4, 12.6)	555 (3.4)	13.2 (10.4, 16.4)
	Employed	29,537 (14.8)	20.8 (20.2, 21.3)	28,343 (15.5)	20.8 (20.3, 21.4)	1,194 (7.4)	18.8 (16.4, 21.3)
	Retired	37,482 (18.8)	22.5 (22.0, 23.0)	30,955 (16.9)	23.5 (23.0, 24.1)	6,527 (40.4)	17.5 (16.5, 18.5)
	Working age not in labor <sup>†</sup>	5,606 (2.8)	21.0 (19.8, 22.2)	5,311 (2.9)	21.5 (20.3, 22.8)	295 (1.8)	11.5 (8.1, 15.9)
<b>Clinical severity*</b>	Asymptomatic	81,584 (40.9)	19.9 (19.6, 20.2)	77,057 (42.1)	20.3 (19.9, 20.6)	4,527 (28.0)	14.1 (13.1, 15.3)
	Mild/moderate	7,602 (3.8)	19.9 (18.9, 21.0)	7,216 (3.9)	20.1 (19.1, 21.2)	386 (2.4)	16.6 (12.9, 21.0)
	Severe or critical	32 (0.0)	15.6 (5.9, 34.3)	22 (0.0)	13.6 (3.8, 36.4)	10 (0.1)	20.0 (4.0, 64.1)

581 CI: confidence interval; <sup>†</sup> people of working age ( $\geq 18$  years) unemployed or not in the labor force (disabled); \*Clinical severity of first infection.

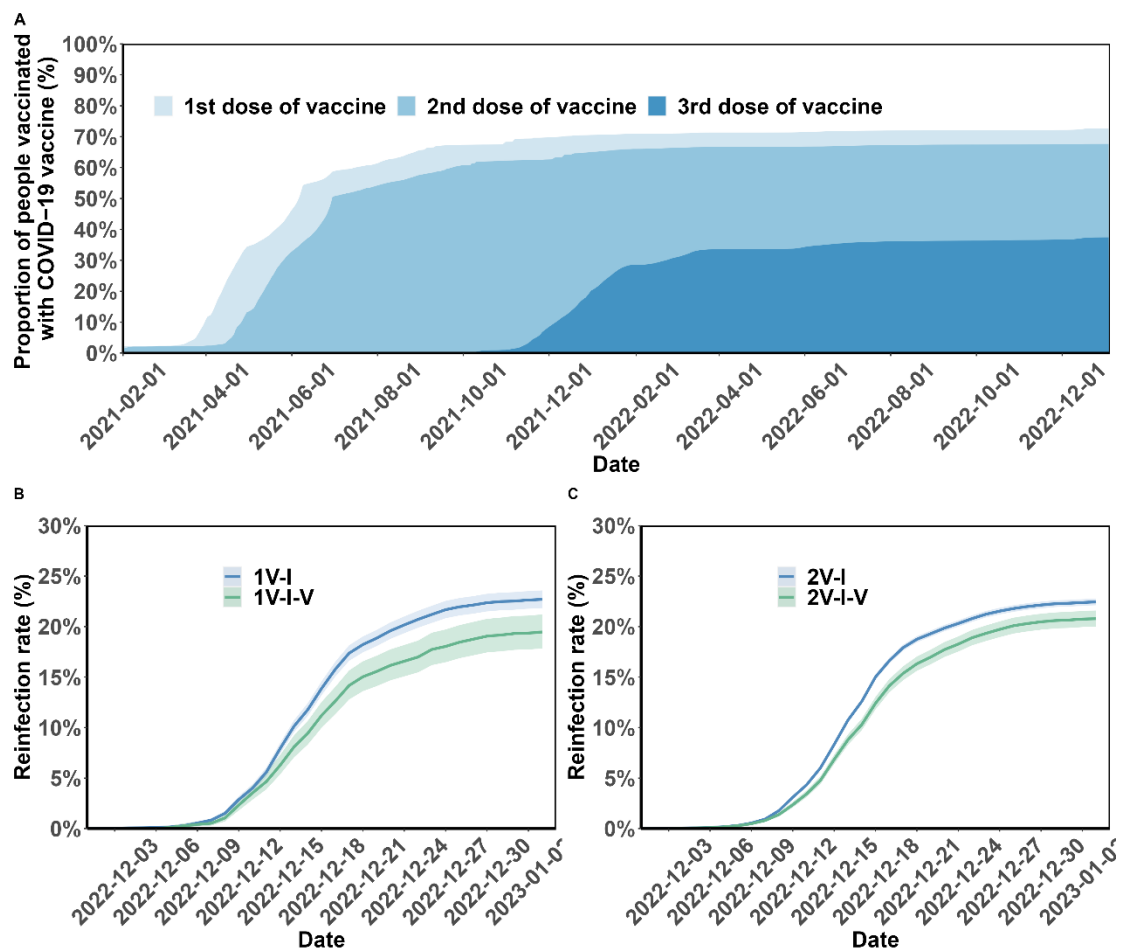


582

583 **Figure 1. Flow chart describing the selection of participants for the analysis.** The number  
 584 of individuals in this figure is not the same as some of the numbers in **Table 1** because of  
 585 missing data in key variables.



586



587

588 **Figure 2. Vaccination coverage and cumulative incidence of SARS-CoV-2**

589 **reinfection in the study population.** Panel A presents the percentages of the study

590 population vaccinated over time. The cumulative incidence of SARS-CoV-2

591 reinfections is presented by the number of vaccination doses before (panels) and after

592 (lines) first infection (panels B-C). Shaded regions: 95% CIs. 1V-I, 2V-I represented

593 1, 2 and 3 vaccine doses before infection, respectively; 1V-I-V, 2V-I-V corresponds

594 to 1 and 2 doses before infection, then post-infection vaccination, respectively. As

595 mentioned in the *Results* section, 142 and 144 study participants who received one

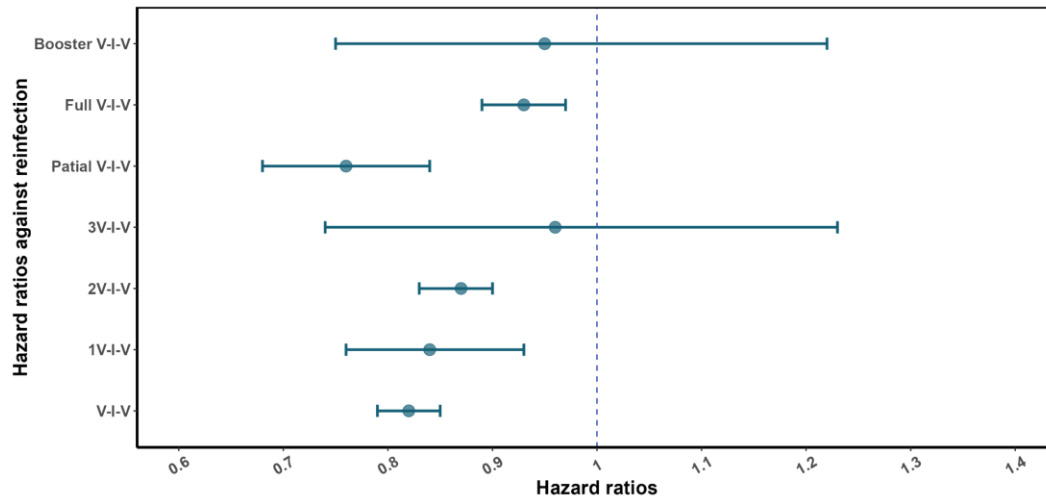
596 and two pre-infection vaccine doses received two post-infection vaccine doses. We do

597 not show the corresponding plot for those individuals who received 3 pre-infection

598 doses as their post-infection dose was after the start of the follow-up, in December.

599

600



601

602 **Figure 3. Effect of vaccine dose on SARS-CoV-2 reinfection stratified by pre-**  
603 **infection vaccination.** Error bars (95% CIs) and circles represent aHR for SARS-  
604 CoV-2 reinfection estimated using Cox proportional hazards models. 1V-I-V, 2V-I-V,  
605 3V-I-V corresponds to 1, 2 and 3 vaccine doses before infection, then vaccination,  
606 respectively; they were compared to 1V-I, 2V-I, 3V-I, respectively. V-I-V, Partial V-  
607 I-V, Full V-I-V and Booster V-I-V represent any pre-infection vaccination, partial  
608 vaccination, full vaccination and booster vaccination before infection, followed by  
609 post-infection vaccination, respectively.

610

611

612

613

614

615

616

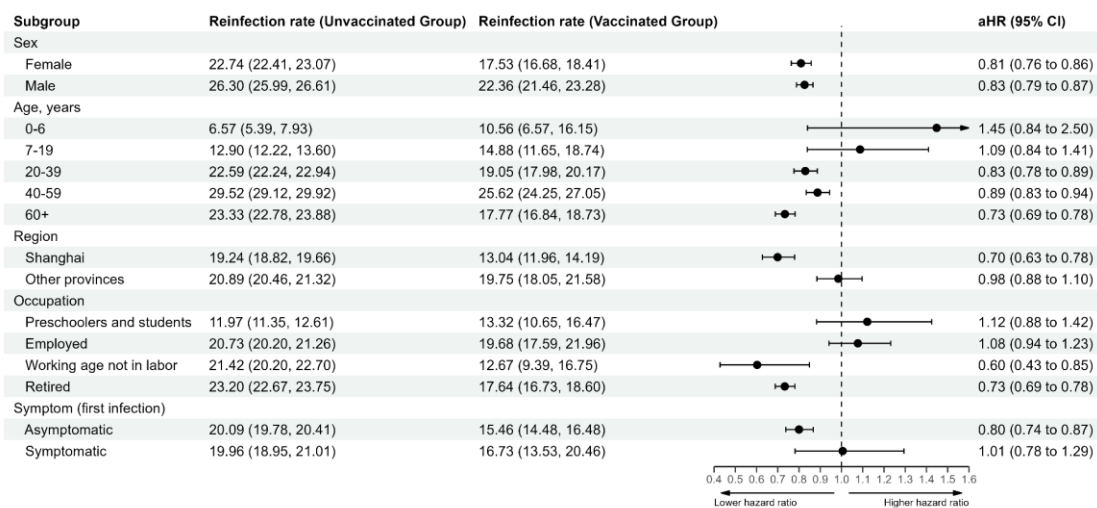
617

618

619

620

621



622

623 **Figure 4. Vaccine-related protection against SARS-CoV-2 reinfection stratified**  
 624 **by demographic characteristic.** The vertical dotted line at 1.0 indicates no effect on  
 625 protection.

626

627

628

629

630