


## Predictors of Time-to-ART-Initiation Survival Times in a Random Sample of Adults Living with HIV from Malawi – A Historical, Nationally Representative Cohort Sample of 2004-2015 HIV Data.

<sup>1</sup>Hemson Hendrix Salema 

### ABSTRACT:

#### Background

Despite globally adapted universal test-and-treat (UTT) strategy of HIV management, survival time-to-antiretroviral-therapy initiation (TTAT) remains heterogenous and affected by diverse factors which remain unexplained in Malawi. This study explored correlates to TTAT-initiation in Malawi among adults living with HIV.

#### Methods

A multicentre retrospective cohort study was undertaken from eight centres. Medical records of ( $n=9,953$ ) adult patients aged 15+ years old, were reviewed. A life table, the Kaplan-Meier log-rank, and Cox Proportion Hazard regression were used to calculate survival TTAT-initiation and its correlates, respectively. Adjusted Hazard ratio less than 1 (aHR <1) signified factors negatively associated, while aHR >1 meant factors positively associated with TTAT-initiation. Hazard ratio with 95% Confidence interval (95% CI) and  $p < 0.05$  were used to declare statistical significance.

#### Results

Data from ( $n=9,953$ ) adult HIV patients were abstracted from hospital medical records. Patients median age was 40 (IQR: 33-48 years). 60.8% were females, 45.2% were younger adults of 20-39 years, and 78.8% were either married or cohabiting. 48.1% had advanced HIV disease; WHO clinical stage III, 24.5% had WHO stage IV, whereas 27.5% were asymptomatic; thus; 24.9% initiated ART due to low CD4+ count and 2.6% under PMTCT's Option-B+. Findings from TTAT-initiation survival function analysis show that each patient had a single entry into the study and provided a total of 5,414 event-time-intervals, giving a 100% total event-failure without censored observations. Mean and median survival times were 527.2 days and 6 (IQR 0-5,414) days, respectively. Treatment-initiation (time at risk) was observed at the rate of 0.002 per 5,247,268 person-years. From multivariable Cox PH regression analysis, independent factors identified to be negatively associated with early (timely) antiretroviral treatment-initiation included ; older age of 55+ years by 16% [aHR 0.84, 95%CI: (0.71–0.97)], male gender by 4% [aHR=0.96, 95%CI: (0.92–0.98)], bacterial causes by 5% [aHR=0.95, 95%CI: (0.89–0.99)], mycobacterial causes by 14% [aHR=0.86, 95%CI: (0.81–0.92)], high viraemia VL>1,000 copies/mL by 17% [aHR=0.83, 95%CI: (0.81–0.95)], registered in secondary tier and tertiary tier health facilities by 21% [aHR 0.79, 95%CI: (0.73-0.86) and 14% [aHR 0.86, 95%CI: (0.79-0.93) respectively, longer HIV survivorship (duration) by 58% to 85%, and having respiratory symptoms like coughing or breathlessness by 7% [0.93 95%CI: (0.88–0.97)]. These factors acted as barriers to early time-to-ART-initiation. In contrast younger adults of 20-39 years; [aHR=1.04, 95%CI: (1.02–1.19)], early mid-aged patients of 40-54 years; [aHR=1.03, 95%CI: (1.01– 1.21)], incomplete basic education level; [aHR 1.09, 95%CI: (1.02-1.20)], secondary education level; [aHR=1.06, 95%CI: (1.01-1.12)], Northern and Southern regions ethnicity; [aHR=1.07, 95%CI: (1.02–1.16)] and [aHR=1.06, 95%CI: (1.01–1.12) respectively, manifesting chronic headache or fevers; [aHR=1.12, 95%CI: (1.04–1.21)], being asymptomatic; [aHR=1.02, 95%CI: (1.02–1.13), ( $p < 0.041$ )], being immunosuppressed with WHO clinical stage III; [aHR=1.86, 95%CI: (1.21-3.45)], WHO clinical stage IV; [aHR=2.80, 95%CI: (1.20-3.22)], protozoal pathological infection; [aHR=1.06, 95%CI: (1.02-1.15)], low CD4+ cell count <250 cells/ $\mu$ L; [aHR=1.05, 95%CI: (1.01–1.09)], self-employment [aHR=1.04, 95%CI: (1.00–1.09)], and year of HIV diagnosis variable, were all positively associated with treatment-initiation and acted as precursors to early (timely) ART-initiation.

#### Conclusion

The study demonstrates that apart from meeting clinical eligible, different clinical and nonclinical factors contributed to time-to-treatment initiation among adults living with HIV. These factors; which are still prevalent in Malawi, have contributed to the spiralling and high mortality and morbidity from HIV/AIDS in Malawi and– hence, a knowledge of their existence, coupled with efforts to counteract and halt their occurrences, and strategies to strengthen and sustain the gained milestones in all tiers of health facility establishments across Malawi cannot be overemphasised.

#### Key words:

HIV/AIDS, ART, ALHIV (Adults Living HIV), Survival analysis, Survival time, Cox proportional hazards model, ART-initiation, Universal test-and-treat.

**NOTE: This preprint reports new research that has not been certified by peer review and should not be used to guide clinical practice.**

<sup>1</sup> Corresponding author  
Division of Health Sciences, Warwick Medical School, University of Warwick, Coventry, UK. Email: [hsalema02@outlook.com](mailto:hsalema02@outlook.com), (alt. email: [h.h.salema@warwick.ac.uk](mailto:h.h.salema@warwick.ac.uk))

## BACKGROUND

HIV remains the leading cause of mortality and morbidity worldwide and continues to disproportionately affect emerging economies; compromising population's health of the world's poorest people and swelling-up economic costs to their health systems. According to recent 2023 report of the Joint United Nations Programme on HIV/AIDS (UNAIDS) and the World Health Organisation (WHO), by end of 2022, globally, 39 million people were living with HIV (PLHIV), 1.3 million became newly infected and 630,000 people died from AIDS-related illnesses [1, 2]. Of the recent HIV epidemic, the WHO African region registered the greatest burden with 25.6 million PLHIV, 660,000 new infections, and 380,000 AIDS-related deaths [2]. Furthermore, an estimated 67% of the 38.4 million PLHIV worldwide in 2021 were from SSA [3]. The current HIV epidemic statistics bring the cumulative total to 85.6 million people ever infected and 40.4 million AIDS-related deaths since epidemic started [1]. Of all PLHIV in 2022, only 76% (29.8 million) were accessing antiretroviral therapy (ART) leaving 9.2 million people without access to ART.

Although still incurable, the untreatable virus; with its complex pathophysiology that demands complex treatment regimens [4], is no longer a “death sentence” as it has progressed from a fatal disease to a chronic illness owing primarily to the development of potent ART [5-7]. For over quarter a century, the combination antiretroviral therapy (cART) has been the global standard approach to treating HIV infection [8-10]. While the first cART regimens were inferior, the present ones are more potent, less toxic, and have fewer adverse-effects, have reduced pill burden – often one a day [11], or better still, a long-acting extended-release injectable ART regimen given every 1 or 2 months or every other month as 2 injections [12-18]. Moreover, they suppress HIV replication better, and have higher genetic barriers to resistance [11, 19]. Thus, present ART is highly effective in slowing HIV progression to AIDS, reduce AIDS-related mortality and morbidity [20, 21], and prevent further HIV transmission – as suppression of viral replication means achieving undetectable (viral) levels, and nontransmissible virus [22, 23], – however, ART-initiation time and coverage are principally crucial areas.

Timely ART initiation among PLHIV contributes a pivotal role to handle the epidemic. This then shifts the focus of care from survival to improving quality of life through adherence and retention in care and speed up of viral suppression [24] – and this defines an effective (HIV) care cascade. Thus, efficient HIV continuum of care demands timely (early) ART initiation for all PLHIV. Despite the fact, delayed or late ART start has been and remains a challenge among newly diagnosed HIV-seropositive and ART-naïve individuals. While immediate (early) ART-start following confirmed HIV diagnosis is now universal gold standard HIV management in the present universal test-and-treat (UTT) strategy [22, 25], previous management guidelines were to the contrary. Hitherto, potential PLHIV typically, were entered into care and observed moving down the HIV cascade of care continuum – a linear and unidirectional continuum of care [26-28] comprising of HIV testing, retention in pre-ART care, ART-initiation, and sustained suppression on ART – until they meet ART eligibility criteria by manifesting specific clinical features of advanced HIV disease (AHD) [29-34]. This strategy potentially promoted lost-to-follow-up and late ART-initiation.

Although ART-initiation is a crucial component of HIV cascade of care, barriers to timely treatment initiation and deficits in the spectrum of engagement in HIV care remains a realism. Earlier epidemiological evidence has demonstrated notable multiple factors as identifiable barriers that have a bearing on ART-initiation periods. Such distinct barriers include late HIV diagnosis, suboptimal linkage to, and retention in HIV care, insufficient ART usage and suboptimal ART adherence [35], infection route [36, 37], patients' age [38-40], race, ethnicity, and environmental factors [41-43], gender [44], HIV subtypes, poor nutrition, co-infections, severe stress, one's genetic background and immunological factors such as CD4 T-cell count [45-51], virological factors [52-57], psychosocial factors [58-63], and resource availability or socioeconomic factors [64]. These present significant impediments to achieving optimal treatment outcomes namely; undetectable viraemia and improved immune status [65]. Moreover, many PLHIV start and stop HIV care or ART multiple times over the course of their lives, creating the so-called “side door” re-entrance into the cascade for individuals who left the system

[66] - this swells-up negative or undesirable treatment outcomes.

While the past decades have seen marked progressive decreases in HIV infection rates in developed nations, the developing world still lags behind. HIV continues to affect the world's poorest populations and contribute to a cycle of poverty due to decreased productivity from acute to long-term comorbidities [67]. Within the low- middle-income countries (LMICs) the Sub-Saharan Africa (SSA) remains hugely disproportionately affected [1, 2].

Malawi, a relatively small, poor, and landlocked Sub-Saharan African nation in the Southern part of Africa, has one of the highest HIV prevalence globally; currently, estimated at 8.9% among adults [68]. With limited accessibility of care and services, SSA countries including Malawi, share the highest HIV/AIDS global burden [69]. Currently, Malawi HIV epidemic ranges from 4.0% to 14.2% [68]. In 2004 Malawi introduced free antiretroviral treatment to clinically eligible persons, however, not every eligible patient was able to promptly commence treatment potentially, resulting in

consistently high AIDS-related deaths. In spite of high mortality attributed to delayed ART-initiation (even in the wake of free ART), factors contributing to the delays remain unexplained. This study aims to examine predictors associated with time-to-ART-initiation survival times since confirmatory HIV-seropositivity test results. While as presently there're clear descriptions and cut-points to define early-, rapid-, same-day-, late-, and delayed ART-initiation – based on time of, vs condition at presentation to care and lag-time to starting treatment [70-73] previous guidelines and recommendations were based only on 'standard of care' where AIDS-related clinical events, and then, low CD4+ cell count were the reference points [71, 74-77]. All patients in the present (ADROC) study commenced ART following this strategy and this study explored correlates to treatment-initiation times in this cohort. Although presently 97.9% of PLHIV in Malawi are on cART [1, 2, 69] with as high as 88% same-day ART-initiation uptake [78], these achievements and milestones require to be improved further, strengthened, and be sustained and an exploration of correlates for or against time-to-ART-initiation can greatly contribute to this goal.

## METHODS AND MATERIALS

---

### *Study Design, Setting, and Participants.*

The methodology employed in this study has already been [detailed somewhere in the ADROC Study](#). Briefly, a historical retrospective chart review cohort study was conducted between March and May 2016 in eight Health facilities randomly selected through multistage probability sampling across Malawi. Patients' medical records (PMR) popularly called 'ART Master cards' – electronic medical records (EMR) or physical patients medical records (PPMR), were the sampling frames. HIV patient's register and clinical progress notes were duly consulted for missing or additional information as necessary. Data collection sites included all existing tiers of health facility establishments in Malawi: thus, primary, secondary, and tertiary tier Health facilities – of which; 3 of the 8 research sites had PPMR. Follow-up time for each patient was calculated from HIV-seropositive confirmatory date to ART-initiation date. Of the eight data collection sites; one was in Northern Malawi, three in Central Malawi, and four in Southern region of Malawi.

### *Study population: Inclusion & Exclusion Criteria.*

Enrolled participants were PLHIV aged 15+ years who were once commenced on ART following Malawi's standardised treatment protocols between Jan. 2004 and Dec. 2015 – regardless of ART exposure duration, ART adherence, and patient's status (alive or dead). All ART-naïve patients, and patients aged <15 years old were excluded from the study.

### *Sample Size and Sampling Procedure*

The study's sample size and sampling procedure has been previously [detailed in another paper \(the ADRCO Study\)](#). The sample size was determined using double population proportion procedure used in previous studies and recommended in prevalence studies [79-84] using the following equation:

$$n = Z \frac{\alpha^2}{2} \left( \frac{P(1-P)}{d^2} \right) \times D = (8,654)$$

**Where:**  $n$  = is the sample size,  
 $P$  = Prevalence of opportunistic disease in PLHIV in Malawi @10.6% HIV rate based on 2010 MDHS  
 $d$  = margin of error between sample and population sizes ( $n$  vs  $N$ ) (0.006)  
 $Z \frac{\alpha^2}{2}$  = statistical critical value at 95% confidence interval (1.96)  
 $D$  = design effect for a cluster sampling of sampling frames (DHOs, Health facilities & ART Master cards) estimated @ 2.0.

An allowance of 15% was applied to the estimated sample size ( $n=8,654$ ) to compensate for poor documentation resulting in final sample size of ( $n=9,953$ ). A three-stage probability sampling method was used to randomise the primary sampling units; the Health facilities and medical records data frames. Health facilities were selected from the list of 716 existing ART facilities as recorded in the 2015 Ministry of Health's HIV Unit report [85, 86]. Participating sites were sampled using probability proportional to size from primary sampling units from the simple equation  $\dots K=N/n$ :

...where  $\dots K$  = is the sampling interval unit,  $\dots N$  = is the total cumulative population size (or the sampling frame (population)),  $\dots n$  = is the number of sampling units to be selected [87-90].

At each research (ART) centre, exclusion criteria were applied to the primary data frame [ $(N_1)$ ], to form secondary sampling frame, [ $N_2$ ]; a stratum of eligible patients. The sampling procedure was [then] replicated to randomly sample potential participants from  $N_2$ . Anonymised or de-identified patients' serial numbers [from  $(N_2)$ ] were listed in excel as a final sampling frame from which  $n_1, n_2, n_3, n_4, n_5, \dots, n_x$  serial numbers were randomly selected. In research sites where patients' records storage systems were electronic platforms and fully functional from the constructed sampling frame of eligible subjects ( $N_2$ ), participants were randomly selected using computer-generated random sample in excel. The allocation of total study subjects at each health facility was based on the proportion of total number of ART-exposed adults.

#### **Data collection tools and procedures**

Likewise, data collection procedure has been explained [somewhere in another study](#). Briefly, data were collected using a structured electronic tool purposefully designed and developed in Microsoft Access to capture data on both prevalent and incident AIDS-associated clinical conditions,

associated risk factors, HIV history, ART history, and de-identified demographic details according to the ADROC Study variables. Prior to this, a pilot study was conducted from two ART sites to judge the useability, functionality, and validity and this gave chance to update or amend and realign the tools.

#### **Data Quality Assurance**

The first exercise at each site was to elect and train a resident research team. The teams were strictly following the planned and approved data collection process. Training on data collection procedures, close supervision of research teams during data collection and random double data re-entry checks were implemented as part of quality control measures.

#### **Statistical analysis procedure**

Statistical analyses were executed using Stata for windows version 15.1. Data were wrangled, cleaned, edited, categorised, and re-categorized prior to the actual analysis. Survival analysis involved (nonparametric) estimations of TTAT-initiation survival function with Kaplan-Meier (K-M) methods. Frequency and proportions were expressed as absolute numbers and percentages. A day was used as time scale to calculate time-to-ART-initiation. Person-days of observation was calculated as "date of ART initiation (event-function date) subtract from date of positive HIV diagnosis confirmation." Descriptive survival analysis such as life table and K-M function curves were computed to estimate survival probability. The K-M Life Table was used to check probabilities of ART-initiation at different time intervals and to check cumulative survival probabilities. Survival function equality tests across different levels of variables (covariates) were tested using the log-rank test and survival (or hazard) function curves. Both bivariable and multivariable Cox Proportional Hazard (PH) regression model analysis was performed to investigate potential predictors of ART-initiation. For univariate (and bivariable)

model, variables were purposefully selected based on their clinical significance. For multivariable Cox PH model, the predictors which revealed association with outcome variables at the univariable  $p$ -value ( $p < 0.25$ ) and the non-violation of proportionality test ( $p > 0.05$ ) determined variable inclusion into the final multivariable Cox PH regression model. Thus, the K-M curves were used to explore shapes of categorical predictors and determine their proportionality and inclusion in final multivariable model. The predictors' fitness for the model was numerically verified using the Log-rank tests for equality across strata... [model...1]. In addition, the final model was double fitted using stepwise backward elimination of variables to judge the fitness of the model... [model...2]. Overall, results from [model...1] and [model...2] were similar in both the number of variables and the effect size (ES) estimates. The final Cox PH model was then compared with the best of the parametric distribution models; the Weibull, Exponential, Gompertz, lognormal, through Cox-Snell residual reliability test judge the goodness-of-fit of model best-fitting the data. The Akaike's Information Criterion (AIC) was used to evaluate the strength and validity of the parametric models that showed the smaller the value of the statistic; lowest AIC value, as best the fitting model. The Schoenfeld and scaled Schoenfeld residuals test was employed to assess final hazard regression model adequacy and numeric results were confirmed through scaled Schoenfeld residual curves. Hazard Ratios with 95%

confidence intervals (HR, 95% CI) was computed and statistical significance was declared at 5% level ( $p < 0.05$ ). Cox proportional hazards regression model was used to determine factors associated with risk of time-to-ART-initiation by controlling confounding factors. Finally, the Cox-Snell residual plot was used to evaluate the overall goodness-of-fit of final Cox PH regression model.

### **Operational definitions**

**Survival time:** Length of time between HIV-seropositive date and ART-initiation date.

**Event-failure:** Antiretroviral therapy (ART)-initiation.

**Event date or Event-failure date:** Antiretroviral therapy (ART)-initiation date.

**HIV duration (survival):** Time from HIV diagnosis.

**Good adherence:**  $\geq 95\%$  adherence (missing only 1 out of 30 doses or 2 from the 60 doses).

**Fair adherence:** 85%–94% adherence (missing 2–4 out of 30 doses or 4–9 from 60 doses).

**Poor adherence:**  $< 85\%$  adherence (missing  $> 5$  out of 30 doses or  $> 10$  from 60 doses) [91].

**Educational level classification:** Based on UNESCO's International Standard Classification of Education: incomplete basic education, basic education, secondary level, and tertiary level [92].

**Hazard ratio (HR): HR < & HR >:** Factors with HR  $< 1$  means negative association, HR  $> 1$  means positive association with time-to-ART-initiation.

## **RESULTS**

### **Baseline socio-demographic characteristics**

Sample disposition is presented in Table 2. Data for ( $n=9,953$ ) enrolled participants were generated over an 11-year period – spanning from 2004 to 2015. The majority of participants were females (60.8%), young adults of 20-39 years (45.2%), and 78.8% were either married or cohabiting. Proportions of subjects with basic education and secondary education levels were indifferent; 33.7% & 32.8% respectively, and more than half (55.3%) were in paid employment. Educational level was categorized based on UNESCO's International Standard Classification of Education: incomplete basic education, basic education, secondary level, and tertiary level [92]. 59.6% were

recruited from Southern region of Malawi, 67.7% from tertiary (3<sup>rd</sup> tier) Health facilities (i.e., Central hospitals ART clinics) and majority (65.1%,  $N=6,477$ ) were urban residents.

All enrolled subjects were once commenced on ART under Malawi standardised treatment protocols. Most patients commenced treatment while in advanced HIV disease (AHD) phase; 48.1% and 24.5% had WHO clinical stage III & IV, respectively. 27.5% were asymptomatic at treatment initiation; of which 24.9% of patients had low CD4 count and 2.6% commenced ART under PMTCT's Option-B+ criteria (were either breastfeeding or pregnant mothers).

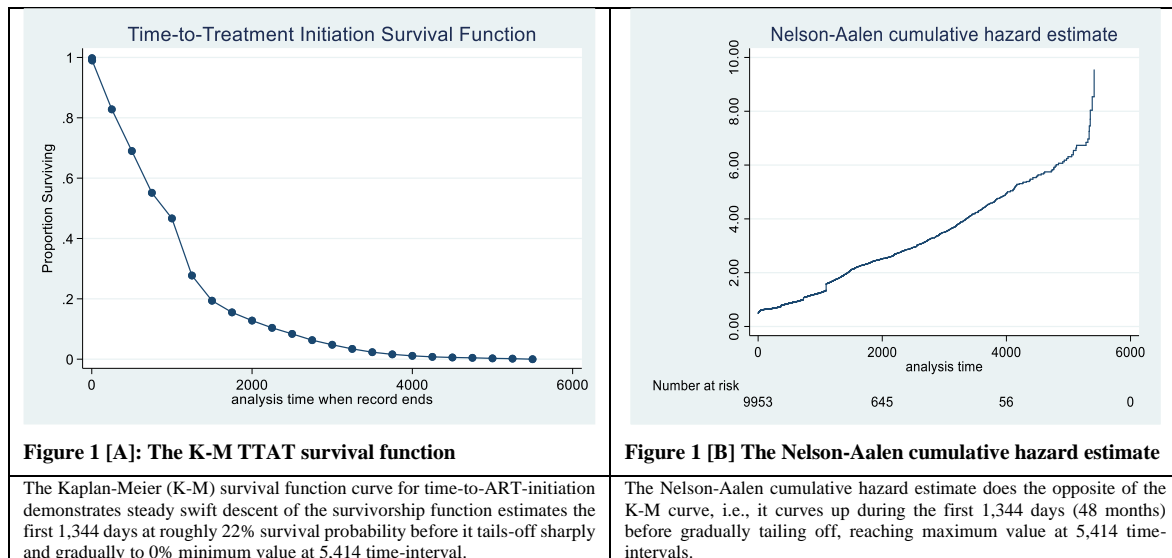
CD4+ count, and viral load tests data were extracted on two time-points: as initial baseline and as follow-up test results – the latter were the most recent available test results. Overall, the mean ( $\pm$ SD) baseline initial CD4 count was  $145.1 \pm 95.1$  cells/ $\mu$ L. Most patients; 69.9%, had severe immunosuppression with baseline initial CD4 count  $<250$  cells/ $\mu$ L. Similarly, the majority (96.4%), had severe viral failure with baseline initial viral load (VL)  $>1,000$  copies/mL. The mean ( $\pm$ SD) baseline initial VL was  $6.0 \pm 4.3$  Log<sub>10</sub> copies/mL, and majority had  $>4.9$  Log<sub>10</sub> copies/mL. 86.5% had lived with HIV for over 2 years, 78.4% had been on ART more than 2 years and 67.9% were continuing treatment with good adherence rate. Efavirenz-based Reverse Transcriptase Inhibitors (RTIs) ART-regimes were frequently used first-line treatment regimens in 67.1% of patients compared to 28.5% NVP-based regimens. On maintenance regimens; 95.4% were continuing with first-line regimens while 3.3% had been switched to second-line regimens; the boosted-Ritonavir PIs regimens – implying that they had proven first-line treatment failure.

### Survival Times-to-ART-Initiation

Descriptive findings of time-to-ART-initiation (TTAT) survival function show that each patient had a single entry into the study – giving a 100% total event-failure without censored observations. The study data were generated through a span of 11-year period and provided a total of 5,414 event-time-intervals, i.e., survival (failure) times. The mean and median survival times were 527.2 days and 6 (IQR 0-5,414) days, respectively. Treatment initiation; time at risk, was observed at the rate of 0.002 per 5,247,268 person-years. Time-to-ART-initiation incidence rate ratio by gender was 0.9477 ( $p=0.004$ ).

The Kaplan-Meier (K-M) survival function curve for TTAT (Fig. 1A) demonstrates that survivorship function estimates descended steadily and swiftly the first 1,344 days (48 months) at which time, the survival probability was roughly 22%. It then tails-off sharply, and gradually reaching a 0% minimum value at 5,414 time-interval. Inversely, the Nelson-Aalen (N-A) cumulative hazard estimate curve (Fig. 1B) goes up, reaching maximum value at 5,414 time-intervals. Thus, the hazard function plot sharply curves (bends) up during the first 48 months (1,344 days) before gradually tailing off. The initial steep descent, or ascent, suggests that most patients started treatment shortly after HIV diagnosis. With the median survival of 6 days, this may further imply that for most patients, HIV diagnosis was made either while in advanced stages of the disease (a more probable reason), or that clinicians were proactively monitoring (following-up) treatment-naïve patients and start them on ART as soon as clinical eligibility was established.

The K-M Actuarial Lifetable (Table 1) demonstrates that the 6 days median survival time fell within the first time-interval and that almost half of all patients (N=4,912) were eligible for, and commenced ART by the end of 1<sup>st</sup> time-interval. This implies that in these patients, treatment-initiation date was the same as HIV-diagnosis date (i.e., treatment was started on the same day or as rapidly as HIV diagnosis was made). Furthermore, based on the K-M actuarial lifetable results alongside (Fig. 3); over half of ART-initiation events (58.1%, N=5,779) occurred within the first 0-250 time-interval band (within the first eight-months). Fewer patients lived longer before being eligible for treatment such that, by 2,000<sup>th</sup> and 4,000<sup>th</sup> time-intervals - (i.e., 66.7 months or 5.6 years and 133.3 months or 11.11 years); only (N=645) and (N=56) patients respectively, were still [asymptomatic] and yet to be eligible for ART.

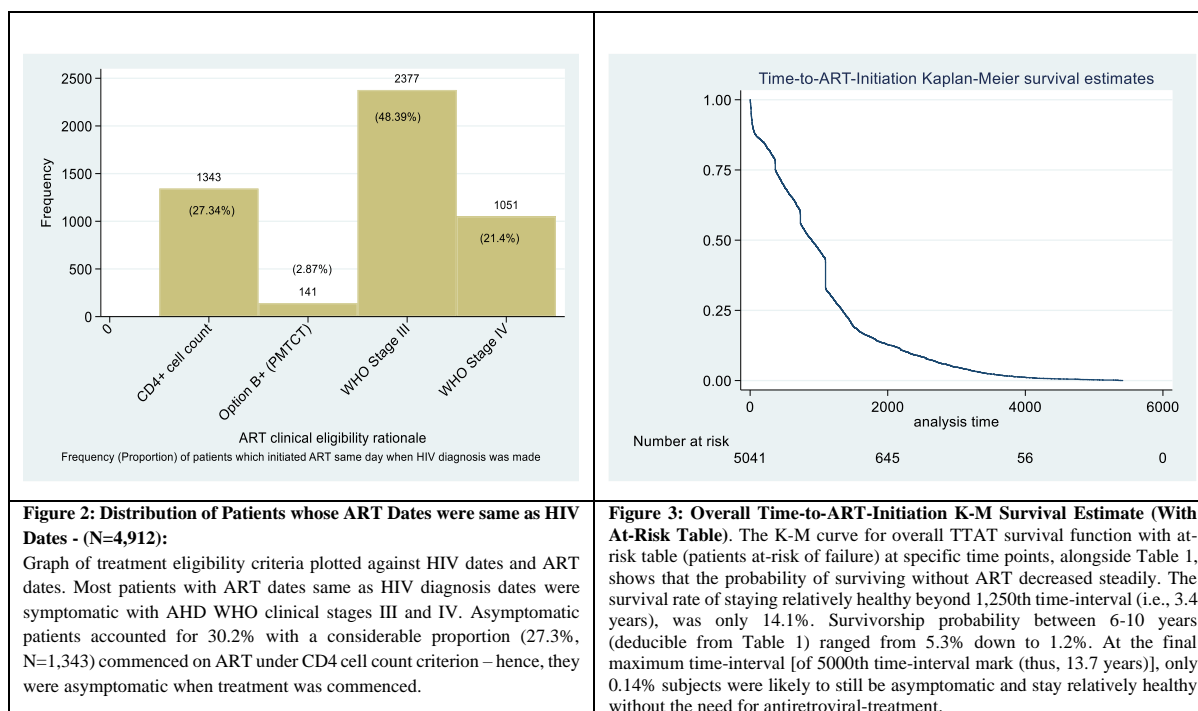


Interval (Time interval, days)	Beginning Total (No. at risk)	Failure (event) (No. of events)	Censored (lost) observations	Survival Function	Std. Error of the estimated survival	[95% CI]
1 2	9953	4912	0	0.5065	0.0050	0.4966 0.5163
0 250	9953	5779	0	0.4194	0.0049	0.4097 0.4290
250 500	4174	696	0	0.3494	0.0048	0.3401 0.3588
500 750	3478	698	0	0.2793	0.0045	0.2705 0.2882
750 1000	2780	428	0	0.2363	0.0043	0.2280 0.2447
1000 1250	2352	954	0	<b>0.1405</b>	0.0035	0.1337 0.1474
1250 1500	1398	421	0	0.0982	0.0030	0.0924 0.1041
1500 1750	977	195	0	0.0786	0.0027	0.0734 0.0840
1750 2000	782	137	0	0.0648	0.0025	0.0601 0.0698
2000 2250	645	121	0	<b>0.0526</b>	0.0022	0.0484 0.0572
2250 2500	524	101	0	0.0425	0.0020	0.0387 0.0466
2500 2750	423	105	0	0.0320	0.0018	0.0286 0.0355
2750 3000	318	77	0	0.0242	0.0015	0.0213 0.0274
3000 3250	241	69	0	<b>0.0173</b>	0.0013	0.0149 0.0200
3250 3500	172	55	0	0.0118	0.0011	0.0098 0.0140
3500 3750	117	36	0	0.0081	0.0009	0.0065 0.0101
3750 4000	81	25	0	0.0056	0.0007	0.0043 0.0073
4000 4250	56	17	0	0.0039	0.0006	0.0028 0.0053
4250 4500	39	10	0	0.0029	0.0005	0.0020 0.0041
4500 4750	29	6	0	0.0023	0.0005	0.0015 0.0034
4750 5000	23	9	0	<b>0.0014</b>	0.0004	0.0008 0.0023
5000 5250	14	5	0	0.0009	0.0003	0.0005 0.0017
5250 5500	9	9	0	0.0000	.	.

**Table 1:** The Kaplan-Meier Actuarial Life-Table illustrating proportions (of patients) surviving followed over treatment-initiation period.

**Note:**

- Time-intervals are grouped into 250-interval-bands (in days), except for the first time-interval row.
- Over half of ART-initiation events (N=5,779) occurred within the first 0-250 time-interval band [meaning that 58.1% of patients' clinical latency period fell within the first eight-months, (i.e., they became clinically eligible for ART – and were therefore commenced on ART within 8 months of HIV diagnosis)].
- Fewer patients lived longer before meeting ART eligibility criteria such that, by 2000<sup>th</sup> and 4000<sup>th</sup> time-intervals; [i.e., 66.7 months (5.6 years) and 133.3 months (11.11 years) post HIV diagnosis], only (N=645) and (N=56) patients respectively [Fig. 2], were still not eligible, hence, yet to commence treatment.



### Predictors Associated with Time-to-ART-Initiation

In this study, time-to-ART-initiation (TTAT) survival function defines survival times elapsed between confirmatory HIV-seropositive diagnosis date and antiretroviral therapy eligibility/initiation date. Technically, TTAT-initiation is the [clinical latency period \(asymptomatic or chronic HIV infection stage\)](#). For this survival analysis, the event-failure was a good and desirable occurrence, – thus, “risk of ART-initiation” precisely refers to time-to-event which is time-to-ART-initiation, *i.e.*, the probability of commencing ART. A positive risk means early (timely) ART-initiation while a negative risk means late or delayed ART-initiation without reference to number of days (lag-time). Factors with hazard ratio less than 1; (HR <1), means negative association with time-to-ART-initiation – *i.e.*, these factors were associated with late (delayed) ART-initiation; hence, acted as barriers to early (rapid) or timely treatment initiation. Conversely, factors with HR >1 means positive association with time-to-ART-initiation; hence, being associated with early (rapid or timely) ART-initiation, henceforth, acted as precursors to rapid or timely ART-initiation.

To this end, in the multivariable Cox PH regression model adjusted for ART eligibility (Table 2), age was negatively associated with time-to-treatment initiation. The predictor demonstrated that every increase in age of 5 years, and 10

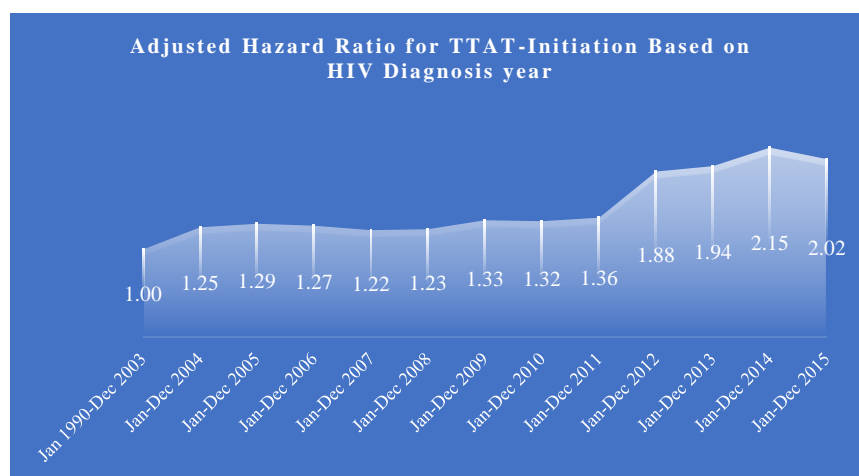
years, was negatively correlated with early ART-initiation by 2% and 4% respectively. Such that, compared to 15–19-year-olds, older age of 55+ years acted as a barrier to, and negatively associated with ART-initiation by 16% [aHR 0.84, 95%CI: (0.71–0.97)]. Male gender was 4% (aHR=0.96) negatively associated with early ART-initiation compared to females. On aetiological (pathological) factors responsible for causing ODs, the findings show that bacterial causes (aHR=0.95) and mycobacterial causes (aHR=0.86) were respectively, potential barriers to, and negatively associated with early ART-initiation, as was high viraemia VL>1,000 copies/mL (aHR=0.83). On health facility types as a factor influencing ART-initiation, secondary and tertiary healthcare facilities were associated with 21% [aHR 0.79, 95%CI: (0.73-0.86)] and 14% [aHR 0.86, 95%CI: (0.79-0.93)], negative association with early ART-initiation compared to primary health facilities. The findings also demonstrated that contraceptive use likewise acted as a barrier to rapid ART-initiation and was associated with delayed initiation by 7% - a different finding from South Africa that demonstrated no association with TTAT [93]. On HIV duration variable, the findings demonstrated that increase of every 5 and 10 years of HIV survivorship explained a 24% and 42% negative association to rapid ART-initiation. Thus, compared to patients with 1-2 years of living with HIV, those with 3-5



years, 6-10 years and >10 years HIV duration were 31%, 58% and 85% associated with delayed ART-initiation.

Conversely, the multivariable Cox PH predictive model demonstrated multiple factors positively associated with time-to-treatment-initiation and acted as precursors to timely (early) ART-initiation. Compared to the younger population aged 15-19 years, patients aged 20-39 years, and 40-54 years old, were associated with rapid ART-initiation by 4% and 3%, respectively [aHR=1.04, 95%CI: (1.02-1.19)] and [aHR=1.03, 95%CI: (1.01-1.21)]. On patient's education levels, compared to tertiary education incomplete basic education, and secondary education explained a 9% and 6% positive association with rapid ART-initiation [aHR 1.09, 95%CI: (1.02-1.20) versus aHR=1.06, 95%CI: (1.01-1.12)] respectively. This association was however not reported from a recent study from Africa which observed no correlation [93]. Comparably, the likelihood of rapid ART-initiation was increased by 7% in Northern region and by 6% in Southern region compared to the Central region of Malawi ( $p=0.001$ ). On clinical symptoms at presentation of care, time-to-ART-initiation was increased by

12% in patients presenting with chronic headache and/or fevers compared to asymptomatic patients ( $p<0.041$ ). Consequently, manifesting with AHD: WHO stage III was positively associated with early ART-initiation by 86% (aHR=1.86, 95%CI: (1.21-3.45) whereas WHO stage IV explained a 3-fold increase in early ART-initiation (aHR=2.80, 95%CI: (1.20-3.22)). Similarly, protozoal causes (aHR=1.06, 95%CI: (1.02-1.15), low CD4 count <250 cells/ $\mu$ L [aHR=1.05, 95%CI: (1.01-1.09) and self-employment [aHR=1.04 (1.00-1.09) were all positively associated with rapid ART-initiation with varying ES. Significant positive associations were also observed in year of HIV diagnosis variable (from 2004 through to 2015). Overall, the analysis demonstrated that hazard rates were progressively increasing in stepwise pattern throughout the 11-year-period data were generated except in 2007 & 2008 (Fig. 4). Early (rapid) ART-initiation increased by 25% among patients diagnosed with HIV in 2004 and by 88% in 2012 ( $p<0.0001$ ). Moreover, the rates were over 2-fold higher in 2014 and 2015; thus, [aHR 2.15, 95%CI: (1.82-2.55) and aHR 2.02, 95%CI: (1.58-2.59) respectively.



**Figure 4: Adjusted Hazard Ratios for Time-to-ART-Initiation based on HIV Diagnosis year.** Associations of HIV diagnosis year with TTAT (2004-2015). Overall, from 2004, adjusted hazard ratios, progressively increased in a stepwise pattern through to 2015 except in 2007-2008. The highest peak was in 2014.

## DISCUSSION

This study, which to my knowledge is the first of its kind in Malawi to analyse ART-initiation predictors among treatment-exposed adults using panel data, has demonstrated associations between demographical, socio-economical, geographical, behavioural, and clinical factors with time-to-ART-initiation. Patients were initiated on treatment at different periods between

January 2004 and December 2015 and followed till death or otherwise lost-to-follow-up, stopped, or defaulted treatment. Globally, overall, there's dearth of panel data studies similar to the present one – except a few with distinctive methodological differences that limit direct comparisons with the present one. Notwithstanding, comparisons are drawn from epidemiological

studies with similar aims to the present one especially those that explored factors associated with late (delayed) ART-initiation in clinically eligible individuals. In this nationally representative sample, 100% treatment-initiation rate was observed at the rate of 0.002 per 5,247,268 person-years and time-to-ART-initiation incidence rate ratio by gender was 0.9477 ( $p=0.004$ ). The median (IQR) survival time-to-ART-initiation in the present study was 6 (IQR: 0-5414) days. This finding is similar to 5 (IQR 1-13) days median time from West African countries – Burkina Faso, Cote d’Ivoire, Mali, and Togo, [94], and similar to 4 (IQR 1-9) days from Ethiopia study [95] but was much lower than 29 (IQR: 0-514) days from UK study [73], lower than 21 (IQR: 17-39) days from Portugal [96]

and from Republic of South Africa (RSA) [97] and, than 31 (Q1-Q3: 8-537.5) days in Croatia [98]. Furthermore, in another RSA study, median time to ART-initiation was 12 (IQR: 1-59) days [99]. A multicentre European cohort study reported a median time from OD diagnosis to ART-initiation of 30 (IQR:16-58) days [100]. These findings highlight the fact that time-to-ART-start remain universally heterogenous and relatively longer even in settings with advanced and effective health service like Europe. In a multivariable Cox PH model adjusted for time-to-ART-initiation, structural factors related to demographic, clinical, and socio-economic marginalisation of PLHIVA, posed important influences on ART-initiation.

### Demographic Correlates to Time-to-ART-initiation

Demographic variables in the present study included age, gender, marital status, and family relation. The findings demonstrate that age, family (guardian) relation, and gender were associated with time-to-ART-initiation in a multivariable predictive model with different effect size (ES) estimates. Thus, late mid-age; 55+ years, was a barrier to, and negatively associated with early ART-initiation by a factor of 16%. Inversely, younger adults (20-39 years), and early mid-aged adults (40-54 years), were positively associated with early ART-initiation. This study’s findings on advancing age as barrier to early ART-initiation appear lower than findings from Canada study which reported a 40% positive association between old age [advancing age] and late (or delayed) ART-initiation [35], but are higher than 3% positive association reported more recently from another Canada study [71]. On the contrary, this finding is inverse relation to another study; also from Canada, which reported 2% positive association between aging and rapid-ART-initiation [101]. The current study finding on younger age Vs TTAT are in congruent with West African multinational study reported that younger age (of at least 24 years) was associated with early ART-initiation [94] – a similar association was also observed from South African KwaZulu Natal study [102]. The KwaZulu Natal study reported that early mid-age (of 35-44 years) had a 63% positive association with early ART-initiation (in males) and 90% probability (in females) whereas being  $\geq 45$  years old was a barrier to early ART-initiation [102] – the findings also shared in a study from Iran where old age was reported to be significantly associated with risk of late ART-initiation

[aOR:1.02, 95% CI:(1.00-1.04)] [103] and a similar pattern was also observed from China [104].

The study also demonstrated that males were associated with delayed ART-initiation. This finding, however, differs with studies from Canada (Joseph, *et al.*, 2016) and the US [105] where no association between gender and time-to-ART-initiation was observed and from southern Iran study which reported no association between gender and treatment initiation times [103]. However, studies from Zimbabwe [106], Ethiopia [107], and Cameroon [108], reported that male gender was a risk factor for late-ART-presentation – therefore, a barrier to rapid treatment-initiation. Contrastingly, a study from Mozambique reported that female gender was associate with lower risk of late ART-initiation [109]. In addition, an RSA study exploring determinants of time-to-ART-initiation observed similar to the present study that hypothesised that females were associated with early ART-initiation – i.e., females had higher probability to rapid ART-initiation [(aHR=3.12-fold, 95% CI:2.87–3.38,  $p < 0.0001$ ), (aOR=11.92-fold, 95% CI:( 9.81–14.52),  $p < 0.0001$ )] [99] likewise a study from China [104]. The gender difference observed in the present study and from studies from other SSA nations in comparison to those from developed nations like the US highlight the fact that within developing nations, males have less health-seeking behaviours than females [110, 111]. Across the globe, prevailing concepts of masculinity lead to men being less likely than their counterparts to seek healthcare, less likely to have HIV testing and less likely to initiate and adhere to ART

[112]. This challenge is arguably more prevalent in SSA region where men and boys with HIV are 20% less likely to know their status and 27% less likely to access ART than their counterparts [113]. Although marital status was not statistically significantly associated with TTAT-initiation in the present study, the predictor has been established as an independent factor elsewhere [44] with reports that being married is associated with lower risk of late ART-initiation [109]. The Iran study exploring factors associated with late ART-initiation observed

that being single was associated with late ART start by 80% (aOR: 1.8, 95%CI:1.17-2.78) [103] as was also reported in China [104]. This study also found that dependency on guardian escort was 9% negatively associated with early ART-initiation. This type of correlation is typical to this study as it has not been examined elsewhere. Nonetheless, this finding may be attributed to dependency behaviour widely common in most communities [114].

### **Socioeconomic & Geographic Correlates to Time-to-ART-initiation**

Socioeconomic variables in this study included education level, employment status, occupation classification, residential status, and geographical region. Different socioeconomic factors often interrelate to, and influence each other. Thus; one's employment dictates their income whose level often correlates to their education attainment which often helps to dictate their employment. Moreover, geographic, and residential status often dictates one's income level. These in turn influence the general public health status and health service delivery and operations. However, this study demonstrated mixed findings that patient's education level and employment status were associated with early (timely) ART-initiation. Thus, having either incomplete basic education and, having secondary education, were positively associated with early ART-initiation by 9% and 6% respectively, as was self-employment (4%). These findings compare with the Mozambique study which reported that secondary or tertiary education had lower risk of late ART-initiation [109]. The finding however contrasts with studies from Canada [101], and Ethiopia [107] both of which found no statistically significant association between education status and rapid time-to-treatment-initiation. On the effect of employment status, a West African study, moreover, reported that people who "self-perceived" to be in (very) difficult financial situation were highly associated with early ART-initiation (aHR=1.44) [94]. According to socioeconomic-education level relationship, these people possess expectedly incomplete basic or basic education levels. However, conversely, participants with wealth index within Quantiles 2-5 were found to be statistically significantly associated with 38% higher probability of early ART-initiation in a logistic regression [93].

Geographical factors significantly associated with TTAT-initiation in this study included type of health facility and

specific data collection centres. However, the associations, whether positive or negative, appear to depend on health facility tier and geographical location. Thus, secondary tier, and tertiary tier Health facilities overall, acted as barriers to, and were negatively associated with early ART-initiation by 21% and 14%. On the other hand, data collection centre variable significant findings suggest that Nkhoma ART centre (a semi-urban, secondary tier facility) was associated with early ART-initiation by 54% (aHR=1.54), and DREAM programme ART centre (an urban, primary ART centre) by 12% (aHR=1.12). Inversely, Mzuzu Central hospital (an urban ART centre), and Thyolo District hospital (a semi-urban ART centre), were 43% and 47% respectively, significantly associated with delayed ART-initiation. The geographical factors positive association findings in this study appear consistent with findings from Cameroon [108] and Canada [35] that explored factors associated with late ART-initiation. A Montreal (Canada) study exploring geographical factors associated with late ART-initiation reported that type of health facility; thus, university medical centres [a 3<sup>rd</sup> tier university teaching hospital] versus community facilities [primary tier health facility], were independently associated with early ART-initiation [aOR=2.03] [115]. In addition, two more studies from Canada both demonstrated significant positive associations between patient's residential status and rapid ART-initiation [71, 101]. In another setting, Ivana & colleagues (2022) in the ECHO Trial involving women from four African nations observed that one's geographical location had an influence on TTAT. Thus, the ECHO Trial observed that compared to RSA, participants from Zambia were 2.73-fold (95%CI:1.21-6.11) highly likely to rapid ART initiate [93]. Similarly, geographical location was likewise observed to be highly associated with rapid ART-initiation; thus, compared to Lome (Togo), the hazard (aHR)

for rapid ART-initiation was 5.15-fold for Abidjan (Côte d'Ivoire), 4.36-fold for Bamako (Mali), and 7.77-fold for Ouagadougou (Burkina Faso) [94]. Moreover, a multicentre study of two European nations; UK (London) and France (Paris) assessing factors associated with time between OD diagnosis and ART-initiation observed that patients in London were associated with longer time to ART-initiation by 38% (aHR=0.68, 95%CI:0.48-0.80) when compared to patients from Paris [100]. This finding demonstrates that geographic location has a bearing on treatment initiation time and compares with the finding in the present study.

On the other hand, on patients' residential status, the present (ADROC) study found that compared to rural area, semi-urban and urban areas explained 8% [95%CI: 1.00-1.15], and 6% [95%CI: 1.01-1.12] respectively, positive association to early (timely) ART-initiation. This finding compares with but is much lower than 3.93-fold reported from Ethiopia where urban living was positively associated with early (same-day) ART-initiation [116] and is also lower than 2.02-fold [(95%CI: 1.37–2.97),  $p<0.001$ ] reported also from Ethiopia [95]. Notwithstanding, the study findings on residential location differs with one from Brazil which investigated the effect of socio-economic inequalities using education level as a proxy, on late initiation of ART-initiation [117]. This study demonstrated that compared to tertiary education, incomplete basic education was 89% [aOR:1.89, 95%CI:1.47–2.43], basic

education was 61% [aOR:1.61, 95%CI:1.23–2.10], and secondary education was 35% [aOR:1.35, 95%CI:1.09–1.67], increased odds of late ART-initiation [117].

Variations on geographical status findings in this study could be explained by variances in health service delivery, health facility's patient-load, health facility geographical location, and population density between full (complete) and partial public sector health facilities. Thus, DREAM programme and Nkhoma ART medical centres are not-for-profit semi-public sector health facilities run by mission institutions under the Christian Health Association of Malawi (CHAM). These have at least adequate health personnel and relatively lower patient-load opposed to full public sector hospitals such as Mzuzu and Thyolo. Furthermore, historically, the Northern Region of Malawi is less populated while the South is denser than the Central. And, the North is less developed than Central and South Malawi – hence, do not attract many professionals, therefore, experience high disproportional patient-clinician ratio that affect the rate of health service delivery including HIV management. On the other hand, Thyolo District in Southern region has had one of the highest HIV rates historically [118, 119]. Finally, Southern Malawi has many health service delivery non-governmental organisations (NGOs). Often, these factors have attributed combined synergy for either improved or delayed ART-initiation.

### Bio-Clinical Correlates to Time-to-ART-initiation

Bio-Clinical predictors in this study included patient's presenting features, aetiological agents responsible for ODs, patient's CD4+ count and HIV-RNA load levels, ART eligibility criteria, ART regimen formulations, prophylaxis treatment for ODs, HIV duration, clinical latency period and HIV diagnosis year.

The current study demonstrated that chronic cough and/or breathlessness (7%), chronic diarrhoea and/or weight loss (10%), and chronic (or intermittent) fevers and headaches (14%), were negatively associated with rapid ART-initiation, and acted as barriers to treatment, hence, associated with delayed ART-initiation. Similarly, on aetiological agent variable, bacterial, and mycobacterial aetiological causes were negatively associated with rapid-ART-initiation by 5% and 14%, respectively. Inversely, protozoal infections (diarrhoeal

diseases) were associated with rapid ART-initiation (aHR=1.06). The findings on presenting clinical features and ODs aetiological agents are seemingly unique to the present study as previous evidence is scanty. Nonetheless, a multicentre study from Europe examining TTAT-initiation reported that Tuberculosis (TB), a mycobacterial condition, explained a 38% negative association with rapid ART-initiation (i.e., had longer time to ART-initiation) (aHR=0.62, 95%CI: 0.48-0.80),  $p<0.01$  [100]. In a different study from China, TB was 42.80-fold highly likely to be associated with late/delayed ART start [104]. These findings, though the effect size (ES) estimates were larger than the present study, supports the present study's findings on association of aetiological agents responsible for causing ODs; in this case, mycobacterial causes, on TTAT-initiation. Although negative associations were unexpected,

they somehow reflect population's dependency and reliance on alternative therapies as first interventions to ill health including HIV other than modern medicine; – a widespread practice in most African populations [120-122].

HIV surrogate markers: CD4+ cell count and VL levels, both demonstrated clinically expected findings. CD4 cell count is an HIV surrogate and prognostic marker of disease progression whereas viral-RNA (VL) is a marker of HIV disease activity [123-126]. In this study, low CD4 count of <250 cells/ $\mu$ L, was 15% positively associated with early (rapid) ART-initiation [aHR=1.15]; a finding which compares with, though lower than 31% from US study [105], but higher than studies from Canada [115] and Mozambique [109]. A UK study reported that having higher median baseline CD4+ count was associated with delayed ART initiation [73] whereas contrarywise, low CD4 count displayed a 2.16-fold to 4.71-fold higher probability of rapid ART-initiation in a study from Italy [127] – much higher than the finding in the present study. Comparatively, KwaZulu Natal study reported that having higher CD4+ cell count (of about 200-350 cell/ $\mu$ L) was associated with rapid 9% ART-initiation [102].

The ADROC Study findings also compare favourably with the Icona Study from Italy that described factors associated with rapid or delayed ART-initiation. The Icona Study reported that overall, PLHIV with lower CD4+ count and higher HIV-RNA were highly associated with rapid ART-initiation. Thus, adjusting for different factors; the Icona study demonstrated that compared to having low CD4+ count <200 cell/ $\mu$ L was associated with 4.71-fold higher probability of initiating treatment early [127]. This finding is congruent with the present study's findings – though with much higher ES. Comparatively, a European study demonstrated that high CD4+ count ( $\geq$ 200 cells/ $\mu$ L) was correlated to longer TTAT-initiation by 60% [aHR=0.30, 95% CI:0.20-0.44] [100].

However, HIV-RNA load showed negative association to rapid-ART-initiation. The findings demonstrated that high, VL>1,000 copies/mL was 17% negatively associated with rapid ART-initiation and acted as barrier (aHR=0.87). This finding, however, partly reflects previous recommendations that guided clinical practice from the introduction of ARVs. Thus, while HIV-seropositivity regardless of VL level, is currently a universal treatment-initiation eligibility criteria

under the UTT strategy, earlier guidelines were contrariwise, based on meeting clinical eligibility criteria of AHD [7, 128, 129]. As a marker of response to ART, viral loads were mostly used to monitor therapy effectiveness following initiation [7]. The present UTT strategy of initiating ART early with definitive lag-time references [98], is the update of initial recommendations of commencing ARVs during “early” HIV infection; where “early” was defined as period up to 6 months after HIV diagnosis [130-133]. In line with current global recommendations, Malawi adopted the UTT strategy in 2016 and embedded it in her successive “Integrated clinical guidelines for HIV management” [134, 135]. The present study findings on VL are consistent and similar to previous evidence elsewhere. The US multicentre study reported that overall, VL was associated with higher adjusted relative risk (ARR) of 23% to 89% of delayed ART-initiation across both early– and late–ART periods [105]. Similarly, a Canadian study identified that high viraemia was highly associated with late-ART-initiation (aOR=5.57) in multivariable logistic regression [35]. Furthermore, another Canadian study on influences of socio-demographic and clinical factors on early ART-initiation reported no significant association of VL with early ART-initiation; inversely translating that high VL was negatively associated with and acted as barrier to rapid ART-initiation [115]. Contrastingly, in the Italian Icona Study, PLHIV with VL (HIV-RNA)  $\geq$ 100,000 c/mL had a 2.31-fold higher probability (95% CI: 1.37-3.92) of rapid ART-initiation compared to those with VL<100,000 c/mL [127].

This study also demonstrated significant positive association between HIV diagnosis year variable and time-to-ART-initiation. Overall, the predictor was associated with rapid ART-initiation with progressively stepwise pattern increasing trends (rates) with every passing calendar-year except 2007/2008 (Fig. 4). These findings highlight and reflect Malawi's evolving HIV management over the years since 2004's initial recommendations. Thus, the progressive trends in time-to-ART-initiation in the present study reflect Malawi's evolving treatment guidelines over time in response to WHO recommendations: i.e., from David Ho's “hit early, hit hard” model, to the “treat early and treat hard” strategy in early 2000s based on AHD – WHO clinical stages III and IV, evolving to initiating ART due to low CD4 count below acceptable thresholds; thus, from CD4  $\leq$ 200,  $\leq$ 350,  $\leq$ 350+TasP,  $\leq$ 500 cells/ $\mu$ L, and to the present “treat-all” HIV+ persons; the UTT

strategy – reflecting the 2000, 2006, 2010, 2013, and 2015 guidelines [136-139]. The findings in the present are consistent with observational cohort results in Vancouver (Canada) which showed that recent annual HIV cases were associated with rapid (early) ART-initiation [101] and are equally consistent with San Francisco Citywide Study results [140]. The San Francisco study, like the (present) ADROC Study, demonstrated a progressive increasing trends and probability of early (rapid) ART-initiation with every passing calendar year, thus; increasing aOR year on: 2014 by 3.0-fold, 2015 by 6.37-

fold, 2016 by 12.33-fold, 2017 by 16.84-fold [140] – a clear similar pattern observed in present study. Additionally, HIV diagnosis year variable was a significant finding from multicentre study where compared to 2000-2008 year of diagnosis, 2009-2012 had 2.07-fold (95% CI:1.58-2.72,  $p<0.01$ ) higher probability of rapid ART-initiation [100]; a pattern similar to present one. Nonetheless, present study's findings are different from Canada's Montreal study which reported negative association between rapid-ART-initiation and new HIV cases [115].

## CONCLUSION

---

This study has highlighted insights into factors that have been associated with both early (timely) or late (delayed) initiation of antiretroviral therapy among adults living with HIV in Malawi in the wake of free anti-HIV treatment in the era of clinical eligibility criteria guidelines. The study has identified different demographic, geographic, socioeconomic, and (bio)clinical factors that influenced ART-initiation in among the enrolled cohort besides meeting eligibility criteria. These factors have contributed in some way towards mortality and morbidity from HIV/AIDS in Malawi. Early ART start has been linked with double benefits of as-treatment-as-prevention. Hence, late ART start will obviously put the trajectory in reverse. Unfortunately, there are no similar previous studies from Malawi to compare the present findings with – however, factors impacting time-to-ART-initiation have been examined in studies elsewhere and the findings compare variably.

Although the findings in the present study relate to the previous (and outdated) guidelines on HIV management, the identified factors are still relevant even during the present-day practise and cannot be ignored. Even though Malawi adopted WHO's recommended UTT strategy of HIV management in 2016, there are still considerable delays in presentation to care, HIV diagnosis, and ART-initiation as well as adherence to treatment that will potentially affect the overall long-term survival outcome. Besides, it has already been established that PLHIV may start and stop HIV care or ART multiple times over the

course of their lives, as such, a knowledge of factors for or against early treatment initiation cannot be ignored, overlooked, or overemphasised.

### Strengths and limitations

In this cohort, the relatively larger sample size provides the findings that are to a greater extent representative of adults living with HIV in Malawi. In addition, the data used cut across all three regions of Malawi; South, Central, and Northern regions, and covers all three levels of healthcare establishments where diseases including HIV are treated, namely primary level, secondary tier, and tertiary tier health facilities, making the data fit of a nationally representative sample. The nationally representativeness of the data gives the findings credence, validity, and strength to be applicable and generalisable across Malawi and other areas within the Sub-Saharan African region with similar settings. Hence, the results are relevant especially to Malawi. However, the time-to-ART-initiation descriptions used in the study are rather too generic, broad, and too general and are without reference to any lag-time as current literature stipulates. While this might potentially cause a bit of confusion to some, it ought to be noted that this description reflects previous HIV management guidelines used as reference guide when all enrolled patients in this study commenced ART where lag-times were not applied.

---

**Table 2: Sample Disposition and Univariable and Multivariable Cox Proportion Hazard Regression Analysis of Time-to-ART-Initiation Survival Time**

Covariate (Variable)	Sample Disposition: Adult Living with HIV on cART, 2004-2015		Survival Regression Analysis of Time-to-ART-Initiation Survival Times		
	Patients Distribution Total N (%)	Univariable Analysis (Crude estimates) HR (95% CI)	Multivariable Analysis aHR (95% CI)		
			Cox PH Distribution	Weibull Distribution	
<b>Age (years)</b>					
Age (years)	9,953 (100%)	1.00 (1.00–1.00)	1.00 (0.99–1.00)	1.00 (0.99–1.00)	
Age_5 [age increase of every 5 yrs.]	9,953 (100%)	0.98 (0.97–0.99)	0.98 (0.95–0.99)	0.99 (0.97–1.01)	
Age_10 [age increase of every 10 yrs.]	9,953 (100%)	0.96 (0.94–0.98)	0.96 (0.90–0.98)	0.98 (0.94–1.03)	
<b>Age group</b>					
15-19 (Adolescents)	358 (3.60)	1 (ref)	1 (ref)	1 (ref)	
20-39 years (Young Adults)	4,501 (45.22)	1.03 (1.02–1.14)**	1.04 (1.02–1.19)**	1.05 (0.92–1.19)	
40-54 years (Early Mid-Aged)	3,785 (38.03)	0.97 (0.87–1.08)	1.03 (1.01–1.21)**	1.01 (0.86–1.19)	
55+ years (Late Mid-Aged)	1,306 (13.12)	0.89 (0.79–0.92)	0.84 (0.71–0.97)**	0.99 (0.79–1.23)	
<b>Care type (Health facility type)</b>					
Primary care	735 (7.38)	1 (ref)			
Secondary care	2,482 (24.94)	0.77 (0.71–0.83)	0.79 (0.73–0.86)**	0.69 (0.63–0.75) **	
Tertiary care	6,736 (67.68)	0.85 (0.78–0.91)	0.86 (0.79–0.93) **	0.81 (0.74–0.87) **	
<b>Residential areas</b>					
Rural	2,047 (20.57)	1 (ref)			
Semi-urban	1,427 (14.34)	1.10 (1.03–1.17)	1.08 (1.00–1.15) **	1.11 (1.03–1.19) **	
Urban	6,477 (65.08)	1.07 (1.02–1.13)	1.06 (1.01–1.12) **	1.10 (1.05–1.16) **	
<b>Regional areas (geographical region)</b>					
Central Region	2,441 (24.53)	1 (ref)			
Northern Region	1,585 (15.92)	1.08 (1.02–1.15)	1.07 (1.02–1.16) **	1.20 (1.13–1.29) **	
Southern Region	5,927 (59.55)	1.01 (1.01–1.06)	1.06 (1.01–1.12) **	1.05 (1.01–1.11) **	
<b>Gender</b>					
Female	6,055 (60.84)	1 (ref)	1 (ref)	1 (ref)	
Male	3,898 (39.16)	0.96 (0.93–0.98)	0.96 (0.92–0.98)**	0.97 (0.92–1.02)	
<b>Marital status</b>					
Previously married	1,380 (13.87)	1 (ref)	1 (ref)	1 (ref)	
Married (partnership)	7,837 (78.74)	1.02 (1.01–1.08)	1.00 (0.94–1.06)	1.02 (0.96–1.08)	
Single (never married)	733 (7.36)	1.02 (1.01–1.15)	0.98 (0.88–1.08)	0.97 (0.88–1.07)	
<b>Education level</b>					
Tertiary education	713 (7.16)	1 (ref)	1 (ref)	1 (ref)	
Incomplete basic education	3,349 (33.65)	1.14 (1.05–1.24)	1.09 (1.02–1.20)**	1.09 (1.00–1.20)	
Basic education.	3,260 (32.75)	1.04 (1.02–1.10)	1.04 (0.98–1.10)	1.03 (0.97–1.09)	
Secondary education.	2,631 (26.43)	1.07 (1.02–1.13)	1.06 (1.01–1.12)**	1.05 (0.99–1.11)	
<b>Employment status</b>					
Salaried-employees	5,506 (55.32)	1 (ref)	1 (ref)	1 (ref)	
Self-employed	4,447 (44.68)	1.02 (1.00–1.06)	1.04 (1.00–1.09)**	1.03 (0.99–1.08)	
<b>Occupation type</b>					
Manual occupations	1,658 (16.66)	1 (ref)	1 (ref)	1 (ref)	
Other (menial) occupations	4,949 (49.72)	0.98 (0.93–1.04)	0.99 (0.93–1.05)	1.00 (0.95–1.07)	
White collar	3,346 (33.62)	0.96 (0.90–1.02)	0.99 (0.92–1.05)	0.99 (0.93–1.06)	
<b>ART clinical criteria</b>					
CD4 cell count	2,475 (24.87)	1 (ref)			
Option-B+	261 (2.62)	1.01 (0.88–1.14)	0.94 (0.79–1.12)	0.89 (0.78–1.02)	
WHO Stage III	4,781 (48.04)	0.95 (0.91–1.03)	1.86 (1.21–3.45)**	0.50 (0.13–2.04)	
WHO Stage IV	2,436 (24.48)	0.92 (0.87–0.97)	2.80 (1.20–3.22)**	0.43 (0.11–1.72)	
<b>Aetiological agent</b>					
Asymptomatic/universal	2,732 (27.45)	1 (ref)	1 (ref)	1 (ref)	
Bacterial conditions	1,461 (14.68)	0.91 (0.86–0.97)	0.95 (0.89–0.99)**	0.90 (0.84–0.96)	
Fungal (mycotic) cond.	711 (7.14)	0.94 (0.86–1.03)	0.97 (0.89–1.06)	0.94 (0.86–1.02)	
Lymphomatous conditions	216 (2.17)	0.96 (0.84–1.10)	0.99 (0.86–1.15)	0.98 (0.85–1.13)	
Mycobacterial cond.	3,529 (35.46)	0.94 (0.89–0.98)	0.86 (0.81–0.92)**	0.92 (0.87–0.97)	
Parasitic (protozoan)	366 (3.68)	1.01 (0.90–1.13)	1.06 (1.02–1.15)**	1.03 (1.01–1.16)	
Viral conditions	938 (9.42)	0.98 (0.92–1.06)	1.03 (0.95–1.11)	0.99 (0.91–1.06)	
<b>CD4 count initial (recent)</b>					
CD4 count(_initial)	9,953 (100%)	0.99 (0.99–1.00)	1.00 (1.00–1.00)	0.99 (0.98–0.99)**	
CD4_100i	9,953 (100%)	0.98 (0.96–1.00)	1.00 (0.98–1.04)	1.00 (0.98–1.04)	
CD4_250i	9,953 (100%)	0.95 (0.91–1.01)	1.02 (0.96–1.09)	1.02 (0.96–1.09)	
<b>CD4 count initial</b>					
>250 cells/μL	6,956 (69.89)	1 (ref)	1 (ref)	1 (ref)	
<250 cells/μL	2,988 (30.02)	1.05 (1.01–1.10)**	1.15 (1.10–1.19)**	1.15 (1.10–1.19)**	

Covariate (Variable)	Sample Disposition: Adult Living with HIV on cART, 2004-2015			
	Patients Distribution Total N (%)	Survival Regression Analysis of Time-to-ART-Initiation Survival Times		
		Univariable Analysis (Crude estimates) HR (95% CI)	Multivariable Analysis aHR (95% CI)	
			Cox PH Distribution	Weibull Distribution
<b>Initial VL levels</b>				
VL initial	9,953 (100%)	1.00 (1.00–1.00)	1.00 (0.99–1.00)	1.00 (1.00–1.00)
VL_1000i (1,000)	9,953 (100%)	0.99 (0.99–0.99)	1.00 (0.99–1.00)	1.00 (0.99–1.00)
VL_10,000i (4.0 Log <sub>10</sub> )	9,953 (100%)	0.99 (0.99–0.99)	1.00 (0.99–1.00)	1.00 (0.99–1.00)
VL_100,000i (5.0 Log <sub>10</sub> )	9,953 (100%)	0.99 (0.99–0.99)	1.00 (0.99–1.00)	1.00 (0.99–1.00)
VL_1,000,000i (6.0 Log <sub>10</sub> )	9,953 (100%)	0.95 (0.93–0.97)	1.01 (0.98–1.03)	1.02 (0.97–1.03)
<b>Initial VL levels categorisation</b>				
<1,000 copies/mL	355 (3.57)	1 (ref)	1 (ref)	1 (ref)
>1,000 copies/mL	9,590 (96.35)	0.89 (0.80–0.99)	0.83 (0.81–0.95)**	0.95 (0.85–0.96)**
<b>Contraception</b>				
Yes	7,087 (71.20)	1 (ref)	1 (ref)	1 (ref)
No	2,866 (28.80)	0.95 (0.92–1.07)	0.93 (0.88–0.98)**	0.92 (0.88–0.97)**
<b>HIV Diagnosis year</b>				
Jan 1990-Dec 2003	1636 (16.44)	1 (ref)	1 (ref)	1 (ref)
Jan-Dec 2004	439 (4.41)	1.24 (1.12–1.39)**	1.25 (1.12–1.39)**	1.27 (1.14–1.42)**
Jan-Dec 2005	1122 (11.27)	1.28 (1.18–1.39)**	1.29 (1.20–1.40)**	1.28 (1.19–1.39)**
Jan-Dec 2006	1270 (12.76)	1.27 (1.18–1.37)**	1.27 (1.18–1.37)**	1.28 (1.19–1.38)**
Jan-Dec 2007	1250 (12.56)	1.21 (1.13–1.31)**	1.22 (1.14–1.32)**	1.24 (1.15–1.33)**
Jan-Dec 2008	819 (8.23)	1.17 (1.07–1.29)**	1.23 (1.12–1.35)**	1.24 (1.13–1.36)**
Jan-Dec 2009	482 (4.84)	1.26 (1.15–1.38)**	1.33 (1.21–1.45)**	1.36 (1.24–1.48)**
Jan-Dec 2010	490 (4.92)	1.25 (1.14–1.37)**	1.32 (1.20–1.45)**	1.29 (1.17–1.41)**
Jan-Dec 2011	709 (7.12)	1.26 (1.16–1.38)**	1.36 (1.24–1.48)**	1.39 (1.28–1.52)**
Jan-Dec 2012	648 (6.51)	1.38 (1.26–1.52)**	1.88 (1.65–2.14)**	2.02 (1.78–2.30)**
Jan-Dec 2013	581 (5.84)	1.49 (1.30–1.61)**	1.94 (1.69–2.24)**	2.13 (1.85–2.46)**
Jan-Dec 2014	371 (3.73)	1.61 (1.39–1.85)**	2.15 (1.82–2.55)**	2.35 (1.99–2.78)**
Jan-Dec 2015	136 (1.37)	1.49 (1.19–1.88)**	2.02 (1.58–2.59)**	2.14 (1.67–2.74)**
<b>ART period</b>				
Early-ART period	9,953 (100%)	1 (ref)	1 (ref)	1 (ref)
late-ART period		1.04 (0.98–1.08)	0.73 (0.67–0.80)**	0.70 (0.64–0.76)
<b>HIV Duration (days/years)</b>				
HIV duration (days)	9,953 (100%)	0.99 (0.99–0.99)	0.99 (0.99–0.99)**	0.99 (0.99–0.99)**
HIV duration_5years	9,953 (100%)	0.74 (0.70 – 0.77)	0.76 (0.73 – 0.81)**	0.73 (0.72 – 0.81)**
HIV duration_10years	9,953 (100%)	0.55 (0.50 – 0.59)	0.58 (0.53 – 0.64)**	0.54 (0.51 – 0.64)**
<b>HIV Duration groups (years)</b>				
1-2 years	1,342 (13.48)	1 (ref)		
3-5 years	2,610 (26.22)	0.68 (0.63–0.72)	0.69 (0.64–0.73)**	0.37 (0.35–0.40)
6-10 years	4,440 (44.61)	0.41 (0.38–0.44)	0.42 (0.39–0.44)**	0.22 (0.21–0.24)
>10 years	1,561 (15.68)	0.16 (0.14–0.17)	0.15 (0.14–0.17)**	0.10 (0.10–0.11)
<b>Clinical presentation to care</b>				
HTC/VCT, Option B+	4173 (41.93)	1 (ref)		
Cough/breathlessness	2389 (24.0)	0.96 (0.89–1.05)	0.93 (0.88–0.97)**	1.00 (0.95–1.06)
Diarrhoea or weight loss	725 (7.28)	0.93 (0.86–0.99)**	0.99 (0.90–1.10)	0.96 (0.88–1.04)
Fever & headache	1157 (11.62)	1.08 (1.03–1.14)**	1.12 (1.04–1.21)**	0.98 (0.92–1.05)
Other symptoms	1079 (10.84)	1.03 (0.96–1.11)	1.02 (1.02–1.13)**	0.99 (0.92–1.07)
Skin or oral lesions	430 (4.32)	1.01 (0.91–1.12)	1.01 (0.87–1.17)	1.03 (0.93–1.14)

#### Authors' contributions:

HHS contributed 100% of research work, thus; Conceptualization, Data curation, Methodology, Formal analysis, Writing – original draft, Writing – review & editing, Writing – final draft .

#### Acknowledgements:

The author is grateful to all gate keepers and research teams from all 8 research sites: Nkhoma Hospital, Lighthouse Trust & Martin Preus Centre, Partners-in-Hope, Mzuzu Hospital, DREAM Centre, Chiradzulu Hospital, QECH, and Thyolo Hospital ART facilities for their undivided support towards this study.

**Competing interests:** Author declares no potential competing interests with respect to the research, authorship, or publication of this article.

**Availability of data and materials:** All relevant data generated or analysed during the current study are available from the corresponding author, HHS, on reasonable request.

**Funding:** None (self-funded) and no funding was received.

#### Ethical approval and Informed consent to participate:

Study's ethical approval was granted by the University of Warwick Research Ethics Committee; The Biomedical and Scientific Research Ethics Committee (BSREC) [BSREC approval number: REGO-2015-1576], and from Malawi Research Ethics Committee; The National Health Sciences Research Committee (NHSRC) in the Ministry of Health [NHSRC approval number: NHSRC # 16/3/1555]. The need for consent to participate was waived off due to nature and source of data.

**Supplementary materials:** None.

**ORCID iDs:** <https://orcid.org/0000-0002-7113-8723>



## REFERENCES

1. UNAIDS. Fact sheet - Latest global and regional statistics on the status of the AIDS epidemic. Washington, D.C.: UNAIDS; 2023 [Available from: <https://www.unaids.org/en/resources/fact-sheet#:~:text=39%20million%20%5B33.1%20million%E2%80%9345.7,AIDS%2Drelated%20illnesses%20in%202022.>
2. WHO. HIV data and statistics, globally and by WHO region, 2023 Geneva: WHO; 2023 [Available from: <https://www.who.int/teams/global-hiv-hepatitis-and-stis-programmes/hiv/strategic-information/hiv-data-and-statistics#:~:text=An%20estimated%2025.6%20million%20%5B21.6,receiving%20antiretroviral%20therapy%20in%202022.>
3. UNAIDS. IN DANGER: UNAIDS Global AIDS Update 2022. Geneva, Switzerland: UNAIDS; 2022.
4. Murray CJL, Ortblad KF, Guinovart C, Lim SS, Wolock TM, Roberts DA, et al. Global, regional, and national incidence and mortality for HIV, tuberculosis, and malaria during 1990–2013: a systematic analysis for the Global Burden of Disease Study 2013. *The Lancet*. 2014;384(9947):1005-70.
5. Matic S, Lazarus JV, Donoghoe MC. HIV/AIDS in Europe: Moving from death sentence to chronic disease management. Copenhagen Ø, Denmark: World Health Organisation Regional Office for Europe; 2006. Available from: <https://apps.who.int/iris/handle/10665/328064>.
6. WHO. Consolidated guidelines on the use of antiretroviral drugs for treating and preventing HIV infection. Recommendations for a public health approach. Geneva: World Health Organization; 2013 June, 2017.
7. DHHS | NIH. Guidelines for the Use of Antiretroviral Agents in Adults and Adolescents Living with HIV: Plasma HIV-1 RNA (Viral Load) and CD4 Count Monitoring online: U.S. Department of Health and Human Services; 2014 [Available from: <https://aidsinfo.nih.gov/guidelines/html/1/adult-and-adolescent-arv/458/plasma-hiv-1-rna--viral-load--and-cd4-count-monitoring>.
8. de Bethune MP. Non-nucleoside reverse transcriptase inhibitors (NNRTIs), their discovery, development, and use in the treatment of HIV-1 infection: a review of the last 20 years (1989-2009). *Antiviral Res*. 2010;85(1):75-90.
9. Vella S, Schwartländer B, Sow SP, Eholie SP, Murphy RL. The history of antiretroviral therapy and of its implementation in resource-limited areas of the world. *AIDS (London, England)*. 2012;26(10):1231-41.
10. Forsythe SS, McGreevey W, Whiteside A, Shah M, Cohen J, Hecht R, et al. Twenty Years Of Antiretroviral Therapy For People Living With HIV: Global Costs, Health Achievements, Economic Benefits. *Health Affairs*. 2019;38(7):1163-72.
11. Astuti N, Maggiolo F. Single-Tablet Regimens in HIV Therapy. *Infect Dis Ther*. 2014;3(1):1-17.
12. Venkatesan P. Long-acting injectable ART for HIV: a (cautious) step forward. *The Lancet Microbe*. 2022;3(2):e94.
13. Pinto RM, Hall E, Tomlin R. Injectable Long-Acting Cabotegravir-Rilpivirine Therapy for People Living With HIV/AIDS: Addressing Implementation Barriers From the Start. *J Assoc Nurses AIDS Care*. 2023;34(2):216-20.
14. Chounta V, Overton ET, Mills A, Swindells S, Benn PD, Vanveggel S, et al. Patient-Reported Outcomes Through 1 Year of an HIV-1 Clinical Trial Evaluating Long-Acting Cabotegravir and Rilpivirine Administered Every 4 or 8 Weeks (ATLAS-2M). *Patient*. 2021;14(6):849-62.
15. Chounta V, Snedecor SJ, Wu S, Van de Velde N. Indirect comparison of 48-week efficacy and safety of long-acting cabotegravir and rilpivirine maintenance every 8 weeks with daily oral standard of care antiretroviral therapy in participants with virologically suppressed HIV-1-infection. *BMC Infect Dis*. 2022;22(1):428.
16. Phillips AN, Bansi-Matharu L, Cambiano V, Ehrenkranz P, Serenata C, Venter F, et al. The potential role of long-acting injectable cabotegravir-rilpivirine in the treatment of HIV in sub-Saharan Africa: a modelling analysis. *Lancet Glob Health*. 2021;9(5):e620-e7.
17. NICE, BNF. Cabotegravir - HIV-1 infection [in combination with rilpivirine prolonged-release injection]: NICE; 2023 [Available from: <https://bnf.nice.org.uk/drugs/cabotegravir/>.
18. ViiV\_Healthcare. Cabenuva - A long-acting extended-release injectable ART suspensions USA: ViiV Healthcare; 2023 [Available from: <https://www.cabenuva.com/savings-and-support/faqs/#:~:text=CABENUVA%20is%20the%20first%20and,important%20to%20attend%20all%20appointments.>
19. Camacho R, Teófilo E. Antiretroviral therapy in treatment-naïve patients with HIV infection. *Curr Opin HIV AIDS*. 2011;6 Suppl 1:S3-11.
20. Granich R, Gupta S, Hersh B, Williams B, Montaner J, Young B, et al. Trends in AIDS Deaths, New Infections and ART Coverage in the Top 30 Countries with the Highest AIDS Mortality Burden; 1990-2013. *PLoS One*. 2015;10(7):e0131353.
21. Tobin SC. U=U gains strength with release of PARTNER2 data. *AIDS (London, England)*. 2019;33(3):N1.

22. Ingabire PM, Semitala F, Kanya MR, Nakanjako D. Delayed Antiretroviral Therapy (ART) Initiation among Hospitalized Adults in a Resource-Limited Settings: A Challenge to the Global Target of ART for 90% of HIV-Infected Individuals. *AIDS Res Treat*. 2019;2019:1832152.
23. Tao LL, Liu M, Li SM, Liu J, Jiang SL, Wang LJ, et al. Impact of Antiretroviral Therapy on the Spread of Human Immunodeficiency Virus in Chaoyang District, Beijing, China: Using the Asian Epidemic Model. *Chin Med J (Engl)*. 2017;130(1):32-8.
24. Amanyire G, Semitala FC, Namusobya J, Katuramu R, Kampiire L, Wallenta J, et al. Effects of a multicomponent intervention to streamline initiation of antiretroviral therapy in Africa: a stepped-wedge cluster-randomised trial. *Lancet HIV*. 2016;3(11):e539-e48.
25. Rosen S, Maskew M, Fox MP, Nyoni C, Mongwenyana C, Maletse G, et al. Initiating Antiretroviral Therapy for HIV at a Patient's First Clinic Visit: The RapIT Randomized Controlled Trial. *PLoS Med*. 2016;13(5):e1002015.
26. Gardner EM, McLees MP, Steiner JF, Del Rio C, Burman WJ. The spectrum of engagement in HIV care and its relevance to test-and-treat strategies for prevention of HIV infection. *Clin Infect Dis*. 2011;52(6):793-800.
27. Kay ES, Batey DS, Mugavero MJ. The HIV treatment cascade and care continuum: updates, goals, and recommendations for the future. *AIDS research and therapy*. 2016;13:35-.
28. Gueler A, Vanobberghen F, Rice B, Egger M, Mugglin C. The HIV Care Cascade from HIV diagnosis to viral suppression in sub-Saharan Africa: a systematic review and meta-regression analysis protocol. *Systematic reviews*. 2017;6(1):172.
29. Sterne JA, May M, Costagliola D, de Wolf F, Phillips AN, Harris R, et al. Timing of initiation of antiretroviral therapy in AIDS-free HIV-1-infected patients: a collaborative analysis of 18 HIV cohort studies. *Lancet*. 373. England2009. p. 1352-63.
30. Goebel FD, Nitschmann S. Timing of initiation of antiretroviral therapy in HIV-1-infected patients. Meta-analysis of the When To Start Consortium. *Internist (Berl)*. 2010;51(4):539-41.
31. Siegfried N, Davies MA, Penazzato M, Muhe LM, Egger M. Optimal time for initiating antiretroviral therapy (ART) in HIV-infected, treatment-naïve children aged 2 to 5 years old. *Cochrane Database Syst Rev*. 2013;10(10):Cd010309.
32. Siegfried N, Uthman OA, Rutherford GW. Optimal time for initiation of antiretroviral therapy in asymptomatic, HIV-infected, treatment-naïve adults. *Cochrane Database Syst Rev*. 2010(3):CD008272.
33. Egger M, Johnson LF. Estimating trends in life expectancy in HIV-positive individuals. *The Lancet Global Health*. 2015;3(3):e122-e3.
34. Cain LE, Logan R, Robins JM, Sterne JA, Sabin C, Bansi L, et al. When to initiate combined antiretroviral therapy to reduce mortality and AIDS-defining illness in HIV-infected persons in developed countries: an observational study. *Ann Intern Med*. 2011;154(8):509-15.
35. Palmer AK, Cescon A, Chan K, Cooper C, Raboud JM, Miller CL, et al. Factors associated with late initiation of highly active antiretroviral therapy among young HIV-positive men and women aged 18 to 29 years in Canada. *J Int Assoc Provid AIDS Care*. 2014;13(1):56-62.
36. Mocroft A, Ledergerber B, Zilmer K, Kirk O, Hirschel B, Viard JP, et al. Short-term clinical disease progression in HIV-1-positive patients taking combination antiretroviral therapy: the EuroSIDA risk-score. *AIDS (London, England)*. 2007;21(14):1867-75.
37. Srasuebkul P, Lim PL, Lee MP, Kumarasamy N, Zhou J, Sirisanthana T, et al. Short-term clinical disease progression in HIV-infected patients receiving combination antiretroviral therapy: results from the TREAT Asia HIV observational database. *Clinical infectious diseases : an official publication of the Infectious Diseases Society of America*. 2009;48(7):940-50.
38. CASCADE Collaboration. Timing of HAART initiation and clinical outcomes in human immunodeficiency virus type 1 seroconverters. *Arch Intern Med*. 2011;171(17):1560-9.
39. Chow SC, Chang M, Pong A. Statistical Consideration of Adaptive Methods in Clinical Development. *Journal of Biopharmaceutical Statistics*. 2005;15(4):575-91.
40. Chow JY, Alsan M, Armstrong W, del Rio C, Marconi VC. Risk factors for AIDS-defining illnesses among a population of poorly adherent people living with HIV/AIDS in Atlanta, Georgia. *AIDS care*. 2015;27(7):844-8.
41. Morgan D, Mahe C, Mayanja B, Okongo JM, Lubega R, Whitworth JA. HIV-1 infection in rural Africa: is there a difference in median time to AIDS and survival compared with that in industrialized countries? *AIDS (London, England)*. 2002;16(4):597-603.
42. Harrison L. Effect of HIV-1 subtype on virological and immunological responses to first-line HAART. 14th Annual Conference of the British HIV Association (BHIVA)-23-25 April 2008, Belfast, Abstract 10; Belfast: Belfast.; 2008.
43. Geretti AM, Harrison L, Green H, Sabin C, Hill T, Fearnhill E, et al. Effect of HIV-1 Subtype on Virologic and Immunologic Response to Starting Highly Active Antiretroviral Therapy. *Clinical Infectious Diseases*. 2009;48(9):1296-305.

44. Patterson K, Napravnik S, Eron J, Keruly J, Moore R. Effects of age and sex on immunological and virological responses to initial highly active antiretroviral therapy. *HIV Med.* 2007;8(6):406-10.
45. Phillips AN, Lundgren JD. The CD4 lymphocyte count and risk of clinical progression. *Curr Opin HIV AIDS.* 2006;1(1):43-9.
46. Zhou J, Kumarasamy N, TREAT-Asia-HIV-Observational-Database. Predicting short-term disease progression among HIV-infected patients in Asia and the Pacific region: preliminary results from the TREAT Asia HIV Observational Database (TAHOD). *HIV Med.* 2005;6(3):216-23.
47. de Wolf F, Spijkerman I, Schellekens PT, Langendam M, Kuiken C, Bakker M, et al. AIDS prognosis based on HIV-1 RNA, CD4+ T-cell count and function: markers with reciprocal predictive value over time after seroconversion. *AIDS (London, England).* 1997;11(15):1799-806.
48. Cozzi Lepri A, Katzenstein TL, Ullum H, Phillips AN, Skinhoj P, Gerstoft J, et al. The relative prognostic value of plasma HIV RNA levels and CD4 lymphocyte counts in advanced HIV infection. *AIDS (London, England).* 1998;12(13):1639-43.
49. Hogg RS, Yip B, Kully C, Craib KJ, O'Shaughnessy MV, Schechter MT, et al. Improved survival among HIV-infected patients after initiation of triple-drug antiretroviral regimens. *CMAJ : Canadian Medical Association journal = journal de l'Association medicale canadienne.* 1999;160(5):659-65.
50. Goujard C, Bonarek M, Meyer L, Bonnet F, Chaix ML, Deveau C, et al. CD4 cell count and HIV DNA level are independent predictors of disease progression after primary HIV type 1 infection in untreated patients. *Clin Infect Dis.* 2006;42(5):709-15.
51. Chow KY, Ang LW, Verghesse I, Chew SK, Leo YS. Measurable predictive factors for progression to AIDS among HIV-infected patients in Singapore. *Ann Acad Med Singapore.* 2005;34(1):84-9.
52. Bartlett JG, Lane HC. Guidelines for the use of Antiretroviral Drugs in HIV-1-Infected Adults and Adolescents. In: PCPTHIV. I, editor. *Clinical Guidelines for the Treatment and Management of HIV Infection.* USA: US Department of Health and Human Services; 2005. p. 1-118.
53. Lyles RH, Munoz A, Yamashita TE, Bazmi H, Detels R, Rinaldo CR, et al. Natural history of human immunodeficiency virus type 1 viremia after seroconversion and proximal to AIDS in a large cohort of homosexual men. Multicenter AIDS Cohort Study. *J Infect Dis.* 2000;181(3):872-80.
54. Thiebaut R, Pellegrin I, Chene G, Viallard JF, Fleury H, Moreau JF, et al. Immunological markers after long-term treatment interruption in chronically HIV-1 infected patients with CD4 cell count above 400 x 10(6) cells/l. *AIDS (London, England).* 2005;19(1):53-61.
55. Arnaout RA, Lloyd AL, O'Brien TR, Goedert JJ, Leonard JM, Nowak MA. A simple relationship between viral load and survival time in HIV-1 infection. *Proceedings of the National Academy of Sciences.* 1999;96(20):11549.
56. Chopera DR, Mlotshwa M, Woodman Z, Mlisana K, de Assis Rosa D, Martin DP, et al. Virological and Immunological Factors Associated with HIV-1 Differential Disease Progression in HLA-B\*58:01-Positive Individuals. *Journal of Virology.* 2011;85(14):7070.
57. Bhatia R, Narain JP. Guidelines for HIV diagnosis and Monitoring of Antiretroviral therapy: WHO Project: ICP BCT 001 | Regional Office for South-East Asia. New Delhi: World Health Organisation.; 2005. Contract No.: SEA-HLM-382 (Rev. 1).
58. Anastos K, Schneider MF, Gange SJ, Minkoff H, Greenblatt RM, Feldman J, et al. The association of race, sociodemographic, and behavioral characteristics with response to highly active antiretroviral therapy in women. *J Acquir Immune Defic Syndr.* 2005;39(5):537-44.
59. Ironson G, O'Cleirigh C, Fletcher MA, Laurenceau JP, Balbin E, Klimas N, et al. Psychosocial factors predict CD4 and viral load change in men and women with human immunodeficiency virus in the era of highly active antiretroviral treatment. *Psychosom Med.* 2005;67(6):1013-21.
60. Leserman J, Petitto JM, Golden RN, Gaynes BN, Gu H, Perkins DO, et al. Impact of stressful life events, depression, social support, coping, and cortisol on progression to AIDS. *Am J Psychiatry.* 2000;157(8):1221-8.
61. Leserman J, Petitto JM, Gu H, Gaynes BN, Barroso J, Golden RN, et al. Progression to AIDS, a clinical AIDS condition and mortality: psychosocial and physiological predictors. *Psychol Med.* 2002;32(6):1059-73.
62. Ashton E, Vosvick M, Chesney M, Gore-Felton C, Koopman C, O'Shea K, et al. Social support and maladaptive coping as predictors of the change in physical health symptoms among persons living with HIV/AIDS. *AIDS Patient Care STDS.* 2005;19(9):587-98.
63. Parruti G, Manzoli L, Toro PM, D'Amico G, Rotolo S, Graziani V, et al. Long-term adherence to first-line highly active antiretroviral therapy in a hospital-based cohort: predictors and impact on virologic response and relapse. *AIDS Patient Care STDS.* 2006;20(1):48-56.

64. Langford SE, Ananworanich J, Cooper DA. Predictors of disease progression in HIV infection: a review. *AIDS Res Ther.* 2007;4:11.
65. Eldred L, Malitz F. Introduction [to the supplemental issue on the HRSA SPNS Outreach Initiative]. *AIDS Patient Care STDs.* 2007;21 (Suppl 1)::S1–S2
66. Ehrenkranz P, Rosen S, Boulle A, Eaton JW, Ford N, Fox MP, et al. The revolving door of HIV care: Revising the service delivery cascade to achieve the UNAIDS 95-95-95 goals. *PLoS Med.* 2021;18(5):e1003651.
67. WHO. TDR | Global Report for Research on Infectious Diseases of Poverty: World Health Organization; 2012 [updated 2015-04-09 10:44:21. Available from: [http://www.who.int/tdr/publications/global\\_report/en/](http://www.who.int/tdr/publications/global_report/en/).
68. MPHIA. Malawi Population-based HIV Impact Assessment (MPHIA 2020-2021) Lilongwe: National AIDS Commission; 2022 [cited 2023. Available from: [https://phia.icap.columbia.edu/wp-content/uploads/2022/03/110322\\_MPHIA\\_Summary-sheet-English.pdf](https://phia.icap.columbia.edu/wp-content/uploads/2022/03/110322_MPHIA_Summary-sheet-English.pdf).
69. WHO. WHO HIV Country Intelligence Tool: Malawi HIV Country Profile 2023 Geneva: WHO; 2023 [Available from: <https://cfs.hivci.org/index.html>.
70. Xu J, Sönnnerborg A, Gao L, Wang P, Bouey JZH, Cheng F. Delayed Treatment for People Living With HIV in China, 2004–2016: An Analysis of An Observational Cohort. *Int J Environ Res Public Health.* 2020;17(5).
71. Kesselring S, Osborne C, Bever A, Salters K, Cui Z, Chia J, et al. Factors associated with delayed and late ART initiation among people living with HIV in BC: results from the engage study. *AIDS care.* 2019;31(7):885-92.
72. Ali H, Zakar R, Junaid K, Khan A, Fischer F. Frequency and reasons for delayed treatment initiation after HIV diagnosis: cross-sectional study in Lahore, Pakistan. *BMC public health.* 2021;21(1):1000.
73. Lee MJ, Venturelli S, McKenna W, Teh J, Negedu O, Florman KE, et al. Reasons for delayed antiretroviral therapy (ART) initiation in the era of early ART initiation guidelines: a retrospective service evaluation. *Int J STD AIDS.* 2019;30(4):415-8.
74. Schuettfort G, Cabello A, Cotter AG, Leuw PDE, Górgolas M, Hamzah L, et al. Reasons for Choice of Antiretroviral Regimens in HIV Patients Presenting Late for Initial Treatment in Europe. *AIDS Patient Care STDs.* 2021;35(4):110-5.
75. Lahuerta M, Ue F, Hoffman S, Elul B, Kulkarni SG, Wu Y, et al. The problem of late ART initiation in Sub-Saharan Africa: a transient aspect of scale-up or a long-term phenomenon? *J Health Care Poor Underserved.* 2013;24(1):359-83.
76. Anlay DZ, Tiruneh BT, Dachew BA. Late ART Initiation among adult HIV patients at university of Gondar Hospital, NorthWest Ethiopia. *Afr Health Sci.* 2019;19(3):2324-34.
77. Cid-Silva P, Margusino-Framiñán L, Balboa-Barreiro V, Pernas-Souto B, Mena-De-Cea Á, Martín-Herranz I, et al. Late HIV Diagnosis but Earlier Antiretroviral Treatment Initiation in Northwest Spain: Impact of Current Treatment Guidelines. *J Int Assoc Provid AIDS Care.* 2019;18:2325958218821940.
78. Huber A, Hirasen K, Brennan AT, Phiri B, Tcherini T, Mulenga L, et al. Uptake of same-day initiation of HIV treatment in Malawi, South Africa, and Zambia as reported in routinely collected data: the SPRINT retrospective cohort study. *Gates Open Res.* 2023;7:42.
79. Daniel WW, Cross CL. *Biostatistics : a foundation for analysis in the health sciences.* 10th ed. Hoboken, NJ: Wiley.; 2013. 958 p.
80. Daniel WW. *Biostatistics : a foundation for analysis in the health sciences.* 7th ed. New York: John Wiley & Sons; 1999.
81. Charan J, Biswas T. How to Calculate Sample Size for Different Study Designs in Medical Research? *Indian J Psychol Med.* 2013;35(2):121-6.
82. Gorstein J, Sullivan KM, Parvanta I, Begin F. *Indicators and Methods for Cross-Sectional Surveys of Vitamin and Mineral Status of Populations.* The Micronutrient Initiative (Ottawa) and the Centers for Disease Control and Prevention (Atlanta). 2007.
83. Hajian-Tilaki K. Sample size estimation in epidemiologic studies. *Caspian J Intern Med.* 2011;2(4):289-98.
84. Naing L, Winn T, Rusli BN. Practical Issues in Calculating the Sample Size for Prevalence Studies. *Archives of Orofacial Sciences.* 2006;1:9-14.
85. Jahn A, Harries AD, Schouten EJ, Libamba E, Ford N, Maher D, et al. Scaling-up antiretroviral therapy in Malawi. *Bulletin of the World Health Organization.* 2016;94(10):772-6.
86. NAC., MGMoH., UNAIDS. *Malawi AIDS Response Progress Report 2015.* Lilongwe, Malawi: National AIDS Commission (NAC); 2015.

87. Knottnerus P. Multistage and Cluster (Sub)Sampling. In: Knottnerus P, editor. *Sample Survey Theory: Some Pythagorean Perspectives*. New York, NY: Springer New York; 2003. p. 147-87.
88. WHO. WHO STEPS Surveillance. Geneva, Switzerland: World Health Organization; 2017.
89. Trochim WM. *The Research Methods Knowledge Base*. 2nd ed. Cincinnati, OH.: Atomic Dog Publishing; 2000.
90. Trochim WM. *The Research Methods Knowledge Base 2007*. Available from: [https://www.researchgate.net/publication/243783609\\_The\\_Research\\_Methods\\_Knowledge\\_Base/link/55db837008aed6a199ac6246/download](https://www.researchgate.net/publication/243783609_The_Research_Methods_Knowledge_Base/link/55db837008aed6a199ac6246/download).
91. Sabaté E. *Adherence to long-term therapies: evidence for action*. Geneva: World Health Organization; 2003.
92. UNESCO. *International Standard Classification of Education (ISCED) 2011* Montreal, Quebec Canada: UNESCO Institute for Statistics; 2011 [Available from: <https://uis.unesco.org/en/topic/international-standard-classification-education-isced>].
93. Beesham I, Issema R, Palanee-Phillips T, Onono M, Evans S, Beksinska M, et al. ART initiation among women newly diagnosed with HIV in a contraceptive trial in sub-Saharan Africa. *AIDS care*. 2022;34(4):478-85.
94. Dah TTE, Yaya I, Mensah E, Coulibaly A, Kouamé JM, Traoré I, et al. Rapid antiretroviral therapy initiation and its effect on treatment response in MSM in West Africa. *AIDS (London, England)*. 2021;35(13):2201-10.
95. Bayisa L, Abera T, Mulisa D, Mosisa G, Mosisa A, Tolosa T, et al. Time to Antiretroviral Therapy Initiation and Its Predictors Among Newly Diagnosed HIV-Positive People in Nekemte Town, Western Ethiopia: Claim of Universal Test and Treat. *HIV/AIDS (Auckland, NZ)*. 2021;13:959-72.
96. Nicolau V, Cortes R, Lopes M, Virgolino A, Santos O, Martins A, et al. HIV Infection: Time from Diagnosis to Initiation of Antiretroviral Therapy in Portugal, a Multicentric Study. *Healthcare (Basel)*. 2021;9(7).
97. Onoya D, Sineke T, Hendrickson C, Mokhele I, Maskew M, Long LC, et al. Impact of the test and treat policy on delays in antiretroviral therapy initiation among adult HIV positive patients from six clinics in Johannesburg, South Africa: results from a prospective cohort study. *BMJ open*. 2020;10(3):e030228.
98. Bogdanić N, Bendig L, Lukas D, Zekan Š, Begovac J. Timeliness of antiretroviral therapy initiation in the era before universal treatment. *Sci Rep*. 2021;11(1):10508.
99. Larsen A, Cheyip M, Tesfay A, Vranken P, Fomundam H, Wutoh A, et al. Timing and Predictors of Initiation on Antiretroviral Therapy Among Newly-Diagnosed HIV-Infected Persons in South Africa. *AIDS Behav*. 2019;23(2):375-85.
100. Deconinck L, Yazdanpanah Y, Gilson RJ, Melliez H, Viget N, Joly V, et al. Time to initiation of antiretroviral therapy in HIV-infected patients diagnosed with an opportunistic disease: a cohort study. *HIV Med*. 2015;16(4):219-29.
101. Joseph B, Wood E, Hayashi K, Kerr T, Barrios R, Parashar S, et al. Factors associated with initiation of antiretroviral therapy among HIV-positive people who use injection drugs in a Canadian setting. *AIDS (London, England)*. 2016;30(6):925-32.
102. Plazy M, Newell ML, Orne-Gliemann J, Naidu K, Dabis F, Dray-Spira R. Barriers to antiretroviral treatment initiation in rural KwaZulu-Natal, South Africa. *HIV Med*. 2015;16(9):521-32.
103. Afrashteh S, Fararouei M, Ghaem H, Gheibi Z. Factors Associated With Late Antiretroviral Therapy Initiation Among People Living With HIV in Southern Iran: A Historical Cohort Study. *Front Public Health*. 2022;10:881069.
104. Mi Y, Zhou M, Zeng Y, Wang P, Gao L, Cheng F. Factors Associated With Delayed and Late Initiation of Antiretroviral Therapy Among Patients With HIV in Beijing, China, 2010-2020. *Int J Public Health*. 2023;68:1605824.
105. Fatukasi TV, Cole SR, Moore RD, Mathews WC, Edwards JK, Eron JJ, et al. Risk factors for delayed antiretroviral therapy initiation among HIV-seropositive patients. *PLoS One*. 2017;12(7):e0180843.
106. Nyika H, Mugurungi O, Shambira G, Gombe NT, Bangure D, Mungati M, et al. Factors associated with late presentation for HIV/AIDS care in Harare City, Zimbabwe, 2015. *BMC public health*. 2016;16:369.
107. Nash D, Tymejczyk O, Gadisa T, Kulkarni SG, Hoffman S, Yigzaw M, et al. Factors associated with initiation of antiretroviral therapy in the advanced stages of HIV infection in six Ethiopian HIV clinics, 2012 to 2013. *J Int AIDS Soc*. 2016;19(1):20637.
108. Ndawinz JDA, Chaix B, Koulla-Shiro S, Delaporte E, Okouda B, Abanda A, et al. Factors associated with late antiretroviral therapy initiation in Cameroon: a representative multilevel analysis. *Journal of Antimicrobial Chemotherapy*. 2013;68(6):1388-99.
109. Lahuerta M, Lima J, Nuwagaba-Biribonwoha H, Okamura M, Alvim MF, Fernandes R, et al. Factors associated with late antiretroviral therapy initiation among adults in Mozambique. *PLoS One*. 2012;7(5):e37125.

110. Parent MC, Hammer JH, Bradstreet TC, Schwartz EN, Jobe T. Men's Mental Health Help-Seeking Behaviors: An Intersectional Analysis. *American Journal of Men's Health*. 2016;12(1):64-73.
111. Yingying W, Kate H, Irwin N, Nick F, Irene P. Do men consult less than women? An analysis of routinely collected UK general practice data. *BMJ open*. 2013;3(8):e003320.
112. Nyein PP, Aung E, Aung NM, Kyi MM, Boyd M, Lin KS, et al. The impact of gender and the social determinants of health on the clinical course of people living with HIV in Myanmar: an observational study. *AIDS Research and Therapy*. 2021;18(1):50.
113. UNAIDS. *Blind Spot: Reaching Out to men and Boys - addressing a blind spot in response to HIV*. 2017.
114. Hoffman M, Mofolo I, Salima C, Hoffman I, Zadrozny S, Martinson F, et al. Utilization of family members to provide hospital care in Malawi: the role of Hospital Guardians. *Malawi medical journal : the journal of Medical Association of Malawi*. 2012;24(4):74-8.
115. Mehraj V, Cox J, Lebouche B, Costiniuk C, Cao W, Li T, et al. Socio-economic status and time trends associated with early ART initiation following primary HIV infection in Montreal, Canada: 1996 to 2015. *J Int AIDS Soc*. 2018;21(2).
116. Bayisa L, Bayisa D, Turi E, Mulisa D, Tolossa T, Akuma AO, et al. Same-Day ART Initiation and Associated Factors Among People Living with HIV on Lifelong Therapy at Nekemte Specialized Hospital, Western Ethiopia. *HIV/AIDS (Auckland, NZ)*. 2023;15:11-22.
117. Rodrigues A, Struchiner CJ, Coelho LE, Veloso VG, Grinsztejn B, Luz PM. Late initiation of antiretroviral therapy: inequalities by educational level despite universal access to care and treatment. *BMC public health*. 2021;21(1):389.
118. MGMoH. Ministry of Health, Malawi. *Malawi Population-based HIV Impact Assessment (MPHIA) 2015-16: First Report*. Lilongwe: Ministry of Health. November 2017; 2017 21 Dec 2018.
119. MGMoH. *Malawi Population-Based HIV Impact Assessment (MPHIA) 2015-2016: Final Report*. Lilongwe, Malawi: Ministry of Health; 2018 21 Dec, 2018.
120. Abdullahi AA. Trends and challenges of traditional medicine in Africa. *Afr J Tradit Complement Altern Med*. 2011;8(5 Suppl):115-23.
121. Fokunang CN, Ndikum V, Tabi OY, Jiofack RB, Ngameni B, Guedje NM, et al. Traditional medicine: past, present and future research and development prospects and integration in the National Health System of Cameroon. *Afr J Tradit Complement Altern Med*. 2011;8(3):284-95.
122. Stuttaford M, Al Makhamreh S, Coomans F, Harrington J, Himonga C, Hundt GL. The right to traditional, complementary, and alternative health care. *Glob Health Action*. 2014;7:24121.
123. Peto T. Surrogate markers in HIV disease. *J Antimicrob Chemother*. 1996;37 Suppl B:161-70.
124. Lagakos SW. Surrogate markers in AIDS clinical trials: conceptual basis, validation, and uncertainties. *Clin Infect Dis*. 1993;16 Suppl 1:S22-5.
125. Lange JM, de Wolf F, Goudsmit J. Markers for progression in HIV infection. *AIDS (London, England)*. 1989;3 Suppl 1:S153-60.
126. Lafeuillade A, Tamalet C, Pellegrino P, de Micco P, Vignoli C, Quilichini R. Correlation between surrogate markers, viral load, and disease progression in HIV-1 infection. *J Acquir Immune Defic Syndr (1988)*. 1994;7(10):1028-33.
127. d'Arminio Monforte A, Tavelli A, Cozzi-Lepri A, Castagna A, Passerini S, Francisci D, et al. Virological response and retention in care according to time of starting ART in Italy: data from the IcoNa Foundation Study cohort. *J Antimicrob Chemother*. 2020;75(3):681-9.
128. Murray JS, Elashoff MR, Iacono-Connors LC, Cvetkovich TA, Struble KA. The use of plasma HIV RNA as a study endpoint in efficacy trials of antiretroviral drugs. *AIDS (London, England)*. 1999;13(7):797-804.
129. WHO-SEA, UNICEF-SA. *Management of HIV infection and antiretroviral therapy in infants and children: a clinical manual*. New Delhi: WHO Regional Office for South-East Asia. <https://apps.who.int/iris/handle/10665/205454>. New Delhi: WHO and UNICEF; 2006.
130. DHHS | NIH. *Panel on Antiretroviral Guidelines for Adults and Adolescents. Guidelines for the Use of Antiretroviral Agents in Adults and Adolescents Living with HIV*. Department of Health and Human Services. 2018 [Available from: <http://www.aidsinfo.nih.gov/ContentFiles/AdultandAdolescentGL.pdf>].
131. WHO. *Antiretroviral Treatment As Prevention (TASP) Of HIV and TB: June 2012 Programmatic Update*. Geneva, Switzerland: World Health Organization; 2012.
132. Garnett GP, Baggaley RF. Treating our way out of the HIV pandemic: could we, would we, should we? *Lancet*. 2009;373(9657):9-11.

133. Nah K, Nishiura H, Tsuchiya N, Sun X, Asai Y, Imamura A. Test-and-treat approach to HIV/AIDS: a primer for mathematical modeling. *Theor Biol Med Model.* 2017;14(1):16-.
134. MGoH. Clinical management of HIV in Children and Adults: Malawi integrated guidelines and standard operating procedure for providing HIV services, 4th ed. Lilongwe: Ministry of Health, HIV Unit; 2018.
135. MGoH. Clinical management of HIV in Children and Adults: Malawi integrated guidelines and standard operating procedure for providing HIV services, 3rd ed. Lilongwe: Ministry of Health, HIV Unit; 2016.
136. WHO. Consolidated Guidelines on the Use of Antiretroviral Drugs for Treating and Preventing HIV Infection: Recommendations for a Public Health Approach. Geneva: World Health Organization; 2016; [2016 June, 2017]. Available from: <https://www.ncbi.nlm.nih.gov/books/NBK374294/>.
137. Ho DD. Time to hit HIV, early and hard. *N Engl J Med.* 1995;333(7):450-1.
138. Wood E, Hogg RS, Yip B, Harrigan PR, O'Shaughnessy MV, Montaner JS. Effect of medication adherence on survival of HIV-infected adults who start highly active antiretroviral therapy when the CD4+ cell count is 0.200 to 0.350 x 10<sup>9</sup> cells/L. *Ann Intern Med.* 2003;139(10):810-6.
139. WHO. Progress report 2016: prevent HIV, test and treat all, WHO support for country impact. Geneva, Switzerland: World Health Organization; 2016.
140. Bacon O, Chin J, Cohen SE, Hessel NA, Sachdev D, Coffey S, et al. Decreased Time From Human Immunodeficiency Virus Diagnosis to Care, Antiretroviral Therapy Initiation, and Virologic Suppression during the Citywide RAPID Initiative in San Francisco. *Clin Infect Dis.* 2021;73(1):e122-e8.