

Profiling health and socioeconomic disadvantage in the northern Adelaide Local Health Network population.

Cheryl Shoubridge^{1*}, John Maddison², John Lynch¹, Mark Boyd¹⁻².

1 Adelaide Medical School, University of Adelaide, SA 5005, Australia

2 Northern Adelaide Local Health Network, Adelaide, Australia.

3 School of Public Health, University of Adelaide

4 Population Health Sciences, University of Bristol

*Corresponding author:

A Prof Cheryl Shoubridge

Adelaide School of Medicine, Faculty of Health Sciences

The University of Adelaide , Adelaide, SA 5005

AUSTRALIA

Phone: 61 8 8313 2355

Email: cheryl.shoubridge@adelaide.edu.au

Abstract

Objective: We describe aspects of social disadvantage in the northern Adelaide region, demonstrate how living with disadvantage impacts health outcomes to understand how the local health network can better serve this disadvantaged community.

Design: Using large scale, population-based data from the 2021 census we captured a snapshot of the disadvantage and health status of the community within the northern Adelaide region compared to the central and southern regions of Adelaide and other Australian capital cities.

Results: Northern Adelaide is a region of greater relative disadvantage, as shown by both the low Index of Relative Socio-Economic Disadvantage score (993) compared to the national average (1000) and scores above the national average for the central and southern Adelaide regions. Social determinants that contribute to this relative disadvantage include the proportion of people with no or limited education (26%) and those living on constrained income sources (e.g. unemployment benefits / aged pension, 10% and 72%, respectively). The northern Adelaide region has higher burdens of long-term health conditions including but not limited to diabetes, heart disease, kidney disease and lung diseases. The comparatively high prevalence of obesity (37%) for people in the north of Adelaide were associated with low numbers of people with adequate fruit intake (48%) and the higher proportion of people who currently smoke (16%) and who undertake low or no levels of exercise (73%).

Conclusions: Social disadvantage in the northern Adelaide region is associated with poorer health outcomes and higher levels of health risk behaviour compared to the less disadvantaged central and southern regions of Adelaide. Adapting health care to recognise this association may help improve the health of people living with disadvantage.

NOTE: This preprint reports new research that has not been certified by peer review and should not be used to guide clinical practice.

Summary box

- **The known.** The northern Adelaide region is a disadvantaged community.
- **The new.** Here we demonstrate the types and prevalence of social determinants of health and the health status of the northern Adelaide community compared to other regions of greater Adelaide and other greater Australian capital cities.
- **The implications.** This snapshot of the local social determinants of health sets a context for the health system to respond to the well-being needs of a community that are driven by some of the most adverse social determinants in Australia.

Introduction

Social determinants of health (SDoH) are the 'non-medical factors influencing health outcomes' and can both enable and promote, as well as create barriers to achieving optimal health outcomes (1). SDoH are a broad category of factors that include but are not limited to housing, neighbourhood and physical environment, safety, food availability and financial security. The well-established and strong connection between social disadvantage and adverse health outcomes is underscored by the 2008 WHO Commission on Social Determinants of Health report (2). Within the Australian setting, the Australian Institute of Health and Welfare compared different socioeconomic groups, as determined by the Index of relative socio-economic disadvantage, in terms of health risk factors, chronic conditions, deaths and disease burden (3). Across almost all health measures, people living in lower socioeconomic groups generally have worse health outcomes. This phenomenon is known as the 'the social gradient of health'. Socioeconomic disadvantage contributes substantially to increased disease burden and constitutes a barrier to effective treatment and intervention. The relative contribution of SDoH and the health system have been estimated that the health system contributes ~20% and SDoH about ~50% of health and wellbeing (4-5).

Within the greater Adelaide region, the northern Adelaide community is known to be disadvantaged and is well understood to manifest relatively poor health outcomes (6). This population is served by the Northern Adelaide Local Health Network (NALHN), comprising two major hospitals, the Lyell McEwin and Modbury Hospitals. To understand how this local health network can better serve a disadvantaged community, we sought to profile the health status and describe aspects of socioeconomic disadvantage within the northern Adelaide population.

Materials and Methods

Data source

We analysed data from the Australian Bureau of Statistics (ABS), using the Social Health Atlas of Australia: 2021 Census and data by population health areas (PHA), updated throughout 2023. Public health network (PHN) regions within Australian states or Territories are made up of defined local

health networks (LHNs), each containing local government areas (LGAs) that are in turn comprised of PHAs. One of the Socio-Economic Indexes for Areas (SEIFA) developed by the ABS to rank areas within Australia by advantage and disadvantage based on socio-economic measures within the census is the Index of Relative Socio-Economic Disadvantage (IRSD). The IRSD score is standardised to the national average of 1000 and SD of 100, and is a measure of relative disadvantage only, with a score <1000 indicating a relatively greater disadvantage. SEIFA data was sourced from the Public Health Information Development Unit (<https://phidu.torrens.edu.au>) data by PHA (2021). The boundaries of the PHN regions within Adelaide, their LHNs and constituent LGAs are as described by the Adelaide PHN initiative of the South Australian government (<https://adelaidephn.com.au>), accessed February 2023. PHA codes and names from the SA data for the greater Adelaide region, and the catchment areas for the individual LHNs are shown in [Supplementary Information -Table 1](#). The northern Adelaide region represents the catchment for the Northern Adelaide Local Health Network (NALHN). Central and southern Adelaide regions reflect the catchment for central Adelaide Local Health Network (CALHN) and Southern Adelaide Local Health Network (SALHN), respectively. Ethics approval was not required for this study as only publicly available, deidentified, population level data was used.

Data and statistical analysis

Data were analysed using GraphPad Prism version 9 (GraphPad Software Inc.) with graphs presented as box and whisker plots unless otherwise specified. Associations were analysed using linear regression.

RESULTS

The northern Adelaide region is a region of disadvantage.

The Index of Relative Socio-Economic Disadvantage (IRSD) scores from the 2021 census for greater capital city areas within each state of Australia demonstrate that greater Adelaide and greater Hobart have scores below the national average, with 993 and 991, respectively ([Figure 1A](#)). To better understand this low score in the greater Adelaide region we examined the IRSD scores as they relate to local health network catchment areas. The greater Adelaide region is serviced by three metropolitan local health networks, comprising the northern (NALHN), central (CALHN) and southern Adelaide (SALHN) local health networks. The IRSD score in the northern region (945) indicates greater disadvantage compared to the scores in the central (1024) or southern region (1007) of greater Adelaide at the local government area ([Figure 1B](#)) and individual PHA levels ([Figure 1C](#)). Thirteen PHAs in the northern region have IRSD scores below the national average of 1000 ([Figure 1D](#)). Of the 18 PHAs within the northern Adelaide region, 6 were ranked within the worse ~10% disadvantaged regions nationally ([Figure 1D](#)).

Population composition

The northern Adelaide region comprises ~ 24% of the greater Adelaide population. The proportion of northern Adelaide residents born in Australia (64%), overseas in predominately English-speaking countries (8.2%) or non-English speaking countries (21.3%) was consistent with the Australian greater capital cities (61.3%, 8.5% and 25.8%) and the greater Adelaide region (68.7%, 8.4% and 19.2%), respectively (Figure 2A). Similarly, the distribution of broad age categories within the population in the greater capital cities around Australia and the greater Adelaide regions follows a consistent pattern, with the largest proportion of people being in the 25 to 44 yr bracket, followed by the 45 to 64 yr bracket (Supplementary Information - Figure 1A-B). The proportion of Aboriginal and Torres Strait Islander residents in the northern Adelaide region (2.4%) was higher than those in the greater Adelaide region (1.7%) and the Australian average (1.8%), but less than some other national jurisdictions (Figure 2B and Supplementary Information -Table 2). This is equivalent to 44% of the greater Adelaide Aboriginal population and 24% of the total South Australian Aboriginal population (Figure 2C).

Social Determinants: Education, income, families, and housing

The greater Adelaide region has one of the lowest prevalence (at 20 per 100) of people who did not go to school or left school at or below Year 10 compared to other greater capital cities (Table 1). In contrast, the northern Adelaide region had one of the highest rates (at 26 per 100) compared to other greater capital cities and the central and southern regions of greater Adelaide (at 17 per 100) (Figure 3A). In relation to sources of income for the working age population (16-64 yrs), the greater Adelaide region (7 %) nationally and the northern Adelaide region (10%) locally have the highest percentages of people receiving unemployment benefits (Figure 3B), many as long-term recipients (Table 1). Similarly for the population aged 65 yrs and over, the greater Adelaide region (64%) and the northern Adelaide region (72%) have the highest percentages receiving the aged pension (Figure 3C). The proportion of low-income welfare dependent families with children in the northern Adelaide region (7%) is higher than all the greater capital cities (median at 4.5%) (Table 1 and Figure 3D). Although the percentage of social housing (rented dwellings) and the proportion of households that were receiving rent assistance across the greater capital cities of Australia is quite variable (Table 1), for both measures we see a higher proportion in the northern Adelaide region compared to the combined central and southern regions of Adelaide (Figure 3E-F).

Long-term health conditions, health measures and hospital admissions

The number and types of long-term health conditions, median age of death and the prevalence of premature mortality and avoidable deaths are shown on Table 2. Relative to the greater capital cities of Australia, greater Adelaide has the third highest level of premature mortality (at 236 per 100,000) compared to the highest levels in greater Darwin (at 282 per 100,000) and the lowest levels in greater Canberra (at 199 per 100,000). Within greater Adelaide, the northern Adelaide region (at 271 per 100,000) has a higher rate of premature mortality than central and southern Adelaide (at 224 per

100,000). At the population levels in the 2021 census, this would equate to 1132 people dying prematurely in the northern Adelaide region (across a similar time frame), 197 more deaths relative to the rate in the central and southern regions of greater Adelaide for a comparable population number. A similar trend is seen with death from avoidable causes which includes deaths from conditions that are potentially preventable through individualised care and/or treatable through existing primary or hospital care, and include infections such as viral pneumonia and influenza, diabetes, diseases of circulatory systems including hypertension and renal disease through to external causes such as falls and burns ([Supplementary Information Table 3](#)). In persons between 0 and 74 years of age, deaths from avoidable causes (2016 to 2020) in the greater Adelaide region (at 111 in 100,000) were similar to the median value of all other greater capital cities (at 108 in 100,000) ([Table 2](#)) but lower than the northern Adelaide region (at 131 per 100,000) ([Figure 4A](#)). At the population levels in the 2021 census, this would equate to 546 people dying from avoidable causes in the northern Adelaide region (across a similar time frame), 105 more avoidable deaths relative to the rate in the central and southern regions of greater Adelaide for a comparable population number. The number of total admissions to all hospitals (excluding same-day admissions for renal dialysis) is reasonably consistent across the greater capital cities (where data is available) when shown as the average ASR per 100,000 people ([Table 2](#)). Within the greater Adelaide region, of all hospital admissions in the northern Adelaide region 55% are to public hospitals, a 22% increase compared to proportion of admissions to public hospitals in the combined central and southern regions of Adelaide ([Figure 4B](#)).

The number of people self-reporting one or more or three or more long-term health conditions is higher in the northern Adelaide region compared to the combined central and southern regions of Adelaide ([Figure 4 C-D](#)). These long-term health conditions include diabetes ([Figure 4 E](#)), heart disease ([Figure 4 F](#)), kidney disease ([Figure 4 G](#)) and lung conditions ([Figure 4 H](#)). To give an indication of the scale of disparity, at the population levels in the 2021 census this would equate to 27,170 people in the northern Adelaide region living with diabetes, 38% more than the relative rate in the central and southern regions of greater Adelaide for a comparable population number.

Risk Factors

A prevalent health condition in the northern Adelaide population is obesity ([Table 3](#)). In greater capital cities of Australia, the modelled estimates (2017-2018) for people over 18 years of age indicate that in general less than 30 in every 100 people (ASR) are obese. Greater Adelaide has one of the highest levels of people with obesity (32%) and within the greater Adelaide region this number is higher again in the northern Adelaide region at almost 37%. Not surprisingly, we demonstrate a correlation between the higher numbers of people with obesity and the lower number of people with adequate fruit intake per day ([Figure 5A](#)). In the opposite direction, we demonstrate a correlation of higher numbers of people with obesity with a higher proportion of current smokers ([Figure 5B](#)) and

with a higher number of people with low, very low or no levels of exercise (in the previous week) (Figure 5C).

Northern Adelaide compares with western Sydney, a known region of disadvantage.

Western Sydney is almost six times larger than the size of northern Adelaide based on population and is a widely recognised region of social disadvantage. The IRSD scores for northern Adelaide (945) and western Sydney (983) confirm that both regions experience relative disadvantage (Table 4). However, compared to western Sydney, the northern Adelaide region has a higher percentage of people over 65 years old living on the aged pension, higher rates of unemployment and higher numbers of people with one or more or three or more long-term health conditions, including diabetes and heart disease (Table 4). Generally the risk factors measured between the two communities were quite similar in prevalence, e.g. high blood pressure and the proportion of people being overweight or obese, the numbers of people currently smoking or living with obesity.

Discussion

We have captured a broad snapshot of the relative disadvantage in the northern Adelaide community compared to greater Adelaide, national capital cities and a region of known socioeconomic disadvantage, western Sydney. We describe social determinants of health that may contribute to the relative disadvantage and demonstrate associations of living in disadvantaged circumstances and poorer health outcomes of people in the northern Adelaide community. In the case of the northern Adelaide region, the relative level of disadvantage is brought into sharp focus with almost 80% of the population within the northern Adelaide region residing in a local government area with an IRSD score indicating high relative disadvantage. Given the small size of greater Adelaide (geographically and population density), we would have expected a more homogeneous distribution in the relative disadvantage within communities, or at least a less stark change between areas of the city in reasonable proximity. This level of disadvantage in an Australian capital city is confronting, but unfortunately not isolated (7). The analysis clearly indicates that the northern Adelaide region has a community with a high percentage of people living on constrained income namely the aged pension during retirement age, and unemployment benefits during working age; many are long term recipients. This limits financial security, with protracted and long-lasting periods of parental unemployment linked to long term health problems in their children (8). This then leads to an increased likelihood of inter-generational disadvantage. These observations indicate that the social disadvantage and related health burden may continue to worsen for parts of this community in the absence of interventions. The current cost-of-living crisis has already been shown to increase the rates of food and housing insecurity, affecting the disadvantaged disproportionately and exacerbating that disadvantage (9-10).

One of the health issues particularly prevalent in the northern Adelaide community is obesity. Limited healthy food choices and opportunities for physical activity to health outcomes are known to all contribute to the prevalence (11-12). Indeed, a recent study in the Australia setting shows that most groceries purchased by low socioeconomic households between 2015 and 2019 are ultra-processed foods associated that increase risks of obesity (13), highlighting the continued need for education and access to healthy food choices as a public health priority.

The present study sought to establish the mixture and prevalence of social determinants of health impacting the northern Adelaide community with a view to better understand how living with disadvantage leads to poorer health outcomes in this population. This necessary first step was required to identify the scale of the problem on the ground being borne by the LHN responsible for serving the health needs of this population. There is a growing appreciation that inequity to health service provision and accessibility are linked to socioeconomic disadvantage and have been demonstrated recently in the Australian context for people with disabilities (14), people experiencing long term unemployment (15) through to patients experiencing barriers to accessing digital health solutions offered via selected hospital clinics (16). The calls for targeted investment in interventions mainly focused to vulnerable populations may provide the necessary improvements public health overall (17).

In the case of the northern Adelaide community, there is a need in the short to medium term to ensure that there is adequate, locally based public infrastructure to meet the health care needs of this disadvantaged population. Considering the demonstrated dependence of this population on the public health system coupled with the underlying health conditions in this community, the resourcing may need to be greater than that required in less disadvantaged areas of Greater Adelaide. This study demonstrates the need for targeted interventions to address the root cause of social disadvantage in the north of Adelaide, focusing on education, employment, and health literacy, with health planners having an important role to assist planning and leading these interventions. There is a clear need for research to establish the impact of treating an individual's disease without adequately addressing underlying social disadvantage which is prevalent in this population. At the coalface, clinicians and health workers have an important role to play in understanding how the social determinants of health relevant to their patients may impact their care.

Data Sharing Statement: This article includes no original data.

Competing interests: The authors have no competing interests. Neither the authors or their institutions have received any payments or services in the past 36 months from a third party that could be perceived to influence, or give the appearance of potentially influencing, the submitted work. Neither the authors or their institutions at any time have received payment or services from a third party for any aspect of the submitted work.

List of Abbreviations

ASR	Age-standardised rate
CALHN	Central Adelaide local health network
LGA	local government area
LHN	local health network
NALHN	Northern Adelaide local health network
PHA	Public Health Area
SALHN	Southern Adelaide local health network

List of URLs and online resources

Adelaide PHN	https://adelaidephn.com.au
PHIDU	https://phidu.torrens.edu.au

References

1. Australian Institute of Health and Welfare. Social determinants of health. Canberra: AIHW, 2022 [cited 2023 April 24]. Available from: <https://www.aihw.gov.au/reports/australias-health/social-determinants-of-health>
2. Commission on Social Determinants of Health. Closing the gap in a generation: health equity through action on the social determinants of health. Final Report of the CSDH. Geneva. Geneva: WHO; 2008 [cited 2023 April 24]. Available from: <https://www.who.int/publications/i/item/WHO-IER-CSDH-08.1>
3. Australian Institute of Health and Welfare. Health across socioeconomic groups. Canberra: AIHW, 2022 [cited 2023 April 24]. Available from: <https://www.aihw.gov.au/reports/australias-health/health-across-socioeconomic-groups>
4. Tanton R, Dare L, Miranti, R, et al. Dropping Off the Edge 2021: Persistent and multilayered disadvantage in Australia, Jesuit Social Services: Melbourne 2021 [cited 2023 May 26]. Available from: https://static1.squarespace.com/static/6170c344c08c146555a5bcbe/t/61958bf805c25c1e068da90f/1637190707712/DOTE_Report+_Final.pdf
5. McGovern L. "The Relative Contribution of Multiple Determinants to Health," Health Affairs Health Policy Brief, August 21, 2014 DOI: 10.1377/hpb20140821.404487
6. Pourat N, Chen X, Lu C, et al. The Relative Contribution of Social Determinants of Health Among Health Resources and Services Administration-Funded Health Centres. *Popul Health Manag.* 2022; 25(2):199-208.
7. Giles-Corti B, Saghapour T, Turrell G, et al. Spatial and socioeconomic inequities in liveability in Australia's 21 largest cities: Does city size matter? *Health Place.* 2022; 78:102899.
8. Mooi-Reci I, Wooden M. Jobless parents, unhealthy children? How past exposure to parental joblessness influences children's future health. *SSM Popul Health.* 2022; 19:101144.
9. Foodbank South Australia, Foodbank Hunger report 2023. [cited Nov 16 2023]. Available from: <https://reports.foodbank.org.au/foodbank-hunger-report-2023>
10. Russell, C., Verrelli, S., Taylor, E., & Xu, H. Salvos community hardship snapshot 2023: At breaking point. The Salvation Army. 2023 [cited 2023 Nov 27]. Available from: <https://www.salvationarmy.org.au/about-us/news-and-stories/publications-and-resources/2023-red-shield-report>
11. Bjornstad P, Chao LC, Cree-Green M, et al. Youth-onset type 2 diabetes mellitus: an urgent challenge. *Nat Rev Nephrol.* 2023; 19(3):168-184.
12. Pulling Kuhn A, Cockerham A, O'Reilly N, et al. Home and Neighbourhood Physical Activity Location Availability among African American Adolescent Girls Living in Low-Income, Urban Communities: Associations with Objectively Measured Physical Activity. *Int J Environ Res Public Health.* 2021; 18(9):5003.

13. Coyle DH, Huang L, Shahid M, et al. Socio-economic difference in purchases of ultra-processed foods in Australia: an analysis of a nationally representative household grocery purchasing panel. *Int J Behav Nutr Phys Act.* 2022;19(1):148.
14. Mitchell RJ, Ryder T, Matar K, et al. An overview of systematic reviews to determine the impact of socio-environmental factors on health outcomes of people with disabilities. *Health Soc Care Community.* 2022; 30(4):1254-1274.
15. de Jager E, Gunnarsson R, Ho YH. Emergency to Elective Surgery Ratio as a Disparities Sensitive Surgical Access Metric, A Study of Low Socioeconomic Status in Australia. *World J Surg.* 2022; 46(4):776-783.
16. Freeman T, Fisher M, Foley K, et al. Barriers to digital health services among people living in areas of socioeconomic disadvantage: Research from hospital diabetes and antenatal clinics. *Health Promot J Austr.* 2022; 33(3):751-757.
17. Chatelan A, Khalatbari-Soltani S. Evaluating and rethinking public health for the 21st century: Toward vulnerable population interventions. *Front Public Health.* 2022; 28; 10: 1033270

Figure Legends

Figure 1: IRSD scores in greater Adelaide is being driven by the relative disadvantage in the northern Adelaide region.

Population and IRSD scores for the A) greater capital cities and B) LHNs and C) PHAs within LGA areas for the greater Adelaide region where the northern region (green), and central and southern Adelaide regions (blue). Greater capital cities index scores for Australia (grey bar; Australian GCC as a black square). D) National ranking of IRSD scores indicate that 12 LGAs within northern region have lower scores than the national average, with 6 PHAs in this region ranked within the 10% most disadvantaged. ^Numbers of people in greater Adelaide Area are higher than the aggregate values of southern, central and northern regions due to a small number of PHA that are captured in the greater Adelaide region that fall outside the catchment PHAs for the three metropolitan Local Health Networks within Adelaide. All data from the 2021 census.

Figure 2: Population country of origin in northern Adelaide is generally consistent with the greater Capital cities and greater Adelaide population landscape.

A) Place of birth as a percentage of the total population with greater capital cities and of population health areas within the greater Adelaide regions. B) People that identify as Aboriginal or Torres Strait Islander as a percentage of the total population and C) as a proportion of the greater Adelaide regions and South Australia. Greater capital cities (grey bars; Australian GCC average as black square) and greater Adelaide (orange circle). Northern Adelaide region (green bars) and central and southern Adelaide regions (blue bars). Data presented as Mean \pm SEM. All data from the 2021 census.

Figure 3: Social factors contributing to disadvantage in northern Adelaide.

A) Number of people with schooling less than year 10 (ASR per 100 people); B) percentage of people over the age of 65 years receiving the age pension; C) percentage of people aged 16-64 yrs receiving unemployment (Newstart or youth allowance) benefits, D) proportion of low-income welfare dependent families with children, E) proportion of social housing (rented) and F) proportion of households receiving rent assistance. Greater capital cities in Australia (grey; Australian GCC as a black square and greater Adelaide as an orange circle), northern Adelaide region (green) and combined central and southern Adelaide regions (blue). All data from the 2021 census unless specified otherwise.

Figure 4: Impact of disadvantage on long-term health conditions and health measures.

A) Deaths from avoidable causes (ASR per 100,000 people); B) proportion of private and public hospital admissions. C) Number of people with one or more and D) three or more long-term health disorders (self-reported) (ASR per 100 people). Number of people with E) diabetes; F) heart-disease;

G) kidney-disease; H) lung conditions as a self-reported long term health condition (ASR per 100 people). For all graphs the greater capital cities in Australia (grey bar; Australian GCC as a black square and greater Adelaide as an orange circle), northern Adelaide region (green bar) and combined central and southern Adelaide regions (blue bar). All data from the 2021 census unless specified otherwise.

Figure 5: Association of the prevalence of obesity with risk factors in the northern Adelaide region. The number of people who were obese were compared to; A) the number of people with adequate levels of fruit intake; B) the number of people who were current smokers; C) the number of people who undertook low, very low or no exercise in previous week. All data were in people aged 18 yrs and over from modelled estimates across 2017-2018. Greater capital cities in Australia (orange) northern Adelaide region (green) and combined central and southern Adelaide regions (blue). D) Linear regression analysis for northern vs central and southern Adelaide regions.

Figure 1

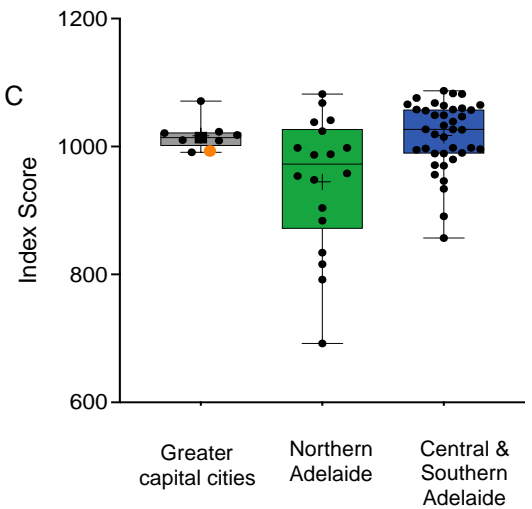
A

	Australia Greater CC	Greater Sydney	Greater Melbourne	Greater Brisbane	Greater Adelaide	Greater Perth	Greater Hobart	Greater Darwin	Greater Canberra
Population	17,020,559	5,231,147	4,917,750	2,526,238	1,387,290	2,116,647	247,086	139,902	454,499
IRSD Score #	1014	1010	1018	1009	993	1021	991	1023	1071

B

	Greater Adelaide	Northern Adelaide	Central Adelaide	Southern Adelaide
Population	1,387,290 [^]	417994	476986	374840
IRSD Score #	993	945	1024	1007

C



D

(2021) LGA / PHA within Northern Adelaide region	Population Census 2021	Score Australia =1000	Rank Lowest =1162
Playford			
Davoren Park	18313	792	1142
Elizabeth East	14047	834	1123
Elizabeth/ Smithfield - Elizabeth North	23275	692	1156
One Tree Hill	2473	1082	99
Playford - West	41828	958	872
Port Adelaide			
Enfield - Blair Athol	25578	904	1045
Northgate - Northfield/ Valley View - Gilles Plains	28692	998	622
Windsor Gardens	22587	998	624
Salisbury			
Dry Creek - North/ Pooraka	21935	988	697
Ingle Farm	15681	954	893
Para Hills/ Salisbury East	33548	948	918
Parafield/ Parafield Gardens/ Paralowie	36304	884	1083
Salisbury/ Salisbury North	37081	816	1135
Tea Tree Gully			
Golden Grove/ Greenwith	19423	1041	337
Highbury - Dernancourt	11048	1068	172
Hope Valley - Modbury	17496	987	705
Modbury Heights/ Redwood Park	35524	1038	352
St Agnes - Ridgeway	13161	1024	471

Figure 1: IRSD scores in greater Adelaide is being driven by the relative disadvantage in the northern Adelaide region. Population and IRSD scores for the A) greater capital cities and B) LHNs and C) PHAs within LGA areas for the greater Adelaide region where the northern region (green), and central and southern Adelaide regions (blue). Greater capital cities index scores for Australia (grey bar; Australian GCC as a black square). D) National ranking of IRSD scores indicate that 12 LGAs within northern region have lower scores than the national average, with 6 PHAs in this region ranked within the 10% most disadvantaged. ^Numbers of people in greater Adelaide Area are higher than the aggregate values of southern, central and northern regions due to a small number of PHA that are captured in the greater Adelaide region that fall outside the catchment PHAs for the three metropolitan Local Health Networks within Adelaide. All data from the 2021 census.

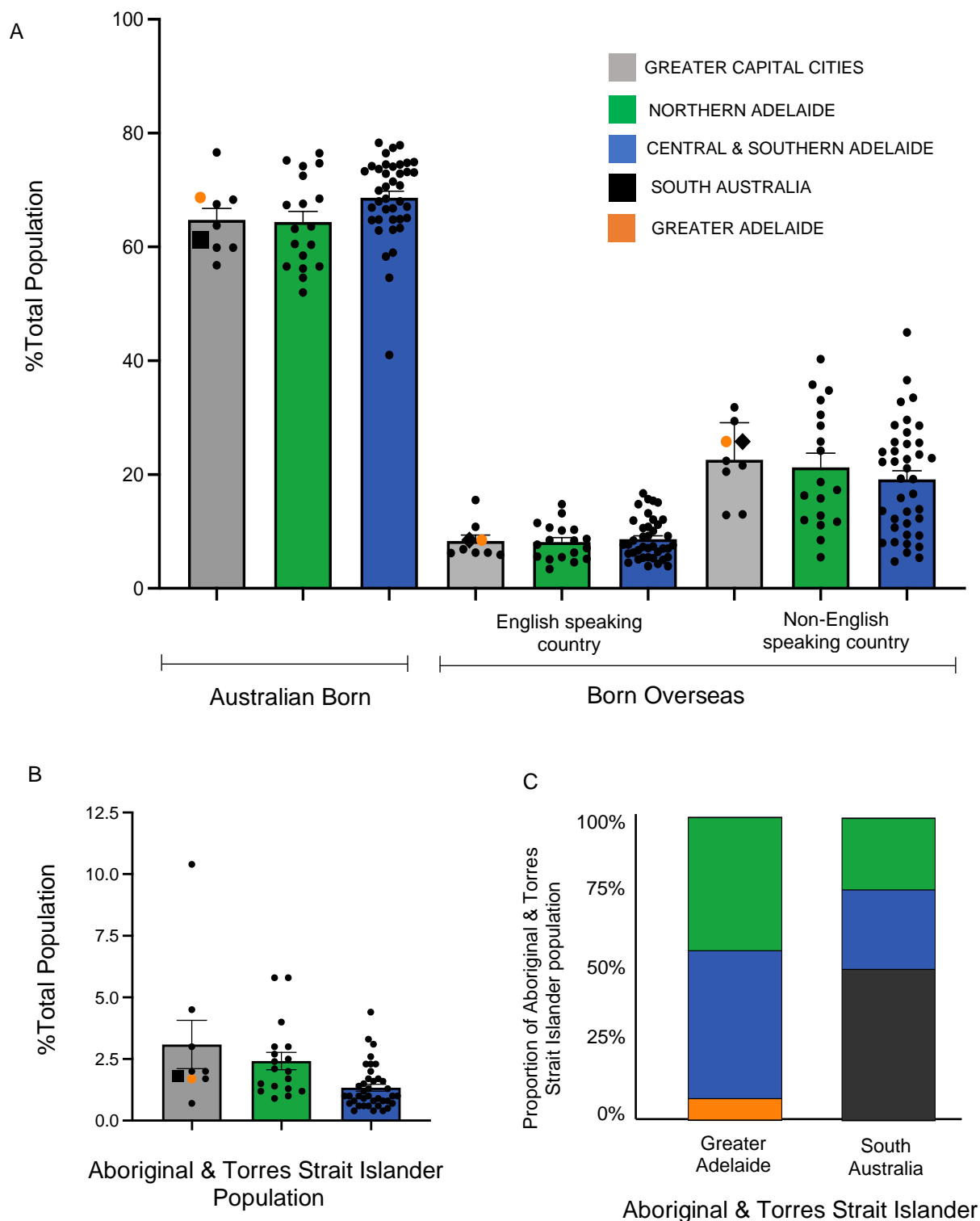


Figure 2: Population country of origin in northern Adelaide is generally consistent with the greater Capital cities and greater Adelaide population landscape.

A) Place of birth as a percentage of the total population with greater capital cities and of population health areas within the greater Adelaide regions. B) People that identify as Aboriginal or Torres Strait Islander as a percentage of the total population and C) as a proportion of the greater Adelaide regions and South Australia. Greater capital cities (grey bars; Australian GCC average as black square) and greater Adelaide (orange circle). Northern Adelaide region (green bars) and central and southern Adelaide regions (blue bars). Data presented as Mean \pm SEM. All data from the 2021 census.

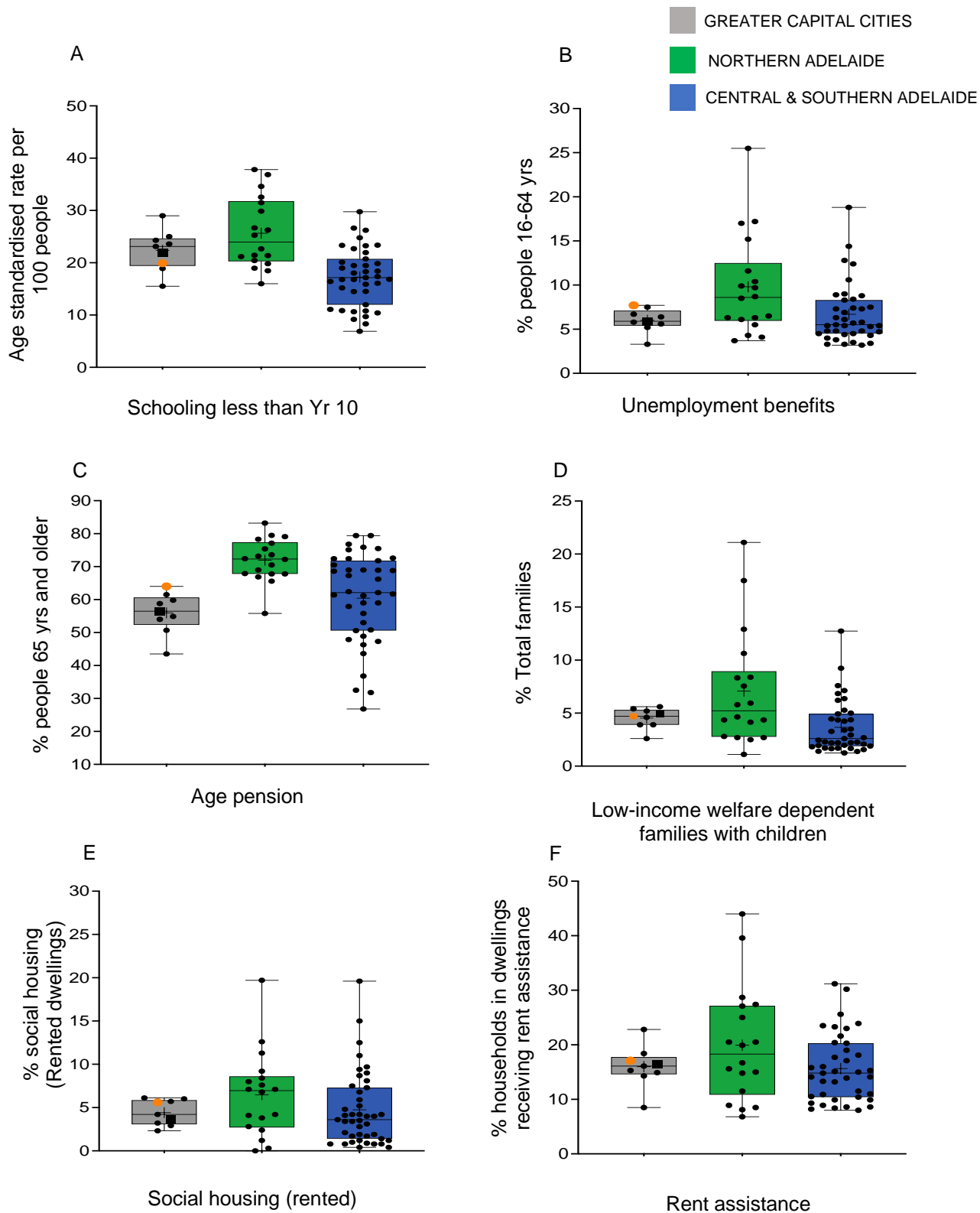


Figure 3: Social factors contributing to disadvantage in northern Adelaide.

A) Number of people with schooling less than year 10 (ASR per 100 people); B) percentage of people over the age of 65 years receiving the age pension; C) percentage of people aged 16-64 yrs receiving unemployment (Newstart or youth allowance) benefits, D) proportion of low-income welfare dependent families with children, E) proportion of social housing (rented) and F) proportion of households receiving rent assistance. Greater capital cities in Australia (grey; Australian GCC as a black square and greater Adelaide as an orange circle), northern Adelaide region (green) and combined central and southern Adelaide regions (blue). All data from the 2021 census unless specified otherwise.

LONG-TERM HEALTH CONDITIONS

GREATER CAPITAL CITIES

NORTHERN ADELAIDE

CENTRAL & SOUTHERN ADELAIDE

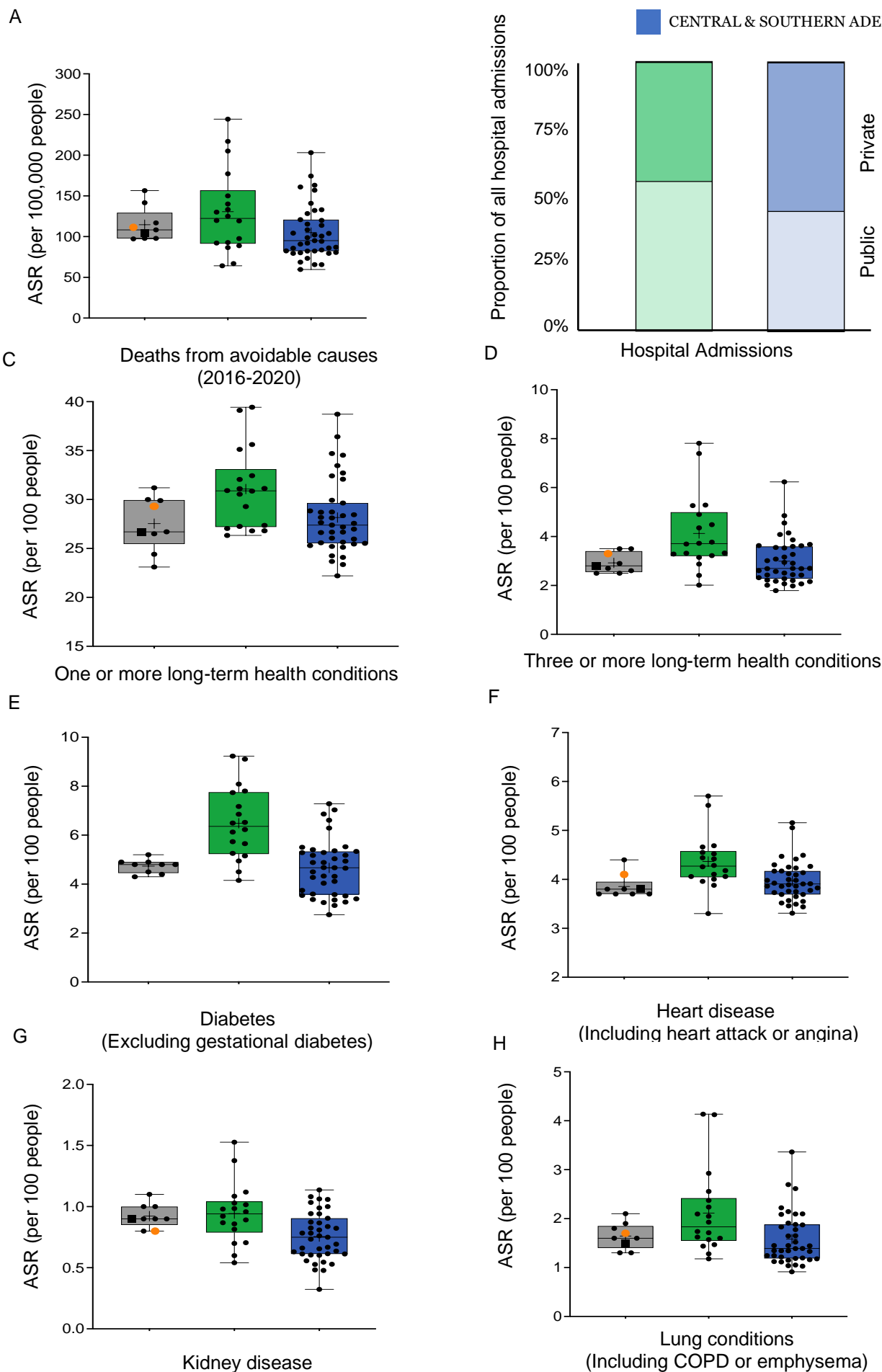
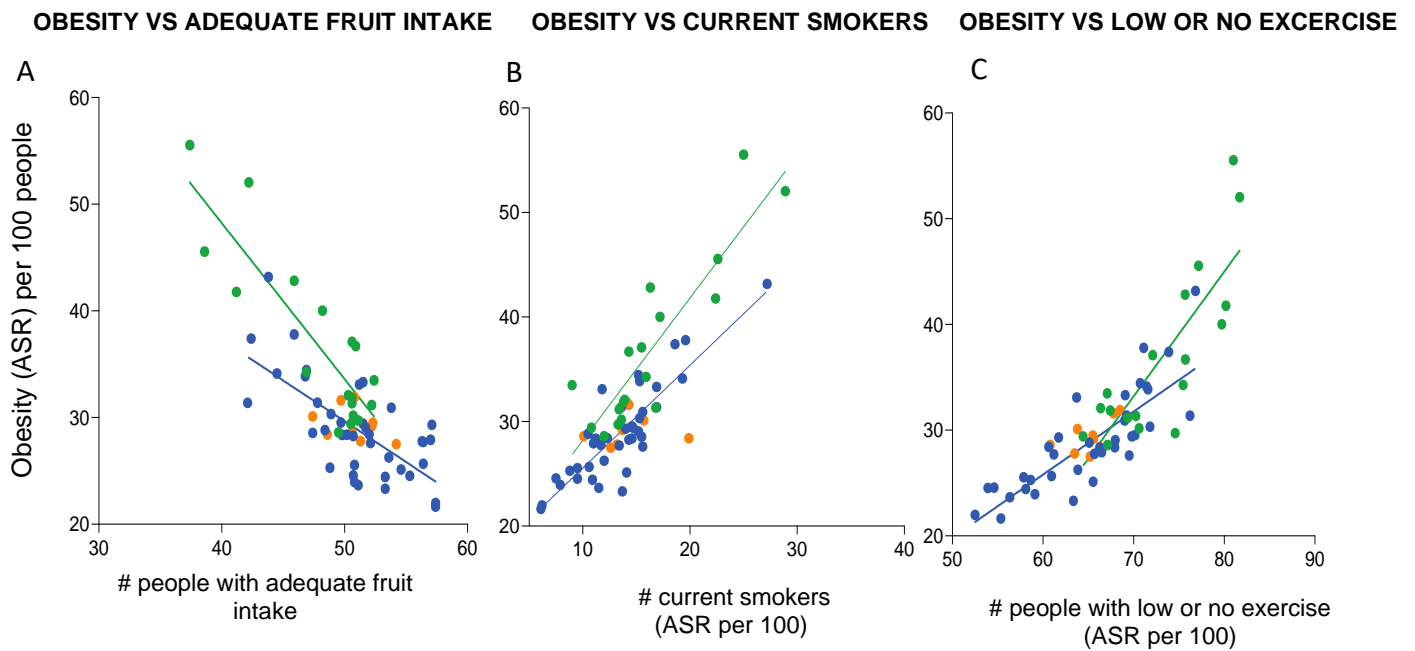


Figure 4: Impact of disadvantage on long-term health conditions and health measures.

A) Deaths from avoidable causes (ASR per 100,000 people); B) proportion of private and public hospital admissions. C) Number of people with one or more and D) three or more long-term health disorders (self-reported) (ASR per 100 people). Number of people with E) diabetes; F) heart-disease; G) kidney-disease; H) lung conditions as a self-reported long term health condition (ASR per 100 people). For all graphs the greater capital cities in Australia (grey bar; Australian GCC as a black square and greater Adelaide as an orange circle), northern Adelaide region (green bar) and combined central and southern Adelaide regions (blue bar). All data from the 2021 census unless specified otherwise.

Figure 5



Simple Linear regression data		R ²		Differences between slopes
		Northern	Central Southern	
Obesity vs				
Adequate fruit intake	A	0.7615	0.4778	P=0.0036
Current smokers	B	0.7885	0.7481	P=0.0358
Exercise - low, very low or none in previous week	C	0.6768	0.6652	P=0.0014

■ GREATER CAPITAL CITIES
■ NORTHERN ADELAIDE
■ CENTRAL & SOUTHERN ADELAIDE

Figure 5: Association of the prevalence of obesity with risk factors in the northern Adelaide region. The number of people who were obese were compared to; A) the number of people with adequate levels of fruit intake; B) the number of people who were current smokers; C) the number of people who undertook low, very low or no exercise in previous week. All data were in people aged 18 yrs and over from modelled estimates across 2017-2018. Greater capital cities in Australia (orange) northern Adelaide region (green) and combined central and southern Adelaide regions (blue). D) Linear regression analysis for northern vs central and southern Adelaide regions.

Table 1: Factors contributing to disadvantage in the greater capital cities and greater Adelaide regions

2021 Census	Northern Adelaide	Central + Southern	Greater Adelaide	Australia (Greater CC)	Greater Sydney	Greater Melbourne	Greater Brisbane	Greater Perth	Greater Hobart	Greater Darwin	Greater Canberra
EMPLOYMENT & EDUCATION											
Schooling ≤ Yr 10 (ASR /100)	25.6	17.3	19.9	21.9	23.1	18.9	25.0	23.6	29.0	24.3	15.5
% full-time school ~ 16 yr ¹ 2016	85.2	89.0	88.0	86.3	86.2	87.4	86.0	84.4	79.2	80.1	88.9
% school leavers in higher ed ²	41.7	46.6	42.6	33.5	34.9	n.a	40.4	20.1	27.0	24.4	16.7
% Learning or earning at 15 to 24 yrs (2016)	83.4	88.4	86.6	86.3	86.9	87.3	84.1	84.8	84.3	79.5	89.4
INCOME											
% Labour force participation ~ 15yrs and over 2020	60.7	62.2	62.6	66.3	66.5	67.0	65.6	66.6	63.0	73.6	69.1
% Age pension (~65 ys & older)	72.0	60.4	64.0	56.5	54.0	54.9	59.8	58.8	61.5	50.7	43.5
% People on unemployment benefits	9.8	6.7	7.7	5.9	5.2	5.6	6.7	6.4	7.5	5.8	3.3
– Long term	9.0	6.1	7.0	5.3	4.7	5.0	6.0	5.8	6.8	5.1	2.9
% Health care card holders	9.9	7.7	8.4	7.0	6.1	7.4	7.6	7.3	8.1	6.3	4.6
FAMILIES											
% Low-income welfare dependent families + children	7.1	3.7	4.7	4.3	3.9	3.9	5.2	4.6	5.6	5.4	2.6
% Single Parent Families with children < 15 yrs	23.0	20.1	22.0	18.5	16.9	16.7	22.2	19.3	26	21.5	17.6
HOUSING											
% Social housing (rented)	6.9	5.0	5.6	3.6	4.2	2.3	3.2	2.9	6.0	6.1	5.7
% households ~ rent assistance	19.9	15.6	17.1	16.5	16.1	14.9	22.8	15.3	18.4	14.3	8.5
% Aboriginal households ~ rent assistance	35.6	32.6	36.3	34.4	30.5	30.7	42.3	38.5	31.0	30.9	13.9
¹ Full-time participation in secondary school education at age 16 yrs ~ as a percentage of people aged 16 – Data from 2016 ² School leaver participation in higher education as a percentage of persons aged 17 – Data from 2021 (excludes Victoria)											

Table 2: Prevalence of long-term health conditions and health measures in the greater capital cities and greater Adelaide regions

	Northern Adelaide	Central + Southern	Greater Adelaide	Australia (Greater CC)	Greater Sydney	Greater Melbourne	Greater Brisbane	Greater Perth	Greater Hobart	Greater Darwin	Greater Canberra
NUMBER AND TYPE OF LONG-TERM HEALTH CONDITIONS (2021)											
- 1 or more	31.1	28.2	29.3	26.7	24.4	26.5	29.9	26.7	31.2	23.1	30.0
- 3 or more	4.1	3.0	3.3	2.8	2.5	2.7	3.5	2.6	3.5	2.5	2.9
Diabetes ¹	6.5	4.7	5.2	4.8	4.9	4.8	4.9	4.5	4.3	4.8	4.4
Heart Disease ²	4.4	4.0	4.1	3.8	3.7	3.7	4.4	3.8	3.8	3.7	3.7
Kidney Disease	0.94	0.75	0.8	0.9	0.9	0.9	1.0	0.8	0.9	1.0	1.1
Lung Conditions ³	2.1	1.6	1.7	1.5	1.3	1.3	2.1	1.6	1.9	1.8	1.6
MEASURES OF HEALTH (2016 to 2020)											
Median age at death- persons ⁴	79	83	83	82	82	82	80	81	81	70	81
Premature mortality – Total deaths 0 -74 years ⁵	270.8	223.6	235.6	213.1	205.1	200.7	232.8	213.7	270.2	281.9	199.4
Death from avoidable causes, 0-74 years ⁵	130.6	105.2	111.4	104.0	97.2	97.9	116.9	108.3	141.7	156.6	97.9
HOSPITAL ADMISISONS (2018-2019)											
All hospitals ⁶	35,413	37,319	36,892	37,178	35,399	39,698	NA	37,660	NA	NA	NA
Private hospitals ⁶	15,647	20,598	19,002	17,878.2	17,881	17,621	NA	17,682	NA	NA	NA
Public hospitals ⁶	19,485	16,543	17,807	20,527.7	17,442	21,917	26,026	19,872	18,229	33,030	20,706
Number and type of long-term health conditions - All data presented as Age Standardised Rate per 100 people self-reporting having a long-term health condition as part of the 2021 census (ABS).											
¹ Excluding gestational diabetes; ² Including heart attack or angina; ³ Including COPD or emphysema.											
Measures of health - ⁴ Average value of the collective of individual PHA Median age of death; ⁵ Average annual ASR per 100,000 ~ 2016-2020											
Hospital admissions exclude same-day admissions for renal dialysis. ⁶ Average ASR per 100,000 people (rounded to nearest whole number).											

Table 3– Estimated prevalence of risk factors impacting health in greater capital cities and in Adelaide LHNs

2017-2018 Modelled estimates	Northern Adelaide	Central + Southern	Greater Adelaide*	Australia (Greater CC)	Greater Sydney	Greater Melbourne	Greater Brisbane	Greater Perth	Greater Hobart	Greater Darwin	Greater Canberra
HEALTH CONCERN											
Overweight (not obese)	35.1	37.1	36.1	35.6	34.8	36.1	34.1	36.5	36.3	34.0	35.1
Obese	36.9	28.9	31.6	29.2	27.5	29.5	31.9	27.8	30.1	28.4	28.6
High blood pressure	22.7	21.49	21.9	22.4	22.8	22.4	22.5	22.3	22.0	17.7	21.8
RISK FACTORS											
Adequate fruit intake / day	47.8	51.0	49.7	52.2	54.2	52.3	50.8	51.3	47.4	48.6	50.6
Alcohol: 2 std drinks / day on average	12.1	14.8	14.0	14.2	13.3	13.0	16.0	16.4	17.6	21.1	15.0
Current smokers	16.4	13.4	14.3	13.7	12.7	14.5	14.1	13.2	15.7	19.9	10.1
Exercise ~ low, very low or none in previous week	73.1	65.2	67.8	65.6	65.2	65.5	68.5	63.5	63.8	66.3	60.8
All data presented as Age Standardised Rate per 100 people 18 years and over from modelled estimates 2017-2018 * Numbers in Greater Adelaide Area include data for NALHN, CALHN, SALHN as well as selected PHAs from the BHFLHN											

Table 4– Selected demographic, health and risk factors in Northern Adelaide compared to Western Sydney

	Northern Adelaide	Greater Adelaide*	Australia (Greater CC)	Western Sydney	Greater Sydney
Population (<i>census 2021</i>)	417,994	1,387,290	17,020,559	2,606,544	5,231,147
IRSD score	945	993	1014	983	1010
A) INCOME, EMPLOYMENT & EDUCATION					
% Age pension (~65 ys & older)	72.0	64.0	56.5	63.4	54.0
% People on unemployment benefits	9.8	7.7	5.9	7.6	5.2
Schooling \leq Yr 10 (ASR /100)	25.6	19.9	21.9	30.4	23.1
B) NUMBER AND TYPE OF LONG-TERM HEALTH CONDITIONS					
- 1 or more	31.1	29.3	26.7	17.6	24.4
- 3 or more	4.1	3.3	2.8	2.9	2.5
Diabetes ¹	6.5	5.2	4.8	6.0	4.9
Heart Disease ²	4.4	4.1	3.8	4.1	3.7
C) HEALTH CONCERNS / RISK FACTORS					
Overweight (not obese)	35.1	36.1	35.6	34.6	34.8
Obese	36.9	31.6	29.2	32.5	27.5
High blood pressure	22.7	21.9	22.4	23.0	22.8
Current smokers	16.4	14.3	13.7	14.0	12.7
<p>A) ASR = Age Standardised Rate per 100 people * Population in Greater Adelaide Area include data for northern, central and southern regions as well as some PHAs from a regional LHN B) Data presented as Age Standardised Rate per 100 people self-reporting having a long-term health condition as part of the 2021 census (ABS); ¹ Excluding gestational diabetes; ² Including heart attack or angina. C) All data presented as Age Standardised Rate per 100 people 18 years and over from modelled estimates 2017-2018.</p>					