

1 **Disentangling the relationship between cancer mortality and COVID-19 in**
2 **the US**

3 **Authors: Chelsea L. Hansen^{1,2,3}, Cécile Viboud¹, Lone Simonsen^{1,2}**

4 ¹Division of International Epidemiology and Population Studies, Fogarty
5 International Center, National Institutes of Health, Bethesda, MD, USA. 20892

6 ²PandemiX Center, Dept of Science & Environment, Roskilde University,
7 Denmark

8 ³Brotman Baty Institute, University of Washington, Seattle, WA

9

10 Word count: 6972 (excluding headings and appendix)

11

12

13

14

15

16

17

18

19

20

21

22

23

24

25 **Abstract: 447 words**

26 Several countries have reported that deaths with a primary code of cancer did not rise during
27 COVID-19 pandemic waves compared to baseline pre-pandemic levels. This is in apparent
28 conflict with findings from cohort studies where cancer has been identified as a risk factor for
29 COVID-19 mortality. Here we further elucidate the relationship between cancer mortality and
30 COVID-19 on a population level in the US by testing the impact of death certificate coding
31 changes during the pandemic and leveraging heterogeneity in pandemic intensity across US
32 states. We computed excess mortality from weekly deaths during 2014-2020 nationally and for
33 three states with distinct COVID-19 wave timing (NY, TX, and CA). We compared pandemic-
34 related mortality patterns from underlying and multiple cause (MC) death data for six types of
35 cancer and compared to that seen for chronic conditions such as diabetes and Alzheimer's. Any
36 death certificate coding changes should be eliminated by study of MC data.

37 Nationally in 2020, we found only modest excess MC cancer mortality (~13,600 deaths),
38 representing a 3% elevation over baseline level. Mortality elevation was measurably higher for
39 less deadly cancers (breast, colorectal, and hematologic, 2-7%) than cancers with a poor 5-year
40 survival (lung and pancreatic, 0-1%). In comparison, there was substantial elevation in MC
41 deaths from diabetes (37%) and Alzheimer's (19%). Homing in on the intense spring 2020
42 COVID-19 wave in NY, mortality elevation was 1-16% for different types of cancer and 128%
43 and 49% for diabetes and Alzheimer's, respectively. To investigate the peculiar absence of
44 excess mortality on deadly cancers, we implemented a demographic model and simulated the
45 expected covid-related mortality using COVID-19 attack rates, life expectancy, population size
46 and mean age for each chronic condition. This model indicates that these factors largely explain
47 the considerable differences in observed excess mortality between these chronic conditions
48 during the COVID-19 pandemic, even if cancer had increased the relative risk of mortality by a
49 factor of 2 or 5.

50 In conclusion, we found limited elevation in cancer mortality during COVID-19 waves, even after
51 considering MC mortality, and this was especially pronounced for the deadliest cancers. Our
52 demographic model predicted low expected excess mortality in populations living with certain
53 types of cancer, even if cancer is a risk factor for COVID-19 fatality, due to competing mortality
54 risk. We also find a moderate increase in excess mortality from hematological cancers, aligned
55 with other types of observational studies. While our study concentrates on the immediate
56 consequences of the COVID-19 pandemic on cancer mortality in 2020, further research should
57 consider excess mortality in the complete pandemic period. Also, a study of the delayed impact
58 of the pandemic on cancer mortality due to delayed diagnosis and treatment during the
59 pandemic period is warranted.

60 Introduction

61 The dominant risk factors for COVID-19 mortality have consistently been shown to be advanced
62 age, male gender and certain chronic diseases such as diabetes, obesity and heart disease
63 (Chavez-MacGregor et al., 2022; R  thrich et al., 2021; Williamson et al., 2020). Cancer has also
64 been identified as a high-risk condition based on case-control and cohort studies, although
65 these studies have provided conflicting results. In a large cohort study of ~500,000 COVID-19
66 inpatients, only cancer patients under recent treatment were at increased risk of COVID-19
67 related deaths (OR=1.7) relative to non-cancer patients (Chavez-MacGregor et al., 2022).
68 Conversely, a smaller European study of 3,000 COVID-19 inpatients found that cancer was not
69 a risk factor (R  thrich et al., 2021), as did an international, multicenter study of 4,000 confirmed
70 COVID-19 inpatients (Raad et al., 2023). More recently a meta-analysis of 35 studies from
71 Europe, North America, and Asia found a 2-fold increased risk of COVID-19 mortality among
72 cancer patients (Di Felice et al., 2022). Similarly, a large analysis from the UK found that the risk
73 of COVID-19 mortality for cancer patients had declined over the course of the pandemic but
74 remained 2.5 times higher than for non-cancer patients into 2022 (Starkey et al., 2023). Taken
75 together, such observational studies provide a mixed picture of cancer as a COVID-19 mortality
76 risk factor, with several studies reporting that controlling for important factors such as age is a
77 challenge. Furthermore, cancer is often considered as a single disease category despite the
78 diversity of conditions and patients represented.

79 Further evidence for the relationship between cancer and COVID-19 comes from population-
80 level analysis of vital statistics. A recent US study showed no elevation in underlying cancer
81 deaths concomitant with COVID-19 waves, in stark contrast to the sharp rise in mortality from
82 other chronic diseases (W.-E. Lee et al., 2023). In several other countries, including Sweden,
83 Italy, Latvia, Brazil, England and Wales, underlying cancer mortality was found to be stable or
84 decreasing during the first year of the pandemic (Alicandro et al., 2023; Fernandes et al., 2021;
85 Gobiņa et al., 2022; Grande et al., 2022; Kontopantelis et al., 2022; Lundberg et al., 2023).
86 Further, an excess mortality study of 240,000 cancer patients in Belgium found a 33% rise in
87 mortality in April 2020, but concluded that this was no different from the rise observed in the
88 general population (Silversmit et al., 2021). The apparent lack of association between cancer
89 mortality and COVID-19 on a population level raises the question of the true relationship
90 between cancer and COVID-19.

91 The relationship between these two diseases could occur via multiple biological mechanisms.
92 First, immunosuppression in cancer patients could increase susceptibility to SARS-CoV-2
93 infection and/or risk of severe clinical outcome upon infection. Conversely, immunosuppression
94 could act as a protective factor in the face of a severe respiratory infection that kills by over-
95 stimulating the immune system – the immune incompetence rescue hypothesis (Reichert 2004).
96 This hypothesis was put forward to explain the observed absence in excess cancer mortality
97 during the 1968 influenza pandemic, a departure from elevated mortality seen for other high-risk
98 conditions such as heart disease and diabetes (Reichert 2004). A further mechanism that could
99 affect the observed relationship between cancer deaths and COVID-19 is changing guidelines
100 for establishing the primary cause of death. Coding guidelines evolved throughout the pandemic

101 as testing for SARS-CoV-2 infection became more widespread, which presumably affected vital
102 statistics studies.

103 To further elucidate the relationship between cancer mortality and COVID-19 on a population
104 level, we analyzed US vital statistics in detail to understand the potential role of death certificate
105 coding changes during the pandemic and explored putative differences in mortality patterns
106 between different types of cancer. We considered death certificates listing cancer as the
107 underlying cause of death (UC) or anywhere on the death certificate (multiple-cause (MC)).
108 Assuming there is a high propensity to attribute a primary code of COVID-19 during the
109 pandemic in any patient with COVID-19, deaths among individuals with both cancer and
110 COVID-19 near the time of death would be coded as UC COVID-19. However, cancer should
111 still be captured in the MC data, and thus, analysis of MC death data should control for any
112 changes in death certificate coding practices during the pandemic (Fedeli et al., 2024). The US
113 provides a particularly useful case study as the timing of COVID-19 waves varied considerably
114 between states, so that elevations in cancer deaths, should they exist, should also be
115 heterogeneous. For comparison, we also assessed population-level excess mortality patterns
116 for other chronic conditions such as diabetes, ischemic heart disease (IHD), kidney disease,
117 and Alzheimer's, for which the association with COVID-19 is less debated.

118 **Results**

119 Establishing patterns and timing of COVID-19 related deaths

120 We obtained individual ICD-10 coded death certificate data from the US for the period January
121 1, 2014, to December 31, 2020. We compiled time series by week and cause of death, for
122 underlying cause (UC) and for multiple-cause (MC) mortality. We considered 10 causes of
123 death, including diabetes, Alzheimer's disease, ischemic heart disease (IHD), kidney disease,
124 and 6 types of cancer (all-cause cancer, colorectal, breast, pancreatic, lung, and hematological;
125 see Table 1 and Appendix 1 - Table 1 for a list of disease codes). We chose these specific
126 cancers to illustrate conditions for which the 5- year survival rate is low (13% and 25%,
127 respectively, for pancreatic and lung cancers) and high (65% and 91%, respectively, for
128 colorectal and breast cancers) (National Cancer Institute, n.d.). Hematological cancer (67% 5-
129 year survival rate) was included because it has been singled out as a risk factor in several
130 previous studies due to the immune suppression associated with both its malignancy and
131 treatment. (Chavez-MacGregor et al., 2022; X. Han et al., 2022; R  thrich et al., 2021;
132 Williamson et al., 2020). To compare mortality patterns with the timing of COVID-19 pandemic
133 waves, we accessed national and state-level counts of reported COVID-19 cases from the
134 Centers for Disease Control and Prevention (CDC)(Centers for Disease Control and Prevention,
135 2022).

136 In national data, time series of COVID-19-coded death certificates (both UC and MC) tracked
137 with the temporal patterns of laboratory-confirmed COVID-19 cases (Figure 1), revealing three
138 distinct COVID-19 waves: a spring wave peaking on April 12, 2020, a smaller summer wave
139 peaking on July 26, 2020, and a large winter wave that had not yet peaked by the end of the

140 study in December 2020. This correspondence between COVID-19 case and death activity
141 represents a “signature” mortality pattern of COVID-19.

142 Analysis of state-level data reveals variable timing, intensity, and number of COVID-19 waves
143 across the US during 2020. To focus on periods with substantial COVID-19 activity and explore
144 the association with cancer, we identified three large US states with unique, well-defined waves
145 (Figure 1). New York (NY) state experienced a large, early wave in March-May 2020, based on
146 recorded COVID-19 cases and deaths and high seroprevalence of SARS-CoV-2 antibodies in
147 this period (over 20% (Stadlbauer et al., 2021)). Meanwhile, California (CA) experienced a large
148 COVID-19 wave at the end of the year and had little activity during the spring and summer.
149 Finally, Texas (TX) had two large waves; one during late summer, followed by one in winter
150 2020.

151 National patterns in excess mortality from cancer

152 Similar to other influenza and COVID-19 population-level mortality studies (Islam et al., 2021;
153 Karlinsky and Kobak, 2021; W.-E. Lee et al., 2023; Msemburi et al., 2023), we established a
154 weekly baseline model for expected mortality in the absence of pandemic activity by modeling
155 time trends and seasonality in pre-pandemic data and letting the model run forward during the
156 pandemic (see Methods). Each cause of death (UC and MC) and geography (aggregated
157 National, NY, TX, and CA) was modeled separately. We then computed excess mortality as the
158 difference between observed deaths and the model-predicted baseline. We summed weekly
159 estimates to calculate excess mortality for the full pandemic period and during each of the 3
160 waves (see Methods). In addition to these absolute effects of the pandemic on mortality, we
161 also calculated the relative effects by dividing excess mortality by baseline mortality. This
162 approach has been used in the past to standardize mortality effects in strata with very different
163 underlying risks (e.g., age groups, geographies, or causes of death, see Methods).

164 Nationally, we found a drop in UC cancer deaths during spring 2020 (Figure 2, panel a; Table
165 2), although the drop was not statistically significant. A similar non-significant decline was also
166 seen for specific cancer types (Figure 2, panels d-f; Appendix 1 - Figure 1, panels a,f-j). Further,
167 pre-pandemic mortality trends for each cancer type continued unabated during the first
168 pandemic year. We reasoned that this early drop in UC cancer deaths may be explained by
169 changes in coding practices, so we next turned to MC mortality to resolve this question.

170 Time series of MC cancer mortality showed a significant increase in all three waves (Figure 2,
171 panel a; Appendix 1 - Table 2). A similar pattern was seen in MC time series for colorectal
172 (Figure 2, panel h), breast (Appendix 1 - Figure 1, panel i), and hematological cancer (Appendix
173 1 - Figure 1, panel j). However, the total excess mortality was modest with 13,600 excess
174 cancer deaths in 2020, representing a statistically significant 3% elevation over baseline (Table
175 2). The largest relative increase in MC mortality was observed in hematological cancer at 7%
176 (statistically significant, 3,600 excess deaths). No excess in MC mortality was seen for the two
177 deadliest cancers, pancreatic cancer (Figure 2, panel f) and lung cancer (Appendix 1 - Figure 1,
178 panel g).

179 National patterns in deaths due to other chronic conditions

180 We considered diabetes and Alzheimer's as "positive controls" as they are also considered
 181 COVID-19 risk factors and can illustrate how positive associations between chronic conditions
 182 and COVID-19 manifest in population level excess mortality studies. Diabetes provides a
 183 particularly useful comparator for cancer as the mean age at death is similar (~72 years, Table
 184 1) and because few individuals live in a nursing home (Appendix 1 - Supplemental Methods).
 185 Mortality time series from UC and MC diabetes and Alzheimer's were highly correlated with
 186 COVID-19 activity, with statistically significant mortality elevation synchronous with pandemic
 187 waves (Figure 2 b-c; Appendix 1 - Figures 2-5). For diabetes, we measured an excess of 10,800
 188 and 82,300 deaths (UC and MC, respectively), corresponding to statistically significant
 189 elevations of 16% and 37% over baseline level mortality (Table 2). For Alzheimer's, we
 190 estimated 8,500 and 21,700 excess deaths, corresponding to statistically significant elevations
 191 of 9% and 19% elevation over baseline, respectively. Pandemic-related excess mortality was
 192 also seen for IHD and kidney disease (see supplement for estimates, Appendix 1 - Table 2).

193 State-level patterns in excess mortality

194 Similar to patterns seen in national level data, none of the state-level analyses revealed notable
 195 increases in UC cancer mortality, while there was a modest, non-significant increase in MC
 196 cancer mortality (Figures 3-5; Appendix 1 - Figures 6-8). The largest mortality increase was
 197 seen in NY during the spring wave, with a 6% rise in MC cancer mortality above the model
 198 baseline (Table 2; Appendix 1 - Table 3). The magnitude of the increase seen during the spring
 199 wave varied by cancer type, with minimal increases seen in pancreatic and lung cancers (1%)
 200 and higher increases in colorectal, hematological, and breast cancers (9%, 10%, and 16%,
 201 respectively). For comparison, there was a statistically significant rise in Alzheimer's and
 202 diabetes deaths during this wave of 49% and 128%.

203 In CA and TX, mortality fluctuations were less pronounced than in NY, coinciding with less
 204 intense COVID-19 waves, and this was seen across all conditions. MC excess mortality
 205 estimates remained within +/-4% of baseline levels for cancers, irrespective of the type of
 206 cancer and pandemic wave, except for hematological cancers which saw an 11% rise in Texas
 207 during the summer wave and an 8% rise in California during the winter wave. None of these
 208 elevations were statistically significant. In comparison, there was statistically significant excess
 209 mortality elevation for both Alzheimer's and diabetes deaths (range, 18-59% in the CA winter
 210 wave, and 45-77% in the TX summer wave, Table 2, Appendix 1- Tables 4-5).

211 Demographic mortality projections under the null hypothesis that cancer in and of itself is not a
 212 risk factor for COVID-19 mortality

213 Next, to get a sense of the expected mortality elevation, we ran simulations to gauge the level of
 214 individual-level association (traditionally measured as relative risk, RR) between COVID-19 and
 215 the studied chronic conditions that is consistent with the population-level excess mortality
 216 patterns observed during the pandemic. Using cancer as an example, two main factors could
 217 drive cancer mortality patterns during COVID-19, namely the size and age of the population

218 living with cancer (since age is such a pronounced risk factor for COVID-19), and the life
219 expectancy under cancer diagnosis. These factors would operate irrespective of the true
220 biological relationship between COVID-19 severity and cancer. The same logic applies to
221 mortality from other chronic conditions, such as diabetes or Alzheimer's.

222 To test the hypothesis that these population factors alone could explain differences in excess
223 mortality between chronic conditions, we designed a simple model of COVID-19 mortality for
224 individuals with chronic conditions (see methods for details). The model projected excess
225 mortality during the pandemic under the null hypothesis that the chronic condition was not in
226 and of itself a risk factor for COVID-19 mortality, with only the demography of the population
227 living with the disease (namely, the age and size of the at-risk populations and baseline risk of
228 death from each condition) affecting excess mortality. In the demographic model, we first
229 estimated the number of expected SARS-CoV-2 infections among persons with a certain
230 condition, by multiplying the estimated number of US individuals living with the condition (CDC,
231 Division of Population Health, n.d.; Dhana et al., 2023; Rajan et al., 2021; U.S. Cancer Statistics
232 Working Group, released in November 2023) by the reported SARS-CoV-2 seroprevalence at
233 the end of our study period (December 2020 for the national, or after each wave for the state
234 data)(Centers for Disease Control and Prevention, 2023). We focused on seroprevalence
235 among individuals ≥ 65 years, the most relevant age group for the conditions we considered (we
236 also run a sensitivity analysis considering seroprevalence in adults 50-64 years, see
237 discussion). We then multiplied the estimated number of SARS-CoV-2 infections by an age-
238 specific infection-fatality ratio (IFR) for SARS-CoV-2 (COVID-19 Forecasting Team, 2022). This
239 gave an estimate of COVID-19-related deaths, or excess deaths, for a given condition. To
240 estimate a percent elevation over baseline and compare with our vital statistics analysis, we
241 divided the excess death estimate derived from the demographic model by the total deaths for
242 that condition for a similar period of time in 2019 (see Methods). We repeated this analysis for
243 each cancer type, diabetes, and Alzheimer's. In addition to the null hypothesis, we also
244 projected alternative hypotheses of a biological association between chronic conditions and
245 COVID-19, assuming that a given chronic condition would raise the risk of COVID-19 mortality
246 (via the infection fatality ratio) by a factor of 2 or 5. We compared these modeled expectations
247 for the null and alternative hypotheses with the observed excess mortality in 2020, using MC
248 mortality as the outcome (Table 2).

249 Under the null hypothesis we projected a 0-2% elevation over the 2019 baseline in deaths for all
250 cancer types in national data, and 0-9% elevations in state-level data (Table 3). Under the
251 alternative hypothesis that cancer increases COVID-19 mortality risk by a factor of 2, the
252 projected elevation is 0-5% in national data and 0-18% in state-level data. In general, the largest
253 projected increases were found in NY state, driven by the higher attack rates. We also see
254 systematic differences in the percent elevation over baseline by type of cancer, related to the
255 lethality of different cancers. For instance, even if cancer increases COVID-19 mortality risk by a
256 factor of 2, we expect to see only a 0-1% increase for particularly deadly cancers such as
257 pancreatic and lung cancer, in part driven by the high competing risk of death from these
258 cancers (short life expectancy) and the small size of the population-at-risk. The expected
259 increases for less deadly cancers, such as colorectal and breast, were notably higher (2-5% in
260 national data, and 9-18% during the large spring wave in New York), in part driven by the lower

261 risk of death from these cancers (longer life expectancy). Based on the observations from our
262 time series analysis of MC mortality in all states, non-hematological cancers are most consistent
263 with a 1- to 2-fold increase in mortality, with the caveat that most of the confidence intervals
264 include zero, and the differences in projected mortality under these hypotheses are minimal. In
265 contrast, for hematological cancer, the observed rise in mortality exceeds the expected
266 elevation even under the assumption of a 5-fold increase in mortality.

267 We repeated this analysis for diabetes and Alzheimer's (Table 3). For diabetes under the null
268 hypothesis, we projected an 8% elevation over baseline in national data and 12-30% in state-
269 level data based on the age distribution and substantial size of the population-at-risk alone. In
270 fact, we observed in vital statistics analysis a 37% elevation over baseline in national US data
271 and 59-128% in state-level data, with the largest increase seen in NY and lowest increase in
272 CA. These observations are most consistent with a 5-fold increase in mortality based on our
273 demographic model (projected elevation 40% nationally and 62-148% at the state level). For
274 Alzheimer's under the null hypothesis, we projected a 28% increase over baseline nationally,
275 and 30-191% increases at the state level, largely driven by the advanced age of the population-
276 at-risk. In contrast, analysis of vital statistics data reveals a 19% increase nationally and 18-49%
277 across states, which is in fact lower than the null hypothesis (we return to this surprising result in
278 the discussion). Strikingly, our demographic model supports that COVID-19 will manifest
279 differently in population-level excess mortality for each of these chronic conditions, even under
280 the null hypothesis of no biological association between viral infection and these underlying
281 comorbidities. Overall, these projections support the idea that demography alone (age, size, and
282 baseline mortality of the population living with each of these conditions) can explain much of the
283 differences in absolute and relative mortality elevations seen during the pandemic across
284 conditions like cancer, diabetes, and Alzheimer's.

285 **Discussion**

286 Cancer is generally thought of as a risk factor for severe COVID-19 outcomes, yet observational
287 studies have produced conflicting evidence. With recent availability of more detailed US vital
288 statistics data, we used statistical time series approaches to generate excess mortality
289 estimates for multiple cause of death data, different types of cancer, and several geographic
290 locations during 2020. We accounted for potential changes in coding practices during the
291 pandemic, for instance capturing a COVID-19 patient with cancer whose death may have been
292 coded as an underlying COVID-19 death and not a cancer death. Based on multiple cause of
293 death data, we estimated 13,600 national COVID-19-related excess cancer deaths, which aligns
294 well with reporting on death certificate data, where 13,400 deaths are ascribed to COVID-19 in
295 cancer patients (Appendix 1 - Figure 9) (Fedeli et al., 2024). Yet these deaths only represent a
296 3% elevation over the expected baseline cancer mortality. Percent mortality elevation was
297 measurably higher for less deadly cancers (breast and colorectal) than cancers with a poor 5-
298 year survival (lung and pancreatic). Consistent with other studies (Chavez-MacGregor et al.,
299 2022; S. Han et al., 2022; R  thrich et al., 2021; Williamson et al., 2020), we found that the
300 largest mortality increase for specific cancer types was seen in hematological cancers with a 7%
301 elevation over baseline in national data. Across the board, the largest elevations in cancer

302 mortality were observed in the states most impacted by the first year of the COVID-19 pandemic
303 (e.g., NY), lending support to the specificity of our excess mortality approach.

304 In contrast to cancer, we observed substantial COVID-19-related excess mortality for diabetes
305 and Alzheimer's, temporally and geographically consistent with the three-wave "signature"
306 pattern observed in reported COVID-19 cases and deaths across the US. To investigate
307 whether demographic differences in underlying patient populations (age distribution, population
308 size, and baseline risk of death due to chronic condition) could explain differences in excess
309 mortality during the pandemic, we ran a simple demographic model for each condition – first
310 assuming the condition in and of itself was not a risk factor for COVID-19-related mortality (null
311 hypothesis). Doing so we found that the rise in cancer deaths during COVID-19 was expected to
312 remain low compared to these other chronic conditions, largely driven by the higher risk of death
313 from cancer itself compared to diabetes and Alzheimer's. These demographic projections
314 illustrate the importance of competing risks (Figure 6), where the risk of cancer death
315 predominates over the risk of COVID-19 death in 2020. This is exacerbated in cancers with high
316 mortality rates. For instance, even if pancreatic cancer had in fact doubled the risk of dying of
317 COVID-19 (IFR = 4.2% vs. 2.1%), we would only expect a rise in excess mortality around 0.4%
318 during the pandemic (Table 3), while the 2019 baseline risk of death for pancreatic cancer itself
319 is over 60% (Figure 6). On the other hand, for conditions with a lower baseline level mortality,
320 such as diabetes, we expect substantial COVID-19 driven elevations in mortality.

321 Our analysis revealed interesting differences between types of cancers. Both nationally and at
322 the state-level, the observed excess mortality for non-hematological cancers was consistent
323 with a 1- to 2-fold increase in COVID-19 mortality risk in patients with these types of cancer.
324 Importantly, our analysis ignores any behavioral effects associated with the pandemic. It is
325 conceivable that cancer patients may have shielded themselves from COVID-19 more than the
326 average person in 2020. Our projections assume an average risk of infection for a typical
327 individual over 65 years as there is no serologic data on infection attack rates for specific clinical
328 population subgroups (of any age). If shielding from exposure to SARS-CoV-2 was high among
329 cancer patients, our projections of cancer excess mortality during the pandemic would be
330 inflated. In other words, if shielding was particularly pronounced, cancer may conceivably be a
331 higher risk factor than shown here. Retrospective serologic analysis of banked sera from the
332 first year of the pandemic, broken down by underlying comorbidities, may shed light on whether
333 infection risk may have varied by chronic condition.

334 State-level mortality patterns can potentially provide complementary insights on the question of
335 shielding. Because NY state experienced the earliest and most intense COVID-19 wave of the
336 US, with over 20% of the population infected in Spring 2020 (Stadlbauer et al., 2021), and
337 because social distancing did not come into effect until March 2020, shielding would have had a
338 more limited impact there than in other states. Thus, a biological relationship between cancer
339 and COVID-19 would have been most dramatic in NY in spring 2020. Indeed, cancer excess
340 mortality was exacerbated in NY, including an 9-16% increase in colorectal and breast cancer
341 mortality, consistent with a 2-fold increase in COVID-19 mortality risk from these cancers, and a
342 10% increase in hematological cancers, consistent with a 5-fold increase in COVID-19 mortality
343 risk. In NY, the absence of excess mortality in lethal cancers, such as pancreatic and lung

344 cancers (1% over baseline) are, as discussed above, still consistent with what would be
345 expected under a high competing risk situation.

346 We used diabetes and Alzheimer as positive controls for a known biological association
347 between COVID-19 and chronic conditions. Diabetes stood out in our analyses with the highest
348 absolute and relative increases in excess mortality during the pandemic. The magnitude of the
349 mortality increases, both nationally and at the state level, were close to what would be expected
350 if diabetes increased COVID-19 mortality by 5-fold. Many studies have shown that diabetes
351 increases the risk of COVID-19 mortality, with an effect size around 2 (Williamson et al. 2020;
352 Huang et al. 2020; Kastora et al. 2022). Impaired immune function and chronic inflammation
353 have been identified as mechanisms driving poor outcomes for diabetes patients (Figueroa-
354 Pizano et al. 2021). The discrepancy between the observed excess and our expectations may
355 come down to uncertainty in the SARS-CoV-2 infection rates assumed in our demographic
356 model. The population living with diabetes is slightly younger than that of the other conditions
357 (mean age, 58-60 years), while we used serologic infection rates reported for individuals over
358 65 years in our main analysis. The SARS-CoV-2 attack-rate among those 50-64 years was
359 10.1% at the end of 2020, compared to 6.3% in individuals over 65 (Centers for Disease Control
360 and Prevention, 2023). A sensitivity analysis using this higher attack rate in our demographic
361 model lends more support to the hypothesis that diabetes increases COVID-19 mortality by 2-
362 fold, rather than 5-fold as found in our main analysis.

363 Our second positive control, Alzheimer's, revealed surprising results. Although we observed
364 significant excess mortality in MC Alzheimer's data, it was still less than expected under the null
365 hypothesis that Alzheimer's was not a risk factor for COVID-19 mortality. This is unexpected in
366 light of several observational studies that have shown Alzheimer's to be a risk factor (Tahira et
367 al., 2021; Wang et al., 2021; Zhang et al., 2021). As with cancer and diabetes, there is
368 uncertainty in the SARS-CoV-2 infection rates used in the demographic model, due to the
369 potential effect of shielding and the age-specific SARS-CoV-2 infection risk of the Alzheimer's
370 population. We estimated that the average age of the population living with Alzheimer's disease
371 was 80-81 years, and the infection rates for the general population over 65 years may not
372 accurately reflect exposure in this subpopulation. Decreasing the attack rates by 20-30% (down
373 to 4.4-5.0%) puts the observed estimates in the range of the expectations under the null
374 hypothesis. Overall, given uncertainty in SARS-CoV-2 attack-rates and the age and size of the
375 population-at-risk for all studied conditions, our demographic model projections are not an exact
376 tool to titrate excess mortality nor the relative risk associated with each condition. Our model
377 merely serves as an illustration of the role of demography and competing risks.

378 Most vital statistics studies of the COVID-19 pandemic have relied on underlying cause-specific
379 deaths, which are prone to changes in coding practices. Our initial hypothesis going into this
380 work was that coding changes associated with a better recognition of the impact of SARS-CoV-
381 2 led to an underestimation of excess mortality from cancer, affecting our perception of the
382 relationship between cancer and COVID-19. We certainly found an effect of coding changes,
383 where for instance a drop in excess mortality in underlying cancer deaths turned into an
384 increase in multiple-cause (any-listed) cancer deaths, particularly in the first COVID-19
385 pandemic wave. A similar observation was made by Fedeli et al. The impact of coding changes

386 was also seen in mortality from other chronic conditions but was particularly important for
387 cancer. Yet both the absolute and relative excess mortality elevation remained modest for
388 cancer, even after adjustment for coding changes, highlighting the importance of additional
389 mechanisms such as competing mortality risks between COVID-19 and cancer.

390 An interesting hypothesis was put forward 20 years ago proposing that immunosuppression
391 from cancer may explain the lack of excess cancer mortality in the 1968 influenza pandemic –
392 the immune incompetence rescue hypothesis (Reichert et al 2004). This hypothesis contends
393 that it is a detrimental immune response that leads to influenza death. A similar hypothesis was
394 put forward to explain the extreme mortality in young healthy adults in the 1918 pandemic (Short
395 et al., 2018). However, observational studies have found that patients with hematological
396 cancers have twice the risk of dying compared to patients without cancer, likely due to the
397 immunosuppression associated with their malignancy and treatment (X. Han et al., 2022;
398 Starkey et al., 2023; Williamson et al., 2020). Under the immune incompetence rescue
399 hypothesis, hematological cancers would be expected to have the lowest excess mortality of all
400 types of cancers. Our excess mortality analysis reveals instead that hematologic cancers were
401 the most impacted by the pandemic, relative to other types of cancer, with observed mortality
402 patterns consistent with a 5-fold increase in risk of COVID-19 death in patients with
403 hematological cancers. Overall, we do not find any support for the immune competence rescue
404 hypothesis.

405 Our study is subject to limitations. First, we did not study the potential long-term consequences
406 of the pandemic on cancer care, which may have resulted in avoidance of the health care
407 system for diagnosis or treatment. We did not see any delayed pandemic effect on mortality
408 from pancreatic cancer, which may have manifested in 2020 given the very low survival rate of
409 this cancer (Lemanska et al., 2023), but we cannot rule out longer-term effects on breast or
410 colorectal cancers that would not be seen until 2021 or later (Doan et al., 2023; Han et al., 2023;
411 Haribhai et al., 2023; R. Lee et al., 2023; Nascimento de Lima et al., 2023; Nickson et al., 2023;
412 Nonboe et al., 2023; Tope et al., 2023). Interestingly, in the US, all-cause underlying cancer
413 mortality rates do not appear to rise between 2020 and 2023 (Appendix 1 - Figure 10), but data
414 prior to the pandemic show a rise in cancer incidence, largely driven by increasing cancer rates
415 in younger adults (Zhao et al. 2023; Siegel et al. 2024). Additional years of data will be
416 important to evaluate the long-term impacts of the COVID-19 pandemic and these changing
417 demographics on cancer mortality rates. Additional years of data will also be important for
418 assessing the impact of vaccination on the relationship between cancer and COVID-19; there is
419 evidence that vaccines may be less immunogenic in patients with cancer compared to those
420 without (Seneviratne et al., 2022). Another limitation of our study is the reliance on mortality as
421 an outcome, and not the risk of COVID-19-related hospitalization and morbidity, and Long
422 COVID in cancer patients. A small US study reported that 60% of cancer patients suffered Long
423 COVID symptoms (Dagher et al., 2023). Future analyses using hospitalization data and
424 electronic medical records may provide additional insights on how different cancer stages or
425 other comorbidities may contribute to increased risk of severe COVID-19 outcomes. Lastly, a
426 few methodological limitations are worth raising. Though it was important to assess excess
427 mortality in state level data because of asynchrony in pandemic waves, confidence intervals in
428 state-level estimates were large, particularly for specific types of cancers, affecting significance

429 levels. Additional methodological limitations relate to our demographic model, especially as
430 regards assumptions about SARS-CoV-2 infection rates in populations of different ages and
431 with different chronic conditions. Importantly, our conclusions regarding the importance of
432 competing risks are robust to these assumptions. Lastly, our study is a time-trend analysis and
433 – like cohort and case-control studies – correlation does not necessarily imply causation.
434 However, the intensity and brevity of COVID-19 pandemic waves in space and time lends
435 support to our analyses.

436 **Conclusion**

437 Our detailed excess mortality study considered six cancer types and found that there is at most
438 a modest elevation in cancer mortality during the COVID-19 pandemic in the US. Our results
439 demonstrate the importance of considering multiple-causes-of-death records to accurately
440 reflect changes in coding practices associated with the emergence of a new pathogen. In
441 contrast to earlier studies, we propose that lack of excess cancer mortality during the COVID-19
442 pandemic reflects the competing mortality risk from cancer (especially for deadly types like
443 pancreatic and lung cancers) itself rather than protection conferred from immunosuppression.
444 We note the more pronounced elevation in mortality from hematological cancers during the
445 pandemic, compared to other cancers and to expectations from a demographic model, which
446 aligns with a particular group of cancer patients singled out in several cohort studies. Future
447 research on the relationship between COVID-19 and cancer should concentrate on additional
448 outcomes, such as excess hospitalizations, Long COVID, changes in screening practices during
449 COVID-19, and longer-term patterns in cancer mortality.

450 **Materials and Methods**

451 **Data sources**

452 US National vital statistics.

453 We obtained individual ICD-10 coded death certificate data with exact date of death from the
454 United States for the period January 1, 2014, to December 31, 2020. Each death certificate has
455 one underlying cause (UC) of death, defined as the disease or injury that initiated the train of
456 events leading directly to death, and up to twenty causes of death in total, referred to here as
457 multiple cause mortality (MC). We considered 10 conditions, including diabetes, Alzheimer's
458 disease, ischemic heart disease (IHD), kidney disease, and 6 types of cancer (all-cause cancer,
459 colorectal, breast, pancreatic, lung, and hematological; see Table 1 and Appendix 1 – Table 1
460 for a list of disease codes). We chose these types of cancer to illustrate conditions for which the
461 5- year survival rate is low (13% and 25%, respectively, for pancreatic and lung cancers) and
462 high (65% and 91%, respectively, for colorectal and breast cancers) (National Cancer Institute,
463 n.d.). Hematological cancer (67% 5-year survival) was included because it was singled out as a
464 risk factor by previous studies. We compiled time series by week, geography (aggregated
465 National, NY, TX, and CA) and cause of death, separately for underlying and multiple cause
466 mortality.

467 To observe longer-term trends in later years of the COVID-19 pandemic, we downloaded
468 aggregated weekly-level data from 2021 to 2023 for all-cause cancer, diabetes, and Alzheimer's
469 disease from CDC Wonder.

470 Estimated populations living with each chronic condition.

471 We estimated the size of the population-at-risk for all-cause and specific cancers using the 5-
472 year limited duration prevalence estimates provided by the U.S. Cancer Statistics webpage
473 (U.S. Cancer Statistics Working Group ...). Estimates for diabetes were drawn from CDC's
474 Behavioral Risk Factor Surveillance System Chronic Disease Indicators (CDC, Division of
475 Population Health). Estimates for Alzheimer's disease were taken from publications from the
476 Alzheimer's Association (Rajan et al. 2021; Dhana et al. 2023).

477 For each condition, age-specific prevalence data were tabulated for the US and for each state
478 separately. For cancer, age-level data were only available at the national level so these age-
479 specific prevalence estimates were applied to the populations for each of the three states
480 considered (NY, CA, TX). Age-level data were provided for all ages for cancer (<20 years, 20-
481 80 years in 10-year groupings, ≥80 years), for adults ≥ 18 for diabetes (18-44years, 45-64years,
482 ≥65 years) and for adults ≥65 for Alzheimer's disease (65-74years, 75-84yrs, ≥85years). A
483 weighted mean age for the population-at-risk for each condition was calculated using the mid-
484 point for each age group.

485 Other data sources

486 To compare vital statistics patterns with COVID-19 surveillance data, we accessed national and
487 state counts of laboratory-confirmed COVID-19 cases in 2020, from the CDC (Centers for
488 Disease Control and Prevention, 2022).

489 To clarify the expected role of COVID-19 on excess mortality, we compiled data on the
490 proportion of the population with serologic evidence of SARS-CoV-2 infection from the CDC
491 dashboard (Centers for Disease Control and Prevention, 2023). We further compiled data on
492 estimated age-specific infection-fatality ratios from COVID-19, provided by single year of age
493 (COVID-19 Forecasting Team, 2022).

494

495 **Statistical approach**

496 Weekly excess mortality models

497 Similar to other influenza and COVID-19 excess mortality studies (Islam et al., 2021; Karlinsky
498 and Kobak, 2021; W.-E. Lee et al., 2023; Msemburi et al., 2023), we established a predicted
499 baseline of expected mortality for each time series, and computed the excess mortality as the
500 excess in observed deaths over this baseline. To establish baselines for each disease nationally
501 and in each state, we applied negative binomial regression models to weekly mortality counts
502 for each cause of death, smoothed with a 5-week moving average and rounded to the nearest

503 integer. Models included harmonic terms for seasonality, time trends, and an offset for
 504 population size. For each condition and location, we used Akaike Information Criterion (AIC) to
 505 select between three models with different time trends (see Appendix 1 - Supplemental
 506 Methods, Appendix 1- Figure 11, for the final model selection for each location and condition),
 507 following:

508 Model 1:

509 $\text{Weekly_mortality} = t + \cos(2\pi t/52.17) + \sin(2\pi t/52.17) + \text{offset}(\log(\text{population}))$, where t
 510 represents week.

511 Model 2:

512 $\text{Weekly_mortality} = t + t^2 + \cos(2\pi t/52.17) + \sin(2\pi t/52.17) + \text{offset}(\log(\text{population}))$, where t
 513 represents week.

514 Model 3:

515 $\text{Weekly_mortality} = t + t^2 + t^3 + \cos(2\pi t/52.17) + \sin(2\pi t/52.17) + \text{offset}(\log(\text{population}))$, where t
 516 represents week.

517 We fitted national and state-level models for each mortality outcome from January 19, 2014, to
 518 March 1, 2020, and projected the baseline forward until December 6, 2020, the last complete
 519 week of smoothed mortality data. Models were fitted using the MASS package in R version 4.3.

520 Using COVID-19 coded death certificates from March 1, 2020, to December 6, 2020, we
 521 established the timing of each pandemic wave from trough to trough. We found that nationally,
 522 the first wave occurred from March 1, 2020, to June 27, 2020; the second wave from June 28,
 523 2020, to October 3, 2020, and the third from October 4, 2020, to December 6, 2020 (the 3rd
 524 wave was not completed by the last week of available smoothed data on December 6, 2020).
 525 For NY, the pandemic pattern was characterized by an intense first wave in Spring 2020, while
 526 TX had its major wave in summer 2020 and CA in late 2020. Comparison of mortality patterns
 527 from these three states provides an opportunity to separate the effect of SARS-CoV-2 infection
 528 from that of behavioral changes later in the pandemic. For instance, the effects of healthcare
 529 avoidance would predominate in CA or TX in Spring 2020, as there was little SARS-CoV-2
 530 activity but much media attention on COVID-19, with cancer patients potentially avoiding
 531 medical care out of fear of getting infected. In contrast, risk of infection would dominate in NY in
 532 Spring 2020, and behavioral factors may only play a role as SARS-CoV-2 awareness increased
 533 and the wave was brought under control by social distancing.

534 We estimated weekly excess mortality by subtracting the predicted baseline from the observed
 535 mortality. We summed weekly estimates to calculate excess mortality for the full pandemic
 536 period and for each of the 3 waves within the first year of the pandemic. In addition to estimating
 537 the absolute effects of the pandemic on mortality, we also calculated relative effects by dividing
 538 excess deaths in each diagnosis group by the model baseline. Confidence intervals on excess
 539 mortality estimates were calculated by resampling the estimated model coefficients 10,000

540 times using a multivariate normal distribution and accounting for negative binomial errors in
541 weekly mortality counts.

542 We used Pearson correlation to test synchronicity patterns in weekly excess mortality from
543 different cancers and chronic conditions to underlying COVID-19 deaths. Correlation analysis
544 assumes a direct and immediate effect of COVID-19 on cancer mortality. We also investigated
545 the possibility of delayed effects or harvesting by inspecting the time series for evidence of such
546 effects and by comparing total excess deaths for distinct pandemic waves and the whole of
547 2020.

548 Projections of excess mortality under the null hypothesis of no specific COVID-19 mortality risk
549 of each condition

550 To further test the impact of age on the association between chronic conditions and COVID-19
551 and clarify the additional risk due to each chronic condition, we projected the number of COVID-
552 19 deaths under the null hypothesis that demographic characteristics alone (size, age, and
553 baseline mortality risk for each condition) are driving excess mortality, and that there is no
554 interaction between the condition and SARS-CoV-2 infection. Excess mortality projections were
555 then compared with observed excess mortality. We only used MC deaths for this approach to
556 account for the possibility that some individuals may suffer from multiple conditions. For
557 example, an estimated 11.5% of US adults with type 2 diabetes also have a history of cancer
558 (Yeh et al., 2018).

559 We first calculated the number of expected COVID-19 infections among persons living with a
560 certain chronic condition, by multiplying the estimated number of individuals living with the
561 condition by the reported SARS-CoV-2 seroprevalence among individuals ≥ 65 years at specific
562 time points during 2020. For the national data and California, we used results from the survey
563 conducted from November 23 - December 12, 2020. For New York we used estimates from the
564 survey conducted from July 27 - August 13, 2020 (the earliest data available). And for Texas we
565 used the survey conducted from October 5-19, 2020 (following the large summer wave).
566 (Centers for Disease Control and Prevention, 2023). We then multiplied this by the COVID-19
567 IFR based on the estimated mean age of individuals living with the condition (COVID-19
568 Forecasting Team, 2022) to arrive at the projected number of COVID-19-related excess deaths
569 for a particular condition during 2020. We put uncertainty intervals around these estimates using
570 the lower and upper bounds from the estimated attack-rates and COVID-19 IFRs.

571 To obtain a relative metric of expected COVID-19 burden, we divided projected COVID-19
572 excess deaths by total deaths in each diagnosis group in the 2019 baseline period (March to
573 December 2019, for the national data. For the states we used the months in 2019
574 corresponding to their large waves in 2020), resulting in an expected percentage elevation over
575 baseline in 2020. We compared this null expectation to the observed percentage elevation over
576 baseline from our excess mortality models. We also generated the expected number of excess
577 deaths under alternative hypotheses where each condition is associated with a 2- or 5-fold
578 increased risk of COVID-19 related death given infection (i.e., the baseline age-adjusted
579 infection fatality ratio used in the null hypothesis was increased 2- or 5-fold).

580 The equation for the expected percent increase in excess mortality over baseline deaths under
 581 the null hypothesis, for a specific risk condition (cancer, diabetes., Alzheimer) and time-period,
 582 can be written as:

583 Expected percent increase in excess mortality for a chronic condition and time period = (size of
 584 population-at-risk for the condition * SARS-CoV-2 infection rate for the period * age-specific
 585 IFR) / baseline mortality for the condition in comparable period in 2019

586 The expected mortality increases under the alternative hypothesis of a 2- or 5-fold increased
 587 risk of COVID-19 death from the condition under study is modeled by multiplying the right-hand
 588 side of the above equation by the increased risk (i.e., we assume that presence of the
 589 underlying condition will increase the IFR by 2- or 5-fold compared to the IFR for the general
 590 population).

591 **Acknowledgements**

592 This paper is dedicated to our colleague Robert J Taylor who succumbed to cancer in 2022 and
 593 who wanted to know if a cancer diagnosis was a COVID-19 mortality risk factor.

594 **Additional Information**

595 Funding

596 LS acknowledges funding from the Carlsberg Foundation, grant number CF20-0046. LS and
 597 CLH acknowledge funding from Danish National Research Foundation (grant number
 598 DNRF170) for the PandemiX Center of Excellence. CLH has received contract-based hourly
 599 consulting fees from Sanofi outside of the submitted work.

600 Author contributions

601 Chelsea Hansen, Data curation, Formal analysis, Visualization, Methodology, Writing – original
 602 draft, Writing – review and editing; Cécile Viboud, Data curation, Formal analysis, Visualization,
 603 Methodology, Writing – original draft, Writing – review and editing; Lone Simonsen,
 604 Conceptualization, Data curation, Formal analysis, Visualization, Methodology, Writing – original
 605 draft, Writing – review and editing

606 Author ORCIDs

607 Chelsea L Hansen: <https://orcid.org/0000-0002-4526-6772>

608 Cécile Viboud: <http://orcid.org/0000-0003-3243-4711>

609 Lone Simonsen: <http://orcid.org/0000-0003-1535-8526>

610 Data availability

611 Individual-level mortality data were obtained from the National Center for Healthcare Statistics.
 612 These data are not publicly available due to privacy concerns, but descriptive characteristics
 613 have been summarized in Table 1 and Appendix - Table 1. The excess mortality models in this

614 paper use mortality data aggregated by week and US state. These data, along with the model
 615 code, have been posted to the following public GitHub repository: [https://github.com/chelsea-](https://github.com/chelsea-hansen/Disentangling-the-relationship-between-cancer-mortality-and-COVID-19)
 616 [hansen/Disentangling-the-relationship-between-cancer-mortality-and-COVID-19](https://github.com/chelsea-hansen/Disentangling-the-relationship-between-cancer-mortality-and-COVID-19)

617 Additional weekly, aggregated mortality data are publicly available through CDC Wonder.

618 Data used for the demographic model, along with the code have also been posted to the GitHub
 619 repository.

620 Weekly, state-level data on recorded COVID-19 cases and deaths are publicly available. Data
 621 were downloaded from here: [https://data.cdc.gov/Case-Surveillance/Weekly-United-States-](https://data.cdc.gov/Case-Surveillance/Weekly-United-States-COVID-19-Cases-and-Deaths-by-/pwn4-m3yp)
 622 [COVID-19-Cases-and-Deaths-by-/pwn4-m3yp](https://data.cdc.gov/Case-Surveillance/Weekly-United-States-COVID-19-Cases-and-Deaths-by-/pwn4-m3yp) and have also been posted as a .csv file to the
 623 GitHub repository referenced above.

624 Disclaimer

625 This article represents the views of the authors and not necessarily those of the National
 626 Institutes of Health or the US government.

627 References

- 628 Alicandro G, La Vecchia C, Islam N, Pizzato M. 2023. A comprehensive analysis of all-cause
 629 and cause-specific excess deaths in 30 countries during 2020. *Eur J Epidemiol*.
 630 doi:10.1007/s10654-023-01044-x
- 631 CDC, Division of Population Health. n.d. Chronic disease indicators. Diabetes among adults.
 632 <https://cdi.cdc.gov/?location=US&category=DIA&indicators=DIA01>
- 633 Centers for Disease Control and Prevention. 2023. COVID-19 serology surveillance.
 634 <https://www.cdc.gov/coronavirus/2019-ncov/covid-data/serology.html>
- 635 Centers for Disease Control and Prevention. 2022. Weekly United States COVID-19 cases and
 636 deaths by state - ARCHIVED.
- 637 Chavez-MacGregor M, Lei X, Zhao H, Scheet P, Giordano SH. 2022. Evaluation of COVID-19
 638 Mortality and Adverse Outcomes in US Patients With or Without Cancer. *JAMA Oncol*
 639 **8**:69–78.
- 640 COVID-19 Forecasting Team. 2022. Variation in the COVID-19 infection-fatality ratio by age,
 641 time, and geography during the pre-vaccine era: a systematic analysis. *Lancet* **399**:1469–
 642 1488.
- 643 Dagher H, Chaftari A-M, Subbiah IM, Malek AE, Jiang Y, Lamie P, Granwehr B, John T, Yopez
 644 E, Borjan J, Reyes-Gibby C, Flores M, Khawaja F, Pande M, Ali N, Rojo R, Karp DD,
 645 Chaftari P, Hachem R, Raad II. 2023. Long COVID in cancer patients: preponderance of
 646 symptoms in majority of patients over long time period. *Elife* **12**. doi:10.7554/eLife.81182
- 647 Dhana K, Beck T, Desai P, Wilson RS, Evans DA, Rajan KB. 2023. Prevalence of Alzheimer's
 648 disease dementia in the 50 US states and 3142 counties: A population estimate using the
 649 2020 bridged-race postcensal from the National Center for Health Statistics. *Alzheimers*
 650 *Dement* **19**:4388–4395.
- 651 Di Felice G, Visci G, Teglia F, Angelini M, Boffetta P. 2022. Effect of cancer on outcome of
 652 COVID-19 patients: a systematic review and meta-analysis of studies of unvaccinated
 653 patients. *Elife* **11**. doi:10.7554/eLife.74634
- 654 Doan C, Li S, Goodwin JS. 2023. Breast and Lung Cancer Screening Among Medicare
 655 Enrollees During the COVID-19 Pandemic. *JAMA Netw Open* **6**:e2255589.
- 656 Fedeli U, Amidei CB, Han X, Jemal A. 2024. Changes in cancer-related mortality during the

- 657 COVID-19 pandemic in the United States. *JNCI* 116(1): 167-169. Doi:10.1093/jnci/djad191.
- 658 Fernandes GA, Junior APN, Azevedo E Silva G, Feriani D, França E Silva ILA, Caruso P,
659 Curado MP. 2021. Excess mortality by specific causes of deaths in the city of São Paulo,
660 Brazil, during the COVID-19 pandemic. *PLoS One* 16:e0252238.
- 661 Gobiņa I, Avotiņš A, Kojalo U, Strēle I, Pildava S, Villeruša A, Briģis Ģ. 2022. Excess mortality
662 associated with the COVID-19 pandemic in Latvia: a population-level analysis of all-cause
663 and noncommunicable disease deaths in 2020. *BMC Public Health* 22:1109.
- 664 Grande E, Fedeli U, Pappagallo M, Cialesi R, Marchetti S, Minelli G, Iavarone I, Frova L, Onder
665 G, Grippo F. 2022. Variation in Cause-Specific Mortality Rates in Italy during the First Wave
666 of the COVID-19 Pandemic: A Study Based on Nationwide Data. *Int J Environ Res Public
667 Health* 19. doi:10.3390/ijerph19020805
- 668 Han S, Zhuang Q, Chiang J, Tan SH, Chua GWY, Xie C, Chua MLK, Soon YY, Yang VS. 2022.
669 Impact of cancer diagnoses on the outcomes of patients with COVID-19: a systematic
670 review and meta-analysis. *BMJ Open* 12:e044661.
- 671 Han X, Hu X, Zhao J, Jemal A, Yabroff KR. 2022. Identification of Deaths Caused by Cancer
672 and COVID-19 in the US During March to December 2020. *JAMA Oncol* 8:1696–1698.
- 673 Han X, Yang NN, Nogueira L, Jiang C, Wagle NS, Zhao J, Shi KS, Fan Q, Schafer E, Yabroff
674 KR, Jemal A. 2023. Changes in cancer diagnoses and stage distribution during the first
675 year of the COVID-19 pandemic in the USA: a cross-sectional nationwide assessment.
676 *Lancet Oncol* 24:855–867.
- 677 Haribhai S, Bhatia K, Shahmanesh M. 2023. Global elective breast- and colorectal cancer
678 surgery performance backlogs, attributable mortality and implemented health system
679 responses during the COVID-19 pandemic: A scoping review. *PLOS Glob Public Health*
680 3:e0001413.
- 681 Islam N, Shkolnikov VM, Acosta RJ, Klimkin I, Kawachi I, Irizarry RA, Alicandro G, Khunti K,
682 Yates T, Jdanov DA, White M, Lewington S, Lacey B. 2021. Excess deaths associated with
683 covid-19 pandemic in 2020: age and sex disaggregated time series analysis in 29 high
684 income countries. *BMJ* 373:n1137.
- 685 Karlinsky A, Kobak D. 2021. Tracking excess mortality across countries during the COVID-19
686 pandemic with the World Mortality Dataset. *Elife* 10. doi:10.7554/eLife.69336
- 687 Kontopantelis E, Mamas MA, Webb RT, Castro A, Rutter MK, Gale CP, Ashcroft DM, Pierce M,
688 Abel KM, Price G, Faivre-Finn C, Van Spall HGC, Graham MM, Morciano M, Martin GP,
689 Sutton M, Doran T. 2022. Excess years of life lost to COVID-19 and other causes of death
690 by sex, neighbourhood deprivation, and region in England and Wales during 2020: A
691 registry-based study. *PLoS Med* 19:e1003904.
- 692 Lee R, Xu W, Dozier M, McQuillan R, Theodoratou E, Figueroa J, UNCOVER and the
693 International Partnership for Resilience in Cancer Systems (I-PaRCS), Breast Cancer
694 Working Group 2. 2023. A rapid review on the COVID-19's global impact on breast cancer
695 screening participation rates and volumes from January-December 2020. *Elife* 12.
696 doi:10.7554/eLife.85680
- 697 Lee W-E, Woo Park S, Weinberger DM, Olson D, Simonsen L, Grenfell BT, Viboud C. 2023.
698 Direct and indirect mortality impacts of the COVID-19 pandemic in the United States, March
699 1, 2020 to January 1, 2022. *Elife* 12. doi:10.7554/eLife.77562
- 700 Lemanska A, Andrews C, Fisher L, Bacon S, Frampton AE, Mehrkar A, Inglesby P, Davy S,
701 Roberts K, Patalay P, Goldacre B, MacKenna B, OpenSAFELY Collaborative, Walker AJ.
702 2023. Healthcare in England was affected by the COVID-19 pandemic across the
703 pancreatic cancer pathway: A cohort study using OpenSAFELY-TPP. *Elife* 12.
704 doi:10.7554/eLife.85332
- 705 Lundberg CE, Santosa A, Björk J, Brandén M, Cronie O, Lindgren M, Edqvist J, Åberg M, Adiels
706 M, Rosengren A. 2023. Age and sex differences in cause-specific excess mortality and
707 years of life lost associated with COVID-19 infection in the Swedish population. *Eur J Public*

- 708 *Health*. doi:10.1093/eurpub/ckad086
- 709 Msemburi W, Karlinsky A, Knutson V, Aleshin-Guendel S, Chatterji S, Wakefield J. 2023. The
710 WHO estimates of excess mortality associated with the COVID-19 pandemic. *Nature*
711 **613**:130–137.
- 712 Nascimento de Lima P, van den Puttelaar R, Hahn AI, Harlass M, Collier N, Ozik J, Zauber AG,
713 Lansdorp-Vogelaar I, Rutter CM. 2023. Projected long-term effects of colorectal cancer
714 screening disruptions following the COVID-19 pandemic. *Elife* **12**. doi:10.7554/eLife.85264
- 715 National Cancer Institute. n.d. Cancer stat facts. *SEER*. <https://seer.cancer.gov/statfacts/>
- 716 Nickson C, Smith MA, Feletto E, Velentzis LS, Broun K, Deij S, Grogan P, Hall M, He E, St John
717 DJ, Lew J-B, Procopio P, Simms KT, Worthington J, Mann GB, Canfell K. 2023. A modelled
718 evaluation of the impact of COVID-19 on breast, bowel, and cervical cancer screening
719 programmes in Australia. *Elife* **12**. doi:10.7554/eLife.82818
- 720 Nonboe MH, Napolitano G, Schroll JB, Vejborg I, Waldstrøm M, Lynge E. 2023. Impact of
721 COVID-19 pandemic on breast and cervical cancer screening in Denmark: A register-based
722 study. *Elife* **12**. doi:10.7554/eLife.81605
- 723 Raad II, Hachem R, Masayuki N, Datoguia T, Dagher H, Jiang Y, Subbiah V, Siddiqui B, Bayle
724 A, Somer R, Fernández Cruz A, Gorak E, Bhinder A, Mori N, Hamerschlag N, Shelanski S,
725 Dragovich T, Vong Kiat YE, Fakhreddine S, Pierre AH, Chemaly RF, Mulanovich V, Adachi
726 J, Borjan J, Khawaja F, Granwehr B, John T, Yepez EY, Torres HA, Ammakkanavar NR,
727 Yibirin M, Reyes-Gibby CC, Pande M, Ali N, Rojo RD, Ali SM, Deeba RE, Chaftari P,
728 Matsuo T, Ishikawa K, Hasegawa R, Aguado-Noya R, García AG, Puchol CT, Lee DG,
729 Slavin M, Teh B, Arias CA, Data-Driven Determinants for COVID-19 Oncology Discovery
730 Effort (D3CODE) Team, Kontoyiannis DP, Malek AE, Chaftari A-M. 2023. International
731 multicenter study comparing COVID-19 in patients with cancer to patients without cancer:
732 Impact of risk factors and treatment modalities on survivorship. *Elife* **12**.
733 doi:10.7554/eLife.81127
- 734 Rajan KB, Weuve J, Barnes LL, McAninch EA, Wilson RS, Evans DA. 2021. Population
735 estimate of people with clinical Alzheimer's disease and mild cognitive impairment in the
736 United States (2020-2060). *Alzheimers Dement* **17**:1966–1975.
- 737 Rüttrich MM, Giessen-Jung C, Borgmann S, Classen AY, Dolff S, Grüner B, Hanses F, Isberner
738 N, Köhler P, Lanznaster J, Merle U, Nadalin S, Piepel C, Schneider J, Schons M, Strauss
739 R, Tometten L, Vehreschild JJ, von Lilienfeld-Toal M, Beutel G, Wille K, LEOSS Study
740 Group. 2021. COVID-19 in cancer patients: clinical characteristics and outcome-an analysis
741 of the LEOSS registry. *Ann Hematol* **100**:383–393.
- 742 Seneviratne SL, Yasawardene P, Wijerathne W, Somawardana B. 2022. COVID-19 vaccination
743 in cancer patients: a narrative review. *J Int Med Res* **50**:3000605221086155.
- 744 Short KR, Kedzierska K, van de Sandt CE. 2018. Back to the Future: Lessons Learned From
745 the 1918 Influenza Pandemic. *Front Cell Infect Microbiol* **8**:343.
- 746 Silversmit G, Verdoodt F, Van Damme N, De Schutter H, Van Eycken L. 2021. Excess Mortality
747 in a Nationwide Cohort of Cancer Patients during the Initial Phase of the COVID-19
748 Pandemic in Belgium. *Cancer Epidemiol Biomarkers Prev* **30**:1615–1619.
- 749 Stadlbauer D, Tan J, Jiang K, Hernandez MM, Fabre S, Amanat F, Teo C, Arunkumar GA,
750 McMahon M, Capuano C, Twyman K, Jhang J, Nowak MD, Simon V, Sordillo EM, van
751 Bakel H, Kramer F. 2021. Repeated cross-sectional sero-monitoring of SARS-CoV-2 in
752 New York City. *Nature* **590**:146–150.
- 753 Starkey T, Ionescu MC, Tilby M, Little M, Burke E, Fittall MW, Khan S, Liu JKH, Platt JR, Mew
754 R, Tripathy AR, Watts I, Williams ST, Appanna N, Al-Hajji Y, Barnard M, Benny L, Burnett
755 A, Bytyci J, Cattell EL, Cheng V, Clark JJ, Eastlake L, Gerrand K, Ghafoor Q, Grumett S,
756 Harper-Wynne C, Kahn R, Lee AJX, Lomas O, Lydon A, McKenzie H, NCRI Consumer
757 Forum, Panneerselvam H, Pascoe JS, Patel G, Patel V, Potter VA, Randle A, Rigg AS,
758 Robinson TM, Roylance R, Roques TW, Rozmanowski S, Roux RL, Shah K, Sheehan R,

- 759 Sintler M, Swarup S, Taylor H, Tillett T, Tuthill M, Williams S, Ying Y, Beggs A, Iveson T,
760 Lee SM, Middleton G, Middleton M, Protheroe A, Fowler T, Johnson P, Lee LYW. 2023. A
761 population-scale temporal case-control evaluation of COVID-19 disease phenotype and
762 related outcome rates in patients with cancer in England (UKCCP). *Sci Rep* **13**:11327.
- 763 Tahira AC, Verjovski-Almeida S, Ferreira ST. 2021. Dementia is an age-independent risk factor
764 for severity and death in COVID-19 inpatients. *Alzheimers Dement* **17**:1818–1831.
- 765 Tope P, Farah E, Ali R, El-Zein M, Miller WH, Franco EL. 2023. The impact of lag time to cancer
766 diagnosis and treatment on clinical outcomes prior to the COVID-19 pandemic: A scoping
767 review of systematic reviews and meta-analyses. *Elife* **12**. doi:10.7554/eLife.81354
- 768 U.S. Cancer Statistics Working Group. released in November 2023. U.S. Cancer Statistics Data
769 Visualizations Tool, based on 2022 submission data (1999-2020): U.S. Department of
770 Health and Human Services, Centers for Disease Control and Prevention and National
771 Cancer Institute. <https://www.cdc.gov/cancer/dataviz>
- 772 Wang Q, Davis PB, Gurney ME, Xu R. 2021. COVID-19 and dementia: Analyses of risk,
773 disparity, and outcomes from electronic health records in the US. *Alzheimers Dement*
774 **17**:1297–1306.
- 775 Williamson EJ, Walker AJ, Bhaskaran K, Bacon S, Bates C, Morton CE, Curtis HJ, Mehrkar A,
776 Evans D, Inglesby P, Cockburn J, McDonald HI, MacKenna B, Tomlinson L, Douglas IJ,
777 Rentsch CT, Mathur R, Wong AYS, Grieve R, Harrison D, Forbes H, Schultze A, Croker R,
778 Parry J, Hester F, Harper S, Perera R, Evans SJW, Smeeth L, Goldacre B. 2020. Factors
779 associated with COVID-19-related death using OpenSAFELY. *Nature* **584**:430–436.
- 780 Yeh H-C, Golozar A, Brancati FL. 2018. Cancer and Diabetes In: Cowie CC, Casagrande SS,
781 Menke A, Cissell MA, Eberhardt MS, Meigs JB, Gregg EW, Knowler WC, Barrett-Connor E,
782 Becker DJ, Brancati FL, Boyko EJ, Herman WH, Howard BV, Narayan KMV, Rewers M,
783 Fradkin JE, editors. Diabetes in America. Bethesda (MD): National Institute of Diabetes and
784 Digestive and Kidney Diseases (US).
- 785 Zhang Q, Schultz JL, Aldridge GM, Simmering JE, Kim Y, Ogilvie AC, Narayanan NS. 2021.
786 COVID-19 case fatality and Alzheimer’s disease. *J Alzheimers Dis* **84**:1447–1452.

787

788

789 **Table 1.** Each diagnosis group and its corresponding ICD-10 codes, number of underlying deaths, mean age in years at time of
 790 death, the percentage of deaths occurring at home, and the percentage of deaths occurring in nursing homes for 2019 and 2020.

Year	Diagnosis Group	ICD-10 Codes	No. Deaths	Mean age, years (IQR)	%Home/ER	%Nursing Home
2019	Cancer	C00-C99	493,397	72 (64-81)	45	12
	Pancreatic Cancer	C25	37,864	72 (64-80)	51	9
	Colorectal Cancer	C18-C20	42,484	71 (61-82)	46	13
	Hematologic Cancers	C81-C96	47,174	74 (67-84)	35	11
	Diabetes	E10-E14	70,763	72 (63-82)	53	17
	Alzheimer's	G30	98,675	87 (82-92)	29	50
2020	Cancer	C00-C99	513,275	72 (64-81)	55	8
	Pancreatic Cancer	C25	39,893	72 (65-80)	61	6
	Colorectal Cancer	C18-C20	43,990	71 (61-82)	56	9
	Hematologic Cancers	C81-C96	49,161	74 (67-84)	46	8
	Diabetes	E10-E14	88,124	71 (62-82)	58	15
	Alzheimer's	G30	115,256	86 (82-92)	33	46

791 **Table 2.** The estimated number of excess deaths and the percentage over baseline for each diagnosis group when listed as both the underlying
 792 cause or anywhere on the death certificate (multiple cause). Estimates for the national-level data are provided for the full pandemic period and for
 793 each state based on when the first large wave was experienced.

Cause of Death	State	Wave	Multiple Cause		Underlying Cause	
			Excess Deaths	% Over Baseline	Excess Deaths	% Over Baseline
Cancer	National	Overall	13601*	3.0	11	0.0
	New York	1	747	6.0	-474	-5.0
	Texas	2	467	4.0	39	0.0
	California	3	529	4.0	82	1.0
Pancreatic Cancer	National	Overall	-25	-0.0	-282	-1.0
	New York	1	8	1.0	-16	-2.0
	Texas	2	17	2.0	24	3.0
	California	3	0	0.0	-18	-2.0
Colorectal Cancer	National	Overall	988	2.0	-168	-0.0
	New York	1	91	9.0	-16	-2.0
	Texas	2	4	0.0	-34	-3.0
	California	3	27	2.0	-1	-0.0
Hematologic Cancers	National	Overall	3615*	7.0	111	0.0
	New York	1	121	10.0	-107	-11.0
	Texas	2	136	11.0	21	2.0
	California	3	114	8.0	20	2.0
Diabetes	National	Overall	82318*	37.0	10784*	16.0
	New York	1	5945*	128.0	568*	40.0
	Texas	2	4612*	77.0	420*	23.0
	California	3	3474*	59.0	575*	33.0
Alzheimer's	National	Overall	21712*	19.0	8528*	9.0
	New York	1	734*	49.0	188	16.0
	Texas	2	1398*	45.0	805*	31.0
	California	3	726*	18.0	259	8.0

794 *Confidence interval does not include zero

795

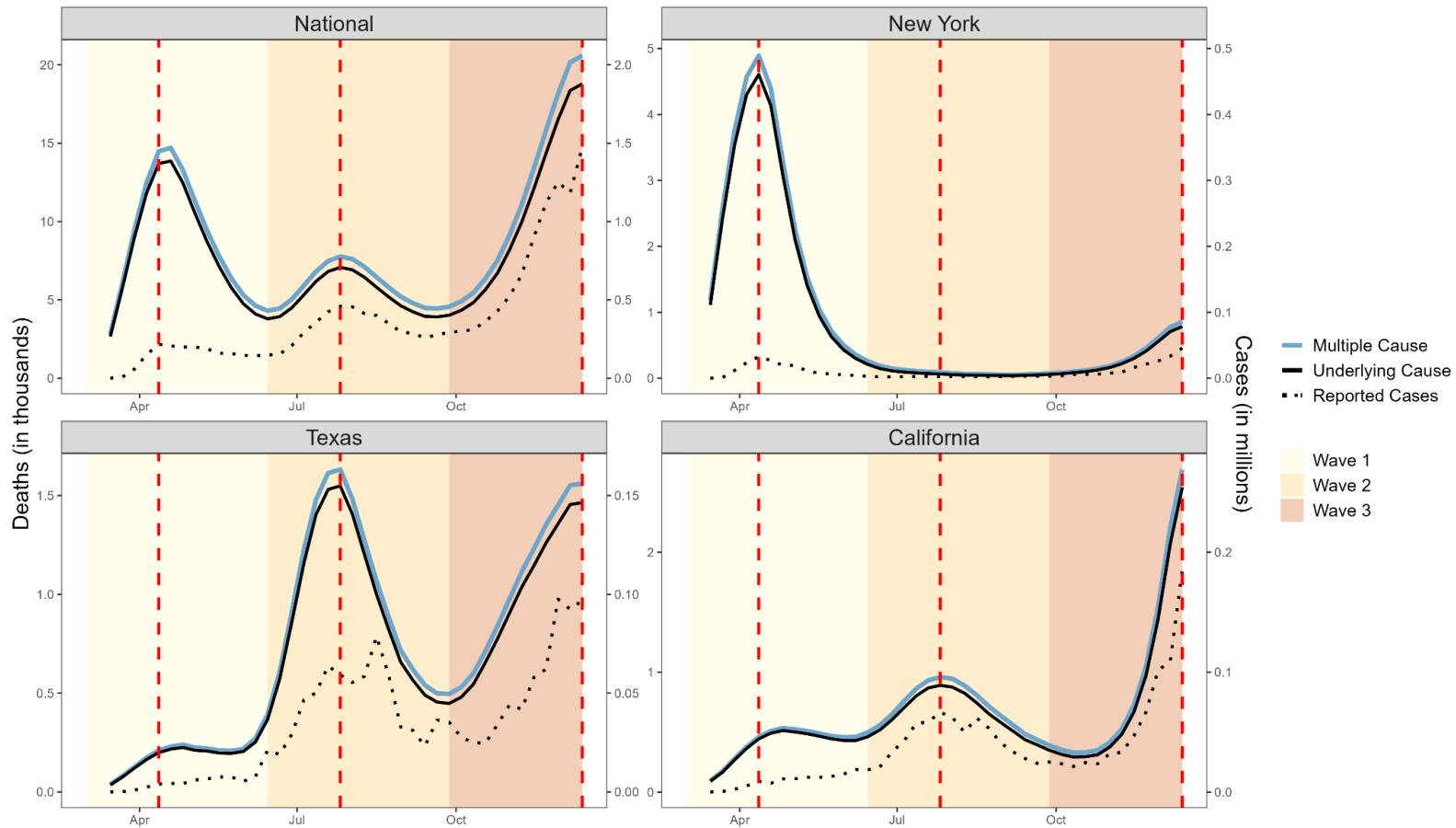
796 **Table 3. Projections of COVID-19-related excess mortality patterns for different cancers and chronic conditions in the US,**
 797 **under different hypotheses for the association between the condition and COVID-19.** Projections are provided for the null
 798 hypothesis of no biological interaction between the condition and COVID-19; these projection are solely driven by the size and mean
 799 age of the population living with each condition (where age determines the infection-fatality ratio from COVID-19), and the baseline
 800 risk of death from the condition over a similar time period (March to December 2019 for the national data, and for the states
 801 comparable dates in 2019 corresponding to the relevant COVID-19 wave). Additional projections are provided under alternative
 802 hypotheses, where each condition is associated with a relative risk (RR) of 2 or 5 for COVID-19 related death (infection-fatality ratio
 803 multiplied by 2 or 5).
 804

Chronic condition	State	Population at risk	Mean age	Wave	Observed MC deaths over same period in 2019	Observed excess (% over baseline) in 2020	Expected excess (null)	Expected excess (RR=2)	Expected excess (RR=5)
All cancers	National	5718925	65	Overall	546453	3 (1-4)	1 (1-2)	2 (1-4)	6 (4-10)
	New York	400891	65	Wave 1	12244	6 (-1-15)	4 (2-10)	9 (3-20)	22 (8-51)
	Texas	397993	63	Wave 2	12187	4 (-3-11)	2 (1-6)	5 (2-12)	11 (4-29)
	California	599552	64	Wave 3	16713	4 (-1-10)	2 (0-5)	4 (1-9)	9 (2-23)
Pancreatic	National	66319	67	Overall	39798	0 (-6-7)	0 (0-0)	0 (0-1)	1 (1-2)
	New York	2584	67	Wave 1	963	1 (-21-35)	0 (0-1)	1 (0-2)	2 (1-5)
	Texas	2264	66	Wave 2	882	2 (-19-34)	0 (0-1)	0 (0-1)	1 (0-3)
	California	3482	67	Wave 3	1277	0 (-17-24)	0 (0-0)	0 (0-1)	1 (0-2)
Lung cancer	National	425015	70	Overall	123622	1 (-3-5)	1 (0-1)	1 (1-2)	3 (2-5)
	New York	17709	71	Wave 1	2643	1 (-13-20)	2 (1-4)	3 (1-8)	8 (3-20)
	Texas	12700	70	Wave 2	2513	2 (-11-20)	1 (0-2)	1 (1-4)	4 (1-9)

	California	19079	70	Wave 3	2861	3 (-10-18)	1 (0-2)	1 (0-3)	3 (1-8)
Hematological	National	459463	62	Overall	57892	7 (1-13)	1 (0-1)	1 (1-2)	3 (2-5)
	New York	15577	62	Wave 1	1305	10 (-11-40)	1 (0-3)	2 (1-5)	6 (2-13)
	Texas	14927	59	Wave 2	1231	11 (-9-38)	1 (0-1)	1 (0-3)	3 (1-7)
	California	21290	61	Wave 3	1916	8 (-8-29)	0 (0-1)	1 (0-2)	2 (1-5)
Colorectal	National	473264	66	Overall	49053	2 (-4-8)	1 (1-2)	2 (1-4)	6 (4-10)
	New York	30859	66	Wave 1	1048	9 (-13-44)	4 (2-10)	9 (3-20)	22 (8-51)
	Texas	36641	65	Wave 2	1224	0 (-18-26)	3 (1-7)	5 (2-13)	13 (4-33)
	California	51863	65	Wave 3	1575	2 (-14-24)	2 (1-5)	4 (1-10)	9 (3-24)
Breast	National	1097917	64	Overall	43519	2 (-4-9)	2 (2-4)	5 (3-8)	12 (8-21)
	New York	74459	64	Wave 1	981	16 (-8-53)	9 (3-21)	18 (7-42)	46 (17-106)
	Texas	77860	62	Wave 2	1019	3 (-17-32)	5 (2-12)	10 (3-24)	24 (8-61)
	California	123433	63	Wave 3	1421	2 (-15-25)	4 (1-10)	8 (2-20)	20 (5-51)
Diabetes	National	29105146	60	Overall	229326	37 (31-43)	8 (5-14)	16 (10-28)	40 (26-69)
	New York	1792926	60	Wave 1	4804	128 (104-158)	30 (11-68)	59 (22-136)	148 (55-340)
	Texas	2450005	58	Wave 2	5898	77 (61-96)	17 (6-44)	35 (12-87)	86 (30-218)
	California	3514440	59	Wave 3	8399	59 (47-74)	12 (3-32)	25 (7-64)	62 (17-160)
Alzheimer's	National	6070000	81	Overall	118993	19 (11-28)	28 (18-48)	57 (36-96)	142 (90-240)

New York	426500	81	Wave 1	1563	49 (23-87)	191 (70-432)	381 (140-863)	953 (350-2158)
Texas	459300	80	Wave 2	2974	45 (27-69)	63 (21-158)	126 (43-315)	315 (107-788)
California	719700	81	Wave 3	5394	18 (6-33)	39 (11-98)	78 (21-196)	195 (53-491)

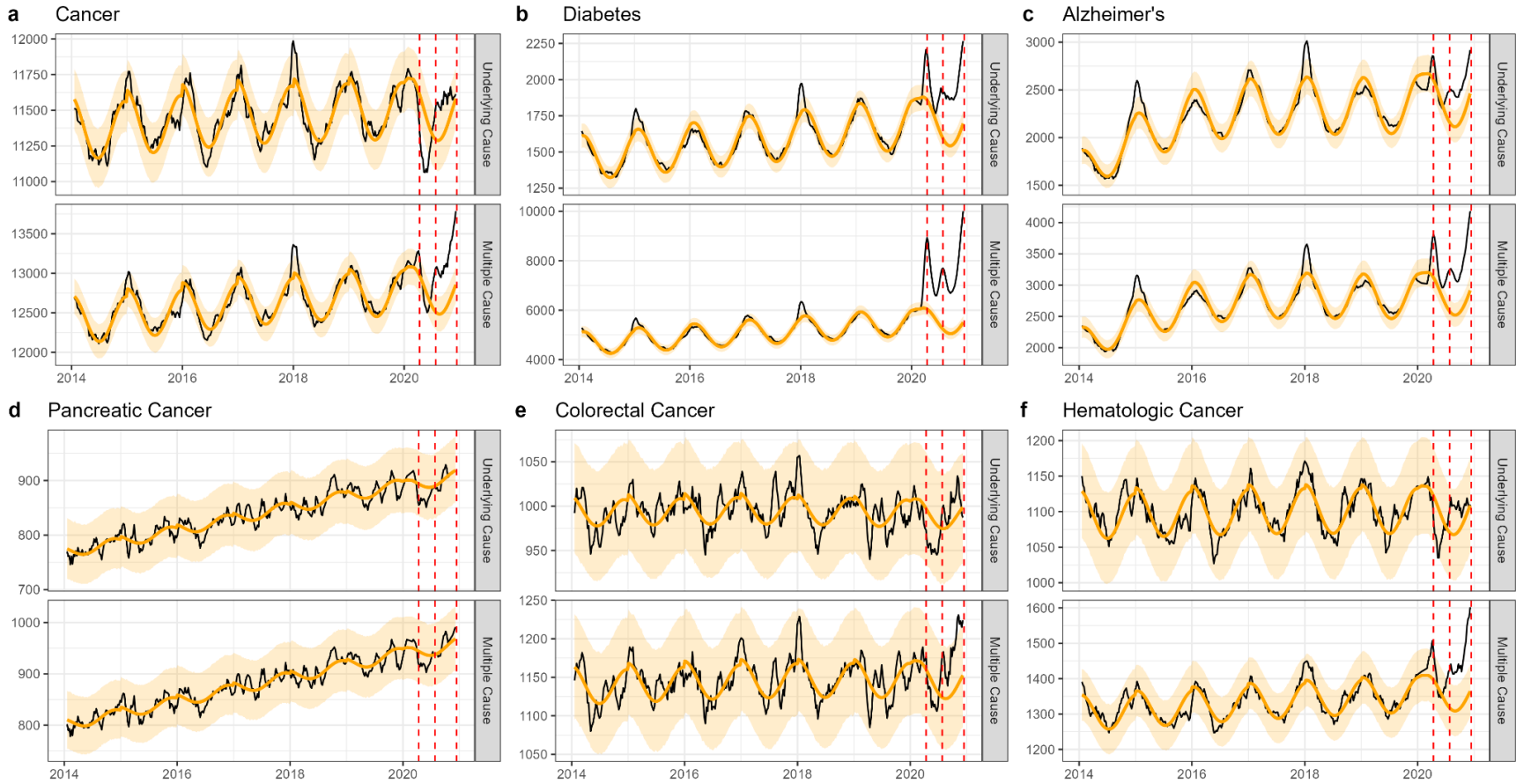
806 **Figure 1. Weekly counts of death certificates listing COVID-19 as either the underlying or a multiple cause.** When included on
807 a death certificate, COVID-19 was most often listed as the underlying cause of death rather than a contributing cause. National-level
808 data reveal three distinct waves: Wave 1 (spring, March 1 - June 27, 2020), Wave 2 (summer, June 28 - October 3, 2020), and Wave
809 3 (winter, October 4 - December 6, 2020, incomplete). Vertical dashed lines represent the peak of each wave, dotted lines represent
810 the number of reported cases (y-axis on the right). New York experienced its first large COVID-19 wave in Wave 1, while Texas had
811 its first large wave in Wave 2 and California did not experience a large wave until Wave 3 which had not yet peaked at the end of
812 2020.



813
814

815 **Figure 2.** National-level weekly observed and estimated baseline mortality for each diagnosis group as both the underlying cause or
816 anywhere on the death certificate (multiple cause) from 2014 to 2020. Baselines during the pandemic are projected based on the
817 previous years of data.

National

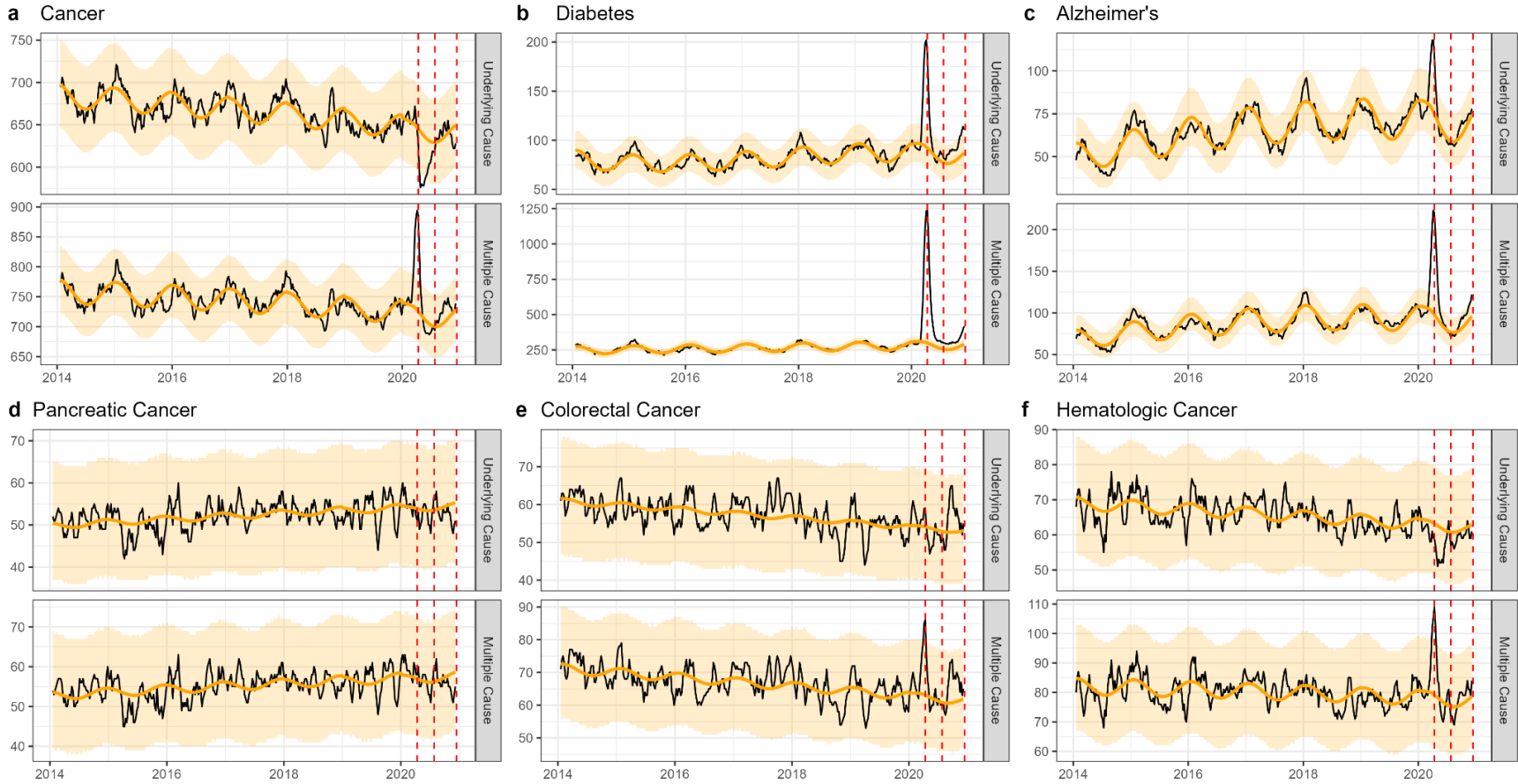


818

819

820 **Figure 3.** The same as figure 1, but for New York. New York experienced its first large wave of COVID-19 in spring 2020 (Wave 1).

New York



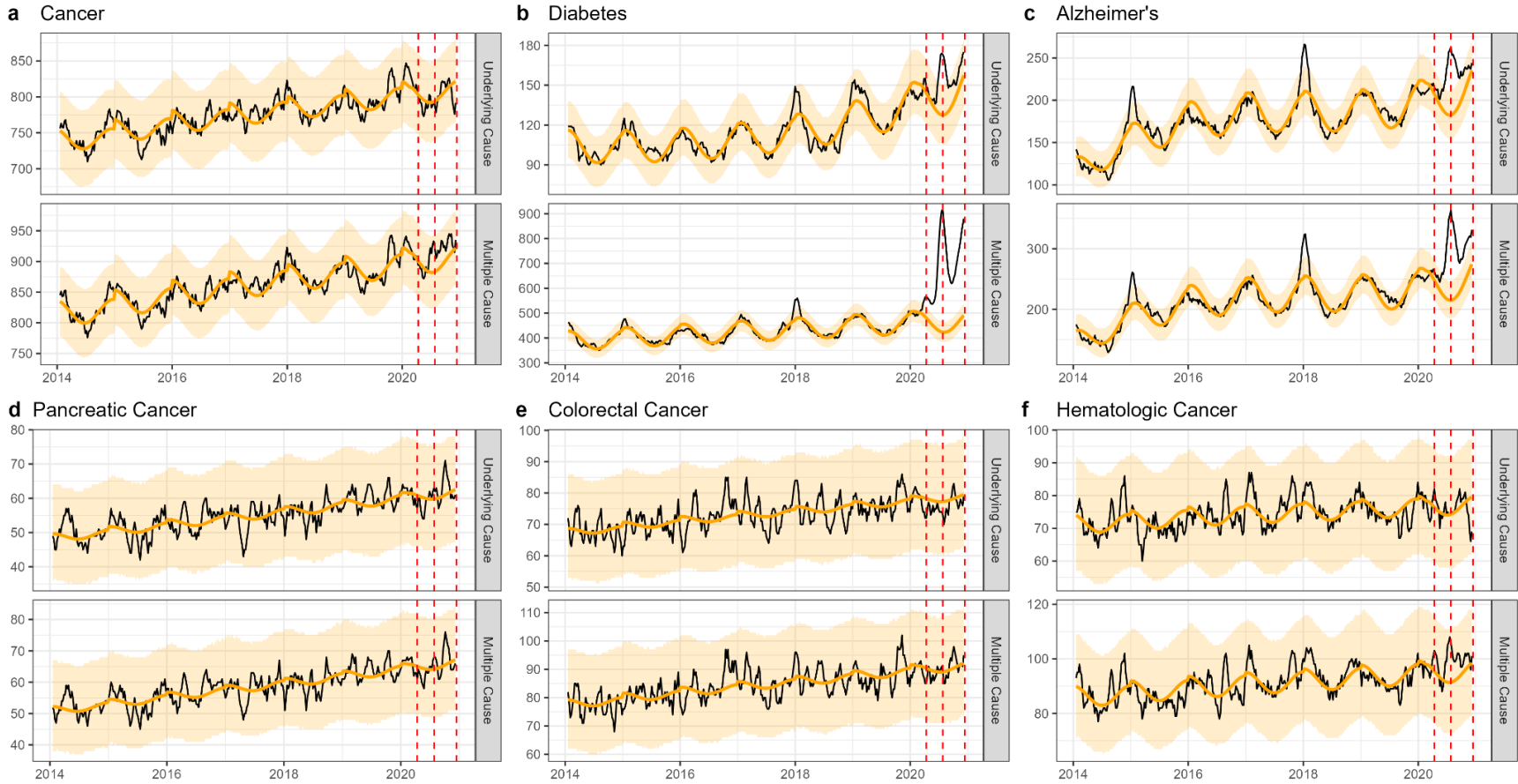
821

822

823

824 **Figure 4.** The same as figure 1, but for Texas. Texas experienced its first large wave of COVID-19 in the summer of 2020 (Wave 2).

Texas



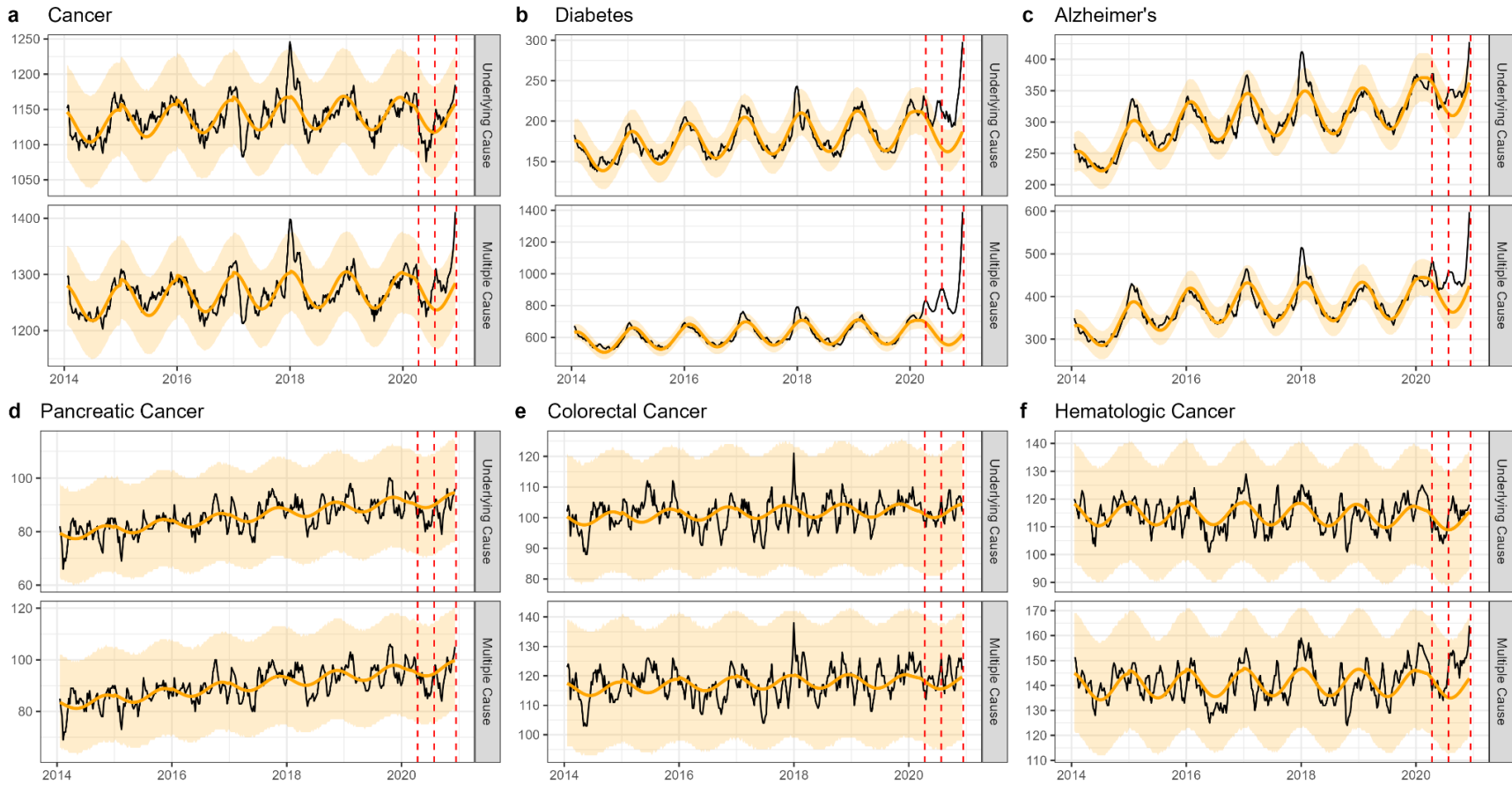
825

826

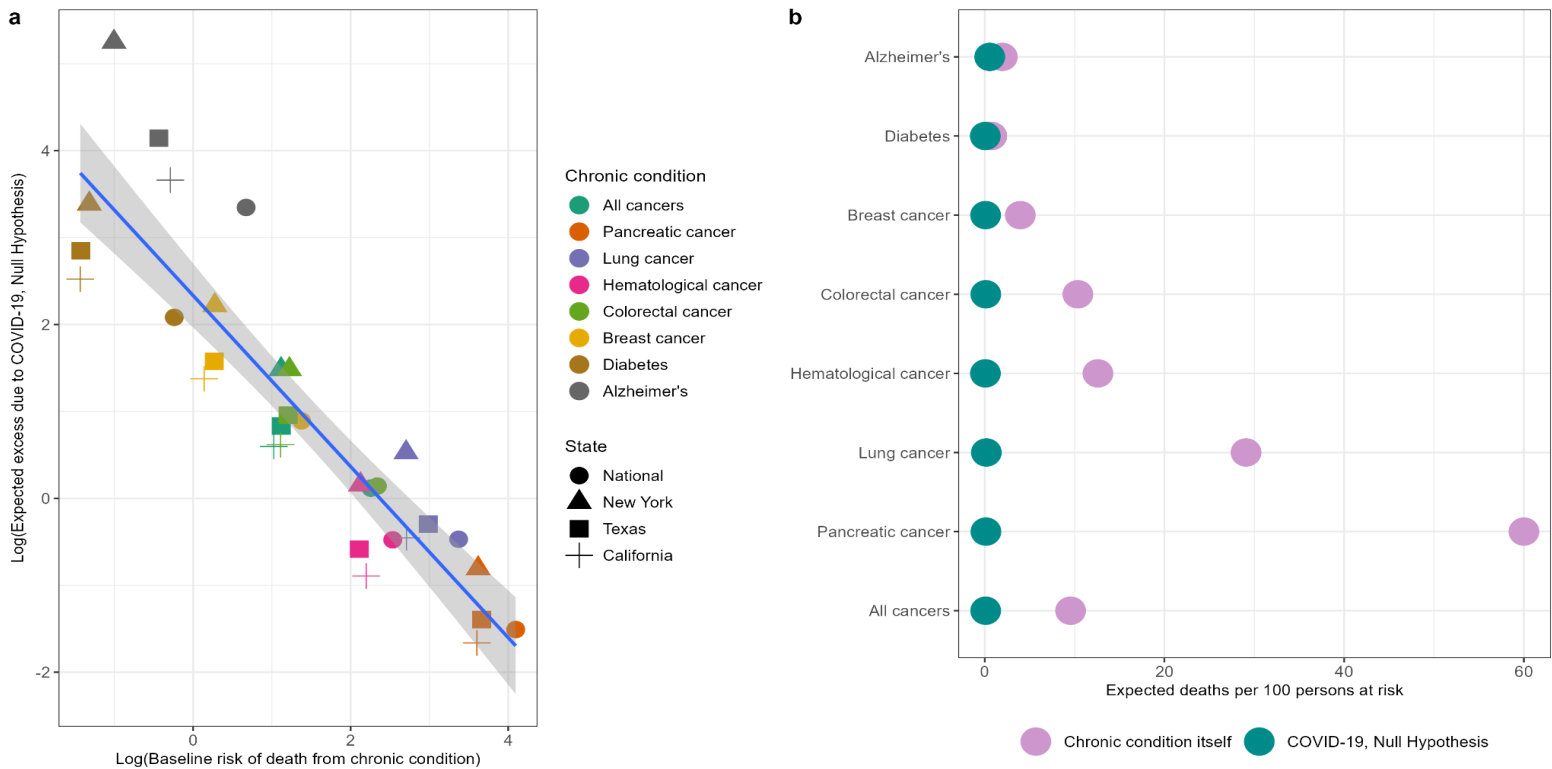
827

828 **Figure 5.** The same as figure 1, but for California. California did not experience a large wave of COVID-19 until the winter of 2020-
829 2021 (Wave 3), only the first half of which is captured here.

California



831 **Figure 6. Illustration of competing risks.** Based on our demographic model, we expect a small increase in cancer mortality relative
 832 to diabetes and Alzheimer’s due to the higher competing risk of death from cancer compared to COVID-19. Panel a) shows the log of
 833 the baseline mortality rate (based on observed mortality in 2019) from each condition on the x-axis and the log of the expected
 834 excess mortality (elevation over baseline) on the y-axis. Chronic conditions are shown in colors while states are shown in different
 835 shapes. Pancreatic cancer, the deadliest cancer considered, is on the bottom right (highest baseline mortality, lowest expected
 836 excess) while diabetes and Alzheimer’s are on the top left (lowest baseline mortality, highest expected excess). Panel b) shows the
 837 baseline number of deaths per 100 persons at risk for each condition expected from March - December 2020 (based on deaths over
 838 this same period in 2019, purple dots) compared to the expected number of deaths due to COVID-19 under the null hypothesis
 839 (green dots). The null hypothesis stipulates that there is no biological association between any of these chronic diseases and
 840 COVID-19. For diabetes and Alzheimer’s, the risks of baseline death and COVID-19 death are similar, while risk of death from
 841 cancer out competes risk of COVID-19 death for all types of cancer.



843 **APPENDIX 1**
844 **Supplemental Methods**

845
846 Model selection and cross validation

847 Time series models included harmonic terms for seasonality, time trends, and an offset for
848 population size. For each condition and location, we used Akaike Information Criterion (AIC) to
849 select between three models with different time trends. The starting model (Model 1) included
850 only a linear time trend. We then tested this against a model with linear and quadratic time
851 trends (Model 2). If the AIC of Model 2 was not 2 less than Model 1, Model 1 was used as the
852 final model. If the AIC of Model 2 was 2 less than Model 1, then Model 2 was tested against a
853 model with linear, quadratic, and cubic time trends (Model 3). If the AIC of Model 3 was not 2
854 less than Model 2, then Model 2 was taken as the final model. If the AIC of Model 3 was 2 less
855 than Model 2, Model 3 was taken as the final model. The final model for each condition and
856 location was then applied to the data from 2014-2018 only and used to predict the 2019 data.
857 The coverage probability was calculated as the proportion of weeks of observed data in 2019
858 that fell within the 95% prediction interval of the time series model. The final model selected for
859 each condition and location is provided in the appendix (Appendix 1- Figure 11).

860 Characteristics of cancer, diabetes, and Alzheimer's deaths in the pre-pandemic period.

861 For each chronic condition studied (cancer, diabetes, Alzheimer's), we assessed potential
862 changes in the characteristics of deaths during the pandemic period that are unrelated to timing
863 but may signal an association with COVID-19. For instance, age is known to be a major risk
864 factor for COVID-19 mortality. For each chronic condition, we computed the average age-at-
865 death in the pre-pandemic year 2019, and compared this to the average age-at-death in 2020.
866 The second potential confounder is living arrangement, as individuals living in nursing homes
867 may be at increased risk of exposure (and death) to COVID-19 due to mixing, even if their
868 underlying condition is not per se a risk factor. To test this hypothesis, we also compared the
869 proportion of individuals in each disease group who died in nursing homes in 2019 and 2020.
870 And finally, to illustrate the impact of coding practices we compared ICD-10 letter categories
871 between 2020 and 2019 for the underlying cause of death when cancer or diabetes are included
872 on the death certificate but are not listed as the underlying cause of death (Appendix 1 - Figure
873 9). For 2020, we further compared death certificates listing both COVID-19 and cancer to those
874 listing both COVID-19 and diabetes. For all comparisons between 2019 and 2020 data are
875 limited to March to December to isolate the pandemic period.

876
877 **Supplemental tables and figures**

878 **Appendix 1 - Table 1.** Diagnosis groups and corresponding ICD-10 codes, number of underlying and multiple cause deaths, mean
 879 age in years at time of death, the percentage of deaths occurring at home, and the percentage of deaths occurring in nursing homes
 880 for 2019 and 2020.

Year	Diagnosis group	ICD-10 codes	Underlying Cause				Multiple Cause			
			No. Deaths	Mean age, years (IQR)	%Home/E R	%Nursing Home	No. Deaths	Mean age, years (IQR)	%Home/E R	%Nursing Home
2019	Cancer	C00-C99	493,397	72 (64-81)	45	12	546,453	72 (64-82)	44	13
	Pancreatic Cancer	C25	37,864	72 (64-80)	51	9	39,798	72 (64-80)	50	9
	Lung Cancer	C34	114,552	72 (65-80)	45	12	123,622	72 (65-80)	44	12
	Colorectal Cancer	C18-C20	42,484	71 (61-82)	46	13	49,053	72 (62-83)	45	14
	Breast Cancer	C50	35,115	69 (59-81)	44	13	43,519	71 (61-83)	43	15
	Hematological Cancer	C81-C96	47,174	74 (67-84)	35	11	57,892	74 (67-84)	35	12
	Diabetes	E10-E14	70,763	72 (63-82)	53	17	229,326	74 (65-84)	46	19
	Alzheimer's	G30	98,675	87 (82-92)	29	50	118,993	87 (82-92)	29	48
	Ischemic Heart Disease	I20-I25	292,659	77 (67-88)	50	18	440,225	77 (68-87)	47	18

	Kidney Disease	N00-07, 17-19,25-28	46,120	76 (68-87)	25	18	189,938	76 (67-87)	20	15
2020	Cancer	C00-C99	513,275	72 (64-81)	55	8	586,503	72 (64-82)	52	9
	Pancreatic Cancer	C25	39,893	72 (65-80)	61	6	42,383	72 (65-80)	60	6
	Lung Cancer	C34	115,554	72 (65-80)	54	8	127,671	72 (65-80)	53	8
	Colorectal Cancer	C18-C20	43,990	71 (61-82)	56	9	52,319	72 (62-83)	53	10
	Breast Cancer	C50	36,296	70 (60-81)	54	10	47,094	72 (62-83)	51	12
	Hematological Cancer	C81-C96	49,161	74 (67-84)	46	8	64,840	74 (68-84)	43	9
	Diabetes	E10-E14	88,124	71 (62-82)	58	15	343,061	73 (65-83)	45	16
	Alzheimer's	G30	115,256	86 (82-92)	33	46	151,206	86 (82-92)	31	47
	Ischemic Heart Disease	I20-I25	327,854	76 (67-88)	54	16	533,204	77 (68-87)	49	16
	Kidney Disease	N00-07, 17-19,25-28	49,796	76 (68-87)	30	15	255,708	75 (67-86)	21	12

882 **Appendix 1 - Table 2.** Supplemental Table 2. Estimated number of excess deaths and the percentage over baseline for each
 883 diagnosis group (National). Estimates are aggregated over all of 2020 and for each COVID-19 wave during 2020.

Cause of death	Wave	Multiple Cause		Underlying Cause	
		Excess Deaths	% Over Baseline	Excess Deaths	% Over Baseline
Cancer	Overall	13601*	3.0	11	0.0
	1	79	0.0	-3917*	-2.0
	2	6519*	4.0	2662	2.0
	3	7003*	6.0	1266	1.0
Pancreatic Cancer	Overall	-25	-0.0	-282	-1.0
	1	-213	-1.0	-281	-2.0
	2	44	0.0	-30	-0.0
	3	144	1.0	29	0.0
Lung Cancer	Overall	1102	1.0	-814	-1.0
	1	-729	-1.0	-1221	-3.0
	2	784	2.0	249	1.0
	3	1047	4.0	158	1.0
Breast Cancer	Overall	838	2.0	-438	-1.0
	1	-66	-0.0	-415	-3.0
	2	437	3.0	81	1.0
	3	467	5.0	-105	-1.0
Colorectal Cancer	Overall	988	2.0	-168	-0.0
	1	-169	-1.0	-463	-3.0
	2	454	3.0	112	1.0
	3	703*	6.0	183	2.0
Hematological Cancers	Overall	3615*	7.0	111	0.0
	1	546	2.0	-447	-2.0
	2	1412*	8.0	412	3.0
	3	1657*	12.0	146	1.0
Diabetes	Overall	82318*	37.0	10784*	16.0
	1	25306*	25.0	2305*	7.0
	2	27534*	38.0	4330*	20.0

	3	29477*	56.0	4148*	26.0
Alzheimer's	Overall	21712*	19.0	8528*	9.0
	1	4763*	9.0	547	1.0
	2	8054*	22.0	4257*	14.0
	3	8894*	33.0	3724*	16.0
Ischemic Heart Disease	Overall	58793*	14.0	17194*	6.0
	1	12042*	6.0	862	1.0
	2	21783*	16.0	7912*	9.0
	3	24967*	25.0	8419*	13.0
Kidney Disease	Overall	41907*	22.0	785	2.0
	1	8182*	10.0	-1048	-5.0
	2	14767*	25.0	777	5.0
	3	18958*	44.0	1056*	10.0

884

*Confidence interval does not include zero

885 **Appendix 1 - Table 3.** Supplemental Table 2. Estimated number of excess deaths and the percentage over baseline for each
 886 diagnosis group (New York). Estimates are aggregated over all of 2020 and for each COVID-19 wave during 2020.
 887

Cause of death	Wave	Multiple Cause		Underlying Cause	
		Excess Deaths	% Over Baseline	Excess Deaths	% Over Baseline
Cancer	Overall	1012	4.0	-557	-2.0
	1	747	6.0	-474	-5.0
	2	120	1.0	-6	-0.0
	3	144	2.0	-77	-1.0
Pancreatic Cancer	Overall	-29	-1.0	-58	-3.0
	1	8	1.0	-16	-2.0
	2	-1	-0.0	-9	-1.0
	3	-37	-6.0	-33	-6.0
Lung Cancer	Overall	47	1.0	-163	-3.0
	1	27	1.0	-143	-7.0
	2	23	1.0	16	1.0
	3	-3	-0.0	-36	-3.0
Breast Cancer	Overall	205	9.0	-46	-2.0
	1	151	16.0	-34	-4.0
	2	31	4.0	3	0.0
	3	23	4.0	-15	-3.0
Colorectal Cancer	Overall	189	8.0	42	2.0
	1	91	9.0	-16	-2.0
	2	40	5.0	26	4.0
	3	58	9.0	33	6.0
Hematological Cancers	Overall	156	5.0	-149	-6.0
	1	121	10.0	-107	-11.0
	2	1	0.0	-25	-3.0
	3	35	5.0	-18	-3.0
Diabetes	Overall	7240*	66.0	866*	26.0
	1	5945*	128.0	568*	40.0
	2	631*	18.0	121	11.0

	3	664*	24.0	177	21.0
Alzheimer's	Overall	884*	26.0	233	9.0
	1	734*	49.0	188	16.0
	2	1	0.0	1	0.0
	3	150	17.0	44	6.0
Ischemic Heart Disease	Overall	7118*	25.0	3756*	17.0
	1	6607*	54.0	4092*	44.0
	2	179	2.0	-184	-3.0
	3	331	5.0	-152	-3.0
Kidney Disease	Overall	2438*	34.0	51	3.0
	1	1946*	63.0	22	3.0
	2	144	6.0	-13	-2.0
	3	349*	19.0	42	8.0

888

*Confidence interval does not include zero

889 **.Appendix 1 - Table 4.** Supplemental Table 2. Estimated number of excess deaths and the percentage over baseline for each
 890 diagnosis group (Texas). Estimates are aggregated over all of 2020 and for each COVID-19 wave during 2020.
 891

Cause of death	Wave	Multiple Cause		Underlying Cause	
		Excess Deaths	% Over Baseline	Excess Deaths	% Over Baseline
Cancer	Overall	602	2.0	-130	-0.0
	1	-48	-0.0	-62	-0.0
	2	467	4.0	39	0.0
	3	183	2.0	-107	-1.0
Pancreatic Cancer	Overall	1	0.0	5	0.0
	1	-36	-3.0	-36	-4.0
	2	17	2.0	24	3.0
	3	20	3.0	17	3.0
Lung Cancer	Overall	176	2.0	108	2.0
	1	33	1.0	31	1.0
	2	60	2.0	27	1.0
	3	84	5.0	49	3.0
Breast Cancer	Overall	-19	-1.0	-131	-5.0
	1	-54	-4.0	-54	-6.0
	2	29	3.0	-25	-3.0
	3	6	1.0	-51	-8.0
Colorectal Cancer	Overall	-12	-0.0	-92	-3.0
	1	-33	-2.0	-49	-4.0
	2	4	0.0	-34	-3.0
	3	17	2.0	-10	-1.0
Hematological Cancers	Overall	194	5.0	-12	-0.0
	1	24	2.0	1	0.0
	2	136	11.0	21	2.0
	3	33	3.0	-34	-4.0
Diabetes	Overall	8902*	49.0	618	11.0
	1	1411*	19.0	61	3.0
	2	4612*	77.0	420*	23.0

	3	2879*	62.0	138	9.0
Alzheimer's	Overall	2242*	24.0	1184	15.0
	1	309	8.0	197	6.0
	2	1398*	45.0	805*	31.0
	3	536*	21.0	181	8.0
Ischemic Heart Disease	Overall	6018*	20.0	1700	9.0
	1	736	6.0	99	1.0
	2	3376*	34.0	1228*	19.0
	3	1905*	24.0	374	7.0
Kidney Disease	Overall	6724*	47.0	579	19.0
	1	886*	15.0	115	9.0
	2	3535*	76.0	285*	28.0
	3	2303*	66.0	179	23.0

892

*Confidence interval does not include zero

893 **Appendix 1 - Table 5.** Supplemental Table 2. Estimated number of excess deaths and the percentage over baseline for each
 894 diagnosis group (California). Estimates are aggregated over all of 2020 and for each COVID-19 wave during 2020.

Cause of death	Wave	Multiple Cause		Underlying Cause	
		Excess Deaths	% Over Baseline	Excess Deaths	% Over Baseline
Cancer	Overall	991	2.0	-29	-0.0
	1	-102	-1.0	-236	-1.0
	2	564	3.0	125	1.0
	3	529	4.0	82	1.0
Pancreatic Cancer	Overall	-97	-3.0	-126	-4.0
	1	-28	-2.0	-39	-3.0
	2	-69	-5.0	-70	-6.0
	3	0	0.0	-18	-2.0
Lung Cancer	Overall	-10	-0.0	-132	-2.0
	1	-82	-3.0	-96	-3.0
	2	18	1.0	-48	-2.0
	3	54	3.0	13	1.0
Breast Cancer	Overall	67	2.0	-22	-1.0
	1	-44	-3.0	-34	-3.0
	2	92	6.0	44	4.0
	3	20	2.0	-33	-4.0
Colorectal Cancer	Overall	100	2.0	20	1.0
	1	7	0.0	-4	-0.0
	2	66	4.0	25	2.0
	3	27	2.0	-1	-0.0
Hematological Cancers	Overall	279	5.0	52	1.0
	1	0	0.0	-33	-2.0
	2	164	9.0	64	4.0
	3	114	8.0	20	2.0
Diabetes	Overall	9163*	39.0	1408*	20.0
	1	1843*	18.0	213	7.0

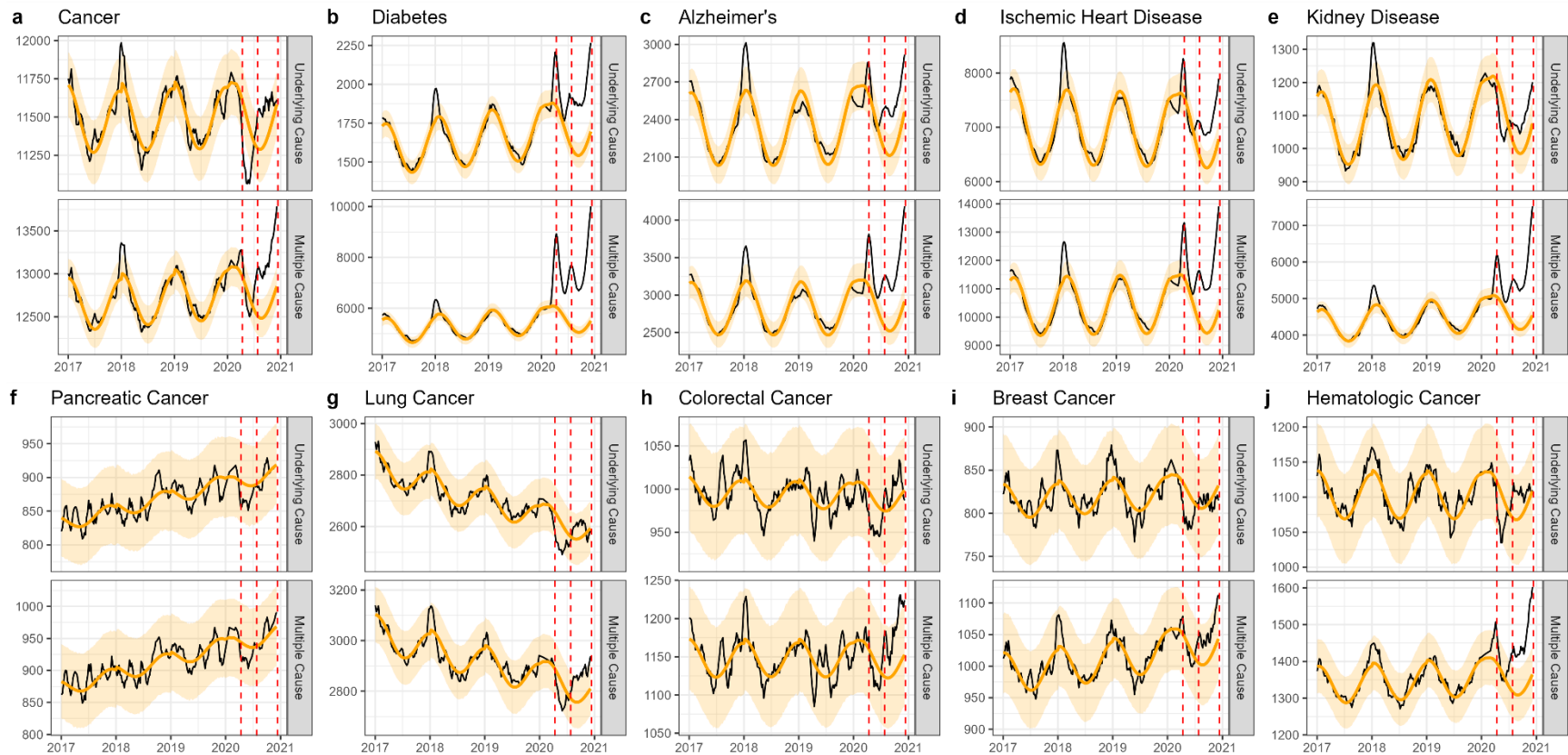
	2	3846*	49.0	620*	27.0
	3	3474*	59.0	575*	33.0
Alzheimer's	Overall	2143*	14.0	594	5.0
	1	375	6.0	-76	-1.0
	2	1041*	20.0	410	9.0
	3	726*	18.0	259	8.0
Ischemic Heart Disease	Overall	5905*	16.0	2888*	11.0
	1	650	4.0	104	1.0
	2	2966*	24.0	1581*	19.0
	3	2289*	25.0	1204*	19.0
Kidney Disease	Overall	3858*	21.0	8	0.0
	1	301	4.0	-114	-8.0
	2	1967*	33.0	63	6.0
	3	1590*	36.0	59	7.0

895

*Confidence interval does not include zero

896 **Appendix 1 - Figure 1.** National-level weekly observed and estimated baseline mortality for each diagnosis group as both the
897 underlying cause or anywhere on the death certificate (multiple cause) from 2017 to 2020. Baselines during the pandemic
898 projected based on the previous years of data.

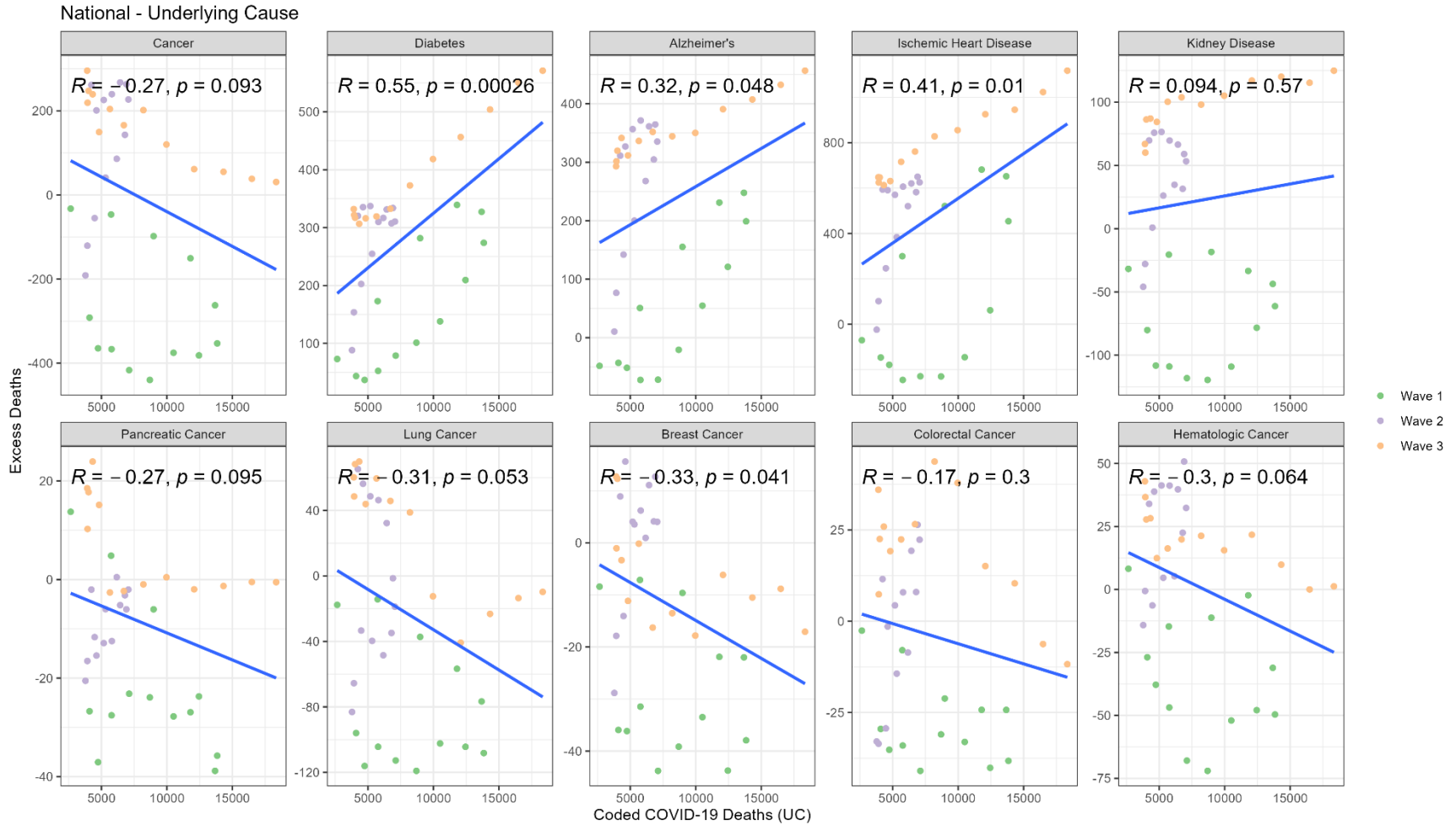
National



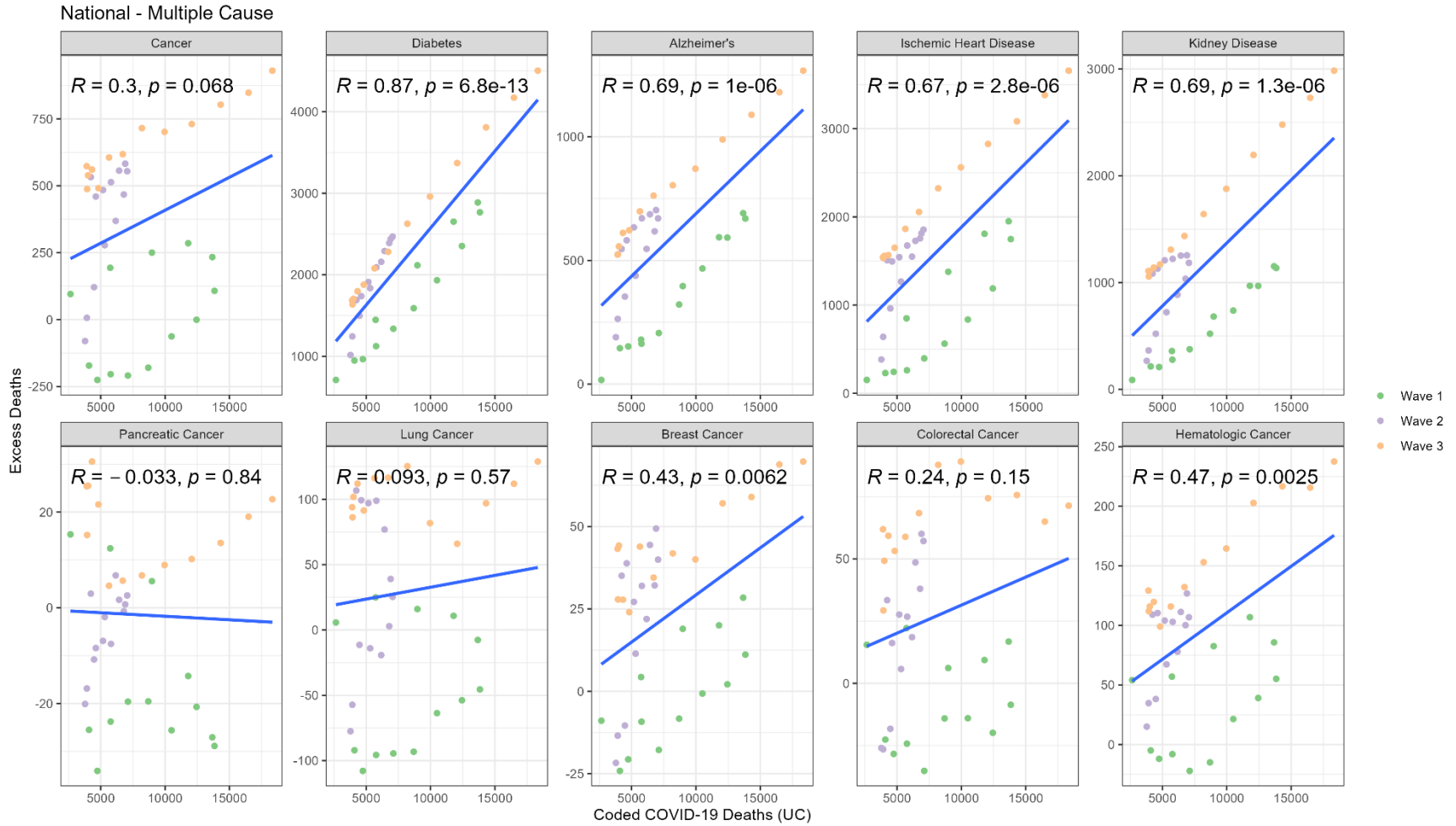
899

900

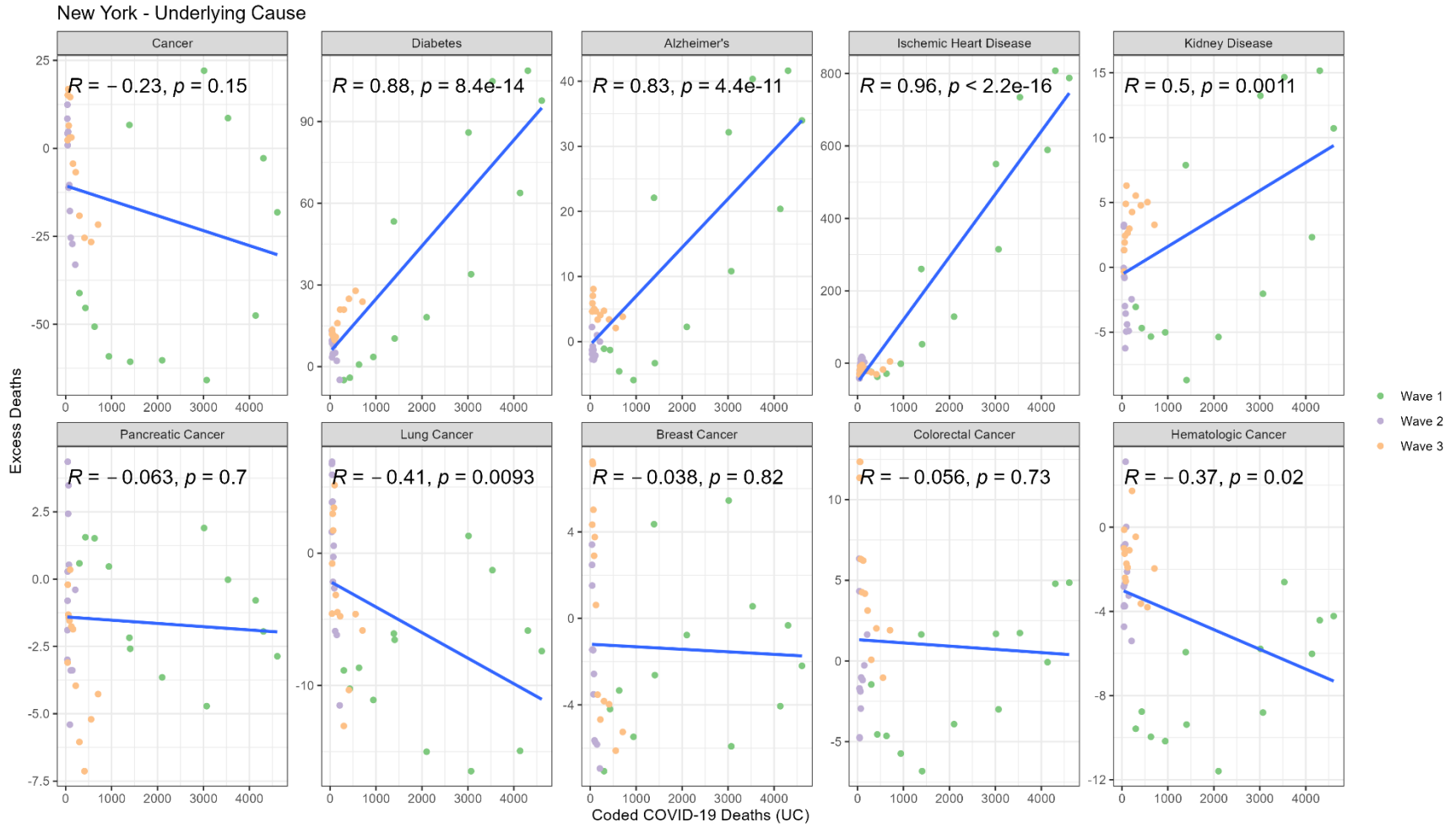
901 **Appendix 1 - Figure 2.** Correlation between weekly number of COVID-19 coded deaths and excess underlying deaths for each
902 diagnosis group (National).



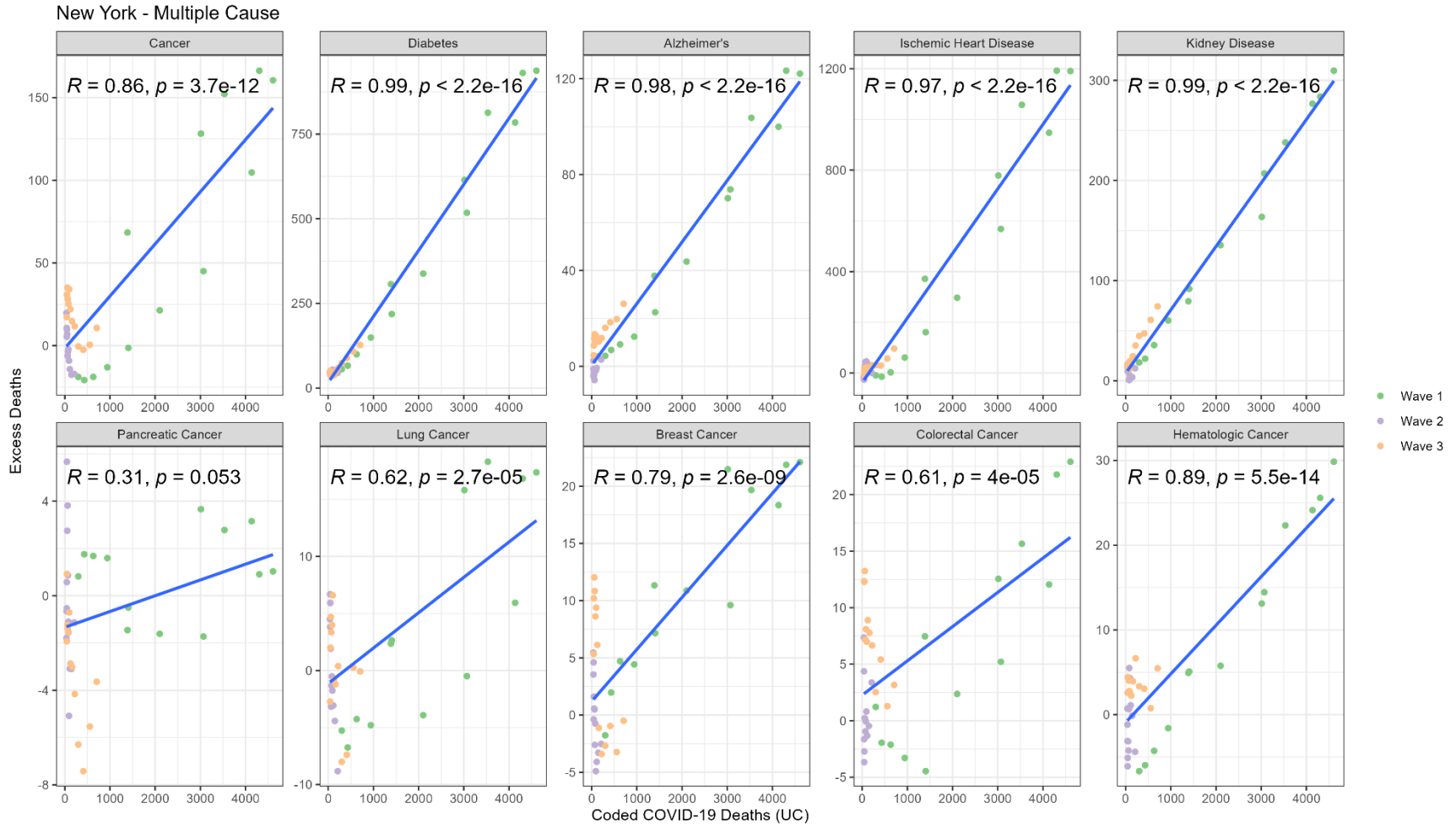
904 **Appendix 1 - Figure 3.** Correlation between weekly number of COVID-19 coded deaths and excess multiple cause deaths for each
 905 diagnosis group (National).



907 **Appendix 1 - Figure 4.** Correlation between weekly number of COVID-19 coded deaths and excess underlying deaths for each
 908 diagnosis group (New York).

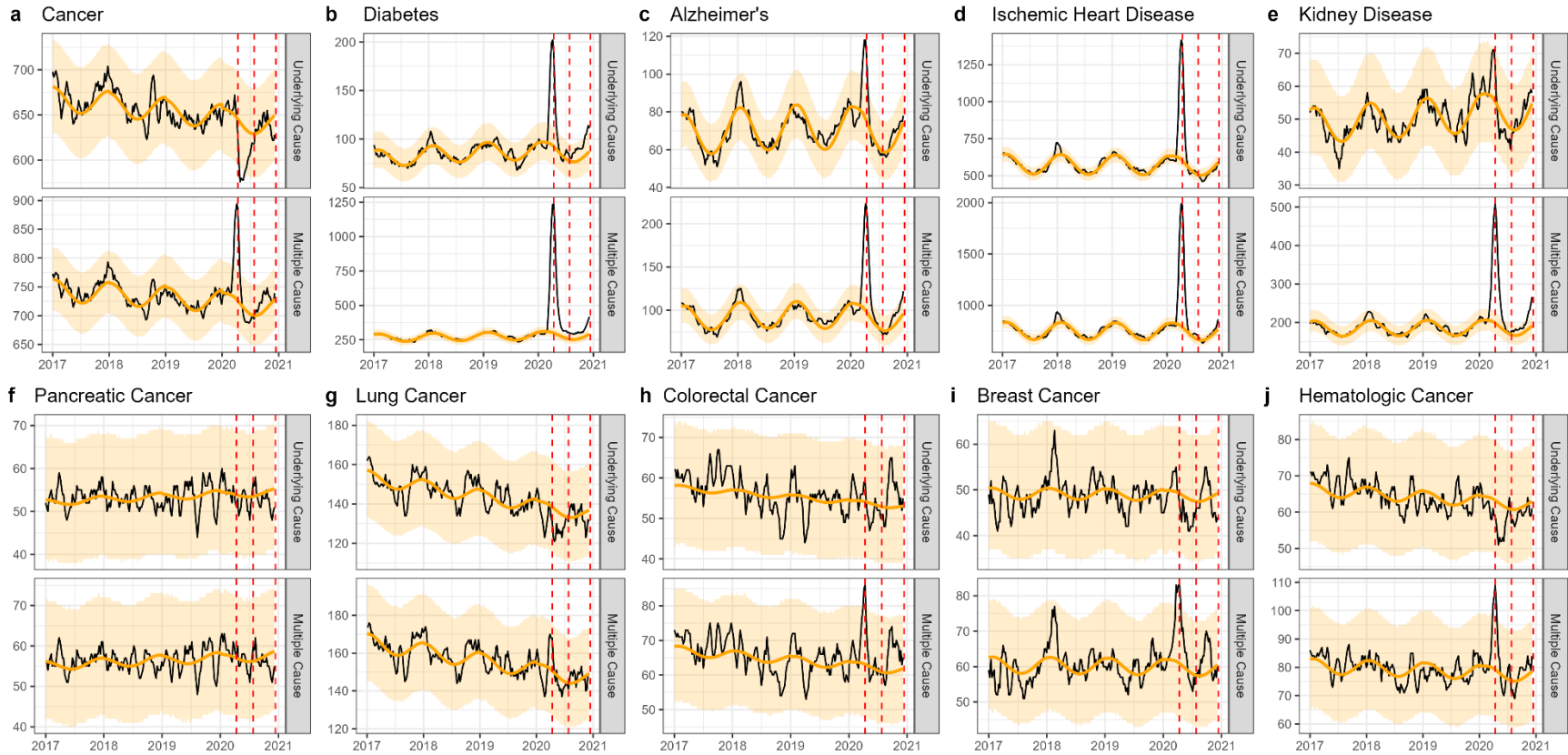


910 **Appendix 1 - Figure 5.** Correlation between weekly number of COVID-19 coded deaths and excess underlying deaths for each
 911 diagnosis group (New York).



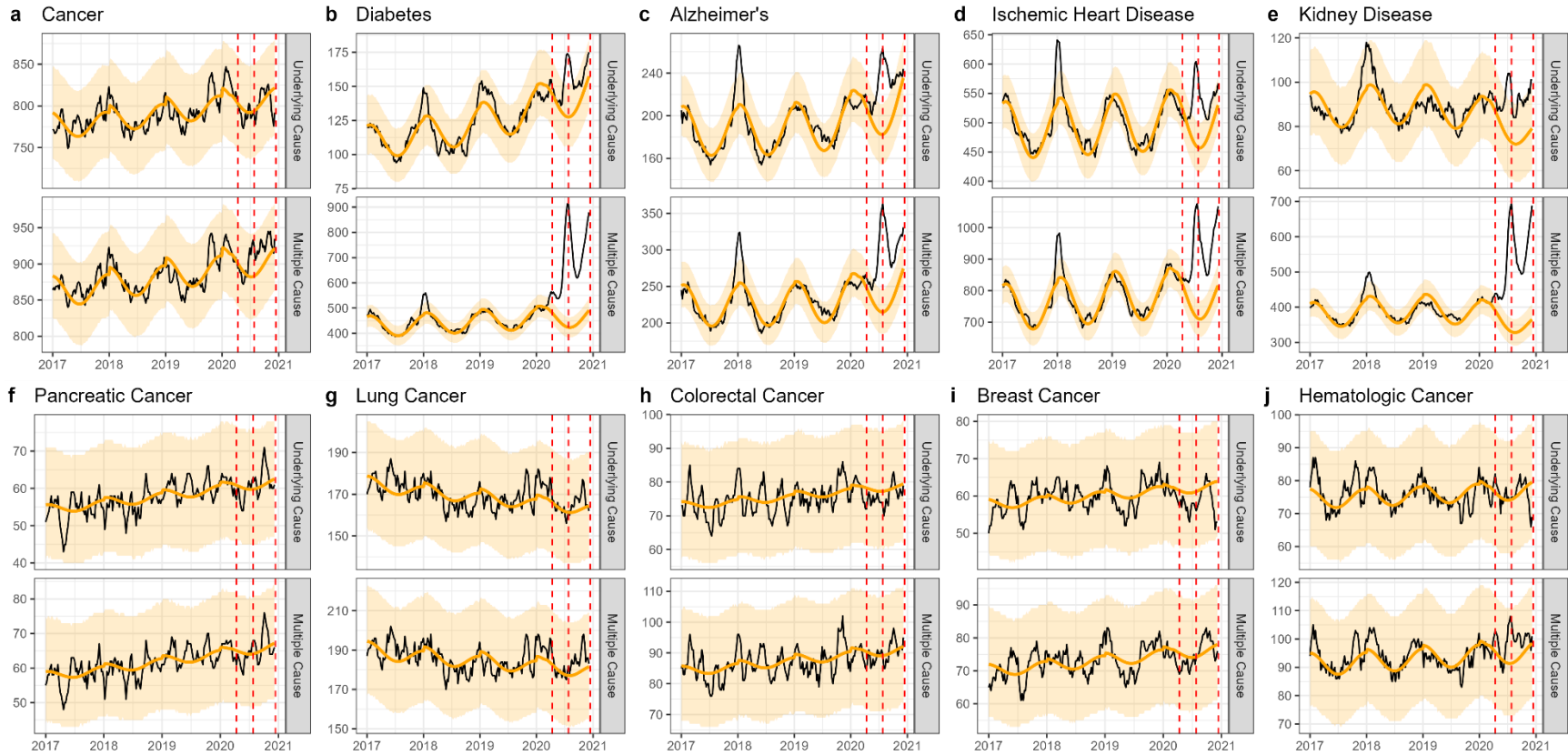
913 **Appendix 1 - Figure 6.** Weekly observed and estimated baseline mortality for each diagnosis group as both the underlying cause or
914 anywhere on the death certificate (multiple cause) from 2017 to 2020 in New York. Baselines during the pandemic are projected
915 based on the previous years of data.

New York



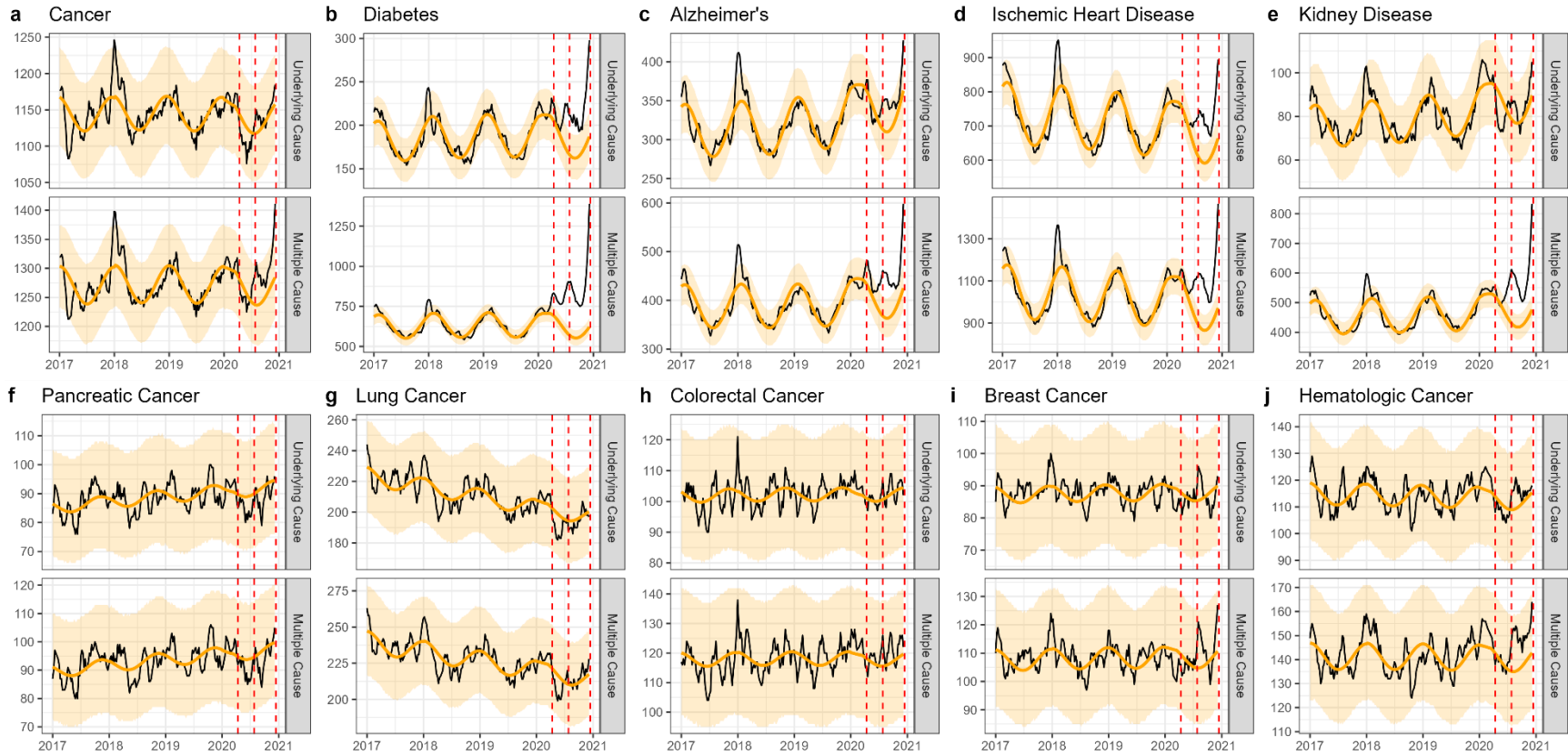
917 **Appendix 1 - Figure 7.** Weekly observed and estimated baseline mortality for each diagnosis group as both the underlying cause or
918 anywhere on the death certificate (multiple cause) from 2017 to 2020 in Texas. Baselines during the pandemic are projected based
919 on the previous years of data.

Texas



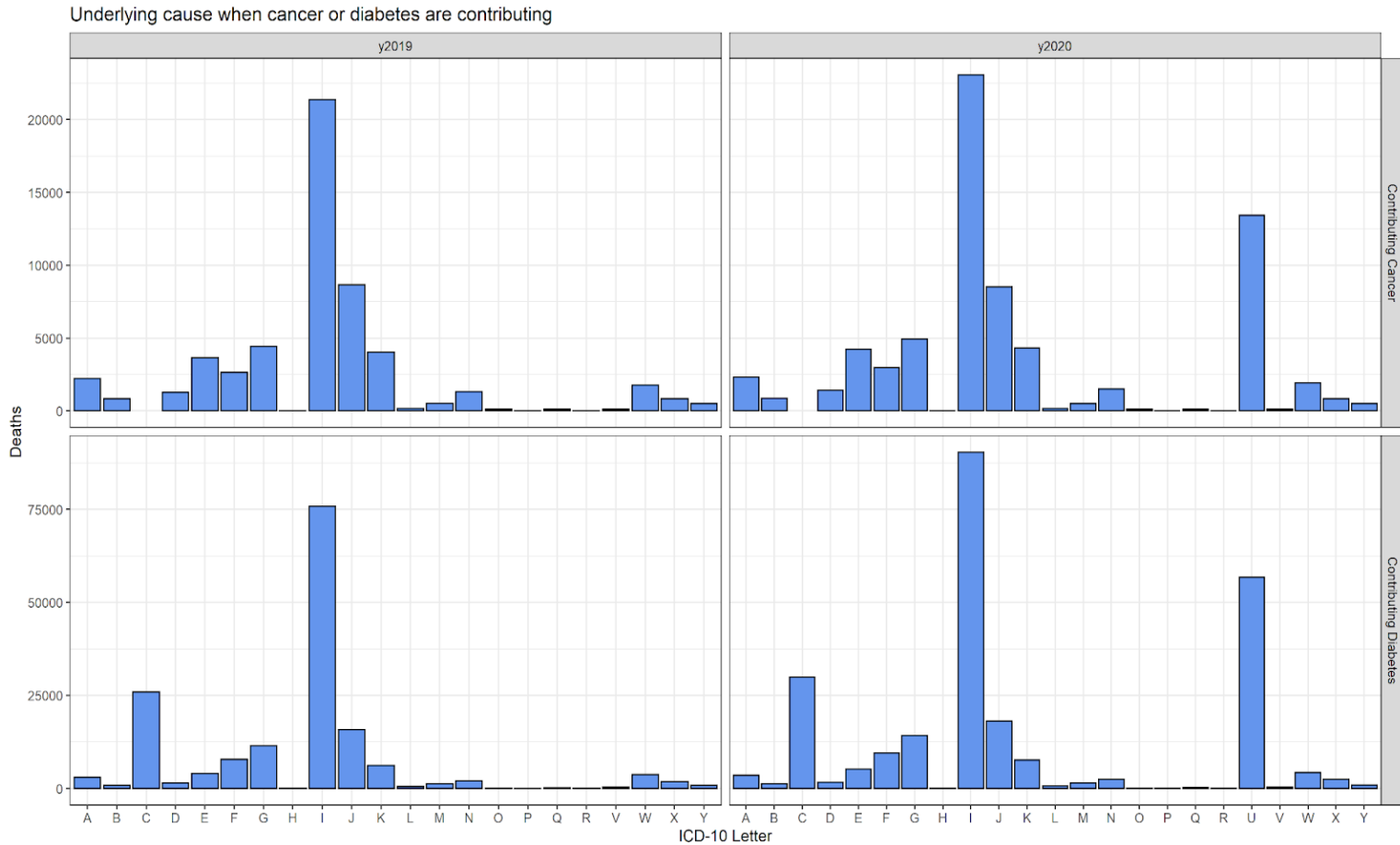
921 **Appendix 1 - Figure 8.** Weekly observed and estimated baseline mortality for each diagnosis group as both the underlying cause or
922 anywhere on the death certificate (multiple cause) from 2017 to 2020 in New York. Baselines during the pandemic are projected
923 based on the previous years of data.

California

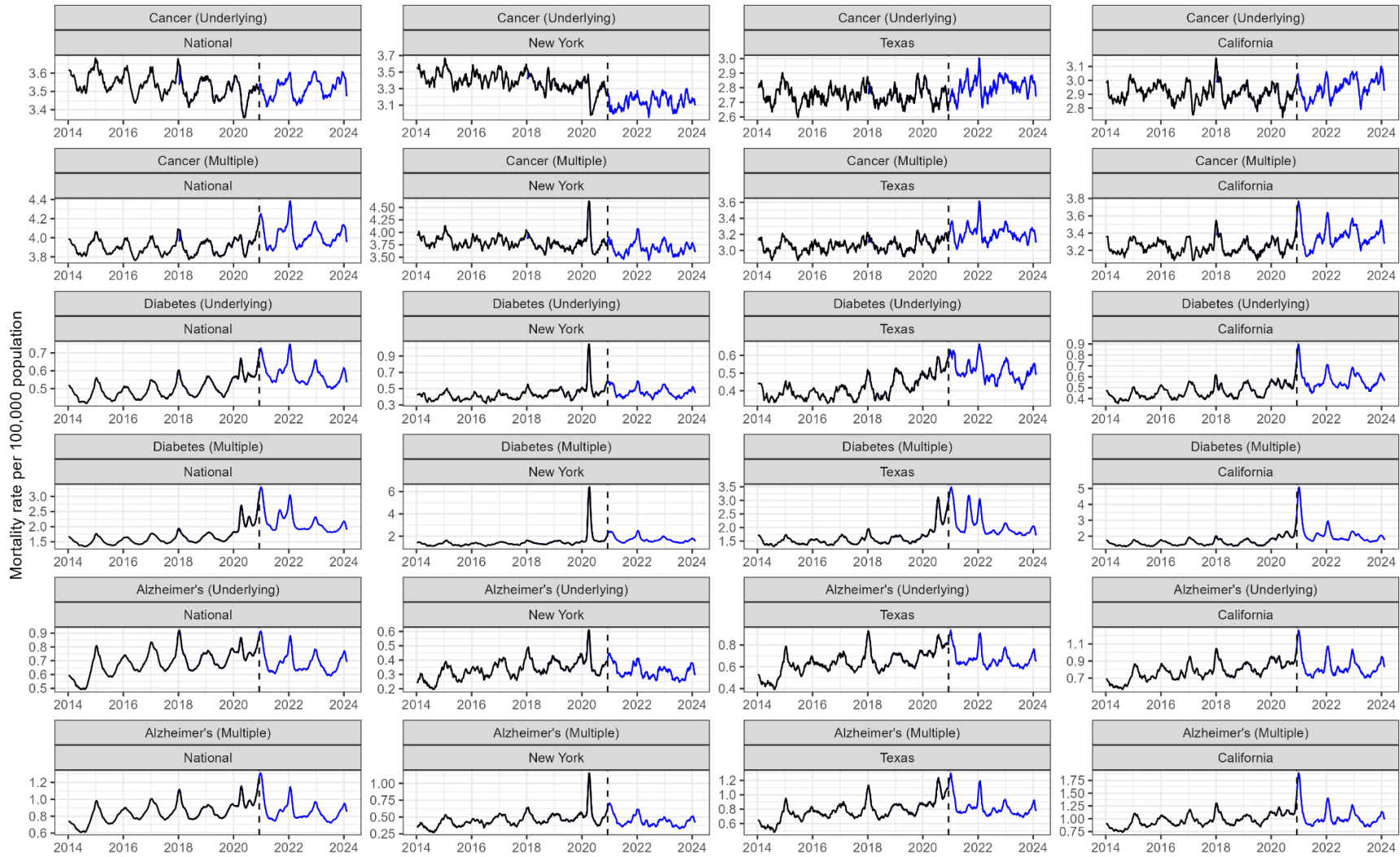


924

925 **Appendix 1 - Figure 9.** Comparison of ICD-10 letter categories between 2020 and 2019 for the underlying cause of death when
 926 cancer or diabetes are included on the death certificate, but are not listed as the underlying cause of death. For both cancer and
 927 diabetes, I codes (diseases of the circulatory system) make up the majority of underlying deaths. The most notable difference
 928 between 2019 and 2020 is the increase in U codes, which includes COVID-19 (U071). In total there were 13,434 deaths ascribed to
 929 COVID-19 (UC deaths) among cancer MC deaths. COVID-19 was included in <3% of all cancer deaths and 17% of diabetes deaths.
 930 In both cases it was listed as the UC on the majority of death certificates where it was included (81% and 97% for cancer and
 931 diabetes, respectively).



933 **Appendix 1 - Figure 10.** Post-2020 trends in cancer, diabetes, and Alzheimer's mortality. Aggregated weekly data was downloaded from CDC
934 Wonder. Trends in cancer mortality rate appear stable in the national data and in Texas and California, but decreasing in New York. The diabetes
935 mortality rate is higher post-2020 compared to earlier years across all states. Alzheimer's appears stable and slowly decreasing.



937 **Appendix 1 - Figure 11.** For each condition three time series models with different time trends were considered (see Methods). The final model
 938 for each condition and location is indicated in blue. The final model was fit to 2014-2018 data only and used to predict the 2019 data. A coverage
 939 proportion (shown in white) was calculated as the proportion of observed 2019 data that fell within the projection intervals of the model. For all
 940 causes of death and states (except MC Kidney disease in California) the coverage proportion was 1, indicating that all data points fell within the
 941 prediction intervals.

