

1 **Hybrid immunity from SARS-CoV-2 infection and vaccination in Canadian**
2 **adults: cohort study**

3
4 Patrick E. Brown¹, Sze Hang Fu¹, Leslie Newcombe¹, Xuyang Tang¹, Nico Nagelkerke¹, H Chaim Birnboim¹, Aiyush
5 Bansal¹, Karen Colwill², Geneviève Mailhot², Melanie Delgado-Brand², Tulunay Tursun², Freda Qi², Anne-Claude
6 Gingras², Arthur S. Slutsky³, Maria D. Pasic³, Jeffrey Companion³, Isaac I. Bogoch⁴, Ed Morawski⁵, Teresa Lam⁵, Angus
7 Reid⁵, Prabhat Jha^{1*}, Ab-C Study Collaborators

8
9 ¹Centre for Global Health Research, Unity Health Toronto and University of Toronto, Toronto, Canada; ²Lunenfeld-
10 Tanenbaum Research Institute, Sinai Health, Toronto, Canada; ³Unity Health Toronto, Toronto, Canada; ⁴Toronto
11 General Hospital, University Hospital Network, Toronto, Canada; ⁵Angus Reid Institute, Vancouver, Canada

12
13 ***For correspondence:** prabhat.jha@utoronto.ca

14
15 Abstract: 291

16 Main text: 2079

17 4 figures and 1 table

18 Supplementary material: 5 figures and 1 table

19 References: 25

20 **Abstract**

21 Background:

22 Few national-level studies have evaluated the impact of “hybrid” immunity (vaccination coupled with
23 recovery from infection) from the Omicron variants of SARS-CoV-2.

24

25 Methods:

26 From May 2020 to December 2022, we conducted serial assessments (each of ~4000-9000 adults)
27 examining SARS-CoV-2 antibodies within a mostly representative Canadian cohort drawn from a
28 national online polling platform. Adults, most of whom were vaccinated, reported viral test–confirmed
29 infections and mailed self-collected dried blood spots to a central lab. Samples underwent highly
30 sensitive and specific antibody assays to spike and nucleocapsid protein antigens, the latter triggered
31 only by infection. We estimated cumulative SARS-CoV-2 incidence prior to the Omicron period and
32 during the BA.1/1.1 and BA.2/5 waves. We assessed changes in antibody levels and in age-specific
33 active immunity levels.

34

35 Results:

36 Spike levels were higher in infected than in uninfected adults, regardless of vaccination doses. Among
37 adults vaccinated at least thrice and infected more than six months earlier, spike levels fell notably and
38 continuously for the nine months post-vaccination. By contrast, among adults infected within six
39 months, spike levels declined gradually. Declines were similar by sex, age group, and ethnicity. Recent
40 vaccination attenuated declines in spike levels from older infections. In a convenience sample, spike
41 antibody and cellular responses were correlated. Near the end of 2022, about 35% of adults above age
42 60 had their last vaccine dose more than six months ago, and about 25% remained uninfected. The
43 cumulative incidence of SARS-CoV-2 infection rose from 13% (95% CI 11-14%) before omicron to 78%
44 (76-80%) by December 2022, equating to 25 million infected adults cumulatively. However, the COVID-
45 19 weekly death rate during the BA.2/5 waves was less than half of that during the BA.1/1.1 wave,
46 implying a protective role for hybrid immunity.

47

48 Conclusions:

49 Strategies to maintain population-level hybrid immunity require up-to-date vaccination coverage,
50 including among those recovering from infection. Population-based, self-collected dried blood spots
51 are a practicable biological surveillance platform.

52

53 Funding:

54 Funding was provided by the COVID-19 Immunity Task Force, Canadian Institutes of Health Research,
55 Pfizer Global Medical Grants, and St. Michael’s Hospital Foundation. PJ and ACG are funded by the
56 Canada Research Chairs Program.

57

58 **Introduction**

59 Infection with the Omicron BA.1/1.1 variant of the SARS-CoV-2 virus occurred worldwide late in 2021
60 and in early 2022. “Hybrid” immunity (vaccination coupled with recovery from infection) has emerged
61 as a major determinant of the lower burden of COVID-19 morbidity and mortality in 2022 compared to
62 2020 or 2021.^{1,2}

63
64 Epidemiological studies have identified hybrid immunity as partially protective against infection or
65 reinfection, and more strongly protective against hospitalization, severe disease, or death.¹⁻³ However,
66 such studies rely on the follow-up of hospitalized patients or those with access to PCR-based testing,
67 and not randomly selected populations. Thus, the contribution of infection and vaccination to hybrid
68 immunity and the duration of immunity from either exposure remain remarkably poorly documented
69 at the population level.⁴⁻⁷

70
71 Development of strategies to move from pandemic to endemic management of COVID-19 will be
72 greatly enabled by evidence of population-level immunity, which ideally should be informed by
73 changes over time in biologic measures of immunologic protection (antibody levels, infection status,
74 vaccination, and healthcare utilization). Humoral antibody levels, which correlate strongly with cellular
75 immunity,⁸ are the most practical method to monitor populations.

76
77 Canada provides an opportunity to document hybrid immunity. Although reaching high levels of
78 vaccination reasonably quickly (by September 2021), Canada experienced a large increase in infections
79 from Omicron from December 2021, even among vaccinated people.⁹ Vaccines used in Canada (mostly
80 the mRNA and some adenovirus vaccines) trigger antibody responses to the SARS-CoV-2 spike protein
81 and its receptor-binding domain (RBD), but not to the nucleocapsid protein (N).¹⁰ This enables
82 serological distinction of infection from vaccination.

83
84 In this study, we estimate cumulative SARS-CoV-2 incidence among Canadian adults in 2020⁴ and 2021
85 - prior to the Omicron period - and during two major Omicron waves (BA.1/1.1 and BA.2 and BA.5) in
86 2022.⁵ We assess declines in active immunity and changes over time in age-specific active immunity
87 levels based on prior infection and concurrent vaccination.

88 89 **Results**

90 We examined three time periods: (i) March 2020 to December 2021 when Canada faced waves of
91 ancestral, Alpha, and Delta variants of SARS-CoV-2; (ii) January-March 2022 during the Omicron
92 BA.1/1.1 wave; and (iii) April-December 2022 during the Omicron BA.2 and BA.5 waves. Figure 1
93 provides the timeline for Phases 1 to 6, in relation to national weekly averages of confirmed COVID-19
94 cases and weekly averages of vaccination from any dose.

95
96 We surveyed 10 088 adults in Phase 6 of Ab-C, of whom 4025 provided DBS from 26 September to 21
97 November 2022, and of whom 3378 provided both surveys and DBS. Study participants were

98 comparable to Canadian adults in prevalence of obesity, smoking, diabetes, and vaccination, but fewer
99 lower-education adults participated (supplementary table S1). More females and vaccinated adults
100 provided DBS in Phase 6. Lack of vaccination and lower education were correlated (supplementary
101 methods), so we adjusted cumulative incidence for vaccination status. The characteristics of the cohort
102 were stable between Phases 3, 4, and 6 (supplementary table S1), so changes in antibody levels are
103 unlikely to be confounded by differential recruitment in each phase.^{4,5}
104

105 Canada had four major viral waves before December 2021 and a major increase in vaccination
106 coverage with two doses peaking in early July 2021 (fig 1). A large Omicron BA.1/1.1 wave of January-
107 March 2022 coincided with a large increase in vaccination, mostly of third (booster) doses. The six Ab-C
108 phases captured Canada's major infection and vaccination peaks in a reasonably timely manner.
109

110 Spike levels were higher in infected than in uninfected adults, regardless of vaccination doses (fig 2).
111 Spike levels were higher among those who were infected and vaccinated, and lowest among the very
112 few who were immune naïve or had only one vaccine dose or infection without vaccination.
113 Uninfected adults with four vaccine doses were similar in spike level distribution to infected adults with
114 only two or three vaccine doses. Results using the RBD protein were similar (supplementary figure S3).
115

116 Among adults vaccinated at least thrice and infected more than six months earlier, spike levels fell
117 notably and continuously for the nine months post-vaccination (fig 3). By contrast, among adults
118 infected within six months, the decline in spike levels was more gradual. Declines were similar by sex,
119 by age group (15-59 years or 60+ years), and among various ethnicities (including visible minorities and
120 Indigenous populations). Vaccination within six months boosted spike levels from older infections that
121 would have otherwise fallen, yielding similar spike levels among adults infected more than six months
122 ago or infected within six months (supplementary figure S4). Stratifying by periods of 2 months or less,
123 3-5 months, and 6 or more months yielded comparable results, albeit with smaller numbers in each
124 stratum (data not shown).
125

126 Among a convenience sample of 39 adults, all 32 vaccinated adults had positive spike T-cell responses.
127 The T-cell titers and spike antibody levels correlated (supplementary figure S5).
128

129 Applying the Ab-C results, after standardizing for vaccination status, region, age, and sex to the
130 national profile of Canadian adult population, yielded estimates of cumulative incidence of SARS-CoV-2
131 infection rising from about 13% before Omicron to 78% by December 2022. This equates to about 25
132 million infected adults cumulatively. Canada had about 50 000 COVID deaths from March 2020 to
133 December 2022, corresponding to about 6% higher mortality at all ages versus background death
134 rates.¹⁷ Over 90% of Canadian COVID deaths occurred above age 60 years.⁹ Despite the rising
135 cumulative incidence, the COVID-19 weekly death rate per million population during the Omicron
136 BA.2/5 waves (7.7) was less than half of the weekly death rate during the Omicron BA.1/1.1 wave

137 (16.6). This suggests that hybrid immunity played a role in reducing severe disease and deaths (Table
138 1).

139

140 There were marked increases in infection among younger (18-59 years) and older (60+ years) mostly
141 vaccinated adults, rising from about 11% in each age group by August 2021 to about 86% and 75%,
142 respectively, by December 2022 (fig 4). However, fully 35% of adults above age 60, who are most at
143 risk of hospitalization or death, had their last vaccine dose more than six months ago, and about 25%
144 remained uninfected.

145

146 **Discussion**

147 We demonstrate the protective nature of hybrid immunity at a population level using robust biological
148 markers of cumulative infection paired with viral testing. While steps to protect individuals and
149 populations from SARS-CoV-2 infection must continue to be implemented, close to 80% of Canadian
150 adults became infected, mostly from the Omicron variants, by December 2022. This led to notable
151 morbidity and mortality, but also led to population-level hybrid immunity.

152

153 Despite a marked increase in cumulative infection, COVID-19 death rates during Omicron BA.2 and
154 BA.5 were markedly lower than during BA.1/1.1, likely reflecting protection against severe disease
155 from hybrid immunity (despite lower protection against reinfection). Canadian healthcare systems
156 were overburdened with COVID-related hospitalizations several times during the pandemic. Since
157 summer 2022, hospitalizations have eased significantly, most notably with fewer admissions to
158 intensive care units following the initial Omicron BA.1/1.1 wave.⁹ Differences in pathogenicity of
159 successive Omicron variants are likely too small¹⁸ to explain the differences in COVID-19 death rates.

160

161 We showed that absent recent infection, spike levels declined up to nine months, but reassuringly,
162 declines were comparable in older versus younger adults and by sex and ethnicity. Importantly, recent
163 vaccination attenuated the declines in spike levels from older infections. Obviously, reliance on
164 infections is unwise to boost immunity, especially for those most vulnerable to severe COVID-19.

165 Collectively, our and other studies on hybrid immunity^{1-5,7,19} suggest that older adults may require
166 access to booster doses at 6 to 12-month intervals, and prior to possible seasonal waves. Strategies to
167 maintain population-level hybrid immunity require high vaccination coverage, including among those
168 who have recovered from infection and the few remaining unvaccinated.

169

170 The Ab-C study is one of the few nationally representative serosurveys to measure hybrid immunity
171 objectively,⁵⁻⁷ and has the benefit of sampling the entire population. Large increases from Omicron
172 wave are evident in other Canadian studies (mostly done prior to the BA.5 waves).²⁰ A national US
173 study among blood donors reports lower levels of infection than do we,⁶ but has not yet reported on
174 the BA.4/5 waves. Moreover, blood donors or hospitalized patients may have notable biases.²⁰ Since
175 the Omicron variant of SARS-CoV-2 appeared, self-testing using rapid antigen tests displaced PCR-
176 testing in many countries, including Canada.²¹ The use of spike levels has limitations, although we

177 found it correlated with cellular immunity. Earlier studies demonstrate that high levels of spike or RBD
178 antibodies are predictive of neutralizing antibodies⁸ and correlate with lower viral loads that reduce
179 severe disease in the infected and transmission to others.²²

180

181 Nonetheless, our study has some limitations. First, we deliberately focused on distributions of antibody
182 levels which overlap in the comparison categories, but this has the benefit of showing the full range of
183 spike antibody response in the various strata of the infected and vaccinated. We may be
184 underestimating spike antibody levels due to assay saturation.¹³ N-positivity may have underestimated
185 actual infection because mild cases among vaccinated adults did not mount an antibody response or
186 because people did not seroconvert during the sampling period. Conversely, some adults may have
187 reverted to N-negative status. Finally, defining infection based on cumulative seropositivity and time-
188 specific viral test positivity is crude and made more complicated by periodic viral or vaccination waves.
189 Thus, we are limited in quantifying the hybrid immunity arising from various sequences of variant
190 infections and vaccinations. For example, the apparent plateauing of spike level declines at nine
191 months in figure 3 may reflect cohorts facing at least two distinct vaccination or viral waves.

192

193 Canadian COVID-19 death rates are lower compared to the United States and other similar countries,²³
194 and we speculate this may be from the sequence of low levels of infection pre-Omicron paired with
195 high vaccination coverage of two doses, followed by a large Omicron wave. Comparative analyses
196 across countries using objective measures of hybrid immunity are required. In Canada and other
197 countries, home-based self-drawn dried blood spots are a widely practicable and relatively inexpensive
198 monitoring strategy for SARS-CoV-2 population immunity. Despite their limitations, serial serosurveys
199 at the population level are reasonably efficient, low-cost ways to monitor hybrid immunity and to
200 study newer variants of SARS-CoV-2, and possibly even other infectious agents.

201

202 **Materials and Methods**

203 From May 2020, the Action to Beat Coronavirus (Ab-C) conducted six serial assessments of SARS-CoV-2
204 symptoms and seropositivity, with five surveys covering about 4000-9000 adults (fig 1). We recruited
205 adults using the Angus Reid Forum, a nationally representative online polling platform that
206 approximately matches Canada's demographic profile.⁴ Details of the sampling, antibody testing
207 strategy, and analyses have been published earlier.^{4,5,11,12} The supplementary methods and
208 supplementary figure S1 report the recruitment, the dried blood spot (DBS) sample return rates, and
209 the few exclusions from the six phases of the study.

210

211 The online survey assessed demographic characteristics, history of smoking, hypertension, obesity
212 (self-reported height and weight), diabetes, and experience with SARS-CoV-2 infection symptoms and
213 PCR or rapid antigen testing. At the end of the survey, respondents indicated their willingness to self-
214 collect a blood sample by finger prick, and we sent consenters a DBS collection kit. DBS samples were
215 returned to Unity Health laboratories in Toronto, with mail transit times ranging 3-6 days. Sinai Health
216 in Toronto conducted highly sensitive and specific chemiluminescence-based enzyme-linked

217 immunosorbent assays targeting the spike protein, RBD, and N.^{13,14} Various quality control steps
218 focused on reducing false positives and false negatives, and adjusting the dilution to better detect
219 antibody signals once vaccination became widespread (Section S1 provides details of the lab methods
220 and analyses). We conducted cluster analyses of N-positivity to assign a probability of seropositivity to
221 each sample using control samples and those with known past viral testing results (supplementary
222 figure S2). In a subset of 39 adults in Toronto selected conveniently, we collected venous blood
223 samples at home, and tested these centrally for cellular immunity using the Euroimmun Interferon
224 Gamma Release Assay¹⁵ to detect T-cell activity against the spike protein (supplementary methods).
225
226 Our primary outcomes were the relative levels of antibodies to the spike protein (hereafter “spike
227 levels”), which are increased both by vaccination and infection (defined as N-positivity or self-reported
228 PCR/rapid test positivity), as a proxy for hybrid immunity levels. Our secondary outcome was the
229 combination of vaccination history and infection. We applied the age-specific cumulative incidence of
230 SARS-CoV-2 to the Statistics Canada national population totals¹⁶ to derive estimates of the number of
231 adults infected in each major phase and compared cumulative incidence to confirmed COVID deaths by
232 phase. Confirmed COVID deaths in Canada⁹ are within 10% of analyses that apply excess all-cause
233 mortality as an upper bound for COVID-19 mortality.¹⁷
234

235 **Acknowledgements**

236 We thank the thousands of Canadians who participated in the Ab-C study. Euroimmun Medical
237 Diagnostics (Sean McFadden) supported the T-cell testing platform at St. Joseph’s Health Centre/Unity
238 Health.
239

240 **Competing interests**

241 ASS has received consulting fees from Apeiron Biologics, Cellenkos, Diffusion Pharmaceuticals, and GlaxoSmithKline
242 outside the submitted work. IIB has served as a consultant for BlueDot and the National Hockey League Players’
243 Association outside the submitted work.
244

245 **Funding**

246 Funding was provided by the COVID-19 Immunity Task Force, Canadian Institutes of Health Research, Pfizer Global
247 Medical Grants, and St. Michael’s Hospital Foundation. PJ and ACG are funded by the Canada Research Chairs
248 Program. The funders had no role in study design, data collection and interpretation, or the decision to submit the
249 work for publication.
250

251 **Author contributions**

252 PJ and AR conceived the study. SHF, LN, AB, and EM contributed to Ab-C recruitment and implementation. PEB, SHF,
253 XT, NN, TL, and PJ contributed to statistical analyses. HCB, KC, GM, MDB, TT, FQ, A-CG, MDP, and JC contributed to
254 laboratory methods. ASS and IIB contributed to data analysis and interpretation. PJ, PEB, and SHF wrote the first
255 draft, and all authors contributed. PJ is the study guarantor. The corresponding author attests that all listed authors
256 meet authorship criteria and that no others meeting the criteria have been omitted.
257

258 **Ethics**

259 The Ab-C study was approved by the Unity Health Toronto Research Ethics Board (REB # 20-107 and 21-213). All
260 participants provided informed consent to be included in the study.
261

It is made available under a [CC-BY 4.0 International license](#) .

262
263
264
265

Data availability

Ab-C data will be made available publicly through the COVID-19 Immunity Task Force Databank. Analytical code will be available on request in accordance with the Ab-C study's data governance plan.

266
267
268
269
270
271
272
273
274
275
276
277
278
279
280
281
282
283
284
285
286
287
288
289
290
291
292
293
294
295
296
297
298
299
300
301
302
303
304
305
306
307
308
309
310
311
312
313
314
315
316
317
318

References

- 1 Bobrovitz N, Ware H, Ma X, et al. Protective effectiveness of previous SARS-CoV-2 infection and hybrid immunity against the omicron variant and severe disease: a systematic review and meta-regression. *Lancet Infect Dis* 2023;S1473-3099(22)00801-5.
- 2 COVID-19 Forecasting Team. Past SARS-CoV-2 infection protection against re-infection: a systematic review and meta-analysis. *Lancet* 2022;401:833-42.
- 3 Altarawneh HN, Chemaitelly H, Hasan MR, et al. Protection against the Omicron variant from previous SARS-CoV-2 infection. *N Engl J Med* 2022;386:1288-90.
- 4 Tang X, Sharma A, Pasic M, et al. Assessment of SARS-CoV-2 seropositivity during the first and second viral waves in 2020 and 2021 among Canadian adults. *JAMA Netw Open* 2022;5:e2146798.
- 5 Brown PE, Fu SH, Bansal A, et al. Omicron BA.1/1.1 SARS-CoV-2 infection among vaccinated Canadian adults. *N Engl J Med* 2022;386:2337-9.
- 6 Centers for Disease Control and Prevention. COVID Data Tracker. Atlanta, GA: US Department of Health and Human Services, CDC, 2023. <https://covid.cdc.gov/covid-data-tracker> (accessed 28 February 2023).
- 7 Goldberg Y, Mandel M, Bar-On YM, et al. Protection and waning of natural and hybrid immunity to SARS-CoV-2. *N Engl J Med* 2022;386:2201-12.
- 8 Feng C, Shi J, Fan Q, et al. Protective humoral and cellular immune responses to SARS-CoV-2 persist up to 1 year after recovery. *Nat Commun* 2021;12:4984.
- 9 Public Health Agency of Canada. Coronavirus disease (COVID-19). Ottawa, ON: Public Health Agency of Canada, 2023. <https://health-infobase.canada.ca/covid-19/> (accessed 28 February 2023).
- 10 Duarte N, Yanes-Lane M, Arora RK, et al. Adapting serosurveys for the SARS-CoV-2 vaccine era. *Open Forum Infect Dis* 2022;9:ofab632.
- 11 Wu DC, Jha P, Lam T, et al. Predictors of self-reported symptoms and testing for COVID-19 in Canada using a nationally representative survey. *PLoS One* 2020;15:e0240778.
- 12 Tang X, Gelband H, Nagelkerke N, et al. COVID-19 vaccination intention during early vaccine rollout in Canada: a nationwide online survey. *Lancet Reg Health Am* 2021;2:100055.
- 13 Colwill K, Galipeau Y, Stuibler M, et al. A scalable serology solution for profiling humoral immune responses to SARS-CoV-2 infection and vaccination. *Clin Transl Immunology* 2022;11:e1380.
- 14 Isho B, Abe KT, Zuo M, et al. Persistence of serum and saliva antibody responses to SARS-CoV-2 spike antigens in COVID-19 patients. *Sci Immunol* 2020;5:eabe5511.
- 15 Fernandez-Gonzalez M, Agullo V, Padilla S, et al. Clinical performance of a standardized Severe Acute Respiratory Syndrome Coronavirus 2 (SARS-CoV-2) interferon-gamma release assay for simple detection of T-cell responses after infection or vaccination. *Clin Infect Dis* 2022;75:e338-46.
- 16 Statistics Canada. Table 17-10-0005-01 population estimates on July 1st, by age and sex. 2023. <https://doi.org/10.25318/1710000501-eng> (accessed 15 February 2023).
- 17 World Health Organization. Global excess deaths associated with COVID-19 (modelled estimates). Geneva: World Health Organization, 2022. <https://www.who.int/data/sets/global-excess-deaths-associated-with-covid-19-modelled-estimates> (accessed 28 February 2023).
- 18 Strasser ZH, Greifer N, Hadavand A, Murphy SN, Estiri H. Estimates of SARS-CoV-2 Omicron BA.2 subvariant severity in New England. *JAMA Netw Open* 2022;5:e2238354.
- 19 Tan CY, Chiew CJ, Lee VJ, Ong B, Lye DC, Tan KB. Comparative effectiveness of 3 or 4 doses of mRNA and inactivated whole-virus vaccines against COVID-19 infection, hospitalization and severe outcomes among elderly in Singapore. *Lancet Reg Health West Pac* 2022;29:100654.
- 20 Murphy TJ, Swail H, Jain J, et al. The evolution of population immunity to SARS-CoV-2 – a time-series study of seroprevalence in Canada, 2020-2022. *Can Med Assoc J* (in press).
- 21 Angus Reid Forum. Incidence of Omicron: One-in-five Canadians report COVID-19 infection in their household since Dec. 1. Angus Reid Forum, 2022. <https://angusreid.org/omicron-incidence-restrictions/> (accessed 28 February 2023).
- 22 Tan ST, Kwan AT, Rodriguez-Barraquer I, et al. Infectiousness of SARS-CoV-2 breakthrough infections and reinfections during the Omicron wave. *Nat Med* 2023;29(2):358-65.
- 23 Razak F, Shin S, Naylor CD, Slutsky AS. Canada's response to the initial 2 years of the COVID-19 pandemic: a comparison with peer countries. *Can Med Assoc J* 2022;194:E870-7.
- 24 Little N. COVID-19 Tracker Canada. <https://covid19tracker.ca/> (accessed 3 February 2023).
- 25 Fox J, Weisberg S. An R companion to applied regression. Thousand Oaks, CA: Sage Publications; 2018.

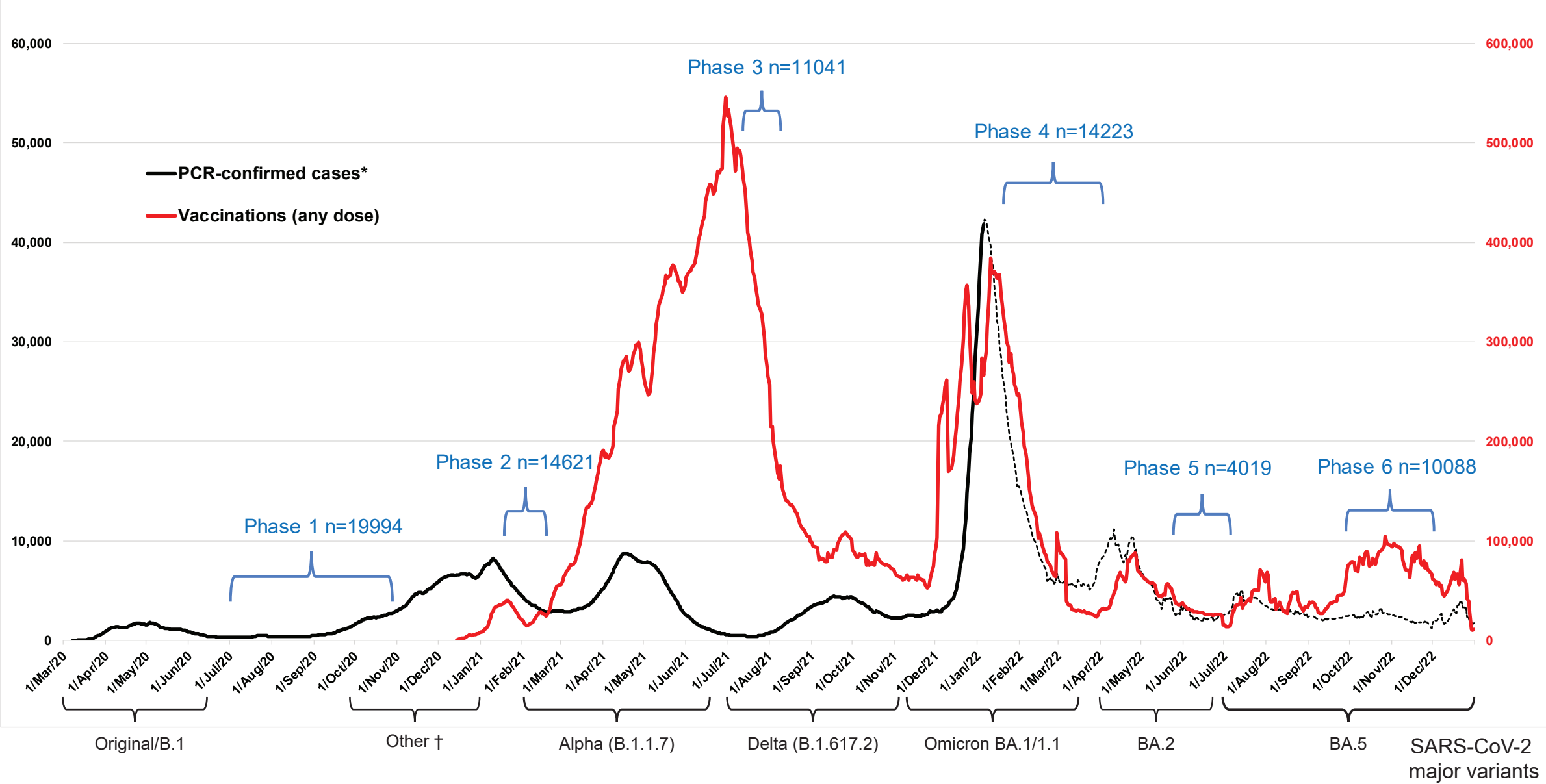
Table 1. Cumulative incidence, numbers of infected adults, cumulative deaths, and period COVID-19 mortality rate in Canada during various SARS-CoV-2 viral waves

Time period	Cumulative incidence* % (95% CI)	No of adult (age 18 or older) infections in millions	Cumulative no of deaths[†]	Covid-19 mortality rate per million per week during the relevant period
Pre-Omicron 2020-2021	12.7 (11.2-14.1)	3.9 (3.5-4.4)	30 149	8.6
Omicron BA.1/1.1 Jan.-Mar. 2022	35.7 (34.0-37.4)	11.3 (10.7-11.8)	37 750	16.6
Omicron BA.2/5 Apr.-Dec. 2022	77.7 (75.7-79.6)	24.6 (23.9-25.2)	49 674	7.7

Notes:

*Post-stratified for geographic region, age, sex, and vaccination status to derive the mean estimate (supplementary methods).

†We used data by end of December 2021, March 2022, and December 2022 from Public Health Agency of Canada's COVID-19 epidemiology update (<https://health-infobase.canada.ca/covid-19/>) for total number of deaths.⁹ Applying the proportion of long-term care deaths from Long-term Care COVID-19 Tracker (<https://ltc-covid19-tracker.ca>) to the last period, 19 789 of total cumulative deaths occurred in long-term care. Of all long-term care deaths, about 80% occurred during the pre-Omicron period, mostly during the first viral wave of March-June 2020 (fig 1). Over 90% of all COVID deaths occurred at ages 60 or older.



* Dotted line indicates period after restrictions to PCR testing eligibility
 † Major variants include AE.8, B.1.36.36, B.1.2, B.1.160, B.1.438.1

Figure 1. Seven-day rolling averages of PCR-confirmed covid-19 cases in Canada (black solid and dotted line), and SARS-CoV-2 vaccinations (any dose; red line) in relation to the data collection phases of the Ab-C study. Testing and vaccination data were derived from COVID-19 Tracker Canada as of 3 February 2023 (<https://COVID19Tracker.ca>).²⁴ Data on major variants were obtained from Public Health Agency of Canada’s Health Infobase COVID-19 epidemiology update (<https://health-infobase.canada.ca/covid-19/testing-variants.html>).⁹ Dotted lines for PCR-based testing after 1 January 2022 reflect the major uncertainty in PCR-based testing. Widespread PCR testing guidelines became stricter and were significantly scaled back in community settings and thus became far less reliable to monitor trends.

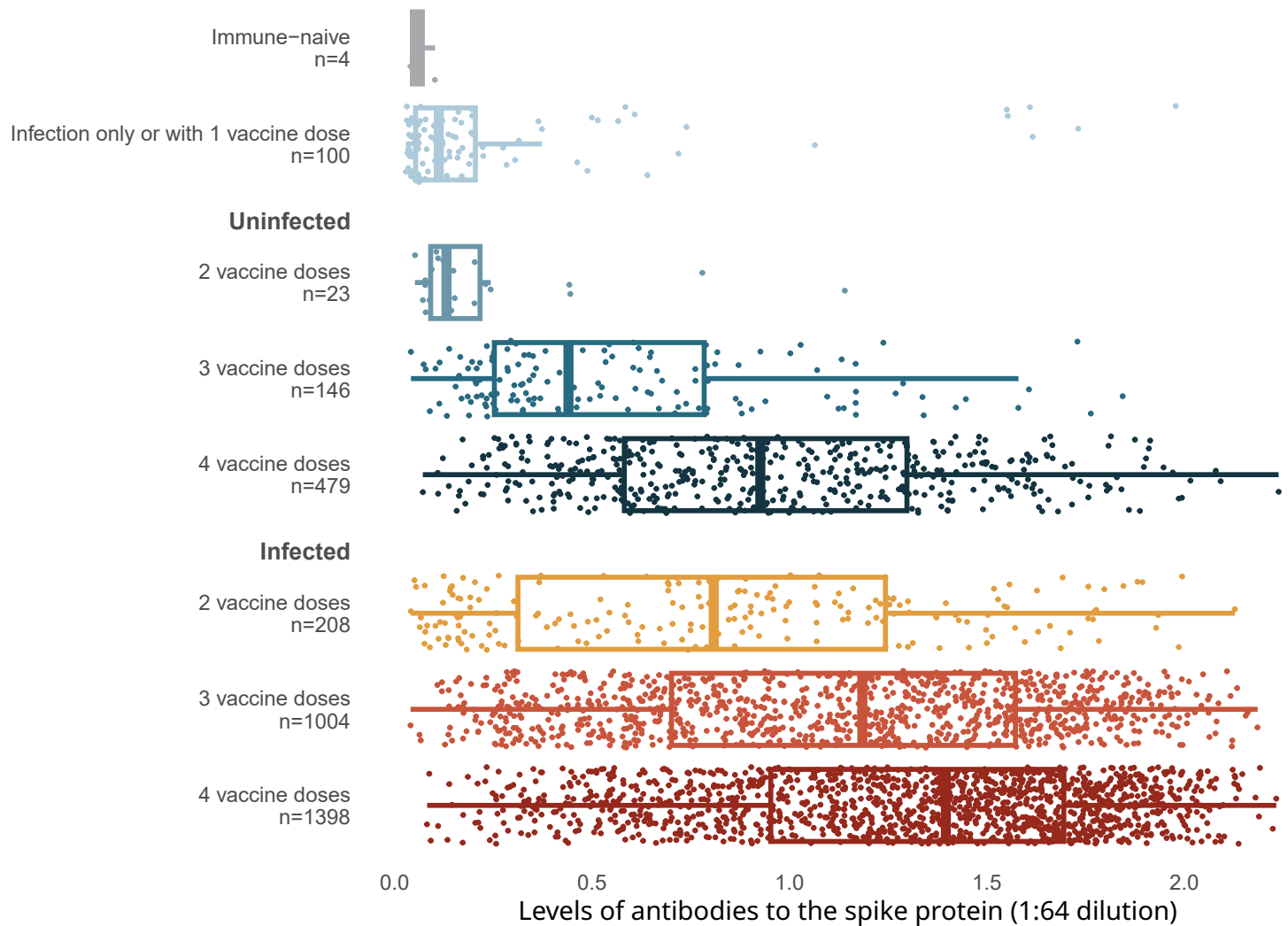


Figure 2. Levels of antibodies to the spike protein stratified by infection and number of vaccination doses.

Circles represent individuals with their last vaccination (or unvaccinated) >10 days prior to dried blood spot sample collection (n=3378 with complete information available as of the time of analyses after excluding 14 low quality samples). We further excluded 16 participants whose samples were seronegative and viral test was positive, but who did not provide viral test dates or reported test dates less than eight days from the receipt of DBS. The solid-coloured line represents the median and box plots show the interquartile range. The results above a relative level of 1.2 are outside the linear range of the assay. Results using the receptor-binding domain antigen were similar to the spike protein (supplementary figure S3).

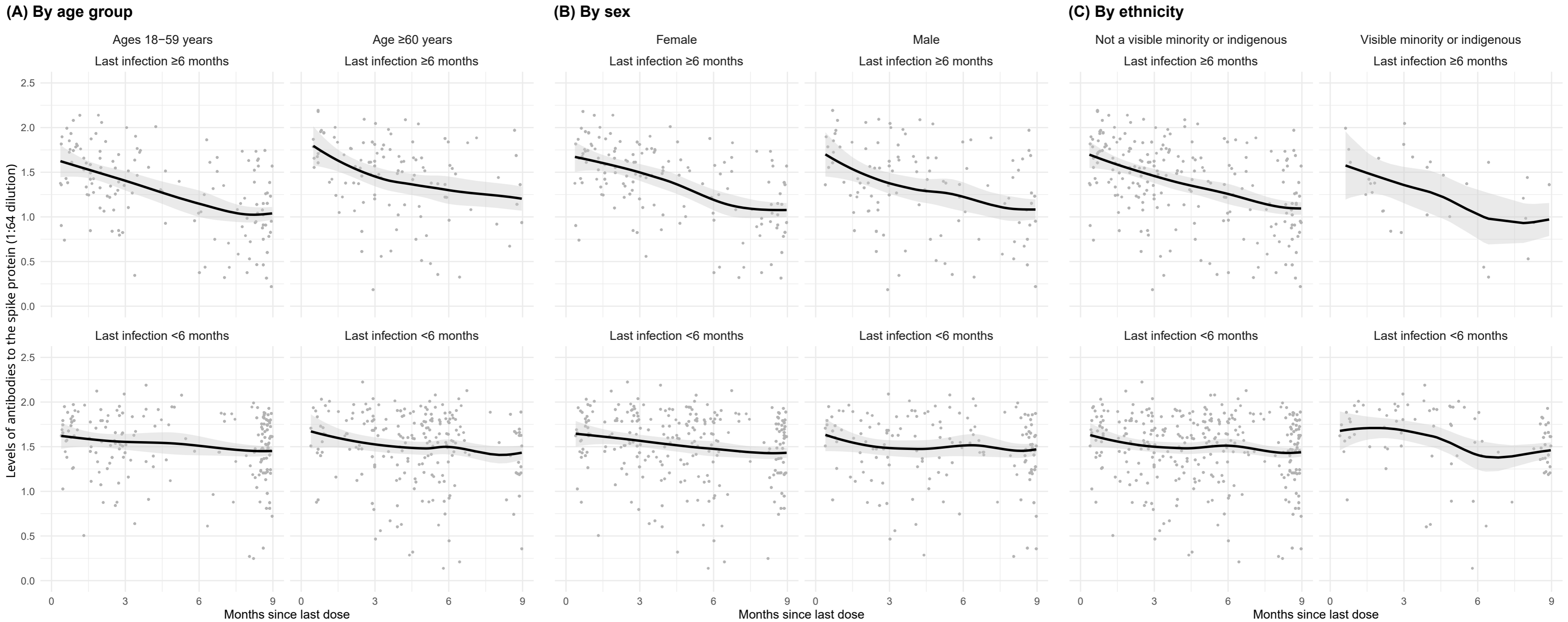


Figure 3. Age, sex, and ethnicity-specific trends to nine months in levels of antibodies to the spike protein among adults vaccinated with 3-4 doses, stratified by infection more than six months ago or less than six months ago.

See footnote to figure 2 for testing details. We created smoothed curves and 95% confidence intervals using locally weighted scatterplot smoothing with span parameter of 0.8.²⁵

Ages 18–59 years

Age 60 years and above

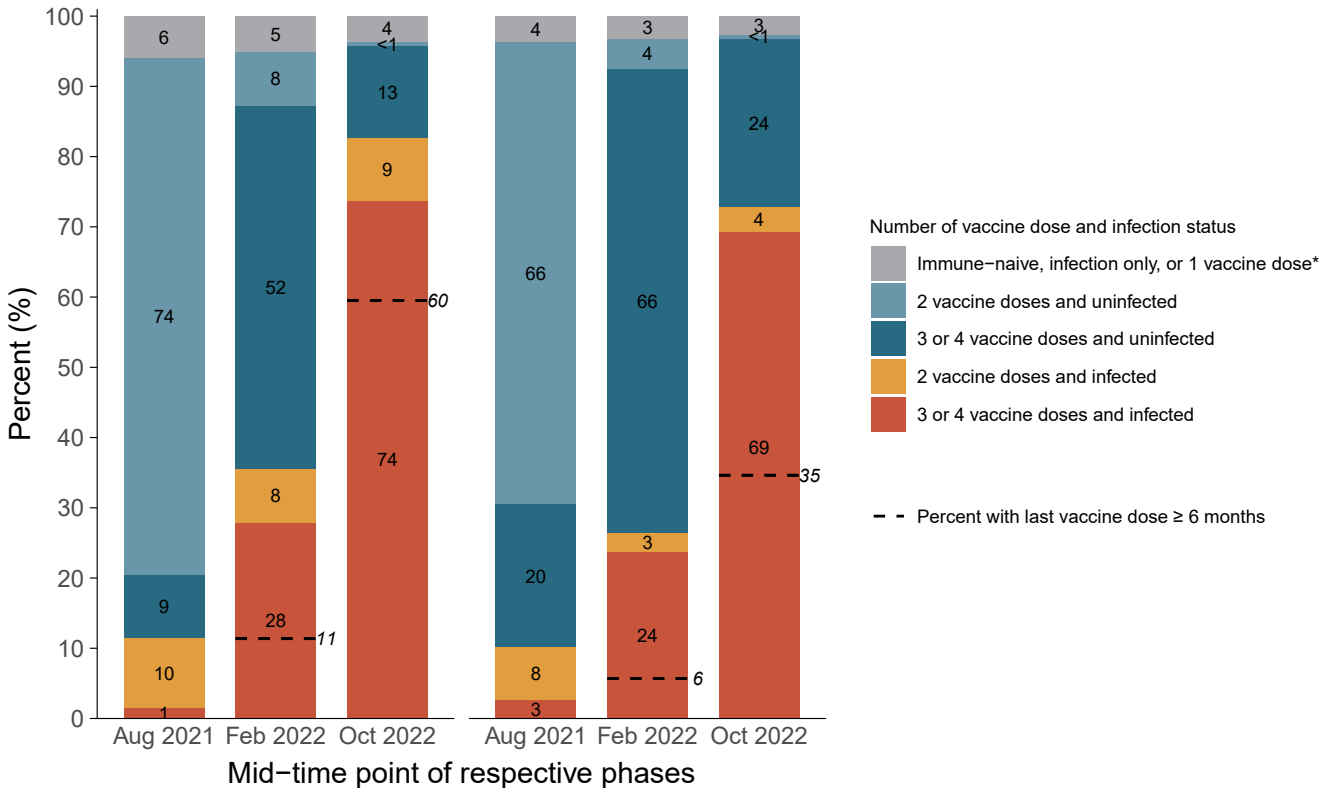


Figure 4. Cumulative incidence in each stratum of infection and vaccination in the pre-omicron wave, during the omicron BA.1/1.1 wave, and during the BA.2 and BA.5 waves by age group.

*Including uninfected and infected cases. The first column in each age group represents the antibody and viral test positivity for the entire period prior to omicron, whereas the second column represents the values during the omicron BA.1/1.1 wave and the third during the BA.2/5 waves. By the last time period studied, the numbers of participants aged 15–59 who were N-positive, viral test-positive, and positive to both were 675 (41%), 37 (2%), and 699 (43%). The comparable numbers for participants aged 60 or more were 763 (44%), 35 (2%), and 500 (29%).

Supplementary material

Brown PE, Fu SH, Newcombe L, et al. Hybrid immunity from SARS-CoV-2 infection and vaccination in Canadian adults: cohort study.

Methods

Subject recruitment	1
IgG serology	1
Determining positivity	2
IGRA T-cell analysis	2
Epidemiological analyses	3

Supplementary figures

Figure S1. Study flow including sampling and study inclusion by phase in the Ab-C study	4
Figure S2. Histograms and fitted densities for N positivity levels	5
Figure S3. Levels of antibodies to RBD stratified by infection and number of vaccination doses	6
Figure S4. Levels of antibodies to the spike protein stratified by infection, vaccination doses, and time since last vaccination or since last infection	7
Figure S5. Correlation between levels of antibodies to the spike protein and T-cell spike titers	8

Supplementary tables

Table S1. Sample characteristics and representativeness of phases 4 and 6 for online surveys and DBS samples	9
--	---

STROBE Statement	10
-------------------------	----

Acknowledgments	13
------------------------	----

Supplementary references	13
---------------------------------	----

Methods

Subject recruitment

The Action to Beat Coronavirus (Ab-C) study received ethical approval from Unity Health Toronto (REB 20-107). In Phase 1, from May through September 2020, we invited 44 270 members (out of about 78 000 total members) of the Angus Reid Forum,¹ an established nationwide polling panel of Canadian adults aged 18 and older, to complete an online survey about SARS-CoV-2 symptoms and testing histories. The sampled population was stratified by age groups (18-34, 35-54, 55+); sex (male, female); education (high school education or lower, some college or college or technical degree, some university, or university degree); and region, by census metropolitan area to match the national demographic profile, with oversampling of adults 60 years or older. In August 2021, we invited about 3100 additional Forum panel members from 17 regions with high burden of infection (of 93 total regions nationwide), based on a regression analysis of SARS-CoV-2 case counts.² From December 2020 through January 2021, we invited all 19 994 Phase 1 participants to join Phase 2, retaining the same sampling frame. Phase 3 and 4 recruitment used similar approaches. In Phase 4, we conducted additional outreach to 2587 additional members from marginalized groups at higher risk of SARS-CoV-2 infection (2045 visible minorities and 542 Indigenous individuals). Of these, 1229 agreed to provide DBS and were included in Phase 4 mailouts (919 visible minorities and 310 Indigenous individuals). In Phase 5, a subset of 1304 participants who had recently tested negative for antibodies to nucleocapsid (N) were selected for a supplementary DBS sample; in Phase 6, 5703 DBS participants from any previous phase were enrolled.

Participants were not compensated financially by the study for participating, but earned modest redeemable points from the Angus Reid Forum.³ Figure S1 illustrates the study recruitment and flow; there were few (about 1%) exclusions, mostly from incomplete testing.

IgG serology

Participants collected five small circles of blood on special bar-coded filter paper, dried the sample for at least two hours, placed it in a two-layer protective pouch, and returned it to St. Michael's Hospital in Toronto, postage prepaid. Mailing time across Canada ranged from about 3 to 8 days. Upon arrival, samples were scanned, catalogued, and stored at 4°C in larger boxes with additional desiccant, and monitored for humidity levels (kept <20%).

Antibodies were then eluted from a 4.7 mm punch in 99 µL of PBS + 0.1% Tween (PBS-T) and 1% Triton X-100. The use of 99 µL was to ensure sufficient eluate to test three antigens (spike protein, receptor binding domain (RBD) of the spike, and nucleocapsid protein (N)). Punches were incubated in elution buffer for a minimum of 4 hours with gentle shaking (150 RPM) at room temperature or overnight at 4°C. The samples were then centrifuged at 1000 g for 30 seconds.

The Network Biology Collaborative Centre at Sinai Health, Toronto, conducted a high-throughput, highly sensitive chemiluminescence-based ELISA targeting the spike protein, RBD, and N. Chemiluminescent ELISA assays were performed as previously described on a ThermoFisher Scientific F7 robotic platform^{4,5} with a few modifications. Briefly, LUMITRAC 600 high-binding white polystyrene 384-well microplates (Greiner Bio-One #781074, VWR #82051-268) were pre-coated overnight with 10 µL/well of antigen (50 ng spike (SmT1), 20 ng RBD and 7 ng nucleocapsid, all supplied by the National Research Council of Canada (NRC)). After washing (all washes were 4 times with 100 µL PBS-T), wells were blocked for 1 hour in 80 µL 5% Blocker BLOTTO (ThermoFisher Scientific, #37530) and then washed. 10 µL of sample (2.5 or 0.156 µL of DBS eluate diluted in 1% final Blocker BLOTTO in PBS-T) was added to each well and incubated for 2 hours at room temperature. After washing, 10 µL of a human anti-IgG fused to HRP (IgG#5, supplied by NRC, final of 0.9 ng/well) diluted in 1% final Blocker BLOTTO in PBS-T was added to each well followed by a 1-hour incubation at room temperature. After 4 washes, 10 µL of SuperSignal ELISA pico chemiluminescent substrate (diluted 1:4 in MilliQ distilled H₂O) was added to each well and incubated for 5-8 min at room temperature. Chemiluminescence was read on an EnVision (Perkin Elmer) plate reader at 100 ms/well using an ultra-sensitive detector.

Each 384-well assay plate included replicates of a standard reference curve of a human anti-spike IgG antibody (VHH72-Fc supplied by NRC)⁵ or an anti-nucleocapsid IgG antibody (Genscript, #A02039), positive and negative master mixes of pooled serum samples, human IgG negative control (Sigma, #I4506), and blanks as controls. Negative and/or positive DBS controls (defined using plasma serology results) were included in runs in each phase.

For each antigen, raw values (counts per second) were normalized to a blank-subtracted point in the linear range of the standard reference curve to create a relative ratio (hereinafter referred to as antibody levels). The samples were processed at a 1:4 dilution of the DBS eluate (2.5 µL/well of sample) and 1:64 dilution. We used the former to derive positivity threshold and the latter to display antibody level distributions.

Determining positivity

There is uncertainty in the measured values of the antibodies to N. We sought to reflect this uncertainty in the confidence intervals for prevalence estimates. We used control samples and known positives to estimate the probability of seropositivity for each sample, and we used multiple imputation to account for the unknown true seropositivity status. We estimated log relative rates in a model adjusting for age, sex, region, and vaccination status. Using post-stratification, we computed estimates and confidence intervals for prevalence in the population and various subgroups, adjusting for the representativeness of the sample.

Figure S2A shows the histogram of logged N-positivity for known laboratory negative control samples within each testing plate (in blue) and antibody levels from known positive samples from phase 4. Known positives are individuals who reported a positive covid-19 test result more than seven days before their DBS was received. We used maximum likelihood estimation to define skew-normal densities for the case and control samples, shown as solid lines. Figures S2B to S2D show histograms of observed antibody levels for each phase, along with a fitted density estimated as a mixture of the red and blue densities from Figure S2A. We estimated a mixing proportion for each phase (by maximum likelihood), the densities for each component are shown in blue and red for the seronegative and seropositive components respectively.

For each sample, we calculated a probability of seropositivity using Bayes rule. This probability depends on the mixing proportion as well as the red and blue densities, as when prevalence is high the threshold should be lowered to reduce false negatives. These probabilities are used for multiple imputation, generating 100 datasets where each sample is designated as seropositive or seronegative. For grouping subjects as infected and uninfected in the “immunity wall” figures, cutoffs for each phase (shown in Figure S2s) are set so that the expected number of false positives and false negatives is identical.

Prevalence estimates and their confidence intervals use post-stratification, adjusting the study sample to reflect the Canadian distribution of population by age, sex, region and vaccination status. For each phase, we fit a logistic regression model which included vaccination status (no doses v. one or more) and region (British Columbia and Yukon; Prairie provinces, NWT, Nunavut; Ontario; Quebec; Atlantic provinces), each of which are interacted with age and sex (and the age-sex interaction). We did not interact vaccination status with region, as the number of unvaccinated individuals in the sample was small in some regions. We obtained estimates of log relative rates and the accompanying variance matrix for each of the 100 imputed datasets and combined them according to Rubin’s rule.

The population by age, sex, province, and vaccination status at each phase are obtained from the Public Health Agency of Canada’s Infobase.⁶ Weights are calculated for each age-sex-region-vaccination group and a weighted average of group-level prevalences is computed with standard errors obtained from the delta method.⁷

Interferon-Gamma Release Assay (IGRA) T-cell analysis

We selected a convenience sample of adults in the Ab-C study within urban Toronto. After obtaining consent for re-contact, participants attended either a Unity Health Toronto hospital visit or agreed to a home visit. A phlebotomist collected one tube of venous blood from each participant using 7 mL lithium-heparin blood collection tubes. Blood collection tubes were mixed by inversion, stored at room temperature, and delivered to the St. Joseph’s Health Centre laboratory within 16 hours of collection to be refrigerated at 2-8°C.

Prior to stimulation, samples were removed from refrigeration for 30 minutes. For each whole-blood sample, one stimulation tube set from the Quan-T-Cell SARS-CoV-2 kit (EUROIMMUN, ET 2606-3003) was warmed to room temperature. Each set consisted of three stimulation tubes: (1) CoV-2 IGRA BLANK: no T-cell stimulation, for determination of the individual IFN- γ background; (2) CoV-2 IGRA TUBE: specific T-cell stimulation using antigens based on the SARS-CoV-2 spike protein; (3) CoV-2 IGRA STIM: unspecific T-cell stimulation by means of a mitogen, for control of the stimulation ability. The blood collection tube was mixed by gentle inversion, then sampled using 1 mL pipets to draw and transfer 500 μ L of whole blood to each of the three tubes. The filled stimulation tubes were sealed and mixed by rapid inversion, then shaken by hand and incubated at 37°C for 20-24 hours. At the end of the incubation period, the tubes were removed from the incubator and centrifuged for 10 minutes between 6000-12000 x g.

Following centrifugation, the plasma obtained from the stimulated whole-blood samples was diluted and used on the anti-IFN- γ -coated ELISA plate. EUROIMMUN Mississauga conducted interferon-gamma release assays using the Quan-T-Cell ELISA (EQ 6841-9601). 100 μ L of the calibrators, controls, and diluted plasma samples (1:5 in sample buffer) were transferred into the individual microplate wells and incubated for 120 minutes at room temperature. The wells were washed (5 times, each using 300 μ L of wash buffer). 100 μ L of biotin was pipetted into each well and incubated for 30 minutes at room temperature. The wells were washed, and 100 μ L of enzyme conjugate was pipetted into each well and incubated for 30

minutes at room temperature. The wells were washed, and 100 μ L of chromogen/substrate solution was pipetted into each well and incubated for 20 minutes at room temperature, protected from direct sunlight. 100 μ L of stop solution was pipetted into each well. Photometric measurements of the colour intensity were made at a wavelength of 450 nm and a reference wavelength between 620 and 650 nm.

Epidemiological Analyses

This analysis focused on Phases 3 to 6 of the Ab-C study, which correspond to the pre-omicron (Aug 15 to Oct 15, 2021) and omicron (BA.1/1.1, BA.2, and BA.5) periods (Jan 24 to Mar 30; May 27 to Jul 1; and Sep 26 to Nov 21, 2022), respectively. To confirm the Ab-C data is representative of the Canadian population, we calculated the proportion of participants who filled out the survey and provided DBS by demographic characteristics (province, household size, age, sex, education, ethnicity, weight, smoking status, diabetes, hypertension) and vaccination status, and compared these to the Canadian national data (Table S1).

As already reported,² the demographic and health characteristics of those who completed surveys and provided DBS were generally comparable to the Canadian census population, except for fewer adults with an educational level of some college or less in the Ab-C study compared with the census population. In Phase 6, the proportion of adults unvaccinated was similar in the Ab-C surveyed population (8%) as in Canada overall (10%). However, the unvaccinated rates were lower in those who submitted DBS samples (3%). We have previously found greater unvaccinated rates among the lower levels of education.⁸ Education level (some college or less, college graduate, university graduate) was inversely correlated with vaccination status: chi-squared statistic 17.156 (df=2; p-value of 0.0001882). Hence, we adjusted for vaccination status when calculating estimates of cumulative incidence. Moreover, the Ab-C study has had fewer racial or ethnic minority adults (which is defined by Statistics Canada, the national lead statistical agency, as “Visible Minorities”) but more Indigenous adults than the census population. Compared with the census population or nationally representative surveys, study participants had a similar prevalence of obesity, current or former smoking, diabetes and hypertension.

The phase 3 to 6 population distributions, which are most directly relevant to estimating cumulative and period-specific Omicron incidence, are broadly similar among those who completed surveys and those who provided a DBS (Table S1).⁹ Finally, a comparison of those invited who participated and did not in Phase 1 of the study showed a bias towards greater female participation.² However, differences by sex were not important predictors of cumulative incidence (data not shown), so this bias does not materially affect the overall estimates of cumulative infection.

The age-specific “immunity wall” in Figure 4 defines infection as either having tested positive on polymerase chain reaction or antigen rapid test or with antibodies to the N antigen (which is appropriate among the largely vaccinated cohort). N positivity reflects infection and would not arise from Canadian-approved vaccines that only contain the spike protein. We defined infection as any positive covid-19 test more than 7 days prior to the DBS being received and any N positivity.

We obtained the overall cumulative incidence of SARS-CoV-2 infections based on N positivity and derived the 95% confidence intervals using the delta method.⁷ In order to examine the level of antibody response from infection and vaccination (by vaccine doses), we display the distributions of antibodies to spike antigens (at the 1:64 dilution) using box plots with jitter (Figure 2). Results for antibodies to RBD are similar (Figure S4). All analyses were performed using Stata 17 and R 4.2.1.

Figure S1. Study flow including sampling and study inclusion by phase in the Ab-C study

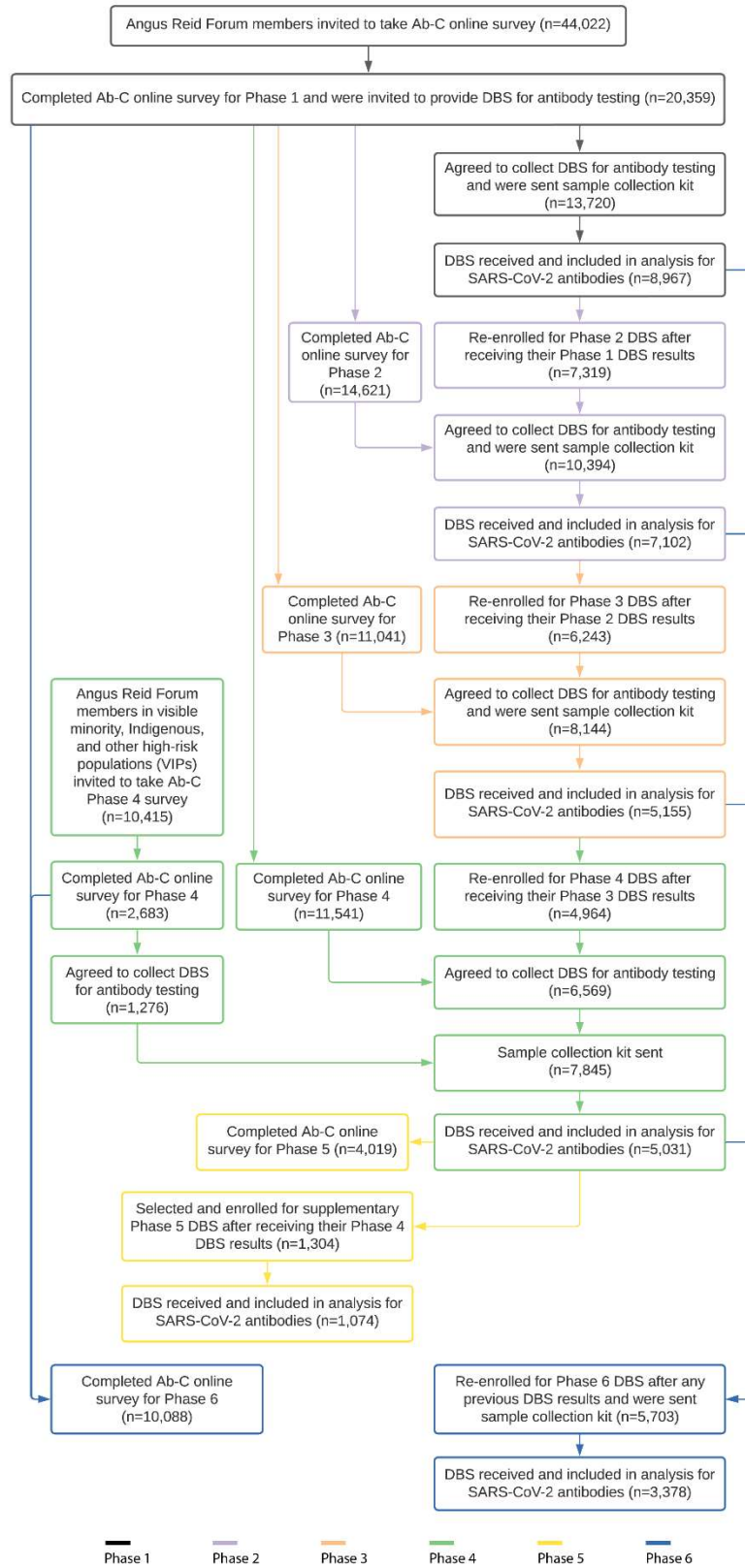


Figure S2. Histograms and fitted densities for N positivity levels. Values on the natural scale (not logged) are shown on the horizontal axis in grey.

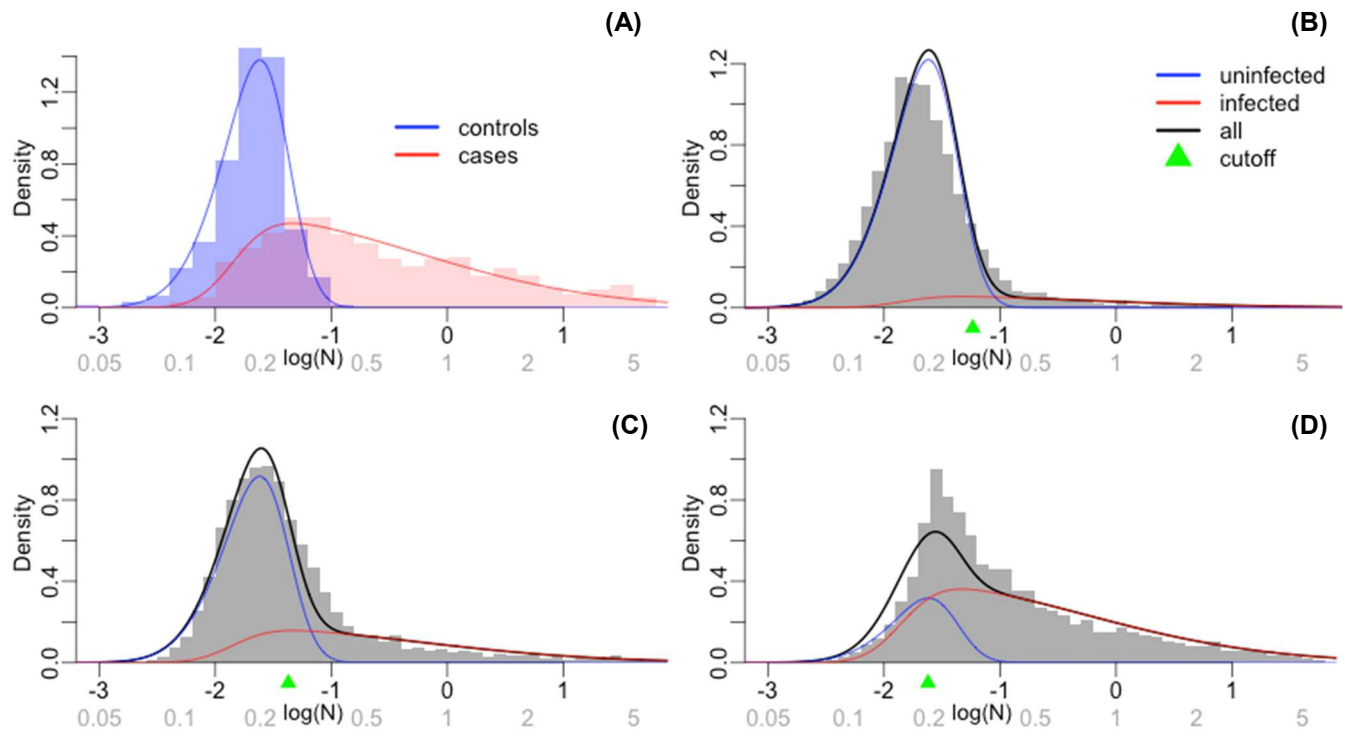


Figure S3. Levels of antibodies to RBD stratified by infection and number of vaccination doses.

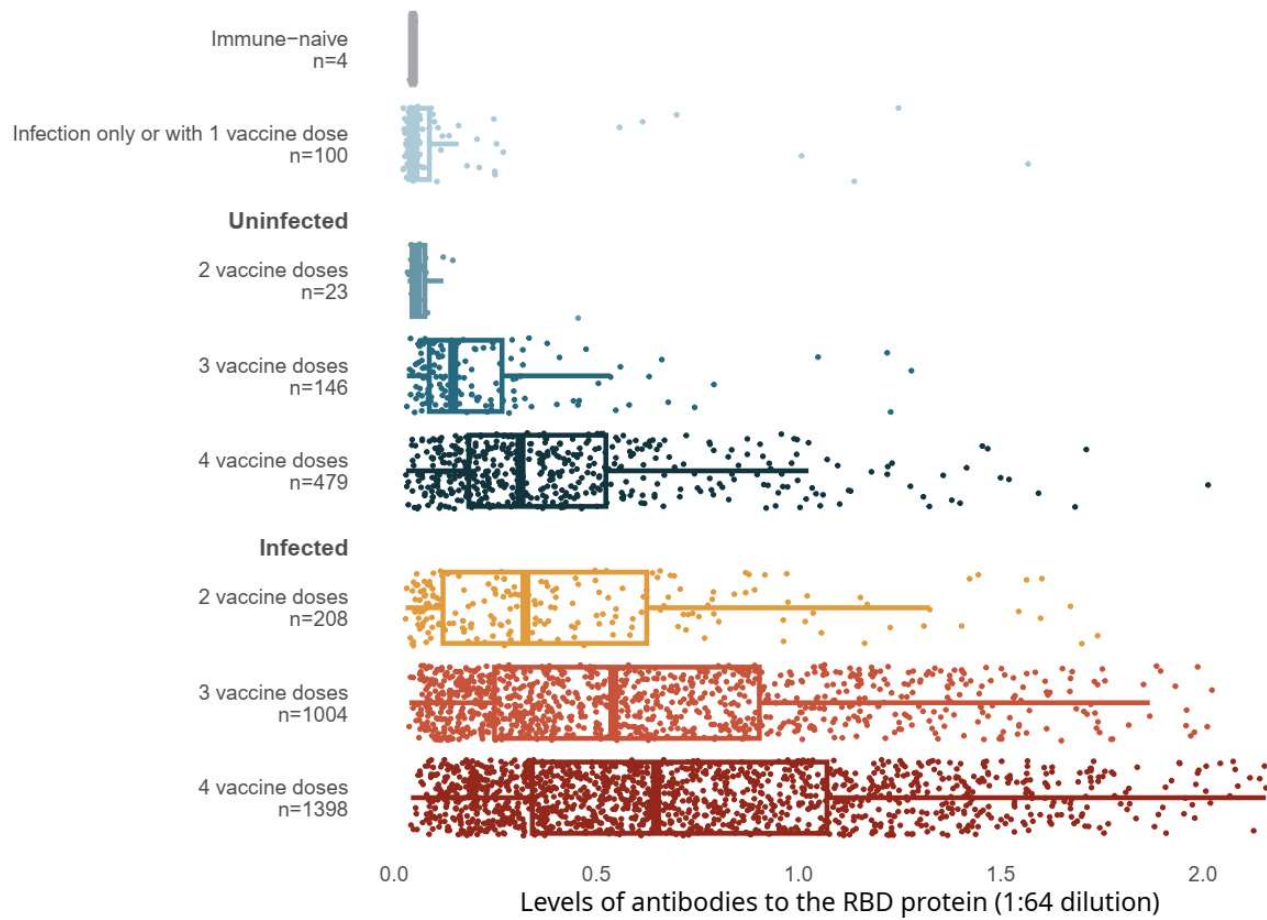


Figure S4. Levels of antibodies to the spike protein stratified by infection, vaccination doses, and time since last vaccination or since last infection.

(A) Uninfected by time of last dose



(B) Infected by time of last dose and infection

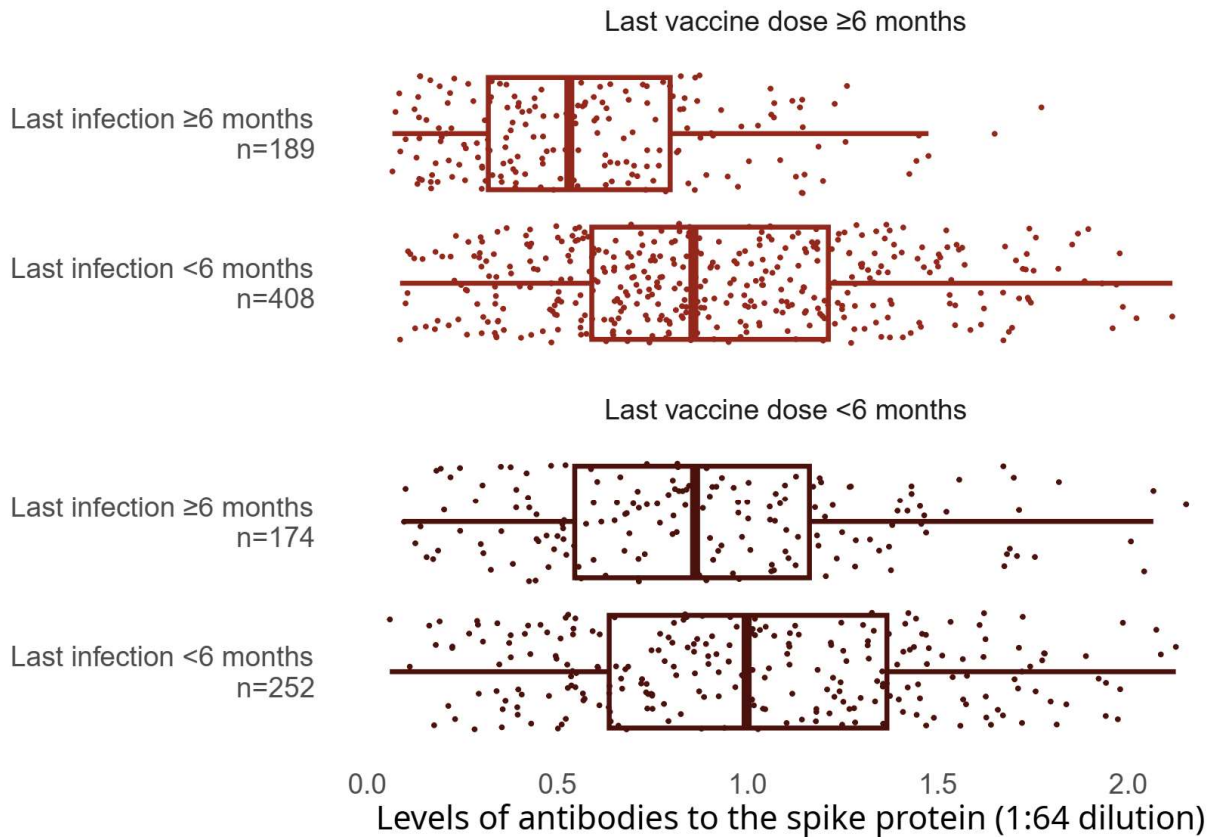
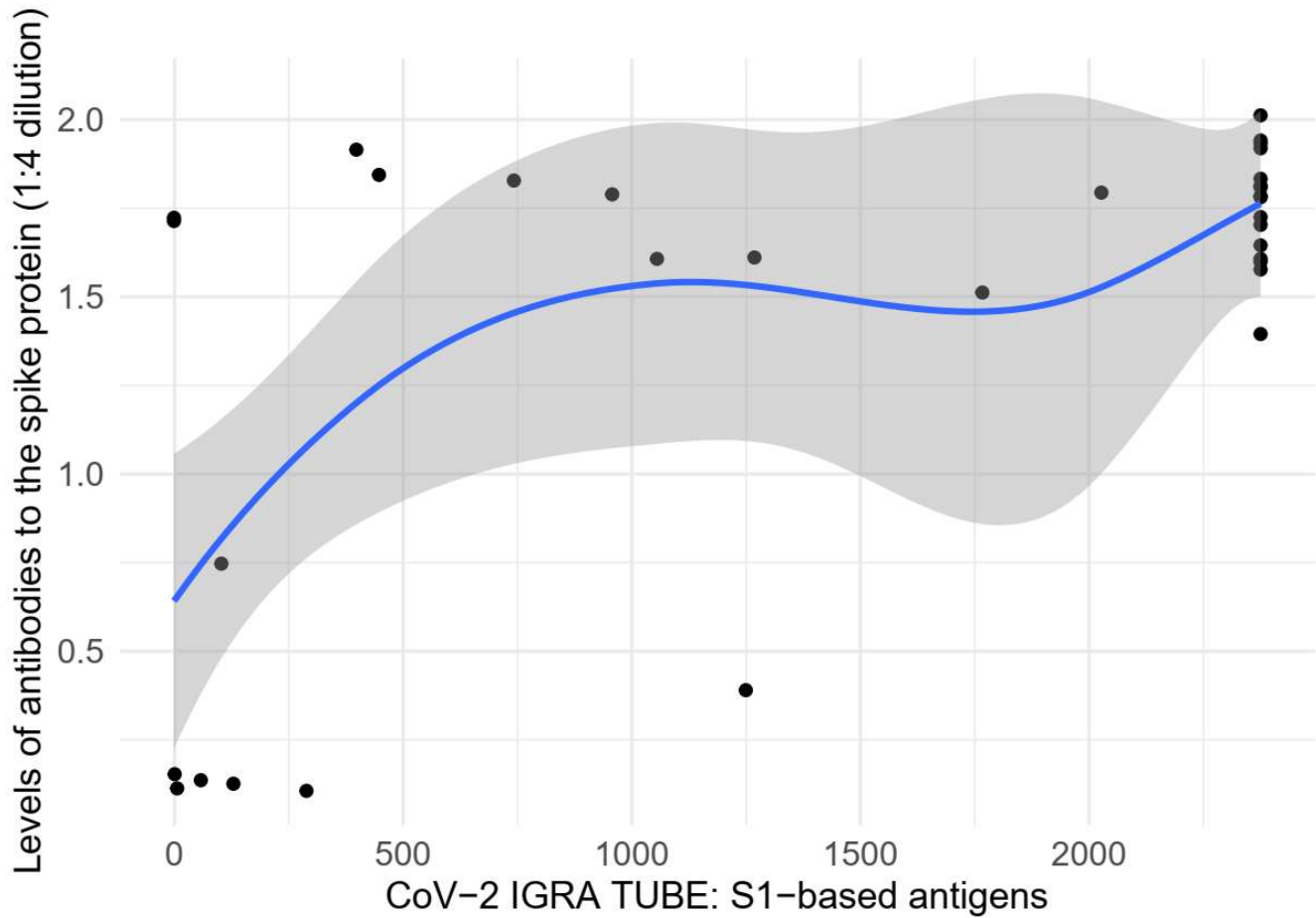


Figure S5. Correlation between levels of antibodies to the spike protein and T-cell spike titers.



Notes: X-axis represents interferon-gamma stimulation on blood samples using antigens based on the SARS-CoV-2 spike protein (https://www.coronavirus-diagnostics.com/documents/Indications/Infections/Coronavirus/ET_2606_D_UK_A.pdf), and y-axis represents SARS-CoV-2 spike protein antibodies in dried-blood spot samples. The two variables had a Spearman correlation of 0.508. Smoothed curves and 95% confidence intervals were obtained using locally weighted scatterplot smoothing with span parameter of 0.8.¹⁰

Table S1. Sample characteristics and representativeness of phases 4 and 6 for online surveys and DBS samples

	2016 Canadian Census or national surveys	Phase 4 Survey		Phase 4 DBS sample		Phase 6 Survey		Phase 6 DBS sample	
		n	%	n	%	n	%	n	%
Total (N)		14224		5031		10088		3378	
High risk regions*		4824	33.6%	1732	34.0%	3530	34.6%	1164	33.5%
Province									
Ontario	38%	5707	40.0%	2103	41.5%	3957	39.3%	1417	41.6%
British Columbia & Yukon	14%	2862	20.1%	1035	20.9%	2120	21.1%	732	22.4%
Quebec	23%	1764	12.5%	617	12.2%	1223	12.0%	364	10.5%
Prairie provinces & NWT	19%	2992	21.1%	979	19.6%	2155	21.5%	653	19.4%
Atlantic provinces	7%	899	6.2%	297	5.9%	633	6.2%	212	6.2%
Sex									
Male	49%	6453	45.9%	1997	40.1%	4492	45.0%	1271	37.8%
Female	51%	7628	53.1%	3003	59.3%	5515	54.2%	2089	61.7%
Prefer to self-describe		143	1.0%	31	0.6%	81	0.8%	18	0.6%
Age group									
18-39 years	49%	3632	23.9%	1060	19.5%	2084	19.1%	512	13.8%
40-59 years	28%	5195	36.1%	1752	34.4%	3699	35.9%	1134	32.7%
60-69 years	12%	3303	24.5%	1355	28.3%	2484	26.1%	994	30.7%
70+ years	11%	2094	15.5%	864	17.9%	1821	18.9%	738	22.8%
Education									
Some college or less	45%	3372	34.0%	1050	30.6%	2395	34.3%	702	30.7%
College graduate	32%	4680	31.6%	1621	31.5%	3333	32.1%	1102	32.3%
University graduate	23%	6172	34.4%	2360	37.9%	4360	33.6%	1574	37.0%
Visible minority	22%	3438	23.5%	820	15.8%	2482	24.2%	525	15.3%
Indigenous	5%	1504	11.0%	495	10.2%	803	8.6%	234	7.3%
Household size									
Live alone	28%	2614	18.7%	990	19.7%	2070	20.8%	730	21.5%
Two people	34%	6144	44.0%	2328	47.0%	4475	45.2%	1635	49.4%
Three people	15%	2338	16.2%	747	14.8%	1558	15.2%	477	14.0%
Four people or more	22%	3128	21.2%	966	18.5%	1985	18.8%	536	15.2%
Ever smoking	54%	6652	49.8%	2331	49.1%	4781	50.6%	1599	50.4%
Obesity (≥ 30 kg/m²)	27%	3750	27.4%	1368	28.1%	2675	27.7%	908	27.8%
Diabetic history	9%	1418	10.6%	518	11.0%	1037	10.9%	359	11.4%
Hypertension history	23%	3826	28.4%	1452	30.4%	2850	29.7%	1006	31.3%
Vaccination†									
Unvaccinated	10%	1275	9.7%	209	4.5%	739	7.9%	95	3.1%
Vaccinated	90%	12949	90.3%	4819	95.5%	9349	92.1%	3283	96.9%
One dose	1%	136	1.1%	23	0.5%	76	0.8%	10	0.3%
Two doses	29%	3807	29.9%	876	18.5%	1246	13.0%	233	7.2%
Three doses	32%	9006	69.0%	3920	81.0%	3801	37.2%	1158	34.0%
Four or more doses	28%					4226	41.1%	1882	55.5%

*17 high-burden regions identified from a regression analysis of SARS-CoV-2 case counts

†As of 1 January 2023

Broadly, the characteristics of the cohort did not change materially between phase 3 and 4 and phase 6, such as in the persistent underrepresentation of lesser educated Canadian adults.²

STROBE Statement

	Item No.	Recommendation	Relevant text from manuscript (page no.)
Title and abstract	1	(a) Indicate the study's design with a commonly used term in the title or the abstract (b) Provide in the abstract an informative and balanced summary of what was done and what was found	cohort study (1) Abstract – Main outcome measures and Results sections (2)
Introduction			
Background/rationale	2	Explain the scientific background and rationale for the investigation being reported	Epidemiological studies have identified hybrid immunity as partially protective against infection or reinfection, and more strongly protective against hospitalization, severe disease, or death. However, such studies rely on the follow-up of hospitalized patients or those with access to PCR-based testing, and not randomly selected populations. Thus, the contribution of infection and vaccination to hybrid immunity and the duration of immunity from either exposure remain remarkably poorly documented at the population level. (3)
Objectives	3	State specific objectives, including any prespecified hypotheses	[W]e estimate cumulative SARS-CoV-2 incidence among Canadian adults in 2020 and 2021 - prior to the omicron period - and during two major omicron waves (BA.1/1.1 and BA.2 and BA.5) in 2022. We assess declines in active immunity and changes over time in age-specific active immunity levels based on prior infection and concurrent vaccination. (3)
Methods			
Study design	4	Present key elements of study design early in the paper	[Ab-C] conducted six serial assessments of SARS-CoV-2 symptoms and seropositivity, with five surveys covering about 4000-9000 adults. [...] Sinai Health in Toronto conducted highly sensitive and specific chemiluminescence-based enzyme-linked immunosorbent assays (3,4)
Setting	5	Describe the setting, locations, and relevant dates, including periods of recruitment, exposure, follow-up, and data collection	We surveyed 10 088 adults in Phase 6 of Ab-C, of whom 4025 provided DBS from 26 September to 21 November 2022, and of whom 3378 provided both surveys and DBS (4)
Participants	6	(a) Give the eligibility criteria, and the sources and methods of selection of participants. Describe methods of follow-up (b) For matched studies, give matching criteria and number of exposed and unexposed	Nationwide polling panel of Canadian adults aged 18 and older [...] The sampled population was stratified by [age, sex, education,] and region, by census metropolitan area to match the national demographic distribution (supplementary methods) NA
Variables	7	Clearly define all outcomes, exposures, predictors, potential confounders, and effect modifiers. Give diagnostic criteria, if applicable	The online survey assessed demographic characteristics, history of smoking, hypertension, obesity (self-reported height and weight), diabetes, and experience with SARS-CoV-2 infection symptoms and PCR or rapid antigen testing [...] Sinai Health in Toronto conducted highly sensitive and specific chemiluminescence-based enzyme-linked immunosorbent assays targeting the spike protein, RBD, and N (4)
Data sources/measurement	8*	For each variable of interest, give sources of data and details of methods of assessment (measurement). Describe comparability of assessment methods if there is more than one group	See no. 6.
Bias	9	Describe any efforts to address potential sources of bias	N-positivity may have underestimated actual infection because mild cases among vaccinated adults did not mount an antibody response or

			because people did not seroconvert during the sampling period. (6)
Study size	10	Explain how the study size was arrived at	NA
Quantitative variables	11	Explain how quantitative variables were handled in the analyses. If applicable, describe which groupings were chosen and why	IgG serology, Determining positivity, and Epidemiological analyses sections (supplementary methods)
Statistical methods	12	(a) Describe all statistical methods, including those used to control for confounding	We obtained the overall cumulative incidence of SARS-CoV-2 infections based on N positivity and derived the 95% confidence intervals using the delta method. (supplementary methods)
		(b) Describe any methods used to examine subgroups and interactions	For each phase, we fit a logistic regression model which included vaccination status (no doses v. one or more) and region (British Columbia and Yukon; Prairie provinces, NWT, Nunavut; Ontario; Quebec; Atlantic provinces), each of which are interacted with age and sex (and the age-sex interaction). We did not interact vaccination status with region, as the number of unvaccinated individuals in the sample was small in some regions. (supplementary methods)
		(c) Explain how missing data were addressed	NA
		(d) If applicable, explain how loss to follow-up was addressed	NA
		(e) Describe any sensitivity analyses	[A] comparison of those invited who participated and did not in Phase 1 of the study showed a bias towards greater female participation. However, differences by sex were not important predictors of cumulative incidence (supplementary methods)
Results			
Participants	13*	(a) Report numbers of individuals at each stage of study—e.g. numbers potentially eligible, examined for eligibility, confirmed eligible, included in the study, completing follow-up, and analyzed	Figure S1
		(b) Give reasons for non-participation at each stage	Figure S1
		(c) Consider use of a flow diagram	Figure S1
Descriptive data	14*	(a) Give characteristics of study participants (e.g. demographic, clinical, social) and information on exposures and potential confounders	Table S1
		(b) Indicate number of participants with missing data for each variable of interest	Figure S1
		(c) Summarize follow-up time (e.g., average and total amount)	Figure 1
Outcome data	15*	Report numbers of outcome events or summary measures over time	Figure 1, Figure S1
Main results	16	(a) Give unadjusted estimates and, if applicable, confounder-adjusted estimates and their precision (e.g., 95% confidence interval). Make clear which confounders were adjusted for and why they were included	Lack of vaccination and lower education were correlated (supplementary methods), so we adjusted cumulative incidence for vaccination status. (4) Post-stratified for geographic region, age, sex, and vaccination status to derive the mean estimate. (Table 1)
		(b) Report category boundaries when continuous variables were categorized	NA
		(c) If relevant, consider translating estimates of relative risk into absolute risk for a meaningful time period	NA
Other analyses	17	Report other analyses done—e.g. analyses of subgroups and interactions, and sensitivity analyses	NA
Discussion			
Key results	18	Summarize key results with reference to study objectives	Applying the Ab-C results, after standardizing for vaccination status, region, age, and sex to the national profile of Canadian adult population,

			yielded estimates of cumulative incidence of SARS-CoV-2 infection rising from about 13% before omicron to 78% by December 2022. This equates to about 25 million infected adults cumulatively. (5)
Limitations	19	Discuss limitations of the study, taking into account sources of potential bias or imprecision. Discuss both direction and magnitude of any potential bias	[W]e deliberately focused on distributions of antibody levels which overlap in the comparison categories, but this has the benefit of showing the full range of spike antibody response in the various strata of the infected and vaccinated. We may be under-estimating spike antibody levels due to assay saturation. N-positivity may have underestimated actual infection because mild cases among vaccinated adults did not mount an antibody response or because people did not seroconvert during the sampling period. Conversely, some adults may have reverted to N-negative status. (7)
Interpretation	20	Give a cautious overall interpretation of results considering objectives, limitations, multiplicity of analyses, results from similar studies, and other relevant evidence	We demonstrate the protective nature of hybrid immunity at a population level using robust biological markers of cumulative infection paired with viral testing. While steps to protect individuals and populations from SARS-CoV-2 infection should continue to be implemented, close to 80% of Canadian adults became infected, mostly from the omicron variants, by December 2022. (6)
Generalizability	21	Discuss the generalizability (external validity) of the study results	Study participants were comparable to Canadian adults in prevalence of obesity, smoking, diabetes, and vaccination, but fewer lower-education adults participated (5)
Other information			
Funding	22	Give the source of funding and the role of the funders for the present study and, if applicable, for the original study on which the present article is based	Funding was provided by the COVID-19 Immunity Task Force, Canadian Institutes of Health Research, Pfizer Global Medical Grants, and St. Michael's Hospital Foundation. (8)

Acknowledgments

We thank the thousands of Canadians who participated in the Action to Beat Coronavirus study. A full listing for the Ab-C Study Collaborators is available at www.abcstudy.ca.

Supplementary references

1. Angus Reid Institute. How we poll. <http://angusreid.org/how-we-poll-ari/> (accessed 17 December 2020).
2. Tang X, Sharma A, Pasic M, et al. Assessment of SARS-CoV-2 seropositivity during the first and second viral waves in 2020 and 2021 among Canadian adults. *JAMA Netw Open* 2022;5:e2146798.
3. Action to Beat Coronavirus Study. Participant Information Sheet. https://abcstudy.ca/docs/abcstudy_information.pdf (accessed 25 November 2021).
4. Isho B, Abe KT, Zuo M, et al. Persistence of serum and saliva antibody responses to SARS-CoV-2 spike antigens in patients with COVID-19. *Sci Immunol* 2020;5:eabe5511.
5. Colwill K, Galipeau Y, Stuiblé M, et al. A scalable serology solution for profiling humoral immune responses to SARS-CoV-2 infection and vaccination. *Clin Transl Immunology* 2022;11:e1380.
6. Public Health Agency of Canada. COVID-19 epidemiology update. Ottawa, ON: Public Health Agency of Canada, 2023. <https://health-infobase.canada.ca/covid-19/> (accessed 3 February 2023).
7. Jackson C. delta method: The delta method. In: msm: Multi-State Markov and Hidden Markov Models in Continuous Time. <https://rdrr.io/cran/msm/man/deltamethod.html> (accessed 3 February 2023).
8. Tang X, Gelband H, Nagelkerke N, et al. Action to beat coronavirus/Action pour battre le coronavirus (Ab-C) Study Investigators. COVID-19 vaccination intention during early vaccine rollout in Canada: a nationwide online survey. *Lancet Reg Health Am* 2021;2:100055.
9. Brown PE, Fu SH, Bansal A, et al. Ab-C Study Collaborators. Omicron BA.1/1.1 SARS-CoV-2 infection among vaccinated Canadian adults. *New Engl J Med* 2022;386:2337-9.
10. Fox J, Weisberg S. An R companion to applied regression. Thousand Oaks, CA: Sage Publications; 2018.