

1 **Risk and early signs of PTSD in people indirectly exposed to October 7 events**

2 Dan Yamin, PhD^{1,2,3,*}, Shahar Lev-Ari, PhD^{4,*}, Merav Mofaz, PhD¹, Ron Elias, Bsc¹, David

3 Spiegel, MD⁵, Matan Yechezkel, MS¹, Margaret L. Brandeau, PhD², Erez Shmueli, PhD^{1,3,6,*}

4 ¹ Department of Industrial Engineering, Tel Aviv University, Tel Aviv, Israel.

5 ² Department of Management Science and Engineering, Stanford University, Stanford, CA,

6 USA.

7 ³ Wizermed D.H. LTD, Zoran, Israel.

8 ⁴ Department of Health Promotion, Tel Aviv University, Tel Aviv, Israel.

9 ⁵ Department of Psychiatry and Behavioral Sciences, Stanford University, Stanford, CA,

10 USA.

11 ⁶ MIT Media Lab, Cambridge, MA, USA.

12 * Contributed equally.

13

14 **Address correspondence to:** Prof. Erez Shmueli, shmueli@tau.ac.il

15 **Keywords:** Wearable sensors, PTSD, Anxiety, indirect exposure, October 7 atrocities,

16 physiological reactions, well-being

17 **Primary Funding source**

18 ISRAEL SCIENCE FOUNDATION (grant no. 3409/19), within the Israel Precision Medicine

19 Partnership program, and Koret Foundation gift for Smart Cities and Digital Living.

20 Abstract word count: 239

21 Text word count: 2,219

23 **First paragraph**

24 **The coordinated terrorist attacks on October 7, 2023, resulted in catastrophic atrocities,**
25 **and marked the beginning of the 2023 Israel– Hamas war. The overwhelming coverage**
26 **by mainstream and social media, characterized by extreme details and graphic images,**
27 **vividly transported viewers to the horrifying scene. It remains unclear to what extent**
28 **such indirect exposure influences the occurrence of stress, anxiety, and post-traumatic**
29 **symptoms. We analyzed data from a three-year prospective study in which 4,797**
30 **participants received smartwatches and completed daily questionnaires, supplemented**
31 **by a nationwide clinical survey with 2,536 participants. Among the participants not**
32 **directly exposed, we estimated PTSD prevalence to be 22.9-36.0% and moderate to**
33 **severe anxiety prevalence to be 22.9-55.32%, with 752,057 daily questionnaires before**
34 **and after October 7 further indicating higher stress levels than those reported in**
35 **previous events, including political disputes, the COVID-19 pandemic, and past armed**
36 **conflicts. The occurrences of PTSD and anxiety are well explained by increased and**
37 **persistent news consumption, and especially by the availability of gory videos on social**
38 **media. Continuous monitoring of participants via smartwatches and daily**
39 **questionnaires further revealed considerable differences in stress, mood, step counts,**
40 **sleep quality, and duration in the first week after the October 7 events among those who**
41 **later developed PTSD. This study demonstrates the unprecedented amplifying effect of**
42 **mass media on mental health in terror and war settings and highlights the potential of**
43 **continuous monitoring for early detection and prompt treatment of those in need.**

44

45

46 **Main text**

47 On October 7, 2023, a series of attacks across Israeli municipalities resulted in significant
48 casualties, sexual abuse, and abductions of civilians from their homes ¹. These atrocities not
49 only had a visible toll, including physical destruction and loss of life, but also raised concerns
50 about potential long-term mental health implications, such as post-traumatic stress disorder
51 (PTSD) among civilians.

52 Early detection of PTSD is crucial, as timely interventions can significantly aid individuals in
53 coping with the initial impact and prevent the progression to chronic PTSD. Beyond certain
54 preconditions ², two primary factors influence an individual's risk of developing PTSD: the
55 extent of their exposure to the trauma and their unique physiological and psychological
56 responses in the aftermath ². Previous research indicates that indirect exposure to trauma, such
57 as through media, can also precipitate PTSD, although the effects may differ from those of
58 direct exposure ³⁻⁵. The graphic coverage of the October 7 events on social media platforms
59 like Telegram and TikTok was extremely vivid and detailed, posing new challenges in
60 assessing the media's impact on PTSD. In terms of individual responses to trauma, the 'impact
61 phase'—the initial period post-trauma—is critical in the development of PTSD. This phase
62 involves the initial recognition and reaction to the traumatic event, though not everyone who
63 experiences this stage will necessarily develop chronic PTSD. The relationship between
64 individuals' responses during this stage and the risk of developing PTSD at later stages
65 remains an area requiring further exploration.

66 Stress response systems, both the sympathetic adrenal medullary system producing
67 epinephrine and rapid increases in heart rate and blood pressure, and the hypothalamic-
68 pituitary-adrenal axis releasing increased cortisol that mobilizes blood glucose, are designed
69 for rapid response to stressors, with homeostatic mechanisms that return to relatively normal
70 levels quickly after stress is over. However, chronic or repeated stress produces a resetting of
71 response levels, termed allostasis, a new and debilitating neuroendocrine pattern ⁶.

72 Neuroplasticity, especially in portions of the brain devoted to memory and emotion such as
73 the dentate gyrus of the hippocampus, strengthens pathways that trigger ongoing
74 physiological stress response, including hyperarousal at reminders of earlier or ongoing
75 stressors, laying the neural groundwork for PTSD⁷. Prior prospective studies have shown an
76 evolution of patterns of PTSD symptoms over time. A network analysis of populations
77 exposed to trauma⁸ found initial patterns of reexperiencing trauma, intrusive thoughts, and
78 avoidance, while a year later avoidance was associated with dysphoria, and emotional
79 numbing was connected with social distancing⁸. A study of responses to the 9/11 World
80 Trade Center attack found that early emotional support and lack of constraints on emotional
81 expression as well as lack of cognitive negativity and self-blame predicted less emotional
82 distress six months later. Media exposure was associated with substantially higher initial
83 distress⁹. These findings all point to possible avenues of management of response to
84 community trauma that may ameliorate emotional damage over time.

85 To bridge these gaps and gain insights into the early indicators of PTSD risk, our analysis
86 encompassed data from a three-year observational prospective study of 4,797 participants.
87 These individuals were provided with smartwatches and tasked with completing daily
88 questionnaires using a dedicated mobile application, capturing data both before and following
89 the events of October 7. Complementing this, we conducted a panel study including
90 nationwide surveys involving 2,536 participants, ensuring a representative sample of the adult
91 Jewish population in Israel.

92 **Unprecedented levels of stress, anxiety, and PTSD**

93 On the morning of October 7, during a time usually marked by holiday calm and weekend
94 relaxation, a series of unexpected atrocities jolted the Israeli population, triggering
95 unprecedented levels of stress, anxiety, and post-trauma. The extent of this upheaval was
96 captured through detailed data from daily self-reported questionnaires and a variety of
97 physiological metrics measured by smartwatches worn by participants in our prospective

98 study (Figure 1 A-E). Specifically, over the past three years, we conducted an observational
99 prospective study in which we equipped 4,797 participants with smartwatches and a dedicated
100 mobile application ¹⁰⁻¹⁴. The smartwatches continuously monitored several physiological
101 measures, while the mobile application collected daily self-reported questionnaires on the
102 general health and well-being of each participant. Data based on 752,057 daily questionnaires
103 filled out by participants between January 1, 2021 and November 30, 2023 revealed that
104 stress levels after October 7 were unprecedented (a maximum level of 3.45, 95% CI 3.3-3.6,
105 on a scale of 1 to 5; ‘very low’– ‘very high’) and far exceeded those observed during previous
106 events (Figure 1A). This includes the deadliest and most contagious COVID-19 wave, during
107 which 30% of the Israeli population tested positive over a short period of three months (a
108 maximum level of 2.44, 95% CI 2.4-2.48); widespread political protests sparked by a
109 controversial judicial reform, culminating in the dismissal of an Israeli minister and strikes
110 across private and public sectors (a maximum level of 2.6, 95% CI 2.54-2.66); and intense
111 military engagements, with over 1,000 rockets launched from Gaza towards multiple Israeli
112 cities (a maximum level of 2.94, 95% CI 2.83-3.05). Additionally, data comparison of a
113 routine period preceding October 7 (September 30, 2023 until October 6, 2023) and the week
114 after October 7 highlighted a marked decline in reported mood level (3.68, 95% CI 3.59-3.77
115 vs. 2.81, 95% CI 2.69-2.93, on a scale of 1 to 5); decreased physical activity, as evidenced by
116 a significant drop in daily step count (7,881, 95% CI 7,588-8,175 vs. 6,127, 95% CI 5,841-
117 6,411 steps); and a distinct decrease in reported sleep quality (3.51, 95% CI 3.41-3.6 vs. 3.14,
118 95% CI 3.03-3.25, on a scale of 1 to 5) accompanied by an increase in awake time during the
119 night (594.25, 95% CI 544.84-643.66 vs. 687.35, 95% CI 628.82-745.88 seconds) (Figure
120 1B-E). As an illustrative demonstration, we found increase in heart rate and stress based on
121 heart rate variability during the first 72 hours after October 7 (Supplementary Figures S2 and
122 S3) that were comparable to the reactions we previously observed following COVID-19
123 vaccinations ¹¹.

124 Next, we evaluated the extent to which the atrocities had post-traumatic effects on those
125 indirectly exposed (Figure 1F). To do so, we conducted a Post-traumatic Stress Disorder
126 Checklist (PCL-5) survey among a panel of 2,536 participants 6-7 weeks after October 7. The
127 PCL-5 questionnaire has previously demonstrated strong internal consistency, high test-retest
128 reliability, and strong convergent validity with the gold standard PTSD diagnosis ¹⁵.
129 Participants were representative of the adult Jewish population in Israel by age, sex, and
130 geographical location. Among the 2,341 participants who were indirectly exposed to the
131 atrocities, the estimated prevalence of PTSD was 22.9% (95% CI 21.19%-24.6%) using the
132 most conservative case definition, and up to 35.96% (95% CI 34.05%-37.93%) with the least
133 conservative definition. This prevalence was substantially higher than the 7.5% found 6-8
134 weeks after the 9/11 terror attack among New York City residents ^{16,17}.

135 Similarly, using the General Anxiety Disorder (GAD) 7-item questionnaire among those not
136 directly exposed, the estimated prevalence of anxiety was 55.32% (95% CI 53.23%-57.4%),
137 with 22.86% (95% CI 21.14%-24.63%) being moderate to severe.

138

139

140

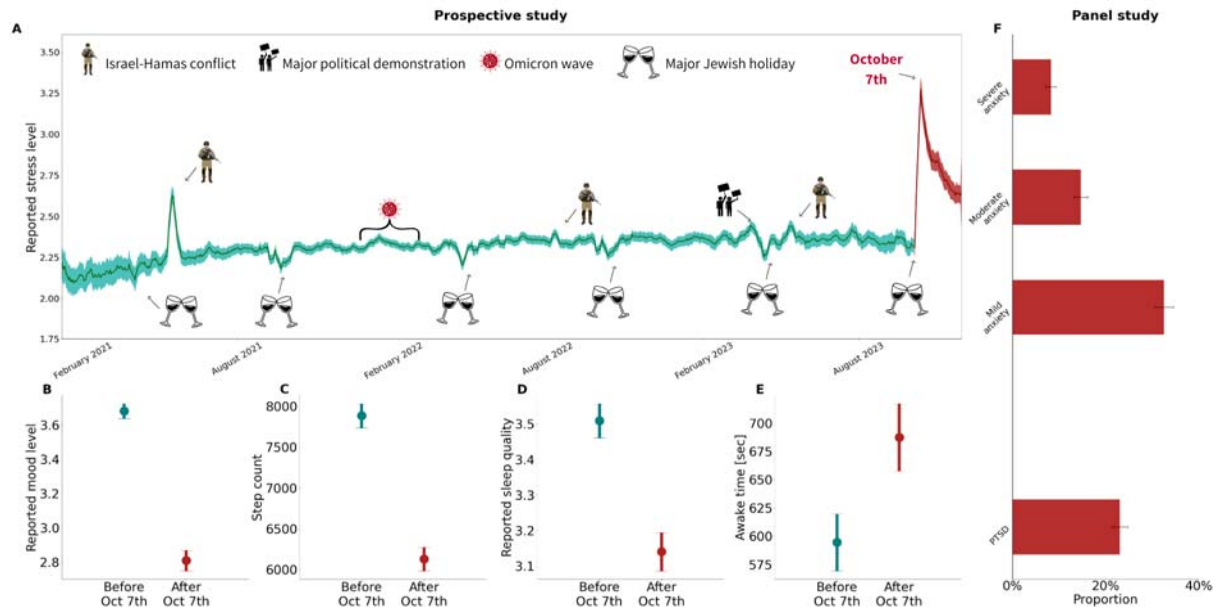


Figure 1: (A) mean daily reported stress levels for the prospective study active participants for the period January 1, 2021, to November 30, 2023. The stress levels were reported by participants as part of 752,057 daily questionnaires filled out. Stress was reported on a scale of 1 (Low) - 5 (High). The presented values are the daily moving average and the associated 95% confidence interval using a 7-day window. Figures (B-E) compare the measures recorded in a routine period before October 7 (September 30, 2023, to October 6, 2023) with those from the week after. Mean values and 95% confidence intervals are presented. Figure F shows the prevalence estimates of anxiety levels using the GAD-7 questionnaire and PTSD using the PCL-5 questionnaire among the panel study participants who were indirectly exposed to the October 7 events. In all panels, the color red represents data recorded after October 7, and green represents data recorded before October 7.

141

142 **Exposure to news and gory videos as predictors of the prevalence of PTSD**

143 In contrast to the 9/11 terror attack, where smartphones and social media platforms were not
144 available, the October 7 events were extensively documented in real-time through GoPro
145 cameras and disseminated on various media platforms. We investigated the relationship
146 between the frequency of news consumption and the number of gory videos viewed, and the

147 prevalence of PTSD among panel participants (Figure 2). After adjusting for age, sex,
148 socioeconomic status, and religious level, logistic regression revealed a positive correlation:
149 higher news consumption in the first week and more gory videos viewed following October 7
150 were associated with an increased prevalence of PTSD (p.values 0.041 and 0.003)
151 (Supplementary Table S3). For instance, estimated PTSD prevalence among those who did
152 not watch any gory videos or news was 7.7%, compared to 31.7 % among those who watched
153 more than eight hours of news per day and viewed five or more gory videos during the first
154 week after the event (Figure 2A). Among the various media platforms, Telegram presented
155 the highest exposure rate to gory videos at 88.4%, followed by Instagram and TikTok at
156 59.3% and 55.4%, respectively (Figure 2B).

157

158

159

160

161

162

163

164

165

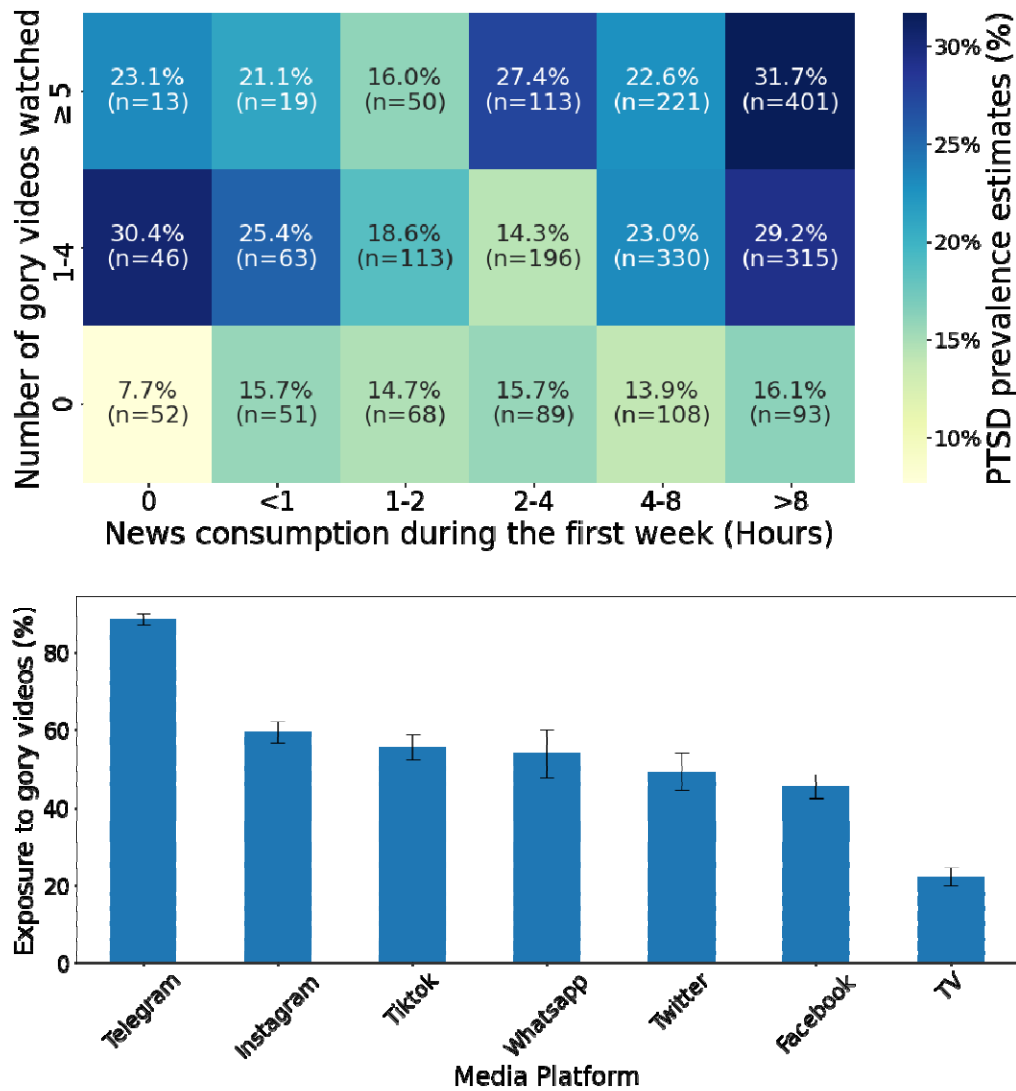


Figure 2: (A) Estimated prevalence of PTSD as a function of the number of hours spent watching news each day and the number of gory videos watched, in the first week after October 7. Adjusting for age, sex, socioeconomic status, and religious level, a logistic regression confirms that ‘news consumption’ and ‘number of gory videos watched’ are significantly correlated with PTSD prevalence (p.value 0.041 and 0.003 respectively) (Supplementary Table S3). (B) Exposure rate to gory videos by media platforms. For each media platform, we calculated the exposure rate as the number of participants who reported watching gory videos in that media platform divided by the total number of individuals who reported using that media platform.

167 Greater changes in measures among those who will later develop PTSD

168 Interventions administered shortly after a traumatic event have the potential to prevent post-
169 traumatic stress disorder¹⁸. A key challenge in delivering interventions is understanding how
170 PTSD develops in the acute post-trauma period¹⁸. Specifically, little is known about
171 physiological reactions occurring shortly after the trauma for those who later develop PTSD
172¹⁹. Focusing on the first week after the events, we found that participants who later developed
173 PTSD exhibited a higher increase in reported stress levels (1.31 vs. 0.85, on a 1-5 scale) and
174 a sharper decline in: reported mood level (1.28 vs. 0.82, on a 1-5 scale), physical activity as
175 manifested by step count (2155 vs. 1620 steps), reported sleep quality (0.7 vs. 0.31, on a 1-5
176 scale), and reported sleep duration (31 vs. 10 minutes) (Figure 3).

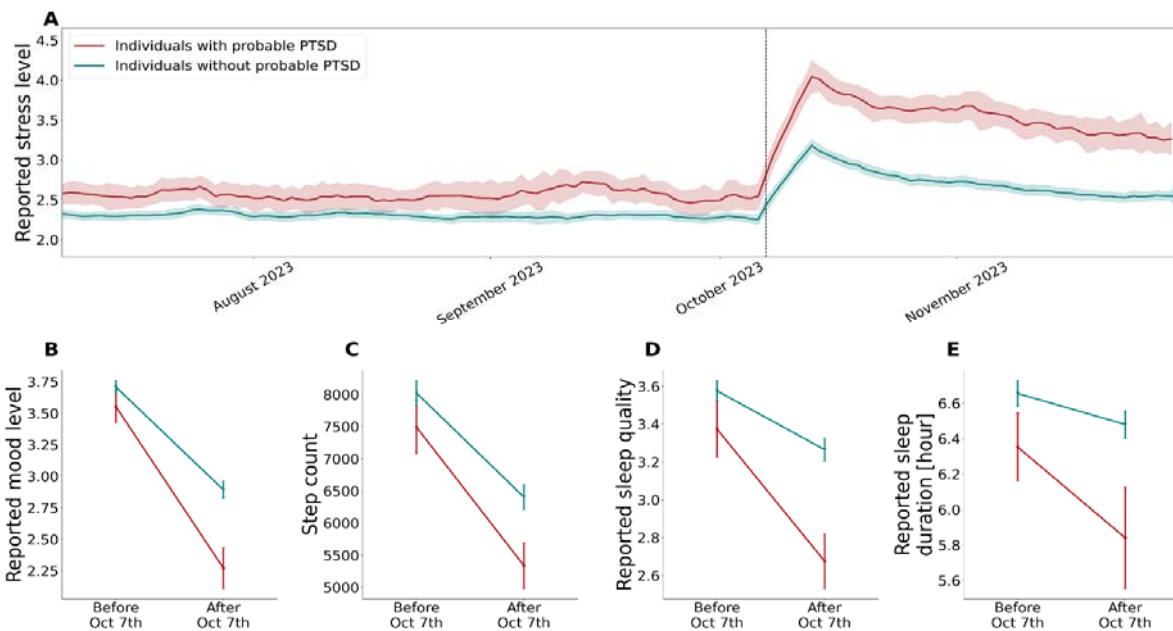


Figure 3: (A) Mean daily reported stress level for the prospective study participants for the period July 1, 2023 to November 30, 2023, stratified by PTSD status. Stress levels were reported by participants as part of the daily questionnaires on a scale of 1 (Low) - 5 (High). The presented values are the daily moving average and the associated 95% confidence interval using a 7-day window. Figures (B-E) compare the measures recorded in a routine period before October 7 (September 30, 2023, to October 6, 2023) with those from the week after, stratified by PTSD status. Mean values and 95% confidence intervals are presented.

177 **Discussion**

178 In today's reality, where detailed, unfiltered, graphic, and prolonged coverage of massive
179 traumatic events is common, we find that PTSD rates among those indirectly exposed can be
180 substantially high, reaching 22.89-35.96%. These rates are exceptionally high, comparable to
181 those experienced by health professionals who encounter trauma in their professional duties
182 ²⁰⁻²². Specifically, the hours spent, and the number of gory videos viewed in the first week
183 following October 7 were associated with an increased risk. Furthermore, using information
184 from smartwatches and simple daily questionnaires, we found early signs in individuals who
185 later developed PTSD: these include a substantial increase in stress level and decline in mood
186 level, reduced activity as indicated by decreased step counts, and abnormal sleep as reflected
187 by a decline in sleep quality and duration.

188 The DSM-5's inclusion of indirect exposure to trauma as a criterion for PTSD acknowledges
189 the reality of 'secondary traumatic stress', a condition prevalent among professionals regularly
190 exposed to the aftermath of traumatic events, such as first responders and mental health
191 workers ²³. Highly visual social media platforms, including Telegram, Instagram, and TikTok,
192 are gaining popularity, particularly among younger demographics ²⁴. Our study emphasizes
193 the profound impact that mass media's graphic portrayals of trauma can have on public mental
194 health in terror and war contexts, highlighting the public health importance of developing
195 guidelines and recommendations for posting and watching such unfiltered content. Given the
196 ubiquity of video and still photography on smartphones and other portable cameras, people
197 are now widely exposed to real images and sounds of violence, murder, sexual assault, and
198 other trauma as it occurs. Such exposure produces post-traumatic stress symptoms that are
199 comparable to those that follow current Criterion A exposure ²⁵, prompting a need for
200 consideration of further expansion of exposure criteria in the DSM to include seeing such
201 images electronically and outside the context of work.

202 Few studies have explored the potential of physiological data from smartwatches in assessing
203 individual responses during the immediate aftermath of trauma. Recent study found that
204 monitoring such biometrics could predict adverse posttraumatic neuropsychiatric sequelae
205 following traumatic stress exposure in hospital settings ²⁶. Another study demonstrated the
206 efficacy of detecting hyperarousal through heart rate and body acceleration data, achieving an
207 83% success rate in predicting PTSD onset in veterans ²⁷. Our study expands this knowledge
208 by revealing that civilians indirectly exposed to secondary traumatic stress via mass media
209 suffer from similar types of physiological changes in stress, sleep, and physical activity
210 during the week after such exposure and are at increased risk of developing PTSD.

211 Our findings extend current knowledge linking heightened stress levels, decreased physical
212 activity, and sleep disturbances to the development of PTSD ²⁸⁻³³. Further, our findings
213 suggest that the extent of these physiological reactions, as detected objectively via
214 smartwatches and subjectively by the individual, provides early signs from the impact phase.
215 The significance of these findings is amplified by the fact that a substantial number of
216 individuals with PTSD remain undiagnosed, despite the availability of early and personalized
217 treatments ³⁴⁻³⁸. The absence of proper diagnosis and subsequent treatments can lead to more
218 severe long-term health outcomes, including persistent depressive symptoms, increased
219 suicide attempts, higher morbidity, and premature death ³⁸⁻⁴⁰. The ability to monitor and
220 analyze biometric data from smartwatches opens new avenues for identifying early signs of
221 PTSD at the population level, particularly in cases of indirect exposure to trauma through
222 mass media. This is crucial for timely intervention and the prevention of long-term adverse
223 mental health outcomes.

224 Our study has several limitations. We assumed that the traumatic event is defined by the
225 October 7 atrocities, but the context of our PTSD prevalence estimates includes the onset of
226 war following the October 7 events in the Gaza Strip. However, as opposed to the ongoing
227 trauma of the civilians in Gaza, we believe that the trauma experienced by Israeli citizens
228 primarily stems from the specific incidents on October 7. Second, though previously validated

229 in several settings, including in Israel ^{15,41}, our prevalence estimate for PTSD is based on the
230 PCL-5 survey, while a gold standard diagnosis requires assessment by healthcare
231 professionals. Finally, the lack of longitudinal data limits our understanding of PTSD's
232 progression, severity, and long-term impacts. Future research should include longer follow-up
233 periods to provide a more comprehensive understanding of the trajectory of PTSD over time.

234

235

236 **Main references**

- 237 1. Column: Israel's Darkest Hour Casts a Shadow on the World | TIME.
238 <https://time.com/6321967/israel-president-isaac-herzog-hamas-attack/>.
- 239 2. Ressler, K. J. *et al.* Post-traumatic stress disorder: clinical and translational
240 neuroscience from cells to circuits. *Nature Reviews Neurology* 2022 18:5 **18**, 273–288
241 (2022).
- 242 3. Holman, E. A., Garfin, D. R., Lubens, P. & Silver, R. C. Media Exposure to Collective
243 Trauma, Mental Health, and Functioning: Does It Matter What You See? *Clinical*
244 *Psychological Science* **8**, 111–124 (2020).
- 245 4. Galea, S. *et al.* Trends of probable post-traumatic stress disorder in New York City
246 after the September 11 terrorist attacks. *Am J Epidemiol* **158**, 514–524 (2003).
- 247 5. Neria, Y. & Sullivan, G. M. Understanding the Mental Health Effects of Indirect
248 Exposure to Mass Trauma Through the Media. *JAMA*: *the journal of the American*
249 *Medical Association* **306**, 1374 (2011).
- 250 6. McEwen, B. S. & Seeman, T. Protective and damaging effects of mediators of stress.
251 Elaborating and testing the concepts of allostasis and allostatic load. *Ann N Y Acad Sci*
252 **896**, 30–47 (1999).
- 253 7. Akil, H. & Nestler, E. J. The neurobiology of stress: Vulnerability, resilience, and
254 major depression. *Proc Natl Acad Sci U S A* **120**, e2312662120 (2023).
- 255 8. Bryant, R. A. *et al.* Acute and Chronic Posttraumatic Stress Symptoms in the
256 Emergence of Posttraumatic Stress Disorder A Network Analysis. (2017)
257 doi:10.1001/jamapsychiatry.2016.3470.
- 258 9. Butler, L. D. *et al.* Psychosocial predictors of resilience after the September 11, 2001
259 terrorist attacks. *J Nerv Ment Dis* **197**, 266–273 (2009).

- 260 10. Mofaz, M. *et al.* Real-time sensing of war's effects on wellbeing with smartphones
261 and smartwatches. *Communications Medicine* 2023 3:1 **3**, 1–11 (2023).
- 262 11. Yechezkel, M. *et al.* Safety of the fourth COVID-19 BNT162b2 mRNA (second
263 booster) vaccine: a prospective and retrospective cohort study. *Lancet Respir Med* **0**,
264 (2022).
- 265 12. Mofaz, M. *et al.* Self-Reported and Physiologic Reactions to Third BNT162b2 mRNA
266 COVID-19 (Booster) Vaccine Dose. *Emerg Infect Dis* **28**, 1375 (2022).
- 267 13. Guan, G. *et al.* Higher sensitivity monitoring of reactions to COVID-19 vaccination
268 using smartwatches. *npj Digital Medicine* 2022 5:1 **5**, 1–9 (2022).
- 269 14. Oved, S. *et al.* Differential effects of COVID-19 lockdowns on well-being: interaction
270 between age, gender and chronotype. *J R Soc Interface* **18**, (2021).
- 271 15. Blevins, C. A., Weathers, F. W., Davis, M. T., Witte, T. K. & Domino, J. L. The
272 Posttraumatic Stress Disorder Checklist for DSM-5 (PCL-5): Development and Initial
273 Psychometric Evaluation. *J Trauma Stress* **28**, 489–498 (2015).
- 274 16. Neria, Y. & Sullivan, G. M. Understanding the Mental Health Effects of Indirect
275 Exposure to Mass Trauma Through the Media. *JAMA* □: *the journal of the American*
276 *Medical Association* **306**, 1374 (2011).
- 277 17. S, G. *et al.* Psychological sequelae of the September 11 terrorist attacks in New York
278 City. *N Engl J Med* **346**, 34 (2002).
- 279 18. Price, M., Stolk-Cooke, K. van, Brier, Z. M. F. & Legrand, A. C. mHealth solutions
280 for early interventions after trauma: improvements and considerations for assessment
281 and intervention throughout the acute post-trauma period. *Mhealth* **4**, 22–22 (2018).
- 282 19. Mellman, T. A., Bustamante, V., Fins, A. I., Pigeon, W. R. & Nolan, B. REM sleep
283 and the early development of posttraumatic stress disorder. *American Journal of*
284 *Psychiatry* **159**, 1696–1701 (2002).

- 285 20. May, J. M., Richardi, T. M. & Barth, K. S. Dialectical behavior therapy as treatment
286 for borderline personality disorder. *Ment Health Clin* **6**, 62 (2016).
- 287 21. Figley, C. R. *Compassion fatigue as secondary traumatic stress disorder: An*
288 *overview. Compassion fatigue: Coping with secondary traumatic stress disorder in*
289 *those who treat the traumatised* (Brunner-Routledge, 1995).
- 290 22. Bride, B. E. Prevalence of secondary traumatic stress among social workers. *Soc Work*
291 **52**, 63–70 (2007).
- 292 23. American Psychiatric Association. Diagnostic and Statistical Manual of Mental
293 Disorders. *Diagnostic and Statistical Manual of Mental Disorders* (2022)
294 doi:10.1176/APPI.BOOKS.9780890425787.
- 295 24. McCrory, E., Foulkes, L. & Viding, E. Social thinning and stress generation after
296 childhood maltreatment: a neurocognitive social transactional model of psychiatric
297 vulnerability. *Lancet Psychiatry* **9**, 828–837 (2022).
- 298 25. Howard, J., Lorenzo-Luaces, L., Lind, C., Lakhan, P. & Rutter, L. Is a Criterion A
299 trauma necessary to elicit posttraumatic stress symptoms? *J Psychiatr Res* (2023)
300 doi:10.1016/J.JPSYCHIRES.2023.12.008.
- 301 26. Straus, L. D. *et al.* Utility of Wrist-Wearable Data for Assessing Pain, Sleep, and
302 Anxiety Outcomes After Traumatic Stress Exposure. *JAMA Psychiatry* **80**, 220–229
303 (2023).
- 304 27. Sadeghi, M., McDonald, A. D. & Sasangohar, F. Posttraumatic stress disorder
305 hyperarousal event detection using smartwatch physiological and activity data. *PLoS*
306 *One* **17**, (2022).
- 307 28. Zhang, Y. *et al.* Sleep in posttraumatic stress disorder: A systematic review and meta-
308 analysis of polysomnographic findings. *Sleep Med Rev* **48**, (2019).

- 309 29. Gehrman, P. *et al.* Predeployment Sleep Duration and Insomnia Symptoms as Risk
310 Factors for New-Onset Mental Health Disorders Following Military Deployment.
311 *Sleep* **36**, 1009–1018 (2013).
- 312 30. Hegberg, N. J., Hayes, J. P. & Hayes, S. M. Exercise Intervention in PTSD: A
313 Narrative Review and Rationale for Implementation. *Front Psychiatry* **10**, (2019).
- 314 31. Whitworth, J. W. & Ciccolo, J. T. Exercise and Post-Traumatic Stress Disorder in
315 Military Veterans: A Systematic Review. *Mil Med* **181**, 953–960 (2016).
- 316 32. Vancampfort, D. *et al.* Physical fitness in people with posttraumatic stress disorder: a
317 systematic review. *Disabil Rehabil* **39**, 2461–2467 (2017).
- 318 33. Miller, K. E. & Rasmussen, A. War exposure, daily stressors, and mental health in
319 conflict and post-conflict settings: bridging the divide between trauma-focused and
320 psychosocial frameworks. *Soc Sci Med* **70**, 7–16 (2010).
- 321 34. Smith Flowers, P., & Larkin, M., J. Interpretative phenomenological analysis: Theory,
322 method and research. Thousand Oaks, CA: Sage Publications Inc. 225 (2009).
- 323 35. GRINAGE, B. D. Diagnosis and Management of Post-traumatic Stress Disorder. *Am*
324 *Fam Physician* **68**, 2401–2409 (2003).
- 325 36. Meltzer, L. J., Montgomery-Downs, H. E., Insana, S. P. & Walsh, C. M. Use of
326 actigraphy for assessment in pediatric sleep research. *Sleep Med Rev* **16**, 463–475
327 (2012).
- 328 37. Lecrubier, Y. Posttraumatic Stress Disorder in Primary Care: A Hidden Diagnosis. *J*
329 *Clin Psychiatry* **65**, 14894 (2004).
- 330 38. Gagnon-Sanschagrín, P. *et al.* Identifying individuals with undiagnosed post-traumatic
331 stress disorder in a large United States civilian population - a machine learning
332 approach. *BMC Psychiatry* **22**, (2022).

333 39. Goenjian, A. K. *et al.* A prospective study of posttraumatic stress and depressive
334 reactions among treated and untreated adolescents 5 years after a catastrophic disaster.
335 *Am J Psychiatry* **162**, 2302–2308 (2005).

336 40. Priebe, S. *et al.* Patients' views and readmissions 1 year after involuntary
337 hospitalisation. *Br J Psychiatry* **194**, 49–54 (2009).

338 41. Raz, A. *et al.* Behavioral Self-Blame in PTSD—Etiology, Risk Factors, and Proposed
339 Interventions. *International Journal of Environmental Research and Public Health*
340 *2023, Vol. 20, Page 6530* **20**, 6530 (2023).

341

342

343 **Methods**

344 **Study Design and Participants**

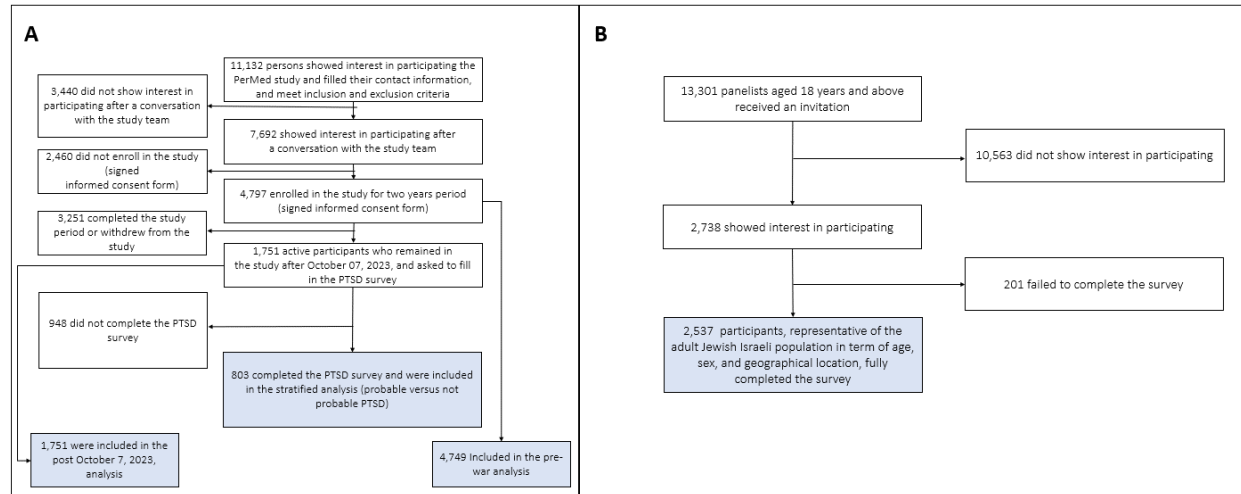
345 *Panel Study*

346 For the panel study, we hired a professional survey company to recruit 2,536 participants from
347 November 1, 2023 to December 3, 2023. Participants were aged 18 years or older, and were
348 representative of the adult Israeli Jewish population by age, sex, and geographical location
349 (Supplementary appendix A). Participant recruitment was conducted through a preregistered panelists'
350 database via email. The survey company was responsible for ensuring that participants fulfilled all the
351 study's requirements. To guarantee the representativeness of the sample, invitations were
352 systematically distributed to panelists, ensuring their participation in the study through a staggered and
353 quota-based approach. For inclusion in the panel study, participants were required to be 18 years or
354 older, enrolled in the survey company's database of panelists, and willing to consent to the specified
355 terms of the study (Supplementary appendix D). Panelists were excluded if they failed to complete the
356 study requirements.

357 *Prospective study*

358 The ongoing PerMed prospective observational study included 4,797 participants aged 18 years and
359 older who were recruited starting November 1, 2020, from all across Israel¹⁻⁵(Supplementary appendix
360 A and B). As of December 6, 2023, a total of 1,751 participants remained active in the study.
361 Participant recruitment was conducted via advertisements on social media and word-of-mouth. Each
362 participant signed an informed consent form after receiving a comprehensive explanation of the study
363 from a professional survey company.

364 To be included in the PerMed study, participants needed to be 18 years or older, using their own
365 smartphone, and able to give written informed consent by themselves. Participants were excluded if
366 they knew that they would be outside of Israel for more than three months continuously at any point for
367 the two years after enrolment. Participants were also excluded if they were students or employees of



368 the principal investigator.

369 **Figure 4: Study participants.** (A) prospective study, (B) panel study.

370

371

372 **Procedures**

373 **Panel study**

374 Upon enrollment, participants were provided with written information about the nature of the
375 study. We asked participants to complete online PTSD and anxiety surveys, focusing on
376 coping with events that occurred on October 7, to detect probable cases of PTSD and anxiety
377 at the nationwide level. At this stage, participants were also requested to provide demographic
378 information, including age, sex, household size, educational background, and news
379 consumption behavior.

380 The online PTSD survey incorporates the Post-traumatic Stress Disorder Checklist (PCL-5), a
381 self-report questionnaire designed to assess the 20 symptoms outlined in the DSM-5 criteria
382 for PTSD. The PCL-5 serves various purposes, including screening individuals for PTSD and
383 making provisional diagnoses ⁶. It is widely used for clinical and research purposes;
384 psychometrically, the PCL-5 demonstrates strong internal consistency ($\alpha = .94$), high test-
385 retest reliability ($r = .82$), and strong convergent validity ($r_s = .74$ to $.85$) ⁶.

386 The survey also utilized the General Anxiety Disorder (GAD) 7 item questionnaire (GAD-7)
387 to identify probable cases of GAD along with measuring anxiety symptom severity. The tool
388 is also widely used as a screening measure of panic, social anxiety, and PTSD. The
389 questionnaire is considered valid, sensitive, and specific for the diagnosis of GAD in the
390 general population ⁷. We used the Israeli Ministry of Health's (IMOH) Hebrew translation of
391 these two questionnaires.

392 *Prospective study*

393 Upon enrolment in the prospective study, we collected information on participants' sex, age,
394 household income, city of residence, and religious level. After enrolment, participants used
395 the PerMed mobile application to complete a daily questionnaire ⁸⁻¹⁰. The questionnaire
396 allowed participants to report on stress levels, mood, and sleep quality (Supplementary
397 appendix A). Participants who were active in the study after the events on October 7, 2023,
398 were asked to fill in an online PTSD survey eight weeks later.

399 Participants in the prospective cohort were equipped with Garmin Vivosmart 4 smart fitness
400 trackers. Among other features, the smartwatch collects data for all-day heart rate, HRV-
401 based stress, ¹¹ step counts, sleep duration, and sleep-level classification, including light, deep,
402 rapid eye movement (REM), and awake periods ¹ (Supplementary appendix A). We focused
403 on these measures because they provide continuous information on the well-being of an
404 individual. Additionally, individuals diagnosed with PTSD may encounter nightmares,
405 insomnia and often report a reduction in sleep time due to waking up earlier than desired,

406 restlessness during the night, and difficulties falling asleep, all of which impact daily life ¹².
407 Step counts are strongly correlated with the physical activity level of an individual. Given that
408 PTSD involves anxiety and depression, those diagnosed with PTSD tend to be less physically
409 active ¹³.

410 The smartwatch's optical wrist heart rate monitor was designed to continuously measure the
411 user's heart rate. The frequency at which the heart rate was measured varied and sometimes
412 depended on the level of activity of the user: when the user started an activity, the optical
413 heart rate monitor's measurement frequency increased. As heart rate variability (HRV) was
414 not easily accessible through Garmin's application programming interface, we used Garmin's
415 stress level instead, which is calculated based on HRV ¹¹. Specifically, the device uses heart
416 rate data to determine the interval between each heartbeat. The variable length of time
417 between each heartbeat is regulated by the body's autonomic nervous system. Less variability
418 between beats correlates with higher stress levels, whereas an increase in variability indicates
419 less stress ¹⁴. When examining the data collected in our study, we identified a heart rate
420 sample approximately every 15 s and a stress-based HRV sample every 180 s.

421 We developed a dedicated data collection platform that collects for each participant data from
422 the smartphone sensors and daily questionnaires via the PerMed application and the
423 smartwatch sensors via the Garmin Health API (Supplementary appendix B). These collected
424 data are securely stored in Tel Aviv University facilities.

425 Participants completed a one-time enrolment questionnaire, received Garmin Vivosmart 4
426 smartwatches, and installed two applications on their mobile phones: (1) the PerMed
427 application ⁸⁻¹⁰, which collects daily self-reported questionnaires; and (2) an application that
428 passively records smartwatch data. Participants were asked to wear their smartwatches as
429 much as possible. Using a dedicated dashboard to monitor compliance, a survey company
430 ensured that participants' questionnaires were filled at least twice a week, that their

431 smartwatches were charged and properly worn, and that any technical problems with the
432 mobile applications or smartwatch were resolved (Supplementary appendix A).

433 We implemented several preventive measures to minimize participant attrition and discomfort
434 and thereby improve the quality, continuity, and reliability of the collected data. First, each
435 day, participants who did not fill out their daily questionnaire by 19:00h received a reminder
436 notification through the PerMed application. Second, we developed a dedicated dashboard
437 that allowed the survey company to identify participants who repeatedly neglected to
438 complete the daily questionnaire or did not wear their smartwatch for extended periods of
439 time. These participants were contacted by the survey company (either by text message or
440 phone call) and were encouraged to better adhere to the study protocol. Third, to strengthen
441 participants' engagement, a weekly summary report was generated for each participant, which
442 was available inside the PerMed application. Similarly, a monthly newsletter with recent
443 findings from published studies and useful tips regarding the smartwatch's capabilities was
444 sent to the participants. At the end of two years, participants received all the obtained personal
445 insights and could keep the smartwatch as a gift (Supplementary appendix C).

446 **Outcomes**

447 For both the prospective and panel study cohorts, we analyzed the online PTSD survey
448 (Supplementary Table S1 and Supplementary appendix D). We defined the main outcomes as
449 probable PTSD and anxiety levels for each participant.

450 For the prospective study, we analyzed step counts, sleep duration, and awake episodes
451 during sleep from the smartwatches. In analyzing the daily questionnaires, we calculated the
452 daily mean of reported stress, reported mood, reported sleep quality, and reported sleep
453 duration before and after the events of October 7. For each measure, the prespecified
454 outcomes are the daily mean value of each measurement. We calculated the daily mean value
455 before and after the events of October 7.

456 We also analyzed heart rate and HRV-based stress from the smartwatches. For these
457 measures, we calculated the hourly mean value before and after the events of October 7.

458

459 **Statistical analysis**

460 PTSD diagnosis requires an interview conducted by a trained clinician. As our outcome was
461 derived from a screening tool, we characterize the result as "probable PTSD". We defined
462 probable PTSD as a total score of 33 on the PCL-5 questionnaire and meeting the DSM-5
463 diagnostic rule which requires at least: 1 B item (questions 1-5), 1 C item (questions 6-7), 2 D
464 items (questions 8-14), 2 E items (questions 15-20). This definition aligns with the most
465 conservative criteria, consistent with the guidelines established by the International Society
466 for Traumatic Stress Studies¹⁵ (Supplementary appendix D). In a secondary analysis, we
467 considered a less conservative definition of probable PTSD, whereby it is identified by either
468 a total score of 31 on the PCL-5 questionnaire or by meeting the DSM-5 diagnostic rule.

469 In line with the GAD-7 criteria, the anxiety level of participants was determined by the total
470 score: no anxiety (0-4), mild (5-9), moderate (10-14) and severe (15)⁷.

471 ***Panel study***

472 ***Descriptive statistics***

473 We analyzed the data of participants who had indirect exposure to the events of October 7.
474 Specifically, we defined indirect exposure for all participants who, along with their immediate
475 family, were not injured, killed, or abducted. To ensure specificity in attributing PTSD
476 sources, we excluded individuals who evacuated their homes. This exclusion is based on the
477 consideration that PTSD in these cases may stem more from the evacuation process than the
478 events of October 7. We evaluated the estimated prevalence of PTSD as the proportion of
479 individuals with probable PTSD. We also stratified the prevalence estimate by the duration of

480 news information consumption during the first week after October 7 and the extent of
481 exposure to gory videos. Additionally, we examined the rates of each anxiety level.

482 We also evaluated the rates of exposure to gory videos on each media platform. Specifically,
483 we divided the number of participants who were exposed to gory videos on each platform by
484 the number of participants who consumed news information using that platform.

485 The 95% confidence intervals (CIs) were obtained under the assumption of binomial
486 distribution.

487 *Inferential statistics*

488 To examine the unadjusted associations between the probability of probable PTSD, duration
489 of news consumption during the first week following October 7, and the extent of exposure to
490 gory videos, while controlling for other explanatory variables (age, sex, educational
491 background, PTSD background, religious level, and socioeconomic level), we applied a
492 logistic regression model:

$$(1) \quad \ln \left(\frac{p}{1-p} \right) \sim \text{age} + \text{sex} + \text{educational background} + \text{PTSD background} \\ + \text{religious level} + \text{socioeconomic level} \\ + \text{duration of news consumption} + \text{gory video exposure},$$

493

494

495 where p represents the probability of probable PTSD. Age is treated as a continuous variable,
496 while educational background, religious level, socioeconomic level, duration of news
497 consumption, and gory video exposure are considered ordinal variables. Sex and PTSD
498 background are categorized as Boolean variables.

499 Likewise, to examine the unadjusted associations between the probability of moderate to
500 severe anxiety, duration of news consumption during the two weeks before filling in the
501 online PTSD survey, and the extent of exposure to gory videos, while controlling for other
502 explanatory variables (age, sex, educational background, anxiety background, religious level,
503 and socioeconomic level), we applied a logistic regression model:

$$\ln \left(\frac{p}{1-p} \right) \sim \textit{age} + \textit{sex} + \textit{educational background}$$

(2) $+ \textit{anxiety background} + \textit{religious level}$
 $+ \textit{socioeconomic level} + \textit{duration of news consumption}$
 $+ \textit{gory video exposure},$

504 where p represents the probability of moderate to severe anxiety. Age is treated as a
505 continuous variable, while educational background, religious level, socioeconomic level,
506 duration of news consumption, and gory video exposure are considered ordinal variables. Sex
507 and anxiety background are categorized as Boolean variables.

508 For both models, we derived the odds ratios and their corresponding 95% confidence intervals
509 from the values of the regression coefficients.

510 ***Prospective study***

511 ***Descriptive statistics***

512 From the commencement of the prospective study on January 1, 2021, to December 3, 2023,
513 we collected 1,933,475 days of smartwatch data and 752,057 completed self-reported
514 questionnaires. Additionally, 803 participants filled in the PTSD online survey.

515 Before analyzing the data, we conducted a preprocessing step. If participants filled out the
516 daily questionnaire more than once on the same day, only the latest questionnaire for that day
517 was considered. The rationale behind this decision was that once a questionnaire was filled, it
518 was sent to the server, and could not be updated. Therefore, in the case of a filling error,
519 participants were instructed to re-fill the questionnaire.

520 For a more comprehensive understanding of individual perception, we examined the reported
521 stress levels throughout the PerMed study period. The reported stress levels were recorded
522 from the daily questionnaires on a scale of 1 to 5, where 1 represents 'very low,' and 5
523 signifies 'very high.' We calculated the daily moving average and the associated 95%
524 confidence interval with a 7-day window from January 1, 2021, to November 30, 2023, for all
525 active participants. For participants who filled in the PTSD online survey, we implemented
526 the same procedure, stratifying them based on whether they exhibited probable PTSD.

527 We noted several significant national events that might have influenced reported stress levels,
528 including the major Jewish holidays (Passover and Rosh Hashanah), armed conflicts
529 involving the firing of at least 1,000 rockets at the civilian population, a major political
530 demonstration related to judicial reform that was escalated on March 26, 2023, following the
531 dismissal of the Minister of Defense and the strike in both the public and private sectors, and
532 the SARS-CoV-2 Omicron wave, which persisted from December 20, 2023, to May 1, 2023,
533 with approximately 30% of the Israeli population reportedly infected¹⁶.

534 For each participant who remained active after October 7, 2023, we assessed the reported
535 sleep quality (measured from daily questionnaires on a scale of 1 to 5 where 1 represents
536 'awful' and 5 signifies 'excellent'), as well as various physiological indicators: duration of
537 awake time during sleep, step counts, and duration of high-stress levels. We computed a
538 single weighted average value for each of the two periods—the week prior to October 7, 2023
539 (baseline period) and the week after October 7, 2023.

540 The weighted average for each participant was determined by first averaging the
541 corresponding indicator values separately for workdays and free days (weekends and national
542 holidays). Subsequently, the weighted average of these two values was calculated, assigning a
543 weight of 5/7 to workdays and 2/7 to free days. The rationale for computing this weighted
544 average is further explained elsewhere ¹. In essence, we identified a weekly rhythm across
545 various indicators, with free days exhibiting different mean daily values than workdays.
546 Given the relatively short duration of the examined time periods and variations in the number
547 of free days (e.g., holidays), we aimed to correct for potential biases. Finally, we calculated
548 the mean and corresponding 95% confidence interval for each indicator across the
549 participants. For each indicator, we utilized a paired t-test (Supplementary Table S5) to
550 examine the difference between the weighted averages during the baseline period and those
551 following October 7, 2023.

552 For participants who filled in the PTSD online survey, we repeated the above analysis,
553 stratifying participants based on whether they exhibited probable PTSD.

554 ***Inferential statistics***

555 For each of the well-being indicators, we explored the unadjusted associations between the
556 probability of probable PTSD, the weighted average during the baseline period, and the
557 difference in the weighted average between baseline and the week after October 7 periods,
558 while controlling for other explanatory variables (age and sex), we applied a logistic
559 regression model (Supplementary Table S6):

$$(3) \quad \ln \left(\frac{p}{1-p} \right) \sim \text{age} + \text{sex} + \text{baseline period average} \\ + \text{average difference,}$$

560 where p represents the probability of probable PTSD. Age, weighted average during the
561 baseline period, and the difference in the weighted average between baseline and the week
562 after October 7 periods are treated as continuous variables, while sex is categorized as
563 Boolean variables.

564 All statistical analyses were performed using Python 3.8.

565 **Ethics**

566 The panel study, PTSD survey, and the prospective study protocols were approved by the Tel
567 Aviv University Institutional Review Board (0007545-1). Before participating in the panel
568 studies, all subjects were advised, in writing, as to the nature of the study. All data were de-
569 identified and no personally identifiable information was gathered.

570 **Role of the funding source**

571 The funders of the study had no role in study design, data collection, data analysis, data
572 interpretation, or writing of the report.

573 **Data availability statements**

574 According to this study's Tel Aviv University Institutional Review Board approval (0007545-
575 1) and data utilization committees' guidelines, no patient-level data is to be shared outside the
576 permitted researchers.

577 **Code availability statements**

578 The Statistical analysis code will be available upon publication.

579

580 **Methods references**

- 581 1. Mofaz, M. *et al.* Real-time sensing of war's effects on wellbeing with smartphones
582 and smartwatches. *Communications Medicine* 2023 3:1 **3**, 1–11 (2023).
- 583 2. Yechezkel, M. *et al.* Safety of the fourth COVID-19 BNT162b2 mRNA (second
584 booster) vaccine: a prospective and retrospective cohort study. *Lancet Respir Med* **0**,
585 (2022).
- 586 3. Mofaz, M. *et al.* Self-Reported and Physiologic Reactions to Third BNT162b2 mRNA
587 COVID-19 (Booster) Vaccine Dose. *Emerg Infect Dis* **28**, 1375 (2022).
- 588 4. Guan, G. *et al.* Higher sensitivity monitoring of reactions to COVID-19 vaccination
589 using smartwatches. *npj Digital Medicine* 2022 5:1 **5**, 1–9 (2022).
- 590 5. Oved, S. *et al.* Differential effects of COVID-19 lockdowns on well-being: interaction
591 between age, gender and chronotype. *J R Soc Interface* **18**, (2021).
- 592 6. Blevins, C. A., Weathers, F. W., Davis, M. T., Witte, T. K. & Domino, J. L. The
593 Posttraumatic Stress Disorder Checklist for DSM-5 (PCL-5): Development and Initial
594 Psychometric Evaluation. *J Trauma Stress* **28**, 489–498 (2015).
- 595 7. Löwe, B. *et al.* Validation and standardization of the generalized anxiety disorder
596 screener (GAD-7) in the general population. *Med Care* **46**, 266–274 (2008).
- 597 8. Oved, S. *et al.* *Differential effects of COVID-19 lockdowns on well-being: interaction*
598 *between age, gender and chronotype.* (2021) doi:10.21203/RS.3.RS-137929/V1.
- 599 9. Mofaz, M. *et al.* Self-Reported and Physiologic Reactions to Third BNT162b2 mRNA
600 COVID-19 (Booster) Vaccine Dose. *Emerg Infect Dis* **28**, 1375 (2022).
- 601 10. Gepner, Y. *et al.* Utilizing wearable sensors for continuous and highly-sensitive
602 monitoring of reactions to the BNT162b2 mRNA COVID-19 vaccine.
603 *Communications Medicine* 2022 2:1 **2**, 1–8 (2022).

- 604 11. VÍVOSMART @ 4 Owner’s Manual. (2018).
- 605 12. Sleep Problems and PTSD - PTSD: National Center for PTSD.
606 https://www.ptsd.va.gov/understand/related/sleep_problems.asp.
- 607 13. Zen, A. L., Whooley, M. A., Zhao, S. & Cohen, B. E. Post-Traumatic Stress Disorder
608 is Associated With Poor Health Behaviors: Findings From the Heart and Soul Study.
609 *Health Psychology* **31**, 194 (2012).
- 610 14. What Is the Stress Level Feature on My Garmin Watch? | Garmin Support.
611 <https://support.garmin.com/en-US/?faq=WT9BmhjacO4ZpxbCc0EKn9>.
- 612 15. ISTSS - Posttraumatic Stress Disorder Checklist. [https://istss.org/clinical-](https://istss.org/clinical-resources/assessing-trauma/ptsd-checklist-dsm-5?gclid=Cj0KCQiAgqGrBhDtARIsAM5s0_kIFIV4y3jn36yr2sC5-6VohlDk05TMyRsIosd5YiZOBB7N1DWkRMgaAsJnEALw_wcB)
613 [resources/assessing-trauma/ptsd-checklist-dsm-](https://istss.org/clinical-resources/assessing-trauma/ptsd-checklist-dsm-5?gclid=Cj0KCQiAgqGrBhDtARIsAM5s0_kIFIV4y3jn36yr2sC5-6VohlDk05TMyRsIosd5YiZOBB7N1DWkRMgaAsJnEALw_wcB)
614 [5?gclid=Cj0KCQiAgqGrBhDtARIsAM5s0_kIFIV4y3jn36yr2sC5-](https://istss.org/clinical-resources/assessing-trauma/ptsd-checklist-dsm-5?gclid=Cj0KCQiAgqGrBhDtARIsAM5s0_kIFIV4y3jn36yr2sC5-6VohlDk05TMyRsIosd5YiZOBB7N1DWkRMgaAsJnEALw_wcB)
615 [6VohlDk05TMyRsIosd5YiZOBB7N1DWkRMgaAsJnEALw_wcB](https://istss.org/clinical-resources/assessing-trauma/ptsd-checklist-dsm-5?gclid=Cj0KCQiAgqGrBhDtARIsAM5s0_kIFIV4y3jn36yr2sC5-6VohlDk05TMyRsIosd5YiZOBB7N1DWkRMgaAsJnEALw_wcB).
- 616 16. COVID-19 Datasets- Government Data. <https://data.gov.il/dataset/covid-19>.
- 617
- 618

619 **Acknowledgments**

620 This work was supported by ISRAEL SCIENCE FOUNDATION (grant no. 3409/19), within
621 the Israel Precision Medicine Partnership program and a Koret Foundation gift for Smart
622 Cities and Digital Living.

623

624 **Authors' contributions**

625 Conception and design: DY, SLA, ES. DY, MY, MF, RE, and ES had access to the raw data
626 and were responsible for verifying the data. Analysis and interpretation of the data: MY, DY,
627 ES, MF, RE, and DS. Statistical analysis: MY, DY, ES, MF, and RE. Drafting the article: all
628 authors. Critical revision of the article for important intellectual content: DY, ES. Final
629 approval of the article: All authors. Obtaining funding: DY, ES, and MLB.

630

631 **Declaration of Interests**

632 All authors declare no competing interests.

633
634
635
636
637
638
639
640
641
642
643
644
645
646
647
648
649
650
651
652
653
654
655
656
657
658
659
660
661
662
663

Supplementary Materials for:

Risk and early signs of PTSD in people indirectly exposed to October 7 events

Dan Yamin, PhD^{1,2,3,*}, Shahar Lev-Ari, PhD^{4,*}, Merav Mofaz, PhD¹, Ron Elias, Bsc¹, David Spiegel, MD⁵, Matan Yechezkel, MS¹, Margaret L. Brandeau, PhD², Erez Shmueli, PhD^{1,3,6,*}

¹Department of Industrial Engineering, Tel Aviv University, Tel Aviv, Israel.

²Department of Management Science and Engineering, Stanford University, Stanford, CA, USA.

³Wizermed D.H. LTD, Zoran, Israel.

⁴Department of Health Promotion, Tel Aviv University, Tel Aviv, Israel.

⁵Department of Psychiatry and Behavioral Sciences, Stanford University, Stanford, CA, USA.

⁶MIT Media Lab, Cambridge, MA, USA.

* Contributed equally.

Address correspondence to: Prof. Erez Shmueli, shmueli@tau.ac.il

Keywords: Wearable sensors, PTSD, Anxiety, indirect exposure, October 7 atrocities, physiological reactions, well-being

Table of Contents

Appendix A – Study protocol.....	2
Prospective part.....	2
Panel study.....	5
Appendix B – Data collection platform and data access.....	8
Architecture.....	8
The PerMed Dashboard.....	8
The Type of Data Collected and data access.....	9
Appendix C – Prospective study participants’ adherence.....	9
Appendix D – PTSD online survey.....	11
Appendix E – Additional results.....	16
Appendix F – Additional results: continous physiological measures.....	22
References.....	24

664 **Appendix A – Study protocol**

665 **Prospective part**

666

667 *Study Design*

668 In this study we will analyze data that were already collected and will be collected as part of the PerMed study ¹.
669 Participants in the PerMed study are recruited for a period of two years, during which they are equipped with a
670 Garmin Vivosmart 4 smartwatches and are asked to wear them as much as they could. In addition, participants
671 install two applications on their mobile phones: an application that passively collects data from the smartwatch and a
672 dedicated mobile application which allows participants to fill a daily. We will also ask active participants to fill in
673 dedicated surveys for the detection of Post-Traumatic Stress Disorder (PTSD) and anxiety. In this study, we will
674 consider for each participant the 4-weeks period prior to October 7, 2023, as the baseline period.

675

676 *Participants*

677 The inclusion criteria for the PerMed study includes those aged > 18 years. Individuals who are not eligible to give
678 and sign a consent form of their free are excluded. In this study, we will analyze the data of participants aged 18
679 years and above before and after October, 7, 2023 . To recruit participants and ensure they complete all the study's
680 requirements, we will hire a professional survey company. Potential participants will be recruited through
681 advertisements in social media, online banners, and word-of-mouth. The survey company is responsible for
682 guaranteeing the participants meet the study's requirements, in particular, that the questionnaires are filled daily,
683 ensuring the smartwatches are charged constantly and worn properly, and assisting participants resolve technical
684 problems.

685

686 *Study procedures*

687 Before participation in the study, all participants will be advised orally and in writing about the nature of the
688 experiments and give written, informed consent. At this time, participants will be asked to complete an enrollment
689 questionnaire that includes demographic information and health status. In addition, participants will be asked to
690 install two applications on their mobile phones: an application that passively collects data from the smartwatch and
691 the PerMed application, which allows participants to fill in the daily questionnaires. Participants will be given
692 instructions regarding the self-reported symptoms questionnaires and how to operate the smartwatch, which they
693 will wear as much as they can. We will also ask active participants to fill in dedicated surveys of PTSD eight weeks
694 after the events of October 7, 2023 to detect a possible signs of probable PTSD.

695

696 *Enrollment questionnaire*

697 All participants will fill in a one-time enrollment questionnaire that includes demographic questions and questions
698 about the participant's health condition in general. Specifically, the questionnaire will include the following: age,
699 sex, height, weight, underlying medical conditions, and household income (Listed in Table S2). Other questions
700 such as name, address, phone and email will be recorded and used by the survey company to contact the
701 participants. The answers will be filled-in directly by the survey company to the study's secured dashboard.

702

703 *Monitoring device*

704 Participants will be equipped with Garmin Vivosmart 4 smart fitness trackers. Among other features, the smartwatch
705 provides all-day heart rate and heart rate variability and during-night blood oxygen saturation level tracking
706 capabilities ².

707
708 The optical wrist heart rate (HR) monitor of the smartwatch is designed to continuously monitor a user's heart rate.
709 The frequency at which heart rate is measured varies and may depend on the level of activity of the user: when the
710 user starts an activity, the optical HR monitor's measurement frequency increases.

711
712 Since heart rate variability (HRV) is not easily accessible through Garmin's application programming interface
713 (API), we use Garmin's stress level instead, which is calculated based on HRV. Specifically, the device uses heart
714 rate data to determine the interval between each heartbeat. The variable length of time between each heartbeat is
715 regulated by the body's autonomic nervous system. Less variability between beats correlates with higher stress
716 levels, whereas an increase in variability indicates less stress ³. A similar relationship between HRV and stress was
717 also seen in ^{4,5}.

718
719 Examining the data collected in our study, we identified an HR sample roughly every 15 seconds, a stress – based
720 HRV sample every 180 seconds.

721
722 While the Garmin smartwatch provides state-of-the-art wrist monitoring, it is not a medical-grade device, and some
723 readings may be inaccurate under certain circumstances, depending on factors such as the fit of the device and the
724 type and intensity of the activity undertaken by a participant ⁶⁻⁸.

725

726 *Daily questionnaires*

727 All participants will complete the daily self-reported questionnaire in a dedicated application (the PerMed mobile
728 application). The daily questionnaire we will use includes the following questions:

How is your mood today? • Awful (1)• Bad (2)• OK (3)• Good (4)• Excellent (5)

How would you describe the level of your stress during the last day?• Very Low (1)•
Low (2)• Medium (3)• High (4)• Very high (5)

How would you define your last night sleep quality?• Awful (1)• Bad (2)• OK (3)•
Good (4)• Excellent (5)

Try to remember how many minutes of sports activity you performed on the last day?

Have you experienced one or more of the following symptoms in the last 24 hours?•
My general feeling is good, and I have no symptoms• Heat measured above 37.5•
Cough• Sore throat• Runny nose• Headache• Shortness of breath• Muscle aches•
Weakness / fatigue• Diarrhea• Nausea / vomiting• Chills• Confusion• Loss of
sense of taste / smell• Another symptom.

729

730 *PTSD dedicated survey*

731 All participants will be asked to fill in an online survey that includes well-established PTSD surveys via the PerMed
732 application. The Posttraumatic Stress Disorder Checklist (PCL-5) is a self-report questionnaire designed to assess
733 the 20 symptoms outlined in the DSM-5 criteria for PTSD. The PCL-5 serves various purposes, including screening

734 individuals for PTSD and making provisional diagnoses⁹. It is widely used for clinical and research purposes;
735 psychometrically, the PCL-5 demonstrates strong internal consistency ($\alpha = .94$), high test-retest reliability ($r = .82$),
736 and strong convergent validity ($r_s = .74$ to $.85$)⁹. We will utilize the General Anxiety Disorder (GAD) 7 item
737 questionnaire (GAD-7) to identify probable cases of GAD along with measuring anxiety symptom severity. The tool
738 is also widely used as a screening measure of panic, social anxiety, and PTSD. The questionnaire is considered
739 valid, sensitive, and specific for the diagnosis of GAD in the general population¹⁰. Will use the Israeli Ministry of
740 Health's (IMOH) Hebrew translation of these surveys. See Appendix D for the full survey.

741

742 *Data Storage*

743 Data collected from the mobile phone application and from the smartwatches will be stored on a secure server
744 within Tel Aviv University facilities. The server runs a CentOS operating system and is located in the Software
745 Engineering Building at Tel Aviv University. This server is protected behind the university's firewall and is not
746 connected to external networks. In addition, a secure connection through an SSL protocol and a trusted certificate
747 will be obtained for the transfer of information from the mobile phone application into the secured server.

748

749 Access will be restricted to investigators in the study. The information from the mobile application will be stored in
750 a structured manner on the secured server without any explicitly identifying information (name, ID number, email).
751 Each participant will be assigned a coded participant number that will be used to identify the subject in the database.
752 The code with the identified information will be stored in an encrypted form on a separate secured server that only
753 the research manager will have access to. Access to all servers is restricted with username and password.

754

755 All (non-digital) questionnaires and signed informed consent documents will be stored in a secured cabinet in Tel
756 Aviv University, to which only the research manager and the principal investigators will have access. No data
757 collected as part of the study will be added to individuals' medical charts.

758

759 *Data preprocessing*

760 We will perform several preprocessing steps. Concerning the daily questionnaires, in cases where participants will
761 fill in the daily questionnaire more than once on a given day, only the last entry for that day will be considered, as it
762 is reasoned that the last one likely best represented the entire day. Self-reported symptoms that are entered as the
763 free text will be manually categorized.

764

765 For participant that completed PTSD survey will also be categorized probable PTSD if the total score of the PCL-5
766 questionnaire is ≥ 33 and meet the DSM-5 diagnostic rule which requires at least: 1 B item (questions 1-5), 1 C item
767 (questions 6-7), 2 D items (questions 8-14), 2 E items (questions 15-20). In line with the GAD-7 criteria, anxiety
768 level of participant will be determined by the total score: no anxiety (0-4), mild (5-9), moderate (10-14) and severe
769 (≥ 15). Then we will compute the proportion of participants presenting probable PTSD and proportions of each
770 anxiety level.

771

772 *Data Analysis and inclusion criteria*

773 For a more comprehensive understanding of individual perception, we will examine the reported stress levels
774 throughout the PerMed study period. We will calculate the daily centered moving average and the associated 95%
775 confidence interval with a 7-day window from January 1, 2021, for all active participants. For participants who
776 filled in the PTSD online survey, we will implement the same procedure, stratifying them based on whether they
777 exhibited probable PTSD.

778

779 For each participant who will remain active after October 7, 2023, we will assess the reported sleep quality, as well
780 as various physiological indicators: duration of awake time during sleep, step counts, and duration of high stress
781 levels. We will compute a single weighted average value for each of the two periods — a week prior to October 7,
782 2023 (baseline period) and the week after October 7, 2023. For each indicator, we will utilize paired t-test to
783 examine the difference between the weighted averages during the baseline period and those following October 7,
784 2023.

785
786
787 The weighted average for each participant will be determined by first averaging the corresponding indicator values
788 separately for workdays and free days (weekends and national holidays). Subsequently, the weighted average of
789 these two values will be calculated, assigning a weight of 5/7 to workdays and 2/7 to free days. The rationale for
790 computing this weighted average is further explained in ¹¹. In essence, we identified a weekly rhythm across various
791 indicators, with free days exhibiting different mean daily values than workdays. Given the relatively short duration
792 of the examined time periods and variations in the number of free days (e.g., holidays), we aimed to correct for
793 potential biases. Finally, we will calculate the mean and its corresponding 95% confidence interval for each
794 indicator across the participants.

795
796 For participants who filled in the PTSD online survey, we will repeat the above analysis, by stratifying the
797 participants based on whether they exhibited probable PTSD.

798
799 For each of the well-being indicators, we will explore the unadjusted associations between the probability of
800 probable PTSD, the weighted average during the baseline period, and the difference in the weighted average
801 between baseline and the week after October 7 periods, while controlling for other explanatory variables (age and
802 sex).

803
804 All statistical analyses will be performed using Python 3.8.
805

806 ***Potential Risks & Risk management***

807 No specific risks arising from the smartwatches are expected, as the device is already commercialized with no
808 known adverse reactions. The main risk in this study is the leakage of private data which we intend to manage as we
809 describe in the following section.

810

811 ***Privacy/Confidentiality***

812 Results from this study will be handled at an aggregated level. Individual data records will remain confidential and
813 will not be published or shared with any third party. Signed and dated informed consent forms, as well as data
814 recording sheets (e.g., case report forms) will be stored in locked cabinets during the study and following its
815 completion. A file containing the personal details of the participants will be coded to help preserve confidentiality
816 and will be separated from all other data collected throughout the study. This file will be kept by the principal
817 investigator. Data will be stored on computers in password-protected files.

818 The data obtained from the smartwatch used in this study will be linked to a coded participant number. The
819 smartwatch does not include a GPS. The data collected by the PerMed application will arrive directly to PerMed
820 back-end servers and will be stored securely.

821

822 **Panel study**

823 ***Study Design***

824 In this study will recruit and analyze data of 2,500 participants representative of the Jewish Israeli population in
825 terms of age, sex, and geographical location. Participants will be asked to fill in online dedicated surveys for the

826 detection of probable PTSD and anxiety. Participants will also be asked to provide basic demographic data such as
827 age, sex, educational background, place of residence, and etc. (see Appendix E)

828

829 *Participants*

830 Inclusion criteria includes individuals age > 18 years from the Jewish Israeli population. To recruit participants for
831 the panel study and ensure they complete all the study's requirements, we will hire a professional survey company.
832 Potential participants will be recruited through a preregistered panelists' database via email. The survey company
833 will ensure that the participants are representative of the Israeli population in term of age, sex and geographical
834 location. To incentivize participants to complete all study's requirements (i.e., complete the PTSD survey), each
835 participant will receive 3 New Israeli Shekels upon completion of study's requirements.

836

837

838 *Study procedures*

839 Before participating in the study, all participants will be advised in writing about the nature of the survey (see
840 Appendix E). At this time, participants will be asked to complete the PTSD online survey about coping with the
841 events that began on October 7, that includes demographic information and news consumption behavior, to detect a
842 possible sign of probable PTSD nationwide.

843

844 *Description of the data*

845 Data will be collected in the online survey includes (see the survey questions in Appendix E):

- 846 ➤ Sociodemographic:
- 847 • Sex
 - 848 • Age
 - 849 • Household size
 - 850 • Household income
 - 851 • Religion
 - 852 • Place of residence (city name)
- 853 ➤ History of PTSD and anxiety (binary)
- 854 ➤ News consumption behavior
- 855 • News consumption frequency
 - 856 • News consumption platforms
- 857 ➤ PCL-5 and GAD-7 questionnaire
- 858

859 *Data collection and storage*

860 The data will be extracted and stored on a secure server within Tel Aviv University facilities. The server runs a
861 CentOS operating system and is located in the Software Engineering Building at Tel Aviv University. This server is
862 protected behind the university's firewall and is not connected to external networks.

863 Access will be restricted to investigators in the study. The information from the online PTSD survey will be stored
864 in a structured manner on the secured server without any explicitly identifying information (name, ID number,
865 email). Each participant will be assigned a coded participant number that will be used to identify the subject in the
866 database.

867

868 *Data Analysis and inclusion criteria*

869 The questionnaire data will be preprocessed by manually categorizing any self-reported symptom of probable PTSD
870 and anxiety according to the PCL-5 and GAD-7 criteria. Participant will be categorized as probable PTSD if the
871 total score of the PCL-5 questionnaire is ≥ 33 and meet the DSM-5 diagnostic rule which requires at least: 1 B item
872 (questions 1-5), 1 C item (questions 6-7), 2 D items (questions 8-14), 2 E items (questions 15-20). In line with the
873 GAD-7 criteria, anxiety level of participant will be determined by the total scores: no anxiety (0-4), mild (5-9),
874 moderate (10-14) and severe (≥ 15).

875
876
877 We will analyze the data of participants who had either direct or indirect exposure to the events of October 7. We
878 define direct exposure as participants who were evacuated from their place of residence or indicated that they or
879 their immediate family were injured, killed or abducted. Indirect exposure refers to situations in which participants
880 or their immediate family members did not experience physical harm or the need for evacuation, but their income
881 might have been affected. For each level of exposure, we will evaluate the prevalence estimate of PTSD as the
882 proportions of probable PTSD, we will also stratify the prevalence estimate by the duration of news information
883 consumption during the first week after October 7 and the extent of exposure to gory videos. Additionally, we will
884 examine the rates of each anxiety level.

885
886
887 We will also evaluate the rates of exposure to gory videos on each media platform. Specifically, we will divide the
888 number of participants who were exposed to gory videos on each platform by the number of participants who
889 consume news information using that platform.

890
891
892 The 95% confidence intervals (CIs) will be obtained under the assumption of binomial distribution.

893
894 To examine the relation between the probability of probable PTSD and news information consumption behavior,
895 controlling for other explanatory variables (age, sex, educational background, PTSD background, religious level,
896 and socioeconomic level), we will fit a logistic regression model.

897
898
899 Likewise, we will also examine the unadjusted associations between the probability of moderate to severe anxiety,
900 duration of news consumption during the two weeks before filling in the online PTSD survey, and the extent of
901 exposure to gory videos, while controlling for other explanatory variables (age, sex, educational background,
902 anxiety background, religious level, and socioeconomic level).

903 904 ***Potential Risks & Risk management***

905 The main risk in this study is the leakage of private data which we intend to manage as we describe in the following
906 section.

907 908 ***Privacy/Confidentiality***

909 Results from this study will be handled at an aggregated level. Individual data records will remain confidential and
910 will not be published or shared with any third party.

911

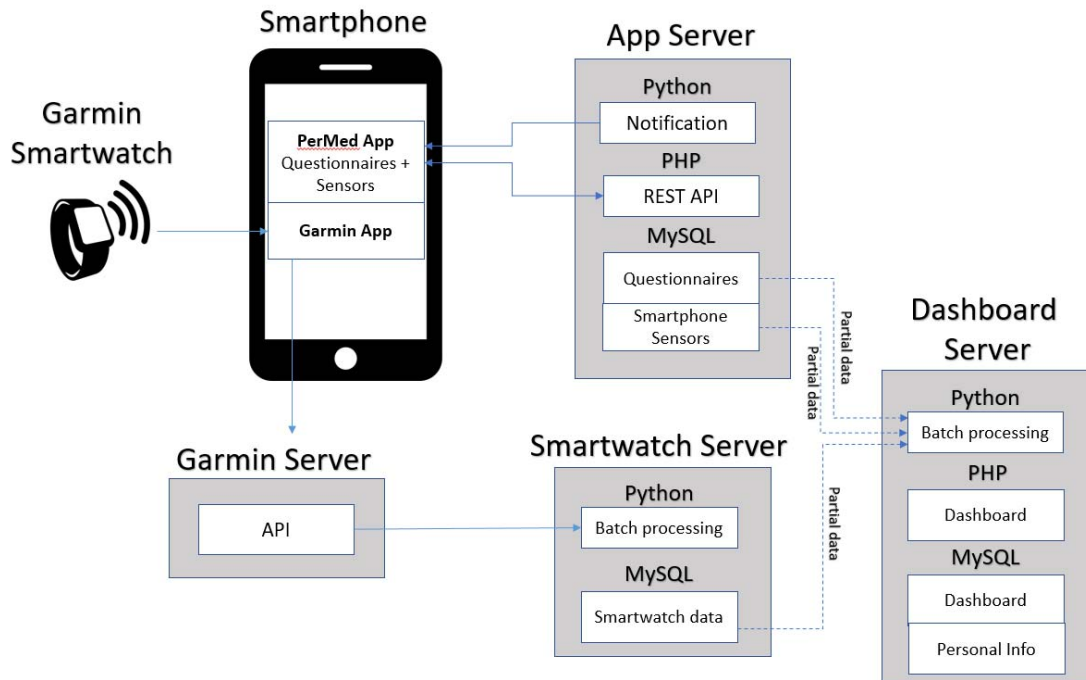
912 Appendix B – Data collection platform and data access

913

914 Architecture

915 The data collection platform contains several components that interact with each other (see Figure 2):

- 916 • **The PerMed application** – This application is installed on each participant’s phone to collect sensors
917 data and the self-reported daily questionnaires. It also handles the smartwatch pairing. The current
918 version of the application supports both Android and iOS devices.
- 919 • **The smartwatch** - send the data to the Garmin Connect app on the smartphone, which then sends these
920 data to Garmin’s server.
- 921 • **The smartwatch application** – This application (currently Garmin) receives information from the
922 smartwatch via Bluetooth and transmits it to the company's server. In addition, it provides a convenient
923 interface for displaying the participant's smartwatch information.
- 924 • **The app server** – The webserver handles the database connectivity using REST API pages. It enables
925 the server to authenticate users as they launch the application and write records to the database. A
926 MySQL server stores the sensors' raw data and the answers to the daily questionnaires. At last, there is a
927 batch processes running on the server that sends app notifications (daily reminder to fill the
928 questionnaire).
- 929 • **The dashboard server** - hosts the dashboard pages, which assist in monitoring the quality of the
930 information and controlling the experiment. The dashboard has access to participant information and
931 signals indicating whether questionnaires were completed and the smart watch was worn without seeing
932 its content directly. A batch process is responsible for aggregating raw data for dashboard statistics.
- 933 • **The smartwatch server** - A MySQL server stores the smartwatch data. A batch process is responsible
934 for collecting the data from the Garmin server.



935 **Figure S1.** The high-level architecture of the PerMed’s data collection platform.

936

937

The PerMed Dashboard

938 Participants will be recruited by a qualified external recruitment team headed by Tel Aviv University
939 personal. The team receive limited information essential control the experiment. Thus, we developed a
940 dedicated dashboard for monitoring the quality of the information and control the experiment. This
941 dashboard aims to identify data collection issues such as participants who did not fill the daily
942 questionnaires or participants who did not charge the battery of their smartwatches. The dashboard also
943 helps us identify problems that were not related to participants' cooperation, such as bugs in the mobileapp.
944 This identification allows us to respond faster and provide timely solutions.

945 **The Type of Data Collected and data access**

946 Data collected by the platform arrive from four primary sources:

- 947 **Enrolment questionnaire** - data were collected from a one-time enrollment questionnaire that
948 includes basic personal characteristics such as socio-demographic information (e.g., age, gender,
949 height, weight), general habits, health status, and a short Big Five personality questionnaire.
- 950 **Daily questionnaire** – consists of questions on 1) wellbeing, 2) general health condition, 3)
951 symptoms observed, 4) test results to diagnose infectious diseases, 4) vaccination or medication
952 consumption (if relevant to the study question).
- 953 **Smartphone sensor data** – consist of location, Wi-Fi, Bluetooth, screen, and activity.
- 954 **Smartwatch data** - consist of heart rate data, accelerometer and gyroscope information and measures
955 based on these data including active minutes, steps, distance, calories, and sleep level classification,
956 including light, deep, REM, and awake periods.

957 The current research, aims to explore the safety of vaccination, is part of a larger study. Raw accelerometer
958 data, mobile activity and GPS locations are generally considered sensitive information. In accordance with the
959 data minimization principle, we did not extract this type of data for this vaccination safety research.

960

961 **Appendix C – Prospective study participants' adherence**

962

963 We employed a professional survey company to recruit participants and ensure they adhere to the study
964 requirements. Participant recruitment was performed via advertisements on social media and word-of-mouth. Each
965 participant signed an informed consent form after receiving a comprehensive explanation on the study. Then,
966 participants completed a one-time enrollment questionnaire, were equipped with Garmin Vivosmart 4 smartwatches,
967 and installed two applications on their mobile phones: (1) the PerMed application^{1,12,13}, which collects daily self-
968 reported questionnaires, and (2) an application that passively records smartwatch data. Participants were asked to
969 wear their smartwatches as much as possible. The survey company ensured that participants' questionnaires were
970 filled at least twice a week, that their smartwatches were charged and properly worn, and that any technical
971 problems with the mobile applications or smartwatch were resolved. Participants were monitored through the mobile
972 application and smartwatches for a period of at least 49 days, starting seven days before vaccination. Participants
973 also granted full access to their EMR data.

974

975 We implemented several preventive measures to minimize participant attrition and discomfort as a means to
976 improve the quality, continuity and reliability of the collected data. First, each day, participants who did not fill their
977 daily questionnaire by 7 pm received a reminder notification through the PerMed application. Second, we developed
978 a dedicated dashboard that allowed the survey company to identify participants who repeatedly neglected to
979 complete the daily questionnaire or did not wear their smartwatch for extended periods of time; these participants
980 were contacted by the survey company (either by text message or phone call) and encouraged to better adhere to the
981 study protocol. Third, to strengthen participants' engagement, a weekly personalized summary report was generated
982 for each participant, which was available inside the PerMed application. Similarly, a monthly newsletter with recent

983 findings from the study and useful tips regarding the smartwatch's capabilities was sent to the participants. At the
984 end of the study, participants will receive all personal insights that were obtained and can keep the smartwatch as a
985 gift.
986

987 **Appendix D – PTSD online survey**

988

989 Participants will be asked to fill in an online survey that includes well-established PTSD surveys. The online survey
990 incorporates The Post-traumatic Stress Disorder Checklist (PCL-5) is a self-report questionnaire designed to assess
991 the 20 symptoms outlined in the DSM-5 criteria for PTSD. The PCL-5 serves various purposes, including screening
992 individuals for PTSD and making provisional diagnoses⁹. It is widely used for clinical and research purposes;
993 psychometrically, the PCL-5 demonstrates strong internal consistency ($\alpha = .94$), high test-retest reliability ($r = .82$),
994 and strong convergent validity ($r_s = .74$ to $.85$)⁹. We will also utilize the General Anxiety Disorder (GAD) 7 item
995 questionnaire (GAD-7) to identify probable cases of GAD along with measuring anxiety symptom severity. The tool
996 is also widely used as a screening measure of panic, social anxiety, and PTSD. The questionnaire is considered
997 valid, sensitive, and specific for the diagnosis of GAD in the general population¹⁰. Will use the Israeli Ministry of
998 Health's (IMOH) Hebrew translation of these surveys.

999 The online survey also includes questions regarding demographic information and consumption of news
1000 information.

1001 PTSD diagnosis requires an interview conducted by a trained clinician. As our outcome was derived from a
1002 screening tool, we characterize the result as a "probable PTSD." This terminology, utilized in previous studies. Thus,
1003 we will opt for a more conservative interpretation, defining only individuals with a total score of ≥ 33 on the PCL-5
1004 questionnaire and meeting the DSM-5 diagnostic rule which requires at least: 1 B item (questions 1-5), 1 C item
1005 (questions 6-7), 2 D items (questions 8-14), 2 E items (questions 15-20) as probable PTSD.

1006

1007 **The English version of the PTSD online survey:**

1008

1009 Dear participant,

1010

1011 The following questionnaire is about coping with the events that began on October 7.

1012 The data will be used for statistical analysis as part of an academic study carried out by researchers from the Faculty
1013 of Medicine and the Faculty of Engineering from Tel Aviv University.

1014 Your answers will help us learn about the effect of the "Swords of Iron" operation on the mental state of the citizens
1015 of the State of Israel and develop ways of coping with the effects of the war.

1016 There are no correct or incorrect answers, but it is crucial to answer all questions truthfully.

1017 The purpose of this questionnaire is not to diagnose any medical condition. If you are feeling unwell, we advise you
1018 to contact your primary care physician for further treatment.

1019 Thank you for your valuable time and cooperation with the research team.

1020

Table S1. PTSD online survey.

No.	Question
1	What is your age?
2	Please select all the statements that apply to you from the following list (you can select more than one statement) <ul style="list-style-type: none">• In the events, either my family members or I were injured.• One of my family members was abducted.

	<ul style="list-style-type: none"> • Either my family members or I were evacuated from our place of residence. • My source of income was affected by the events. • I am acquainted with people whom their family members or friends were killed, injured, or abducted during the events. • I am acquainted with people who were killed, injured, or abducted during the events. • I am acquainted with people who were evacuated from the place of residence (either from southern or northern Israel). • I am acquainted with people whom their source of income or their work capacity have been affected by the events. • None of the above.
3	<p>During the first week of the war that began on October 7, how frequently did you consume news information (TV, news sites, social media) about the fighting events?</p> <ul style="list-style-type: none"> • I did not consume. • Less than an hour a day • 1-2 hours a day • 2-4 hours a day • 4-8 hours a day • More than 8 hours a day
4	<p>During the last two weeks, how frequently did you consume news information (TV, news sites, social media) about the fighting events?</p> <ul style="list-style-type: none"> • I did not consume. • Less than an hour a day • 1-2 hours a day • 2-4 hours a day • 4-8 hours a day • More than 8 hours a day
5	<p>Which platforms do you use to consume news information? (You can select more than one answer)</p> <ul style="list-style-type: none"> • TV • Facebook • Instagram • Twitter • TikTok • Telegram • WhatsApp • Newspapers • Word of mouth • Other, please specify
6	<p>To the best of your recollection, how much were you exposed to gory videos depicting war events? (such as videos documenting the killings carried out on October 7, or the abductions of the captives)</p> <ul style="list-style-type: none"> • I was not exposed. • Occasionally (up to five times) • Many times (over five cases)
7	<p>If you encountered gory videos of war events (such as videos documenting the killings carried out on October 7, or the abductions of the captives), on which digital platforms were you primarily exposed?</p> <ul style="list-style-type: none"> • TV • Facebook • Instagram • Twitter • TikTok • Telegram

	<ul style="list-style-type: none"> WhatsApp Other, please specify 																																																																																																																								
8	<p>Below is a list of problems that people sometimes have in response to a very stressful experience. Please read each problem carefully and then indicate how much you have been bothered by that problem in the past month following the events that began on October 7 (hereinafter the war events).</p> <table border="1"> <thead> <tr> <th>1. In the past month, how much were you bothered by:</th> <th>Not at all</th> <th>A little bit</th> <th>Moderately</th> <th>Quite a bit</th> <th>Extremely</th> </tr> </thead> <tbody> <tr> <td>2. Repeated, disturbing, and unwanted memories of the war events?</td> <td></td> <td></td> <td></td> <td></td> <td></td> </tr> <tr> <td>3. Repeated, disturbing dreams of the war events?</td> <td></td> <td></td> <td></td> <td></td> <td></td> </tr> <tr> <td>Suddenly feeling or acting as if the stressful experience of October 7/ war events, were actually happening again (as if you were actually back there reliving it)?</td> <td></td> <td></td> <td></td> <td></td> <td></td> </tr> <tr> <td>4. Feeling very upset when something reminded you of the war events?</td> <td></td> <td></td> <td></td> <td></td> <td></td> </tr> <tr> <td>5. Having strong physical reactions when something reminded you of war events (for example, heart pounding, trouble breathing, sweating)?</td> <td></td> <td></td> <td></td> <td></td> <td></td> </tr> <tr> <td>6. Avoiding memories, thoughts, or feelings related to the war events? (referring to factors originating from within yourself and not external influences)</td> <td></td> <td></td> <td></td> <td></td> <td></td> </tr> <tr> <td>7. Avoiding external reminders of the war events (for example, people, places, conversations, activities, objects, or situations)?</td> <td></td> <td></td> <td></td> <td></td> <td></td> </tr> <tr> <td>8. Trouble remembering important parts of the war events?</td> <td></td> <td></td> <td></td> <td></td> <td></td> </tr> <tr> <td>9. Having strong negative beliefs about yourself, other people, or the world (for example, having thoughts such as: I am bad, there is something seriously wrong with me, no one can be trusted, the world is completely dangerous)?</td> <td></td> <td></td> <td></td> <td></td> <td></td> </tr> <tr> <td>10. Blaming yourself or someone else for the stressful experience or what happened after it?</td> <td></td> <td></td> <td></td> <td></td> <td></td> </tr> <tr> <td>11. Having strong negative feelings such as fear, horror, anger, guilt, or shame?</td> <td></td> <td></td> <td></td> <td></td> <td></td> </tr> <tr> <td>12. Loss of interest in activities that you used to enjoy?</td> <td></td> <td></td> <td></td> <td></td> <td></td> </tr> <tr> <td>13. Feeling distant or cut off from other people?</td> <td></td> <td></td> <td></td> <td></td> <td></td> </tr> <tr> <td>14. Trouble experiencing positive feelings (for example, being unable to feel happiness or have loving feelings for people close to you)?</td> <td></td> <td></td> <td></td> <td></td> <td></td> </tr> <tr> <td>15. Irritable behavior, angry outbursts, or acting aggressively?</td> <td></td> <td></td> <td></td> <td></td> <td></td> </tr> <tr> <td>16. Taking too many risks or doing things that could cause you harm?</td> <td></td> <td></td> <td></td> <td></td> <td></td> </tr> <tr> <td>17. Being “superalert” or watchful or on guard?</td> <td></td> <td></td> <td></td> <td></td> <td></td> </tr> <tr> <td>18. Feeling jumpy or easily startled?</td> <td></td> <td></td> <td></td> <td></td> <td></td> </tr> <tr> <td>19. Having difficulty concentrating?</td> <td></td> <td></td> <td></td> <td></td> <td></td> </tr> </tbody> </table>	1. In the past month, how much were you bothered by:	Not at all	A little bit	Moderately	Quite a bit	Extremely	2. Repeated, disturbing, and unwanted memories of the war events?						3. Repeated, disturbing dreams of the war events?						Suddenly feeling or acting as if the stressful experience of October 7/ war events, were actually happening again (as if you were actually back there reliving it)?						4. Feeling very upset when something reminded you of the war events?						5. Having strong physical reactions when something reminded you of war events (for example, heart pounding, trouble breathing, sweating)?						6. Avoiding memories, thoughts, or feelings related to the war events? (referring to factors originating from within yourself and not external influences)						7. Avoiding external reminders of the war events (for example, people, places, conversations, activities, objects, or situations)?						8. Trouble remembering important parts of the war events?						9. Having strong negative beliefs about yourself, other people, or the world (for example, having thoughts such as: I am bad, there is something seriously wrong with me, no one can be trusted, the world is completely dangerous)?						10. Blaming yourself or someone else for the stressful experience or what happened after it?						11. Having strong negative feelings such as fear, horror, anger, guilt, or shame?						12. Loss of interest in activities that you used to enjoy?						13. Feeling distant or cut off from other people?						14. Trouble experiencing positive feelings (for example, being unable to feel happiness or have loving feelings for people close to you)?						15. Irritable behavior, angry outbursts, or acting aggressively?						16. Taking too many risks or doing things that could cause you harm?						17. Being “superalert” or watchful or on guard?						18. Feeling jumpy or easily startled?						19. Having difficulty concentrating?					
1. In the past month, how much were you bothered by:	Not at all	A little bit	Moderately	Quite a bit	Extremely																																																																																																																				
2. Repeated, disturbing, and unwanted memories of the war events?																																																																																																																									
3. Repeated, disturbing dreams of the war events?																																																																																																																									
Suddenly feeling or acting as if the stressful experience of October 7/ war events, were actually happening again (as if you were actually back there reliving it)?																																																																																																																									
4. Feeling very upset when something reminded you of the war events?																																																																																																																									
5. Having strong physical reactions when something reminded you of war events (for example, heart pounding, trouble breathing, sweating)?																																																																																																																									
6. Avoiding memories, thoughts, or feelings related to the war events? (referring to factors originating from within yourself and not external influences)																																																																																																																									
7. Avoiding external reminders of the war events (for example, people, places, conversations, activities, objects, or situations)?																																																																																																																									
8. Trouble remembering important parts of the war events?																																																																																																																									
9. Having strong negative beliefs about yourself, other people, or the world (for example, having thoughts such as: I am bad, there is something seriously wrong with me, no one can be trusted, the world is completely dangerous)?																																																																																																																									
10. Blaming yourself or someone else for the stressful experience or what happened after it?																																																																																																																									
11. Having strong negative feelings such as fear, horror, anger, guilt, or shame?																																																																																																																									
12. Loss of interest in activities that you used to enjoy?																																																																																																																									
13. Feeling distant or cut off from other people?																																																																																																																									
14. Trouble experiencing positive feelings (for example, being unable to feel happiness or have loving feelings for people close to you)?																																																																																																																									
15. Irritable behavior, angry outbursts, or acting aggressively?																																																																																																																									
16. Taking too many risks or doing things that could cause you harm?																																																																																																																									
17. Being “superalert” or watchful or on guard?																																																																																																																									
18. Feeling jumpy or easily startled?																																																																																																																									
19. Having difficulty concentrating?																																																																																																																									

	20. Trouble falling or staying asleep?					
9	Over the last two weeks, how often have you been bothered by the following problems?					
		Not at all	Several days	More than half the days	Nearly every day	
	1. Feeling nervous, anxious, or on edge					
	2. Not being able to stop or control worrying					
	3. Worrying too much about different things					
	4. Trouble relaxing					
	5. Being so restless that it is hard to sit still					
	6. Becoming easily annoyed or irritable					
	7. Feeling afraid, as if something awful might happen					
10	How many close friends do you have with whom you can share your feelings? (enter a numerical value only)					
11	What is your sex? <ul style="list-style-type: none"> • Male • Female • Other, please specify 					
12	What is your educational background (the last school you attended)? <ul style="list-style-type: none"> • Elementary education • High School Diploma • Technical/Vocational Training • Bachelor's Degree • Master's Degree or higher 					
13	What is your marital status? <ul style="list-style-type: none"> • Single • Married • Divorced or separated • Widow/er 					
14	How many individuals reside in your household, including yourself?					
15	Do you have children? If yes, how many? <ul style="list-style-type: none"> • Yes, how many: • No 					
16	Is either yourself or any of your immediate family members currently serving in the Israeli security forces? (For instance, in active duty or reserve service; you can select multiple options.) <ul style="list-style-type: none"> • Myself • Child • Spouse • Parent • Sibling • Other, please specify • No 					

17	<p>What is your religion?</p> <ul style="list-style-type: none">• Jewish• Moslem• Christian• Druze• Other, please specify
18	<p>As per the Central Bureau of Statistics, the average monthly income for a dual-income family in Israel is approximately NIS 20,000 gross (NIS 11,000 for a single breadwinner). How would you assess your income?</p> <ul style="list-style-type: none">• Way below average• Slightly below average• Average• Slightly above average• Way above average
19	<p>Where is your permanent place of residence?</p>
20	<p>Have you been diagnosed in the past (before the events of October 7) as suffering from one or more of the following syndromes:</p> <ul style="list-style-type: none">• Post-traumatic stress disorder (PTSD)• Anxiety• Depression• I have not• I choose not to disclose
21	<p>Did you experience attacks or symptoms of the syndrome in the three months preceding October 7?</p> <ul style="list-style-type: none">• Yes• No• I choose not to disclose

1021

1022

1023

1024

1025 **Appendix E – Additional results**

1026

Table S2. Cohorts characteristics.

	Prospective Cohort		Panel study cohort
	Active participants pre-war period	Active participants after October 7, 2023	
Total (%)	4,797 (100%)	1751 (100%)	2536 (100%)
Sex			
Female (%)	2387 (49.8%)	898 (51.3%)	1340 (52.86%)
Male (%)	2410 (50.2%)	853 (48.7%)	1195 (47.14%)
Age (years)			
Mean	45.6	48.6	39.86
Std	14.9	14.1	14
Range	20-90	20-88	18 - 77
Median	44	48	38
Age group			
18-30 (%)	944 (19.7%)	198 (11.3%)	820 (32.35%)
31-50 (%)	2023 (42.2%)	764 (43.6%)	1049 (41.39%)
51-64 (%)	1206 (25.1%)	514 (29.4%)	515 (20.32%)
≥ 65 (%)	624 (13.0%)	275 (15.7%)	150 (5.91%)
Household income			
Below average (%)	2107 (43.9%)	697 (39.8%)	1111 (43.8%)
Average (%)	883 (18.4%)	374 (21.4%)	751 (29.61%)
Above average (%)	1708 (35.6%)	661 (37.7%)	674 (26.57%)
Not reported	99 (2.1%)	19 (1.1%)	(-)
Educational background			
Elementary education	8 (0.01%)	2 (0.01%)	30 (1.18%)
High school diploma	774 (16.1%)	174 (9.9%)	626 (24.68%)
Technical/Vocational Training	1061 (22.1%)	380 (21.7%)	670 (26.41%)
Academic degree	2937	1194	1210

It is made available under a [CC-BY-ND 4.0 International license](https://creativecommons.org/licenses/by-nd/4.0/) .

	(61.2%)	(68.2%)	(47.7%)
Not reported	17 (0.03%)	1 (0.0%)	(-)
Extent of exposure*			
Direct	14 (0.02%)	14 (0.7%)	52 (2.05%)
Affected	42 (0.08%)	43 (2.5%)	143 (5.63%)
Indirect	743 (15.5%)	746 (42.6%)	2341 (92.31%)
Not reported	3998 (83.3%)	948 (54.1%)	(-)
PTSD background			
Yes	31 (0.06%)	31 (1.8%)	90 (3.54%)
Not	738 (15.4%)	741 (42.3%)	2446 (96.45%)
Not reported	4028 (84.0%)	979 (55.9%)	(-)
Anxiety background			
Yes	52 (1.1%)	53 (3.0%)	242 (9.54%)
Not	717 (14.9%)	719 (41.1%)	2294 (90.45%)
Not reported	4028 (84.0%)	979 (55.9%)	(-)

* The extent of exposure is determined by PTSD survey question 2 (see Appendix E). 'Indirect' encompasses all participants who, along with their immediate family, were not injured, killed, or abducted. 'Affected' refers to individuals who responded that their source of income was affected or were evacuated from their place of residence. 'Direct' includes individuals who responded that they or their immediate family were injured, killed, or abducted.

1027

1028

Table S3. Regression model coefficients for probable PTSD within the participants of the panel study

Factor	Coefficient (95% CI)	P-value	Odds Ratio (95% CI)
Age	-0.0195 (-0.028 to -0.011)	<0.001	0.981 (0.973 to 0.989)
Sex	0.7462 (0.525 to 0.967)	<0.001	2.109 (1.691 to 2.630)
Educational background	0.0833 (-0.025 to 0.192)	0.132	1.087 (0.975 to 1.211)
PTSD background	1.2584 (0.744 to 1.773)	<0.001	3.520 (2.104 to 5.887)
Duration of news consumption during the first week following October 7	0.0845 (0.004 to 0.165)	0.041	1.089 (1.004 to 1.180)
Extent of exposure to gory videos	0.2418 (0.08 to 0.403)	0.003	1.270 (1.083 to 1.497)
Religious level	-0.1385 (-0.258 to -0.019)	0.023	0.871 (0.772 to 0.981)
Socioeconomic level	-0.1017 (-0.194 to -0.009)	0.031	0.900 (0.823 to 0.991)

1029

1030

Table S4. Regression model coefficients for anxiety within the participants of the panel study

Factor	Coefficient (95% CI)	P-value	Odds Ratio (95% CI)
Age	-0.0121 (-0.02 to -0.004)	0.005	0.988 (0.980 to 0.996)
Sex	0.8239 (0.605 to 1.042)	<0.001	2.2793 (1.832 to 2.836)
Educational background	-0.0153 (-0.123 to 0.092)	0.779	0.9848 (0.885 to 1.096)
Duration of news consumption during the two weeks before filling in the online PTSD survey	0.2296 (0.148 to 0.311)	<0.001	1.2581 (1.159 to 1.365)
Extent of exposure to gory videos	0.2074 (0.052 to 0.363)	0.009	1.2305 (1.053 to 1.438)
Religious level	-0.1325 (-0.252 to -0.014)	0.029	0.8759 (0.778 to 0.986)
Socioeconomic level	-0.128 (-0.22 to -0.036)	0.006	0.8799 (0.803 to 0.964)
Anxiety background	0.944 (0.625 to 1.263)	<0.001	2.570 (1.868 to 3.536)

1031

Table S5. Paired t-test results for each well-being indicator among the participants of the prospective study

Well-being indicator	N	Baseline average value (95% CI)	Week after October 7, 2023, average value (95% CI)	Average difference	P-value
Reported mood	228	3.68 (3.59 to 3.77)	2.81 (2.69 to 2.93)	-0.87	<0.001
Reported stress	228	2.36 (2.26 to 2.46)	3.28 (3.15 to 3.40)	0.90	<0.001
Step counts	621	7881.74 (7588.00 to 8175.47)	6126.76 (5841.64 to 6411.89)	-1754.97	<0.001
Distance travelled in meters	621	5983.14 (5675.98 to 6290.29)	4605.25 (4325.89 to 4884.62)	-1377.89	<0.001
Reported sleep quality	227	3.51 (3.41 to 3.60)	3.14 (3.03 to 3.25)	-0.37	<0.001
Reported sleep time	225	6.61 (6.49 to 6.74)	6.38 (6.23 to 6.53)	-0.23	0.016
Awake duration in seconds	494	594.25 (544.84 to 643.66)	687.35 (628.82 to 745.88)	93.10	0.017
Light sleep duration in seconds	494	16031.23 (15767.75 to 16294.70)	16312.04 (16008.71 to 16615.38)	280.82	0.171
Rem sleep in seconds	494	4631.35 (4445.45 to 4817.24)	4786.15 (4577.13 to 4995.16)	154.80	0.278
Deep sleep duration in seconds	494	4313.71 (4116.09 to 4511.34)	4304.18 (4085.71 to 4522.65)	-9.54	0.949

1032

Table S6. Regression model coefficients of each well-being indicator among the participants of the prospective study

Well-being indicator	Probable PTSD*	N	Baseline average value	Week after October 7, 2023, average value	Average difference	P-value
Reported mood	No	187	3.71 (3.66 to 3.76)	2.89 (2.83 to 2.96)	-0.82	0.007
Reported mood	Yes	187	3.55 (3.50 to 3.61)	2.27 (2.20 to 2.34)	-1.28	0.007
Reported stress	No	187	2.29 (2.23 to 2.34)	3.14 (3.07 to 3.21)	0.85	0.002
Reported stress	Yes	187	2.67 (2.60 to 2.73)	3.98 (3.92 to 4.04)	1.31	0.002
Step counts	No	431	8021.87 (7844.06 to 8199.67)	6402.28 (6223.12 to 6581.44)	-1619.59	0.055
Step counts	Yes	431	7491.50 (7319.69 to 7663.31)	5336.39 (5188.88 to 5483.90)	-2155.11	0.055
Distance travelled in meters	No	431	6258.60 (6056.52 to 6460.67)	4925.72 (4733.44 to 5117.99)	-1332.88	0.079
Distance travelled in meters	Yes	431	5406.74 (5248.06 to 5565.42)	3783.53 (3667.25 to 3899.81)	-1623.21	0.079
Reported sleep quality	No	186	3.58 (3.53 to 3.63)	3.27 (3.21 to 3.32)	-0.31	0.002
Reported sleep quality	Yes	186	3.37 (3.31 to 3.43)	2.68 (2.62 to 2.74)	-0.70	0.002
Reported sleep time	No	186	6.66 (6.59 to 6.72)	6.48 (6.41 to 6.55)	-0.17	0.029
Reported sleep time	Yes	186	6.35 (6.27 to 6.43)	5.84 (5.72 to 5.96)	-0.51	0.029
Awake duration in seconds	No	357	594.21 (565.00 to 623.42)	665.13 (629.72 to 700.53)	70.92	0.357
Awake duration in seconds	Yes	357	574.45 (551.08 to 597.82)	738.05 (709.66 to 766.45)	163.60	0.357
Light sleep duration in seconds	No	357	15911.31 (15760.01 to 16062.60)	16079.81 (15904.66 to 16254.95)	168.50	0.371
Light sleep duration in seconds	Yes	357	16797.03 (16645.68 to 16948.39)	17137.82 (16967.12 to 17308.52)	340.79	0.371
Rem sleep in seconds	No	357	4730.07 (4612.17 to 4847.97)	4781.87 (4655.31 to 4908.43)	51.80	0.810
Rem sleep in seconds	Yes	357	4559.48 (4461.32 to 4657.63)	4661.21 (4549.23 to 4773.19)	101.74	0.810
Deep sleep duration in seconds	No	357	4281.51 (4161.61 to 4401.40)	4343.37 (4209.04 to 4477.69)	61.86	0.600

Deep sleep duration in seconds	Yes	357	4344.85 (4237.13 to 4452.57)	4296.20 (4164.64 to 4427.75)	-48.65	0.600
--------------------------------	-----	-----	------------------------------	------------------------------	--------	-------

* Probable PTSD was determined based on the response for the PTSD survey (see Appendix D)

1033

1034 **Appendix F – Additional results: continuous physiological measures**

1035

1036 To calculate the changes in smartwatch measures after October 7, 2023, for active participants in the
1037 prospective study, (Figures S2 and S3), we performed the following steps. First, for each participant
1038 and each hour we calculated the difference between the mean value of the measure tested on that hour
1039 and that of the corresponding hour in a week prior (keeping the same day of the week and same hour
1040 during the day). If such data were not recorded (e.g., a participant did not wear the smartwatch in the
1041 same period before and after vaccination), we excluded the participant from this analysis. Then, we
1042 aggregated each hour's differences over all participants to calculate a mean difference and the
1043 associated 95% confidence interval.

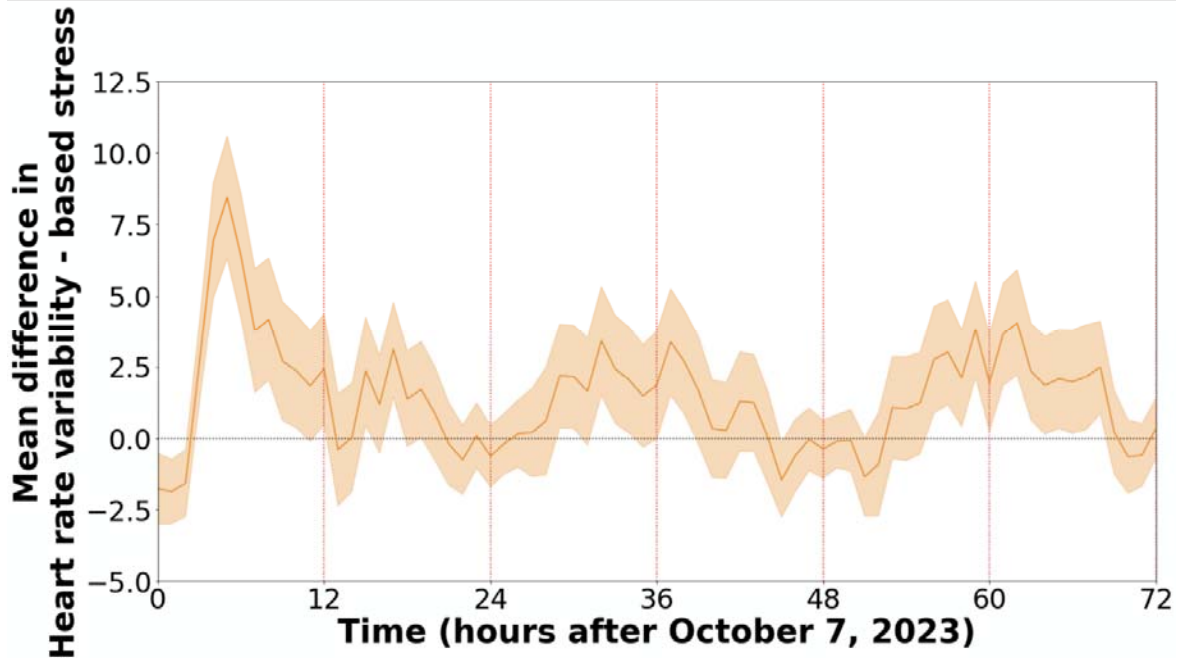


Figure S2. HRV-based stress reaction to October 7, 2023, events as recorded by the smartwatches. The figures show the mean difference between the baseline and the week after period in terms heart rate variability-based stress (n=512). Mean values are depicted as solid lines, and 95% confidence intervals are presented as shaded regions.

1044

It is made available under a [CC-BY-ND 4.0 International license](https://creativecommons.org/licenses/by-nd/4.0/) .

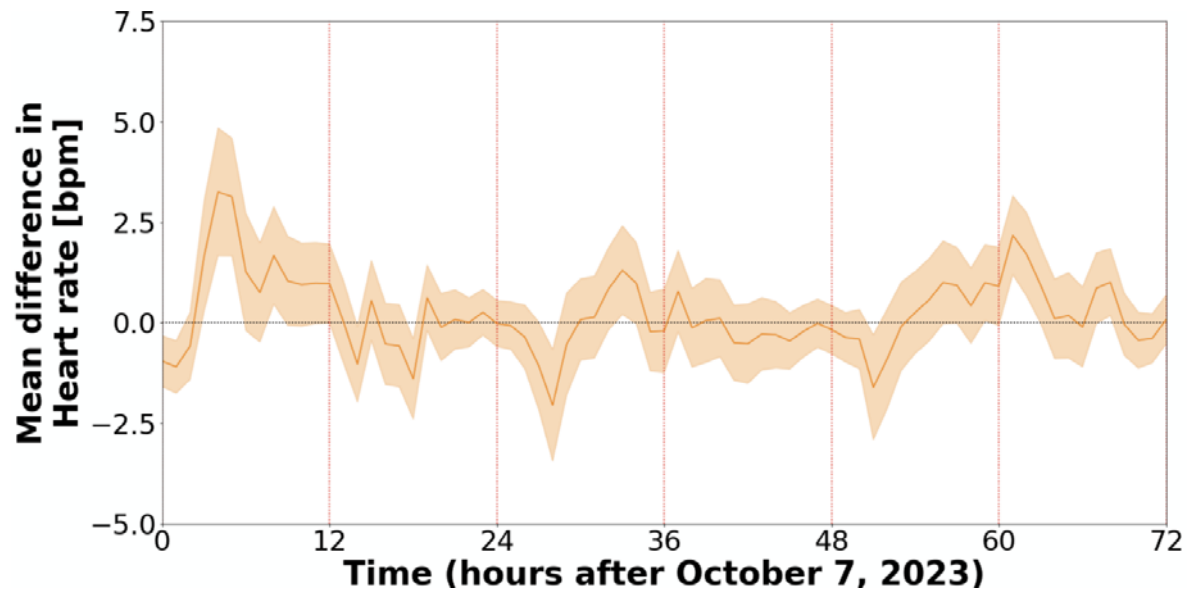


Figure S3. Heart rate reaction to October 7, 2023, events as recorded by the smartwatches. The figures show the mean difference between the baseline and the week after period in terms heart rate (n=495). Mean values are depicted as solid lines, and 95% confidence intervals are presented as shaded regions.

1045

1046 **References**

- 1047 1. Oved, S. *et al.* *Differential effects of COVID-19 lockdowns on well-being: interaction*
1048 *between age, gender and chronotype.* (2021) doi:10.21203/RS.3.RS-137929/V1.
- 1049 2. VÍVOSMART ® 4 Owner’s Manual. (2018).
- 1050 3. What Is the Stress Level Feature on My Garmin Watch? | Garmin Support.
1051 <https://support.garmin.com/en-US/?faq=WT9BmhjacO4ZpxbCc0EKn9>.
- 1052 4. Kim, H.-G., Cheon, E.-J., Bai, D.-S., Lee, Y. H. & Koo, B.-H. Stress and Heart Rate
1053 Variability: A Meta-Analysis and Review of the Literature. *Psychiatry Investig* **15**,
1054 235 (2018).
- 1055 5. Pereira, T., Almeida, P. R., Cunha, J. P. S. & Aguiar, A. Heart rate variability metrics
1056 for fine-grained stress level assessment. *Comput Methods Programs Biomed* **148**, 71–
1057 80 (2017).
- 1058 6. RK, R. *et al.* Accuracy of Wrist-Worn Activity Monitors During Common Daily
1059 Physical Activities and Types of Structured Exercise: Evaluation Study. *JMIR*
1060 *Mhealth Uhealth* **6**, (2018).
- 1061 7. Bent, B., Goldstein, B. A., Kibbe, W. A. & Dunn, J. P. Investigating sources of
1062 inaccuracy in wearable optical heart rate sensors. *npj Digital Medicine* *2020 3:1* **3**, 1–9
1063 (2020).
- 1064 8. Accuracy | Garmin. <https://www.garmin.com/en-US/legal/atdisclaimer/>.
- 1065 9. Blevins, C. A., Weathers, F. W., Davis, M. T., Witte, T. K. & Domino, J. L. The
1066 Posttraumatic Stress Disorder Checklist for DSM-5 (PCL-5): Development and Initial
1067 Psychometric Evaluation. *J Trauma Stress* **28**, 489–498 (2015).
- 1068 10. Löwe, B. *et al.* Validation and standardization of the generalized anxiety disorder
1069 screener (GAD-7) in the general population. *Med Care* **46**, 266–274 (2008).
- 1070 11. Mofaz, M. *et al.* Real-time sensing of war’s effects on wellbeing with smartphones
1071 and smartwatches. *Communications Medicine* *2023 3:1* **3**, 1–11 (2023).
- 1072 12. Mofaz, M. *et al.* Self-Reported and Physiologic Reactions to Third BNT162b2 mRNA
1073 COVID-19 (Booster) Vaccine Dose. *Emerg Infect Dis* **28**, 1375 (2022).
- 1074 13. Gepner, Y. *et al.* Utilizing wearable sensors for continuous and highly-sensitive
1075 monitoring of reactions to the BNT162b2 mRNA COVID-19 vaccine.
1076 *Communications Medicine* *2022 2:1* **2**, 1–8 (2022).

1077

1078

1079

1080

1081