

Investigating disorder-specific and transdiagnostic alterations in model-based and model-free decision-making

Franziska Knolle*^{1,2,3}, Pritha Sen^{1,2}, Adam Culbreth⁴, Kathrin Koch^{1,2}, Benita Schmitz-Koep^{1,2}, Deniz A. Gürsel^{1,2}, Klaus Wunderlich^{1,2}, Mihai Avram⁵, Götz Berberich⁶, Christian Sorg^{1,2,7}, Felix Brandl^{2,7}

1 School of Medicine and Health, Department of Diagnostic and Interventional Neuroradiology, Technical University of Munich, Munich, Germany

2 School of Medicine and Health, TUM-NIC Neuroimaging Center, Technical University of Munich, Munich, Germany

3 Department of Psychiatry, University of Cambridge, Cambridge, UK

4 Department of Psychiatry, Maryland Psychiatric Research Center, University of Maryland, School of Medicine, Baltimore, USA

5 Translational Psychiatry, Department of Psychiatry and Psychotherapy, University of Lübeck, Lübeck, Germany

6 Windach Institute and Hospital of Neurobehavioural Research and Therapy, Windach, Germany

7 Technical University of Munich, School of Medicine, Department of Psychiatry, Munich, Germany

Keywords: Transdiagnostic; Schizophrenia; Depression; Obsessive-compulsive disorder; Model-based; Model-free; Win-stay; Decision-Making; Reward Processing; Two-step task

Number of words in abstract: 228

Number of words in text: 3995

Number of figures: 4

Number of tables: 2

*corresponding author:

Dr. Franziska Knolle

Department of Diagnostic and Interventional Neuroradiology, School of Medicine and Health, Klinikum rechts der Isar, Technical University Munich, 81675 Munich, Germany

Phone: +49 89 4041 7976

Fax: +49 89 4140 4653

Email: franziska.knolle@tum.de

ORCID: 0000-0002-9542-613X

Abstract

Background:

Decision-making alterations are present in psychiatric illnesses like major depressive disorder (MDD), obsessive-compulsive disorder (OCD), and schizophrenia, linked to symptoms of the respective disorders. Understanding unique and shared decision-making alterations across these disorders is crucial for early diagnosis and treatment, especially given potential comorbidities.

Methods:

Using two computational modeling approaches – logistic regression and hierarchical Bayesian modeling – we analyzed alterations in model-based and model-free decision-making in a transdiagnostic cohort comprising MDD (N=23), OCD (N=25), and schizophrenia (N=27) patients. Our aim was to identify disorder-specific and shared alterations and their associations with symptoms.

Results:

Overall, participants of all groups relied on model-free decision-making. Our results revealed that schizophrenia patients had the lowest learning rate and highest switching rate, indicating low perseverance. Further, OCD patients were more random in both task stages compared to controls and MDD patients. All patient groups exhibited more randomness in responses than controls, with schizophrenia patients showing the highest levels. Importantly, the study showed that increased model-free behavior correlated with elevated depressive symptoms and more model-based decision making was linked to lower anhedonia levels across all patients.

Conclusions:

This study highlights disorder-specific and shared decision-making alterations in individuals with MDD, OCD, and schizophrenia. This study suggests that anhedonia and depressive symptoms, which are present in all three disorders, share underlying behavioral mechanisms. Improving model-based behavior may which may be a target for intervention and treatment.

Introduction

Decision-making and learning impairments are core characteristics of a wide range of psychiatric disorders¹⁻³ such as major depressive disorder (MDD)^{4,5}, obsessive-compulsive disorder (OCD)^{6,7}, and schizophrenia^{8,9} and link to their specific symptoms. As these disorders share symptoms, it is important to identify decision-making alterations which are specific to each disorder and those that occur across several disorders. A better understanding of these associations may facilitate therapeutic rehabilitation strategies for these patients.

MDD is characterized with persistent symptoms like anhedonia, rumination, and cognitive biases¹⁰⁻¹². Decision-theoretic approaches^{13,14} suggest that alterations in reward anticipation^{15,16}, effort-cost evaluation¹⁷⁻¹⁹, and a negative bias^{20,21} could be underlying mechanisms. A study by Ang and colleagues²² revealed that MDD patients show steeper discounting of effort-based rewards and reduced willingness to invest cognitive effort. Similarly, Treadway and colleagues¹⁹ demonstrated that MDD patients were less inclined to expend efforts for rewards and less able to use information about reward magnitude and probabilities for optimal decision-making, and that motivational deficits were associated with higher symptom severity. Furthermore, general deficits in reinforcement learning especially the brain signals in response to reward prediction error and expected value (i.e., wanting), decreased reward sensitivity (i.e., liking) and model-free (i.e., habitual) or model-based (i.e., goal-directed) learning have been proposed²³⁻²⁶. In probabilistic reward tasks, MDD patients lack the typical preference for frequently rewarded choices, which correlates with anhedonia scores^{27,28}. These findings highlight the involvement of reward-related mechanisms in core MDD symptoms, as revealed by cognitive neuroscience approaches.

OCD is characterized by chronic doubting, and compulsive behaviors reflected in dysfunctional decision-making²⁹. OCD patients exhibit difficulty in adapting reward perception and tend to make rigid, repetitive decisions³⁰. Some studies suggesting that OCD may result from dysfunctional goal-directed control and an over-reliance on habitual control^{6,31,32}. The literature presents conflicting evidence regarding the associations between symptom severity and decision-making abnormalities^{6,33-36}. This inconsistency may be partially explained by effects of illness duration³⁶. In a probabilistic learning paradigm, Murray and colleagues³⁷ reported that dysfunctions during reward processing in OCD may be of dopaminergic origin, which may be similar to those alterations seen in schizophrenia patients³⁸⁻⁴⁰. Furthermore, in a two-step decision-making task, OCD individuals exhibited more model-free choices in rewarded outcomes and more model-based choices in loss outcomes, with compulsions severity linked to habitual learning of rewarded outcomes and obsessions severity linked to increased choice switching following losses⁴¹. Various imaging studies have also indicated altered activations in brain

regions that are associated with habit formation⁴²⁻⁴⁵, highlighting the importance of investigating decision-making alterations in OCD.

In schizophrenia patients, dysfunctional decision-making relates to both positive (hallucinations and delusions) and negative symptoms (apathy, social withdrawal)^{8,46}. Delusions have been associated with "jumping-to-conclusions," which may lead to hasty judgments and false beliefs⁴⁷⁻⁴⁹. Deficits in reward anticipation⁵⁰⁻⁵², prediction error processing³⁸⁻⁴⁰ and reward and punishment sensitivity⁵³⁻⁵⁵ have been shown in early and late stages of schizophrenia. Furthermore, alterations reward processing have been found to contribute to diminished motivation, affecting future reward assessment⁵⁶⁻⁵⁸. Impaired habitual decision-making has also been identified as a contributing factor to negative symptoms in schizophrenia⁵⁹. Impaired effort-based decision-making may be linked to motivational anhedonia in psychosis as patients are unwilling to expend effort to gain rewards⁶⁰⁻⁶². Compared to controls, schizophrenia patients exhibit reduced reliance on goal-directed decision-making, indicating more unpredictable behavior⁶³.

The literature suggests alterations in distinct reinforcement learning systems in psychiatric disorders like OCD, MDD, and schizophrenia^{59,63-68}, which underlie model-free and model-based decision-making processes⁶⁹. These processes can be studied using the two-step Markov decision task⁶⁹, yet no study has examined these in a transdiagnostic sample. Our study aims to identify disorder-specific and general decision-making alterations in MDD, OCD, and schizophrenia patients in remission, using computational modeling and linking them to symptoms. We hypothesized MDD patients to perform better with a mix of model-based and model-free strategies, OCD patients to exhibit more model-free decisions, and schizophrenia patients to be more random in their choices compared to the other patient groups, respectively. Decision-making impairments were expected to correlate with symptoms within each group, with co-occurring symptoms showing similar trends. For instance, depression scores in MDD and schizophrenia patients were expected to correlate similarly with decision-making parameters.

Methods

Participants

Twenty-five healthy controls (HC), 23 MDD patients, 25 OCD patients, and 27 schizophrenia (SCZ) patients in psychotic remission took part in the study. Sample sizes were determined based on a power analysis (G*Power 3.1 software⁷⁰) with alpha=0.05, power=0.85, medium effect size of $f=0.38$ which revealed 90 participants. To account for poor data or outliers, we collected ~15% more participants per group. The demographic characteristics, cognitive and clinical scores are summarized in Table 1. Schizophrenia and MDD patients were recruited from the Clinic and Polyclinic for Psychiatry and Psychotherapy in Klinikum Rechts der Isar at the Technical University of Munich (TUM), and the OCD

patients were recruited from the Windach Institute and Hospital of Neurobehavioral Research and Therapy. Patients met Diagnostic and Statistical Manual of Mental Disorders (DSM)-IV criteria for SCZ, MDD, and OCD⁷¹. For schizophrenia patients, psychotic remission was based on Andreasen criteria⁷², with a score of ≤ 3 for each Positive and Negative Syndrome Scale (PANSS) positive item. MDD patients were in an acute depressive episode. Medication for all patients was kept stable for at least two weeks before assessments. Except for Obsessive-Compulsive Inventory – Revised⁷³ (OCI-R) scores which was collected only for OCD patients, all other clinical scores were collected across all participants. Healthy controls were age and gender matched and did not report any personal history of severe neurological, psychiatric or medical disorders. The study was approved by the TUM ethics committee. All participants gave their informed, written consent after receiving a complete description of the study.

Task description

All participants completed the two-step task adapted from Daw et al⁶⁹ (Figure 1), designed to differentiate between model-free and model-based decision-making (see detailed description in supplements) . The task involved maximizing monetary reward over 200 trials, split into four blocks of 50 trials each. Each trial consisted of two decision stages, with participants choosing between two fractal images. Transition probabilities between stages were probabilistic, with common transitions occurring 70% of the time and uncommon transitions 30% of the time. Participants developed strategies based on feedback in stage two to maximize reward. Model-based decision-making involved using transition probabilities to infer action likelihood, while model-free decision-making relied solely on trial outcomes. For detailed imaging results, refer to ⁵⁹, Brandl et al.(in submission), Sen et al.(in submission).

Table 1. Demographic characteristics, clinical characteristics, and the cognitive function of the healthy controls and patients with major depressive disorder, obsessive-compulsive disorder, and schizophrenia

| | CON (n=25) | MDD (n=23) | OCD (n=25) | SCZ (n=27) | Group Differences |
|------------------------------------|--------------|-------------|--------------|-------------|---------------------------------|
| Demographic characteristics | | | | | |
| Age | 36.6 (11.9) | 41.6 (15.4) | 33.8 (12.5) | 40.9 (11.9) | H (3, 100)=7.405, p=ns |
| Gender | 15M, 10F | 9M, 14F | 5M, 20F | 18M, 8F | χ^2 (3, 100)=15.4, p<0.001 |
| Cognitive score | | | | | |
| Symbol-coding task | 60 (10.6) | 53 (3.32) | 57.5 (10.6) | 41.6 (9.62) | H (3, 100)=28.802, p<0.001 |
| Clinical Scores | | | | | |
| HAMD | 1.48 (1.81) | 13.5 (3.01) | 12.6 (4.75) | 3.65 (2.38) | H (3, 100)=69.863, p<0.001 |
| PANSS | | | | | |
| Positive | 7 (0) | 7.52 (0.68) | 7.68 (0.748) | 10.9 (3.46) | H (3, 100)=12.67, p=0.005 |
| Negative | 7 (0) | 12.4 (3.11) | 8.2 (0.913) | 14.8 (6.12) | H (3, 100)=62.235, p<0.001 |
| General | 16.7 (0.802) | 27 (3.57) | 22.2 (3.06) | 25.9 (7.11) | H (3, 100)=59.931, p<0.001 |
| Total | 30.6 (0.783) | 47.6 (6.12) | 37.6 (3.11) | 50.5 (12) | H (3, 100)=68.52, p<0.001 |
| YBOCS | 0 | 0 | 21.2 (6.74) | 0 | H (3, 100)=58.659, p<0.001 |
| OCI-R | NA | NA | 26.8 (9.76) | NA | |
| Anhedonia | | | | | |
| Chapman Social | 4.16 (2.91) | 11.6 (4.62) | 9.72 (6.1) | 9 (3.95) | H (3, 100)=28.859, p<0.001 |
| Chapman Physical | 2.08 (1.21) | 5.83 (3.51) | 5.28 (3.61) | 4.89 (3.19) | H (3, 100)=17.726, p<0.001 |
| Chapman Total | 5.65 (2.76) | 17.4 (7.20) | 15 (8.11) | 14.3 (6.85) | H (3, 100)=32.403, p<0.001 |

Note: Data are presented as mean (SD) except for Gender. Abbreviations: ns=non-significant; CON, healthy controls; MDD, major depressive disorder patients; OCD, obsessive-compulsive disorder patients; SCZ, schizophrenia patients; n, number of subjects; M, male; F, female; HAMD, Hamilton Depression Scale⁷⁴; PANSS, Positive and Negative Syndrome Scale⁷⁵; Y-BOCS, Yale-Brown Obsessive-Compulsive Scale⁷⁶; OCI-R, Obsessive-Compulsive Inventory – Revised⁷³; Scales for Physical and Social Anhedonia – Chapman⁷⁷; Symbol coding task of the Brief Assessment of Cognition in Schizophrenia (BACS)⁷⁸

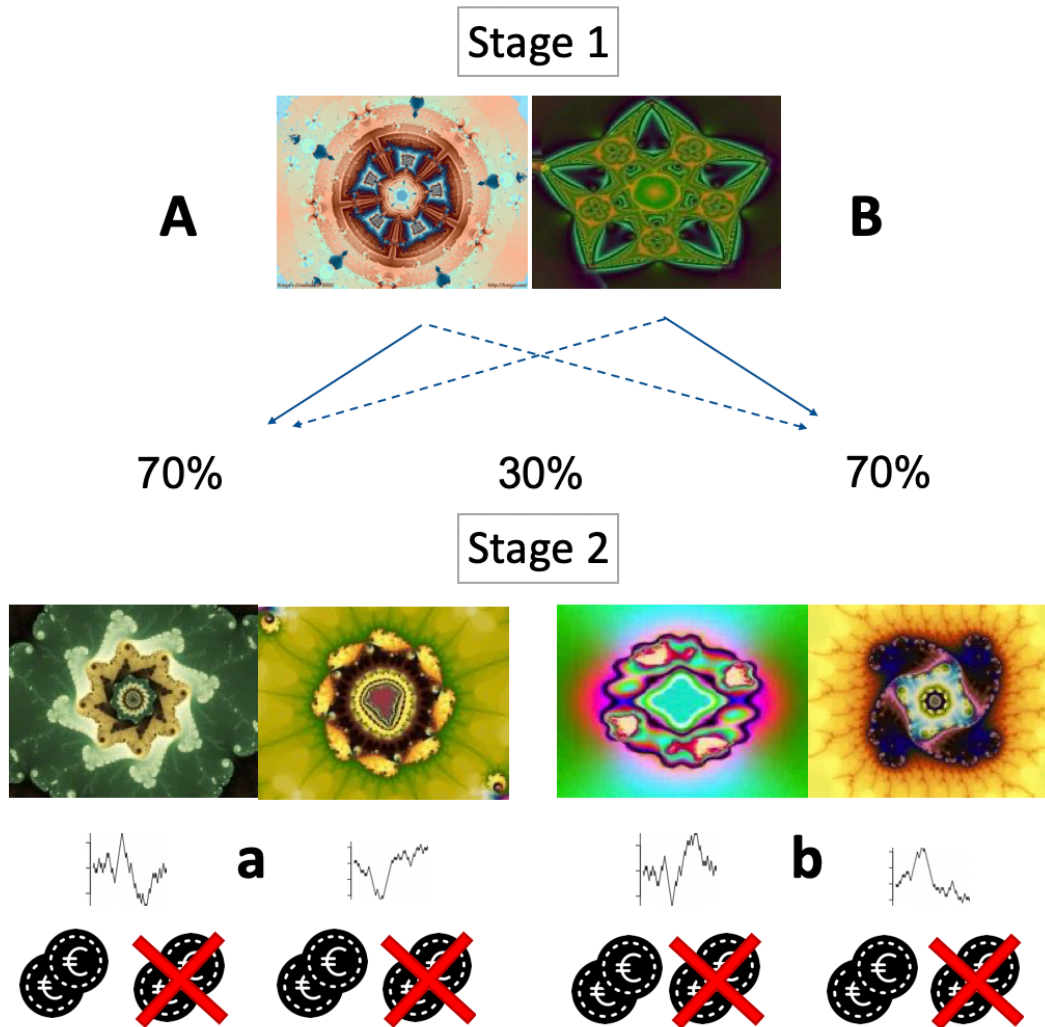


Figure 1 Two-step Markov decision task. Showing the state transition structure which allows discrimination between model-based and model-free behavior. Note: All stimuli in stage 2 are associated with a probabilistic reward changing slowly and independently based on Gaussian random walks, forcing subjects to continuously learn and explore the second stage choices.

Analysis

Stay Probability

Stay-probability was assessed to investigate an action bias. It is the probability of an individual selecting the same first stage choice as in the previous trial, which can show a model-free or a model-based strategy depending on the results of the previous trial (i.e., outcome and transition type). See supplements for exact description. Stay-probabilities were compared across groups using a robust mixed ANOVA with stay probability as the dependent variable, group as the between-subject variable, and previous trial transition type (common/uncommon) and previous trial outcome (rewarded/unrewarded) as within-subject variables. For post-hoc analysis for the factors that resulted

in a significant effect, we performed pairwise t-tests corrected for multiple comparisons using Bonferroni adjustments for each of the parameters.

Logistic Regression Analysis

We used a hierarchical logistic regression to estimate in a classical approach model-free and model-based decision-making by including independent contributions of choices (stay/shift) on the subject level depending on outcome (rewarded/unrewarded) and transition type of the previous trial (common/uncommon), similar to previous reports^{63,79}. We controlled for BACS and illness duration as fixed effects. We used the following equation:

$$\text{stay} \sim 1 + \text{reward_previous} + \text{transition_type} + \text{reward_previous} * \text{transition_type} + \text{BACS} + \text{Illness_duration} + (1 + \text{transition_type} + \text{reward_previous} + \text{reward_previous} * \text{transition_type} | \text{Subject})$$

We extracted individual beta estimates for reward reflecting model-free behavior and for the interaction of reward and transition reflecting model-based behavior for each individual subject to explore which decision-making strategy individuals were more likely to use.

We performed a robust mixed ANOVA and robust post hoc tests for significant effects based on trimmed means using the bootstrap method, with beta estimates as the dependent variable, group as the between-subject factor and decision-making strategy (reward beta=model-free/interaction beta=model-based) as the within-subject factor. We then conducted post-hoc analyses for significant effects using one-way robust ANOVA with the bootstrap method.

To explore associations of the beta estimates with clinical scores, we computed, across and within all groups, Spearman's correlations. We excluded one participant from the MDD group for this analysis due to missing values.

Computational Modeling

Furthermore, we used hierarchical Bayesian modeling to estimate computational parameters describing neurocognitive processes underlying decision-making behavior. We fitted four models under one hierarchical prior across all subjects independent of group using the hBayesDM package (version 1.2.1)⁸⁰. We fitted four chains for each model with 1,000 burn-in samples and 3,000 samples. All models are shown in Table 2. The winning model – the 6-parameter model – was determined based on model-convergence with $R_{hat} < 1.04$, $\text{pareto } k < 0.7$ and lowest leave one out information criterion (LOOIC) values.

Table 2. Models with LOOIC values

| Model | Description | Parameters | LOOIC |
|-------------|---|--|-----------|
| 4-parameter | <p>As implemented by Wunderlich and colleagues⁸¹, this model comprised of the following four parameters:</p> <p>Learning rate ('α'): showing the efficiency of learning over the trials, the higher the score, the better the subjects understand and perform the task</p> <p>Inverse-temperature/choice randomness ('β'): influence of reward prediction on choices, beta referring to the proportions of random choices made during the task, with $\beta=0$ for completely random responding and $\beta=\infty$ for deterministically choosing the highest value option</p> <p>Perseverance ('π'): Perseverance determines how strongly the subject(s) stick to their decisions. The higher the score on the perseverance scale, the lower the chance of switching to a different image.</p> <p>Model-weights ('ω'): referring to the degree of model-based influence on choices, takes values from 0 to 1, '0' indicating more model-free decisions, and '1' being more model-based.</p> | $\alpha, \beta, \pi, \omega$ | 39841.237 |
| 5-parameter | <p>Five-parameter model: As implemented by Culbreth and colleagues⁶³, in addition to 'α', $2, \pi$ and 'π', this model had 'β-1MF' and 'β-1MB' (choice randomness in stage 1 for model-free and model-based choices respectively), and 'β-2' (choice randomness for decisions in stage 2)</p> | α, β -1MF, β -1MB, β -2 | 40083.131 |

| | |
|-------------|---|
| 6-parameter | Six-parameter model: In addition to ‘ β -1’ α -1, α -2, β -1, β -2, π , 39160.12 (choice randomness in stage 1, not separate ω for model-free and model-based choices), ‘ β -2’, ‘ π ’, and ‘ ω ’, this model included ‘ α -1’ and ‘ α -2’ referring to the learning rate of stage 1 and stage 2 respectively |
| 7-parameter | Seven-parameter model: An extension of the α -1, α -2, β -1, β -2, π , No six-parameter model as implemented in the ω , λ convergence study by Daw and colleagues ⁶⁹ , included the above-mentioned six parameters along with ‘ λ ’ (eligibility parameter, governing the relative importance of model-free and model-based reinforcer, with $\lambda=1$ in which only the final reward is important, and $\lambda=0$ in which only the second-stage value plays a role). |

After removing outliers (see description below), we explored group differences for the modeling parameters using robust one-way ANOVA followed by robust post-hoc tests for significant effects corrected for multiple comparisons using Bonferroni adjustments based on trimmed means with bootstrapping method, with each parameter as the dependent variable and group as the between subject variable.

To study the associations between modeling parameters and clinical scores, we performed partial Spearman’s correlations controlling for cognitive function using the symbol-coding task of the BACS, as decision-making is highly dependent on cognitive abilities, and illness duration. These correlations were performed across and within all groups. We focused on the parameters model weights ω to reflect the concept of model-free (<0.5) and model-based (>0.5) behavior more closely, and on perseverance π which reflects stickiness or the ability of being able to change a response pattern. We had to exclude one participant from the MDD group for this analysis due to missing values. See supplements for additional correlations.

General procedure

All statistical analyses were conducted using the R Statistical Software (version 4.1.1)⁸². Data was visualized using the ggplot2 package (version 3.4.2)⁸³, the ggpubr package (version 0.6.0)⁸⁴, and the Hmisc package (version 4.5-0)⁸⁵. Shapiro-Wilks tests, ANOVA analyses, t-tests, were conducted with the

rstatix package (version 0.7.2)⁸⁶. Robust ANOVAs and robust post-hoc tests were conducted using the WRS2 package (version 1.1-4)⁸⁷. Correlation analyses were completed and visualized with the ggcorrplot package (version 0.1.3)⁸⁸. Partial correlations were implemented using the ppcor package (version 1.1)⁸⁹. Logistic regression analysis was carried out using the lmer4 package (version 1.1-33)⁹⁰.

Before assessing for group-comparisons, data was inspected for normality of distribution using Shapiro-Wilks test. If data was normally distributed, ANOVA and t-tests were conducted, and if assumptions for normality were not met (Shapiro-Wilks $p > 0.05$), robust ANOVA and robust post hoc tests were conducted based on 20% trimmed means and 2000 bootstrap samples. Spearman Rank tests were used for correlation analyses. Correlations were not controlled for multiple comparison due to the explorative nature of the correlations and the small sample sizes of each groups, which would otherwise lead to excessively conservative results. Correlations across all participants are presented in the supplementary material. In all the tests, a p -value < 0.05 was considered significant.

Potential outliers with values > 1.5 times the interquartile range of the respective score were identified and excluded from the dataset. Outlier exclusion has only been applied to those analyses were stated.

Results

Task learning

To assess whether participants understood the task we compared task outcomes for each group contrasting the first and the last 50 trials. There was a significant effect for first and last trials, but not for group or the interaction between both (see supplements for details), indicating that all groups performed similarly independent of the strategy. Interestingly the results indicated that all participants did worse on the last 50 trials.

Stay probability – Group differences

Stay probabilities for ideal model-free and model-based behavior are displayed in Figure 2a and actual stay probabilities in the current task are displayed in Figure 2b. The visual inspection and comparison to simulated behavior revealed that controls and OCD patients employed model-free decision-making behavior, MDD patients used a hybrid strategy and schizophrenia patients were largely random in their choice profile. The mixed factor ANOVA identified significant main effects of group ($F(3, 96) = 6.61$, $p < 0.001$; $\eta_p^2 = 0.17$) and reward outcome in previous trial ($F(1, 96) = 43.08$, $p < 0.001$; $\eta_p^2 = 0.31$), and significant interaction effects between group and reward outcome in previous trial ($F(3, 96) = 2.99$, $p = 0.035$; $\eta_p^2 = 0.09$), and transition type in previous trial and reward outcome in previous trial ($F(1, 96) = 6.46$, $p = 0.013$; $\eta_p^2 = 0.06$). See Supplementary Table 1 for post hoc tests.

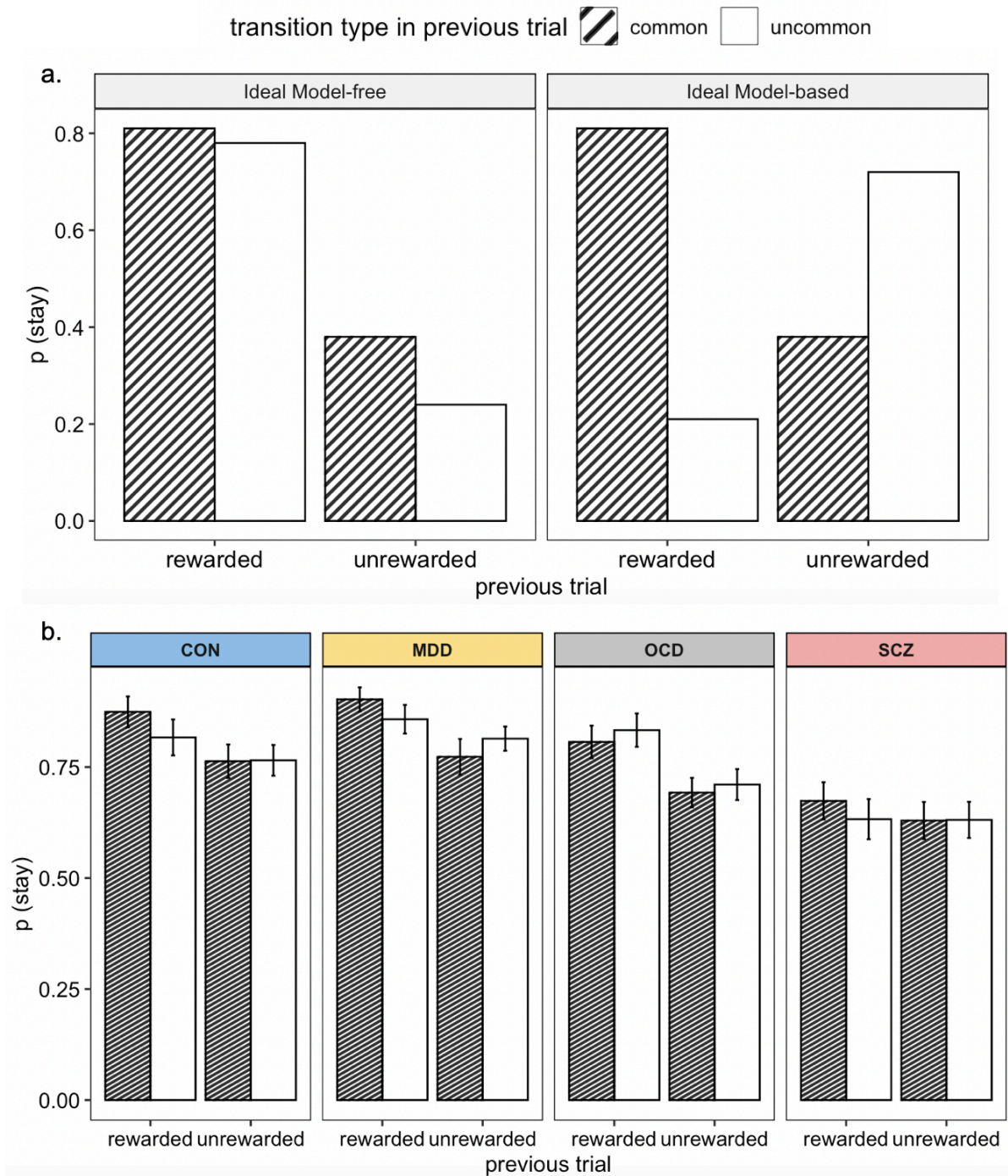


Figure 2 Ideal and actual stay probabilities. Note: (a) Ideal, simulated model-based decision-making behavior: Model-free reinforcement learning predicts that a first-stage choice yielding a reward is likely to be repeated on the upcoming trial, regardless of a common or an uncommon transition; Ideal model-based decision-making behavior: Model-based reinforcement learning predicts that an uncommon transition should affect the value of the next first stage option, leading to a predicted interaction between reward and transition probability; (b) Rewarded trials, independent of transition show higher stay probabilities across healthy controls, MDD and OCD suggesting increased model-free behavior; the plot slightly displays an influence of both strategies in MDD; and random choice behavior in SCZ patients.

Logistic regression results and correlations

The robust mixed ANOVA revealed a significant effect for the decision-making strategy ($F(1,50.51)=20.43, p<0.001, \eta_p^2=0.42$), but no effect for group or an interaction. Post-hoc tests revealed that all participants favored model-free decision strategies (Mean=0.034, SD=0.08) over model-based decisions (Mean=-0.03 e⁻⁹, SD=0.01), $\psi=0.05, p<0.001, 95\% \text{ CI } [0.04, 0.08]$. Based on our hypotheses, we investigated group differences within model-free and model-based behavior separately comparing individual betas for reward and reward*transition, respectively. We found a significant difference for the estimate of model-free decision-making – reward beta ($F(3,30.91)=3.84, p=0.03, \eta_p^2=0.48$); but no differences for model-based behavior. Post-hoc pairwise comparisons revealed that MDD patients and OCD patients employed significantly more model-free behavior compared to schizophrenia patients (Supplementary Table 2).

Correlation analyses revealed that more model-free behavior is linked to stronger depressive symptoms ($r=0.34, p=0.004$, Figure 3a); and in a trend that more model-based behavior would be associated with less anhedonia ($r=-0.21, p=0.075$, Figure 3b). Within groups separately, we found a negative correlation between reward beta and HAMD in MDD patients ($r=-0.52, p=0.02$), indicating that more model-free behavior is associated with fewer depressive symptoms. This correlation is driven by two individuals, see supplements for further analysis.

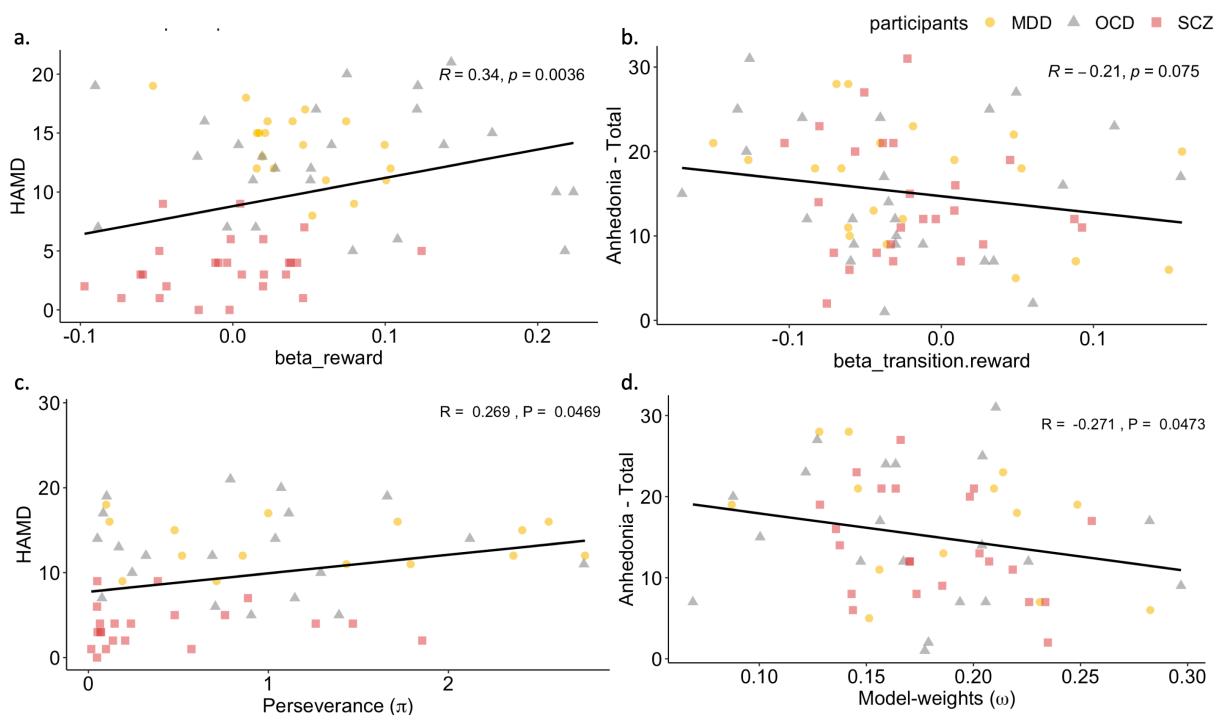


Figure 3 Correlations between model-free and model-based behavior and clinical scores across all groups. (a) reward beta estimate from the logistic regression and HAMD (b) reward x transition interaction beta estimate from the logistic regression and Anhedonia total (c) Perseverance (π) from the computational model and HAMD (d) Model-weights (ω) from the computational model and Anhedonia – Total.

Modeling parameters – Group differences

The computational modeling analysis allowed the investigation of differences in six computational parameters underlying the decision-making behavior. Significant group differences (Figure 4) were identified in the learning rate at stage one α -1 ($F(3,22.04)=9.12$, $p=0.01$, $\eta_p^2=0.43$), but not in the learning rate at stage two, in the choice randomness at stage one β -1 ($F(3,29.16)=3.52$, $p=0.06$, $\eta_p^2=0.41$) and stage two β -2 ($F(3,30.07)=9.68$, $p=0.002$, $\eta_p^2=0.68$), and the perseverance π ($F(3, 29.58)=11.05$, $p<0.001$, $\eta_p^2=0.51$). Although not showing any group differences the parameter model weights (ω) indicating model-free vs model-based behavior showed clear evidence for model-free behavior in all groups. Post-hoc analyses (Supplementary Table 3) showed that schizophrenia patients learned least at stage 1, while there were no differences at stage 2. Furthermore, they revealed that OCD patients were significantly more random at stage 1 compared to controls and MDD patients, while schizophrenia patients were more random at stage 2 compared to all other groups. Lastly, the post-hoc analyses showed that perseverance was lowest in schizophrenia patients compared to all other groups.

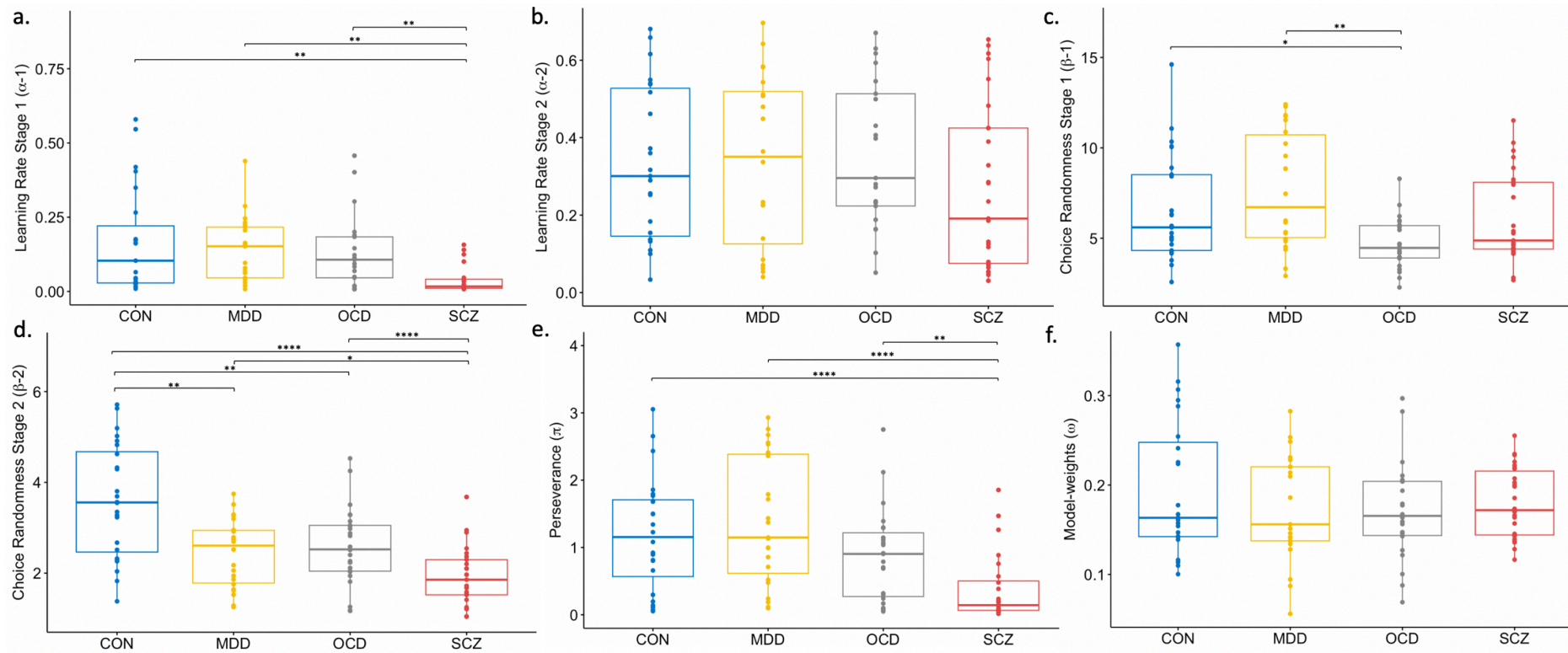


Figure 4 Group differences in model-parameters. Note: (a) Learning rate stage 1 ($\alpha-1$); (b) Inverse temperature stage 2 ($\beta-1$); (c) Learning rate stage 1 ($\alpha-1$); (d) Inverse temperature stage 2 ($\beta-2$); (e) Perseverance (π); (f) Model-weights (ω); Group differences are calculated with robust post-hoc tests based on trimmed means using bootstrapping method *: significant differences at $p < 0.05$; **: significant differences at $p < 0.01$; ***: significant differences at $p < 0.001$; ****: significant differences at $p < 0.0001$; p-values are adjusted using Bonferroni correction. The individual box plots represent the minimum, maximum, median, first quartile and third quartile and the outliers in the data set.

Across all patients, correlation analyses revealed that greater unwillingness to adapt the decision strategy was linked to stronger depressive symptoms ($r=0.269$, $p=0.047$, Figure 3c); and that more model-based behavior would be associated with less anhedonia ($r=-0.271$, $p=0.047$, Figure 3d). Within groups separately, we found that more model-free behavior is associated with less anhedonia ($r=-0.48$, $p=0.038$), and in a trend that more model-based behavior is also associated with less anhedonia ($r=-0.39$, $p=0.098$).

Additionally, we explored association between modeling parameters and beta estimates from logistic regressions. The results are presented in the supplementary materials.

Discussion

In this study, we investigated disorder-general and disorder-specific decision-making patterns and their associations with symptoms in individuals diagnosed with MDD, OCD, and schizophrenia using two computational approaches. We found that controls and OCD patients predominantly utilized model-free decision-making, while MDD patients exhibited a hybrid strategy, and schizophrenia patients showed largely random decision-making. These results were confirmed by regression and Bayesian analyses. Regression analysis revealed a stronger reliance on model-free strategies in OCD and MDD patients compared to schizophrenia patients. Bayesian analysis showed that schizophrenia patients had the lowest learning rate and perseveration, indicating random behavior, while OCD patients exhibited the lowest influence of reward at stage one, and schizophrenia patients showed the least influence at stage two. Importantly, both approaches revealed consistent symptom correlations across all patients showing that more model-free decision-making was associated with stronger depressive symptoms, whereas more model-based decision-making was linked to lower anhedonia. These disorder-general alterations spanning various psychiatric disorder offer insights into similarities and potential targets for interventions, especially for co-occurring symptoms.

Whereas all groups showed a preference for model-free behavior inspecting the stay-probabilities, the MDD group showed to some extent hybrid model-free decision-making behavior. This finding was quantified by the Bayesian computational parameters, which revealed that choice randomness in MDD patients was lowest compared to all other groups at the first stage, whereas choices at the second stage were more random compared to controls, but less random compared to all other groups. Although this is, to our knowledge, the first time that model-free and model-based decision-making has been investigated in patients with depression using a task that requires both strategies such as the two-step

task, research from healthy individuals with depressive symptoms indicated similar results. Blanco and colleagues⁹¹ showed in an earlier study using a leap frog task, that depressive participants used a reflexive, model-free decision-making strategies which did not integrate environmental changes and explored randomly. Similarly, Heller and colleagues⁶⁷, suggested that individuals with stronger depressive symptoms transitioned to model-free behavior when exposed to stress. This is interesting as research has consistently shown that individuals with stronger depression, or with MDD also reported higher levels of stress⁹²⁻⁹⁴ and depressive symptoms respectively. Importantly, this notion is supported by the symptom correlations that we found across all patients. These indicated a reduction of depressive symptoms with less model-free behavior and consistently a reduction of anhedonia with more model-based decision-making behavior. Interestingly, within the MDD group alone we found a negative correlation between model-free behavior and depressive symptom, indicating, fewer symptoms with more model-free behavior. This is in contrast to the overall correlation. We argue that while most MDD patients align with the correlation reported across all patients, only two individuals are driving this negative correlation, without whom the correlation within the MDDs is no longer significant, but remains across all patients (see supplementary materials for supportive analyses). Also, it has been shown that reward processing is sensitive to medication doses⁹⁵ which could additionally impact the correlation.

Our results, furthermore, showed that the OCD group used stronger model-free behavior compared to controls, which is consistent with the literature^{31,41,96}. For example, Voon and colleagues⁴¹ found that OCD patients showed less goal-directed, model-based and more habitual, model-free choices to rewarding outcomes also using the two-step task. The increased model-free behavior was linked to stronger obsessions⁴¹. Thus, this overreliance on habituated behavior³⁰ has been linked to the inability of inhibiting established responses, especially in novel situations. This may be due to difficulties in shifting attention from one aspect of a stimulus to another, and in suppressing or reverting to previously rewarded responses^{97,98}. As individuals with OCD also exhibit neurocognitive deficits in attentional and extra-dimensional set-shifting, affective set-shifting and reversal learning, as well as task shifting^{99,100}, this cognitive inflexibility may underlie the inability to dynamically balancing between model-free and model-based decision-making. While all analyses in our study confirmed a clear reliance on model-free decision-making behavior, the Bayesian computational parameters also revealed that decisions made by OCD patients were largely random, as seen by the decreased impact of preceding rewards (i.e., increased choice randomness) and more choice switches (i.e., reduced perseverance). These computational parameters indicate increased random exploration, which has been linked to impulsivity¹⁰¹ and compulsivity¹⁰². Although we did not find that more model-free or less model-based behavior was linked to stronger obsessions and compulsions, we did find an association with stronger depressive symptoms when patients made more model-free and less model-based choices.

Confirming our hypothesis, schizophrenia patients in our study made largely random choices, which was especially apparent in rewarded common transitions. This is partially in contrast to earlier findings by Culbreth and colleagues⁶³ showing that chronic schizophrenia patients were impaired in model-based behavior, but employed model-free decision-making in the same task, and to findings by Waltz and colleagues¹⁰³, who reported that schizophrenia patients showed alterations in goal directed explorations but not random exploration, whereas more simple probabilistic learning tasks have consistently shown increased randomness in decision-making^{38,55}. The Bayesian computational parameters in the present analysis clearly showed increased random exploration through decreased impact of preceding rewards (i.e., increased choice randomness) and more choice switches (i.e., reduced perseverance), which is very similar to the behavior seen in OCD patients within this study. Interestingly, it seems that the schizophrenia patients in our sample were particularly insensitive to the outcome of their choices, causing a disruption of model-free decision-making strategies. The insensitivity to reward has been shown across all stages of schizophrenia and has been associated with negative symptoms, especially anhedonia, and cognitive deficits^{55,61,104,105}. Thus, our findings are in line with previous literature elucidating that these patients generally possess an impairment in reward anticipation and effort-based decision-making^{8,61}. Completely random choice behavior on the two-step task might be a useful indicator for schizophrenia patients in remission of positive symptoms, however, this requires further exploration. Again, this is supported by the correlations we found across all patients, showing that more model-free and less model-based behavior is linked to more depressive symptoms and higher anhedonia.

Despite some differences across the groups, the results seem to converge in showing that higher reward effect or sensitivity, as indicated by less randomness and more model-based decision-making, are associated with a reduction of symptoms, especially anhedonia and depressive symptoms. This is in line with the previous literature suggesting impaired reward processing is associated with such symptoms across different psychiatric disorders^{56,61,106–110}. This is an important finding of this transdiagnostic study, as anhedonia and depressive symptoms occur in all three disorders. The results seem to indicate a shared behavioral mechanism which underlies these symptoms, suggesting that model-based, or goal-directed decision making, is beneficial for reducing symptoms. This provides a potential starting point for a behavioral intervention in order to reduce anhedonia and depressive symptoms.

Limitations

Whereas previous studies were able to elicit both model-based and model-free behavior with the original set up^{41,59,69}, using the standard two-step decision-making paradigm, we were unable to induce model-based behavior even in healthy controls. This might be due to implicit task instructions and using

Gaussian-randomized reward probabilities. Akam and colleagues¹¹¹ and Da Silva and Hare¹¹² were both able to induce model-based behavior changing reward distribution and paradigm instructions, respectively. The results of the Bayesian model elicited fewer and sometimes contradictory correlations with symptoms. One reason may be that we fitted the model under one hierarchical prior across all subjects independent of group which allows comparability between groups, which is necessary to understand distinct and shared associations. Previous work^{55,113} indicated clear differences in the parameters when using group specific vs. group general priors. The rationale however for fitting the model across all participants is that this would allow us to investigate the most robust, albeit very conservative, model. None of the analyses has been controlled for medication. As we use a transdiagnostic sample, we were unable to calculate general equivalent doses combining medication for different symptoms and disorders. Furthermore, the correlations are not adjusted for multiple comparisons, given the exploratory nature of the analysis and the small sample sizes. Any significant findings will necessitate validation in subsequent studies. This study only tested one decision-making paradigm, a broader set of paradigms would further increase the significance of the findings, and allow a more fine-grained investigation of mechanisms underlying shared symptoms.

Conclusion

Taken together, this study revealed that while all groups performed more model-free decision making, there were differences in learning rates and randomness of choices. Importantly, the results indicated that more model-free behavior was linked to an increase in depressive symptoms and more model-based behavior was associated with lower levels of anhedonia across all patients. Thus, this study highlights important general and specific decision-making alterations in individuals with MDD, OCD and schizophrenia and that co-occurring alterations and symptoms potentially share underlying behavioral mechanisms.

Acknowledgements

We thank all participants for their time and dedication.

Conflicts of interest

None of the authors reported any conflict of interest.

References

1. Endrass, T., & Ullsperger, M. (2021). Decision-making as transdiagnostic construct for mental health research. *Neuron*, *109*(12), 1912–1914.
<https://doi.org/10.1016/j.neuron.2021.05.035>
2. Goschke, T. (2014). Dysfunctions of decision-making and cognitive control as transdiagnostic mechanisms of mental disorders: Advances, gaps, and needs in current research. *International Journal of Methods in Psychiatric Research*, *23*(S1), 41–57.
<https://doi.org/10.1002/mpr.1410>
3. Gu, Y., Zhou, C., Yang, J., Zhang, Q., Zhu, G., Sun, L., Ge, M., & Wang, Y. (2020). A transdiagnostic comparison of affective decision-making in patients with schizophrenia, major depressive disorder, or bipolar disorder. *PsyCh Journal*, *9*(2), 199–209. <https://doi.org/10.1002/pchj.351>
4. Cella, M., Dymond, S., & Cooper, A. (2010). Impaired flexible decision-making in major depressive disorder. *Journal of Affective Disorders*, *124*(1), 207–210.
<https://doi.org/10.1016/j.jad.2009.11.013>
5. Hindmarch, T., Hotopf, M., & Owen, G. S. (2013). Depression and decision-making capacity for treatment or research: A systematic review. *BMC Medical Ethics*, *14*(1), 54. <https://doi.org/10.1186/1472-6939-14-54>
6. Cavadini, P., Gorini, A., & Bellodi, L. (2006). Understanding Obsessive–Compulsive Disorder: Focus on Decision Making. *Neuropsychology Review*, *16*(1), 3–15.
<https://doi.org/10.1007/s11065-006-9001-y>
7. Grassi, G., Pallanti, S., Righi, L., Figeo, M., Mantione, M., Denys, D., Piccagliani, D., Rossi, A., & Stratta, P. (2015). Think twice: Impulsivity and decision making in obsessive–compulsive disorder. *Journal of Behavioral Addictions*, *4*(4), 263–272.
<https://doi.org/10.1556/2006.4.2015.039>

8. Kesby, J. P., Murray, G. K., & Knolle, F. (2021). Neural Circuitry of Salience and Reward Processing in Psychosis. *Biological Psychiatry Global Open Science*.
<https://doi.org/10.1016/j.bpsgos.2021.12.003>
9. Saperia, S., Da Silva, S., Siddiqui, I., Agid, O., Daskalakis, Z. J., Ravindran, A., Voineskos, A. N., Zakzanis, K. K., Remington, G., & Foussias, G. (2019). Reward-driven decision-making impairments in schizophrenia. *Schizophrenia Research*, 206, 277–283. <https://doi.org/10.1016/j.schres.2018.11.004>
10. Belzung, C., Willner, P., & Philippot, P. (2015). Depression: From psychopathology to pathophysiology. *Current Opinion in Neurobiology*, 30, 24–30.
<https://doi.org/10.1016/j.conb.2014.08.013>
11. Joormann, J., & Stanton, C. H. (2016). *Examining emotion regulation in depression: A review and future directions—ScienceDirect*.
<https://www.sciencedirect.com/science/article/pii/S0005796716301188>
12. Krings, A., Heeren, A., Fontaine, P., & Blairy, S. (2020). Attentional biases in depression: Relation to disorder severity, rumination, and anhedonia. *Comprehensive Psychiatry*, 100, 152173. <https://doi.org/10.1016/j.comppsy.2020.152173>
13. Dolan, R. J. (2002). Emotion, Cognition, and Behavior. *Science*.
<https://www.science.org/doi/full/10.1126/science.1076358>
14. Huys, Q. J. M., Daw, N. D., & Dayan, P. (2015). Depression: A Decision-Theoretic Analysis. *Annual Review of Neuroscience*, 38(1), 1–23.
<https://doi.org/10.1146/annurev-neuro-071714-033928>
15. McFarland, B. R., & Klein, D. N. (2009). Emotional reactivity in depression: Diminished responsiveness to anticipated reward but not to anticipated punishment or to nonreward or avoidance. *Depression and Anxiety*, 26(2), 117–122.
<https://doi.org/10.1002/da.20513>

16. Sherdell, L., Waugh, C. E., & Gotlib, I. H. (2012). Anticipatory pleasure predicts motivation for reward in major depression. *Journal of Abnormal Psychology, 121*(1), 51–60. <https://doi.org/10.1037/a0024945>
17. Culbreth, A. J., Moran, E. K., & Barch, D. M. (2018). Effort-cost decision-making in psychosis and depression: Could a similar behavioral deficit arise from disparate psychological and neural mechanisms? *Psychological Medicine*. <https://www.cambridge.org/core/journals/psychological-medicine/article/abs/effortcost-decisionmaking-in-psychosis-and-depression-could-a-similar-behavioral-deficit-arise-from-disparate-psychological-and-neural-mechanisms/D6F322EA921BC99DDBB5E8BF419A2610>
18. Moran, E. K., Prevost, C., Culbreth, A. J., & Barch, D. M. (2023). Effort-cost decision-making in psychotic and mood disorders. *Journal of Psychopathology and Clinical Science, 132*(4), 490–498. <https://doi.org/10.1037/abn0000822>
19. Treadway, M. T., Bossaller, N. A., Shelton, R. C., & Zald, D. H. (2012). Effort-based decision-making in major depressive disorder: A translational model of motivational anhedonia. *Journal of Abnormal Psychology, 121*(3), 553–558. <https://doi.org/10.1037/a0028813>
20. Beevers, C. G., Mullarkey, M. C., Dainer-Best, J., Stewart, R. A., Labrada, J., Allen, J. J. B., McGeary, J. E., & Shumake, J. (2019). Association between negative cognitive bias and depression: A symptom-level approach. *Journal of Abnormal Psychology, 128*(3), 212–227. <https://doi.org/10.1037/abn0000405>
21. Noworyta, K., Cieslik, A., & Rygula, R. (2021). Neuromolecular Underpinnings of Negative Cognitive Bias in Depression. *Cells, 10*(11), Article 11. <https://doi.org/10.3390/cells10113157>

22. Ang, Y.-S., Gelda, S. E., & Pizzagalli, D. A. (2023). Cognitive effort-based decision-making in major depressive disorder. *Psychological Medicine*, *53*(9), 4228–4235. <https://doi.org/10.1017/S0033291722000964>
23. Chen, C., Takahashi, T., Nakagawa, S., Inoue, T., & Kusumi, I. (2015). Reinforcement learning in depression: A review of computational research. *Neuroscience & Biobehavioral Reviews*, *55*, 247–267. <https://doi.org/10.1016/j.neubiorev.2015.05.005>
24. Kerestes, R., Davey, C. G., Stephanou, K., Whittle, S., & Harrison, B. J. (2014). Functional brain imaging studies of youth depression: A systematic review. *NeuroImage: Clinical*, *4*, 209–231. <https://doi.org/10.1016/j.nicl.2013.11.009>
25. Knutson, B., Bhanji, J. P., Cooney, R. E., Atlas, L. Y., & Gotlib, I. H. (2008). Neural Responses to Monetary Incentives in Major Depression. *Biological Psychiatry*, *63*(7), 686–692. <https://doi.org/10.1016/j.biopsych.2007.07.023>
26. Steele, J. D., Kumar, P., & Ebmeier, K. P. (2007). Blunted response to feedback information in depressive illness. *Brain*, *130*(9), 2367–2374. <https://doi.org/10.1093/brain/awm150>
27. Pizzagalli, D. A. (2014). Depression, Stress, and Anhedonia: Toward a Synthesis and Integrated Model. *Annual Review of Clinical Psychology*, *10*(1), 393–423. <https://doi.org/10.1146/annurev-clinpsy-050212-185606>
28. Ragland, J. D., Cools, R., Frank, M., Pizzagalli, D. A., Preston, A., Ranganath, C., & Wagner, A. D. (2009). CNTRICS Final Task Selection: Long-Term Memory. *Schizophrenia Bulletin*, *35*(1), 197–212. <https://doi.org/10.1093/schbul/sbn134>
29. Benzina, N., Mallet, L., Burguière, E., N'Diaye, K., & Pelissolo, A. (2016). Cognitive Dysfunction in Obsessive-Compulsive Disorder. *Current Psychiatry Reports*, *18*(9), 80. <https://doi.org/10.1007/s11920-016-0720-3>

30. Gillan, C. M., & Robbins, T. W. (2014). Goal-directed learning and obsessive–compulsive disorder. *Philosophical Transactions of the Royal Society B: Biological Sciences*, *369*(1655), 20130475. <https://doi.org/10.1098/rstb.2013.0475>
31. Gillan, C. M., Pappmeyer, M., Morein-Zamir, S., Sahakian, B. J., Fineberg, N. A., Robbins, T. W., & de Wit, S. (2011). Disruption in the Balance Between Goal-Directed Behavior and Habit Learning in Obsessive-Compulsive Disorder. *American Journal of Psychiatry*, *168*(7), 718–726. <https://doi.org/10.1176/appi.ajp.2011.10071062>
32. Grosskurth, E. D., Bach, D. R., Economides, M., Huys, Q. J. M., & Holper, L. (2019). No substantial change in the balance between model-free and model-based control via training on the two-step task. *PLOS Computational Biology*, *15*(11), e1007443. <https://doi.org/10.1371/journal.pcbi.1007443>
33. Gillan, C. M. (2017). *Habits and goals in OCD*.
34. Nestadt, G., Kamath, V., Maher, B. S., Krasnow, J., Nestadt, P., Wang, Y., Bakker, A., & Samuels, J. (2016). Doubt and the Decision-making Process in Obsessive-Compulsive Disorder. *Medical Hypotheses*, *96*, 1–4. <https://doi.org/10.1016/j.mehy.2016.09.010>
35. Robbins, T. W. (2022). *Cognitive flexibility, OCD and the brain*. *145*(3), 814–815.
36. Suhas, S., & Rao, N. P. (2019). Neurocognitive deficits in obsessive–compulsive disorder: A selective review. *Indian Journal of Psychiatry*, *61*(Suppl 1), S30–S36. https://doi.org/10.4103/psychiatry.IndianJPsychiatry_517_18
37. Murray, G. K., Knolle, F., Ersche, K. D., Craig, K. J., Abbott, S., Shabbir, S. S., Fineberg, N. A., Suckling, J., Sahakian, B. J., Bullmore, E. T., & Robbins, T. W. (2019). Dopaminergic drug treatment remediates exaggerated cingulate prediction error responses in obsessive-compulsive disorder. *Psychopharmacology*, *236*(8), 2325–2336. <https://doi.org/10.1007/s00213-019-05292-2>

38. Ermakova, A. O., Knolle, F., Justicia, A., Bullmore, E. T., Jones, P. B., Robbins, T. W., Fletcher, P. C., & Murray, G. K. (2018). Abnormal reward prediction-error signalling in antipsychotic naive individuals with first-episode psychosis or clinical risk for psychosis. *Neuropsychopharmacology*, *43*(8), Article 8.
<https://doi.org/10.1038/s41386-018-0056-2>
39. Kathagen, T., Kaminski, J., Heinz, A., Buchert, R., & Schlagenhauf, F. (2020). Striatal Dopamine and Reward Prediction Error Signaling in Unmedicated Schizophrenia Patients. *Schizophrenia Bulletin*, *46*(6), 1535–1546.
<https://doi.org/10.1093/schbul/sbaa055>
40. Yaple, Z. A., Tolomeo, S., & Yu, R. (2021). Abnormal prediction error processing in schizophrenia and depression. *Human Brain Mapping*, *42*(11), 3547–3560.
<https://doi.org/10.1002/hbm.25453>
41. Voon, V., Baek, K., Enander, J., Worbe, Y., Morris, L. S., Harrison, N. A., Robbins, T. W., Rück, C., & Daw, N. (2015). Motivation and value influences in the relative balance of goal-directed and habitual behaviours in obsessive-compulsive disorder. *Translational Psychiatry*, *5*(11), Article 11. <https://doi.org/10.1038/tp.2015.165>
42. Adinoff, B., Devous, M. D., Cooper, D. B., Best, S. E., Chandler, P., Harris, T., Cervin, C. A., & Cullum, C. M. (2003). Resting regional cerebral blood flow and gambling task performance in cocaine-dependent subjects and healthy comparison subjects. *The American Journal of Psychiatry*, *160*(10), 1892–1894.
<https://doi.org/10.1176/appi.ajp.160.10.1892>
43. Baxter, L. R., Phelps, M. E., Mazziotta, J. C., Guze, B. H., Schwartz, J. M., & Selin, C. E. (1987). Local cerebral glucose metabolic rates in obsessive-compulsive disorder. A comparison with rates in unipolar depression and in normal controls. *Archives of General Psychiatry*, *44*(3), 211–218.
<https://doi.org/10.1001/archpsyc.1987.01800150017003>

44. Perani, D., Colombo, C., Bressi, S., Bonfanti, A., Grassi, F., Scarone, S., Bellodi, L., Smeraldi, E., & Fazio, F. (1995). [18F]FDG PET study in obsessive-compulsive disorder. A clinical/metabolic correlation study after treatment. *The British Journal of Psychiatry: The Journal of Mental Science*, *166*(2), 244–250.
<https://doi.org/10.1192/bjp.166.2.244>
45. Saxena, S., Brody, A. L., Schwartz, J. M., & Baxter, L. R. (1998). Neuroimaging and frontal-subcortical circuitry in obsessive-compulsive disorder. *The British Journal of Psychiatry*, *173*(S35), 26–37. <https://doi.org/10.1192/S0007125000297870>
46. Sterzer, P., Voss, M., Schlagenhaut, F., & Heinz, A. (2019). Decision-making in schizophrenia: A predictive-coding perspective. *NeuroImage*, *190*, 133–143.
<https://doi.org/10.1016/j.neuroimage.2018.05.074>
47. Dudley, R., Taylor, P., Wickham, S., & Hutton, P. (2015). *Psychosis, Delusions and the “Jumping to Conclusions” Reasoning Bias: A Systematic Review and Meta-analysis* | *Schizophrenia Bulletin* | Oxford Academic.
<https://academic.oup.com/schizophreniabulletin/article/42/3/652/2413859>
48. Ermakova, A. O., Gileadi, N., Knolle, F., Justicia, A., Anderson, R., Fletcher, P. C., Moutoussis, M., & Murray, G. K. (2019). Cost Evaluation During Decision-Making in Patients at Early Stages of Psychosis. *Computational Psychiatry (Cambridge, Mass.)*, *3*, 18–39. https://doi.org/10.1162/cpsy_a_00020
49. Evans, S. L., Averbeck, B. B., & Furl, N. (2015). Jumping to conclusions in schizophrenia. *Neuropsychiatric Disease and Treatment*, *11*, 1615–1624.
<https://doi.org/10.2147/NDT.S56870>
50. Leroy, A., Amad, A., D’Hondt, F., Pins, D., Jaafari, N., Thomas, P., & Jardri, R. (2020). Reward anticipation in schizophrenia: A coordinate-based meta-analysis. *Schizophrenia Research*, *218*, 2–6. <https://doi.org/10.1016/j.schres.2019.12.041>

51. Murray, G. K., Clark, L., Corlett, P. R., Blackwell, A. D., Cools, R., Jones, P. B., Robbins, T. W., & Poustka, L. (2008). Incentive motivation in first-episode psychosis: A behavioural study. *BMC Psychiatry*, *8*(1), 34. <https://doi.org/10.1186/1471-244X-8-34>
52. Radua, J., Schmidt, A., Borgwardt, S., Heinz, A., Schlagenhauf, F., McGuire, P., & Fusar-Poli, P. (2015). Ventral Striatal Activation During Reward Processing in Psychosis: A Neurofunctional Meta-Analysis. *JAMA Psychiatry*, *72*(12), 1243–1251. <https://doi.org/10.1001/jamapsychiatry.2015.2196>
53. Cella, M., Bishara, A. J., Medin, E., Swan, S., Reeder, C., & Wykes, T. (2014). Identifying Cognitive Remediation Change Through Computational Modelling—Effects on Reinforcement Learning in Schizophrenia. *Schizophrenia Bulletin*, *40*(6), 1422–1432.
54. Cheng, G. L. F., Tang, J. C. Y., Li, F. W. S., Lau, E. Y. Y., & Lee, T. M. C. (2012). Schizophrenia and risk-taking: Impaired reward but preserved punishment processing. *Schizophrenia Research*, *136*(1–3), 122–127.
55. Montagnese, M., Knolle, F., Haarsma, J., Griffin, J. D., Richards, A., Vertes, P. E., Kiddle, B., Fletcher, P. C., Jones, P. B., Owen, M. J., Fonagy, P., Bullmore, E. T., Dolan, R. J., Moutoussis, M., Goodyer, I. M., & Murray, G. K. (2020). Reinforcement learning as an intermediate phenotype in psychosis? Deficits sensitive to illness stage but not associated with polygenic risk of schizophrenia in the general population. *Schizophrenia Research*, *222*, 389–396. <https://doi.org/10.1016/j.schres.2020.04.022>
56. Deserno, L., Heinz, A., & Schlagenhauf, F. (2017). Computational approaches to schizophrenia: A perspective on negative symptoms. *Schizophrenia Research*, *186*, 46–54. <https://doi.org/10.1016/j.schres.2016.10.004>

57. Gold, J. M., Waltz, J. A., Prentice, K. J., Morris, S. E., & Heerey, E. A. (2008). Reward Processing in Schizophrenia: A Deficit in the Representation of Value. *Schizophrenia Bulletin*, *34*(5), 835–847. <https://doi.org/10.1093/schbul/sbn068>
58. Heinz, A., & Schlagenhauf, F. (2010). Dopaminergic Dysfunction in Schizophrenia: Salience Attribution Revisited. *Schizophrenia Bulletin*, *36*(3), 472–485. <https://doi.org/10.1093/schbul/sbq031>
59. Brandl, F., Knolle, F., Avram, M., Leucht, C., Yakushev, I., Priller, J., Leucht, S., Ziegler, S., Wunderlich, K., & Sorg, C. (2022). Negative symptoms, striatal dopamine, and model-free reward decision-making in schizophrenia. *Brain*, awac268. <https://doi.org/10.1093/brain/awac268>
60. Culbreth, A. J., Moran, E. K., & Barch, D. M. (2018). Effort-based decision-making in schizophrenia. *Current Opinion in Behavioral Sciences*, *22*, 1–6. <https://doi.org/10.1016/j.cobeha.2017.12.003>
61. Gold, J. M., Strauss, G. P., Waltz, J. A., Robinson, B. M., Brown, J. K., & Frank, M. J. (2013). Negative Symptoms of Schizophrenia Are Associated with Abnormal Effort-Cost Computations. *Biological Psychiatry*, *74*(2), 130–136. <https://doi.org/10.1016/j.biopsych.2012.12.022>
62. McCarthy, J. M., Treadway, M. T., Bennett, M. E., & Blanchard, J. J. (2016). Inefficient effort allocation and negative symptoms in individuals with schizophrenia. *Schizophrenia Research*, *170*(2), 278–284. <https://doi.org/10.1016/j.schres.2015.12.017>
63. Culbreth, A. J., Westbrook, A., Daw, N. D., Botvinick, M., & Barch, D. M. (2016). Reduced model-based decision-making in schizophrenia. *Journal of Abnormal Psychology*, *125*(6), 777–787. <https://doi.org/10.1037/abn0000164>
64. Bishop, S. J., & Gagne, C. (2018). Anxiety, Depression, and Decision Making: A Computational Perspective. *Annual Review of Neuroscience*, *41*, 371–388.

65. Gruner, P., Anticevic, A., Lee, D., & Pittenger, C. (2016). Arbitration between Action Strategies in Obsessive-Compulsive Disorder. *The Neuroscientist*, 22(2), 188–198.
66. Hauser, T. U., Moutoussis, M., Iannarone, R., Brem, S., Walitza, S., Drechsler, R., Dayan, P., & Dolan, R. J. (2017). Increased decision thresholds enhance information gathering performance in juvenile Obsessive-Compulsive Disorder (OCD). *PLOS Computational Biology*, 13(4).
<https://journals.plos.org/ploscompbiol/article?id=10.1371/journal.pcbi.1005440>
67. Heller, A. S., Ezie, C. E. C., Otto, A. R., & Timpano, K. R. (2018). Model-based learning and individual differences in depression: The moderating role of stress. *Behaviour Research and Therapy*, 111, 19–26. <https://doi.org/10.1016/j.brat.2018.09.007>
68. Palzett, E. H., Kool, W., Millner, A. J., & Gershman, S. J. (2019). Incentives Boost Model-Based Control Across a Range of Severity on Several Psychiatric Constructs. *Biological Psychiatry*, 85(5), 425–433.
69. Daw, N. D., Gershman, S. J., Seymour, B., Dayan, P., & Dolan, R. J. (2011). Model-Based Influences on Humans' Choices and Striatal Prediction Errors. *Neuron*, 69(6), 1204–1215. <https://doi.org/10.1016/j.neuron.2011.02.027>
70. Faul, F., Erdfelder, E., Buchner, A., & Lang, A.-G. (2009). Statistical power analyses using G*Power 3.1: Tests for correlation and regression analyses. *Behavior Research Methods*, 41(4), 1149–1160. <https://doi.org/10.3758/BRM.41.4.1149>
71. First, M., Spitzer, R., Gibbon, M., & Williams, J. (2002). *Structured Clinical Interview for DSM-IV-TR Axis I Disorders, Research Version, Patient Edition (SCID-I/P)*. Biometrics Research, New York State Psychiatric Institute: New York.
72. Andreasen, N. C., Carpenter, W. T., Kane, J. M., Lasser, R. A., Marder, S. R., & Weinberger, D. R. (2005). Remission in Schizophrenia: Proposed Criteria and Rationale for Consensus. *American Journal of Psychiatry*, 162(3), 441–449.
<https://doi.org/10.1176/appi.ajp.162.3.441>

73. Foa, E. B., Huppert, J. D., Leiberg, S., Langner, R., Kichic, R., Hajcak, G., & Salkovskis, P. M. (2002). The Obsessive-Compulsive Inventory: Development and validation of a short version. *Psychological Assessment, 14*(4), 485–496.
<https://doi.org/10.1037/1040-3590.14.4.485>
74. Hamilton, M. (1967). Development of a Rating Scale for Primary Depressive Illness. *British Journal of Social and Clinical Psychology, 6*(4), 278–296.
<https://doi.org/10.1111/j.2044-8260.1967.tb00530.x>
75. Kay, S. R., Fiszbein, A., & Opler, L. A. (1987). The Positive and Negative Syndrome Scale (PANSS) for Schizophrenia. *Schizophrenia Bulletin, 13*(2), 261–276.
<https://doi.org/10.1093/schbul/13.2.261>
76. Goodman, W. K., Price, L. H., Rasmussen, S. A., Mazure, C., Fleischmann, R. L., Hill, C. L., Heninger, G. R., & Charney, D. S. (1989). The Yale-Brown Obsessive Compulsive Scale: I. Development, Use, and Reliability. *Archives of General Psychiatry, 46*(11), 1006–1011. <https://doi.org/10.1001/archpsyc.1989.01810110048007>
77. Chapman, L. J., Chapman, J. P., & Raulin, M. L. (1976). Scales for physical and social anhedonia. *Journal of Abnormal Psychology, 85*(4), 374–382.
<https://doi.org/10.1037/0021-843X.85.4.374>
78. Keefe, R. S. E., Goldberg, T. E., Harvey, P. D., Gold, J. M., Poe, M. P., & Coughenour, L. (2004). The Brief Assessment of Cognition in Schizophrenia: Reliability, sensitivity, and comparison with a standard neurocognitive battery. *Schizophrenia Research, 68*(2–3), 283–297. <https://doi.org/10.1016/j.schres.2003.09.011>
79. Otto, A. R., Skatova, A., Madlon-Kay, S., & Daw, N. D. (2015). Cognitive control predicts use of model-based reinforcement learning. *Journal of Cognitive Neuroscience, 27*(2), 319–333. https://doi.org/10.1162/jocn_a_00709
80. Ahn, W.-Y., Haines, N., & Zhang, L. (2017). Revealing Neurocomputational Mechanisms of Reinforcement Learning and Decision-Making With the hBayesDM Package.

- Computational Psychiatry (Cambridge, Mass.), 1, 24–57.*
https://doi.org/10.1162/CPSY_a_00002
81. Wunderlich, K., Smittenaar, P., & Dolan, R. J. (2012). Dopamine Enhances Model-Based over Model-Free Choice Behavior. *Neuron, 75*(3), 418–424.
<https://doi.org/10.1016/j.neuron.2012.03.042>
82. R Core Team. (2021). *R: A Language and Environment for Statistical Computing*. R Foundation for Statistical Computing. <https://www.R-project.org/>
83. Wickham, H. (2016). *ggplot2: Elegant Graphics for Data Analysis*. Springer-Verlag New York. <https://ggplot2.tidyverse.org>
84. Kassambara, A. (2020). *ggpubr: 'ggplot2' Based Publication Ready Plots*.
<https://CRAN.R-project.org/package=ggpubr>
85. Jr, F. E. H., Dupont, with contributions from C., & others, many. (2021). *Hmisc: Harrell Miscellaneous*. <https://CRAN.R-project.org/package=Hmisc>
86. Singmann, H., Bolker, B., Westfall, J., Aust, F., & Ben-Shachar, M. S. (2021). *afex: Analysis of Factorial Experiments*. <https://CRAN.R-project.org/package=afex>
87. Mair, P., & Wilcox, R. (2019). Robust statistical methods in R using the WRS2 package. *Behaviour Research Methods, 52*, 464–488.
88. Kassambara, A. (2019). *ggcorrplot: Visualization of a Correlation Matrix using 'ggplot2'*. <https://CRAN.R-project.org/package=ggcorrplot>
89. Kim, S. (2015). *ppcor: Partial and Semi-Partial (Part) Correlation*. <https://CRAN.R-project.org/package=ppcor>
90. Bates, D., Mächler, M., Bolker, B., & Walker, S. (2015). Fitting Linear Mixed-Effects Models Using {lme4}. *Journal of Statistical Software, 67*(1), 1–48.
<https://doi.org/10.18637/jss.v067.i01>

91. Blanco, N. J., Otto, A. R., Maddox, W. T., Beevers, C. G., & Love, B. C. (2013). The influence of depression symptoms on exploratory decision-making. *Cognition*, *129*(3), 563–568. <https://doi.org/10.1016/j.cognition.2013.08.018>
92. Farabaugh, A. H., Mischoulon, D., Fava, M., Green, C., Guyker, W., & Alpert, J. (2004). The potential relationship between levels of perceived stress and subtypes of major depressive disorder (MDD). *Acta Psychiatrica Scandinavica*, *110*(6), 465–470. <https://doi.org/10.1111/j.1600-0447.2004.00377.x>
93. Richter-Levin, G., & Xu, L. (2018). How could stress lead to major depressive disorder? *IBRO Reports*, *4*, 38–43. <https://doi.org/10.1016/j.ibror.2018.04.001>
94. Vinkers, C. H., Joëls, M., Milaneschi, Y., Kahn, R. S., Penninx, B. W. J. H., & Boks, M. P. M. (2014). Stress Exposure Across the Life Span Cumulatively Increases Depression Risk and Is Moderated by Neuroticism. *Depression and Anxiety*, *31*(9), 737–745. <https://doi.org/10.1002/da.22262>
95. Soder, H. E., Cooper, J. A., Lopez-Gamundi, P., Hoots, J. K., Nunez, C., Lawlor, V. M., Lane, S. D., Treadway, M. T., & Wardle, M. C. (2021). Dose-response effects of d-amphetamine on effort-based decision-making and reinforcement learning. *Neuropsychopharmacology*, *46*(6), Article 6. <https://doi.org/10.1038/s41386-020-0779-8>
96. Rocha, F. F. da, Alvarenga, N. B., Malloy-Diniz, L., & Corrêa, H. (2011). Decision-making impairment in obsessive-compulsive disorder as measured by the Iowa Gambling Task. *Arquivos de Neuro-Psiquiatria*, *69*, 642–647. <https://doi.org/10.1590/S0004-282X2011000500013>
97. Chamberlain, S. R., Menzies, L., Hampshire, A., Suckling, J., Fineberg, N. A., del Campo, N., Aitken, M., Craig, K., Owen, A. M., Bullmore, E. T., Robbins, T. W., & Sahakian, B. J. (2008). Orbitofrontal Dysfunction in Patients with Obsessive-

- Compulsive Disorder and Their Unaffected Relatives. *Science*, 321(5887), 421–422.
<https://doi.org/10.1126/science.1154433>
98. Remijnse, P. L., Nielen, M. M. A., van Balkom, A. J. L. M., Cath, D. C., van Oppen, P., Uylings, H. B. M., & Veltman, D. J. (2006). Reduced Orbitofrontal-Striatal Activity on a Reversal Learning Task in Obsessive-Compulsive Disorder. *Archives of General Psychiatry*, 63(11), 1225–1236. <https://doi.org/10.1001/archpsyc.63.11.1225>
99. Chamberlain, S. R., Solly, J. E., Hook, R. W., Vaghi, M. M., & Robbins, T. W. (2021). Cognitive Inflexibility in OCD and Related Disorders. In N. A. Fineberg & T. W. Robbins (Eds.), *The Neurobiology and Treatment of OCD: Accelerating Progress* (pp. 125–145). Springer International Publishing. https://doi.org/10.1007/7854_2020_198
100. Rosa-Alcázar, A. I., Rosa-Alcázar, Á., Martínez-Esparza, I. C., Storch, E. A., & Olivares-Olivares, P. J. (2021). Response Inhibition, Cognitive Flexibility and Working Memory in Obsessive-Compulsive Disorder, Generalized Anxiety Disorder and Social Anxiety Disorder. *International Journal of Environmental Research and Public Health*, 18(7), Article 7. <https://doi.org/10.3390/ijerph18073642>
101. Dubois, M., & Hauser, T. U. (2022). Value-free random exploration is linked to impulsivity. *Nature Communications*, 13(1), Article 1. <https://doi.org/10.1038/s41467-022-31918-9>
102. Lee, J. K., Rouault, M., & Wyart, V. (2023). *Compulsivity is linked to maladaptive choice variability but unaltered reinforcement learning under uncertainty* (p. 2023.01.05.522867). bioRxiv. <https://doi.org/10.1101/2023.01.05.522867>
103. Waltz, J. A., Wilson, R. C., Albrecht, M. A., Frank, M. J., & Gold, J. M. (2020). Differential Effects of Psychotic Illness on Directed and Random Exploration. *Computational Psychiatry (Cambridge, Mass.)*, 4, 18–39.
https://doi.org/10.1162/cpsy_a_00027

104. Barch, D. M., Treadway, M. T., & Schoen, N. (2014). Effort, anhedonia, and function in schizophrenia: Reduced effort allocation predicts amotivation and functional impairment. *Journal of Abnormal Psychology, 123*(2), 387–397.
<https://doi.org/10.1037/a0036299>
105. Saleh, Y., Jarratt-Barnham, I., Petitet, P., Fernandez-Egea, E., Manohar, S. G., & Husain, M. (2023). Negative symptoms and cognitive impairment are associated with distinct motivational deficits in treatment resistant schizophrenia. *Molecular Psychiatry, 1*–11.
<https://doi.org/10.1038/s41380-023-02232-7>
106. Coccarello, R. (2019). Anhedonia in depression symptomatology: Appetite dysregulation and defective brain reward processing. *Behavioural Brain Research, 372*, 112041. <https://doi.org/10.1016/j.bbr.2019.112041>
107. Fan, J., Han, Y., Xia, J., Wang, X., Liu, Q., Liu, Y., Lu, J., Yu, Q., Yang, Y., & Zhu, X. (2023). Childhood Neglect rather than Abuse Is More Strongly Associated with Anhedonia across Major Depression and Obsessive-Compulsive Disorder Patients and University Students. *Depression and Anxiety, 2023*, e2429889.
<https://doi.org/10.1155/2023/2429889>
108. Oh, H., Lee, J., Patriquin, M. A., Oldham, J., & Salas, R. (2023). Reward Processing in Psychiatric Inpatients With Depression. *Biological Psychiatry: Cognitive Neuroscience and Neuroimaging, 8*(7), 731–740.
<https://doi.org/10.1016/j.bpsc.2021.05.010>
109. Slaney, C., Perkins, A. M., Davis, R., Penton-Voak, I., Munafò, M. R., Houghton, C. J., & Robinson, E. S. J. (2023). Objective measures of reward sensitivity and motivation in people with high v. Low anhedonia. *Psychological Medicine, 53*(10), 4324–4332.
<https://doi.org/10.1017/S0033291722001052>
110. Stringaris, A., Vidal-Ribas Belil, P., Artiges, E., Lemaitre, H., Gollier-Briant, F., Wolke, S., Vulser, H., Miranda, R., Penttilä, J., Struve, M., Fadai, T., Kappel, V., Grimmer,

- Y., Goodman, R., Poustka, L., Conrod, P., Cattrell, A., Banaschewski, T., Bokde, A. L. W., ... IMAGEN Consortium. (2015). The Brain's Response to Reward Anticipation and Depression in Adolescence: Dimensionality, Specificity, and Longitudinal Predictions in a Community-Based Sample. *American Journal of Psychiatry*, *172*(12), 1215–1223. <https://doi.org/10.1176/appi.ajp.2015.14101298>
111. Akam, T., Costa, R., & Dayan, P. (2015). Simple Plans or Sophisticated Habits? State, Transition and Learning Interactions in the Two-Step Task. *PLOS Computational Biology*, *11*(12), e1004648. <https://doi.org/10.1371/journal.pcbi.1004648>
112. Feher da Silva, C., & Hare, T. A. (2020). Humans primarily use model-based inference in the two-stage task. *Nature Human Behaviour*, *4*(10), Article 10. <https://doi.org/10.1038/s41562-020-0905-y>
113. Knolle, F., Sterner, E., Moutoussis, M., Adams, R. A., Griffin, J. D., Haarsma, J., Taverne, H., Goodyer, I. M., Fletcher, P. C., & Murray, G. K. (2022). *Action selection in early stages of psychosis: An active inference approach* | medRxiv. <https://www.medrxiv.org/content/10.1101/2022.05.11.22274896v1>

Legends for tables and figures

Table 1

Demographic characteristics, clinical characteristics, and the cognitive function of the healthy controls and patients with major depressive disorder, obsessive-compulsive disorder, and schizophrenia

Table 2

Models with LOOIC values

Figure 1

Two-step Markov decision task. Showing the state transition structure which allows discrimination between model-based and model-free behavior. Note: All stimuli in stage 2 are associated with a probabilistic reward changing slowly and independently based on Gaussian random walks, forcing subjects to continuously learn and explore the second stage choices.

Figure 2

Ideal and actual stay probabilities. Note: (a) Ideal, simulated model-based decision-making behavior: Model-free reinforcement learning predicts that a first-stage choice yielding a reward is likely to be repeated on the upcoming trial, regardless of a common or an uncommon transition; Ideal model-based decision-making behavior: Model-based reinforcement learning predicts that an uncommon transition should affect the value of the next first stage option, leading to a predicted interaction between reward and transition probability; (b) Rewarded trials, independent of transition show higher stay probabilities across healthy controls, MDD and OCD suggesting increased model-free behavior; the plot slightly displays an influence of both strategies in MDD; and random choice behavior in SCZ patients.

Figure 3

Correlations between model-free and model-based behavior and clinical scores across all groups. (a) reward beta estimate from the logistic regression and HAMD (b) reward x transition interaction beta estimate from the logistic regression and Anhedonia total (c) Perseverance (π) from the computational model and HAMD (d) Model-weights (ω) from the computational model and Anhedonia – Total.

Figure 4

Group differences in model-parameters. Note: (a) Learning rate stage 1 ($\alpha-1$); (b) Inverse temperature stage 2 ($\beta-1$); (c) Learning rate stage 1 ($\alpha-1$); (d) Inverse temperature stage 2 ($\beta-2$); (e) Perseverance (π); (f) Model-weights (ω); Group differences are calculated with robust post-hoc tests based on trimmed means using bootstrapping method *: significant differences at $p < 0.05$; **: significant differences at $p < 0.01$; ***: significant differences at $p < 0.001$; ; ****: significant differences at $p < 0.0001$; p-values are adjusted using Bonferroni correction. The individual box plots represent the minimum, maximum, median, first quartile and third quartile and the outliers in the data set.