

Expression of mechano-growth factor (MGF) in refractory overactive bladder.

Spiritosanto E^{1,2*}, Lemmon B^{3*}, Mohamedi-Yousufi F¹, Munasinghe HA¹, Mahmood A⁴, Bray R³, McNeice R⁵, Mackenzie FE⁴, Hill NJ^{1,6,#,§} and Cortes E^{3,#}

¹ Biomolecular Sciences Department, Kingston University London, Penrhyn Road, Kingston-upon-Thames KT1 2EE, UK

² Current address: Warwick Medical School, Coventry, CV4 7HL, UK

³ Department of Urogynaecology, Kingston Hospital, Kingston-upon-Thames KT2 7QB, UK

⁴ Department of Chemical and Pharmaceutical Sciences, Kingston University London, Penrhyn Road, Kingston-upon-Thames, KT1 2EE, UK

⁵ School of Computer Science and Mathematics, Kingston University London, Penrhyn Road, Kingston-upon-Thames, KT1 2EE, UK

⁶School of Biomedical Sciences, Portland Square, Plymouth, Devon PL4 8AA, UK

* Denotes equal contribution as first authors

Equal contribution as senior authors

§ Corresponding author natasha.hill@plymouth.ac.uk

Abstract

Overactive bladder (OAB) is a urological symptom complex defined by urinary urgency. It can have a devastating impact on an individual's quality of life and leads to significant financial cost. Insulin-like growth factor 1 (IGF-1) is a protein hormone involved in a broad range of processes including cell proliferation and differentiation. IGF-1 is also regulated through alternative splicing. While the primary *IGF-1Ea* transcript is highly expressed in liver, the alternative *IGF-1Ec* transcript encodes the proteolytically-derived MGF peptide and has been primarily studied in skeletal muscle. MGF has been shown to stimulate satellite cell proliferation following tissue mechanical stretch or injury, but the role of MGF in smooth muscle, such as the detrusor muscle of the bladder, has been little explored. The aim of this study was to explore the expression of MGF in bladder biopsies from patients with OAB and age-matched controls.

We show using immunohistochemistry that MGF is widely expressed in bladder tissue. Quantification of MGF expression by western blot showed that average MGF expression is more than doubled in OAB biopsies compared to controls (mean MGF in OAB=0.51±0.1, n=23; mean MGF in controls=0.22±0.07, n=9; p=0.05). Furthermore, there is an inverse correlation between MGF protein levels and symptom severity, as determined by the urodynamic parameter maximum cystometric capacity (correlation=0.53, p=0.03 n=16). MGF expression was highest in OAB biopsies with strong expression of the muscle cell marker *DES*. Combined with our observation that MGF induces cell proliferation in primary bladder cultures, our data suggests that high MGF expression in OAB patients may represent an attempted protective response in the bladder.

Dedicatory

We would like to dedicate this paper to Professor Linda Cardozo MD FRCOG OBE from Kings College Hospital for her support during the length of this project, who passed away unexpectedly before completion of the manuscript.

Funding

This work was conducted with the partial support of the Kingston Hospital Charity.

Conflict of interest statement

The authors declare that no conflicts of interest relating to this study. Neither the authors or their institutions received any payments or services in the past 36 months from a third party that could be perceived to influence, or give the appearance of potentially influencing, the submitted work. Funding bodies were not involved in the preparation of this manuscript.

Statement of contribution

ES designed experiments, carried out the majority of experimental work, analysed data and prepared the manuscript; BL consented patients, collected biopsy samples and clinical data, and wrote clinical sections of the manuscript; FM-Y contributed data to Figure 1; AMu contributed to Figure 4; AMa was involved in assay development; RB consented patients, and collected biopsy samples and clinical data; RM advised on statistical analysis; FEM was involved in project supervision and contributed to discussions on data analysis and interpretation; NJH designed experiments, supervised the project, contributed to data analysis, interpretation and preparation of figures, and edited the manuscript; EC conceived the project, obtained ethical permissions and funding, and edited the manuscript. All authors have read and agreed to publication of this manuscript.

Introduction:

Overactive bladder (OAB) is a urological symptom complex defined by urinary urgency, with or without urgency incontinence, usually accompanied by daytime frequency and nocturia, in the absence of proven urinary infection or other pathology [1]. The prevalence of OAB varies across studies but increases with age and disproportionately affects the female population, with up to 43% of women over forty having symptoms [2]. OAB can have a devastating impact on an individual's quality of life and leads to significant direct and indirect financial cost [3, 4]. An evaluation of OAB in the United States has shown that the cost of managing patients with OAB has increased from \$65.9 billion in 2007 to a projected \$82.6 billion in 2020 [5].

OAB is a symptomatic diagnosis based on taking a focused patient history with the aid of validated questionnaires [6]. A urine analysis, a bladder diary, and physical examination are

also required to exclude other pathologies that may cause similar urinary symptoms. First line treatment includes lifestyle modifications such as smoking cessation and weight loss where appropriate, pelvic floor exercises, fluid management, and bladder retraining. Medical therapy is second line treatment, where receptors in the detrusor muscle are targeted to induce smooth muscle relaxation. Meta-analysis has shown that antimuscarinic medications reduce incontinence episodes, urgency, and frequency of voids [7]. However, effectiveness can vary, and some women will experience troublesome side effects such as dry mouth, constipation, blurred vision, and cognitive impairment. There is mounting evidence of the effects of antimuscarinics on the latter, particularly in the elderly population with long-term use [8]. Alternative medical treatment is with beta-3-agonists, such as Mirabegron, which has been found to be equally effective [9]. In the absence of improvement following conservative and medical management, a patient is described as having refractory OAB. Refractory OAB can be treated using techniques that encourage neuromodulation such as Botulinum toxin A injection into the bladder muscle, percutaneous tibial nerve stimulation (PTNS), or sacral nerve stimulation (SNS).

Reliance on symptom analysis alone can lead to misdiagnosis and delays in accessing treatment. A more holistic approach that contemplates the physiological nature of OAB is needed. The most used currently remains urodynamic investigation, with urodynamic detrusor overactivity (DO) remaining the hallmark of OAB. However, multiple international and national guidelines do not recommend the initial universal use of urodynamics for patients with OAB symptoms. Urodynamic DO as a true biomarker of OAB is inadequate. DO is only seen in half of patients with OAB symptoms, and asymptomatic individuals without OAB can also display involuntary detrusor contractions during testing [6].

Insulin-like growth factor 1 (IGF-1) is a protein hormone involved in a broad range of processes including cell growth and survival, proliferation, differentiation, and tissue metabolism [10, 11]. It is known that one of the mechanisms through which circulating IGF-1 is regulated and exerts its function is through alternative splicing, which allows the production of multiple mRNA transcripts encoding distinct proteins dependent on the tissue, developmental stage or external stimuli [12]. Transcript *IGF-1Ea* represents the canonical and main variant found in the liver [13] and is expressed in muscle with a predominant pro-differentiative function. Transcript *IGF-1Ec* was also originally identified in the liver but is expressed at much lower levels than the *Ea* variant [14]. *IGF-1Ec* (and rat homologue *IGF-1Eb*) has been studied primarily in skeletal muscle and shown to stimulate extracellular satellite cell proliferation following tissue mechanical stretch or injury [15, 16].

The precursor protein products of the different IGF-1 transcripts are cleaved to generate the mature IGF-1 protein and an E-peptide. The IGF-1 protein encoded by the different transcripts is identical, but the E-peptides generated are distinct. The E-peptide generated by the *IGF-1Ec* transcript is commonly known as mechano-growth factor, or MGF. MGF is upregulated

following mechanical stretch, injury and/or electrical stimulation of skeletal muscle *in vivo* [17, 18, 19], and promotes skeletal muscle proliferation *in vitro* [20, 21, 22]. Reduced MGF expression seen with age is associated with reduced ability to respond to mechanical overload [20, 23, 24, 25]. MGF has also been shown to play a role in other tissues, including the brain, where it promotes hippocampal neurogenesis, neuronal guidance and growth, motor unit and motoneuron survival [26, 27, 28, 29], and in heart [30], tendons [31] and bone-marrow [32]. Li *et al* showed that Transforming Growth Factor- β (TGF- β) mediated-IGF-1 production and smooth muscle cell hyperplasia is accompanied by MGF upregulation and peptide expression, with consequent hypertrophy of smooth muscle cells [33]. MGF has been shown to be expressed in the myometrium of the normal uterus with upregulated MGF expression in women with leiomyomas, and in the ovary [34]. However, very little is known about MGF in smooth muscle or neuromodulation properties, when it comes to its function or its mechanism of action. In addition, there is also evidence that levels of MGF decrease with aging, conditioning the ability of older skeletal muscle to respond to mechanical overload [35].

As described by Cortes *et al*, MGF was found to be widely expressed in the wall of the human bladder. MGF was seen in the bladder of asymptomatic individuals as well as in patients with Painful Bladder Syndrome (BPS), recurrent urinary tract infection, and OAB [34]. Smooth muscle in the human bladder is not limited to the detrusor muscle. Studies have shown that smooth muscle exists in the muscularis mucosa between the urothelium, and the detrusor muscle layers, with muscle fibres described as running parallel to large vessels [36]. Histological assessment of normal bladder tissue and OAB bladders has shown that in OAB bladders, there is inflammatory infiltration and fibrosis replacing the detrusor muscle. It has also been shown that when comparing patients with neurogenic OAB who have received treatment with Botulinum toxin A with those that have not, patients who underwent Botox treatment had increased smooth muscle content and reduced fibrosis in the follow up biopsy [37], suggesting a *de novo* muscle smooth muscle regeneration mechanism.

In the present study we examined the expression of MGF in human bladder biopsies of patients with refractory OAB prior to treatment with Botulinum toxin A. We evaluated correlation of MGF expression with symptom severity at diagnosis, using validated symptom questionnaires and urodynamic parameters.

Materials and Methods

Patient selection

The study was granted ethical approval by the South-East London Research Ethics Committee (A5-2: 10/H0805/51, IRAS number 474470, 8th Feb 2010). The chief investigator (CE) conducted the first phase of the study in collaboration with Kings College London between

2010-13 [34] The second phase of the study was conducted in collaboration with Kingston University London between 2016-19. All experiments were performed in accordance with the declaration of Helsinki, and written informed consent was obtained from all study participants, and all institutional forms have been stored appropriately.

Patients included in the study group had a clinical diagnosis of refractory OAB (rOAB) and failed symptom improvement with bladder retraining and oral treatment of an anticholinergic drug, a beta-3 agonist (mirabegron), or both. All these women underwent urodynamic investigation as per NICE guidance, and only women with urodynamic detrusor overactivity were included in the study. During urodynamic testing, first desire to void (FDV), normal sensation to void (NS), and Maximum Cystometric Capacity (MCC) were recorded for all our participants. They were then discussed in our local multidisciplinary team (MDT) meeting at Kingston hospital and offered third line treatment for OAB with intra-vesical Botulinum Toxin A injections. Women were consented by our two Urogynaecology Consultants (CE, BR) prior to their procedure and bladder biopsies were taken with rigid cystoscopy using cold cup biopsy forceps. Diathermy to the biopsy site was carried out to ensure haemostasis prior to proceeding with injections of either 100iu or 200iu of Botox.

The control group was recruited from patients undergoing other gynaecological surgery without any lower urinary tract symptoms (LUTS). We asked women to complete two validated self-assessment screening questionnaires for OAB (OAB V-8, BSAQ for mixed incontinence) and we only included women in our control group who scored zero in both questionnaires.

All bladder biopsies were immediately placed into an RNeasy[®] lysis buffer (Qiagen). For processing, samples were placed on absorbent paper, weighed and then homogenised using a TissueLyser (Qiagen) with 5 mm beads for 15 minutes at 20 Hz. Equal parts of the homogenate were taken for protein and RNA extraction using the PARIS extraction kit (ThermoFisher) according to the manufacturer's protocol.

RNA isolation and cDNA synthesis

RNA was quantified using a BioDrop Spectrophotometer (Fisher), and 260/280 ratio used as an indication of sample purity. Total mRNA (40 ng/reaction) was reverse transcribed using a RevertAid First Strand cDNA Synthesis Kit (Fisher) with oligo(dT) primer. 'No reverse transcriptase' control (NRT), 'no template control' (NTC) were used as negative controls for the cDNA synthesis. The reaction was performed in Applied Biosystems Veriti 96 well thermal cycler, using the following thermal profile: 42° C for 60 ', 70° C for 5 '.

RT-qPCR and sub-group analysis

RT-qPCR was performed using Maxima SYBR Green Master Mix (Fisher), 4.5 ng RNA equivalent cDNA and appropriate forward and reverse primers (see Supplementary Figure 1g for primer sequences) in a final volume of 5µl. Amplification of NRT, NTC and dH₂O negative controls was also performed. RT-qPCR amplification was performed in a Techne Prime Pro 48 Real-time qPCR machine, using the following thermal profile: 95° C for 10 '; 40 cycles of 95° C

for 10", 55° C for 30" and 72° C for 15", followed by one cycle of 95° C for 15", 55° C for 15" and 95° C for 15". Melt curve analysis and agarose gel electrophoresis were used to confirm amplification of a single PCR product. Three different reference genes were initially tested for stability across control and OAB samples (*GAPDH*, *B2M*, *ACTB*) and *B2M* was selected as the most stable. The stability of *B2M* was calculated by comparing the average Cq in OAB samples (Cq=27.85 ± 1.05, n=23) compared to control (Cq=26.98 ± 1.93, n=9). The difference between the two was not statistically significant (p=0.7).

Samples were tested for expression of desmin (*DES*), vimentin (*VIM*), uroplakin 2 (*UPK2*) and β 2-microglobulin (*B2M*). Primer efficiency was determined by amplification of serially diluted templates. Relative quantification was performed using the $\Delta\Delta Cq$ method (Livak and Schmittgen, Methods 2001). For the sub-group analysis, relative inverted Cq (RI-Cq) values were first calculated by subtracting each Cq value from 41 (the maximum cycle number + 1) and then calculating as a percentage relative to the total inverted Cq value for all 3 tissue marker genes in that biopsy. This provides a rough estimation of the relative contribution of each cell type within a biopsy. A sample was designated as *DES*^{hi} where *DES* was the major component in the biopsy *ie* if the RI-Cq value for *DES* was higher than *VIM* and *UPK2* by >3. Similar designations were used for *VIM*^{hi} and *UPK2*^{hi} groups. Where two genes were contributing equally to the sample the designation was eg *DES&VIM*^{hi}, and where the difference between all three genes was <3 the sample was designated as 'EVEN'.

Immunohistochemistry

Human OAB bladder samples were fixed in 10% neutral buffered formalin for 24 h, embedded in paraffin, and sectioned at 5- μ m thickness onto poly-L-lysine coated slides. Antigen retrieval was performed by boiling in 0.01M citrate buffer for 10 mins. Sections were stained using an anti-MGF E-peptide antibody (Merck Life Sciences #07-2108, rabbit polyclonal, 1/50 dilution) and HRP-tagged secondary (Vector Laboratories, BA-1100, 1/200 dilution), or secondary only control staining. Detection was performed using the Vector ABC kit with 3,3'-Diaminobenzidine (DAB) as substrate. Sections were counterstained with haematoxylin and imaged using a Nikon H550L microscope and 20X objective.

Western blot

Total protein concentration was quantified using the Bicinchoninic Acid (BCA) assay (Pierce), and 30 μ g protein/well was run for ~1.5 hrs on a Mini-PROTEAN TGX Precast Protein Gel (Biorad) before transfer to nitrocellulose using a Trans-Blot Turbo (Biorad). Membranes were blocked in Odyssey TBS blocking buffer (Li-Cor) for 1 h, washed with Tris-buffered saline with Tween 20 (TBST) and incubated with diluted anti-MGF (Sigma-Aldrich #07-2108, rabbit polyclonal raised against the E-peptide of MGF; 1/1,000 dilution) and anti- β -actin (mouse monoclonal #8224, Abcam, 1/1,000 dilution) primary antibodies at 4°C for 24 h. Blots were washed and incubated with 1/15,000 of near-infrared (NIR)-labelled secondary antibodies for 1hr at RT (anti-mouse-IR680LT (red) and anti-rabbit-IR800CW (green), both from Li-Cor). After washing, blots were visualised using the Li-Cor Odyssey CLx NIR imager and signal quantified

using Li-Cor Image Studio Lite V.5.2 software. MGF band intensity was normalized to β -actin loading control.

Isolation and culture of murine bladder smooth muscle cells

Murine bladder was isolated from adult outbred ICR mice aged 8-12 weeks (Harlan, Huntingdon UK) following cervical dislocation, carried out at Kings College London (establishment licence: X24D82DFF; project licence: PBCFBE464) in accordance with the U.K. Home Office Animals (Scientific Procedures) Act 1986 with 2012 amendments. Tissue was washed thoroughly in D-PBS containing antibiotics (pen/strep) and anti-mycotic agent (Fungizone, Gibco). A single cell solution containing smooth muscle cells was prepared based on a modified version of the protocol by *Pokrywczynsja et al.* (2016). Briefly, bladders from 3 animals were minced using sterile scalpels and scissors and incubated at 37°C for 1 hr in digestion solution (1 ml Advanced DMEM/F-12 supplemented with antibiotics and anti-mycotic, 2 mg/ml Collagenase D and Dispase II). Enzymes were then blocked by adding an equal amount of medium and the solution was passed through a 100 μ m cell strainer to remove undigested tissue. The suspension was then centrifuged for 5 mins at 1500 X g, the supernatant discarded, and the cell pellet resuspended in smooth muscle (SM) culture medium supplemented with 5% smooth muscle growth supplements (SMGS, Gibco). The cells were seeded at 0.01×10^6 cells/well in a 96-well plate and fresh medium added each day. MGF peptide with the sequence Tyr-Gln-Pro-Pro-Ser-Thr-Asn-Lys-Asn-Thr-Lys-Ser-Gln-D-Arg-D-Arg-Lys-Gly-Ser-Thr-Phe-Glu-Glu-His-Lys (Yang and Goldspink, 2002) was commercially synthesized (Genscript) and used to treat the bladder cell cultures for 72 hours at the indicated concentrations, after allowing the cells to adhere overnight.

EdU staining assay and cell viability assay.

Cell proliferation was assessed by EdU (5-ethynyl-2'-deoxyuridine) incorporation into primary murine bladder cells (EdU-Click 488, Sigma-Aldrich), following the manufacturer's guidelines, for the last 48 hrs of 72 hr culture. EdU is incorporated into DNA during active DNA synthesis. Cells were fixed in 4% PFA, permeabilised with 0.4% Triton-X100/PBS, washed and blocked with 0.05M glycine buffer. Cells were then stained with rabbit anti-smooth muscle myosin heavy chain 11 (SMMHC) primary antibody (Abcam, #53219, 1/100) for 1 hr at RT, to identify smooth muscle cells (Nagai, Larson and Periasamy, 1988). Cells were then incubated in secondary antibody for 1 hr at RT (IgG (H+L) Highly Cross-Adsorbed Donkey anti-Rabbit, Alexa Fluor 555, Invitrogen; 1/200), and counterstained with DAPI. Images were taken using an EVOS Imaging Station (4X objective). Quantification of total and proliferating cells, labelled with Alexa 488, was performed using the cell count function and manually, respectively, of ImageJ software [38].

Statistical analysis

Statistical analysis was performed using MS Excel and IBM® SPSS® Statistics. Variables were tested for normality using a Shapiro-Wilk test, and significance levels greater than 0.05 were

assumed to be normally distributed. Non-parametric bivariate (Spearman) correlation was used to determine correlation between variables of interest. χ^2 test was performed in MS Excel. The nonparametric Mann-Whitney U test was used to compare means of groups not normally distributed. One-way analysis of variance (ANOVA) test, followed by the post hoc Tukey's test, was used to compare the means of more than two samples; p-values ≤ 0.05 were considered statistically significant.

Results

Study population

Our study population included 23 women with refractory OAB and detrusor overactivity on urodynamic testing, and we included nine women without lower urinary tract symptoms as our controls. Control patients had a mean age of 56.4 and an average parity of two. Our study group had a mean age of 62.4 and an average parity of two (table 1).

Expression of the smooth muscle marker *DES* is reduced in OAB biopsies.

The bladder consists of three main layers: urothelium, sub-mucosal lamina propria containing myofibroblast-like cells, and detrusor smooth muscle. To examine the composition of biopsy samples we used RT-qPCR to determine the expression of specific gene markers of each layer: Desmin (*DES*) for smooth muscle, Uroplakin (*UPK2*) for urothelium, and Vimentin (*VIM*) for myofibroblast/stromal cells. Primers were validated as shown in Supplementary Figure 1 and detailed in the methods.

As shown in Figure 1A, expression of the smooth muscle marker *DES* was decreased in OAB biopsies compared to controls, although the difference did not meet statistical significance ($p=0.09$). A high degree of variation was observed in biopsy composition when using fold change analysis, but it was evident from the relative Cq values of the different markers within each biopsy that some samples predominantly expressed one or two markers, while others expressed equal levels of all three. Samples were therefore grouped into six different subgroups (*DES*^{hi}, *VIM*^{hi}, *UPK2*^{hi}, *DES&VIM*^{hi}, *VIM&UPK2*^{hi}, and EVEN) based on the relative expression of tissue markers (see Supplementary Table 1). As shown in Figure 1b, while most control samples (67%) were classified as *DES*^{hi}, only 22% of OAB samples were classified as *DES*^{hi}. χ^2 -analysis of the distribution of *DES*^{hi} vs 'other' samples in controls and OAB patients confirmed statistically significant difference between the two ($p=0.02$, $n=32$), suggesting that either smooth muscle is significantly reduced in the bladder of OAB patients, or there is an increase of another cell type.

MGF expression is increased in OAB.

MGF expression has been extensively studied in skeletal muscle tissue and was only previously investigated in the bladder by Cortes *et al* in 2011 (34). As shown in Figure 2a, MGF protein expression was detected in bladder biopsies by immunohistochemistry, where a

diffuse stain was observed throughout the biopsy tissue. MGF protein expression was confirmed by western blot analysis of biopsy lysates using an antibody specific to the MGF-E peptide that recognizes both pro- and mature MGF, but not IGF-I (Anti-Mechano Growth Factor (MGF) Antibody, Sigma-Aldrich #07-2108). As shown in Figure 2b, bands of around 15 kDa were observed, consistent with previous reports [35, 36] and likely representing the MGF precursor protein. No bands were observed in the 8kDa region where the mature E-peptide would be expected (see uncropped blots in Supplementary Figure 2). Quantification of MGF protein expression by western blot showed that, on average, MGF expression is more than doubled in rOAB biopsies compared to controls (mean MGF in OAB=0.51±0.1, n=23; mean MGF in controls=0.22±0.07, n=9; p=0.05; Figure 2c). Furthermore, analysis of MGF expression in each of the main sub-groups identified in Figure 1 demonstrates that MGF expression is highest in *DES^{hi}* OAB samples, and mean MGF expression is 3.6-fold higher in rOAB patient biopsies classified as *DES^{hi}* than in *DES^{hi}* control samples, as shown in Figure 2d, although this difference did not reach statistical significance (mean control = 0.23± 0.10, n=6; mean OAB=0.84±0.23, n=5, p=0.13). The increased MGF expression is therefore largely occurring in the sub-group of rOAB patients that have high levels of smooth muscle (*DES^{hi}*). This suggests a potential link between high MGF production and bladder smooth muscle content in OAB patients, perhaps indicative of a regenerative need in bladder smooth muscle. When we looked at the difference between pre- and post- menopausal women in the three layers studied, there was no statistical difference in MGF expression.

Analysis of correlation between MGF protein expression and clinical parameters of OAB severity

To investigate the relationship between MGF expression and clinical severity of OAB, we looked at the urodynamic parameter maximum cystometric capacity (MCC) and we looked at validated screening questionnaire scores from OAB-V8 and BSAQ.

As shown in Figure 3a, there was a significant positive correlation between MCC score and MGF expression (correlation=0.53, p=0.03 n=16; clinical parameters were not available for all patients). A higher MCC score indicates a greater bladder capacity and less clinically severe OAB, hence higher MGF levels may indicate healthier regenerative capacity of detrusor smooth muscle. It should be noted that one patient with the highest MGF expression did not fit this overall trend.

No correlation was detected between MGF expression and either BSAQ or OABV8 self-assessment scores (BSAQ: correlation=0.25, p=0.35, n=16; OABV8: correlation=0.31, p=0.25, n=16; Figure 3b) in line with recent findings. We therefore tested the correlation between questionnaire scores and MCC however, as shown in Figure 3c, no correlation was observed between MCC score and self-assessments (BSAQ: correlation=-0.02, p=0.95, n=16; OABV8: correlation=-0.12, p=0.66, n=16), suggesting that scores in self-reporting questionnaires may not be reliable as a measurement of OAB severity.

MGF promotes smooth muscle cell proliferation *in vitro*.

Having shown that high MGF expression in refractory OAB patients is associated with higher smooth muscle content and high MCC, we then wanted to test whether MGF can promote bladder smooth muscle proliferation *in vitro*. Single cell suspensions from murine bladder were prepared and cultured for 72-hours in the presence of varying concentrations of MGF. Proliferation was determined by EdU assay, co-staining with an antibody to smooth muscle myosin heavy chain (SMMHC) to identify smooth muscle cells within the mixed population. Staining indicated that most cells were SMMHC positive smooth muscle cells (Figure 4a). As shown in Figure 4b, addition of increasing concentrations of MGF induced increasing levels of smooth muscle cell proliferation. At the highest concentration used (100 ng/ml), MGF peptide induced a more than three-fold increase in the percentage of proliferating nuclei compared to untreated controls ($4.4\% \pm 0.02$ in control, $14.1\% \pm 0.03$ with 100 ng/ml of MGF, $p=0.008$). This provides further support for the hypothesis that MGF promotes bladder smooth muscle regeneration and plays a protective role in OAB.

Discussion

The management of OAB is established on treating the symptom complex in a systematic 'trial and error' approach. This therapeutic strategy results in relative success and involves patients having to go through trialling multiple medication types and enduring side effects which may limit compliance. There are many contributors to OAB symptoms such as ageing, menopausal status, obesity, and lifestyle including psychological stress. These factors may contribute to the complex pathophysiology of OAB and to the inadequacy of a systematic approach in the management of all individuals with OAB symptoms.

There are many theories for the pathophysiology of OAB including the myogenic and neurogenic models. And there is emerging evidence that the urothelium [39] and the urethra [40] may have a greater role in OAB than previously thought. Other aetiologies include reduced bladder perfusion [41] leading to altered cell metabolism and apoptosis [42, 43], increased expression of inflammatory mediators [44], and undetected bacterial infection [45]. Additionally, there is evidence of bi-directional mechano-transduction signals between the urothelium and lamina propria [46]. In the presence of MGF it is logical to infer that this mechanical signalling could lead to trigger stem cell differentiation [47] mediated by the MGF splice variant. In a similar way as macrophage infiltration is known to result in the upregulation of MGF [48], the increase in inflammatory mediators seen in OAB [44] could also be involved in a pathway with MGF. So we find ourselves in a pathological environment where several promoters known as causative of OAB could be favouring the actions of the MGF protein.

Our data shows that MGF is expressed in the bladder and can be detected at the protein level. Detection of the MGF protein in the bladder wall is consistent with the precursor form of the protein, pro-MGF (mature IGF-1 with MGF attached) as demonstrated by the observation of a 15kDa band on Western blot. The presence of pro-MGF in three different layers of the bladder wall is significant knowing MGF's regenerative properties in both neuronal and muscle tissue. Its expression in the lamina propria is also of interest as the lamina propria can be thought of as the functional centre of the bladder wall, consisting of extracellular matrix (ECM), progenitor cells, interstitial cells, and efferent nerve endings [49], all upon which MGF may exert its regenerative action.

Increased hypoxic conditions in the bladder have been shown to alter cell metabolism, promoting angiogenesis, and apoptosis. This in turn increases expression of growth factors such as nerve growth factor (NGF), tumour growth factor-B (TGF-B) (which promotes remodelling of the ECM and fibrosis), vascular endothelial growth factor (VEGF), but also MGF as seen in neuronal tissue [50]. This could imply that a reduced bladder perfusion [41] seen as causative factor in OAB could be prevented by a healthy MGF pool provision, due to its anti-apoptotic characteristics [51].

We were unable to detect smaller fragments corresponding to the cleaved MGF peptide (8 kDa), similar to the experience of other research groups [52, 53, 54]. The Ea peptide fragment is only detected with pro-IGF-1A overexpression [55], suggesting that E-peptide fragments can be produced but are present either at low levels or rapidly degrade after cleavage making detection difficult. Our experiments using synthetic MGF peptide suggest that MGF peptides are effective at increasing proliferation in murine bladder cells, consistent with studies in C2C12 myoblast cells [20, 22] and human skeletal muscle cells [25].

Studies have revealed that mechanically stressed bladder smooth muscle cells are acutely receptive to their biomechanical environment and cyclical deformation induces connective tissue synthesis [36,37]. Although the mechanisms underlying these effects have yet to be determined, the basis of mechano-transduction, the process by which muscle cells detect mechanical force and convert this into biochemical signalling, is beginning to be better understood [56]. As described by Comperat et al,[37] bladder histology from patients with OAB show a loss of smooth muscle with replacement by patches of fibrosis and tissue high in collagen. This process seems to revert following treatment with botulinum toxin A injections into the bladder wall which promote further relaxation and hence distension of the bladder wall [37]. In line with this, we have found that on analysis of bladder biopsies, the level of expression of the smooth muscle marker *DES*^{hi} (detecting smooth muscle cells of the detrusor muscle) was reduced in our rOAB study group when compared with our control group. Increased deposition of connective tissue between muscle fascicles is a well-characterised pathological feature of OAB [57]. Decreased expression of *DES* in OAB women versus our control group did not meet statistical significance and may represent a normal variation in

sampling. The sampling depth is blind and therefore biopsies taken will have varying amounts of detrusor muscle, sometimes none [58].

We did find that MGF protein expression was increased in the refractory OAB study group when compared with our asymptomatic controls. This increased expression was most marked in the *DES^{hi}* subgroup of bladder biopsies, therefore the tissue samples that contained the most smooth muscle cells (figure 2) which would be expected to facilitate *de novo* muscle generation. Other studies have shown that MGF expression is upregulated in skeletal muscle following mechanical or electrical stimulation [59]. A positive correlation between MGF expression and smooth muscle regeneration could reflect a possible mechanism of action by which upregulation of MGF leads to smooth muscle cell proliferation and detrusor muscle recovery seen in patients with overactive bladder following Botox injections. On culturing murine bladder cell suspensions with MGF, we have demonstrated that increasing concentrations of MGF induce smooth muscle cell proliferation by increasing amounts, giving some support to the above hypothesis. This is consistent with studies in C2C12 myoblast cells [20, 22] and human skeletal muscle cells where MGF also promoted cell proliferation [25]. However, whether this had a positive correlation with better clinical outcome following Botox injections was not studied by the current paper.

We also found that there was a statistically significant correlation between MGF expression and maximum cystometric capacity (MCC), with greater MGF expression seen with larger MCC volumes. MCC observed during urodynamics is used as a marker of disease severity in this study due to reduced MCC being seen in up to 75.9% of patients with overactive bladder symptoms [60]. Although MCC is an established parameter of OAB severity [61] a relationship between MGF expression and MCC cannot automatically be established. One can however speculate that if MGF favours smooth muscle regeneration in the bladder, its increased expression could also favour a healthier and more compliant bladder. It is also of interest, that although MGF expression has been shown to decrease with age in skeletal muscle and patients with sarcopenia [62], we found no statistically significant differences in MGF expression between pre and post-menopausal women suggesting that age related hormonal changes seen in women not be the aging factor affecting MGF expression.

Our study provides evidence that MGF is expressed widely throughout the bladder; in the urothelium, ECM, and detrusor muscle layers. It is possible that high MGF expression represents an attempt at muscle regeneration, particularly since high MGF expression primarily occurs in *DES^{hi}* patients. However, other explanations are also possible. Increased MGF expression and high *DES* composition could reflect disease heterogeneity, with these samples perhaps representing patients with a primarily myogenic rather than neuropathic aetiology, and it would be of interest in future studies to determine whether there is a correlation between MGF expression and treatment responsiveness that could be useful as a

predictor of treatment outcome. Confirmation of our findings in a larger study would be important for validation.

Although preliminary, our study demonstrates that MGF expression is increased in OAB bladder biopsy samples with high *DES* expression, and that there is an inverse correlation between MGF expression and OAB severity. Combined with the observation that MGF induces bladder cell proliferation *in vitro*, our data suggests that high MGF expression in OAB patients may represent an attempted protective response in the bladder, but the exact mechanisms of action of MGF in overactive bladder remain unknown. The widespread expression of this protein enhances the original description by Goldspink *et al* [20] which focused its repair capacity to skeletal muscle function and opens instead the avenue to a broader understanding of the tissue regenerating potential of MGF.

References:

- 1) **P. Abrams**, L. Cardozo, M. Fall et al, "The Standardisation of terminology of lower urinary tract function: report from the standardisation sub-committee of the international continence society," *Neurology and Urodynamics*, vol. 21, no. 2, pp. 167-178, 2002
- 2) **Milsom I**, Abrams P, Cardozo L, et al. How Widespread are the symptoms of overactive bladder and how are they managed? A population-based prevalence study. *BJU Int* 2001; 87: 760-766
- 3) **Mcghan, W. F.** (2001) 'Cost Effectiveness and Quality of Life Considerations in the Treatment of Patients with Overactive Bladder', 7(2 Suppl), pp. S62–S75.
- 4) **Stewart, W. F. et al.** (2003) 'Prevalence and burden of overactive bladder in the United States', *World Journal of Urology*, 20(6), pp. 327–336. doi: 10.1007/s00345-002-0301-4.
- 5) **Coyne KS**, Wein A, Nicholson S, et al.: Economic burden of urgency urinary incontinence in the United States: a systematic review. *J Manag Care Pharm.* 2014; 20(2): 130-40
- 6) **Hashim H** and Abrams P. Is the bladder a reliable witness for predicting detrusor overactivity?. *J Urol* 2006; 175: 191-194
- 7) **Chapple CR**, Khullar V, Gabriel Z, et al. The effects of antimuscarinic treatments in overactive bladder: an update of a systematic review and meta-analysis. *Eur Urol* 2008;54:543–62
- 8) **Araklitis, G. et al.** (2020) 'Recent advances in managing overactive bladder', *F1000Research*. doi: 10.12688/f1000research.26607.1.
- 9) **Khullar, V. et al.** (2013) 'Efficacy and tolerability of mirabegron, a β 3-adrenoceptor agonist, in patients with overactive bladder: Results from a randomised European-Australian phase 3 trial', *European Urology*, 63(2), pp. 283–295. doi: 10.1016/j.eururo.2012.10.016.
- 10) **Puche, J. E.** and Castilla-Cortázar, I. (2012) 'Human conditions of insulin-like growth factor-I (IGF-I) deficiency', *Journal of Translational Medicine*. doi: 10.1186/1479-5876-10-224.
- 11) **Bergman, D. et al.** (2013) 'Insulin-like growth factor 2 in development and disease: A mini-review', *Gerontology*, 59(3), pp. 240–249. doi: 10.1159/000343995.
- 12) **Nilsen, T. W.** and Graveley, B. R. (2010) 'Expansion of the eukaryotic proteome by alternative splicing', *Nature*, 463(7280), pp. 457–463. doi: 10.1038/nature08909.
- 13) **Lin, W. W.** and Oberbauer, A. M. (1998) 'Alternative splicing of insulin-like growth factor I mRNA is developmentally regulated in the rat and mouse with preferential exon 2 usage in the mouse', *Growth Hormone and IGF Research*. doi: 10.1016/S1096-6374(98)80115-9.

- 14) **Chew, S. L. et al.** (1995) 'An alternatively spliced human insulin-like growth factor-I transcript with hepatic tissue expression that diverts away from the mitogenic IBE1 peptide', *Endocrinology*, 136(5), pp. 1939–1944. doi: 10.1210/endo.136.5.7720641.
- 15) **Roberts, C. T. et al.** (1987) 'Molecular cloning of rat insulin-like growth factor I complementary deoxyribonucleic acids: Differential messenger ribonucleic acid processing and regulation by growth hormone in extrahepatic tissues', *Molecular Endocrinology*. doi: 10.1210/mend-1-3-243.
- 16) **Shimatsu, A.** and Rotwein, P. (1987) 'Mosaic evolution of the insulin-like growth factors', *The Journal of Biological Chemistry*.
- 17) **Yang, S. et al.** (1996) 'Cloning and characterization of an IGF-1 isoform expressed in skeletal muscle subjected to stretch', *Journal of Muscle Research and Cell Motility*, 17(4), pp. 487–495. doi: 10.1007/BF00123364.
- 18) **McKoy, G. et al.** (1999) 'Expression of insulin growth factor-1 splice variants and structural genes in rabbit skeletal muscle induced by stretch and stimulation', *Journal of Physiology*, 516(Pt 2), pp. 583–592. doi: 10.1111/j.1469-7793.1999.0583v.x.
- 19) **Hill, M., Wernig, A.** and Goldspink, G. (2003) 'Muscle satellite (stem) cell activation during local tissue injury and repair', *Journal of Anatomy*, 203(1), pp. 89–99. doi: 10.1046/j.1469-7580.2003.00195.x.
- 20) **Yang, S. Y.** and Goldspink, G. (2002) 'Different roles of the IGF-I Ec peptide (MGF) and mature IGF-I in myoblast proliferation and differentiation', *FEBS Letters*. doi: 10.1016/S0014-5793(02)02918-6.
- 21) **Hill, M.** and Goldspink, G. (2003) 'Expression and splicing of the insulin-like growth factor gene in rodent muscle is associated with muscle satellite (stem) cell activation following local tissue damage', *Journal of Physiology*, 549(Pt 2), pp. 409–418. doi: 10.1113/jphysiol.2002.035832.
- 22) **Philippou, A. et al.** (2009) 'Expression of IGF-1 isoforms after exercise-induced muscle damage in humans: Characterization of the MGF E peptide actions *in vitro*', *In Vivo*.
- 23) **Brooks, S. V.** and Faulkner, J. A. (1994) 'Skeletal muscle weakness in old age: Underlying mechanisms', *Medicine and Science in Sports and Exercise*, 26(4), pp. 432–439.
- 24) **Hameed, M. et al.** (2003) 'Expression of IGF-I splice variants in young and old human skeletal muscle after high resistance exercise', *Journal of Physiology*, 547(Pt 1), pp. 247–254. doi: 10.1113/jphysiol.2002.032136.
- 25) **Kandalla, P. K. et al.** (2011) 'Mechano Growth Factor E peptide (MGF-E), derived from an isoform of IGF-1, activates human muscle progenitor cells and induces an increase in their fusion potential at different ages', *Mechanisms of Ageing and Development*, 132(4), pp. 154–162. doi: 10.1016/j.mad.2011.02.007.
- 26) **Dluzniewska, J.** (2005) 'A strong neuroprotective effect of the autonomous C-terminal peptide of IGF-1 Ec (MGF) in brain ischemia', *The FASEB Journal*, 19(13), pp. 1896–1898. doi: 10.1096/fj.05-3786fje.
- 27) **Riddoch-Contreras, J. et al.** (2009) 'Mechano-growth factor, an IGF-I splice variant, rescues motoneurons and improves muscle function in SOD1G93A mice', *Experimental Neurology*, 215(2), pp. 281–289. doi: 10.1016/j.expneurol.2008.10.014.
- 28) **Tang, J. J. et al.** (2017) 'Mechano growth factor, a splice variant of IGF-1, promotes neurogenesis in the aging mouse brain', *Molecular Brain*, 10(1), p. 23. doi: 10.1186/s13041-017-0304-0.
- 29) **Liu, M. et al.** (2018) 'Potential effect of mechano growth factor E-domain peptide on axonal guidance growth in primary cultured cortical neurons of rats', *Journal of Tissue Engineering and Regenerative Medicine*, 12(1), pp. 70–79. doi: 10.1002/term.2364.

- 30) **Doroudian, G. et al.** (2014) 'Sustained delivery of MGF peptide from microrods attracts stem cells and reduces apoptosis of myocytes', *Biomedical Microdevices*, 16(5), pp. 705–715. doi: 10.1007/s10544-014-9875-z.
- 31) **Zhang, B. et al.** (2016) 'Mechano-growth factor E peptide promotes healing of rat injured tendon', *Biotechnology Letters*, 38(10), pp. 1817–1825. doi: 10.1007/s10529-016-2162-8.
- 32) **Sha, Y. et al.** (2017) 'MGF E peptide pretreatment improves the proliferation and osteogenic differentiation of BMSCs via MEK-ERK1/2 and PI3K-Akt pathway under severe hypoxia', *Life Sciences*, 189, pp. 52–62. doi: 10.1016/j.lfs.2017.09.017.
- 33) **Li, C. et al.** (2015) 'Increased IGF-IEc expression and mechano-growth factor production in intestinal muscle of fibrostenotic Crohn's disease and smooth muscle hypertrophy', *American Journal of Physiology - Gastrointestinal and Liver Physiology*. doi: 10.1152/ajpgi.00414.2014.
- 34) **Cortes, E., Chin-Smith, E., Kelleher, C., & Tribe, R.** (2011). Expression of Insulin-like Growth Factor-1 (IGF-1) Splice variants and bladder distention. Does a reduced bladder volume prevent detrusor muscle regeneration? *Neurourology and Urodynamics*, 30(6), 1183-1184
- 35) **J Y Ro, A G Ayala, A el-Naggar.** Muscularis mucosa of urinary bladder. Importance for staging and treatment. *Am J Surg Pathol*. 1987 Sep;11(9):668-73. doi: 10.1097/00000478-198709000-00002.
- 36) **Owino V, Yang SY, Goldspink G.** Age-related loss of skeletal muscle function and the inability to express the autocrine form of insulin-like growth factor-1 (MGF) in response to mechanical overload. *FEBS Lett*. 2001 Sep 14;505(2):259-63. doi: 10.1016/s0014-5793(01)02825-3.
- 37) **Comperat, Reitz, Delcourt, Capron, Denys, Chartier-Kastler** (2006). Histologic features in the Urinary Bladder Wall Affected from Neurogenic Overactivity- a comparison of inflammation, oedema and fibrosis with and without injection of Botulinium Toxin Type A. *European Urology* 50 (2006) 1058-1064. doi:10.1016/j.eururo.2006.01.025
- 38) **Peyronnet, Mironska, Chapple, Cardozo, Oelke, Dmochowski, Amarengo, Gamé, Kirby, Van Der Aa, Jean-Nicolas Cornu.** A Comprehensive Review of Overactive Bladder Pathophysiology: On the Way to Tailored Treatment. *Eur Urol*. 2019. PMID: 30922690 Review.
- 39) **Schneider, C. A., Rasband, W. S. and Eliceiri, K. W.** (2012) 'Image to ImageJ: 25 years of image analysis. *Nature methods*', *Nature Methods*, 9.
- 40) **Jung SY, Fraser MO, Ozawa H, et al.** Urethral afferent nerve activity affects the micturition reflex; implication for the relationship between stress incontinence and detrusor instability. *J Urol* 1999;162:204–12.
- 41) **Pinggera GM, Mitterberger M, Steiner E, Pallwein L, Frauscher F, Aigner F, et al.** Association of lower urinary tract symptoms and chronic ischaemia of the lower urinary tract in elderly women and men: assessment using colour Doppler ultrasonography. *BJU Int*. 2008;102:470–4.
- 42) **Azadzi KM, Tarcan T, Kozlowski R, et al.** Overactivity and structural changes in the chronically ischemic bladder. *J Urol*. 1999;162:1768–78. [https://doi.org/10.1016/S0022-5347\(05\)68236-5](https://doi.org/10.1016/S0022-5347(05)68236-5).
- 43) **Nomiya M, Yamaguchi O, Andersson K-E, Sagawa K, Aikawa K, Shishido K, et al.** The effect of atherosclerosis-induced chronic bladder ischaemia on bladder function in the rat. *NeuroUrol Urodyn*. 2012;31:195–200. <https://doi.org/10.1002/nau.21073>.
- 44) **Tyagi P, Barclay D, Zamora R, Yoshimura N, Peters K, et al.** Urine cytokines suggest an inflammatory response in the overactive bladder: a pilot study. *Int Urol Nephrol*. 2010;42(3):629–35. <https://doi.org/10.1007/s11255-009-9647-5>.
- 45) **Stamm WE, Counts GW, Running KR, Fihn S, Turck M, Holmes KH.** Diagnosis of Coliform Infection in Acutely Dysuric Women. *N Engl J Med*. 1982;307:463–8.
- 46) **Oluwole, B.O., Du, W., Mills, I., and Sumpio, B.E.** Generegulation by mechanical forces. *Endothelium* 5, 85, 1997.

- 47) **Grinnell, F.** Fibroblasts, myofibroblasts, and wound contraction. *J. Cell Biol.* 124, 401, 1994, 35,36,37
- 48) **Keng-Ting Sun,** Kwok-Kuen Cheung, Shannon W. N. Au, Simon S. Yeung, and Ella W. Yeung. Overexpression of Mechano-Growth Factor Modulates Inflammatory Cytokine Expression and Macrophage Resolution in Skeletal Muscle Injury. *Front Physiol.* 2018; 9: 999. doi: 10.3389/fphys.2018.00999
- 49) **Andersson KE,** McCloskey KD. Lamina propria: The functional center of the bladder? *Neurourol Urodyn.* 2014 Jan;33(1):9-16. doi: 10.1002/nau.22465. Epub 2013 Jul 11.
- 50) **Tang,** Podratz, Lange, Scoble, Jang and Windebank. Mechano growth factor, a splice variant of IGF-1, promotes neurogenesis in the aging mouse brain. *Molecular Brain* (2017) 10:23. DOI 10.1186/s13041-017-0304-0
- 51) **Mavrommatis E,** Shioura KM, Los T, Goldspink PH. *Mol Cell Biochem.* 2013;381 (1-2):69-83.
- 52) **Kravchenko, I. V. et al.** (2006) 'Monoclonal antibodies to mechano-growth factor', *Hybridoma*, 25(5), pp. 300–305. doi: 10.1089/hyb.2006.25.300.
- 53) **Philippou, A. et al.** (2008) 'Characterization of a rabbit antihuman Mechano Growth Factor (MGF) polyclonal antibody against the last 24 amino acids of the E domain', *In Vivo*, 22(1), pp. 27–35.
- 54) **Durzynska, J. et al.** (2013) 'The pro-forms of insulin-like growth factor i (igf-i) are predominant in skeletal muscle and alter igf-i receptor activation', *Endocrinology*, 154(3), pp. 1215–1224. doi: 10.1210/en.2012-1992.
- 55) **Wilson, H. E. et al.** (2001) 'Monoclonal antibodies to the carboxy-terminal Ea sequence of pro-insulin-like growth factor-IA (proIGF-IA) recognize proIGF-IA secreted by IM9 B-lymphocytes', *Growth Hormone and IGF Research*, 11(1). doi: 10.1054/ghir.2000.0182.
- 56) **Sotiris Korossis,** Fiona Bolland, Eileen Ingham, John Fisher, John Kearney, Jennifer Southgate. Tissue Engineering of the Urinary Bladder: Considering Structure-Function Relationships and the Role of Mechanotransduction. *Tissue Eng* 2006 Apr;12(4):635-44. doi: 10.1089/ten.2006.12.635.
- 57) **Steers, W. D.** (2002) 'Pathophysiology of overactive bladder and urge urinary incontinence.', *Reviews in urology*, 4 Suppl 4.
- 58) **Tailor,** Morris, Bhide, Fernando, Digesu, Khullar. Does cystoscopy method affect the investigation of bladder pain syndrome/interstitial cystitis? *Int Urogynaecol J*, 2021 May;32(5):1229-1235. doi: 10.1007/s00192-020-04512-0. Epub 2020 Sep 21
- 59) **Cortes,** Wong te Fong, Hameed, Harridge, Maclean, Yang, Reid, Goldspink. Insulin-like growth factor-1 gene splice variants as markers of muscle damage in levator ani muscle after the first vaginal delivery. *Am J Obstet Gynaecol.* 2005 Jul;193(1):64-70. doi: 10.1016/j.ajog.2004.12.088
- 60) **Frenkl, T. L. et al.** (2011) 'Variability of urodynamic parameters in patients with overactive bladder', *Neurourology and Urodynamics*, 30(8). doi: 10.1002/nau.21081.
- 61) **Al-Zahrani,** Gajewski. Urodynamic findings in women with refractory overactive bladder symptoms. *In J Urol.* 2016 Jan;23(1):75-9. doi: 10.1111/iju.12954. Epub 2015 Sep 28.
- 62) **Ailin Bian,** Yue Ma, Xinzi Zhou, Ying Guo, Wenyi Wang, Yiran Zhang & Xiaofei Wang. Association between sarcopenia and levels of growth hormone and insulin-like growth factor-1 in the elderly. *BMC Musculoskeletal Disorders* 21, 214 (2020)

Figure legends

Figure 1. Analysis of cellular composition in control and OAB biopsies. Expression of markers for smooth muscle (*DES*), stroma (*VIM*) and urothelium (*UPK2*) was quantified by RT-qPCR to determine the relative contribution of each cell type to biopsy composition. In (a) fold change gene expression was determined using the $\Delta\Delta C_q$ method and $\beta 2$ -microglobulin (*B2M*) as a reference gene, calculating fold change relative to the mean control value for each gene. Statistical analysis was carried out using the Mann-Whitney U test (n=9 control and n=23 OAB samples). In (b), samples were categorised into the indicated subgroups based on predominant marker/s expression. A χ^2 test was performed to determine statistical significance of the difference in the distribution of *DES*^{hi}/other sub-groups between control and OAB samples. The categorisation is described fully in the methods, and the allocation of individual samples is shown in Supplementary Table 1.

Figure 2. MGF expression is increased in OAB tissue. An antibody specific to the MGF E-peptide was used to detect expression of MGF protein by immunohistochemistry staining (a) and western blot (b-d) analysis of biopsy sections. In (a) 5 μ m sections of formalin-fixed OAB bladder biopsies were stained with anti-MGF (i) or secondary antibody only control (ii) and counterstained with haematoxylin. In (b-d) 30 μ g biopsy lysates were analysed by western blot for detection of MGF (~15 kDa) and β -actin (42 kDa) as a loading control. L=size ladder. A representative blot is shown in (b) and a scatter plot showing quantification of MGF band intensity is shown in (c). The bar indicates mean relative MGF expression in control and OAB biopsies (0.22 and 0.51, respectively). In (d), the graph shows mean relative MGF expression \pm SEM in control/OAB biopsies in the three main sub-groups identified in Figure 1: *DES*^{hi} (n=6/5), *VIM*^{hi} (n=1/6), *DES&VIM*^{hi} (n=2/6). Statistical analysis in (c) and (d) was performed using the Mann-Whitney U test.

Figure 3. Analysis of correlation between MGF protein expression and clinical parameters of OAB severity. Spearman's bivariate correlation followed by post-hoc Student's *t*-test was used to determine the correlation between biopsy MGF expression and (a) the maximum cystometric capacity (MCC) in OAB patients (correlation=0.53, p=0.03, n=16), and (b) patient self-assessment scores for two-types of questionnaire: BSAQ (correlation=0.25, p=0.35, n=16) and OAB-V8 (correlation=0.31, p=0.25, n=16). In (c) correlation was tested between MCC and patients' scores from BSAQ (correlation= -0.02, p=0.95, n=16) and OAB-V8 (correlation= -0.12, p=0.66, n=16) questionnaires.

Figure 4. Effect of MGF on primary murine bladder cells proliferation. The indicated concentration of synthetic MGF peptide was added to primary cultures of murine bladder cells for 72 hours, with EdU added for the final 48 hours. Cells were stained with an anti-SMMHC antibody (red) to identify smooth muscle cells, and EdU was visualised by Click-iT® detection (green); all cells were labelled using DAPI nuclear stain (blue). Images were taken at 4X magnification using an EVOS-imaging station, with additional digital zoom. Representative images are shown in (a), and the graph in (b) shows mean %EdU+ proliferating cells/image +/- SEM (n=11-18 images, from 3-5 wells). Statistical analysis was performed using one-way ANOVA test followed by post-hoc t-test.

Table legends

Table 1. Clinical characteristics of patient cohort. Clinical OAB parameters obtained with the urodynamic test *i.e* '1st' and '2nd' sensation and Maximum Cystometric Capacity (MCC). Self-assessment questionnaire scores (BSAQ and OABV8) were also recorded, although this information was only available for 16/23 OAB patients.

Supplementary Figure legends

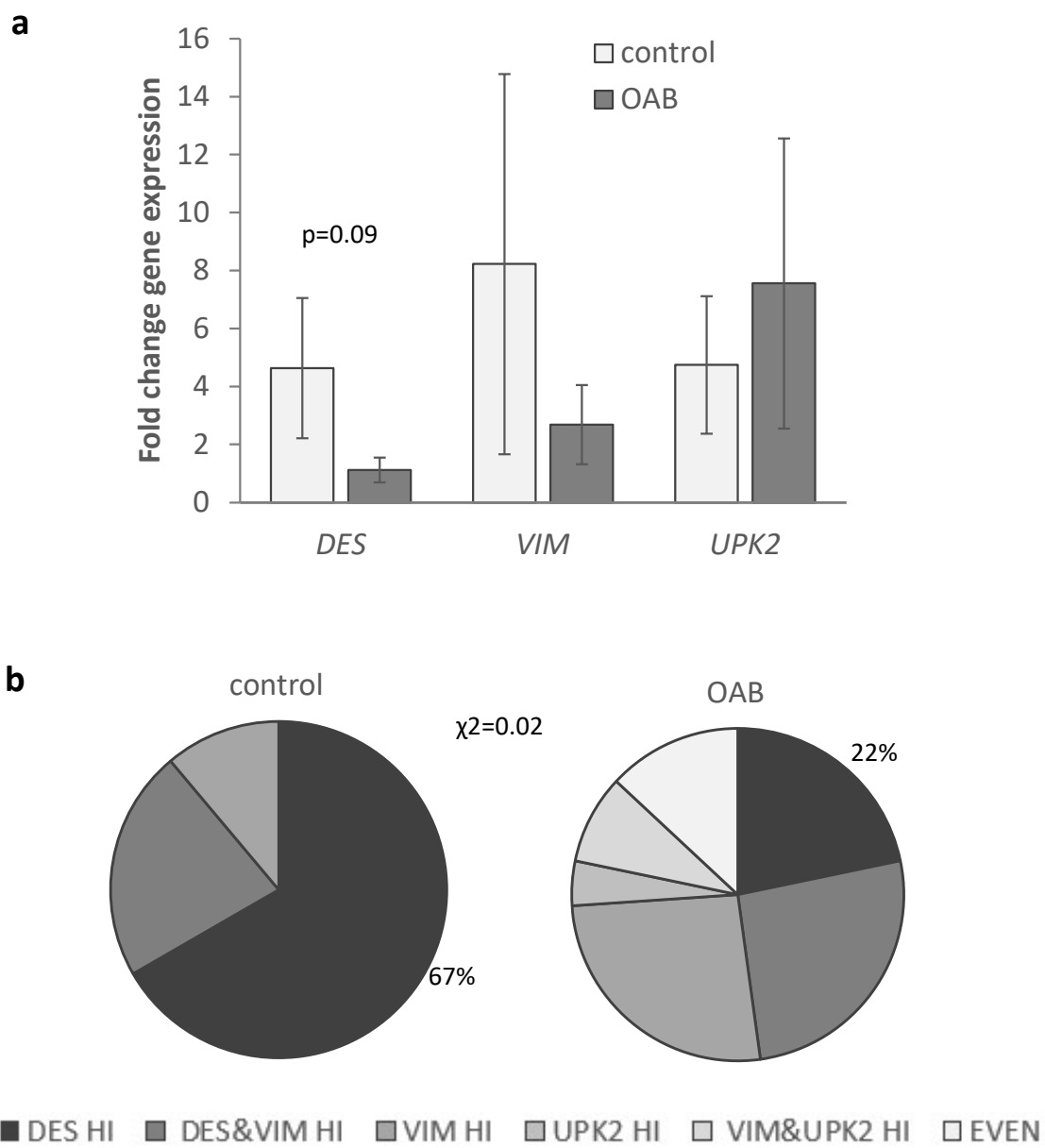
Supplementary Figure 1: Primer validation for RT-qPCR. The amplification efficiency of *UPKN* (a), *B2M* (b), *VIM* (c) and *DES* (d) primers used for RT-qPCR biopsy analysis was determined by serial template dilution and plotting Cq values against log (sample quantity). The slope of the linear best fit was used to calculate primer efficiency (e). In (f), RT-PCR products amplified using the indicated primers on a biopsy sample were analysed by agarose gel electrophoresis. Single bands of the expected size were observed with all primers used (*DES*, *VIM*, *UPK2*, *GAPDH*, *B2M* and *ACTB*). The expected PCR product sizes in addition to primer sequences are shown in (g).

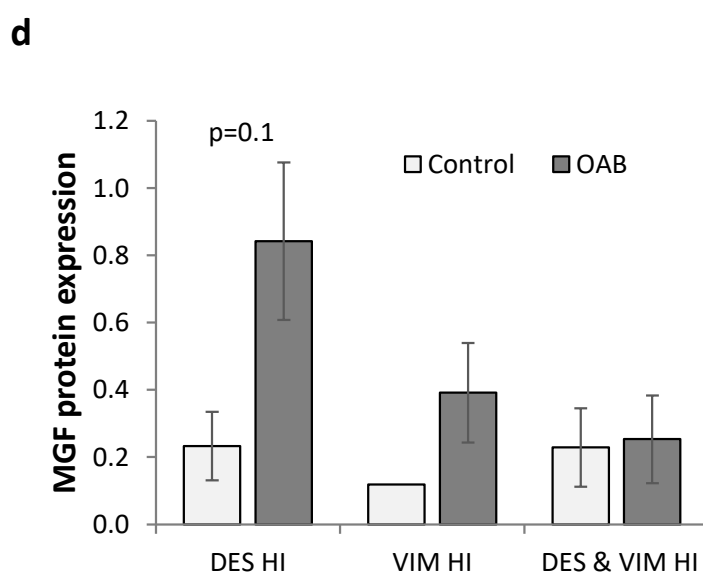
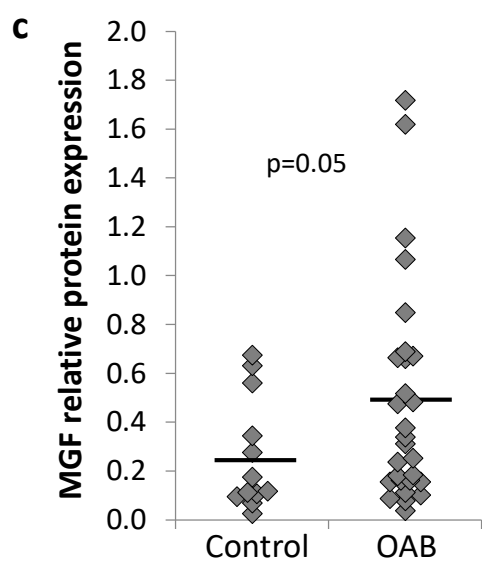
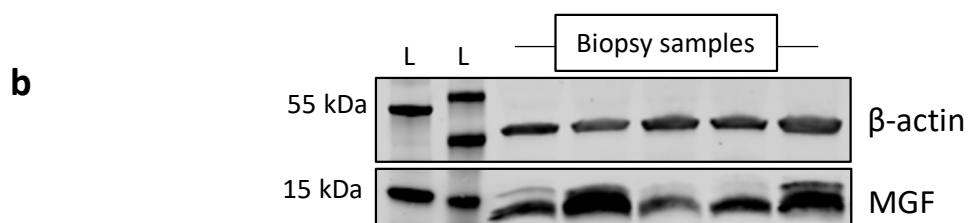
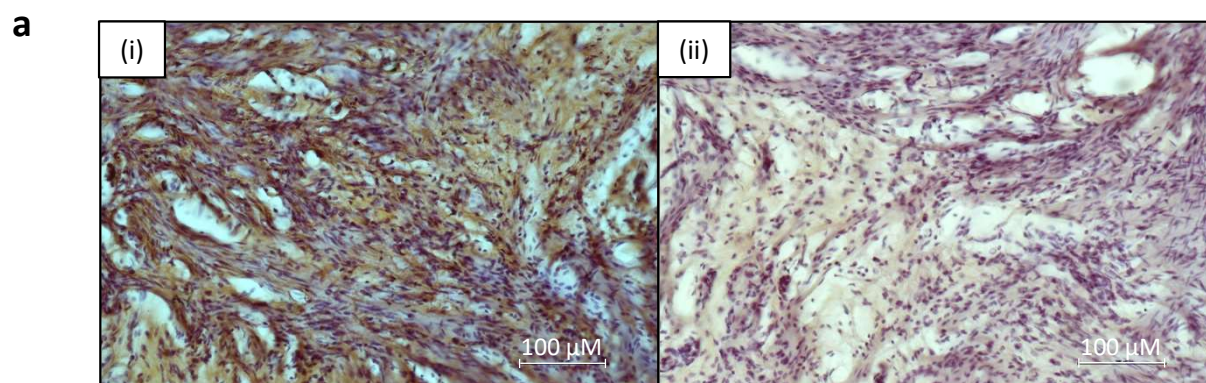
Supplementary Figure 2: Uncropped blots of westerns shown in Figure 2 stained with antibodies to (a) β -actin and (b) MGF peptide.

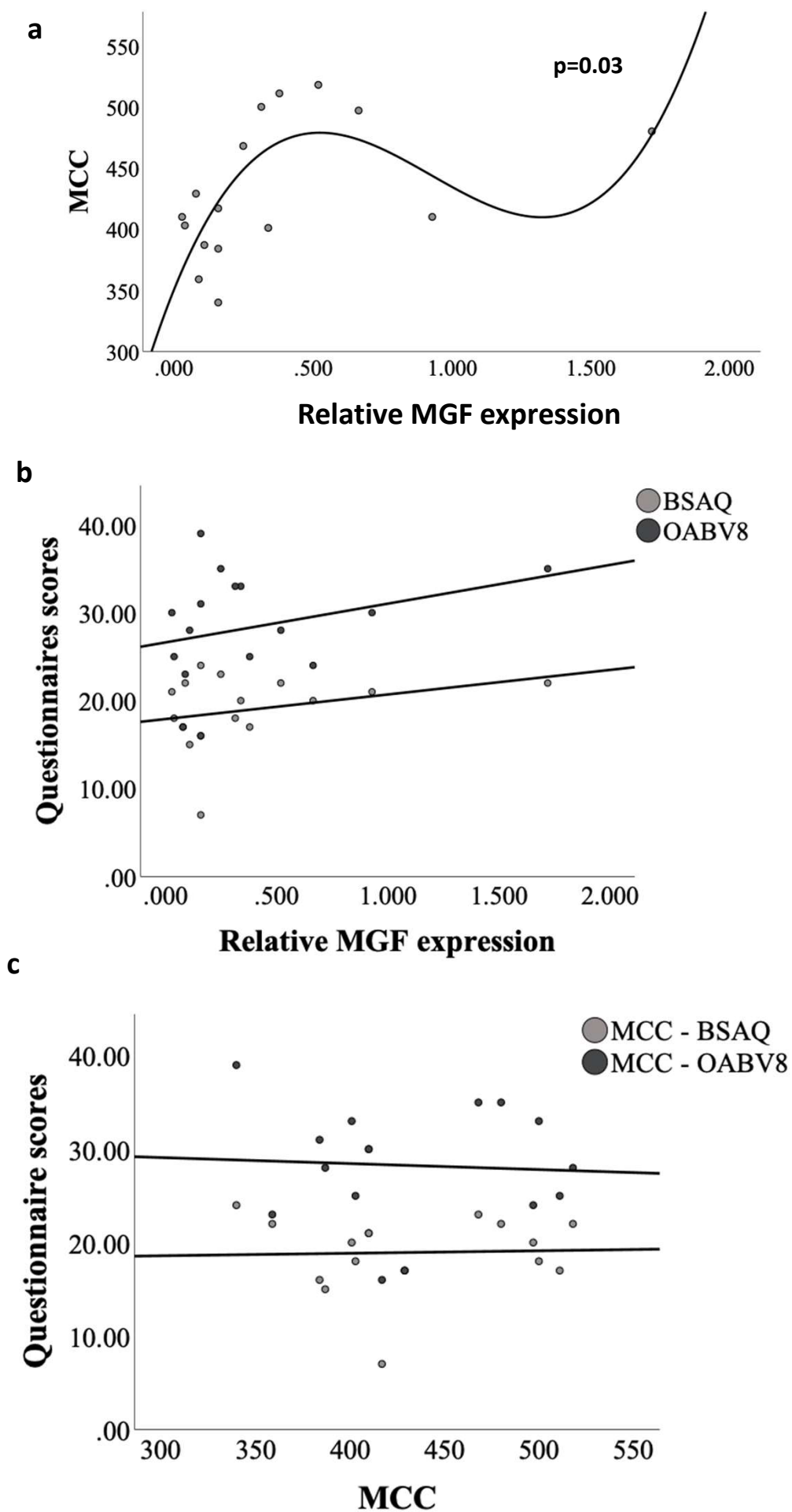
Supplementary Table legends

Supplementary Table 1: Scoring of individual biopsy samples according to most highly expressed cell type marker/s. RI-Cq values for *DES*, *VIM* and *UPK2* gene expression were

determined by RT-qPCR as shown in Figure 1. (a) Designation of each biopsy as DES^{hi} (green), VIM^{hi} (blue), $DES\&VIM^{hi}$ (orange), $UKP2^{hi}$ (red), $VIM\&UKP2^{hi}$ (yellow) or EVEN (grey) was performed as described in the methods and indicated by the respective colour. *'Difference' indicates the difference between 'hi' sample (or mean) and 'low' sample (or mean) which should be greater than or equal to 3, or sample was scored as 'even'. (b) Summary of the numerical distribution of sub-groups in control (CTL) and OAB samples shown visually in Figure 1b.







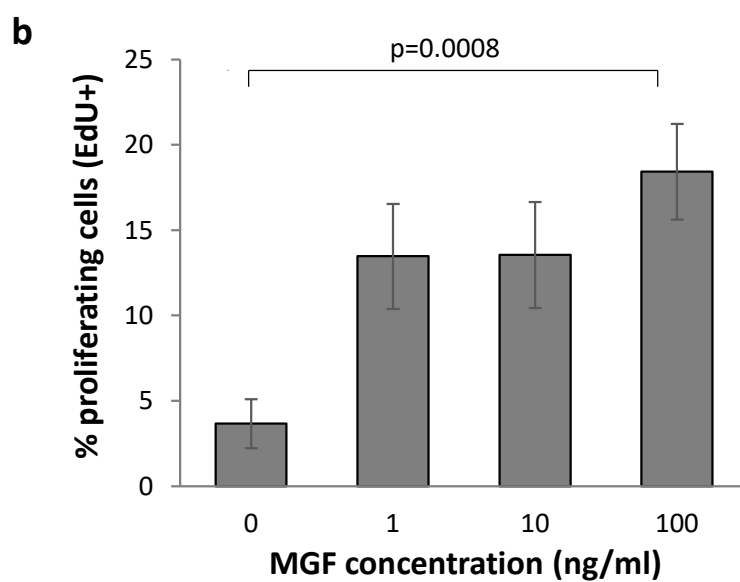
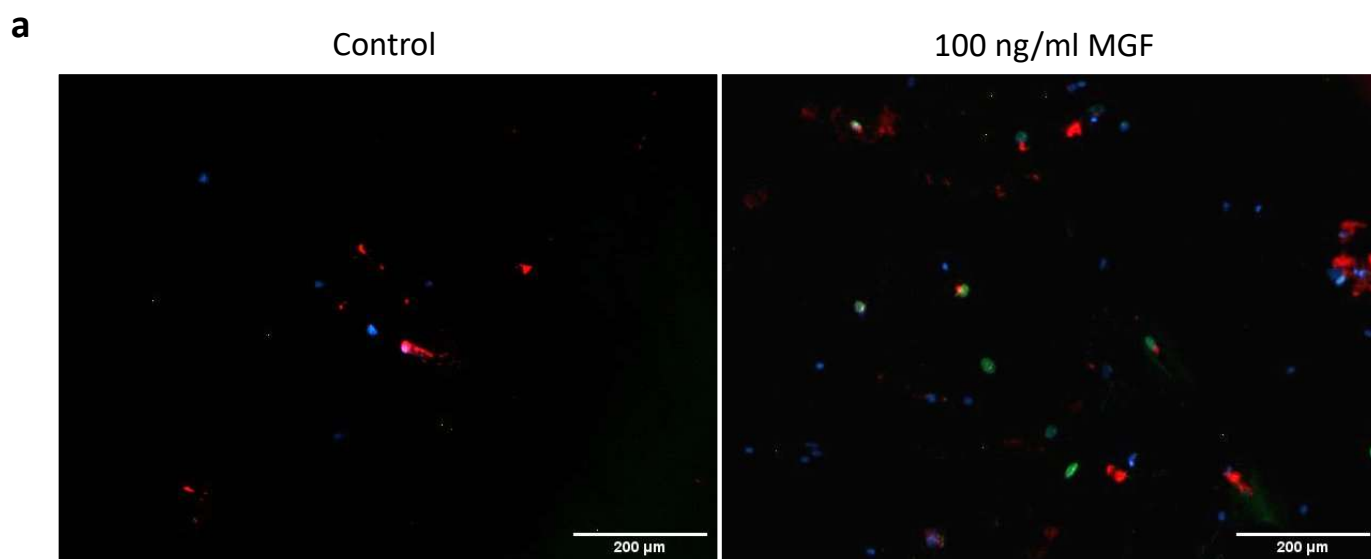


Table 1

Type	M/F	Ethnicity	Parity	1st	2nd	MCC	DO	Inconti nence	BSAQ	OABV8
Control	F	other	2	NA	NA	NA	NA	Yes	23	38
Control	F	white	2	NA	NA	NA	NA		3	5
Control	F	white	3	NA	NA	NA	NA	No		
Control	F	white	2	NA	NA	NA	NA	No	12	10
Control	F	white	NA	NA	NA	NA	NA	No	6	0
Control	F	asian	2	600		600	no	No	9	16
Control	F	asian	2	NA	NA	NA	NA	No	12	20
Control	F	white	2	NA	NA	NA	NA	No		
Control	F	white	3	NA	NA	NA	NA		13	13
OAB	F	white	1	120	210	410	terminal	Yes	21	30
OAB	F	asian	3	157	460	480	yes	Yes	22	35
OAB	F	arab	4			NA	yes			
OAB	F	white	NA	85	340	450	yes	Yes		
OAB	F	other	twins	125	275	518	yes	Yes	22	28
OAB	F	white	twins + 1	158	300	340	yes	Yes	24	39
OAB	F	NA	NA			NA				
OAB	F	white	1	107	163	403	yes	Yes	18	25
OAB	F	black	4	95	205	359	yes	Yes	22	23
OAB	F	white	NA	100	300	429	no	Yes	17	17
OAB	F	white	NA	302	440	469	yes	No	23	35
OAB	F	white	1	56	311	401	yes	Yes	20	33
OAB	F	white	1	120	233	500	yes	No	22	26
OAB	F	white	1	206	421	497	yes	Yes	20	24
OAB	F	white	2	160	279	388	yes	Yes		
OAB	F	asian	1	200	311	500	yes	No	18	33
OAB	F	white	2	296	488	511	no	No	17	25
OAB	F	white	NA	180	369	417	yes	No	7	16
OAB	F	white	NA	NA	NA	NA	NA	Yes		
OAB	F	white	NA	200	270	384	yes	Yes	16	31
OAB	F	white	NA	136	228	0	yes	Yes	24	37
OAB	F	white	NA	110	303	387	yes	Yes	15	28