

1 **The Association between Helicobacter pylori Infection and Triglyceride-Glucose**
2 **(TyG) Index in US Adults: a retrospective cross-sectional study**

3 **Running title:** H. pylori Infection and TyG Index in US Adults

4 Authors: Wei Fu^{1#} Junlong zhao^{2#} GuoBin Chen¹ Linya Lyu¹ Yao Ding¹
5 Liang-Bi Xu³

6 Department(s) and institution(s) :

7 1. Department of Gastroenterology, 925th Hospital of PLA Joint Logistics Support
8 Force, Guiyang, China.

9 2. State Key Laboratory of Cancer Biology, Department of Medical Genetics and
10 Developmental Biology, School of Basic Medicine, Fourth Military Medical
11 University, Xi'an, China.

12 3. Department of the Digestive Endoscopy, The Affiliated Hospital of Guizhou
13 Medical University, Guiyang, 550000, China.

14 #Contributed equally.

15 Corresponding Author: Wei Fu

16 E-mail address : Fmmfw@foxmail.com

17 Co-corresponding author: Liang-Bi Xu

18 E-mail address : gzxlb@sina.com

19 **ABSTRACT**

20 **Background:** The Triglyceride-glucose (TyG) index is an emerging marker for
21 insulin resistance and metabolic syndrome. Helicobacter pylori, a bacterium
22 associated with gastrointestinal diseases, may also influence metabolic risk profiles.
23 This study aimed to investigate the relationship between the TyG index and
24 Helicobacter pylori infection among a representative sample of adults.

25 **Methods:** A total of 9965 participants from the NHANES 1999-2000 cycle were
26 involved from March 1, 1999, to December 1, 2000. A cross-sectional analysis was
27 conducted on 3797 participants. The baseline characteristics according to the quartile
28 of the TyG index were evaluated. Multivariate binary logistic regression models were
29 constructed to analyze the independent effects of the TyG index on Helicobacter
30 pylori infection. A two-piecewise binary logistic regression model was used to
31 explore the non-linear relationship between the TyG index and Helicobacter pylori,
32 with an inflection point identified. Subgroup analyses were performed to assess the
33 trends of effect sizes across different variables including age, sex, glucose levels,
34 body mass index (BMI), and chronic kidney disease (CKD).

35 **Results:** Multivariate analysis indicated a linear relationship between the TyG index
36 and Helicobacter pylori infection, suggesting differential influence of the TyG index
37 on Helicobacter pylori infection. Subgroup analysis demonstrated significant
38 interactions only for a few variables, with all p-values for interaction below 0.05.

39 **Conclusions:** The study suggests a linear association between the TyG index and
40 Helicobacter pylori infection. These findings have implications for understanding the
41 metabolic influences on Helicobacter pylori infection and may guide targeted
42 interventions for at-risk populations.

43 **Keywords:** Triglyceride-glucose index, Helicobacter pylori, insulin resistance,
44 metabolic syndrome, non-linear relationship, cross-sectional study.

46 INTRODUCTION

47 The interplay between metabolic disorders and infectious diseases has garnered
48 considerable attention in recent years, paving the way for a better understanding of
49 their shared pathophysiological mechanisms. The Triglyceride-glucose (TyG) index, a
50 simple and cost-effective surrogate marker of insulin resistance, has been increasingly
51 recognized for its role in predicting metabolic syndrome and cardiovascular
52 diseases[1–3]. Insulin resistance, a hallmark of type 2 diabetes, has been implicated in
53 the alteration of immune responses, potentially influencing the susceptibility to and
54 severity of infectious diseases, including those caused by *Helicobacter pylori*[4–6].

55 *Helicobacter pylori*, a Gram-negative bacterium, colonizes the gastric mucosa of
56 approximately half of the global population, leading to a range of gastrointestinal
57 diseases such as gastritis, peptic ulcers, and gastric cancer[7–9]. Beyond its established
58 role in gastrointestinal pathology, *H. pylori* infection has been associated with
59 extragastric manifestations, including cardiovascular and metabolic derangements,
60 suggesting a broader impact on human health[10–12]. Despite the known associations
61 between metabolic abnormalities and *H. pylori* infection, the direct role of the TyG
62 index in relation to *H. pylori* infection remains poorly understood.

63 Research indicates that *Helicobacter pylori* infection is associated with the
64 progression of atherosclerosis and is significantly and independently correlated with
65 higher levels of LDL-C (low-density lipoprotein cholesterol) and lower levels of
66 HDL-C (high-density lipoprotein cholesterol). However, *Helicobacter pylori* infection
67 is not related to obesity-related parameters, glucose tolerance, or systolic blood
68 pressure [13]. There are also studies with opposing conclusions, which explored the
69 relationship between *Helicobacter pylori* infection and fasting plasma glucose (FPG)
70 levels in a non-diabetic population. The study found that *Helicobacter pylori* infection
71 is an independent risk factor for increased FPG levels, and persistent infection can
72 lead to increased levels of FPG and triglycerides/high-density lipoprotein (TG/HDL),
73 which could be risk factors for diabetes[14]. Recent research findings on the
74 association between *Helicobacter pylori* infection and insulin resistance and metabolic
75 syndrome have been contradictory. Therefore, a comprehensive meta-analysis was
76 conducted, which included 22 studies involving 206,911 subjects. The results suggest
77 that *Helicobacter pylori* infection may be related to metabolic syndrome and insulin
78 resistance. Both case-control studies and cohort studies have shown this
79 association[15].

80 Investigating this relationship is crucial, as it may elucidate potential metabolic
81 pathways through which *H. pylori* influences disease and inform targeted
82 interventions for at-risk populations. This study aimed to explore the relationship
83 between the TyG index and *H. pylori* infection in a large cross-sectional adult
84 population. To address this hypothesis, we conducted a comprehensive analysis,
85 considering both linear and non-linear models, to delineate the nature of the
86 association between the TyG index and *H. pylori* infection. Furthermore, we
87 performed subgroup analyses to determine if age, sex, glucose levels, body mass
88 index (BMI), and chronic kidney disease (CKD) modified the observed associations.
89 The findings of this study are expected to contribute valuable insights into the

90 metabolic factors influencing *H. pylori* infection, potentially offering a new
91 perspective on the management and prevention strategies for this common infection.
92

93 **METHODS**

94 **Study population**

95 The National Center for Health Statistics (NCHS) is responsible for conducting the
96 National Health and Nutrition Examination Survey (NHANES), which is an ongoing
97 research project supported by the Centers for Disease Control and Prevention (CDC)
98 [16]. This study has adopted a composite sampling technique, including multi-stage,
99 stratified, and cluster probability sampling methods, to ensure that the sample
100 adequately represents the U.S. population[17–19]. The study data are derived from the
101 1999-2000 NHANES. Participants in this cycle included those with data on
102 Helicobacter pylori infection and Tyg index[20, 21].All procedures received approval
103 from the CDC Ethics Review Board, and written informed consent was secured from
104 all participants. Since the investigators had no access to identifying information, the
105 data analyzed in this study were anonymized and publicly available on the NHANES
106 website. Consequently, the 925th Hospital Review Board determined that this study
107 qualified as "non-human subjects" research[20].

108 The inclusion criteria for this study were based on the NHANES 1999-2000 cycle,
109 with a total of 9965 subjects participating. Exclusion criteria were applied, which
110 included participants with missing data for H. pylori serology, participants with
111 missing data for gastric diseases, and participants with missing data for covariates .

112 **Variables**

113 The primary independent variable of interest in this study is the baseline
114 measurement of the triglyceride-glucose (TyG) index. The triglyceride-glucose (TyG)
115 index was calculated using the formula: $TyG = \ln[(\text{fasting triglycerides (mg/dL)} \times$
116 $\text{fasting glucose (mg/dL)}) / 2]$, where "ln" denotes the natural logarithm[21].The
117 dependent variable is the presence of Helicobacter pylori infection, which is assessed
118 using a dichotomous variable. In this study, standard ELISA thresholds were
119 employed to classify participants as seropositive for Helicobacter pylori (optical
120 density (OD) value ≥ 1.1) or seronegative (OD value < 0.9). Equivocal OD values
121 ranging from 0.9 to 1.1 were excluded to avoid the potential for confounding
122 statistical results[22, 23].

123 The following variables were included in the fully-adjusted model based on the
124 following criteria: demographic data, variables reported in previous literature to affect
125 the TyG index or Helicobacter pylori, and variables based on clinical experiences.
126 The fully-adjusted model included the following variables:Continuous variables
127 obtained at baseline:age,serum C-reactive protein,Glucose,and
128 Triglycerides.Categorical variables obtained at baseline: gender, education, race,high
129 blood pressure, own housing, alcohol behavior ,smoke behavior,BMI,Gastrointestinal
130 illness, and CKD(Chronic kidney disease)[24–30].Patients with Chronic Kidney
131 Disease (CKD) were defined as those with an estimated Glomerular Filtration Rate
132 (eGFR) of less than 60 ml/min/1.73 m² and/or proteinuria (dipstick results positive at
133 or above 1+), demonstrating stable kidney function for at least three months prior to
134 the study commencement[31].

135 **Statistical analysis**

136 Categorical variables were expressed as frequencies and percentages. The

137 differences among the TyG groups (quartiles) were analyzed using various statistical
138 tests: the χ^2 test for categorical variables, the t-test for normally distributed variables,
139 and the Mann-Whitney U test for variables with skewed distributions[32].

140 The analysis was conducted in three stages. The first stage involved the application
141 of multivariate binary logistic regression models, resulting in three distinct models:
142 Model 1 without any covariate adjustments; Model 2 adjusted solely for
143 sociodemographic data; and Model 3, which incorporated the covariates listed in
144 Table 1. In the second stage, to address potential nonlinearity between the TyG index
145 and *Helicobacter pylori* infection, a generalized additive model (GAM) and smooth
146 curve fitting via penalized splines were utilized. Should nonlinearity be confirmed, a
147 recursive algorithm would determine the inflection point, followed by the
148 development of a two-piecewise binary logistic regression model on either side of this
149 point. The final stage entailed subgroup analyses using stratified binary logistic
150 regression models. Continuous variables were categorized based on clinical thresholds
151 or tertiles prior to conducting an interaction test, and effect modification was assessed
152 through the likelihood ratio test.

153 To confirm the robustness of the data analysis, a sensitivity analysis was
154 performed. The TyG index was transformed into a categorical variable, and a P-value
155 for trend was computed. The purpose of this analysis was to corroborate the findings
156 obtained when the TyG index was treated as a continuous variable and to investigate
157 potential nonlinearity.

158 Statistical analyses were conducted using the R software package version 4.2.2
159 (The R Foundation, <http://www.R-project.org>) and Free Statistics software version
160 1.9. A two-tailed test was employed, with a p-value less than 0.05 deemed indicative
161 of statistical significance.

162

163 **RESULTS**

164 **Baseline characteristics of selected participants**

165 A total of 3797 participants were included in the final data analysis, as illustrated
166 in Figure 1 (please refer to the flow chart). Table 1 presents the baseline
167 characteristics of these selected participants according to the quartile of TyG index.

168 The average age of the study cohort was 41.8 years. The majority of participants
169 were Mexicans (47%) with an education level higher than high school (>1) (82.6%),
170 and there were individuals who never smoked (32.8%) or drank alcohol (52.1%). The
171 mean TyG index was 5.8. Participants without HP infection had a significantly lower
172 average TyG index, were younger, and had a lower BMI compared to those with HP
173 infection. In terms of comorbidities, 25% of the study cohort had hypertension (Table
174 1). The group with HP infection had a higher incidence of hypertension and a history
175 of cardiovascular diseases than the group without HP infection.

176 **Univariate analysis**

177 Table 2 summarizes the univariate analysis of risk factors associated with
178 *Helicobacter pylori* infection, reporting the disease risk in terms of OR and 95% CI.
179 Age, Education, Race, own housing, High blood pressure, and TyG were significantly
180 associated with *Helicobacter pylori* infection ($p < 0.001$). Other factors, including
181 Gastric illness and CRP, showed no significant association with *Helicobacter pylori*
182 infection (Table 2).

183 To assess the independent effect of the TyG index on *Helicobacter pylori*, we
184 developed three univariate and multivariate binary logistic regression models. Table 3
185 illustrates the odds ratio (OR) as the effect size and the corresponding 95%
186 confidence intervals (CIs). In the unadjusted model (Model 0), the effect size
187 represents the change in the risk of *Helicobacter pylori* infection associated with a
188 one-unit difference in the TyG index. For instance, in the unadjusted model, a
189 one-unit difference in the TyG index implies a 40% increase in the risk of
190 *Helicobacter pylori* infection, with a 95% CI of [1.26, 1.55]. In the minimally adjusted
191 model (Model 1), a one-unit increase in the TyG index is linked to a 27% rise in the
192 risk of *Helicobacter pylori* infection, with a 95% CI of [1.14, 1.41]. In the fully
193 adjusted model (Model 3), encompassing all covariates as displayed in Table 1, a
194 one-unit increase in the TyG index is associated with an 18% increase in the risk of
195 *Helicobacter pylori* infection, with a 95% CI of [1.04, 1.34].

196 **Sensitivity analysis**

197 For the sensitivity analysis, the TyG index was converted from a continuous
198 variable to a categorical variable (five groups of the TyG index). The P-value for
199 trend of the TyG index with categorical variables in the fully-adjusted model was
200 0.009, consistent with the results when the TyG index is treated as a continuous
201 variable. Additionally, we observed that the trend of the effect size in different TyG
202 index groups was not equidistant (Table 3).

203 This study analyzed whether there is a linear relationship between the TyG index
204 and *Helicobacter pylori* infection. After adjusting for covariates, the smooth curve
205 and the result of the generalized additive model indicated a linear relationship
206 between the TyG index and *Helicobacter pylori*. Both binary logistic regression and

207 two-piecewise binary logistic regression were used to fit the association, and the
208 best-fit model was selected based on the P-value for the log likelihood ratio test. Since
209 the P-value for the log likelihood ratio test was more than 0.05, the two-piecewise
210 binary logistic regression was chosen to accurately represent the relationship between
211 the TyG index and Helicobacter pylori. .

212 **Subgroup analysis**

213 To observe the trend of effect sizes in different variables, we stratified the analysis
214 by age, sex, glucose (glu), body mass index (bmi), and chronic kidney disease (CKD)
215 (Figure 2). We found that, according to our a priori specifications, no interactions
216 were observed, and the p-values for all interactions were greater than 0.05, indicating
217 robust results.

218

219 **DISUSSION**

220 Our results clarify that there is a significant linear relationship between the
221 triglyceride-glucose (TyG) index and *Helicobacter pylori* infection, which contributes
222 to the growing body of literature on the metabolic effects of infectious diseases.
223 Subgroup analysis shows that the relationship between the TyG index and
224 *Helicobacter pylori* infection is modulated by factors such as age, gender, blood
225 glucose levels, BMI, and chronic kidney disease (CKD), with no interactions found in
226 any subgroup, leading to robust results.

227 These previous findings are consistent with reports that metabolic variables have
228 differential impacts on infectious diseases, studying the role of metabolic health in the
229 outcomes of *H. pylori* infection. *Helicobacter pylori* infection and eradication can
230 selectively shape the metabolome and microbiome profiles of gastric lesions.
231 However, how these different metabolic pathways, including isopentanoic acid,
232 cholesterol, fatty acids, and phospholipids, specifically regulate the occurrence of
233 gastric cancer or affect the host's serum metabolism, thereby leading to the
234 development of metabolic-related diseases, remains largely unknown[33].

235 Our results are consistent with previous studies suggesting a potential link
236 between insulin resistance and the pathogenesis of *H. pylori* infection. You N, Chen Y
237 et al have indicated that *H. pylori* infection is an independent risk factor for increased
238 fasting plasma glucose (FPG) levels in non-diabetic (DM) individuals. Persistent *H.*
239 *pylori* infection leads to elevated levels of FPG[34].

240 *Helicobacter pylori* infection (HPI) is diagnosed more frequently in patients with
241 diabetes. Among them, insulin resistance in patients with type 1 diabetes (DMT1) is
242 associated with the accumulation of advanced glycation end products (AGEs) in the
243 skin and the progression of chronic complications[35]. Song provided evidence that
244 the eradication of *Helicobacter pylori* can improve glycemic control in patients with
245 type 2 diabetes (T2DM), which indirectly reflects the interaction between
246 *Helicobacter pylori* and diabetes[36].

247 It has also been discovered that diabetic patients with active *Helicobacter pylori*
248 infection require higher intensity of glycemic treatment to achieve comparable blood
249 sugar levels. Furthermore, the eradication of *Helicobacter pylori* has been shown to
250 reduce A1C levels, thereby improving glycemic control[37]. The results of a
251 meta-analysis suggest that there is a possibility of metabolic syndrome and insulin
252 resistance in individuals with *Helicobacter pylori* infection[15].

253 Research has found that the inflammatory response and inflammatory factors
254 produced during HP (*Helicobacter pylori*) infection are important etiological factors
255 for insulin resistance and metabolic syndrome (MS). The coexistence of long-term
256 chronic inflammation and immune dysfunction may be precipitating factors for HP
257 infection[38].

258 One possible mechanism is that inflammation associated with *Helicobacter pylori*
259 may also lead to increased insulin resistance, thereby increasing the risk of diabetes in
260 infected individuals. Additionally, the occurrence of skin diseases and
261 ophthalmological conditions has been associated with this microorganism. In this
262 context, this small review aims to collect major studies that link *Helicobacter pylori*

263 infection with extragastric diseases and to explore the main mechanisms that may
264 explain the role of *Helicobacter pylori* in these conditions[39].

265 Current research is focusing on the common pathogenic aspects between bacteria
266 and insulin resistance or autoimmunity, the role of bacterial infections in
267 cardiovascular risk, and whether infections worsen glycemic outcomes in diabetic
268 patients. However, studies in this field still need to ultimately assess and interpret the
269 potential relationship between *Helicobacter pylori* and diabetes. Some studies that
270 agree have reached opposite conclusions[40].

271 The TyG index, as a marker of insulin resistance, may affect the immune
272 system's ability to respond to *Helicobacter pylori*, potentially influencing the
273 efficiency of bacterial colonization or the host's susceptibility to infection-related
274 complications. The linear association we discovered adds to the complexity of
275 understanding this relationship and emphasizes the need for further research to dissect
276 the underlying biological mechanisms.

277 Our study highlights the importance of personalized approaches in managing *H.*
278 *pylori*-infected patients by demonstrating that the association is not consistent across
279 different levels of metabolic health.

280 The clinical significance of our study is substantial. Recognizing the linear
281 dynamics between the TyG index and *H. pylori* infection may help clinicians identify
282 individuals at high risk for infection or related complications. This could lead to
283 earlier interventions, tailored treatment strategies, and potentially improved prognosis
284 for patients with combined metabolic and infectious disease conditions. Our study
285 includes a larger sample size compared to previous similar studies, enhancing the
286 statistical power and generalizability of our findings. We specifically addressed the
287 nonlinearity between variables in our study, allowing for a more comprehensive
288 exploration of the association and providing a more accurate representation of the
289 relationship. As an observational study, we employed strict statistical adjustment
290 methods to minimize the impact of potential confounders, thus enhancing the internal
291 validity of our results. We considered the TyG index as both a continuous and a
292 categorical variable, reducing the chance of contingency in data analysis and
293 improving the robustness of our findings.

294 However, our study has limitations. The generalizability of our findings is limited
295 as the study subjects were restricted to the NHANES 1999-2000 cycle, which may
296 limit the universality and extrapolation of our findings to broader populations. We
297 excluded participants with missing data for *H. pylori* serology and covariates, so our
298 results may not apply to these specific groups. The cross-sectional design precludes
299 the establishment of causality, and the lack of longitudinal data limits our ability to
300 determine the directionality of the observed associations. Moreover, the mechanisms
301 by which *H. pylori* affects glycemic control are not yet certain and may require
302 further exploration through biological experiments. Future longitudinal studies are
303 needed to confirm our findings and explore the causal pathways involved.

304 In conclusion, our study indicates a linear relationship between the TyG index
305 and *H. pylori* infection that is influenced by various metabolic and demographic
306 factors. These insights pave the way for more detailed studies into the metabolic

307 factors affecting H. pylori etiology and may ultimately lead to more effective patient
308 management strategies.

309 **Author Contributions**

310 FW contributed to the conceptualization and design of the study, data curation, and
311 writing the original draft. ZJL played a significant role in methodology, formal
312 analysis, and investigation. LLY DY CGB was involved in the validation, data
313 curation, and analysis. provided resources, reviewed, and edited the manuscript. ZJL
314 XLB, who is also the corresponding author, oversaw the project administration,
315 supervised the study, and was responsible for funding acquisition. All authors have
316 read and agreed to the published version of the manuscript.

317 **ACKNOWLEDGE**

318 The authors thank all the staff members in our institution. We appreciate Dr. Jie
319 Liu of the Department of Vascular and Endovascular Surgery, Chinese PLA General
320 Hospital for statistics, study design consultations and editing the manuscript. During the
321 preparation of this work, we utilized AIGC for language polishing. Following the use
322 of this service, the author reviewed and edited the content as necessary, taking full
323 responsibility for the publication's content.

324 **FUNDING**

325 This work was supported by National Natural Science Foundation of China (Grant
326 No. 82373270), Guizhou Provincial Department of Science and Technology Natural
327 Science Foundation (No. Foundation-ZK[2022]), Guizhou Provincial Health
328 Commission Science and Technology Fund (No. gzwkj2023-135), and science
329 Foundation of 925th hospital (No. 2023[3]), (No. 2022[3/4])

330 **COMPETING INTERESTS**

331 The authors have no known conflicts of interest.

332

REFERENCE

333

334 1. Huang Q, Yin L, Liu Z, Wei M, Feng J, Huang Q, et al. Association of novel lipid
335 indicators with the risk of stroke among participants in Central China: a
336 population-based prospective study. *Front Endocrinol (Lausanne)*. 2023;14:1266552.

337 2. Zhou Y, Wang C, Che H, Cheng L, Zhu D, Rao C, et al. Association between the
338 triglyceride-glucose index and the risk of mortality among patients with chronic heart
339 failure: results from a retrospective cohort study in China. *Cardiovasc Diabetol*.
340 2023;22:171.

341 3. Zhang M, Zhang J, Xing Z. Association of TyG index with prostate-specific
342 antigen (PSA) in American men: results from NHANES, 2003-2010. *Ir J Med Sci*.
343 2023. <https://doi.org/10.1007/s11845-023-03431-5>.

344 4. Chen Y, Yang C, You N, Zhang J. Relationship between *Helicobacter pylori* and
345 glycated hemoglobin: a cohort study. *Front Cell Infect Microbiol*. 2023;13:1196338.

346 5. Polyzos SA, Papaefthymiou A, Douberis M, Mavridoglou G, Kountouras J.
347 *Helicobacter pylori* infection and diabetes mellitus. *Diabetes Metab Syndr*.
348 2021;15:845–6.

349 6. Liu Y, Shuai P, Chen W, Liu Y, Li D. Association between *Helicobacter pylori*
350 infection and metabolic syndrome and its components. *Front Endocrinol (Lausanne)*.
351 2023;14:1188487.

352 7. Muruaga EJ, Jones NL. *Helicobacter pylori* genetic variations: A driver of gastric
353 cancer progression? *Gastroenterology*. 2023;:S0016-5085(23)05226-5.

354 8. Luo S, Ru J, Khan Mirzaei M, Xue J, Peng X, Ralser A, et al. *Helicobacter pylori*
355 infection alters gut virome by expanding temperate phages linked to increased risk of
356 colorectal cancer. *Gut*. 2023;:gutjnl-2023-330362.

357 9. Gu J, He F, Clifford GM, Li M, Fan Z, Li X, et al. A systematic review and
358 meta-analysis on the relative and attributable risk of *Helicobacter pylori* infection and
359 cardia and non-cardia gastric cancer. *Expert Rev Mol Diagn*. 2023.
360 <https://doi.org/10.1080/14737159.2023.2277377>.

361 10. He J, Liu Y, Ouyang Q, Li R, Li J, Chen W, et al. *Helicobacter pylori* and
362 unignorable extragastric diseases: Mechanism and implications. *Front Microbiol*.
363 2022;13:972777.

364 11. Liuzzo G, Patrono C. *Helicobacter pylori* eradication as a gastroprotective strategy
365 in elderly aspirin-treated subjects: established facts and unanswered questions. *Eur*
366 *Heart J*. 2023;44:711–2.

367 12. Aramouni K, Assaf RK, Azar M, Jabbour K, Shaito A, Sahebkar A, et al.
368 Infection with *Helicobacter pylori* may predispose to atherosclerosis: role of

369 inflammation and thickening of intima-media of carotid arteries. *Front Pharmacol.*
370 2023;14:1285754.

371 13. Kim TJ, Lee H, Kang M, Kim JE, Choi Y-H, Min YW, et al. *Helicobacter pylori*
372 is associated with dyslipidemia but not with other risk factors of cardiovascular
373 disease. *Sci Rep.* 2016;6:38015.

374 14. You N, Chen Y, Yan X, Gu B, Wang J, Zhang J. Persistent *Helicobacter pylori*
375 infection leads to elevated fasting plasma glucose level: A retrospective cohort study
376 based on a nondiabetes Chinese population. *J Gastroenterol Hepatol.* 2023.
377 <https://doi.org/10.1111/jgh.16275>.

378 15. Azami M, Baradaran HR, Dehghanbanadaki H, Kohnepoushi P, Saed L,
379 Moradkhani A, et al. Association of *Helicobacter pylori* infection with the risk of
380 metabolic syndrome and insulin resistance: an updated systematic review and
381 meta-analysis. *Diabetol Metab Syndr.* 2021;13:145.

382 16. Tan L, Liu Y, Liu J, Zhang G, Liu Z, Shi R. Association between insulin
383 resistance and uncontrolled hypertension and arterial stiffness among US adults: a
384 population-based study. *Cardiovasc Diabetol.* 2023;22:311.

385 17. Lei T, Li M, Qian H, Yang J, Hu Y, Hua L. The Effect of Sleep on Metabolism,
386 Musculoskeletal Disease, and Mortality in the General US Population: Analysis of
387 Results From the National Health and Nutrition Examination Survey. *JMIR Public*
388 *Health Surveill.* 2023;9:e46385.

389 18. Lau DT, Ahluwalia N, Fryar CD, Kaufman M, Arispe IE, Paulose-Ram R. Data
390 Related to Social Determinants of Health Captured in the National Health and
391 Nutrition Examination Survey. *Am J Public Health.* 2023;113:1290–5.

392 19. Yin Y-H, Zhou S-Y, Lu D-F, Chen X-P, Liu B, Lu S, et al. Higher waist
393 circumference is associated with increased likelihood of female infertility: NHANES
394 2017-2020 results. *Front Endocrinol (Lausanne).* 2023;14:1216413.

395 20. Centers for Disease Control and Prevention. 2014. National health and nutrition
396 examination survey. http://www.cdc.gov/nchs/nhanes/about_nhanes.htm.

397 21. Chen W, Ding S, Tu J, Xiao G, Chen K, Zhang Y, et al. Association between the
398 insulin resistance marker TyG index and subsequent adverse long-term cardiovascular
399 events in young and middle-aged US adults based on obesity status. *Lipids Health*
400 *Dis.* 2023;22:65.

401 22. Xie J, Wang J, Zeng R, Xie Y. Association between *Helicobacter pylori* infection
402 and triglyceride levels: a nested cross-sectional study. *Front Endocrinol (Lausanne).*
403 2023;14:1220347.

404 23. Zhang K, Han Y, Gu F, Gu Z, Zhao J, Chen J, et al. Association between dietary

- 405 zinc intake and *Helicobacter pylori* seropositivity in US adults: National Health and
406 Nutrition Examination Survey. *Front Nutr.* 2023;10:1243908.
- 407 24. Wang J, Liu D, Xie Y. Association between *Helicobacter pylori* infection and
408 serum thyroid stimulating hormone in the National Health and Nutrition Examination
409 Survey 1999-2000. *Front Endocrinol (Lausanne).* 2022;13:1018267.
- 410 25. Meier HCS, Miller FW, Dinse GE, Weinberg CR, Cho CC, Parks CG.
411 *Helicobacter pylori* seropositivity is associated with antinuclear antibodies in US
412 adults, NHANES 1999-2000. *Epidemiol Infect.* 2020;148:e20.
- 413 26. Huang J, Xie C, Niu Z, He L, Li J. The relation between *Helicobacter pylori*
414 immunoglobulin G seropositivity and leukocyte telomere length in US adults from
415 NHANES 1999-2000. *Helicobacter.* 2020;25.
- 416 27. Song K, Park G, Lee HS, Lee M, Lee HI, Choi HS, et al. Comparison of the
417 Triglyceride Glucose Index and Modified Triglyceride Glucose Indices to Predict
418 Nonalcoholic Fatty Liver Disease in Youths. *J Pediatr.* 2022;242:79-85.e1.
- 419 28. Xue Y, Xu J, Li M, Gao Y. Potential screening indicators for early diagnosis of
420 NAFLD/MAFLD and liver fibrosis: Triglyceride glucose index-related parameters.
421 *Front Endocrinol (Lausanne).* 2022;13:951689.
- 422 29. Shi Y-Y, Zheng R, Cai J-J, Qian S-Z. The association between triglyceride
423 glucose index and depression: data from NHANES 2005-2018. *BMC Psychiatry.*
424 2021;21:267.
- 425 30. Chen Y, Segers S, Blaser MJ. Association between *Helicobacter pylori* and
426 mortality in the NHANES III study. *Gut.* 2013;62:1262–9.
- 427 31. Kimura H, Tanaka K, Saito H, Iwasaki T, Kazama S, Shimabukuro M, et al.
428 Impact of red blood cell distribution width-albumin ratio on prognosis of patients with
429 CKD. *Sci Rep.* 2023;13:15774.
- 430 32. Liu C-F, Chien L-W. Triglyceride glucose index and poor sleep patterns in
431 non-diabetic adults: Evidence from NHANES 2005-2016. *Front Nutr.*
432 2023;10:1051667.
- 433 33. Ye J, Feng T, Su L, Li J, Gong Y, Ma X. Interactions between *Helicobacter pylori*
434 infection and host metabolic homeostasis: A comprehensive review. *Helicobacter.*
435 2023;:e13030.
- 436 34. You N, Chen Y, Yan X, Gu B, Wang J, Zhang J. Persistent *Helicobacter pylori*
437 infection leads to elevated fasting plasma glucose level: A retrospective cohort study
438 based on a nondiabetes Chinese population. *J Gastroenterol Hepatol.* 2023.
439 <https://doi.org/10.1111/jgh.16275>.

- 440 35. Zawada AE, Naskręt D, Piłaciński S, Adamska A, Grzymisławski M, Eder P, et
441 al. Helicobacter pylori infection is associated with increased accumulation of
442 advanced glycation end products in the skin in patients with type 1 diabetes: A
443 preliminary study. *Adv Clin Exp Med*. 2023;32:1009–16.
- 444 36. Song X, Cai C, Jin Q, Chen X, Yu C. The efficacy of Helicobacter pylori
445 eradication in diabetics and its effect on glycemic control: A systematic review and
446 meta-analysis. *Helicobacter*. 2021;26:e12781.
- 447 37. Cheng K-P, Yang Y-J, Hung H-C, Lin C-H, Wu C-T, Hung M-H, et al.
448 Helicobacter pylori eradication improves glycemic control in type 2 diabetes patients
449 with asymptomatic active Helicobacter pylori infection. *J Diabetes Investig*.
450 2019;10:1092–101.
- 451 38. Xie Q, He Y, Zhou D, Jiang Y, Deng Y, Li R. Recent research progress on the
452 correlation between metabolic syndrome and Helicobacter pylori infection. *PeerJ*.
453 2023;11:e15755.
- 454 39. Santos MLC, de Brito BB, da Silva FAF, Sampaio MM, Marques HS, Oliveira E
455 Silva N, et al. Helicobacter pylori infection: Beyond gastric manifestations. *World J*
456 *Gastroenterol*. 2020;26:4076–93.
- 457 40. Valenzano M, Bisio A, Grassi G. Helicobacter pylori and diabetes mellitus: a
458 controversial relationship. *Minerva Endocrinol*. 2019;44:301–9.

Table 1: Baseline Characteristics of the Study Population: Comparison Between the Helicobacter pylori Seropositive and Seronegative Groups

Variables	Total (n = 3557)	HP seronegative (n = 2005)	HP seropositive (n = 1552)	P value	statistic
AGE, Mean ± SD	49.5 ± 18.5	47.0 ± 18.7	52.8 ± 17.6	< 0.001	88.631
Gender, n (%)				0.072	3.232
Male	1697 (47.7)	930 (46.4)	767 (49.4)		
Female	1860 (52.3)	1075 (53.6)	785 (50.6)		
Education (%)				< 0.001	292.905
Less than high school	619 (17.4)	157 (7.8)	462 (29.8)		
High school above	2938 (82.6)	1848 (92.2)	1090 (70.2)		
Race, n (%)				< 0.001	519.459
Mexican	1671 (47.0)	1271 (63.4)	400 (25.8)		
Other Hispanic	603 (17.0)	268 (13.4)	335 (21.6)		
non-hispanic white	961 (27.0)	323 (16.1)	638 (41.1)		
Non-Hispanic black	322 (9.1)	143 (7.1)	179 (11.5)		
High blood pressure (%)				< 0.001	48.994
Normal	1368 (38.5)	858 (42.8)	510 (32.9)		
pre-Hypertensive	1299 (36.5)	721 (36)	578 (37.2)		
hypertension	890 (25.0)	426 (21.2)	464 (29.9)		
own.housing, n (%)				< 0.001	40.596
No	735 (20.7)	338 (16.9)	397 (25.6)		
Yes	2822 (79.3)	1667 (83.1)	1155 (74.4)		
Alcohol behavior, n (%)				0.007	7.197
No	1166 (32.8)	620 (30.9)	546 (35.2)		
Yes	2391 (67.2)	1385 (69.1)	1006 (64.8)		
Smoke behavior, n (%)				0.016	8.268
Never	1854 (52.1)	1084 (54.1)	770 (49.6)		
Sometimes	739 (20.8)	388 (19.4)	351 (22.6)		
Everyday	964 (27.1)	533 (26.6)	431 (27.8)		
BMI.cut, n (%)				< 0.001	11.326
<25	1126 (31.7)	681 (34)	445 (28.7)		
>=25	2431 (68.3)	1324 (66)	1107 (71.3)		
Gastric illness, n (%)				0.679	0.172
No	3228 (90.8)	1816 (90.6)	1412 (91)		
Yes	329 (9.2)	189 (9.4)	140 (9)		
CRP,(mg/dL)	0.2 (0.1, 0.6)	0.2 (0.1, 0.6)	0.3 (0.1, 0.6)	< 0.001	13.433
CKD, n (%)				0.01	6.598
No	128 (3.6)	58 (2.9)	70 (4.5)		
Yes	3429 (96.4)	1947 (97.1)	1482 (95.5)		
Glucose, (mmol/L)	5.4 ± 2.0	5.2 ± 1.7	5.6 ± 2.3	< 0.001	34.907
Triglycerides, (mmol/L)	1.3 (0.9, 2.0)	1.3 (0.9, 1.9)	1.4 (1.0, 2.1)	< 0.001	22.559
TyG., Mean ± SD	5.8 ± 0.7	5.7 ± 0.6	5.8 ± 0.7	< 0.001	43.521

Other race/ethnicity includes all race/ethnicity other than Mexico-American, non-Hispanic white and black. CRP, C reactive protein; BMI, Body mass index. CKD, chronic kidney disease.T value is for continuous variables and X2 Value is for categorical variables. Bold represents statistically significant.Mean ± SD

Table 2 Univariate analysis of risk factor associated with Helicobacter pylori seropositivity.

Variable	OR(95%CI)	P-value
Age	1.02 (1.01~1.02)	<0.001
Sex		
Male	Ref.	
Female	0.89 (0.78~1.01)	0.072
Education		
Less than high school	Ref.	
High school above	0.2 (0.16~0.24)	<0.001
Race, n (%)		
Mexican	Ref.	
Other Hispanic	3.97 (3.26~4.83)	<0.001
non-hispanic white	6.28 (5.27~7.47)	<0.001
Non-Hispanic black	3.98 (3.11~5.09)	<0.001
own.housing		
No	Ref.	
Yes	1.71 (1.45~2.01)	<0.001
Alcohol behavior		
No	Ref.	
Yes	1.21 (1.05~1.4)	0.007
Smoke behavior, n (%)		
Never	Ref.	
Sometimes	1.27 (1.07~1.51)	0.006
Everyday	1.14 (0.97~1.33)	0.106
BMI, n (%)		
<25	Ref.	
>=25	1.28 (1.11~1.48)	0.001
Gastric illness, n (%)		
No	Ref.	
Yes	1.05 (0.83~1.32)	0.679
High blood pressure (%)		
Normal	Ref.	
pre-Hypertensive	1.35 (1.16~1.57)	<0.001
Hypertension	1.83 (1.54~2.17)	<0.001
CKD, n (%)		
No	Ref.	
Yes	0.63 (0.44~0.9)	0.011
CRP	1.06 (0.99~1.14)	0.115
TyG	1.4 (1.26~1.55)	<0.001

Table 3 Multivariate logistical regression for TyG on Helicobacter pylori seropositivity..

Variable	Model 0		Model1		Model2		Model3	
	OR(95% CI)	P value	OR(95% CI)	P value	OR(95% CI)	P value	OR(95% CI)	P value
TyG	1.4 (1.26~1.55)	<0.001	1.27 (1.14~1.41)	<0.001	1.17 (1.04~1.31)	0.01	1.18 (1.04~1.34)	0.008
Q1(<5.203)	1(Ref)		1(Ref)		1(Ref)		1(Ref)	
Q2(>=5.203,<5.553)	1.15 (0.93~1.42)	0.196	1 (0.81~1.25)	0.986	0.97 (0.76~1.23)	0.797	0.97 (0.76~1.24)	0.824
Q3(>=5.553,<5.86)	1.21 (0.98~1.49)	0.083	1.04 (0.84~1.29)	0.723	0.93 (0.73~1.18)	0.533	0.93 (0.73~1.19)	0.577
Q4(>=5.86,<6.249)	1.41 (1.14~1.75)	0.001	1.2 (0.96~1.49)	0.108	1.15 (0.9~1.47)	0.257	1.16 (0.9~1.49)	0.243
Q5(<=6.249)	1.91 (1.55~2.36)	<0.001	1.54 (1.23~1.91)	<0.001	1.31 (1.03~1.68)	0.031	1.33 (1.03~1.73)	0.028
P for trend		<0.001		<0.001		0.01		0.009

Model 0: No covariates were adjusted.

Model 1: Adjusted for Age, Gender.

Model 2: Adjusted for Age, Gender, Edu, Race, Own.housing, Alcohol, Smoke.

Model 3: Adjusted for Age, Gender, Edu, Race, Own.housing, Alcohol, Smoke, BMI, Gastric.illness, HBP, CKD, CRP.

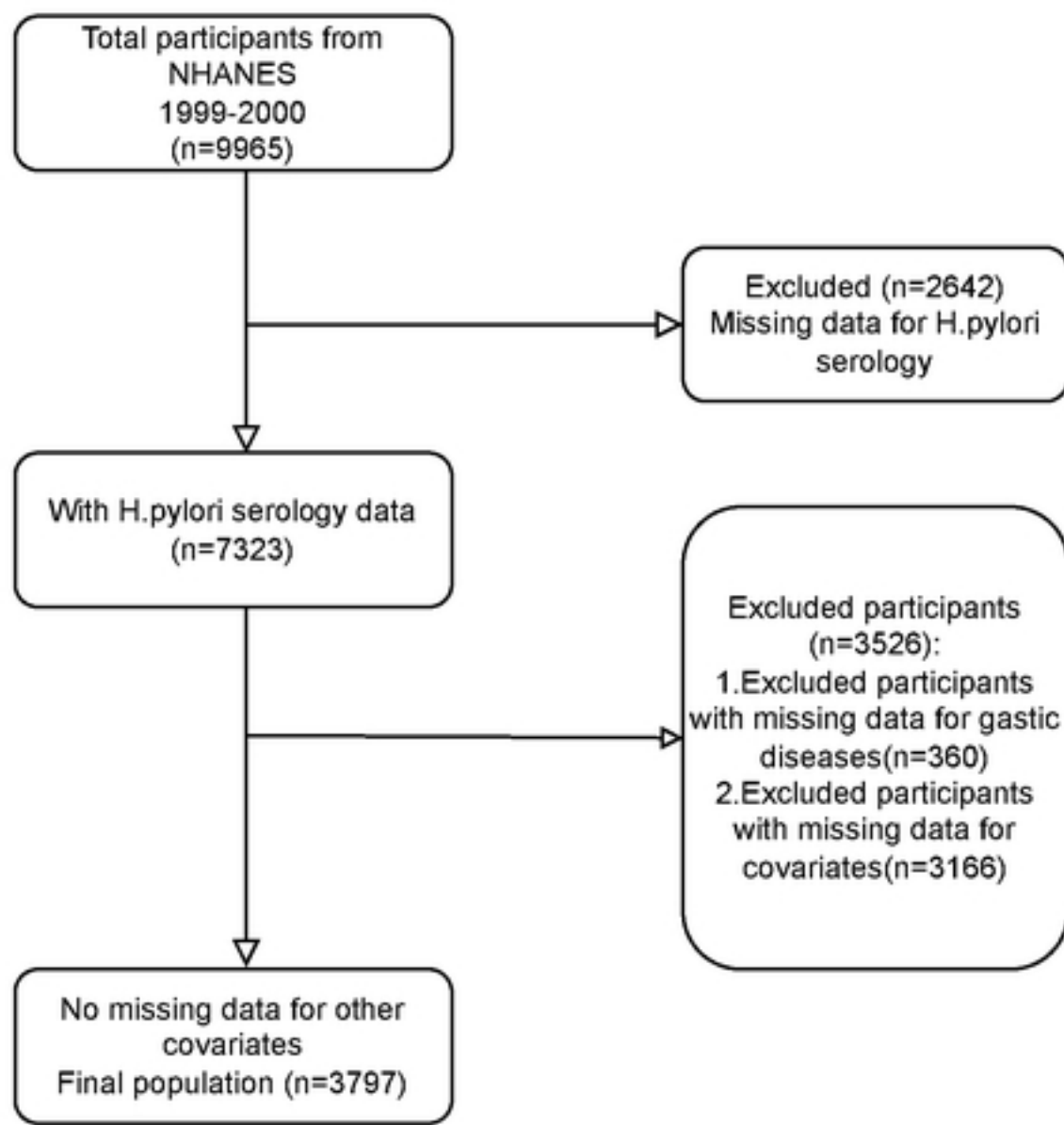


figure 1

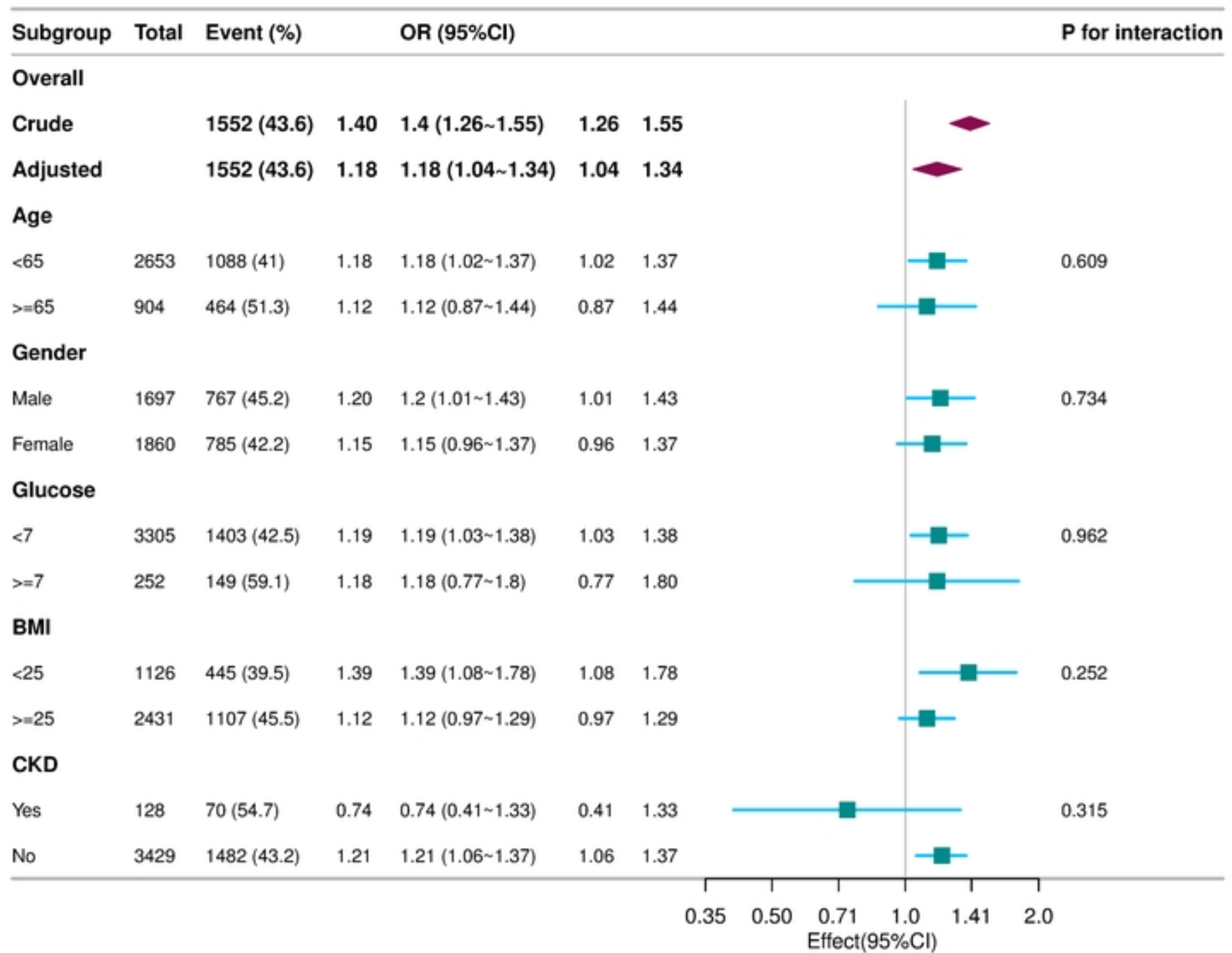


fig2