

1 **Long-term impact of pre-natal exposure to the Ukraine famine of 1932-1933 on adult type**  
2 **2 diabetes mellitus**

3  
4

5 L.H. Lumey<sup>1</sup>, Chihua Li<sup>2,3</sup>, Mykola Khalangot<sup>4,5</sup>, Nataliia Levchuk<sup>6,7</sup>, Oleh Wolowyna<sup>8</sup>

6  
7

1. Columbia University, New York

8 2. University of Michigan, Ann Arbor

9 3. Johns Hopkins University, Baltimore

10 4. Komisarenko Institute of Endocrinology and Metabolism, Kyiv

11 5. Shupyk National Healthcare University, Kyiv

12 6. Ptoukha Institute of Demography and Social Sciences, Kyiv

13 7. Max Planck Institute for Demographic Research, Rostock

14 8. University of North Carolina, Chapel Hill

15  
16

17  
18

19  
20

21 Correspondence:

22 L.H.Lumey, MD,

23 Department of Epidemiology,

24 Columbia University Mailman School of Public Health,

25 722 West 168th Street, Room 1617

26 New York, NY 10032, USA

27 Phone; +1 845 633-0013

28 Email: lumey@columbia.edu

29 **Abstract**

30 **Importance**

31 The long-term impacts of early-life famine exposure on Type 2 Diabetes Mellitus (T2DM) have  
32 been widely documented across countries, but it remains less clear what is the critical time  
33 window and if there is a dose-response between famine intensity and risk of T2DM.

34  
35 **Objective**

36 To establish the relation between prenatal famine exposure and adult Type 2 diabetes mellitus  
37 (T2DM).

38  
39 **Design**

40 A national cross-sectional study.

41  
42 **Setting**

43 The man-made Ukrainian Holodomor famine of 1932-1933.

44  
45 **Participants**

46 A total number of 128,225 T2DM cases diagnosed at age 40 or over from the national diabetes  
47 register 2000-2008 in Ukraine. The population at risk includes 10,186,016 Soviet Ukraine births  
48 (excepting one oblast/province) between 1930-1938 classified by month and year and oblast of  
49 birth.

50  
51 **Exposure**

52 Births born in January-June 1934 from oblasts that experienced extreme, severe, or significant  
53 famine in 1932-1933. Famine intensity was measured based on the excess mortality during the  
54 famine.

55  
56 **Main Outcomes and Measures**

57 T2DM diagnosis was based on WHO (1999) criteria.

58  
59 **Results**

60 We observed in univariate analysis a 1.8-fold increase in T2DM (OR 1.80; 95% CI 1.74-1.85)  
61 among individuals born in the first half-year of 1934 in regions with extreme, severe, or  
62 significant famine. We observed no increase among individuals born in regions with no famine.  
63 In multivariate analysis across regions and adjusting for season of birth we observed a larger  
64 than 2-fold increase (OR 2.21; 95% CI 2.00-2.45). There was a dose-response by famine  
65 intensity, with ORs increasing from 1.94 to 2.39 across regions. The pattern was similar in men  
66 and women.

67  
68 **Conclusions and Relevance**

69 Births in the first half-year of 1934 were conceived at the height of the Ukraine famine in 1933.  
70 This relation for T2DM outcomes points to early gestation as a critical time window relating  
71 maternal nutrition in pregnancy to offspring health in later life. Further studies of biological  
72 mechanisms should focus on this time window for which changes in DNA methylation and later  
73 body size have also been observed.

74 **Key Points**

75 **Question**

76 What is the critical time window for early-life famine exposure on Type 2 Diabetes Mellitus  
77 (T2DM)? Is there any dose-response relationship between early-life famine exposure and  
78 T2DM?

79

80 **Findings**

81 We found an increased risk of T2DM (Odds Ratio 2.21; 95% CI 2.00-2.45) among individuals  
82 born during the first half-year of 1934. A clear dose-response relationship was observed using  
83 excess mortality as a measure of famine intensity.

84

85 **Meaning**

86 Early gestation is a critical time window relating maternal undernutrition in pregnancy to  
87 offspring health in later life.

## 88 INTRODUCTION

89 Russia's deliberate war strategy in Ukraine has disrupted agriculture and food storage and  
90 distribution systems to hinder food supplies to the population, with consequences extending  
91 beyond Ukraine.<sup>1,2</sup> The war has created an immediate humanitarian crisis of catastrophic  
92 proportions with uncertain long-term health effects.<sup>1</sup> In 1932-1933, Ukrainian food supplies were  
93 also deliberately obstructed by Soviet interventions, leading to about 4 million excess deaths in  
94 the short-term.<sup>3</sup> This famine in Ukraine is called Holodomor (death by starvation) to underline  
95 these events. We report on the long-term impact of the Holodomor on Type 2 Diabetes Mellitus  
96 (T2DM) cases diagnosed seven decades after prenatal famine exposure.

97  
98 To study long-term health effects of early famine, large and well-defined birth cohorts are  
99 needed with significant variations in intensity of famine exposure.<sup>4,5</sup> In addition, health outcomes  
100 need to be documented using standardized measures. The Ukraine setting provides an unusual  
101 opportunity to investigate this question because the famine was concentrated in a six-month  
102 period in early 1933, it showed extreme variations in intensity across oblasts (provinces), and  
103 adult outcomes were assembled in a national diabetes registry without consideration of place and  
104 date of birth. For T2DM in later life, a regional study of the Ukraine famine together with local  
105 studies of the Dutch Famine of 1944-45, the Chinese Famine of 1959-61 and three famines in  
106 20th century Austria all suggest a relation with prenatal nutrition.<sup>6-11</sup> We previously reported a  
107 1.5-fold increase in T2DM in Ukraine among men and women born in four oblasts with extreme  
108 famine and a 1.3-fold increase in three oblasts with severe famine.<sup>9</sup> As potential limitations we  
109 noted that the population at risk for T2DM was defined by survivors included in the 2001  
110 Ukraine census and that the study covered only nine out of 24 oblasts.

111  
112 Three improvements in this study allow for a more definitive estimate of the relation between  
113 early famine timing and T2DM. First, we identify the study population at birth rather than from  
114 survivors included in the census. Second, we expand the study to cover births in all but one of 24  
115 Ukraine oblasts instead of being limited to nine as before. Third, we now estimate famine  
116 intensity at the oblast level using previously unavailable population reconstructions of famine  
117 related mortality. As before, we analyze T2DM outcomes by month of birth to establish critical  
118 time windows for early life famine exposure in relation to later health.

119  
120 **METHODS**

121 We used three variables to assess adult T2DM risk in relation to early famine exposure.  
122 First, the size of the population at risk as study denominator; second, the number of T2DM cases  
123 in later life as the study numerator; and third, excess mortality as an indicator of the level of  
124 famine intensity. These parameters were estimated for specific geographical units that show wide  
125 variations in the timing and intensity of famine exposure. We then examined potential dose-  
126 response relations between the level of prenatal famine in different periods of gestation and adult  
127 T2DM.

128  
129 Ukraine is currently composed of 24 oblasts (provinces) and the Autonomous Republic of  
130 Crimea, annexed by Russia in 2014. Seventeen of these oblasts cover what used to be Soviet  
131 Ukraine and they show significant variation in the degree of famine exposure in 1932-1933.  
132 These oblasts were ordered in three groups (with significant, severe, or extreme famine)  
133 according to the level of famine exposure as determined by excess mortality during the famine.

134 The remaining seven oblasts cover what used to be Polish, Romanian, or Czech territory at the  
135 time of the famine and had no famine exposure. These oblasts were annexed by Soviet Ukraine  
136 after WWII. Crimea was omitted because it was not part of Soviet Ukraine during the  
137 Holodomor. Zaporizhzhya oblast was omitted because of incomplete data.

138

### 139 **Population reconstruction to estimate excess deaths and actual births**

140 Excess mortality is defined as the difference between the actual number of deaths during the  
141 famine period and the estimated number of deaths during the same period had there been no  
142 famine. The actual number of deaths during the Holodomor was much higher than the number of  
143 registered deaths. This requires an adjustment of registered deaths, especially in 1933.<sup>3</sup> To assess  
144 estimated deaths had there been no famine, reliable estimates of mortality levels before and after  
145 the famine are needed. Elements for making these estimates are provided by the methodology of  
146 population reconstruction. This methodology was also used to estimate numbers of monthly  
147 births by oblast and sex from 1930 to 1938.

148

### 149 **Type 2 diabetes mellitus assessment**

150 To ascertain T2DM outcomes among the populations at risk defined by sex, month and year  
151 of birth 1930-1938, and oblast of residence, we identified all T2DM cases included in the  
152 national Ukraine diabetes register (Komisarenko Institute of Endocrinology and Metabolism,  
153 Kyiv) for individuals born in Ukraine between 1930-1938. The register was created in 2000  
154 and last updated in 2008. Reports by primary care physicians for diabetics are the primary  
155 data source for the register. T2DM diagnosis was based on WHO (1999) criteria.<sup>12</sup> To  
156 minimize bias from Type One Juvenile Onset Diabetes contamination, we restricted cases to the

157 141,012 individuals in the registry diagnosed with T2DM at age 40 or over. For 12,787  
158 individuals (9.1%), birth month was unknown, leaving 128,225 cases for further analysis.

159

## 160 **Famine intensity**

161 Prior to data analysis, the 17 oblasts were grouped into three categories by their excess  
162 mortality: a) extreme famine (212 - 243 losses/1,000 population): Poltava, Cherkasy, and  
163 Kyiv; b) severe famine (97 - 161 losses/1,000): Vinnytsia, Zhytomyr, Kirovohrad, Sumy,  
164 Kharkiv, Kherson, Mykolaiv, Odesa, and Dnipropetrovsk; and c) significant famine (47 - 94  
165 losses/1,000): Chernihiv, Khmelnytskyi, Luhansk, and Donetsk. The seven oblasts of Western  
166 Ukraine were not exposed to famine. The map shows great variations in the famine intensity  
167 across Ukraine, from 47 excess deaths per 1,000 population in Donetsk oblast to 243 excess  
168 deaths in Poltava oblast (**Figure 1**). The number of births in the first half year of 1934, nine  
169 months after the famine, in the regions with extreme, severe, significant, and no famine, was  
170 22%, 32%, 46%, and 97% respectively compared to that during pre-famine periods. Therefore,  
171 famine-related changes in mortality were followed by proportional changes in fertility nine  
172 months later.

173

174

## 175 **Study conduct**

176 The use of anonymized data was approved by the institutional review board of the  
177 Komisarenko Institute of Endocrinology and Metabolism, Kyiv, Ukraine, and the need for  
178 informed consent for the purpose of this study was waived.

179

## 180 **Statistical analysis**

181 We estimated long-term famine effects using a Difference-in-Differences approach to  
182 capture interactions of oblasts and month of birth over time.<sup>13,14</sup> As noted, the place  
183 classification identifies four region groups: oblasts with extreme, severe, significant or no  
184 famine losses. We examined differences in discrete outcomes (the odds of T2DM) on a  
185 multiplicative scale in logistic regression models. We carried out exploratory analysis as  
186 outlined in **Appendix** and identified a peak increase in T2D odds for births between  
187 January-June 1934 in famine exposed oblasts.

188  
189 We then also combined all region groups to estimate the T2DM odds associated with births  
190 in extreme, severe, and significant famine regions as any famine exposure relative to births  
191 in no famine regions. We modeled T2DM as a function of region, year of birth, and season  
192 of birth and their interactions first for men and women separately and then combined,  
193 adjusting for sex.

194  
195 In sensitivity analyses, we examined potential changes in the odds for T2DM using as  
196 controls only pre-famine births or only post-famine births or combining the two groups. We  
197 further conducted a meta-regression to integrate associations between famine intensity and T2D  
198 risk at the oblast level and the regional level.

199

## 200 **RESULTS**

201 Our study population at risk for T2DM includes the 10,186,016 Soviet Ukraine births in the  
202 years 1930-38 outside of Zaporizhzhya. 51.8% of births were men and 48.2% were women.



203 14.5% of the population was born in regions with extreme famine, 38.8% in regions with  
204 severe famine, 22.2% in regions with significant famine, and 24.4% in regions with no famine  
205 (**Table 1**). Study outcomes include the 128,225 T2DM patients from the national T2DM  
206 registry 2000-2008 who were born between 1930-38. Information on births and T2DM cases  
207 classified by sex, half-year and year of birth, and by region of famine intensity is provided  
208 in **Appendix Supplementary Table 1**.

209

### 210 **Exploratory analysis to identify critical time window**

211 In exploratory analyses as described in **Appendix** T2DM prevalence showed the strongest  
212 increase among births in the first half-year of 1934. The increase was not seen among births  
213 in any of the months before or after. Specifically, there was no adult T2DM increase among  
214 individuals exposed to famine in the first year of life. Stratification by region of birth shows a  
215 dose-response relation, with the larger T2DM increase in regions exposed to more severe famine  
216 in 1933 (**Figure 2**).

217

### 218 **T2DM increase in selected critical time window**

219 Within regions of different famine intensity, births in January-June 1934 in regions with  
220 extreme famine showed a 2.15-fold increase in T2DM, in regions with severe famine a 1.93-  
221 fold increase, and in regions with significant famine a 1.48-fold increase relative to the pre-  
222 of post-famine births in the same region. Regions with no famine showed no T2DM increase  
223 compared to time-controls. Births after any famine exposure (combining extreme, severe,  
224 and significant regions) showed a 1.80-fold increase (95% CI: 1.74-1.85) in T2DM relative  
225 to unexposed controls. Findings in men and women were similar (**Table 1, upper panel**).

226  
227 Comparing famine births to unexposed controls in multivariable analysis, births in regions  
228 with any famine exposure (extreme, severe, and significant famine combined) showed a  
229 2.21-fold increase (95% CI: 2.00-2.45) in T2DM prevalence. Within the any famine  
230 exposure group, births in regions with extreme and severe famine showed a 2.39- and 2.38-  
231 fold increase respectively and births in regions with significant famine a 1.94-fold increase  
232 relative to births in regions with no famine. Again, men and women showed similar findings  
233 (**Table 1, lower panel**).

#### 234 235 **Sensitivity analysis**

236 Effect estimates did not differ using either pre-famine or post-famine births as controls and  
237 the groups were combined in final analysis. The relation between T2DM outcomes in each  
238 of the 17 oblasts and Western Ukraine in relation to excess mortality in 1933 is shown in  
239 **Figure 3**. The meta-regression shows a consistent trend at the oblast and at the regional  
240 level comparing famine intensity in early gestation and later T2DM.

#### 241 242 **DISCUSSION**

243 Our findings show a larger than 2-fold increase in the odds of developing T2DM in later life in  
244 men and women born in famine exposed provinces in Ukraine in early 1934 (OR 2.21; 95% CI:  
245 2.00-2.45). Stratification by level of famine severity shows a dose-response relation. These births  
246 were conceived in the 6-month period around June 1933 when famine mortality was at its  
247 highest. The T2DM increase in later life is therefore related to famine exposure in early  
248 gestation. No T2DM increase was seen among infants exposed to famine in mid or late gestation

249 or in the first years of life. Outcomes in men and women were largely overlapping but are  
250 reported by sex and adjusted for sex for completeness.

251  
252 The 2-fold T2DM increase is higher than the 1.5-fold increase reported in 2015 by some of us in  
253 a previous Ukraine study limited to nine selected oblasts.<sup>9</sup> As an important limitation, the study  
254 population at the time was defined by individuals included in the 2001 national Census of  
255 Ukraine. The previous study was further limited to births in an opportunity sample of the nine  
256 Ukraine provinces for which data were then available. Our nationwide study including 23 out of  
257 the 24 oblasts avoids potential biases related to the selection of oblasts.

258  
259 The well-defined temporal relationship between Holodomor births and adult T2DM emerges in  
260 part from the dynamics of the Ukraine famine. The Holodomor far exceeded other major famines  
261 in terms of its intensity, with an excess mortality reaching 140/1,000 overall and exceeding  
262 200/1,000 in some oblasts. It resulted in 4 million excess deaths. In the Chinese famine of 1959-  
263 61, the largest famine of modern times, with an estimated 30 million excess deaths, national  
264 mortality did not exceed 25/1,000 but a much larger population was affected.<sup>15</sup> The Holodomor  
265 losses were concentrated between January-June 1933 (for Mortality Surge see **Appendix**) while  
266 in China the famine losses were spread over several years. The Ukraine famine characteristics  
267 therefore allow for unusual specificity in defining the timing of exposure.

268  
269 The assembly of Ukraine reconstructed births between 1930-38 as study denominator for the  
270 population at T2DM risk overcomes limitations associated with the previous use of the 2001  
271 Census population for this purpose. The reconstructed births include 10.2m individuals of which

272 52% were male. The 2001 Census population for births between 1930-38 includes 3.6m  
273 individuals of which 40% were male. This indicates that 27% of men and 43% of women of the  
274 birth cohorts were no longer represented in the census, either because they were no longer alive  
275 or because of other reasons. These losses could give rise to multiple biases of unknown  
276 magnitude and direction, including from premature deaths related to T2DM or other conditions.  
277 Our observations on cohort survival are in agreement with the 27% male and 49% female  
278 survival rates seen in Ukrainian cohort life tables for 1932-1933 births.<sup>16</sup>

279  
280 With regard to classifying famine severity experienced in early life, the meta-regression of  
281 famine intensity and later life T2DM based on oblast level findings (**Figure 3**) confirms the  
282 suitability of our pre-study arrangement of oblasts in four grouped categories (extreme,  
283 severe, significant, or no famine exposure) (**Table 1**). While there is variation in the relation  
284 between oblast famine intensity and later T2DM in individuals, the overall picture shows a  
285 robust association between famine intensity and later life T2DM. We note that the T2DM  
286 association in oblasts exposed to extreme or severe famine shows considerable overlap and  
287 that these categories could be merged without loss of information. As discussed below, we  
288 have no indications that measurement errors of famine intensity or diabetes prevalence  
289 differed by oblast.

290

### 291 **Strengths and limitations**

292 Among the strengths of our study we mention the successful assembly of all pre-famine, famine,  
293 and post-famine monthly births between the years 1930-38 in Ukraine oblasts to define  
294 populations at risk; the famine exposure defined by place by the multi-level classification of

295 famine severity at the oblast and regional level; the unexposed place controls provided by  
296 Western Ukraine oblasts that were not part of Soviet Ukraine during the famine; the famine  
297 exposure defined in time by specific characteristics of this man-made famine that resulted in  
298 extreme human losses condensed in a 6-month time period; and the famine outcomes ascertained  
299 nationwide through the 2000-08 Ukraine national diabetes register after a long follow-up period.

300  
301 We also note some limitations. First, famine exposure was estimated at the province level as  
302 measures of famine exposure at the individual level are not available. Second, T2DM cases in  
303 the national register were reported by oblast of current residence. And third, the diabetes register  
304 cannot be used to reliably determine T2DM prevalence in Ukraine because cases are  
305 underreported. We discuss the potential impact of these limitations in **Appendix**.

306  
307 More generally, the study cannot exclude potential confounding by selected lifestyle  
308 characteristics or behaviors. As an example, we have no information on income, education, or  
309 dietary habits that could drive T2D risk and act as potential mediators of T2D risk. And  
310 information on being overweight or obese which could be an important factor in determining  
311 diabetes is not available.<sup>6,17</sup> Any of the above if significantly different in births between January  
312 and July 1934 in famine affected areas could be a potential threat to the study's validity.

313

#### 314 **In search of mechanisms**

315 To date, studies in humans have only been able to provide a general direction regarding possible  
316 mechanisms related to early gestation famine exposure. In temporal order these are reflected in  
317 selective survival of fetuses,<sup>18</sup> DNA methylation changes at the imprinted IgF2 gene<sup>19</sup> or

318 candidate genes involved in metabolic disease,<sup>5,20-22</sup> increased overweight in young adults,  
319 increased T2DM in middle age, and increased mortality through age 65.<sup>6,13,23</sup> Further exploration  
320 will likely require experimental studies in animals to examine specific hypotheses.

321

### 322 **Implications of findings, also for current situation in Ukraine**

323 The current Russian war against Ukraine has generated both immediate and far-reaching  
324 implications on global food security, particularly affecting some countries in Africa and Middle  
325 East which heavily depend on food imports from Ukraine and Russia.<sup>24</sup> While the issue of food  
326 scarcity was already a persistent concern in these countries, the Russian invasion of Ukraine has  
327 substantially exacerbated this critical challenge and could lead to an increase in famine-related  
328 deaths and long-term adverse health outcomes.

329 **ACKNOWLEDGEMENTS**

330 Funding provided by the Ukraine State complex program Diabetes Mellitus, project number  
331 0106U000844. LHL and OW received support from the Holodomor Research and Education  
332 Consortium in Canada. LHL received support from a NIDI-NIAS Fellowship of the Royal  
333 Netherlands Academy of Sciences and from grants R01 AG028593 (PI: Lumey) and R01  
334 AG06687 (MPIs: Lumey and Belsky) National Institute of Aging, National Institutes of Health.  
335 We thank Dr. Vitaliy Gurianov (Bohomolets National Medical University, Kyiv, Ukraine) for  
336 statistical advice.

## 337 References

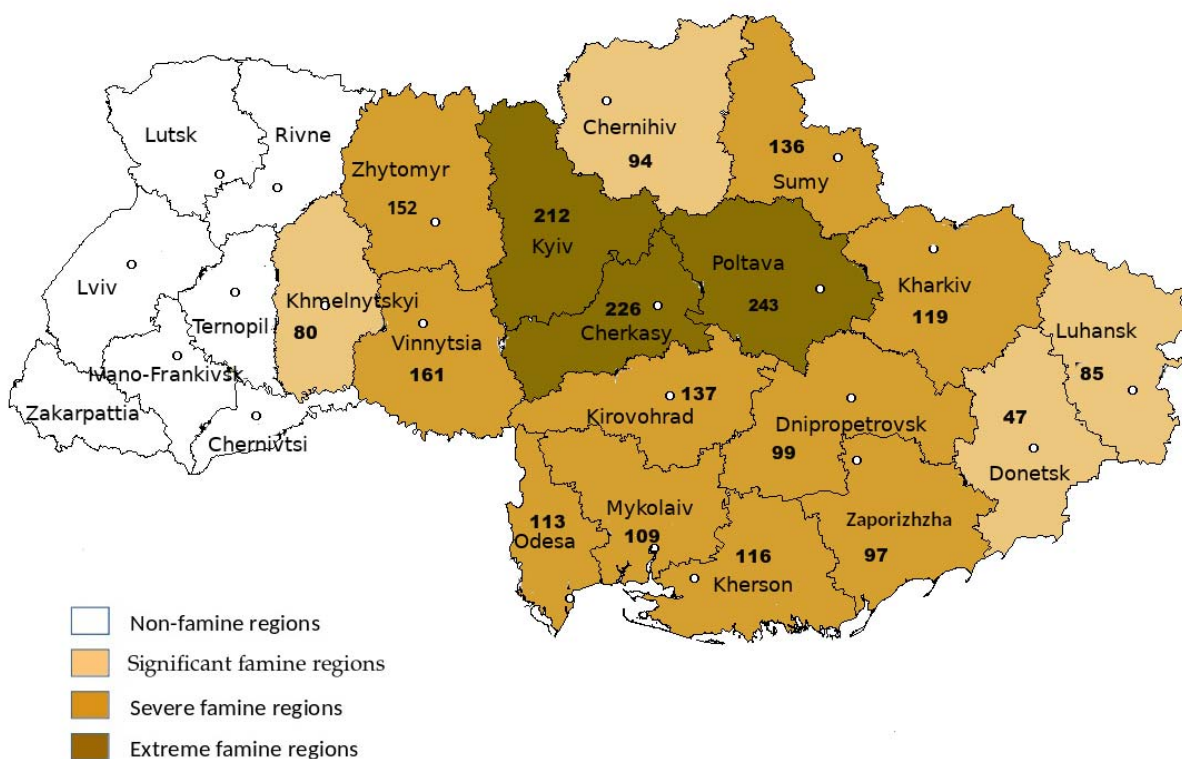
338

- 339 1. Fontanarosa PB, Flanagin A, Golub RM. Catastrophic Health Consequences of the War  
340 in Ukraine. *JAMA* 2022; **327**(16): 1549-50.
- 341 2. Levy BS, Leaning J. Russia's War in Ukraine - The Devastation of Health and Human  
342 Rights. *N Engl J Med* 2022; **387**(2): 102-5.
- 343 3. Rudnytskyi O, Levchuk N, Wolowyna O, Shevchuk P, Kovbasiuk A. Demography of a  
344 man-made human catastrophe: The case of massive famine in Ukraine 1932-1933. *Can Stud*  
345 *Popul* 2015; **42**(1-2): 53-80.
- 346 4. Lumey LH, Stein AD, Susser E. Prenatal famine and adult health. *Annu Rev Public*  
347 *Health* 2011; **32**: 237-62.
- 348 5. Li C, Tobi EW, Heijmans BT, Lumey LH. The effect of the Chinese Famine on type 2  
349 diabetes mellitus epidemics. *Nat Rev Endocrinol* 2019; **15**(6): 313-4.
- 350 6. Lumey L, Li C, Stein A, Tobi E, Heijmans B. Adult glucose dysregulation after severe  
351 prenatal food restriction in the Dutch Hunger Winter: Only partial mediation by current body size.  
352 *J Dev Orig Health Dis* 2017; **8**: S53.
- 353 7. Ravelli AC, van der Meulen JH, Michels RP, et al. Glucose tolerance in adults after  
354 prenatal exposure to famine. *Lancet* 1998; **351**(9097): 173-7.
- 355 8. Li C, Lumey LH. Early-Life Exposure to the Chinese Famine of 1959-1961 and Type 2  
356 Diabetes in Adulthood: A Systematic Review and Meta-Analysis. *Nutrients* 2022; **14**(14).
- 357 9. Lumey LH, Khalangot MD, Vaiserman AM. Association between type 2 diabetes and  
358 prenatal exposure to the Ukraine famine of 1932-33: a retrospective cohort study. *Lancet*  
359 *Diabetes Endocrinol* 2015; **3**(10): 787-94.
- 360 10. Kaleta M, Leutner M, Thurner S, et al. Diabetes incidence in Austria: The role of famines  
361 on diabetes and related NCDs. *Heliyon* 2023; **9**(7): e17570.
- 362 11. Thurner S, Klimek P, Szell M, et al. Quantification of excess risk for diabetes for those  
363 born in times of hunger, in an entire population of a nation, across a century. *Proc Natl Acad Sci*  
364 *U S A* 2013; **110**(12): 4703-7.
- 365 12. World Health O. Definition, diagnosis and classification of diabetes mellitus and its  
366 complications : report of a WHO consultation. Part 1, Diagnosis and classification of diabetes  
367 mellitus. Geneva: World Health Organization; 1999.
- 368 13. Lumey LH, Ekamper P, Bijwaard G, Conti G, van Poppel F. Overweight and obesity at  
369 age 19 after pre-natal famine exposure. *Int J Obes (Lond)* 2021; **45**(8): 1668-76.
- 370 14. Li C, Lumey LH. Studies into severe famine in early life and diabetes in adulthood: the  
371 need to control for differences in participant age and location. *Diabetologia* 2017; **60**(7): 1359-  
372 60.
- 373 15. Li C, Lumey LH. Exposure to the Chinese famine of 1959-61 in early life and long-term  
374 health conditions: a systematic review and meta-analysis. *Int J Epidemiol* 2017; **46**(4): 1157-70.
- 375 16. Levchuk N. Long-Term Trends in Period and Cohort Life Expectancies in Ukraine (in  
376 Ukrainian). *Demogr Soc Econ* 2016; (1): 80-92.
- 377 17. Li C, Lumey LH. Interaction or mediation by adult obesity of the relation between fetal  
378 famine exposure and type 2 diabetes? *Int J Epidemiol* 2019; **48**(2): 654-6.
- 379 18. Tobi EW, van den Heuvel J, Zwaan BJ, Lumey LH, Heijmans BT, Uller T. Selective  
380 Survival of Embryos Can Explain DNA Methylation Signatures of Adverse Prenatal  
381 Environments. *Cell Rep* 2018; **25**(10): 2660-7.e4.
- 382 19. Heijmans BT, Tobi EW, Stein AD, et al. Persistent epigenetic differences associated with  
383 prenatal exposure to famine in humans. *Proc Natl Acad Sci U S A* 2008; **105**(44): 17046-9.
- 384 20. Tobi EW, Slieker RC, Luijk R, et al. DNA methylation as a mediator of the association  
385 between prenatal adversity and risk factors for metabolic disease in adulthood. *Sci Adv* 2018;  
386 **4**(1): eaao4364.
- 387 21. Tobi EW, Goeman JJ, Monajemi R, et al. DNA methylation signatures link prenatal

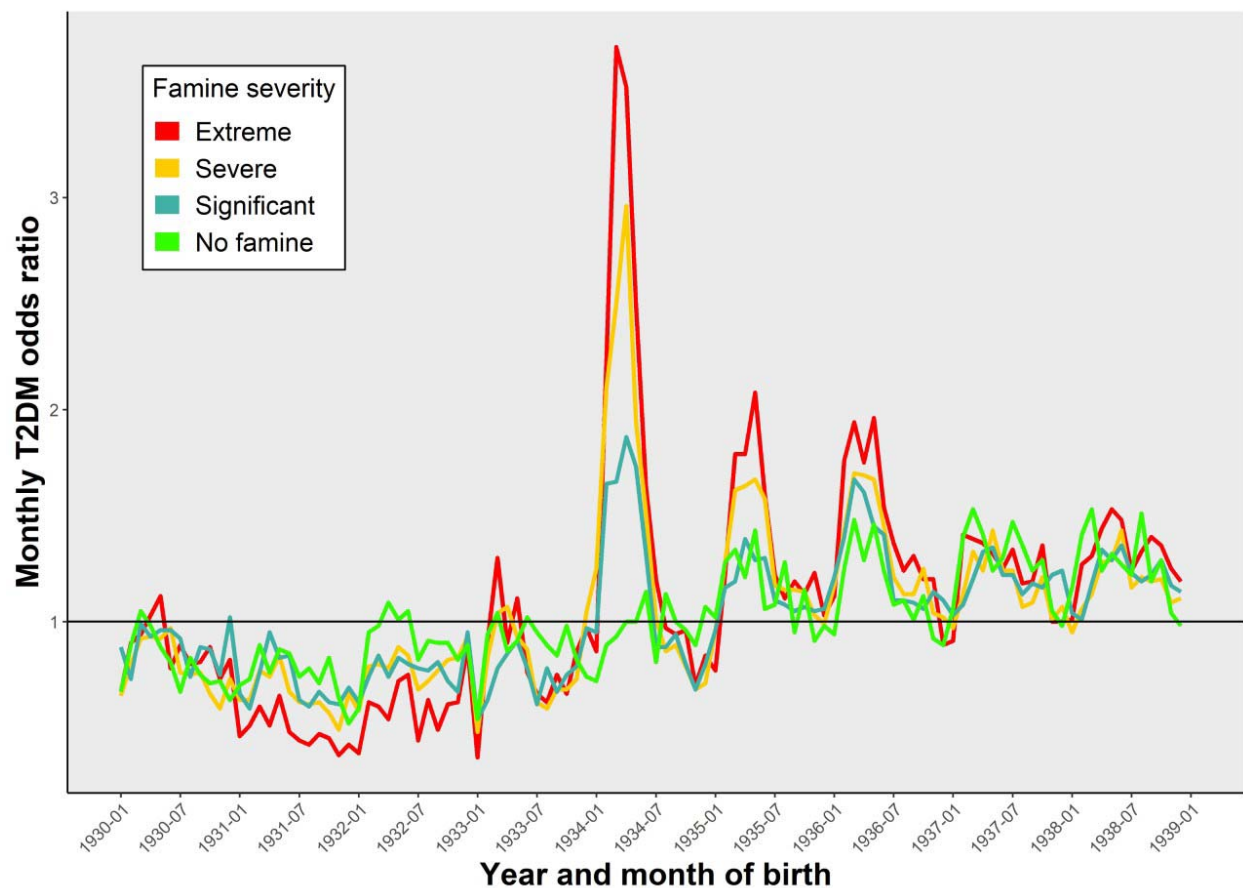


- 388 famine exposure to growth and metabolism. *Nat Commun* 2014; **5**: 5592.  
389 22. Li C, Tobi EW, Heijmans BT, Lumey LH. Reply to 'Chinese famine and the diabetes  
390 mellitus epidemic'. *Nat Rev Endocrinol* 2020; **16**(2): 123-4.  
391 23. Ekamper P, van Poppel F, Stein AD, Bijwaard GE, Lumey LH. Prenatal famine exposure  
392 and adult mortality from cancer, cardiovascular disease, and other causes through age 63  
393 years. *Am J Epidemiol* 2015; **181**(4): 271-9.  
394 24. Larkin H. Conflict and Climate Collide to Create an Acute Hunger Crisis for an  
395 Unprecedented 345 Million People. *JAMA* 2022; **328**(22): 2198-200.  
396

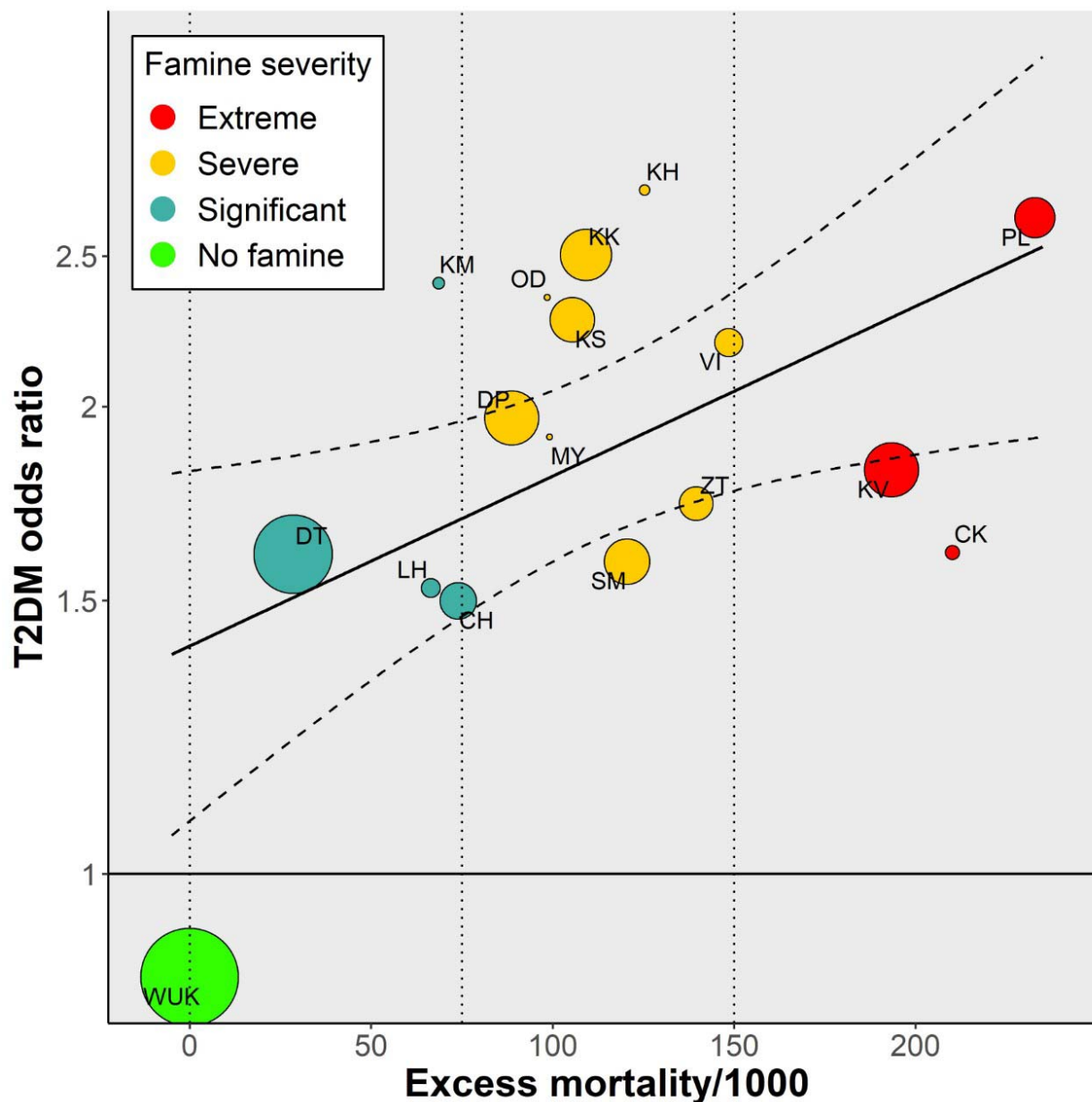
**Figure 1. Regional distribution of 1932-1933 famine losses (per 1,000 population) by level of famine: significant (47 to 94), severe (97 to 161) and extreme (212 to 243)**



**Figure 2. Odds of Type 2 diabetes mellitus (T2DM) among births in any specific month and year from January 1930 to December 1938 relative to births in the same month and region but in different years**



**Figure 3. Association between famine intensity and T2D risk at the oblast level and with oblasts color coded by famine severity at the group level**



The size of each dot is proportional to the weight of the study in terms of population size. The dashed colored lines represent the 95% CI for the meta-regression model.

Oblasts with extreme famine: CK:Cherkasy, PL:Poltava, and KV:Kyiv; with severe famine: DP:Dnipropetrovsk, KK:Kharkiv, KS:Kherson, KH:Kirovohrad, MY:Mykolaiv, OD:Odesa, SM:Sumy, VT:Vinnytsia and ZT:Zhytomyr; with significant famine: CH:Chernihiv, DT: Donetsk, KM:Khmelnyskyi, and LH:Luhansk; with no famine: WUK:Western Ukraine.

**Table 1. Odds of Type 2 diabetes mellitus (T2DM) 2000-2008  
Reconstructed births in January-June 1934 vs all other Ukraine births in 1930-1938  
by regional intensity of Ukrainian famine 1932-1933  
Odds Ratios and 95% Confidence Intervals**

<b>Diabetes Univariate analysis within birth region#</b>						
128,225 T2DM cases (Men n=38,790 and Women n=89,435)						
Births in 1st half year 1934 (January-June) vs all other births 1930-1938						
	Men n=5,272,731		Women n=4,913,285		All n=10,186,016 (adj. for sex)	
	OR	95% CI	OR	95% CI	OR	95% CI
<b>Region of Birth</b>						
Extreme Famine n=1,478,456	2.16	1.89-2.47	2.16	1.97-2.37	2.15	1.99-2.32
Severe Famine n=3,955,120	1.98	1.83-2.14	1.92	1.82-2.03	1.93	1.85-2.02
Significant Famine n=2,265,136	1.58	1.41-1.77	1.45	1.35-1.56	1.48	1.40-1.58
No Famine n=2,487,304	0.94	0.85-1.04	0.92	0.86-0.99	0.93	0.87-0.98
Any Famine n=7,698,712	1.85	1.75-1.96	1.78	1.71-1.85	1.80	1.74-1.85
<b>Multivariable Analysis across birth regions*</b>						
	Men n=5,272,731		Women n=4,913,285		All n=10,186,016 (adj. for sex)	
	OR	95% CI	OR	95% CI	OR	95% CI
<b>Region of Birth</b>						
Extreme Famine n=1,478,456	2.45	1.93-3.11	2.37	2.00-2.80	2.39	2.09-2.74
Severe Famine n=3,955,120	2.31	1.91-2.79	2.41	2.11-2.75	2.38	2.13-2.65
Significant Famine n=2,265,136	1.92	1.54-2.39	1.95	1.68-2.26	1.94	1.71-2.19
No Famine n=2,487,304	Ref	-	Ref	-	Ref	-
Any Famine n=7,698,712	2.19	1.84-2.60	2.23	1.97-2.51	2.21	2.00-2.45

#Cross-product Odds Ratios within birth region

\*Difference in Differences analysis. Odds Ratio's for the 3-way interaction terms of the main effects year of birth (1934 vs all other years 1930-1938), half-year of birth (January-June vs July-December), and birth region (exposed to extreme/severe/significant famine) in a single model including all lower-level interaction terms and adjustment for sex where applicable.