

1 **Association between late-life air pollution exposure and medial temporal lobe atrophy in**  
2 **older women**

3  
4 Xinhui Wang, PhD<sup>\*1</sup>; Lauren E. Salminen, PhD<sup>\*1,2</sup>; Andrew J. Petkus, PhD<sup>1</sup>; Ira Driscoll, PhD<sup>3</sup>; Joshua  
5 Millstein, PhD<sup>4</sup>; Daniel P. Beavers, PhD<sup>5</sup>; Mark A. Espeland, PhD<sup>6,7</sup>; Guray Erus, PhD<sup>8</sup>; Meredith N.  
6 Braskie, PhD<sup>1,2</sup>; Paul M. Thompson, PhD<sup>1,2</sup>; Margaret Gatz, PhD<sup>9</sup>; Helena C. Chui, MD<sup>1</sup>; Susan M  
7 Resnick, PhD<sup>10</sup>; Joel D. Kaufman, MD, MPH<sup>11</sup>; Stephen R. Rapp, PhD<sup>12,13</sup>; Sally Shumaker, PhD<sup>13</sup>; Mark  
8 Brown, MA<sup>7</sup>; Diana Younan, PhD, MPH<sup>4</sup>; Jiu-Chiuan Chen, MD, ScD<sup>1,4</sup>

9  
10  
11 <sup>1</sup>Department of Neurology, University of Southern California, Los Angeles, California  
12 <sup>2</sup>Mark and Mary Stevens Neuroimaging and Informatics Institute, Keck School of Medicine, University  
13 of Southern California, Los Angeles, California  
14 <sup>3</sup>Department of Medicine, University of Wisconsin-Madison, Madison, Wisconsin  
15 <sup>4</sup>Department of Population and Public Health Sciences, University of Southern California, Los Angeles,  
16 California  
17 <sup>5</sup>Departments of Statistical Sciences, Wake Forest University, Winston-Salem, North Carolina  
18 <sup>6</sup>Department of Internal Medicine, Wake Forest School of Medicine, Winston-Salem, North Carolina  
19 <sup>7</sup>Department of Biostatistics and Data Sciences, Wake Forest School of Medicine, Winston-Salem, North  
20 Carolina  
21 <sup>8</sup>Center for Biomedical Image Computing and Analytics (CBICA), University of Pennsylvania,  
22 Philadelphia, Pennsylvania  
23 <sup>9</sup>Center for Economic and Social Research, University of Southern California, Los Angeles, California  
24 <sup>10</sup>The Laboratory of Behavioral Neuroscience, National Institute on Aging, Baltimore, Maryland

25 <sup>11</sup>Departments of Environmental & Occupational Health Sciences, Medicine (General Internal Medicine),  
26 and Epidemiology, University of Washington, Seattle, Washington

27 <sup>12</sup>Departments of Psychiatry and Behavioral Medicine, Wake Forest School of Medicine, Winston-Salem,  
28 North Carolina

29 <sup>13</sup>Department of Social Sciences and Health Policy, Wake Forest School of Medicine, Winston-Salem,  
30 North Carolina

31

32

33 \* Authors contributed equally to this work

34

35

36 **Total word count of the manuscript text: 3024**

37 **Highlights**

- 38 • First longitudinal study on air pollution and medial temporal lobe (MTL) volume.
- 39 • Late-life PM<sub>2.5</sub> and NO<sub>2</sub> associated with MTL atrophy over time in older women.
- 40 • Heterogeneous adverse effects were observed across different subregions of the MTL.
- 41 • Results not differ by *APOE* genotype, age, education, or cardiovascular risk factors.
- 42 • Adverse effects remained at low-level exposure compliant with regulatory standards.

43

44

## Abstract

45 **Background:** Ambient air pollution exposures increase risk for Alzheimer's disease (AD) and  
46 related dementias, possibly due to structural changes in the medial temporal lobe (MTL).  
47 However, existing MRI studies examining exposure effects on the MTL were cross-sectional and  
48 focused on the hippocampus, yielding mixed results.

49 **Method:** To determine whether air pollution exposures were associated with MTL atrophy over  
50 time, we conducted a longitudinal study including 653 cognitively unimpaired community-  
51 dwelling older women from the Women's Health Initiative Memory Study with two MRI brain  
52 scans (MRI-1: 2005-6; MRI-2: 2009-10;  $M_{age}$  at MRI-1=77.3±3.5years). Using regionalized  
53 universal kriging models, exposures at residential locations were estimated as 3-year annual  
54 averages of fine particulate matter (PM<sub>2.5</sub>) and nitrogen dioxide (NO<sub>2</sub>) prior to MRI-1. Bilateral  
55 gray matter volumes of the hippocampus, amygdala, parahippocampal gyrus (PHG), and  
56 entorhinal cortex (ERC) were summed to operationalize the MTL. We used linear regressions to  
57 estimate exposure effects on 5-year volume changes in the MTL and its subregions, adjusting for  
58 intracranial volume, sociodemographic, lifestyle, and clinical characteristics.

59 **Results:** On average, MTL volume decreased by  $0.53 \pm 1.00 \text{cm}^3$  over 5 years. For each  
60 interquartile increase of PM<sub>2.5</sub> ( $3.26 \mu\text{g}/\text{m}^3$ ) and NO<sub>2</sub> (6.77ppb), adjusted MTL volume had  
61 greater shrinkage by  $0.32 \text{cm}^3$  (95%CI=[-0.43,-0.21]) and  $0.12 \text{cm}^3$  (95%CI=[-0.22,-0.01]),  
62 respectively. The exposure effects did not differ by *APOE* ε4 genotype, sociodemographic, and  
63 cardiovascular risk factors, and remained among women with low-level PM<sub>2.5</sub> exposure. Greater  
64 PHG atrophy was associated with higher PM<sub>2.5</sub> (b=-0.24, 95%CI=[-0.29,-0.19]) and NO<sub>2</sub>  
65 exposures (b=-0.09, 95%CI=[-0.14,-0.04]). Higher exposure to PM<sub>2.5</sub> but not NO<sub>2</sub> was also

66 associated with greater ERC atrophy. Exposures were not associated with amygdala or  
67 hippocampal atrophy.

68 **Conclusion:** In summary, higher late-life PM<sub>2.5</sub> and NO<sub>2</sub> exposures were associated with greater  
69 MTL atrophy over time in cognitively unimpaired older women. The PHG and ERC - the MTL  
70 cortical subregions where AD neuropathologies likely begin, may be preferentially vulnerable to  
71 air pollution neurotoxicity.

72

73 **Keywords:** air pollution, medial temporal lobe, atrophy, AD neuropathology, parahippocampal  
74 gyrus, entorhinal cortex

75

## 76 **1. Introduction**

77 Alzheimer's disease (AD) and related dementias (ADRD) are leading causes of death and  
78 disability worldwide, disproportionately affecting women over age 65.<sup>1</sup> The progression of  
79 ADRD occurs along a continuum of neuropathological processes and brain atrophy that  
80 eventually leads to cognitive decline and impaired activities of daily living.<sup>2,3</sup> Early AD is  
81 characterized by changes in memory-related processes that are subserved by the medial temporal  
82 lobe (MTL), including the hippocampus, amygdala, parahippocampal gyrus (PHG), and  
83 entorhinal cortex (ERC).<sup>4-8</sup> Cumulative evidence has shown that late-life exposure to ambient air  
84 pollution, including fine particulate matter (PM<sub>2.5</sub>) and traffic-related pollution (NO<sub>2</sub>), is a risk  
85 factor for AD-related neuropathology,<sup>9,10</sup> memory-related cognitive decline, and ADRD.<sup>11-13</sup>  
86 However, brain MRI studies linking air pollution neurotoxicity to MTL atrophy in humans are  
87 less conclusive, especially at the preclinical stage, partly due to cross-sectional designs that  
88 yielded mixed results. No studies have investigated the neurotoxic effects of exposures in MTL  
89 subregions either.<sup>10,14-19</sup> Additionally, it remains unclear whether established risk factors for late-  
90 onset AD, such as cardiovascular disease (CVD) and the Apolipoprotein E (*APOE*) genotype,  
91 modulate the neurotoxic effects of air pollution on AD-related neurodegeneration.<sup>20-25</sup> To  
92 address these knowledge gaps, we conducted a longitudinal study to assess whether PM<sub>2.5</sub> and  
93 NO<sub>2</sub> contribute to atrophy of the MTL and its subregions in cognitively unimpaired older  
94 women, and evaluated whether associations differ by population characteristics and AD risk  
95 factors.

96

## 97 **2. Methods**

### 98 **2.1 Participants and study design**

99 We examined community-dwelling women enrolled in the Women's Health Initiative  
100 (WHI) Memory Study (WHIMS)<sup>26</sup> who underwent two MRI scans.<sup>27,28</sup> WHIMS is an ancillary  
101 study of WHI – hormone therapy trials, designed to investigate postmenopausal hormone therapy  
102 on cognitive function and dementia risk. Women were  $\geq 65$  years of age and free of dementia at  
103 enrollment. Between April 2005 and January 2006, 1405 women completed a baseline MRI scan  
104 (MRI-1). Approximately half of these women (n=720) completed a follow-up MRI scan (MRI-2)  
105 in 2009-2010, with average 4.7 years of follow-up. Since this study focused on examining air  
106 pollution neurotoxicity in the preclinical stage, we excluded 11 women with mild cognitive  
107 impairment (MCI) or probable dementia at MRI-1 and 56 women missing key covariates,  
108 rendering a final analytic sample of 653 cognitively unimpaired women (Figure 1).

109 Study protocols were approved by the Institutional Review Board at the University of  
110 Southern California. Written informed consent was obtained from all participants as part of the  
111 WHIMS-MRI study.

112

## 113 **2.2 Air pollution exposure estimation**

114 Participants' residential addresses were prospectively collected at each WHI assessment  
115 since WHI inception in 1993 and updated at least semiannually during regular follow-up contacts  
116 or by participant reporting change of address between regular contacts.<sup>29</sup> At each geocoded  
117 residential location, annual mean concentrations of ambient PM<sub>2.5</sub> in  $\mu\text{g}/\text{m}^3$  and NO<sub>2</sub> in ppb were  
118 estimated using validated regionalized national universal kriging models with partial least  
119 squares regression of geographic covariates and US Environmental Protection Agency  
120 monitoring data. Over 300 geographic covariates covering categories of population, land use,  
121 vegetative index, impervious surfaces, roadway, and proximity to features were used in the

122 national models for PM<sub>2.5</sub> estimation.<sup>30</sup> For NO<sub>2</sub> estimation, over 400 geographic covariates  
123 covering proximity and buffer measures as well as satellite data were used in prediction.<sup>31</sup> The  
124 average cross-validation R<sup>2</sup> was 0.88 for PM<sub>2.5</sub> and 0.85 for NO<sub>2</sub>. We used the annual estimates  
125 of each pollutant to calculate the average spanning the 3-year time window prior to MRI-1 with  
126 the length of stay at each residential location within the 3 years as the weight, accounting for  
127 residential mobility.

128

### 129 **2.3 MRI acquisition and processing**

130 MRI scans were collected on 1.5T scanners at 14 WHI centers using standardized  
131 acquisition protocols developed by the WHIMS-MRI Quality Control Center at the University of  
132 Pennsylvania, Philadelphia.<sup>32-34</sup> The scan series for volumetric imaging used a 22cm field of  
133 view and a 256x256 acquisition matrix and the following pulse sequences: oblique axial spin  
134 density/T2-weighted spin echo images, oblique axial fast fluid-attenuated inversion recovery  
135 (FLAIR) T2-weighted spin echo image and oblique axial fast spoiled 3D T1-weighted gradient  
136 echo images. Pulse sequence parameters are provided in earlier work.<sup>32,33</sup> Trained technicians at  
137 each site completed rigorous quality control procedures (e.g., magnetic field homogeneity  
138 evaluation, slice thickness and position accuracy, RF coil checks, etc.) outlined by the WHIMS-  
139 MRI program, which was adapted from the American College of Radiology.

140 Regions of interest (ROIs) were extracted using a multi-atlas region segmentation  
141 (MUSE) that transforms region-specific labeled atlases into a harmonized map. Specifically,  
142 MUSE follows a voxel-based spatial adaptation strategy to transform multiple atlases with  
143 different warping algorithms and regularization parameters into an ensemble-based parcellation  
144 of anatomical reference labels. This approach leads to robust segmentation accuracy and is



145 superior to other multi-atlas segmentation and label fusion methods, especially for multi-site  
146 MRI investigations and longitudinal analyses.<sup>35,36</sup>

147         Gray matter volumes of the hippocampus, amygdala, PHG, and ERC were estimated and  
148 summed across left and right hemispheres. Total MTL volume was operationally defined as the  
149 summed volumes of these four bilateral ROIs. MTL atrophy was quantified as the difference  
150 between volumes measured at MRI-1 and MRI-2, divided by the years between the two MRI  
151 scans and then multiplied by 5 to represent 5-year volume changes.

152

## 153 **2.4 Covariates of interest**

154         At WHI inception (1993–1998), structured questionnaires were administered to gather  
155 information on age, race/ethnicity, socioeconomic factors (education, family income, and  
156 employment status), and lifestyle factors (smoking status, alcohol use, and physical activity).  
157 Except for continuous age at MRI-1, other variables with categorical levels reported in tables  
158 were used in analyses. As this was a predominantly White sample, the race/ethnicity variable  
159 was coded as: “White (not Hispanic)” vs. “Other ethnic or racial background” which included  
160 “Hispanic/Latino”, “American Indian/Alaska Native”, “Asian”, “Black”, or “More than one  
161 race”.

162         Clinical characteristics collected at WHI inception included body mass index (BMI,  
163 calculated using measured weight and height), depressive symptoms using the Center for  
164 Epidemiologic Studies Depression Scale short form,<sup>37</sup> self-reported prior use of postmenopausal  
165 hormones, and self-reported history of CVD (e.g., heart problems, problems with blood  
166 circulation, blood clots) and related risk factors (e.g., hypertension, hypercholesterolemia or  
167 diabetes mellitus) which were validated previously.<sup>38–40</sup> Because few women endorsing a history

168 of diabetes (n=16) or hypercholesterolemia (n=97), we created a binary variable to indicate if a  
169 person had none or at least one type of CVD risk factors to boost statistical power.

170 Besides information collected at WHI inception, lifestyle factors, BMI, hypertension, and  
171 CVD history were also updated at MRI-1. Contextual socioeconomic characteristics of  
172 residential neighborhoods (e.g., neighborhood socioeconomic status, nSES) were measured at  
173 both WHI inception and MRI-1 using US Census tract-level data.<sup>41</sup> Higher nSES scores  
174 indicated more socioeconomically-favorable neighborhoods. *APOE* genotype ( $\epsilon 3/\epsilon 3$ ,  $\epsilon 3/\epsilon 4$ , or  
175  $\epsilon 4/\epsilon 4$ ) was measured in a subset of 522 women. Details are available in the Supplement.

176

## 177 **2.5 Statistical Approach**

178 We used linear regressions to estimate the associations between baseline air pollution  
179 exposures and 5-year volume changes in the total MTL and its subregions, adjusting for  
180 intracranial volume (ICV), sociodemographic variables (age, geographical region, race/ethnicity,  
181 education, income, employment status, and nSES), lifestyle factors (smoking, alcohol use, and  
182 physical activity), prior postmenopausal hormone use, WHI hormone therapy assignment, and  
183 clinical characteristics (BMI, depressive symptoms, CVD risk factors) collected at WHI  
184 inception gradually in main analyses (Table 2). To account for attrition from MRI-1 to MRI-2,  
185 we incorporated inverse-probability weighting in all models. We conducted moderation analyses  
186 to determine whether exposure associations with MTL atrophy differed by age, education, CVD  
187 risk factors, BMI, and *APOE*  $\epsilon 4$  genotype (carriers vs. non-carriers). To put the estimated  
188 associations in context, we conducted an *ad hoc* Cox proportional hazard regression in women  
189 without dementia before MRI-1 to estimate how exposure-related MTL atrophy would translate

190 to dementia risk, using outcome data from the WHIMS protocols. Details are described in the  
191 Supplement.

192 Additional analyses were conducted to evaluate the robustness of our findings. First, we  
193 restricted our analyses to women with PM<sub>2.5</sub> exposure below the NAAQS (12 µg/m<sup>3</sup>) to evaluate  
194 low-level exposure effects. Second, we refit the models using covariates updated at MRI-1 to  
195 address residual confounding due to temporal misspecification of potential confounders (lifestyle  
196 factors, nSES, and clinical variables). Third, we refit the models with further adjusting for the  
197 corresponding MRI-1 volume to assess whether the regression to the mean in MRI volume  
198 changes may impact the observed associations. Lastly, we excluded women who developed MCI  
199 or dementia between MRI-1 and MRI-2 to determine whether observed associations were driven  
200 by underlying dementia risk.

201 All statistical analyses were performed using R 4.1.2 and SAS 9.4. Statistical significance  
202 for inferential analyses were interpreted at the 0.05 alpha level. Multiple comparison correction  
203 was done for analyses on the four MTL subregions using the Benjamini–Hochberg false  
204 discovery rate (FDR) approach.<sup>42</sup>

205

### 206 **3. Results**

#### 207 **3.1 Sample characteristics**

208 Compared to the 752 women excluded from this study (Figure 1), women in the analytic  
209 sample (n=653) tended to be younger, had lower exposures and larger MTL volumes, and had  
210 more overweight (BMI in 25-29 kg/m<sup>2</sup>) at MRI-1. A greater proportion identified as non-  
211 Hispanic White and had higher family income but had fewer CVD risk factors (Tables S1&S2).

212 Non-Hispanic White women had significantly lower PM<sub>2.5</sub> and NO<sub>2</sub> exposures at MRI-1  
213 than those of other ethnic and racial backgrounds (Table 1). Women living in the West had lower  
214 PM<sub>2.5</sub> exposures while women living in the South had much lower NO<sub>2</sub> exposures than those  
215 from other regions. Compared to their counterparts, women without prior use of postmenopausal  
216 hormones or those living in the most socioeconomically-*unfavorable* neighborhoods had higher  
217 PM<sub>2.5</sub> exposures. By contrast, NO<sub>2</sub> exposures were the highest in the most socioeconomically-  
218 favorable neighborhoods, and in women aged ≥80 years, completed ≥4 years of college,  
219 currently smoking, past drinkers or those drinking <1 drink/day at MRI-1. On average, total  
220 MTL volume decreased by 0.53±1.00 cm<sup>3</sup> over 5 years and was more pronounced in women  
221 aged ≥80 years, lived in the Northeast, or with BMI <25 kg/m<sup>2</sup> at MRI-1 (Table 1).

222

### 223 **3.2 Associations between exposures and MTL atrophy**

224 Table 2 shows the associations between exposures and MTL atrophy across multiple  
225 models adjusting for different covariates. For each interquartile range (IQR) increase in PM<sub>2.5</sub>  
226 (IQR=3.26 µg/m<sup>3</sup>) and NO<sub>2</sub> (IQR=6.77 ppb), MTL volume decreased by 0.32 cm<sup>3</sup> (95% CI=[-  
227 0.43, -0.21], p<0.01) and 0.12 cm<sup>3</sup> (95% CI=[-0.22, -0.01], p=0.03) over 5 years, adjusting for  
228 ICV, age, geographic region, race/ethnicity, SES measures, lifestyle factors, and clinical  
229 characteristics (Model E, Table 2). The observed exposure-related MTL atrophies were  
230 equivalent to 17% (95% CI=[11%, 24%]) and 6% (95% CI=[0.6%, 12%]) increased dementia  
231 risk, respectively.

232 Associations between exposure and total MTL atrophy did not change much when partial  
233 covariates were removed (Models B - D vs. E) and remained significant with adjustment of  
234 covariates updated at MRI-1 (Model F) or MTL volume at MRI-1 (Model G, Table 2). When

235 restricting the analyses to individuals with low-level exposures ( $PM_{2.5} < 12 \mu g/m^3$ ), the  
236 associations became stronger (Table S5). After excluding 33 women with incident MCI or  
237 dementia before MRI-2, the estimated associations did not change for  $PM_{2.5}$  and became stronger  
238 for  $NO_2$  ( $b = -0.14$ , 95% CI =  $[-0.25, -0.04]$ ,  $p < 0.01$ ; Model E, Table S6). We found no statistical  
239 evidence that the observed adverse exposure effects on MTL atrophy differed by age, education,  
240 BMI, CVD risk factors, or *APOE* genotype (Figure 2).

241 Exposure-related brain atrophy differed across MTL subregions (Figure 3, Table S4). For  
242 each respective IQR increase of  $PM_{2.5}$  and  $NO_2$ , PHG volume declined by  $0.24 \text{ cm}^3$  (95% CI =  $[-$   
243  $0.29, -0.19]$ , FDR-corrected  $p < 0.01$ ) and  $0.09 \text{ cm}^3$  (95% CI =  $[-0.14, -0.04]$ , FDR-corrected  
244  $p < 0.01$ ) over 5 years, after adjusting for all potential confounders (Model E, Table S4). The  
245 corresponding ERC volume declined by  $0.06 \text{ cm}^3$  over 5 years (95% CI =  $[-0.10, -0.01]$ , FDR-  
246 corrected  $p = 0.04$ ) per IQR increase of  $PM_{2.5}$ , but not with  $NO_2$ . Neither pollutant was associated  
247 with amygdala or hippocampal atrophy (Table S4).

248

#### 249 **4. Discussion**

250 This is the first longitudinal study linking late-life air pollution exposures to preclinical  
251 MTL atrophy in community-dwelling cognitively unimpaired older women. We found that  
252 women living in locations with higher levels of  $PM_{2.5}$  and  $NO_2$  had greater MTL atrophy over  
253 time, and these associations could not be explained by sociodemographic, lifestyle, and clinical  
254 characteristics. Exposure-related brain atrophy varied across MTL subregions, with significant  
255 adverse effects observed for the PHG and ERC, but not the amygdala or hippocampus. These  
256 associations persisted in women who remained cognitively unimpaired over the study period and  
257 also in women living in locations with  $PM_{2.5}$  below the current EPA standard. Exposure-related

258 MTL atrophy did not differ substantially by sociodemographic variables, cardiovascular risk  
259 factors, or *APOE* genotype. Collectively these results support the contribution of air pollution  
260 neurotoxicity on preclinical MTL neurodegeneration in older women.

261 Previous MRI studies investigating exposure effects on the brain regions that are  
262 vulnerable to AD in older adults have examined the hippocampus<sup>10,14-19</sup> or “AD signature”  
263 areas.<sup>17,21,43</sup> They were cross-sectional and largely reported no associations. Longitudinal studies  
264 offer a better understanding of how air pollution exposures influence intraindividual brain  
265 changes. Using the WHIMS-MRI data, our group published the first longitudinal MRI study  
266 linking PM<sub>2.5</sub> exposure to the spatial extent of AD-related neurodegeneration<sup>43</sup>, as reflected by  
267 the AD pattern similarity score, which summarizes multiple areas of brain atrophy beyond the  
268 MTL, but does not allow the examination on specific regions. Because MTL regions contribute  
269 critically to memory-related processes and are more susceptible to early AD-related brain  
270 disruption,<sup>6,44</sup> focusing on MTL atrophy could provide better insight on air pollution  
271 neurotoxicity on brain aging at preclinical stage of AD progression. The results presented herein  
272 add to the literature by showing adverse longitudinal effects of both PM<sub>2.5</sub> and NO<sub>2</sub> on  
273 progressive MTL atrophy in cognitively unimpaired older women, specifically in cortical MTL  
274 subregions.

275 Associations between long-term air pollution exposure and hippocampal volume in  
276 humans are complex. A recent meta-analysis identified a significant PM<sub>2.5</sub> exposure effect on the  
277 adult hippocampus,<sup>45</sup> yet three studies that reported null associations were excluded.<sup>14-16</sup> In  
278 addition, even though null associations were found on the whole hippocampus volume in three  
279 studies included in the meta-analyses,<sup>17,18,21</sup> non-independent effect size estimates<sup>46</sup> that were  
280 modeled separately by sex,<sup>18</sup> geographic location,<sup>17</sup> or on left and right hippocampi were used in

281 the meta analyses.<sup>19,21</sup> Thus, the observed lack of exposure effect on hippocampal shrinkage in  
282 our study is consistent with 6 out of 7 cross-sectional studies that reported no association  
283 between PM<sub>2.5</sub> and whole hippocampal volume in older adults.<sup>14-19, 21</sup>

284 To our knowledge only one cross-sectional study has examined the associations of air  
285 pollution exposure on MTL subregions beyond the hippocampus.<sup>18</sup> Specifically, Cho et al.<sup>18</sup>  
286 reported inverse associations between PM<sub>2.5</sub> (1-year average) and NO<sub>2</sub> (5-year average) exposure  
287 and cortical thickness in the PHG, but not the ERC in cognitively unimpaired older adults living  
288 in South Korea. The authors also reported a significant association between higher NO<sub>2</sub> (but not  
289 PM<sub>2.5</sub>) and smaller amygdala volume. Our longitudinal results further demonstrate that cortical  
290 atrophy in the PHG, and to some extent the ERC, are important MTL targets of air pollution  
291 neurotoxicity at the preclinical stage. We did not observe any longitudinal effect of exposures on  
292 subcortical MTL volumes (hippocampus and amygdala).

293 Adverse exposure associations with cortical (versus subcortical) MTL atrophy is  
294 consistent with the established pattern of brain atrophy in preclinical AD that typically begins in  
295 the cortex and later impacts subcortical areas.<sup>44,47</sup> Further, PHG and ERC atrophy has been  
296 shown to predict incident dementia risk in longitudinal human MRI studies, whereas  
297 hippocampal atrophy does not predict dementia risk after controlling for ERC volume.<sup>48</sup>  
298 Exposure-related atrophy in the PHG and ERC has important functional implications, as both  
299 structures are involved in information encoding, consolidation, and retrieval as well as  
300 spatiotemporal memory.<sup>49-51</sup> Indeed, atrophy in these structures may explain previously reported  
301 associations between air pollution exposure and cognitive difficulties on tests of memory.<sup>52-55</sup>  
302 These structures are also important for olfactory processing functions that mediate memory

303 formation,<sup>56,57</sup> are associated with air pollution exposure,<sup>58,59</sup> and are among the earliest to shrink  
304 in preclinical ADRD.<sup>60,61</sup>

305         How air pollution neurotoxicity affects neuropathological processes along the ADRD  
306 continuum at the preclinical stage remains largely unknown. Animal studies have shown that air  
307 pollution exposure contributes to AD pathogenic processes such as beta-amyloid (A $\beta$ ) and tau  
308 deposition,<sup>62</sup> and this was supported in recent human studies using PET imaging<sup>9</sup>, CSF and  
309 plasma biomarkers.<sup>10,63</sup> Progressive exposure-related MTL atrophy may also result from  
310 neuropathological processes apart from preclinical AD,<sup>6</sup> such as hippocampal sclerosis,<sup>64</sup>  
311 primary age-related tauopathy (PART),<sup>65</sup> and limbic-predominant age-related TDP-43  
312 encephalopathy (LATE).<sup>66</sup> Although the neuropathological processes underlying the observed  
313 associations in our study are unclear, our findings should motivate future studies that use PET  
314 and other biomarkers to test the hypothesized mediating role of A $\beta$  or tau between exposures and  
315 MTL atrophy across different age-related neurodegenerative conditions.

316         Our study has some limitations. First, we cannot make inferences about possible effects  
317 of exposure during midlife, which may also be a vulnerability period for the preclinical AD  
318 pathogenic processes.<sup>67,68</sup> Second, we could not rule out the possibility of unmeasured  
319 confounding by other environmental factors (such as, noise and green space). However, it is  
320 noteworthy that scientific evidence for the early neurodegeneration affected by these other  
321 environmental exposures is sparse. Third, prior data from animal models suggest that exposure  
322 may selectively affect the CA1 subfield of the hippocampus,<sup>69</sup> yet our study did not include fine  
323 segmentation of hippocampal subfields and this deserves further examination in humans. Fourth,  
324 the MUSE MRI protocols do not parcellate local white matter, but investigations of white matter



325 microstructure may inform the heterogeneous associations between exposures and MTL  
326 subregions. Lastly, our findings cannot be generalized to men or younger women.

327 Major strengths of this study include our longitudinal design and rigorous analytic  
328 approach that allowed us to evaluate intraindividual changes in exposure-related brain outcomes.  
329 Additionally, the high-quality, comprehensive data of the WHIMS cohort allowed us to adjust  
330 for a variety of covariates and evaluate potential impacts related to the development of incident  
331 dementia. Finally, the MUSE MRI protocol used herein was designed to improve multi-site  
332 registration issues for longitudinal analyses, as it fuses multiple warped atlases that are not site-  
333 specific harmonized to define the ROIs.<sup>35</sup>

334

## 335 **5. Conclusions**

336 In cognitively unimpaired older women, late-life exposures to outdoor air pollution  
337 contribute to preclinical cortical atrophy of MTL, including PHG and ERC. These putatively  
338 adverse effects were observed regardless of genetic or CVD risks for AD and were detected  
339 even with low levels of exposures in compliance with regulatory standards. These findings  
340 support the role of air pollution neurotoxicity along the brain aging continuum. Future work  
341 includes investigating the underlying neuropathological processes and white matter  
342 microstructure affected by late-life exposures.

343

## 344 **Acknowledgements**

345 The air pollution models were developed under a STAR research assistance agreement, No.  
346 RD831697 (MESA Air) and RD-83830001 (MESA Air Next Stage), awarded by the US  
347 Environmental Protection Agency (EPA). This study is supported by R01AG033078 (PI: Dr.

348 Chen), RF1AG054068 (PI: Dr. Chen), R01ES025888 (PI: Drs. Chen & Kaufman),  
349 P01AG055367, the Southern California Environmental Health Sciences Center  
350 (5P30ES007048), and the Alzheimer's Disease Research Center at USC (NIA; P50AG005142  
351 and P30AG066530). Dr. Salminen is support by grant 1R01ES033961-01, which is co-funded by  
352 NIEHS and NIA. Dr. Younan is also supported by a grant from the Alzheimer's Association  
353 (AARF-19-591356). Dr. Espeland receives funding from the Wake Forest Alzheimer's Disease  
354 Core Center (P30AG049638–01A1). Dr. Resnick is supported by the Intramural Research  
355 Program, National Institute on Aging, NIH. The WHI program is funded by the National Heart,  
356 Lung, and Blood Institute, National Institutes of Health, U.S. Department of Health and Human  
357 Services through contracts HHSN268201600018C, HHSN268201600001C,  
358 HHSN268201600002C, HHSN268201600003C, and HHSN268201600004C. A list of  
359 contributors to WHI is available at [https://www-who-org.s3.us-west-2.amazonaws.com/wp-](https://www-who-org.s3.us-west-2.amazonaws.com/wp-content/uploads/WHI-Investigator-Long-List.pdf)  
360 [content/uploads/WHI-Investigator-Long-List.pdf](https://www-who-org.s3.us-west-2.amazonaws.com/wp-content/uploads/WHI-Investigator-Long-List.pdf).

361  
362 **Role of the Funder/Sponsor:** The funders/sponsors had no role in the design and conduct of the  
363 study; collection, management, analysis, and interpretation of the data; preparation, review, or  
364 approval of the manuscript; and decision to submit the manuscript for publication.

365  
366 **Conflict of Interest Disclosures:** None reported

367  
368 **Author Contributions:**  
369 Drs. Wang and Salminen contributed equally to this work.

370 Dr. Wang had full access to all the data in the study and takes responsibility for the integrity of  
371 the data and the accuracy of the data analysis.

372 Xinhui Wang: Conceptualization, Methodology, Software, Validataion, Formal analysis, Data  
373 Curation, Visualization, Writing - original draft;

374 Lauren E. Salminen: Conceptualization, Methodology, Writing - original draft;

375 Andrew J. Petkus: Methodology, Writing - Review & Editing;

376 Ira Driscoll: Conceptualization, Writing - Review & Editing;

377 Joshua Millstein: Methodology, Writing - Review & Editing;

378 Daniel P. Beavers: Methodology, Data Curation, Writing - Review & Editing;

379 Mark A. Espeland: Methodology, Data Curation, Writing - Review & Editing;

380 Guray Erus: Data Curation, Writing - Review & Editing;

381 Meredith N. Braskie: Conceptualization, Writing - Review & Editing;

382 Paul M. Thompson: Conceptualization, Writing - Review & Editing;

383 Margaret Gatz: Writing - Review & Editing;

384 Helena C. Chui: Writing - Review & Editing;

385 Susan M Resnick: Conceptualization, Writing - Review & Editing;

386 Joel D. Kaufman: Funding acquisition, Writing - Review & Editing;

387 Stephen R. Rapp: Conceptualization, Writing - Review & Editing;

388 Sally Shumaker: Conceptualization, Writing - Review & Editing;

389 Mark Brown: Data Curation, Writing - Review & Editing;

390 Diana Younan: Writing - Review & Editing;

391 Jiu-Chiuan Chen: Conceptualization, Supervision, Project administration, Funding acquisition,  
392 Writing - original draft

393

394 **Data Sharing Statement**

395 Data, codebook, and analytic code used in this report are held by the NIH-funded Coordinating  
396 Center of the Women's Health Initiative at the Fred Hutchinson Cancer Research Center and  
397 may be accessed as described on the Women's Health Initiative website:  
398 <https://www.whi.org/md/working-with-whi-data>.

399

400

401 **References**

- 402 1. Bacigalupo, Mayer, Lacorte. A systematic review and meta-analysis on the prevalence of  
403 dementia in Europe: estimates from the Highest-Quality studies adopting the DSM IV  
404 diagnostic .... *J At Mol Phys*. [https://content.iospress.com/articles/journal-of-alzheimers-](https://content.iospress.com/articles/journal-of-alzheimers-disease/jad180416)  
405 [disease/jad180416](https://content.iospress.com/articles/journal-of-alzheimers-disease/jad180416)
- 406 2. Aisen PS, Cummings J, Jack CR Jr, et al. On the path to 2025: understanding the  
407 Alzheimer's disease continuum. *Alzheimers Res Ther*. 2017;9(1):60. doi:10.1186/s13195-  
408 017-0283-5
- 409 3. Jack CR Jr, Knopman DS, Jagust WJ, et al. Hypothetical model of dynamic biomarkers of  
410 the Alzheimer's pathological cascade. *Lancet Neurol*. 2010;9(1):119-128.  
411 doi:10.1016/S1474-4422(09)70299-6
- 412 4. Braak H, Braak E. Neuropathological staging of Alzheimer-related changes. *Acta*  
413 *Neuropathol*. 1991;82(4):239-259. doi:10.1007/bf00308809
- 414 5. Braak H, Braak E. Staging of Alzheimer's disease-related neurofibrillary changes.  
415 *Neurobiol Aging*. 1995;16(3):271-278; discussion 278-284. doi:10.1016/0197-  
416 4580(95)00021-6
- 417 6. Pettigrew C, Soldan A, Sloane K, et al. Progressive medial temporal lobe atrophy during  
418 preclinical Alzheimer's disease. *Neuroimage Clin*. 2017;16:439-446.  
419 doi:10.1016/j.nicl.2017.08.022
- 420 7. Jack CR Jr, Shiung MM, Gunter JL, et al. Comparison of different MRI brain atrophy rate  
421 measures with clinical disease progression in AD. *Neurology*. 2004;62(4):591-600.  
422 doi:10.1212/01.wnl.0000110315.26026.ef
- 423 8. Chauveau L, Kuhn E, Palix C, et al. Medial temporal lobe subregional atrophy in aging and  
424 Alzheimer's disease: A longitudinal study. *Front Aging Neurosci*. 2021;13:750154.  
425 doi:10.3389/fnagi.2021.750154
- 426 9. Iaccarino L, La Joie R, Lesman-Segev OH, et al. Association Between Ambient Air  
427 Pollution and Amyloid Positron Emission Tomography Positivity in Older Adults With  
428 Cognitive Impairment. *JAMA Neurol*. 2021;78(2):197-207.  
429 doi:10.1001/jamaneurol.2020.3962
- 430 10. Crous-Bou M, Alemany S, Vilor-Tejedor N, et al. Air pollution and biomarkers of  
431 Alzheimer's disease in cognitively unimpaired individuals. *Alzheimers Dement*.  
432 2020;16(S10). doi:10.1002/alz.044802
- 433 11. Livingston G, Huntley J, Sommerlad A, et al. Dementia prevention, intervention, and care:  
434 2020 report of the Lancet Commission. *Lancet*. 2020;396(10248):413-446.  
435 doi:10.1016/S0140-6736(20)30367-6
- 436 12. Peters R, Ee N, Peters J, Booth A, Mudway I, Anstey KJ. Air Pollution and Dementia: A

- 437 Systematic Review. *J Alzheimers Dis.* 2019;70(s1):S145-S163. doi:10.3233/JAD-180631
- 438 13. Power MC, Adar SD, Yanosky JD, Weuve J. Exposure to air pollution as a potential  
439 contributor to cognitive function, cognitive decline, brain imaging, and dementia: A  
440 systematic review of epidemiologic research. *Neurotoxicology.* 2016;56:235-253.  
441 doi:10.1016/j.neuro.2016.06.004
- 442 14. Chen JC, Wang X, Wellenius GA, et al. Ambient air pollution and neurotoxicity on brain  
443 structure: Evidence from women's health initiative memory study. *Ann Neurol.*  
444 2015;78(3):466-476. doi:10.1002/ana.24460
- 445 15. Wilker EH, Preis SR, Beiser AS, et al. Long-term exposure to fine particulate matter,  
446 residential proximity to major roads and measures of brain structure. *Stroke.*  
447 2015;46(5):1161-1166. doi:10.1161/STROKEAHA.114.008348
- 448 16. Casanova R, Wang X, Reyes J, et al. A Voxel-Based Morphometry Study Reveals Local  
449 Brain Structural Alterations Associated with Ambient Fine Particles in Older Women. *Front*  
450 *Hum Neurosci.* 2016;10:495. doi:10.3389/fnhum.2016.00495
- 451 17. Power MC, Lamichhane AP, Liao D, et al. The Association of Long-Term Exposure to  
452 Particulate Matter Air Pollution with Brain MRI Findings: The ARIC Study. *Environ*  
453 *Health Perspect.* 2018;126(2):027009. doi:10.1289/EHP2152
- 454 18. Cho J, Noh Y, Kim SY, et al. Long-Term Ambient Air Pollution Exposures and Brain  
455 Imaging Markers in Korean Adults: The Environmental Pollution-Induced Neurological  
456 Effects (EPINEF) Study. *Environ Health Perspect.* 2020;128(11):117006.  
457 doi:10.1289/EHP7133
- 458 19. Hedges DW, Erickson LD, Kunzleman J, Brown BL, Gale SD. Association between  
459 exposure to air pollution and hippocampal volume in adults in the UK Biobank.  
460 *Neurotoxicology.* 2019;74:108-120. doi:10.1016/j.neuro.2019.06.005
- 461 20. Cacciottolo M, Wang X, Driscoll I, et al. Particulate air pollutants, APOE alleles and their  
462 contributions to cognitive impairment in older women and to amyloidogenesis in  
463 experimental models. *Transl Psychiatry.* 2017;7(1):e1022. doi:10.1038/tp.2016.280
- 464 21. Crous-Bou M, Gascon M, Gispert JD, et al. Impact of urban environmental exposures on  
465 cognitive performance and brain structure of healthy individuals at risk for Alzheimer's  
466 dementia. *Environ Int.* 2020;138:105546. doi:10.1016/j.envint.2020.105546
- 467 22. Kulick ER, Elkind MSV, Boehme AK, et al. Long-term exposure to ambient air pollution,  
468 APOE- $\epsilon$ 4 status, and cognitive decline in a cohort of older adults in northern Manhattan.  
469 *Environment International.* 2020;136:105440. doi:10.1016/j.envint.2019.105440
- 470 23. Oudin A, Andersson J, Sundström A, et al. Traffic-Related Air Pollution as a Risk Factor  
471 for Dementia: No Clear Modifying Effects of APOE  $\epsilon$ 4 in the Betula Cohort. *Journal of*  
472 *Alzheimer's Disease.* 2019;71(3):733-740. doi:10.3233/jad-181037

- 473 24. Wang X, Younan D, Millstein J, et al. Association of improved air quality with lower  
474 dementia risk in older women. *Proc Natl Acad Sci U S A*. 2022;119(2).  
475 doi:10.1073/pnas.2107833119
- 476 25. Younan D, Wang X, Millstein J, et al. Air quality improvement and cognitive decline in  
477 community-dwelling older women in the United States: A longitudinal cohort study. *PLoS*  
478 *Med*. 2022;19(2):e1003893. doi:10.1371/journal.pmed.1003893
- 479 26. Shumaker SA, Reboussin BA, Espeland MA, et al. The Women's Health Initiative Memory  
480 Study (WHIMS): a trial of the effect of estrogen therapy in preventing and slowing the  
481 progression of dementia. *Control Clin Trials*. 1998;19(6):604-621. doi:10.1016/s0197-  
482 2456(98)00038-5
- 483 27. Coker LH, Hogan PE, Bryan NR, et al. Postmenopausal hormone therapy and subclinical  
484 cerebrovascular disease: the WHIMS-MRI Study. *Neurology*. 2009;72(2):125-134.  
485 doi:10.1212/01.wnl.0000339036.88842.9e
- 486 28. Jaramillo SA, Felton D, Andrews L, et al. Enrollment in a brain magnetic resonance study:  
487 results from the Women's Health Initiative Memory Study Magnetic Resonance Imaging  
488 Study (WHIMS-MRI). *Acad Radiol*. 2007;14(5):603-612. doi:10.1016/j.acra.2007.02.001
- 489 29. Whitsel EA, Quibrera PM, Smith RL, et al. Accuracy of commercial geocoding: assessment  
490 and implications. *Epidemiol Perspect Innov*. 2006;3:8. doi:10.1186/1742-5573-3-8
- 491 30. Sampson PD, Richards M, Szpiro AA, et al. A regionalized national universal kriging  
492 model using Partial Least Squares regression for estimating annual PM2.5 concentrations in  
493 epidemiology. *Atmos Environ* . 2013;75:383-392. doi:10.1016/j.atmosenv.2013.04.015
- 494 31. Young MT, Bechle MJ, Sampson PD, et al. Satellite-Based NO2 and Model Validation in a  
495 National Prediction Model Based on Universal Kriging and Land-Use Regression. *Environ*  
496 *Sci Technol*. 2016;50(7):3686-3694. doi:10.1021/acs.est.5b05099
- 497 32. Resnick SM, Espeland MA, Jaramillo SA, et al. Postmenopausal hormone therapy and  
498 regional brain volumes: the WHIMS-MRI Study. *Neurology*. 2009;72(2):135-142.  
499 doi:10.1212/01.wnl.0000339037.76336.cf
- 500 33. Coker LH, Hogan PE, Bryan NR, et al. Postmenopausal hormone therapy and subclinical  
501 cerebrovascular disease: the WHIMS-MRI Study. *Neurology*. 2009;72(2):125-134.  
502 doi:10.1212/01.wnl.0000339036.88842.9e
- 503 34. Jaramillo SA, Felton D, Andrews L, et al. Enrollment in a brain magnetic resonance study:  
504 results from the Women's Health Initiative Memory Study Magnetic Resonance Imaging  
505 Study (WHIMS-MRI). *Acad Radiol*. 2007;14(5):603-612. doi:10.1016/j.acra.2007.02.001
- 506 35. Doshi J, Erus G, Ou Y, et al. MUSE: MUlti-atlas region Segmentation utilizing Ensembles  
507 of registration algorithms and parameters, and locally optimal atlas selection. *Neuroimage*.  
508 2016;127:186-195. doi:10.1016/j.neuroimage.2015.11.073

- 509 36. Erus G, Doshi J, An Y, Verganelakis D, Resnick SM, Davatzikos C. Longitudinally and  
510 inter-site consistent multi-atlas based parcellation of brain anatomy using harmonized  
511 atlases. *Neuroimage*. 2018;166:71-78. doi:10.1016/j.neuroimage.2017.10.026
- 512 37. Andresen EM, Malmgren JA, Carter WB, Patrick DL. Screening for Depression in Well  
513 Older Adults: Evaluation of a Short Form of the CES-D. *Am J Prev Med*. 1994;10(2):77-84.  
514 doi:10.1016/S0749-3797(18)30622-6
- 515 38. Heckbert SR, Kooperberg C, Safford MM, et al. Comparison of self-report, hospital  
516 discharge codes, and adjudication of cardiovascular events in the Women's Health  
517 Initiative. *Am J Epidemiol*. 2004;160(12):1152-1158. doi:10.1093/aje/kwh314
- 518 39. Johnson-Kozlow M, Rock CL, Gilpin EA, Hollenbach KA, Pierce JP. Validation of the  
519 WHI brief physical activity questionnaire among women diagnosed with breast cancer. *Am*  
520 *J Health Behav*. 2007;31(2):193-202. doi:10.5555/ajhb.2007.31.2.193
- 521 40. Margolis KL, Lihong Qi, Brzyski R, et al. Validity of diabetes self-reports in the Women's  
522 Health Initiative: comparison with medication inventories and fasting glucose  
523 measurements. *Clin Trials*. 2008;5(3):240-247. doi:10.1177/1740774508091749
- 524 41. Diez Roux AV, Merkin SS, Arnett D, et al. Neighborhood of residence and incidence of  
525 coronary heart disease. *N Engl J Med*. 2001;345(2):99-106.  
526 doi:10.1056/NEJM200107123450205
- 527 42. Benjamini Y, Hochberg Y. Controlling the False Discovery Rate: A Practical and Powerful  
528 Approach to Multiple Testing. *Journal of the Royal Statistical Society: Series B*  
529 *(Methodological)*. 1995;57(1):289-300. doi:10.1111/j.2517-6161.1995.tb02031.x
- 530 43. Younan D, Wang X, Casanova R, et al. PM2.5 associated with gray matter atrophy  
531 reflecting increased Alzheimers risk in older women. *Neurology*. Published online  
532 November 18, 2020. doi:10.1212/WNL.0000000000011149
- 533 44. Younes L, Albert M, Miller MI, BIOCARD Research Team. Inferring changepoint times of  
534 medial temporal lobe morphometric change in preclinical Alzheimer's disease. *Neuroimage*  
535 *Clin*. 2014;5:178-187. doi:10.1016/j.nicl.2014.04.009
- 536 45. Balboni E, Filippini T, Crous-Bou M, Guxens M, Erickson LD, Vinceti M. The association  
537 between air pollutants and hippocampal volume from magnetic resonance imaging: A  
538 systematic review and meta-analysis. *Environ Res*. 2022;204(Pt A):111976.  
539 doi:10.1016/j.envres.2021.111976
- 540 46. Cheung MWL. A Guide to Conducting a Meta-Analysis with Non-Independent Effect  
541 Sizes. *Neuropsychol Rev*. 2019;29(4):387-396. doi:10.1007/s11065-019-09415-6
- 542 47. Pegueroles J, Vilaplana E, Montal V, et al. Longitudinal brain structural changes in  
543 preclinical Alzheimer's disease. *Alzheimers Dement*. 2017;13(5):499-509.  
544 doi:10.1016/j.jalz.2016.08.010



- 545 48. Stoub TR, Bulgakova M, Leurgans S, et al. MRI predictors of risk of incident Alzheimer  
546 disease: a longitudinal study. *Neurology*. 2005;64(9):1520-1524.  
547 doi:10.1212/01.WNL.0000160089.43264.1A
- 548 49. Montchal ME, Reagh ZM, Yassa MA. Precise temporal memories are supported by the  
549 lateral entorhinal cortex in humans. *Nat Neurosci*. 2019;22(2):284-288.  
550 doi:10.1038/s41593-018-0303-1
- 551 50. Umbach G, Kantak P, Jacobs J, et al. Time cells in the human hippocampus and entorhinal  
552 cortex support episodic memory. *Proc Natl Acad Sci U S A*. 2020;117(45):28463-28474.  
553 doi:10.1073/pnas.2013250117
- 554 51. Roesler R, McGaugh JL. The Entorhinal Cortex as a Gateway for Amygdala Influences on  
555 Memory Consolidation. *Neuroscience*. Published online February 3, 2022.  
556 doi:10.1016/j.neuroscience.2022.01.023
- 557 52. Petkus AJ, Younan D, Wang X, et al. Associations Between Air Pollution Exposure and  
558 Empirically Derived Profiles of Cognitive Performance in Older Women. *J Alzheimers Dis*.  
559 2021;84(4):1691-1707. doi:10.3233/JAD-210518
- 560 53. Wang X, Younan D, Petkus AJ, et al. Ambient Air Pollution and Long-Term Trajectories of  
561 Episodic Memory Decline among Older Women in the WHIMS-ECHO Cohort. *Environ*  
562 *Health Perspect*. 2021;129(9):97009. doi:10.1289/EHP7668
- 563 54. Younan D, Petkus AJ, Widaman KF, et al. Particulate matter and episodic memory decline  
564 mediated by early neuroanatomic biomarkers of Alzheimer's disease. *Brain*.  
565 2020;143(1):289-302. doi:10.1093/brain/awz348
- 566 55. Cho J, Jang H, Park H, Noh Y, Sohn J, Koh SB, Lee SK, Kim SY, Kim C. Alzheimer's  
567 disease-like cortical atrophy mediates the effect of air pollution on global cognitive  
568 function. *Environ Int*. 2023 Jan;171:107703. doi: 10.1016/j.envint.2022.107703
- 569 56. Heck DH, Kozma R, Kay LM. The rhythm of memory: how breathing shapes memory  
570 function. *J Neurophysiol*. 2019;122(2):563-571. doi:10.1152/jn.00200.2019
- 571 57. Ward AM, Calamia M, Thiemann E, Dunlap J, Tranel D. Association between olfaction and  
572 higher cortical functions in Alzheimer's disease, mild cognitive impairment, and healthy  
573 older adults. *J Clin Exp Neuropsychol*. 2017;39(7):646-658.  
574 doi:10.1080/13803395.2016.1253667
- 575 58. Oberdörster G, Sharp Z, Atudorei V, et al. Translocation of inhaled ultrafine particles to the  
576 brain. *Inhal Toxicol*. 2004;16(6-7):437-445. doi:10.1080/08958370490439597
- 577 59. Ekström IA, Rizzuto D, Grande G, Bellander T, Laukka EJ. Environmental Air Pollution  
578 and Olfactory Decline in Aging. *Environ Health Perspect*. 2022;130(2):27005.  
579 doi:10.1289/EHP9563
- 580 60. Iizuka N, Masaoka Y, Kubota S, et al. Entorhinal cortex and parahippocampus volume

- 581 reductions impact olfactory decline in aged subjects. *Brain Behav.* 2021;11(5):e02115.  
582 doi:10.1002/brb3.2115
- 583 61. Bathini P, Brai E, Auber LA. Olfactory dysfunction in the pathophysiological continuum of  
584 dementia. *Ageing Res Rev.* 2019;55:100956. doi:10.1016/j.arr.2019.100956
- 585 62. Thiankhaw K, Chattipakorn N, Chattipakorn SC. PM2.5 exposure in association with AD-  
586 related neuropathology and cognitive outcomes. *Environ Pollut.* 2022;292(Pt A):118320.  
587 doi:10.1016/j.envpol.2021.118320
- 588 63. Hajat A, Park C, Adam C, Fitzpatrick AL, Ilango SD, Leary C, Libby T, Lopez O, Semmens  
589 EO, Kaufman JD. Air pollution and plasma amyloid beta in a cohort of older adults:  
590 Evidence from the Ginkgo Evaluation of Memory study. *Environ Int.* 2023  
591 Feb;172:107800. doi: 10.1016/j.envint.2023.107800
- 592 64. Barkhof F, Polvikoski TM, van Straaten ECW, et al. The significance of medial temporal  
593 lobe atrophy: a postmortem MRI study in the very old. *Neurology.* 2007;69(15):1521-1527.  
594 doi:10.1212/01.wnl.0000277459.83543.99
- 595 65. Crary JF, Trojanowski JQ, Schneider JA, et al. Primary age-related tauopathy (PART): a  
596 common pathology associated with human aging. *Acta Neuropathol.* 2014;128(6):755-766.  
597 doi:10.1007/s00401-014-1349-0
- 598 66. Nelson PT, Dickson DW, Trojanowski JQ, et al. Limbic-predominant age-related TDP-43  
599 encephalopathy (LATE): consensus working group report. *Brain.* 2019;142(6):1503-1527.  
600 doi:10.1093/brain/awz099
- 601 67. Ritchie K, Ritchie CW, Yaffe K, Skoog I, Scarmeas N. Is late-onset Alzheimer's disease  
602 really a disease of midlife? *Alzheimers Dement.* 2015;1(2):122-130.  
603 doi:10.1016/j.trci.2015.06.004
- 604 68. West NA, Gwen Windham B, Knopman DS, Shibata DK, Coker LH, Mosley TH.  
605 Neuroimaging findings in midlife and risk of late-life dementia over 20 years of follow-up.  
606 *Neurology.* 2019;92(9):e917-e923. doi:10.1212/wnl.0000000000006989
- 607 69. Woodward NC, Pakbin P, Saffari A, et al. Traffic-related air pollution impact on mouse  
608 brain accelerates myelin and neuritic aging changes with specificity for CA1 neurons.  
609 *Neurobiol Aging.* 2017;53:48-58. doi:10.1016/j.neurobiolaging.2017.01.007

**Table 1. Distribution of air pollution exposures and total medial temporal lobe atrophy by population characteristics.**

Population Characteristics at WHI inception (1993-1998)	N (%)	PM <sub>2.5</sub> exposure (µg/m <sup>3</sup> ) <sup>a</sup>		NO <sub>2</sub> exposure (ppb) <sup>a</sup>		Total MTL atrophy (cm <sup>3</sup> ) <sup>b</sup>	
		Mean ± SD	P <sup>c</sup>	Mean ± SD	P <sup>c</sup>	Mean ± SD	P <sup>c</sup>
Overall	653	11.19 ± 2.36		11.92 ± 5.30		-0.53 ± 1.00	
<b>Sociodemographic Variables</b>							
Age at MRI-1 visit (years)							
< 75	189 (28.9%)	11.07 ± 2.41		11.10 ± 4.99		-0.34 ± 1.12	
≥ 75 and < 80	314 (48.1%)	11.17 ± 2.37	0.40	11.92 ± 5.22	0.01*	-0.58 ± 0.95	0.007**
≥ 80	150 (23.0%)	11.41 ± 2.27		12.93 ± 5.69		-0.66 ± 0.90	
Region							
Northeast	172 (26.3%)	11.67 ± 2.43		13.39 ± 7.35		-0.81 ± 0.82	
South	64 (9.8%)	11.40 ± 1.61	<0.001***	7.63 ± 2.33	<0.001***	-0.19 ± 1.10	<0.001***
Midwest	255 (39.1%)	11.48 ± 2.05		11.47 ± 3.57		-0.50 ± 0.96	
West	162 (24.8%)	10.16 ± 2.68		12.75 ± 4.85		-0.41 ± 1.12	
Race and Ethnicity							
White (not Hispanic)	614 (94.0%)	11.12 ± 2.39		11.57 ± 4.90		-0.53 ± 1.01	
Other ethnic or racial background <sup>d</sup>	39 (6.0%)	12.39 ± 1.39	0.001**	17.39 ± 7.90	<0.001***	-0.51 ± 0.87	0.92
Education							
≤ High school or GED	194 (29.7%)	11.29 ± 2.40		11.14 ± 4.37		-0.49 ± 1.01	
> HS/GED but < 4y of college	246 (37.7%)	11.00 ± 2.32	0.27	12.05 ± 5.39	0.04*	-0.51 ± 1.02	0.58
≥ 4y of college	213 (32.6%)	11.33 ± 2.36		12.48 ± 5.87		-0.59 ± 0.97	
Employment							
Currently working	85 (13.0%)	11.11 ± 2.39		12.73 ± 6.18		-0.44 ± 1.12	
Not working	60 (9.2%)	11.59 ± 2.33	0.39	12.06 ± 4.07	0.29	-0.60 ± 0.92	0.61
Retired	508 (77.8%)	11.16 ± 2.36		11.76 ± 5.27		-0.53 ± 0.99	
Family Income							
< \$35,000	313 (47.9%)	11.17 ± 2.48		11.41 ± 4.93		-0.51 ± 1.02	
\$35,000 to \$74,999	252 (38.6%)	11.14 ± 2.22		12.20 ± 5.51		-0.56 ± 0.94	
≥ \$75,000	61 (9.3%)	11.61 ± 2.23	0.53	13.16 ± 5.64	0.07	-0.68 ± 0.95	0.07
Not known	27 (4.1%)	11.01 ± 2.50		12.36 ± 6.16		-0.10 ± 1.32	

**Table 1. Distribution of air pollution exposures and total medial temporal lobe atrophy by population characteristics (continued).**

Population Characteristics at WHI inception (1993-1998)	N (%)	PM <sub>2.5</sub> exposure (µg/m <sup>3</sup> ) <sup>a</sup>		NO <sub>2</sub> exposure (ppb) <sup>a</sup>		Total MTL atrophy (cm <sup>3</sup> ) <sup>b</sup>	
		Mean ± SD	P <sup>c</sup>	Mean ± SD	P <sup>c</sup>	Mean ± SD	P <sup>c</sup>
<b>Neighborhood SES<sup>e</sup></b>							
< -3.54	163 (25.0%)	11.66 ± 2.50	0.03*	11.83 ± 6.22	<0.001***	-0.47 ± 1.01	0.87
≥ -3.54 and < -0.26	162 (24.8%)	11.12 ± 2.47		10.41 ± 4.24		-0.55 ± 1.04	
≥ -0.26 and < 3.16	164 (25.1%)	10.99 ± 2.31		12.01 ± 5.26		-0.55 ± 0.94	
≥ 3.16	164 (25.1%)	11.01 ± 2.08		13.39 ± 4.90		-0.53 ± 1.01	
<b>Lifestyle Factors</b>							
<b>Smoking status</b>							
Never smoked	376 (57.6%)	11.20 ± 2.34	0.85	11.23 ± 4.41	<0.001***	-0.53 ± 0.97	0.59
Past smoker	249 (38.1%)	11.16 ± 2.35		12.65 ± 5.97		-0.55 ± 1.02	
Current Smoker	28 (4.3%)	11.42 ± 2.71		14.72 ± 7.84		-0.35 ± 1.21	
<b>Alcohol use</b>							
Non-drinker	82 (12.6%)	11.52 ± 2.06	0.31	10.49 ± 3.92	0.06	-0.59 ± 1.01	0.20
Past drinker	105 (16.1%)	11.43 ± 2.53		11.87 ± 5.17		-0.35 ± 1.04	
< 1 drink per day	393 (60.2%)	11.09 ± 2.39		12.13 ± 5.54		-0.54 ± 0.96	
≥ 1 drink per day	73 (11.2%)	11.06 ± 2.24		12.45 ± 5.31		-0.65 ± 1.12	
<b>Moderate or strenuous physical activities ≥ 20 minutes</b>							
No activity	354 (54.2%)	11.30 ± 2.40	0.15	12.05 ± 5.28	0.56	-0.52 ± 1.02	0.33
Some activity	40 (6.1%)	11.34 ± 2.34		11.86 ± 6.45		-0.80 ± 0.94	
2-4 episodes/week	144 (22.1%)	11.26 ± 2.28		12.12 ± 5.17		-0.48 ± 0.92	
> 4 episodes/week	115 (17.6%)	10.74 ± 2.30		11.29 ± 5.11		-0.52 ± 1.06	
<b>Physical Health</b>							
<b>Body Mass Index (kg/m<sup>2</sup>)</b>							
< 25	190 (29.1%)	11.18 ± 2.27	0.96	12.55 ± 5.63	0.13	-0.62 ± 1.04	0.32
25-29	261 (40.0%)	11.23 ± 2.40		11.79 ± 5.06		-0.49 ± 0.95	
≥ 30	202 (30.9%)	11.17 ± 2.40		11.49 ± 5.25		-0.49 ± 1.02	
<b>CVD and related risk factors<sup>f</sup></b>							
None	355 (54.4%)	11.16 ± 2.37	0.68	11.69 ± 5.02	0.24	-0.55 ± 1.03	0.55
At least 1 type	298 (45.6%)	11.24 ± 2.35		12.18 ± 5.61		-0.50 ± 0.96	

**Table 1. Distribution of air pollution exposures and total medial temporal lobe atrophy by population characteristics (continued).**

Population Characteristics at WHI inception (1993-1998)	N (%)	PM <sub>2.5</sub> exposure (µg/m <sup>3</sup> ) <sup>a</sup>		NO <sub>2</sub> exposure (ppb) <sup>a</sup>		Total MTL atrophy (cm <sup>3</sup> ) <sup>b</sup>	
		Mean ± SD	P <sup>c</sup>	Mean ± SD	P <sup>c</sup>	Mean ± SD	P <sup>c</sup>
Any prior postmenopausal hormone use							
No	348 (53.3%)	11.39 ± 2.28	0.03*	12.07 ± 5.23	0.42	-0.59 ± 0.97	0.07
Yes	305 (46.7%)	10.98 ± 2.43		11.74 ± 5.39		-0.45 ± 1.03	
WHI Therapy Assignment							
CEE-alone placebo	116 (17.8%)	11.28 ± 2.61	0.93	11.85 ± 5.09	0.11	-0.47 ± 1.03	0.54
CEE-alone	118 (18.1%)	11.11 ± 2.47		11.84 ± 5.60		-0.64 ± 0.92	
CEE+MPA placebo	215 (32.9%)	11.15 ± 2.27		11.34 ± 4.86		-0.49 ± 1.01	
CEE+MPA	204 (31.2%)	11.24 ± 2.24		12.60 ± 5.63		-0.54 ± 1.01	
APOE genotype							
ε3/3	402 (77.0%)	11.13 ± 2.36	0.65	11.56 ± 5.01	0.12	-0.54 ± 0.94	0.52
ε3/4+ε4/4	120 (23.0%)	11.25 ± 2.30		12.42 ± 5.84		-0.61 ± 1.04	
<b>Covariates updated at MRI-1 (2005-2006)</b>							
Neighborhood SES <sup>e</sup>							
< -2.48	164 (25.1%)	11.76 ± 2.32	<0.001***	12.02 ± 5.77	<0.001***	-0.54 ± 1.00	0.18
≥ -2.48 and < 0.67	163 (25.0%)	11.13 ± 2.55		10.46 ± 4.78		-0.39 ± 1.09	
≥ 0.67 and < 4.19	163 (25.0%)	10.67 ± 2.37		11.40 ± 4.98		-0.56 ± 0.92	
≥ 4.19	163 (25.0%)	11.21 ± 2.05		13.78 ± 5.10		-0.62 ± 0.98	
Smoking status							
Never smoked	371 (57.0%)	11.20 ± 2.35	0.32	11.16 ± 4.39	<0.001***	-0.52 ± 0.98	0.74
Past smoker	260 (39.9%)	11.12 ± 2.38		12.80 ± 6.15		-0.52 ± 1.02	
Current Smoker	20 (3.1%)	11.94 ± 2.35		13.86 ± 6.55		-0.70 ± 1.21	
Alcohol use							
Non-drinker	80 (12.3%)	11.54 ± 2.07	0.41	10.43 ± 3.88	0.006**	-0.56 ± 1.01	0.81
Past drinker	214 (32.8%)	11.18 ± 2.56		11.80 ± 5.44		-0.47 ± 0.93	
< 1 drink per day	300 (46.0%)	11.18 ± 2.34		12.56 ± 5.73		-0.55 ± 1.02	
≥ 1 drink per day	58 (8.9%)	10.87 ± 2.04		10.98 ± 3.31		-0.56 ± 1.13	

**Table 1. Distribution of air pollution exposures and total medial temporal lobe atrophy by population characteristics (continued).**

Covariates updated at MRI-1 (2005-2006)	N (%)	PM <sub>2.5</sub> exposure (µg/m <sup>3</sup> ) <sup>a</sup>		NO <sub>2</sub> exposure (ppb) <sup>a</sup>		Total MTL atrophy (cm <sup>3</sup> ) <sup>b</sup>	
		Mean ± SD	P <sup>c</sup>	Mean ± SD	P <sup>c</sup>	Mean ± SD	P <sup>c</sup>
Moderate or strenuous physical activities ≥ 20 minutes							
No activity	377 (58.4%)	11.18 ± 2.29	0.54	11.90 ± 5.14	0.82	-0.58 ± 1.01	0.47
Some activity	24 (3.7%)	11.41 ± 1.98		12.75 ± 6.97		-0.46 ± 1.01	
2-4 episodes/week	142 (22.0%)	11.39 ± 2.46		12.03 ± 5.00		-0.46 ± 0.97	
> 4 episodes/week	102 (15.8%)	10.96 ± 2.56		11.64 ± 6.03		-0.45 ± 0.99	
Body Mass Index (kg/m <sup>2</sup> )							
< 25	185 (28.3%)	11.33 ± 2.19	0.61	12.67 ± 5.61	0.07	-0.73 ± 1.01	0.003**
25-29	272 (41.7%)	11.11 ± 2.44		11.57 ± 5.06		-0.48 ± 0.95	
≥ 30	196 (30.0%)	11.19 ± 2.41		11.69 ± 5.28		-0.41 ± 1.03	
CVD and related risk factors <sup>g</sup>							
None	148 (22.7%)	11.36 ± 2.36	0.32	12.08 ± 4.81	0.66	-0.50 ± 1.02	0.75
At least 1 type	505 (77.3%)	11.14 ± 2.36		11.87 ± 5.44		-0.53 ± 1.00	
Ethnicity							
Not Hispanic/Latino	641 (98.2%)	11.17 ± 2.37	0.12	11.85 ± 5.30	0.02	-0.53 ± 1.00	0.76
Hispanic/Latino	12 (1.8%)	12.25 ± 1.07		15.46 ± 4.28		-0.44 ± 0.92	
Race							
American Indian/Alaska Native	1 (0.2%)	12.85 ± .	0.02	19.19 ± .	<0.001	-0.55 ± .	0.99
Asian	9 (1.4%)	11.98 ± 1.28		15.41 ± 6.97		-0.65 ± 1.16	
Black	13 (2.0%)	13.28 ± 1.16		20.35 ± 10.45		-0.44 ± 0.73	
White	621 (95.1%)	11.13 ± 2.38		11.61 ± 4.91		-0.53 ± 1.01	
More than one race	7 (1.1%)	11.40 ± 1.50		16.06 ± 7.17		-0.51 ± 0.77	
Unknown/Not reported	2 (0.3%)	12.63 ± 0.27		18.15 ± 0.48		-0.07 ± 0.39	

Abbreviations: *APOE*, Apolipoprotein E; CEE, conjugated equine estrogens; CVD, cardiovascular disease; HS/GED, high school or general educational development; MPA, medroxyprogesterone acetate; MRI, magnetic resonance imaging; MTL, Medial Temporal Lobe; NO<sub>2</sub>, nitrogen dioxide; PM<sub>2.5</sub>, fine particulate matter; ppb, parts per billion; SD, standard deviation; SES, socioeconomic status; WHI, Women's Health Initiative.

<sup>a</sup> Air pollution exposures were preceding 3-year average estimated at the MRI-1 visit.

<sup>b</sup> Atrophy in total MTL was calculated as the change in brain volume of the total MTL region over 5 years.

<sup>c</sup> p-values were calculated using ANOVA F-tests for mean exposures. \*p<0.05, \*\*<0.01, \*\*\*<0.001

<sup>d</sup> Others include Hispanic women or non-Hispanic women with race in American Indian/Alaska Native, Asian, Black, more than one race, or unknown/not reported.

<sup>e</sup> Neighborhood SES is the sum of six standardized U.S. Census tract-level variables measuring domains of wealth/income, education, and occupation. A higher neighborhood SES score indicates a more advantageous neighborhood SES.

<sup>f</sup> CVD and related risk factors were defined by whether a person had reported any history of CVD event (self-reported heart problems, problems with blood circulation, or blood clots), hypertension, hypercholesterolemia, or diabetes mellitus (none vs. at least one).

<sup>g</sup> CVD and related risk factors were defined by whether a person had reported any history of CVD event (self-reported at WHI inception or any incident CVD events occurred before MRI-1), hypertension, hypercholesterolemia, or diabetes mellitus (none vs. at least one).

**Table 2. Associations between air pollution exposures and medial temporal lobe atrophy**

Model	PM <sub>2.5</sub> exposure <sup>a</sup>			NO <sub>2</sub> exposure <sup>a</sup>		
	b <sup>b</sup>	95% CI	p	b <sup>b</sup>	95% CI	p
Model A	-0.32	-0.42, -0.21	<0.01	-0.16	-0.25, -0.07	<0.01
Model B	-0.31	-0.42, -0.20	<0.01	-0.11	-0.22, -0.01	0.03
Model C	-0.32	-0.43, -0.21	<0.01	-0.12	-0.22, -0.01	0.03
Model D	-0.32	-0.43, -0.21	<0.01	-0.11	-0.22, -0.01	0.03
Model E	-0.32	-0.43, -0.21	<0.01	-0.12	-0.22, -0.01	0.03
Model F	-0.31	-0.42, -0.20	<0.01	-0.11	-0.21, -0.002	0.047
Model G	-0.32	-0.43, -0.21	<0.01	-0.12	-0.22, -0.01	0.03

Abbreviations: CI: confidence interval; MRI, magnetic resonance imaging; NO<sub>2</sub>, nitrogen dioxide; PM<sub>2.5</sub>, fine particulate matter; ppb, parts per billion; SES, socioeconomic status; WHI, Women's Health Initiative.

<sup>a</sup> Air pollution exposures were preceding 3-year average estimated at the MRI-1 visit.

interquartile range (IQR)<sub>PM<sub>2.5</sub></sub> = 3.26 µg/m<sup>3</sup>; IQR<sub>NO<sub>2</sub></sub> = 6.77 ppb

<sup>b</sup> b represents the average change in brain volume (cm<sup>3</sup>) over 5 years for each IQR increase of 3-year average exposure. A negative b means higher air pollution exposure was associated with a greater atrophy in medial temporal lobe over 5 years.

Model A: incorporated inverse-probability weighting approach and adjusted for the intracranial volume and age

Model B: adjusted for Model A covariates + geographic region, race/ethnicity, education, income, employment status, and neighborhood SES

Model C: adjusted for Model B covariates + lifestyle factors (smoking; alcohol use; physical activities), prior postmenopausal hormone use, and WHI hormone therapy assignment

Model D: adjusted for Model C covariates + body mass index and depressive symptoms (logit transformation of the raw score)

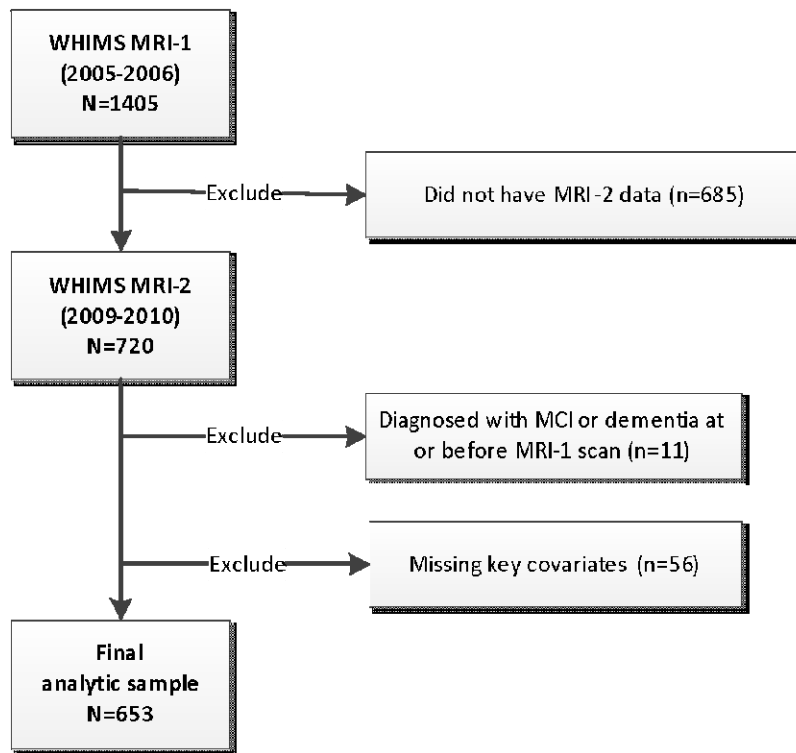
Model E: adjusted for Model D covariates + cardiovascular disease and related risk factors

Model F: adjusted for Model E covariates with lifestyle factors, body mass index, neighborhood SES, and cardiovascular disease and related risk factors updated at MRI-1 visit.

Model G: adjusted for Model E covariates + medial temporal lobe volume at MRI-1 visit.

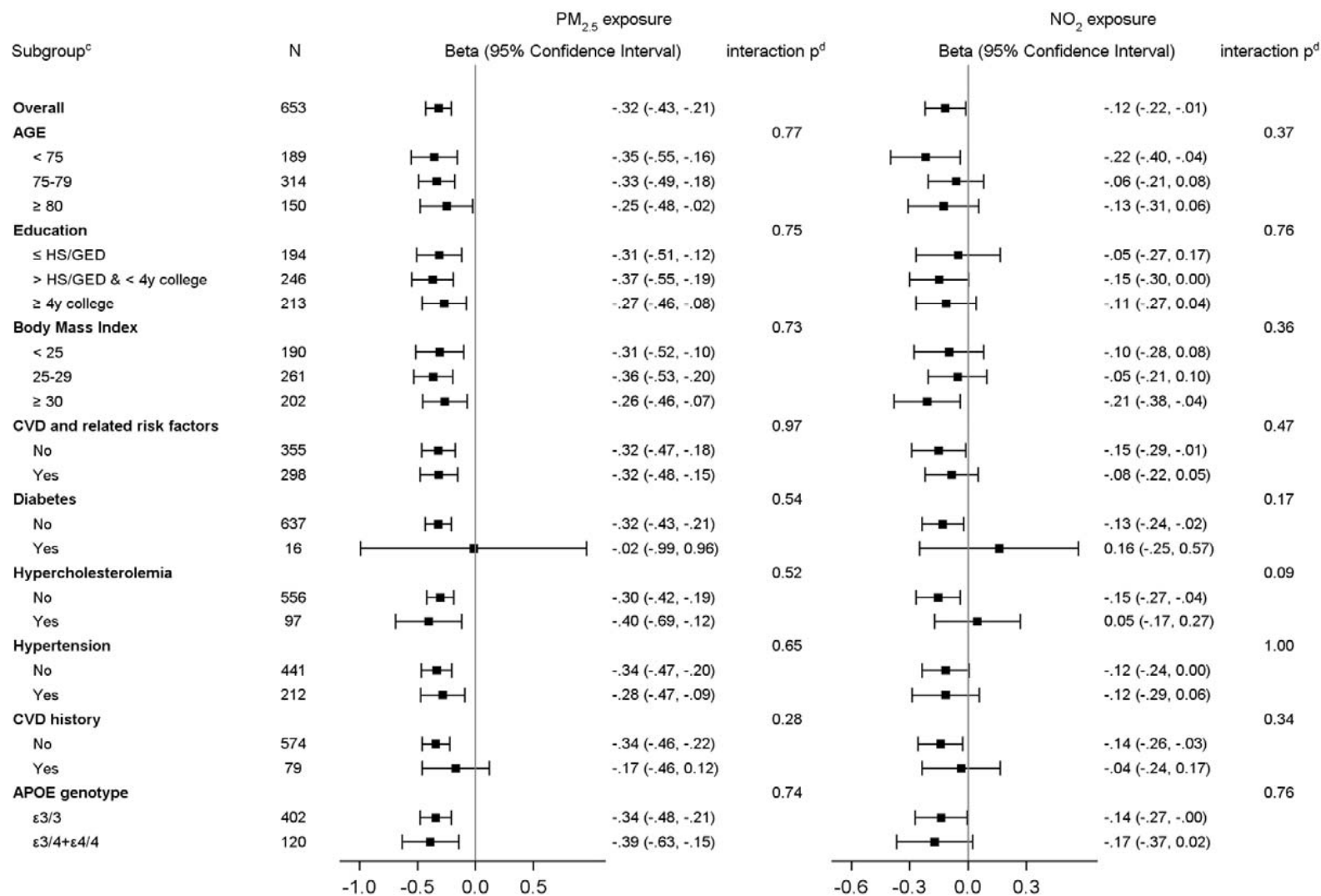


**Figure 1. Flowchart of study population.**



Abbreviations: MCI, mild cognitive impairment; MRI, magnetic resonance imaging; WHIMS, Women's Health Initiative Memory Study.

**Figure 2. Estimated associations<sup>a</sup> between air pollution exposures<sup>b</sup> and atrophy in the medial temporal lobe, stratified by population characteristics.**



Abbreviations: *APOE*, Apolipoprotein E; CVD, cardiovascular disease; HS/GED, high school/general educational development; IQR, interquartile range; MRI, magnetic resonance imaging; NO<sub>2</sub>, nitrogen dioxide; PM<sub>2.5</sub>, fine particulate matter; ppb, parts per billion; WHI, Women's Health Initiative.

Legend: The bars and whisker represent the regression coefficients and corresponding 95% confidence intervals.

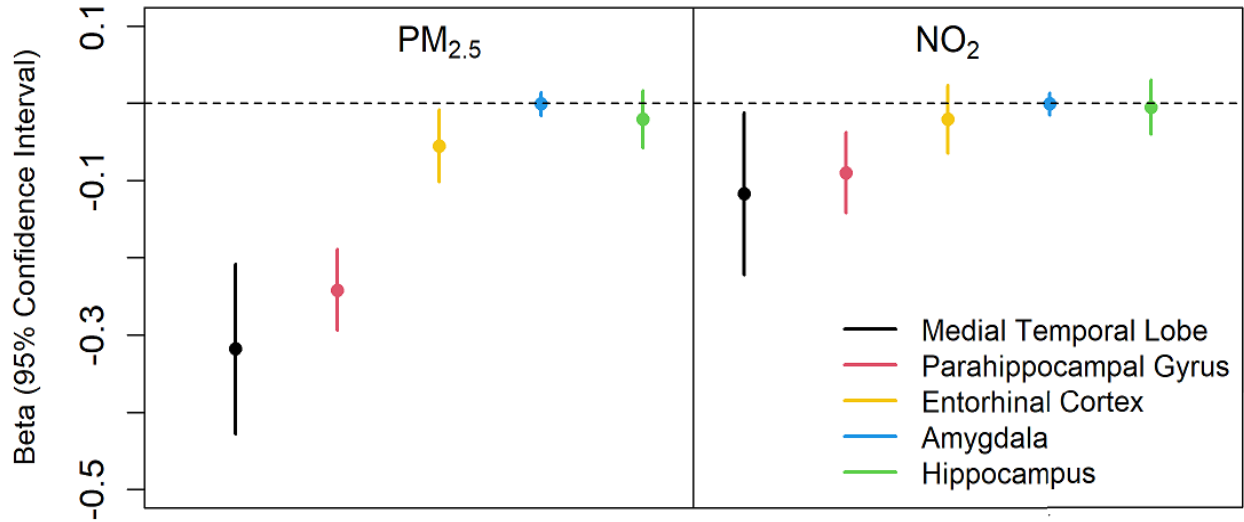
<sup>a</sup> Associations were estimated as volume change (in  $\text{cm}^3$ ) in medial temporal lobe over 5 years for each IQR increase of air pollution exposure ( $\text{IQR}_{\text{PM}_{2.5}} = 3.26 \mu\text{g}/\text{m}^3$ ;  $\text{IQR}_{\text{NO}_2} = 6.77 \text{ ppb}$ ), incorporating inverse-probability weighting approach and adjusting for intracranial volume, geographic region, age, race/ ethnicity, education, income, employment status, neighborhood socioeconomic status, lifestyle factors (smoking, drinking, and physical activities), prior postmenopausal hormone use, WHI hormone therapy assignment, body mass index, depressive symptoms, and CVD and related risk factors. The results of overall samples were from Model E of Table 2.

<sup>b</sup> Air pollution exposures were preceding 3-year average estimated at the MRI-1 visit.

<sup>c</sup> CVD and related risk factors were defined by whether a person had reported any history of CVD event (self-reported heart problems, problems with blood circulation, or blood clots), hypertension, hypercholesterolemia, or diabetes mellitus (none vs. at least one).

<sup>d</sup> p-Value was calculated using Wald t test for the interaction between exposure and each subgroup unadjusted for multiple comparison. After controlling for multiple comparison using Benjamini–Hochberg approach, false discovery rate corrected p-values  $> 0.05$  for all interaction tests.

**Figure 3. Estimated associations between air pollution exposures and atrophy in the medial temporal lobe and its subregions.**



Abbreviations: IQR, interquartile range; MRI, magnetic resonance imaging; NO<sub>2</sub>, nitrogen dioxide; PM<sub>2.5</sub>, fine particulate matter; ppb, parts per billion; WHI, Women's Health Initiative.

Legend: The dots and whiskers represent the regression coefficients and corresponding 95% confidence intervals. The regression coefficients were estimated as volume changes (in cm<sup>3</sup>) over 5 years for each IQR increase of air pollution exposure (IQR<sub>PM<sub>2.5</sub></sub> = 3.26 μg/m<sup>3</sup>; IQR<sub>NO<sub>2</sub></sub> = 6.77 ppb). Results illustrated in this figure were from Model E of Table 2 and Table S4, which incorporated inverse-probability weighting approach and adjusted for intracranial volume, geographic region, age, race/ethnicity, education, income, employment status, neighborhood socioeconomic status, lifestyle factors (smoking, drinking, and physical activities), prior postmenopausal hormone use, WHI hormone therapy assignment, body mass index, depressive symptoms, and cardiovascular disease and related risk factors.