

1 **Prevalence of Methicillin-Resistant *Staphylococcus aureus* in Diabetic Patients Visiting the**
2 **37-MilitaryHospital in the Accra Metropolis**

3 **Akosua Serwaa Boaitey-Biko^a, Ishmael Bukari^c, Isaac Ogbe^b, Michael Acheampong**
4 **Debrah^{a,b} ***

5 ^aDepartment of Medical Laboratory Science, University of Ghana.

6 ^bDepartment of Biochemistry, Cell, and Molecular Biology, University of Ghana.

7 ^cKwame Nkrumah University of Science and Technology

8 *Corresponding author

9 Email: michdebrah@gmail.com

10

11

12

13

14

15

16

17 **Abstract**

18 Misuse of antibiotics contributes to the worldwide rise in antibiotic resistance. However, it is equally
19 important to consider inevitable situations that may contribute to a rise in antibiotic resistance and
20 implement best practices to ensure the minimality of their resulting adverse effects. A case in point is
21 the increasing prevalence of methicillin-resistant *Staphylococcus aureus* (MRSA), a strain of
22 bacterium that has developed resistance to the antibiotic methicillin and other lactams among long-
23 term diabetic patients as observed in this study. Diabetes is associated with immunosuppression and
24 foot ulcers, which require the constant use of antibiotics as prophylactics, as such, persons with this
25 condition would hold bacterial populations subject to immense selective pressure and are therefore at
26 increased risk for MRSA colonization. Furthermore, these individuals may serve as reservoirs and
27 disseminate these highly drug-resistant strains on return to the general populace. This warranted an
28 investigation into the prevalence of MRSA among diabetic patients at the 37-Military Hospital. A
29 total of 50 samples were taken from the sampled Military Hospital by swabbing the participants' skin,
30 nose, and wounds aseptically, and 20 samples were acquired from non-diabetics to serve as controls.
31 To culture the samples, blood, and mannitol salt agar were used. Bacteria were isolated and identified
32 using Gram staining and other biochemical testing. The Kirby-Bauer disc diffusion method was used
33 with Muller-Hinton agar to test for antimicrobial susceptibility. According to the study's findings,
34 antibiotic resistance was much higher among diabetic patients than among non-diabetic patients at
35 the 37-Military Hospital in the Accra Metropolis, Ghana.

36

37 **Introduction**

38 The incidence of diabetes mellitus (DM), a chronic metabolic disorder characterized by elevated
39 blood sugar levels, has reached epidemic proportions worldwide including Ghana (1,2). The presence
40 of diabetes lowers the immune system, which increases the body's susceptibility to infections (3).
41 Among people with diabetes, methicillin-resistant *Staphylococcus aureus* (MRSA) is a leading cause
42 of various infections, including skin, soft tissue, the urinary tract, heart, and blood vessels (4–6)
43 MRSA is a distinctly evolved strain of the bacterium *Staphylococcus aureus* that has developed
44 resistance to multiple antibiotics, including methicillin, beta-lactam antibiotics, and cephalosporins,
45 greatly increasing the recalcitrance of their associated infections (7–9). Also, studies have shown that
46 diabetic individuals are more susceptible to MRSA colonization and infection than other patient
47 populations during hospital admission (10–14).

48 Except in cases of severely advanced DM or following a surgical procedure, in Ghana, most diabetic
49 cases are handled as outpatient; where individuals visit hospital clinics for tests and treatment without
50 a need for a hospital stay. This method of patient management without proper monitoring mechanisms
51 would not only put diabetic patients at increased risk of infection leading to complications but also
52 position diabetic individuals as vectors for these drug-resistant pathogens into the general populace
53 on return to their homes and daily activities.

54 Thus, it is essential to gain an understanding of the incidence of MRSA in the diabetic patient
55 population at major hospitals as well as the risk factors associated with the infection, to direct
56 infection control efforts and improve patient outcomes in Ghana. This study focuses on the 37-
57 Military Hospital, and aims to contribute significantly toward advancing patient care, the creation of
58 targeted interventions, enhanced infection control strategies, and appropriate antibiotic prescribing

59 practices, all of which are intended to minimize the spread of MRSA infections and their impact on
60 this vulnerable group within the Accra Metropolitan Area.

61 **Results**

62 **Demographic Characteristics**

63 According to the results of the study, the average age of female diabetic patients was somewhat higher
64 than that of male diabetic patients, with a range of 46-82 years for the former and 45-77 years for the
65 latter. We also discovered that the median age of diabetic patients was 54 years old for men and 63
66 years old for women. In addition, the 3 infants' ages ranged from 2 to 6, with the average being 4
67 years.

68 **Bacterial Profile of Study Participants and Control**

69 Tables 1 & 2 show that *S. aureus* was the predominant bacterium isolated from both groups. We
70 also found that the highest numbers of *S. aureus* isolates were found on the skin of diabetic patients,
71 *S. aureus* was isolated from three different sites: the nose (30%), wounds (5%), and skin (65%)
72 indicating that the skin might serve as a significant reservoir for this bacterium in diabetic
73 individuals.

74 In the non-diabetic control group, *S. aureus* was found in the nose (33%) and wounds (67%), with no
75 isolates detected from the skin. This suggests that *S. aureus* may be present in the nasal passages and
76 wounds of non-diabetic individuals, but not as prevalent on their skin compared to diabetic patients.

77 In addition, it was revealed that *Pseudomonas aeruginosa* was present in both groups but at a lower
78 percentage in diabetic patients (8%) compared to non-diabetic controls (14%).

79

80 **Differential Statistics between the Isolated *S. Aureus*, Age, Gender, and the Part of the Body**
81 **from Which Sample Was Collected.**

82 From the data presented in Table 4, it is evident that there is a significant association between the
83 prevalence of *S. aureus* and the age of the participants, with a p-value of 0.001. This suggests that the
84 prevalence of *S. aureus* varies with different age groups, highlighting a potential age-related pattern
85 in its occurrence. However, the association between *S. aureus* prevalence and gender was not
86 significant, as evidenced by the p-value of 0.686. This means that there is no significant difference in
87 the prevalence of *S. aureus* between males and females in the study population.

88 Another important finding is the significant association between the isolated *S. aureus* and the part of
89 the body from which the sample was collected, with a p-value of 0.001. This indicates that *S. aureus*
90 colonization differs depending on the location of the sample. In particular, the higher prevalence of
91 *S. aureus* on the skin of diabetic patients may be reflected in this association.

92 **Percentage Distribution of Isolated MRSA**

93 Figures 1 and 2 highlight that MRSA is more dominant than sensitive *S. aureus* within diabetic
94 patients, for which an opposite trend is observed in non-diabetic patients. Furthermore, in the diabetic
95 patient group, all 6 cases (100%) of *S. aureus* isolated from the nose were identified as MRSA.
96 Additionally, of the 16 MRSA cases among diabetic patients, the majority, 10 cases (62.5%), were
97 isolated from the skin, while 6 cases (37.5%) were isolated from the nose. Notably, no MRSA was
98 obtained from the wounds of diabetic participants. This data highlights that MRSA is particularly
99 common in the nasal passages and skin of diabetic patients.

100 In the control group, 2 out of 6 cases (33%) of *S. aureus* isolated from the nose were identified as
101 MRSA. Similarly, 1 case (16.5%) each was isolated from the wound and nose of participants in the
102 control group were MRSA.

103 **Percentage Distribution of Antibiotic Susceptibility Profile of Isolated *S. Aureus*.**

104 In the diabetic patient group, the *S. aureus* isolates showed high resistance to penicillin (100%),
105 erythromycin (85%), and trimethoprim-sulfamethoxazole (85%). They also displayed considerable
106 resistance to ceftazidime (80%), gentamicin (60%), and clindamycin (60%). However, there was
107 relatively low resistance to vancomycin (30%) and tetracycline (20%). The most effective antibiotic
108 was linezolid, with a high sensitivity rate of 85%, and no resistance was observed against it. There
109 were also 4 cases (20%) of intermediate susceptibility to ceftazidime among the *S. aureus* isolates from
110 diabetic patients.

111 In the non-diabetic control group, *S. aureus* isolates showed high resistance to penicillin (100%) and
112 tetracycline (67%) and moderate resistance to trimethoprim-sulfamethoxazole (50%). However, the
113 highest sensitivity was observed for linezolid, with all isolates showing susceptibility (100%).

114 Overall, these results indicate that the isolated *S. aureus* strains from diabetic patients exhibited
115 significant resistance to multiple commonly used antibiotics, posing challenges in treating infections
116 caused by these strains. Linezolid appeared to be the most effective antibiotic for diabetic patients
117 and non-diabetic controls. This information is provided in Figures 3 and 4, together with Table 5,
118 showing the breakpoints for antibiotic susceptibility testing, interpreting the results in the context of
119 standard guidelines and assist clinicians in making informed decisions about appropriate antibiotic
120 therapy for MRSA infections.

121

122 **Percentage Distribution of Antibiotic Susceptibility Profile of Isolated MRSA**

123 From the data presented in Figures 5 and 6, along with the information in Table 5, within the diabetic
124 patient group, the MRSA isolates exhibited high resistance to penicillin (100%) and trimethoprim-
125 sulfamethoxazole (100%). They also showed considerable resistance to erythromycin (93.75%) and

126 gentamicin (75%). However, there was a relatively low level of resistance to linezolid (6.25%),
127 making it one of the most effective antibiotics against MRSA in this group. Interestingly, there were
128 11 cases (68.75%) of MRSA isolates with intermediate sensitivity to vancomycin, suggesting some
129 degree of reduced susceptibility to this last-resort antibiotic.

130 Overall, the data indicates significant antibiotic resistance among the MRSA isolates from diabetic
131 patients and non-diabetic controls.

132 **Discussion**

133 From the results, we highlight that the increasing prevalence of MRSA potentially represents a strain-
134 level variation which has been shown in research by Kalan *et al* to be associated with poor clinical
135 outcomes in diabetic patients (15). Although the MRSA prevalence is more prominent in diabetic
136 patients, the lack of competing bacteria within the non-diabetic patients presents a significant risk of
137 a potential epidemic. These findings emphasize the importance of monitoring and controlling MRSA
138 colonization in diabetic patients to reduce the risk of potential infections and improve overall patient
139 outcomes.

140 Also, the presence of *Proteus* spp and Coliform which were exclusively isolated from the diabetic
141 patient group are of interest as previous research by Kalan *et al* has shown that non-pathogenic
142 bacteria may contribute to accelerated wound healing but in some other cases may contribute to
143 exacerbated inflammation through the presentation of superantigens and non-specific stimulation of
144 T-cell populations (15). Further analysis of these bacterial isolates may provide valuable insights into
145 their role in clinical outcomes for diabetic patients and non-diabetic controls, potentially aiding in
146 understanding the link between bacterial infections and diabetes.

147 Looking at the antibiograms of the MRSA strains, an observable interesting pattern is that despite the
148 uniformity displayed by the strains in their extreme sensitivity to linezolid as well as resistance to

149 penicillin and tetracycline across both patient categories (control and diabetic) a significant increase
150 in resistance is presented in specific antibiotics (Clindamycin, Erythromycin, Gentamycin and
151 Trimethoprim-sulfamethoxazole) within the diabetic patient group as compared to the control group.
152 A study by Anafo, R. B., *et al* in 2021 reported similar resistance levels for penicillin (91%-95%) but
153 generally lower resistance levels for other antibiotics (16). Also, the sensitivity to linezolid is reflected
154 in their results suggesting that the significant increase in resistance within the diabetic patient group
155 as compared to the control group in our results may represent a reflection of an environment
156 supporting increased evolutionary pressure driving the generation of highly multi-drug resistant
157 strains which may go beyond drug pressure selection. Identifying any other potential contributors if
158 present would be critical to controlling the emergence of epidemic strains in the future.

159 The presence of a pre-existing resistant population or a significant intermediately resistant population
160 within these specific antibiotics displaying an increased resistance profile as you move from the
161 control group to the diabetic group lends weight to a transitional theory in which sensitive strains
162 become intermediately resistant before acquiring full resistance. However, the profile of clindamycin
163 appears to deviate from this trend in that, although no intermediately resistant population is observed
164 within the control group, a significant population of highly resistant strains is observed in the diabetic
165 patient group. Similarly, by convention of a transitional theory to the generation of a highly resistant
166 population, we would expect a significant percentage of strains responding in a resistant manner to
167 vancomycin within the diabetic patient group since all the strains tested within the control group were
168 intermediate-resistant. The results, however, show that a percentage of the strains within the diabetic
169 group are sensitive. These sensitive strains however may highlight that a shift to intermediate
170 resistance across strains may not be 100% complete thus far. The presence of vancomycin-
171 intermediate *Staphylococcus aureus* (VISA) has also been reported in over 50 cases with an overall

172 1.7% prevalence among approximately 23,000 strains (17). Since vancomycin has been the go-to
173 antibiotic for treating MRSA infections for decades, this and other research suggest that this rising
174 resistance is a problem (17,18). Nevertheless, the distribution of intermediately resistant MRSA to
175 vancomycin indicates a need for close monitoring and control to prevent a shift toward high
176 resistance.

177 A similar pattern is observed across the antibiograms of *S. aureus* in the control and diabetic patient
178 groups. An increasing pattern of resistance as you transition from the control group to the diabetic
179 group in the same manner across the same specific antibiotics (Clindamycin, Erythromycin,
180 Gentamycin, and Trimethoprim-sulfamethoxazole) as in the case of the MRSA strains. These
181 similarities highlight that factors contributing to the generation of resistant strains within diabetic
182 patients may act uniformly across bacterial strains present.

183 Overall, the data points to a growing prevalence of highly resistant strains within diabetic patient
184 groups as such, strategies including constant drug resistance surveillance, and antibiotic prescription
185 control are needed if the current outpatient system of handling diabetic patients is to be maintained.

186

187

188

189

190 **Materials and Methods**

191 **Introduction**

192 This study investigated the bacterial profile and antimicrobial susceptibility of samples collected from
193 diabetic patients and non-diabetic controls at the 37-Military Hospital. A total of 50 samples were
194 aseptically collected from diabetic patients, including swabs from their skin, nostrils, and wounds.
195 Additionally, 20 samples were obtained from non-diabetic individuals to serve as controls. The
196 samples were cultured on blood and mannitol salt agar, and subsequent isolation and identification of
197 bacteria were performed using Gram staining and other biochemical tests. The susceptibility of the
198 isolated bacteria to antimicrobial agents was assessed using the disk diffusion method on Muller-
199 Hinton agar.

200 **Sample Collection**

201 Participants for this study were recruited from the diabetic patient population at the 37-Military
202 Hospital across several hospital sites: the Medical and Surgical Outpatient Department (SOPD),
203 Female and Male Medical Ward, Surgical and Polyclinic Dressing Room, and Emergency Room.
204 Written informed consent was obtained from each participant before sample collection. Aseptic
205 techniques were employed during the collection of samples to minimize contamination. For diabetic
206 patients, swabs were taken from their skin, nostrils, and any existing wounds. For the non-diabetic
207 controls, swabs were taken from the skin and nostrils. The cotton tips of the swab sticks were broken
208 into pre-labeled bijoux bottles containing 10 ml sterile peptone water and gently re-capped. The
209 collected samples were carefully labeled and transported to the Microbiology Laboratory, School of
210 Biomedical and Allied Health Sciences, College of Health Sciences, University of Ghana, Korle-Bu,
211 for analysis.

212

213 **Analysis of the Samples**

214 All the media utilized in this investigation were sterilized (autoclaved at 121C for 15 minutes) and
215 prepared following the manufacturer's instructions. Prepared media included Blood Agar (BA),
216 Mannitol Salt Agar (MSA), MacConkey Agar (MA), and Muller Hinton Agar (MHA). All
217 biochemical test media were produced per Oxoid, UK, manufacturer specifications, and each swab
218 sample was streaked onto both blood and mannitol salt agar plates to promote the growth of a wide
219 range of bacterial species. The plates were then incubated aerobically at 37°C for 48 h. After
220 incubation, colony morphology, and Gram staining were used to identify the different bacterial
221 species present in the samples. Further biochemical tests, including catalase, oxidase, and sugar
222 fermentation tests, were conducted to confirm the bacterial identification and sorting.

223 **Antibiotic Susceptibility Testing**

224 The modified Kirby Bauer disk diffusion technique was employed. Two or three colonies were taken
225 from each isolate and emulsified in 5 ml of sterile peptone water to achieve a turbidity of 0.5
226 McFarland. The prepared inoculum was applied to the MHA using a sterile inoculating loop.
227 Penicillin G (1 g), gentamycin (10 g), clindamycin (2 g), erythromycin (15 g), tetracycline (30 g),
228 trimethoprim-sulfamethoxazole (25 g), linezolid (10 g), vancomycin (5 g), and cefoxitin (30 g)
229 antibiotic discs were utilized on the MHA. The reference strain of MRSA was ATCC 29523, obtained
230 from the American Type Culture Collection. For 24 hours, the plates were kept at 37 degrees Celsius.
231 Vernier calipers were used to measure the sizes of the inhibitory zones in millimeters (mm). The
232 antibiotic discs were used to test their efficacy against the bacterial isolates, and the average diameter
233 of the zone of inhibition was calculated. The obtained results were compared to cutoffs established
234 by the Clinical and Laboratory Standards Institute (CLSI, 2017).

235

236 **Statistical Analysis**

237 Data obtained from the antimicrobial susceptibility testing were analyzed using Microsoft Excel to
238 assess the significance of differences between the bacterial profiles and susceptibility patterns of
239 diabetic and non-diabetic controls. Descriptive statistics were used to summarize the data, and
240 inferential statistics, such as t-tests or chi-square tests, were applied as appropriate. The results were
241 then presented in tables and graphs to facilitate interpretation and discussion of the findings.

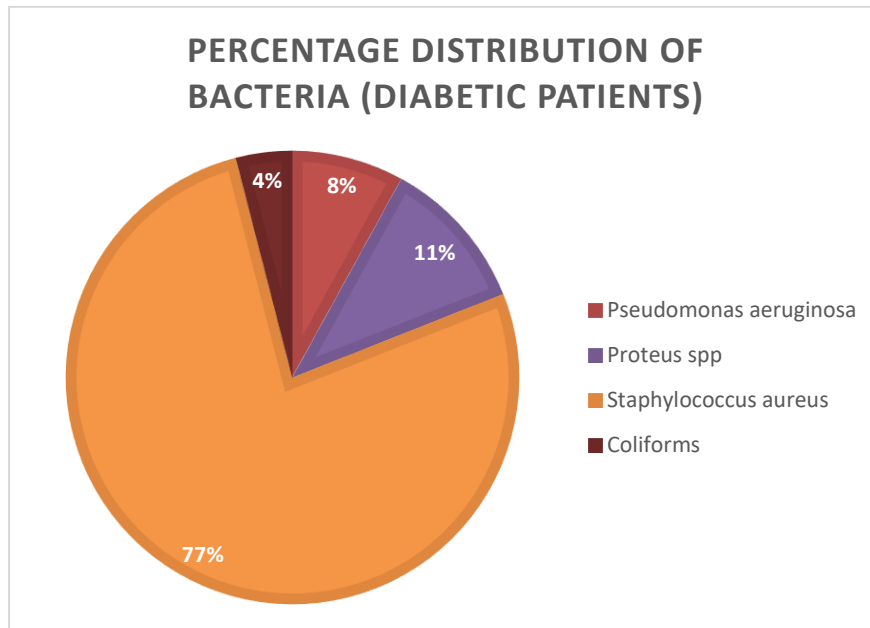
242

243 **List of Tables**

244 **Table 1:** Percentage distribution of bacteria isolated from the diabetic patients selected for the study.

Bacteria isolated	Number	Percentage (%)
<i>Pseudomonas aeruginosa</i>	2	8
<i>Proteus spp</i>	3	11
<i>Staphylococcus aureus</i>	20	77
Coliforms	1	4
Total	26	100

245



246

247

248

249

250

251

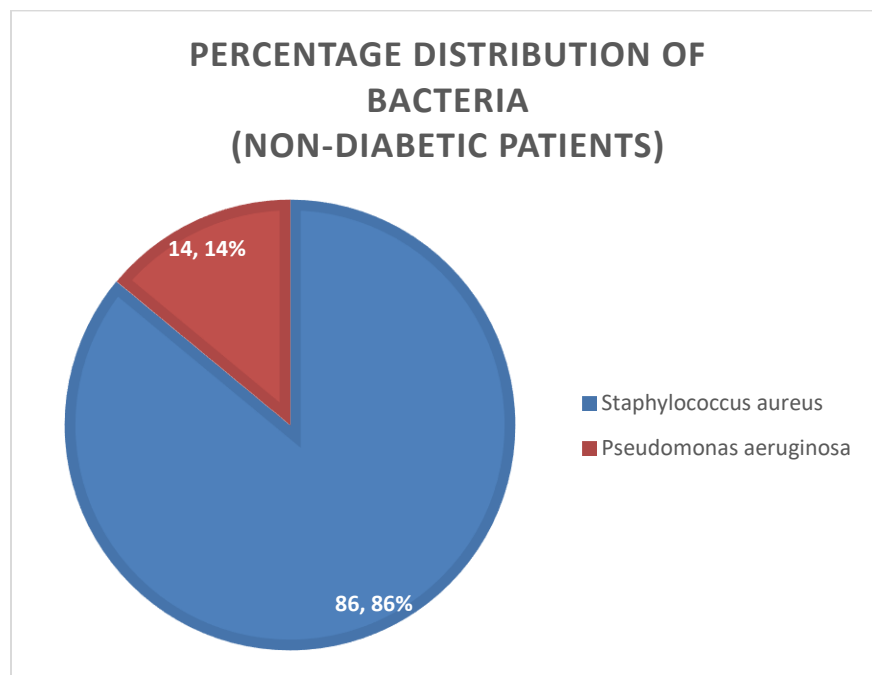
252

253

254 **Table 2:** Percentage distribution of the bacteria isolated from the healthy participants (controls)

255	Bacteria isolates	Number of isolates	Percentage (%)
256	Staphylococcus aureus	6	86
257	Pseudomonas aeruginosa	1	14
258	Total	7	100

259



260

261

262

263

264

265

266 **Table 3:** Percentage distribution of *S. aureus* isolated from the various body sites of the study
267 participants in 37-Military Hospital, Accra.

268

269

Parts of the body	Diabetic patients	percentage %	Control samples	%
Nose	6	30	2	33
Wound	1	5	4	67
Skin	13	65		
Total	20	100	6	100

270

271 **Table 4:** Association between the isolated *S. aureus*, age, gender, and the part of the body from
272 which the sample was collected.

273

274

275

Parameters	Organism	P-value
Age	<i>S. aureus</i>	0.001
Body part	<i>S. aureus</i>	0.001
Gender	<i>S. aureus</i>	0.686

276

277

278

279

280

281

282

283

284 **Table 5:** The breakpoints of the antibiotic susceptibility profile as per CLSI 2017

Antibiotic		Disc content	Zone Diameter		
Class	Type	(µg)	S≥	I	R≤
Penicillin	Penicillin G	1	29		28
Glycopeptide	Vancomycin	5	14	11-13	10
Aminoglycosides	Gentamycin	10	15	13-14	12
Macrolides	Erythromycin	15	23	14-22	13
Tetracyclines	Tetracycline	30	19	15-18	14
Lincosamides	Clindamycin	2	21	15-20	14
Folate Pathway Inhibitor	Trimethoprim- Sulfamethoxazole	25	16	11-15	10
Oxazolidinones	Linezolid	10	21		20
Penicillinase-Stable Penicillins	Cefoxitin	30	22		21

285

286

287

288

289

290

291

292

293

294

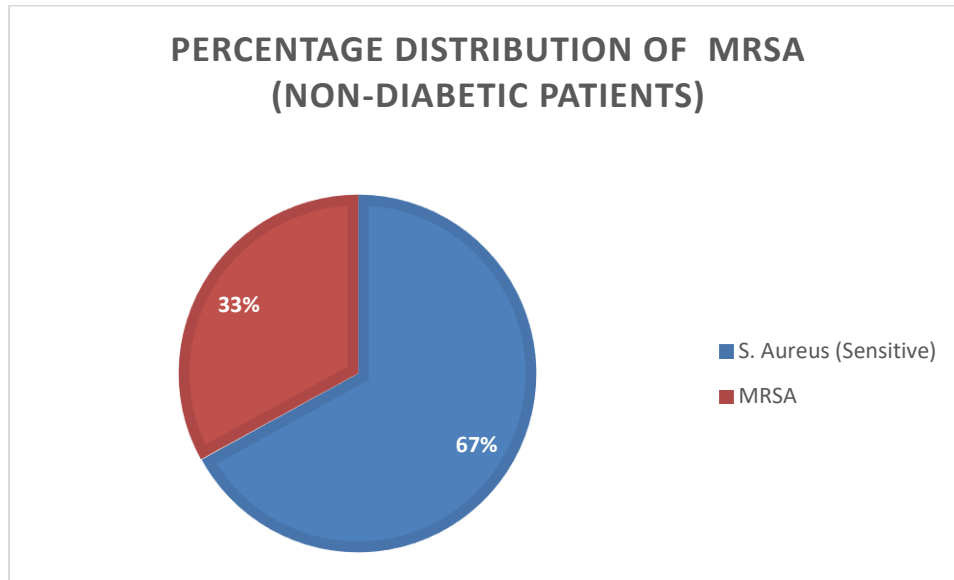
295

296

297

298 **List of Figures**

299



300

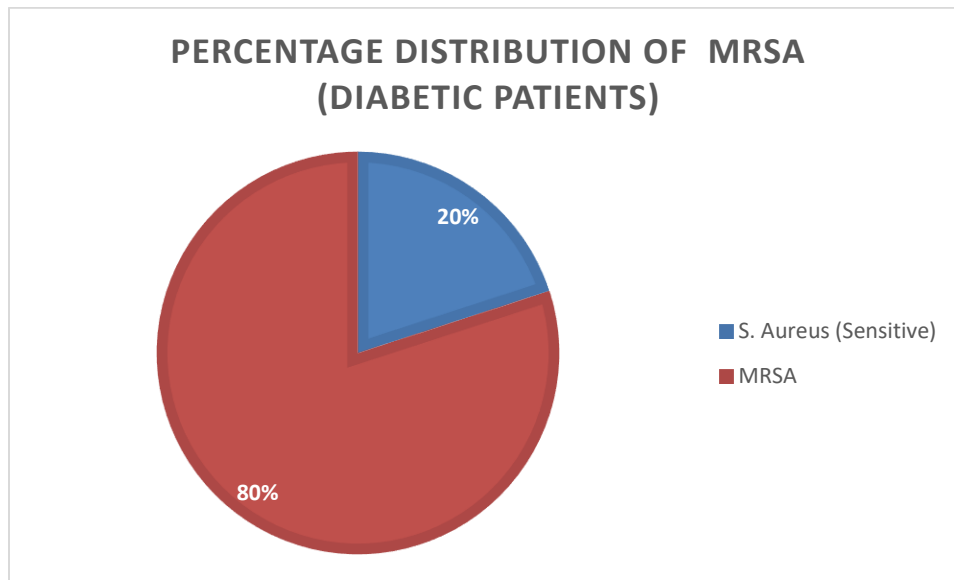
301

302 **Figure 1: Percentage Distribution of S. aureus and MRSA in non-diabetic patients.**

303

304

305



306

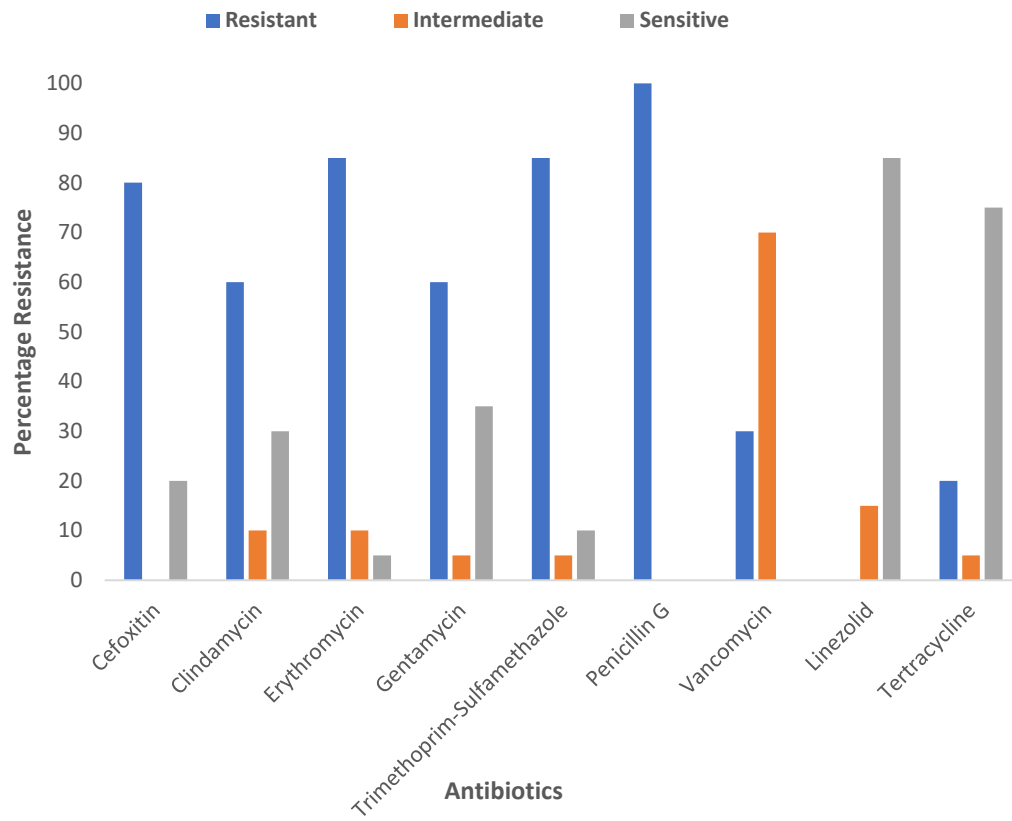
307

308 **Figure 2: Percentage Distribution of S. aureus and MRSA in diabetic patients.**

309

310

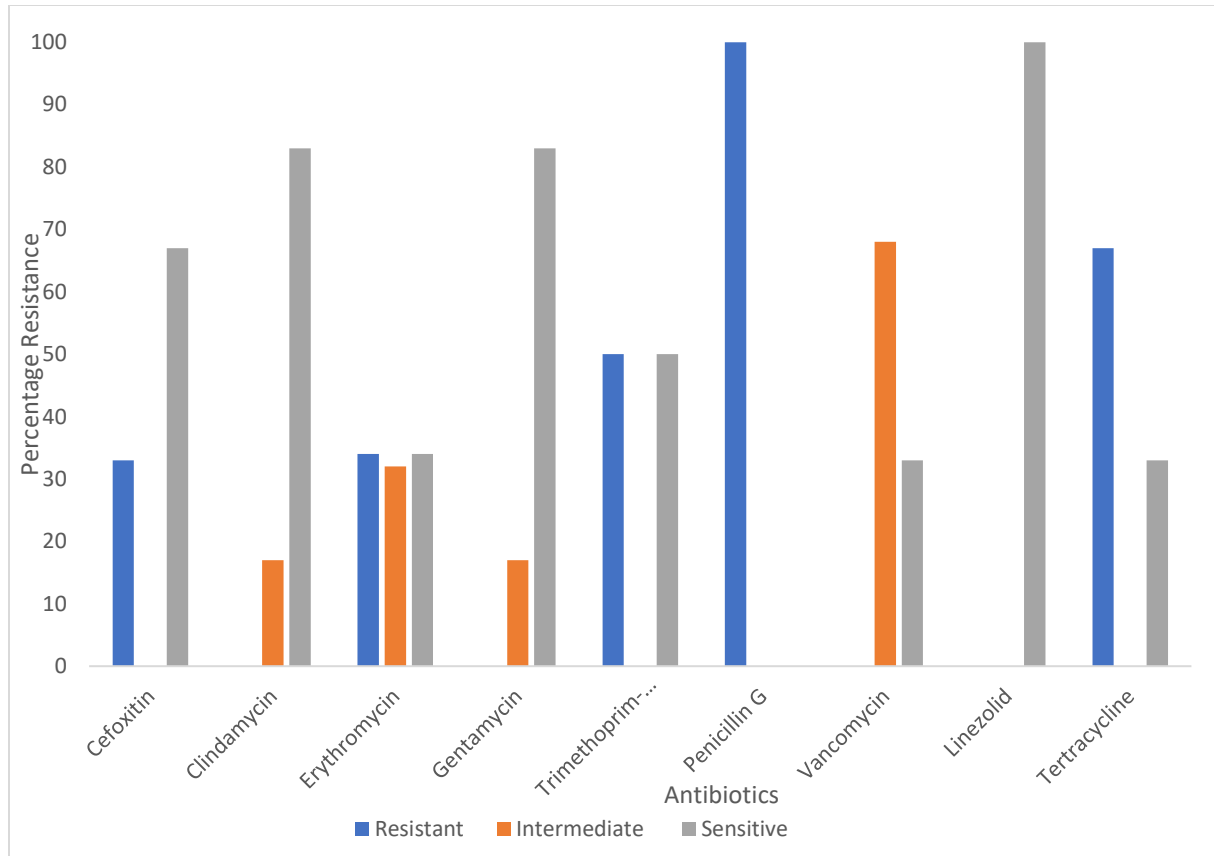
It is made available under a [CC-BY-ND 4.0 International license](https://creativecommons.org/licenses/by-nd/4.0/) .



311

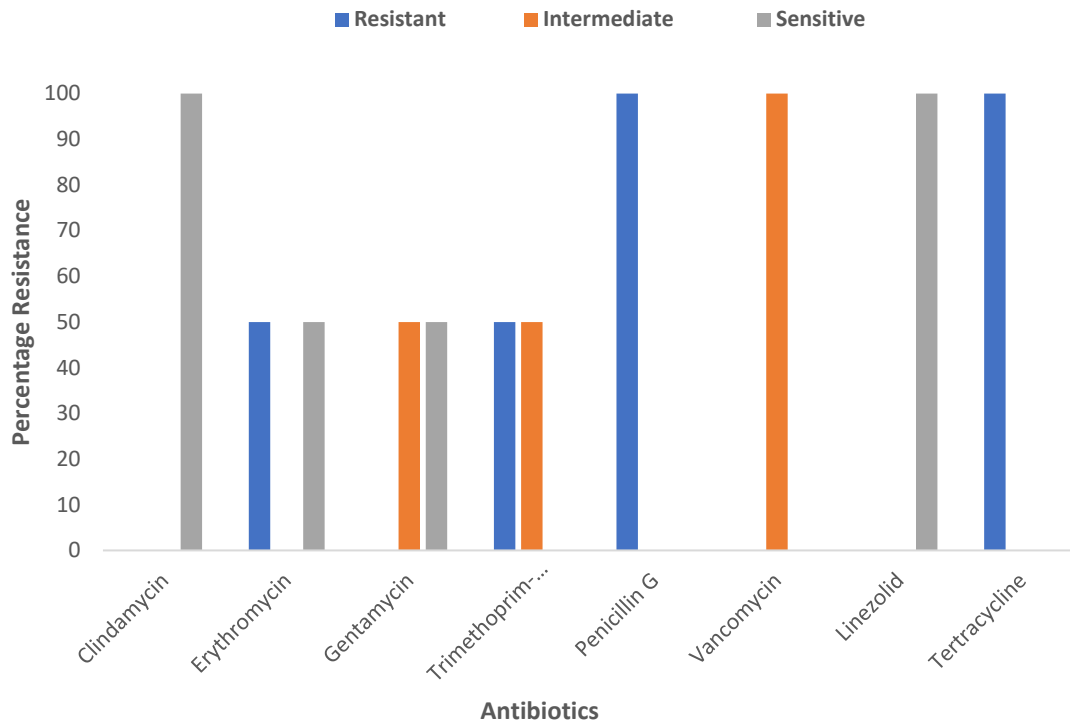
312 **Figure 3: Antibiogram of isolated *S. aureus* from diabetic parents**

It is made available under a [CC-BY-ND 4.0 International license](https://creativecommons.org/licenses/by-nd/4.0/) .



313

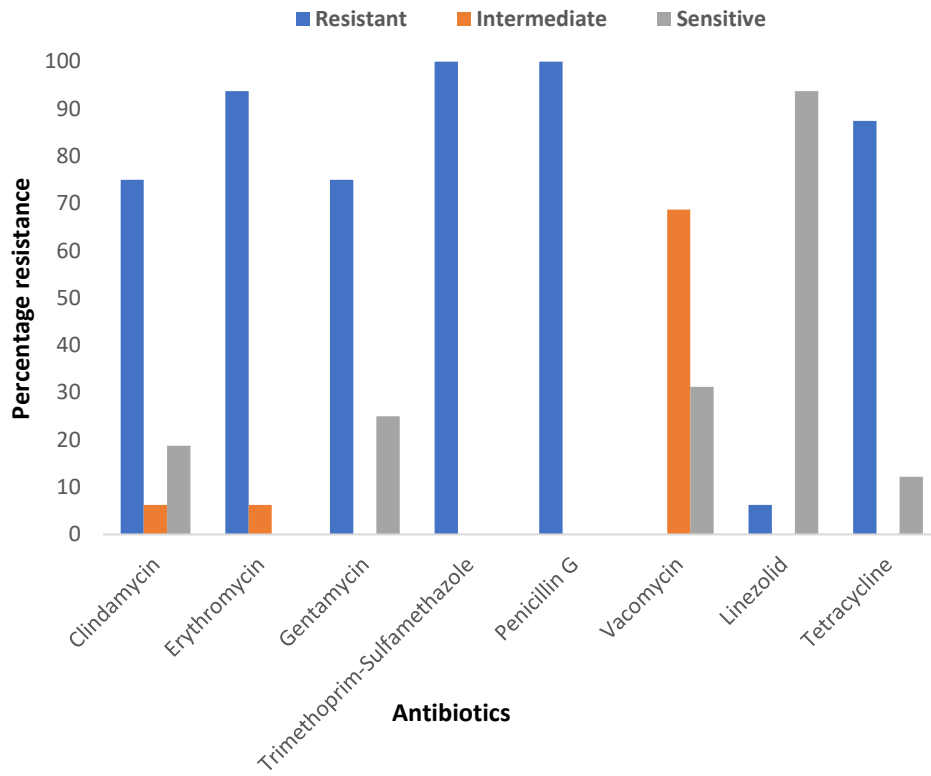
314 **Figure 4: Antibiogram of isolated *S. aureus* from control samples**



315

316 **Figure 5: Antibiogram of isolated MRSA from the control sample**

It is made available under a [CC-BY-ND 4.0 International license](https://creativecommons.org/licenses/by-nd/4.0/) .



317

318 **Figure 6:** Antibiogram of isolated MRSA from diabetic patients

319

320

321

322

323

324 **References**

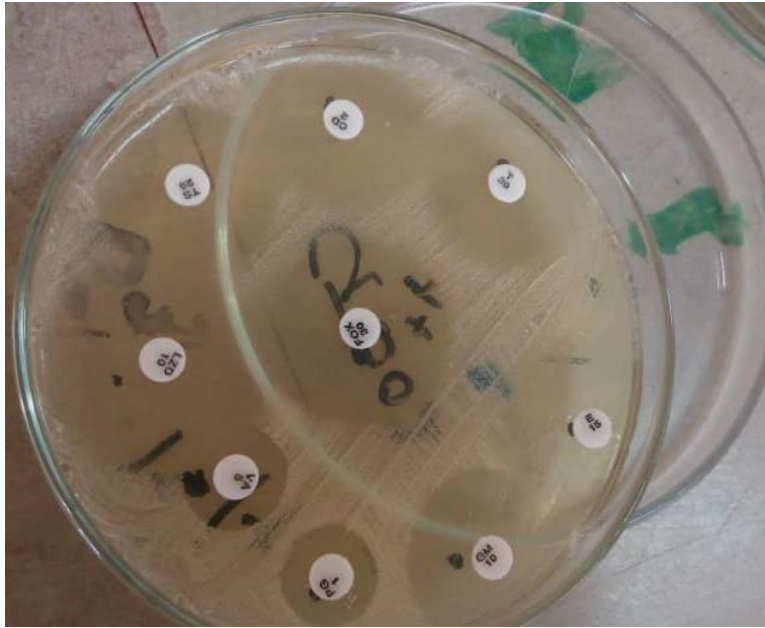
- 325 1. Amissah NA, Buultjens AH, Ablordey A, van Dam L, Opoku-Ware A, Baines SL, et al.
326 Methicillin resistant *Staphylococcus aureus* transmission in a Ghanaian burn unit: The
327 importance of active surveillance in resource-limited settings. *Front Microbiol.*
328 2017;8(OCT):1–11.
- 329 2. Baines SL, Holt KE, Schultz MB, Seemann T, Howden BO, Jensen SO, et al. Convergent
330 adaptation in the dominant global hospital clone ST239 of methicillin-resistant
331 *Staphylococcus aureus*. *MBio.* 2015;6(2):1–9.
- 332 3. Berbudi A, Rahmadika N, Tjahjadi AI, Ruslami R. Type 2 Diabetes and its Impact on the
333 Immune System. *Curr Diabetes Rev.* 2019;16(5):442–9.
- 334 4. Aaghar N, Aaghar M, Murntaz Shahina, Hussain Asif. Frequency of MRSA in patients
335 presenting with recurrent skin infection in skin unit Hatyatabad Medical Complex
336 Peshawar. *Kaohsiung J Med Sci.* 2016;9(3):316–9. Available from:
337 http://kjms.com.pk/sites/default/files/KJMS_6_0.pdf
- 338 5. Claeys KC, Zasowski EJ, Lagnf AM, Levine DP, Davis SL, Rybak MJ. Novel application
339 of published risk factors for methicillin-resistant *S. aureus* in acute bacterial skin and skin
340 structure infections. *Int J Antimicrob Agents.* 2018;51(1):43–6. Available from:
341 <https://doi.org/10.1016/j.ijantimicag.2017.05.015>
- 342 6. Lipsky BA, Tabak YP, Johannes RS, Vo L, Hyde L, Weigelt JA. Skin and soft tissue
343 infections in hospitalised patients with diabetes: Culture isolates and risk factors
344 associated with mortality, length of stay and cost. *Diabetologia.* 2010;53(5):914–23.
- 345 7. Bishburg E, Bishburg K. Minocycline-an old drug for a new century: emphasis on
346 methicillin-resistant *Staphylococcus aureus* (MRSA) and *Acinetobacter baumannii*. *Int J*

- 347 Antimicrob Agents. 2009;34(5):395–401.
- 348 8. Chang VS, Dhaliwal DK, Raju L, Kowalski RP. Antibiotic resistance in the treatment of
349 staphylococcus aureus Keratitis: A 20-year review. *Cornea*. 2015;34(6):698–703.
- 350 9. Hamilton SM, J. Andrew NA, Eun JC, Li B, Costa TM, Severin A, et al. crossm High-
351 Level Resistance of Staphylococcus. *Am Soc Microbiol*. 2017;61(6):1–10.
- 352 10. Karikari AB, Frimpong E, Owusu-Ofori A. Methicillin-resistant Staphylococcus aureus
353 among patients in a teaching hospital in Ghana. *Int J One Heal*. 2017;3:46–9.
- 354 11. Kurup R, Ansari AA. A study to identify bacteriological profile and other risk factors
355 among diabetic and non-diabetic foot ulcer patients in a Guyanese hospital setting.
356 *Diabetes Metab Syndr Clin Res Rev*. 2019;13(3):1871–6. Available from:
357 <https://doi.org/10.1016/j.dsx.2019.04.024>
- 358 12. Reveles KR, Duhon BM, Moore RJ, Hand EO, Howell CK. Epidemiology of methicillin-
359 resistant Staphylococcus aureus diabetic foot infections in a large academic hospital:
360 Implications for antimicrobial stewardship. *PLoS One*. 2016;11(8):1–8.
- 361 13. Stacey HJ, Clements CS, Welburn SC, Jones JD. The prevalence of methicillin-resistant
362 Staphylococcus aureus among diabetic patients: a meta-analysis. *Acta Diabetol*.
363 2019;56(8):907–21. Available from: <http://dx.doi.org/10.1007/s00592-019-01301-0>
- 364 14. Stanaway S, Johnson D, Moulik P, Gill G. Methicillin-resistant Staphylococcus aureus
365 (MRSA) isolation from diabetic foot ulcers correlates with nasal MRSA carriage. *Diabetes*
366 *Res Clin Pract*. 2007;75(1):47–50.
- 367 15. Kalan LR, Meisel JS, Loesche MA, Horwinski J, Soaita I, Chen X, et al. Strain- and
368 Species-Level Variation in the Microbiome of Diabetic Wounds Is Associated with
369 Clinical Outcomes and Therapeutic Efficacy. *Cell Host Microbe*. 2019;25(5):641-655.e5.

- 370 Available from: <https://doi.org/10.1016/j.chom.2019.03.006>
- 371 16. Anafo RB, Atiase Y, Kotey FCN, Dayie NTKD, Tetteh-Quarcoo PB, Duodu S, et al.
372 Methicillin-resistant *Staphylococcus aureus* (MRSA) nasal carriage among patients with
373 diabetes at the Korle Bu Teaching Hospital. *PLoS One* [Internet]. 2021;16(9
374 September):1–12. Available from: <http://dx.doi.org/10.1371/journal.pone.0257004>
- 375 17. Shariati A, Dadashi M, Moghadam MT, van Belkum A, Yaslianifard S, Darban-Sarokhalil
376 D. Global prevalence and distribution of vancomycin resistant, vancomycin intermediate
377 and heterogeneously vancomycin intermediate *Staphylococcus aureus* clinical isolates: a
378 systematic review and meta-analysis. *Sci Rep*. 2020;10(1):1–16. Available from:
379 <https://doi.org/10.1038/s41598-020-69058-z>
- 380 18. Baseri N, Najar-Peerayeh S, Bagheri Amiri F. Prevalence of vancomycin-intermediate
381 *Staphylococcus aureus* among clinical isolates in Iran: A systematic review and meta-
382 analysis. *J Glob Antimicrob Resist*. 2018;15:178–87. Available from:
383 <https://doi.org/10.1016/j.jgar.2018.06.018>
- 384

385 **Supplementary Figures**

386 ***SF1*: The image of Antibiotic susceptibility testing of *S. aureus*.**



387

388

389 ***SF2*: Positive Coagulase test for *S. aureus***



390

391

392

393

394

395

396

397

398 **SF3: Confirmation of *S. aureus* on Mannitol salt agar**

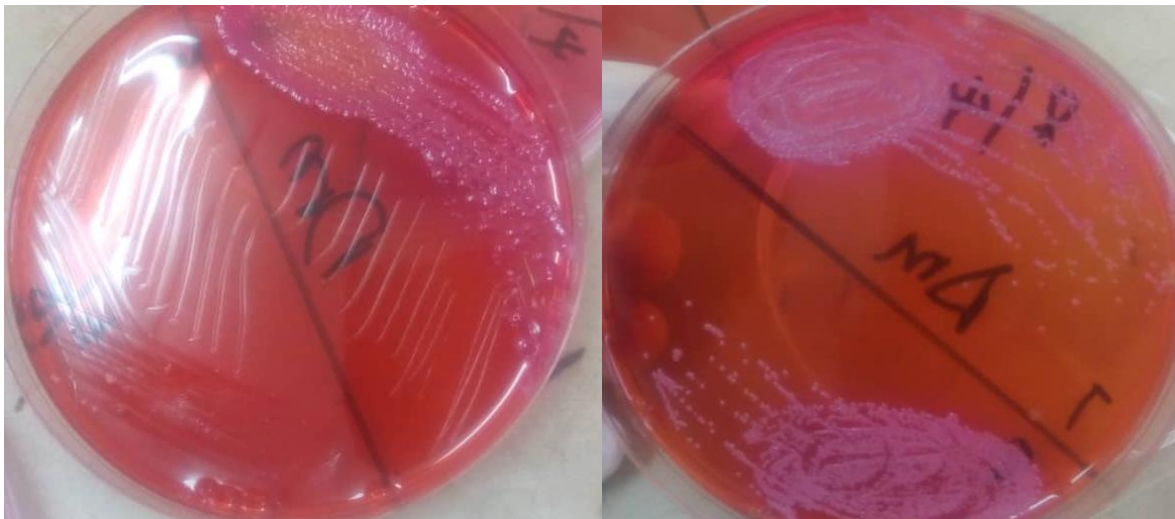
399



400

401

402 **SF4: Bacteria growth from direct inoculation of swab stick samples onto Mackonkey agar**



403