

Differential Prognostic Value of Angiography-Derived Microcirculatory Resistance for Coronary Artery Bypass Grafting of Intermediate Coronary Stenosis

Wenlong Yan, MD^{*}; Yangyang Wang, MD^{*}; Haoyu Hu, MSc; Wei Wang, MD; Zhenfu Li, MSc; Xin Zheng, BSc; Sumin Yang, MD

Correspondence to: Sumin Yang, MD, Department of Cardiovascular Surgery, The Affiliated Hospital of Qingdao University, Qingdao, Shandong 266000, China. Email: yangsumin@qdu.edu.cn

^{*} W. Yan and Y. Wang contributed equally.

BACKGROUND: For patients with intermediate coronary stenoses, the prognostic value of coronary artery bypass grafting (CABG) remains controversial. The prognostic impact of CABG may be different according to Murray law-based quantitative flow ratio (μ QFR) and angiography-derived microcirculatory resistance (AMR) in patients with intermediate coronary stenoses.

METHODS AND RESULTS Clinical data of 1411 cases who were diagnosed with multivessel coronary artery disease and had coronary artery intermediate stenoses (50% to 70% by visual assessment) between January 2013 and January 2020 were collected. Patients were categorized into CABG and defer groups based on the decision to bypass intermediate stenoses. These patients were further divided into different subgroups based on μ QFR and AMR. The primary outcome was the major adverse cardiac and cerebrovascular events (MACCE), defined as a composite of cardiac death, target vessel myocardial infarction, target vessel revascularization and stroke. Multivariable analysis showed AMR (HR = 1.68, 95% CI 1.18-4.14, P = 0.008) was independent factor associated with MACCE in all patients. On receiver-operating characteristic (ROC) curve analysis, the estimated area under the curve was 0.75 (95% CI: 0.72-0.79) for MACCE. Using the maximum Youden's index, the optimal cutoff value for AMR to predict MACCE was 2.50 mmHg*s/cm. In defer group, MACCE was significantly lower in patients with both μ QFR > 0.80 and AMR < 2.50 mmHg*s/cm as compared with patients with μ QFR > 0.80 (13.2% vs 22.0%, P = 0.031) or AMR < 2.50 mmHg*s/cm (13.2% vs 23.6%, P = 0.012) alone. Compared with patients with both normal μ QFR and AMR, patients with both abnormal μ QFR and AMR carried the highest risk for MACCE (HR = 3.46, 95% CI 2.10-5.71, P < 0.001). CABG was associated with a lower risk of MACCE compared with the deferral strategy when both μ QFR and AMR were abnormal. In contrast, at normal μ QFR and AMR, patients in both CABG and defer groups had similar MACCE outcomes.

CONCLUSIONS: In patients with intermediate coronary stenoses, the prognostic value of treatment strategy differed according to μ QFR and AMR, with a significant interaction. The combination of μ QFR and AMR can help stratify risk and guide

treatment strategies for patients with intermediate coronary stenoses.

Key Words: Murray law-based quantitative flow ratio, angiography-derived microcirculatory resistance, coronary artery bypass grafting, intermediate coronary stenosis

Patients with multivessel coronary artery disease experience improved survival rates after undergoing coronary artery bypass grafting (CABG), particularly those with significant comorbidities^{1,2}. The standard practice for this important surgical procedure requires complete revascularization of the coronary artery. However, different studies have different definitions of complete revascularization, so the management of intermediate stenosis is still controversial^{3,4}. Current guidelines recommend coronary physiologic assessment of intermediate stenoses to guide treatment in the absence of documented ischemia^{5,6}. However, unlike the success of coronary physiologic assessment in percutaneous coronary intervention (PCI), it is currently believed that coronary physiologic assessment needs further research in the field of CABG⁶.

Atherosclerotic plaque-induced obstruction causes flow-limiting stenosis in an epicardial coronary artery, which is mechanistically associated with coronary artery disease (CAD). Accumulating studies demonstrate that most patients presenting with myocardial ischemia symptoms have coronary microvascular dysfunction (CMD)⁷⁻¹⁰. CMD affects coronary microvascular structure and/or function and was previously thought to be harmless or not harmful. However, current evidence links CMD to poor quality of life, shortened survival time, and major cardiovascular and cerebrovascular adverse events (MACCE) in CAD patients¹¹⁻¹³. Equipment availability, costs, and the procedure's long duration limit simultaneous invasive physiologic and CMD assessments. The wire- and adenosine-free angiography-derived microcirculatory resistance (AMR) index, is a valid alternative to the index of microcirculatory resistance (IMR) assessment, which is invasive and wire-based. This study assessed the clinical implications of identifying distinct disturbed coronary hemodynamic patterns using Murray law-based quantitative flow ratio (μ QFR) and AMR for decision-making regarding coronary revascularization.

METHODS

Study population

Isolated CABG patients at the Affiliated Hospital of Qingdao University from January 2013 to January 2020 were retrospectively analyzed (Fig. 1). The inclusion criteria included: patients diagnosed with multivessel coronary artery disease and had coronary artery intermediate stenoses (50% to 70% by visual assessment). The exclusion criteria included: patients without intermediate stenoses, patients who had left main artery stenosis >50%, image data missing or with poor quality, patients who had emergency surgery, and patients with previous heart surgery. Patients were categorized into CABG and Defer groups based on the decision to bypass intermediate stenoses. The Affiliated Hospital of Qingdao University Institutional Review Board approved the study on October 30, 2023 (QYFY WZLL 28170), and

waived the
informed consent requirement.

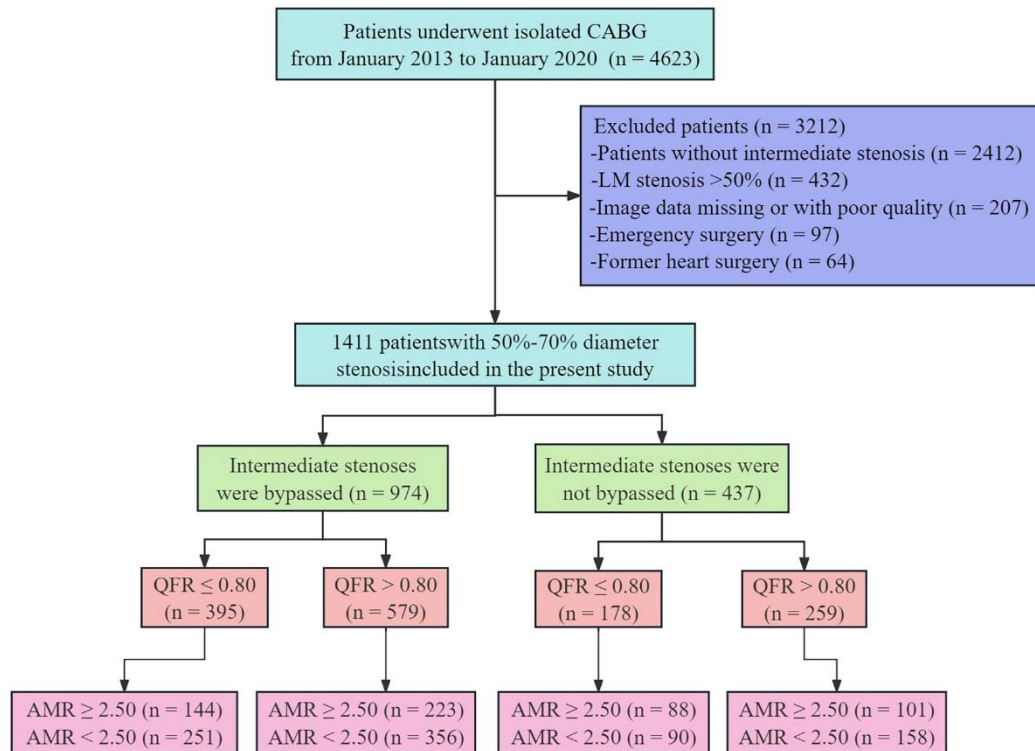


Figure 1 Study flow

Coronary angiography and physiological measurements

The coronary angiography puncture point was the radial or femoral artery, with a 5-F or 6-F sheath diameter, and 100 IU/kg intravenous heparin was used for preoperative anticoagulation. X-ray systems (Allura X per FD20, Philips; Innova IGS520, GE) were used to capture images at ≥ 15 frames/s. An expert certified analyst computed the single-view Murray law-based μ QFR analysis using the μ QFR software (AngioPlus Core, version V3, Shanghai Pulse Medical Technology Inc., Shanghai, China) at CardHemo, Med-X Research Institute, Shanghai Jiao Tong University, Shanghai, China, an independent academic core laboratory. The single-view μ QFR methodology is detailed in a previous study¹⁴.

Study endpoints

Telephone or outpatient follow-up was conducted, and cardiac death, target vessel myocardial infarction or revascularization, and stroke were classified as MACCE. The Academic Research Consortium report¹⁵ guided the clinical outcome classification and patients' hospital records, treating cardiologist, or general practitioner confirmed adverse events.

Statistical analysis

The analysis of normally distributed continuous data involved examining the mean standard deviation (SD) using the Student's t-test, while for non-normally distributed continuous data, the statistical significance of the median and interquartile ranges was

assessed using the Mann-Whitney U test. Categorical variables, expressed as percentages, were examined using Pearson's χ^2 or Fisher's exact tests. Survival rates for MACCE were computed using the Kaplan-Meier analysis, and the log-rank test was used to assess the differences. Cox proportional regression analysis determined the relationship between AMR and clinical outcomes. The link between the AMR, clinical outcomes, and each variable (Table 2) was evaluated using univariate analyses. Variables with a univariate predictive value of $P < 0.10$ were included as covariates in the multivariable models (Table 3). The hazard ratio (HR) was estimated at a 95% confidence interval (CI). The area under the curve (AUC) of the receiver-operating characteristic (ROC) curve analysis evaluated AMR's prediction accuracy for MACCE. Youden's index algorithm criterion was used to identify optimal AMR cutoff values. Inverse probability of treatment weighting (IPTW) and propensity score matching (PSM) analyses were used to adjust for the uneven baseline characteristics of the CABG and Defer groups. After matching, the equilibrium was assessed using standardized mean differences (SMD). Populations were considered well-balanced if the SMD was $<10\%$. The closest neighbor method was used to compute the PSM with a 1:2 ratio and a 0.2 caliper. R Analysis 4.2.2 (R Core Team, R Foundation for Statistical Computing, Vienna, Austria) was used for PSM and IPTW assessment. Other statistical analyses and graphics generation were performed using SPSS version 25.0 (IBM, Armonk, NY, USA). P values less than 0.05 was statistically significant.

RESULTS

Baseline characteristics

Figure 1 presents the study's flowchart. Eventually, a total of 1411 patients were included, for coronary artery intermediate stenoses CABG was deferred in 437 patients (Defer group) and performed in 974 patients (CABG group). The study population's key baseline characteristics are summarized in Table 1. About 23.2% of patients were female. The average age of the patients was 60.5 ± 8.4 years, with a BMI was 24.5 ± 3.4 kg/m². A total of 447 (31.7%) had diabetes, 486 (34.2%) had $\mu\text{QFR} \leq 0.80$, the mean AMR was 2.16 ± 0.82 mmHg*s/cm, and the mean SYNTAX score was 27.0 ± 10.3 . The patients were followed up for a median duration of 5.9 (IQR: 3.9-8.1 years) years.

Table 1. Baseline characteristics of the study population

	All patients (n=1411)	CABG group (n=974)	Defer group (n=437)
Age (years)	60.5 \pm 8.4	60.2 \pm 8.4	61.1 \pm 8.6
Female	327 (23.2%)	222 (22.8%)	105 (24.0%)
BMI (kg/m ²)	24.5 \pm 3.4	24.5 \pm 3.5	24.2 \pm 3.2
Hypertension	866 (61.4%)	591 (60.7%)	275 (62.9%)
Diabetes mellitus	447 (31.7%)	302 (31.0%)	145 (33.2%)
PAD	80 (5.7%)	50 (5.1%)	30 (6.9%)
Carotid stenosis	203 (14.4%)	142 (14.6%)	61 (14.0%)
Renal disease	97 (6.9%)	65 (6.7%)	32 (7.3%)
Chronic lung disease	55 (3.9%)	39 (4.0%)	16 (3.7%)
Cerebrovascular disease	38 (2.7%)	25 (2.6%)	13 (3.0%)
Liver Disease	46 (3.3%)	32 (3.3%)	14 (3.2%)
Smoking history	748 (53.0%)	509 (52.3%)	239 (54.7%)

Atrial fibrillation or flutter	26 (1.8%)	19 (2.0%)	7 (1.6%)
Prior MI	292 (20.7%)	206 (21.1%)	86 (19.7%)
Prior PCI	191 (13.5%)	134 (13.8%)	57 (13.0%)
LVEF<50%	106 (7.5%)	77 (7.9%)	29 (6.6%)
NYHA class			
I	119 (8.4%)	79 (8.1%)	40 (9.2%)
II	678 (48.1%)	475 (48.8%)	203 (46.5%)
III	545 (38.7%)	369 (37.9%)	176 (40.1%)
IV	69 (4.9%)	51 (5.2%)	18 (4.1%)
3-vessel disease	1095 (77.6%)	767 (78.7%)	328 (75.1%)
μ QFR \leq 0.80	483 (34.2%)	356 (36.6%)	127 (29.1%)
AMR (mmHg*s/cm)	2.16 \pm 0.82	2.37 \pm 0.74	2.01 \pm 0.89
SYNTAX	27.0 \pm 10.3	27.5 \pm 10.6	25.9 \pm 9.9

BMI body mass index, PAD peripheral arterial disease, MI myocardial infarction, PCI percutaneous coronary intervention, LVEF left ventricular ejection fraction, NYHA New York Heart Association, QFR quantitative flow ratio, AMR angiographic microvascular resistance

Predictors of MACCE

Univariate analysis results showed that age, diabetes mellitus, LVEF, μ QFR \leq 0.80, AMR, and SYNTAX were relative risk factors for MACCE in all patients (Table 2). Age, diabetes mellitus, renal disease, LVEF, μ QFR \leq 0.80 and AMR were relative risk factors for MACCE in CABG group. Age, diabetes mellitus, carotid stenosis, LVEF, μ QFR \leq 0.80, AMR and SYNTAX were relative risk factors for MACCE in defer group.

In the univariate analysis, variables with $P < 0.10$ were used in a backward logistic regression analysis. In the multivariable analysis, age (HR = 1.21, 95% CI 1.08-1.69, $P = 0.014$), diabetes mellitus (HR = 1.41, 95% CI 1.10-2.37, $P < 0.001$), μ QFR \leq 0.80 (HR = 1.32, 95% CI 1.07-3.22, $P = 0.011$) and AMR (HR = 1.68, 95% CI 1.18-4.14, $P = 0.008$) were independent factors associated with MACCE in all patients (Table 3). Age (HR = 1.77, 95% CI 1.23-2.31, $P = 0.017$), LVEF (HR = 1.38, 95% CI 1.14-2.87, $P = 0.002$) and AMR (HR = 1.41, 95% CI 1.23-3.64, $P = 0.026$) were independently associated with MACCE in the CABG group. Diabetes mellitus (HR = 1.28, 95% CI 1.08-1.53, $P = 0.022$), μ QFR \leq 0.80 (HR = 2.11, 95% CI 1.04-4.30, $P = 0.039$) and AMR (HR = 1.64, 95% CI 1.11-3.69, $P < 0.001$) were independent predictors of MACCE in Defer group.

Table 2. Univariate analysis for MACCE

	All patients		CABG group		Defer group	
	HR (95% CI)	P-value	HR (95% CI)	P-value	HR (95% CI)	P-value
Age	1.51(1.28-2.87)	0.005	1.71(1.29-3.03)	<0.001	1.02(1.00-1.04)	0.035
Female	1.33(0.77-2.33)	0.332	1.40(0.90-1.89)	0.068	1.60(0.44-4.85)	0.455
BMI	1.66(0.44-2.25)	0.568	1.17(0.83-1.51)	0.181	1.05(0.90-1.61)	0.468
Hypertension	1.26(0.65-2.46)	0.411	1.26(0.95-1.67)	0.118	1.51(0.42-3.24)	0.138
Diabetes mellitus	1.49(1.15-2.14)	0.020	1.39(1.05-1.84)	0.021	1.74(1.21-2.48)	0.012
PAD	1.22(0.60-3.19)	0.665	1.60(0.74-2.39)	0.245	1.49(0.49-3.17)	0.478
Carotid stenosis	1.02(0.97-1.66)	0.268	1.52(0.68-3.15)	0.411	1.43(1.07-2.36)	0.021
Renal disease	1.78(0.74-4.25)	0.194	1.46(1.12-3.74)	0.025	1.28(0.66-3.81)	0.098
Chronic lung disease	1.09(0.91-1.33)	0.176	1.14(0.58-4.40)	0.560	1.19(0.41-3.73)	0.322
Cerebrovascular disease	1.41(0.65-3.07)	0.375	1.08(0.47-3.07)	0.131	1.58(0.53-4.77)	0.478

Liver Disease	1.05(0.26-4.32)	0.947	1.27(0.36-4.06)	0.646	1.49(0.56-3.97)	0.416
Smoking history	1.10(0.81-2.55)	0.279	1.32(0.20-4.73)	0.664	1.37(0.57-3.30)	0.471
Atrial fibrillation	1.46(0.45-4.74)	0.527	1.73(0.77-3.91)	0.182	1.10(0.82-2.02)	0.132
Prior MI	1.09(0.92-1.36)	0.176	1.45(0.60-5.98)	0.717	1.41(0.65-3.03)	0.258
Prior PCI	1.10(0.89-1.66)	0.219	1.53(0.77-2.18)	0.118	1.24(0.74-2.08)	0.400
LVEF	1.68(1.13-3.69)	0.006	1.28(1.03-3.39)	0.015	2.36(1.29-4.02)	0.005
NYHA class III IV	1.01(0.96-1.88)	0.132	1.30(0.92-1.71)	0.090	1.32(0.92-1.88)	0.124
3-vessel disease	1.33(0.88-1.99)	0.143	1.22(0.87-1.72)	0.244	2.66(0.93-6.65)	0.170
μ QFR \leq 0.80	1.46(1.09-4.12)	0.005	1.38(1.05-2.81)	0.008	1.63(1.24-2.76)	0.018
AMR	1.79(1.22-4.68)	<0.001	2.11(1.18-5.87)	0.006	2.54(1.28-3.41)	0.011
SYNTAX	1.29(1.07-3.64)	0.026	1.05(1.03-1.06)	0.165	1.26(1.44-1.98)	<0.001

BMI body mass index, PAD peripheral arterial disease, MI myocardial infarction, PCI percutaneous coronary intervention, LVEF left ventricular ejection fraction, NYHA New York Heart Association, μ QFR Murray law-based quantitative flow ratio, AMR angiographic microvascular resistance

Table 3. Multivariable analysis for MACCE

	All patients		CABG group		Defer group	
	HR (95% CI)	P-value	HR (95% CI)	P-value	HR (95% CI)	P-value
Age	1.21(1.08-1.69)	0.014	1.77(1.23-2.31)	0.017	1.27(0.86-1.88)	0.225
Female	-	-	1.19(0.76-2.14)	0.363	-	-
Diabetes mellitus	1.41(1.10-2.37)	<0.001	1.33(0.52-3.66)	0.521	1.28(1.08-1.53)	0.022
Carotid stenosis	-	-	-	-	1.10(0.82-1.47)	0.525
Renal disease	-	-	1.24(0.87-1.69)	0.274	1.06(0.88-1.25)	0.470
LVEF	1.34(0.73-2.81)	0.364	1.38(1.14-2.87)	0.002	1.76(0.77-3.63)	0.166
NYHA class III IV	-	-	1.38(0.83-2.11)	0.120	-	-
μ QFR \leq 0.80	1.31(1.07-3.22)	0.011	1.22(0.79-2.72)	0.203	2.11(1.04-4.30)	0.039
AMR	1.68(1.18-4.14)	0.008	1.41(1.23-3.64)	0.026	1.64(1.11-3.69)	<0.001
SYNTAX	1.19(0.94-1.99)	0.056	-	-	1.53(0.74-3.74)	0.136

LVEF left ventricular ejection fraction, NYHA New York Heart Association, μ QFR Murray law-based quantitative flow ratio, AMR angiographic microvascular resistance

Association between AMR and MACCE

On ROC curve analysis, the estimated AUC was 0.75 (95% CI: 0.72-0.79) for MACCE. AMR's optimal cutoff value for predicting MACCE using Youden's maximum index was 2.50 mmHg*s/cm (Figure 2).

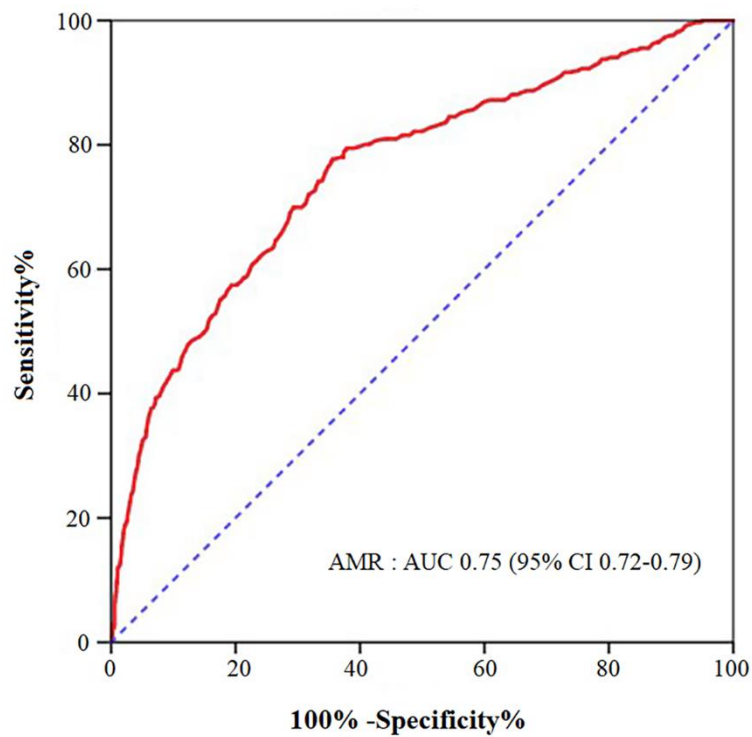


Figure 2 Receiver-Operating Characteristic Curve Analysis

Combined μ QFR and AMR strategy

In defer group, we evaluated the predictive value of μ QFR combined with AMR for MACCE in 437 patients. Patients with both μ QFR > 0.80 and AMR < 2.50 mmHg*s/cm had significantly lower MACCE incidence than those with μ QFR > 0.80 (13.2% vs 22.0%, P = 0.031) or AMR < 2.50 mmHg*s/cm (13.2% vs 23.6%, P = 0.012) alone (Figure 3).

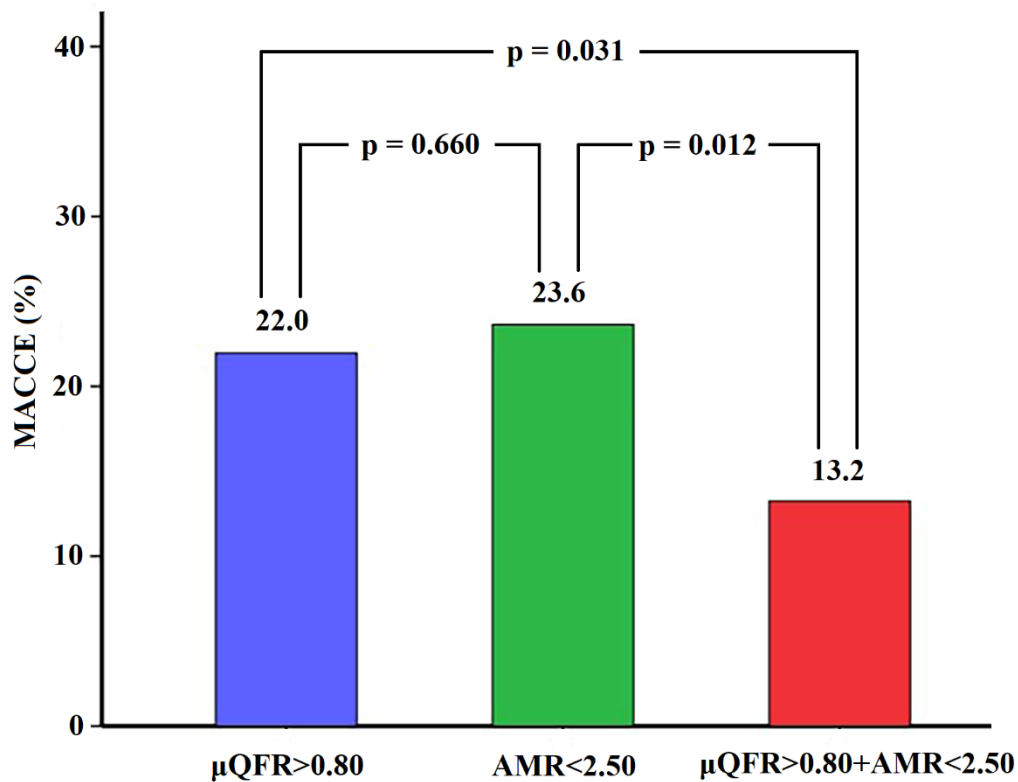
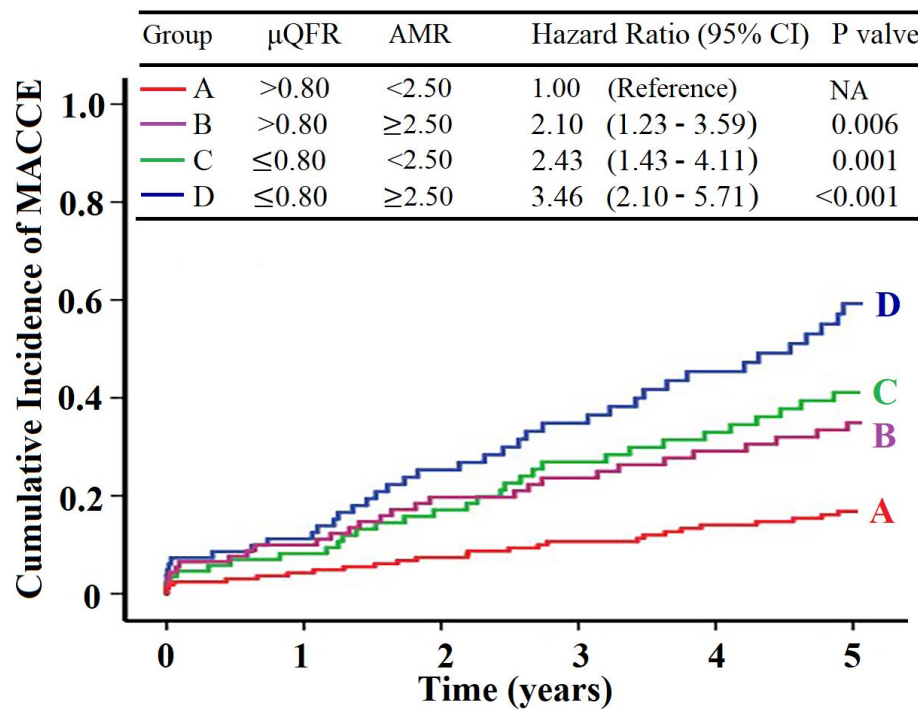


Figure 3 Stratified Analysis by μQFR and AMR

Medium-term clinical outcomes according to μQFR and AMR in defer group

The Figure 4 depicts the Kaplan-Meier curves for MACCE of 5 years across groups defined by μQFR and AMR in patients in defer group. Compared with patients with both normal μQFR and AMR, patients with both abnormal μQFR and AMR carried the highest risk for MACCE (HR = 3.46, 95% CI 2.10-5.71, $P < 0.001$). Discordance with normal μQFR and abnormal AMR and discordance with abnormal μQFR and normal AMR led to more MACCE than the group with normal μQFR and AMR (Group B vs Group A: HR = 2.10, 95% CI 1.23-3.59, $P = 0.006$; Group C vs Group A: HR = 2.43, 95% CI 1.43-4.11, $P = 0.001$).



Number at risk	0	1	2	3	4	5
Group A	158	147	134	118	99	78
Group B	101	89	77	62	50	41
Group C	90	80	68	55	48	39
Group D	88	74	58	45	32	25

Figure 4 Clinical Outcomes according to μ QFR and AMR in Defer Group

Effect of CABG on medium-term clinical outcomes divided according to μ QFR and AMR

In CABG group, patients with μ QFR \leq 0.80 and AMR \geq 2.50 mmHg*s/cm were defined as group 1 (n = 144). In defer group, patients with μ QFR \leq 0.80 and AMR \geq 2.50 mmHg*s/cm were defined as group 2 (n = 88). The risk of MACCE was lower in group 1 than in group 2 (HR = 0.52, 95% CI 0.33-0.82, P = 0.005, Figure 5A). After PSM and IPTW matching, MACCE remained lower in group 1 than in group 2 (Figure 5B and Figure 5C).

In CABG group, patients with μ QFR > 0.80 and AMR < 2.50 mmHg*s/cm were defined as group 3 (n = 356). In defer group, patients with μ QFR > 0.80 and AMR < 2.50 mmHg*s/cm were defined as group 4 (n = 158). Groups 3 and 4 MACCE did not differ (HR = 1.15, 95% CI 0.73-1.80, P = 0.558, Figure 6A). After PSM and IPTW matching, groups 3 and 4 MACCE did not differ (Figure 6B and Figure 6C).

Table 4. Baseline characteristics of group 1 and 2

	Initial Cohort			After PSM				After IPTW			
	Group 1 (n=144)	Group 2 (n=88)	P value	Group 1 (n=71)	Group 2 (n=71)	P value	SMD	Group 1 (n=149)	Group 2 (n=93)	P value	SMD
Age (years)	60.6 ± 8.1	63.3 ± 8.5	0.016	61.2 ± 8.3	62.5 ± 8.4	0.355	0.076	61.1 ± 8.3	61.9 ± 8.5	0.471	0.032
Female	38 (26.4%)	20 (22.7%)	0.532	17 (23.9%)	15 (21.1%)	0.688	0.022	34 (22.8%)	22 (23.7%)	0.881	0.009
BMI (kg/m ²)	24.1 ± 3.4	26.3 ± 3.8	<0.001	24.4 ± 3.5	25.3 ± 3.3	0.117	0.066	24.3 ± 3.5	24.6 ± 3.4	0.513	0.021
Hypertension	87 (60.4%)	56 (63.6%)	0.625	44 (62.0%)	46 (64.8%)	0.728	0.010	91 (61.1%)	60 (64.5%)	0.591	0.036
Diabetes mellitus	46 (31.9%)	31 (35.2%)	0.606	21 (29.6%)	24 (33.8%)	0.588	0.054	49 (32.9%)	32 (34.4%)	0.807	0.008
PAD	7 (4.9%)	7 (8.0%)	0.337	7 (4.9%)	7 (8.0%)	0.337	0.018	7 (4.9%)	7 (8.0%)	0.337	0.025
Carotid stenosis	20 (13.9%)	9 (10.2%)	0.413	8 (11.3%)	6 (8.5%)	0.573	0.025	21 (14.1%)	9 (10.2%)	0.311	0.033
Renal disease	8 (5.6%)	7 (8.0%)	0.471	5 (7.0%)	7 (8.0%)	0.546	0.041	10 (6.7%)	7 (8.0%)	0.809	0.014
Chronic lung disease	8 (5.6%)	3 (3.4%)	0.669	5 (7.0%)	3 (4.2%)	0.716	0.011	8 (5.4%)	6 (6.5%)	0.726	0.039
Cerebrovascular disease	5 (3.5%)	5 (5.7%)	0.638	3 (4.2%)	4 (5.6%)	1.000	0.000	5 (3.4%)	4 (4.3%)	0.977	0.024
Liver Disease	4 (2.8%)	4 (4.5%)	0.730	3 (4.2%)	4 (5.6%)	1.000	0.000	6 (4.0%)	4 (4.3%)	0.820	0.020
Smoking history	73 (50.7%)	53 (60.2%)	0.157	38 (53.5%)	42 (59.2%)	0.499	0.053	85 (57.0%)	54 (58.1%)	0.876	0.011
Atrial fibrillation or flutter	5 (3.5%)	6 (6.8%)	0.398	4 (5.6%)	5 (7.0%)	1.000	0.000	7 (4.7%)	6 (6.5%)	0.768	0.015
Prior MI	40 (27.8%)	14 (15.9%)	0.038	16 (22.5%)	13 (18.3%)	0.532	0.038	36 (24.2%)	19 (20.4%)	0.501	0.068
Prior PCI	25 (17.4%)	11 (12.5%)	0.321	11 (15.5%)	9 (12.7%)	0.630	0.009	25 (16.8%)	13 (14.0%)	0.560	0.061
LVEF<50%	12 (8.3%)	9 (10.2%)	0.626	6 (8.5%)	8 (11.3%)	0.573	0.065	14 (9.4%)	9 (9.7%)	0.942	0.004
NYHA class			0.568			1.000	0.000			0.870	0.018
I	20 (13.9%)	14 (15.9%)		9 (12.7%)	10 (14.1%)			24 (16.1%)	13 (14.0%)		
II	70 (48.6%)	36 (40.9%)		35 (49.3%)	31 (43.7%)			66 (44.3%)	39 (41.9%)		
III	45 (31.3%)	34 (38.6%)		22 (31.0%)	26 (36.6%)			50 (33.6%)	36 (38.7%)		
IV	9 (6.3%)	4 (4.5%)		5 (7.0%)	4 (5.6%)			9 (6.0%)	5 (5.4%)		
3-vessel disease	104 (72.2%)	51 (58.0%)	0.025	48 (67.6%)	43 (60.6%)	0.382	0.022	102 (68.5%)	60 (64.5%)	0.526	0.033
SYNTAX	26.4 ± 10.1	25.1 ± 10.8	0.355	26.2 ± 9.8	25.6 ± 9.6	0.713	0.006	26.2 ± 10.2	25.8 ± 10.5	0.770	0.014

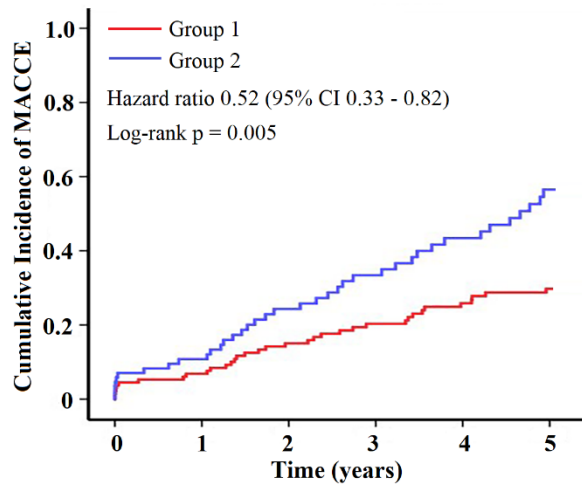
BMI body mass index, PAD peripheral arterial disease, MI myocardial infarction, PCI percutaneous coronary intervention, LVEF left ventricular ejection fraction, NYHA New York Heart Association

Table 5. Baseline characteristics of group 3 and 4

	Initial Cohort			After PSM				After IPTW			
	Group 3 (n=356)	Group 4 (n=158)	P valve	Group 3 (n=149)	Group 4 (n=149)	P valve	SMD	Group 3 (n=351)	Group 4 (n=162)	P valve	SMD
Age (years)	61.6 ± 8.8	60.7 ± 8.1	0.274	61.1 ± 9.3	60.9 ± 8.3	0.845		61.3 ± 9.2	60.8 ± 8.5	0.558	0.040
Female	72 (20.2%)	45 (28.5%)	0.039	33 (22.1%)	39 (26.2%)	0.417		87 (24.8%)	43 (26.5%)	0.671	0.021
BMI (kg/m ²)	25.6 ± 4.2	24.3 ± 3.8	0.001	25.2 ± 4.1	24.5 ± 3.7	0.123		25.0 ± 4.0	24.6 ± 3.9	0.289	0.077
Hypertension	208 (58.4%)	101 (63.9%)	0.240	88 (59.1%)	95 (63.8%)	0.405		214 (61.0%)	100 (61.7%)	0.870	0.014
Diabetes mellitus	95 (26.7%)	56 (35.4%)	0.044	46 (30.9%)	49 (32.9%)	0.709		108 (30.8%)	55 (34.0%)	0.472	0.055
PAD	23 (6.5%)	7 (4.4%)	0.365	8 (5.4%)	6 (4.0%)	0.584		21 (6.0%)	9 (5.6%)	0.848	0.008
Carotid stenosis	60 (16.9%)	18 (11.4%)	0.111	21 (14.1%)	17 (11.4%)	0.487		52 (14.8%)	19 (11.7%)	0.347	0.024
Renal disease	17 (4.8%)	12 (7.6%)	0.201	8 (5.4%)	10 (6.7%)	0.627		21 (6.0%)	11 (6.8%)	0.725	0.011
Chronic lung disease	16 (4.5%)	6 (3.8%)	0.719	6 (4.0%)	5 (3.4%)	0.759		14 (4.0%)	5 (3.1%)	0.615	0.023
Cerebrovascular disease	11 (3.1%)	8 (5.1%)	0.274	5 (3.4%)	7 (4.7%)	0.556		13 (3.7%)	7 (4.3%)	0.737	0.009
Liver Disease	12 (3.4%)	5 (3.2%)	0.904	5 (3.4%)	4 (2.7%)	1.000		12 (3.4%)	7 (4.3%)	0.615	0.057
Smoking history	215 (60.4%)	79 (50.0%)	0.028	82 (55.0%)	76 (51.0%)	0.486		197 (56.1%)	83 (51.2%)	0.301	0.036
Atrial fibrillation or flutter	8 (2.2%)	5 (3.2%)	0.759	5 (3.4%)	4 (2.7%)	1.000		8 (2.3%)	4 (2.5%)	0.856	0.002
Prior MI	78 (21.9%)	27 (17.1%)	0.211	30 (20.1%)	26 (17.4%)	0.553		75 (21.4%)	31 (19.1%)	0.562	0.029
Prior PCI	45 (12.6%)	14 (8.9%)	0.215	16 (10.7%)	13 (8.7%)	0.558		38 (10.8%)	16 (9.9%)	0.745	0.007
LVEF<50%	28 (7.9%)	5 (3.2%)	0.045	8 (5.4%)	4 (2.7%)	0.239		22 (6.3%)	8 (4.9%)	0.551	0.074
NYHA class			0.518			0.425				0.891	0.001
I	39 (11.0%)	12 (7.6%)		14 (9.4%)	10 (6.7%)			35 (10.0%)	13 (8.0%)		
II	172 (48.3%)	77 (48.7%)		83 (55.7%)	75 (50.3%)			169 (48.1%)	79 (48.8%)		
III	124 (34.8%)	62 (39.2%)		45 (30.2%)	58 (38.9%)			130 (37.0%)	63 (38.9%)		
IV	21 (5.9%)	7 (4.4%)		7 (4.7%)	6 (4.0%)			17 (4.8%)	7 (4.3%)		
3-vessel disease	223 (62.6%)	88 (55.7%)	0.137	90 (60.4%)	84 (56.4%)	0.481		217 (61.8%)	95 (58.6%)	0.493	0.036
SYNTAX	25.3 ± 8.8	23.5 ± 9.2	0.035	25.1 ± 9.1	24.2 ± 9.8	0.313		25.0 ± 9.5	24.6 ± 10.2	0.665	0.021

BMI body mass index, PAD peripheral arterial disease, MI myocardial infarction, PCI percutaneous coronary intervention, LVEF left ventricular ejection fraction, NYHA New York Heart Associa

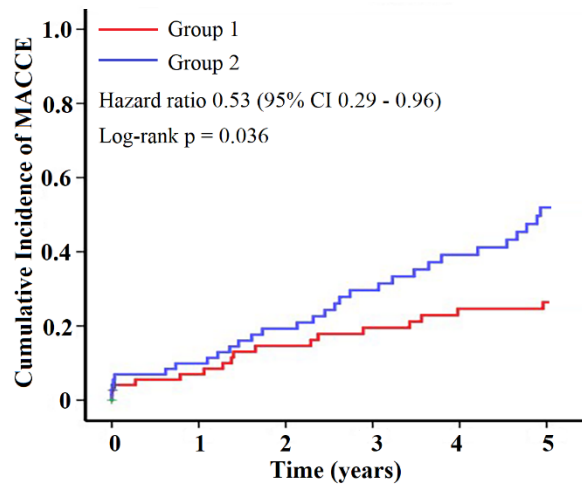
A



Number at risk

Group 1	144	130	113	101	89	71
Group 2	88	74	58	45	32	25

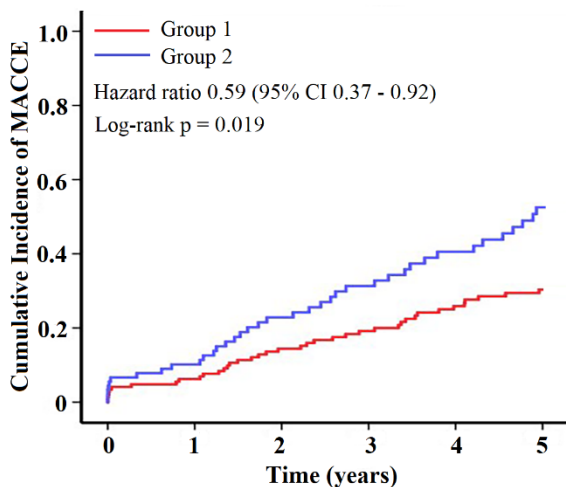
B



Number at risk

Group 1	75	66	57	48	40	32
Group 2	75	64	53	43	34	22

C

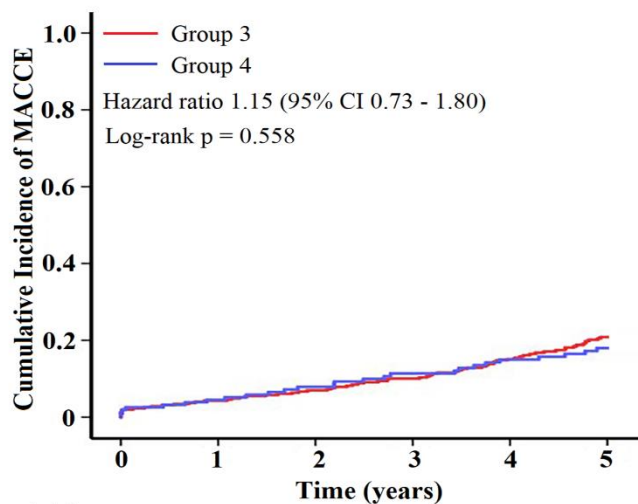


Number at risk

Group 1	149	133	119	103	91	74
Group 2	93	75	61	48	35	28

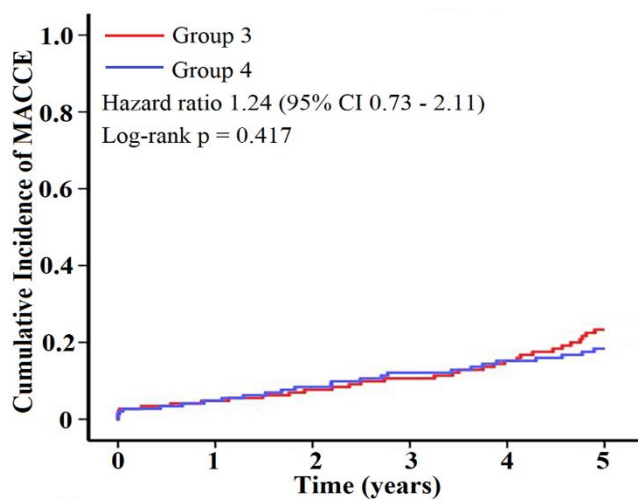
Figure 5 Clinical Outcomes of Group 1 and Group 2 A. Clinical Outcomes in Initial Cohort B. Clinical Outcomes of Patients after PSM C. Clinical Outcomes of Patients after IPTW

A



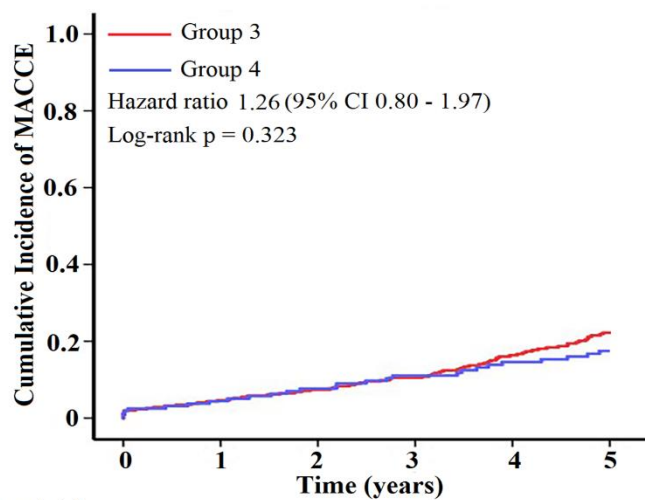
Number at risk	0	1	2	3	4	5
Group 3	356	321	292	257	216	181
Group 4	158	147	134	118	99	78

B



Number at risk	0	1	2	3	4	5
Group 3	149	140	129	111	86	60
Group 4	149	142	133	116	95	71

C



Number at risk	0	1	2	3	4	5
Group 3	351	319	289	252	208	177
Group 4	162	148	136	119	100	80

Figure 6 Clinical Outcomes of Group 3 and Group 4 A. Clinical Outcomes in Initial Cohort B. Clinical Outcomes of Patients after PSM C. Clinical Outcomes of Patients after IPTW

DISCUSSION

This study assessed the predictive significance of AMR for CABG in intermediate coronary stenosis. The primary outcomes are outlined. First, AMR independently predicted MACCE in the 5-year follow-up of patients who received CABG and those who did not. The optimal cutoff value for AMR to predict MACCE was 2.50 mmHg*s/cm, and the estimated AUC was 0.75. Second, μ QFR and AMR assessments in patients with intermediate stenoses offered insights into the microvascular system that were not apparent when reviewing only the clinical or angiographic features. Patients with abnormal AMR and μ QFR had worse clinical outcomes than those in other groups. Third, although CABG reduced the risk of MACCE for patients with abnormal μ QFR and AMR, it did not reduce this risk for those with normal μ QFR and AMR.

In ischemia with non-obstructive coronary microvascular disease (INOCA), myocardial ischemia and symptoms are caused by CMD, either alone or in combination with CAD¹⁶. Prior research has demonstrated that in patients without flow-limiting epicardial stenosis, microvascular disease increases the risk of cardiovascular events^{17,18}. Recurrent or persistent angina, even in patients receiving effective PCI or CABG treatment, may be determined in part by CMD. In these cases, angina results from complex, multifactorial, structural, and functional causes¹⁹. However, hyperemic microvascular resistance (HMR) and IMR are rarely used clinically despite CMD's prognostic potential. Their use is limited by cost, procedural time, patient discomfort from intravenous adenosine infusion, and increased procedural risk from manipulating a pressure wire in the infarcted artery. Based on computational flow analysis, several angiography-based solutions against invasive IMR have been proposed and validated for CMD investigation²⁰⁻²². During routine angiographic evaluations, AMR demonstrated its effectiveness as a viable substitute for wire-based IMR measurements in patients with suspected or known CAD²³. This study's findings indicated that AMR independently predicted MACCE in all patients. The Youden test indicated that the optimal cutoff value for AMR in the ROC analysis for MACCE was 2.50 mmHg*s/cm, with an estimated AUC of 0.75 (95% CI: 0.72-0.79). This proves that AMR has good predictive value for this group of patients. We also demonstrated that lesions with a baseline AMR \geq 2.50 mmHg*s/cm showed a higher likelihood of triggering an adverse MACCE event. AMR is easy to measure, which makes it a desirable addition to risk stratification, especially for angiographically stenotic intermediate lesions, which warrant further study.

Further, we found that μ QFR combined with AMR was very good in stratifying the risk in patients with intermediate coronary stenoses who did not receive CABG. The fractional flow reserve (FFR) and μ QFR can then be used to guide PCI strategies, as numerous studies have demonstrated the relationship between coronary physiologic

assessment indices and clinical outcomes²⁴⁻²⁶. Based on these insights, it has been suggested that FFR and μ QFR could be used to guide target arteries for CABG. Finally, some researchers believe that CABG prolongs life expectancy, and using FFR to direct revascularization is not as logical for CABG as it is for PCI²⁷. Our study explored the guiding value of coronary artery physiologic assessment indices in CABG from a new perspective. For patients with intermediate coronary stenoses who did not receive CABG, those with both normal μ QFR and AMR had significantly lower MACCE than those with normal μ QFR or AMR alone (Figure 3). Meanwhile, compared with both normal μ QFR and AMR (Group A), both abnormal μ QFR and AMR (Group D) carried the highest risk for MACCE (Figure 4). After finding this interesting result, we compared the effects of CABG on these different risk groups. For patients with both abnormal μ QFR and AMR, MACCE reduced significantly in the CABG group compared to the Defer group. Conversely, for patients with both normal μ QFR and AMR, both groups had a similar risk of MACCE. And the results were consistent in the initial patients and patients after PSM or IPTW matching (Figures 5 6). These results demonstrate that in patients with intermediate coronary stenoses, CABG is beneficial in the cohort with both abnormal μ QFR and AMR cohort but not in those with normal μ QFR and AMR. This may be explained by the improved microvascular resistance in the abnormal μ QFR and AMR cohorts due to CABG-induced epicardial coronary stenosis relief, leading to increased myocardial perfusion. Despite the widespread belief that PCI or CABG do not affect microvascular resistance, a previous study demonstrated that after coronary revascularization, increased distal coronary pressure significantly reduced the microvascular resistance index²⁸. Similarly, findings from the current study indicate that combining μ QFR with AMR can effectively identify patients with intermediate coronary stenoses who may benefit from CABG and those who could be safely deferred.

Study limitations

First, this study has the inherent drawbacks of a retrospective registry, even with the large sample size and follow-up duration. As a result, a prospective randomized study is required to confirm these conclusions. Second, AMR relies on angiography, image quality, and optimal projection. For this study's AMR analysis, we excluded 4.5% of the patients because the angiographic image was of low quality. Third, selection bias may have occurred because the final decision for CABG was at the operator's discretion. Although the results of the multivariable adjusted analysis were consistent with the PSM and IPTW analysis, it is important to take into account the potential impact of unmeasured bias.

CONCLUSIONS

In the 5-year-follow-up evaluation, AMR independently predicted MACCE in patients with intermediate coronary stenoses. The treatment strategy's prognostic values varied, with significant interaction, based on the μ QFR and AMR. CABG was associated with a lower risk of MACCE compared with the deferral strategy when both μ QFR and

AMR were abnormal. In contrast, at normal μ QFR and AMR, patients in both CABG and Defer groups had similar MACCE outcomes. The combination of μ QFR and AMR can help stratify risk and guide treatment strategies for patients with intermediate coronary stenoses.

Affiliations

Department of Cardiovascular Surgery, The Affiliated Hospital of Qingdao University, Qingdao, China (W.Y., Y. W., H.Hu., W. W., Z. L., S. Y.); Department of Nuclear Medicine, The Affiliated Hospital of Qingdao University, Qingdao, China (Y.W.); Department of Operating Room, The Affiliated Hospital of Qingdao University, Qingdao, China (X.Z.).

Sources of Funding

None.

Disclosures

None.

1. Bianco V, Kilic A, Mulukutla S, Gleason TG, Kliner D, Allen CC, Habertauer A, Aranda-Michel E, Humar R, Navid F, et al. Percutaneous coronary intervention versus coronary artery bypass grafting in patients with reduced ejection fraction. *J Thorac Cardiovasc Surg.* 2021;161. doi: 10.1016/j.jtcvs.2020.06.159
2. Holm NR, Mäkikallio T, Lindsay MM, Spence MS, Erglis A, Menown IBA, Trovik T, Kellerth T, Kalinauskas G, Mogensen LJH, et al. Percutaneous coronary angioplasty versus coronary artery bypass grafting in the treatment of unprotected left main stenosis: updated 5-year outcomes from the randomised, non-inferiority NOBLE trial. *Lancet.* 2020;395:191-199. doi: 10.1016/S0140-6736(19)32972-1
3. Gaba P, Gersh BJ, Ali ZA, Moses JW, Stone GW. Complete versus incomplete coronary revascularization: definitions, assessment and outcomes. *Nat Rev Cardiol.* 2021;18:155-168. doi: 10.1038/s41569-020-00457-5
4. Leviner DB, Torregrossa G, Puskas JD. Incomplete revascularization: what the

- surgeon needs to know. *Ann Cardiothorac Surg.* 2018;7:463-469. doi: 10.21037/acs.2018.06.07
5. Neumann F-J, Sousa-Uva M, Ahlsson A, Alfonso F, Banning AP, Benedetto U, Byrne RA, Collet J-P, Falk V, Head SJ, et al. 2018 ESC/EACTS Guidelines on myocardial revascularization. *Eur Heart J.* 2019;40. doi: 10.1093/eurheartj/ehy394
 6. Lawton JS, Tamis-Holland JE, Bangalore S, Bates ER, Beckie TM, Bischoff JM, Bittl JA, Cohen MG, DiMaio JM, Don CW, et al. 2021 ACC/AHA/SCAI Guideline for Coronary Artery Revascularization: A Report of the American College of Cardiology/American Heart Association Joint Committee on Clinical Practice Guidelines. *J Am Coll Cardiol.* 2022;79. doi: 10.1016/j.jacc.2021.09.006
 7. Ya'qoub L, Elgendy IY, Pepine CJ. Syndrome of Nonobstructive Coronary Artery Diseases: A Comprehensive Overview of Open Artery Ischemia. *Am J Med.* 2021;134:1321-1329. doi: 10.1016/j.amjmed.2021.06.038
 8. Beltrame JF, Tavella R, Jones D, Zeitz C. Management of ischaemia with non-obstructive coronary arteries (INOCA). *BMJ.* 2021;375:e060602. doi: 10.1136/bmj-2021-060602
 9. Kunadian V, Chieffo A, Camici PG, Berry C, Escaned J, Maas AHEM, Prescott E, Karam N, Appelman Y, Fraccaro C, et al. An EAPCI Expert Consensus Document on Ischaemia with Non-Obstructive Coronary Arteries in Collaboration with European Society of Cardiology Working Group on Coronary Pathophysiology & Microcirculation Endorsed by Coronary Vasomotor Disorders International Study Group. *Eur Heart J.* 2020;41:3504-3520. doi: 10.1093/eurheartj/ehaa503

10. Maddox TM, Stanislawski MA, Grunwald GK, Bradley SM, Ho PM, Tsai TT, Patel MR, Sandhu A, Valle J, Magid DJ, et al. Nonobstructive coronary artery disease and risk of myocardial infarction. *JAMA*. 2014;312:1754-1763. doi: 10.1001/jama.2014.14681
11. Taqueti VR, Solomon SD, Shah AM, Desai AS, Groarke JD, Osborne MT, Hainer J, Bibbo CF, Dorbala S, Blankstein R, et al. Coronary microvascular dysfunction and future risk of heart failure with preserved ejection fraction. *Eur Heart J*. 2018;39:840-849. doi: 10.1093/eurheartj/ehx721
12. Schumann CL, Mathew RC, Dean J-HL, Yang Y, Balfour PC, Shaw PW, Robinson AA, Salerno M, Kramer CM, Bourque JM. Functional and Economic Impact of INOCA and Influence of Coronary Microvascular Dysfunction. *JACC Cardiovasc Imaging*. 2021;14:1369-1379. doi: 10.1016/j.jcmg.2021.01.041
13. Del Buono MG, Montone RA, Camilli M, Carbone S, Narula J, Lavie CJ, Niccoli G, Crea F. Coronary Microvascular Dysfunction Across the Spectrum of Cardiovascular Diseases: JACC State-of-the-Art Review. *J Am Coll Cardiol*. 2021;78:1352-1371. doi: 10.1016/j.jacc.2021.07.042
14. Tu S, Ding D, Chang Y, Li C, Wijns W, Xu B. Diagnostic accuracy of quantitative flow ratio for assessment of coronary stenosis significance from a single angiographic view: A novel method based on bifurcation fractal law. *Catheter Cardiovasc Interv*. 2021;97 Suppl 2:1040-1047. doi: 10.1002/ccd.29592
15. Garcia-Garcia HM, McFadden EP, Farb A, Mehran R, Stone GW, Spertus J, Onuma Y, Morel M-A, van Es G-A, Zuckerman B, et al. Standardized End Point Definitions for Coronary Intervention Trials: The Academic Research Consortium-2 Consensus

- Document. *Eur Heart J*. 2018;39:2192-2207. doi: 10.1093/eurheartj/ehy223
16. Ong P, Camici PG, Beltrame JF, Crea F, Shimokawa H, Sechtem U, Kaski JC, Bairey Merz CN. International standardization of diagnostic criteria for microvascular angina. *Int J Cardiol*. 2018;250:16-20. doi: 10.1016/j.ijcard.2017.08.068
 17. Dhawan SS, Corban MT, Nanjundappa RA, Eshtehardi P, McDaniel MC, Kwarteng CA, Samady H. Coronary microvascular dysfunction is associated with higher frequency of thin-cap fibroatheroma. *Atherosclerosis*. 2012;223:384-388. doi: 10.1016/j.atherosclerosis.2012.05.034
 18. Fearon WF, Low AF, Yong AS, McGeoch R, Berry C, Shah MG, Ho MY, Kim H-S, Loh JP, Oldroyd KG. Prognostic value of the Index of Microcirculatory Resistance measured after primary percutaneous coronary intervention. *Circulation*. 2013;127:2436-2441. doi: 10.1161/CIRCULATIONAHA.112.000298
 19. Mangiacapra F, Del Buono MG, Abbate A, Gori T, Barbato E, Montone RA, Crea F, Niccoli G. Role of endothelial dysfunction in determining angina after percutaneous coronary intervention: Learning from pathophysiology to optimize treatment. *Prog Cardiovasc Dis*. 2020;63:233-242. doi: 10.1016/j.pcad.2020.02.009
 20. Scarsini R, Shanmuganathan M, Kotronias RA, Terentes-Printzios D, Borlotti A, Langrish JP, Lucking AJ, Ribichini F, Ferreira VM, Channon KM, et al. Angiography-derived index of microcirculatory resistance (IMRangio) as a novel pressure-wire-free tool to assess coronary microvascular dysfunction in acute coronary syndromes and stable coronary artery disease. *Int J Cardiovasc Imaging*. 2021;37:1801-1813. doi: 10.1007/s10554-021-02254-8

21. De Maria GL, Scarsini R, Shanmuganathan M, Kotronias RA, Terentes-Printzios D, Borlotti A, Langrish JP, Lucking AJ, Choudhury RP, Kharbada R, et al. Angiography-derived index of microcirculatory resistance as a novel, pressure-wire-free tool to assess coronary microcirculation in ST elevation myocardial infarction. *Int J Cardiovasc Imaging*. 2020;36:1395-1406. doi: 10.1007/s10554-020-01831-7
22. Tebaldi M, Biscaglia S, Di Girolamo D, Erriquez A, Penzo C, Tumscitz C, Campo G. Angio-Based Index of Microcirculatory Resistance for the Assessment of the Coronary Resistance: A Proof of Concept Study. *J Interv Cardiol*. 2020;2020:8887369. doi: 10.1155/2020/8887369
23. Fan Y, Fezzi S, Sun P, Ding N, Li X, Hu X, Wang S, Wijns W, Lu Z, Tu S. In Vivo Validation of a Novel Computational Approach to Assess Microcirculatory Resistance Based on a Single Angiographic View. *J Pers Med*. 2022;12. doi: 10.3390/jpm12111798
24. Zimmermann FM, Omerovic E, Fournier S, Kelbæk H, Johnson NP, Rothenbühler M, Xaplanteris P, Abdel-Wahab M, Barbato E, Høfsten DE, et al. Fractional flow reserve-guided percutaneous coronary intervention vs. medical therapy for patients with stable coronary lesions: meta-analysis of individual patient data. *Eur Heart J*. 2019;40:180-186. doi: 10.1093/eurheartj/ehy812
25. Xaplanteris P, Fournier S, Pijls NHJ, Fearon WF, Barbato E, Tonino PAL, Engstrøm T, Käåb S, Dambrink J-H, Rioufol G, et al. Five-Year Outcomes with PCI Guided by Fractional Flow Reserve. *N Engl J Med*. 2018;379:250-259. doi:

10.1056/NEJMoa1803538

26. Xu B, Tu S, Song L, Jin Z, Yu B, Fu G, Zhou Y, Wang Ja, Chen Y, Pu J, et al.
Angiographic quantitative flow ratio-guided coronary intervention (FAVOR III China): a multicentre, randomised, sham-controlled trial. *Lancet*. 2021;398:2149-2159. doi: 10.1016/S0140-6736(21)02248-0
27. Piccolo R, Giustino G, Mehran R, Windecker S. Stable coronary artery disease: revascularisation and invasive strategies. *Lancet*. 2015;386:702-713. doi: 10.1016/S0140-6736(15)61220-X
28. Verhoeff B-J, Siebes M, Meuwissen M, Atasever B, Voskuil M, de Winter RJ, Koch KT, Tijssen JGP, Spaan JAE, Piek JJ. Influence of percutaneous coronary intervention on coronary microvascular resistance index. *Circulation*. 2005;111:76-82.