
THE INFLUENCE OF CROSS-BORDER MOBILITY ON THE COVID-19 EPIDEMIC IN NORDIC COUNTRIES

A PREPRINT

Mikhail Shubin^{1*}, Hilde Kjelgaard Brustad², Jørgen Eriksson Midtbø³, Felix Günther⁴, Laura Alessandretti⁵, Tapio Ala-Nissila^{6,7}, Gianpaolo Scalia Tomba^{4,8}, Mikko Kivelä⁹, Louis Yat Hin Chan³, Lasse Leskelä¹

* mikhail.shubin@aalto.fi

1 Department of Mathematics and Systems Analysis, Aalto University, Espoo, Finland

2 Oslo Center for Biostatistics and Epidemiology, Oslo University Hospital, Norway

3 Department of Method Development and Analytics, Norwegian Institute of Public Health, Oslo, Norway

4 Department of Mathematics, Stockholm University, Sweden

5 DTU Compute, Technical University of Denmark, Copenhagen, Denmark

6 Quantum Technology Finland Center of Excellence, Department of Applied Physics, Aalto University

7 Interdisciplinary Centre for Mathematical Modelling and Department of Mathematical Sciences, Loughborough University, United Kingdom

8 Department of Mathematics, University of Rome Tor Vergata, Italy

9 Department of Computer Science, Aalto University, Espoo, Finland

ABSTRACT

Restrictions of cross-border mobility are typically used to prevent an emerging disease from entering a country in order to slow down its spread. However, such interventions can come with a significant societal cost and should thus be based on careful analysis and quantitative understanding on their effects. To this end, we model the influence of cross-border mobility on the spread of COVID-19 during 2020 in the neighbouring Nordic countries of Denmark, Finland, Norway and Sweden. We investigate the immediate impact of cross-border travel on disease spread and employ counterfactual scenarios to explore the cumulative effects of introducing additional infected individuals into a population during the ongoing epidemic. Our results indicate that border restrictions can significantly influence the course of an epidemic, but this impact is highly contingent on the prevailing epidemic status of the involved countries. In particular, there are several instances in which the contribution of cross-border movement was found to be negligible. Our findings underscore the critical importance of accurate data and models on both epidemic progression and travel patterns in informing decisions related to inter-country mobility restrictions.

Keywords Covid-19 · Mobility · Epidemiology · Modelling · Bayesian Statistics · Nonpharmaceutical Interventions

1 Introduction

Mobility and the consequent human contacts are the key factors for the spread of infectious diseases. Governments frequently impose and enforce border restrictions on individuals to prevent a disease from entering a country or to slow its spreading. However, such interventions can be problematic from the economical, legal and social angles. To assess the effects of border restrictions, quantitative modeling and prediction of their efficacy should be provided. This topic has experienced renewed interest each time a pandemic threat has emerged e.g., avian flu, SARS, Ebola and, most recently, COVID-19. Various approaches are possible, including descriptive studies [1], studies based on genomic

analyses [2, 3], and studies investigating social and health aspects [4]. However, the variety of mobility restriction schemes enacted by different countries during the COVID-19 pandemic and the general lack of quantitative evaluation of their differences and effects indicate a need for more analytical studies (e.g., [5, 6]). This is particularly important as restrictions on cross-border mobility may have serious detrimental effects on the economy and thus need to be proven to be effective on short and long time scales [7].

Most of the studies to date focus on the use of border restrictions in avoiding or delaying the start of a local epidemic. It has been shown (see [8] and references therein) that, if the restrictions are not 100% effective, they only postpone the start of the epidemic, and the delay time gained is usually short. Furthermore, restrictions must be enacted before the infection has been introduced in the country, since local spread dynamics will quickly dominate over importation. If infections are added in a later phase of the epidemic, the effect may be small because individuals that would be infected by the imported infection could be infected in any case due to the local epidemic [9].

Our interest in the present work is in the quantitative estimation of the effects of cross-border traffic on the number of infected in the Nordic countries sharing a common border during an ongoing epidemic. The COVID-19 pandemic in the Nordic countries during 2020 provides an interesting case study for the effect of border crossing traffic. First, the Nordic countries have had a free movement agreement since 1954, but various exceptions occurred during the COVID-19 period. Second, there were major differences between the internal restrictions and the overall strategies carried out in each country, which led to large differences in the scale and timeline of the pandemic. While movement restrictions within these countries during the epidemic have been analysed, the analyses seem mostly to focus on legal or social aspects (see, e.g., [10, 11]). There are also analyses of the different intervention strategies and their effects in these countries, but without explicit analysis of the interactions between the countries [12].

The interaction between cross-border traffic and epidemic spread can be analysed in several ways, e.g., how epidemic outbreaks affect mobility (see, e.g., [13, 14, 5]) or vice versa, how mobility affects epidemic spread. For designing and enforcing effective but minimally disruptive restrictions on mobility and travel, the latter aspect is more important. Such studies can be both retrospective [9, 15], i.e., based on available data on traffic and disease, or prospective [16], i.e., entirely model-based. In both cases, however, the effects will usually be evaluated by comparing scenarios with different amounts of traffic. In the retrospective case, this will involve counterfactual scenarios [12]. There are two main problems with such an approach. One is the need to specify how the society responds to the new disease scenario and the other is the choice of evaluation criterion of the differences between scenarios. Consider, e.g., the term “first infective” (also sometimes referred as index case) from whom a local epidemic originates; this case is usually considered to be imported. Should we define the effect of importing this infection as the final size of the whole epidemic or just the individuals directly infected by that case? What if it were assumed that the infection would have been introduced anyway, even if the first infective had failed to infect anyone? It is thus important to clearly define measures of difference between scenarios and to distinguish the effects of internal and external forces of infection and of primary (direct) and secondary (consequential) effects of new infections into the population.

Our approach to evaluating the effects of inter-country mobility is to focus on two extreme cases: 1) *Primary effects* of mobility measured by descriptive statistics, i.e., the number of infected individuals that travel to and from each country. 2) *Secondary effects*, which we compute by running various counterfactual scenarios where we eliminate or restore cross-border traffic to pre-epidemic levels, but keep everything else unchanged, and simulate epidemic spreading under these new conditions. This is likely going to overestimate the number of infected over longer time intervals as large increases in the number of infections would probably have been met with stricter restrictions and changes in population behaviour. We thus present the effects over reasonable short forward time intervals. While neither of these evaluation methods give a realistic picture of the effects of mobility restrictions, they may serve as upper and lower bounds for the effects, and taken together they serve as a useful tool for assessing the range of possible outcomes.

To quantitatively assess the problem at hand we formulate an SIR mathematical model (representing the numbers of Susceptible, Infectious and Recovered individuals and their evolution over time; also known as an Eulerian approach) that explicitly uses estimates of cross-border movements of individuals. These movements are subdivided into short-term (commuter) and long-term visits in the receiving country. Combined with hospitalisation data from the modelled countries (and estimates of numbers of imported infections from the rest of the world), we infer the numbers of imported cases and within-country reproductive numbers during different phases of the disease spread. The model is then applied to the first year of the COVID-19 pandemic in the four Nordic countries sharing common borders: Denmark, Finland, Norway and Sweden. Traffic between the Nordic countries and the rest of the world is also considered.

The structure of this paper is as follows: In Section 2 we discuss the data and models used in the present study. Section 3 presents the measures and results for the primary effects, i.e., the direct impact of mobility. Section 4 presents the secondary effects of mobility, i.e., the counterfactual scenarios and their results. Finally, Section 5 summarises and discusses the conclusions of our study.

2 Data and models

Our study requires accurate and detailed data on the course of the epidemic within the countries, mobility between them, and a model that can be used to represent these data. Section 2.1 introduces the health data and Section 2.2 and S1 Appendix cover the mobility data. Section 2.3 describes the model (See also S2 Appendix for the derivation of the model).

2.1 Health data

To calibrate our model, we used the weekly numbers of new hospitalisations due to SARS-CoV-2. Data were obtained from the Finnish Institute for Health and Welfare (Finland), Socialstyrelsen [?] (Sweden), the Norwegian Institute of Public Health [17] (Denmark and Norway) and Our World in Data website [18] (rest of the countries). We used aggregated data without age-based or regional stratification.

2.2 Mobility data

A central part of the research project has been the quantification of the number of individuals moving between the four bordering Nordic countries. To this end, we collected a data set consisting of 12 directed passenger flows between the Nordic countries Denmark, Finland, Norway and Sweden and 4 directed passenger flows from the rest of the world into the 4 countries, and 4 directed passenger flows from the 4 countries to the rest of the world. The transmission model used to simulate the epidemic for each country has a daily temporal resolution. Hence, a daily temporal resolution is needed for the mobility data as well.

The directed flows represent the daily number of individuals travelling by air, road, railway and ferry. Figure 1A visualizes the temporally aggregated mobility between the countries in our data. We note that not all modes of transportation are relevant for all combinations of countries, e.g., no direct railway connection exists between Denmark and Norway. S1 Appendix presents more details on the collection of data for the different sources of transportation for the different countries.

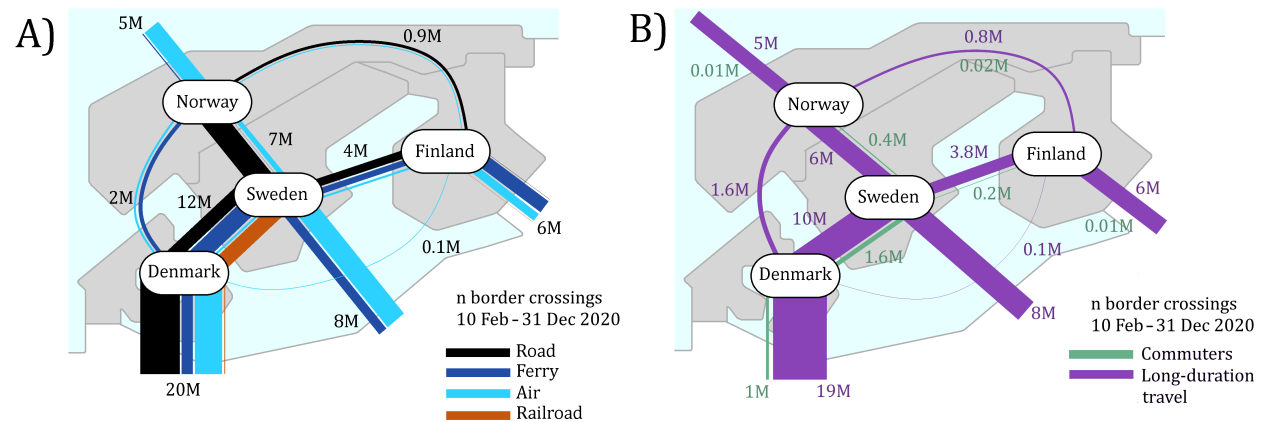


Figure 1: Mobility between the four Nordic and the other countries, represented by lines connecting the origin and destination. The widths of the lines are proportional to the numbers of border crossings during the modeling period (10 February – 31 December 2020). (A): Line color represents the transportation type as indicated in the legend. Numbers near the lines show the total number of border crossings in millions (M). For comparison, populations of Denmark, Finland and Norway are about 5.5 M each, while that of Sweden is 10.5 M. (B) A schematic showing the number of commuters and long-term travellers (see text for detailed definitions).

We split the passenger flows into two categories: commuters and long-term travellers. We define commuters as one-day travellers, meaning individuals that exit a country and return to the same country the same day. The most probable transportation methods for commuters are by road. The road traffic data we have collected have an hourly temporal resolution. By modelling the road traffic, i.e., the time point of each border crossing, by a Gaussian mixture model (GMM), we identify components (Gaussian distributions) of the fitted model that correspond to commuting based on the estimated mean value (corresponding to a time point during the day) of the components. The commuting components then give the probability that a travel occurring at a specific time of the day is of commuter type. Commuting also occurs by railway between Denmark and Sweden across the Öresund bridge. However, the temporal resolution of

the railway data is not accurate enough to apply a GMM. We therefore assume the same fraction of commuters for railway traffic across the Öresund Bridge as for road traffic across it. Figure 1B visualizes how the mobility data are split into commuters and long-term travelers. The widths of the lines are proportional to the number of travels during the modelling period.

We collected data for the entire years of 2019 and 2020. The modelling period is the time interval 10 February 2020 – 31 December 2020. We used data for pre-pandemic year 2019 as a reference for the counterfactual scenarios to be discussed below.

2.3 Model

We use an extended Susceptible-Infected-Removed (SIR) model that tracks the epidemic status in each country. In our model time is discretised with a time step equal to one day. The model has three components: a deterministic *transmission model* simulates the epidemic, an *observation model* links the simulated number of infections to the observed data, and a *parameter model* defines the parameters for transmission and observation models. Figure 2 presents a graphical overview of the model while Table 1 summarizes the notation.

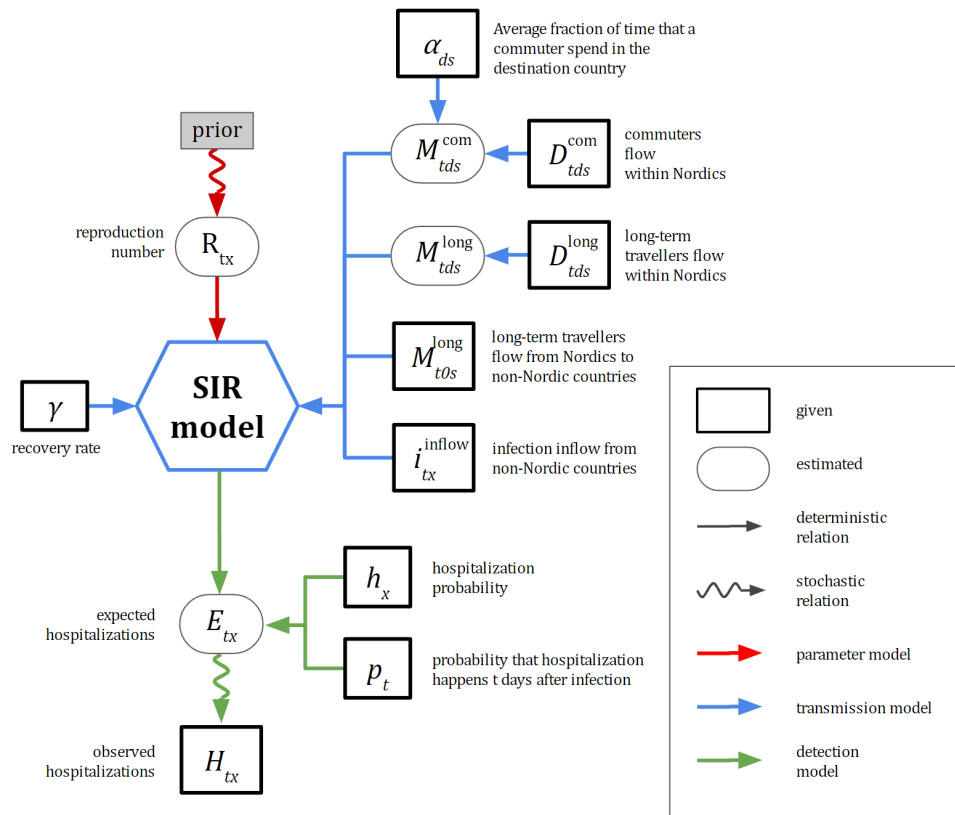


Figure 2: Graphical representation of the SIR model adopted for the present study. The model is spatially resolved at the level of each Nordic country and incorporates flows of travelers between them. The schematic indicates both the relevant variables of the model and data for hospitalisation and mobility used. For more details, see Table 1 for notation and Section 2 on various components of the model.

2.3.1 Transmission model

The transmission model is spatially resolved at the level of each country and incorporates two types of mobilities: daily commuters and long-term travellers. We use an Eulerian approach where we keep track of individuals who are currently present in region x , and we follow the long-term flows of individuals across the regions [19]. In addition, we incorporate a Lagrangian model component to capture the effect of daily commuters as in [20]. We denote by $S_{t,x}$, $I_{t,x}$, and $R_{t,x}$ the expected numbers of susceptible, infectious, and removed individuals who are in the beginning of day $t \in \{0, 1, 2, \dots\}$ located in country $x \in \{1, 2, 3, 4\}$. We allow population sizes of countries changes with time:

Table 1: Notation glossary

Parameter	Value	Definition
<i>Transmission model</i>		
$\mathcal{R}_{t,x}$	estimated	Time- and country-dependent reproduction number
$S_{t,x}, I_{t,x}, R_{t,x}$	estimated	Numbers of Susceptible, Infectious and Removed individuals per day per country
$N_{t,x}$	$S_{t,x} + I_{t,x} + R_{t,x}$	Population size
γ	1/8 (per day)	Recovery rate
$i_{t,x}^{\text{inflow}}$	given	External infectious flow, i.e., number of infectious individuals arriving to country x on day t from outside of the Nordic countries
$i_{t,x}^{\text{new}}$	equation (4)	The number of residents of country x infected on day t
$r_{t,x}$	equation (5)	Risk of infection in country x on day t , $r_{t,x} \in [0, 1]$
$D_{t,d,s}^{\text{com}}, D_{t,d,s}^{\text{long}}$	given	Counts of commuter and long-term travellers flow, i.e., the number of individuals going from country s to d on day t
$M_{t,d,s}^{\text{com}}, M_{t,d,s}^{\text{long}}$	equations (6)-(7)	Population-relative mobility matrices
$M_{t,o,s}^{\text{long}}$	given	Population-relative outflow, i.e., the portion of population leaving country s on the day t to non-Nordic countries
$\alpha_{d,s}$	0.5	Average fraction of time that a commuter from country s spends in country d during a daily trip
<i>Observation model</i>		
$E_{t,x}$	equation (8)	Expected numbers of hospitalisations
$H_{t,x}$	given	Observed number of hospitalisations
h_x	2%	The hospitalisation probability
p_t	given	The probability that hospitalisation happens t days after infection

$N_{t,x} = S_{t,x} + I_{t,x} + R_{t,x} \neq \text{const.}$ Transmission characteristics are parameterised by the recovery rate $\gamma = 1/8$ (per day) and time-dependent country-specific reproduction rate $\mathcal{R}_{t,x} > 0$. Mobility is parameterised using external infectious flow counts $i_{t,x}^{\text{inflow}}$, commuter flow counts $D_{t,x,y}^{\text{com}}$, and long-term flow counts $D_{t,x,y}^{\text{long}}$ indexed by $t \geq 1$, and $x \neq y$.

The model evolves according to $S_{t+1,x} = \sum_y M_{t,x,y}^{\text{long}} S_{t,y} - i_{t,x}^{\text{new}}$;
 $I_{t+1,x} = \sum_y M_{t,x,y}^{\text{long}} I_{t,y} + i_{t,x}^{\text{new}} + i_{t,x}^{\text{inflow}} - I_{t,x} M_{t,o,x}^{\text{long}} - \gamma I_{t,x}$;
 $R_{t+1,x} = \sum_y M_{t,x,y}^{\text{long}} R_{t,y} + \gamma I_{t,x}$, where

$$i_{t,x}^{\text{new}} = S_{t,x} \sum_y M_{t,y,x}^{\text{com}} r_{t,y} \quad (1)$$

is the number of residents of country x infected on day t , and where

$$r_{t,y} = \mathcal{R}_{t,y} \gamma \sum_z M_{t,y,z}^{\text{com}} I_{t,z} / N_{t,y} \quad (2)$$

represents the risk of infection in country y on day t . Here $M_{t,d,s}^{\text{com}}$ and $M_{t,d,s}^{\text{long}}$ are population-relative mobility matrices, defined as follows. Let $D_{t,d,s}^{\text{com}}$ and $D_{t,d,s}^{\text{long}}$ be the number of people from the source country s travelling to the destination country d for a short (i.e., less than one day) or a long (i.e., one day or longer) visit, respectively. We define the relative matrices as:

$$M_{t,d,s}^{\text{long}} = \begin{cases} D_{t,d,s}^{\text{long}} N_{t,s}, & \text{for } s \neq d; \\ 1 - \sum_{x \neq s} D_{t,x,s}^{\text{long}} N_{t,s}, & \text{for } s = d; \end{cases}$$

$$M_{t,d,s}^{\text{com}} = \begin{cases} \alpha_{d,s} D_{t,d,s}^{\text{com}} N_{t,s}, & \text{for } s \neq d; \\ 1 - \alpha_{d,s} \sum_{x \neq s} D_{t,x,s}^{\text{com}} N_{t,s}, & \text{for } s = d, \end{cases} \quad \text{where } \alpha_{d,s} = 0.5 \text{ is a factor representing the average fraction of time that a commuter from country } s \text{ spends in country } d \text{ during a daily trip.}$$

The model is initialized on day $t = 0$ corresponding to 10 February 2020, with 0.01% of the population being infected, i.e., such that $S_{0,x} = 0.9999N_x$;

$$I_{0,x} = 0.0001N_x;$$

$R_{0,x} = 0$, where N_x is the population size of country x . Details of the derivation of the transmission model and its parameters are presented in S2 Appendix.

2.3.2 Observation model

We define the expected number of hospitalisations on day t in country x as a convolution of the number of new infections:

$$E_{t,x} = \sum_{\tau=0}^{t-1} h_x p_{t-\tau} i_{t,x}^{\text{new}}, \quad (3)$$

where $h_x = 0.02$ is the hospitalisation probability in country x and p_d is the probability that hospitalisation happens d days after infection. We set p_d to be a negative binomial distribution with mean of 11 days and standard deviation of 5.

Let $H_{w,x}$ be the number of observed hospitalisations in country x on week w . We link it to the expected numbers with the Negative Binomial (NB) distribution.

$$H_{w,x} \sim NB \left(\text{mean} = \sum_{t=7w}^{7w+6} E_{t,x}, \text{overdispersion} = 0.1 \right). \quad (4)$$

2.3.3 Parameter model and Bayesian parameter inference

The time-dependent reproduction numbers $\mathcal{R}_{t,x}$ are the only free parameters in our model. Our goal is to fit the reproduction numbers \mathcal{R} given the available data: number of hospitalisations H , inflow i^{inflow} and mobility matrices $D^{\text{com}}, D^{\text{long}}, M_{\cdot,0,\cdot}^{\text{long}}$. For each country, we estimate the posterior distribution

$$P(\mathcal{R}|H, D^{\text{com}}, D^{\text{long}}, i^{\text{inflow}}, M_{\cdot,0,\cdot}^{\text{long}}) \quad (5)$$

(where \mathcal{R} represents a vector $\{\mathcal{R}_{t,x}, t \geq 0\}$) using an adaptive Markov chain Monte Carlo (MCMC) algorithm. We allow the chain to run for 50,000 warm-up iterations, and then we run it for 100,000 iterations recording every 10th. On each iteration \mathcal{R}_x corresponding to each country is updated separately. We construct the prior for \mathcal{R}_x as a Gaussian random walk. The initial reproduction number is a priori $\mathcal{R}_{t=0,x} \sim \text{Normal}(2, 0.5)$. The reproduction number on each subsequent Monday ($t > 0, t7 = 0$) is sampled as $\mathcal{R}_{t,x} \sim \text{Normal}(\mathcal{R}_{t-7,x}, 0.25)$. The rest of the values are linearly interpolated between the closest Mondays. We restrict \mathcal{R} to be always positive. Proposal distributions for all batches of parameters are Multivariate Normal, with covariance adapted after each iteration. The details of the adaptation code are presented in [21] and the code implementing our model and fitting is available at gitlab.com/2pi360/covid_model_mobility_public.

3 Primary effects: direct effects of imported and exported cases

3.1 Estimates of the effect of the mobility

This section defines the metrics we use to evaluate the effects of mobility. As the early data on the inflow of infections $i_{t,x}^{\text{inflow}}$ are unreliable, we only show these estimates for dates starting at April ($t = 51$).

3.1.1 Net effect of mobility

The right side of equation (2) can be written as

$$\underbrace{I_{t,x}(1-\gamma)}_{\text{unrecovered existing infections}} + \underbrace{i_{t,x}^{\text{new}}}_{\text{(A) new infections among residents of } x} + \underbrace{\sum_{y,y \neq x} M_{t,x,y}^{\text{long}} I_{t,y}}_{\text{(B) infected from other Nordics arriving to } x} - \underbrace{\sum_{y,y \neq x} M_{t,y,x}^{\text{long}} I_{t,x}}_{\text{(C) departing to other Nordic countries from } x} + \underbrace{i_{t,x}^{\text{inflow}}}_{\text{(D) inflow from outside of Nordics to } x} - \underbrace{M_{t,O,x}^{\text{long}} I_{t,x}}_{\text{(E) departing from } x \text{ to outside of Nordics}}. \quad (6)$$

Here the term A refers to the new infections which occurred among the residents of country x , B to infections coming to x from other Nordic countries, C to infections leaving from x to other Nordic countries, D to new infections coming to x from non-Nordic countries, and E to infections leaving from x to non-Nordic countries. All the quantities A , B , C , D and E are positive. We refer to $Q_{t,x}^{\text{long term}} = B - C$ as the *net flow due to long-term travel* into x and $Q_{t,x}^{\text{non-Nordic}} = D - E$ as the *net flow from non-Nordic countries* into x . The quantity

$$i_{t,x}^{\text{total new}} = i_{t,x}^{\text{new}} + Q_{t,x}^{\text{long term}} + Q_{t,x}^{\text{non-Nordic}} = A + B - C + D - E \quad (7)$$

is referred to as the *total number of new infections*. Terms B and C contain contributions from the individual Nordic countries. Term A defined in equation (11) can be further written as:

$$\underbrace{\mathcal{R}_{t,x} \gamma N_{t,x} S_{t,x} I_{t,x}}_{\text{(F) counterfactual local infections}} - \underbrace{\mathcal{R}_{t,x} \gamma N_{t,x} S_{t,x} I_{t,x} (1 - (M_{t,x,x}^{\text{com}})^2)}_{\text{(G) reduction in local infections due to commuters leaving}} + \underbrace{\mathcal{R}_{t,x} \gamma N_{t,x} S_{t,x} M_{t,x,x}^{\text{com}} \sum_{y,y \neq x} M_{t,x,y}^{\text{com}} I_{t,x}}_{\text{(H) infections caused by commuters arriving from other Nordics to country } x} + \underbrace{\sum_{y,y \neq x} \mathcal{R}_{t,y} \gamma N_{t,y} S_{t,y} M_{t,y,x}^{\text{com}} \sum_z M_{t,y,z}^{\text{com}} I_{t,z}}_{\text{(I) commuters from country } x, \text{ infected in other countries and returning back}}. \quad \text{The quantities } F, G, H \text{ and } I \text{ are}$$

positive. Term F refers to the counterfactual number of the local infections in country x which would have occurred if no commuters had either arrived or left the country. Term G refers to the number of infections inside country x prevented by commuters leaving the country (this decreases both infection pressure and the pool of susceptibles). Term H refers to the infections caused by arriving commuters in the local population. Finally, term I represents the commuters from country x who got infected while abroad and returned back to x . We refer to the term $i_{t,x}^{\text{local}} = F$ as *local infections* and to $Q_{t,x}^{\text{commuting}} = H + I - G$ as the *net commuting effect*. We further refer to the sum

$$Q_{t,x} = Q_{t,x}^{\text{long term}} + Q_{t,x}^{\text{non-Nordic}} + Q_{t,x}^{\text{commuters}} = B - C + D - E - G + H + I \quad (8)$$

as the *net mobility effect*. In the following, we also define the *relative net mobility effect* as a net mobility effect divided by the total number of new infections, i.e.,

$$i_{t,x}^{\text{new rel}} = \frac{Q_{t,x}}{i_{t,x}^{\text{total new}}} = \frac{B - C + D - E - G + H + I}{A + B - C + D - E}. \quad (9)$$

3.1.2 Effective reproduction and multiplication numbers

One of the main metrics of epidemic growth, the effective reproduction number $\mathcal{R}_{t,x}^{\text{eff}}$, is often defined as the average number of secondary infections caused by a single infected individual who got infected at day t in country x . This definition describes local transmission and is not suitable for our purposes. We thus suggest an *effective multiplication number* $\mathcal{M}_{t,x}^{\text{eff}}$ as the number of new infections that emerged in country x for any reason during the average infectious period, divided by the number of new infections at day t . The parameter $\mathcal{R}_{t,x}^{\text{eff}}$ can be approximated as $\mathcal{R}_{t,x} S_{t,x} / N_{t,x}$. In a model without mobility, it could be also approximated by

$$\mathcal{R}_{t,x}^{\text{eff}} \approx \mathcal{R}_{t,x} S_{t,x} N_{t,x} = i_{t,x}^{\text{local}} I_{t,x} \gamma. \quad (10)$$

In analogy to the equation above, we approximate

$$\mathcal{M}_{t,x}^{\text{eff}} = i_{\tau,x}^{\text{total new}} I_{t,x} \gamma. \quad (11)$$

Given that \mathcal{R} is defined as a metric of epidemic growth due to the local transmission and \mathcal{M} is a metric of growth due to all factors, $\mathcal{M} - \mathcal{R}$ represents the growth contributed by mobility. This kind of distinction between sources of epidemic growth has recently been made between the effects of local versus imported cases (see, e.g. [? 9?]), although the exact definition of importation varies.

3.1.3 Prevalence of infection

The prevalence of local infections in country x is defined as $\pi_{t,x} = I_{t,x}/N_x$; the prevalences of infection among commuters and among long-term travellers from Nordic countries, arriving to country x , are defined as

$$\pi_{t,x}^{\text{com}} = \sum_{y,y \neq x} I_{t,x} D_{t,x,y}^{\text{com}} / N_{t,y} \sum_{y,y \neq x} D_{t,x,y}^{\text{com}}, \quad (12)$$

and

$$\pi_{t,x}^{\text{ltt}} = \sum_{y,y \neq x} I_{t,x} D_{t,x,y}^{\text{long}} / N_{t,y} \sum_{y,y \neq x} D_{t,x,y}^{\text{long}}, \quad (13)$$

respectively. Prevalence of infection among long-term travellers from outside Nordic countries is provided by the data.

3.2 Results

We will next describe the results of applying our approach to the four neighboring Nordic countries during April–December 2020. The progress of the epidemic differs between by country (see Figure 3, also S3 Appendix Figure 6). Denmark, Finland and Norway initially followed the same epidemic trajectory: in early April the incidence rate, which we always give as new infections per day per 10,000 inhabitants, was about 5. This incidence rate quickly decreased and stayed below 1 – 2 until October. On the other hand, Sweden had an incidence rate of 20 during the whole of April and this rate dropped to 1 only by July. In October–December Finland, Norway and Sweden had experienced a second wave which reached incidence rates of 3 for Finland and Norway and 10 for Sweden. In Denmark, the second wave started already in September and reached an incidence rate of 40 by December.

The first interesting result from our modeling study is that during the time period considered here, the net effect of inter-country mobility is very small as compared to the number of local infections. To quantify its effect, we computed the *relative net mobility effect* $i_{t,x}^{\text{new rel}} = Q_{t,x} / i_{t,x}^{\text{total new}}$ (see equation (15)). As seen in Figure 3, this fraction is close to zero in Finland almost until mid-May. The relative net mobility effect then peaks around June–July, reaching 40% (0.04 out of the total 0.1 incidence rate is explained by mobility). Norway exhibits a similar pattern to Finland, with the peak time starting earlier already in April, stretching slightly longer in time and reaching 30% (0.1 out of the total 0.3 incidence rate is explained by mobility). Denmark displays a similar, but even less pronounced, peak during spring and summer, reaching 4% (0.002 out of the total 0.05 incidence rate is explained by mobility). However, Denmark becomes a net exporter of infections in August, which means that there were more infected individuals travelling out of the country than coming in during this time period. Sweden on the other hand is a net beneficiary of mobility in our model until late August, however $i_{t,x}^{\text{new rel}}$ never exceeds 10%.

Our model shows that for the inter-country mobility to have a non-negligible effect, three conditions have to be met: (i) the number of new infections in the target country must be very low, (ii) the number of infections in the source country must be large compared to the target country, and (iii) the mobility between the countries must be sufficiently large to transfer sizable amounts of infection. There are two time periods when the first two conditions were met, namely April–August 2020 when Sweden had significantly more new infections than the other countries, and December 2020 when Denmark had a high incidence (see Figure 3). While difference in incidence between two countries is necessary for border crossings to make a difference in our model, it is not a sufficient condition, because the rate of border crossings might not be large enough to enhance the rate of infections. This is the case in the two aforementioned instances, as will be discussed below.

We next turn to the question of what type of travellers brought in the infections, and use the division of border crossings into three groups described in Section 2.2: commuters, long-term travellers from the four Nordic countries, and travellers from the rest of the world. Figure 4 shows the effect of the estimated total net flow of infected travellers on the number of infections per day per 10,000 using this decomposition (see S3 Appendix for the related numbers). The contribution of individuals identified as commuters is consistently very low in our model. This is due to a combination of two effects: the relatively low number of commuters and the fact that the model yields a smaller effect per border crossing for commuters because they spend only part of the day in the country whereas long-term travellers are assumed to reside in the country for their remaining infectious period.

The data on incidences in Figure 3 and on the traveller types of Figure 4 suggest that the significant increase in the relative number of imported infections during summer 2020 in Finland, Norway, and Denmark was due to infected travelers from Sweden. This is confirmed by Figure 4, which exhibits the effect of the countrywise net flows on the number of infections per day per 10,000 (refer to S3 Appendix for related numbers). Note, however, that in December 2020, and to some extent already starting from September, Denmark became a net contributor of infections to the other Nordic countries.

It is made available under a [CC-BY-NC-ND 4.0 International license](https://creativecommons.org/licenses/by-nc-nd/4.0/).

The influence of cross-border mobility on the COVID-19 epidemic in Nordic countries

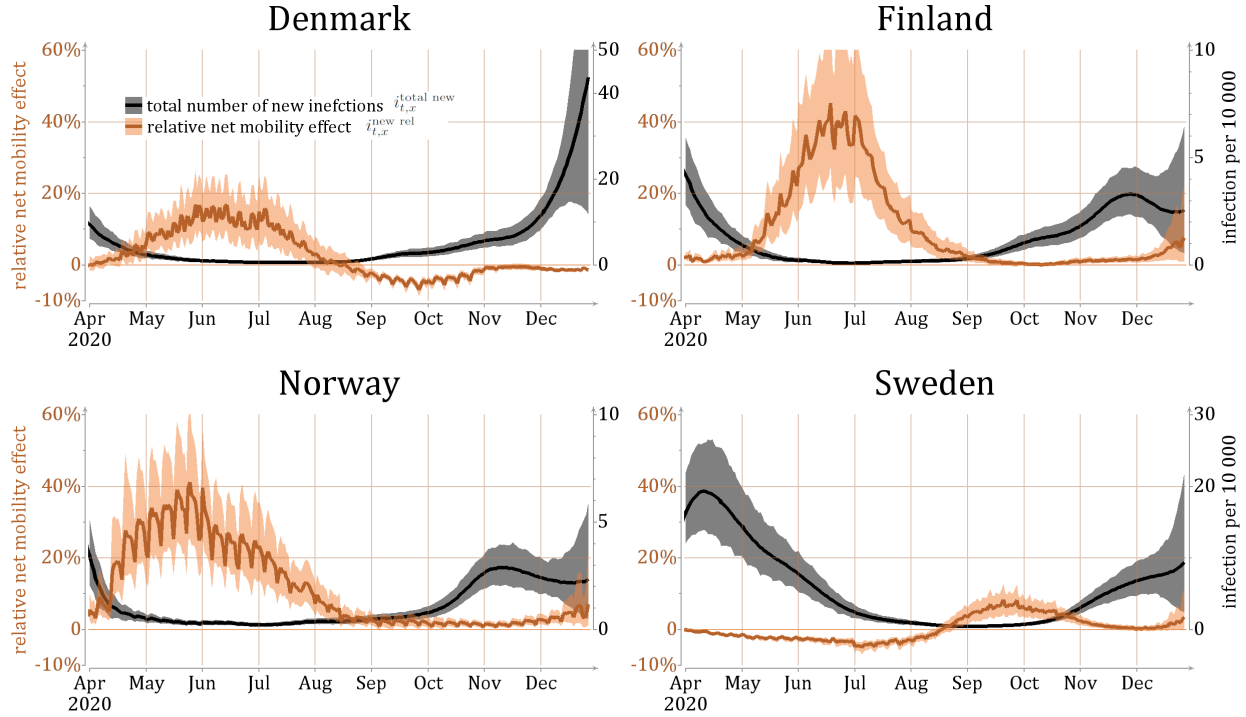


Figure 3: Black color: estimates of the total number of new infections $i_{t,x}^{\text{total new}}$ of equation (12) per day per 10,000 individuals (lines show posterior mean and colored areas show 90% posterior intervals). Orange: estimates of the relative net mobility effect of equation (15) $i_{t,x}^{\text{new rel}}$, defined by dividing the net mobility effect (cf. equation (14)) by the total number of new infections (lines show posterior mean and colored areas show 90% posterior intervals).

The results shown here carry somewhat contradictory messages. On one hand, they show that the net effect of the inter-country mobility is very low. On the other hand, when local transmission rate is low, incoming infections may play a substantial part in the epidemic. To clarify the message, we can examine the epidemic trajectories from another angle, namely by comparing the effective reproduction and multiplication numbers \mathcal{R}^{eff} and \mathcal{M}^{eff} , respectively (Figure 6). When $\mathcal{M}^{\text{eff}} > \mathcal{R}^{\text{eff}}$ mobility introduces extra infections into the population, but when $\mathcal{M}^{\text{eff}} < \mathcal{R}^{\text{eff}}$ mobility removes infections from the population. In particular, when $\mathcal{M}^{\text{eff}} > 1$ and $\mathcal{R}^{\text{eff}} < 1$ the epidemic can only grow because of the inter-country mobility. Such a situation occurred for Finland and Norway during the summer months of 2020.

While the analysis above tells us about the importance of the border crossings for the epidemic pressure on the Nordic countries, it does not directly tell us about the effectiveness of interventions targeting traffic across borders. Here, instead of asking the question whether or not interventions should be implemented, we want to answer the question of whether it would be more effective to enforce interventions on the local population or on the population crossing the borders. To this end, we compute the prevalence, i.e., the proportion of infectious individuals, among the local population (I_a/N_a) and the long-term travellers arriving to the country from Nordics and non-Nordic countries (see Figure 7). There are very large differences in the prevalences of local and travelling populations. Most notably, in Norway and Finland the Nordic travellers are more than hundred times more likely to be infectious than the local population during the summer of 2020. This indicates that every test done at the border during that period (for individuals without symptoms and no knowledge of exposure) was potentially more than hundred times more efficient than tests for the local populations. Similarly, offsetting the effect of a single border crossing could potentially require much larger local movement restrictions. The opposite is true for Sweden, where until mid August, the prevalence of the local population is larger than the prevalence of Nordic travellers.

4 Secondary effects: counterfactual scenarios

The previous section focused on the number of infections coming into a given country. However, such numbers might underestimate the impact of border crossings: imported infections can lead to further infections, which are then

It is made available under a [CC-BY-NC-ND 4.0 International license](https://creativecommons.org/licenses/by-nc-nd/4.0/).

The influence of cross-border mobility on the COVID-19 epidemic in Nordic countries

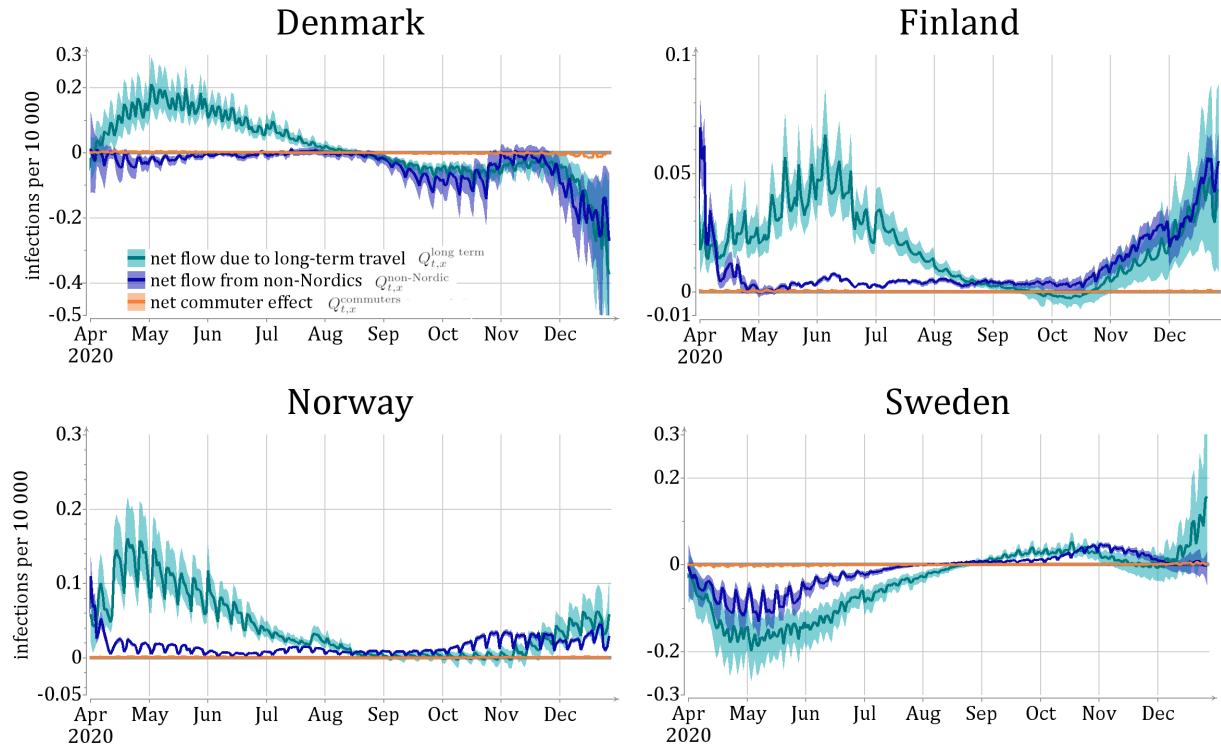


Figure 4: Results of the net mobility effect on the number of infections per day per 10,000 caused by different modes of travel: $Q_{t,x}^{\text{long term}}$, $Q_{t,x}^{\text{non-Nordic}}$ and $Q_{t,x}^{\text{commuters}}$ (see text for details). Lines show posterior mean and colored areas show 90% posterior intervals.

classified as local infections as they are taking place within the country. These further infections could have been (partly) prevented if the original case in the infection chain were prevented. We use counterfactual scenarios to investigate the effect of full infection chains caused by border traffic. The border effect is isolated by changing the rate of mobility while keeping everything else in the model (including the disease spreading parameters) constant.

The counterfactual scenarios are not necessarily accurate predictions of what would have happened if travel restrictions or testing policies at the border were changed. There are two main reasons: firstly, changing policies at borders can alter the behaviour within the country as such measures can be taken as signals from authorities of the seriousness of the epidemic, or people might instead choose to travel more within the country; secondly, the within-country policies and behaviour are affected by the current epidemic situation, but in our counterfactual scenarios we assume that the country-specific reproduction rates $\mathcal{R}_{t,x}$ remain unchanged. For example, if the overall disease burden went down due to restricted cross-border traffic, this could imply that people mix more inside a country and thereby increase the reproduction rate. These responses are difficult to model due to the general nonlinearities and lack of monotonicity inherent in the transmission dynamics [22].

Since we do not model the societal responses to the current epidemic situation, we expect the reliability of our estimates to go down for longer time horizons. Nevertheless, our estimates should serve as an upper bound for the change in number of infected individuals due to border traffic when this traffic increases the number of infections, because more infections would likely result in a reaction decreasing the local reproduction rates rather than increasing them. Similarly, if the changes in border traffic caused a lower number of infections within the country, the counterfactual would serve as a lower bound for the effect as lower number of infected people would likely lead to unchanged or higher reproduction numbers. Also, we do not investigate realistic scenarios where one would slightly adjust the numbers of travellers in an adaptive manner. Thus, short-term estimates should indicate the right order of magnitude and direction of the effect of counterfactual scenarios.

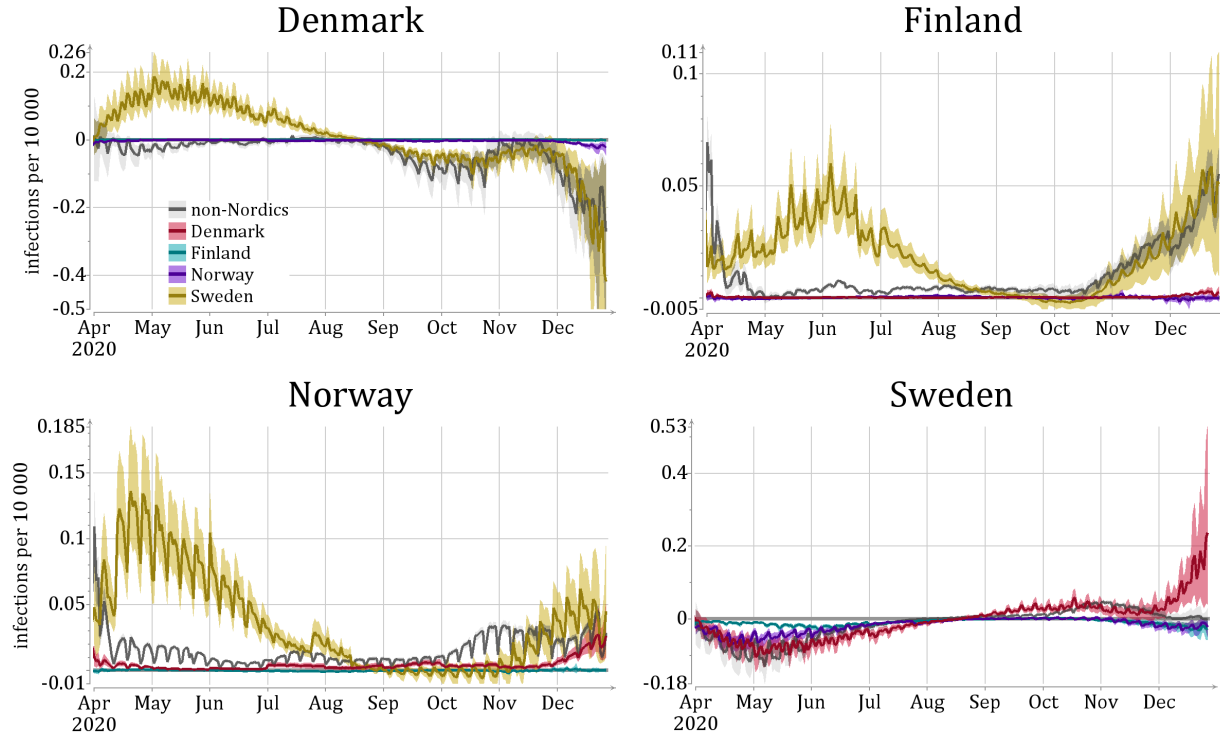


Figure 5: Daily net mobility effect on the number of infections per day per 10,000 individuals from each source country. The color legends are in the upper right panel. The lines show posterior mean and colored areas show 90% posterior intervals.

4.1 Defining the counterfactuals

We focus on the two extreme cases to find the upper and lower limits of the effects of cross-border traffic: We model what-would-have-been cases as two scenarios, where either all mobility is cancelled (zero mobility matrices) or where the mobility is restored to the 2019 pre-pandemic level. We compare these scenarios to a baseline scenario which is the model fitted to the real data from the year 2020 as described in Section 2.3.

We use the same sample of reproduction numbers, $S_{\mathcal{R}}$, sampled from the posterior distribution of the model fitted to the mobility (and health data) from year 2020 in all of our scenarios. For each of these samples $\mathcal{R} \in S_{\mathcal{R}}$, we compute the number of infected individuals at each time step t given the reproduction number and mobility data $I_{t,x}(\mathcal{R}, D^{\text{com}}, D^{\text{long}}, i^{\text{inflow}}, M_{\cdot,0,\cdot}^{\text{long}})$. Note that this computation is deterministic in our SIR model. We then estimate the posterior mean numbers of infected individuals,

$$E(I_{t,x}) \approx \frac{1}{|S_{\mathcal{R}}|} \sum I_{t,x}(\mathcal{R}, D^{\text{com}}, D^{\text{long}}, i^{\text{inflow}}, M_{\cdot,0,\cdot}^{\text{long}}). \quad (14)$$

We do all of our computations using $|S_{\mathcal{R}}| = 1000$ samples.

To construct a counterfactual model, we substitute the appropriate values of the mobility matrices D^{short} , D^{long} , i^{inflow} , and $M_{\cdot,0,\cdot}^{\text{long}}$. To express the scenario for the border closure starting on day t , we modify the mobility data by filling the matrices corresponding to day t and later with zeros. For example, to model the effect of a border closure starting in May 2020, we set all values in the matrices starting from 1 May 2020 to zero. For the scenario of border reopening, the mobility matrices at time t and after are filled with data from 2019. We then recompute the expected number of infected individuals $E(I)$ in equation (14) with the modified matrices but the same sample of the reproduction numbers \mathcal{R} .

We investigate the timing of the hypothetical interventions by varying the starting time at the first day of each month. We show the resulting counterfactual trajectories of I only for 50 days after the start of the scenario, assuming that after 50 days, *ceteris paribus*, assumptions for \mathcal{R} become unrealistic.

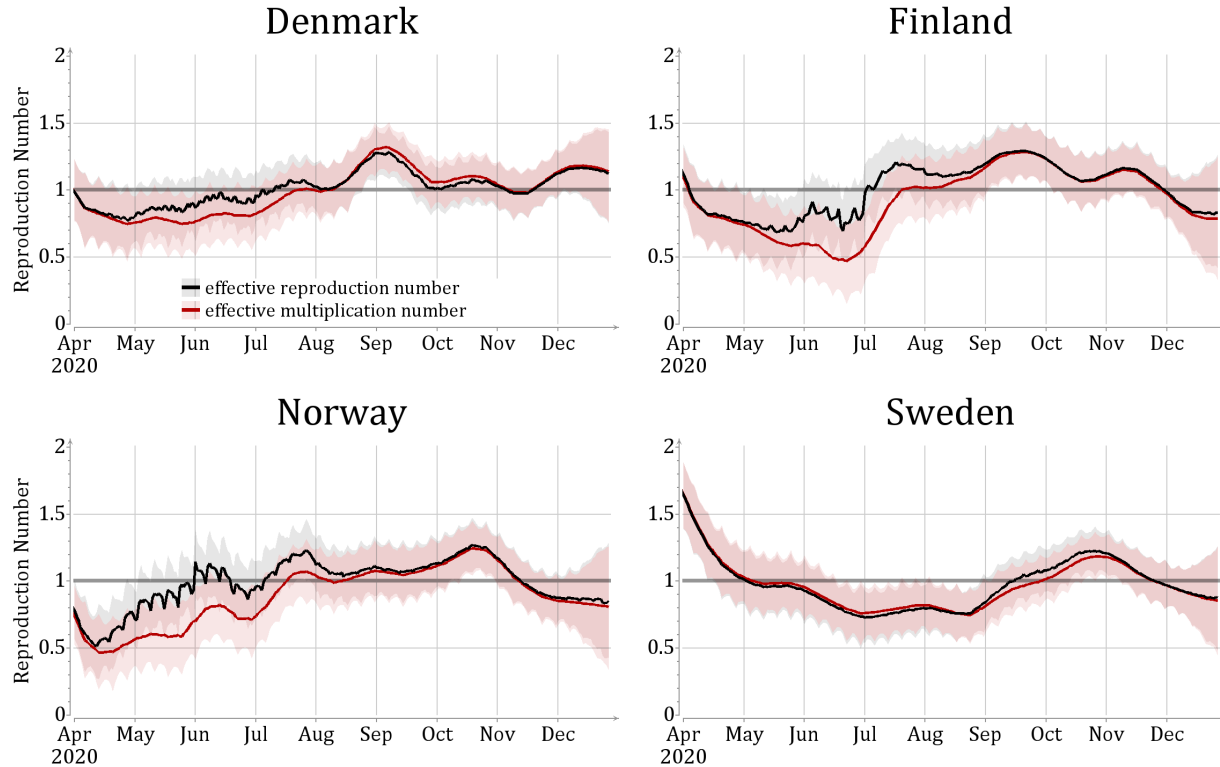


Figure 6: Estimates of daily effective reproduction number $\mathcal{R}_{t,x}^{\text{eff}}$ and multiplication number $\mathcal{M}_{t,x}^{\text{eff}}$, as approximated in equations (16) and (17). The lines show posterior mean and colored areas show 90% posterior intervals.

4.2 Results

For completely closing all border traffic see Figure 8, and returning back to the traffic patterns of 2019 see Figure 9. In Finland and Norway, removing the border traffic in May and June leads to a large reduction in the number of infections during the fifty-day period in our model. Removing the border traffic in July still has a significant effect, but after August the effects are minimal. The reverse is true, but with slightly less dramatic changes, when we return back to 2019 border traffic. Here the increased travels during April have a larger effect than reducing the traffic would have had, presumably due to the real traffic already being low during April.

The results for Denmark are similar to those of Finland and Norway during spring and summer, but with less dramatic changes. During the fall, Denmark would have slightly suffered from removing the border traffic according to our model. Sweden stands out from the other Nordic countries, because the border traffic has very little effect on its epidemic situation. It would have slightly benefited from reduced border traffic in the fall, and from increased border traffic during the spring and summer as this would have slightly reduced the epidemic pressure inside the country.

5 Summary and Discussion

Due to the economic, legal and social complications related to any mobility restrictions it is crucial to understand the efficacy of such measures during pandemic spread. To this end, we have undertaken an in-depth modeling study of the effect of border closures in the four neighboring Nordic countries during 2020. We used two kinds of metrics to estimate the effect of the mobility: descriptive and counterfactual. Descriptive metrics, like the net mobility effect, focus on estimating the direct consequences, i.e., numbers of infections arriving or leaving the country. Such metrics can help decision makers to focus on the most important factors controlling the spread and growth of the infections. From our study we can conclude that for inter-country mobility to have an effect on the spread of the infections, three conditions have to be met: (1) a low number of new infections in the target country, (2) a high number of infections in the exporter country, and (3) a sufficiently high level of mobility between the countries to transfer infection.

It is made available under a [CC-BY-NC-ND 4.0 International license](https://creativecommons.org/licenses/by-nc-nd/4.0/).

The influence of cross-border mobility on the COVID-19 epidemic in Nordic countries

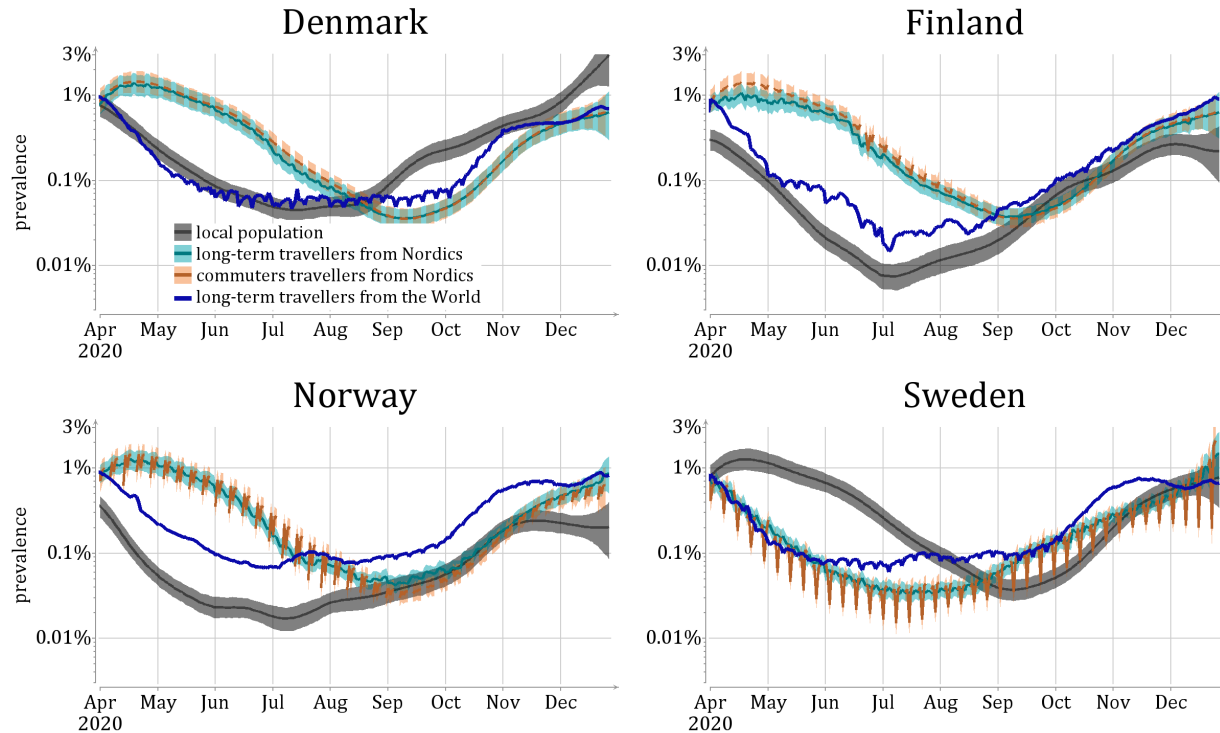


Figure 7: Prevalence among the local population for different travel types, and for long-term travellers visiting a country. Lines show posterior mean and colored areas show 90% posterior intervals.

An interesting detail that emerges from our study is that, in our model, commuters had a consistently low contribution to disease transmission. In our model each commuter spend only half a day in the destination country per border crossing, while long-term travellers spend their whole infectious period (8 days on average); this creates a ratio of 1 to 16, which is further amplified by the low number of identified commuters. This conclusion relies on assumptions about the behaviour of long-term travellers — in reality they could spend much less time in the destination country. There is however a lack of reliable data of this type on long-term travellers.

We should also mention that there is a multitude of possible secondary effects that we have not included in our modeling: arriving infections may cause an outbreak, the outbreak may cause tightening of the restrictions which in turn may lead to reduction of local transmission, which in turn can delay the herd immunity effects etc. While these secondary effects are often negligible in studies estimating the time until the outbreak starts, our focus on investigating the effect of inter-country mobility during the outbreak necessitates their consideration. To this end, we have included two counterfactual scenarios that should constitute bounds for the effects of mobility restrictions, at least in the medium-short time period.

Our rather simplified model does not include stratification by age, region, or detailed disease states. This may prevent our results from being quantitatively exact, but we believe that the qualitative properties would not be affected. It should be added that, during the research project, it was found that detailed data about inter-country mobility is scarce. For instance, the rate of vehicles crossing a border point may be known, but not the number of individuals, or the time they spend in the receiving country. More detailed data on such aspects could improve the modeling accuracy.

National borders often constitute an ideal location for interventions due to a limited number of crossing points, and the existing infrastructure for controlling travel. Further, limiting movement within a country can be practically and legally more difficult than denying access to a country. The interventions can be achieved either via limiting the number of travellers or controlling and testing for symptomatic or asymptomatic passengers. However, assessing the effectiveness of inter-country travel restrictions can be more difficult than within-country travel, because one needs to combine data from multiple countries' health officials. In addition, within-country mobility is much better studied than inter-country mobility. Despite these difficulties, we believe that our modelling study benefits both the assessment of intervention strategies at the borders and modelling epidemic spread within a given country by separating the effect of the external disease pressure and thus yielding more accurate reproduction numbers.

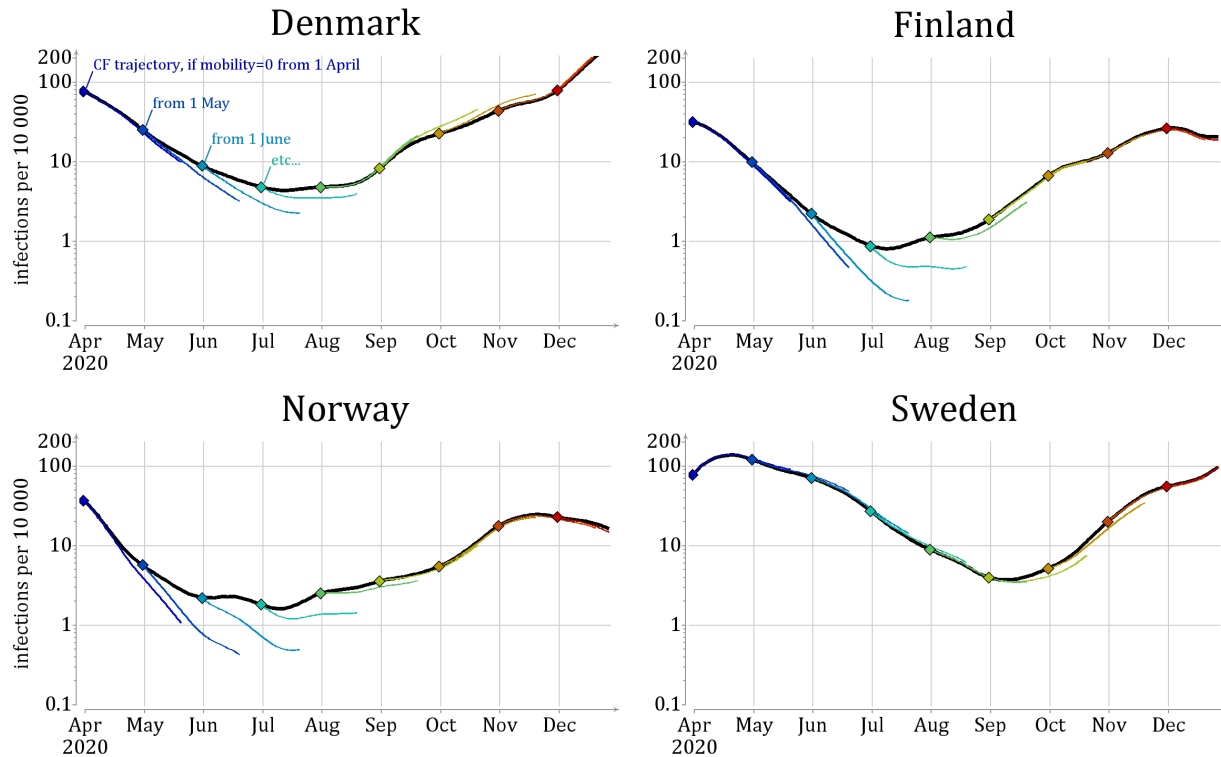


Figure 8: Comparison to counterfactual scenarios for the border closure. Black line shows the mean number of infections $E(I_{t,x})$ in the baseline scenario. Colored lines presents the number of infections in counterfactual scenarios, during the 50 day interval starting with the implementation of restrictions. Dots mark the start of the restriction.

Acknowledgements

This work has been supported in part by the project 105572 NordicMathCovid as part of the Nordic Programme on Health and Welfare funded by NordForsk.

Supporting information

S1 Appendix. Mobility data.

S2 Appendix. Derivation of the transmission model.

S3 Appendix. Additional results.

References

- [1] European Commission, Directorate-General for Regional, Urban Policy, J Peyrony, J Rubio, and R Viaggi. *The effects of COVID-19 induced border closures on cross-border regions – An empirical report covering the period March to June 2020*. Publications Office, 2021.
- [2] Sebastian Duchene, Leo Featherstone, Birgitte Freiesleben de Blasio, Edward C Holmes, Jon Bohlin, and John H-O Pettersson. The impact of public health interventions in the Nordic countries during the first year of SARS-CoV-2 transmission and evolution. *Eurosurveillance*, 26(44), 2021.
- [3] Angela McLaughlin, Vincent Montoya, Rachel L Miller, Gideon J Mordecai, Canadian COVID-19 Genomics Network (CanCOGen) Consortium, Michael Worobey, Art FY Poon, and Jeffrey B Joy. Genomic epidemiology of the first two waves of SARS-CoV-2 in Canada. *eLife*, 11:e73896, aug 2022.

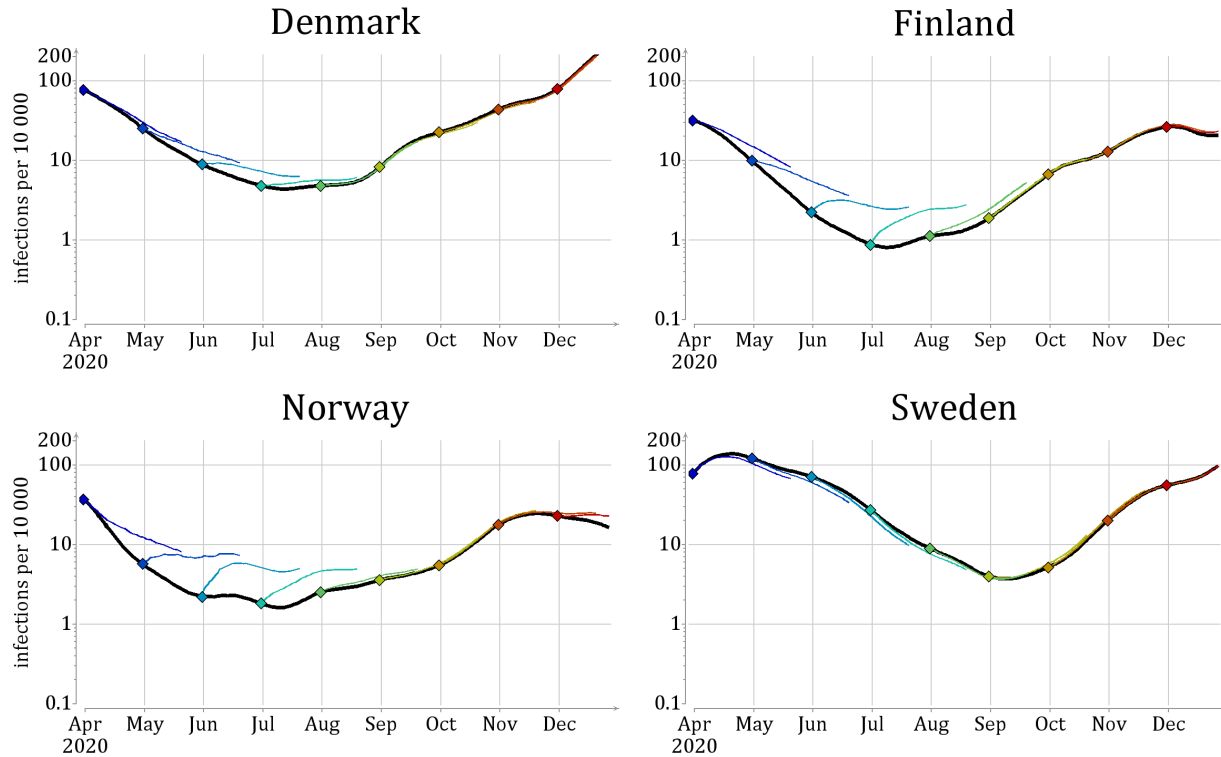


Figure 9: Comparison to counterfactual scenarios for the border reopening. Black line shows the mean number of infections $E(I_{t,x})$ in the baseline scenario. Colored lines presents the number of infections in counterfactual scenarios, during the 50 day interval starting with the implementation of border reopenings. Dots mark the start of the reopenings.

- [4] Lucas Nonnenmacher, Michèle Baumann, Etienne le Bihan, Philippe Askenazy, and Louis Chauvel. Cross-border mobility in European countries: associations between cross-border worker status and health outcomes. *BMC Public Health*, 21(1):588, 2021.
- [5] Adam J Kucharski, Mark Jit, James G Logan, Matthew Cotten, Samuel Clifford, Billy J Quilty, Timothy W Russell, Rosanna W Peeling, Martin Antonio, and David L Heymann. Travel measures in the SARS-CoV-2 variant era need clear objectives. *The Lancet*, 399(10333):1367–1369, 2023/08/24 2022.
- [6] Mary A. Shiraef, Paul Friesen, Lukas Feddern, Mark A. Weiss, Hawraa Al Janabi, Elizabeth Beling, Jonathan Falcone, Cora Hirst, Nora Murphy, Elizabeth Stifel, Erin Straight, Dongying Tao, Erin Tutaj, Mark A. Weiss, Mary A. Shiraef, and COBAP Team. Did border closures slow SARS-CoV-2? *Scientific Reports*, 12(1):1709, 2022.
- [7] Eduardo Medeiros, Martín Guillermo Ramírez, Gyula Ocskay, and Jean Peyrony. Covidfencing effects on cross-border deterritorialism: the case of europe. *European Planning Studies*, 29(5):962–982, 2021.
- [8] Gianpaolo Scalia Tomba and Jacco Wallinga. A simple explanation for the low impact of border control as a countermeasure to the spread of an infectious disease. *Mathematical Biosciences*, 214(1):70–72, 2008.
- [9] Timothy W Russell, Joseph T Wu, Sam Clifford, W John Edmunds, Adam J Kucharski, and Mark Jit. Effect of internationally imported cases on internal spread of COVID-19: a mathematical modelling study. *The Lancet Public Health*, 6(1):e12–e20, 2021.
- [10] Johan Nordensvärd, Therese Sefton, and Sebastian Godenhjelm. Interpreting the state–citizen nexus in contemporary nordic legal and social citizenship: the case of divergence in restriction on freedom of movement as a mitigation policy in the COVID-19 pandemic. *Journal of International and Comparative Social Policy*, 39(1):28–41, 2023.
- [11] Saila Heinikoski and Tatu Hyttinen. The impact of Covid-19 on the free movement regime in the north: Analysis of border closures in Denmark, Finland, Norway and Sweden. *Nordic Journal of International Law*, 91(1):80–100, 2022.

- [12] Swapnil Mishra, James A Scott, Daniel J Laydon, Seth Flaxman, Axel Gandy, Thomas A Mellan, H Juliette T Unwin, Michaela Vollmer, Helen Coupland, Oliver Ratmann, et al. Comparing the responses of the uk, sweden and denmark to covid-19 using counterfactual modelling. *Scientific Reports*, 11(1):16342, 2021.
- [13] Håvard Wallin Aagesen, Olle Järv, and Philippe Gerber. The effect of COVID-19 on cross-border mobilities of people and functional border regions: the Nordic case study from Twitter data. *Geografiska Annaler: Series B, Human Geography*, pages 1–23, 2022.
- [14] Serina Chang, Damir Vrabac1, Jure Leskovec, and Johan Ugander. Estimating geographic spillover effects of COVID-19 policies from large-scale mobility networks. In *37th AAAI Conference on Artificial Intelligence*, 2023.
- [15] Martina L. Reichmuth, Emma B. Hodcroft, Julien Riou, Richard A. Neher, Niel Hens, and Christian L. Althaus. Impact of cross-border-associated cases on the SARS-CoV-2 epidemic in Switzerland during summer 2020 and 2021. *Epidemics*, 41:100654, 2022.
- [16] Lisa Sattenspiel and Klaus Dietz. A structured epidemic model incorporating geographic mobility among regions. *Mathematical Biosciences*, 128(1-2):71–91, 1995.
- [17] Norwegian covid-19 data from folkehelseinstituttet (the norwegian institute of public health). https://github.com/folkehelseinstituttet/surveillance_data.
- [18] Mathieu et al. Our world in data. <https://github.com/owid/covid-19-data/blob/master/public/data/owid-covid-data.csv>. Accessed: 2022-08-30.
- [19] Esteban Vargas Bernal, Omar Saucedo, and Joseph Hua Tien. Relating Eulerian and Lagrangian spatial models for vector-host disease dynamics through a fundamental matrix. *Journal of Mathematical Biology*, 84(7):57, 2022.
- [20] Jeta Molla, Alejandro Ponce de León Chávez, Takayuki Hiraoka, Tapio Ala-Nissila, Mikko Kivelä, and Lasse Leskelä. Adaptive and optimized COVID-19 vaccination strategies across geographical regions and age groups. *PLOS Computational Biology*, 18(4):1–19, 04 2022.
- [21] Matti Vihola. Robust adaptive Metropolis algorithm with coerced acceptance rate. *Statistics and Computing*, 22(5):997–1008, 2012.
- [22] Tom Britton and Lasse Leskelä. Optimal intervention strategies for minimizing total incidence during an epidemic. *SIAM Journal on Applied Mathematics*, 83(2):354–373, 2023.