

1 Regular Article

2  
3 Number of Words: 4,866

4 Number of Figures: 3

5 Number of Tables: 3

6 Supplementary Tables: 2

7  
8  
9  
10  
11 **Christianson Syndrome across the Lifespan:**  
12 **An International Longitudinal Study in Children, Adolescents, and Adults**

13  
14  
15 Brian C. Kavanaugh<sup>1,2</sup>, Jennifer Elacio<sup>1,2,3</sup>, Carrie R. Best<sup>1,2,3</sup>, Danielle G. St. Pierre<sup>1,2,3</sup>, Matthew F.  
16 Pescosolido<sup>1,2,3</sup>, Qing Ouyang<sup>1,2,3</sup>, Paul Caruso<sup>4</sup>, Karen Buch<sup>5</sup>, John Biedermann<sup>1,2,3</sup>, Rebecca S. Bradley<sup>1,2</sup>,  
17 Judy S. Liu<sup>1,2,3,6</sup>, Richard N. Jones<sup>7</sup> and Eric M. Morrow<sup>1,2,3#</sup>

18  
19 <sup>1</sup>Developmental Disorders Genetics Research Program, Department of Psychiatry and Human Behavior,  
20 Alpert Medical School of Brown University, and Emma Pendleton Bradley Hospital, East Providence, RI, USA;

21 <sup>2</sup>Center for Translational Neuroscience, Robert J. and Nancy D. Carney Institute for Brain Science and Brown  
22 Institute for Translational Science, Brown University, Providence, RI, USA;

23 <sup>3</sup>Department of Molecular Biology, Cell Biology and Biochemistry, Brown University, Providence, RI, USA;

24 <sup>4</sup>Lenox Hill Radiology, New York, NY 10075;

25 <sup>5</sup>Department of Radiology, Massachusetts General Hospital and Harvard Medical School, Boston, MA 02114;

26 <sup>6</sup>Department of Neurology, Rhode Island Hospital, Providence, RI 02903;

27 <sup>7</sup>Quantitative Sciences Program, Department of Psychiatry and Human Behavior and Department of  
28 Neurology, Warren Alpert Medical School of Brown University, Providence, RI, USA

29  
30 **Running title:** CS across the lifespan

31  
32 #To whom correspondence should be addressed:

33 Eric M. Morrow MD PhD

34 Brown University, Lab for Molecular Medicine,

35 70 Ship Street, Providence, RI 02912

36 Tel: 401-863-9778

37 Fax: 401- 432-1607

38 E-mail: [eric\\_morrow@brown.edu](mailto:eric_morrow@brown.edu)

## 39 **ABSTRACT**

40 Mutations in the X-linked endosomal Na<sup>+</sup>/H<sup>+</sup> Exchanger 6 (NHE6) causes Christianson Syndrome (CS). In the  
41 largest study to date, we examine genetic diversity and clinical progression, including cerebellar degeneration,  
42 in CS into adulthood. Data were collected as part of the International Christianson Syndrome and NHE6  
43 (SLC9A6) Gene Network Study. Forty-four individuals with 31 unique NHE6 mutations, age 2 to 32 years, were  
44 followed prospectively, herein reporting baseline, 1-year follow-up, and retrospective natural history. We  
45 present data on the CS phenotype with regard to physical growth, adaptive and motor regression, and across  
46 the lifespan, including information on mortality. Longitudinal data on body weight and height were examined  
47 using a linear mixed model: the rate of growth across development was slow and resulted in prominently  
48 decreased age-normed height and weight by adulthood. Adaptive functioning was longitudinally examined: a  
49 majority of adult (18+ years) participants lost gross and fine motor skills over a 1-year follow-up. Previously  
50 defined core diagnostic criteria for CS (present in >85%) – namely nonverbal status, intellectual disability,  
51 epilepsy, postnatal microcephaly, ataxia, hyperkinesia – were universally present in age 6 to 16; however, an  
52 additional core feature of high pain tolerance was added (present in 91%), and furthermore, evolution of  
53 symptoms were noted across the lifespan, such that postnatal microcephaly, ataxia and high pain threshold  
54 were often not apparent prior to age 6, and hyperkinesia decreased after age 16. While neurologic exams were  
55 consistent with cerebellar dysfunction, importantly, a majority of individuals (>50% older than 10) also had  
56 corticospinal tract abnormalities. Three participants died during the period of the study. In this large and  
57 longitudinal study of CS, we begin to define the trajectory of symptoms and the adult phenotype, thereby  
58 identifying critical targets for treatment.

59 **Key words:** Christianson Syndrome, Neurodevelopment; Neurodegeneration; Endosome; Cerebellum;  
60 Regression

## 61 INTRODUCTION

62 Christianson syndrome (CS) in males results from loss-of-function (LOF) mutations in the X-linked gene  
63 *SLC9A6* which encodes the endosomal Na<sup>+</sup>/H<sup>+</sup> Exchanger 6 (NHE6).<sup>1-4</sup> CS is one of the most common forms  
64 of X-linked intellectual disability.<sup>5</sup> The NHE6 protein modulates intra-endosomal pH and endosomal  
65 maturation.<sup>6,7</sup> Studies of the pathophysiology of CS in animals and cells lacking NHE6 have identified both  
66 neurodevelopmental and neurodegenerative features.<sup>6,8-11</sup> In male patients, CS presents early with global  
67 developmental delay, lack of language, postnatal microcephaly, ataxia, epilepsy, and Angelman Syndrome-like  
68 and/or autistic features.<sup>1</sup> However, little systematic data exists which establishes the life course of symptoms in  
69 people with CS into adulthood. In addition to abnormal brain development, progressive neurodegenerative and  
70 medical processes unfold with age.<sup>1,12</sup> Accordingly, CS has been conceptualized as a mixed  
71 neurodevelopmental and neurodegenerative disorder.<sup>10</sup>

72 In the initial large pedigree, Dr. Arnold Christianson and colleagues reported that early neurodevelopmental  
73 abnormalities were followed by a “slow regression” starting in the second decade of life.<sup>3</sup> In our prior report of  
74 14 CS probands, we identified a history of regression in 50% of participants.<sup>1</sup> Also, CS has been described to  
75 involve a progressively worsening ataxia, which appears to be associated with the high prevalence of  
76 cerebellar degeneration in patients (atrophy in 30-60% of cases).<sup>1-4,13</sup> Further, human neuropathologic  
77 studies<sup>3,12</sup> and NHE6-null mouse and rat models have identified cerebellar Purkinje cell loss, and as well as  
78 cortical tissue loss, with tau deposition.<sup>8-10</sup> Dr. Christianson’s original description of an extended South African  
79 pedigree suggested progressive morbidity, thin body habitus, and a potential risk of early mortality<sup>3</sup>; however,  
80 to date the risk of early mortality has not been corroborated in larger studies.

81 A range of different NHE6 mutations have been reported in CS. To date, the majority of published NHE6  
82 mutations are nonsense or splice mutations that are thought to result in complete loss-of-function of the NHE6  
83 protein.<sup>1-4</sup> Nonsense mutations appear to lead to nonsense mediated mRNA decay.<sup>14</sup> Other mutation types (for  
84 example missense) have also been reported but are less common, yet may be informative to protein  
85 function.<sup>1,15</sup> Mutations in CS males generally cluster in the Na<sup>+</sup>/H<sup>+</sup> exchanger region and are less commonly  
86 found in the C-terminus cytoplasmic tail.<sup>1,2</sup> These cytoplasmic tail mutations, again particularly when missense,  
87 could be highly informative given that the function of this part of the protein is not well understood. While  
88 previously reported as inherited in pedigrees, *de novo* mutations now appear to be a relatively common form of

89 transmission.<sup>1</sup> Finally, Pescosolido et al.<sup>1</sup> found little genotype-phenotype correlations between specific  
90 mutations, although the sample size was limiting for this assessment.

91 Based on the International Christianson Syndrome and NHE6 (SLC9A6) Gene Network Study, the current  
92 study examined the largest sample to date of CS probands across the lifespan, importantly including  
93 longitudinal follow-up data and a large proportion of adults. In total this study includes 44 probands, including  
94 11 adults. This group of patients is more than three times as large as the largest prior report<sup>1</sup>, with a wider age  
95 range of participants (age 2 to 32 years). Participants were enrolled as a result of a collaboration of  
96 international participants, clinicians, researchers and the Christianson Syndrome Association (CSA). With a  
97 focus on potential target symptoms for future clinical trials, the four primary aims of this study are to 1) define  
98 new mutations and the range of NHE6 mutations in CS; 2) cross-sectionally and longitudinally examine the  
99 clinical phenotype across the lifespan, as well as the adult phenotype and potential early mortality; and 3)  
100 longitudinally examine growth and maintenance of healthy weight of the probands across the lifespan.  
101 Importantly, we present new mutations, including informative missense mutations. Also, through annual follow-  
102 up, we define a prominent component of the progressive phenotype in CS involving the longitudinal attenuation  
103 of weight gain and growth, as well as loss of motor function with age. We have also observed deaths of  
104 participants. In summary, given the size and the longitudinal design, the current study permits a quantitative  
105 investigation of the CS phenotype across the lifespan, and importantly, the definition of the CS phenotype in  
106 adulthood.

## 107 **METHODS**

108 **Procedures:** This Christianson Syndrome and NHE6 (*SLC9A6*) Gene Network Study was approved by the  
109 Institutional Review Board (IRB) at Lifespan Healthcare and Brown University. Informed consent was given by  
110 the parent/guardian of the participant. The procedures involved the initial enrollment and yearly follow-ups. We  
111 generated natural history data through both retrospective medical record review and history taking, as well as  
112 annual prospective follow-up assessments. At the time of this report, one-year, prospective follow-up data on  
113 22 patients were available.

114  
115 **Recruitment and Enrollment:** Enrollment criteria were adapted from Pescosolido et al.<sup>1</sup> and included males  
116 at any age wherein: 1) there was a prior clinical genetic diagnosis involving mutation in the *SLC9A6* gene; 2)  
117 the participating child had an active clinician; and 3) the clinical phenotype was consistent with CS diagnostic  
118 criteria. CS probands and their extended families were enrolled. Participants were recruited through close  
119 collaboration with the family association, the Christianson Syndrome Association (CSA), participation in the  
120 biannual international conferences for CS, and via genetic diagnostic labs. Participants were predominantly  
121 enrolled remotely in this study due to our international recruitment that spans 11 countries. Materials were  
122 translated into the native language of the family and remote assessments were conducted with a translator  
123 when possible. DNA was isolated from blood or saliva samples. All *NHE6* mutations were verified by Sanger  
124 sequencing by sequencing all coding exons (1-16) and exon/intron junctions as previously described<sup>1</sup> except  
125 where indicated in Table 1.

126  
127 **Clinical Assessment and Medical Record Review:** Clinical data were collected by telephone, video-  
128 conferencing and/or in person assessments and through medical record collection. Standardized research  
129 assessments were also filled out by parents/guardians. The Vineland Adaptive Behavior Scales-Second  
130 Edition (VABS-2)<sup>16</sup> assessed adaptive functioning across the following domains: communication, social, daily  
131 living, motor, and maladaptive behavior. Irritability and hyperactivity were assessed via the Aberrant Behavior  
132 Checklist (ABC)<sup>17</sup>, a parent questionnaire to assess behavioral problems in individuals with developmental  
133 disorders. A detailed medical and family history questionnaire, including items specific to CS, was administered  
134 to parents/guardians. Height and weight were obtained from available medical notes. In-person standard

135 neurological examinations included assessments of cranial nerve, motor (e.g. muscle tone and reflexes),  
136 coordination (e.g. gait), and sensory function that were performed by a board-certified neurologist (JSL).  
137 Prospective follow-up involved an annual telephone or video interview to collect information regarding changes  
138 to medical, neurological, or behavioral symptoms experienced by the proband since the family's last contact  
139 with the study. VABS-2 and ABC were administered, and new medical records were collected.

140

141 **Statistical Analyses:** The sample (n = 44) was divided into four groups, broadly based on developmental  
142 stage at enrollment: toddlers (0-5 years; n = 11), children (6-11 years; n = 9), adolescents (12-16 years; n =  
143 13), and adults (17-32 years; n = 11). ANOVA and chi-squared analysis were used to examine group  
144 differences in clinical characteristics across developmental stages, inheritance/*de novo*, and mutation type. A  
145 subset of the group (n = 22) completed the VABS-2 at baseline and re-assessment at the study 1-year follow-  
146 up. VABS-2 subdomains were used to measure expressive language (Communication scale), interpersonal  
147 skills (Social scale), fine motor skills (Motor scale), and gross motor skills (Motor scale) were examined. The  
148 change in raw skills between baseline and follow-up was calculated to examine potential intra-individual  
149 decline and analyzed using Pearson's correlation. Raw measurements of height/weight were converted to age-  
150 normed percentiles (WHO growth standards for 0-2 years<sup>18</sup>; CDC growth curves for 2-20 years<sup>19</sup>) and to z-  
151 scores. To model physical stature across development, we used linear mixed model (with random slopes and  
152 intercepts) for each variable of interest (i.e., height, weight) with the age of the child as the time basis. The  
153 intercept and age at time point were modeled as fixed and random effects.

## 154 RESULTS

155 **CS-associated Mutations:** In total, 37 distinct families were enrolled with 44 affected males. Thirty-one unique  
156 mutations were identified in the cohort (Table 1; Figure 1). Of the 31 unique mutations, there were: 15  
157 frameshift and/or nonsense mutations; four deleterious missense mutations; nine splice mutations; two copy  
158 number variant deletions; and one mutation that removes the first methionine residue. Of those with known  
159 inheritance (29 of 37 families), 16 cases were inherited (55%) and 13 cases were *de novo* (45%). Notably, five  
160 mutations were recurrent (i.e. occurred in more than one family). Each of the following mutations occurred in  
161 two distinct families: c.899+1delGTAA (mutation 14), c.1024G>A (mutation 16), c.1148G>A (mutation 17), and  
162 c.1710G>A (mutation 30). Mutation 25, c.1498C>T, was found in three families. These recurrent mutations  
163 were inherited in three families not known to be related and were *de novo* in five families. Inheritance was  
164 unknown in the three remaining families with recurrent mutations. No strong genotype-phenotype associations  
165 were evident in the data (Supplemental Table 1).

166  
167 **CS Core and Associated Symptoms Across the Lifespan:** In total, 44 males were evaluated with *SLC9A6*  
168 mutations, ranging from age 2 to 32 years. In order to consider CS symptoms across developmental stages,  
169 cross-sectional analysis was conducted across four age groups (Table 2): 0-5 years at enrollment (n = 11); 6-  
170 11 years (n = 9); 12-16 years (n = 13); and 17-32 years (n = 11). In terms of race and ethnicity: 11% of the  
171 sample identified as Hispanic/Latino (n = 5); 89% identified as White (n = 39); 5% identified as Multi-racial (n =  
172 2); 2% identified as Black (n = 1); and 2% identified as Other (n = 1). Participants were born in eleven different  
173 countries and seven different primary languages were represented in these families.

174 Based on our prior study of 14 CS patients, we proposed CS core symptoms (present >85%) and  
175 secondary symptoms (present in >35%).<sup>1</sup> Core symptoms included intellectual disability, non-verbal status,  
176 epilepsy, ataxia, postnatal microcephaly, and hyperkinesia.<sup>1</sup> The previously proposed core symptoms were  
177 upheld here in this larger study on average across age by combining all age groups (Table 2). Specifically, all  
178 of the core symptoms were present in greater than 85%, including intellectual disability (100%), epilepsy  
179 (100%), non-verbal/non-phrase speech (100%), microcephaly (95%), ataxia (95%), and hyperkinesia (93%).  
180 Notably, we discerned that high pain tolerance represents a new core symptom when considering all age  
181 groups together, present in over 85% (91%).

182 Secondary symptoms that occurred in 35-84% of participants included current sleep problems (51%),  
183 unprovoked laughter (62%), visual acuity problems (52%), current GERD (56%), constipation (55%), eye  
184 movement abnormalities (68%), regression (54%), swallowing problems (44%), and contractures (36%) (Table  
185 2). Previously identified secondary symptoms such as prior Angelman syndrome diagnosis and Autism  
186 Spectrum Disorder (ASD) diagnosis occurred in 29% and 18% of the current sample, respectively. ASD  
187 diagnosis and prior Angelman diagnosis (approaching significance,  $p = .05$ ) were more common in the older  
188 groups, perhaps reflecting more access to accurate genetic testing in the younger group. Scoliosis occurred in  
189 39% of participants; two participants had corrective surgeries for scoliosis between 15 to 20 years of age.

190 While the core symptoms were relatively stable across age groups, there were several notable exceptions.  
191 Absence of phrase speech, intellectual disability, ataxia and epilepsy were stable across all age groups. We  
192 found 80% of the youngest age group (below our cut-off for core symptoms) had microcephaly which elevated  
193 to 100% in all older age groups, reflecting that idea that the microcephaly in CS has a strong postnatal  
194 component (Table 3). This variation in head circumference data reflecting decreases across ages approached  
195 significance ( $p = .089$ ). Similarly, 73% of participants had a high pain threshold in the youngest age group (0-5  
196 years old) which elevated to above 85% (our cut-off for core symptoms) in the older age groups; therefore,  
197 although prevalent in the youngest age group, high pain threshold should not be considered a strict core  
198 symptom in the youngest age group (Table 3). In the current group, ataxia was present in 82% of participants  
199 in the youngest age group, and in 100% of subsequent age groups, again suggesting that ataxia worsens with  
200 age. In line with these observations, with regard to the ability to walk, 100% of participants report walking  
201 unaided by or before age 5; however, ability to walk unaided is lost in approximately 20% of participants in the  
202 6 to 16 groups and 30% are reported as not able to walk unaided in the oldest group (17+ years old). Finally,  
203 with regard to hyperkinesia, this core symptom was present in 100% of the participants in the two younger age  
204 groups, and 92% and 82% of the oldest age group, indicating that hyperkinesia does not meet the cut-off for a  
205 core-symptom in the oldest age group. Concurrent with these data, we observe that the hyperactivity subscale  
206 scores on the Aberrant Behavior Checklist (ABC) are most severe in the younger groups and less prominent in  
207 the oldest group (Table 2), although this does not reach statistical significance.

208 There were statistically significant differences across developmental groups for some reported symptoms or  
209 phenotypic features that are particularly notable. There were significant group differences in the rate of current



210 constipation, prior history of regression, adaptive function (including social, communication, and daily living  
211 subscores) and number of hospitalizations ( $p < .05$ ): each of these experiences were most common in the  
212 adult group (Table 2). Importantly, 100% of participants in the oldest age group reported notable problems with  
213 constipation ( $p = .002$ ). With regard to regression, reports of any regression at some point in their lifetime  
214 increased significantly with age from toddlers (30%), children (44%), adolescents (50%), and adults (90%) ( $p =$   
215  $.047$ ). With regard to adaptive functioning, age-normed Vineland scores appeared stable in toddlers and  
216 children, and then dropped in the adolescent group and again in the adult group ( $p < .001$  for communication,  $p$   
217  $< .001$  social and daily living, and  $p < .0005$  for adaptive functioning). While not representing a statistically  
218 significant difference across groups ( $p = .305$ ), it is notable that the highest level of inability to walk is  
219 experienced in the adult group at approximately 30% (Table 2).

220

221 **Longitudinal Assessment of Growth and Physical Stature across the Lifespan in CS:** Adult patients with  
222 CS have been described as having a thin body habitus<sup>3</sup>; however, systematic analysis of growth in CS across  
223 the lifespan has not been conducted. To study growth in CS across the lifespan, raw measurements of height  
224 and weight were converted to age-normed percentiles (WHO growth standards for 0-2 years<sup>18</sup>; CDC growth  
225 curves for 2-20 years<sup>19</sup>) and to z-scores. To model physical stature across development, we used linear mixed  
226 model (with random slopes and intercepts) for each variable of interest (i.e., height, weight) with the age of the  
227 child as the time basis. The intercept and age at time point were modeled as fixed and random effects. The  
228 height ( $n = 24$ ) and weight ( $n = 30$ ) obtained at clinical appointments was analyzed via mixed linear modeling  
229 of age-based percentiles (Figure 2). While height and weight naturally increased with time (Figure 2A and 2B),  
230 the age-normalized weight, i.e. the z-score ( $n = 30$ ; total data points = 116; range = 1-12 points per person)  
231 linearly declined over time (slope  $p < .001$ ) (Figure 2C). Height z-score ( $n = 24$ ; total data points = 81; range =  
232 1-11 points per person) also linearly declined over time (slope  $p < .001$ ). Of note, the predicted intercept for the  
233 model at birth were within normal ranges; however, as shown the model demonstrates a progressive decline in  
234 growth in CS relative to normal growth with age (Figure 2). Of relevance to challenges in growth and nutrition,  
235 approximately 30% (13/44) participants had G-tubes placed. Approximately 38%, 23%, 23% and 15% had their  
236 G-tubes placed during ages of 0-5, 6-11, 12-16, or 17+ years of age. Indications for G-tube placement have

237 been failure to thrive (FTT), most often at the younger ages, and inability to eat across all ages, generally  
238 related to challenges with swallowing.

239  
240 **Adaptive, Behavioral, and Motor Functioning across the Lifespan: Cross-Sectional Findings.** Parent-  
241 reported adaptive and behavioral data were also available for a subsample of the males (n = 27-31). When  
242 examining differences across the cohort by current developmental stage (cross-sectional analysis), a  
243 statistically significant difference across groups was identified ( $p < .0005$ ) in age-normed overall adaptive  
244 functioning. Specifically, older participants had lower age-normed abilities than younger participants, in that the  
245 younger participants had abilities more similar to their same-aged peers while the abilities of the older  
246 participants were further below those of their same-aged peers (Table 2). In further examining across these  
247 cross-sectional age groups, there were no significant differences between age groups in hyperactivity or  
248 irritability at baseline (Table 2; ABC).

249  
250 *Longitudinal Adaptive/Motor Findings.* Importantly, we also conducted a longitudinal follow-up analysis through  
251 investigation of change in adaptive function in individuals (n = 22), at baseline and at a 1-year follow-up time  
252 point. The change in skills between baseline and follow-up was correlated to age at enrollment. Results  
253 showed that participant age was negatively correlated with change in fine motor skills ( $r = -.50$ ;  $p = .028$ ) and  
254 gross motor skills ( $r = -.63$ ;  $p = .002$ ; Figure 3). Specifically, 5 of 6 adults (83%) experienced a loss in multiple  
255 fine motor skills such as picks up small objects with thumb and fingers and moves object from one hand to the  
256 other. Expressive language and interpersonal skills change were not significantly correlated with age (Figure  
257 3). These longitudinal studies suggest that older participants are at risk for losing previously acquired skills,  
258 particularly in the motor domain, which is observable by parents/guardians at a one-year follow-up. Therefore,  
259 these longitudinal studies augment the above cross-sectional studies.

260  
261 *Neurological Exam.* Standardized, in-person motor examination was performed by a board-certified neurologist  
262 (JSL). Twelve patients were directly examined (Supplemental Table 2). The direct assessment of patients  
263 additionally supports the interpretation that there is age-related worsening of motor function. Older patients (i.e.  
264 age 20 and greater), present with evidence of motor dysfunction with signs of corticospinal tract, i.e. upper

265 motor neuron damage, such as increased tone, weakness, increased and abnormal reflexes. These older  
266 subjects also have evidence of cerebellar dysfunction including tremor and truncal ataxia, as evidenced by  
267 wide based gait. Thus, the clinical phenotype includes upper-motor neuron involvement that emerges  
268 particularly in adulthood, as well as cerebellar dysfunction that is also progressive but presents first in early  
269 adulthood.

270

271 **Participant Deaths:** Three of the 44 participants in this described cohort died (6.8%) during the duration of the  
272 study. One participant, who also may have had other contributing genetic mutations, died between 6 to 10  
273 years of age due to complications caused by a worsening neurological state and increased seizure frequency.  
274 The adult participants died between the ages of 20 to 25 and 30 to 35 years in their homes due to conditions  
275 related to infirmity, such as pneumonia.

## DISCUSSION

This study represents the largest to date of patients with Christianson Syndrome (CS) with confirmed NHE6 mutations. This also is the first study to date as part of the International Christianson Syndrome and NHE6 (SLC9A6) Gene Network Study, presenting longitudinal follow-up and systematic study of CS into adulthood. Forty-four individuals with 31 unique NHE6 mutations, age 2 to 32 years, were followed prospectively, herein reporting baseline, 1-year follow-up, and retrospective natural history. Among the most prominent results are: first, the large range of mutations, wherein there are some notable new missense mutations (discussed below); second, we have also defined the core symptoms of CS and the dynamics of these symptoms across the lifespan, and also, added a novel and important new core symptom, namely the high pain threshold that children exhibit, particularly after age 6; third, we present longitudinal follow-up data demonstrating that CS patients do show decreases in motor function with age; fourth, we present data exhibiting the challenges in maintenance of a healthy weight and reductions of body-mass index with age; and finally, fifth, in this study through longitudinal follow-up, we were able to provide important information with regard to CS features in adulthood and we begin to address the question of life expectancy and mortality. This international CS study has thereby defined future treatment targets, and also provides natural history data of the sort that will support future clinical trials.

### Genetic Diversity in CS and Genotype-Phenotype Relationships

We present 31 unique mutations in 44 affected males with CS. The vast majority are clear complete or near complete loss-of-function mutations, with more than 80% as frameshift/nonsense, splice (29% of total) or highly deleterious copy number variant deletions. A minority represent missense mutations which are likely loss-of-function. There is a possibility that these missense mutations may represent incomplete loss-of-function mutations; however, at present the evidence to support this is only anecdotal. In the current dataset, there is no statistical evidence of genotype-phenotype correlations, providing further support that the majority of *NHE6* mutations are complete or near complete loss-of-function. Prior studies in patient-derived induced pluripotent stem cells have demonstrated that nonsense mutations are subject to nonsense mediated mRNA decay.<sup>14</sup> Of note, the G383D mutation which has been studied functionally in iPSCs exhibits some residual proteins.<sup>14</sup> Another notable finding, in terms of genetic mutations, is that we present here a patient with the L582P

304 mutation which represents a rare missense mutation in the cytoplasmic tail of NHE6 that is associated with the  
305 CS phenotype. The proband with this L582P mutation exhibits core CS symptoms including intellectual  
306 disability, non-verbal, and microcephaly.

### 308 **Natural History of Primary and Secondary CS Symptoms with Age**

309 Previously established core diagnostic features of CS<sup>1</sup> were confirmed in this sample of probands, including  
310 intellectual disability (100%), epilepsy (100%), non-verbal/non-phrase speech (100%), postnatal microcephaly  
311 (95%), ataxia (95%), and hyperkinesia (93%). High pain tolerance, not previously identified as a core feature of  
312 CS, was present in 91% of probands, and therefore, we support the inclusion of high pain tolerance as a new  
313 core diagnostic feature. Importantly, clinicians and caregivers should be aware of this symptom, in order to  
314 understand how people with CS may respond to injury. Minimal response to pain may not be a good indicator  
315 in the evaluation of the seriousness of an injury. Overall, with regard to core symptoms of CS, we show here  
316 that there is some evolution of these symptoms with age, such that microcephaly, ataxia and high pain  
317 threshold are not present in over 85% of CS patients until age 6. Notably, this provides further support that the  
318 microcephaly in CS is indeed postnatal microcephaly, and generally not primary microcephaly. Furthermore,  
319 hyperkinesia appears to dissipate with age, which may be mediated by age-related worsening of motor  
320 function.

321 Secondary symptoms of CS<sup>1</sup> were also highly represented in the sample, including GERD (56%), eye  
322 movement abnormalities (68%), prior regression (54%), and prior diagnosis of Angelman syndrome (29%) and  
323 autism (18%). The majority of these symptoms were similarly observed across developmental periods.  
324 However, we suspect a prior diagnosis of Angelman syndrome will become less common in younger CS males  
325 in the future due to the availability and advances in genetic testing. Indeed, no toddlers were previously  
326 diagnosed with Angelman syndrome. Additional symptoms such as current sleep problems (51%), visual acuity  
327 problems (52%), and swallowing problems (44%) were relatively stable across developmental periods.  
328 Importantly, the adult cohort experienced a higher rate of select medical complications, particularly  
329 gastrointestinal symptoms, such as gastroesophageal reflux, and constipation. Adult CS patients had  
330 significantly greater hospitalizations, along with more frequent infections. Unprovoked laughter becomes more  
331 prominent in adolescence/adulthood, whereas in Angelman syndrome laughter appears to decrease with

age.<sup>20-22</sup> Also, importantly, scoliosis occurred in greater than a third of patients which worsens with age, requiring surgery in a subset.

### **Challenges in Maintaining a Healthy Weight During Growth and Aging in CS**

Clinical records were analyzed to examine height and weight growth across development as they represent secondary CS symptoms.<sup>1</sup> While probands continued to make raw score gains in pounds and inches across time, their slowed rate of growth resulted in a similar pattern of decreasing age-normed score across development for height and weight. Mixed model results estimated height and weight to be in the average or typically developing range at birth. However, height fell to below one standard deviation (SD) below the mean by 7 years and two SDs by 19 years old. Weight fell to below one SD by 8 years old and two SDs by 15 years old. While there was little evidence of loss in body mass in our data, models were only calculated from 0-20 years (based on available developmental normative data). These analyses of body size highlight abnormalities in growth in CS; however, these data call for important future studies. Healthy weight should become a target symptom in growth and adulthood. Studies of nutrition and healthy weight in adulthood are warranted, and consideration of the caloric and nutritional requirements of men with CS will need to become a critical subject in future studies.

### **Longitudinal Data in CS Demonstrate Progression of Motor Symptoms**

We present natural history data reflecting both retrospective methods, as well as prospective study at 1-year follow-up and cross-sectional information on families. The majority of probands (54%) had a history of parent-reported developmental regression that increased in prevalence across development, with 30% of toddlers, 44% of children, 50% of adolescents, and 90% of adults experiencing prior regression. This was not specific to any of the subdomains, although 60% of adults had a prior motor regression and 45% of adults had a prior speech regression. This is consistent with our prior study of regression in 50% of CS probands, most notably in speech and motor domains.<sup>1</sup> Additionally, loss of social skills was noted in about one-third of children with regressions.

To complement these and prior cross-sectional and retrospective analyses, we examined changes in language, social, and motor functions over a 1-year interval follow-up. Here, we find that there was a negative

360 association between participant age at enrollment and fine/gross motor function loss, in that adults  
361 experienced a notable loss of motor functions in this 1-year interval. These data identify motor function as a  
362 target symptom for treatment and prevention of decline. These prospective follow-up data are particularly  
363 notable as we are able to observe a measurable decline in this relatively short time-line of 1-year. This finding  
364 is particularly valuable and hopeful as clinical trials that may target the progression of these motor symptoms  
365 will benefit from observations of this strong effect size in time-frames that appear feasible for a robust trial.

### 367 **Limitations of this study**

368 While this is the largest study to date on CS, the sample size ( $n = 44$ ) is modest, and definition of more rare  
369 events in CS will require a larger and more highly-powered sample. Additionally, while this study does include  
370 prospective, intra-individual longitudinal data, many findings still rely on natural history data from retrospective  
371 clinical records or a convenience sample. For example, this study relies on a clinical diagnosis of autism, as  
372 opposed to prospectively measuring autism symptoms using standardized assessments such as the Autism  
373 Diagnostic Observation Schedule (ADOS)<sup>23</sup>, Autism Diagnostic Interview-Revised (ADI-R)<sup>24</sup>, and Social  
374 Communication Questionnaire (SCQ)<sup>25</sup>. Fewer CS patients were clinically diagnosed with autism (18%, 7 out  
375 of 40) compared to our prior study (43%, 6 out of 14).<sup>1</sup> While there is a strong agreement between a clinical  
376 diagnosis and these measurements<sup>26-28</sup>, we may be underestimating autism-related features in CS. Indeed, in  
377 our prior study using standardized assessments in a small subset of CS patients, we found a majority met  
378 diagnostic criteria for autism by the ADI-R (100%, 3 out of 3) and SCQ (89%, 8 out of 9).<sup>1</sup> In addition, this study  
379 does not examine the clinical progression of epilepsy symptoms, treatment and outcome. Our prior study had a  
380 detailed cross-sectional analysis<sup>1</sup>, and an in-depth analysis of epilepsy natural history is beyond the scope of  
381 the current manuscript and is being addressed in a parallel study. Of note, Dr. Arnold Christianson in his  
382 original study in a large South African pedigree suggested that there may be a risk of premature mortality in  
383 CS. In the course of our study, we have observed the death of three total participants. While this may appear  
384 as an elevated risk given this profound neurologic condition, our sample size remains too small to discern the  
385 specific underlying susceptibilities that may put males with CS at an increased mortality risk in childhood or in  
386 aging. Again, it currently remains unclear whether premature mortality is a risk factor in CS.

388 **Summary**

389 As a part of the International Christianson Syndrome and NHE6 (SLC9A6) Gene Network study, in  
390 collaboration with the Christianson Syndrome Association, we present the largest study to date of male  
391 patients with CS. Overall, this study has identified a large range of loss-of-function mutations, including several  
392 novel missense variants. This study is notable for the identification of a new core symptom (high pain  
393 threshold) and the natural progression into adulthood. This study has the largest group of adults with CS, and  
394 we have defined the clinical progression of motor symptoms. In addition, we identify a decline in body-mass  
395 index with age as an important treatment target moving forward. In conclusion, this study identifies several  
396 target symptoms – particularly health weight gain and motor symptoms -- that progress with a natural history  
397 that may make them amenable to intervention in a future clinical trial. As this CS study grows, the findings  
398 presented here, and in future studies, will enhance clinical readiness as targeted treatments become available.



399 **Acknowledgements:** The authors would like to thank the families for participating in this study. We would also  
400 like to thank the Christianson Syndrome Association for their help with this study. This work was supported by  
401 National Institutes of Health Grants R01NS113141, R01MH102418, R01MH105442, and R21MH115392 to  
402 E.M.M. EMM had full access to all of the data in the study and takes responsibility for the integrity of the data  
403 and the accuracy of the data analysis. None of the authors have a financial conflict of interest.

## 404 **FIGURE LEGENDS**

### 405 **Figure 1. Christianson syndrome-associated NHE6 mutations.**

406 A total of 31 unique NHE6 mutations were identified in 44 CS male probands across 37 families. Pathogenic  
407 *NHE6* mutations include: frameshift and/or nonsense (n = 15, cyan or orange), deleterious missense (n = 4,  
408 black), splice (n = 9), CNVs (n = 2, green) and one that removes the first methionine residue. Out of CS  
409 pedigrees with known inheritance (78%, 29 out of 37 families), 55% were inherited (16 out of 29 pedigrees)  
410 and 45% were *de novo* (13 out of 29 pedigrees). A total of five mutations were recurrent across multiple  
411 pedigrees: c.899+1delGTAA (mutation 14, 2 pedigrees), c.1024G>A (mutation 16, 2 pedigrees), c.1148G>A  
412 (mutation 17, 2 pedigrees), c.1498C>T (mutation 25, 3 pedigrees) and c.1710G>A (mutation 30, 2 pedigrees).  
413 The following mRNA isoforms are used: NM\_001042537, NM\_006359, NM\_001379110.1 and  
414 NM\_001177651. TM=transmembrane.

### 416 **Figure 2. Changes in height and weight across development.**

417 **(A)** Raw score of height (inches) by age (years) from 24 CS probands spanning <1-19 years. Height increases  
418 over time (Pearson's correlation,  $R^2=0.92$ ).

419 **(B)** Raw score of weight (pounds) by age (years) from 30 CS probands spanning <1-19 years. Weight  
420 increases over time (Pearson's correlation,  $R^2=0.90$ ).

421 **(C)** Estimated age-normed height and weight based on liner mixed model analysis. Both height (slope  
422  $p<0.001$ ) and weight (slope  $p<0.001$ ) significantly decline over time. Raw height (n = 24, total data points = 81)  
423 and weight (n = 30, total data points = 116) measurements were converted to age-normed percentiles (WHO  
424 growth standards for 0-2 years<sup>18</sup>; CDC growth curves for 2-20 years<sup>19</sup>) and z-scores. Our linear mixed model  
425 (random slopes and intercepts) of age-based percentiles for height and weight modeled the intercept and age  
426 at time point as fixed and random effects, respectively. Covariance parameters for height were large relative to  
427 their standard errors with statistically significant intercept (slope  $p=0.003$ ), slope ( $p=0.016$ ) and covariance of  
428 intercept and slope ( $p=0.046$ ). Covariance parameters for weight were large relative to their standard errors  
429 with statistically significant intercept (slope  $p=0.002$ ), slope ( $p=0.016$ ) and covariance of intercept and slope  
430 ( $p=0.023$ ).

432 **Figure 3. Longitudinal changes in motor, language, and social functioning over 1-year period.**  
433 Parent-rated changes in gross motor (**A**), fine motor (**B**), expressive language (**C**), and interpersonal/social  
434 functioning (**D**) from enrollment to 1-year follow-up (n = 22). Each point represents an individual proband. Raw  
435 score change between enrollment and 1-year follow-up is plotted by age at enrollment. Changes in gross (**A**,  
436  $R^2=0.40$ ,  $p=0.002$ ) and fine (**B**,  $R^2=0.25$ ,  $p=0.028$ ) motor is significantly correlated with age, as older age is  
437 associated with greater loss of motor skills over a 1-year period. There is no association between age and  
438 changes in expressive language (**C**,  $R^2=0.002$ ,  $p=0.83$ ) or social functioning (**D**,  $R^2=0.00$ ,  $p=0.96$ ) over this  
439 timespan. Pearson's correlation.

440 **TABLE LEGENDS**

441 **Table 1. NHE6 mutations found in 44 affected males across 37 families.**

442 All transcript positions are based on NM\_001042537.1 and protein sequences are based on NP\_001036002.1.  
443 Coordinates reported are hg19. For mutations found in more than one individual, the number of individuals is  
444 denoted in brackets under Variant Type. For mutations found in more than one family, the number of families is  
445 denoted in brackets under Inheritance.

446 <sup>a</sup> Indicates mutations not confirmed by Sanger sequencing and data based solely on medical records.

447

448 **Table 2. Clinical characteristics of CS males across developmental cohorts.**

449 + Denotes numbers approaching statistical significance ( $p < .05$ ). Italicized domains represent proposed core  
450 CS symptoms. Adaptive functioning score from VABS-2 is a composite of the communication, daily living skills,  
451 socialization and motor skills domain scores. GERD=Gastroesophageal reflux disease. ABC=Aberrant  
452 Behavior Checklist. VABS-2=Vineland Adaptive Behavior Scales-2<sup>nd</sup> Edition.

453

454 **Table 3. Core symptoms of Christianson syndrome by age group.**

455 List of core symptoms found in >85% of CS males across the following age groups: toddler (2.5-5 years),  
456 childhood (6-11 years), adolescence (12-16 years) and adulthood (17-32 years).

457 **SUPPLEMENTARY MATERIALS**

458 **Supplementary Table 1. Clinical characteristics of CS males by inheritance and mutation type.**

459 Adaptive functioning score from VABS-2 is a composite of the communication, daily living skills, socialization  
460 and motor skills domain scores. GERD=Gastroesophageal reflux disease. ABC=Aberrant Behavior Checklist.  
461 VABS-2=Vineland Adaptive Behavior Scales-2<sup>nd</sup> Edition.

462

463 **Supplementary Table 2. Neurological examination of CS probands.**

464 Neurological examination of 12 CS males. L=Left. R=Right. L>R=Left greater than right. R>L=Right greater  
465 than left. s.p.=Status post.

## 466 REFERENCES

- 467
- 468 1. Pescosolido MF, Stein DM, Schmidt M, *et al.* Genetic and phenotypic diversity of NHE6 mutations in  
469 Christianson syndrome. *Annals of neurology*. Oct 2014;76(4):581-93. doi:10.1002/ana.24225
- 470 2. Gilfillan GD, Selmer KK, Roxrud I, *et al.* SLC9A6 mutations cause X-linked mental retardation,  
471 microcephaly, epilepsy, and ataxia, a phenotype mimicking Angelman syndrome. *The American Journal of*  
472 *Human Genetics*. 2008;82(4):1003-1010.
- 473 3. Christianson AL, Stevenson RE, van der Meyden CH, *et al.* X linked severe mental retardation,  
474 craniofacial dysmorphism, epilepsy, ophthalmoplegia, and cerebellar atrophy in a large South African kindred  
475 is localised to Xq24-q27. *J Med Genet*. Oct 1999;36(10):759-66. doi:10.1136/jmg.36.10.759
- 476 4. Schroer RJ, Holden KR, Tarpey PS, *et al.* Natural history of Christianson syndrome. *Am J Med Genet*  
477 *A*. Nov 2010;152a(11):2775-83. doi:10.1002/ajmg.a.33093
- 478 5. Tarpey PS, Smith R, Pleasance E, *et al.* A systematic, large-scale resequencing screen of X-  
479 chromosome coding exons in mental retardation. *Nature genetics*. May 2009;41(5):535-43. doi:10.1038/ng.367
- 480 6. Ouyang Q, Lizarraga SB, Schmidt M, *et al.* Christianson syndrome protein NHE6 modulates TrkB  
481 endosomal signaling required for neuronal circuit development. *Neuron*. 2013;80(1):97-112.
- 482 7. Pescosolido MF, Ouyang Q, Liu JS, Morrow EM. Loss of Christianson Syndrome Na<sup>+</sup>/H<sup>+</sup> Exchanger 6  
483 (NHE6) Causes Abnormal Endosome Maturation and Trafficking Underlying Lysosome Dysfunction in  
484 Neurons. *Journal of Neuroscience*. 2021;
- 485 8. Lee Y, Miller MR, Fernandez MA, *et al.* Early lysosome defects precede neurodegeneration with  
486 amyloid- $\beta$  and tau aggregation in NHE6-null rat brain. *Brain*. 2021;
- 487 9. Stromme P, Dobrenis K, Sillitoe RV, *et al.* X-linked Angelman-like syndrome caused by Slc9a6  
488 knockout in mice exhibits evidence of endosomal-lysosomal dysfunction. *Brain : a journal of neurology*. Nov  
489 2011;134(Pt 11):3369-83. doi:10.1093/brain/awr250

- 490 10. Xu M, Ouyang Q, Gong J, *et al.* Mixed Neurodevelopmental and Neurodegenerative Pathology in  
491 Nhe6-Null Mouse Model of Christianson Syndrome. *eNeuro*. Nov-Dec 2017;4(6)doi:10.1523/eneuro.0388-  
492 17.2017
- 493 11. Fernandez MA, Bah F, Ma L, *et al.* Loss of endosomal exchanger NHE6 leads to pathological changes  
494 in tau in human neurons. *Stem Cell Reports*. Sep 13 2022;17(9):2111-2126. doi:10.1016/j.stemcr.2022.08.001
- 495 12. Garbern JY, Neumann M, Trojanowski JQ, *et al.* A mutation affecting the sodium/proton exchanger,  
496 SLC9A6, causes mental retardation with tau deposition. *Brain*. 2010;133(5):1391-1402.
- 497 13. Bosemani T, Zanni G, Hartman AL, *et al.* Christianson syndrome: spectrum of neuroimaging findings.  
498 *Neuropediatrics*. Aug 2014;45(4):247-51. doi:10.1055/s-0033-1363091
- 499 14. Lizarraga SB, Ma L, Maguire AM, *et al.* Human neurons from Christianson syndrome iPSCs reveal  
500 mutation-specific responses to rescue strategies. *Science translational medicine*. Feb 10  
501 2021;13(580)doi:10.1126/scitranslmed.aaw0682
- 502 15. Ilie A, Gao AYL, Boucher A, *et al.* A potential gain-of-function variant of SLC9A6 leads to endosomal  
503 alkalinization and neuronal atrophy associated with Christianson Syndrome. *Neurobiol Dis*. Jan 2019;121:187-  
504 204. doi:10.1016/j.nbd.2018.10.002
- 505 16. Sparrow S, Balla, D., Cicchetti, D. *Vineland Adaptive Behavior Scales*. American Guidance Service;  
506 2005.
- 507 17. Achenbach TM, Rescorla, L. A. *Manual for the ASEBA school-age forms & profiles: An integrated*  
508 *system of multi-informant assessment*. University of Vermont, Research Center for Children, Youth, &  
509 Families; 2001.
- 510 18. Organization WH. *WHO Child Growth Standards: Length/Height-for-Age, Weight-for-Age, Weight-for-*  
511 *Length, Weight-for-Height and Body Mass Index-for-Age: Methods and Development*. World Health  
512 Organization; 2006.

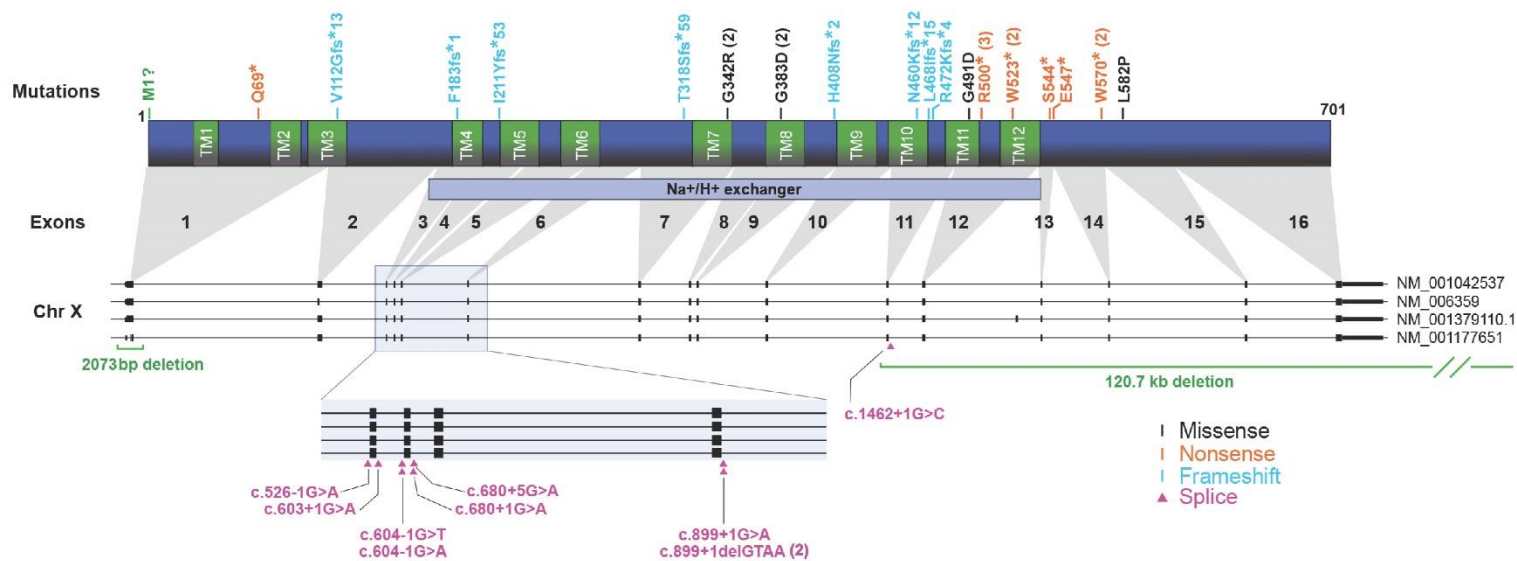
- 513 19. Kuczmariski RJ, Ogden, C., Grummer-Strawn, L., Flegal, K. M. *CDC Growth Charts: United States.*  
514 *Advance Data Report No. 314.* National Center for Health Statistics; 2000.
- 515 20. Buntinx IM, Hennekam RC, Brouwer OF, *et al.* Clinical profile of Angelman syndrome at different ages.  
516 *American journal of medical genetics.* Mar 27 1995;56(2):176-83. doi:10.1002/ajmg.1320560213
- 517 21. Laan LA, den Boer AT, Hennekam RC, Renier WO, Brouwer OF. Angelman syndrome in adulthood.  
518 *American journal of medical genetics.* Dec 18 1996;66(3):356-60. doi:10.1002/(sici)1096-  
519 8628(19961218)66:3<356::Aid-ajmg21>3.0.Co;2-k
- 520 22. Adams D, Horsler K, Mount R, Oliver C. Brief Report: A Longitudinal Study of Excessive Smiling and  
521 Laughing in Children with Angelman Syndrome. *Journal of autism and developmental disorders.* Aug  
522 2015;45(8):2624-7. doi:10.1007/s10803-015-2404-y
- 523 23. Lord C, Risi S, Lambrecht L, *et al.* The autism diagnostic observation schedule-generic: a standard  
524 measure of social and communication deficits associated with the spectrum of autism. *Journal of autism and*  
525 *developmental disorders.* Jun 2000;30(3):205-23.
- 526 24. Lord C, Rutter M, Le Couteur A. Autism Diagnostic Interview—Revised: A revised version of a  
527 diagnostic interview for caregivers of individuals with possible pervasive developmental disorders. *Journal of*  
528 *autism and developmental disorders.* 1994;24(5):659-685. doi:10.1007/BF02172145
- 529 25. Rutter M, Bailey A, Lord C. Social communication questionnaire. Los Angeles, CA: Western  
530 Psychological Services; 2003.
- 531 26. Le Couteur A, Haden G, Hammal D, McConachie H. Diagnosing autism spectrum disorders in pre-  
532 school children using two standardised assessment instruments: the ADI-R and the ADOS. *Journal of autism*  
533 *and developmental disorders.* Feb 2008;38(2):362-72. doi:10.1007/s10803-007-0403-3
- 534 27. Kim SH, Lord C. Combining information from multiple sources for the diagnosis of autism spectrum  
535 disorders for toddlers and young preschoolers from 12 to 47 months of age. *Journal of child psychology and*  
536 *psychiatry, and allied disciplines.* Feb 2012;53(2):143-51. doi:10.1111/j.1469-7610.2011.02458.x



- 537 28. Lebersfeld JB, Swanson M, Clesi CD, O'Kelley SE. Systematic Review and Meta-Analysis of the  
538 Clinical Utility of the ADOS-2 and the ADI-R in Diagnosing Autism Spectrum Disorders in Children. *Journal of*  
539 *autism and developmental disorders*. Nov 2021;51(11):4101-4114. doi:10.1007/s10803-020-04839-z

540

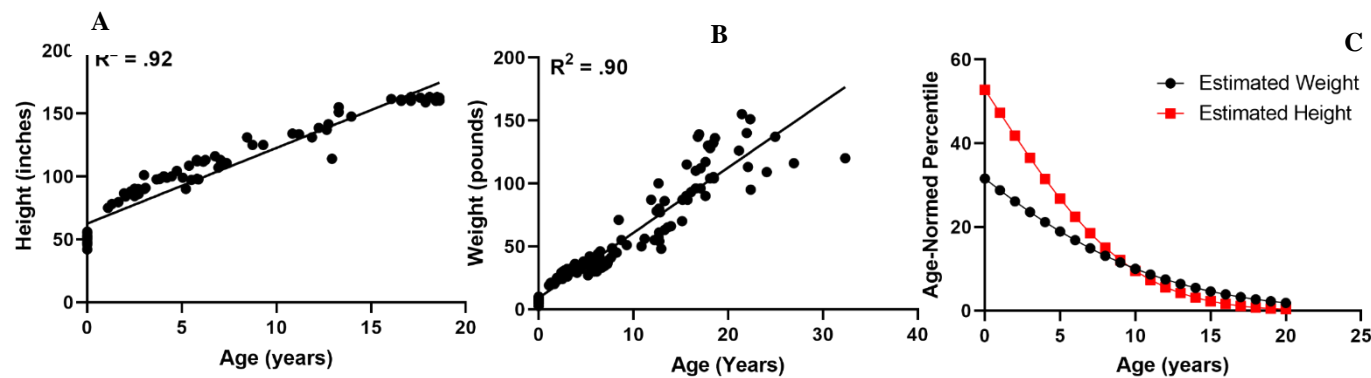
541 **FIGURE 1.**



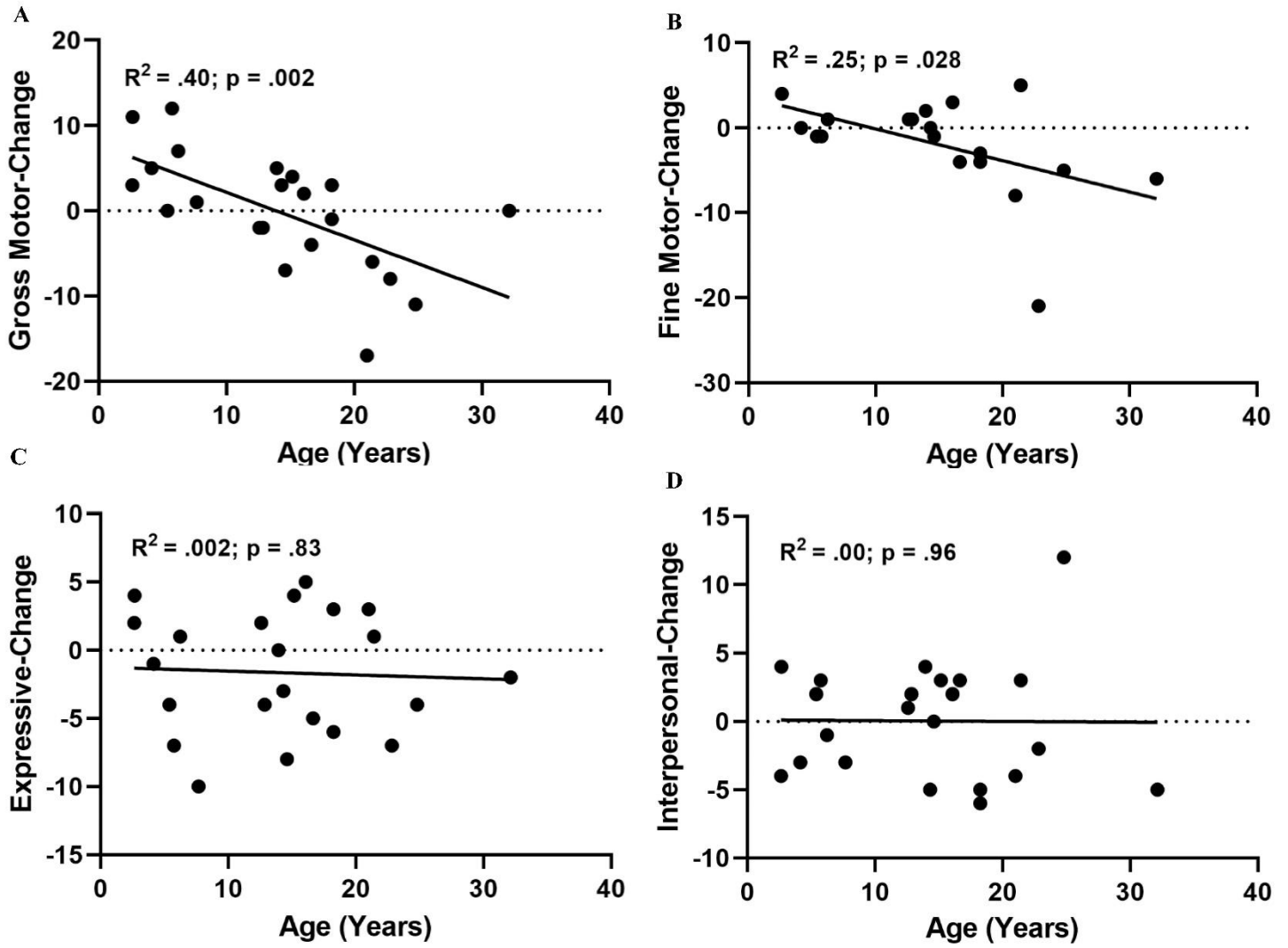
542

543

544 **FIGURE 2.**



545 **FIGURE 3.**



546

547

**Table 1. NHE6 Mutations Found in 44 Affected Males Across 37 Families**

| Mutation        | cDNA Position  | Protein Position | Exon/Intron          | Variant Type   | Inheritance                  | Genomic Coordinates      |
|-----------------|--|------------------|----------------------|----------------|------------------------------|--------------------------|
| 1               | 2073bp deletion including exon 1 and some of intron 1          | -                | Exon 1/Intron 1      | Deletion (2)   | Unknown                      | chrX:135066366-135068439 |
| 2               | c.1A>G   | p.M1?            | Exon 1               | Start Lost     | Inherited                    | chrX:135067662           |
| 3               | c.205C>T   | p.Q69*           | Exon 1               | Nonsense (2)   | Inherited                    | chrX:135067866           |
| 4               | c.335_336delTG   | p.V112Gfs*13     | Exon 2               | Frameshift (2) | Inherited                    | chrX:135076954-135076955 |
| 5               | c.526-1G>A   | -                | Intron 2             | Splice         | De novo                      | chrX:135080266           |
| 6               | c.540_547dup   | p.F183fs*1       | Exon 3               | Frameshift     | Unknown                      | chrX:135080281-135080288 |
| 7 <sup>a</sup>  | c.603+1G>A   | -                | Intron 3             | Splice         | Inherited                    | chrX:135080345           |
| 8               | c.604-1G>T   | -                | Intron 3             | Splice         | Inherited                    | chrX:135080640           |
| 9               | c.604-1G>A   | -                | Intron 3             | Splice (2)     | Inherited                    | chrX:135080640           |
| 10              | c.630_631insT  | p.I211Yfs*53     | Exon 4               | Frameshift (3) | Inherited                    | chrX:135080668           |
| 11              | c.680+1G>A   | -                | Intron 4             | Splice         | De novo                      | chrX:135080718           |
| 12              | c.680+5G>A   | -                | Intron 4             | Splice         | De novo                      | chrX:135080722           |
| 13              | c.899+1G>A   | -                | Intron 6             | Splice         | Inherited                    | chrX:135084373           |
| 14              | c.899+1delGTAA   | -                | Intron 6             | Splice (2)     | Unknown (1)<br>Inherited (1) | chrX:135084373-135084376 |
| 15              | c.953_954delCA   | p.T318Sfs*59     | Exon 7               | Frameshift     | Inherited                    | chrX:135092654-135092655 |
| 16              | c.1024G>A  | p.G342R          | Exon 7               | Missense (2)   | De novo (2)                  | chrX:135092725           |
| 17              | c.1148G>A  | p.G383D          | Exon 9               | Missense (2)   | De novo (2)                  | chrX:135095508           |
| 18              | c.1222_1226delCATAG  | p.H408Nfs*2      | Exon 9               | Frameshift     | De novo                      | chrX:135095582-135095586 |
| 19              | 120.7kb deletion from intron 10 through 3'-untranslated region | -                | Intron 10 to Exon 16 | Deletion       | Inherited                    | chrX:135098247-135218928 |
| 20              | c.1380_1389delinsGTCTTGGGAAGAC T                               | p.N460Kfs*12     | Exon 11              | Frameshift     | Inherited                    | chrX:135104774-135104780 |
| 21 <sup>a</sup> | c.1402_1405del   | p.L468Ifs*15     | Exon 11              | Frameshift     | Unknown                      | chrX:135104796-135104799 |
| 22              | c.1414insA   | p.R472Kfs*4      | Exon 11              | Frameshift     | De novo                      | chrX:135104808           |
| 23              | c.1462+1G>C  | -                | Intron 11            | Splice         | Unknown                      | chrX:135104857           |
| 24              | c.1472G>A  | p.G491D          | Exon 12              | Missense       | Inherited                    | chrX:135106498           |
| 25              | c.1498C>T  | p.R500*          | Exon 12              | Nonsense (3)   | Inherited (2)<br>Unknown (1) | chrX:135106524           |
| 26              | c.1568G>A  | p.W523*          | Exon 12              | Nonsense       | De novo                      | chrX:135106594           |
| 27              | c.1569G>A  | p.W523*          | Exon 12              | Nonsense       | Unknown                      | chrX:135106595           |
| 28 <sup>a</sup> | c.1631C>G  | p.S544*          | Exon 13              | Nonsense       | De novo                      | chrX:135112305           |
| 29              | c.1639G>T  | p.E547*          | Exon 13              | Nonsense (2)   | Inherited                    | chrX:135112313           |
| 30              | c.1710G>A  | p.W570*          | Exon 14              | Nonsense (2)   | De novo (1)<br>Unknown (1)   | chrX:135115635           |
| 31              | c.1745T>C  | p.L582P          | Exon 15              | Missense (1)   | De novo                      | chrX:135122252           |

Note. All transcript positions are based on NM\_001042537.1 and protein sequences are based on NP\_001036002.1. Coordinates reported are hg19. Under Variant Type, if the mutation is found in more than one individual, the total number of individuals are indicated in brackets. Under Inheritance, if the mutation is found in more than one family, the number of families are indicated in brackets. <sup>a</sup> Indicates mutations wherein confirmation by Sanger sequencing was not performed, and the data are based on the medical record alone.

548  
549  
550  
551

552 Table 2. **Clinical Characteristics of CS Males across Developmental Cohorts**

|  | n  | Total sample<br>(n =44) | Toddlers<br>(2.5-5 yrs; n = 11) | Children<br>(6-11 yrs; n = 9) | Adolescents<br>(12-16 yrs; n = 13) | Adults<br>(17-32 yrs; n = 11) | F/X <sup>2</sup> | p                |
|--|----|-------------------------|---------------------------------|-------------------------------|------------------------------------|-------------------------------|------------------|------------------|
| <b>General</b>                           |    |                         |                                 |                               |                                    |                               |                  |                  |
| Age at Enrollment                        | 44 | 12.2 (7.1)              | 4.4 (1.3)                       | 7.5 (1.5)                     | 14 (1.6)                           | 21 (4.1)                      | 106              | <b>&lt;.001</b>  |
| Age at CS Diagnosis, m (sd)              | 44 | 8.0 (6.6)               | 3.4 (1.5)                       | 4.0 (2.2)                     | 7.4 (3.6)                          | 16.5 (7.0)                    | 22.3             | <b>&lt;.001</b>  |
| Able to Walk Currently (%)               | 41 | 34 (83)                 | 11 (100)                        | 7 (78)                        | 9 (82)                             | 7 (70)                        | 3.6              | .305             |
| Phrase Speech                            | 46 | 0%                      | 0%                              | 0%                            | 0%                                 | 0%                            | -                | -                |
| <b>Neurological, n (%)</b>               |    |                         |                                 |                               |                                    |                               |                  |                  |
| <i>Intellectual Disability</i>           | 42 | 42 (100)                | 11 (100)                        | 9 (100)                       | 12 (100)                           | 10 (100)                      | -                | -                |
| <i>Epilepsy</i>                          | 42 | 42 (100)                | 11 (100)                        | 9 (100)                       | 12 (100)                           | 10 (100)                      | -                | -                |
| <i>Microcephaly</i>                      | 41 | 39 (95)                 | 8 (80)                          | 9 (100)                       | 12 (100)                           | 10 (100)                      | 6.5              | .089             |
| <i>Ataxia</i>                            | 39 | 37 (95)                 | 9 (82)                          | 8 (100)                       | 11 (100)                           | 9 (100)                       | 5.4              | .147             |
| Autism Spectrum Disorder                 | 40 | 7 (18)                  | 1 (9)                           | 2 (29)                        | 3 (25)                             | 1 (10)                        | 2.0              | .574             |
| <i>Hyperkinesia</i>                      | 43 | 40 (93)                 | 11 (100)                        | 9 (100)                       | 11 (92)                            | 9 (82)                        | 3.7              | .300             |
| Prior Angelman Dx                        | 42 | 12 (29)                 | 0 (0)                           | 4 (44)                        | 3 (25)                             | 5 (50)                        | 7.8              | .050+            |
| <i>High Pain Tolerance</i>               | 43 | 39 (91)                 | 8 (73)                          | 9 (100)                       | 12 (100)                           | 10 (91)                       | 6.37             | .095             |
| Unprovoked Laughter                      | 42 | 26 (62)                 | 5 (45)                          | 4 (44)                        | 9 (75)                             | 8 (80)                        | 4.69             | .196             |
| Contractures                             | 39 | 14 (36)                 | 2 (20)                          | 3 (33)                        | 4 (36)                             | 5 (56)                        | 2.6              | .451             |
| Visual Acuity Problems                   | 42 | 22 (52)                 | 7 (64)                          | 4 (44)                        | 6 (50)                             | 5 (50)                        | .84              | .841             |
| Eye Movement Abnormalities               | 38 | 26 (68)                 | 6 (60)                          | 7 (78)                        | 10 (83)                            | 3 (43)                        | 4.1              | .257             |
| <b>Medical Status, n (%)</b>             |    |                         |                                 |                               |                                    |                               |                  |                  |
| Swallowing Problems                      | 43 | 19 (44)                 | 5 (45)                          | 2 (22)                        | 5 (42)                             | 7 (64)                        | 3.5              | .323             |
| GERD                                     | 41 | 23 (56)                 | 7 (64)                          | 2 (22)                        | 7 (58)                             | 7 (78)                        | 6.2              | .103             |
| Current Constipation                     | 40 | 22 (55)                 | 6 (55)                          | 3 (33)                        | 2 (22)                             | 11 (100)                      | 14.6             | <b>.002</b>      |
| Osteopenia                               | 39 | 2 (5)                   | 0 (0)                           | 0 (0)                         | 1 (10)                             | 1 (10)                        | 2.0              | .572             |
| Current Sleep Problems                   | 43 | 22 (51)                 | 7 (64)                          | 5 (56)                        | 5 (42)                             | 5 (45)                        | 1.3              | .722             |
| Frequent Infections                      | 41 | 9 (22)                  | 2 (18)                          | 2 (22)                        | 0 (0)                              | 5 (50)                        | 7.78             | .051+            |
| # of Hospitalizations, m (sd)            | 35 | 4.4 (4.2)               | 3.1 (1.4)                       | 3.3 (3.3)                     | 3.3 (2.6)                          | 7.7 (6.2)                     | 3.01             | <b>.045</b>      |
| <b>Regression</b>                        |    |                         |                                 |                               |                                    |                               |                  |                  |
| Any Regression, n (%)                    | 41 | 22 (54)                 | 3 (30)                          | 4 (44)                        | 6 (50)                             | 9 (90)                        | 7.9              | <b>.047</b>      |
| Age at Regression, m (sd)                | 17 | 7.2 (6.1)               | 2.1 (2.7)                       | 1.8 (1.6)                     | 9.2 (3.2)                          | 11 (7.2)                      | 3.76             | <b>.038</b>      |
| Type of Regression, n (%)                |    |                         |                                 |                               |                                    |                               |                  |                  |
| Social Skills                            | 39 | 4 (10)                  | 0 (0)                           | 3 (33)                        | 0 (0)                              | 1 (11)                        | 7.6              | .055+            |
| Eating                                   | 40 | 11 (28)                 | 2 (20)                          | 2 (22)                        | 3 (30)                             | 4 (36)                        | .87              | .832             |
| Speech                                   | 40 | 9 (23)                  | 0 (0)                           | 3 (33)                        | 1 (9)                              | 5 (45)                        | 7.7              | .053+            |
| Motor                                    | 41 | 13 (32)                 | 1 (10)                          | 3 (33)                        | 3 (25)                             | 6 (60)                        | 6.1              | .105             |
| <b>Adaptive Functioning and Behavior</b> |    |                         |                                 |                               |                                    |                               |                  |                  |
| Irritability (ABC) (sd)                  | 31 | 4.7 (6.6)               | 3.3 (4.7)                       | 9.2 (12)                      | 4.8 (6.1)                          | 3.6 (5.0)                     | .972             | .420             |
| Hyperactivity (ABC) (sd)                 | 27 | 22 (15)                 | 24 (13)                         | 30 (11)                       | 23 (17)                            | 12 (12)                       | 1.89             | .159             |
| Adaptive Functioning (VABS-2) (sd)       | 31 | 35 (13)                 | 49 (10)                         | 46 (6.9)                      | 28 (2.6)                           | 24 (4.2)                      | 30.82            | <b>&lt;.0005</b> |
| Communication (VABS-2) (sd)              | 31 | 34 (10.6)               | 46 (11)                         | 42 (5)                        | 30 (1.2)                           | 25 (3.2)                      | 22.2             | <b>&lt;.001</b>  |
| Social (VABS-2) (sd)                     | 31 | 43 (14)                 | 58 (10)                         | 53 (5.8)                      | 36 (4.5)                           | 31 (11)                       | 18.5             | <b>&lt;.001</b>  |
| Daily Living (VABS-2) (sd)               | 31 | 35 (12)                 | 46 (11)                         | 45 (7.5)                      | 29 (3.4)                           | 24 (2.5)                      | 22.7             | <b>&lt;.001</b>  |

553 CS: Christianson syndrome

554 GERD: gastroesophageal reflux disease

555 Values with + indicates numbers approaching statistical significance.

556 VABS-2: Vineland Adaptive Behavior Scales-Second Edition; the Adaptive Function score is a composite of the communication, daily living skills, socialization, and

557 motor skills domain scores

558 ABC: Aberrant Behavior Checklist, a parent questionnaire to assess behavioral problems in individuals with developmental disorders

559 Domains presented in italics represent proposed core CS symptoms by age group

560

**Table 3.**

| <b>Core Symptom<br/>(&gt;85%)</b> | <b>Toddlers<br/>(2.5-5 years)</b> | <b>Children<br/>(6-11 years)</b> | <b>Adolescents<br/>(12-16 years)</b> | <b>Adults<br/>(17-32 years)</b> |
|-----------------------------------|-----------------------------------|----------------------------------|--------------------------------------|---------------------------------|
| <i>Nonverbal</i>                  | ✓                                 | ✓                                | ✓                                    | ✓                               |
| <i>Intellectual Disability</i>    | ✓                                 | ✓                                | ✓                                    | ✓                               |
| <i>Epilepsy</i>                   | ✓                                 | ✓                                | ✓                                    | ✓                               |
| <i>Microcephaly</i>               |                                   | ✓                                | ✓                                    | ✓                               |
| <i>Ataxia</i>                     |                                   | ✓                                | ✓                                    | ✓                               |
| <i>Hyperkinesia</i>               | ✓                                 | ✓                                | ✓                                    |                                 |
| <i>High Pain Tolerance</i>        |                                   | ✓                                | ✓                                    | ✓                               |

561

562  
563

**Supplemental Table I. Clinical Characteristics of CS Males by Inheritance and Mutation Type**

|  | De Novo<br>(n = 15) | Inherited<br>(n = 22) | t/X2<br>p   | Missense<br>(n = 6) | Nonsense<br>(n = 22) | t/X2<br>p   |
|--|---------------------|-----------------------|-------------|---------------------|----------------------|-------------|
| <b>General</b>                           |                     |                       |             |                     |                      |             |
| Age at Enrollment (sd)                   | 12 (5.9)            | 13 (7.8)              | .603        | 8.1 (6.6)           | 14 (5.8)             | <b>.041</b> |
| Age at CS Diagnosis, m (sd)              | 7.1 (5.7)           | 8.6 (7.6)             | .523        | 6.1 (4.5)           | 8.5 (6.7)            | .403        |
| Able to Walk Currently (%)               | 11 (85)             | 17 (81)               | .785        | 5 (83)              | 16 (76)              | .959        |
| History of Regression (%)                | 7 (54)              | 11 (52)               | .934        | 2 (40)              | 11 (52)              | .619        |
| <b>Neurological, n (%)</b>               |                     |                       |             |                     |                      |             |
| Microcephaly                             | 14 (100)            | 19 (95)               | .396        | 5 (100)             | 20 (100)             | -           |
| Ataxia                                   | 14 (100)            | 17 (94)               | .370        | 6 (100)             | 17 (94)              | .555        |
| Autism Spectrum Disorder                 | 4 (29)              | 2 (10)                | .162        | 1 (17)              | 5 (25)               | .671        |
| Hyperkinesia                             | 14 (100)            | 19 (86)               | .149        | 3 (100)             | 18 (75)              | .326        |
| Prior Angelman Dx                        | 4 (29)              | 8 (38)                | .561        | 2 (33)              | 7 (35)               | .940        |
| High Pain Tolerance                      | 14 (100)            | 19 (86)               | .149        | 6 (100)             | 19 (90)              | .432        |
| Unprovoked Laughter                      | 6 (43)              | 16 (76)               | <b>.046</b> | 4 (67)              | 14 (70)              | .877        |
| Contractures                             | 5 (36)              | 5 (28)                | .631        | 2 (40)              | 5 (28)               | .599        |
| Visual Acuity Problems                   | 9 (64)              | 9 (43)                | .214        | 4 (67)              | 10 (50)              | .473        |
| Eye Movement Abnormalities               | 9 (69)              | 14 (70)               | .963        | 3 (60)              | 14 (74)              | .549        |
| <b>Medical Status, n (%)</b>             |                     |                       |             |                     |                      |             |
| Swallowing Problems                      | 7 (100)             | 8 (36)                | .418        | 3 (50)              | 8 (38)               | .601        |
| GERD                                     | 8 (57)              | 11 (52)               | .782        | 3 (50)              | 11 (55)              | .829        |
| Current Constipation                     | 5 (42)              | 13 (62)               | .261        | 4 (67)              | 11 (61)              | .808        |
| Osteopenia                               | 2 (14)              | 0 (0)                 | .089        | 1 (17)              | 1 (6)                | .394        |
| Current Sleep Problems                   | 6 (43)              | 12 (55)               | .494        | 3 (50)              | 11 (52)              | .918        |
| Frequent Infections                      | 3 (23)              | 5 (24)                | .961        | 3 (50)              | 3 (16)               | .087        |
| # of Hospitalizations, m (sd)            | 3.9 (2.7)           | 5.0 (5.4)             | .521        | 3.2 (1.5)           | 4.4 (3.8)            | .570        |
| <b>Adaptive Functioning and Behavior</b> |                     |                       |             |                     |                      |             |
| VABS-2: Adaptive Function                | 35 (13)             | 34 (14)               | .839        | 40 (12.5)           | 30 (9.4)             | .082        |
| ABC: Irritability                        | 6.0 (6.3)           | 4.9 (7.4)             | .704        | 5 (7.8)             | 4.6 (5.6)            | .920        |
| ABC: Hyperactivity                       | 31 (6.0)            | 21 (16)               | .136        | 35 (11.8)           | 21.6 (13.6)          | .135        |

VABS-2: Vineland Adaptive Behavior Scales-Second Edition; the Adaptive Function score is a composite of the communication, daily living skills, socialization, and motor skills domain scores

ABC: Aberrant Behavior Checklist, a parent questionnaire to assess behavioral problems in individuals with developmental disorders

GERD: gastroesophageal reflux disease

564

**Supplemental Table 2. Neurological Exams on 12 CS Males**

| Age @ Exam | Mutation cDNA position   | Mutation Protein Position | Vocalizations | Extraocular Movements                           | Tone, limb or side       | Strength, or pattern of weakness | Tremor                                | Deep tendon reflex (DTR)  | Babinski, left or right | Gait: base, posture             |
|------------|--|---------------------------|---------------|---|--------------------------|----------------------------------|---------------------------------------|---|-------------------------|---------------------------------|
| 6-10       | c.1380_1389delinsG TCTTGG GAAGAC T                             | p.N460Kfs*12              | Present       | Esotropia, L>R                                  | Normal                   | Full                             | None                                  | Normal and symmetric  | Absent                  | Wide base                       |
| 11-15      | c.680+5G>A   | -                         | Present       | Esotropia, s.p. surgical correction             | Normal                   | Full                             | None                                  | Could not assess  | Could not assess        | Wide base                       |
| 11-15      | c.899+1delGTAA   | -                         | Present       | Esotropia, L                                    | Could not assess         | Full                             | None                                  | Normal and symmetric  | B/L                     | Unable to walk                  |
| 11-15      | c.680+1G>A   | -                         | ~ 5 words     | Normal  | Normal                   | Full                             | None                                  | Normal and symmetric  | Absent                  | Normal                          |
| 16-20      | c.526-1>A  | -                         | Present       | Strabismus, s.p. surgical correction            | Low-normal               | Could not assess                 | None                                  | High amplitude patellar reflexes with crossed-adductor response | Right                   | Wide base                       |
| 16-20      | c.630_631insT  | p.I211Yfs*53              | Present       | Strabismus, s.p. incomplete surgical correction | Low-normal               | Full                             | Upper extremity action tremor         | High amplitude throughout                                       | Left                    | Wide base                       |
| 21-25      | c.540_547dup   | p.F183fs*1                | Present       | Normal  | Increased tone, R>L      | Full                             | Left arm intermittent postural tremor | Normal and symmetric  | Absent                  | Wide base                       |
| 21-25      | 120.7kb deletion from intron 10 through 3'-untranslated region | -                         | Present       | Normal  | Increased tone, L>R      | Mild Left hemiparesis            | None                                  | Normal and symmetric  | Left                    | Posturing of upper extremities  |
| 26-30      | c.630_631insT  | p.I211Yfs*53              | Present       | Normal  | Increased tone, Left leg | Full                             | None                                  | High amplitude throughout; symmetric                            | B/L                     | Wide base with toe walking      |
| 26-30      | c.1148G>A  | p.G383D                   | Present       | Normal  | Normal                   | Full                             | None                                  | Normal and symmetric  | Absent                  | Wide base                       |
| 26-30      | c.1569G>A  | p.W523*                   | Present       | Normal  | Normal                   | Full                             | Left leg tremor                       | Normal and symmetric  | Unable to assess        | Wide base                       |
| 26-30      | c.630_631insT  | p.I211Yfs*53              | Present       | Strabismus, s.p. surgical correction            | Increased tone           | Full                             | Upper extremity action tremor         | High amplitude throughout                                       | B/L                     | Wide base, diminished arm swing |

L=Left. R=Right. L>R=Left greater than right. R>L=Right greater than left. s.p.=status post.