

1 **Management of patients with occupational burnout in Switzerland: some insights on the**  
2 **heterogeneity in current practices**

3 Irina Guseva Canu<sup>1\*</sup>, Roger Getzmann<sup>1</sup>, Yara Shoman<sup>1</sup>, Fulvia Rota<sup>2</sup>, Stéphane Saillant<sup>3,4</sup>,  
4 Roland von Känel<sup>5</sup>, Christine Cohidon<sup>6</sup>, Catherine Lazor-Blanchet<sup>7</sup>, Lysiane Rochat<sup>1</sup>, Rafaël  
5 Weissbrodt<sup>8</sup>, Nadia Droz<sup>9°</sup>, and Anny Wahlen<sup>9°</sup>

6 <sup>1</sup> Department of Environmental and Occupational Health, Center for Primary Care and Public  
7 Health (Unisanté), University of Lausanne, Lausanne, Switzerland;

8 <sup>2</sup>Swiss Society for Psychiatry and Psychotherapy, Bern, Switzerland;

9 <sup>3</sup>Centre Neuchâtelois de Psychiatrie (CNP), Neuchatel, Switzerland;

10 <sup>4</sup>University of Lausanne, Lausanne, Switzerland;

11 <sup>5</sup>Department of Consultation-Liaison Psychiatry and Psychosomatic Medicine, University  
12 Hospital Zurich, University of Zurich, Switzerland;

13 <sup>6</sup> Department of Family Medicine, Center for Primary Care and Public Health (Unisanté),  
14 University of Lausanne, Lausanne, Switzerland;

15 <sup>7</sup>Occupational Health Service, Lausanne University Hospital, Switzerland;

16 <sup>8</sup>School of health sciences, HES-SO Valais-Wallis, Sion, Switzerland;

17 <sup>9</sup>PSY4WORK.ch, the Swiss Association of work & organization psychologists, Lausanne,  
18 Switzerland;

19 \* Corresponding author

20 Prof. Guseva Canu Irina

21 Department of Environmental and Occupational Health, Unisanté, University of Lausanne

22 2, Route de la corniche, 1066 Epalinges

23 [Irina.guseva-canu@unisante.ch](mailto:Irina.guseva-canu@unisante.ch)

24 ORCID: 0000-0001-7059-8421

25 ° Equally contributing authors

26 **ABSTRACT**

27 We aimed to describe the characteristics and current practices of Swiss health professionals  
28 who manage patients with occupational burnout (POB), namely the general practitioners (GP),  
29 psychiatrist-psychotherapists (PP), occupational physicians (OP) and psychologists. Among  
30 3216 respondents, 2951 reported to consult POB, and 1130 (713 physicians and 410  
31 psychologists) to treat them. The study showed that POB management constitutes 5 to 25% of  
32 health care professionals' consultations, with an unequal distribution of POBs across  
33 professionals' specialties and specializations, but also across geographic regions. The profile of  
34 POB consulted also differs across professionals. Work psychologists see more often POB at  
35 early burnout stage, GPs have most patients with moderate burnout, while PPs report the largest  
36 proportion of patients with severe burnout.

37 The treatment practices depend on burnout severity. Psychiatrists and physicians with double  
38 specialty (GP-OPs and GP-PPs) treat patients with more severe burnout than GPs.  
39 Psychologists treating patients with severe burnout collaborate with other health professionals  
40 and contact the POB's employer and/or health insurance. Treatment practices and burnout  
41 severity are not associated with the proportion of relapsed patients and patients who return to  
42 work. Yet, the former is associated with professionals' age, sex, and specialty. Physicians with  
43 waiting time >3 months have a higher proportion of relapsed patients. GPs prescribe most often  
44 sick leaves, while PPs are the most frequent prescribers of pharmacological treatment. PPs  
45 collaborate significantly more often than GPs with pharmacologists and contact POB's  
46 employer and health insurance. Among psychologists, work psychologists differ from other  
47 psychologists by a more frequent POB (psycho)education and coaching, namely on how to  
48 negotiate with employer and family, as well as on physical exercise. They also more often  
49 contact POB's employer. Besides profession and specialization, we observed important  
50 regional variation in treatment modalities chosen by both physicians and psychologists.

51 **Key words:** occupational burnout; therapy; severity stage; relapse; return to work

52

### 53 **INTRODUCTION**

54 Since May 2019, burnout is recognized as an occupational phenomenon resulting from “chronic  
55 stress at the workplace that has not been successfully managed” (1). In the 11th revision of the  
56 International Classification of Diseases (ICD-11), burnout is classified among “Factors  
57 influencing health status or contact with health services”, i.e., reasons for using health services,  
58 which are not ascribed as a disease (2). In its advanced stage, burnout shares several symptoms  
59 with depression, but burnout is mostly seen as a risk factor for depression or a mediator in the  
60 relationship between exposure to job stress and depression (3-5). Conversely to depression,  
61 established as a leading cause of disability worldwide and a major contributor to the overall  
62 global burden of disease (6, 7), burnout is recognized as a disease only in few countries (8).  
63 Despite a recently launched effort to harmonize the definition and assessment of occupational  
64 burnout (8, 9), no standardized and internationally accepted criteria are still available. Yet, as  
65 burnout strongly affects a large portion of population, especially in the health care sector (10-  
66 13), it was declared as a ‘public health crisis’ in the USA (14).  
67 In Switzerland, the five sectors at highest risk of occupational burnout (i.e., sectors with the  
68 highest prevalence of job stress and emotional exhaustion) are: 1-banking and insurance, 2-  
69 health care, 3-security and safety, 4-transportation, warehousing and mail, and 5-  
70 accommodation and catering (15). In 2022, the Job Stress Index showed that the proportion of  
71 the Swiss professionally active who feel emotionally exhausted exceeded 30% (16). Indeed,  
72 since the COVID-19 pandemic, burnout is reported at unprecedented rates in all countries (17-  
73 19).

74 Considering this national and international context, our main objective was to explore the  
75 number, characteristics, and activities of Swiss health professionals who manage patients with  
76 occupational burnout (POB) in the Swiss outpatient sector.

77 In a prior qualitative study, we identified that health professionals who are the most concerned  
78 with POB in their clinical practice are general physicians (GPs), occupational physicians (OPs),  
79 psychiatrists-psychotherapists (PPs), psychologists, and occupational nurses (20). This study  
80 was set up to evaluate the resources available for POB management and to look at the current  
81 practices from a care quality and effectiveness perspective in order to identify uncovered needs  
82 and improvement potential. We thus aimed to address more specifically the activity of Swiss  
83 healthcare professionals in the outpatient sector with respect to POB and explore its potential  
84 determinants.

85

## 86 **METHODS**

### 87 **Research questions and hypotheses**

88 To reduce the risk of type I error, also known as a false positive, we limited our analysis to ten  
89 questions as follows: 1-Who among Swiss health professionals are confronted with POB in the  
90 outpatient setting? 2-Who treats the POB? 3-Who believes it is possible to cure occupational  
91 burnout, and who believes this is not possible? 4-Who has the highest proportion of patients  
92 who were able to return to work? 5-Who has the lowest proportion of patients who relapsed?  
93 6-Does the stage of burnout severity influence the treatment choice? 7-Does the prognostic  
94 belief influence the treatment choice? 8-Does the proportion of relapsed patients depend on the  
95 stage of burnout? 9-Does the proportion of patients who relapsed depend on contacts with  
96 patient's employer and health insurance physician or collaborations with other health  
97 professionals? 10-Does the proportion of patients who were able to return to work depend on  
98 contacts with patient's employer and health insurance physician or collaborations with other

99 health professionals? While the first five questions were purely descriptive, the other five were  
100 based on the pre-defined hypotheses to avoid data-driven results and enhance reproducibility.  
101 These hypotheses as well as the statistical analysis plan were determined prior to starting the  
102 analysis and are available at Unisante data depository, along with the protocol of this study  
103 (<https://doi.org/10.16909/dataset/42>).

104

### 105 **Study design and population**

106 We applied the design of a cross-sectional study deployed throughout Switzerland using an  
107 electronic survey. The target population of the survey was Swiss health professionals who are  
108 concerned with the management of occupational burnout in the outpatient setting, i.e.  
109 physicians, psychologists and occupational nurses (Total n = 16'883). The lists and contact  
110 information for these professionals were obtained in collaboration with the Swiss Medical  
111 Association (FMH), the Swiss Federation of Psychologists (FSP), the Swiss Society for  
112 Psychiatry and Psychotherapy (SSPP), the Association of Organization and Work Psychologists  
113 (PSY4WORK.CH), and the Swiss Association of Occupational Health Nurses (ASIST). The  
114 study sample consisted of 3'216 health care professionals who participated between April 7 and  
115 July 20, 2021 in the electronic survey. Since the participation was completely anonymous, the  
116 need for consent was waived by the ethics committee (CER-VD BASEC-Nr. Req-2021-01156).  
117 Table 1 provides the number of respondents and response rates per profession and medical  
118 specialty.

119

**Table 1 here**

### 120 **Data collection**

121 To collect the necessary data, a 48-item questionnaire was construed based on a first  
122 questionnaire developed by Droz and Wahlen (22) and the information obtained from our  
123 qualitative study described in previous reports (20, 21). The questionnaire was divided into four

124 parts: 1-demographic data of the participants, 2-data on the burnout definition and detection, 3-  
125 data on the management and treatment of POBs, and 4-information on needs and suggestions  
126 for practice improvement. The full questionnaire as well as more details on its creation and  
127 testing were published previously (21).

128 A trilingual electronic version of the questionnaire was created using REDCap software and  
129 made available on the internet via a web address and a QR access code. Data entry fields had  
130 validation mechanisms and it was made sure that participants only participated once. The  
131 questionnaire was promoted through various means, including professional associations, press  
132 releases and a web page dedicated to the study. One reminder e-mail and a postal letter were  
133 sent to eligible professionals either by the professional associations or by the research team.  
134 The participation was voluntary and anonymous, the collected data were automatically  
135 transferred to a secure and access-restricted server.

136 Participants who were not confronted with burnout patients were asked to leave the  
137 questionnaire after their demographic data had been collected. Participants who did not manage  
138 burnout patients themselves were asked to leave the questionnaire before questions about  
139 treatment options were asked. The data did not contain any personal identifiers.

#### 140 **Data processing and statistical analysis**

141 First, we checked and recoded variables to reduce the number of categories. For instance, a new  
142 7-class variable “Region of practice” was created: 1-“Lake Geneva region (VD, VS, GE)” 2-  
143 “Espace Mittelland (BE, FR, SO, NE, JU)” 3-“Northwestern Switzerland (BS, BL, AG)” 4-  
144 “Zurich (ZH)” 5- “Eastern Switzerland (GL, SH, AR, AI, SG, GR, TG)” 6. “Central  
145 Switzerland (LU, UR, SZ, OW, NW, ZG)” 7-“Ticino (TI)”. Furthermore, 18 dichotomic  
146 variables (yes/no) for options of burnout treatment were transformed in a 7-class variables  
147 “treatment options chosen”, for physicians and for psychologists, respectively. Finally, we  
148 dichotomized the outcome variables “Prognostic beliefs” as “Yes, burnout can absolutely be

149 healed” versus “Burnout can sometimes or never completely be healed”; “Severity of burnout”  
150 as “Mostly mild or moderate burnout” versus “Mostly severe burnout”; “Proportion of patients  
151 with relapse” as “ $\leq 25\%$  patients who relapsed” versus “ $>25\%$  patients who relapsed”; and  
152 “Proportion of patients fit for work” as “ $\leq 75\%$  patients that are fit for work” versus “ $>75\%$   
153 patients that are fit for work”.

154 The statistical analysis was conducted according to a pre-defined statistical analysis plan (SAP),  
155 where we defined each research question along with the statistical model and variables to  
156 answer it. This SAP was developed following a thorough descriptive analysis of the collected  
157 data and discussion with the project’s scientific committee (21). The SAP is available at the  
158 Unisante data depository (<https://doi.org/10.16909/dataset/42>)

159 We considered several datasets for model application. A full dataset with data from all  
160 respondents was used for the research questions 1 and 2. This dataset was then restricted to  
161 professionals who treat POBs and split by profession (i.e., physicians and psychologists). These  
162 datasets were used for the research questions 3 to 10, where the stratification by profession  
163 allowed us differentiating treatment options prescribed by physicians and therapies conducted  
164 by psychologists in the respective models.

165 As some questions in the survey allowed an answer option “Impossible to specify” or “I don’t  
166 know” and the same participants often chose these options multiple times (indicating the lack  
167 of a precise opinion), we excluded these options from the analysis. Keeping them would  
168 penalize the statistical performance and result interpretation by increasing the model  
169 complexity without adding any meaningful information. Similarly, the respondents with  
170 missing values on outcomes or covariates were excluded. The missing values represented less  
171 than 15% in average and mostly concerned the open questions rather than questions with  
172 multiple choice. The imputation technics in this case have limited or no efficacy.

173 For each research question we first carried out a univariable logistic or multinomial logistic  
174 regression model with the preselected dependent variable and predictor variable. In a second  
175 step, multivariable regression models were applied with all the independent variables of interest  
176 in the same model. The regression results were reported as Odds Ratio (OR) or Relative Risk  
177 Ratio (RRR) with associated 95% confidence interval (IC-95%) and p-value. Data-management  
178 procedures and statistical analyses were performed using STATA V 17.0 software.

179

## 180 **RESULTS**

### 181 **Sample description**

182 The sociodemographic and professional characteristics of responding professionals that treat  
183 occupational burnout are summarized in Table 1. The descriptive characteristics of physicians  
184 and psychologists are provided in Supplementary material Tables S1a and S1b, respectively.  
185 Among the 3216 respondents, 2951 reported having POBs, and 1130, including 713 physicians  
186 and 410 psychologists, treat them. Most (n=894, 79%) work in private practice, are German  
187 speaking and have 16.9-year professional experience on average. Among physicians (Table  
188 S1a), there was a similar percentage of men (48%) and women (52%) whereas among  
189 psychologists (Table S1b); there were 83% women. Among physicians who treat POBs, most  
190 were either GPs (47%) or PPs (48%), while among psychologists the majority were  
191 psychotherapists (82%).

192

**Table 2 here**

### 193 **Proportion of consultations for patients with occupational burnout in professionals'** 194 **practice**

195 The proportion of POB consultations was obtained by dividing the reported number of POB  
196 consultations by the total number of consultations (assessed over the last month of usual  
197 practice). This proportion enables approximation of the prevalence of POB among physicians'



198 psychiatrist's clients. Indirectly, it might reflect the volume of outpatient clinical activities  
199 dedicated to POB among Swiss health professionals. We observed that this proportion varied  
200 according to the profession, medical specialty and psychological specialization (21). Among  
201 physicians, the reported proportion of POB consultations was 6.0%, but those with a double  
202 specialty (GP-PPs or OP-GPs) reported the highest proportion (10.8%), followed by OPs  
203 (8.7%) and PPs (7.3%). GPs' reported proportion was 4.8% among their patients. Among  
204 psychologists (overall proportion of 8.6%), work psychologists reported the highest proportion  
205 (25.6%), while clinical psychologists and psychologists-psychotherapists reported significantly  
206 lower proportion of POB among their clients (8.9% and 6.9%, respectively). The reported  
207 proportion of POB consultations also differed by professionals' region of practice (Figure 1).

208 **Figure 1 here**

209 Figure 1. Average proportion of consultations for patients with occupational burnout (mean and  
210 95% confidence interval) in the Swiss health professionals' activity during the last month  
211 (STOBS-VD survey, June 2021)

212

### 213 **Stage of burnout severity and prognostic beliefs**

214 Among the major groups of professionals, PPs had the highest proportion of patients with  
215 severe burnout (49%) (Figure 2). Psychologists had lower proportions of patients that relapse  
216 than physicians but, in many cases, could not specify it. In contrast, the proportions of patients  
217 that could return to work were similar for physicians and psychologists when omitting those  
218 unable to specify this. As for the prognostic beliefs, the proportion of physicians and  
219 psychologists who believe that occupational burnout can absolutely be cured were similar  
220 (around 51%); yet, GPs had a slightly more optimistic prognostic belief.

221 These distributions differed by geographic region, as demonstrated in Supplementary Material  
222 Figure S1. While professionals in the Mittelland region reported the lowest proportion of severe

223 POBs, they reported more POBs consulting them than physicians in other regions, except the  
224 Ostschweiz (Figure 1). On the other hand, professionals in Ticino report the highest and those  
225 in the Lake Geneva Region the second highest proportion of mainly severe BOP.

226 **Figure 2 here**

227 Figure 2. Distribution (in %) of health professionals per studied outcomes: A – Stage of  
228 burnout severity in majority of patients/clients; B – Believes on the prognosis of burnout; C –  
229 Proportion of treated patients/clients who relapse; D-Proportion of treated patients/clients who  
230 can return to work.

231

### 232 **Professionals' profiles with respect to burnout treatment and treatment outcomes**

233 The results relative to the research questions 1 to 5 are provided in Supplementary materials  
234 Tables S2 to S9, either for all participants or stratified by profession. Regarding the question 1,  
235 we found that psychologists had a lower probability to be confronted with POBs at the first  
236 instance than physicians [OR=0.55, p=0.003] (Table S2a). However, psychologists seem to  
237 treat POBs more often than physicians [OR=1.97, p<0.001] (Table S3a), especially  
238 psychologists specialized as psychotherapists [OR=6.35, p<0.001] (Table S3c). Among  
239 physicians, psychiatrists treat burnout more frequently than GPs [OR=12.6, p<0.001] (Table  
240 S3b). Since neither age, sex, the number of consultations in the previous month nor the number  
241 of years of practice were associated with the treatment of occupational burnout (Tables S3a-c),  
242 no profile emerged as response to the research question 2.

243 Regarding the research question 3, we found that some more pessimistic beliefs were associated  
244 with 60+ age in physicians [OR 2.2, p=0.011] (Table S4a) and female sex in psychologists [OR  
245 2.15, p=0.024] (Table S4b). German-speaking professionals (both psychologists and  
246 physicians) appeared less optimistic regarding burnout prognosis than French speaking

247 professionals, although the regional variation was more pronounced among psychologists than  
248 among physicians.

249 As response to the research question 4, we found that compared to GPs, other medical  
250 specialists treating POBs reported lower proportion of patients able to return to work. This was  
251 also the case of physicians whose waiting time for consultation appointment is longer than one  
252 month (compared to physicians with a sooner consultation possibility) and of physicians  
253 practicing in the regions of Zurich, Ostschweiz and Ticino (compared to physicians in Lemman  
254 region) (Table S5a). In contrast, physicians practicing in the Zentralschweiz region reported a  
255 higher proportion of patients able to return to work than Lemman physicians. Among  
256 psychologists, we observed no regional variation (Table S5b). Compared to clinical  
257 psychologists, psychologists-psychotherapists reported significantly more often a high  
258 proportion of clients who returned to work. Psychologists aged between 40 and 59 years old,  
259 had also a higher proportion of such clients than younger psychologists.

260 Regarding the research question 5, we found that in both physicians and psychologists, 60+ age  
261 and female sex were associated with a lower probability of relapse among the treated POBs. In  
262 contrast, a longer waiting time for consultation appointment, was associated with a higher  
263 chance to have more relapsed patients after treatment among physicians (Table S6a). Among  
264 psychologists, an opposite association was observed (Table S6b).

### 265 **Factors associated with the choice of treatment modalities**

266 As expected, the choice of treatment modalities was highly determined by professional  
267 specialty or specialization (Figure S2). GPs prescribe most often sick leaves, while PPs are the  
268 most frequent prescribers of pharmacological treatment. PPs collaborate significantly more  
269 often than GPs with pharmacologists and contact POB's employer and health insurance. Among  
270 psychologists, work psychologists differ from other psychologists by a more frequent POB  
271 (psycho)education and coaching, namely on how to negotiate with employer and family, as well

272 as on physical exercise. They also more often contact POB's employer. Besides profession and  
273 specialization, we observed important regional variation in treatment modalities chosen by both  
274 physicians and psychologists (Tables S7a and S7b). Physicians in Ticino and in the German-  
275 speaking regions were more prone to contact POB's employer or health insurance doctor in  
276 addition to the treatment prescription than in the Lemman region. This was especially the case of  
277 OPs, PPs, and physicians with double specialty.

278 The probability for physicians to contact POB's employer as part of the treatment procedure  
279 was associated with a more pessimistic belief on burnout prognosis (RRR=1.78, 95%-CI=1.20-  
280 2.62), but after adjustment for other covariates, the association turned to a borderline statistical  
281 significance (RRR=1.48, 95%-CI=0.97-2.26) (Table S7a). Similar associations were observed  
282 for a combination of the treatment prescription, employer contact and interdisciplinary  
283 collaborations, however, it was not associated with practitioner's belief on burnout prognosis.

284 In psychologists, a pessimistic belief on burnout prognosis was also associated with the  
285 combination of therapy and contact with the POB' employer, with a similar association strength  
286 (RRR=1.81, and 1.63, before and after adjustment, respectively) than among physicians (Table  
287 S7b). The combination of therapy with employer and/or health insurance contact and  
288 collaboration with other professionals among psychologists was twice more frequent for clients  
289 with severe burnout (Table S8). In physicians, the stage of burnout severity was associated with  
290 employer contacts and interdisciplinary collaborations only in univariable analysis.

291 In response to the research question 8, we found that the proportion of relapsed patients reported  
292 by respondents does not depend on the stage of burnout severity. The results were in opposite  
293 directions in physicians and psychologists, with OR=0.84 (95%-CI=0.56-1.27) and OR=1.69  
294 (95%-CI=0.88-3.26), respectively. The results corresponding to the research question 9 and 10  
295 are provided in the Table S9. We found no association between interdisciplinary contacts or  
296 collaborations and the proportion of relapsed patients reported by healthcare professionals.

297 However, the association between the collaboration with pharmacologist and proportion of  
298 patients who were able to return to work was negative and statistically significant, meaning that  
299 professionals seek pharmacologist help when their patients cannot manage to return to work.

300

## 301 **DISCUSSION**

### 302 **Main findings**

303 The study provided a state of the art on the number and distribution of Swiss professionals  
304 confronted with POBs, the volume of consultations dedicated to management of POBs in their  
305 practice, the severity of burnout in their POBs, their general beliefs on burnout prognosis, and  
306 treatment options chosen including interdisciplinary collaborations and collaboration with  
307 POB's employer and health insurance. The latter was particularly interesting since the Practical  
308 recommendations on burnout treatment released by the Swiss network of experts on burnout  
309 highlight the importance of interdisciplinarity in the POB treatment (4, 5). The study showed  
310 that POB management constitutes 5 to 25% of health care professionals' outpatient  
311 consultations, with an unequal distribution of POBs across professionals' specialties and  
312 specializations, but also across geographic regions. The latter might raise an issue of health  
313 inequality if the Swiss POBs cannot receive the same health care depending on where they live.  
314 This raises in turn a crucial issue of perception and measurement of occupational burnout across  
315 regions and cultures in Switzerland.

316 Indeed, regional variation was the most salient and consistent finding in most research  
317 questions, especially those aimed to characterize professionals' profile (Questions 1-5). The  
318 regional variation in practice can originate from several sources including regional differences  
319 in professionals' initial and continuous education; disparities in health organization and  
320 healthcare services availability and accessibility; cultural differences in perception of mental  
321 illness and occupational burnout as well as their (de)stigmatization; and influence from border

322 countries. The latter was pointed out in health insurance statistics, according to which sick  
323 leaves are significantly more frequent and longer in the French-speaking Switzerland (20, 21).  
324 Such regional variations in professionals' practice are also remarkable since the Practical  
325 recommendations on burnout treatment exist in Switzerland since 2016 (4, 5), and probably  
326 reflect professionals' individual sensitivity about the problem and its management.

327 We observed that the stage of burnout severity determines the treatment choice as does the  
328 health care professionals' beliefs on the burnout prognosis. Physicians and psychologists tend  
329 to add more collaborative actions and contacts with POB's employer and/or health insurance  
330 mostly for severe POBs and a pessimistic prognosis. This echoes the professionals' identified  
331 gap in the current practice and the need of tripartite collaboration (POB, employer, health  
332 professionals) as early as possible (23-25).

333 All these results seem logical, however by objectivating them using a large and representative  
334 study sample, a comprehensive questionnaire developed by a multidisciplinary research team,  
335 and a rigorous analytical scheme, these results are the first to translate empirical guesses on  
336 burnout management in Swiss outpatient sector into scientific knowledge (26). For this, some  
337 abstractions were still necessary, namely the outcome variables allowing to compare and to  
338 look at the current practices from a care quality and effectiveness perspective. These  
339 abstractions deserve a careful definition and interpretation, with consideration of the study  
340 context.

#### 341 **Relevance and accuracy of the studied variables**

342 We defined four outcomes to analyze the professionals' profiles and practices. The stage of  
343 occupational burnout was defined using a set of open questions on how the professional defines  
344 the burnout and each of its stages of development/severity, considering three main stages: mild  
345 or early burnout, moderate burnout and advanced or clinically severe burnout. The responses  
346 were translated and analyzed using the thematic context method in MaxQDA. The resulting

347 definitions were consistent across professions and regions (21), thus we are confident that  
348 respondents correctly evaluated this outcome for most of their POBs.

349 Regarding the belief on the burnout prognosis, an average assessment for most of one's POBs  
350 can be more challenging, as prognosis depends on multiples factors such as the etiology,  
351 number and severity of symptoms, therapeutical alliance, patient's treatment compliance and  
352 collaboration, as well as availability of the others' support and collaboration. We observed,  
353 however, that most respondents could assess and report their general prognostic beliefs, and  
354 that the rate of those who could not specify it was even lower that for the stage of burnout  
355 (Figure 2).

356 Conversely, the proportion of relapsed patients among the treated POB raised a concern, since  
357 for a quarter of physicians and more than 40% of psychologists, especially the work  
358 psychologists, it was impossible to precise the relapse rate (Figure 2). The discussion with the  
359 scientific committee helped contextualize it, to understand the reason and the impact on the  
360 study results. Indeed, one reason is that a burnout relapse is rarely announced to the professional  
361 by the patient. Moreover, in a psychotherapy context, a patient who relapsed may tend to change  
362 his/her psychotherapist, either following a misalliance with the therapist or for seeking a new  
363 or different treatment approach. Therefore, the accuracy of this outcome may be an issue. Since  
364 we excluded those who could not estimate the average rate of relapse in their patents/clients,  
365 the remaining subsample is likely to be too small to yield results with sufficient statistical  
366 power. This can explain why most associations with this variable are statistically non-  
367 significant and challenging to interpret.

368 Finally, the average rate of POBs ability to return to work after the treatment was well assessed.  
369 Return to work generally symbolizes the recovery (27) or a "return to the normality" (28). Since  
370 return to work is likely to be an outcome, seen as the therapy effect, it can also correspond to

371 the end of the treatment when return to work seems successful (29, 30). Therefore, it is relevant  
372 to assess and to examine this outcome in relation with the treatment modalities as we did.  
373 Regarding the treatment options, in this study we focused on a combination of usually  
374 prescribed treatments or therapies with the contact of POBs' employers, health insurance and  
375 collaborations with other health professionals. For this, we abstracted a 7-class aggregated  
376 variable from 18 options that respondents could select in a multiple-choice question. By doing  
377 this we collapsed the details on therapies prescribed and conducted (Figure S2), as their  
378 consideration without individual POB data would be meaningless. In contrast, it would be  
379 relevant and interesting to consider the different combinations of treatment options delivered at  
380 an individual POB and professional level. This was not possible in the frame of this study but  
381 could be feasible in a prospective cohort study of POBs.

### 382 **Contextual relevance of study findings**

383 It is noteworthy that this study was initiated just before the Covid-19 pandemic. The survey  
384 questionnaire was distributed when the preparation of the 1<sup>st</sup> vaccination campaign started,  
385 which explains that some cantonal associations of GPs and family doctors refused to collaborate  
386 and promote this study. This also can explain the relatively low participation rate, although it  
387 is comparable to other surveys conducted in the field before or after the pandemic (34).  
388 However, as the Covid-19 pandemic increased the incidence and prevalence of mental ill-health  
389 generally and of burnout particularly (11, 19), the proportion of consultations for POB  
390 estimated in this study is likely to under-represent the post-pandemic reality. The pandemic  
391 might also have increased the proportion of severe POBs, the relapse rate, and have decreased  
392 the proportion of those who are able to return to work, as the work conditions worsened in many  
393 instances (6, 35). Consequently, the study findings reflecting the pre-pandemic situation cannot  
394 be directly extrapolated to the pandemic and post-pandemic situation and should be confirmed  
395 in an evolved context.



396 The new national regulation authorizing psychologists-psychotherapists to practice within the  
397 framework of compulsory health insurance independently from psychiatrists is another  
398 contextual change to mention. This regulation entered in operation in July 2022 and might  
399 change the figures on outcome distribution across professions and regions observed in the  
400 present study. This could be another reason for repeating this study in a near future and check  
401 the result reliability in a new context.

#### 402 **Study limitations**

403 This study has several limitations that deserve discussion. Its cross-sectional design is suitable  
404 for producing a reliable picture of the health care professionals in outpatient sector dealing with  
405 POB and describe their activities in general but precludes a formal comparison of their practices  
406 with the Practical recommendations on burnout treatment released by the Swiss network of  
407 experts on burnout (4, 5). Therefore, such a comparison was beyond the scope of the present  
408 study but could be valuable in the future. The 19%-overall response-rate was rather modest but  
409 that of GPs (12%) was particularly low. Given the Covid-19 pandemic context, such a low  
410 participation may conduct to a self-selection of healthcare professionals the most concerned  
411 with BOP management. In turn, this may lead to an over-estimation of POB proportion and a  
412 biased description of practice distributions. As we could only assess the outcomes on an  
413 aggregated level (i.e., as an average for most professionals' POBs), some of observed  
414 associations can be ecological and need confirmation in future studies based on individuals-  
415 level data. As far as we know, such studies of POB do not exist in Switzerland and are also  
416 extremely seldom abroad (31-33). Such studies will also enable comparing the effectiveness  
417 of different treatment options and their combination and producing or updating practice  
418 recommendations regarding burnout management.

419 Although we limited the number of statistical analyses, multiple comparisons using the same  
420 dataset may be still an issue, leading to an increased likelihood of finding significant results by

421 chance. Yet, the result interpretation and validation were conducted in collaboration with the  
422 project scientific committee members to stay true to the original research questions and  
423 hypotheses and enhance the validity and credibility of the study.

424

## 425 **CONCLUSION**

426 This study is the first to objectify the importance of occupational burnout as a health care need  
427 in the outpatient sector in Switzerland. In particular, the study findings point out its relative  
428 importance in general practitioner practice and a potential interest of their training as initiators  
429 and coordinators of burnout treatment. The study revealed that most professionals collaborate  
430 with other health professionals and patient's employer and health insurance only in cases of  
431 severe burnout, pessimistic beliefs on burnout prognosis, and when the return to work is  
432 challenging. The support of this collaborative, interdisciplinary efforts and their extension to  
433 earlier burnout stage might thus improve the treatment outcomes. Education regarding  
434 occupational burnout detection and management seems also necessary, especially in GPs pre-  
435 graduate curriculum. As the study was cross-sectional with some aggregated outcomes, its  
436 findings should be considered with caution and confirmed in future studies, ideally using  
437 prospective cohort design and individual burnout patient data.

438

439

440 **ETHICAL CONSIDERATIONS**

441 The study protocol was submitted to the cantonal ethics commission for Research on Human  
442 Beings of the Canton of Vaud (CER-VD). The CER-VD judged that this study did not fall  
443 within the scope of the Federal Law on Research on Human Beings (HRA) and issued an  
444 exemption from review (BASEC-Nr. Req-2021-01156).

445

446 **AUTHOR CONTRIBUTIONS**

447 IGC, ND, and ND conceived the project and obtained funding. IGC coordinated the study and  
448 drafted the manuscript. RG performed data management and statistical analysis and prepared  
449 figures and tables of study results. All co-authors contributed to the questionnaire development  
450 or testing, survey dissemination, result interpretation and critical review of the manuscript. All  
451 authors agreed on the final version of the manuscript.

452

453 **ACKNOWLEDGEMENTS**

454 We thank persons and organization who help prepare and distribute the survey and supported  
455 this study: S. Blanc, O. Talpain, J. Banrejee, A. Farine, E. Plys, M. Al Gobari, T. Charreau, and  
456 B. Chiarini from Unisanté; S. Barras Duc (FOPH); A.S. Brandt (SECO); M. Brinkrolf (FSP);  
457 M. Dominicé Dao and I. Guessous (HUGe); M.T. Giorgio (SSMT); B. Weil (FMH); Medical  
458 associations of the cantons of Aargau, Bern, Geneva, Glarus, Jura, Neuchatel, Solothurn, St.  
459 Gallen, Thurgau, Vaud, and Wallis. We also thank all respondents for their time and  
460 participation in the study.

461

462 **FUNDING**

463 This work was supported by the General Directorate of Health of the Canton of Vaud via the  
464 grant of the Commission for Health Promotion and the Fight against Addictions (Grant N°  
465 8273/3636000000-801).

466

467 **CONFLICT OF INTEREST**

468 The authors declare no conflict of interest

469

470 **SUPPLEMENTARY MATERIAL / DATASETS**

471 1 file with 18 tables and 2 figures

472

473     **REFERENCES**

- 474     1.   World Health Organization. Burn-out an "occupational phenomenon": International Classification  
475         of Diseases 2019 [Available from: [https://www.who.int/mental\\_health/evidence/burn-out/en/](https://www.who.int/mental_health/evidence/burn-out/en/).  
476     2.   WHO. ICD-11 for Mortality and Morbidity Statistics: QD85 Burn-out. 2019.  
477     3.   Armon G, Melamed S, Toker S, Berliner S, Shapira I. Joint effect of chronic medical illness and  
478         burnout on depressive symptoms among employed adults. *Health Psychol.* 2014;33(3):264-72.  
479     4.   Hochstrasser B, Brühlmann T, Cattapan K, Hättenschwiler J, Holsboer-Trachsler E, Kawohl W,  
480         et al. Le traitement du burnout, partie 1: principes fondamentaux. *Swiss Med Forum.*  
481         2016;16(25):538–41.  
482     5.   Hochstrasser B, Brühlmann T, Cattapan K, Hättenschwiler J, Holsboer-Trachsler E, Kawohl W,  
483         et al. Le traitement du burnout, partie 2: Recommandations pratiques. *Swiss Med Forum.*  
484         2016;16(26):561–7.  
485     6.   GBD. Global, regional, and national burden of 12 mental disorders in 204 countries and territories,  
486         1990-2019: a systematic analysis for the Global Burden of Disease Study 2019. *Lancet Psychiatry.*  
487         2022;9(2):137-50.  
488     7.   Proudman D, Greenberg P, Nellesen D. The Growing Burden of Major Depressive Disorders  
489         (MDD): Implications for Researchers and Policy Makers. *Pharmacoeconomics.* 2021;39(6):619-  
490         25.  
491     8.   Guseva Canu I, Mesot O, Györkös C, Mediouni Z, Mehlum IS, Bugge MD. Burnout syndrome in  
492         Europe: towards a harmonized approach in occupational health practice and research. *Ind Health.*  
493         2019;57(6):745-52.  
494     9.   Guseva Canu I, Marca SC, Dell'Oro F, Balázs Á, Bergamaschi E, Besse C, et al. Harmonized  
495         definition of occupational burnout: A systematic review, semantic analysis, and Delphi consensus  
496         in 29 countries. *Scand J Work Environ Health.* 2021;47(2):95-107.  
497     10. Al-Gobari M, Shoman Y, Blanc S, Guseva Canu I. Point prevalence of burnout in Switzerland: a  
498         systematic review and meta-analysis. *Swiss Med Wkly.* 2022;152:w30229.

- 499 11. Lucas G, Colson S, Boyer L, Inthavong K, Haller PH, Lancon C, et al. Risk factors for burnout and  
500 depression in healthcare workers: The national AMADEUS study protocol. *Encephale*.  
501 2022;48(3):247-53.
- 502 12. Rotenstein LS, Torre M, Ramos MA, Rosales RC, Guille C, Sen S, et al. Prevalence of Burnout  
503 Among Physicians: A Systematic Review. *Jama*. 2018;320(11):1131-50.
- 504 13. Shoman Y, Rousson V, Bianchi R, Guseva Canu I. Holistic Assessment of Factors Associated with  
505 Exhaustion, the Main Symptom of Burnout: A Meta-Analysis of Longitudinal Studies. *Int J*  
506 *Environ Res Public Health*. 2022;19(20).
- 507 14. Jha AK, Iliff AR, Chaoui AA, Defossez S, Bombaugh MC, Miller IR. Crisis in Health Care: A Call  
508 to Action on Physician Burnout. Massachusetts Medical Society. [https://cdn1.sph.harvard.edu/wp-](https://cdn1.sph.harvard.edu/wp-content/uploads/sites/21/2019/01/PhysicianBurnoutReport2018FINAL.pdf)  
509 [content/uploads/sites/21/2019/01/PhysicianBurnoutReport2018FINAL.pdf](https://cdn1.sph.harvard.edu/wp-content/uploads/sites/21/2019/01/PhysicianBurnoutReport2018FINAL.pdf). 2019.
- 510 15. OFS. Enquête suisse sur la santé 2017. Vue d'ensemble (Version corrigée 10.12.2018). Neuchatel,  
511 Suisse: Office Fédéral de Statistique; 2018.
- 512 16. Jensen R, Ulshöfer CT. Job Stress Index 2022.  
513 [https://promotionsante.ch/sites/default/files/migration/documents/Feuille\\_d\\_information\\_072\\_PS](https://promotionsante.ch/sites/default/files/migration/documents/Feuille_d_information_072_PS)  
514 [CH\\_2022-08 - Job Stress Index\\_2022.pdf](https://promotionsante.ch/sites/default/files/migration/documents/Feuille_d_information_072_PS). 2022.
- 515 17. Chen HJ, Liao LL, Lin HL, Chang LC. Burnout and Mental Health and Well-Being of School  
516 Nurses After the First Wave of the COVID-19 Pandemic: A National Cross-Sectional Survey. *J*  
517 *Sch Nurs*. 2023;39(2):125-32.
- 518 18. Llanos-Contreras O, Ibáñez MJ, Prado-Gascó VJ. Job-demand and family business resources in  
519 pandemic context: How they influence burnout and job satisfaction. *Front Psychol*.  
520 2022;13:1061612.
- 521 19. Martí-González M, Alcalá-Ibañez ML, Castán-Esteban JL, Martín-Bielsa L, Gallardo LO. COVID-  
522 19 in School Teachers: Job Satisfaction and Burnout through the Job Demands Control Model.  
523 *Behav Sci (Basel)*. 2023;13(1).
- 524 20. Blanc S, Shoman Y, Talpain O, Saillant S, Chiarini B, von Känel R, et al. Who deals with burnout  
525 in Switzerland and how? A qualitative study among (para-)medical and non-medical professionals.  
526 *Swiss Archives Neurol Psychiat Psychother*. 2023;4-17.

- 527 21. Plys E, A-GM, Farine A., Shoman Y., Rochat L., Talpain O., Blanc S., Weissbrodt R., Saillant S.,  
528 Rota F., Droz N., Wahlen A., Guseva Canu I. Prise en charge des personnes en burnout en Suisse :  
529 Résultats de l'étude épidémiologique auprès des professionnels de la santé. Lausanne: Unisanté –  
530 Centre universitaire de médecine générale et santé publique; 2022. Contract No.: 337.
- 531 22. Droz N, Wahlen A. Burnout, la maladie du XXIe siècle? . Lausanne: Favre; 2020.
- 532 23. Johansson B. Screening Method for Assessment of Work Ability for Patients Suffering From  
533 Mental Fatigue. *Front Behav Neurosci.* 2022;16:869377.
- 534 24. Strömbäck M, Fjellman-Wiklund A, Keisu S, Sturesson M, Eskilsson T. Restoring confidence in  
535 return to work: A qualitative study of the experiences of persons with exhaustion disorder after a  
536 dialogue-based workplace intervention. *PLoS One.* 2020;15(7):e0234897.
- 537 25. Pijpker R, Vaandrager L, Veen EJ, Koelen MA. Combined Interventions to Reduce Burnout  
538 Complaints and Promote Return to Work: A Systematic Review of Effectiveness and Mediators of  
539 Change. *Int J Environ Res Public Health.* 2019;17(1).
- 540 26. Nguyen Huynh A, Béguelin A, Krief P, Marion-Veyron R, Mediouni Z, Regamey F, et al.  
541 [Detection and treatment of burnout by physicians of Unisanté]. *Rev Med Suisse.*  
542 2021;17(723):221-4.
- 543 27. Song Y, Jia Y, Sznajder K, Ding J, Yang X. Recovery experiences mediate the effect of burnout  
544 on life satisfaction among Chinese physicians: a structural equation modeling analysis. *Int Arch*  
545 *Occup Environ Health.* 2021;94(1):31-41.
- 546 28. Fadhlaoui A, Mrad H, Vinette B, Bilodeau K. The post-treatment return-to-work transition  
547 experience for breast cancer survivors under 50 years of age. *Can Oncol Nurs J.* 2021;31(4):393-8.
- 548 29. Rooman C, Sterkens P, Schelfhout S, Van Royen A, Baert S, Deros E. Successful return to work  
549 after burnout: an evaluation of job, person- and private-related burnout determinants as  
550 determinants of return-to-work quality after sick leave for burnout. *Disabil Rehabil.*  
551 2022;44(23):7106-15.
- 552 30. Vasey C. [Burnout: priorities of effective treatment]. *Soins Psychiatr.* 2018;39(318):24-7.

- 553 31. Kärkkäinen R, Saaranen T, Hiltunen S, Ryyänen OP, Räsänen K. Systematic review: Factors  
554 associated with return to work in burnout. *Occup Med (Lond)*. 2017;67(6):461-8.
- 555 32. Glise K, Wiegner L, Jonsdottir IH. Long-term follow-up of residual symptoms in patients treated  
556 for stress-related exhaustion. *BMC Psychology*. 2020;8(1):26.
- 557 33. Stenlund T, Nordin M, Järholm LS. Effects of rehabilitation programmes for patients on long-  
558 term sick leave for burnout: a 3-year follow-up of the REST study. *J Rehabil Med*. 2012;44(8):684-  
559 90.
- 560 34. Remy V, Guseva Canu I. Healthy bus drivers, sustainable public transport: three-time repeated  
561 cross-sectional study in Switzerland. *Int J Public Health*. 2023;21(68)1605925. doi:  
562 10.3389/ijph.2023.1605925.
- 563 35. Remy V, Guseva Canu I. Impact of the SARS-CoV-2 pandemic on health and working conditions  
564 of Swiss bus drivers. *Journal of Transport & Health*. 2023;32:101683.  
565 <https://doi.org/10.1016/j.jth.2023.101683>

566

Table 1. Reponse rate per profession and medical specialty in the STBOS-VD survey

<b>Profession</b>	<b>Target population</b>	<b>Number of respondents</b>	<b>Response rate (%)</b>
Physiciens	10 272	1 723	17
General practitioners	7 227	874	12
Psychiatrists	2 968	657	22
Psychologists	6 514	1 326	20
Occupational health nurses	97	39	40
Other	-	128	-
Total	16 883	3 216	19



Table 2. Descriptive characteristics of the study sample

Characteristics	N	%
Total number of respondents	3216	
Participants confronted to patients with burnout	2951	
Participants treating patients with burnout	1130	100.0
Sex		
Male	414	36.6
Female	716	63.4
Age		
Less than 30 years	17	1.5
30 - 39 years	169	15.0
40 - 49 years	306	27.1
50 - 59 years	335	29.7
60 - 65 years	157	13.9
More than 65 years	146	12.9
Language of correspondance		
French	529	46.8
German	570	50.4
Italian	31	2.7
Principal Swiss region		
Région lémanique (VD, VS, GE)	409	36.2
Espace Mittelland (BE, FR, SO, NE, JU)	228	20.2
Nordwestschweiz (BS, BL, AG)	138	12.2
Zürich (ZH)	157	13.9
Ostschweiz (GL, SH, AR, AI, SG, GR, TG)	97	8.6
Zentralschweiz (LU, UR, SZ, OW, NW, ZG)	70	6.2
Ticino (TI)	31	2.7
Job category		
Physician	713	63.1
Psychologist	410	36.3
Occupational Health Nurse	2	0.2
Other	5	0.4
Principal place of work		
Private practice	894	79.1
Clinic or private care center	60	5.3
Hospital or public clinic	121	10.7
Public company	13	1.2
Private company	22	2.0
Insurance	3	0.3
Other	17	1.5
	Median	IQR
Number of consultations in the last month	85	50 - 150
Number of consultations for burnout in the last month	4	2 - 6
Number of years in practice	15	8 - 25



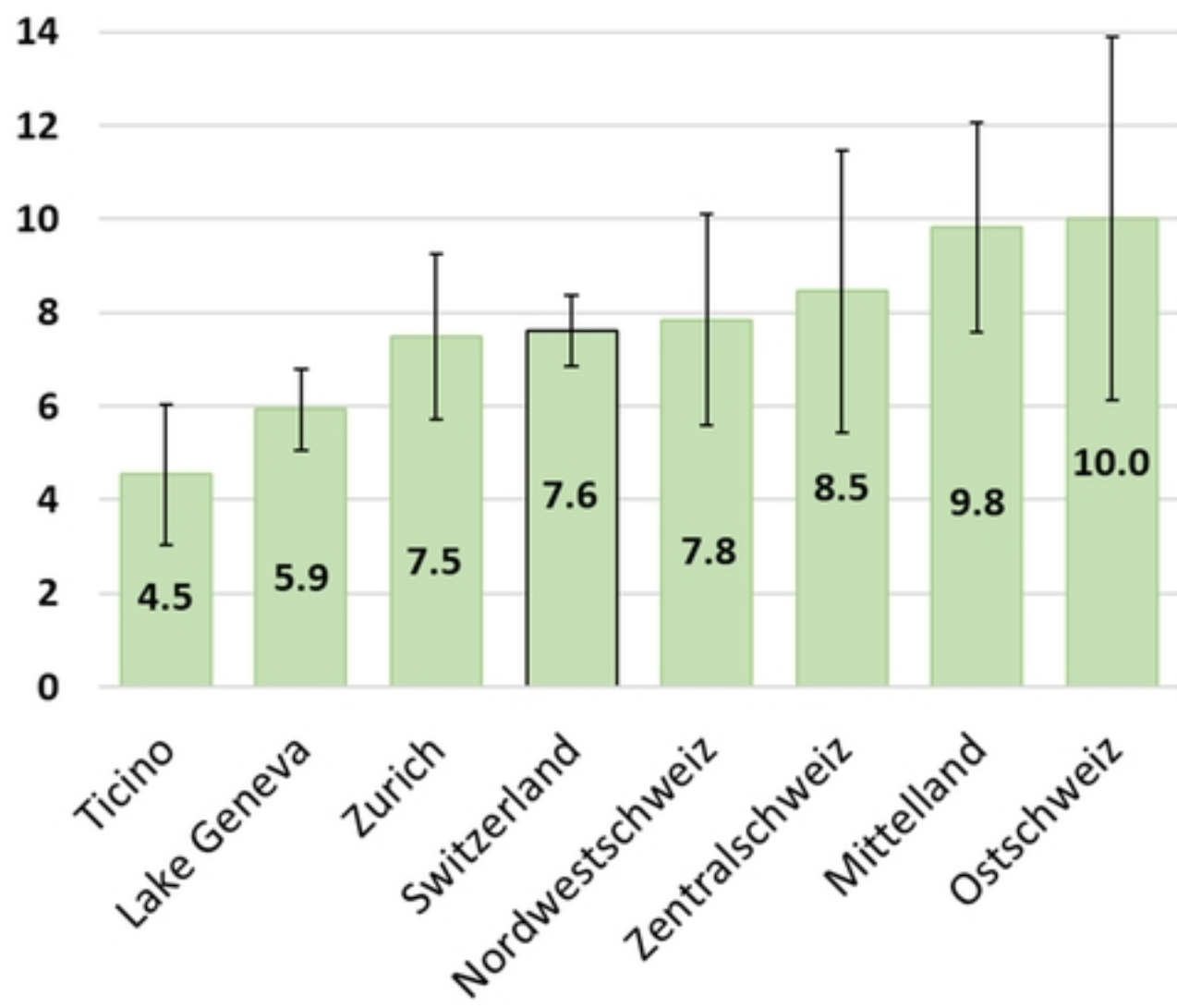


Figure 1

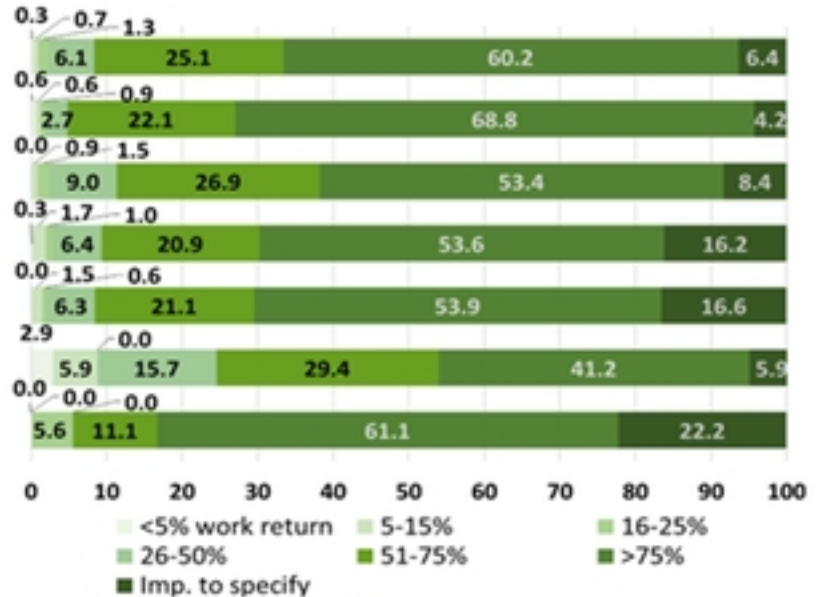
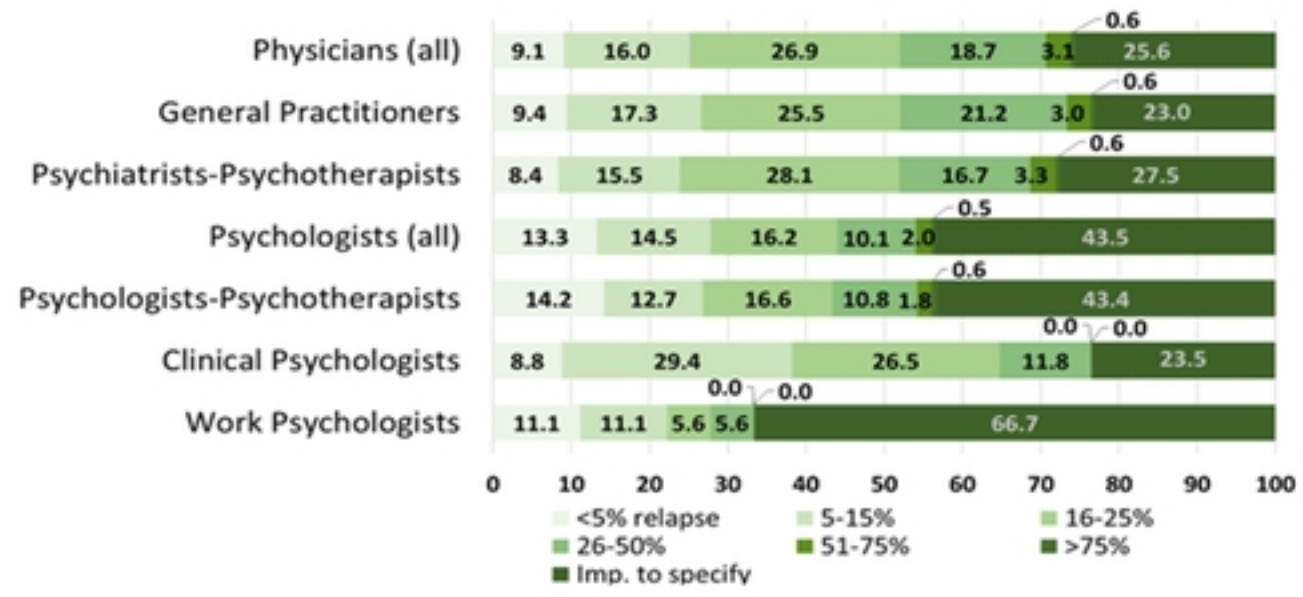
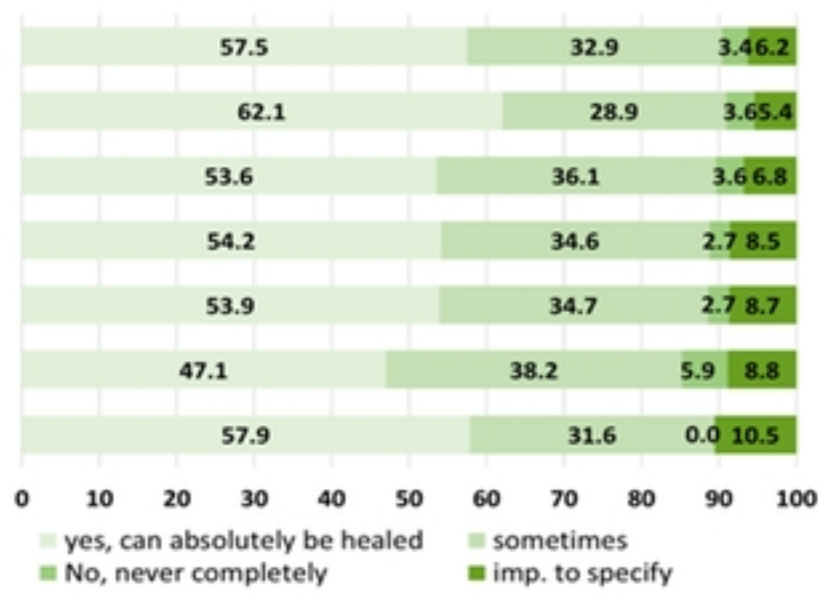
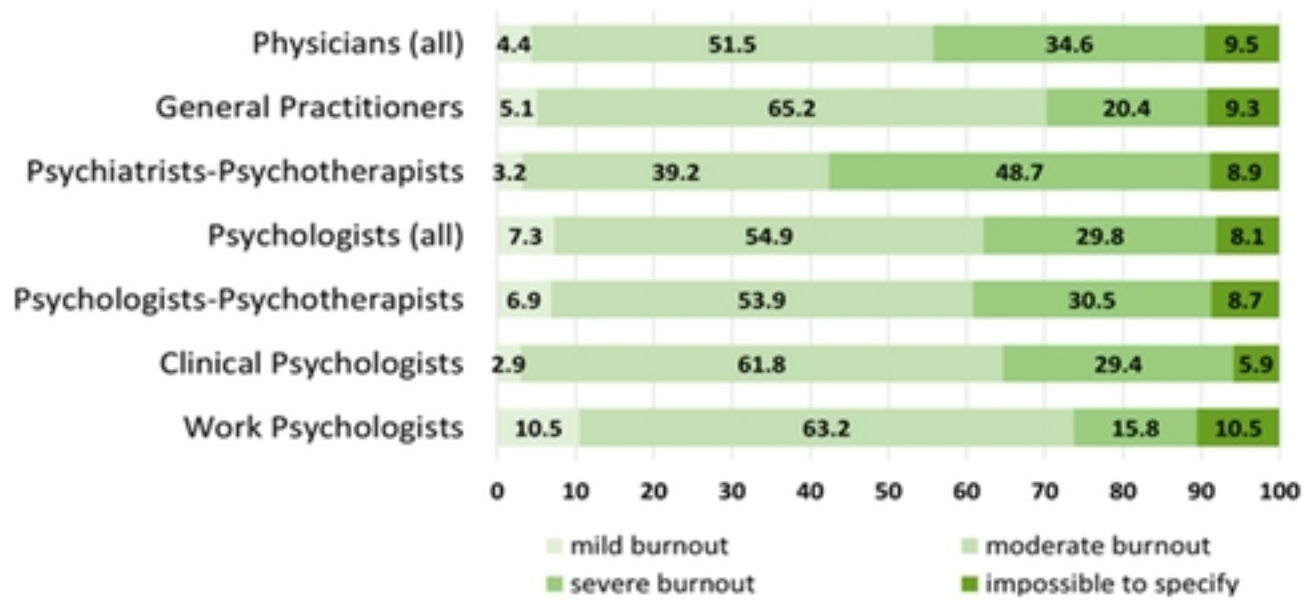


Figure 2